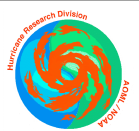




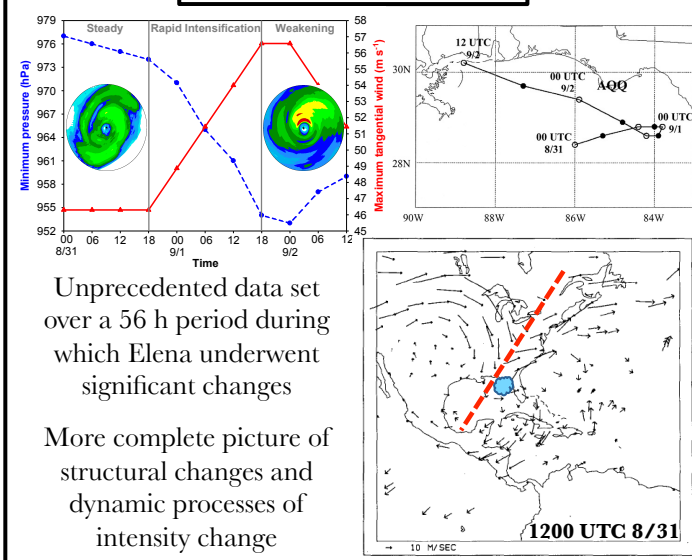
The Structure and Evolution of Hurricane Elena (1985)

Part I: Symmetric Intensification

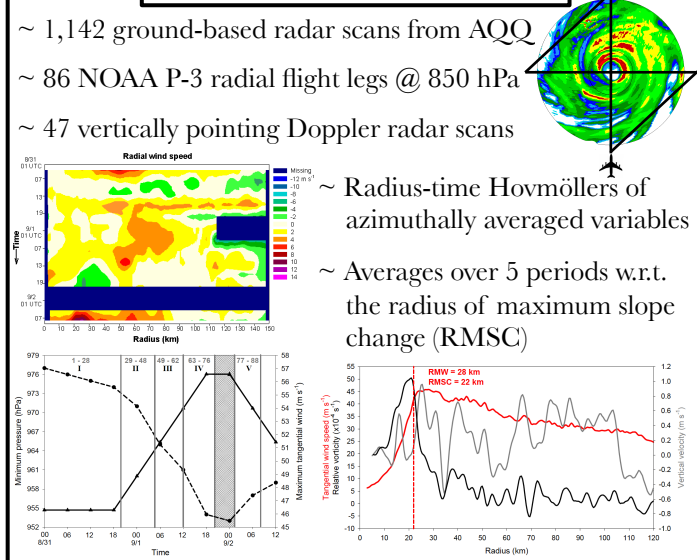
Kristen L. Corbosiero, John Molinari and Michael L. Black



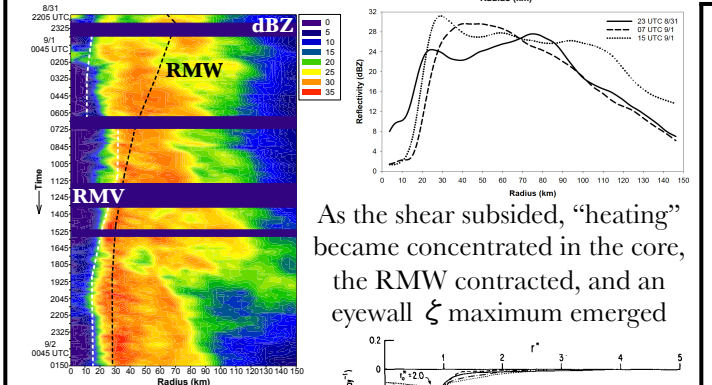
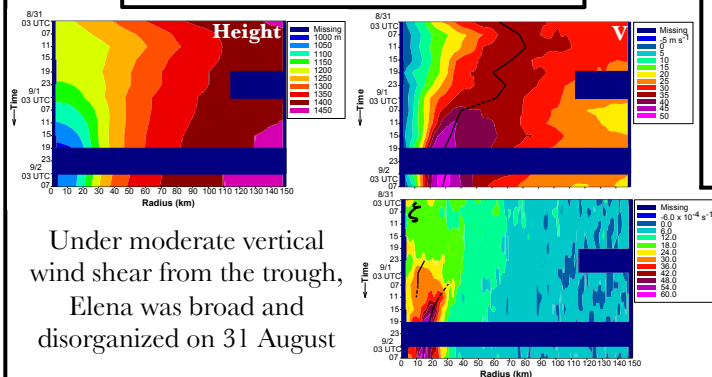
Why Elena (1985)?



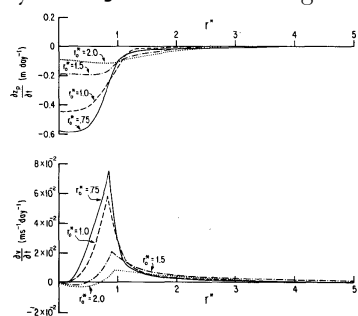
Data and Methodology



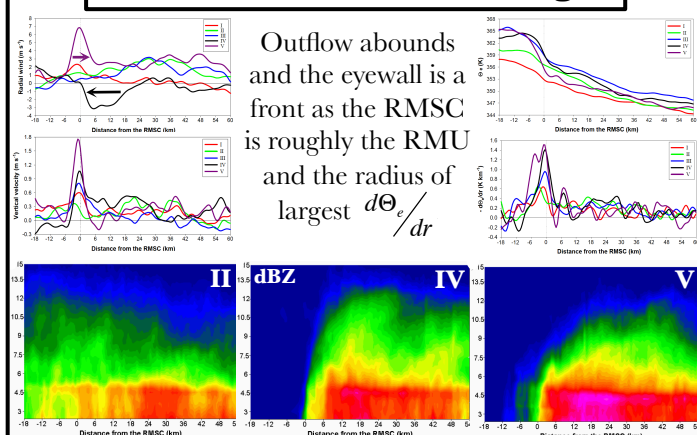
Radius-time Hovmöllers



As the shear subsided, “heating” became concentrated in the core, the RMW contracted, and an eyewall ξ maximum emerged



Radial and vertical changes



During intensification, the eye clears, the inner edge of the eyewall becomes sharp (and is the RMSC), and the outward slope of the eyewall is nearly constant up to 12 km.

