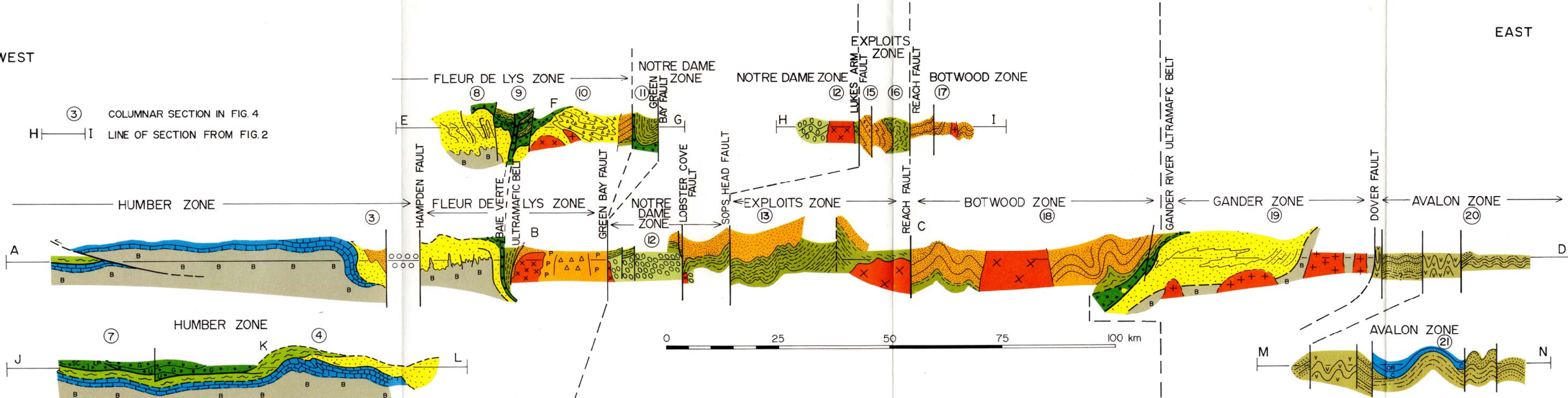


A GEOTRAVERSE ACROSS THE NEWFOUNDLAND APPALACHIANS

WEST

EAST



③ COLUMNAR SECTION IN FIG. 4
H—I LINE OF SECTION FROM FIG. 2

HUMBER ZONE

HUMBER ZONE

HUMBER AND FLEUR DE LYS ZONES

NOTRE DAME, EXPLICIT AND BOTWOOD ZONES

GANDER AND AVALON ZONES

- | | | | | |
|---|---|---|---|--|
| <ul style="list-style-type: none"> OPHIOLITE SEQUENCE (BAY OF ISLANDS COMPLEX) ASSOCIATED VOLCANIC AND PLUTONIC ROCKS, ULTRAMAFIC ROCKS LATE HADRYNIAN-MIDDLE ORDOVICIAN CLASTIC AND CARBONATE ROCKS (HUMBER ARM SUPERGROUP) CAMBRO-ORDOVICIAN SHELF CLASTIC AND CARBONATE ROCKS GRENVILLIAN BASEMENT ROCKS | <ul style="list-style-type: none"> OPHIOLITE SEQUENCE OF THE BAIE VERTE ULTRAMAFIC BELT HADRYNIAN TO CAMBRO-ORDOVICIAN CLASTIC ROCKS ORDOVICIAN PILLOW LAVAS AND ASSOCIATED VOLCANICLASTIC ROCKS, MINOR SEDIMENTS OPHIOLITE SEQUENCE OF THE BAIE VERTE ULTRAMAFIC BELT EARLY ORDOVICIAN MAFIC AND SILICIC VOLCANIC ROCKS HADRYNIAN TO CAMBRO-ORDOVICIAN CLASTIC ROCKS | <ul style="list-style-type: none"> CARBONIFEROUS SANDSTONES AND CONGLOMERATES SILURO-DEVONIAN RHYOLITE-BRECCIA COMPLEX, P: QUARTZ FELDSPAR PORPHYRY SILURO-DEVONIAN MAFIC AND SILICIC VOLCANIC ROCKS, CLASTIC SEDIMENTS BURLINGTON GRANODIORITE (ORDOVICIAN) + DUNAMAGON GRANITE BETTS COVE OPHIOLITE COMPLEX TRONDJEMITE (MANSFIELD COVE AND TWILLINGATE PLUTONS) PILLOW LAVAS, VOLCANICLASTIC ROCKS, MINOR SILICIC VOLCANIC ROCKS (CAMBRIAN AND OLDER?) | <ul style="list-style-type: none"> ORDOVICIAN (PRE-CARADOC) PILLOW LAVAS AND VOLCANICLASTIC ROCKS OF NOTRE DAME ZONE LOWER SILURIAN OLISTOSTROME DUNNAGE MELANGE (CAMBRIAN-LOWER ORDOVICIAN) ORDOVICIAN AND OLDER? (PRE-CARADOC) CLASTIC AND MAFIC VOLCANIC SEQUENCES OF EXPLICIT AND BOTWOOD ZONES MIDDLE ORDOVICIAN (CARADOC) TO SILURIAN CLASTIC ROCKS AND MAFIC TO SILICIC VOLCANIC ROCKS GRANITE (DEVONIAN) GABBRO-DIORITE-GRANODIORITE PLUTONS (DEVONIAN) | <ul style="list-style-type: none"> CAMBRO-ORDOVICIAN SHALLOW WATER CLASTIC ROCKS C: CAMBRIAN OR: ORDOVICIAN LATE HADRYNIAN RED BEDS AND ASSOCIATED VOLCANIC ROCKS (MUSGRAVETOWN GROUP) DOMINANTLY MARINE CLASTIC ROCKS (CONNECTING POINT GROUP) SILICIC AND MAFIC VOLCANIC ROCKS (LOVE COVE GROUP) |
|---|---|---|---|--|

HADRYNIAN MAY BE ALL OR IN PART EQUIVALENT