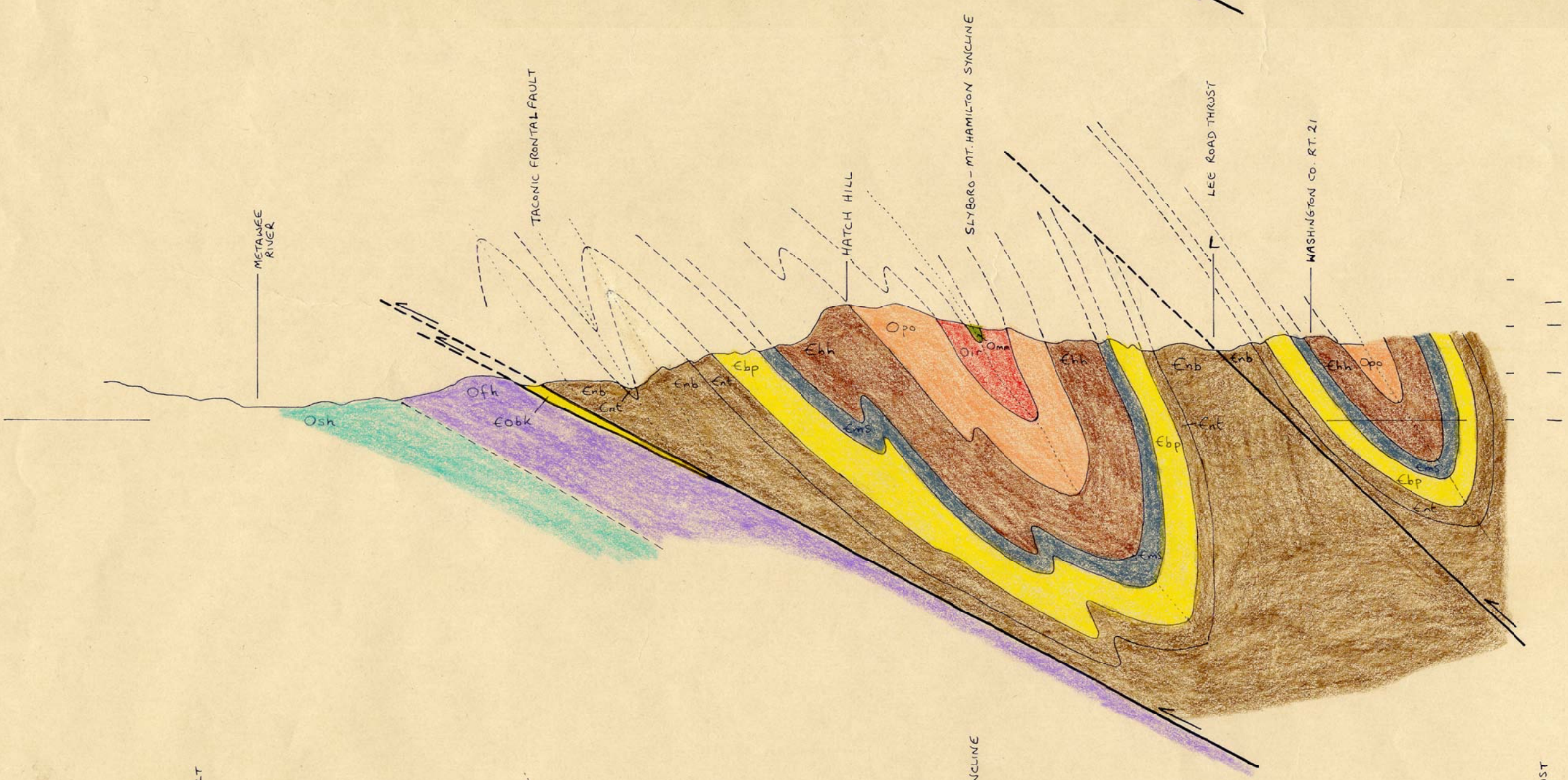
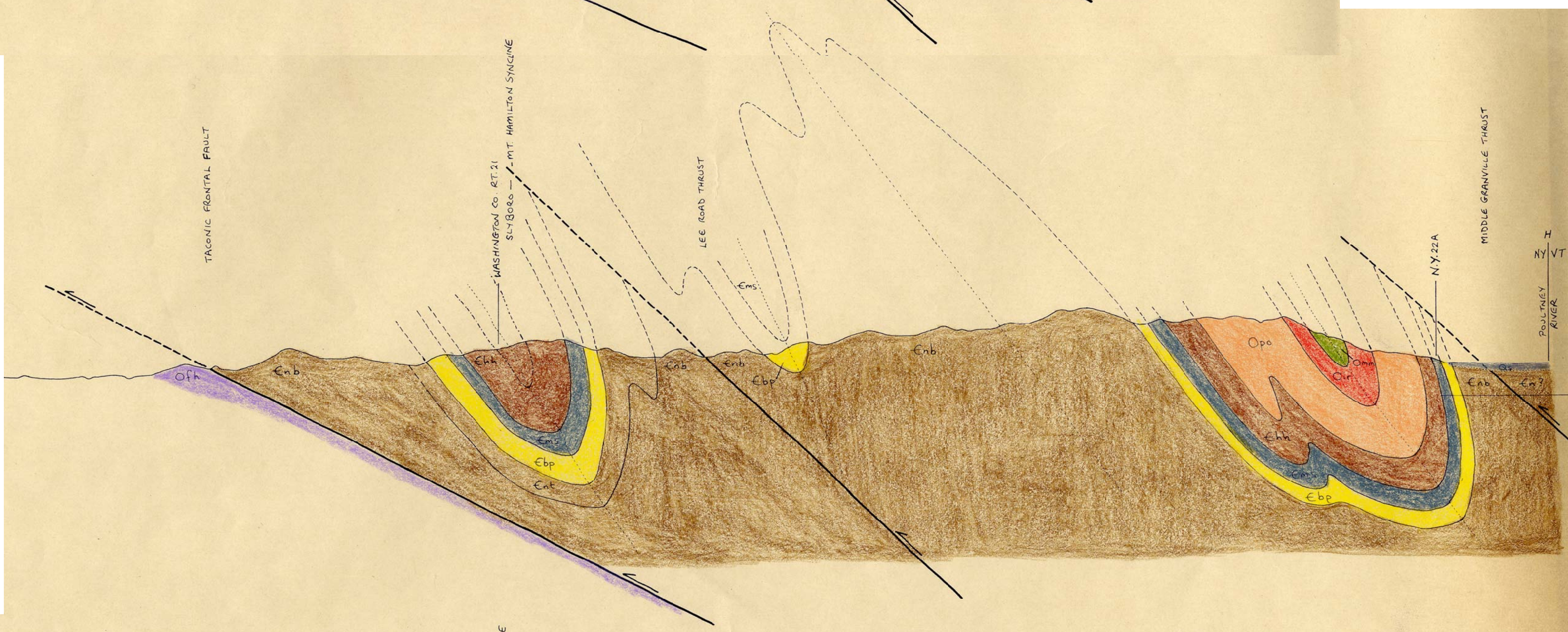
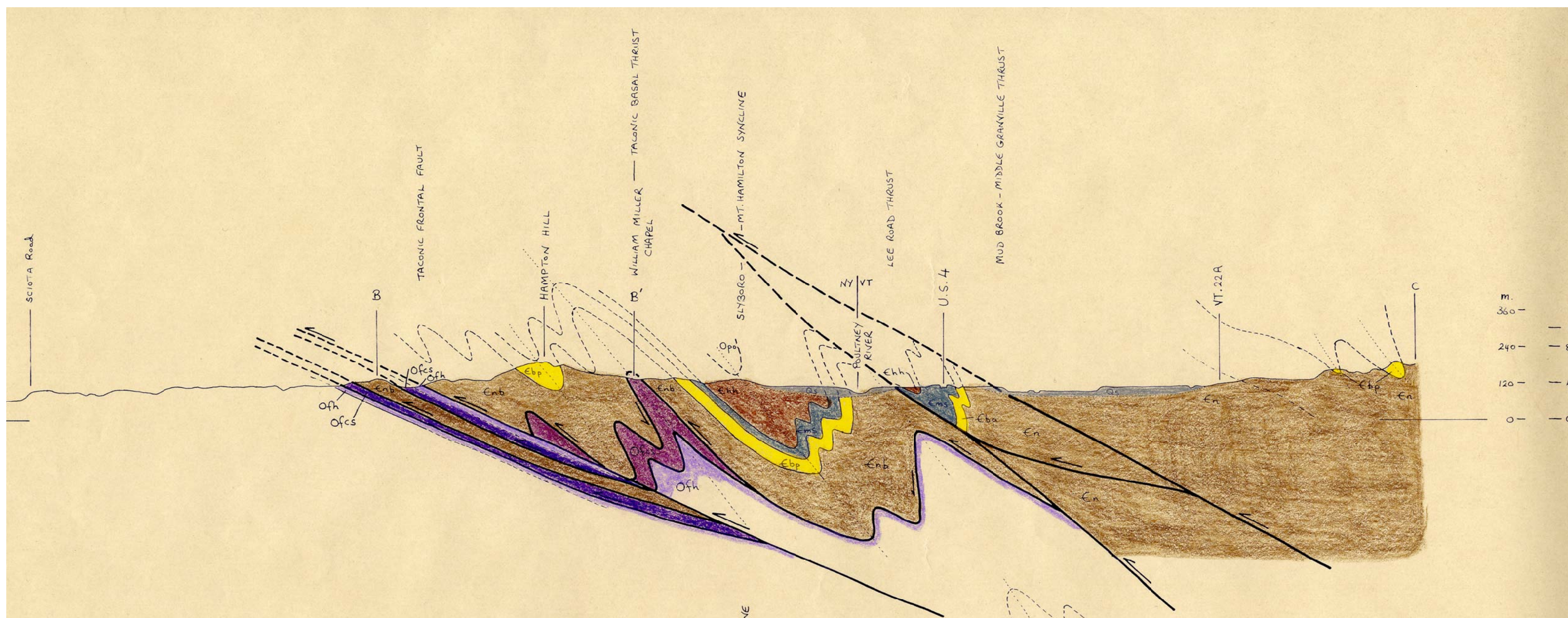


Cross-sections of the Taconic Allochthon in the Thorn Hill and Granville map quadrangles

-- scans of manuscript as submitted by W.S.F. Kidd for inclusion in:
 Fisher, D.W., (1985) Bedrock Geology of the Whitehall-Glens Falls region.
 N.Y. State Museum and Science Service Map and Chart Series 35



Drawn at quadrangle map horizontal scale: 1:24,000
 Vertical Exaggeration 2X (V=2H)

For locations, see manuscript map

Sections are aligned relative to axial trace of Slyboro-Mt. Hamilton syncline

