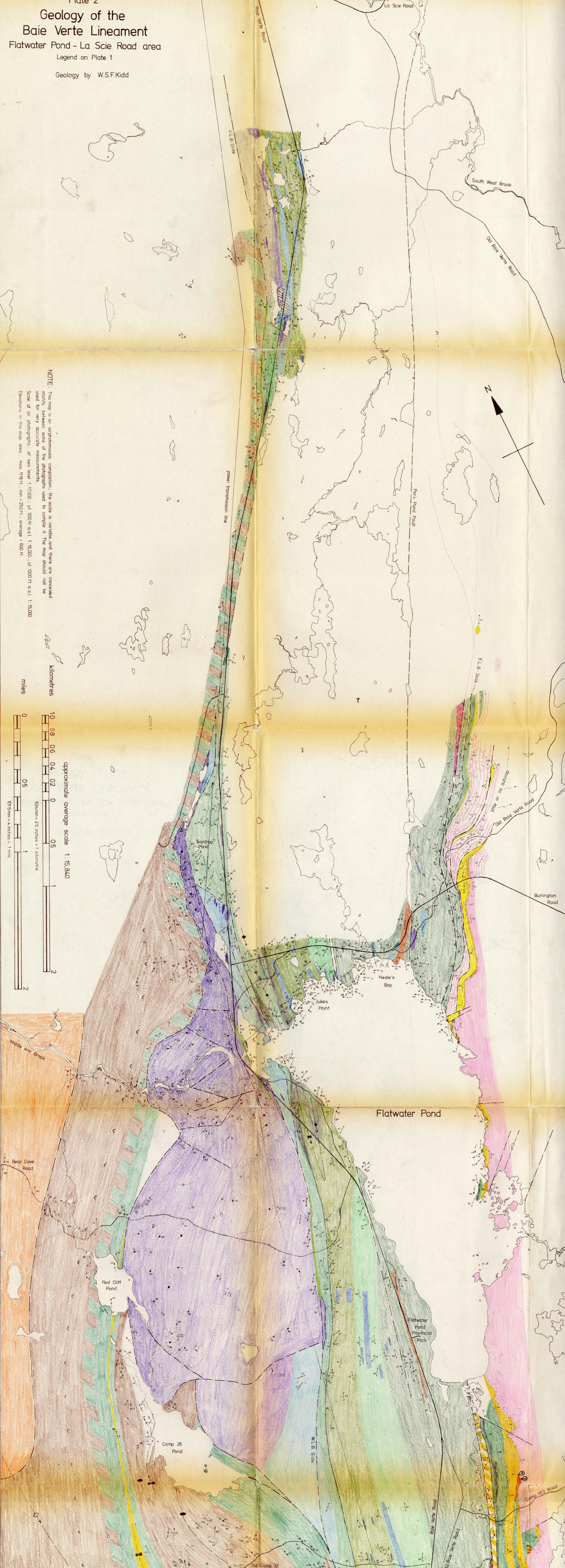


Geology of the Baie Verte Lineament Flatwater Pond - La Scie Road area

Legend on Plate 1

Geology by W.S.F.Kidd



NOTE: This map is an orthophotomosaic compilation; the scale is variable and there are concealed misfits between some of the photographs used to compile it. The map should not be used for very accurate measurements.

Scale of air photographs: at sea level 1:17,000; at 500 ft a.s.l. 1:16,000; at 1,000 ft a.s.l. 1:15,000

Elevations in this map area: max. 118 ft.; min. -250 ft.; average - 600 ft.

kilometres

approximate average scale 1:15,840

miles

