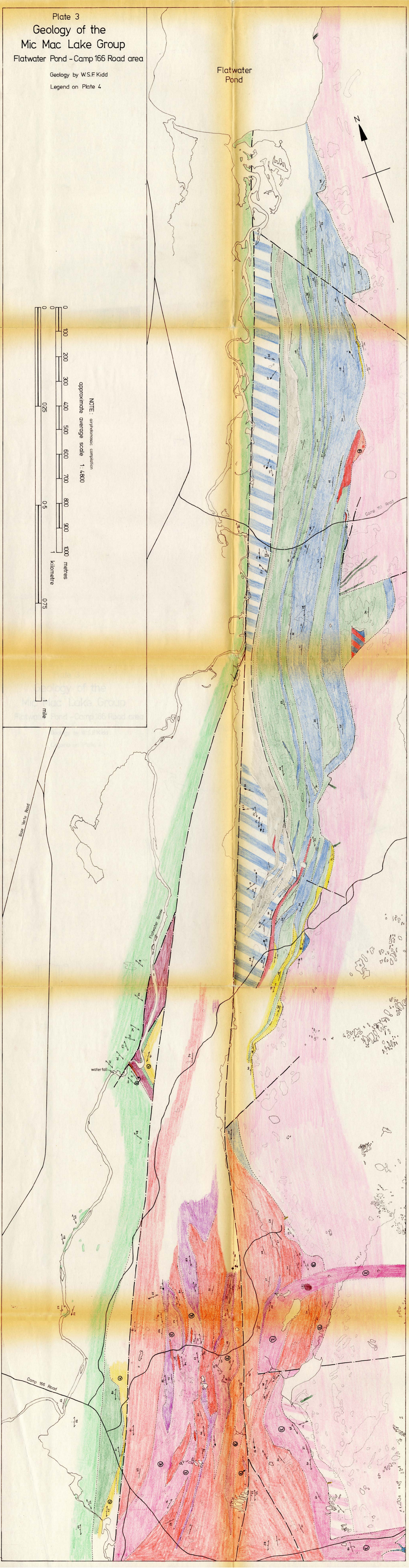
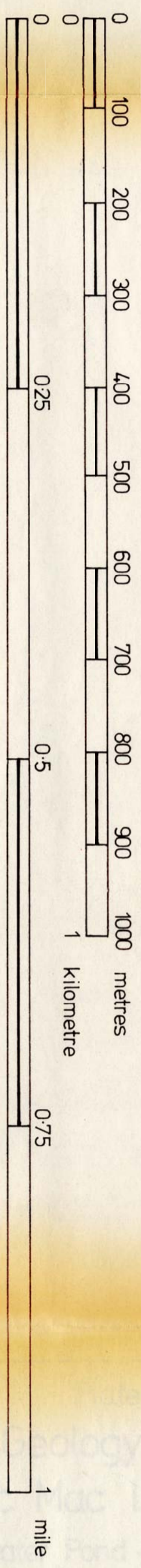
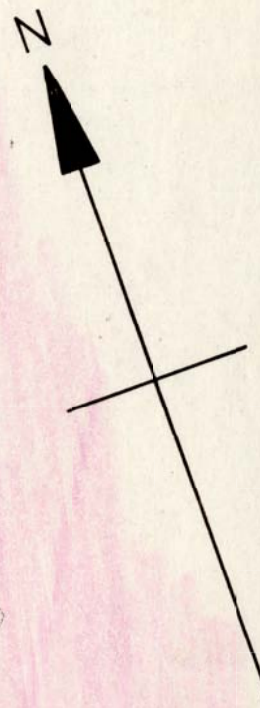


Plate 3  
 Geology of the  
 Mic Mac Lake Group  
 Flatwater Pond - Camp 166 Road area

Geology by W.S.F. Kidd  
 Legend on Plate 4

Flatwater  
 Pond



Baye Verle Road

Firthwater Brook

water fall

Camp 166 Road

Camp 153 Road