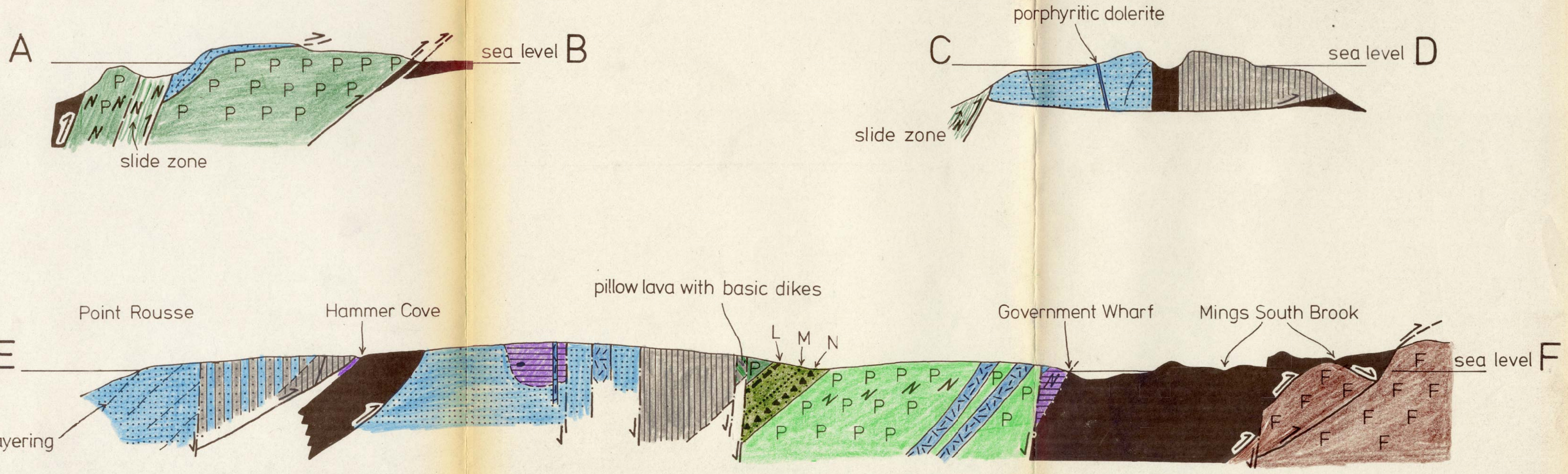
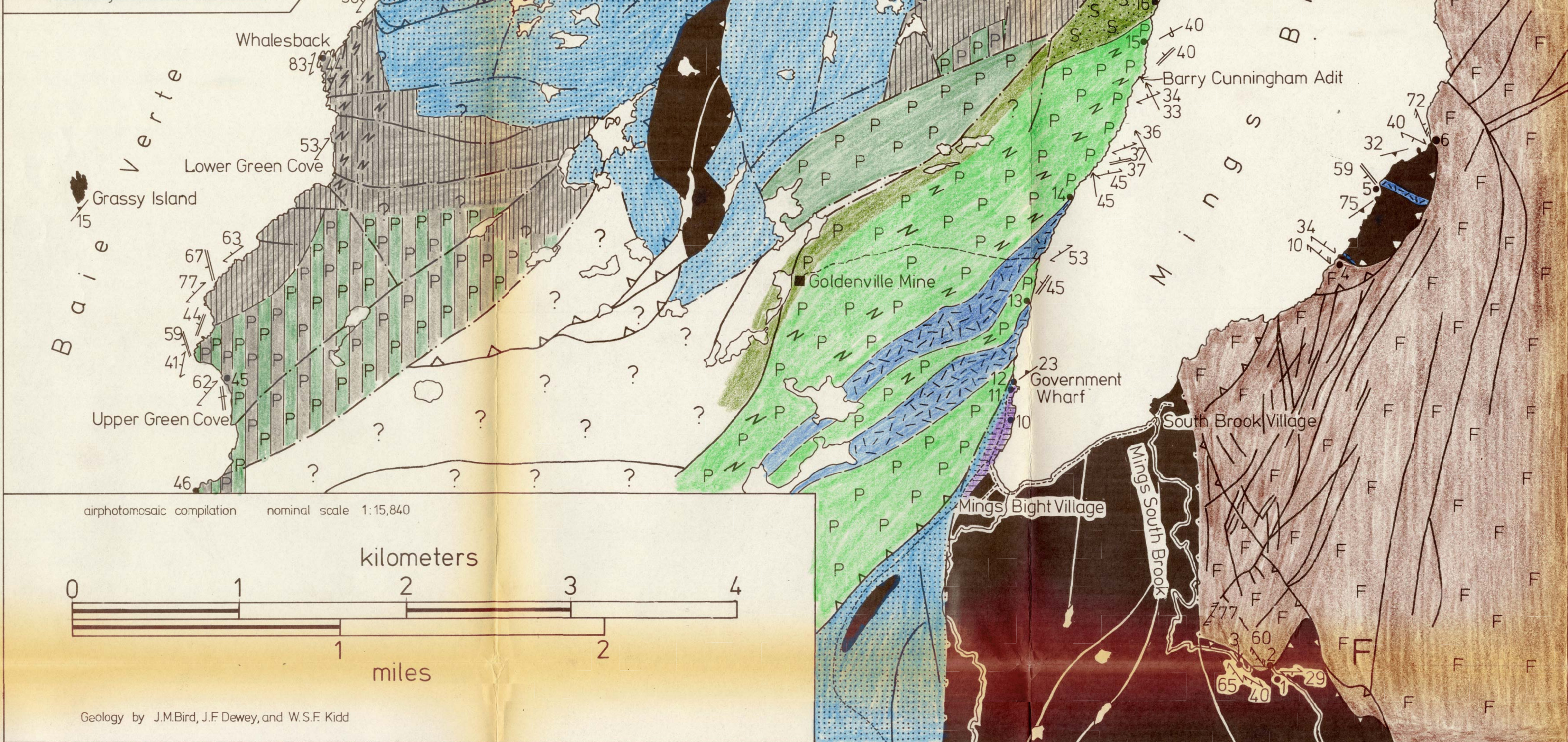


- Porphyritic dolerite
- Sediment
- Pillow lava-hyaloclastite-minor sediment
- Pillow lava with basic dikes
- Sheeted complex [100% basic dikes]
- Gabbro with basic dikes
- Gabbro
- Ultramafic-gabbro transition
- Ultramafic rocks
- Fleur-de-Lys Supergroup

- Inverted bedding
- Cumulate banding
- Flow layering
- Dike orientation
- Strongly deformed terrane
- Stretching lineation [L1] in Baie Verte Group
- Cleavage[S1]
- Schistosity in Fleur-de-Lys Supergroup
- Lithologic boundary
- Steep fault
- Thrust



Geology by J.M.Bird, J.F.Dewey, and W.S.F.Kidd