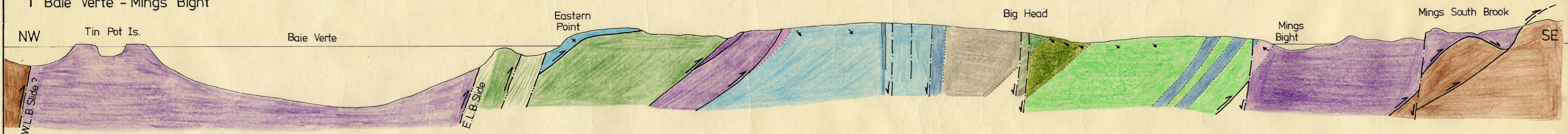
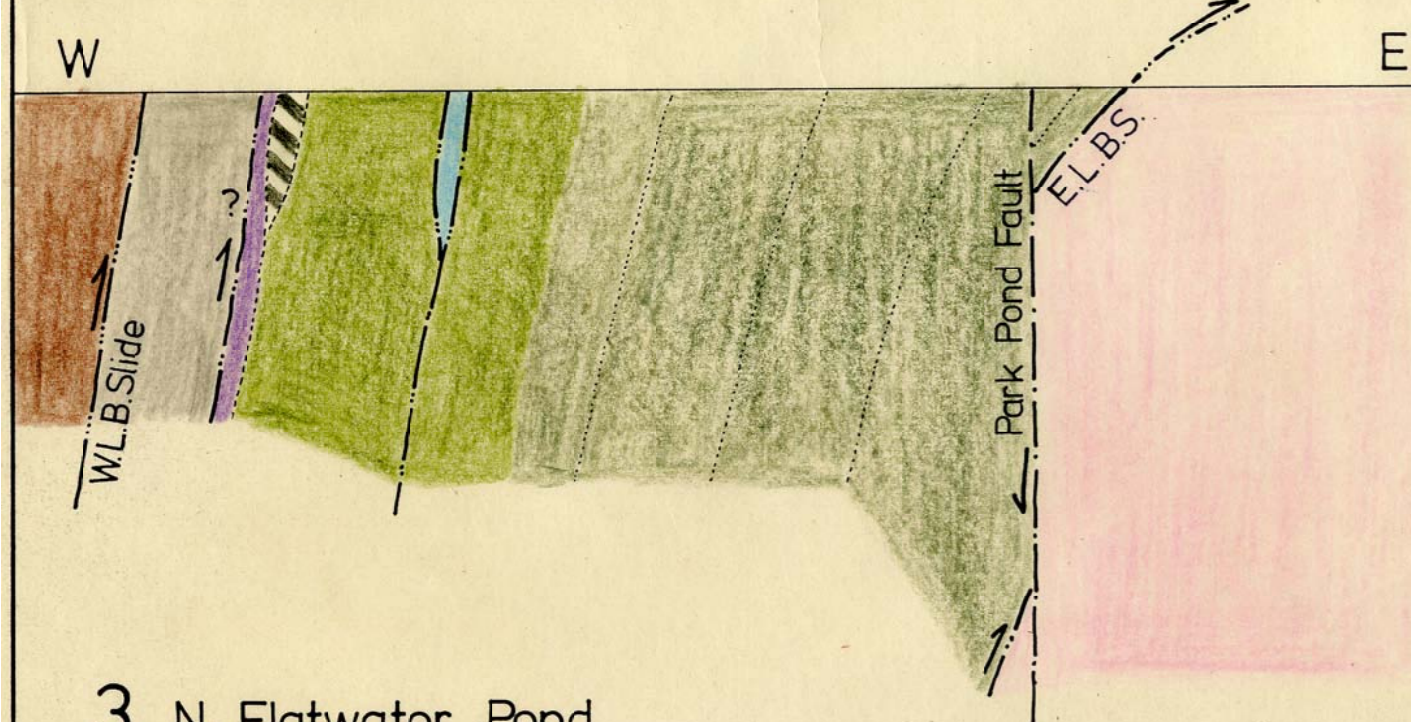


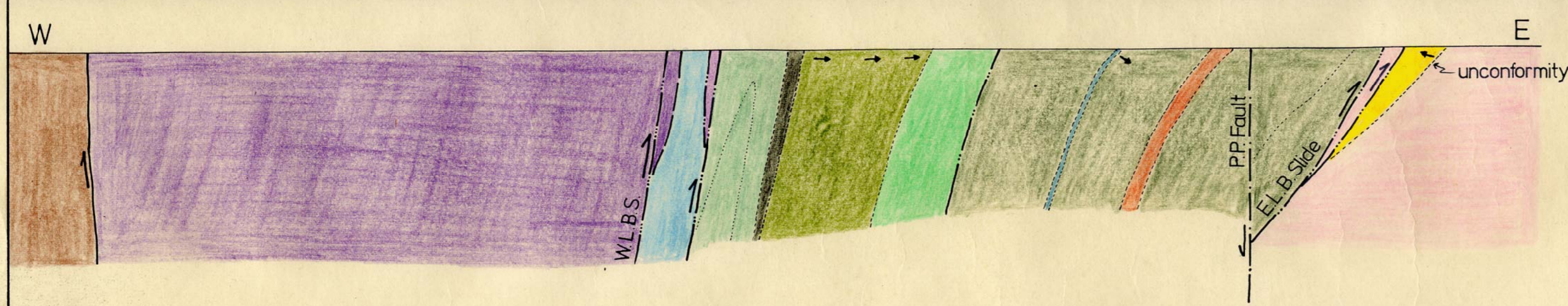
1 Baie Verte - Mings Bight



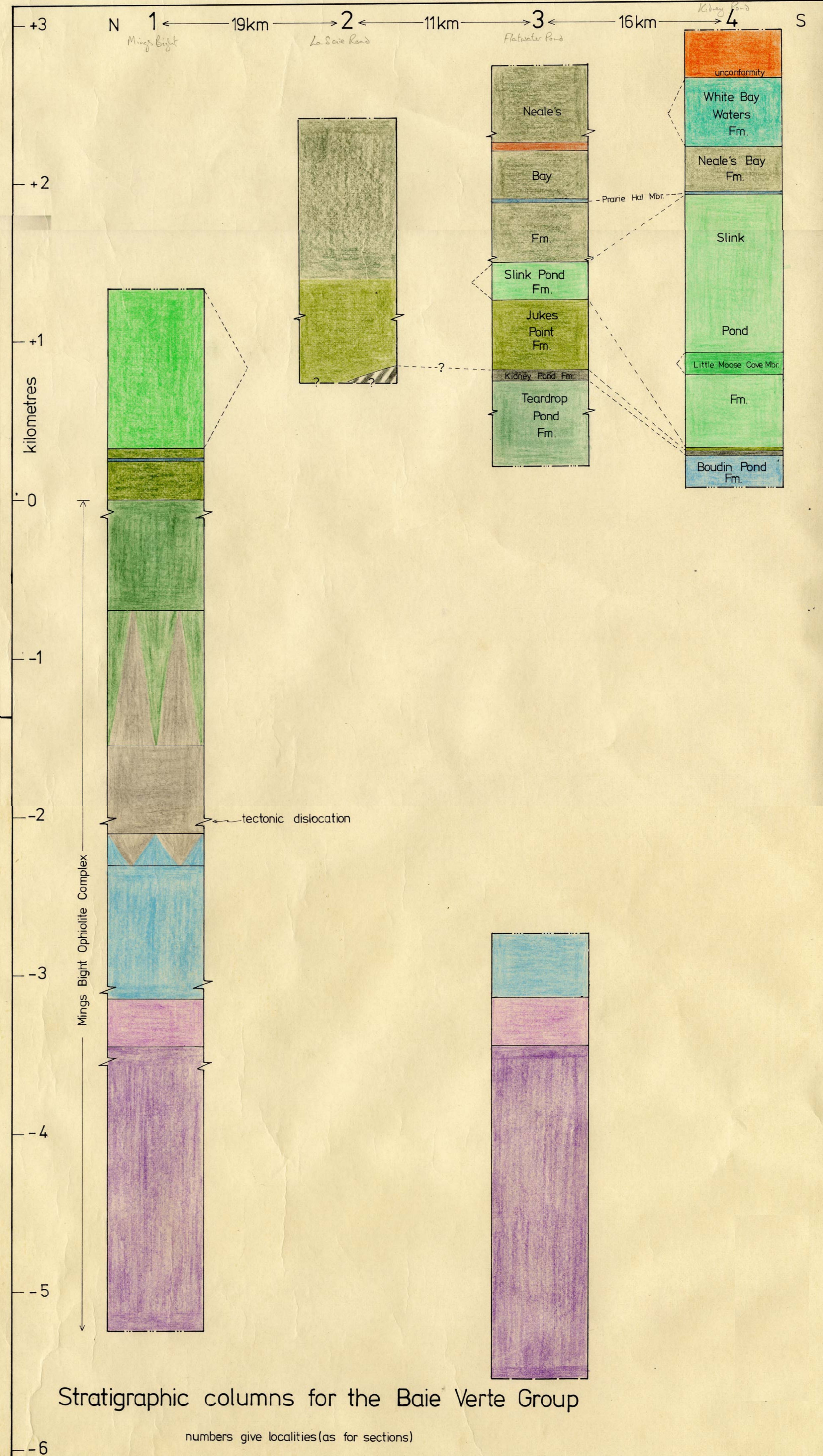
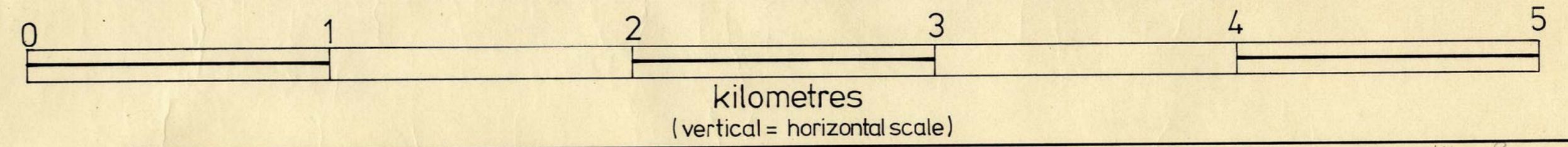
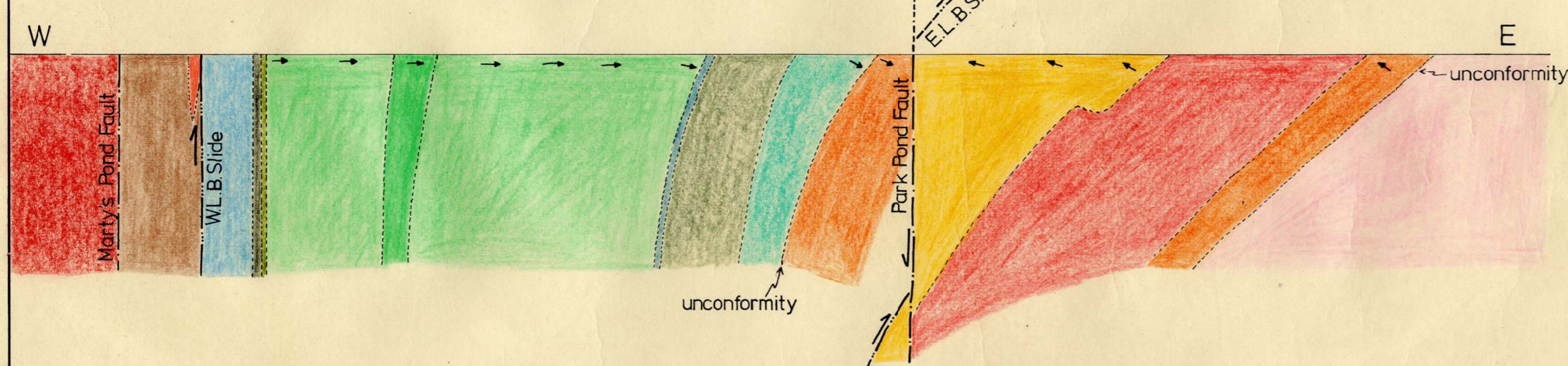
2 S. of La Scie Road



3 N. Flatwater Pond



4 Slink Pond/Kidney Pond - Park Pond



Legend for Plate 7

Burlington Granodiorite

hornblende-biotite granodiorite

Mic Mac Lake Group

- lower unit - eutaxitic ignimbrites, conglomerates, mafic lava minor rhyolite } Armageddon Formation
- upper unit - rhyolite, rhyoignimbrite, minor ignimbrite } Armageddon Formation
- mafic lava, conglomerate } Snoopy Pond Formation
- sandstone } Snoopy Pond Formation

Baie Verte Group

(a) ophiolite complex

- harzburgite, minor dunite; minor sheared serpentinite derivatives } also used for clastic blocks in sediments
- pyroxene-rich partly cumulate ultramafic transition zone } also used for clastic blocks in sediments
- gabbro partly cumulate common parallel diabase dykes } also used for clastic blocks in sediments
- sheeted diabase dyke complex

post-D₃ intrusive rocks (Celebes Pond, Wild Cove Pond)

- porphyritic biotite granite
- metagranodiorite and aplite, syn/pre S₁
- Fleur-de-Lys Supergroup

(b) sediments and volcanics

- Boudin Pond Formation
- Teardrop Pond Formation (m-marble R-maroon argillite)
- Kidney Pond Conglomerate Formation
- quartz-rich boulder conglomerate
- Jukes Point Formation
- Slink Pond Pillow Lava Formation (also pillow lava in other formations)
- Little Moose Cove Member
- Neales Bay Formation
- Prairie Hat Members I and II
- pink silicic tuff
- White Bay Waters Pillow Lava Formation
- dolerite sills

younging (way-up) direction