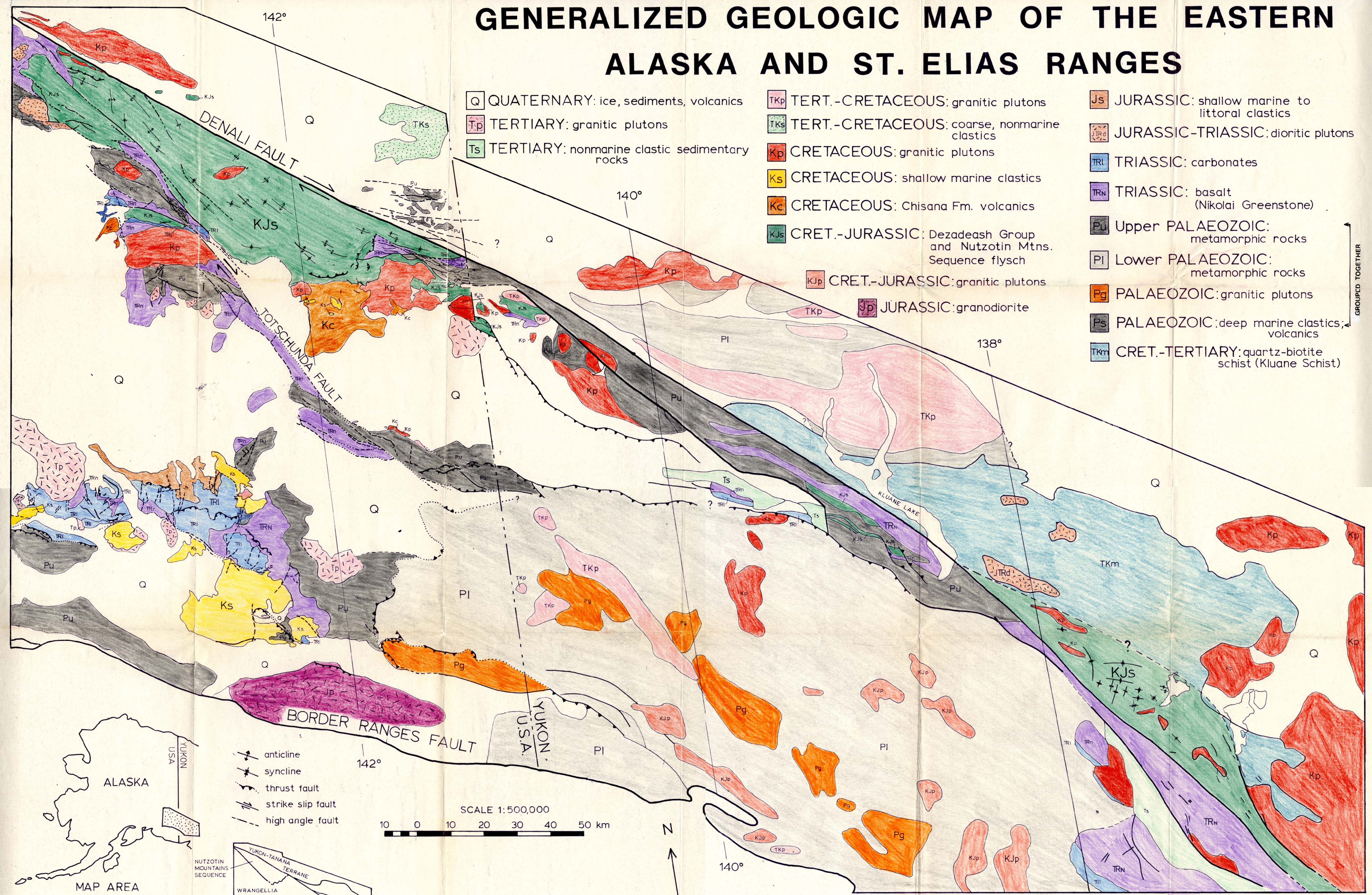


GENERALIZED GEOLOGIC MAP OF THE EASTERN ALASKA AND ST. ELIAS RANGES



- Q QUATERNARY: ice, sediments, volcanics
- Tp TERTIARY: granitic plutons
- Ts TERTIARY: nonmarine clastic sedimentary rocks
- TKp TERT.-CRETACEOUS: granitic plutons
- TKs TERT.-CRETACEOUS: coarse, nonmarine clastics
- Kp CRETACEOUS: granitic plutons
- Ks CRETACEOUS: shallow marine clastics
- Kc CRETACEOUS: Chisana Fm. volcanics
- KJs CRET.-JURASSIC: Dezadeash Group and Nutzotin Mtns. Sequence flysch
- KJp CRET.-JURASSIC: granitic plutons
- Jp JURASSIC: granodiorite
- Js JURASSIC: shallow marine to littoral clastics
- JTRd JURASSIC-TRIASSIC: dioritic plutons
- TRI TRIASSIC: carbonates
- TRn TRIASSIC: basalt (Nikolai Greenstone)
- Pu Upper PALAEOZOIC: metamorphic rocks
- PI Lower PALAEOZOIC: metamorphic rocks
- Pg PALAEOZOIC: granitic plutons
- Ps PALAEOZOIC: deep marine clastics, volcanics
- TKm CRET.-TERTIARY: quartz-biotite schist (Kluane Schist)

- anticline
- syncline
- thrust fault
- strike slip fault
- high angle fault

SCALE 1:500,000
 10 0 10 20 30 40 50 km

