

Bedrock Geologic Map Shoreham - Whiting Region, West-Central Vt.

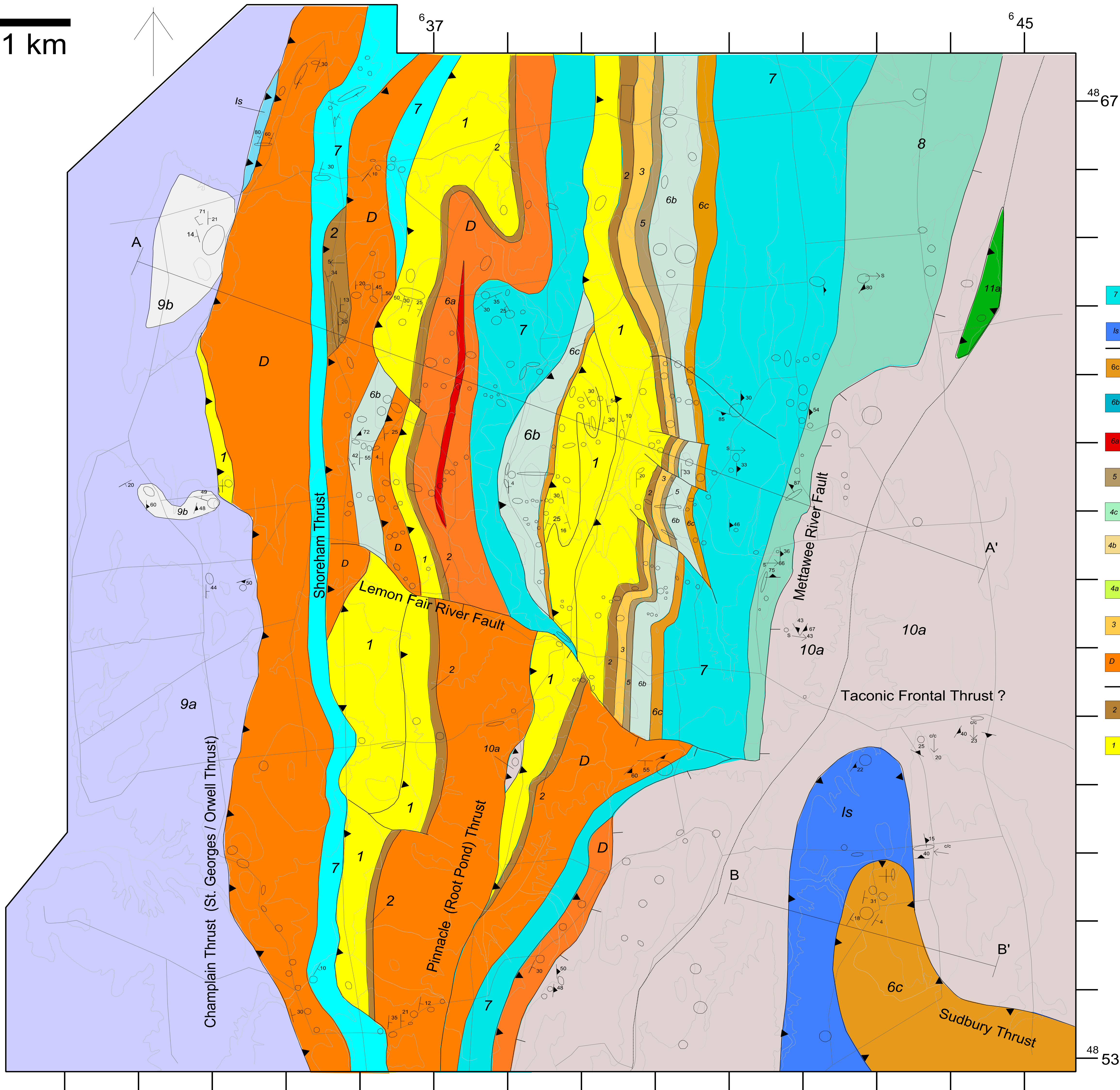
(U.S.G.S. Ticonderoga Quadrangle)
Compiled by Nicholas W. Hayman (March, 1996)
by Nicholas W. Hayman, W.S.F. Kidd
With Additional Contributions from
Andre Hamilton, G. Brent LeClerc

Scale

1 km

N

Contours every 100'



Lithologic Units

- | | |
|---|--|
| 7 Light Blue/Grey Fossiliferous Limestone (Middlebury / Chazy Age) | 13 Calcareous Shale, Medium Bedded (Foultney / Brown's Pond ?) |
| Is Undifferentiated Limestones (Middlebury, Orwell and lower Glens Falls) | 12 Black "sooty" Shale Interbedded with Brown Dolomitic Siltstone (Hatch Hill / W. Castleton) |
| 6c Dark Grey to Tan Massive Dolostone, Brecciated, Chert and Quartz Nodules, Calcite Veins (Providence Island) | 11 Non-Calcareous Green Slate, Lenses of Quartzite, Veins of Calcite and Quartz (Bull Formation) |
| 6b Light Blue/Grey limestone, Dolomitic Sections, Fossiliferous (Sciota) | 10a Black Non-Calcareous Shale / Slate, Weathers to Red/Rust Color, Fissile, Poorly Developed Slaty Cleavage (Hortonville) |
| 6a Dark Grey Dolostone with Fine Brown Laminations of Quartz Silt (Ward) | 10b Melange - Strongly Tectonized, Phacoidal Cleavage, Clasts of Limestone and Quartzite, Veins of Calcite and Quartz. (Taconic Melange / Forbes Hill Conglomerate) |
| 5 Dark Grey Dolostone, Laminated, Quartz and Calcite Nodules (Fort Ann) | 10c Non-Calcareous Black Slate, Quartz and Calcite Veins, Clasts of Quartzite (Taconic black slate) |
| 4c Light Grey Limestone (Smith's Basin) | 9b Non-Calcareous Shale (Iberville) Non-Calcareous Shale interbedded with Dolomitic Siltstone (Iberville - transitional to Cumberland Head) |
| 4b Massive White Dolostone (Fort Edward) | 9a Calcareous Shale (Story Point / Cumberland Head - uppermost portion of Glens Falls) |
| 4a Dolomitic Sandstone / Siltstone, Cross-bedding, Worm Tubules (Winchell Creek) | |
| 3 Light Grey Dolostone, Chert Rich Sections (Whitehall) | |
| D Undifferentiated Dolostones (Beekmantown Age) | |
| 2 Weathers to Red/Brown, Quartz Rich Dolostone Stromatolitic Sections (Ticonderoga) | |
| 1 Grey quartzite, Cross-Bedding (Potsdam / Danby) | |

Legend

- | | |
|--|------------------------------|
| Cleavage | Normal Fault |
| Bedding | Thrust Fault |
| Anticline | Lateral Ramp/Normal Fault |
| Syncline | Inferred Structural Boundary |
| Cleavage/Cleavage Intersection Lineation | Stratigraphic Contact |
| Stretching Lineation | outcrop location |