

# Bedrock Geologic Map Orwell - Benson Region, Southwest Vt.

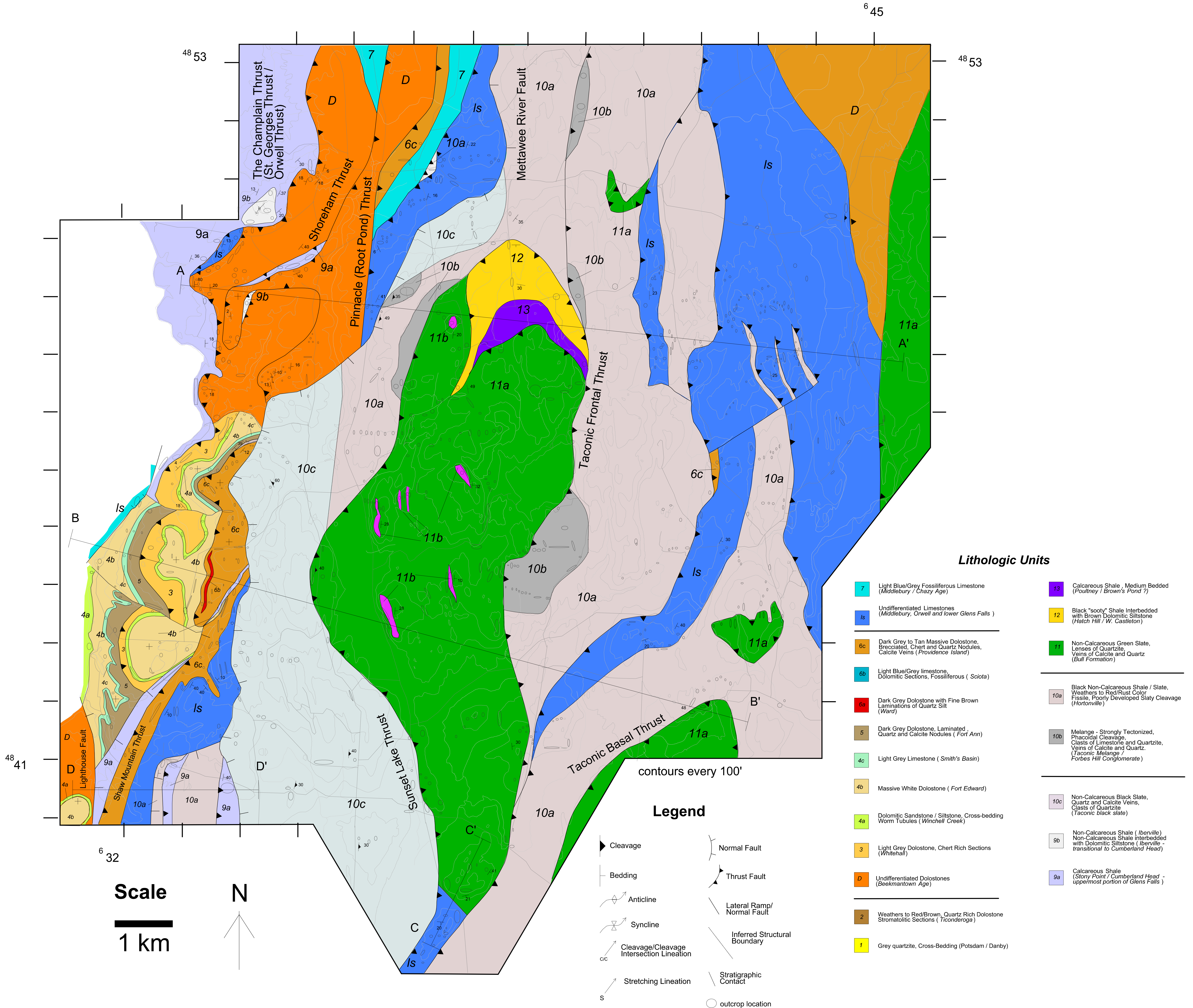
(U.S.G.S. Ticonderoga Quadrangle)

Compiled by Nicholas W. Hayman (February, 1997)

by Nicholas W. Hayman, W.S.F. Kidd

With Additional Contributions from

J. Granducci, J. Bamberger, A. Ambrosino,  
C. Lajewski, B. Miller, R. Eisermann, and M. Yip



## Lithologic Units

- |  |  |
|--|--|
| <b>7</b> Light Blue/Grey Fossiliferous Limestone (Middlebury / Chazy Age)  | <b>13</b> Calcareous Shale, Medium Bedded (Poultney / Brown's Pond ?)  |
| <b>1s</b> Undifferentiated Limestones (Middlebury, Orwell and lower Glens Falls)                                       | <b>12</b> Black "sooty" Shale Interbedded with Brown Dolomitic Siltstone (Hatch Hill / W. Castleton)   |
| <b>6c</b> Dark Grey to Tan Massive Dolostone, Brecciated, Chert and Quartz Nodules, Calcite Veins ( Providence Island) | <b>11</b> Non-Calcareous Green Slate, Lenses of Quartzite, Veins of Calcite and Quartz (Bull Formation)  |
| <b>6b</b> Light Blue/Grey limestone, Dolomitic Sections, Fossiliferous ( Sciota)                                       | <b>10a</b> Black Non-Calcareous Shale / Slate, Weathers to Red/Rust Color Fissile, Poorly Developed Slaty Cleavage (Hortonville)   |
| <b>9a</b> Dark Grey Dolostone with Fine Brown Laminations of Quartz Silt (Ward)  | <b>10b</b> Melange - Strongly Tectonized, Phacoidal Cleavage, Clasts of Limestone and Quartzite, Veins of Calcite and Quartz. (Taconic Melange / Forbes Hill Conglomerate) |
| <b>5</b> Dark Grey Dolostone, Laminated, Quartz and Calcite Nodules ( Fort Ann)  | <b>10c</b> Non-Calcareous Black Slate, Quartz and Calcite Veins, Clasts of Quartzite (Taconic black slate)   |
| <b>4c</b> Light Grey Limestone ( Smith's Basin)  | <b>9b</b> Non-Calcareous Shale (Iberville) Non-Calcareous Shale interbedded with Dolomitic Siltstone (Iberville - transitional to Cumberland Head)                         |
| <b>4b</b> Massive White Dolostone ( Fort Edward)   | <b>9a</b> Calcareous Shale (Stony Point / Cumberland Head - uppermost portion of Glens Falls)  |
| <b>4a</b> Dolomitic Sandstone / Siltstone, Cross-bedding Worm Tubules ( Winchell Creek)                                |  |
| <b>3</b> Light Grey Dolostone, Chert Rich Sections (Whitehall)   |  |
| <b>D</b> Undifferentiated Dolostones (Beekmantown Age)   |  |
| <b>2</b> Weathers to Red/Brown, Quartz Rich Dolostone Stromatolitic Sections ( Ticonderoga)                            |  |
| <b>1</b> Grey quartzite, Cross-Bedding (Potsdam / Danby)   |  |

## Legend

- |  |                              |
|--|------------------------------|
| Cleavage                                 | Normal Fault                 |
| Bedding                                  | Thrust Fault                 |
| Anticline                                | Lateral Ramp/ Normal Fault   |
| Syncline                                 | Inferred Structural Boundary |
| Cleavage/Cleavage Intersection Lineation | Stratigraphic Contact        |
| Stretching Lineation                     | outcrop location             |

Scale  
1 km

N

contours every 100'