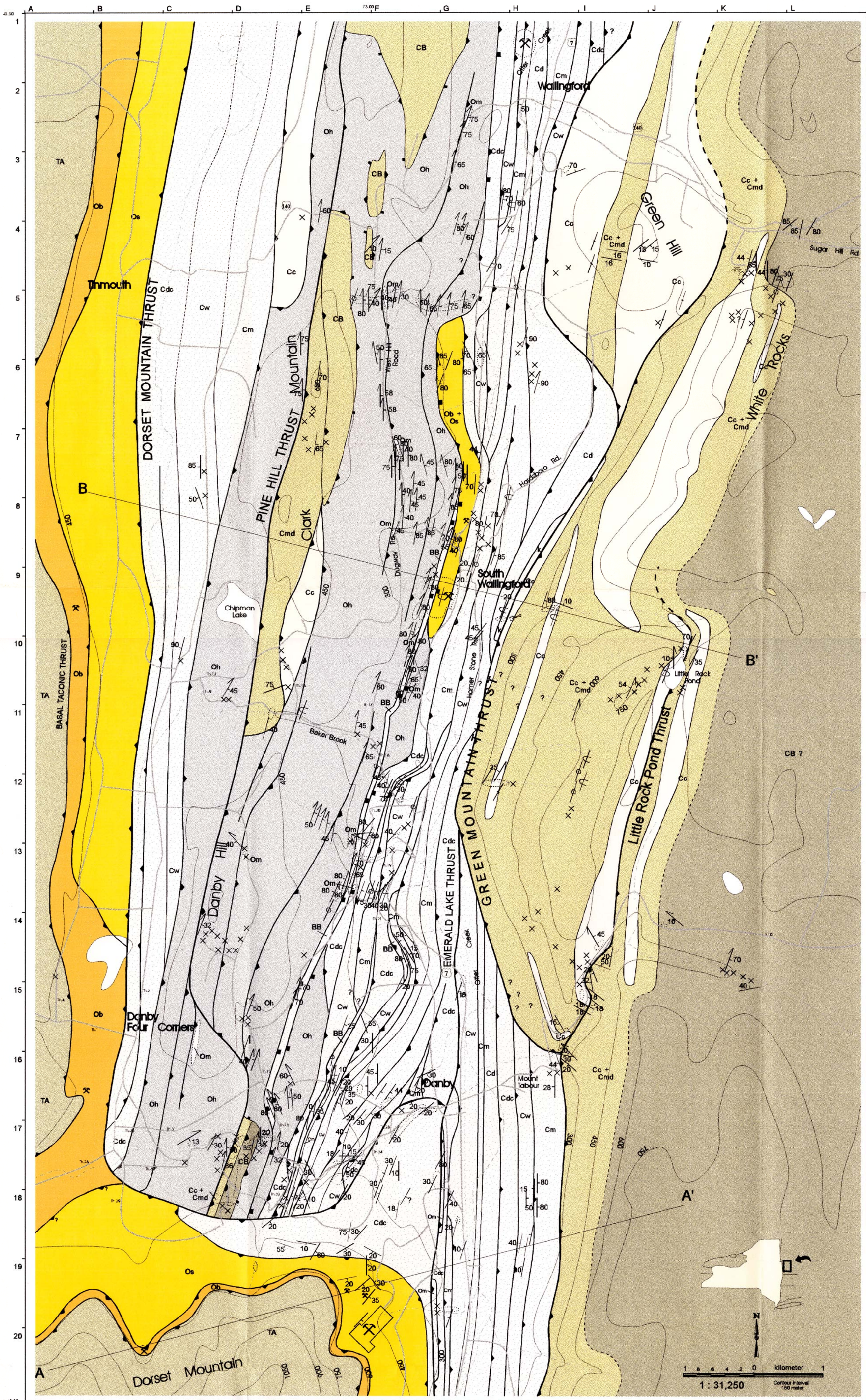


Geologic Map of the Vermont Valley and the western flank of the Green Mountains  
between Dorset Mountain and Wallingford, Vermont



MAP UNITS:

- TA** Taconic Phyllites (Allochthon)
- Ob** Blue Marbles, undifferentiated
- Os** Shelburne Marble
- Shelf sequence**
- Cdc** Danby-Clarendon Springs Dolomite
- Cw** Winooski Dolomite
- Cm** Monkton Quartzite
- Cd** Dunham Dolomite
- Siliciclastic Sequence**
- Cheshire Quartzite** mainly schistose brownish quartzite, upper part clean vitreous quartzite
- Mendon Formation** (undifferentiated): mainly schistose quartzites, mafic metachists, graywackes, arenites/phyllites
- unconformity ?**
- Pre-Cambrian**
- CB** Green Mountain Basement (Grenville) undifferentiated  
Normal fault bounded where not reactivated by later T<sub>1</sub> thrust fault
- BB** mylonitic Baker Brook "Greenschist" BAKER BROOK THRUST
- Oh** Hortonville Formation black phyllites (Valloonsac FM)
- k** Manganese bearing kaolin deposit
- Om** def. grey-white marble

EXPLANATION:

- T<sub>1</sub> thrust faults**  
Baker Brook Thrust
- major thrust fault**
- minor thrust fault**
- T<sub>2</sub> thrust faults**  
duplex roof thrust
- T<sub>3</sub> thrust faults**  
out-of-sequence
- Normal faults**  
reactivated by later T<sub>2</sub> thrusts
- formation boundary**
- observed outcrops**
- strike and dip of cleavage**
- strike and dip of bedding**
- vertical, overturned**
- stretching lineation**
- dike**
- kaolin mine (abandoned)**
- marble quarry**
- road number**
- contour lines**
- roads**
- streams**
- railroad track**

USGS 7.5 QUADRANGLE TOPOGRAPHIC MAPS

Middletown Springs Wallingford  
Dorset Danby

MN GN

This map was produced with CoreDraw 3.0 and printed on a HP LaserJet II (scale 321%)  
Field work was carried out on 1:24,000 topographic base maps. The base maps were digitized, outcrop and detailed topographic features entered.