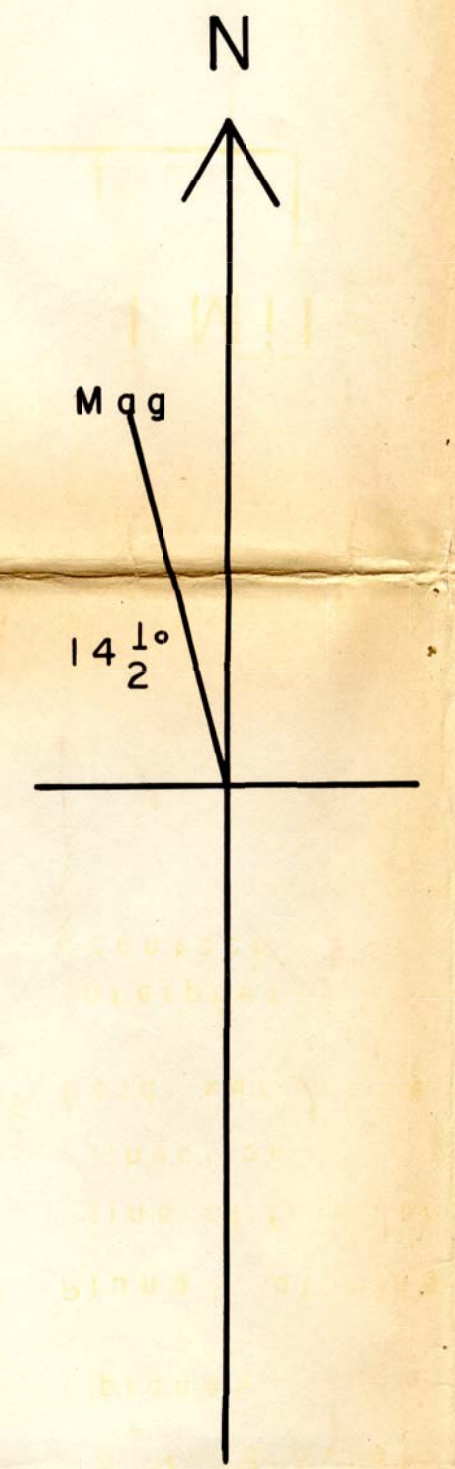
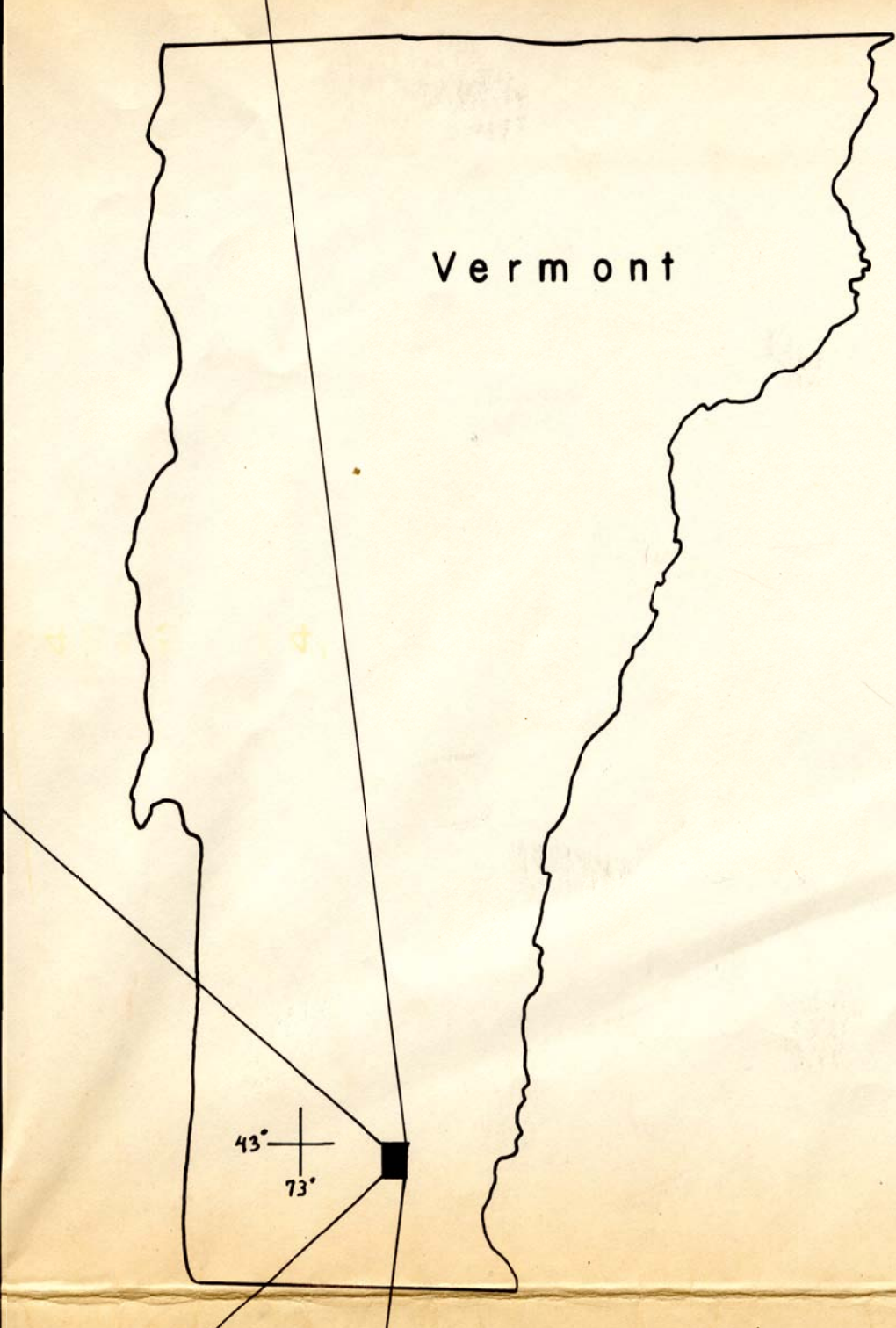
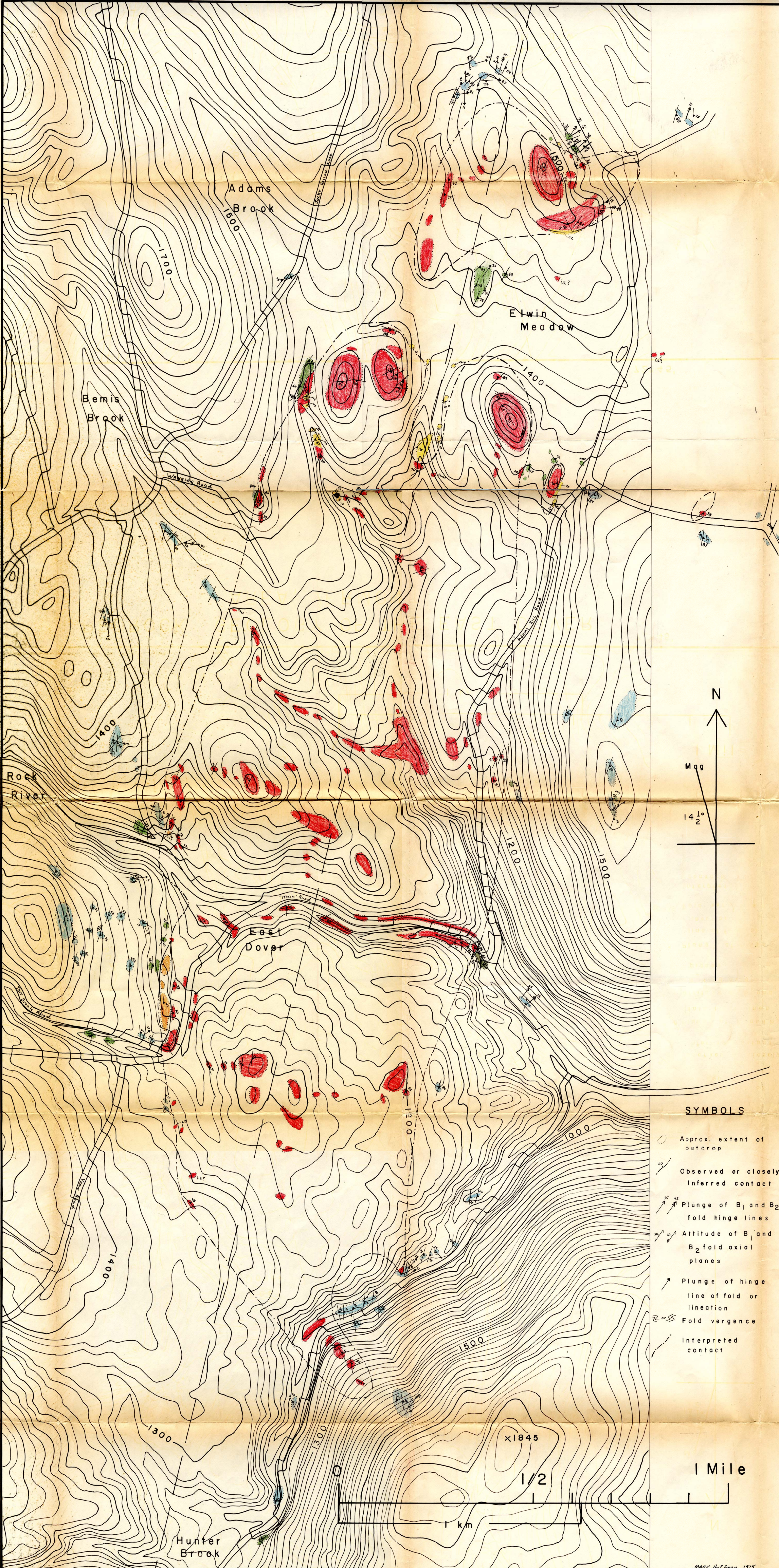


72° 47' 43° 00'

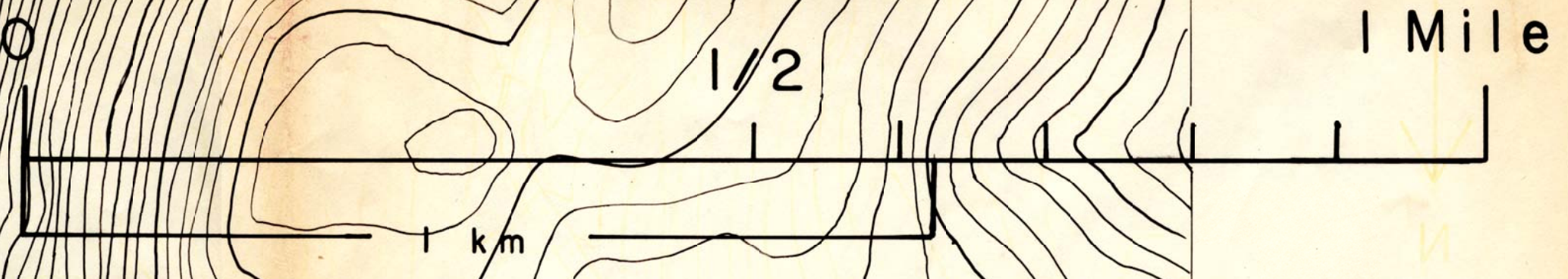
72° 45' 43° 00'

43° 00'

- Serpentinized ultramafic rocks
- Tale-carbonate rock
- Clinzoisite-hornblende unit rocks
- Quartz-mica schists (metapelites)
- Quartz-epidote amphibolites
- Mica-Albite (porphyroblast) schist, one outcrop



- SYMBOLS**
- Approx. extent of outcrop
 - Observed or closely inferred contact
 - Plunge of B₁ and B₂ fold hinge lines
 - Attitude of B₁ and B₂ fold axial planes
 - Plunge of hinge line of fold or lineation
 - Fold vergence
 - Interpreted contact



42° 55.44' 72° 47'

72° 45'

42° 55.44'

BEDROCK GEOLOGY OF THE EAST DOVER AREA, VERMONT

MARK HOFFMAN 1975