

PLATE III
 CROSS-SECTIONS THROUGH THE
COASTAL COMPLEX
 TROUT RIVER AND LARK HARBOUR AREAS
 NEWFOUNDLAND, CANADA

by
Bruce Idleman
 1990

LEGEND

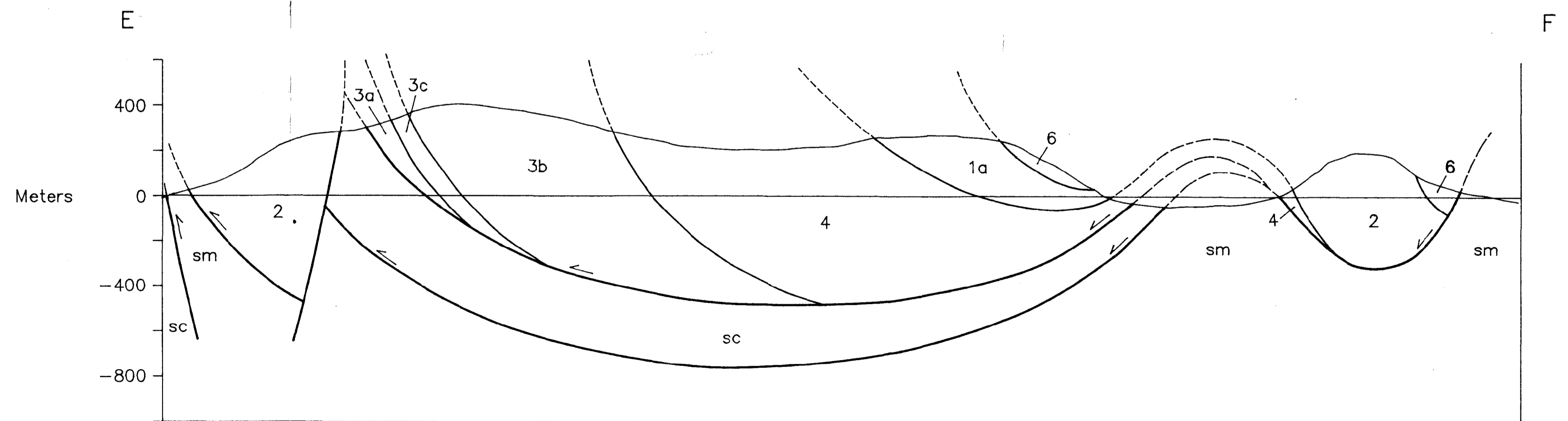
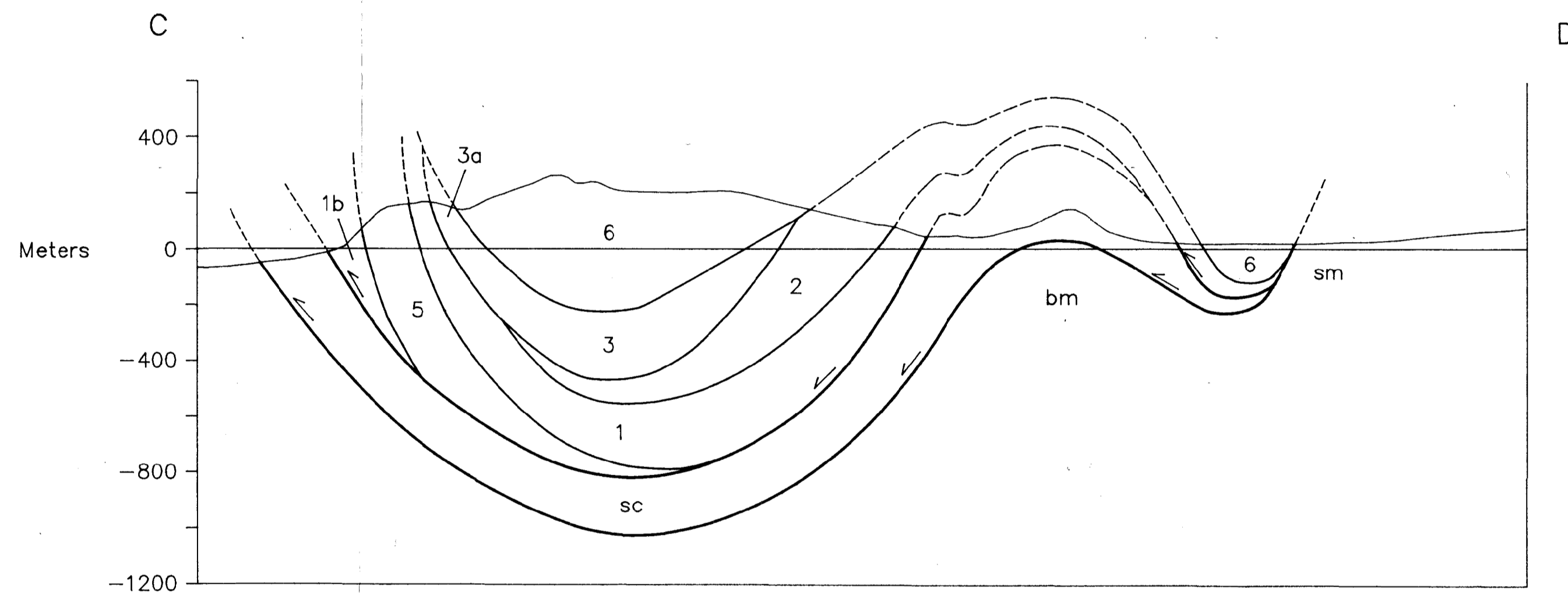
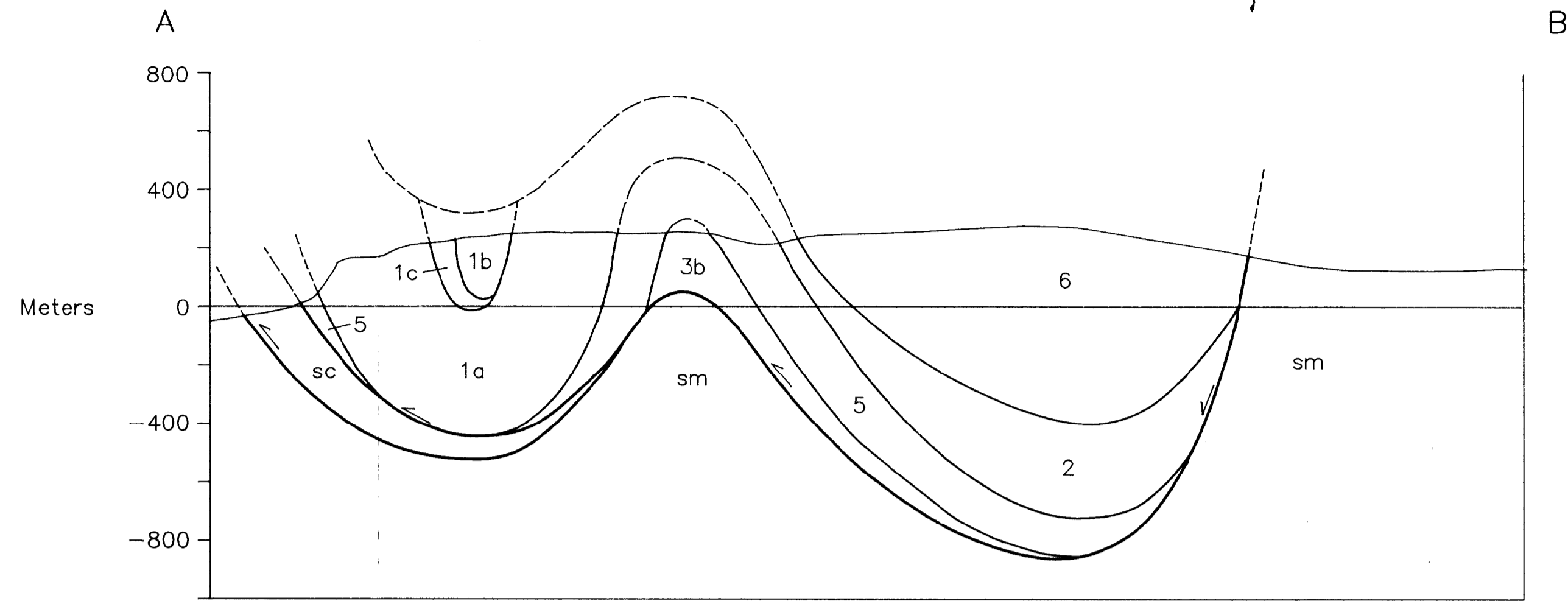
Coastal Complex:

- 1 Gabbroic and ultramafic plutonic rocks.
- 2 Trondhjemite, quartz diorite, and diorite.
- 3 Strongly foliated and lineated greenschist, amphibolite, and minor ultramafic rocks.
- 4 Serpentinite melange.
- 5 Gabbro, microgabbro, and diabase. Occurs as intrusive bodies in Units 1-4.
- 6 Mafic and felsic volcanics and minor volcani-clastic sedimentary rocks.

Humber Arm Supergroup:

- bm Blow-Me-Down Brook Formation.
(sm = sedimentary melange).
- sc Skinner Cove Formation.

Additional lithologic descriptions are provided on Plates I and II.



No Vertical Exaggeration