

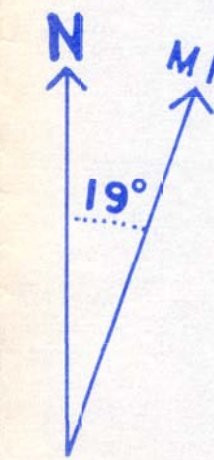
THE GALICE FORMATION

EAST OF KERBY, OREGON

DRAWN BY F. ROSS JONES

October, 1987

SCALE 1:18,526



Map Symbols

- strike and dip of upright bedding
- strike and dip of bedding (younging direction uncertain)
- overturned, vertical, horizontal bedding
- strike and dip of S1 cleavage \*
- small F1 fold or So/S1 intersection, small F2 fold
- group of small F1 folds
- group of small F2 folds

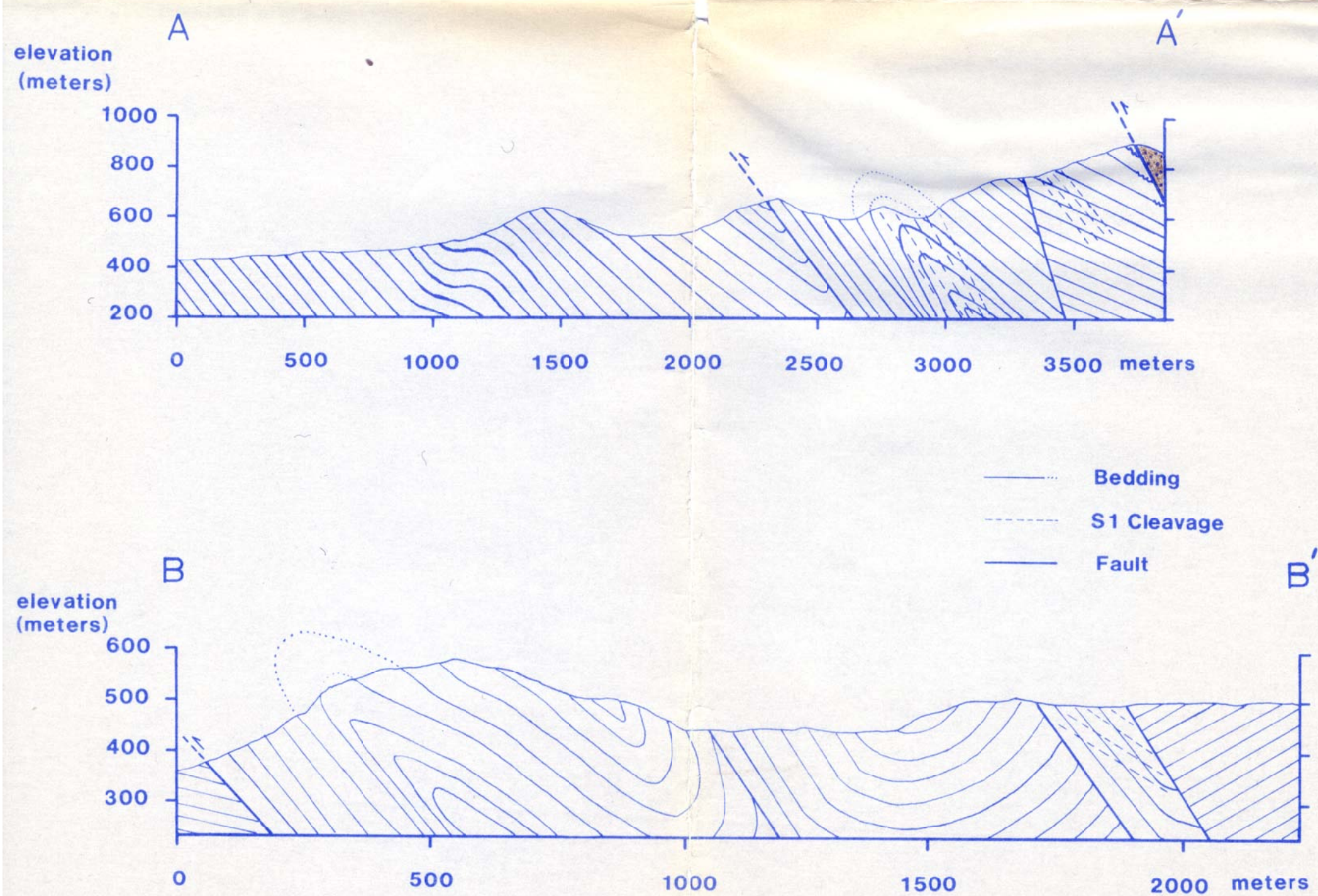
- anticline (F1, F2 indicated where firmly established)
- syncline
- overturned anticline
- overturned syncline
- Preston Peak thrust
- regional normal fault
- thrust fault
- fault, undifferentiated
- sheared or brecciated rock
- location of cross-sections
- small quarry

\* Note: is not shown where S1 is parallel to bedding.

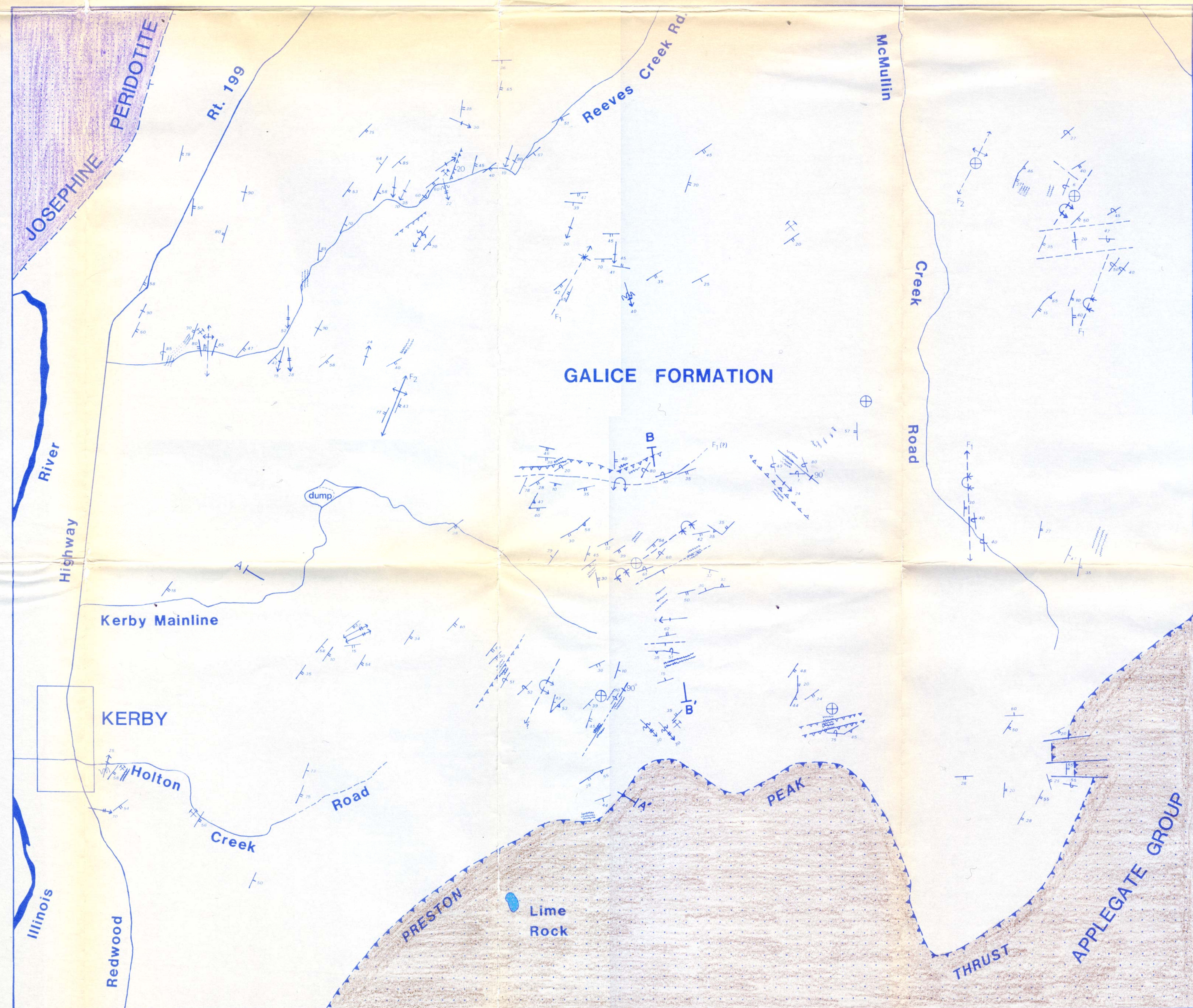
Lithologies

- GALICE FORMATION Lithic wacke, shale, rare pebble conglomerate (see section 1.3 in text).
- JOSEPHINE PERIDOTITE Variably-serpentinized and tectonized harzburgite.
- APPLEGATE GROUP Heterolithic sequence of serpentinite-matrix melange, metabasalt and metamorphosed conglomerate and siliceous argillite. Blocks in serpentinite melange include massive recrystallized limestone (e.g., Lime Rock), amphibolite, quartzite and chert.

Vertical Cross-Sections



Horizontal and vertical scales enlarged 2X.



R.5E.35'