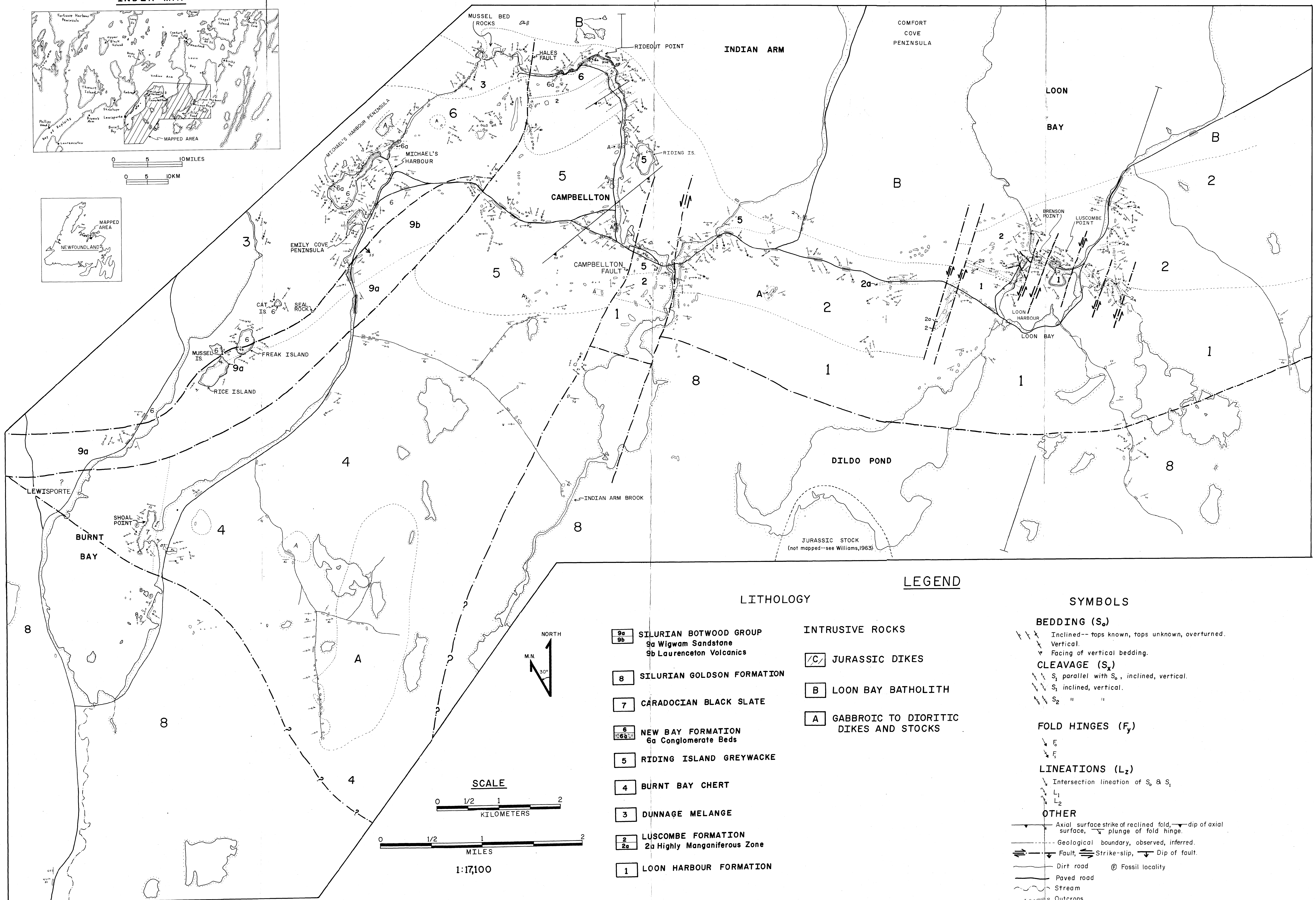
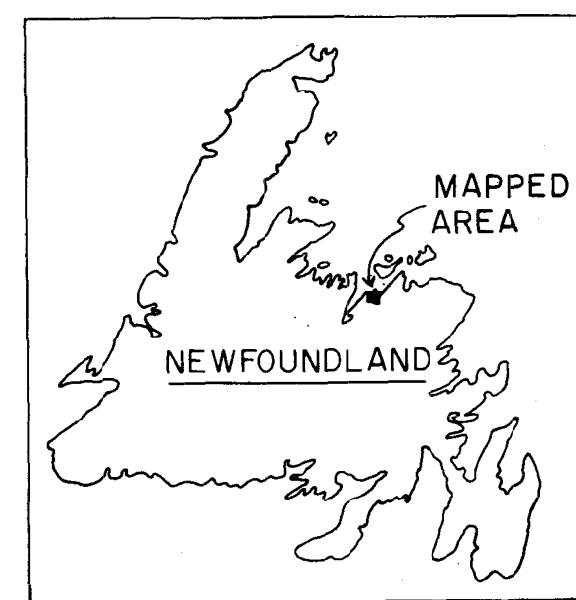
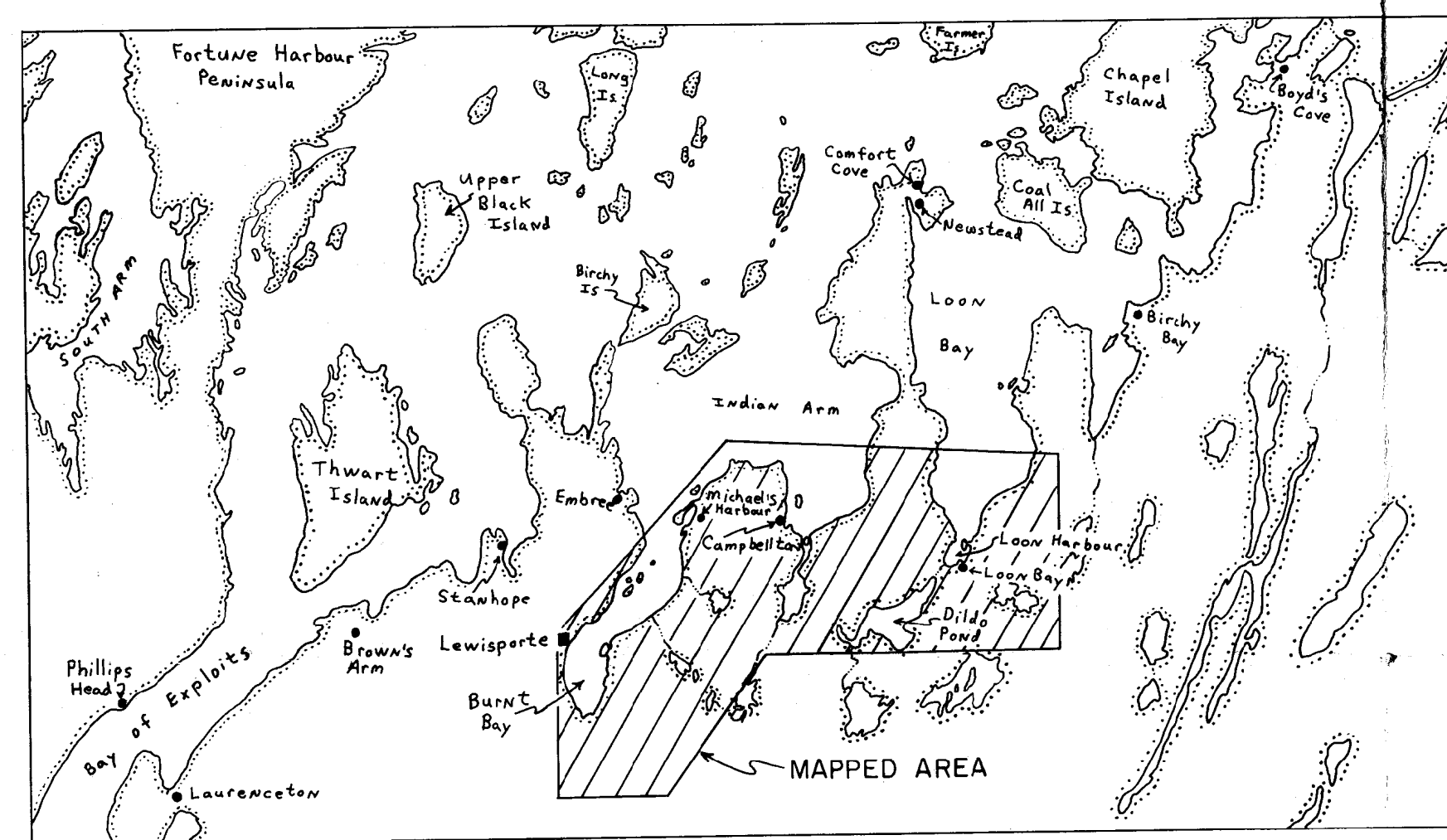


# GEOLOGIC MAP OF THE LEWISPORTE-LOON BAY AREA, NEWFOUNDLAND, CANADA

by Richard F. Livaccari

1979

## INDEX MAP



## LEGEND

### LITHOLOGY

- 9a SILURIAN BOTWOOD GROUP  
9a Wigwam Sandstone  
9b Laurenceton Volcanics
- 8 SILURIAN GOLDSON FORMATION
- 7 CARADOCIAN BLACK SLATE
- 6 NEW BAY FORMATION  
6a Conglomerate Beds
- 5 RIDING ISLAND GREYWACKE
- 4 BURNT BAY CHERT
- 3 DUNNAGE MELANGE
- 2 LUSCOMBE FORMATION  
2a Highly Manganiferous Zone
- 1 LOON HARBOUR FORMATION

### INTRUSIVE ROCKS

- C JURASSIC DIKES
- B LOON BAY BATHOLITH
- A GABBROIC TO DIORITIC DIKES AND STOCKS

### SYMBOLS

- BEDDING ( $S_0$ )**
  - Inclined-- tops known, tops unknown, overturned.
  - Vertical.
  - Facing of vertical bedding.
- CLEAVAGE ( $S_x$ )**
  - $S_1$  parallel with  $S_0$ , inclined, vertical.
  - $S_1$  inclined, vertical.
  - $S_2$  " " "
- FOLD HINGES ( $F_y$ )**
  - $F_y$
- LINEATIONS ( $L_z$ )**
  - Intersection lineation of  $S_0$  &  $S_1$
  - $L_1$
  - $L_2$
- OTHER**
  - Axial surface strike of reclined fold, dip of axial surface, plunge of fold hinge.
  - Geological boundary, observed, inferred.
  - Fault, Strike-slip, Dip of fault.
  - Dirt road
  - Paved road
  - Stream
  - Outcrops
  - @ Fossil locality

