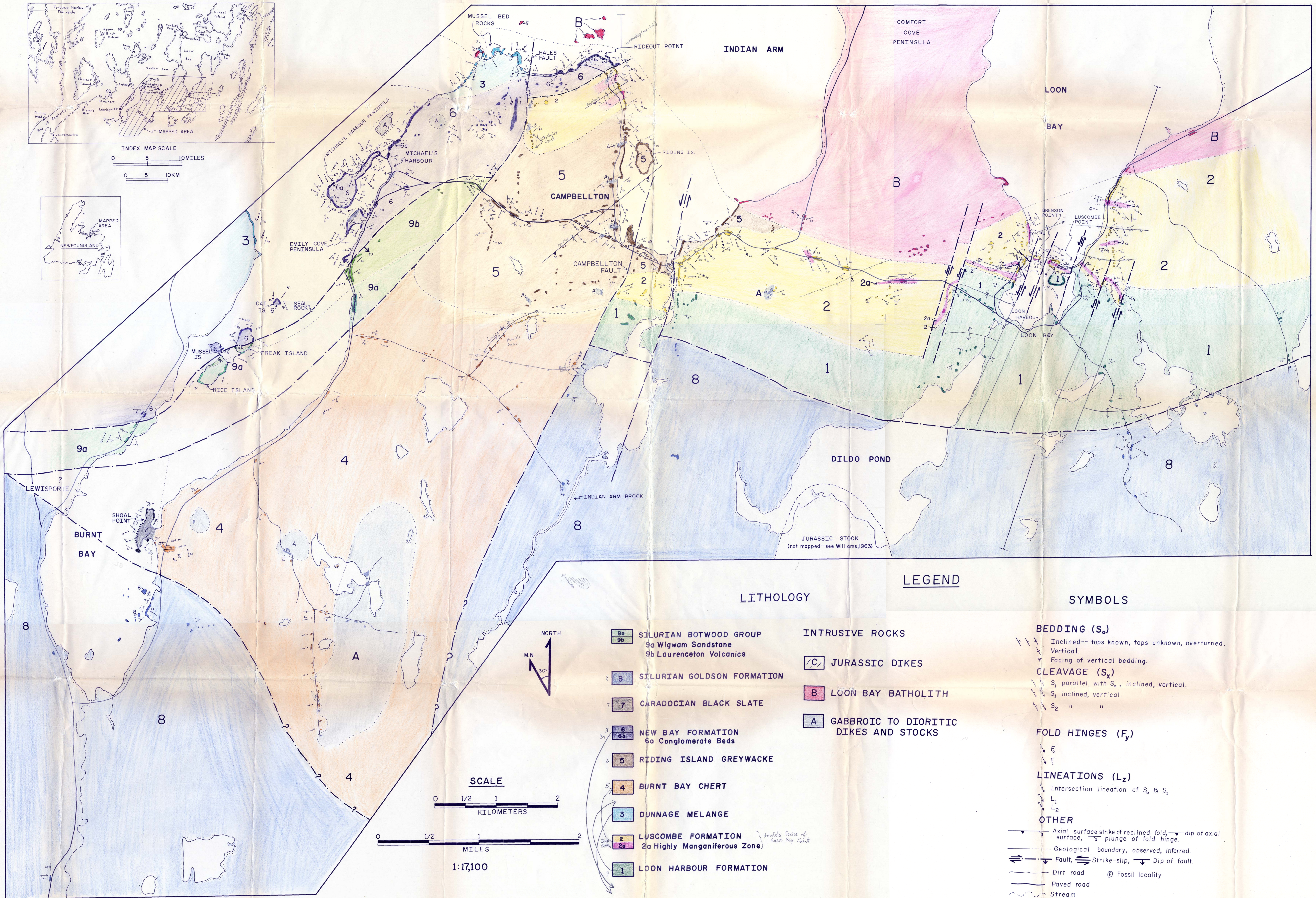
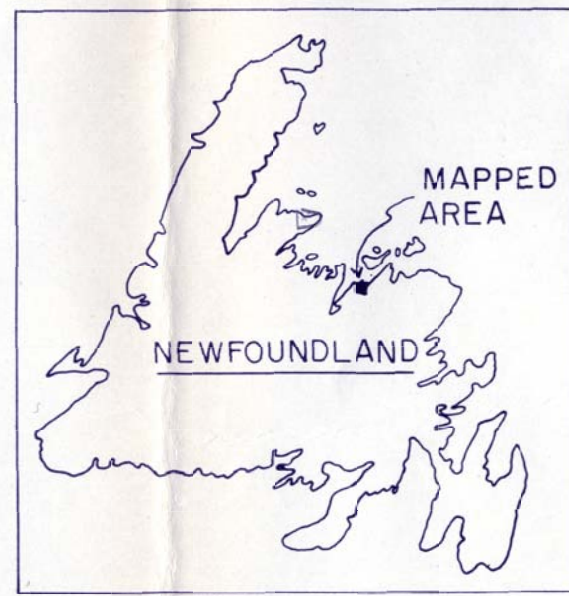
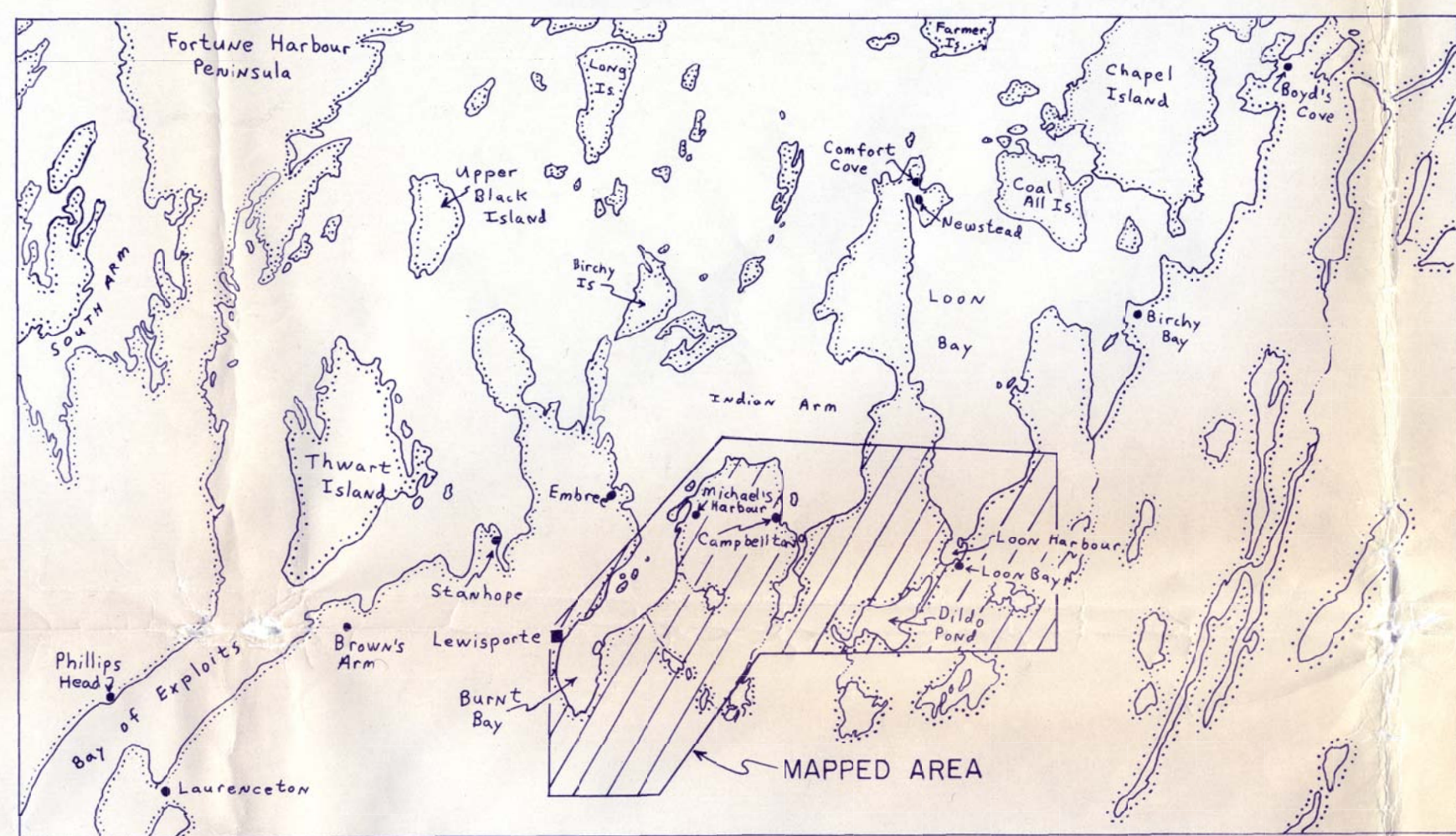


GEOLOGIC MAP OF THE LEWISPORTE-LOON BAY AREA, NEWFOUNDLAND, CANADA

by Richard F. Livaccari

1979

INDEX MAP



LITHOLOGY

- 9a, 9b SILURIAN BOTWOOD GROUP
9a Wigwam Sandstone
9b Laurenceton Volcanics
- 8 SILURIAN GOLDSON FORMATION
- 7 CARADOCIAN BLACK SLATE
- 6, 6a, 6b NEW BAY FORMATION
6a Conglomerate Beds
- 5 RIDING ISLAND GREYWACKE
- 4 BURNT BAY CHERT
- 3 DUNNAGE MELANGE
- 2 LUSCOMBE FORMATION
2a Highly Manganiferous Zone
- 1 LOON HARBOUR FORMATION

INTRUSIVE ROCKS

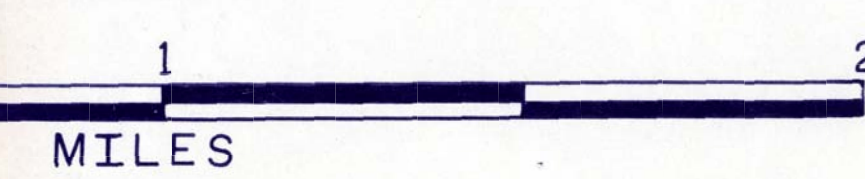
- C JURASSIC DIKES
- B LOON BAY BATHOLITH
- A GABBROIC TO DIORITIC DIKES AND STOCKS

LEGEND

SYMBOLS

- BEDDING (S_x)**
 - Inclined-- tops known, tops unknown, overturned.
 - Vertical.
 - Facing of vertical bedding.
- CLEAVAGE (S_x)**
 - S_1 parallel with S_0 , inclined, vertical.
 - S_1 inclined, vertical.
 - S_2 " " "
- FOLD HINGES (F_f)**
 - F_1
 - F_2
- LINEATIONS (L_z)**
 - Intersection lineation of S_0 & S_1
 - L_1
 - L_2
- OTHER**
 - Axial surface strike of reclined fold, dip of axial surface, plunge of fold hinge.
 - Geological boundary, observed, inferred.
 - Fault, Strike-slip, Dip of fault.
 - Dirt road
 - Paved road
 - Stream
 - Outcrops
 - Fossil locality

SCALE



1:17,100