

GEOLOGICAL MAP OF THE MIDDLE GRANVILLE (N.Y.)-LAKE ST. CATHERINE (VT.) AREA, NORTHERN TACONIC ALLOCHTHON

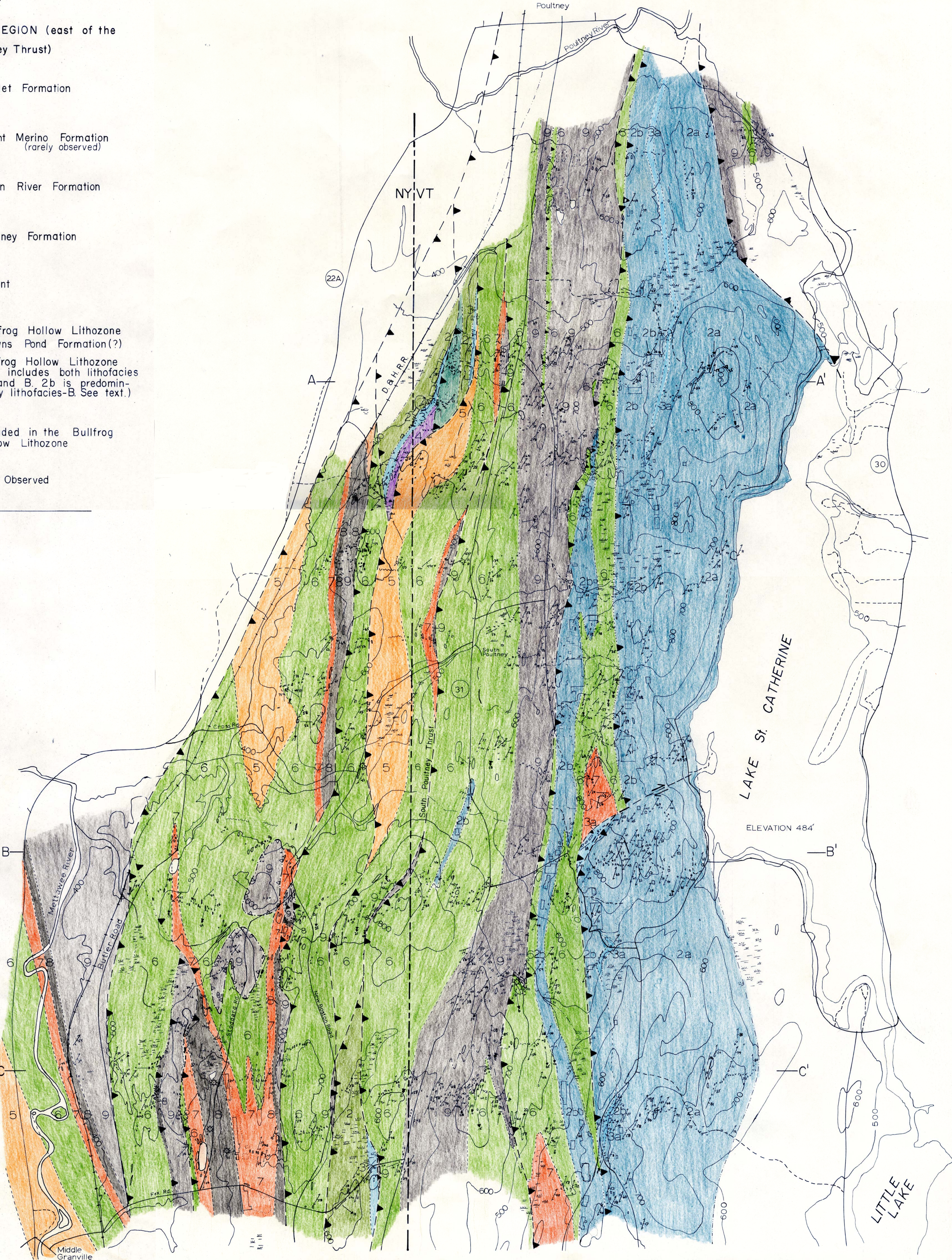
BY DAVID B. ROWLEY (1979)

STRATIGRAPHY

WESTERN REGION (west of the South Poultney Thrust)	EASTERN REGION (east of the South Poultney Thrust)
<div>9</div> Pawlet Formation	<div>9</div> Pawlet Formation
<div>8</div> Mount Merino Formation	<div>8</div> Mount Merino Formation (rarely observed)
<div>7</div> Indian River Formation	<div>7</div> Indian River Formation
<div>6</div> Poultney Formation	<div>6</div> Poultney Formation
<div>5</div> Hatch Hill - West Castleton Formations (undifferentiated)	Absent
<div>4</div> Mettawee Slate Formation	<div>2b</div> Bullfrog Hollow Lithozone <div>3a</div> Browns Pond Formation(?) <div>2a</div> Bullfrog Hollow Lithozone (2a includes both lithofacies A and B. 2b is predominantly lithofacies-B. See text.)
<div>3</div> Browns Pond Formation	
<div>2</div> Truthville Slate Formation	Included in the Bullfrog Hollow Lithozone
<div>1</div> Bomoseen Formation	Not Observed

SYMBOLS

- Bedding ( $S_0$ )
- Inclined, Vertical without younging evidence
  - Inclined, Overturned
  - Parallel to  $S_2$
- Axial Surface Foliations & Fold Axial Surfaces
- $F_1$  axial surface ( $S_1$  not observed)
  - $S_2$  &  $F_2$  Inclined, Vertical
  - $S_3$  &  $F_3$  Inclined, Vertical
  - $S_4$  Inclined (kink-fold boundary)
  - Secondary Layering
- Linear Structures
- Current Lineation (polarity unknown)
  - $F_2$  & possibly  $F_1$  fold hinges &  $L_2^0$
  - $F_3$  &  $L_2^3$  fold hinges
  - $F_4$  fold hinges
- Faults
- Mesoscopic Faults & Fault-Related Lineations
  - $T_1$  Early Thrust Fault
  - $T_2$  &  $T_3$  (stratigraphically constrained)
  - $T_2$  &  $T_3$  (geometrically probable)
- Stratigraphic Contact (inferred)
- Observed Outcrop
  - Scattered Outcrop & Significant Float
  - Slate Quarry
  - Quarry Dump ('tip')
- A—A' Line of Cross Section (Plate II)
- Jurassic(?) Diabase Dikes
  - Fossil Localities (Graptolites)



SCALE 1:12,000

0 1/2 1 mile

0 1/2 1 kilometer

contour interval 100 feet