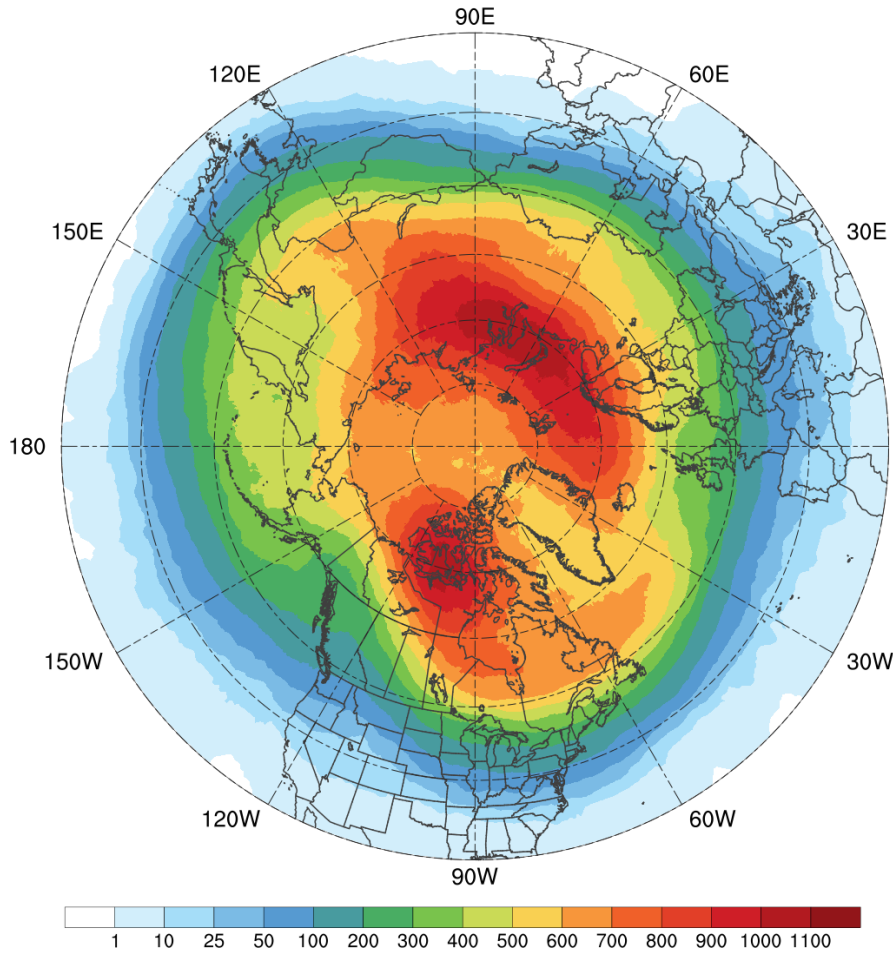
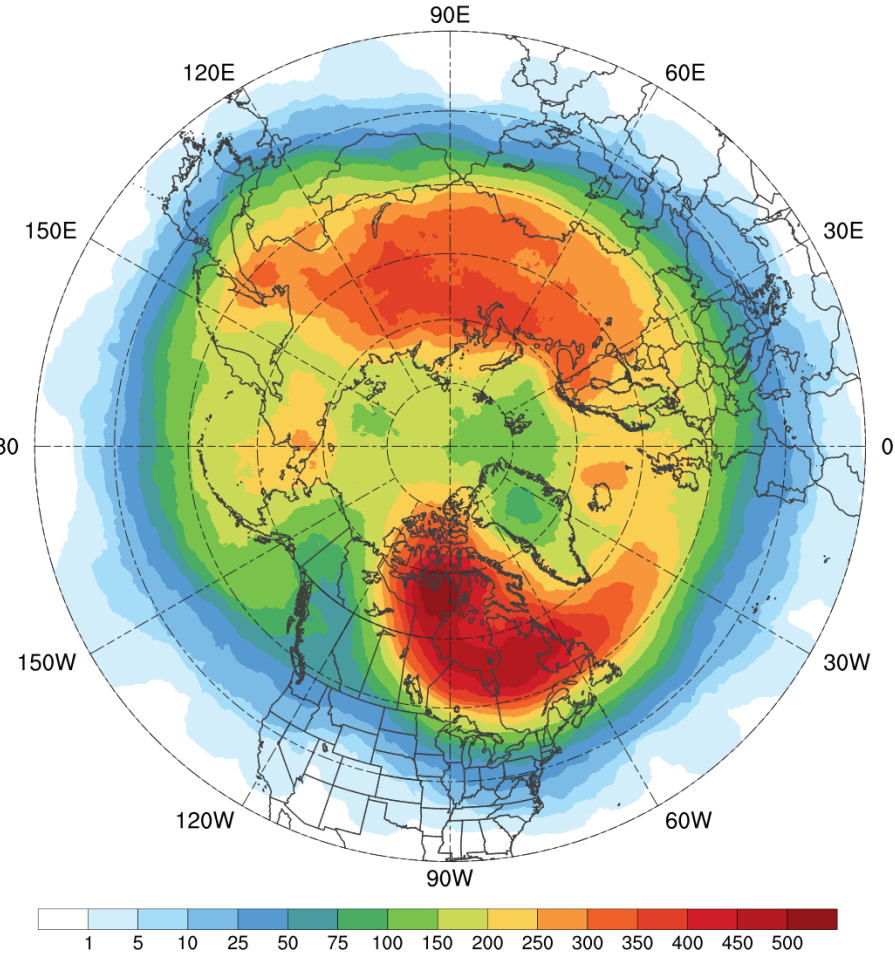


TPV and Cold Pool Track Density (old filtering)

TPVs (N = 4740)



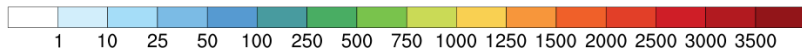
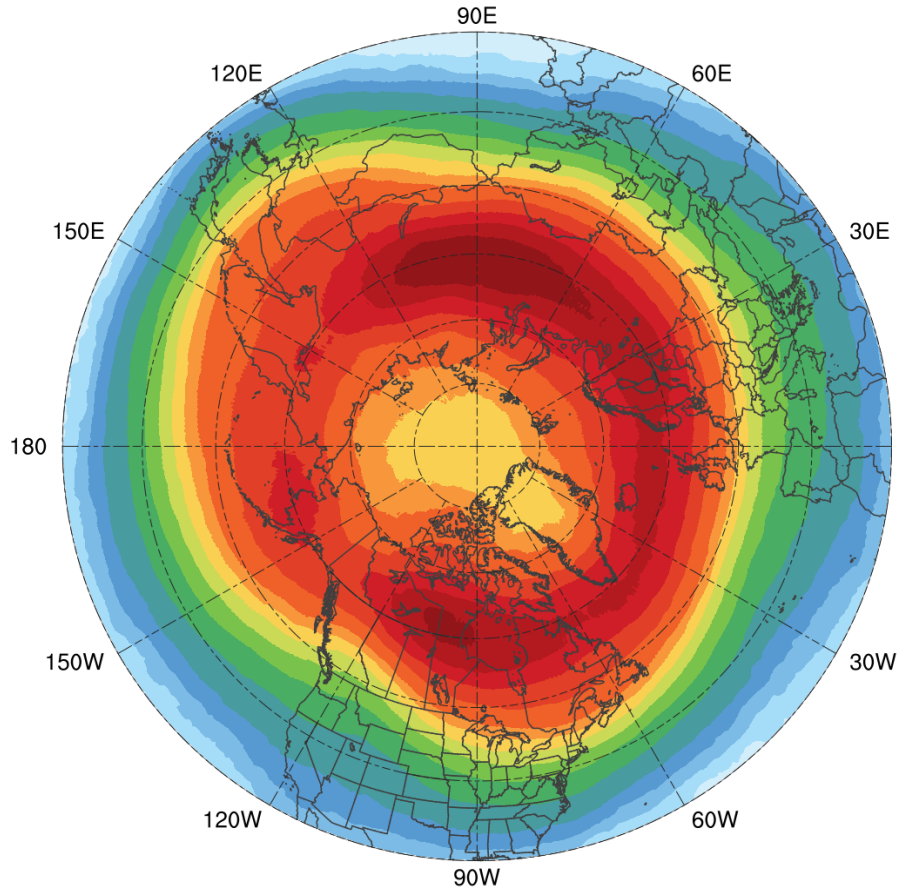
Cold Pools (N = 2749)



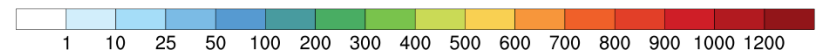
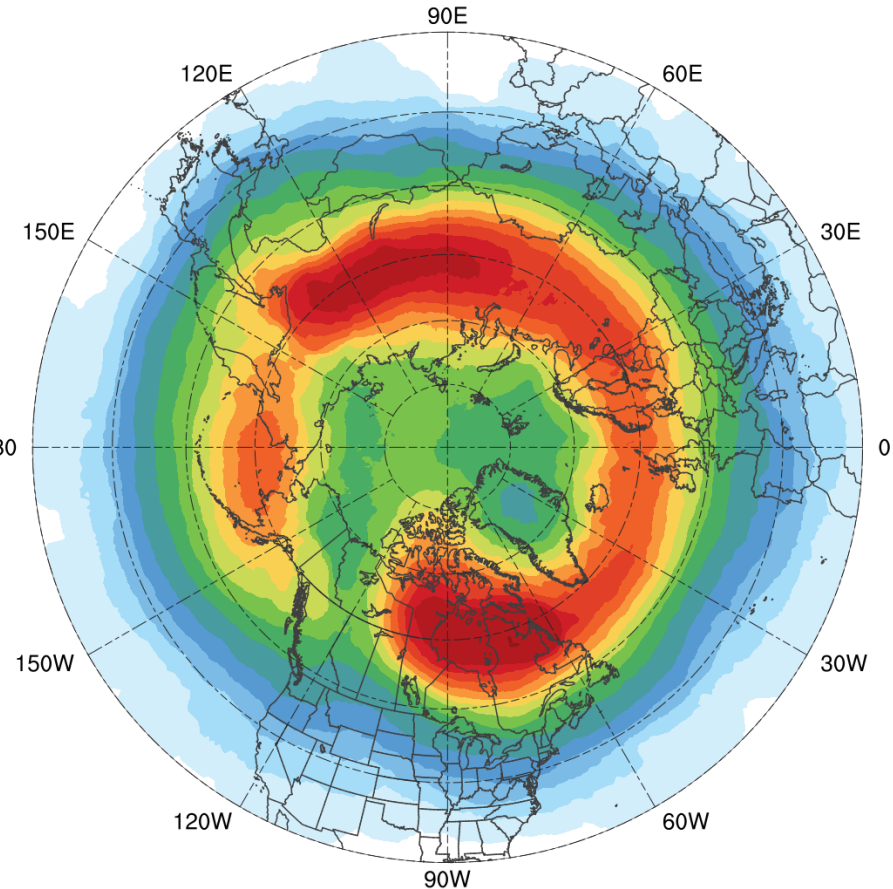
Total number of unique TPVs (left) and cold pools (right) within 500 km of each grid point (using a 0.5° grid) for TPVs and cold pools that move equatorward of 55°N during 1979–2015

TPV and Cold Pool Track Density (new filtering)

TPVs (N = 25085)



Cold Pools (N = 8395)



Total number of unique TPVs (left) and cold pools (right) within 500 km of each grid point (using a 0.5° grid) for TPVs and cold pools that move equatorward of 60°N during 1979–2015