

IR BT & Lightning

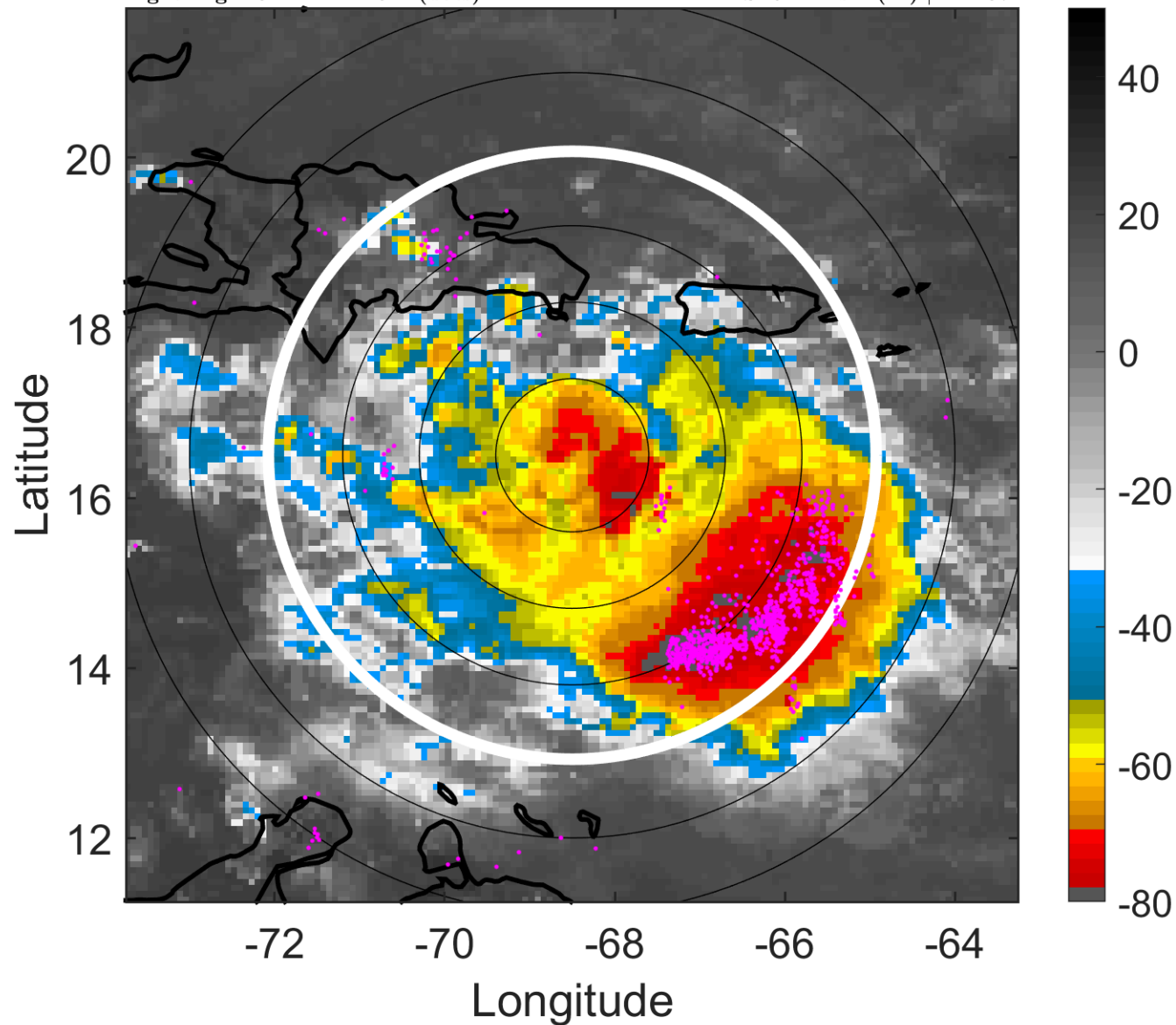
t: 2005102218 (13.4 LT)

Lightning: 13.4 LT \pm 1.5 h (dots)

PT: LLCP | EA: ACT

26L (ALPHA) | 35 kt TS

S: 9.4 m s⁻¹ (M) | H: 207°



6-h IR BT Differences & Lightning

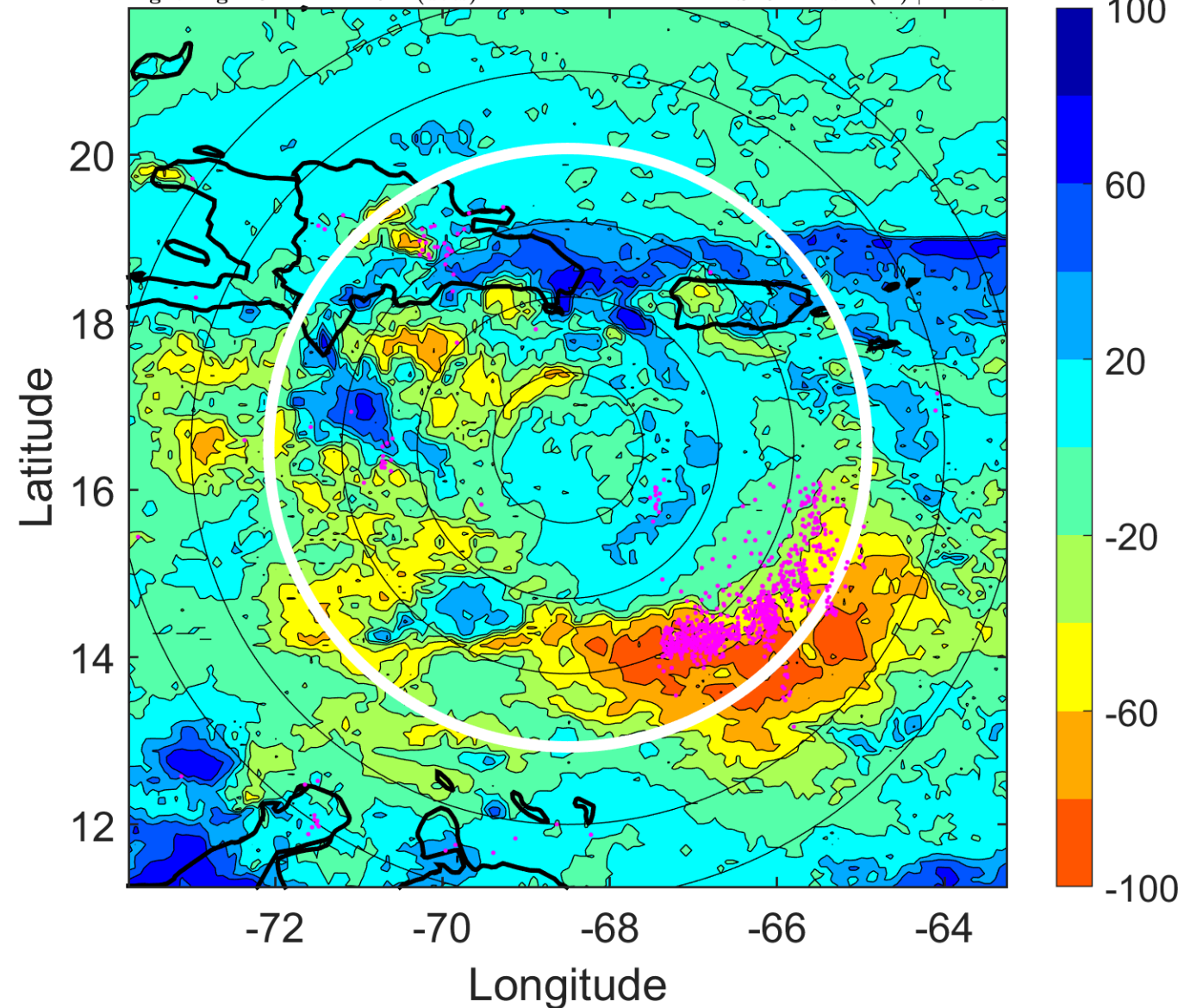
Δ t: 2005102218 (13.4 LT) - 2005102212 (7.5 LT)

Lightning: 13.4 LT \pm 1.5 h (dots)

PT: LLCP | EA: ACT

26L (ALPHA) | 35 kt TS

S: 9.4 m s⁻¹ (M) | H: 207°



IR BT & Lightning

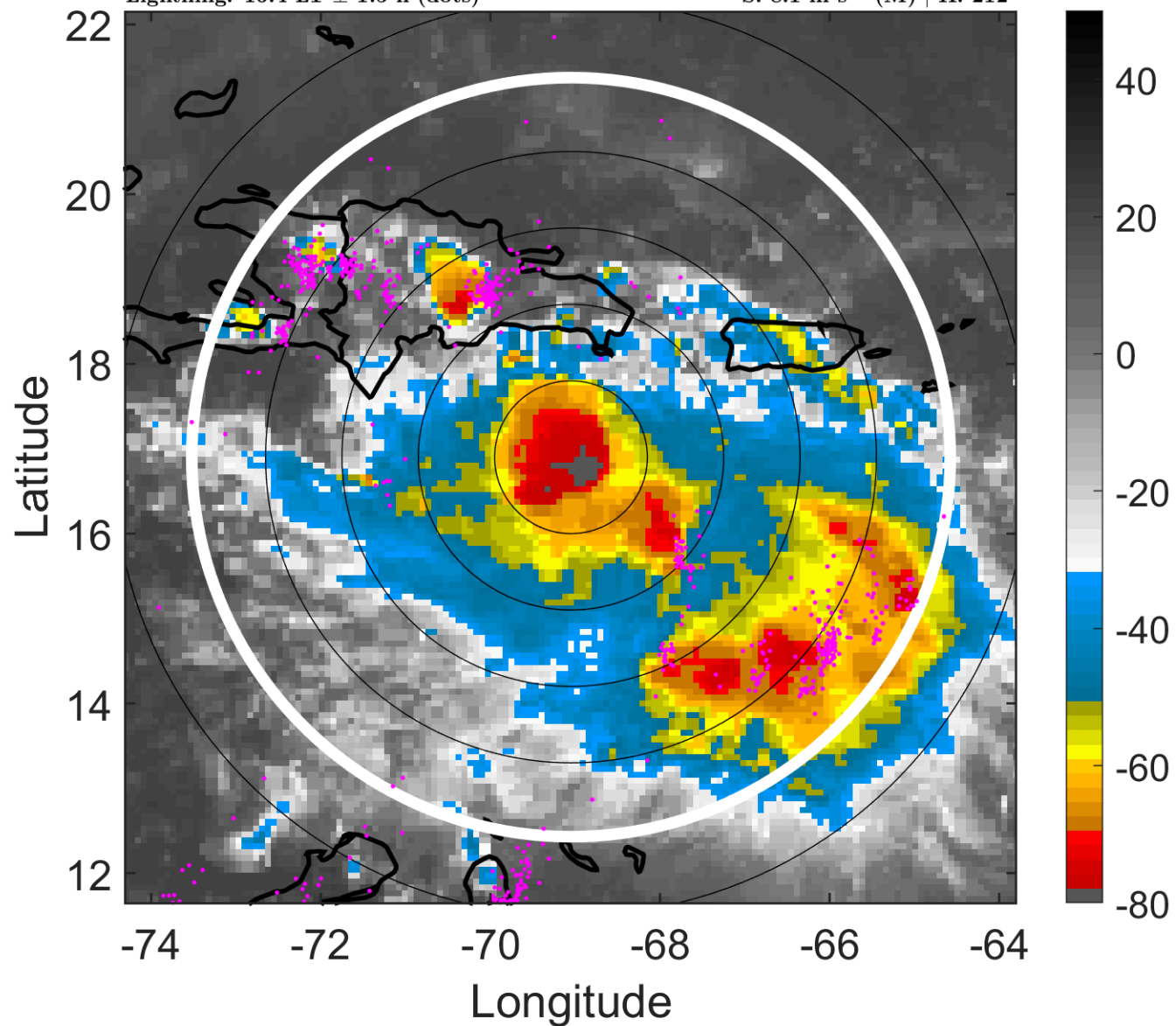
t: 2005102221 (16.4 LT)

Lightning: 16.4 LT \pm 1.5 h (dots)

PT: LLCP | EA: ACT

26L (ALPHA) | 40 kt TS

S: 8.1 m s⁻¹ (M) | H: 212°



6-h IR BT Differences & Lightning

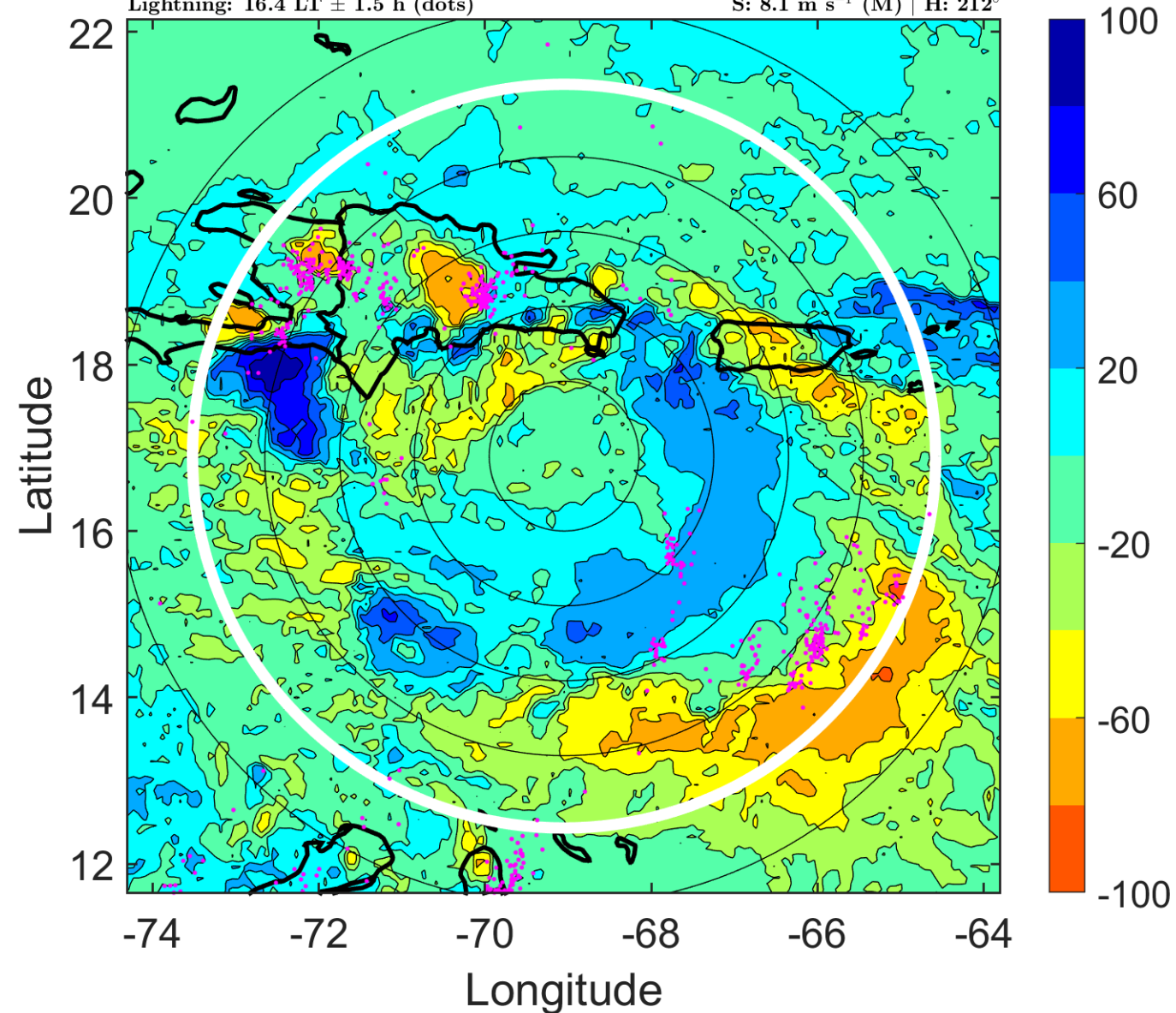
Δ t: 2005102221 (16.4 LT) - 2005102215 (10.5 LT)

Lightning: 16.4 LT \pm 1.5 h (dots)

PT: LLCP | EA: ACT

26L (ALPHA) | 40 kt TS

S: 8.1 m s⁻¹ (M) | H: 212°



IR BT & Lightning

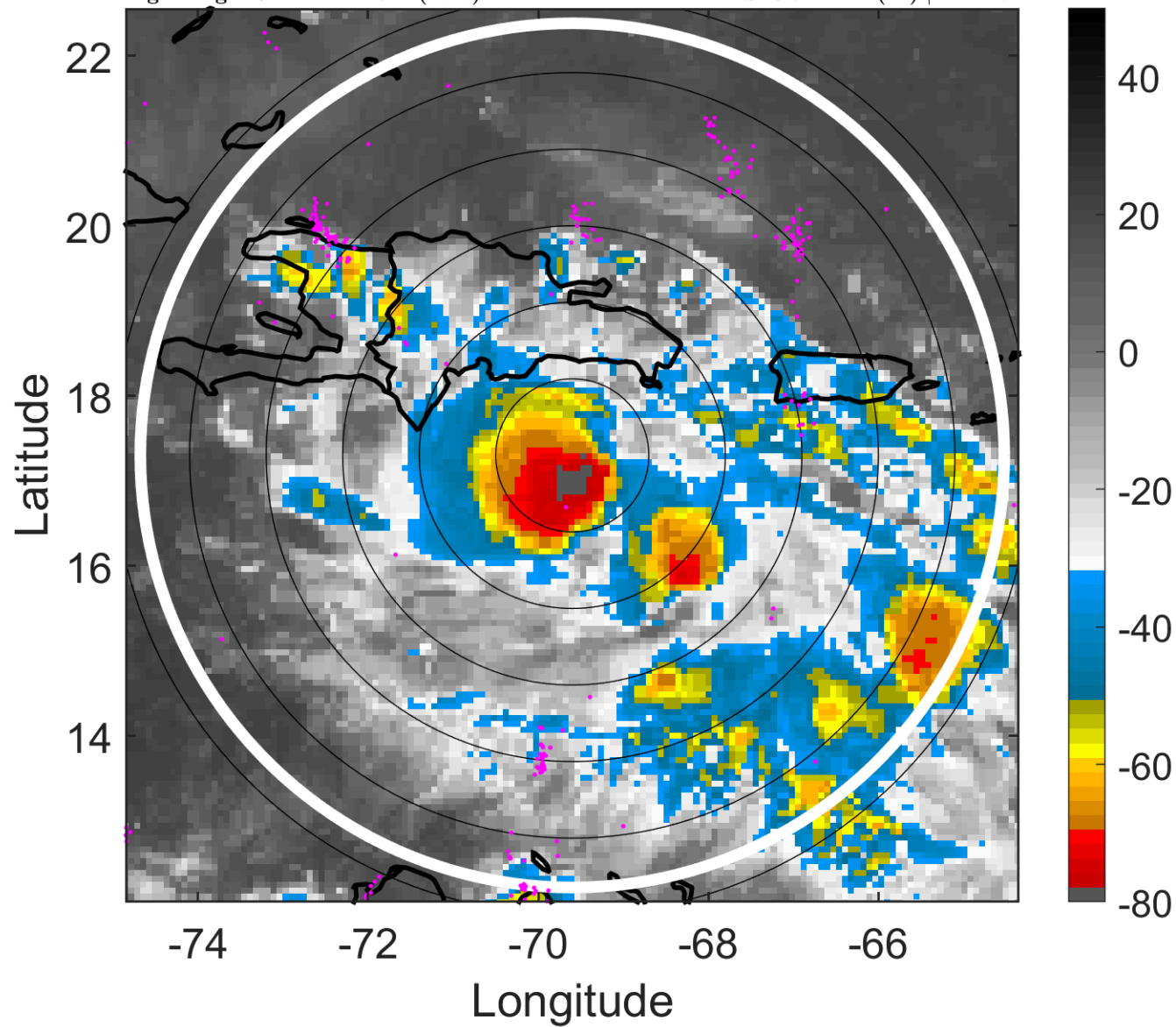
t: 2005102300 (19.4 LT)

Lightning: 19.4 LT \pm 1.5 h (dots)

PT: LLCP | EA: ACT

26L (ALPHA) | 45 kt TS

S: 6.7 m s⁻¹ (M) | H: 217°



6-h IR BT Differences & Lightning

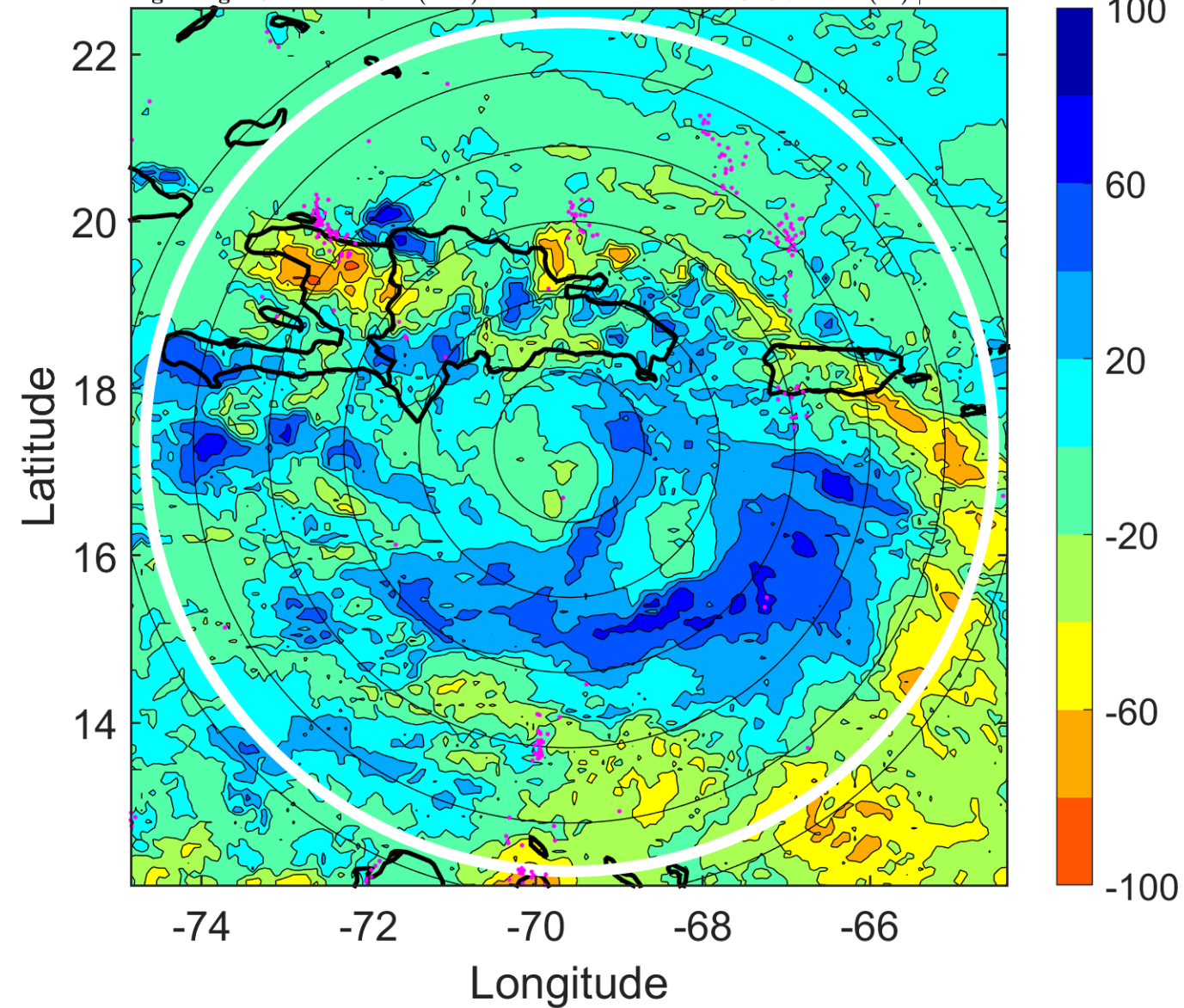
Δ t: 2005102300 (19.4 LT) - 2005102218 (13.4 LT)

Lightning: 19.4 LT \pm 1.5 h (dots)

PT: LLCP | EA: ACT

26L (ALPHA) | 45 kt TS

S: 6.7 m s⁻¹ (M) | H: 217°



IR BT & Lightning

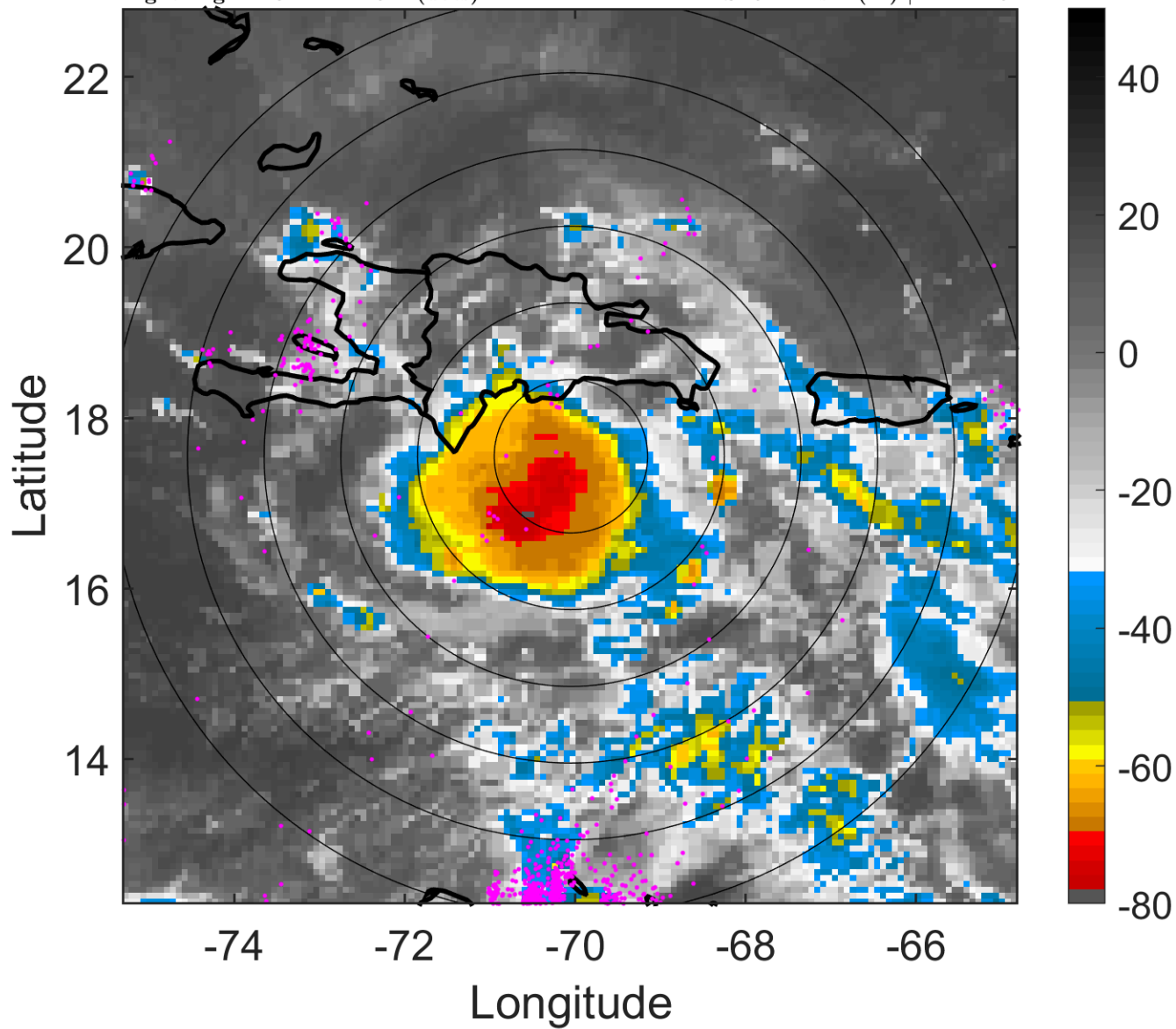
t: 2005102303 (22.3 LT)

Lightning: 22.3 LT \pm 1.5 h (dots)

PT: LLCP | EA: ACT

26L (ALPHA) | 45 kt TS

S: 6.1 m s⁻¹ (M) | H: 221.5°



6-h IR BT Differences & Lightning

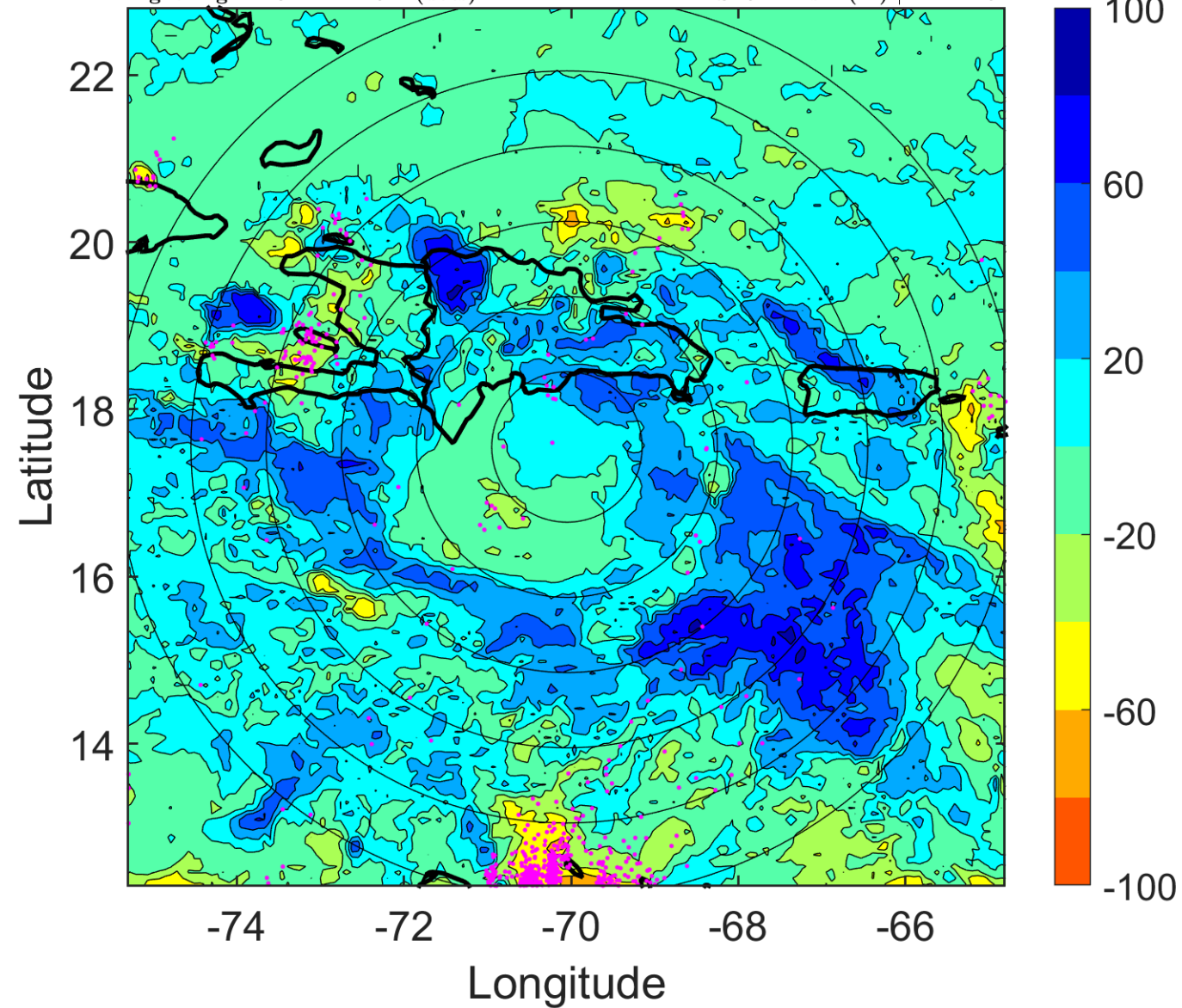
Δ t: 2005102303 (22.3 LT) - 2005102221 (16.4 LT)

Lightning: 22.3 LT \pm 1.5 h (dots)

PT: LLCP | EA: ACT

26L (ALPHA) | 45 kt TS

S: 6.1 m s⁻¹ (M) | H: 221.5°



IR BT & Lightning

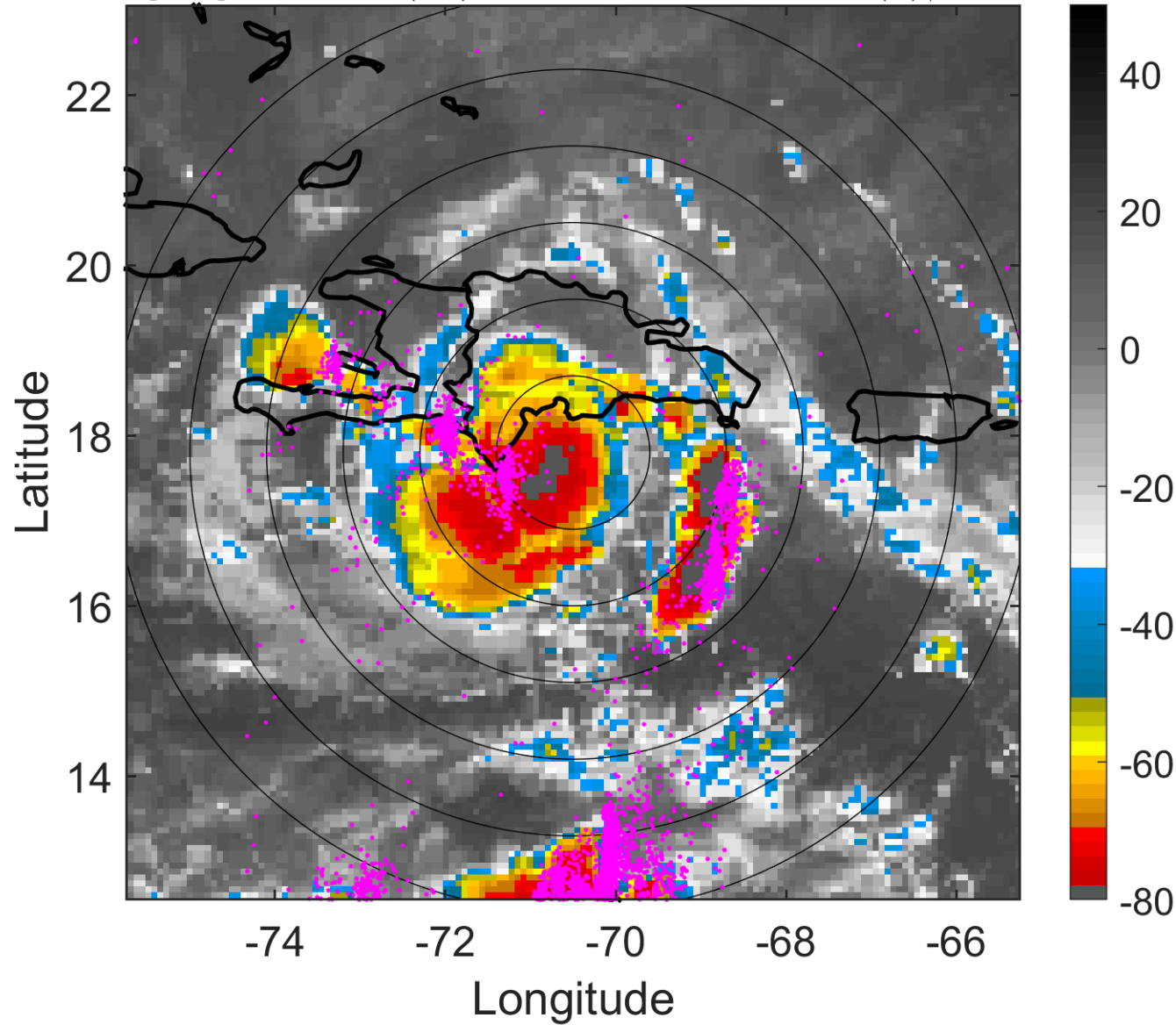
t: 2005102306 (1.3 LT)

Lightning: 1.3 LT \pm 1.5 h (dots)

PT: LLCP | EA: QUASI

26L (ALPHA) | 45 kt TS

S: 5.6 m s⁻¹ (M) | H: 226°



6-h IR BT Differences & Lightning

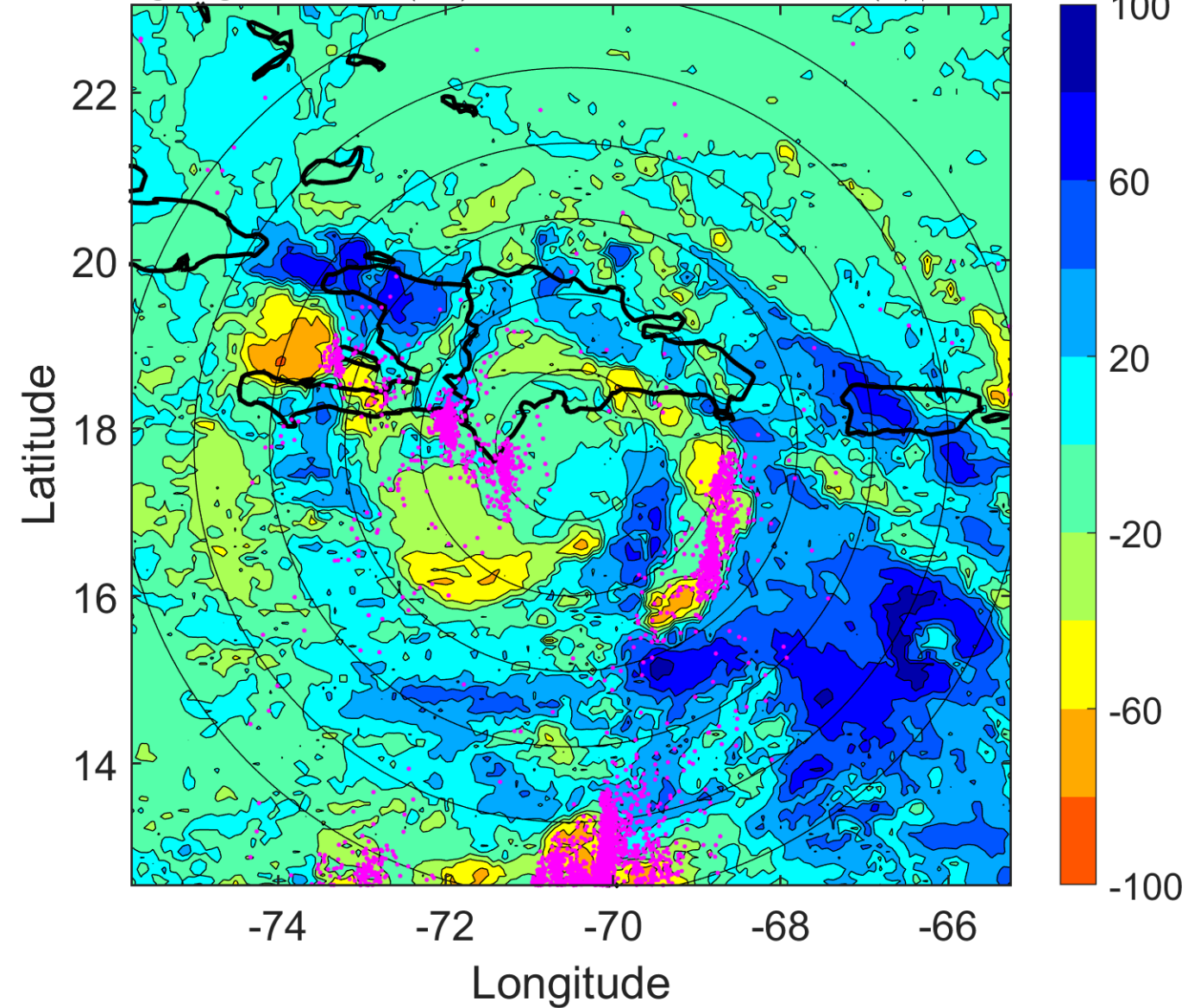
Δ t: 2005102306 (1.3 LT) - 2005102300 (19.4 LT)

Lightning: 1.3 LT \pm 1.5 h (dots)

PT: LLCP | EA: QUASI

26L (ALPHA) | 45 kt TS

S: 5.6 m s⁻¹ (M) | H: 226°



IR BT & Lightning

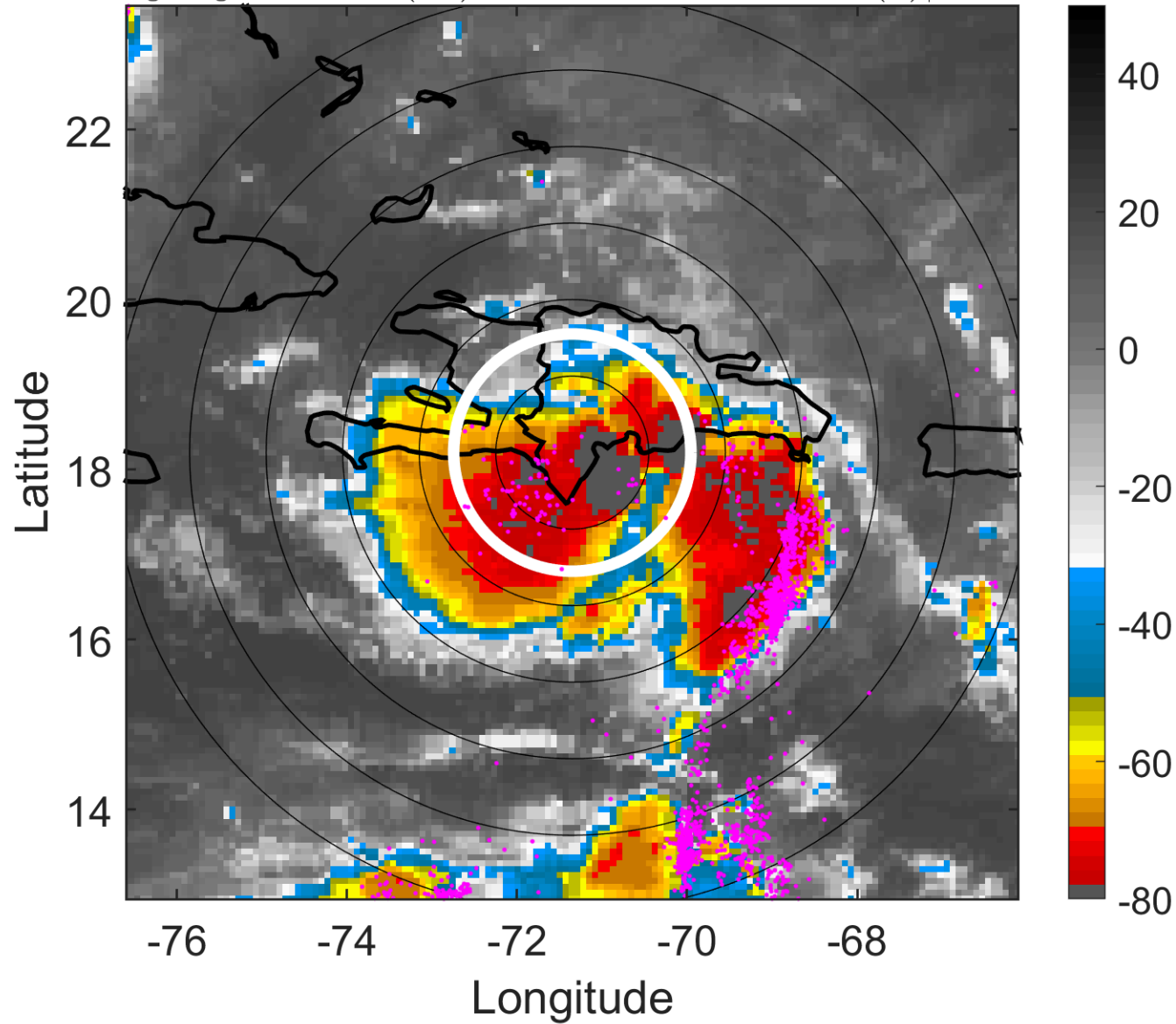
t: 2005102309 (4.2 LT)

Lightning: 4.2 LT \pm 1.5 h (dots)

PT: LLCP | EA: QUASI

26L (ALPHA) | 40 kt TS

S: 6 m s⁻¹ (M) | H: 251°



6-h IR BT Differences & Lightning

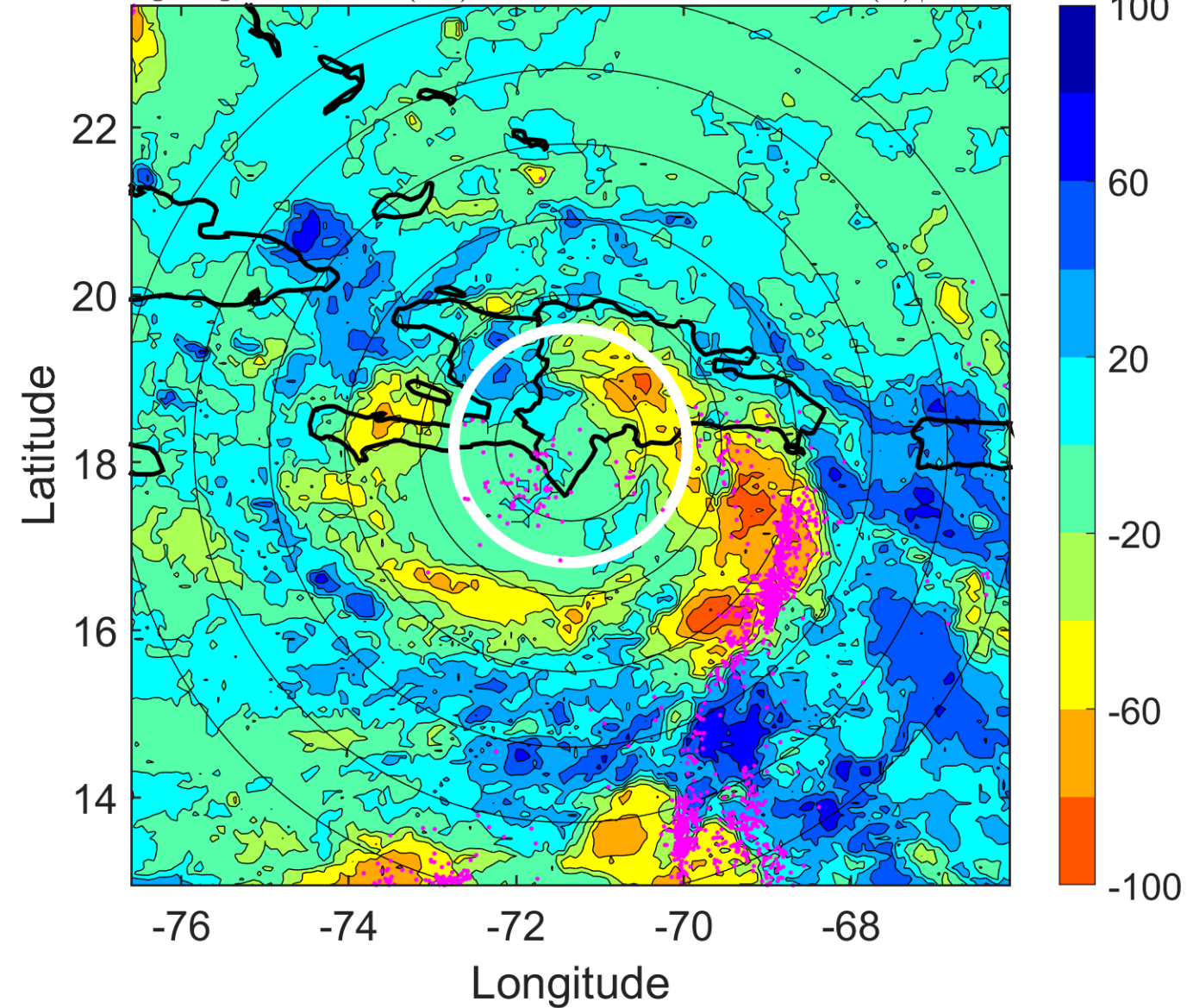
Δ t: 2005102309 (4.2 LT) - 2005102303 (22.3 LT)

Lightning: 4.2 LT \pm 1.5 h (dots)

PT: LLCP | EA: QUASI

26L (ALPHA) | 40 kt TS

S: 6 m s⁻¹ (M) | H: 251°



IR BT & Lightning

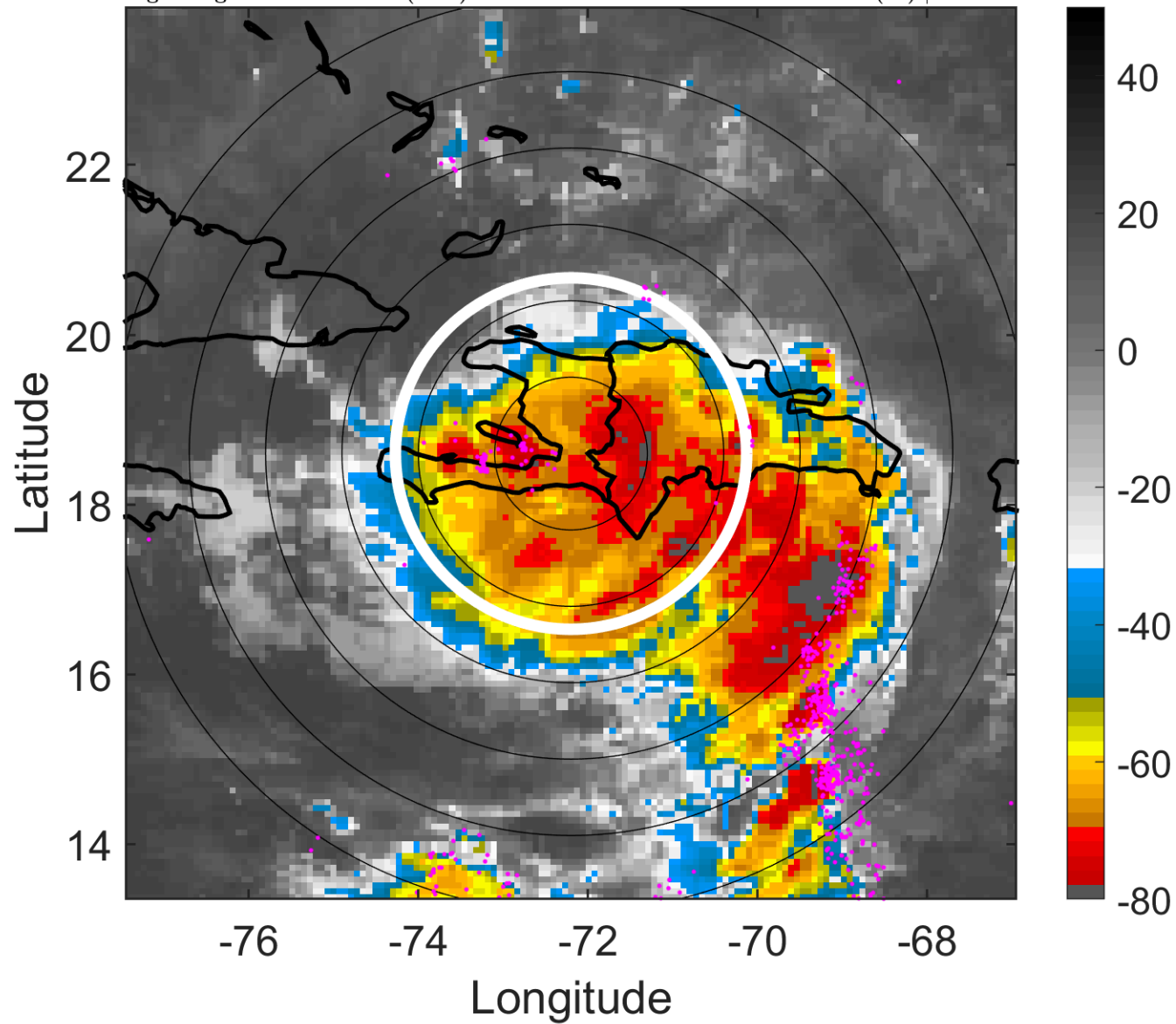
t: 2005102312 (7.2 LT)

Lightning: 7.2 LT \pm 1.5 h (dots)

PT: LLCP | EA: QUASI

26L (ALPHA) | 35 kt TS

S: 6.4 m s⁻¹ (M) | H: 276°



6-h IR BT Differences & Lightning

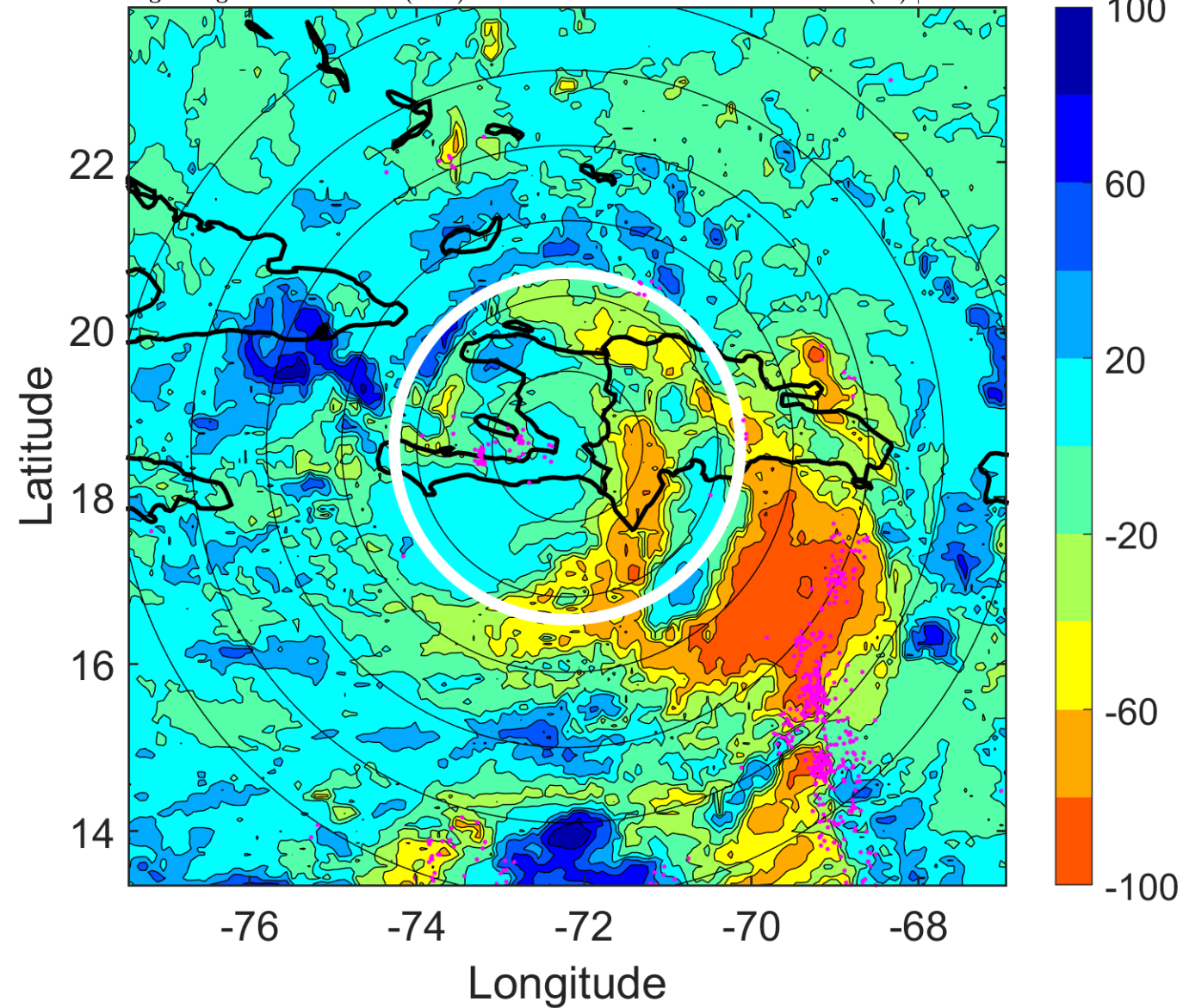
Δ t: 2005102312 (7.2 LT) - 2005102306 (1.3 LT)

Lightning: 7.2 LT \pm 1.5 h (dots)

PT: LLCP | EA: QUASI

26L (ALPHA) | 35 kt TS

S: 6.4 m s⁻¹ (M) | H: 276°



IR BT & Lightning

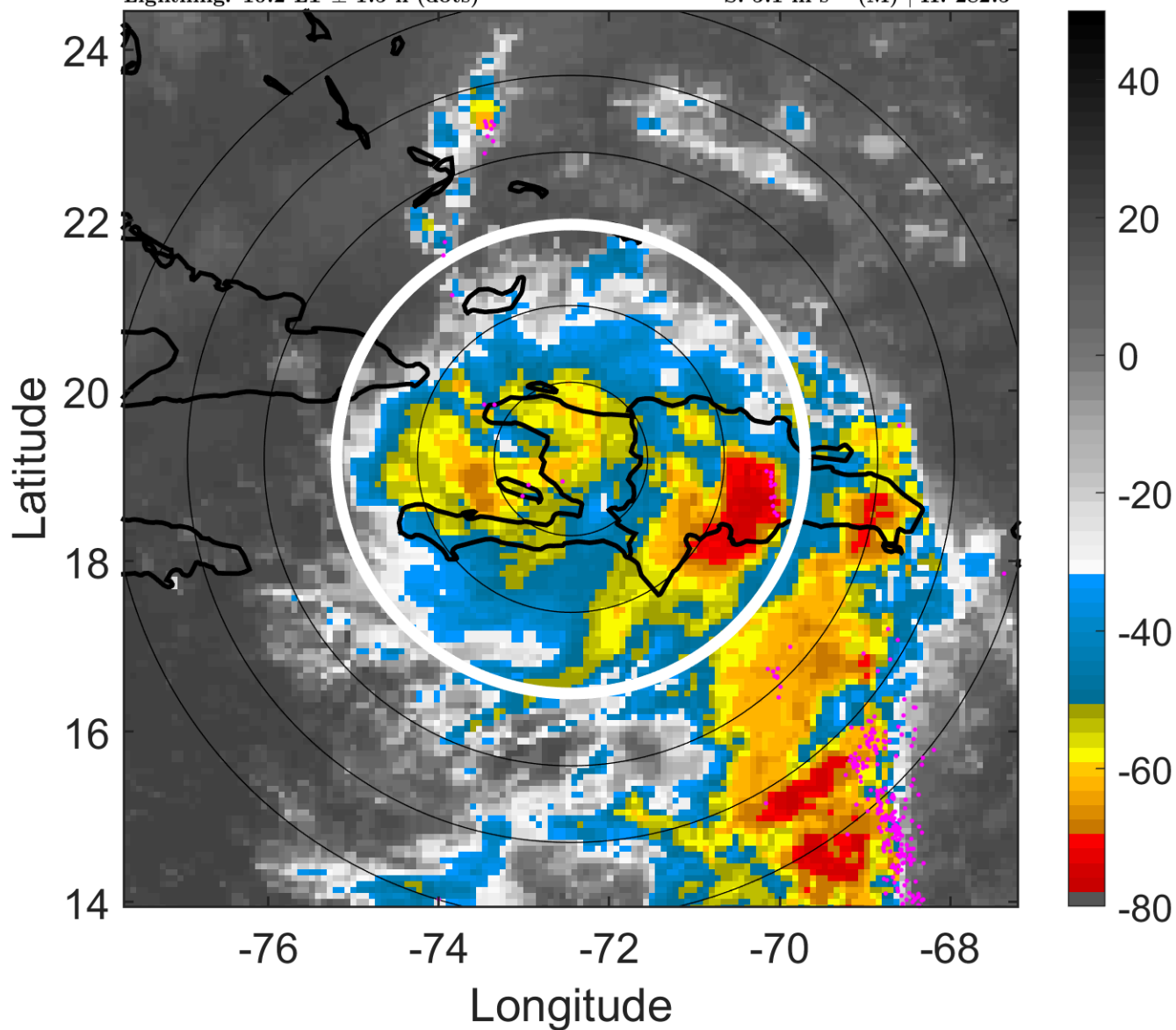
t: 2005102315 (10.2 LT)

Lightning: 10.2 LT \pm 1.5 h (dots)

PT: LLCP | EA: QUASI

26L (ALPHA) | 32.5 kt TD

S: 5.1 m s⁻¹ (M) | H: 282.5°



6-h IR BT Differences & Lightning

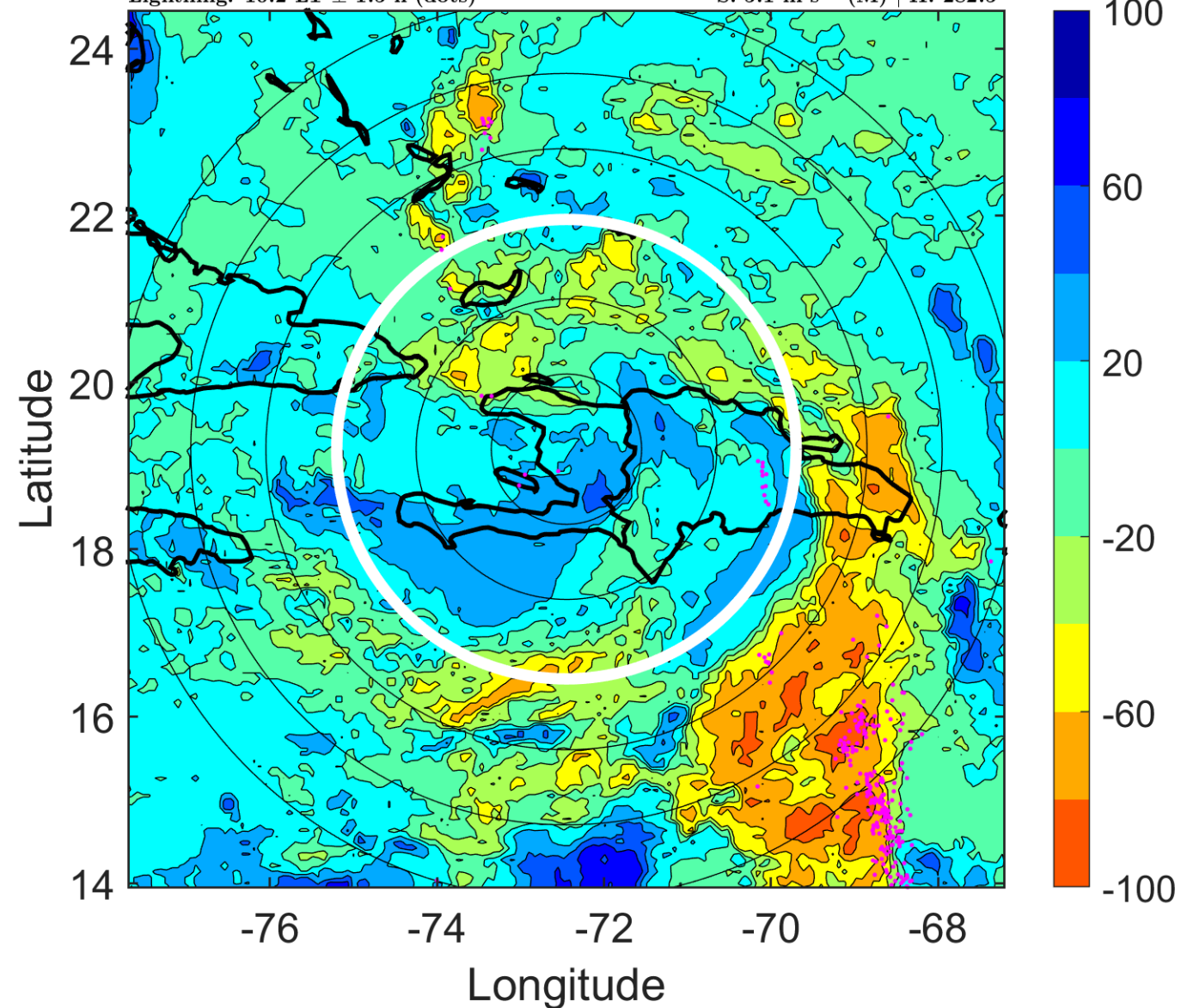
Δ t: 2005102315 (10.2 LT) - 2005102309 (4.2 LT)

Lightning: 10.2 LT \pm 1.5 h (dots)

PT: LLCP | EA: QUASI

26L (ALPHA) | 32.5 kt TD

S: 5.1 m s⁻¹ (M) | H: 282.5°



IR BT & Lightning

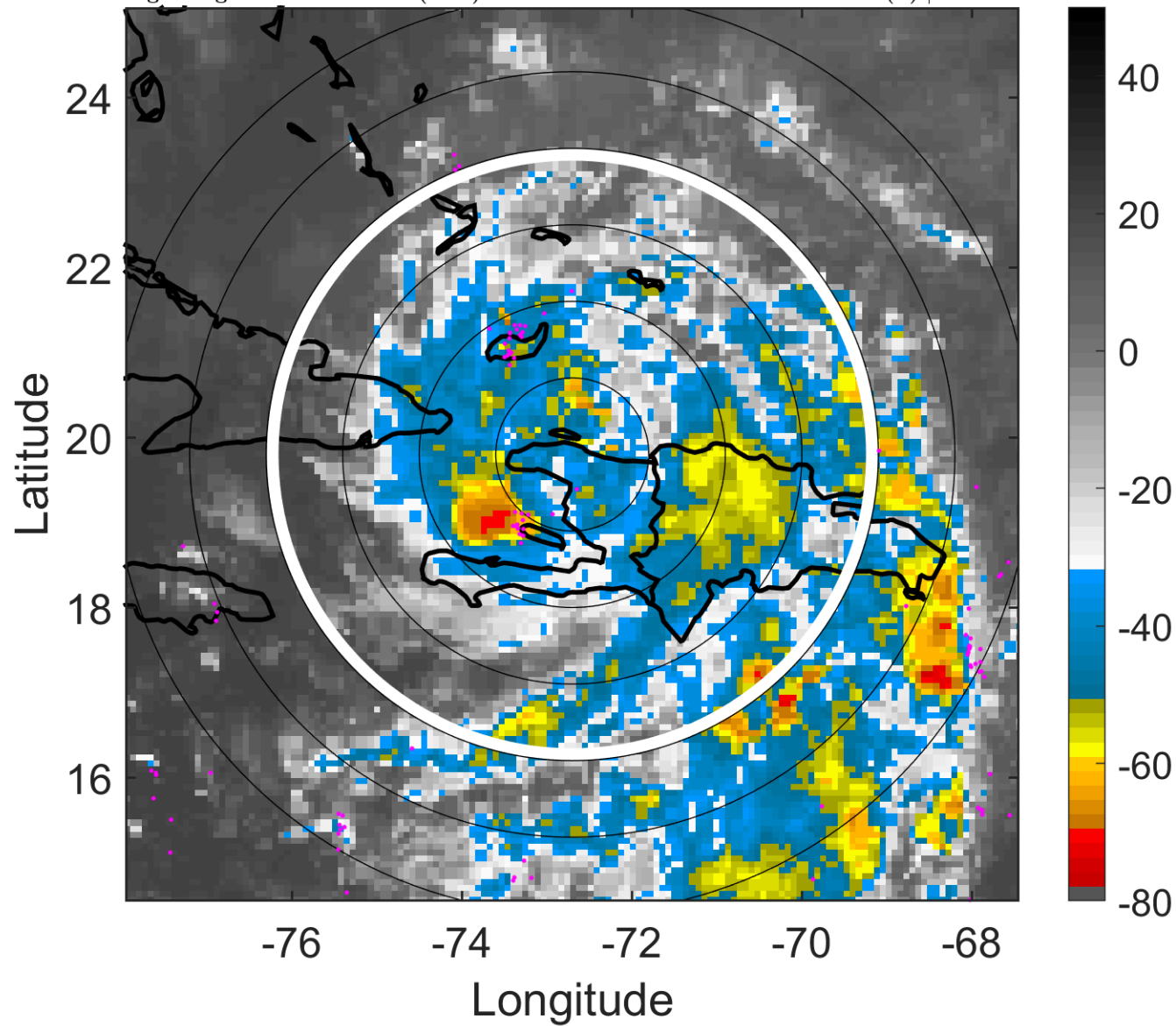
t: 2005102318 (13.2 LT)

Lightning: 13.2 LT \pm 1.5 h (dots)

PT: LLCP | EA: QUASI

26L (ALPHA) | 30 kt TD

S: 3.9 m s⁻¹ (L) | H: 289°



6-h IR BT Differences & Lightning

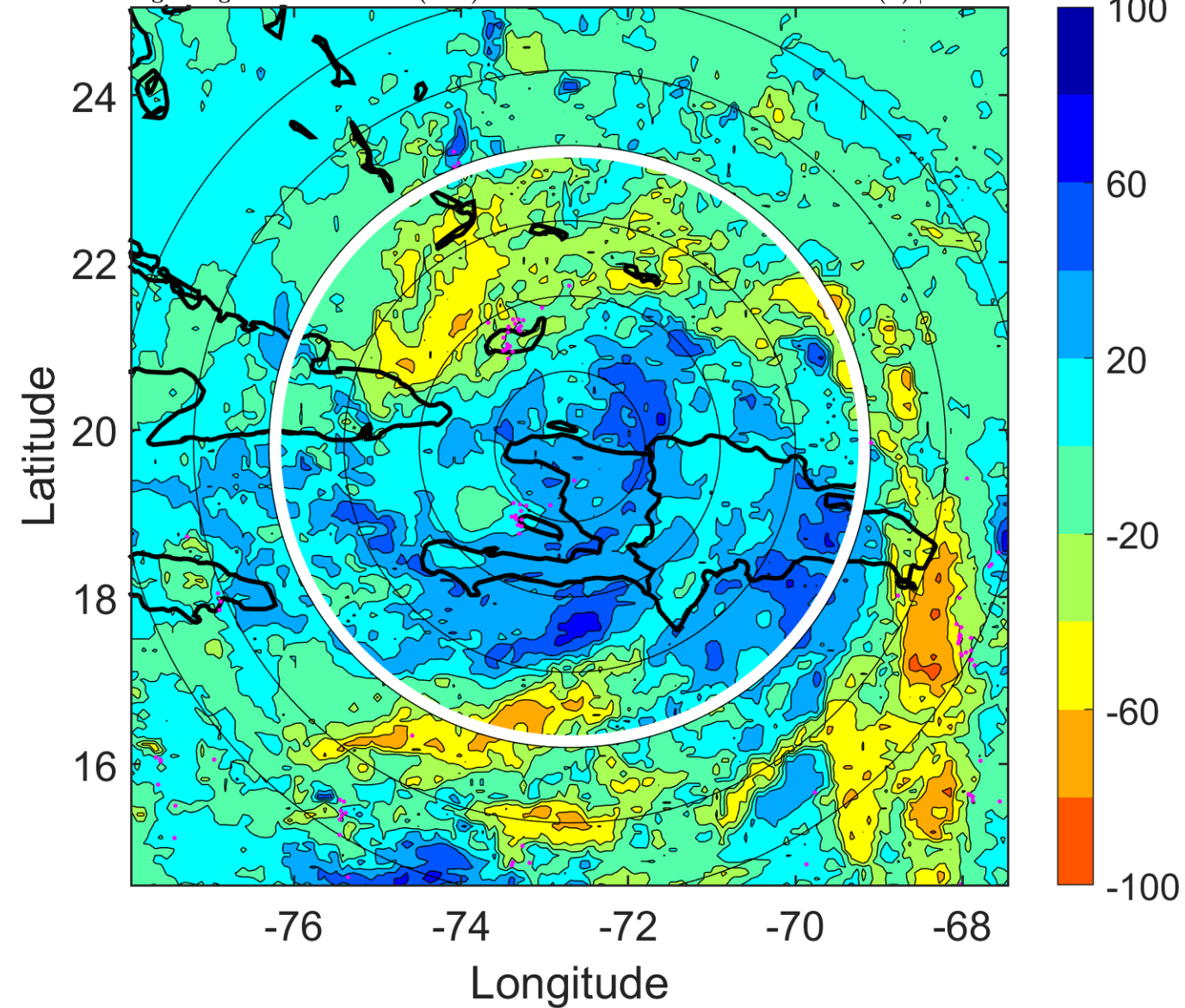
Δ t: 2005102318 (13.2 LT) - 2005102312 (7.2 LT)

Lightning: 13.2 LT \pm 1.5 h (dots)

PT: LLCP | EA: QUASI

26L (ALPHA) | 30 kt TD

S: 3.9 m s⁻¹ (L) | H: 289°



IR BT & Lightning

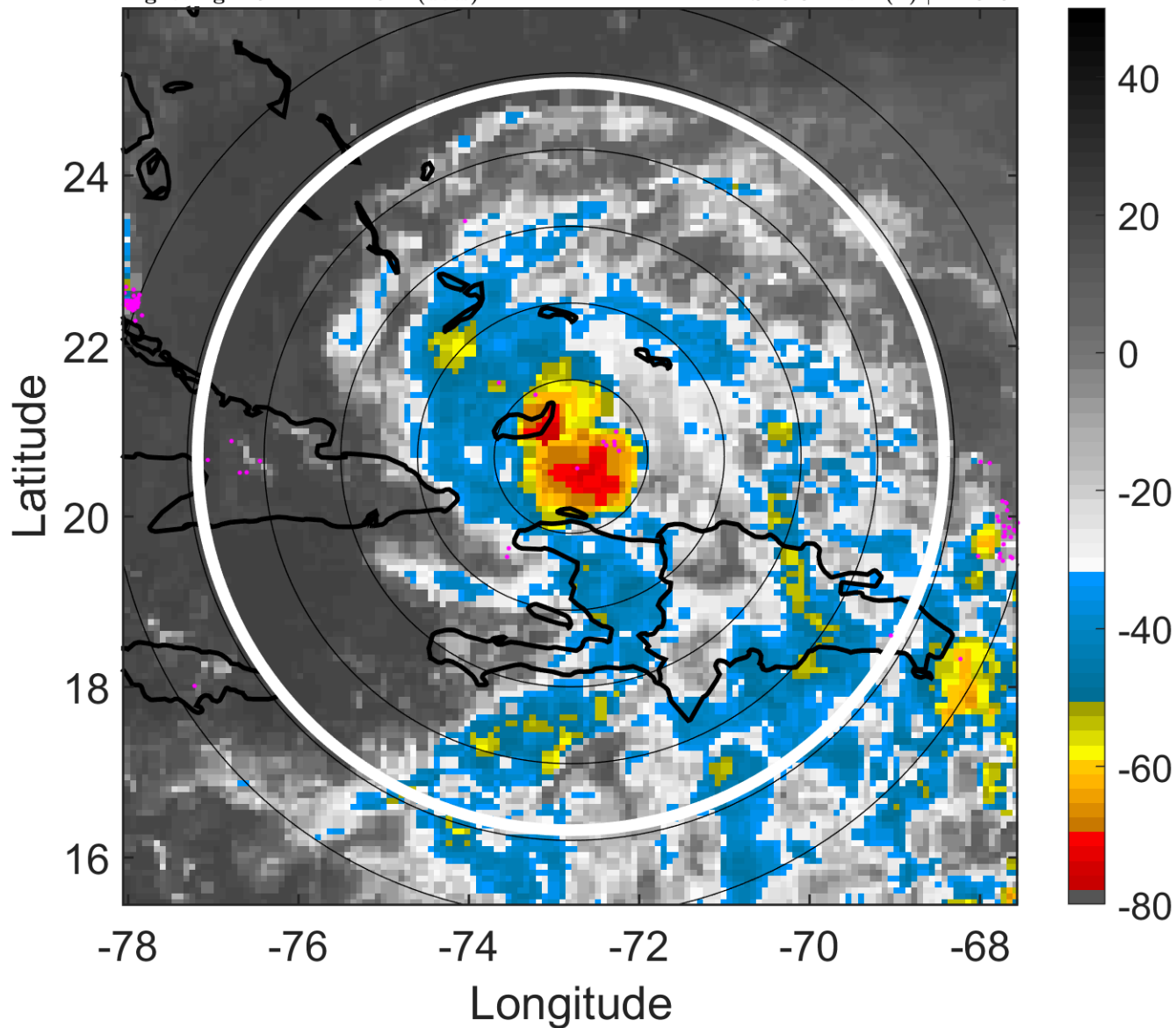
t: 2005102321 (16.1 LT)

Lightning: 16.1 LT \pm 1.5 h (dots)

PT: LLCP | EA: QUASI

26L (ALPHA) | 30 kt TD

S: 3.8 m s⁻¹ (L) | H: 320°



6-h IR BT Differences & Lightning

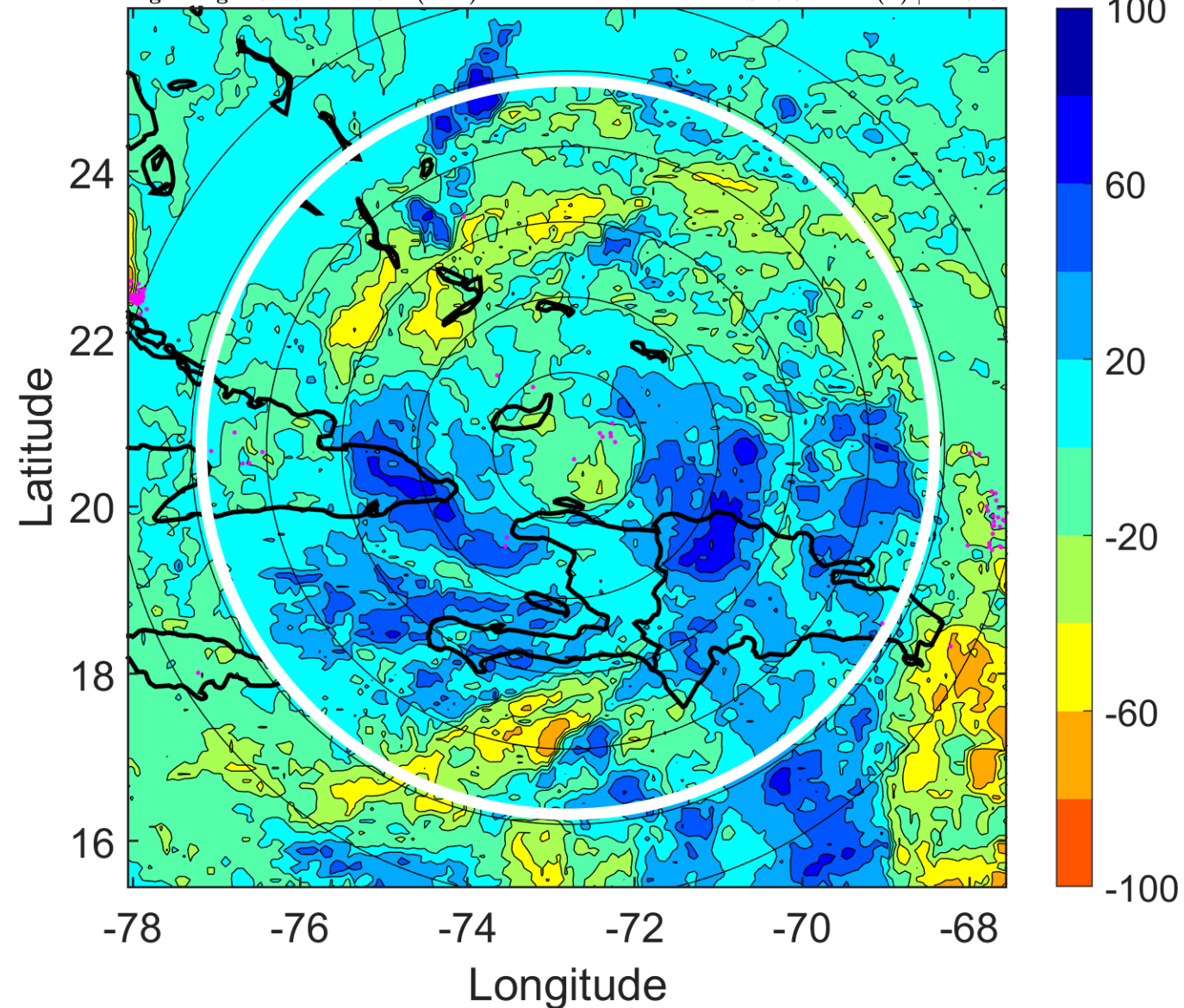
Δ t: 2005102321 (16.1 LT) - 2005102315 (10.2 LT)

Lightning: 16.1 LT \pm 1.5 h (dots)

PT: LLCP | EA: QUASI

26L (ALPHA) | 30 kt TD

S: 3.8 m s⁻¹ (L) | H: 320°



IR BT & Lightning

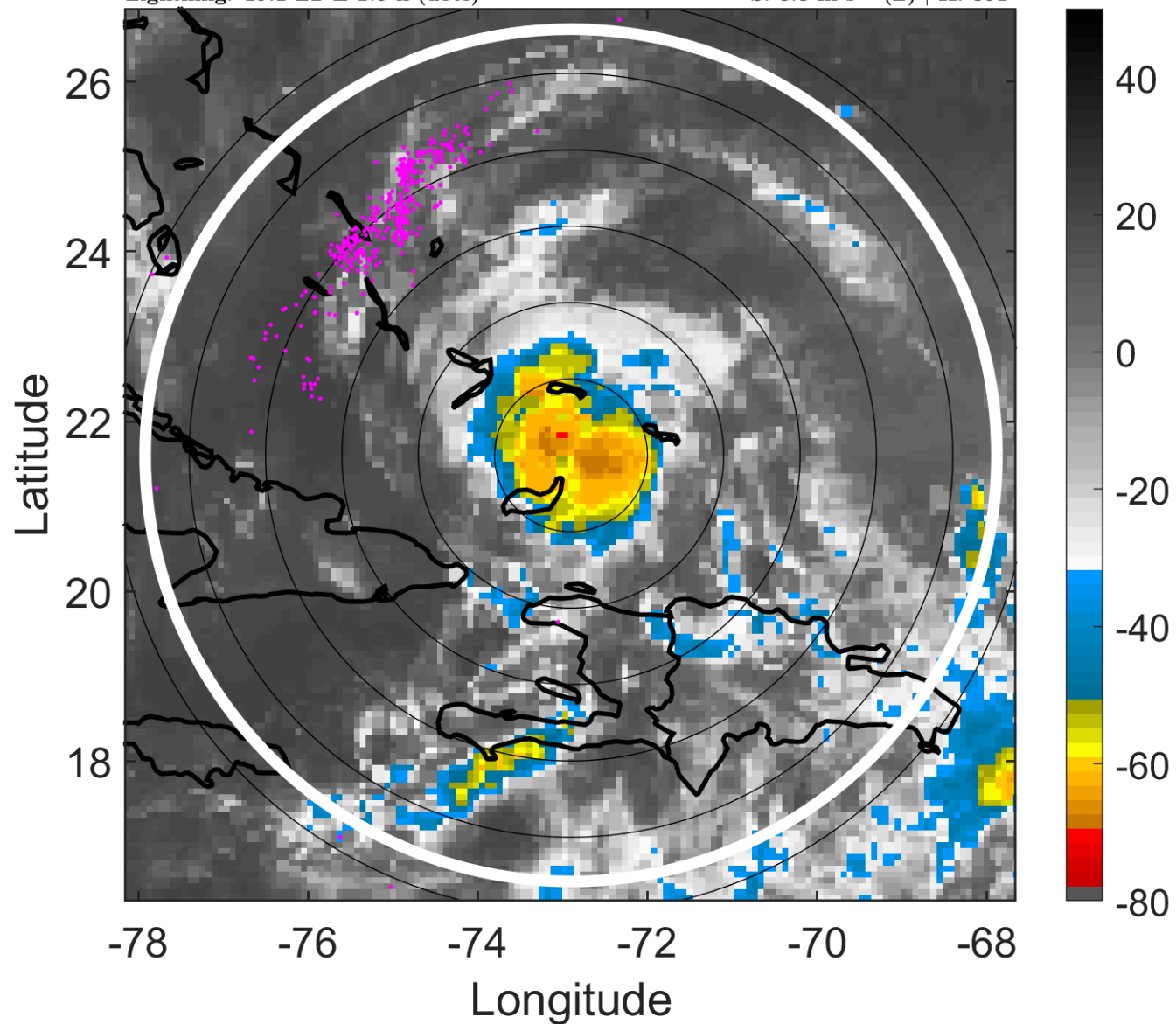
t: 2005102400 (19.1 LT)

Lightning: 19.1 LT \pm 1.5 h (dots)

PT: LLCP | EA: QUASI

26L (ALPHA) | 30 kt TD

S: 3.8 m s⁻¹ (L) | H: 351°



6-h IR BT Differences & Lightning

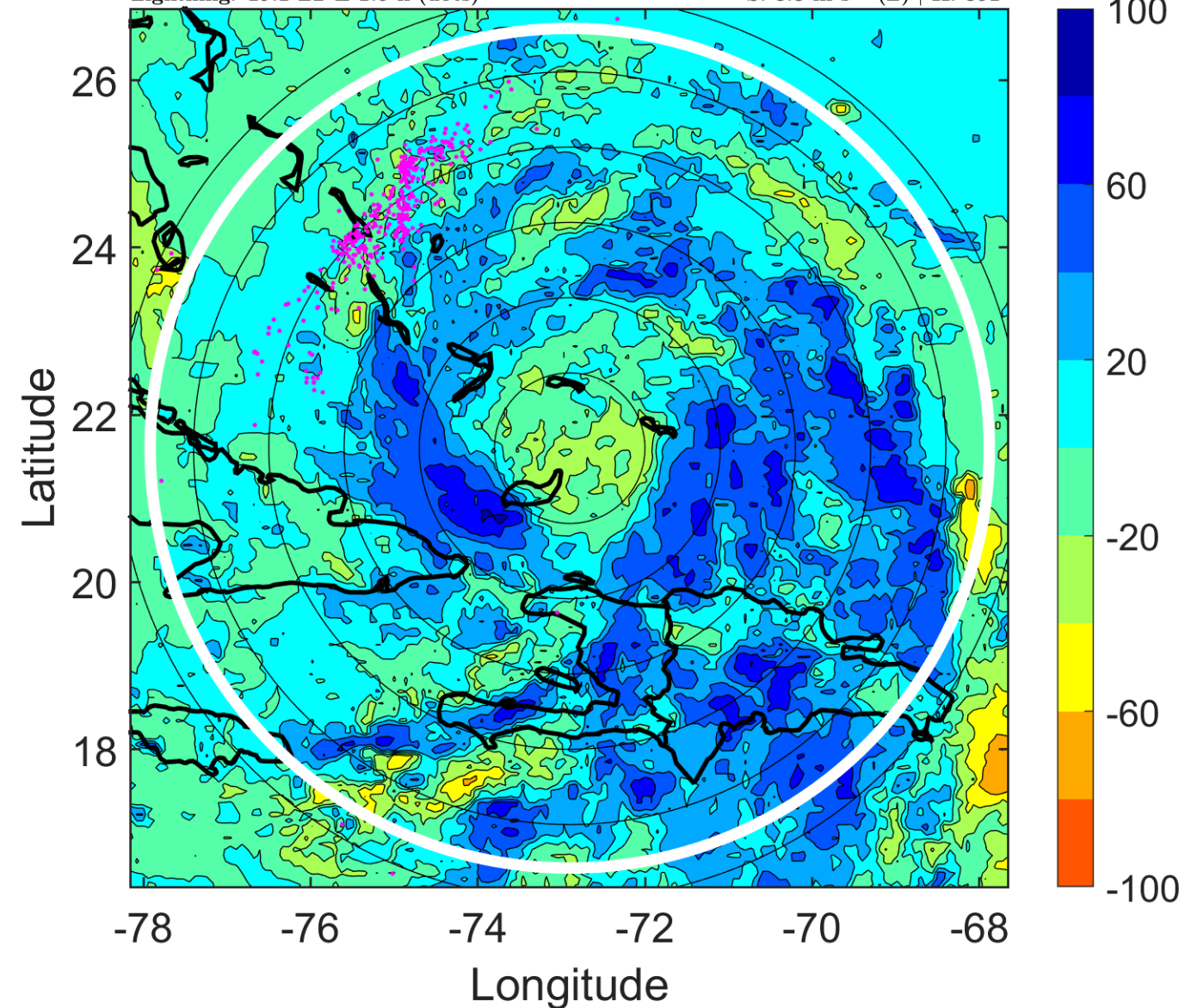
Δ t: 2005102400 (19.1 LT) - 2005102318 (13.2 LT)

Lightning: 19.1 LT \pm 1.5 h (dots)

PT: LLCP | EA: QUASI

26L (ALPHA) | 30 kt TD

S: 3.8 m s⁻¹ (L) | H: 351°



IR BT & Lightning

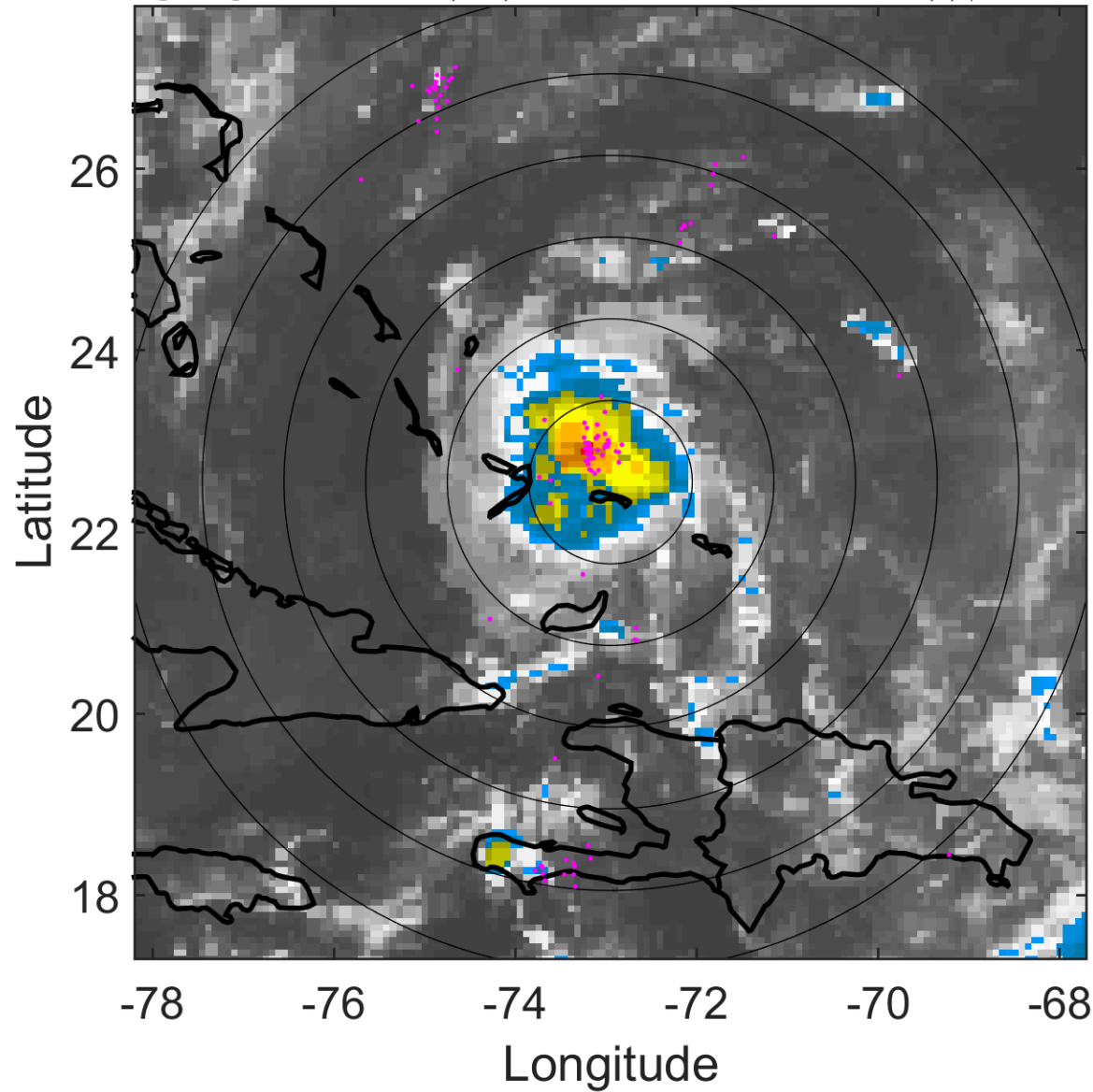
t: 2005102403 (22.1 LT)

Lightning: 22.1 LT \pm 1.5 h (dots)

PT: LLCP | EA: QUASI

26L (ALPHA) | 30 kt TD

S: 3 m s⁻¹ (L) | H: 200.5°



6-h IR BT Differences & Lightning

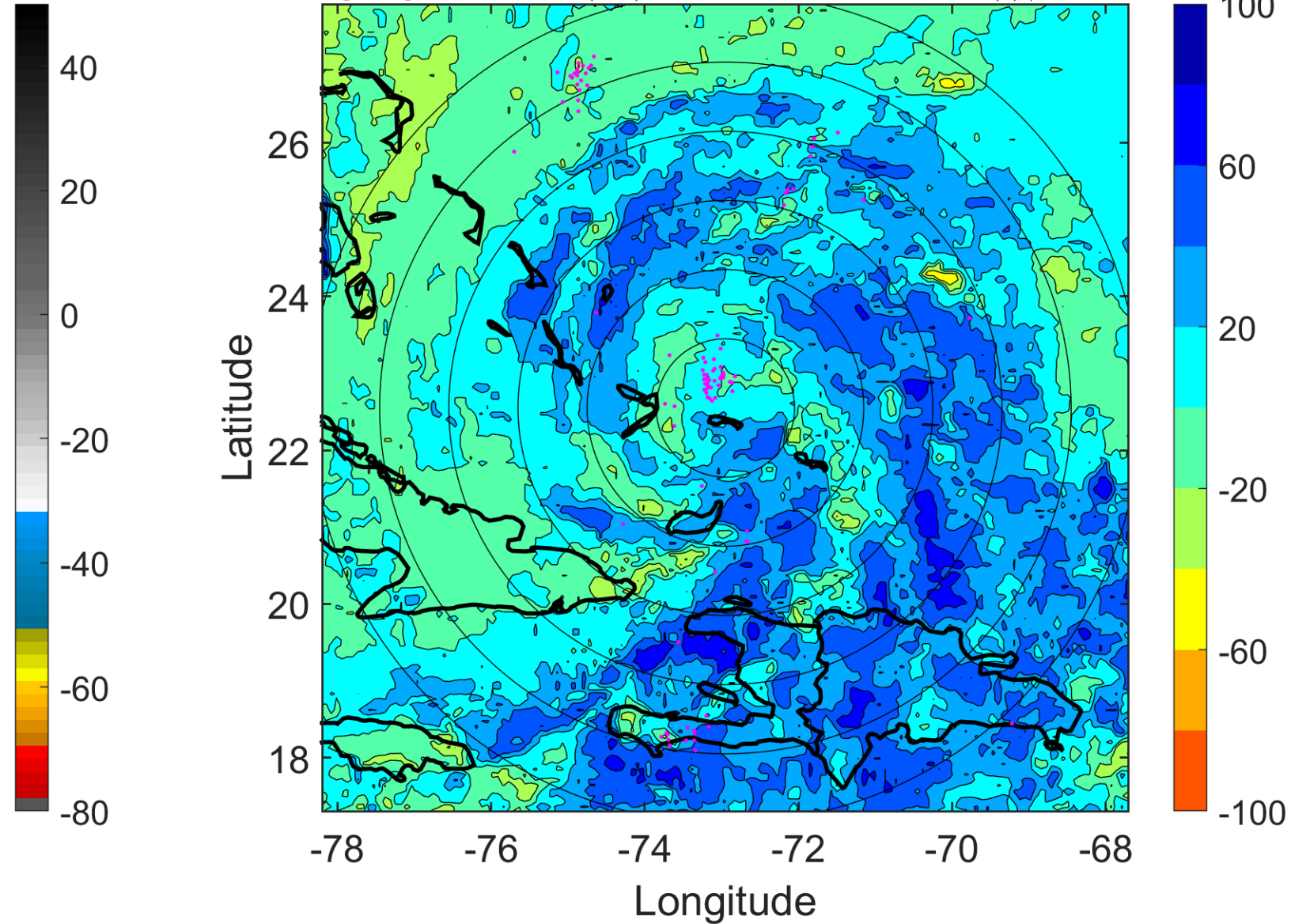
Δ t: 2005102403 (22.1 LT) - 2005102321 (16.1 LT)

Lightning: 22.1 LT \pm 1.5 h (dots)

PT: LLCP | EA: QUASI

26L (ALPHA) | 30 kt TD

S: 3 m s⁻¹ (L) | H: 200.5°



IR BT & Lightning

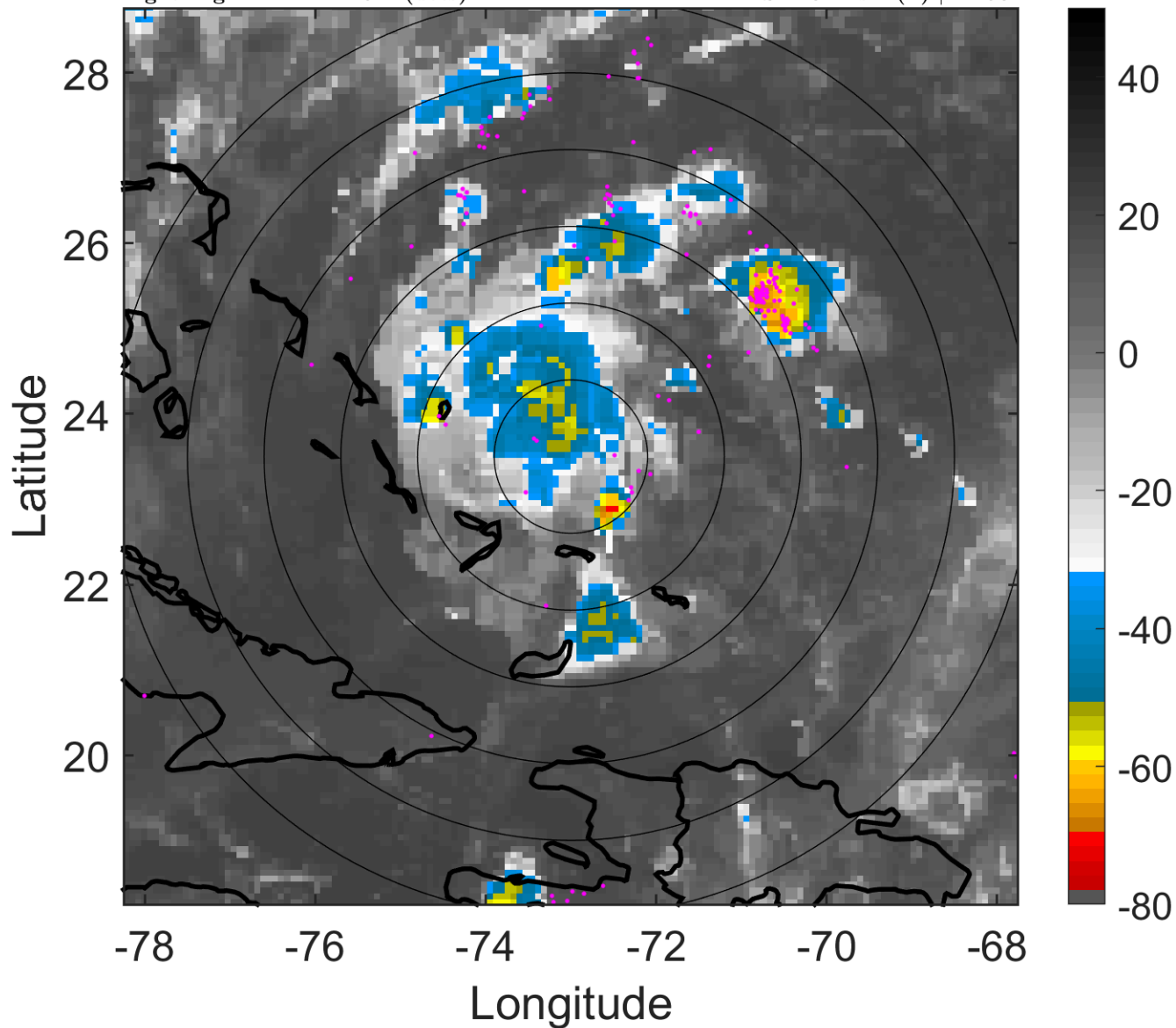
t: 2005102406 (1.1 LT)

Lightning: 1.1 LT \pm 1.5 h (dots)

PT: LLWP | EA: INACT

26L (ALPHA) | 30 kt TD

S: 2.3 m s⁻¹ (L) | H: 50°



6-h IR BT Differences & Lightning

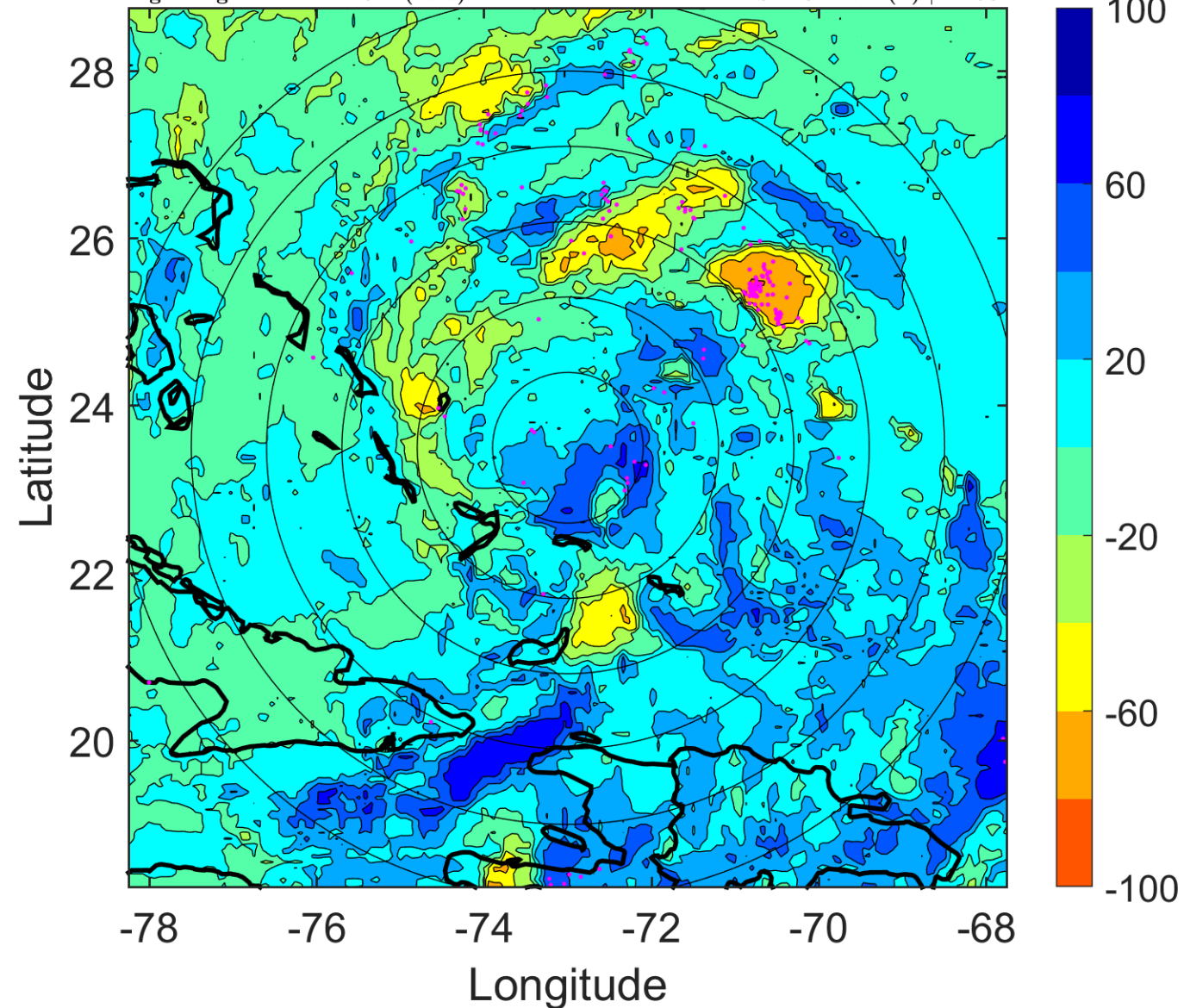
Δ t: 2005102406 (1.1 LT) - 2005102400 (19.1 LT)

Lightning: 1.1 LT \pm 1.5 h (dots)

PT: LLWP | EA: INACT

26L (ALPHA) | 30 kt TD

S: 2.3 m s⁻¹ (L) | H: 50°



IR BT & Lightning

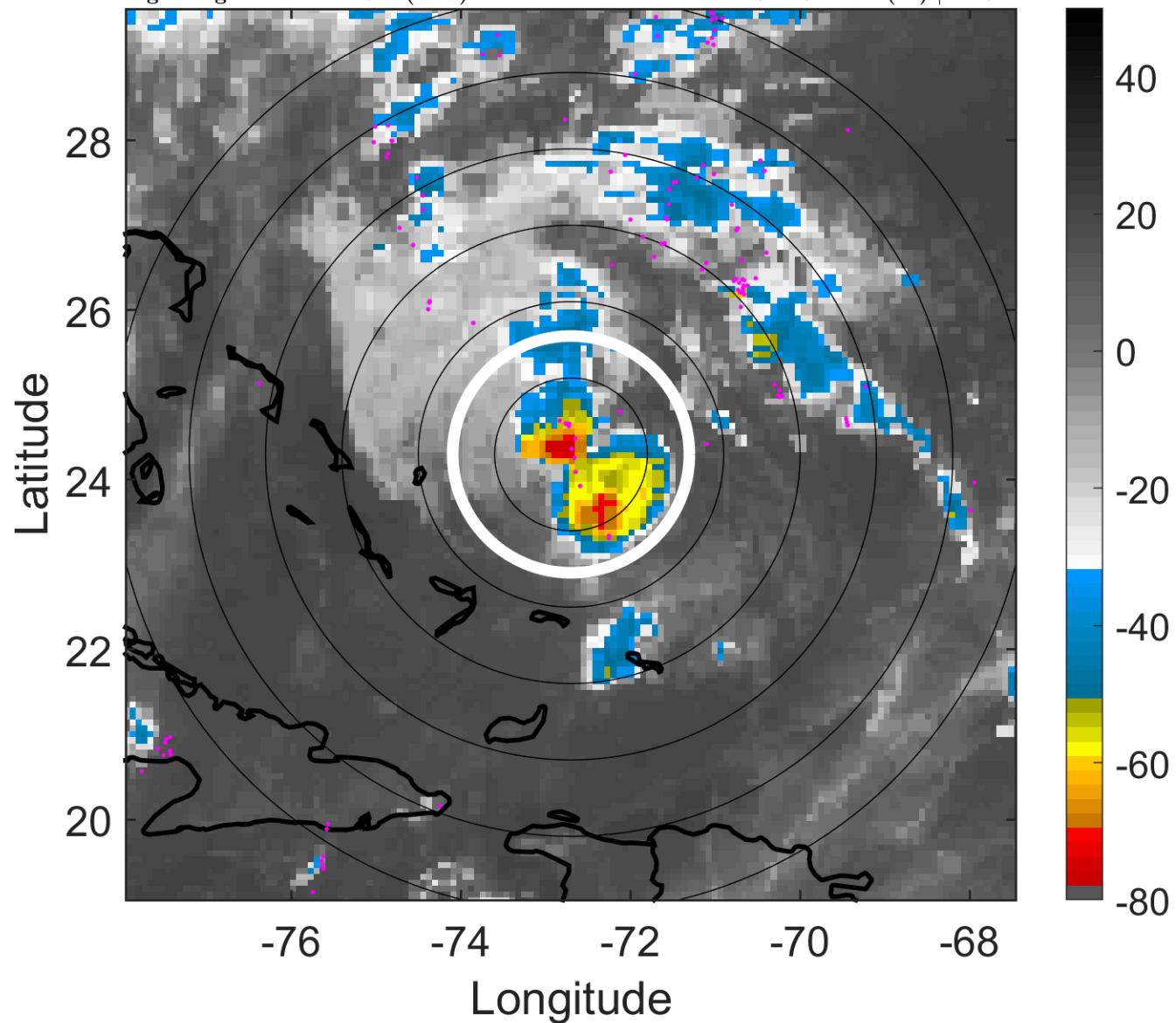
t: 2005102409 (4.2 LT)

Lightning: 4.2 LT \pm 1.5 h (dots)

PT: LLWP | EA: INACT

26L (ALPHA) | 30 kt TD

S: 4.8 m s⁻¹ (M) | H: 92°



6-h IR BT Differences & Lightning

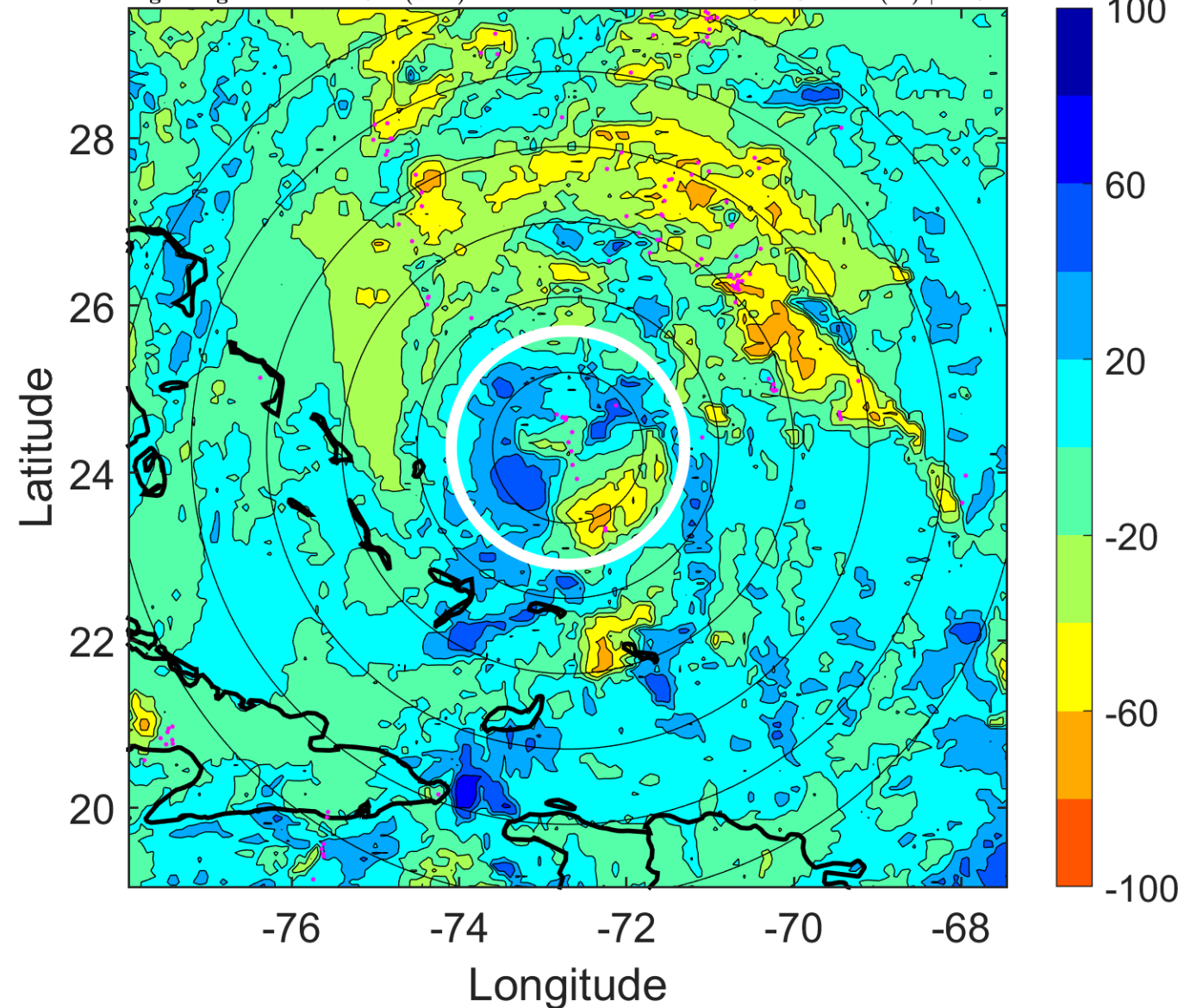
Δ t: 2005102409 (4.2 LT) - 2005102403 (22.1 LT)

Lightning: 4.2 LT \pm 1.5 h (dots)

PT: LLWP | EA: INACT

26L (ALPHA) | 30 kt TD

S: 4.8 m s⁻¹ (M) | H: 92°



IR BT & Lightning

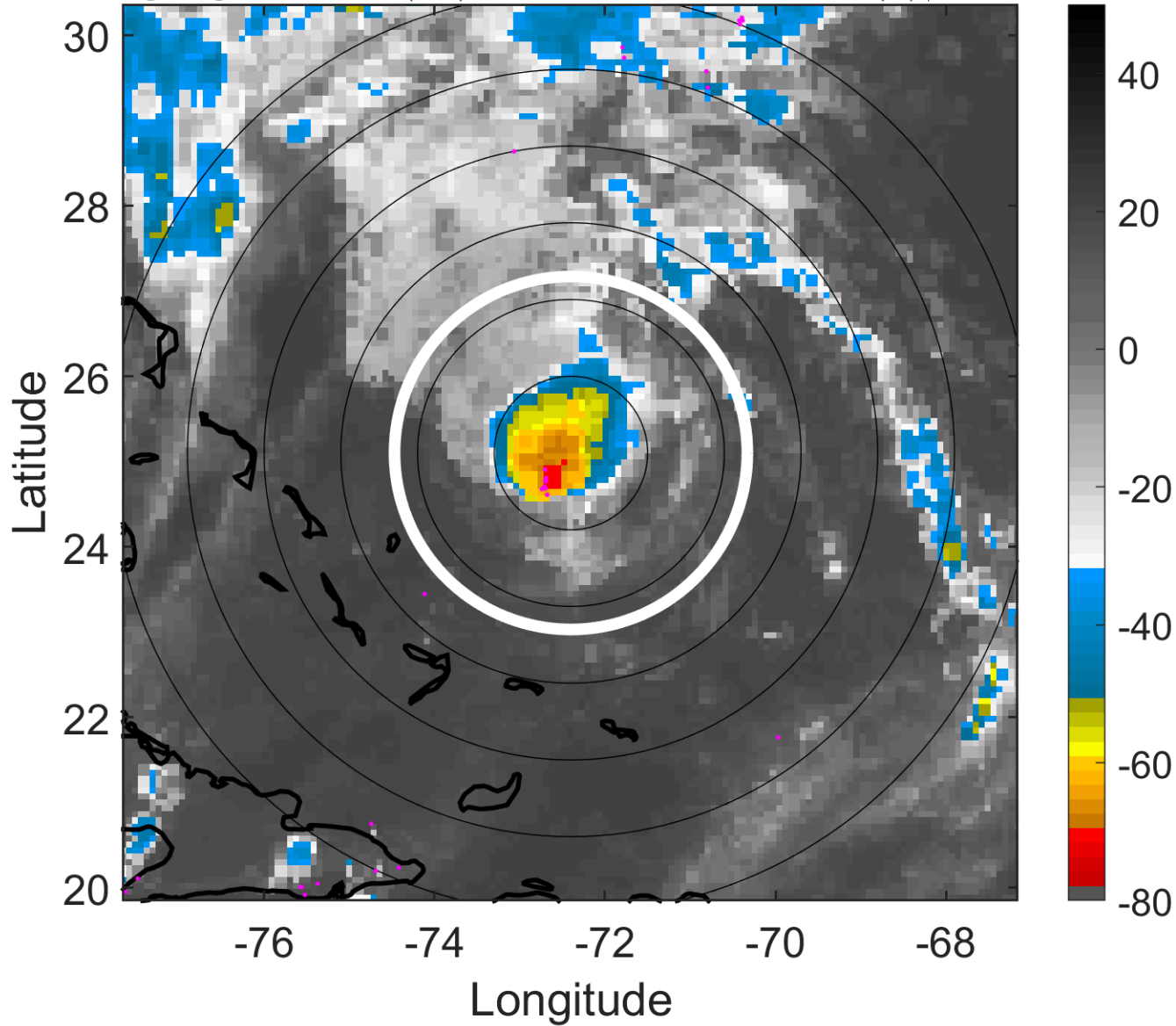
t: 2005102412 (7.2 LT)

Lightning: 7.2 LT \pm 1.5 h (dots)

PT: LLWP | EA: INACT

26L (ALPHA) | 30 kt TD

S: 7.3 m s⁻¹ (M) | H: 134°



6-h IR BT Differences & Lightning

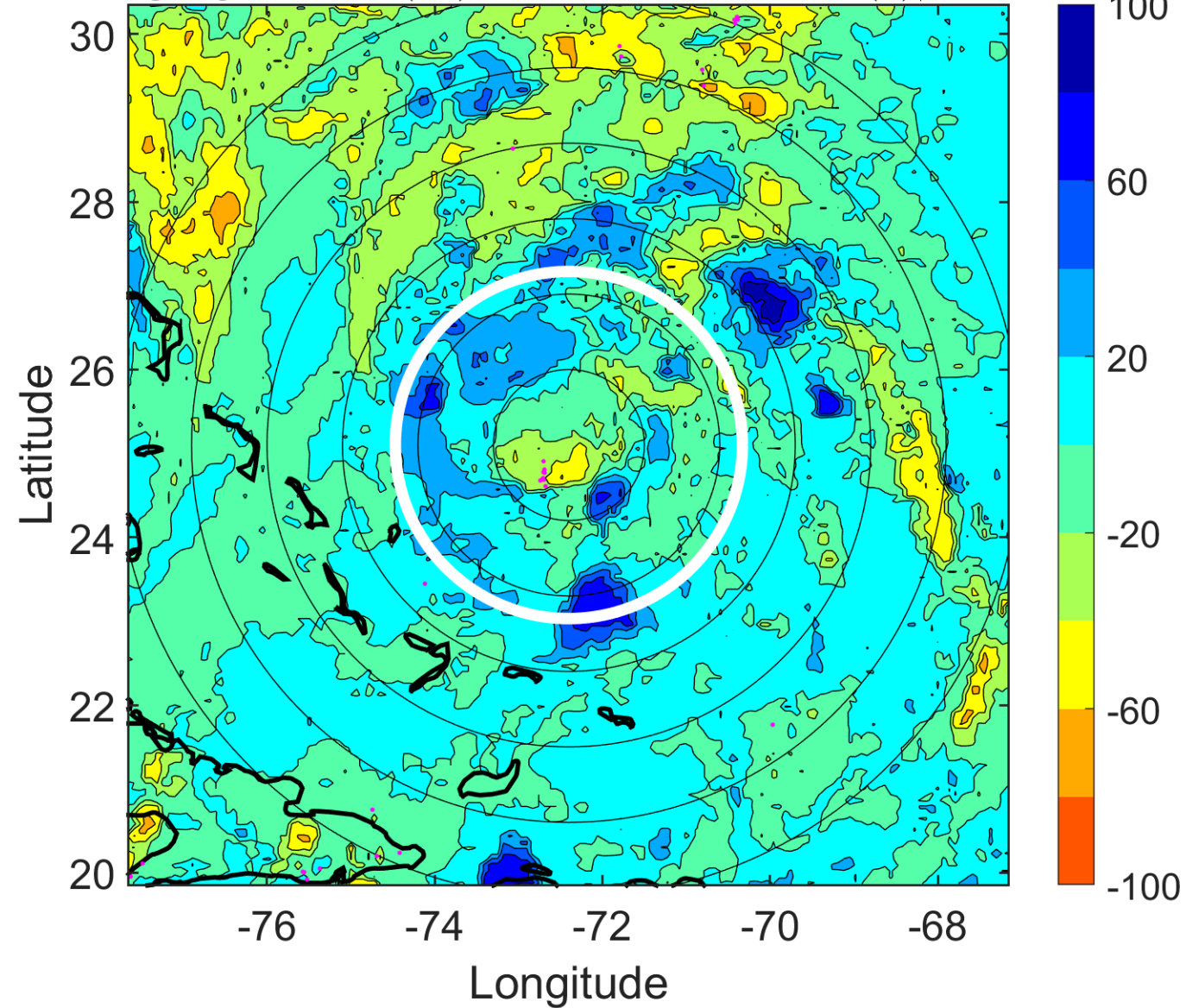
Δ t: 2005102412 (7.2 LT) - 2005102406 (1.1 LT)

Lightning: 7.2 LT \pm 1.5 h (dots)

PT: LLWP | EA: INACT

26L (ALPHA) | 30 kt TD

S: 7.3 m s⁻¹ (M) | H: 134°



IR BT & Lightning

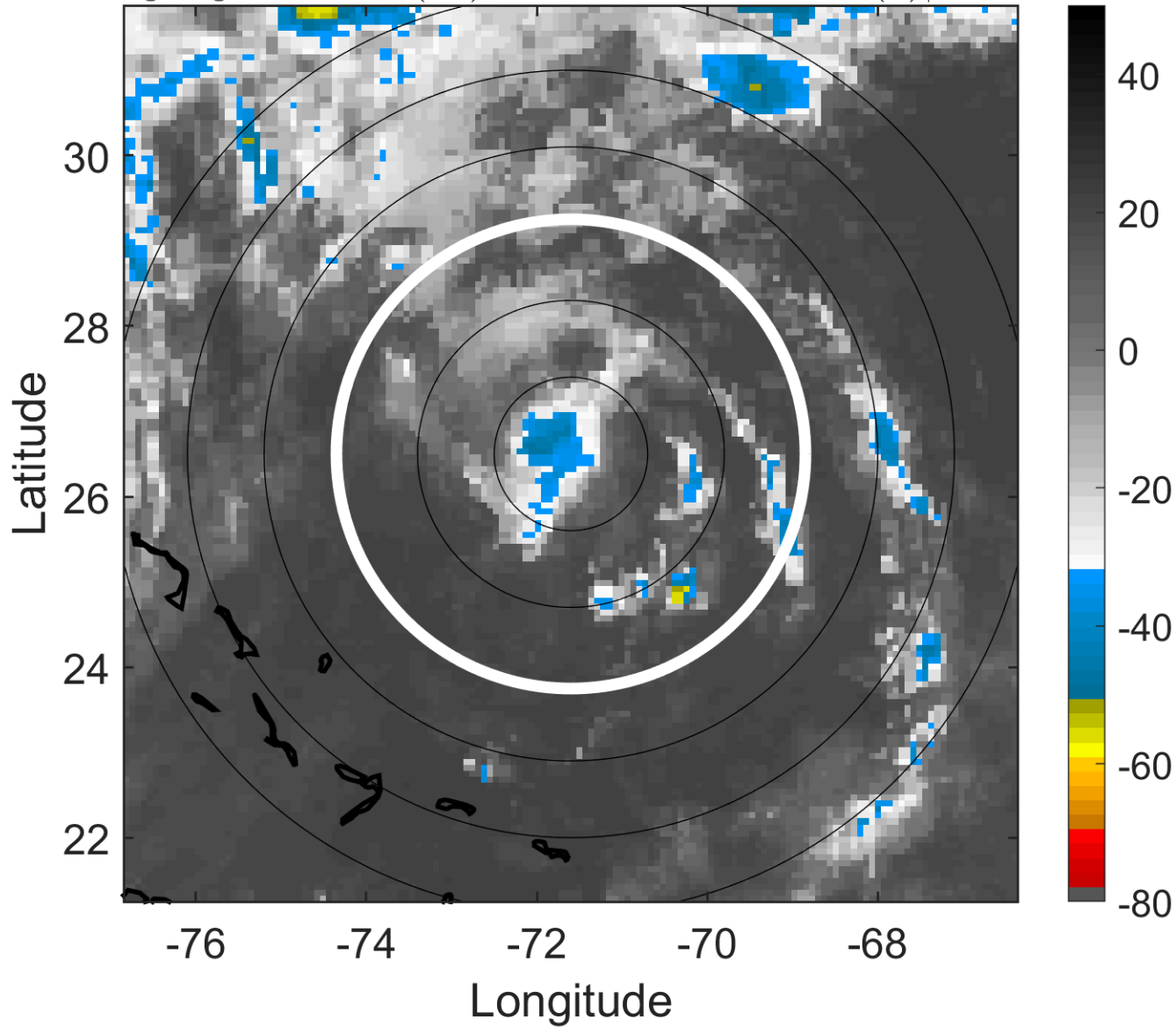
t: 2005102415 (10.2 LT)

Lightning: 10.2 LT \pm 1.5 h (dots)

PT: LLWP | EA: INACT

26L (ALPHA) | 30 kt TD

S: 7.5 m s⁻¹ (M) | H: 137°



6-h IR BT Differences & Lightning

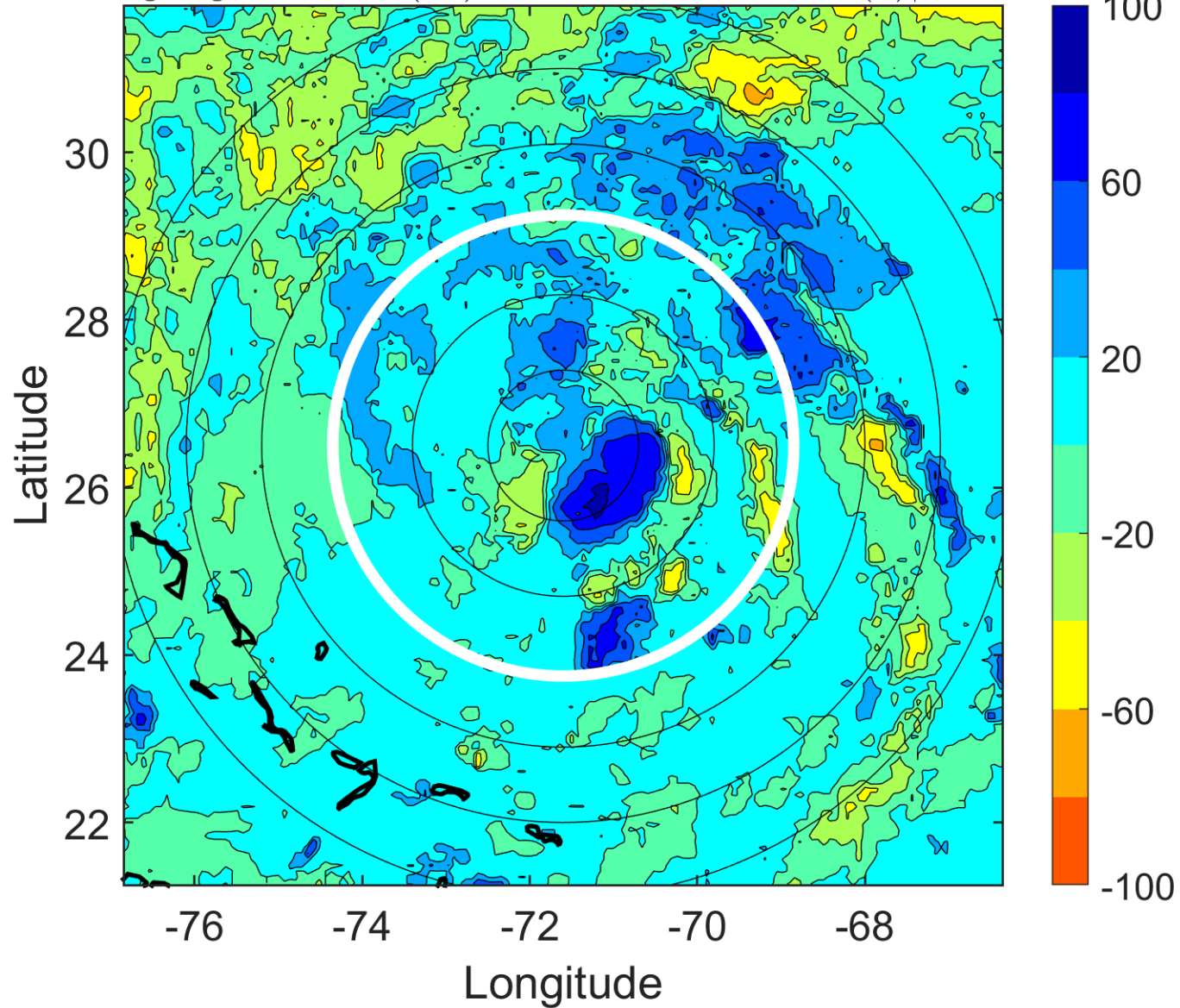
Δ t: 2005102415 (10.2 LT) - 2005102409 (4.2 LT)

Lightning: 10.2 LT \pm 1.5 h (dots)

PT: LLWP | EA: INACT

26L (ALPHA) | 30 kt TD

S: 7.5 m s⁻¹ (M) | H: 137°



IR BT & Lightning

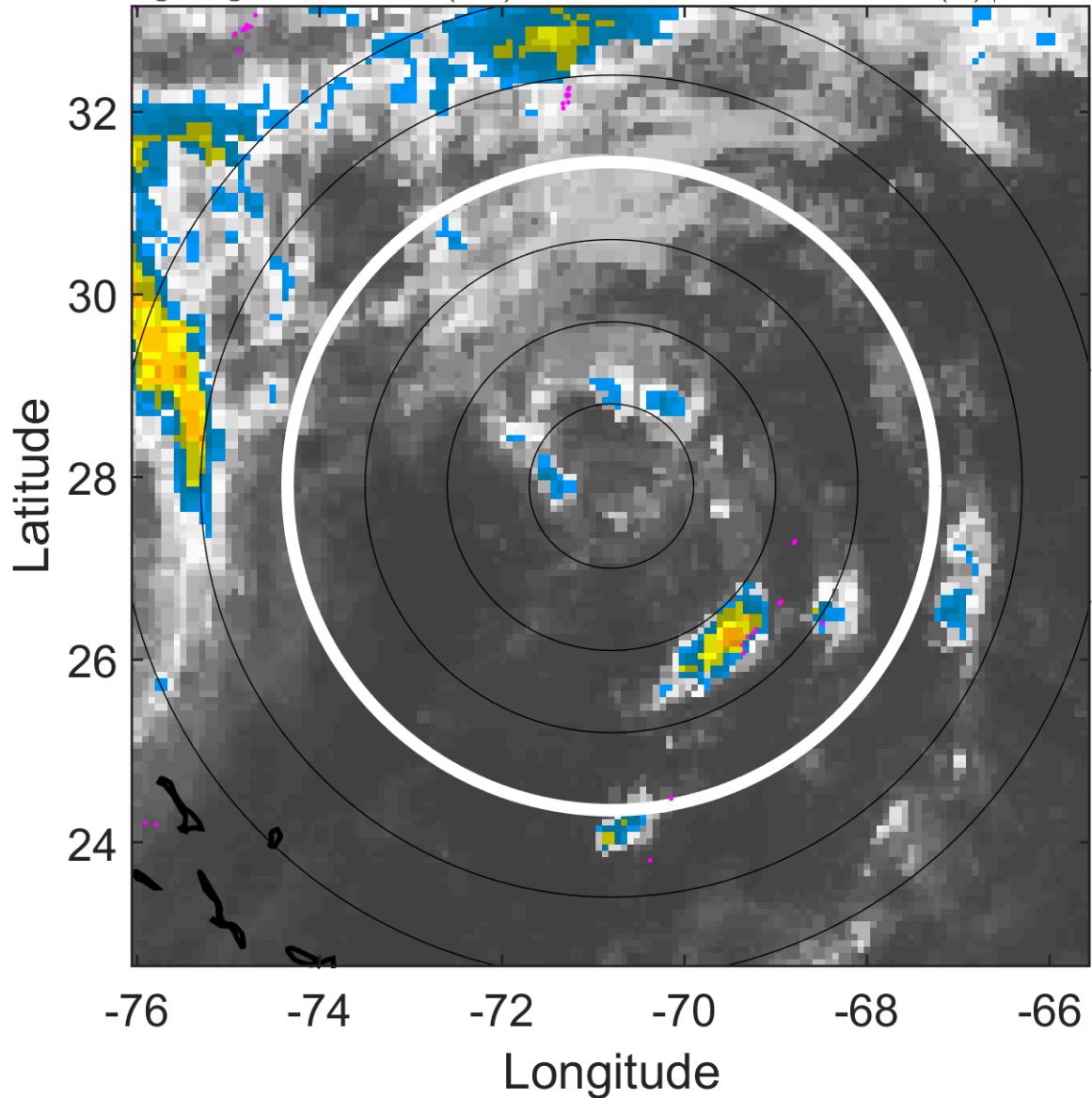
t: 2005102418 (13.3 LT)

Lightning: 13.3 LT \pm 1.5 h (dots)

PT: LLWP | EA: INACT

26L (ALPHA) | 30 kt TD

S: 7.8 m s⁻¹ (M) | H: 140°



6-h IR BT Differences & Lightning

Δ t: 2005102418 (13.3 LT) - 2005102412 (7.2 LT)

Lightning: 13.3 LT \pm 1.5 h (dots)

PT: LLWP | EA: INACT

26L (ALPHA) | 30 kt TD

S: 7.8 m s⁻¹ (M) | H: 140°

