

### IR BT & Lightning

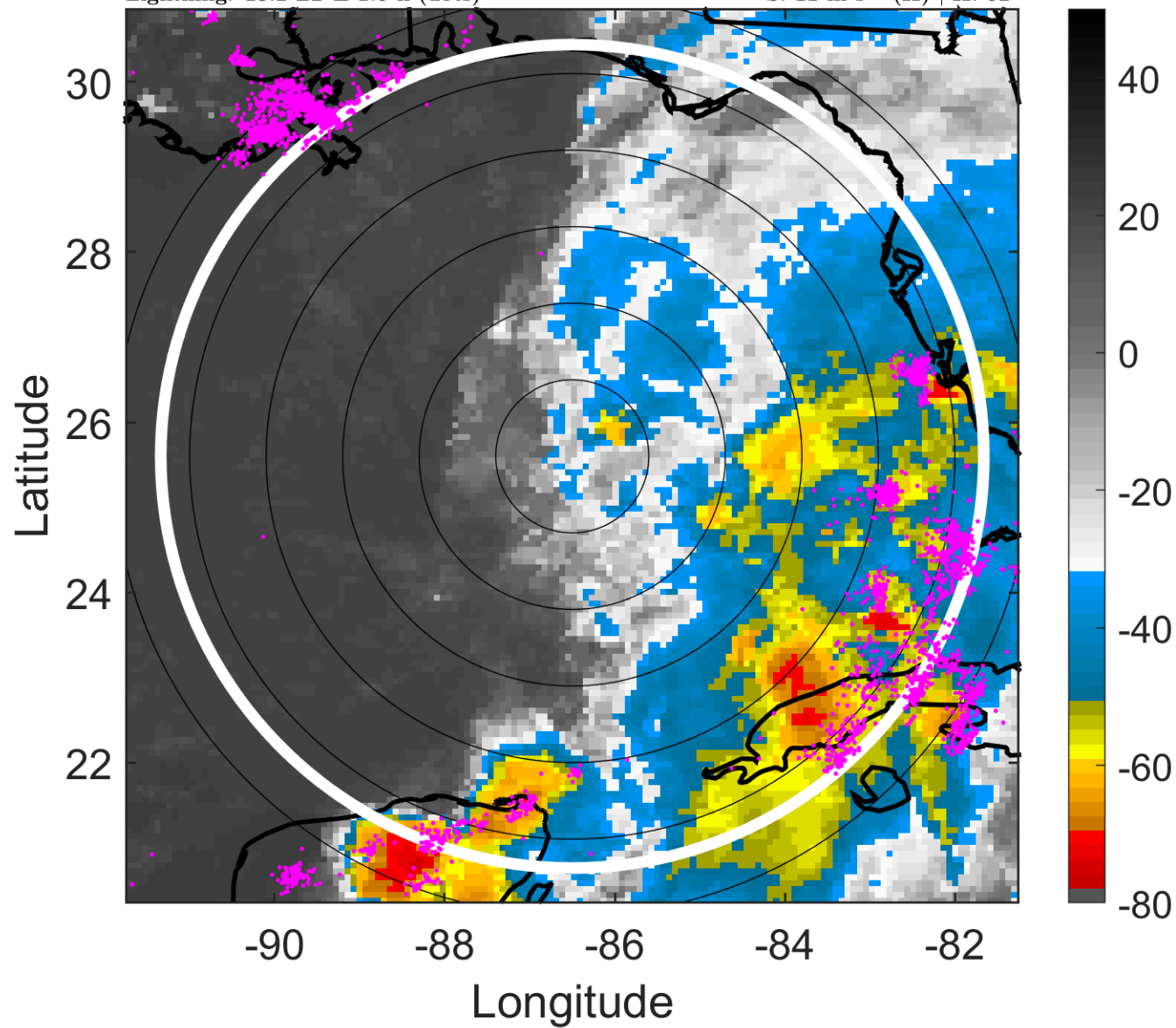
t: 2013060600 (18.2 LT)

Lightning: 18.2 LT  $\pm$  1.5 h (dots)

PT: NP | EA: INACT

01L (ANDREA) | 40 kt TS

S: 11 m s<sup>-1</sup> (H) | H: 62°



### 6-h IR BT Differences & Lightning

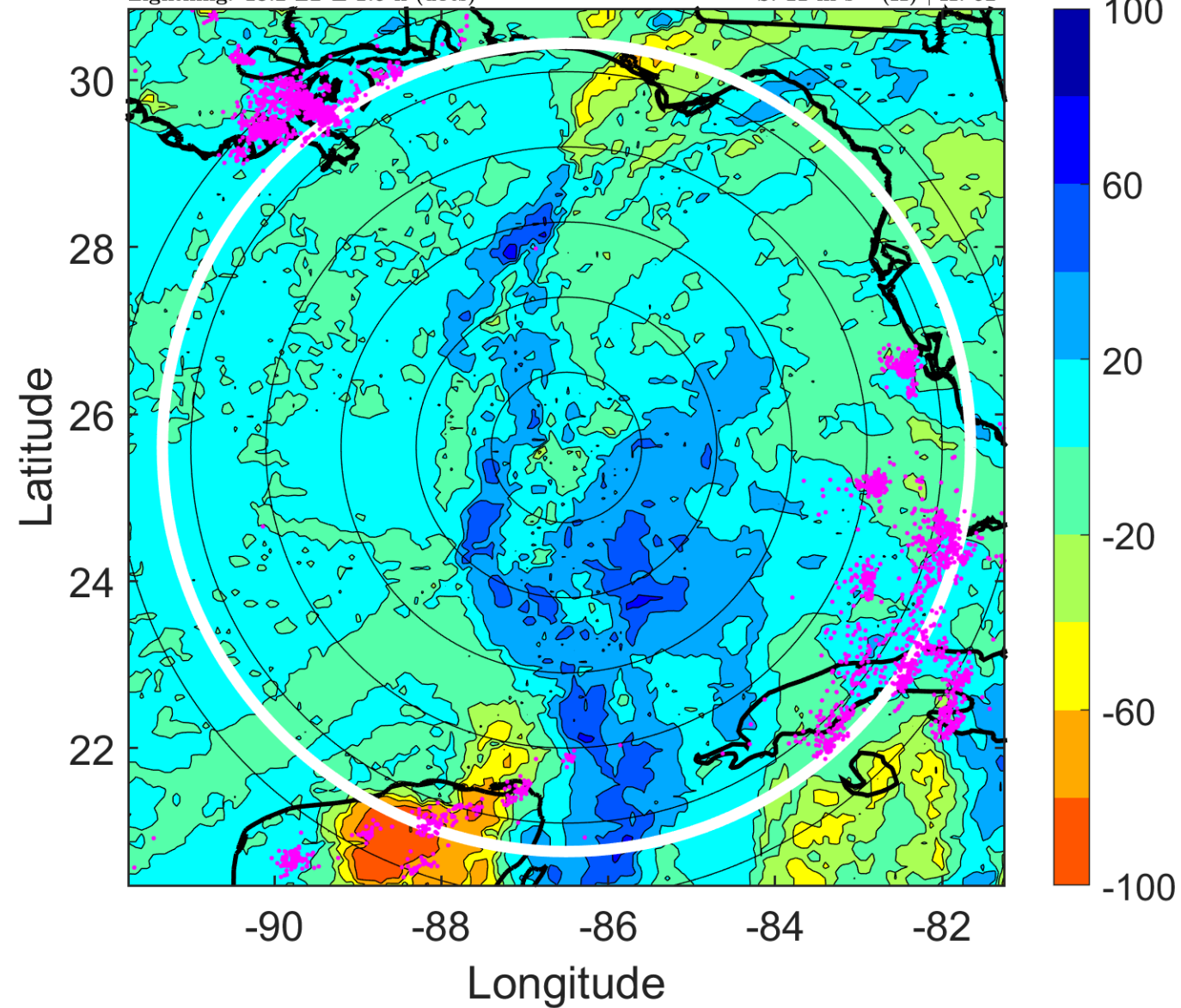
$\Delta$ t: 2013060600 (18.2 LT) - 2013060518 (12.2 LT)

Lightning: 18.2 LT  $\pm$  1.5 h (dots)

PT: NP | EA: INACT

01L (ANDREA) | 40 kt TS

S: 11 m s<sup>-1</sup> (H) | H: 62°



### IR BT & Lightning

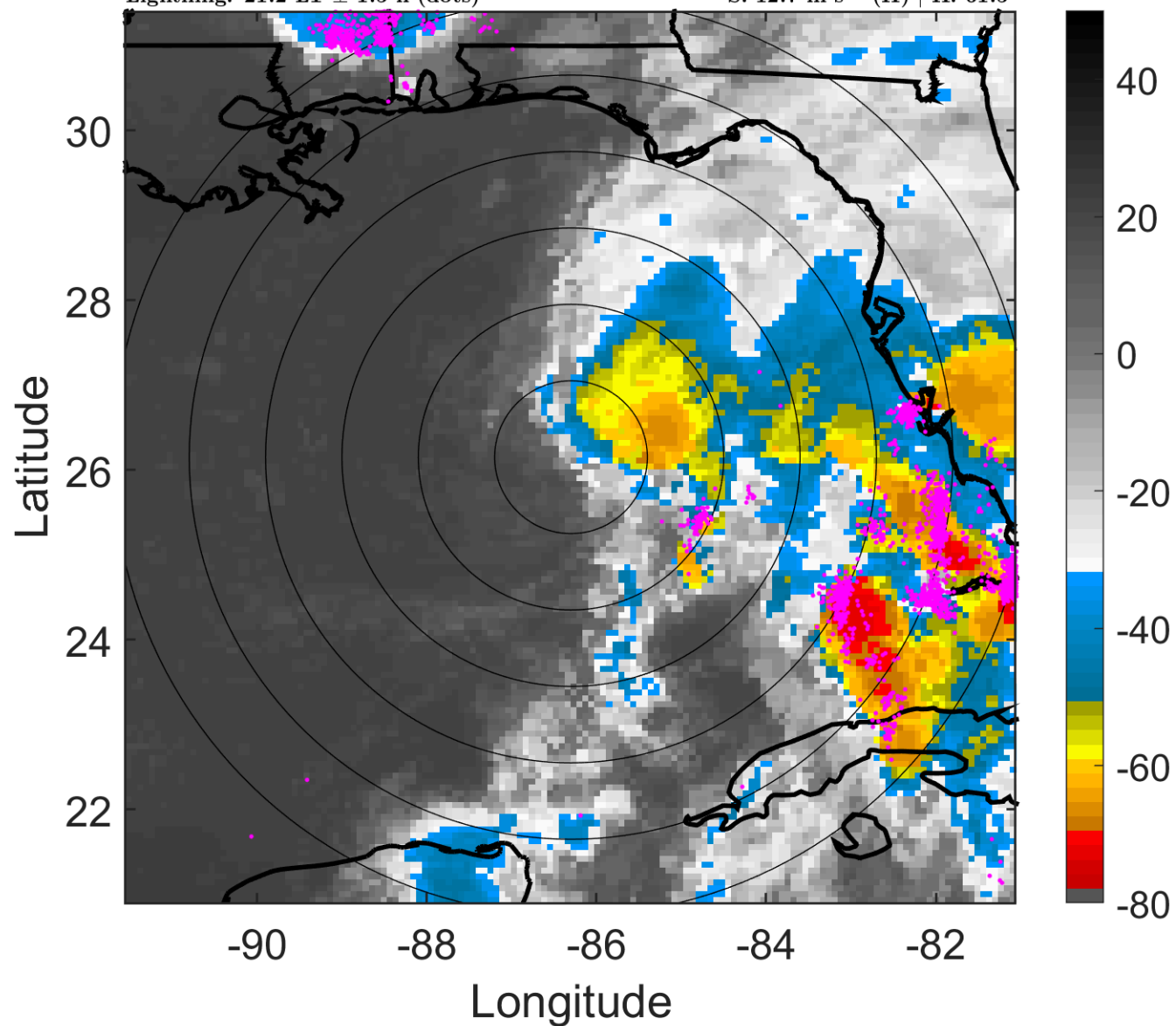
t: 2013060603 (21.2 LT)

Lightning: 21.2 LT  $\pm$  1.5 h (dots)

PT: NP | EA: INACT

01L (ANDREA) | 45 kt TS

S: 12.7 m s<sup>-1</sup> (H) | H: 61.5°



### 6-h IR BT Differences & Lightning

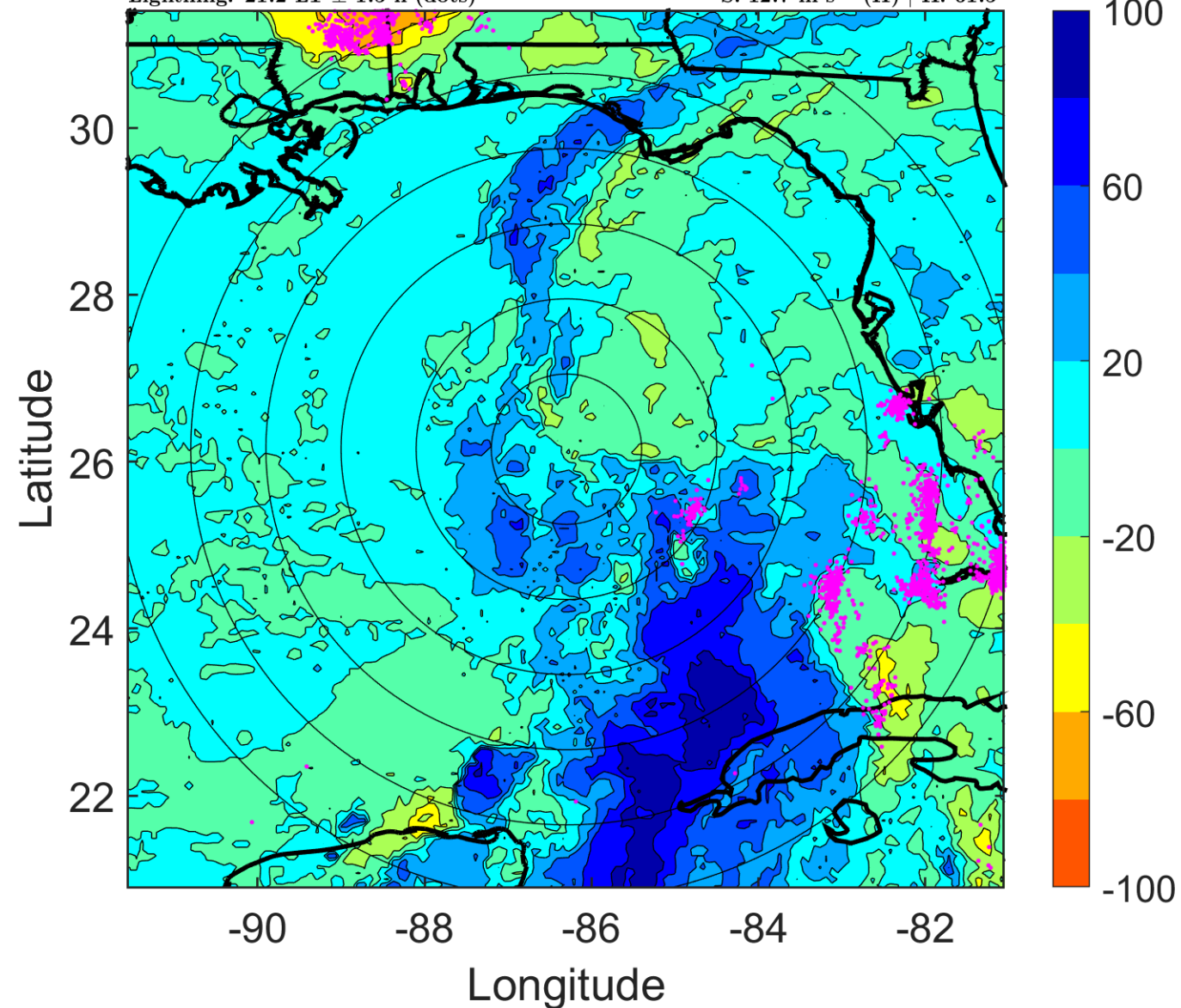
$\Delta$ t: 2013060603 (21.2 LT) - 2013060521 (15.2 LT)

Lightning: 21.2 LT  $\pm$  1.5 h (dots)

PT: NP | EA: INACT

01L (ANDREA) | 45 kt TS

S: 12.7 m s<sup>-1</sup> (H) | H: 61.5°



### IR BT & Lightning

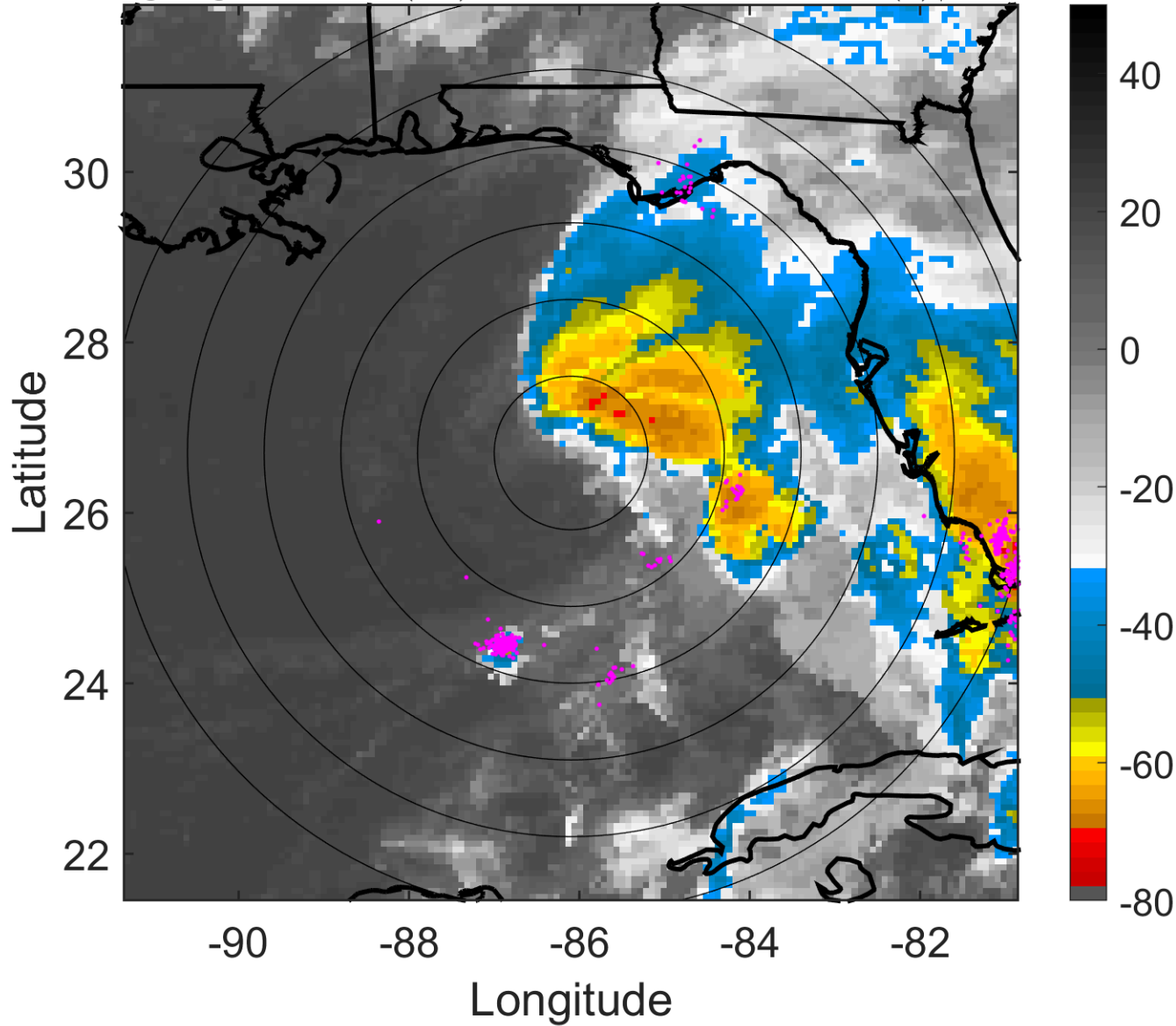
t: 2013060606 (0.3 LT)

Lightning: 0.3 LT  $\pm$  1.5 h (dots)

PT: LLCP | EA: ACT

01L (ANDREA) | 50 kt TS

S: 14.5 m s<sup>-1</sup> (H) | H: 61°



### 6-h IR BT Differences & Lightning

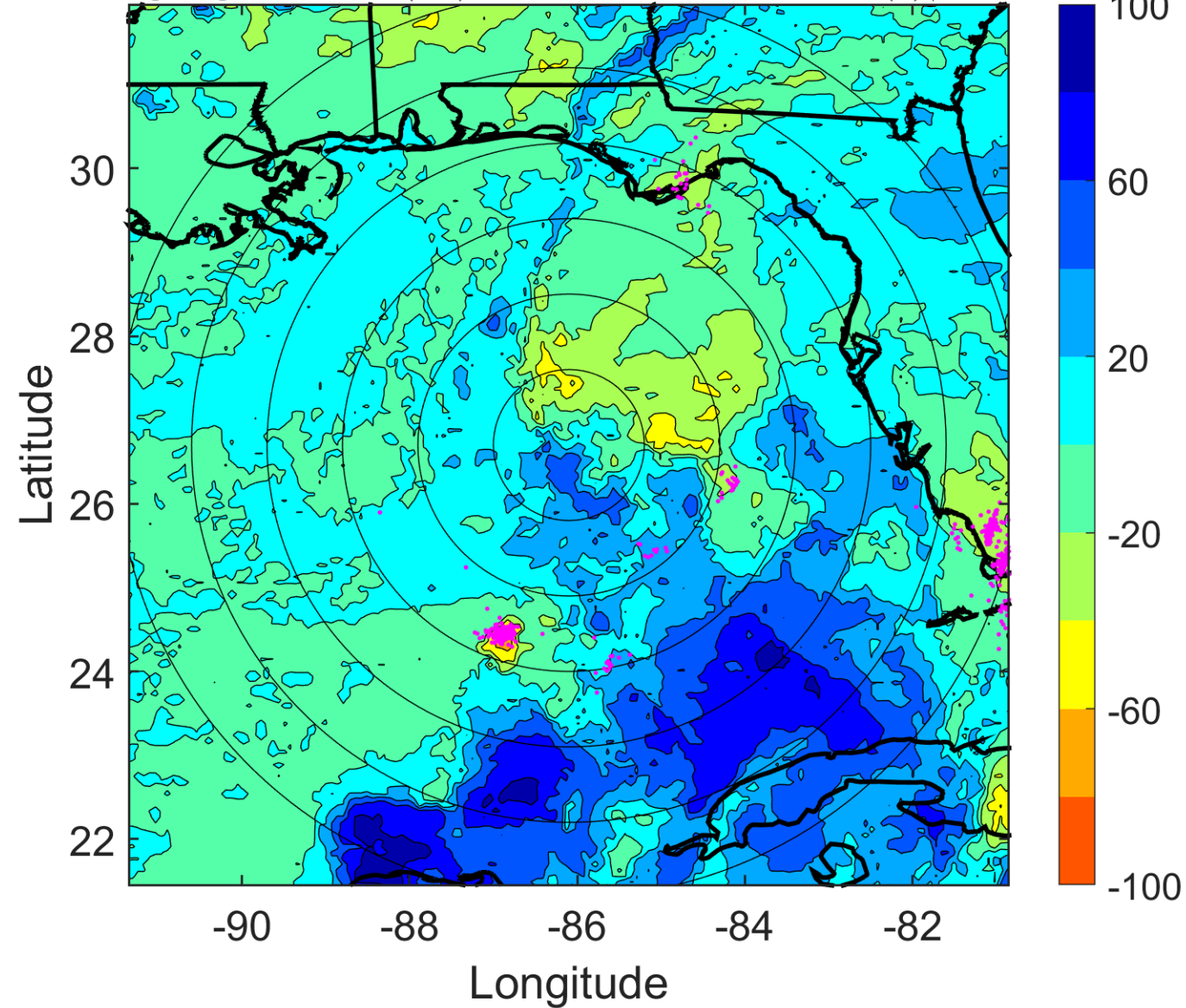
$\Delta$ t: 2013060606 (0.3 LT) - 2013060600 (18.2 LT)

Lightning: 0.3 LT  $\pm$  1.5 h (dots)

PT: LLCP | EA: ACT

01L (ANDREA) | 50 kt TS

S: 14.5 m s<sup>-1</sup> (H) | H: 61°



### IR BT & Lightning

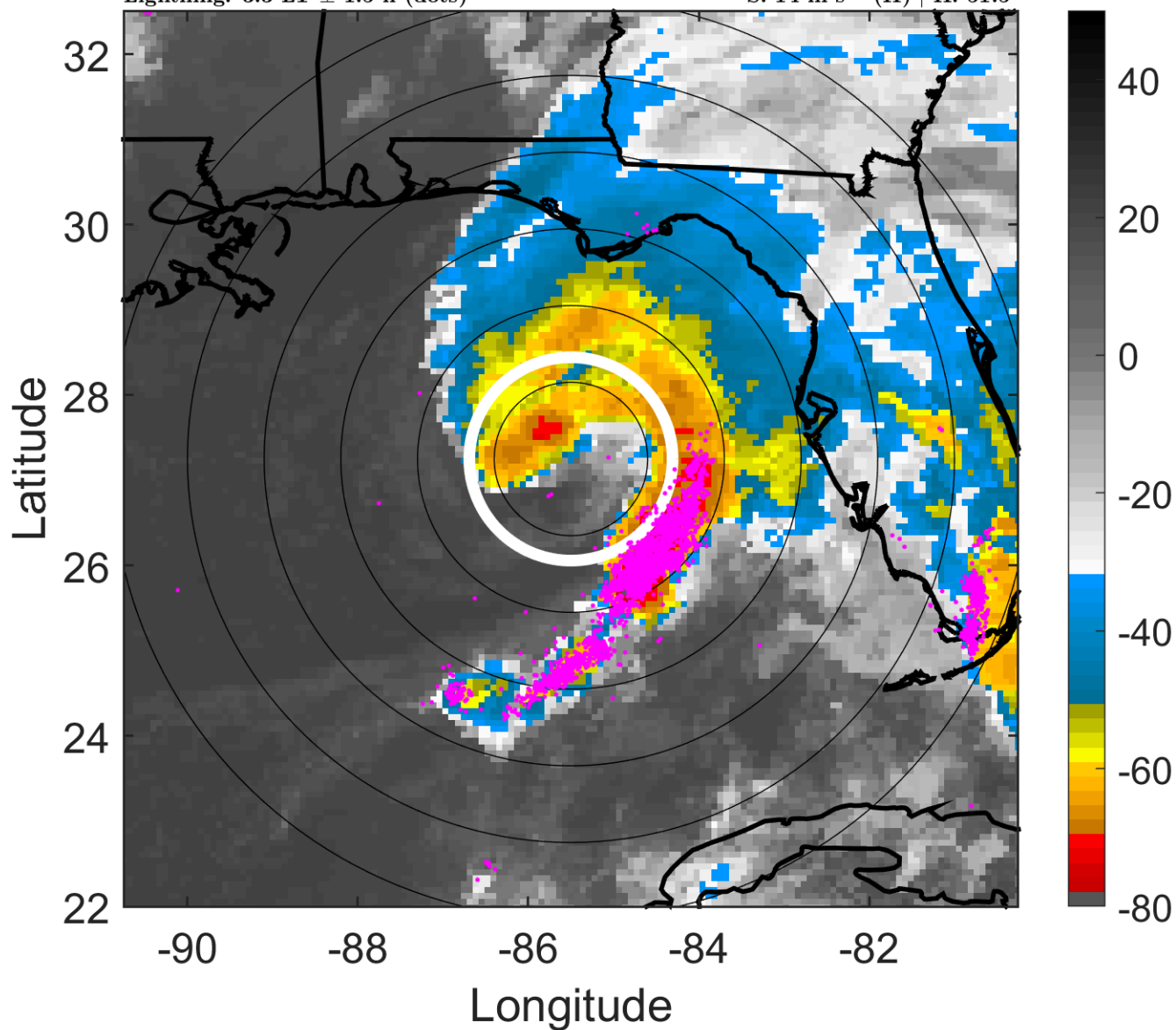
t: 2013060609 (3.3 LT)

Lightning: 3.3 LT  $\pm$  1.5 h (dots)

PT: LLCP | EA: ACT

01L (ANDREA) | 52.5 kt TS

S: 14 m s<sup>-1</sup> (H) | H: 51.5°



### 6-h IR BT Differences & Lightning

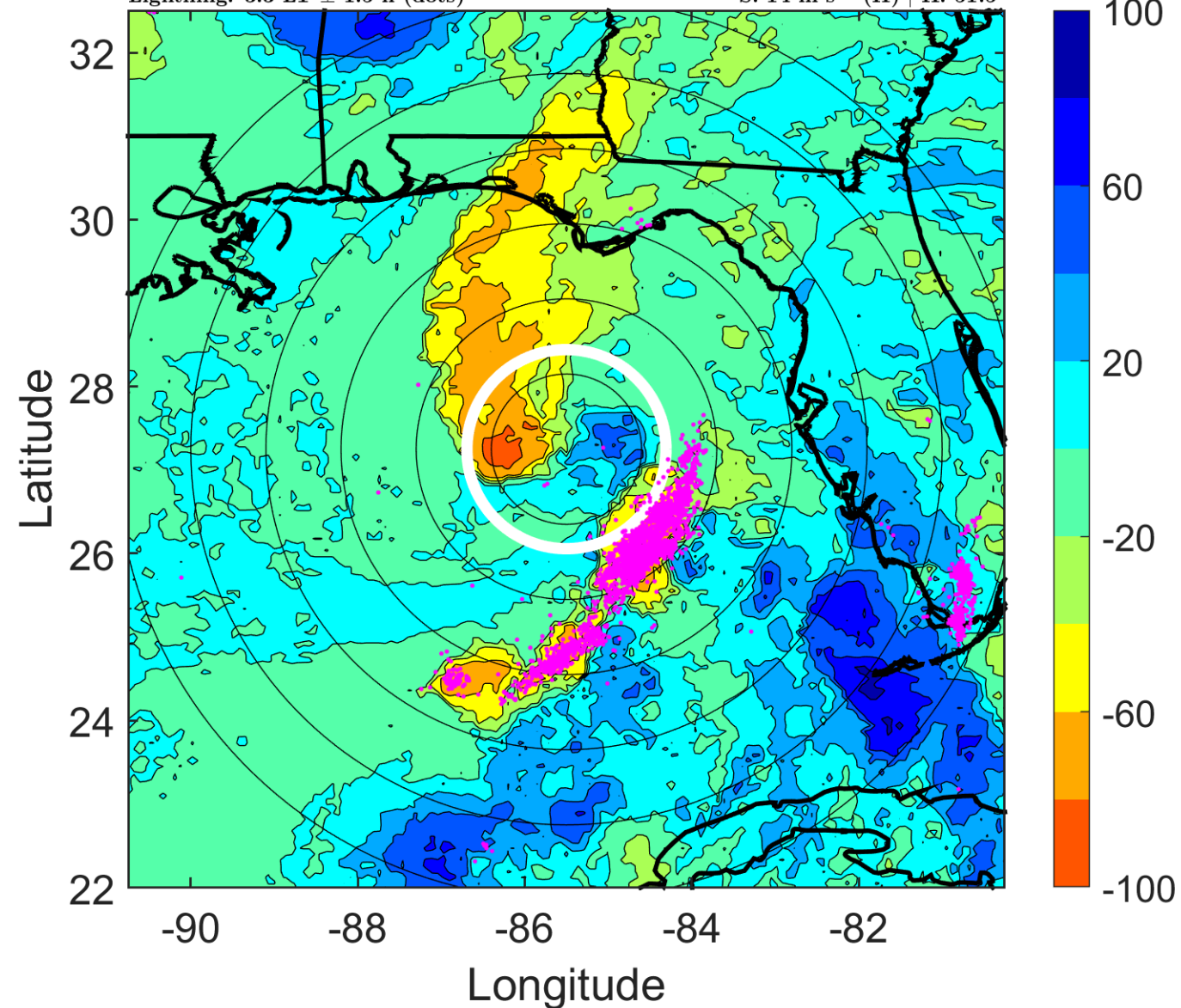
$\Delta$ t: 2013060609 (3.3 LT) - 2013060603 (21.2 LT)

Lightning: 3.3 LT  $\pm$  1.5 h (dots)

PT: LLCP | EA: ACT

01L (ANDREA) | 52.5 kt TS

S: 14 m s<sup>-1</sup> (H) | H: 51.5°



### IR BT & Lightning

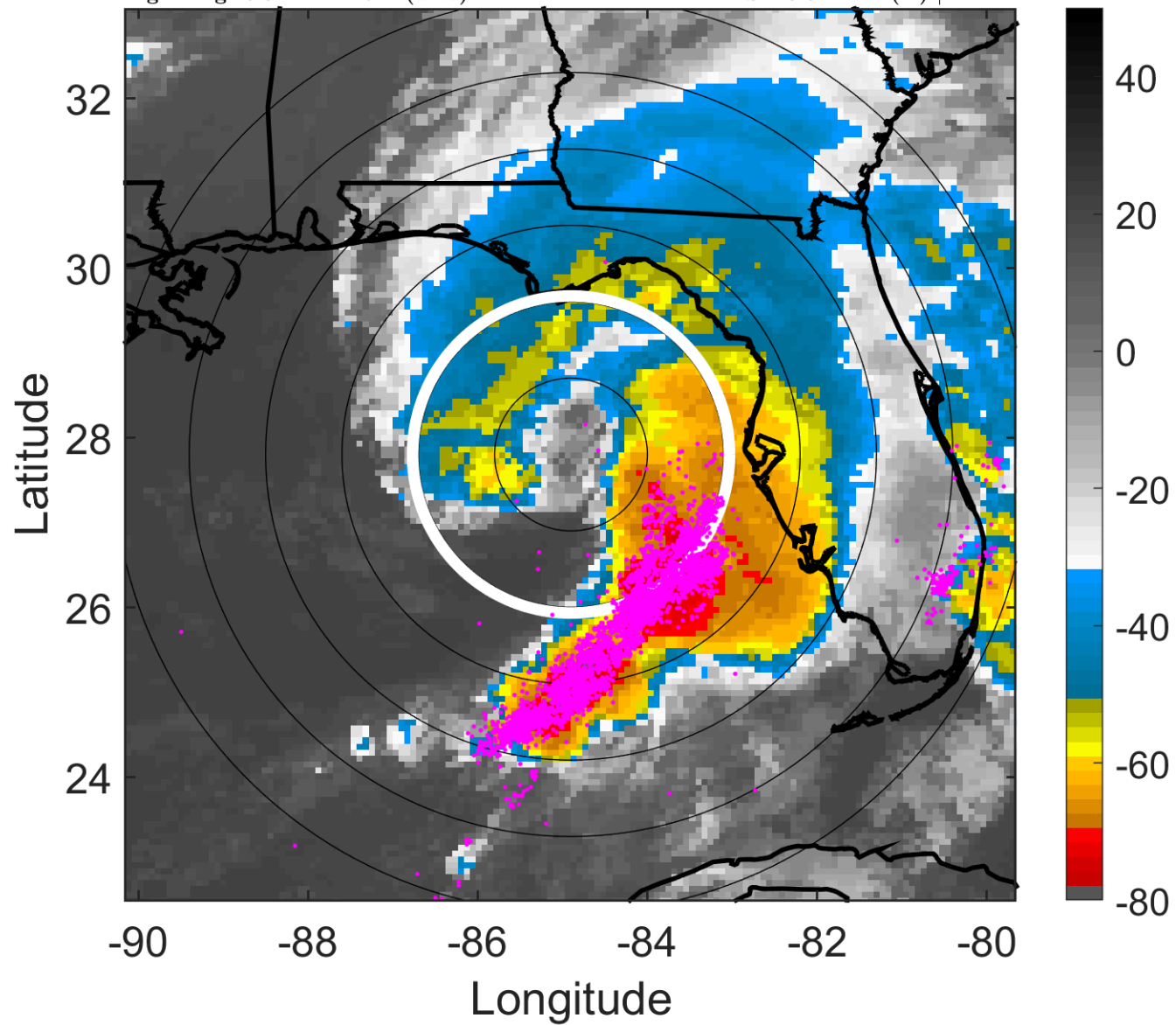
t: 2013060612 (6.3 LT)

Lightning: 6.3 LT  $\pm$  1.5 h (dots)

PT: LLCP | EA: ACT

01L (ANDREA) | 55 kt TS

S: 13.6 m s<sup>-1</sup> (H) | H: 42°



### 6-h IR BT Differences & Lightning

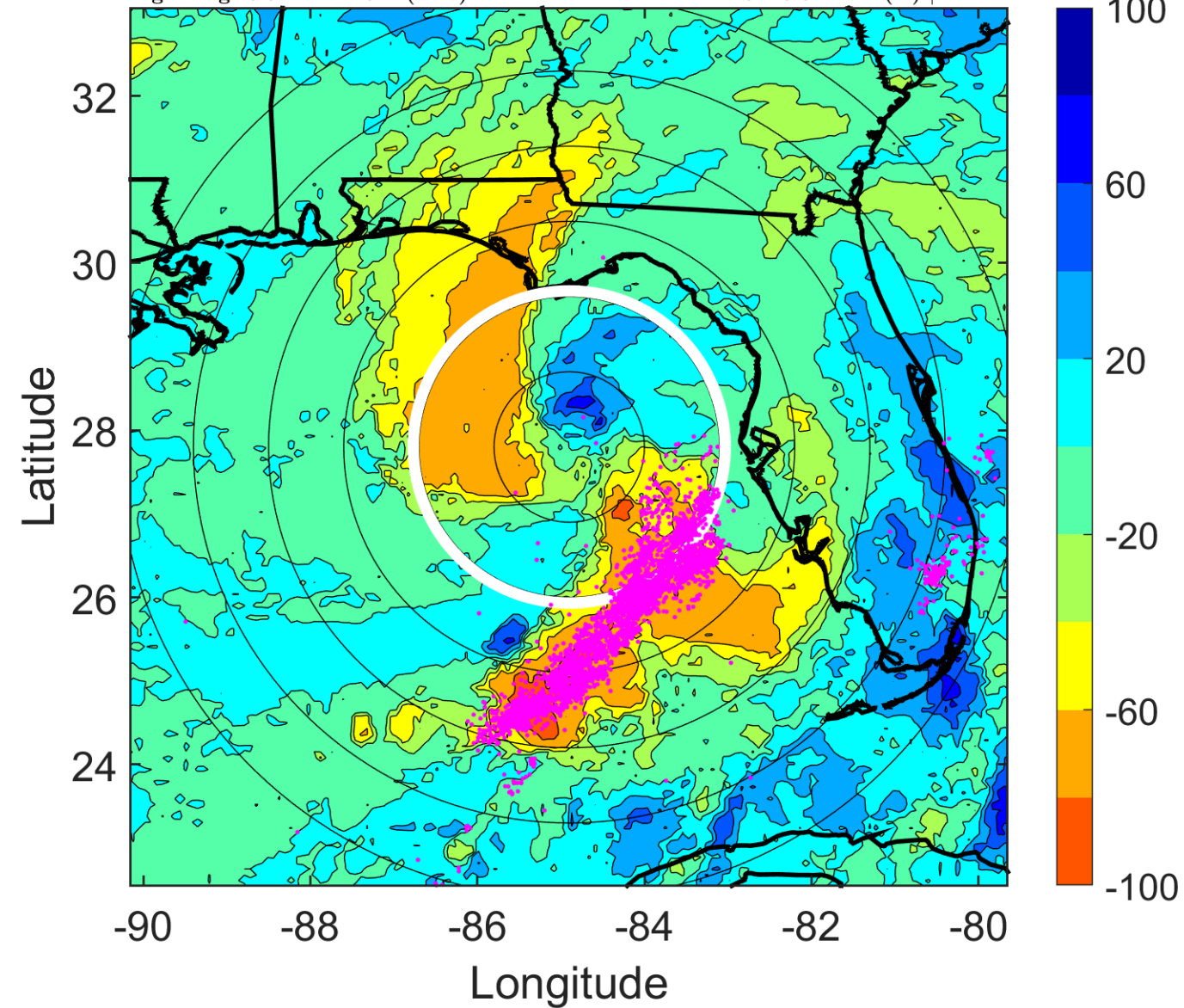
$\Delta$ t: 2013060612 (6.3 LT) - 2013060606 (0.3 LT)

Lightning: 6.3 LT  $\pm$  1.5 h (dots)

PT: LLCP | EA: ACT

01L (ANDREA) | 55 kt TS

S: 13.6 m s<sup>-1</sup> (H) | H: 42°



### IR BT & Lightning

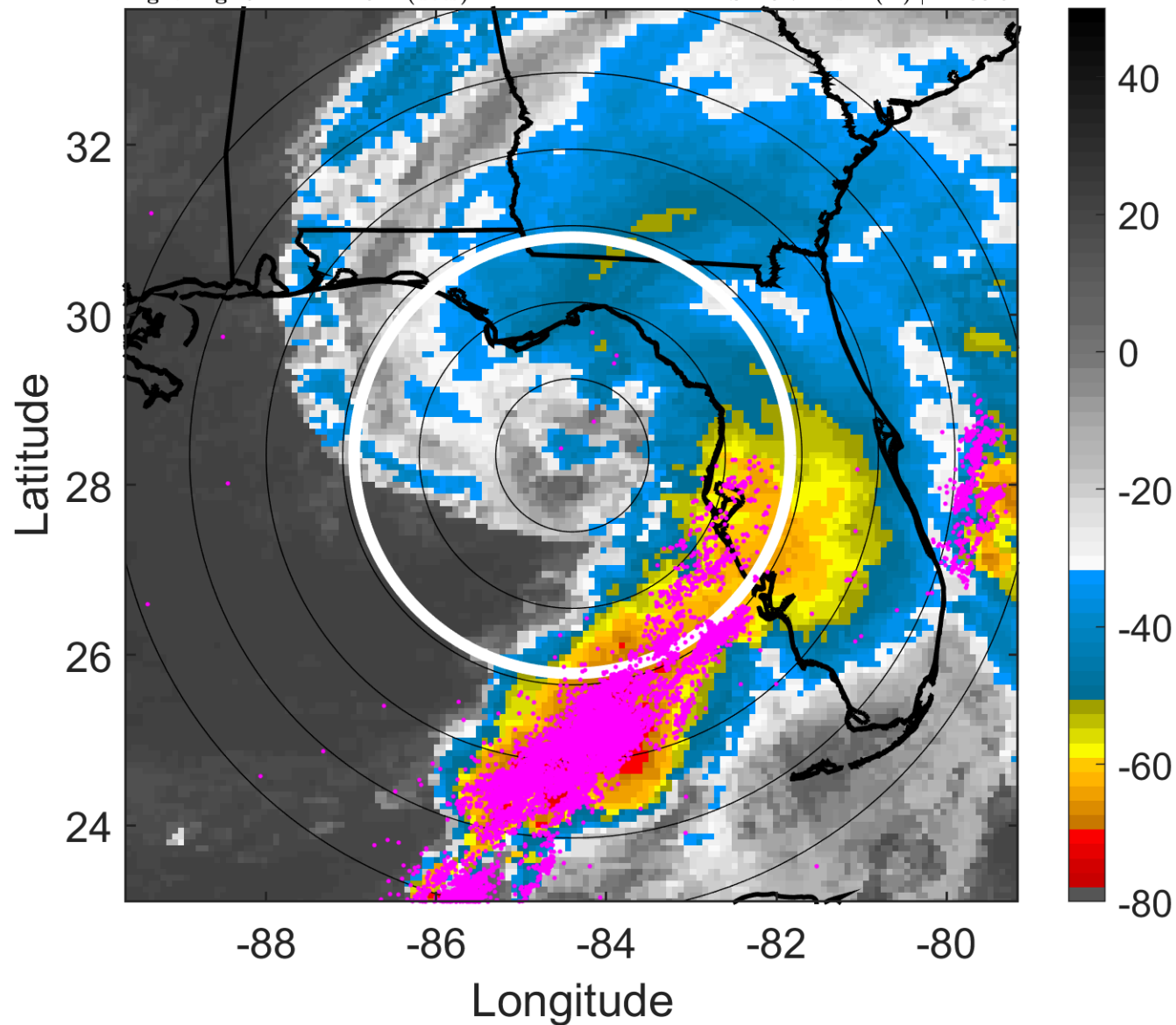
t: 2013060615 (9.4 LT)

Lightning: 9.4 LT  $\pm$  1.5 h (dots)

PT: LLCP | EA: ACT

01L (ANDREA) | 55 kt TS

S: 13.7 m s<sup>-1</sup> (H) | H: 38.5°



### 6-h IR BT Differences & Lightning

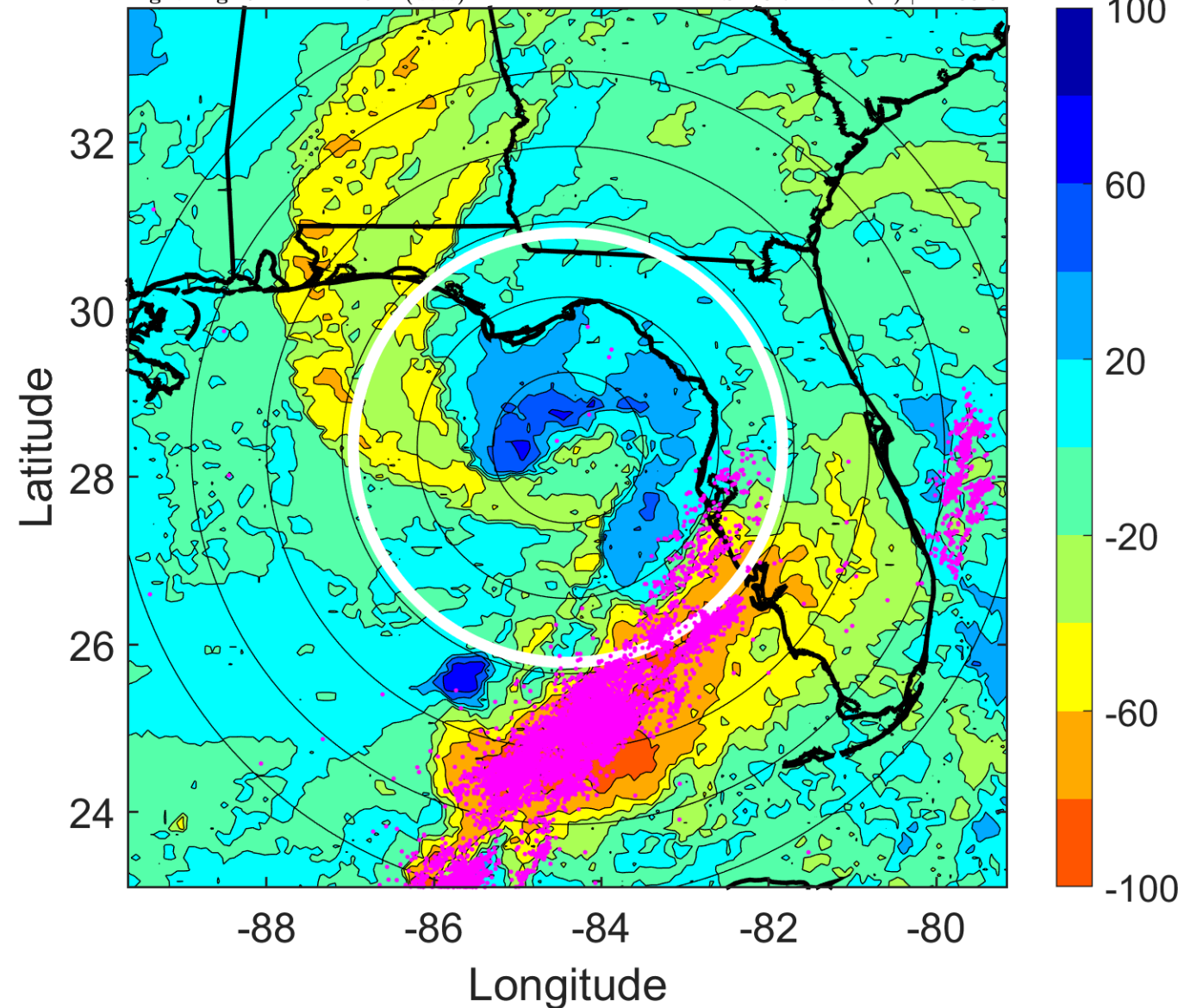
$\Delta$ t: 2013060615 (9.4 LT) - 2013060609 (3.3 LT)

Lightning: 9.4 LT  $\pm$  1.5 h (dots)

PT: LLCP | EA: ACT

01L (ANDREA) | 55 kt TS

S: 13.7 m s<sup>-1</sup> (H) | H: 38.5°



### IR BT & Lightning

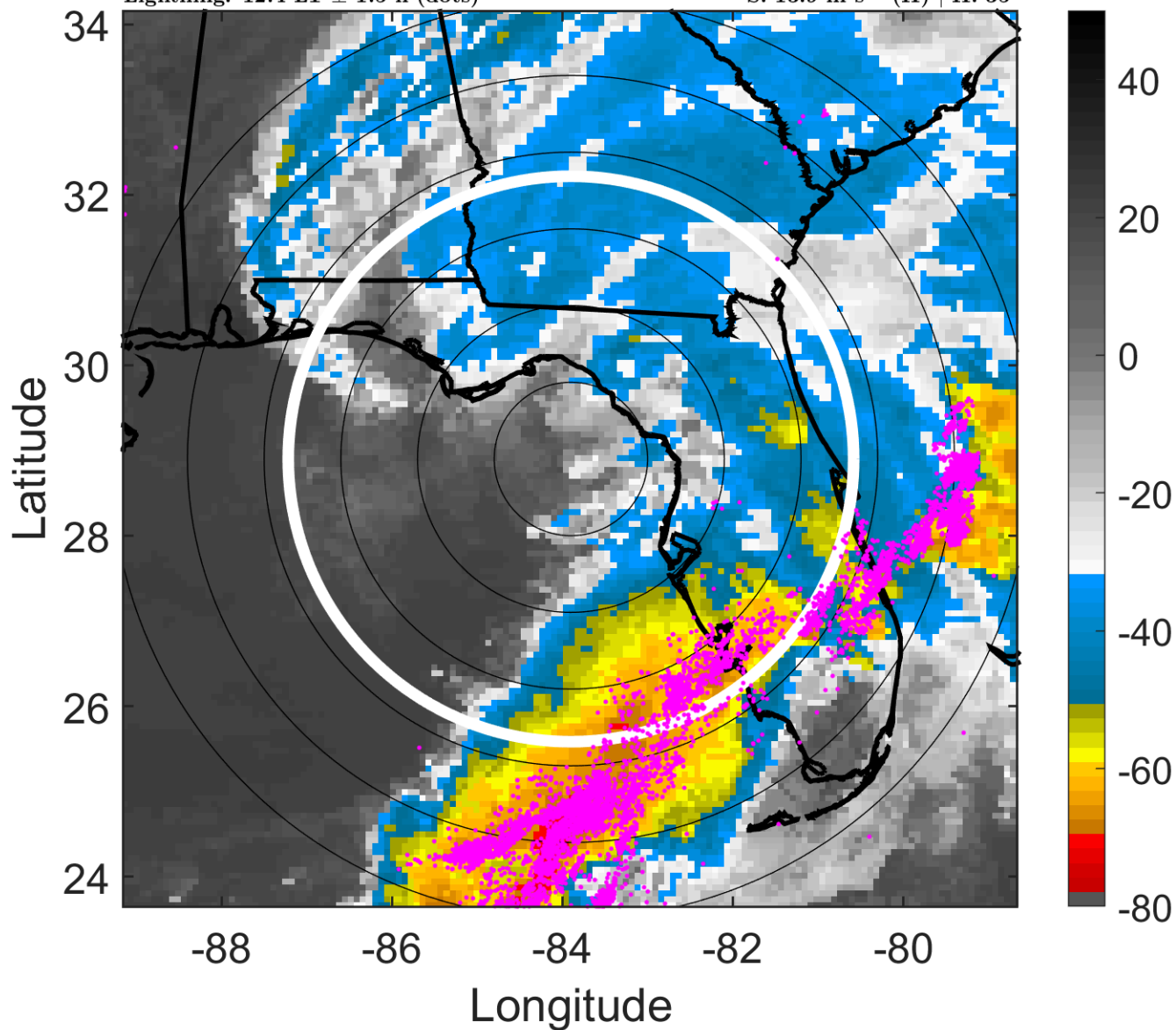
t: 2013060618 (12.4 LT)

Lightning: 12.4 LT  $\pm$  1.5 h (dots)

PT: LLCP | EA: ACT

01L (ANDREA) | 55 kt TS

S: 13.9 m s<sup>-1</sup> (H) | H: 35°



### 6-h IR BT Differences & Lightning

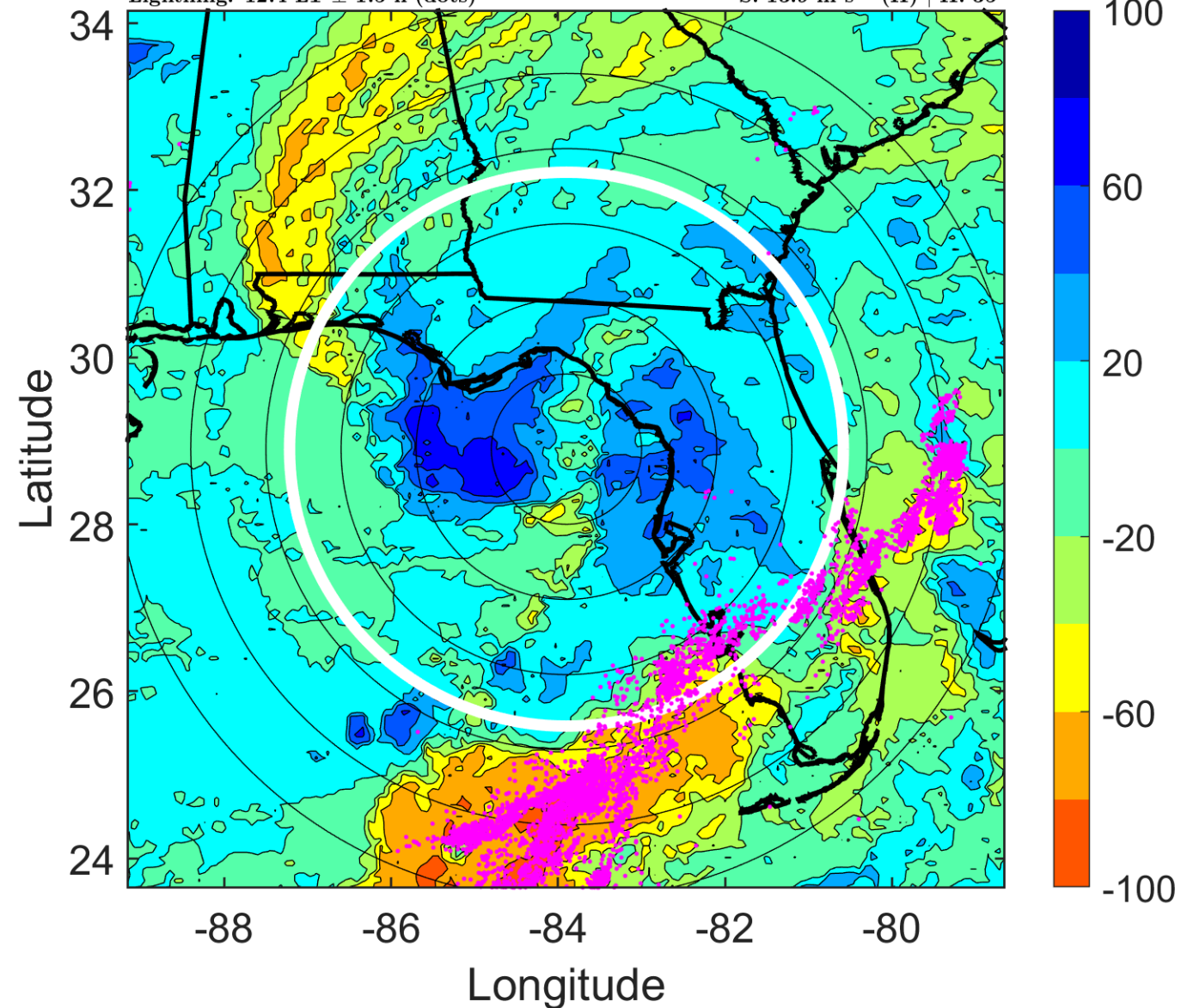
$\Delta$ t: 2013060618 (12.4 LT) - 2013060612 (6.3 LT)

Lightning: 12.4 LT  $\pm$  1.5 h (dots)

PT: LLCP | EA: ACT

01L (ANDREA) | 55 kt TS

S: 13.9 m s<sup>-1</sup> (H) | H: 35°



### IR BT & Lightning

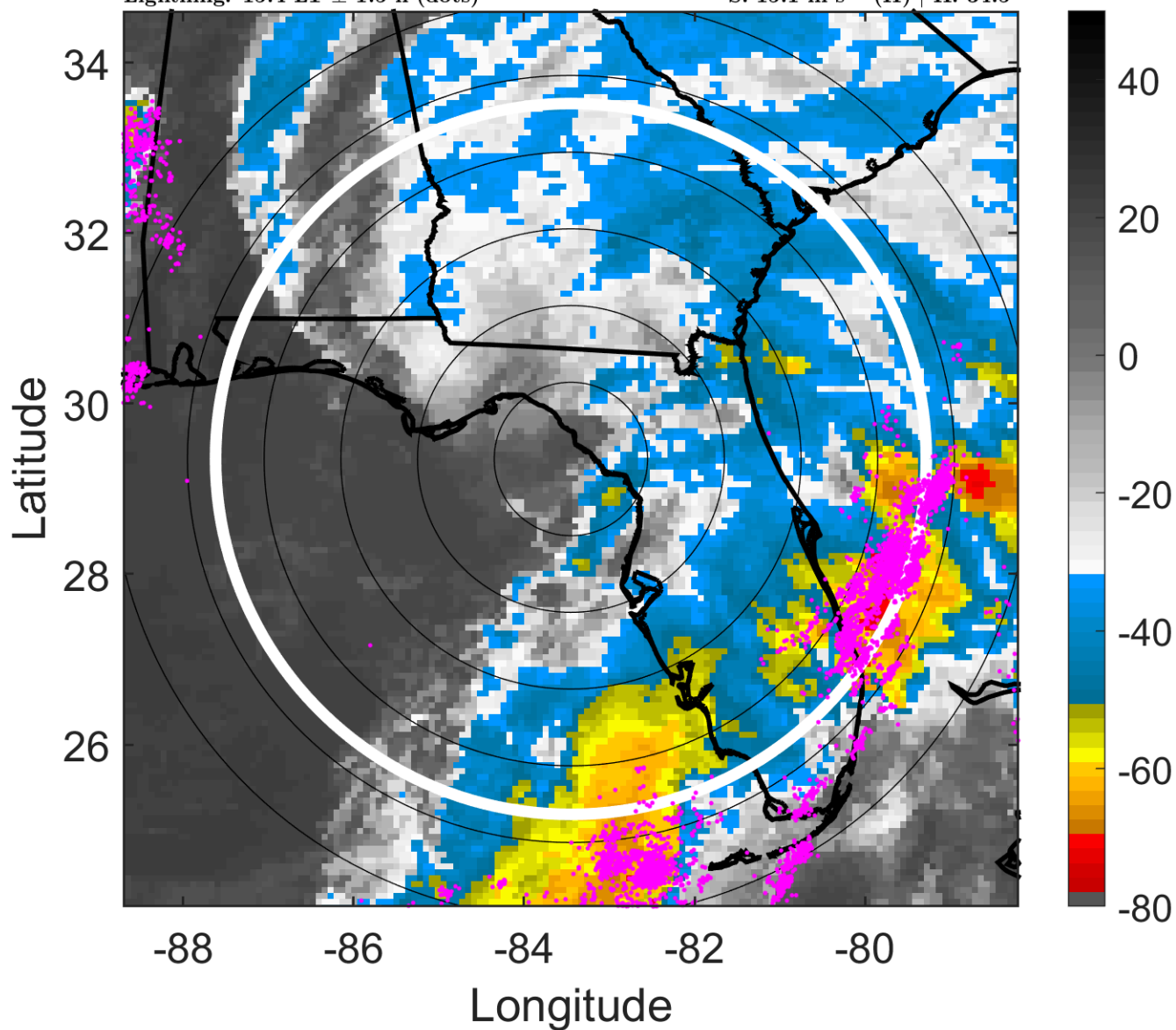
t: 2013060621 (15.4 LT)

Lightning: 15.4 LT  $\pm$  1.5 h (dots)

PT: LLCP | EA: ACT

01L (ANDREA) | 47.5 kt TS

S: 15.1 m s<sup>-1</sup> (H) | H: 34.5°



### 6-h IR BT Differences & Lightning

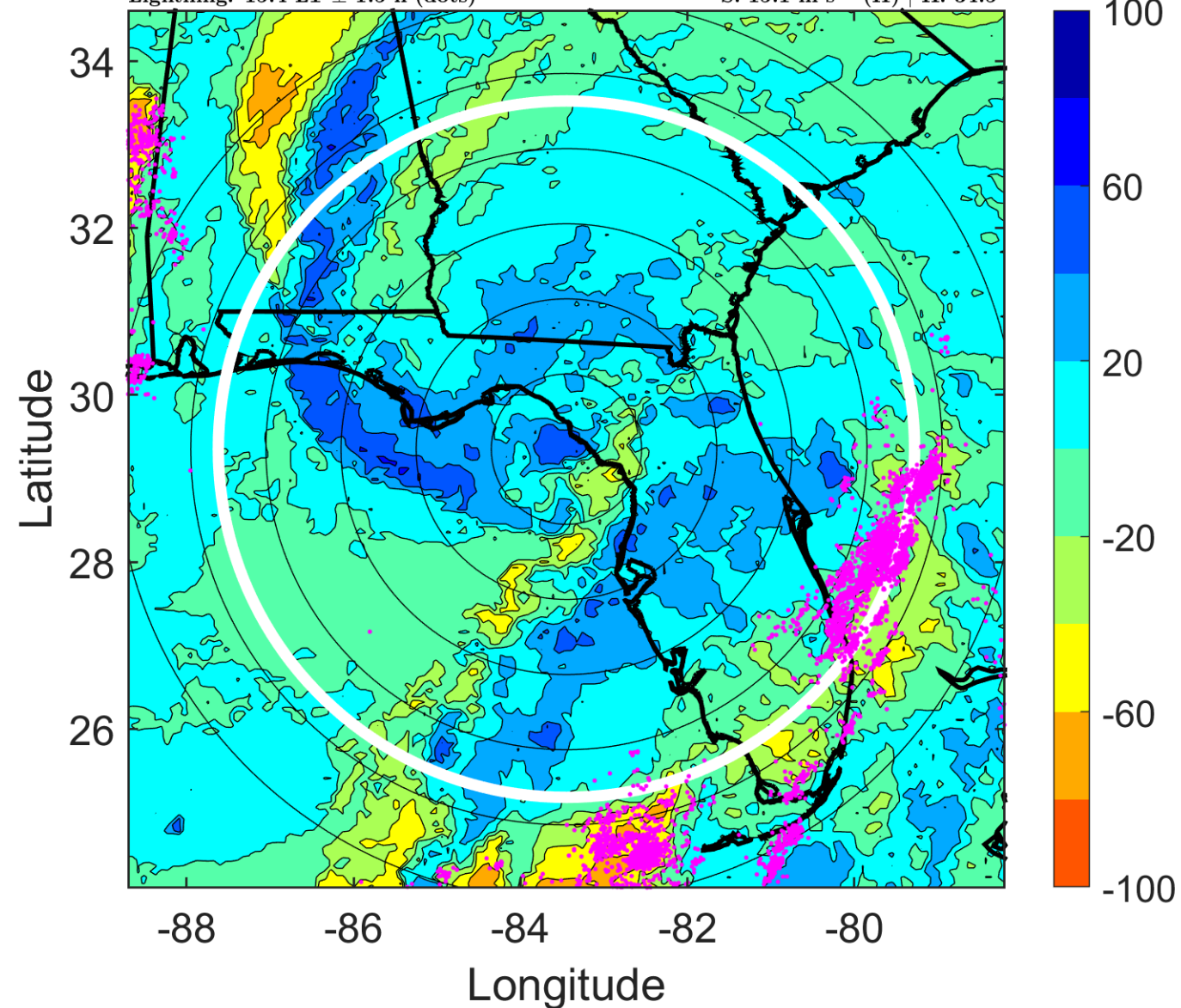
$\Delta$ t: 2013060621 (15.4 LT) - 2013060615 (9.4 LT)

Lightning: 15.4 LT  $\pm$  1.5 h (dots)

PT: LLCP | EA: ACT

01L (ANDREA) | 47.5 kt TS

S: 15.1 m s<sup>-1</sup> (H) | H: 34.5°





### IR BT & Lightning

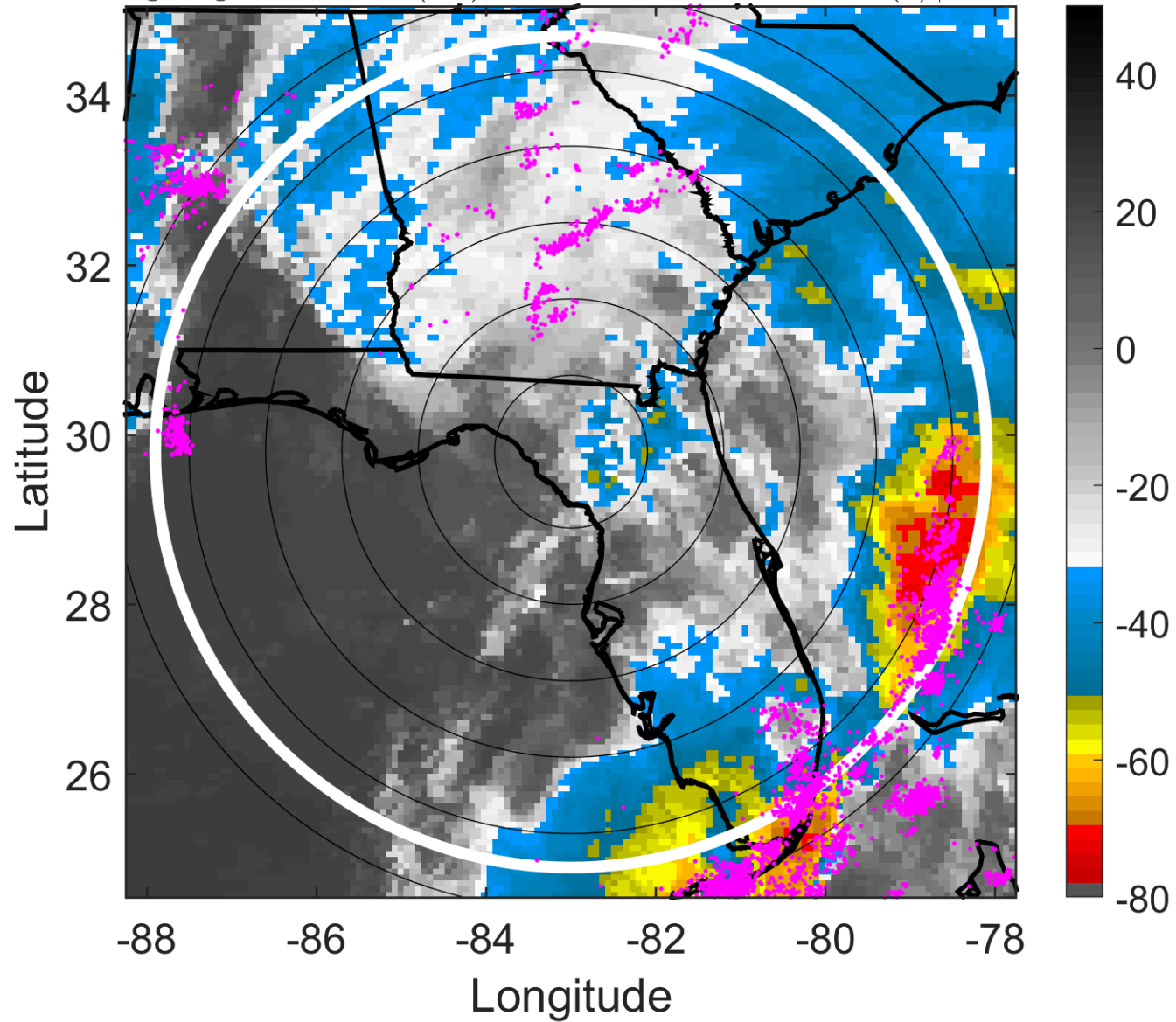
t: 2013060700 (18.5 LT)

Lightning: 18.5 LT  $\pm$  1.5 h (dots)

PT: LLCP | EA: ACT

01L (ANDREA) | 40 kt TS

S: 16.4 m s<sup>-1</sup> (H) | H: 34°



### 6-h IR BT Differences & Lightning

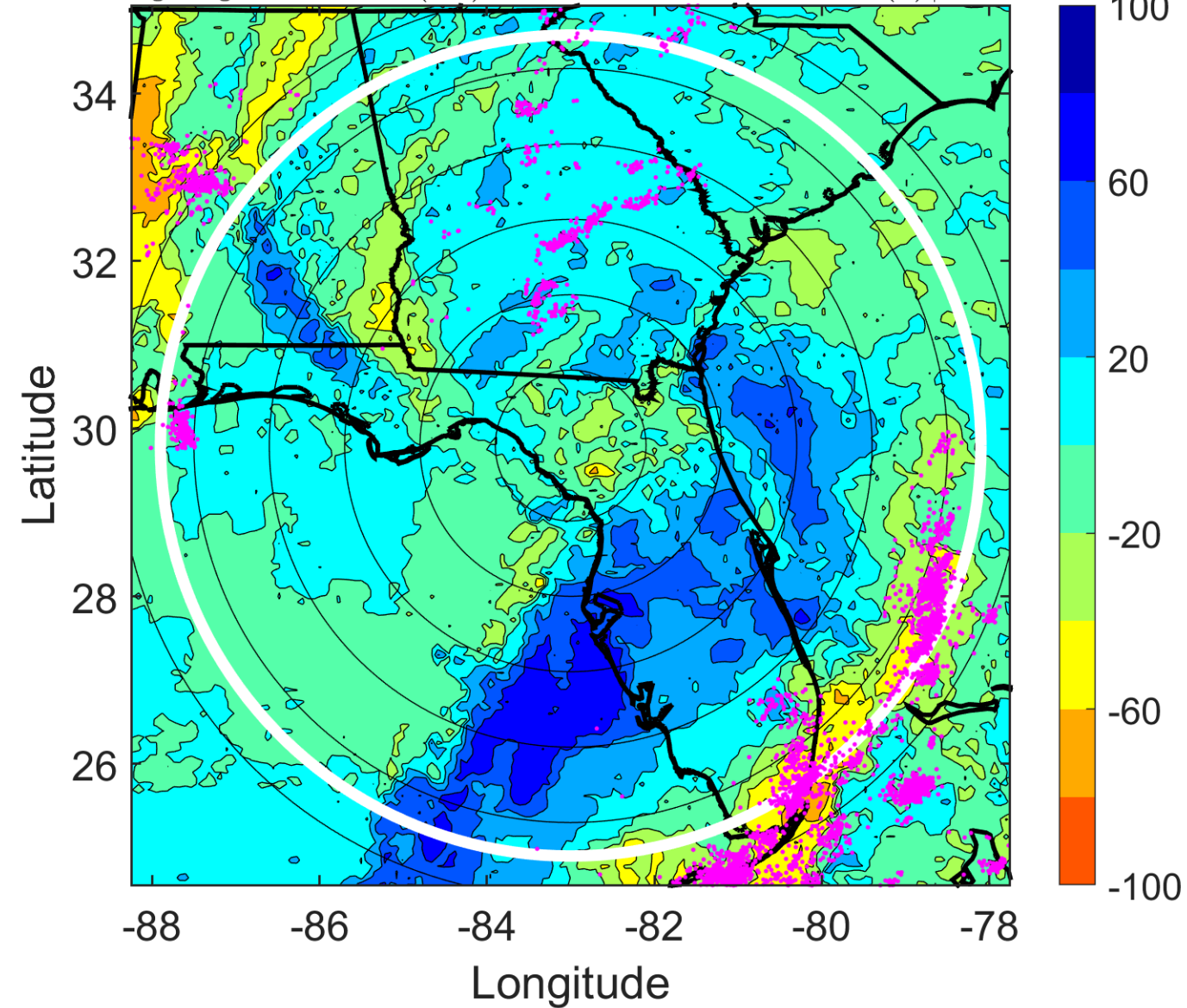
$\Delta$ t: 2013060700 (18.5 LT) - 2013060618 (12.4 LT)

Lightning: 18.5 LT  $\pm$  1.5 h (dots)

PT: LLCP | EA: ACT

01L (ANDREA) | 40 kt TS

S: 16.4 m s<sup>-1</sup> (H) | H: 34°



### IR BT & Lightning

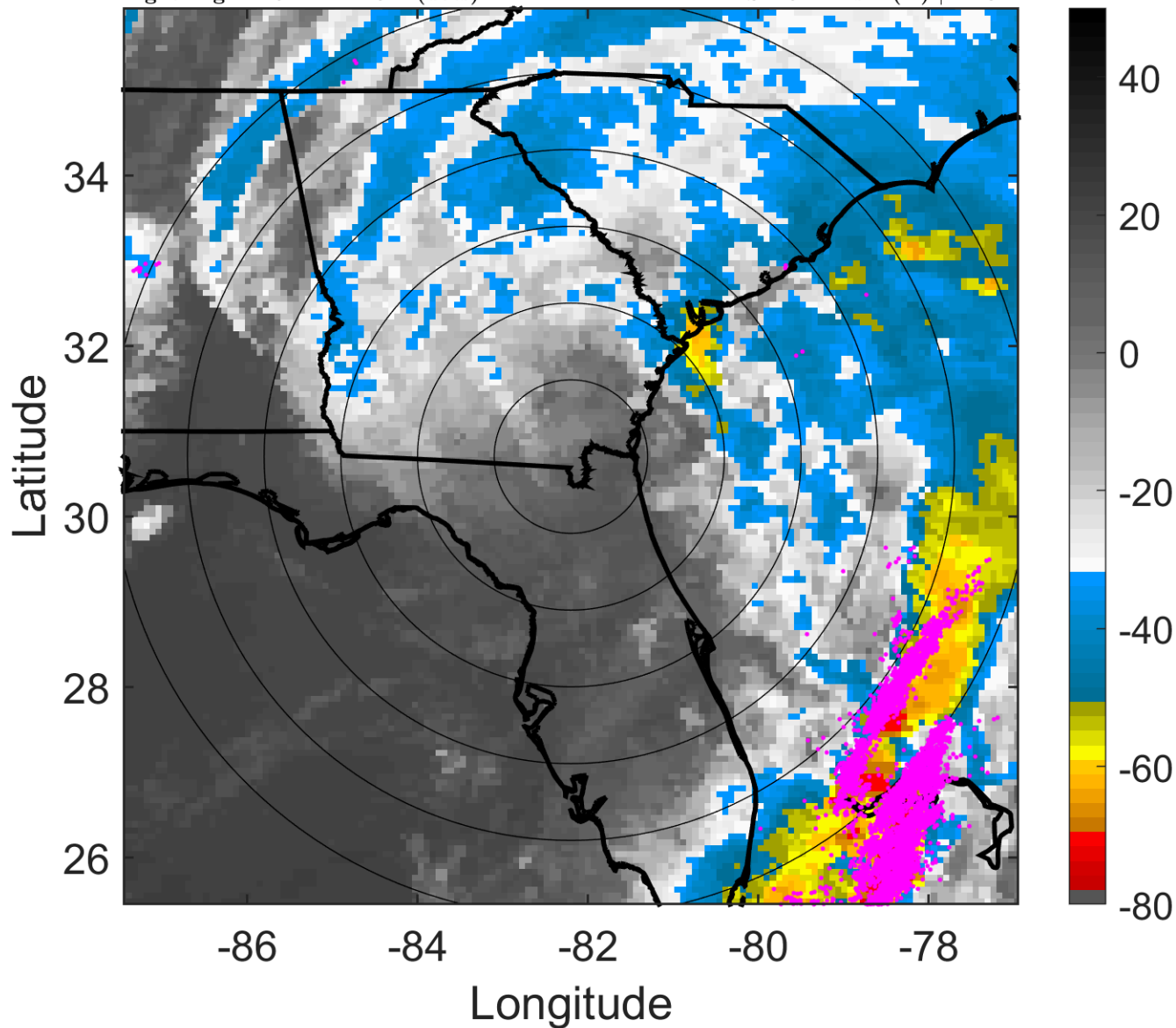
t: 2013060703 (21.5 LT)

Lightning: 21.5 LT  $\pm$  1.5 h (dots)

PT: LLCP | EA: ACT

01L (ANDREA) | 40 kt TS

S: 15.2 m s<sup>-1</sup> (H) | H: 34°



### 6-h IR BT Differences & Lightning

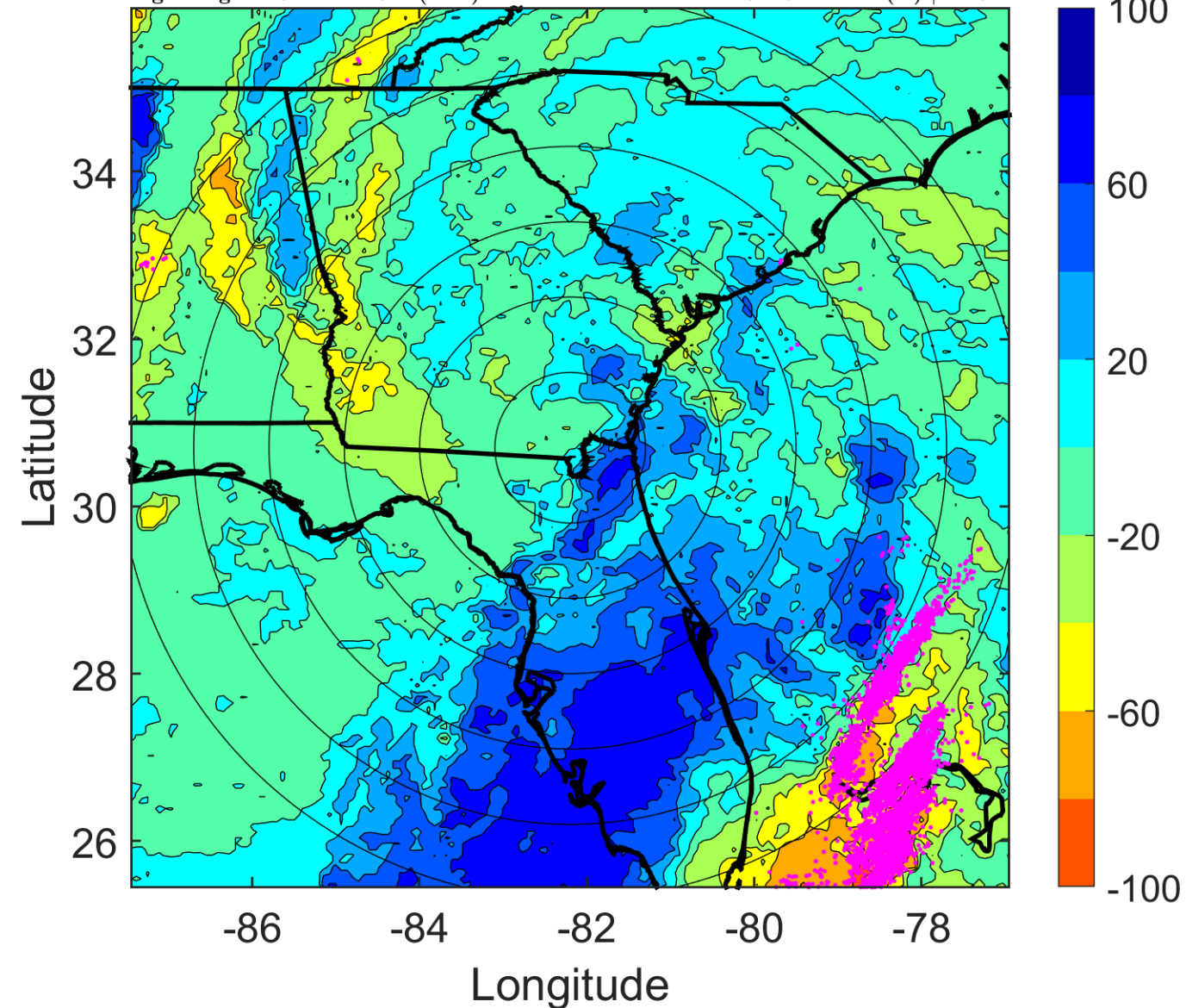
$\Delta$ t: 2013060703 (21.5 LT) - 2013060621 (15.4 LT)

Lightning: 21.5 LT  $\pm$  1.5 h (dots)

PT: LLCP | EA: ACT

01L (ANDREA) | 40 kt TS

S: 15.2 m s<sup>-1</sup> (H) | H: 34°



### IR BT & Lightning

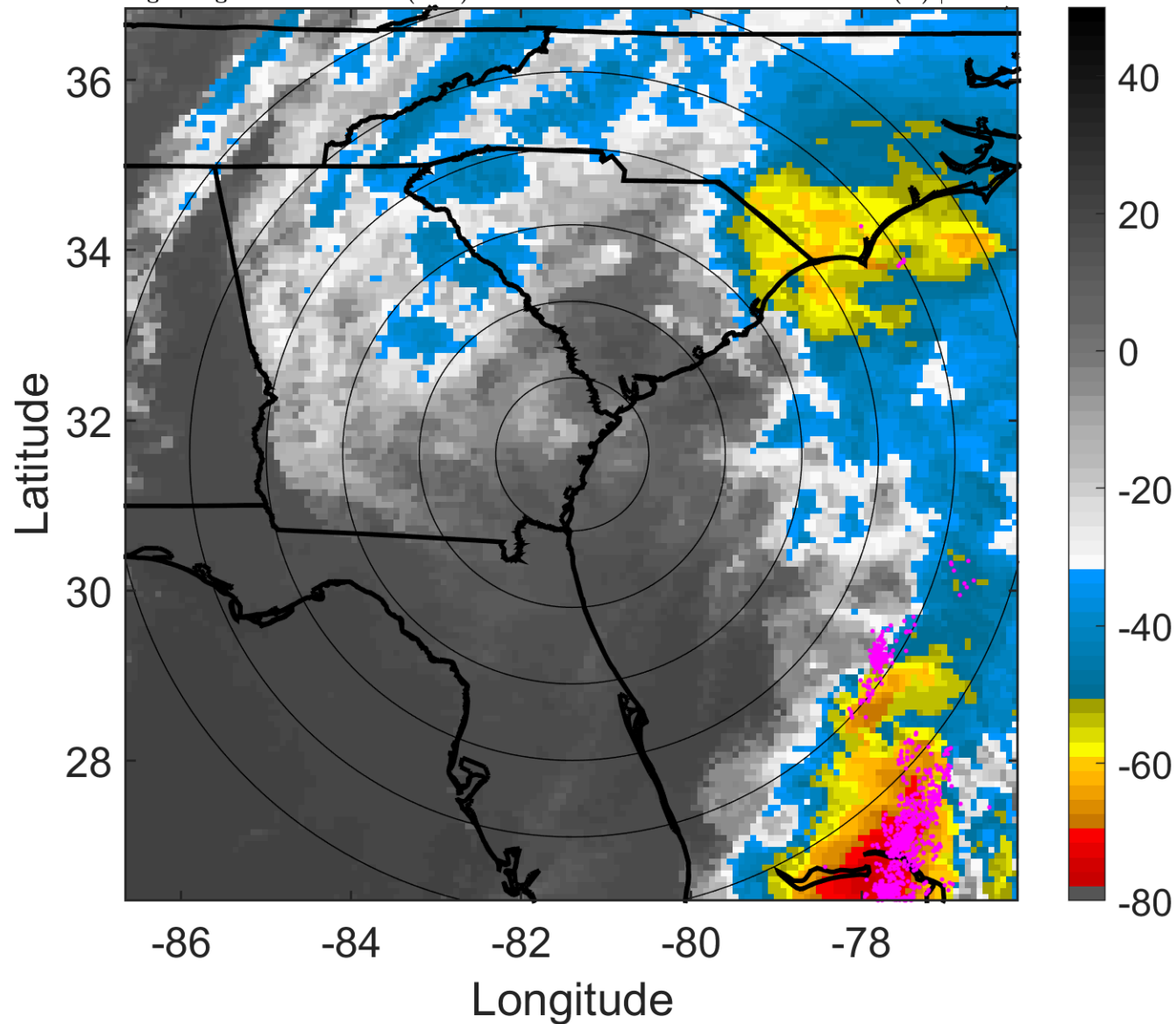
t: 2013060706 (0.6 LT)

Lightning: 0.6 LT  $\pm$  1.5 h (dots)

### LAND EFFECTS

01L (ANDREA) | 40 kt TS

S: 14.1 m s<sup>-1</sup> (H) | H: 34°



### 6-h IR BT Differences & Lightning

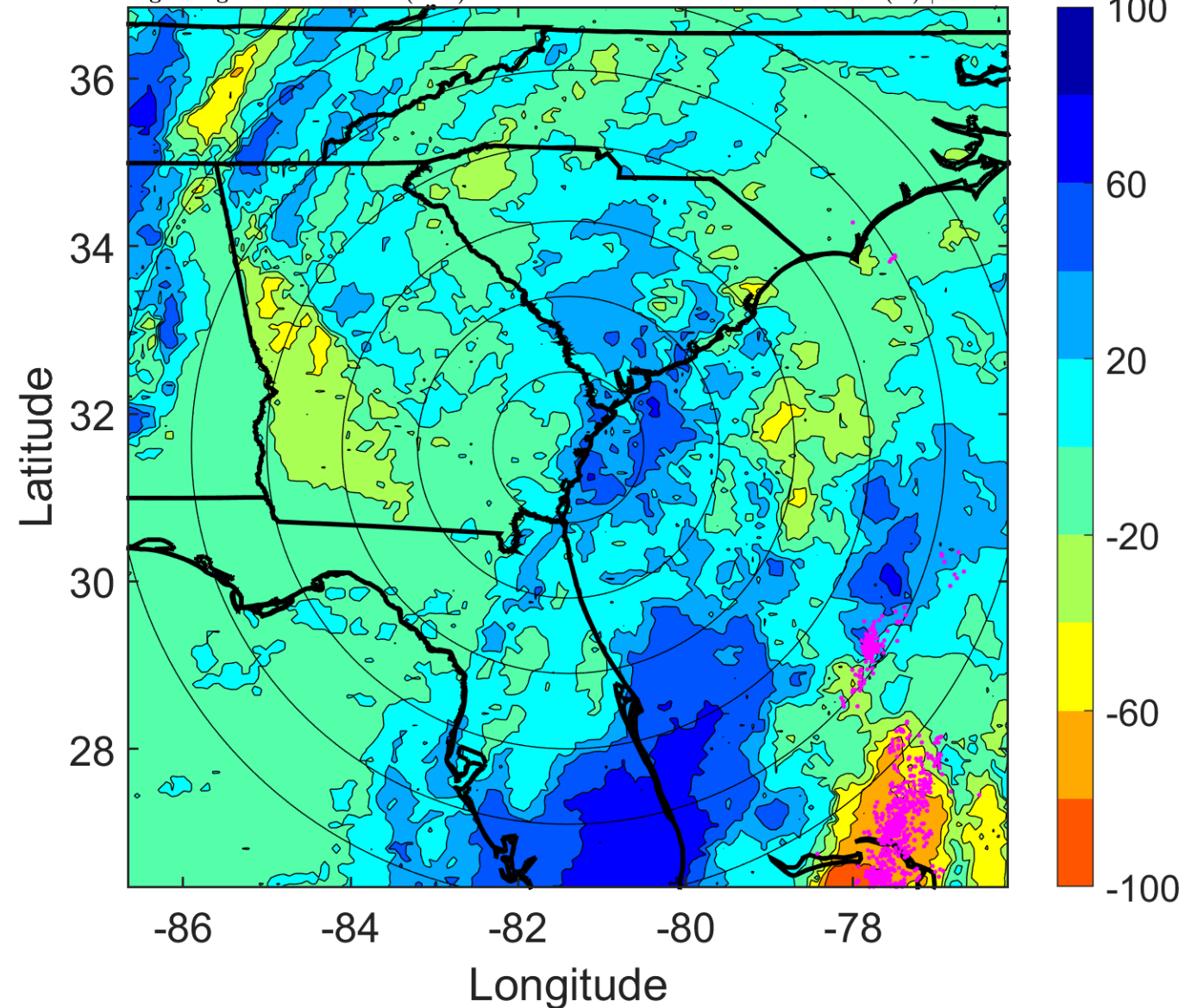
$\Delta$ t: 2013060706 (0.6 LT) - 2013060700 (18.5 LT)

Lightning: 0.6 LT  $\pm$  1.5 h (dots)

### LAND EFFECTS

01L (ANDREA) | 40 kt TS

S: 14.1 m s<sup>-1</sup> (H) | H: 34°



### IR BT & Lightning

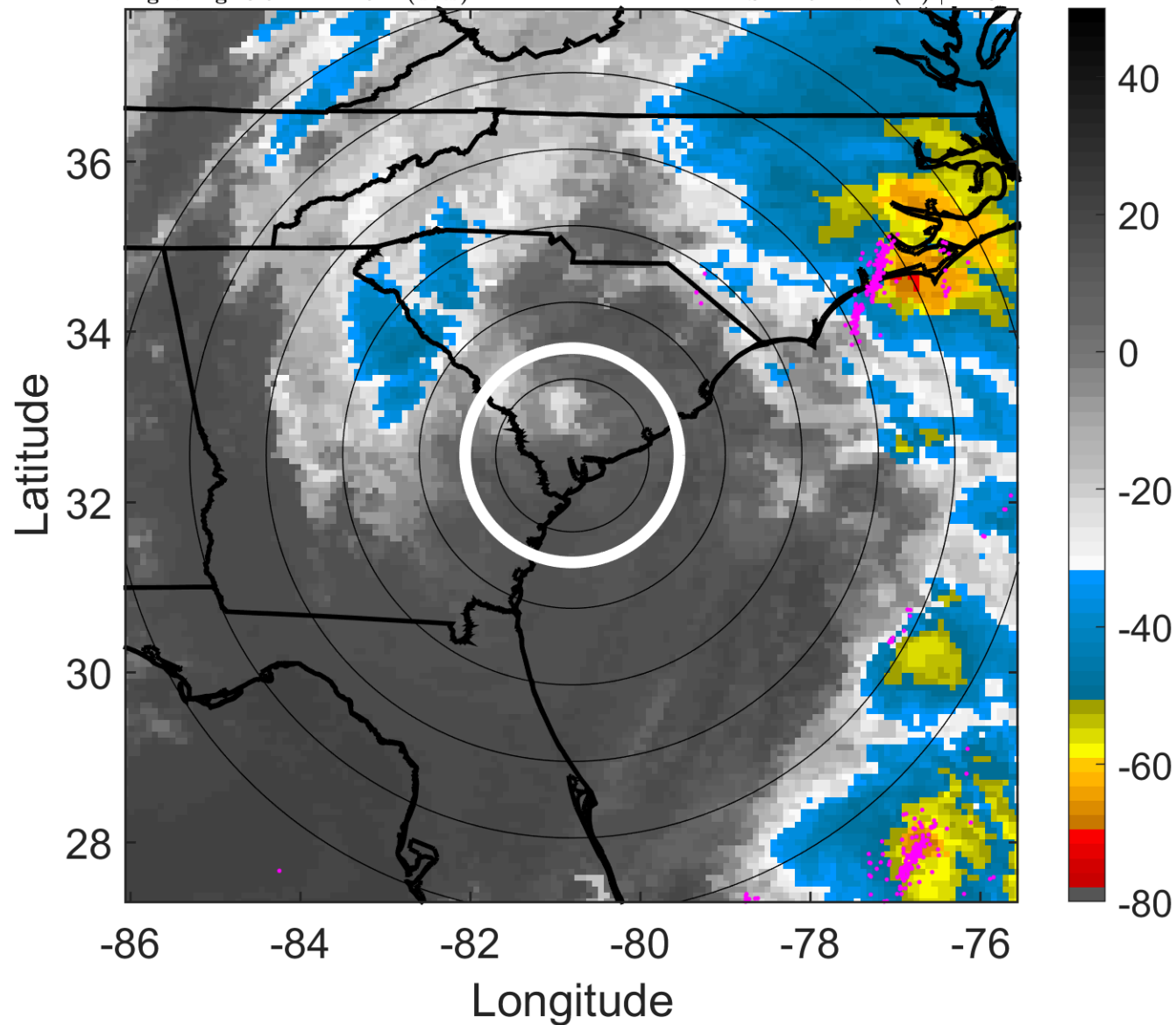
t: 2013060709 (3.6 LT)

Lightning: 3.6 LT  $\pm$  1.5 h (dots)

### LAND EFFECTS

01L (ANDREA) | 40 kt TS

S: 12.9 m s<sup>-1</sup> (H) | H: 31°



### 6-h IR BT Differences & Lightning

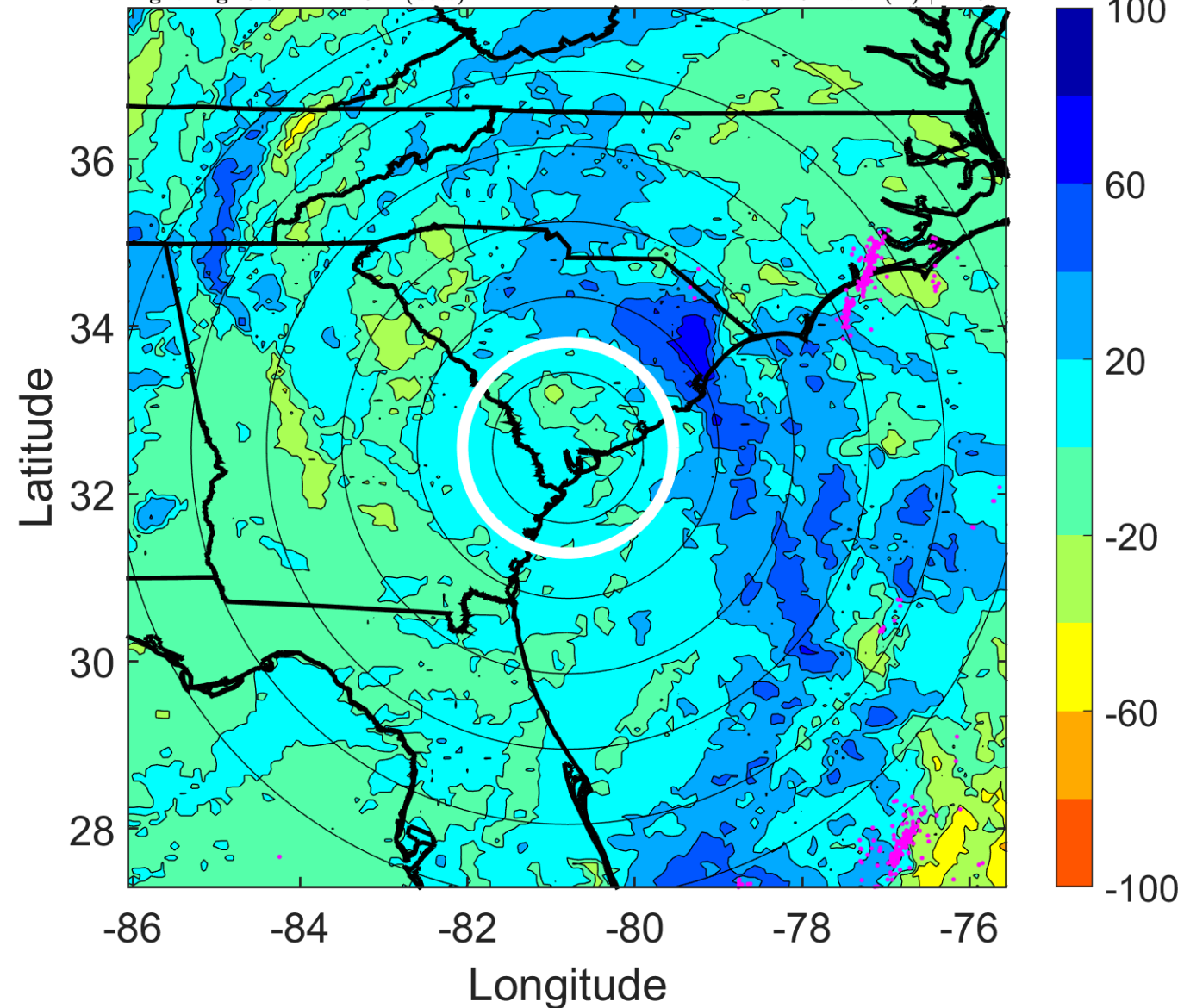
$\Delta$ t: 2013060709 (3.6 LT) - 2013060703 (21.5 LT)

Lightning: 3.6 LT  $\pm$  1.5 h (dots)

### LAND EFFECTS

01L (ANDREA) | 40 kt TS

S: 12.9 m s<sup>-1</sup> (H) | H: 31°



### IR BT & Lightning

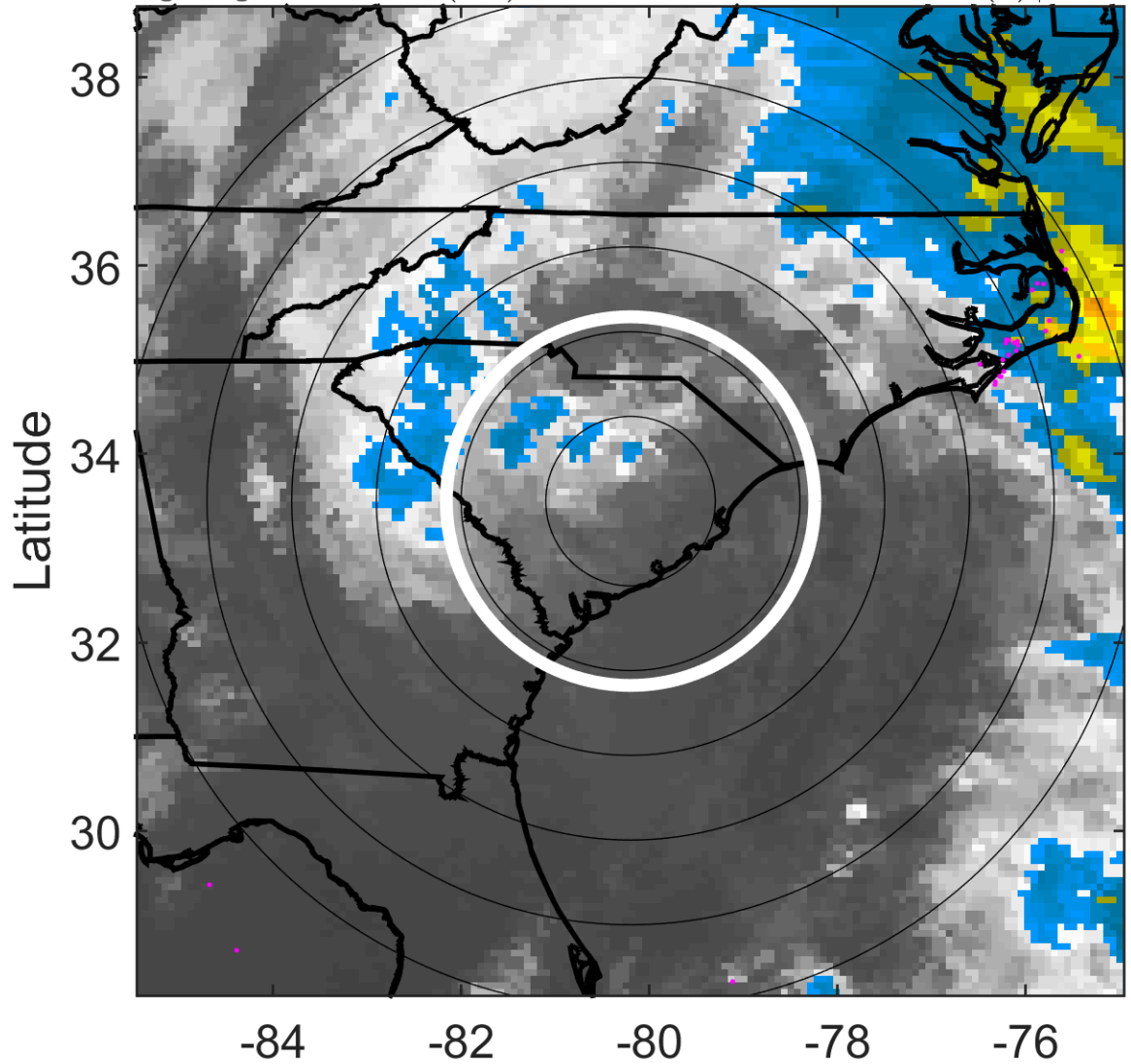
t: 2013060712 (6.7 LT)

Lightning: 6.7 LT  $\pm$  1.5 h (dots)

### LAND EFFECTS

01L (ANDREA) | 40 kt TS

S: 11.8 m s<sup>-1</sup> (H) | H: 28°



### 6-h IR BT Differences & Lightning

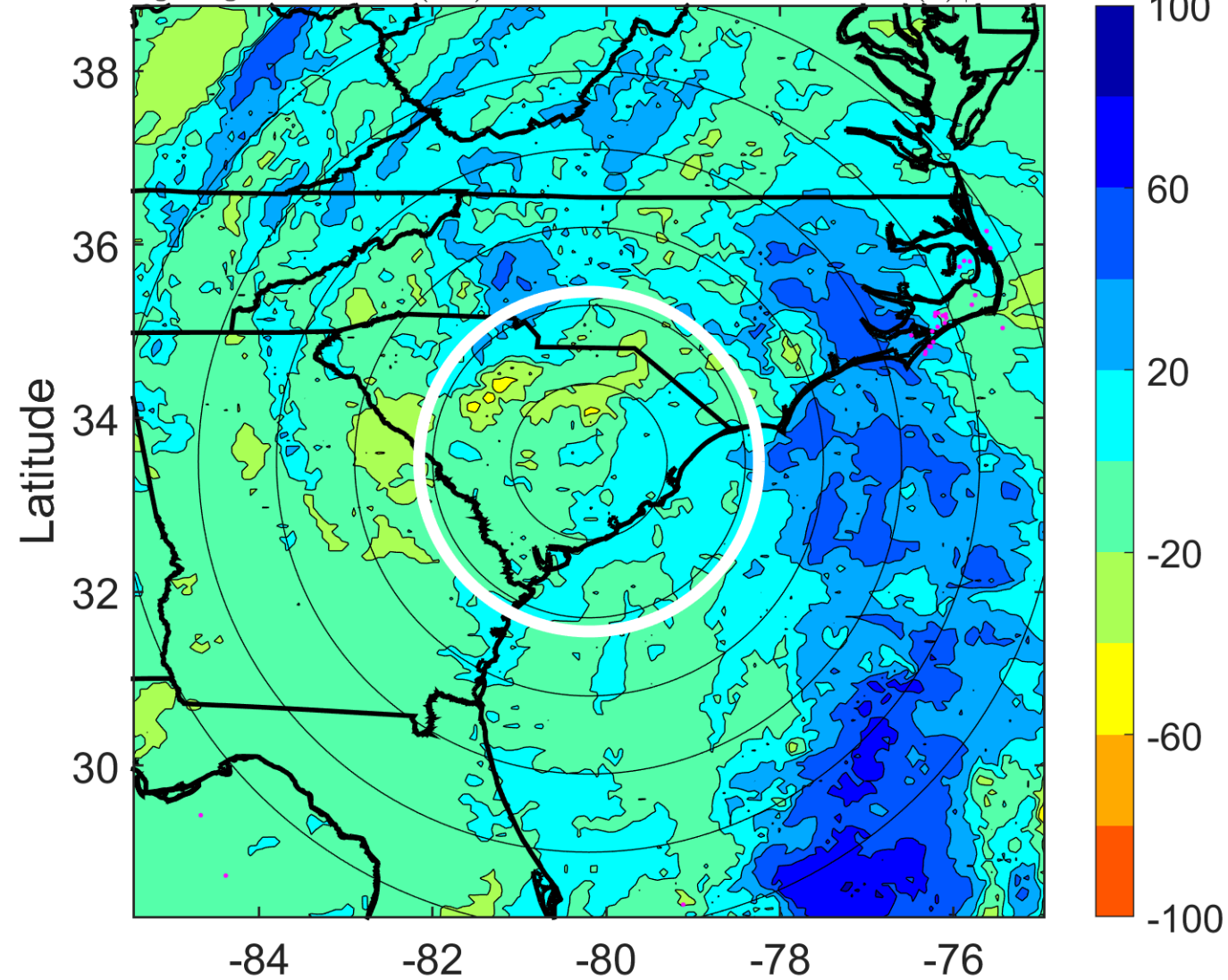
$\Delta$ t: 2013060712 (6.7 LT) - 2013060706 (0.6 LT)

Lightning: 6.7 LT  $\pm$  1.5 h (dots)

### LAND EFFECTS

01L (ANDREA) | 40 kt TS

S: 11.8 m s<sup>-1</sup> (H) | H: 28°



### IR BT & Lightning

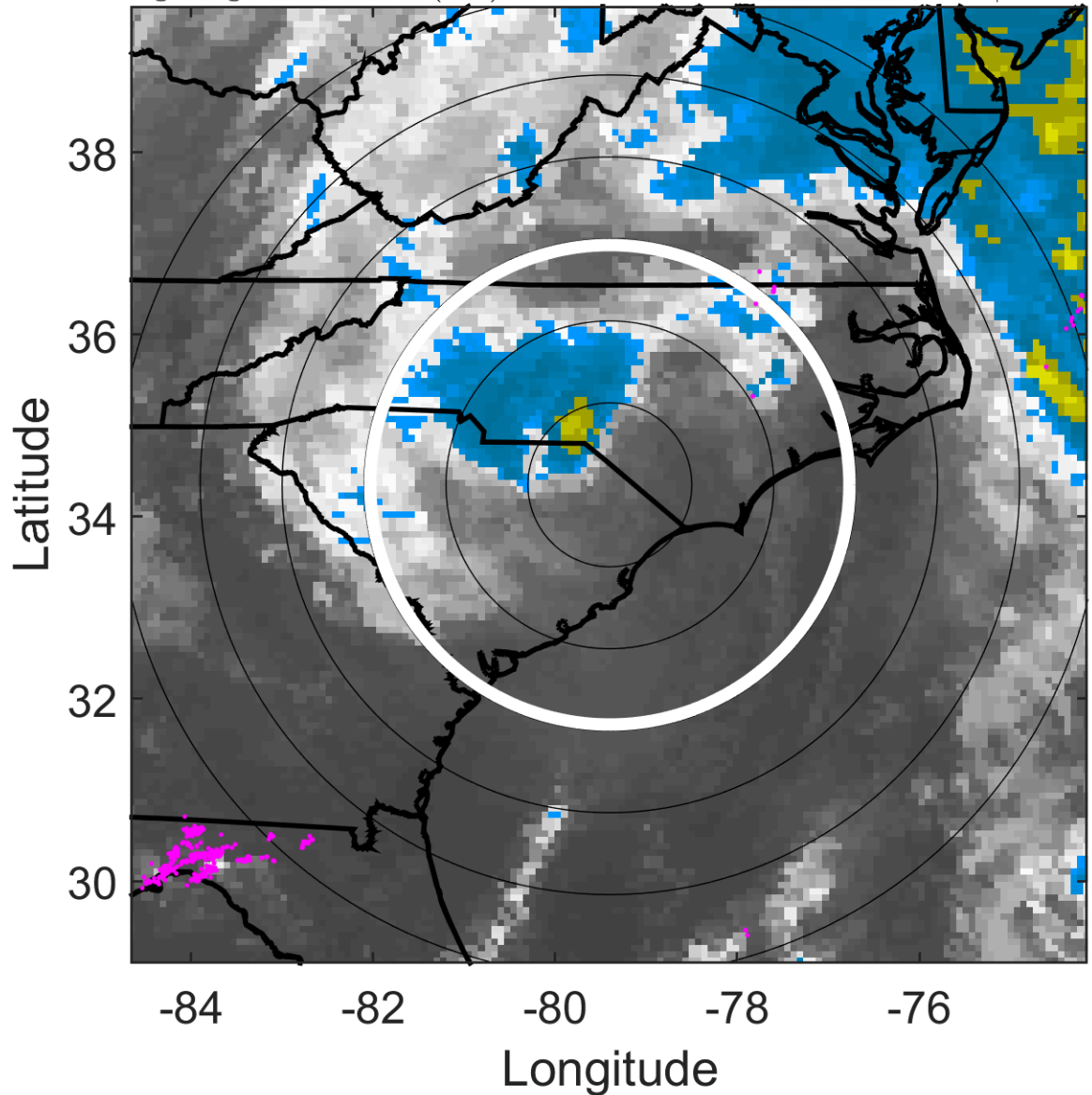
t: 2013060715 (9.7 LT)

Lightning: 9.7 LT  $\pm$  1.5 h (dots)

### LAND EFFECTS

01L (ANDREA) | 40 kt TS

S: null | H: null



### 6-h IR BT Differences & Lightning

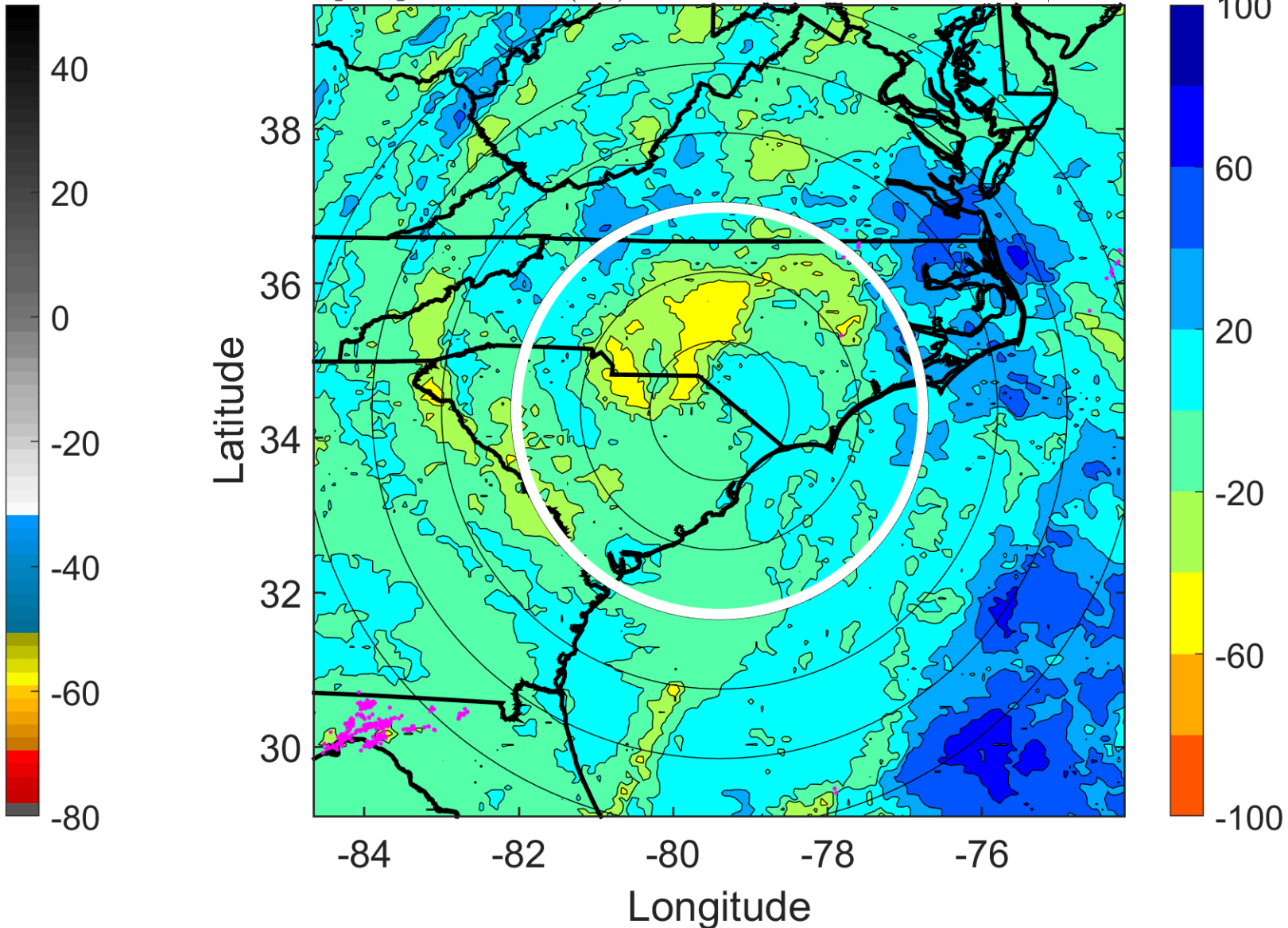
$\Delta$ t: 2013060715 (9.7 LT) - 2013060709 (3.6 LT)

Lightning: 9.7 LT  $\pm$  1.5 h (dots)

### LAND EFFECTS

01L (ANDREA) | 40 kt TS

S: null | H: null



### IR BT & Lightning

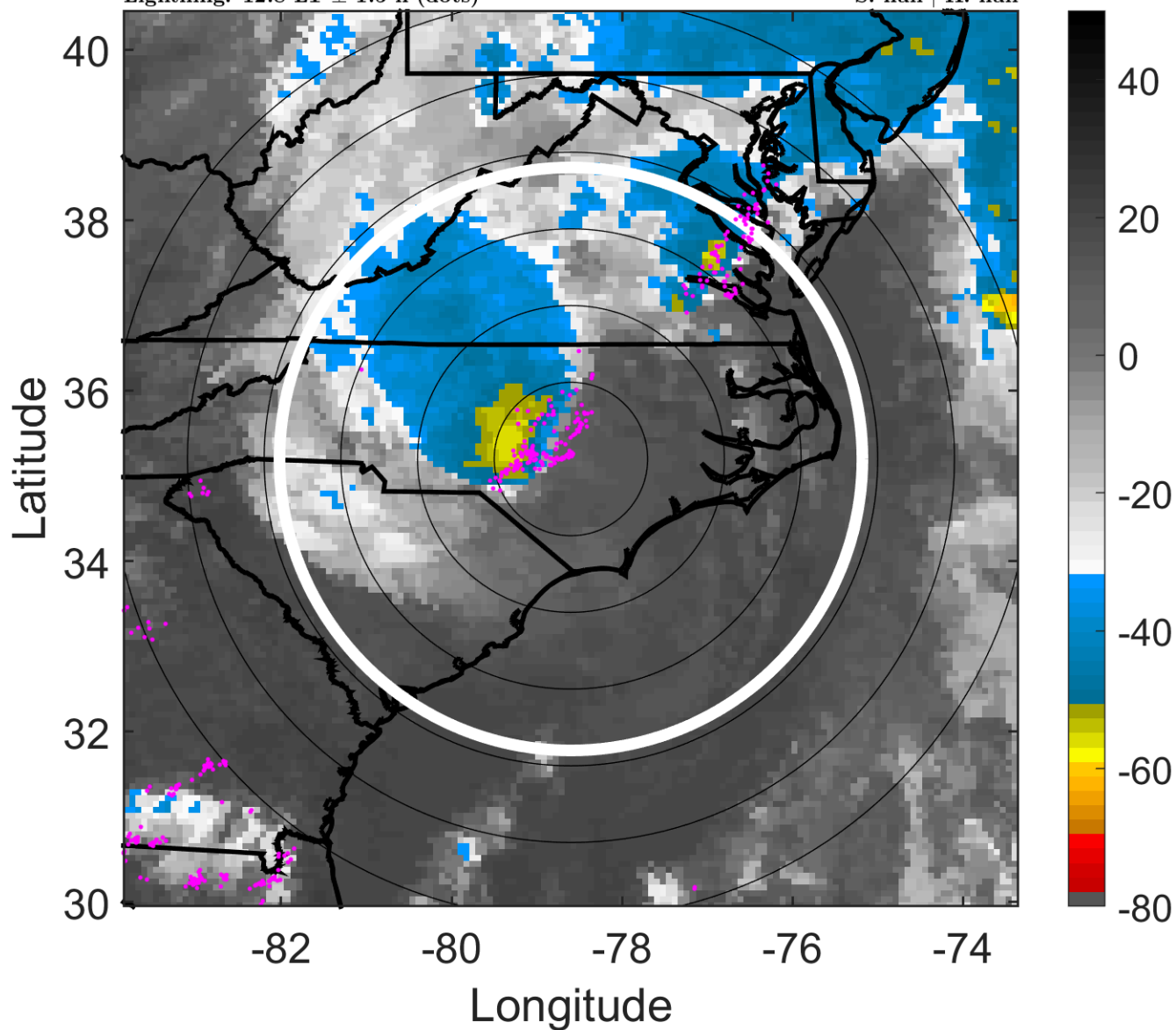
t: 2013060718 (12.8 LT)

Lightning: 12.8 LT  $\pm$  1.5 h (dots)

### LAND EFFECTS

01L (ANDREA) | 40 kt EX

S: null | H: null



### 6-h IR BT Differences & Lightning

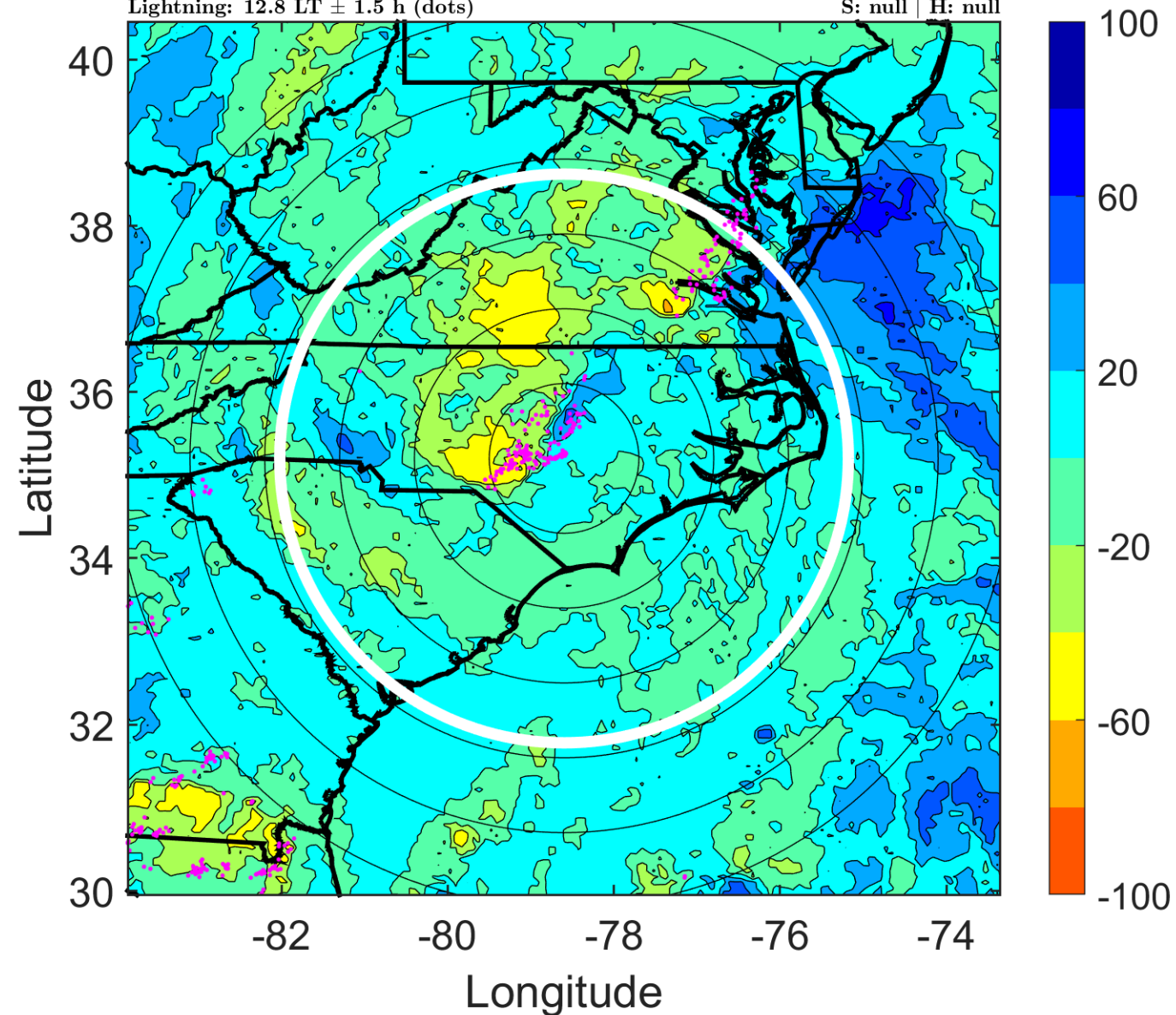
$\Delta$ t: 2013060718 (12.8 LT) - 2013060712 (6.7 LT)

Lightning: 12.8 LT  $\pm$  1.5 h (dots)

### LAND EFFECTS

01L (ANDREA) | 40 kt EX

S: null | H: null



### IR BT & Lightning

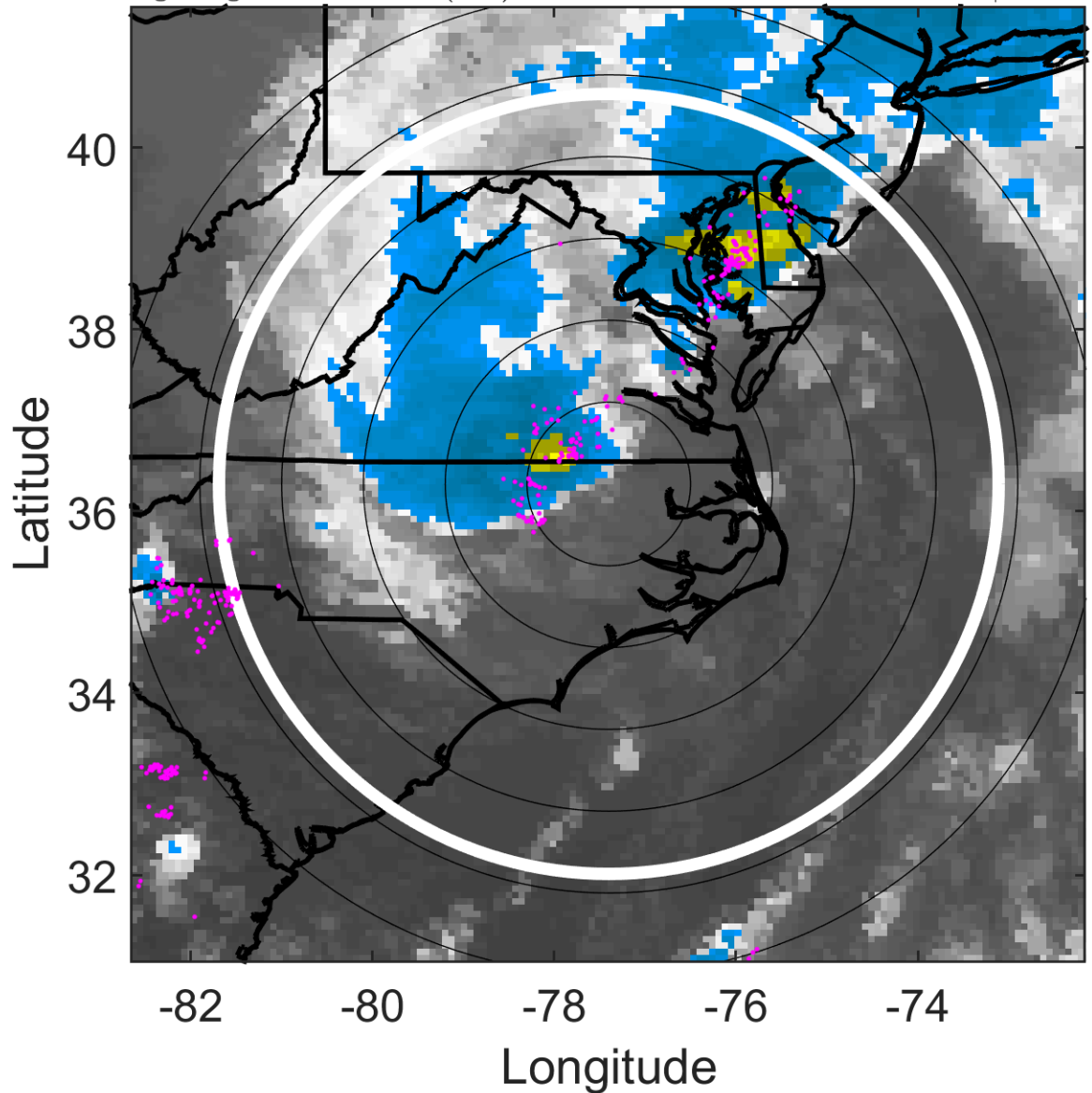
t: 2013060721 (15.8 LT)

Lightning: 15.8 LT  $\pm$  1.5 h (dots)

LAND EFFECTS

01L (ANDREA) | 40 kt EX

S: null | H: null



### 6-h IR BT Differences & Lightning

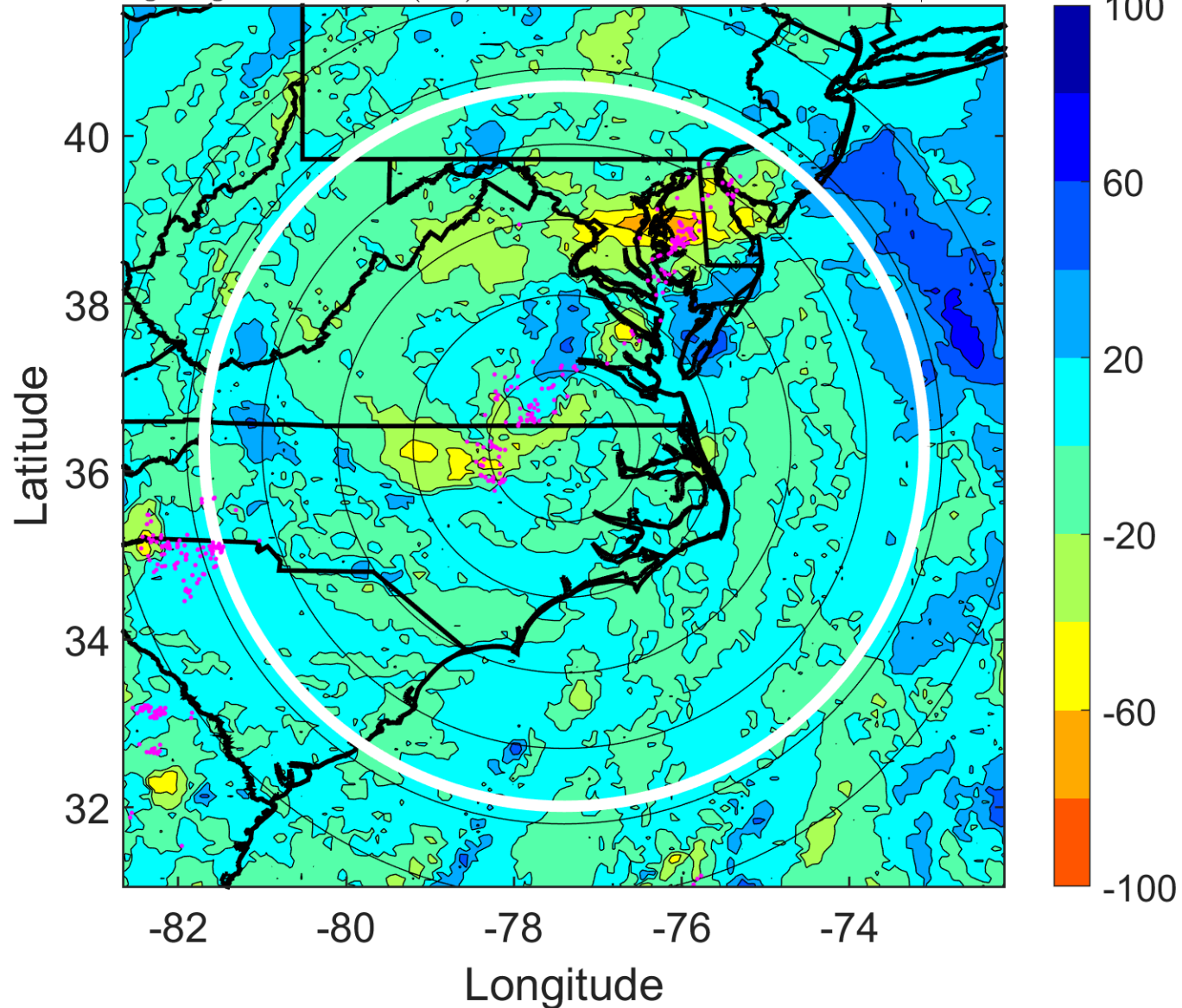
$\Delta$ t: 2013060721 (15.8 LT) - 2013060715 (9.7 LT)

Lightning: 15.8 LT  $\pm$  1.5 h (dots)

LAND EFFECTS

01L (ANDREA) | 40 kt EX

S: null | H: null





### IR BT & Lightning

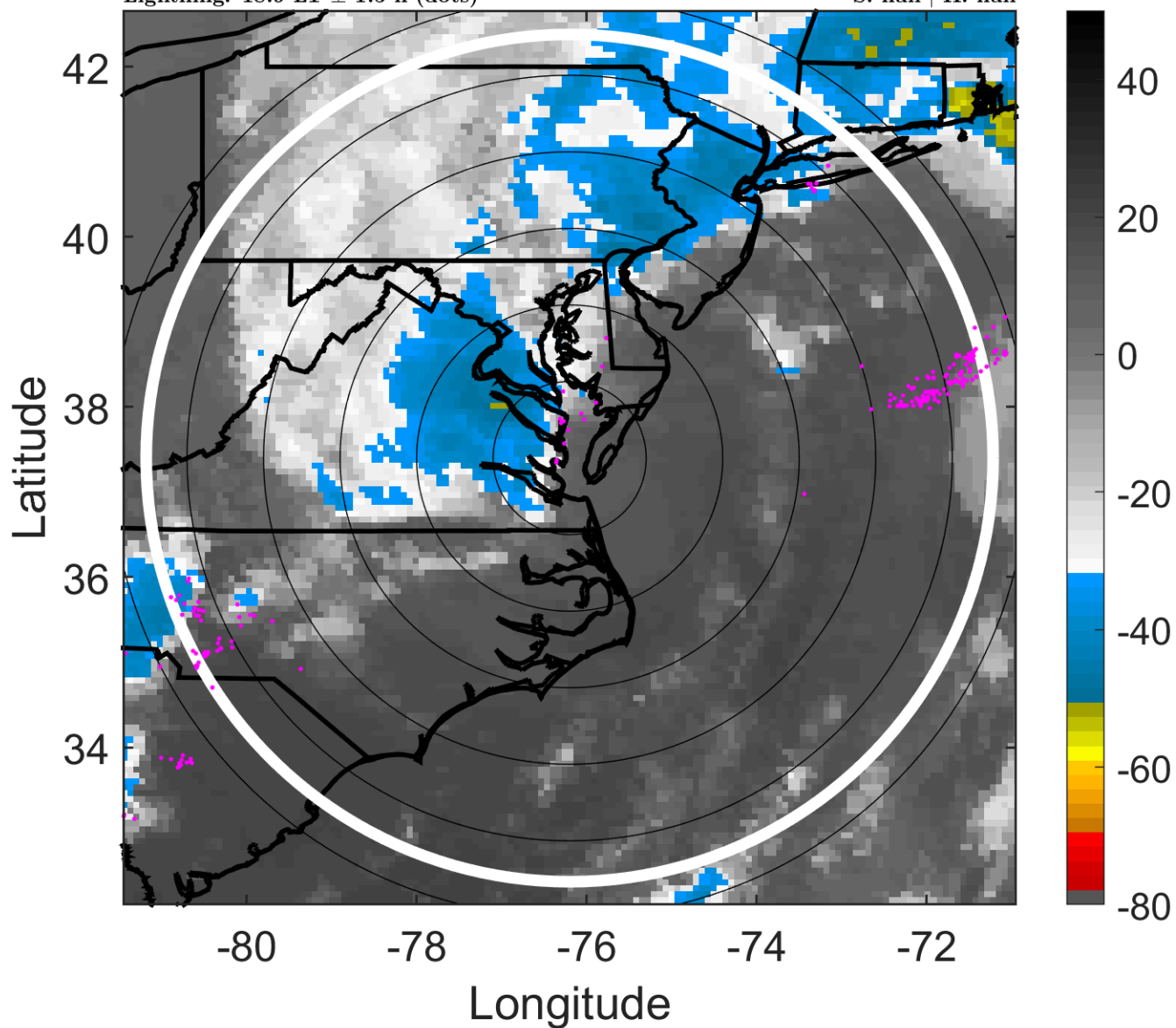
t: 2013060800 (18.9 LT)

Lightning: 18.9 LT  $\pm$  1.5 h (dots)

### LAND EFFECTS

01L (ANDREA) | 40 kt EX

S: null | H: null



### 6-h IR BT Differences & Lightning

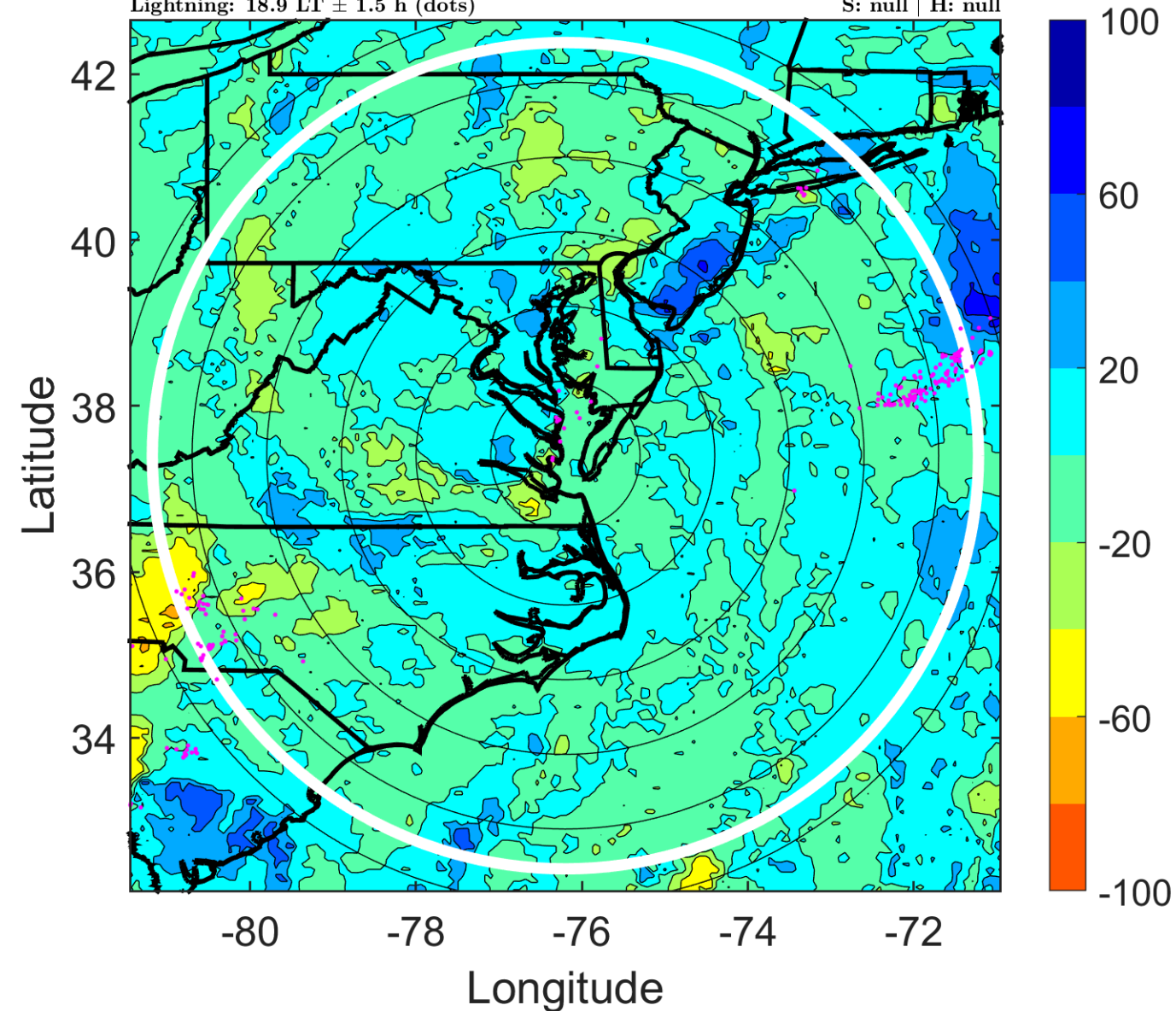
$\Delta$ t: 2013060800 (18.9 LT) - 2013060718 (12.8 LT)

Lightning: 18.9 LT  $\pm$  1.5 h (dots)

### LAND EFFECTS

01L (ANDREA) | 40 kt EX

S: null | H: null



### IR BT & Lightning

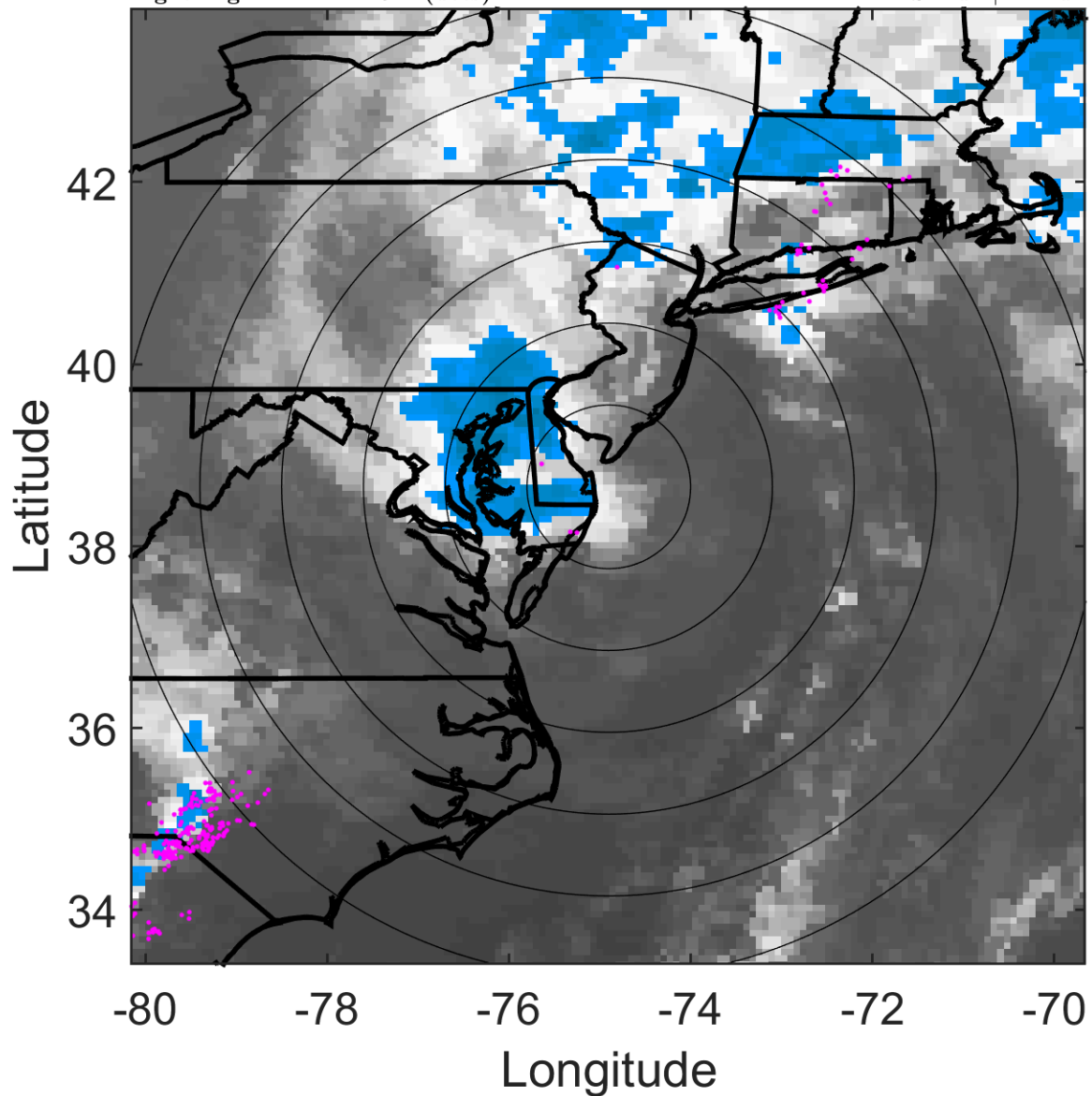
t: 2013060803 (22 LT)

Lightning: 22 LT  $\pm$  1.5 h (dots)

### LAND EFFECTS

01L (ANDREA) | 40 kt EX

S: null | H: null



### 6-h IR BT Differences & Lightning

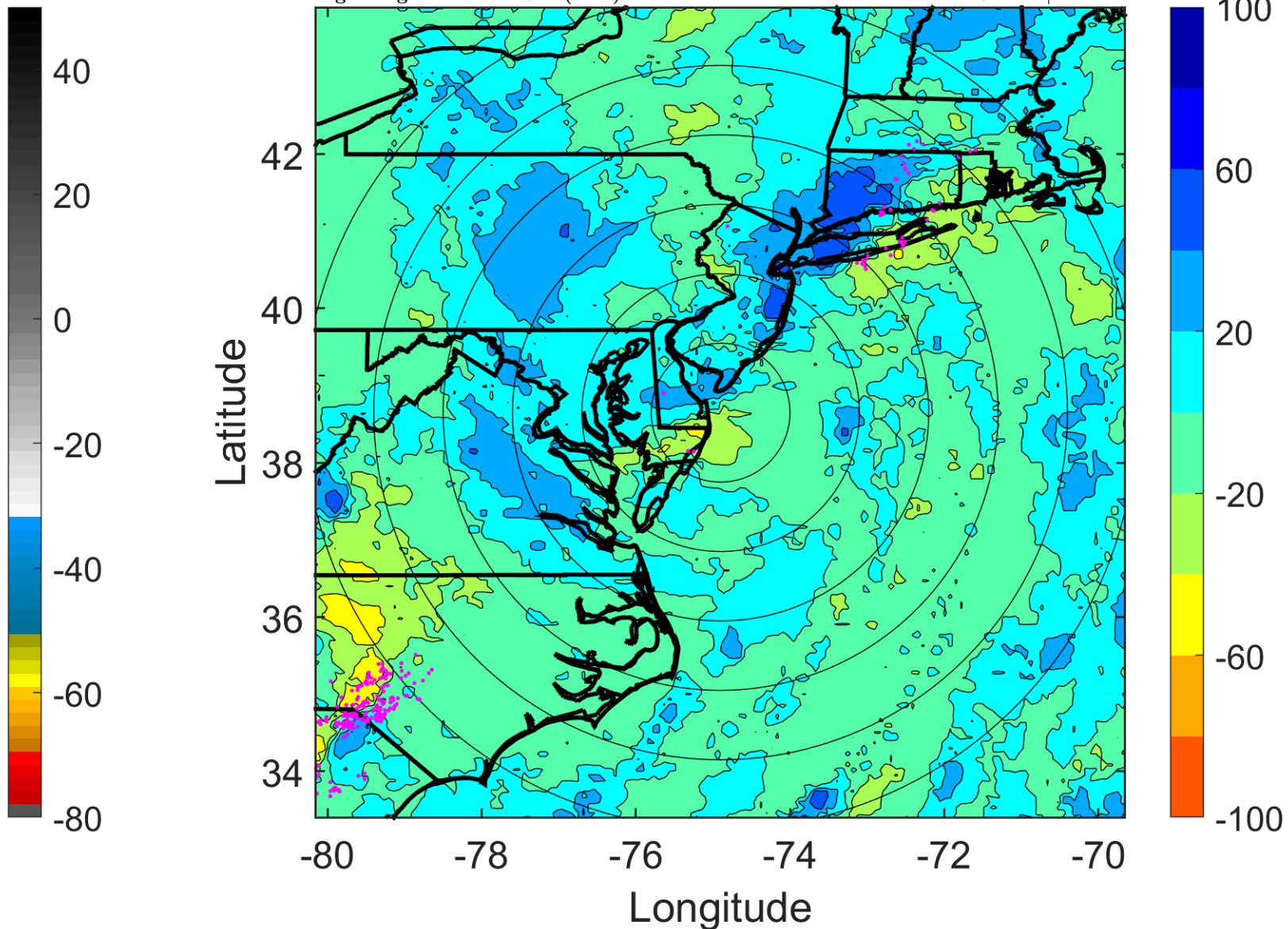
$\Delta$ t: 2013060803 (22 LT) - 2013060721 (15.8 LT)

Lightning: 22 LT  $\pm$  1.5 h (dots)

### LAND EFFECTS

01L (ANDREA) | 40 kt EX

S: null | H: null



### IR BT & Lightning

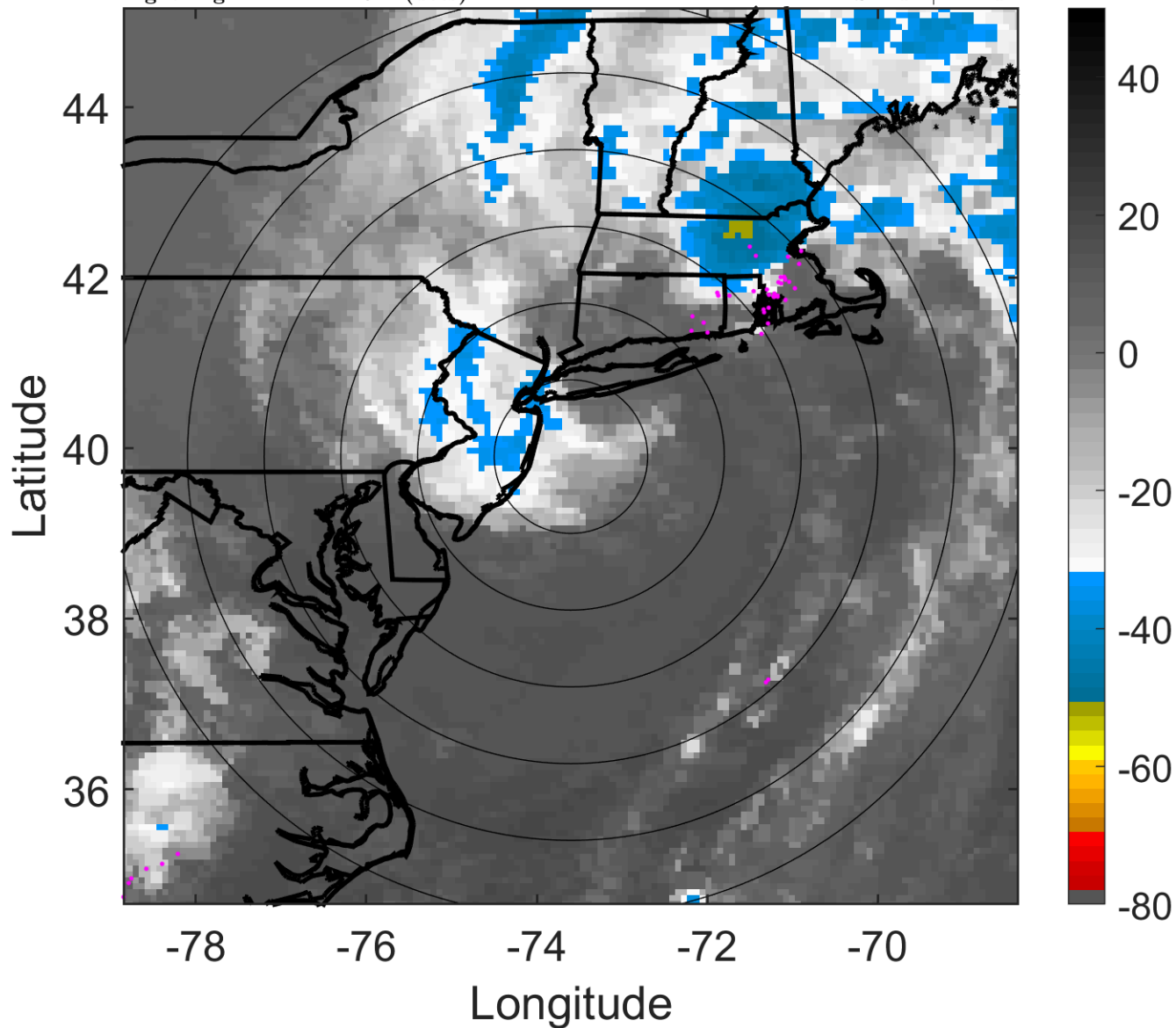
t: 2013060806 (1.1 LT)

Lightning: 1.1 LT  $\pm$  1.5 h (dots)

PT: SLWP | EA: INACT

01L (ANDREA) | 40 kt EX

S: null | H: null



### 6-h IR BT Differences & Lightning

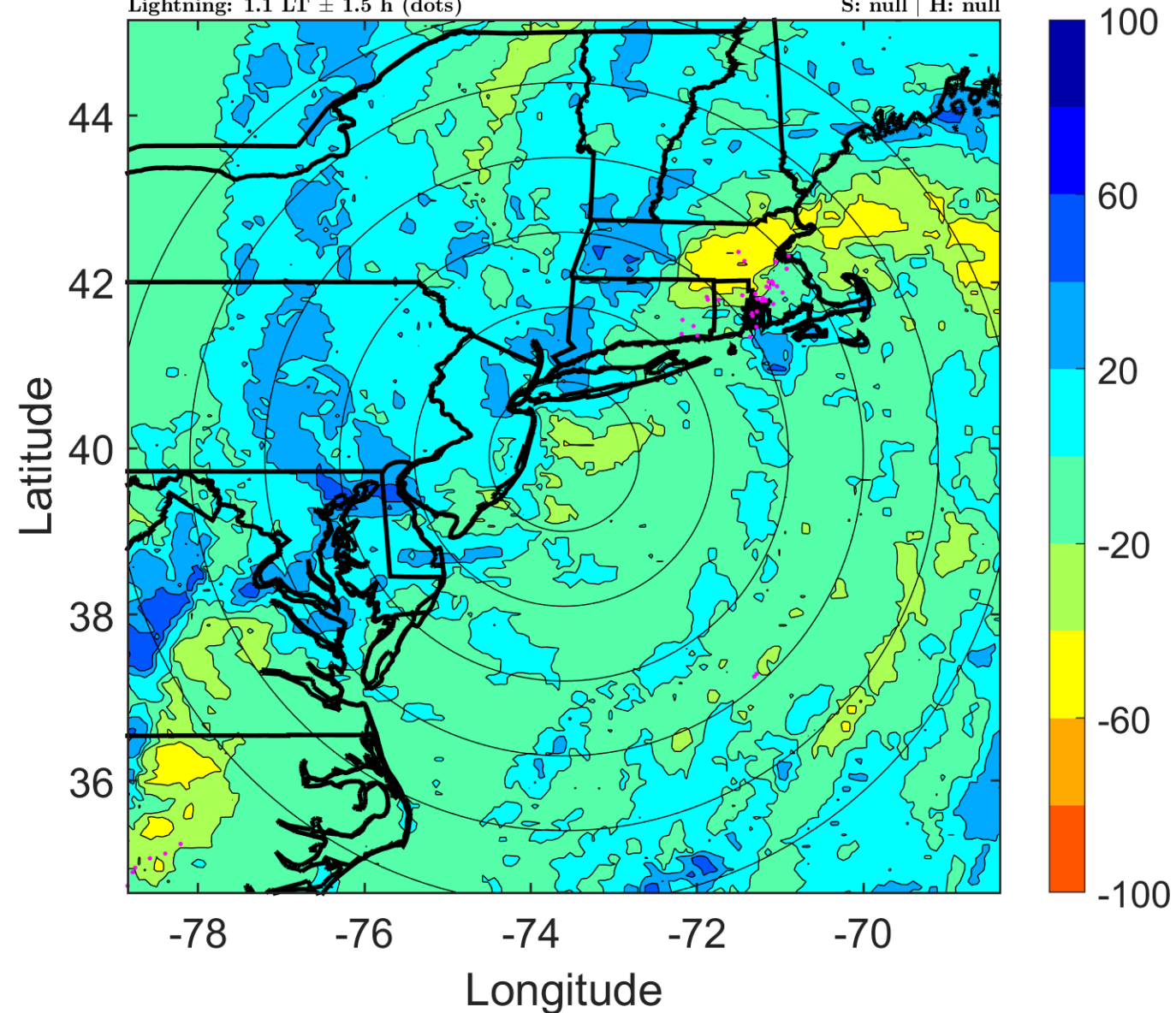
$\Delta$ t: 2013060806 (1.1 LT) - 2013060800 (18.9 LT)

Lightning: 1.1 LT  $\pm$  1.5 h (dots)

PT: SLWP | EA: INACT

01L (ANDREA) | 40 kt EX

S: null | H: null



### IR BT & Lightning

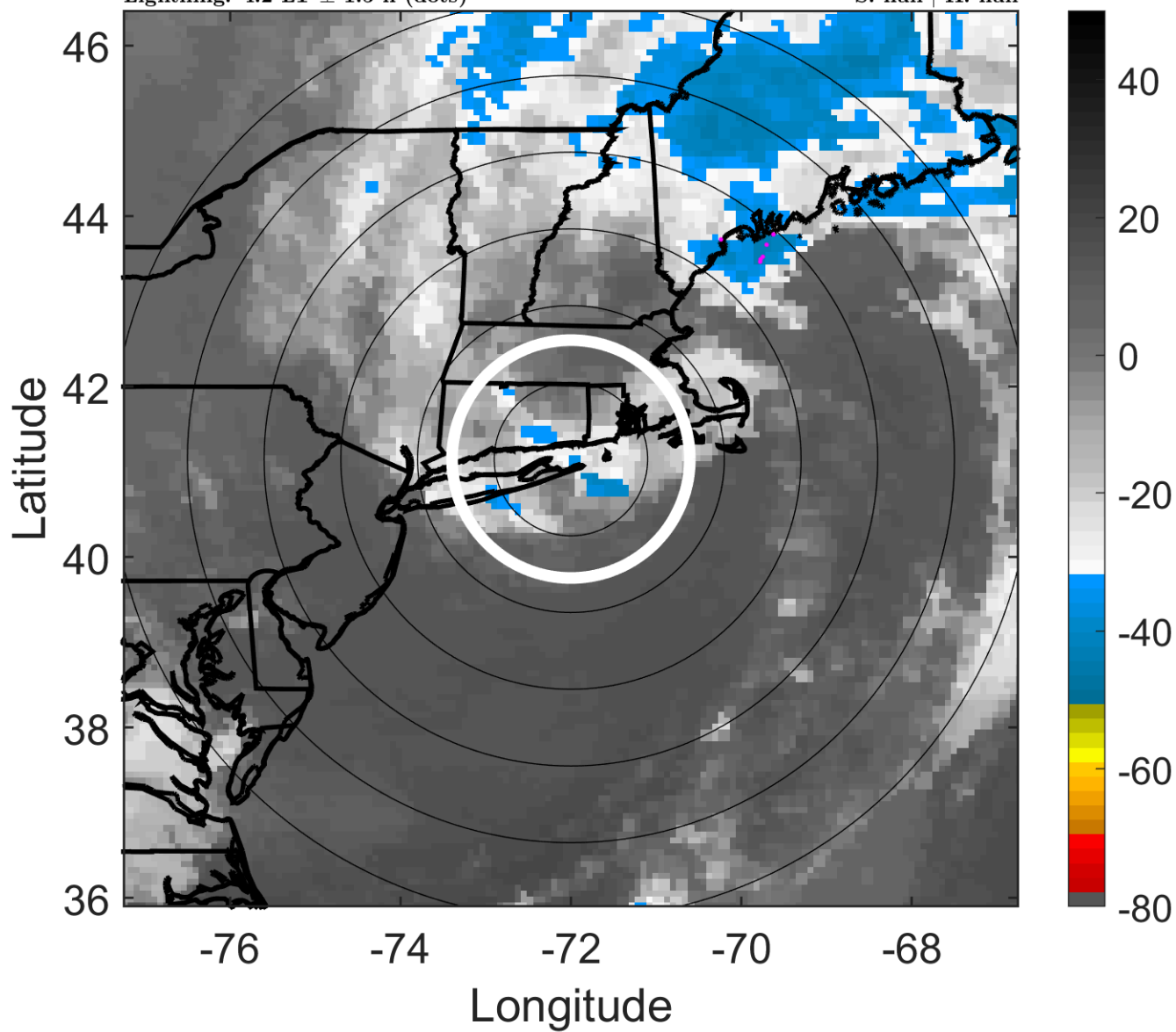
t: 2013060809 (4.2 LT)

Lightning: 4.2 LT  $\pm$  1.5 h (dots)

PT: SLWP | EA: INACT

01L (ANDREA) | 40 kt EX

S: null | H: null



### 6-h IR BT Differences & Lightning

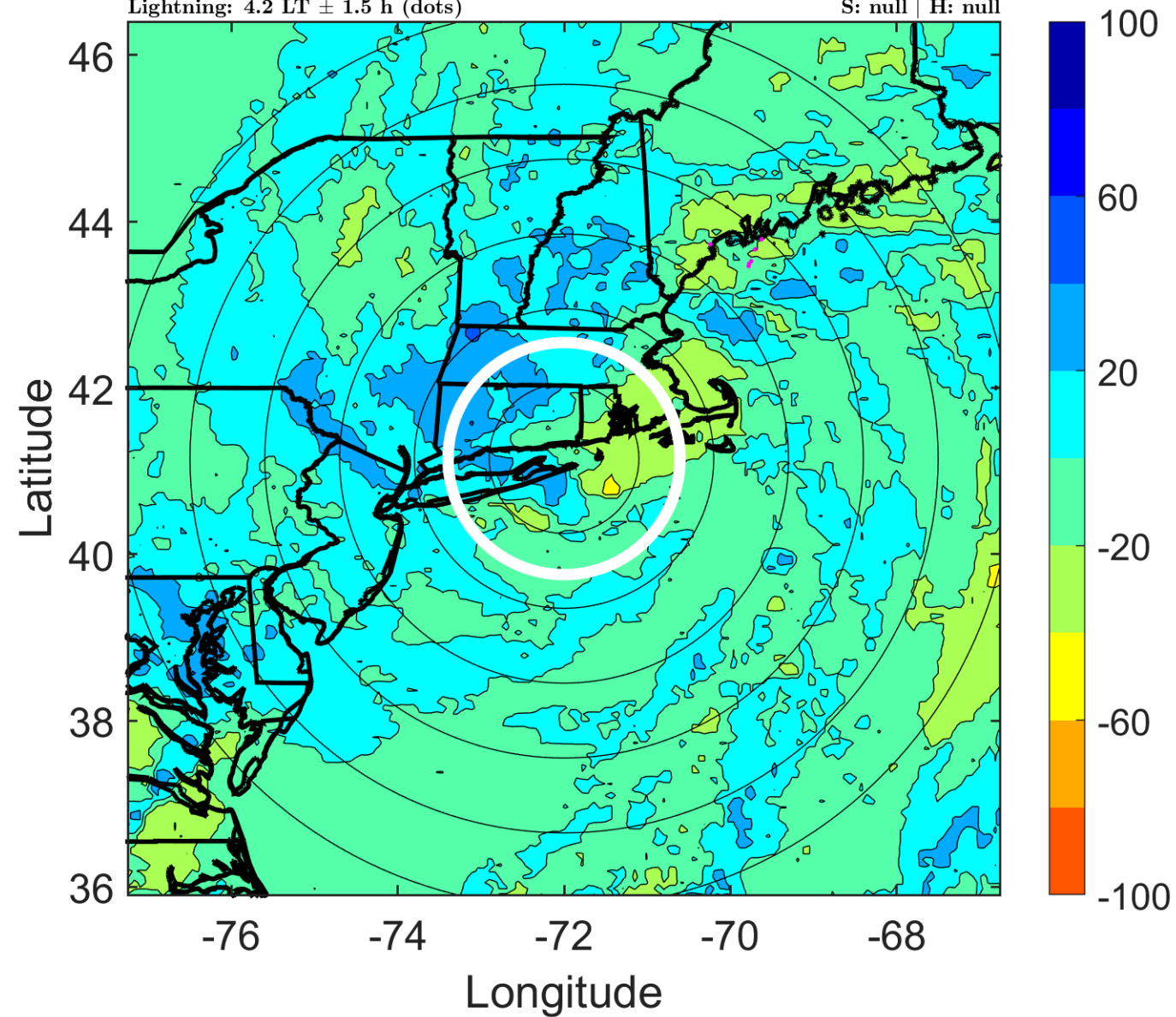
$\Delta$ t: 2013060809 (4.2 LT) - 2013060803 (22 LT)

Lightning: 4.2 LT  $\pm$  1.5 h (dots)

PT: SLWP | EA: INACT

01L (ANDREA) | 40 kt EX

S: null | H: null



### IR BT & Lightning

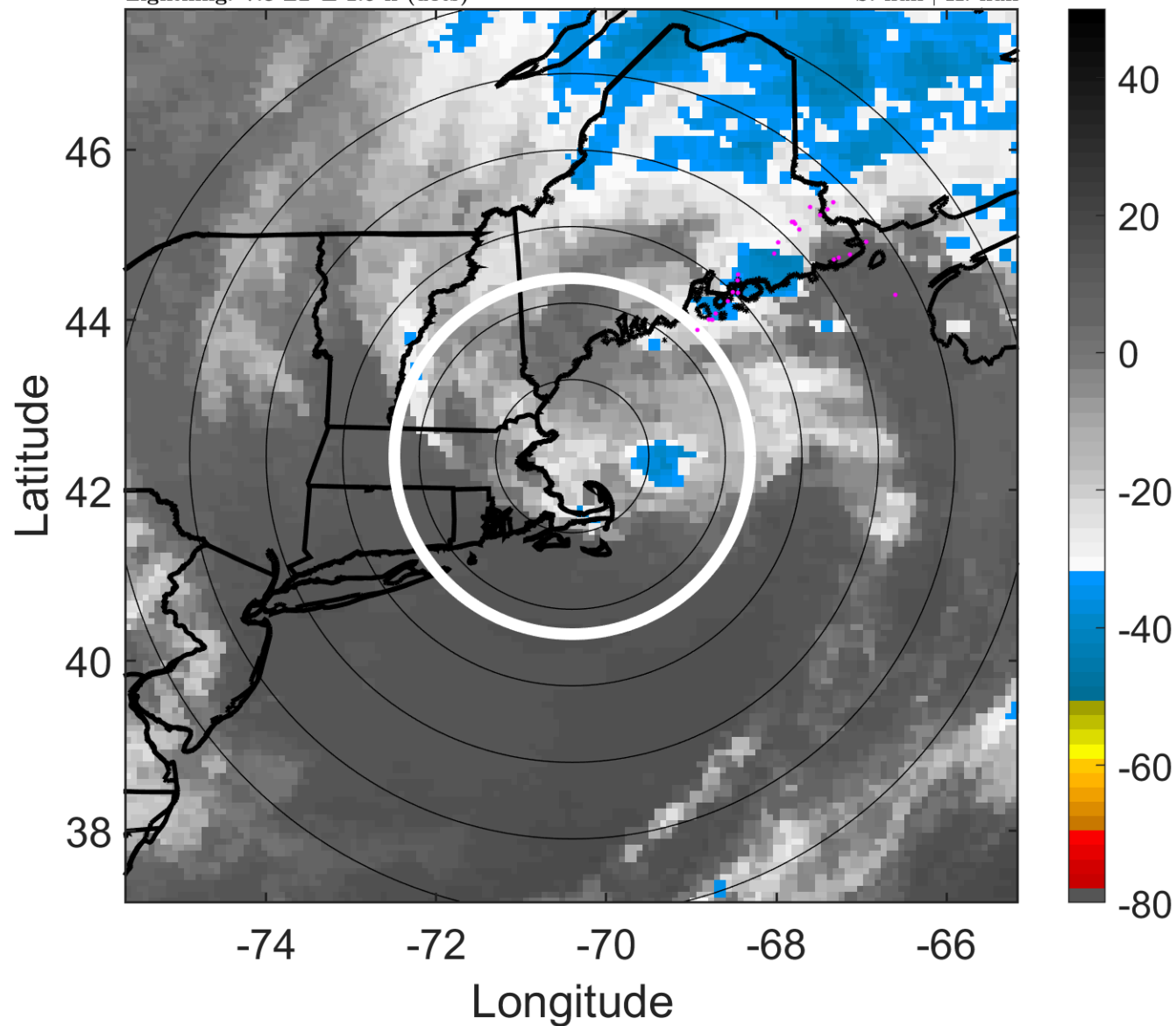
t: 2013060812 (7.3 LT)

Lightning: 7.3 LT  $\pm$  1.5 h (dots)

PT: SLWP | EA: INACT

01L (ANDREA) | 40 kt EX

S: null | H: null



### 6-h IR BT Differences & Lightning

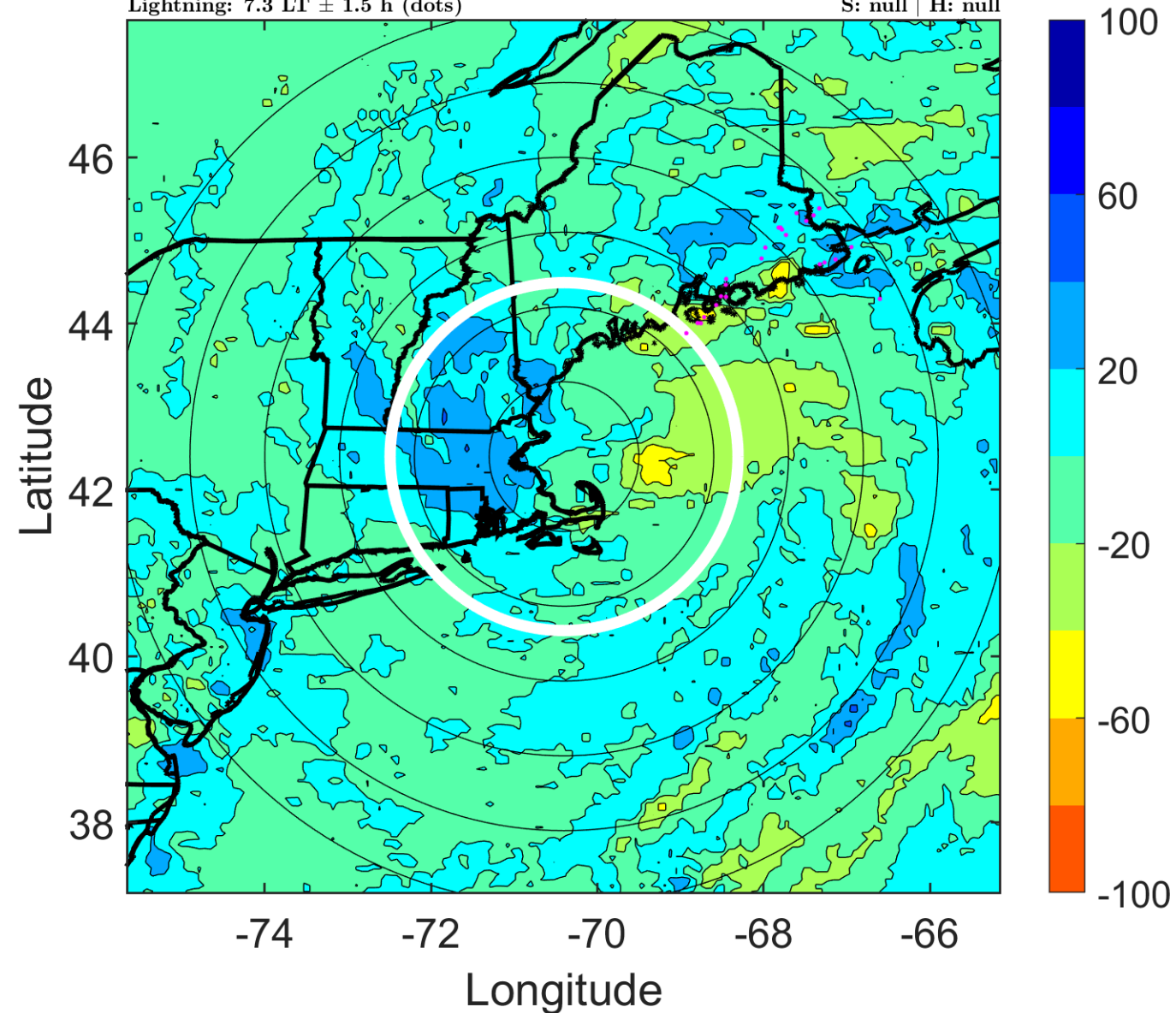
$\Delta$ t: 2013060812 (7.3 LT) - 2013060806 (1.1 LT)

Lightning: 7.3 LT  $\pm$  1.5 h (dots)

PT: SLWP | EA: INACT

01L (ANDREA) | 40 kt EX

S: null | H: null



### IR BT & Lightning

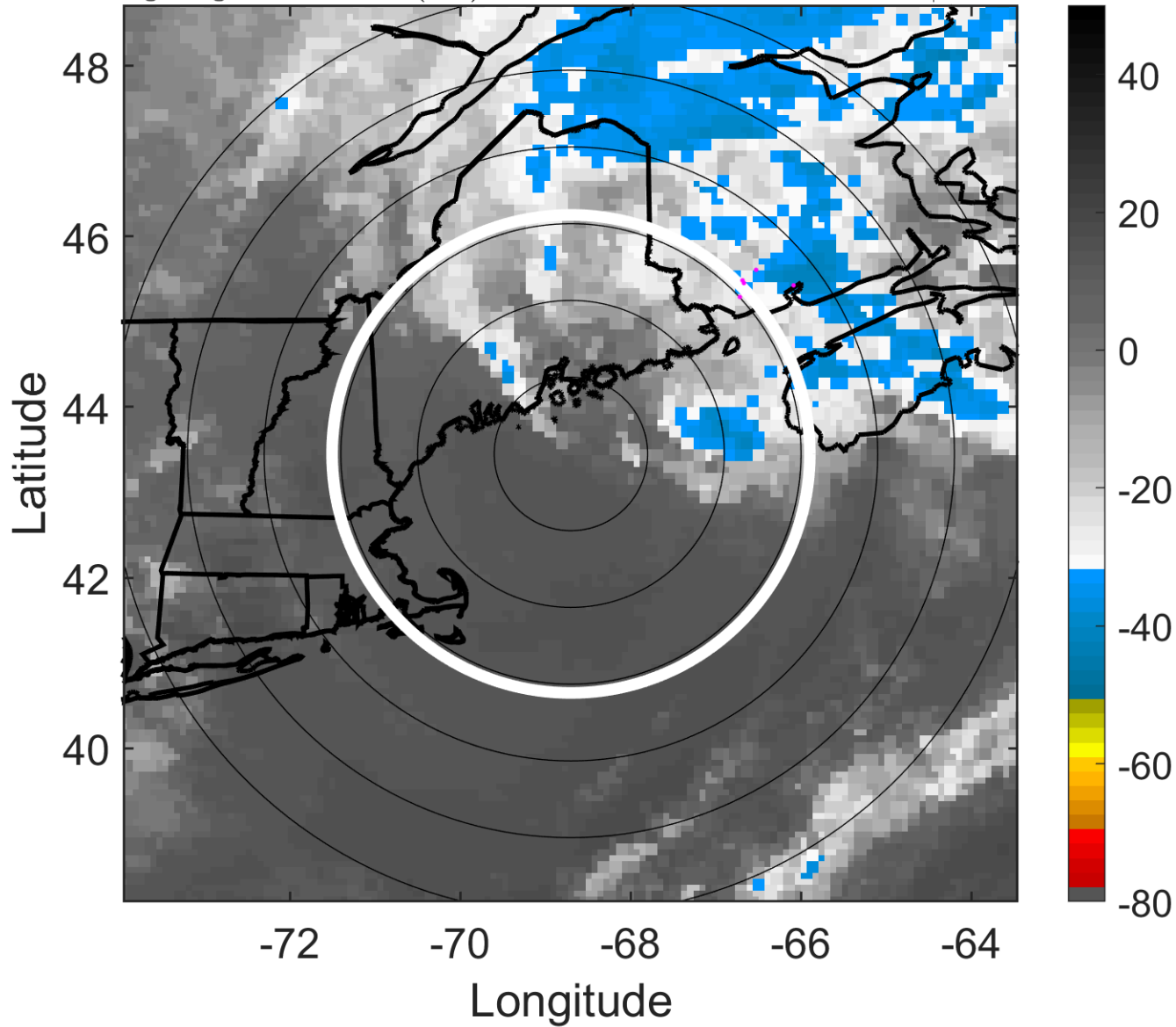
t: 2013060815 (10.4 LT)

Lightning: 10.4 LT  $\pm$  1.5 h (dots)

PT: SLWP | EA: INACT

01L (ANDREA) | 40 kt EX

S: null | H: null



### 6-h IR BT Differences & Lightning

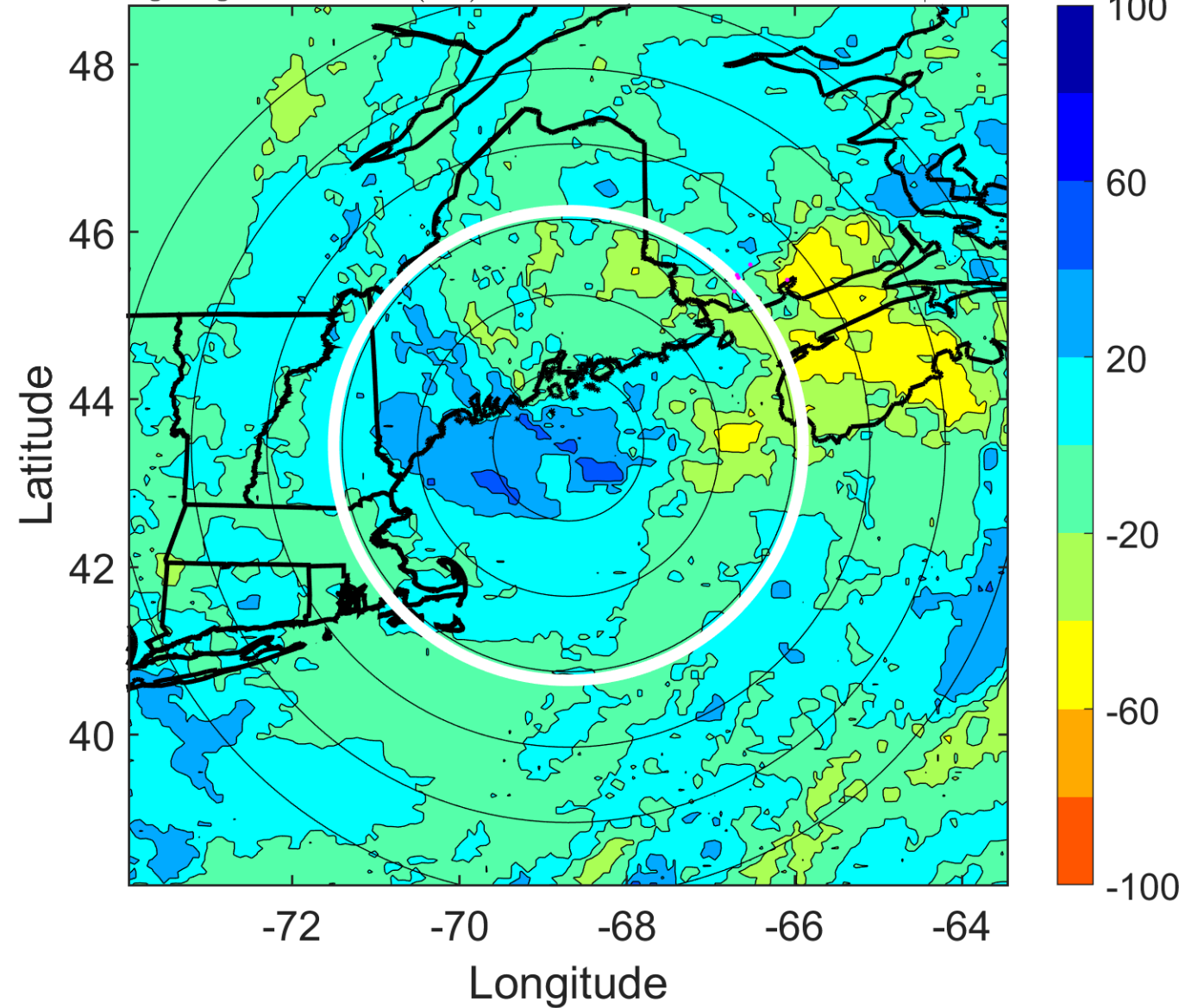
$\Delta$ t: 2013060815 (10.4 LT) - 2013060809 (4.2 LT)

Lightning: 10.4 LT  $\pm$  1.5 h (dots)

PT: SLWP | EA: INACT

01L (ANDREA) | 40 kt EX

S: null | H: null



### IR BT & Lightning

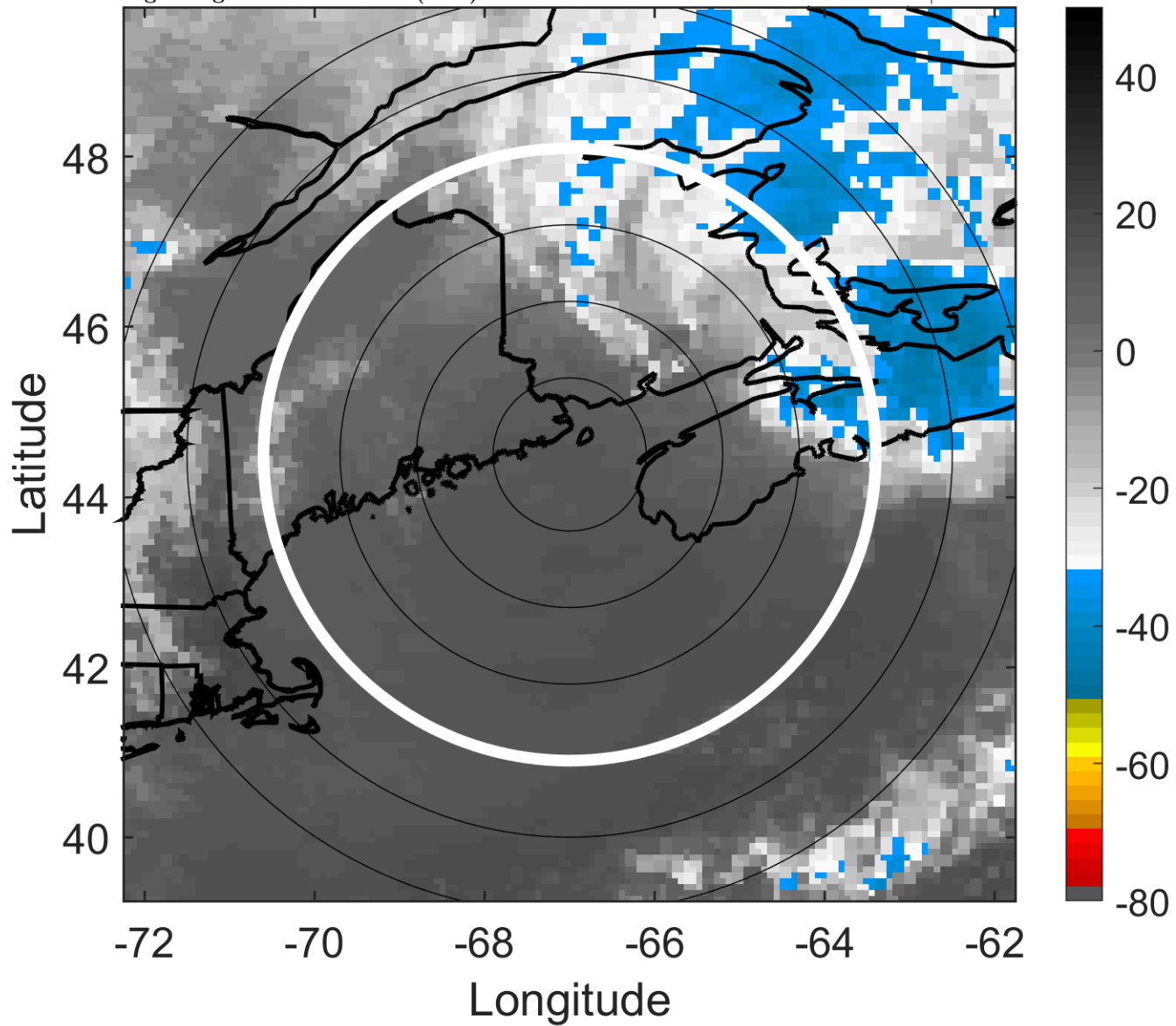
t: 2013060818 (13.5 LT)

Lightning: 13.5 LT  $\pm$  1.5 h (dots)

PT: SLWP | EA: INACT

01L (ANDREA) | 40 kt EX

S: null | H: null



### 6-h IR BT Differences & Lightning

$\Delta$ t: 2013060818 (13.5 LT) - 2013060812 (7.3 LT)

Lightning: 13.5 LT  $\pm$  1.5 h (dots)

PT: SLWP | EA: INACT

01L (ANDREA) | 40 kt EX

S: null | H: null

