

### IR BT & Lightning

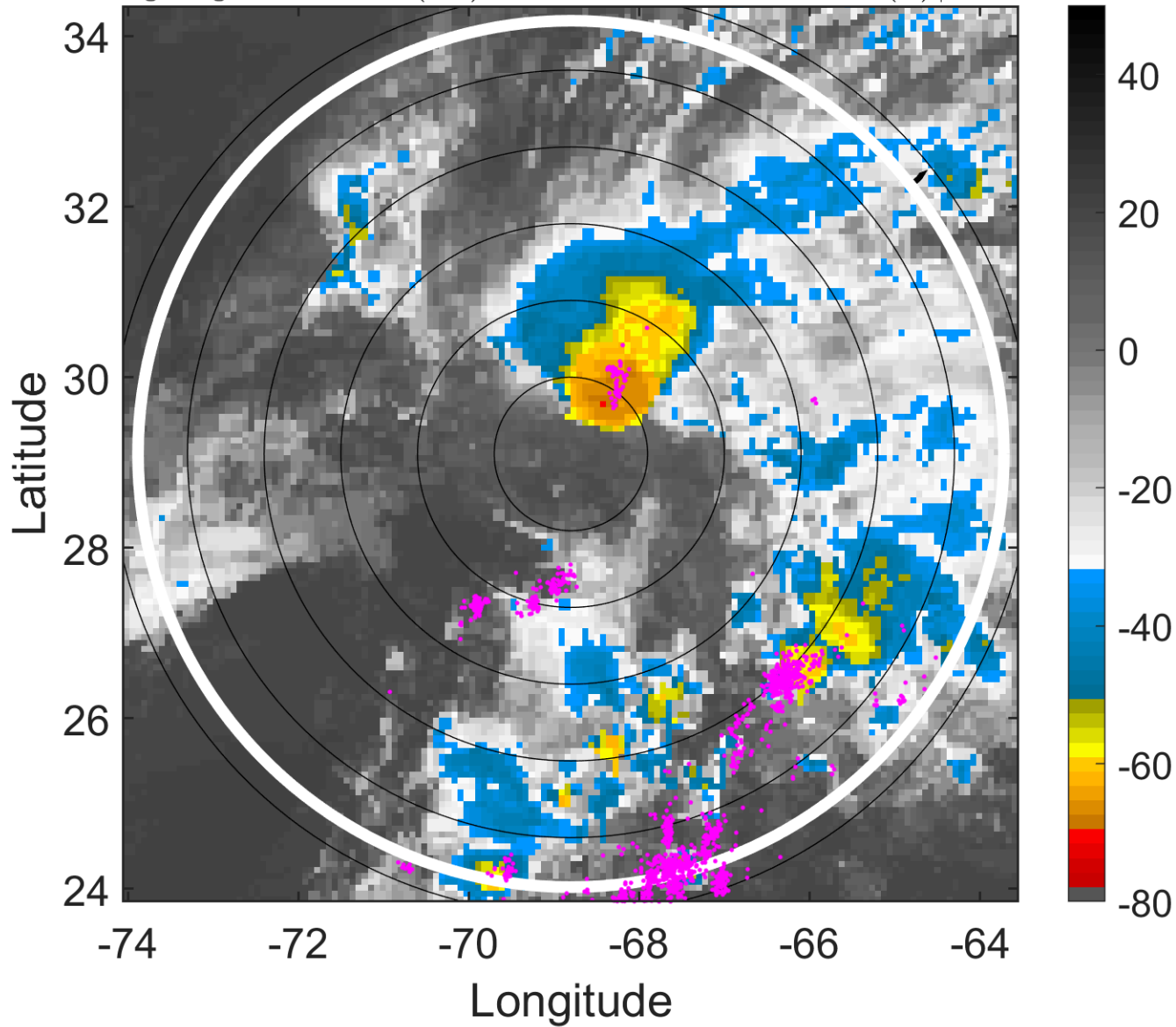
t: 2019052100 (19.4 LT)

Lightning: 19.4 LT  $\pm$  1.5 h (dots)

PT: SLWP | EA: INACT

01L (ANDREA) | 35 kt SS

S: 10.3 m s<sup>-1</sup> (M) | H: 50°



### 6-h IR BT Differences & Lightning

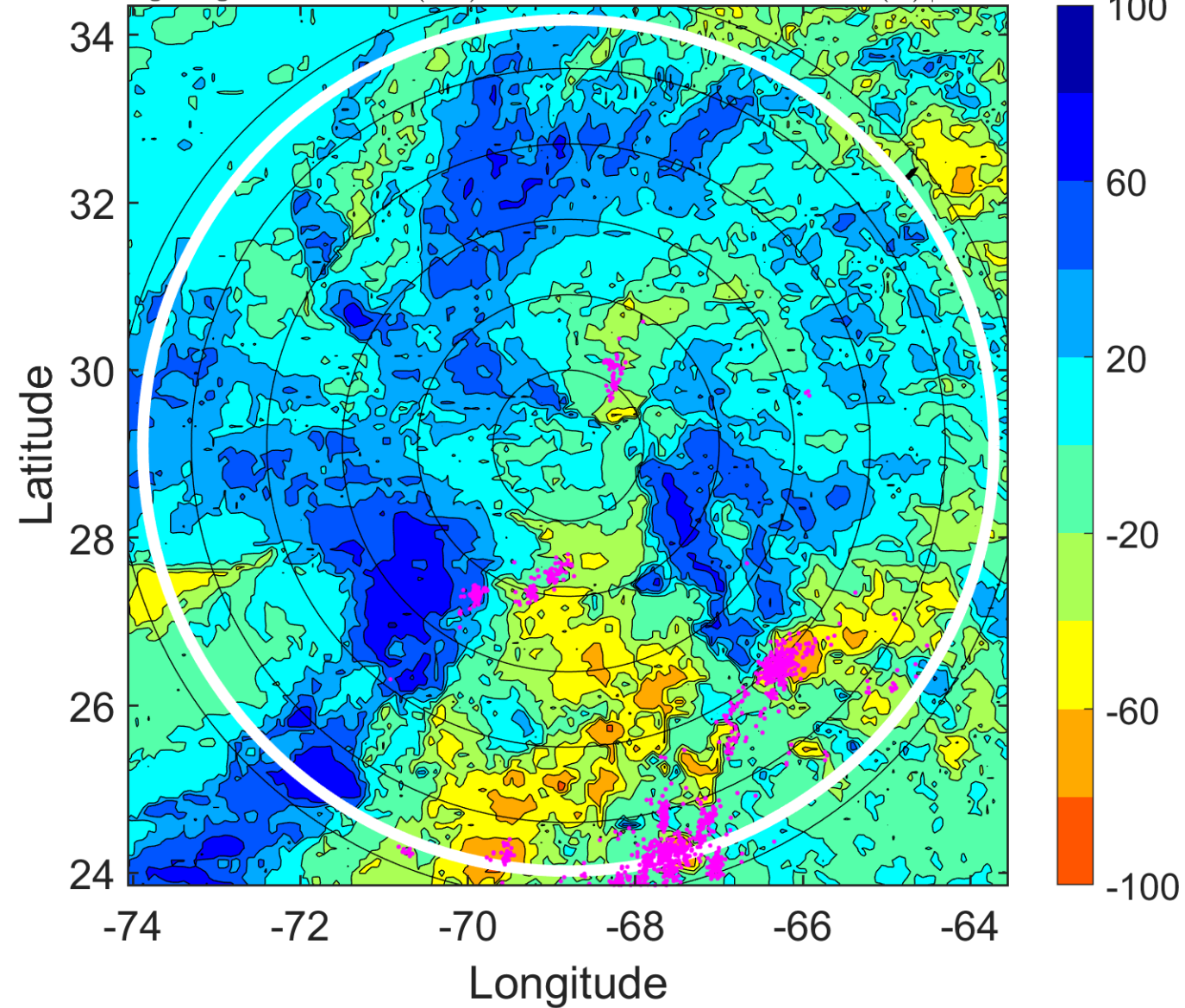
$\Delta$ t: 2019052100 (19.4 LT) - 2019052018 (13.4 LT)

Lightning: 19.4 LT  $\pm$  1.5 h (dots)

PT: SLWP | EA: INACT

01L (ANDREA) | 35 kt SS

S: 10.3 m s<sup>-1</sup> (M) | H: 50°



### IR BT & Lightning

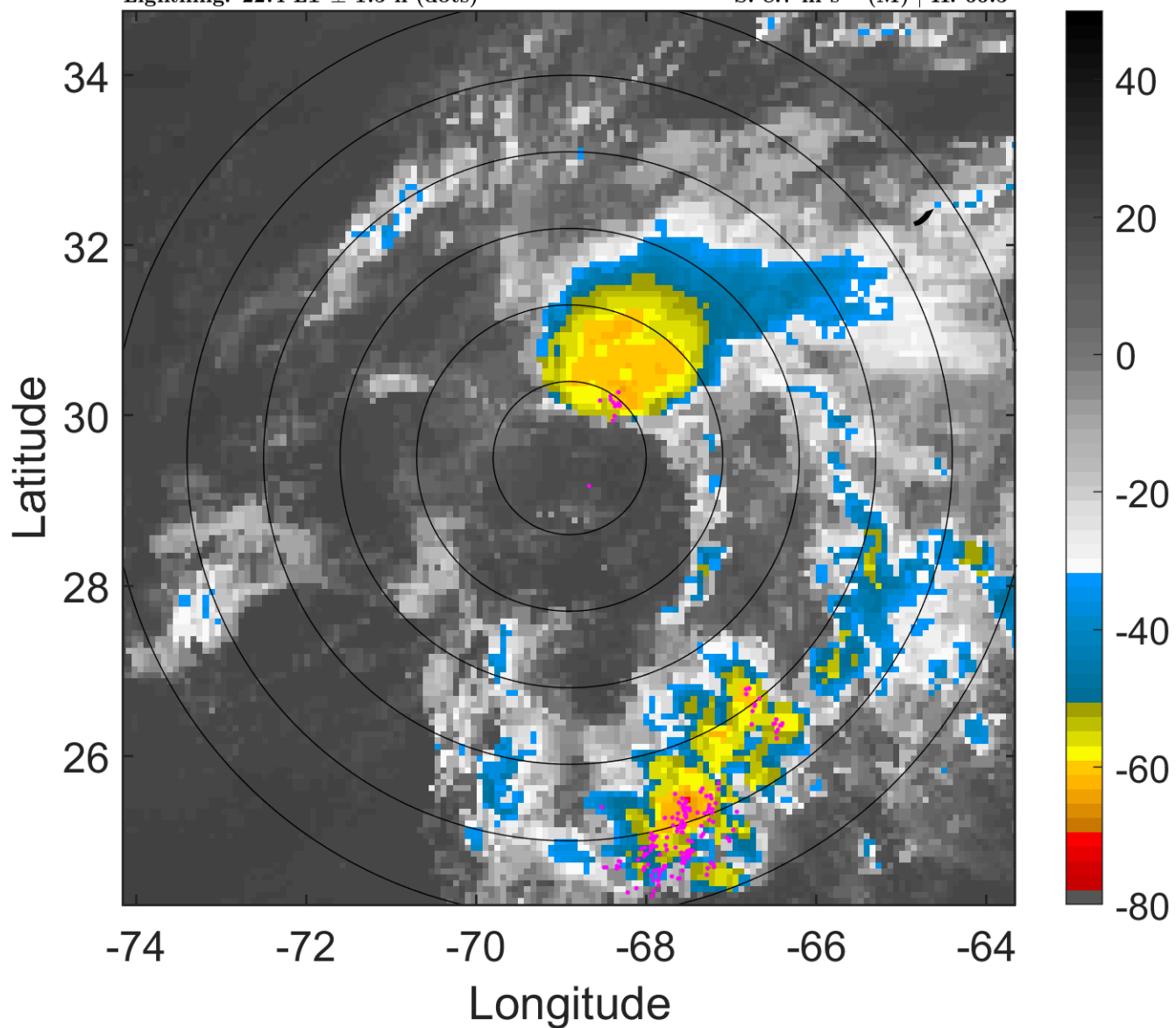
t: 2019052103 (22.4 LT)

Lightning: 22.4 LT  $\pm$  1.5 h (dots)

PT: SLWP | EA: INACT

01L (ANDREA) | 35 kt SS

S: 8.7 m s<sup>-1</sup> (M) | H: 66.5°



### 6-h IR BT Differences & Lightning

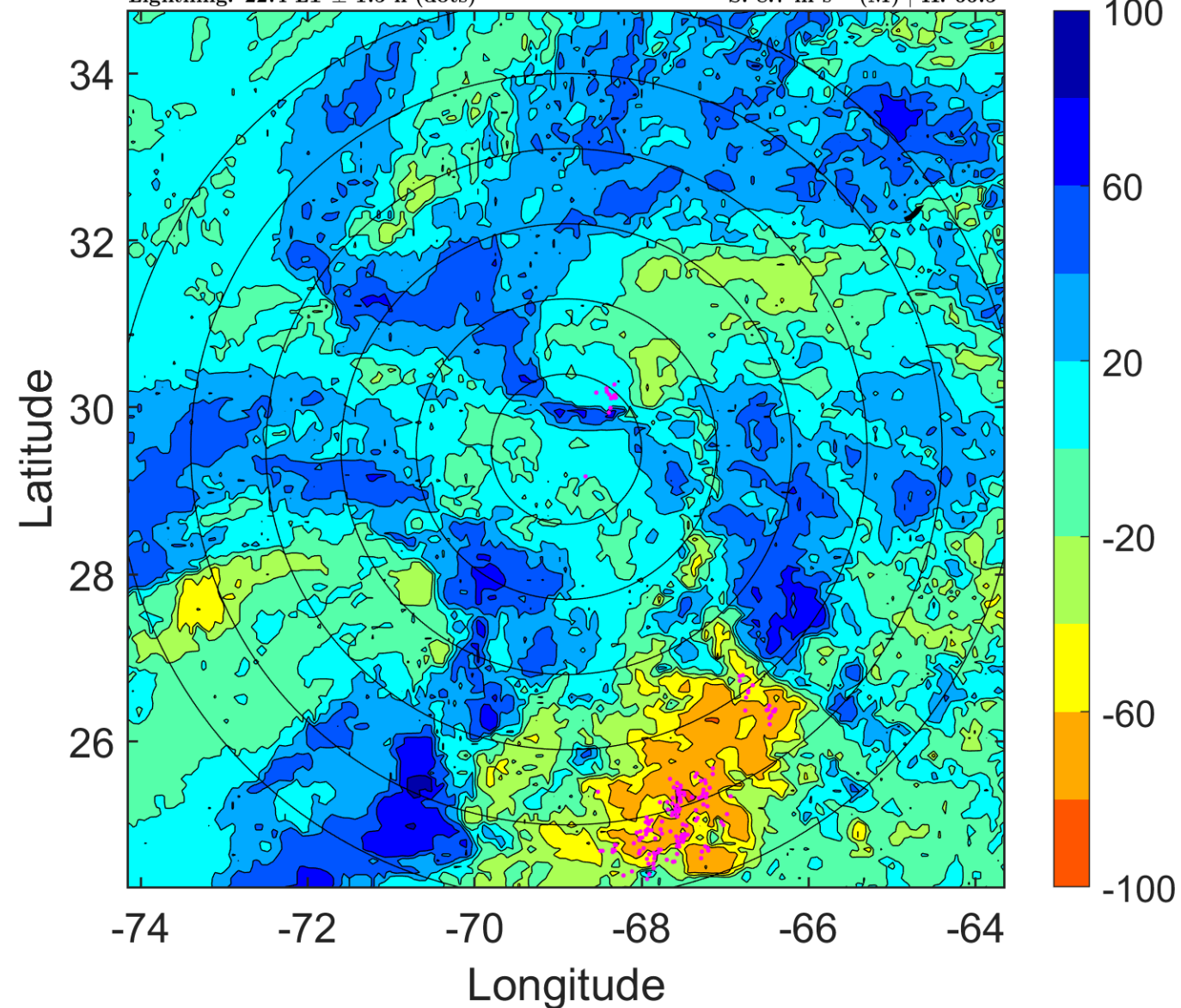
$\Delta$ t: 2019052103 (22.4 LT) - 2019052021 (16.4 LT)

Lightning: 22.4 LT  $\pm$  1.5 h (dots)

PT: SLWP | EA: INACT

01L (ANDREA) | 35 kt SS

S: 8.7 m s<sup>-1</sup> (M) | H: 66.5°



### IR BT & Lightning

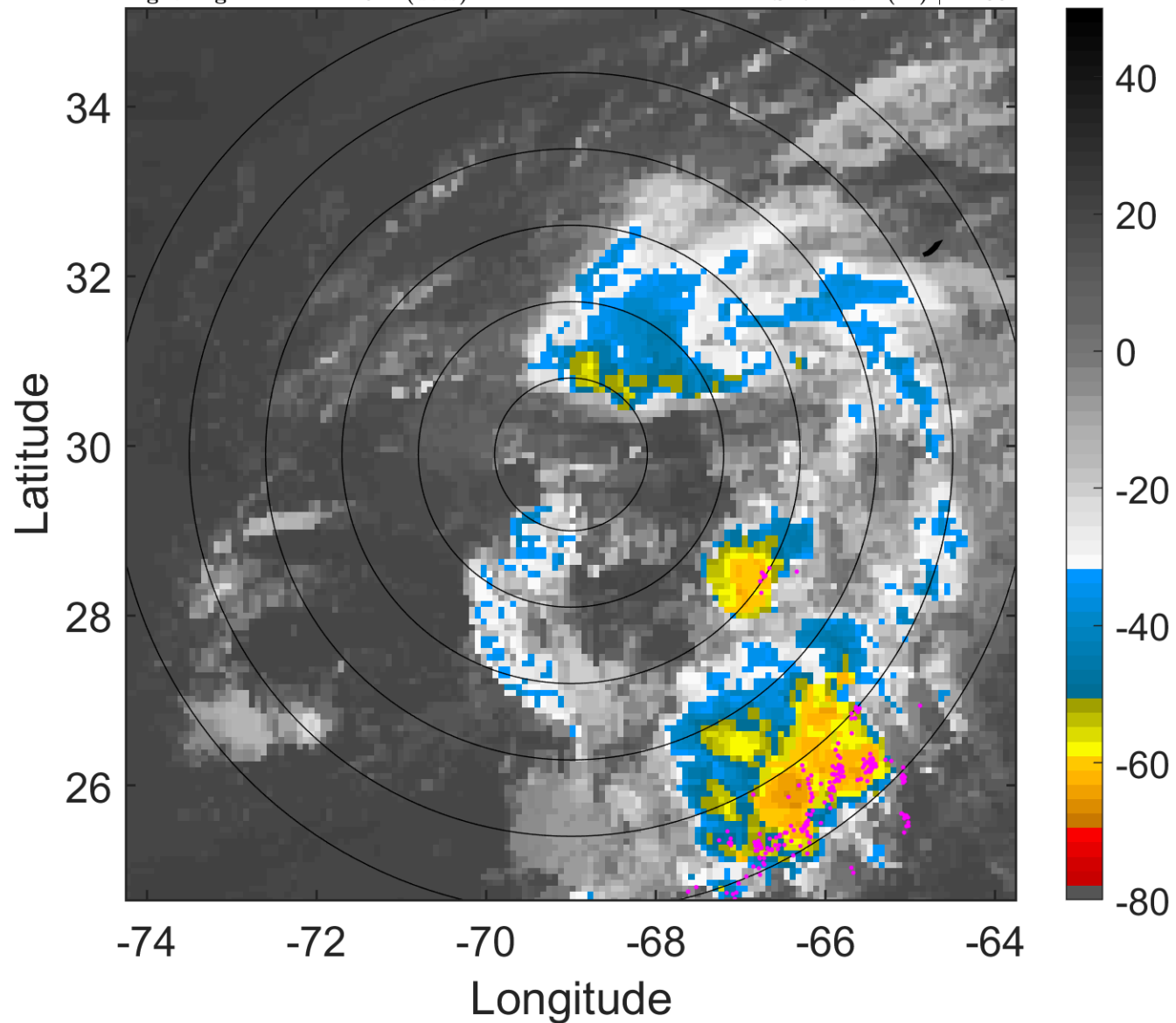
t: 2019052106 (1.4 LT)

Lightning: 1.4 LT  $\pm$  1.5 h (dots)

PT: SLCP | EA: INACT

01L (ANDREA) | 35 kt SS

S: 7 m s<sup>-1</sup> (M) | H: 83°



### 6-h IR BT Differences & Lightning

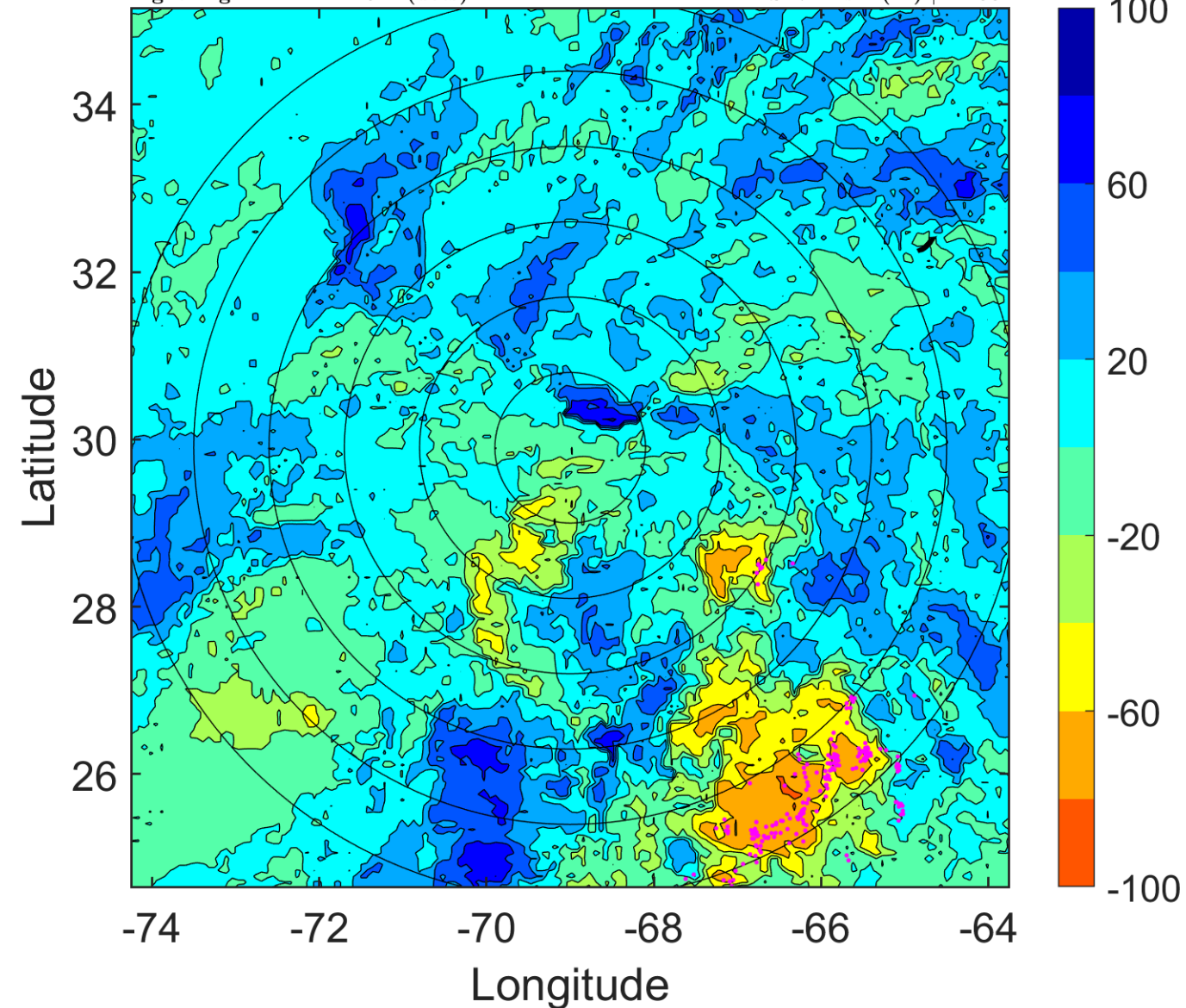
$\Delta$ t: 2019052106 (1.4 LT) - 2019052100 (19.4 LT)

Lightning: 1.4 LT  $\pm$  1.5 h (dots)

PT: SLCP | EA: INACT

01L (ANDREA) | 35 kt SS

S: 7 m s<sup>-1</sup> (M) | H: 83°



### IR BT & Lightning

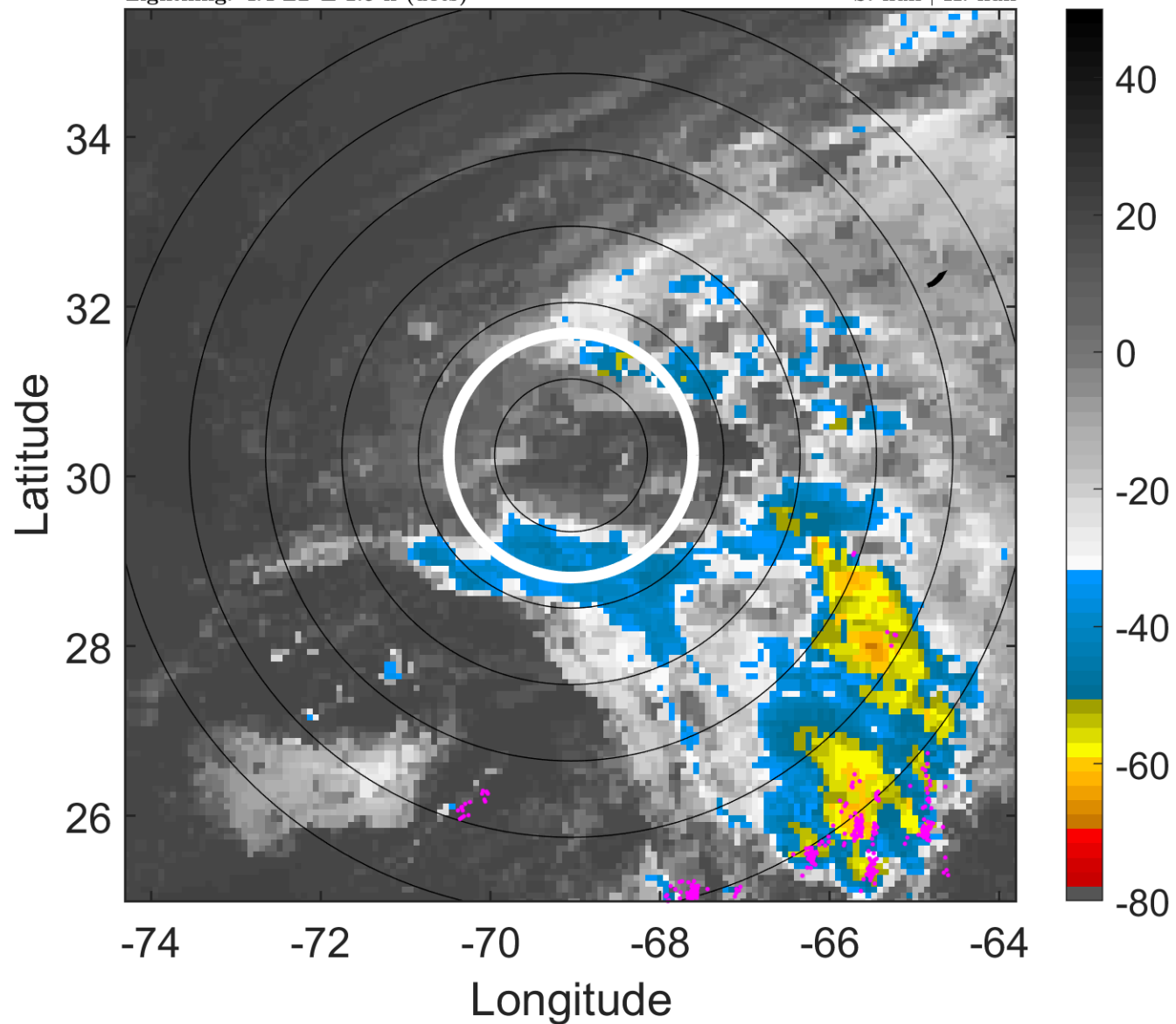
t: 2019052109 (4.4 LT)

Lightning: 4.4 LT  $\pm$  1.5 h (dots)

PT: SLCP | EA: INACT

01L (ANDREA) | 32.5 kt SS

S: null | H: null



### 6-h IR BT Differences & Lightning

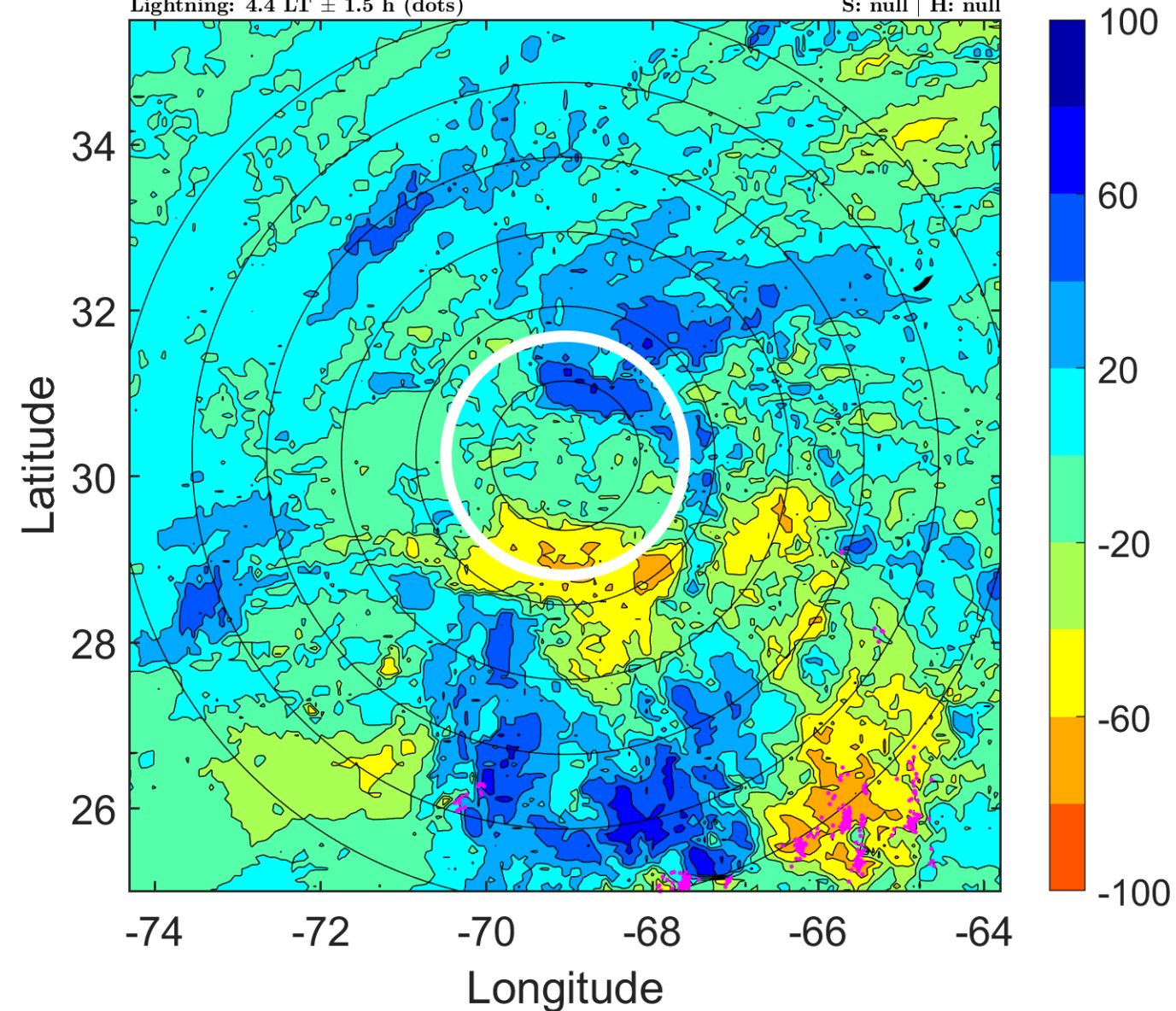
$\Delta$ t: 2019052109 (4.4 LT) - 2019052103 (22.4 LT)

Lightning: 4.4 LT  $\pm$  1.5 h (dots)

PT: SLCP | EA: INACT

01L (ANDREA) | 32.5 kt SS

S: null | H: null



### IR BT & Lightning

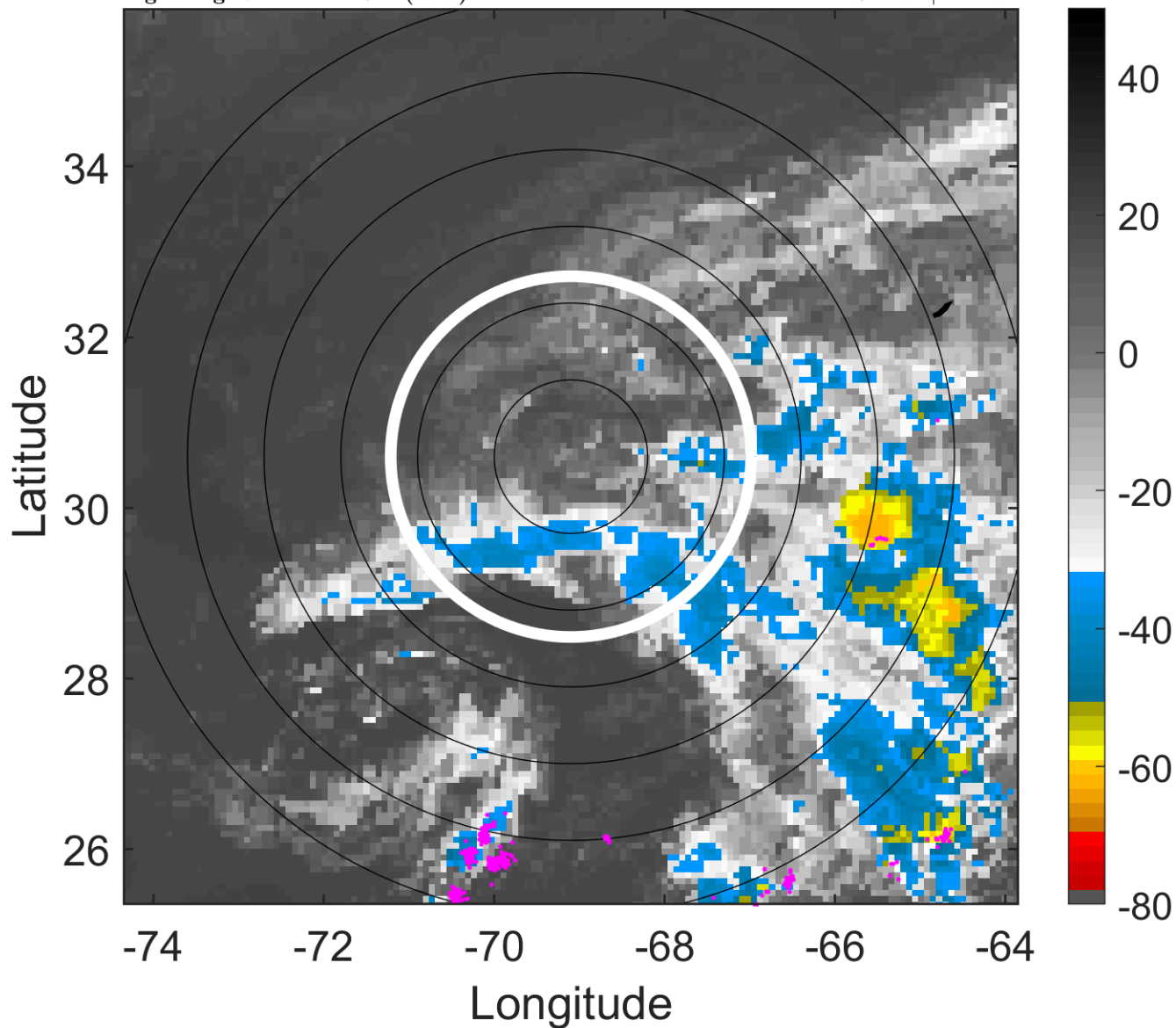
t: 2019052112 (7.4 LT)

Lightning: 7.4 LT  $\pm$  1.5 h (dots)

PT: SLCP | EA: INACT

01L (ANDREA) | 30 kt LO

S: null | H: null



### 6-h IR BT Differences & Lightning

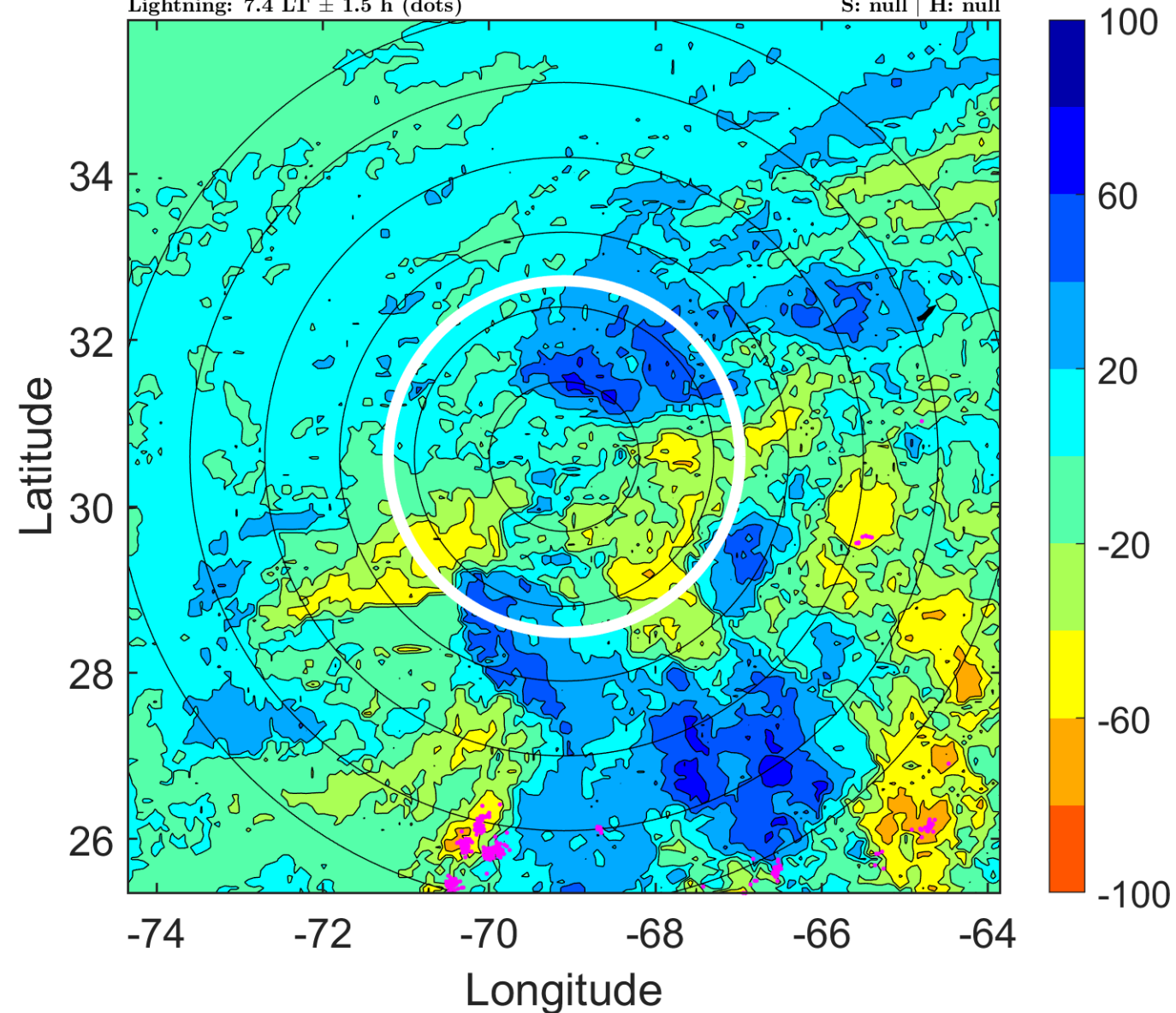
$\Delta$ t: 2019052112 (7.4 LT) - 2019052106 (1.4 LT)

Lightning: 7.4 LT  $\pm$  1.5 h (dots)

PT: SLCP | EA: INACT

01L (ANDREA) | 30 kt LO

S: null | H: null



### IR BT & Lightning

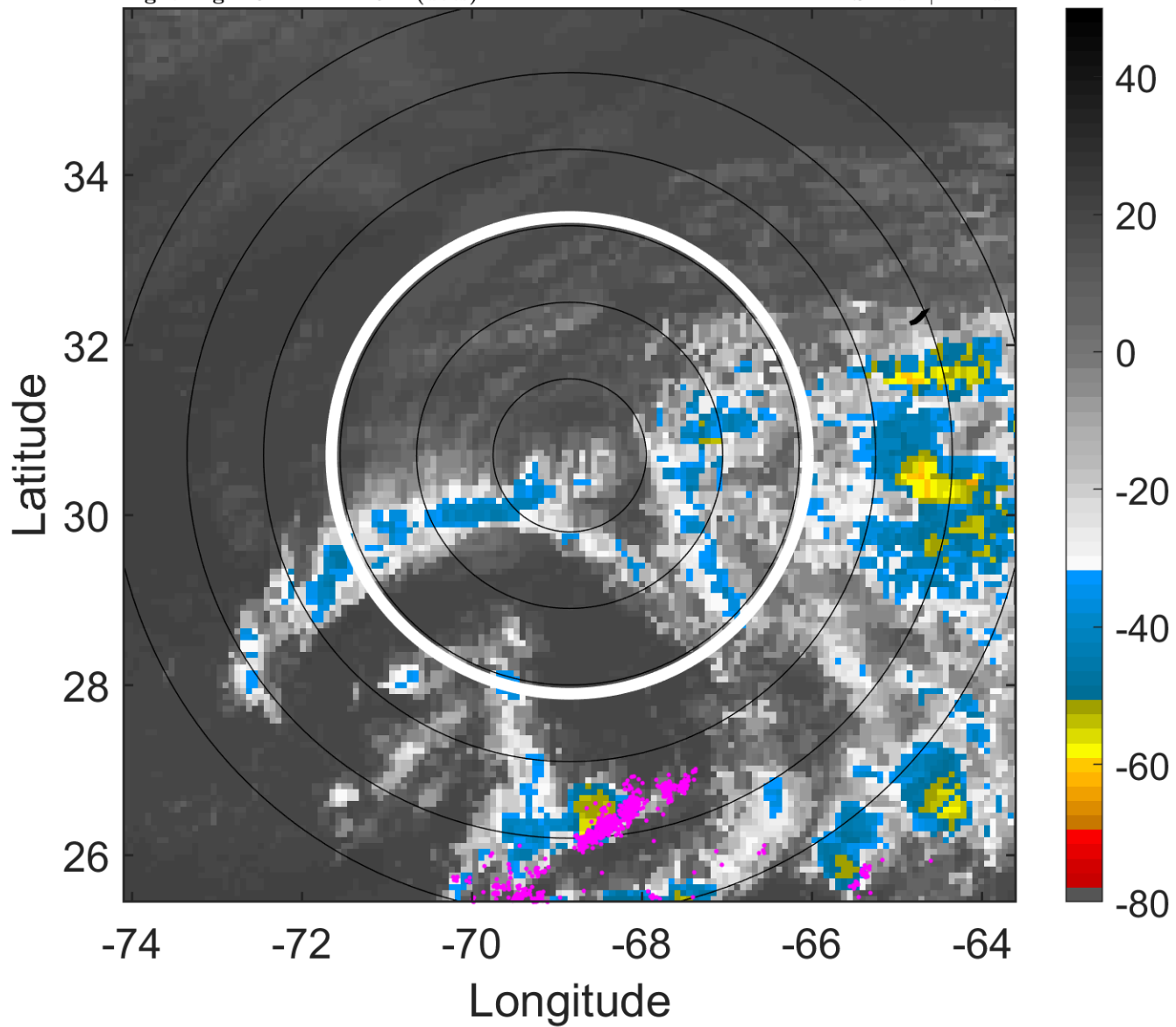
t: 2019052115 (10.4 LT)

Lightning: 10.4 LT  $\pm$  1.5 h (dots)

PT: SLCP | EA: INACT

01L (ANDREA) | 30 kt LO

S: null | H: null



### 6-h IR BT Differences & Lightning

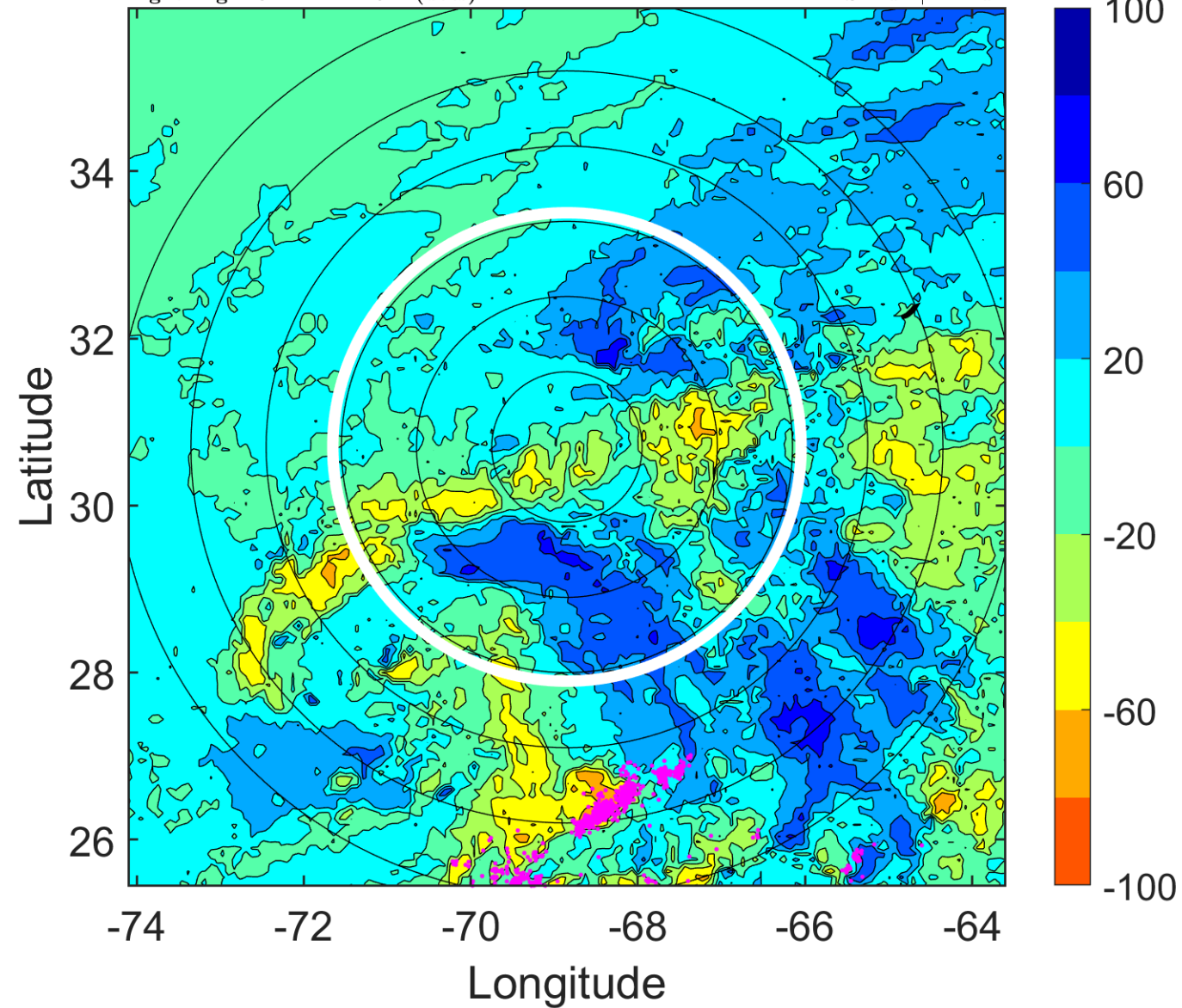
$\Delta$ t: 2019052115 (10.4 LT) - 2019052109 (4.4 LT)

Lightning: 10.4 LT  $\pm$  1.5 h (dots)

PT: SLCP | EA: INACT

01L (ANDREA) | 30 kt LO

S: null | H: null



### IR BT & Lightning

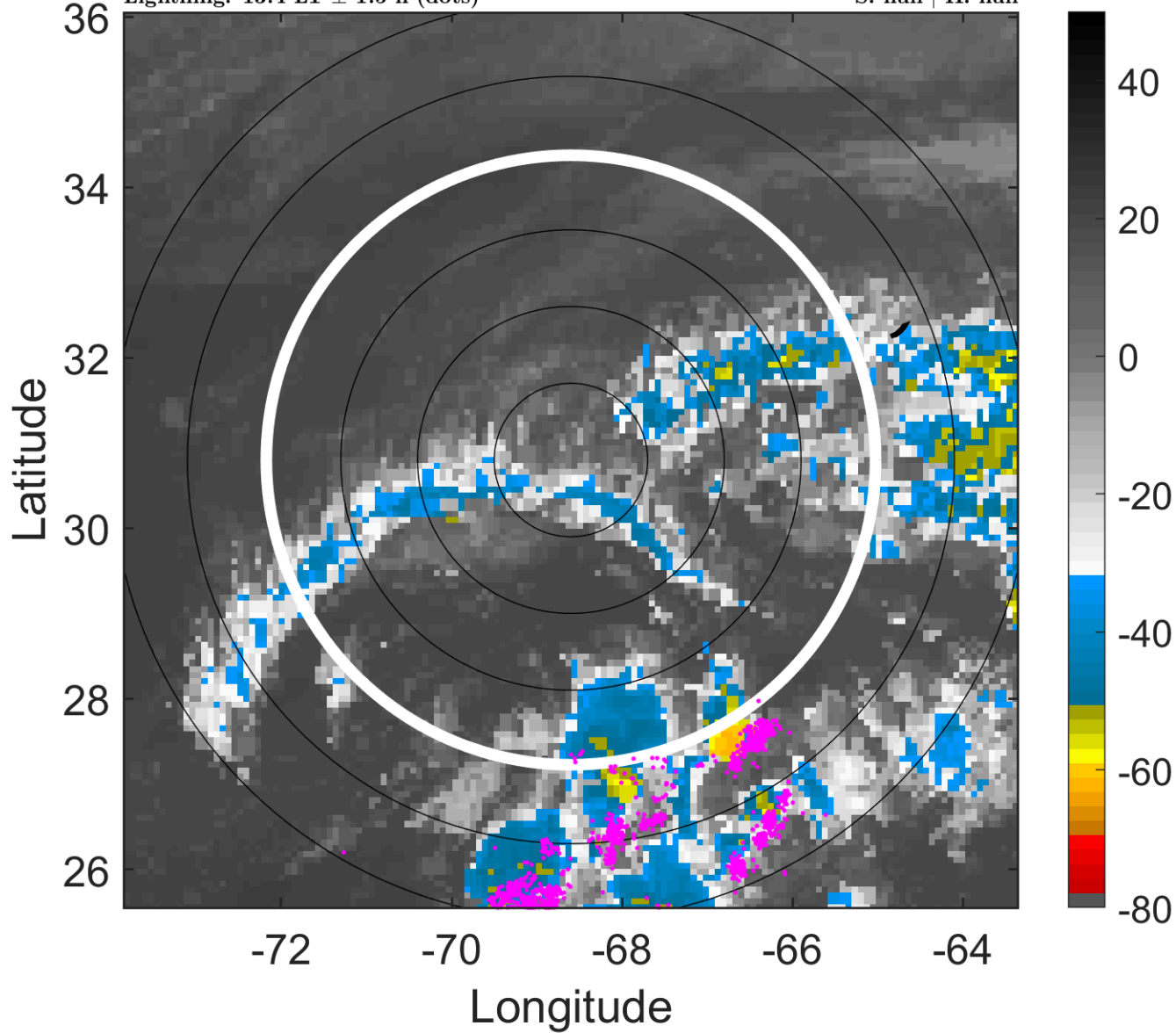
t: 2019052118 (13.4 LT)

Lightning: 13.4 LT  $\pm$  1.5 h (dots)

PT: SLCP | EA: INACT

01L (ANDREA) | 30 kt LO

S: null | H: null



### 6-h IR BT Differences & Lightning

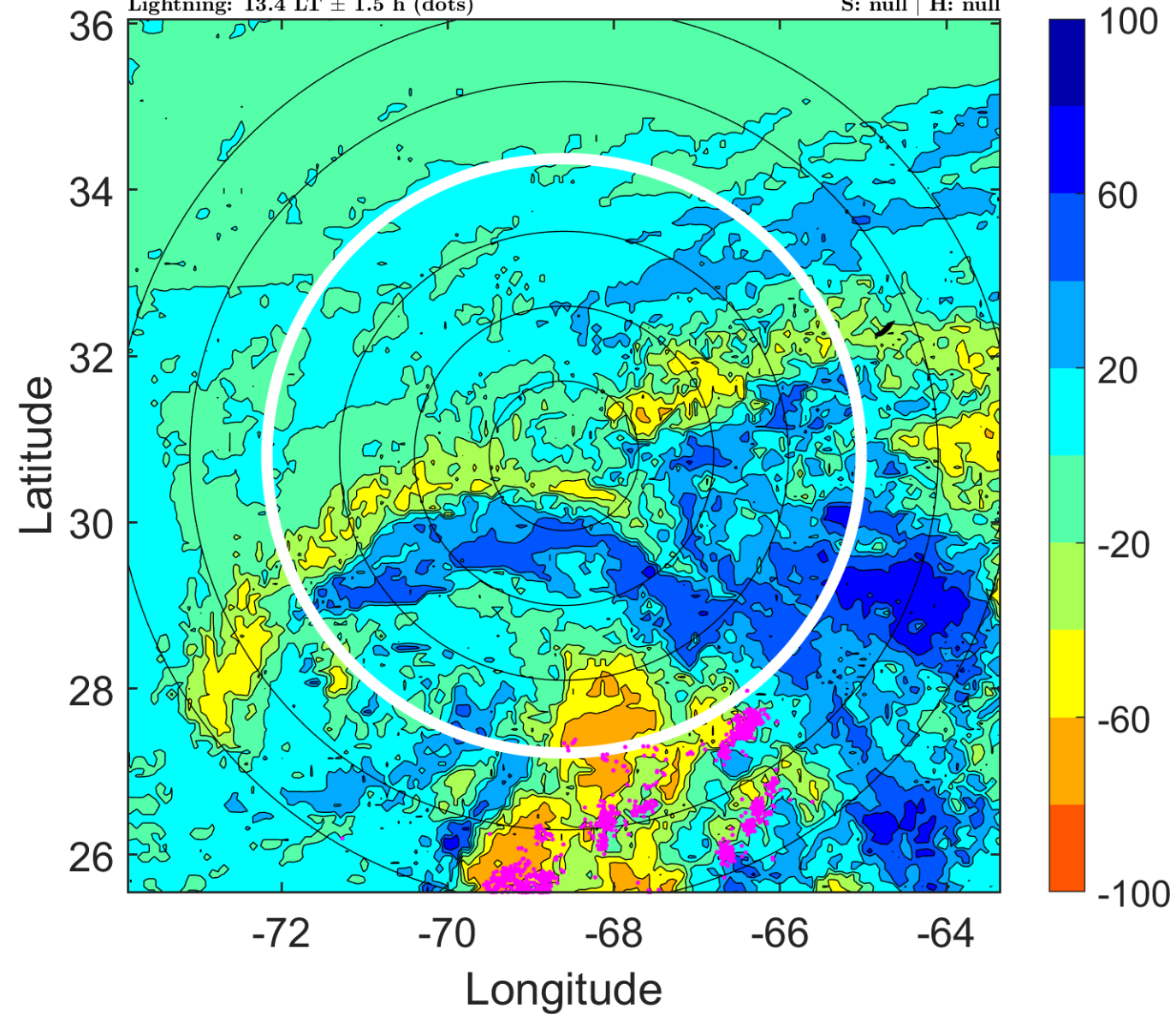
$\Delta$ t: 2019052118 (13.4 LT) - 2019052112 (7.4 LT)

Lightning: 13.4 LT  $\pm$  1.5 h (dots)

PT: SLCP | EA: INACT

01L (ANDREA) | 30 kt LO

S: null | H: null



### IR BT & Lightning

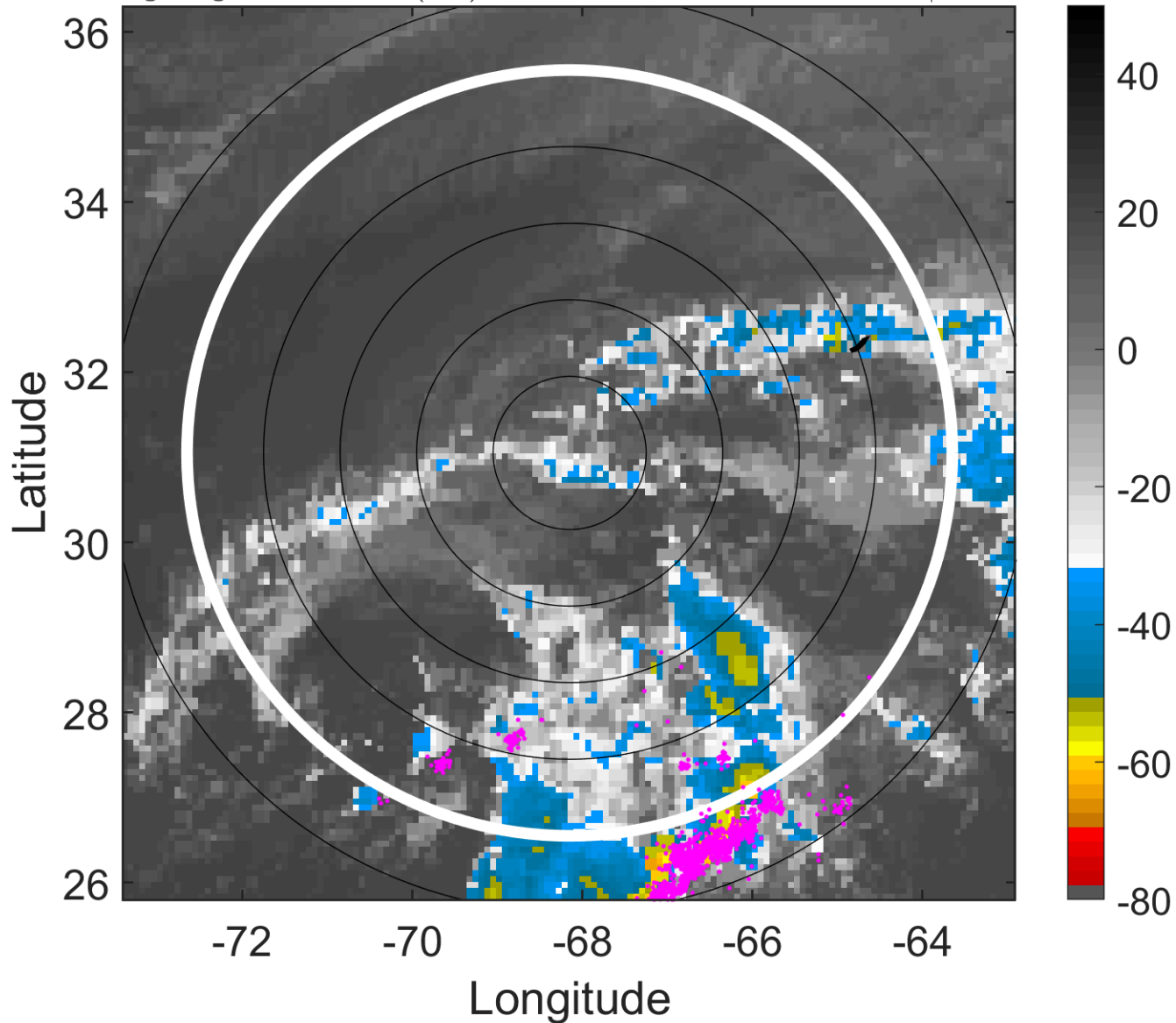
t: 2019052121 (16.5 LT)

Lightning: 16.5 LT  $\pm$  1.5 h (dots)

PT: SLCP | EA: INACT

01L (ANDREA) | 30 kt LO

S: null | H: null



### 6-h IR BT Differences & Lightning

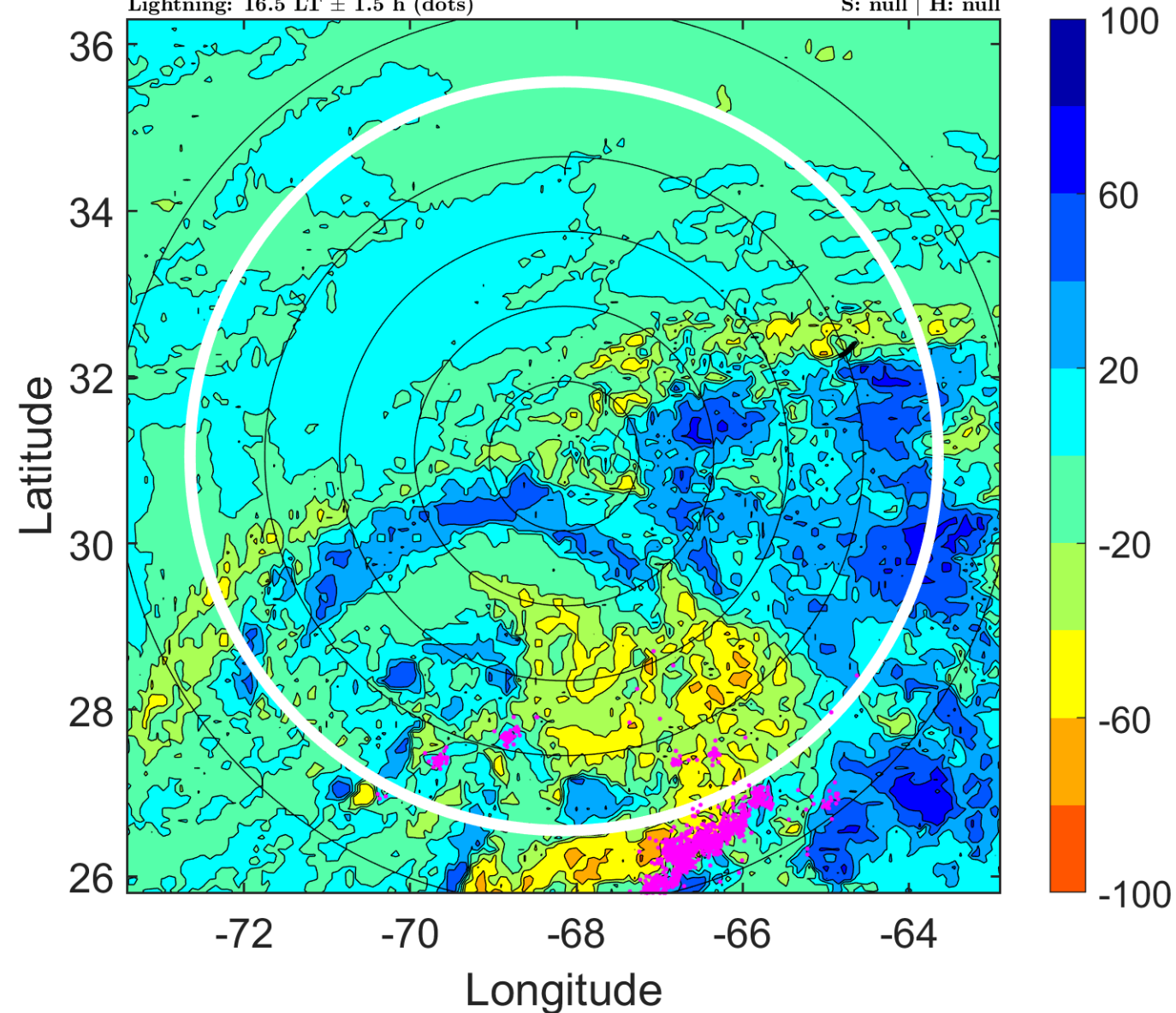
$\Delta$ t: 2019052121 (16.5 LT) - 2019052115 (10.4 LT)

Lightning: 16.5 LT  $\pm$  1.5 h (dots)

PT: SLCP | EA: INACT

01L (ANDREA) | 30 kt LO

S: null | H: null





### IR BT & Lightning

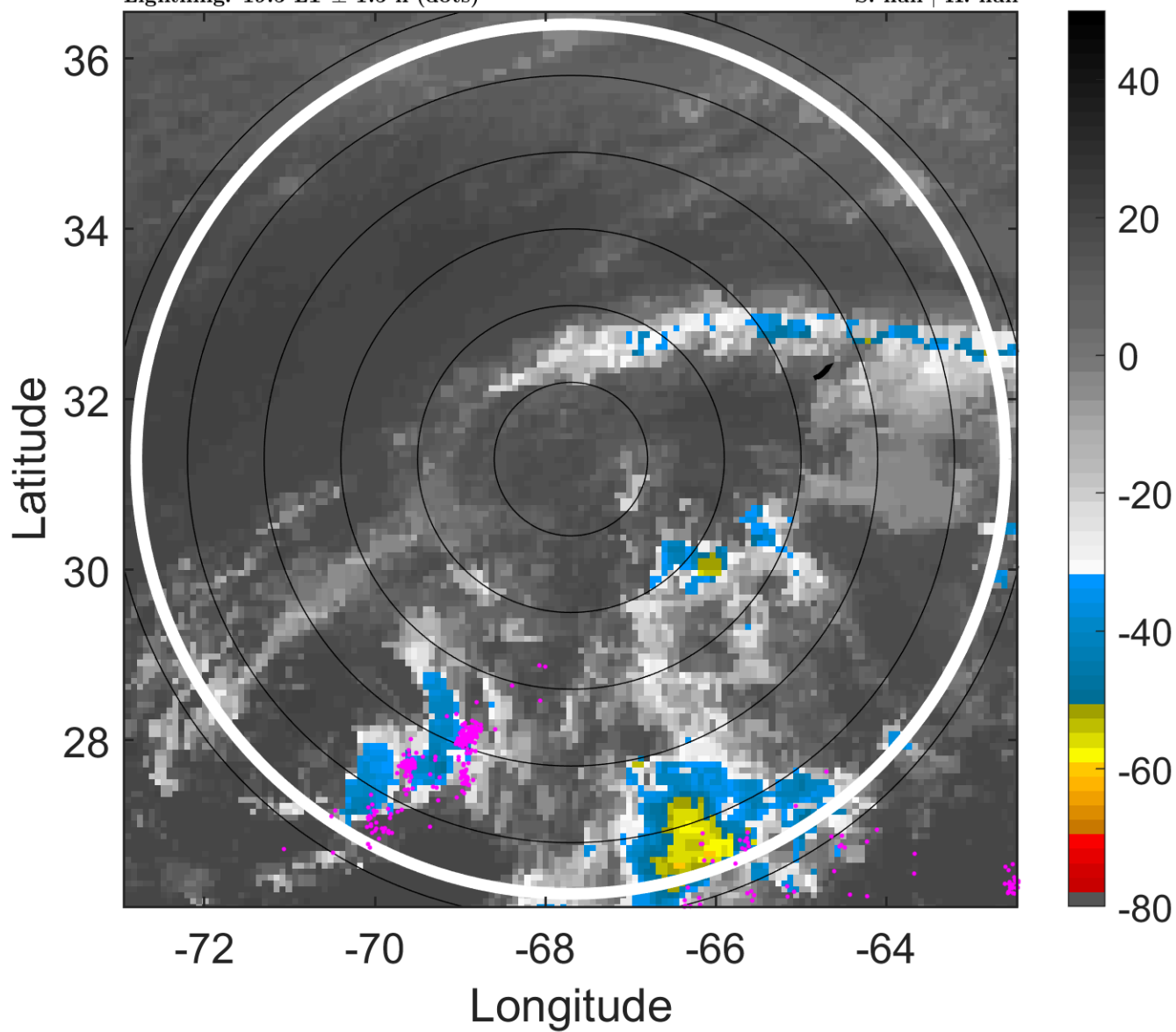
t: 2019052200 (19.5 LT)

Lightning: 19.5 LT  $\pm$  1.5 h (dots)

PT: SLCP | EA: INACT

01L (ANDREA) | 30 kt LO

S: null | H: null



### 6-h IR BT Differences & Lightning

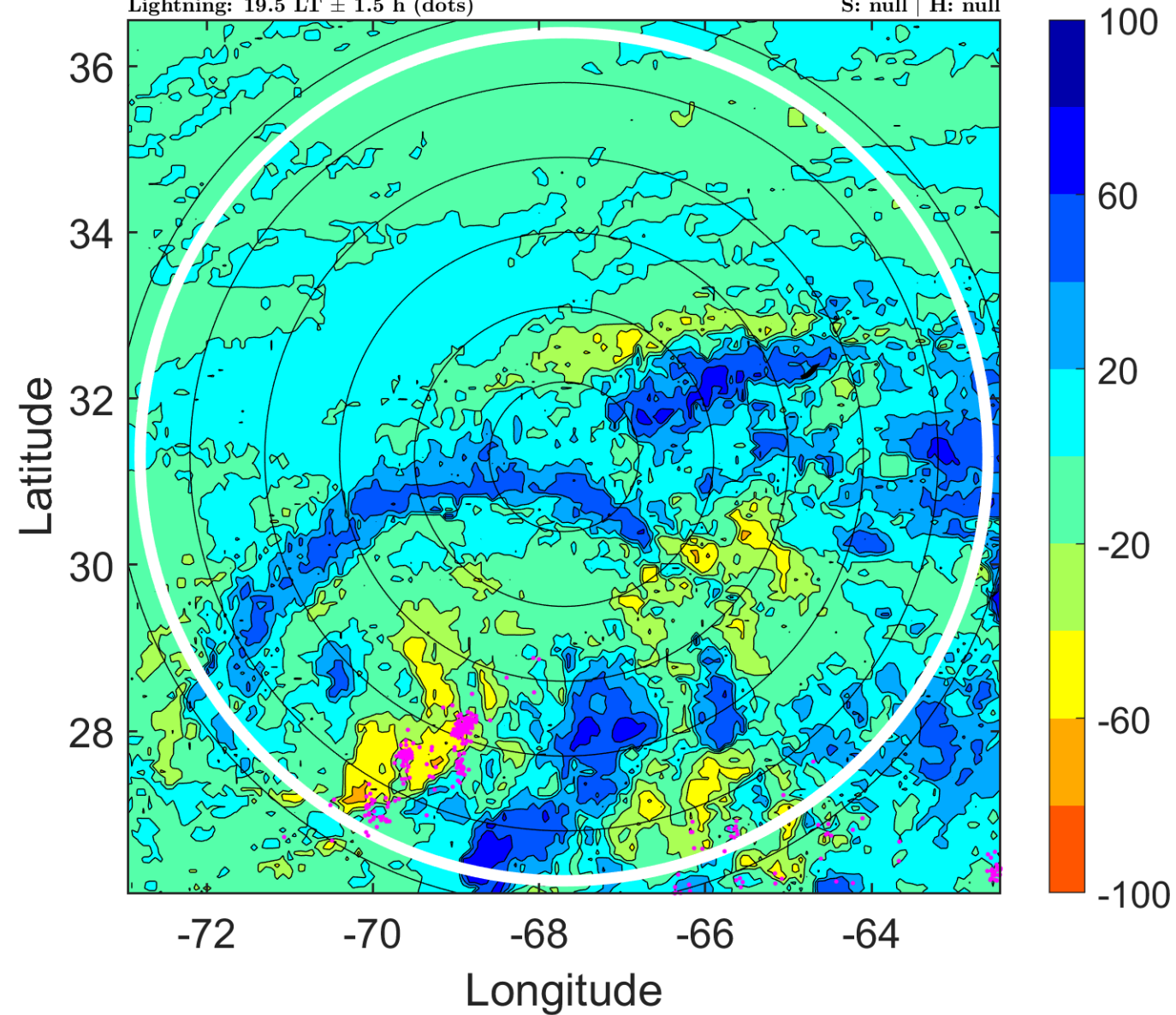
$\Delta$ t: 2019052200 (19.5 LT) - 2019052118 (13.4 LT)

Lightning: 19.5 LT  $\pm$  1.5 h (dots)

PT: SLCP | EA: INACT

01L (ANDREA) | 30 kt LO

S: null | H: null



### IR BT & Lightning

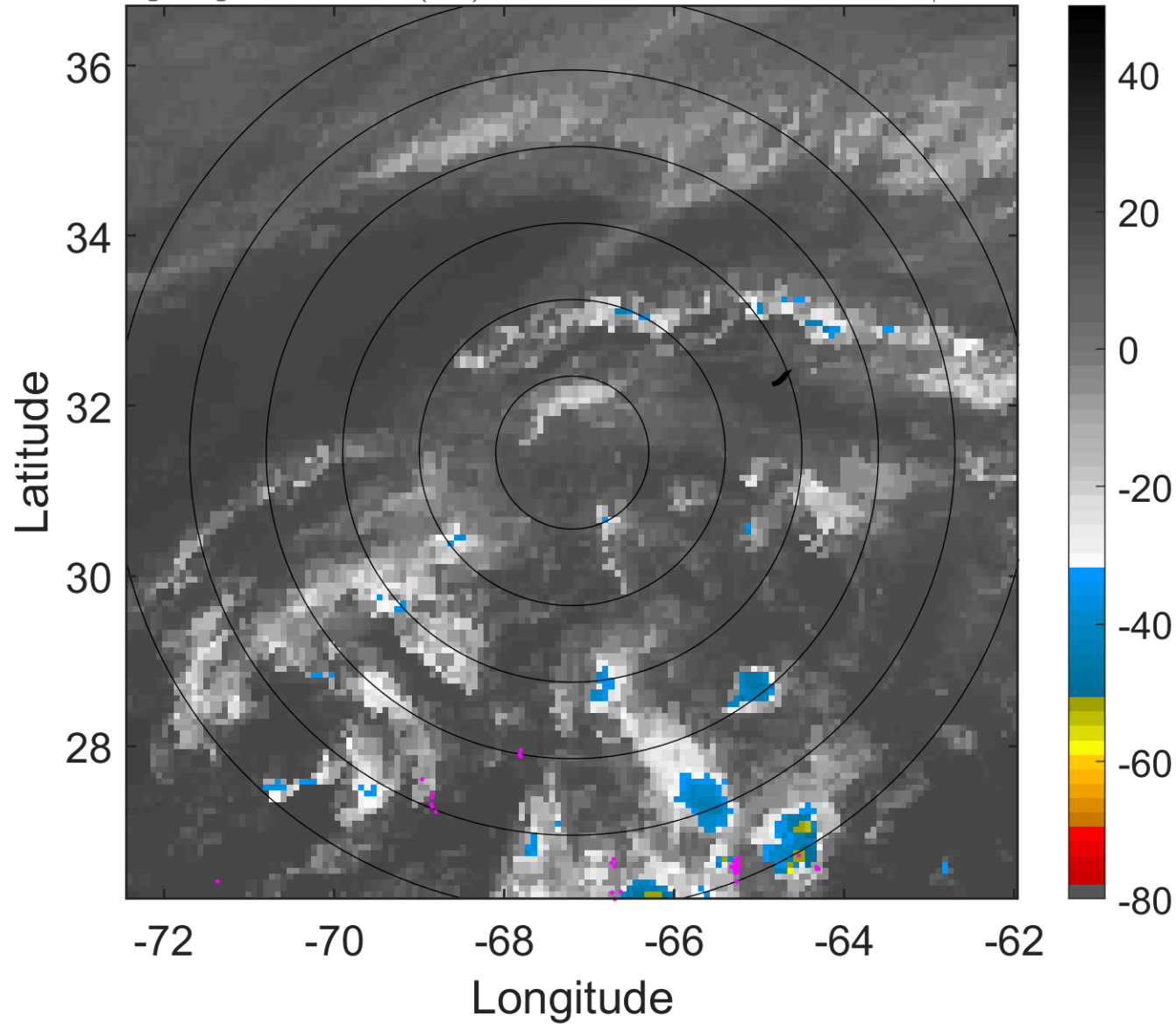
t: 2019052203 (22.5 LT)

Lightning: 22.5 LT  $\pm$  1.5 h (dots)

PT: SLCP | EA: INACT

01L (ANDREA) | 27.5 kt LO

S: null | H: null



### 6-h IR BT Differences & Lightning

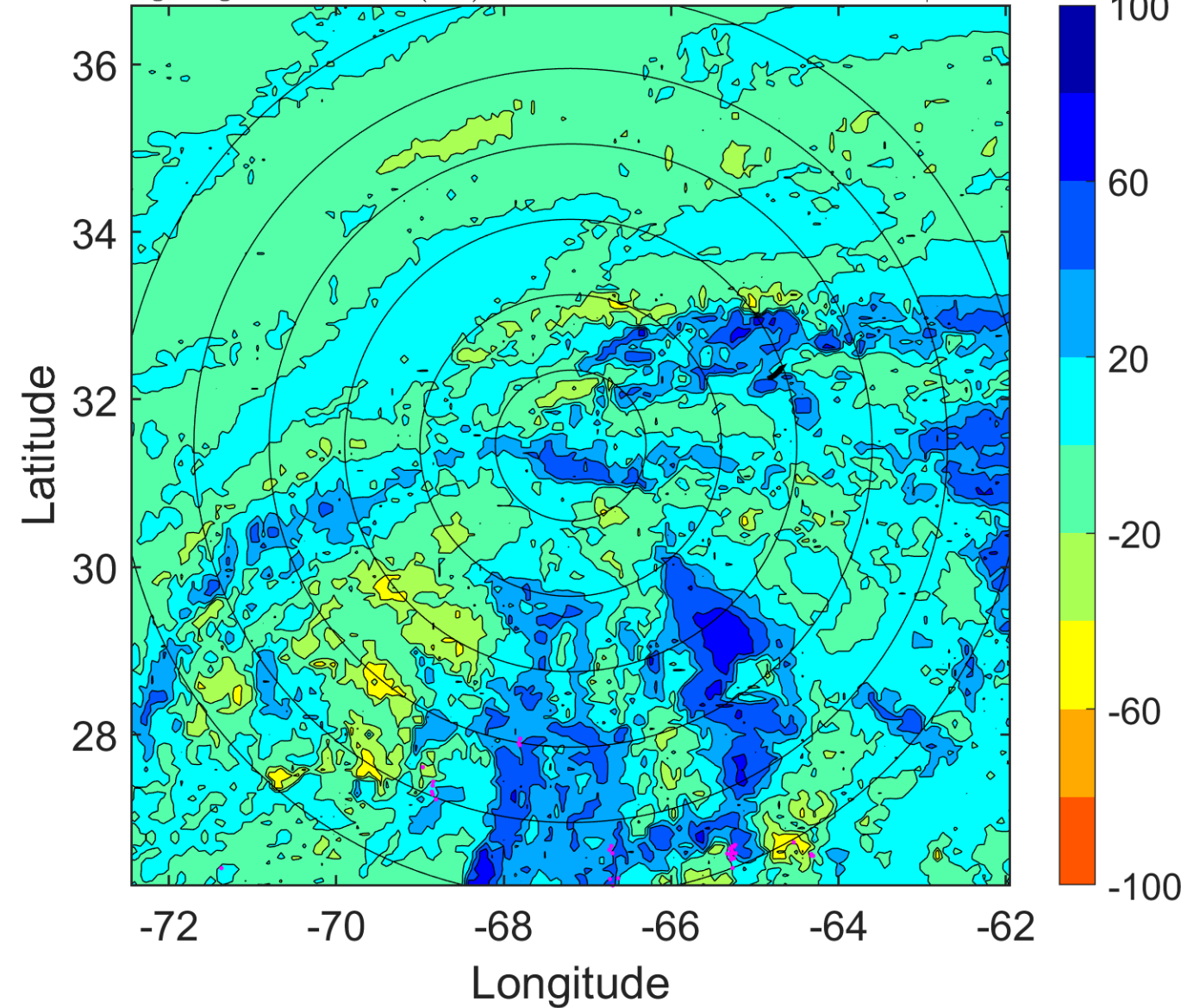
$\Delta$ t: 2019052203 (22.5 LT) - 2019052121 (16.5 LT)

Lightning: 22.5 LT  $\pm$  1.5 h (dots)

PT: SLCP | EA: INACT

01L (ANDREA) | 27.5 kt LO

S: null | H: null



### IR BT & Lightning

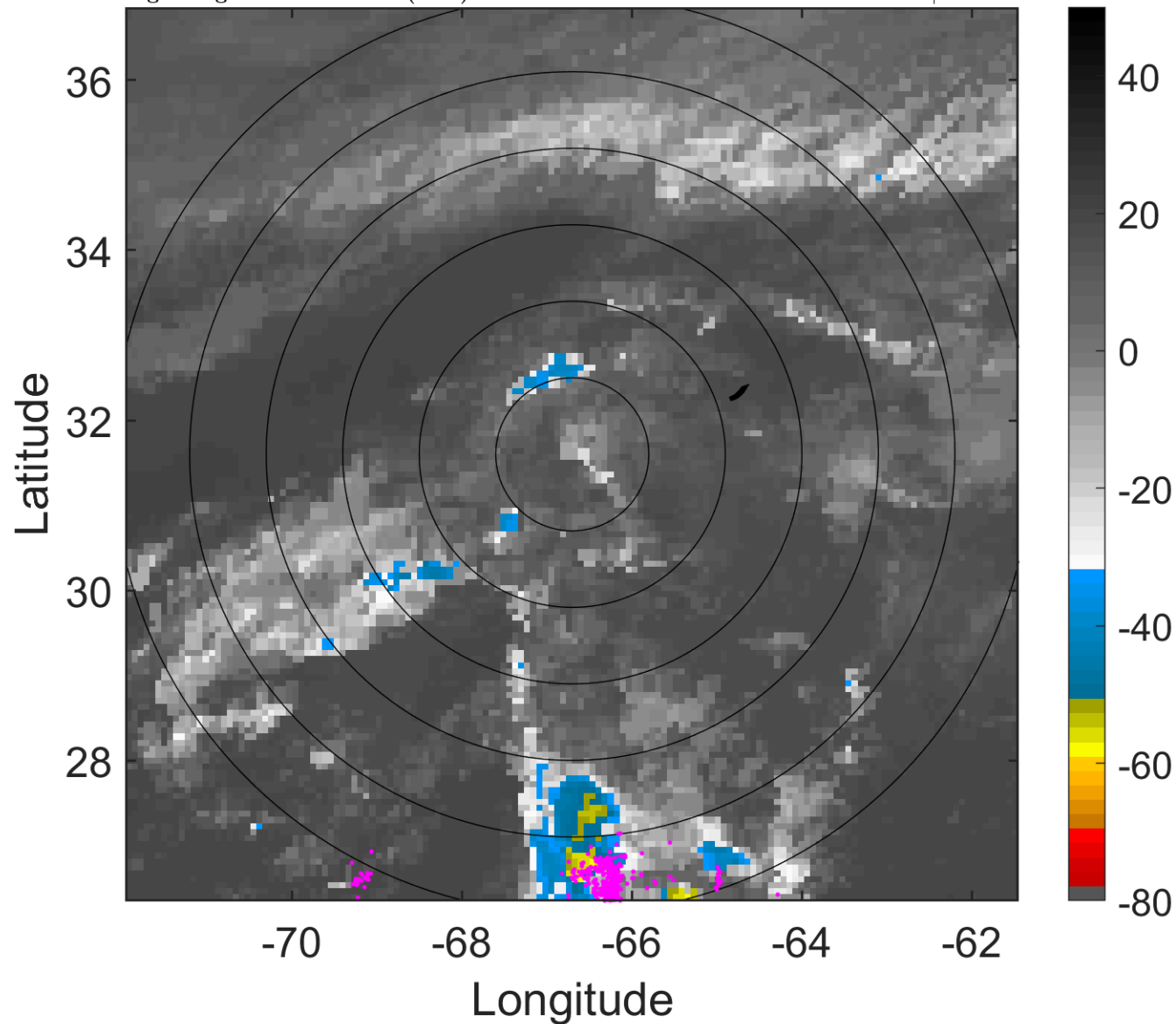
t: 2019052206 (1.6 LT)

Lightning: 1.6 LT  $\pm$  1.5 h (dots)

PT: NP | EA: INACT

01L (ANDREA) | 25 kt LO

S: null | H: null



### 6-h IR BT Differences & Lightning

$\Delta$ t: 2019052206 (1.6 LT) - 2019052200 (19.5 LT)

Lightning: 1.6 LT  $\pm$  1.5 h (dots)

PT: NP | EA: INACT

01L (ANDREA) | 25 kt LO

S: null | H: null

