

IR BT & Lightning

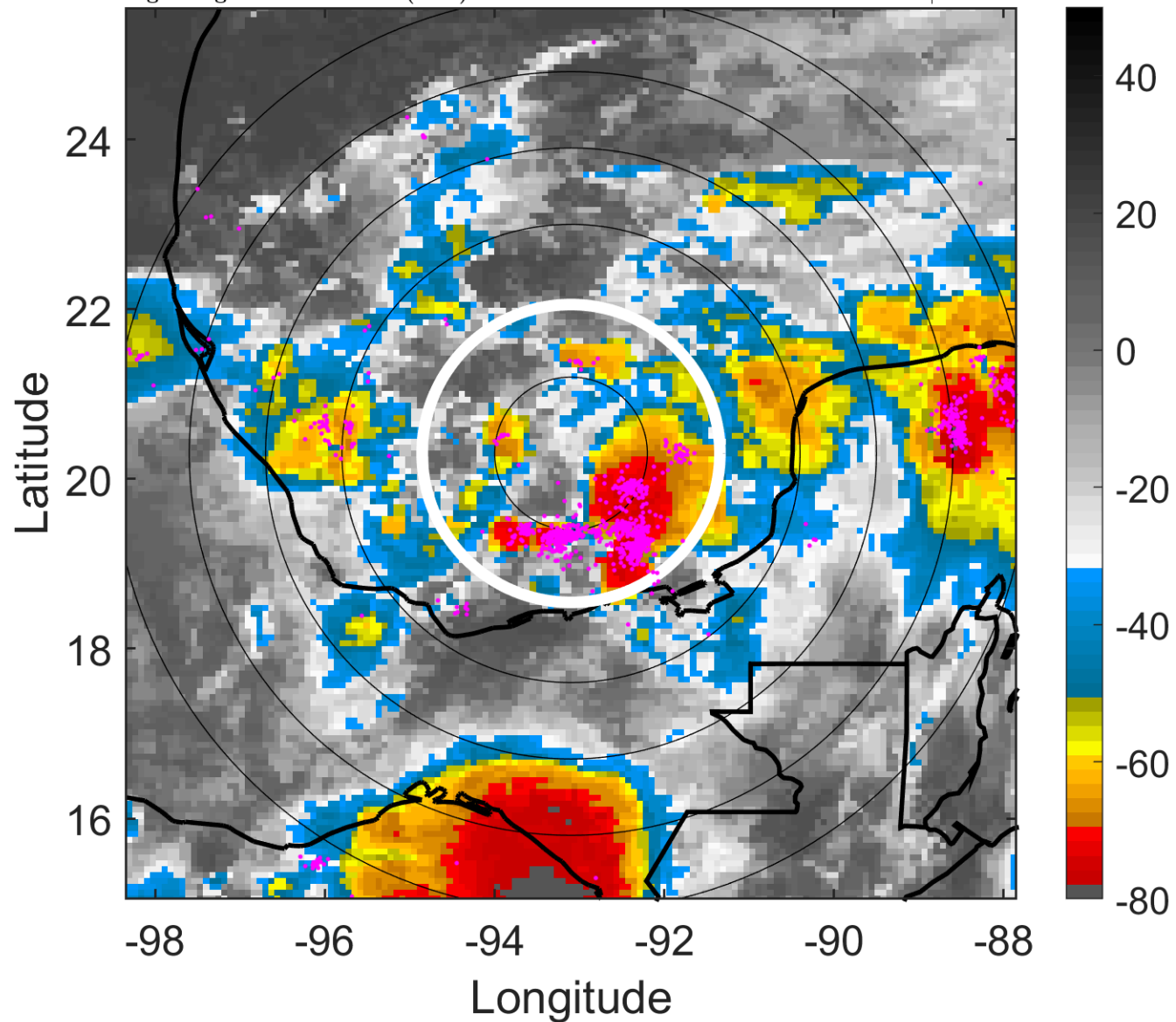
t: 2011062812 (5.8 LT)

Lightning: 5.8 LT \pm 1.5 h (dots)

PT: LLCP | EA: ACT

01L (ARLENE) | 30 kt LO

S: null | H: null



6-h IR BT Differences & Lightning

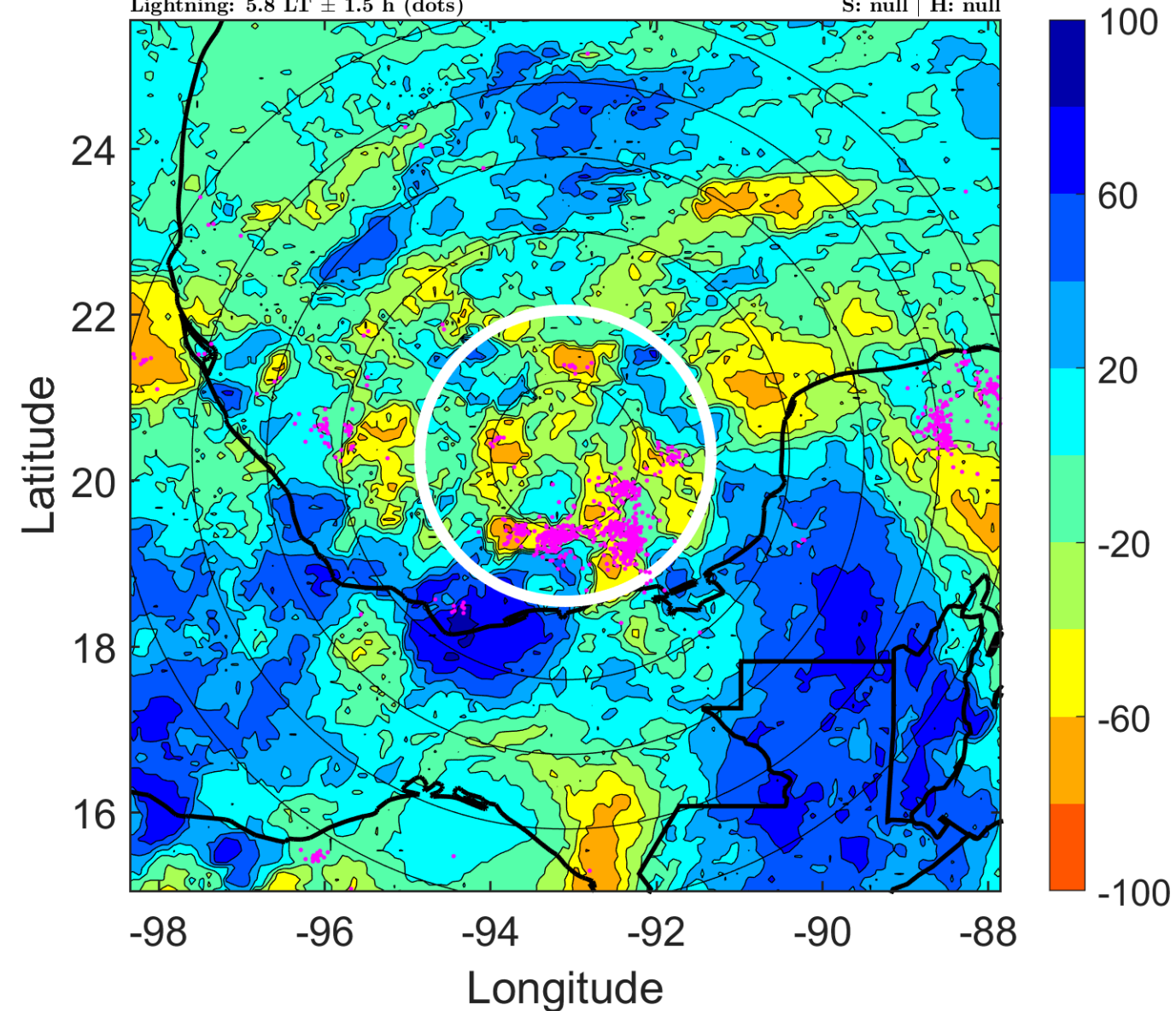
Δ t: 2011062812 (5.8 LT) - 2011062806 (23.8 LT)

Lightning: 5.8 LT \pm 1.5 h (dots)

PT: LLCP | EA: ACT

01L (ARLENE) | 30 kt LO

S: null | H: null



IR BT & Lightning

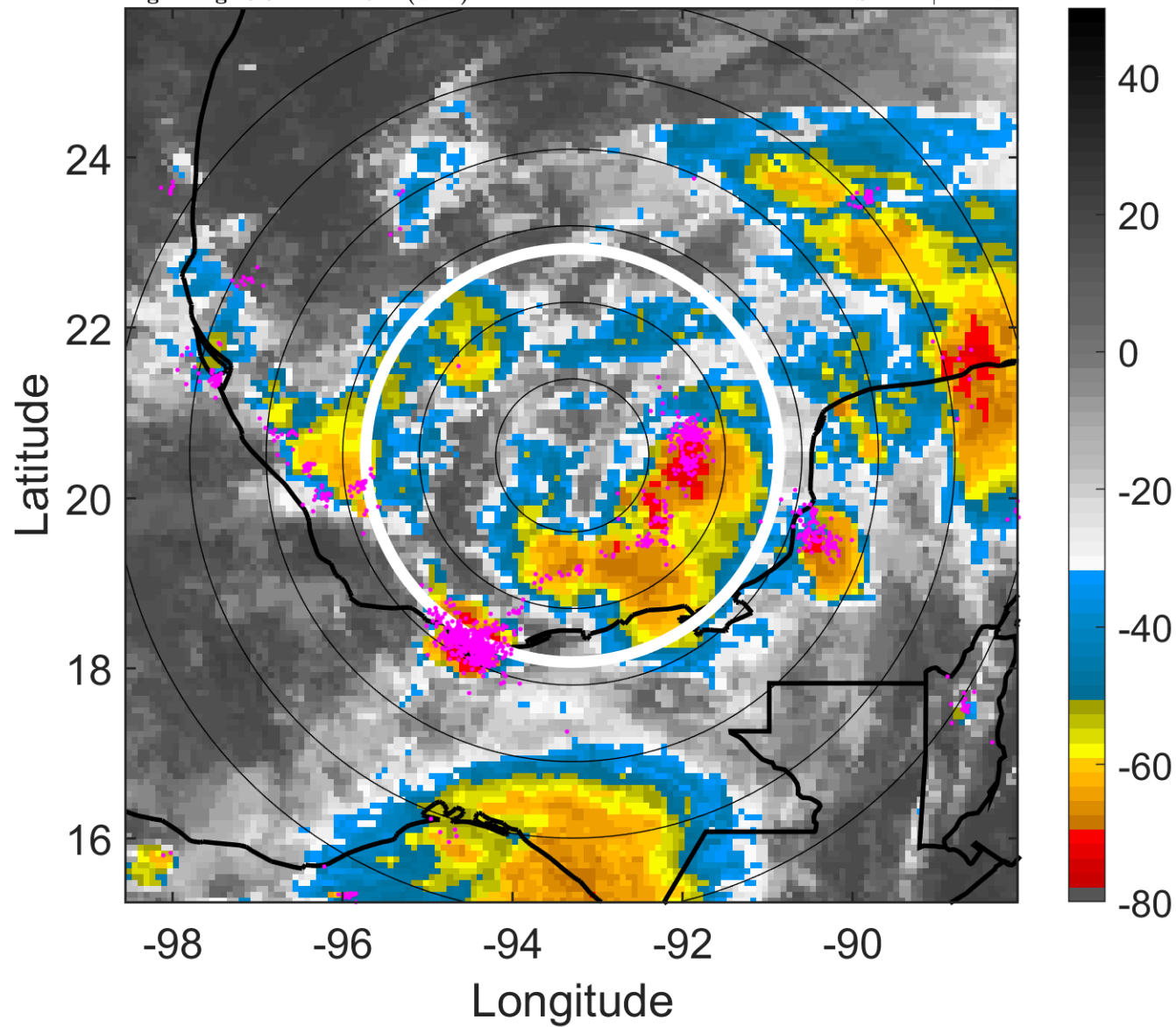
t: 2011062815 (8.8 LT)

Lightning: 8.8 LT \pm 1.5 h (dots)

PT: LLCP | EA: ACT

01L (ARLENE) | 32.5 kt LO

S: null | H: null



6-h IR BT Differences & Lightning

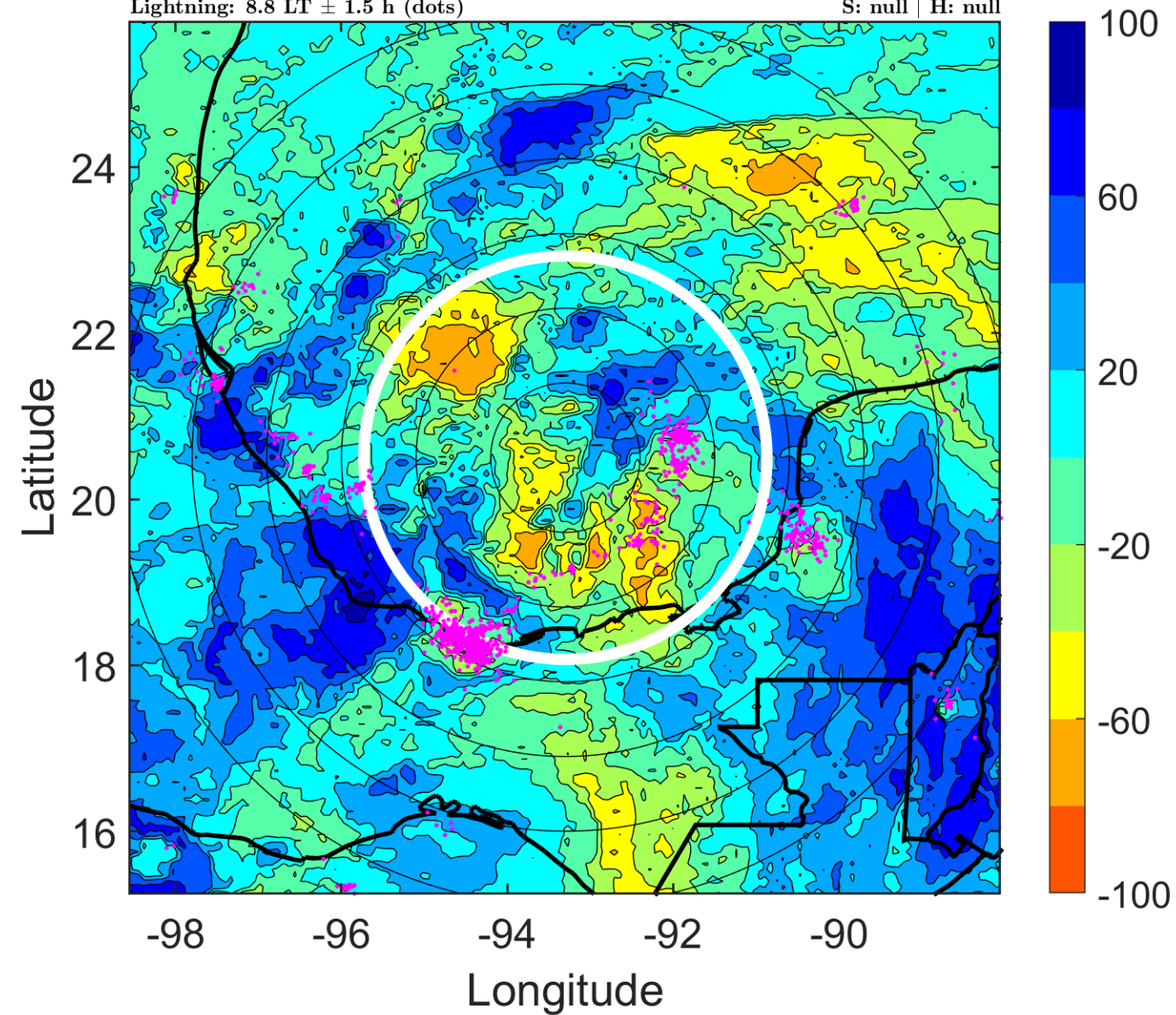
Δ t: 2011062815 (8.8 LT) - 2011062809 (2.8 LT)

Lightning: 8.8 LT \pm 1.5 h (dots)

PT: LLCP | EA: ACT

01L (ARLENE) | 32.5 kt LO

S: null | H: null



IR BT & Lightning

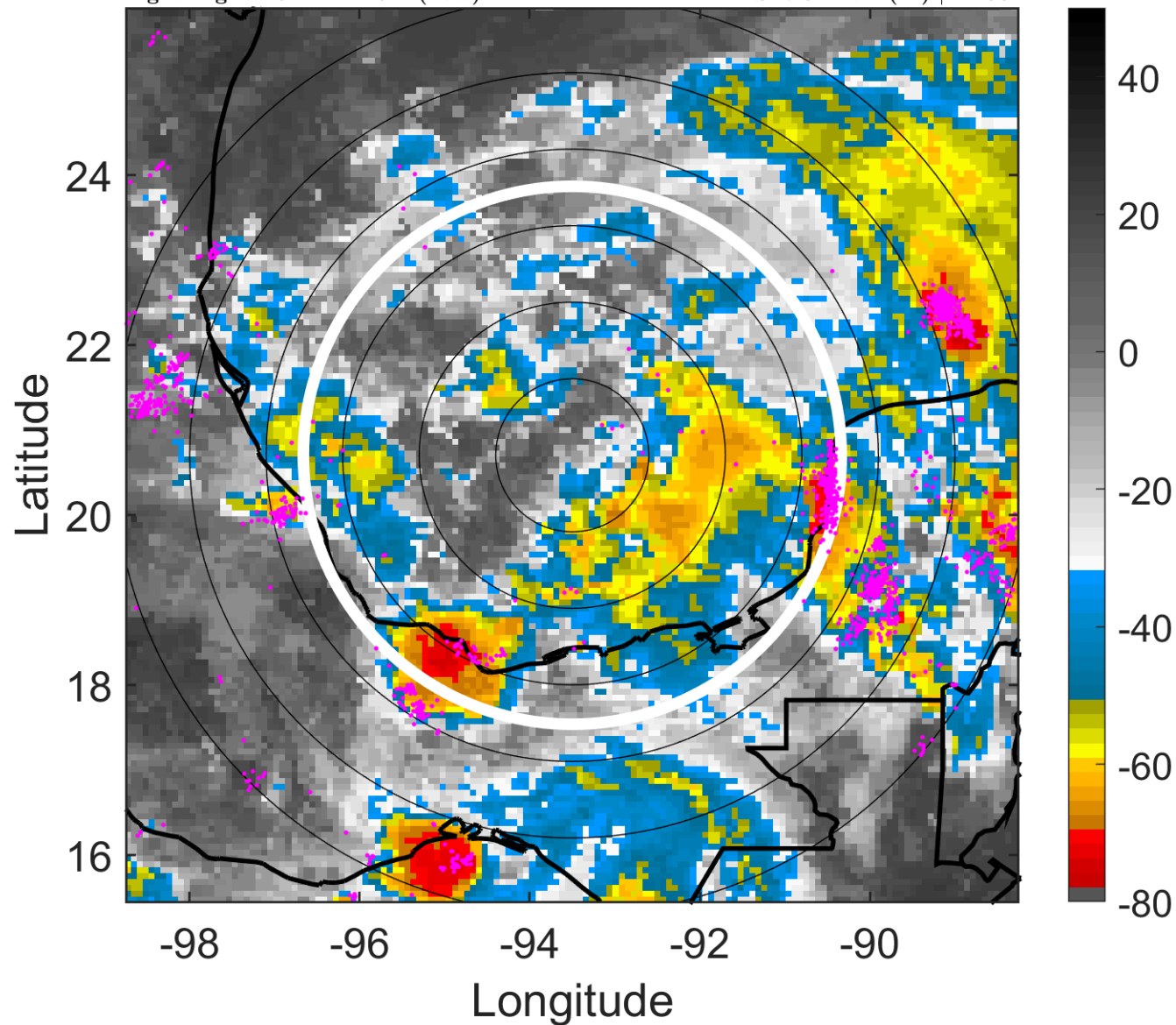
t: 2011062818 (11.8 LT)

Lightning: 11.8 LT \pm 1.5 h (dots)

PT: LLCP | EA: ACT

01L (ARLENE) | 35 kt TS

S: 7.3 m s⁻¹ (M) | H: 93°



6-h IR BT Differences & Lightning

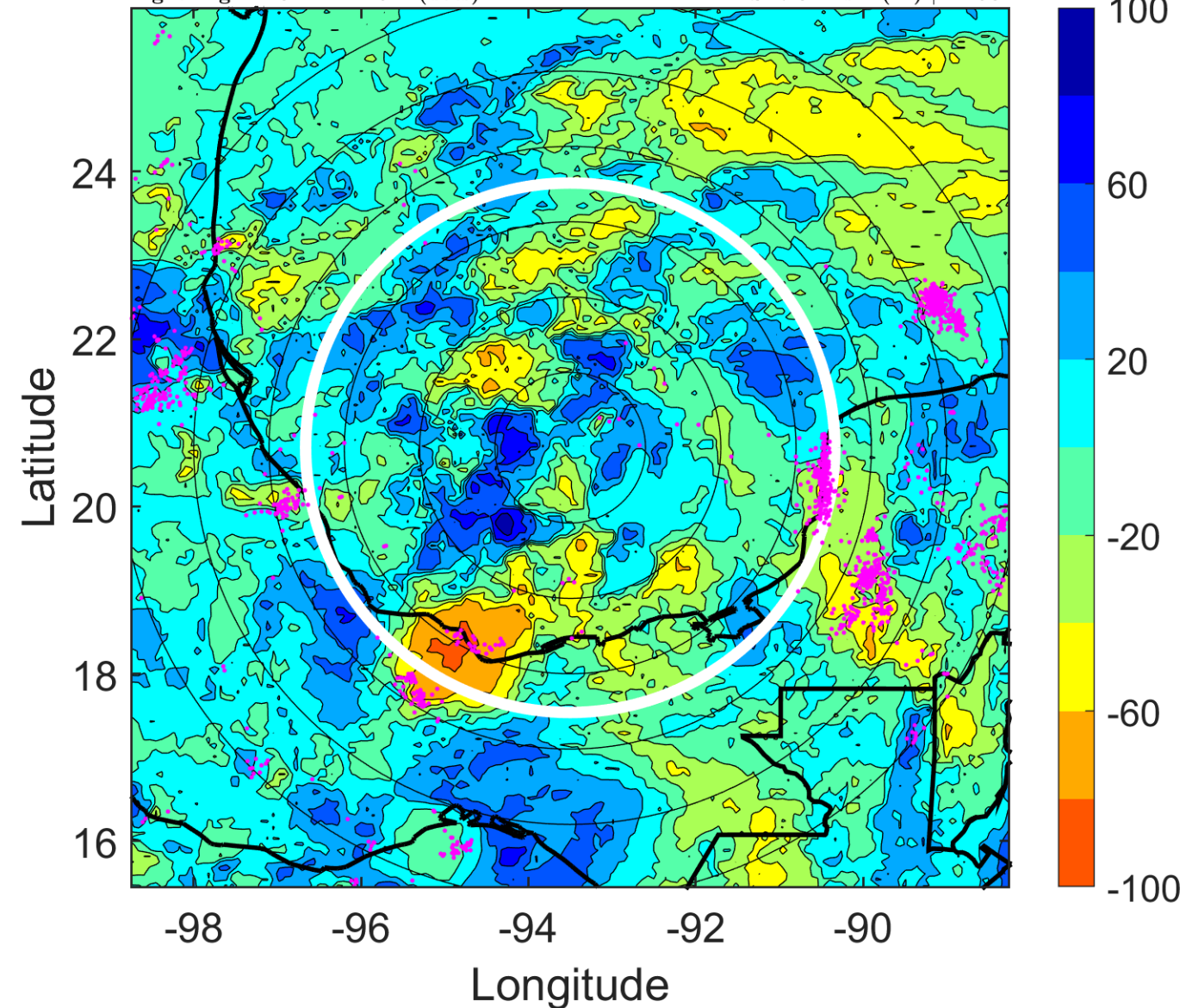
Δ t: 2011062818 (11.8 LT) - 2011062812 (5.8 LT)

Lightning: 11.8 LT \pm 1.5 h (dots)

PT: LLCP | EA: ACT

01L (ARLENE) | 35 kt TS

S: 7.3 m s⁻¹ (M) | H: 93°



IR BT & Lightning

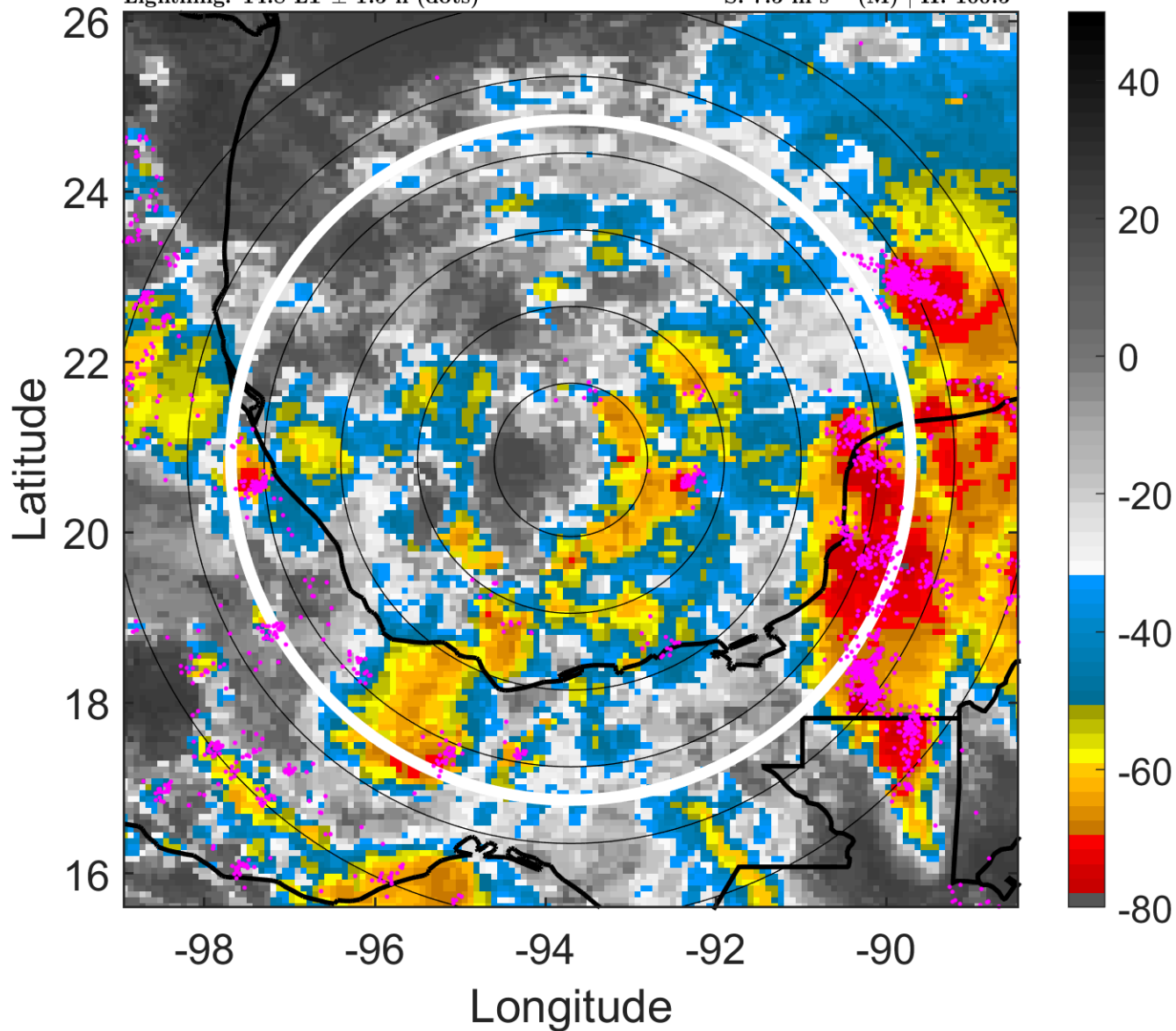
t: 2011062821 (14.8 LT)

Lightning: 14.8 LT \pm 1.5 h (dots)

PT: LLCP | EA: ACT

01L (ARLENE) | 35 kt TS

S: 7.5 m s⁻¹ (M) | H: 100.5°



6-h IR BT Differences & Lightning

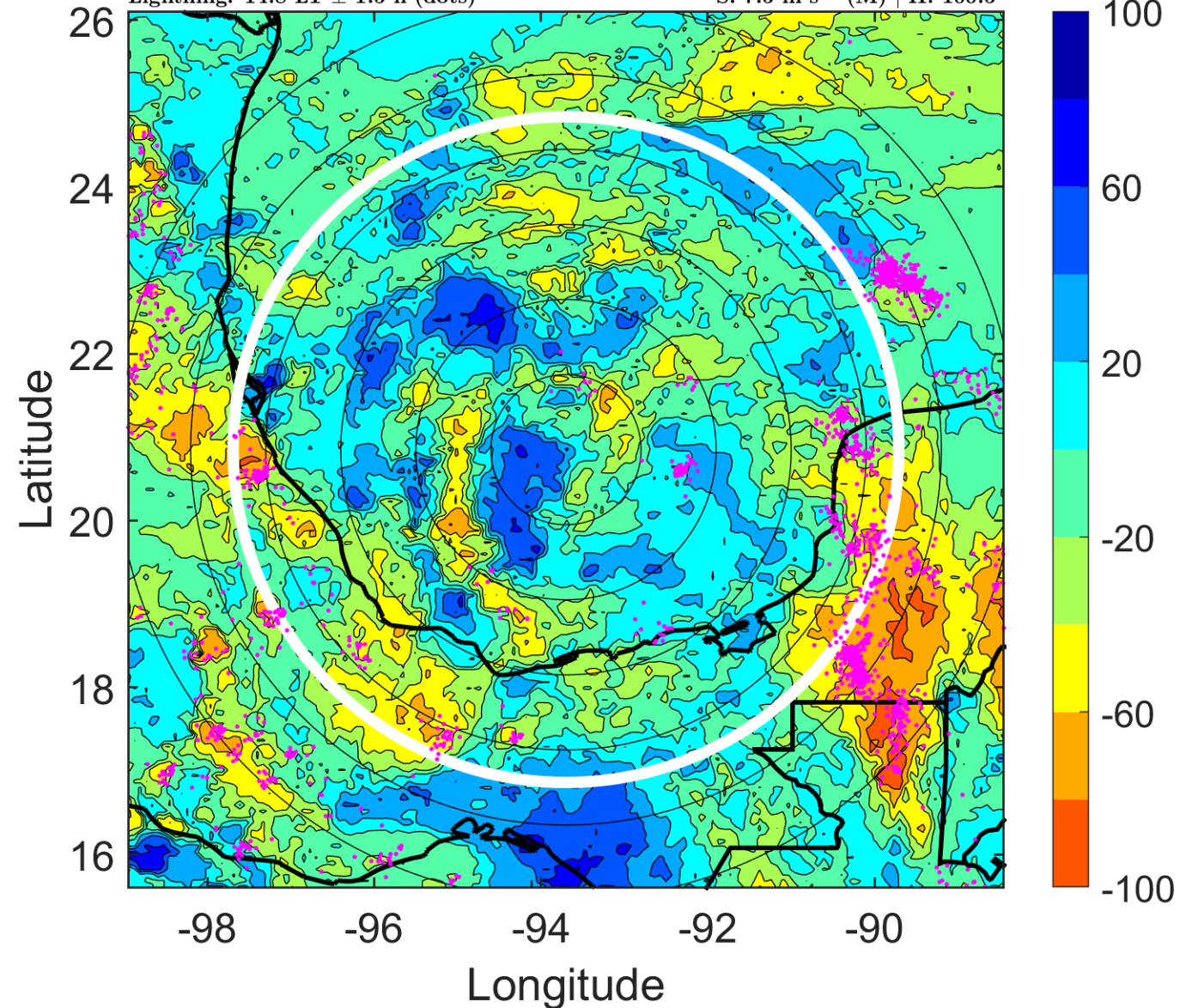
Δ t: 2011062821 (14.8 LT) - 2011062815 (8.8 LT)

Lightning: 14.8 LT \pm 1.5 h (dots)

PT: LLCP | EA: ACT

01L (ARLENE) | 35 kt TS

S: 7.5 m s⁻¹ (M) | H: 100.5°



IR BT & Lightning

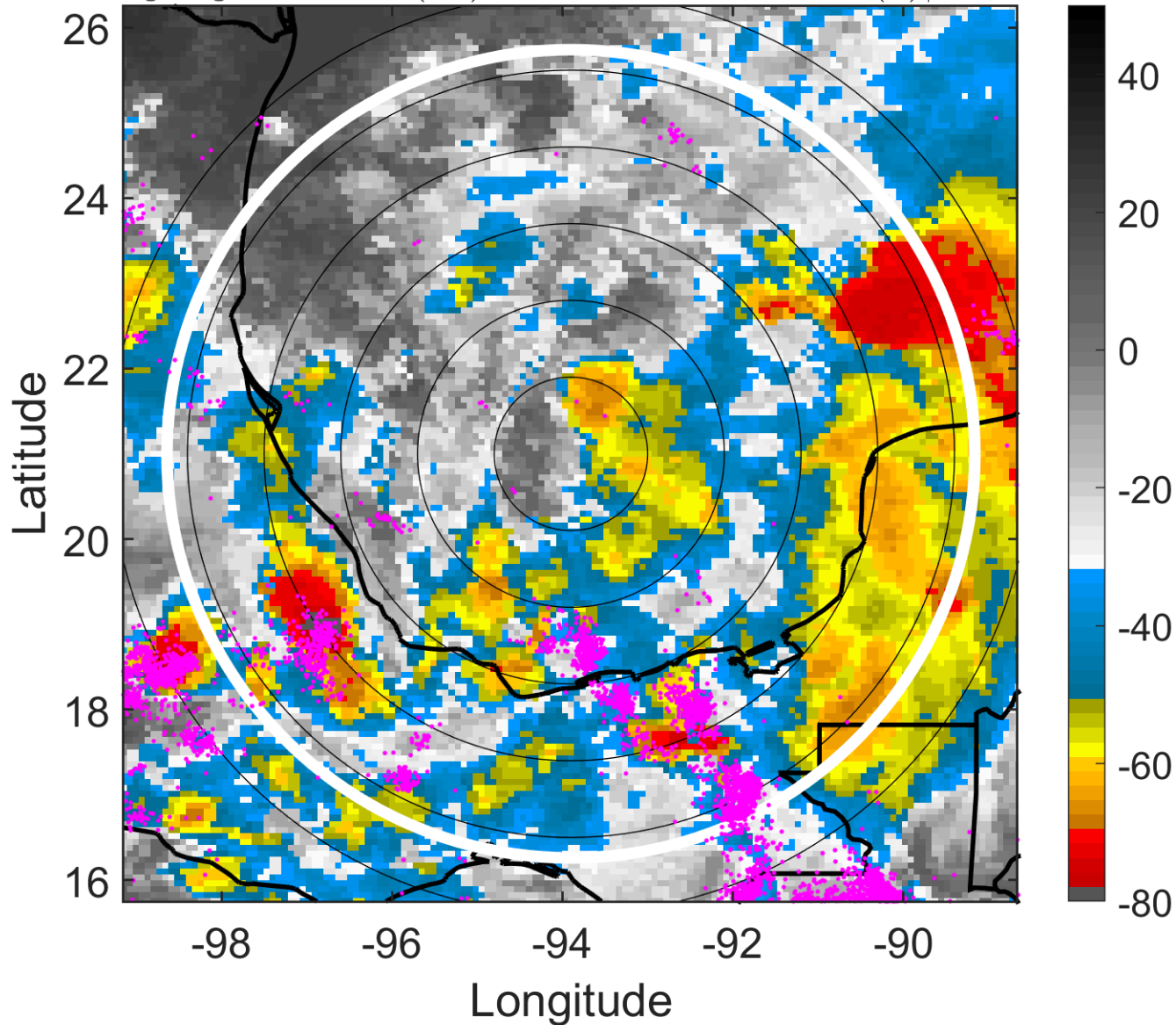
t: 2011062900 (17.7 LT)

Lightning: 17.7 LT \pm 1.5 h (dots)

PT: LLCP | EA: ACT

01L (ARLENE) | 35 kt TS

S: 7.8 m s⁻¹ (M) | H: 108°



6-h IR BT Differences & Lightning

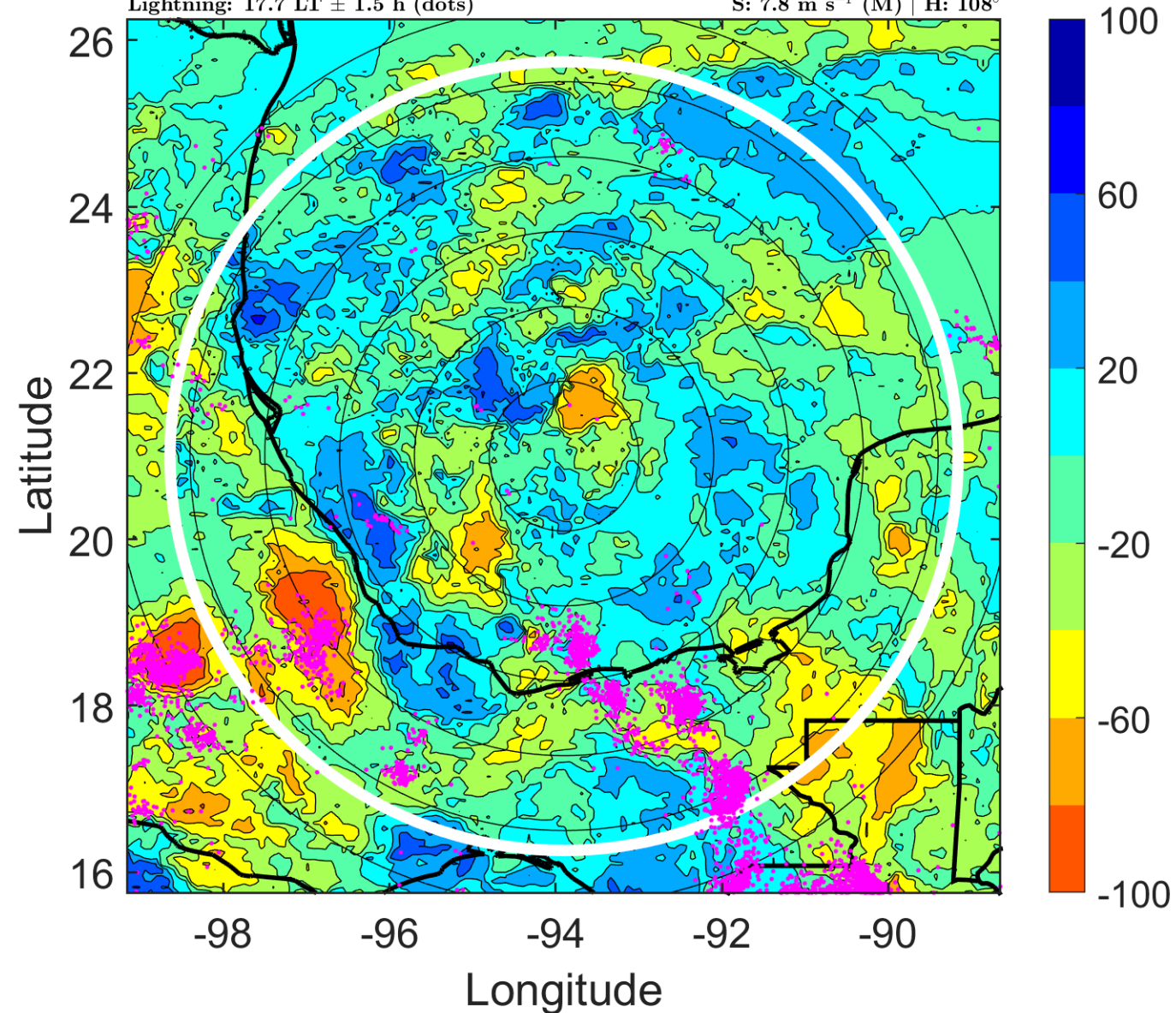
Δ t: 2011062900 (17.7 LT) - 2011062818 (11.8 LT)

Lightning: 17.7 LT \pm 1.5 h (dots)

PT: LLCP | EA: ACT

01L (ARLENE) | 35 kt TS

S: 7.8 m s⁻¹ (M) | H: 108°



IR BT & Lightning

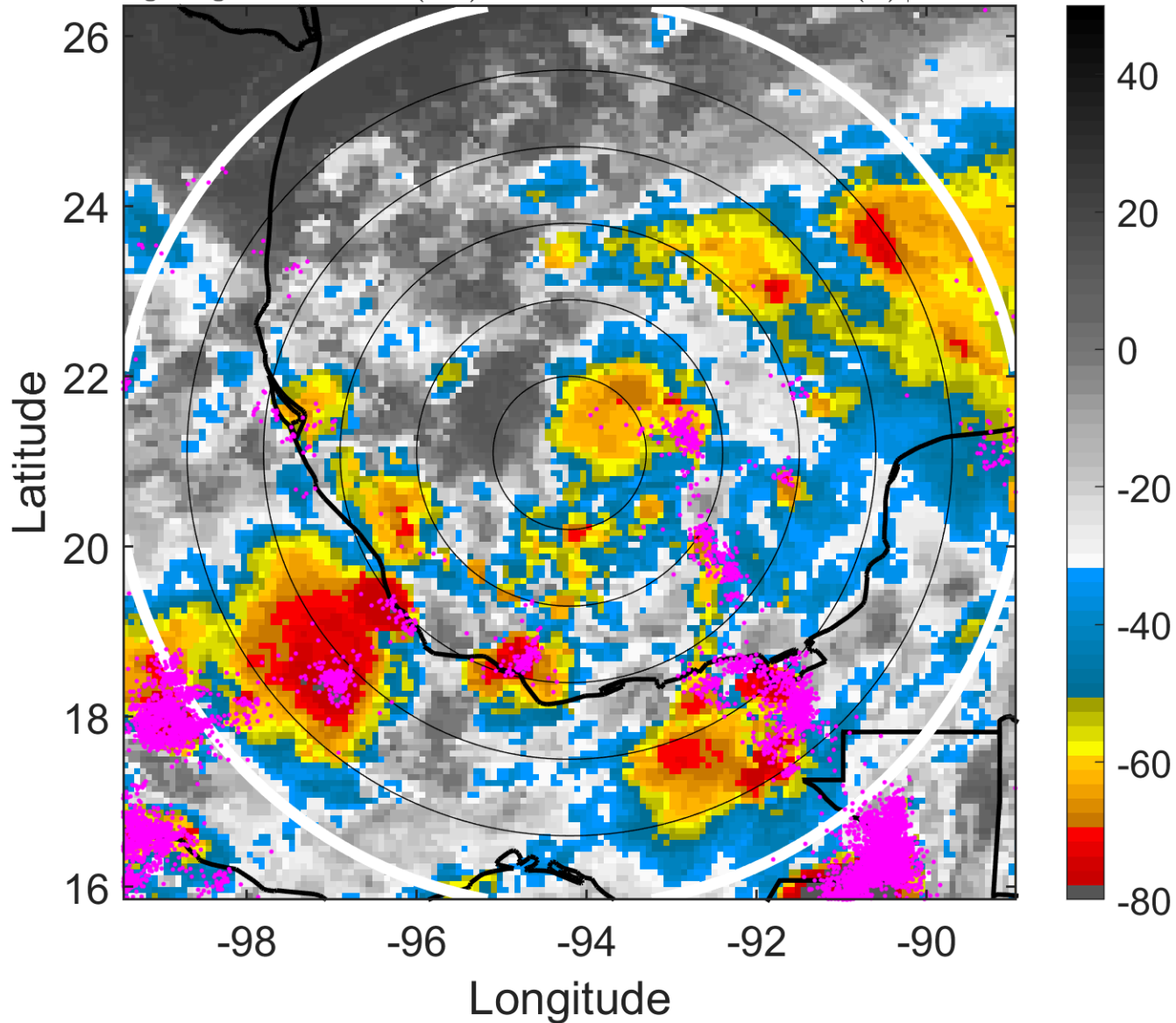
t: 2011062903 (20.7 LT)

Lightning: 20.7 LT \pm 1.5 h (dots)

PT: LLCP | EA: ACT

01L (ARLENE) | 35 kt TS

S: 7.1 m s⁻¹ (M) | H: 102.5°



6-h IR BT Differences & Lightning

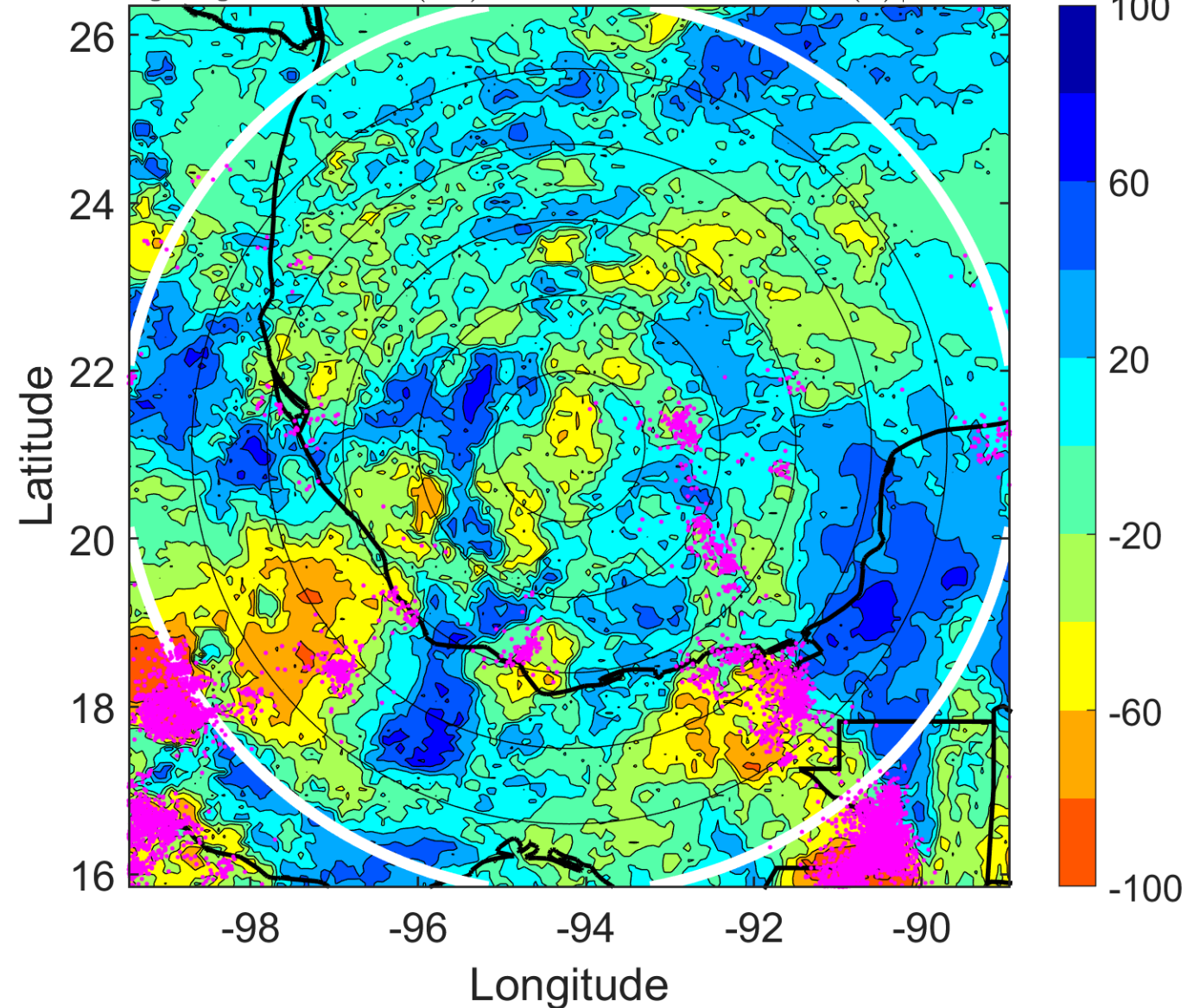
Δ t: 2011062903 (20.7 LT) - 2011062821 (14.8 LT)

Lightning: 20.7 LT \pm 1.5 h (dots)

PT: LLCP | EA: ACT

01L (ARLENE) | 35 kt TS

S: 7.1 m s⁻¹ (M) | H: 102.5°



IR BT & Lightning

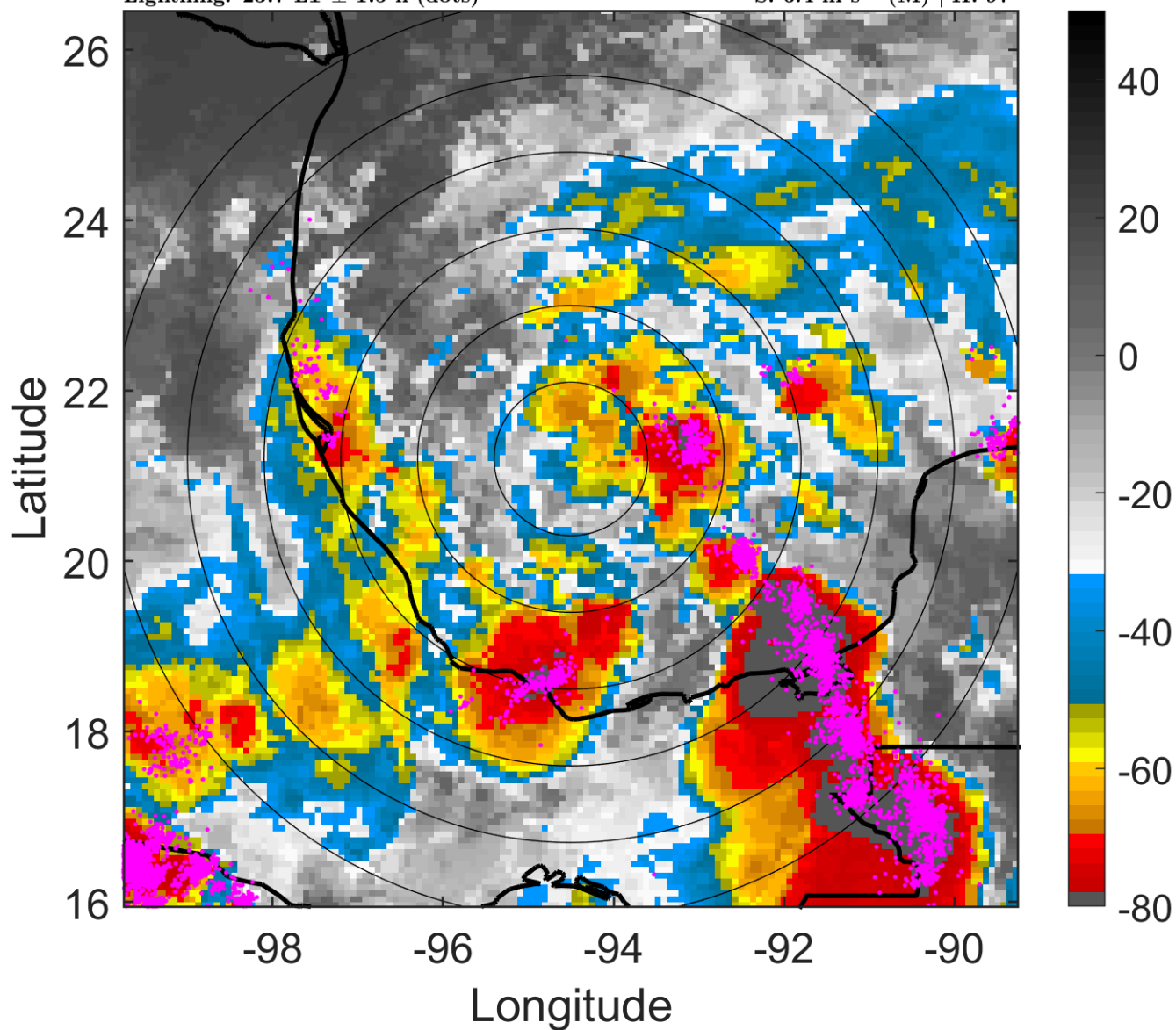
t: 2011062906 (23.7 LT)

Lightning: 23.7 LT \pm 1.5 h (dots)

PT: LLCP | EA: ACT

01L (ARLENE) | 35 kt TS

S: 6.4 m s⁻¹ (M) | H: 97°



6-h IR BT Differences & Lightning

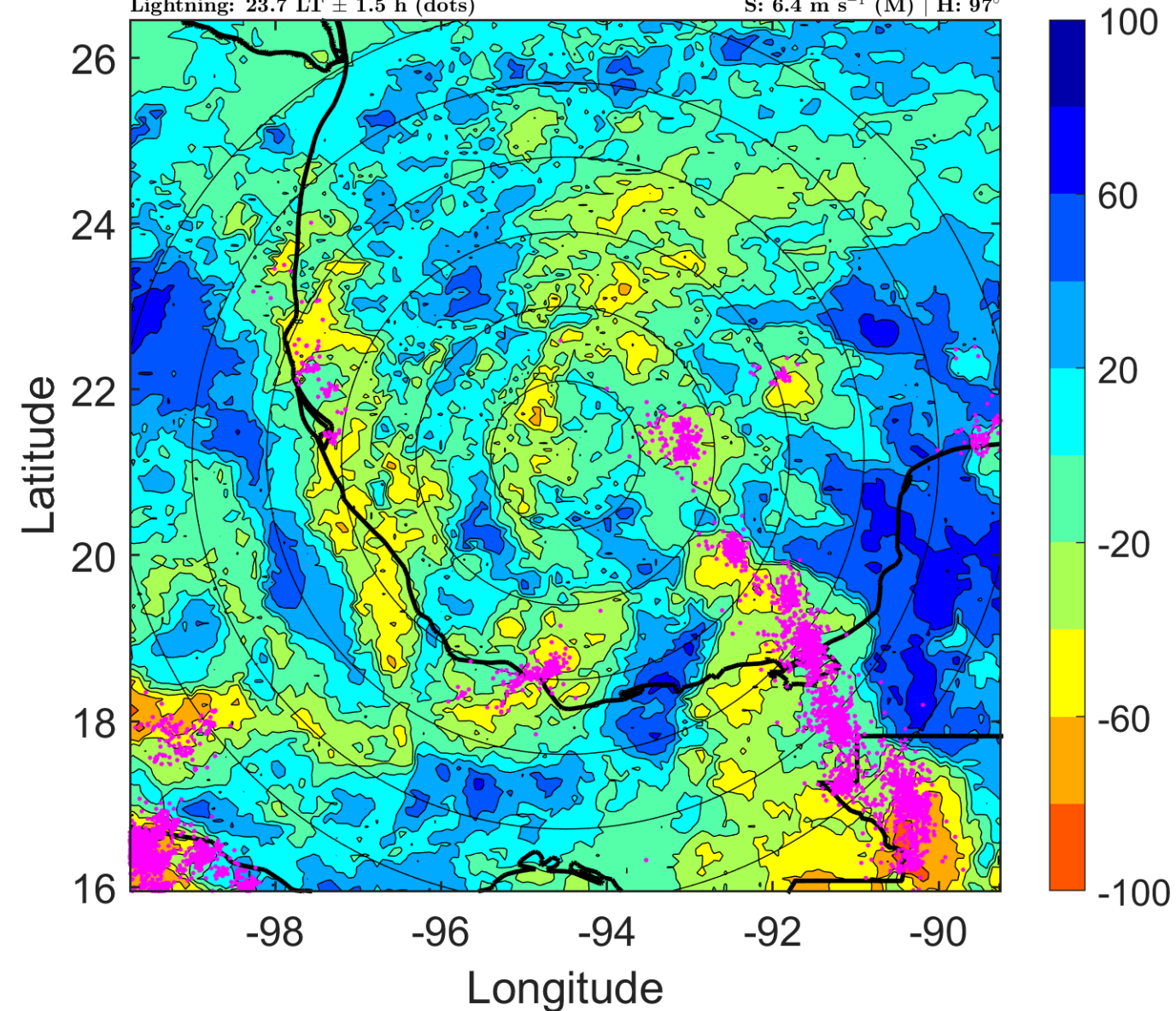
Δ t: 2011062906 (23.7 LT) - 2011062900 (17.7 LT)

Lightning: 23.7 LT \pm 1.5 h (dots)

PT: LLCP | EA: ACT

01L (ARLENE) | 35 kt TS

S: 6.4 m s⁻¹ (M) | H: 97°



IR BT & Lightning

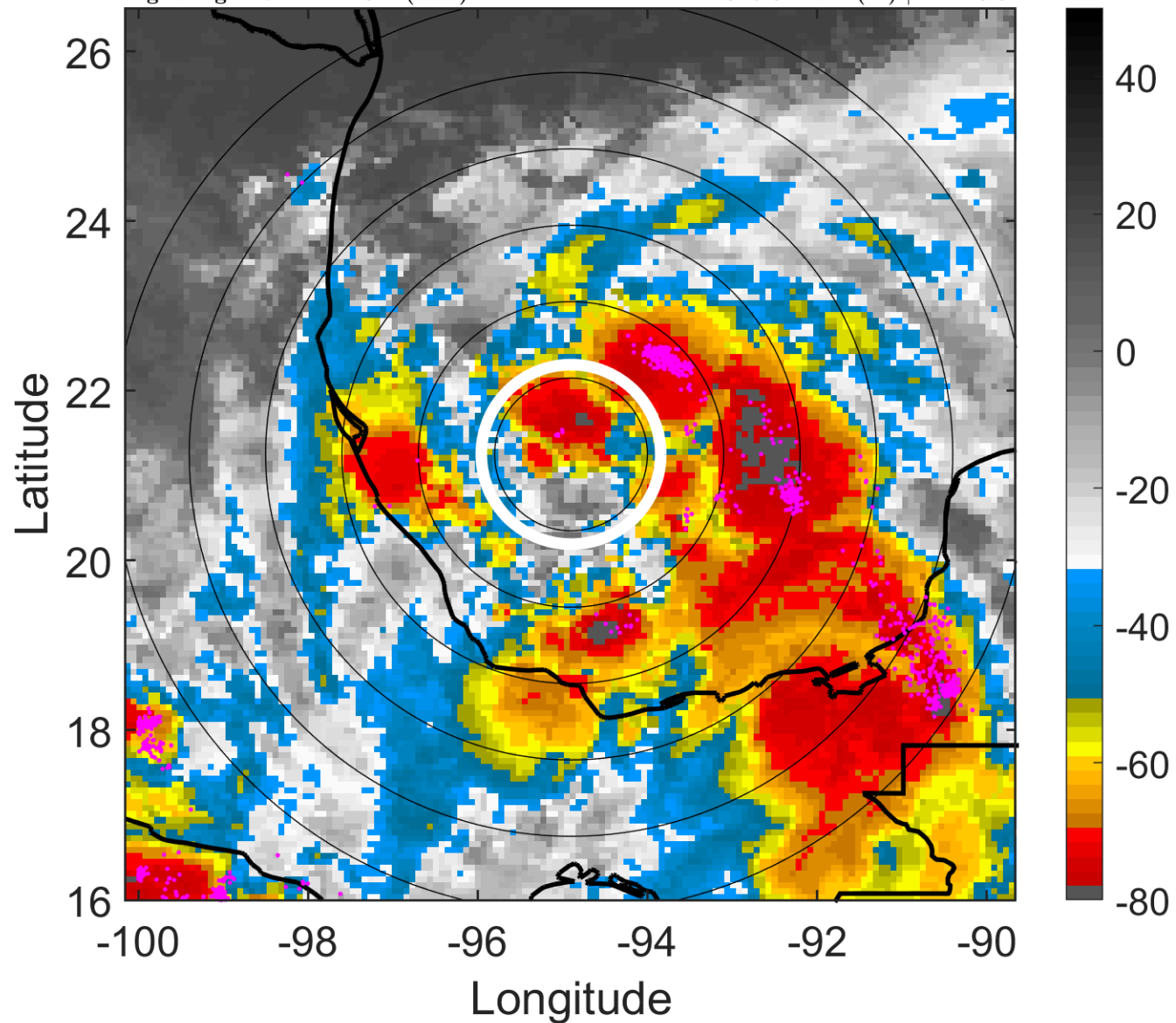
t: 2011062909 (2.7 LT)

Lightning: 2.7 LT \pm 1.5 h (dots)

PT: LLCP | EA: ACT

01L (ARLENE) | 40 kt TS

S: 5.6 m s⁻¹ (M) | H: 110.5°



6-h IR BT Differences & Lightning

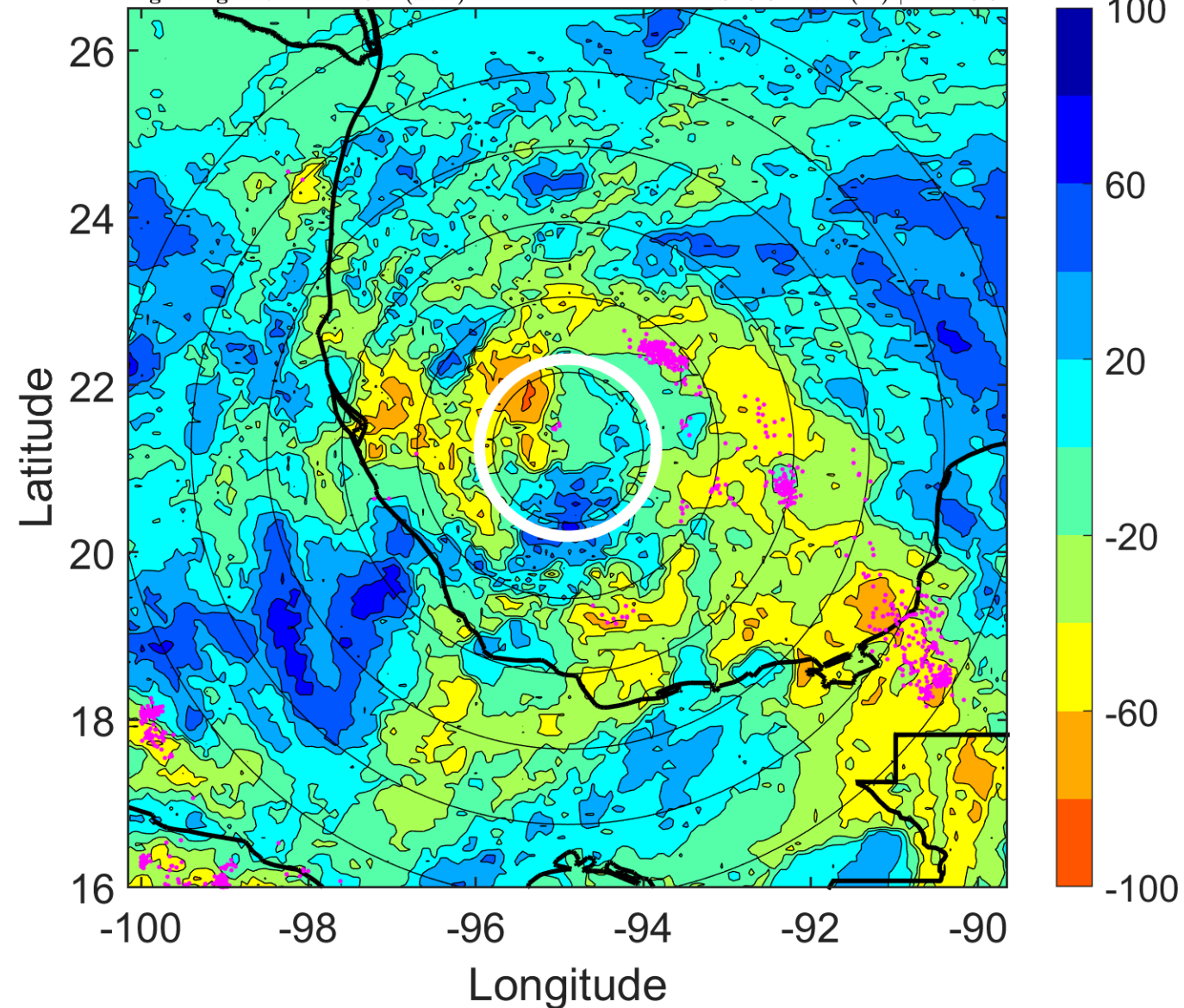
Δ t: 2011062909 (2.7 LT) - 2011062903 (20.7 LT)

Lightning: 2.7 LT \pm 1.5 h (dots)

PT: LLCP | EA: ACT

01L (ARLENE) | 40 kt TS

S: 5.6 m s⁻¹ (M) | H: 110.5°



IR BT & Lightning

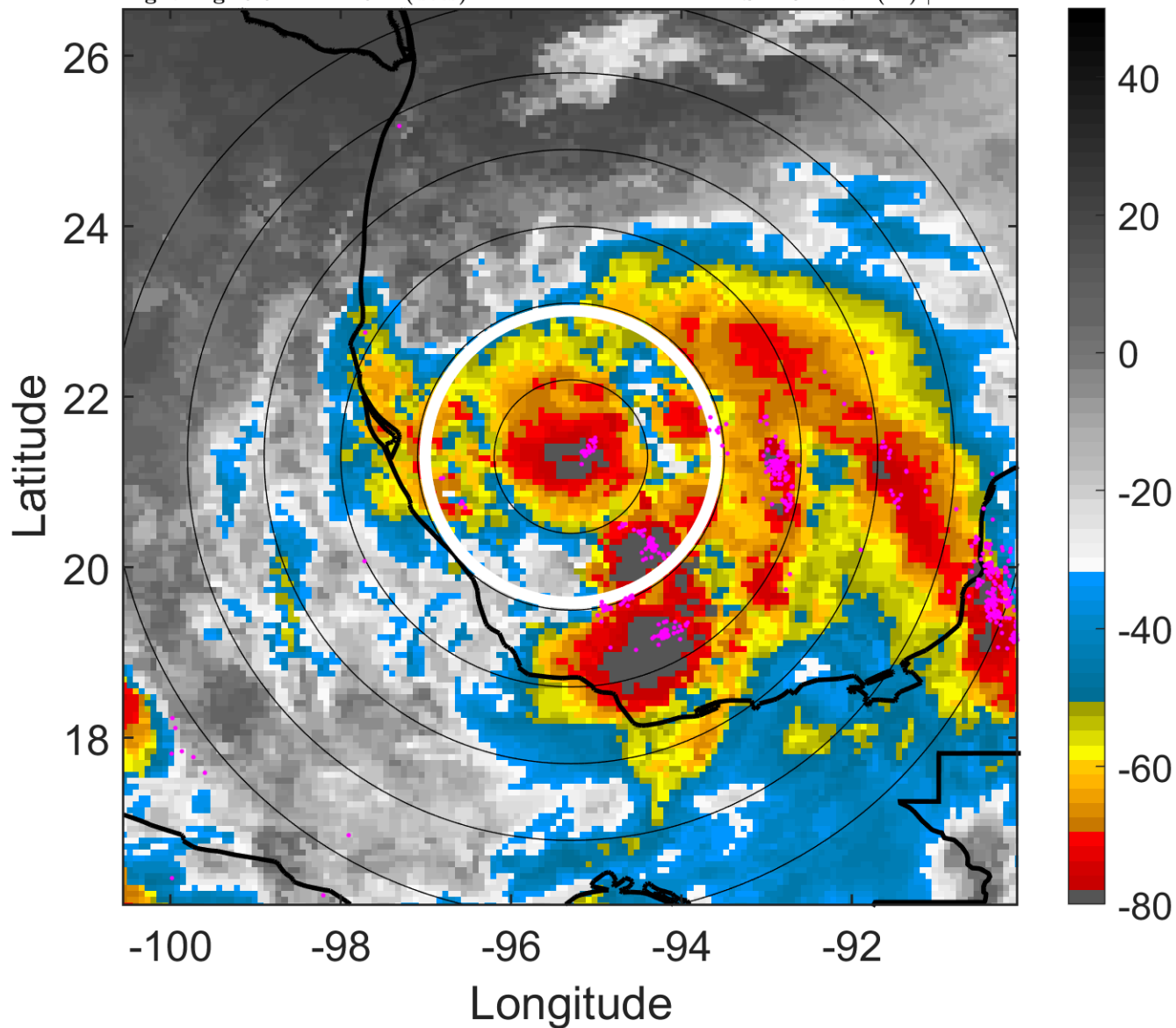
t: 2011062912 (5.6 LT)

Lightning: 5.6 LT \pm 1.5 h (dots)

PT: LLCP | EA: ACT

01L (ARLENE) | 45 kt TS

S: 4.8 m s⁻¹ (M) | H: 124°



6-h IR BT Differences & Lightning

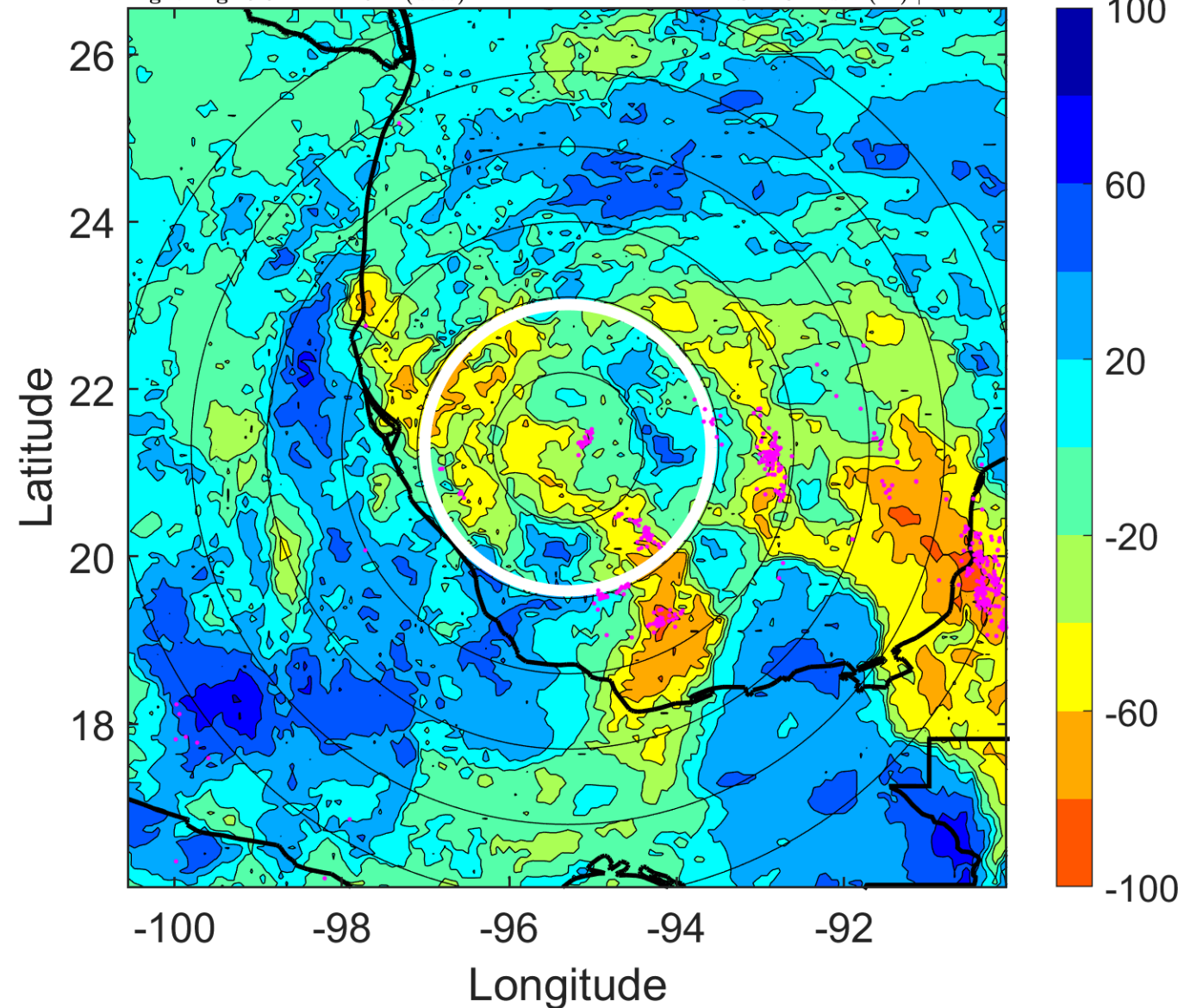
Δ t: 2011062912 (5.6 LT) - 2011062906 (23.7 LT)

Lightning: 5.6 LT \pm 1.5 h (dots)

PT: LLCP | EA: ACT

01L (ARLENE) | 45 kt TS

S: 4.8 m s⁻¹ (M) | H: 124°



IR BT & Lightning

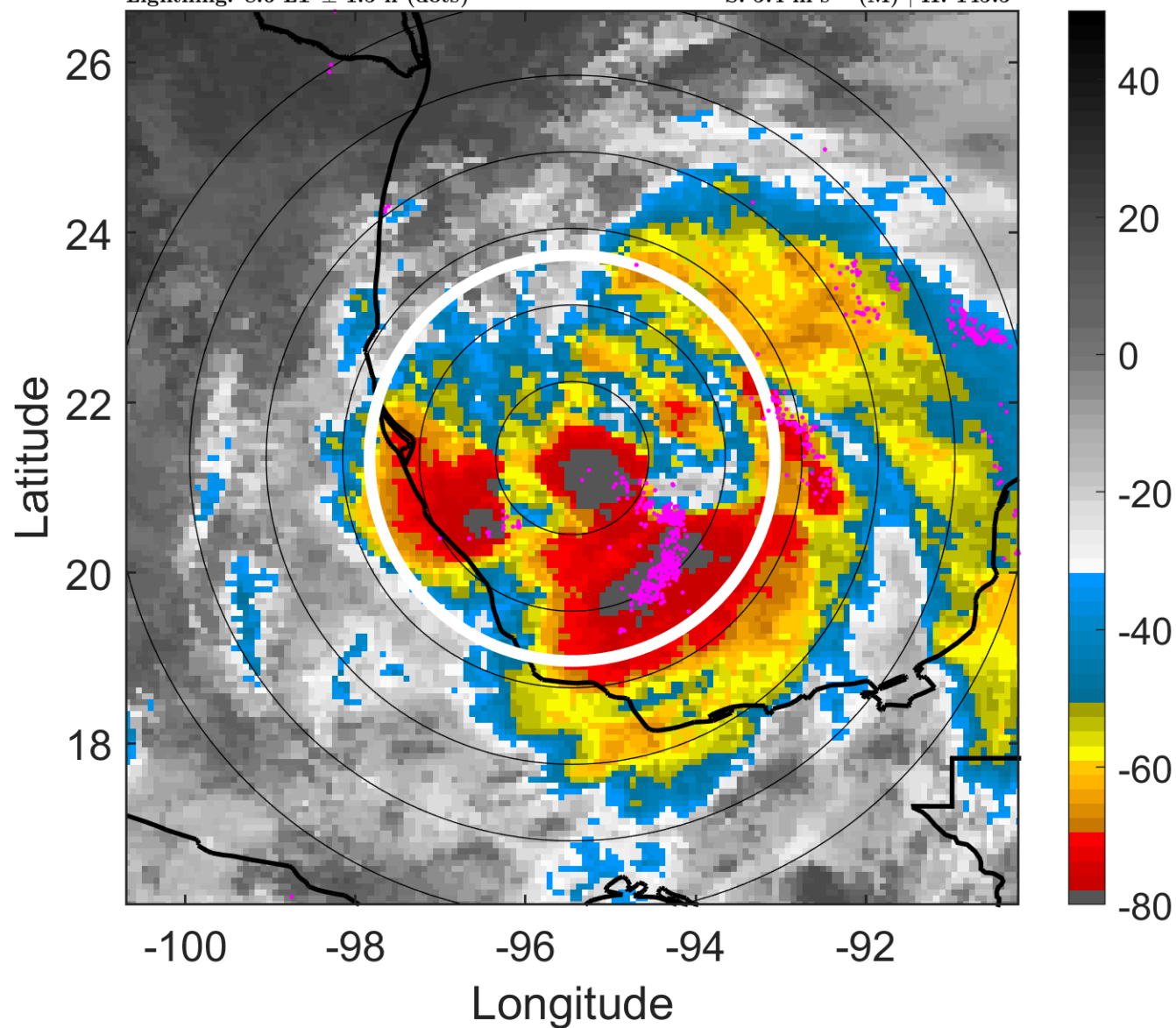
t: 2011062915 (8.6 LT)

Lightning: 8.6 LT \pm 1.5 h (dots)

PT: LLCP | EA: ACT

01L (ARLENE) | 47.5 kt TS

S: 5.4 m s⁻¹ (M) | H: 145.5°



6-h IR BT Differences & Lightning

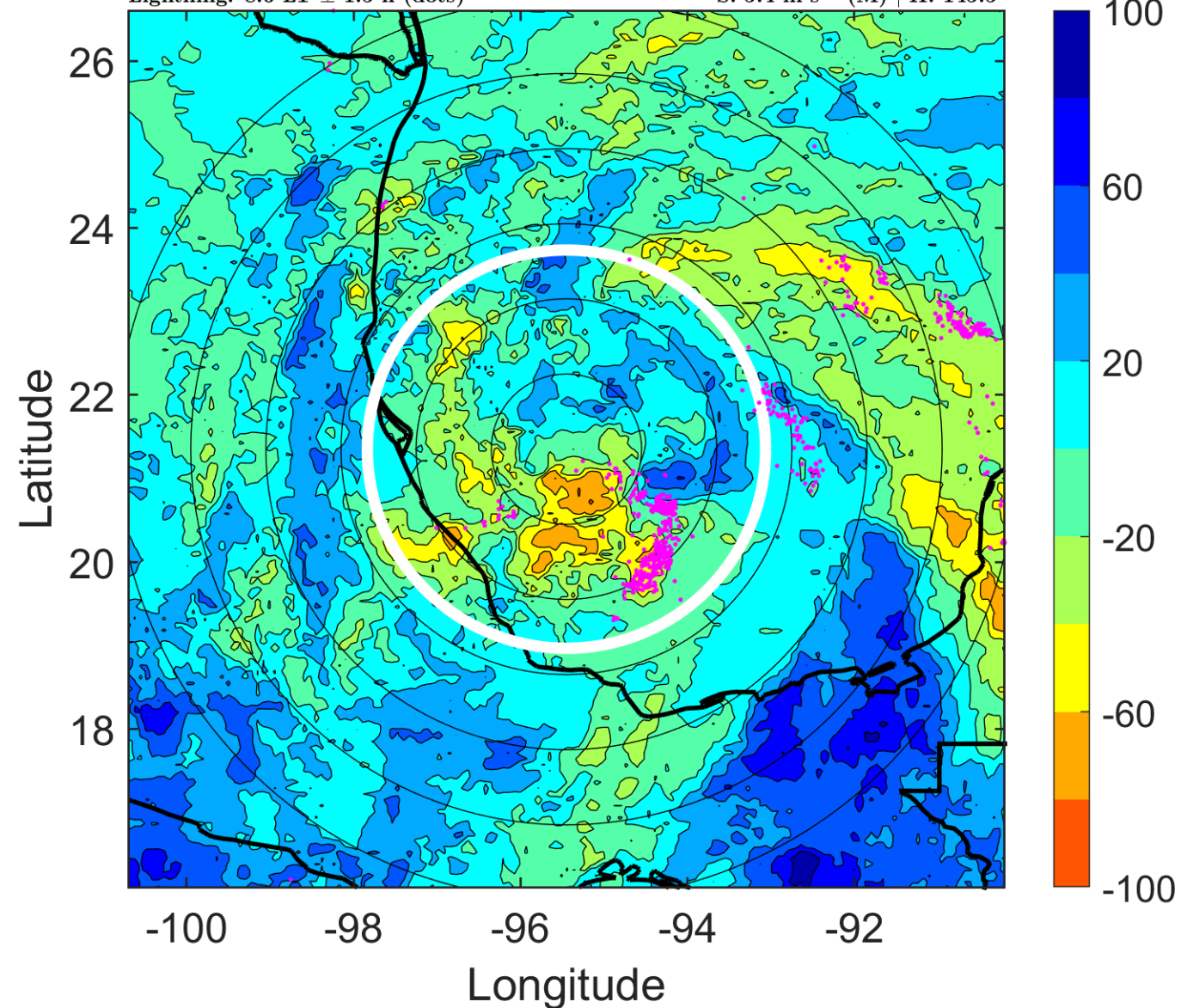
Δ t: 2011062915 (8.6 LT) - 2011062909 (2.7 LT)

Lightning: 8.6 LT \pm 1.5 h (dots)

PT: LLCP | EA: ACT

01L (ARLENE) | 47.5 kt TS

S: 5.4 m s⁻¹ (M) | H: 145.5°



IR BT & Lightning

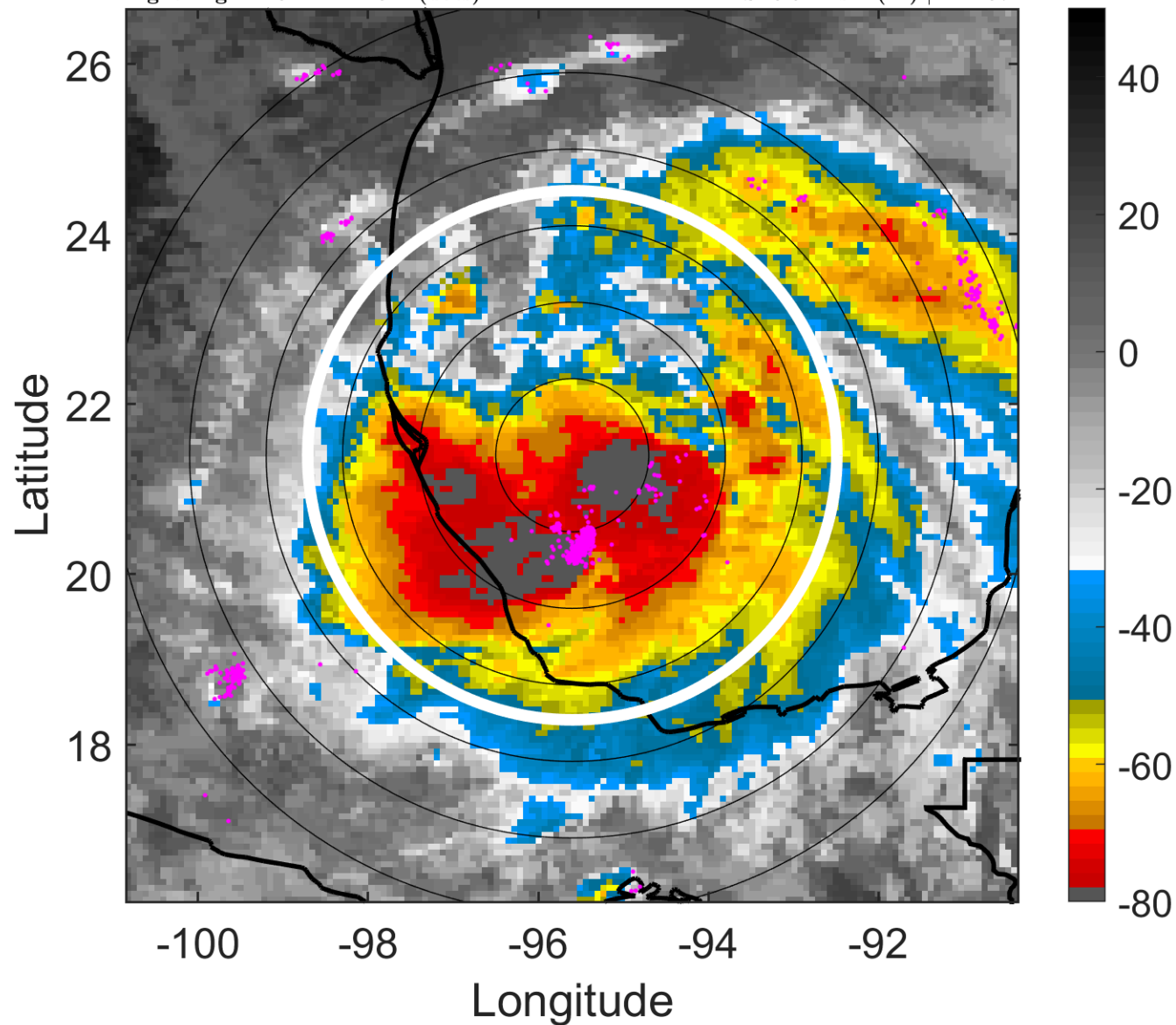
t: 2011062918 (11.6 LT)

Lightning: 11.6 LT \pm 1.5 h (dots)

PT: LLCP | EA: ACT

01L (ARLENE) | 50 kt TS

S: 5.9 m s⁻¹ (M) | H: 167°



6-h IR BT Differences & Lightning

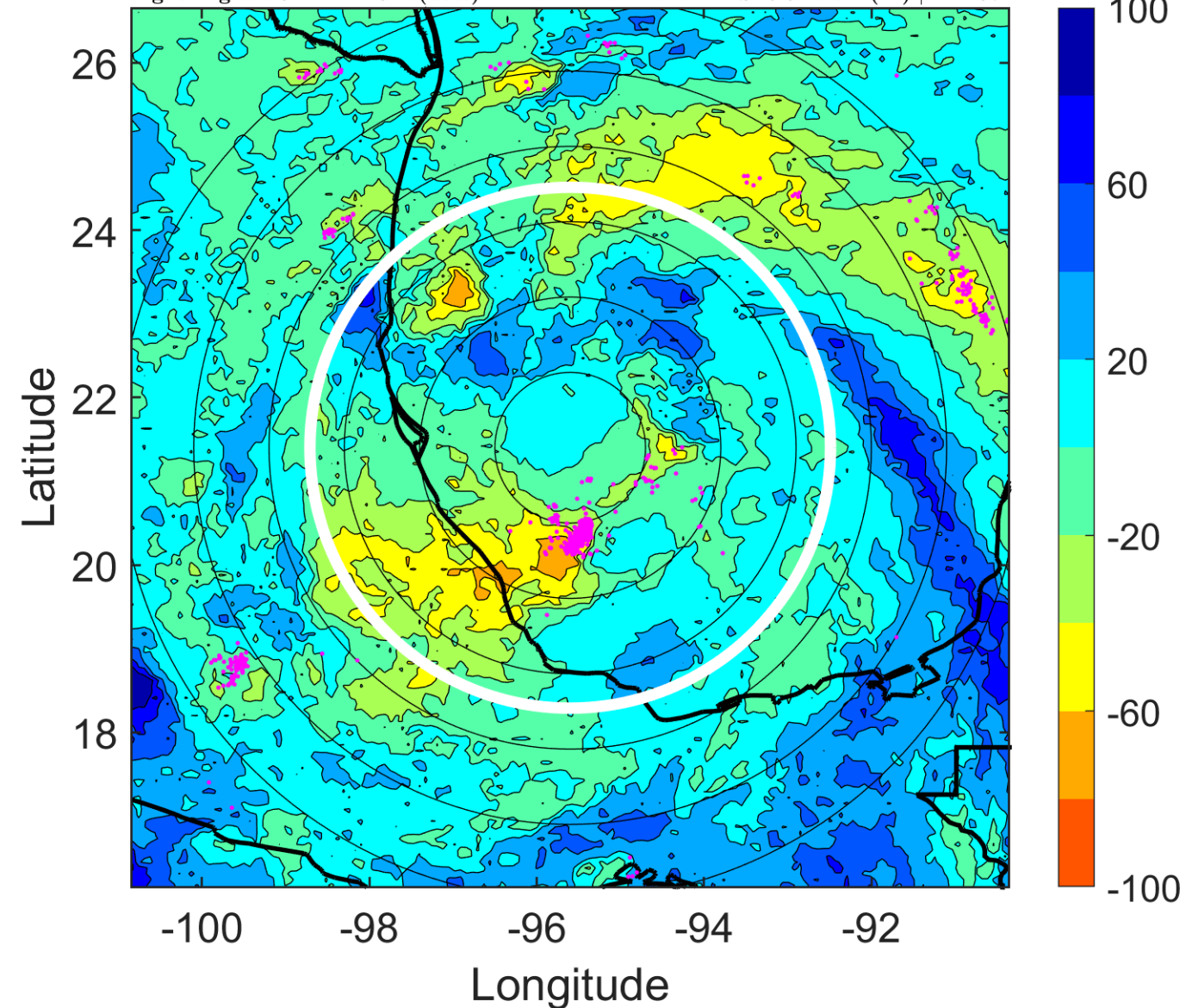
Δ t: 2011062918 (11.6 LT) - 2011062912 (5.6 LT)

Lightning: 11.6 LT \pm 1.5 h (dots)

PT: LLCP | EA: ACT

01L (ARLENE) | 50 kt TS

S: 5.9 m s⁻¹ (M) | H: 167°



IR BT & Lightning

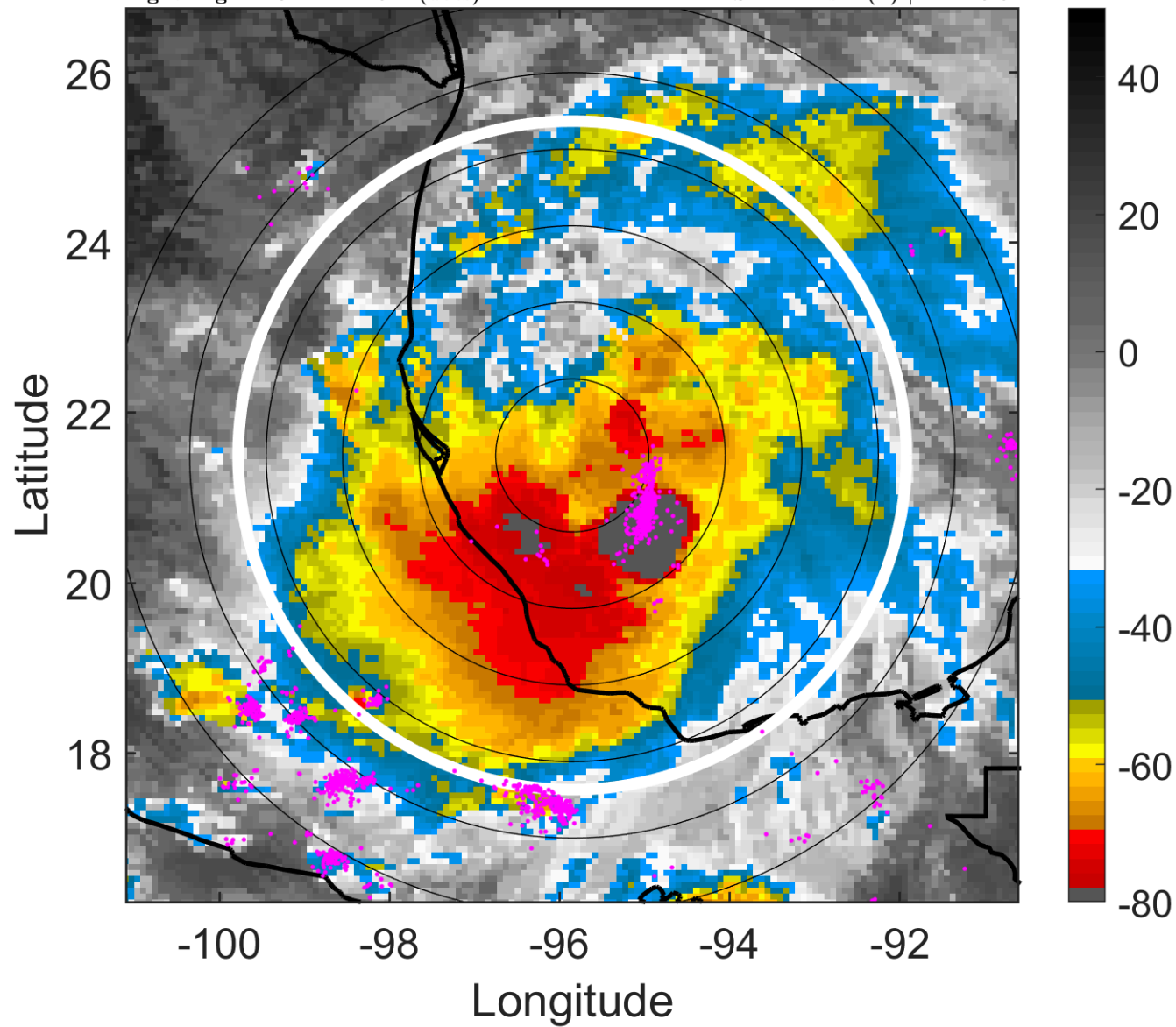
t: 2011062921 (14.6 LT)

Lightning: 14.6 LT \pm 1.5 h (dots)

PT: LLCP | EA: ACT

01L (ARLENE) | 50 kt TS

S: 4.1 m s⁻¹ (L) | H: 145.5°



6-h IR BT Differences & Lightning

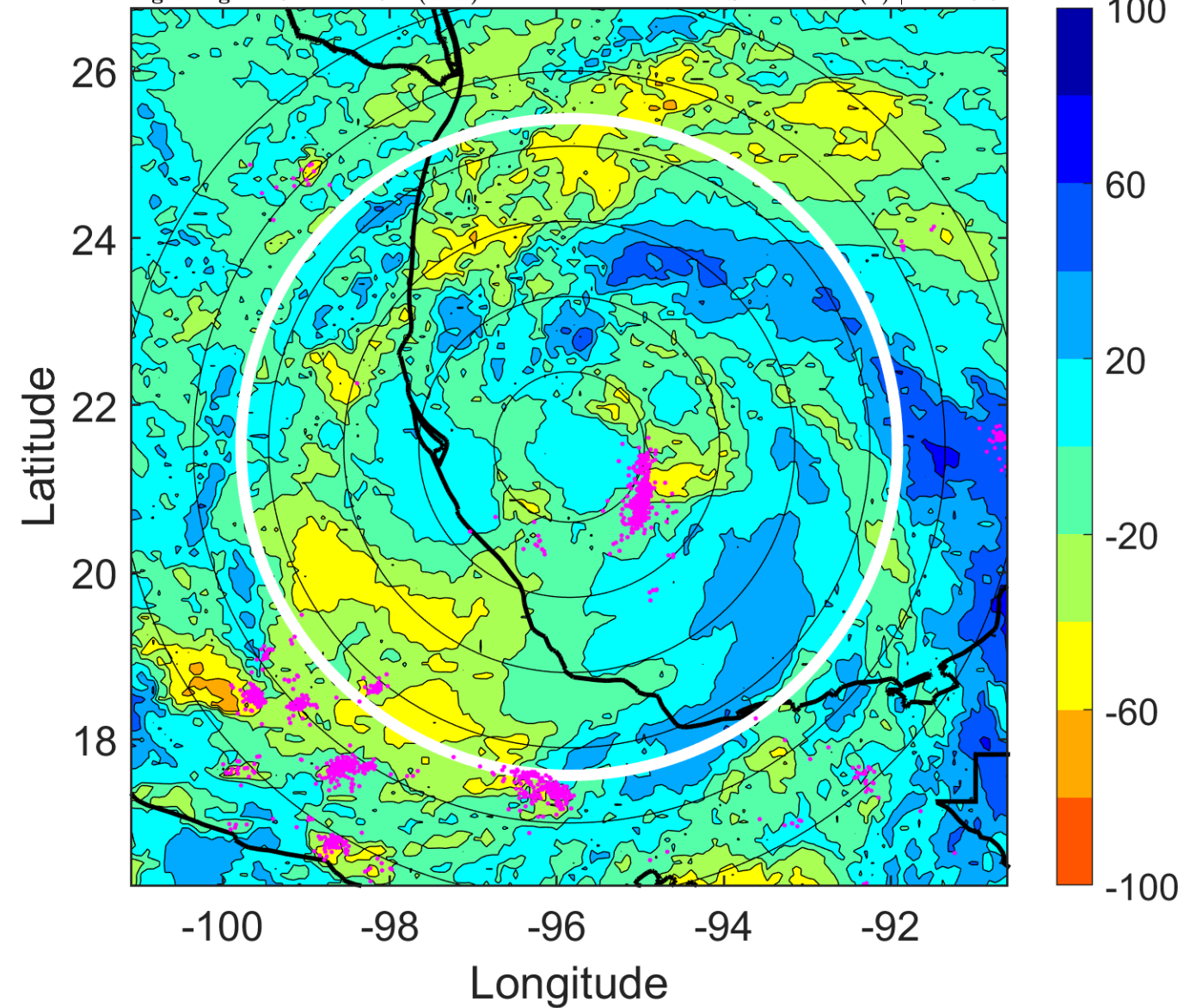
Δ t: 2011062921 (14.6 LT) - 2011062915 (8.6 LT)

Lightning: 14.6 LT \pm 1.5 h (dots)

PT: LLCP | EA: ACT

01L (ARLENE) | 50 kt TS

S: 4.1 m s⁻¹ (L) | H: 145.5°



IR BT & Lightning

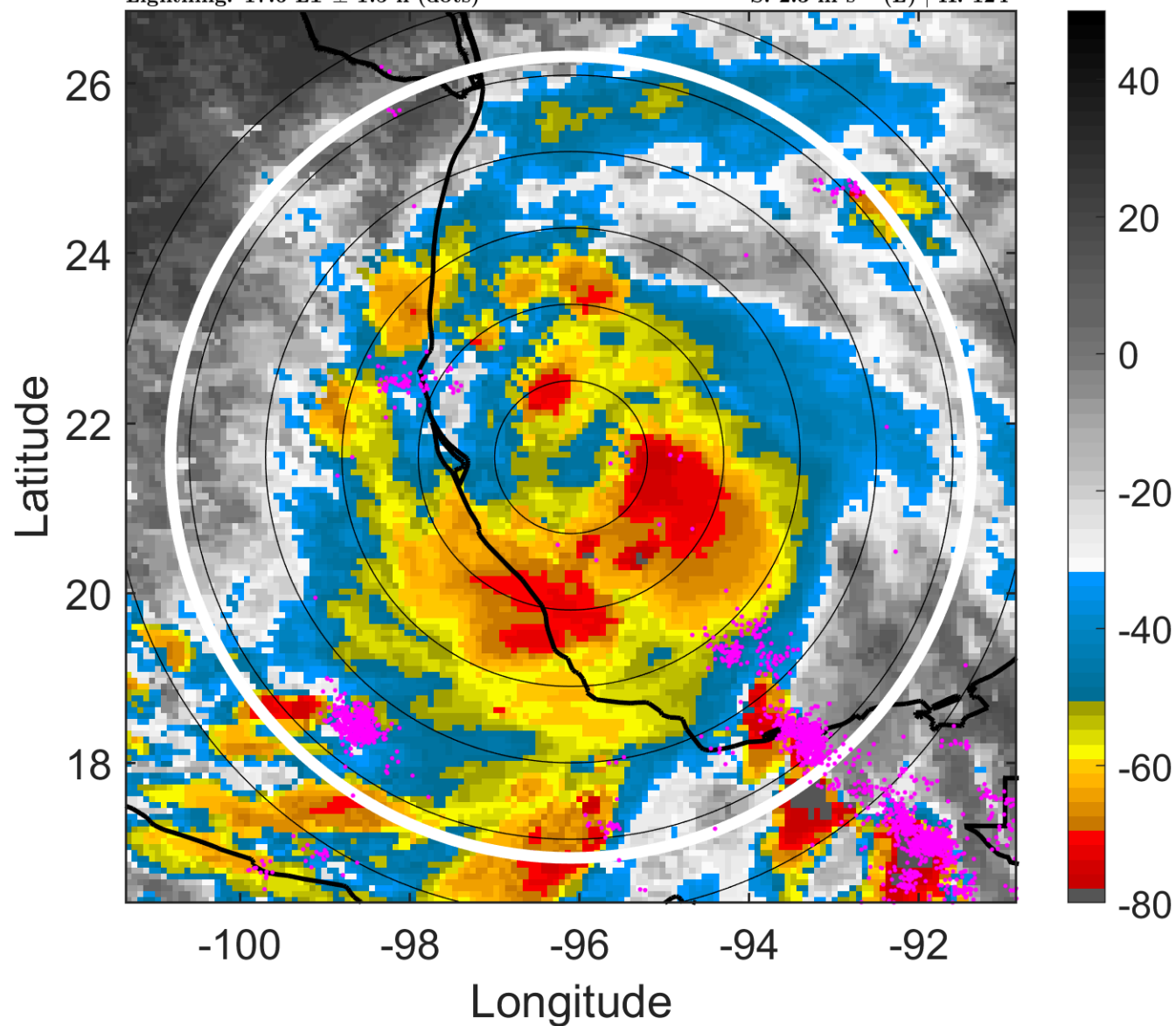
t: 2011063000 (17.6 LT)

Lightning: 17.6 LT \pm 1.5 h (dots)

PT: LLCP | EA: ACT

01L (ARLENE) | 50 kt TS

S: 2.3 m s⁻¹ (L) | H: 124°



6-h IR BT Differences & Lightning

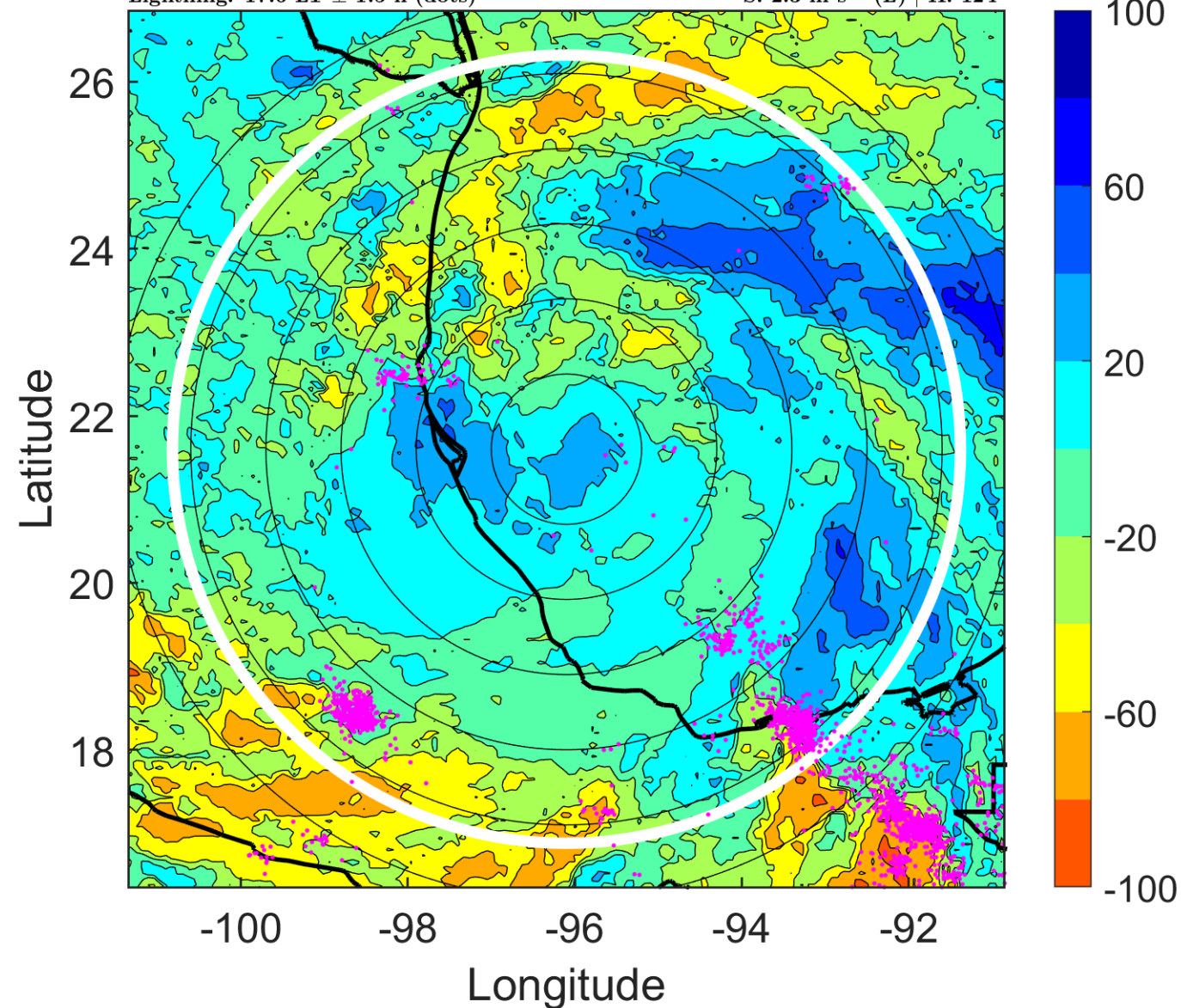
Δ t: 2011063000 (17.6 LT) - 2011062918 (11.6 LT)

Lightning: 17.6 LT \pm 1.5 h (dots)

PT: LLCP | EA: ACT

01L (ARLENE) | 50 kt TS

S: 2.3 m s⁻¹ (L) | H: 124°



IR BT & Lightning

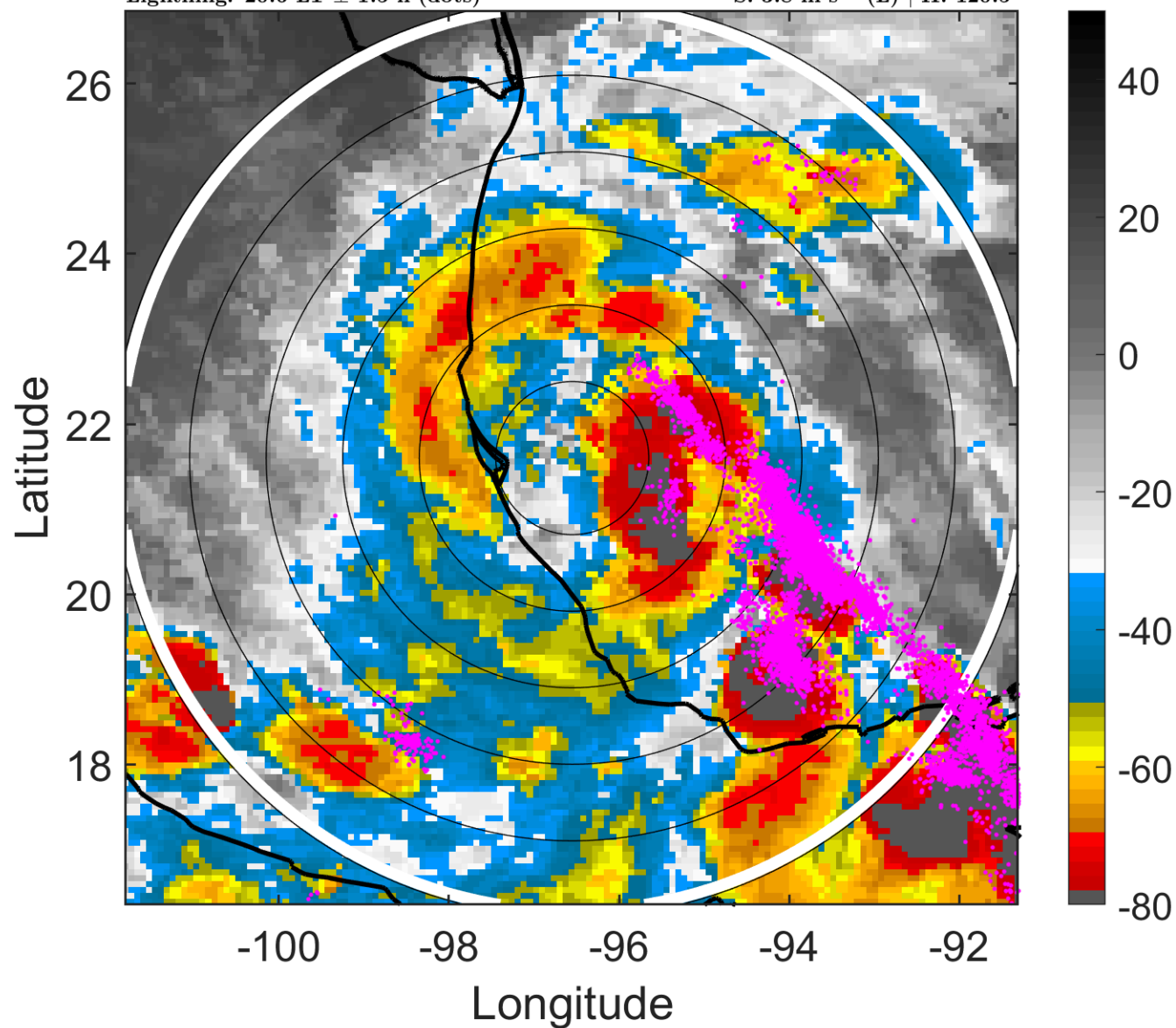
t: 2011063003 (20.6 LT)

Lightning: 20.6 LT \pm 1.5 h (dots)

PT: LLCP | EA: ACT

01L (ARLENE) | 52.5 kt TS

S: 3.8 m s⁻¹ (L) | H: 120.5°



6-h IR BT Differences & Lightning

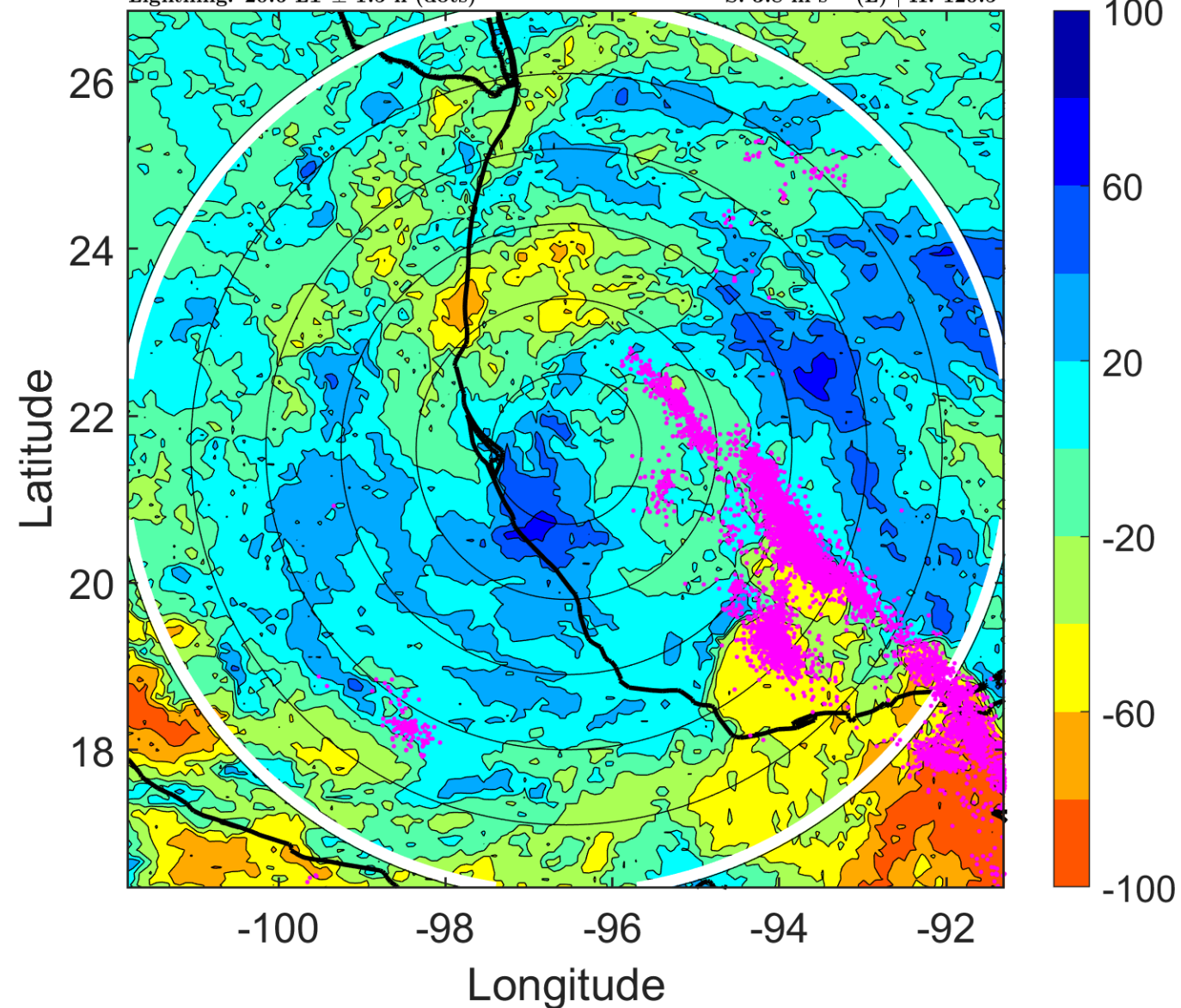
Δ t: 2011063003 (20.6 LT) - 2011062921 (14.6 LT)

Lightning: 20.6 LT \pm 1.5 h (dots)

PT: LLCP | EA: ACT

01L (ARLENE) | 52.5 kt TS

S: 3.8 m s⁻¹ (L) | H: 120.5°



IR BT & Lightning

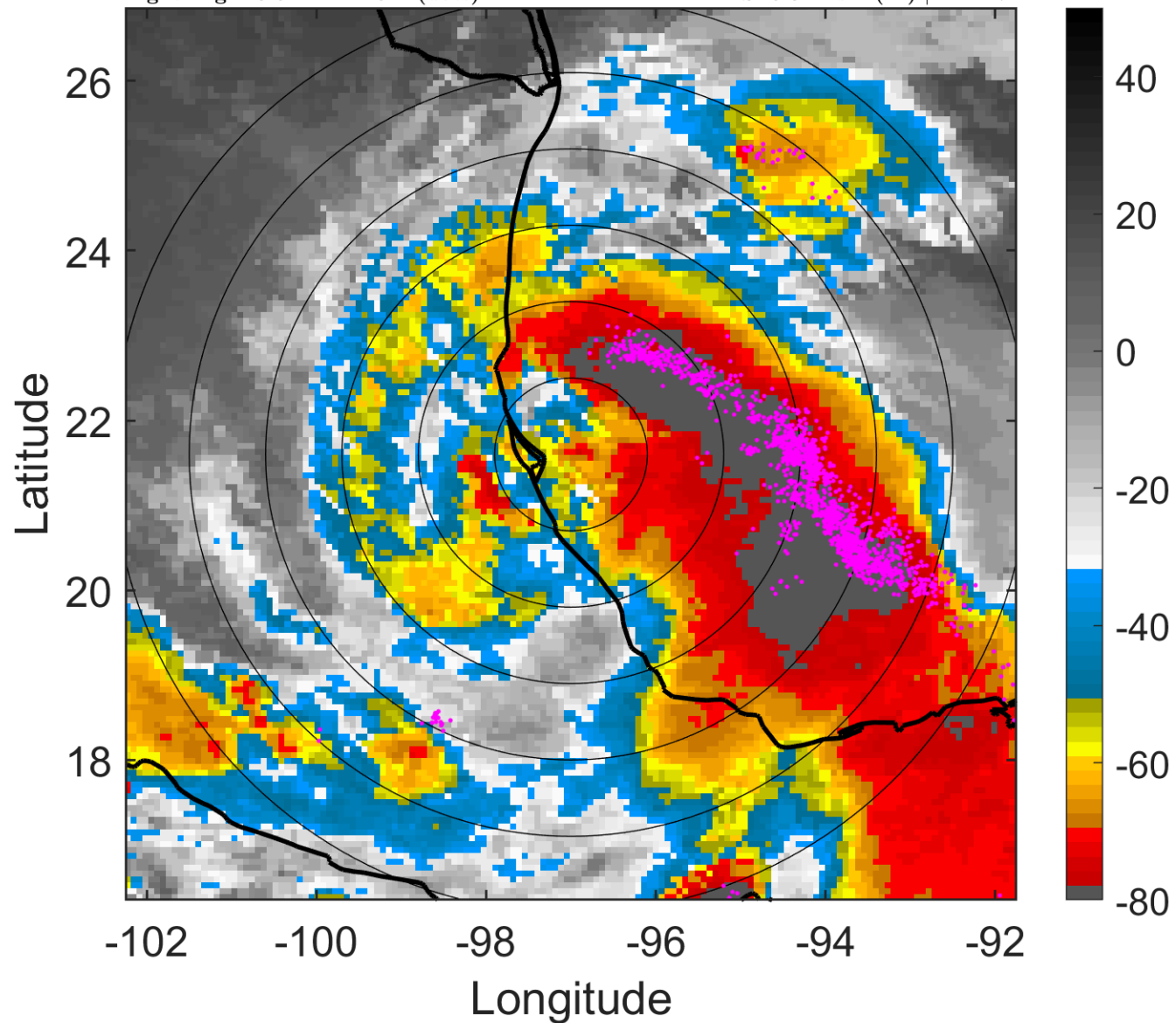
t: 2011063006 (23.5 LT)

Lightning: 23.5 LT \pm 1.5 h (dots)

PT: LLCP | EA: ACT

01L (ARLENE) | 55 kt TS

S: 5.3 m s⁻¹ (M) | H: 117°



6-h IR BT Differences & Lightning

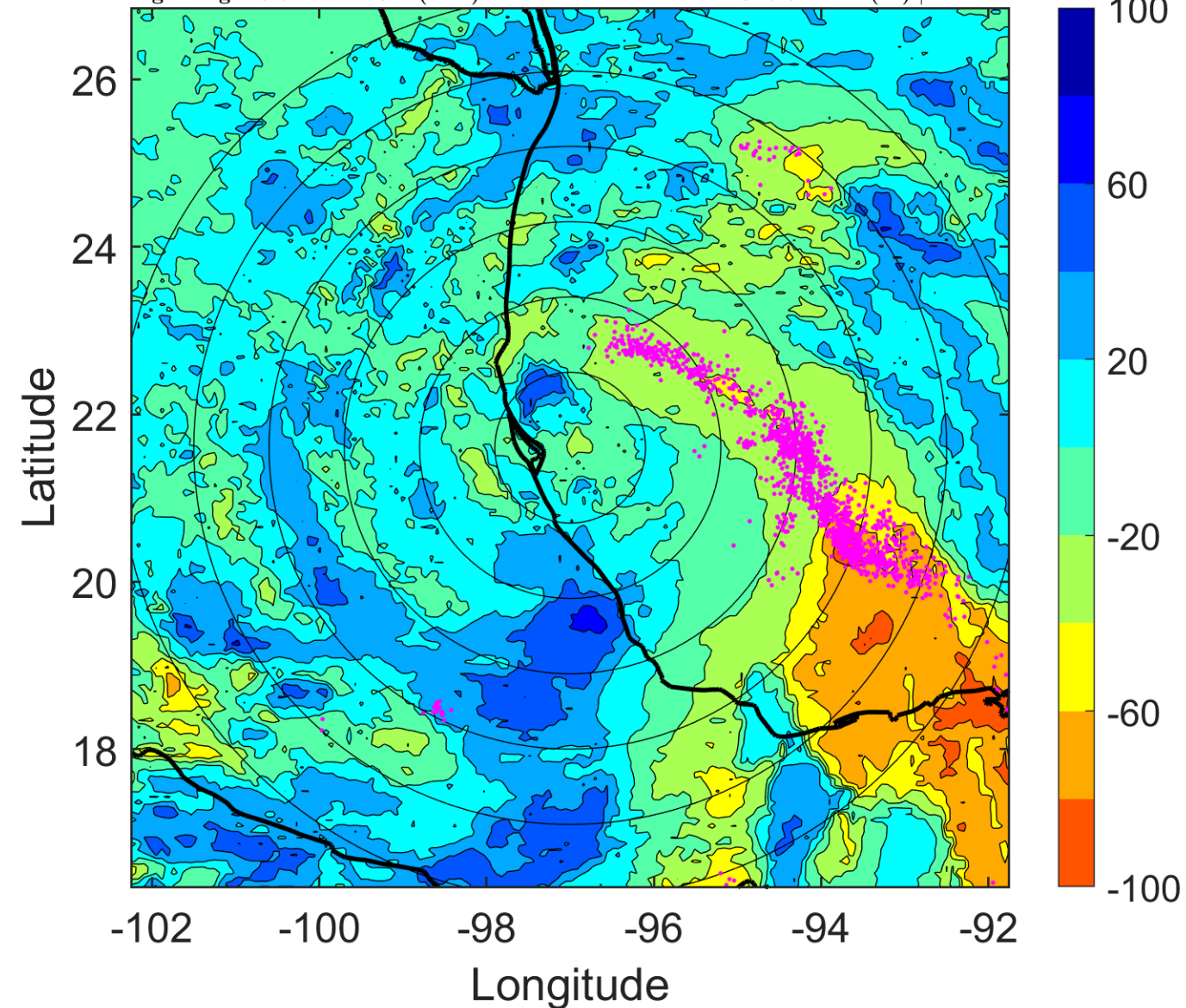
Δ t: 2011063006 (23.5 LT) - 2011063000 (17.6 LT)

Lightning: 23.5 LT \pm 1.5 h (dots)

PT: LLCP | EA: ACT

01L (ARLENE) | 55 kt TS

S: 5.3 m s⁻¹ (M) | H: 117°



IR BT & Lightning

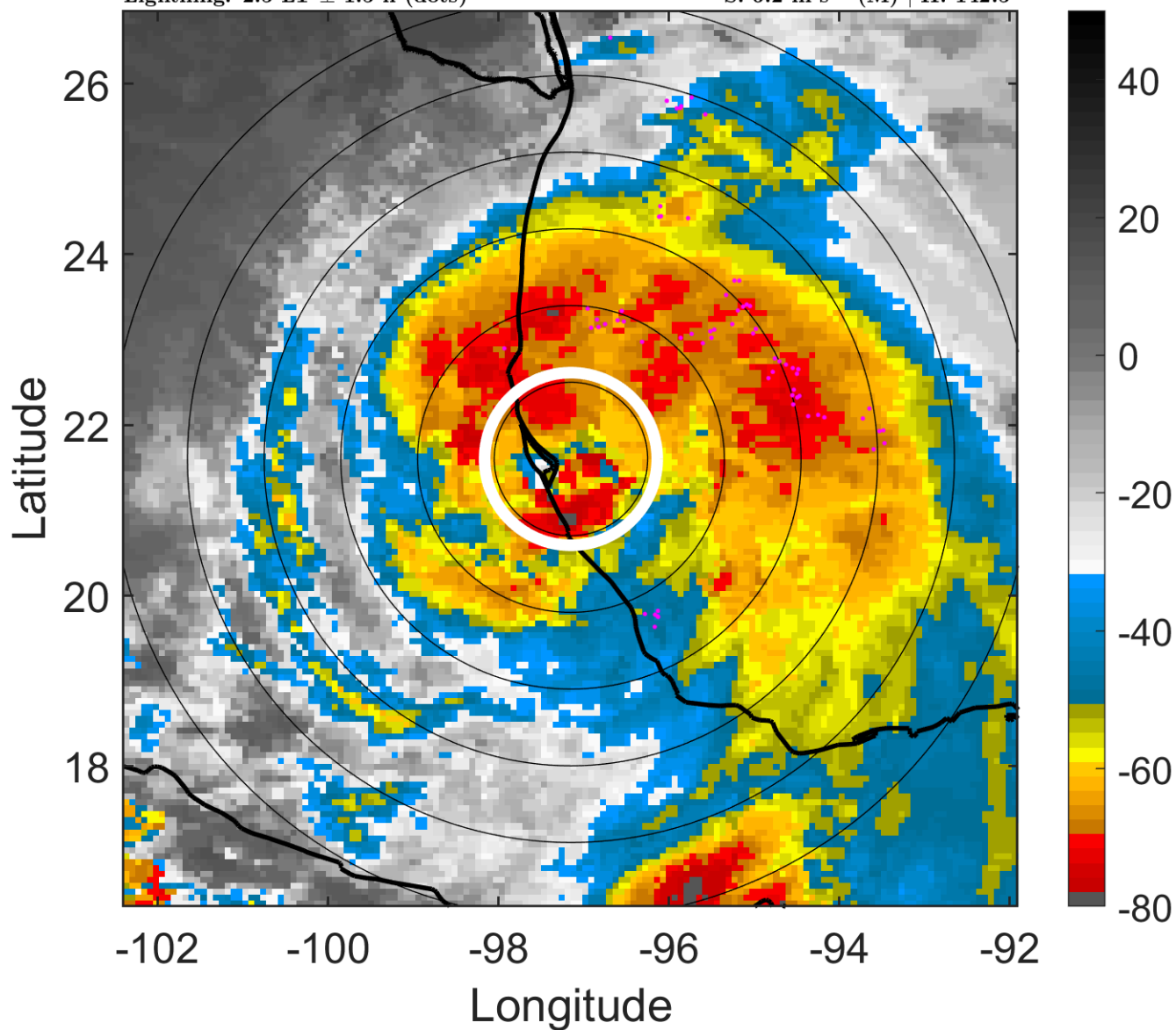
t: 2011063009 (2.5 LT)

Lightning: 2.5 LT \pm 1.5 h (dots)

LAND EFFECTS

01L (ARLENE) | 55 kt TS

S: 6.2 m s⁻¹ (M) | H: 142.5°



6-h IR BT Differences & Lightning

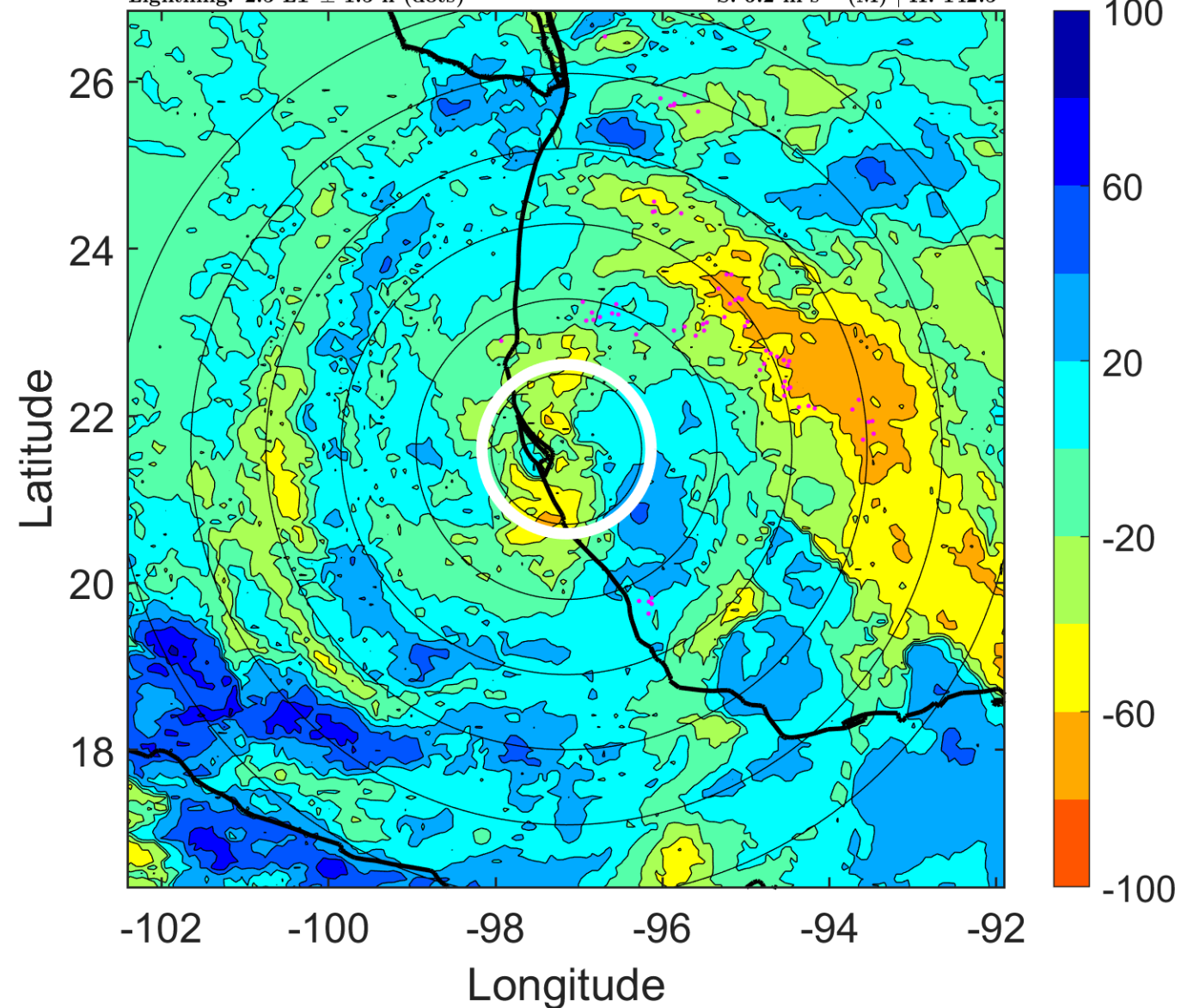
Δ t: 2011063009 (2.5 LT) - 2011063003 (20.6 LT)

Lightning: 2.5 LT \pm 1.5 h (dots)

LAND EFFECTS

01L (ARLENE) | 55 kt TS

S: 6.2 m s⁻¹ (M) | H: 142.5°



IR BT & Lightning

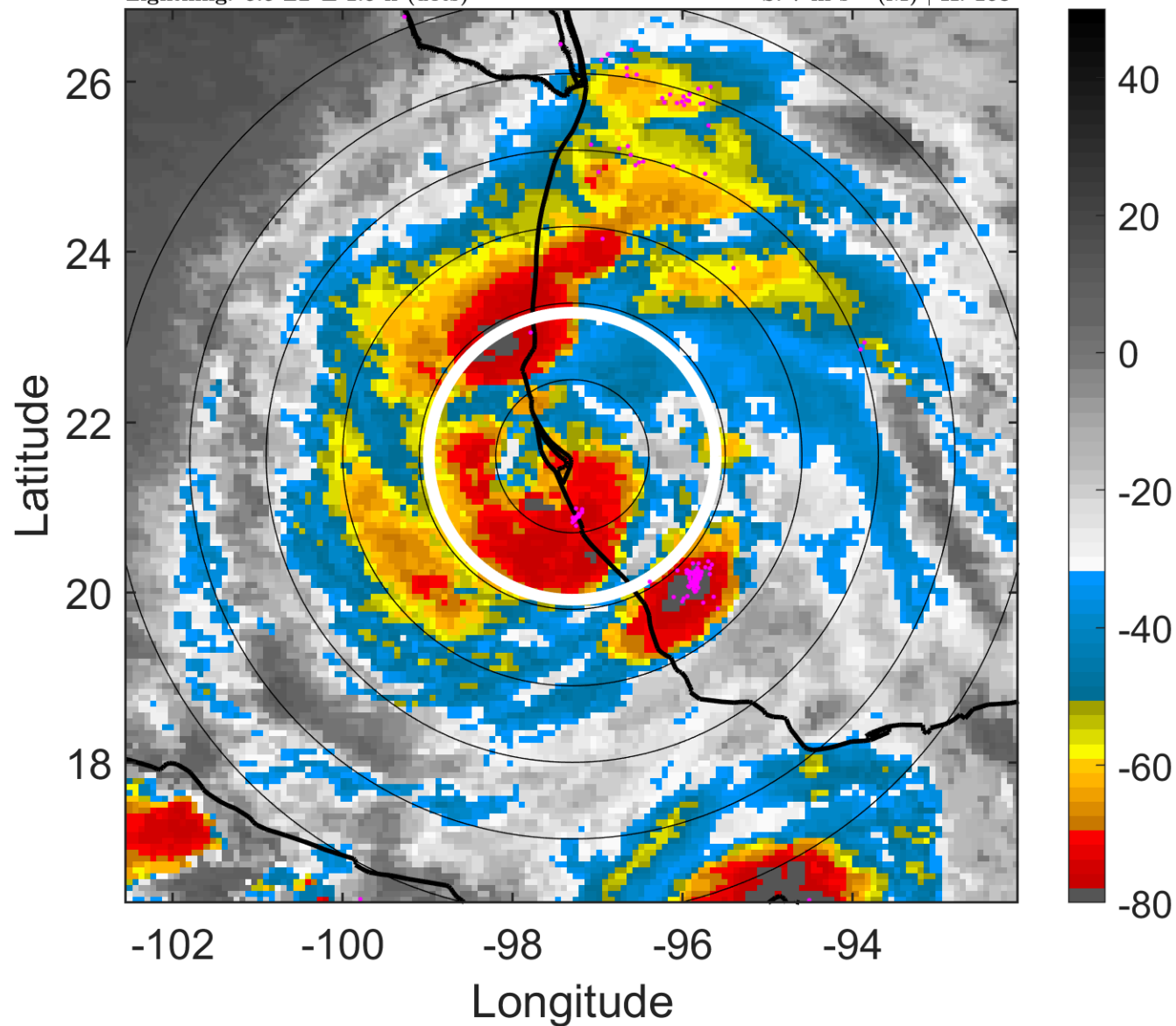
t: 2011063012 (5.5 LT)

Lightning: 5.5 LT \pm 1.5 h (dots)

LAND EFFECTS

01L (ARLENE) | 55 kt TS

S: 7 m s⁻¹ (M) | H: 168°



6-h IR BT Differences & Lightning

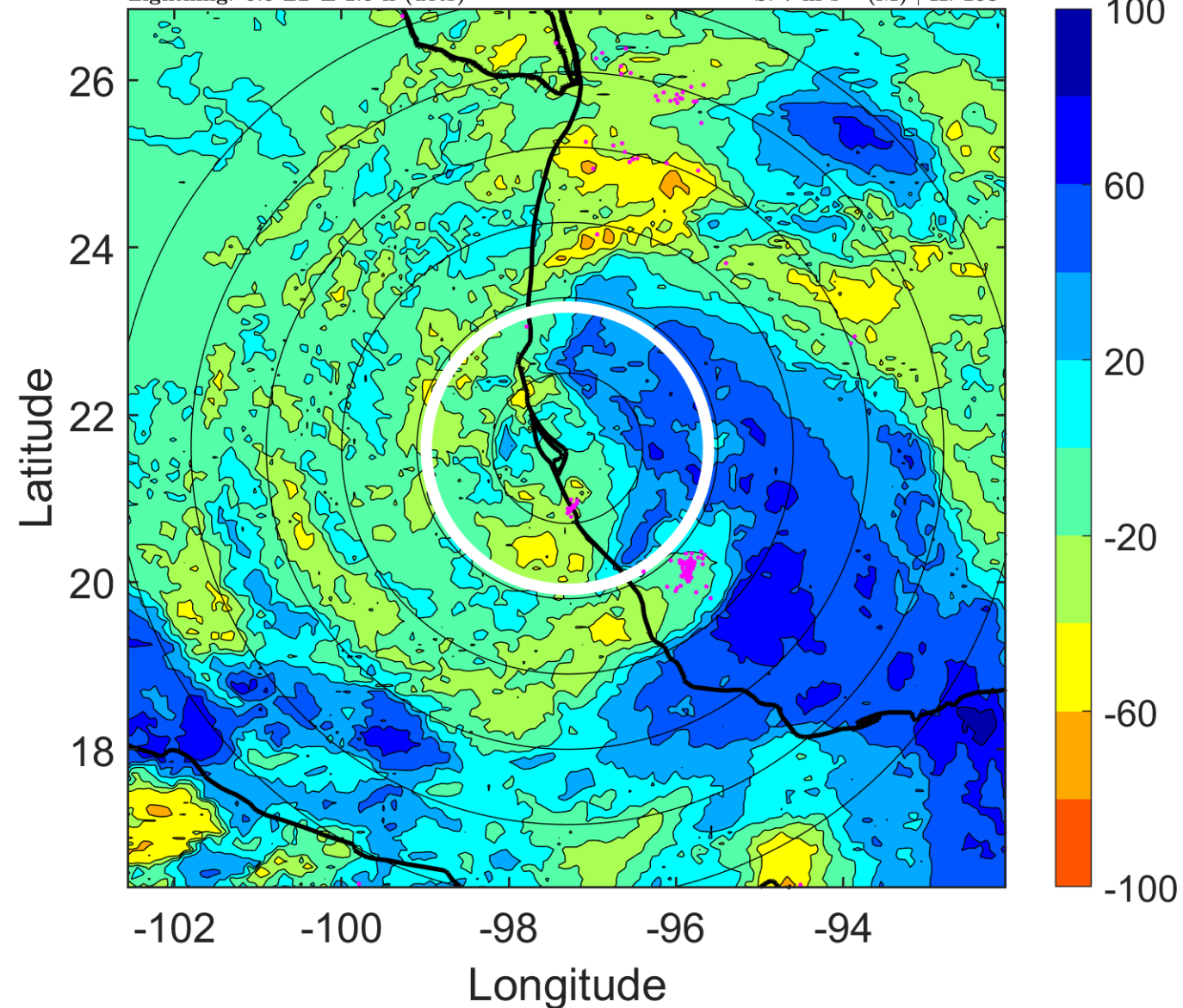
Δ t: 2011063012 (5.5 LT) - 2011063006 (23.5 LT)

Lightning: 5.5 LT \pm 1.5 h (dots)

LAND EFFECTS

01L (ARLENE) | 55 kt TS

S: 7 m s⁻¹ (M) | H: 168°



IR BT & Lightning

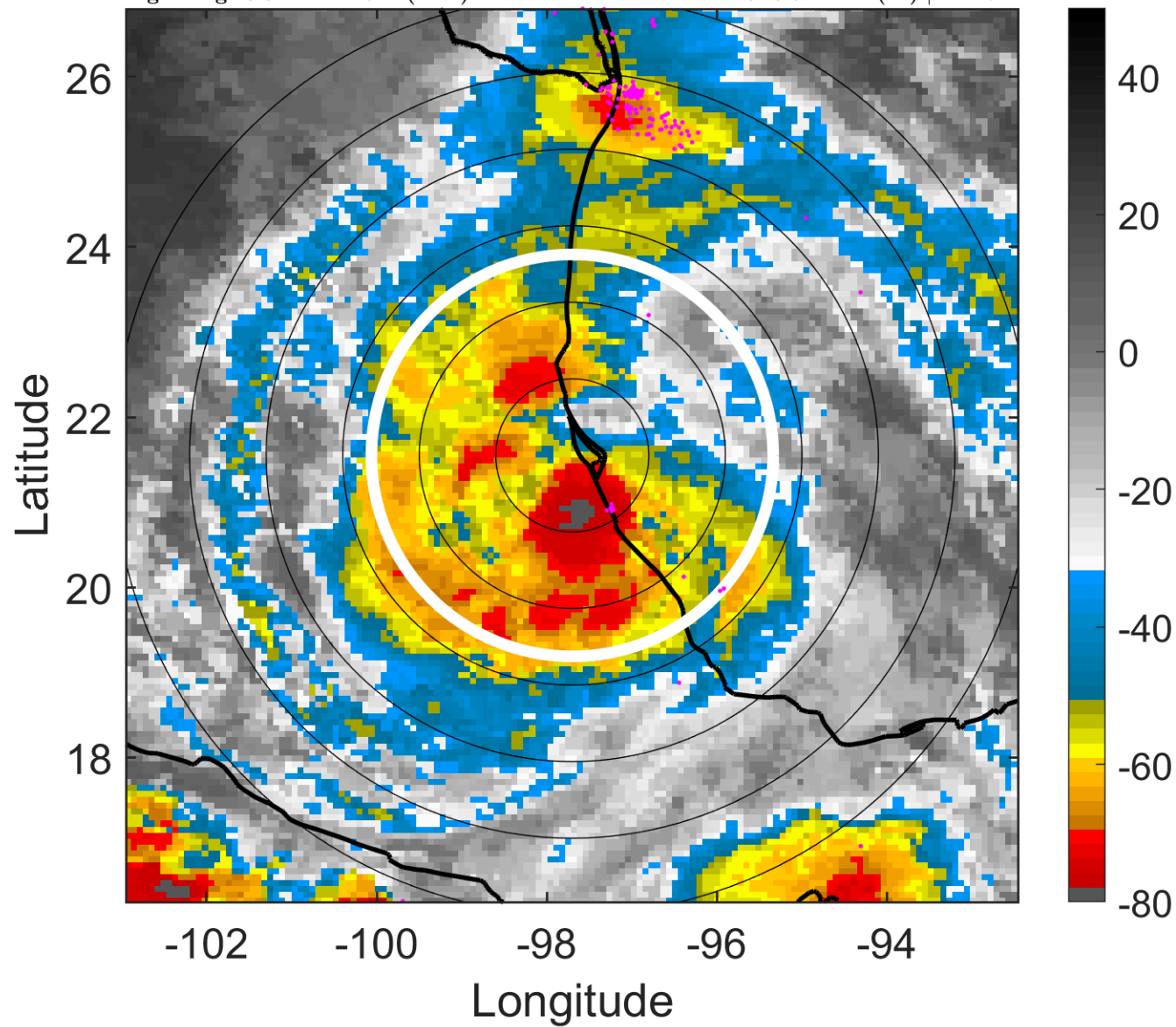
t: 2011063015 (8.5 LT)

Lightning: 8.5 LT \pm 1.5 h (dots)

LAND EFFECTS

01L (ARLENE) | 50 kt TS

S: 6.5 m s⁻¹ (M) | H: 174°



6-h IR BT Differences & Lightning

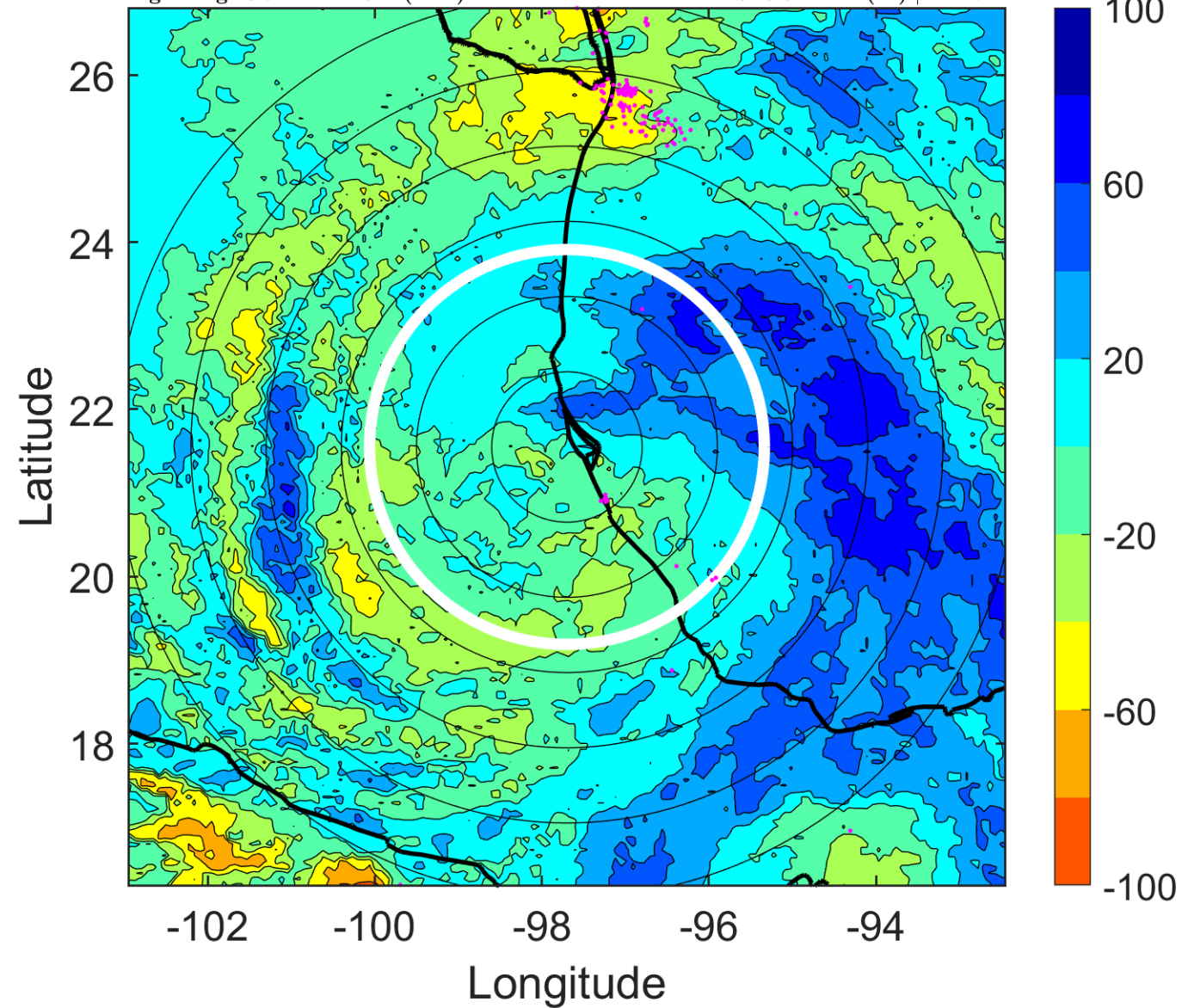
Δ t: 2011063015 (8.5 LT) - 2011063009 (2.5 LT)

Lightning: 8.5 LT \pm 1.5 h (dots)

LAND EFFECTS

01L (ARLENE) | 50 kt TS

S: 6.5 m s⁻¹ (M) | H: 174°



IR BT & Lightning

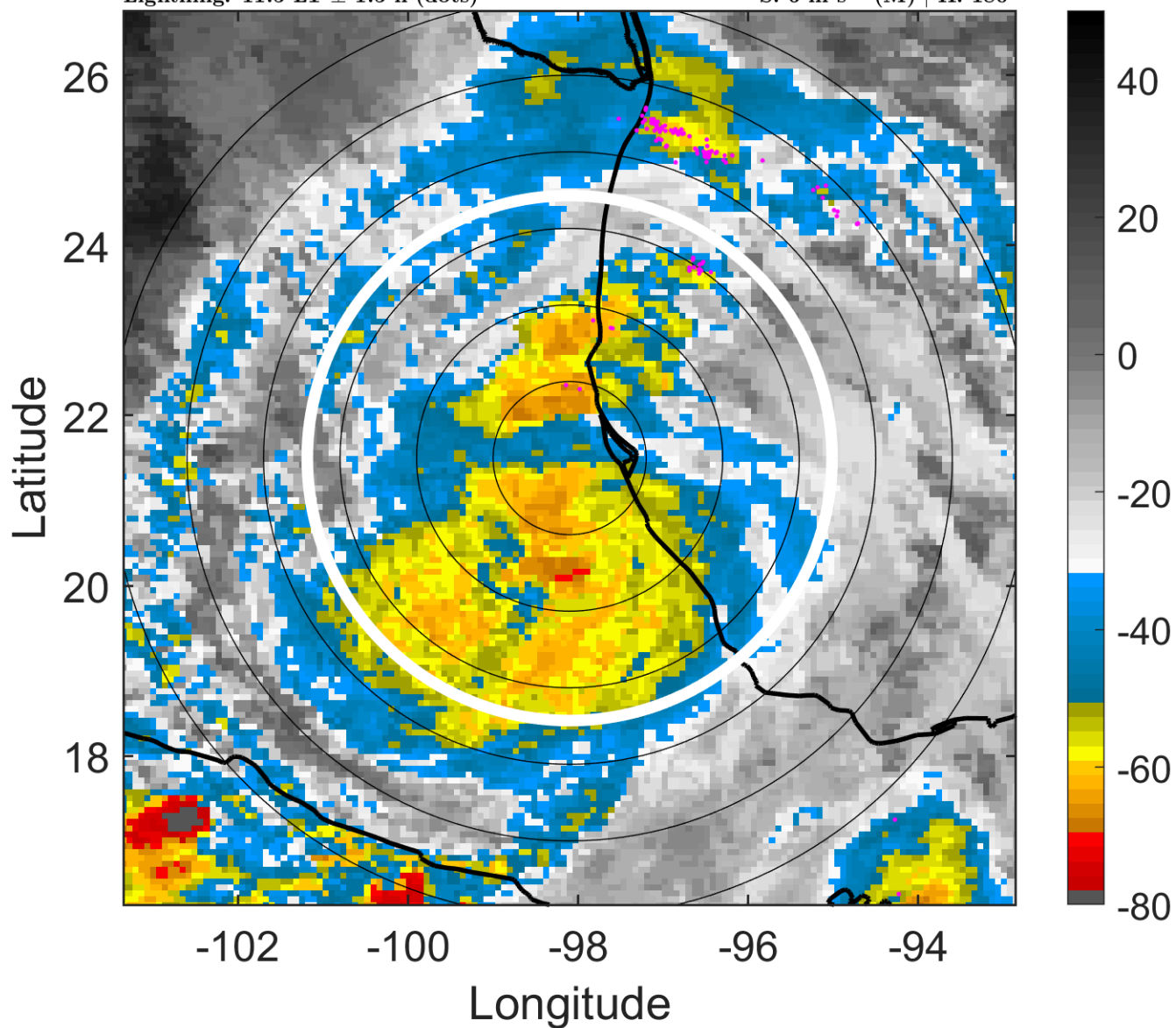
t: 2011063018 (11.5 LT)

Lightning: 11.5 LT \pm 1.5 h (dots)

LAND EFFECTS

01L (ARLENE) | 45 kt TS

S: 6 m s⁻¹ (M) | H: 180°



6-h IR BT Differences & Lightning

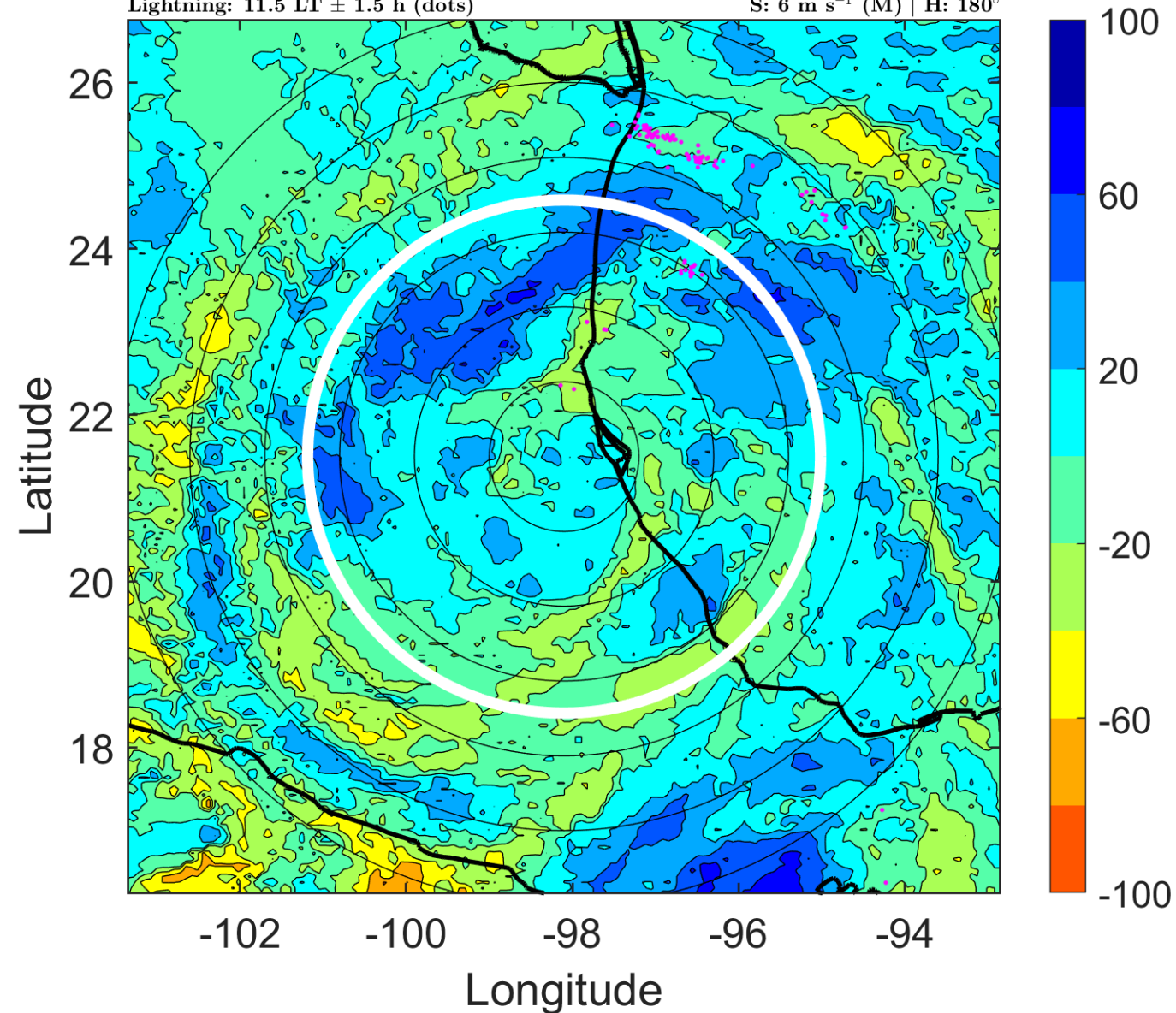
Δ t: 2011063018 (11.5 LT) - 2011063012 (5.5 LT)

Lightning: 11.5 LT \pm 1.5 h (dots)

LAND EFFECTS

01L (ARLENE) | 45 kt TS

S: 6 m s⁻¹ (M) | H: 180°



IR BT & Lightning

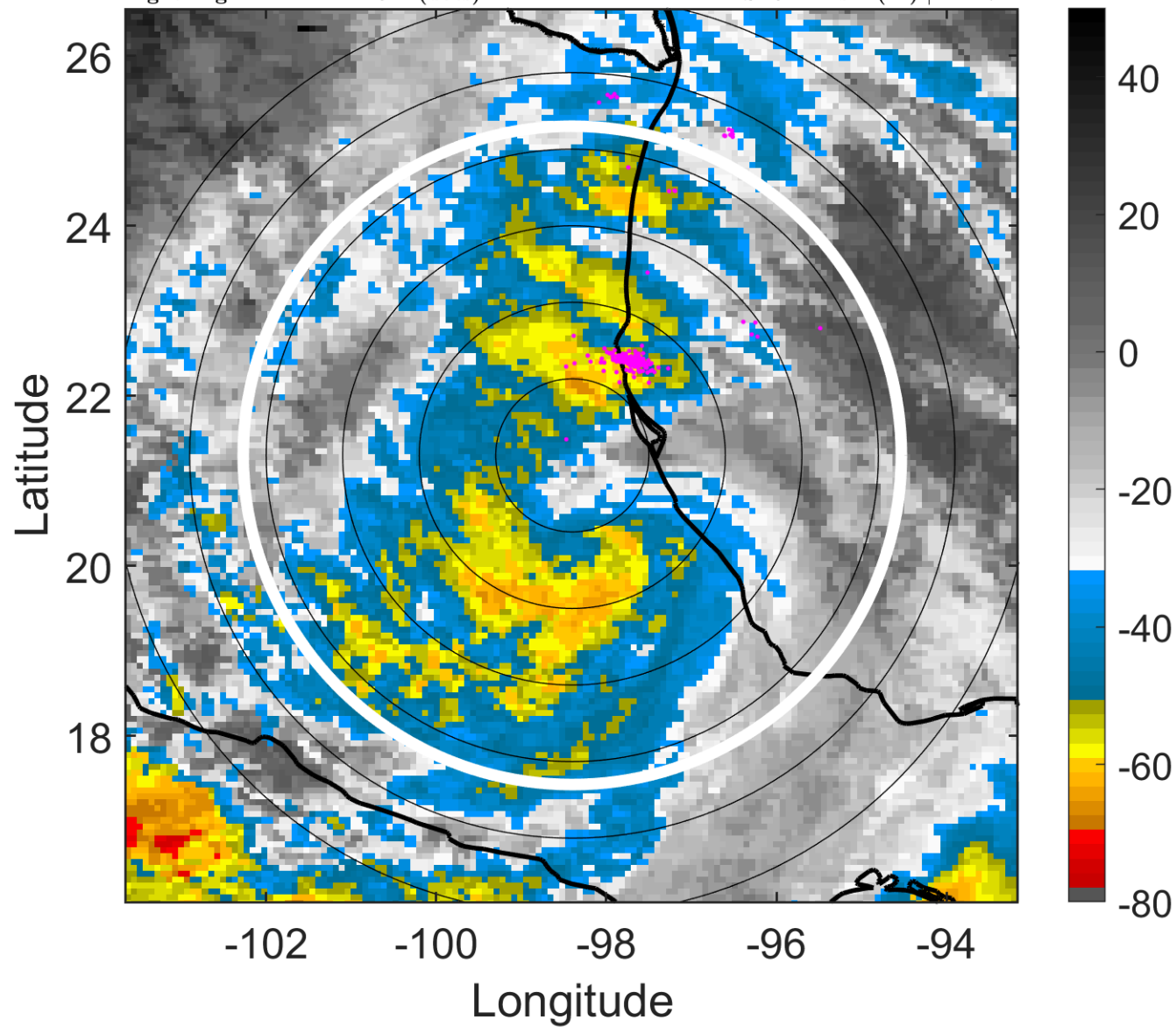
t: 2011063021 (14.4 LT)

Lightning: 14.4 LT \pm 1.5 h (dots)

LAND EFFECTS

01L (ARLENE) | 37.5 kt TS

S: 6.2 m s⁻¹ (M) | H: 174°



6-h IR BT Differences & Lightning

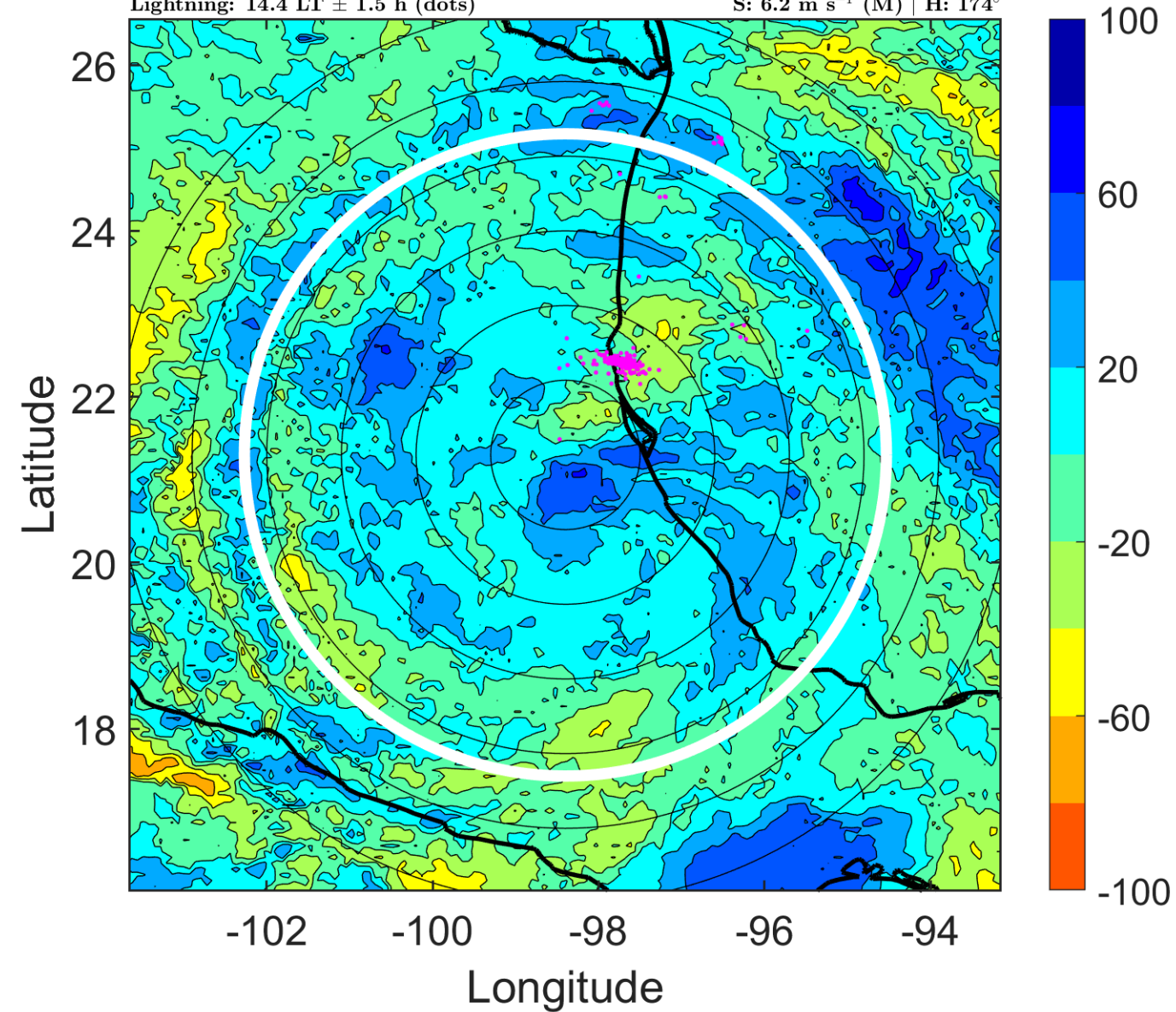
Δ t: 2011063021 (14.4 LT) - 2011063015 (8.5 LT)

Lightning: 14.4 LT \pm 1.5 h (dots)

LAND EFFECTS

01L (ARLENE) | 37.5 kt TS

S: 6.2 m s⁻¹ (M) | H: 174°



IR BT & Lightning

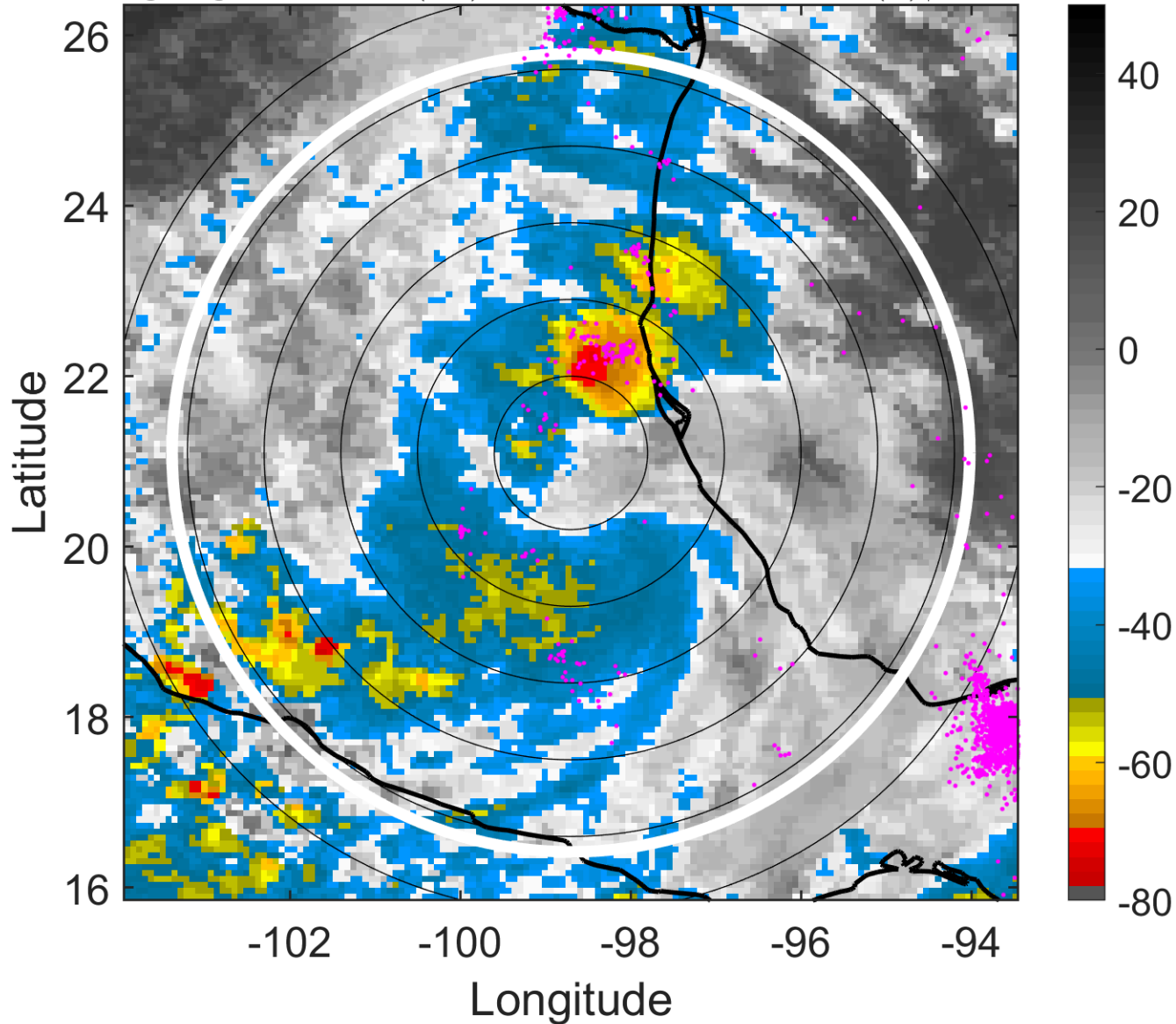
t: 2011070100 (17.4 LT)

Lightning: 17.4 LT \pm 1.5 h (dots)

LAND EFFECTS

01L (ARLENE) | 30 kt TD

S: 6.4 m s⁻¹ (M) | H: 168°



6-h IR BT Differences & Lightning

Δ t: 2011070100 (17.4 LT) - 2011063018 (11.5 LT)

Lightning: 17.4 LT \pm 1.5 h (dots)

LAND EFFECTS

01L (ARLENE) | 30 kt TD

S: 6.4 m s⁻¹ (M) | H: 168°

