

IR BT & Lightning

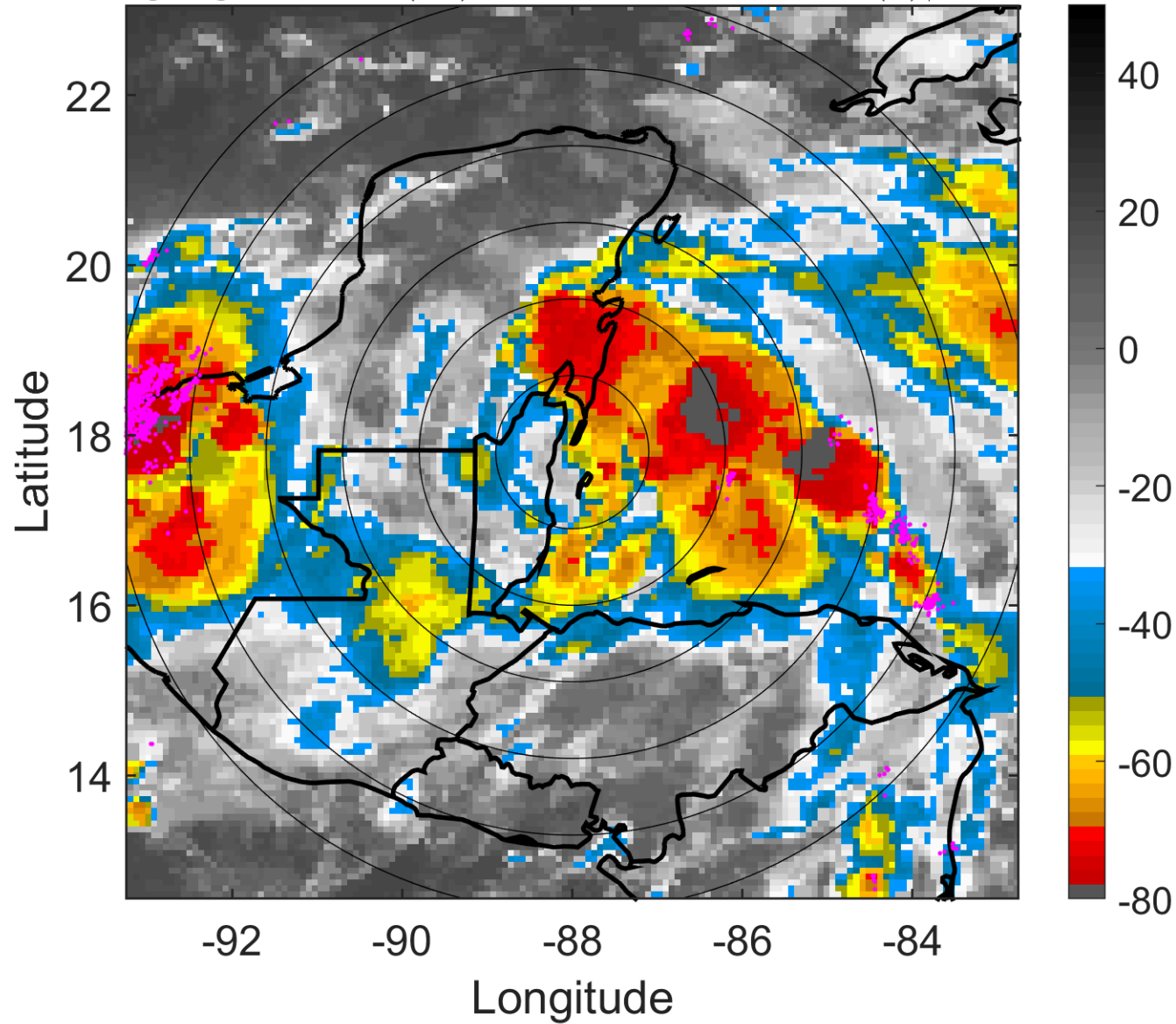
t: 2008053106 (0.1 LT)

Lightning: 0.1 LT \pm 1.5 h (dots)

LAND EFFECTS

01L (ARTHUR) | 40 kt TS

S: 6.5 m s⁻¹ (M) | H: 142°



6-h IR BT Differences & Lightning

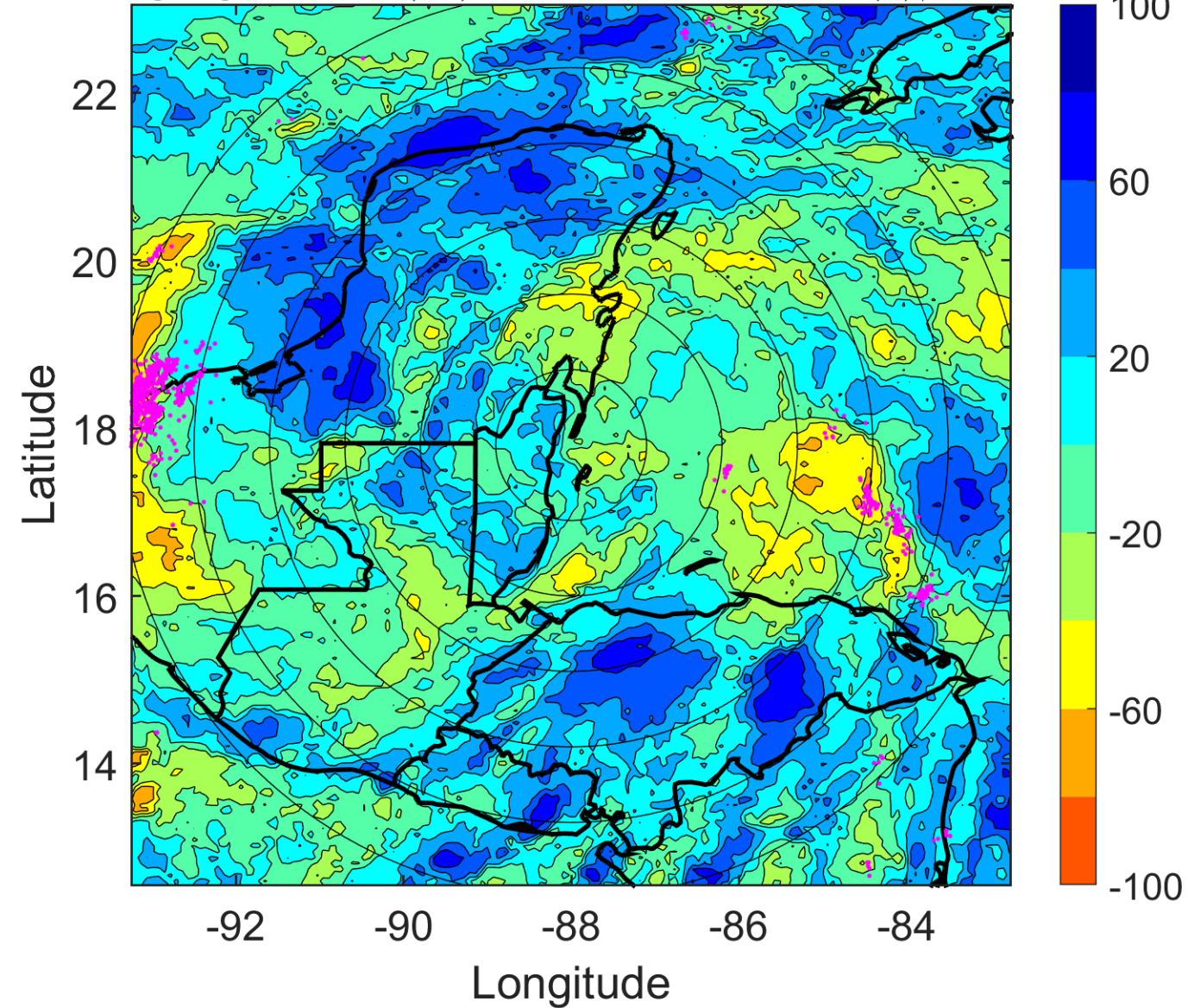
Δ t: 2008053106 (0.1 LT) - 2008053100 (18.2 LT)

Lightning: 0.1 LT \pm 1.5 h (dots)

LAND EFFECTS

01L (ARTHUR) | 40 kt TS

S: 6.5 m s⁻¹ (M) | H: 142°



IR BT & Lightning

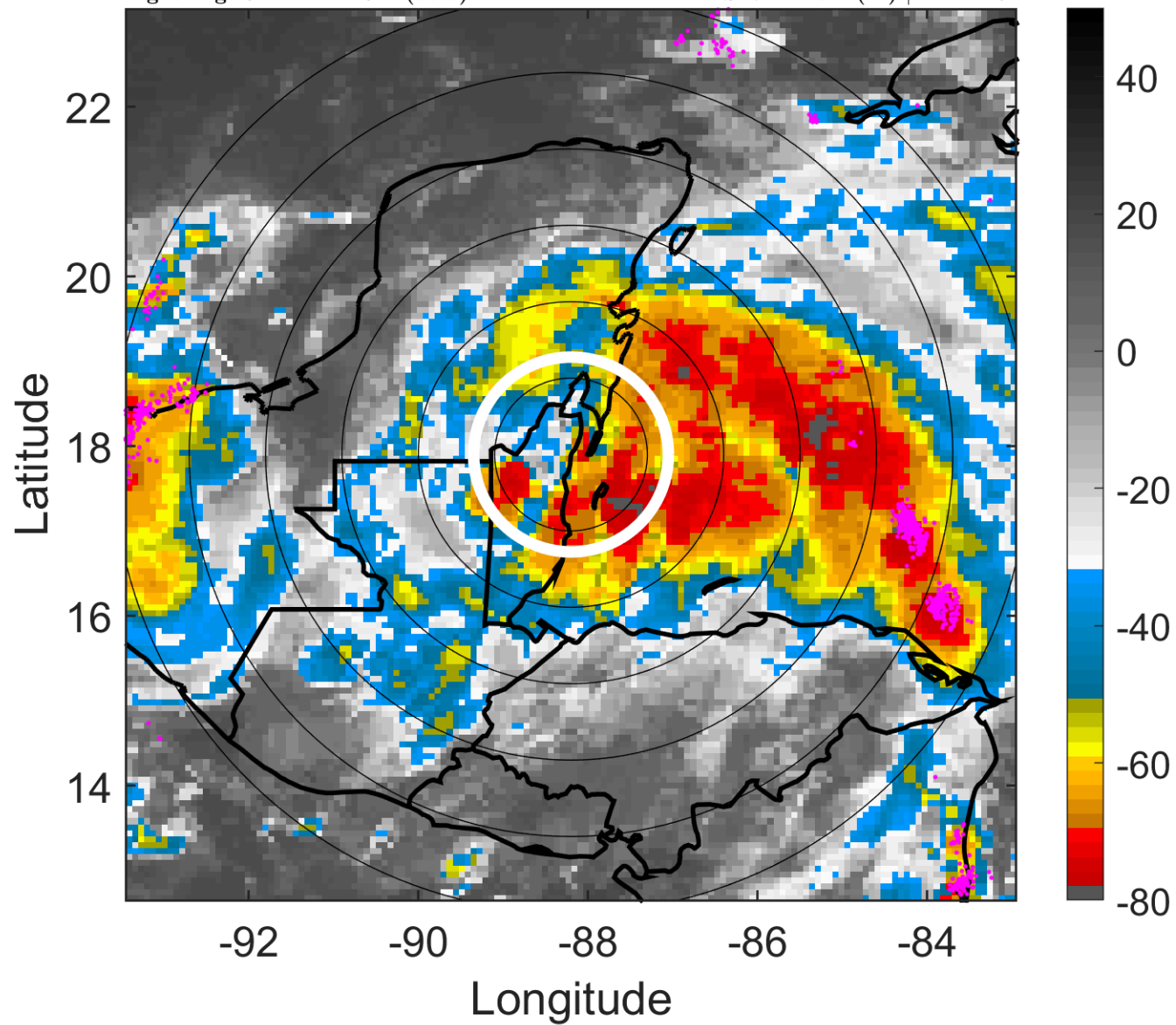
t: 2008053109 (3.1 LT)

Lightning: 3.1 LT \pm 1.5 h (dots)

LAND EFFECTS

01L (ARTHUR) | 37.5 kt TS

S: 7.2 m s⁻¹ (M) | H: 144.5°



6-h IR BT Differences & Lightning

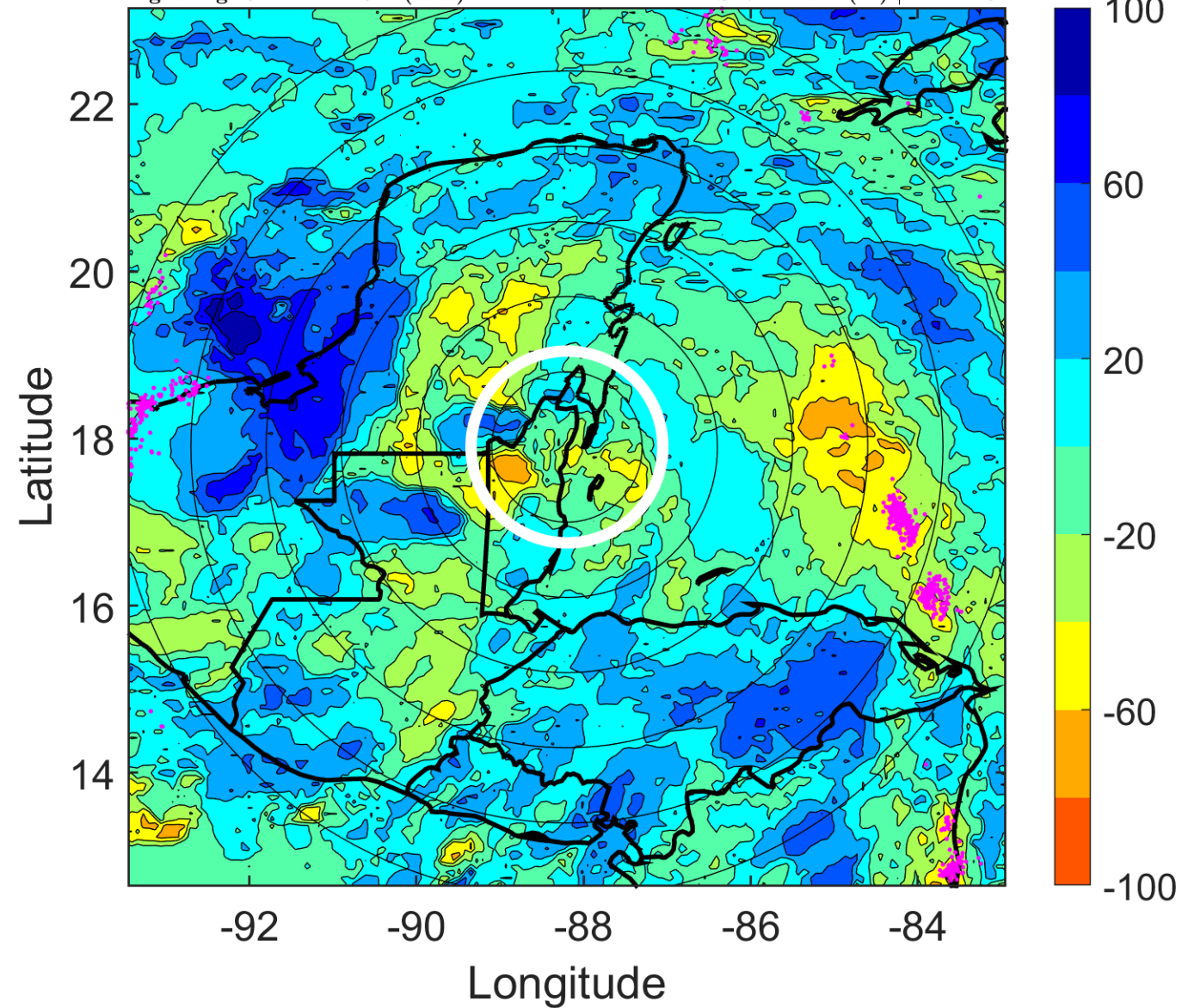
Δ t: 2008053109 (3.1 LT) - 2008053103 (21.2 LT)

Lightning: 3.1 LT \pm 1.5 h (dots)

LAND EFFECTS

01L (ARTHUR) | 37.5 kt TS

S: 7.2 m s⁻¹ (M) | H: 144.5°



IR BT & Lightning

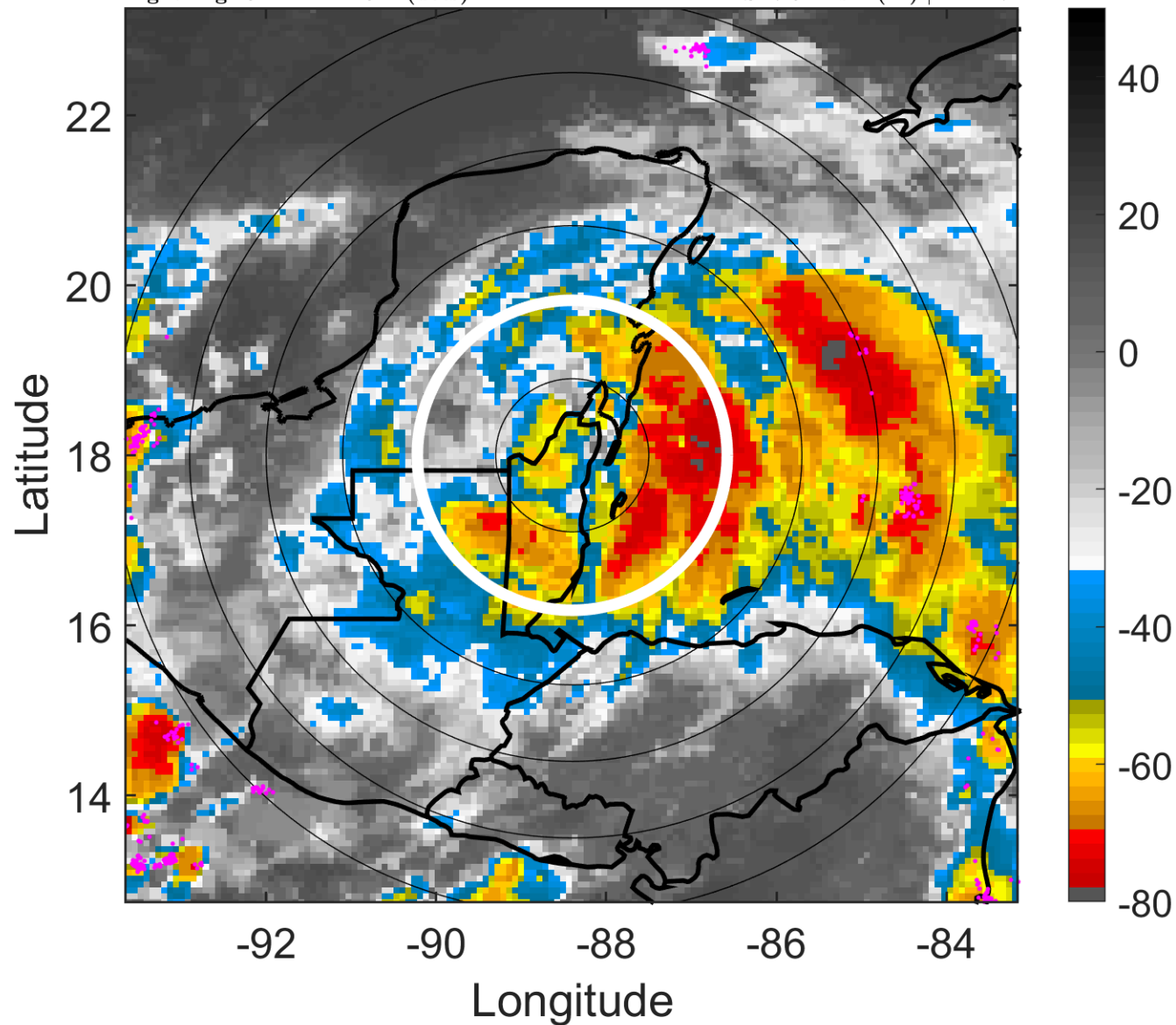
t: 2008053112 (6.1 LT)

Lightning: 6.1 LT \pm 1.5 h (dots)

LAND EFFECTS

01L (ARTHUR) | 35 kt TS

S: 7.9 m s⁻¹ (M) | H: 147°



6-h IR BT Differences & Lightning

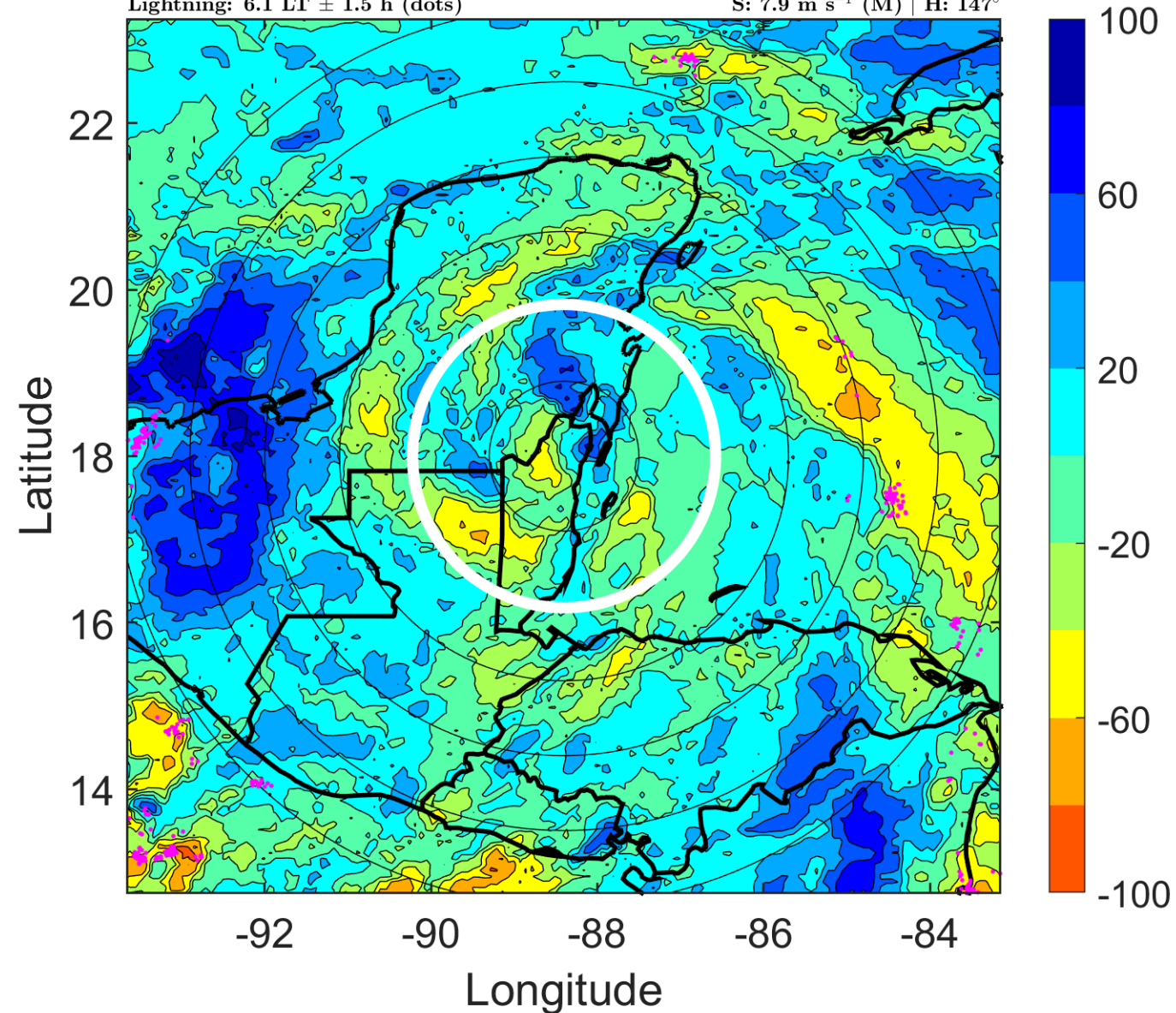
Δ t: 2008053112 (6.1 LT) - 2008053106 (0.1 LT)

Lightning: 6.1 LT \pm 1.5 h (dots)

LAND EFFECTS

01L (ARTHUR) | 35 kt TS

S: 7.9 m s⁻¹ (M) | H: 147°



IR BT & Lightning

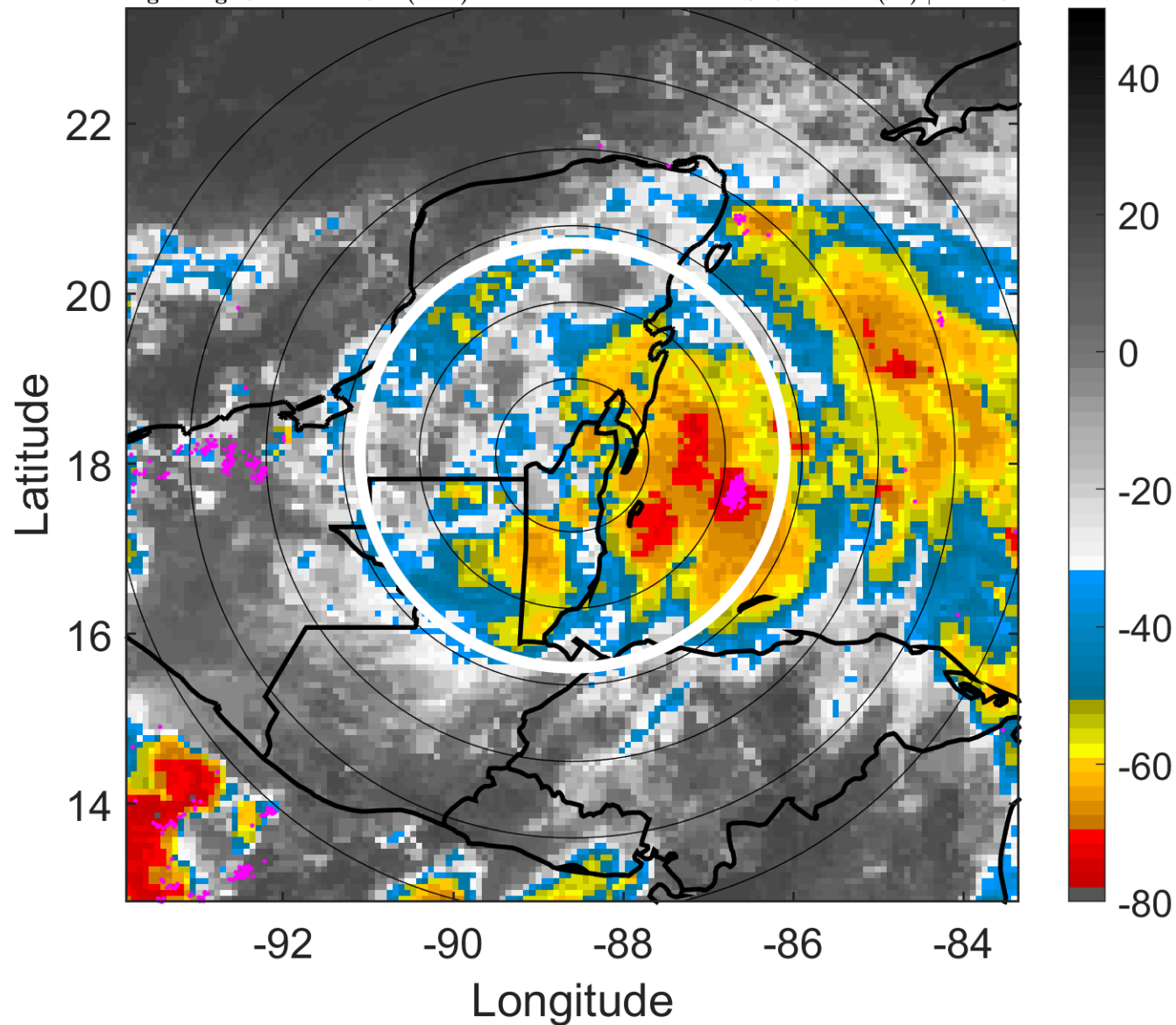
t: 2008053115 (9.1 LT)

Lightning: 9.1 LT \pm 1.5 h (dots)

LAND EFFECTS

01L (ARTHUR) | 35 kt TS

S: 6.8 m s⁻¹ (M) | H: 146°



6-h IR BT Differences & Lightning

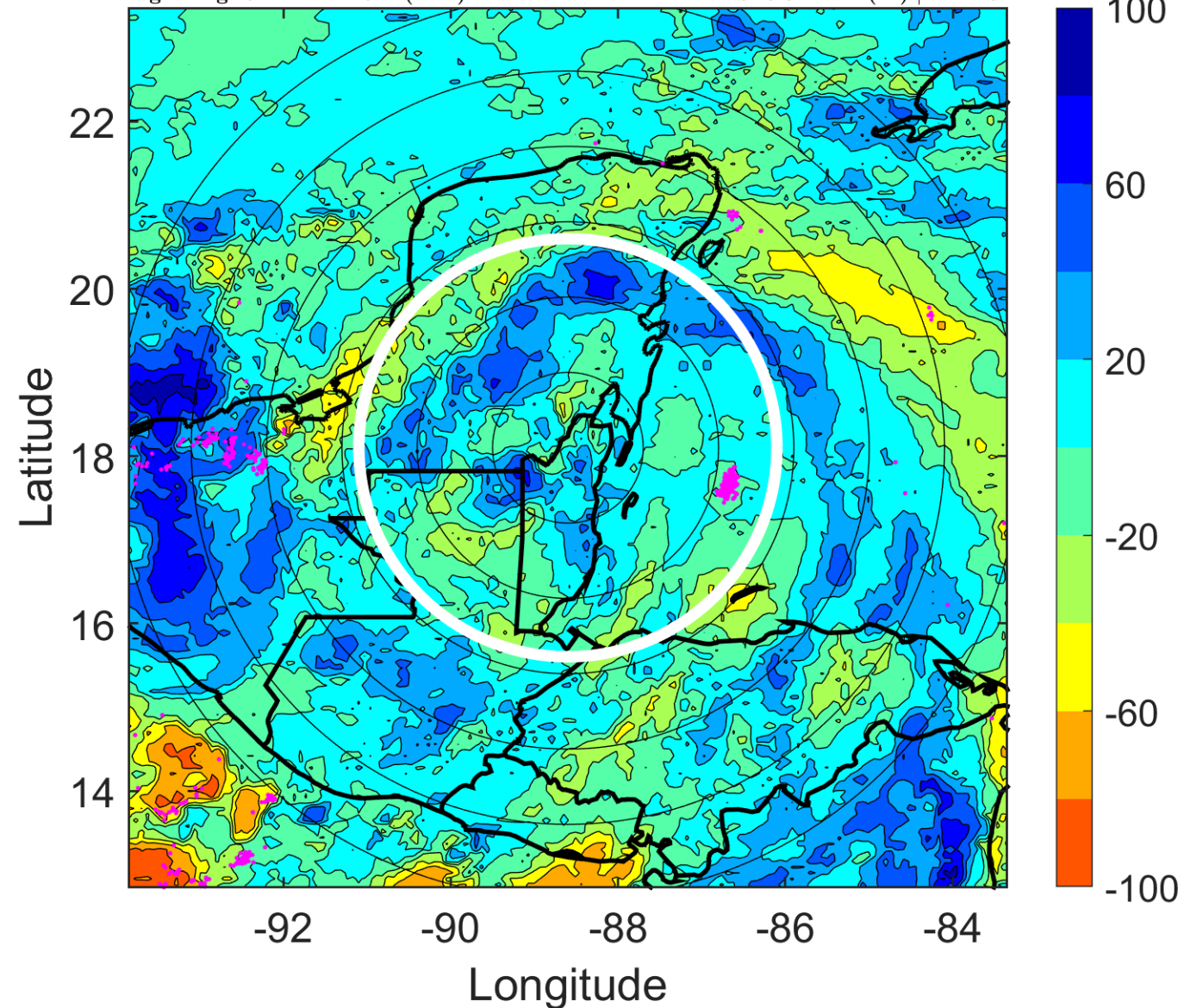
Δ t: 2008053115 (9.1 LT) - 2008053109 (3.1 LT)

Lightning: 9.1 LT \pm 1.5 h (dots)

LAND EFFECTS

01L (ARTHUR) | 35 kt TS

S: 6.8 m s⁻¹ (M) | H: 146°



IR BT & Lightning

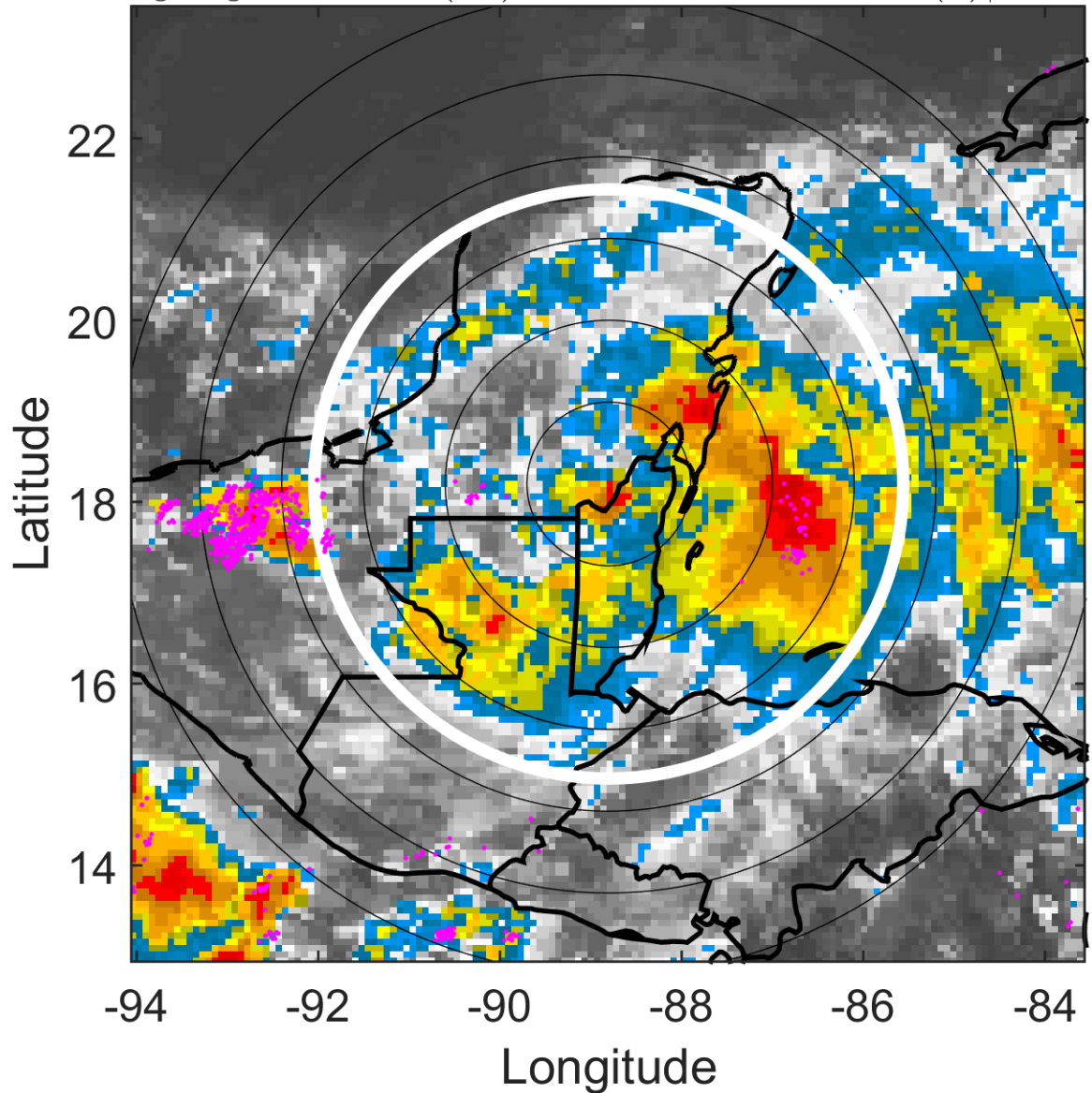
t: 2008053118 (12.1 LT)

Lightning: 12.1 LT \pm 1.5 h (dots)

LAND EFFECTS

01L (ARTHUR) | 35 kt TS

S: 5.7 m s⁻¹ (M) | H: 145°



6-h IR BT Differences & Lightning

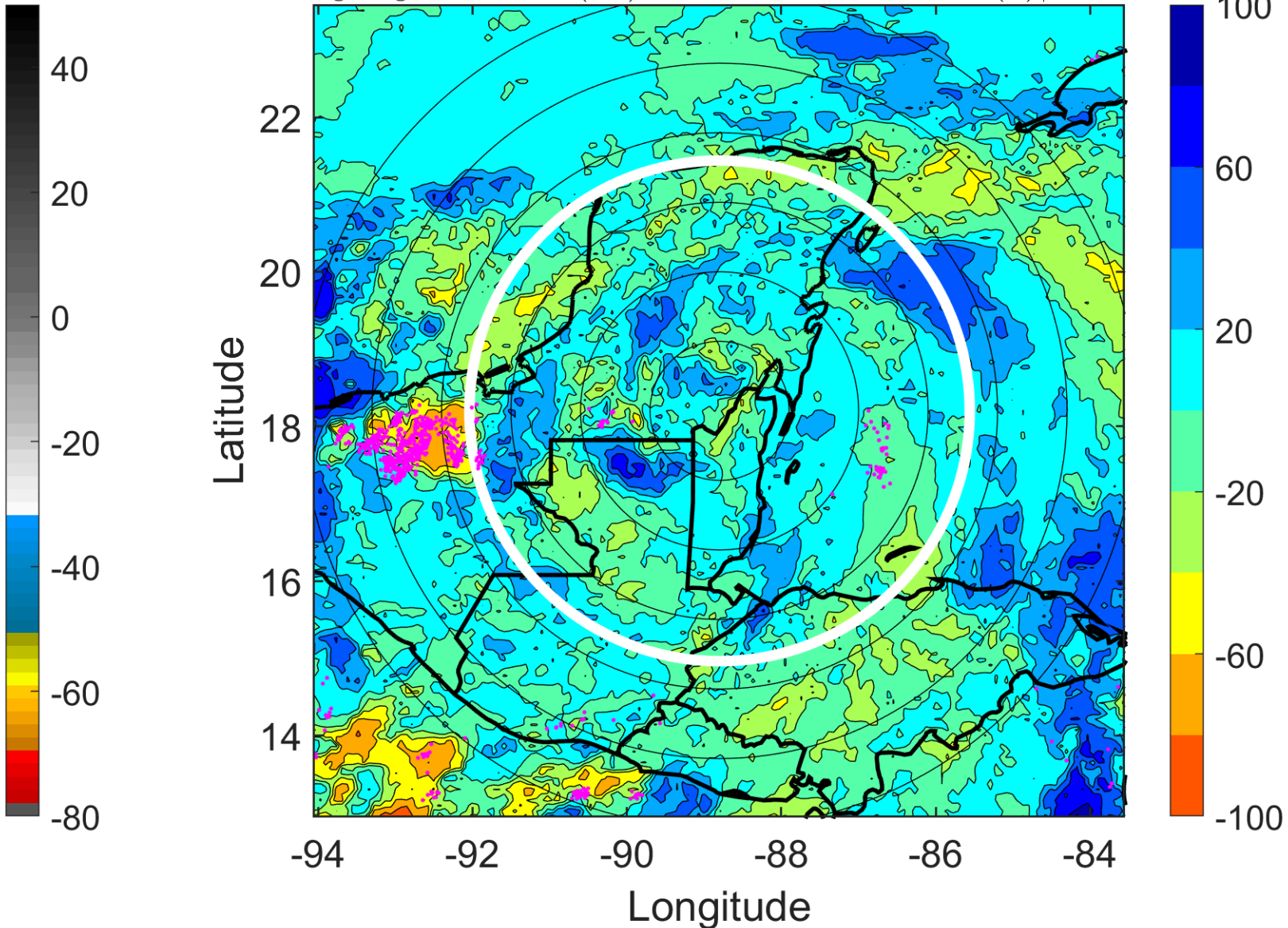
Δ t: 2008053118 (12.1 LT) - 2008053112 (6.1 LT)

Lightning: 12.1 LT \pm 1.5 h (dots)

LAND EFFECTS

01L (ARTHUR) | 35 kt TS

S: 5.7 m s⁻¹ (M) | H: 145°



IR BT & Lightning

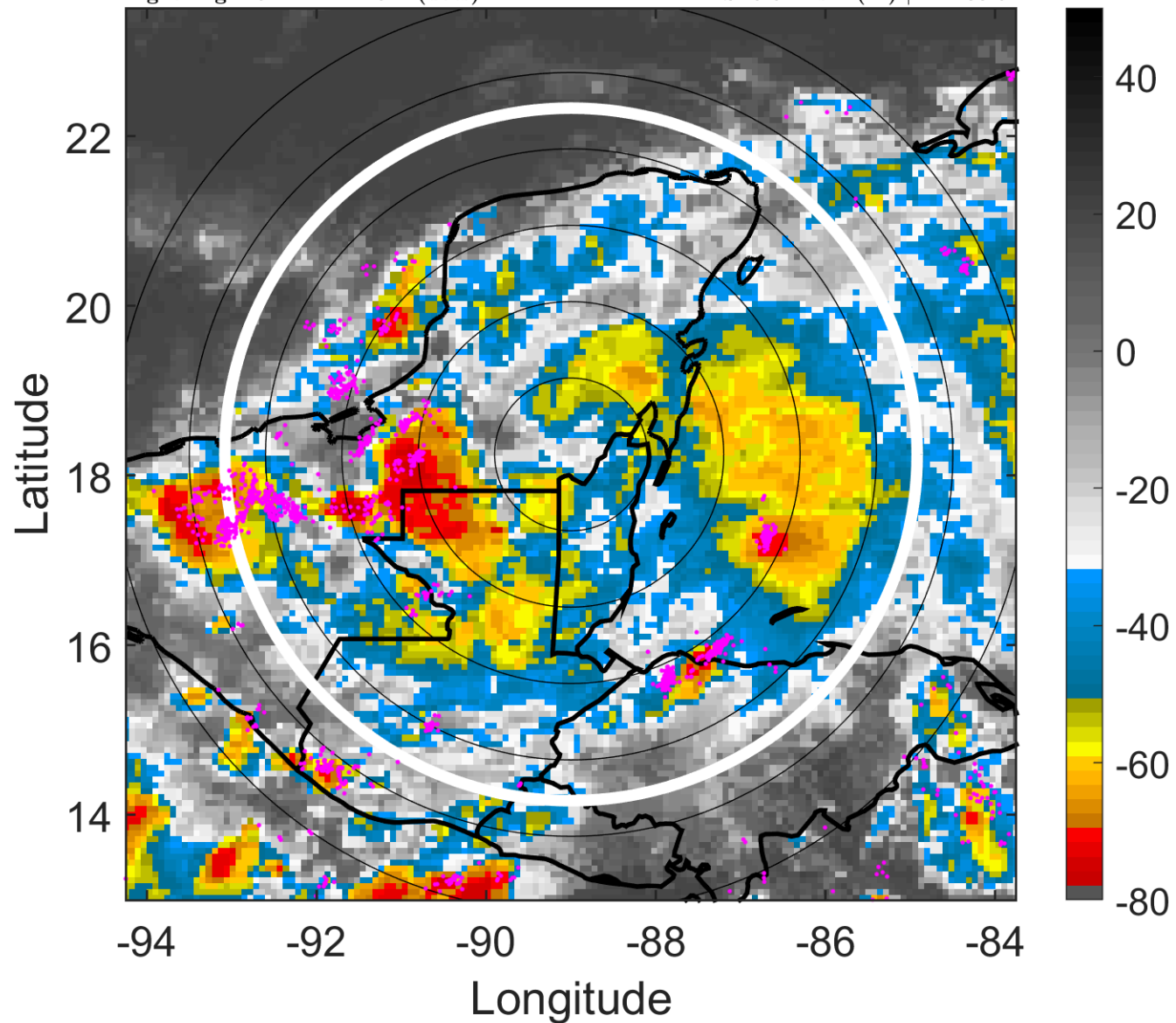
t: 2008053121 (15.1 LT)

Lightning: 15.1 LT \pm 1.5 h (dots)

LAND EFFECTS

01L (ARTHUR) | 35 kt TS

S: 6.6 m s⁻¹ (M) | H: 133.5°



6-h IR BT Differences & Lightning

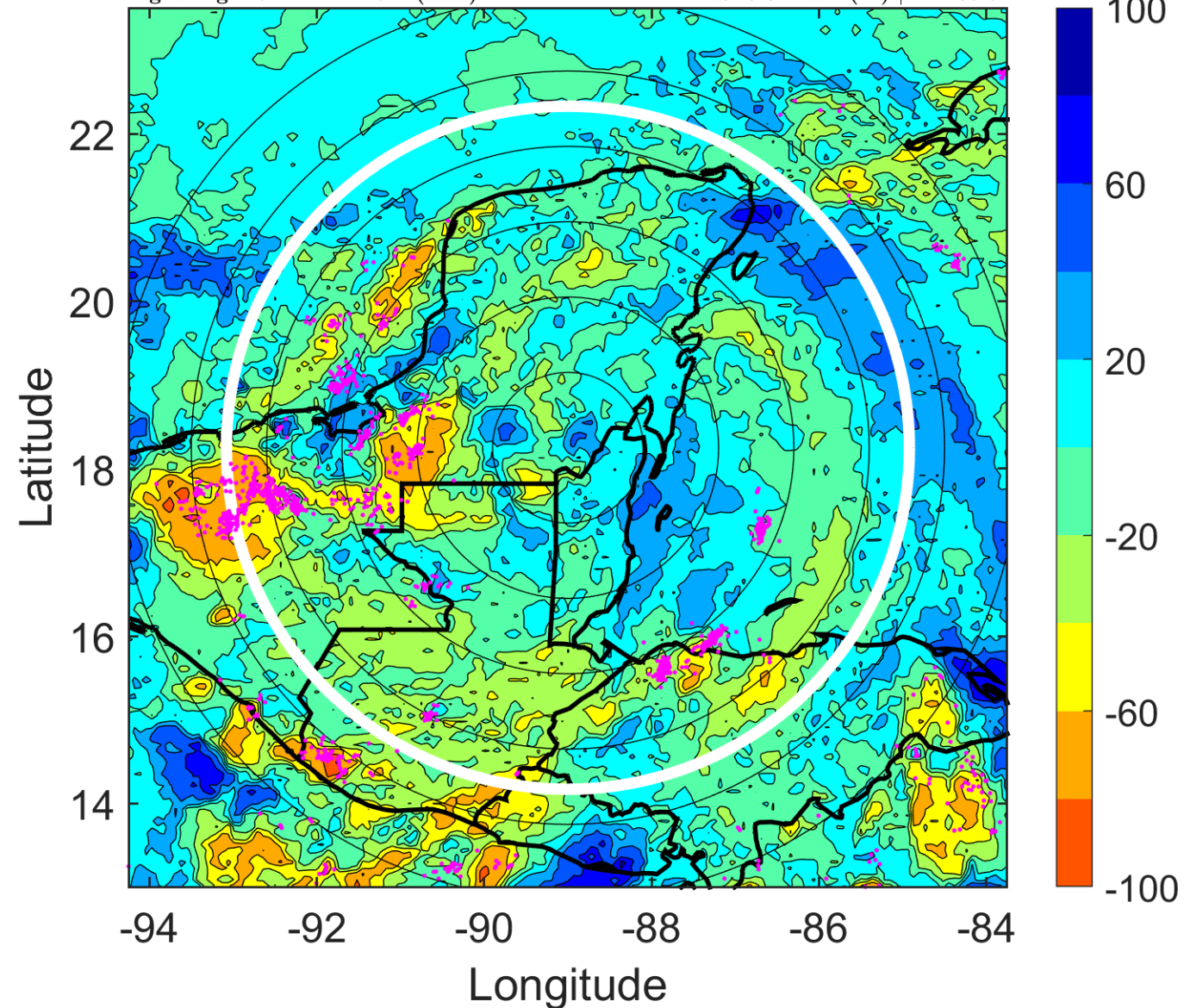
Δ t: 2008053121 (15.1 LT) - 2008053115 (9.1 LT)

Lightning: 15.1 LT \pm 1.5 h (dots)

LAND EFFECTS

01L (ARTHUR) | 35 kt TS

S: 6.6 m s⁻¹ (M) | H: 133.5°



IR BT & Lightning

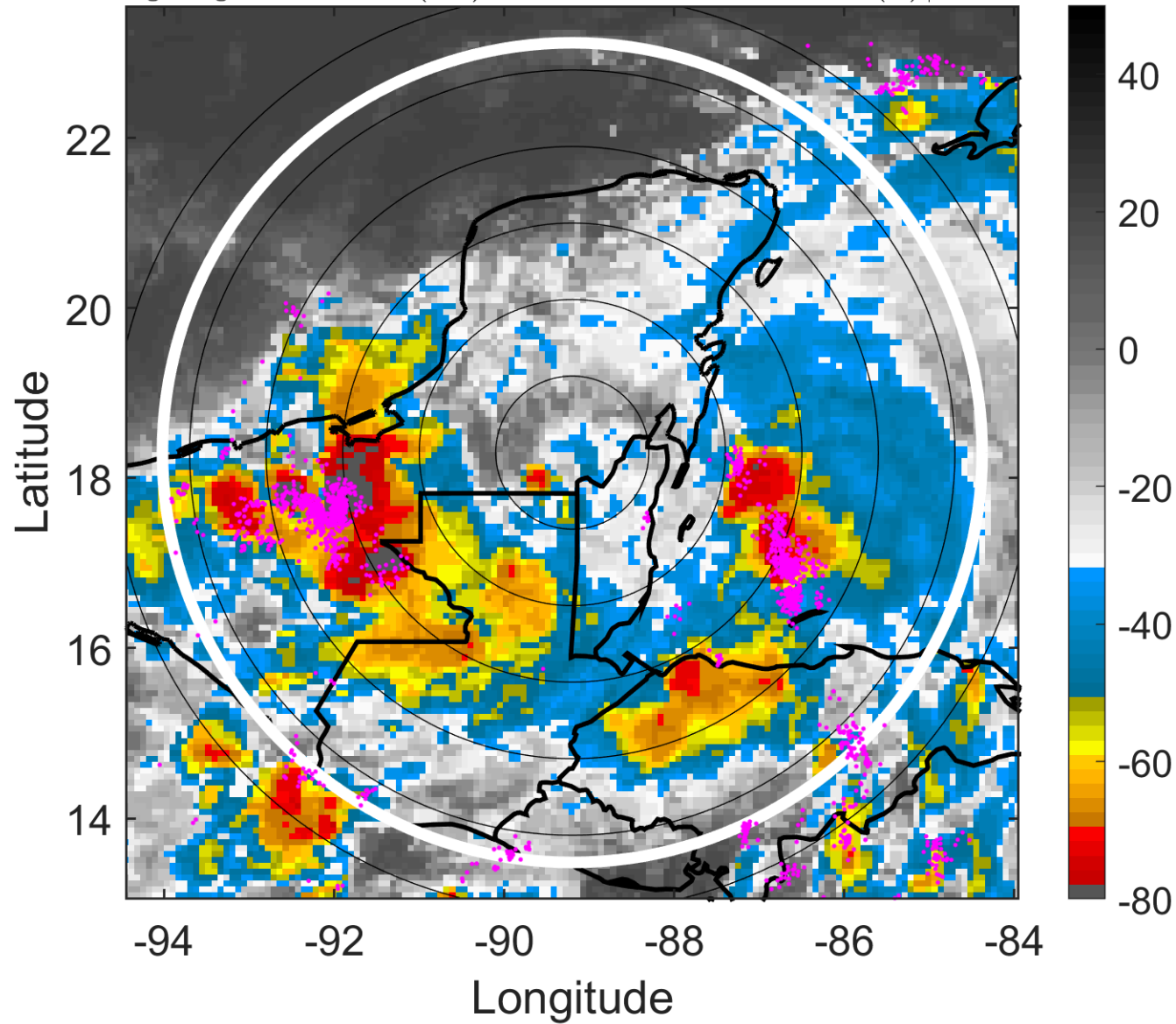
t: 2008060100 (18.1 LT)

Lightning: 18.1 LT \pm 1.5 h (dots)

LAND EFFECTS

01L (ARTHUR) | 35 kt TS

S: 7.6 m s⁻¹ (M) | H: 122°



6-h IR BT Differences & Lightning

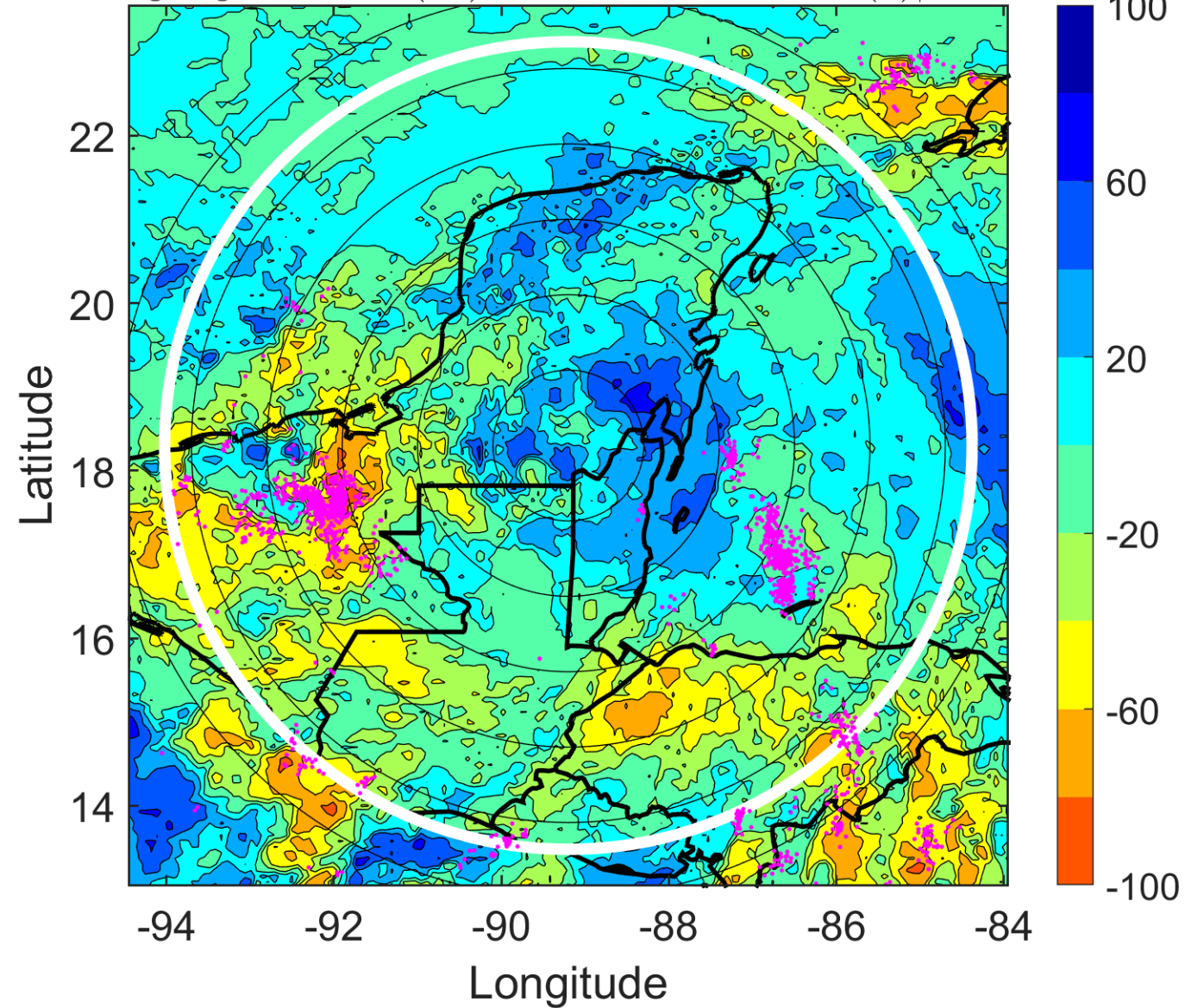
Δ t: 2008060100 (18.1 LT) - 2008053118 (12.1 LT)

Lightning: 18.1 LT \pm 1.5 h (dots)

LAND EFFECTS

01L (ARTHUR) | 35 kt TS

S: 7.6 m s⁻¹ (M) | H: 122°



IR BT & Lightning

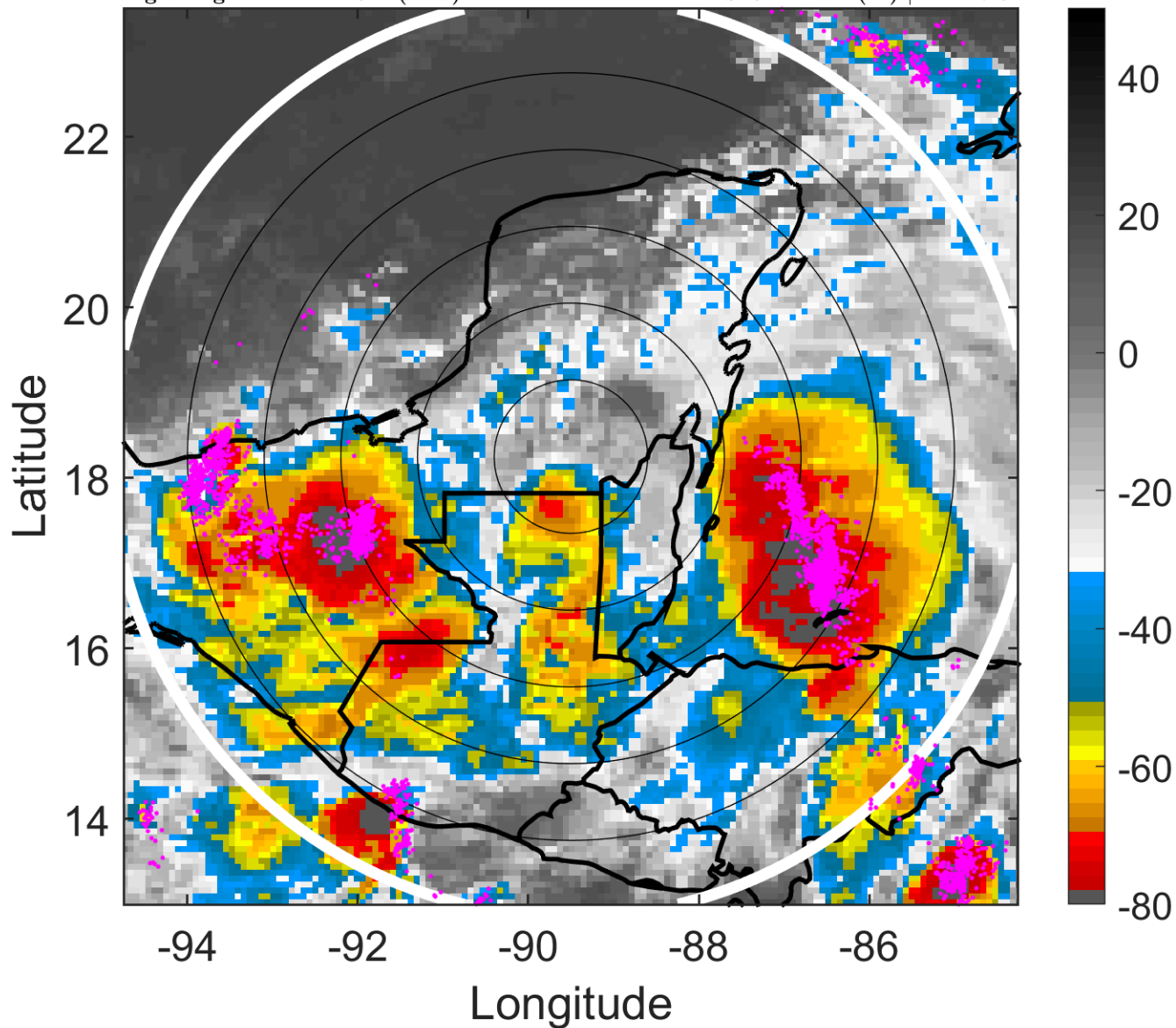
t: 2008060103 (21 LT)

Lightning: 21 LT \pm 1.5 h (dots)

LAND EFFECTS

01L (ARTHUR) | 35 kt TS

S: 9.4 m s⁻¹ (M) | H: 117.5°



6-h IR BT Differences & Lightning

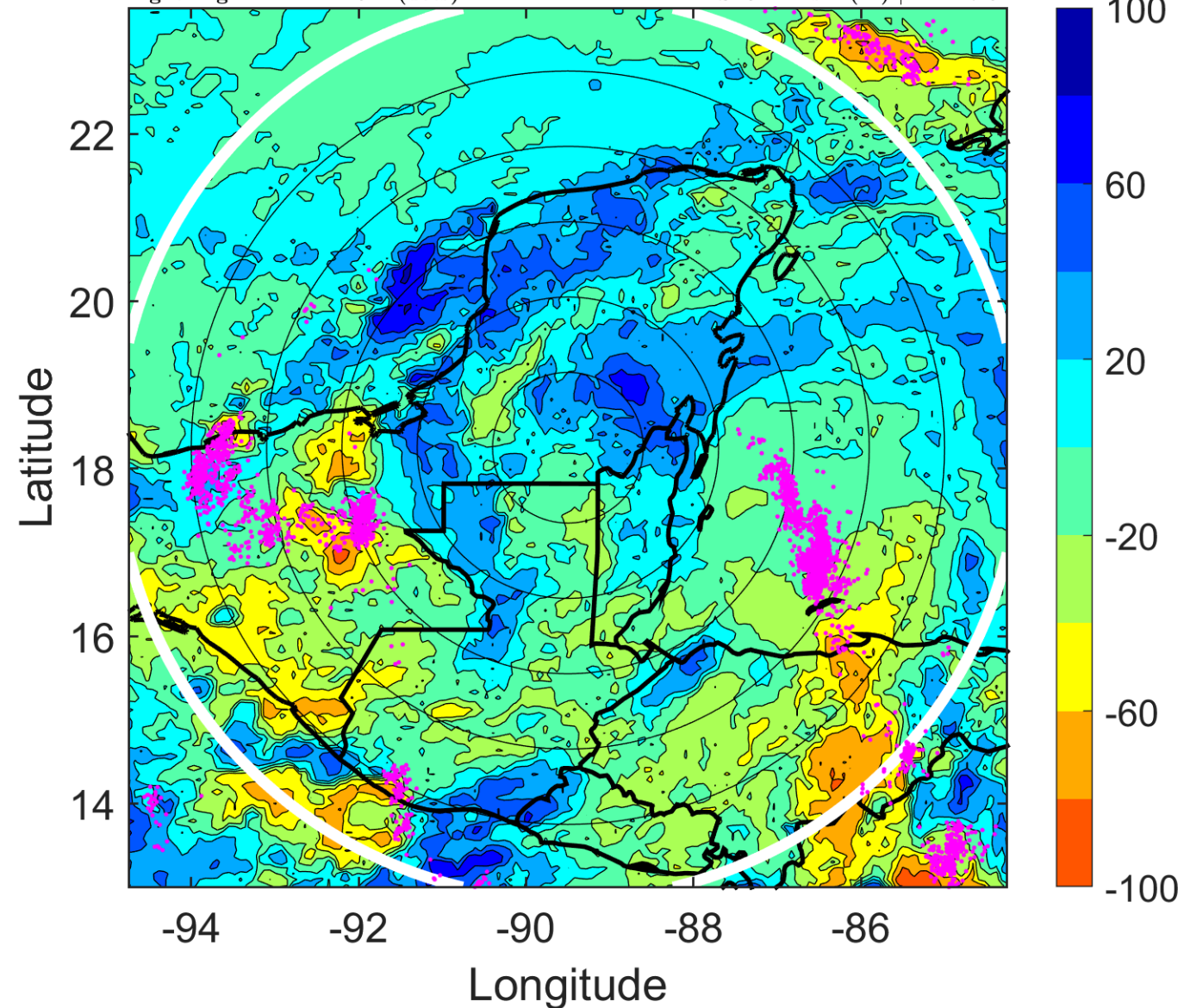
Δ t: 2008060103 (21 LT) - 2008053121 (15.1 LT)

Lightning: 21 LT \pm 1.5 h (dots)

LAND EFFECTS

01L (ARTHUR) | 35 kt TS

S: 9.4 m s⁻¹ (M) | H: 117.5°



IR BT & Lightning

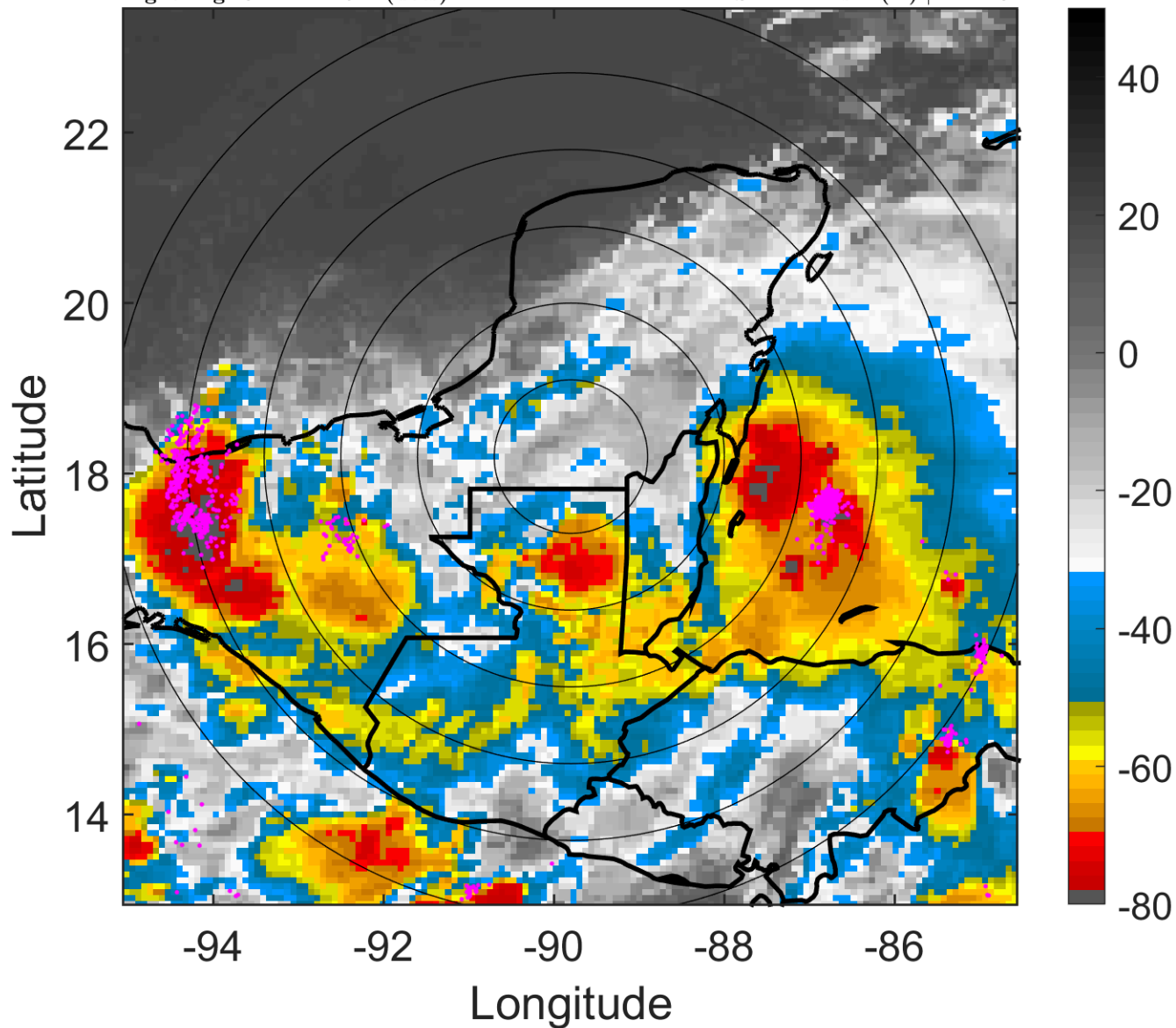
t: 2008060106 (0 LT)

Lightning: 0 LT \pm 1.5 h (dots)

LAND EFFECTS

01L (ARTHUR) | 35 kt TS

S: 11.2 m s⁻¹ (H) | H: 113°



6-h IR BT Differences & Lightning

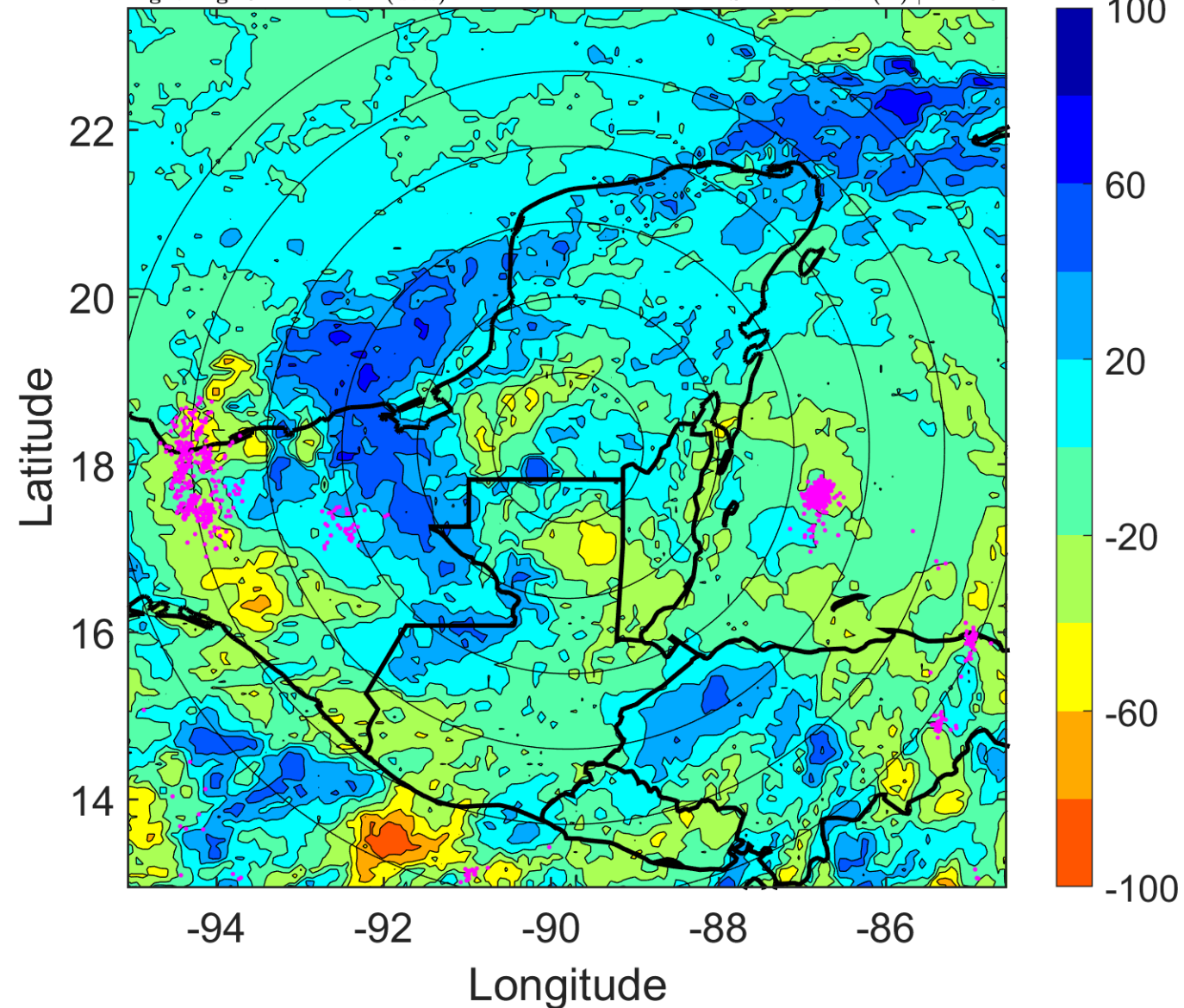
Δ t: 2008060106 (0 LT) - 2008060100 (18.1 LT)

Lightning: 0 LT \pm 1.5 h (dots)

LAND EFFECTS

01L (ARTHUR) | 35 kt TS

S: 11.2 m s⁻¹ (H) | H: 113°



IR BT & Lightning

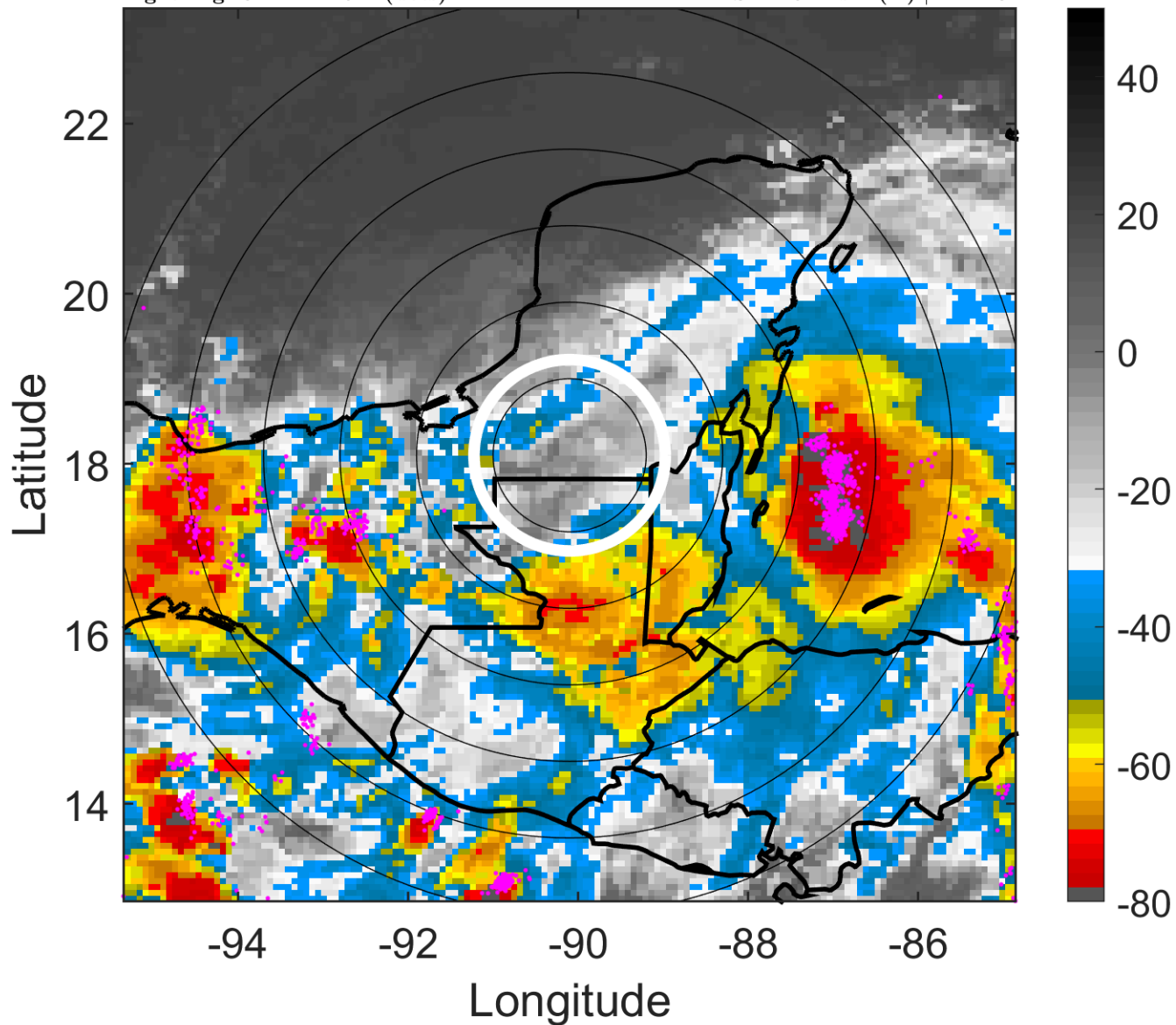
t: 2008060109 (3 LT)

Lightning: 3 LT \pm 1.5 h (dots)

LAND EFFECTS

01L (ARTHUR) | 32.5 kt TD

S: 11.5 m s⁻¹ (H) | H: 128°



6-h IR BT Differences & Lightning

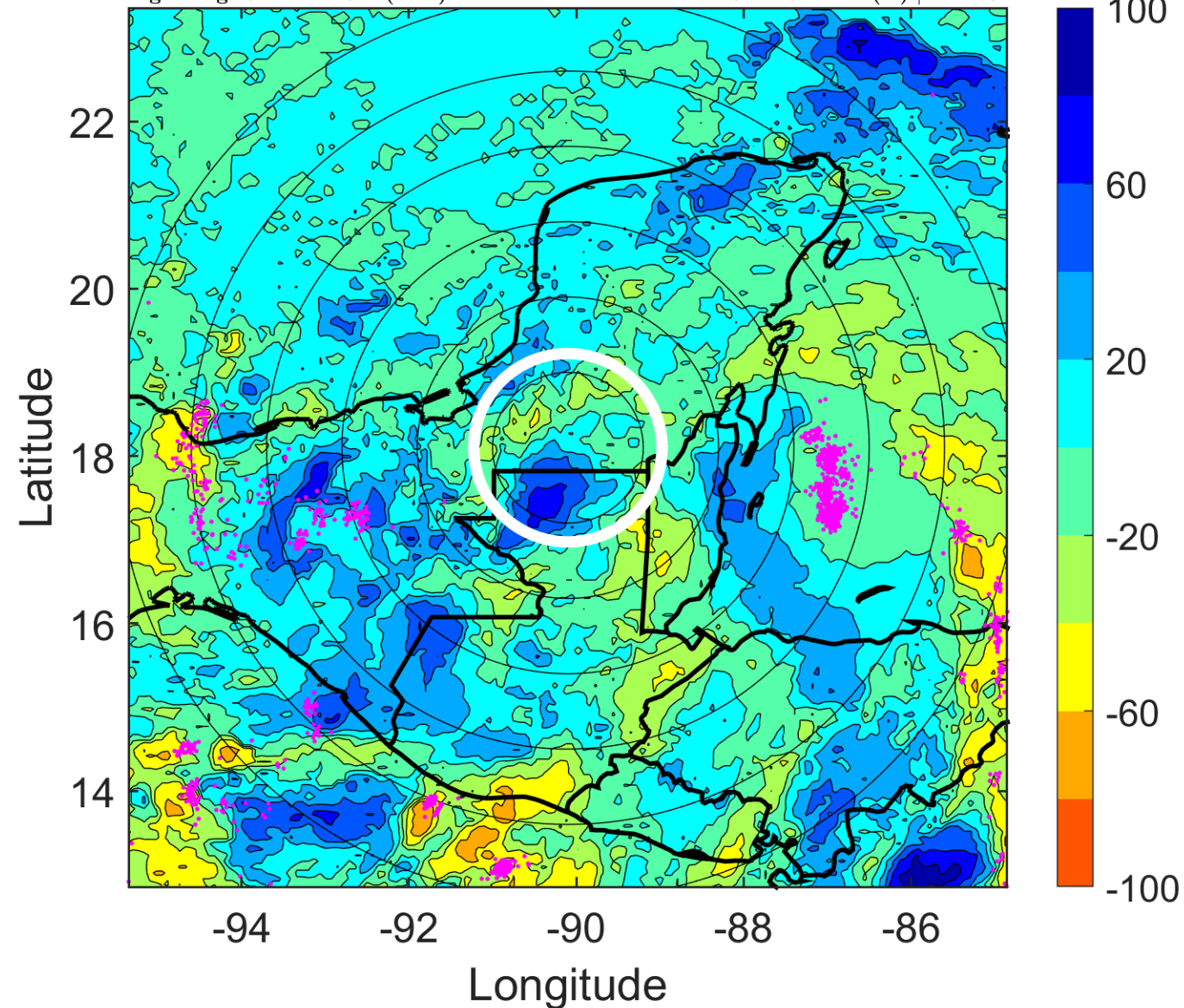
Δ t: 2008060109 (3 LT) - 2008060103 (21 LT)

Lightning: 3 LT \pm 1.5 h (dots)

LAND EFFECTS

01L (ARTHUR) | 32.5 kt TD

S: 11.5 m s⁻¹ (H) | H: 128°



IR BT & Lightning

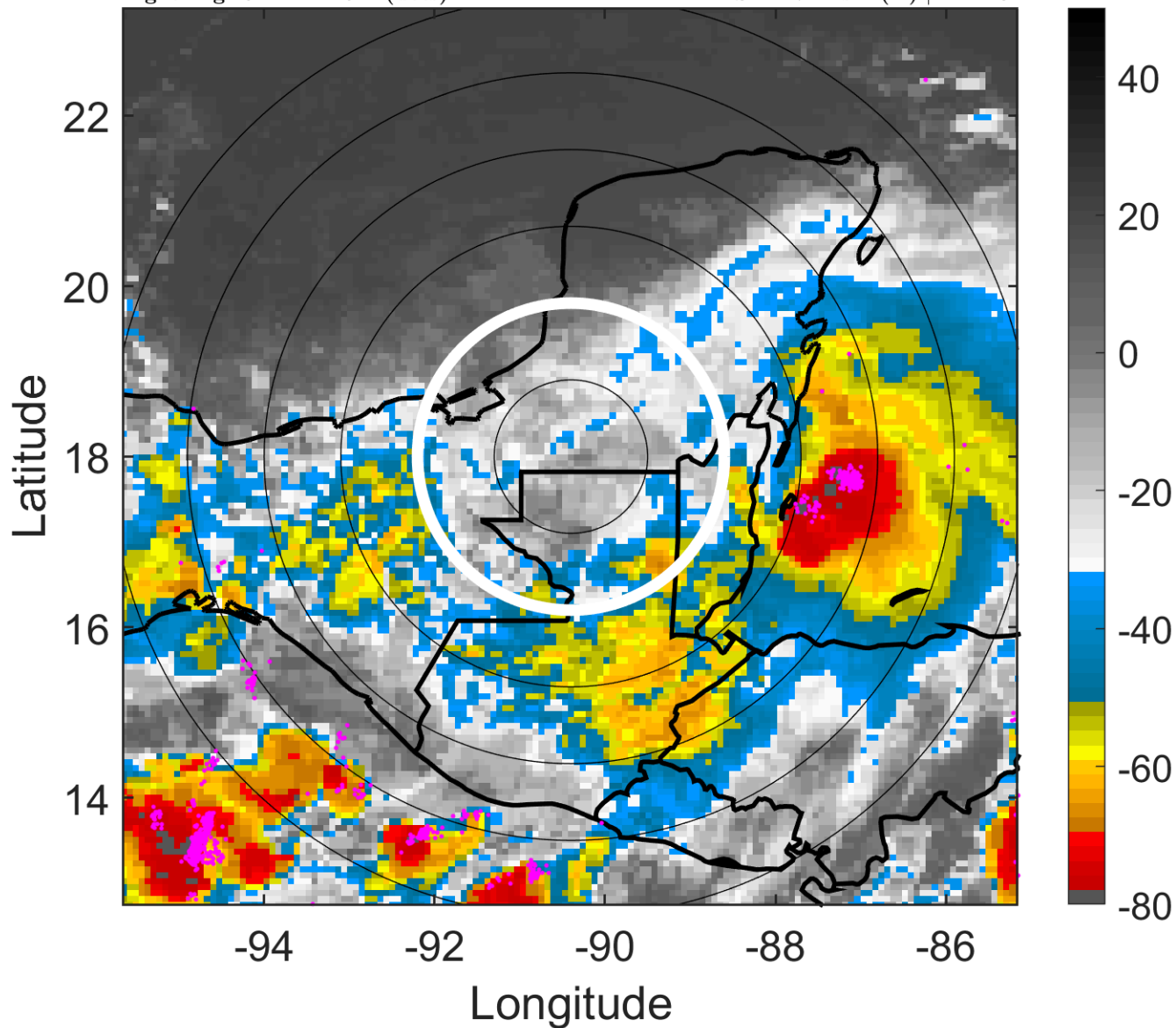
t: 2008060112 (6 LT)

Lightning: 6 LT \pm 1.5 h (dots)

LAND EFFECTS

01L (ARTHUR) | 30 kt TD

S: 11.7 m s⁻¹ (H) | H: 143°



6-h IR BT Differences & Lightning

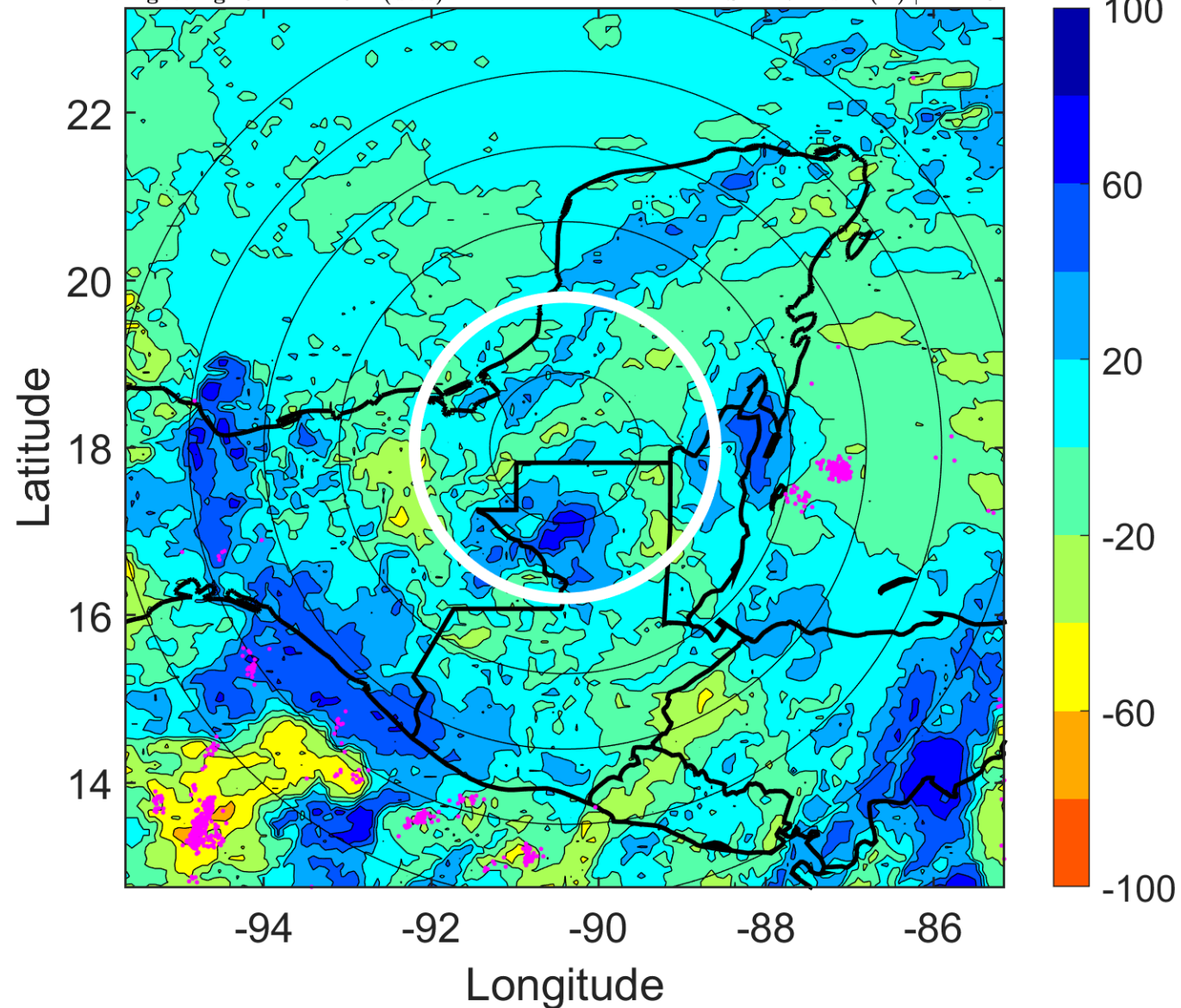
Δ t: 2008060112 (6 LT) - 2008060106 (0 LT)

Lightning: 6 LT \pm 1.5 h (dots)

LAND EFFECTS

01L (ARTHUR) | 30 kt TD

S: 11.7 m s⁻¹ (H) | H: 143°



IR BT & Lightning

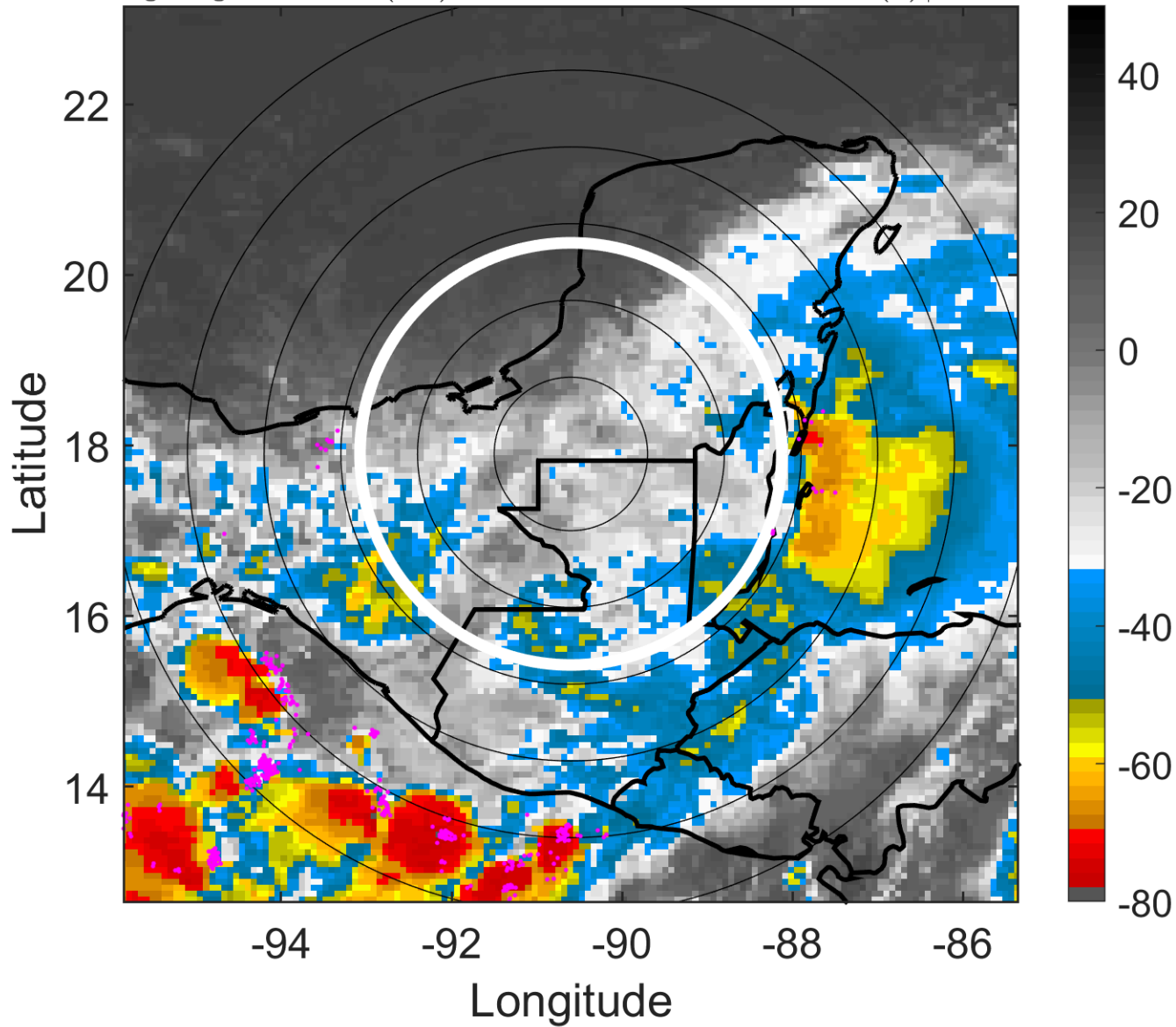
t: 2008060115 (9 LT)

Lightning: 9 LT \pm 1.5 h (dots)

LAND EFFECTS

01L (ARTHUR) | 30 kt TD

S: 12.2 m s⁻¹ (H) | H: 145°



6-h IR BT Differences & Lightning

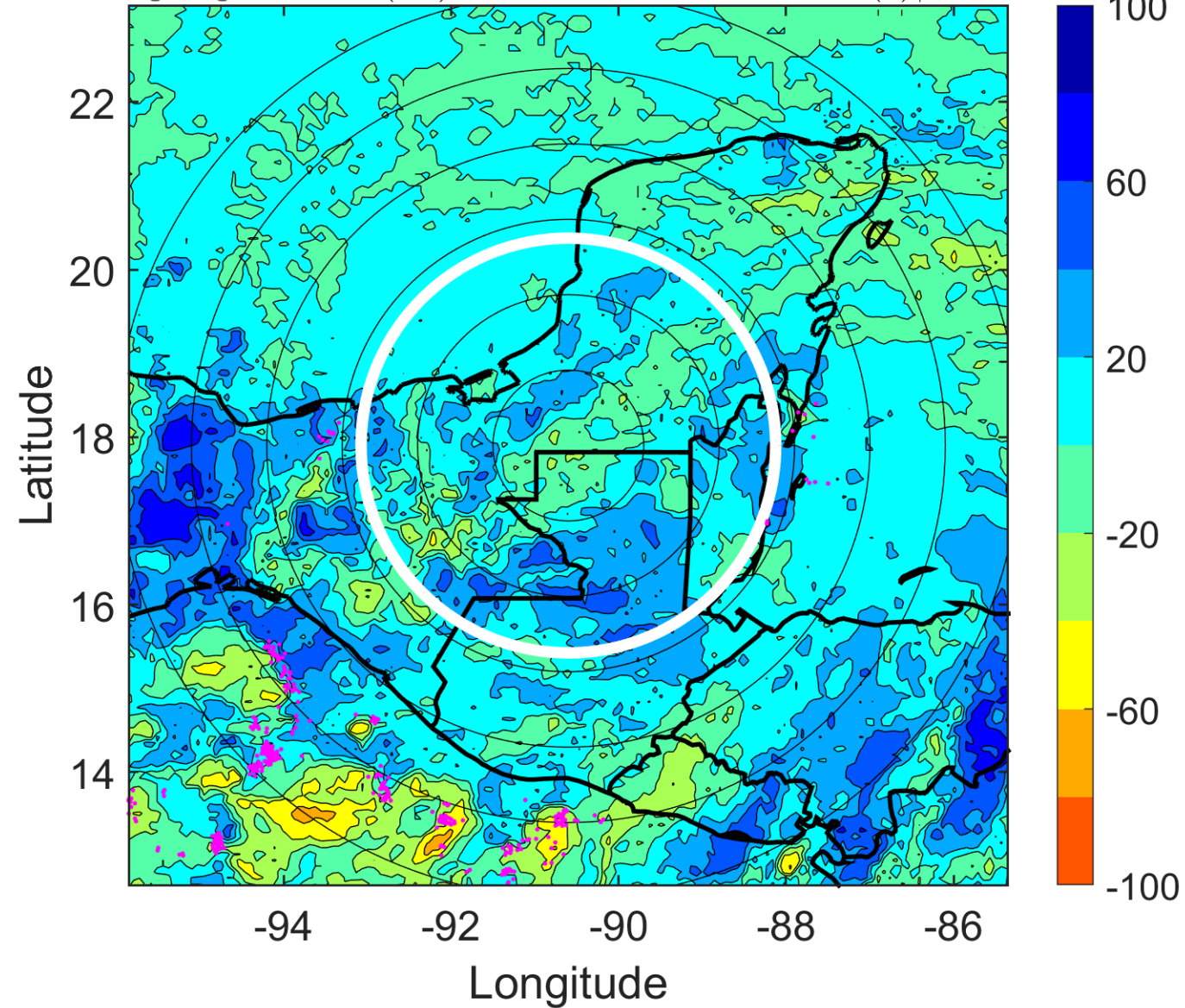
Δ t: 2008060115 (9 LT) - 2008060109 (3 LT)

Lightning: 9 LT \pm 1.5 h (dots)

LAND EFFECTS

01L (ARTHUR) | 30 kt TD

S: 12.2 m s⁻¹ (H) | H: 145°



IR BT & Lightning

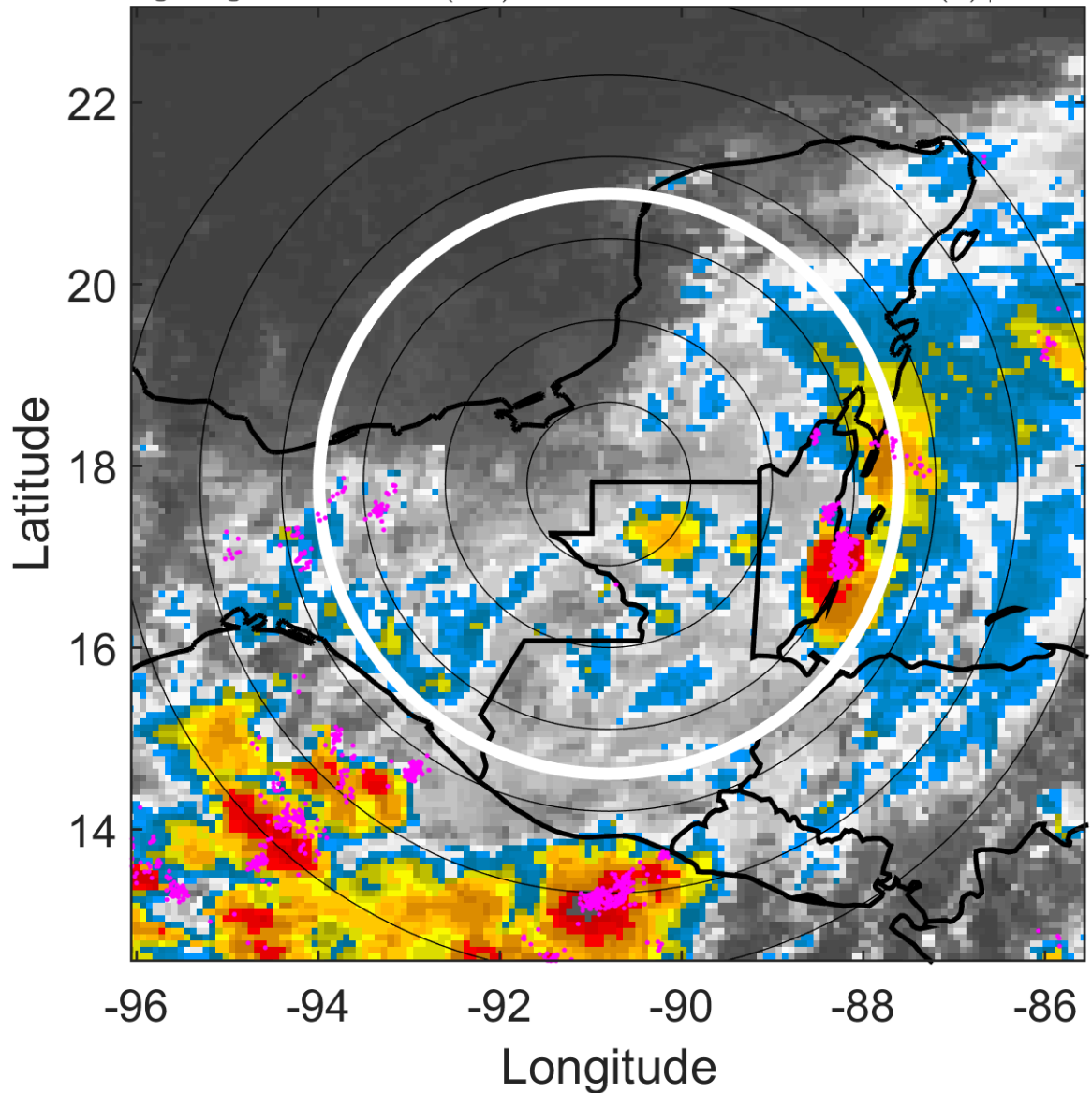
t: 2008060118 (11.9 LT)

Lightning: 11.9 LT \pm 1.5 h (dots)

LAND EFFECTS

01L (ARTHUR) | 30 kt TD

S: 12.6 m s⁻¹ (H) | H: 147°



6-h IR BT Differences & Lightning

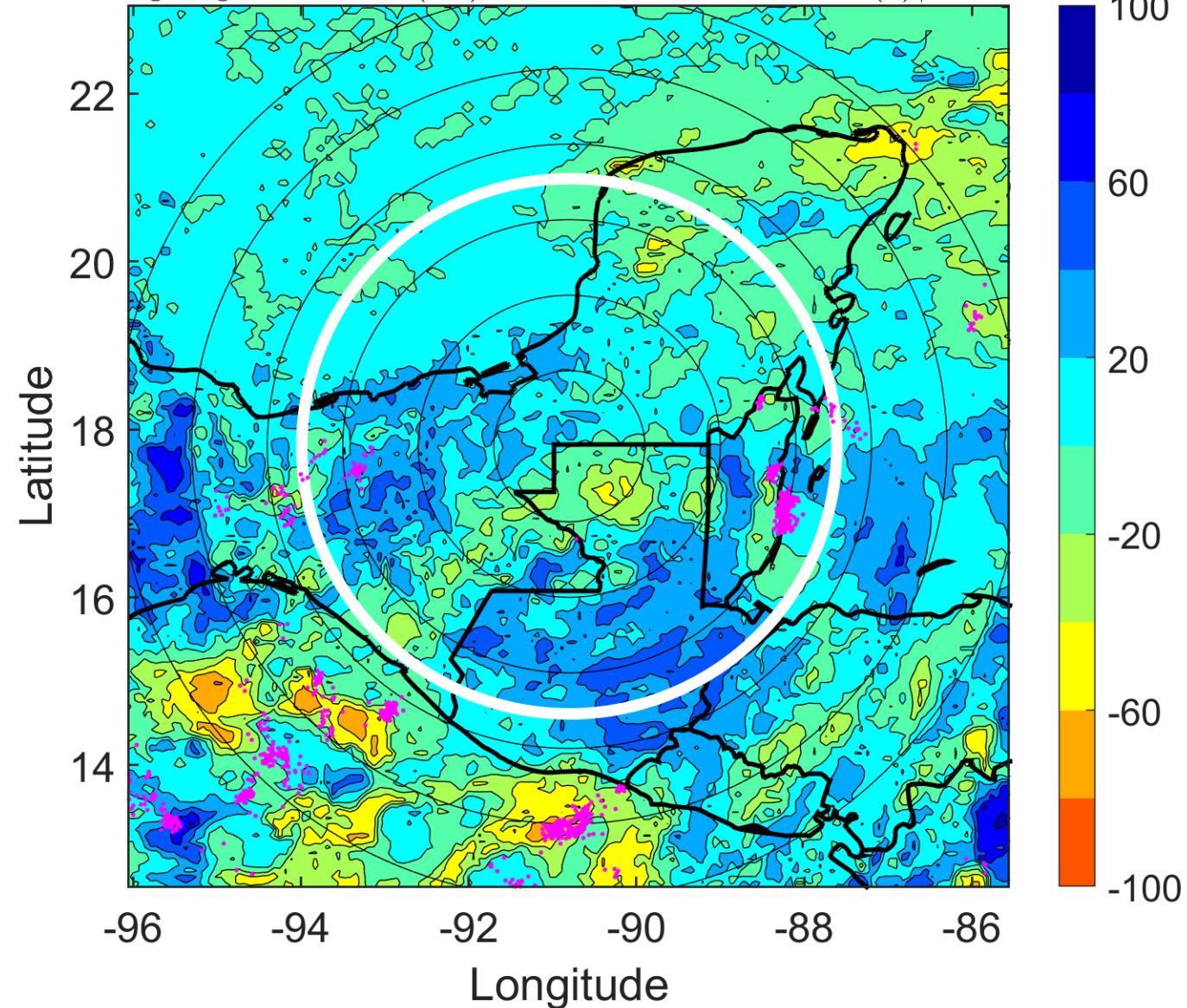
Δ t: 2008060118 (11.9 LT) - 2008060112 (6 LT)

Lightning: 11.9 LT \pm 1.5 h (dots)

LAND EFFECTS

01L (ARTHUR) | 30 kt TD

S: 12.6 m s⁻¹ (H) | H: 147°



IR BT & Lightning

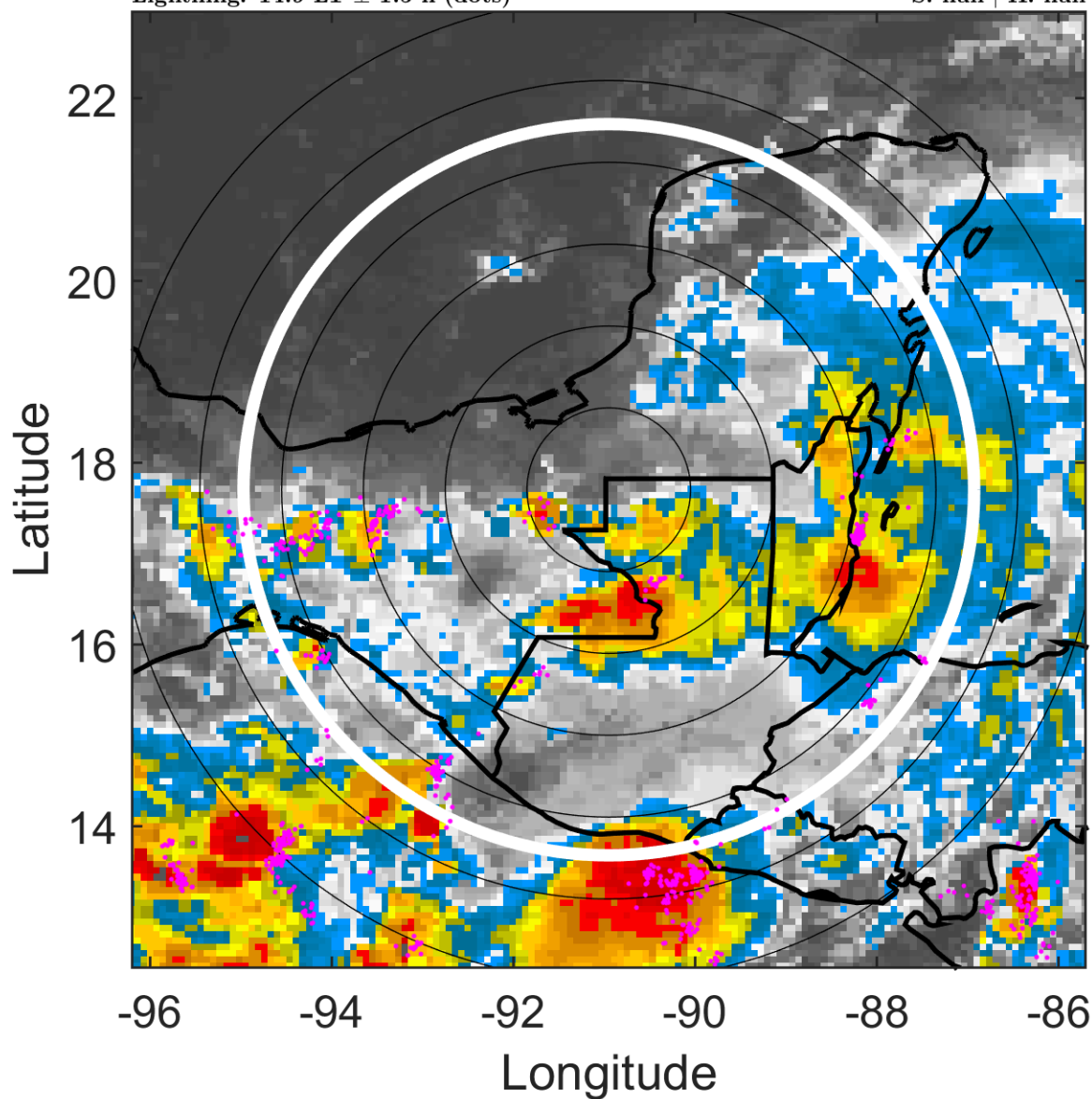
t: 2008060121 (14.9 LT)

Lightning: 14.9 LT \pm 1.5 h (dots)

LAND EFFECTS

01L (ARTHUR) | 27.5 kt TD

S: null | H: null



6-h IR BT Differences & Lightning

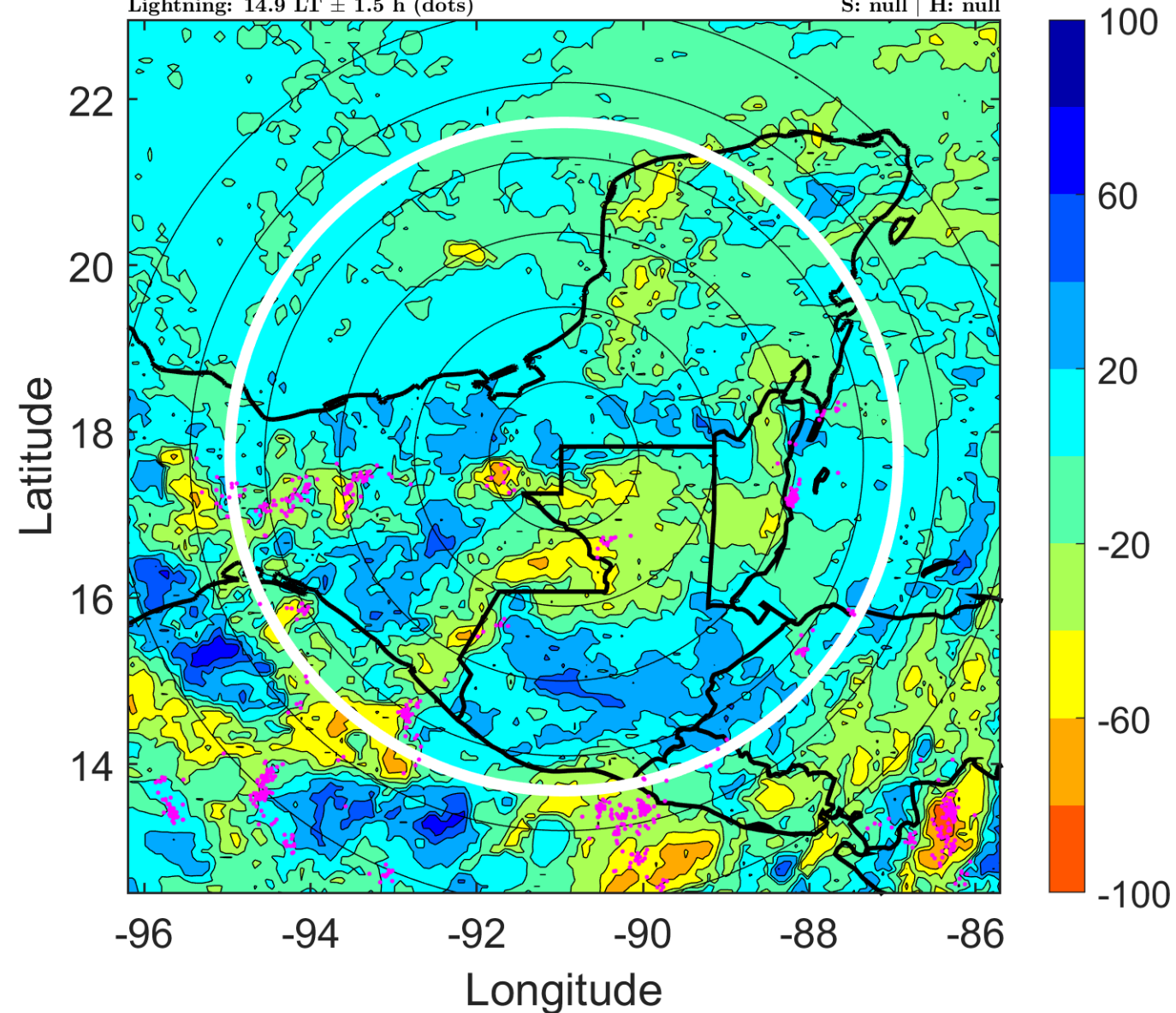
Δ t: 2008060121 (14.9 LT) - 2008060115 (9 LT)

Lightning: 14.9 LT \pm 1.5 h (dots)

LAND EFFECTS

01L (ARTHUR) | 27.5 kt TD

S: null | H: null



IR BT & Lightning

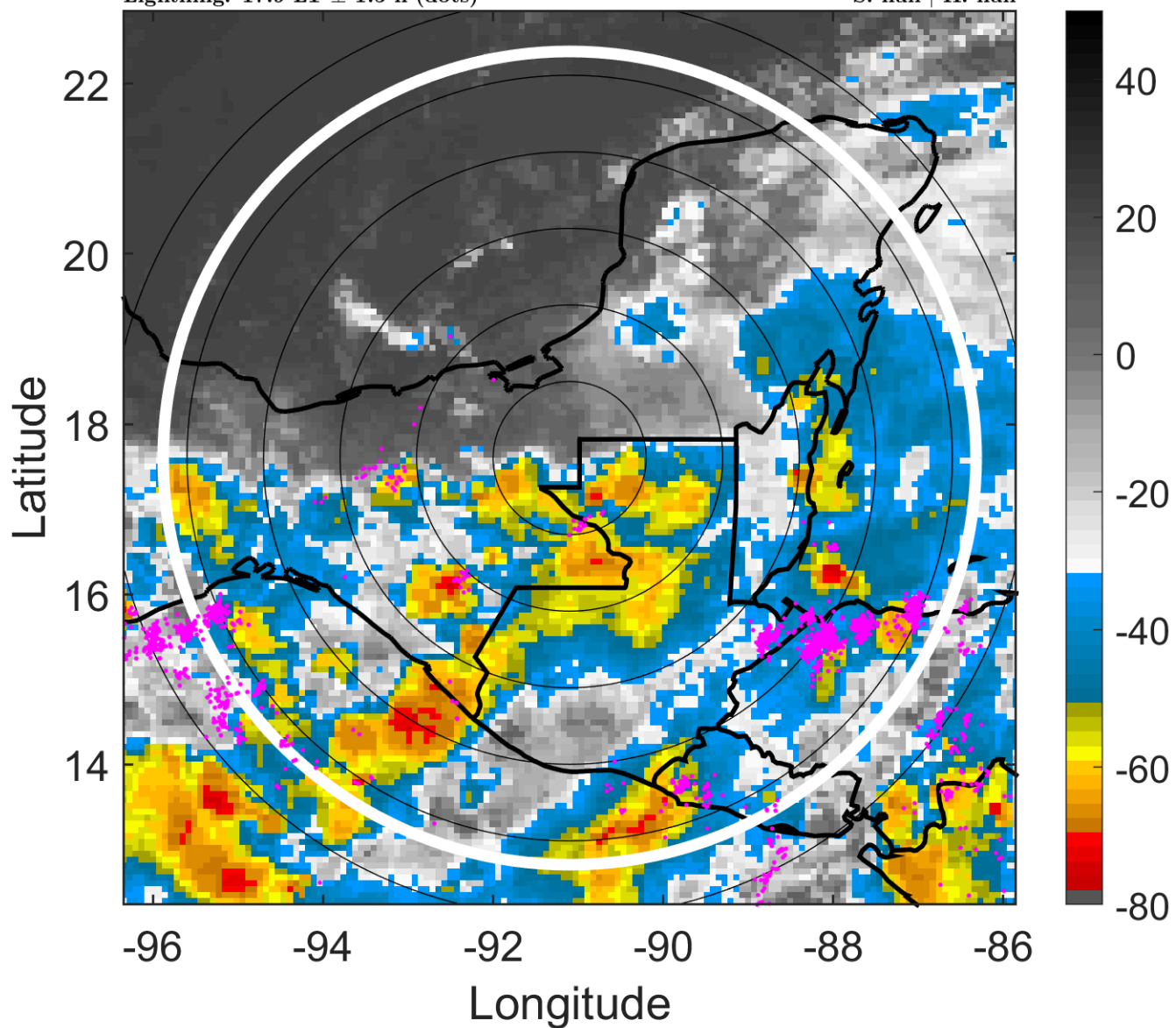
t: 2008060200 (17.9 LT)

Lightning: 17.9 LT \pm 1.5 h (dots)

LAND EFFECTS

01L (ARTHUR) | 25 kt LO

S: null | H: null



6-h IR BT Differences & Lightning

Δ t: 2008060200 (17.9 LT) - 2008060118 (11.9 LT)

Lightning: 17.9 LT \pm 1.5 h (dots)

LAND EFFECTS

01L (ARTHUR) | 25 kt LO

S: null | H: null

