

IR BT & Lightning

t: 2020052712 (6.7 LT)

Lightning: 6.7 LT \pm 1.5 h (dots)

LAND EFFECTS

02L (BERTHA) | 45 kt TS

S: 3.5 m s⁻¹ (L) | H: 20°

6-h IR BT Differences & Lightning

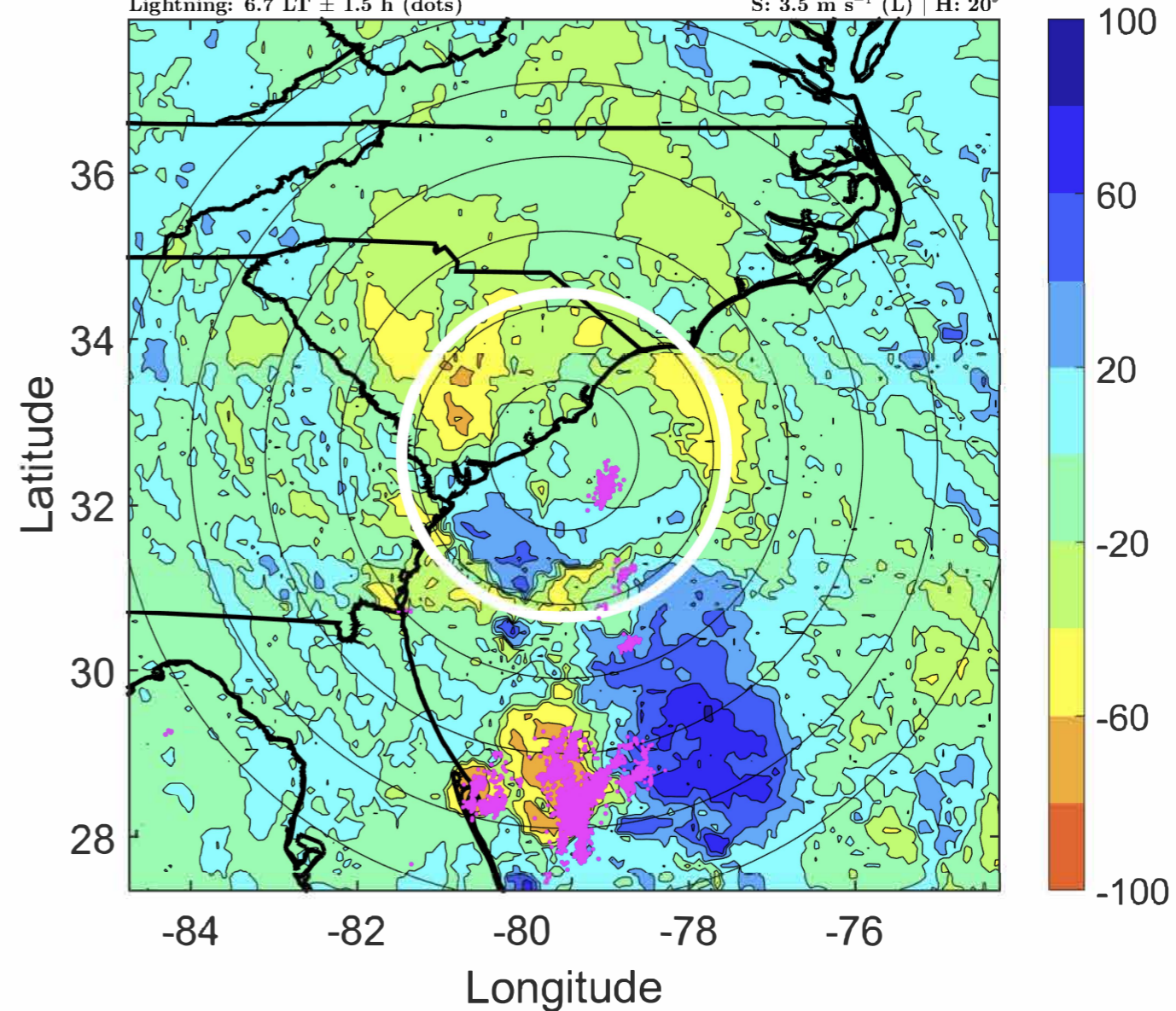
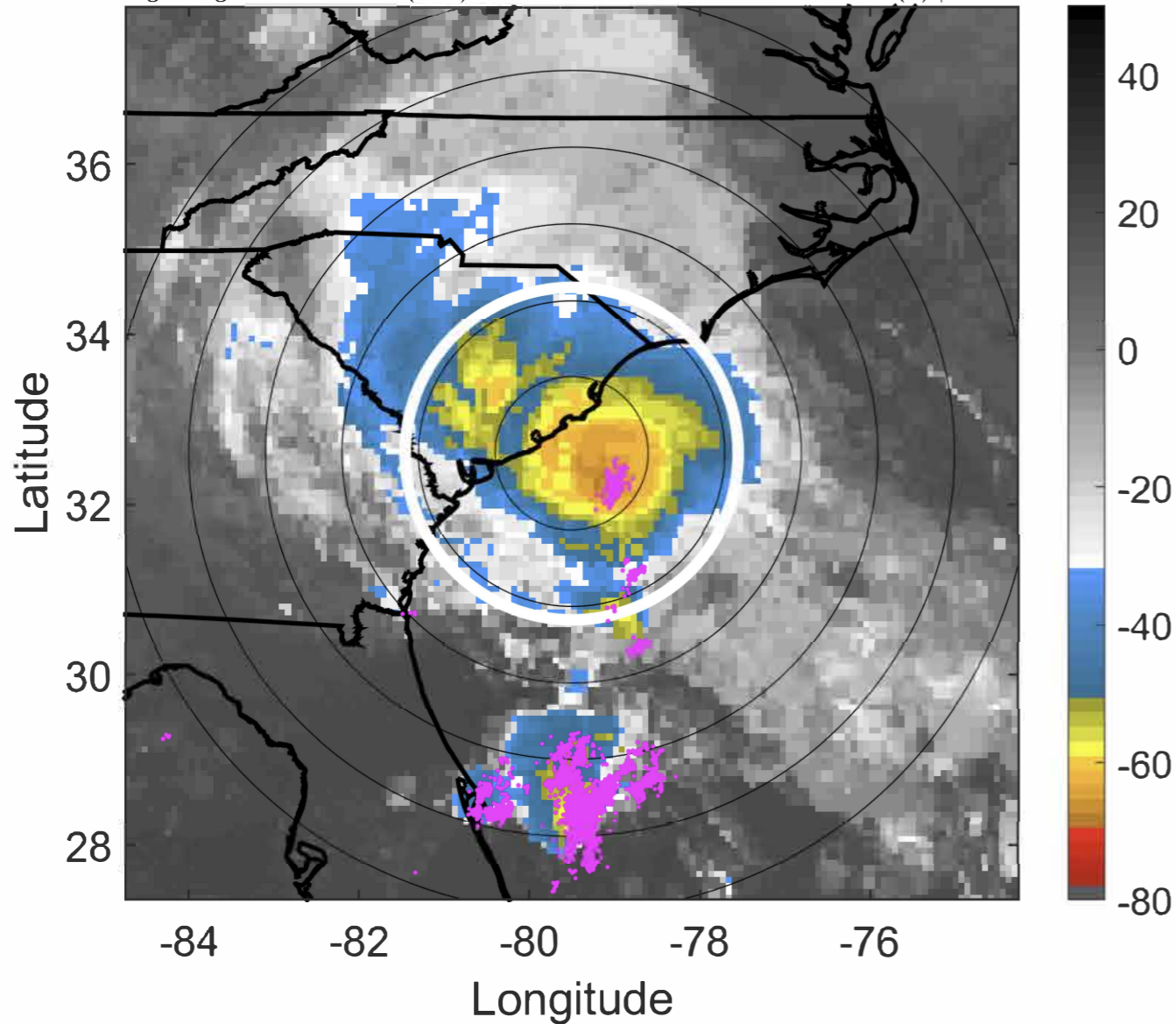
Δ t: 2020052712 (6.7 LT) - 2020052706 (0.7 LT)

Lightning: 6.7 LT \pm 1.5 h (dots)

LAND EFFECTS

02L (BERTHA) | 45 kt TS

S: 3.5 m s⁻¹ (L) | H: 20°



IR BT & Lightning

t: 2020052715 (9.7 LT)

Lightning: 9.7 LT \pm 1.5 h (dots)

LAND EFFECTS

02L (BERTHA) | 37.5 kt TS

S: 4.1 m s⁻¹ (L) | H: 14.5°

6-h IR BT Differences & Lightning

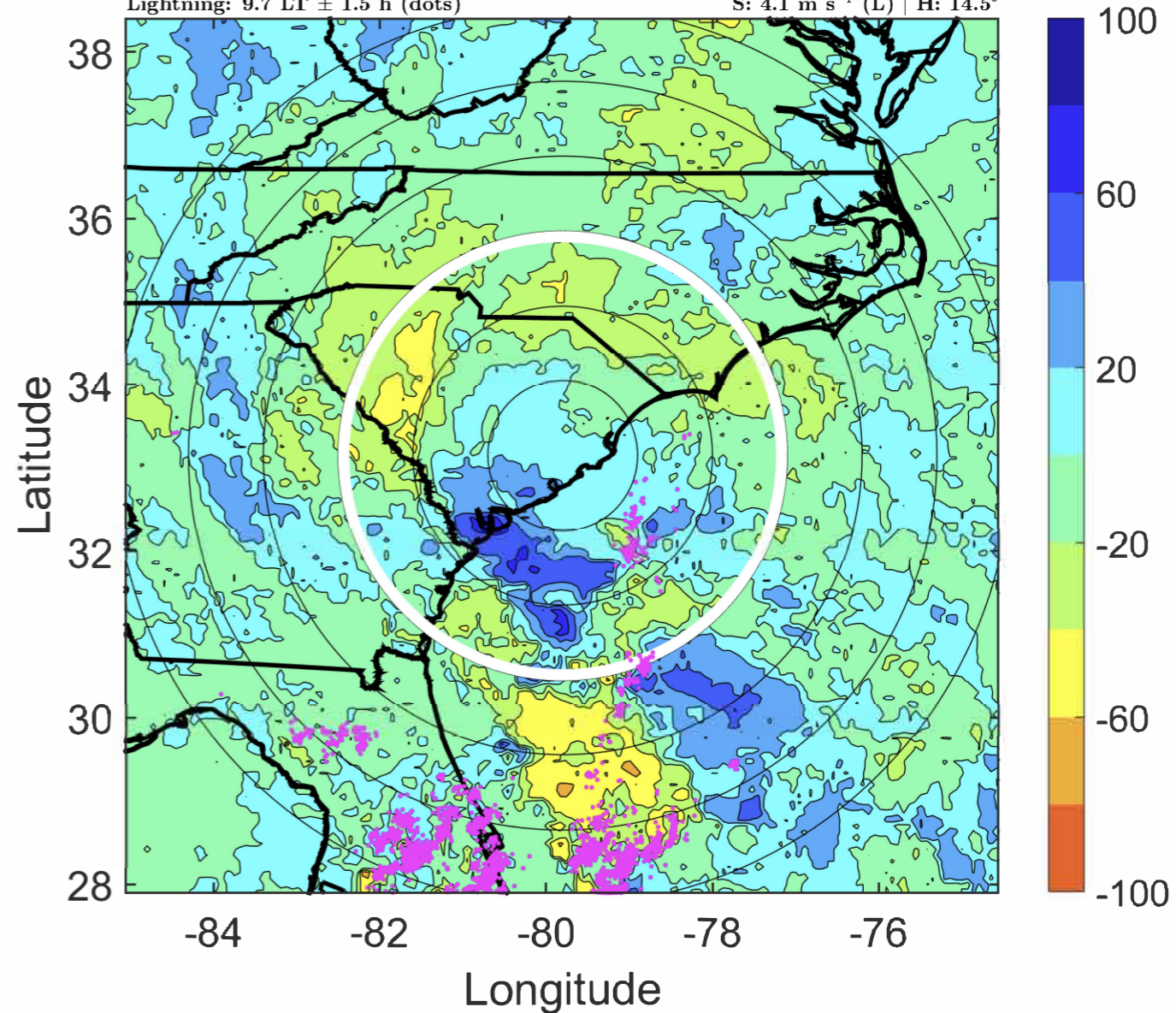
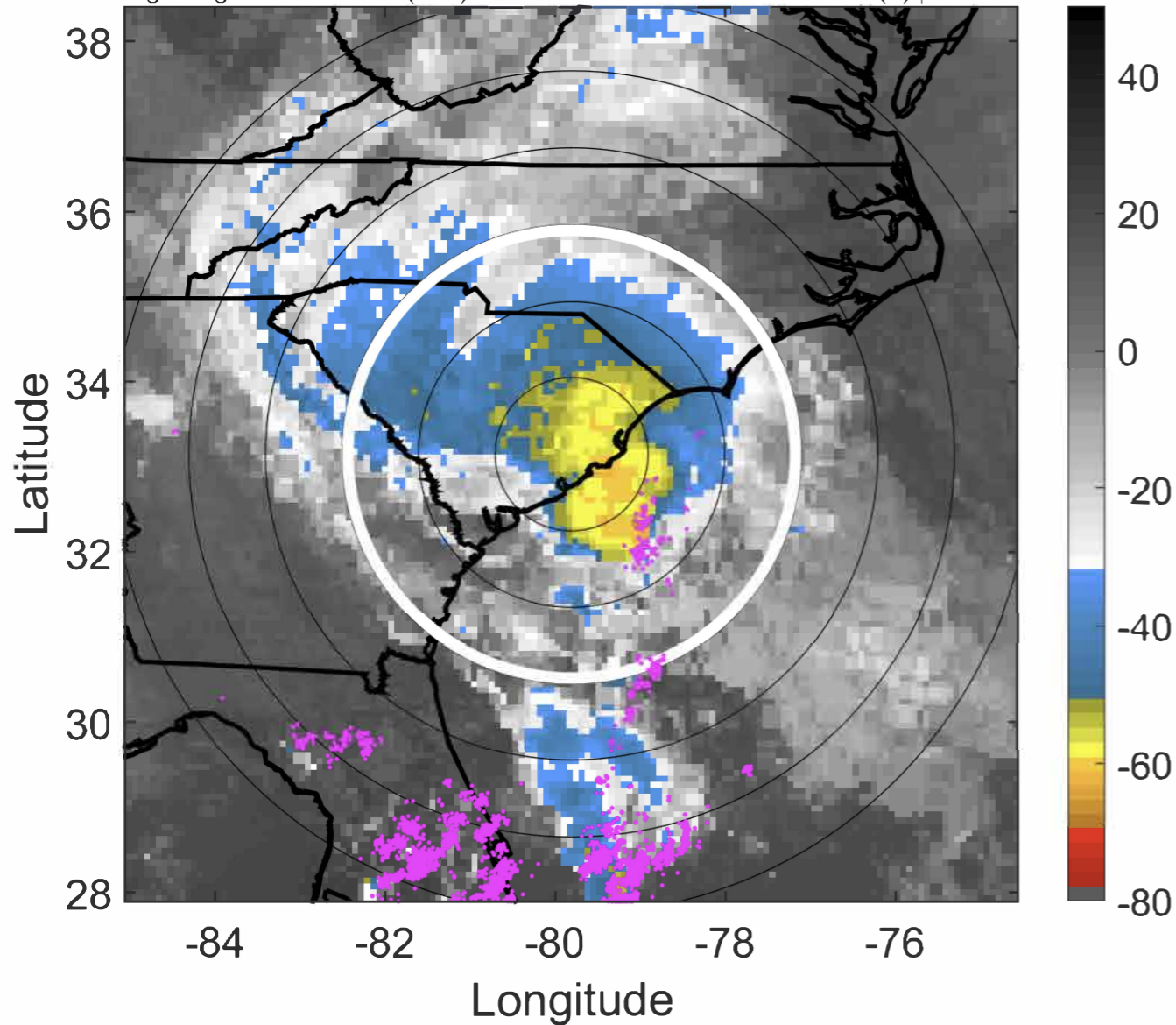
Δ t: 2020052715 (9.7 LT) - 2020052709 (3.7 LT)

Lightning: 9.7 LT \pm 1.5 h (dots)

LAND EFFECTS

02L (BERTHA) | 37.5 kt TS

S: 4.1 m s⁻¹ (L) | H: 14.5°



IR BT & Lightning

t: 2020052718 (12.7 LT)

Lightning: 12.7 LT \pm 1.5 h (dots)

LAND EFFECTS

02L (BERTHA) | 30 kt TD

S: 4.6 m s⁻¹ (M) | H: 9°

6-h IR BT Differences & Lightning

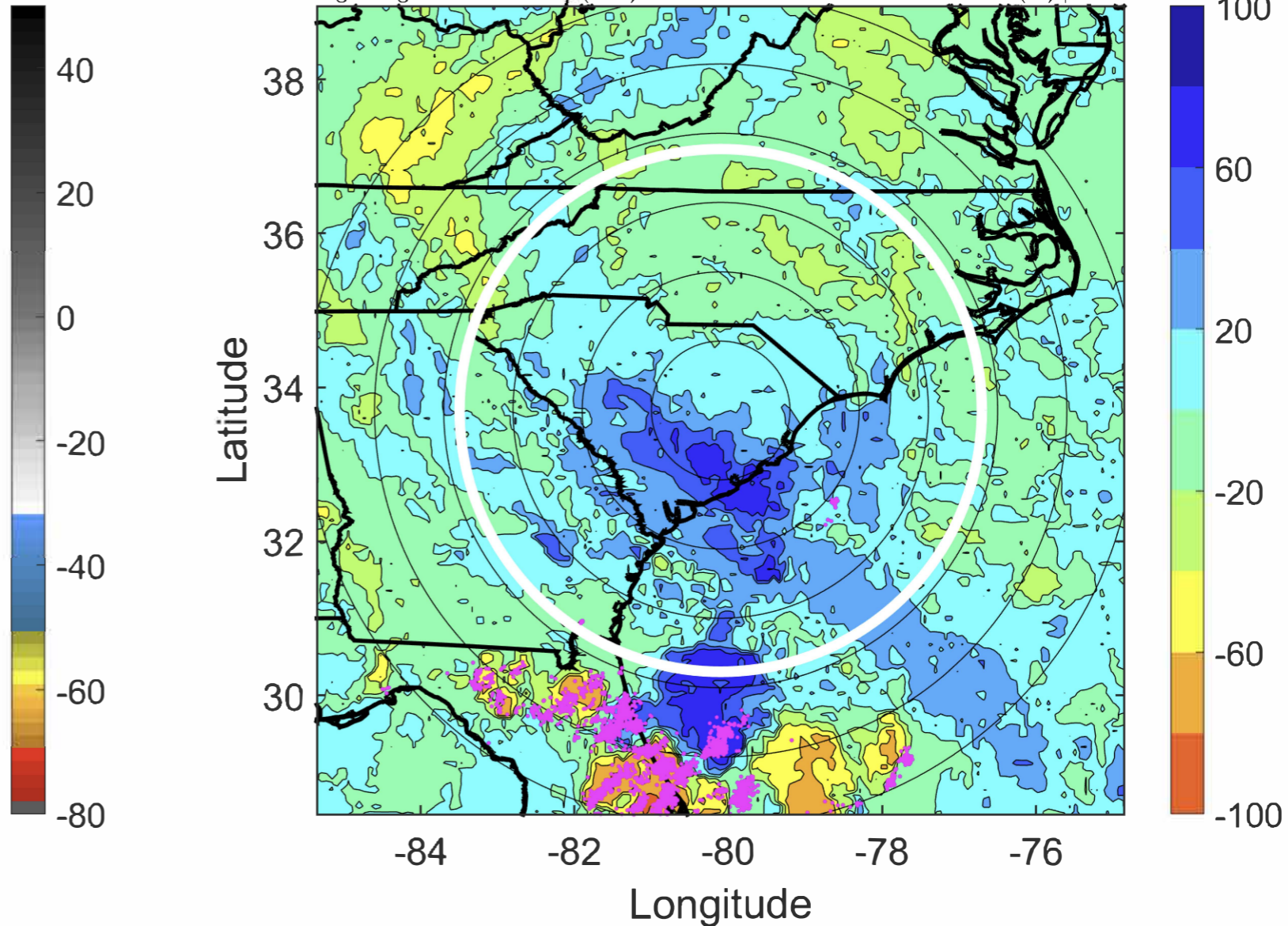
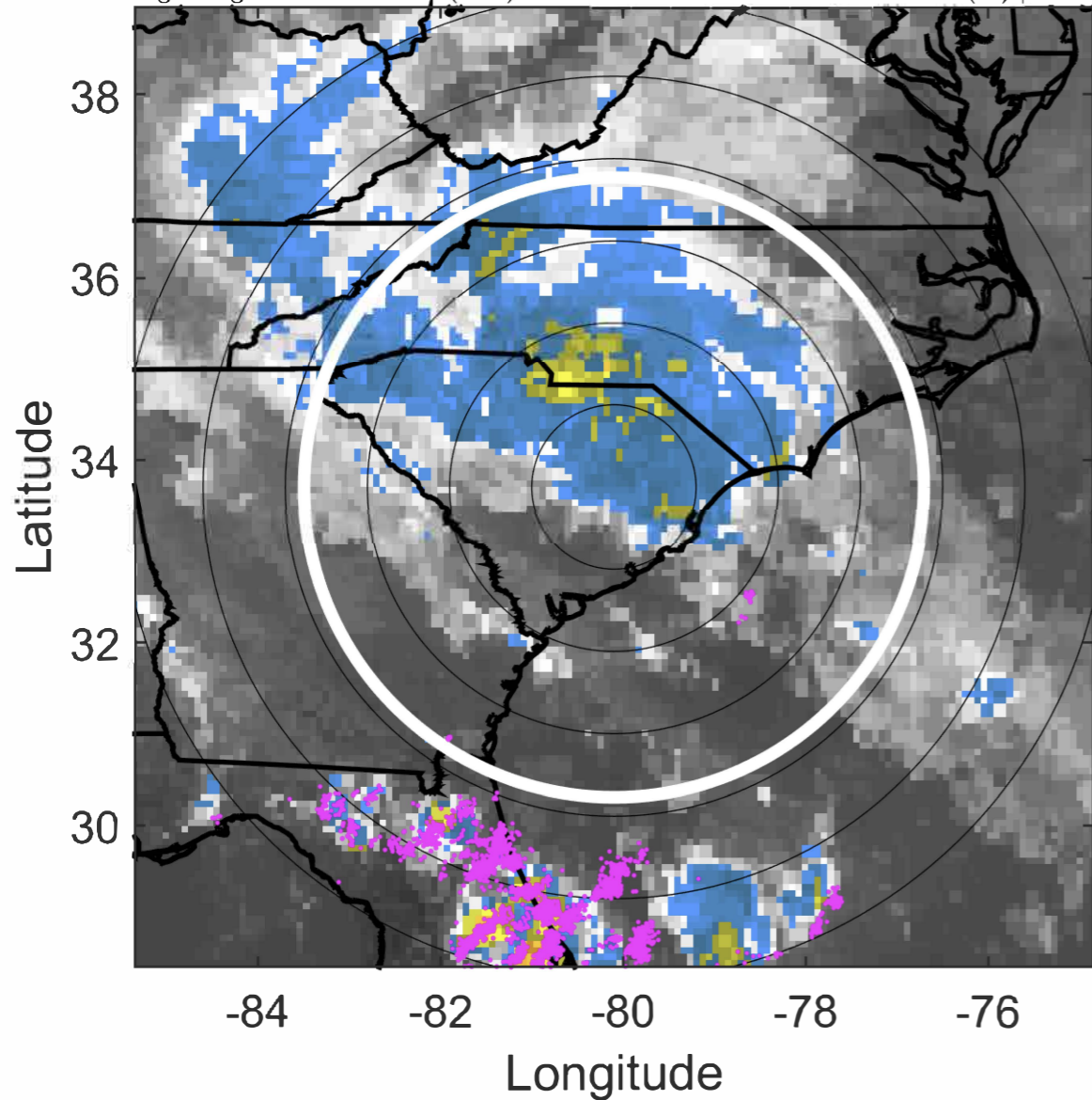
Δ t: 2020052718 (12.7 LT) - 2020052712 (6.7 LT)

Lightning: 12.7 LT \pm 1.5 h (dots)

LAND EFFECTS

02L (BERTHA) | 30 kt TD

S: 4.6 m s⁻¹ (M) | H: 9°



IR BT & Lightning

t: 2020052721 (15.6 LT)

Lightning: 15.6 LT \pm 1.5 h (dots)

LAND EFFECTS

02L (BERTHA) | 27.5 kt TD

S: 5 m s⁻¹ (M) | H: 9°

6-h IR BT Differences & Lightning

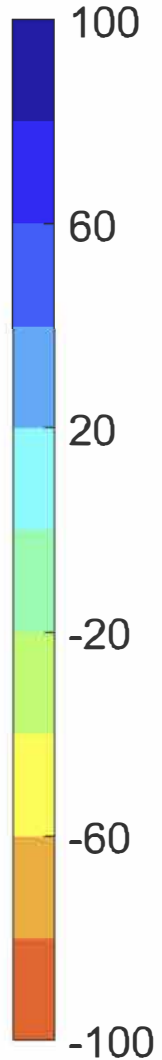
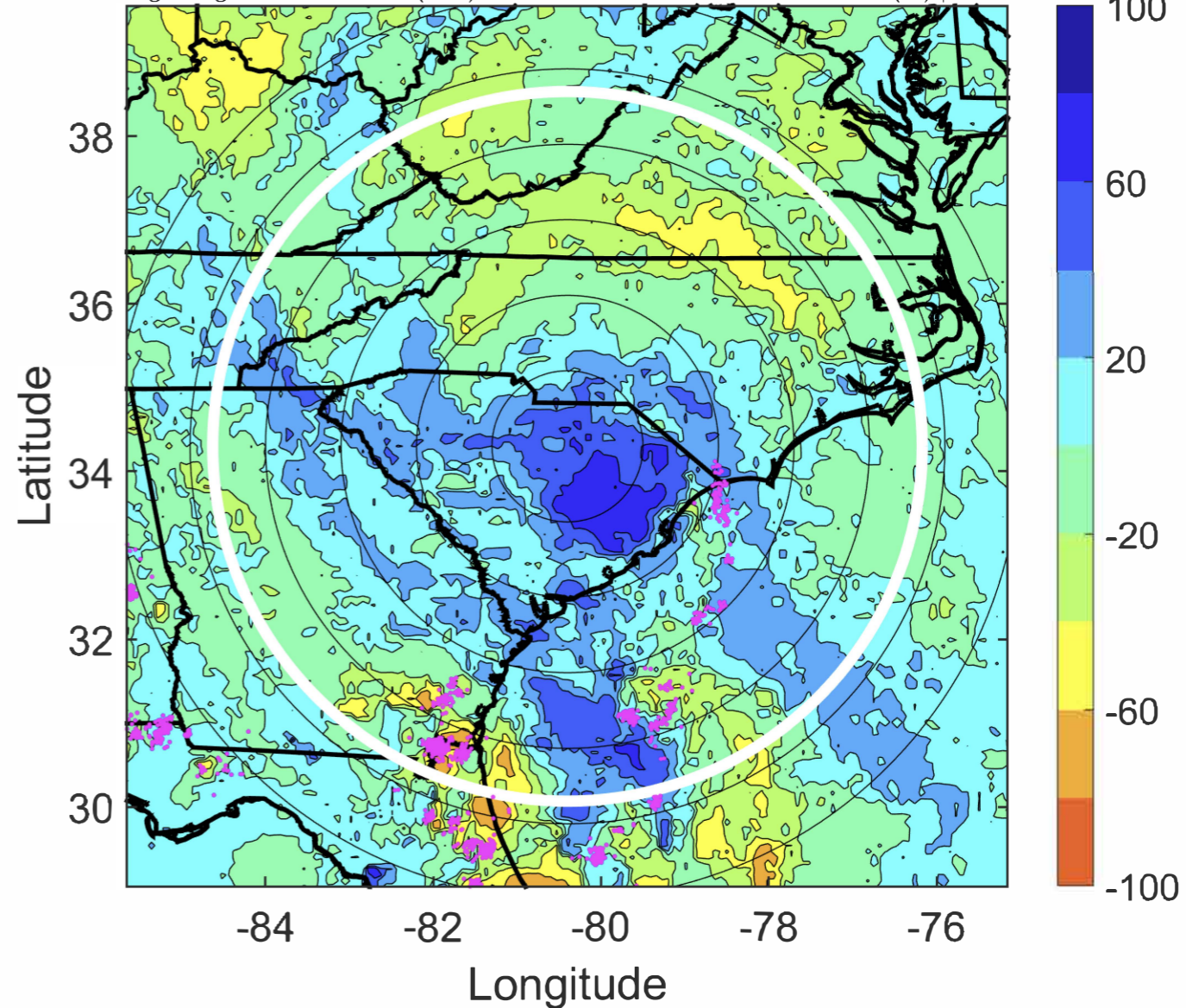
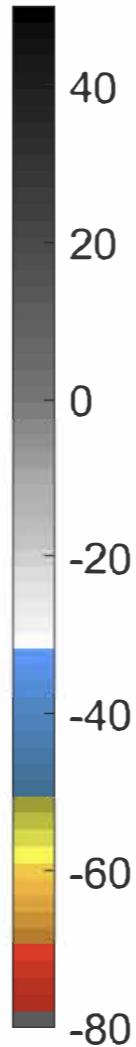
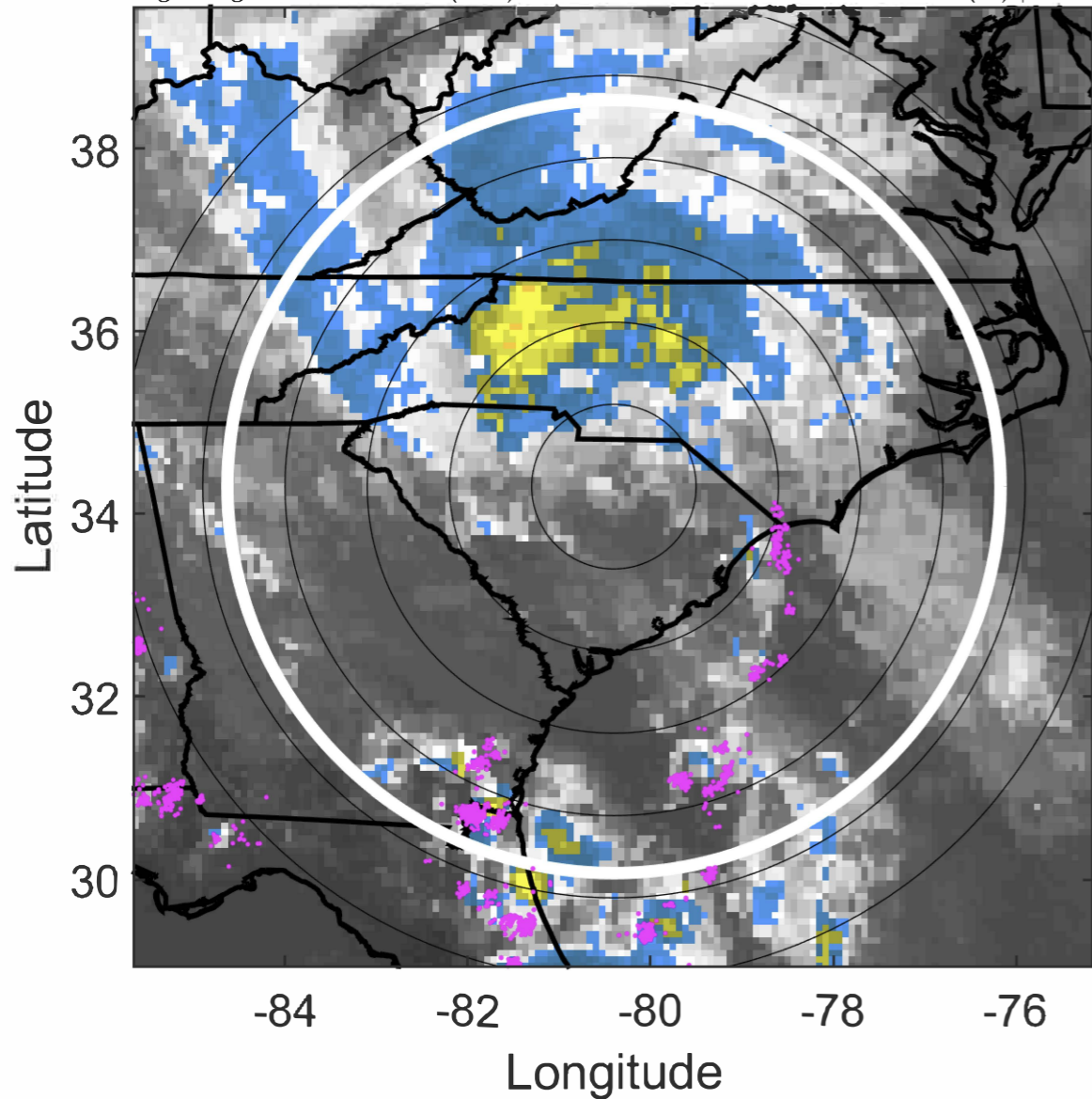
Δ t: 2020052721 (15.6 LT) - 2020052715 (9.7 LT)

Lightning: 15.6 LT \pm 1.5 h (dots)

LAND EFFECTS

02L (BERTHA) | 27.5 kt TD

S: 5 m s⁻¹ (M) | H: 9°



IR BT & Lightning

t: 2020052800 (18.6 LT)

Lightning: 18.6 LT \pm 1.5 h (dots)

LAND EFFECTS

02L (BERTHA) | 25 kt TD

S: 5.3 m s⁻¹ (M) | H: 9°

6-h IR BT Differences & Lightning

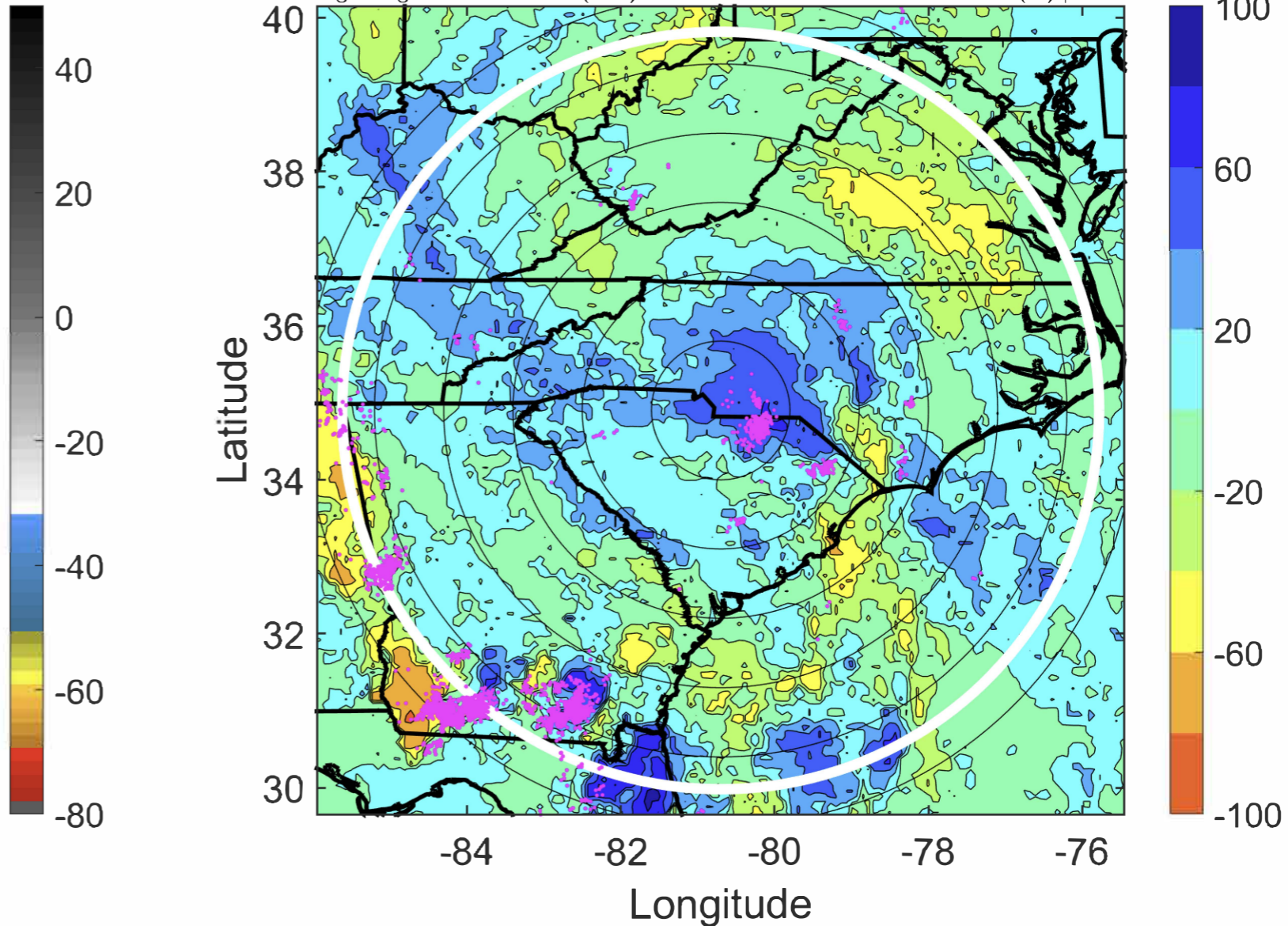
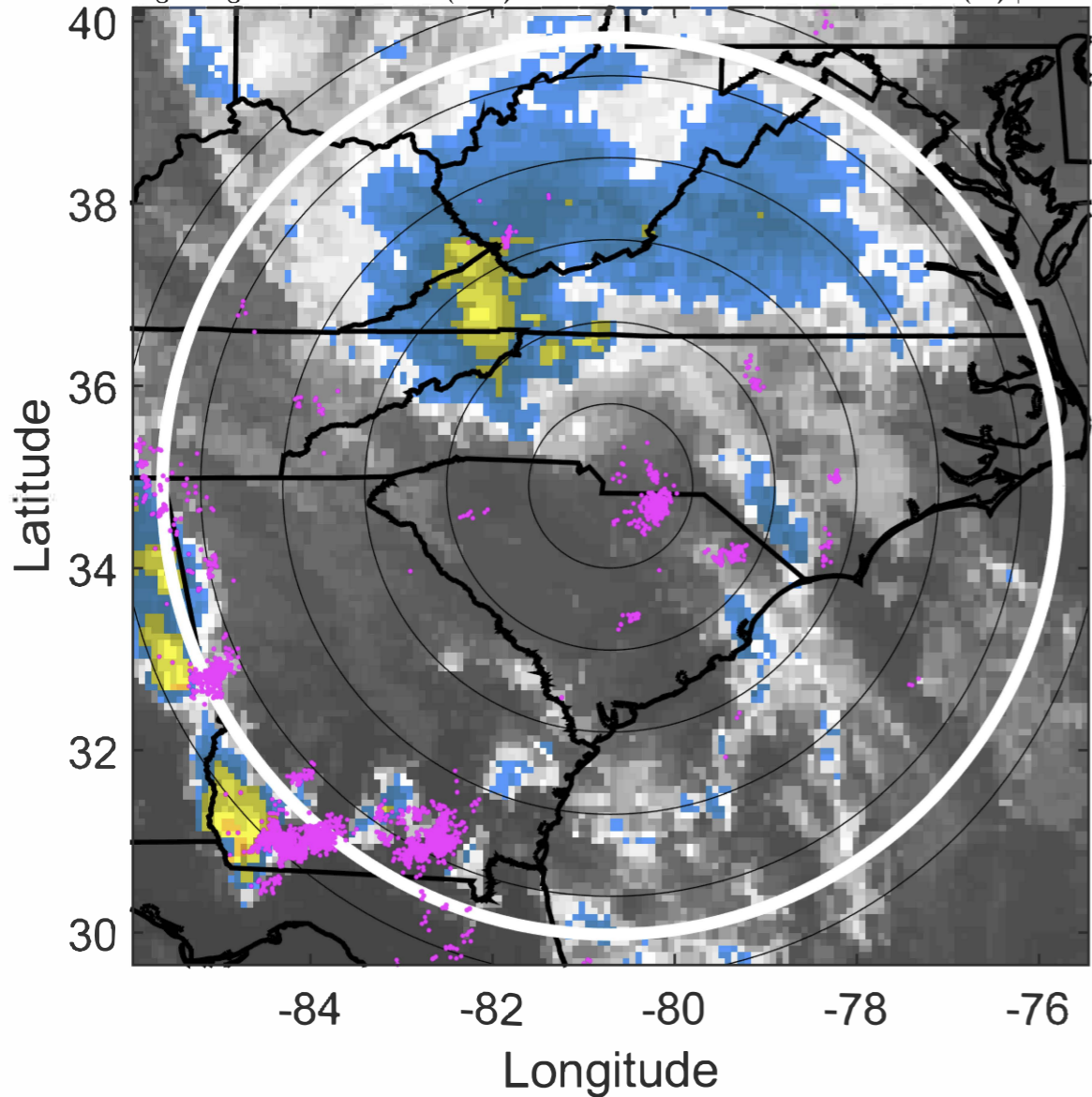
Δ t: 2020052800 (18.6 LT) - 2020052718 (12.7 LT)

Lightning: 18.6 LT \pm 1.5 h (dots)

LAND EFFECTS

02L (BERTHA) | 25 kt TD

S: 5.3 m s⁻¹ (M) | H: 9°



IR BT & Lightning

t: 2020052803 (21.6 LT)

Lightning: 21.6 LT \pm 1.5 h (dots)

LAND EFFECTS

02L (BERTHA) | 22.5 kt TD

S: null | H: null

6-h IR BT Differences & Lightning

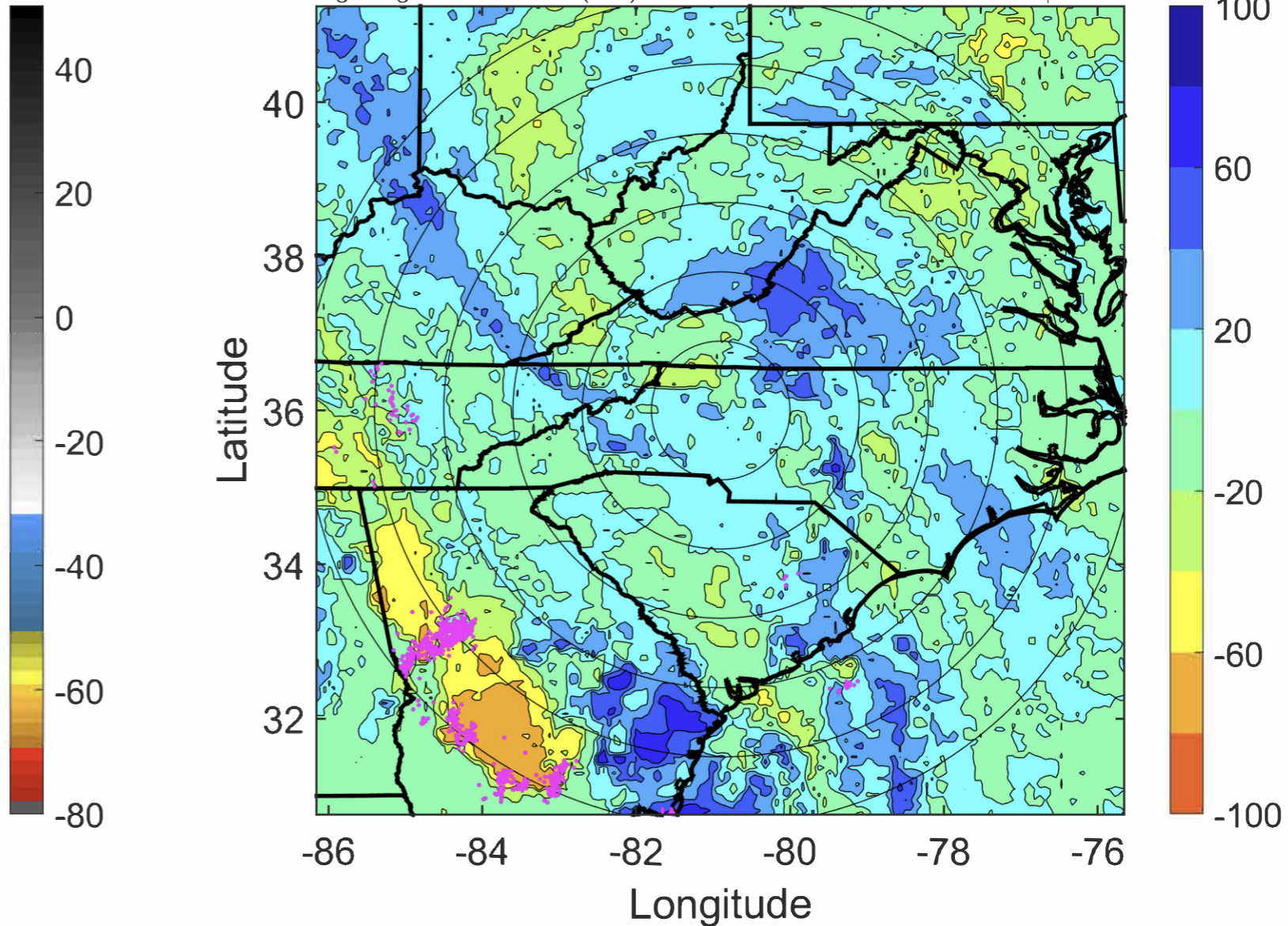
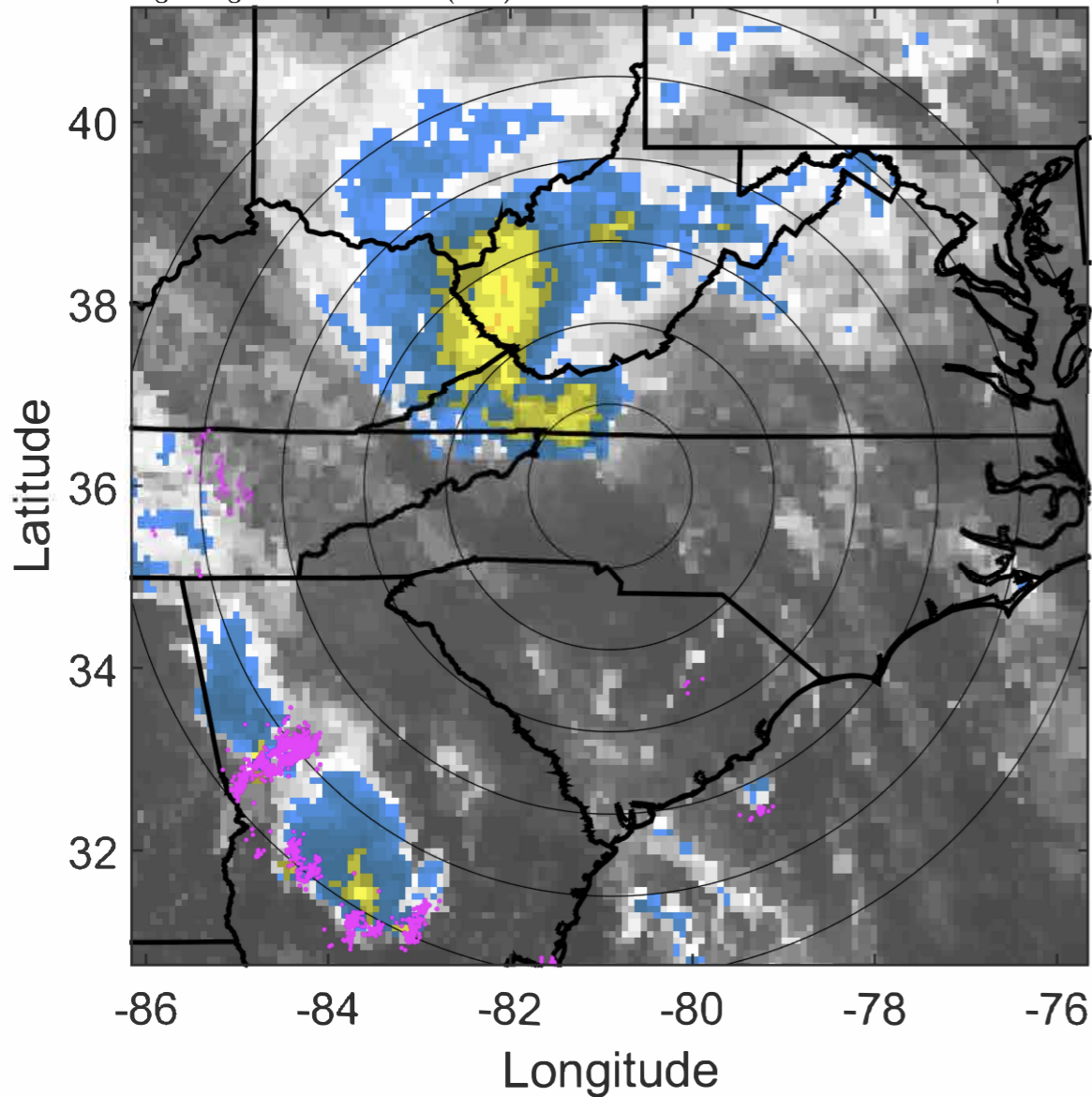
Δ t: 2020052803 (21.6 LT) - 2020052721 (15.6 LT)

Lightning: 21.6 LT \pm 1.5 h (dots)

LAND EFFECTS

02L (BERTHA) | 22.5 kt TD

S: null | H: null



IR BT & Lightning

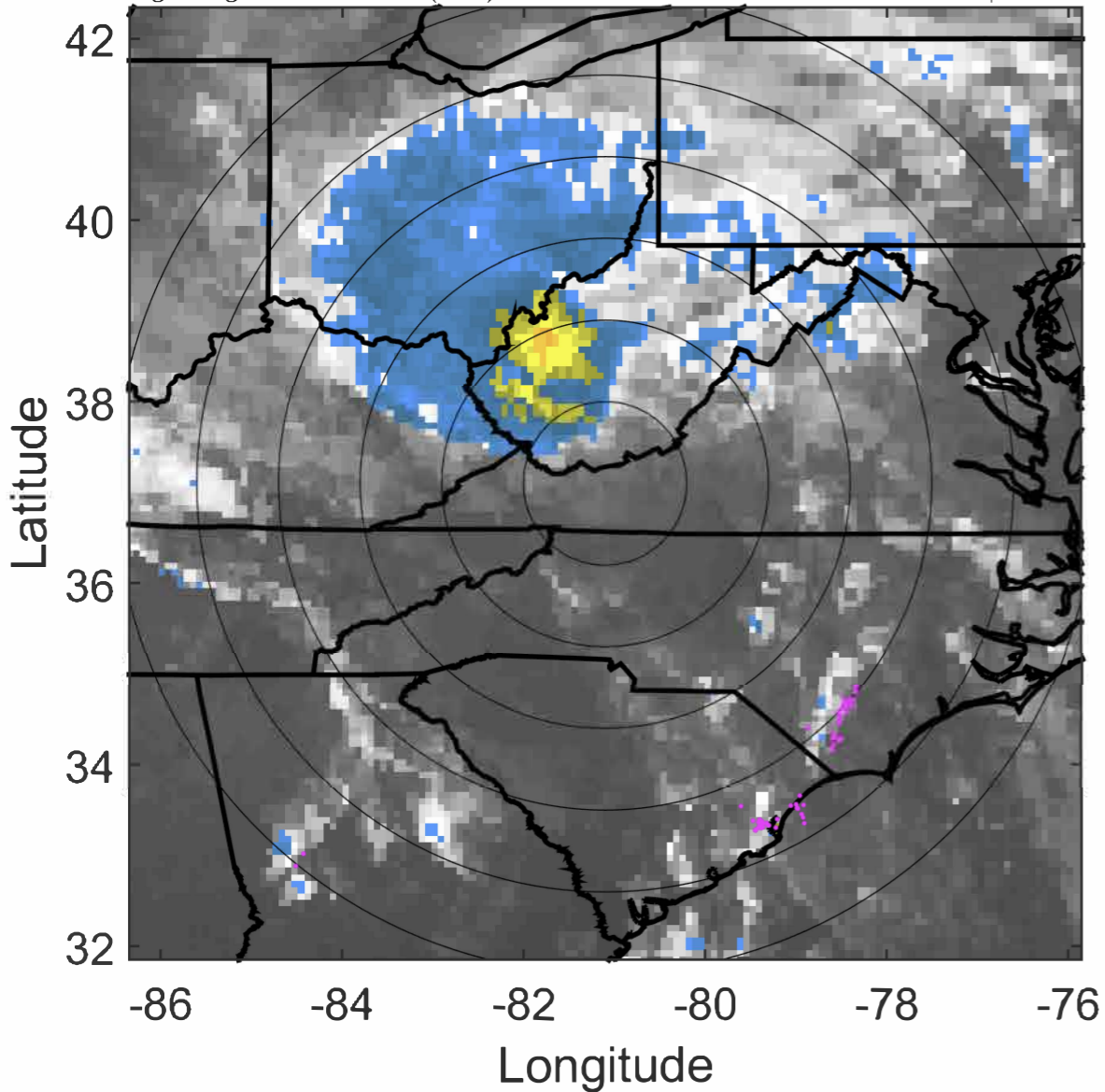
t: 2020052806 (0.6 LT)

Lightning: 0.6 LT \pm 1.5 h (dots)

LAND EFFECTS

02L (BERTHA) | 20 kt EX

S: null | H: null



6-h IR BT Differences & Lightning

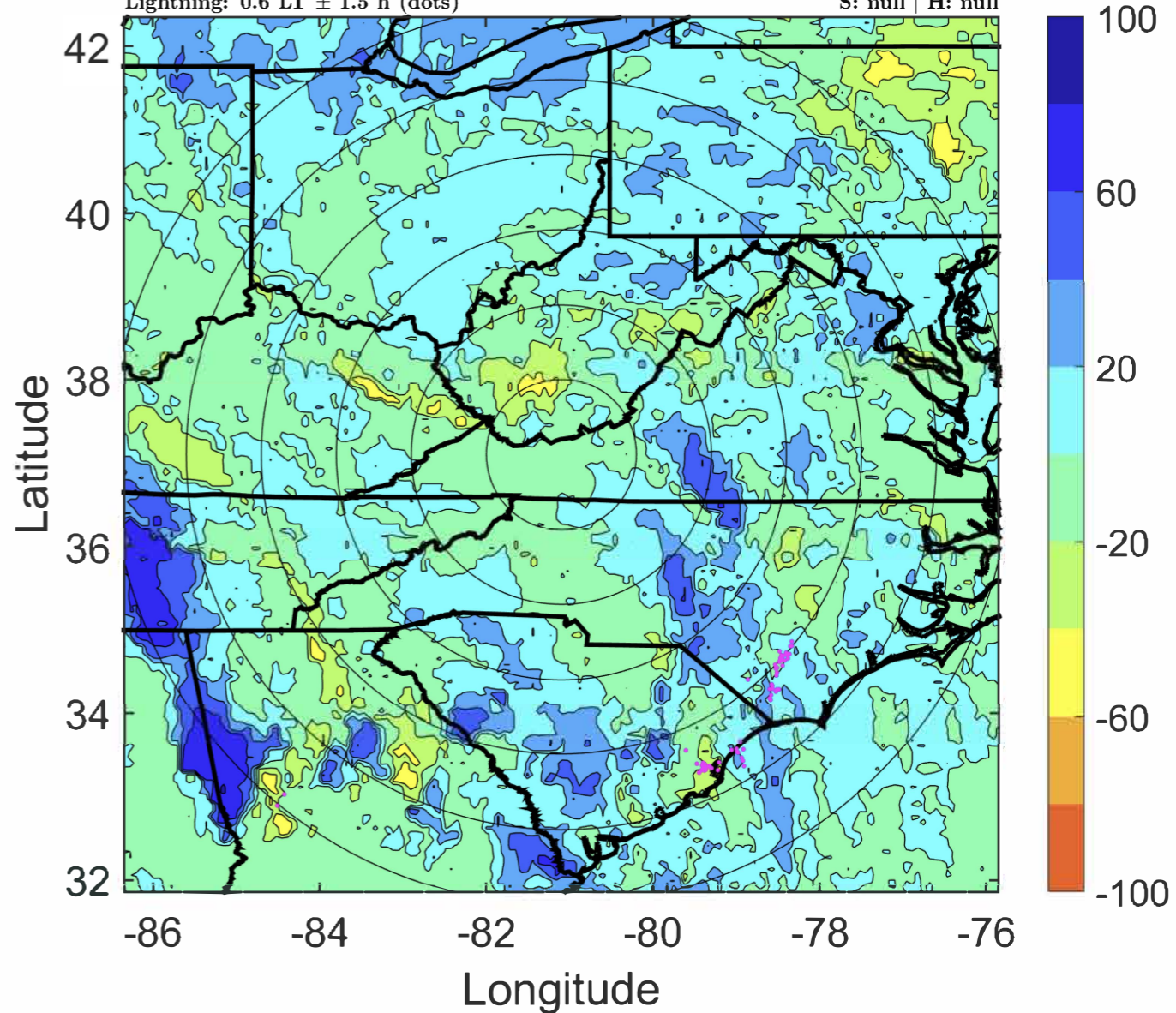
Δ t: 2020052806 (0.6 LT) - 2020052800 (18.6 LT)

Lightning: 0.6 LT \pm 1.5 h (dots)

LAND EFFECTS

02L (BERTHA) | 20 kt EX

S: null | H: null



IR BT & Lightning

t: 2020052809 (3.6 LT)

Lightning: 3.6 LT \pm 1.5 h (dots)

LAND EFFECTS

02L (BERTHA) | 20 kt EX

S: null | H: null

6-h IR BT Differences & Lightning

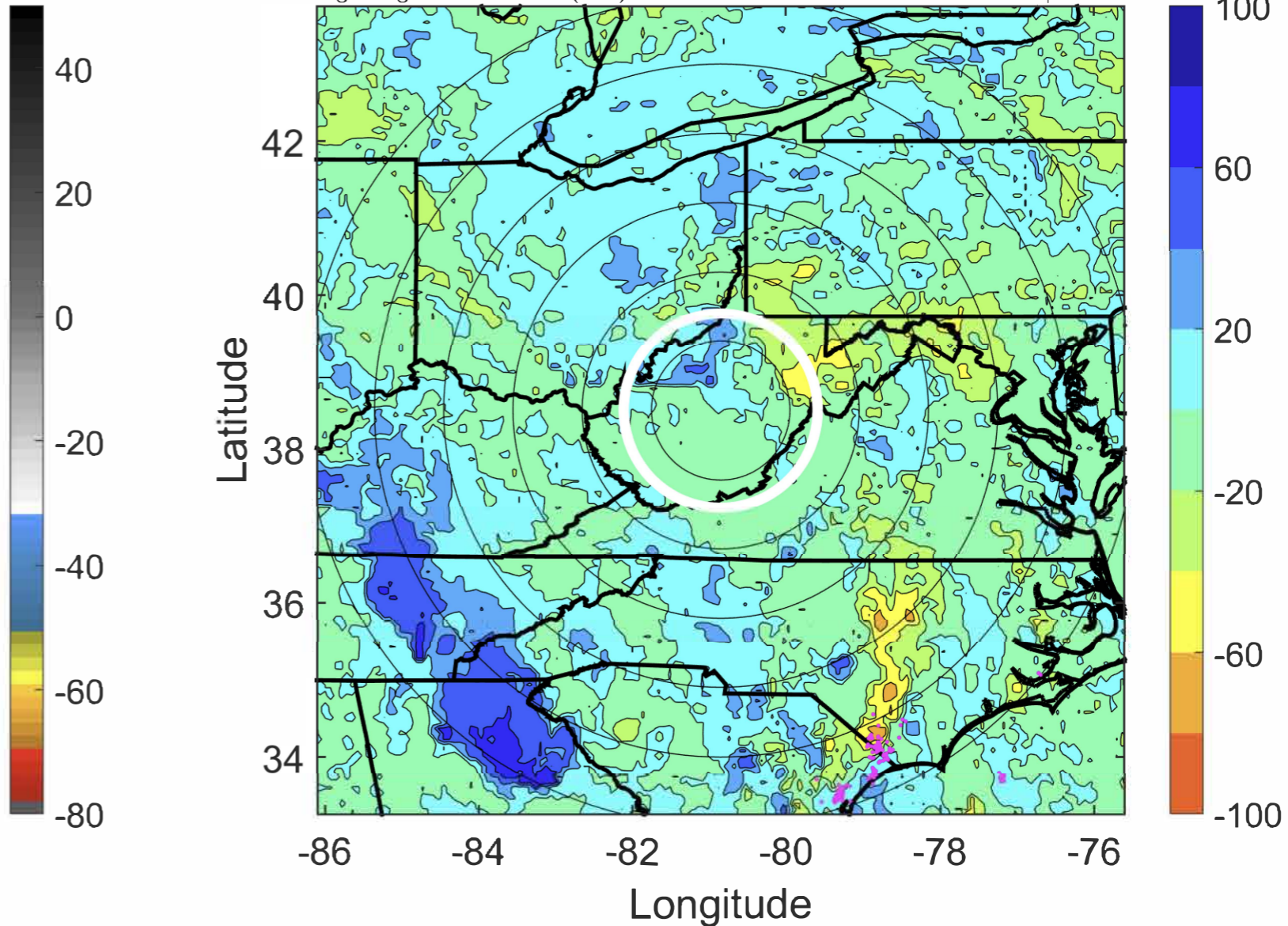
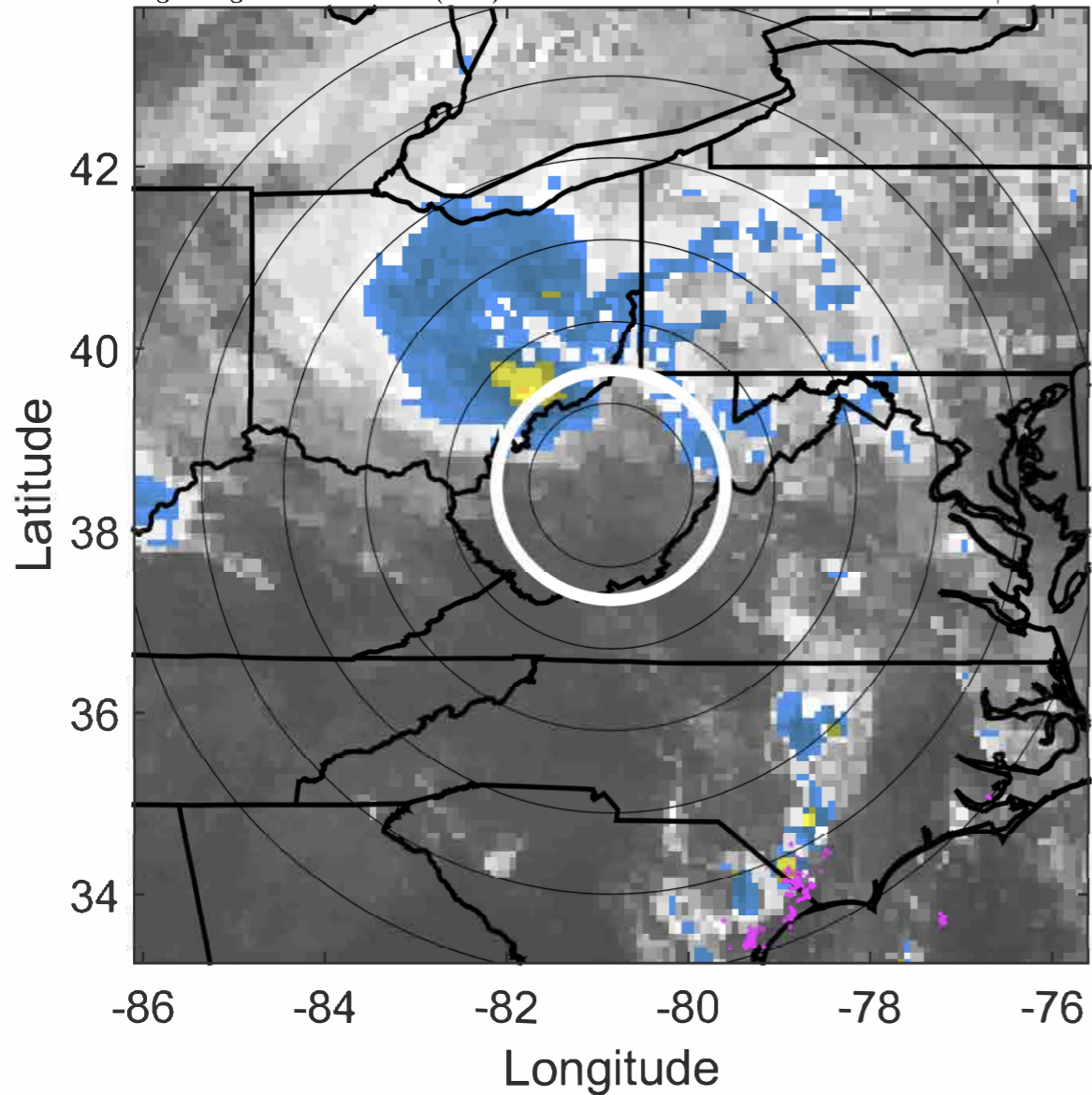
Δ t: 2020052809 (3.6 LT) - 2020052803 (21.6 LT)

Lightning: 3.6 LT \pm 1.5 h (dots)

LAND EFFECTS

02L (BERTHA) | 20 kt EX

S: null | H: null



IR BT & Lightning

t: 2020052812 (6.6 LT)

Lightning: 6.6 LT \pm 1.5 h (dots)

LAND EFFECTS

02L (BERTHA) | 20 kt EX

S: null | H: null

6-h IR BT Differences & Lightning

Δ t: 2020052812 (6.6 LT) - 2020052806 (0.6 LT)

Lightning: 6.6 LT \pm 1.5 h (dots)

LAND EFFECTS

02L (BERTHA) | 20 kt EX

S: null | H: null

