

IR BT & Lightning

t: 2021061400 (18.9 LT)

Lightning: 18.9 LT \pm 1.5 h (dots)

PT: SLCP | EA: QUASI

02L (BILL) | 20 kt LO

S: null | H: null

6-h IR BT Differences & Lightning

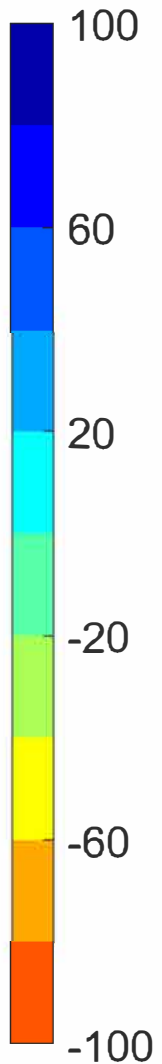
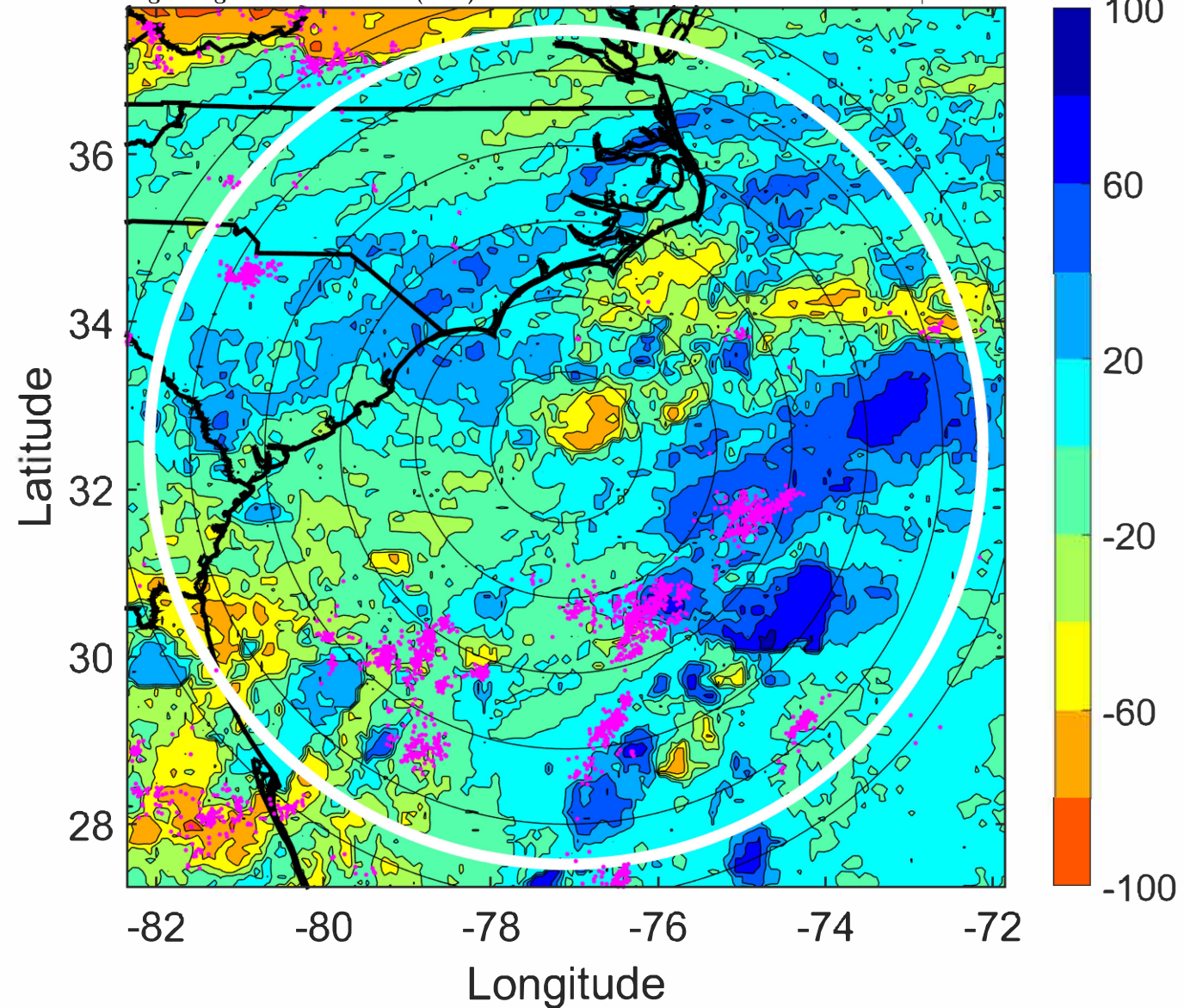
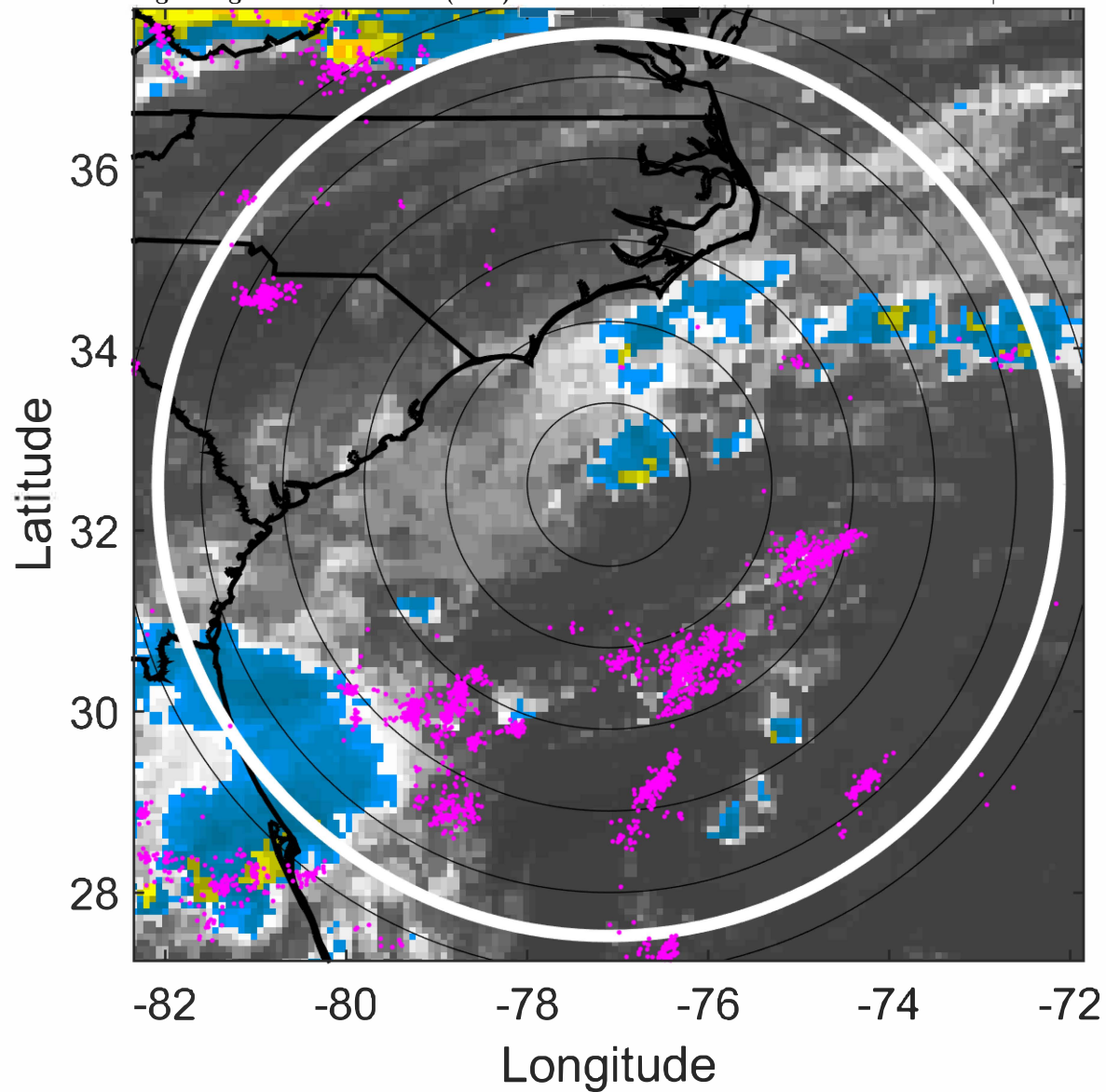
Δ t: 2021061400 (18.9 LT) - 2021061318 (12.8 LT)

Lightning: 18.9 LT \pm 1.5 h (dots)

PT: SLCP | EA: QUASI

02L (BILL) | 20 kt LO

S: null | H: null



IR BT & Lightning

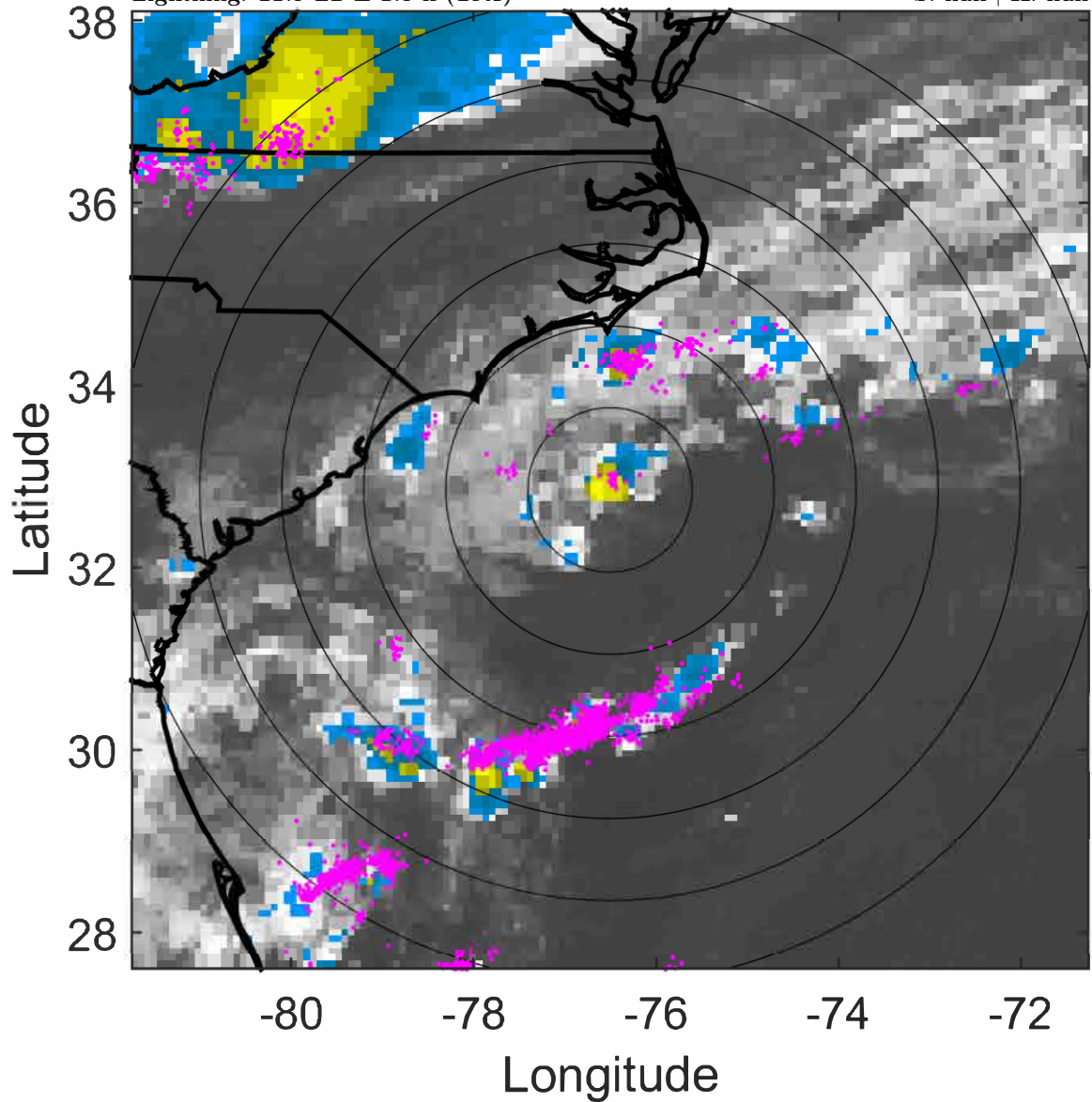
t: 2021061403 (21.9 LT)

Lightning: 21.9 LT \pm 1.5 h (dots)

PT: SLCP | EA: QUASI

02L (BILL) | 22.5 kt LO

S: null | H: null



6-h IR BT Differences & Lightning

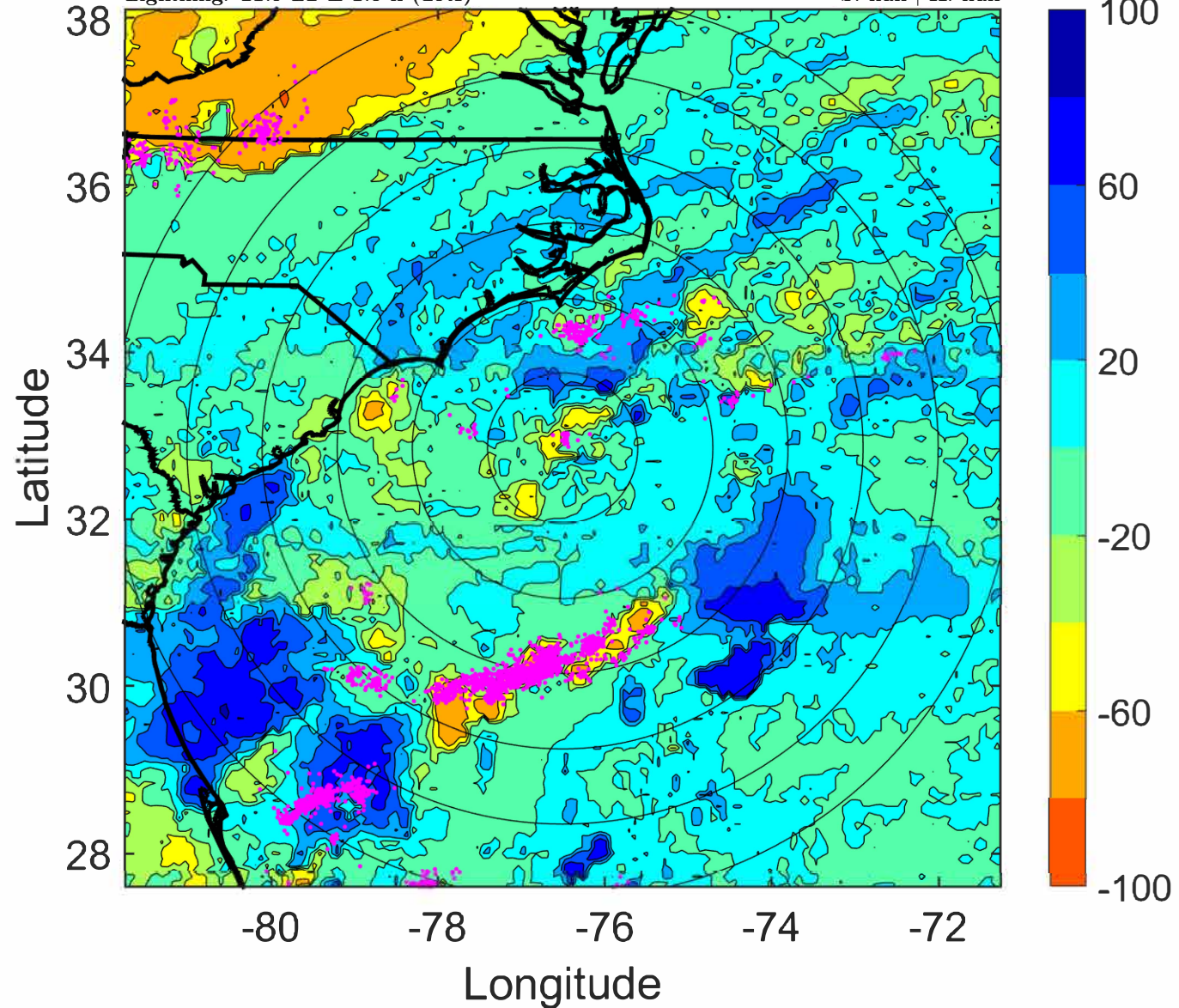
Δ t: 2021061403 (21.9 LT) - 2021061321 (15.8 LT)

Lightning: 21.9 LT \pm 1.5 h (dots)

PT: SLCP | EA: QUASI

02L (BILL) | 22.5 kt LO

S: null | H: null



IR BT & Lightning

t: 2021061406 (0.9 LT)

Lightning: 0.9 LT \pm 1.5 h (dots)

PT: SLCP | EA: QUASI

02L (BILL) | 25 kt TD

S: 3.3 m s⁻¹ (L) | H: 63°

6-h IR BT Differences & Lightning

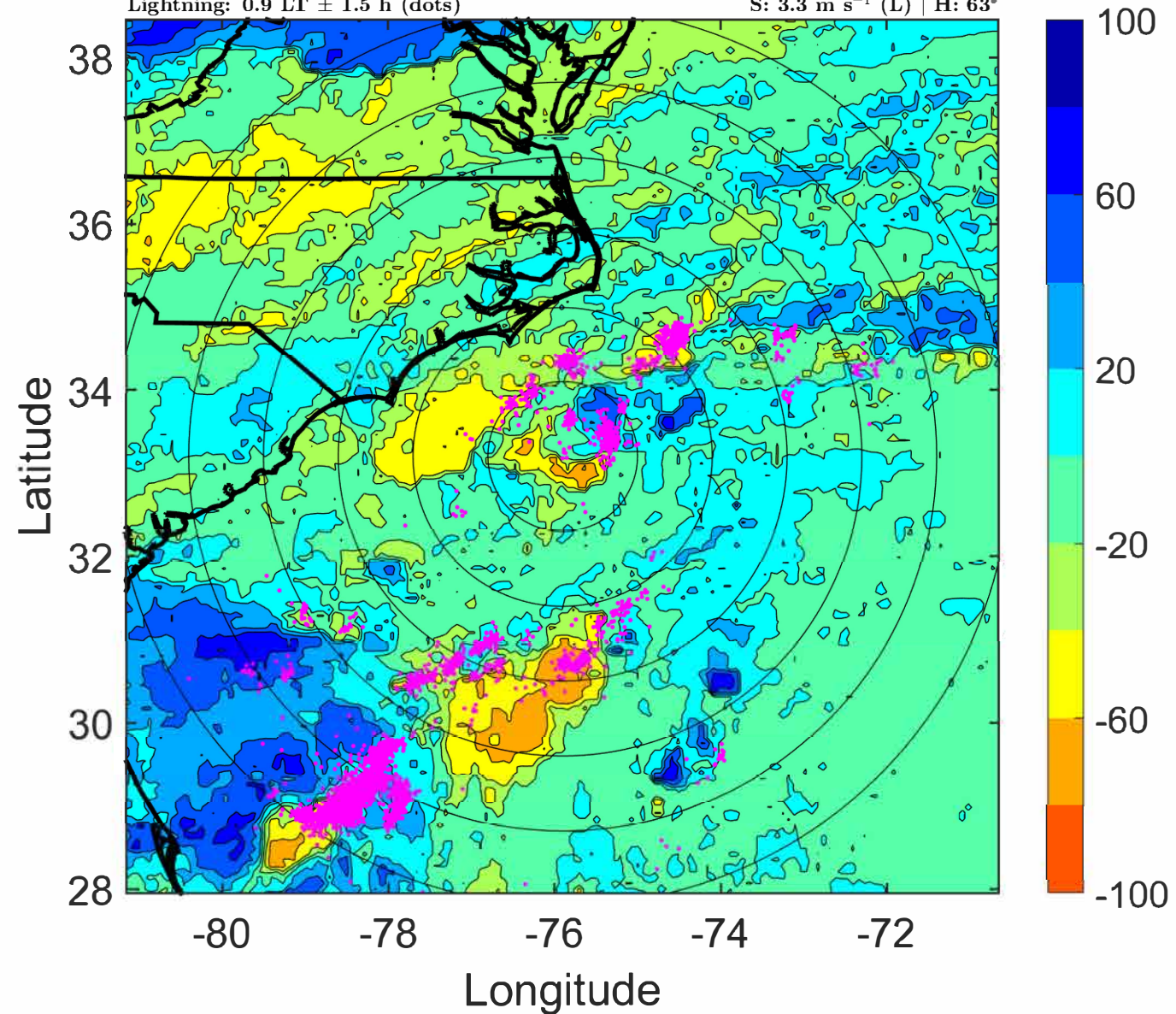
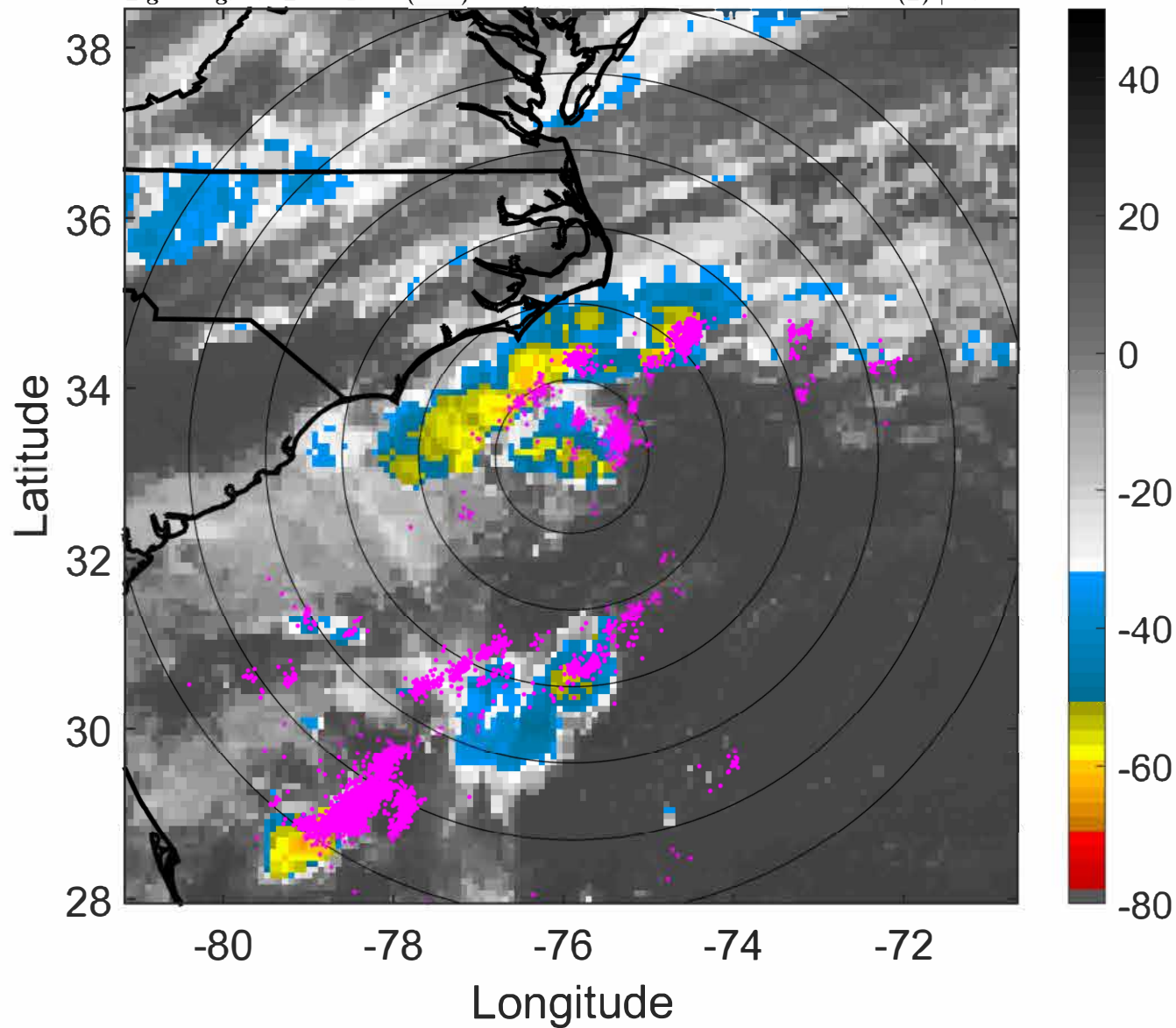
Δ t: 2021061406 (0.9 LT) - 2021061400 (18.9 LT)

Lightning: 0.9 LT \pm 1.5 h (dots)

PT: SLCP | EA: QUASI

02L (BILL) | 25 kt TD

S: 3.3 m s⁻¹ (L) | H: 63°



IR BT & Lightning

t: 2021061409 (4 LT)

Lightning: 4 LT \pm 1.5 h (dots)

PT: SLCP | EA: QUASI

02L (BILL) | 27.5 kt TD

S: 3.7 m s⁻¹ (L) | H: 52.5°

6-h IR BT Differences & Lightning

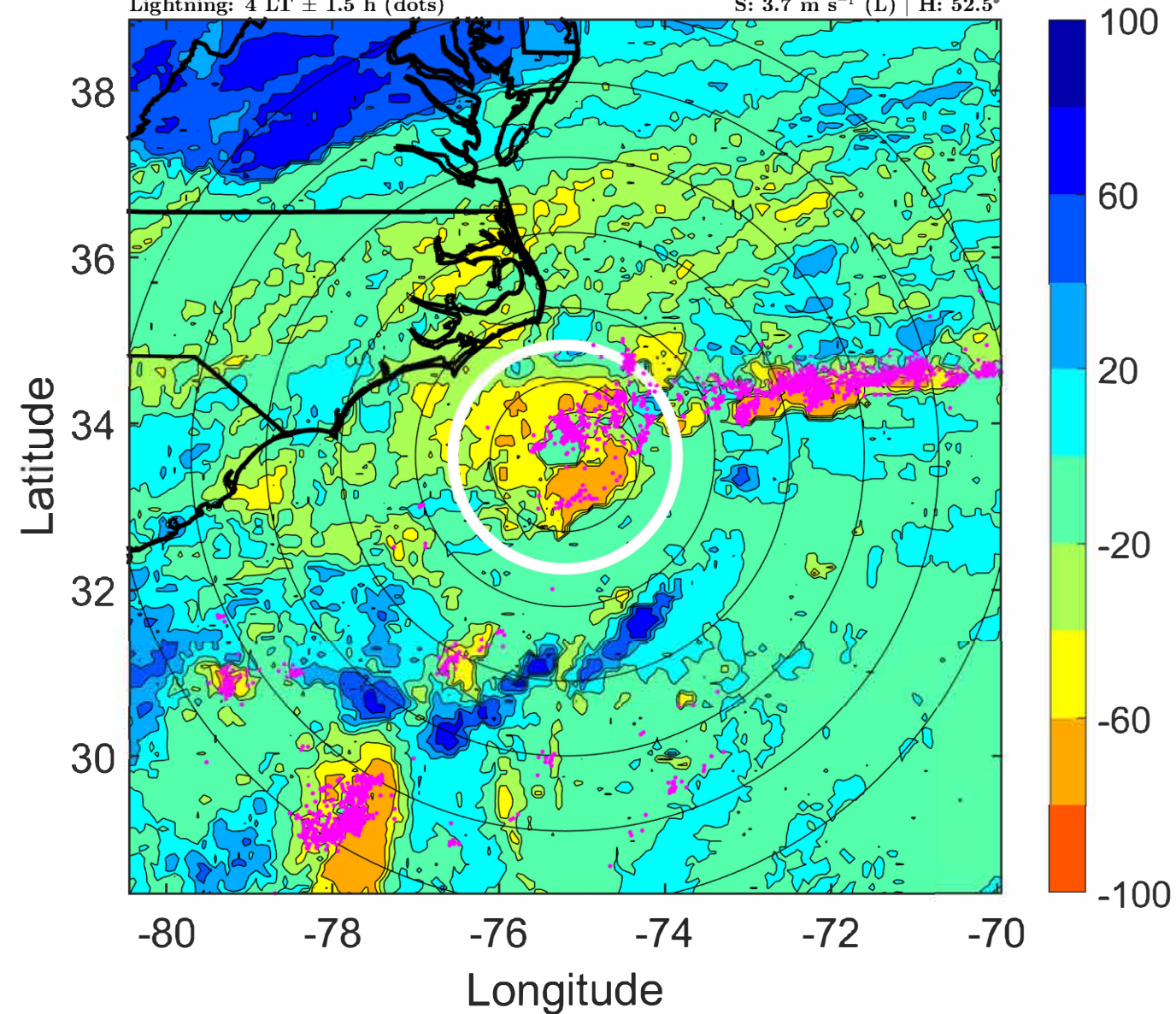
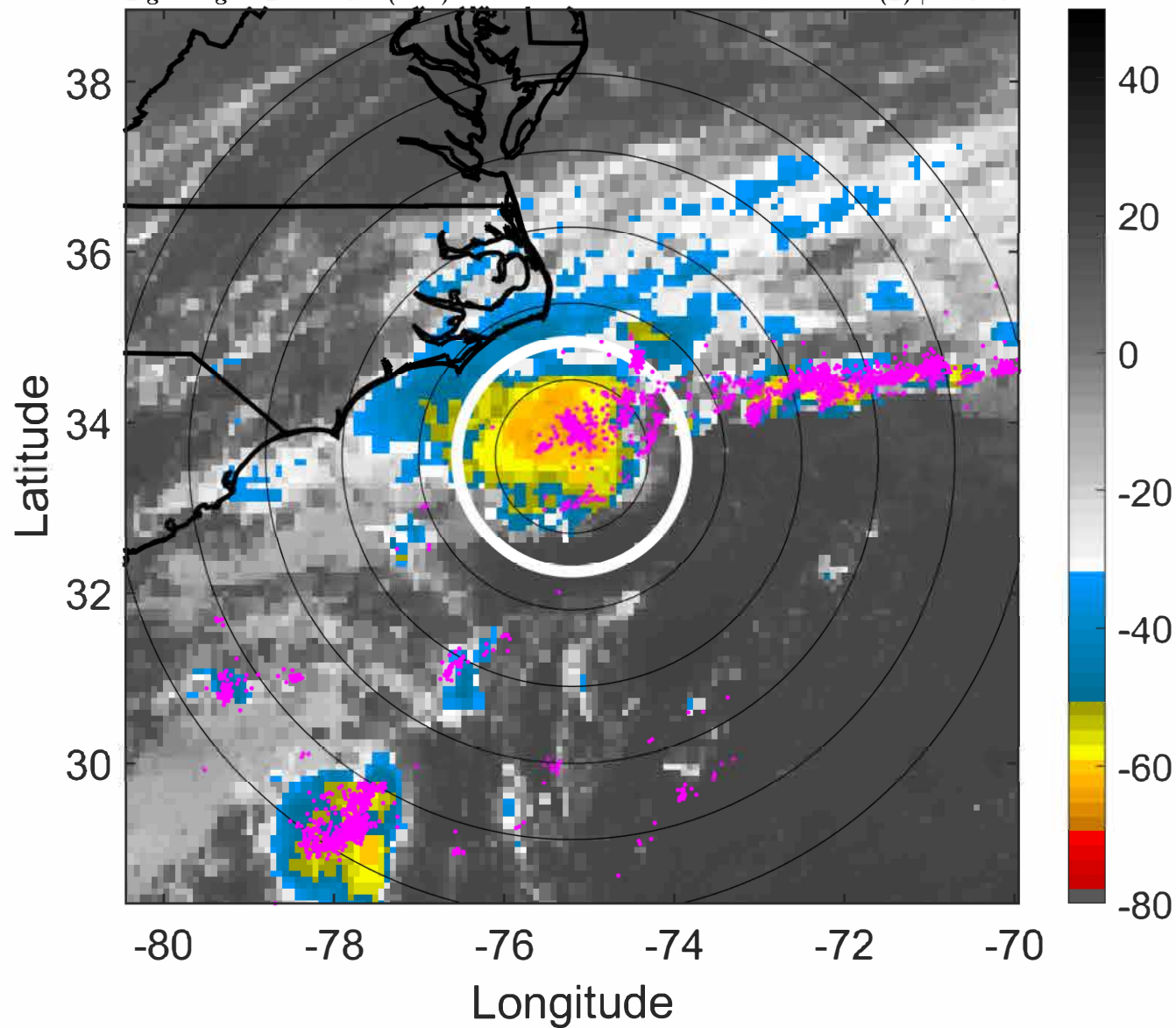
Δ t: 2021061409 (4 LT) - 2021061403 (21.9 LT)

Lightning: 4 LT \pm 1.5 h (dots)

PT: SLCP | EA: QUASI

02L (BILL) | 27.5 kt TD

S: 3.7 m s⁻¹ (L) | H: 52.5°



IR BT & Lightning

t: 2021061412 (7 LT)

Lightning: 7 LT \pm 1.5 h (dots)

PT: SLCP | EA: QUASI

02L (BILL) | 30 kt TD

S: 4.1 m s⁻¹ (L) | H: 42°

6-h IR BT Differences & Lightning

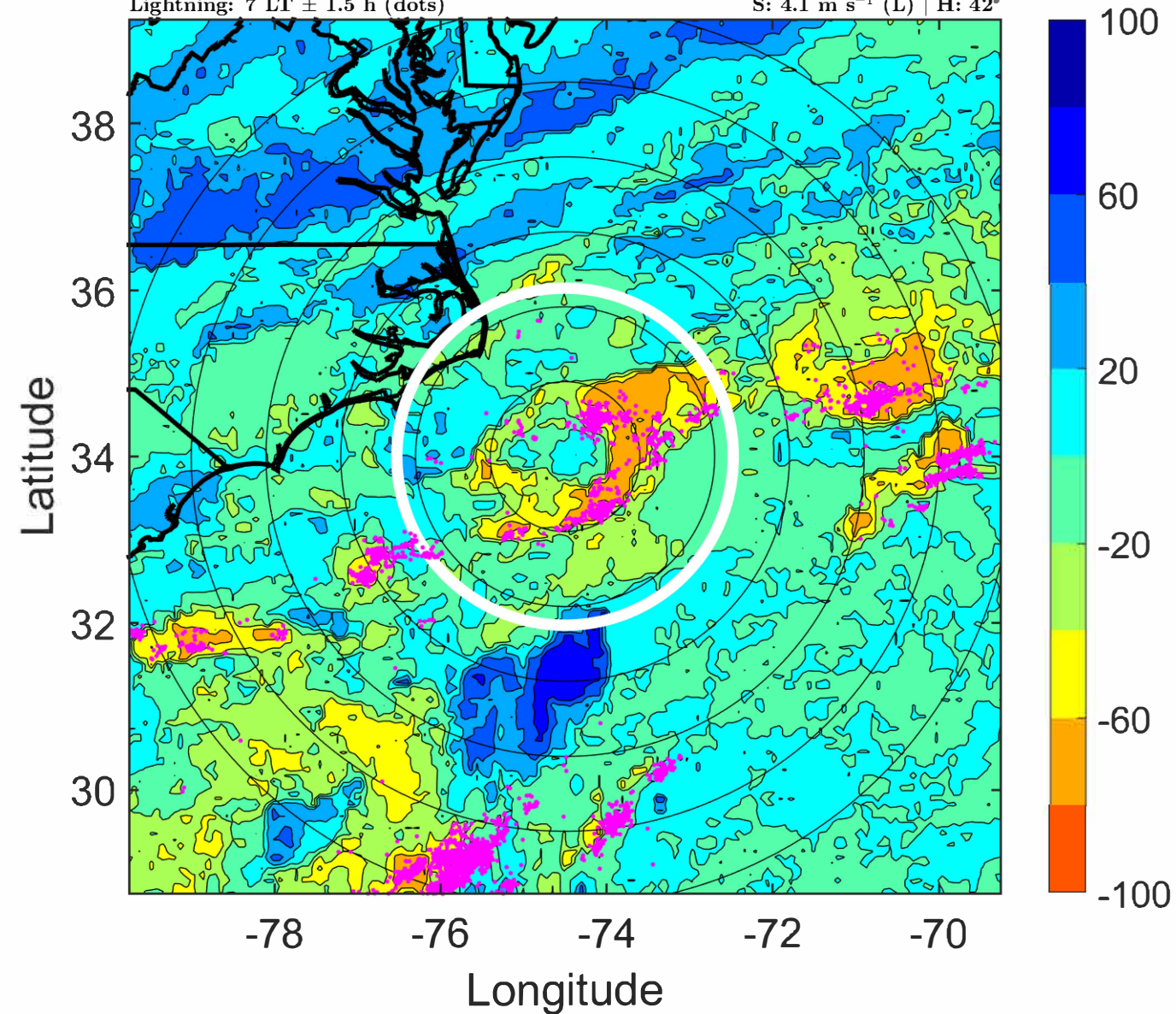
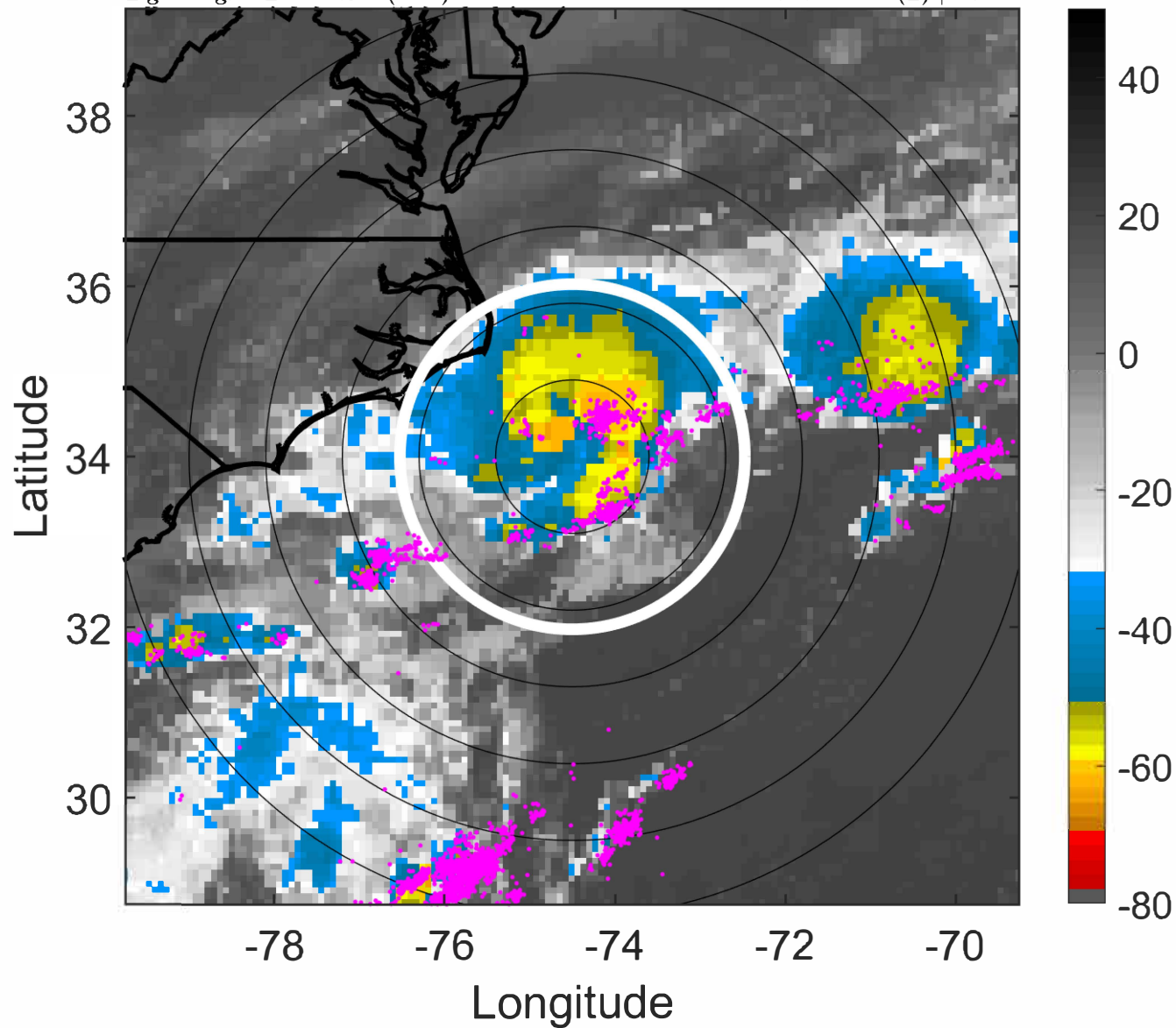
Δ t: 2021061412 (7 LT) - 2021061406 (0.9 LT)

Lightning: 7 LT \pm 1.5 h (dots)

PT: SLCP | EA: QUASI

02L (BILL) | 30 kt TD

S: 4.1 m s⁻¹ (L) | H: 42°



IR BT & Lightning

t: 2021061415 (10.1 LT)

Lightning: 10.1 LT \pm 1.5 h (dots)

PT: SLCP | EA: QUASI

02L (BILL) | 32.5 kt TD

S: 5.3 m s⁻¹ (M) | H: 39.5°

6-h IR BT Differences & Lightning

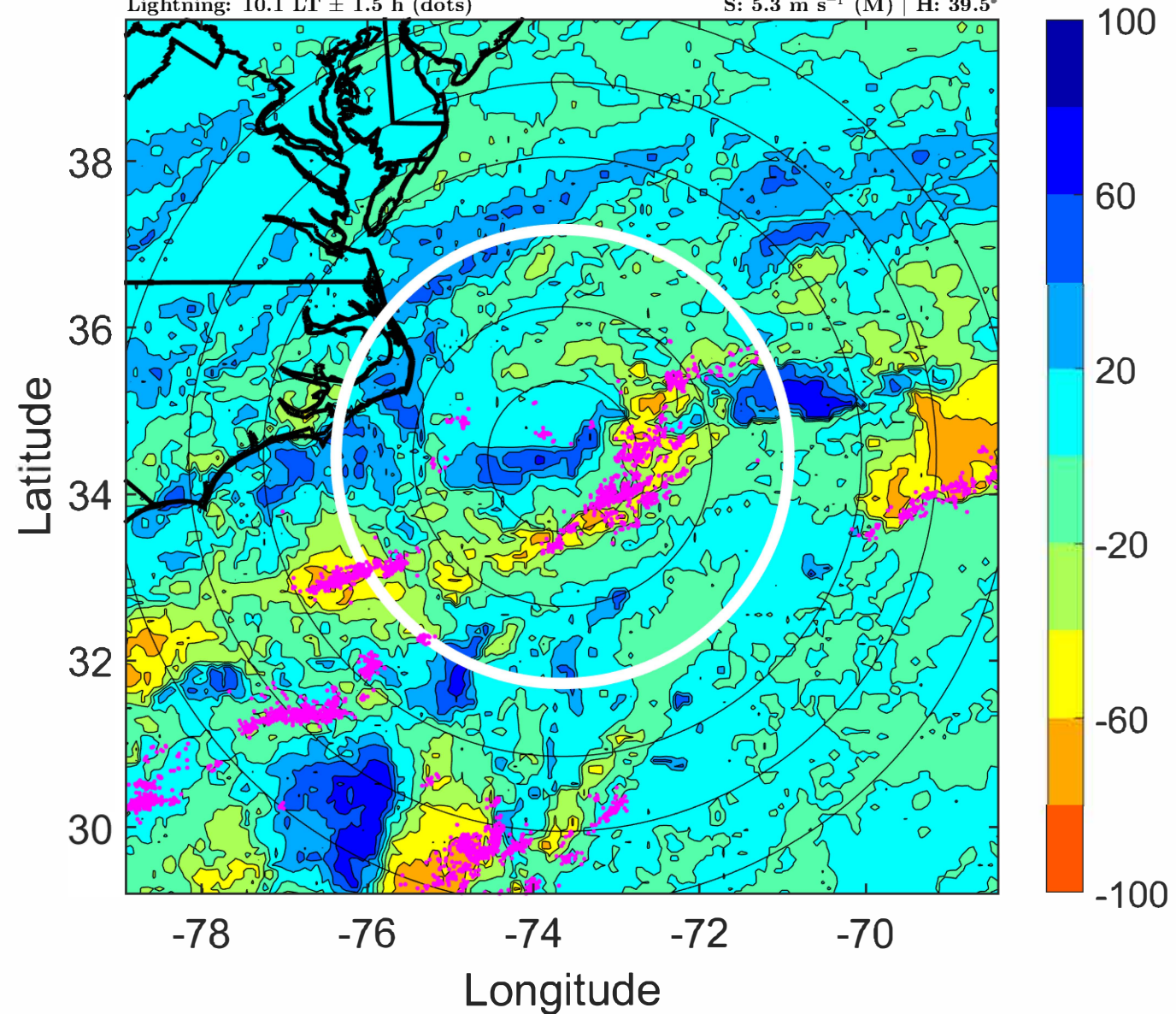
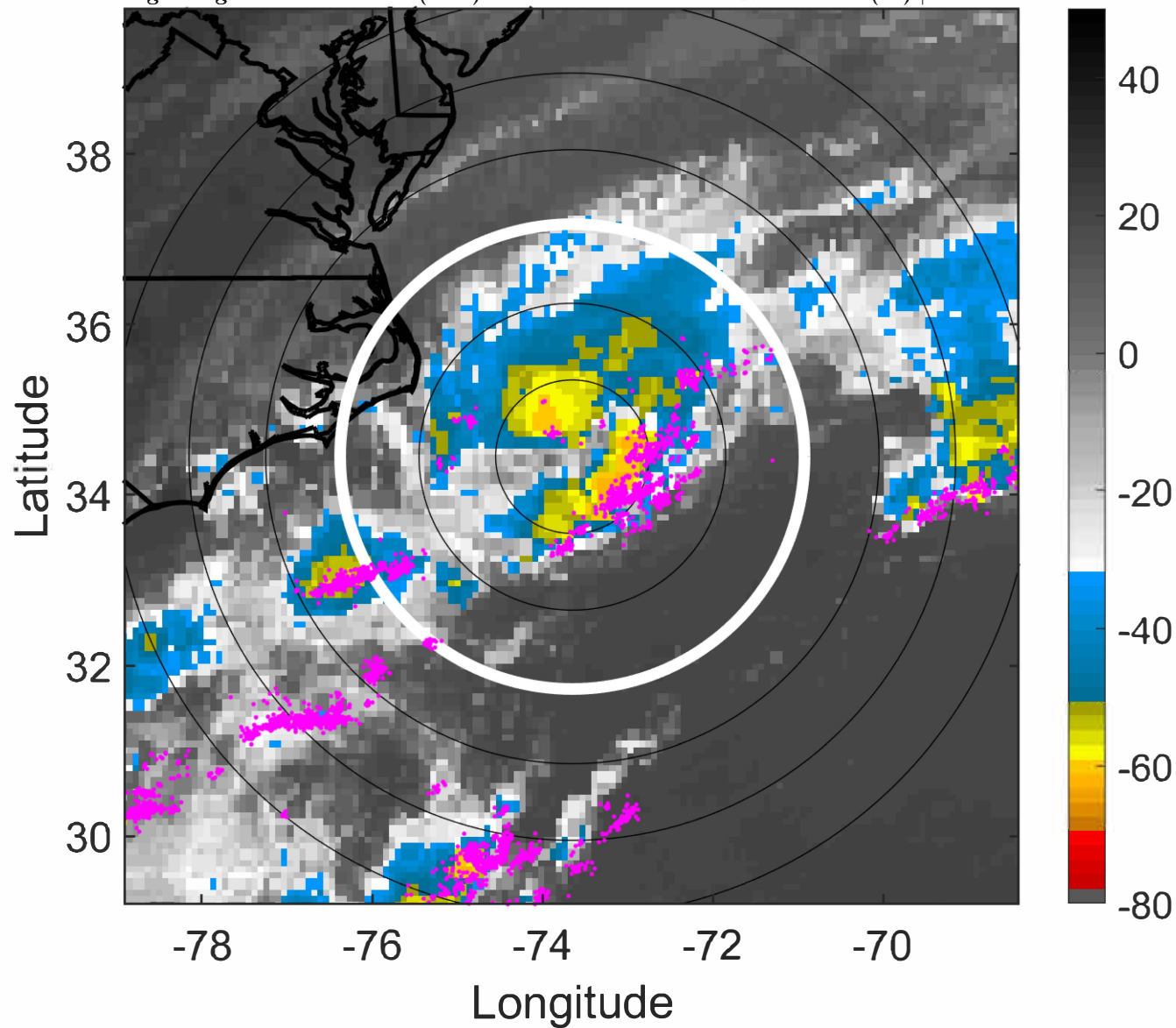
Δ t: 2021061415 (10.1 LT) - 2021061409 (4 LT)

Lightning: 10.1 LT \pm 1.5 h (dots)

PT: SLCP | EA: QUASI

02L (BILL) | 32.5 kt TD

S: 5.3 m s⁻¹ (M) | H: 39.5°



IR BT & Lightning

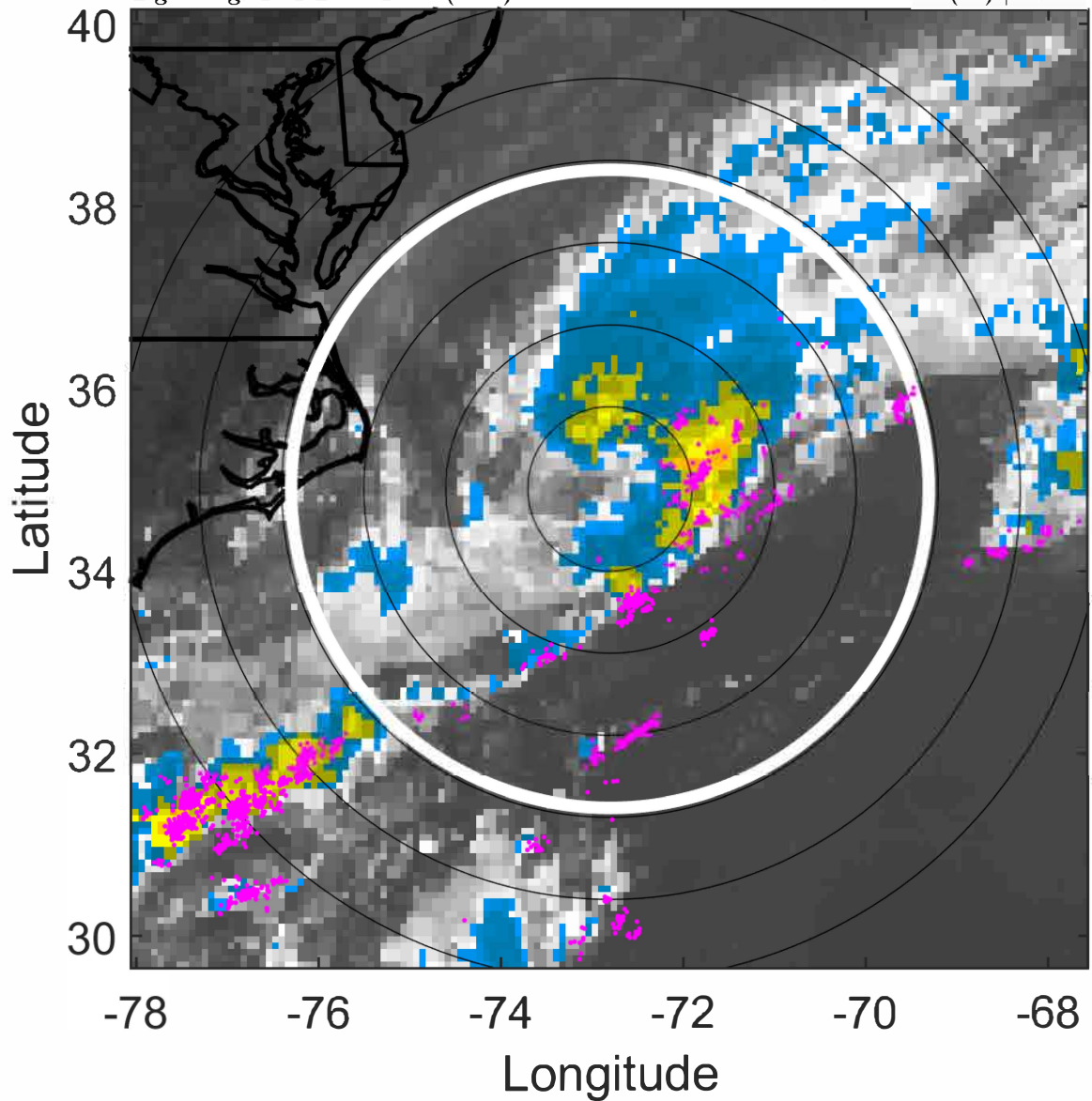
t: 2021061418 (13.1 LT)

Lightning: 13.1 LT \pm 1.5 h (dots)

PT: SLCP | EA: QUASI

02L (BILL) | 35 kt TS

S: 6.5 m s⁻¹ (M) | H: 37°



6-h IR BT Differences & Lightning

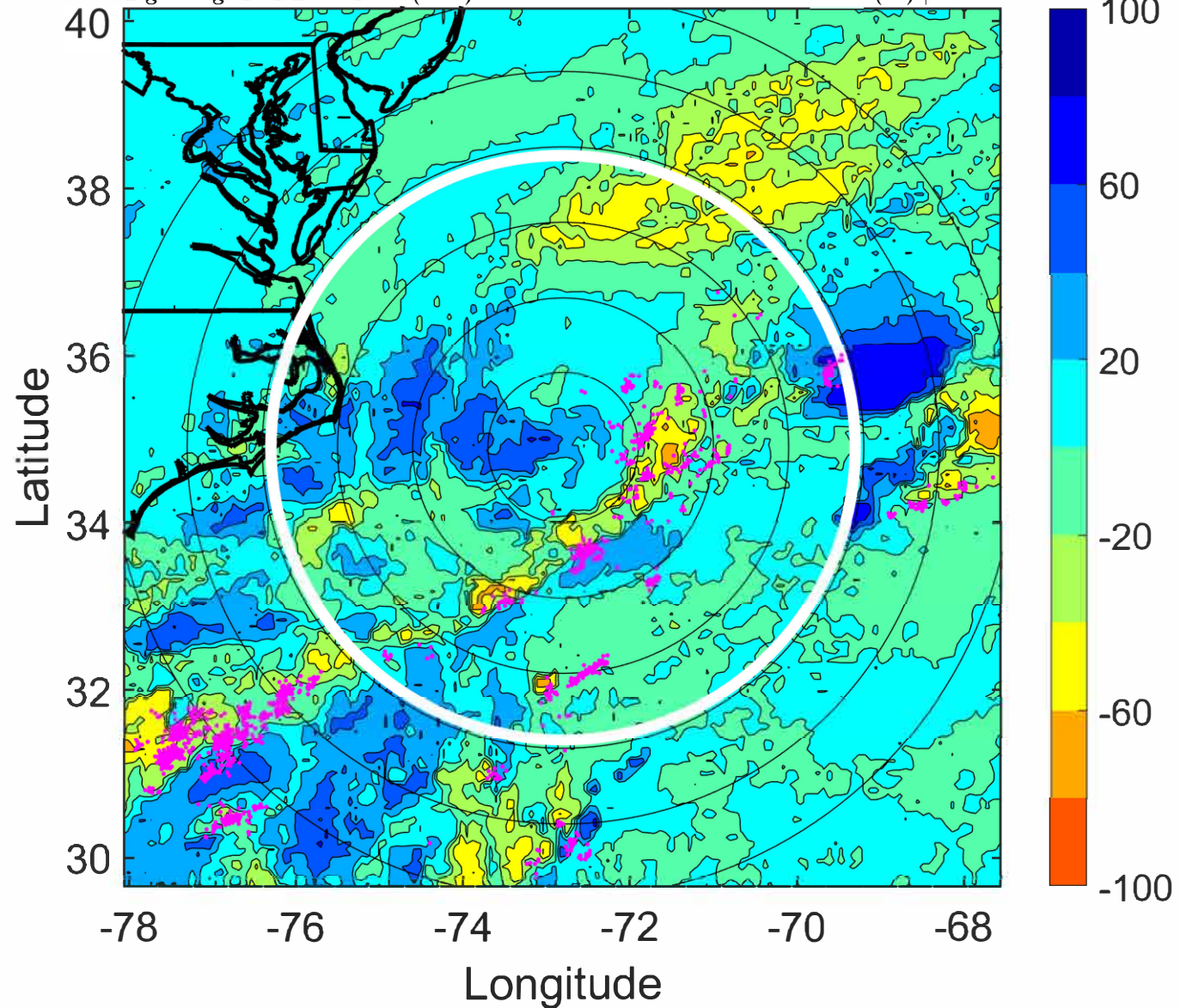
Δ t: 2021061418 (13.1 LT) - 2021061412 (7 LT)

Lightning: 13.1 LT \pm 1.5 h (dots)

PT: SLCP | EA: QUASI

02L (BILL) | 35 kt TS

S: 6.5 m s⁻¹ (M) | H: 37°



IR BT & Lightning

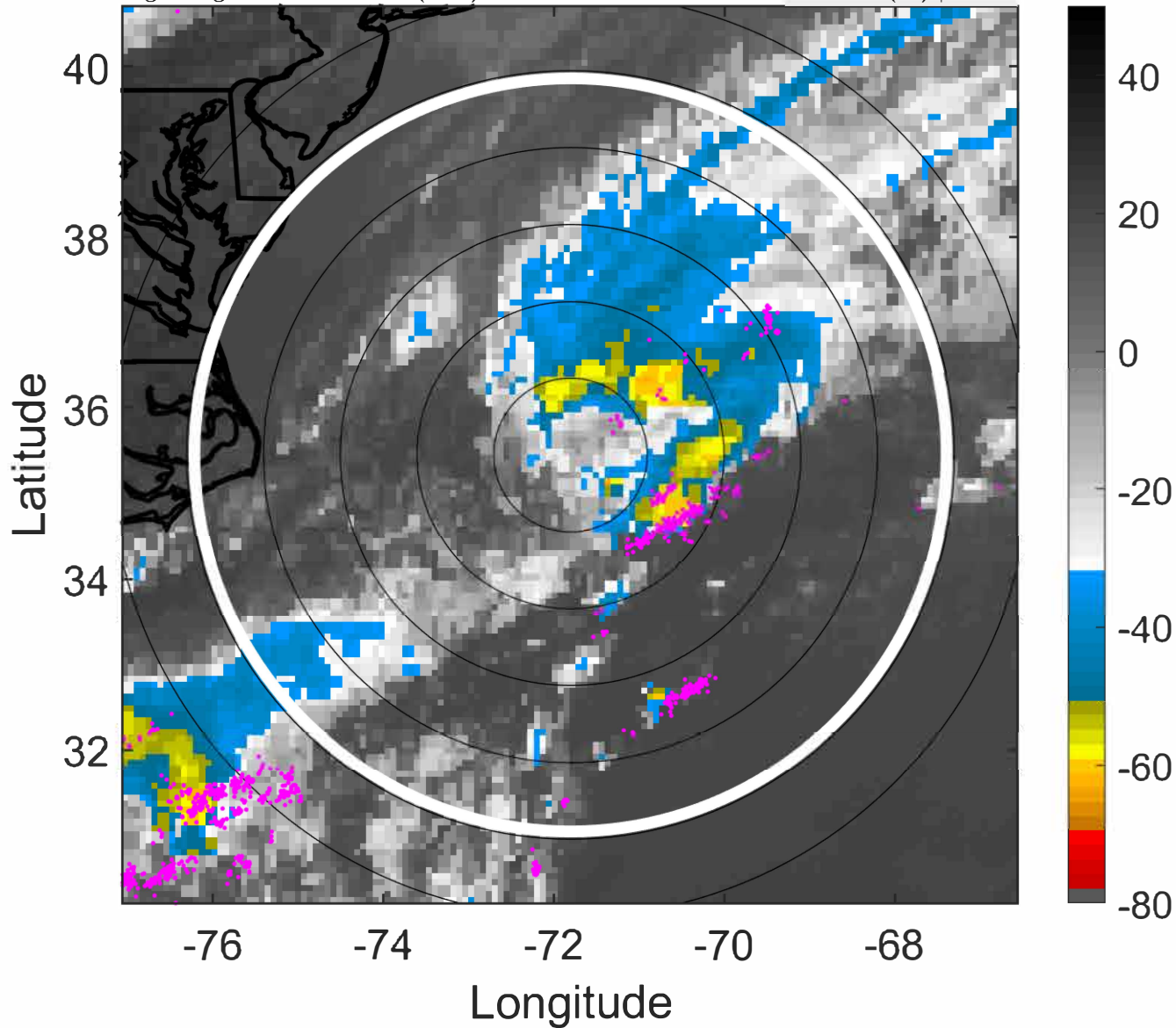
t: 2021061421 (16.2 LT)

Lightning: 16.2 LT \pm 1.5 h (dots)

PT: SLCP | EA: QUASI

02L (BILL) | 37.5 kt TS

S: 7.1 m s⁻¹ (M) | H: 45°



6-h IR BT Differences & Lightning

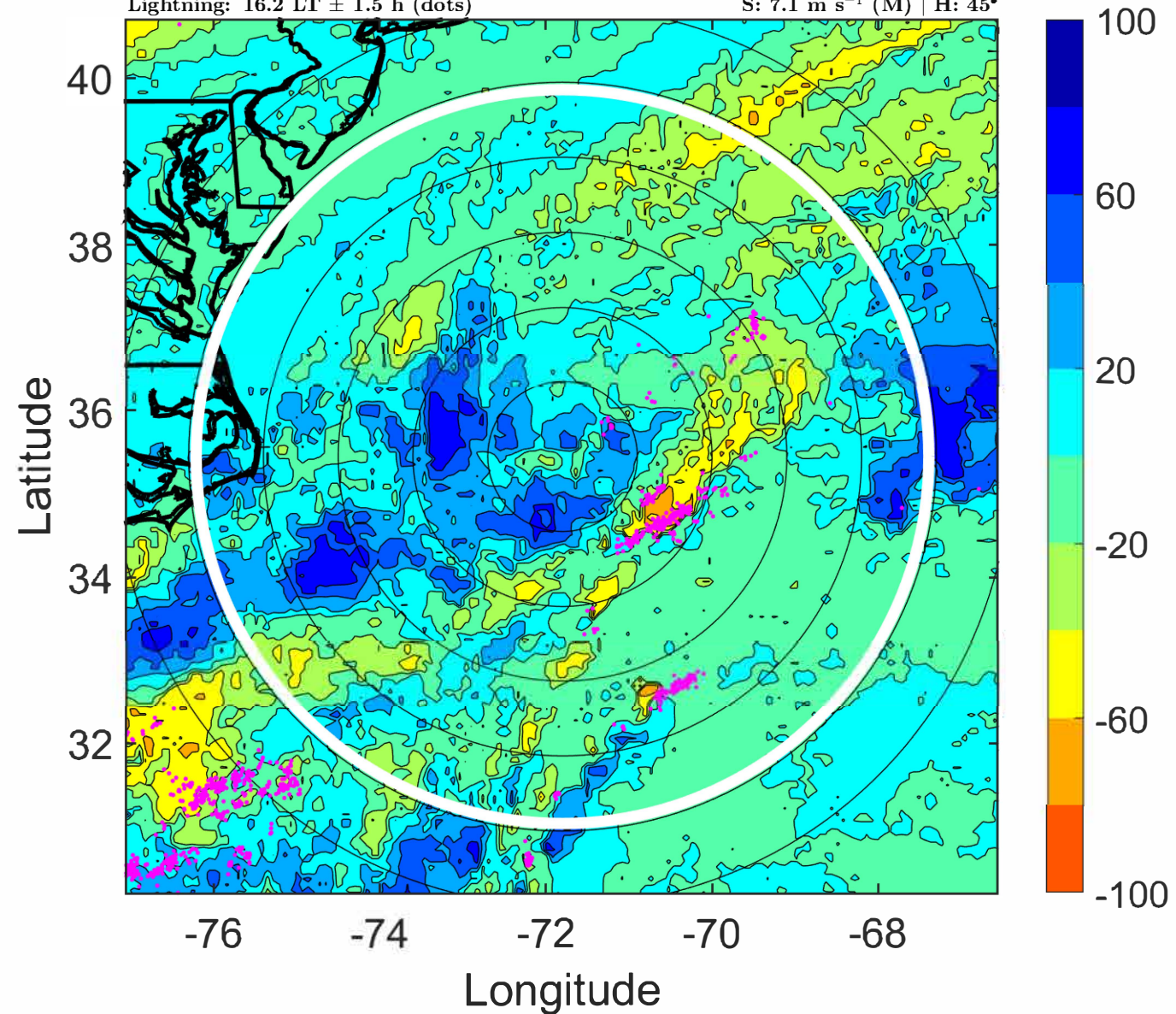
Δ t: 2021061421 (16.2 LT) - 2021061415 (10.1 LT)

Lightning: 16.2 LT \pm 1.5 h (dots)

PT: SLCP | EA: QUASI

02L (BILL) | 37.5 kt TS

S: 7.1 m s⁻¹ (M) | H: 45°



IR BT & Lightning

t: 2021061500 (19.3 LT)

Lightning: 19.3 LT \pm 1.5 h (dots)

PT: SLCP | EA: QUASI

02L (BILL) | 40 kt TS

S: 7.7 m s⁻¹ (M) | H: 53°

6-h IR BT Differences & Lightning

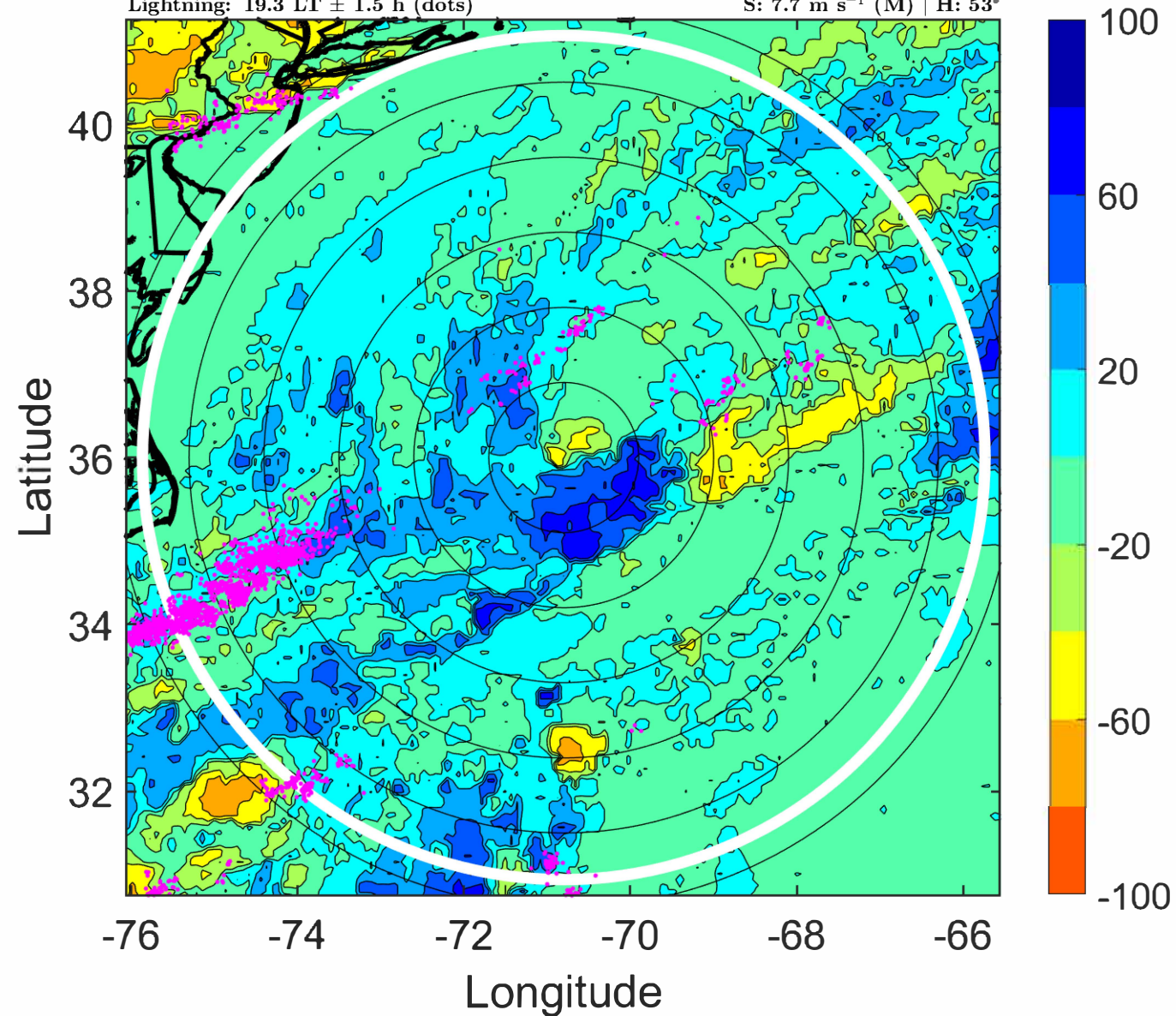
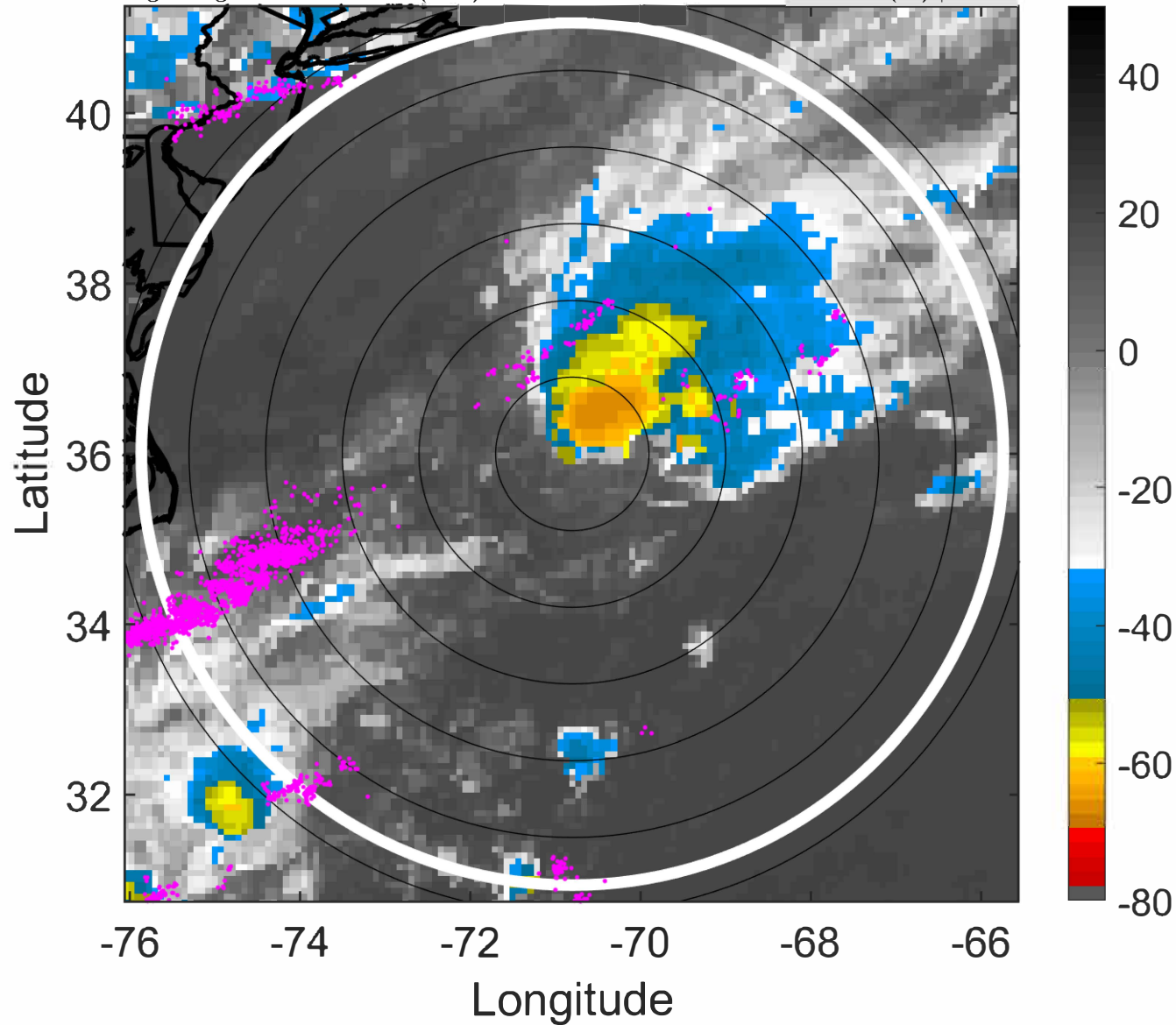
Δ t: 2021061500 (19.3 LT) - 2021061418 (13.1 LT)

Lightning: 19.3 LT \pm 1.5 h (dots)

PT: SLCP | EA: QUASI

02L (BILL) | 40 kt TS

S: 7.7 m s⁻¹ (M) | H: 53°



IR BT & Lightning

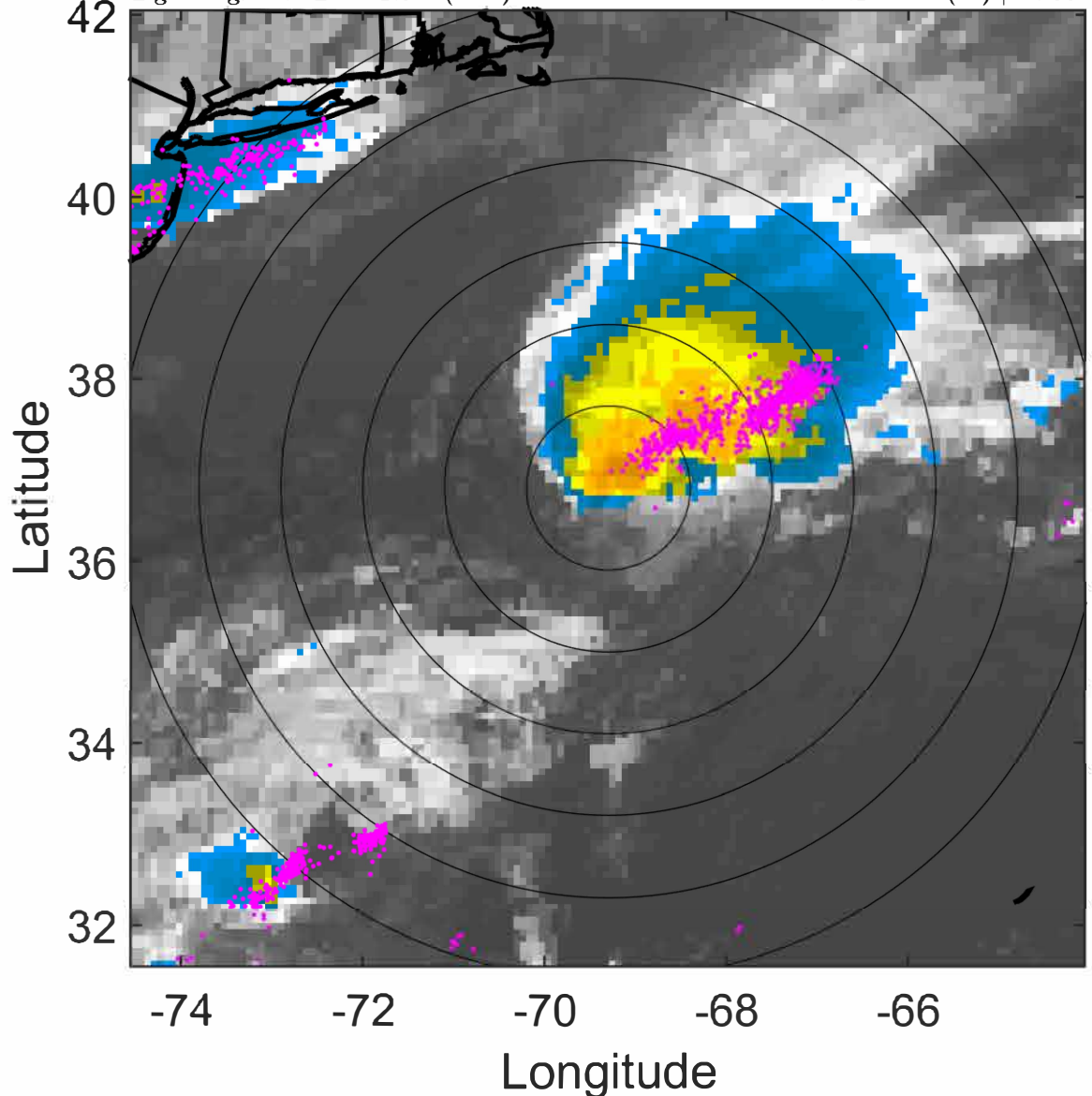
t: 2021061503 (22.4 LT)

Lightning: 22.4 LT \pm 1.5 h (dots)

PT: SLCP | EA: QUASI

02L (BILL) | 45 kt TS

S: 8.1 m s⁻¹ (M) | H: 55°



6-h IR BT Differences & Lightning

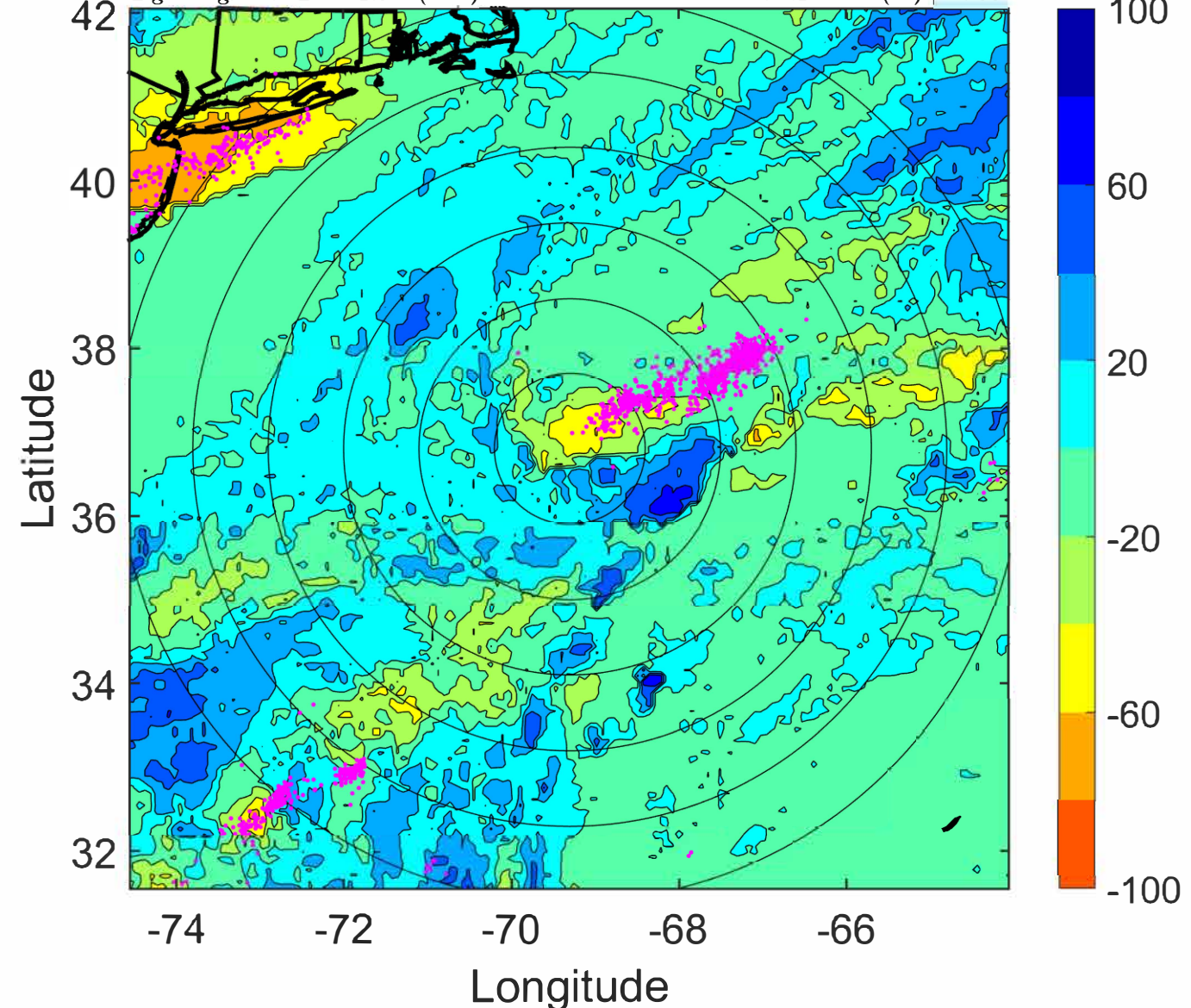
Δ t: 2021061503 (22.4 LT) - 2021061421 (16.2 LT)

Lightning: 22.4 LT \pm 1.5 h (dots)

PT: SLCP | EA: QUASI

02L (BILL) | 45 kt TS

S: 8.1 m s⁻¹ (M) | H: 55°



IR BT & Lightning

t: 2021061506 (1.5 LT)

Lightning: 1.5 LT \pm 1.5 h (dots)

PT: LLCP | EA: QUASI

02L (BILL) | 50 kt TS

S: 8.4 m s⁻¹ (M) | H: 57°

6-h IR BT Differences & Lightning

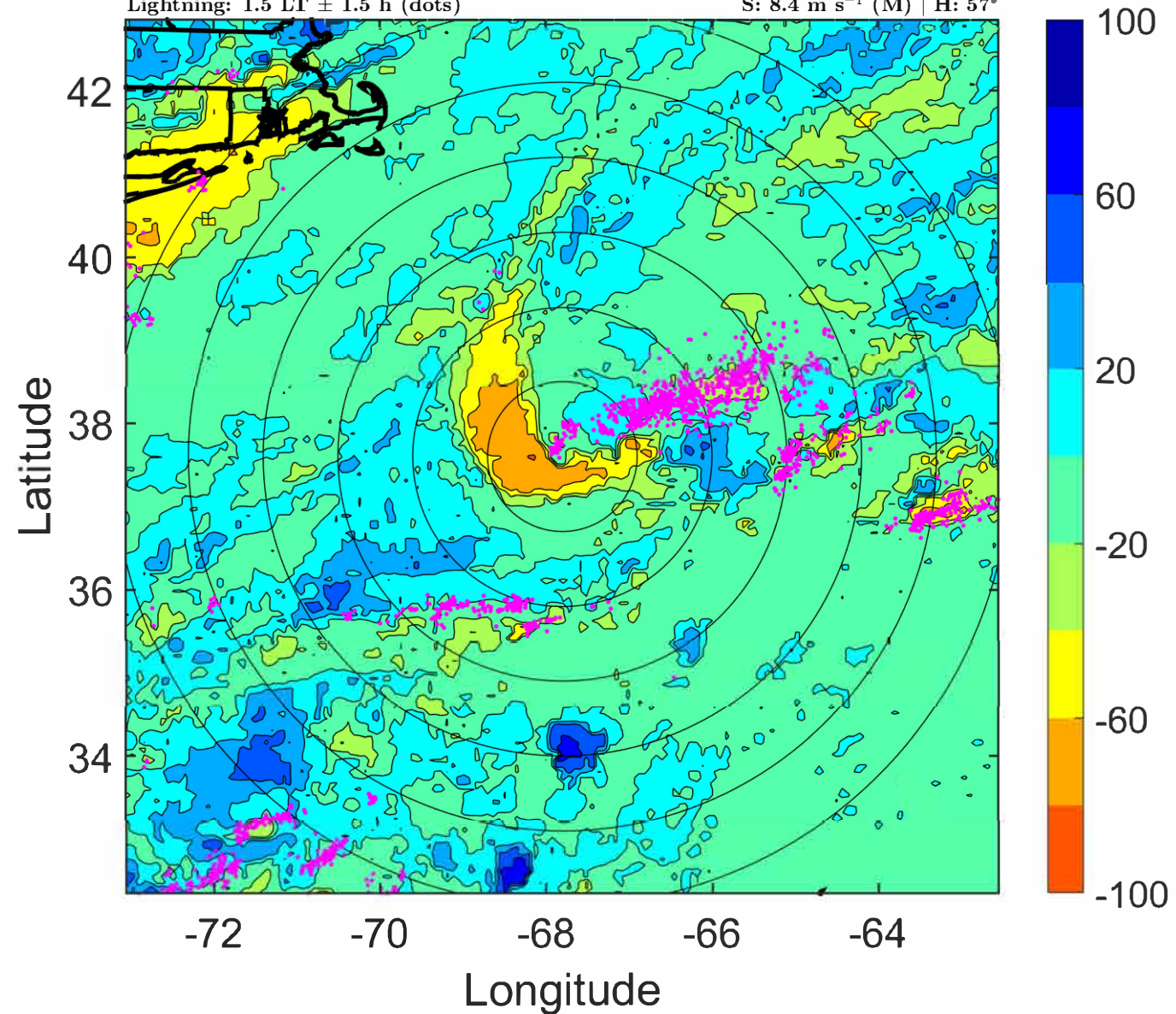
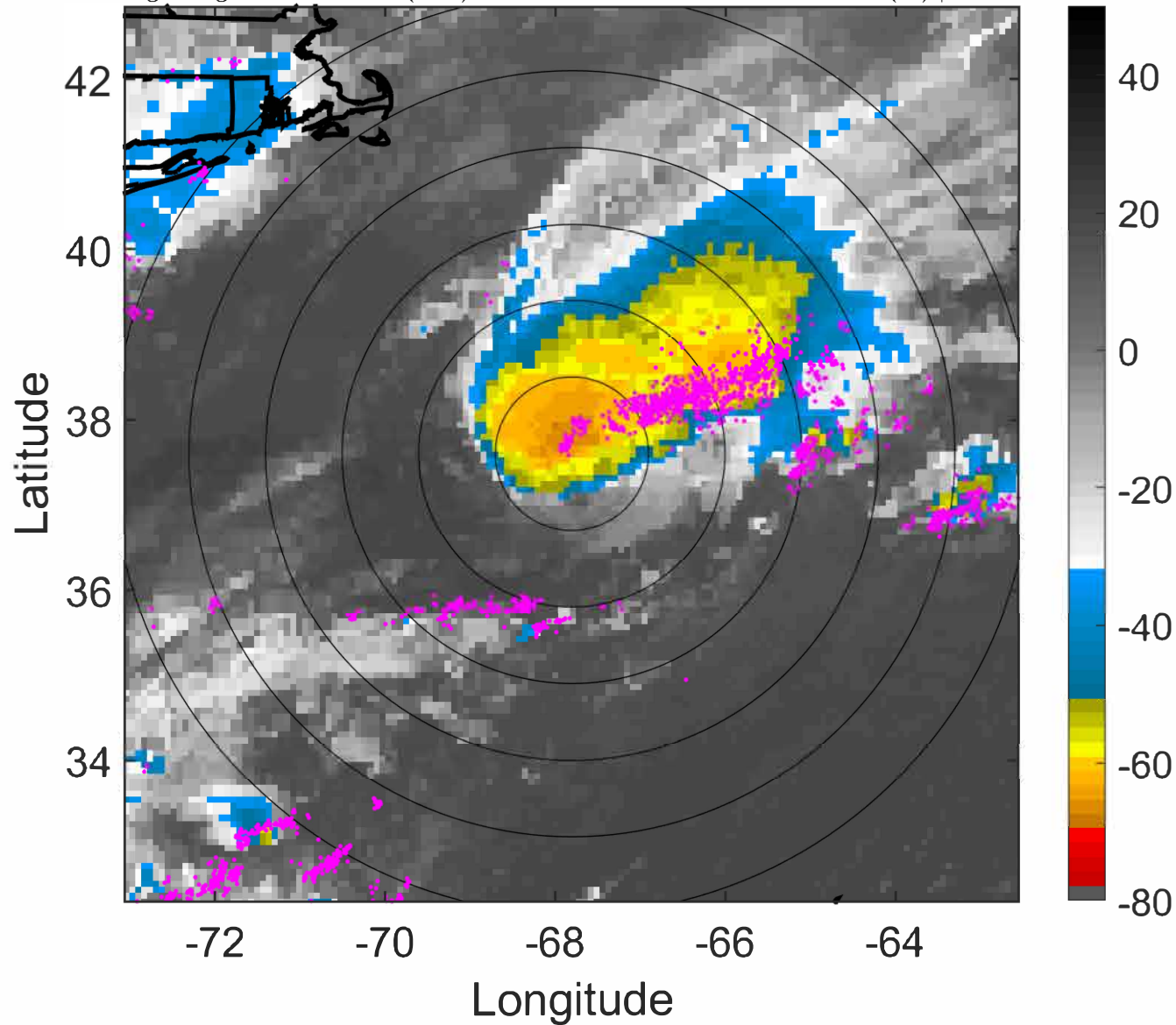
Δ t: 2021061506 (1.5 LT) - 2021061500 (19.3 LT)

Lightning: 1.5 LT \pm 1.5 h (dots)

PT: LLCP | EA: QUASI

02L (BILL) | 50 kt TS

S: 8.4 m s⁻¹ (M) | H: 57°



IR BT & Lightning

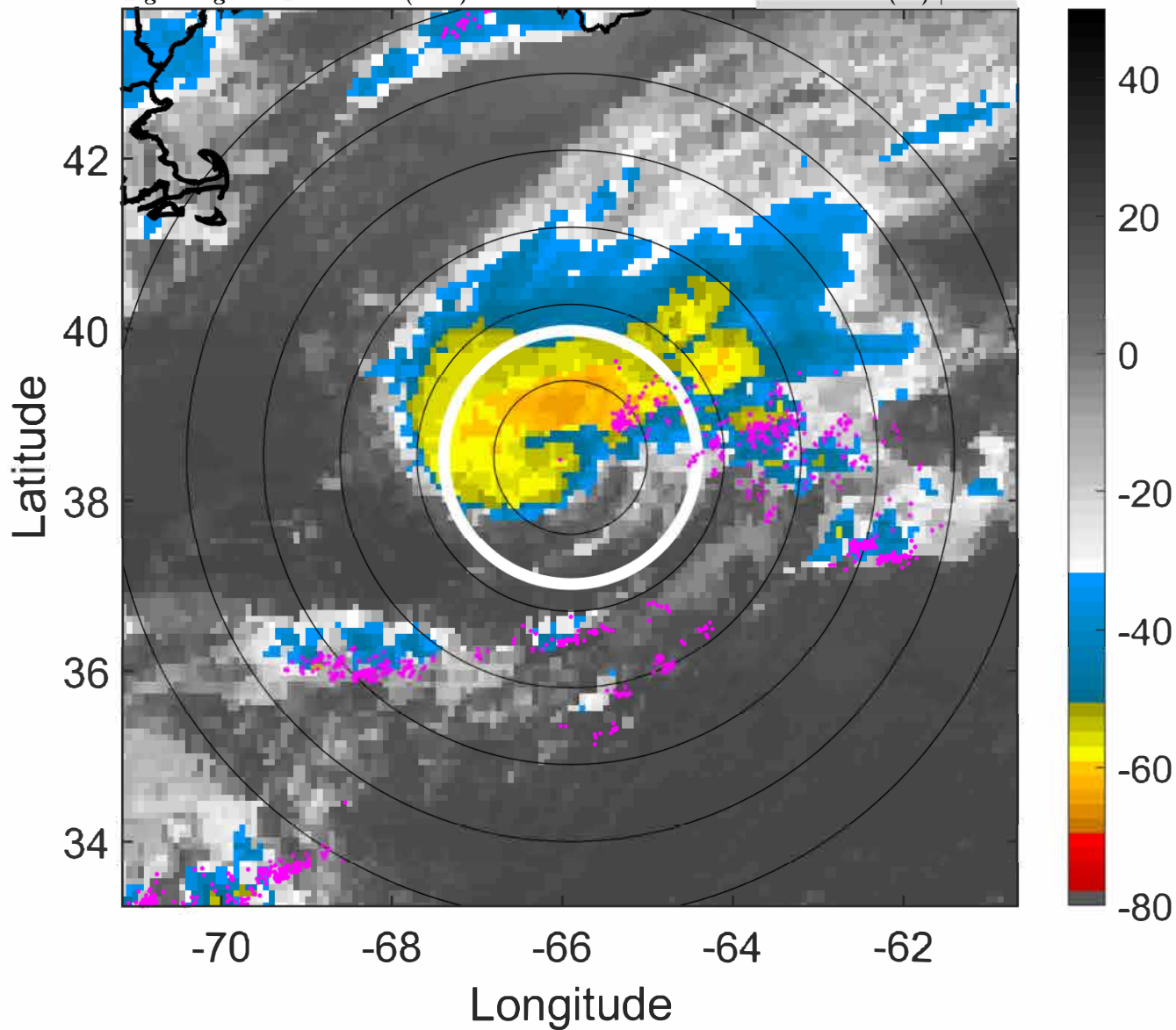
t: 2021061509 (4.6 LT)

Lightning: 4.6 LT \pm 1.5 h (dots)

PT: LLCP | EA: QUASI

02L (BILL) | 52.5 kt TS

S: 8.6 m s⁻¹ (M) | H: 59°



6-h IR BT Differences & Lightning

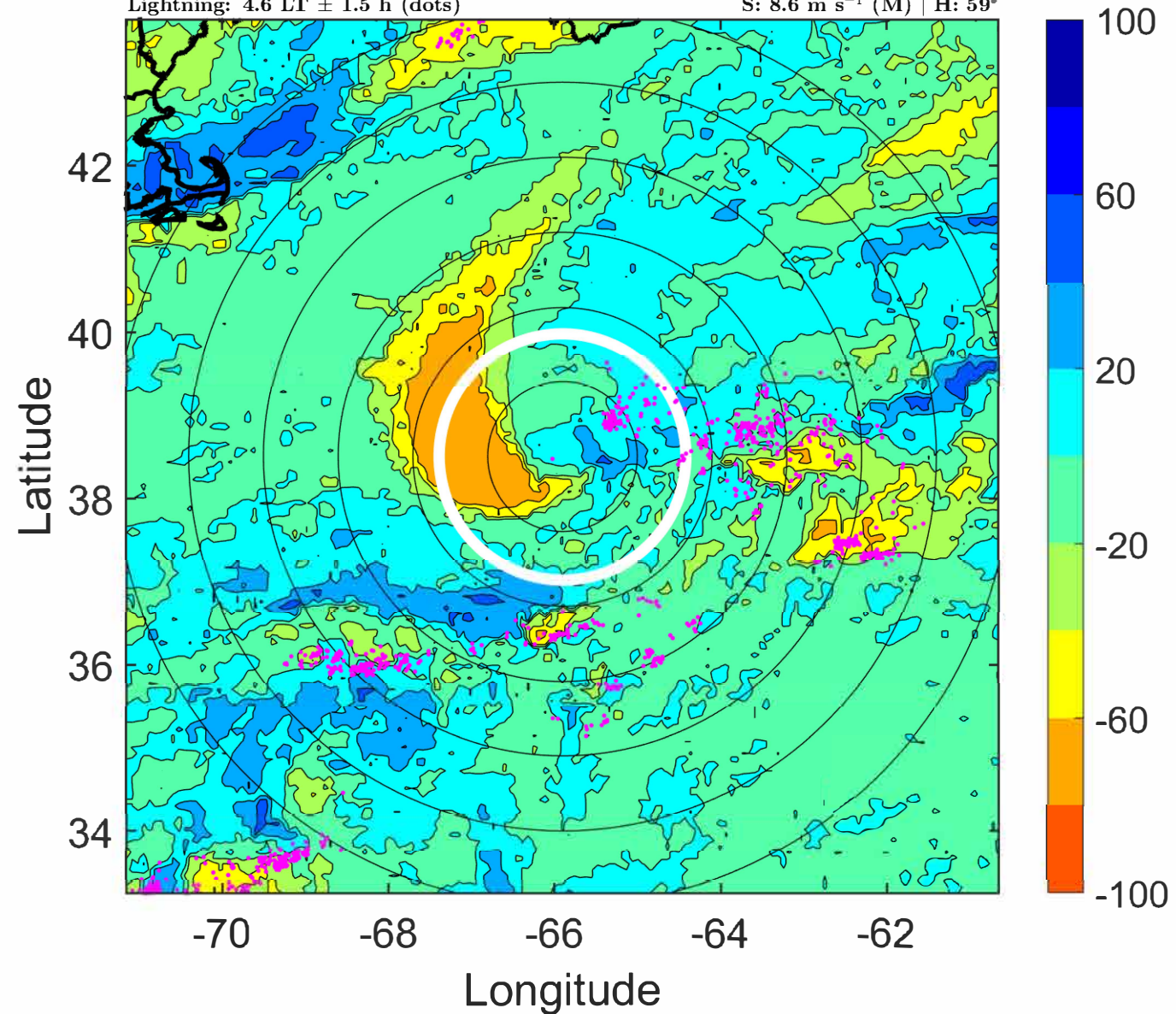
Δ t: 2021061509 (4.6 LT) - 2021061503 (22.4 LT)

Lightning: 4.6 LT \pm 1.5 h (dots)

PT: LLCP | EA: QUASI

02L (BILL) | 52.5 kt TS

S: 8.6 m s⁻¹ (M) | H: 59°



IR BT & Lightning

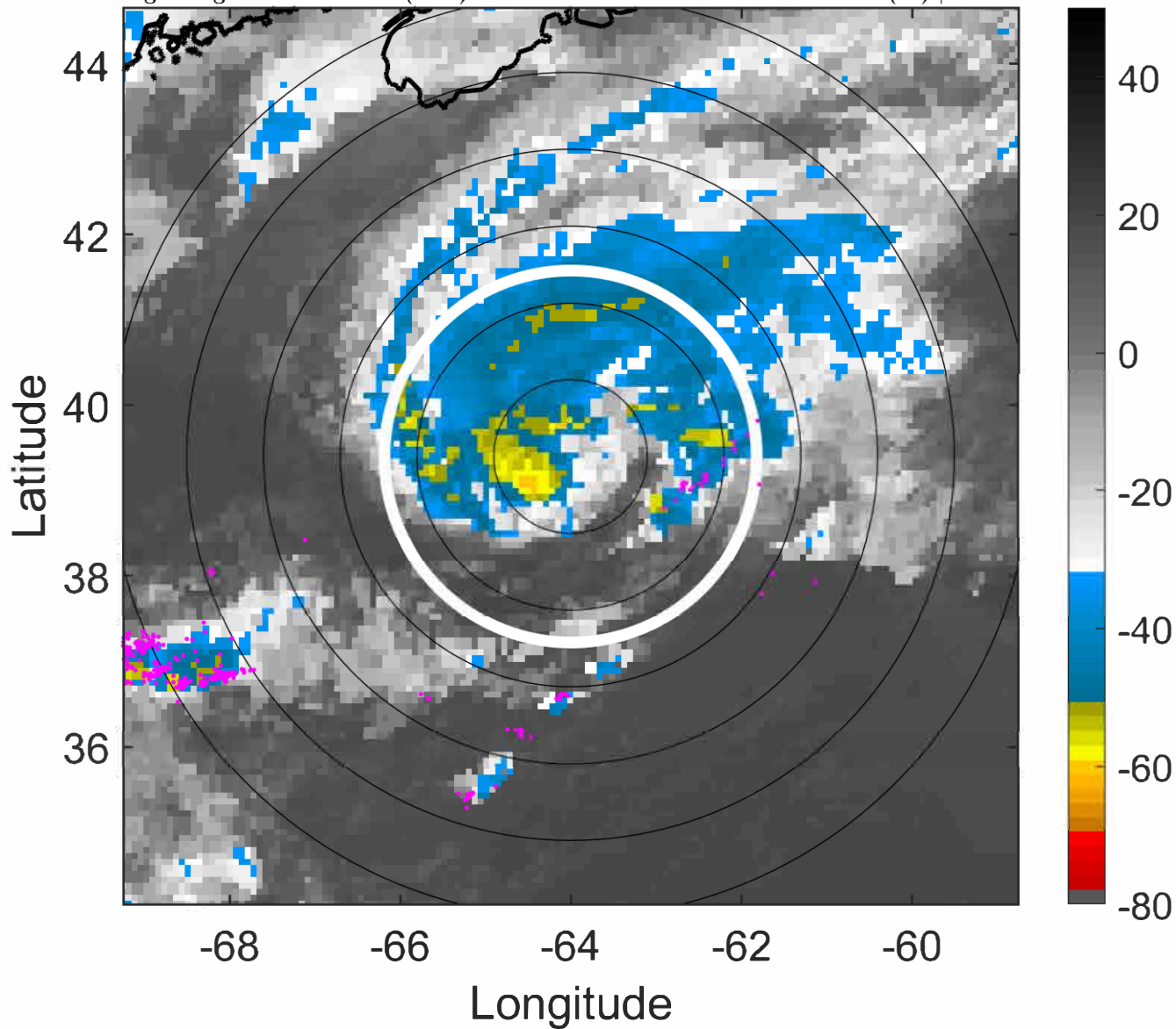
t: 2021061512 (7.7 LT)

Lightning: 7.7 LT \pm 1.5 h (dots)

PT: LLCP | EA: QUASI

02L (BILL) | 55 kt TS

S: 8.7 m s⁻¹ (M) | H: 61°



6-h IR BT Differences & Lightning

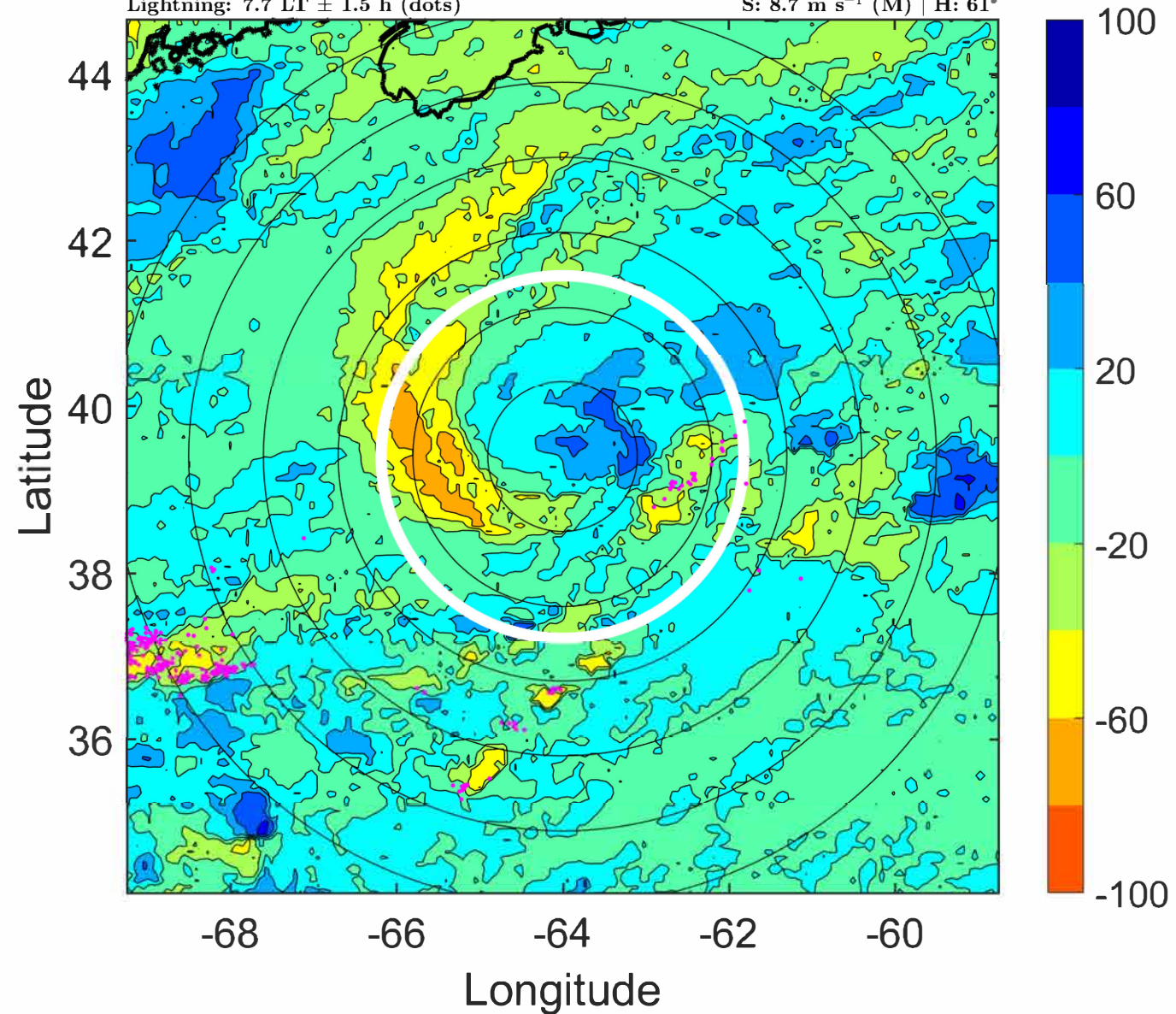
Δ t: 2021061512 (7.7 LT) - 2021061506 (1.5 LT)

Lightning: 7.7 LT \pm 1.5 h (dots)

PT: LLCP | EA: QUASI

02L (BILL) | 55 kt TS

S: 8.7 m s⁻¹ (M) | H: 61°



IR BT & Lightning

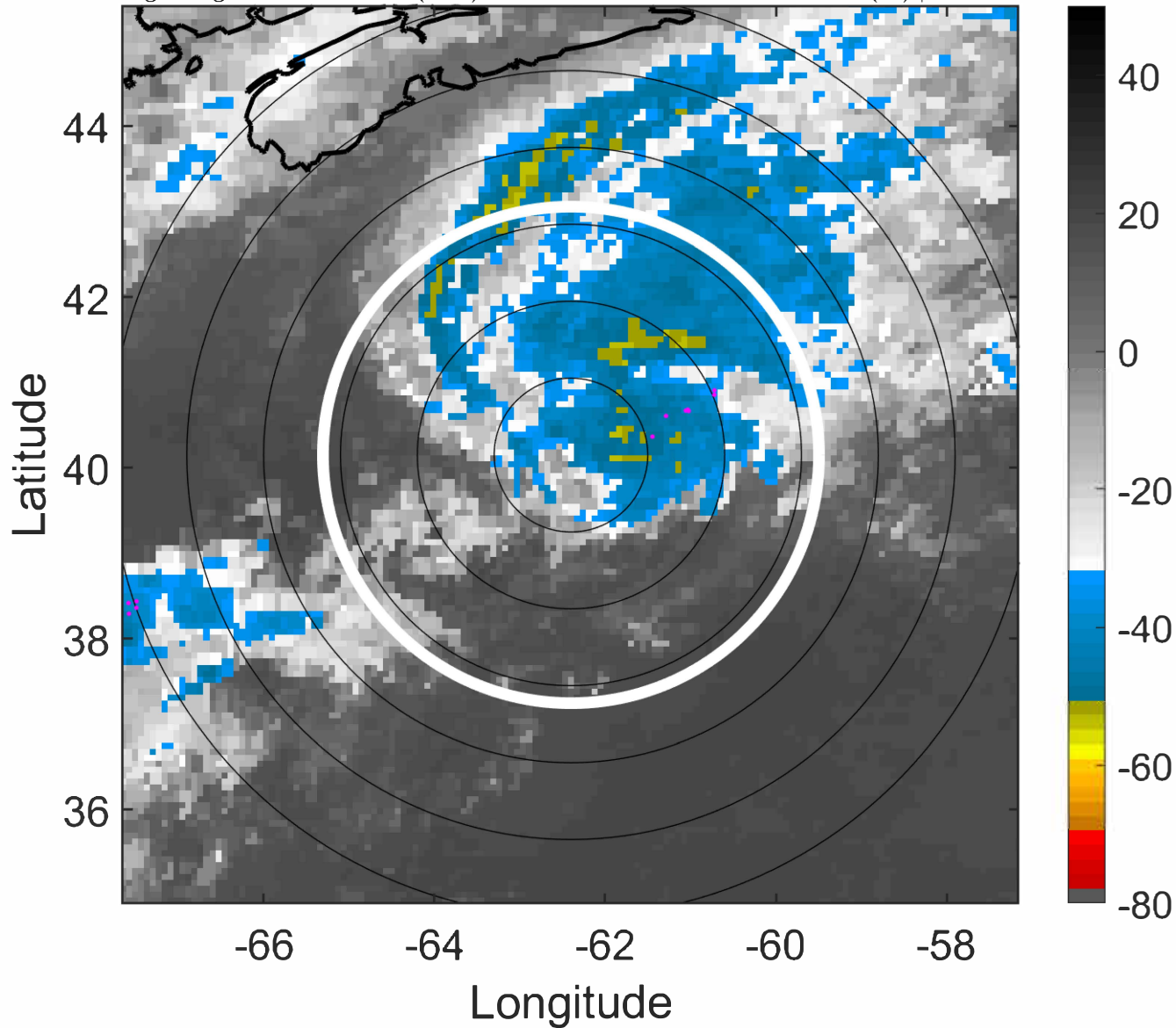
t: 2021061515 (10.8 LT)

Lightning: 10.8 LT \pm 1.5 h (dots)

PT: LLCP | EA: QUASI

02L (BILL) | 50 kt TS

S: 9.1 m s⁻¹ (M) | H: 63.5°



6-h IR BT Differences & Lightning

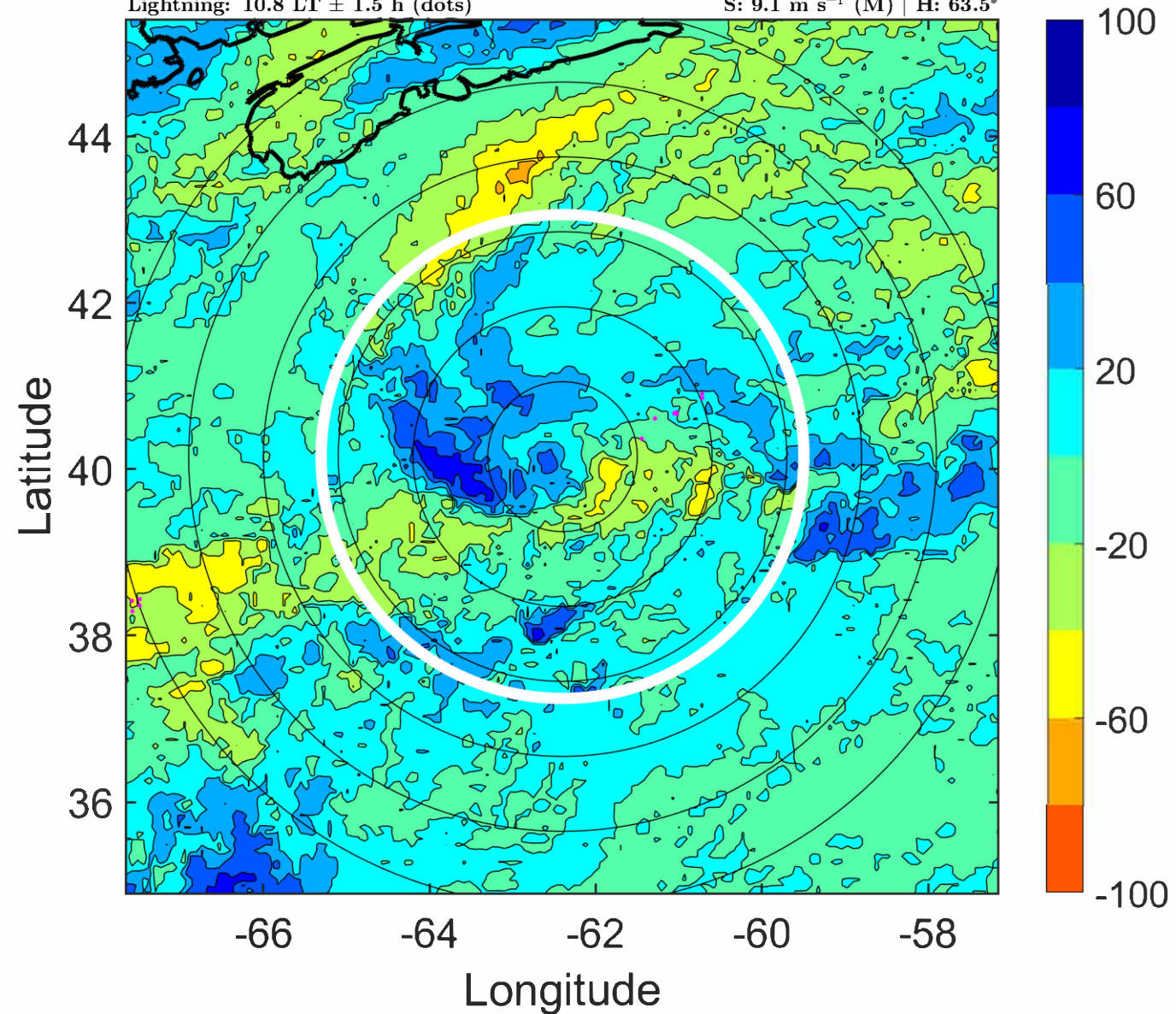
Δ t: 2021061515 (10.8 LT) - 2021061509 (4.6 LT)

Lightning: 10.8 LT \pm 1.5 h (dots)

PT: LLCP | EA: QUASI

02L (BILL) | 50 kt TS

S: 9.1 m s⁻¹ (M) | H: 63.5°



IR BT & Lightning

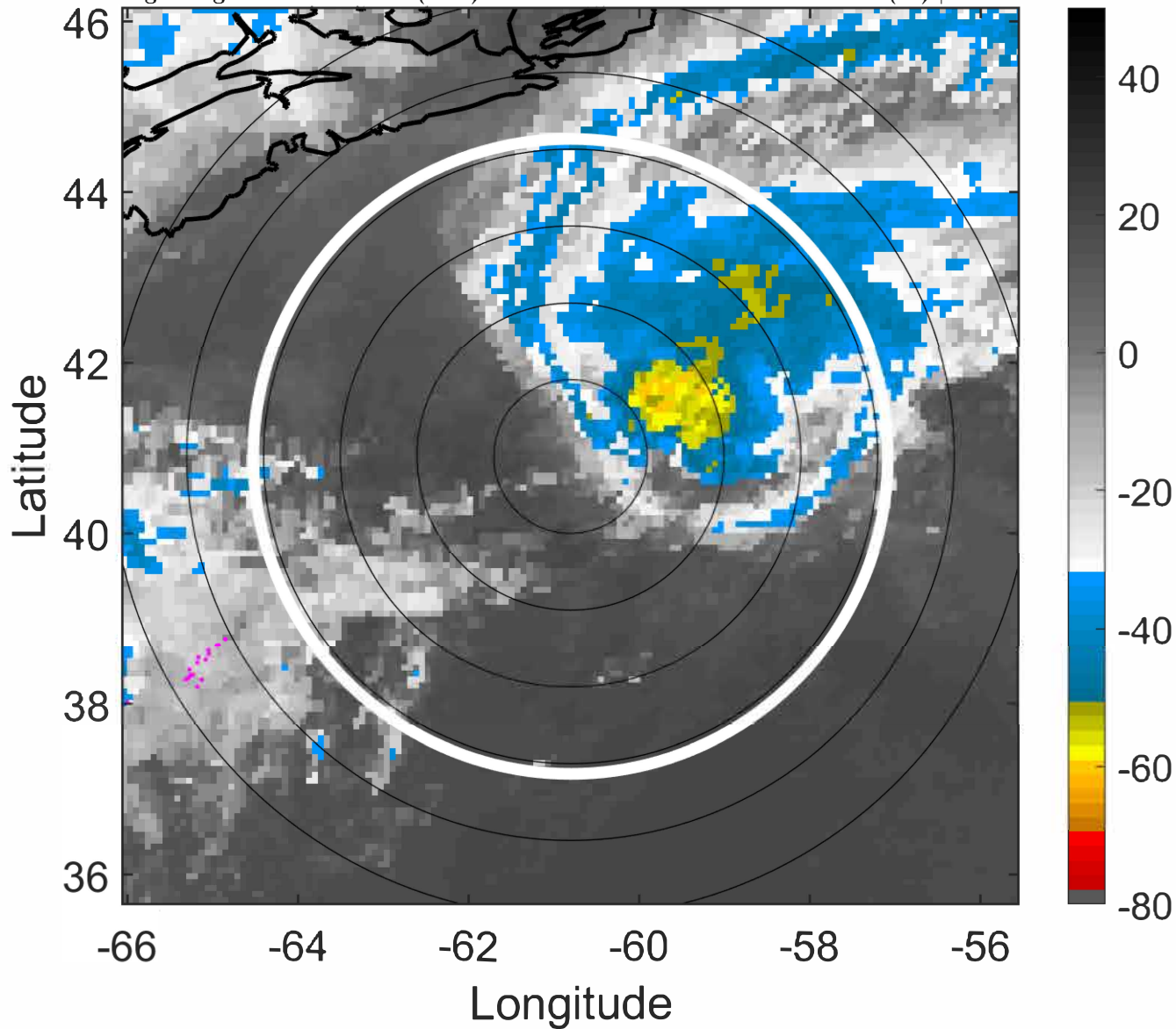
t: 2021061518 (13.9 LT)

Lightning: 13.9 LT \pm 1.5 h (dots)

PT: LLCP | EA: QUASI

02L (BILL) | 45 kt TS

S: 9.4 m s⁻¹ (M) | H: 66°



6-h IR BT Differences & Lightning

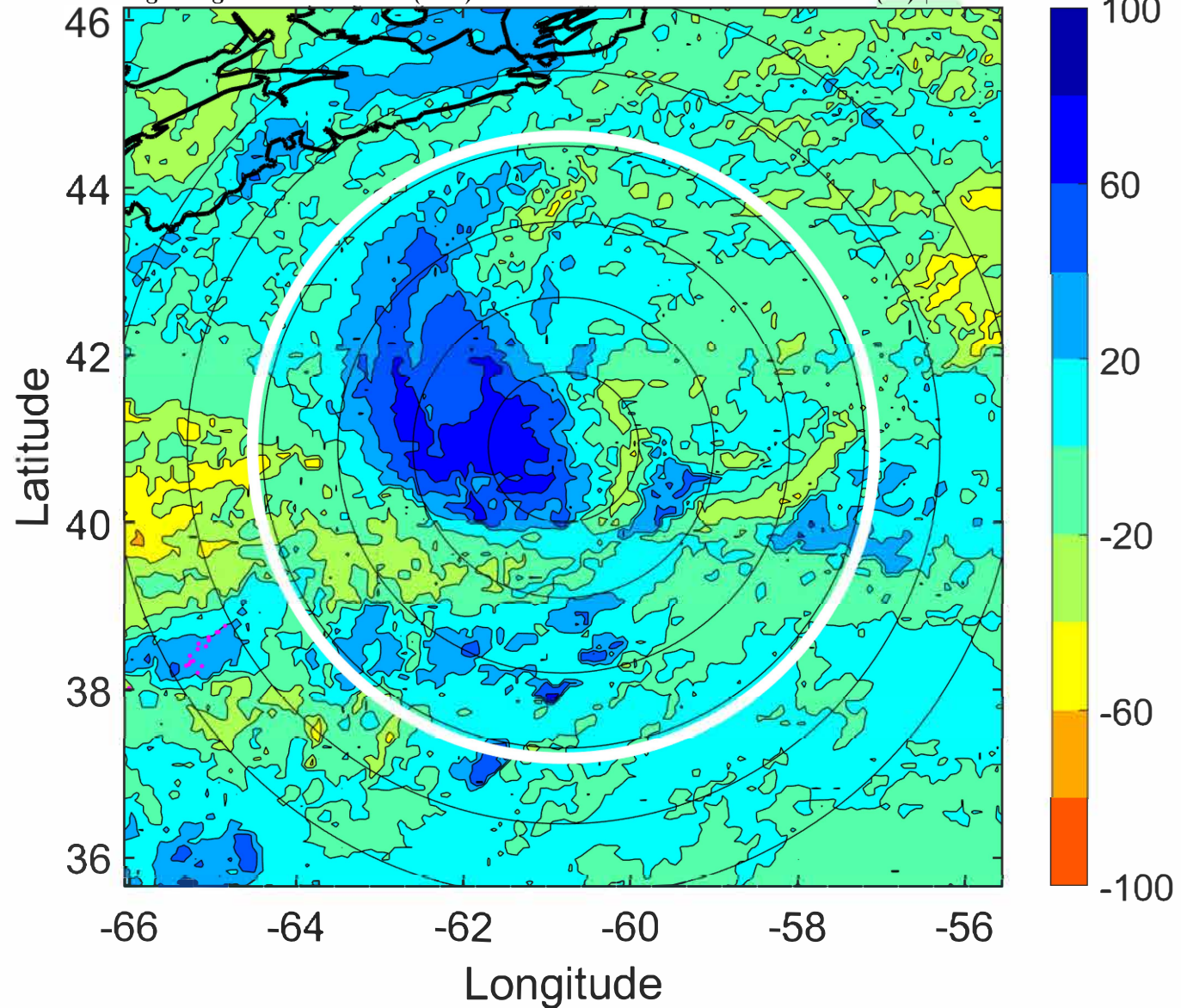
Δ t: 2021061518 (13.9 LT) - 2021061512 (7.7 LT)

Lightning: 13.9 LT \pm 1.5 h (dots)

PT: LLCP | EA: QUASI

02L (BILL) | 45 kt TS

S: 9.4 m s⁻¹ (M) | H: 66°



IR BT & Lightning

t: 2021061521 (17 LT)

Lightning: 17 LT \pm 1.5 h (dots)

PT: LLCP | EA: QUASI

02L (BILL) | 40 kt TS

S: null | H: null

6-h IR BT Differences & Lightning

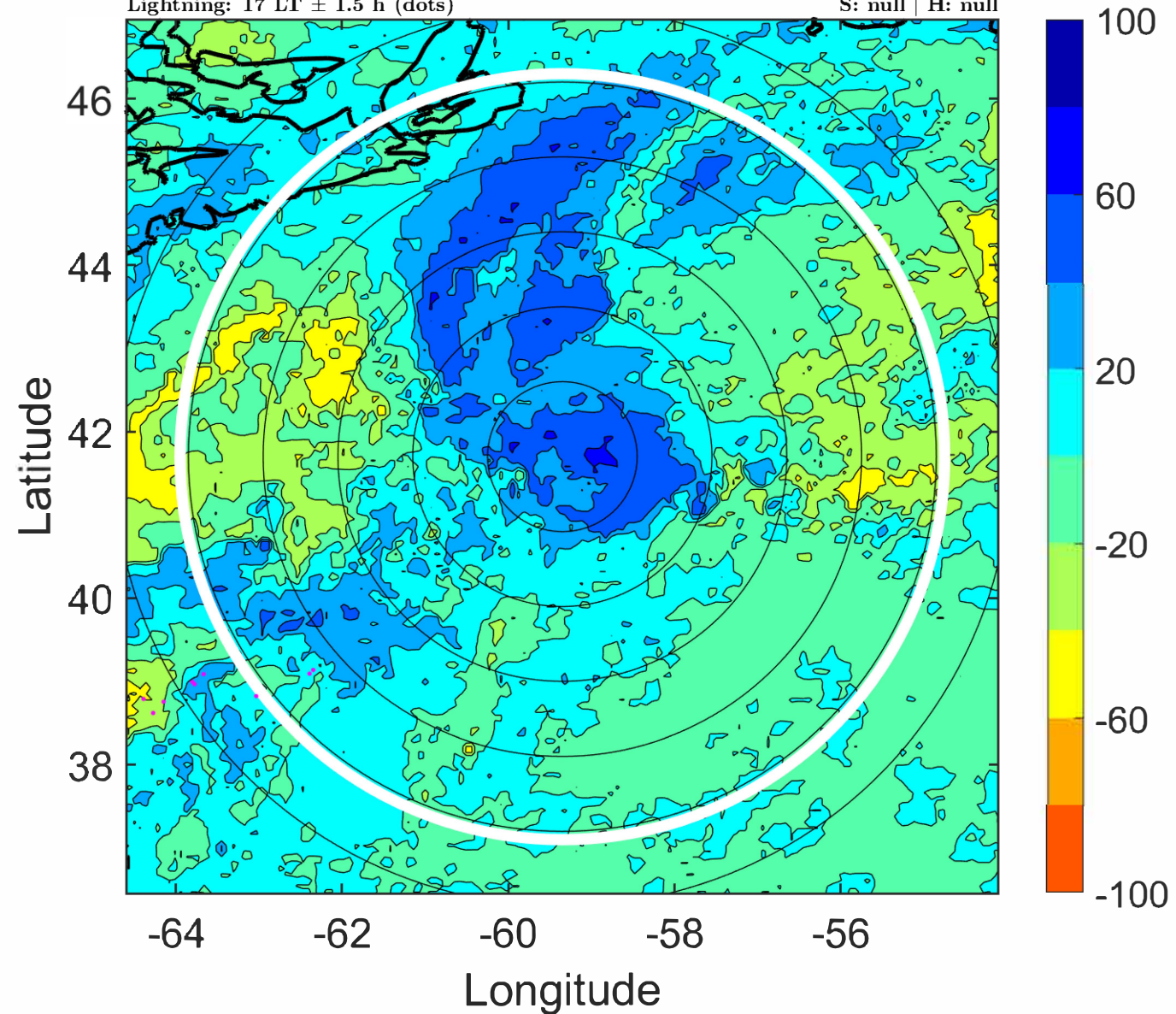
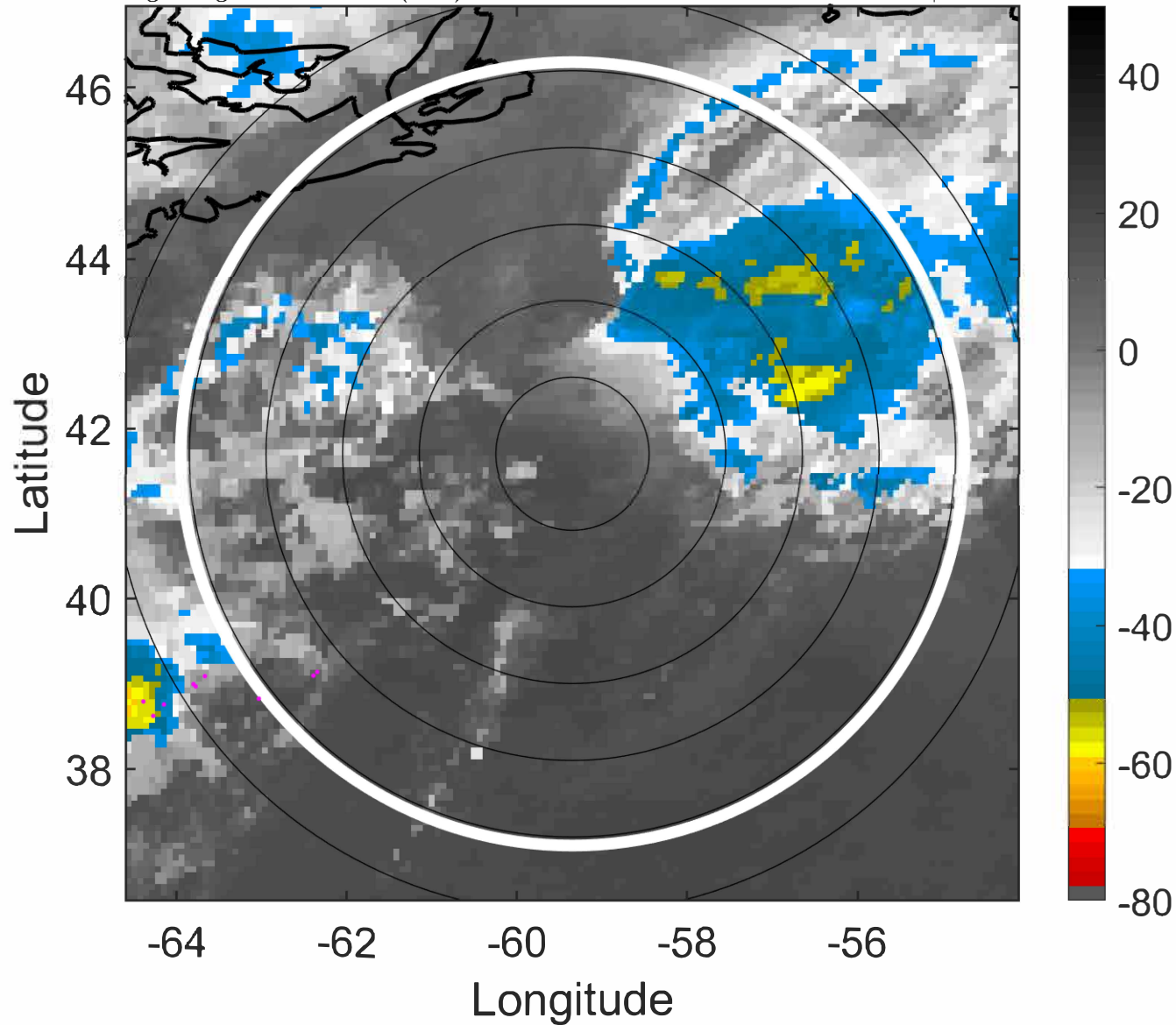
Δ t: 2021061521 (17 LT) - 2021061515 (10.8 LT)

Lightning: 17 LT \pm 1.5 h (dots)

PT: LLCP | EA: QUASI

02L (BILL) | 40 kt TS

S: null | H: null



IR BT & Lightning

t: 2021061600 (20.1 LT)

Lightning: 20.1 LT \pm 1.5 h (dots)

PT: LLCP | EA: QUASI

02L (BILL) | 35 kt EX

S: null | H: null

6-h IR BT Differences & Lightning

Δ t: 2021061600 (20.1 LT) - 2021061518 (13.9 LT)

Lightning: 20.1 LT \pm 1.5 h (dots)

PT: LLCP | EA: QUASI

02L (BILL) | 35 kt EX

S: null | H: null

