

IR BT & Lightning

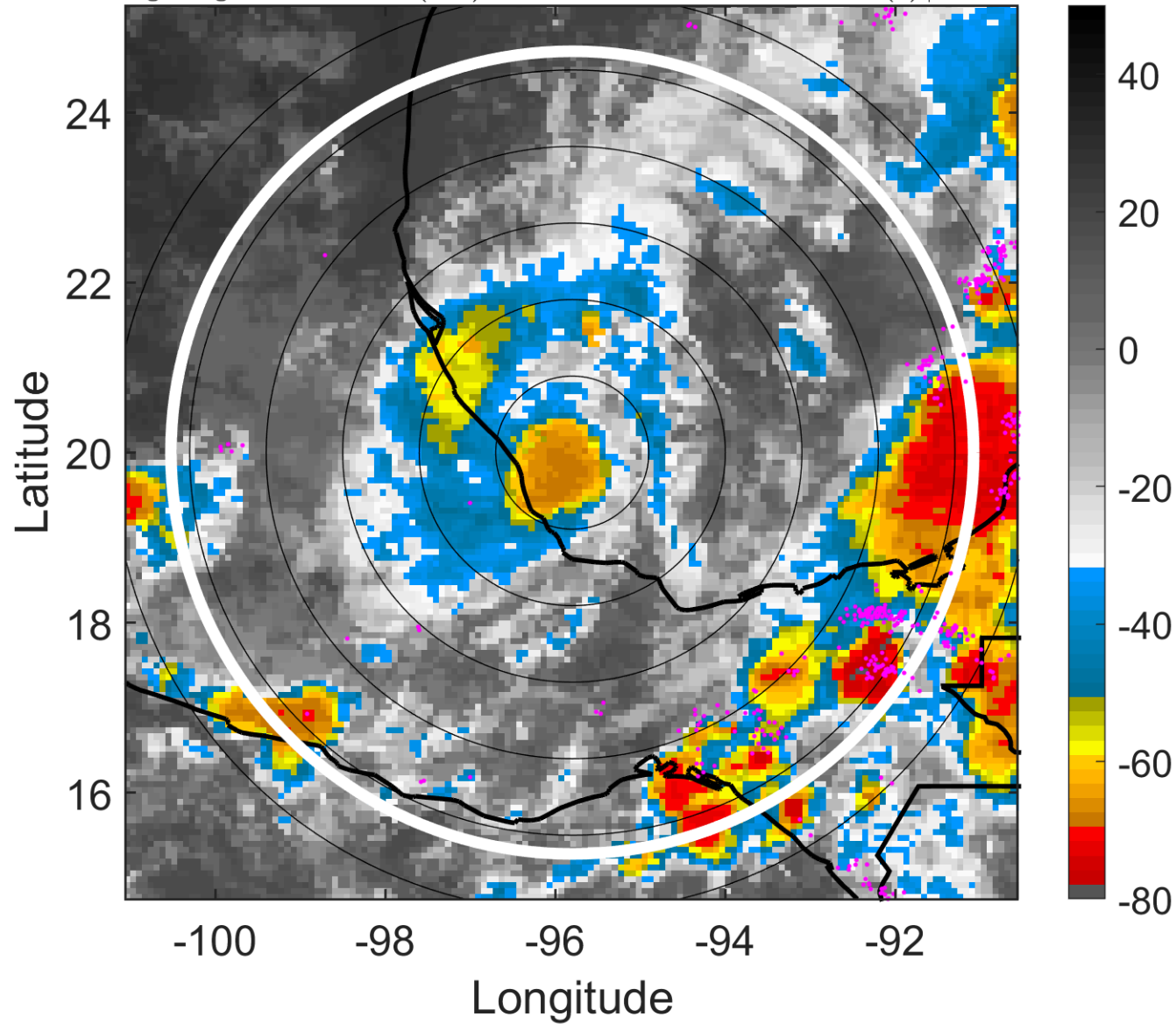
t: 2005062900 (17.6 LT)

Lightning: 17.6 LT \pm 1.5 h (dots)

PT: SLCP | EA: QUASI

02L (BRET) | 35 kt TS

S: 2.2 m s⁻¹ (L) | H: 333°



6-h IR BT Differences & Lightning

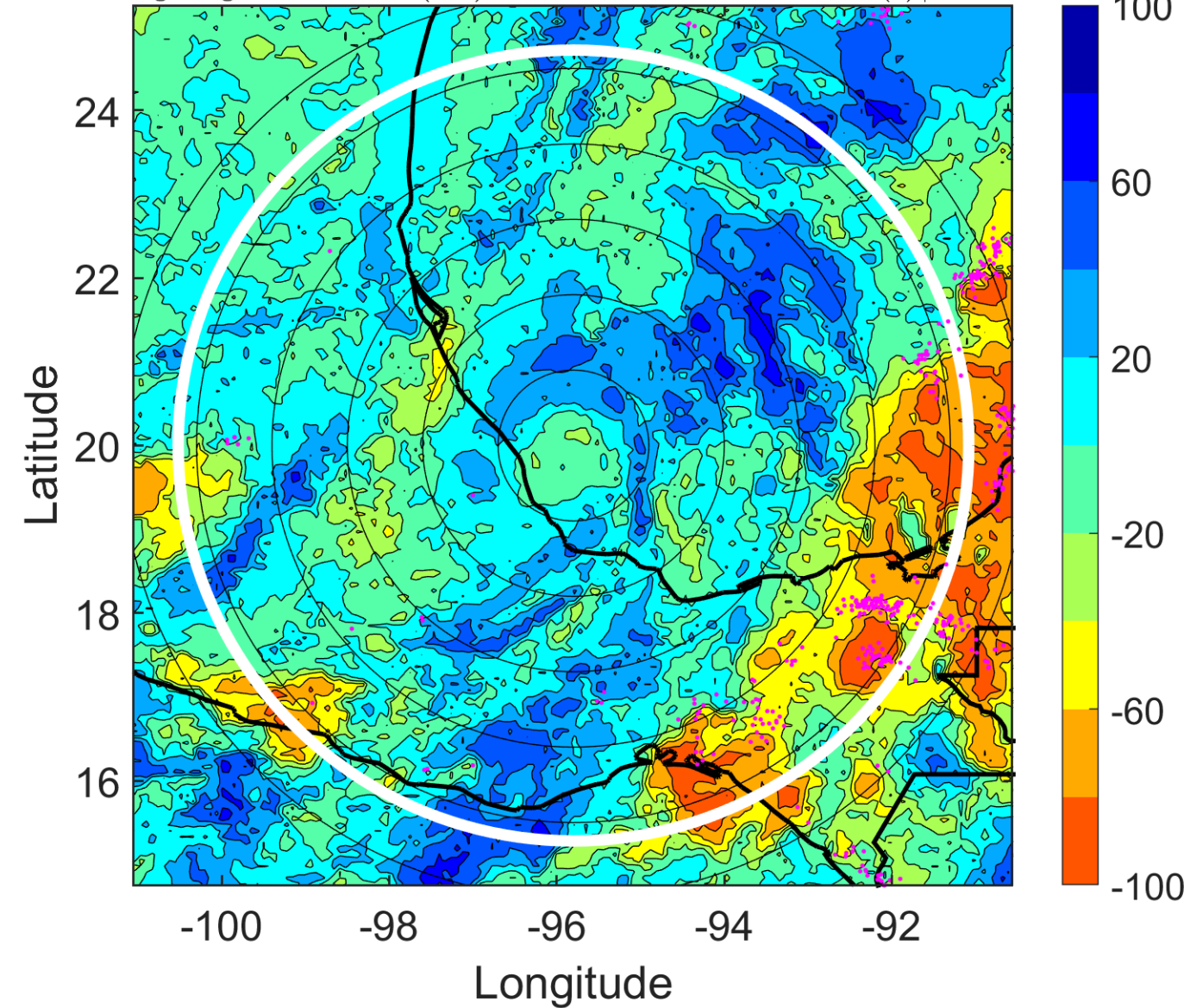
Δ t: 2005062900 (17.6 LT) - 2005062818 (11.6 LT)

Lightning: 17.6 LT \pm 1.5 h (dots)

PT: SLCP | EA: QUASI

02L (BRET) | 35 kt TS

S: 2.2 m s⁻¹ (L) | H: 333°



IR BT & Lightning

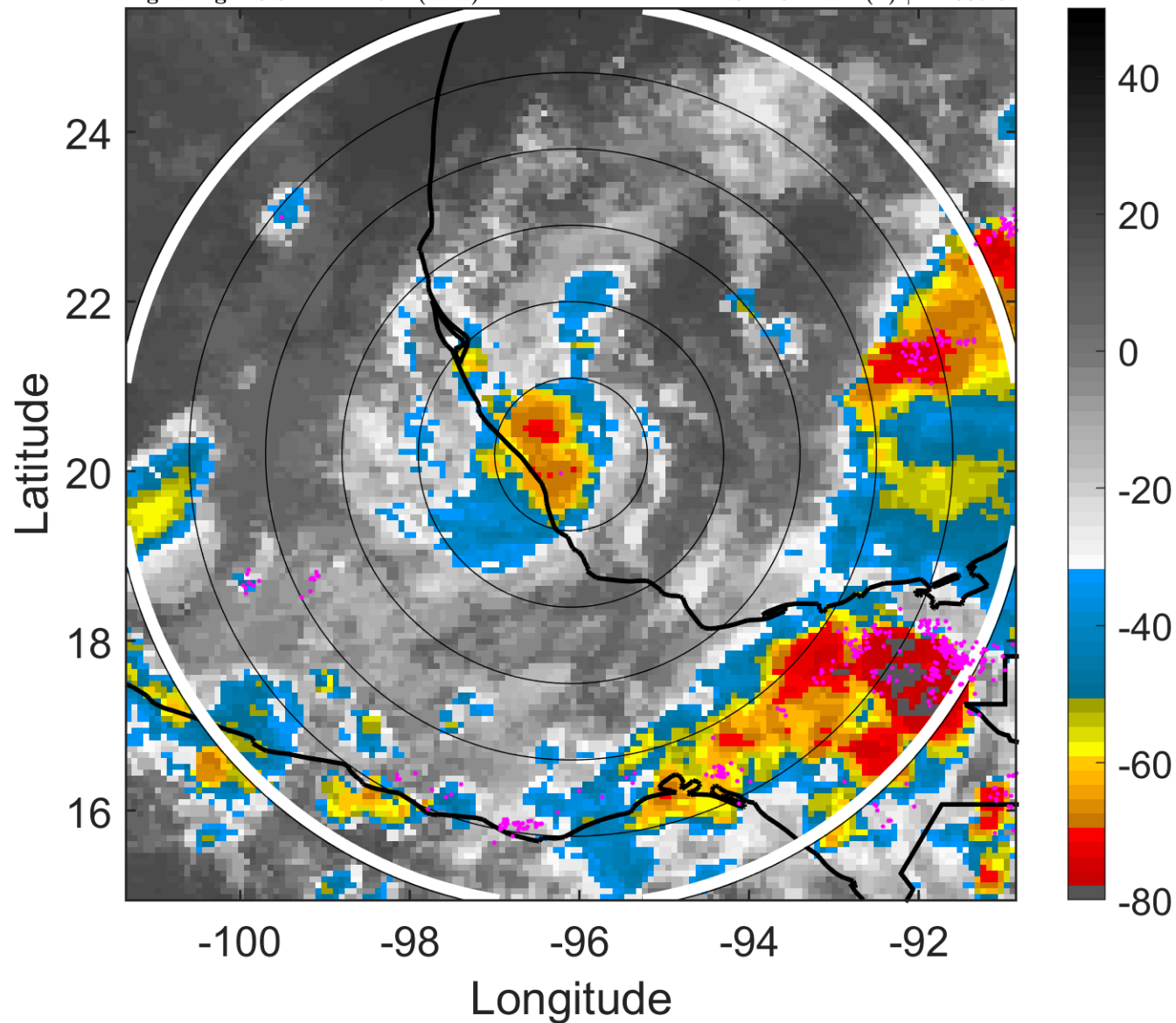
t: 2005062903 (20.6 LT)

Lightning: 20.6 LT \pm 1.5 h (dots)

PT: SLCP | EA: QUASI

02L (BRET) | 35 kt TS

S: 2.3 m s⁻¹ (L) | H: 337.5°



6-h IR BT Differences & Lightning

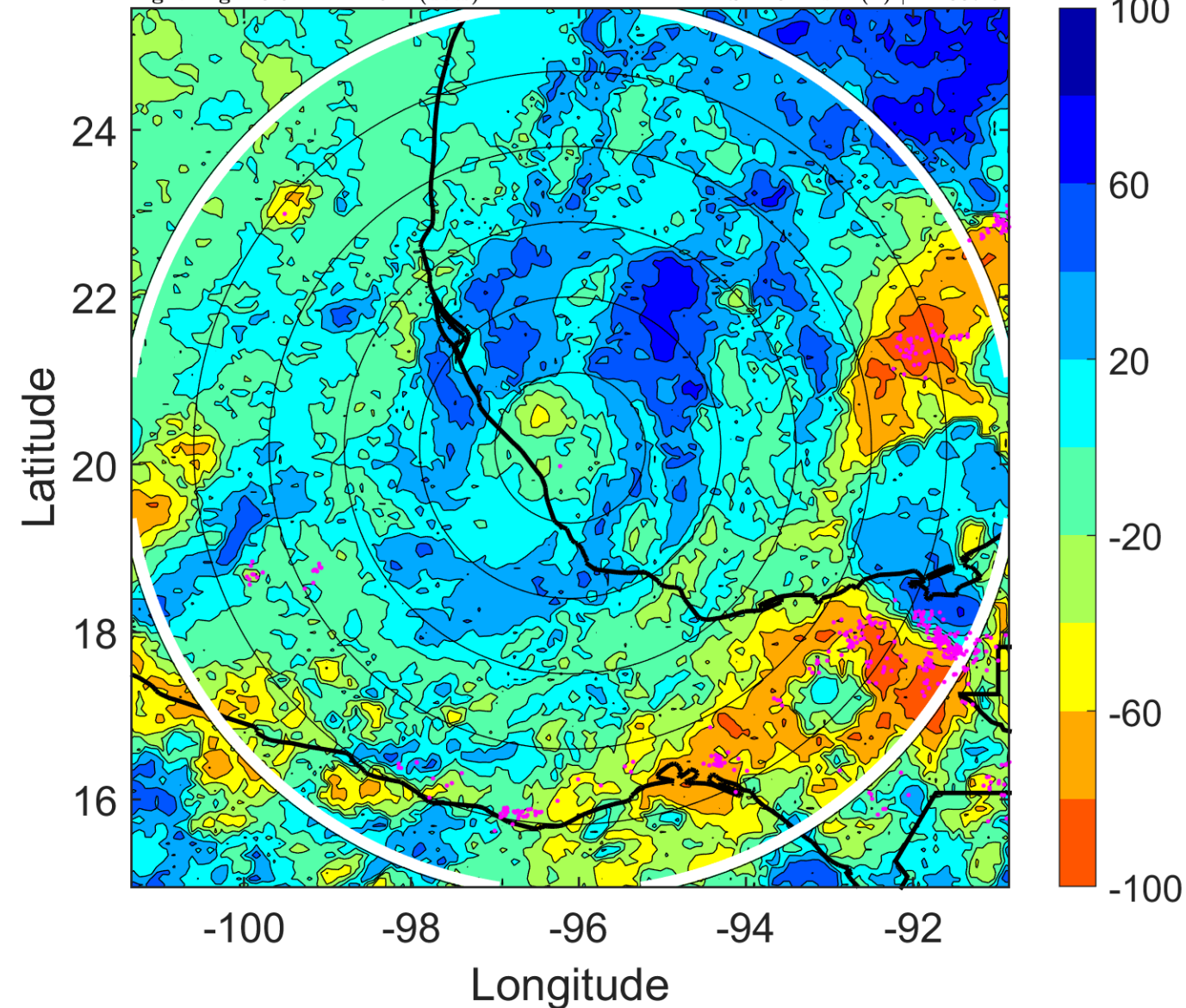
Δ t: 2005062903 (20.6 LT) - 2005062821 (14.6 LT)

Lightning: 20.6 LT \pm 1.5 h (dots)

PT: SLCP | EA: QUASI

02L (BRET) | 35 kt TS

S: 2.3 m s⁻¹ (L) | H: 337.5°



IR BT & Lightning

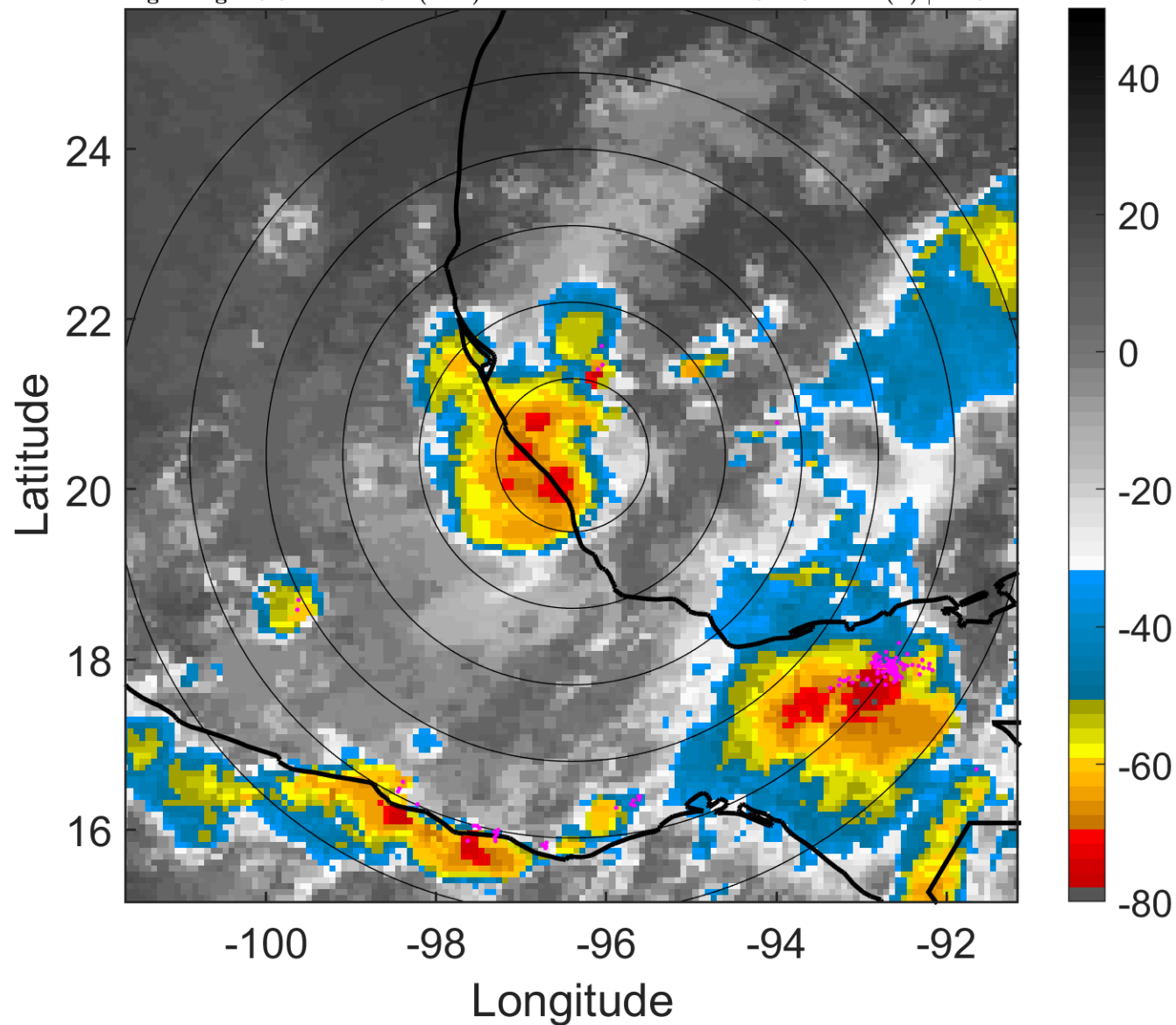
t: 2005062906 (23.6 LT)

Lightning: 23.6 LT \pm 1.5 h (dots)

PT: SLCP | EA: QUASI

02L (BRET) | 35 kt TS

S: 2.3 m s⁻¹ (L) | H: 342°



6-h IR BT Differences & Lightning

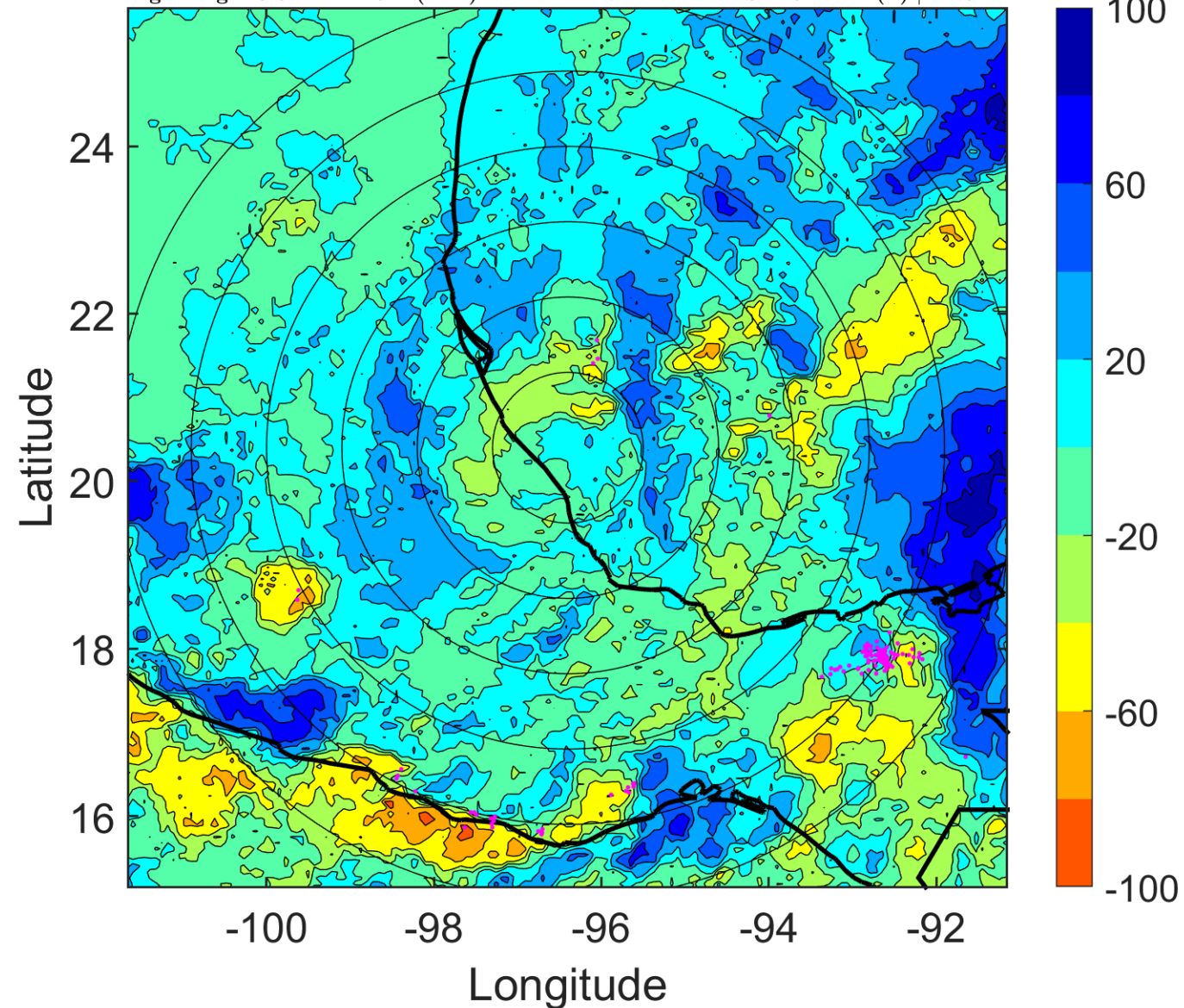
Δ t: 2005062906 (23.6 LT) - 2005062900 (17.6 LT)

Lightning: 23.6 LT \pm 1.5 h (dots)

PT: SLCP | EA: QUASI

02L (BRET) | 35 kt TS

S: 2.3 m s⁻¹ (L) | H: 342°



IR BT & Lightning

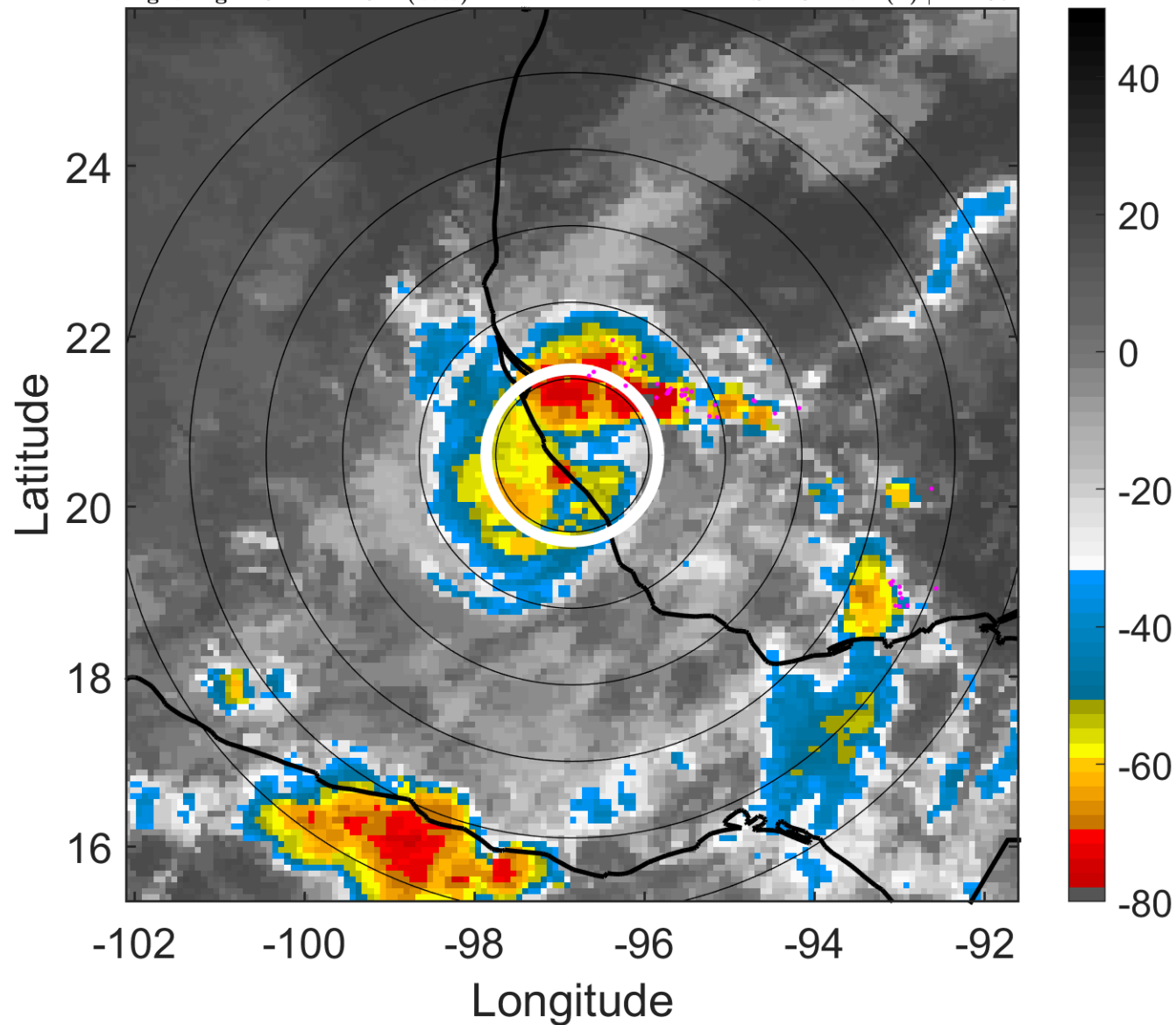
t: 2005062909 (2.5 LT)

Lightning: 2.5 LT \pm 1.5 h (dots)

LAND EFFECTS

02L (BRET) | 35 kt TS

S: 1.6 m s⁻¹ (L) | H: 197°



6-h IR BT Differences & Lightning

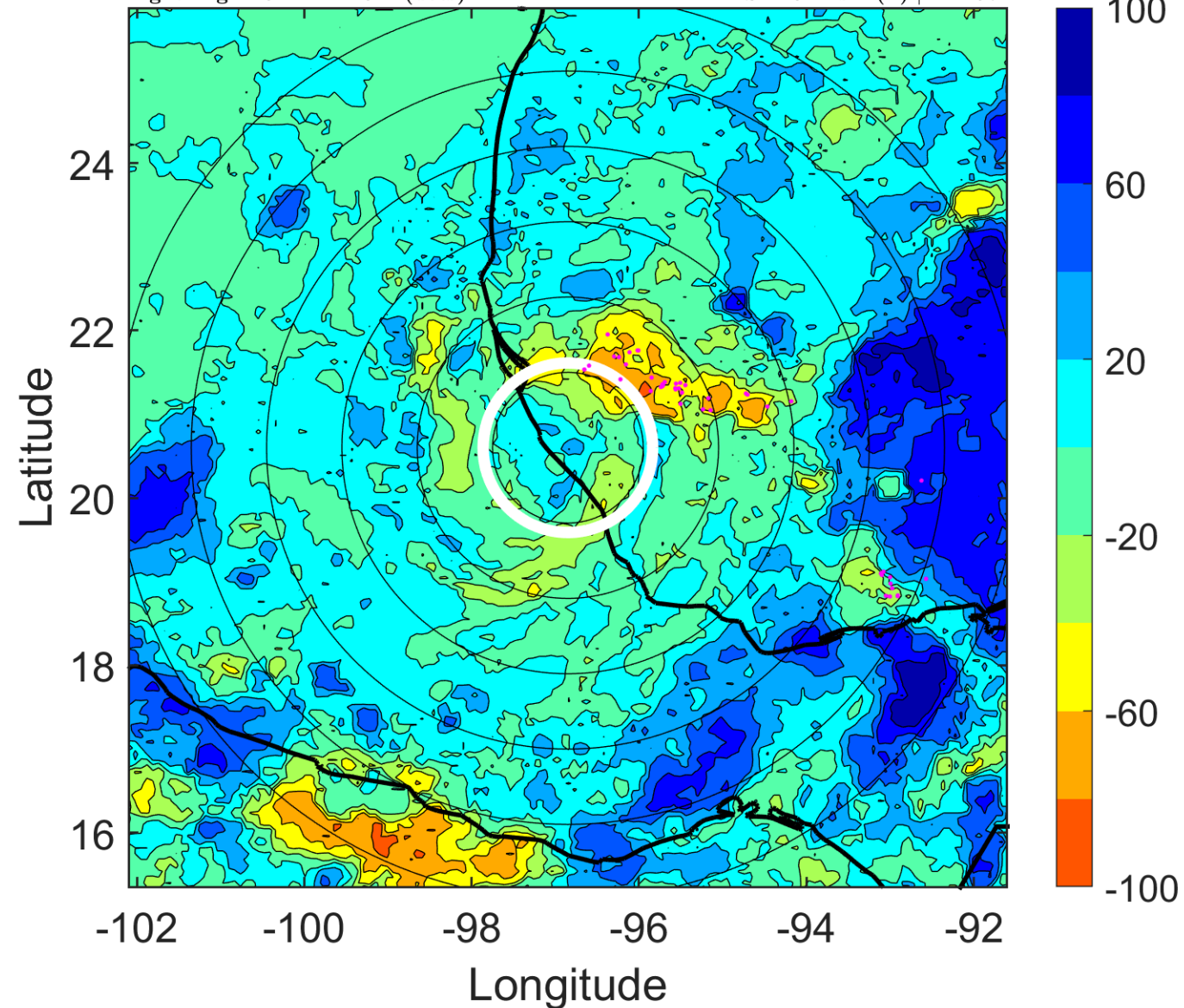
Δ t: 2005062909 (2.5 LT) - 2005062903 (20.6 LT)

Lightning: 2.5 LT \pm 1.5 h (dots)

LAND EFFECTS

02L (BRET) | 35 kt TS

S: 1.6 m s⁻¹ (L) | H: 197°



IR BT & Lightning

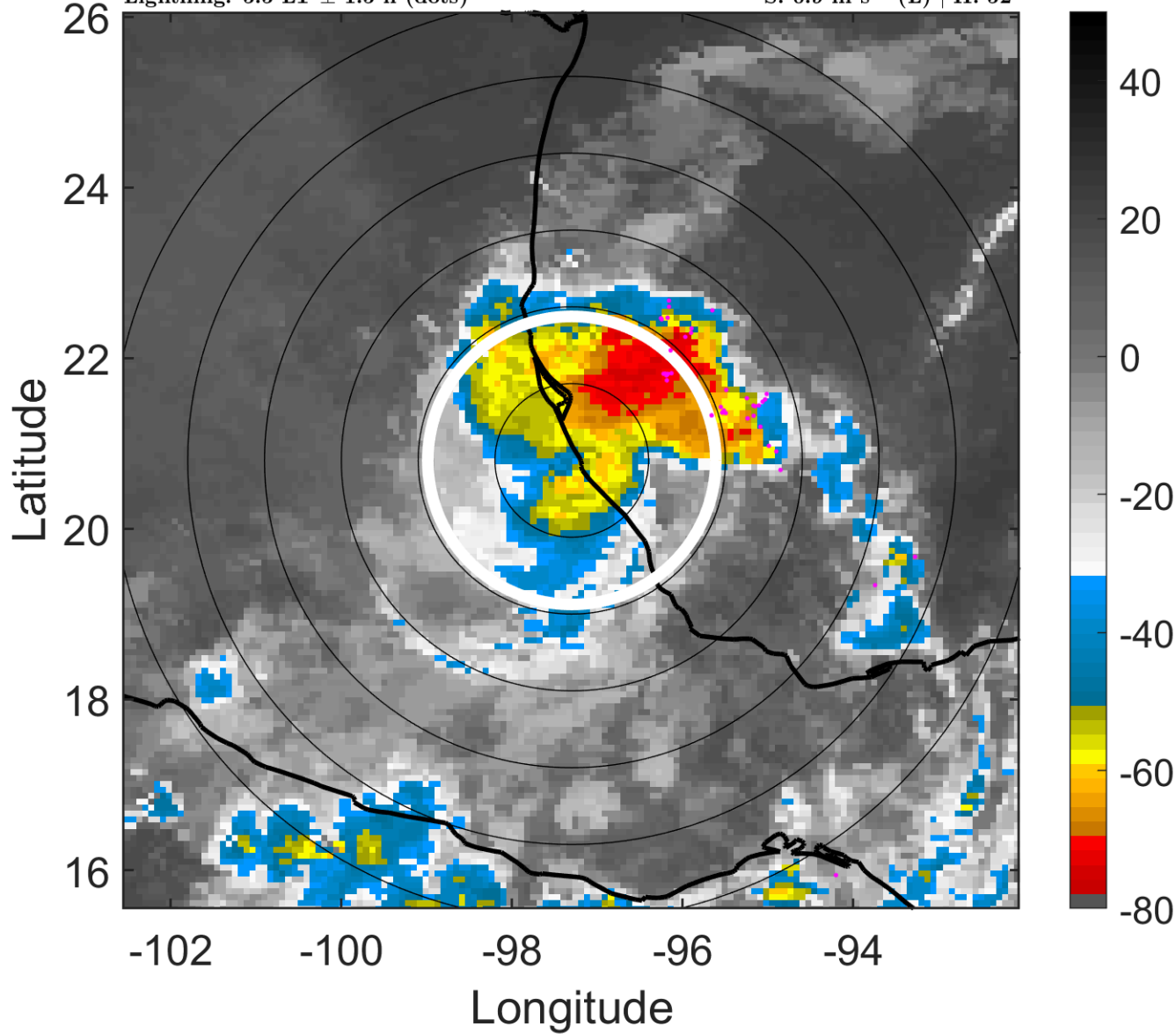
t: 2005062912 (5.5 LT)

Lightning: 5.5 LT \pm 1.5 h (dots)

LAND EFFECTS

02L (BRET) | 35 kt TS

S: 0.9 m s⁻¹ (L) | H: 52°



6-h IR BT Differences & Lightning

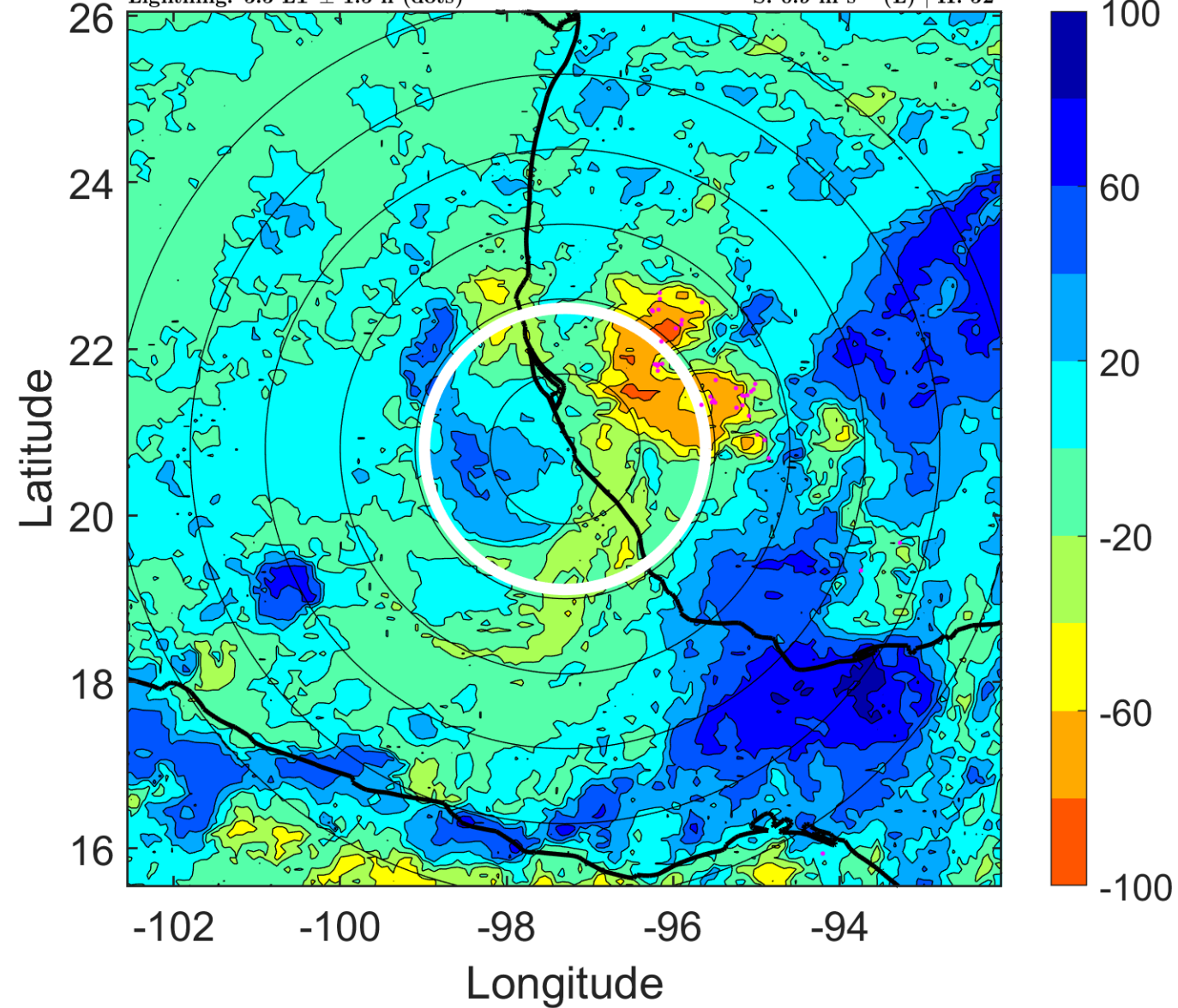
Δ t: 2005062912 (5.5 LT) - 2005062906 (23.6 LT)

Lightning: 5.5 LT \pm 1.5 h (dots)

LAND EFFECTS

02L (BRET) | 35 kt TS

S: 0.9 m s⁻¹ (L) | H: 52°



IR BT & Lightning

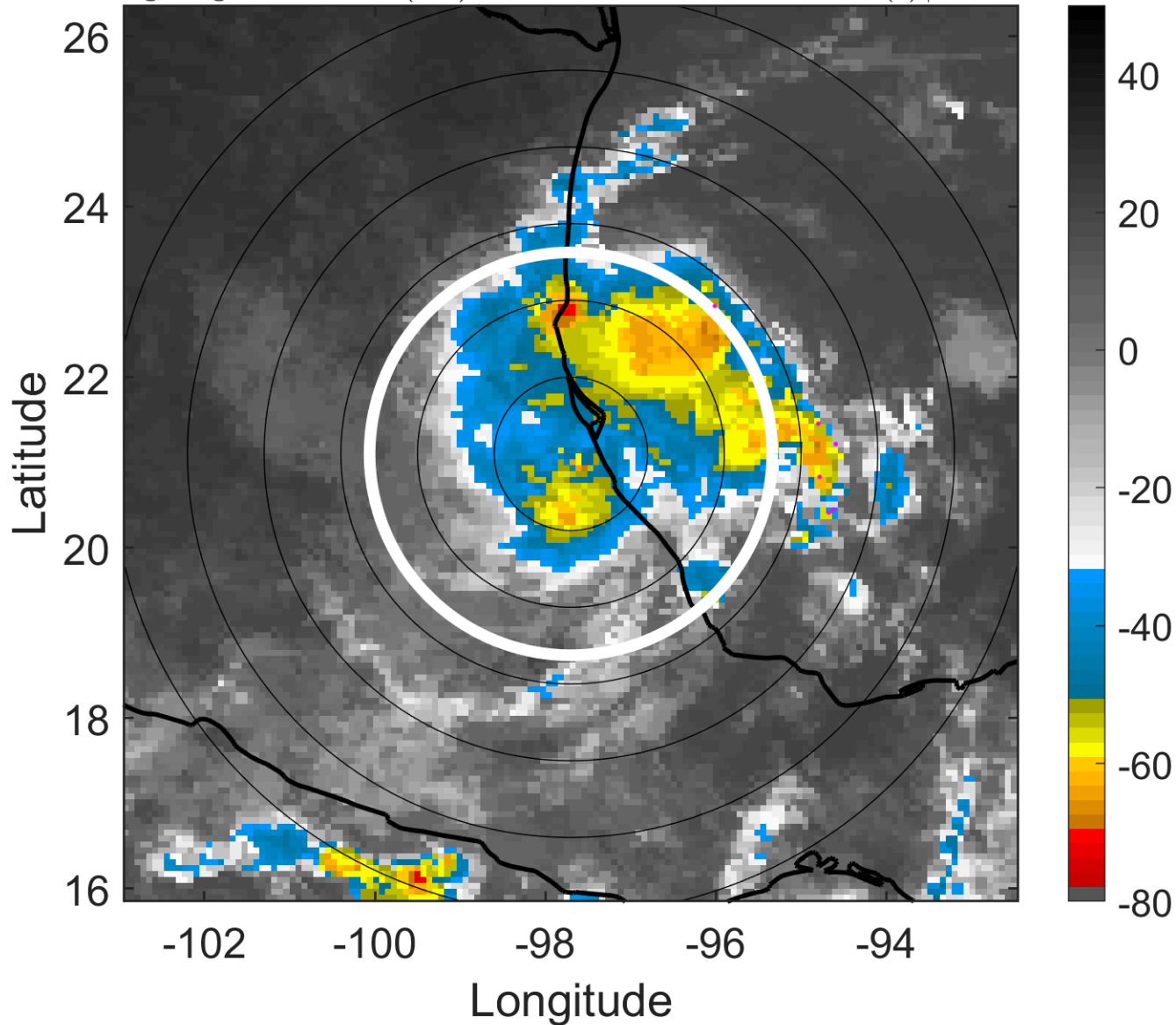
t: 2005062915 (8.5 LT)

Lightning: 8.5 LT \pm 1.5 h (dots)

LAND EFFECTS

02L (BRET) | 30 kt TD

S: 1.3 m s⁻¹ (L) | H: 148°



6-h IR BT Differences & Lightning

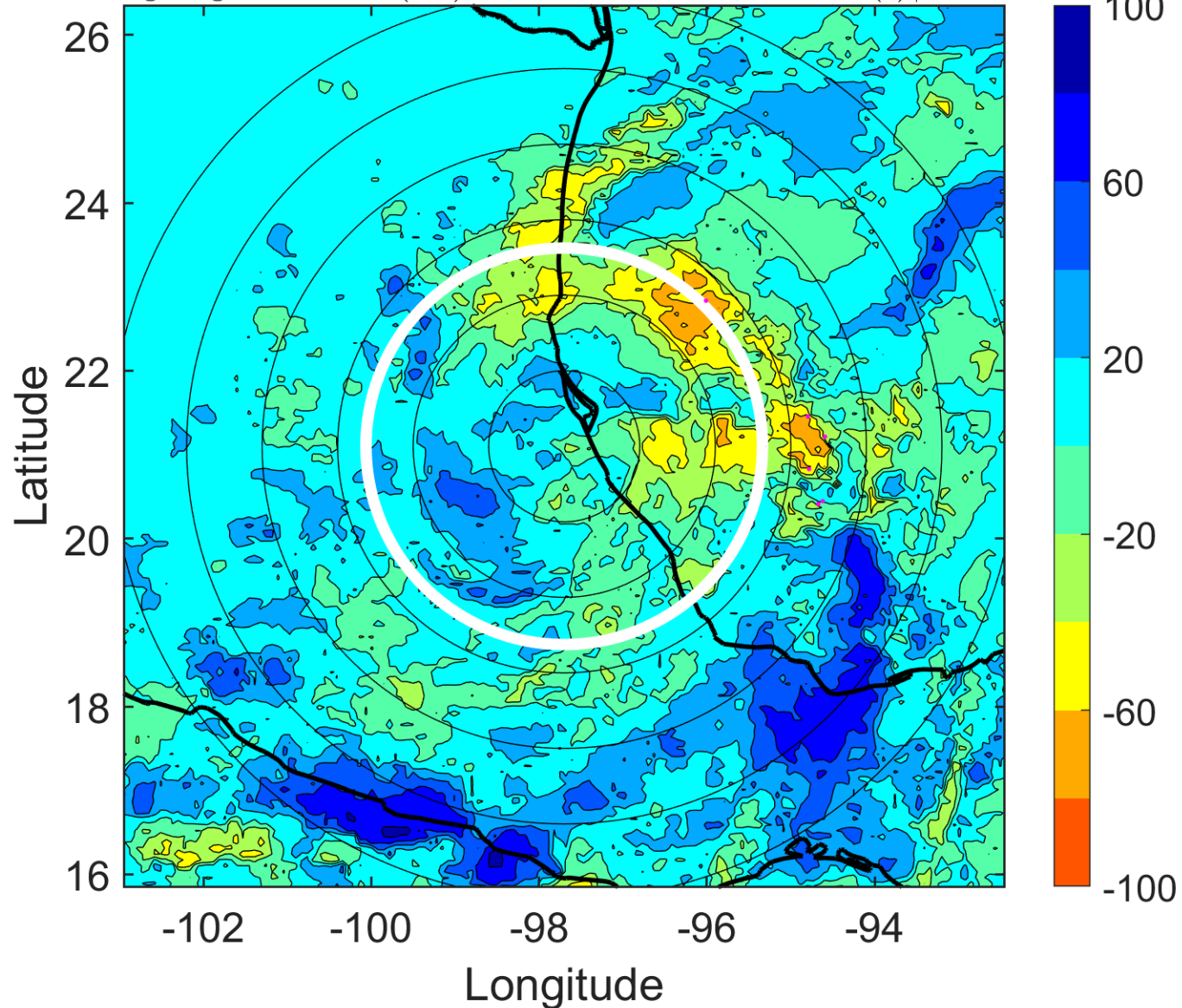
Δ t: 2005062915 (8.5 LT) - 2005062909 (2.5 LT)

Lightning: 8.5 LT \pm 1.5 h (dots)

LAND EFFECTS

02L (BRET) | 30 kt TD

S: 1.3 m s⁻¹ (L) | H: 148°



IR BT & Lightning

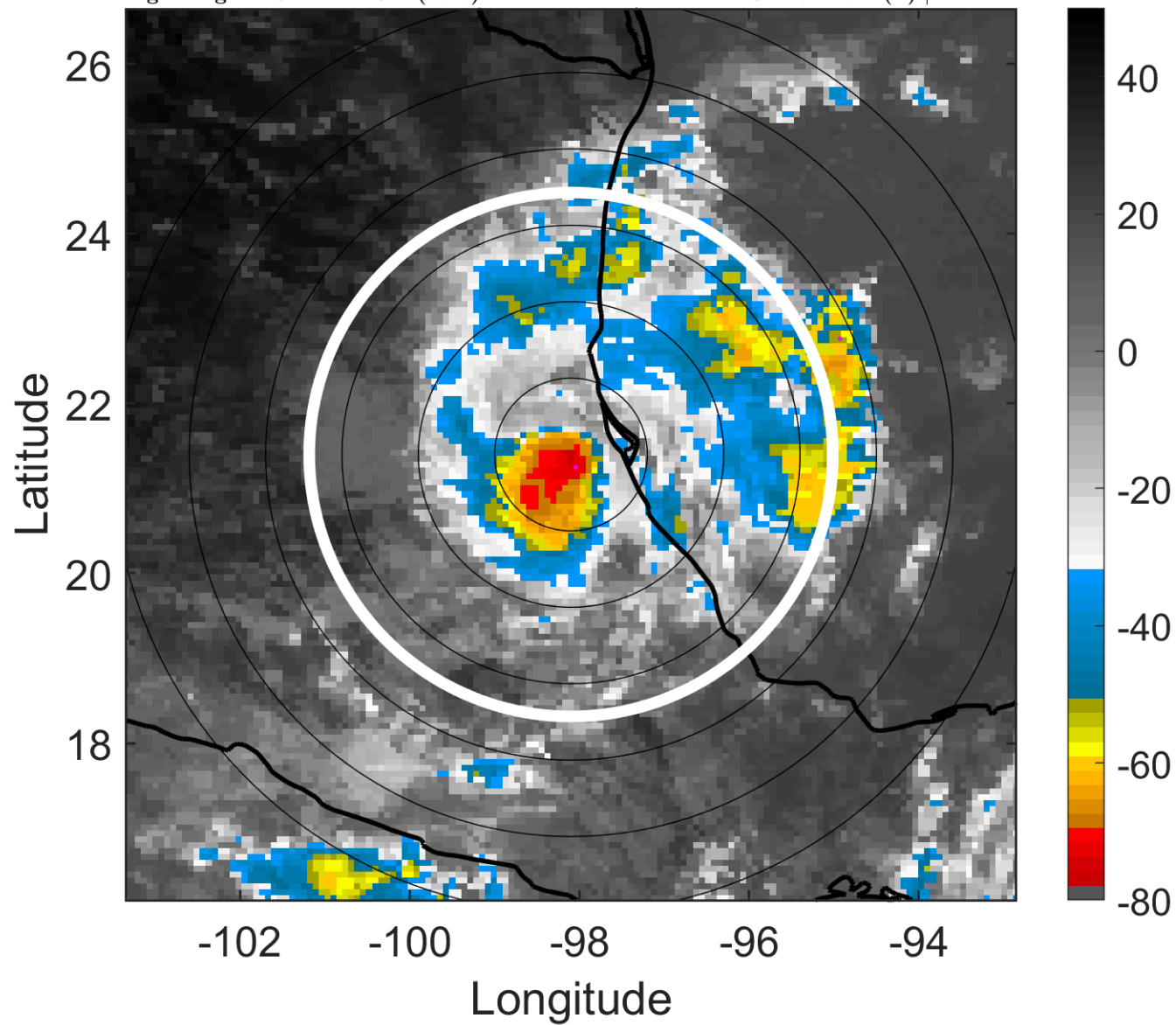
t: 2005062918 (11.5 LT)

Lightning: 11.5 LT \pm 1.5 h (dots)

LAND EFFECTS

02L (BRET) | 25 kt TD

S: 1.7 m s⁻¹ (L) | H: 244°



6-h IR BT Differences & Lightning

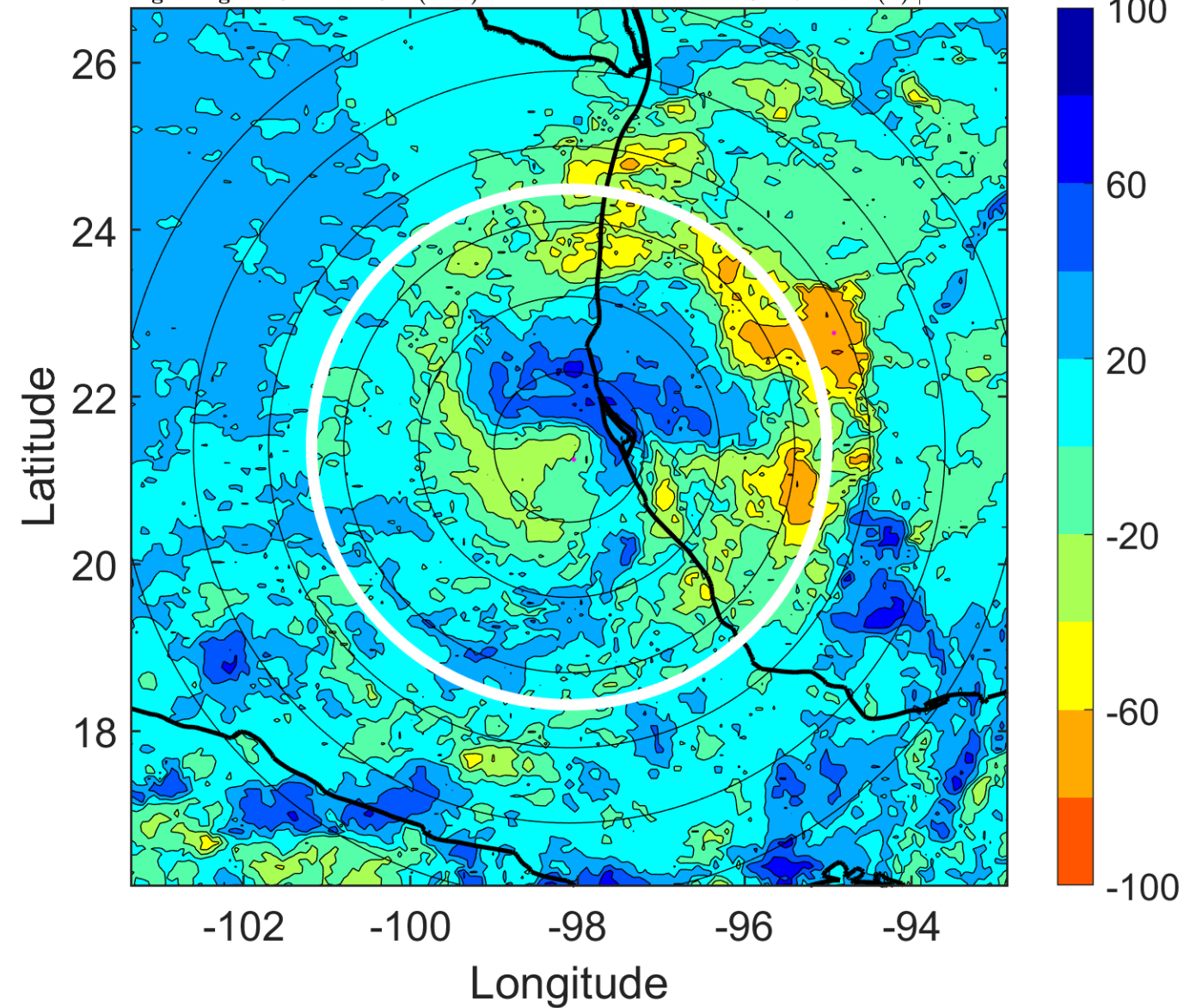
Δ t: 2005062918 (11.5 LT) - 2005062912 (5.5 LT)

Lightning: 11.5 LT \pm 1.5 h (dots)

LAND EFFECTS

02L (BRET) | 25 kt TD

S: 1.7 m s⁻¹ (L) | H: 244°



IR BT & Lightning

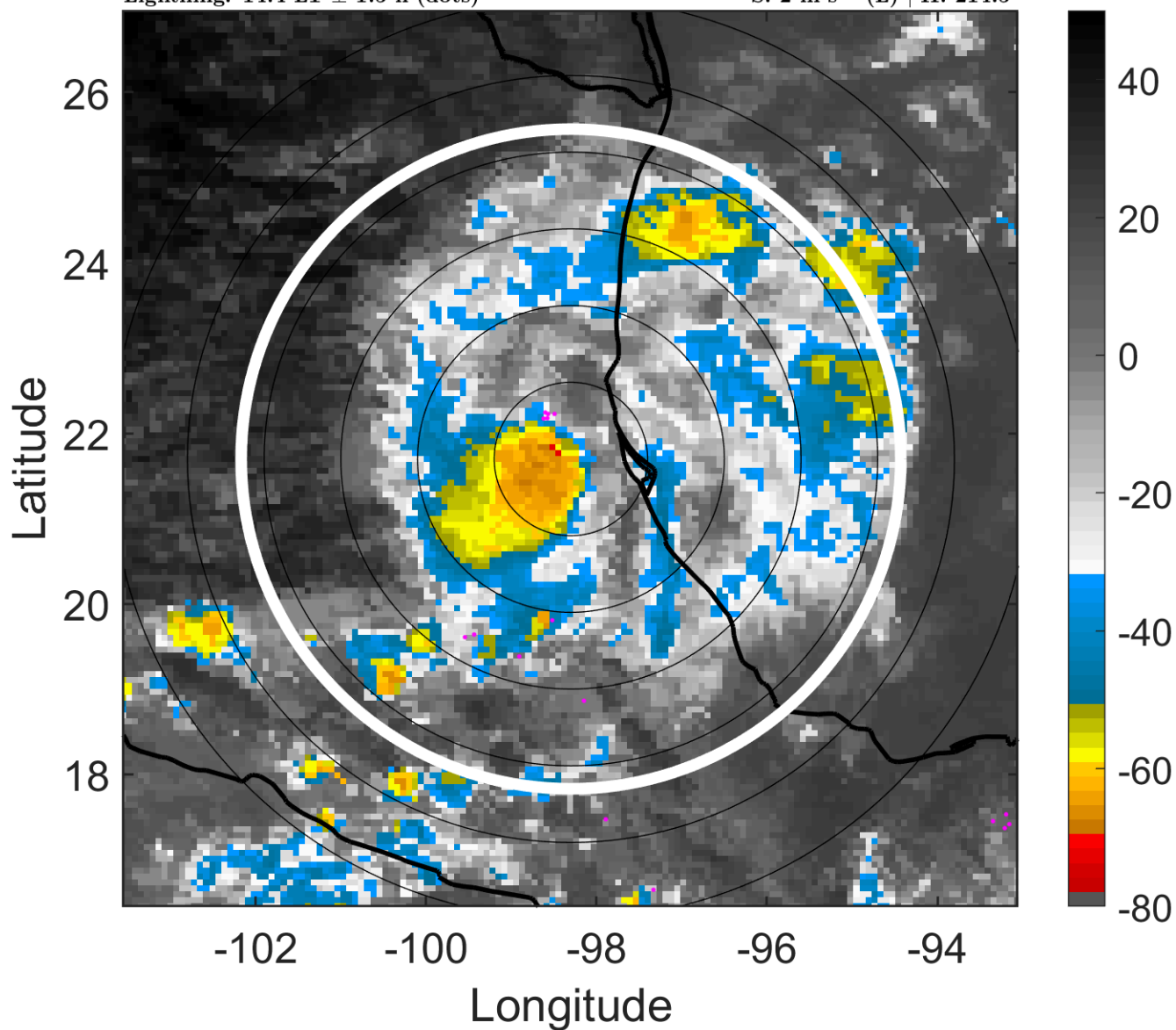
t: 2005062921 (14.4 LT)

Lightning: 14.4 LT \pm 1.5 h (dots)

LAND EFFECTS

02L (BRET) | 25 kt TD

S: 2 m s⁻¹ (L) | H: 214.5°



6-h IR BT Differences & Lightning

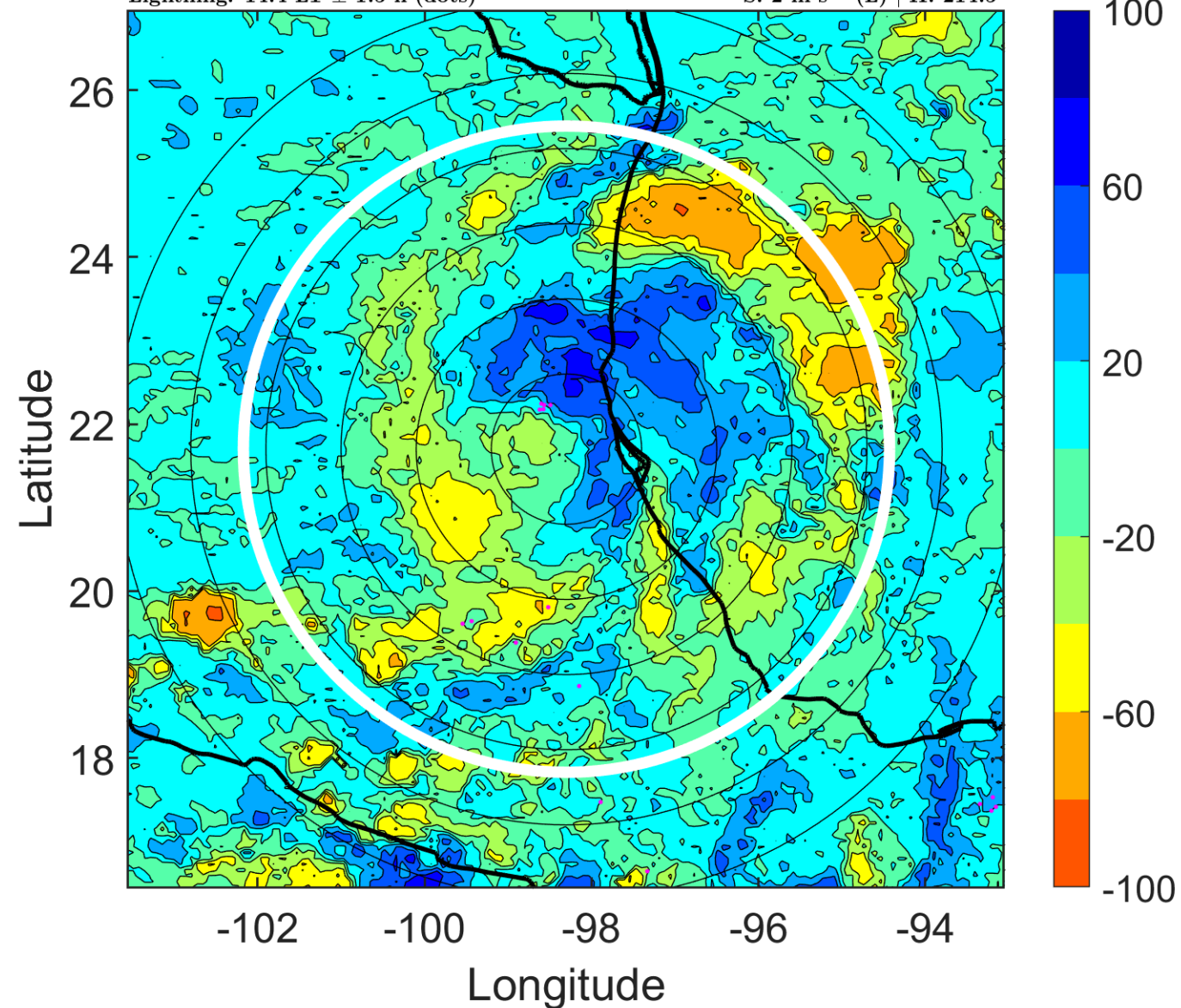
Δ t: 2005062921 (14.4 LT) - 2005062915 (8.5 LT)

Lightning: 14.4 LT \pm 1.5 h (dots)

LAND EFFECTS

02L (BRET) | 25 kt TD

S: 2 m s⁻¹ (L) | H: 214.5°



IR BT & Lightning

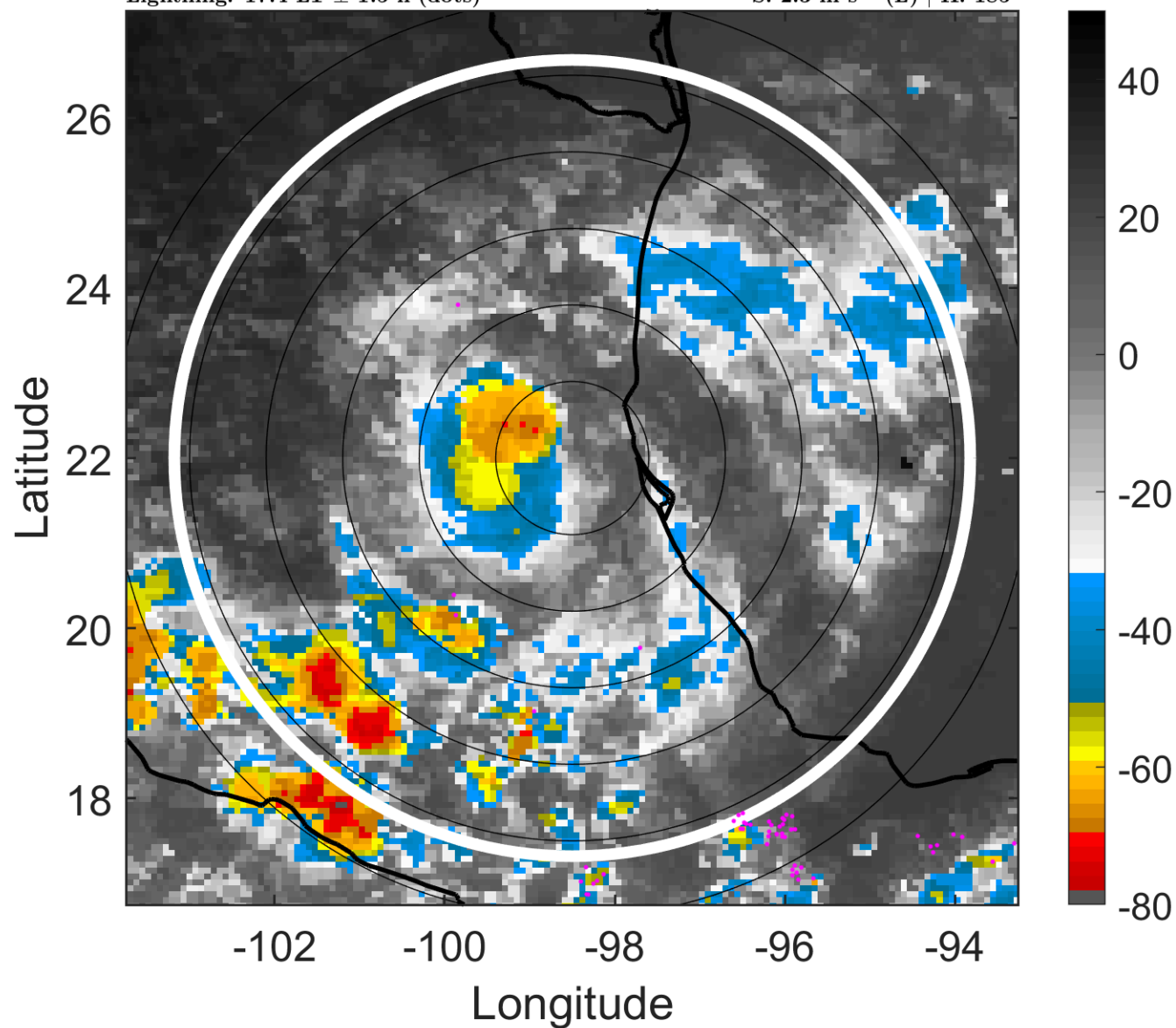
t: 2005063000 (17.4 LT)

Lightning: 17.4 LT \pm 1.5 h (dots)

LAND EFFECTS

02L (BRET) | 25 kt TD

S: 2.3 m s⁻¹ (L) | H: 185°



6-h IR BT Differences & Lightning

Δ t: 2005063000 (17.4 LT) - 2005062918 (11.5 LT)

Lightning: 17.4 LT \pm 1.5 h (dots)

LAND EFFECTS

02L (BRET) | 25 kt TD

S: 2.3 m s⁻¹ (L) | H: 185°

