

IR BT & Lightning

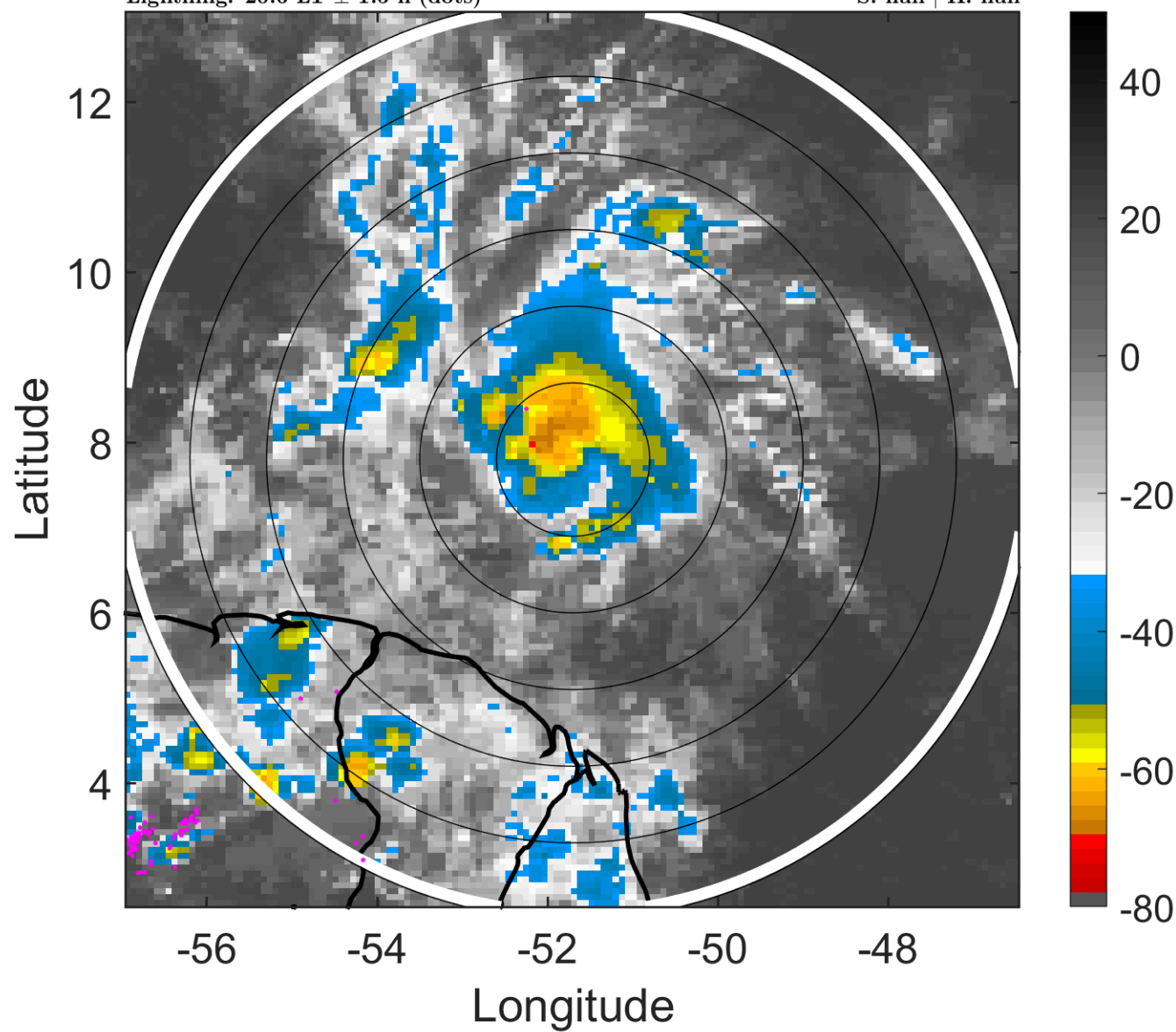
t: 2017061900 (20.6 LT)

Lightning: 20.6 LT \pm 1.5 h (dots)

PT: SLCP | EA: INACT

02L (BRET) | 35 kt DB

S: null | H: null



6-h IR BT Differences & Lightning

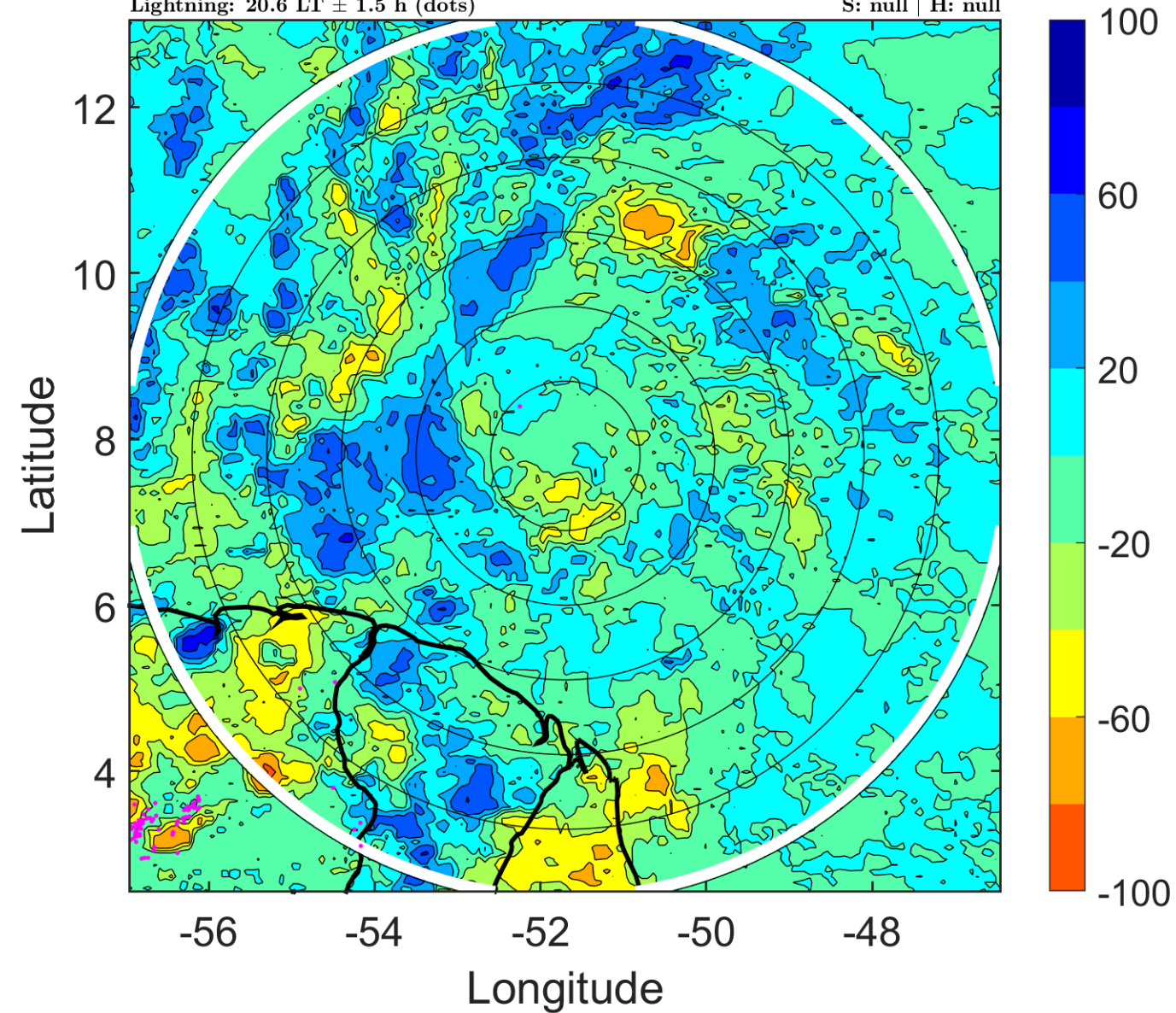
Δ t: 2017061900 (20.6 LT) - 2017061818 (14.7 LT)

Lightning: 20.6 LT \pm 1.5 h (dots)

PT: SLCP | EA: INACT

02L (BRET) | 35 kt DB

S: null | H: null



IR BT & Lightning

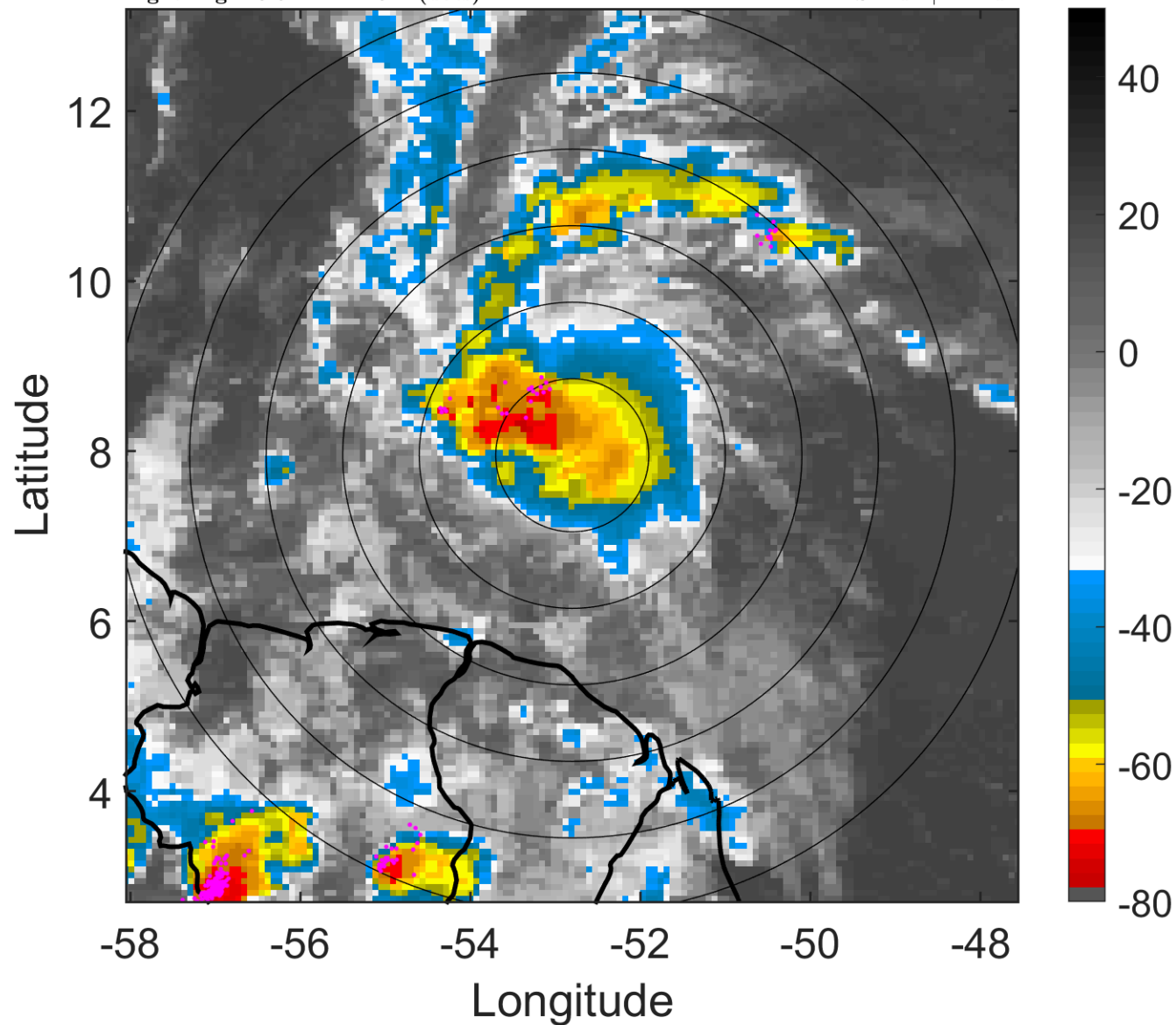
t: 2017061903 (23.5 LT)

Lightning: 23.5 LT \pm 1.5 h (dots)

PT: SLCP | EA: INACT

02L (BRET) | 35 kt DB

S: null | H: null



6-h IR BT Differences & Lightning

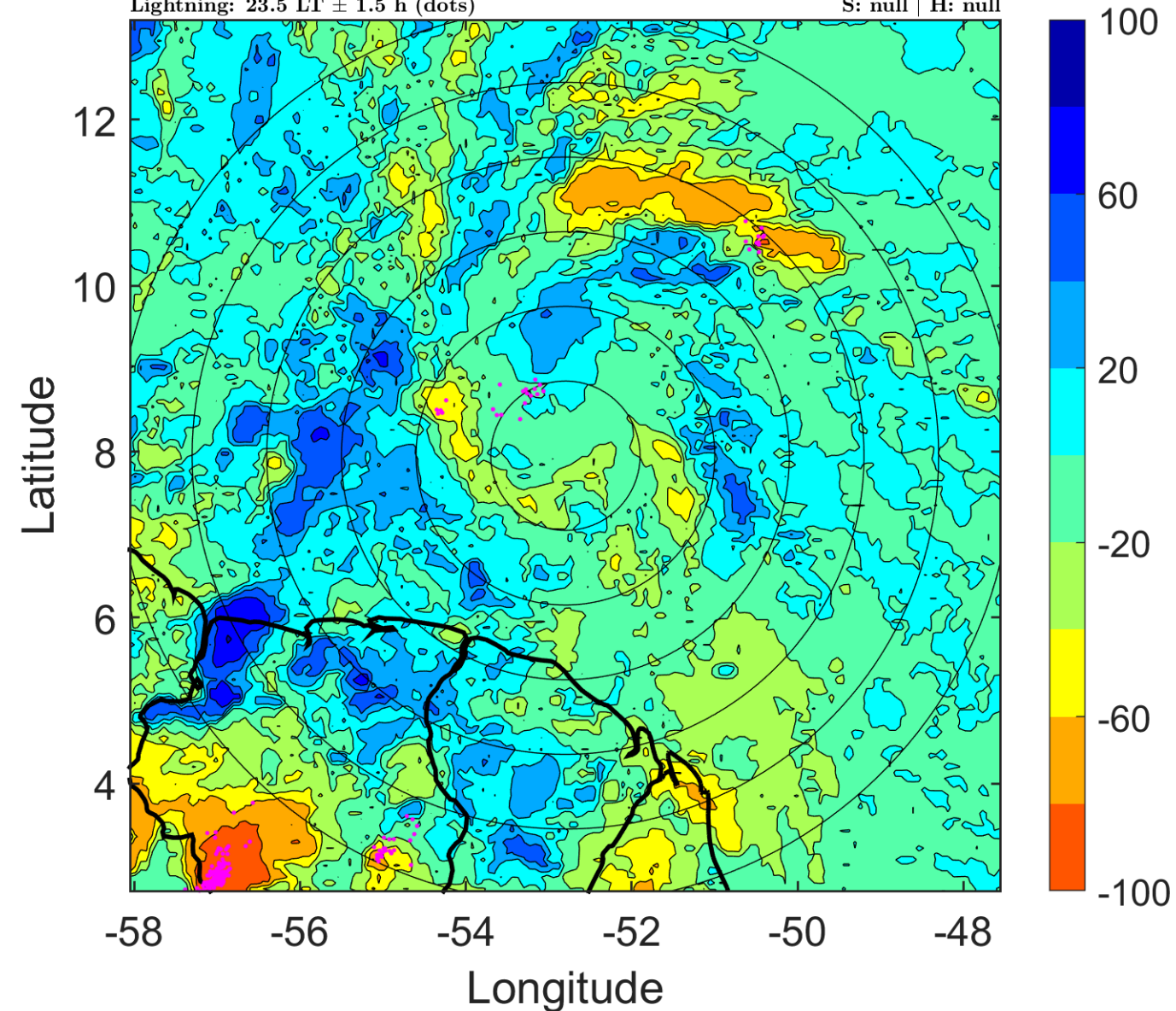
Δ t: 2017061903 (23.5 LT) - 2017061821 (17.6 LT)

Lightning: 23.5 LT \pm 1.5 h (dots)

PT: SLCP | EA: INACT

02L (BRET) | 35 kt DB

S: null | H: null



IR BT & Lightning

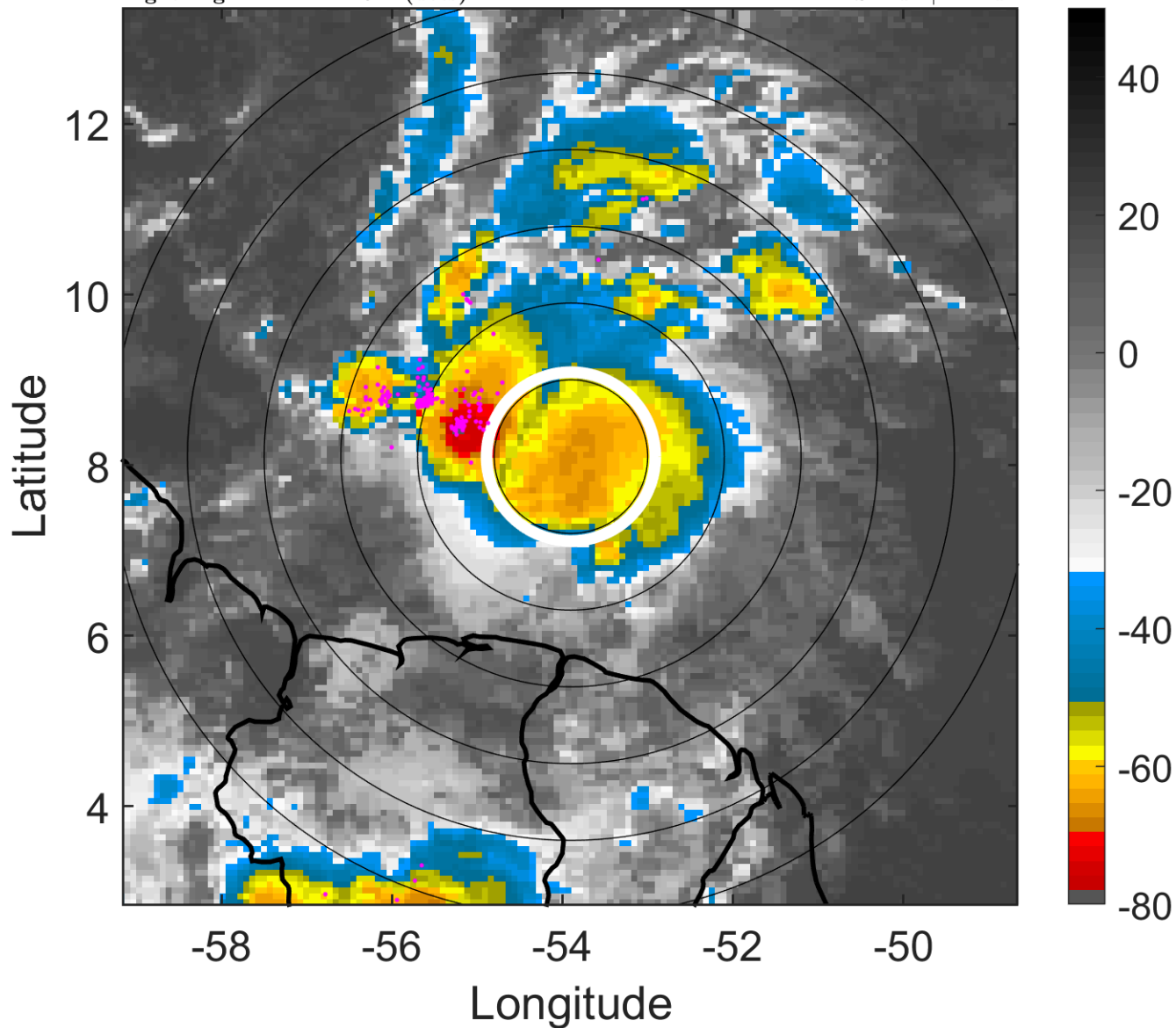
t: 2017061906 (2.4 LT)

Lightning: 2.4 LT \pm 1.5 h (dots)

PT: LLCP | EA: ACT

02L (BRET) | 35 kt DB

S: null | H: null



6-h IR BT Differences & Lightning

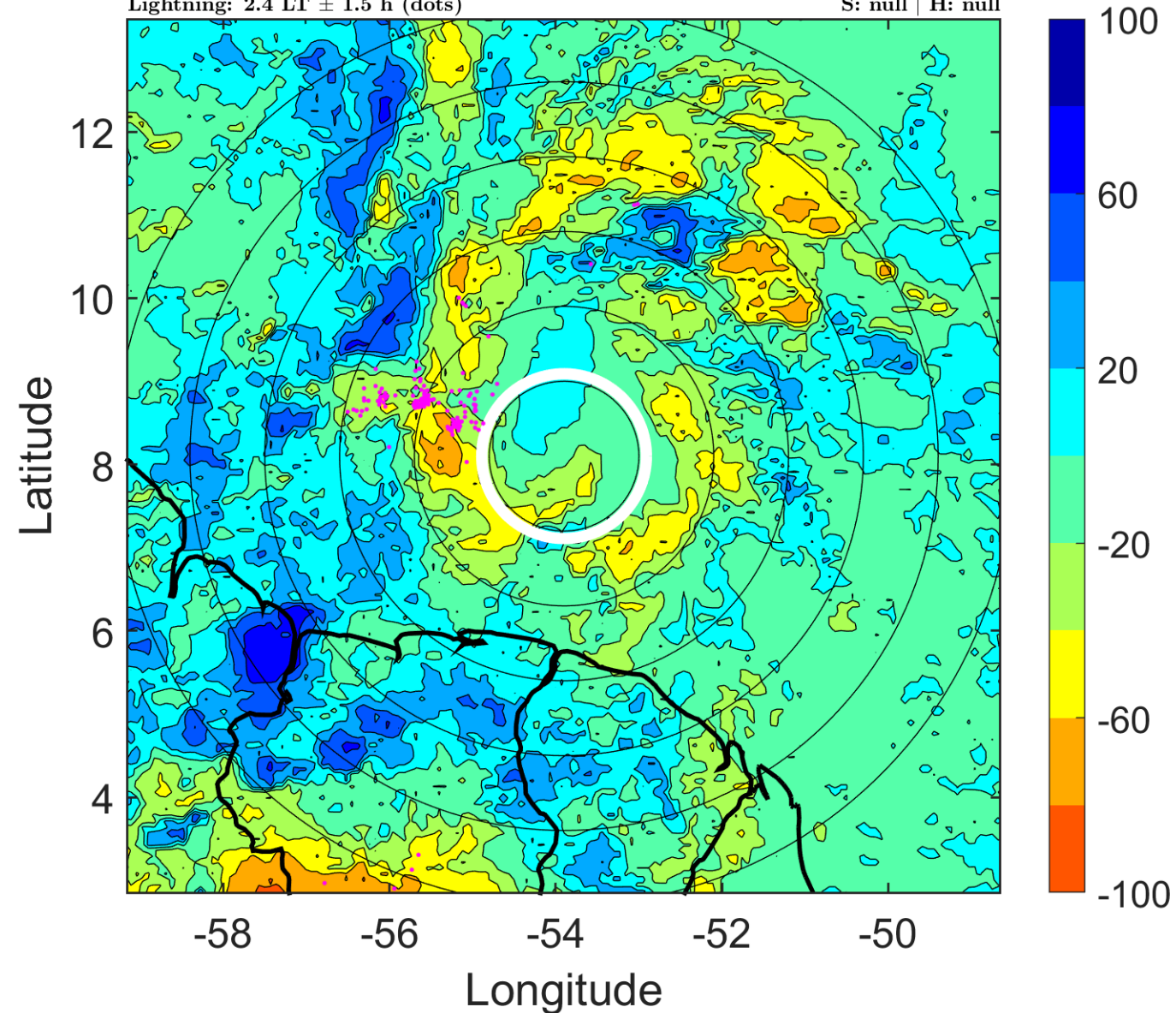
Δ t: 2017061906 (2.4 LT) - 2017061900 (20.6 LT)

Lightning: 2.4 LT \pm 1.5 h (dots)

PT: LLCP | EA: ACT

02L (BRET) | 35 kt DB

S: null | H: null



IR BT & Lightning

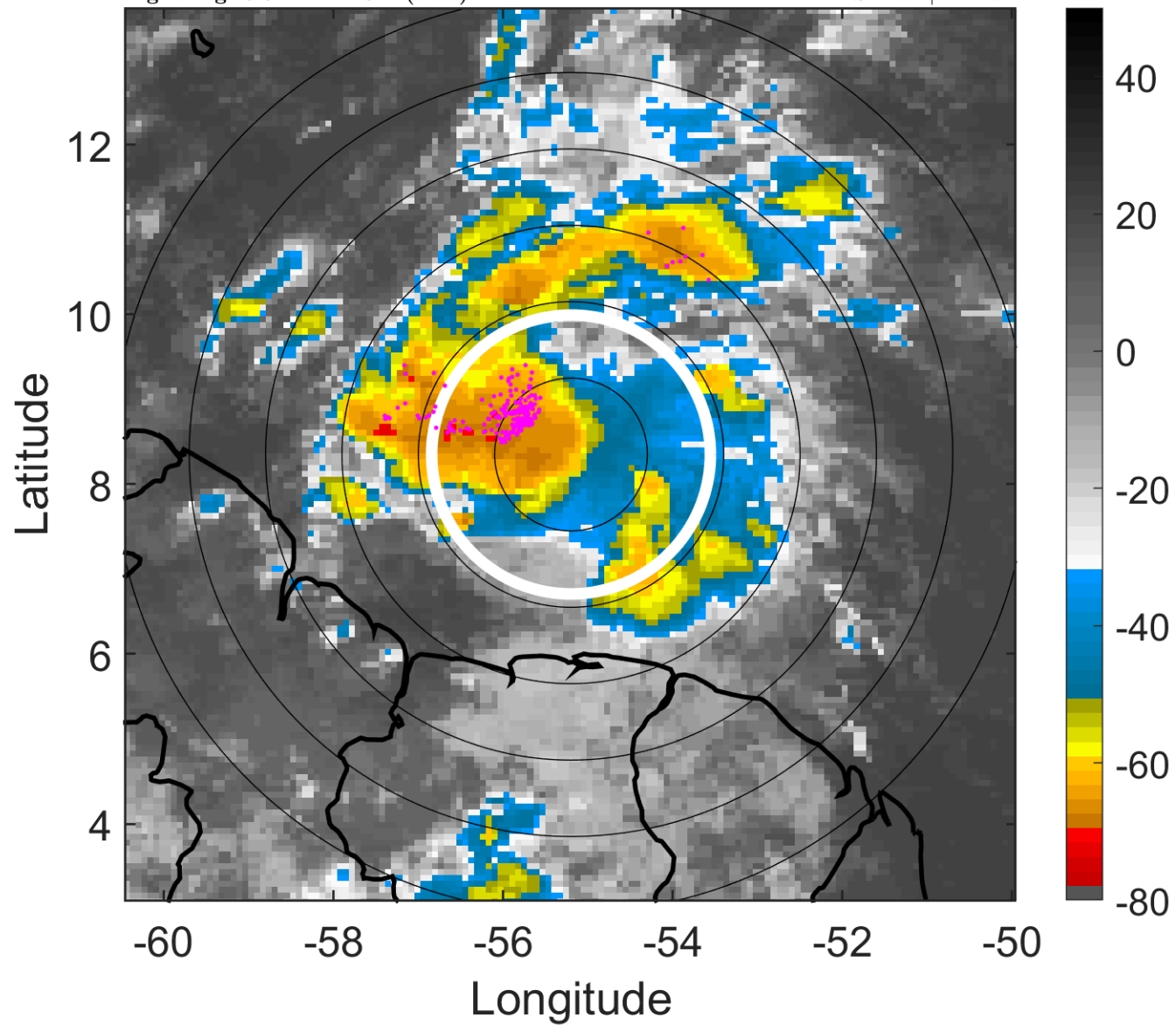
t: 2017061909 (5.3 LT)

Lightning: 5.3 LT \pm 1.5 h (dots)

PT: LLCP | EA: ACT

02L (BRET) | 35 kt DB

S: null | H: null



6-h IR BT Differences & Lightning

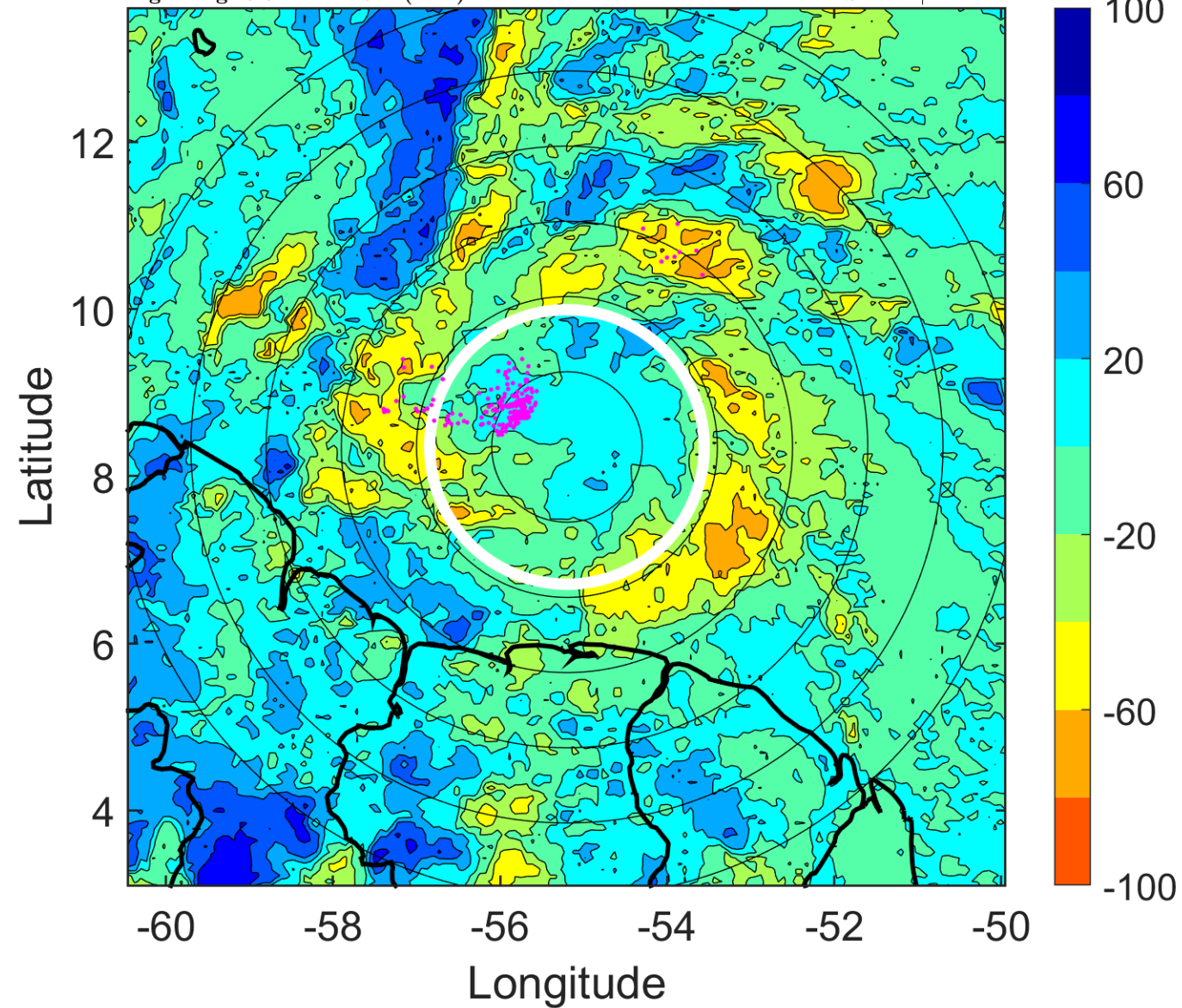
Δ t: 2017061909 (5.3 LT) - 2017061903 (23.5 LT)

Lightning: 5.3 LT \pm 1.5 h (dots)

PT: LLCP | EA: ACT

02L (BRET) | 35 kt DB

S: null | H: null



IR BT & Lightning

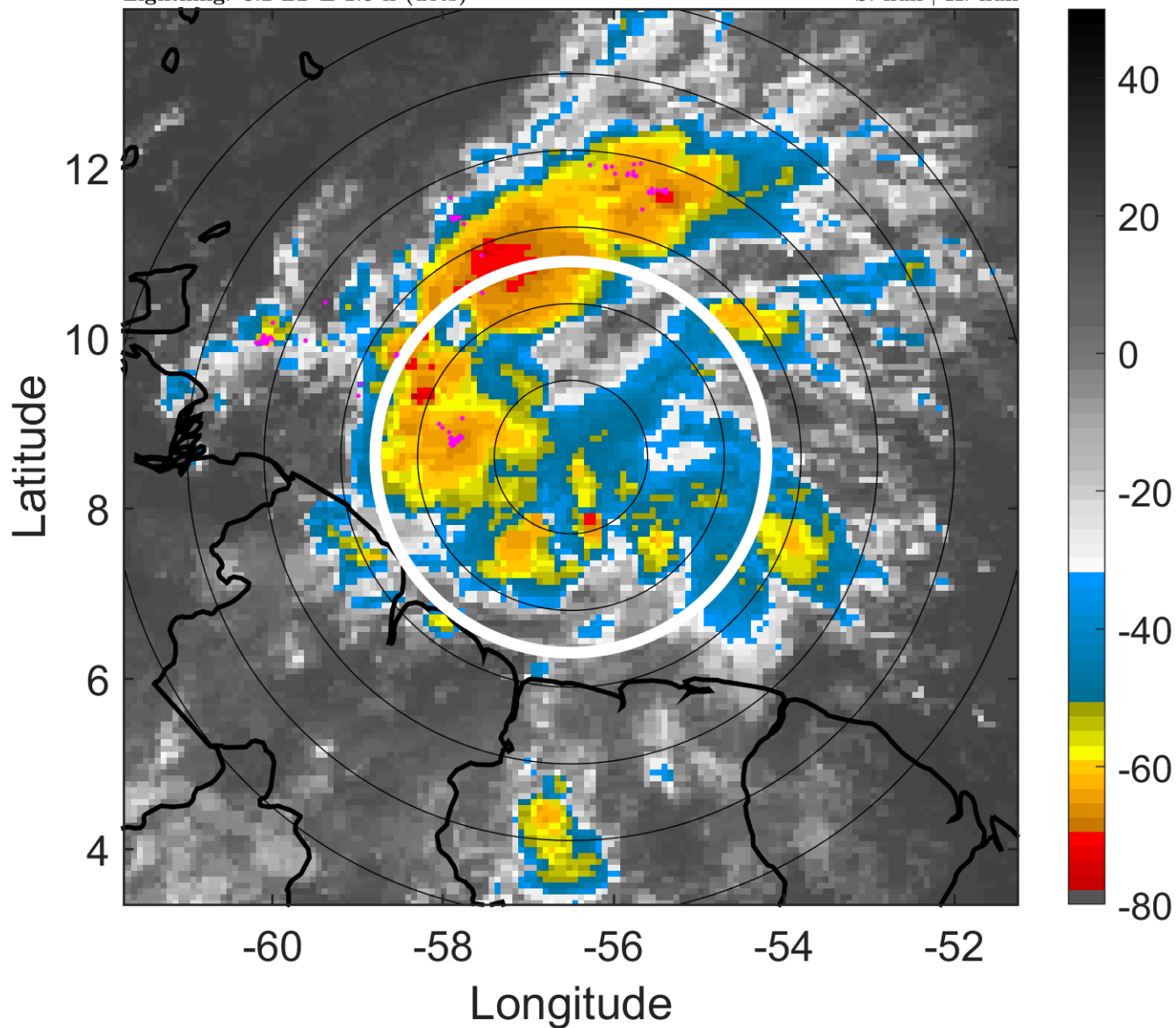
t: 2017061912 (8.2 LT)

Lightning: 8.2 LT \pm 1.5 h (dots)

PT: LLCP | EA: ACT

02L (BRET) | 35 kt DB

S: null | H: null



6-h IR BT Differences & Lightning

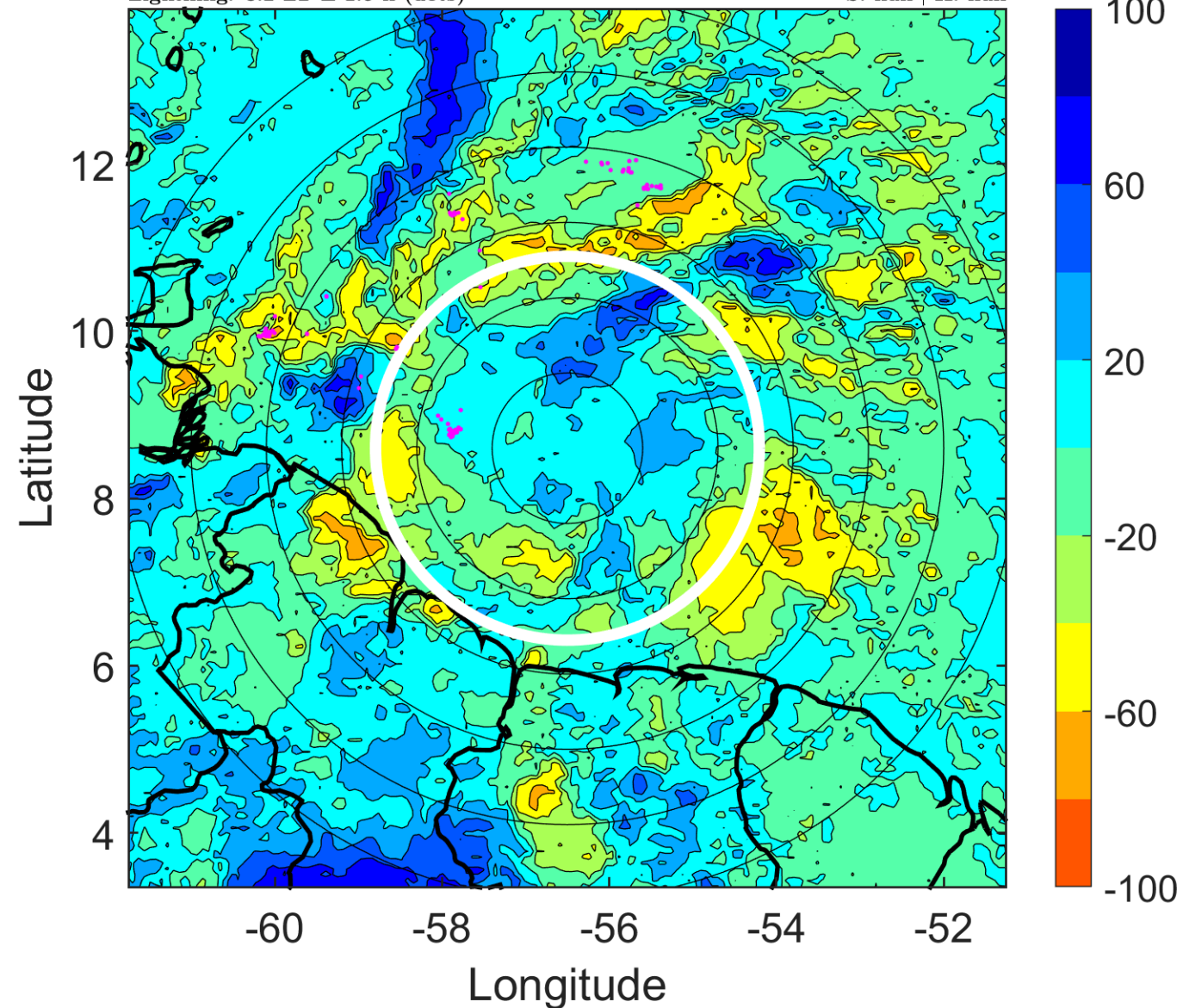
Δ t: 2017061912 (8.2 LT) - 2017061906 (2.4 LT)

Lightning: 8.2 LT \pm 1.5 h (dots)

PT: LLCP | EA: ACT

02L (BRET) | 35 kt DB

S: null | H: null



IR BT & Lightning

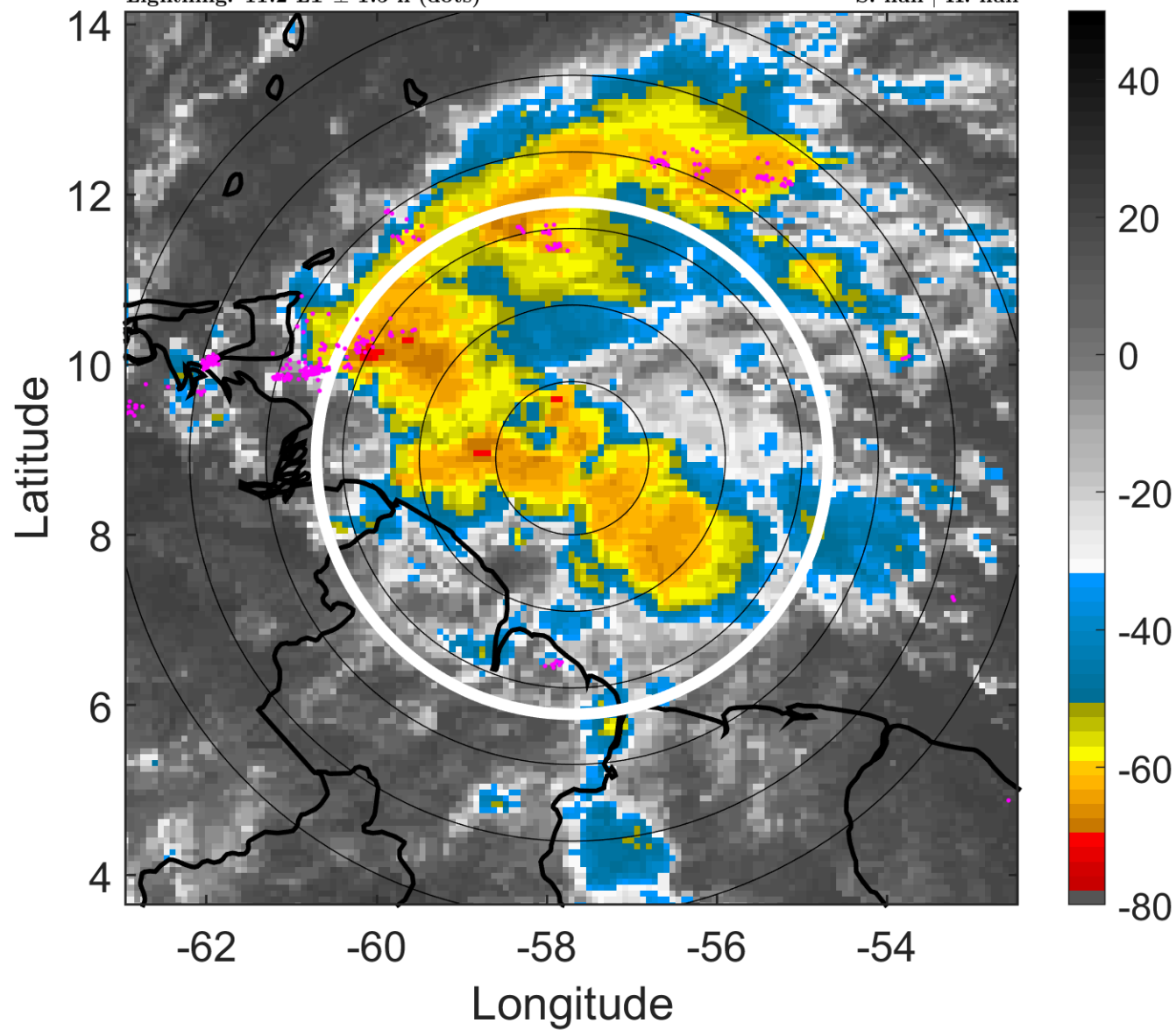
t: 2017061915 (11.2 LT)

Lightning: 11.2 LT \pm 1.5 h (dots)

PT: LLCP | EA: ACT

02L (BRET) | 37.5 kt DB

S: null | H: null



6-h IR BT Differences & Lightning

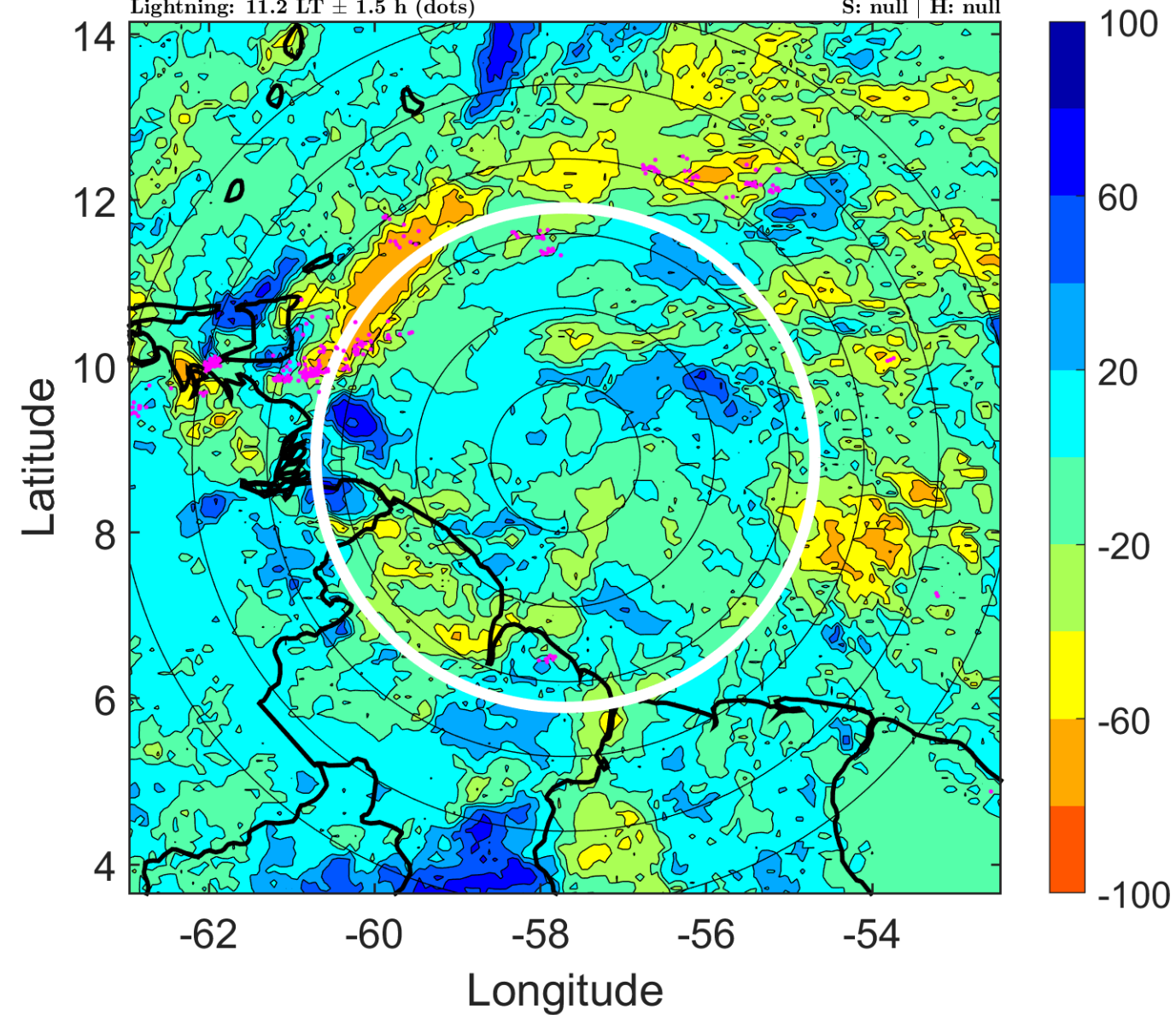
Δ t: 2017061915 (11.2 LT) - 2017061909 (5.3 LT)

Lightning: 11.2 LT \pm 1.5 h (dots)

PT: LLCP | EA: ACT

02L (BRET) | 37.5 kt DB

S: null | H: null



IR BT & Lightning

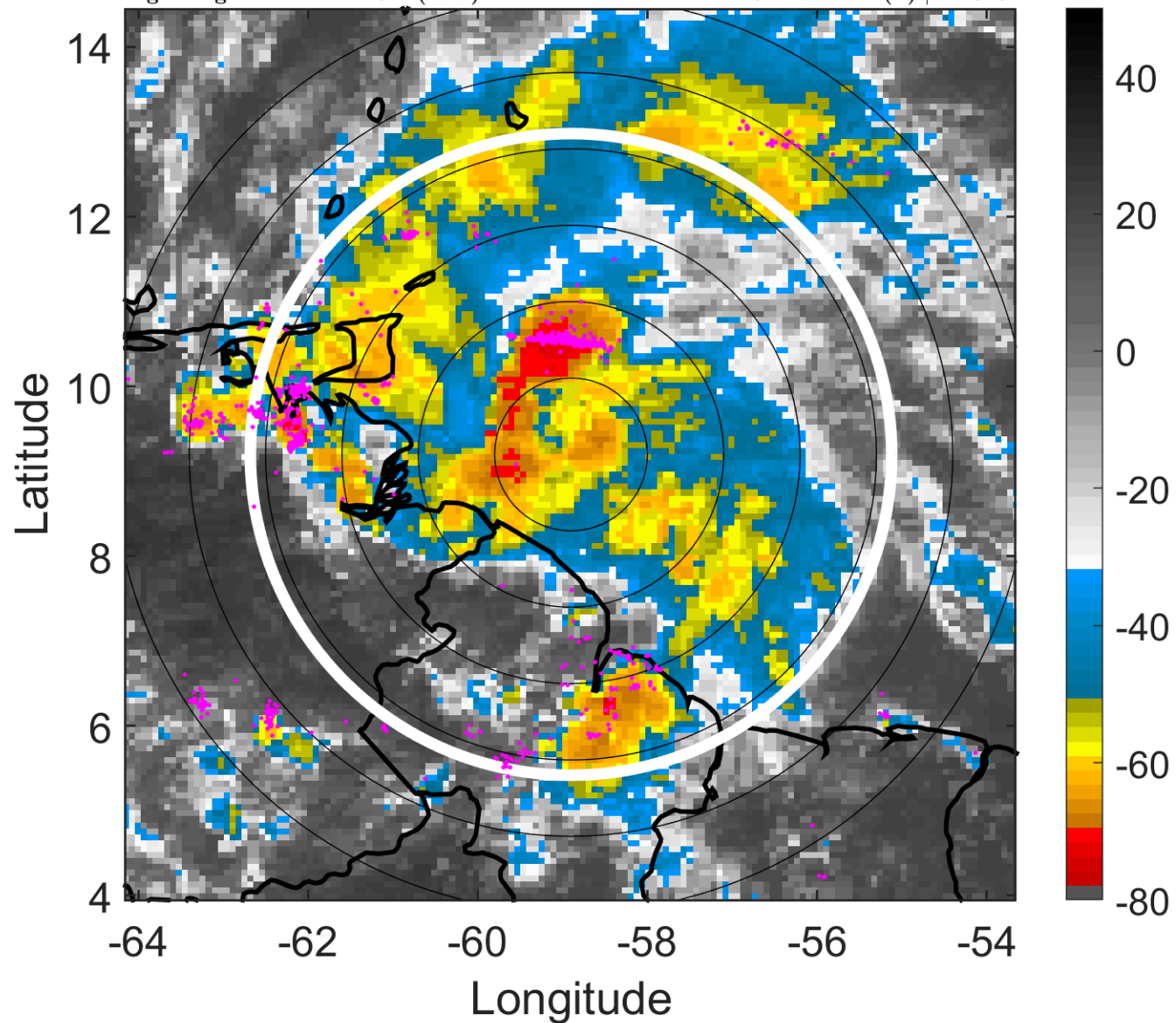
t: 2017061918 (14.1 LT)

Lightning: 14.1 LT \pm 1.5 h (dots)

PT: LLCP | EA: ACT

02L (BRET) | 40 kt TS

S: 1.7 m s⁻¹ (L) | H: 346°



6-h IR BT Differences & Lightning

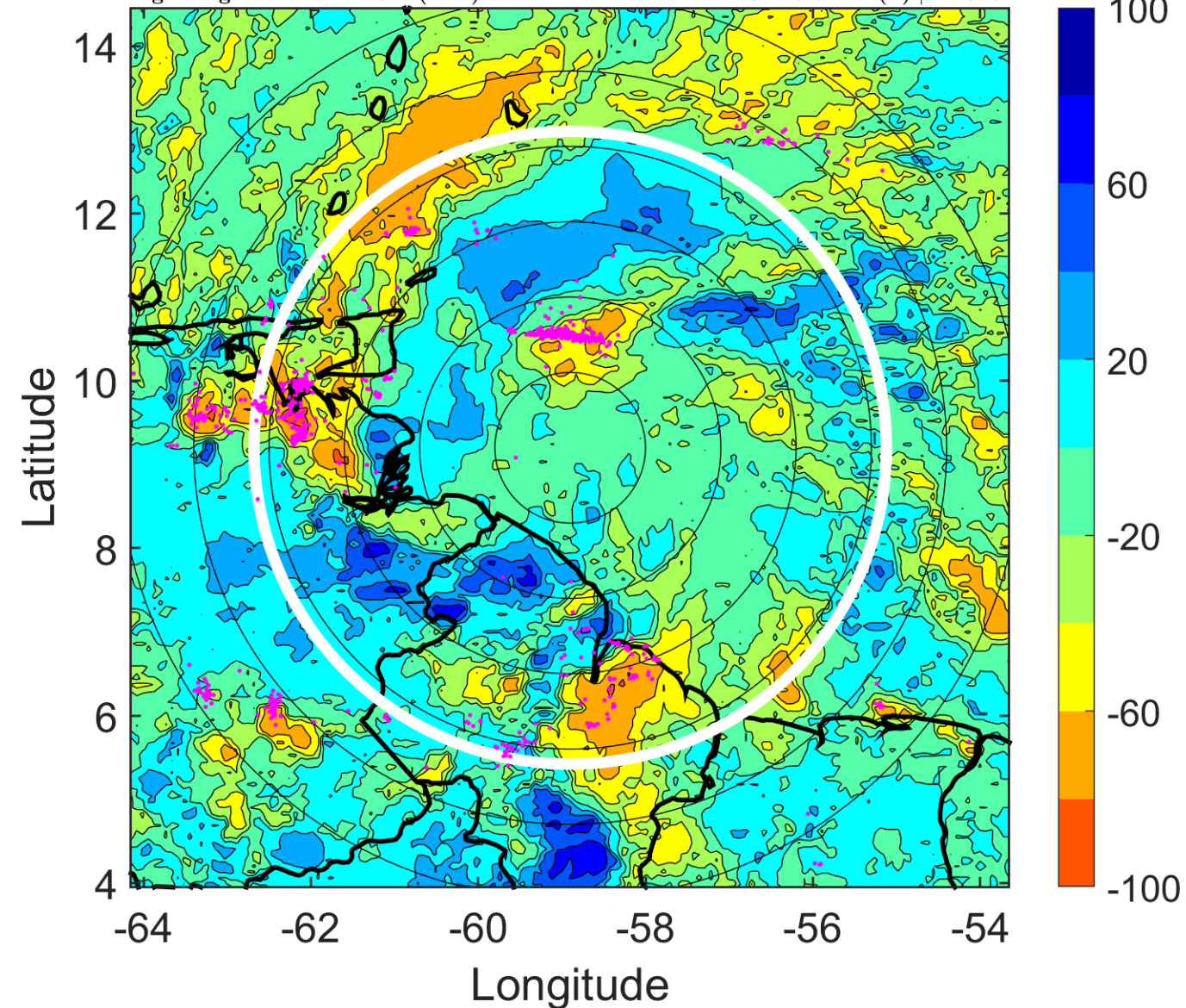
Δ t: 2017061918 (14.1 LT) - 2017061912 (8.2 LT)

Lightning: 14.1 LT \pm 1.5 h (dots)

PT: LLCP | EA: ACT

02L (BRET) | 40 kt TS

S: 1.7 m s⁻¹ (L) | H: 346°



IR BT & Lightning

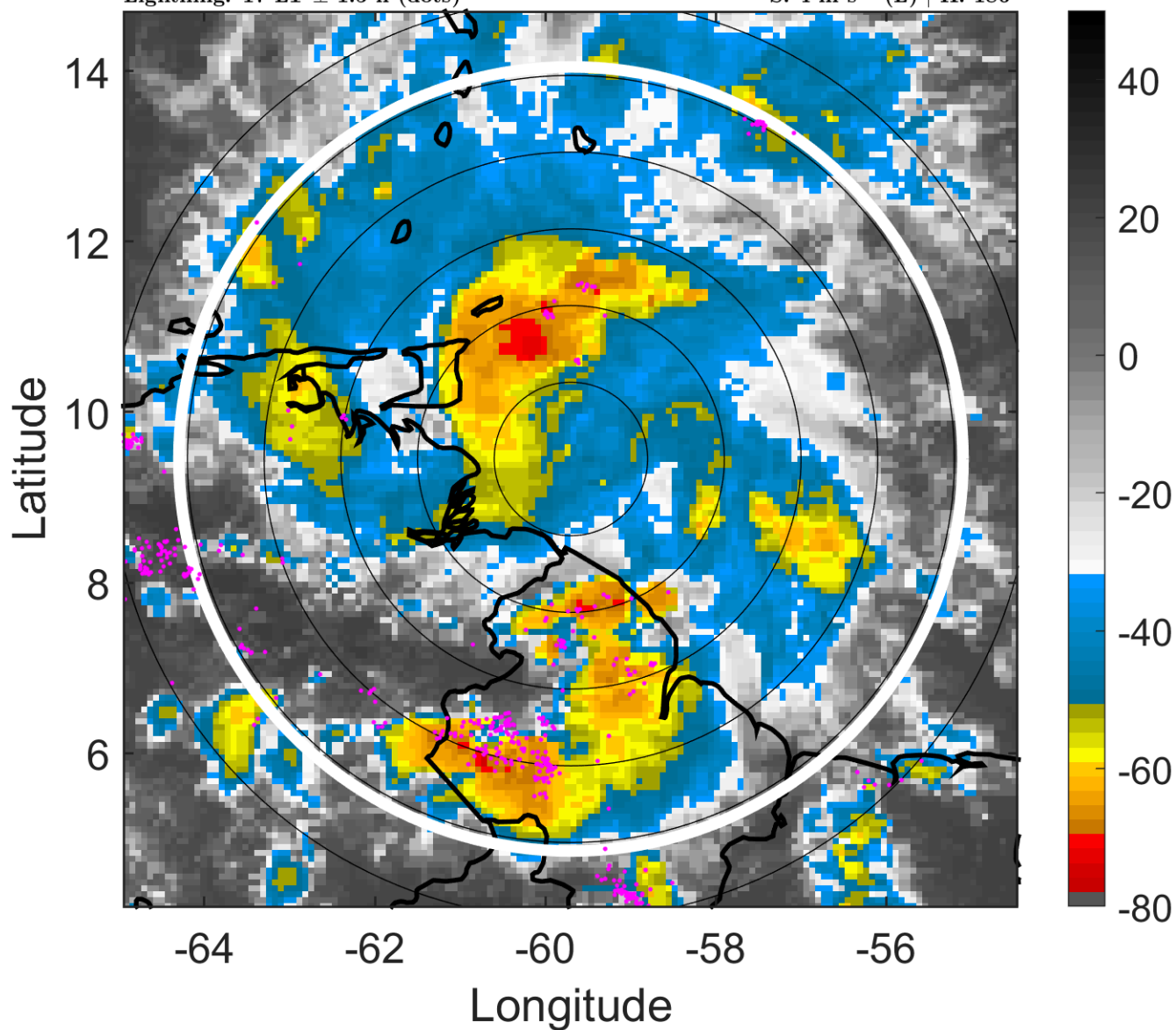
t: 2017061921 (17 LT)

Lightning: 17 LT \pm 1.5 h (dots)

PT: LLCP | EA: ACT

02L (BRET) | 40 kt TS

S: 4 m s⁻¹ (L) | H: 186°



6-h IR BT Differences & Lightning

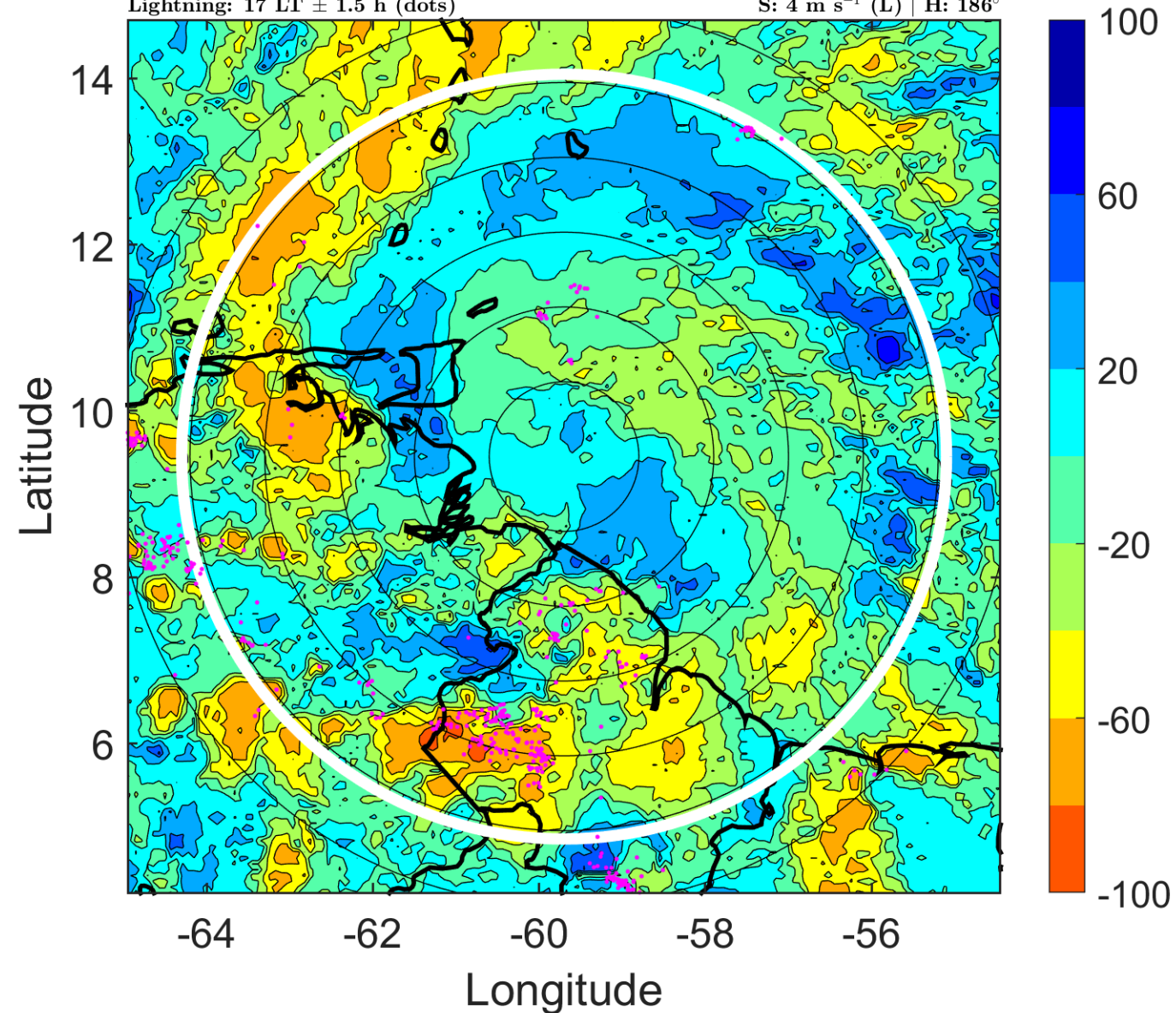
Δ t: 2017061921 (17 LT) - 2017061915 (11.2 LT)

Lightning: 17 LT \pm 1.5 h (dots)

PT: LLCP | EA: ACT

02L (BRET) | 40 kt TS

S: 4 m s⁻¹ (L) | H: 186°



IR BT & Lightning

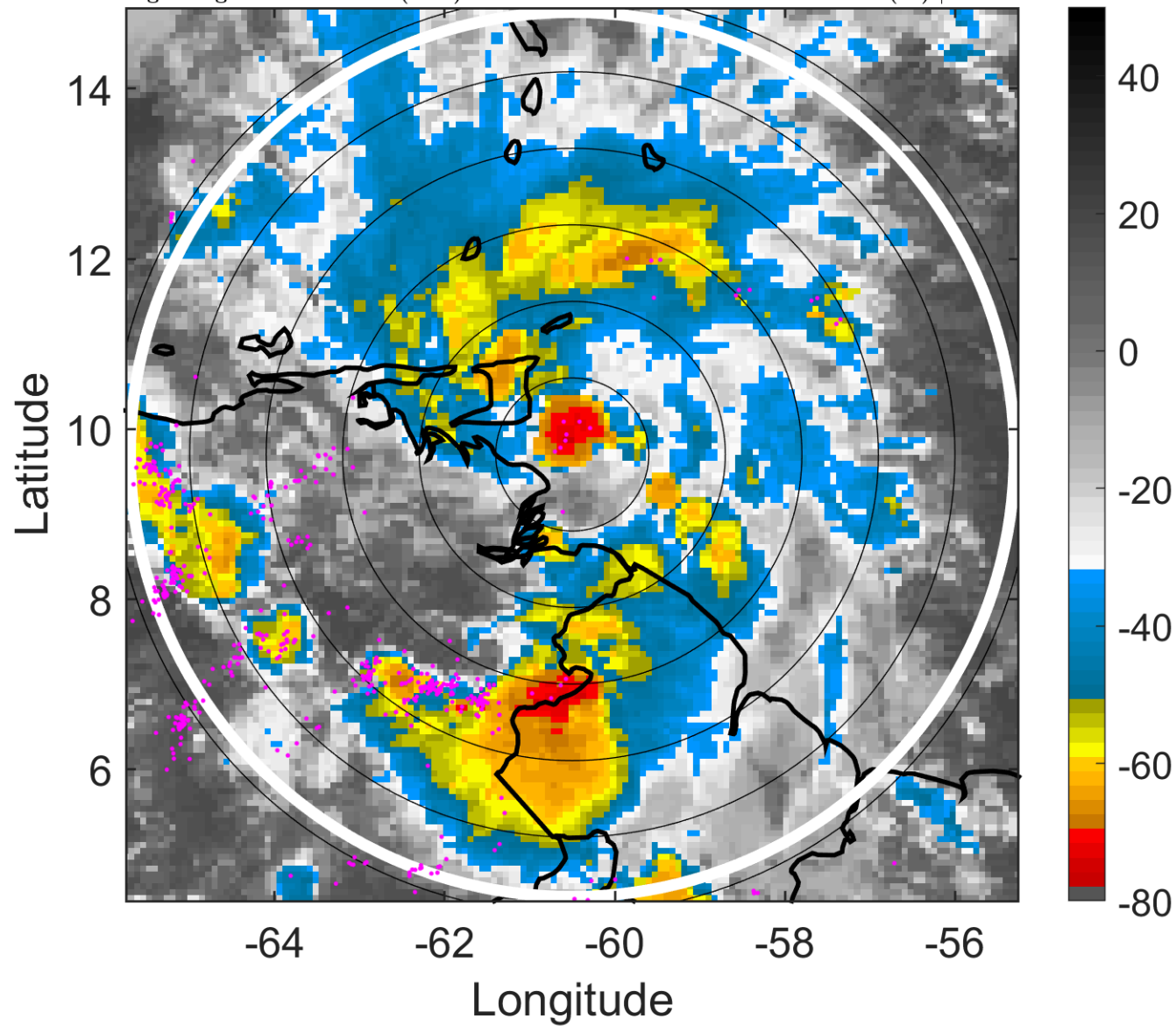
t: 2017062000 (20 LT)

Lightning: 20 LT \pm 1.5 h (dots)

PT: LLCP | EA: ACT

02L (BRET) | 40 kt TS

S: 6.2 m s⁻¹ (M) | H: 26°



6-h IR BT Differences & Lightning

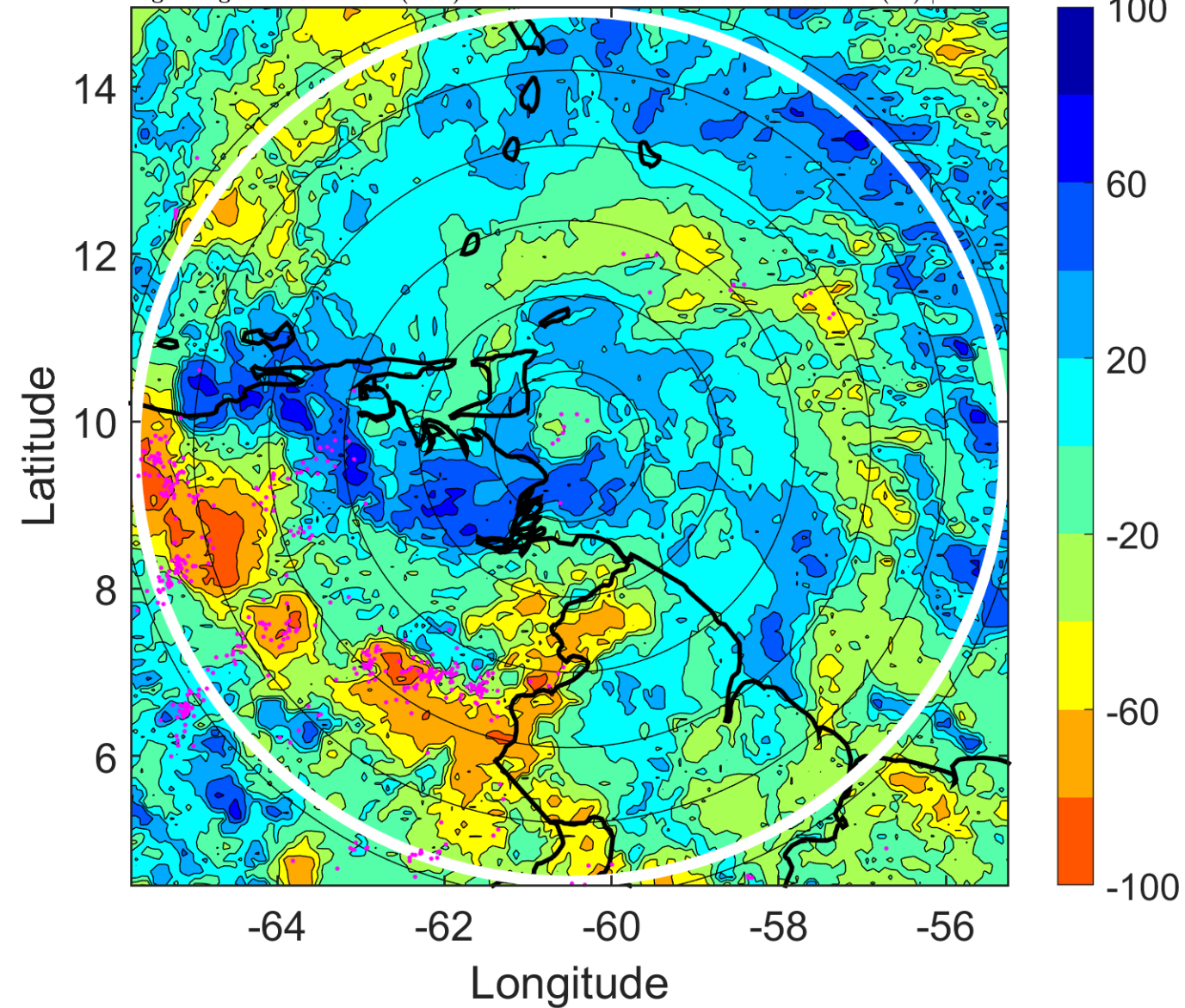
Δ t: 2017062000 (20 LT) - 2017061918 (14.1 LT)

Lightning: 20 LT \pm 1.5 h (dots)

PT: LLCP | EA: ACT

02L (BRET) | 40 kt TS

S: 6.2 m s⁻¹ (M) | H: 26°



IR BT & Lightning

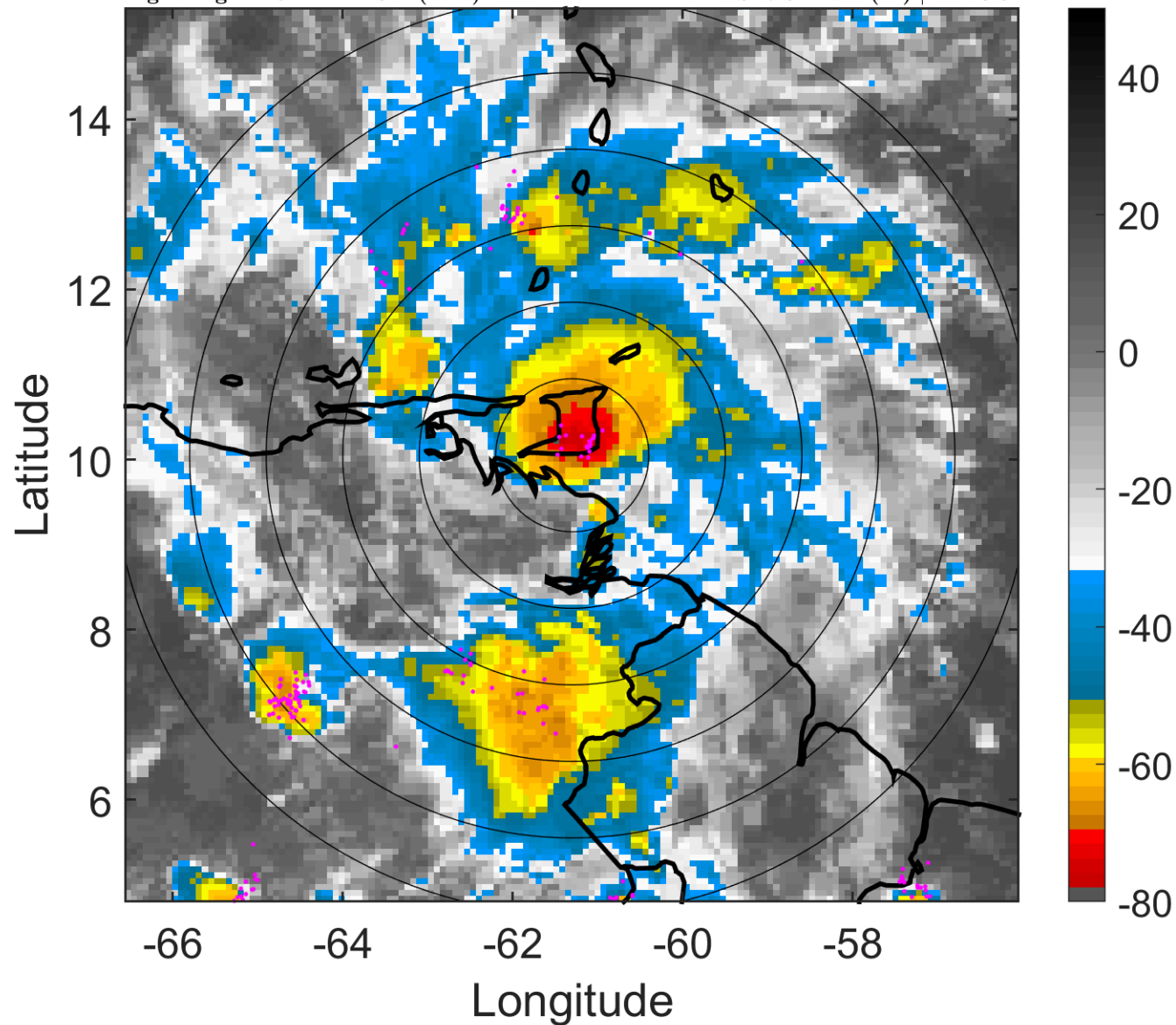
t: 2017062003 (22.9 LT)

Lightning: 22.9 LT \pm 1.5 h (dots)

PT: LLCP | EA: ACT

02L (BRET) | 42.5 kt TS

S: 7.6 m s⁻¹ (M) | H: 28.5°



6-h IR BT Differences & Lightning

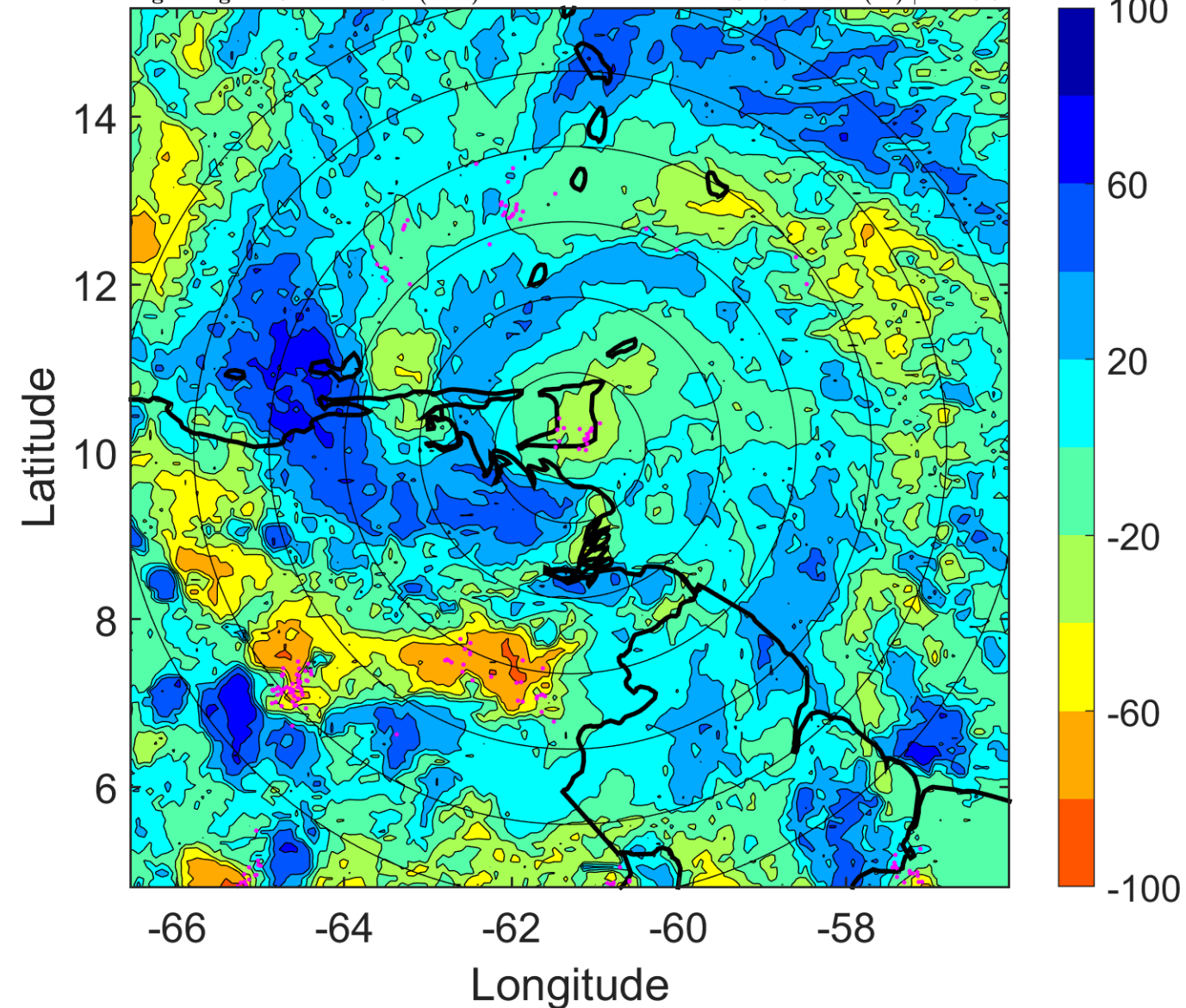
Δ t: 2017062003 (22.9 LT) - 2017061921 (17 LT)

Lightning: 22.9 LT \pm 1.5 h (dots)

PT: LLCP | EA: ACT

02L (BRET) | 42.5 kt TS

S: 7.6 m s⁻¹ (M) | H: 28.5°



IR BT & Lightning

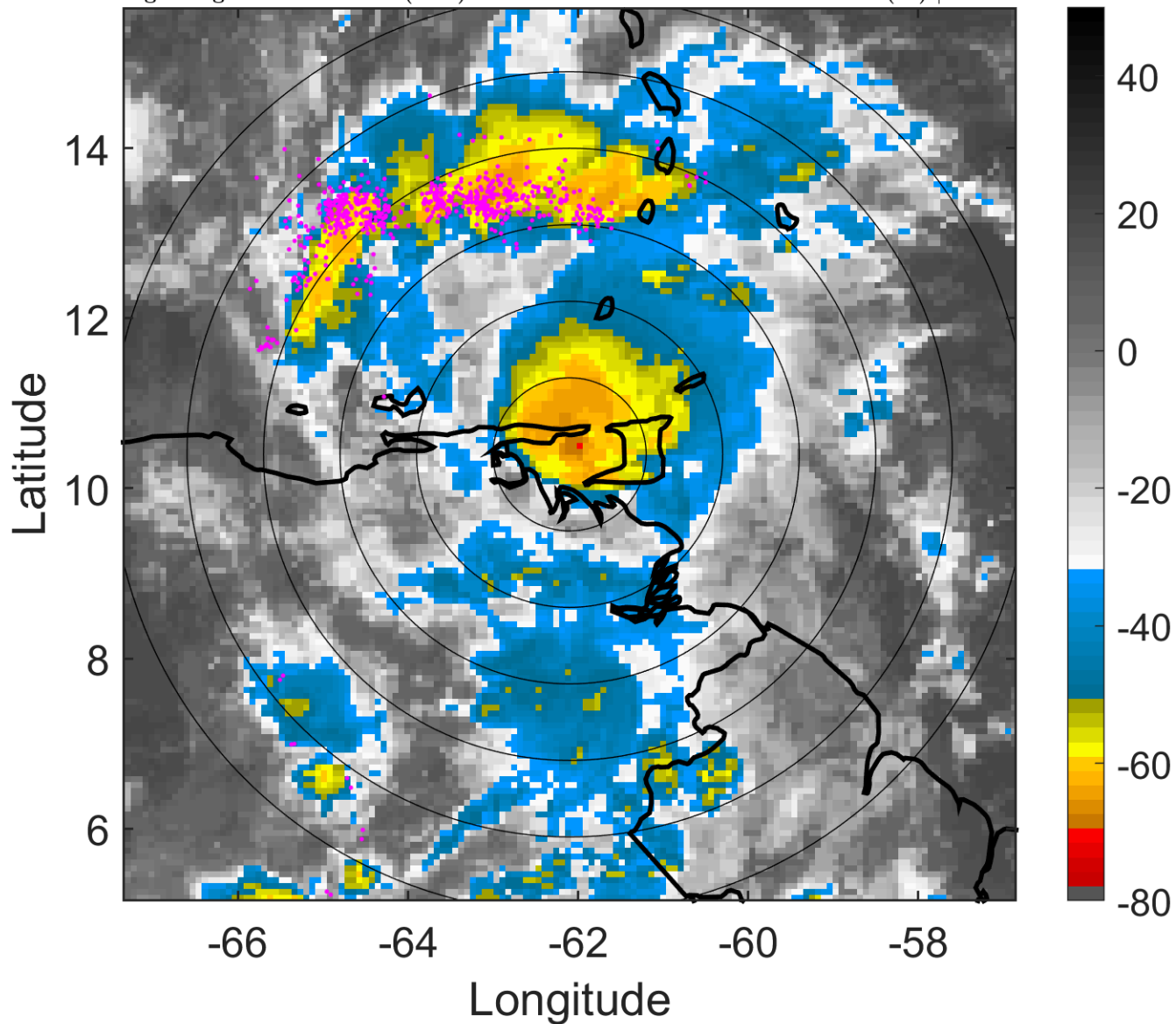
t: 2017062006 (1.9 LT)

Lightning: 1.9 LT \pm 1.5 h (dots)

PT: NP | EA: INACT

02L (BRET) | 45 kt TS

S: 8.9 m s⁻¹ (M) | H: 31°



6-h IR BT Differences & Lightning

Δ t: 2017062006 (1.9 LT) - 2017062000 (20 LT)

Lightning: 1.9 LT \pm 1.5 h (dots)

PT: NP | EA: INACT

02L (BRET) | 45 kt TS

S: 8.9 m s⁻¹ (M) | H: 31°

