

### IR BT & Lightning

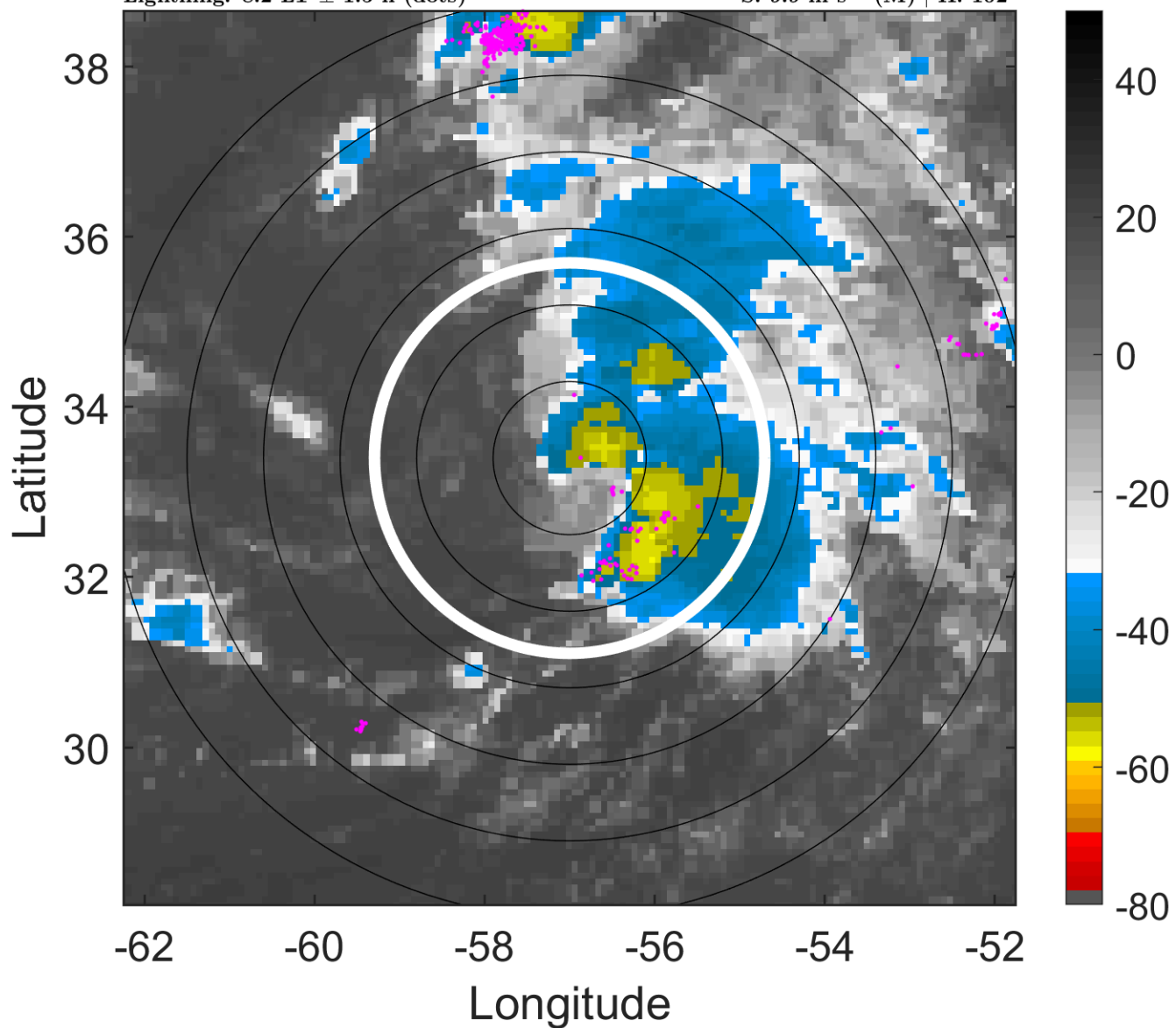
t: 2011072012 (8.2 LT)

Lightning: 8.2 LT  $\pm$  1.5 h (dots)

PT: SLCP | EA: INACT

03L (CINDY) | 35 kt TS

S: 9.9 m s<sup>-1</sup> (M) | H: 102°



### 6-h IR BT Differences & Lightning

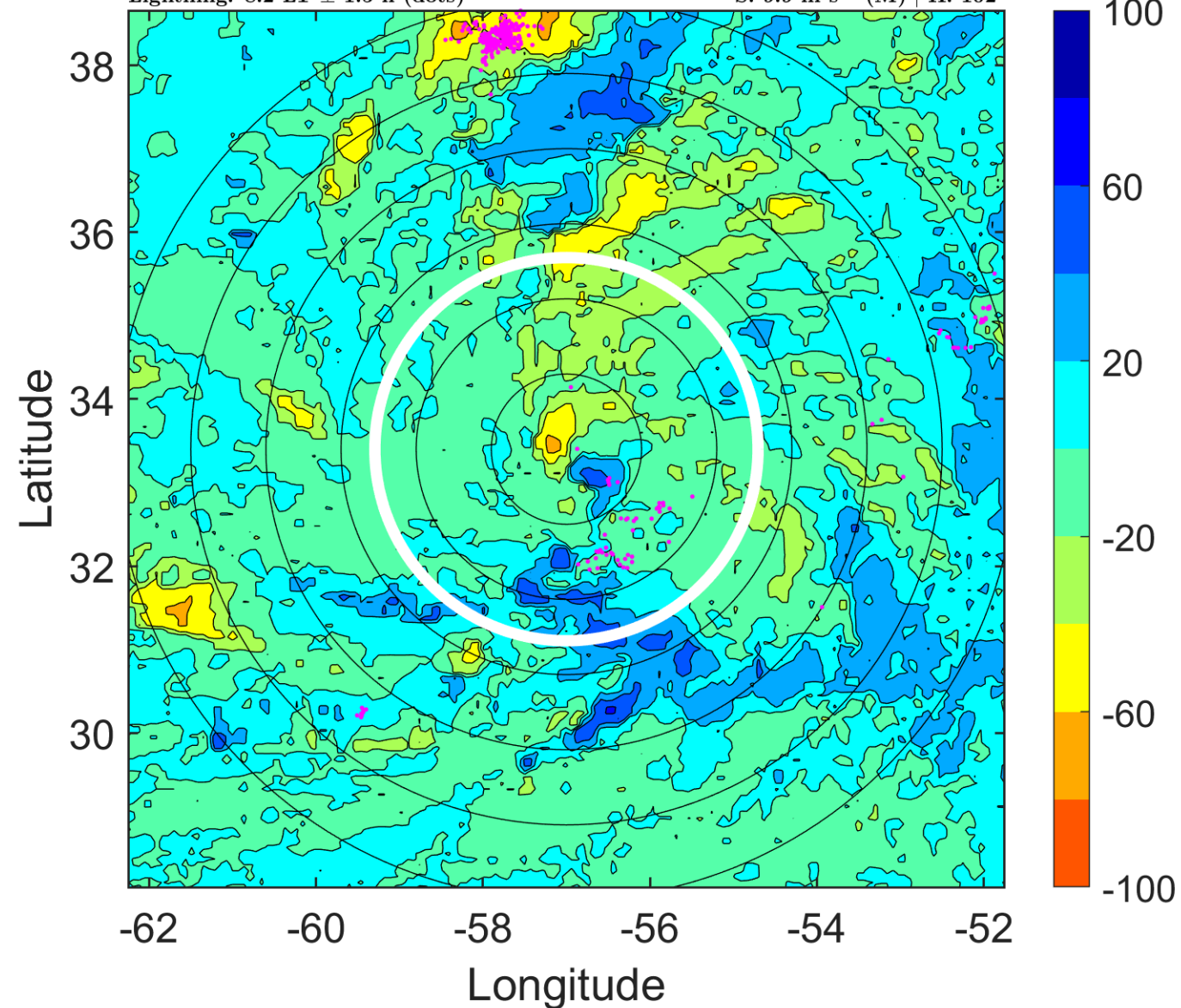
$\Delta$ t: 2011072012 (8.2 LT) - 2011072006 (2 LT)

Lightning: 8.2 LT  $\pm$  1.5 h (dots)

PT: SLCP | EA: INACT

03L (CINDY) | 35 kt TS

S: 9.9 m s<sup>-1</sup> (M) | H: 102°



### IR BT & Lightning

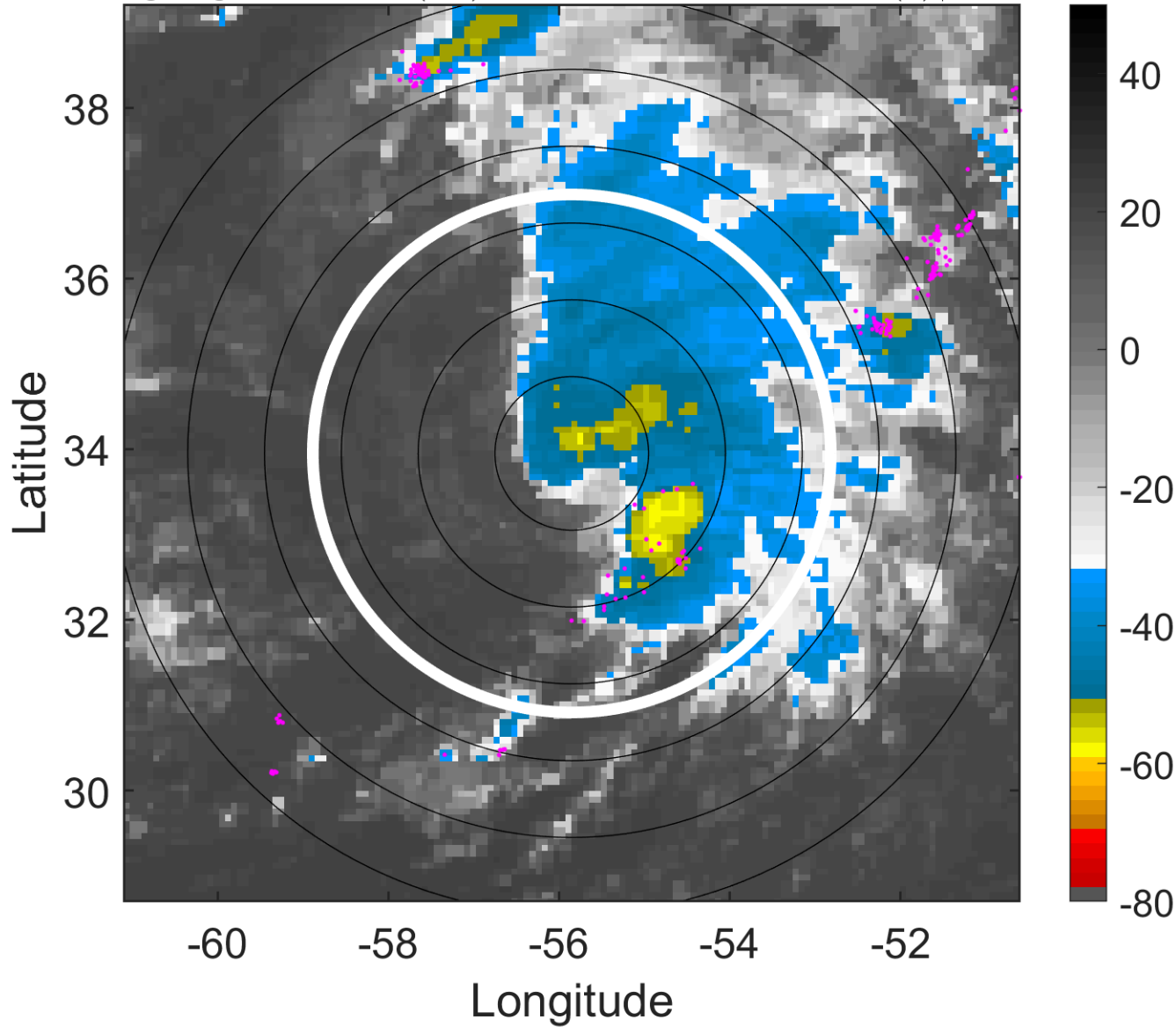
t: 2011072015 (11.3 LT)

Lightning: 11.3 LT  $\pm$  1.5 h (dots)

PT: SLCP | EA: INACT

03L (CINDY) | 37.5 kt TS

S: 11.7 m s<sup>-1</sup> (H) | H: 91°



### 6-h IR BT Differences & Lightning

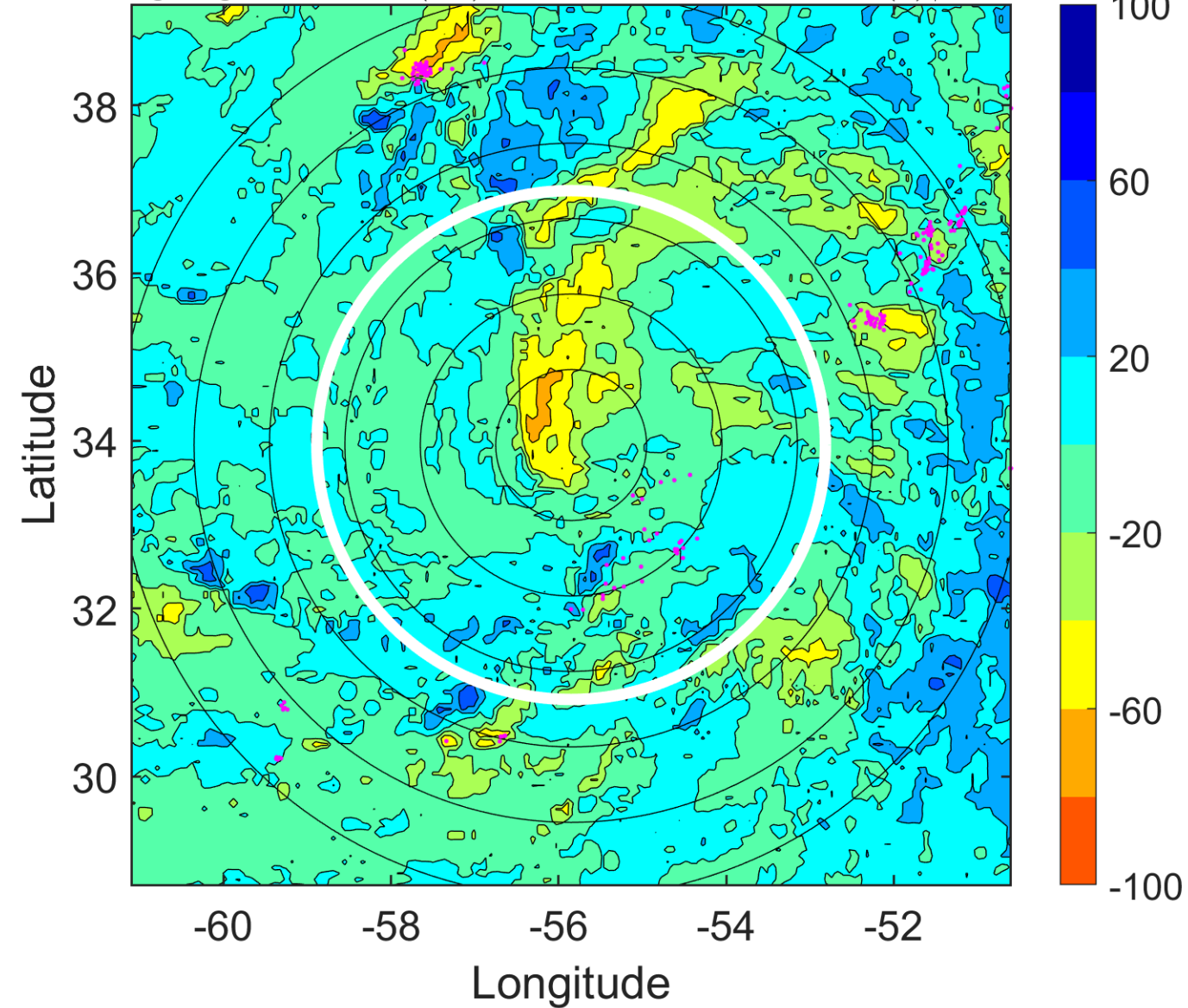
$\Delta$ t: 2011072015 (11.3 LT) - 2011072009 (5.1 LT)

Lightning: 11.3 LT  $\pm$  1.5 h (dots)

PT: SLCP | EA: INACT

03L (CINDY) | 37.5 kt TS

S: 11.7 m s<sup>-1</sup> (H) | H: 91°



### IR BT & Lightning

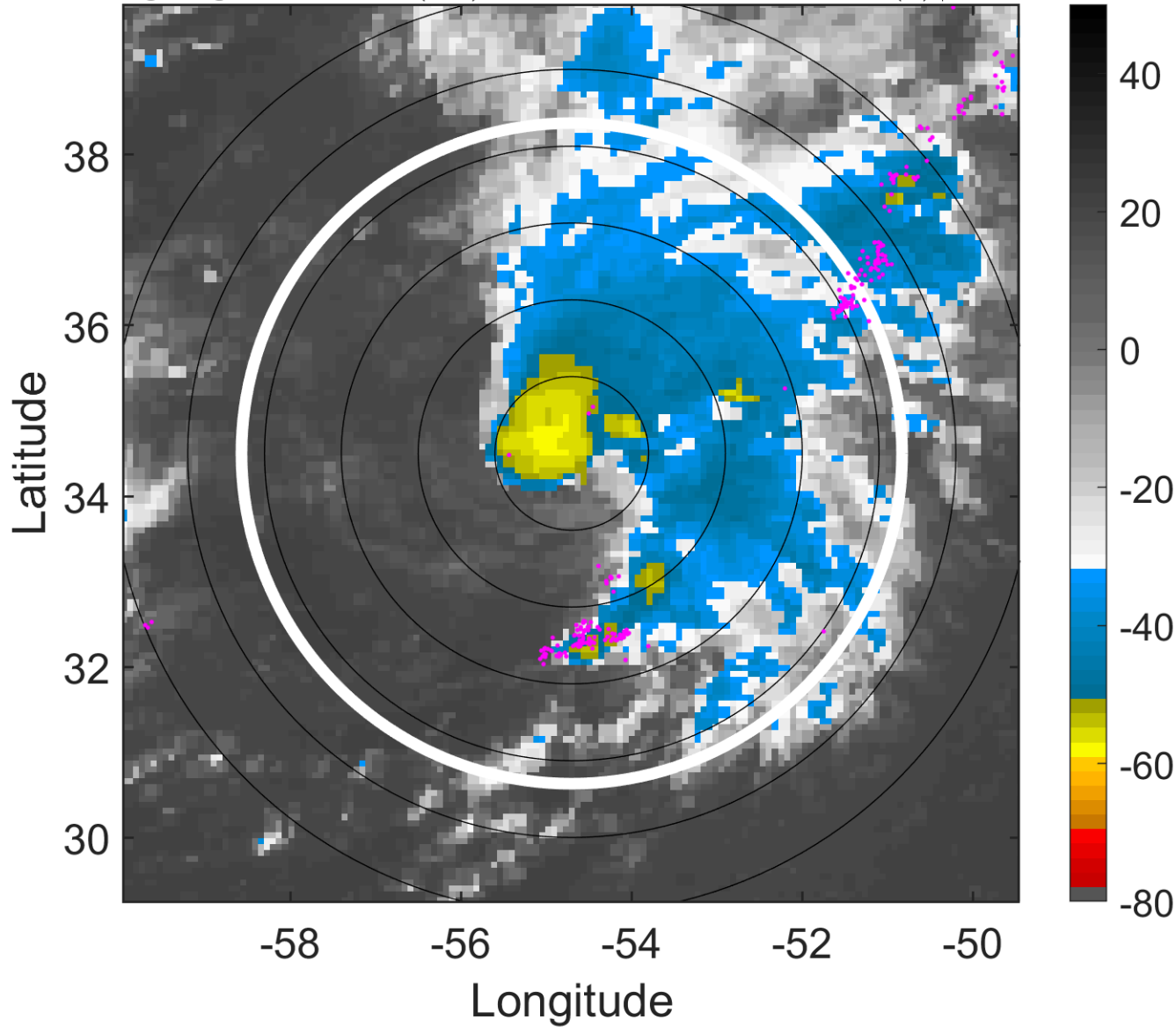
t: 2011072018 (14.4 LT)

Lightning: 14.4 LT  $\pm$  1.5 h (dots)

PT: SLCP | EA: INACT

03L (CINDY) | 40 kt TS

S: 13.4 m s<sup>-1</sup> (H) | H: 80°



### 6-h IR BT Differences & Lightning

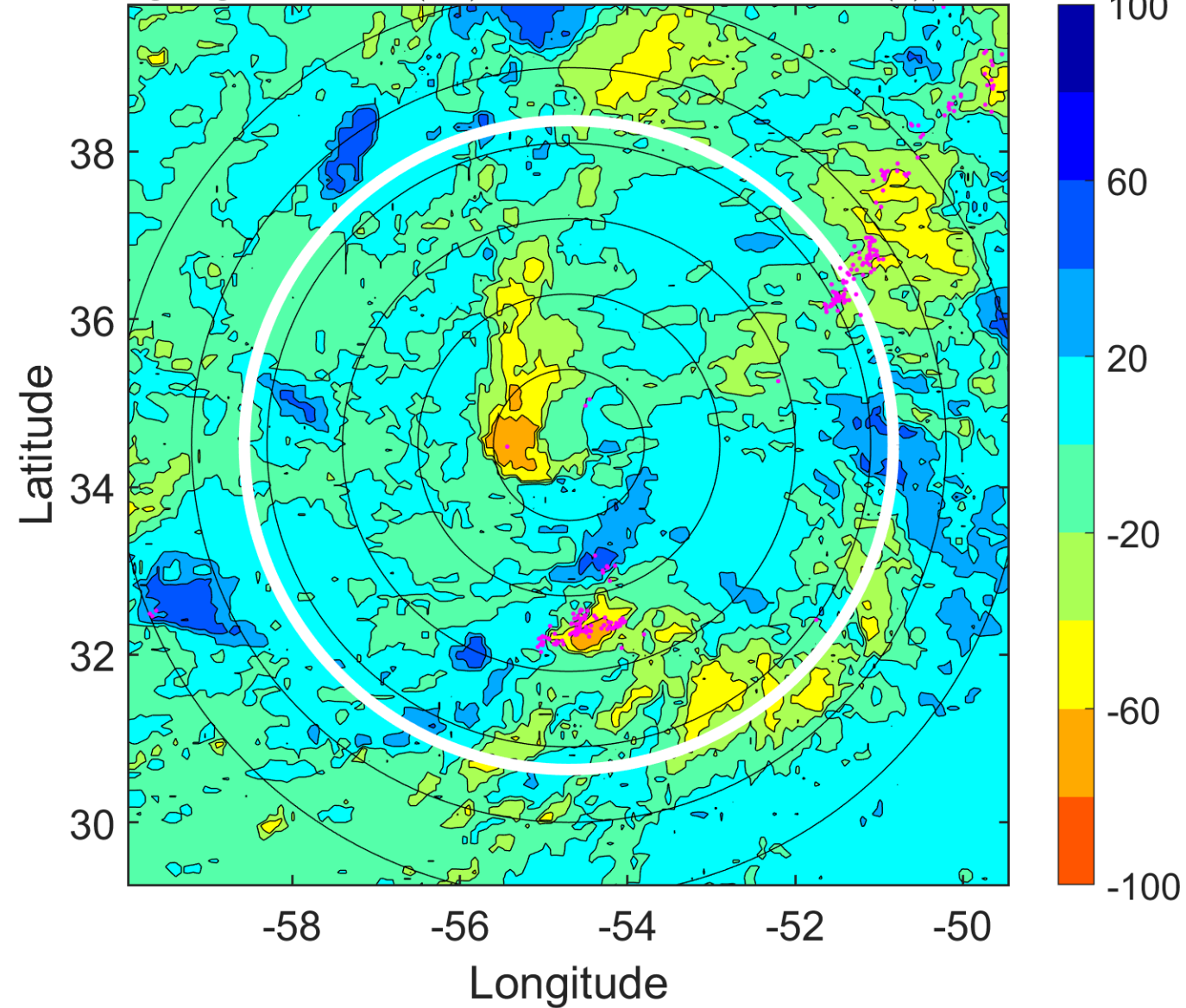
$\Delta$ t: 2011072018 (14.4 LT) - 2011072012 (8.2 LT)

Lightning: 14.4 LT  $\pm$  1.5 h (dots)

PT: SLCP | EA: INACT

03L (CINDY) | 40 kt TS

S: 13.4 m s<sup>-1</sup> (H) | H: 80°



### IR BT & Lightning

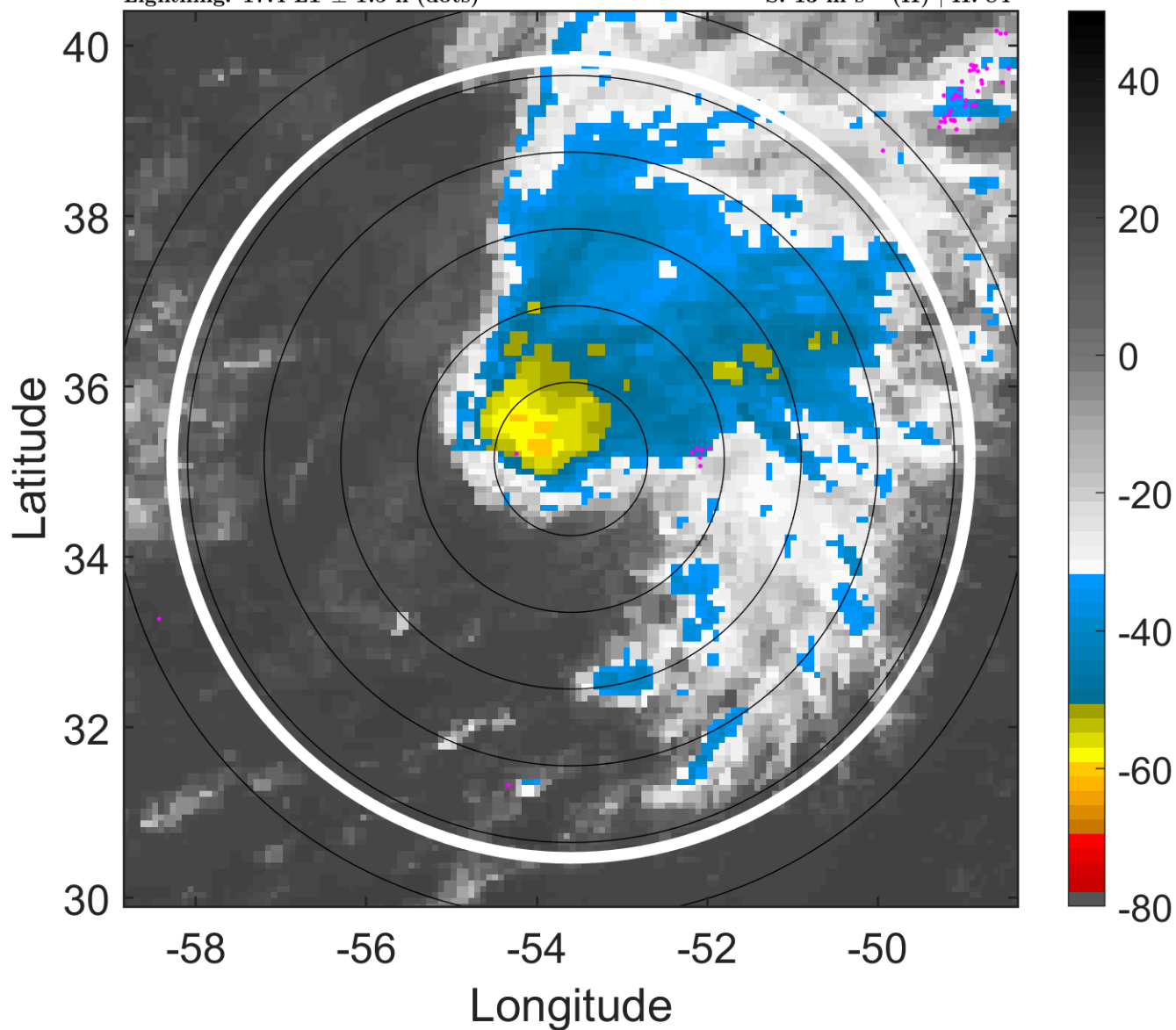
t: 2011072021 (17.4 LT)

Lightning: 17.4 LT  $\pm$  1.5 h (dots)

PT: SLCP | EA: INACT

03L (CINDY) | 42.5 kt TS

S: 13 m s<sup>-1</sup> (H) | H: 84°



### 6-h IR BT Differences & Lightning

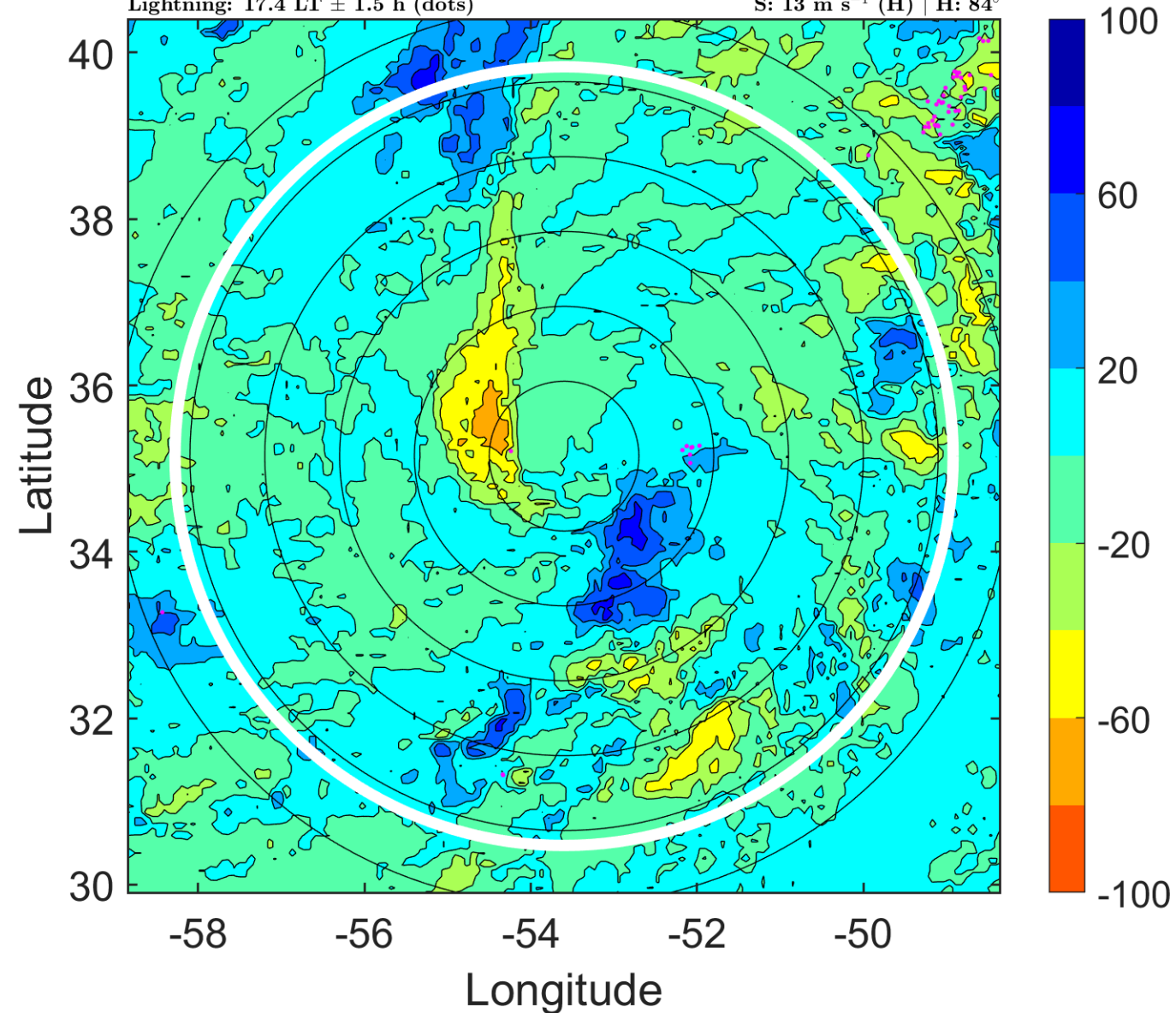
$\Delta$ t: 2011072021 (17.4 LT) - 2011072015 (11.3 LT)

Lightning: 17.4 LT  $\pm$  1.5 h (dots)

PT: SLCP | EA: INACT

03L (CINDY) | 42.5 kt TS

S: 13 m s<sup>-1</sup> (H) | H: 84°



### IR BT & Lightning

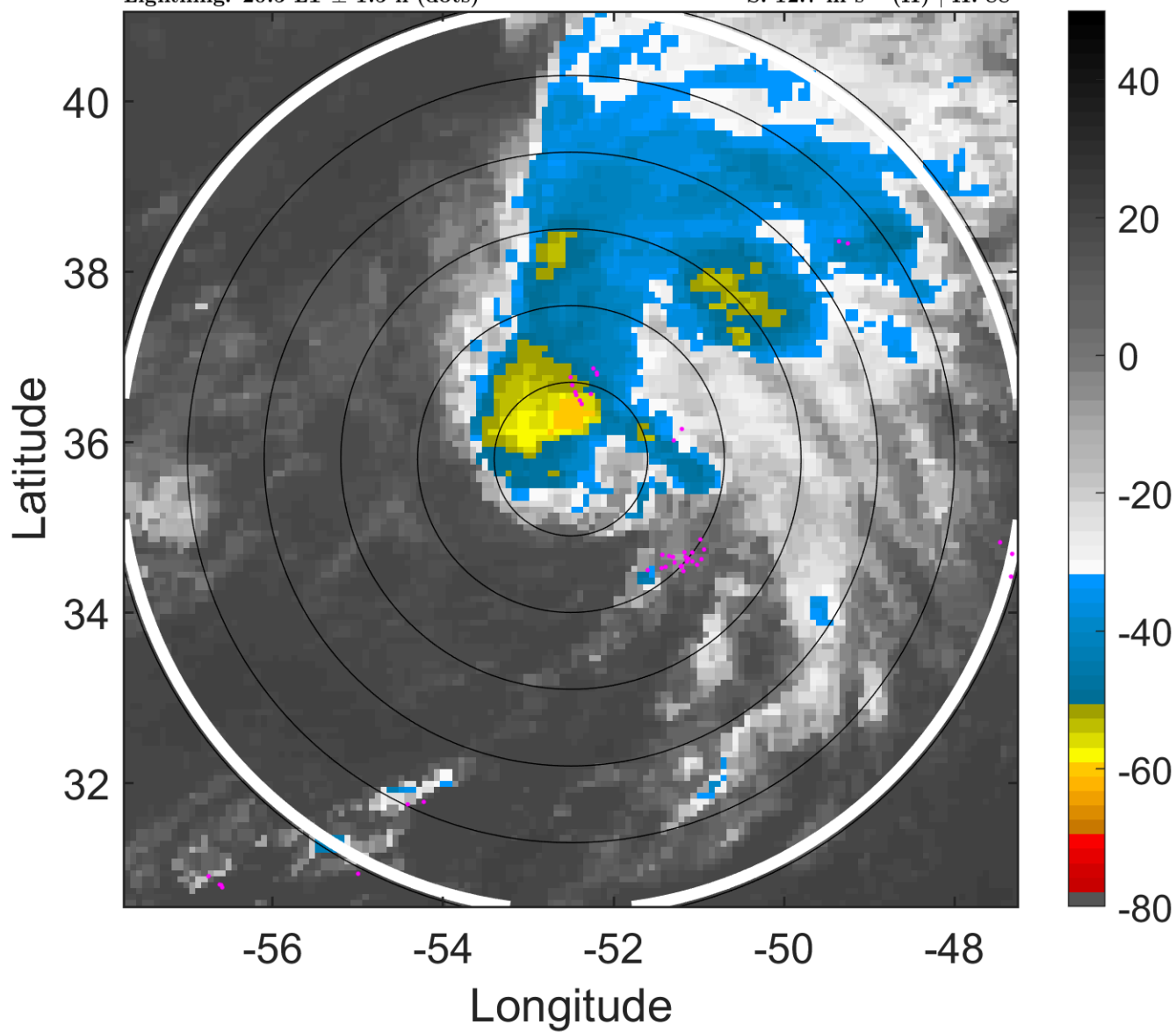
t: 2011072100 (20.5 LT)

Lightning: 20.5 LT  $\pm$  1.5 h (dots)

PT: SLCP | EA: INACT

03L (CINDY) | 45 kt TS

S: 12.7 m s<sup>-1</sup> (H) | H: 88°



### 6-h IR BT Differences & Lightning

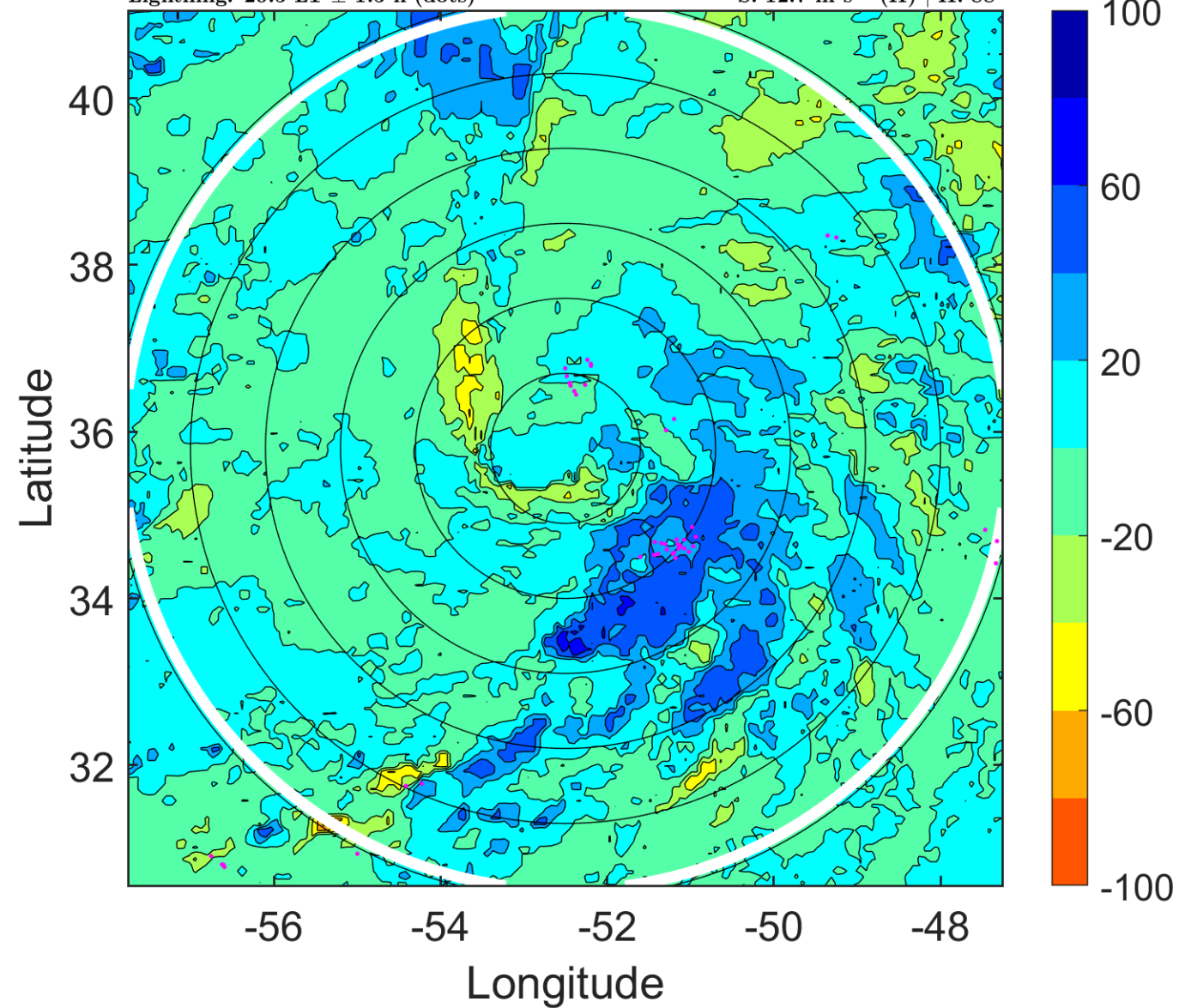
$\Delta$ t: 2011072100 (20.5 LT) - 2011072018 (14.4 LT)

Lightning: 20.5 LT  $\pm$  1.5 h (dots)

PT: SLCP | EA: INACT

03L (CINDY) | 45 kt TS

S: 12.7 m s<sup>-1</sup> (H) | H: 88°



### IR BT & Lightning

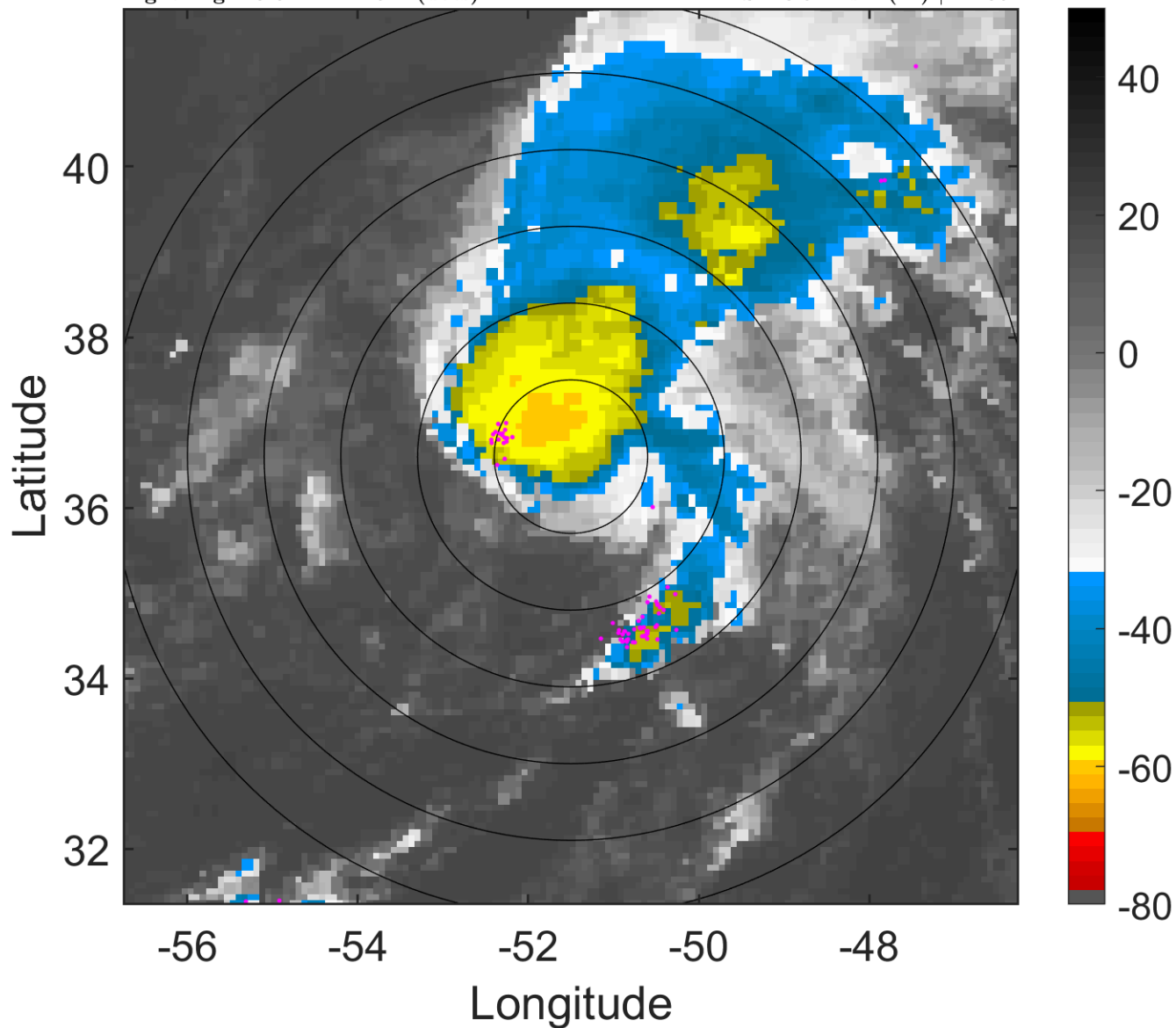
t: 2011072103 (23.6 LT)

Lightning: 23.6 LT  $\pm$  1.5 h (dots)

PT: SLCP | EA: INACT

03L (CINDY) | 47.5 kt TS

S: 10.5 m s<sup>-1</sup> (M) | H: 85°



### 6-h IR BT Differences & Lightning

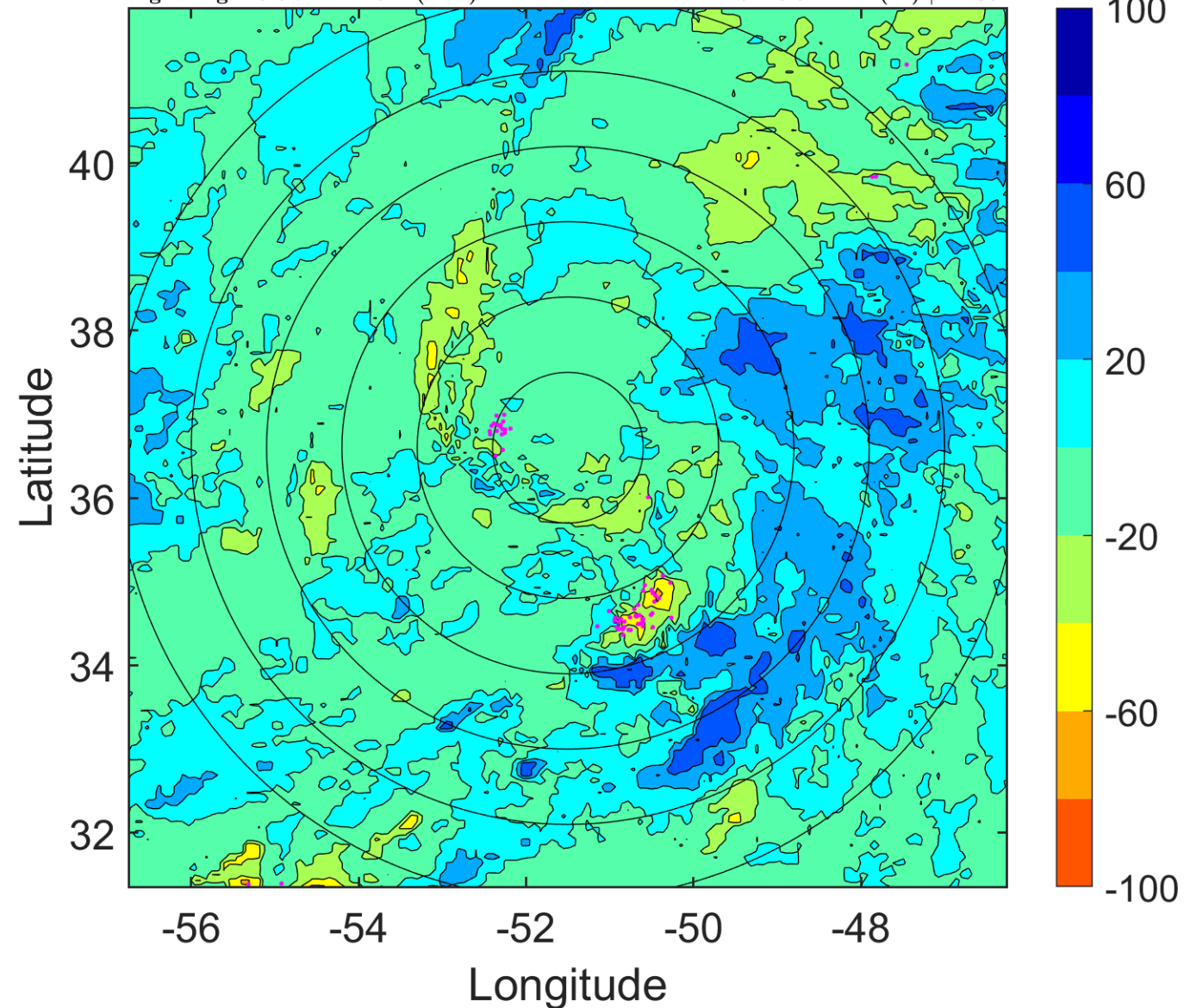
$\Delta$ t: 2011072103 (23.6 LT) - 2011072021 (17.4 LT)

Lightning: 23.6 LT  $\pm$  1.5 h (dots)

PT: SLCP | EA: INACT

03L (CINDY) | 47.5 kt TS

S: 10.5 m s<sup>-1</sup> (M) | H: 85°



### IR BT & Lightning

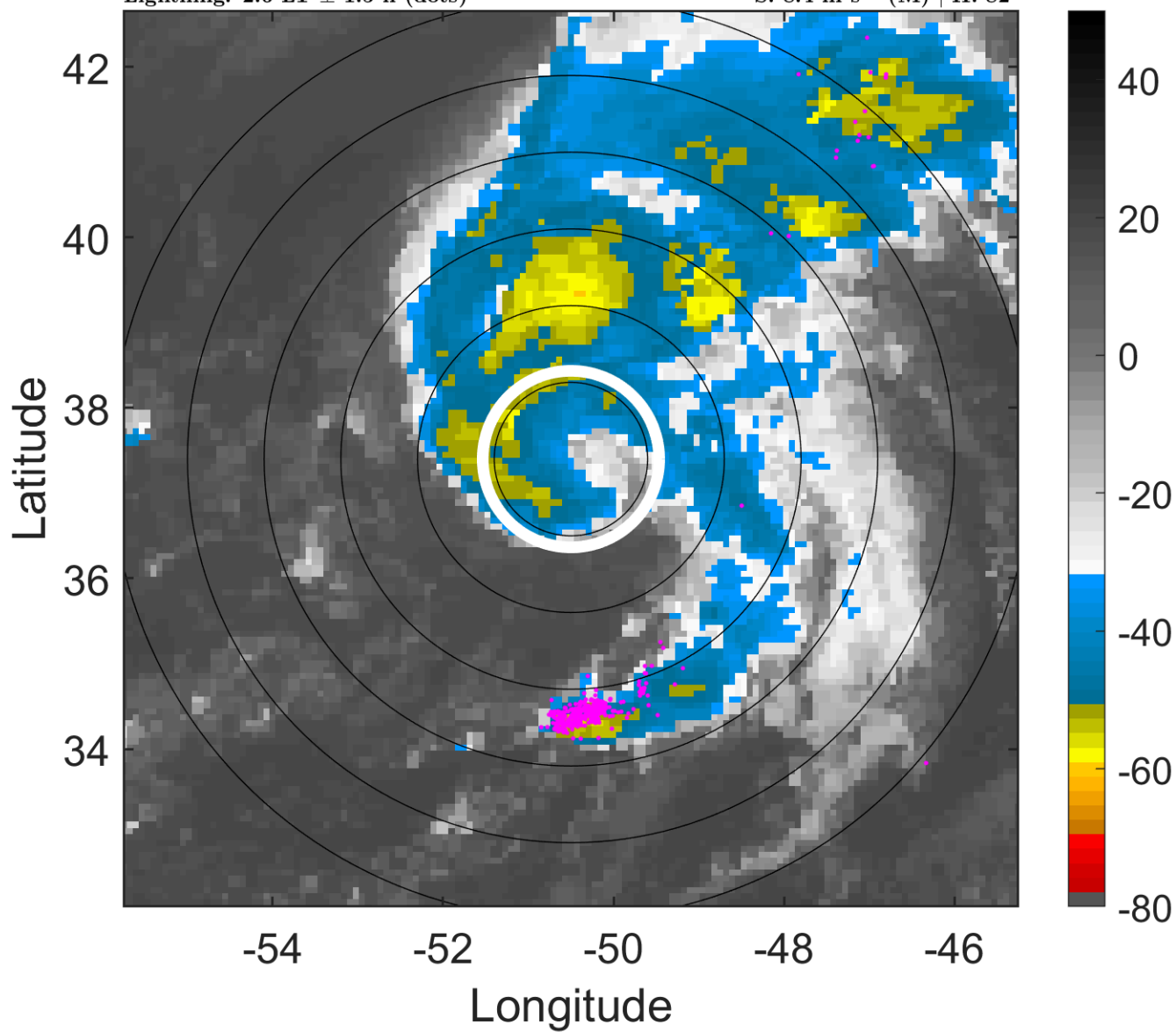
t: 2011072106 (2.6 LT)

Lightning: 2.6 LT  $\pm$  1.5 h (dots)

PT: SLCP | EA: INACT

03L (CINDY) | 50 kt TS

S: 8.4 m s<sup>-1</sup> (M) | H: 82°



### 6-h IR BT Differences & Lightning

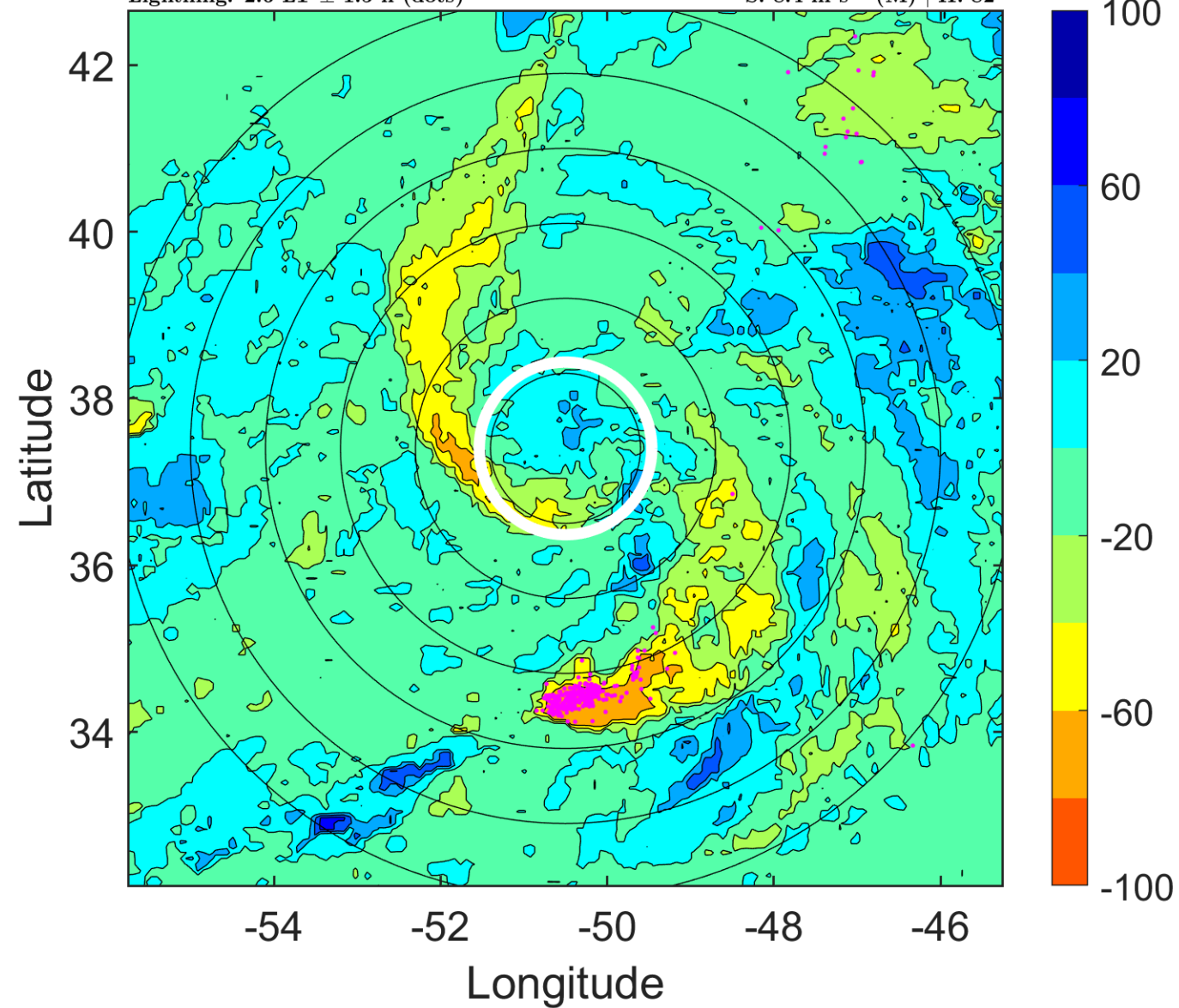
$\Delta$ t: 2011072106 (2.6 LT) - 2011072100 (20.5 LT)

Lightning: 2.6 LT  $\pm$  1.5 h (dots)

PT: SLCP | EA: INACT

03L (CINDY) | 50 kt TS

S: 8.4 m s<sup>-1</sup> (M) | H: 82°



### IR BT & Lightning

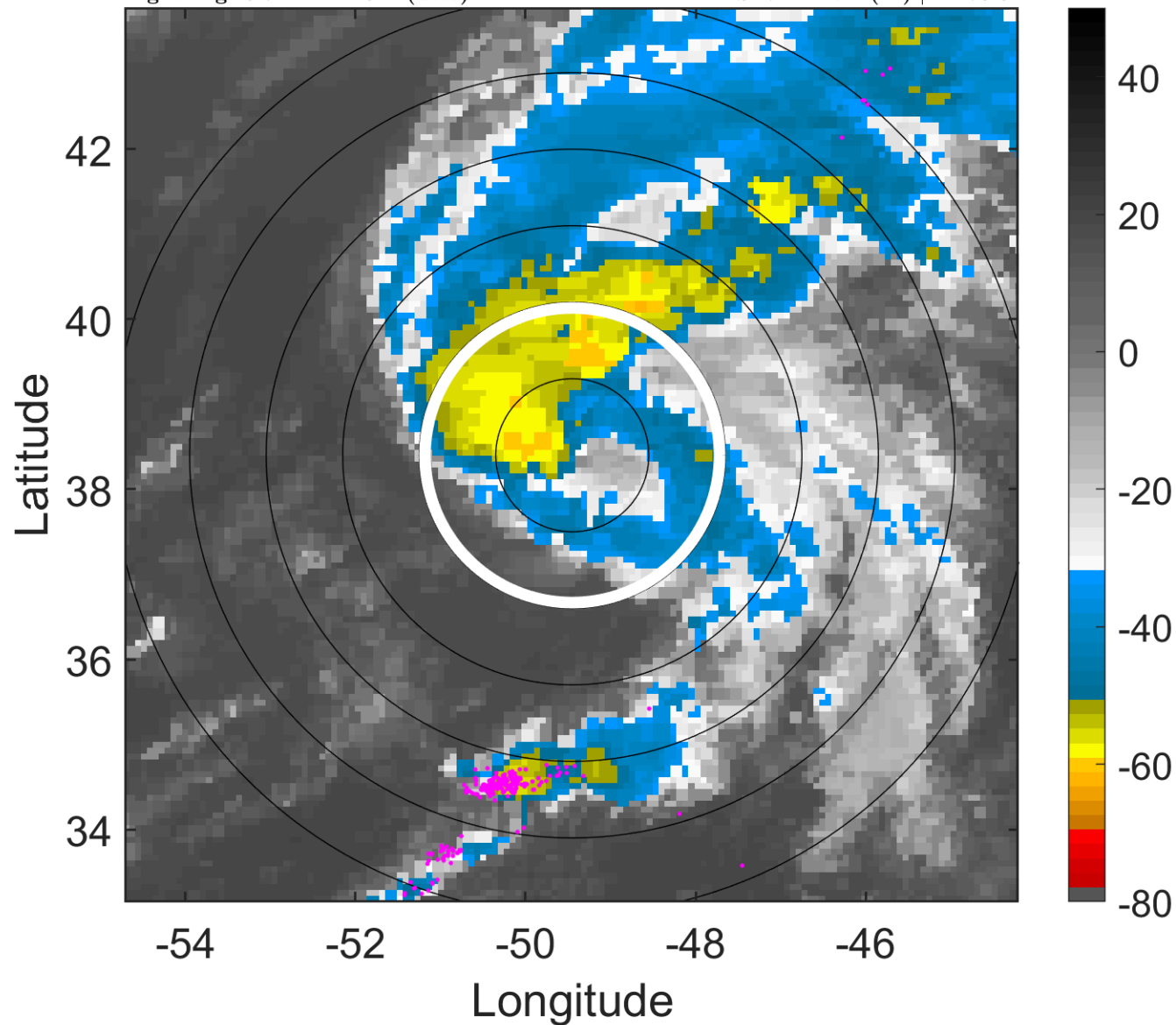
t: 2011072109 (5.7 LT)

Lightning: 5.7 LT  $\pm$  1.5 h (dots)

PT: SLCP | EA: INACT

03L (CINDY) | 52.5 kt TS

S: 7.4 m s<sup>-1</sup> (M) | H: 78.5°



### 6-h IR BT Differences & Lightning

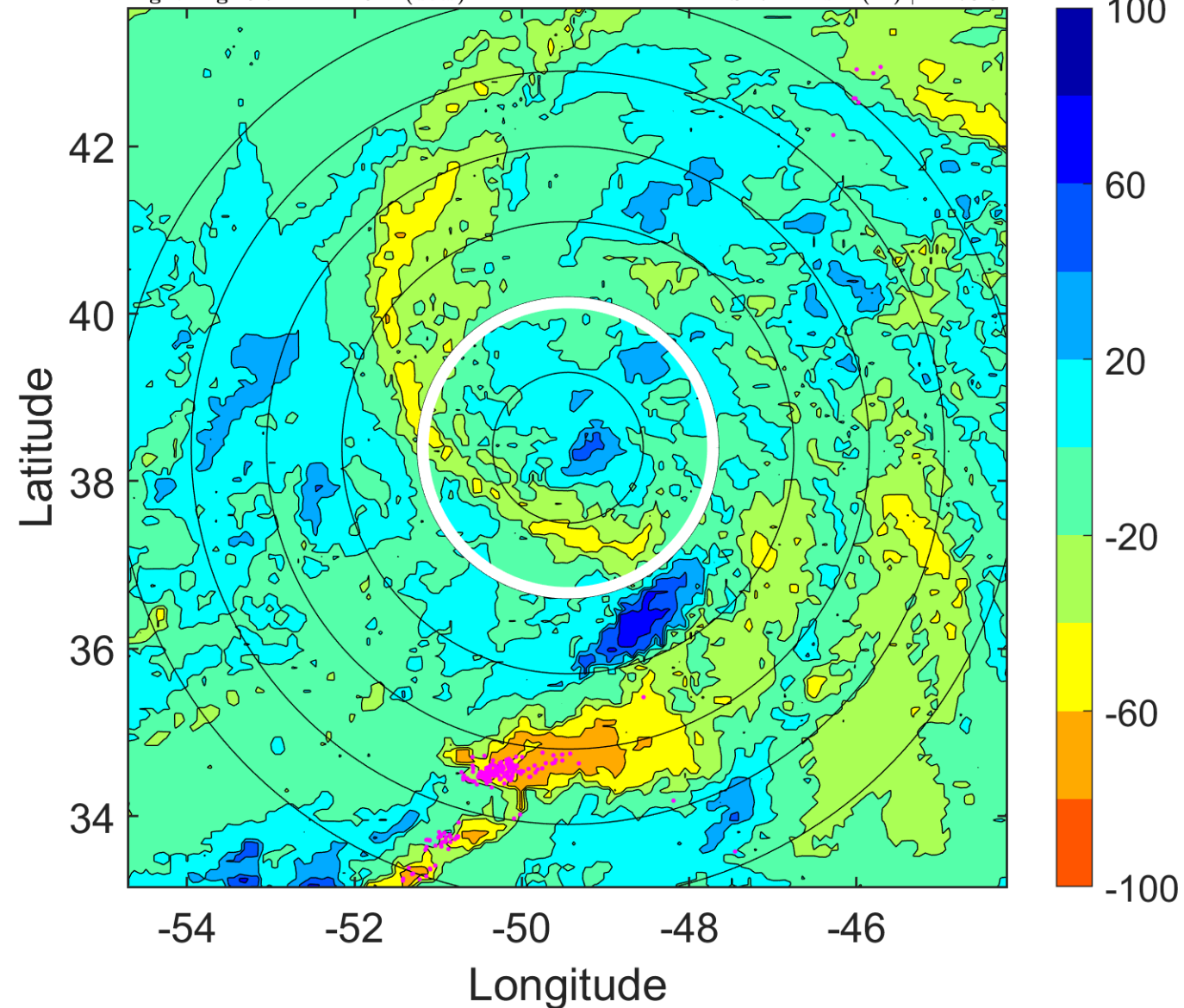
$\Delta$ t: 2011072109 (5.7 LT) - 2011072103 (23.6 LT)

Lightning: 5.7 LT  $\pm$  1.5 h (dots)

PT: SLCP | EA: INACT

03L (CINDY) | 52.5 kt TS

S: 7.4 m s<sup>-1</sup> (M) | H: 78.5°





### IR BT & Lightning

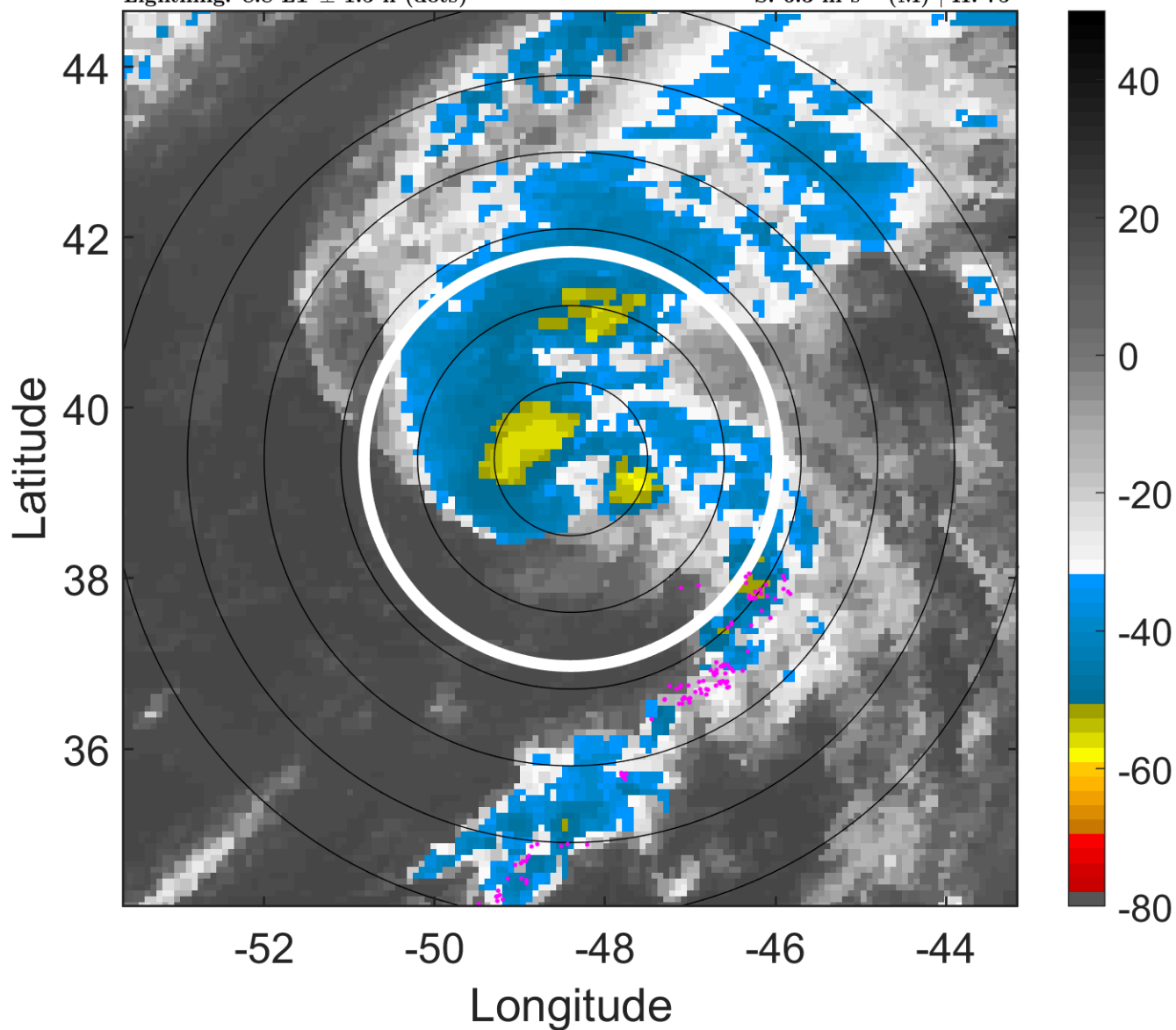
t: 2011072112 (8.8 LT)

Lightning: 8.8 LT  $\pm$  1.5 h (dots)

PT: SLCP | EA: INACT

03L (CINDY) | 55 kt TS

S: 6.3 m s<sup>-1</sup> (M) | H: 75°



### 6-h IR BT Differences & Lightning

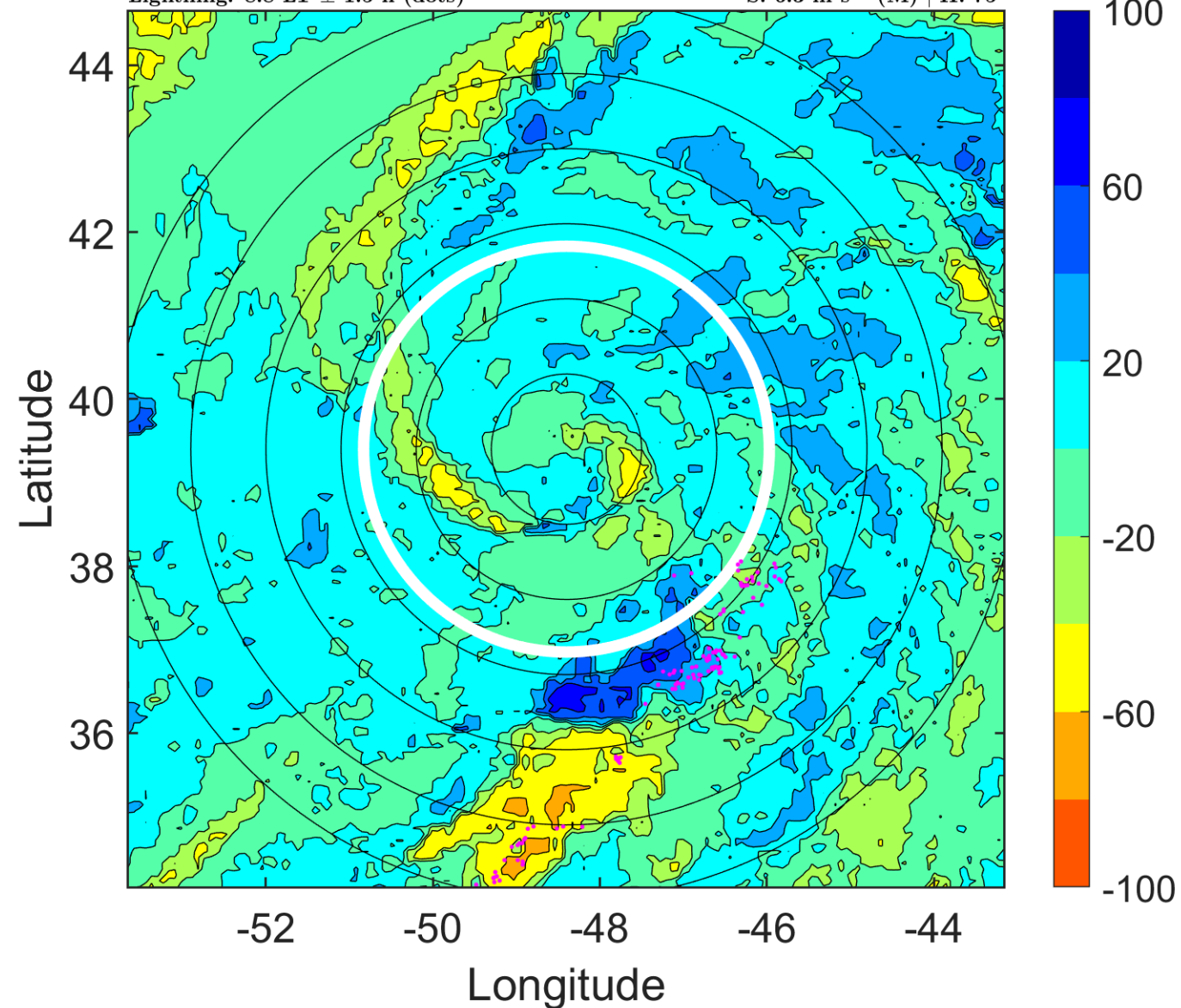
$\Delta$ t: 2011072112 (8.8 LT) - 2011072106 (2.6 LT)

Lightning: 8.8 LT  $\pm$  1.5 h (dots)

PT: SLCP | EA: INACT

03L (CINDY) | 55 kt TS

S: 6.3 m s<sup>-1</sup> (M) | H: 75°



### IR BT & Lightning

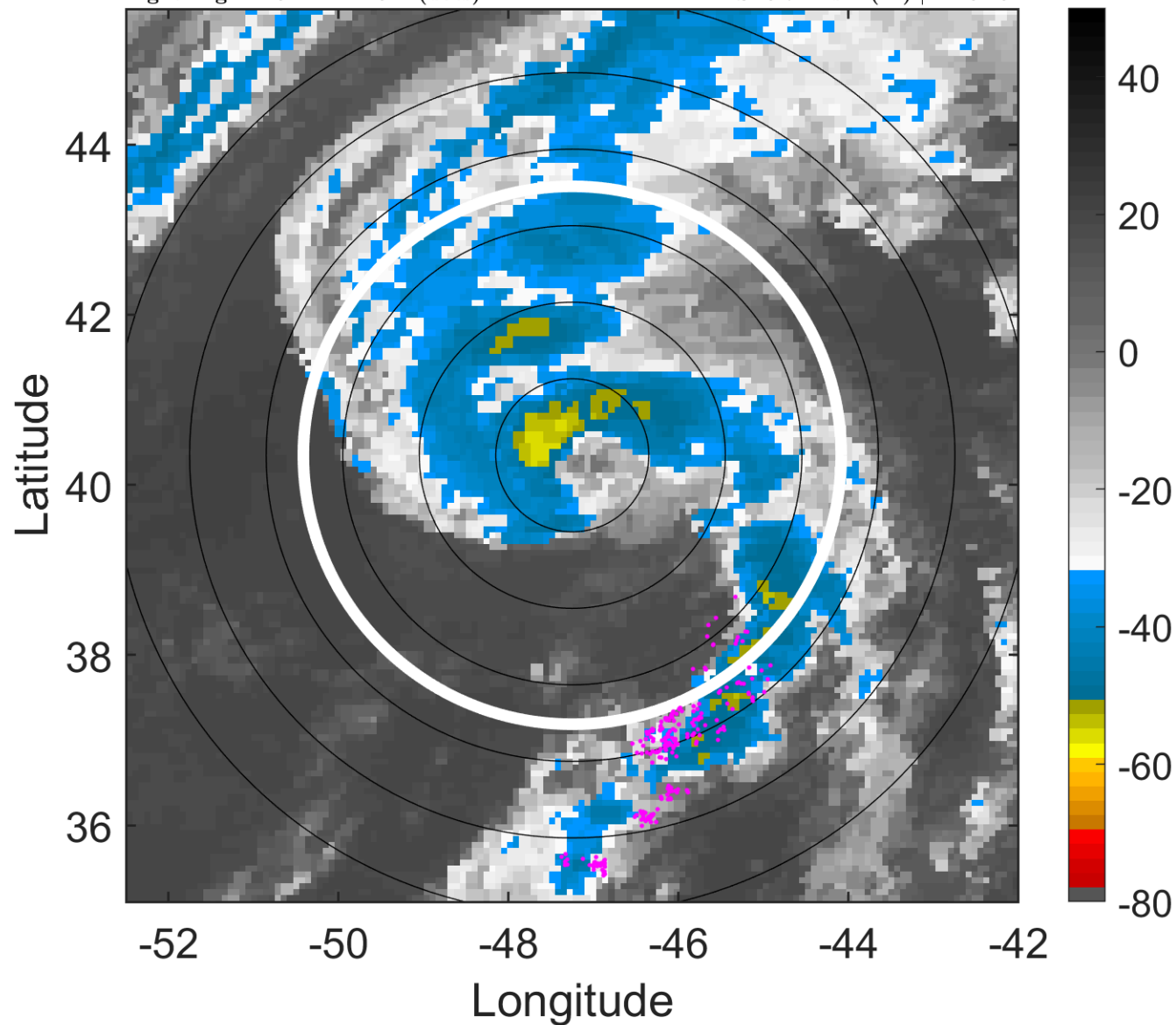
t: 2011072115 (11.9 LT)

Lightning: 11.9 LT  $\pm$  1.5 h (dots)

PT: SLCP | EA: INACT

03L (CINDY) | 57.5 kt TS

S: 5.7 m s<sup>-1</sup> (M) | H: 61.5°



### 6-h IR BT Differences & Lightning

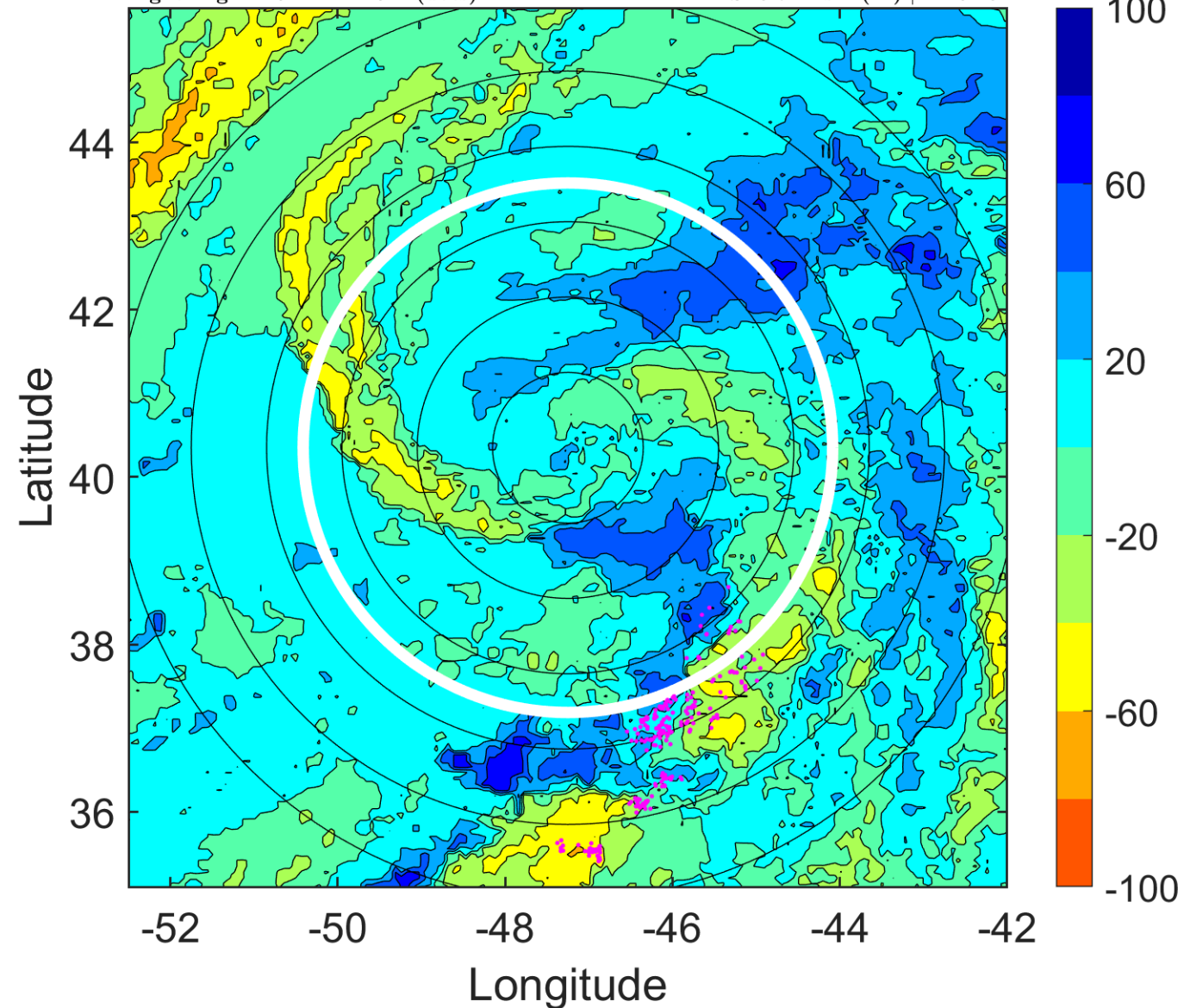
$\Delta$ t: 2011072115 (11.9 LT) - 2011072109 (5.7 LT)

Lightning: 11.9 LT  $\pm$  1.5 h (dots)

PT: SLCP | EA: INACT

03L (CINDY) | 57.5 kt TS

S: 5.7 m s<sup>-1</sup> (M) | H: 61.5°



### IR BT & Lightning

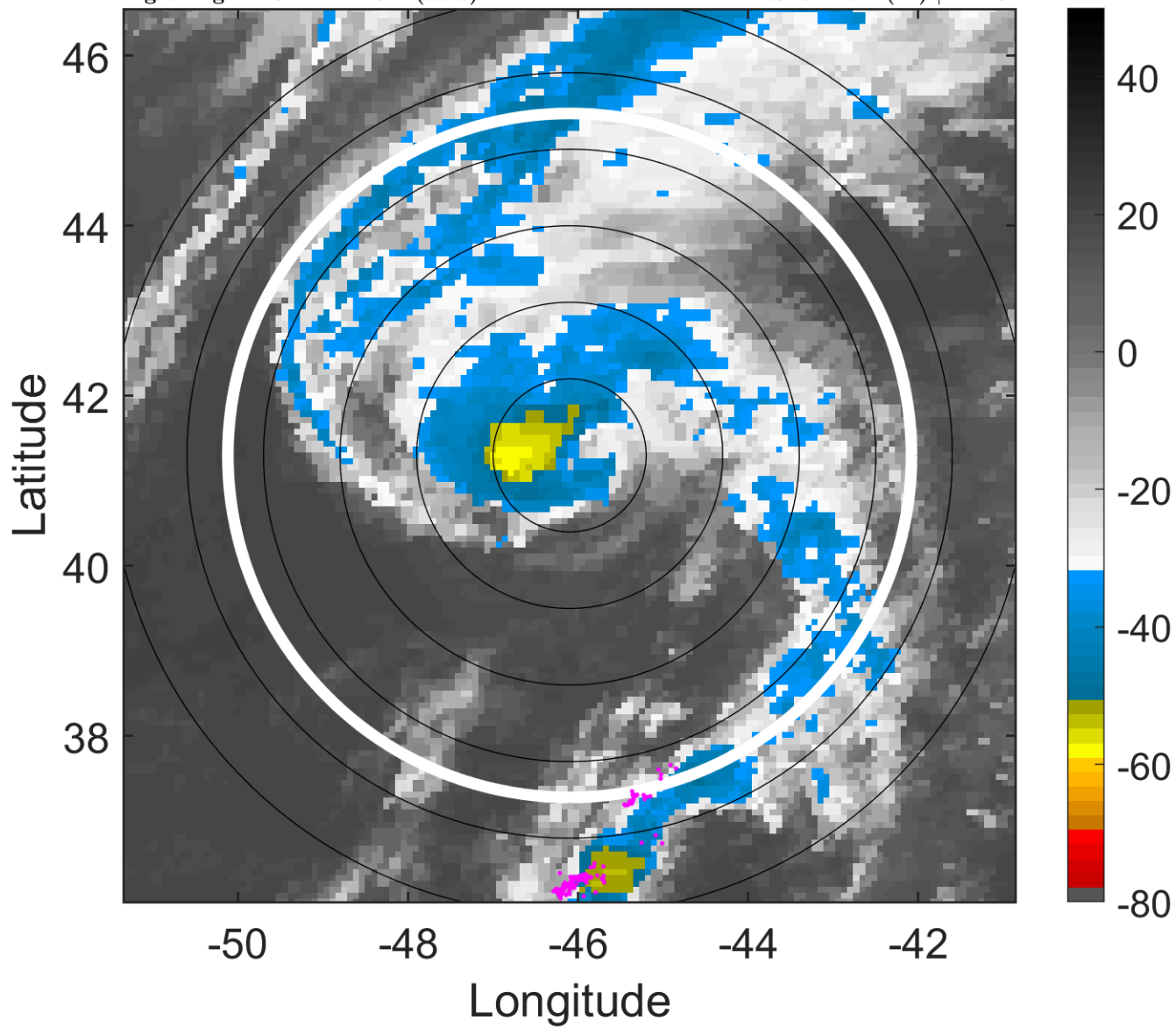
t: 2011072118 (14.9 LT)

Lightning: 14.9 LT  $\pm$  1.5 h (dots)

PT: SLCP | EA: INACT

03L (CINDY) | 60 kt TS

S: 5 m s<sup>-1</sup> (M) | H: 48°



### 6-h IR BT Differences & Lightning

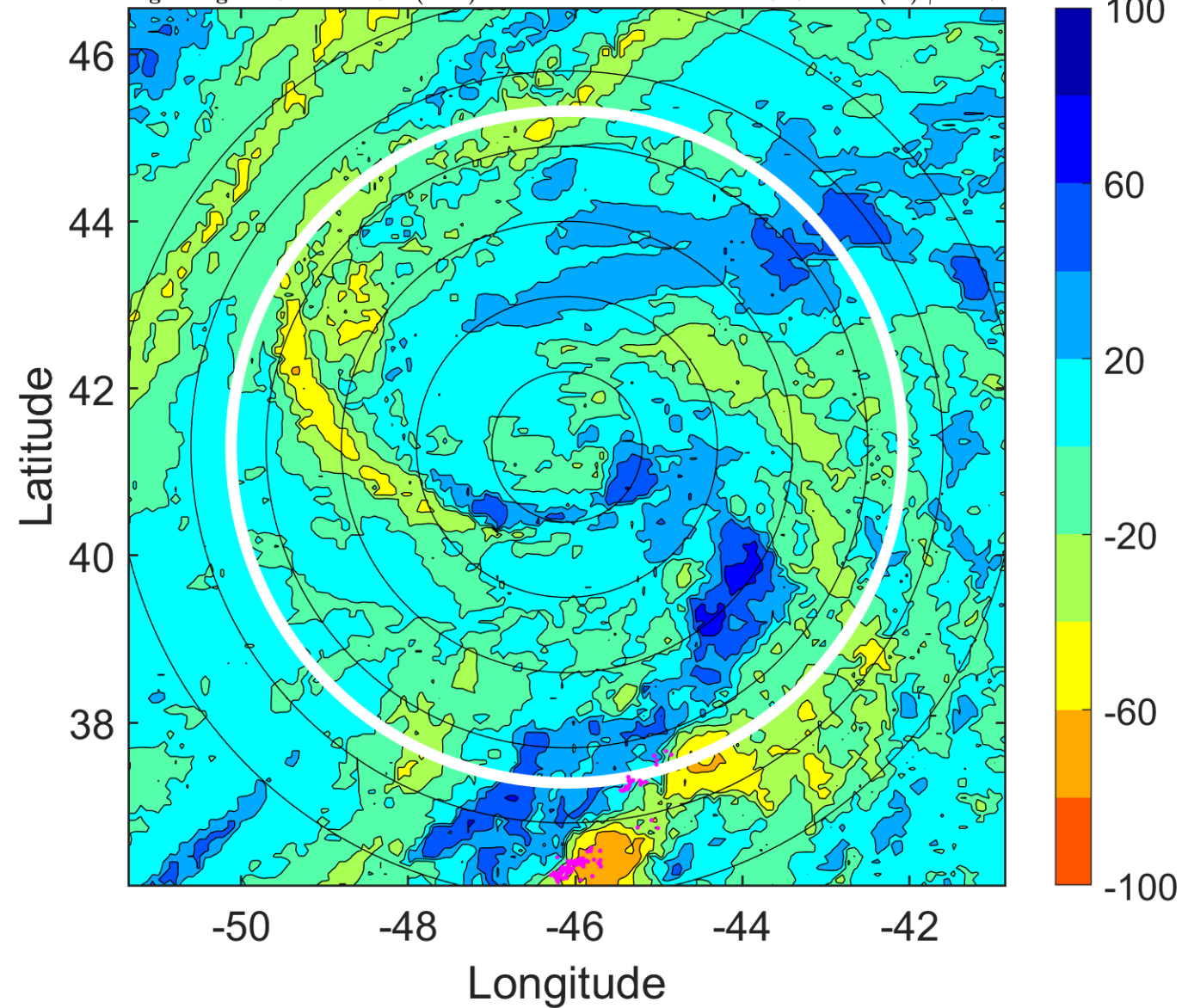
$\Delta$ t: 2011072118 (14.9 LT) - 2011072112 (8.8 LT)

Lightning: 14.9 LT  $\pm$  1.5 h (dots)

PT: SLCP | EA: INACT

03L (CINDY) | 60 kt TS

S: 5 m s<sup>-1</sup> (M) | H: 48°



### IR BT & Lightning

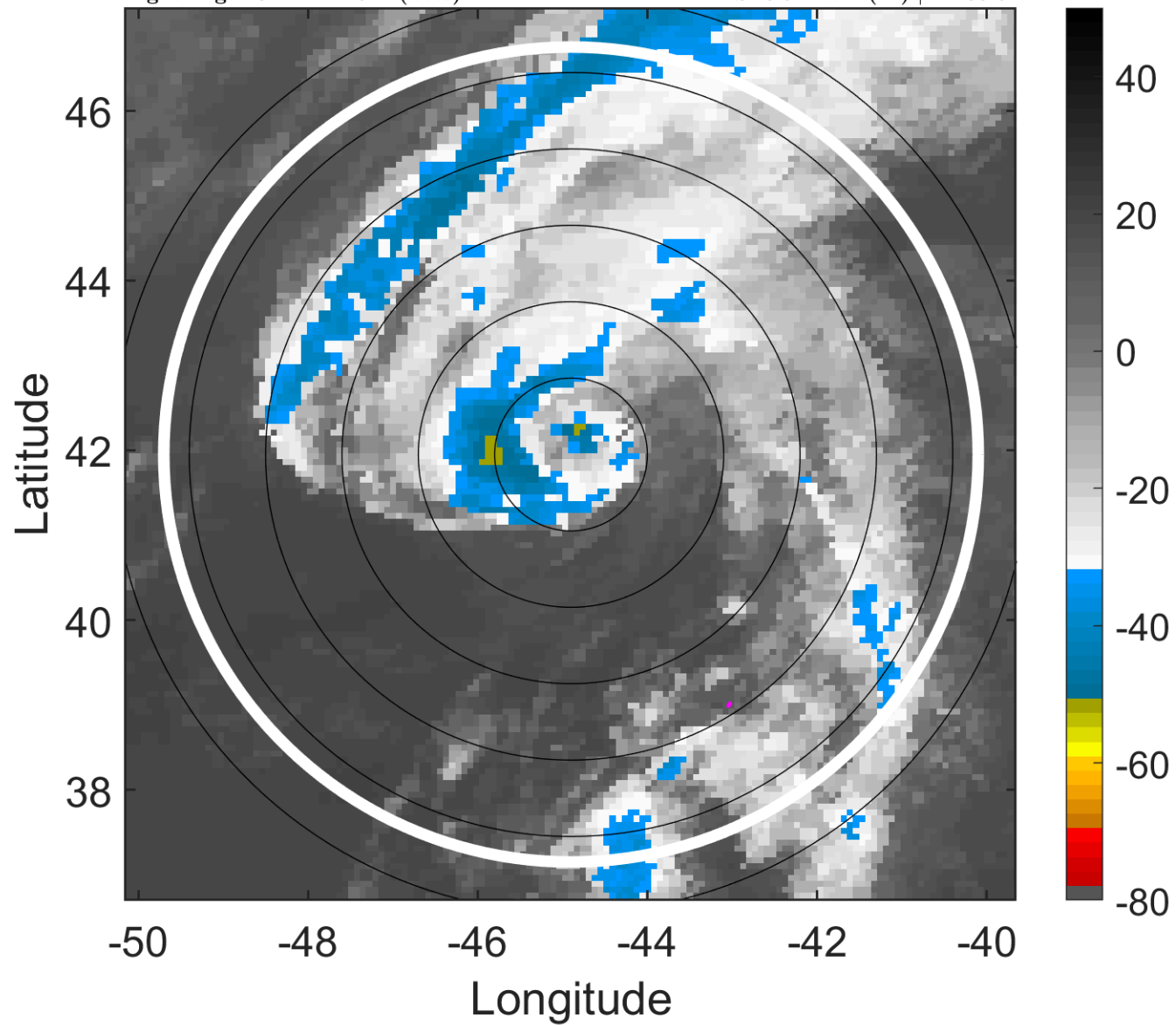
t: 2011072121 (18 LT)

Lightning: 18 LT  $\pm$  1.5 h (dots)

PT: SLCP | EA: INACT

03L (CINDY) | 57.5 kt TS

S: 6.9 m s<sup>-1</sup> (M) | H: 88.5°



### 6-h IR BT Differences & Lightning

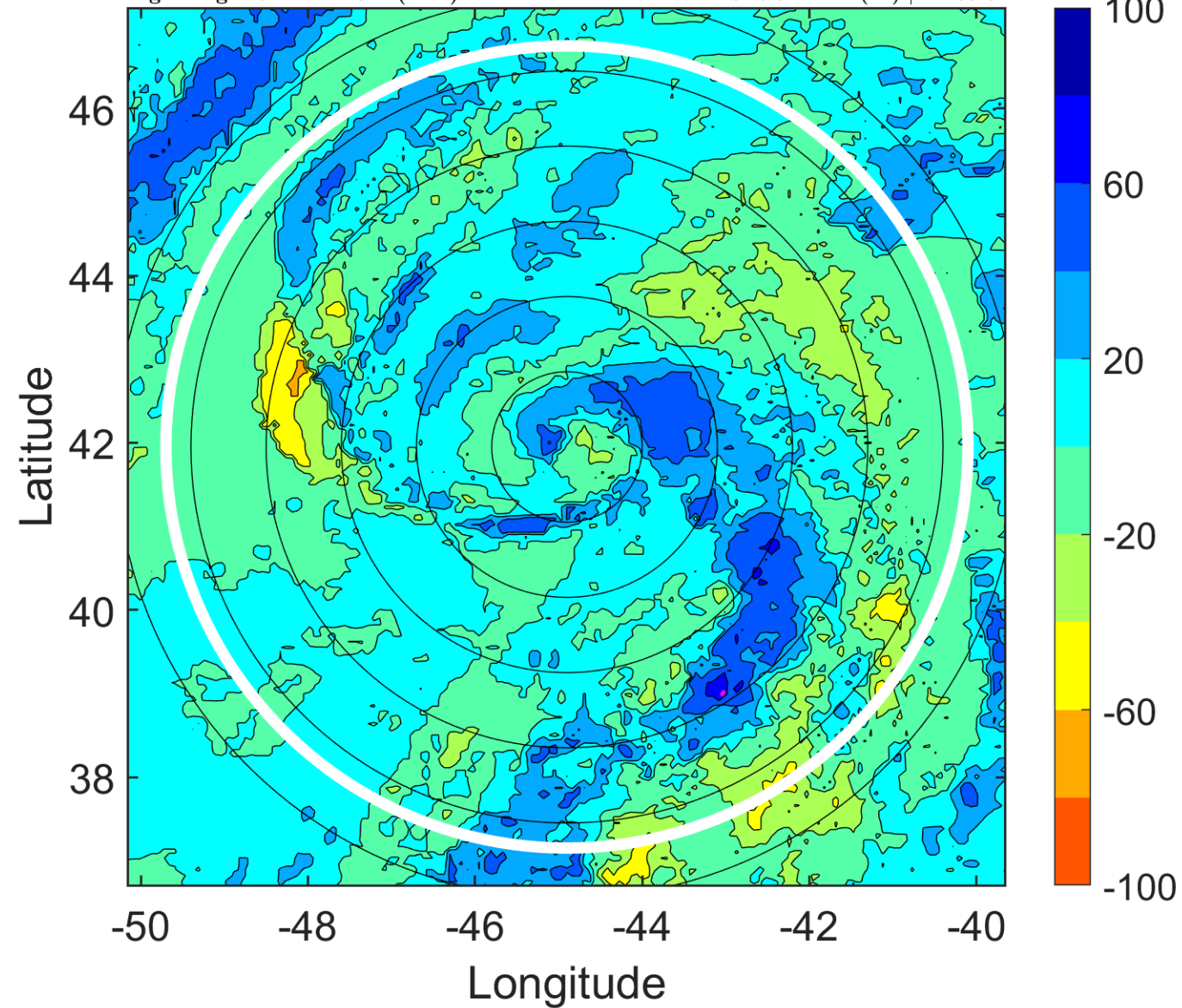
$\Delta$ t: 2011072121 (18 LT) - 2011072115 (11.9 LT)

Lightning: 18 LT  $\pm$  1.5 h (dots)

PT: SLCP | EA: INACT

03L (CINDY) | 57.5 kt TS

S: 6.9 m s<sup>-1</sup> (M) | H: 88.5°



### IR BT & Lightning

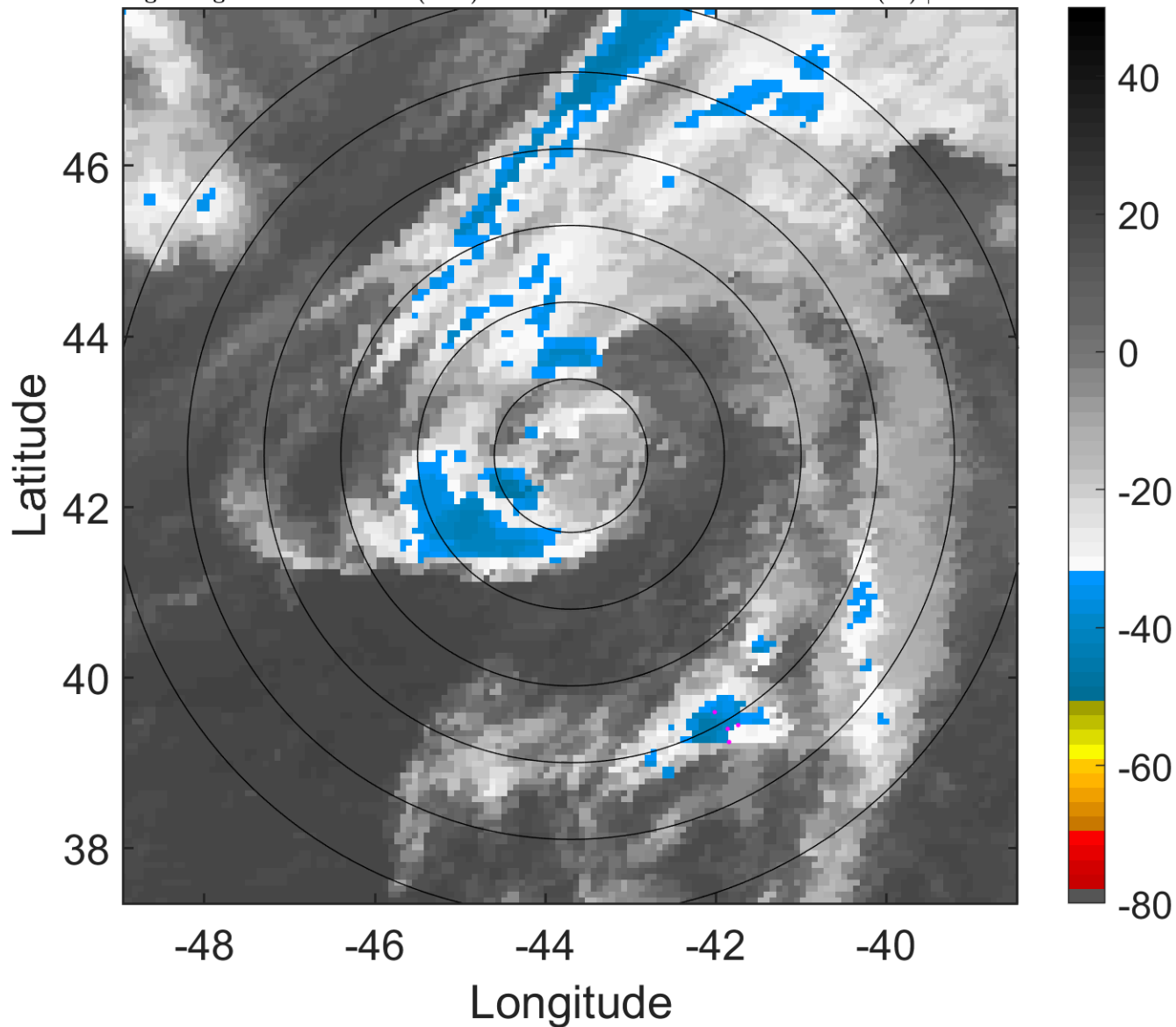
t: 2011072200 (21.1 LT)

Lightning: 21.1 LT  $\pm$  1.5 h (dots)

PT: SLCP | EA: INACT

03L (CINDY) | 55 kt TS

S: 8.9 m s<sup>-1</sup> (M) | H: 129°



### 6-h IR BT Differences & Lightning

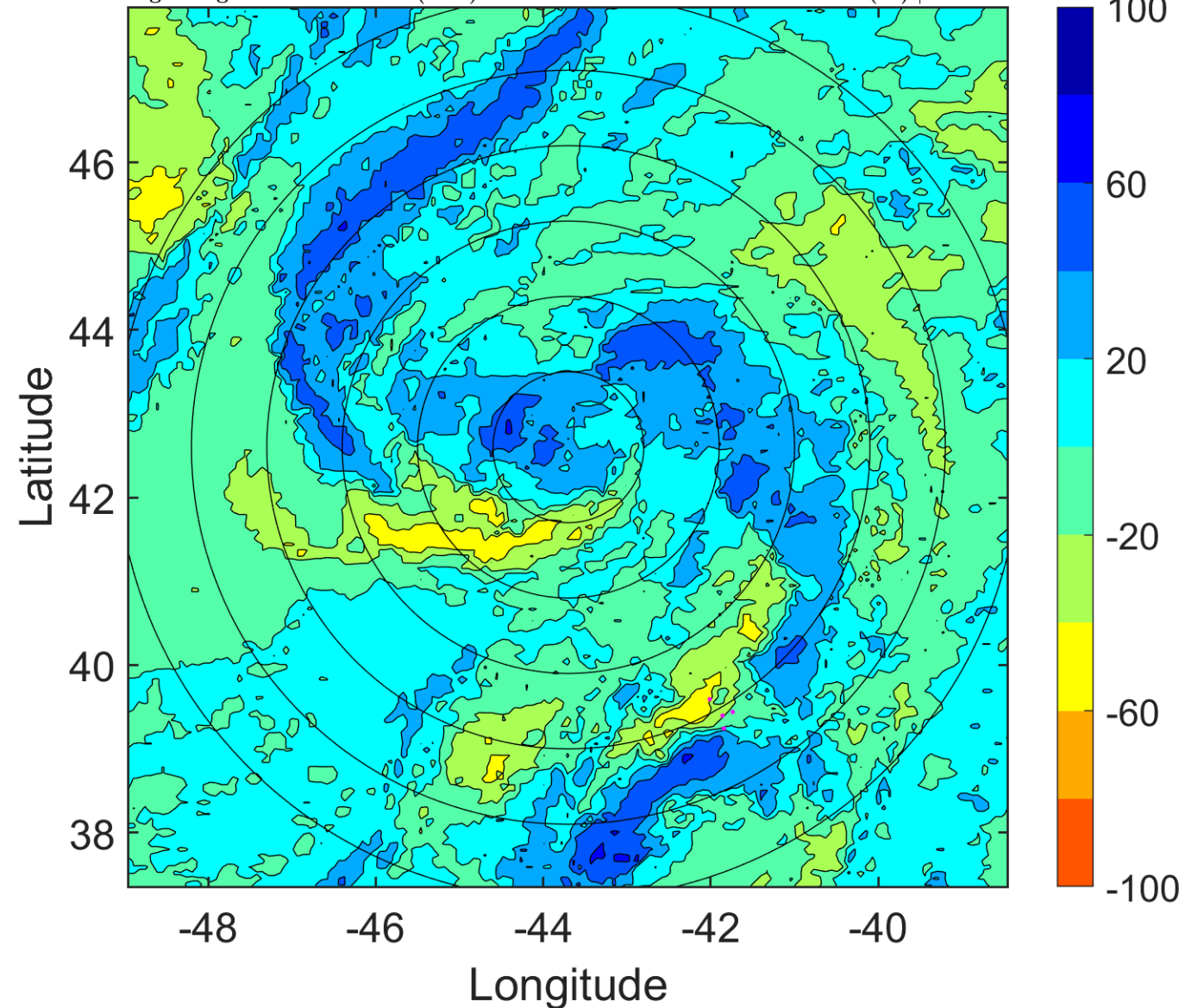
$\Delta$ t: 2011072200 (21.1 LT) - 2011072118 (14.9 LT)

Lightning: 21.1 LT  $\pm$  1.5 h (dots)

PT: SLCP | EA: INACT

03L (CINDY) | 55 kt TS

S: 8.9 m s<sup>-1</sup> (M) | H: 129°



### IR BT & Lightning

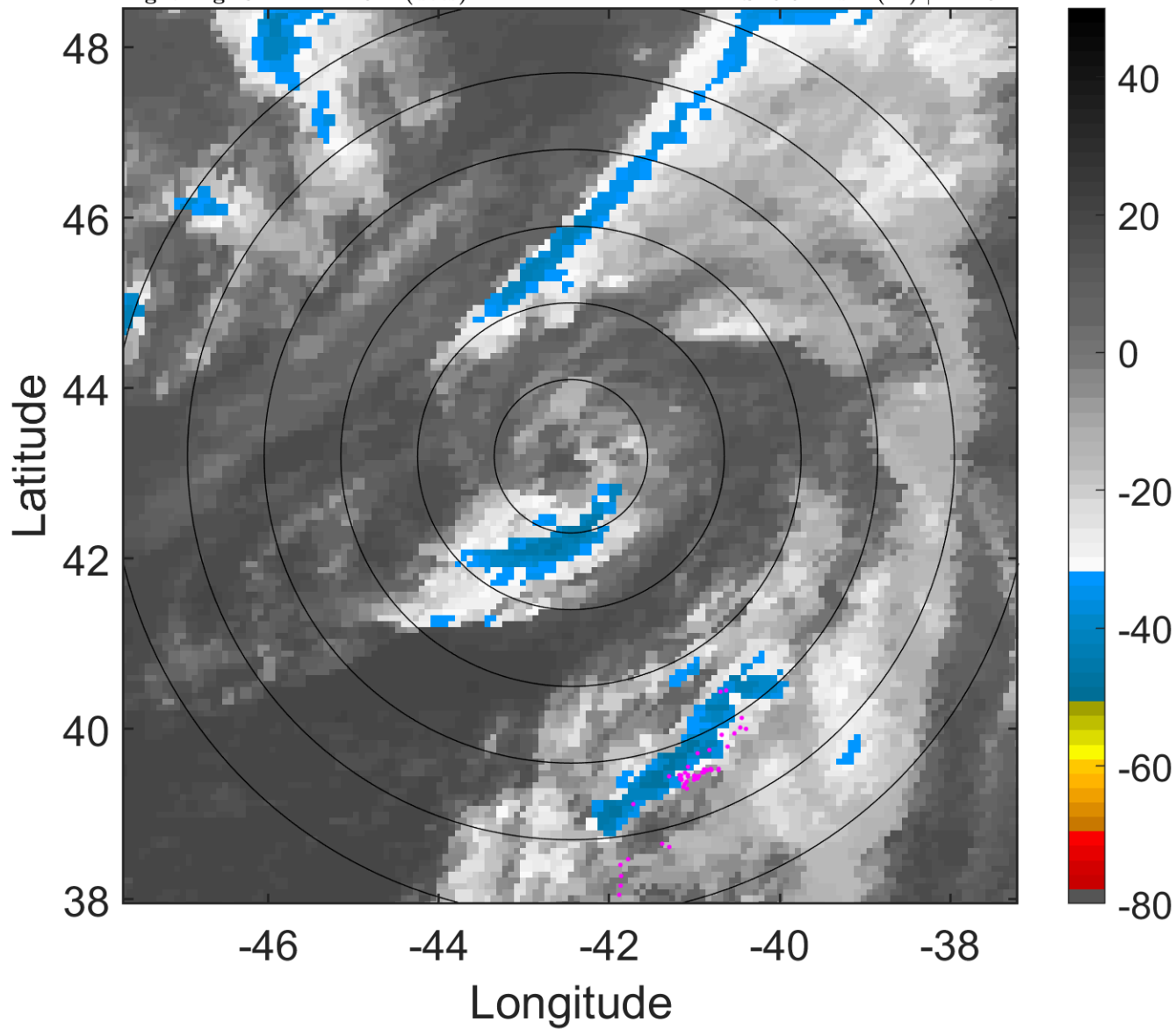
t: 2011072203 (0.2 LT)

Lightning: 0.2 LT  $\pm$  1.5 h (dots)

PT: LLCP | EA: INACT

03L (CINDY) | 52.5 kt TS

S: 9.9 m s<sup>-1</sup> (M) | H: 152°



### 6-h IR BT Differences & Lightning

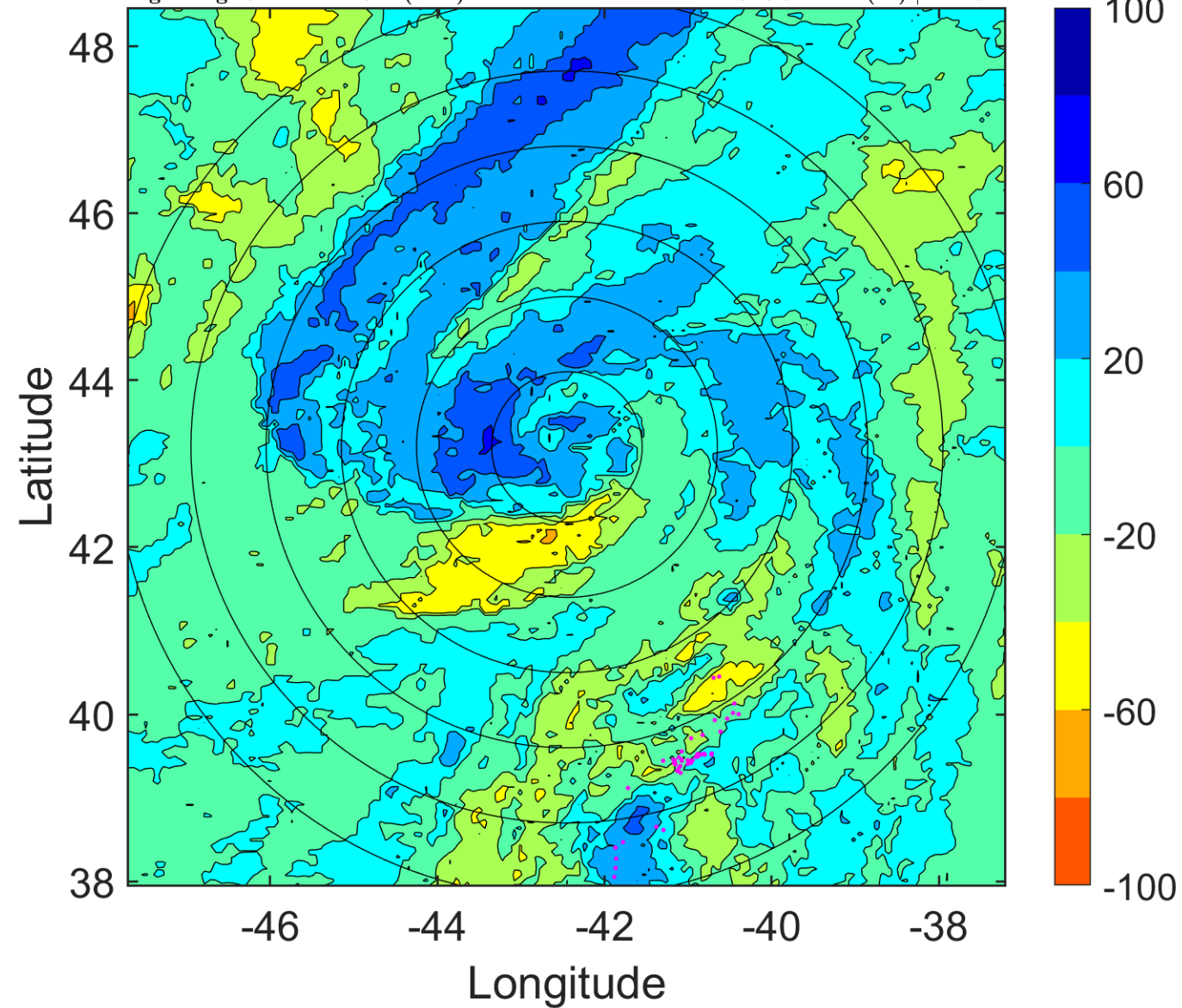
$\Delta$ t: 2011072203 (0.2 LT) - 2011072121 (18 LT)

Lightning: 0.2 LT  $\pm$  1.5 h (dots)

PT: LLCP | EA: INACT

03L (CINDY) | 52.5 kt TS

S: 9.9 m s<sup>-1</sup> (M) | H: 152°



### IR BT & Lightning

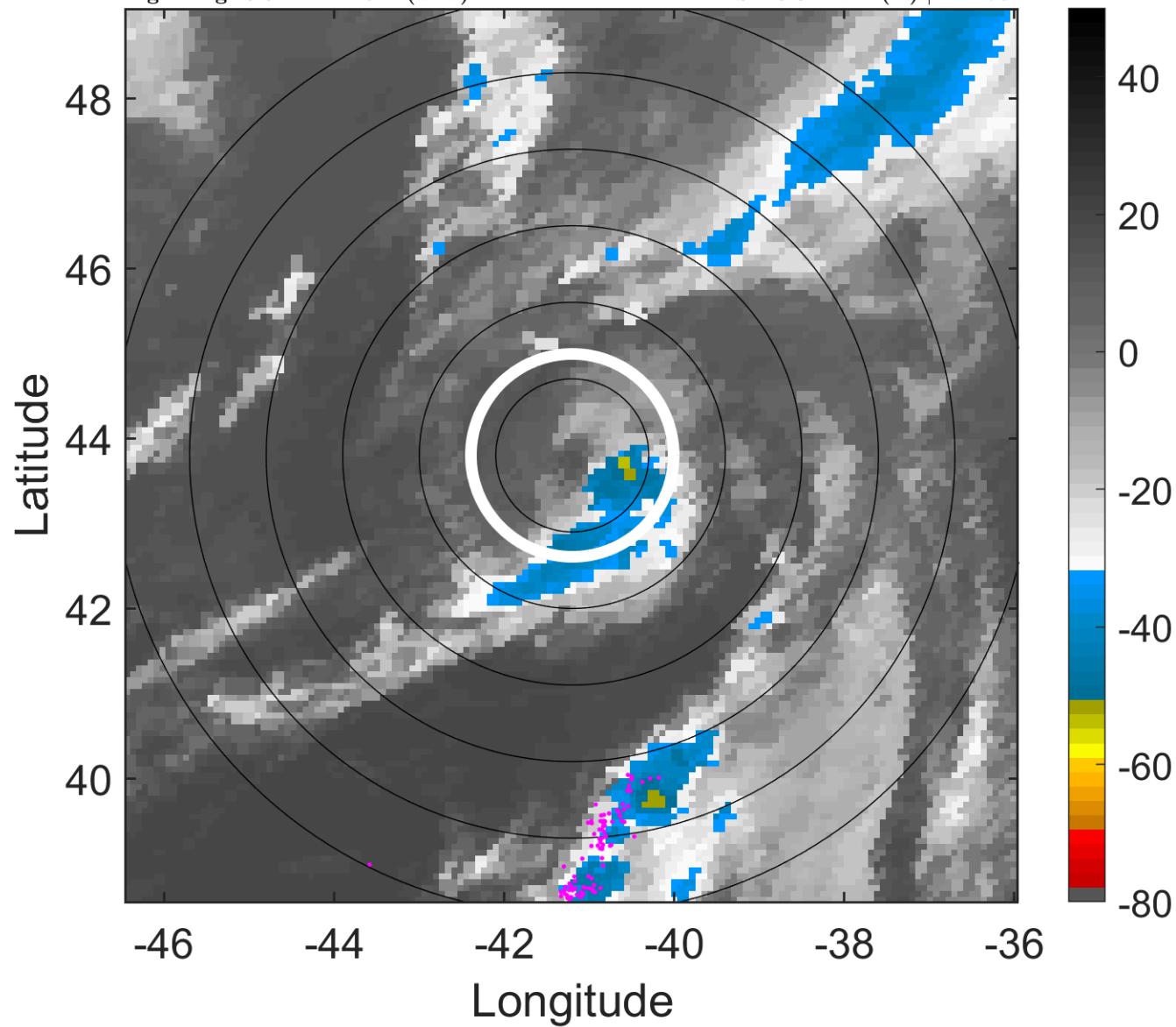
t: 2011072206 (3.3 LT)

Lightning: 3.3 LT  $\pm$  1.5 h (dots)

PT: LLCP | EA: INACT

03L (CINDY) | 50 kt TS

S: 10.8 m s<sup>-1</sup> (H) | H: 175°



### 6-h IR BT Differences & Lightning

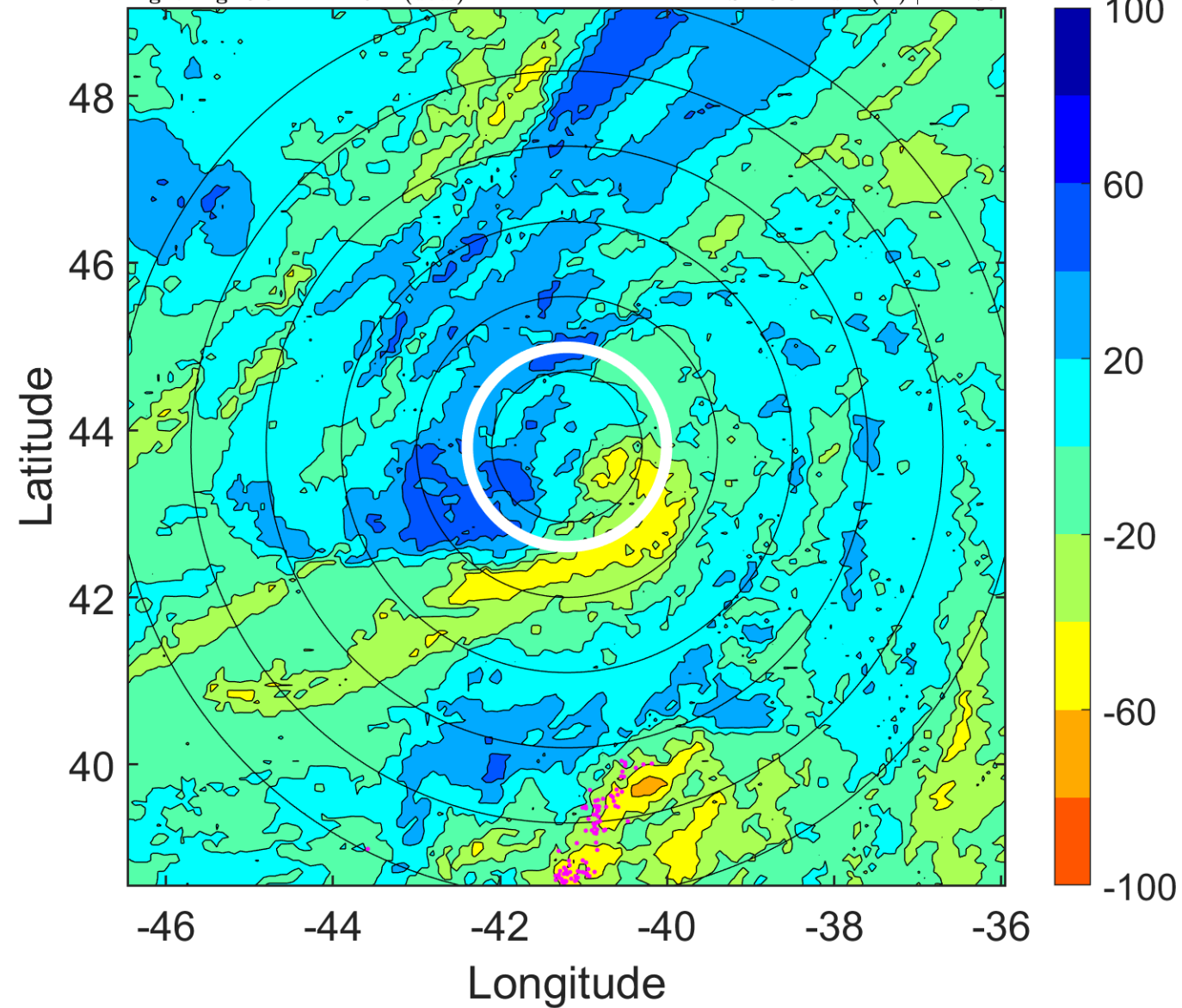
$\Delta$ t: 2011072206 (3.3 LT) - 2011072200 (21.1 LT)

Lightning: 3.3 LT  $\pm$  1.5 h (dots)

PT: LLCP | EA: INACT

03L (CINDY) | 50 kt TS

S: 10.8 m s<sup>-1</sup> (H) | H: 175°



### IR BT & Lightning

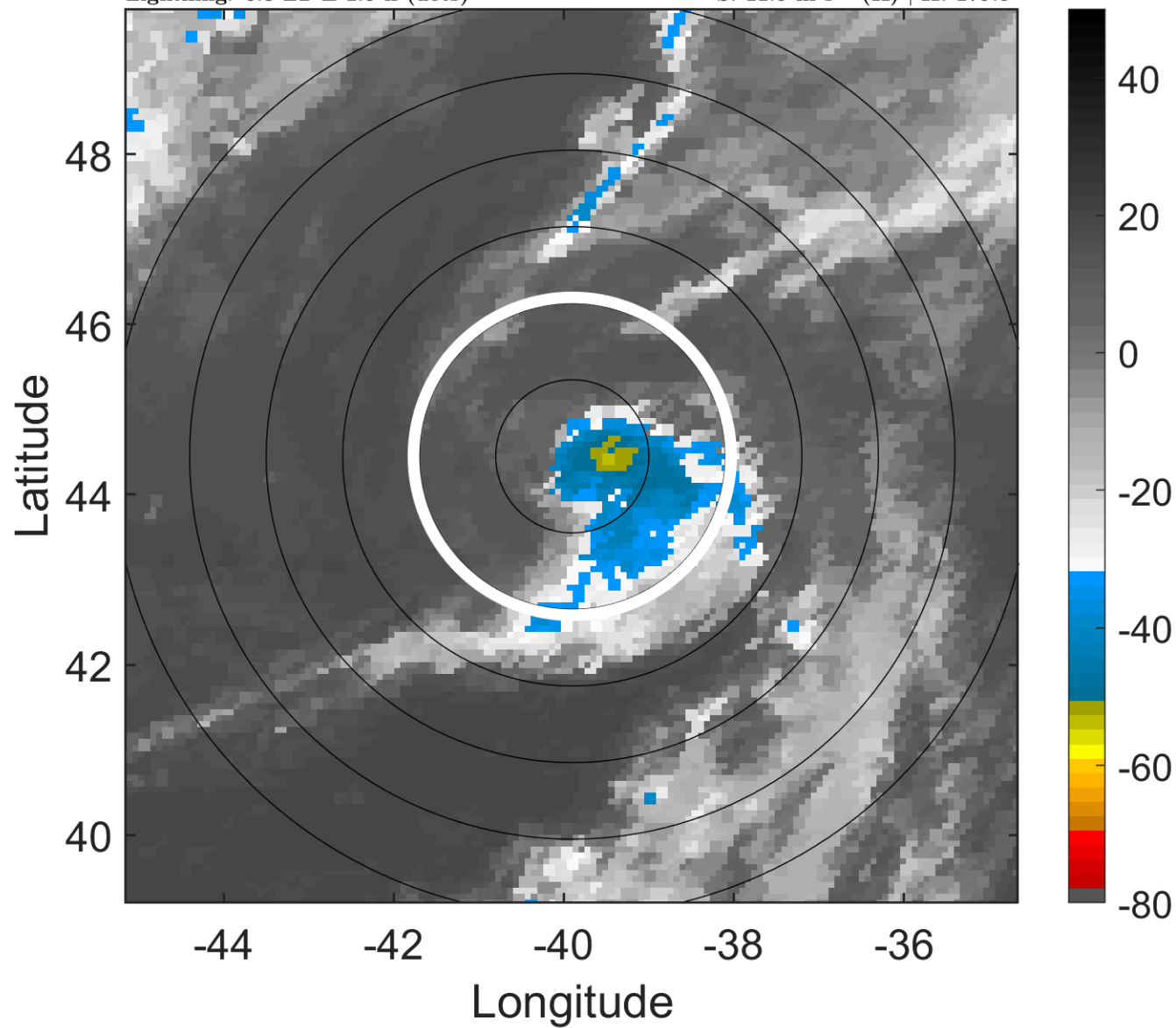
t: 2011072209 (6.3 LT)

Lightning: 6.3 LT  $\pm$  1.5 h (dots)

PT: LLCP | EA: INACT

03L (CINDY) | 47.5 kt TS

S: 11.5 m s<sup>-1</sup> (H) | H: 179.5°



### 6-h IR BT Differences & Lightning

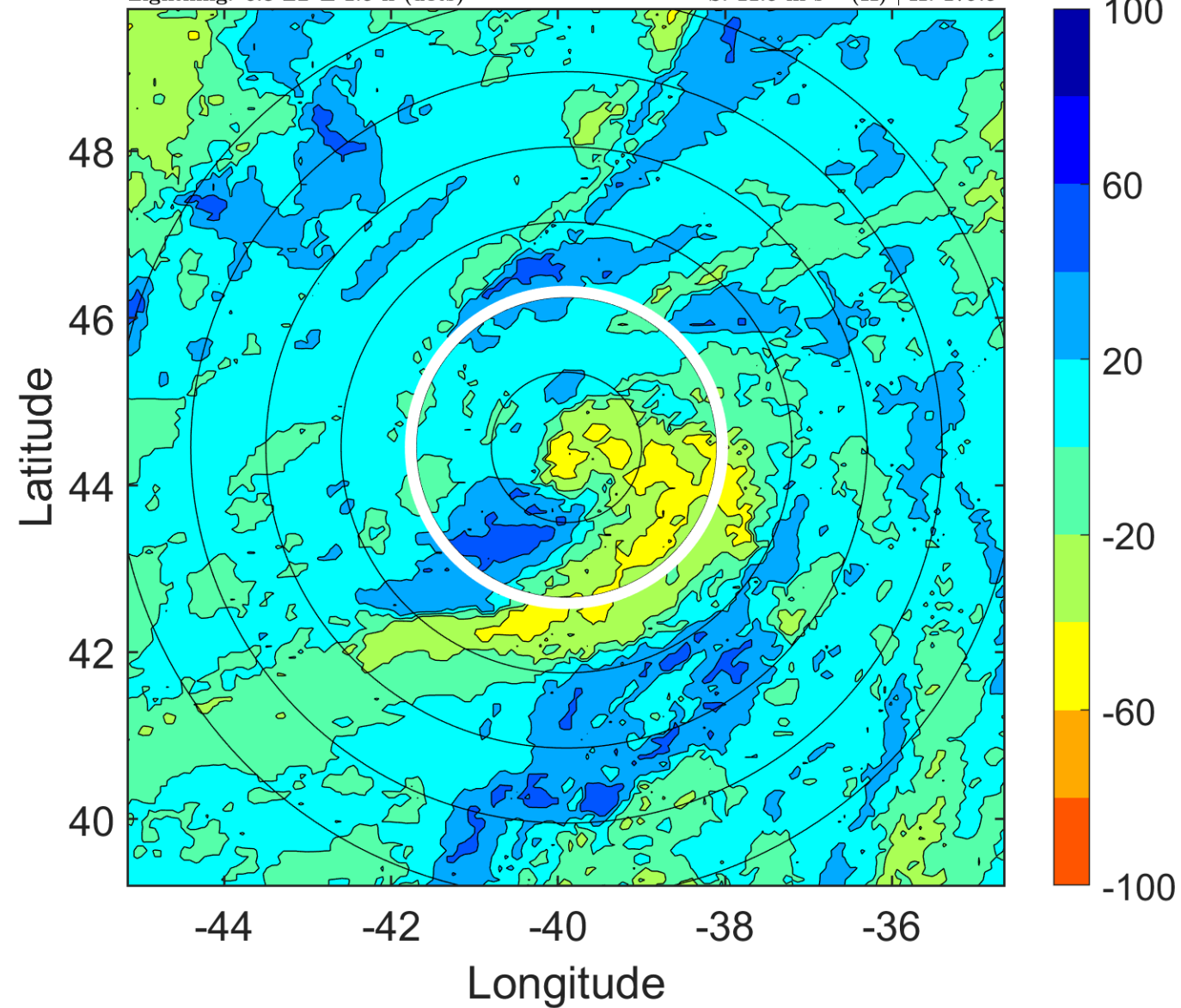
$\Delta$ t: 2011072209 (6.3 LT) - 2011072203 (0.2 LT)

Lightning: 6.3 LT  $\pm$  1.5 h (dots)

PT: LLCP | EA: INACT

03L (CINDY) | 47.5 kt TS

S: 11.5 m s<sup>-1</sup> (H) | H: 179.5°





### IR BT & Lightning

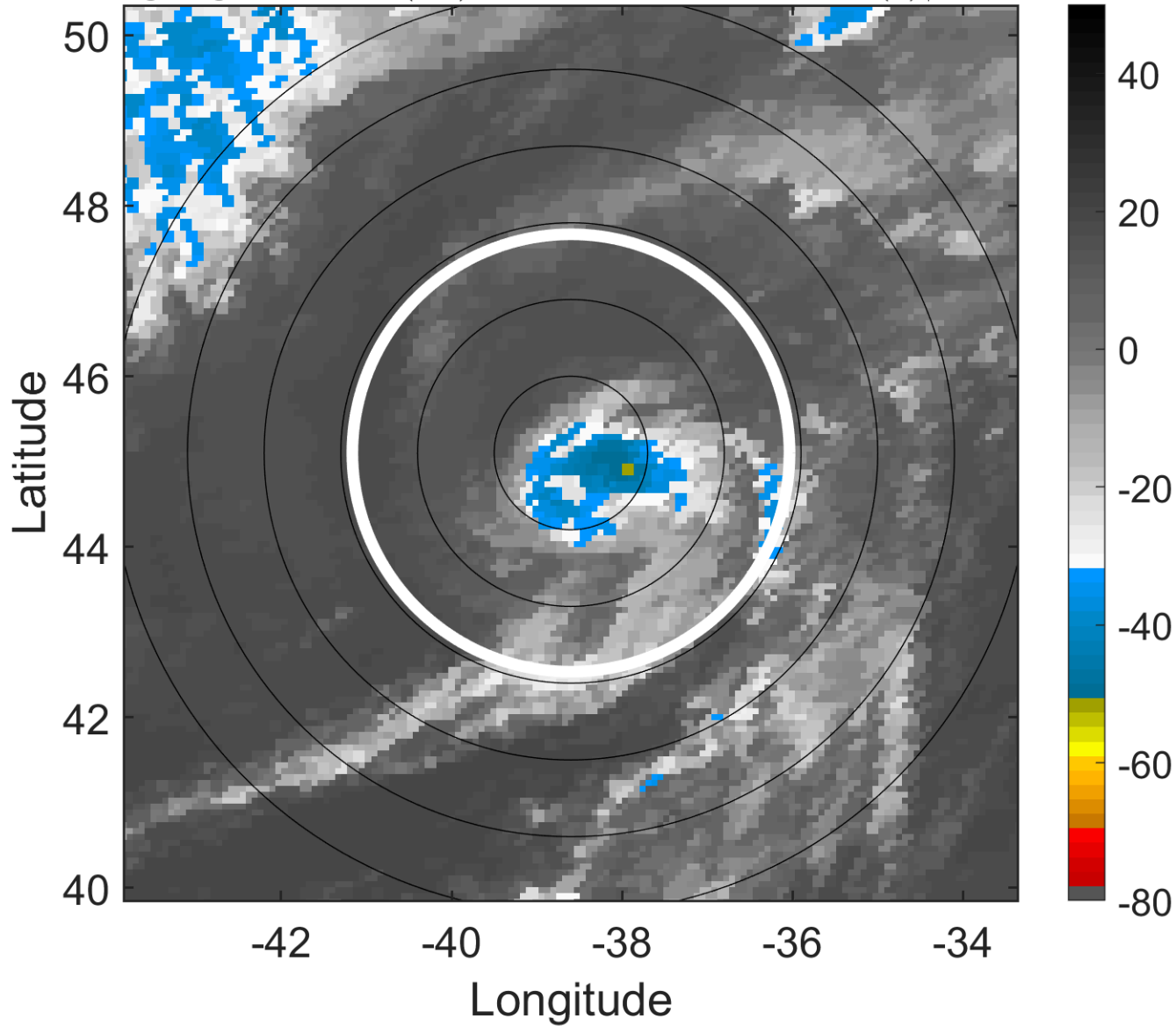
t: 2011072212 (9.4 LT)

Lightning: 9.4 LT  $\pm$  1.5 h (dots)

PT: LLCP | EA: INACT

03L (CINDY) | 45 kt TS

S: 12.2 m s<sup>-1</sup> (H) | H: 184°



### 6-h IR BT Differences & Lightning

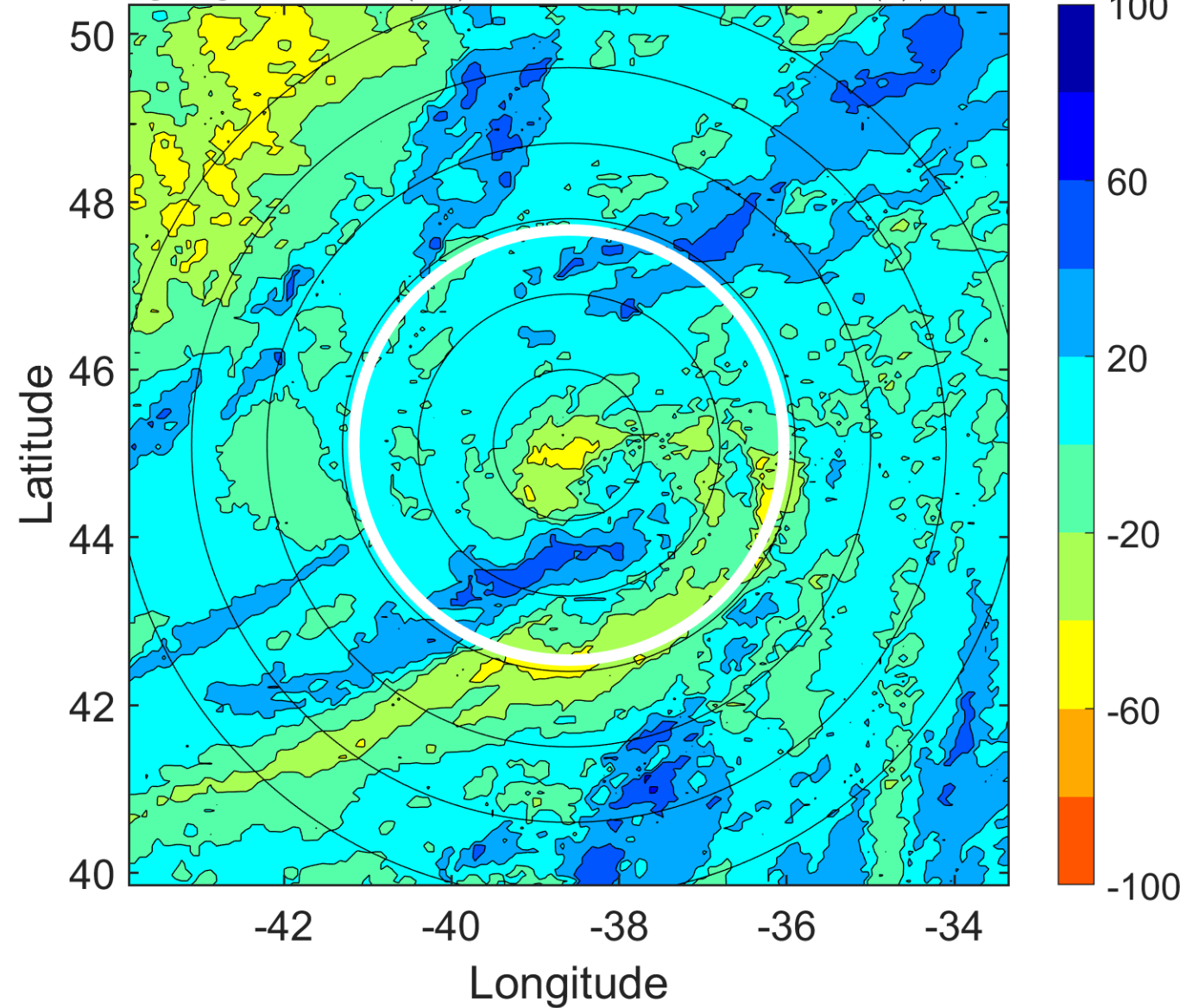
$\Delta$ t: 2011072212 (9.4 LT) - 2011072206 (3.3 LT)

Lightning: 9.4 LT  $\pm$  1.5 h (dots)

PT: LLCP | EA: INACT

03L (CINDY) | 45 kt TS

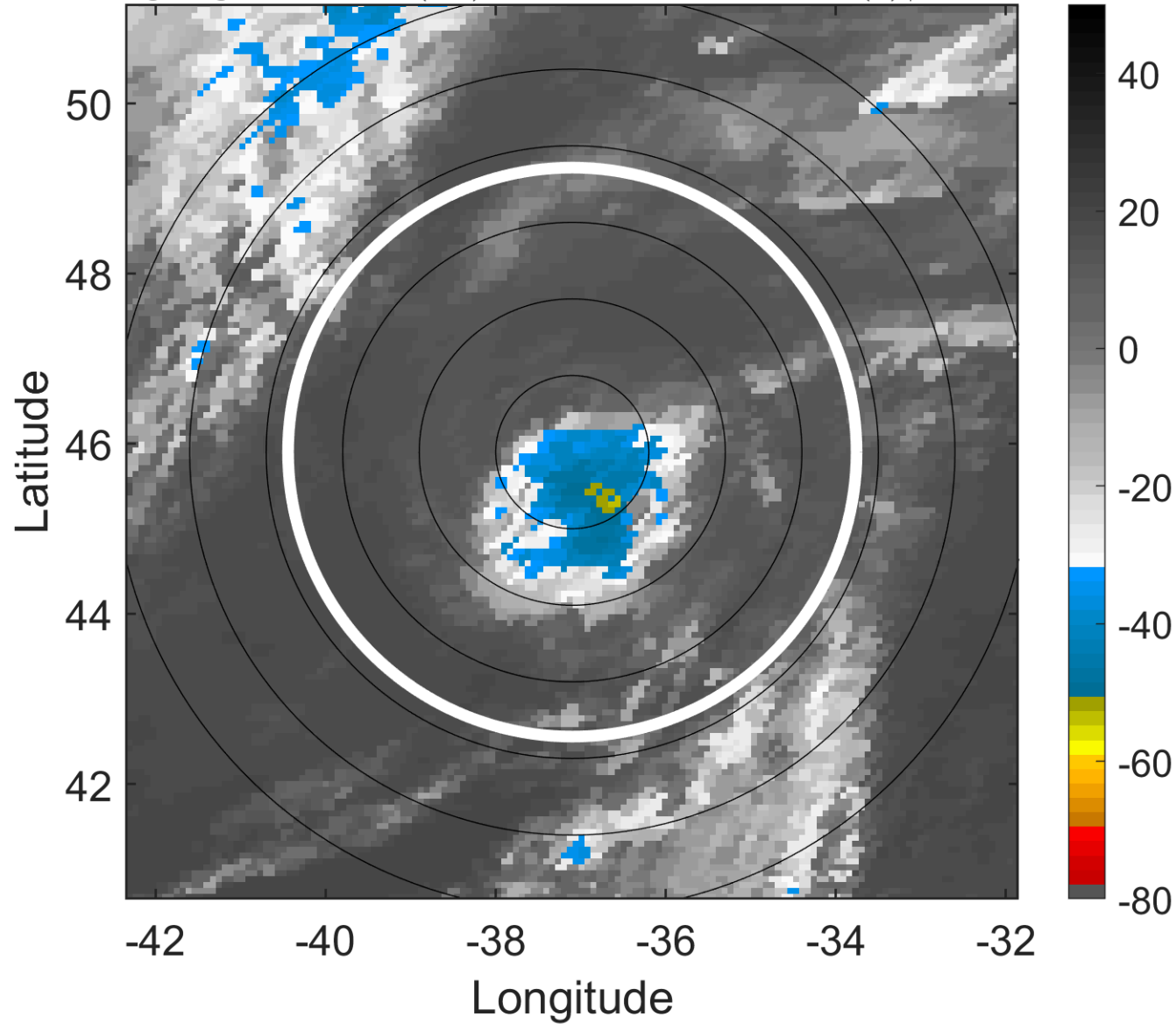
S: 12.2 m s<sup>-1</sup> (H) | H: 184°



### IR BT & Lightning

t: 2011072215 (12.5 LT)  
Lightning: 12.5 LT  $\pm$  1.5 h (dots)

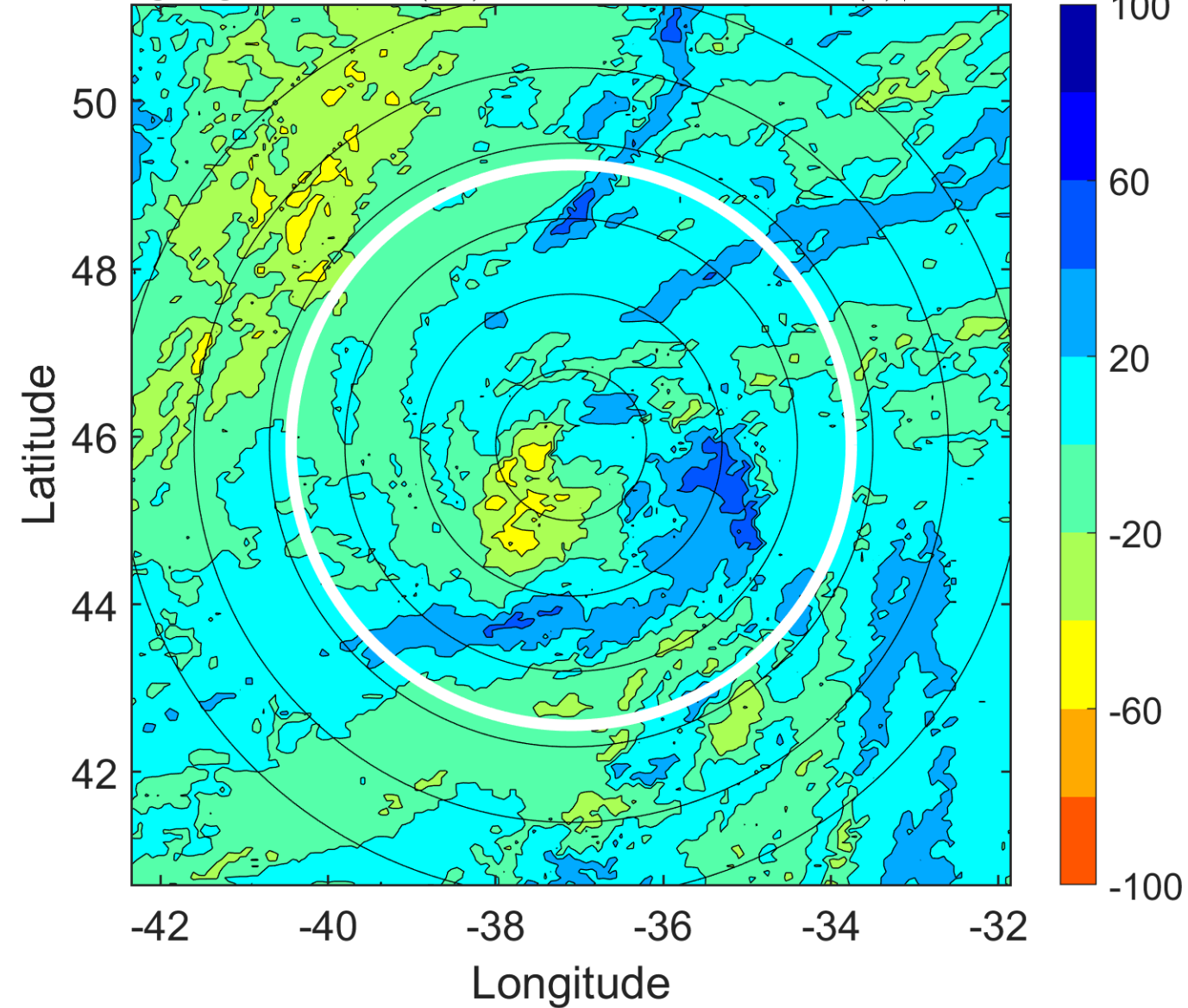
PT: LLCP | EA: INACT  
03L (CINDY) | 42.5 kt TS  
S: 12.4 m s<sup>-1</sup> (H) | H: 178.5°



### 6-h IR BT Differences & Lightning

$\Delta$ t: 2011072215 (12.5 LT) - 2011072209 (6.3 LT)  
Lightning: 12.5 LT  $\pm$  1.5 h (dots)

PT: LLCP | EA: INACT  
03L (CINDY) | 42.5 kt TS  
S: 12.4 m s<sup>-1</sup> (H) | H: 178.5°



### IR BT & Lightning

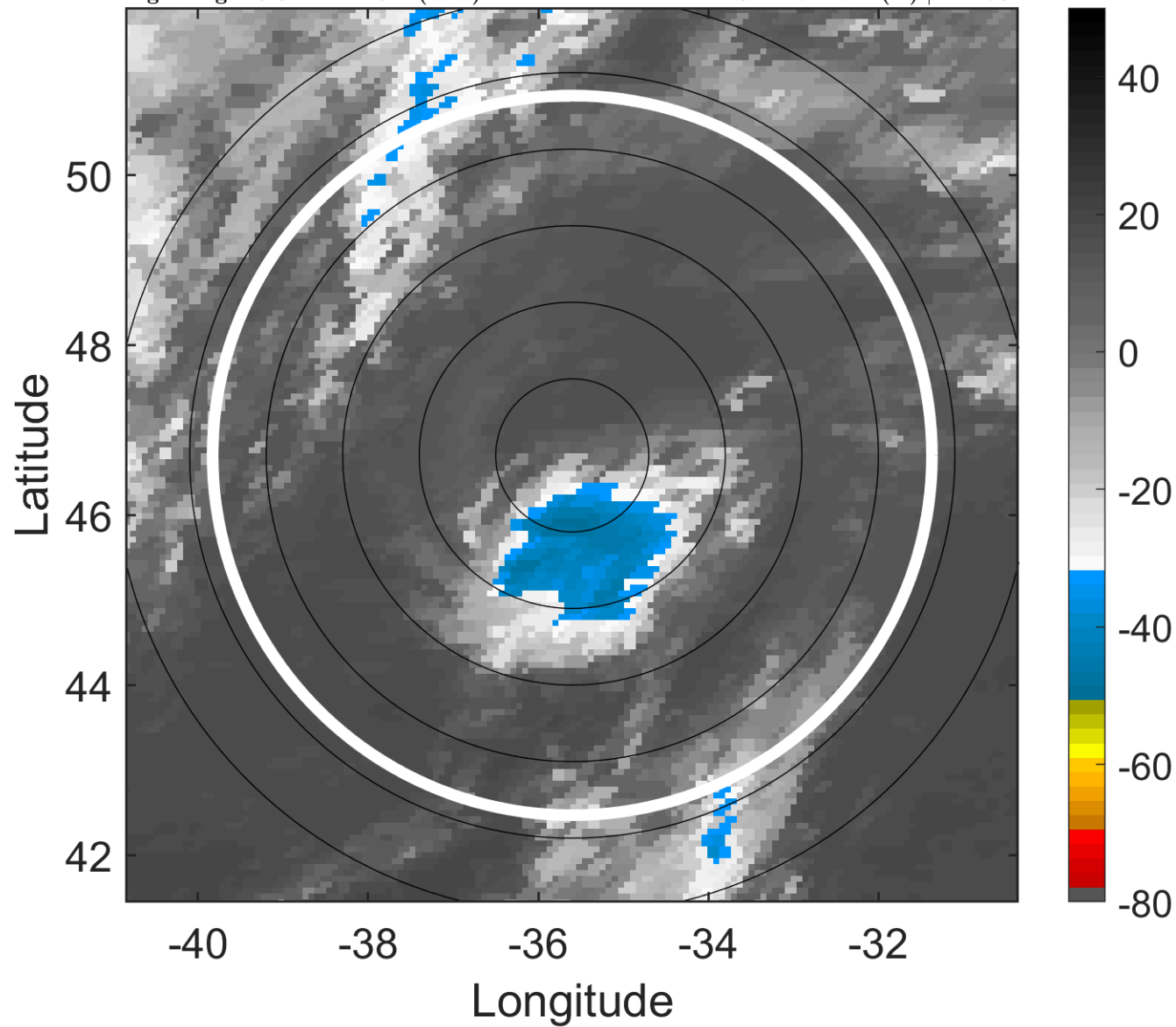
t: 2011072218 (15.6 LT)

Lightning: 15.6 LT  $\pm$  1.5 h (dots)

PT: LLCP | EA: INACT

03L (CINDY) | 40 kt TS

S: 12.7 m s<sup>-1</sup> (H) | H: 173°



### 6-h IR BT Differences & Lightning

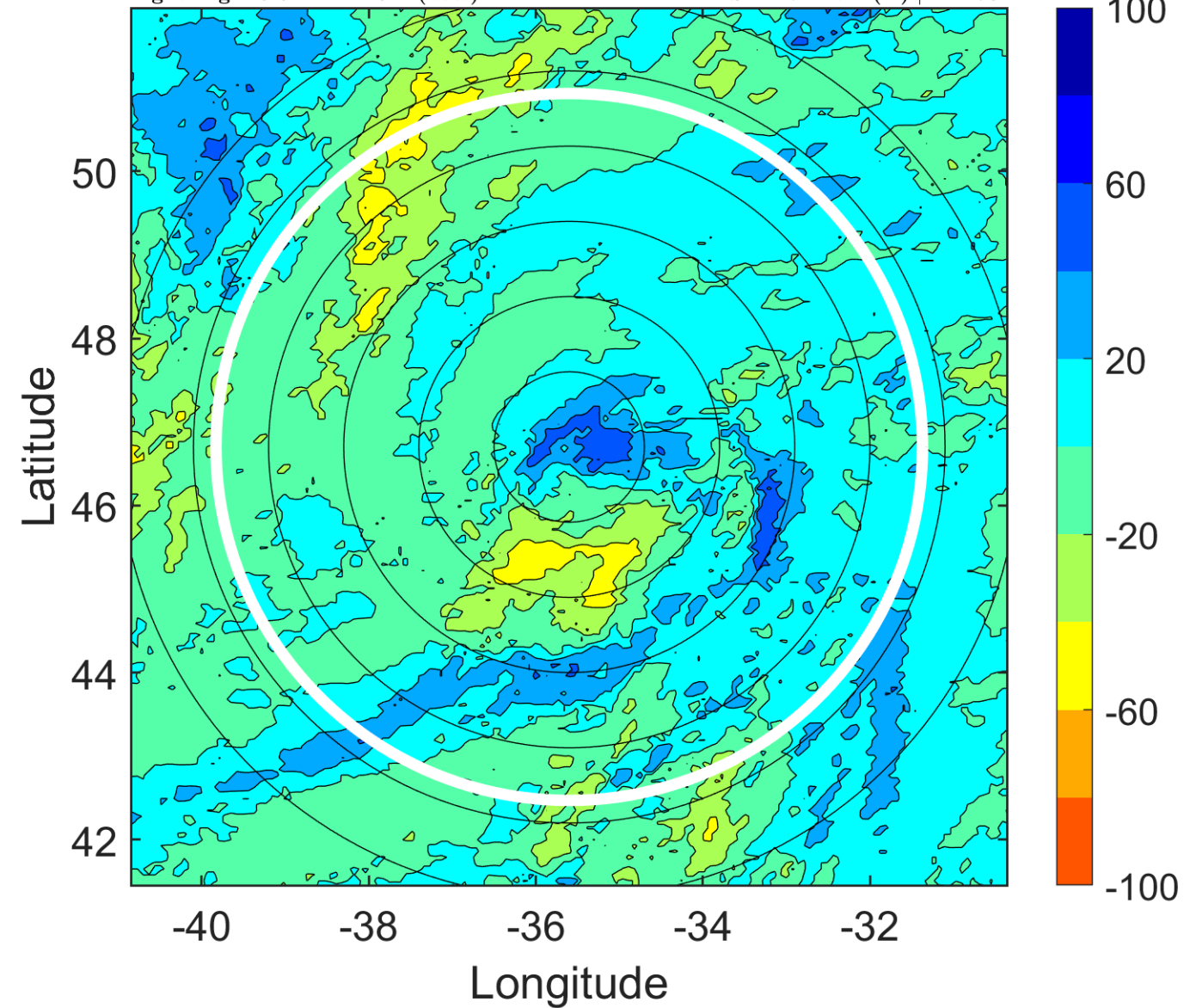
$\Delta$ t: 2011072218 (15.6 LT) - 2011072212 (9.4 LT)

Lightning: 15.6 LT  $\pm$  1.5 h (dots)

PT: LLCP | EA: INACT

03L (CINDY) | 40 kt TS

S: 12.7 m s<sup>-1</sup> (H) | H: 173°



### IR BT & Lightning

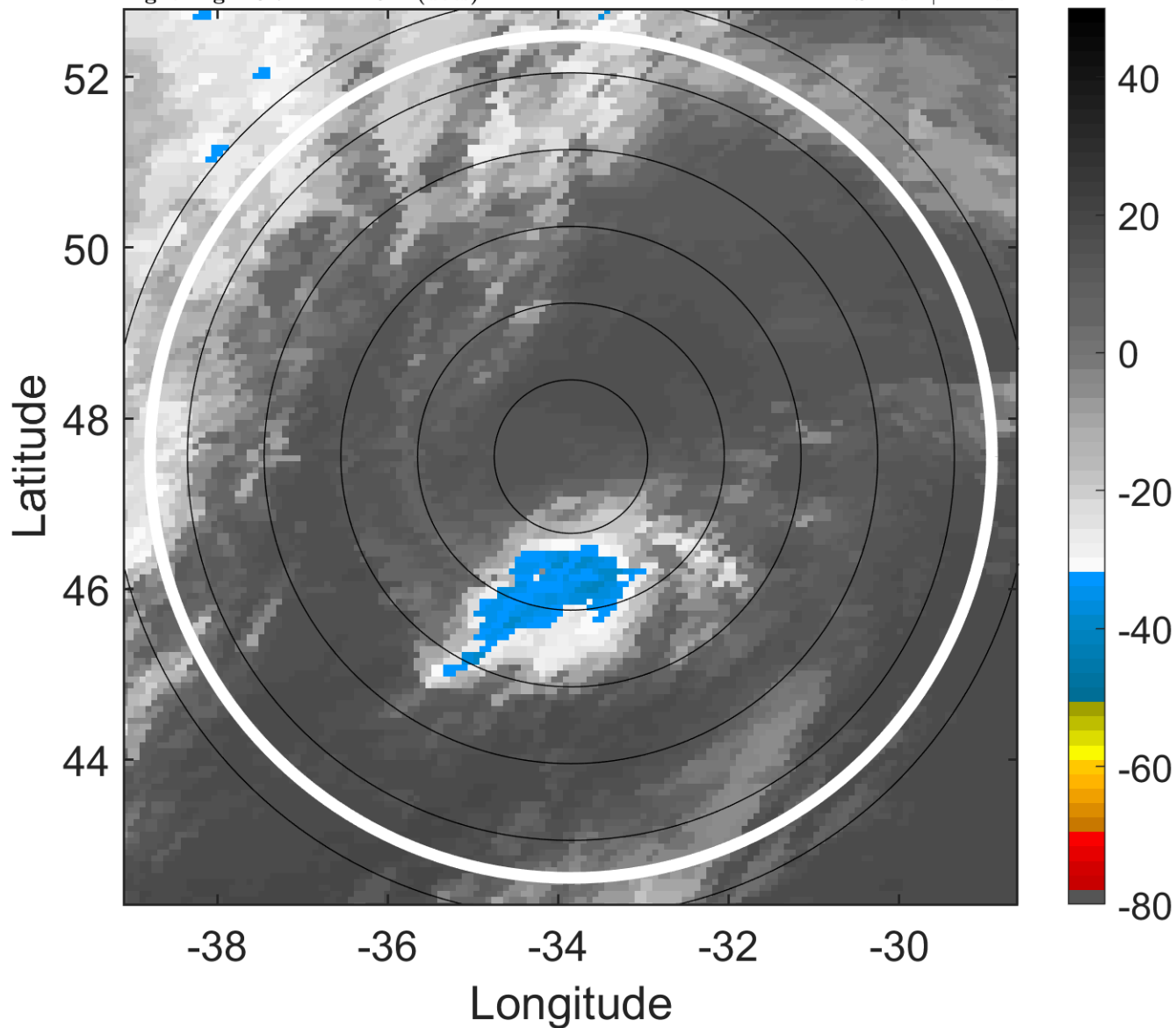
t: 2011072221 (18.7 LT)

Lightning: 18.7 LT  $\pm$  1.5 h (dots)

PT: LLCP | EA: INACT

03L (CINDY) | 40 kt TS

S: null | H: null



### 6-h IR BT Differences & Lightning

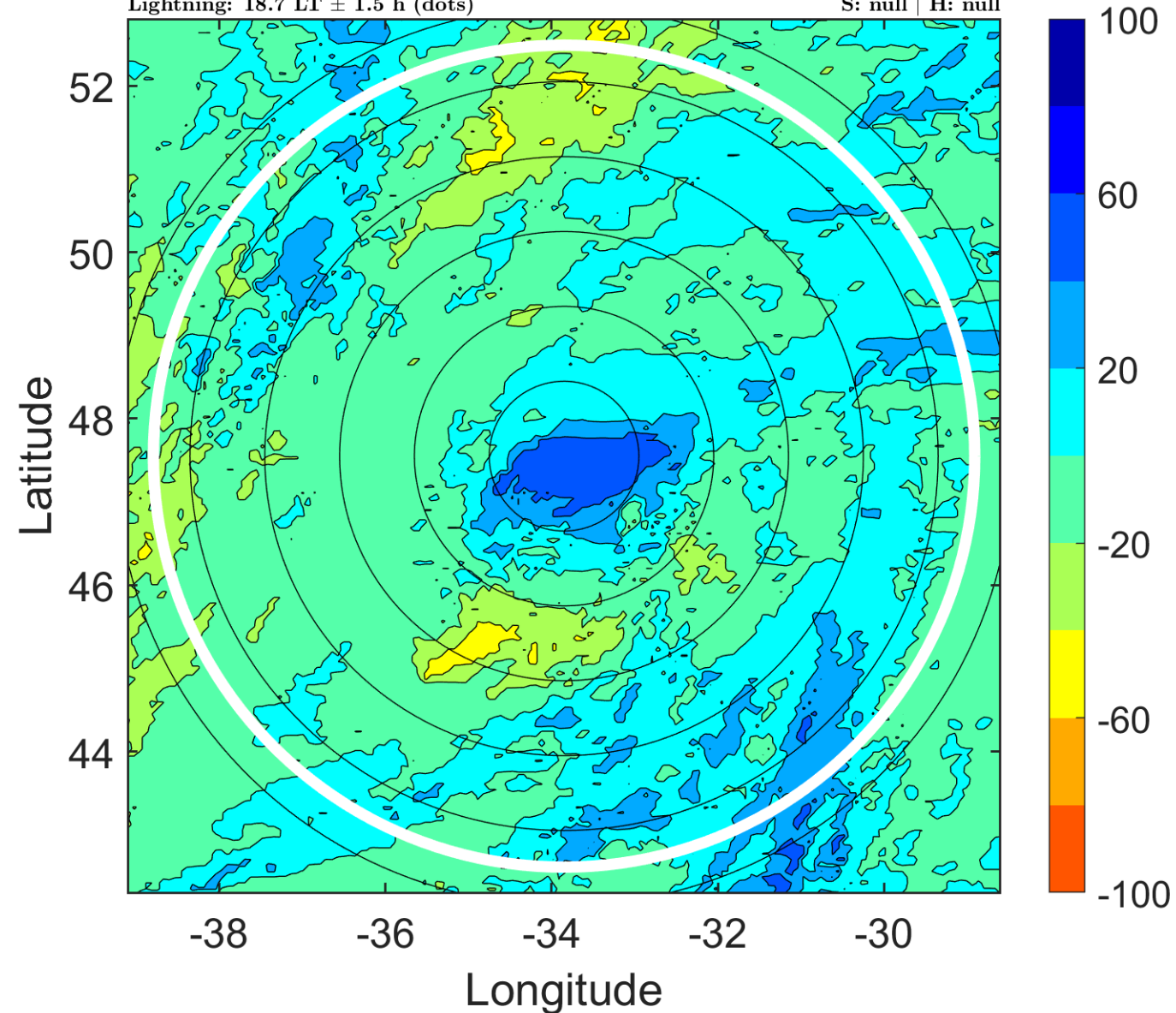
$\Delta$ t: 2011072221 (18.7 LT) - 2011072215 (12.5 LT)

Lightning: 18.7 LT  $\pm$  1.5 h (dots)

PT: LLCP | EA: INACT

03L (CINDY) | 40 kt TS

S: null | H: null



### IR BT & Lightning

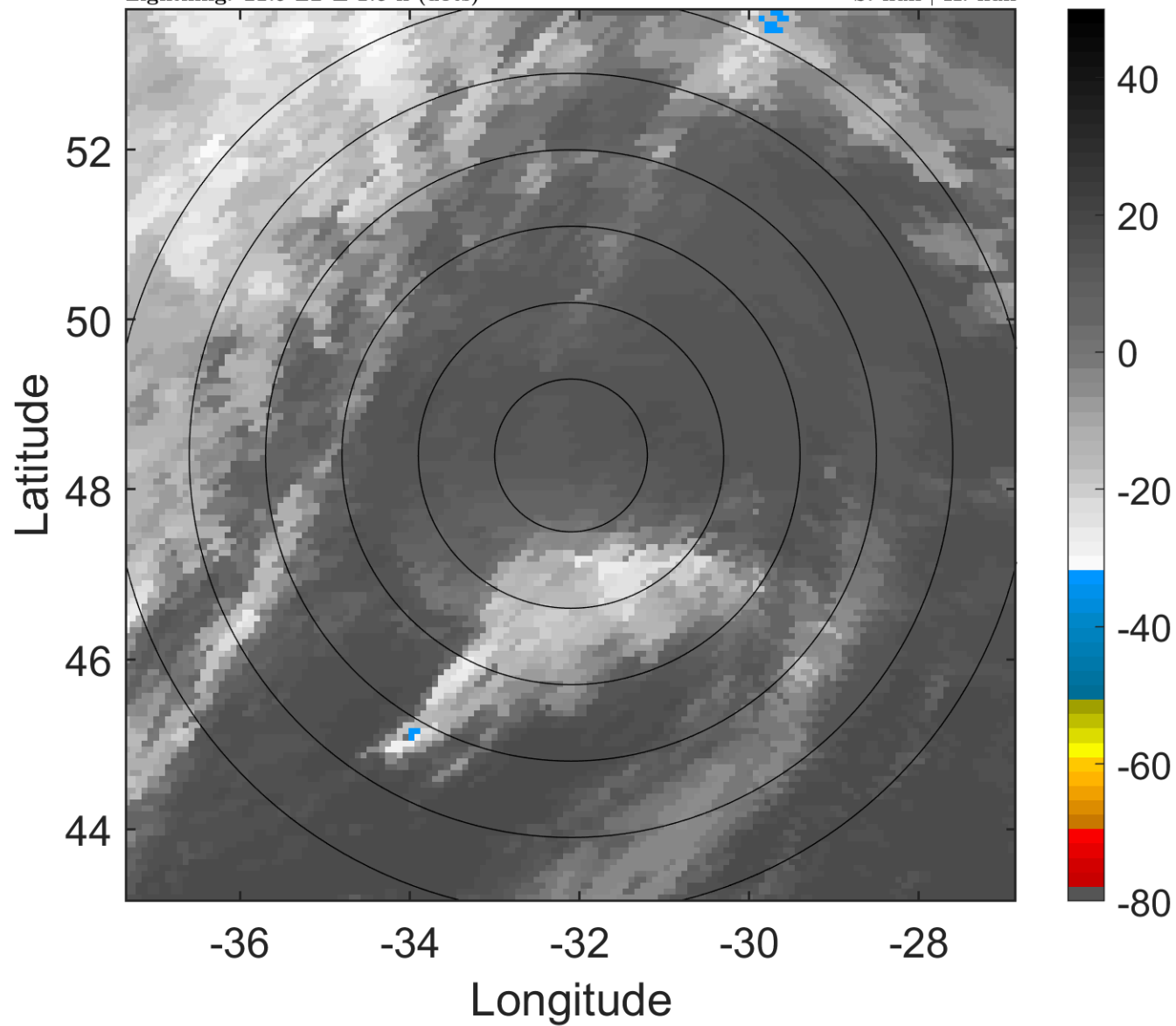
t: 2011072300 (21.9 LT)

Lightning: 21.9 LT  $\pm$  1.5 h (dots)

PT: LLCP | EA: INACT

03L (CINDY) | 40 kt LO

S: null | H: null



### 6-h IR BT Differences & Lightning

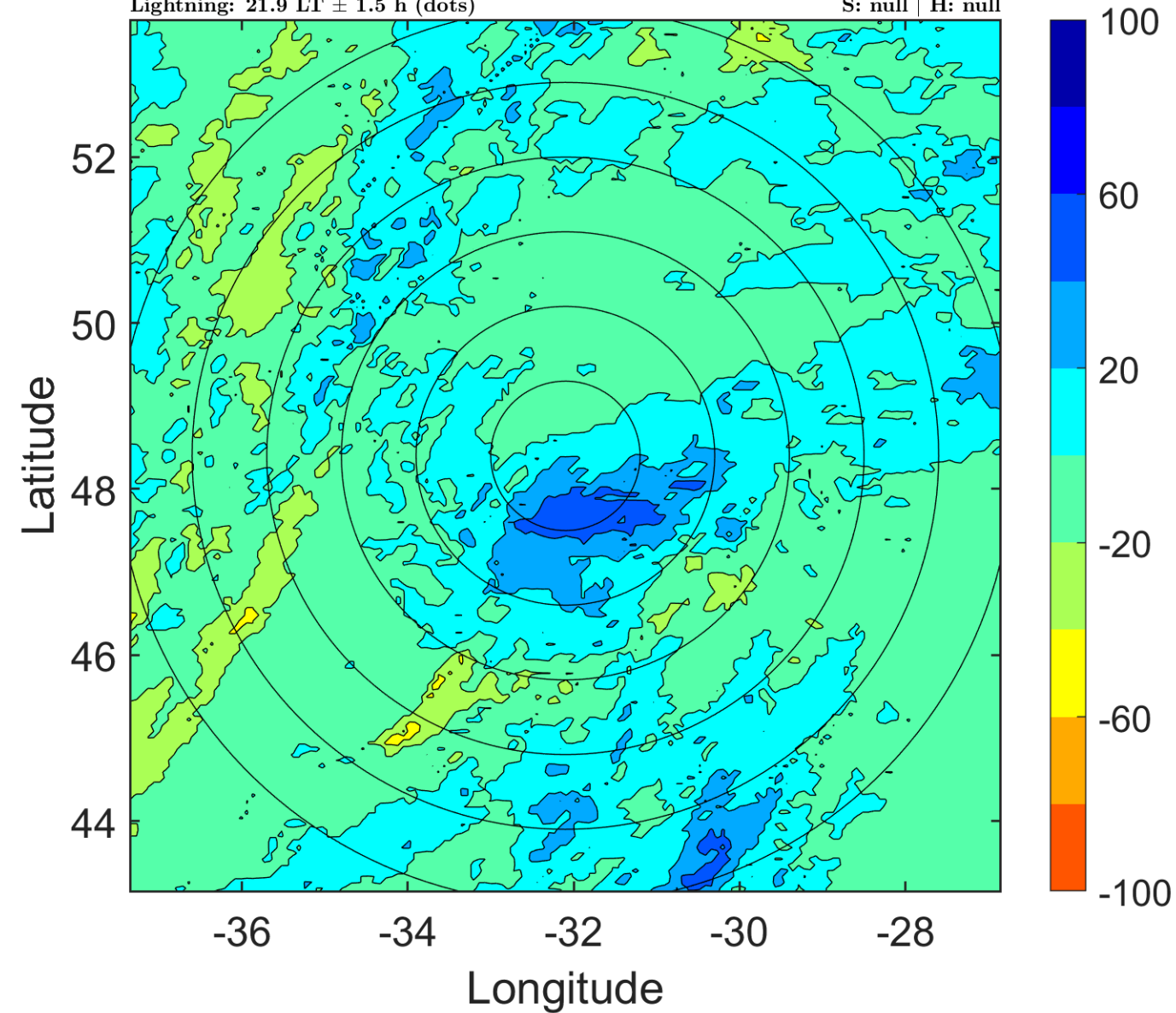
$\Delta$ t: 2011072300 (21.9 LT) - 2011072218 (15.6 LT)

Lightning: 21.9 LT  $\pm$  1.5 h (dots)

PT: LLCP | EA: INACT

03L (CINDY) | 40 kt LO

S: null | H: null



### IR BT & Lightning

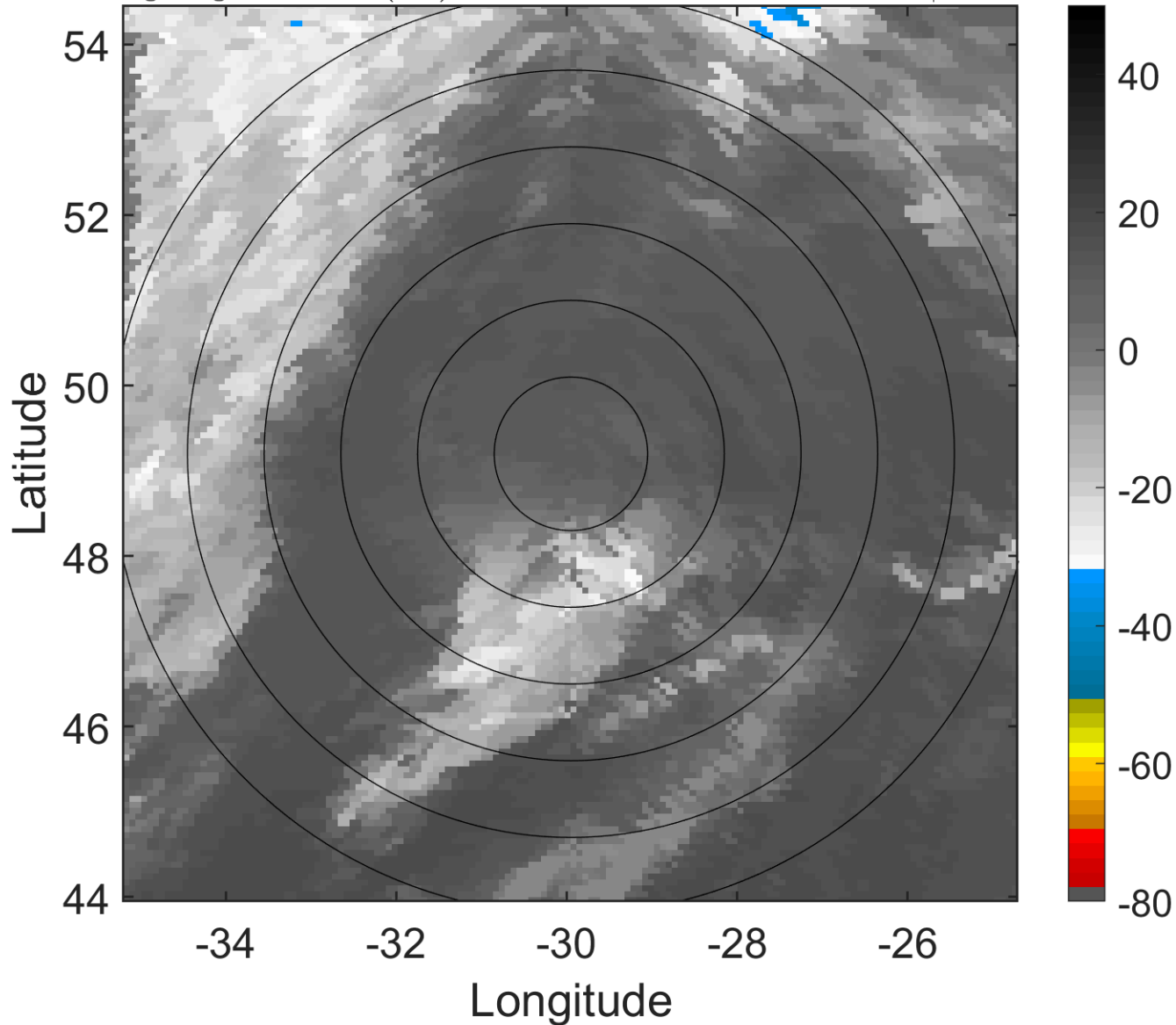
t: 2011072303 (1 LT)

Lightning: 1 LT  $\pm$  1.5 h (dots)

PT: NP | EA: INACT

03L (CINDY) | 37.5 kt LO

S: null | H: null



### 6-h IR BT Differences & Lightning

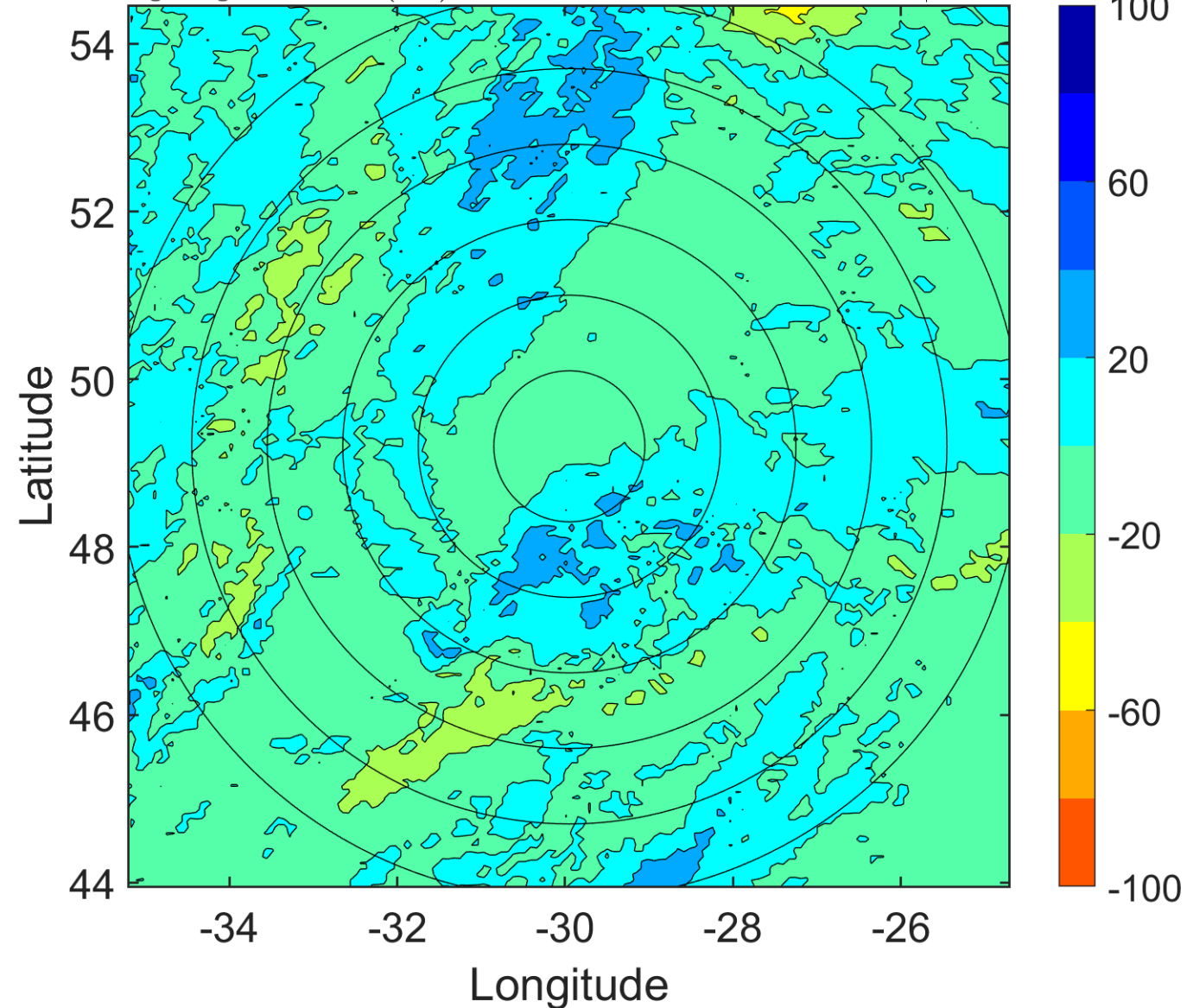
$\Delta$ t: 2011072303 (1 LT) - 2011072221 (18.7 LT)

Lightning: 1 LT  $\pm$  1.5 h (dots)

PT: NP | EA: INACT

03L (CINDY) | 37.5 kt LO

S: null | H: null



### IR BT & Lightning

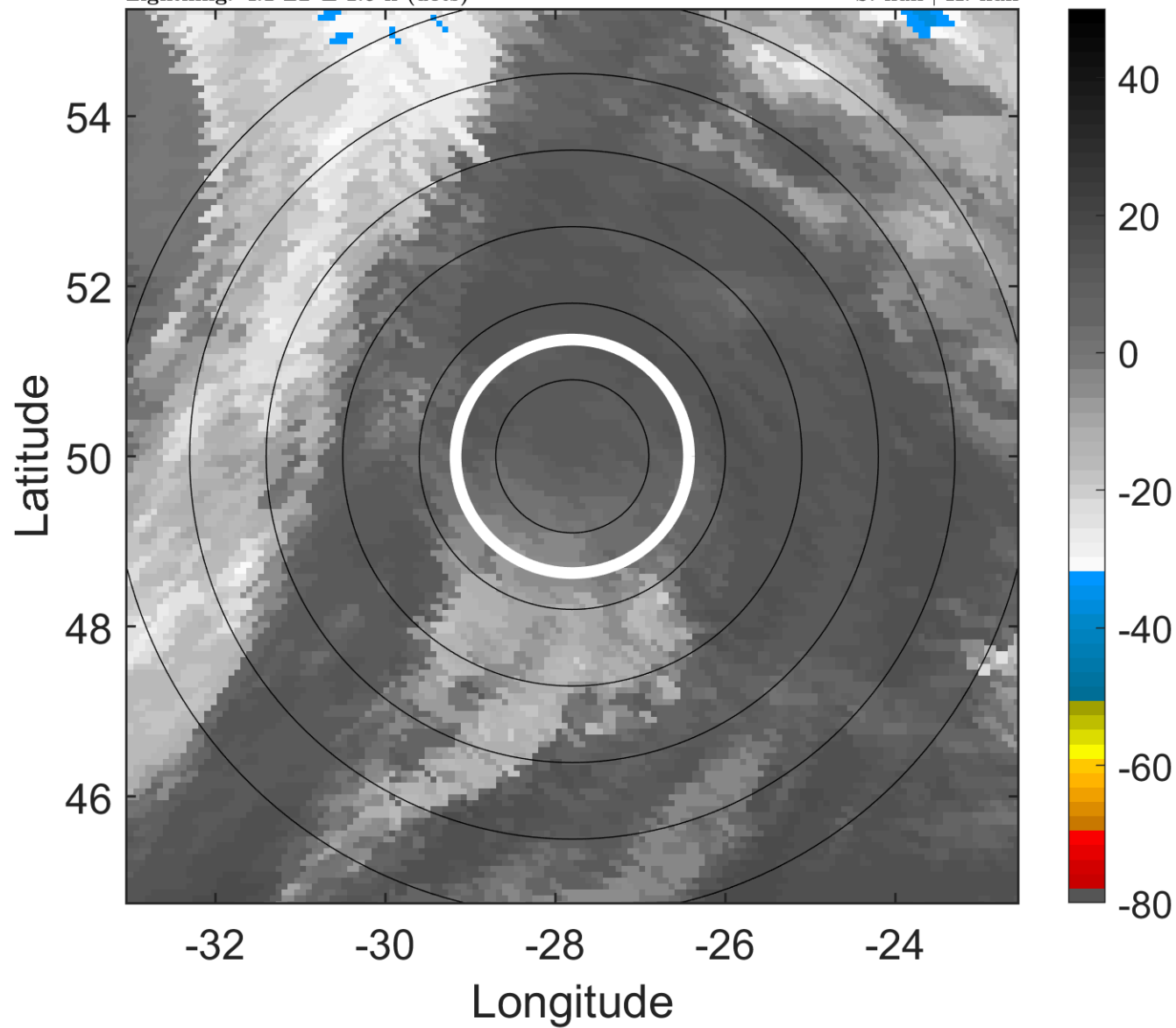
t: 2011072306 (4.1 LT)

Lightning: 4.1 LT  $\pm$  1.5 h (dots)

PT: NP | EA: INACT

03L (CINDY) | 35 kt LO

S: null | H: null



### 6-h IR BT Differences & Lightning

$\Delta$ t: 2011072306 (4.1 LT) - 2011072300 (21.9 LT)

Lightning: 4.1 LT  $\pm$  1.5 h (dots)

PT: NP | EA: INACT

03L (CINDY) | 35 kt LO

S: null | H: null

