

IR BT & Lightning

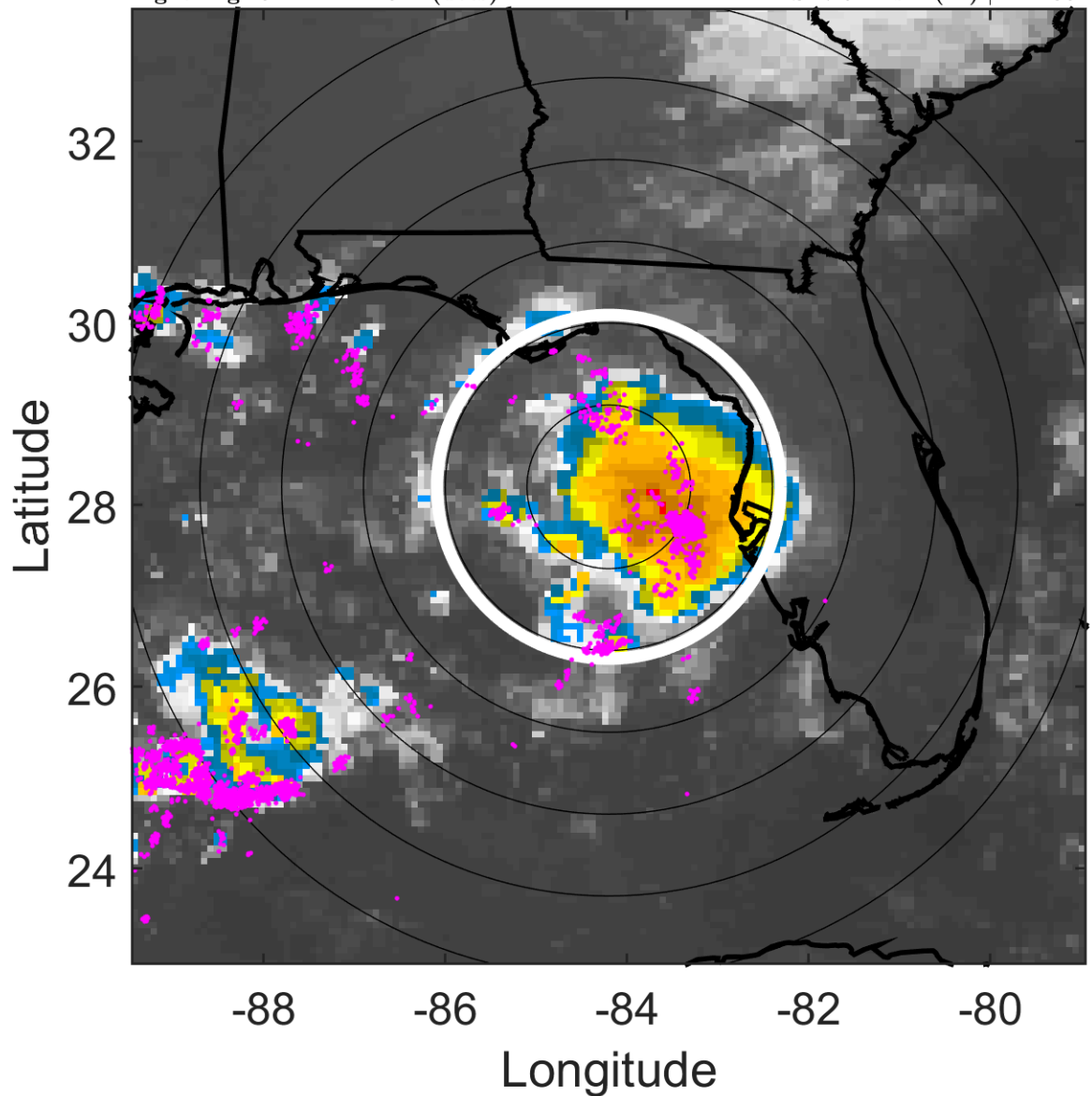
t: 2009081612 (6.4 LT)

Lightning: 6.4 LT \pm 1.5 h (dots)

PT: LLCP | EA: ACT

04L (CLAUDETTE) | 35 kt TS

S: 7.9 m s⁻¹ (M) | H: 105°



6-h IR BT Differences & Lightning

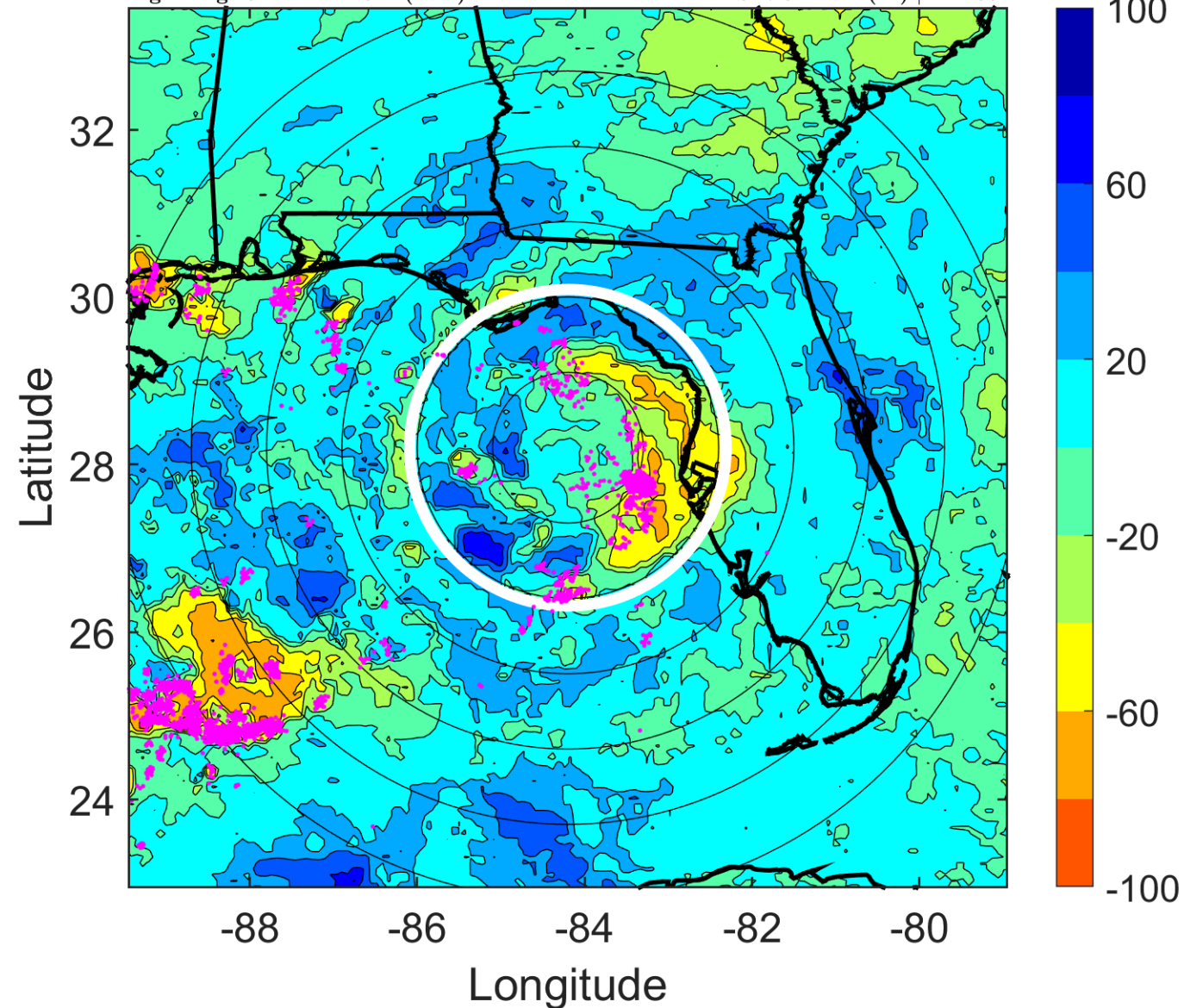
Δ t: 2009081612 (6.4 LT) - 2009081606 (0.4 LT)

Lightning: 6.4 LT \pm 1.5 h (dots)

PT: LLCP | EA: ACT

04L (CLAUDETTE) | 35 kt TS

S: 7.9 m s⁻¹ (M) | H: 105°



IR BT & Lightning

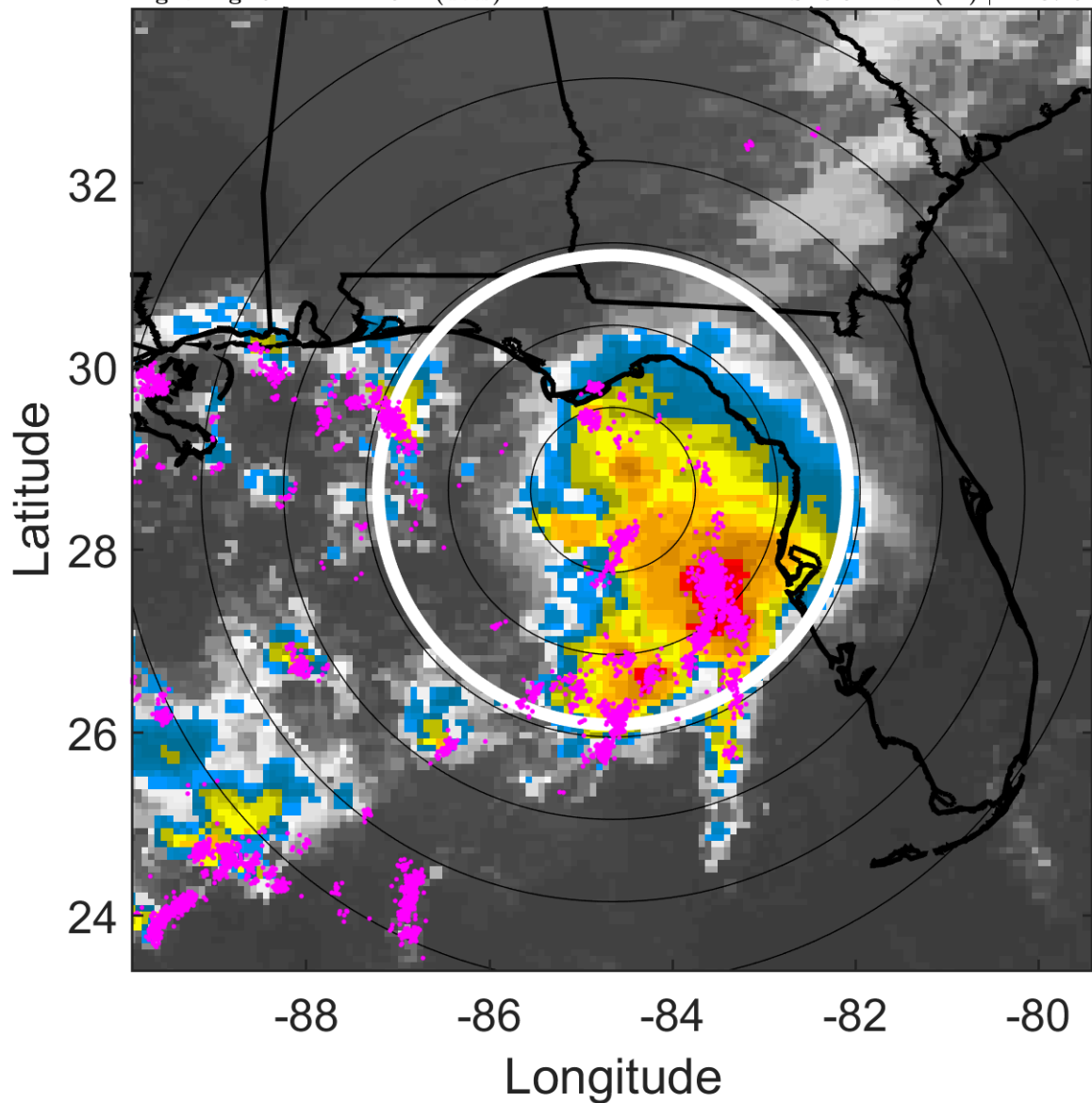
t: 2009081615 (9.4 LT)

Lightning: 9.4 LT \pm 1.5 h (dots)

PT: LLCP | EA: ACT

04L (CLAUDETTE) | 42.5 kt TS

S: 6.5 m s⁻¹ (M) | H: 87.5°



6-h IR BT Differences & Lightning

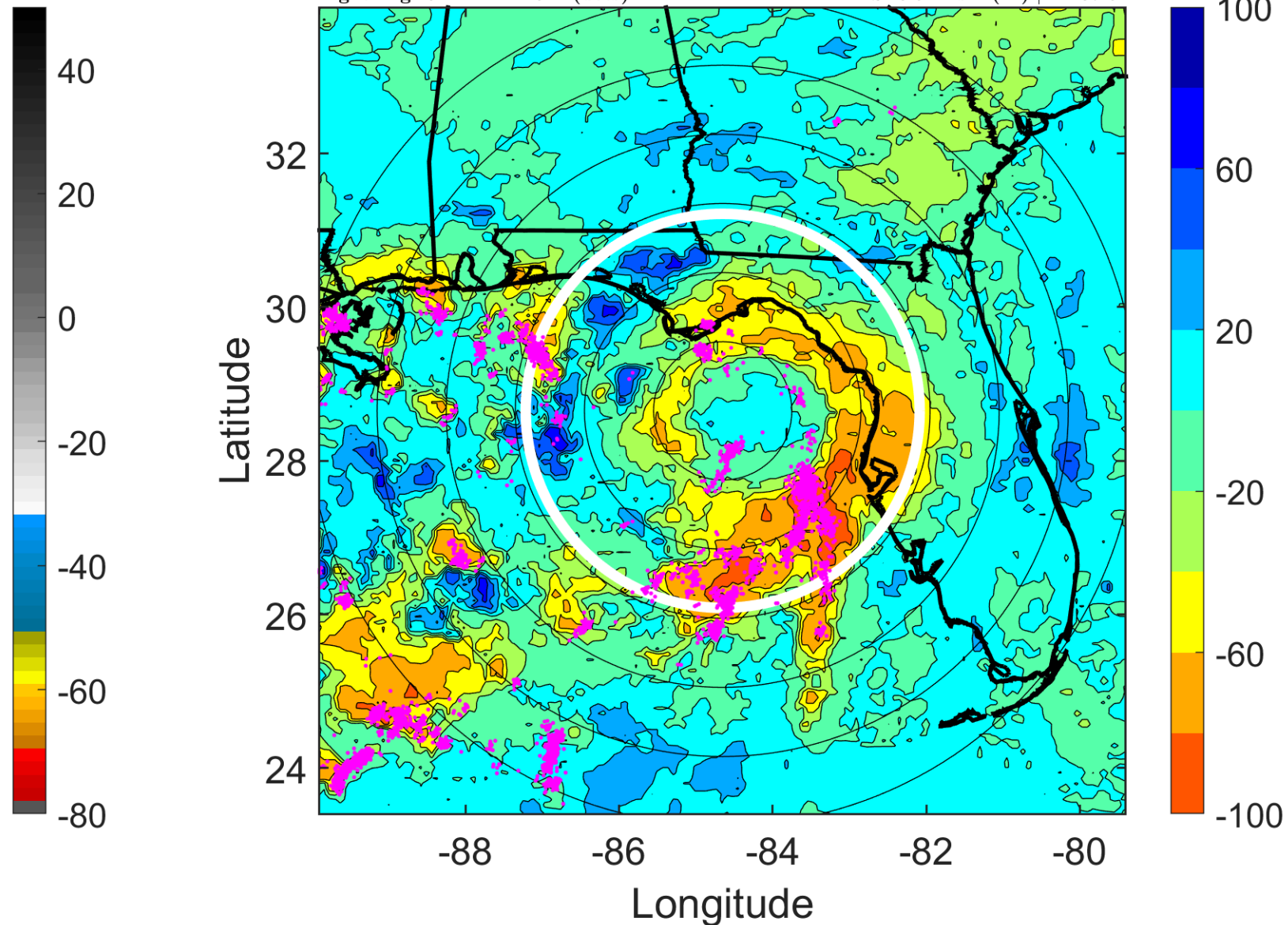
Δ t: 2009081615 (9.4 LT) - 2009081609 (3.4 LT)

Lightning: 9.4 LT \pm 1.5 h (dots)

PT: LLCP | EA: ACT

04L (CLAUDETTE) | 42.5 kt TS

S: 6.5 m s⁻¹ (M) | H: 87.5°



IR BT & Lightning

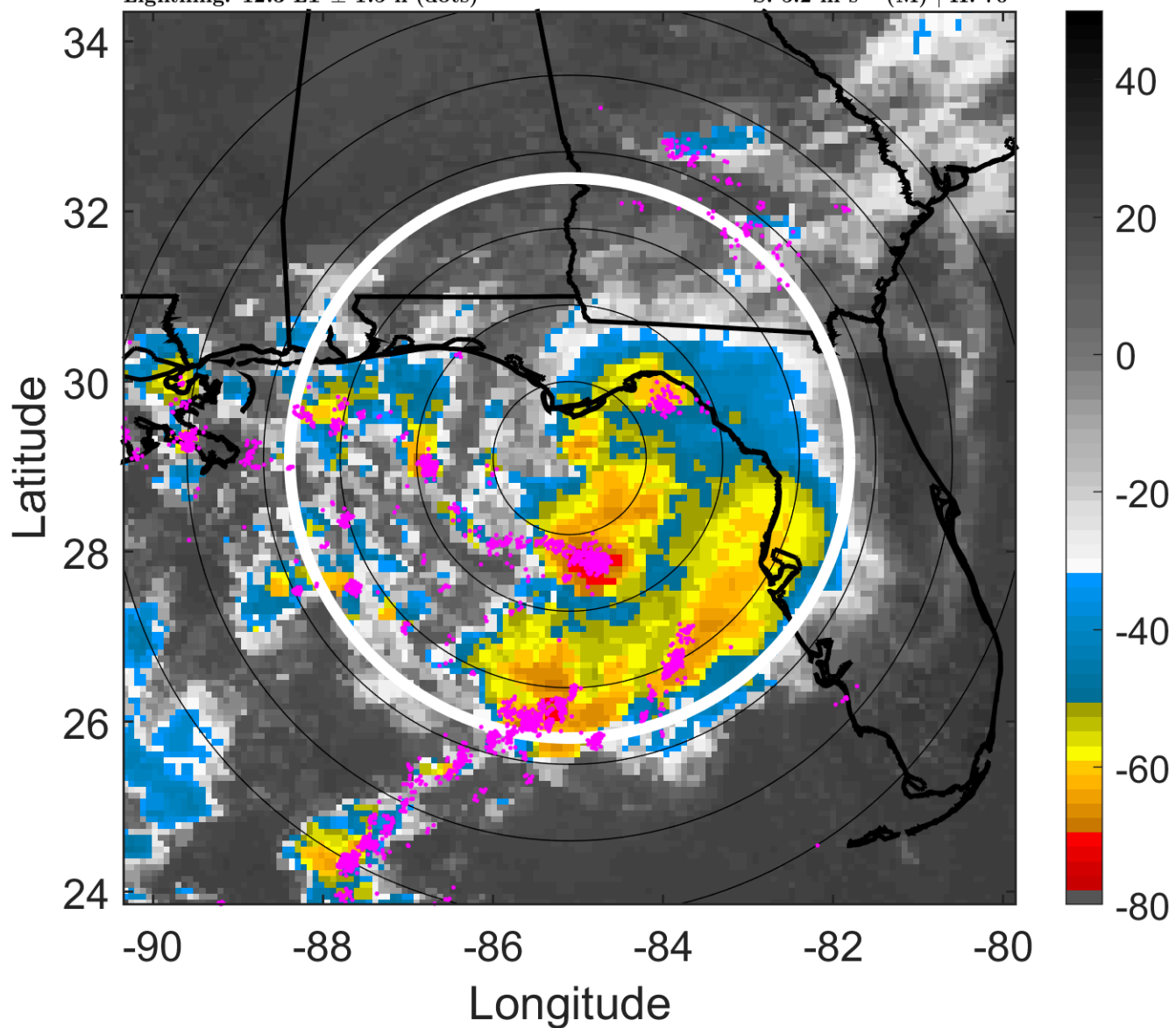
t: 2009081618 (12.3 LT)

Lightning: 12.3 LT \pm 1.5 h (dots)

PT: LLCP | EA: ACT

04L (CLAUDETTE) | 50 kt TS

S: 5.2 m s⁻¹ (M) | H: 70°



6-h IR BT Differences & Lightning

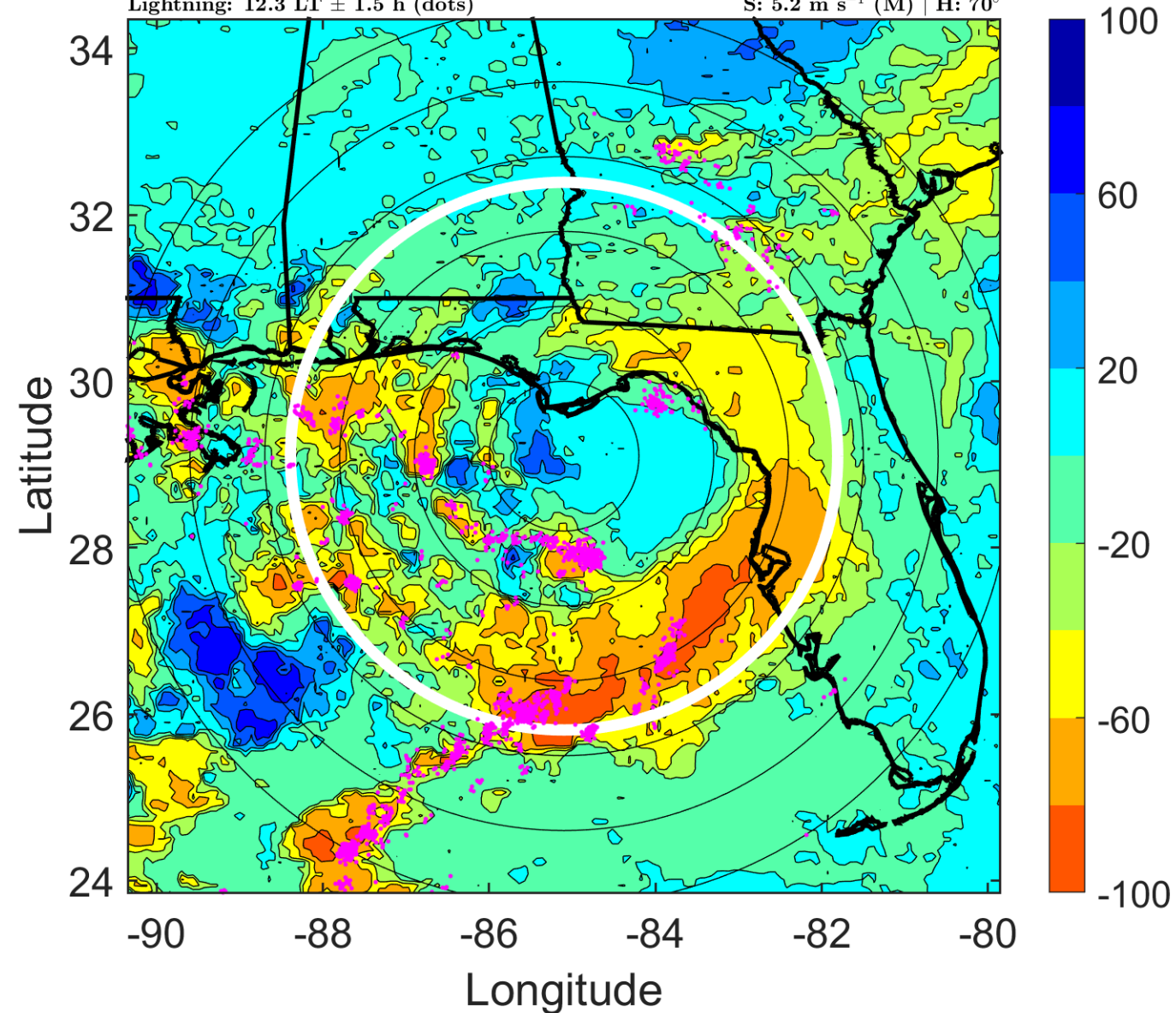
Δ t: 2009081618 (12.3 LT) - 2009081612 (6.4 LT)

Lightning: 12.3 LT \pm 1.5 h (dots)

PT: LLCP | EA: ACT

04L (CLAUDETTE) | 50 kt TS

S: 5.2 m s⁻¹ (M) | H: 70°



IR BT & Lightning

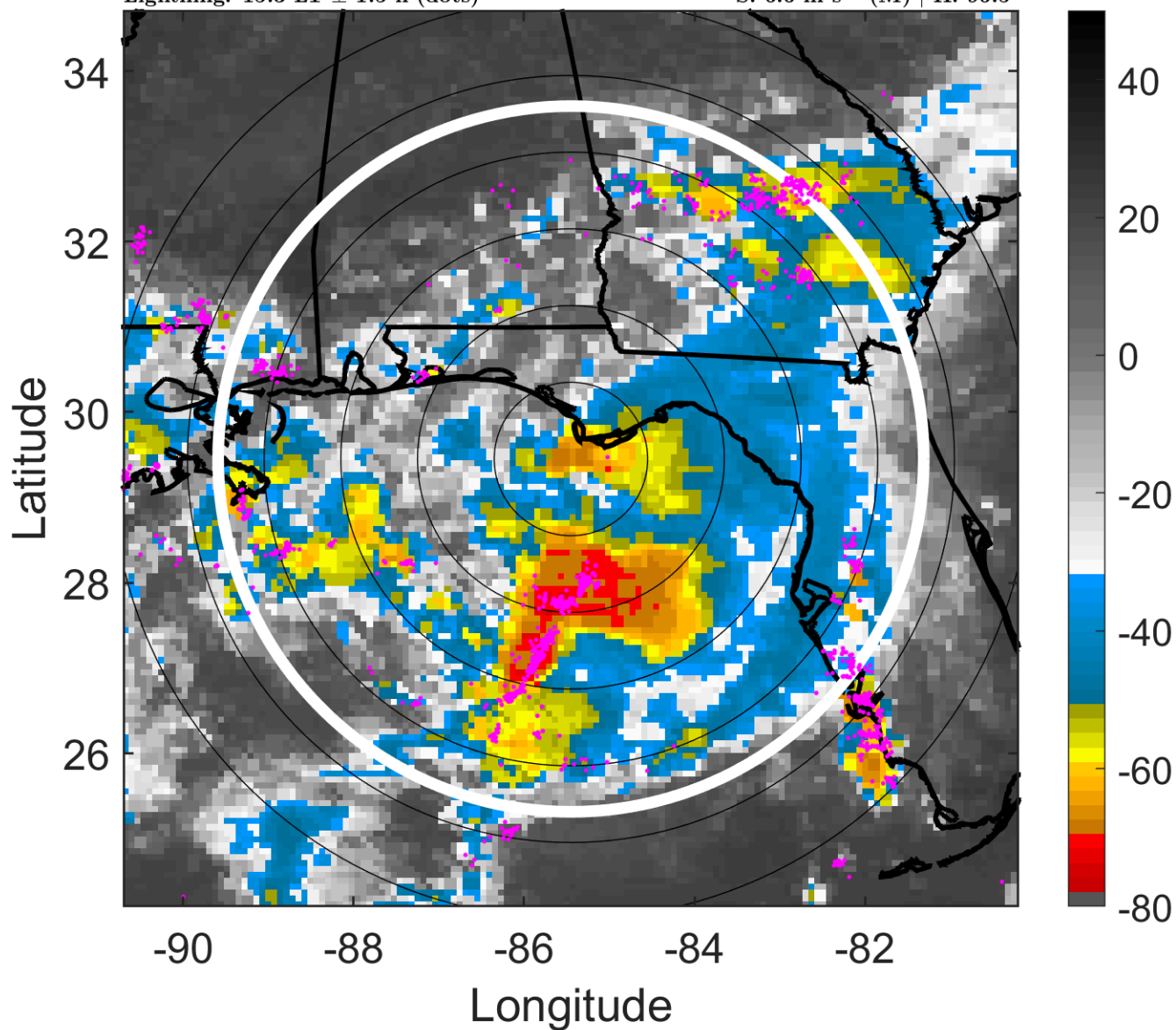
t: 2009081621 (15.3 LT)

Lightning: 15.3 LT \pm 1.5 h (dots)

PT: LLCP | EA: ACT

04L (CLAUDETTE) | 47.5 kt TS

S: 6.6 m s⁻¹ (M) | H: 96.5°



6-h IR BT Differences & Lightning

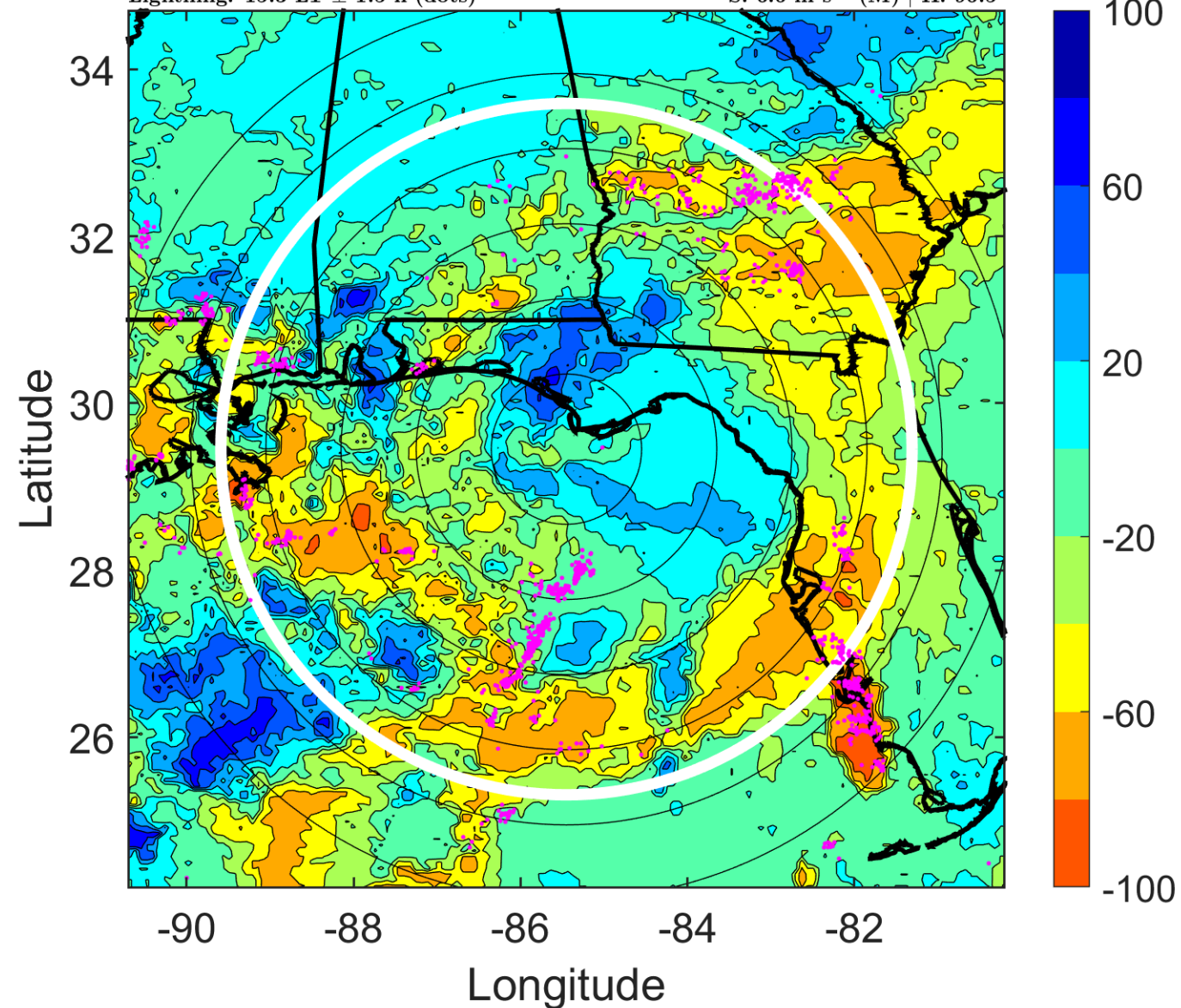
Δ t: 2009081621 (15.3 LT) - 2009081615 (9.4 LT)

Lightning: 15.3 LT \pm 1.5 h (dots)

PT: LLCP | EA: ACT

04L (CLAUDETTE) | 47.5 kt TS

S: 6.6 m s⁻¹ (M) | H: 96.5°



IR BT & Lightning

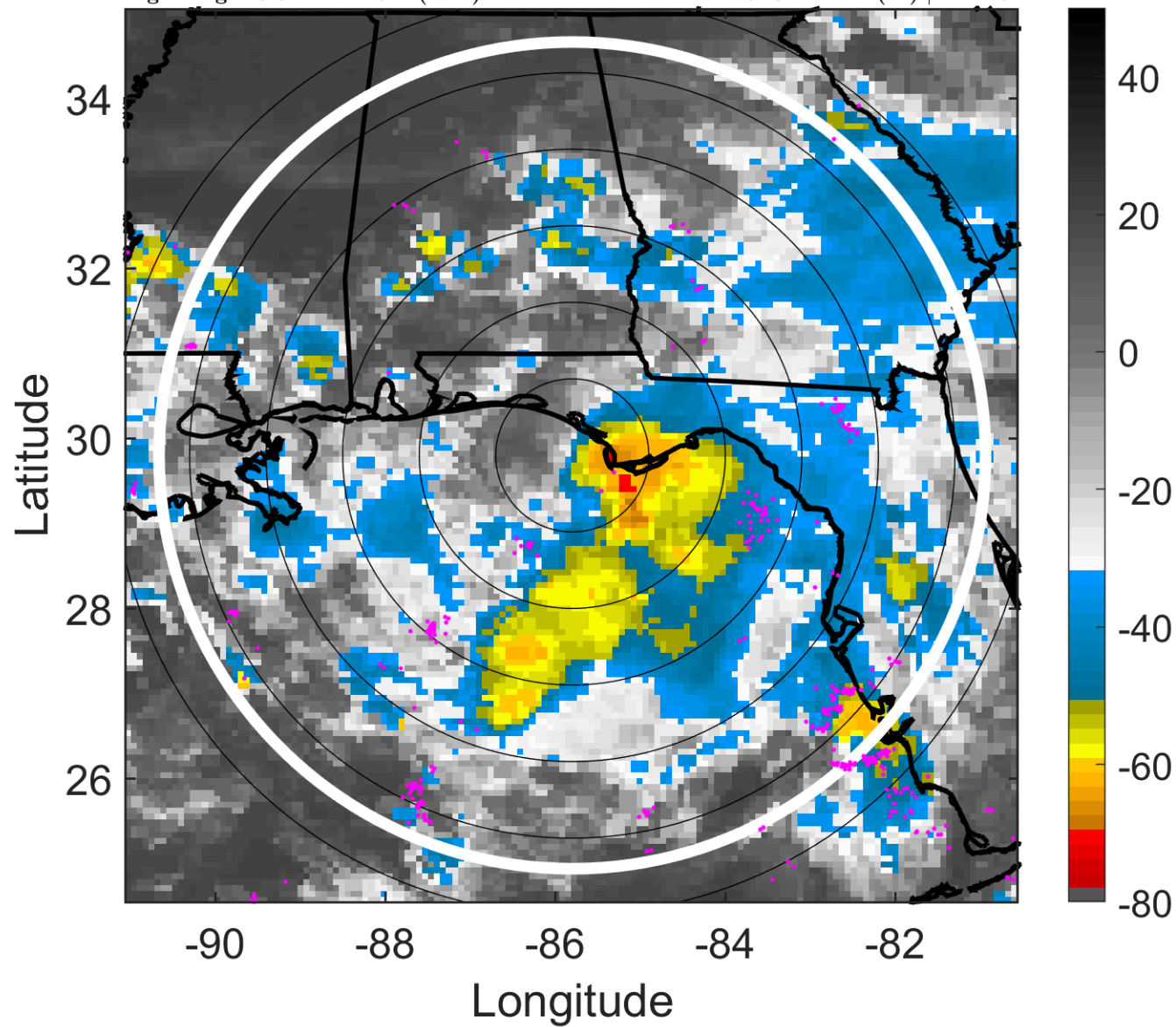
t: 2009081700 (18.3 LT)

Lightning: 18.3 LT \pm 1.5 h (dots)

PT: LLCP | EA: ACT

04L (CLAUDETTE) | 45 kt TS

S: 8.1 m s⁻¹ (M) | H: 123°



6-h IR BT Differences & Lightning

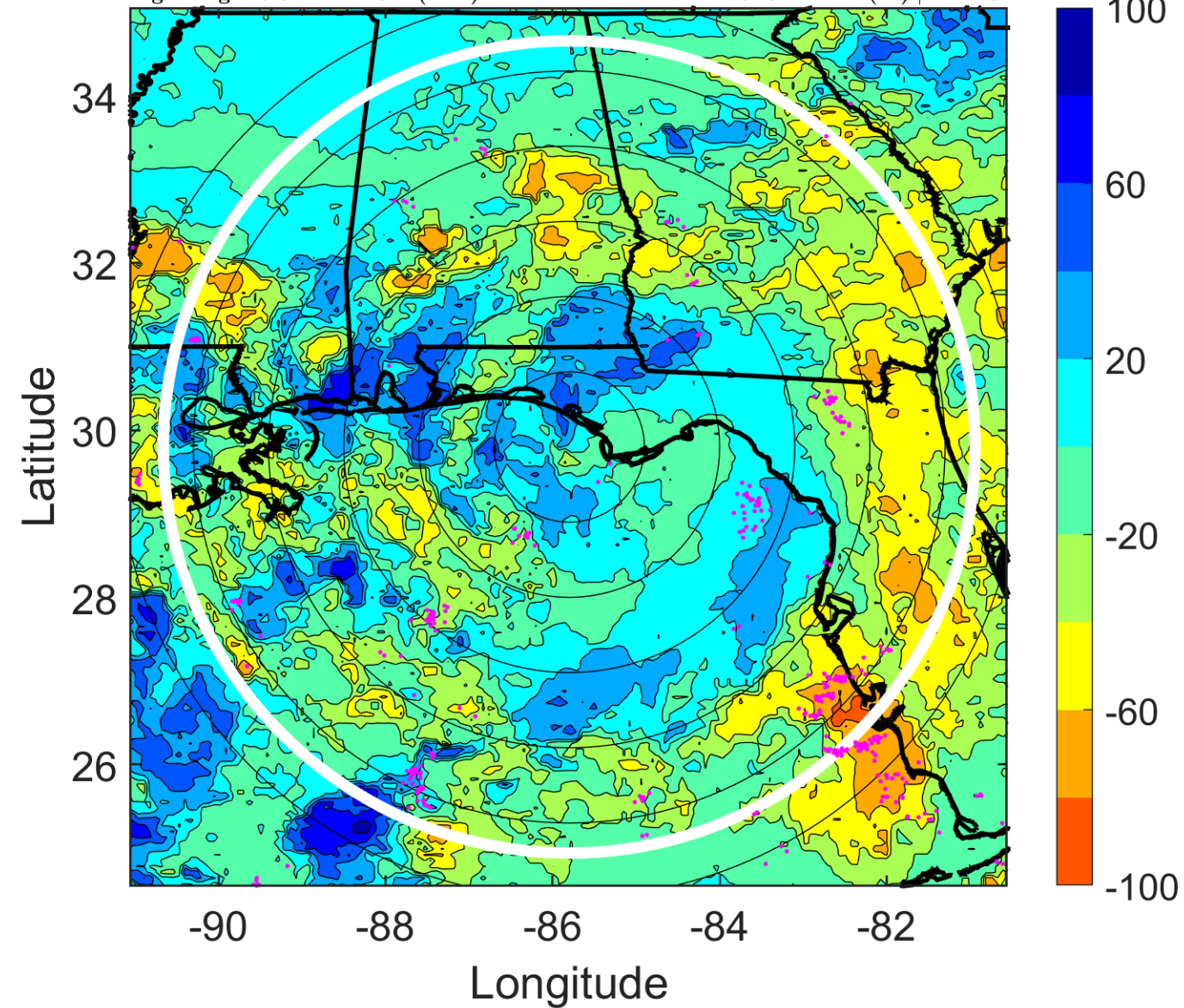
Δ t: 2009081700 (18.3 LT) - 2009081618 (12.3 LT)

Lightning: 18.3 LT \pm 1.5 h (dots)

PT: LLCP | EA: ACT

04L (CLAUDETTE) | 45 kt TS

S: 8.1 m s⁻¹ (M) | H: 123°



IR BT & Lightning

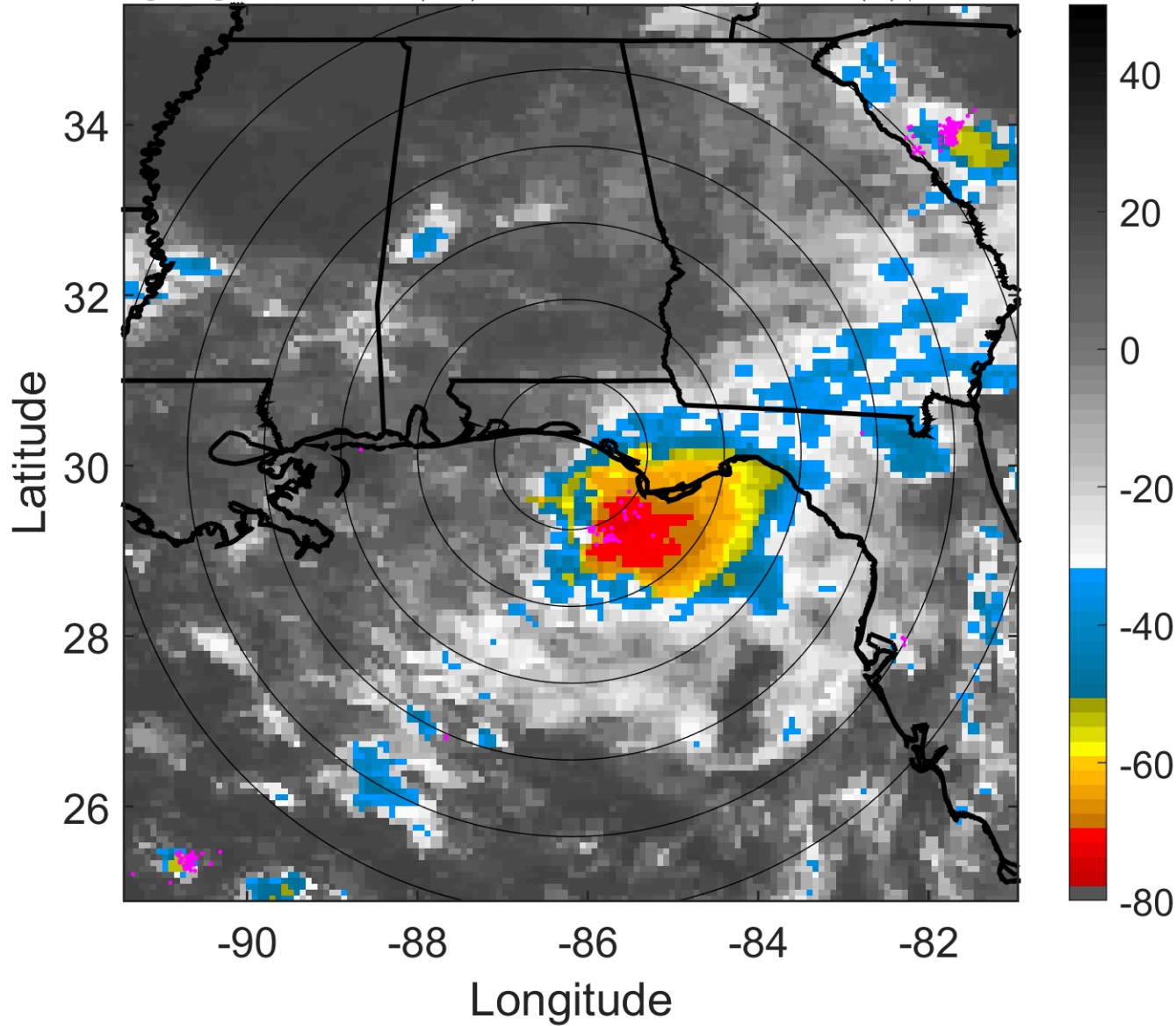
t: 2009081703 (21.3 LT)

Lightning: 21.3 LT \pm 1.5 h (dots)

PT: LLCP | EA: ACT

04L (CLAUDETTE) | 42.5 kt TS

S: 9.4 m s⁻¹ (M) | H: 131.5°



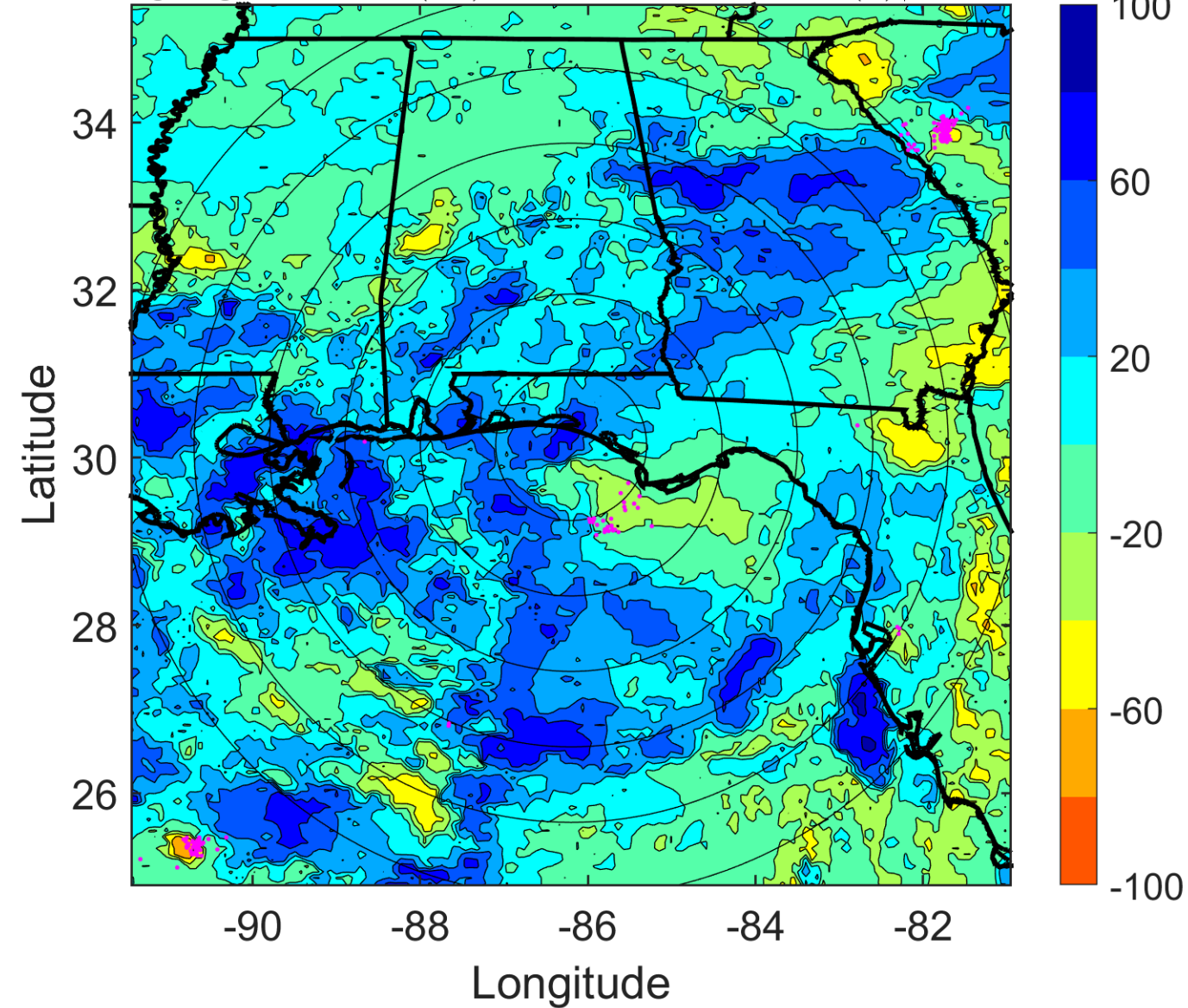
6-h IR BT Differences & Lightning

Δ t: 2009081703 (21.3 LT) - 2009081621 (15.3 LT) 04L (CLAUDETTE) | 42.5 kt TS

Lightning: 21.3 LT \pm 1.5 h (dots)

PT: LLCP | EA: ACT

S: 9.4 m s⁻¹ (M) | H: 131.5°



IR BT & Lightning

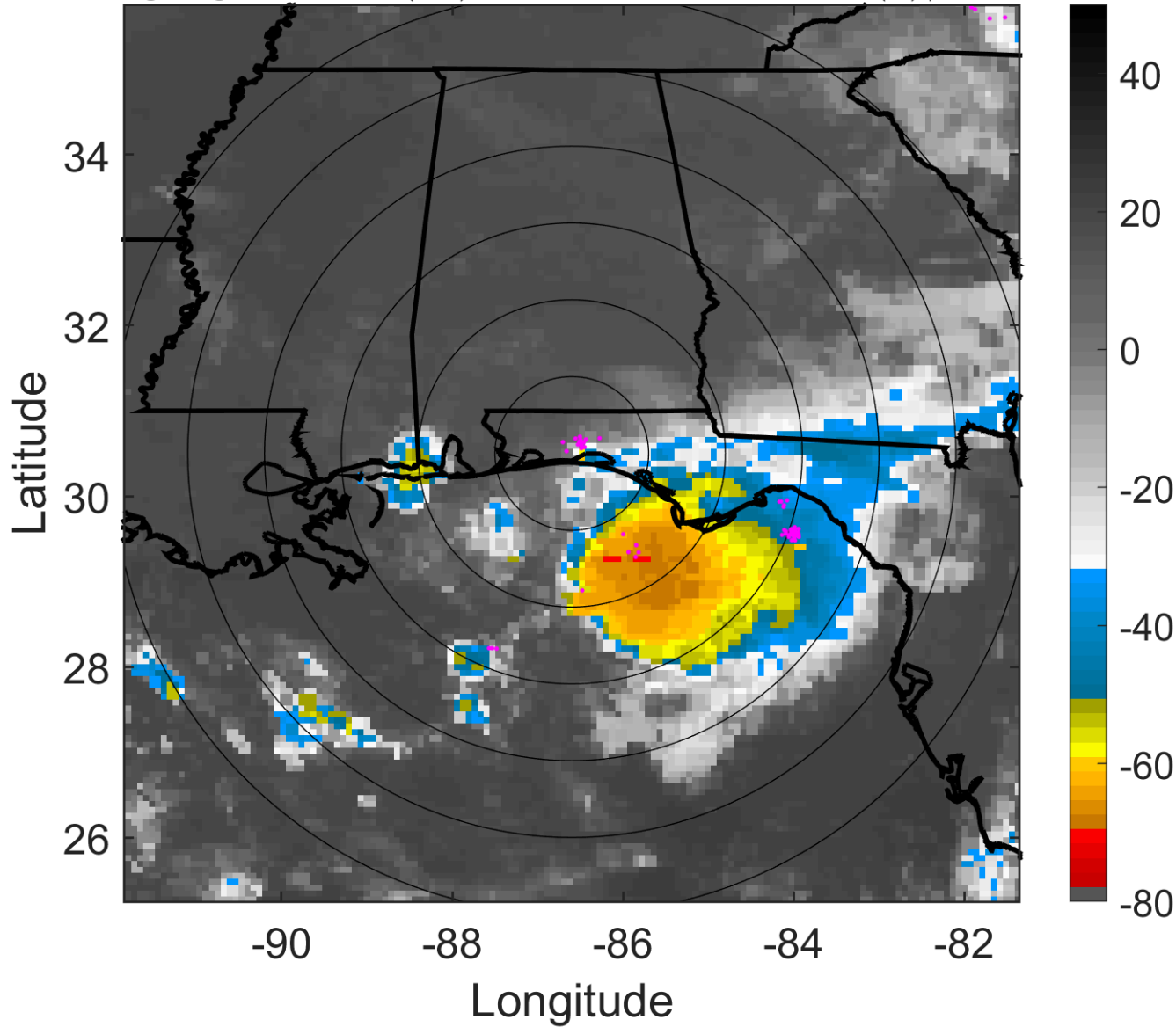
t: 2009081706 (0.2 LT)

Lightning: 0.2 LT \pm 1.5 h (dots)

LAND EFFECTS

04L (CLAUDETTE) | 40 kt TS

S: 10.6 m s⁻¹ (M) | H: 140°



6-h IR BT Differences & Lightning

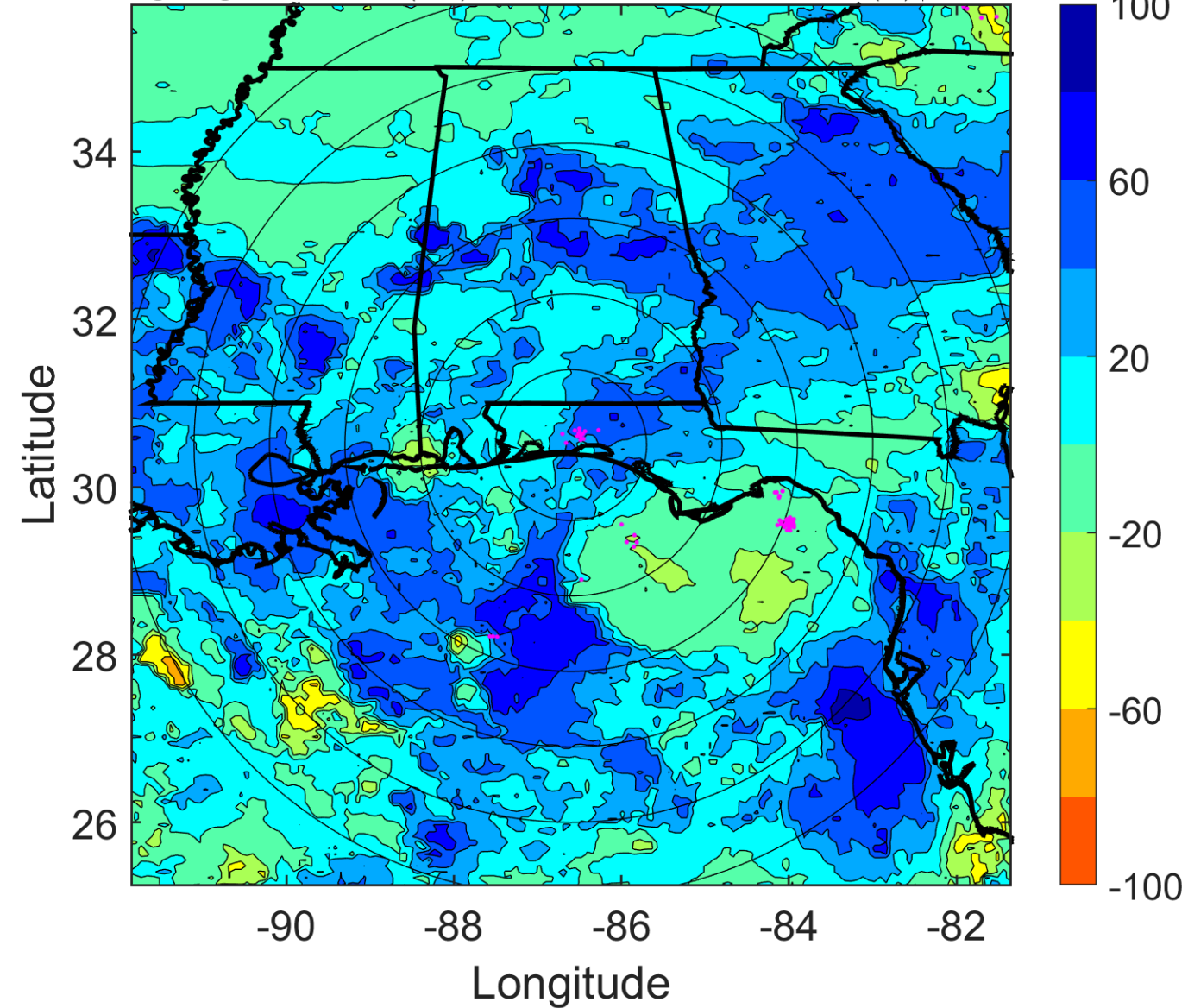
Δ t: 2009081706 (0.2 LT) - 2009081700 (18.3 LT)

Lightning: 0.2 LT \pm 1.5 h (dots)

LAND EFFECTS

04L (CLAUDETTE) | 40 kt TS

S: 10.6 m s⁻¹ (M) | H: 140°



IR BT & Lightning

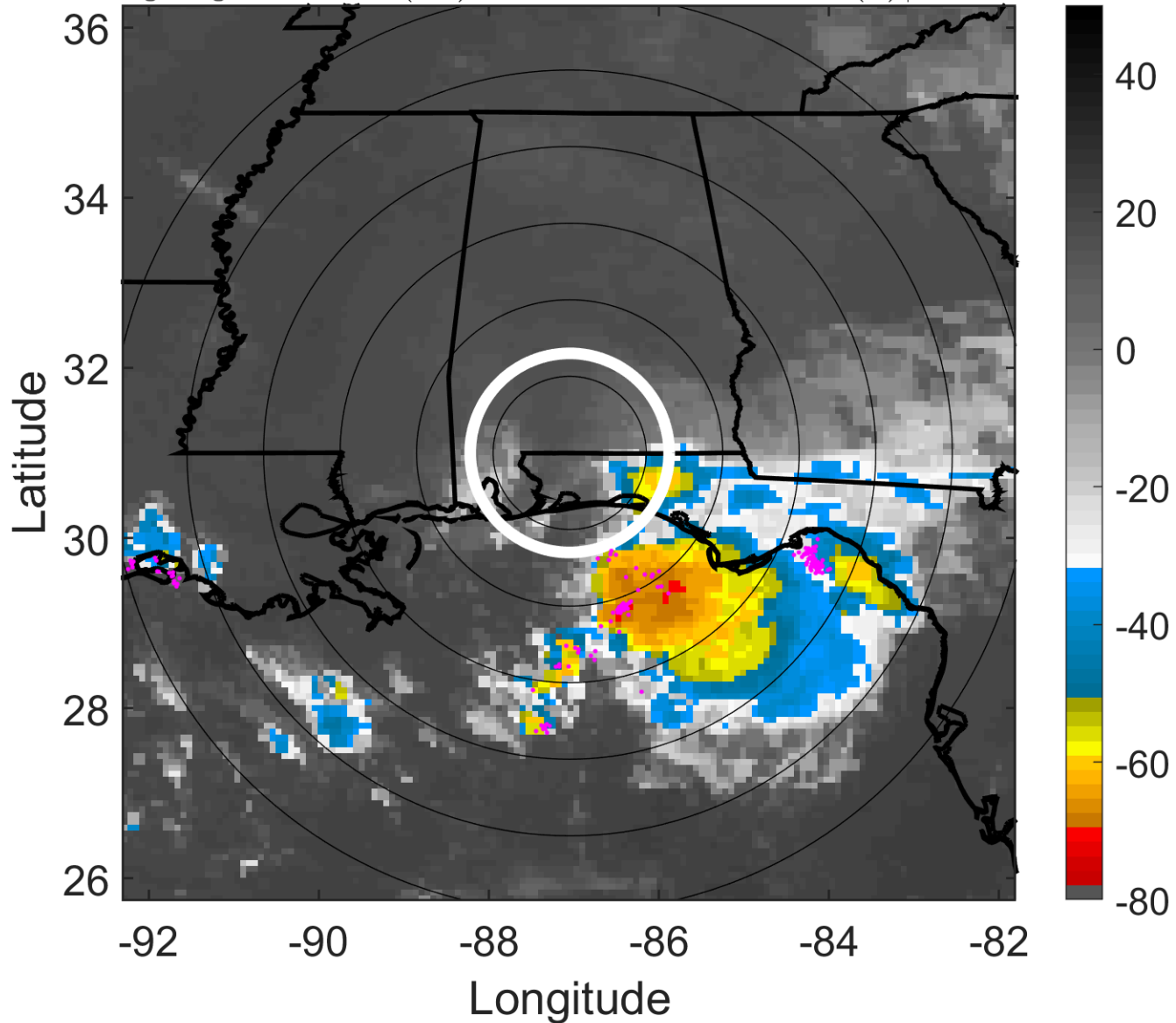
t: 2009081709 (3.2 LT)

Lightning: 3.2 LT \pm 1.5 h (dots)

LAND EFFECTS

04L (CLAUDETTE) | 32.5 kt TD

S: 8.6 m s⁻¹ (M) | H: 142.5°



6-h IR BT Differences & Lightning

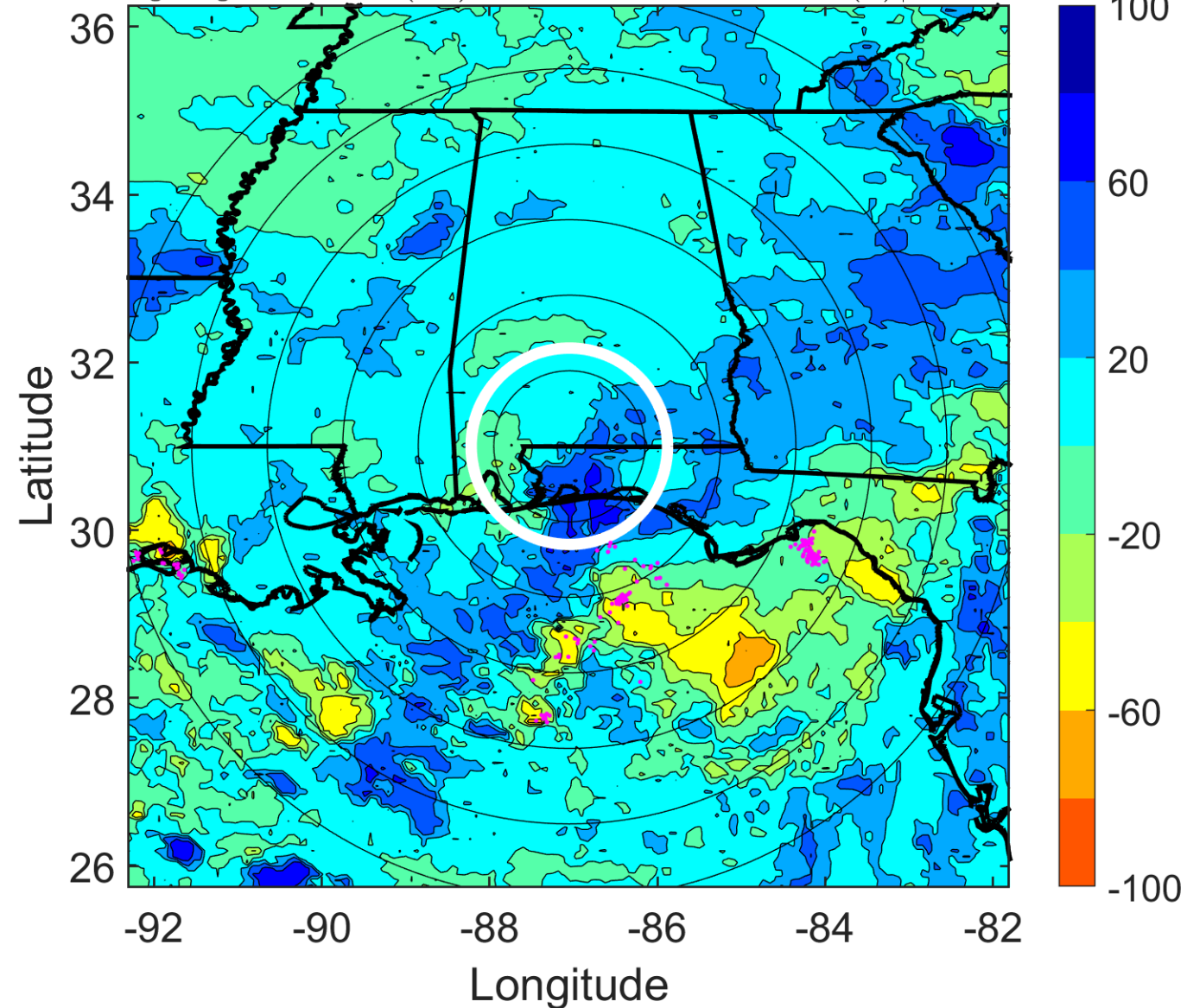
Δ t: 2009081709 (3.2 LT) - 2009081703 (21.3 LT)

Lightning: 3.2 LT \pm 1.5 h (dots)

LAND EFFECTS

04L (CLAUDETTE) | 32.5 kt TD

S: 8.6 m s⁻¹ (M) | H: 142.5°



IR BT & Lightning

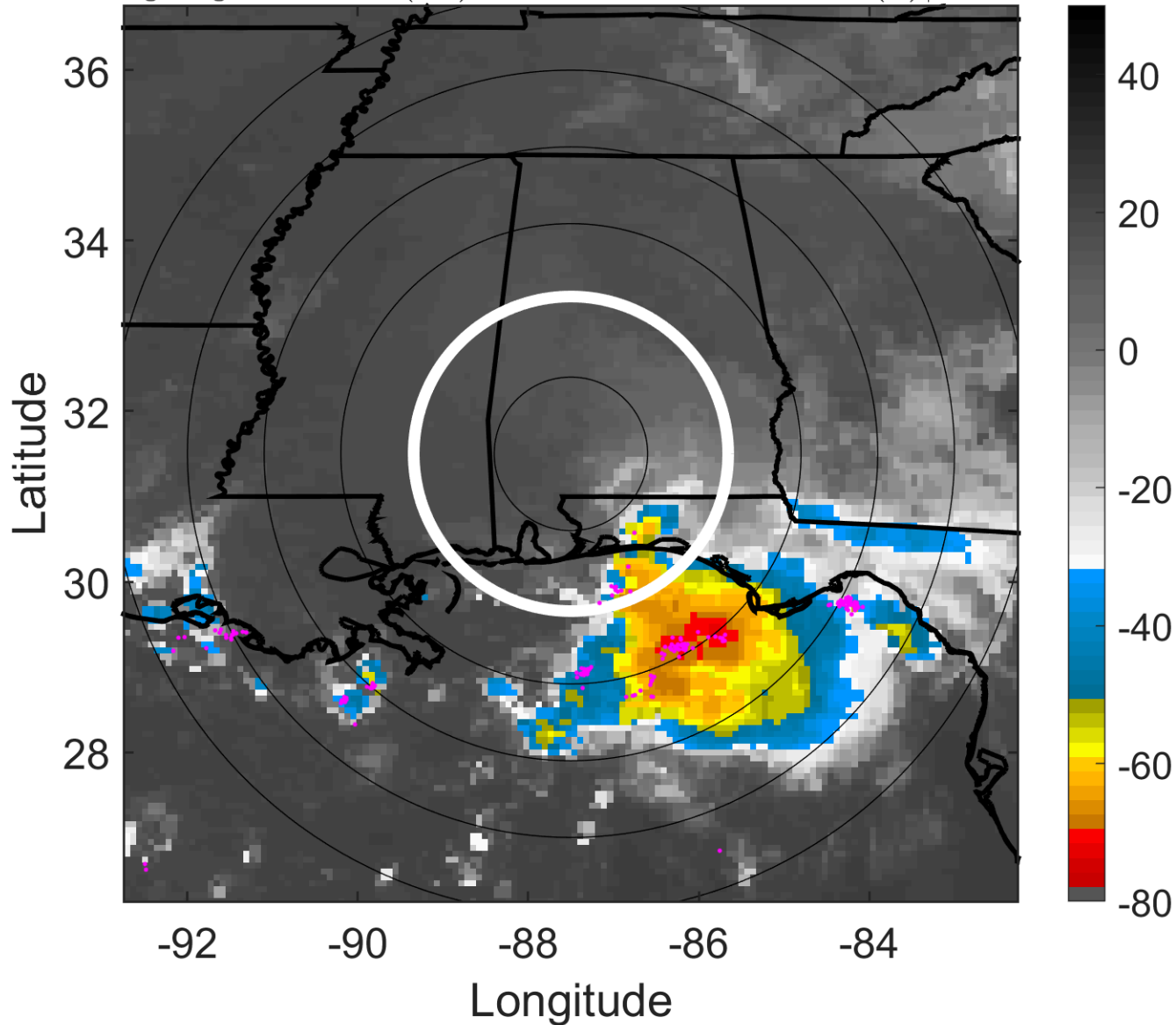
t: 2009081712 (6.2 LT)

Lightning: 6.2 LT \pm 1.5 h (dots)

LAND EFFECTS

04L (CLAUDETTE) | 25 kt TD

S: 6.6 m s⁻¹ (M) | H: 145°



6-h IR BT Differences & Lightning

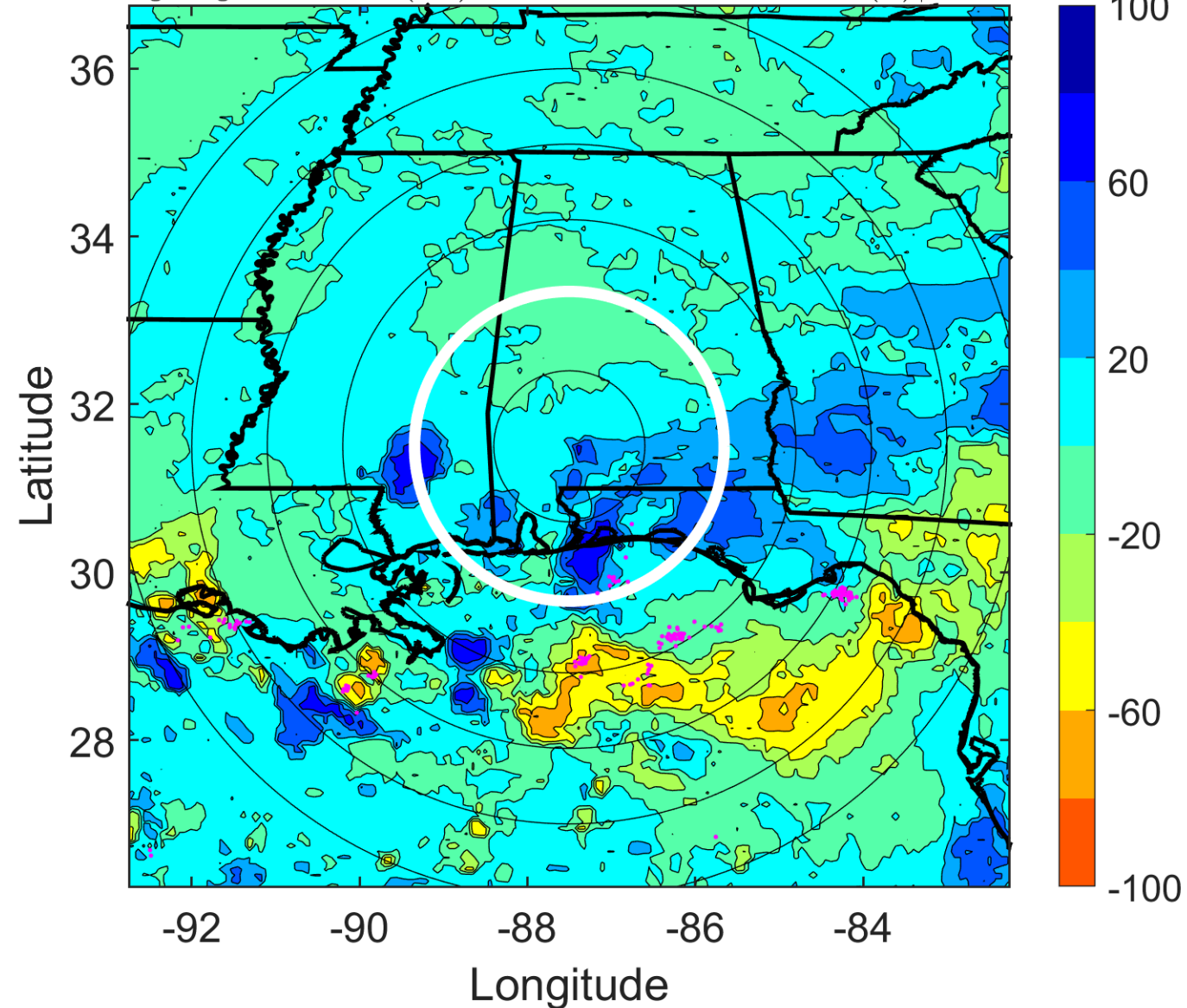
Δ t: 2009081712 (6.2 LT) - 2009081706 (0.2 LT)

Lightning: 6.2 LT \pm 1.5 h (dots)

LAND EFFECTS

04L (CLAUDETTE) | 25 kt TD

S: 6.6 m s⁻¹ (M) | H: 145°



IR BT & Lightning

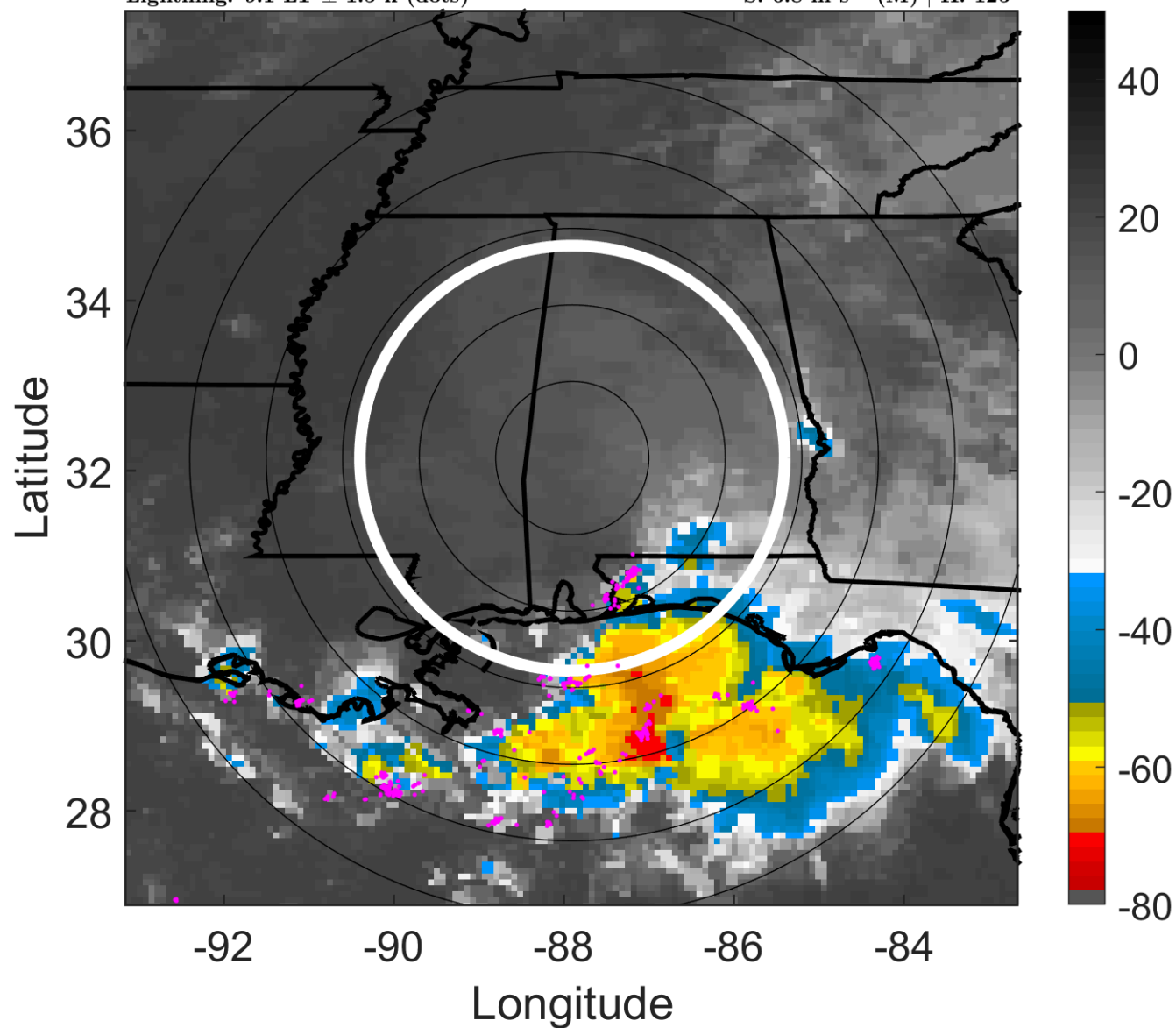
t: 2009081715 (9.1 LT)

Lightning: 9.1 LT \pm 1.5 h (dots)

LAND EFFECTS

04L (CLAUDETTE) | 22.5 kt TD

S: 6.8 m s⁻¹ (M) | H: 125°



6-h IR BT Differences & Lightning

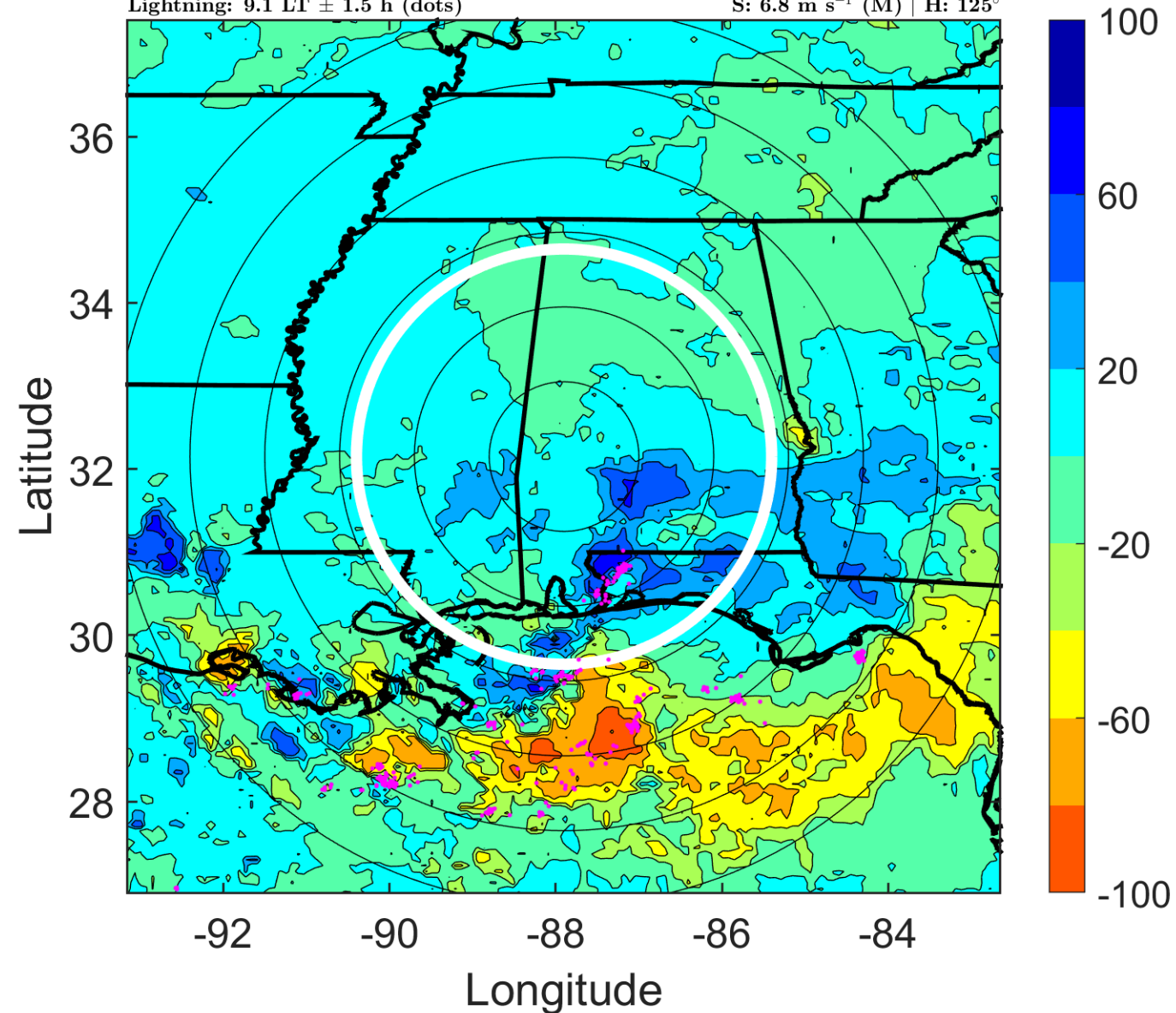
Δ t: 2009081715 (9.1 LT) - 2009081709 (3.2 LT)

Lightning: 9.1 LT \pm 1.5 h (dots)

LAND EFFECTS

04L (CLAUDETTE) | 22.5 kt TD

S: 6.8 m s⁻¹ (M) | H: 125°



IR BT & Lightning

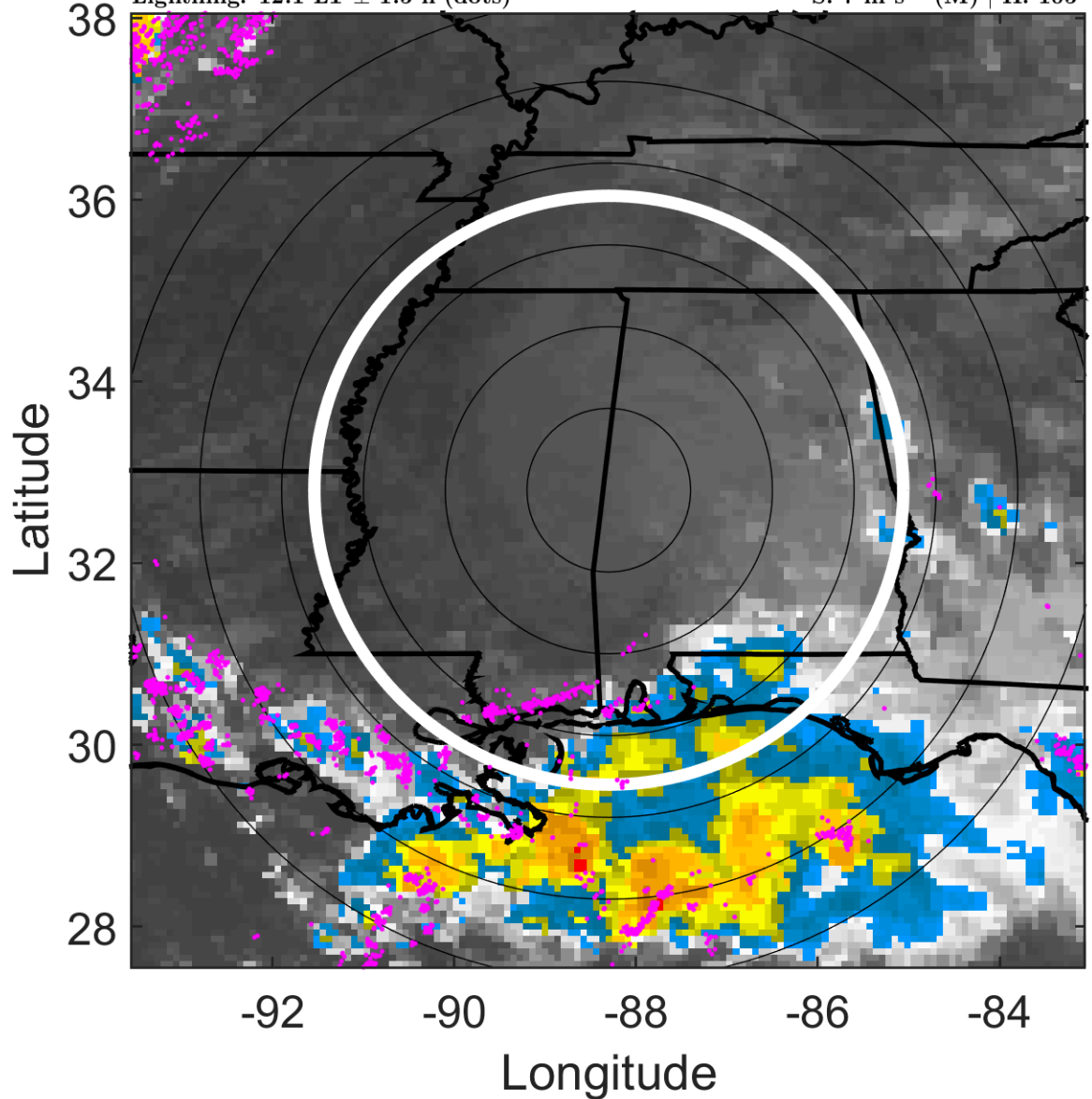
t: 2009081718 (12.1 LT)

Lightning: 12.1 LT \pm 1.5 h (dots)

LAND EFFECTS

04L (CLAUDETTE) | 20 kt TD

S: 7 m s⁻¹ (M) | H: 105°



6-h IR BT Differences & Lightning

Δ t: 2009081718 (12.1 LT) - 2009081712 (6.2 LT)

Lightning: 12.1 LT \pm 1.5 h (dots)

LAND EFFECTS

04L (CLAUDETTE) | 20 kt TD

S: 7 m s⁻¹ (M) | H: 105°

