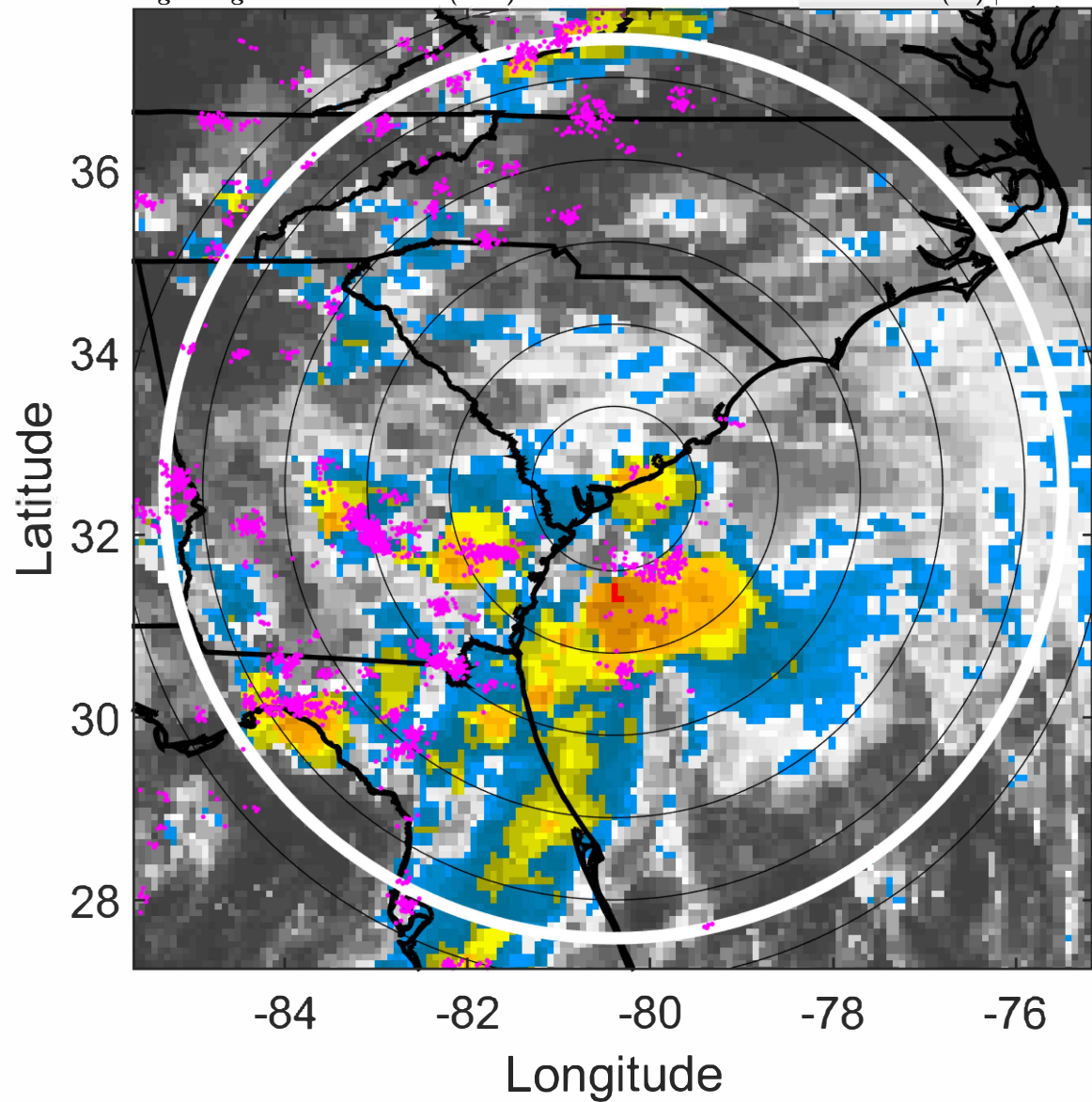


### IR BT & Lightning

t: 2022070200 (18.6 LT)  
Lightning: 18.6 LT  $\pm$  1.5 h (dots)

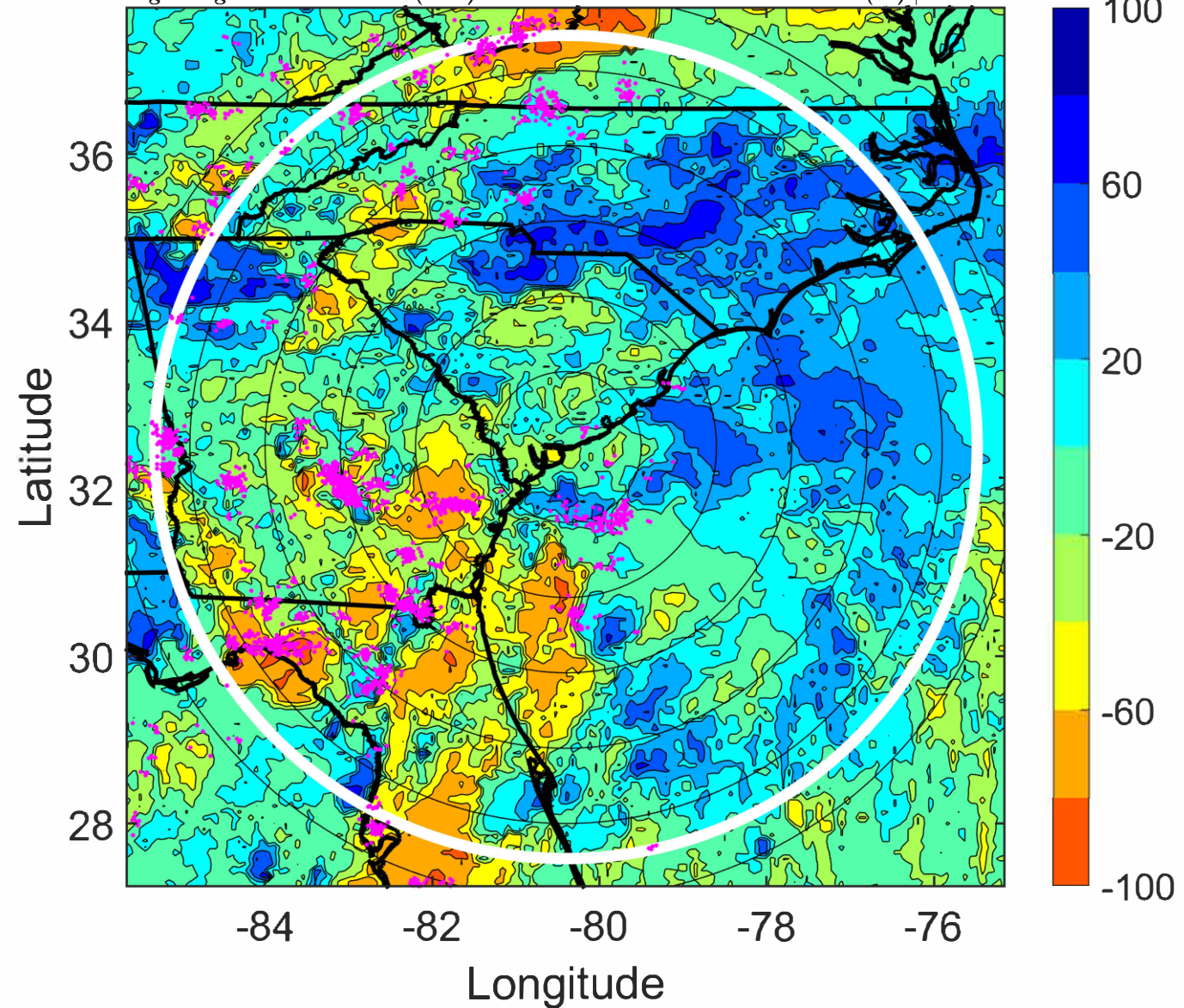
PT: SLCP | EA: QUASI  
03L (COLIN) | 35 kt TS  
S: 6.9 m s<sup>-1</sup> (M) | H: 128°



### 6-h IR BT Differences & Lightning

$\Delta$ t: 2022070200 (18.6 LT) - 2022070118 (12.6 LT)  
Lightning: 18.6 LT  $\pm$  1.5 h (dots)

PT: SLCP | EA: QUASI  
03L (COLIN) | 35 kt TS  
S: 6.9 m s<sup>-1</sup> (M) | H: 128°



### IR BT & Lightning

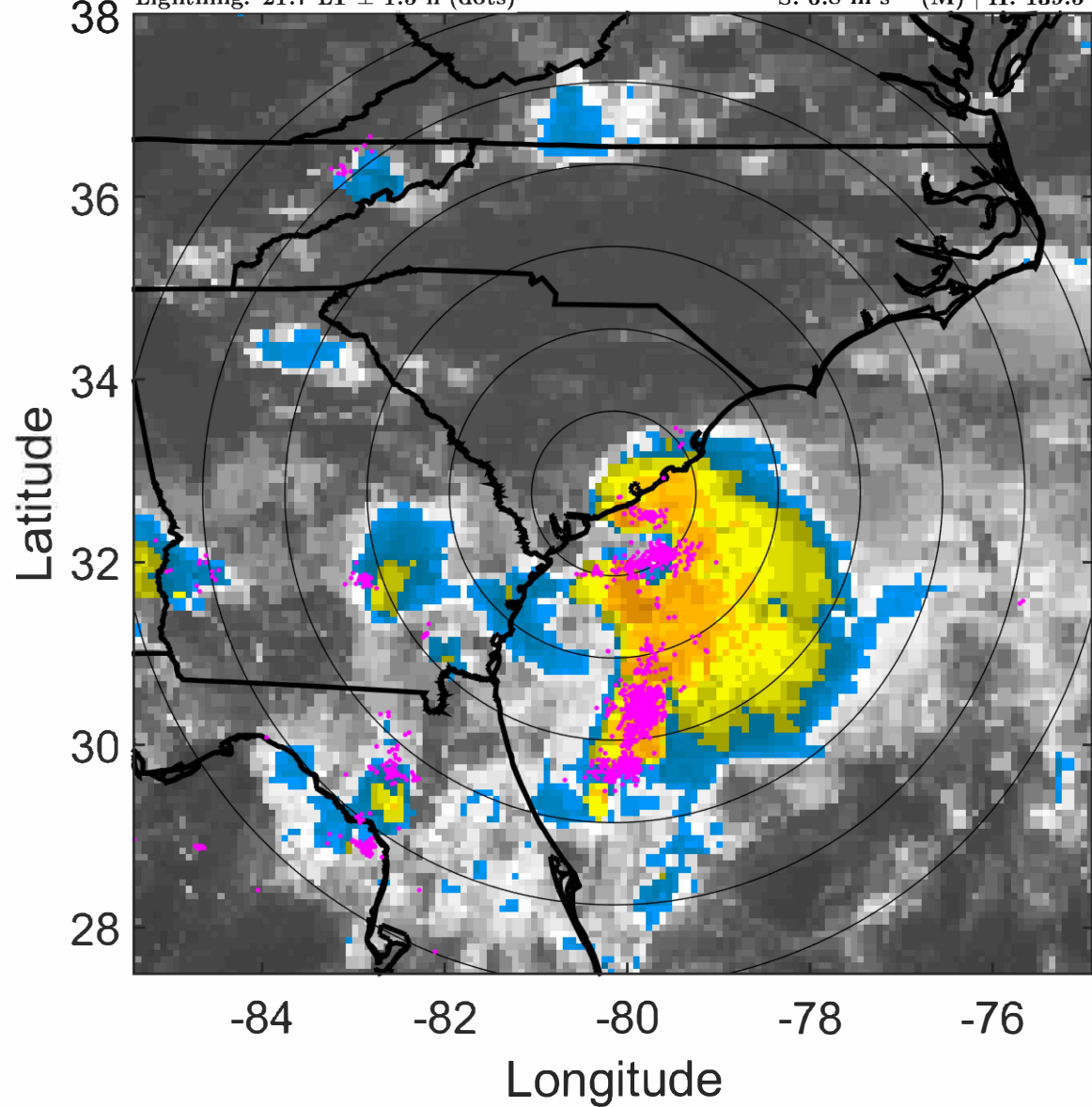
t: 2022070203 (21.7 LT)

Lightning: 21.7 LT  $\pm$  1.5 h (dots)

PT: SLCP | EA: QUASI

03L (COLIN) | 35 kt TS

S: 6.8 m s<sup>-1</sup> (M) | H: 139.5°



### 6-h IR BT Differences & Lightning

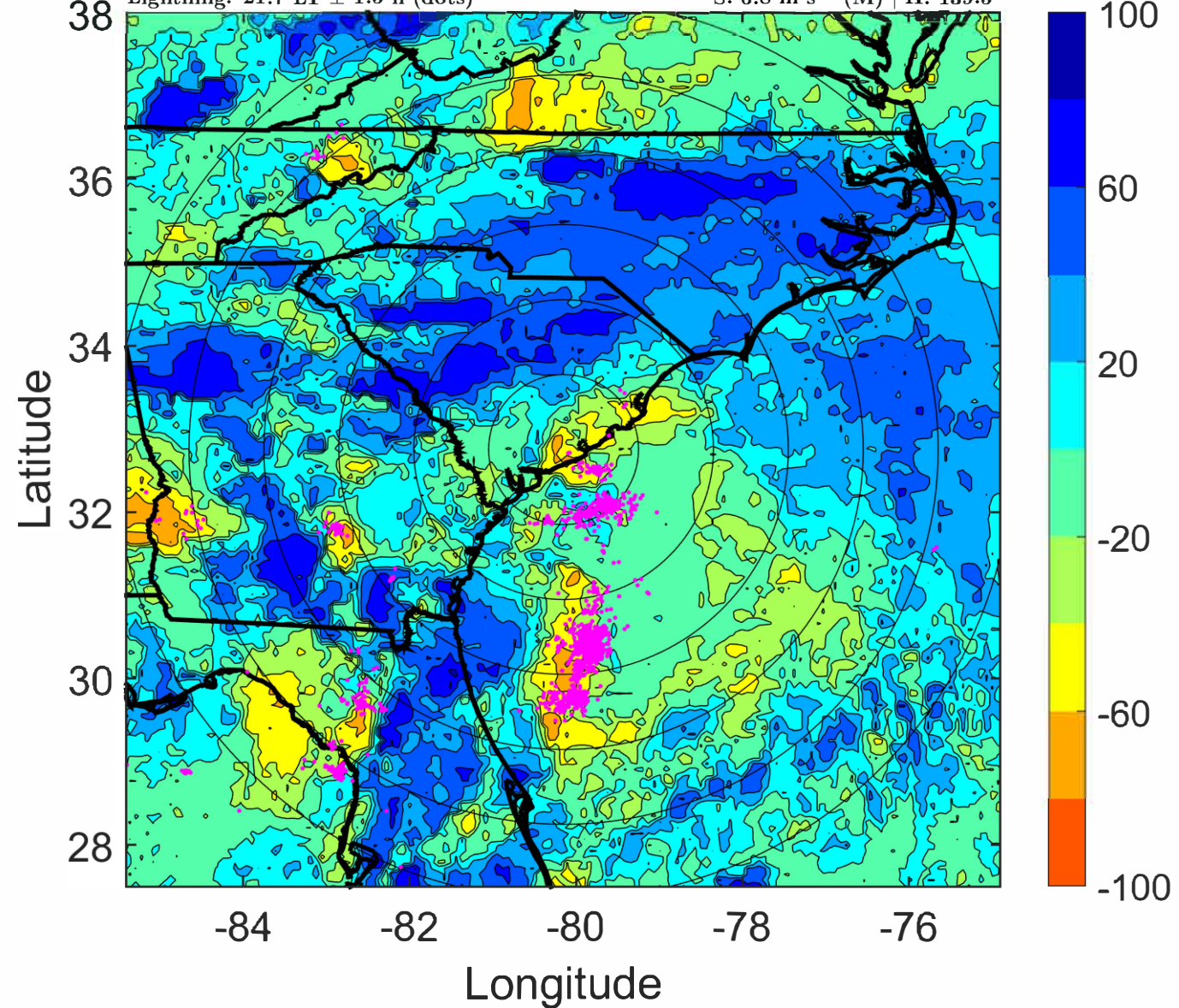
$\Delta$ t: 2022070203 (21.7 LT) - 2022070121 (15.6 LT)

Lightning: 21.7 LT  $\pm$  1.5 h (dots)

PT: SLCP | EA: QUASI

03L (COLIN) | 35 kt TS

S: 6.8 m s<sup>-1</sup> (M) | H: 139.5°



### IR BT & Lightning

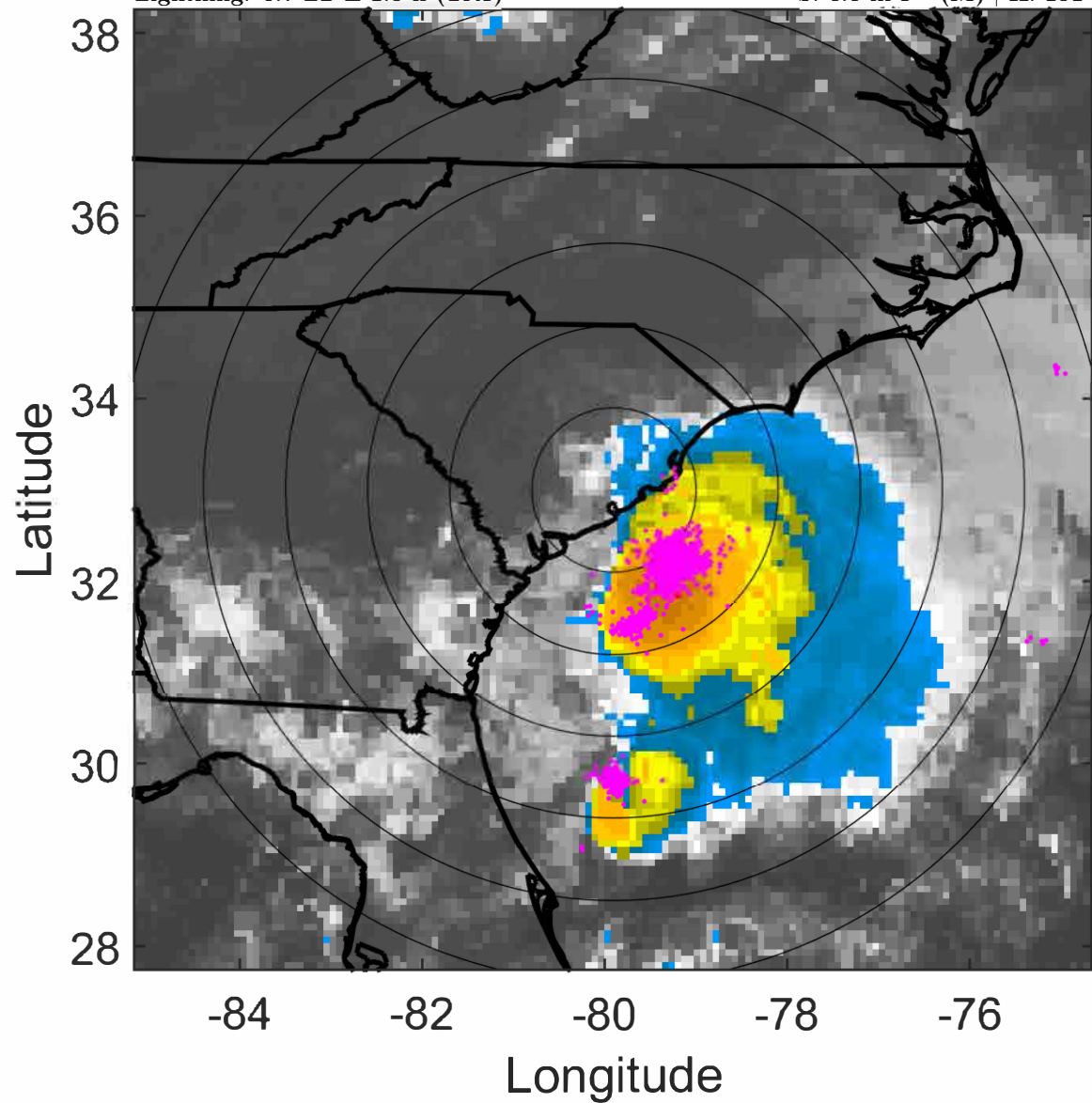
t: 2022070206 (0.7 LT)

Lightning: 0.7 LT  $\pm$  1.5 h (dots)

LAND EFFECTS

03L (COLIN) | 35 kt TS

S: 6.6 m s<sup>-1</sup> (M) | H: 151°



### 6-h IR BT Differences & Lightning

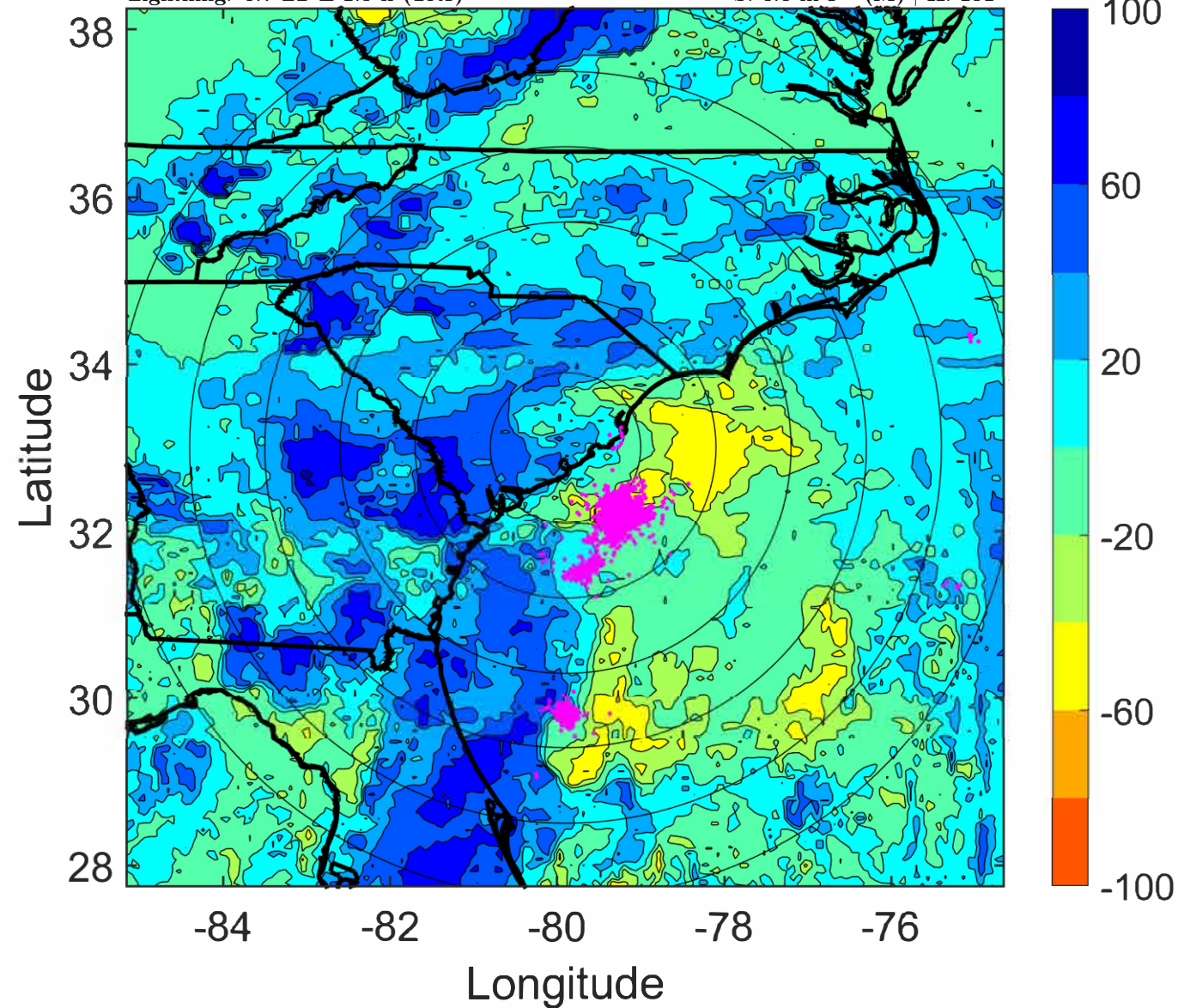
$\Delta$ t: 2022070206 (0.7 LT) - 2022070200 (18.6 LT)

Lightning: 0.7 LT  $\pm$  1.5 h (dots)

LAND EFFECTS

03L (COLIN) | 35 kt TS

S: 6.6 m s<sup>-1</sup> (M) | H: 151°



### IR BT & Lightning

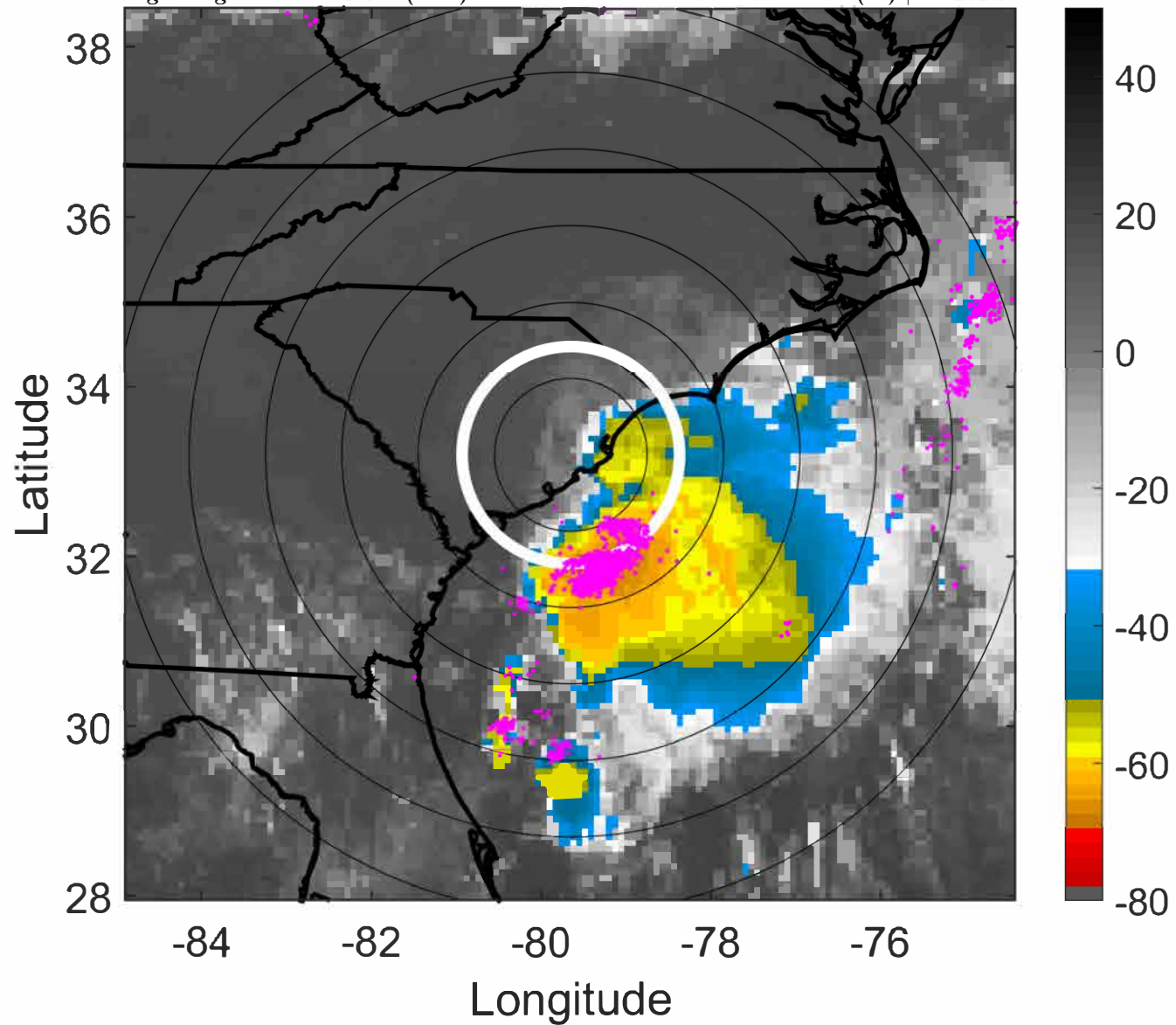
t: 2022070209 (3.7 LT)

Lightning: 3.7 LT  $\pm$  1.5 h (dots)

LAND EFFECTS

03L (COLIN) | 35 kt TS

S: 5.7 m s<sup>-1</sup> (M) | H: 151.5°



### 6-h IR BT Differences & Lightning

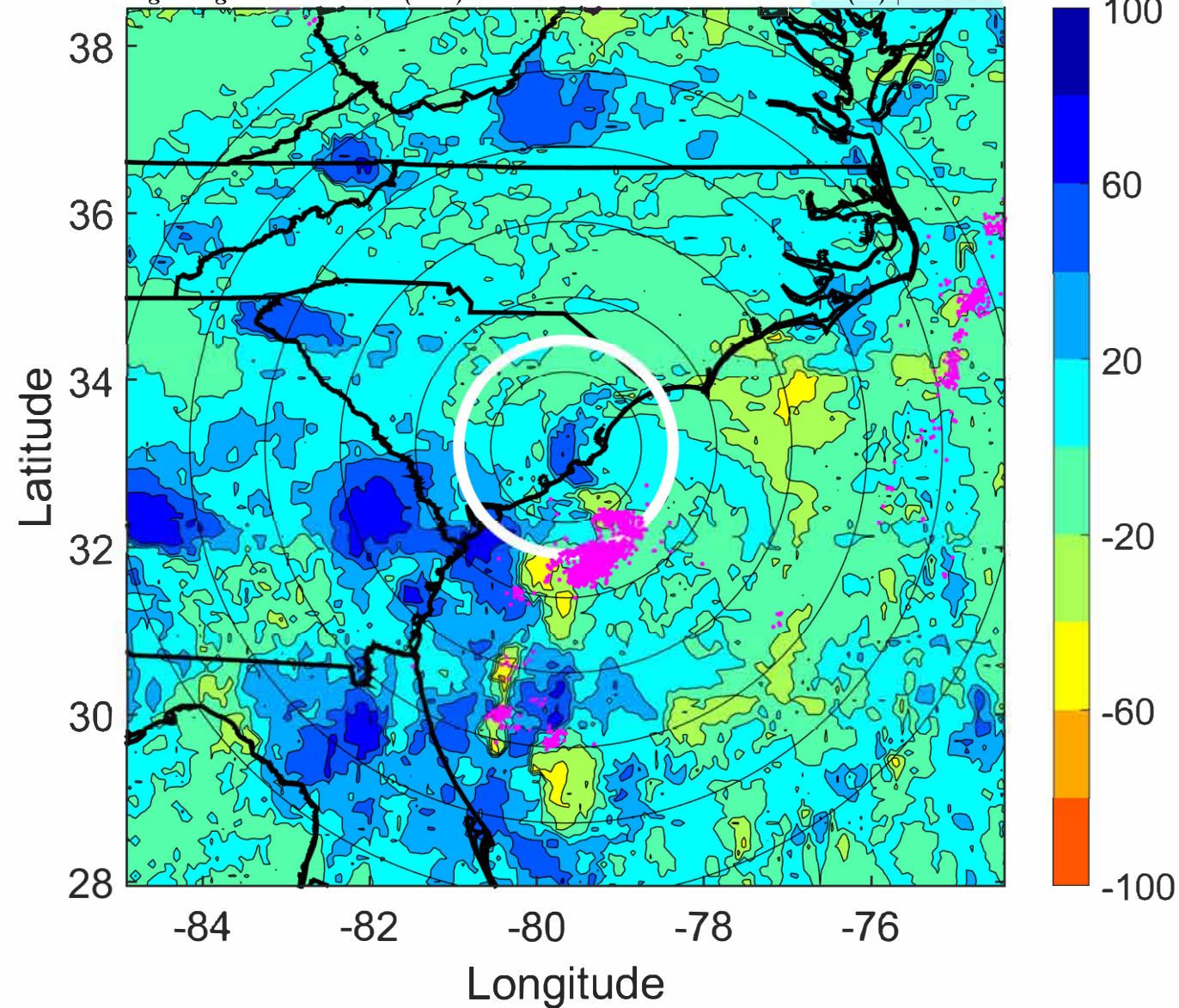
$\Delta$ t: 2022070209 (3.7 LT) - 2022070203 (21.7 LT)

Lightning: 3.7 LT  $\pm$  1.5 h (dots)

LAND EFFECTS

03L (COLIN) | 35 kt TS

S: 5.7 m s<sup>-1</sup> (M) | H: 151.5°



### IR BT & Lightning

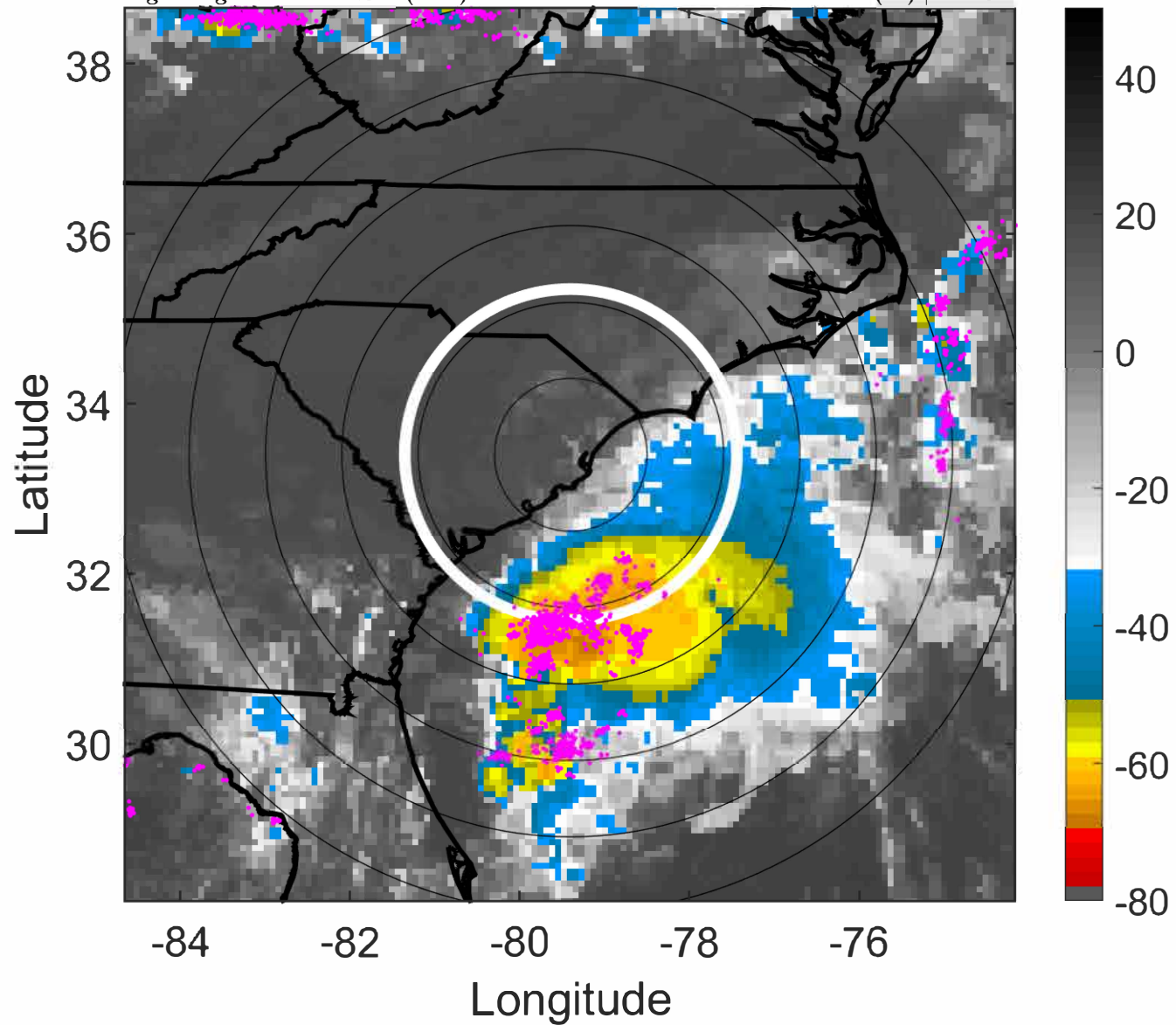
t: 2022070212 (6.7 LT)

Lightning: 6.7 LT  $\pm$  1.5 h (dots)

LAND EFFECTS

03L (COLIN) | 35 kt TS

S: 4.8 m s<sup>-1</sup> (M) | H: 152°



### 6-h IR BT Differences & Lightning

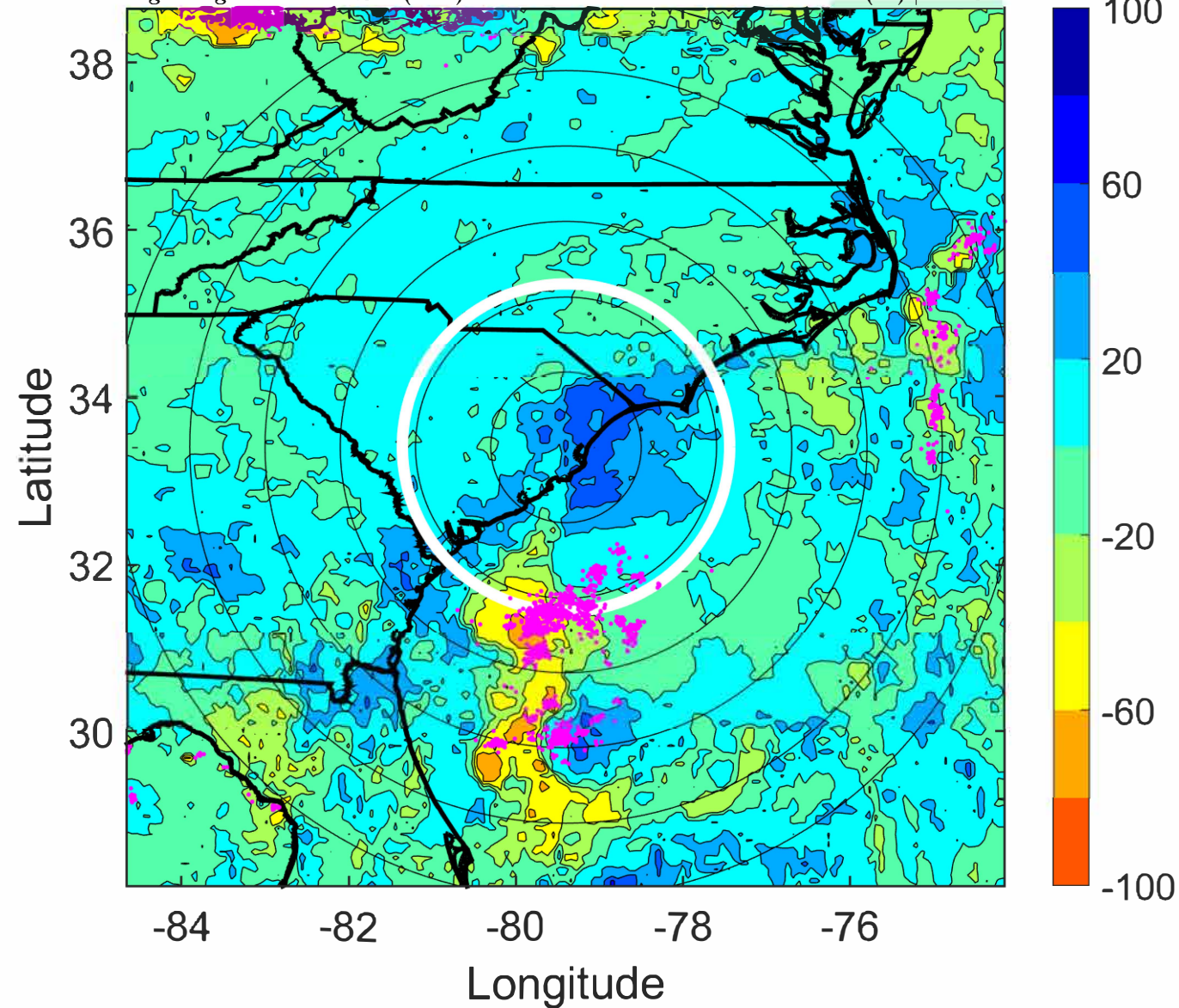
$\Delta$ t: 2022070212 (6.7 LT) - 2022070206 (0.7 LT)

Lightning: 6.7 LT  $\pm$  1.5 h (dots)

LAND EFFECTS

03L (COLIN) | 35 kt TS

S: 4.8 m s<sup>-1</sup> (M) | H: 152°



### IR BT & Lightning

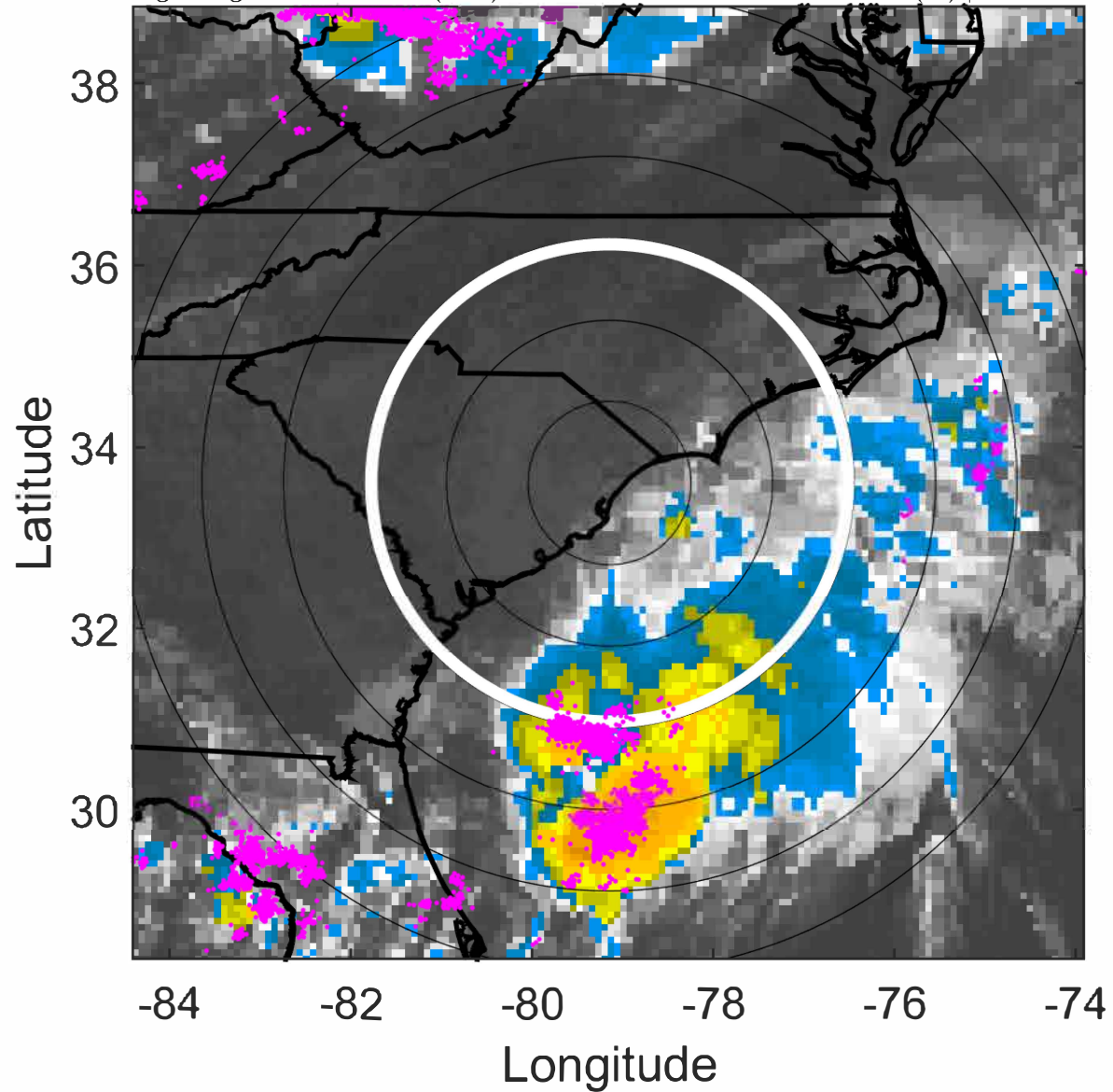
t: 2022070215 (9.7 LT)

Lightning: 9.7 LT  $\pm$  1.5 h (dots)

### LAND EFFECTS

03L (COLIN) | 32.5 kt TD

S: 4.6 m s<sup>-1</sup> (M) | H: 147.5°



### 6-h IR BT Differences & Lightning

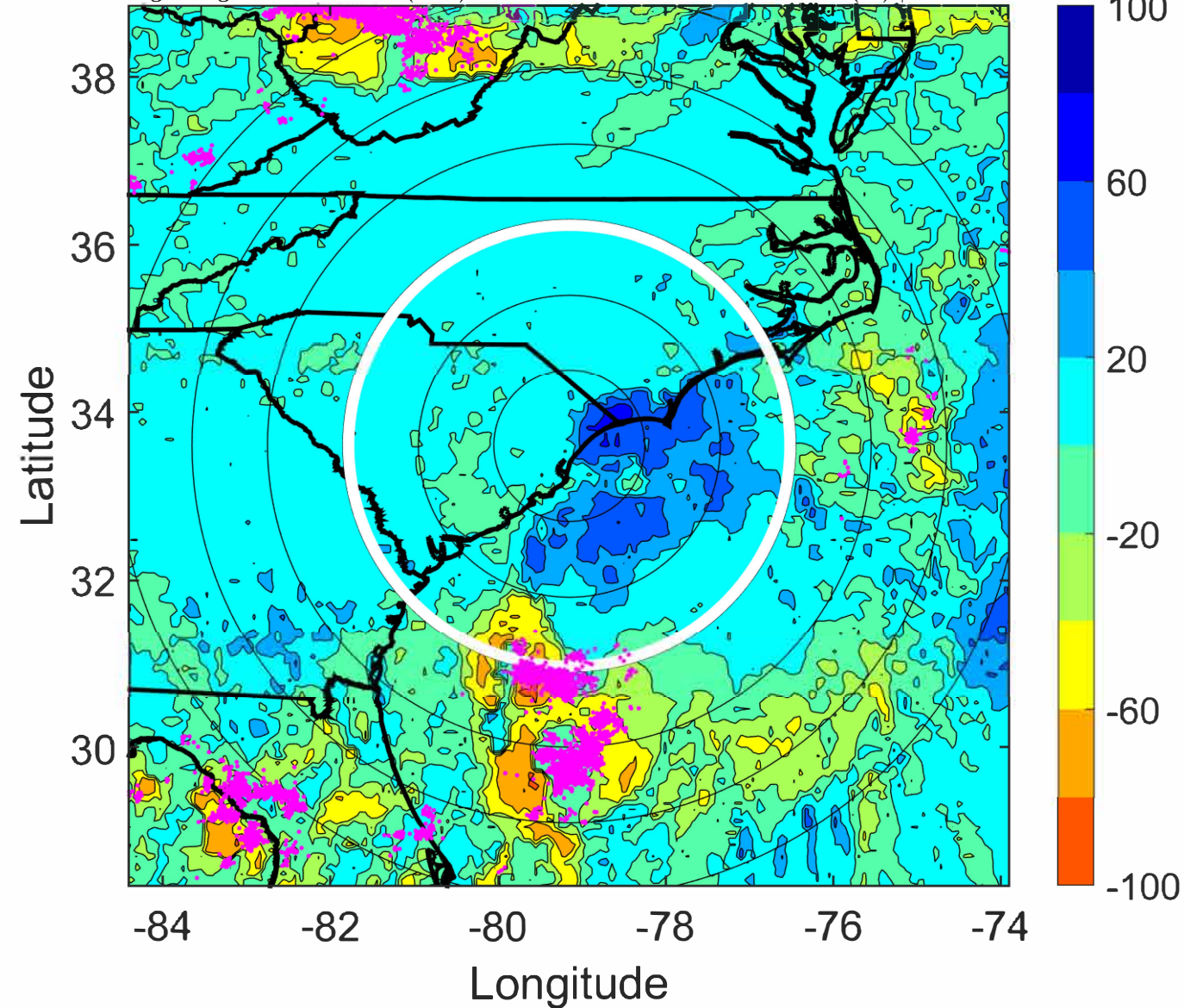
$\Delta$ t: 2022070215 (9.7 LT) - 2022070209 (3.7 LT)

Lightning: 9.7 LT  $\pm$  1.5 h (dots)

### LAND EFFECTS

03L (COLIN) | 32.5 kt TD

S: 4.6 m s<sup>-1</sup> (M) | H: 147.5°

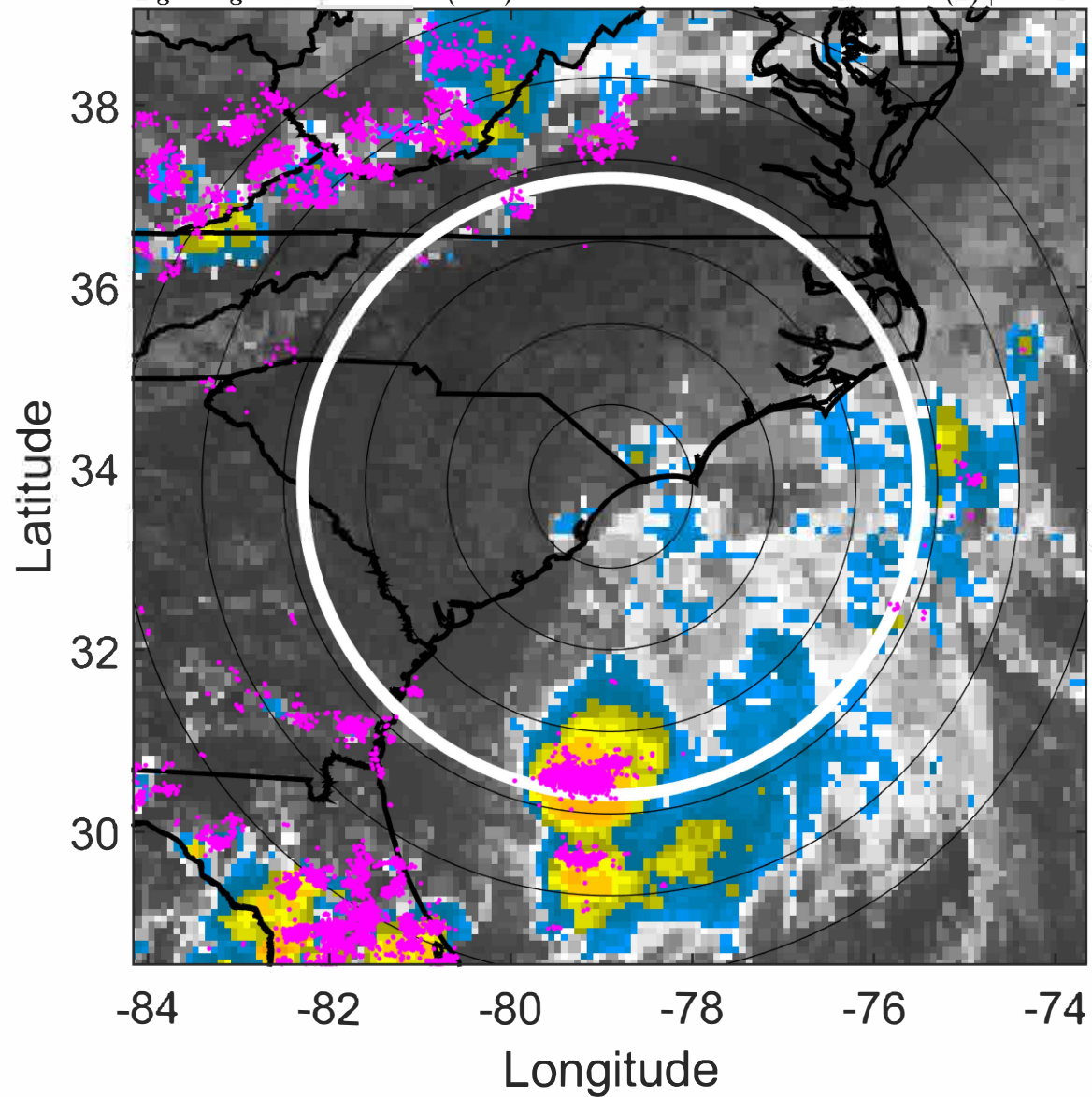


### IR BT & Lightning

t: 2022070218 (12.7 LT)  
Lightning: 12.7 LT  $\pm$  1.5 h (dots)

### LAND EFFECTS

03L (COLIN) | 30 kt TD  
S: 4.3 m s<sup>-1</sup> (L) | H: 143°



### 6-h IR BT Differences & Lightning

$\Delta$ t: 2022070218 (12.7 LT) - 2022070212 (6.7 LT)  
Lightning: 12.7 LT  $\pm$  1.5 h (dots)

### LAND EFFECTS

03L (COLIN) | 30 kt TD  
S: 4.3 m s<sup>-1</sup> (L) | H: 143°

