

IR BT & Lightning

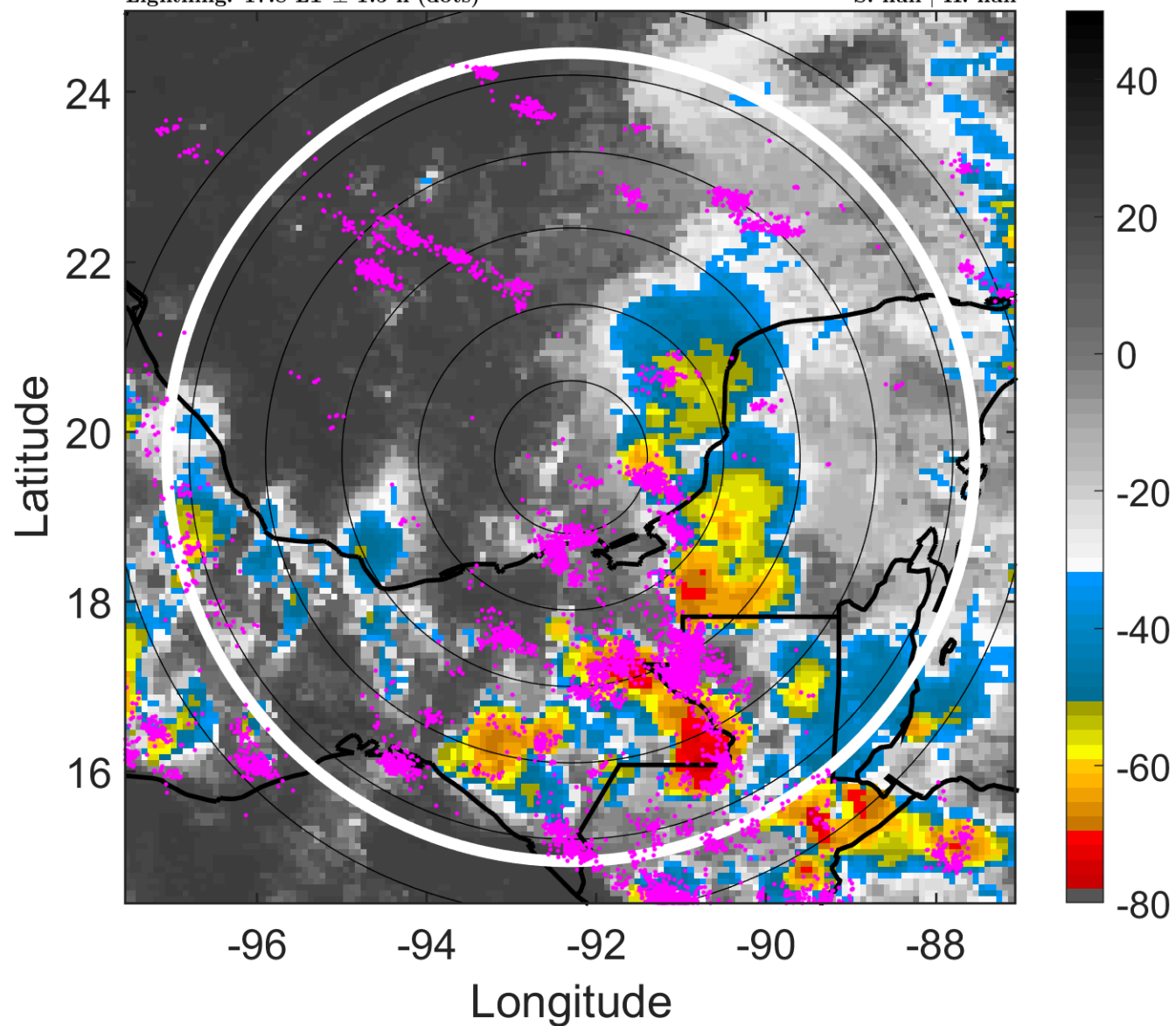
t: 2016061900 (17.8 LT)

Lightning: 17.8 LT \pm 1.5 h (dots)

PT: SLCP | EA: QUASI

04L (DANIELLE) | 25 kt LO

S: null | H: null



6-h IR BT Differences & Lightning

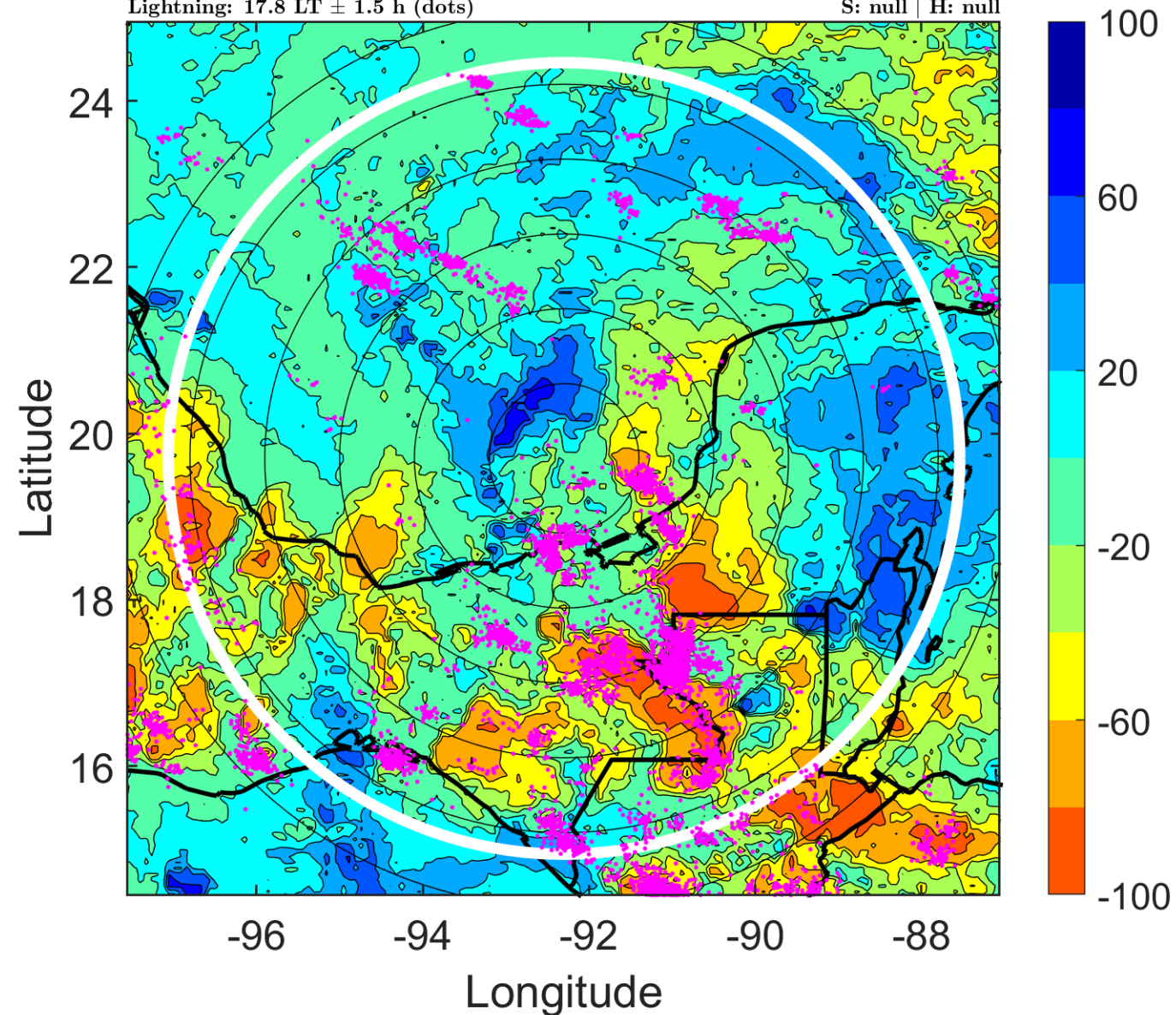
Δ t: 2016061900 (17.8 LT) - 2016061818 (11.9 LT)

Lightning: 17.8 LT \pm 1.5 h (dots)

PT: SLCP | EA: QUASI

04L (DANIELLE) | 25 kt LO

S: null | H: null



IR BT & Lightning

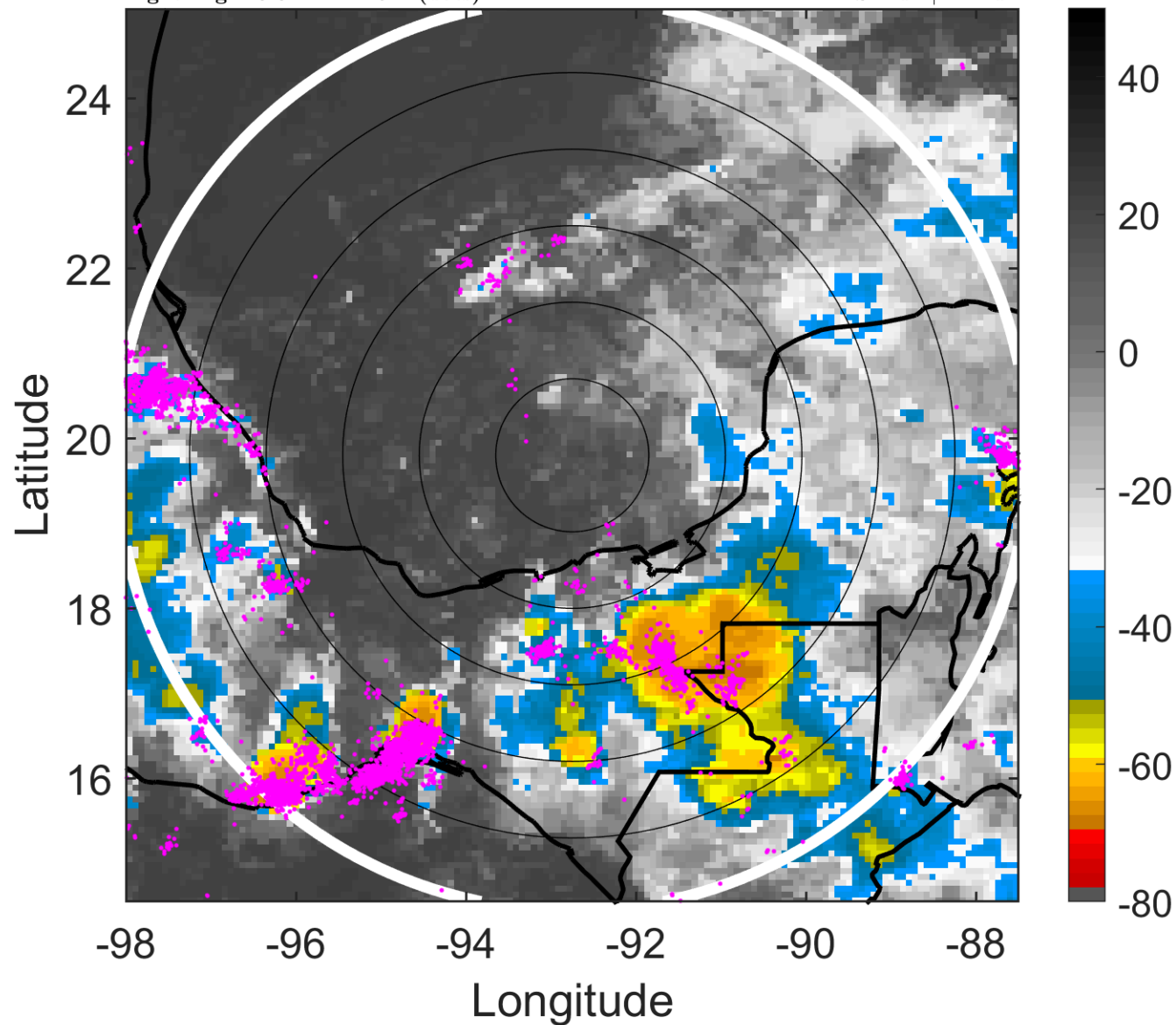
t: 2016061903 (20.8 LT)

Lightning: 20.8 LT \pm 1.5 h (dots)

PT: SLCP | EA: QUASI

04L (DANIELLE) | 25 kt LO

S: null | H: null



6-h IR BT Differences & Lightning

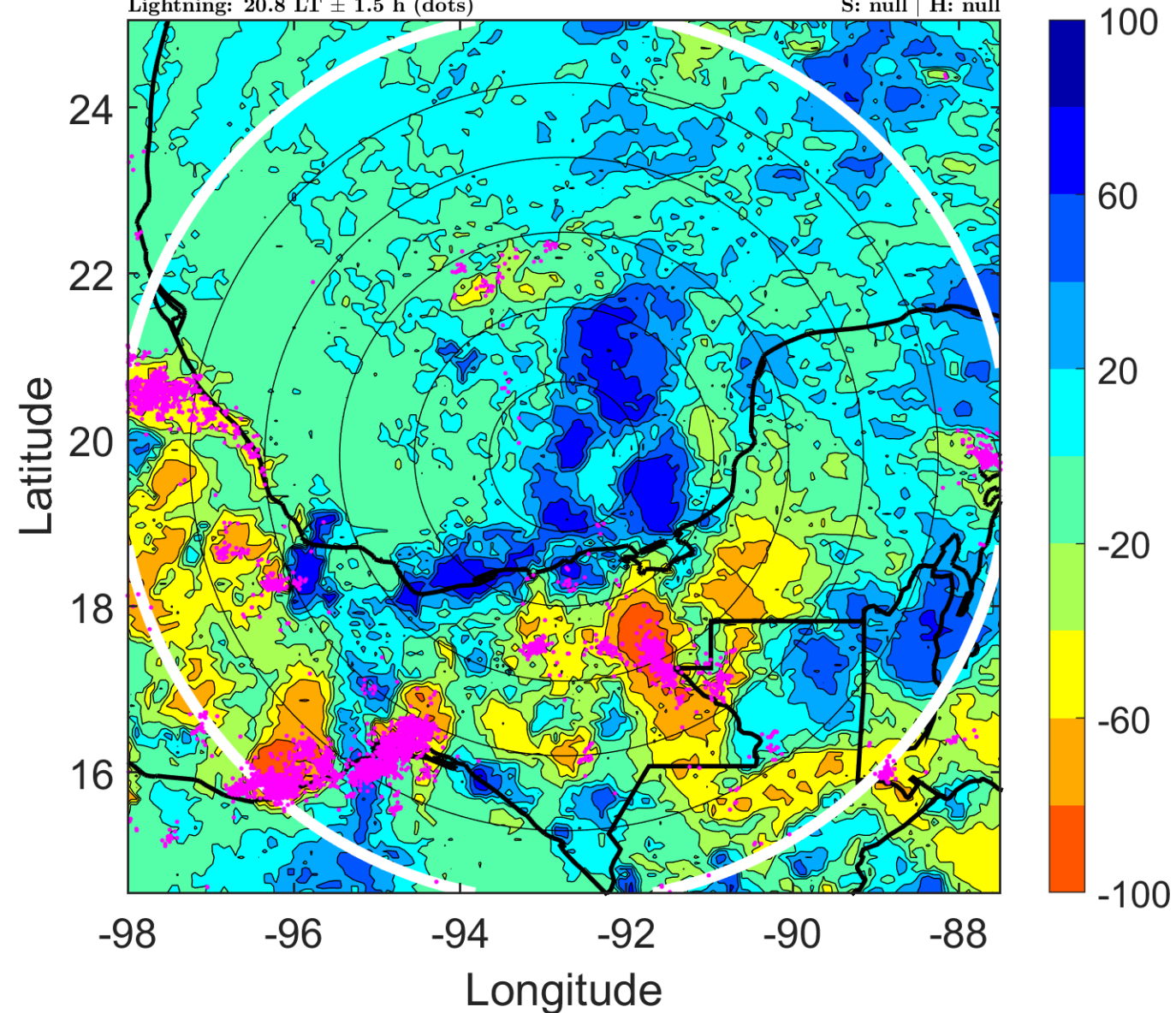
Δ t: 2016061903 (20.8 LT) - 2016061821 (14.9 LT)

Lightning: 20.8 LT \pm 1.5 h (dots)

PT: SLCP | EA: QUASI

04L (DANIELLE) | 25 kt LO

S: null | H: null



IR BT & Lightning

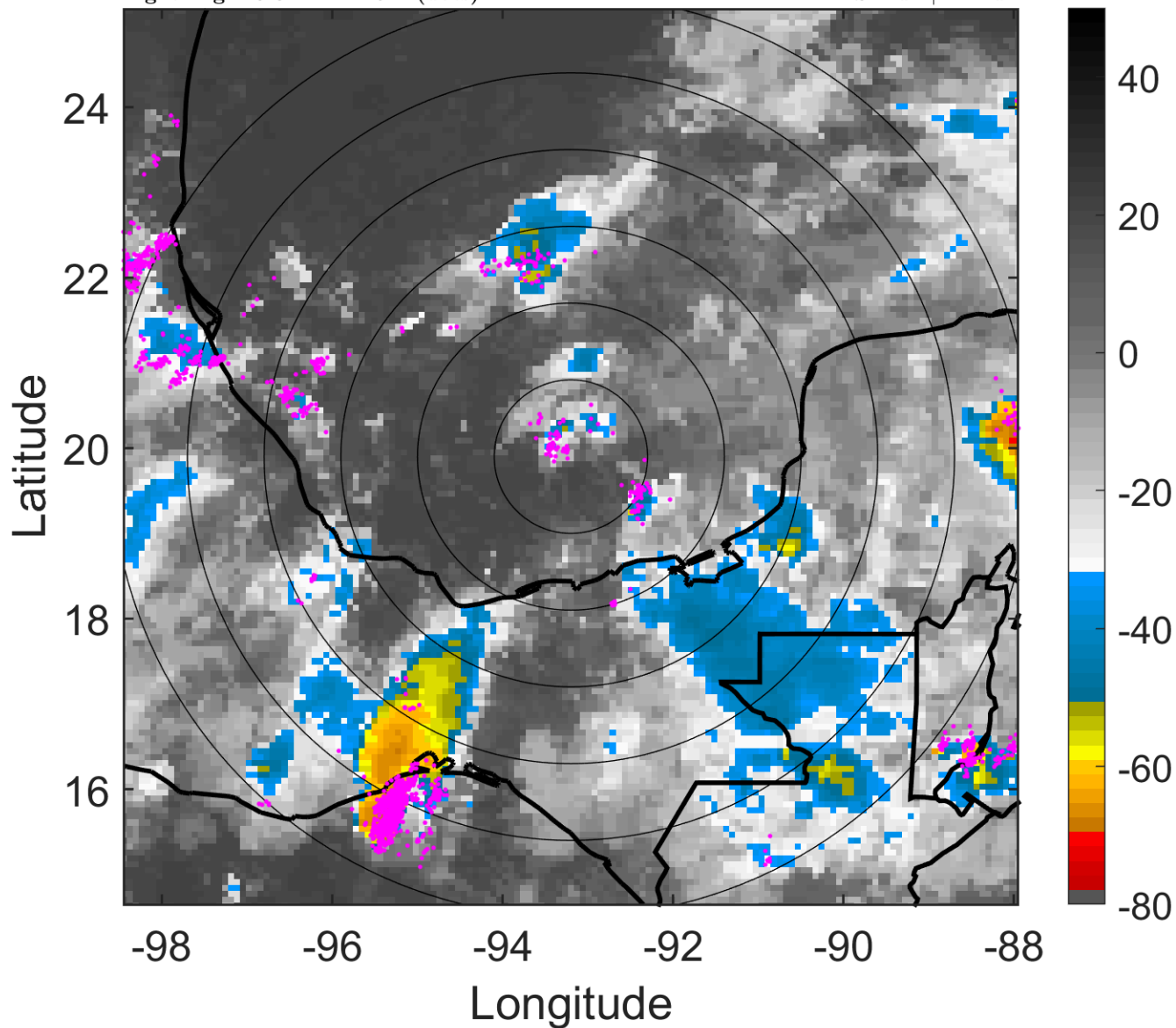
t: 2016061906 (23.8 LT)

Lightning: 23.8 LT \pm 1.5 h (dots)

PT: SLCP | EA: QUASI

04L (DANIELLE) | 25 kt LO

S: null | H: null



6-h IR BT Differences & Lightning

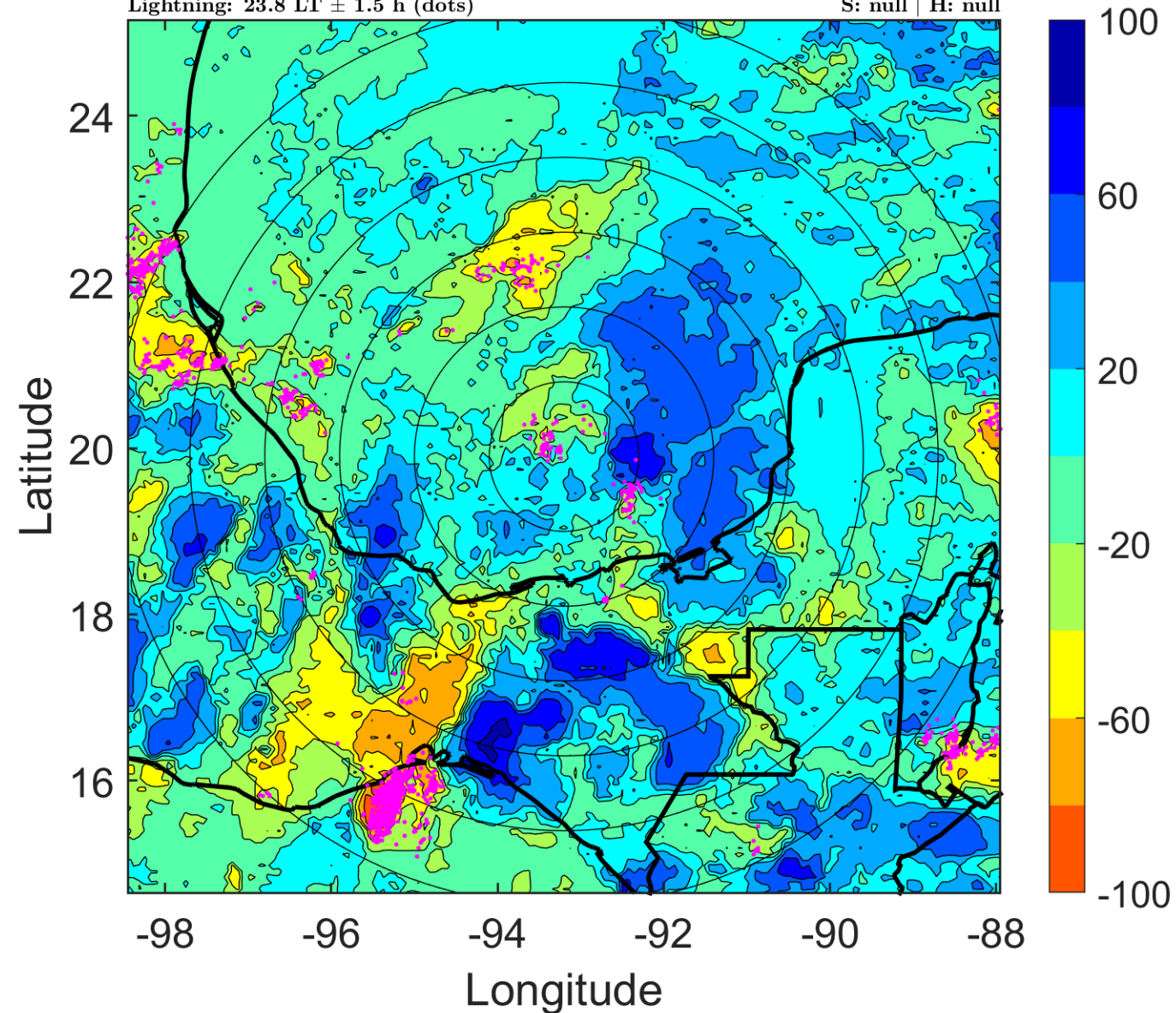
Δ t: 2016061906 (23.8 LT) - 2016061900 (17.8 LT)

Lightning: 23.8 LT \pm 1.5 h (dots)

PT: SLCP | EA: QUASI

04L (DANIELLE) | 25 kt LO

S: null | H: null



IR BT & Lightning

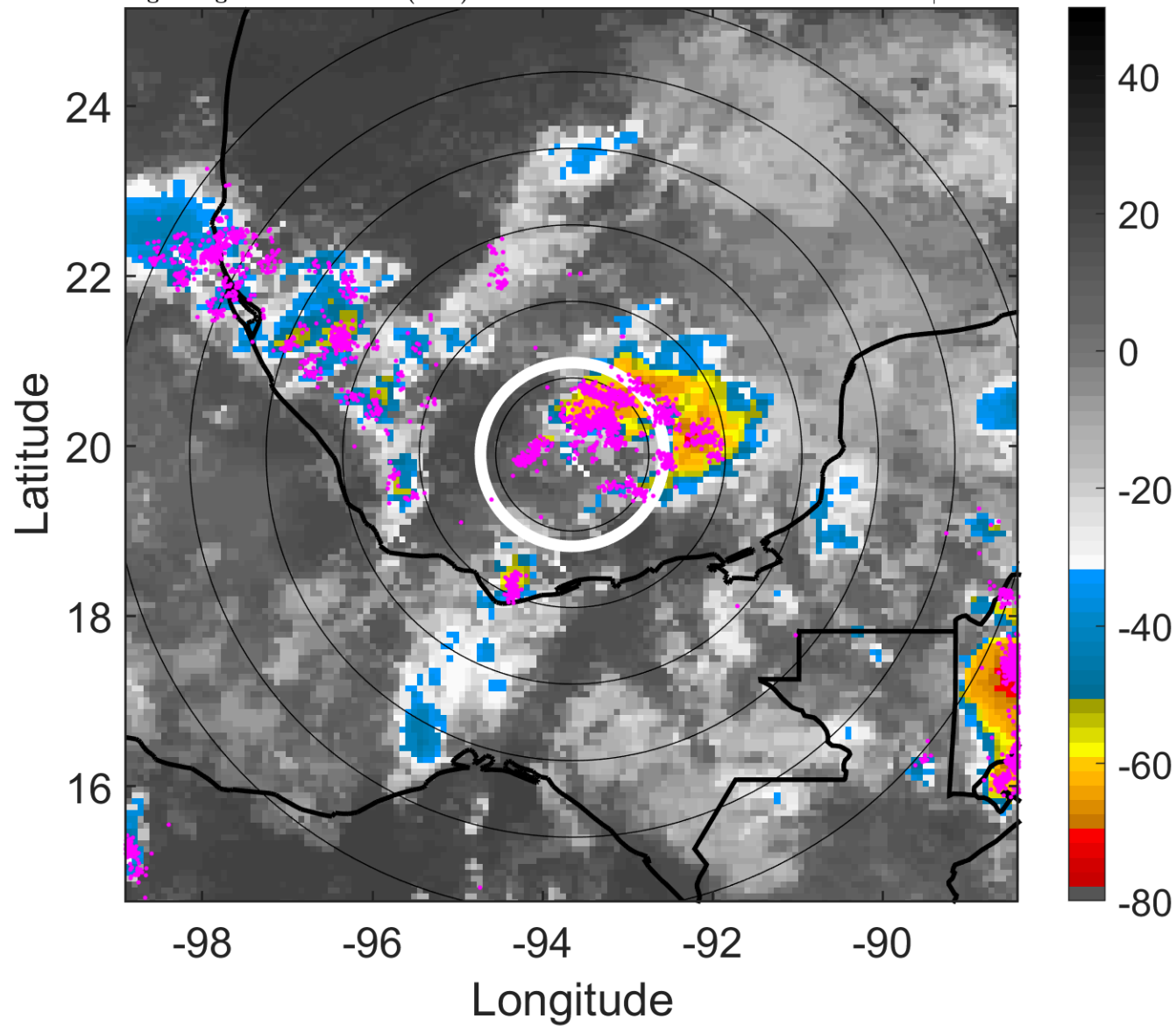
t: 2016061909 (2.8 LT)

Lightning: 2.8 LT \pm 1.5 h (dots)

PT: LLCP | EA: ACT

04L (DANIELLE) | 27.5 kt LO

S: null | H: null



6-h IR BT Differences & Lightning

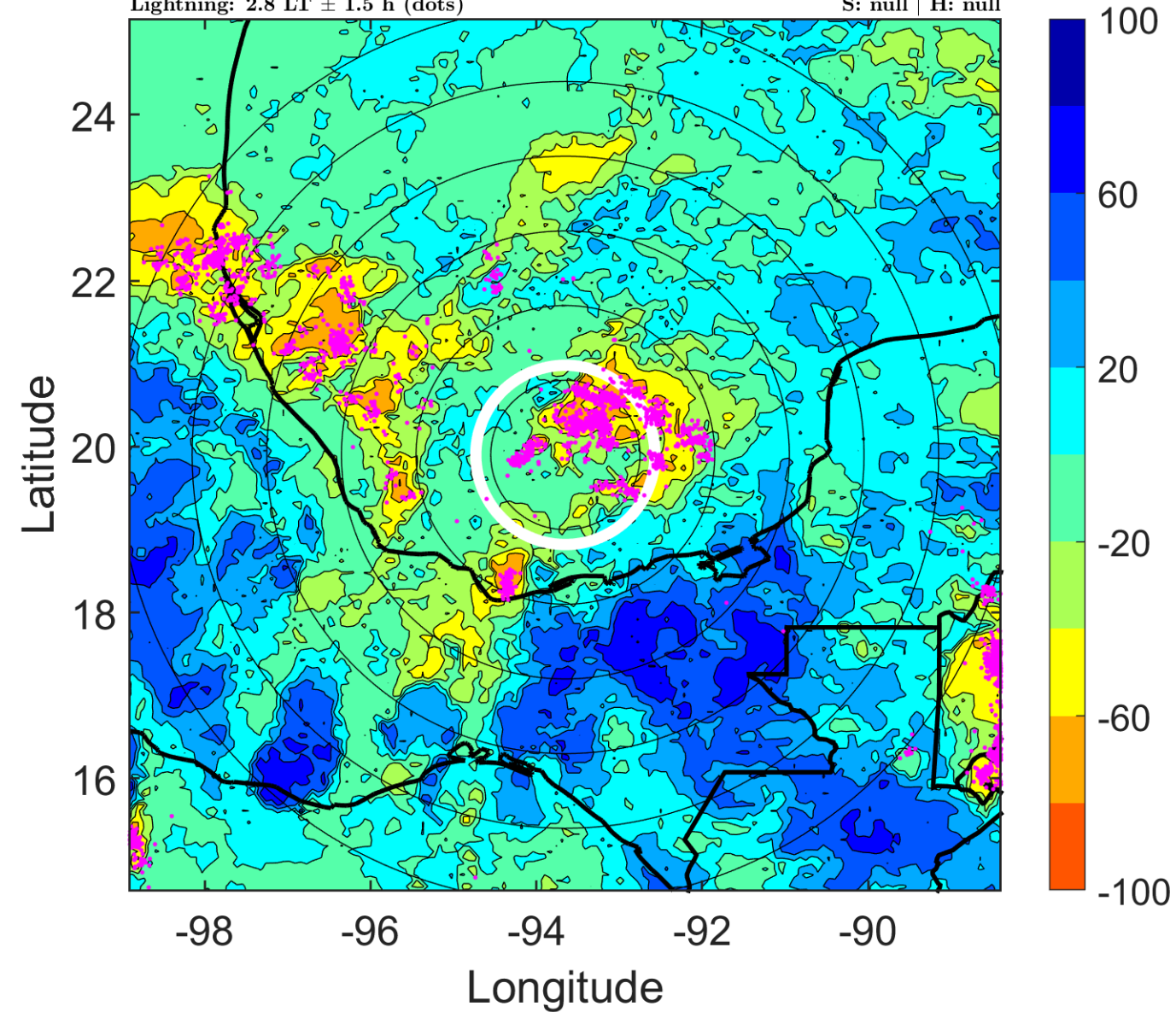
Δ t: 2016061909 (2.8 LT) - 2016061903 (20.8 LT)

Lightning: 2.8 LT \pm 1.5 h (dots)

PT: LLCP | EA: ACT

04L (DANIELLE) | 27.5 kt LO

S: null | H: null



IR BT & Lightning

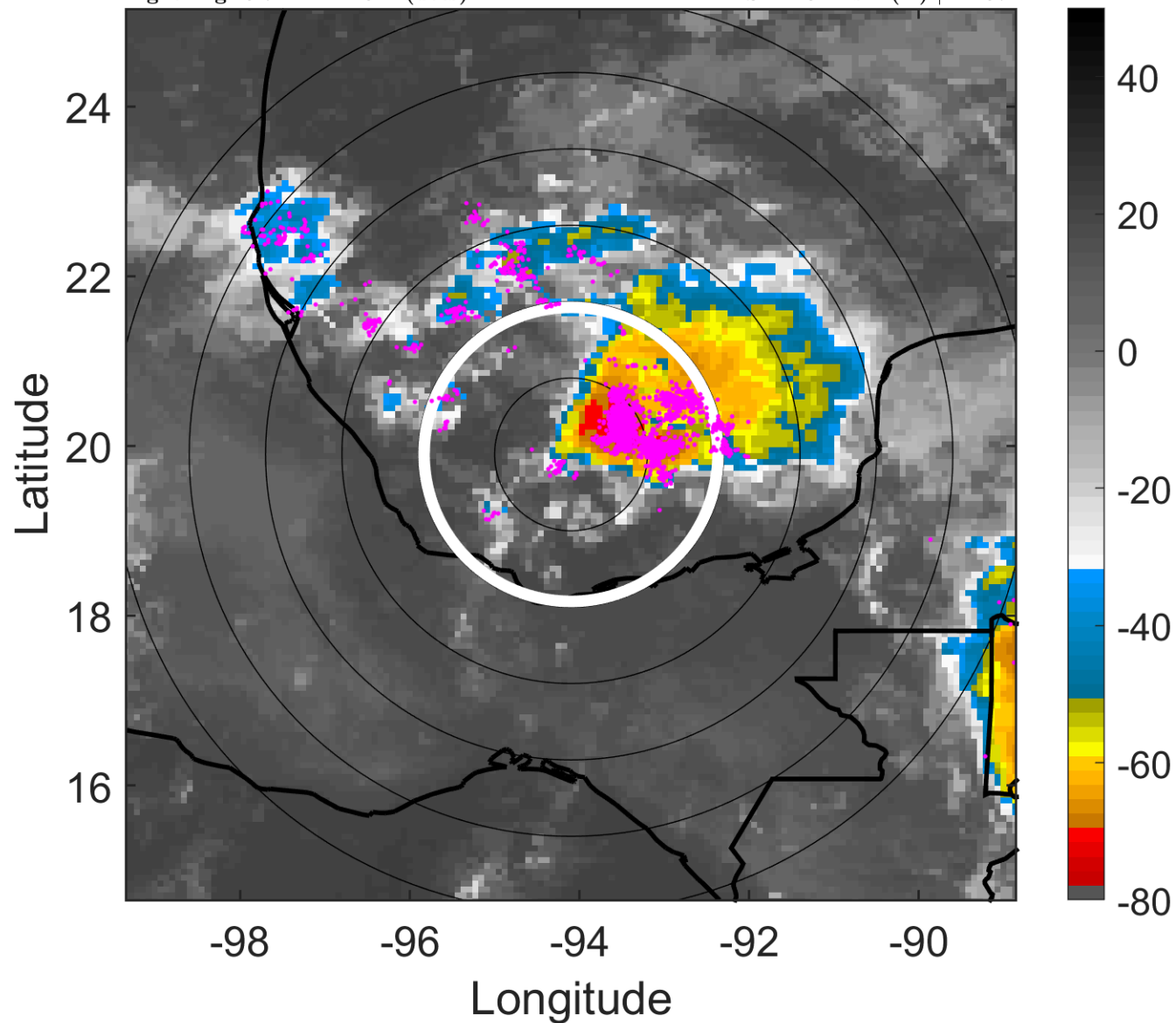
t: 2016061912 (5.7 LT)

Lightning: 5.7 LT \pm 1.5 h (dots)

PT: LLCP | EA: ACT

04L (DANIELLE) | 30 kt TD

S: 12.6 m s⁻¹ (H) | H: 67°



6-h IR BT Differences & Lightning

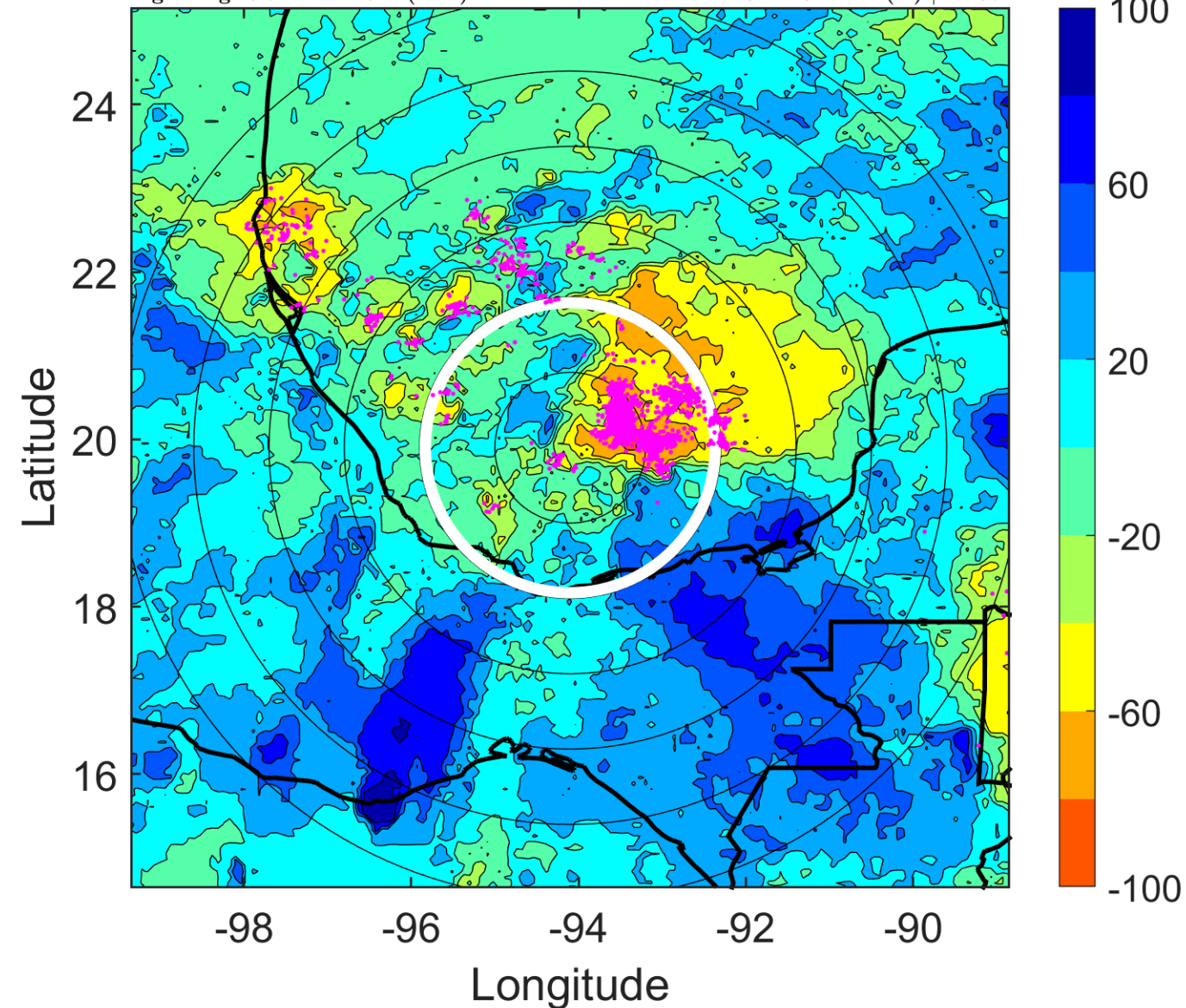
Δ t: 2016061912 (5.7 LT) - 2016061906 (23.8 LT)

Lightning: 5.7 LT \pm 1.5 h (dots)

PT: LLCP | EA: ACT

04L (DANIELLE) | 30 kt TD

S: 12.6 m s⁻¹ (H) | H: 67°



IR BT & Lightning

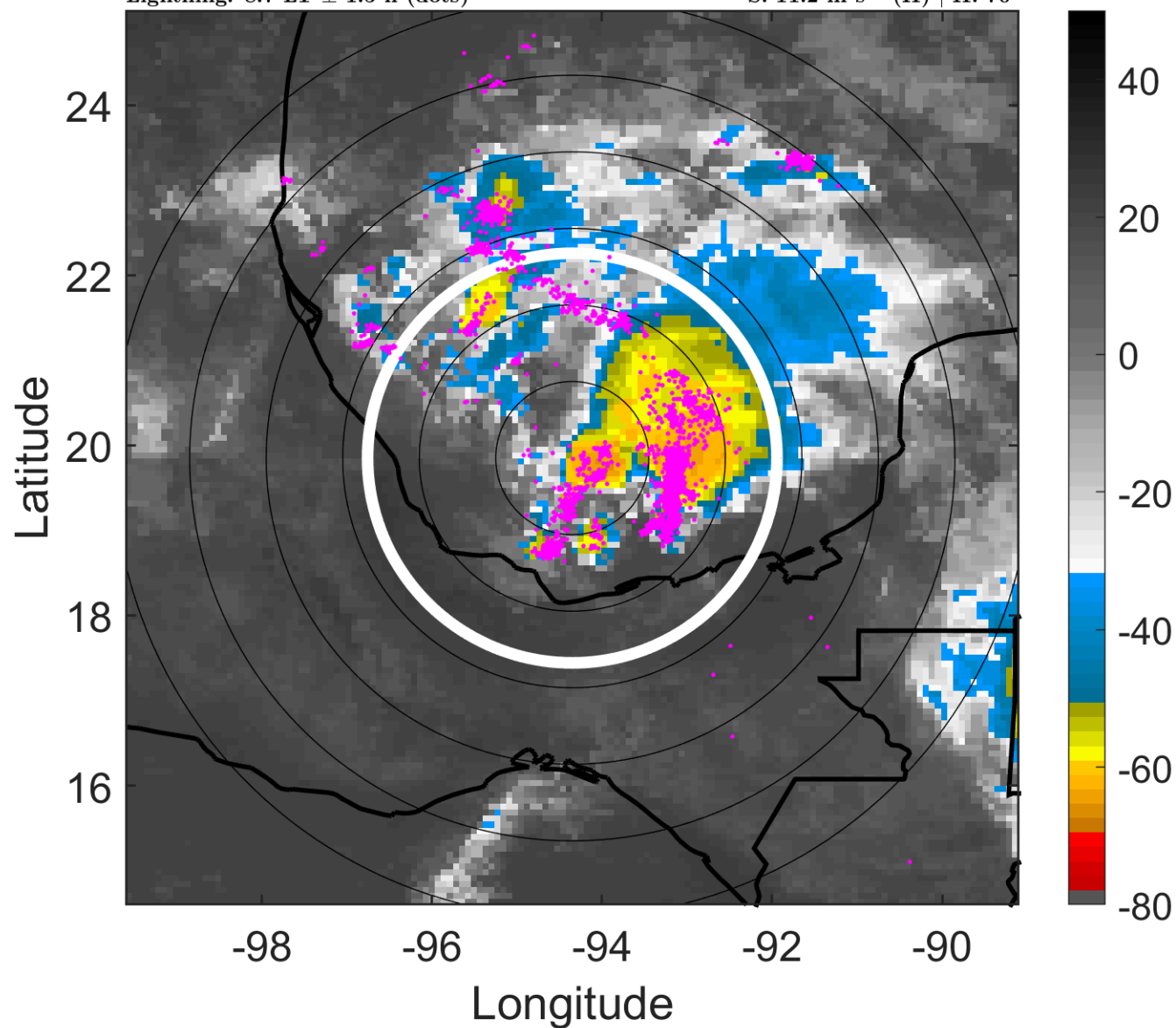
t: 2016061915 (8.7 LT)

Lightning: 8.7 LT \pm 1.5 h (dots)

PT: LLCP | EA: ACT

04L (DANIELLE) | 30 kt TD

S: 11.2 m s⁻¹ (H) | H: 70°



6-h IR BT Differences & Lightning

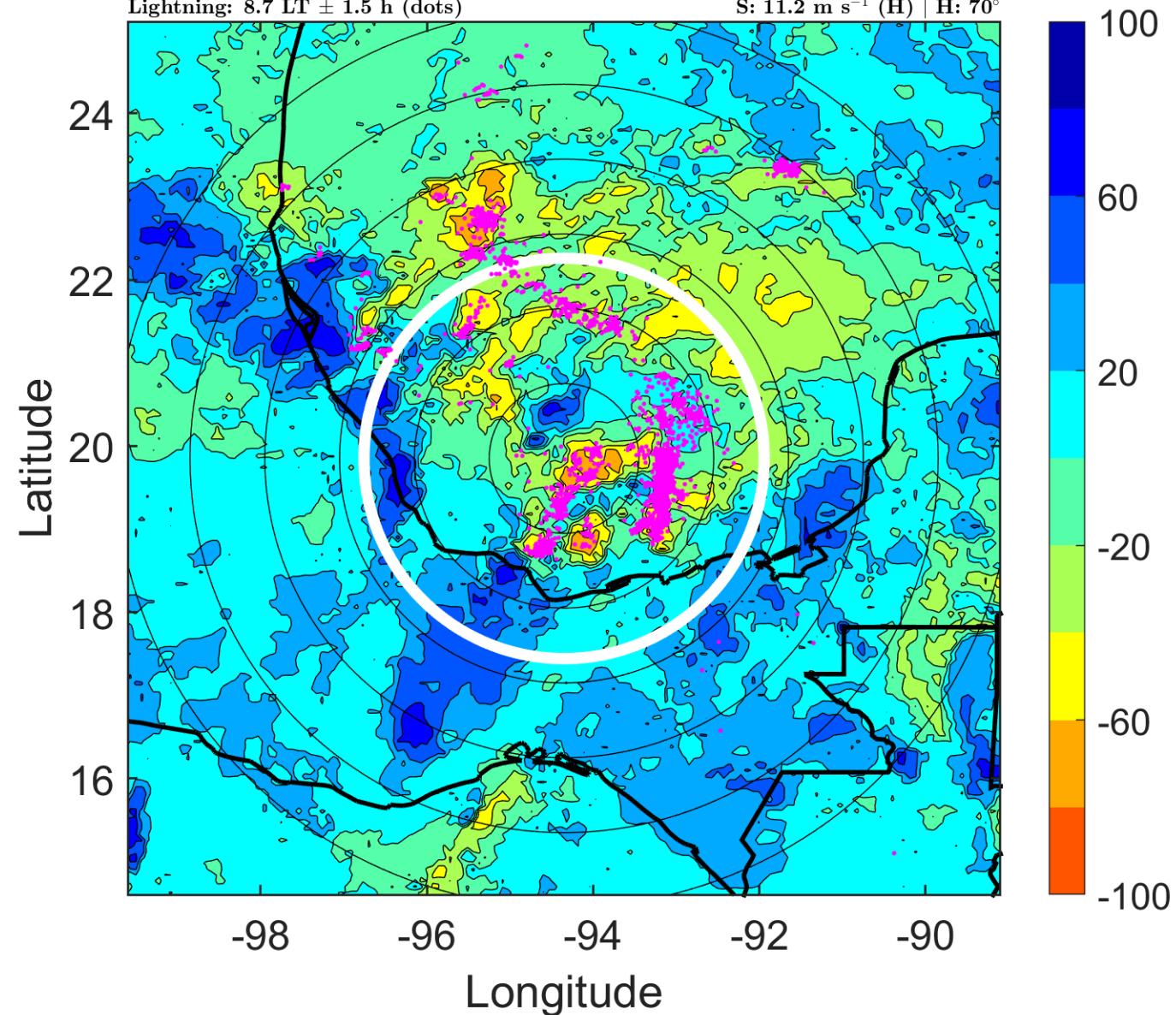
Δ t: 2016061915 (8.7 LT) - 2016061909 (2.8 LT)

Lightning: 8.7 LT \pm 1.5 h (dots)

PT: LLCP | EA: ACT

04L (DANIELLE) | 30 kt TD

S: 11.2 m s⁻¹ (H) | H: 70°



IR BT & Lightning

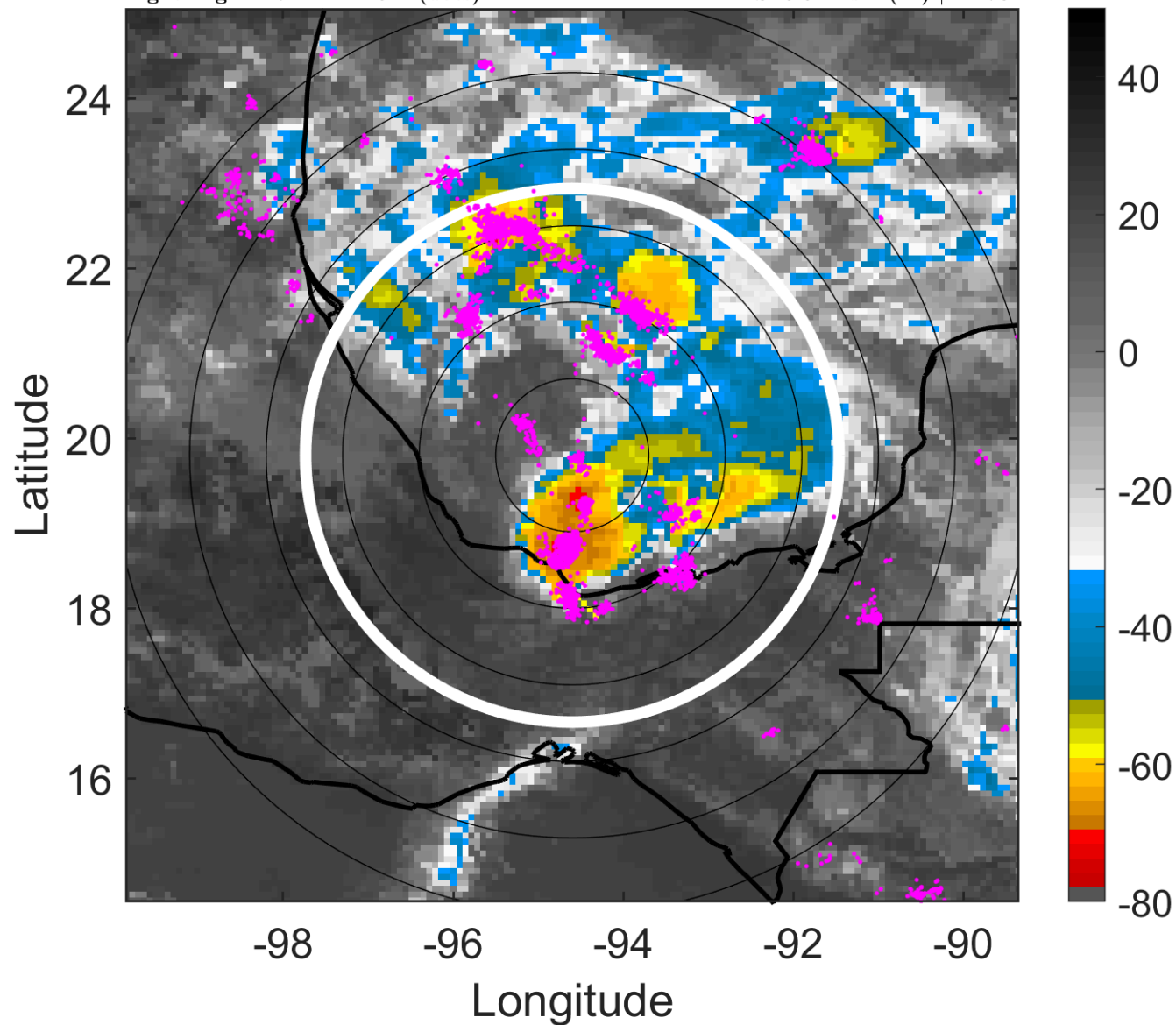
t: 2016061918 (11.7 LT)

Lightning: 11.7 LT \pm 1.5 h (dots)

PT: LLCP | EA: ACT

04L (DANIELLE) | 30 kt TD

S: 9.9 m s⁻¹ (M) | H: 73°



6-h IR BT Differences & Lightning

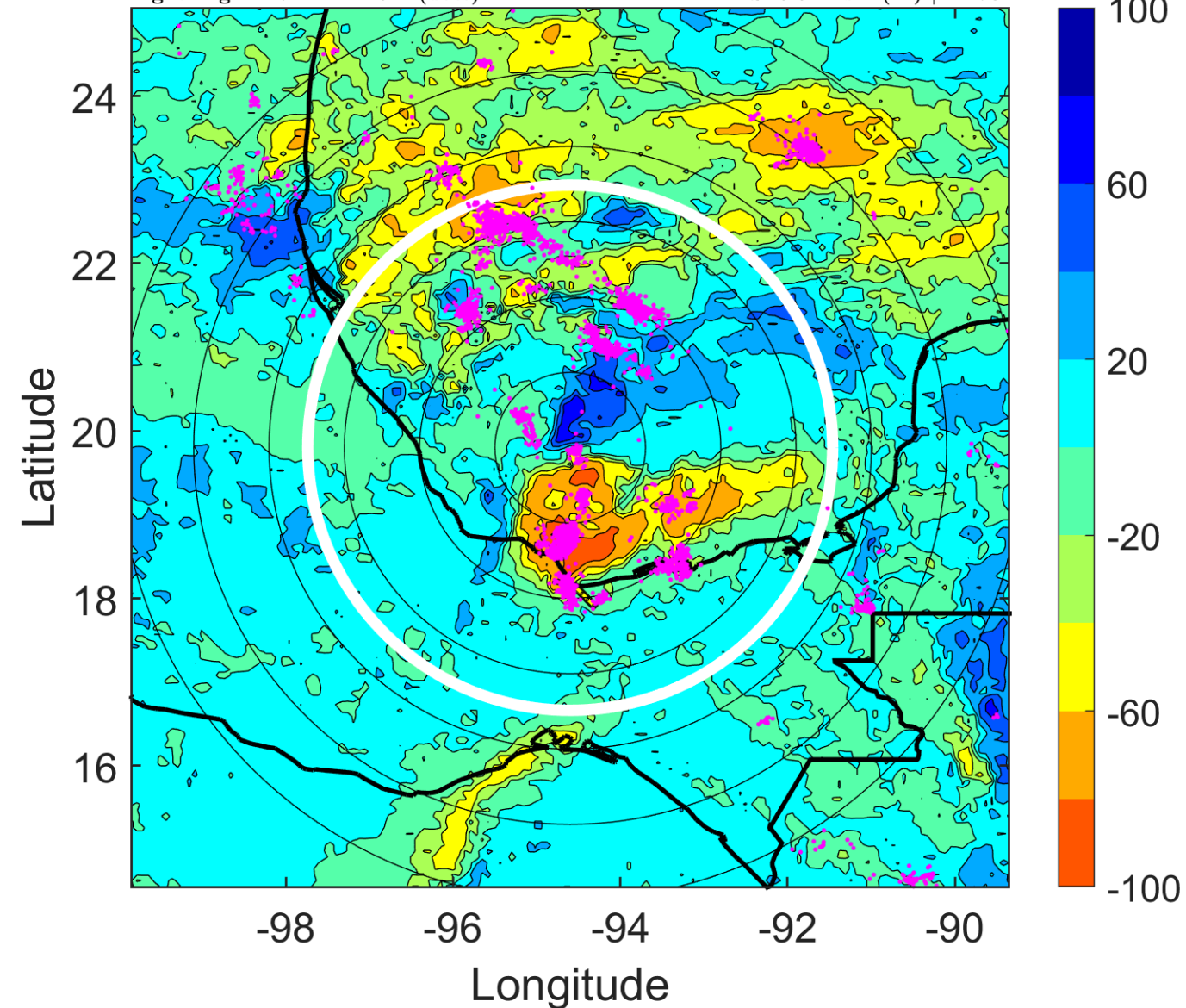
Δ t: 2016061918 (11.7 LT) - 2016061912 (5.7 LT)

Lightning: 11.7 LT \pm 1.5 h (dots)

PT: LLCP | EA: ACT

04L (DANIELLE) | 30 kt TD

S: 9.9 m s⁻¹ (M) | H: 73°



IR BT & Lightning

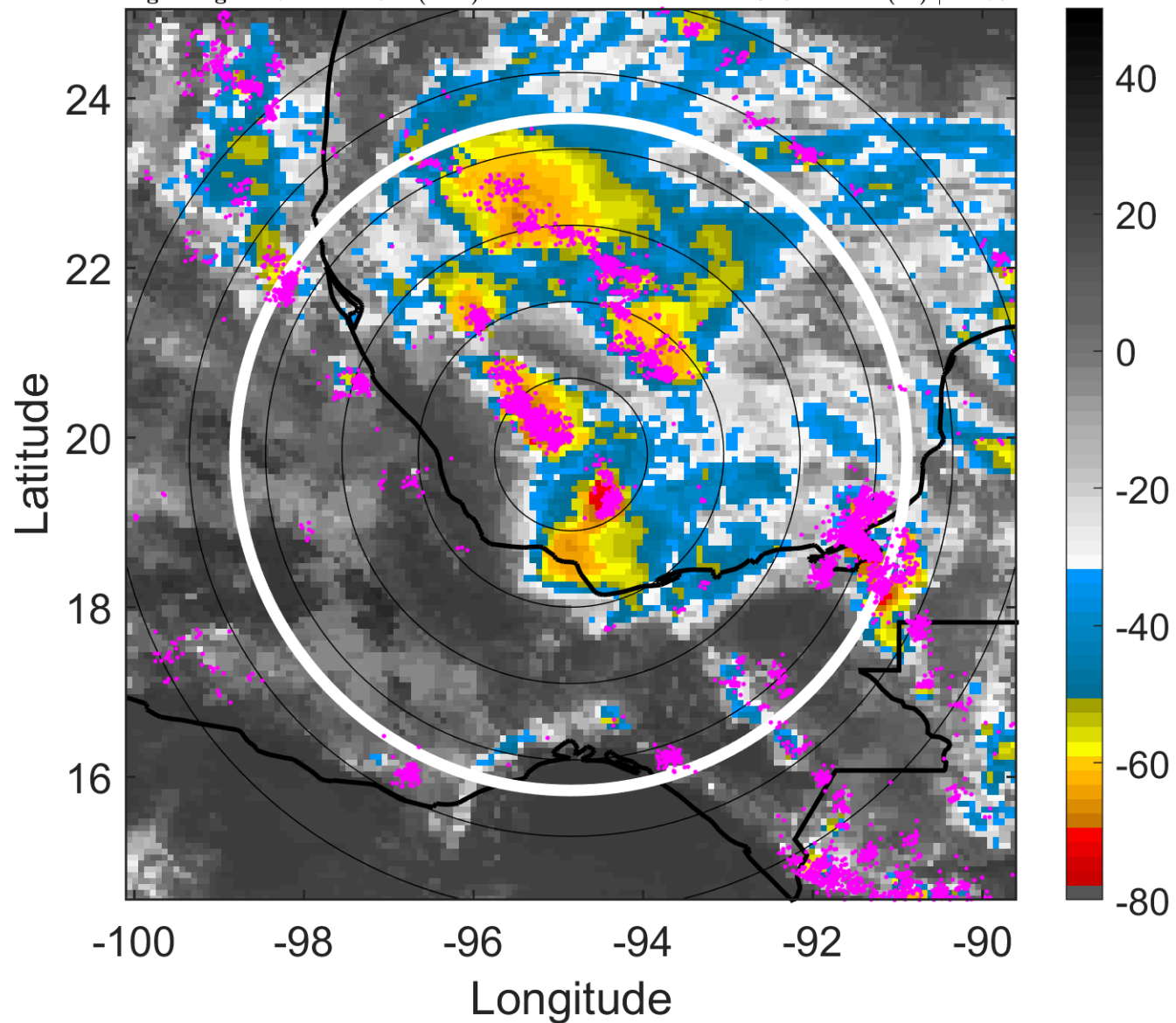
t: 2016061921 (14.7 LT)

Lightning: 14.7 LT \pm 1.5 h (dots)

PT: LLCP | EA: ACT

04L (DANIELLE) | 30 kt TD

S: 9.2 m s⁻¹ (M) | H: 76°



6-h IR BT Differences & Lightning

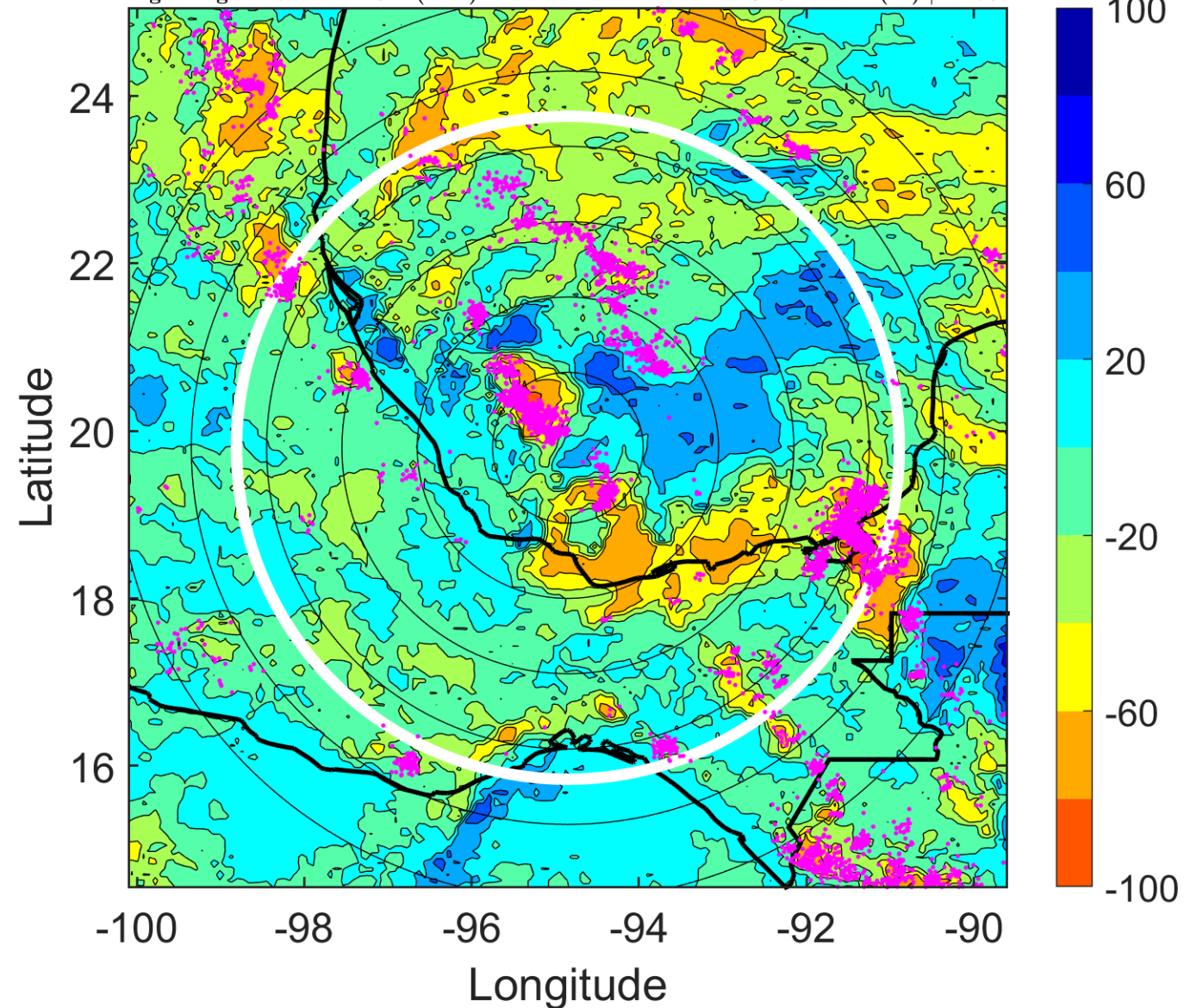
Δ t: 2016061921 (14.7 LT) - 2016061915 (8.7 LT)

Lightning: 14.7 LT \pm 1.5 h (dots)

PT: LLCP | EA: ACT

04L (DANIELLE) | 30 kt TD

S: 9.2 m s⁻¹ (M) | H: 76°



IR BT & Lightning

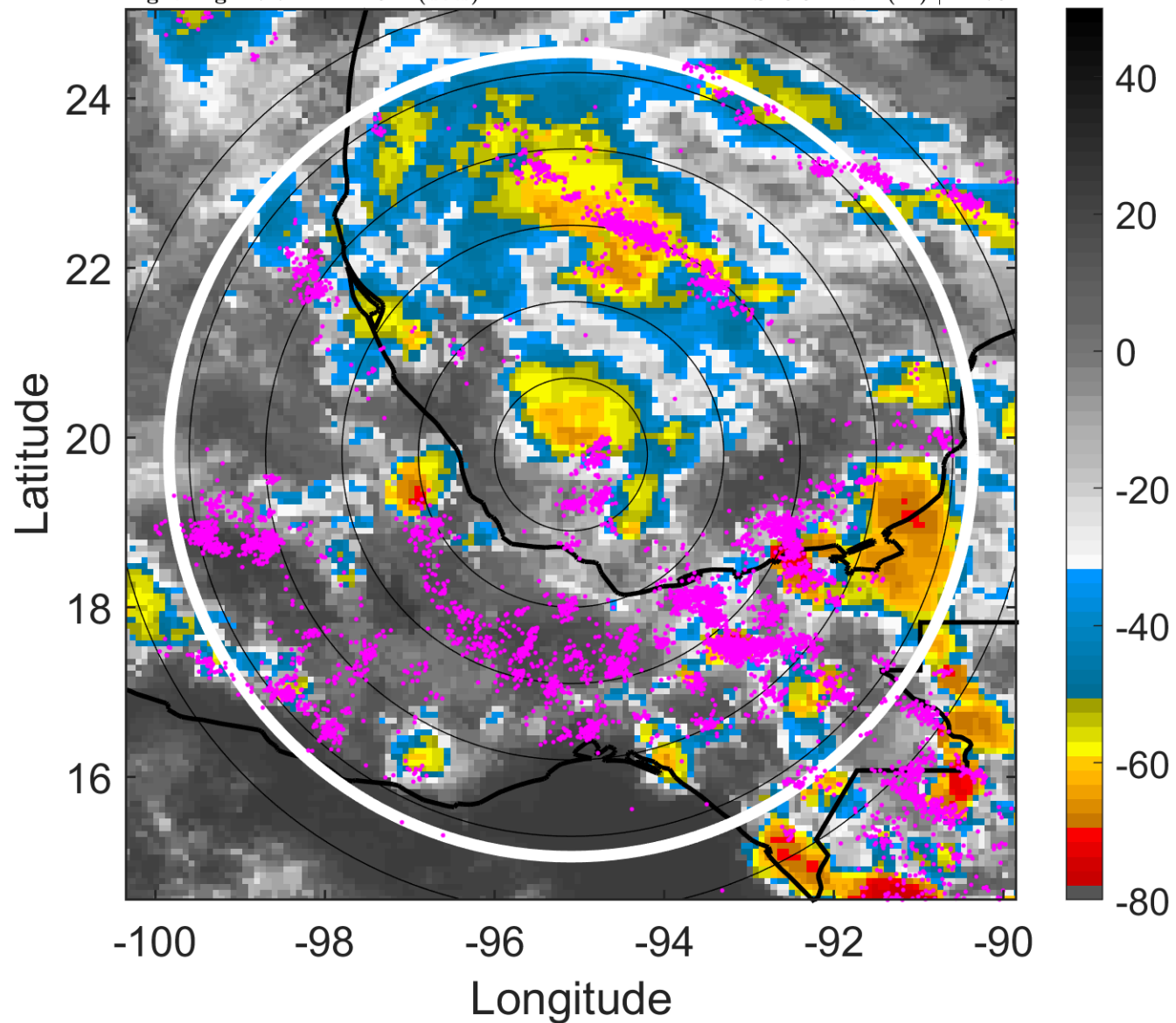
t: 2016062000 (17.7 LT)

Lightning: 17.7 LT \pm 1.5 h (dots)

PT: LLCP | EA: ACT

04L (DANIELLE) | 30 kt TD

S: 8.5 m s⁻¹ (M) | H: 79°



6-h IR BT Differences & Lightning

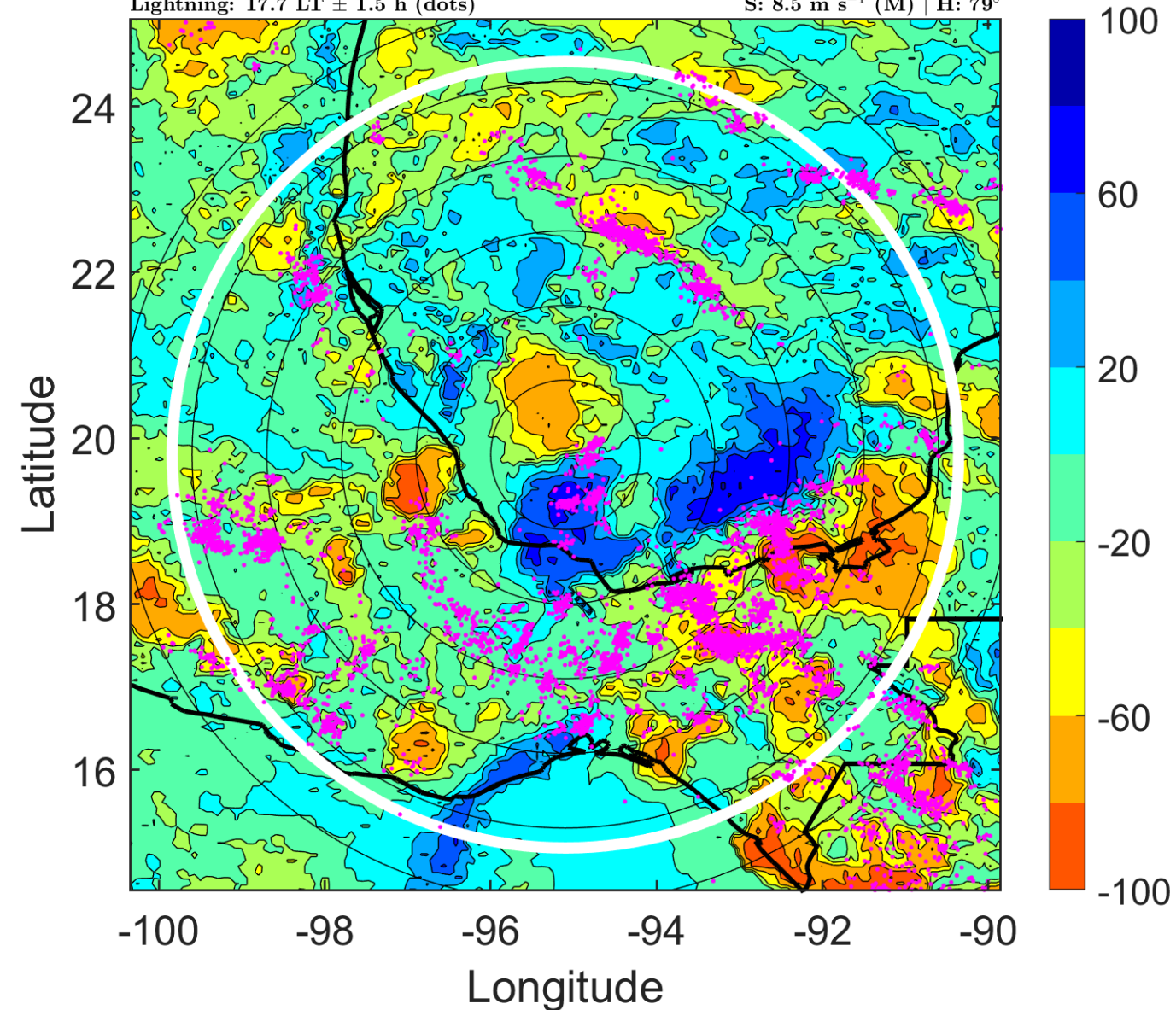
Δ t: 2016062000 (17.7 LT) - 2016061918 (11.7 LT)

Lightning: 17.7 LT \pm 1.5 h (dots)

PT: LLCP | EA: ACT

04L (DANIELLE) | 30 kt TD

S: 8.5 m s⁻¹ (M) | H: 79°



IR BT & Lightning

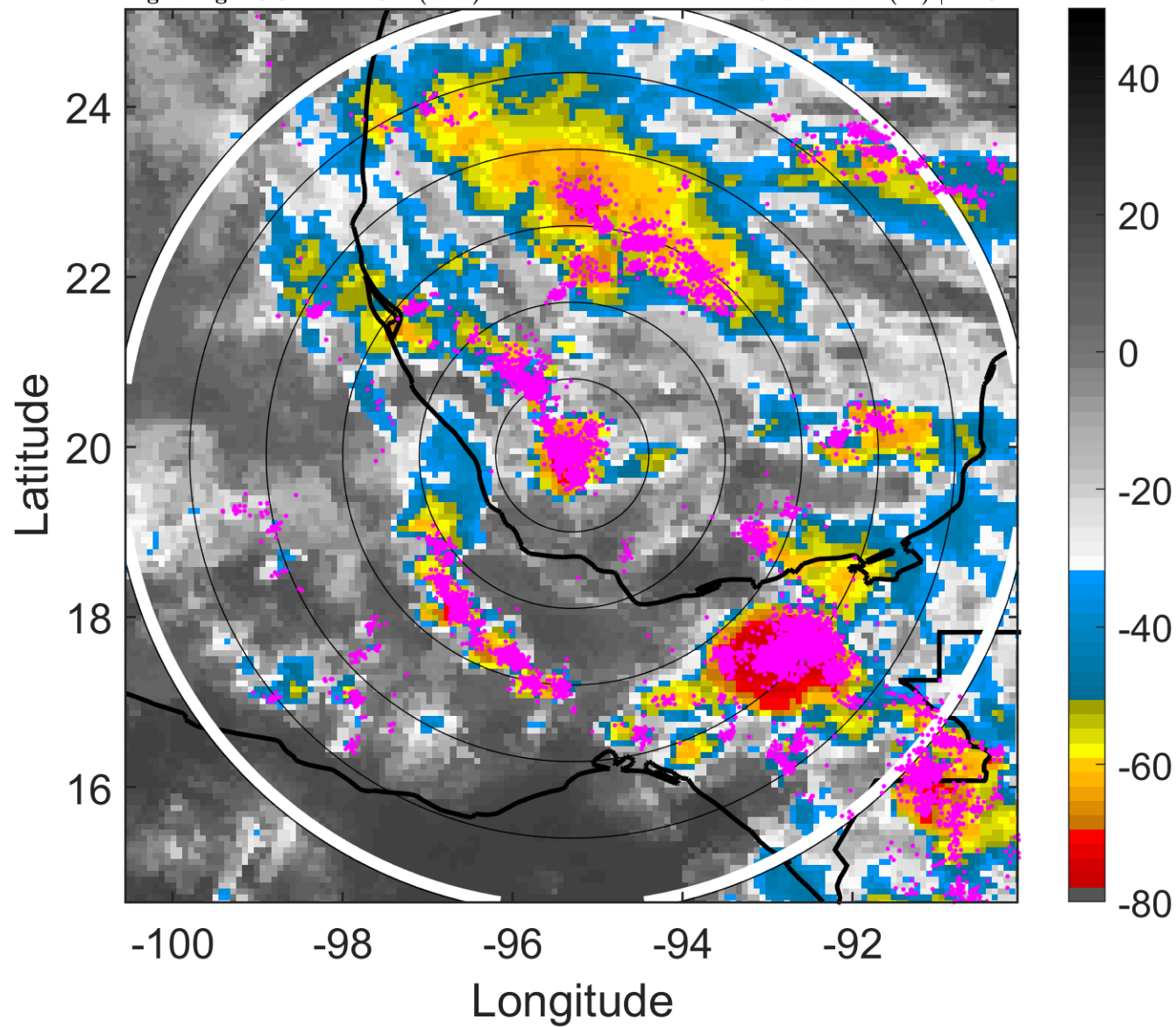
t: 2016062003 (20.6 LT)

Lightning: 20.6 LT \pm 1.5 h (dots)

PT: LLCP | EA: ACT

04L (DANIELLE) | 32.5 kt TD

S: 7.7 m s⁻¹ (M) | H: 81°



6-h IR BT Differences & Lightning

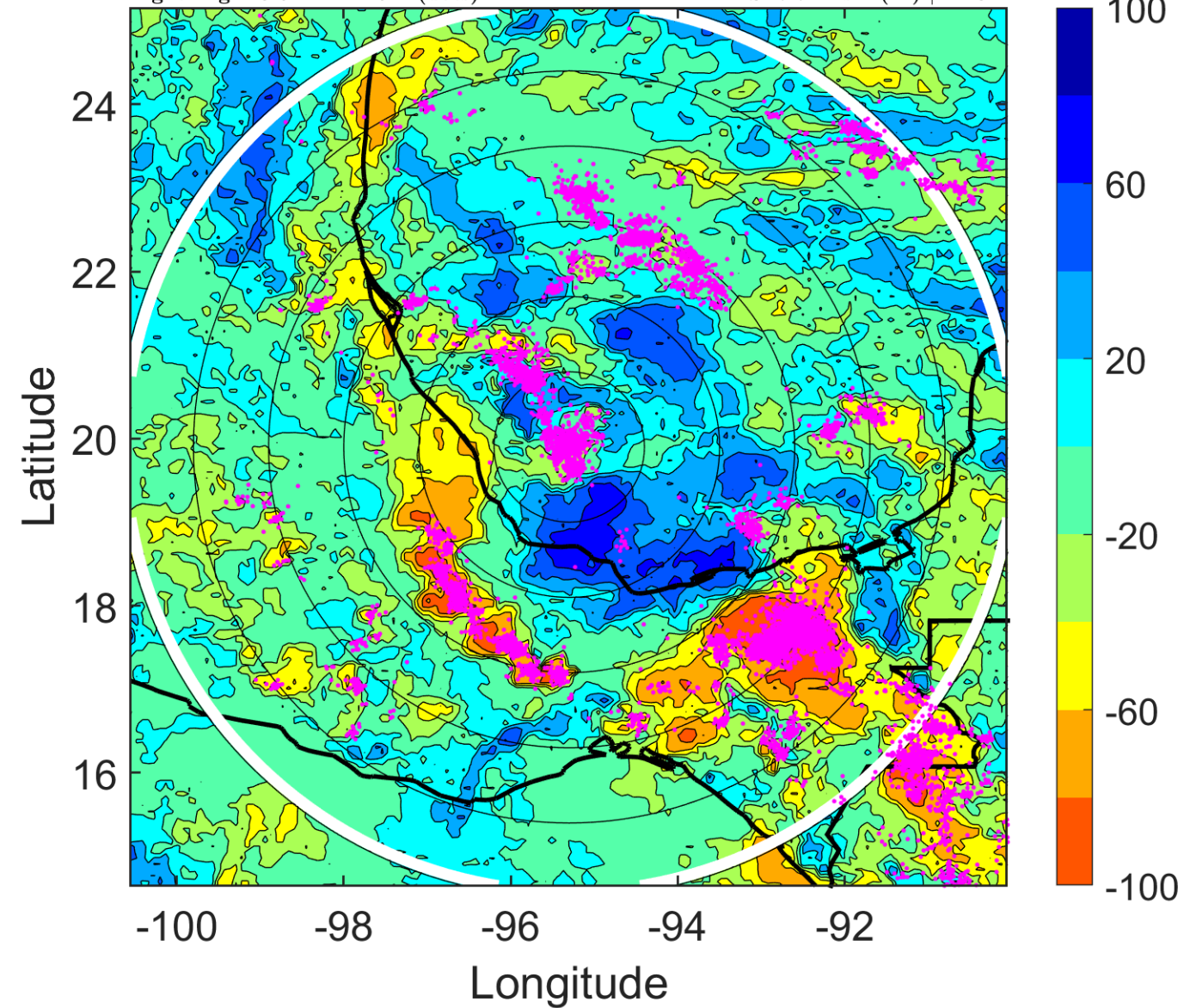
Δ t: 2016062003 (20.6 LT) - 2016061921 (14.7 LT)

Lightning: 20.6 LT \pm 1.5 h (dots)

PT: LLCP | EA: ACT

04L (DANIELLE) | 32.5 kt TD

S: 7.7 m s⁻¹ (M) | H: 81°



IR BT & Lightning

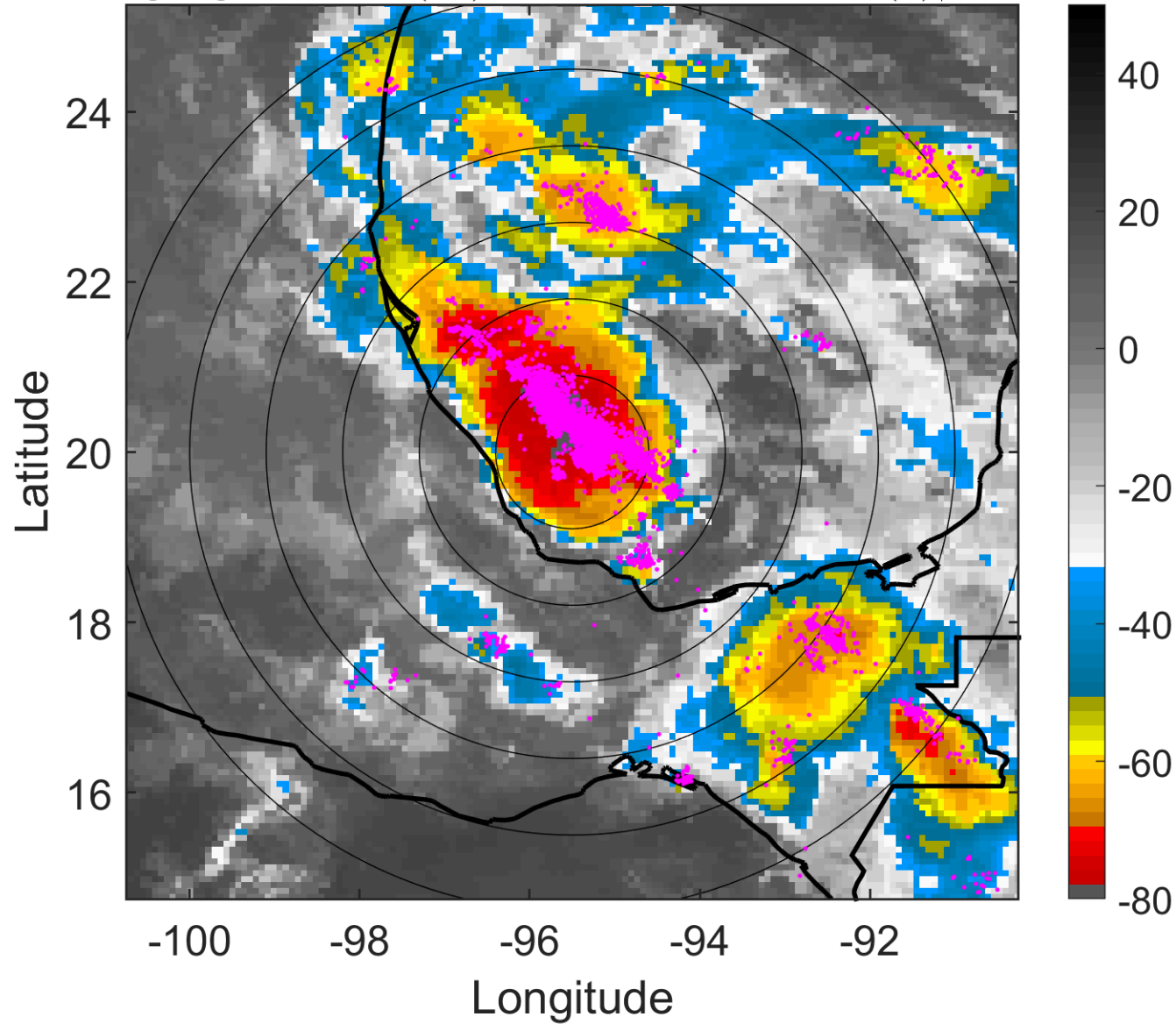
t: 2016062006 (23.6 LT)

Lightning: 23.6 LT \pm 1.5 h (dots)

PT: LLCP | EA: ACT

04L (DANIELLE) | 35 kt TS

S: 6.9 m s⁻¹ (M) | H: 83°



6-h IR BT Differences & Lightning

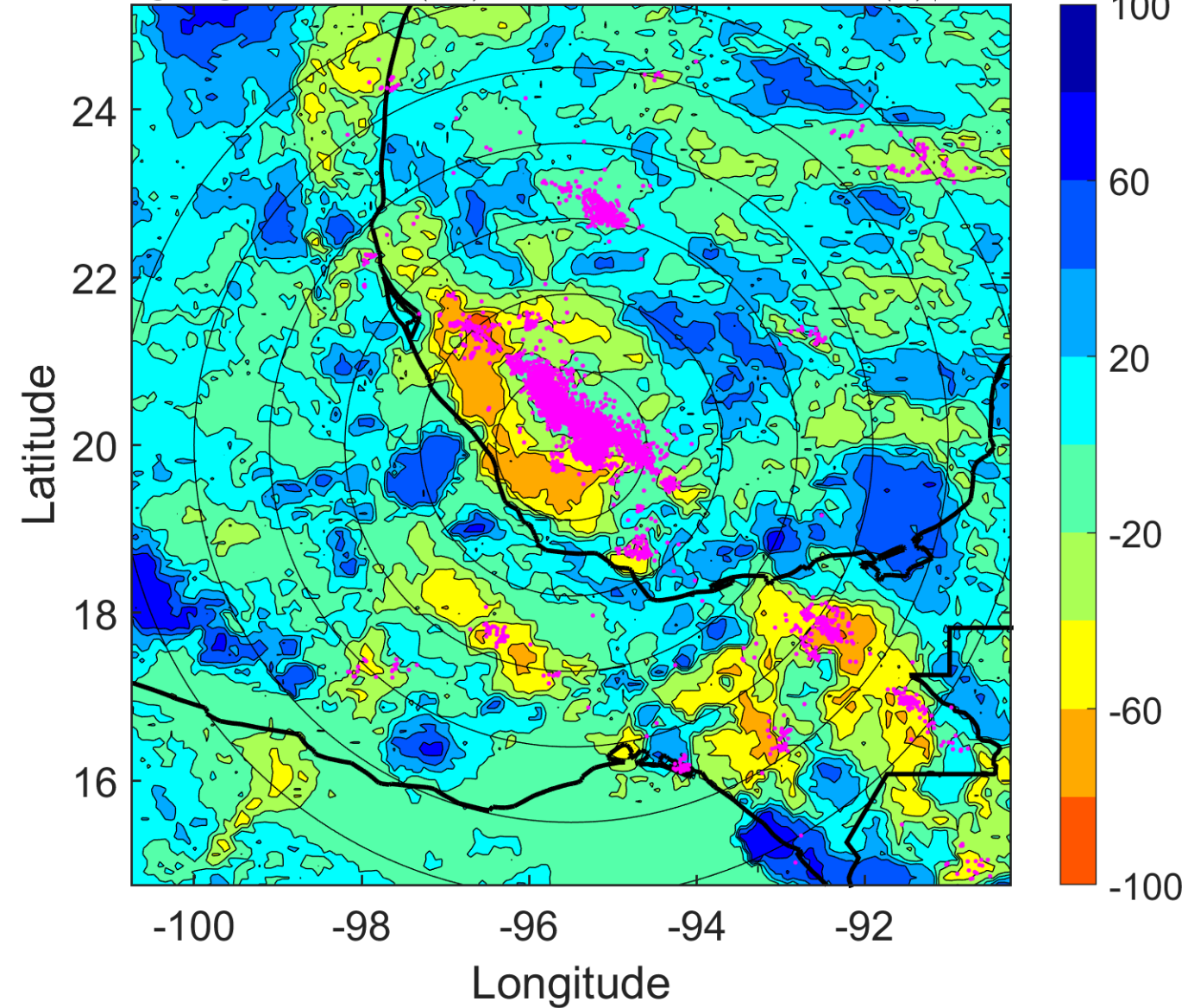
Δ t: 2016062006 (23.6 LT) - 2016062000 (17.7 LT)

Lightning: 23.6 LT \pm 1.5 h (dots)

PT: LLCP | EA: ACT

04L (DANIELLE) | 35 kt TS

S: 6.9 m s⁻¹ (M) | H: 83°



IR BT & Lightning

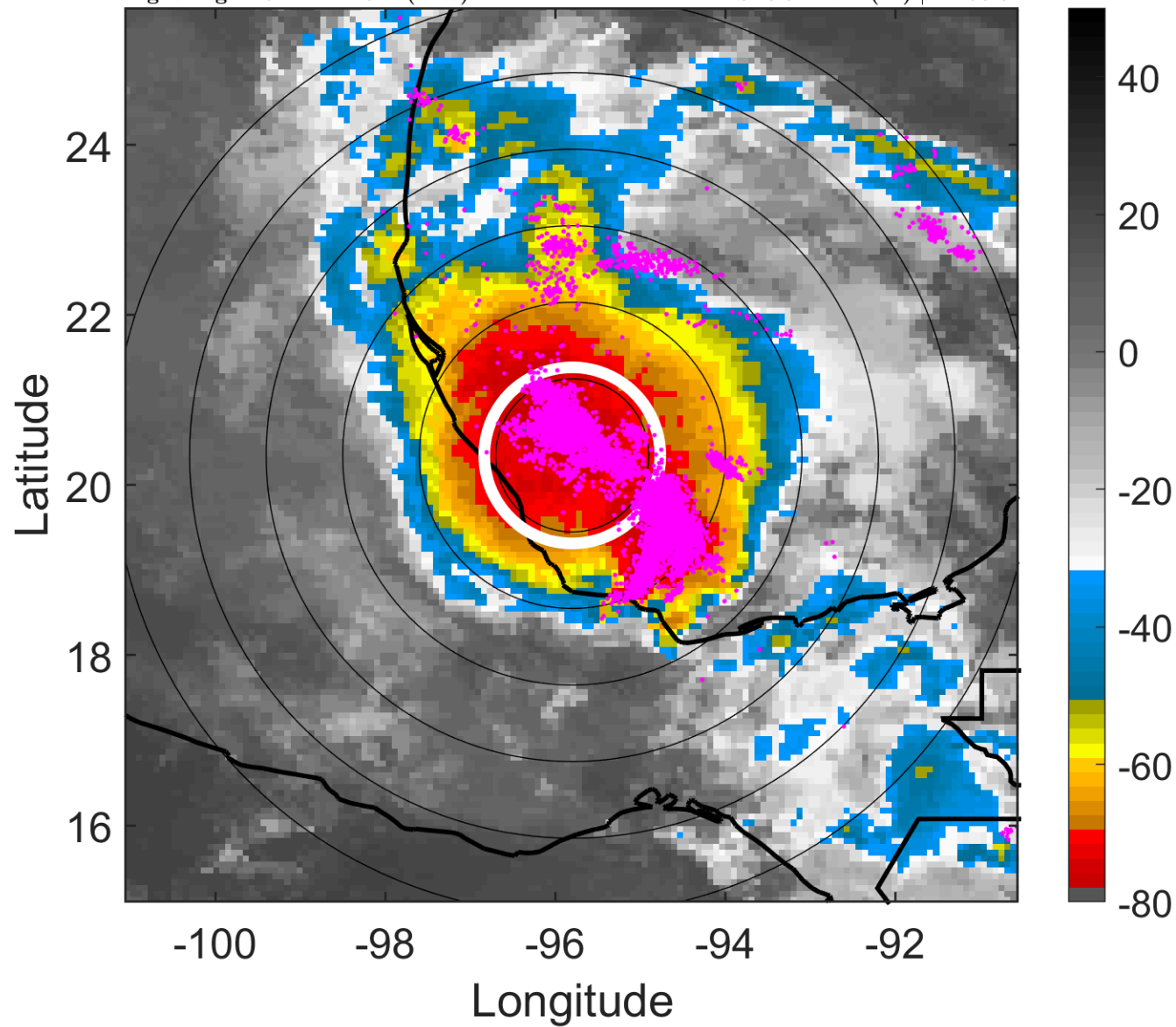
t: 2016062009 (2.6 LT)

Lightning: 2.6 LT \pm 1.5 h (dots)

LAND EFFECTS

04L (DANIELLE) | 37.5 kt TS

S: 6.9 m s⁻¹ (M) | H: 96.5°



6-h IR BT Differences & Lightning

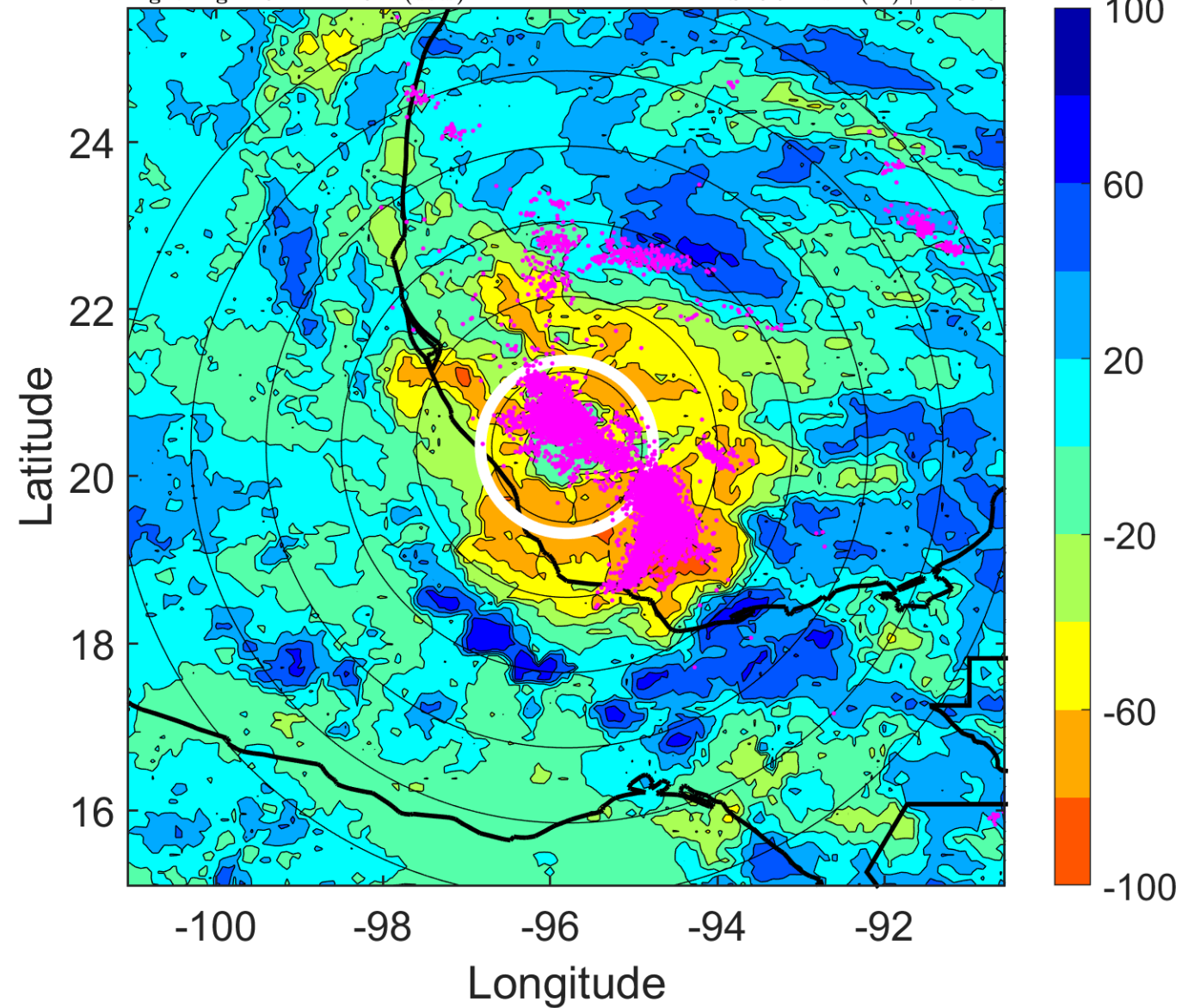
Δ t: 2016062009 (2.6 LT) - 2016062003 (20.6 LT)

Lightning: 2.6 LT \pm 1.5 h (dots)

LAND EFFECTS

04L (DANIELLE) | 37.5 kt TS

S: 6.9 m s⁻¹ (M) | H: 96.5°



IR BT & Lightning

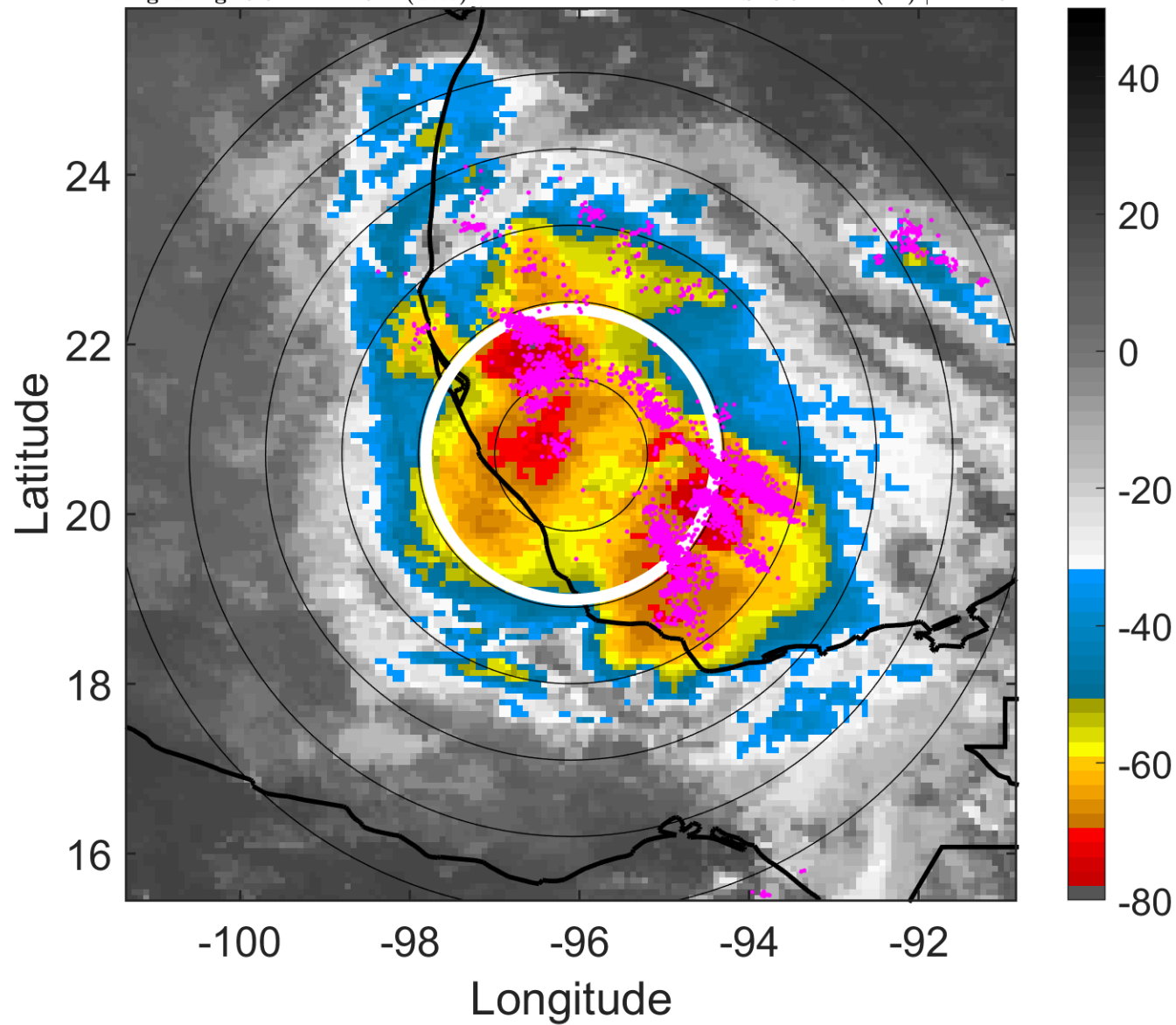
t: 2016062012 (5.6 LT)

Lightning: 5.6 LT \pm 1.5 h (dots)

LAND EFFECTS

04L (DANIELLE) | 40 kt TS

S: 6.9 m s⁻¹ (M) | H: 110°



6-h IR BT Differences & Lightning

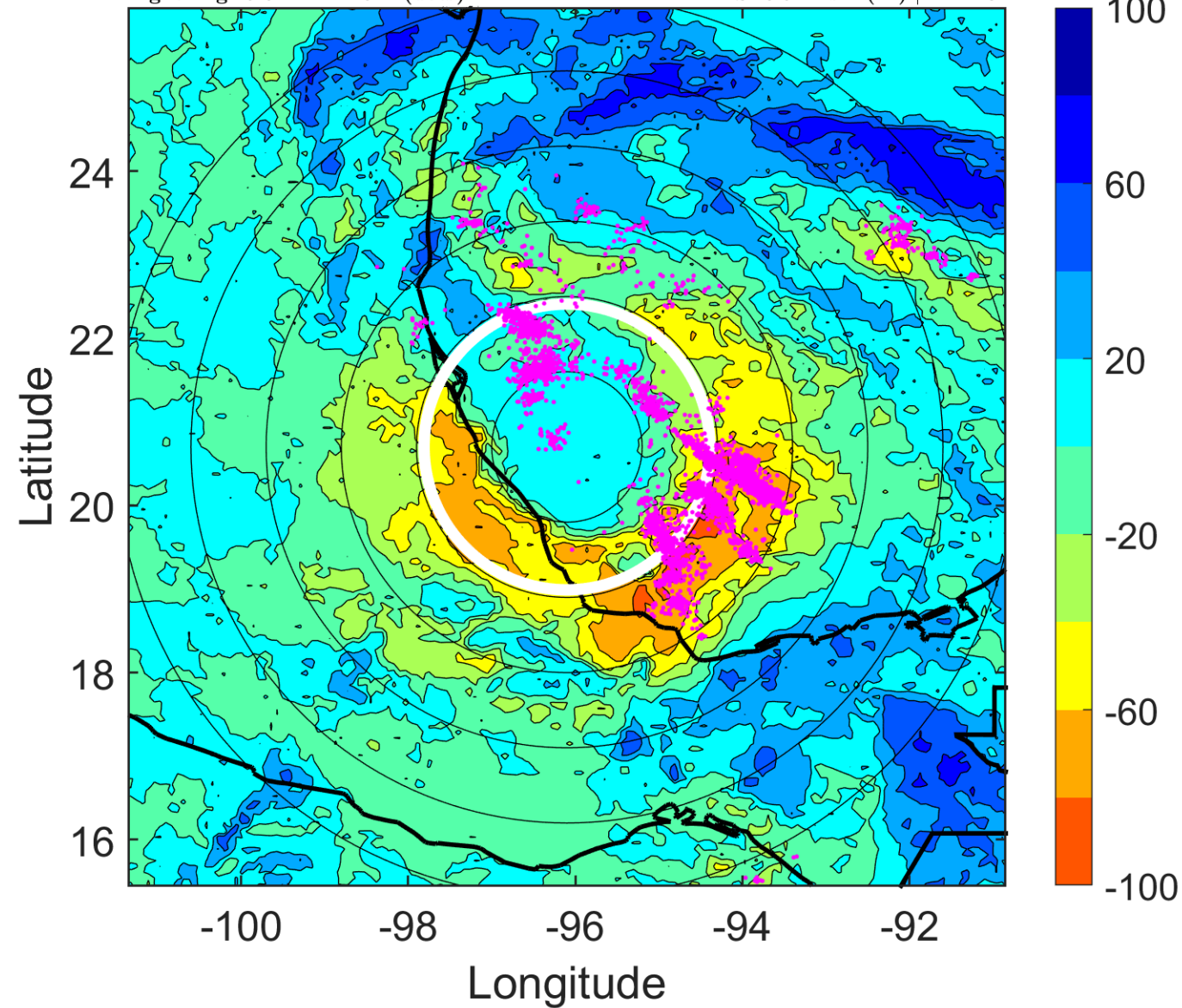
Δ t: 2016062012 (5.6 LT) - 2016062006 (23.6 LT)

Lightning: 5.6 LT \pm 1.5 h (dots)

LAND EFFECTS

04L (DANIELLE) | 40 kt TS

S: 6.9 m s⁻¹ (M) | H: 110°



IR BT & Lightning

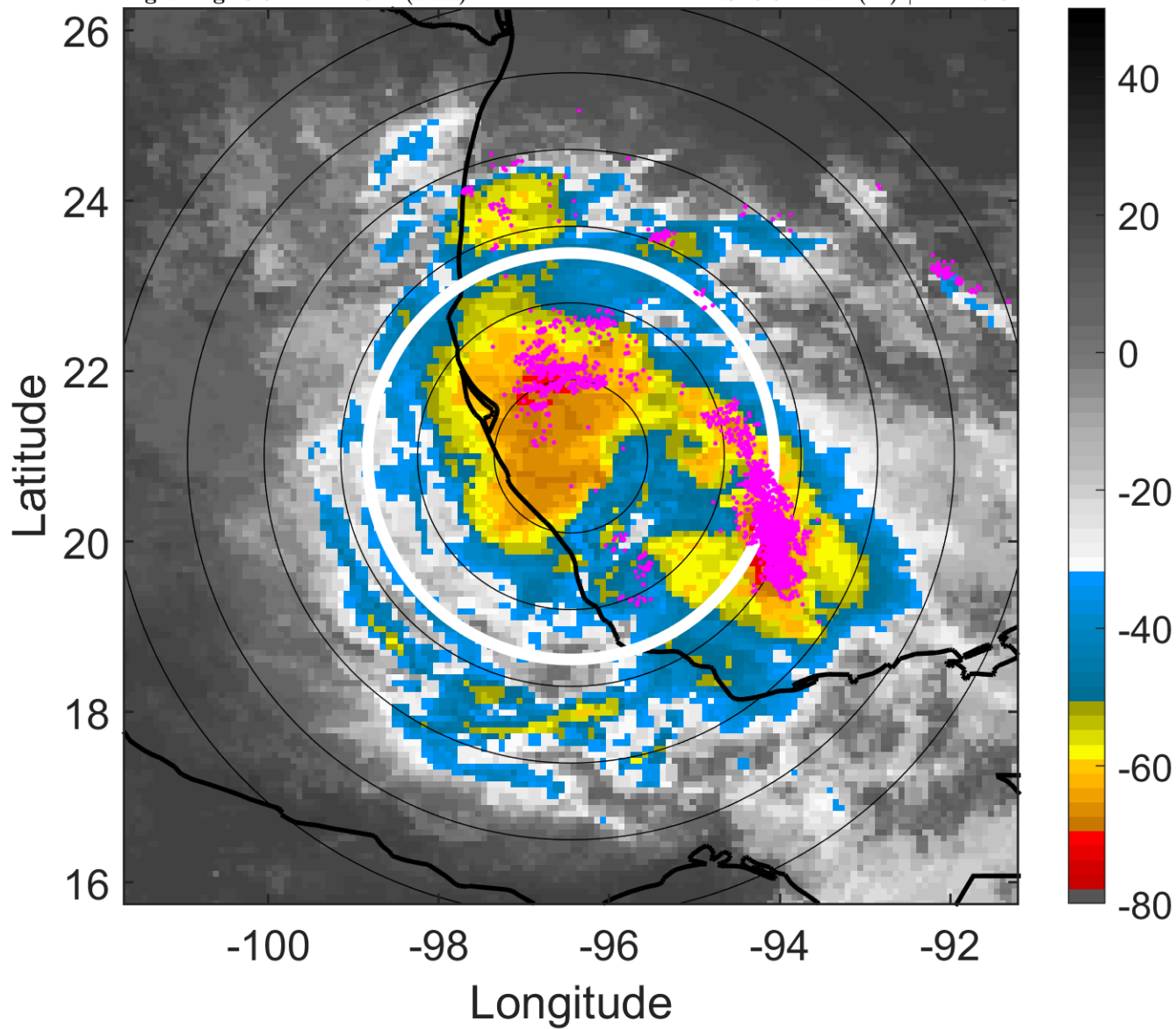
t: 2016062015 (8.6 LT)

Lightning: 8.6 LT \pm 1.5 h (dots)

LAND EFFECTS

04L (DANIELLE) | 37.5 kt TS

S: 6.9 m s⁻¹ (M) | H: 118.5°



6-h IR BT Differences & Lightning

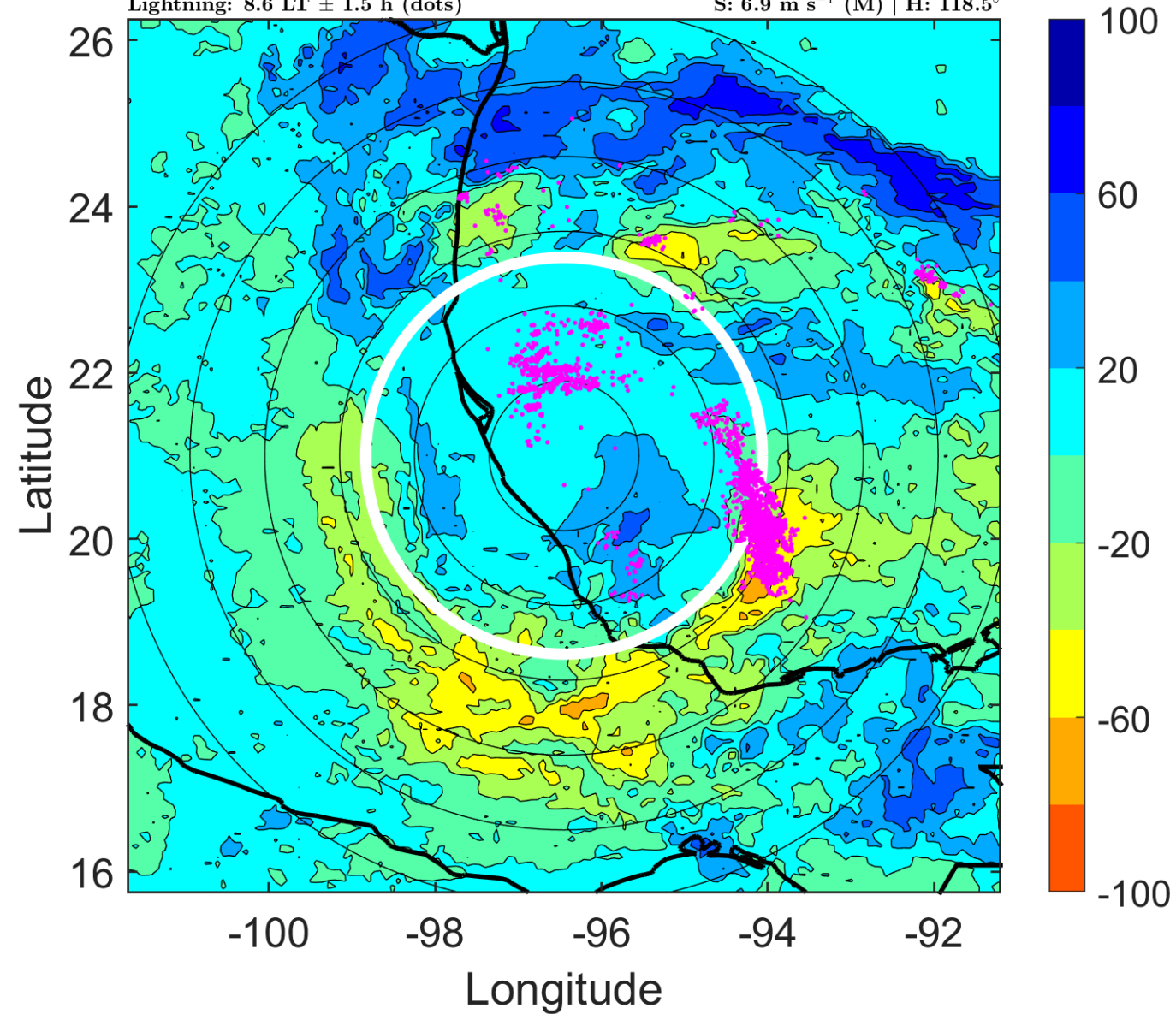
Δ t: 2016062015 (8.6 LT) - 2016062009 (2.6 LT)

Lightning: 8.6 LT \pm 1.5 h (dots)

LAND EFFECTS

04L (DANIELLE) | 37.5 kt TS

S: 6.9 m s⁻¹ (M) | H: 118.5°



IR BT & Lightning

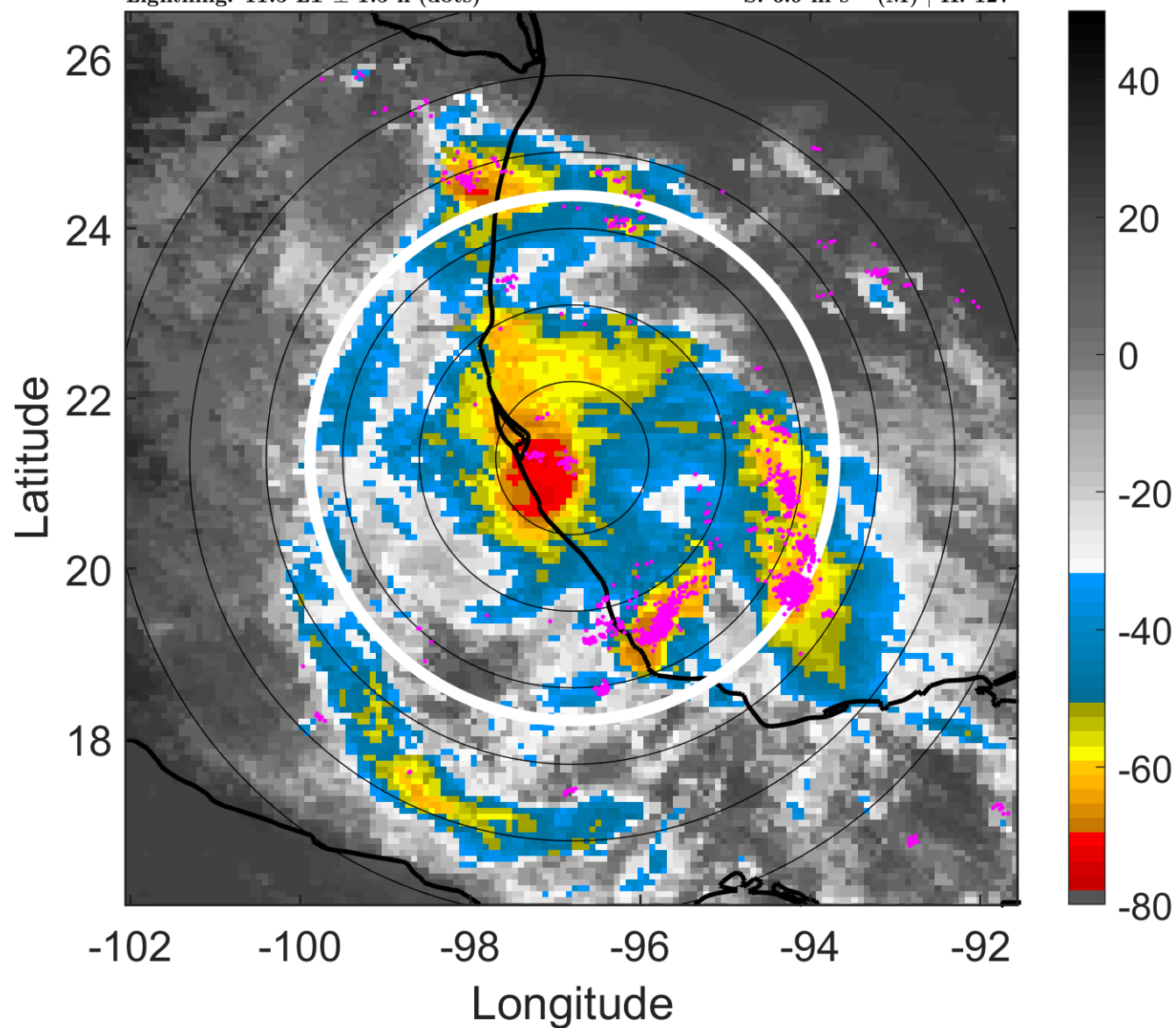
t: 2016062018 (11.5 LT)

Lightning: 11.5 LT \pm 1.5 h (dots)

LAND EFFECTS

04L (DANIELLE) | 35 kt TS

S: 6.9 m s⁻¹ (M) | H: 127°



6-h IR BT Differences & Lightning

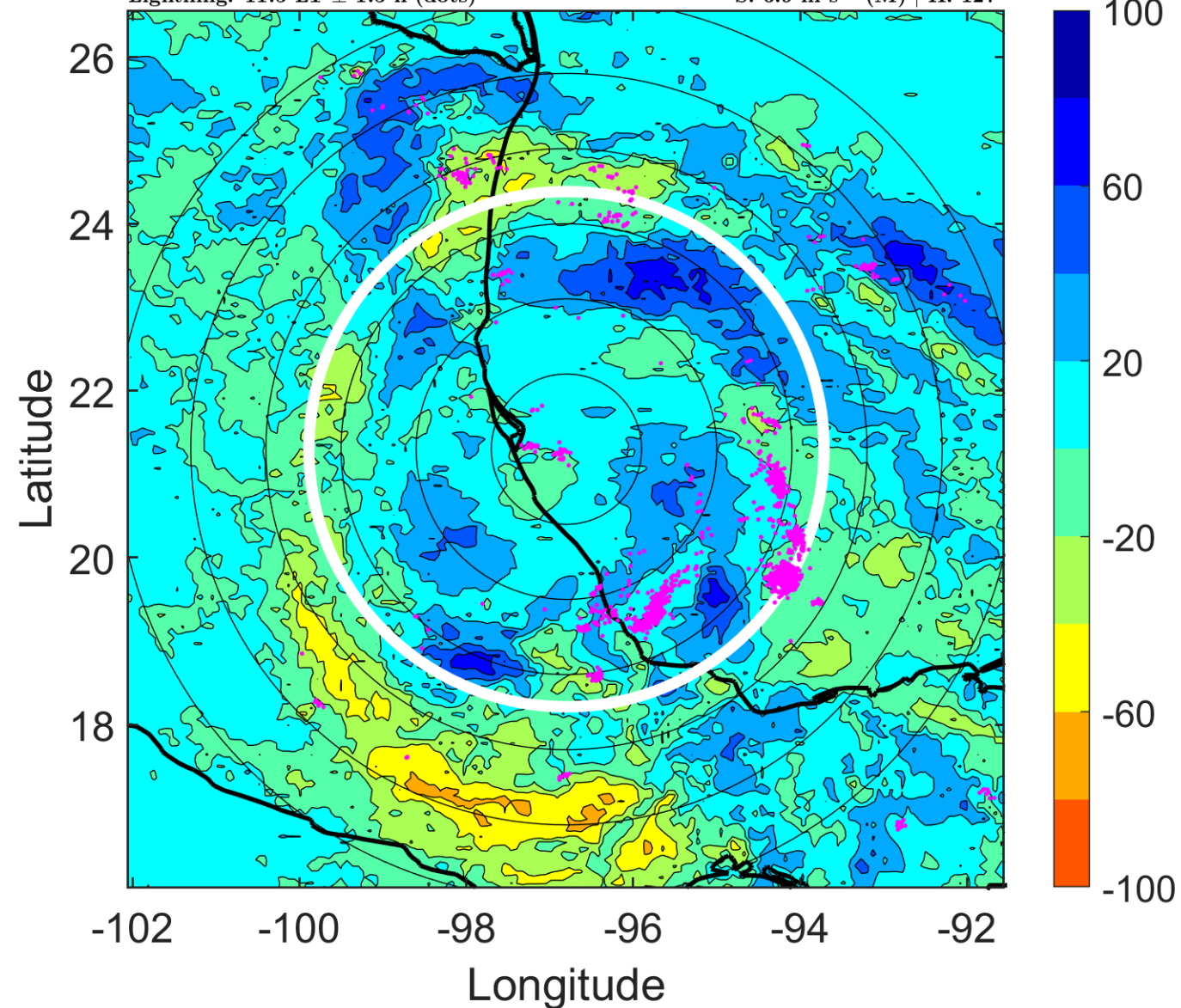
Δ t: 2016062018 (11.5 LT) - 2016062012 (5.6 LT)

Lightning: 11.5 LT \pm 1.5 h (dots)

LAND EFFECTS

04L (DANIELLE) | 35 kt TS

S: 6.9 m s⁻¹ (M) | H: 127°



IR BT & Lightning

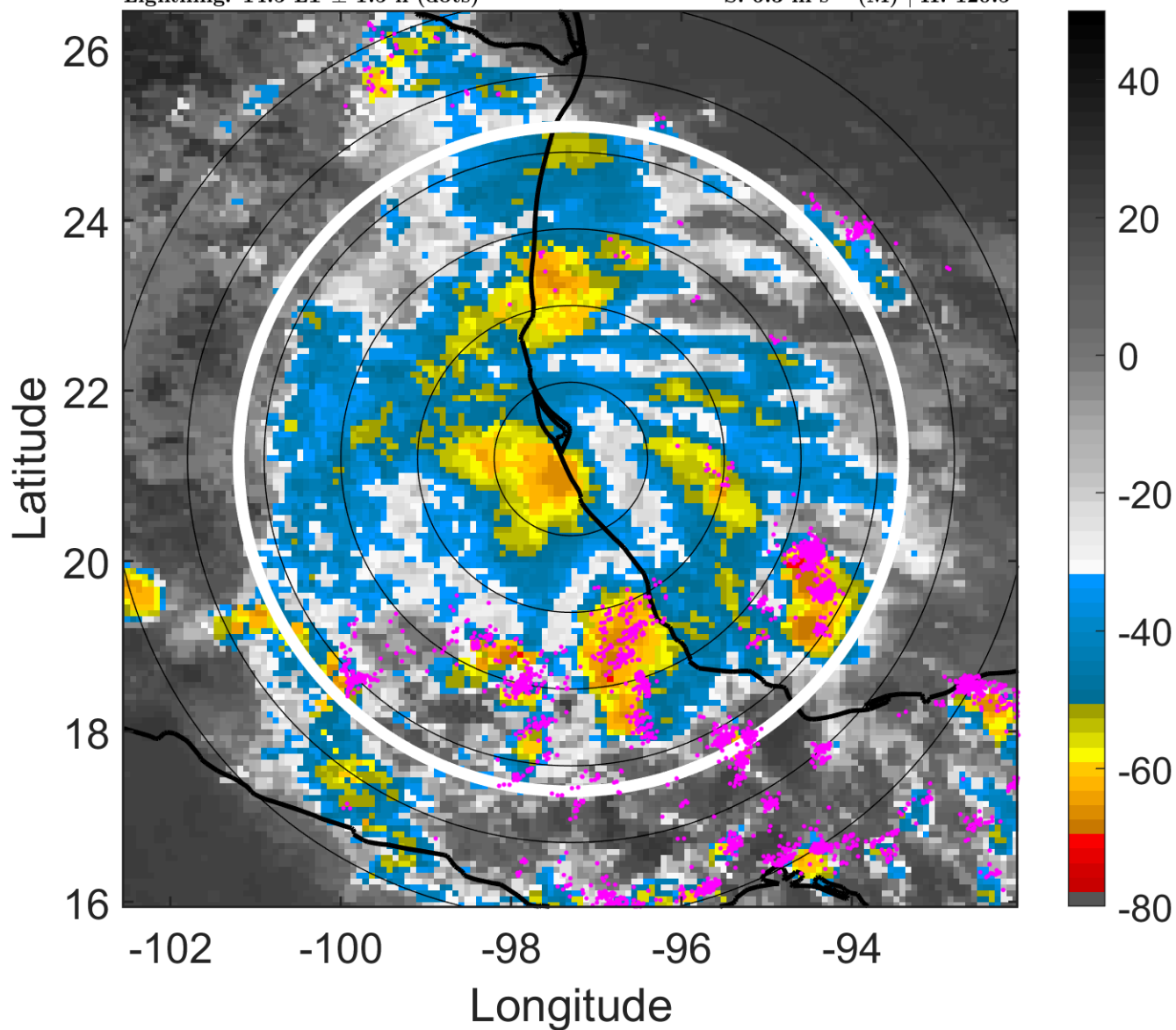
t: 2016062021 (14.5 LT)

Lightning: 14.5 LT \pm 1.5 h (dots)

LAND EFFECTS

04L (DANIELLE) | 32.5 kt TD

S: 6.3 m s⁻¹ (M) | H: 120.5°



6-h IR BT Differences & Lightning

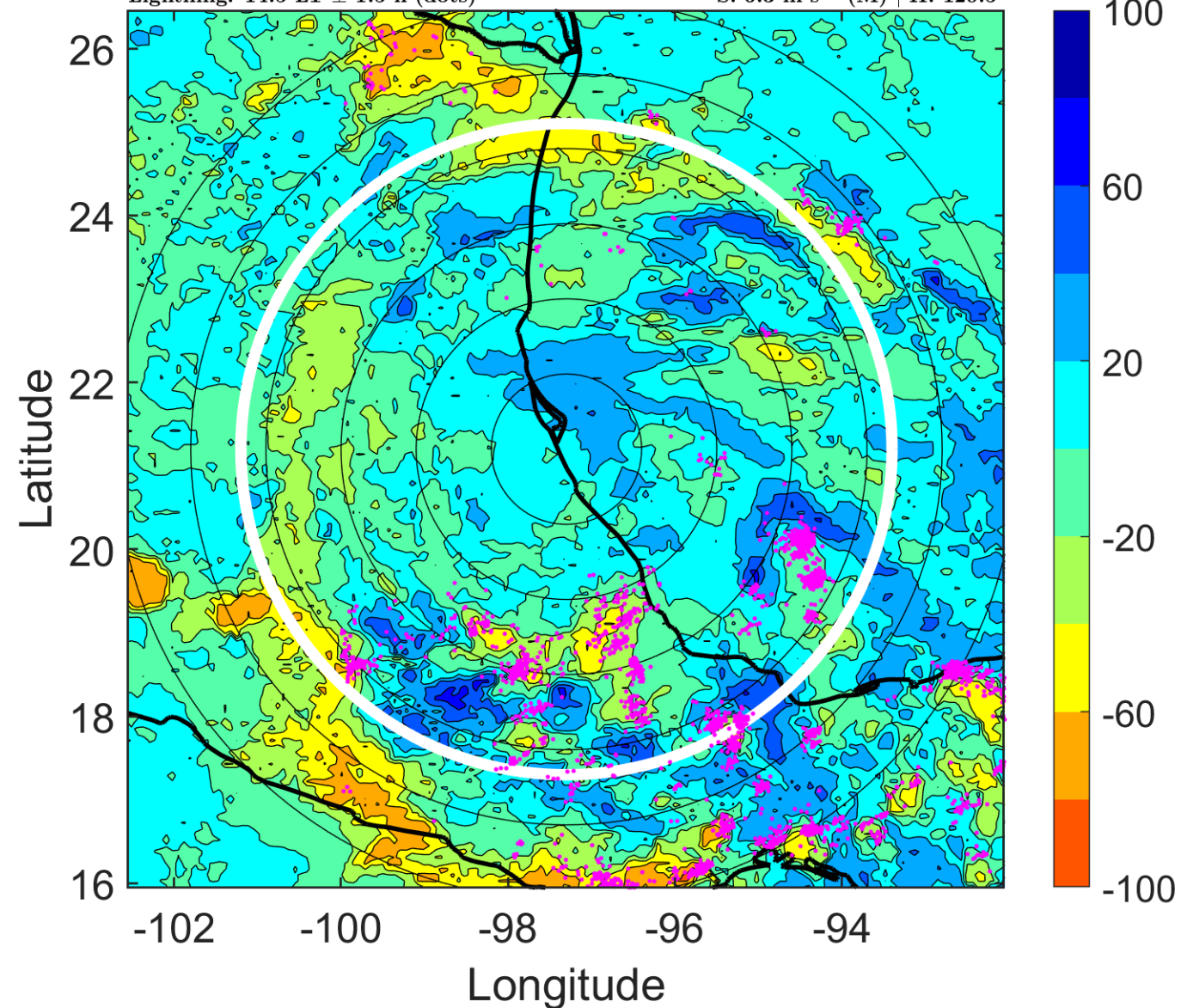
Δ t: 2016062021 (14.5 LT) - 2016062015 (8.6 LT)

Lightning: 14.5 LT \pm 1.5 h (dots)

LAND EFFECTS

04L (DANIELLE) | 32.5 kt TD

S: 6.3 m s⁻¹ (M) | H: 120.5°



IR BT & Lightning

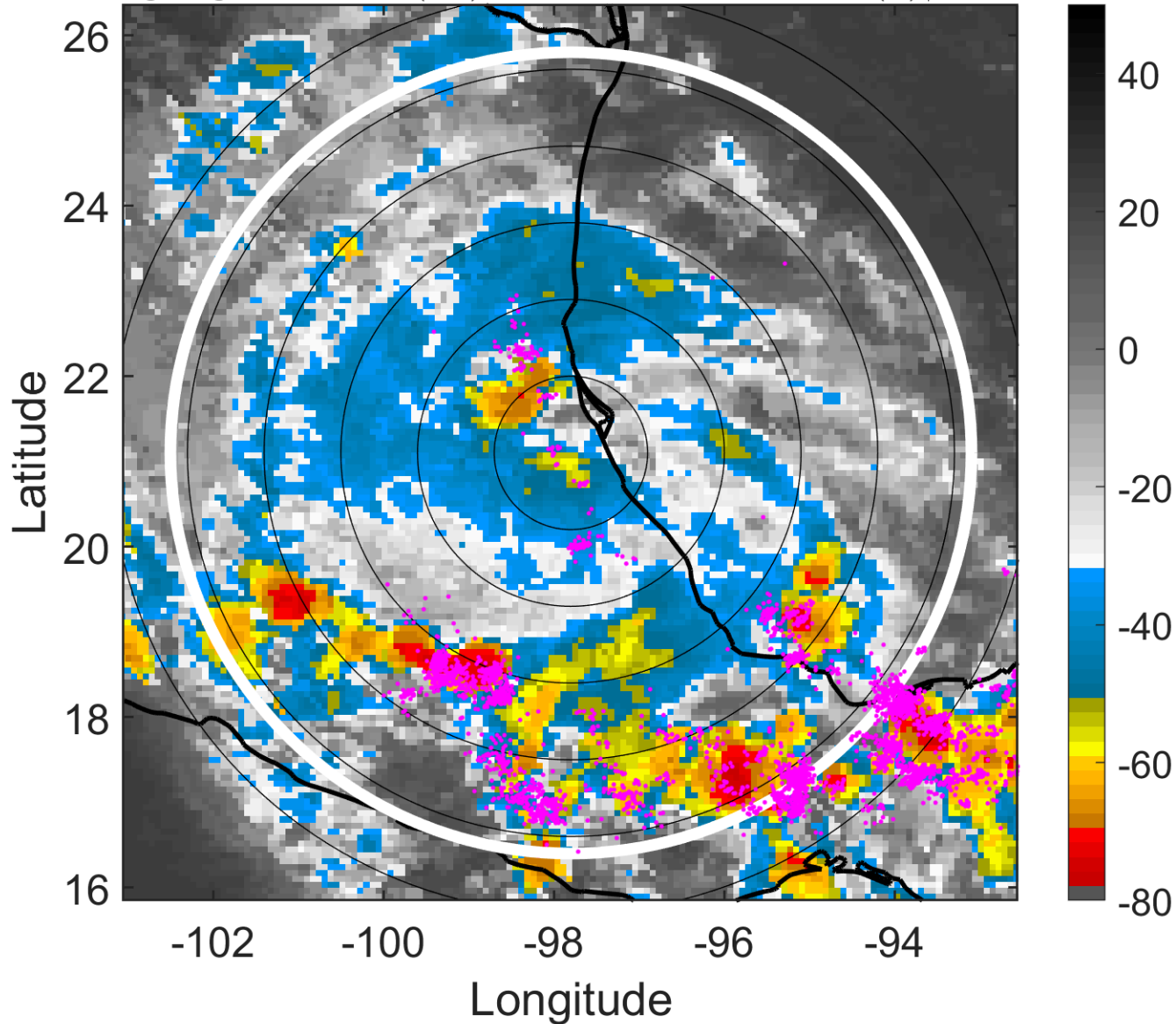
t: 2016062100 (17.5 LT)

Lightning: 17.5 LT \pm 1.5 h (dots)

LAND EFFECTS

04L (DANIELLE) | 30 kt TD

S: 5.7 m s⁻¹ (M) | H: 114°



6-h IR BT Differences & Lightning

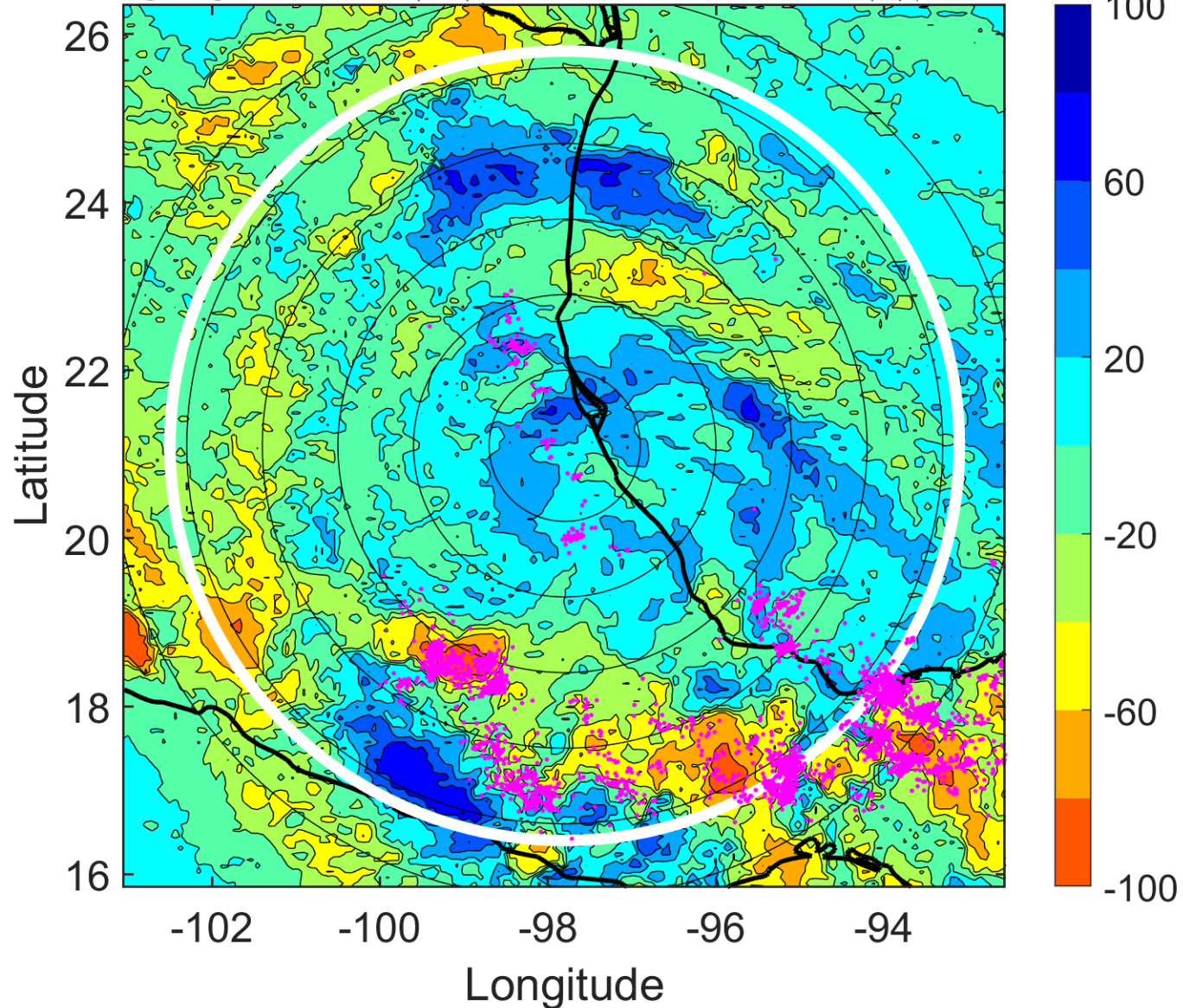
Δ t: 2016062100 (17.5 LT) - 2016062018 (11.5 LT)

Lightning: 17.5 LT \pm 1.5 h (dots)

LAND EFFECTS

04L (DANIELLE) | 30 kt TD

S: 5.7 m s⁻¹ (M) | H: 114°



IR BT & Lightning

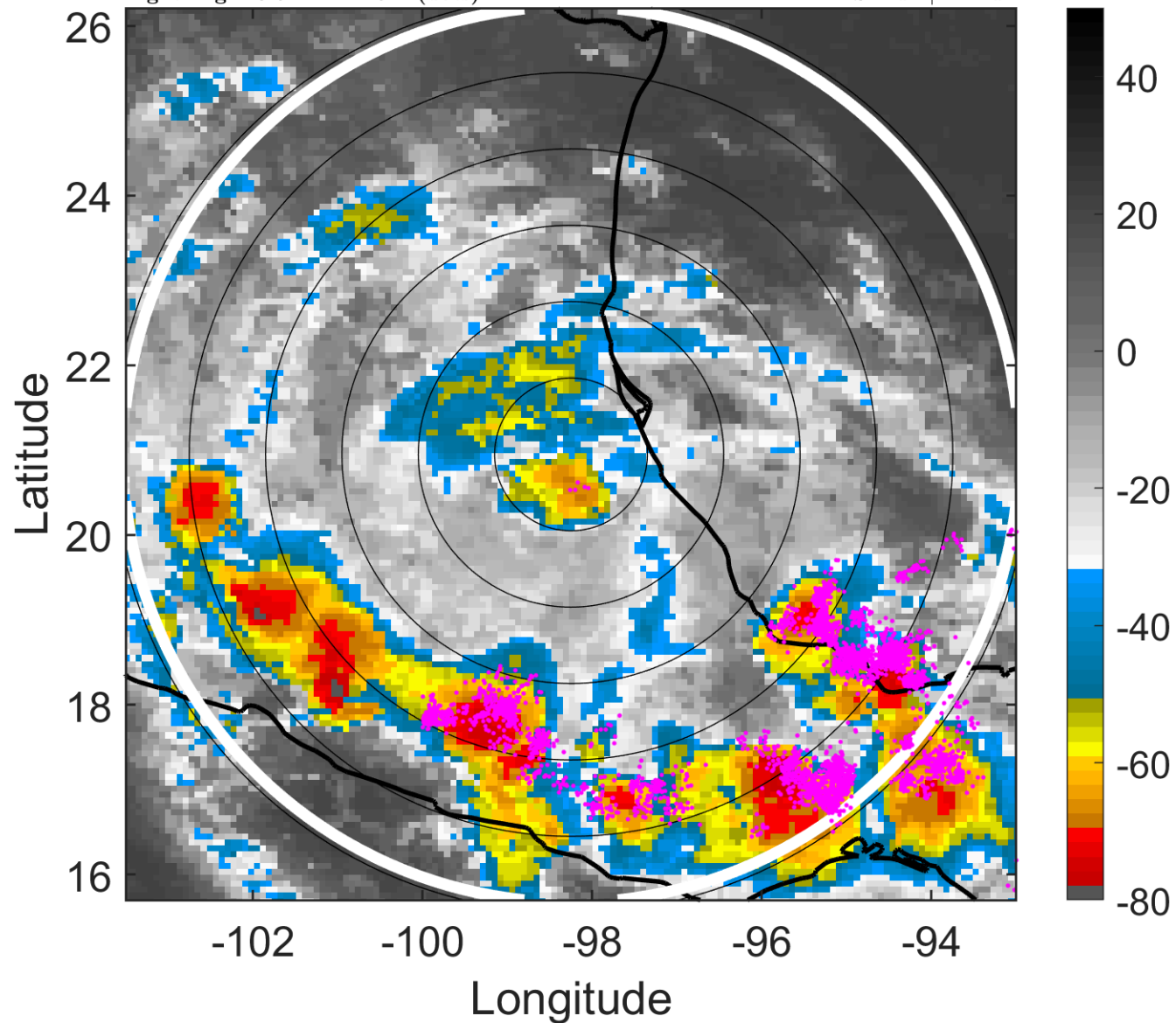
t: 2016062103 (20.5 LT)

Lightning: 20.5 LT \pm 1.5 h (dots)

LAND EFFECTS

04L (DANIELLE) | 25 kt TD

S: null | H: null



6-h IR BT Differences & Lightning

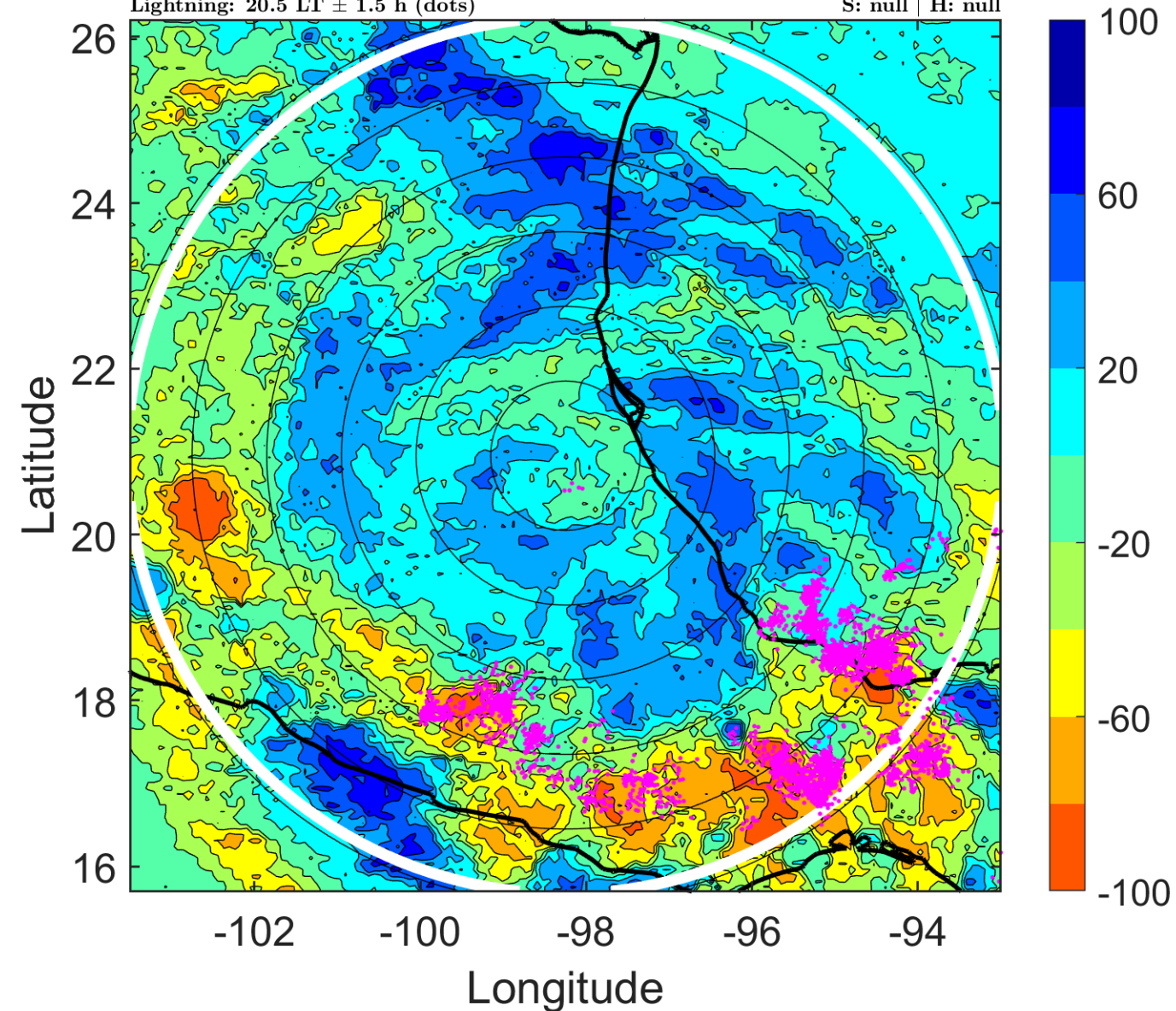
Δ t: 2016062103 (20.5 LT) - 2016062021 (14.5 LT)

Lightning: 20.5 LT \pm 1.5 h (dots)

LAND EFFECTS

04L (DANIELLE) | 25 kt TD

S: null | H: null



IR BT & Lightning

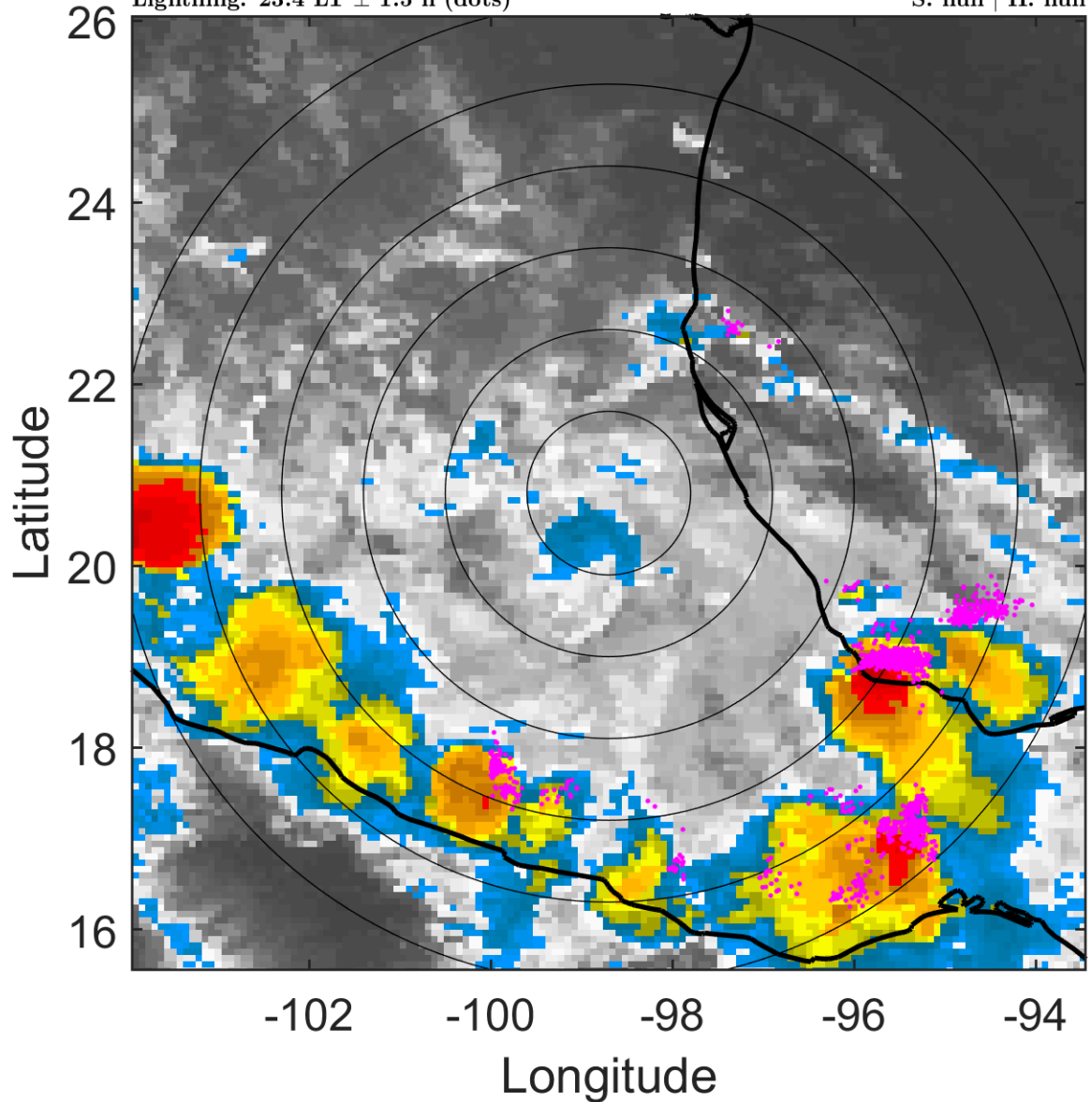
t: 2016062106 (23.4 LT)

Lightning: 23.4 LT \pm 1.5 h (dots)

LAND EFFECTS

04L (DANIELLE) | 20 kt LO

S: null | H: null



6-h IR BT Differences & Lightning

Δ t: 2016062106 (23.4 LT) - 2016062100 (17.5 LT)

Lightning: 23.4 LT \pm 1.5 h (dots)

LAND EFFECTS

04L (DANIELLE) | 20 kt LO

S: null | H: null

