

IR BT & Lightning

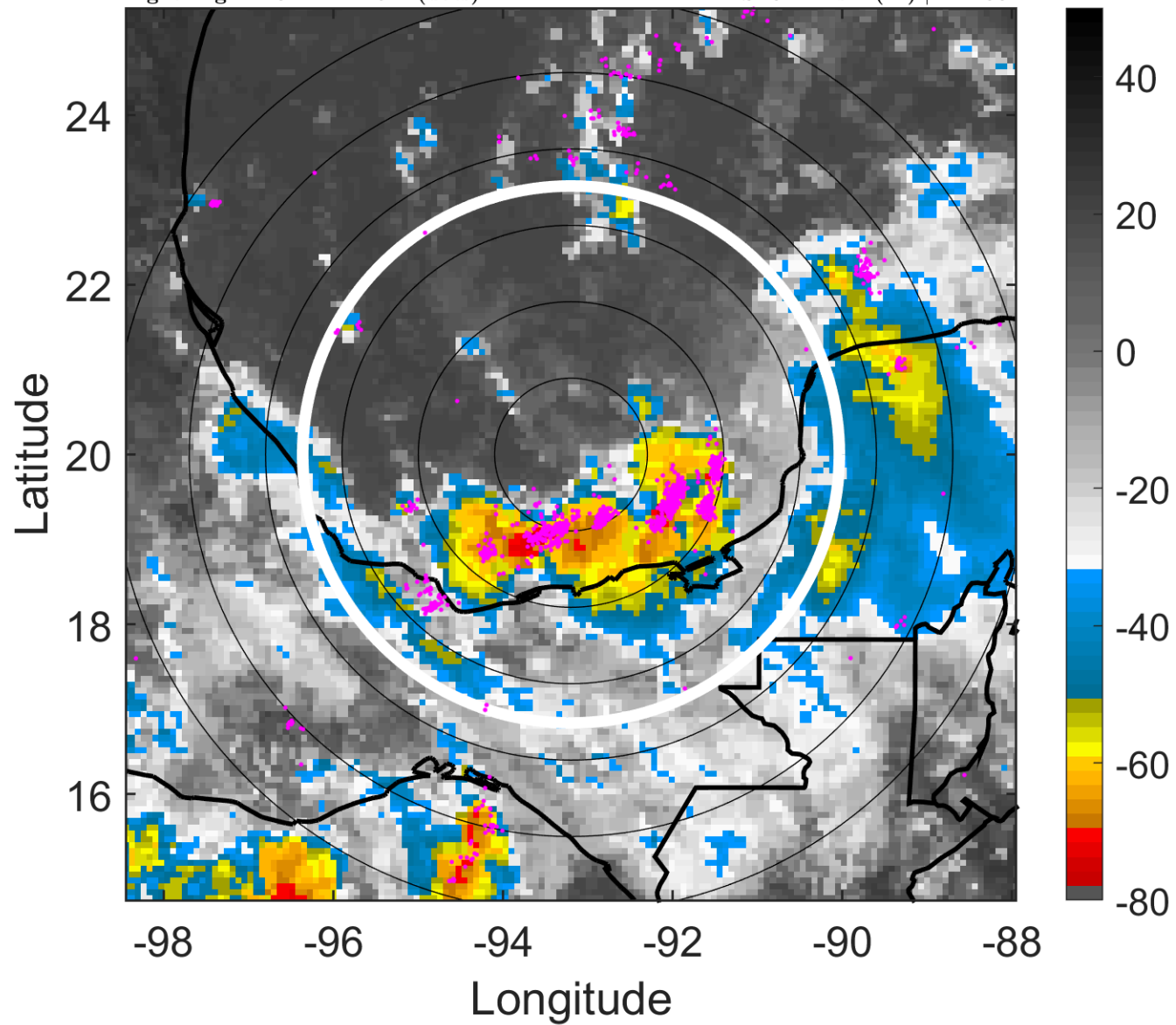
t: 2014090118 (11.8 LT)

Lightning: 11.8 LT \pm 1.5 h (dots)

PT: SLCP | EA: QUASI

05L (DOLLY) | 30 kt TD

S: 8.4 m s⁻¹ (M) | H: 180°



6-h IR BT Differences & Lightning

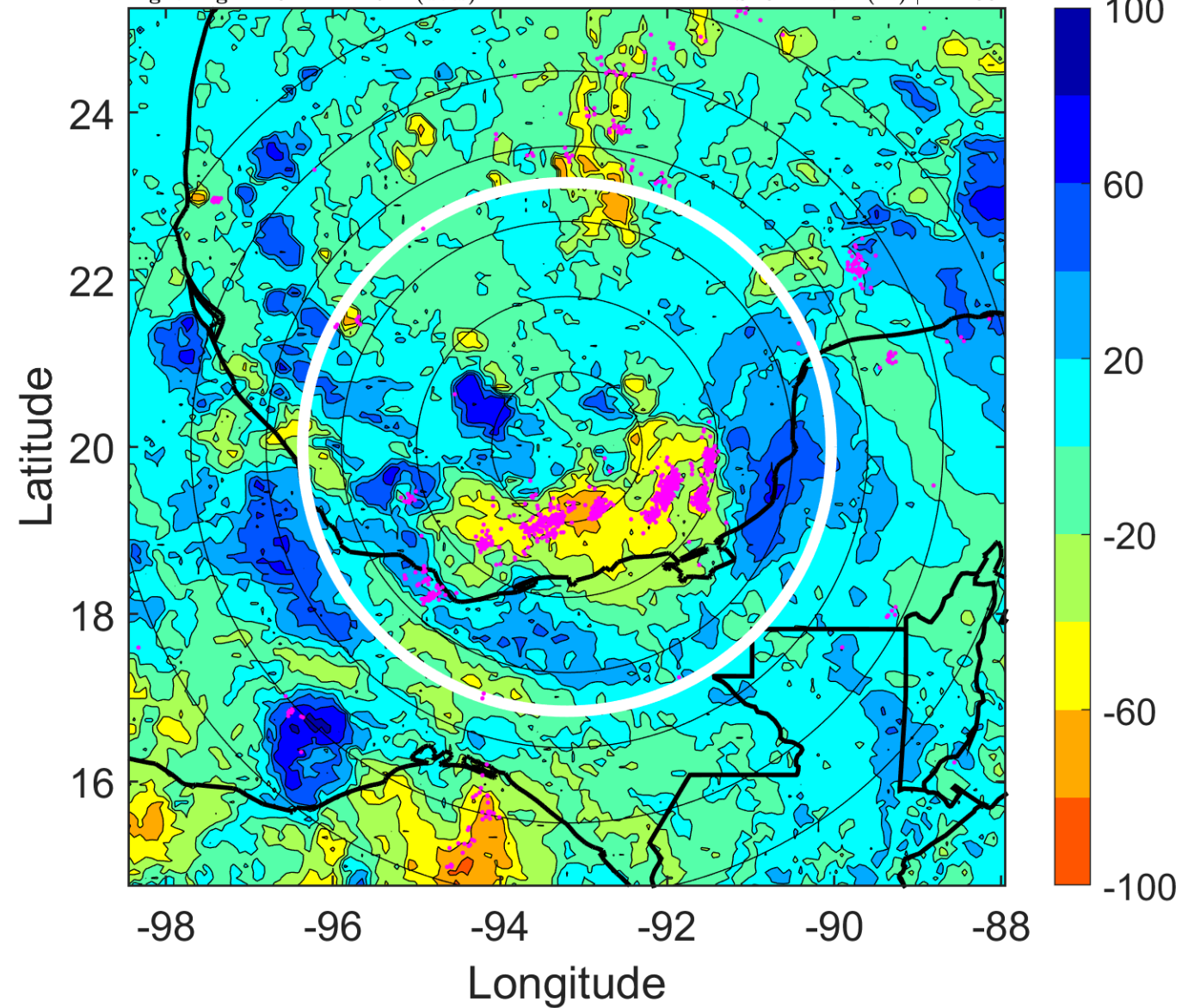
Δ t: 2014090118 (11.8 LT) - 2014090112 (5.8 LT)

Lightning: 11.8 LT \pm 1.5 h (dots)

PT: SLCP | EA: QUASI

05L (DOLLY) | 30 kt TD

S: 8.4 m s⁻¹ (M) | H: 180°



IR BT & Lightning

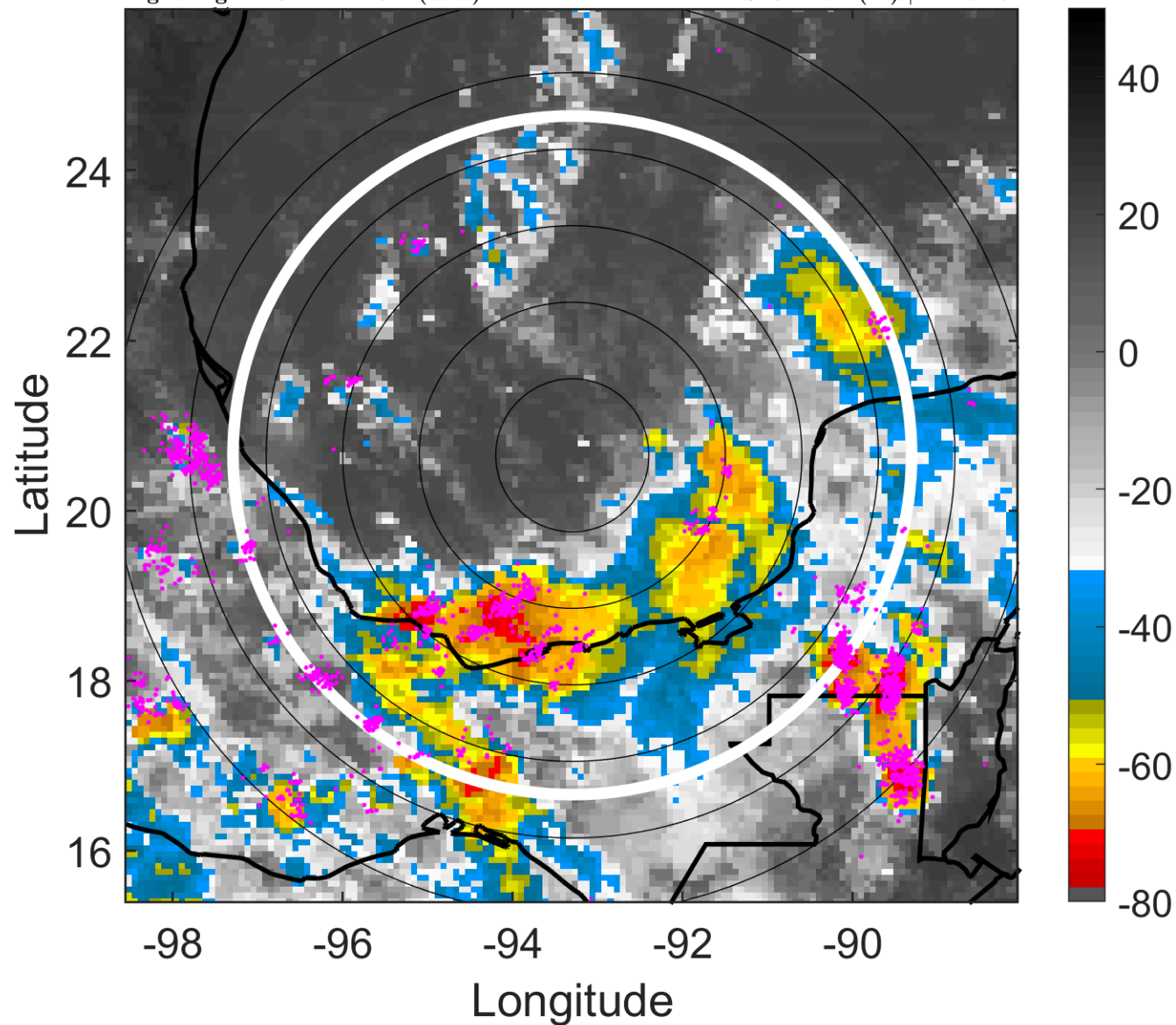
t: 2014090121 (14.8 LT)

Lightning: 14.8 LT \pm 1.5 h (dots)

PT: SLCP | EA: QUASI

05L (DOLLY) | 32.5 kt TD

S: 8 m s⁻¹ (M) | H: 171.5°



6-h IR BT Differences & Lightning

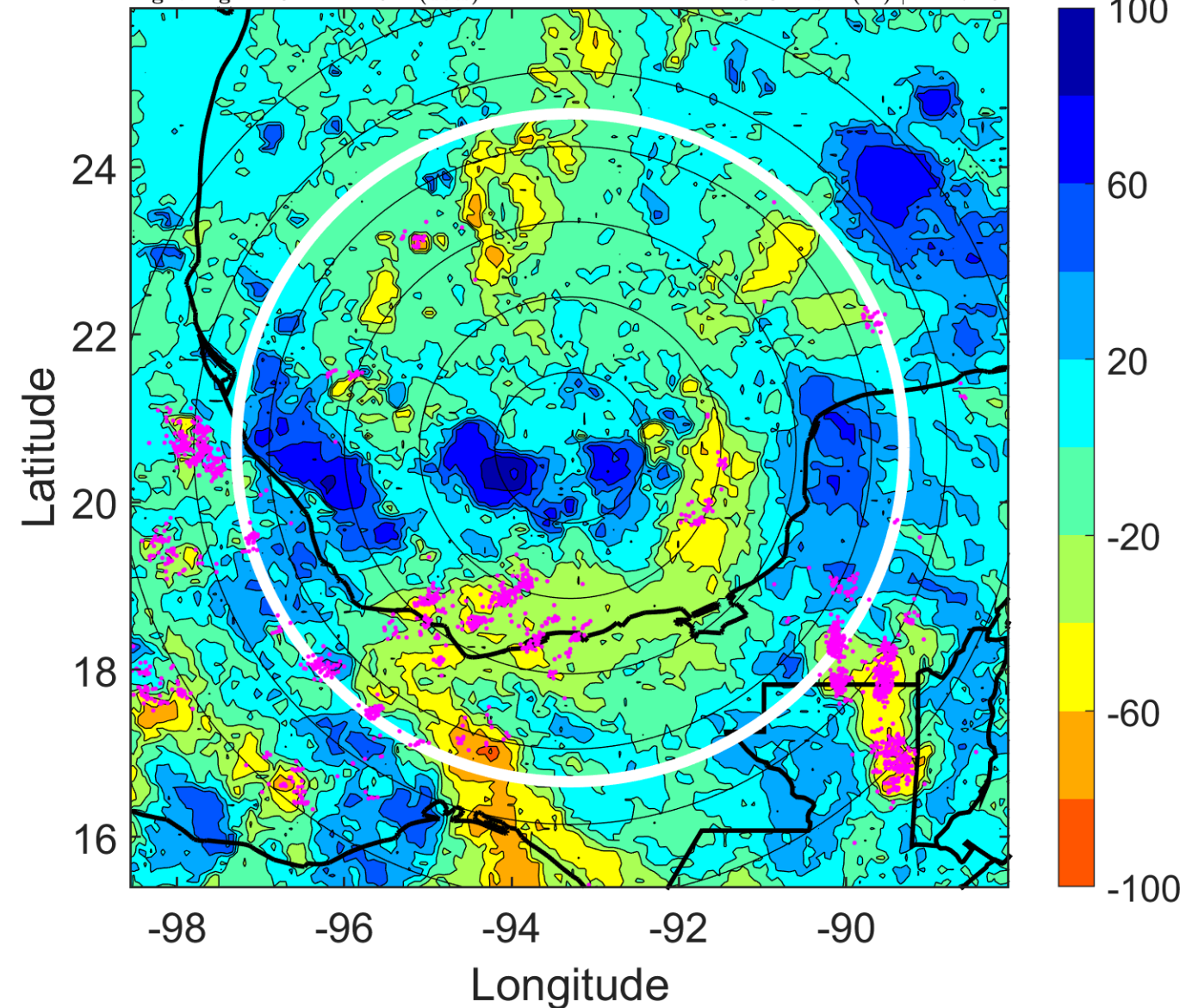
Δ t: 2014090121 (14.8 LT) - 2014090115 (8.8 LT)

Lightning: 14.8 LT \pm 1.5 h (dots)

PT: SLCP | EA: QUASI

05L (DOLLY) | 32.5 kt TD

S: 8 m s⁻¹ (M) | H: 171.5°



IR BT & Lightning

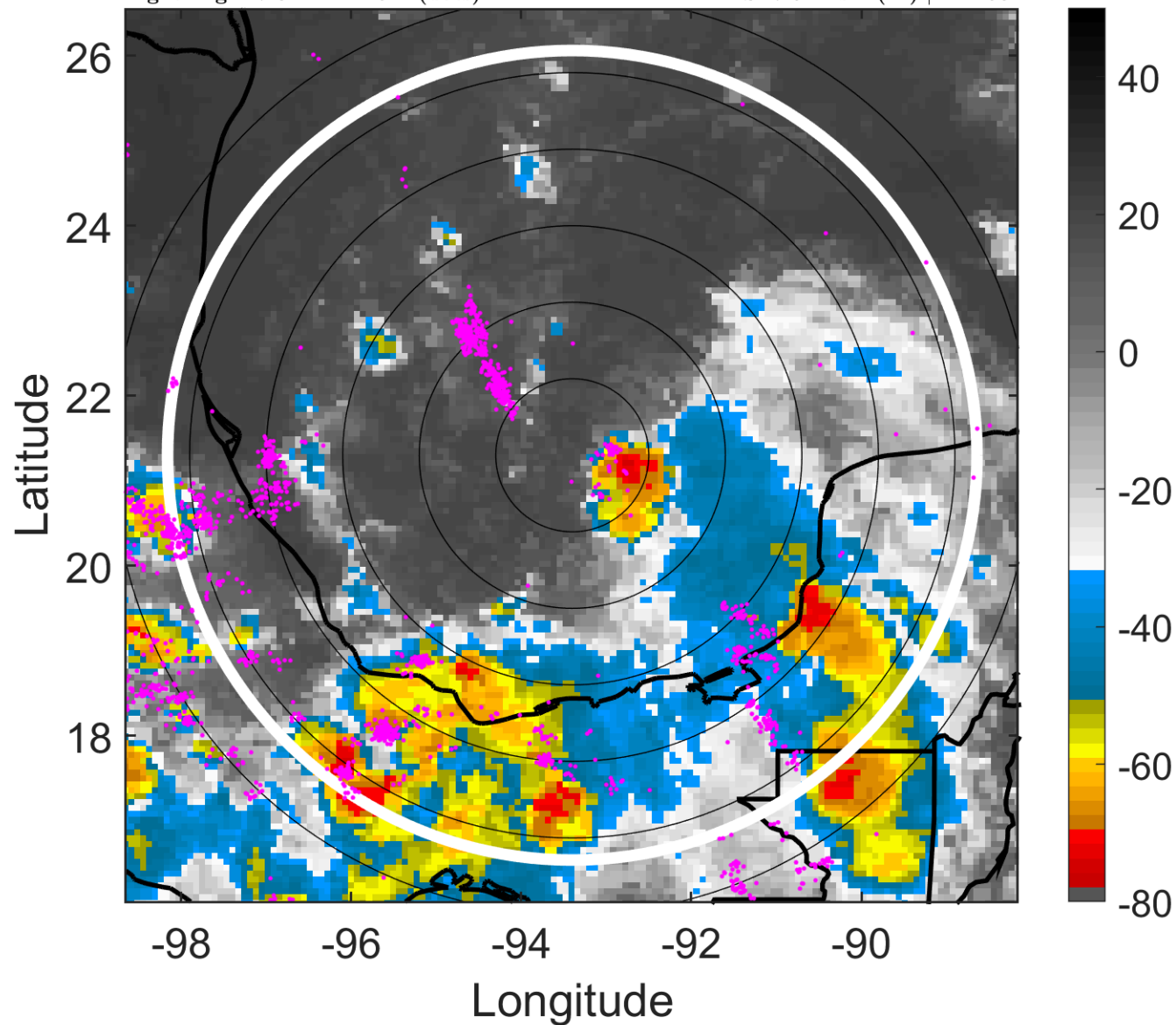
t: 2014090200 (17.8 LT)

Lightning: 17.8 LT \pm 1.5 h (dots)

PT: SLCP | EA: QUASI

05L (DOLLY) | 35 kt TS

S: 7.6 m s⁻¹ (M) | H: 163°



6-h IR BT Differences & Lightning

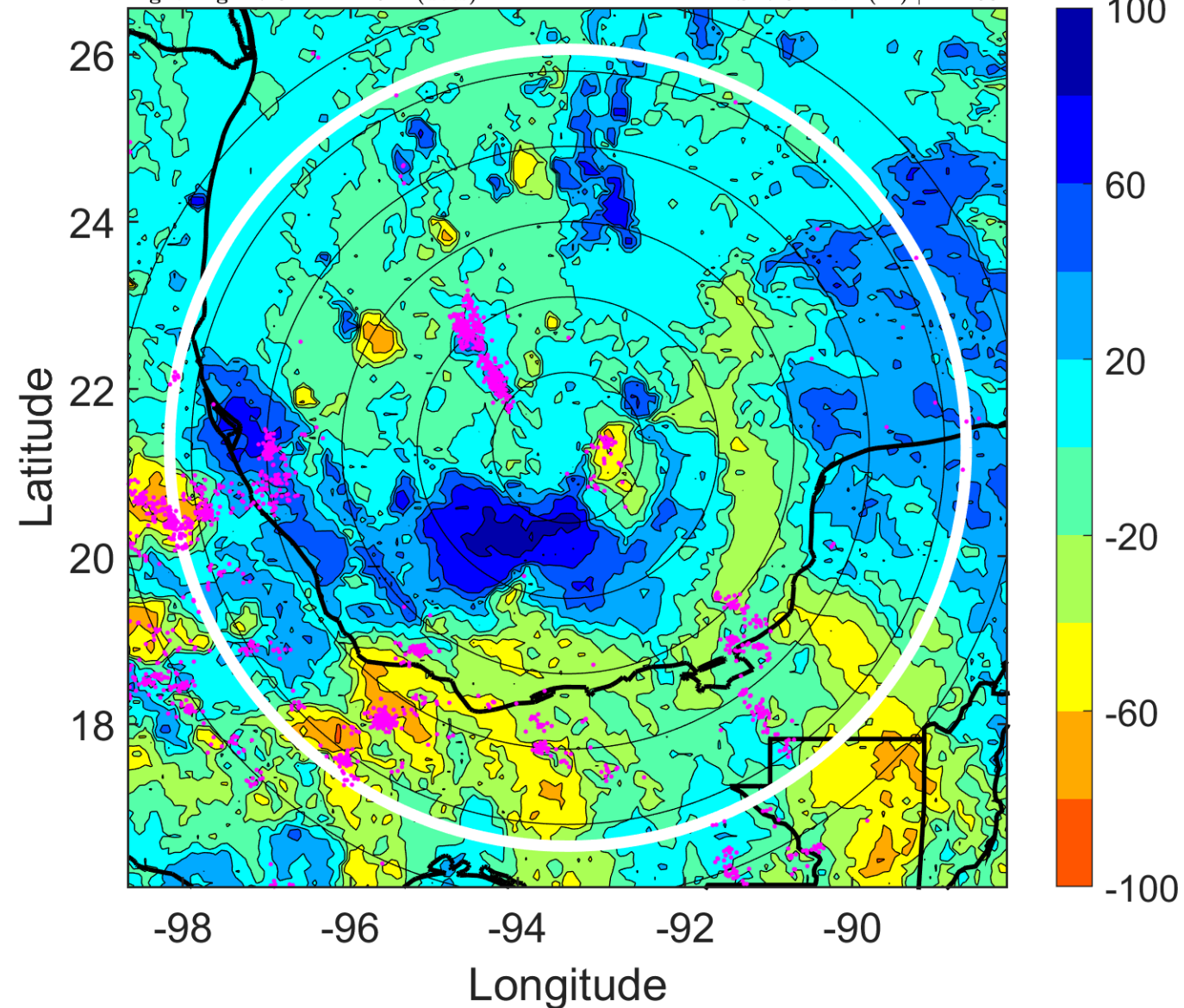
Δ t: 2014090200 (17.8 LT) - 2014090118 (11.8 LT)

Lightning: 17.8 LT \pm 1.5 h (dots)

PT: SLCP | EA: QUASI

05L (DOLLY) | 35 kt TS

S: 7.6 m s⁻¹ (M) | H: 163°



IR BT & Lightning

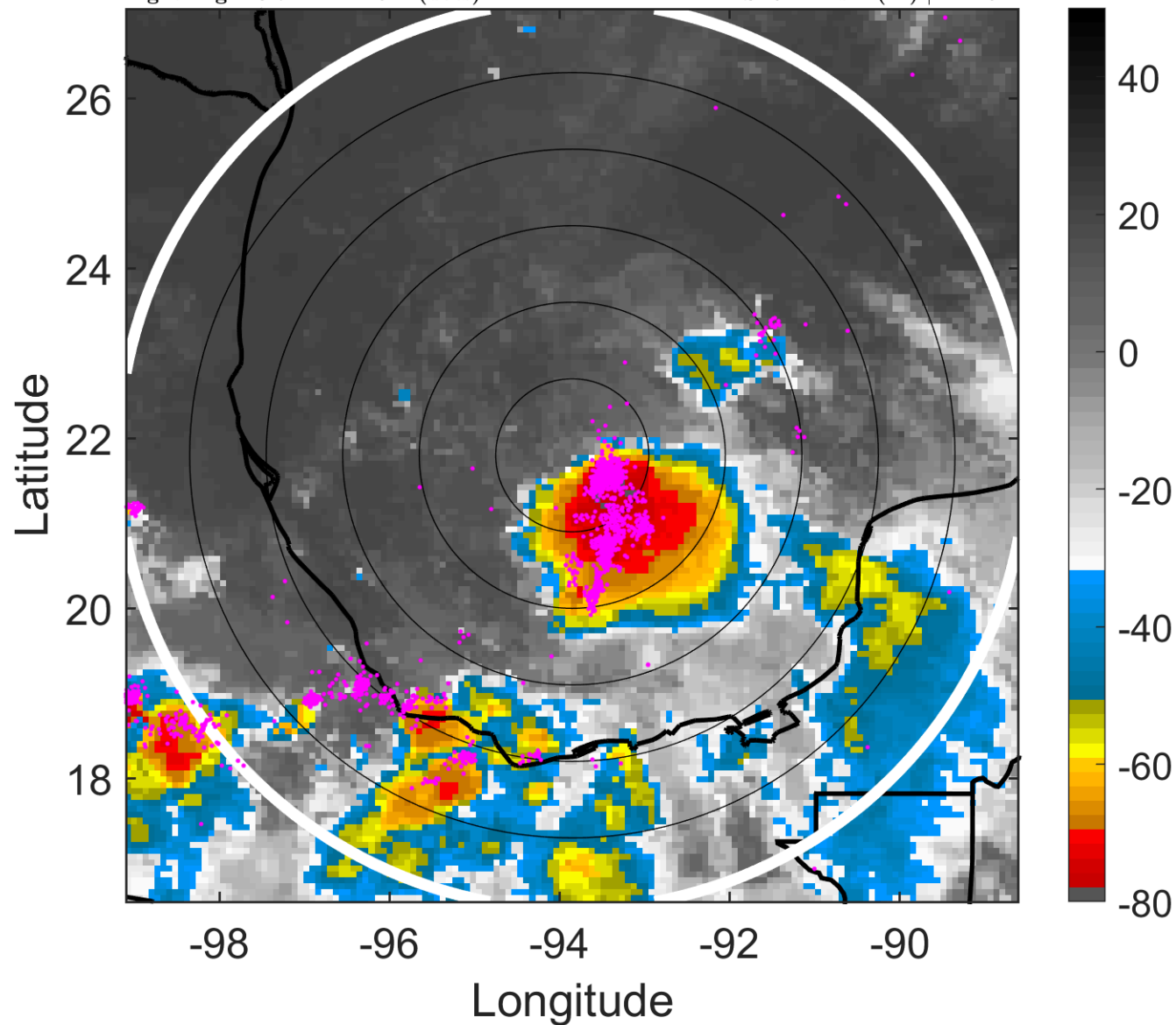
t: 2014090203 (20.7 LT)

Lightning: 20.7 LT \pm 1.5 h (dots)

PT: SLCP | EA: QUASI

05L (DOLLY) | 37.5 kt TS

S: 9.2 m s⁻¹ (M) | H: 162°



6-h IR BT Differences & Lightning

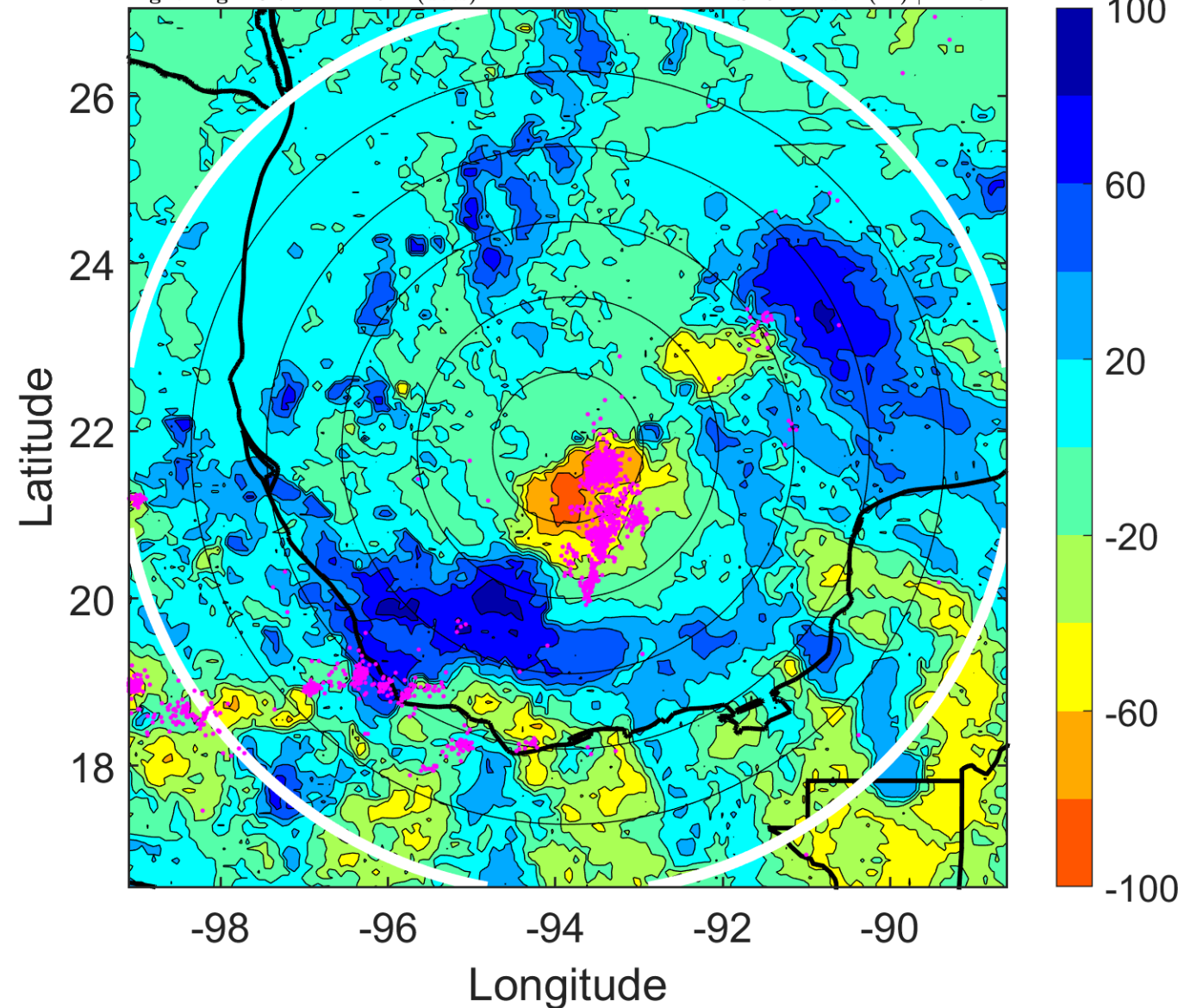
Δ t: 2014090203 (20.7 LT) - 2014090121 (14.8 LT)

Lightning: 20.7 LT \pm 1.5 h (dots)

PT: SLCP | EA: QUASI

05L (DOLLY) | 37.5 kt TS

S: 9.2 m s⁻¹ (M) | H: 162°



IR BT & Lightning

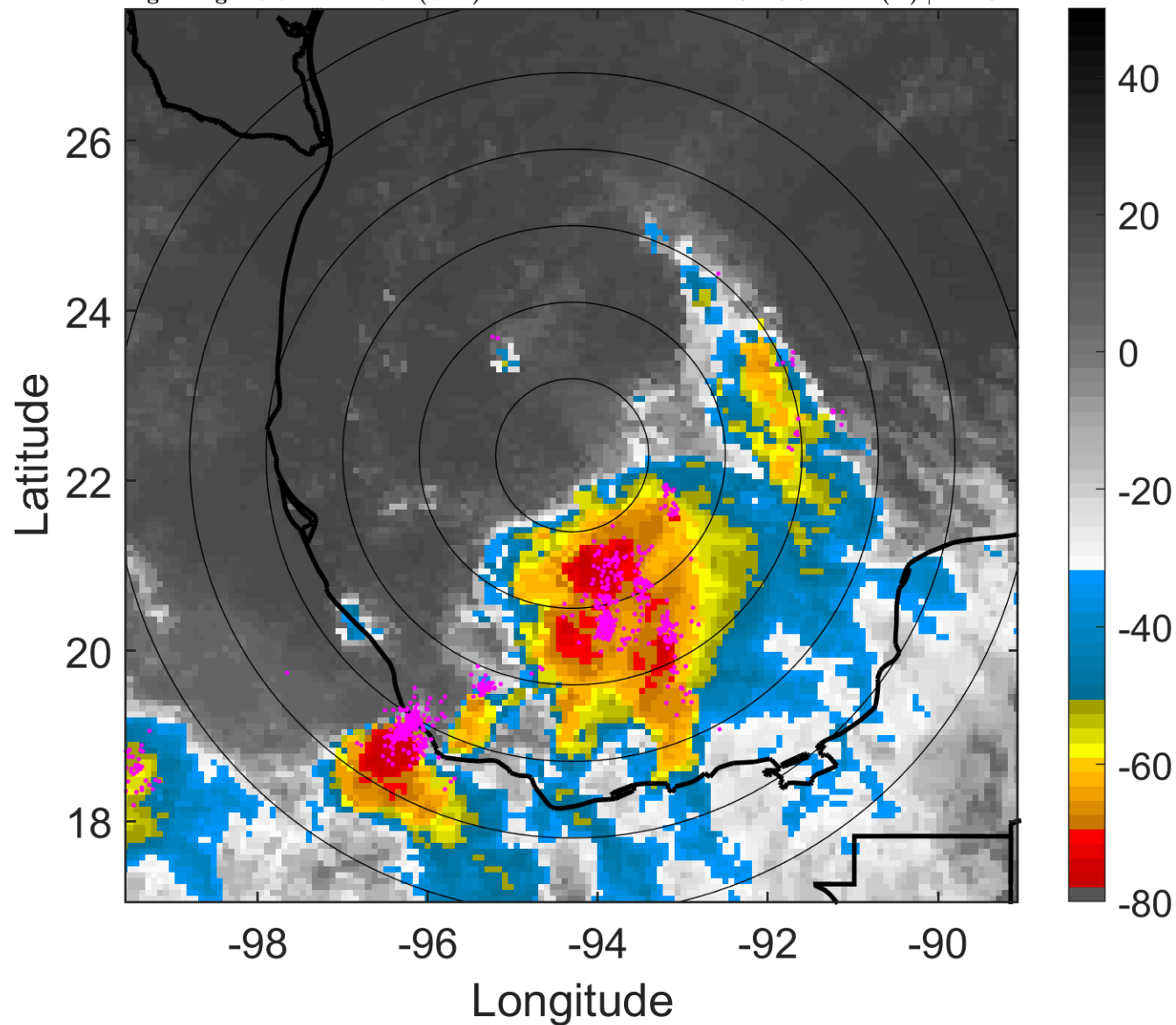
t: 2014090206 (23.7 LT)

Lightning: 23.7 LT \pm 1.5 h (dots)

PT: SLCP | EA: QUASI

05L (DOLLY) | 40 kt TS

S: 10.8 m s⁻¹ (H) | H: 161°



6-h IR BT Differences & Lightning

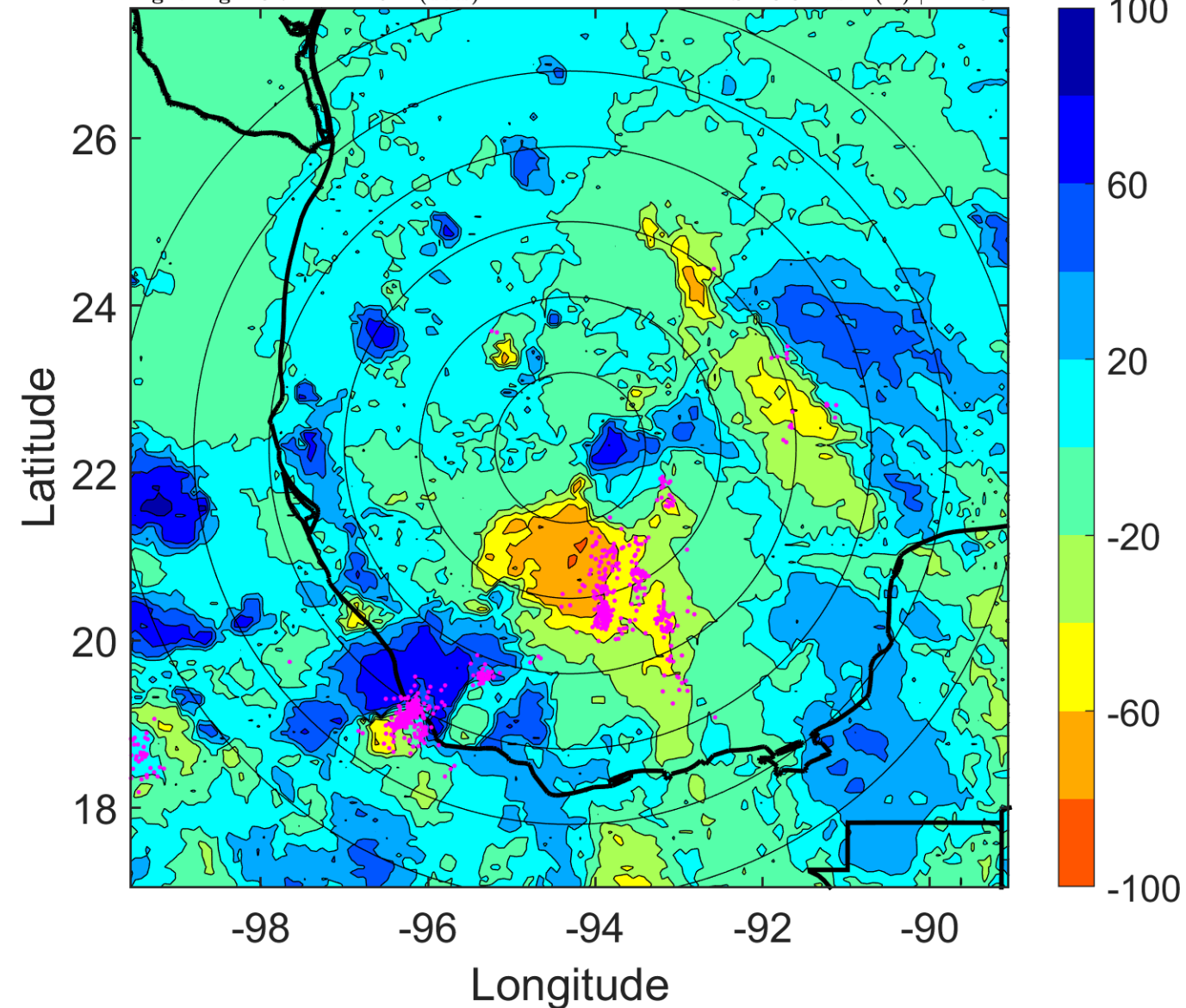
Δ t: 2014090206 (23.7 LT) - 2014090200 (17.8 LT)

Lightning: 23.7 LT \pm 1.5 h (dots)

PT: SLCP | EA: QUASI

05L (DOLLY) | 40 kt TS

S: 10.8 m s⁻¹ (H) | H: 161°



IR BT & Lightning

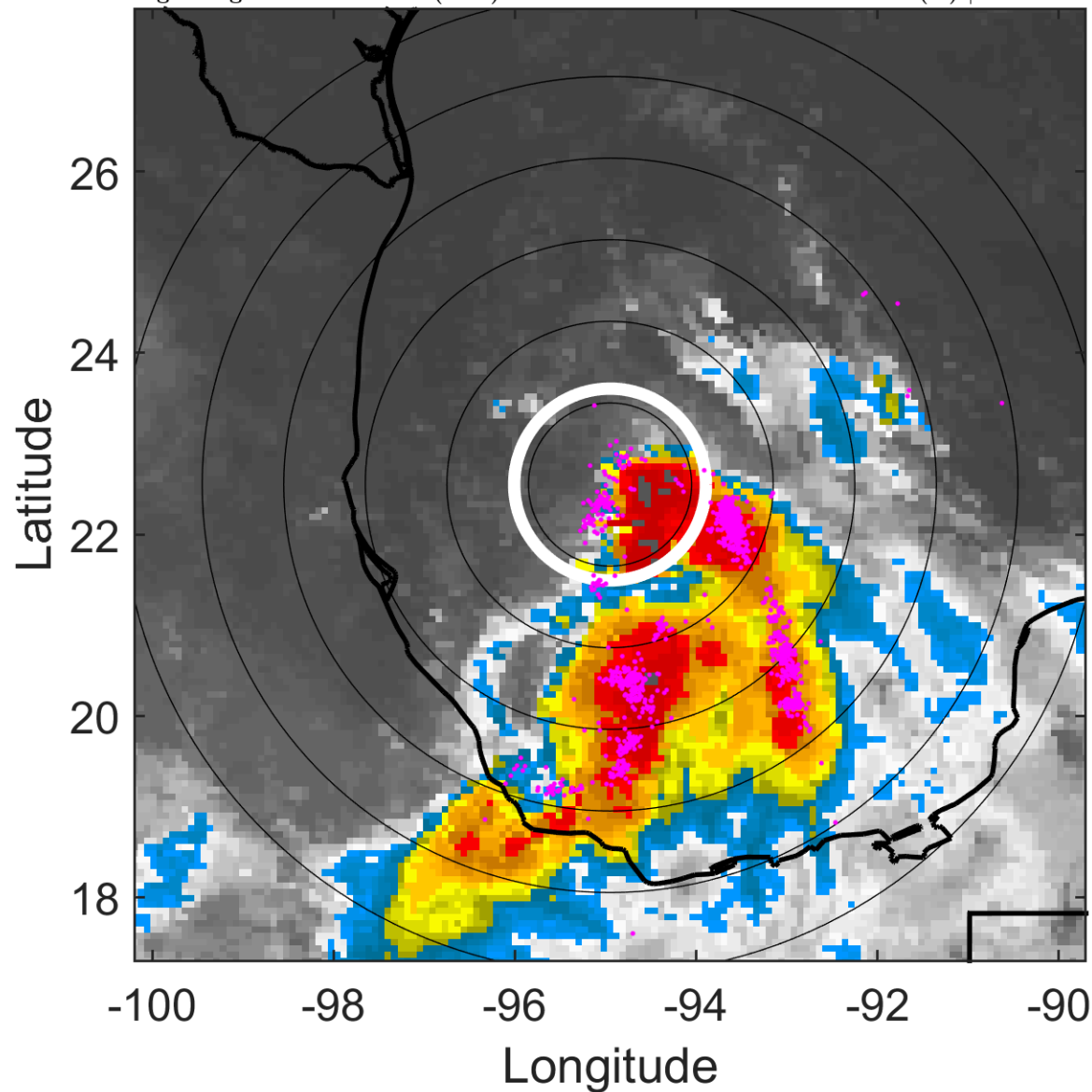
t: 2014090209 (2.7 LT)

Lightning: 2.7 LT \pm 1.5 h (dots)

PT: LLCP | EA: ACT

05L (DOLLY) | 42.5 kt TS

S: 11 m s⁻¹ (H) | H: 162.5°



6-h IR BT Differences & Lightning

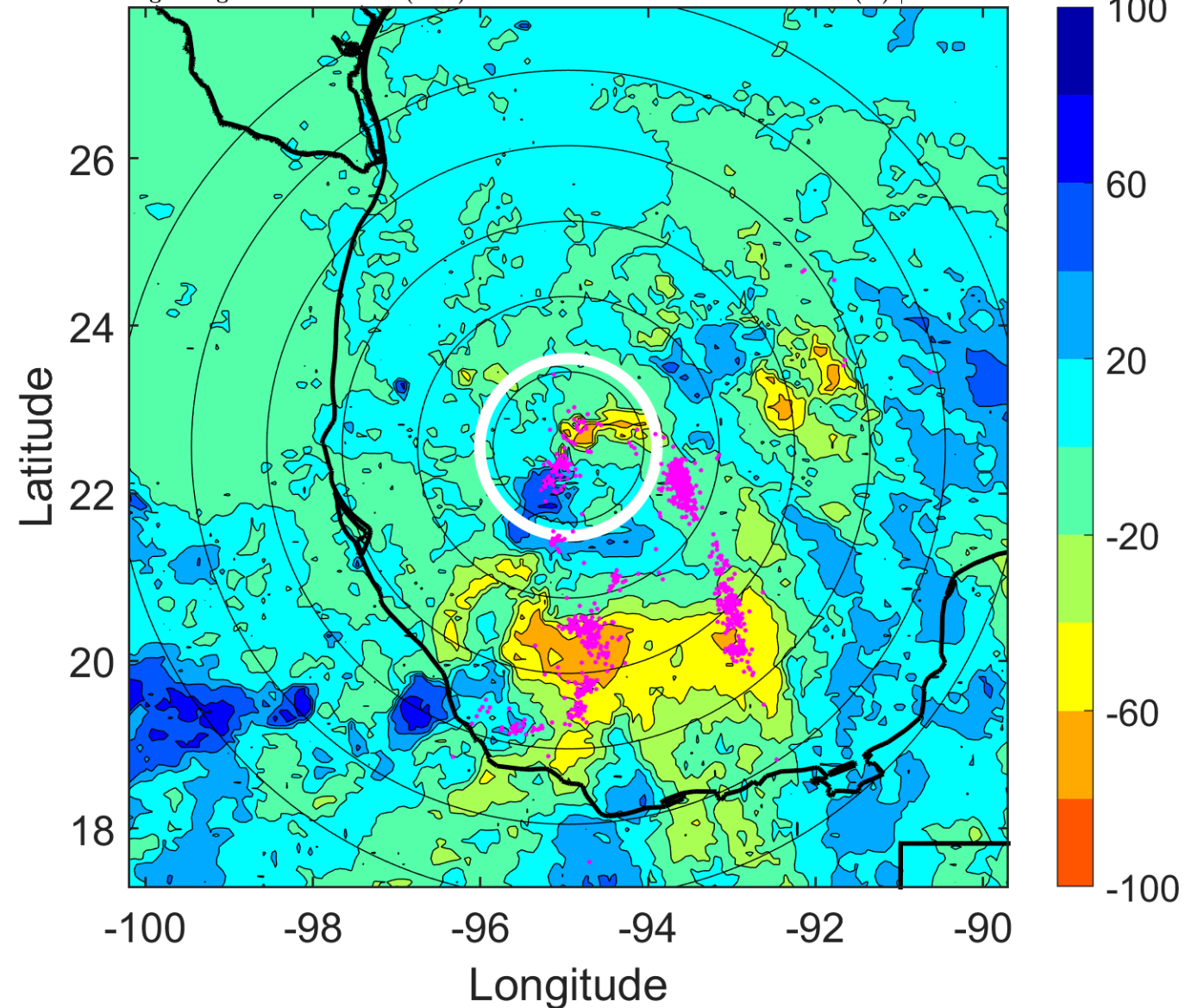
Δ t: 2014090209 (2.7 LT) - 2014090203 (20.7 LT)

Lightning: 2.7 LT \pm 1.5 h (dots)

PT: LLCP | EA: ACT

05L (DOLLY) | 42.5 kt TS

S: 11 m s⁻¹ (H) | H: 162.5°



IR BT & Lightning

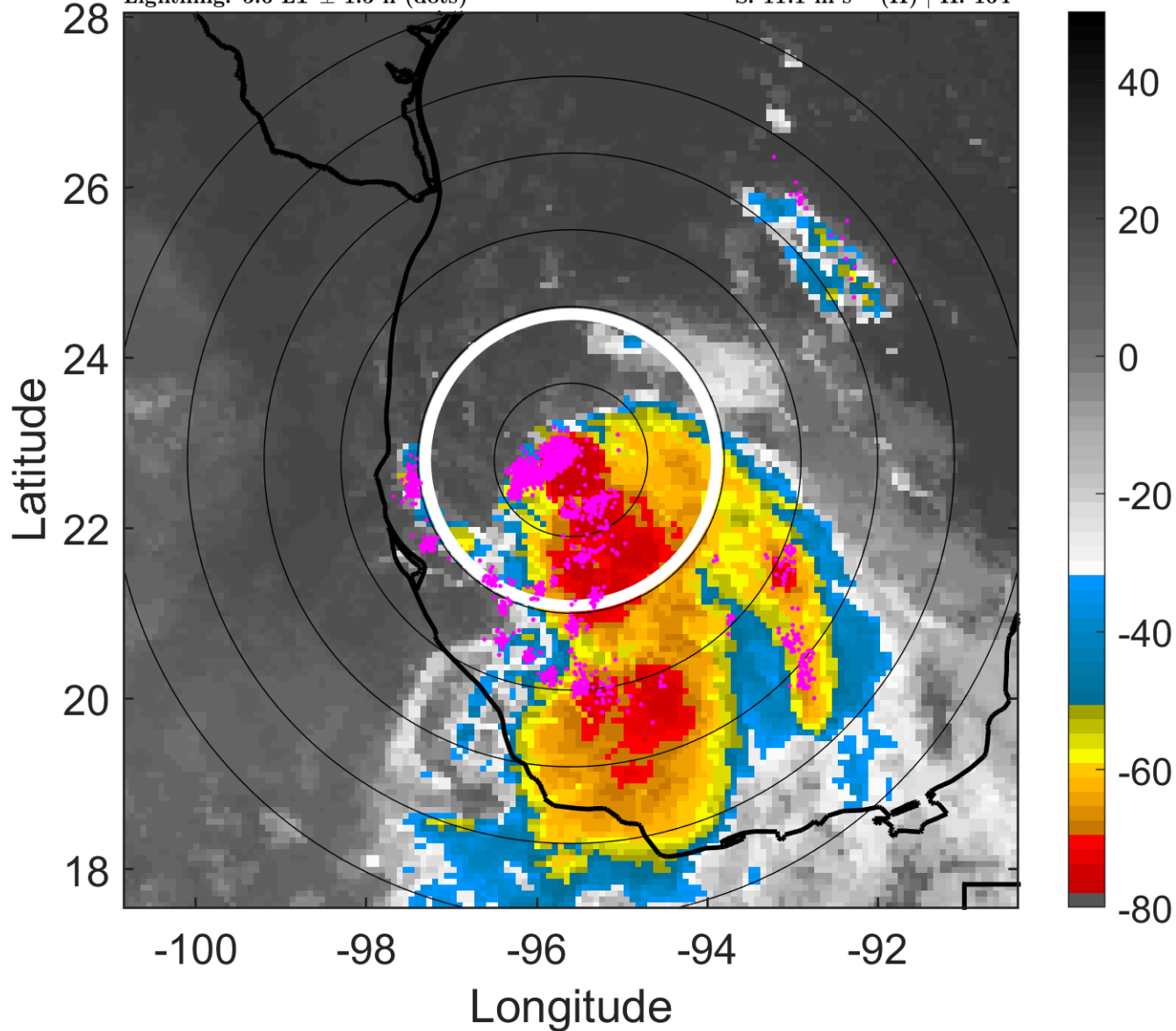
t: 2014090212 (5.6 LT)

Lightning: 5.6 LT \pm 1.5 h (dots)

PT: LLCP | EA: ACT

05L (DOLLY) | 45 kt TS

S: 11.1 m s⁻¹ (H) | H: 164°



6-h IR BT Differences & Lightning

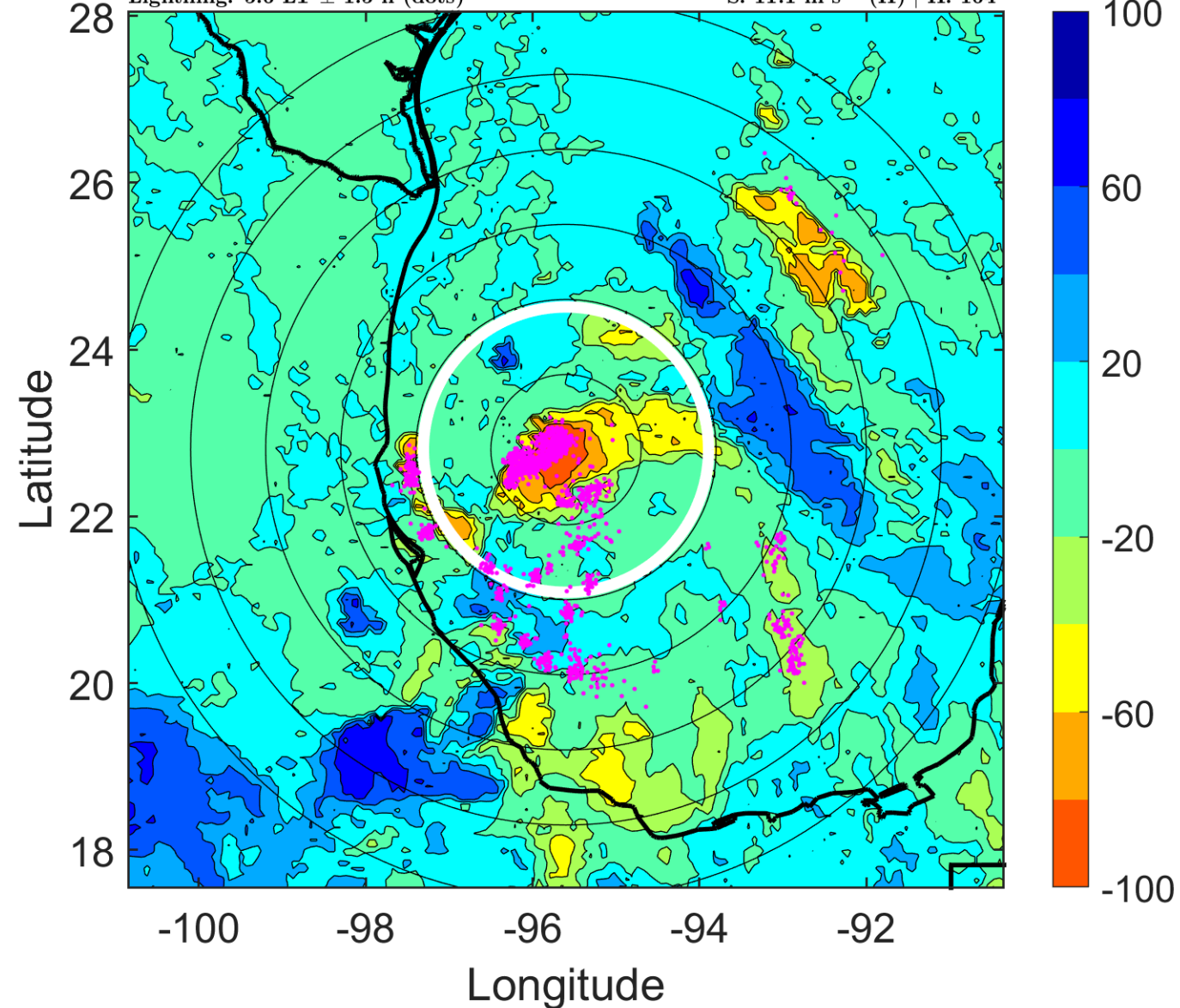
Δ t: 2014090212 (5.6 LT) - 2014090206 (23.7 LT)

Lightning: 5.6 LT \pm 1.5 h (dots)

PT: LLCP | EA: ACT

05L (DOLLY) | 45 kt TS

S: 11.1 m s⁻¹ (H) | H: 164°



IR BT & Lightning

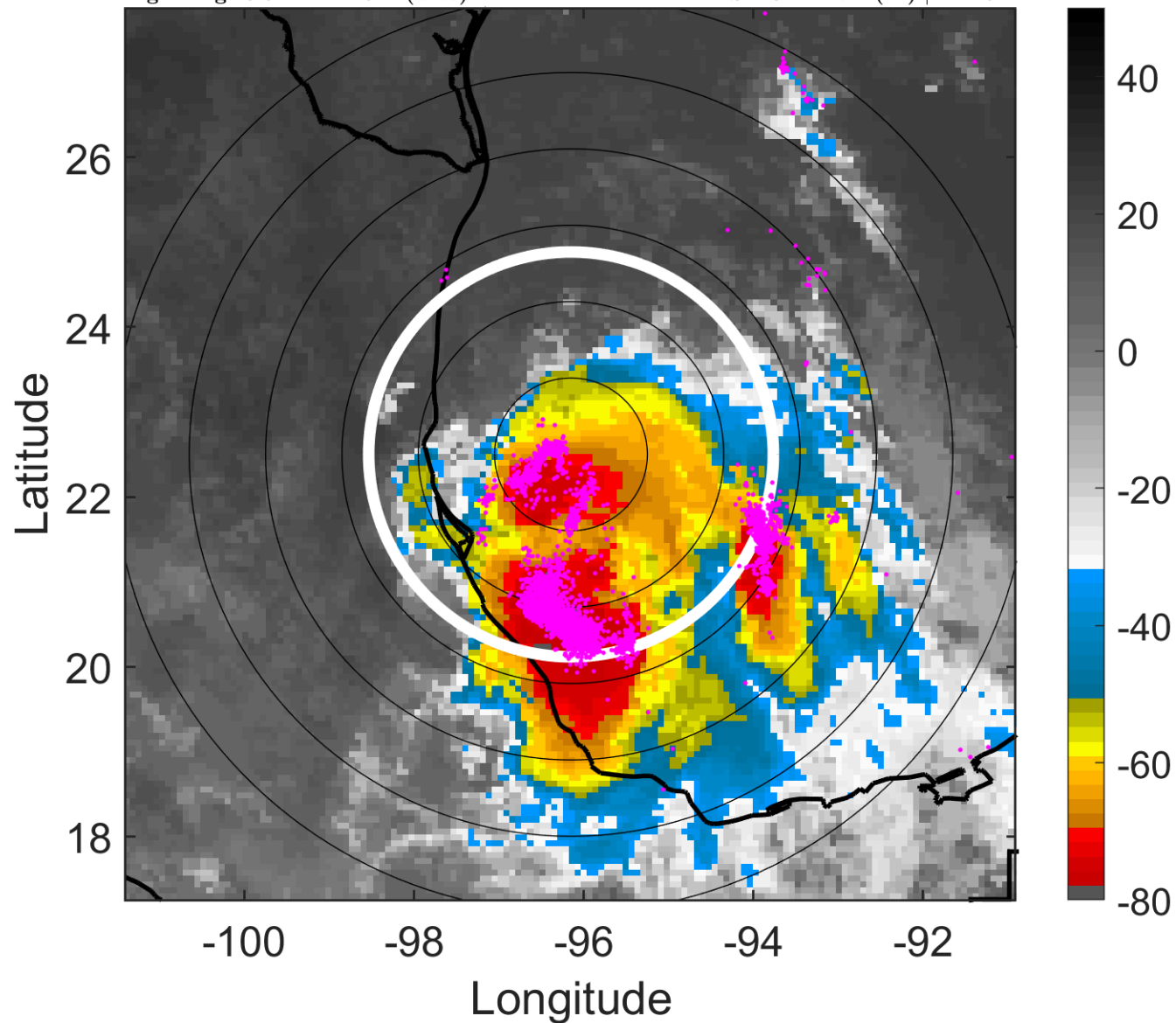
t: 2014090215 (8.6 LT)

Lightning: 8.6 LT \pm 1.5 h (dots)

PT: LLCP | EA: ACT

05L (DOLLY) | 42.5 kt TS

S: 10.2 m s⁻¹ (M) | H: 161°



6-h IR BT Differences & Lightning

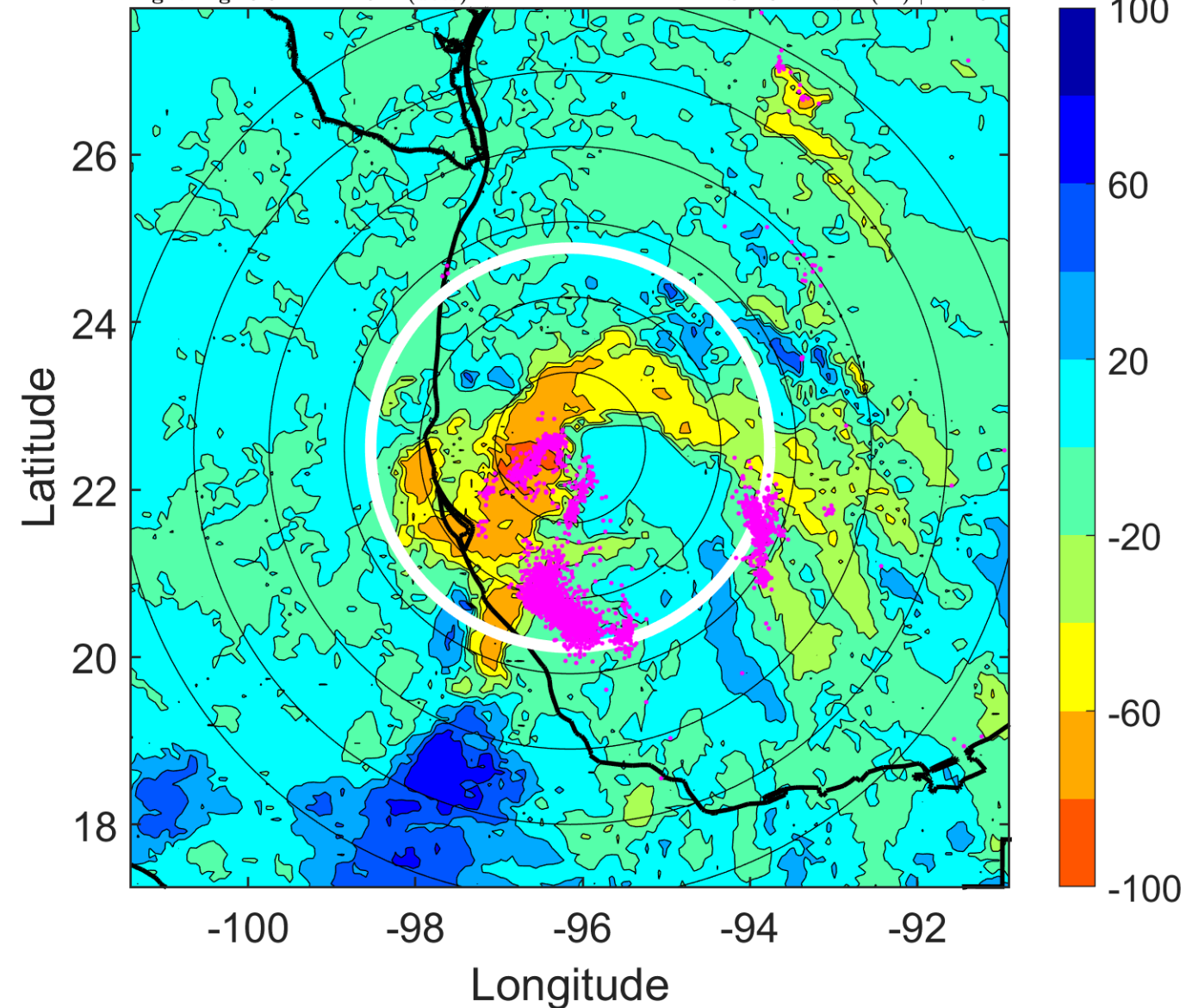
Δ t: 2014090215 (8.6 LT) - 2014090209 (2.7 LT)

Lightning: 8.6 LT \pm 1.5 h (dots)

PT: LLCP | EA: ACT

05L (DOLLY) | 42.5 kt TS

S: 10.2 m s⁻¹ (M) | H: 161°



IR BT & Lightning

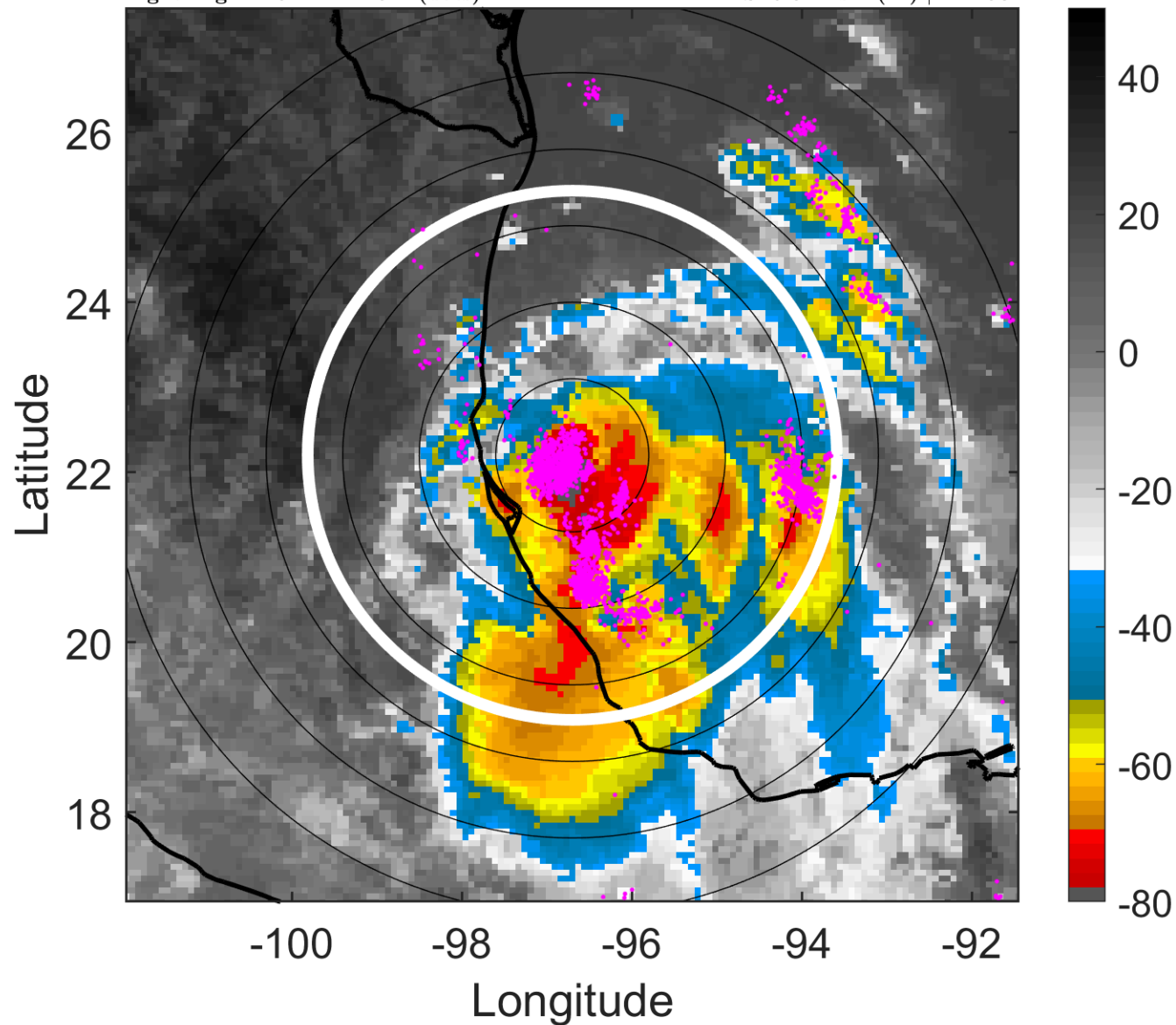
t: 2014090218 (11.6 LT)

Lightning: 11.6 LT \pm 1.5 h (dots)

PT: LLCP | EA: ACT

05L (DOLLY) | 40 kt TS

S: 9.3 m s⁻¹ (M) | H: 158°



6-h IR BT Differences & Lightning

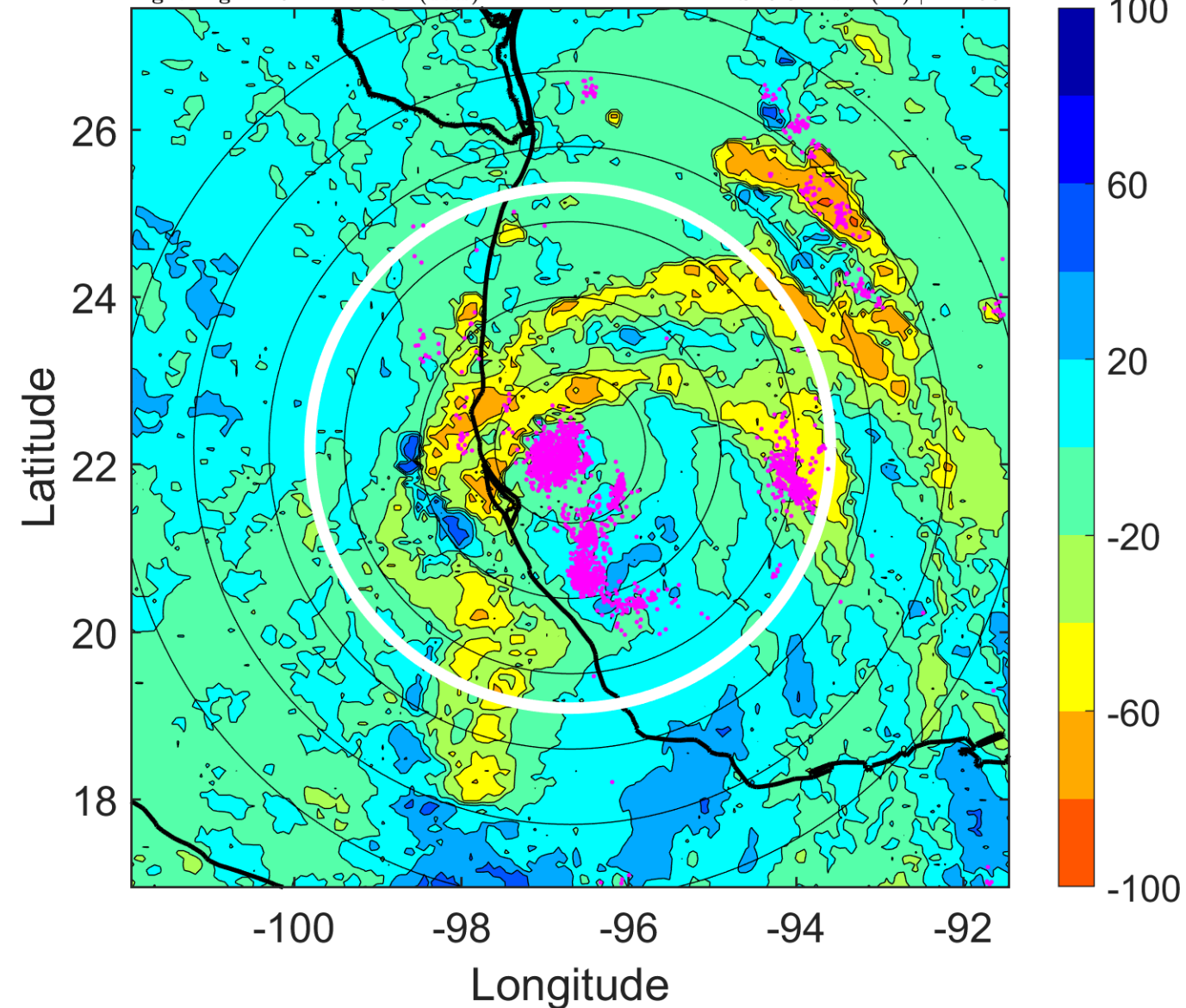
Δ t: 2014090218 (11.6 LT) - 2014090212 (5.6 LT)

Lightning: 11.6 LT \pm 1.5 h (dots)

PT: LLCP | EA: ACT

05L (DOLLY) | 40 kt TS

S: 9.3 m s⁻¹ (M) | H: 158°



IR BT & Lightning

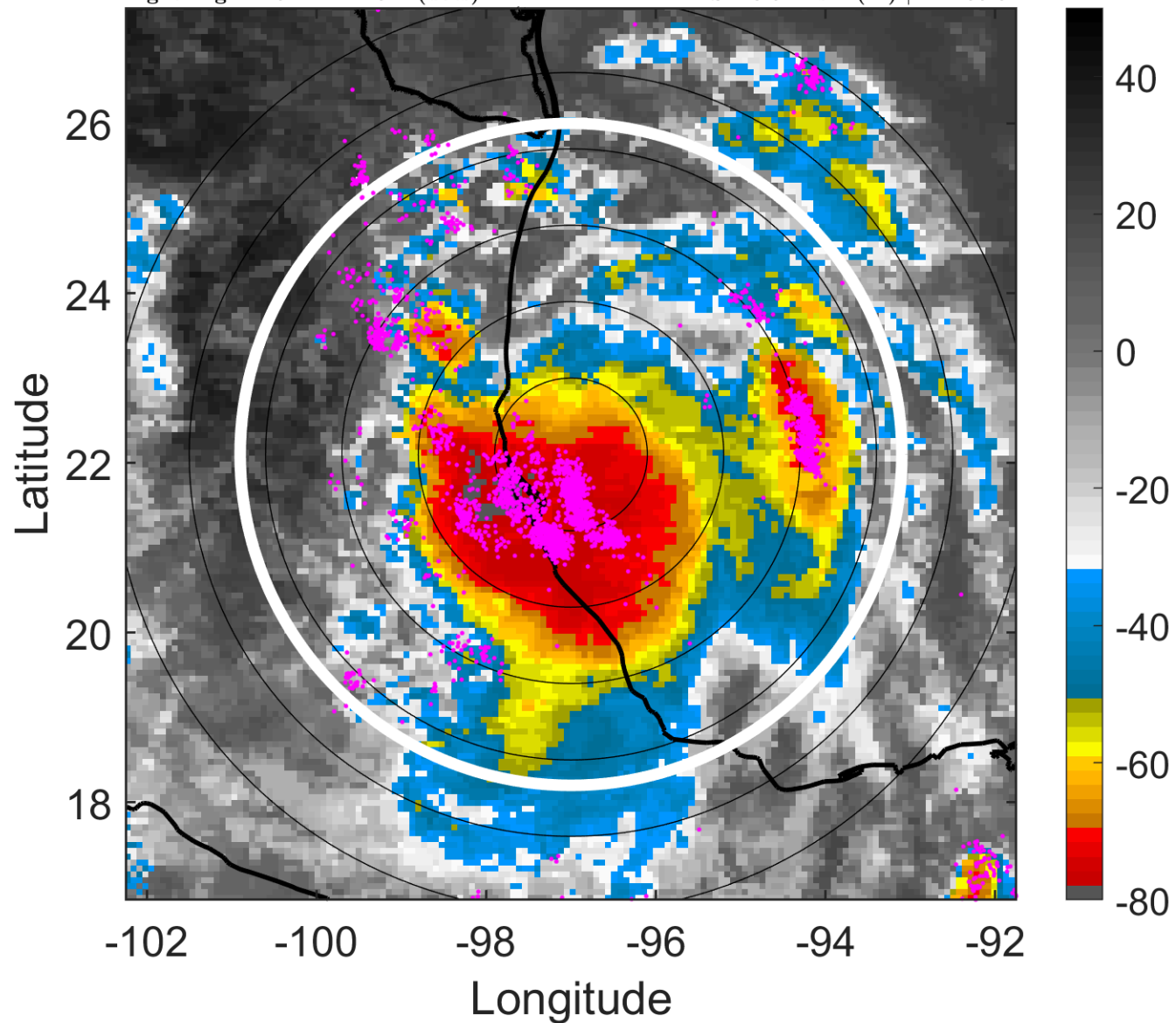
t: 2014090221 (14.5 LT)

Lightning: 14.5 LT \pm 1.5 h (dots)

PT: LLCP | EA: ACT

05L (DOLLY) | 40 kt TS

S: 10.5 m s⁻¹ (M) | H: 155.5°



6-h IR BT Differences & Lightning

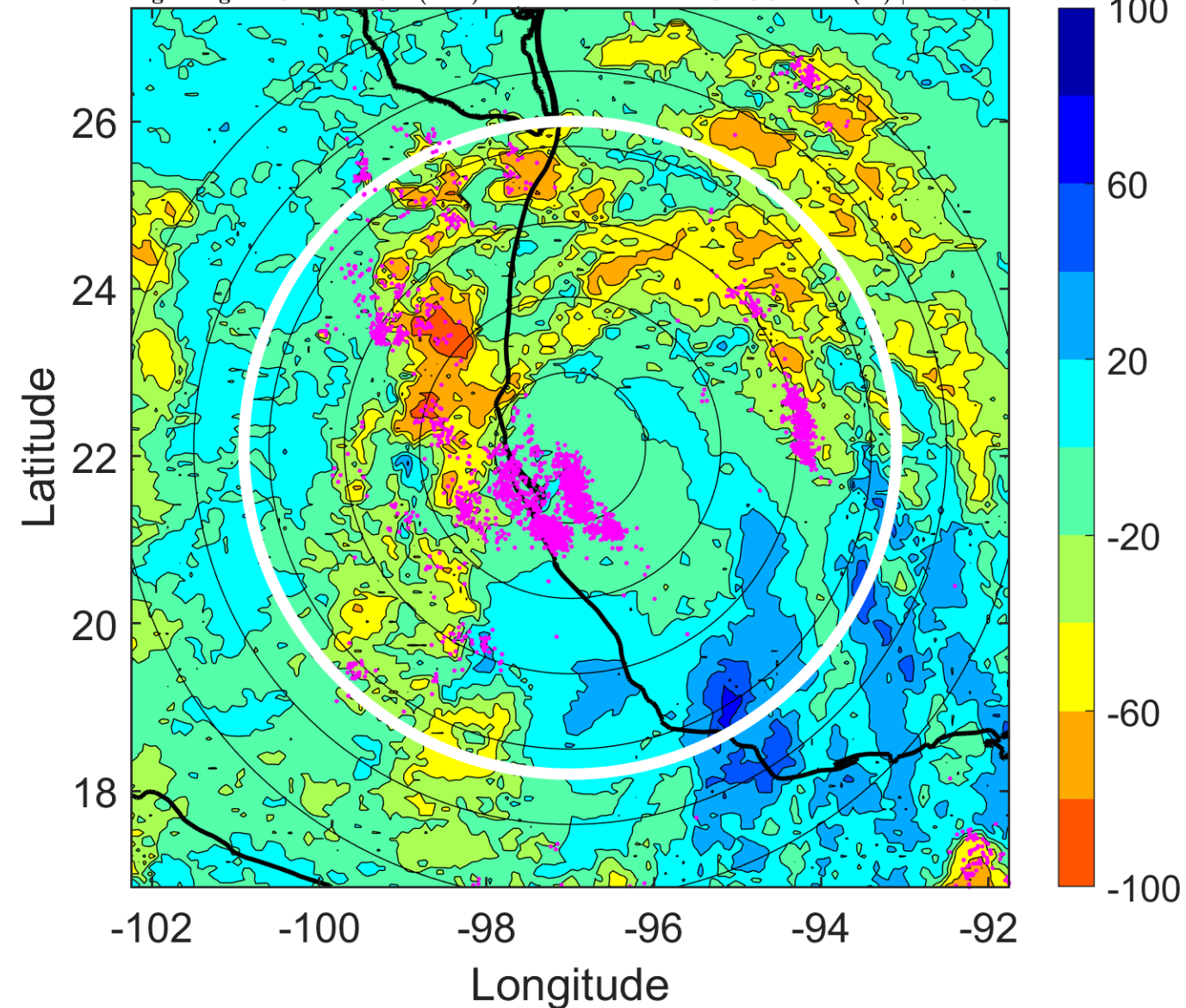
Δ t: 2014090221 (14.5 LT) - 2014090215 (8.6 LT)

Lightning: 14.5 LT \pm 1.5 h (dots)

PT: LLCP | EA: ACT

05L (DOLLY) | 40 kt TS

S: 10.5 m s⁻¹ (M) | H: 155.5°



IR BT & Lightning

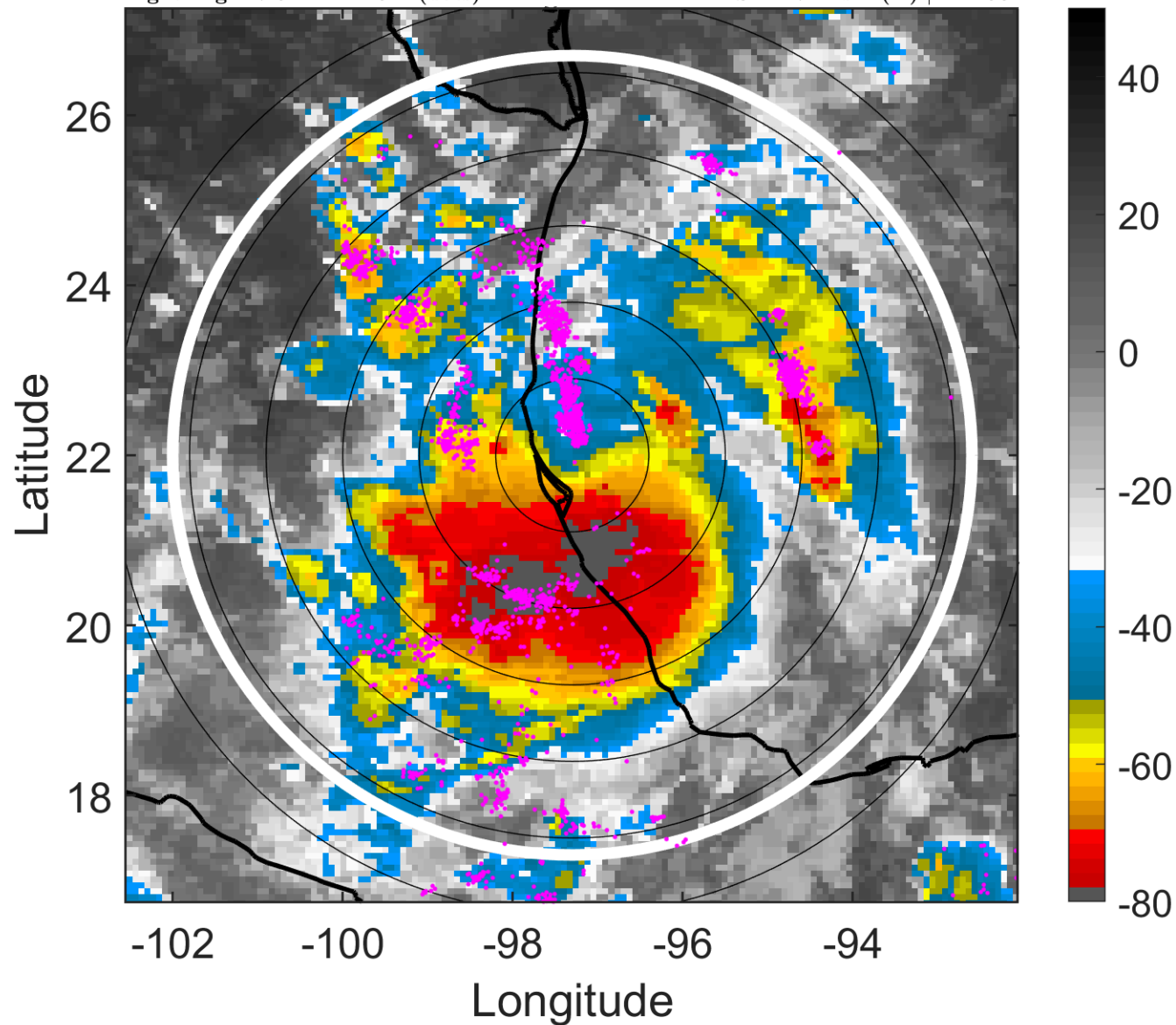
t: 2014090300 (17.5 LT)

Lightning: 17.5 LT \pm 1.5 h (dots)

PT: LLCP | EA: ACT

05L (DOLLY) | 40 kt TS

S: 11.7 m s⁻¹ (H) | H: 153°



6-h IR BT Differences & Lightning

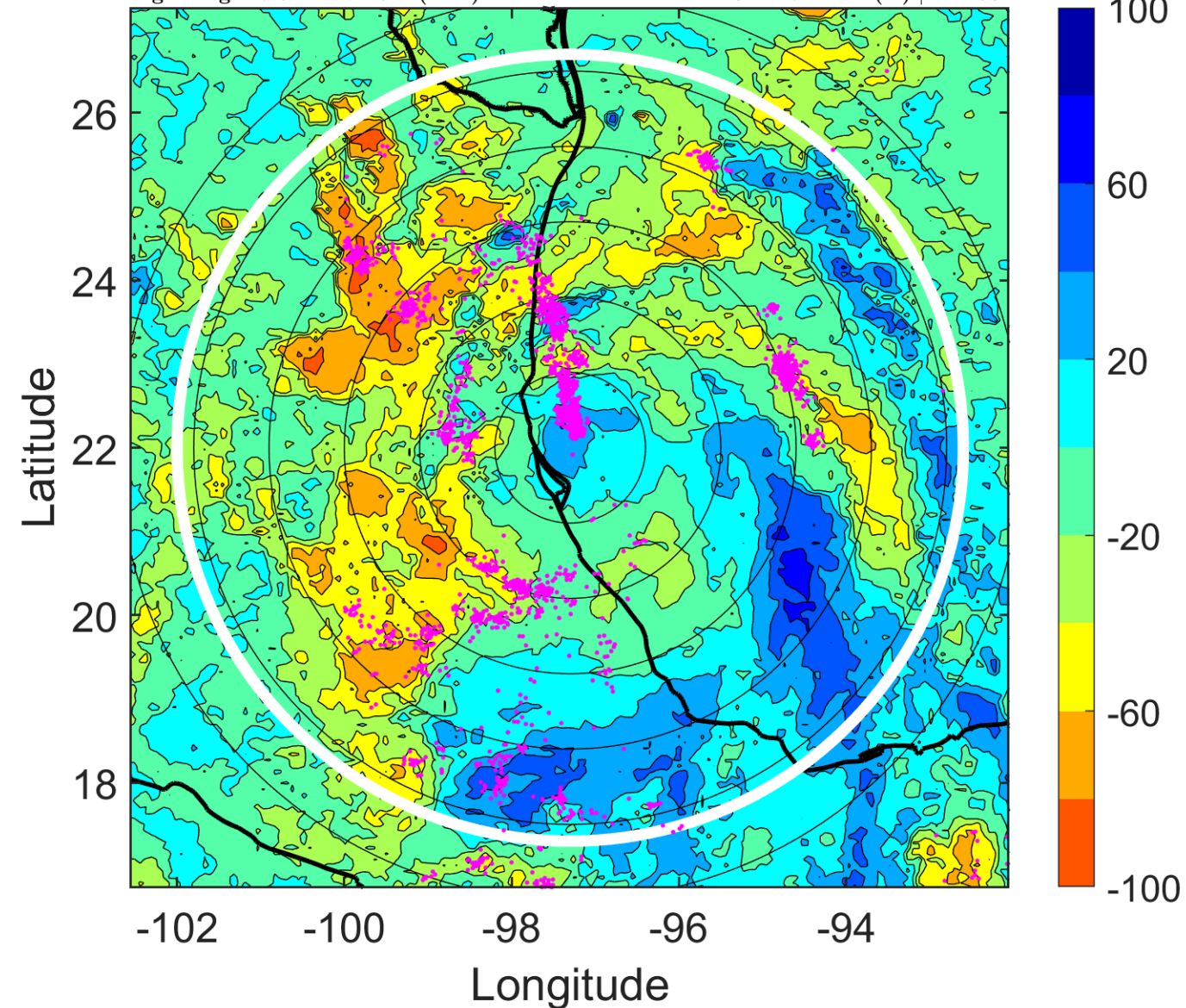
Δ t: 2014090300 (17.5 LT) - 2014090218 (11.6 LT)

Lightning: 17.5 LT \pm 1.5 h (dots)

PT: LLCP | EA: ACT

05L (DOLLY) | 40 kt TS

S: 11.7 m s⁻¹ (H) | H: 153°



IR BT & Lightning

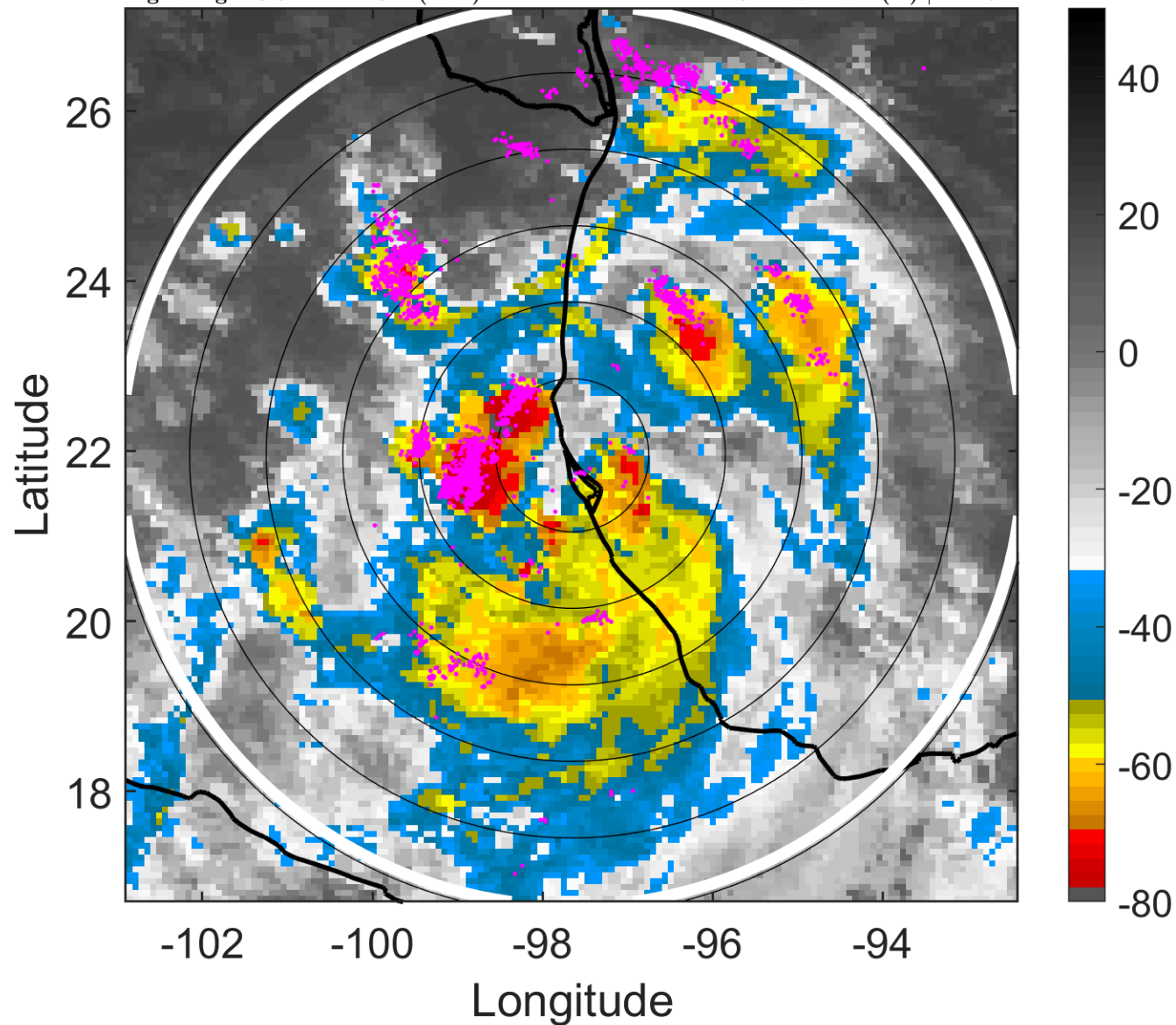
t: 2014090303 (20.5 LT)

Lightning: 20.5 LT \pm 1.5 h (dots)

PT: LLCP | EA: ACT

05L (DOLLY) | 37.5 kt TS

S: 11.7 m s⁻¹ (H) | H: 152°



6-h IR BT Differences & Lightning

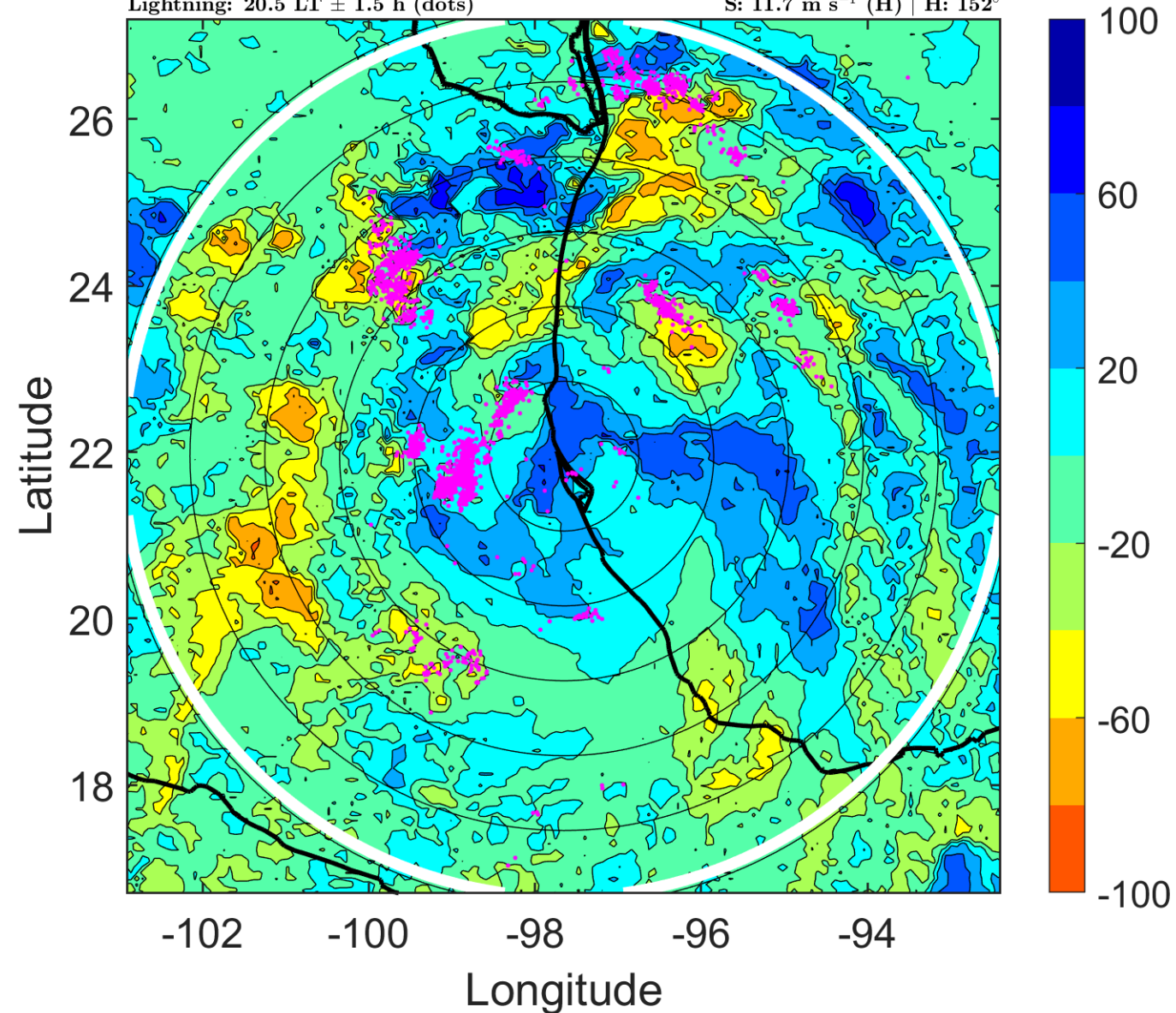
Δ t: 2014090303 (20.5 LT) - 2014090221 (14.5 LT)

Lightning: 20.5 LT \pm 1.5 h (dots)

PT: LLCP | EA: ACT

05L (DOLLY) | 37.5 kt TS

S: 11.7 m s⁻¹ (H) | H: 152°



IR BT & Lightning

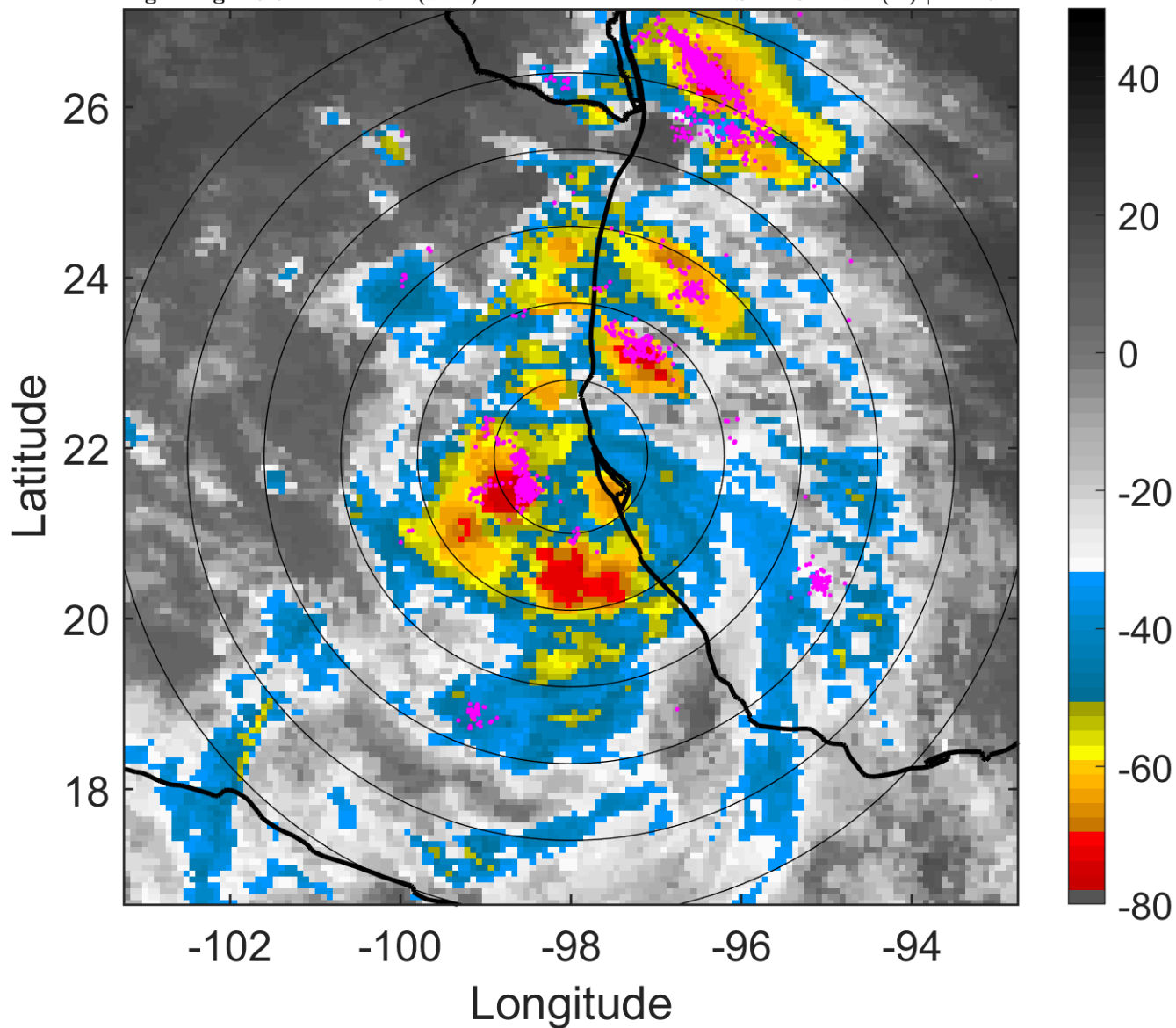
t: 2014090306 (23.5 LT)

Lightning: 23.5 LT \pm 1.5 h (dots)

PT: LLCP | EA: ACT

05L (DOLLY) | 35 kt TS

S: 11.8 m s⁻¹ (H) | H: 151°



6-h IR BT Differences & Lightning

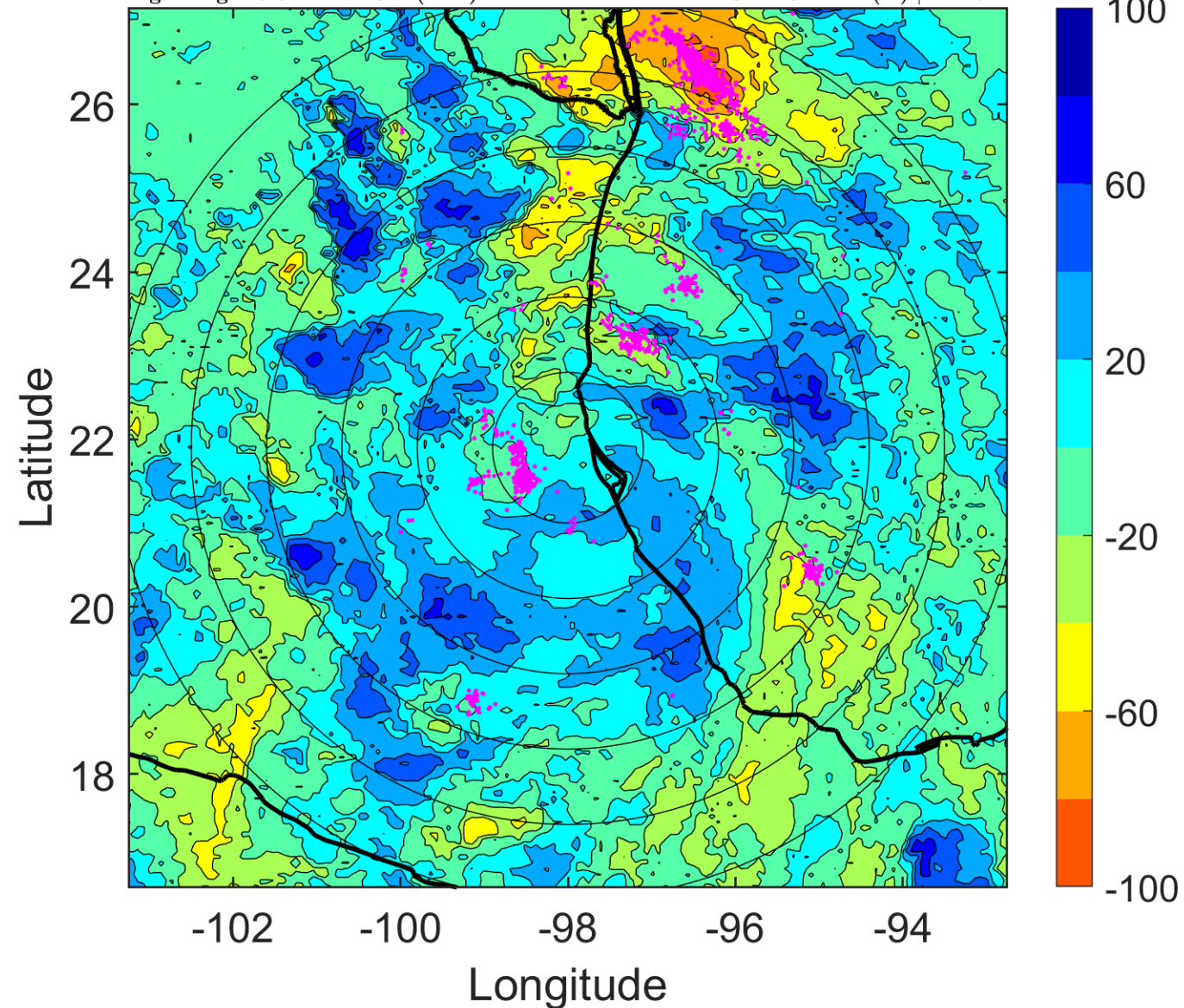
Δ t: 2014090306 (23.5 LT) - 2014090300 (17.5 LT)

Lightning: 23.5 LT \pm 1.5 h (dots)

PT: LLCP | EA: ACT

05L (DOLLY) | 35 kt TS

S: 11.8 m s⁻¹ (H) | H: 151°



IR BT & Lightning

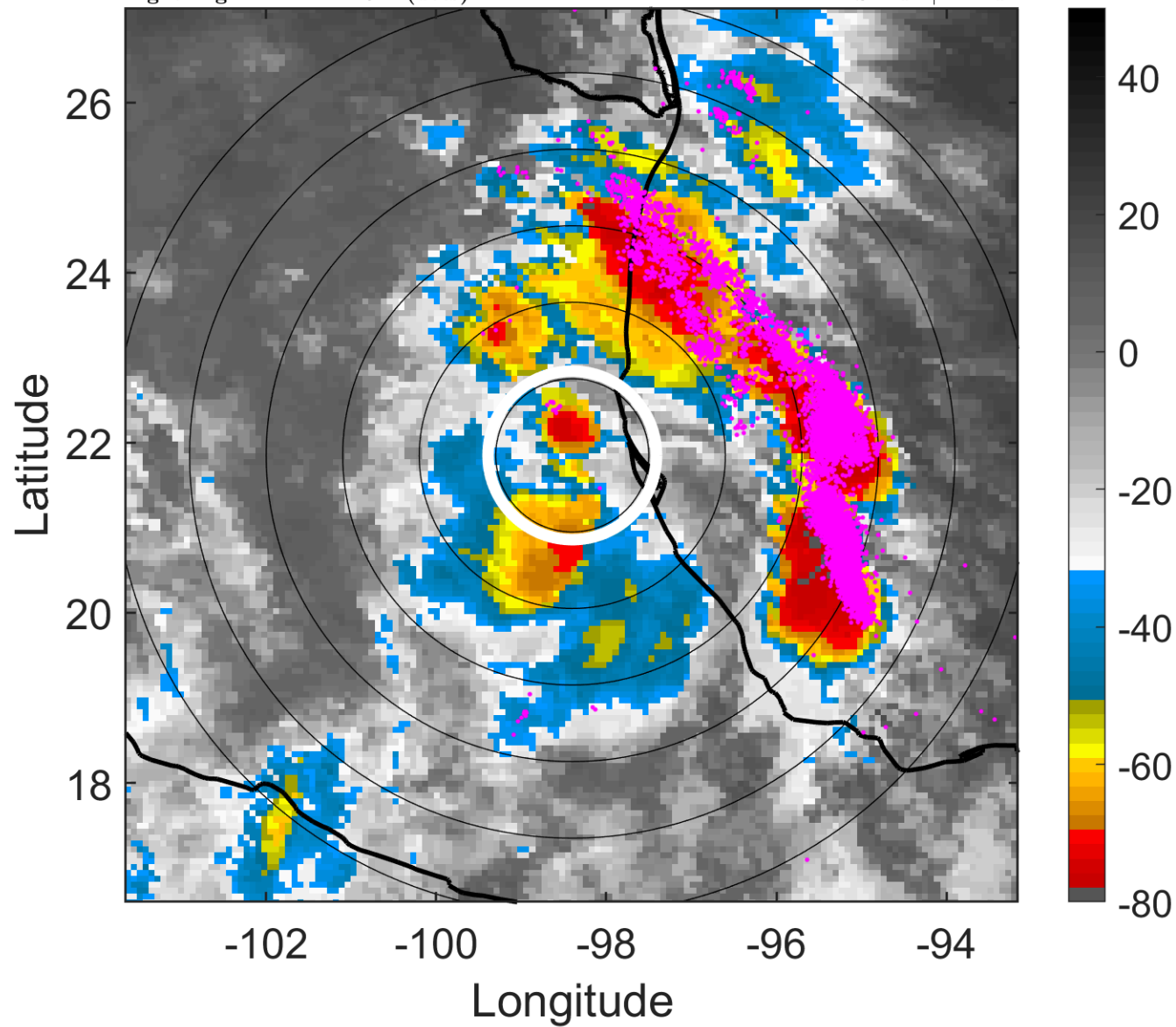
t: 2014090309 (2.4 LT)

Lightning: 2.4 LT \pm 1.5 h (dots)

LAND EFFECTS

05L (DOLLY) | 30 kt TD

S: null | H: null



6-h IR BT Differences & Lightning

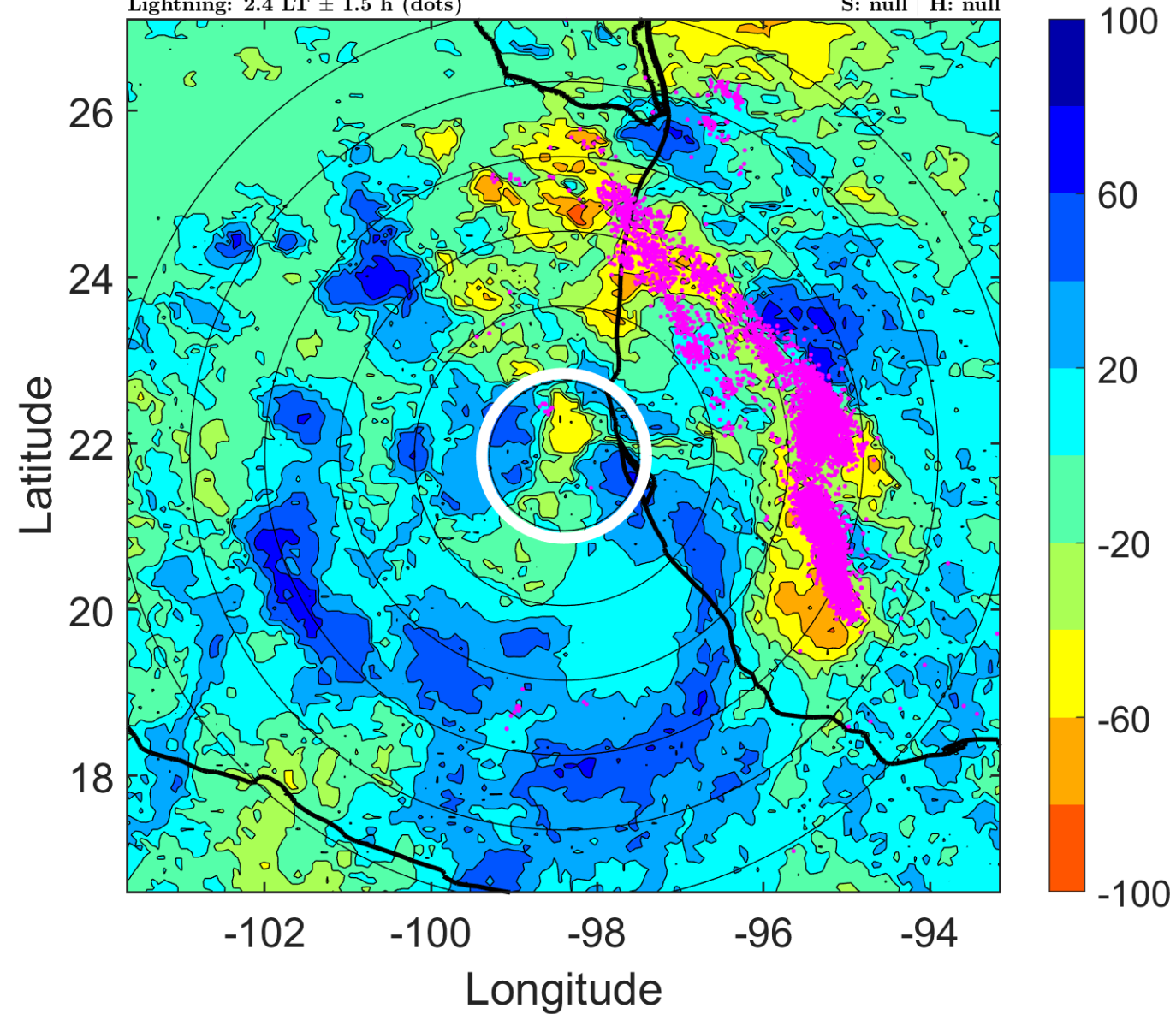
Δ t: 2014090309 (2.4 LT) - 2014090303 (20.5 LT)

Lightning: 2.4 LT \pm 1.5 h (dots)

LAND EFFECTS

05L (DOLLY) | 30 kt TD

S: null | H: null



IR BT & Lightning

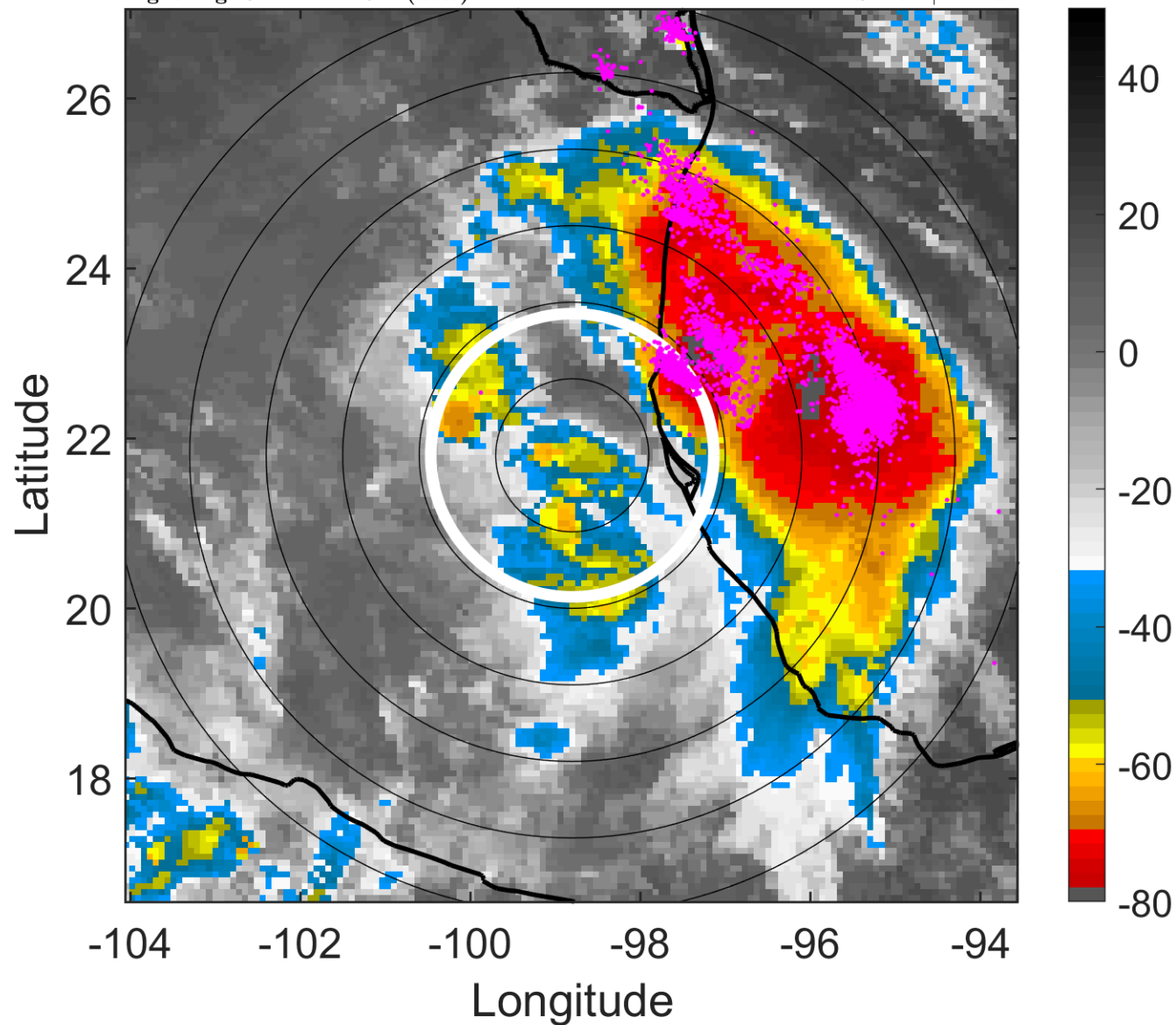
t: 2014090312 (5.4 LT)

Lightning: 5.4 LT \pm 1.5 h (dots)

LAND EFFECTS

05L (DOLLY) | 25 kt LO

S: null | H: null



6-h IR BT Differences & Lightning

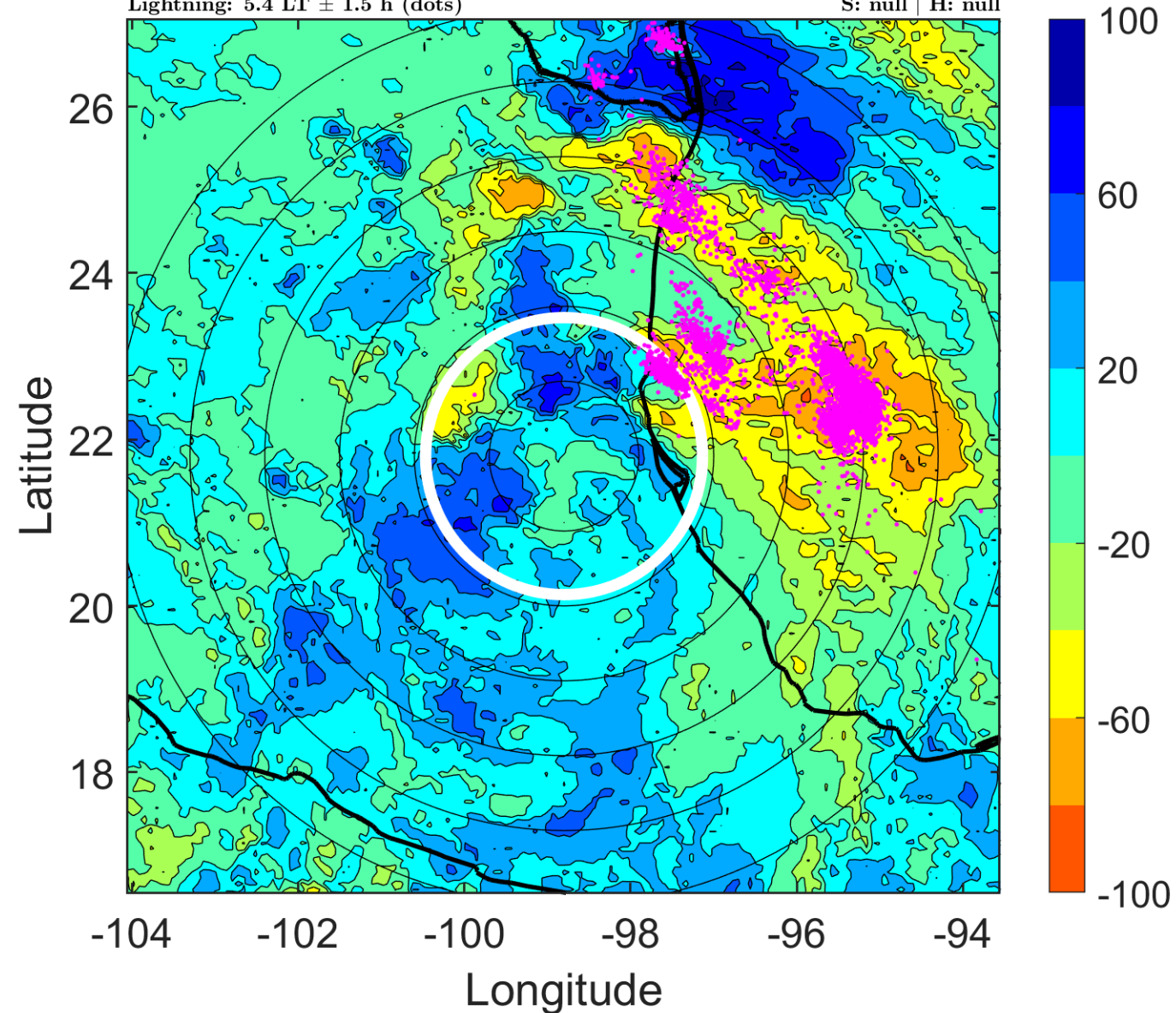
Δ t: 2014090312 (5.4 LT) - 2014090306 (23.5 LT)

Lightning: 5.4 LT \pm 1.5 h (dots)

LAND EFFECTS

05L (DOLLY) | 25 kt LO

S: null | H: null



IR BT & Lightning

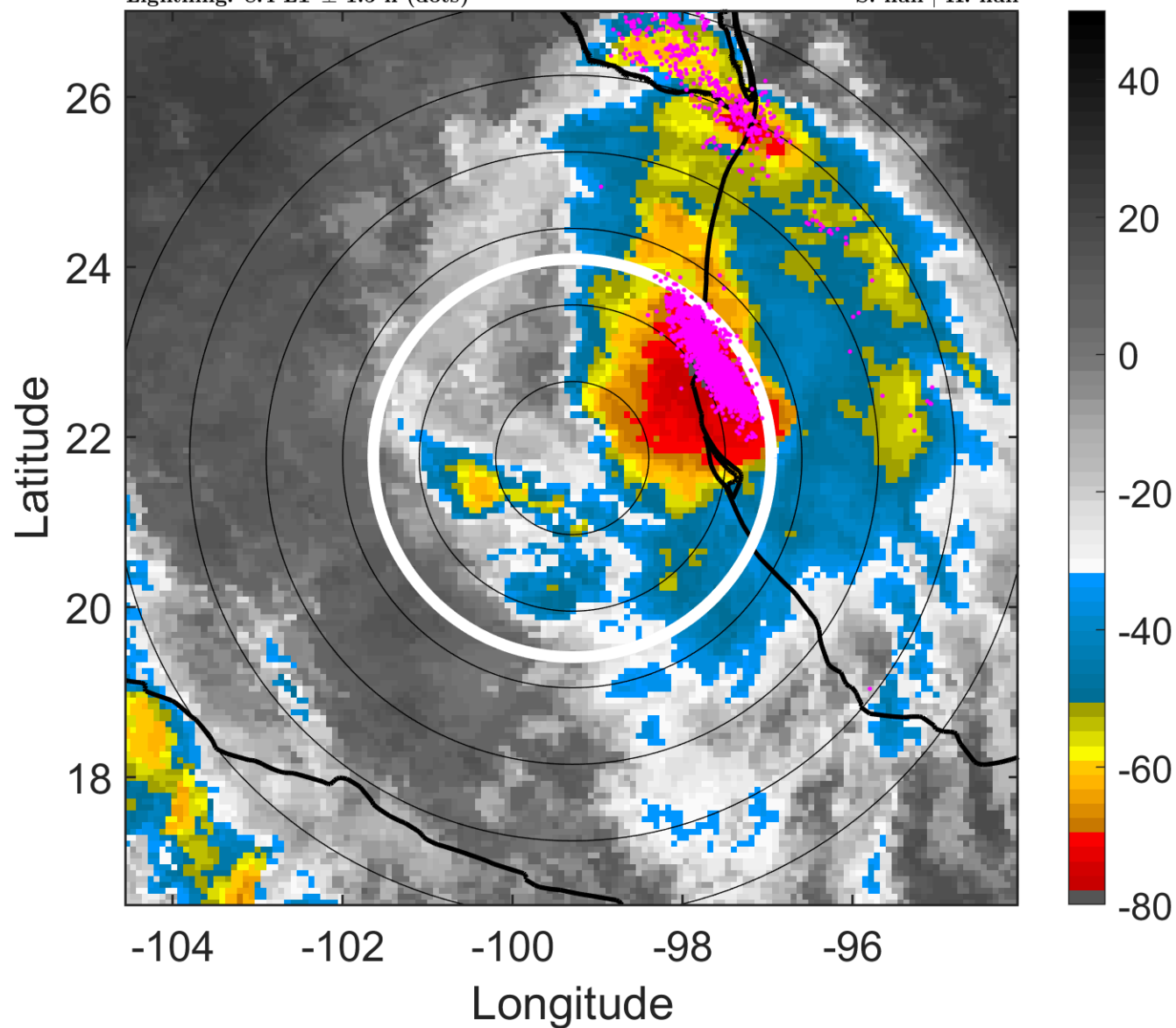
t: 2014090315 (8.4 LT)

Lightning: 8.4 LT \pm 1.5 h (dots)

LAND EFFECTS

05L (DOLLY) | 22.5 kt LO

S: null | H: null



6-h IR BT Differences & Lightning

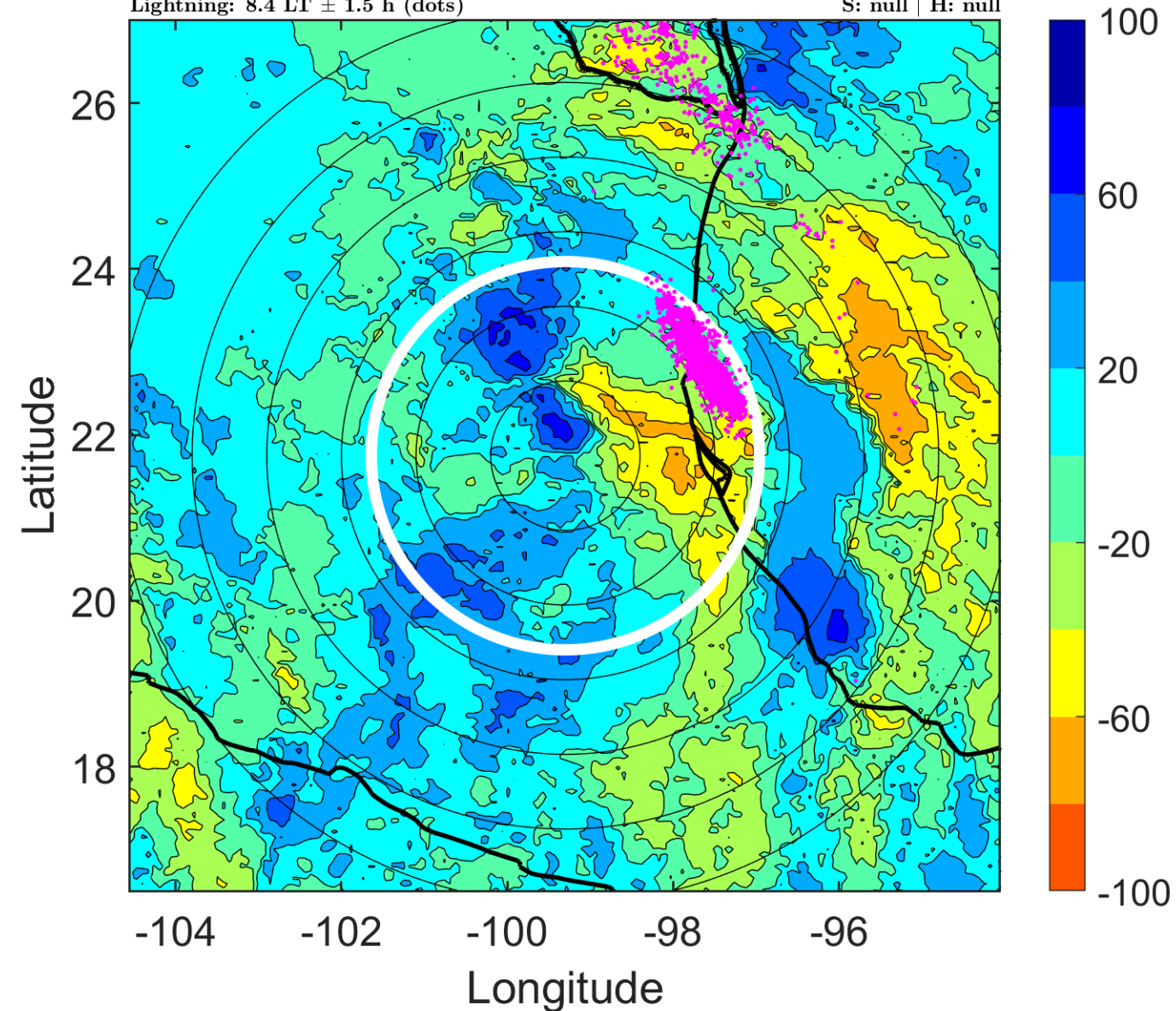
Δ t: 2014090315 (8.4 LT) - 2014090309 (2.4 LT)

Lightning: 8.4 LT \pm 1.5 h (dots)

LAND EFFECTS

05L (DOLLY) | 22.5 kt LO

S: null | H: null



IR BT & Lightning

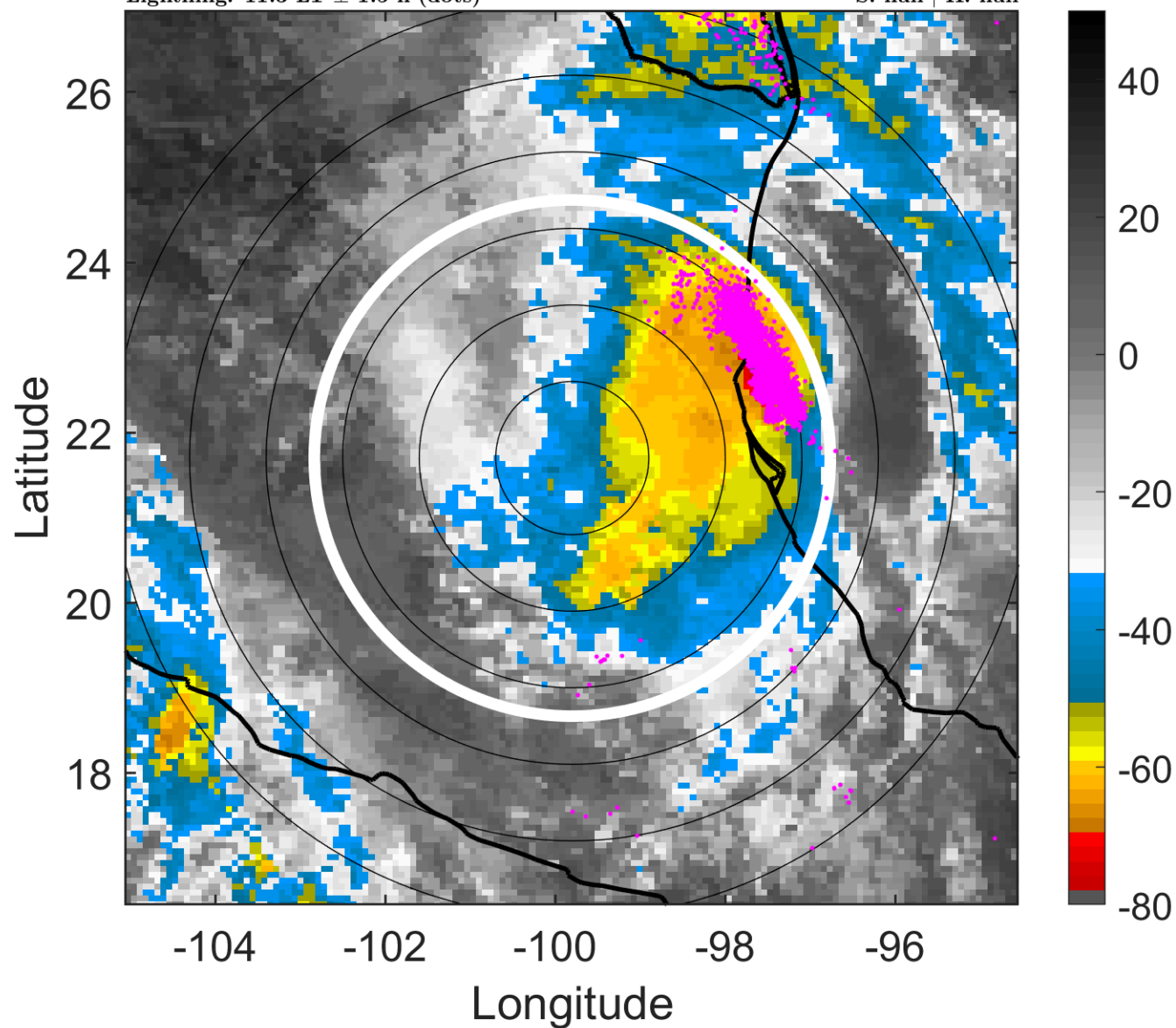
t: 2014090318 (11.3 LT)

Lightning: 11.3 LT \pm 1.5 h (dots)

LAND EFFECTS

05L (DOLLY) | 20 kt LO

S: null | H: null



6-h IR BT Differences & Lightning

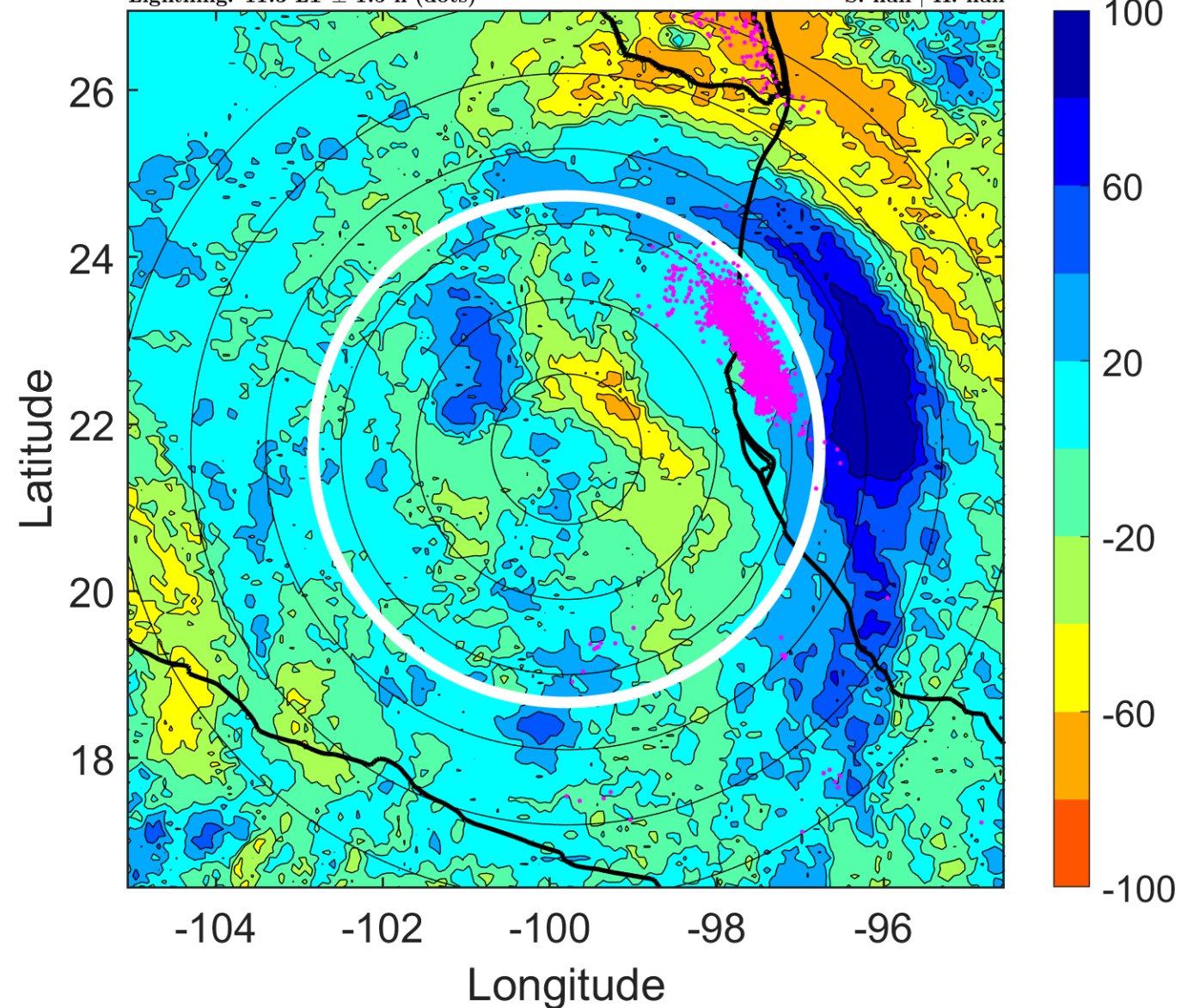
Δ t: 2014090318 (11.3 LT) - 2014090312 (5.4 LT)

Lightning: 11.3 LT \pm 1.5 h (dots)

LAND EFFECTS

05L (DOLLY) | 20 kt LO

S: null | H: null



IR BT & Lightning

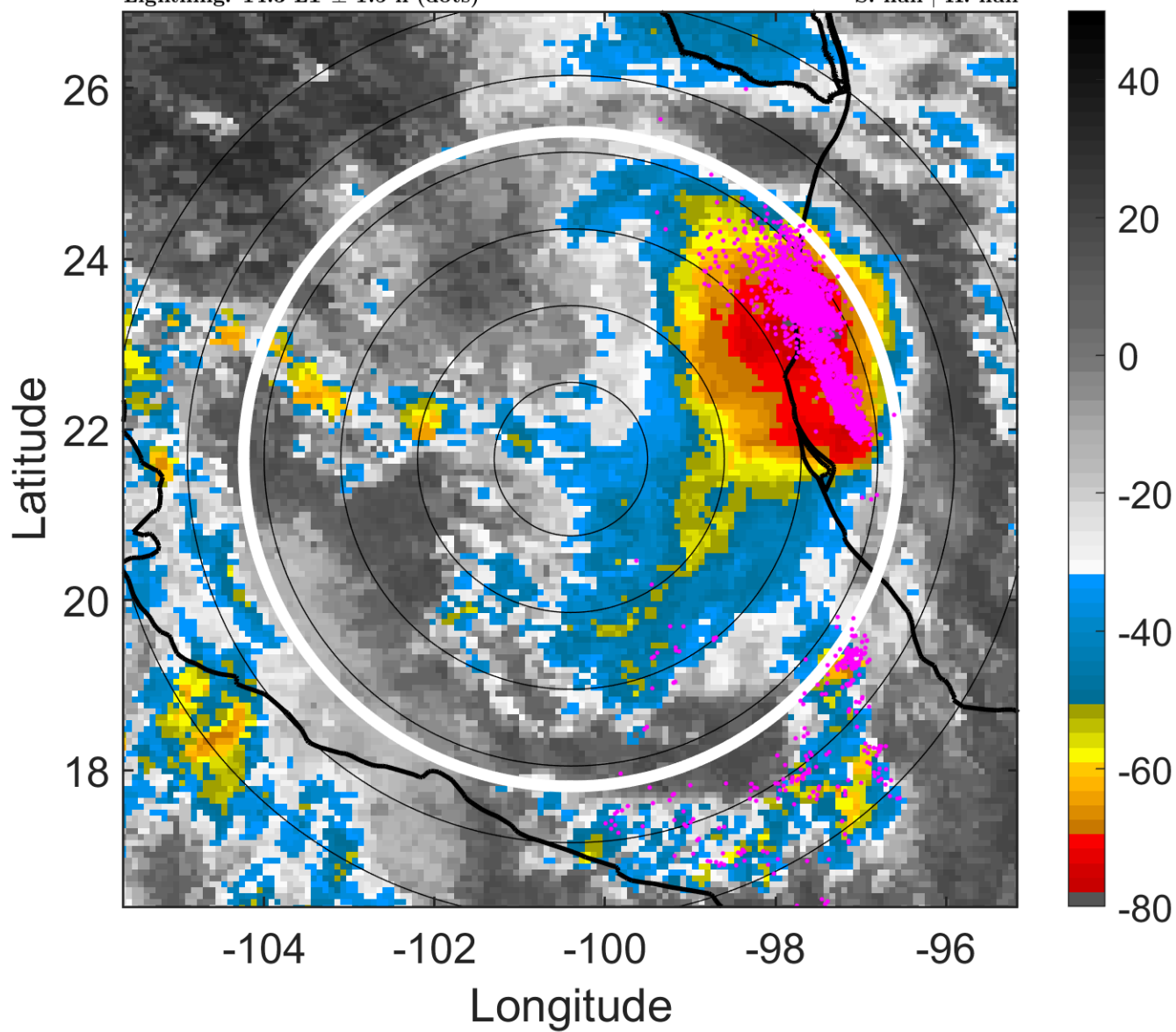
t: 2014090321 (14.3 LT)

Lightning: 14.3 LT \pm 1.5 h (dots)

LAND EFFECTS

05L (DOLLY) | 17.5 kt LO

S: null | H: null



6-h IR BT Differences & Lightning

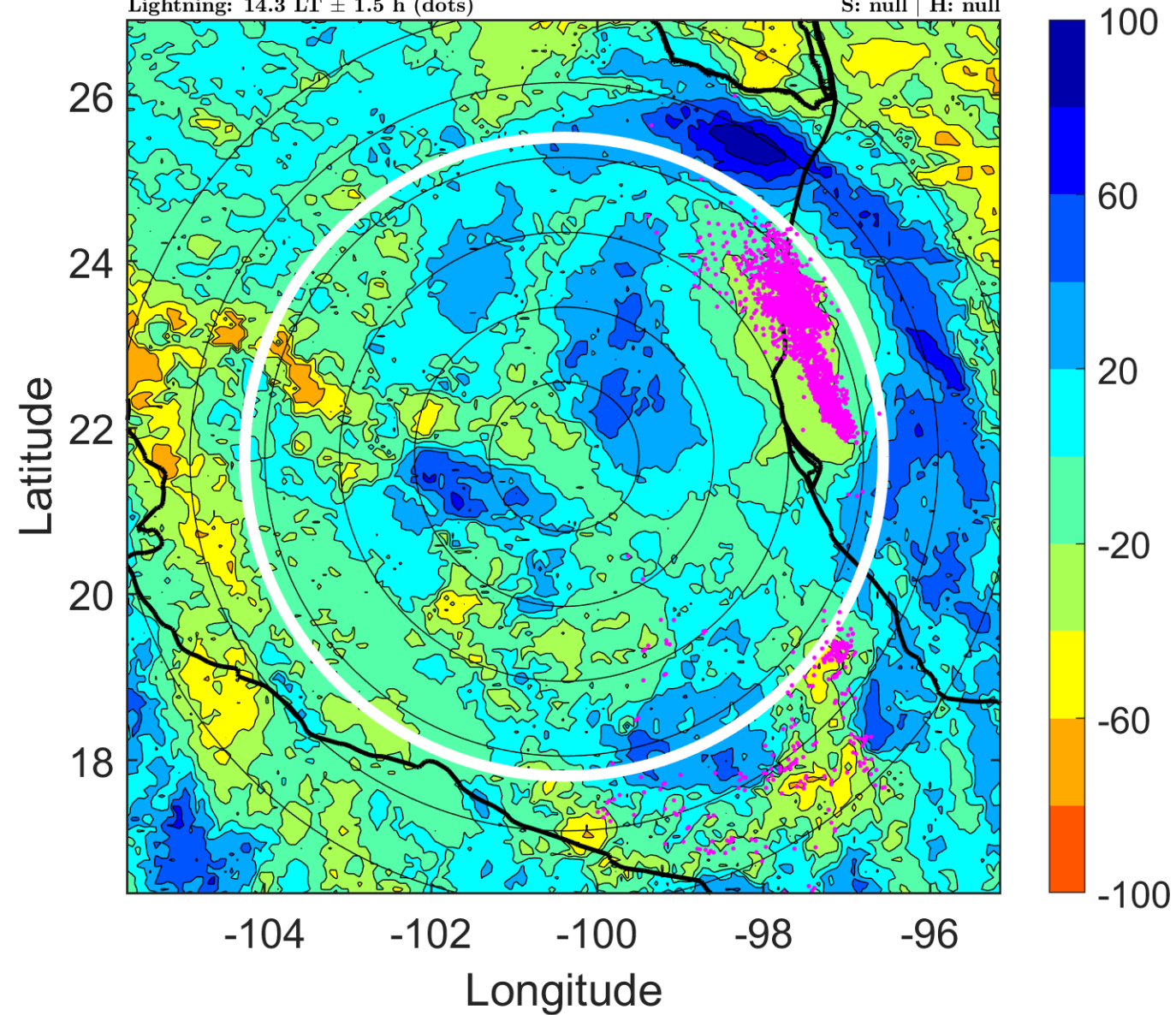
Δ t: 2014090321 (14.3 LT) - 2014090315 (8.4 LT)

Lightning: 14.3 LT \pm 1.5 h (dots)

LAND EFFECTS

05L (DOLLY) | 17.5 kt LO

S: null | H: null



IR BT & Lightning

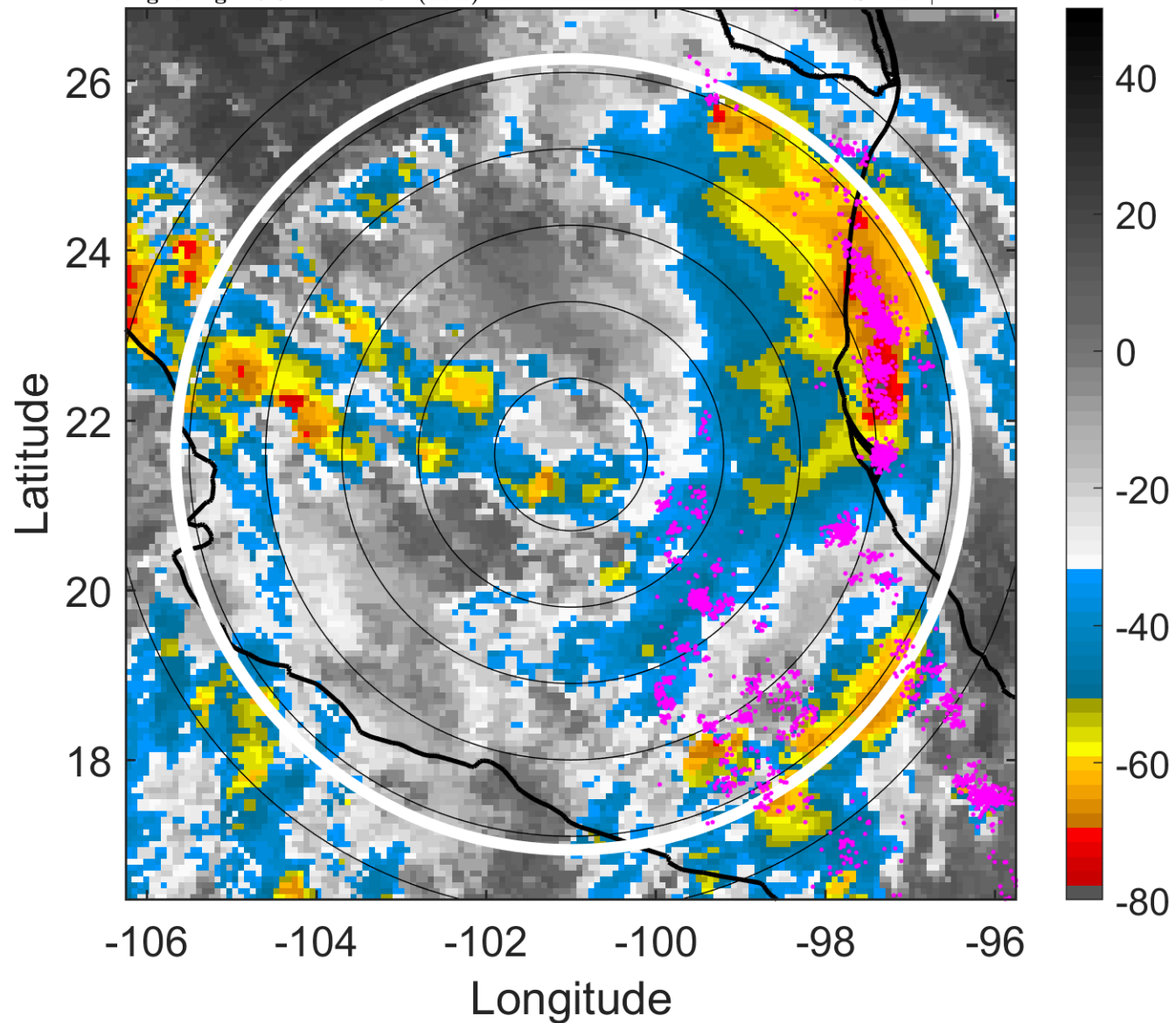
t: 2014090400 (17.3 LT)

Lightning: 17.3 LT \pm 1.5 h (dots)

LAND EFFECTS

05L (DOLLY) | 15 kt LO

S: null | H: null



6-h IR BT Differences & Lightning

Δ t: 2014090400 (17.3 LT) - 2014090318 (11.3 LT)

Lightning: 17.3 LT \pm 1.5 h (dots)

LAND EFFECTS

05L (DOLLY) | 15 kt LO

S: null | H: null

