

IR BT & Lightning

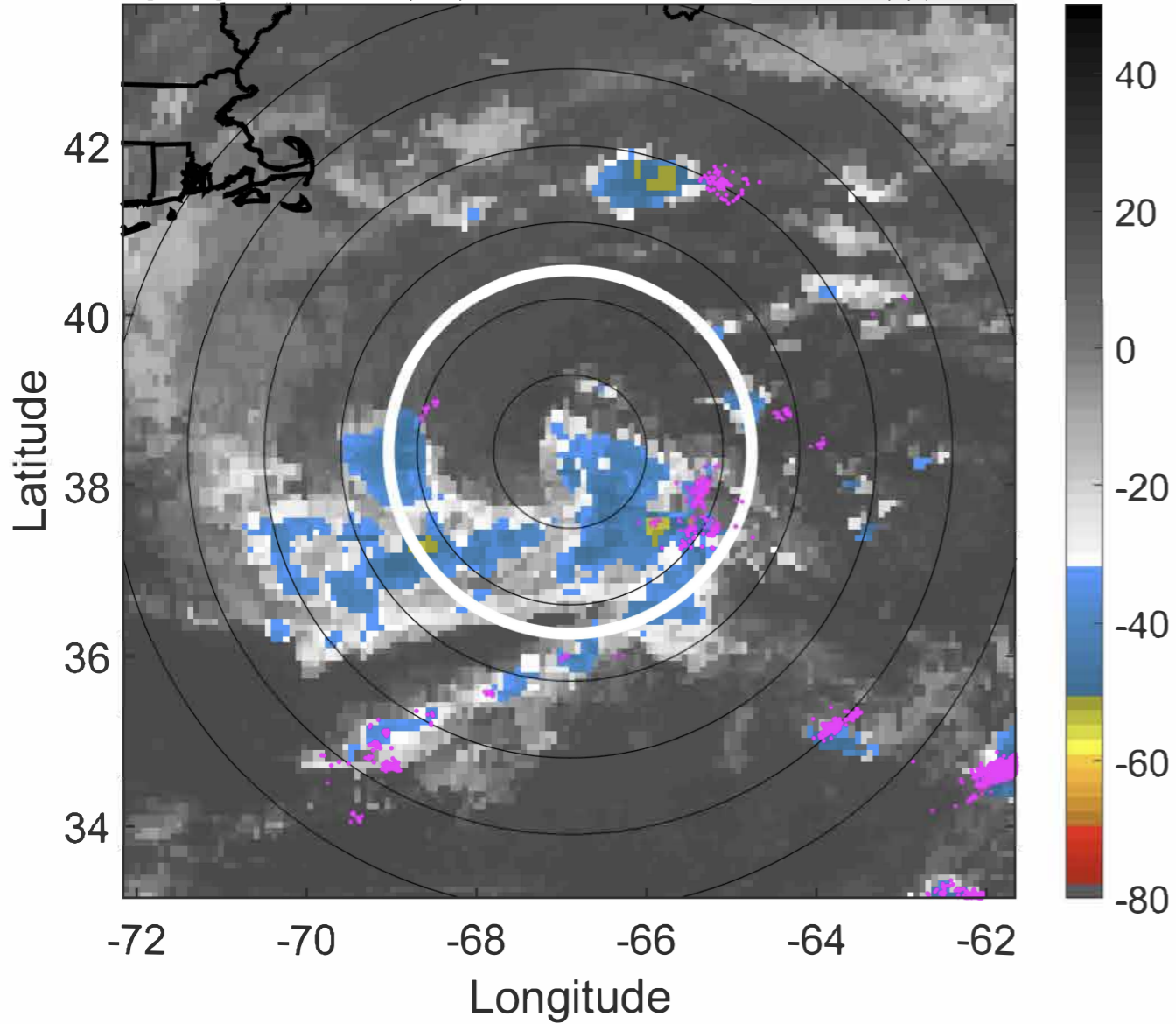
t: 2020062212 (7.5 LT)

Lightning: 7.5 LT \pm 1.5 h (dots)

PT: SLCP | EA: QUASI

04L (DOLLY) | 30 kt SD

S: 1.7 m s⁻¹ (L) | H: 229°



6-h IR BT Differences & Lightning

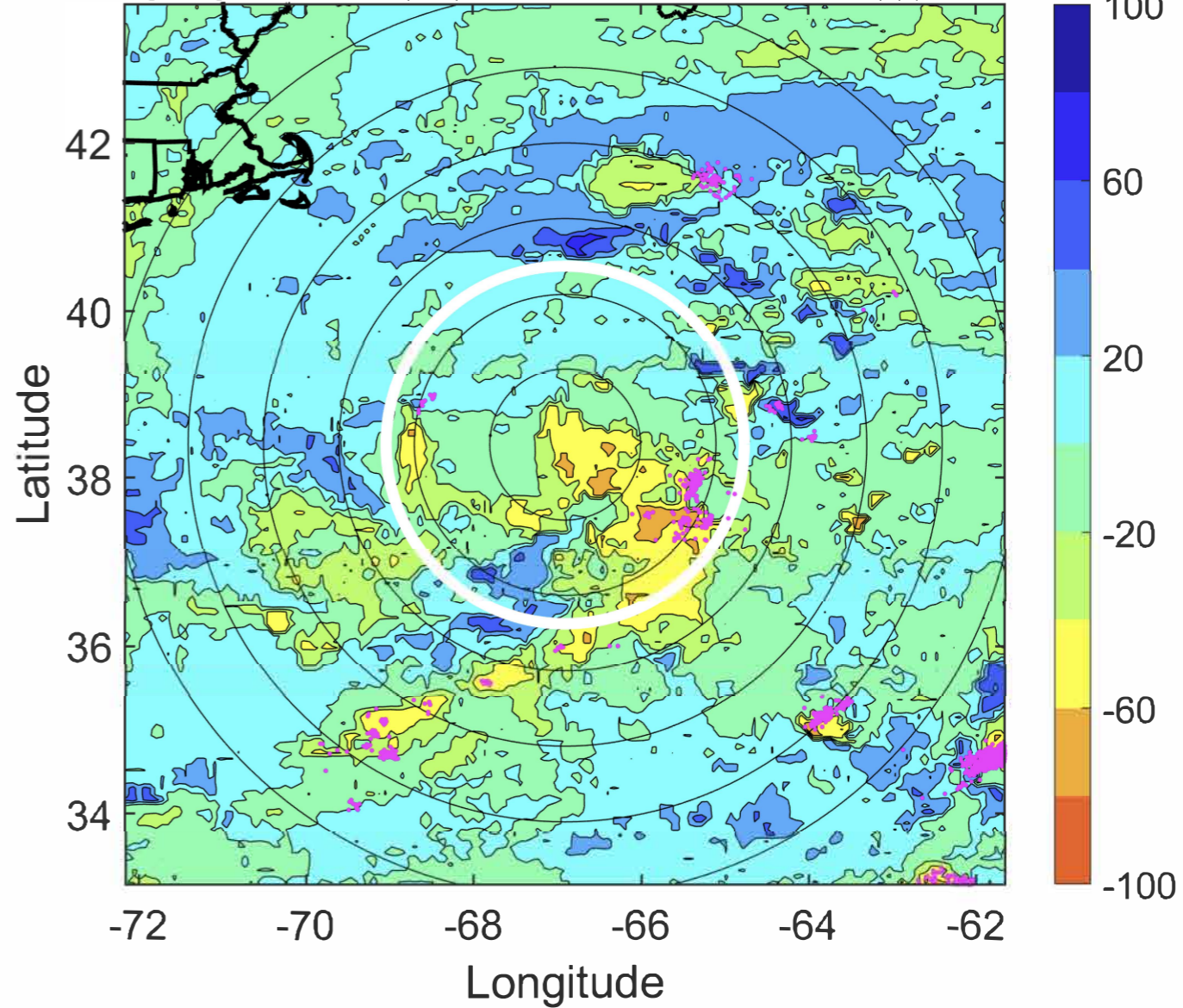
Δ t: 2020062212 (7.5 LT) - 2020062206 (1.5 LT)

Lightning: 7.5 LT \pm 1.5 h (dots)

PT: SLCP | EA: QUASI

04L (DOLLY) | 30 kt SD

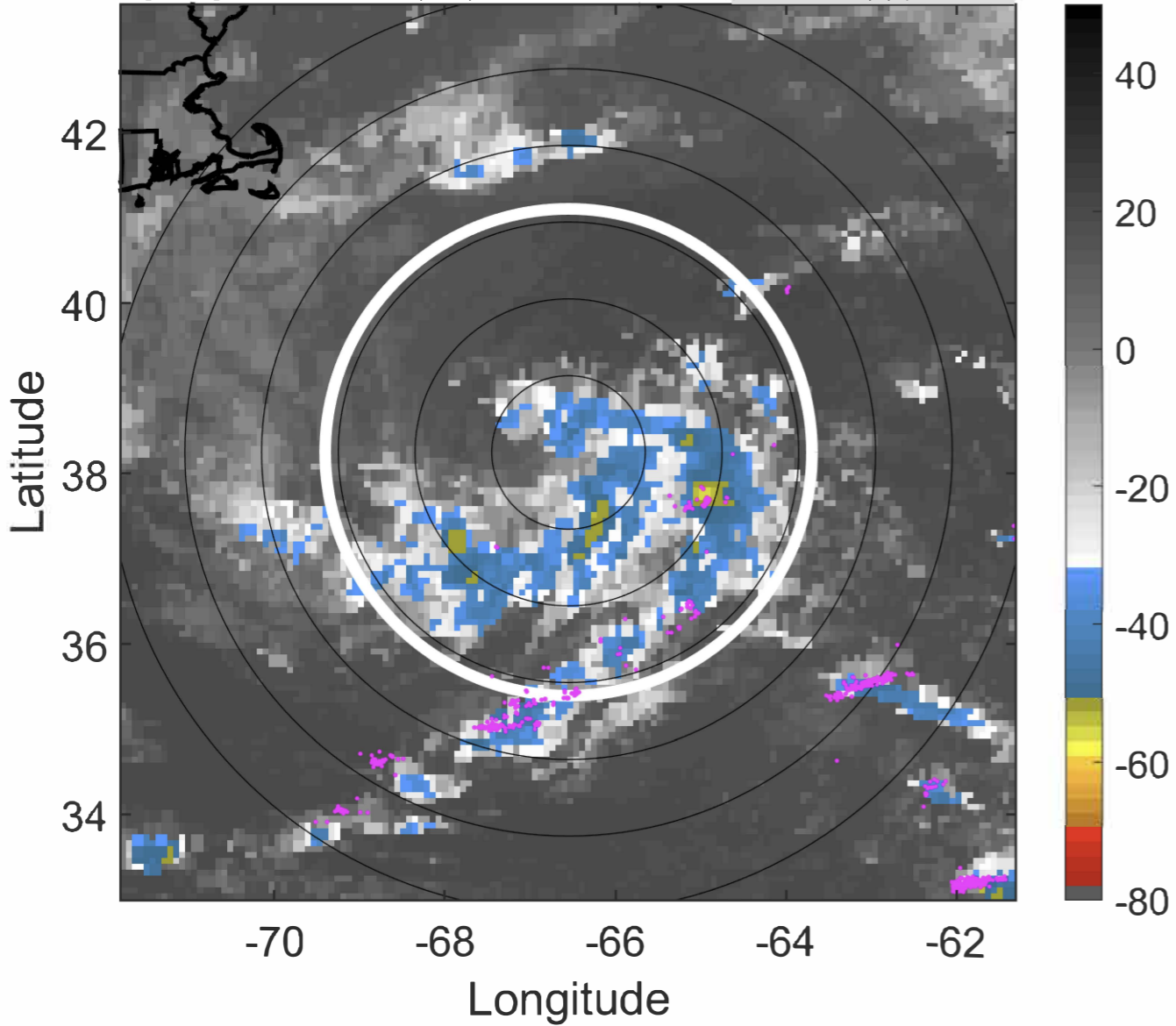
S: 1.7 m s⁻¹ (L) | H: 229°



IR BT & Lightning

t: 2020062215 (10.6 LT)
Lightning: 10.6 LT \pm 1.5 h (dots)

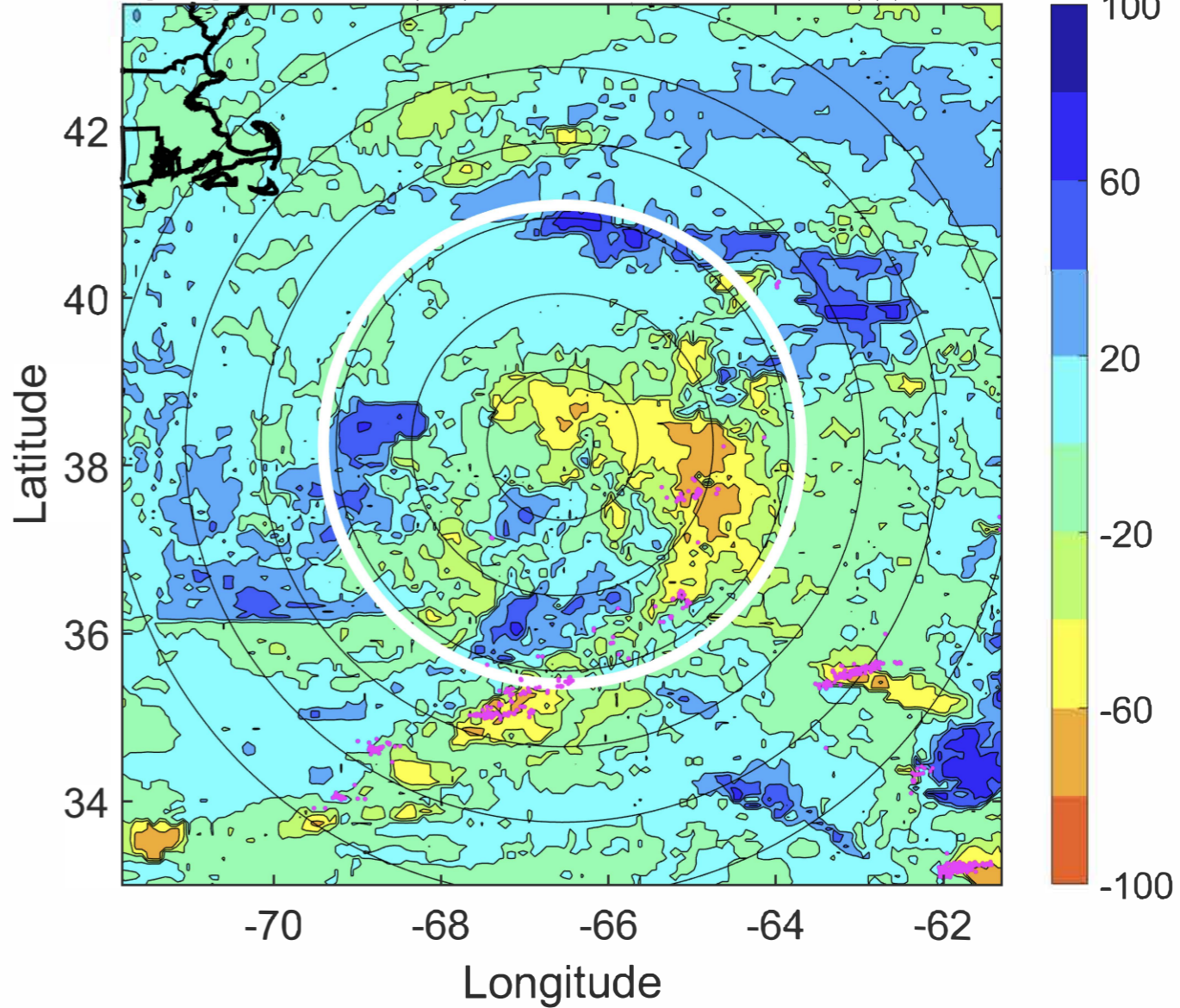
PT: SLCP | EA: QUASI
04L (DOLLY) | 30 kt SD
S: 1.5 m s⁻¹ (L) | H: 207.5°



6-h IR BT Differences & Lightning

Δ t: 2020062215 (10.6 LT) - 2020062209 (4.5 LT)
Lightning: 10.6 LT \pm 1.5 h (dots)

PT: SLCP | EA: QUASI
04L (DOLLY) | 30 kt SD
S: 1.5 m s⁻¹ (L) | H: 207.5°



IR BT & Lightning

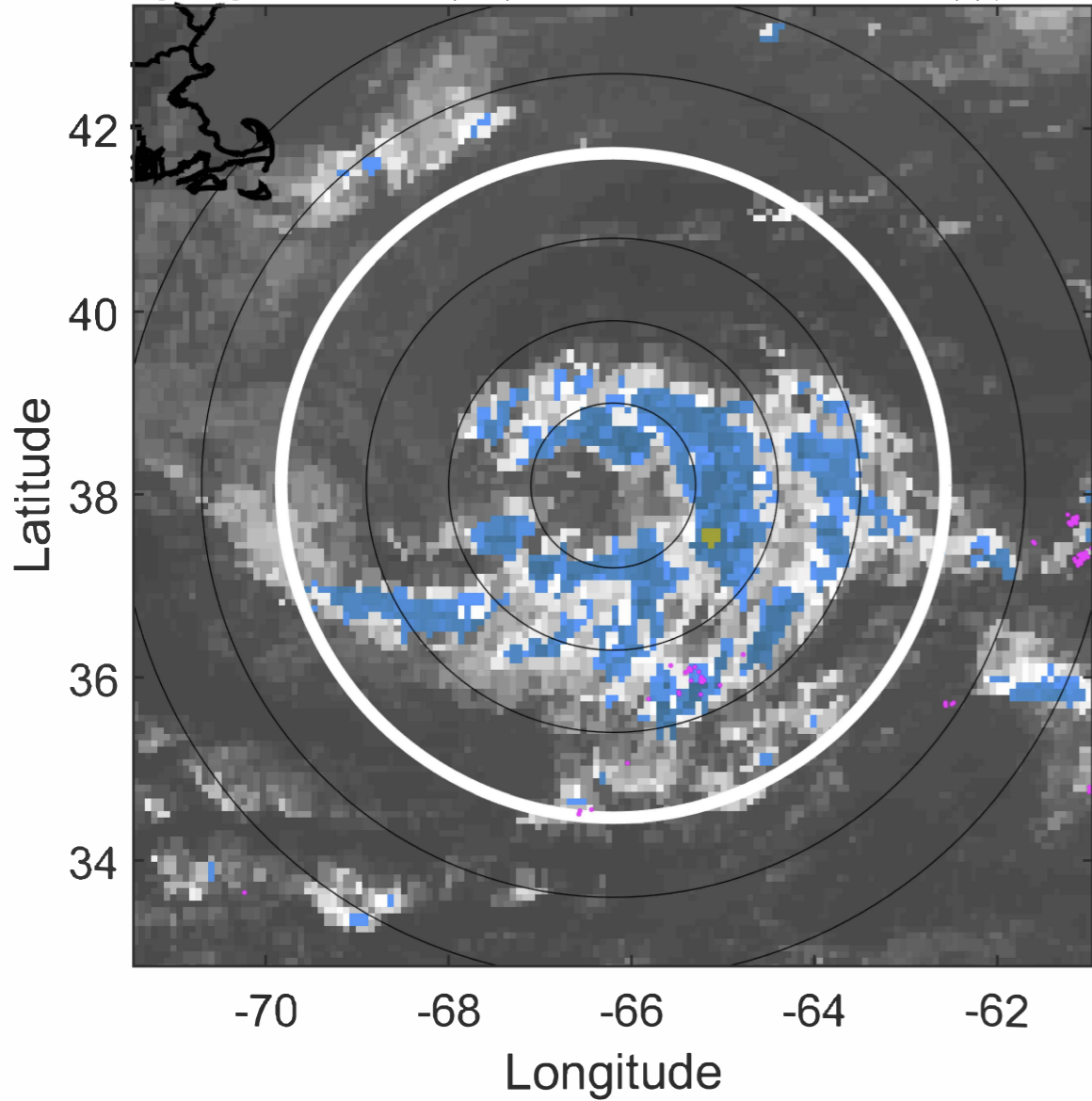
t: 2020062218 (13.6 LT)

Lightning: 13.6 LT \pm 1.5 h (dots)

PT: SLCP | EA: QUASI

04L (DOLLY) | 30 kt SD

S: 1.3 m s⁻¹ (L) | H: 186°



6-h IR BT Differences & Lightning

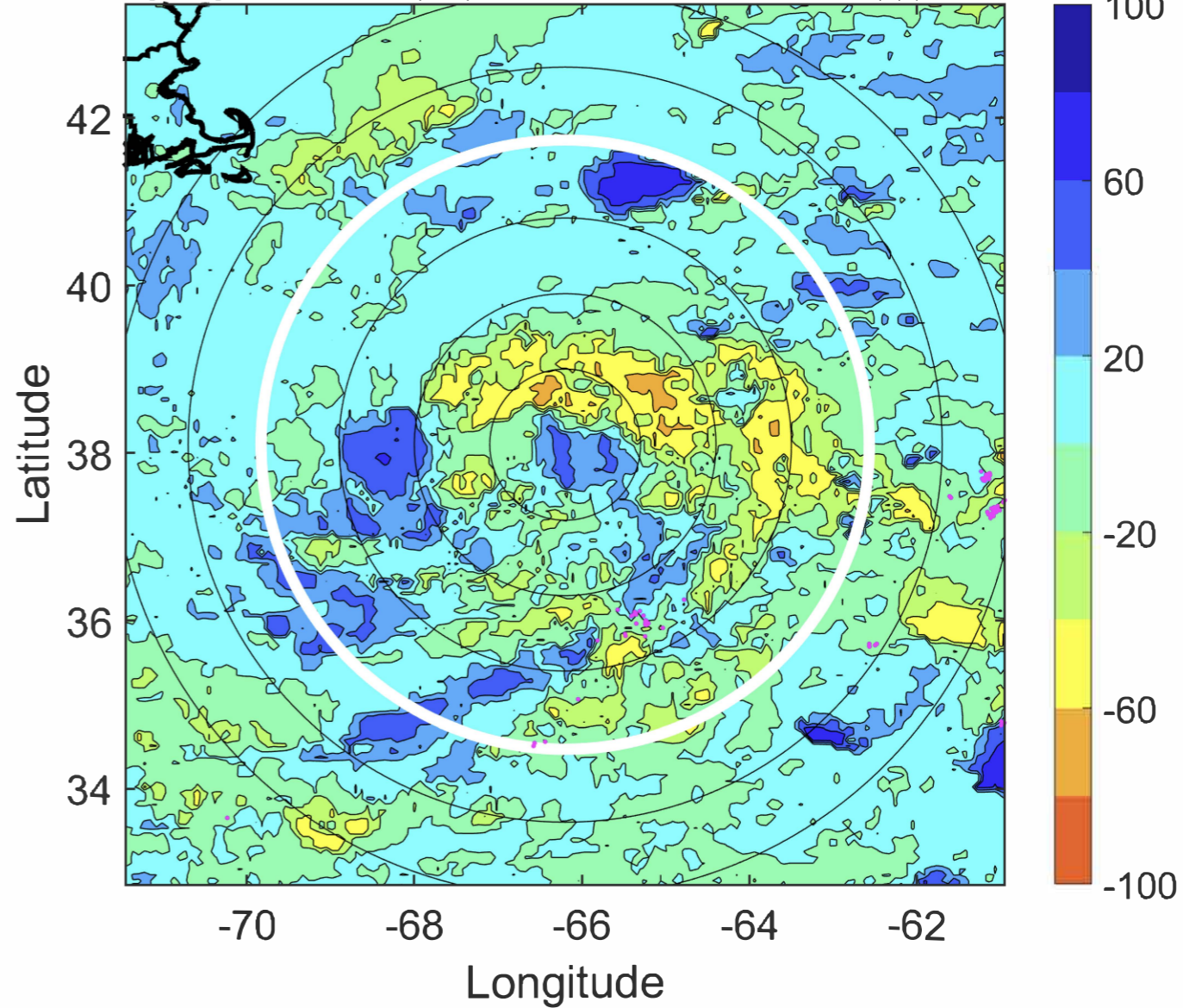
Δ t: 2020062218 (13.6 LT) - 2020062212 (7.5 LT)

Lightning: 13.6 LT \pm 1.5 h (dots)

PT: SLCP | EA: QUASI

04L (DOLLY) | 30 kt SD

S: 1.3 m s⁻¹ (L) | H: 186°



IR BT & Lightning

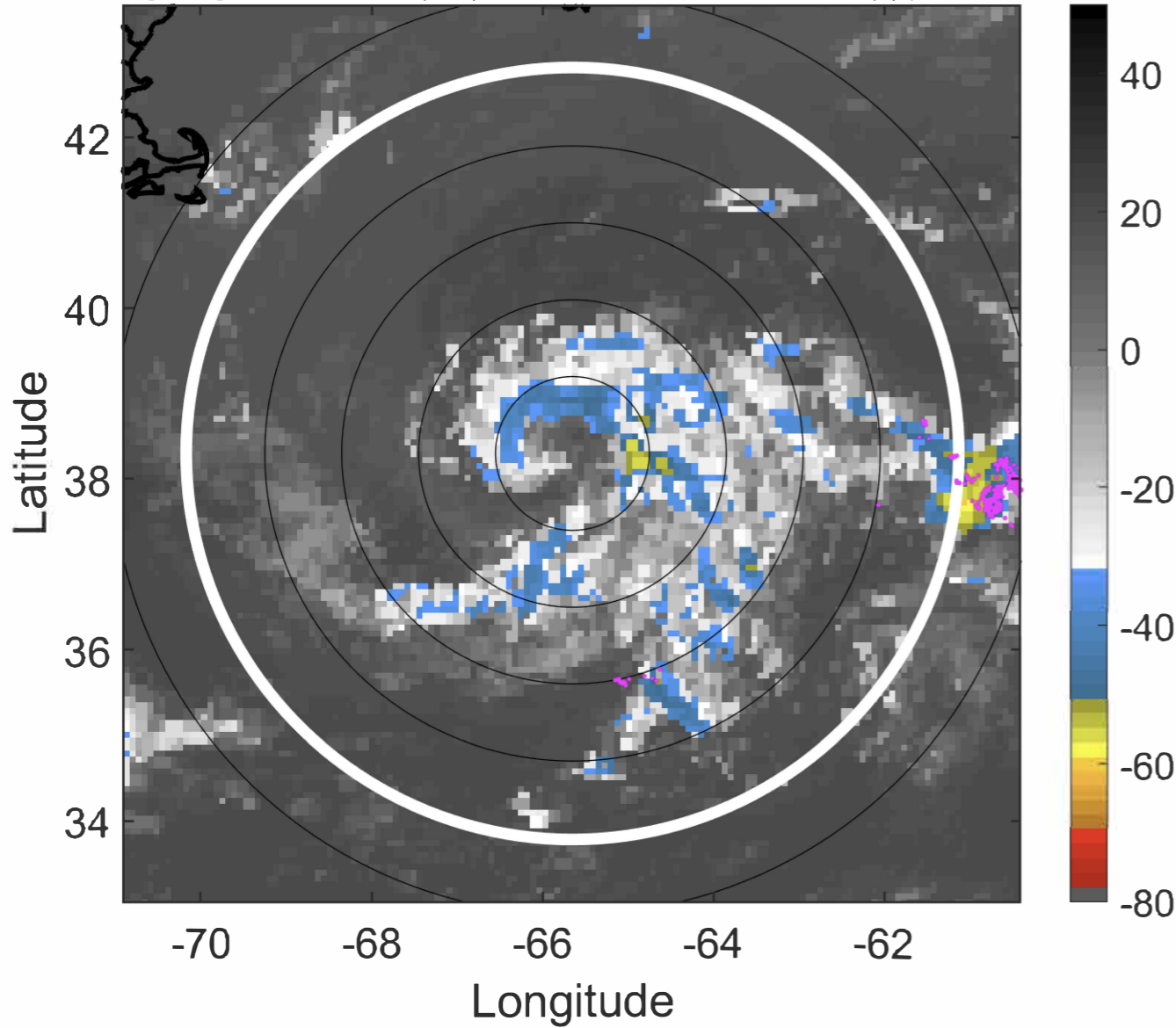
t: 2020062221 (16.6 LT)

Lightning: 16.6 LT \pm 1.5 h (dots)

PT: SLCP | EA: QUASI

04L (DOLLY) | 30 kt SD

S: 2 m s⁻¹ (L) | H: 179.5°



6-h IR BT Differences & Lightning

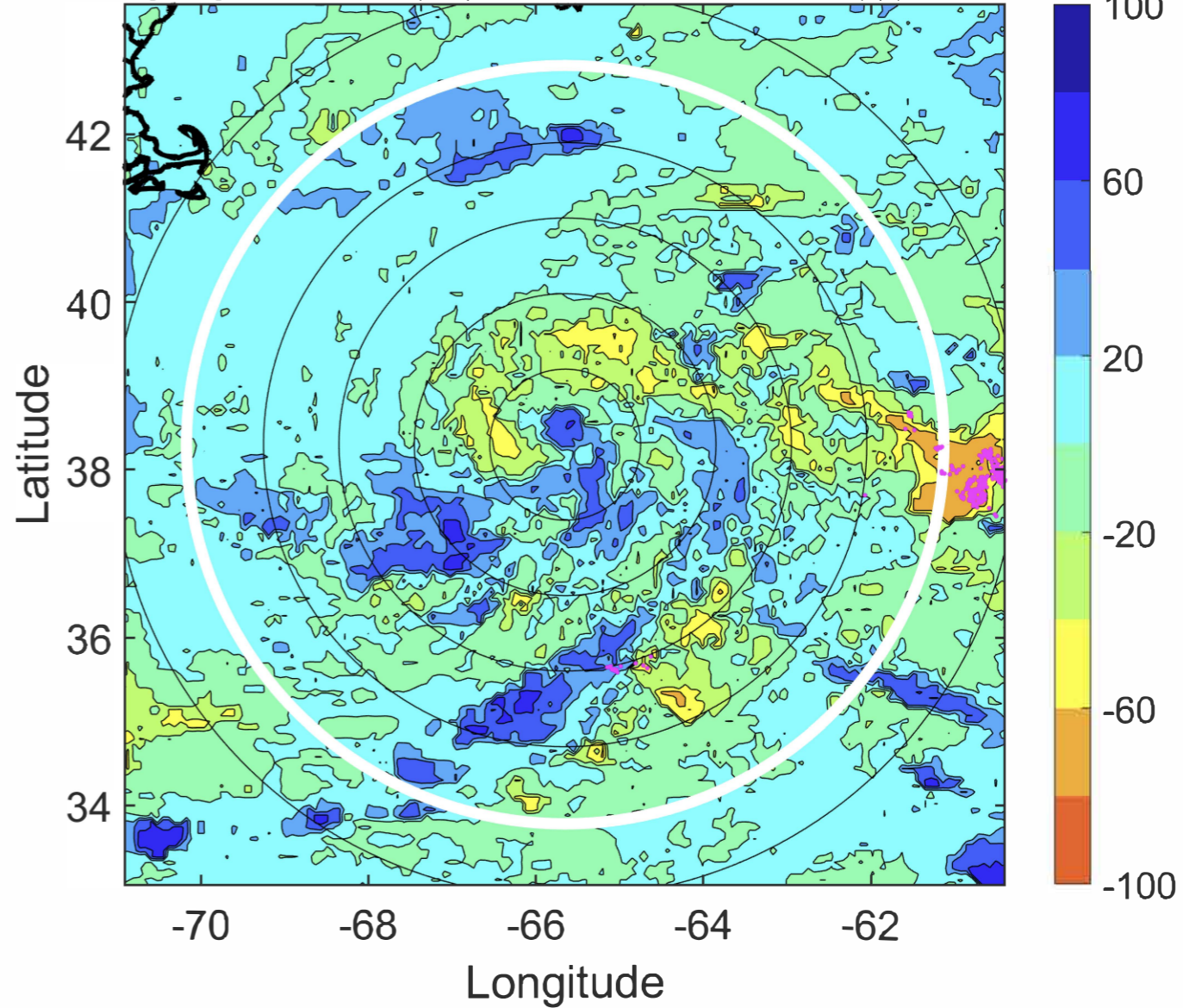
Δ t: 2020062221 (16.6 LT) - 2020062215 (10.6 LT)

Lightning: 16.6 LT \pm 1.5 h (dots)

PT: SLCP | EA: QUASI

04L (DOLLY) | 30 kt SD

S: 2 m s⁻¹ (L) | H: 179.5°



IR BT & Lightning

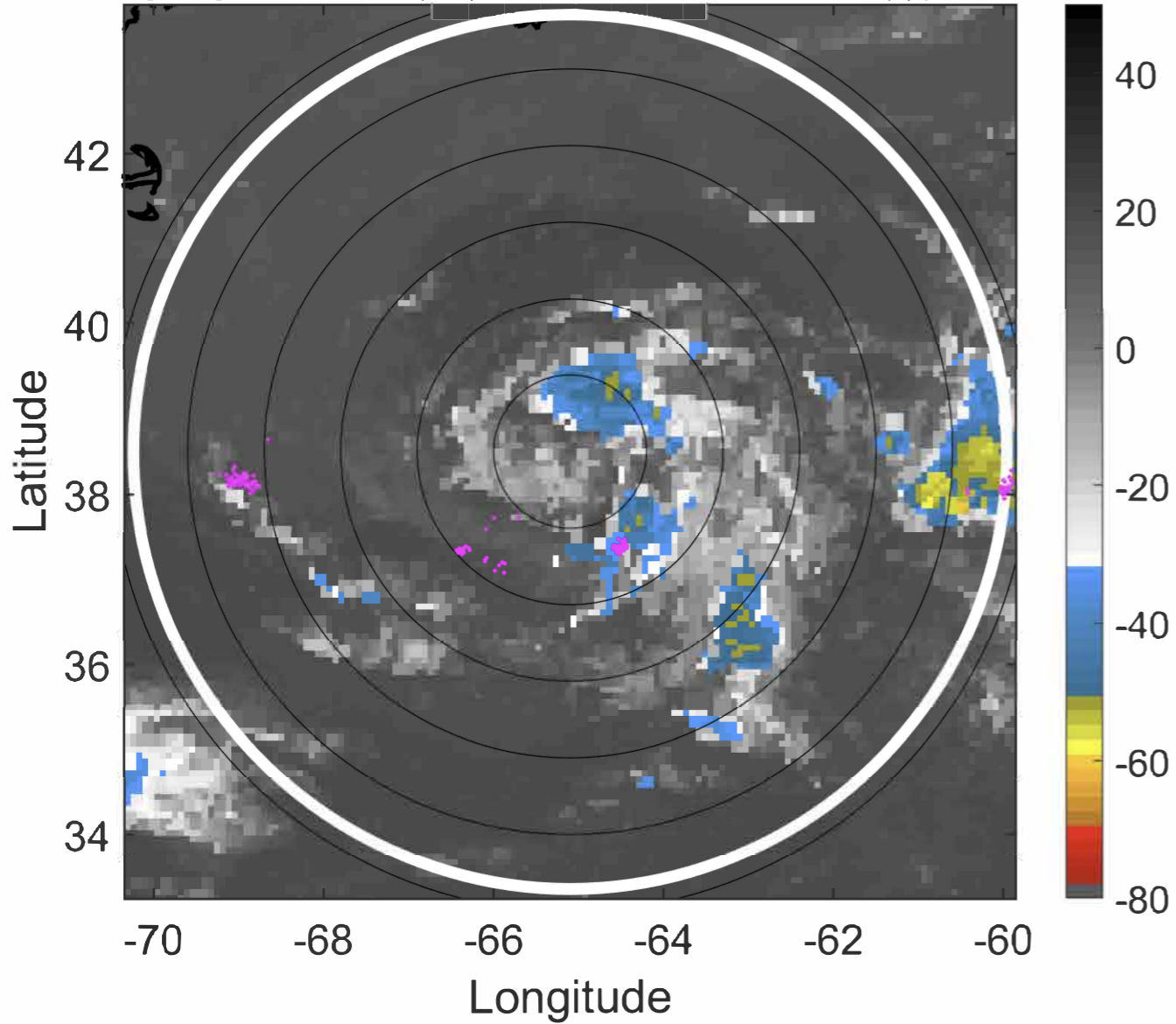
t: 2020062300 (19.7 LT)

Lightning: 19.7 LT \pm 1.5 h (dots)

PT: SLCP | EA: QUASI

04L (DOLLY) | 30 kt SD

S: 2.8 m s⁻¹ (L) | H: 173°



6-h IR BT Differences & Lightning

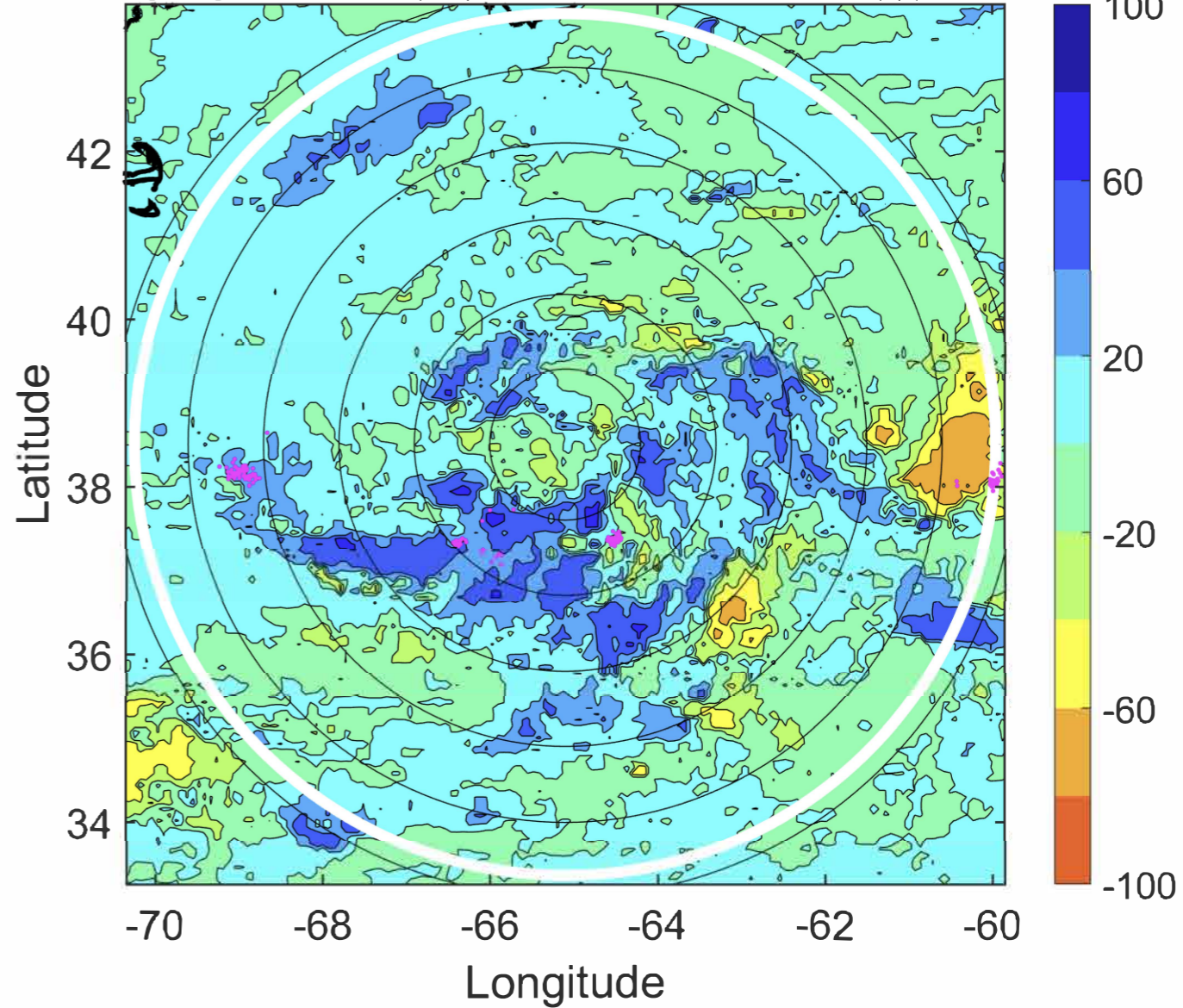
Δ t: 2020062300 (19.7 LT) - 2020062218 (13.6 LT)

Lightning: 19.7 LT \pm 1.5 h (dots)

PT: SLCP | EA: QUASI

04L (DOLLY) | 30 kt SD

S: 2.8 m s⁻¹ (L) | H: 173°



IR BT & Lightning

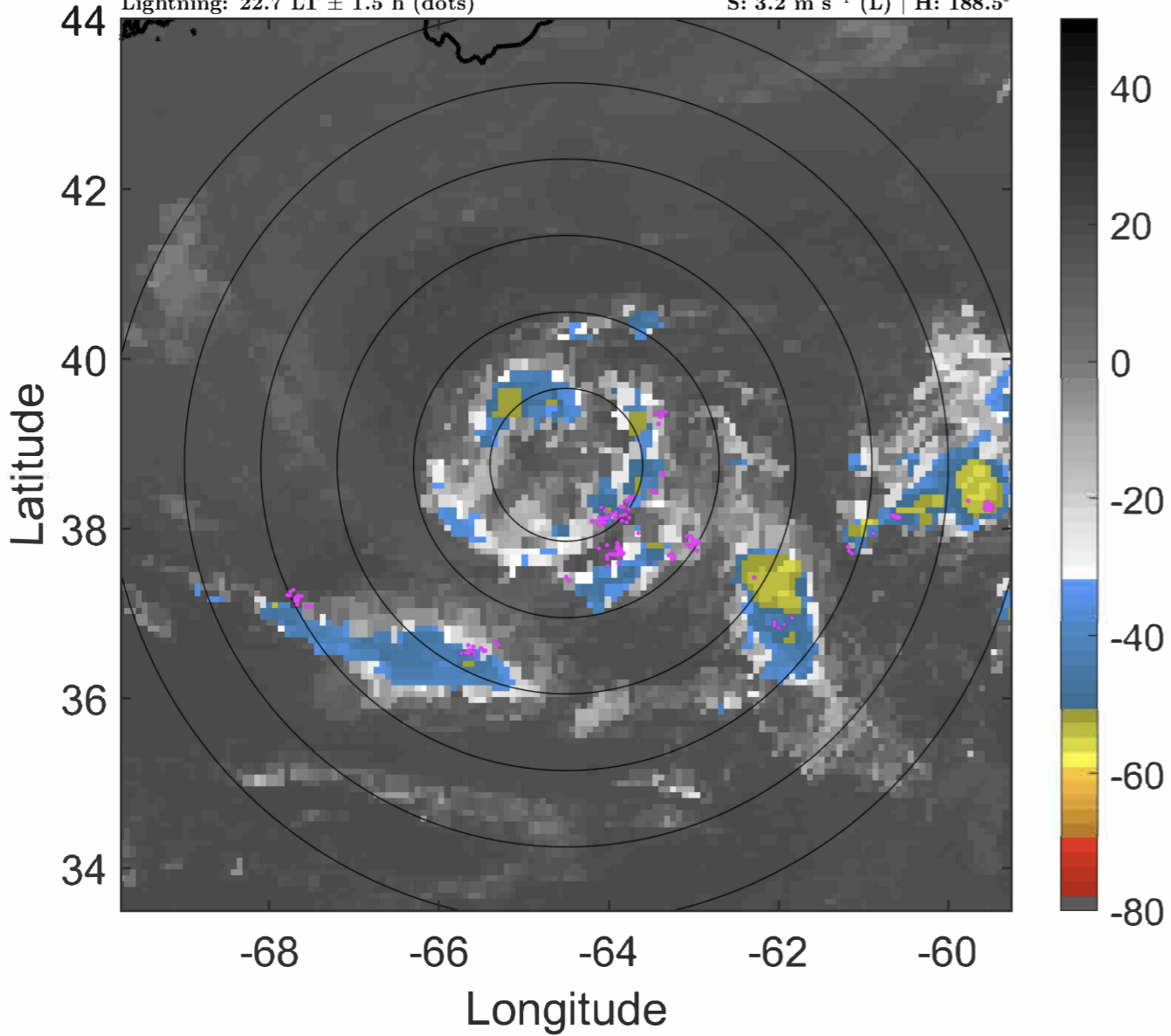
t: 2020062303 (22.7 LT)

Lightning: 22.7 LT \pm 1.5 h (dots)

PT: SLCP | EA: QUASI

04L (DOLLY) | 32.5 kt SD

S: 3.2 m s⁻¹ (L) | H: 188.5°



6-h IR BT Differences & Lightning

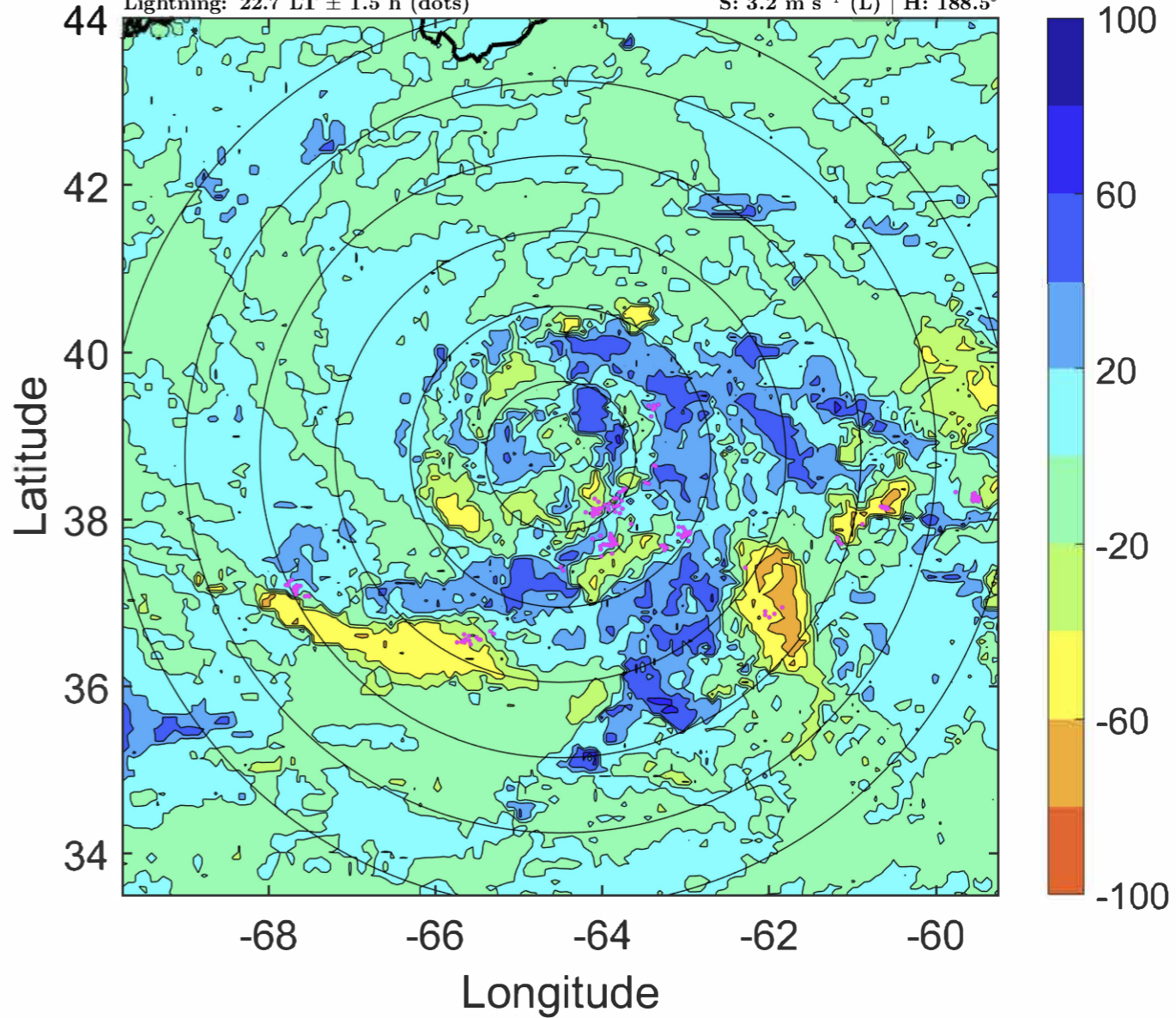
Δ t: 2020062303 (22.7 LT) - 2020062221 (16.6 LT)

Lightning: 22.7 LT \pm 1.5 h (dots)

PT: SLCP | EA: QUASI

04L (DOLLY) | 32.5 kt SD

S: 3.2 m s⁻¹ (L) | H: 188.5°



IR BT & Lightning

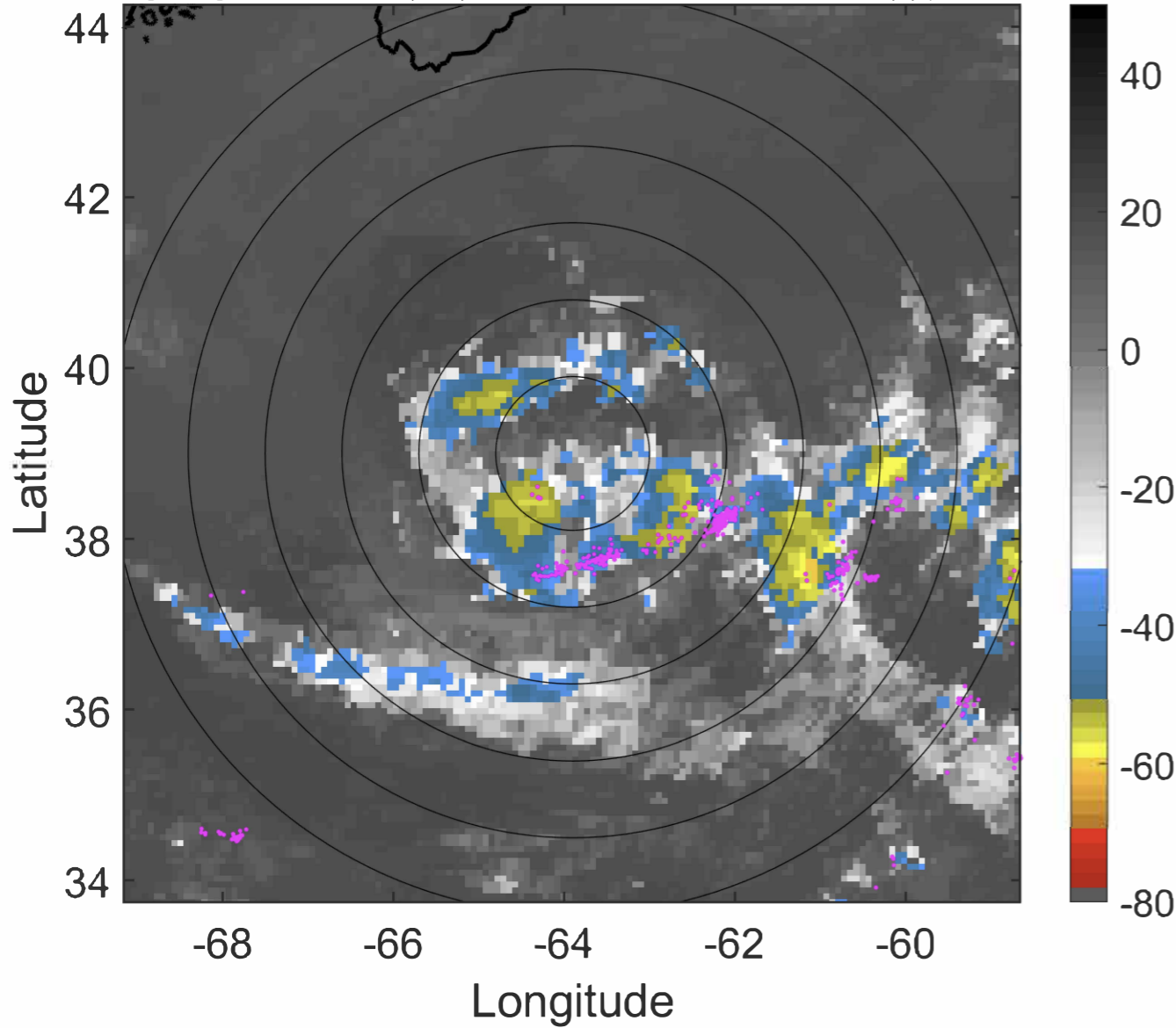
t: 2020062306 (1.7 LT)

Lightning: 1.7 LT \pm 1.5 h (dots)

PT: SLCP | EA: QUASI

04L (DOLLY) | 35 kt SS

S: 3.7 m s⁻¹ (L) | H: 204°



6-h IR BT Differences & Lightning

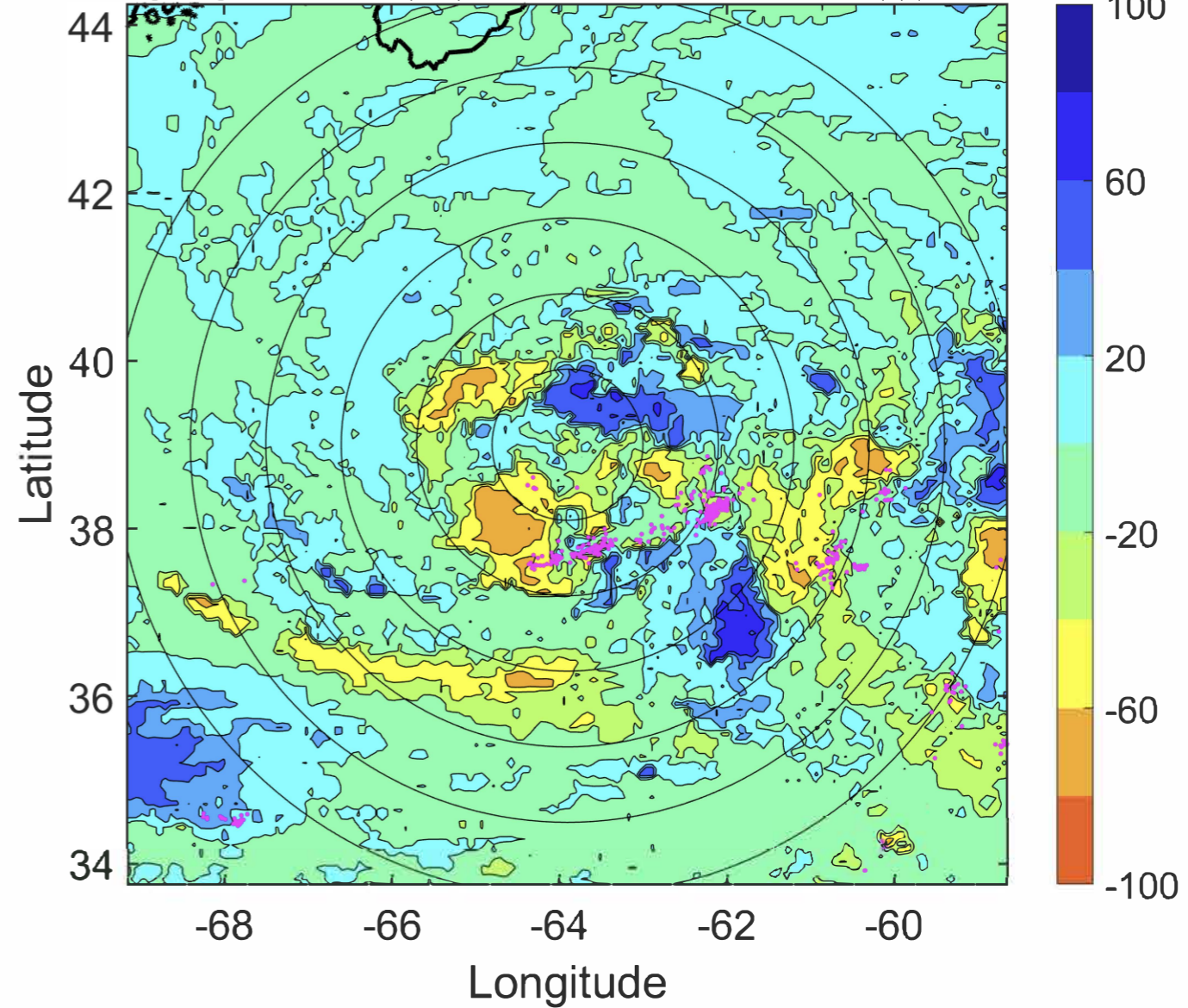
Δ t: 2020062306 (1.7 LT) - 2020062300 (19.7 LT)

Lightning: 1.7 LT \pm 1.5 h (dots)

PT: SLCP | EA: QUASI

04L (DOLLY) | 35 kt SS

S: 3.7 m s⁻¹ (L) | H: 204°



IR BT & Lightning

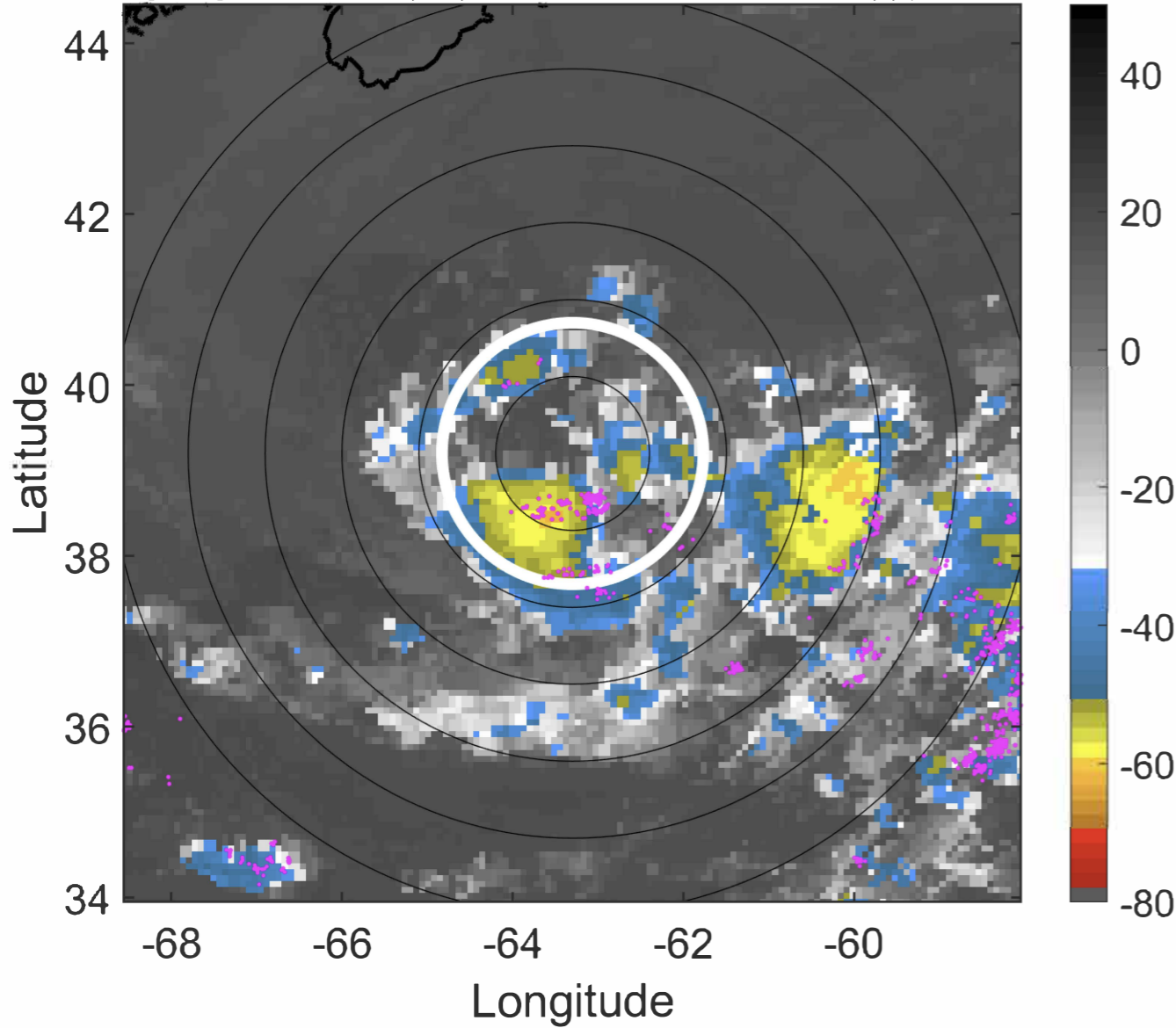
t: 2020062309 (4.8 LT)

Lightning: 4.8 LT \pm 1.5 h (dots)

PT: SLCP | EA: QUASI

04L (DOLLY) | 37.5 kt SS

S: 3.6 m s⁻¹ (L) | H: 209.5°



6-h IR BT Differences & Lightning

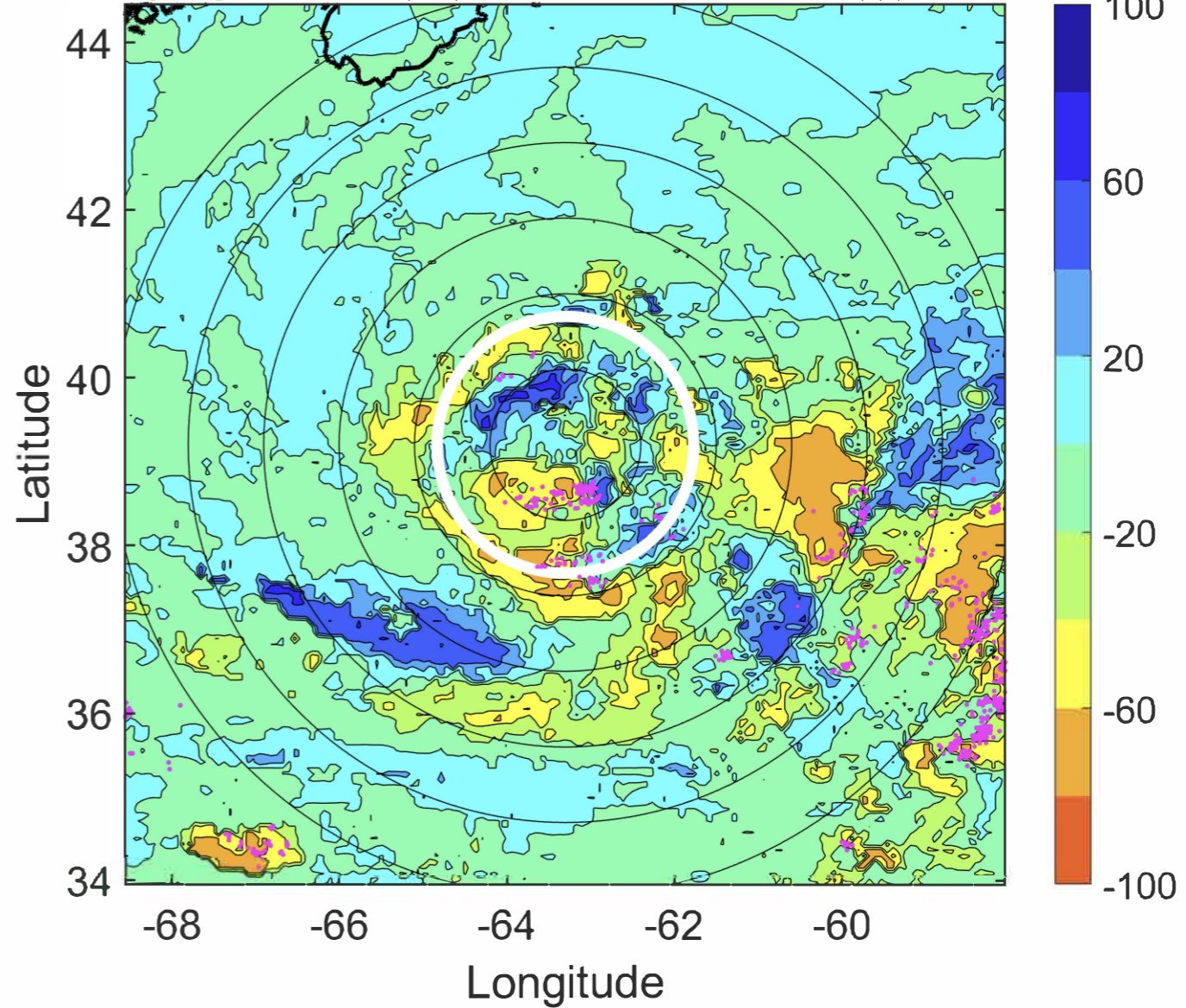
Δ t: 2020062309 (4.8 LT) - 2020062303 (22.7 LT)

Lightning: 4.8 LT \pm 1.5 h (dots)

PT: SLCP | EA: QUASI

04L (DOLLY) | 37.5 kt SS

S: 3.6 m s⁻¹ (L) | H: 209.5°



IR BT & Lightning

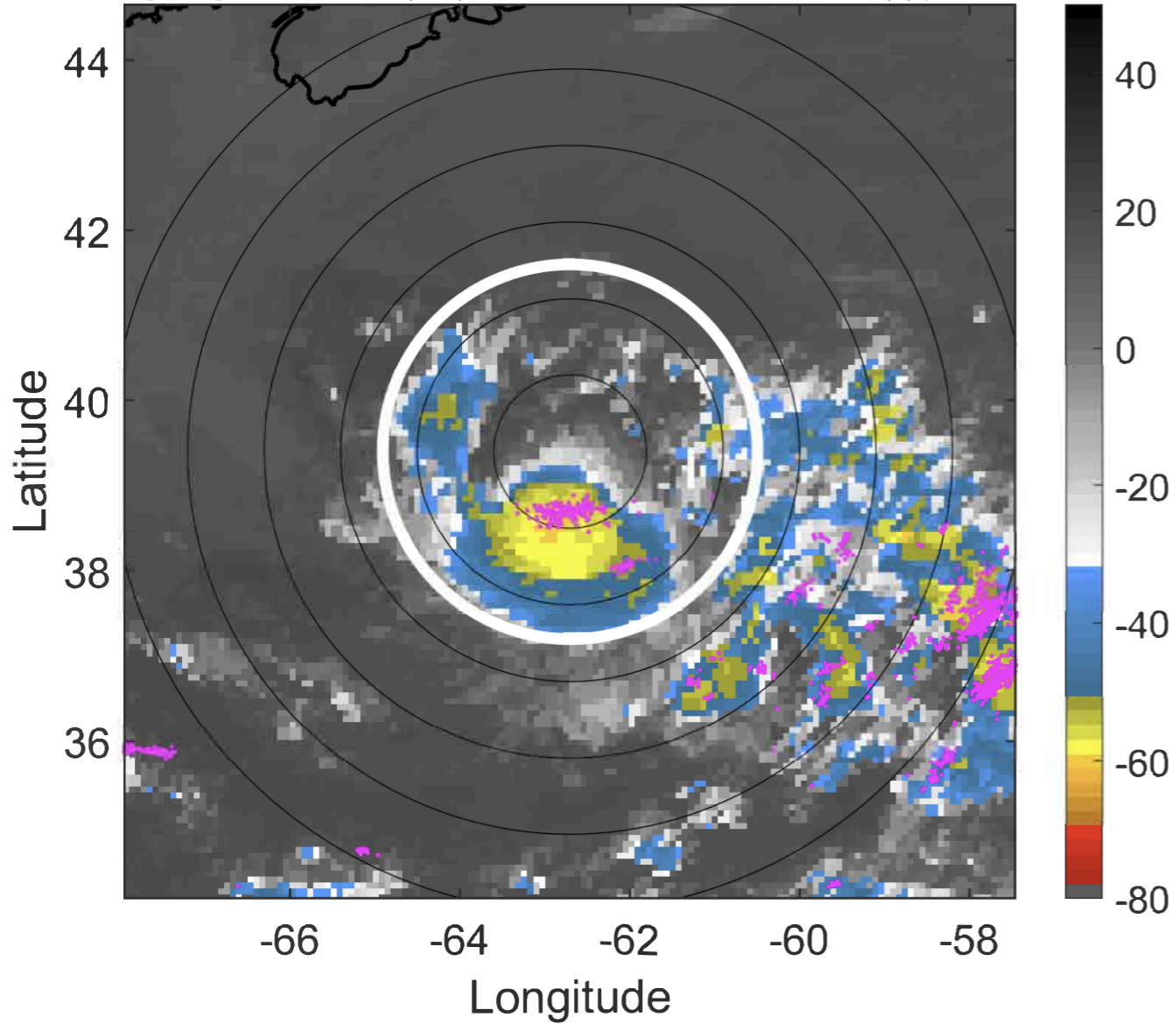
t: 2020062312 (7.8 LT)

Lightning: 7.8 LT \pm 1.5 h (dots)

PT: SLCP | EA: QUASI

04L (DOLLY) | 40 kt TS

S: 3.4 m s⁻¹ (L) | H: 215°



6-h IR BT Differences & Lightning

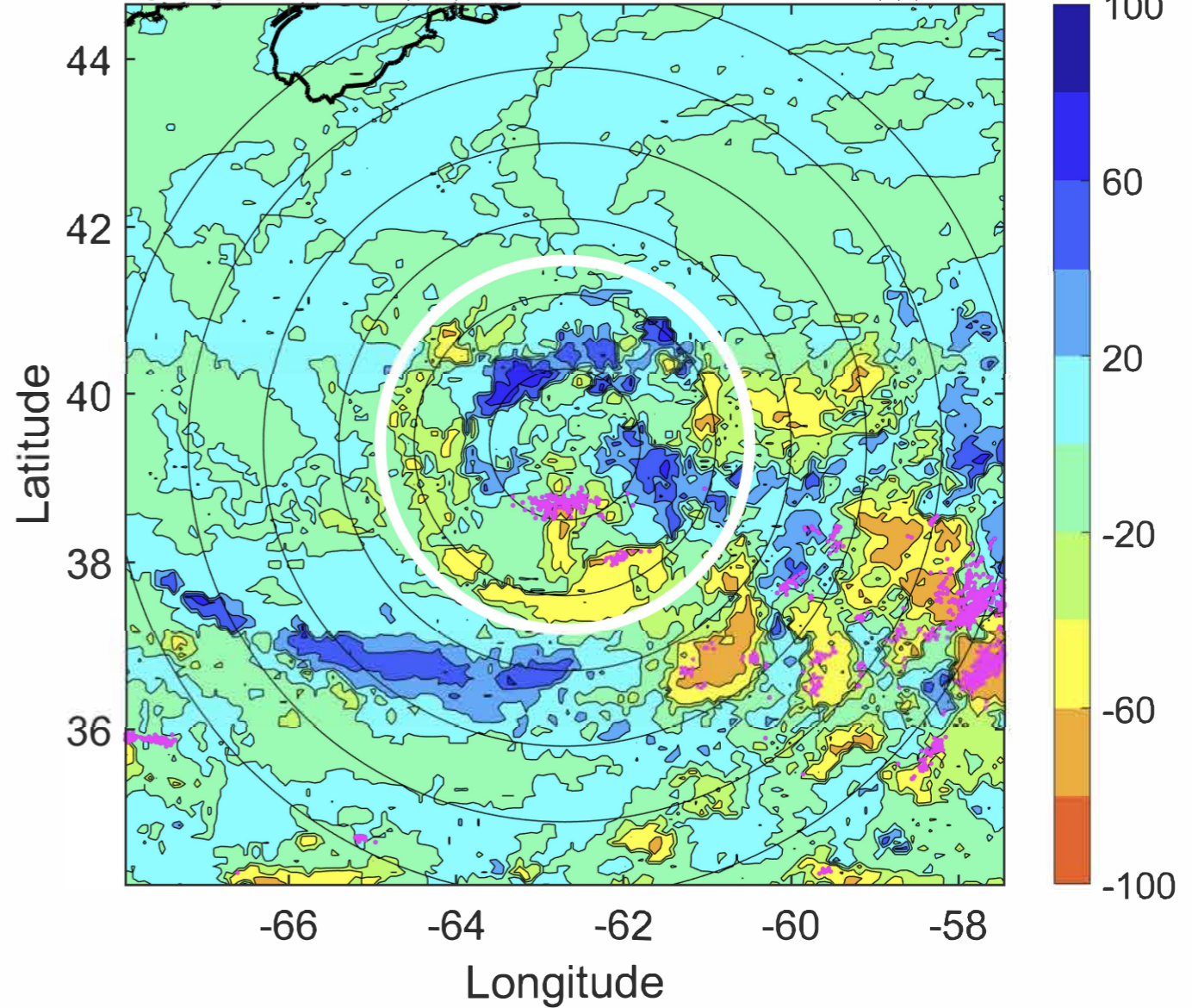
Δ t: 2020062312 (7.8 LT) - 2020062306 (1.7 LT)

Lightning: 7.8 LT \pm 1.5 h (dots)

PT: SLCP | EA: QUASI

04L (DOLLY) | 40 kt TS

S: 3.4 m s⁻¹ (L) | H: 215°



IR BT & Lightning

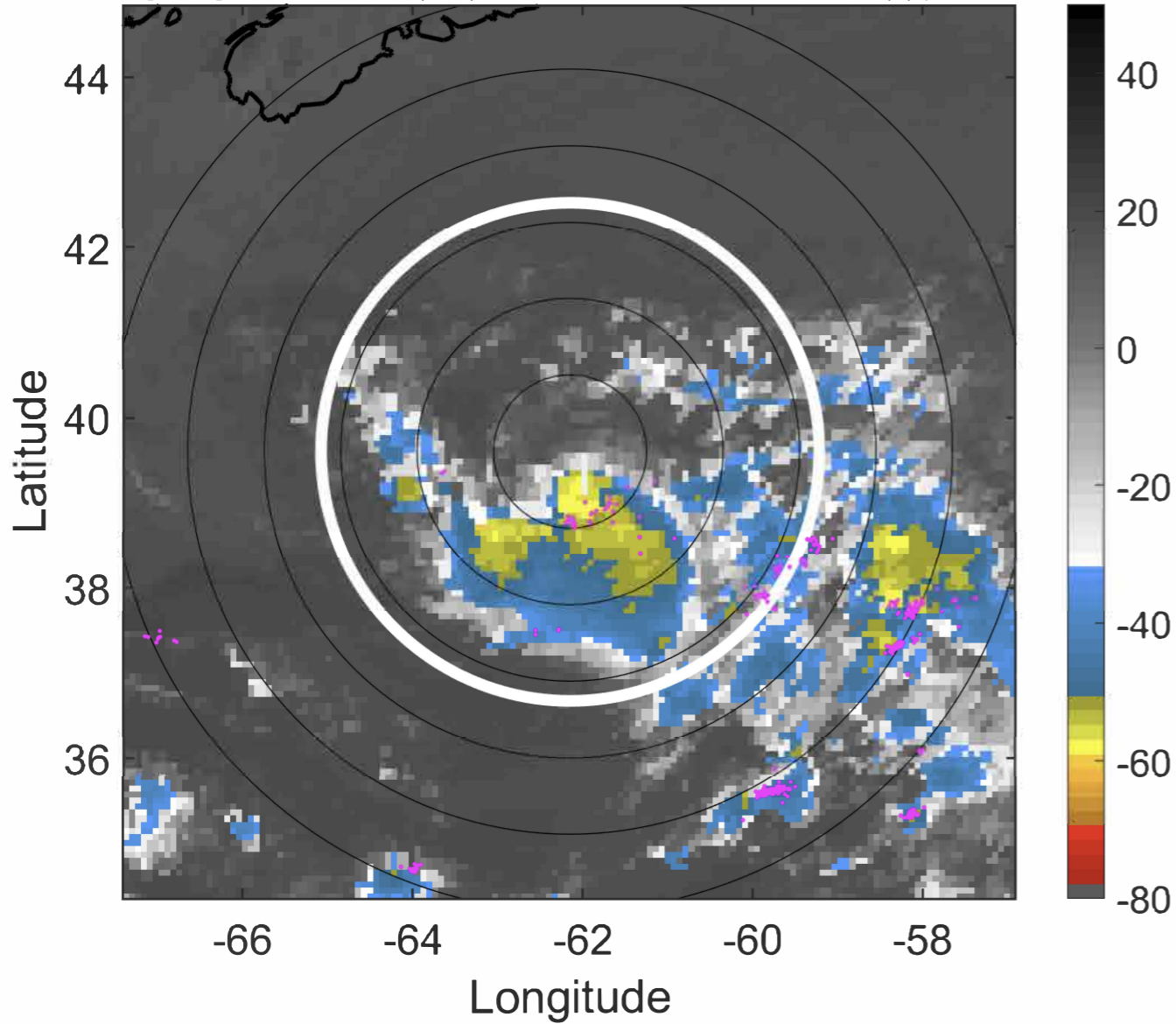
t: 2020062315 (10.9 LT)

Lightning: 10.9 LT \pm 1.5 h (dots)

PT: SLCP | EA: QUASI

04L (DOLLY) | 40 kt TS

S: 3 m s⁻¹ (L) | H: 205°



6-h IR BT Differences & Lightning

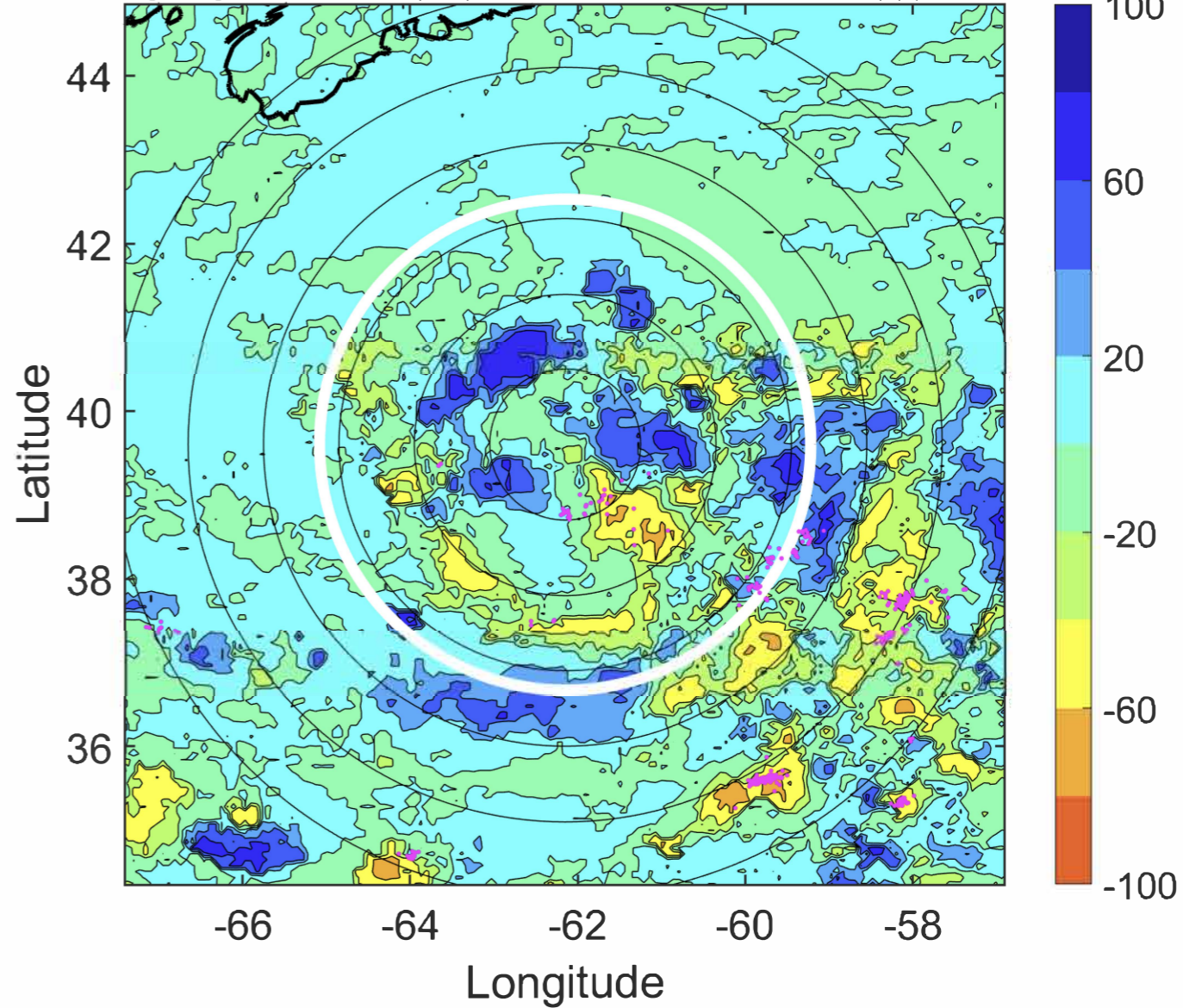
Δ t: 2020062315 (10.9 LT) - 2020062309 (4.8 LT)

Lightning: 10.9 LT \pm 1.5 h (dots)

PT: SLCP | EA: QUASI

04L (DOLLY) | 40 kt TS

S: 3 m s⁻¹ (L) | H: 205°



IR BT & Lightning

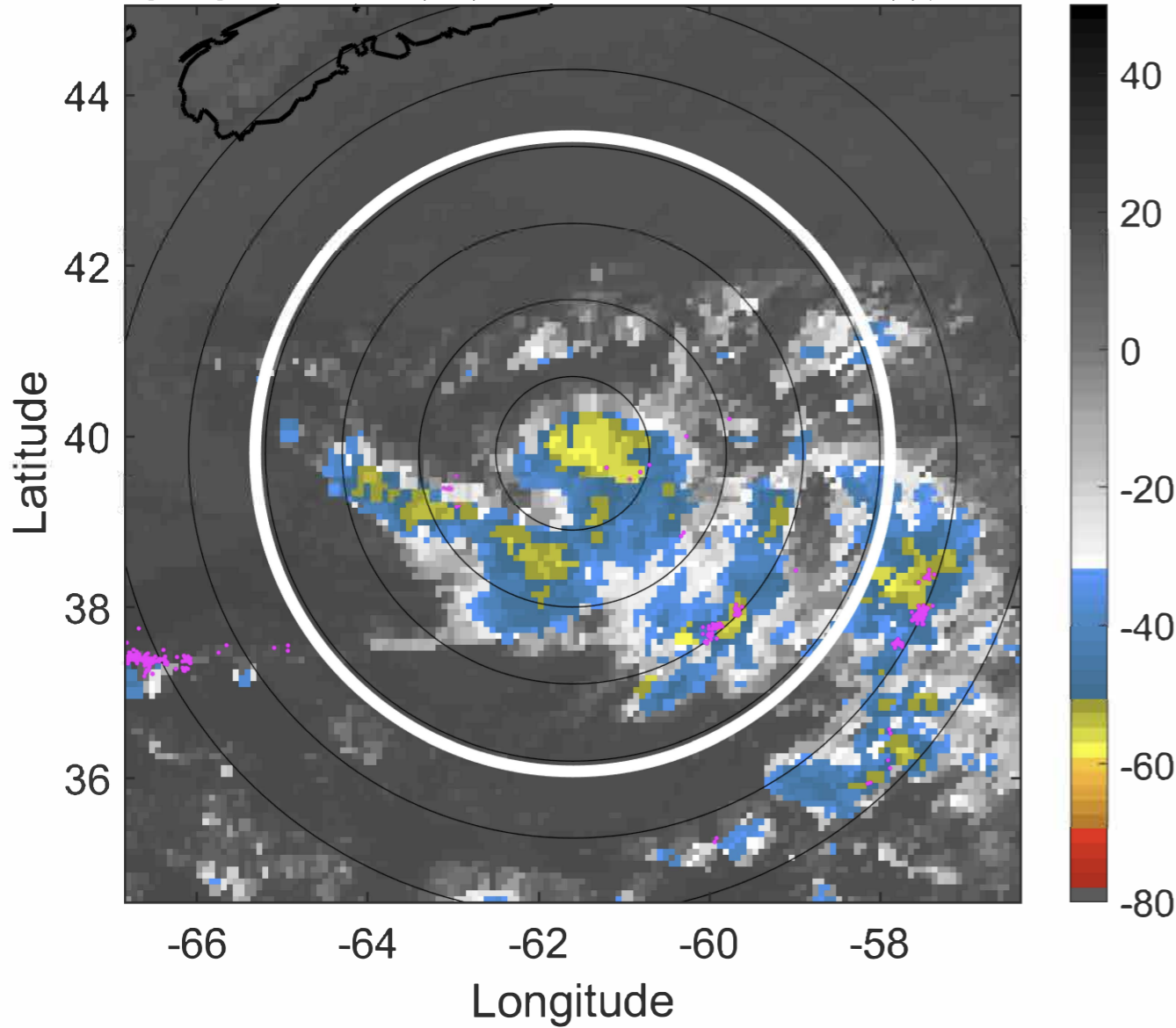
t: 2020062318 (13.9 LT)

Lightning: 13.9 LT \pm 1.5 h (dots)

PT: SLCP | EA: QUASI

04L (DOLLY) | 40 kt TS

S: 2.6 m s⁻¹ (L) | H: 195°



6-h IR BT Differences & Lightning

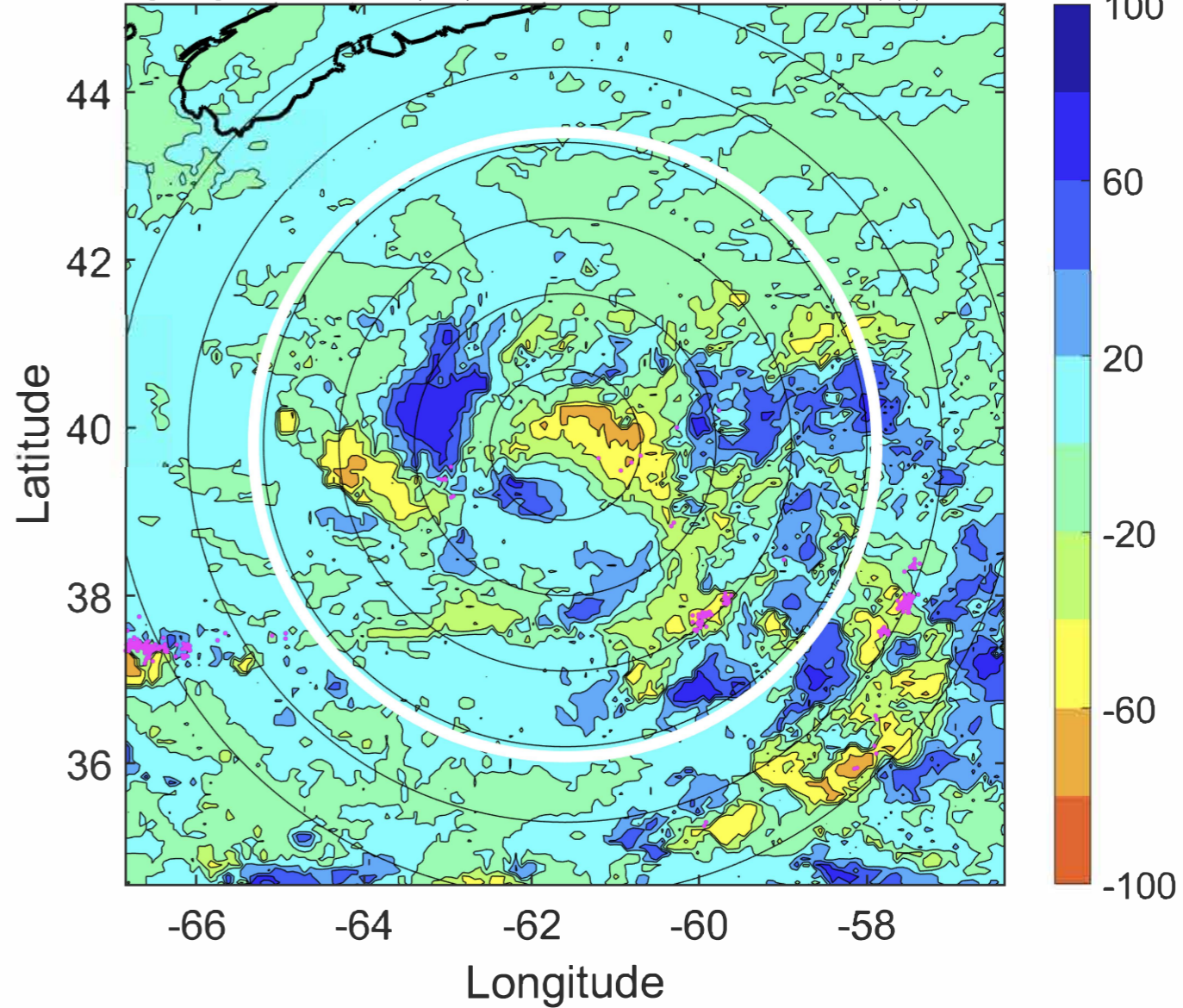
Δ t: 2020062318 (13.9 LT) - 2020062312 (7.8 LT)

Lightning: 13.9 LT \pm 1.5 h (dots)

PT: SLCP | EA: QUASI

04L (DOLLY) | 40 kt TS

S: 2.6 m s⁻¹ (L) | H: 195°



IR BT & Lightning

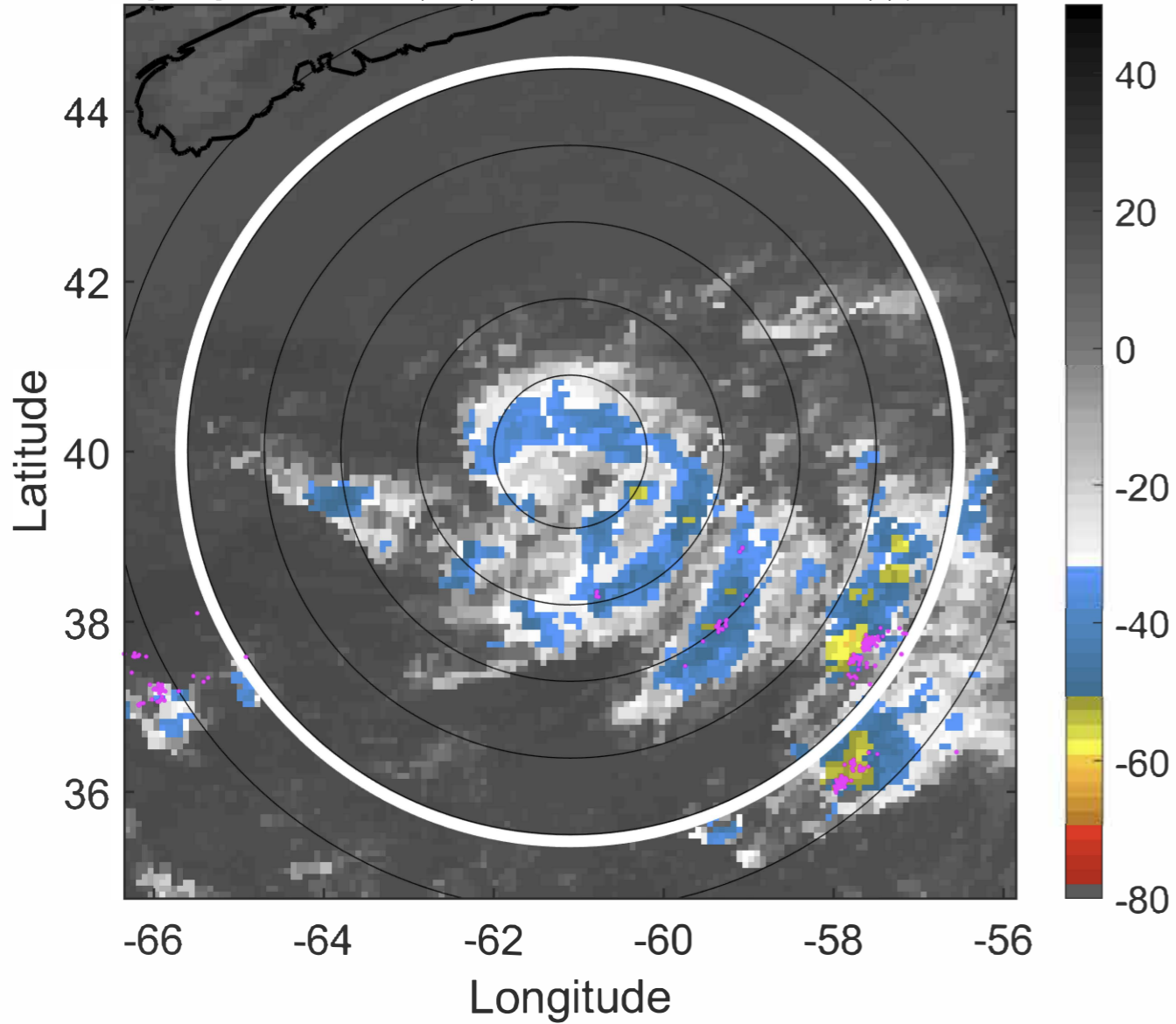
t: 2020062321 (16.9 LT)

Lightning: 16.9 LT \pm 1.5 h (dots)

PT: SLCP | EA: QUASI

04L (DOLLY) | 37.5 kt TS

S: 3.6 m s⁻¹ (L) | H: 198.5°



6-h IR BT Differences & Lightning

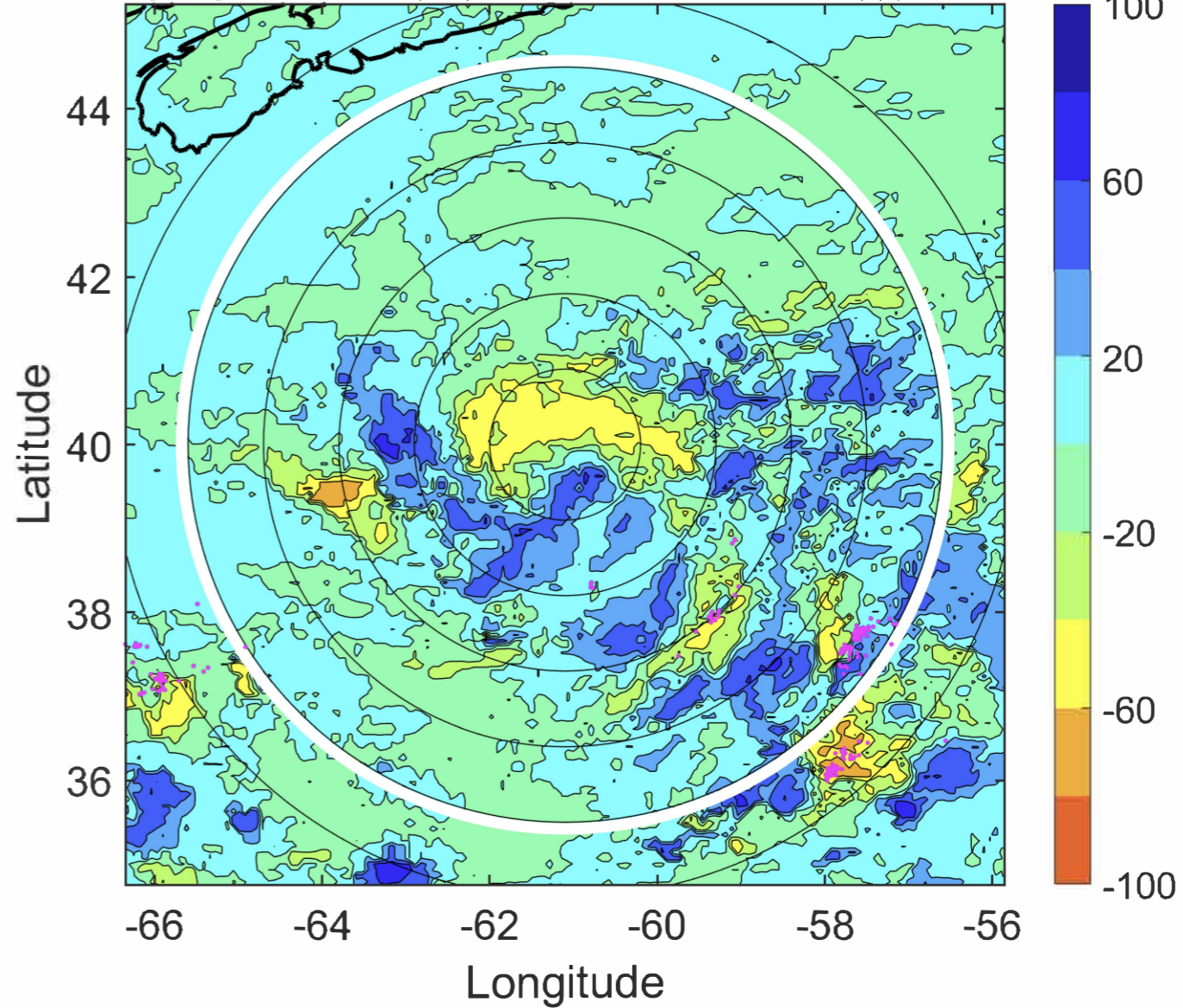
Δ t: 2020062321 (16.9 LT) - 2020062315 (10.9 LT)

Lightning: 16.9 LT \pm 1.5 h (dots)

PT: SLCP | EA: QUASI

04L (DOLLY) | 37.5 kt TS

S: 3.6 m s⁻¹ (L) | H: 198.5°



IR BT & Lightning

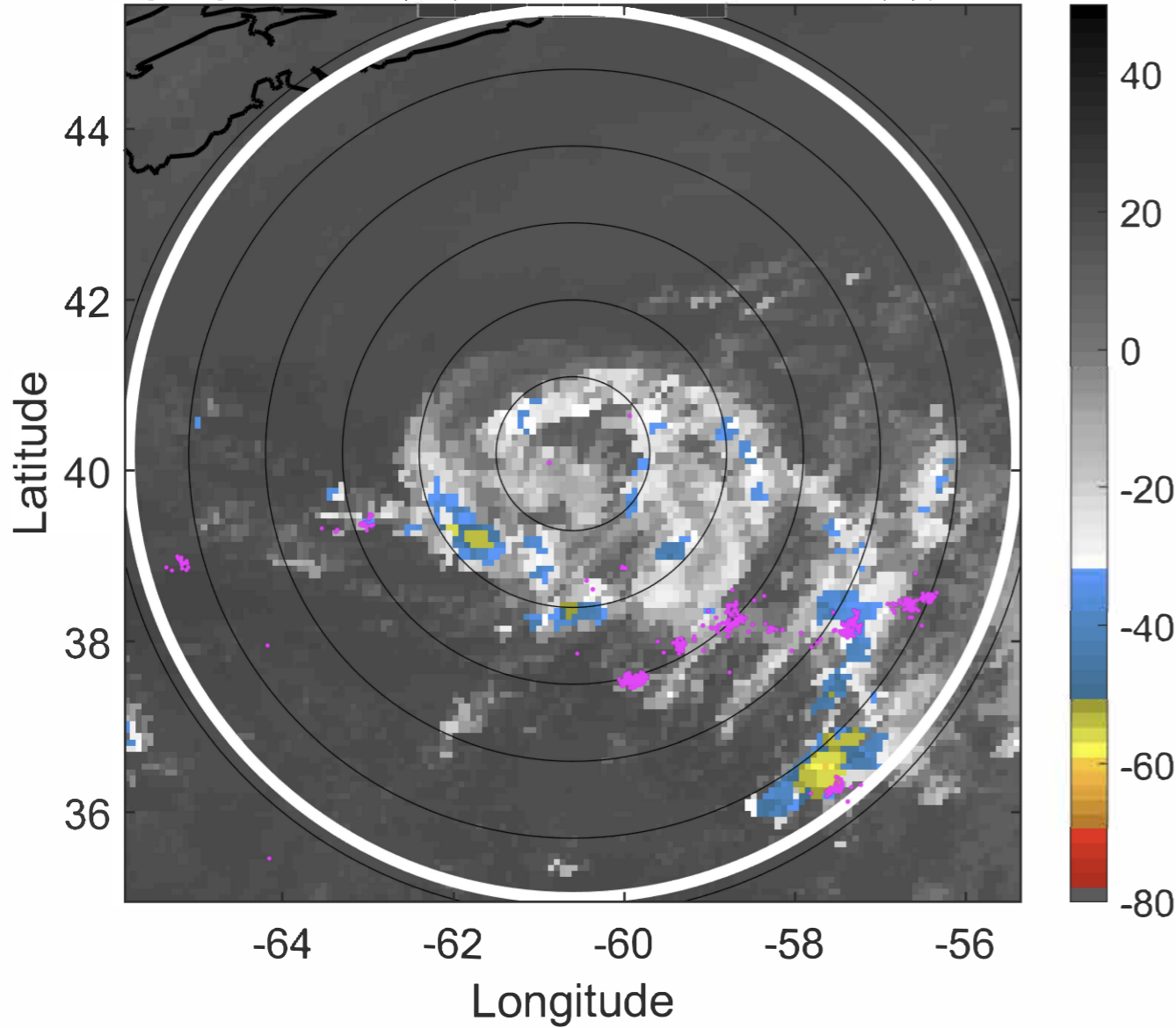
t: 2020062400 (20 LT)

Lightning: 20 LT \pm 1.5 h (dots)

PT: SLCP | EA: QUASI

04L (DOLLY) | 35 kt TS

S: 4.6 m s⁻¹ (M) | H: 202°



6-h IR BT Differences & Lightning

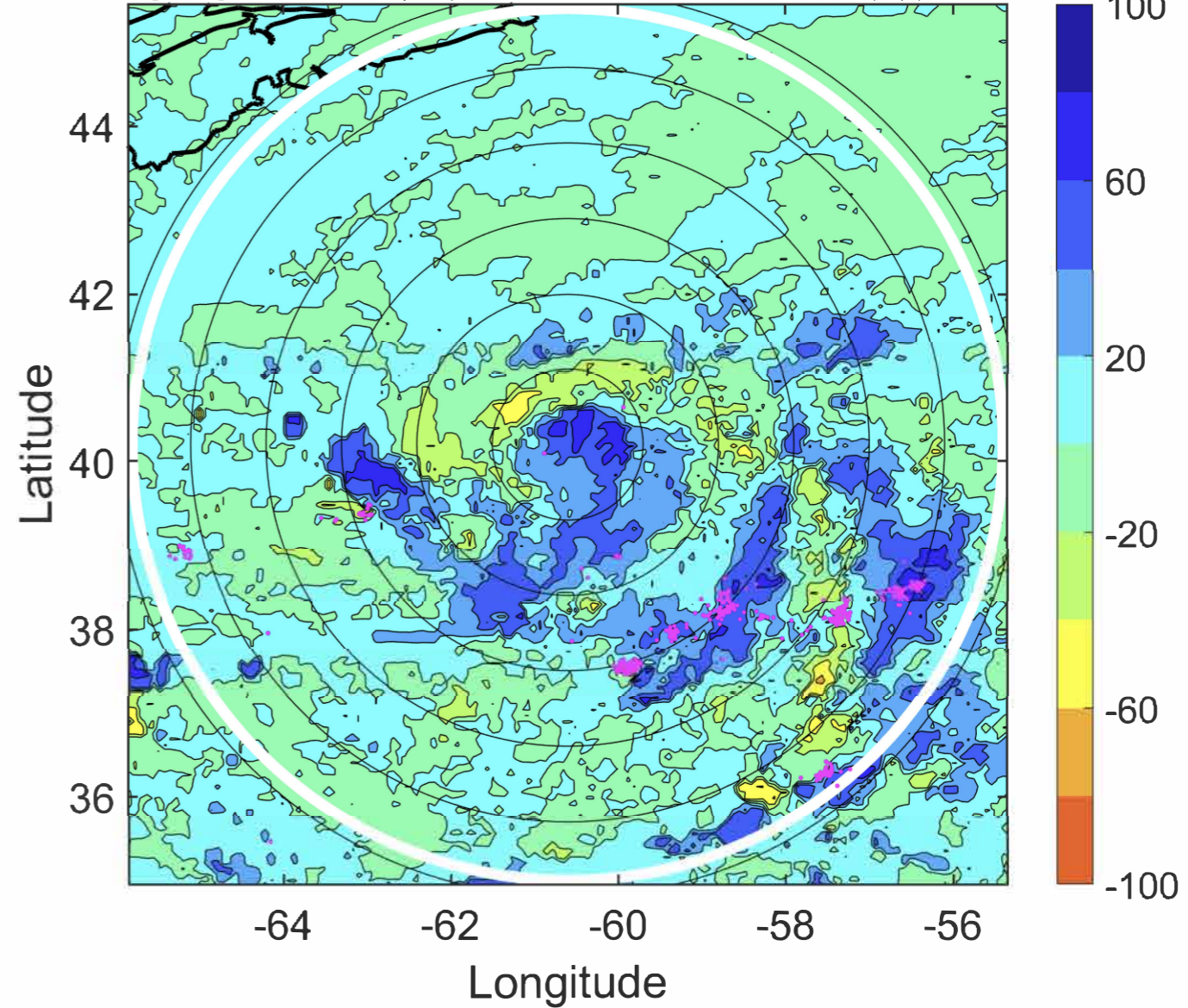
Δ t: 2020062400 (20 LT) - 2020062318 (13.9 LT)

Lightning: 20 LT \pm 1.5 h (dots)

PT: SLCP | EA: QUASI

04L (DOLLY) | 35 kt TS

S: 4.6 m s⁻¹ (M) | H: 202°



IR BT & Lightning

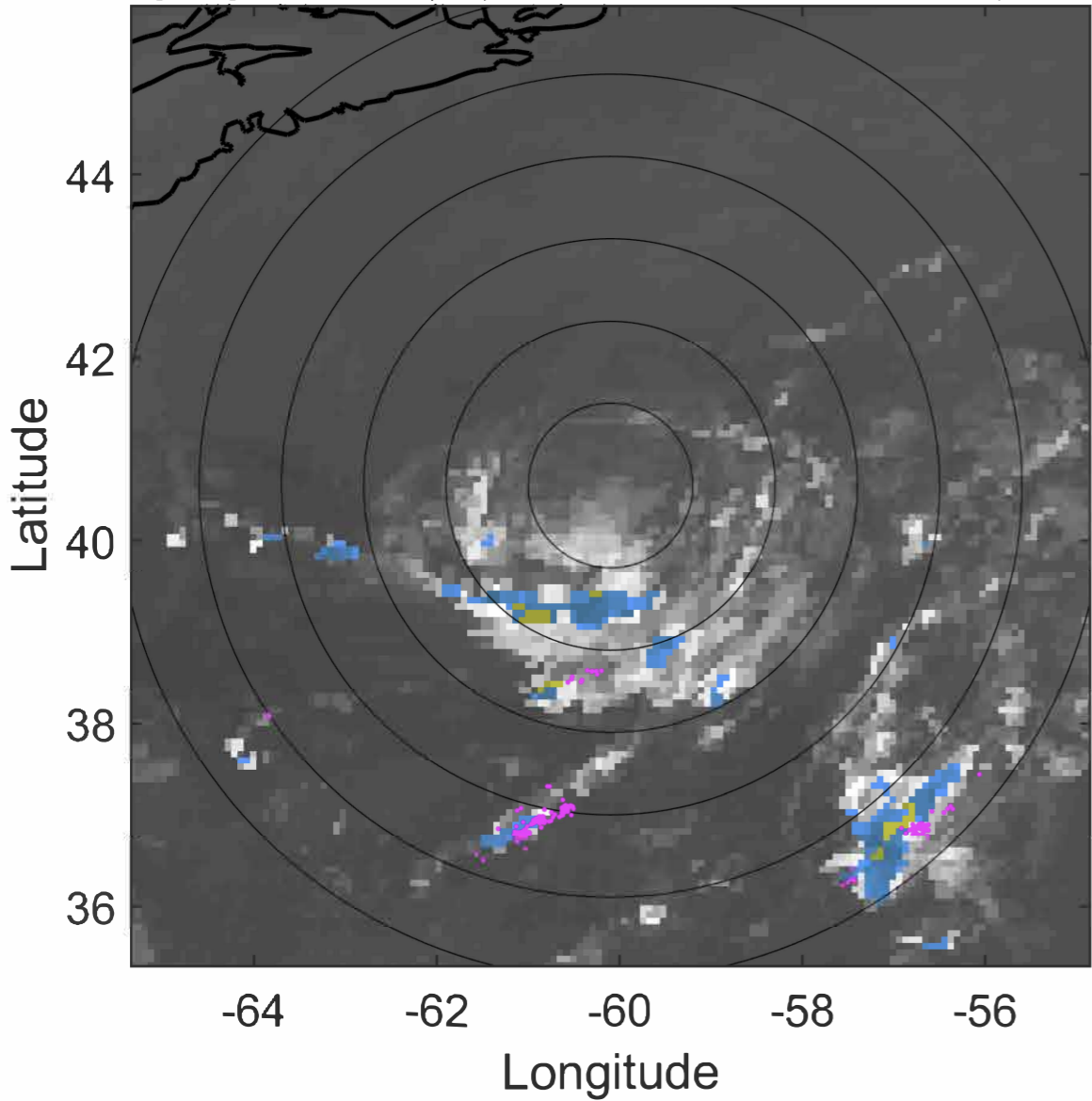
t: 2020062403 (23 LT)

Lightning: 23 LT \pm 1.5 h (dots)

PT: SLCP | EA: QUASI

04L (DOLLY) | 32.5 kt TD

S: null | H: null



6-h IR BT Differences & Lightning

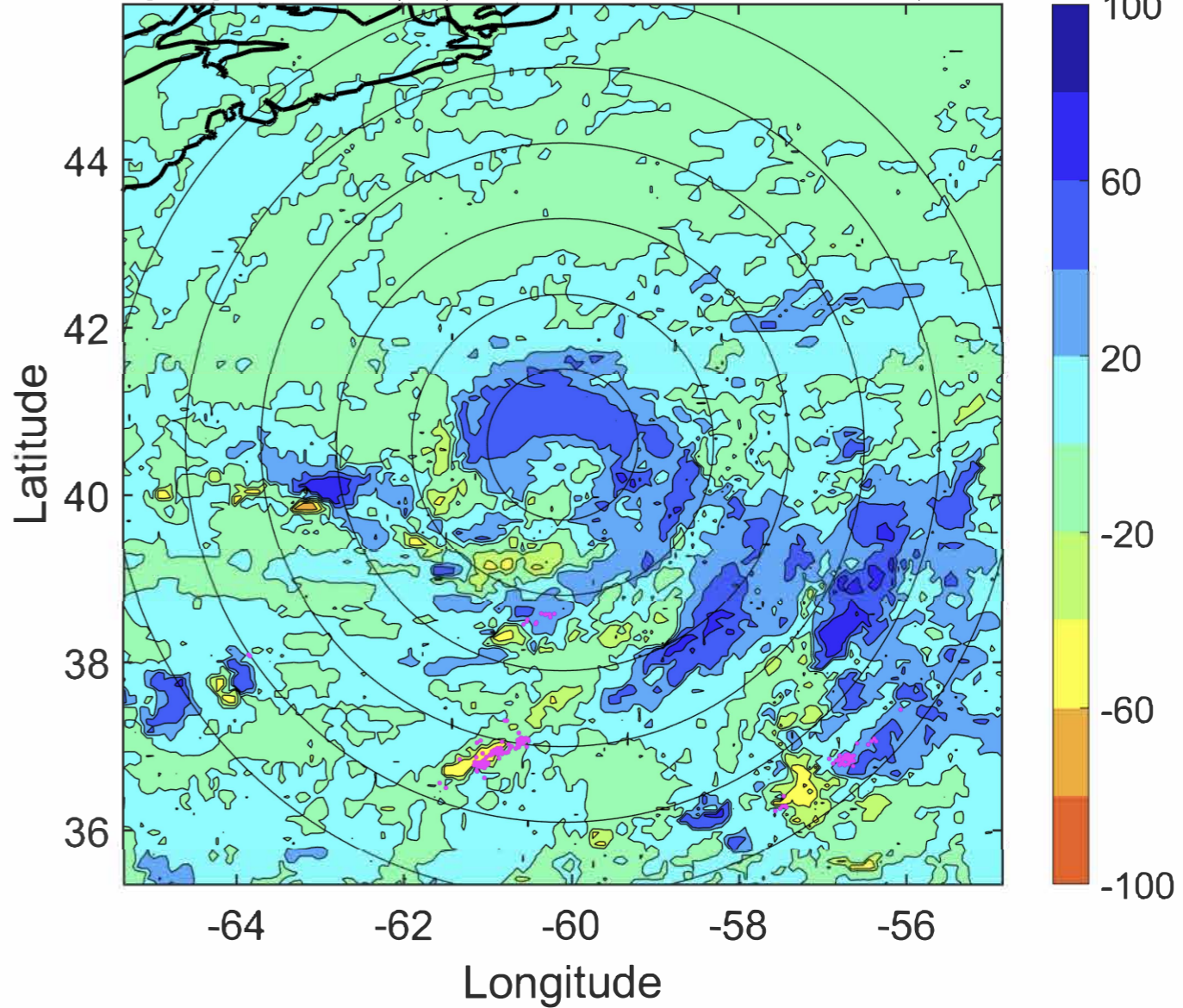
Δ t: 2020062403 (23 LT) - 2020062321 (16.9 LT)

Lightning: 23 LT \pm 1.5 h (dots)

PT: SLCP | EA: QUASI

04L (DOLLY) | 32.5 kt TD

S: null | H: null



IR BT & Lightning

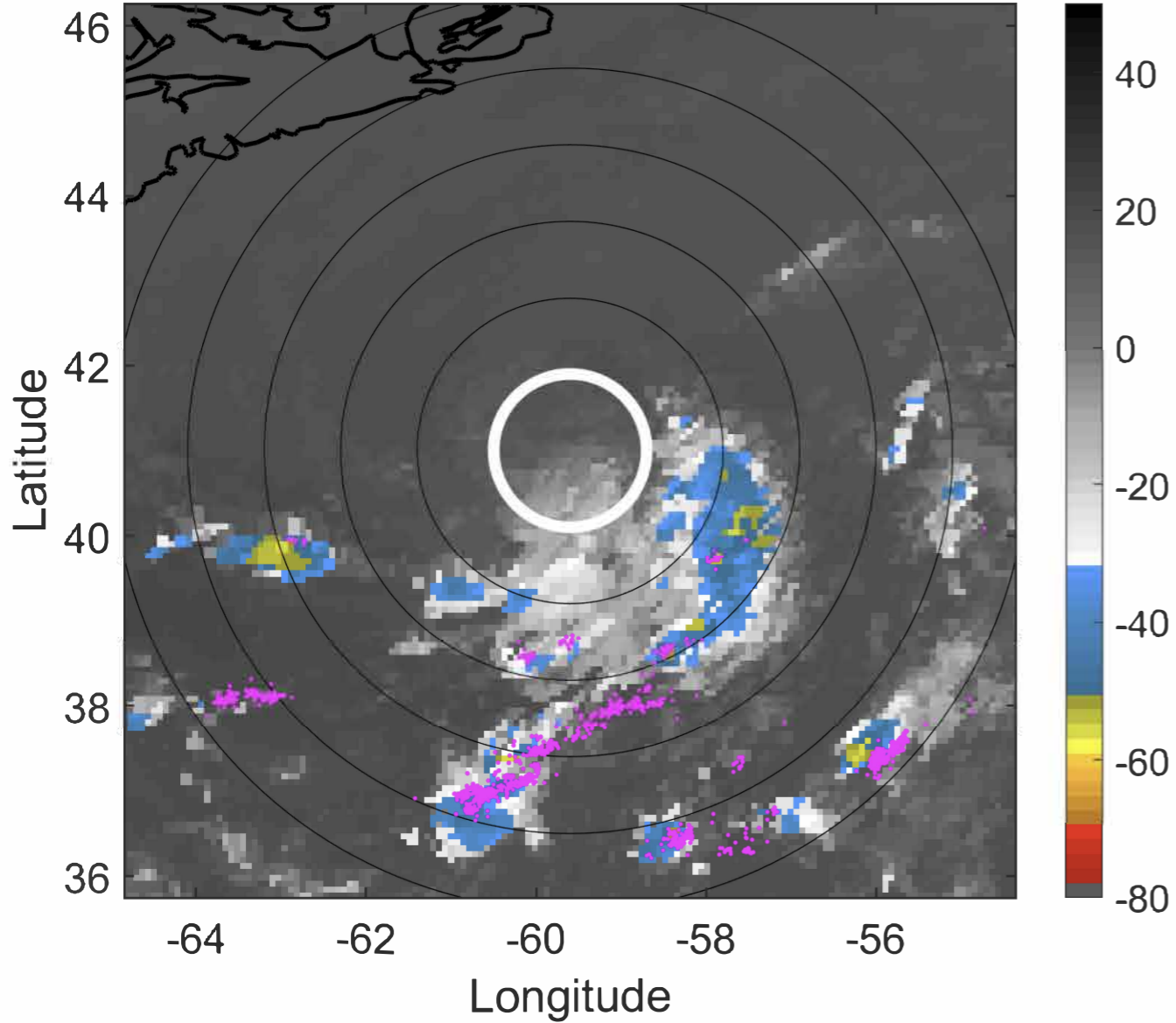
t: 2020062406 (2 LT)

Lightning: 2 LT \pm 1.5 h (dots)

PT: SLWP | EA: INACT

04L (DOLLY) | 30 kt LO

S: null | H: null



6-h IR BT Differences & Lightning

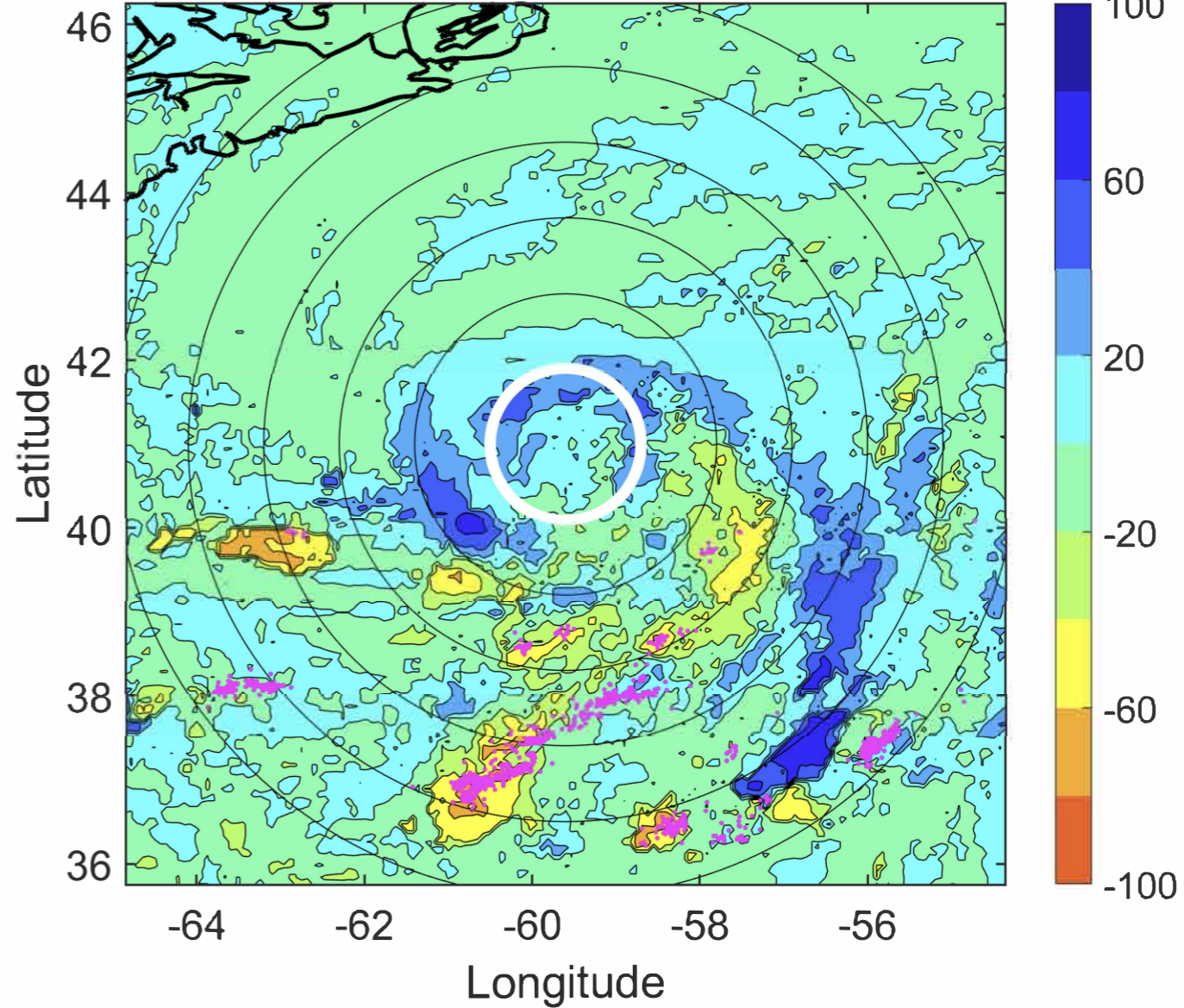
Δ t: 2020062406 (2 LT) - 2020062400 (20 LT)

Lightning: 2 LT \pm 1.5 h (dots)

PT: SLWP | EA: INACT

04L (DOLLY) | 30 kt LO

S: null | H: null



IR BT & Lightning

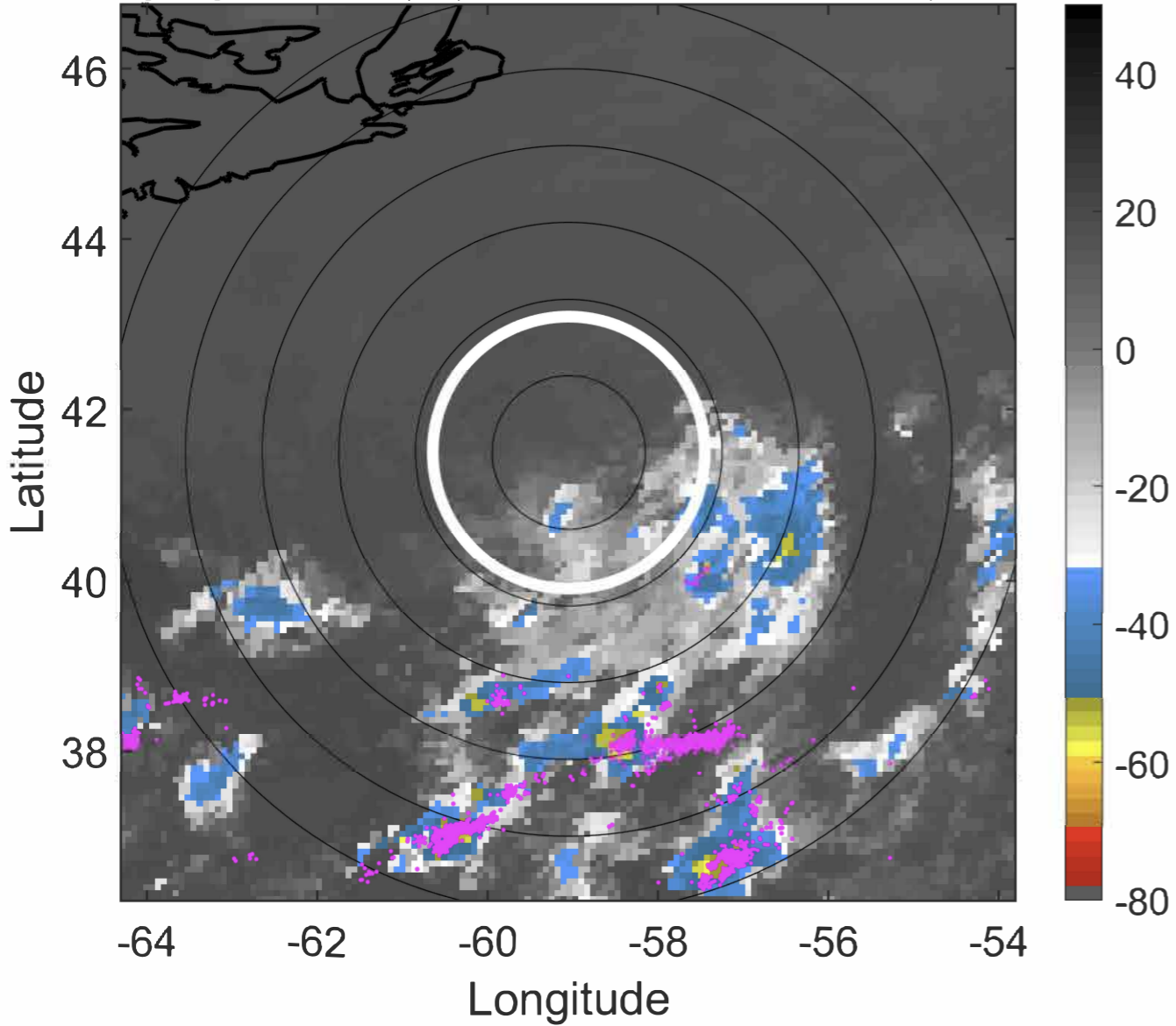
t: 2020062409 (5.1 LT)

Lightning: 5.1 LT \pm 1.5 h (dots)

PT: SLWP | EA: INACT

04L (DOLLY) | 30 kt LO

S: null | H: null



6-h IR BT Differences & Lightning

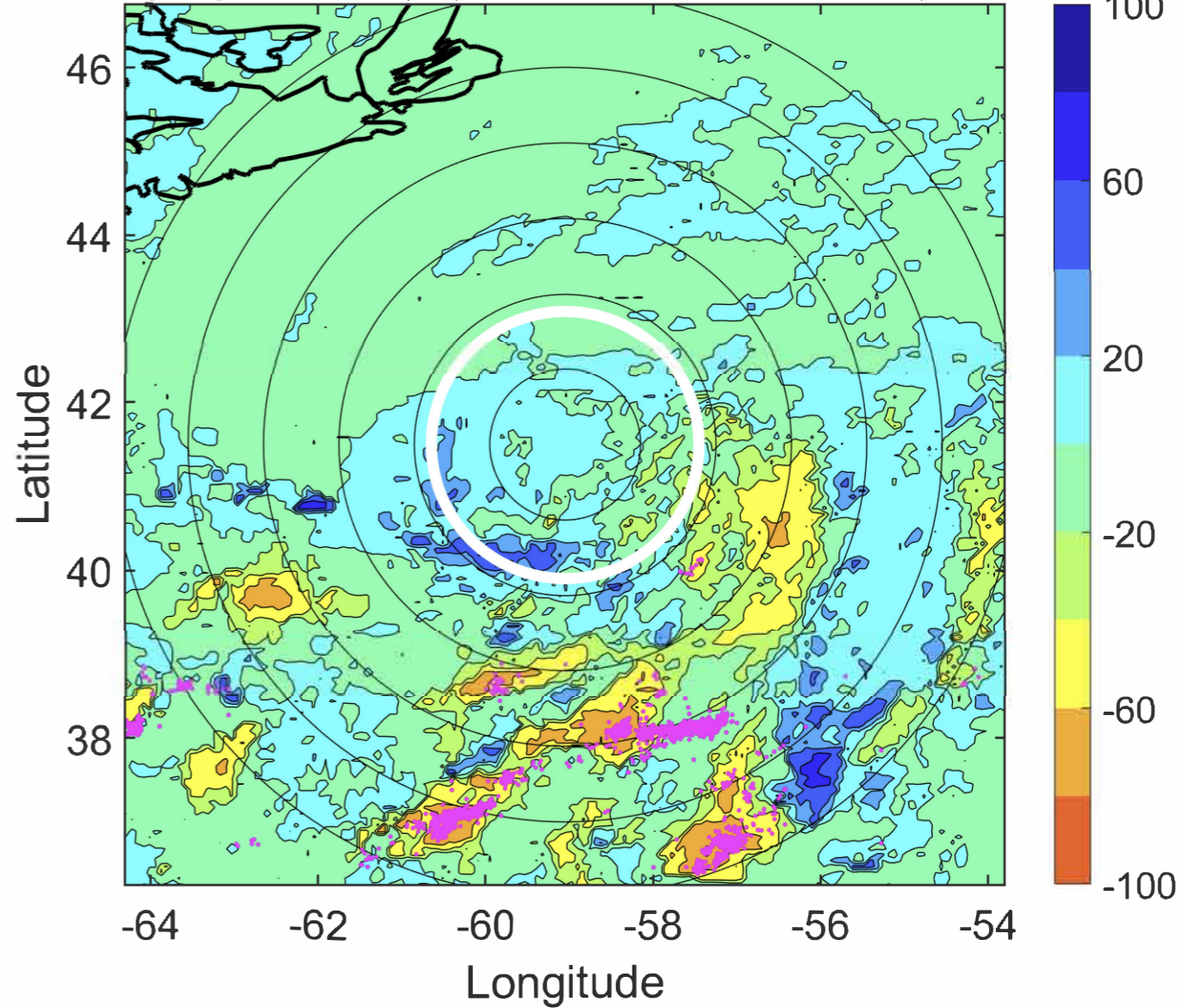
Δ t: 2020062409 (5.1 LT) - 2020062403 (23 LT)

Lightning: 5.1 LT \pm 1.5 h (dots)

PT: SLWP | EA: INACT

04L (DOLLY) | 30 kt LO

S: null | H: null



IR BT & Lightning

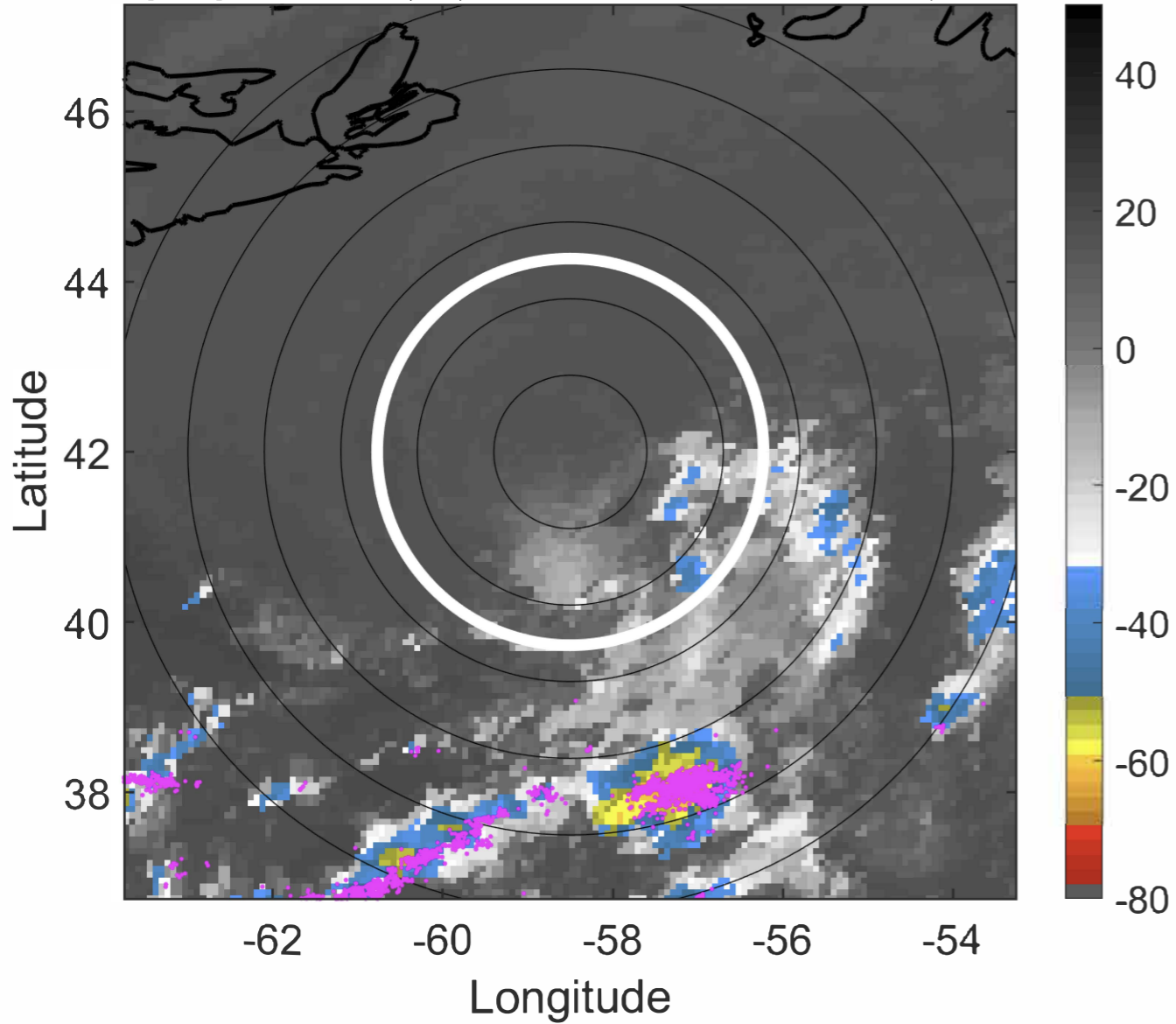
t: 2020062412 (8.1 LT)

Lightning: 8.1 LT \pm 1.5 h (dots)

PT: SLWP | EA: INACT

04L (DOLLY) | 30 kt LO

S: null | H: null



6-h IR BT Differences & Lightning

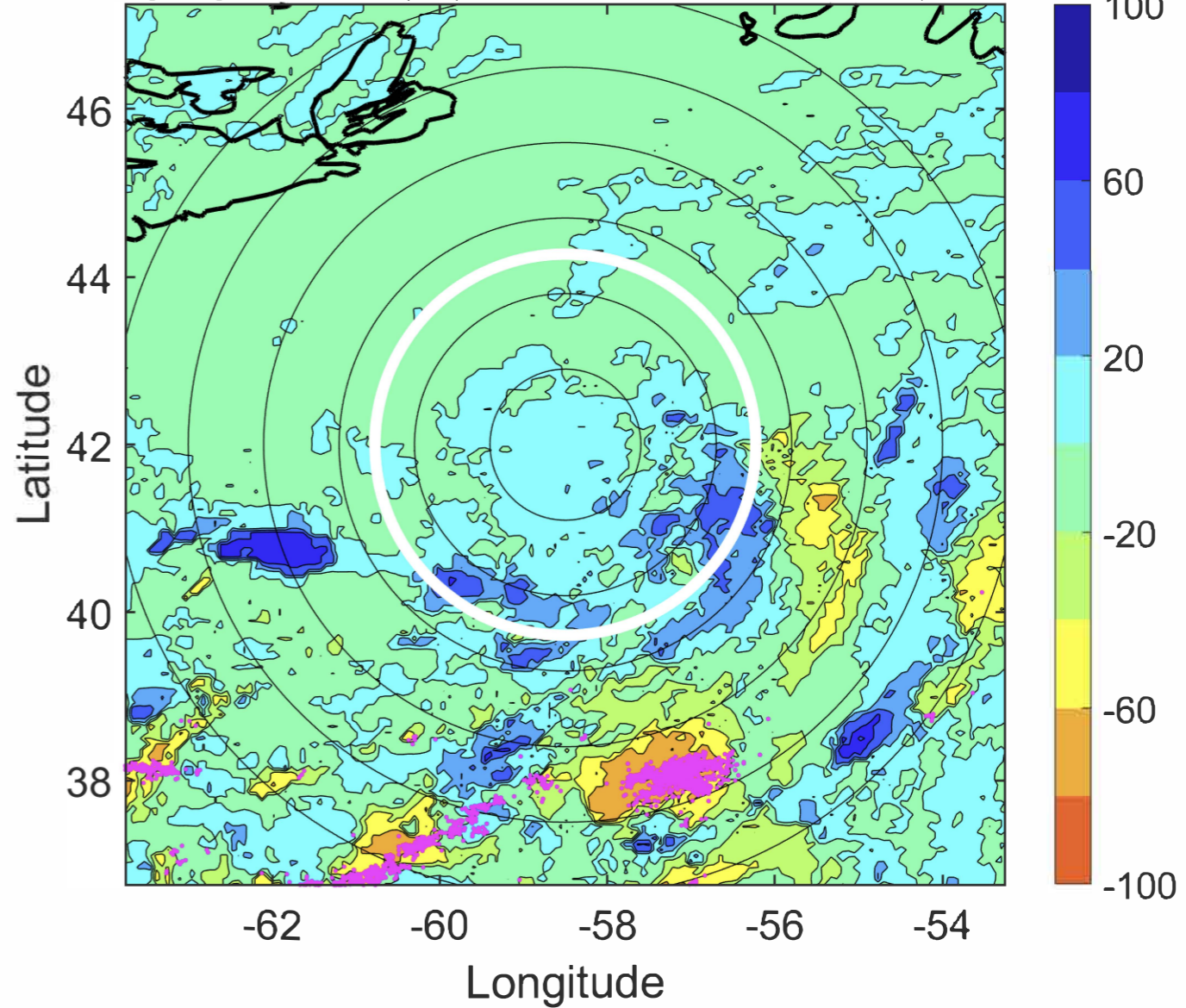
Δ t: 2020062412 (8.1 LT) - 2020062406 (2 LT)

Lightning: 8.1 LT \pm 1.5 h (dots)

PT: SLWP | EA: INACT

04L (DOLLY) | 30 kt LO

S: null | H: null



IR BT & Lightning

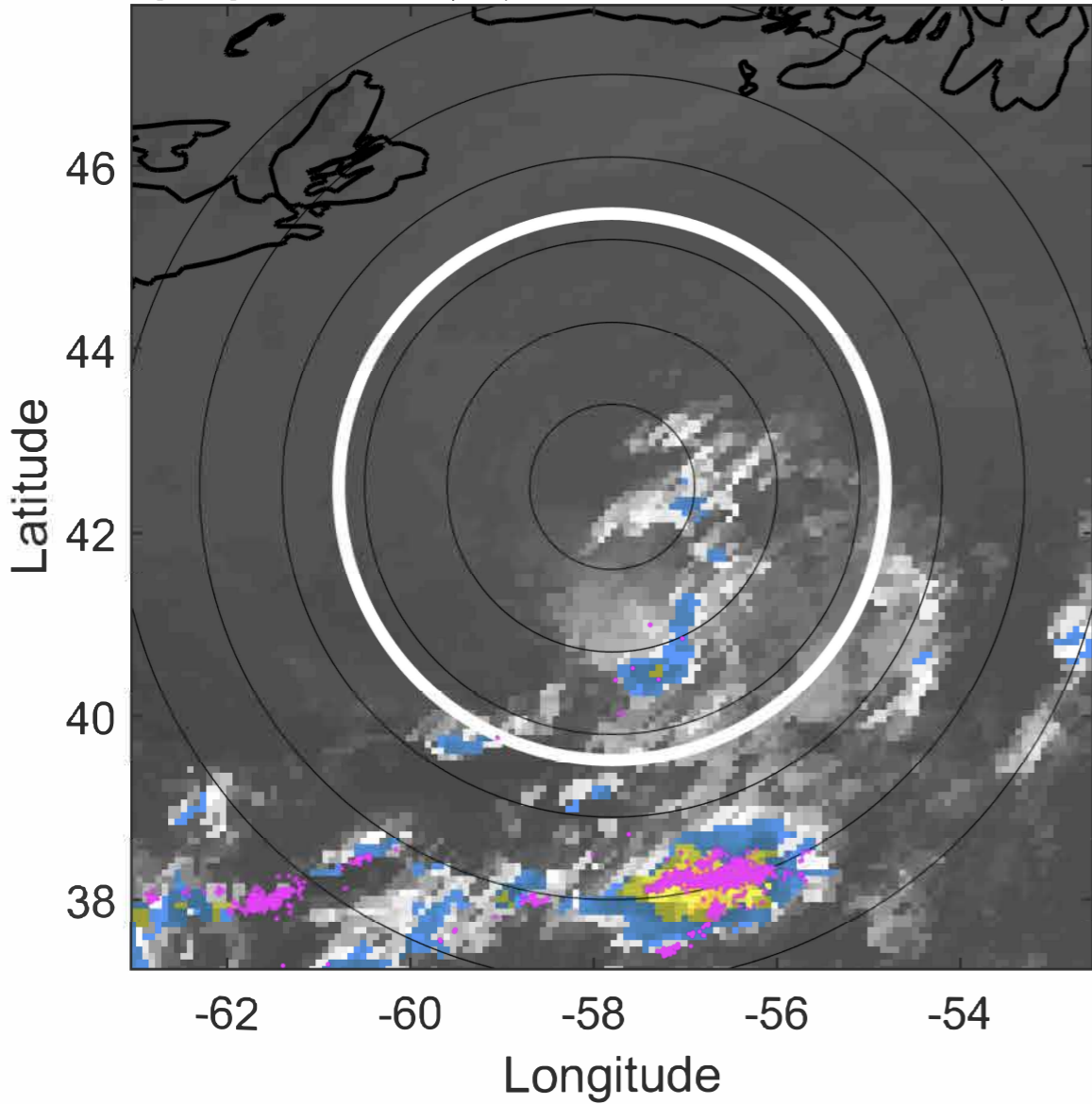
t: 2020062415 (11.1 LT)

Lightning: 11.1 LT \pm 1.5 h (dots)

PT: SLWP | EA: INACT

04L (DOLLY) | 27.5 kt LO

S: null | H: null



6-h IR BT Differences & Lightning

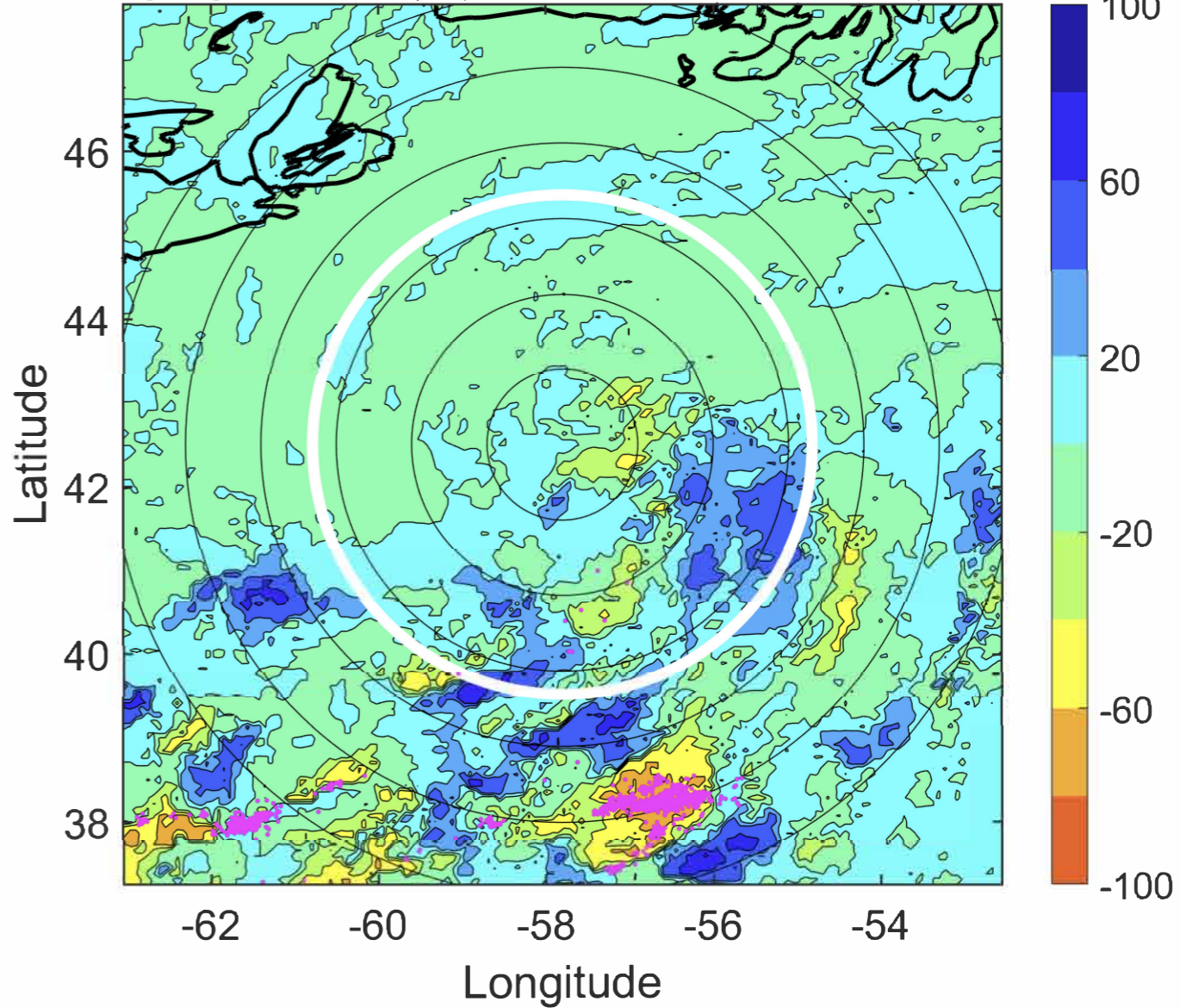
Δ t: 2020062415 (11.1 LT) - 2020062409 (5.1 LT)

Lightning: 11.1 LT \pm 1.5 h (dots)

PT: SLWP | EA: INACT

04L (DOLLY) | 27.5 kt LO

S: null | H: null



IR BT & Lightning

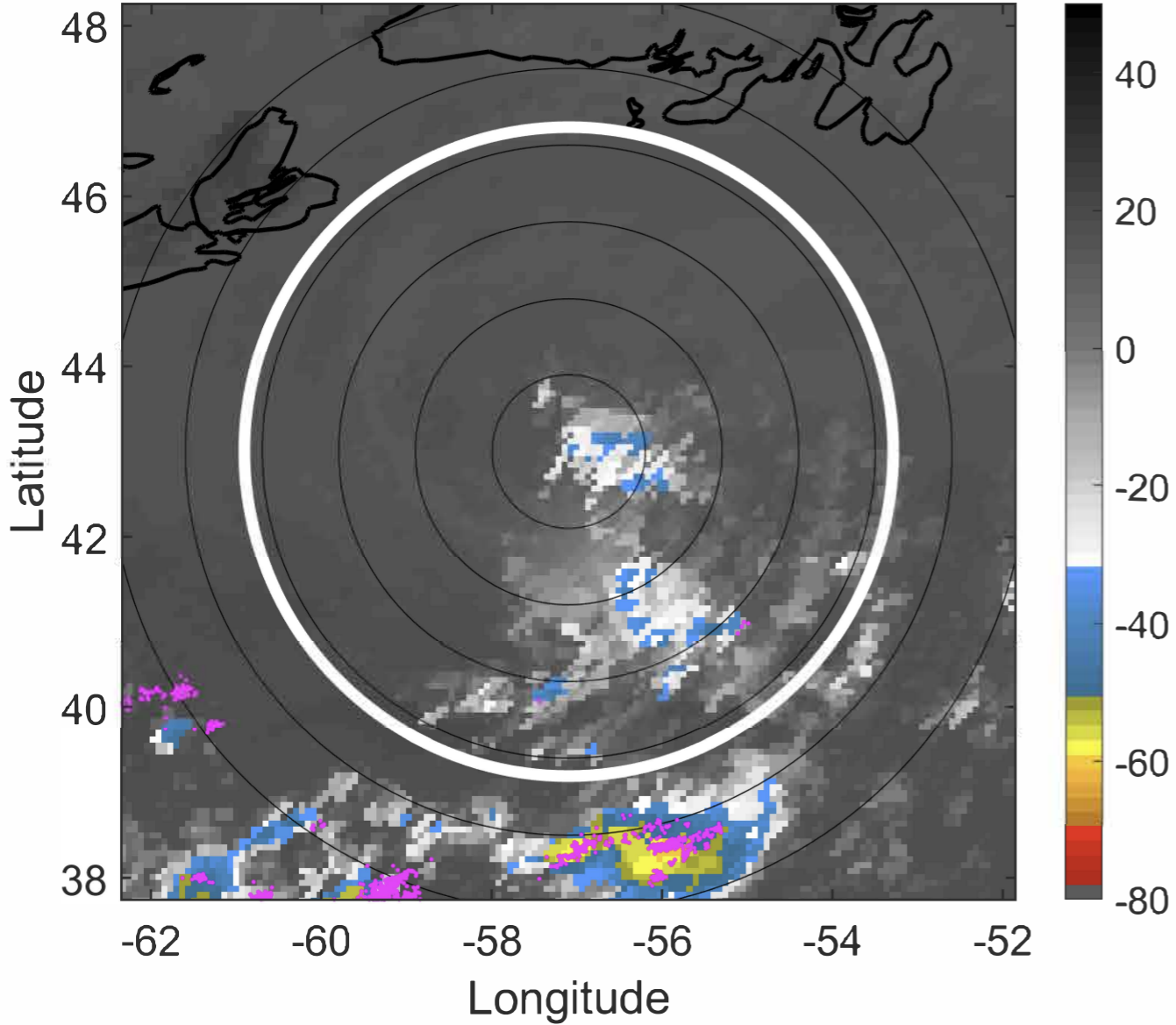
t: 2020062418 (14.2 LT)

Lightning: 14.2 LT \pm 1.5 h (dots)

PT: SLWP | EA: INACT

04L (DOLLY) | 25 kt LO

S: null | H: null



6-h IR BT Differences & Lightning

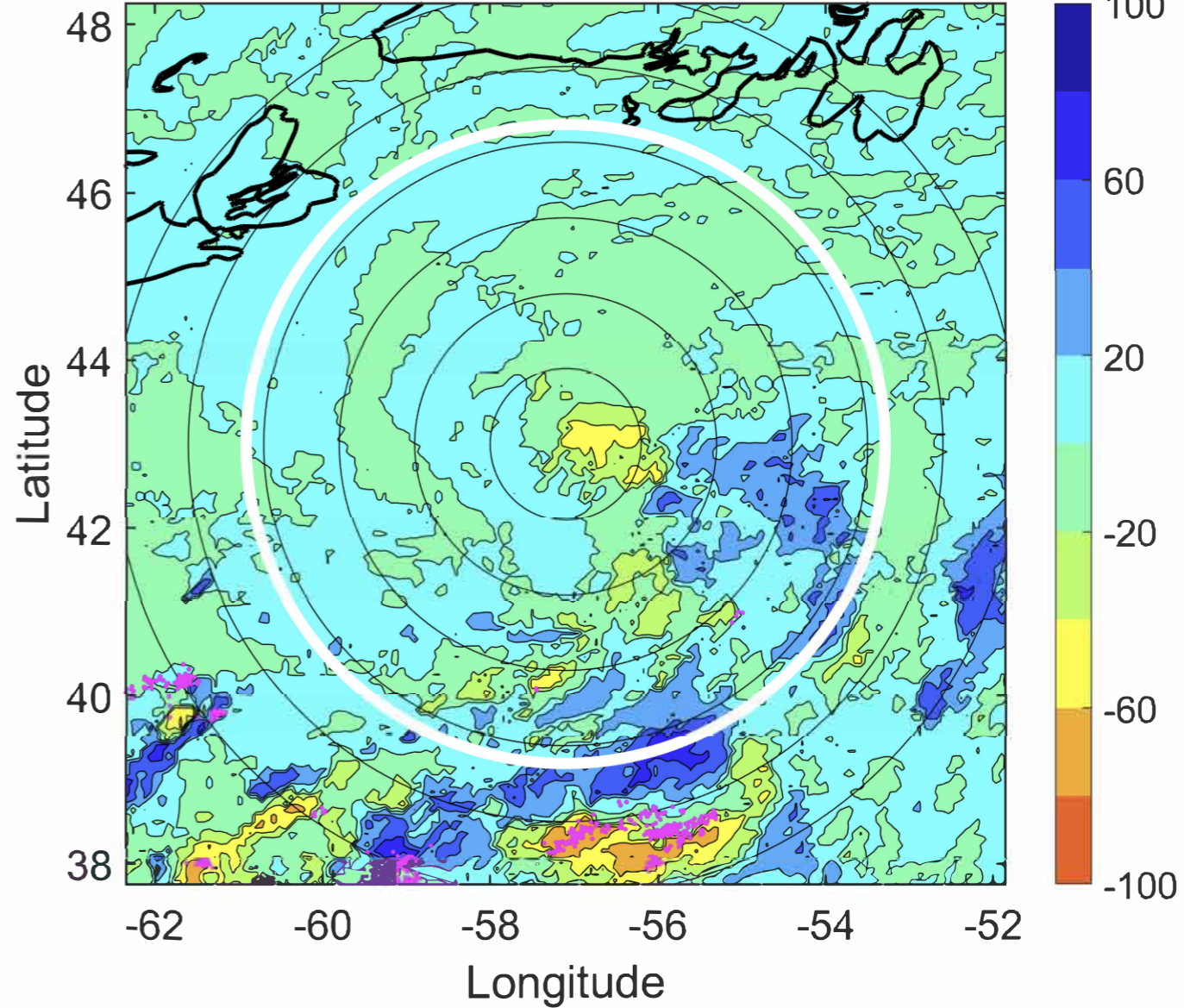
Δ t: 2020062418 (14.2 LT) - 2020062412 (8.1 LT)

Lightning: 14.2 LT \pm 1.5 h (dots)

PT: SLWP | EA: INACT

04L (DOLLY) | 25 kt LO

S: null | H: null



IR BT & Lightning

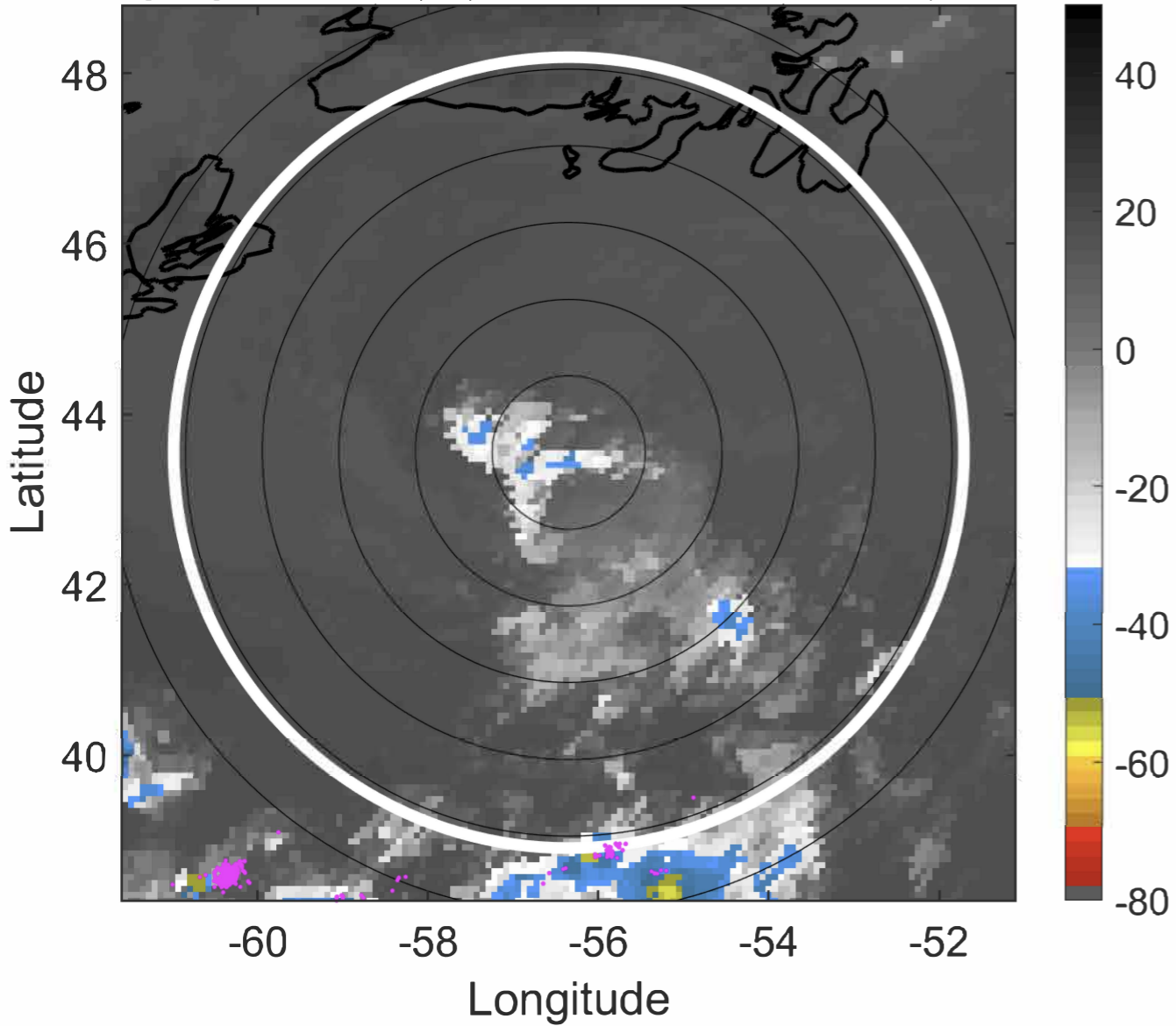
t: 2020062421 (17.2 LT)

Lightning: 17.2 LT \pm 1.5 h (dots)

PT: SLWP | EA: INACT

04L (DOLLY) | 25 kt LO

S: null | H: null



6-h IR BT Differences & Lightning

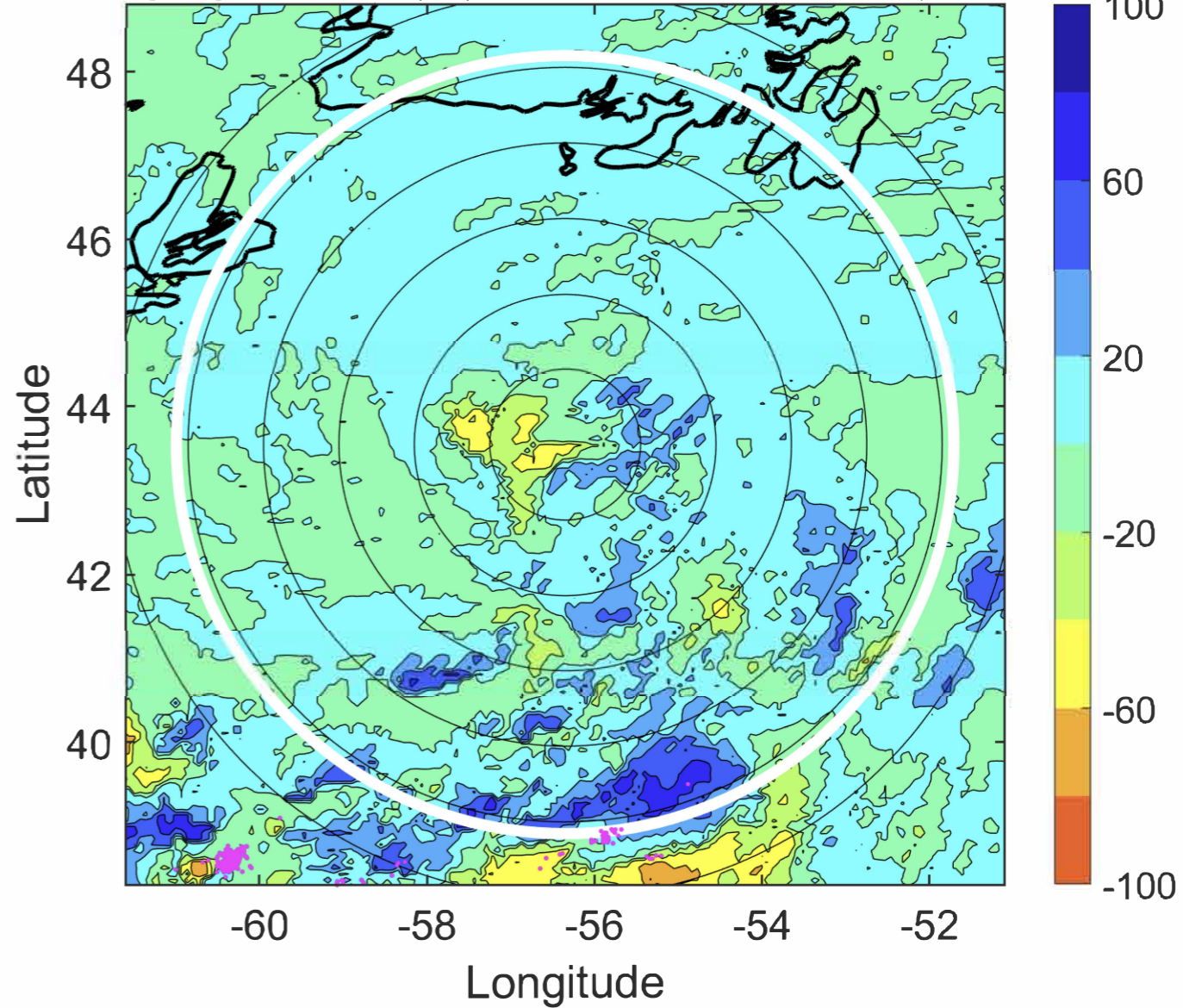
Δ t: 2020062421 (17.2 LT) - 2020062415 (11.1 LT)

Lightning: 17.2 LT \pm 1.5 h (dots)

PT: SLWP | EA: INACT

04L (DOLLY) | 25 kt LO

S: null | H: null



IR BT & Lightning

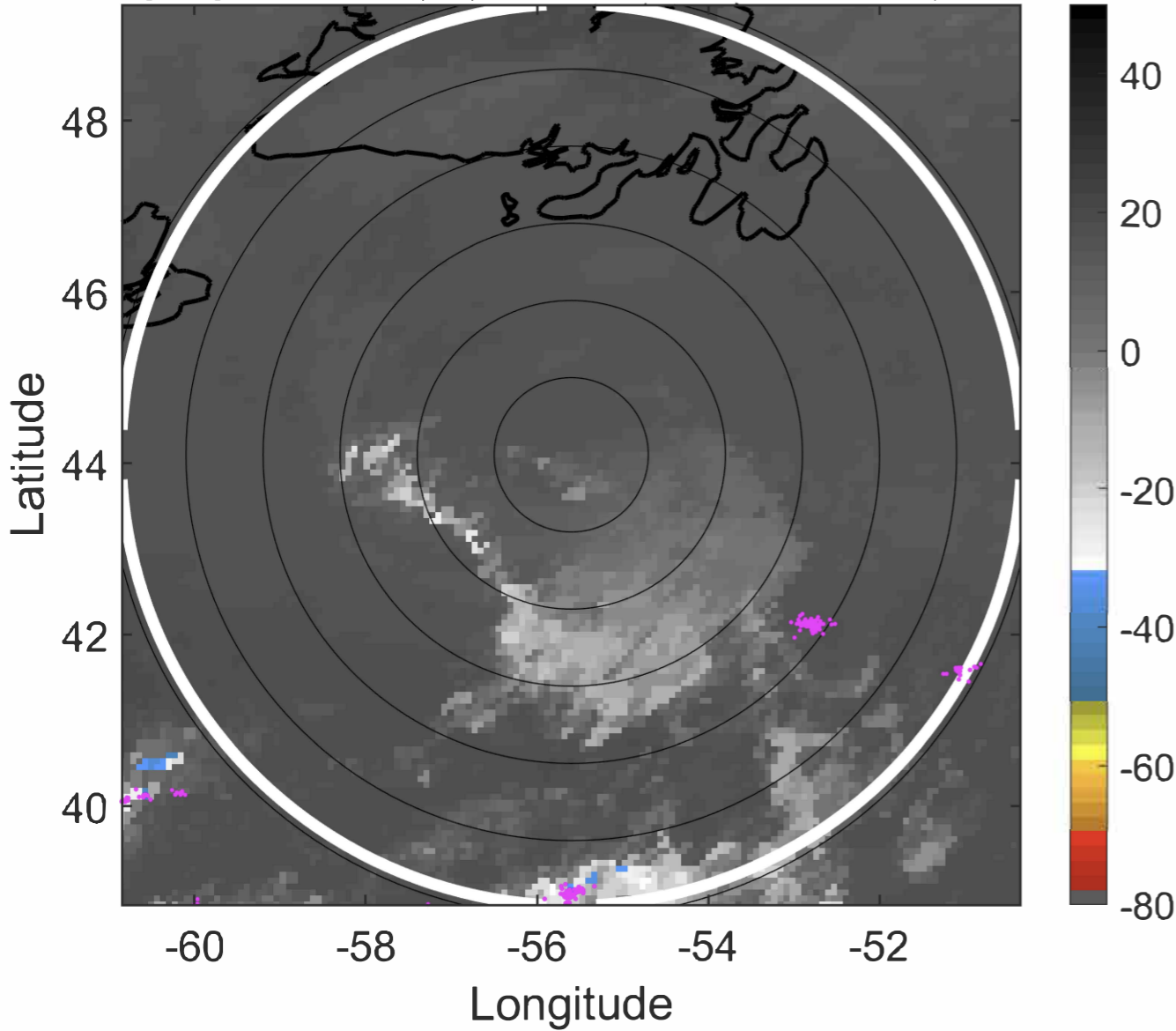
t: 2020062500 (20.3 LT)

Lightning: 20.3 LT \pm 1.5 h (dots)

PT: SLWP | EA: INACT

04L (DOLLY) | 25 kt LO

S: null | H: null



6-h IR BT Differences & Lightning

Δ t: 2020062500 (20.3 LT) - 2020062418 (14.2 LT)

Lightning: 20.3 LT \pm 1.5 h (dots)

PT: SLWP | EA: INACT

04L (DOLLY) | 25 kt LO

S: null | H: null

