

IR BT & Lightning

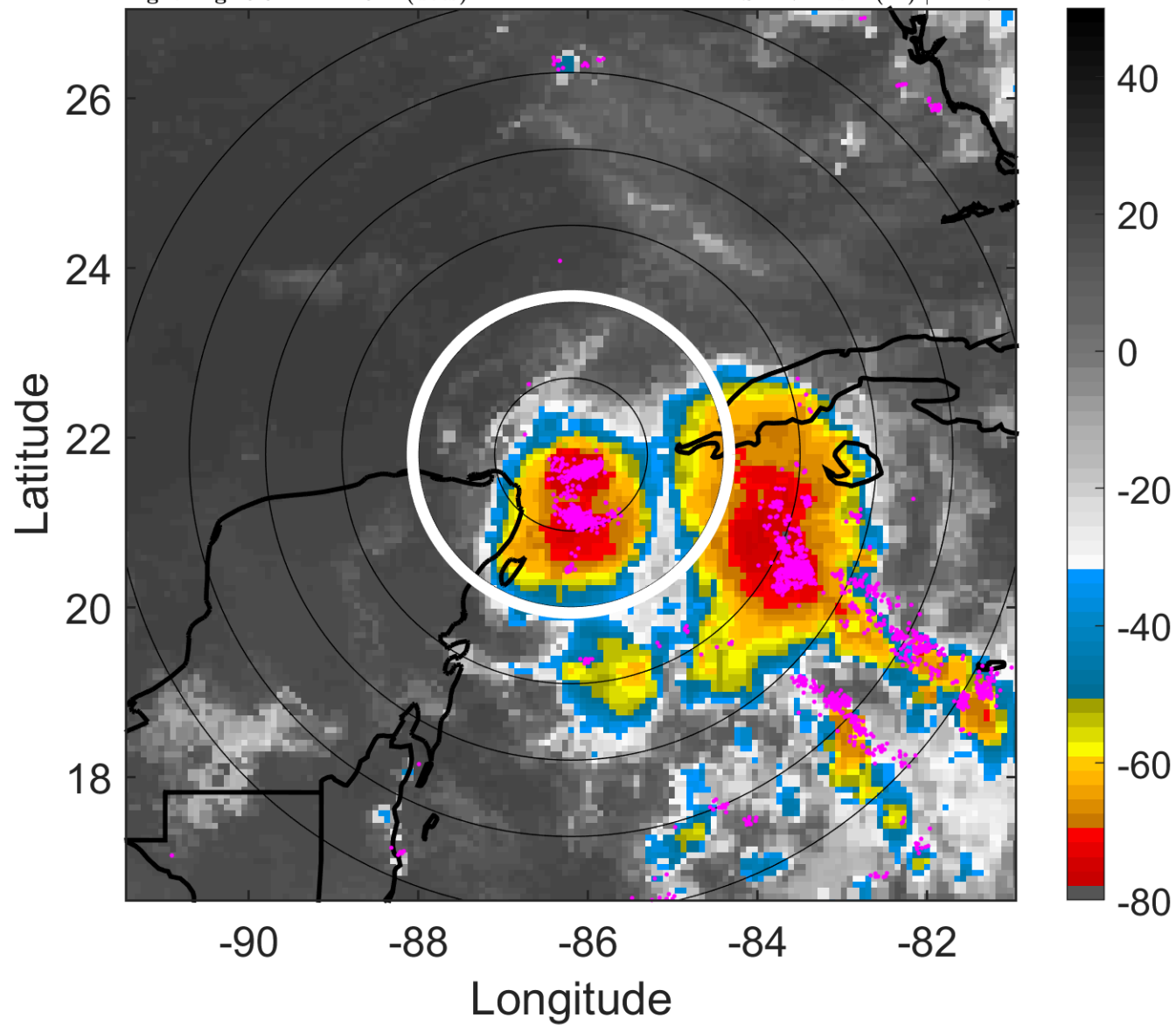
t: 2011072712 (6.3 LT)

Lightning: 6.3 LT \pm 1.5 h (dots)

PT: LLCP | EA: ACT

04L (DON) | 30 kt TD

S: 4.7 m s⁻¹ (M) | H: 174°



6-h IR BT Differences & Lightning

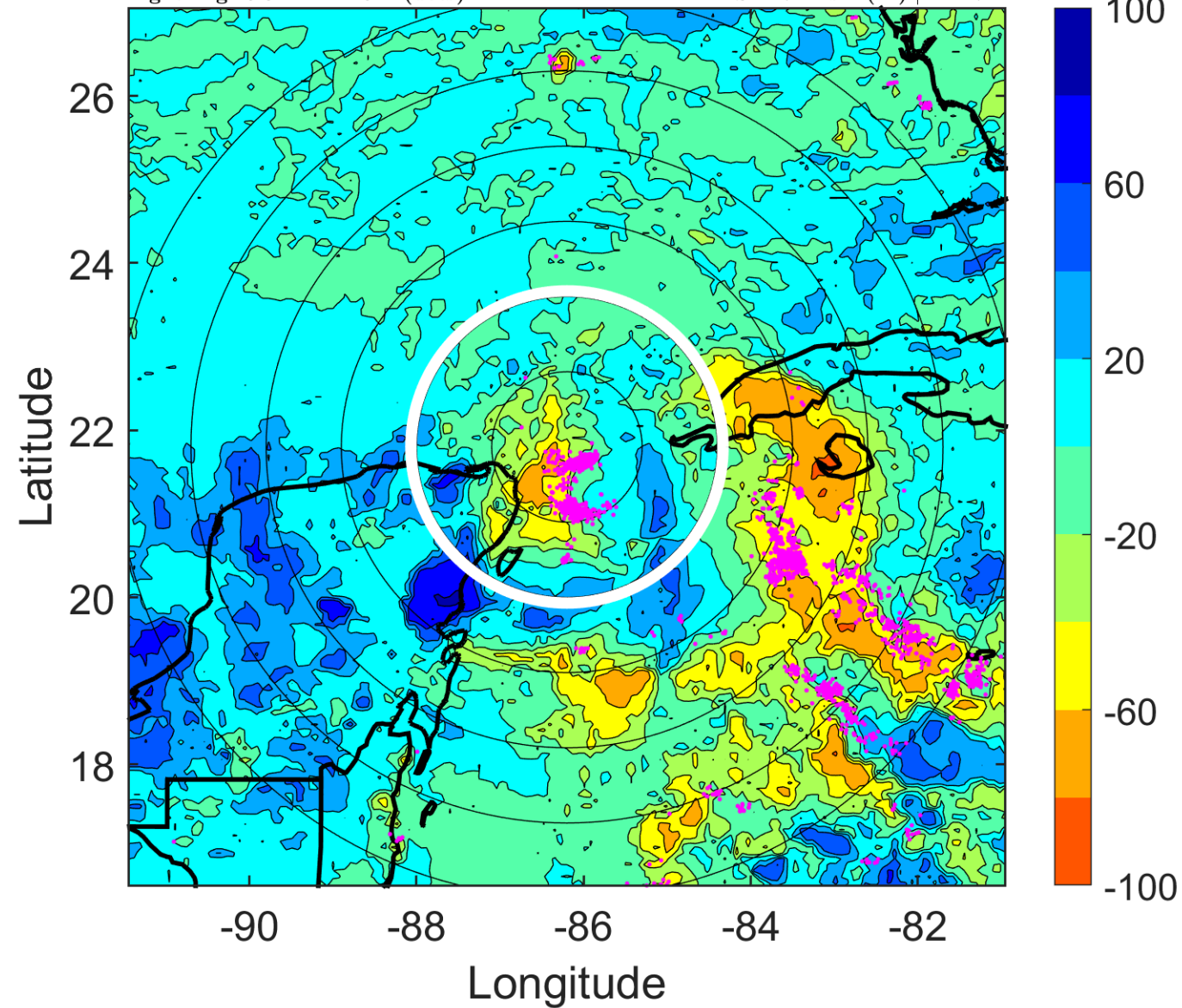
Δ t: 2011072712 (6.3 LT) - 2011072706 (0.3 LT)

Lightning: 6.3 LT \pm 1.5 h (dots)

PT: LLCP | EA: ACT

04L (DON) | 30 kt TD

S: 4.7 m s⁻¹ (M) | H: 174°



IR BT & Lightning

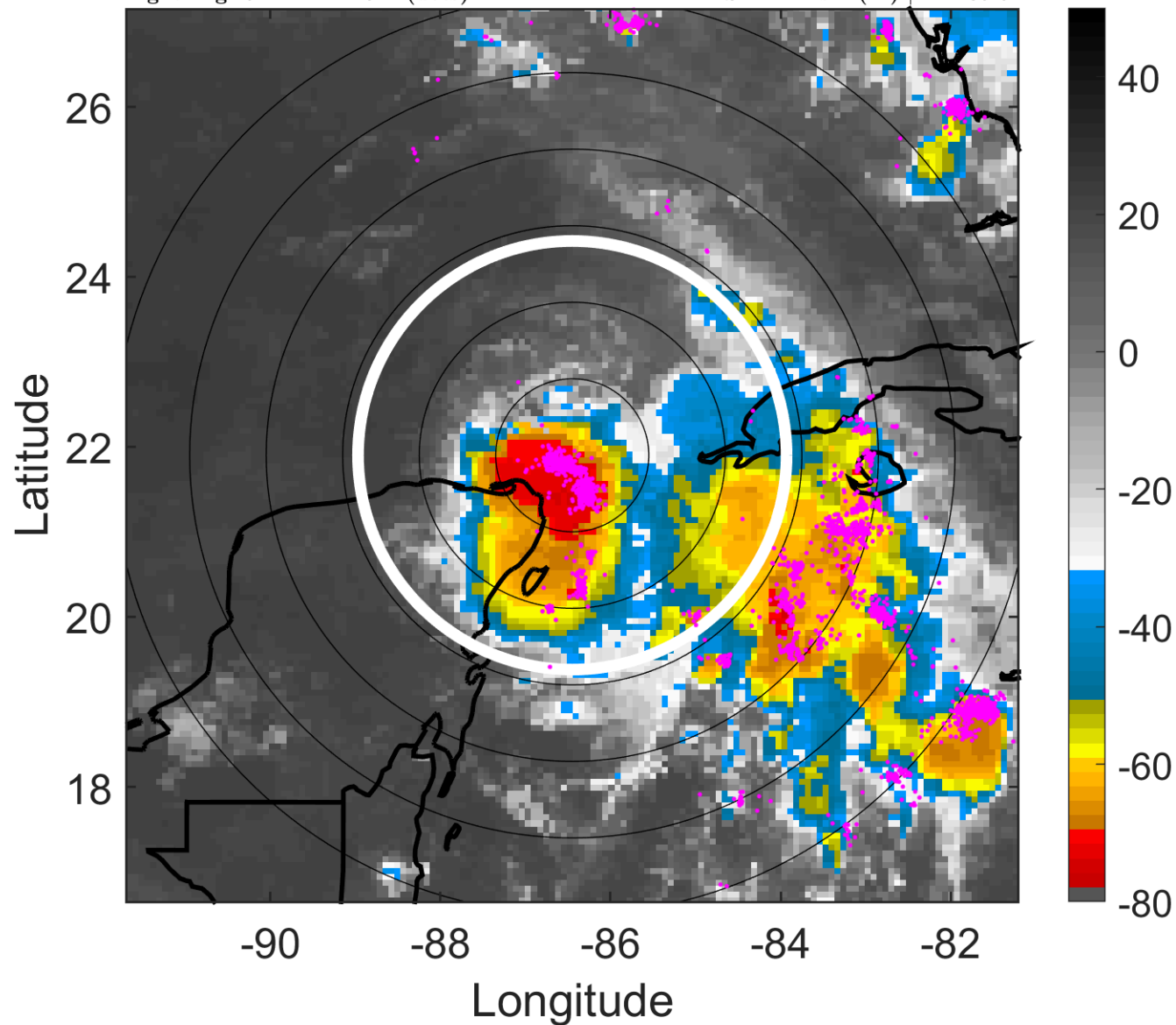
t: 2011072715 (9.2 LT)

Lightning: 9.2 LT \pm 1.5 h (dots)

PT: LLCP | EA: ACT

04L (DON) | 32.5 kt TD

S: 4.4 m s⁻¹ (M) | H: 185.5°



6-h IR BT Differences & Lightning

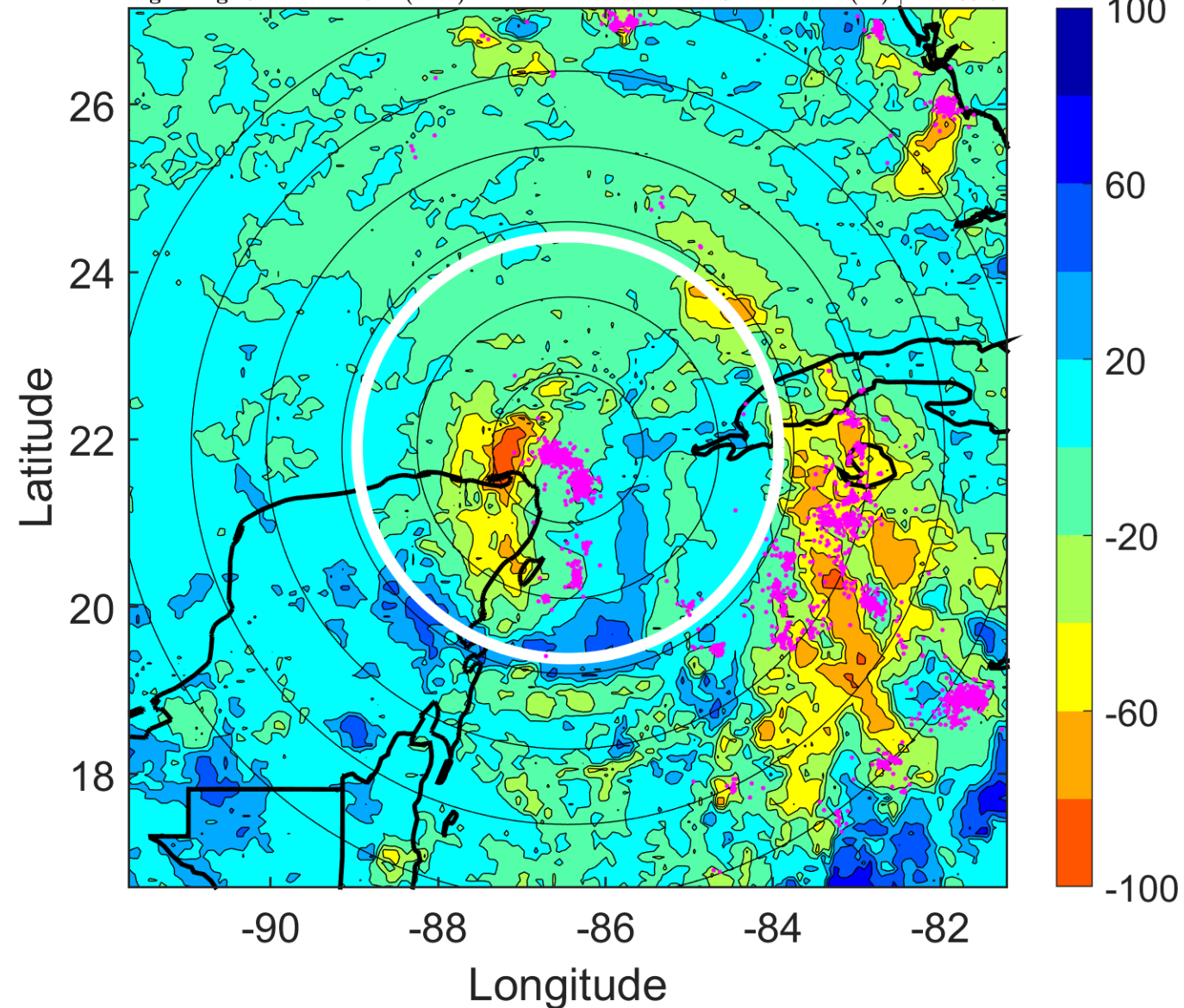
Δ t: 2011072715 (9.2 LT) - 2011072709 (3.3 LT)

Lightning: 9.2 LT \pm 1.5 h (dots)

PT: LLCP | EA: ACT

04L (DON) | 32.5 kt TD

S: 4.4 m s⁻¹ (M) | H: 185.5°



IR BT & Lightning

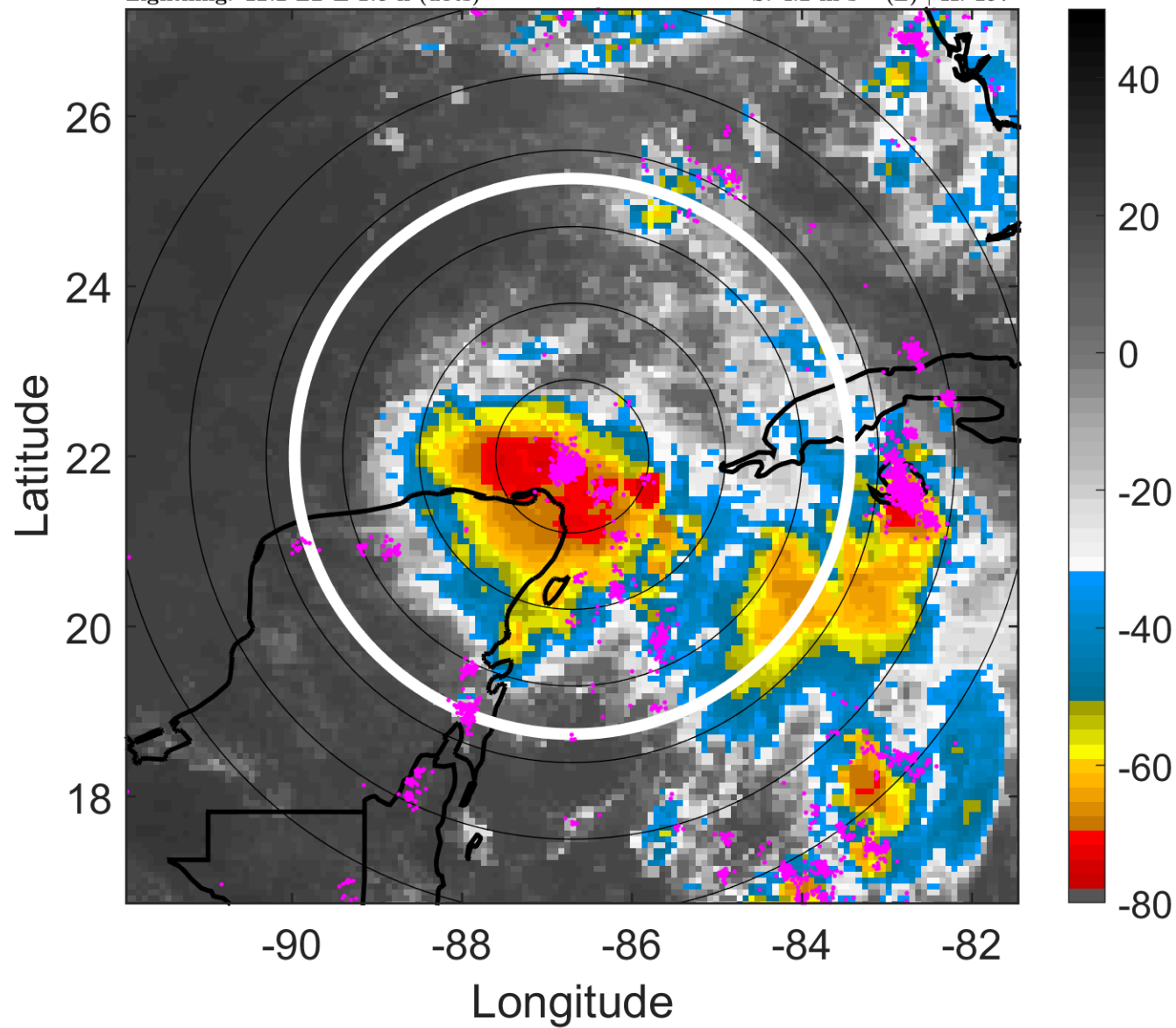
t: 2011072718 (12.2 LT)

Lightning: 12.2 LT \pm 1.5 h (dots)

PT: LLCP | EA: ACT

04L (DON) | 35 kt TS

S: 4.2 m s⁻¹ (L) | H: 197°



6-h IR BT Differences & Lightning

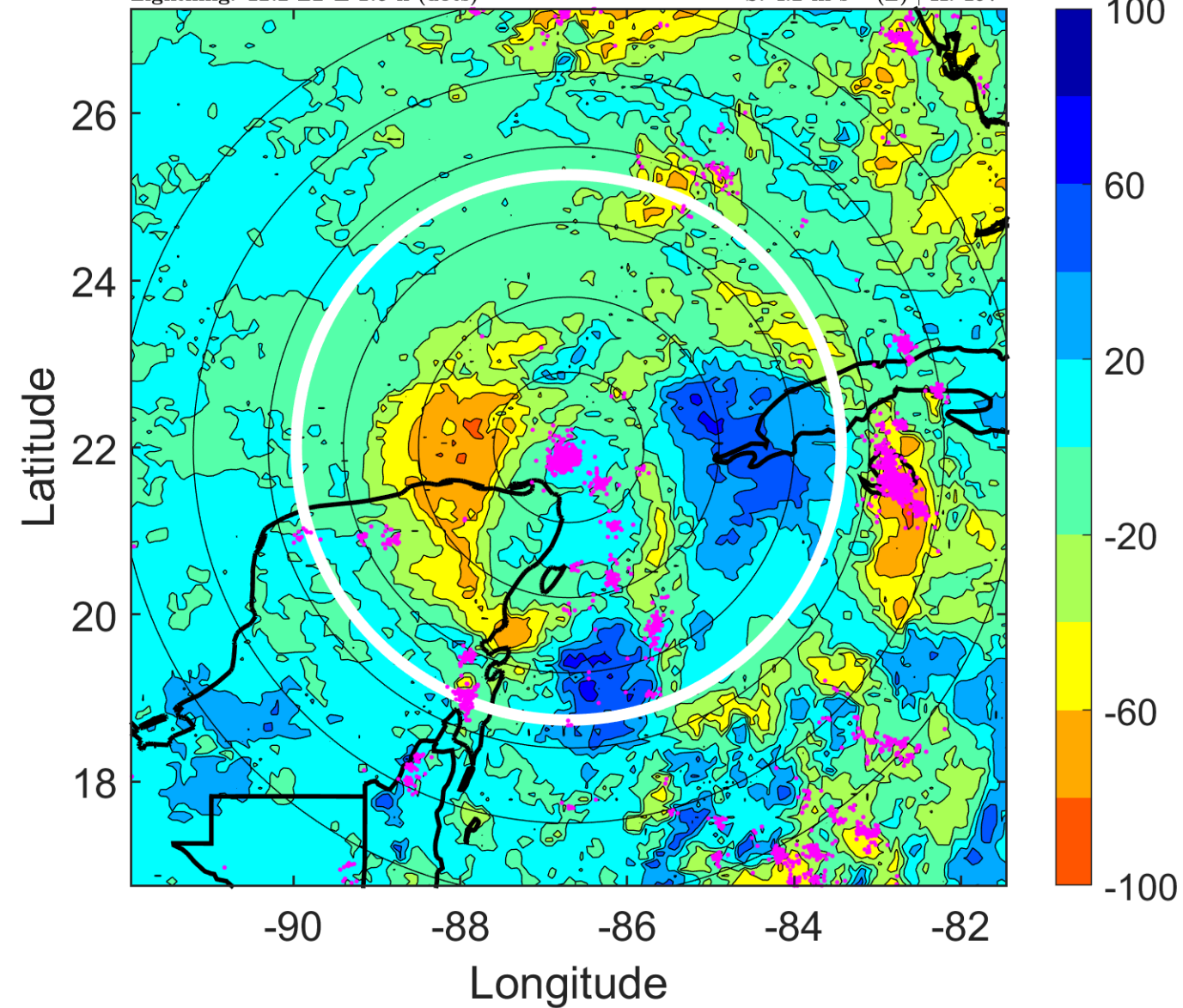
Δ t: 2011072718 (12.2 LT) - 2011072712 (6.3 LT)

Lightning: 12.2 LT \pm 1.5 h (dots)

PT: LLCP | EA: ACT

04L (DON) | 35 kt TS

S: 4.2 m s⁻¹ (L) | H: 197°



IR BT & Lightning

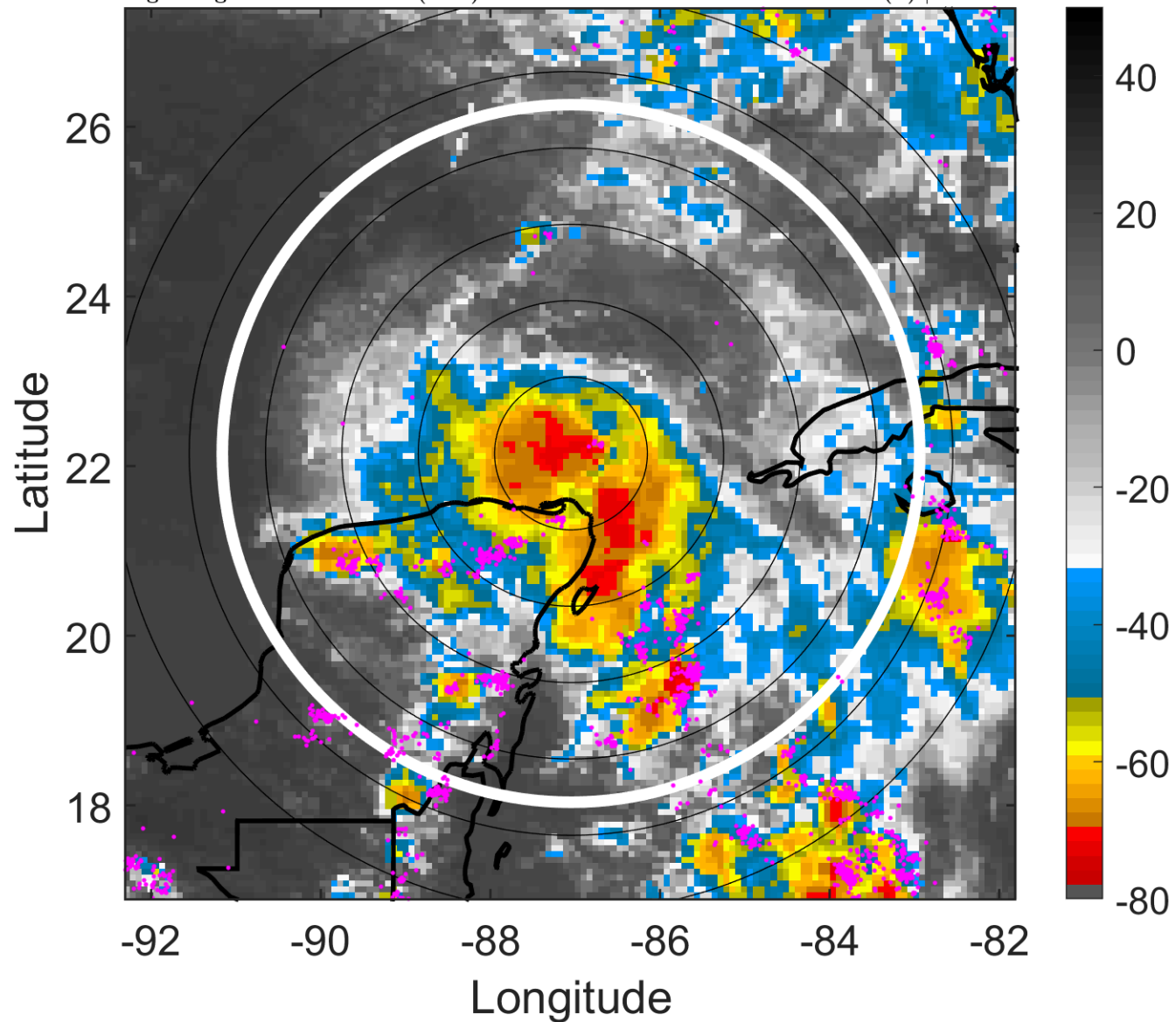
t: 2011072721 (15.2 LT)

Lightning: 15.2 LT \pm 1.5 h (dots)

PT: LLCP | EA: ACT

04L (DON) | 35 kt TS

S: 2.8 m s⁻¹ (L) | H: 190°



6-h IR BT Differences & Lightning

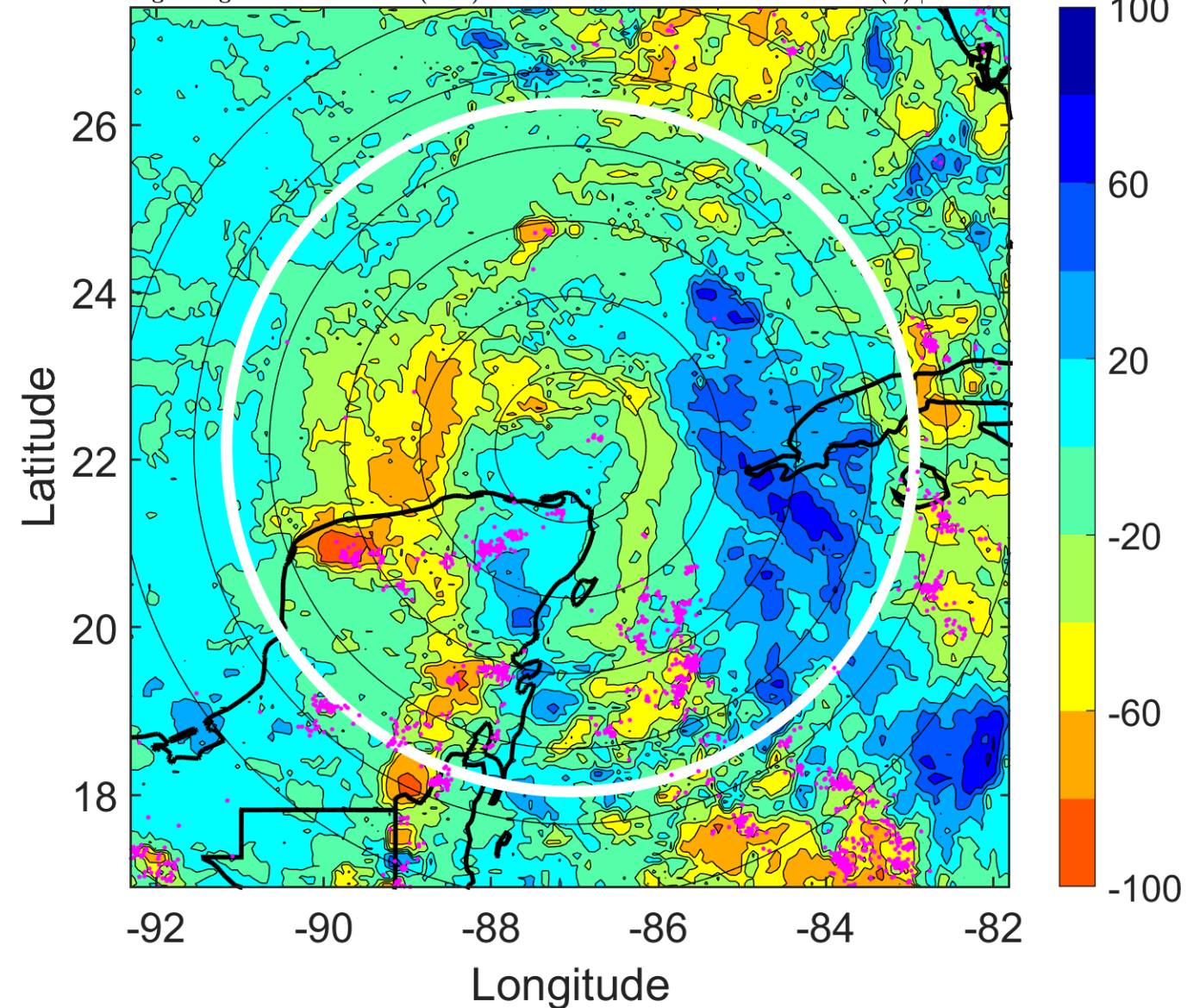
Δ t: 2011072721 (15.2 LT) - 2011072715 (9.2 LT)

Lightning: 15.2 LT \pm 1.5 h (dots)

PT: LLCP | EA: ACT

04L (DON) | 35 kt TS

S: 2.8 m s⁻¹ (L) | H: 190°



IR BT & Lightning

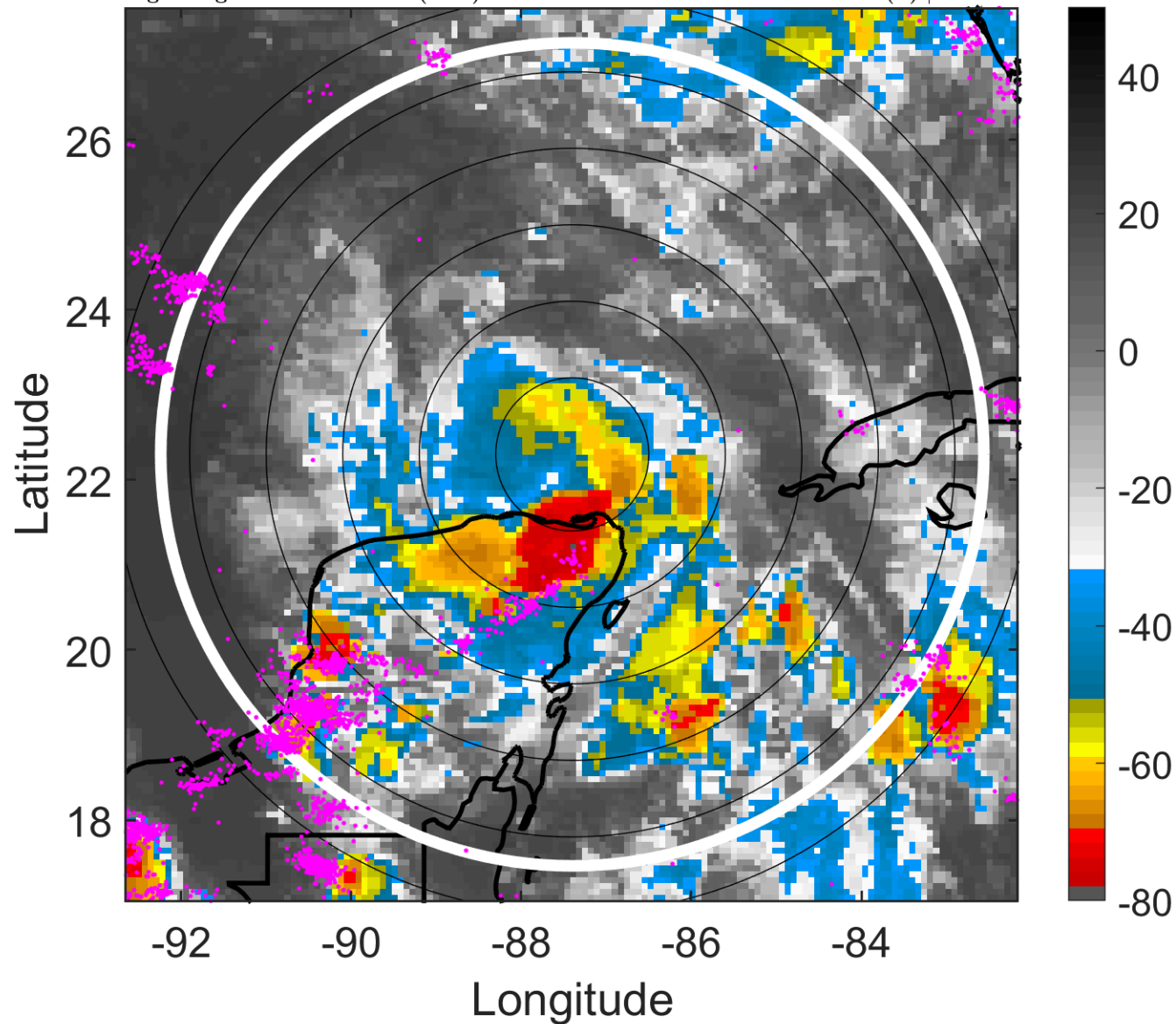
t: 2011072800 (18.2 LT)

Lightning: 18.2 LT \pm 1.5 h (dots)

PT: LLCP | EA: ACT

04L (DON) | 35 kt TS

S: 1.5 m s⁻¹ (L) | H: 183°



6-h IR BT Differences & Lightning

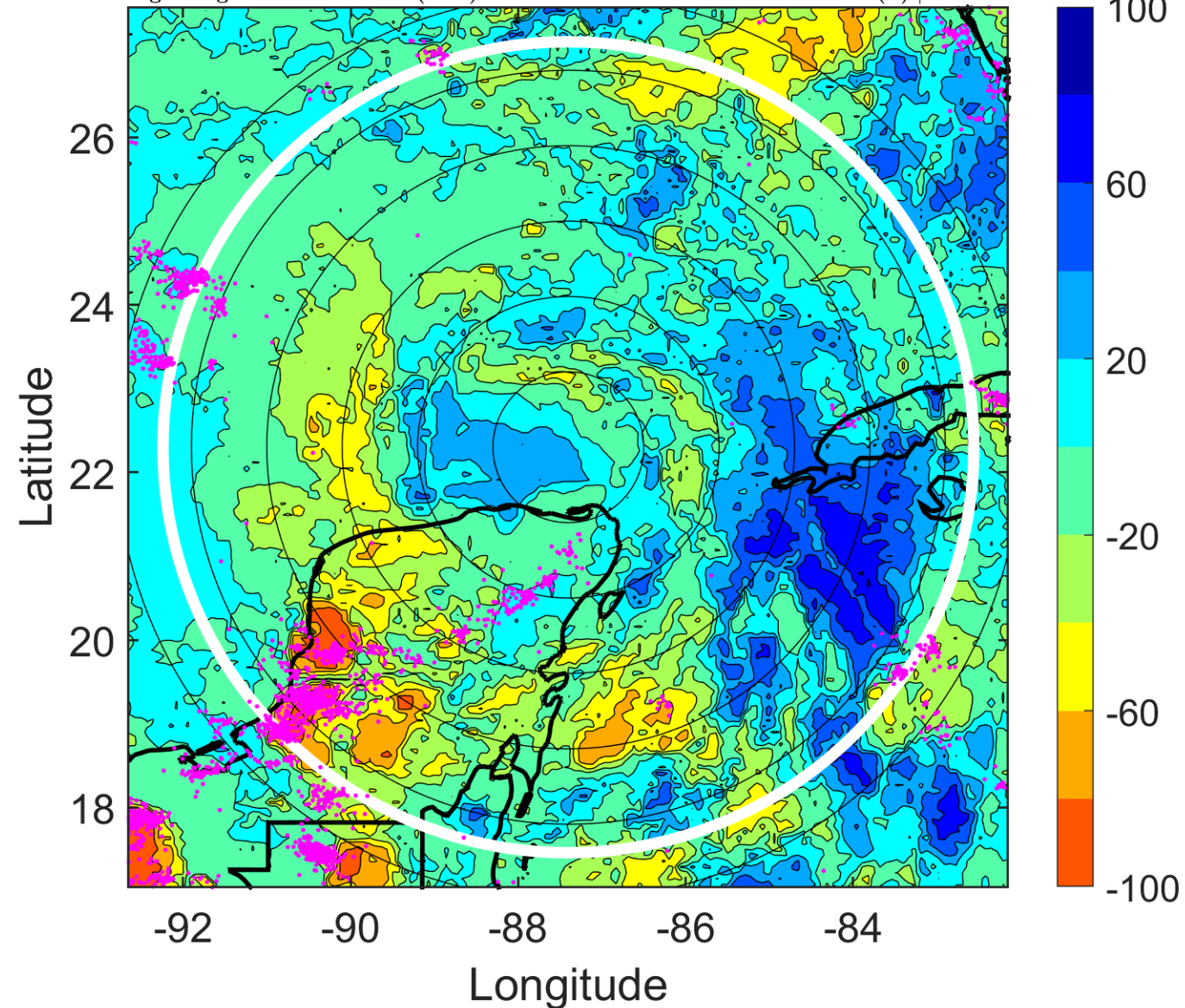
Δ t: 2011072800 (18.2 LT) - 2011072718 (12.2 LT)

Lightning: 18.2 LT \pm 1.5 h (dots)

PT: LLCP | EA: ACT

04L (DON) | 35 kt TS

S: 1.5 m s⁻¹ (L) | H: 183°



IR BT & Lightning

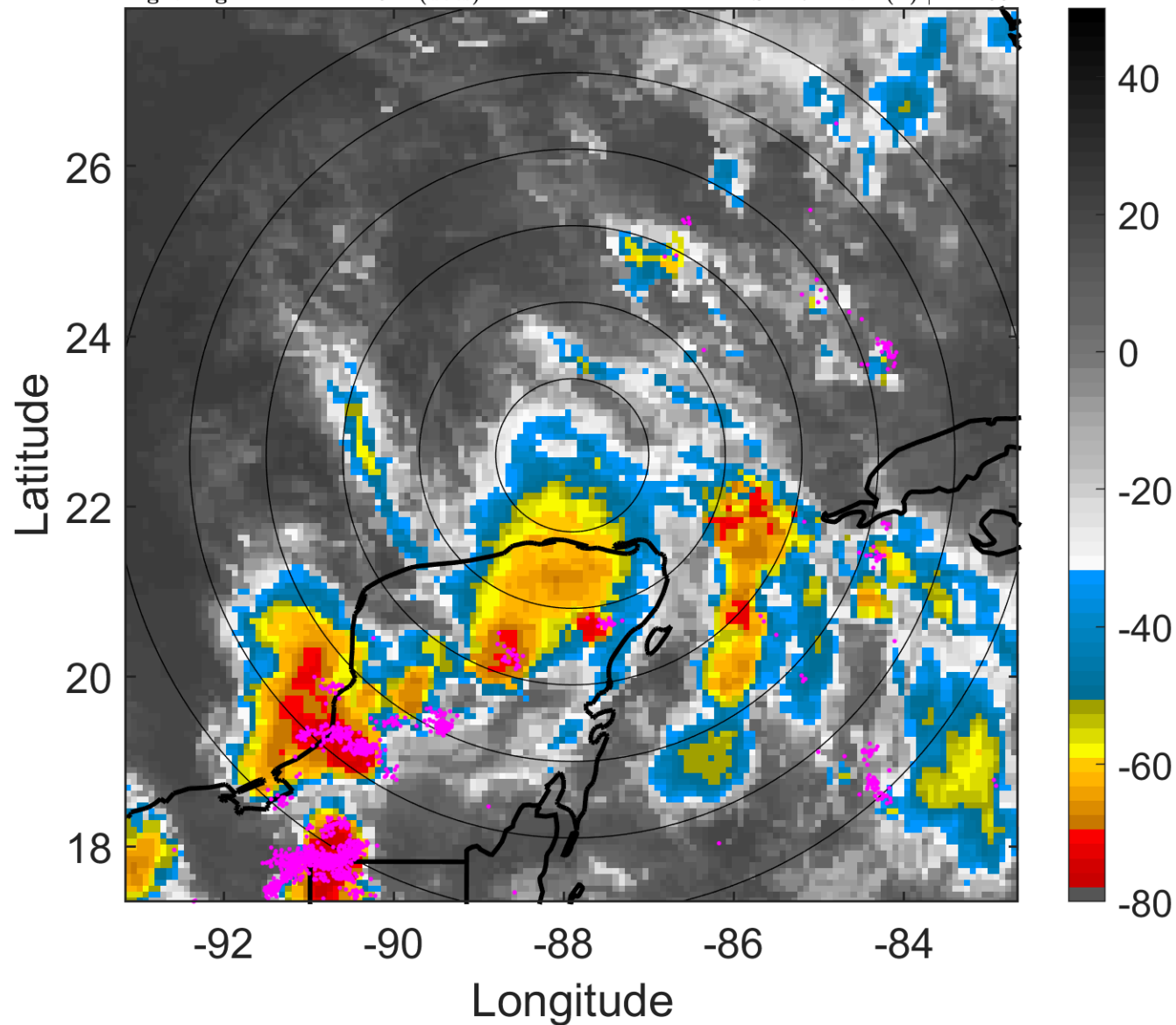
t: 2011072803 (21.1 LT)

Lightning: 21.1 LT \pm 1.5 h (dots)

PT: LLCP | EA: ACT

04L (DON) | 35 kt TS

S: 2.7 m s⁻¹ (L) | H: 165°



6-h IR BT Differences & Lightning

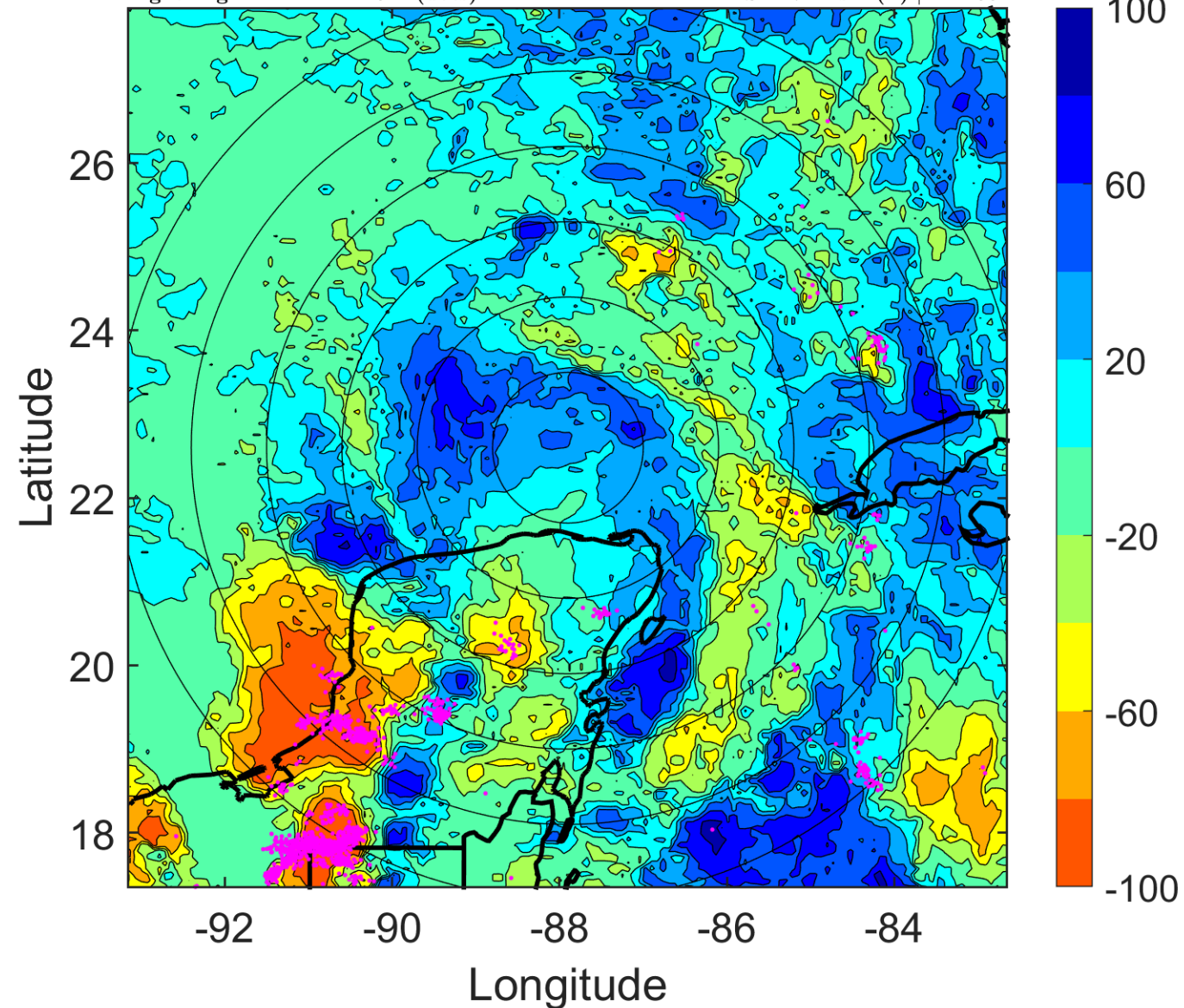
Δ t: 2011072803 (21.1 LT) - 2011072721 (15.2 LT)

Lightning: 21.1 LT \pm 1.5 h (dots)

PT: LLCP | EA: ACT

04L (DON) | 35 kt TS

S: 2.7 m s⁻¹ (L) | H: 165°



IR BT & Lightning

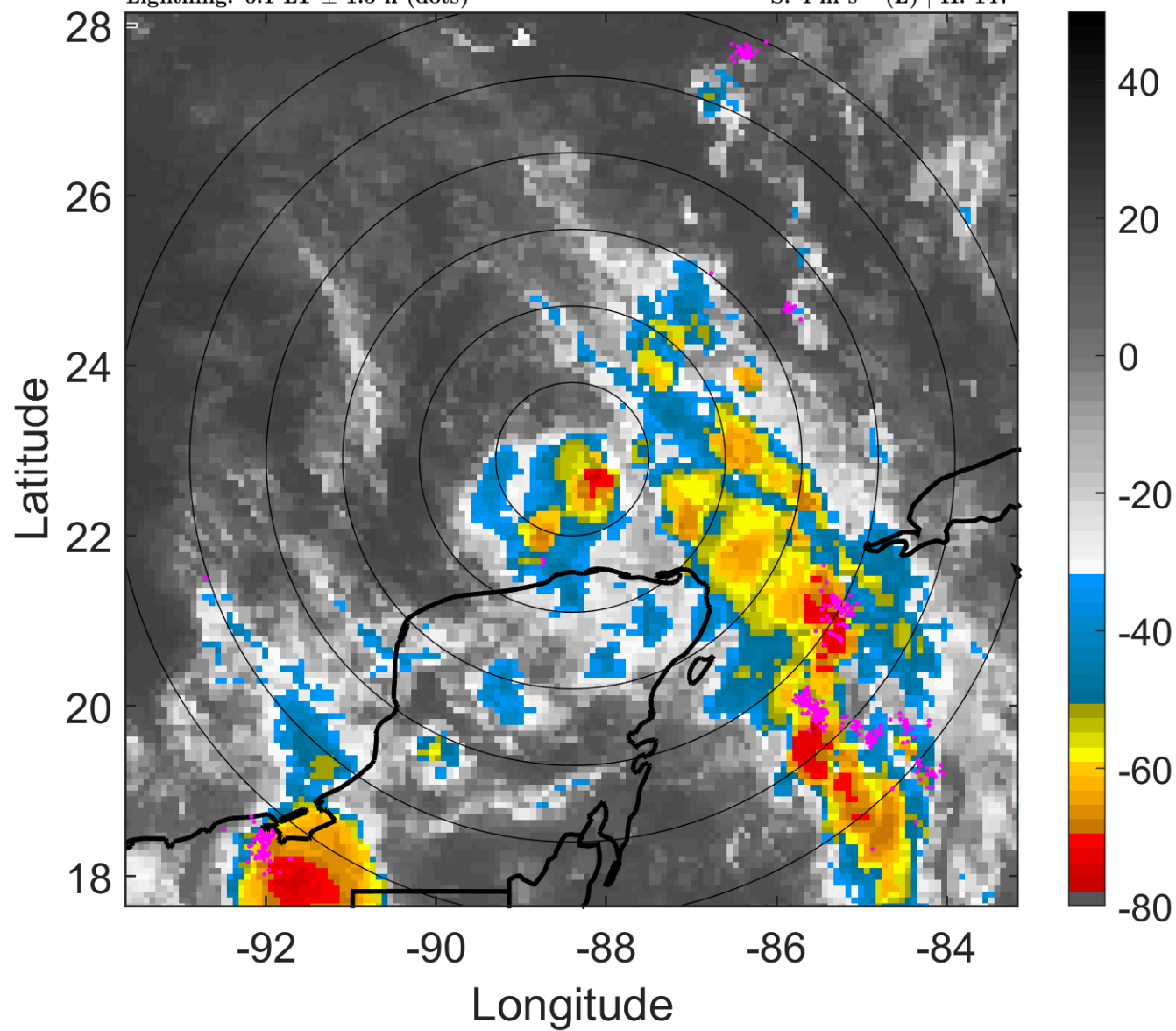
t: 2011072806 (0.1 LT)

Lightning: 0.1 LT \pm 1.5 h (dots)

PT: SLCP | EA: QUASI

04L (DON) | 35 kt TS

S: 4 m s⁻¹ (L) | H: 147°



6-h IR BT Differences & Lightning

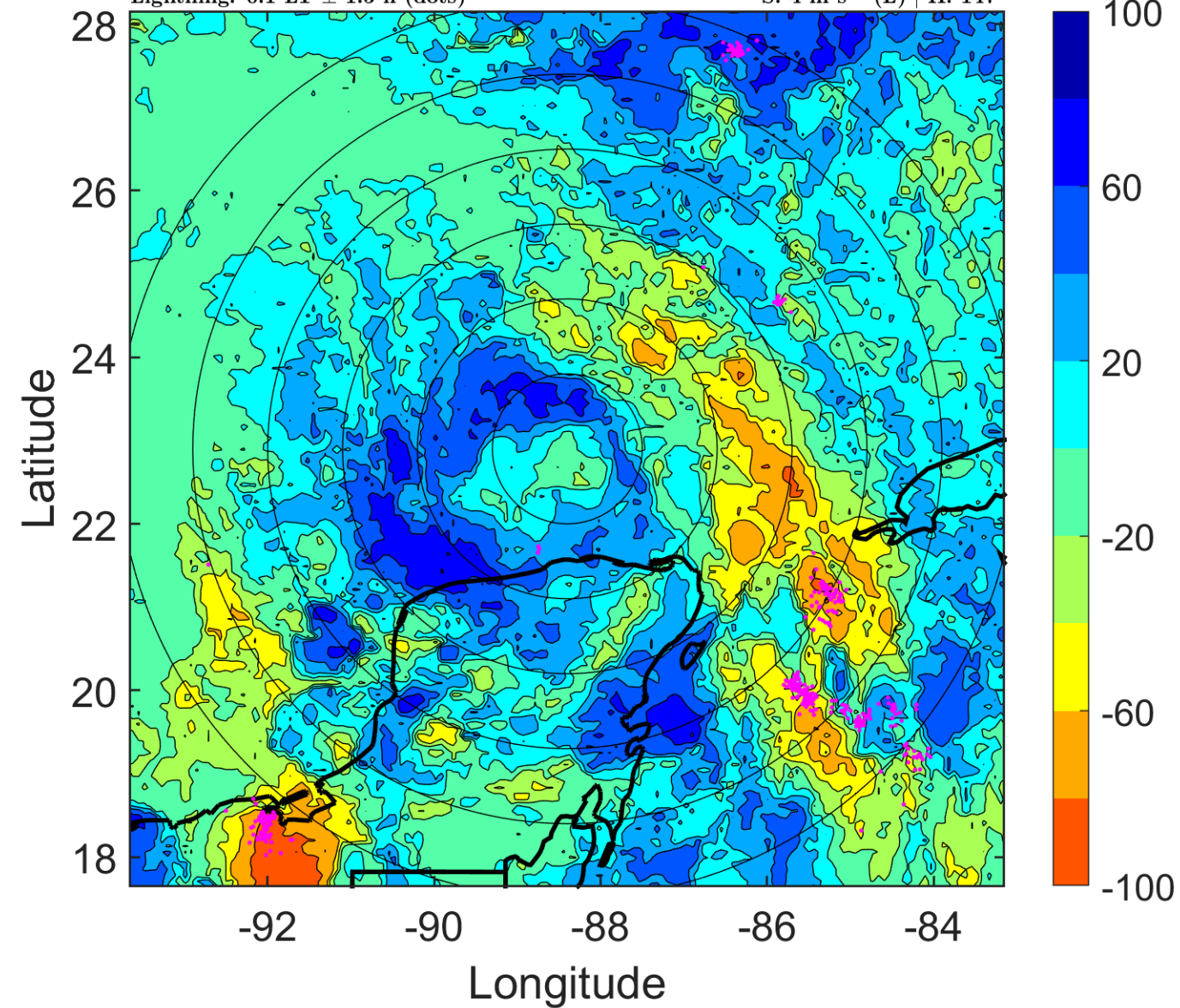
Δ t: 2011072806 (0.1 LT) - 2011072800 (18.2 LT)

Lightning: 0.1 LT \pm 1.5 h (dots)

PT: SLCP | EA: QUASI

04L (DON) | 35 kt TS

S: 4 m s⁻¹ (L) | H: 147°



IR BT & Lightning

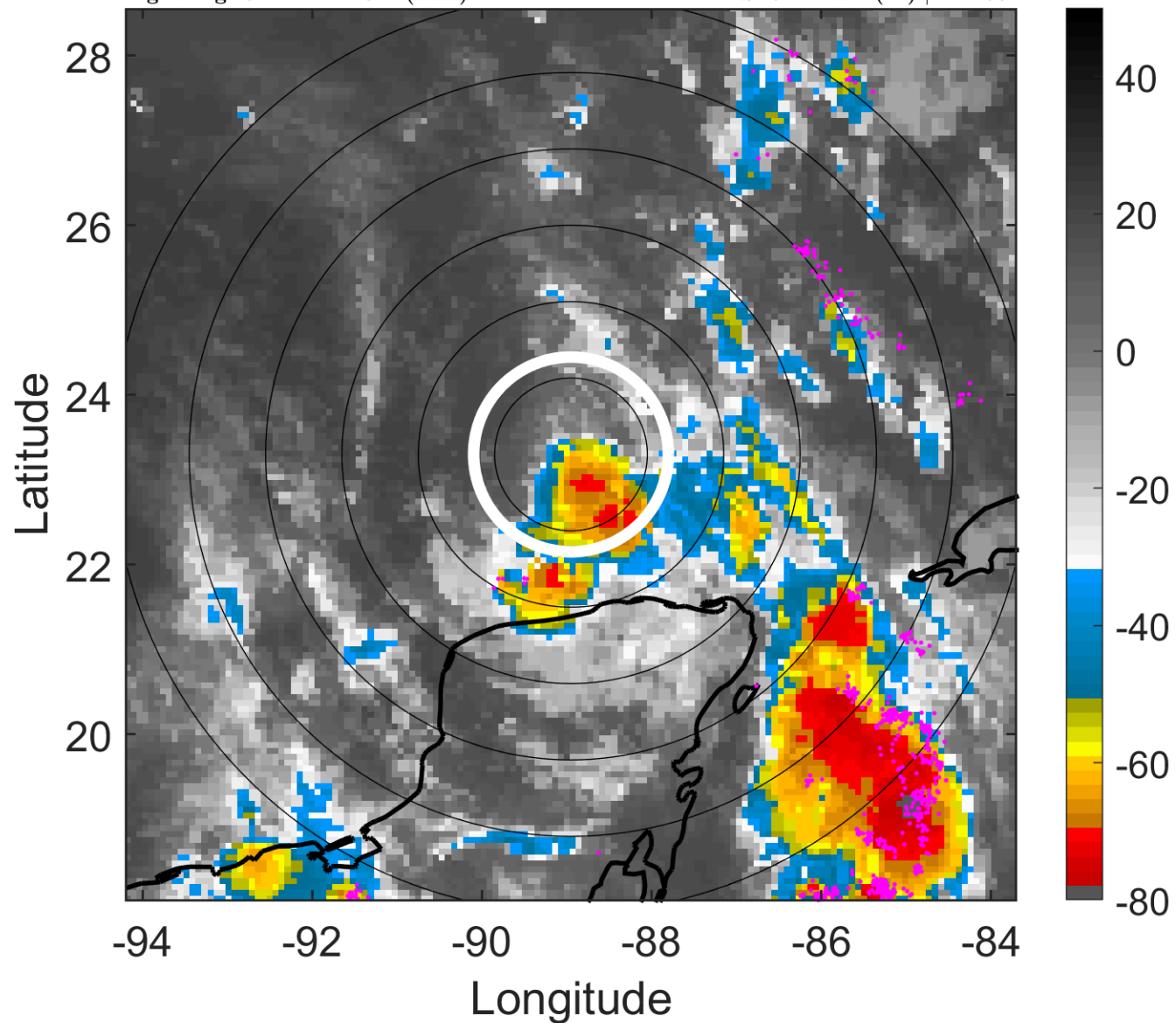
t: 2011072809 (3.1 LT)

Lightning: 3.1 LT \pm 1.5 h (dots)

PT: SLCP | EA: QUASI

04L (DON) | 37.5 kt TS

S: 5.4 m s⁻¹ (M) | H: 160°



6-h IR BT Differences & Lightning

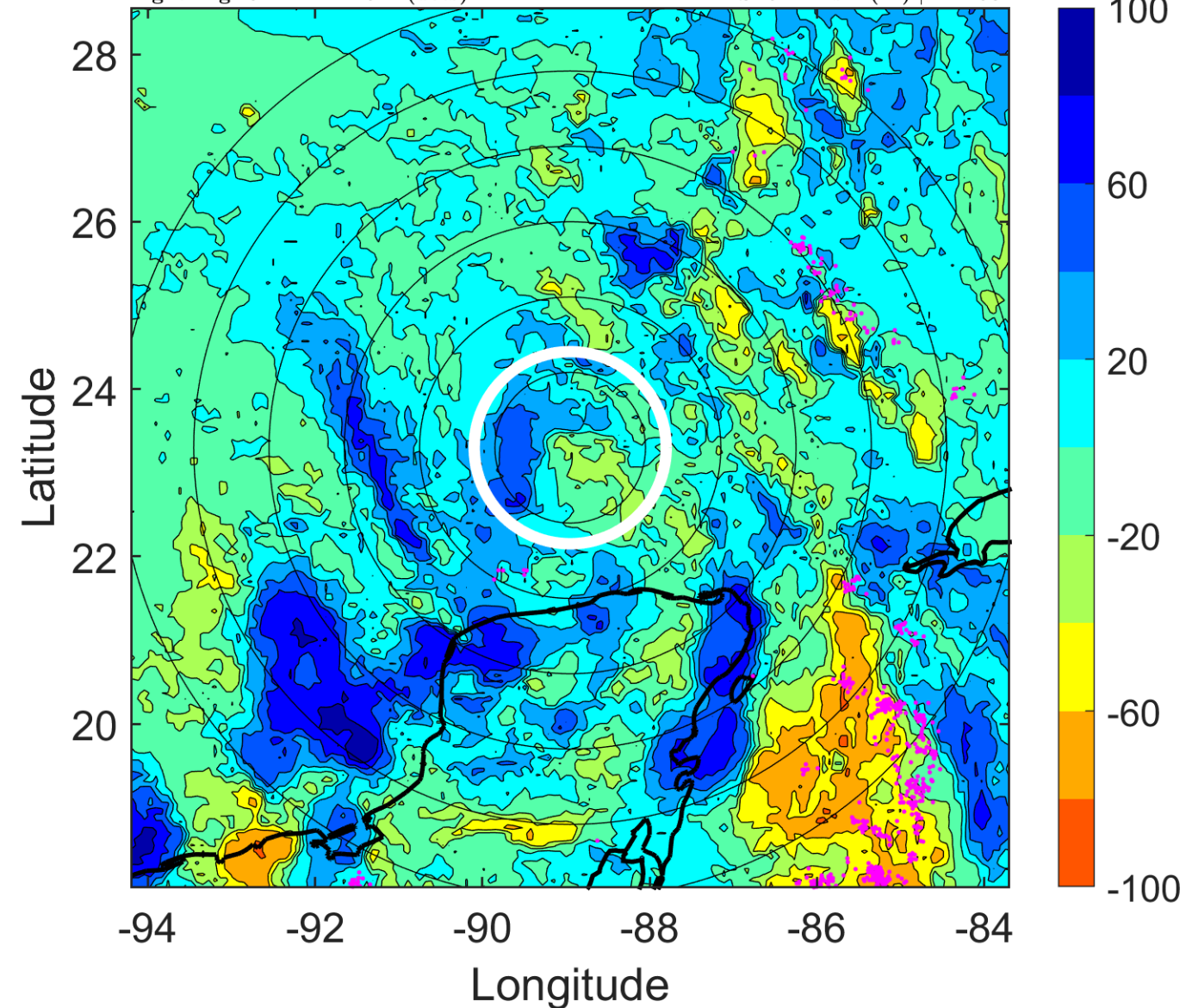
Δ t: 2011072809 (3.1 LT) - 2011072803 (21.1 LT)

Lightning: 3.1 LT \pm 1.5 h (dots)

PT: SLCP | EA: QUASI

04L (DON) | 37.5 kt TS

S: 5.4 m s⁻¹ (M) | H: 160°



IR BT & Lightning

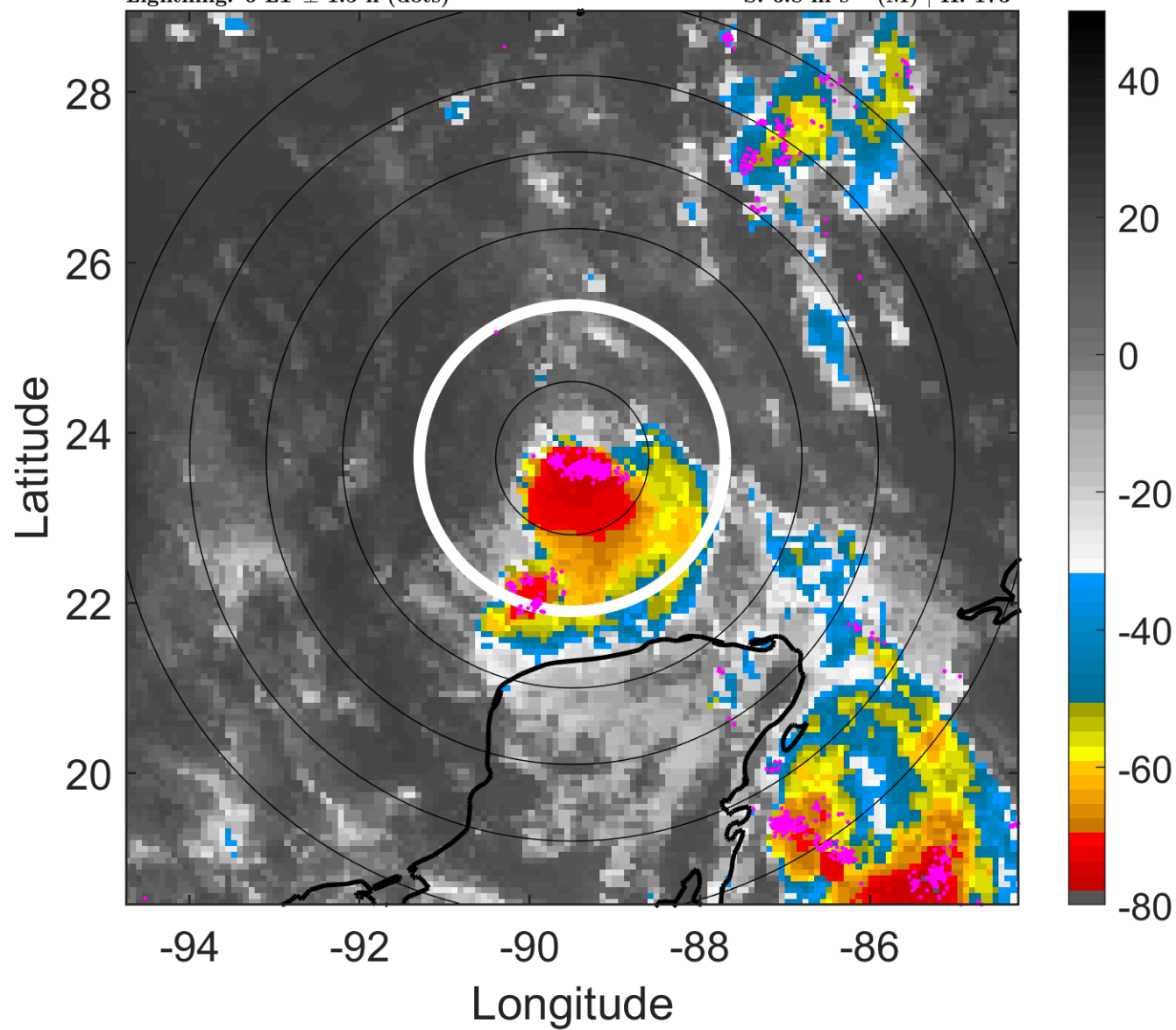
t: 2011072812 (6 LT)

Lightning: 6 LT \pm 1.5 h (dots)

PT: SLCP | EA: QUASI

04L (DON) | 40 kt TS

S: 6.8 m s⁻¹ (M) | H: 173°



6-h IR BT Differences & Lightning

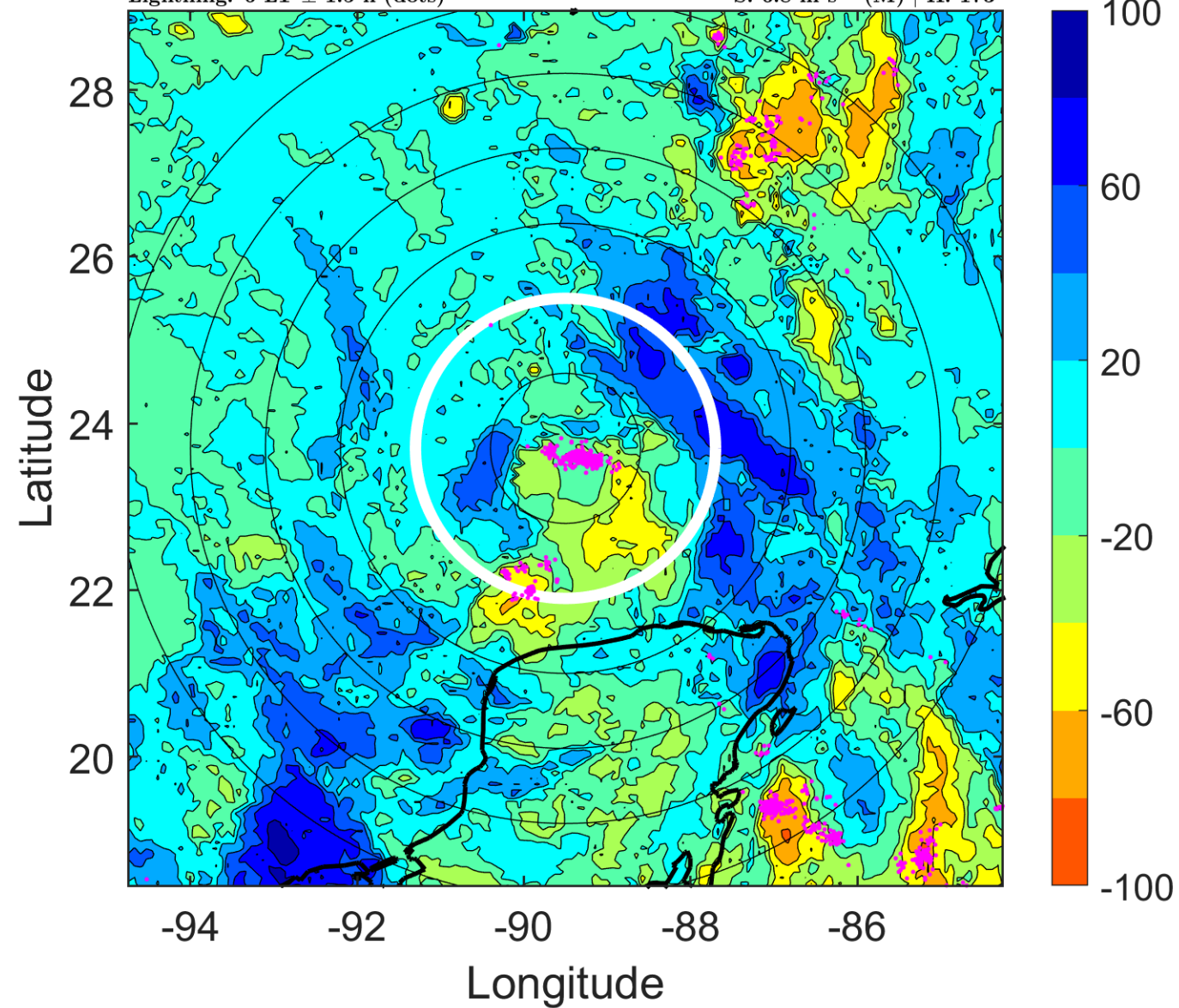
Δ t: 2011072812 (6 LT) - 2011072806 (0.1 LT)

Lightning: 6 LT \pm 1.5 h (dots)

PT: SLCP | EA: QUASI

04L (DON) | 40 kt TS

S: 6.8 m s⁻¹ (M) | H: 173°



IR BT & Lightning

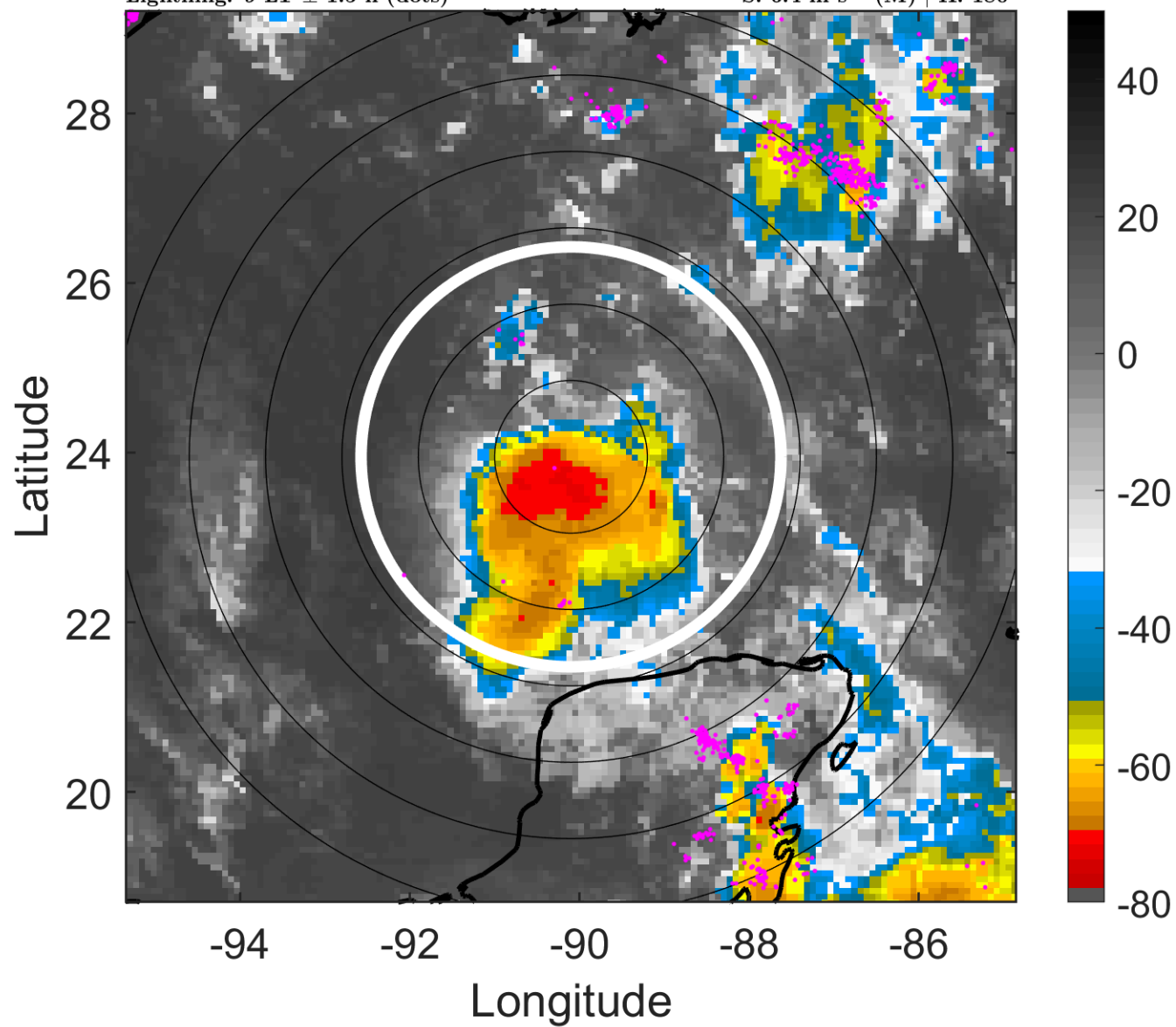
t: 2011072815 (9 LT)

Lightning: 9 LT \pm 1.5 h (dots)

PT: SLCP | EA: QUASI

04L (DON) | 40 kt TS

S: 6.4 m s⁻¹ (M) | H: 180°



6-h IR BT Differences & Lightning

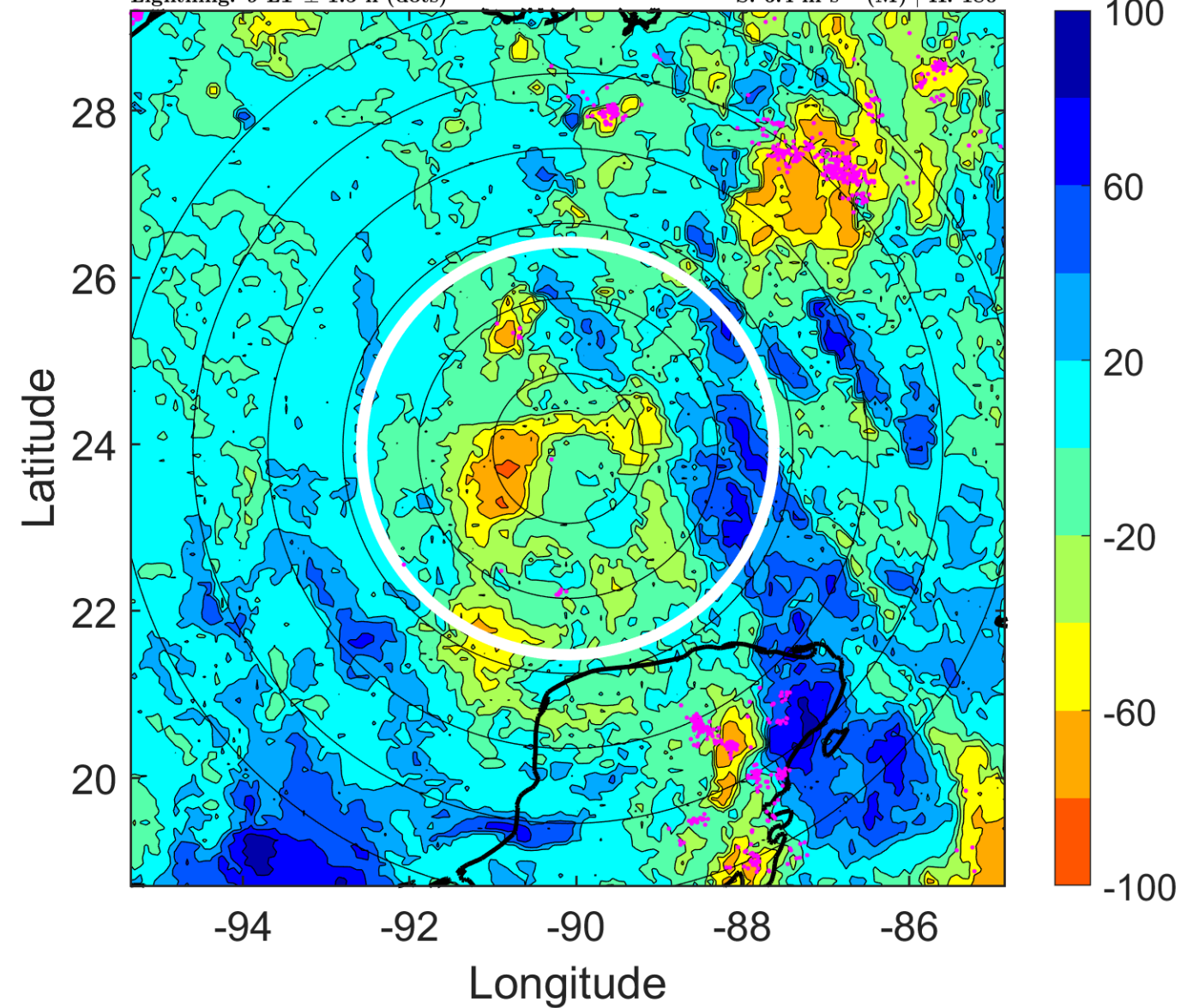
Δ t: 2011072815 (9 LT) - 2011072809 (3.1 LT)

Lightning: 9 LT \pm 1.5 h (dots)

PT: SLCP | EA: QUASI

04L (DON) | 40 kt TS

S: 6.4 m s⁻¹ (M) | H: 180°



IR BT & Lightning

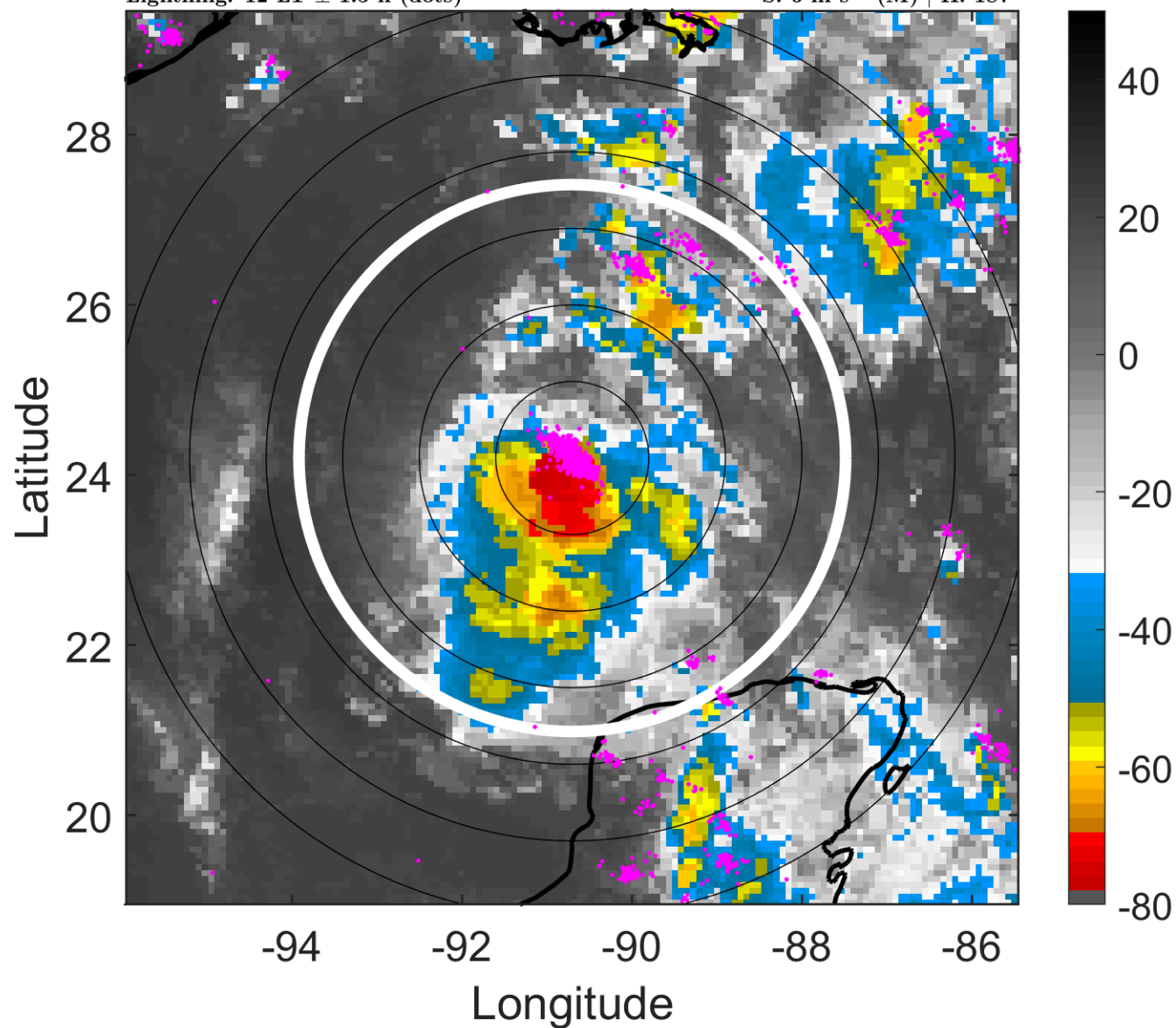
t: 2011072818 (12 LT)

Lightning: 12 LT \pm 1.5 h (dots)

PT: SLCP | EA: QUASI

04L (DON) | 40 kt TS

S: 6 m s⁻¹ (M) | H: 187°



6-h IR BT Differences & Lightning

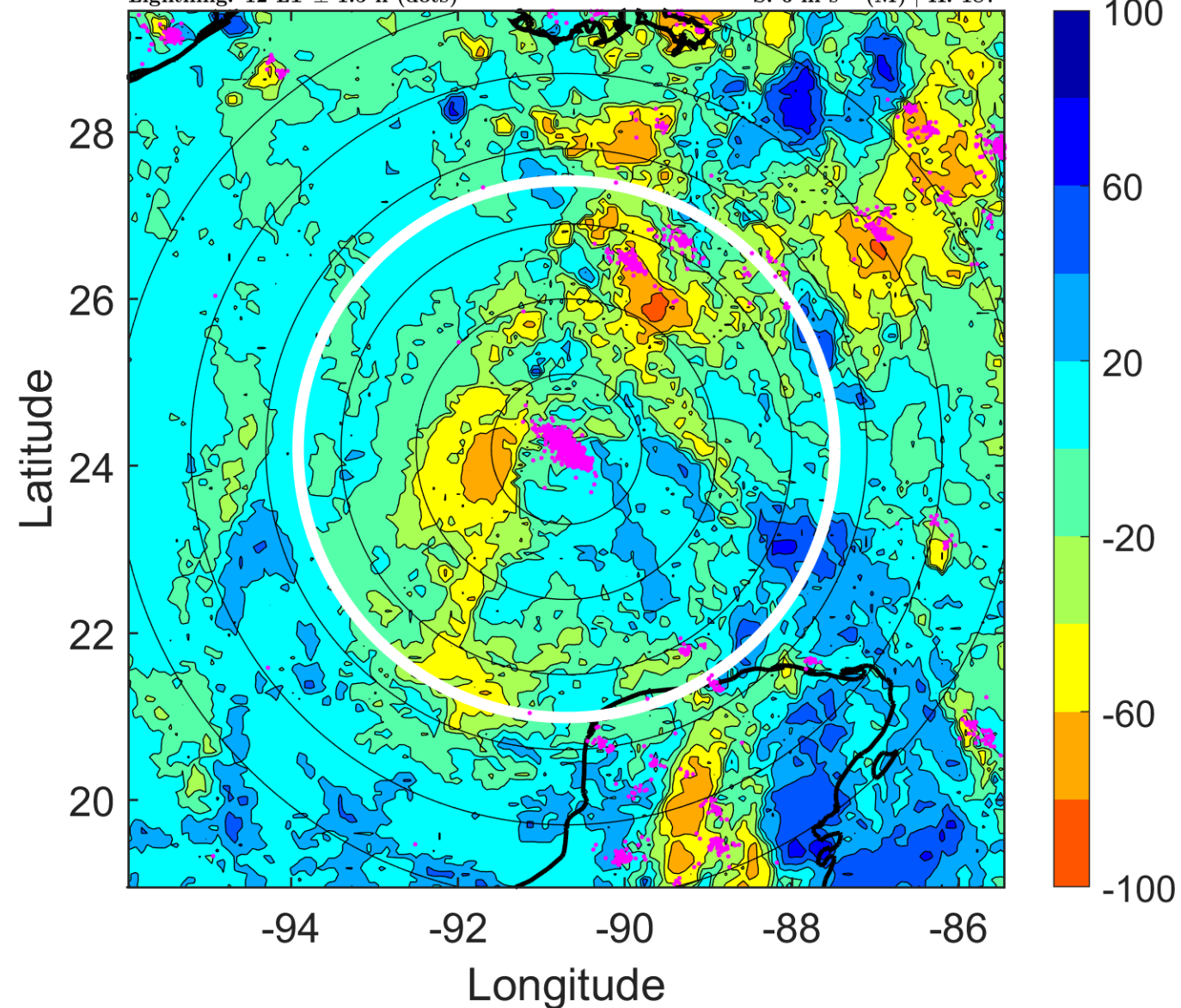
Δ t: 2011072818 (12 LT) - 2011072812 (6 LT)

Lightning: 12 LT \pm 1.5 h (dots)

PT: SLCP | EA: QUASI

04L (DON) | 40 kt TS

S: 6 m s⁻¹ (M) | H: 187°



IR BT & Lightning

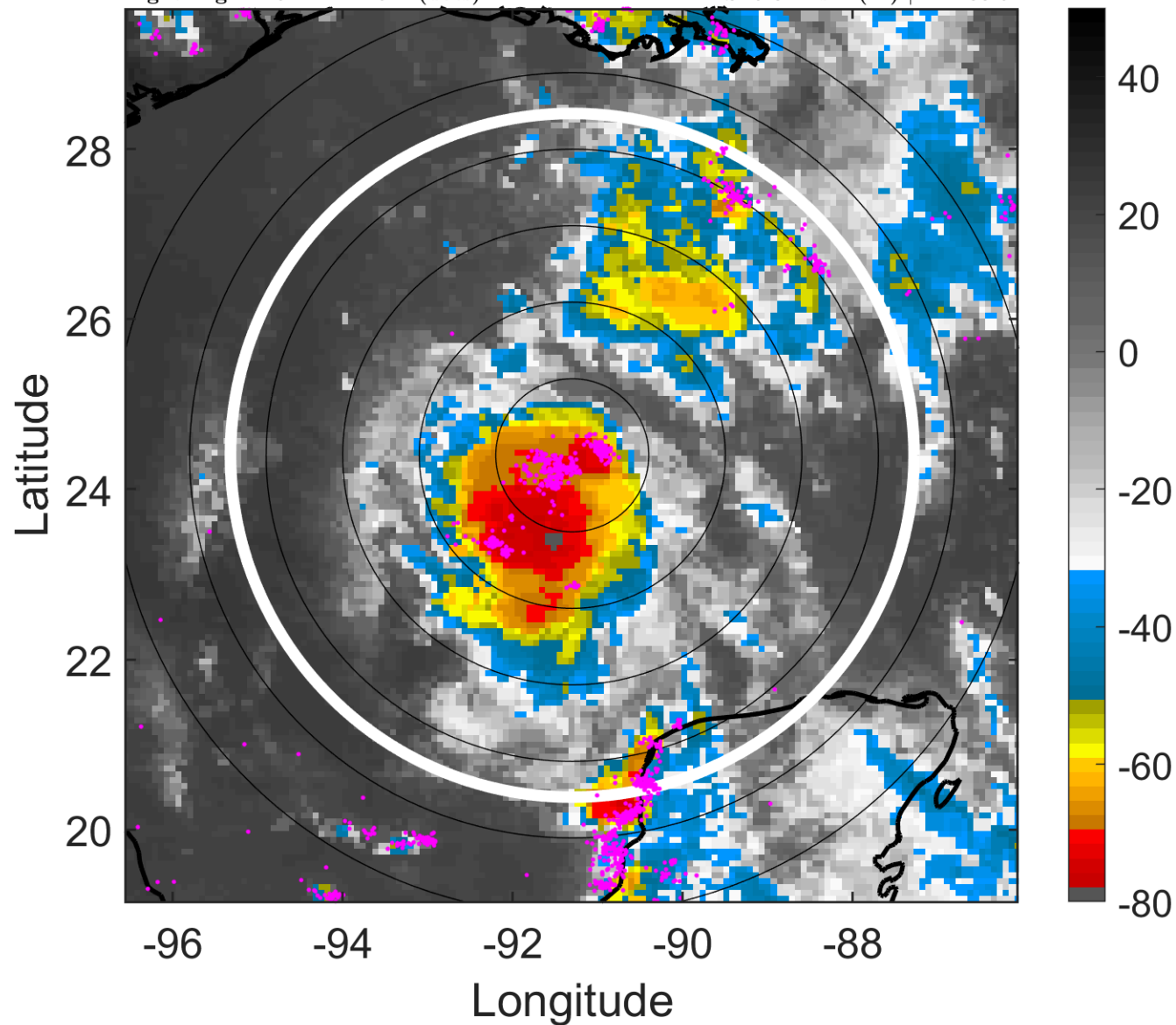
t: 2011072821 (14.9 LT)

Lightning: 14.9 LT \pm 1.5 h (dots)

PT: SLCP | EA: QUASI

04L (DON) | 42.5 kt TS

S: 5.3 m s⁻¹ (M) | H: 180.5°



6-h IR BT Differences & Lightning

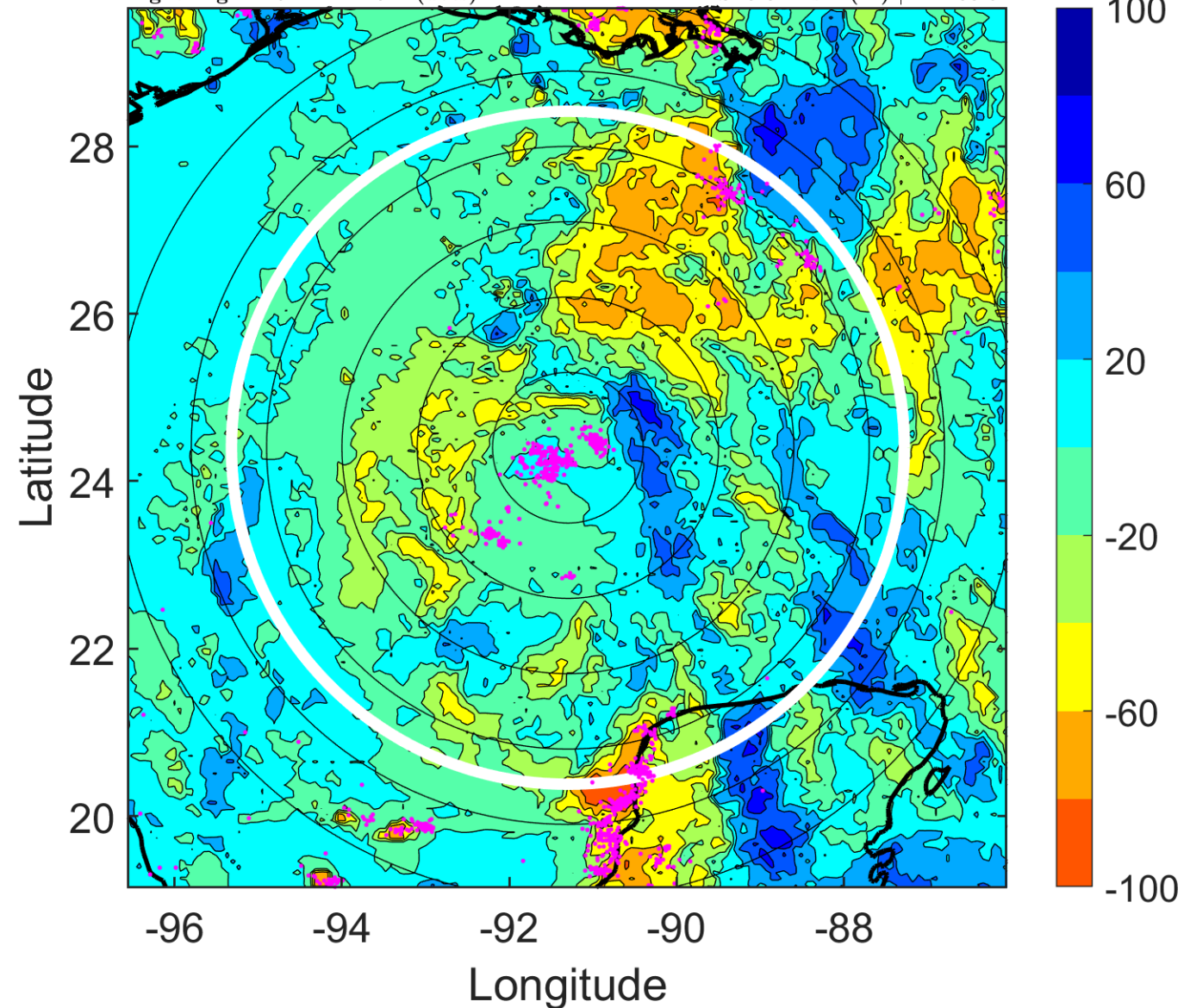
Δ t: 2011072821 (14.9 LT) - 2011072815 (9 LT)

Lightning: 14.9 LT \pm 1.5 h (dots)

PT: SLCP | EA: QUASI

04L (DON) | 42.5 kt TS

S: 5.3 m s⁻¹ (M) | H: 180.5°



IR BT & Lightning

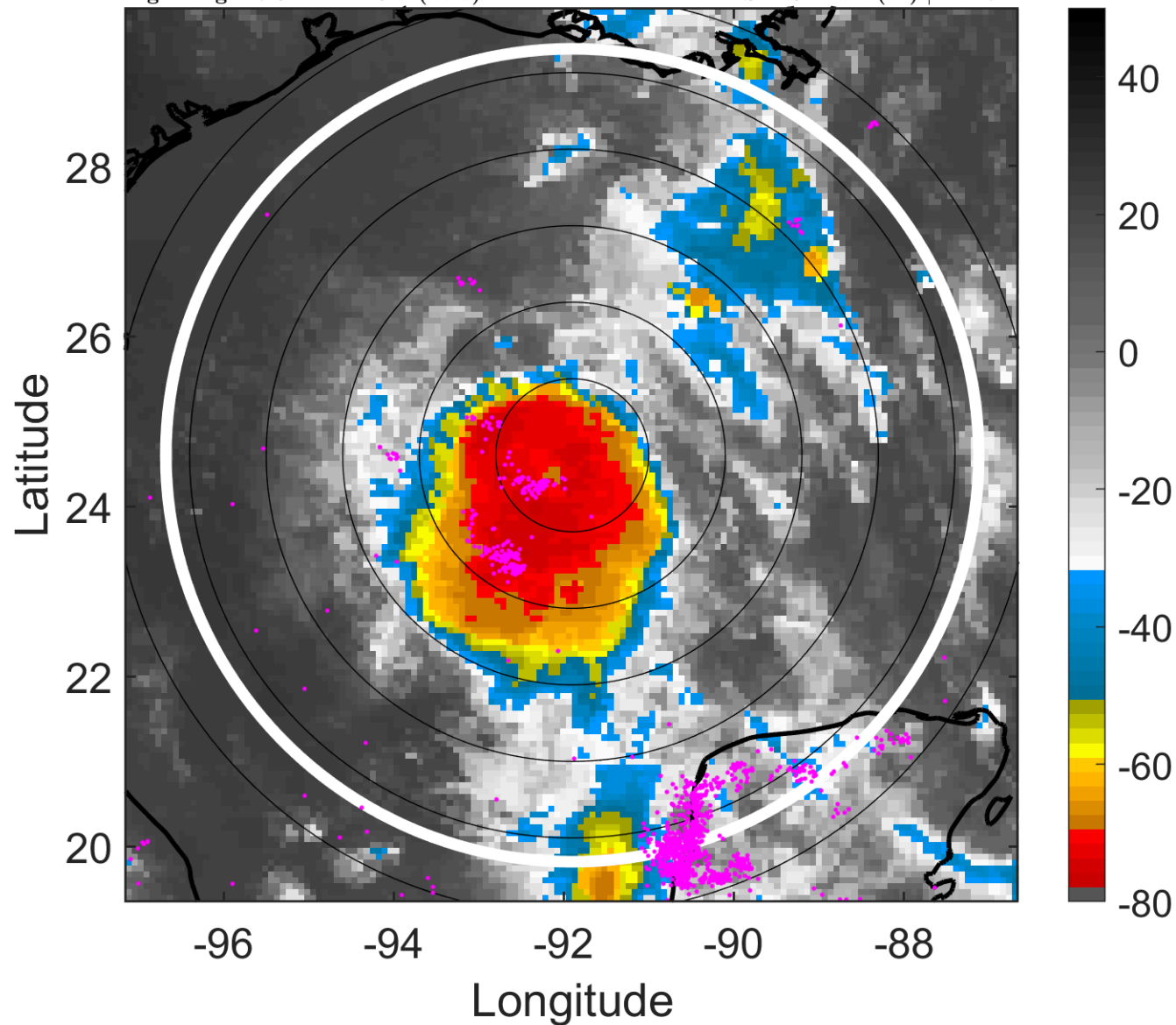
t: 2011072900 (17.9 LT)

Lightning: 17.9 LT \pm 1.5 h (dots)

PT: SLCP | EA: QUASI

04L (DON) | 45 kt TS

S: 4.6 m s⁻¹ (M) | H: 174°



6-h IR BT Differences & Lightning

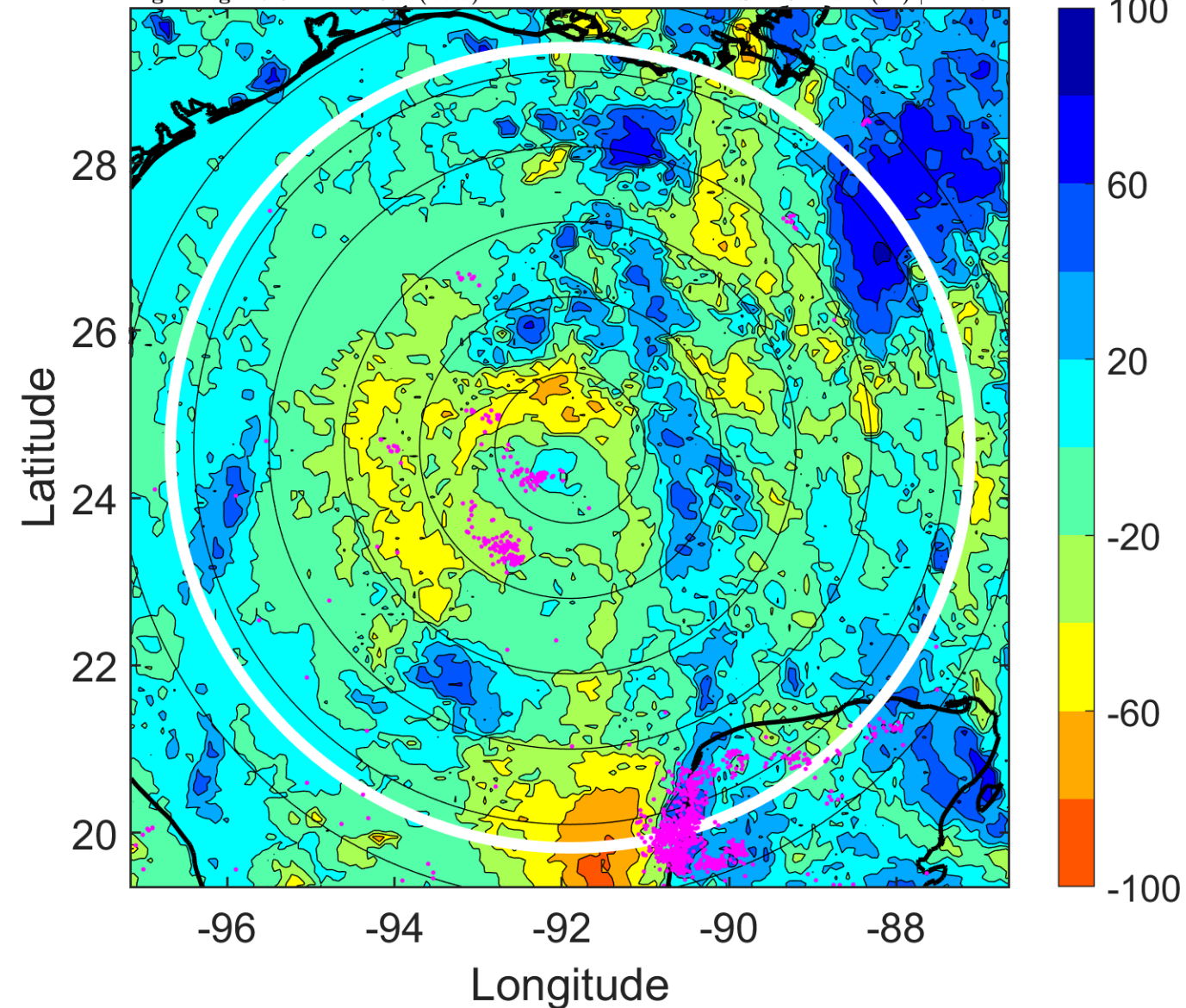
Δ t: 2011072900 (17.9 LT) - 2011072818 (12 LT)

Lightning: 17.9 LT \pm 1.5 h (dots)

PT: SLCP | EA: QUASI

04L (DON) | 45 kt TS

S: 4.6 m s⁻¹ (M) | H: 174°



IR BT & Lightning

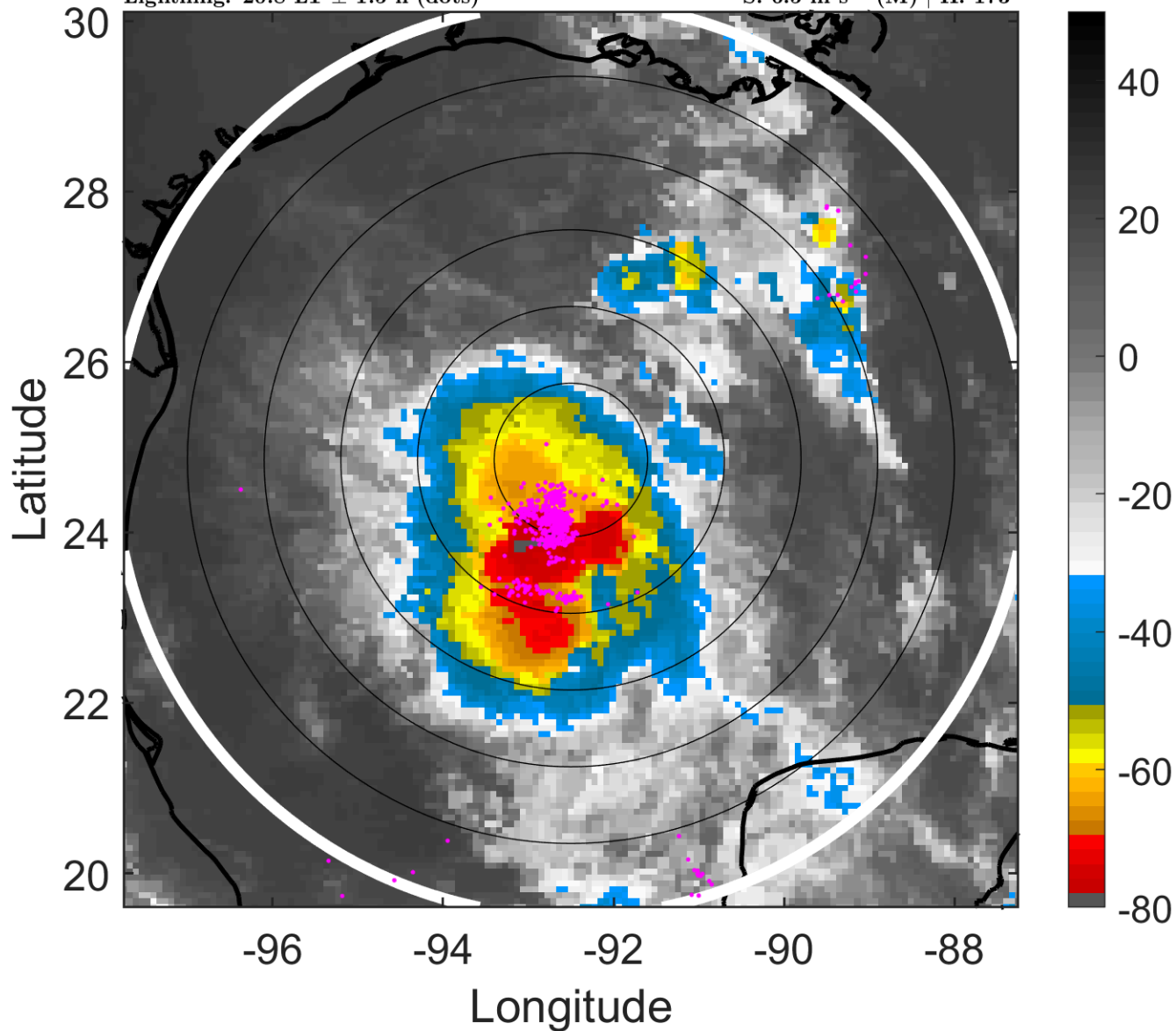
t: 2011072903 (20.8 LT)

Lightning: 20.8 LT \pm 1.5 h (dots)

PT: SLCP | EA: QUASI

04L (DON) | 45 kt TS

S: 6.5 m s⁻¹ (M) | H: 173°



6-h IR BT Differences & Lightning

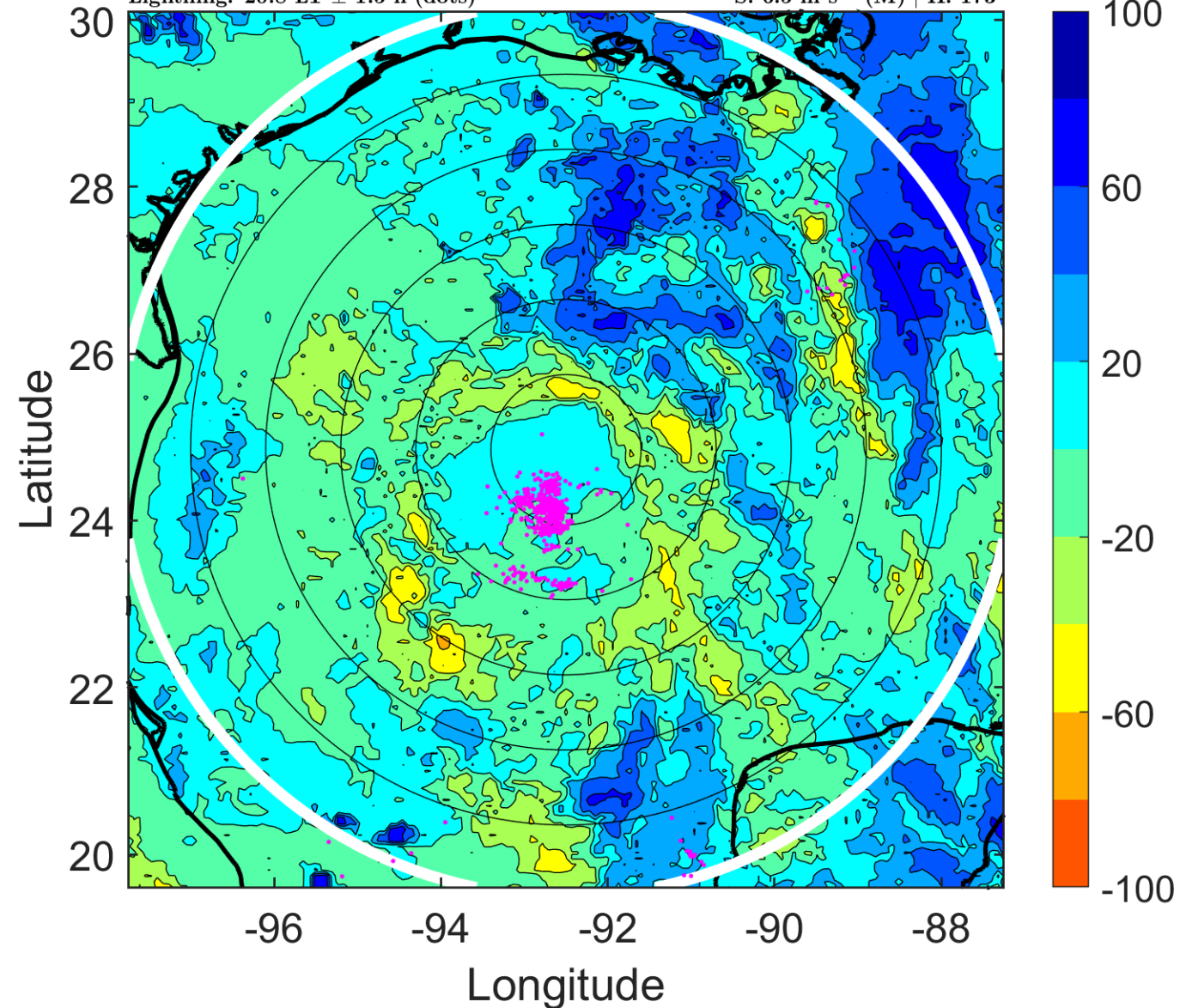
Δ t: 2011072903 (20.8 LT) - 2011072821 (14.9 LT)

Lightning: 20.8 LT \pm 1.5 h (dots)

PT: SLCP | EA: QUASI

04L (DON) | 45 kt TS

S: 6.5 m s⁻¹ (M) | H: 173°



IR BT & Lightning

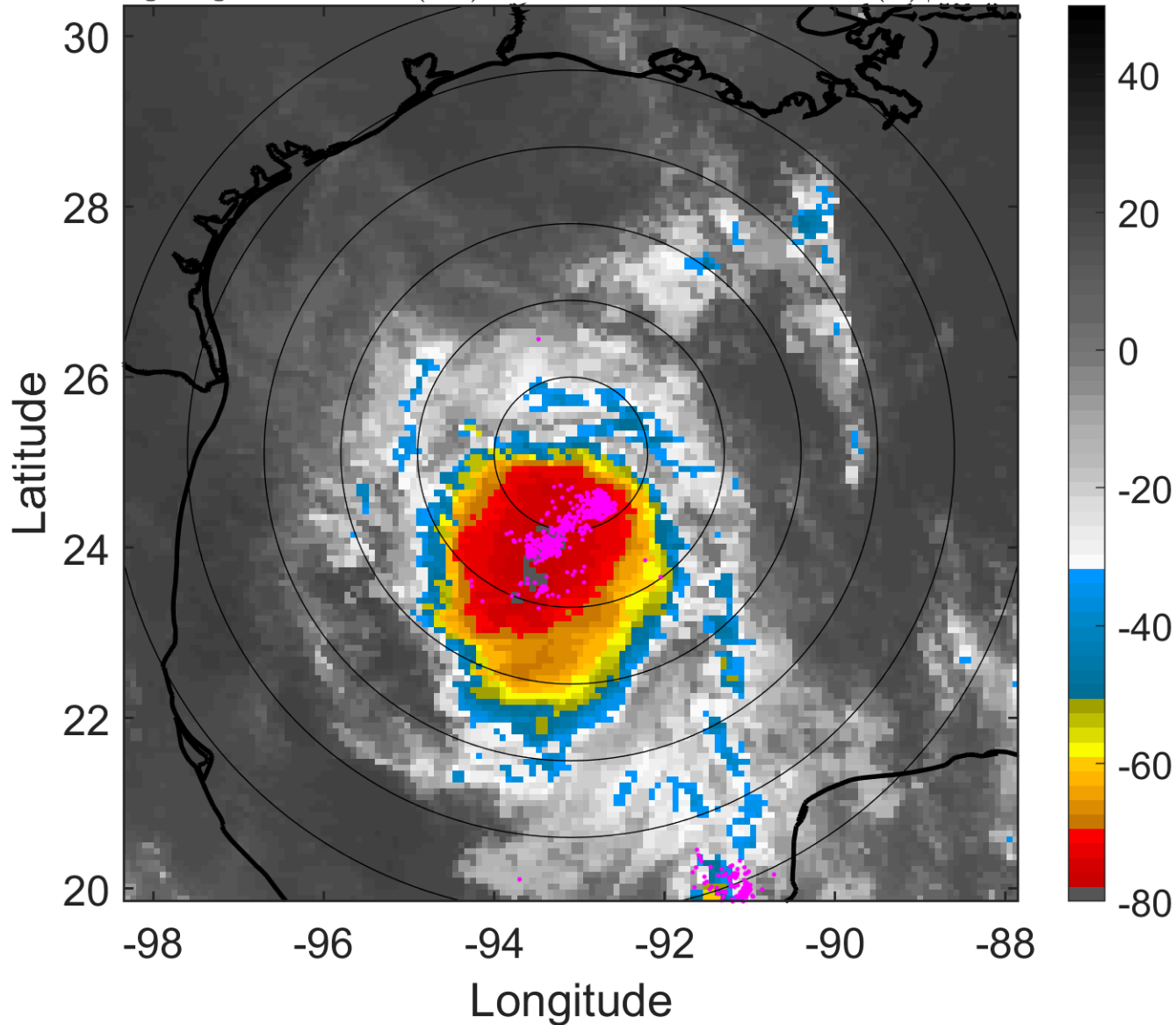
t: 2011072906 (23.8 LT)

Lightning: 23.8 LT \pm 1.5 h (dots)

PT: SLCP | EA: QUASI

04L (DON) | 45 kt TS

S: 8.4 m s⁻¹ (M) | H: 172°



6-h IR BT Differences & Lightning

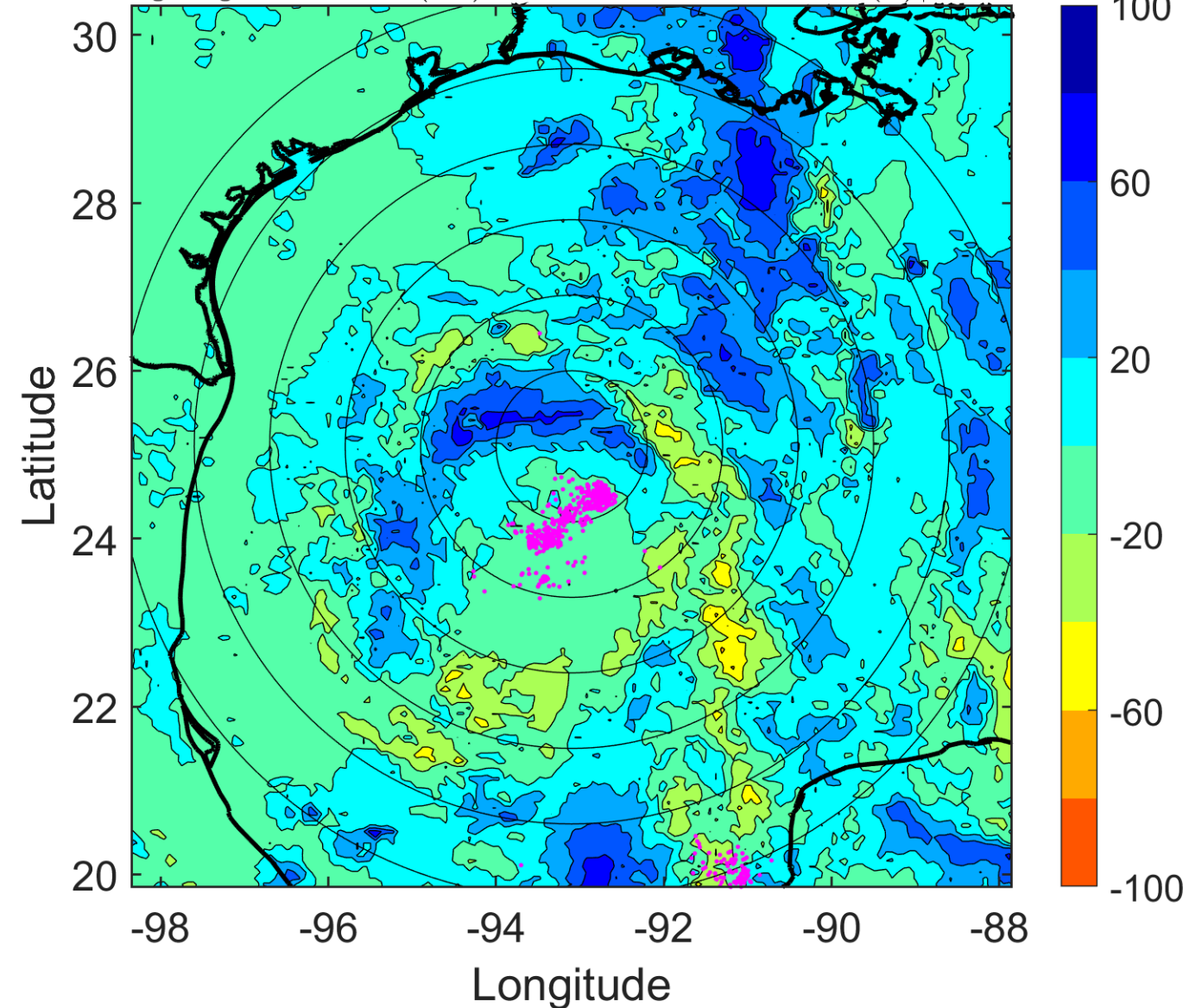
Δ t: 2011072906 (23.8 LT) - 2011072900 (17.9 LT)

Lightning: 23.8 LT \pm 1.5 h (dots)

PT: SLCP | EA: QUASI

04L (DON) | 45 kt TS

S: 8.4 m s⁻¹ (M) | H: 172°



IR BT & Lightning

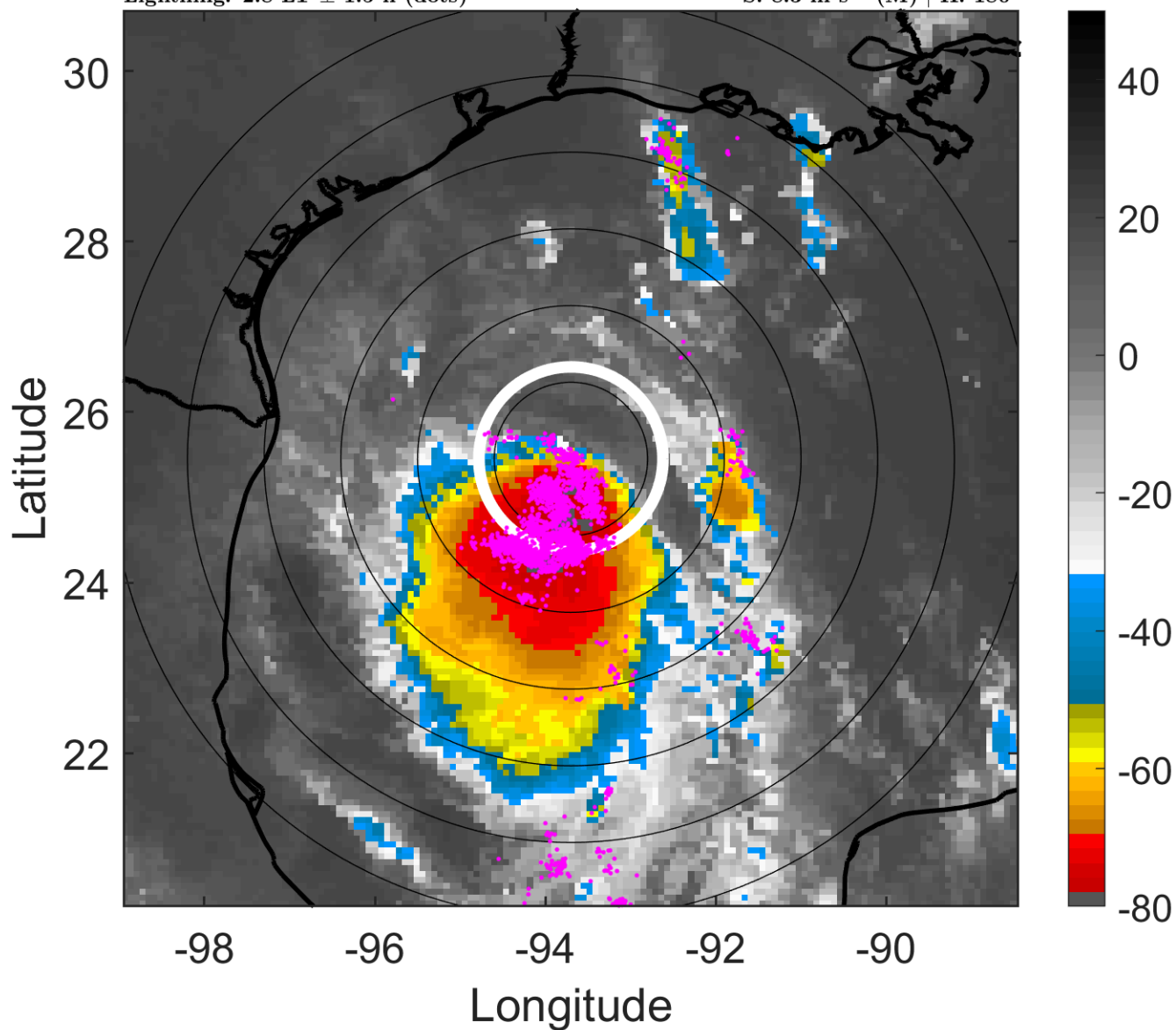
t: 2011072909 (2.8 LT)

Lightning: 2.8 LT \pm 1.5 h (dots)

PT: LLCP | EA: ACT

04L (DON) | 45 kt TS

S: 8.3 m s⁻¹ (M) | H: 180°



6-h IR BT Differences & Lightning

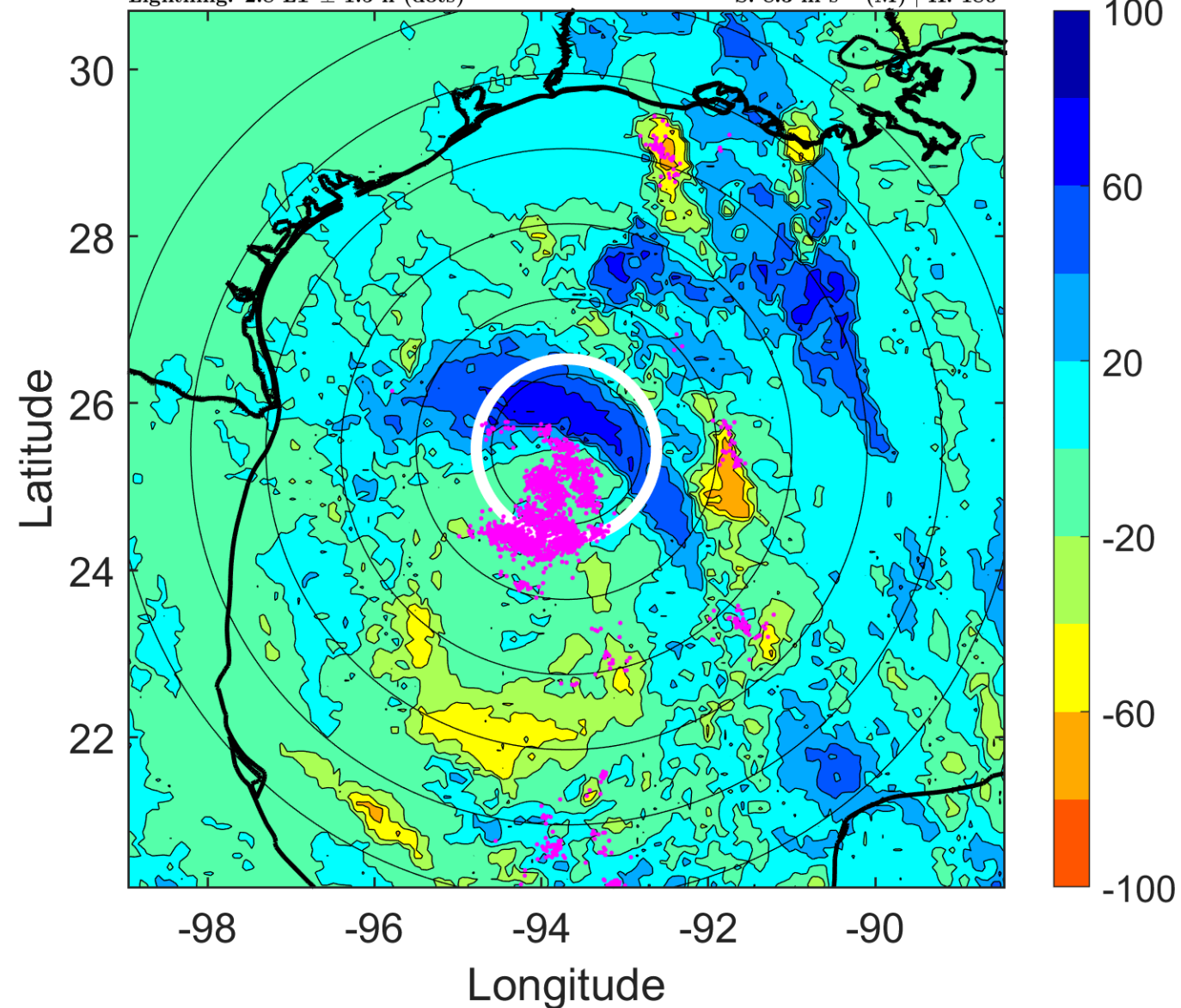
Δ t: 2011072909 (2.8 LT) - 2011072903 (20.8 LT)

Lightning: 2.8 LT \pm 1.5 h (dots)

PT: LLCP | EA: ACT

04L (DON) | 45 kt TS

S: 8.3 m s⁻¹ (M) | H: 180°



IR BT & Lightning

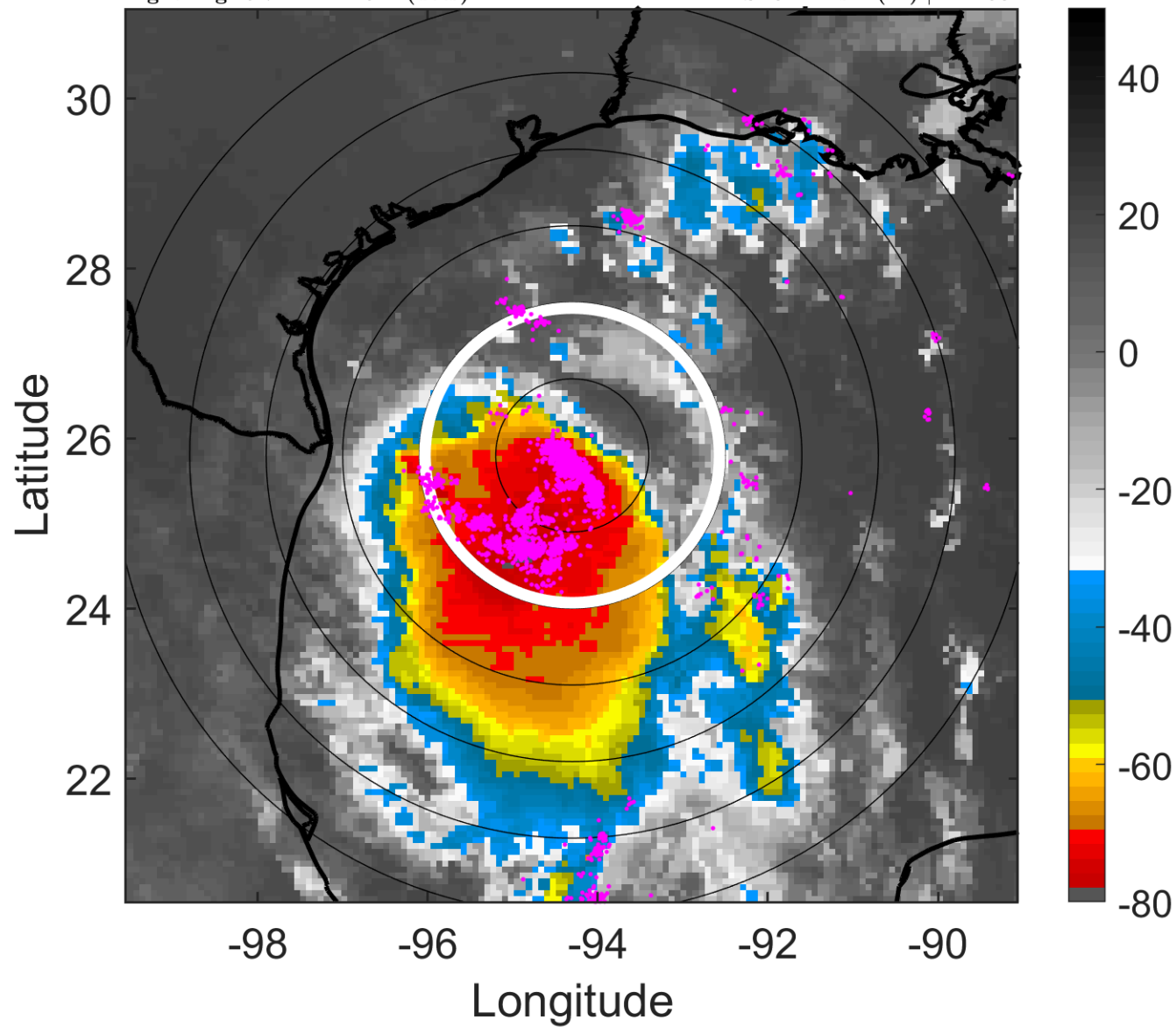
t: 2011072912 (5.7 LT)

Lightning: 5.7 LT \pm 1.5 h (dots)

PT: LLCP | EA: ACT

04L (DON) | 45 kt TS

S: 8.2 m s⁻¹ (M) | H: 188°



6-h IR BT Differences & Lightning

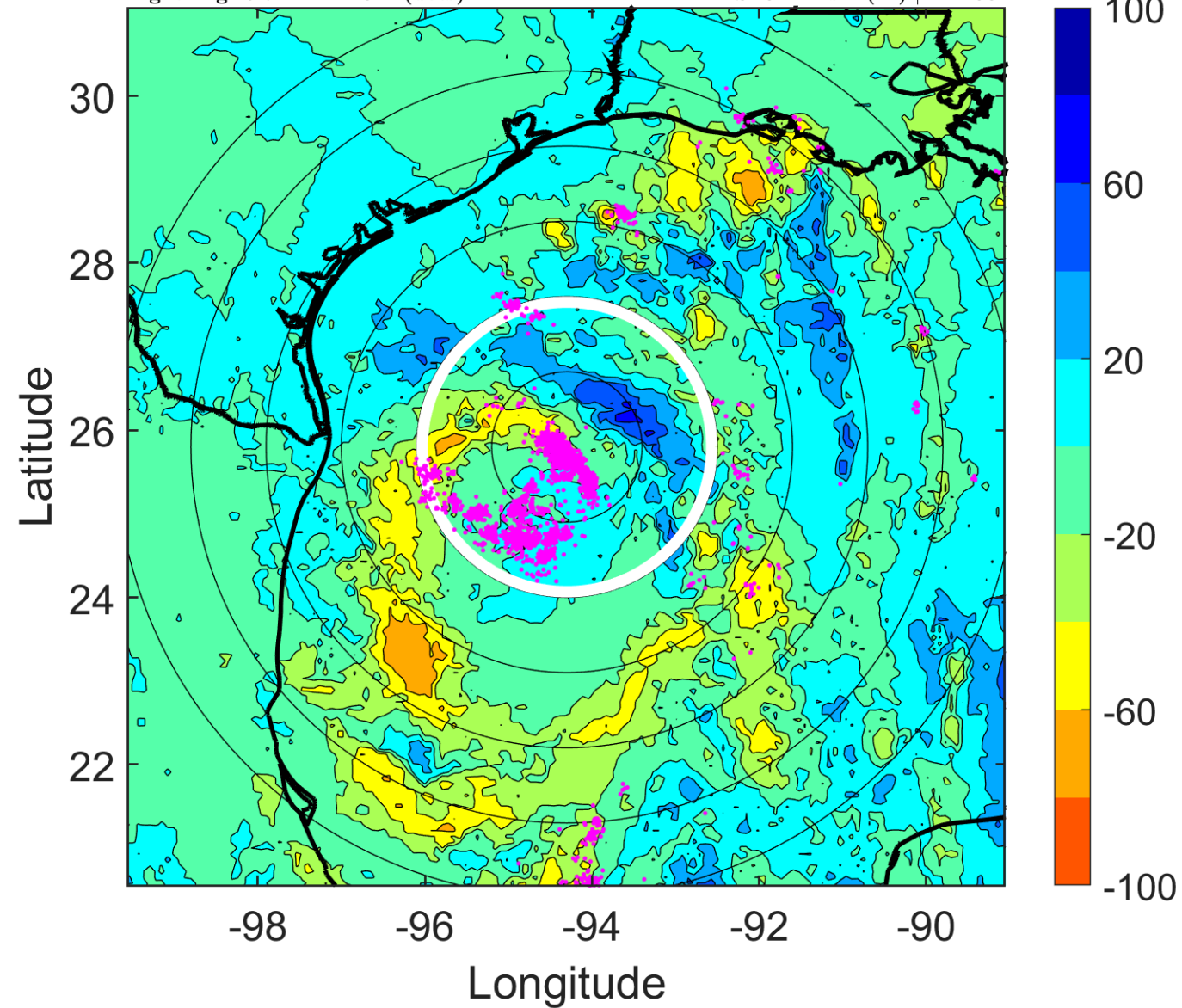
Δ t: 2011072912 (5.7 LT) - 2011072906 (23.8 LT)

Lightning: 5.7 LT \pm 1.5 h (dots)

PT: LLCP | EA: ACT

04L (DON) | 45 kt TS

S: 8.2 m s⁻¹ (M) | H: 188°



IR BT & Lightning

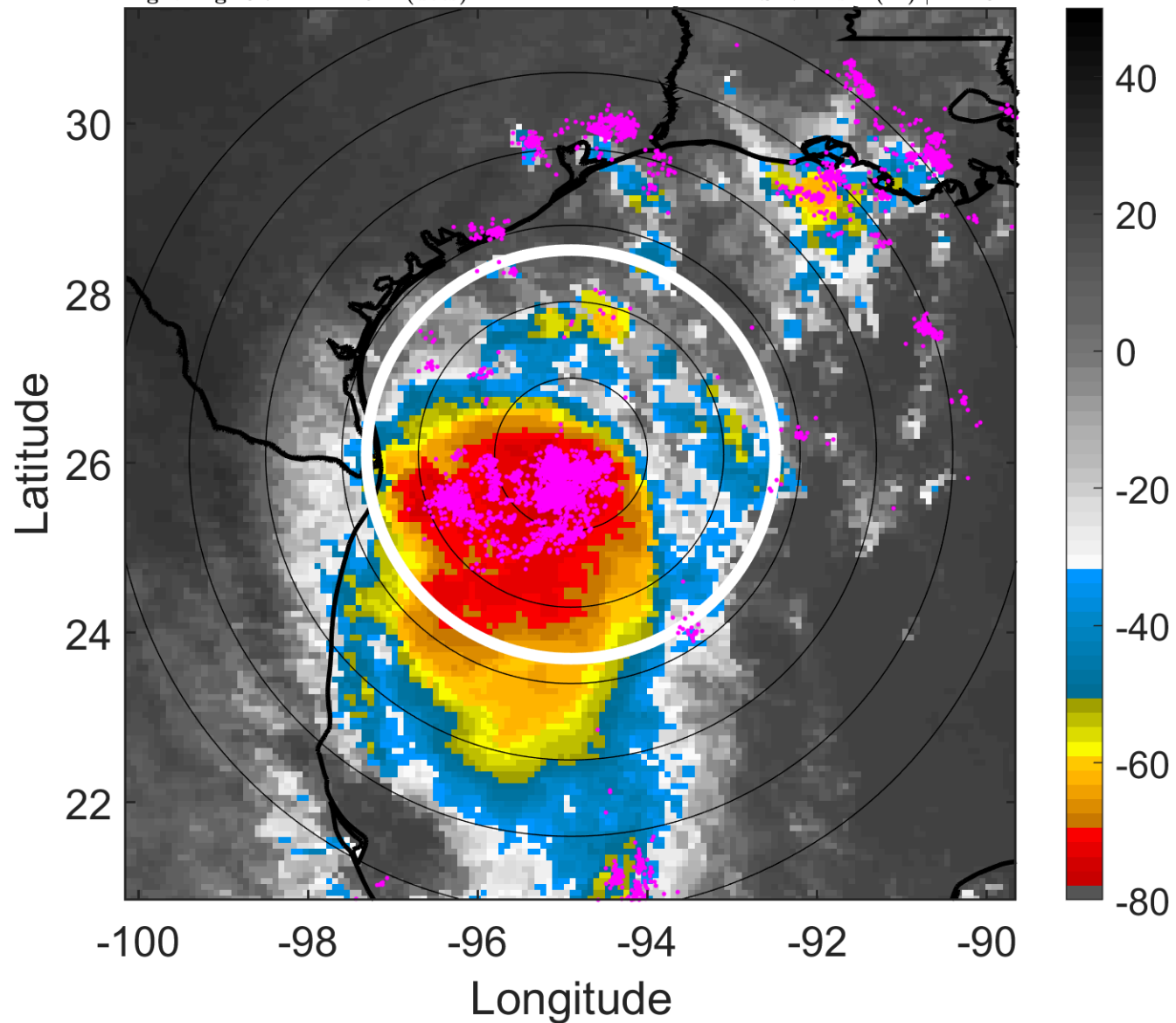
t: 2011072915 (8.7 LT)

Lightning: 8.7 LT \pm 1.5 h (dots)

PT: LLCP | EA: ACT

04L (DON) | 45 kt TS

S: 7 m s⁻¹ (M) | H: 201°



6-h IR BT Differences & Lightning

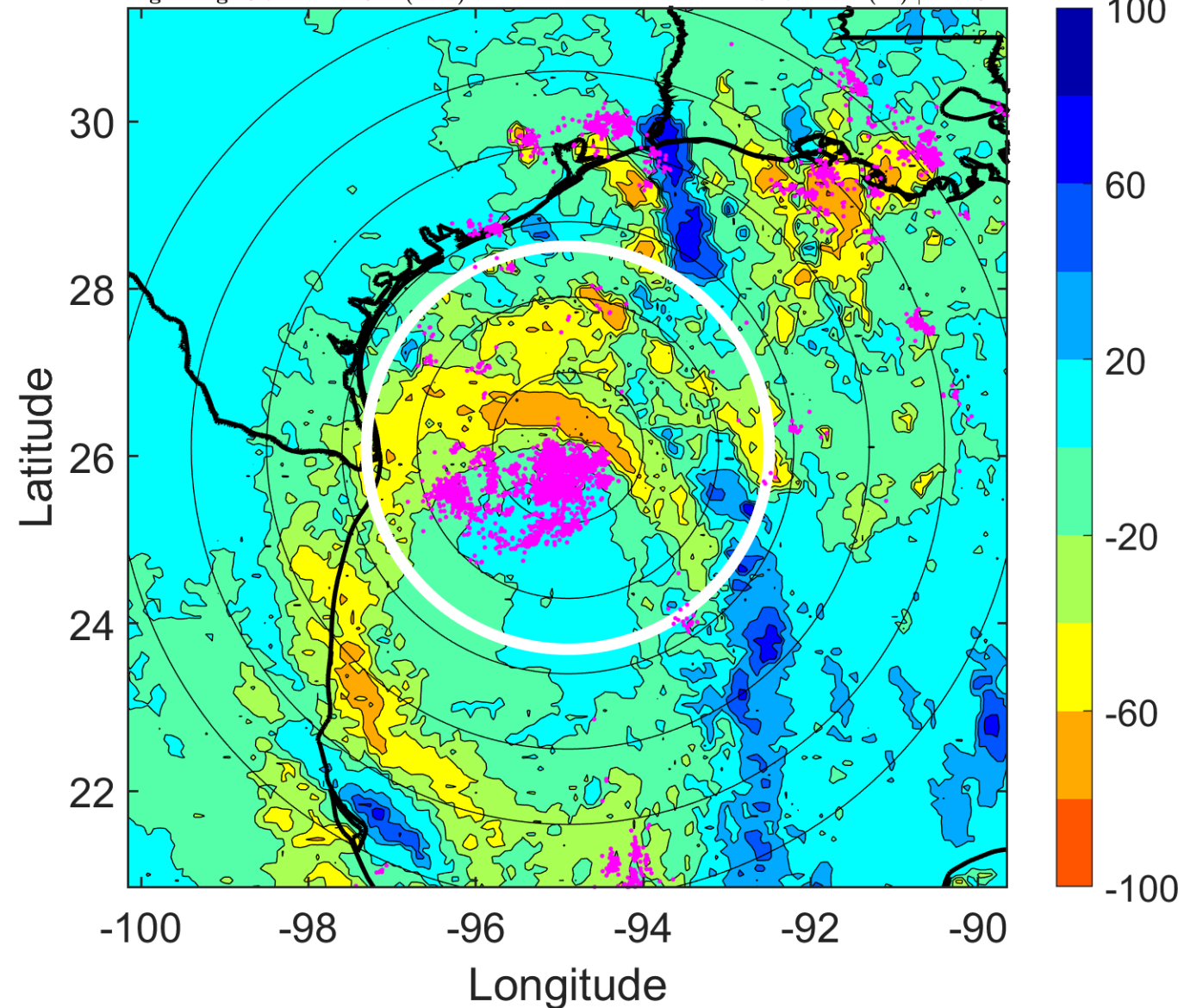
Δ t: 2011072915 (8.7 LT) - 2011072909 (2.8 LT)

Lightning: 8.7 LT \pm 1.5 h (dots)

PT: LLCP | EA: ACT

04L (DON) | 45 kt TS

S: 7 m s⁻¹ (M) | H: 201°



IR BT & Lightning

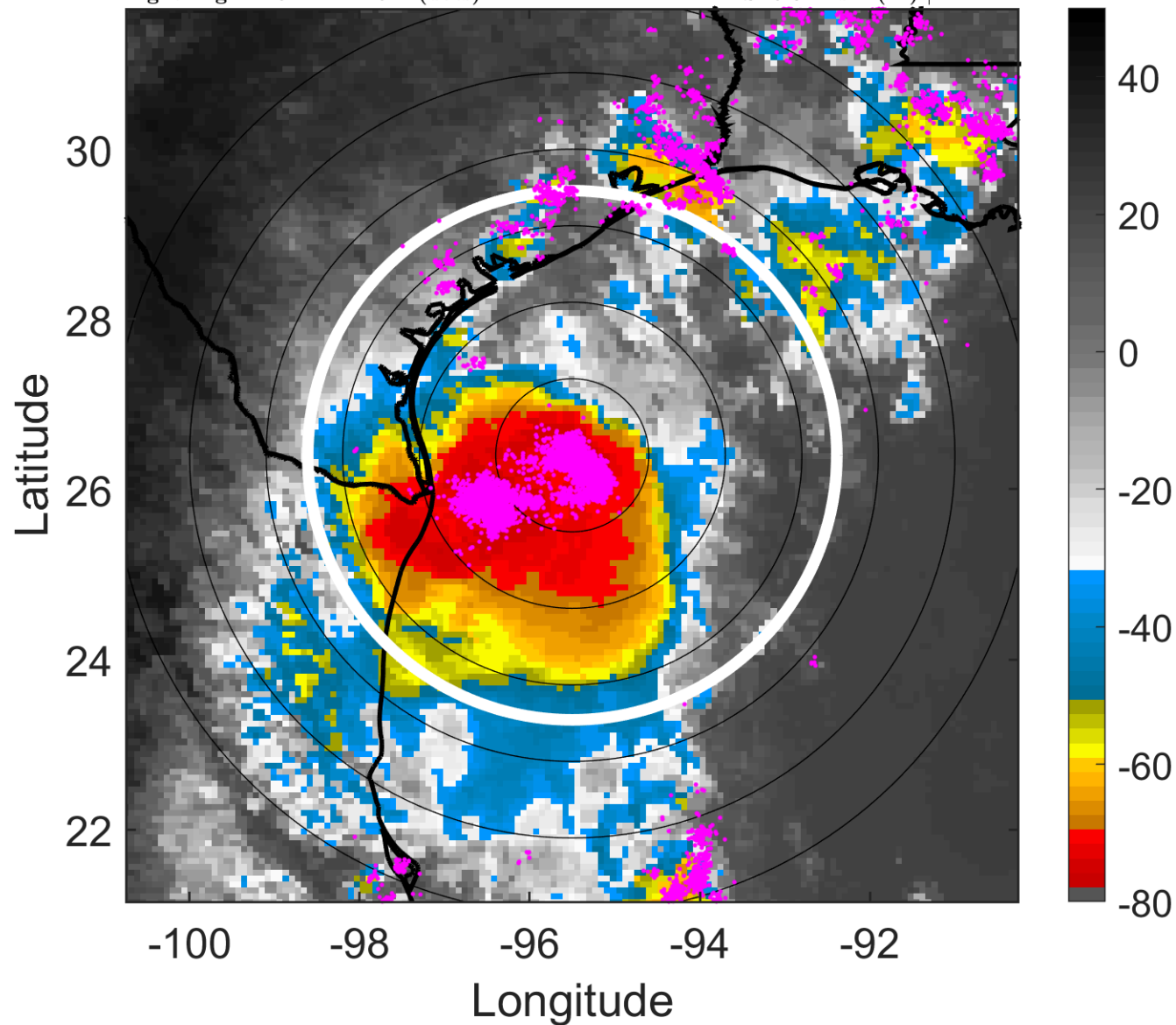
t: 2011072918 (11.6 LT)

Lightning: 11.6 LT \pm 1.5 h (dots)

PT: LLCP | EA: ACT

04L (DON) | 45 kt TS

S: 5.8 m s⁻¹ (M) | H: 214°



6-h IR BT Differences & Lightning

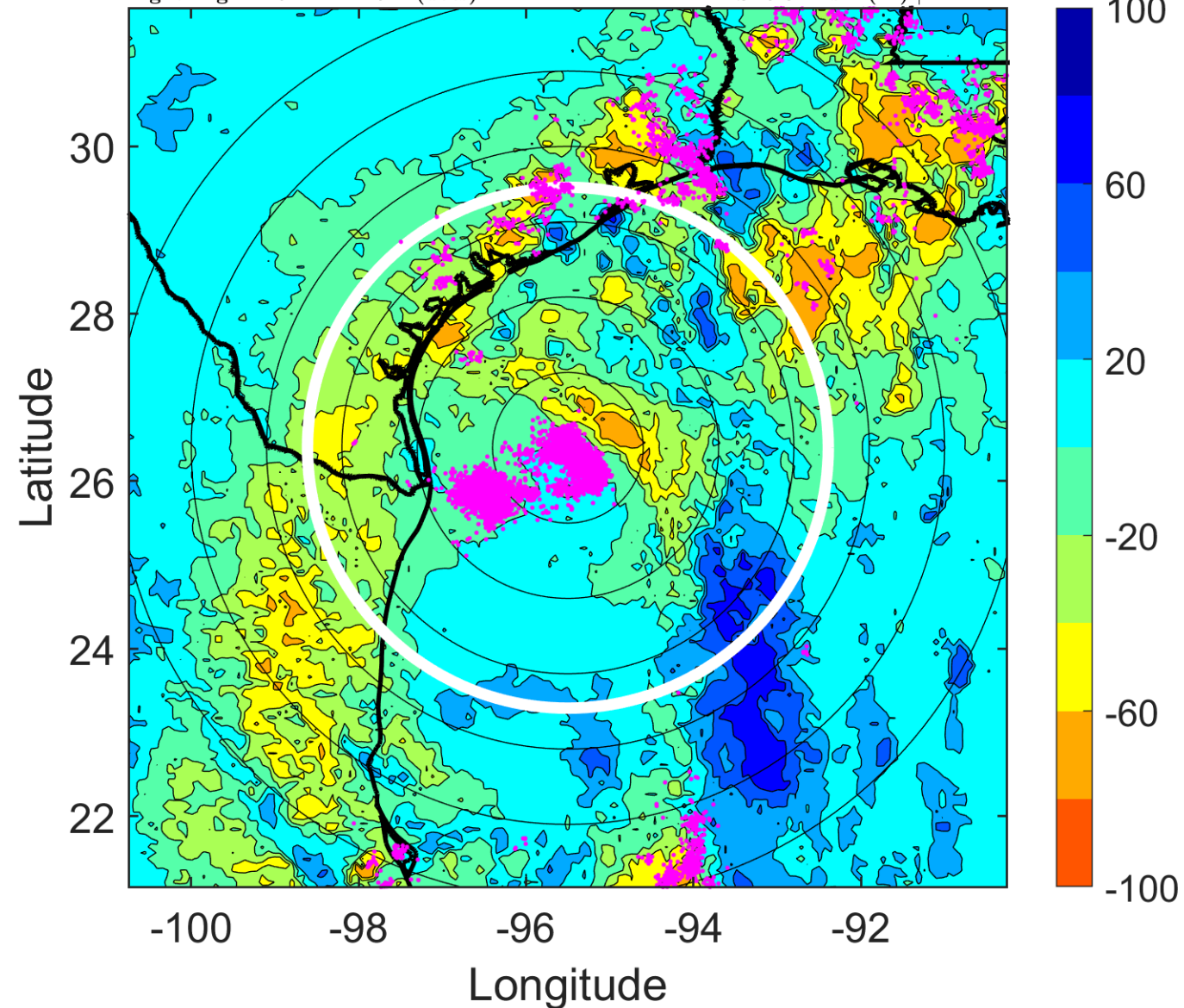
Δ t: 2011072918 (11.6 LT) - 2011072912 (5.7 LT)

Lightning: 11.6 LT \pm 1.5 h (dots)

PT: LLCP | EA: ACT

04L (DON) | 45 kt TS

S: 5.8 m s⁻¹ (M) | H: 214°



IR BT & Lightning

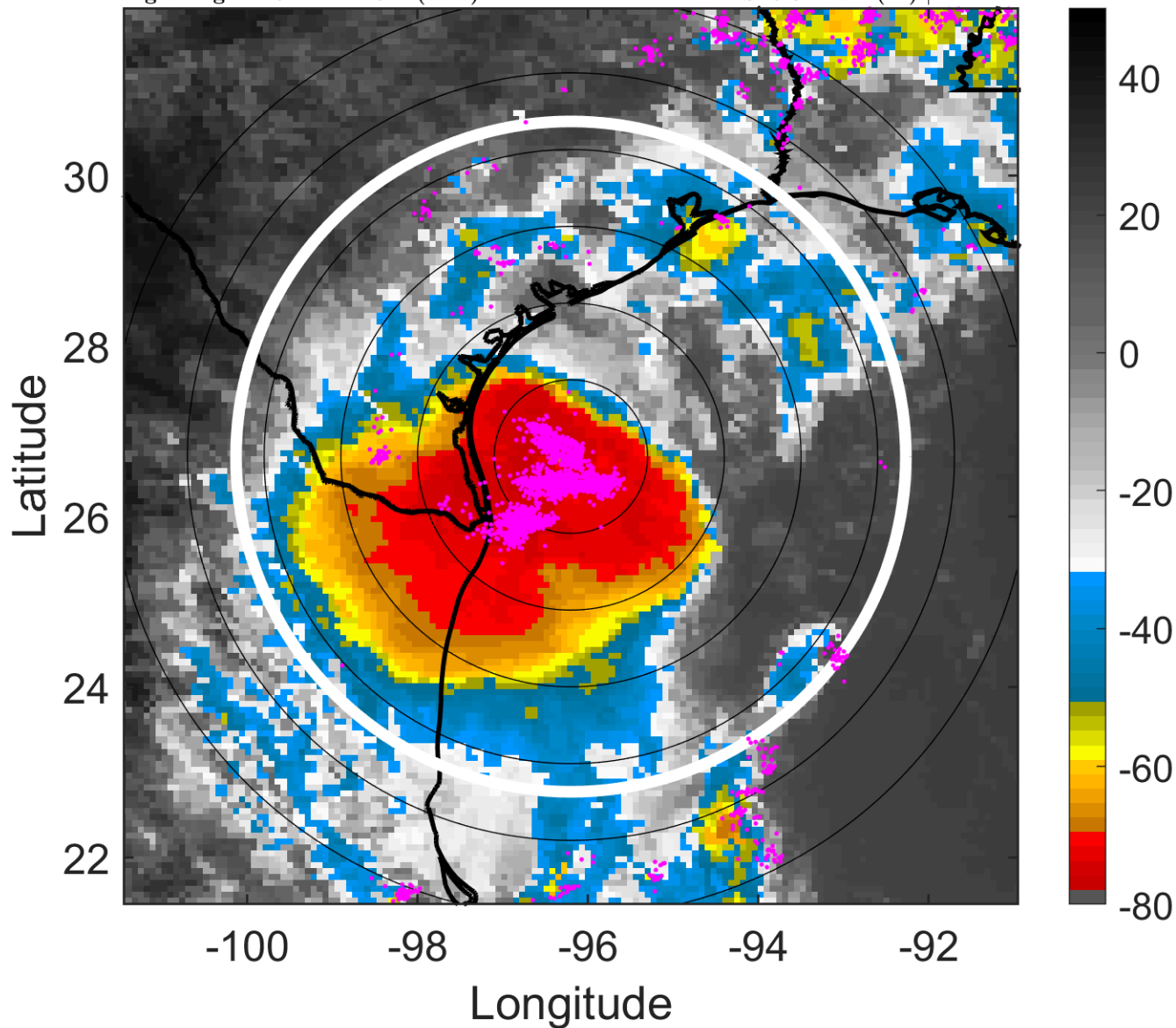
t: 2011072921 (14.6 LT)

Lightning: 14.6 LT \pm 1.5 h (dots)

PT: LLCP | EA: ACT

04L (DON) | 40 kt TS

S: 5.8 m s⁻¹ (M) | H: 214°



6-h IR BT Differences & Lightning

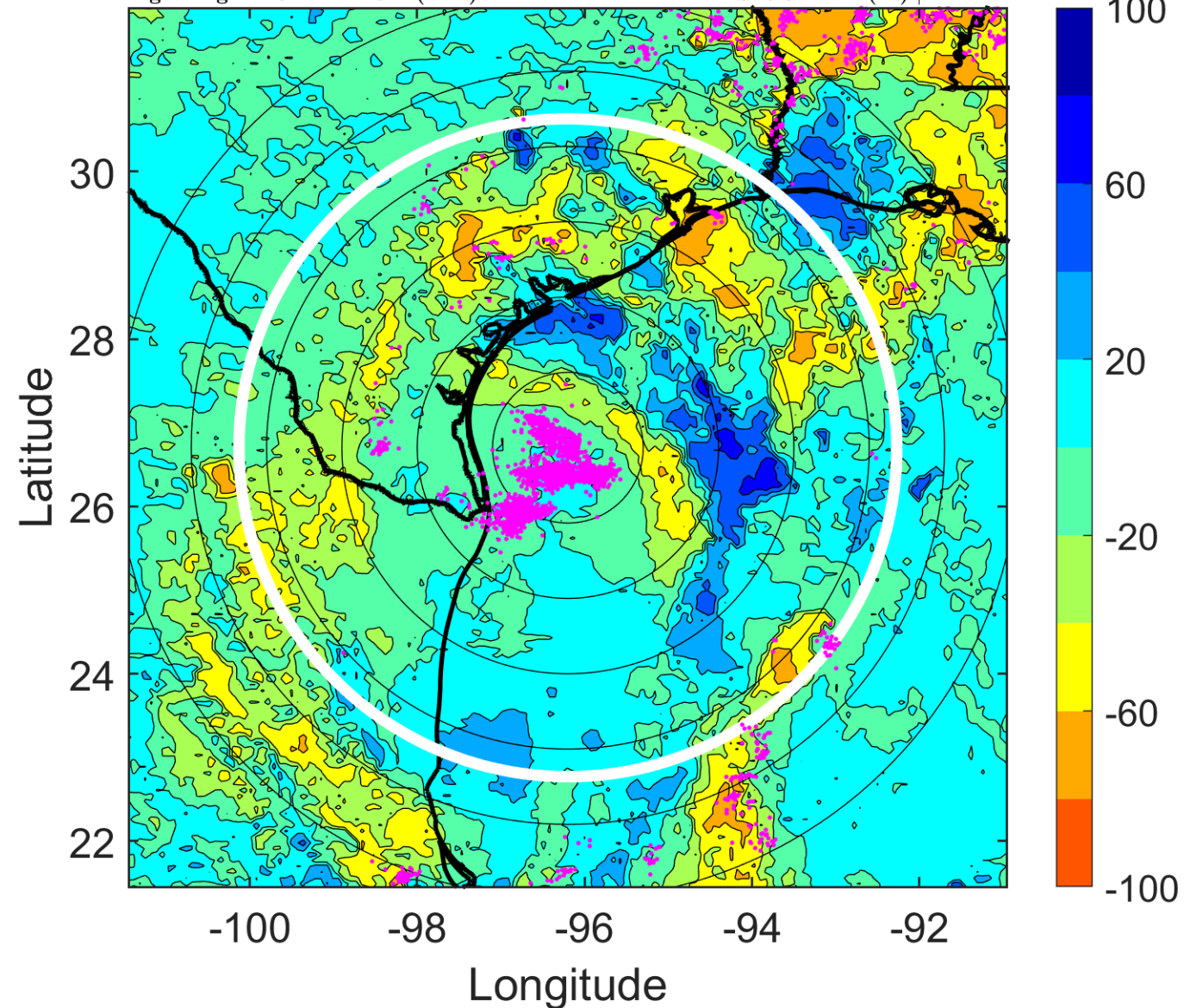
Δ t: 2011072921 (14.6 LT) - 2011072915 (8.7 LT)

Lightning: 14.6 LT \pm 1.5 h (dots)

PT: LLCP | EA: ACT

04L (DON) | 40 kt TS

S: 5.8 m s⁻¹ (M) | H: 214°



IR BT & Lightning

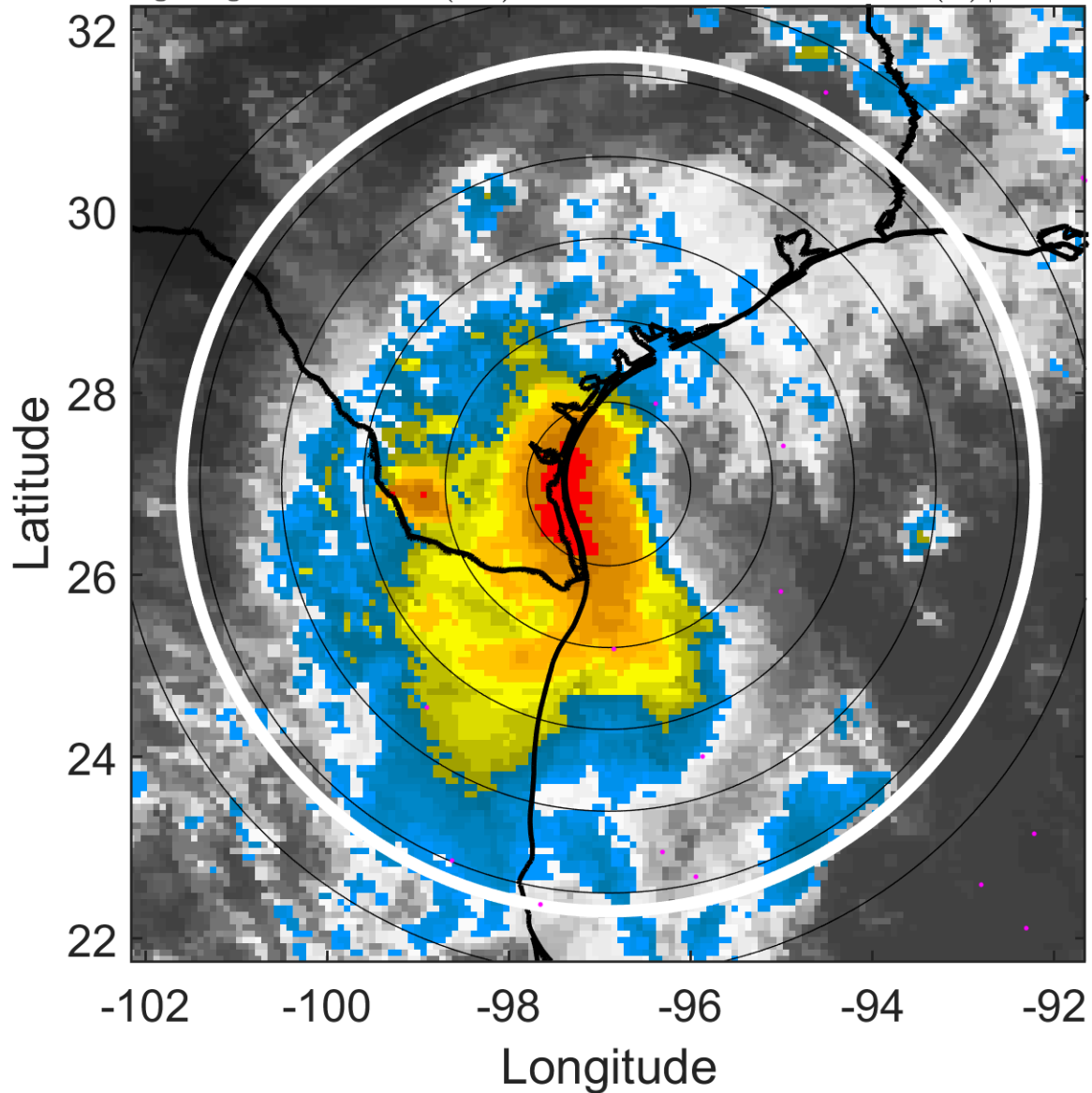
t: 2011073000 (17.5 LT)

Lightning: 17.5 LT \pm 1.5 h (dots)

PT: LLCP | EA: ACT

04L (DON) | 35 kt TS

S: 5.9 m s⁻¹ (M) | H: 214°



6-h IR BT Differences & Lightning

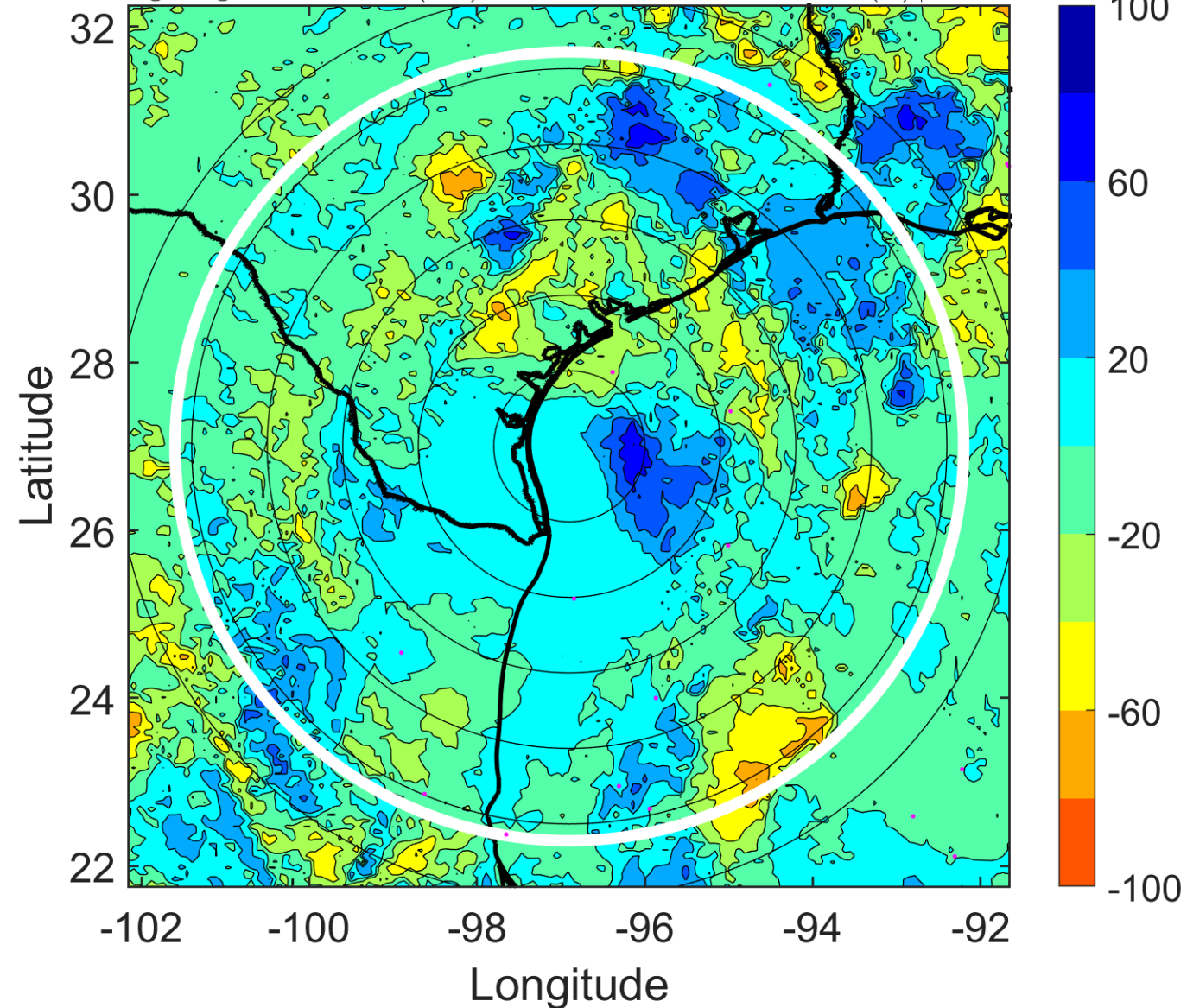
Δ t: 2011073000 (17.5 LT) - 2011072918 (11.6 LT)

Lightning: 17.5 LT \pm 1.5 h (dots)

PT: LLCP | EA: ACT

04L (DON) | 35 kt TS

S: 5.9 m s⁻¹ (M) | H: 214°



IR BT & Lightning

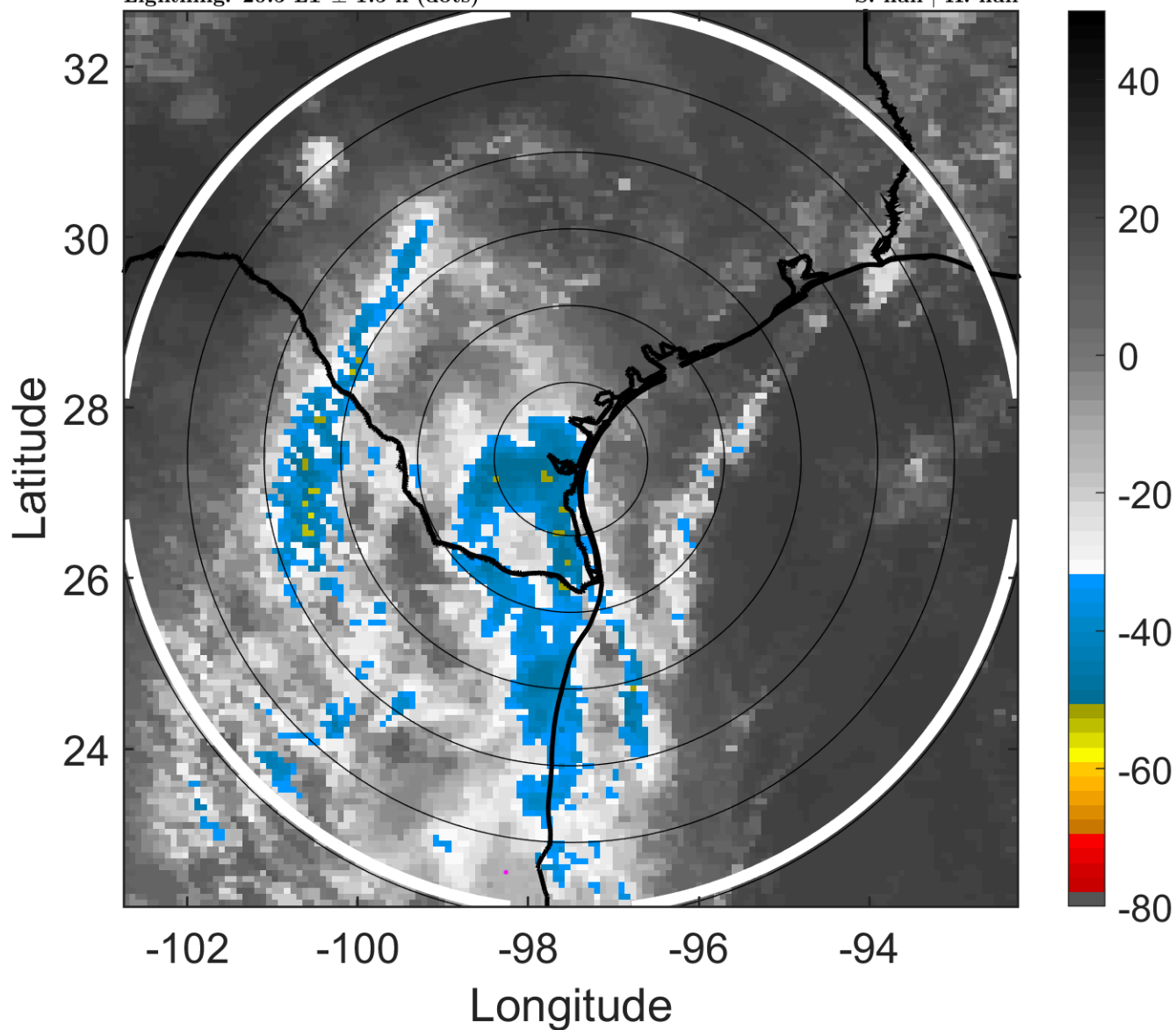
t: 2011073003 (20.5 LT)

Lightning: 20.5 LT \pm 1.5 h (dots)

PT: LLCP | EA: ACT

04L (DON) | 30 kt TD

S: null | H: null



6-h IR BT Differences & Lightning

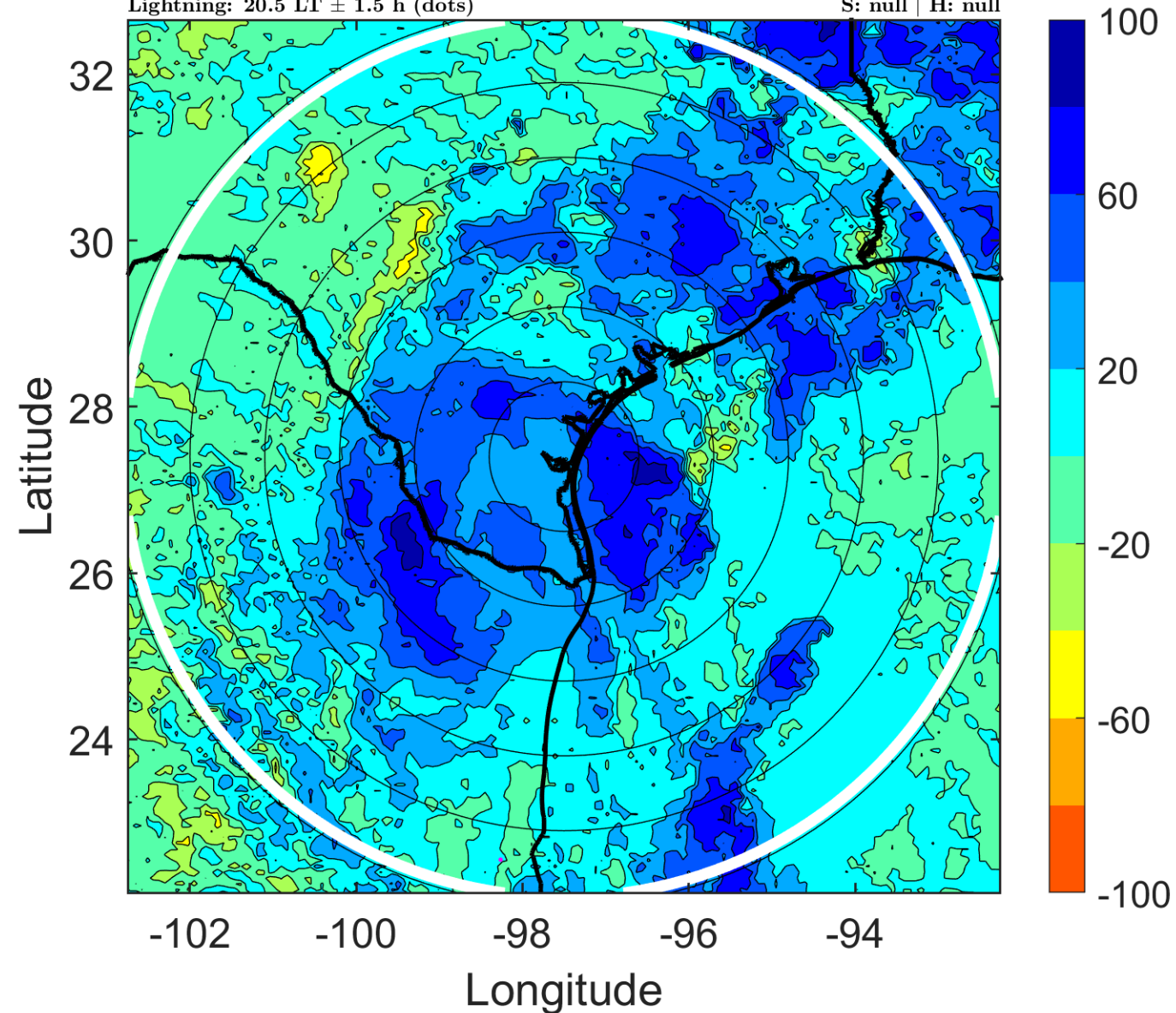
Δ t: 2011073003 (20.5 LT) - 2011072921 (14.6 LT)

Lightning: 20.5 LT \pm 1.5 h (dots)

PT: LLCP | EA: ACT

04L (DON) | 30 kt TD

S: null | H: null



IR BT & Lightning

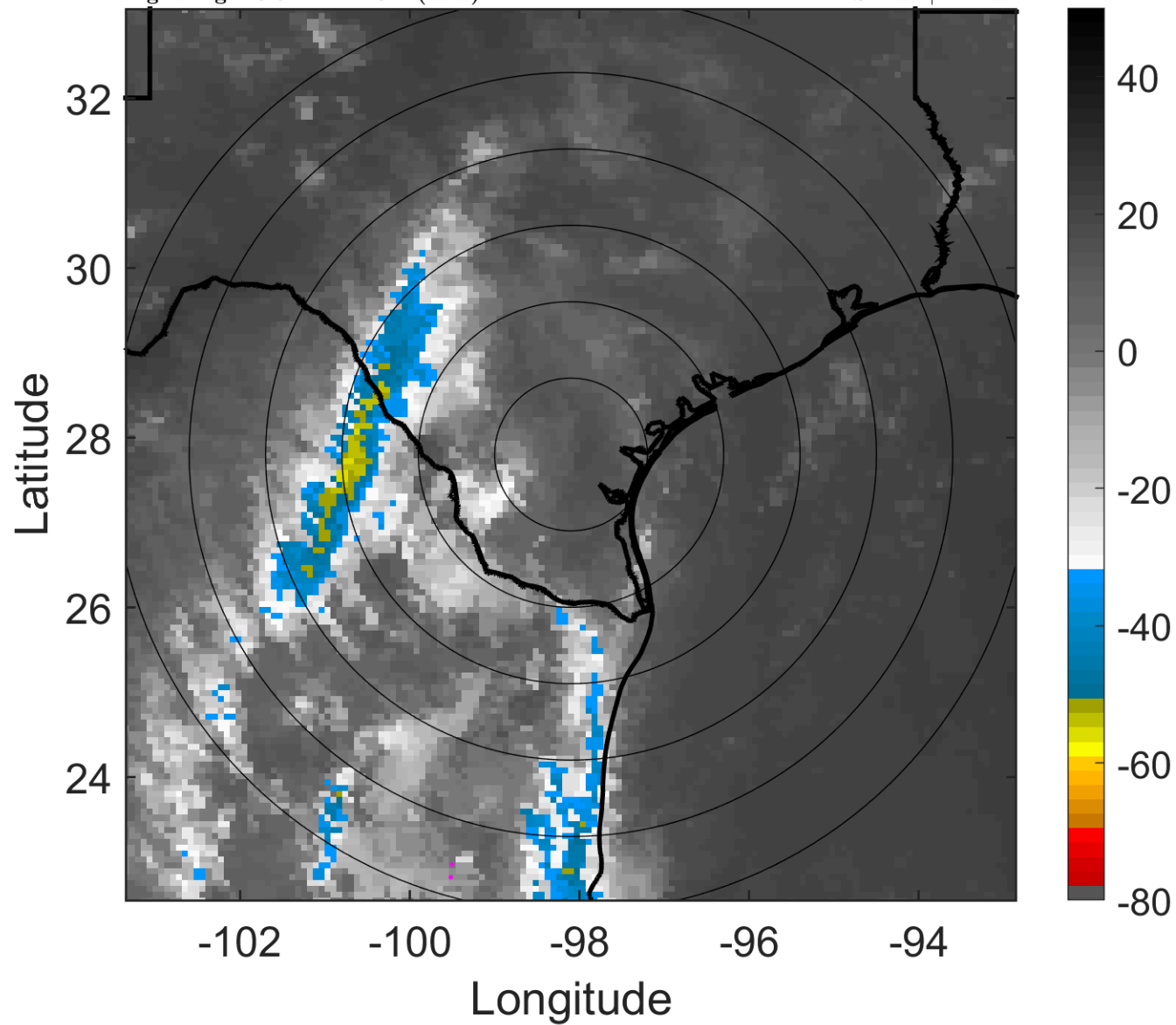
t: 2011073006 (23.5 LT)

Lightning: 23.5 LT \pm 1.5 h (dots)

PT: LLCP | EA: ACT

04L (DON) | 25 kt LO

S: null | H: null



6-h IR BT Differences & Lightning

Δ t: 2011073006 (23.5 LT) - 2011073000 (17.5 LT)

Lightning: 23.5 LT \pm 1.5 h (dots)

PT: LLCP | EA: ACT

04L (DON) | 25 kt LO

S: null | H: null

