

IR BT & Lightning

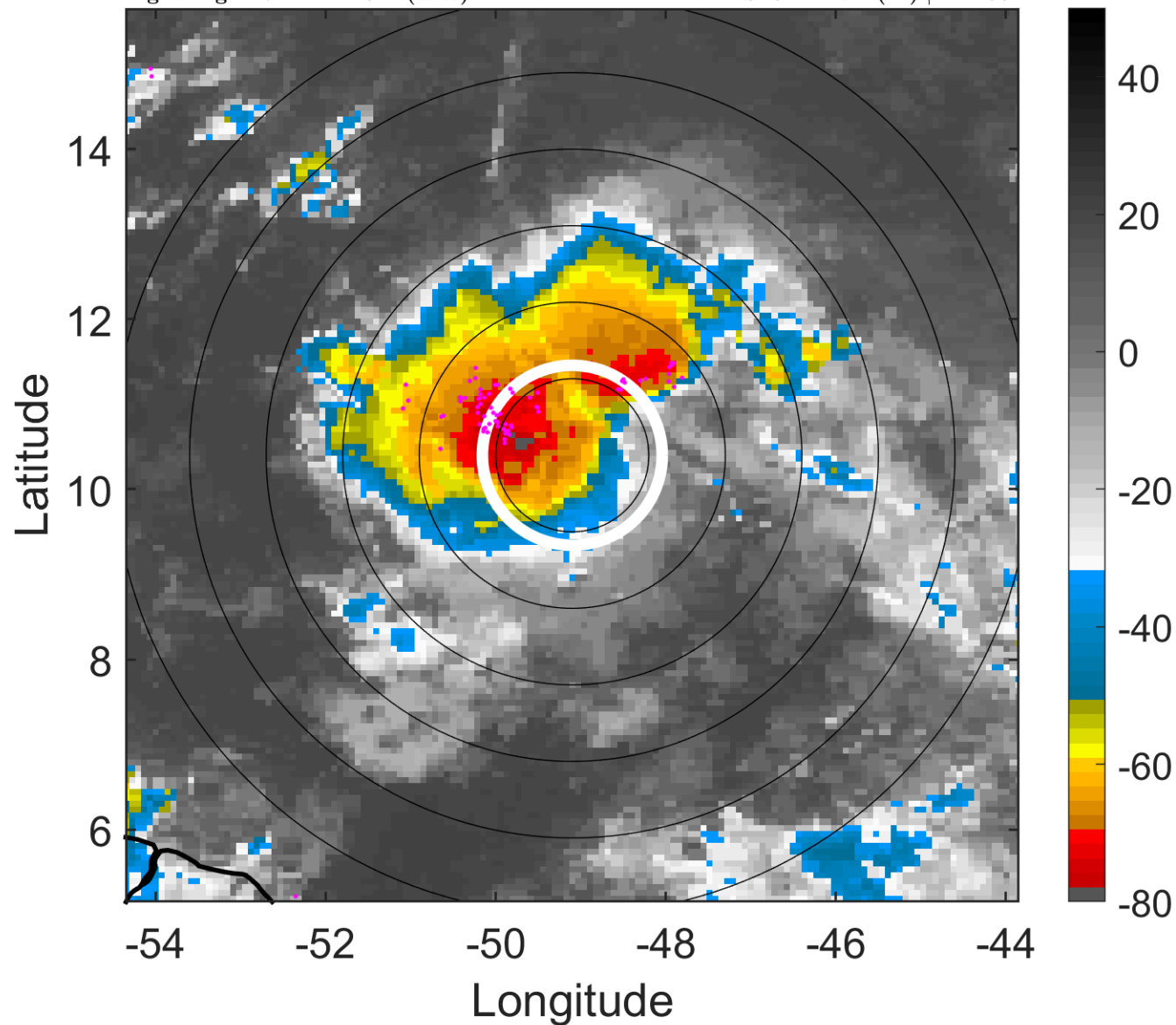
t: 2017071706 (2.7 LT)

Lightning: 2.7 LT \pm 1.5 h (dots)

PT: SLCP | EA: INACT

05L (DON) | 30 kt TD

S: 5.2 m s⁻¹ (M) | H: 280°



6-h IR BT Differences & Lightning

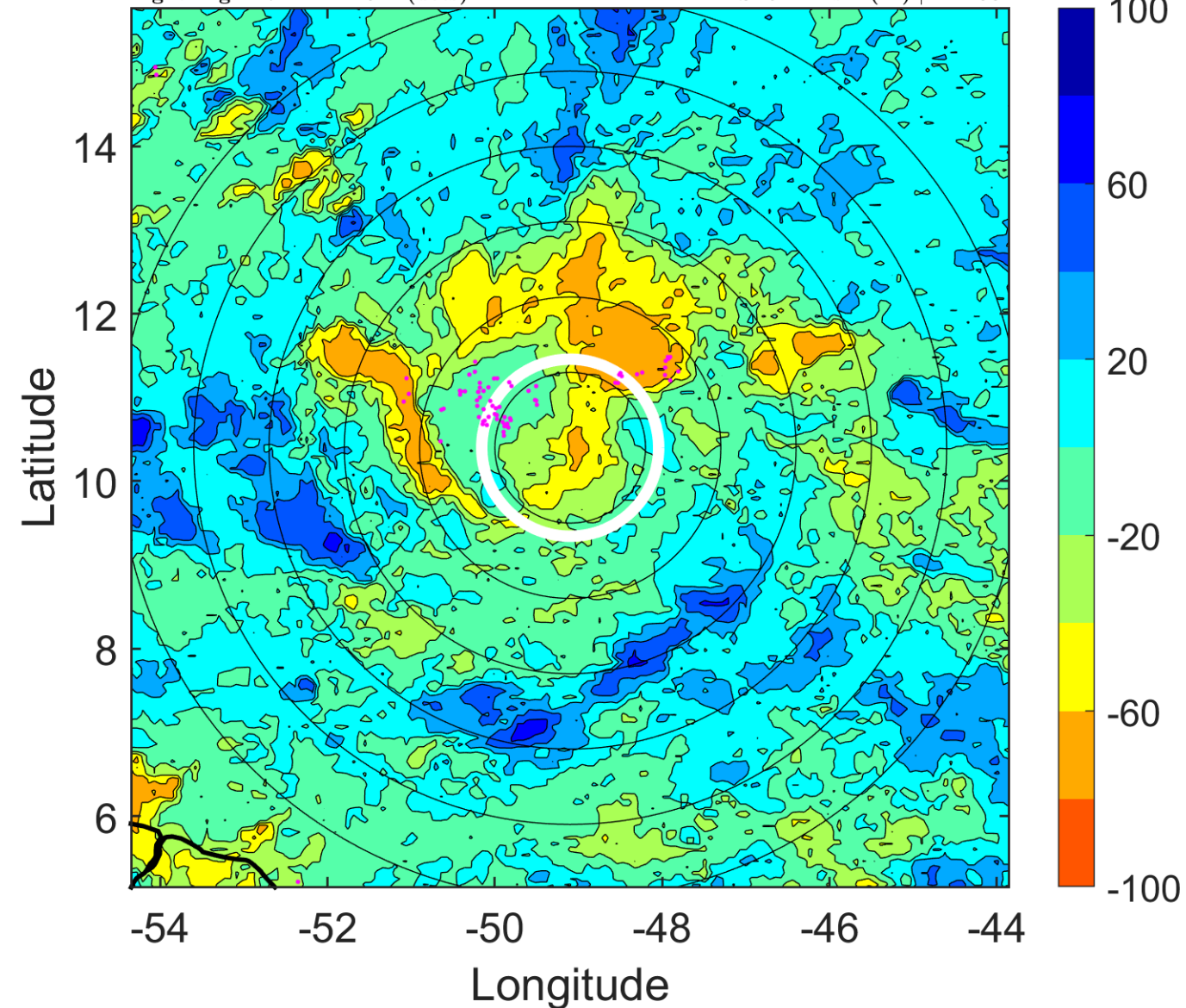
Δ t: 2017071706 (2.7 LT) - 2017071700 (20.8 LT)

Lightning: 2.7 LT \pm 1.5 h (dots)

PT: SLCP | EA: INACT

05L (DON) | 30 kt TD

S: 5.2 m s⁻¹ (M) | H: 280°



IR BT & Lightning

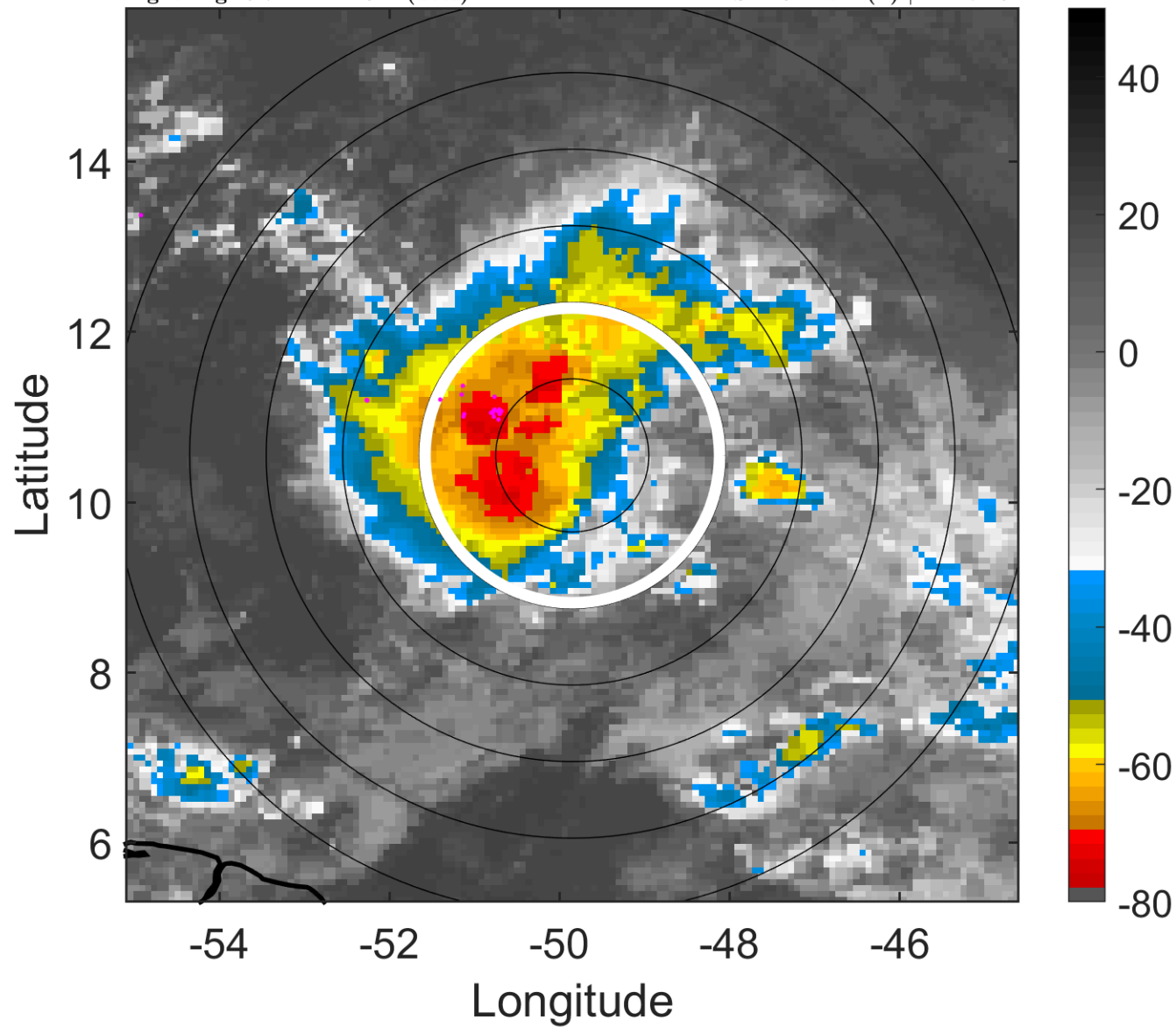
t: 2017071709 (5.7 LT)

Lightning: 5.7 LT \pm 1.5 h (dots)

PT: SLCP | EA: INACT

05L (DON) | 32.5 kt TD

S: 4.3 m s⁻¹ (L) | H: 272.5°



6-h IR BT Differences & Lightning

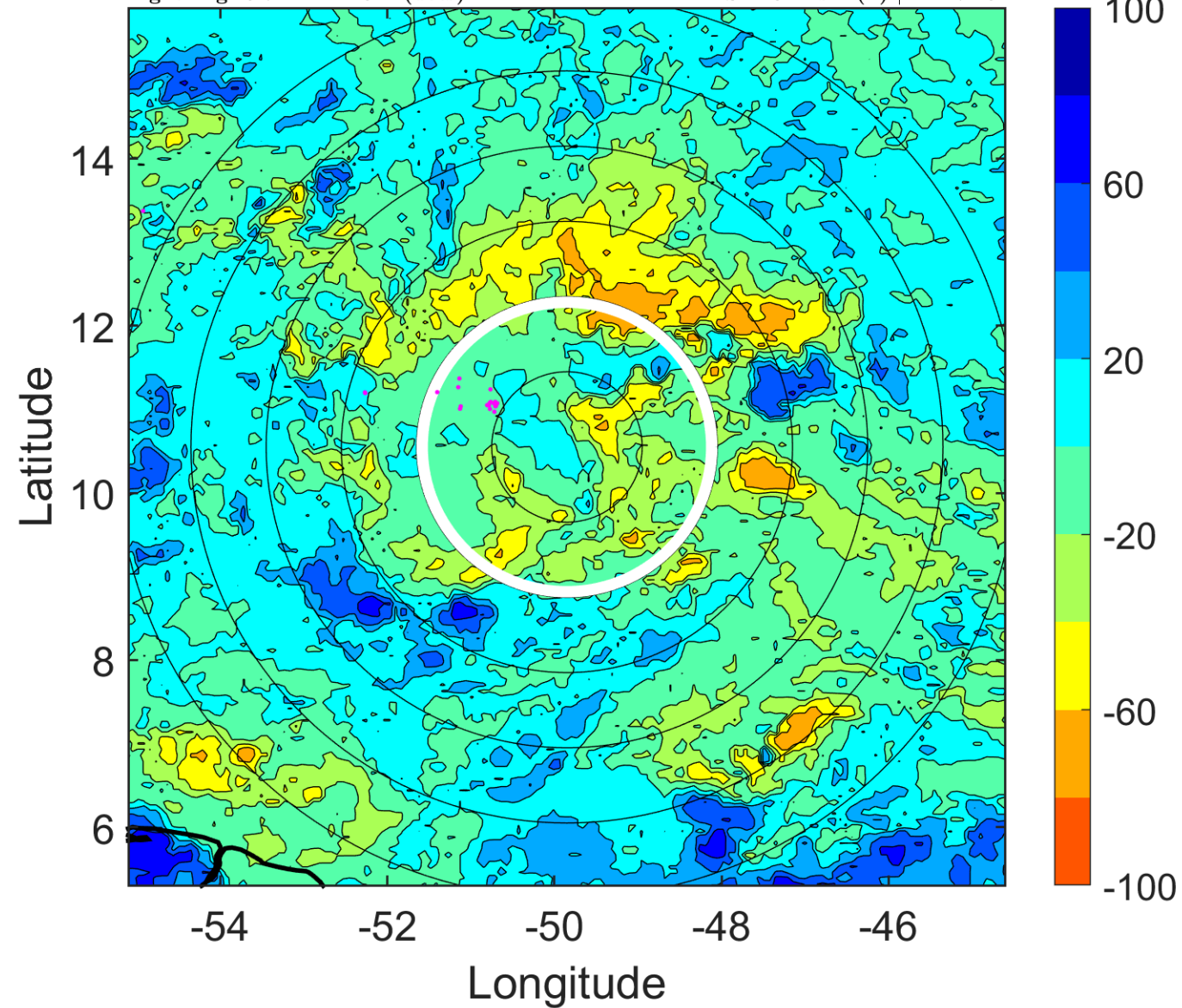
Δ t: 2017071709 (5.7 LT) - 2017071703 (23.8 LT)

Lightning: 5.7 LT \pm 1.5 h (dots)

PT: SLCP | EA: INACT

05L (DON) | 32.5 kt TD

S: 4.3 m s⁻¹ (L) | H: 272.5°



IR BT & Lightning

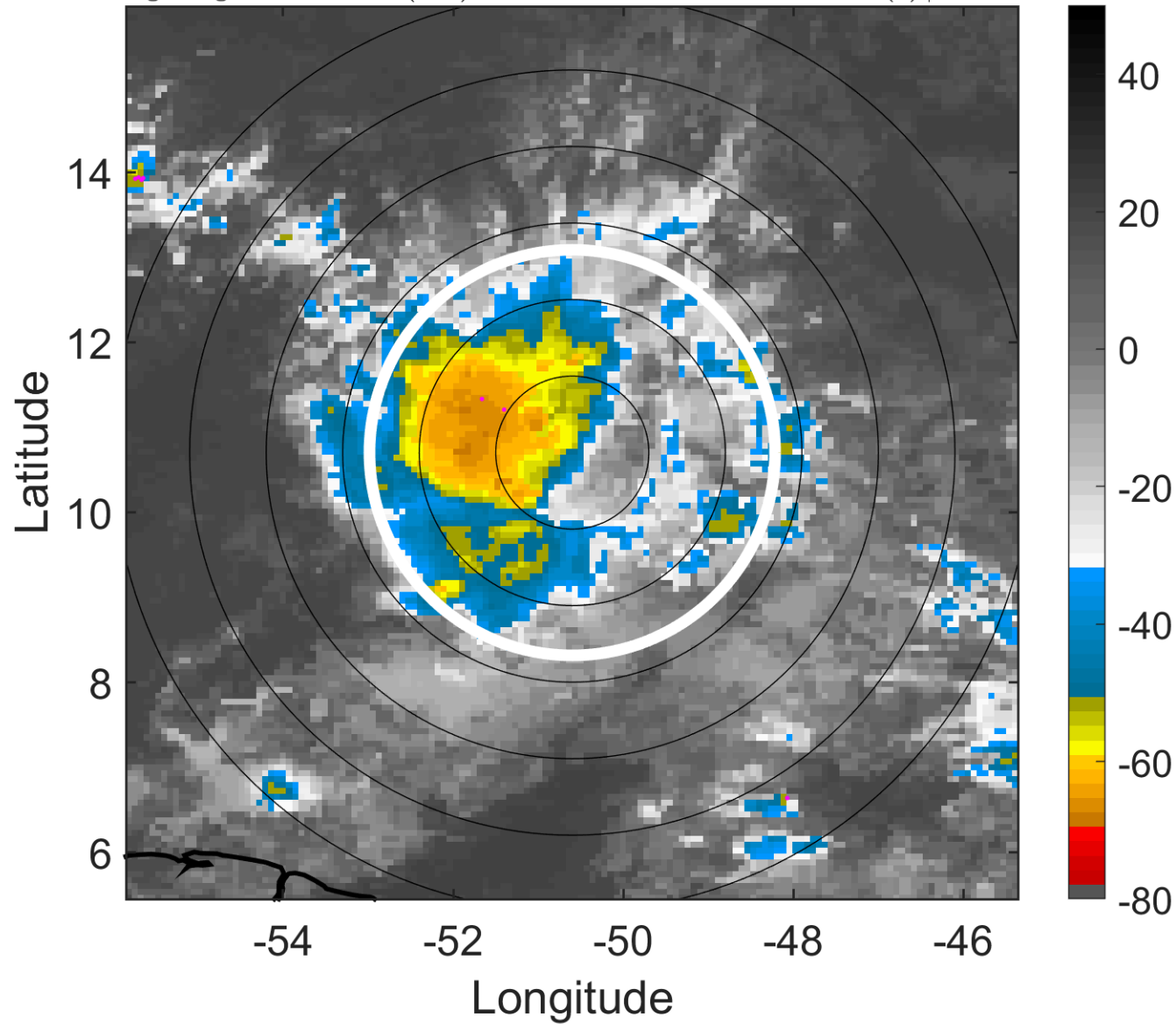
t: 2017071712 (8.6 LT)

Lightning: 8.6 LT \pm 1.5 h (dots)

PT: SLCP | EA: INACT

05L (DON) | 35 kt TS

S: 3.4 m s⁻¹ (L) | H: 265°



6-h IR BT Differences & Lightning

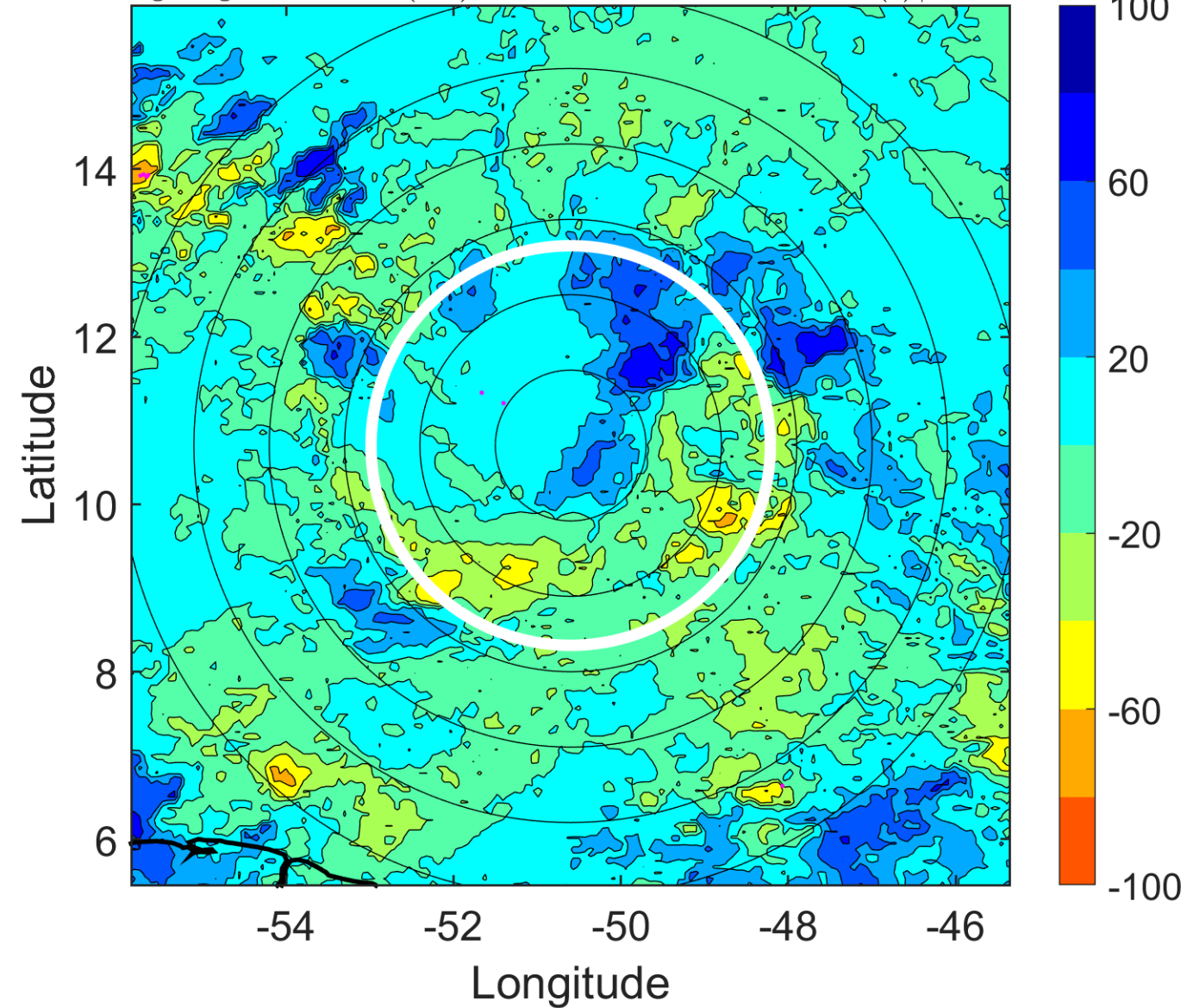
Δ t: 2017071712 (8.6 LT) - 2017071706 (2.7 LT)

Lightning: 8.6 LT \pm 1.5 h (dots)

PT: SLCP | EA: INACT

05L (DON) | 35 kt TS

S: 3.4 m s⁻¹ (L) | H: 265°



IR BT & Lightning

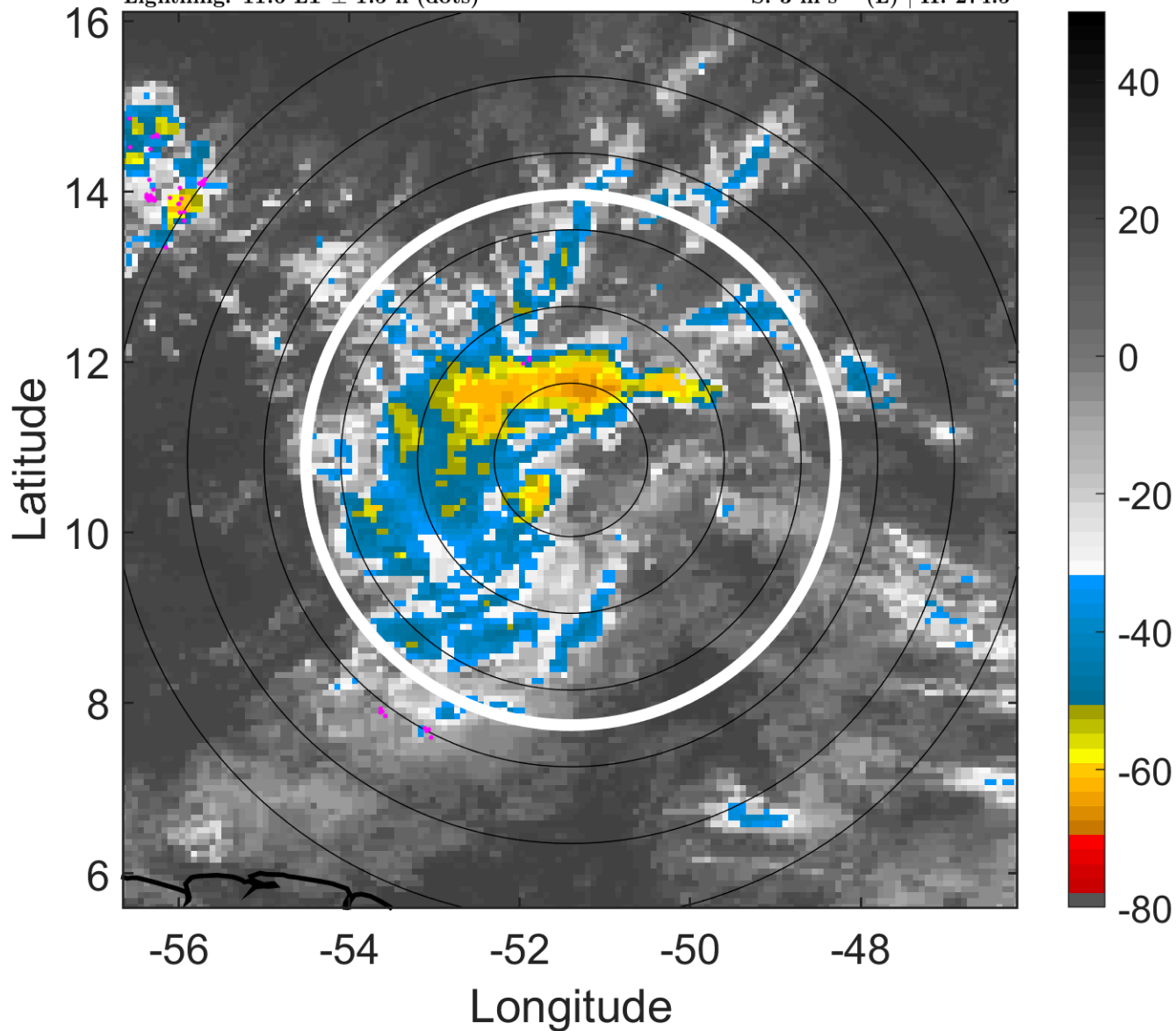
t: 2017071715 (11.6 LT)

Lightning: 11.6 LT \pm 1.5 h (dots)

PT: SLCP | EA: INACT

05L (DON) | 37.5 kt TS

S: 3 m s⁻¹ (L) | H: 274.5°



6-h IR BT Differences & Lightning

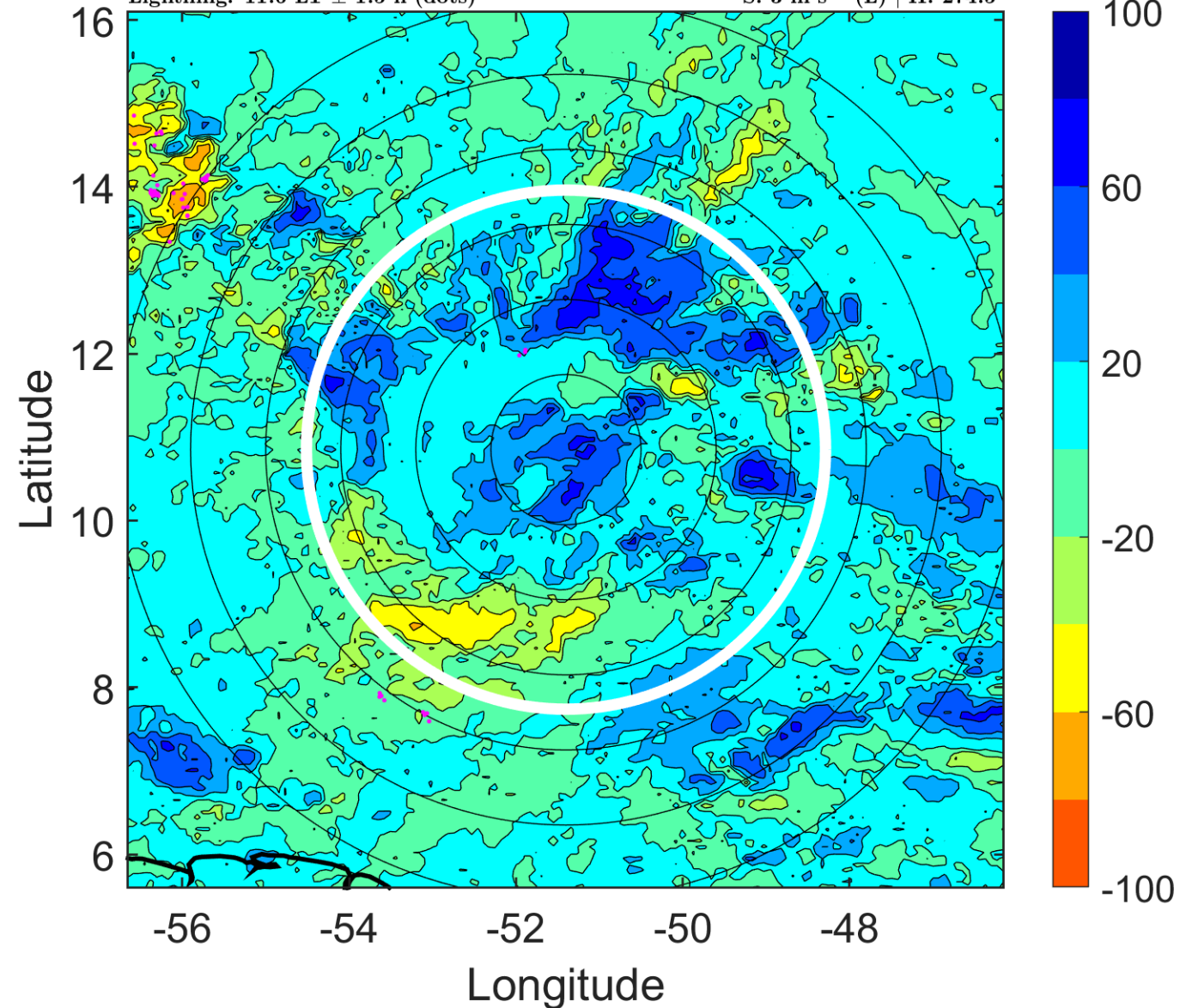
Δ t: 2017071715 (11.6 LT) - 2017071709 (5.7 LT)

Lightning: 11.6 LT \pm 1.5 h (dots)

PT: SLCP | EA: INACT

05L (DON) | 37.5 kt TS

S: 3 m s⁻¹ (L) | H: 274.5°



IR BT & Lightning

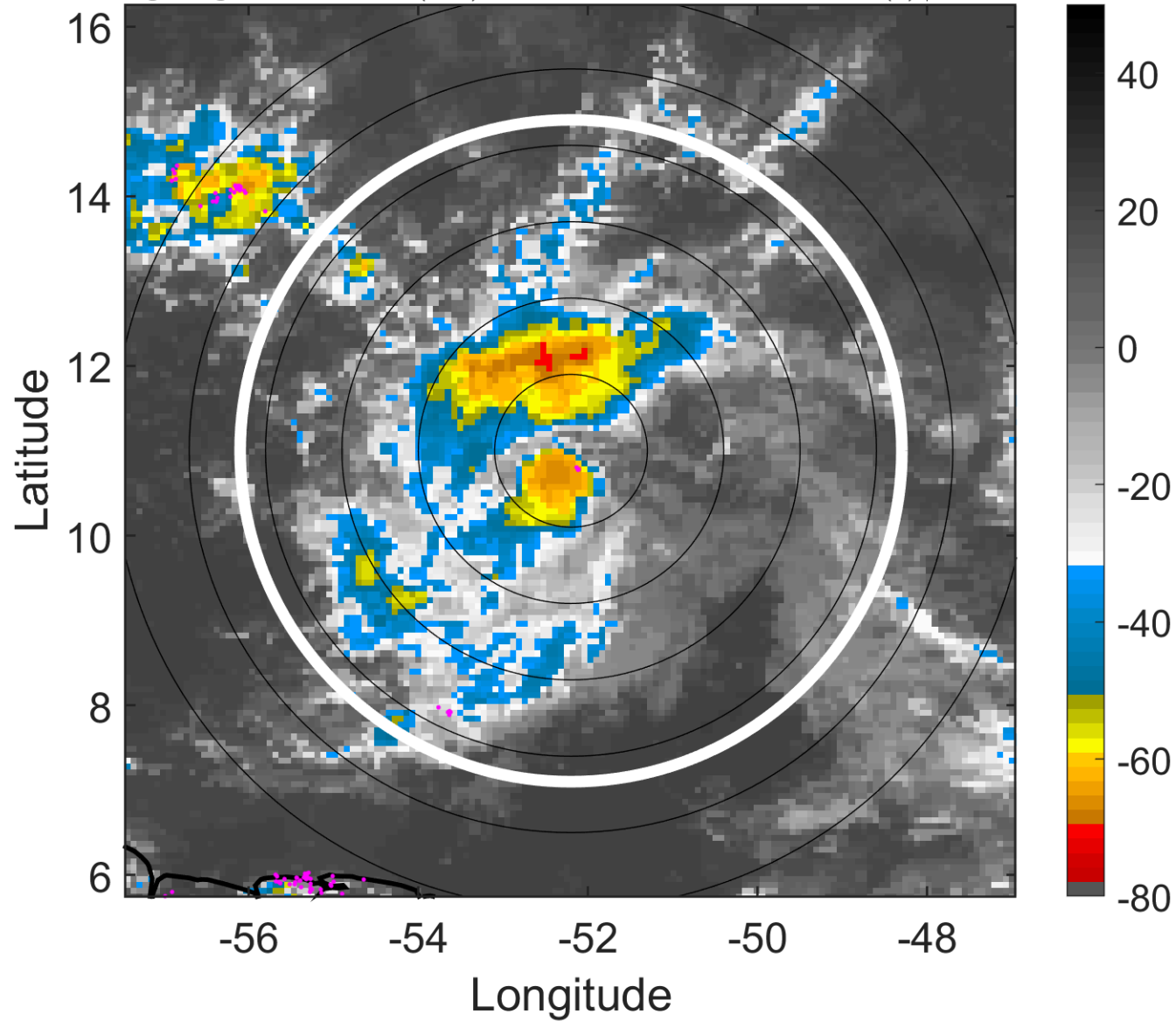
t: 2017071718 (14.5 LT)

Lightning: 14.5 LT \pm 1.5 h (dots)

PT: SLCP | EA: INACT

05L (DON) | 40 kt TS

S: 2.6 m s⁻¹ (L) | H: 284°



6-h IR BT Differences & Lightning

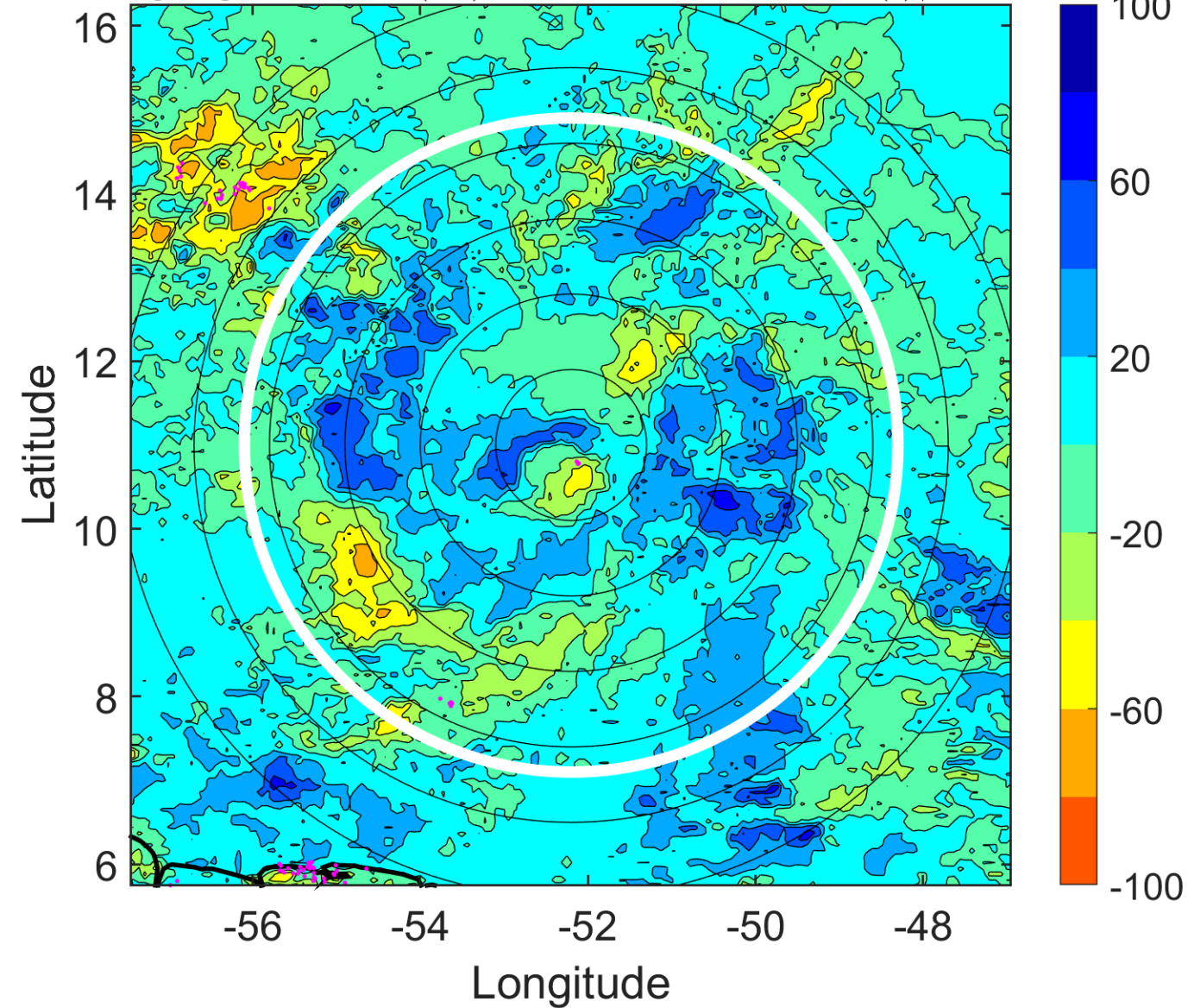
Δ t: 2017071718 (14.5 LT) - 2017071712 (8.6 LT)

Lightning: 14.5 LT \pm 1.5 h (dots)

PT: SLCP | EA: INACT

05L (DON) | 40 kt TS

S: 2.6 m s⁻¹ (L) | H: 284°



IR BT & Lightning

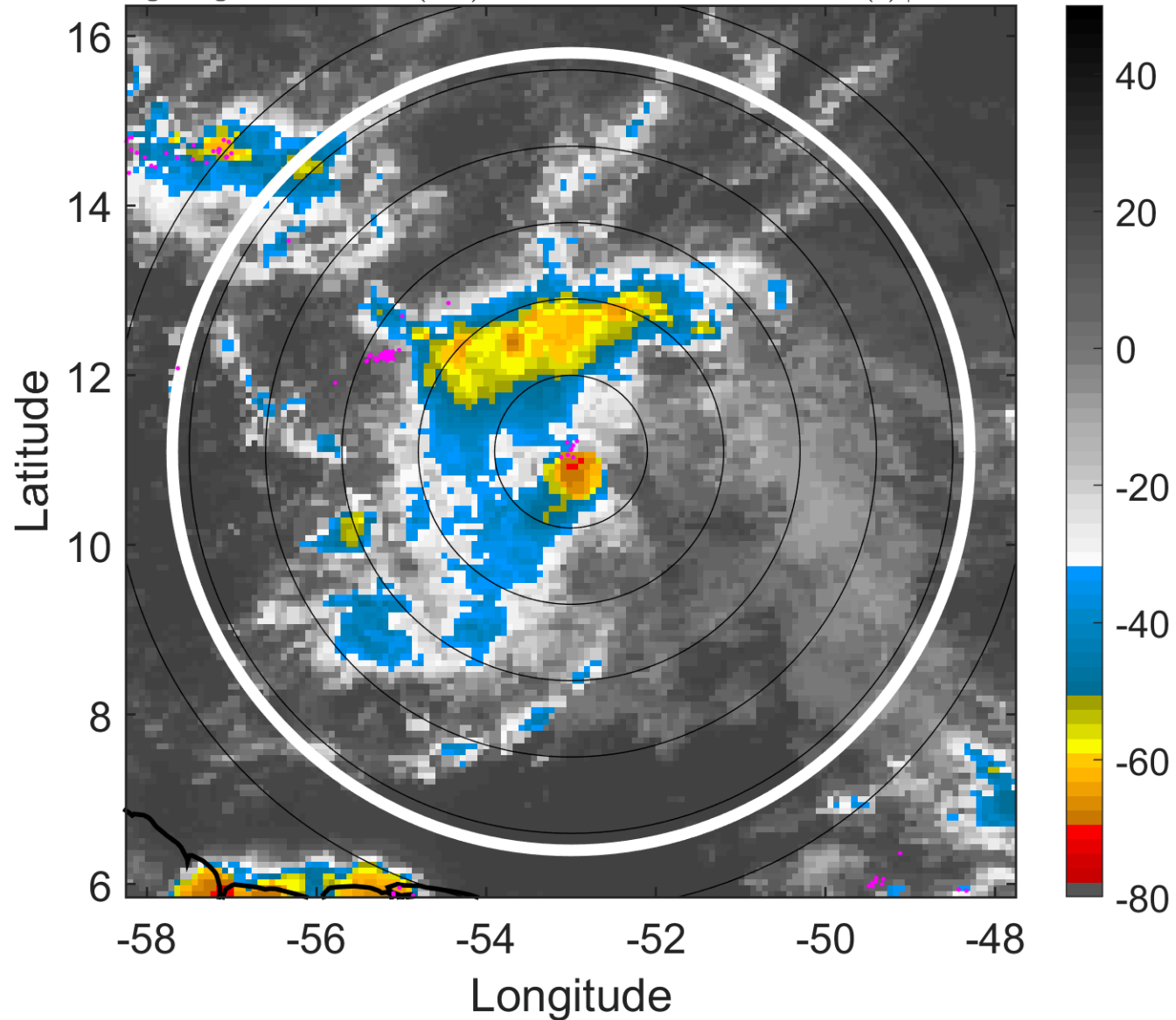
t: 2017071721 (17.5 LT)

Lightning: 17.5 LT \pm 1.5 h (dots)

PT: SLCP | EA: INACT

05L (DON) | 42.5 kt TS

S: 2.1 m s⁻¹ (L) | H: 288.5°



6-h IR BT Differences & Lightning

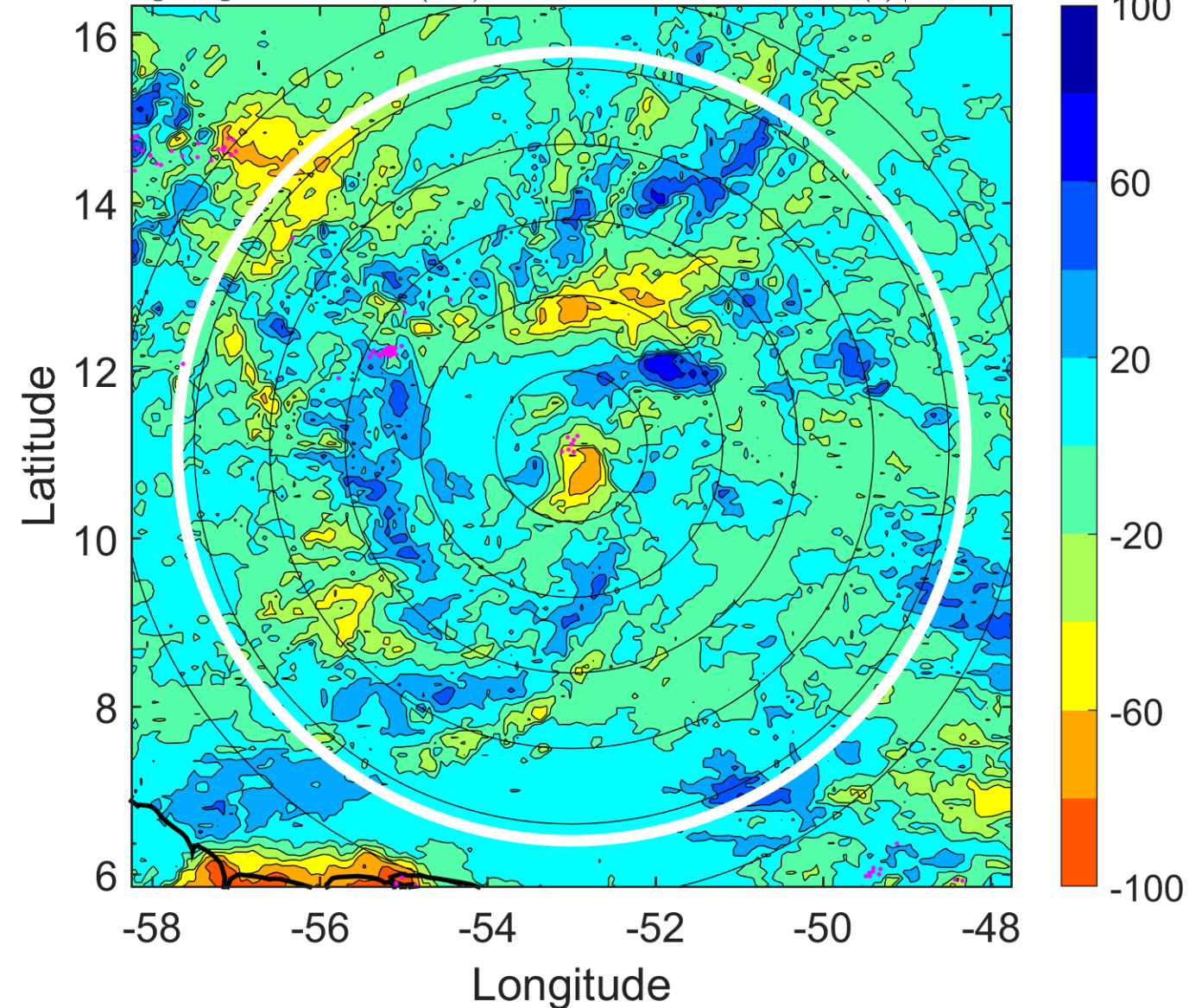
Δ t: 2017071721 (17.5 LT) - 2017071715 (11.6 LT)

Lightning: 17.5 LT \pm 1.5 h (dots)

PT: SLCP | EA: INACT

05L (DON) | 42.5 kt TS

S: 2.1 m s⁻¹ (L) | H: 288.5°



IR BT & Lightning

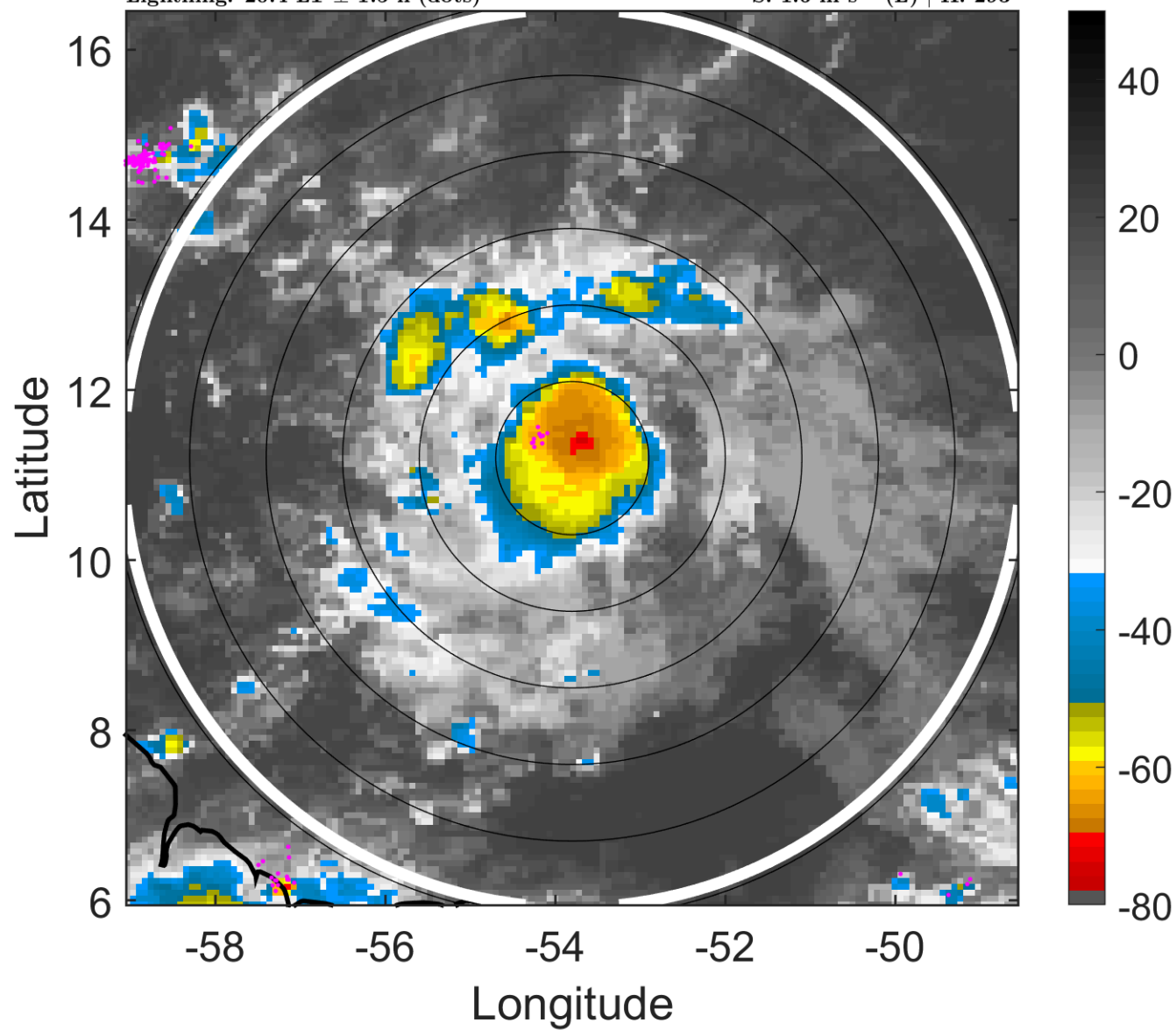
t: 2017071800 (20.4 LT)

Lightning: 20.4 LT \pm 1.5 h (dots)

PT: SLCP | EA: INACT

05L (DON) | 45 kt TS

S: 1.6 m s⁻¹ (L) | H: 293°



6-h IR BT Differences & Lightning

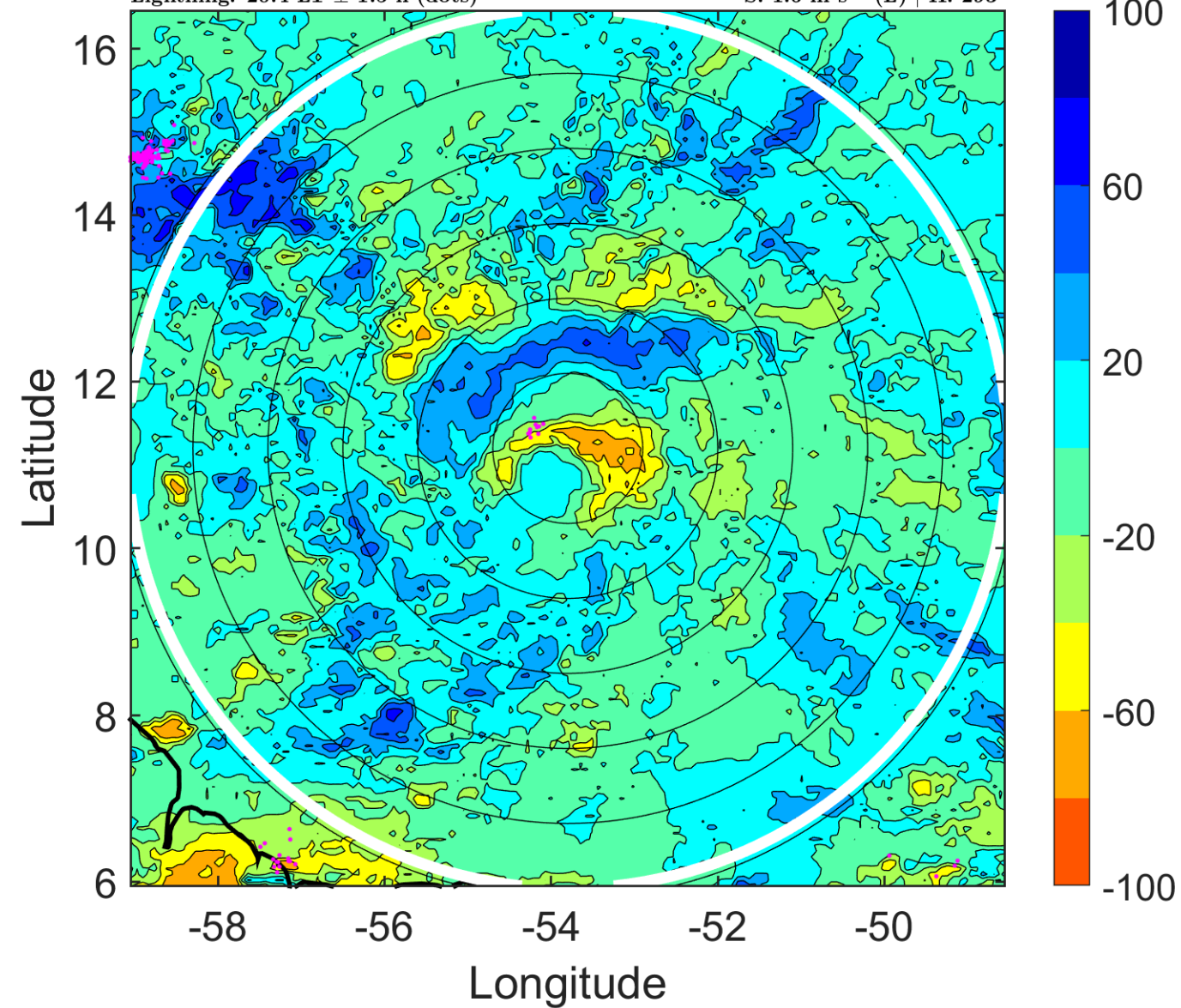
Δ t: 2017071800 (20.4 LT) - 2017071718 (14.5 LT)

Lightning: 20.4 LT \pm 1.5 h (dots)

PT: SLCP | EA: INACT

05L (DON) | 45 kt TS

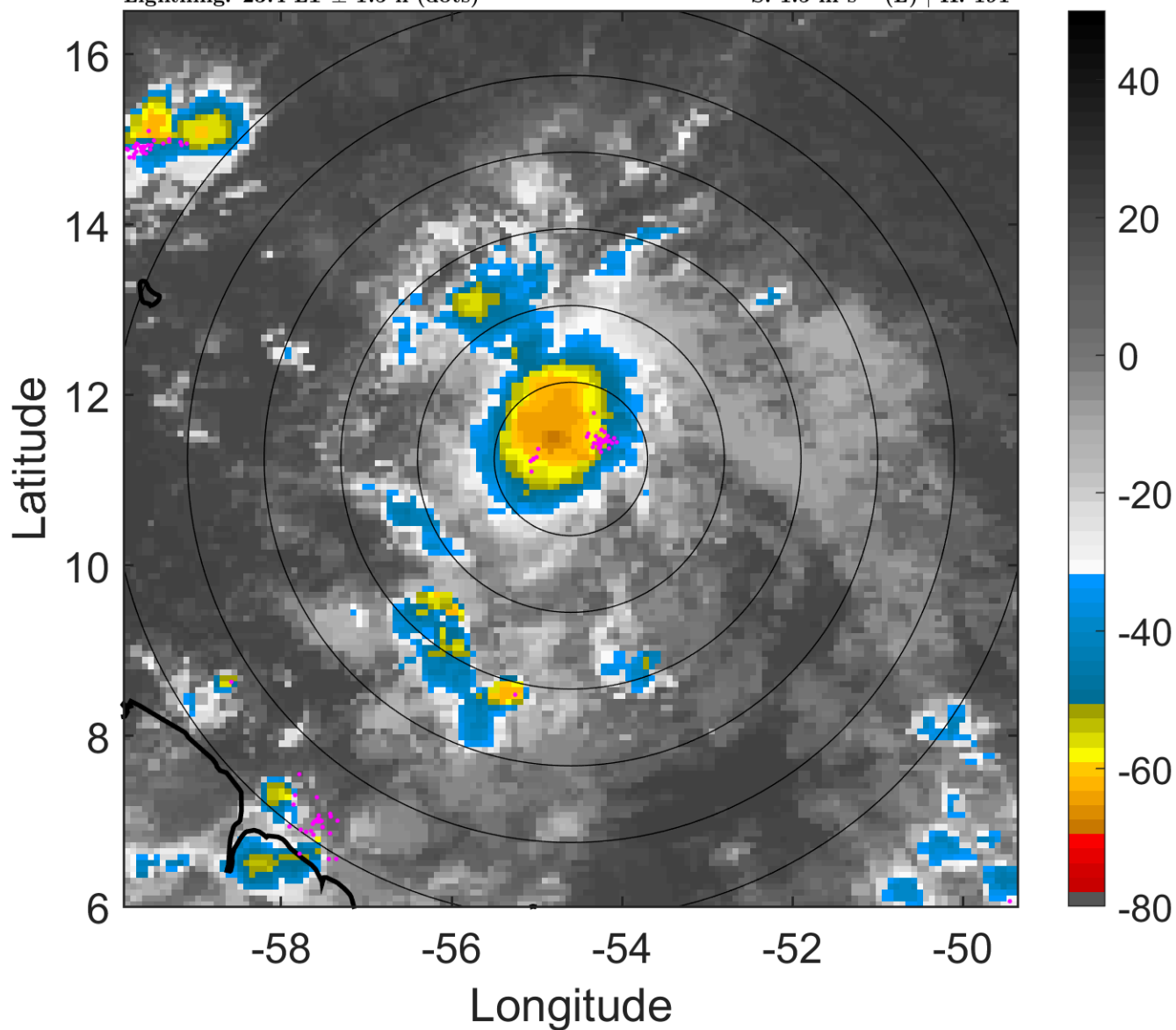
S: 1.6 m s⁻¹ (L) | H: 293°



IR BT & Lightning

t: 2017071803 (23.4 LT)
Lightning: 23.4 LT \pm 1.5 h (dots)

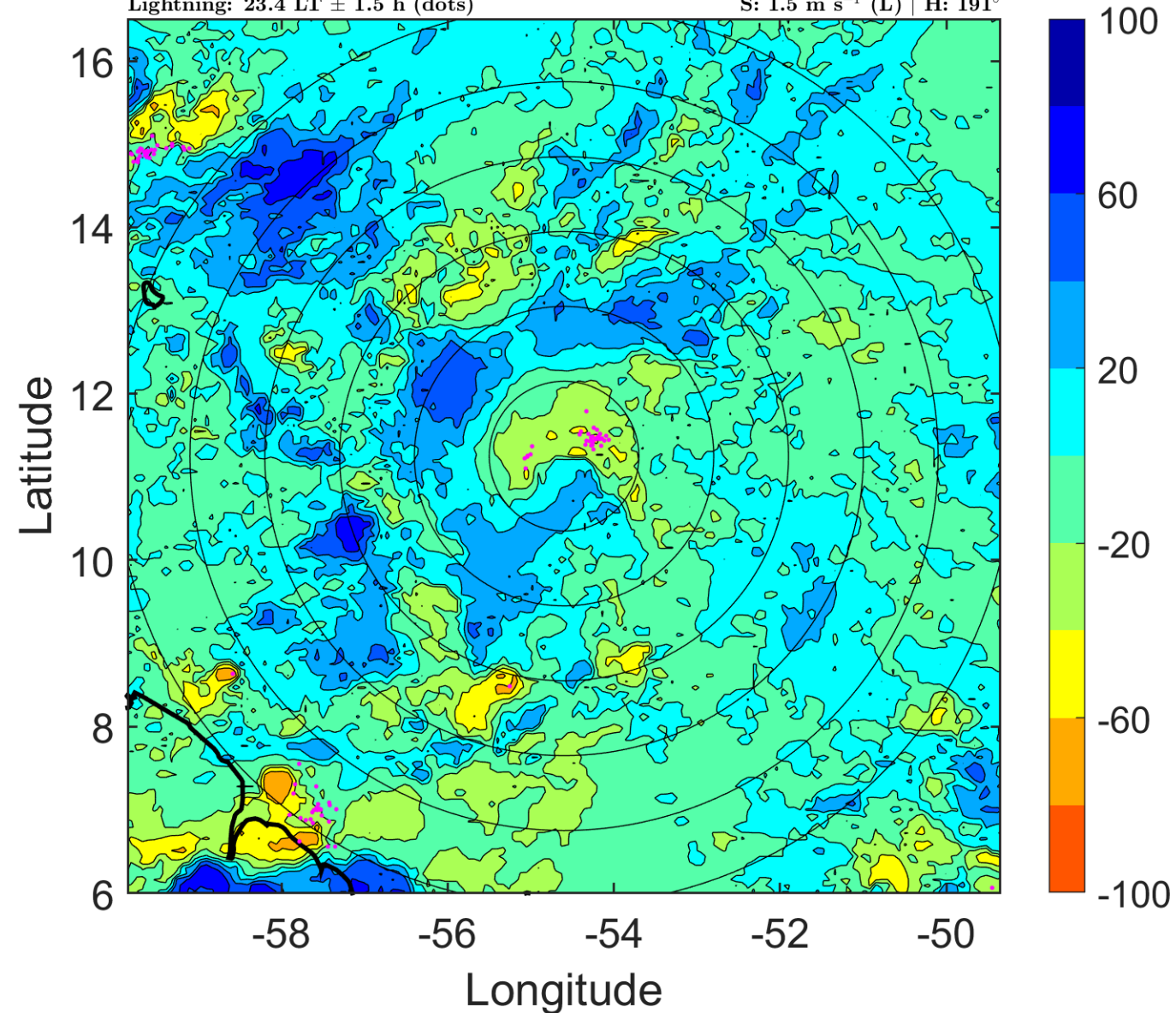
PT: SLCP | EA: INACT
05L (DON) | 42.5 kt TS
S: 1.5 m s⁻¹ (L) | H: 191°



6-h IR BT Differences & Lightning

Δ t: 2017071803 (23.4 LT) - 2017071721 (17.5 LT)
Lightning: 23.4 LT \pm 1.5 h (dots)

PT: SLCP | EA: INACT
05L (DON) | 42.5 kt TS
S: 1.5 m s⁻¹ (L) | H: 191°



IR BT & Lightning

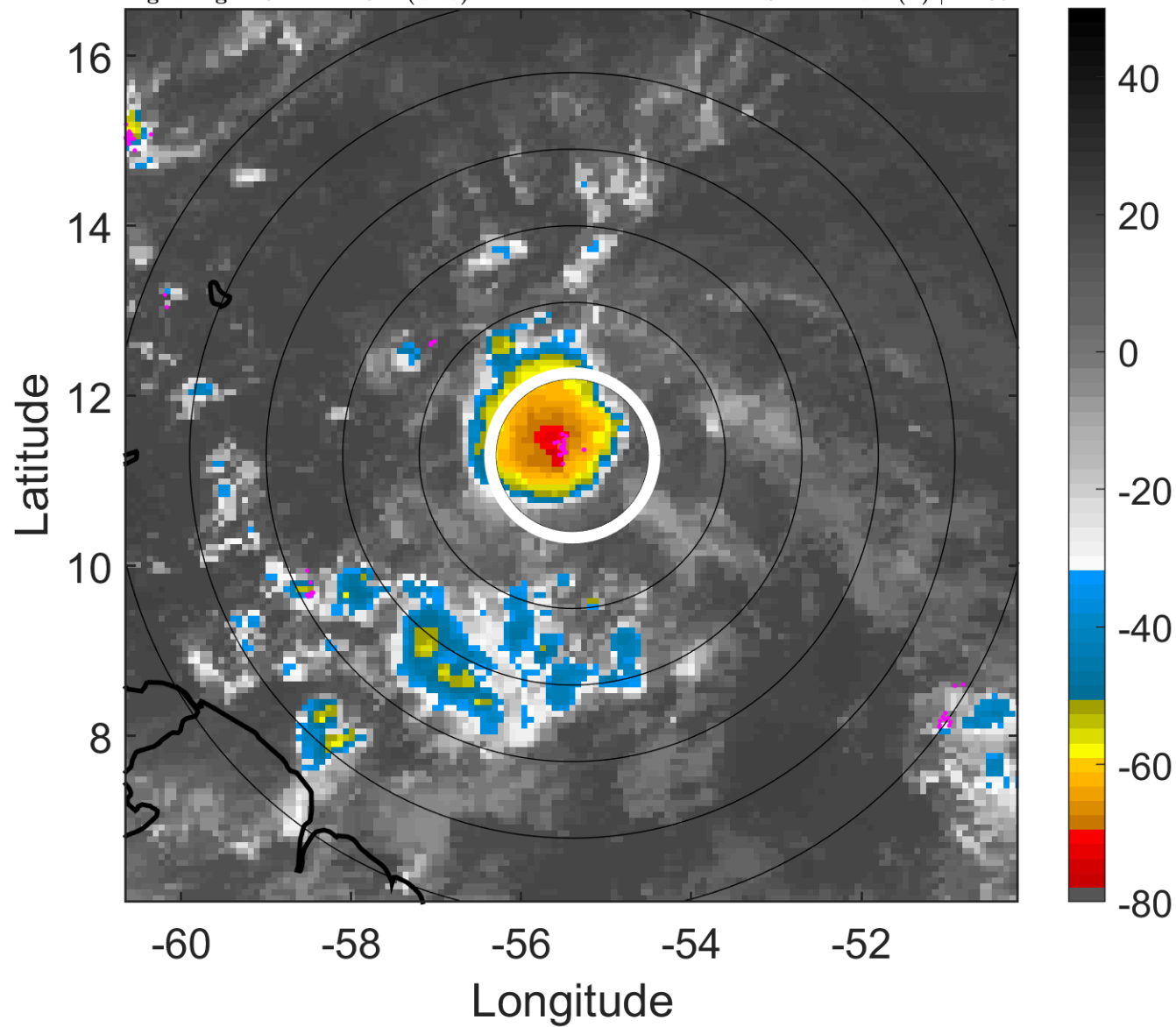
t: 2017071806 (2.3 LT)

Lightning: 2.3 LT \pm 1.5 h (dots)

PT: SLWP | EA: INACT

05L (DON) | 40 kt TS

S: 1.4 m s⁻¹ (L) | H: 89°



6-h IR BT Differences & Lightning

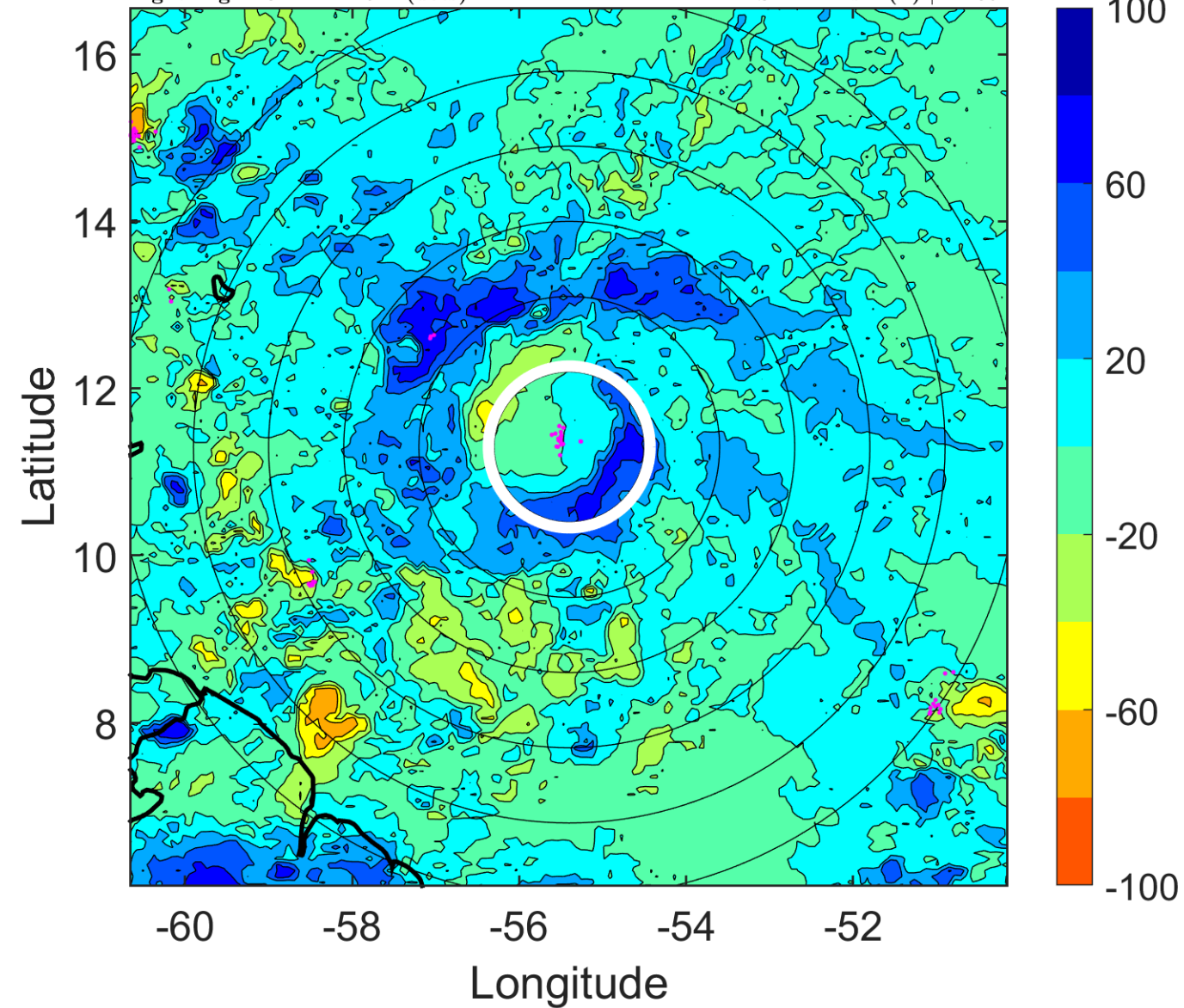
Δ t: 2017071806 (2.3 LT) - 2017071800 (20.4 LT)

Lightning: 2.3 LT \pm 1.5 h (dots)

PT: SLWP | EA: INACT

05L (DON) | 40 kt TS

S: 1.4 m s⁻¹ (L) | H: 89°



IR BT & Lightning

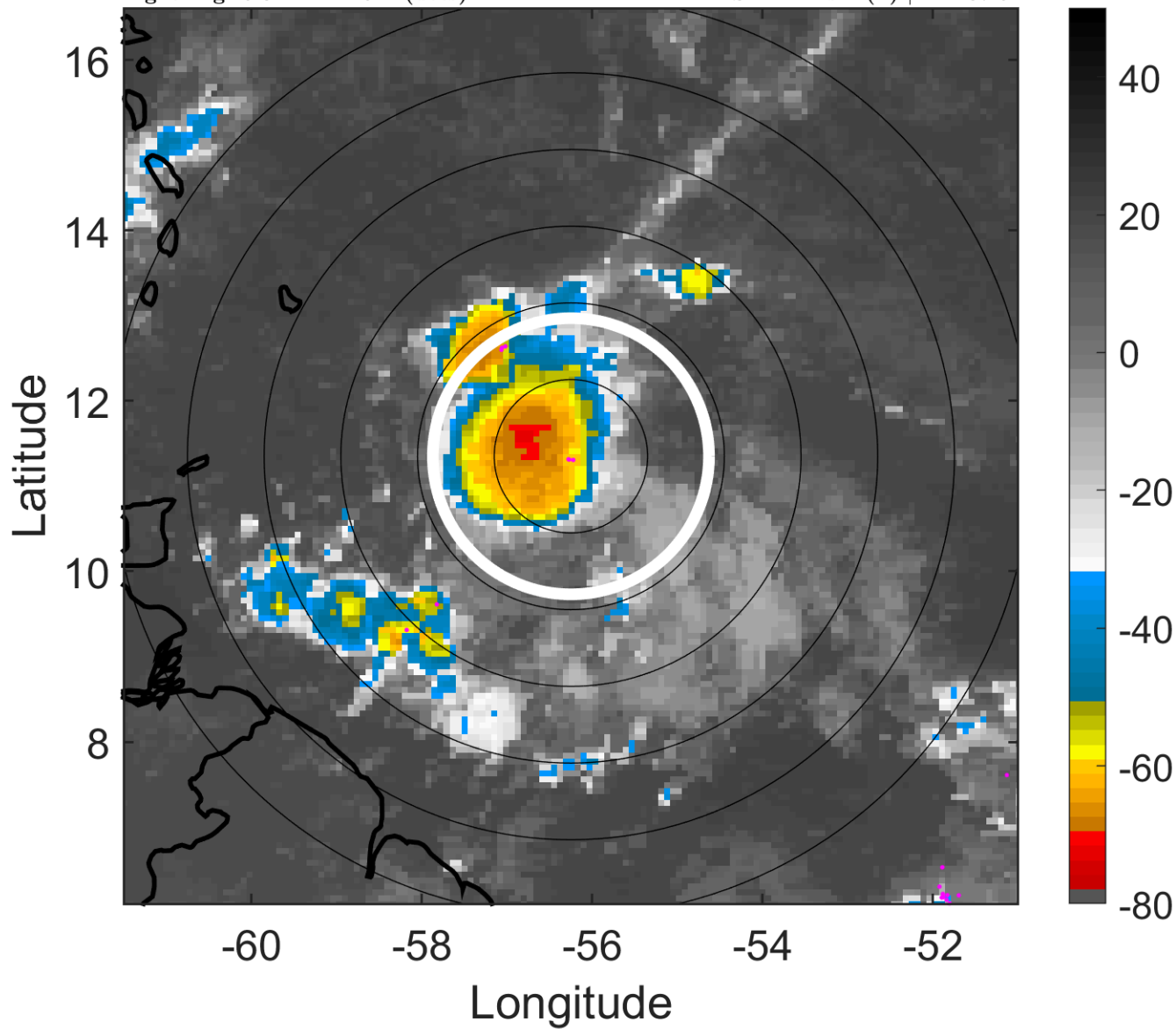
t: 2017071809 (5.3 LT)

Lightning: 5.3 LT \pm 1.5 h (dots)

PT: SLWP | EA: INACT

05L (DON) | 37.5 kt TS

S: 2.4 m s⁻¹ (L) | H: 107.5°



6-h IR BT Differences & Lightning

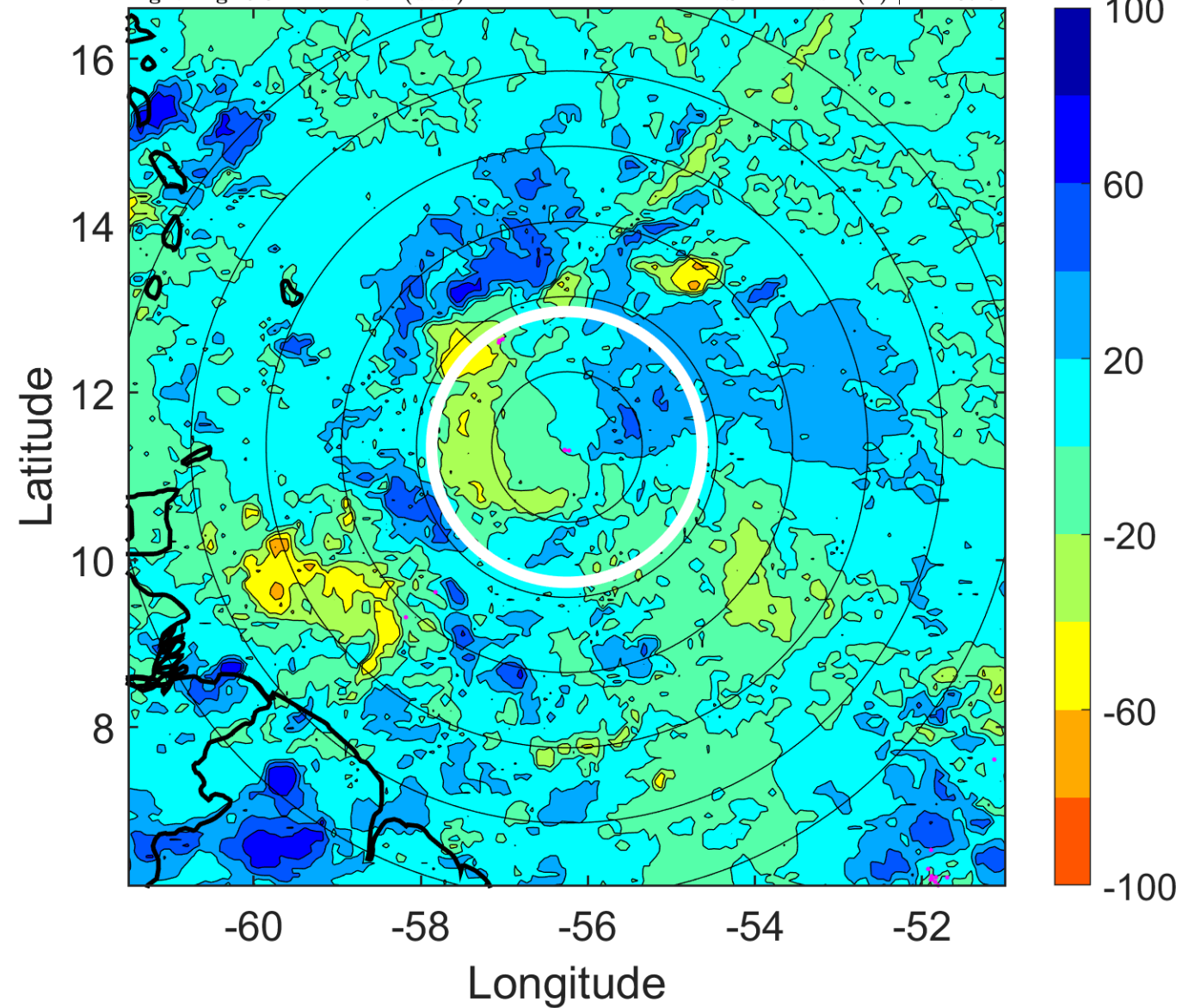
Δ t: 2017071809 (5.3 LT) - 2017071803 (23.4 LT)

Lightning: 5.3 LT \pm 1.5 h (dots)

PT: SLWP | EA: INACT

05L (DON) | 37.5 kt TS

S: 2.4 m s⁻¹ (L) | H: 107.5°



IR BT & Lightning

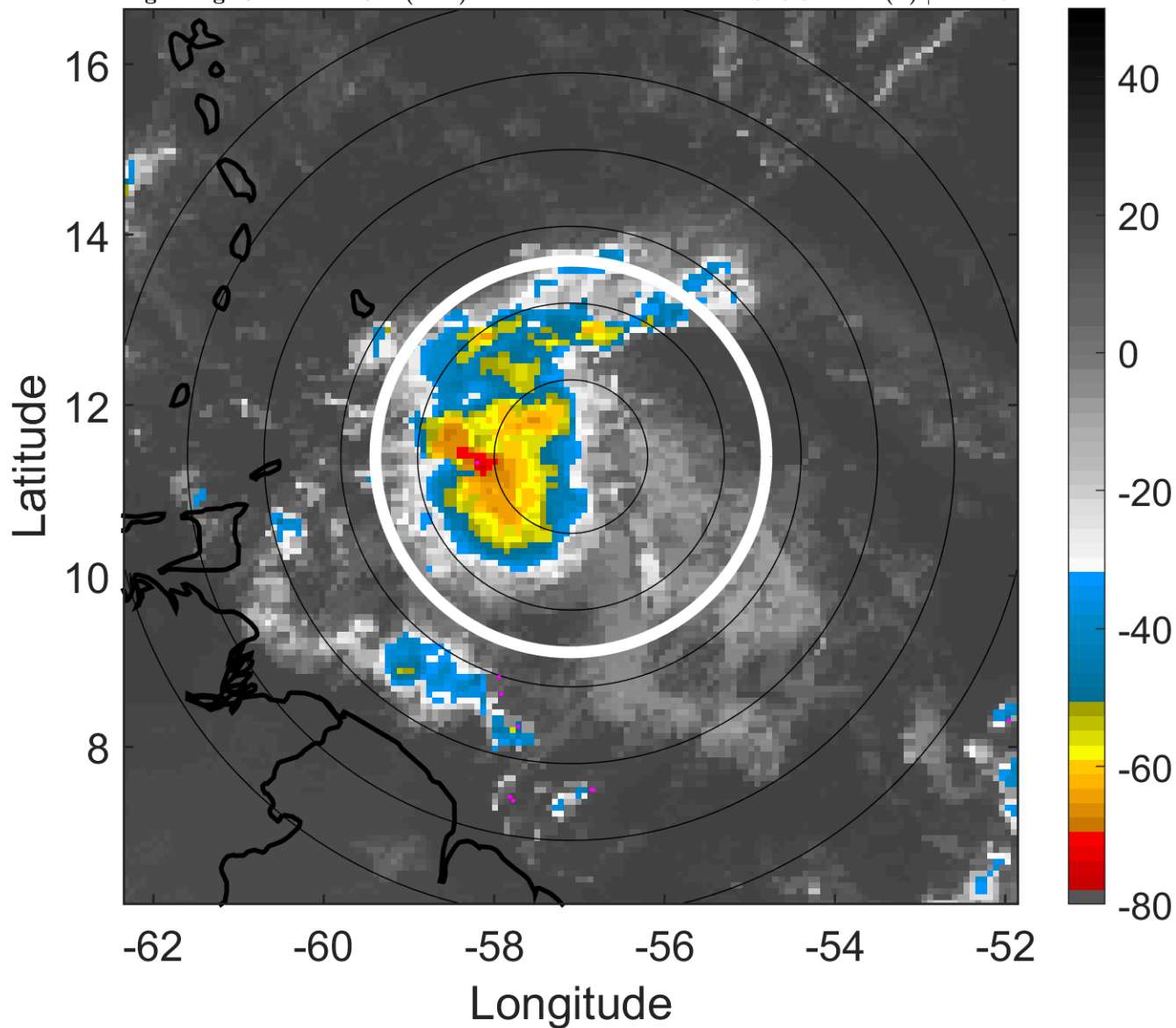
t: 2017071812 (8.2 LT)

Lightning: 8.2 LT \pm 1.5 h (dots)

PT: SLWP | EA: INACT

05L (DON) | 35 kt TS

S: 3.3 m s⁻¹ (L) | H: 126°



6-h IR BT Differences & Lightning

Δ t: 2017071812 (8.2 LT) - 2017071806 (2.3 LT)

Lightning: 8.2 LT \pm 1.5 h (dots)

PT: SLWP | EA: INACT

05L (DON) | 35 kt TS

S: 3.3 m s⁻¹ (L) | H: 126°

