

### IR BT & Lightning

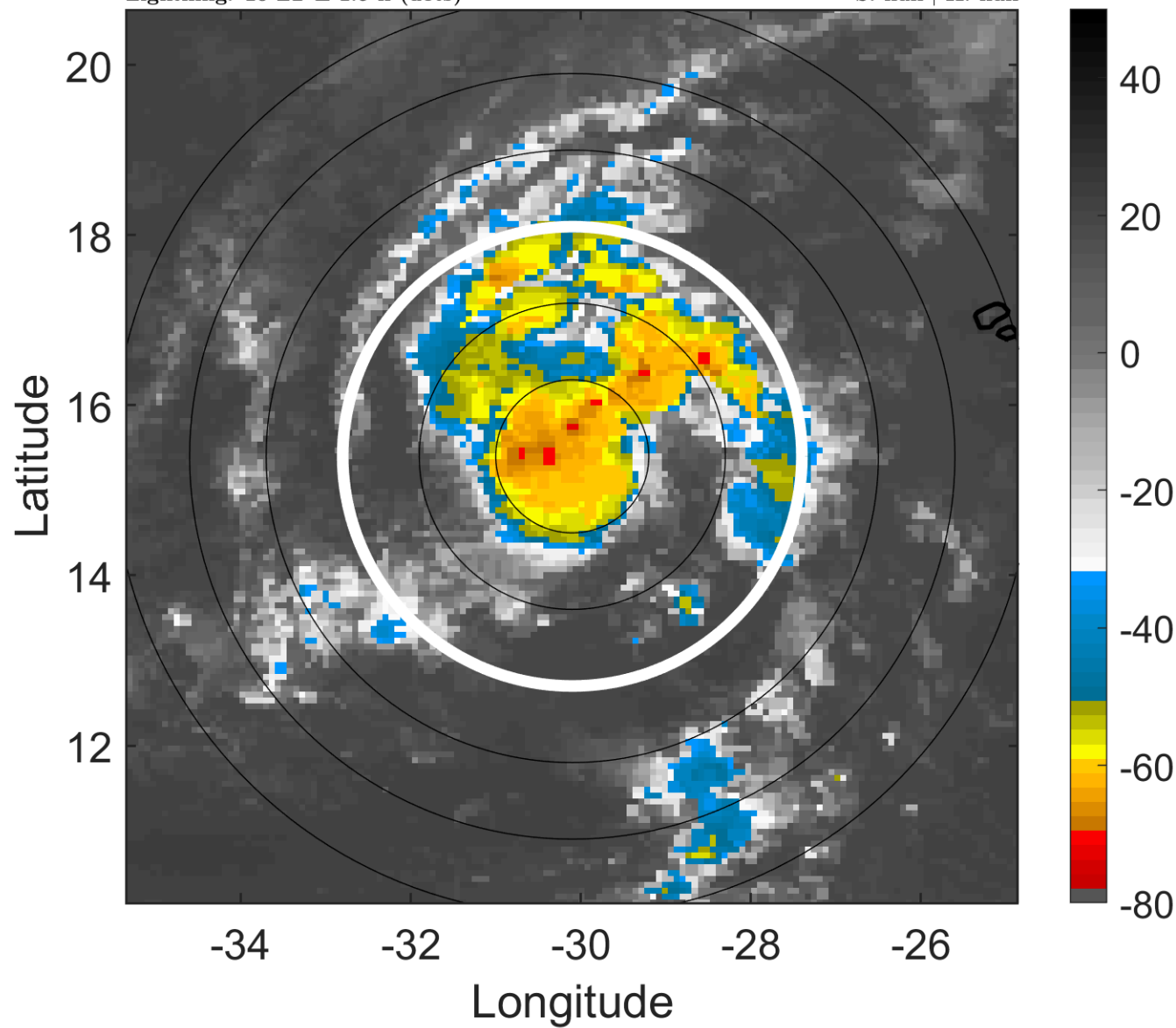
t: 2009092512 (10 LT)

Lightning: 10 LT  $\pm$  1.5 h (dots)

PT: SLCP | EA: QUASI

08L (EIGHT) | 25 kt LO

S: null | H: null



### 6-h IR BT Differences & Lightning

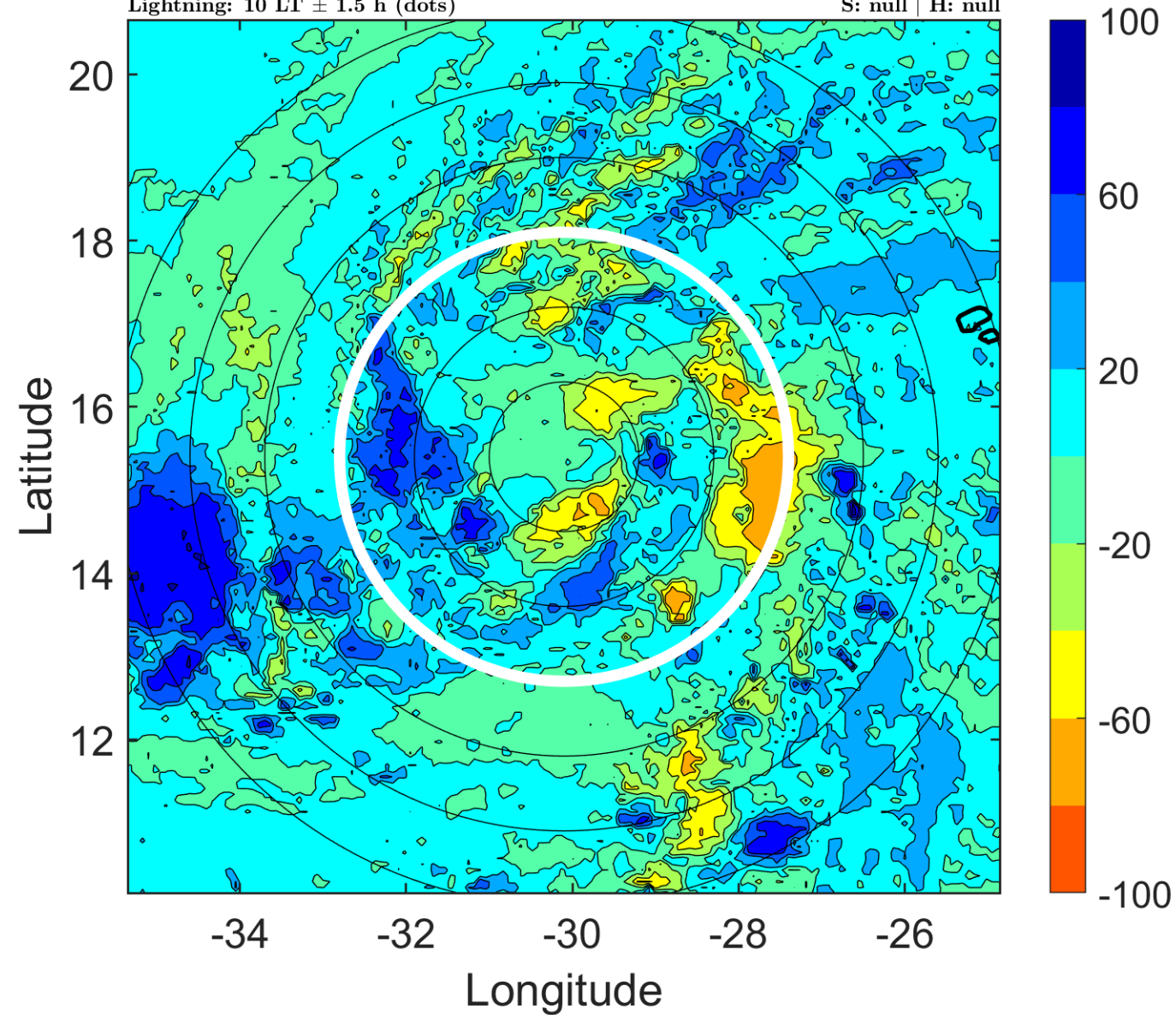
$\Delta$ t: 2009092512 (10 LT) - 2009092506 (4.1 LT)

Lightning: 10 LT  $\pm$  1.5 h (dots)

PT: SLCP | EA: QUASI

08L (EIGHT) | 25 kt LO

S: null | H: null



### IR BT & Lightning

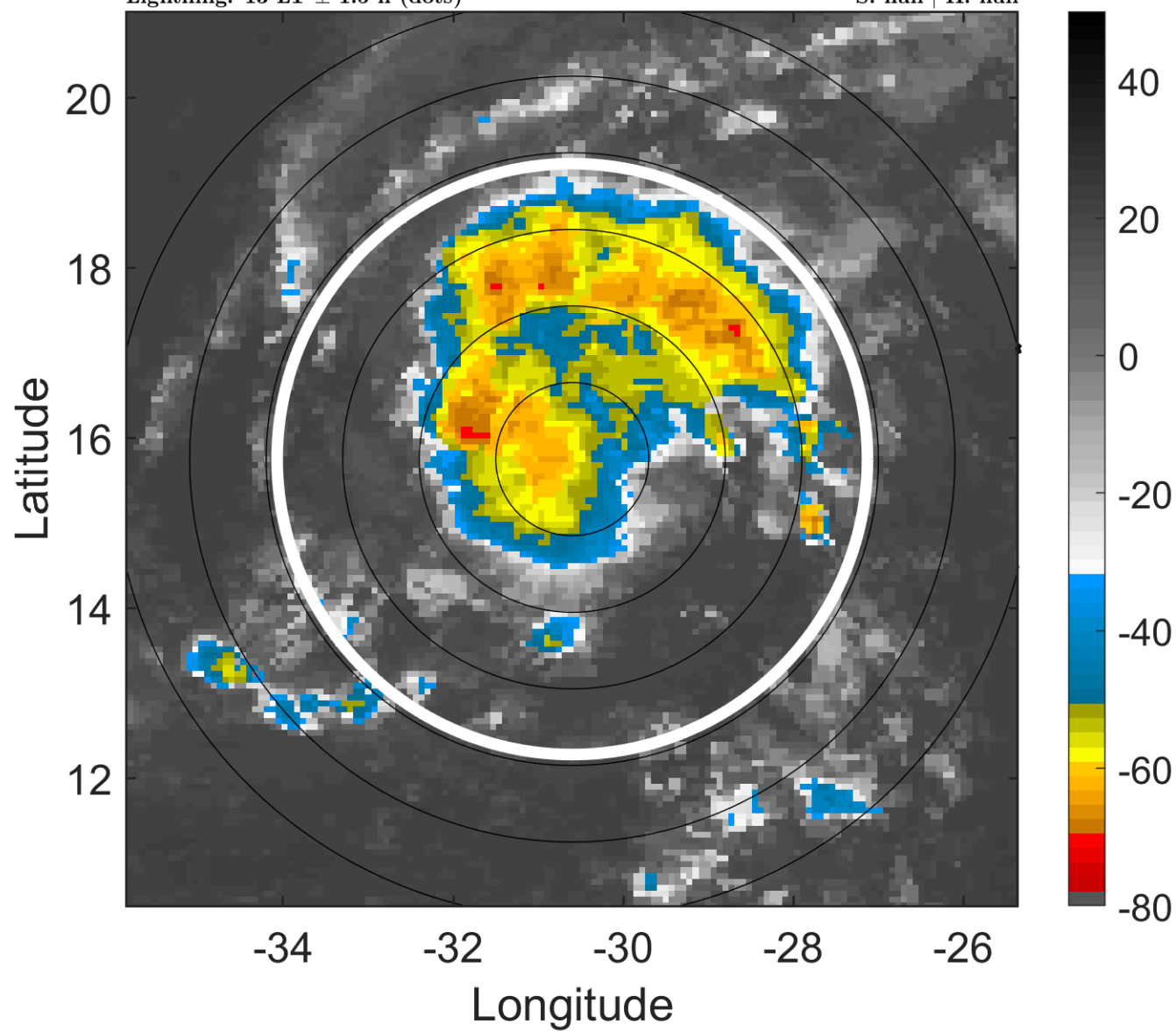
t: 2009092515 (13 LT)

Lightning: 13 LT  $\pm$  1.5 h (dots)

PT: SLCP | EA: QUASI

08L (EIGHT) | 27.5 kt LO

S: null | H: null



### 6-h IR BT Differences & Lightning

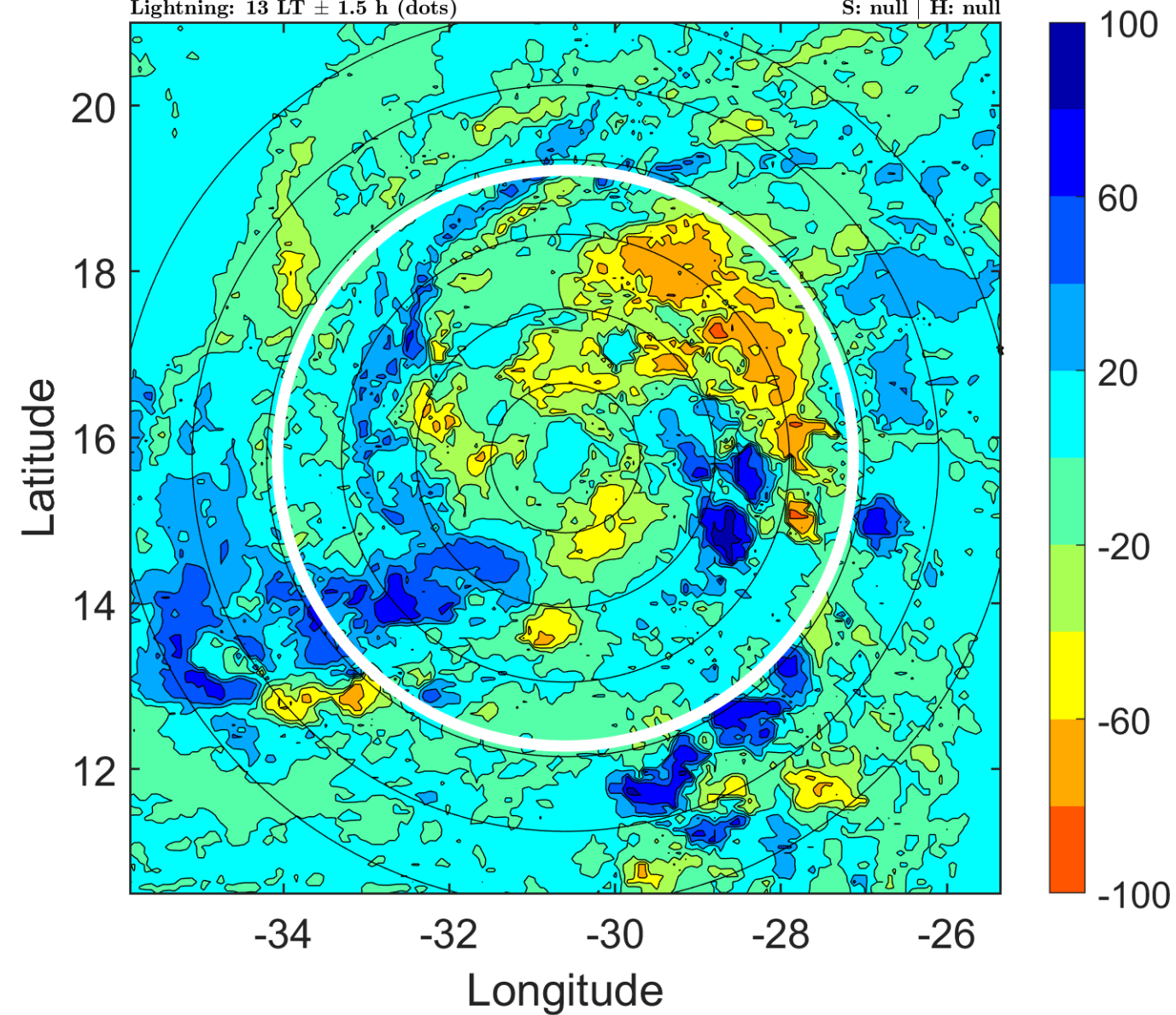
$\Delta$ t: 2009092515 (13 LT) - 2009092509 (7 LT)

Lightning: 13 LT  $\pm$  1.5 h (dots)

PT: SLCP | EA: QUASI

08L (EIGHT) | 27.5 kt LO

S: null | H: null



### IR BT & Lightning

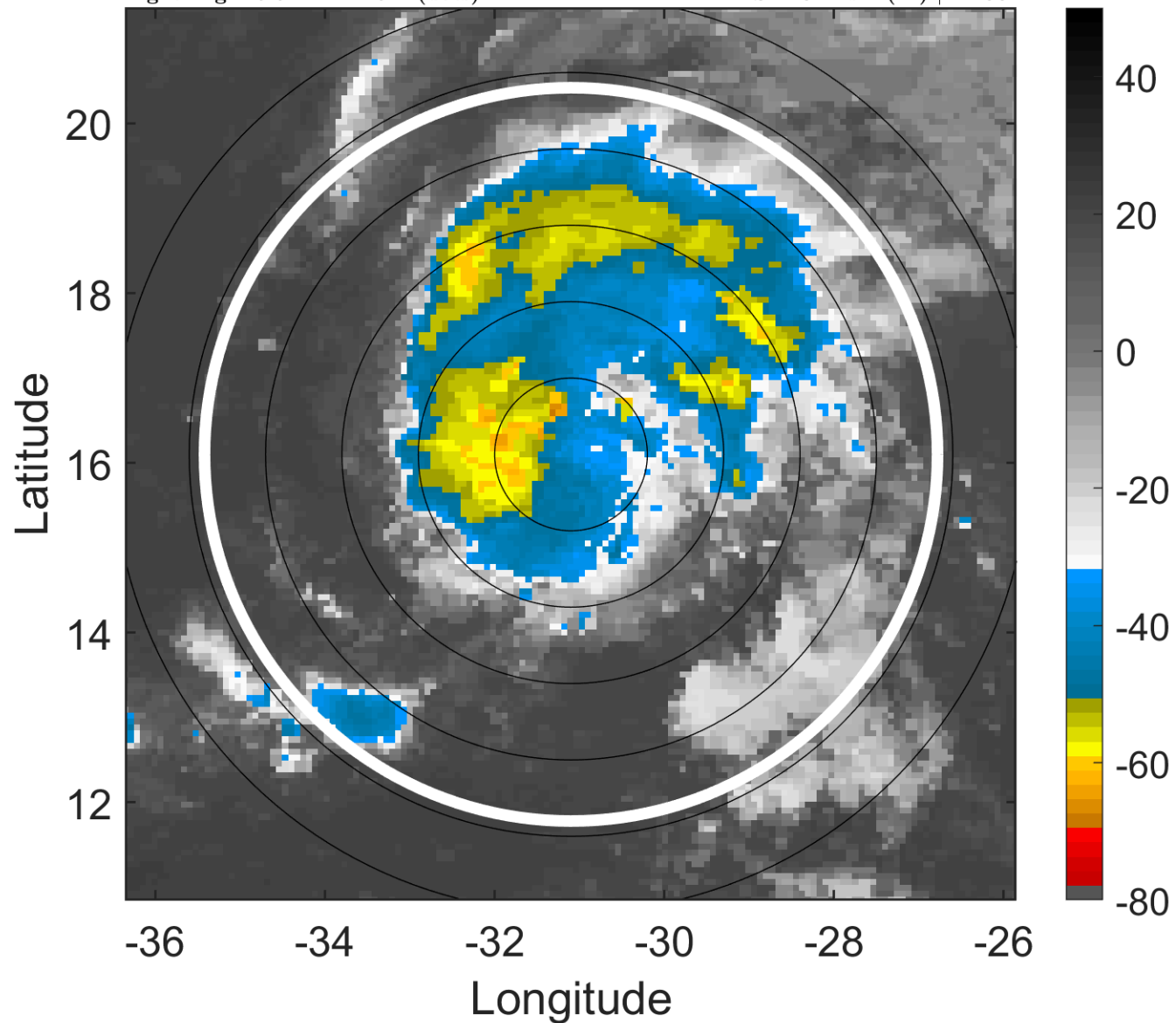
t: 2009092518 (15.9 LT)

Lightning: 15.9 LT  $\pm$  1.5 h (dots)

PT: SLCP | EA: QUASI

08L (EIGHT) | 30 kt TD

S: 4.8 m s<sup>-1</sup> (M) | H: 38°



### 6-h IR BT Differences & Lightning

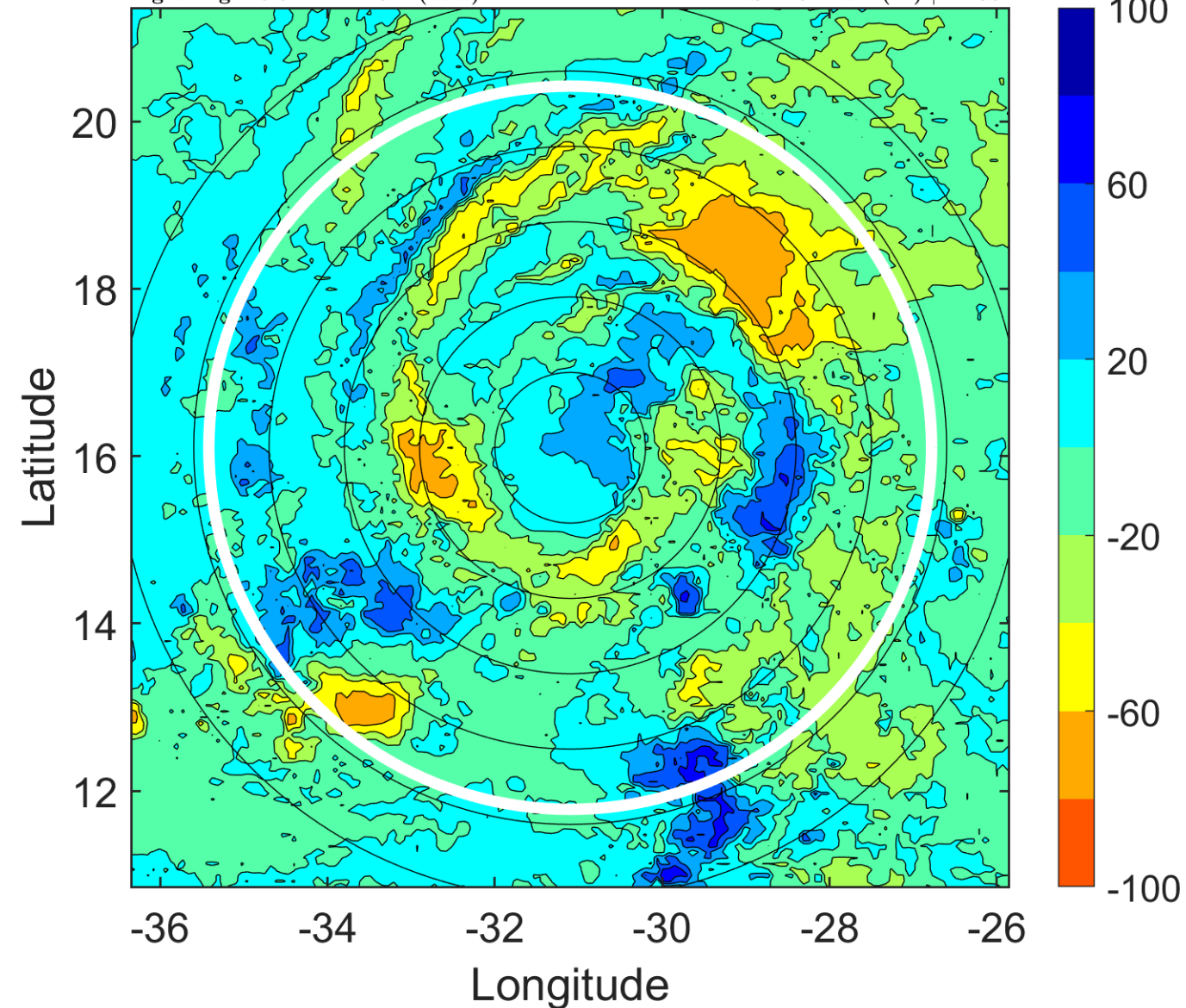
$\Delta$ t: 2009092518 (15.9 LT) - 2009092512 (10 LT)

Lightning: 15.9 LT  $\pm$  1.5 h (dots)

PT: SLCP | EA: QUASI

08L (EIGHT) | 30 kt TD

S: 4.8 m s<sup>-1</sup> (M) | H: 38°





### IR BT & Lightning

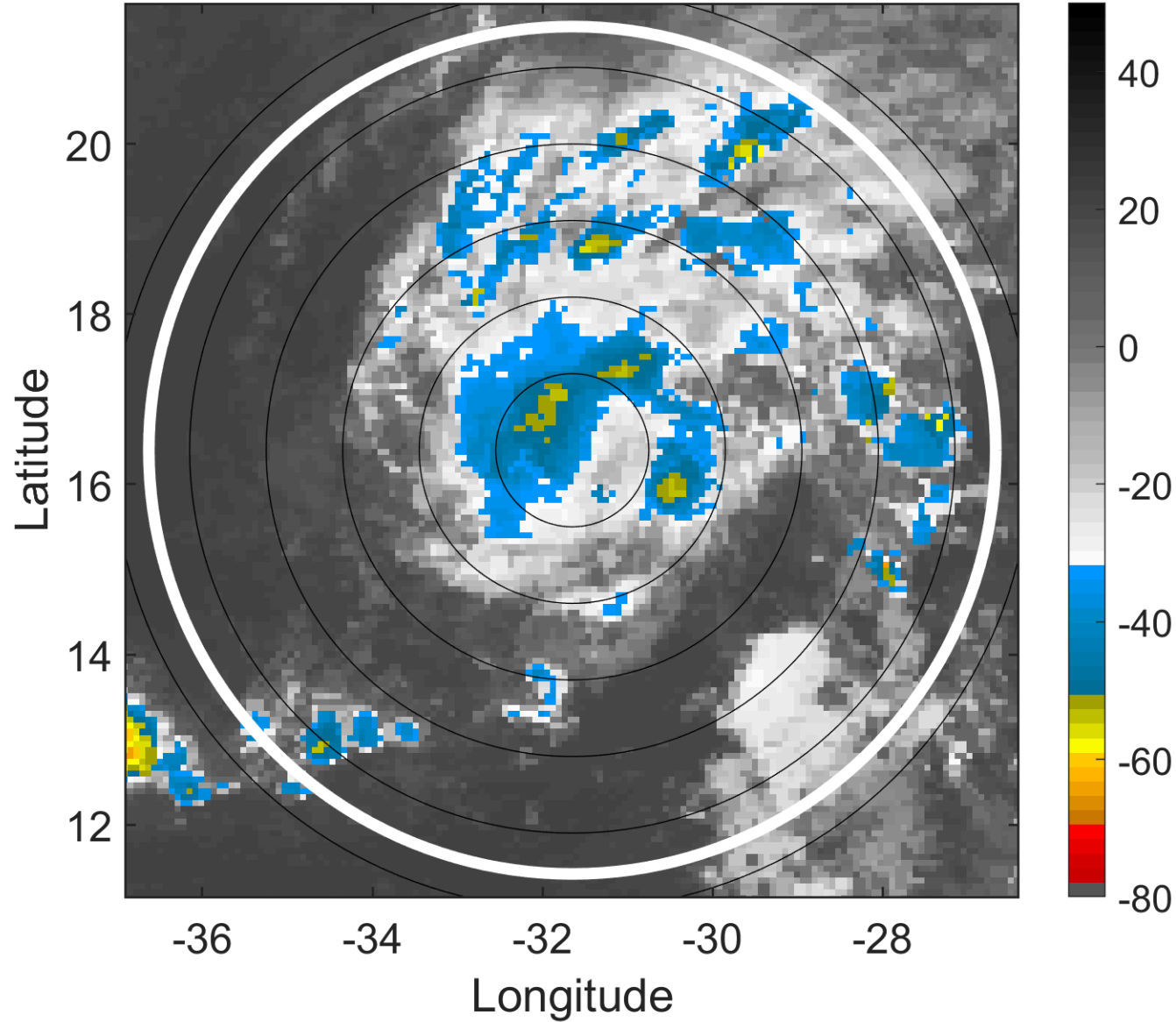
t: 2009092521 (18.9 LT)

Lightning: 18.9 LT  $\pm$  1.5 h (dots)

PT: SLCP | EA: QUASI

08L (EIGHT) | 30 kt TD

S: 5.4 m s<sup>-1</sup> (M) | H: 42.5°



### 6-h IR BT Differences & Lightning

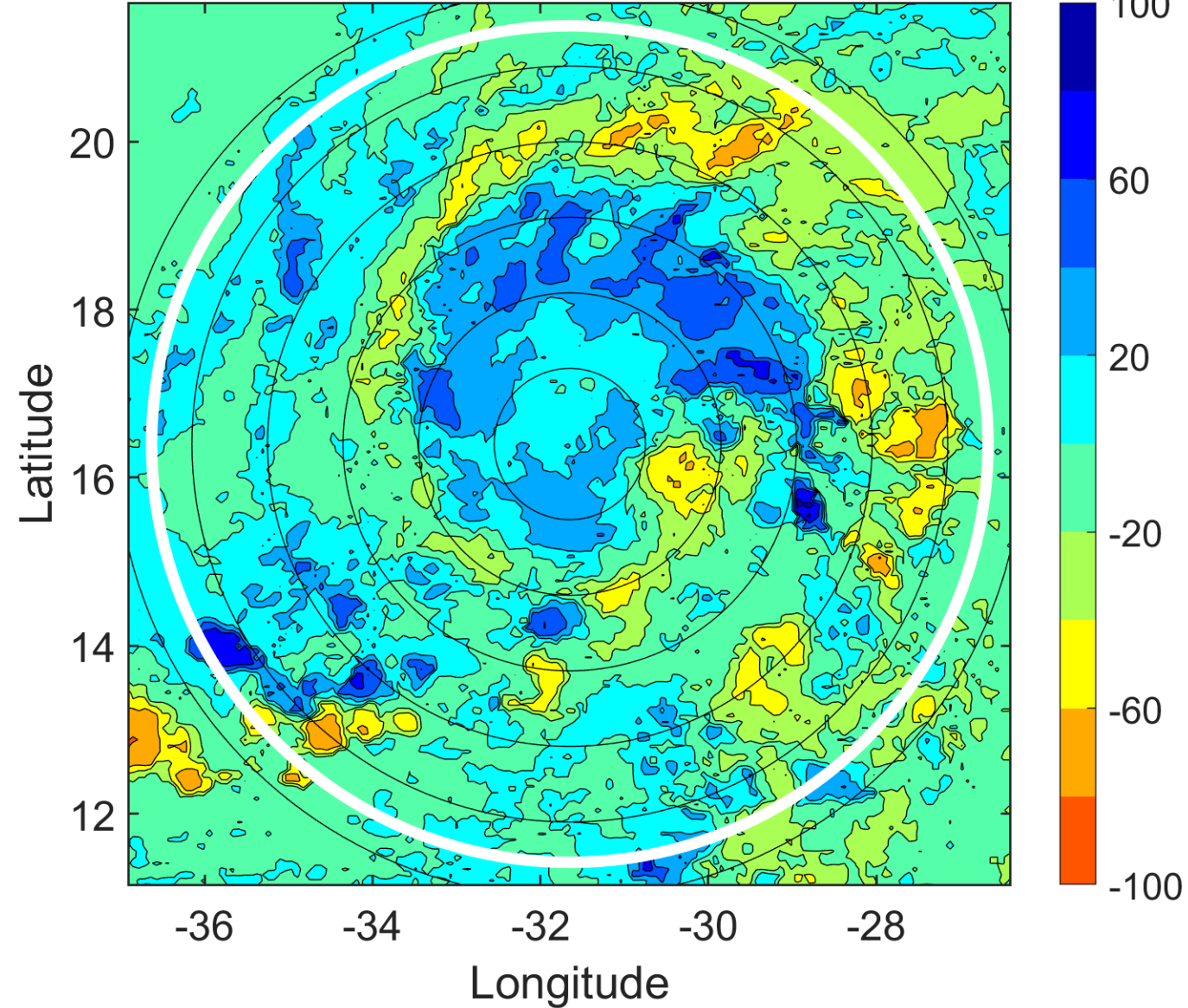
$\Delta$ t: 2009092521 (18.9 LT) - 2009092515 (13 LT)

Lightning: 18.9 LT  $\pm$  1.5 h (dots)

PT: SLCP | EA: QUASI

08L (EIGHT) | 30 kt TD

S: 5.4 m s<sup>-1</sup> (M) | H: 42.5°



### IR BT & Lightning

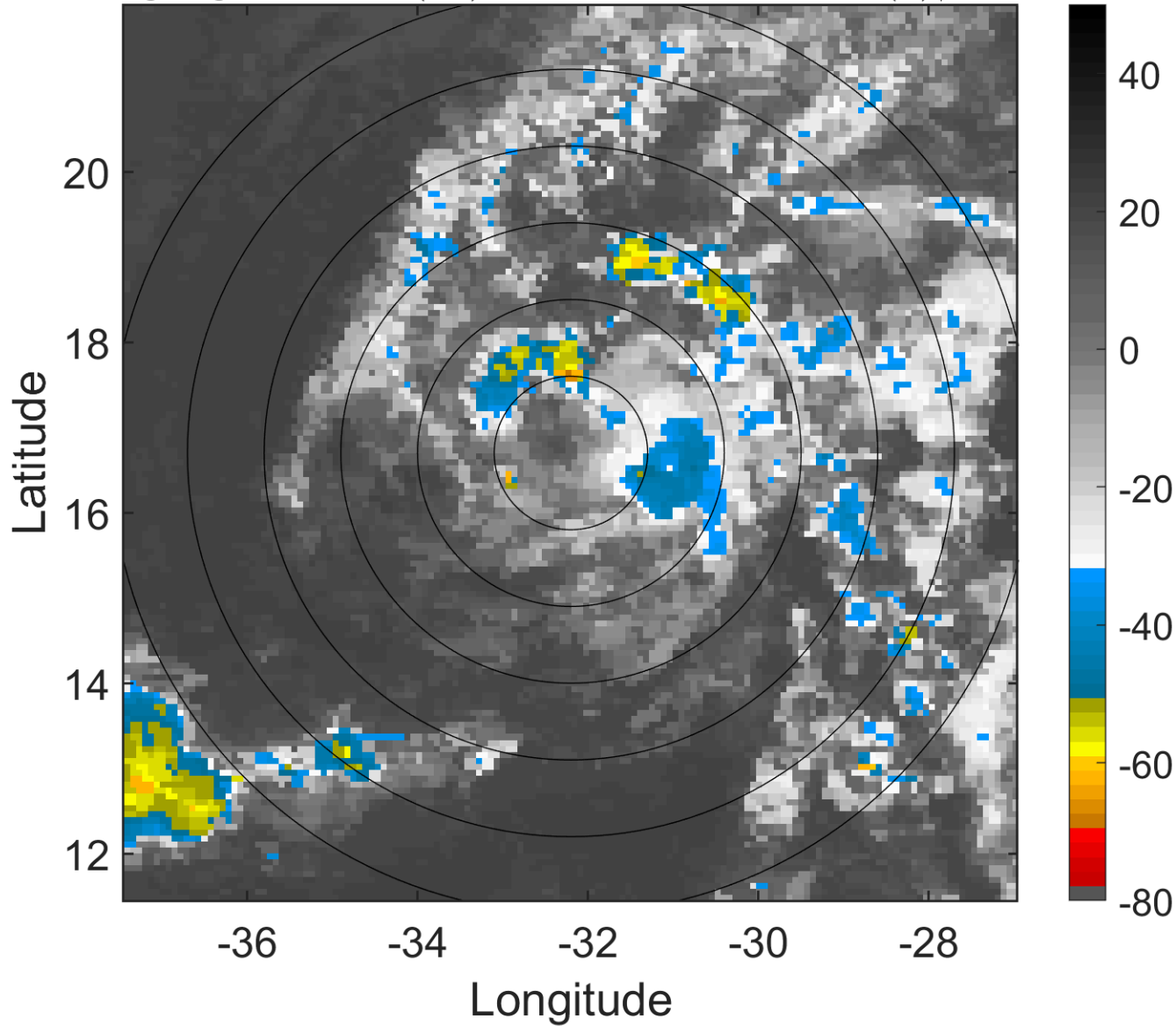
t: 2009092600 (21.9 LT)

Lightning: 21.9 LT  $\pm$  1.5 h (dots)

PT: SLCP | EA: QUASI

08L (EIGHT) | 30 kt TD

S: 5.9 m s<sup>-1</sup> (M) | H: 47°



### 6-h IR BT Differences & Lightning

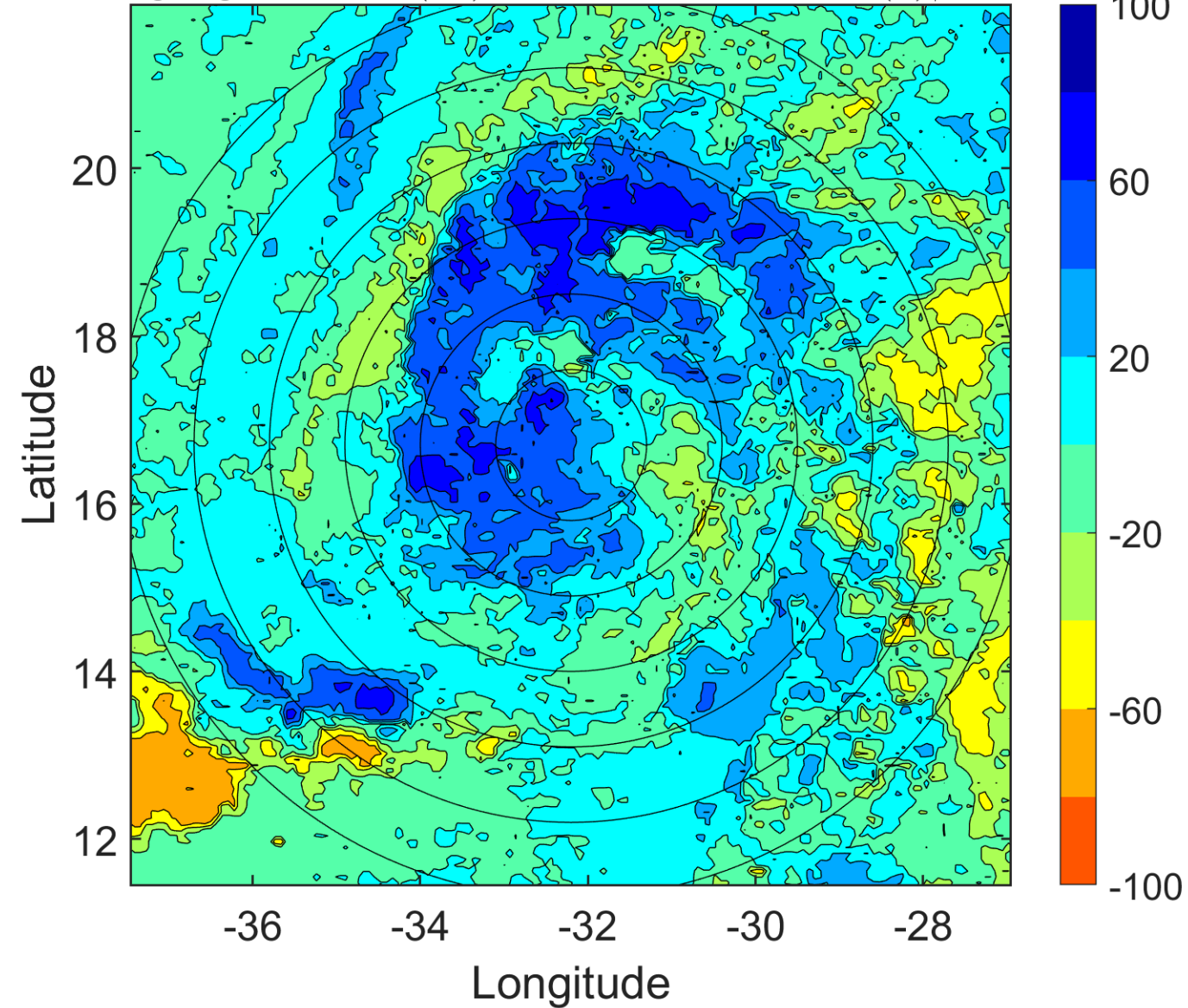
$\Delta$ t: 2009092600 (21.9 LT) - 2009092518 (15.9 LT)

Lightning: 21.9 LT  $\pm$  1.5 h (dots)

PT: SLCP | EA: QUASI

08L (EIGHT) | 30 kt TD

S: 5.9 m s<sup>-1</sup> (M) | H: 47°



### IR BT & Lightning

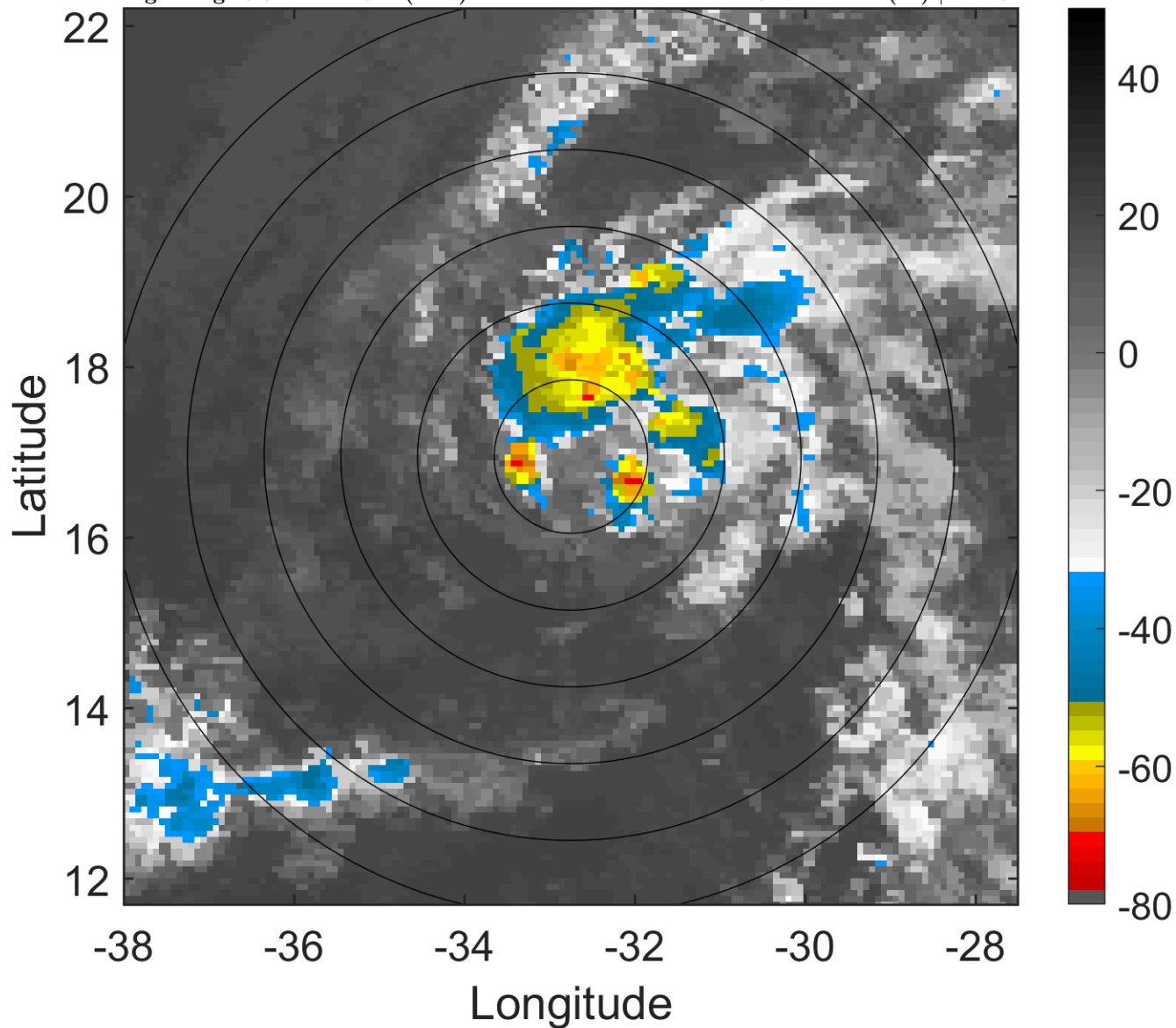
t: 2009092603 (0.8 LT)

Lightning: 0.8 LT  $\pm$  1.5 h (dots)

PT: LLCP | EA: ACT

08L (EIGHT) | 30 kt TD

S: 7.1 m s<sup>-1</sup> (M) | H: 49°



### 6-h IR BT Differences & Lightning

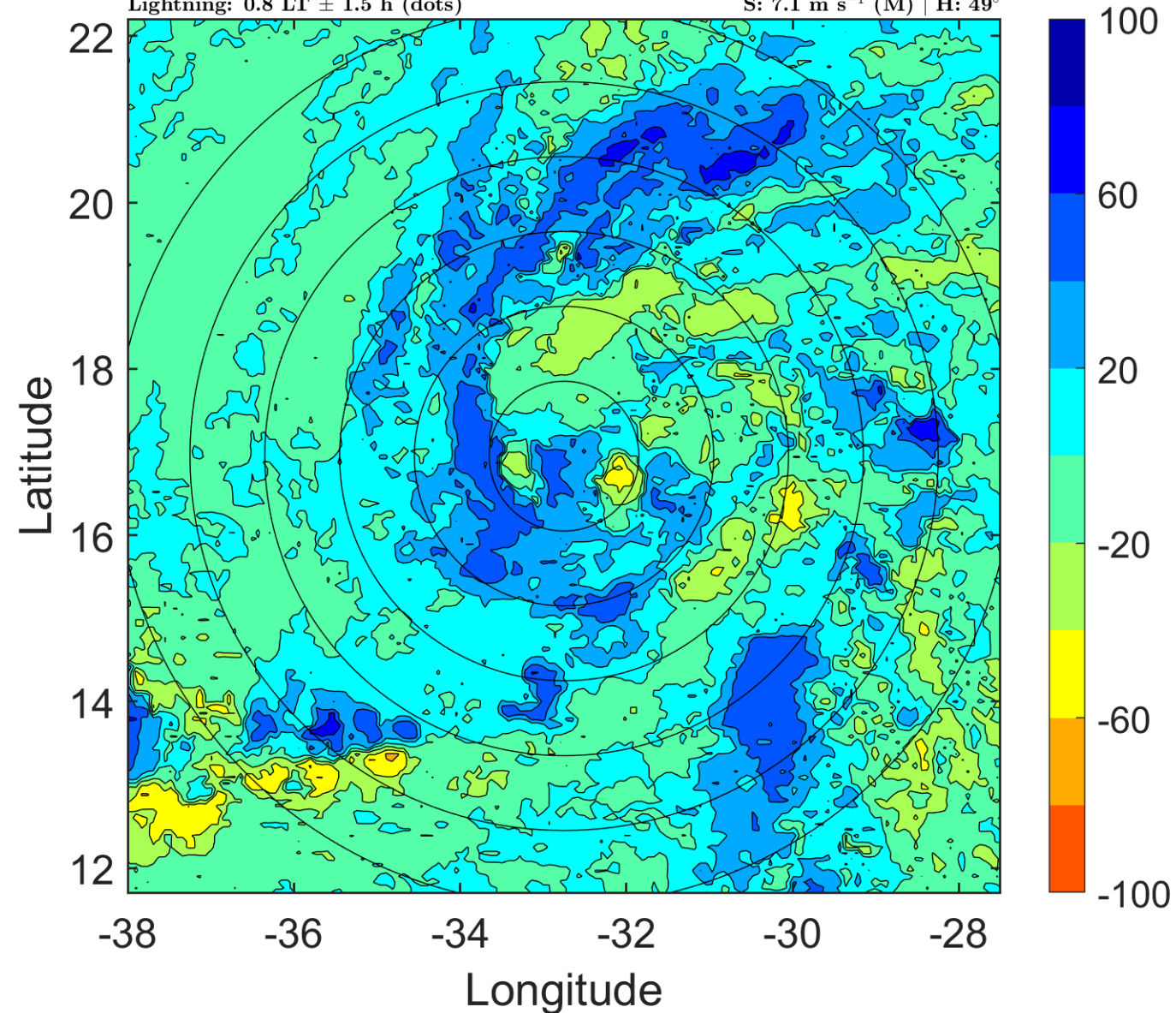
$\Delta$ t: 2009092603 (0.8 LT) - 2009092521 (18.9 LT)

Lightning: 0.8 LT  $\pm$  1.5 h (dots)

PT: LLCP | EA: ACT

08L (EIGHT) | 30 kt TD

S: 7.1 m s<sup>-1</sup> (M) | H: 49°





### IR BT & Lightning

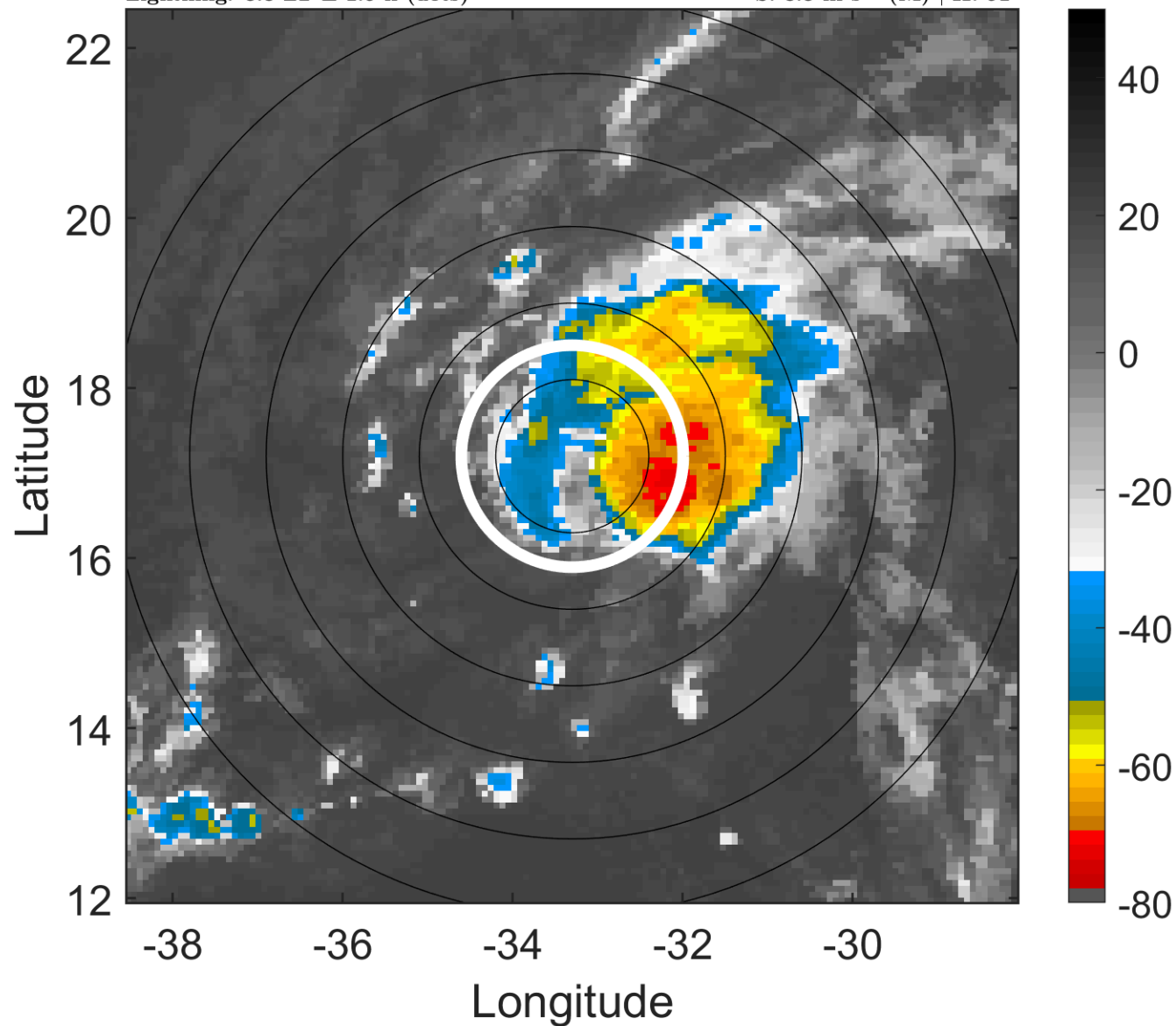
t: 2009092606 (3.8 LT)

Lightning: 3.8 LT  $\pm$  1.5 h (dots)

PT: LLCP | EA: ACT

08L (EIGHT) | 30 kt TD

S: 8.3 m s<sup>-1</sup> (M) | H: 51°



### 6-h IR BT Differences & Lightning

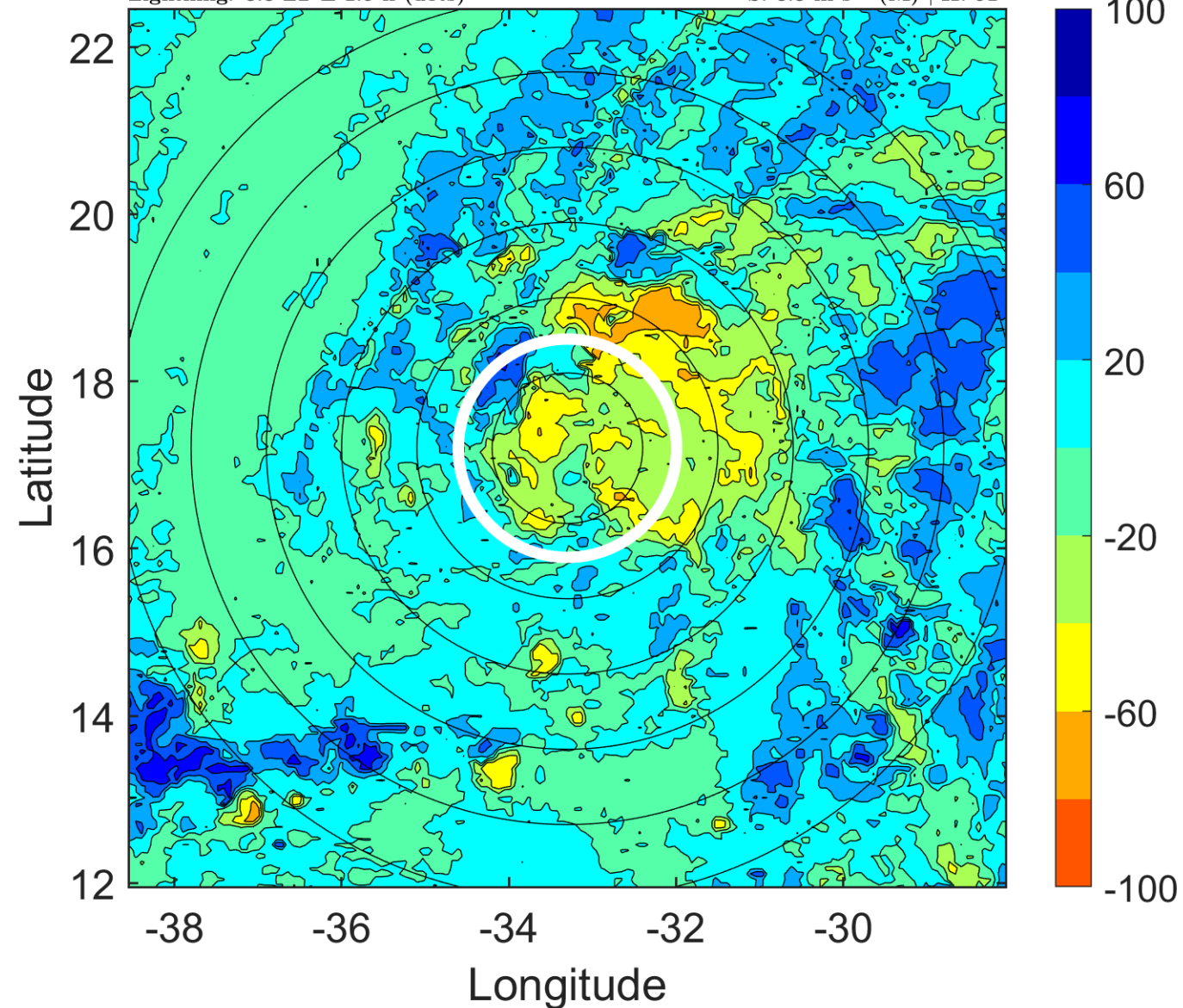
$\Delta$ t: 2009092606 (3.8 LT) - 2009092600 (21.9 LT)

Lightning: 3.8 LT  $\pm$  1.5 h (dots)

PT: LLCP | EA: ACT

08L (EIGHT) | 30 kt TD

S: 8.3 m s<sup>-1</sup> (M) | H: 51°



### IR BT & Lightning

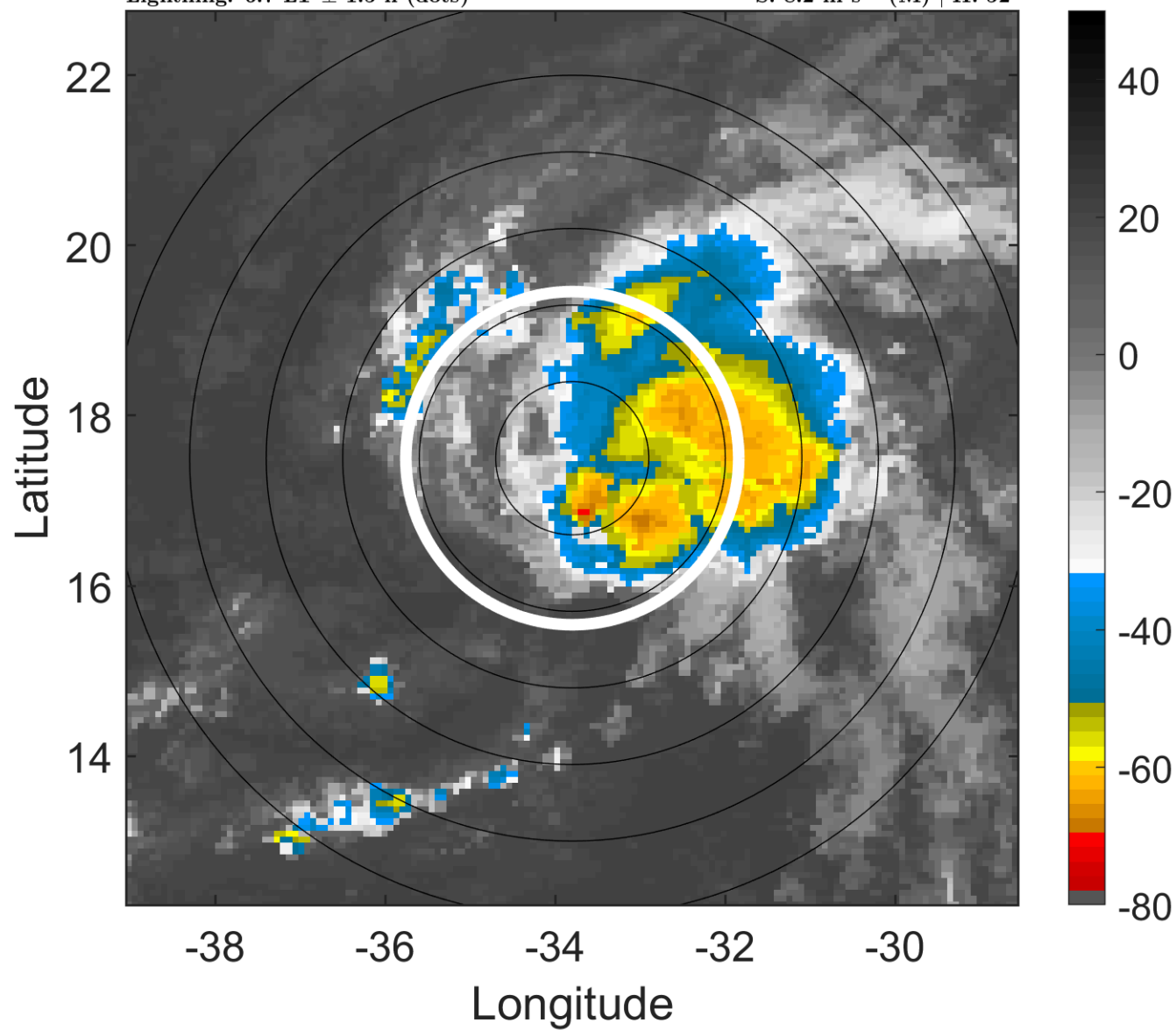
t: 2009092609 (6.7 LT)

Lightning: 6.7 LT  $\pm$  1.5 h (dots)

PT: LLCP | EA: ACT

08L (EIGHT) | 30 kt TD

S: 8.2 m s<sup>-1</sup> (M) | H: 52°



### 6-h IR BT Differences & Lightning

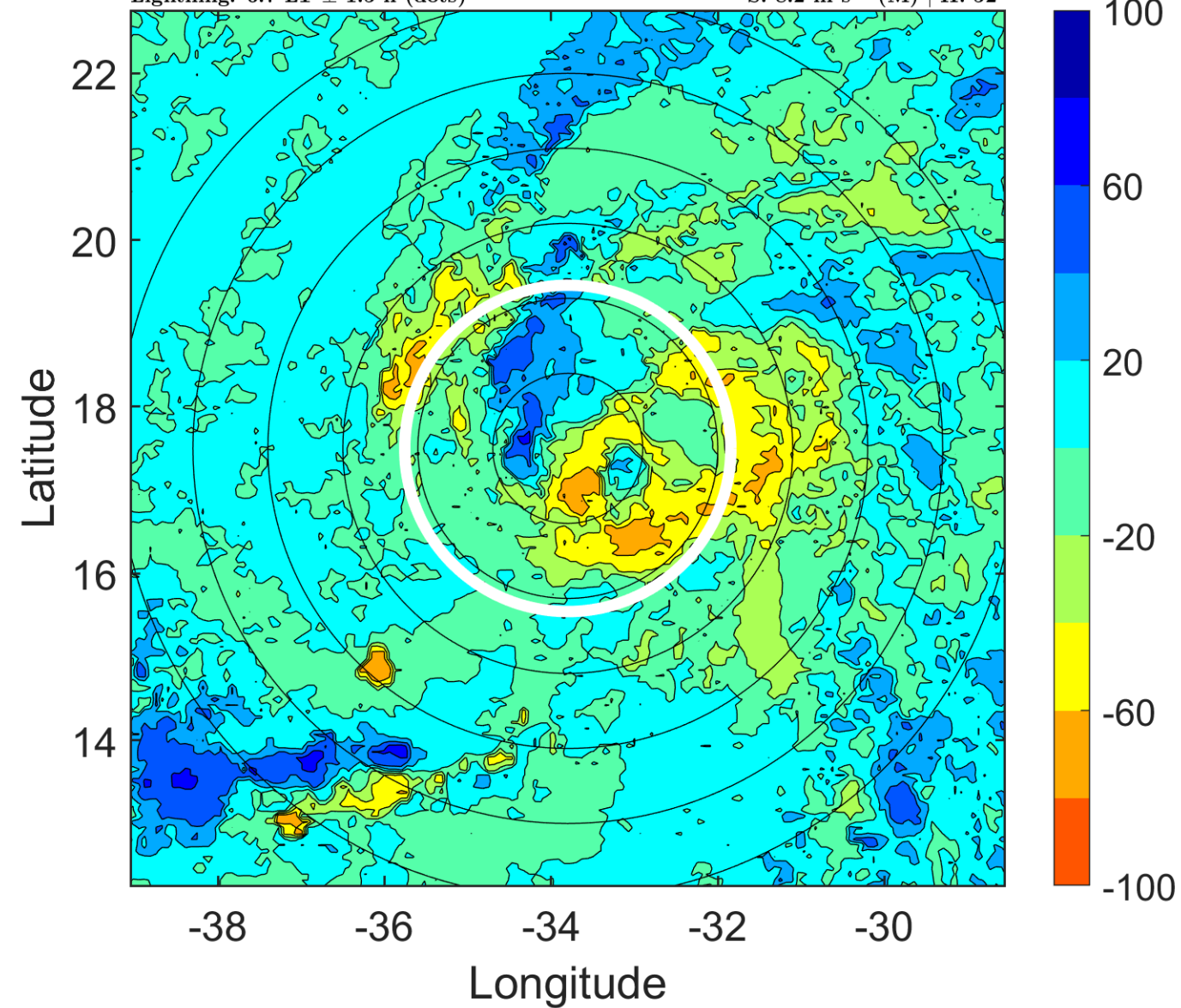
$\Delta$ t: 2009092609 (6.7 LT) - 2009092603 (0.8 LT)

Lightning: 6.7 LT  $\pm$  1.5 h (dots)

PT: LLCP | EA: ACT

08L (EIGHT) | 30 kt TD

S: 8.2 m s<sup>-1</sup> (M) | H: 52°





### IR BT & Lightning

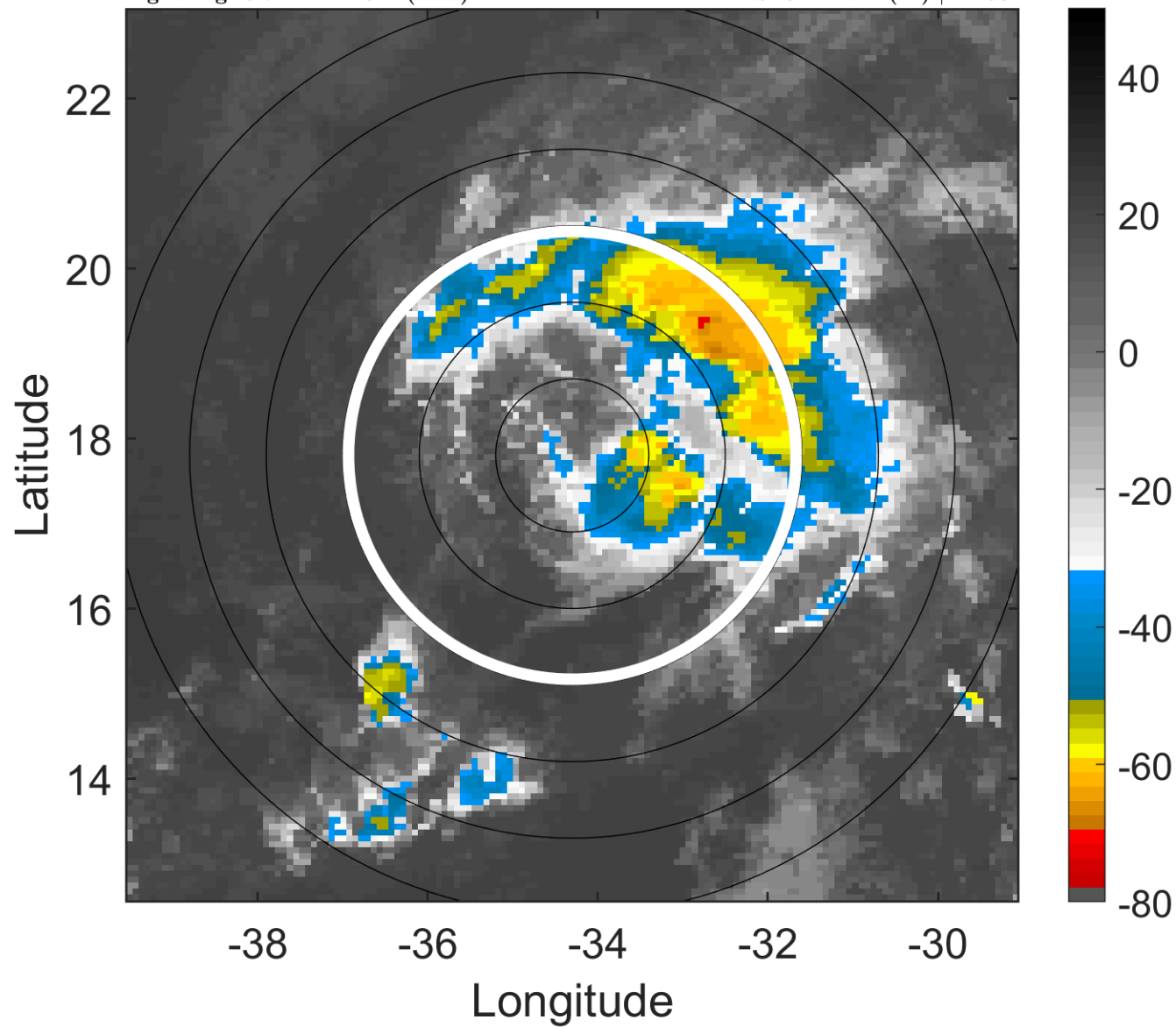
t: 2009092612 (9.7 LT)

Lightning: 9.7 LT  $\pm$  1.5 h (dots)

PT: LLCP | EA: ACT

08L (EIGHT) | 30 kt TD

S: 8.1 m s<sup>-1</sup> (M) | H: 53°



### 6-h IR BT Differences & Lightning

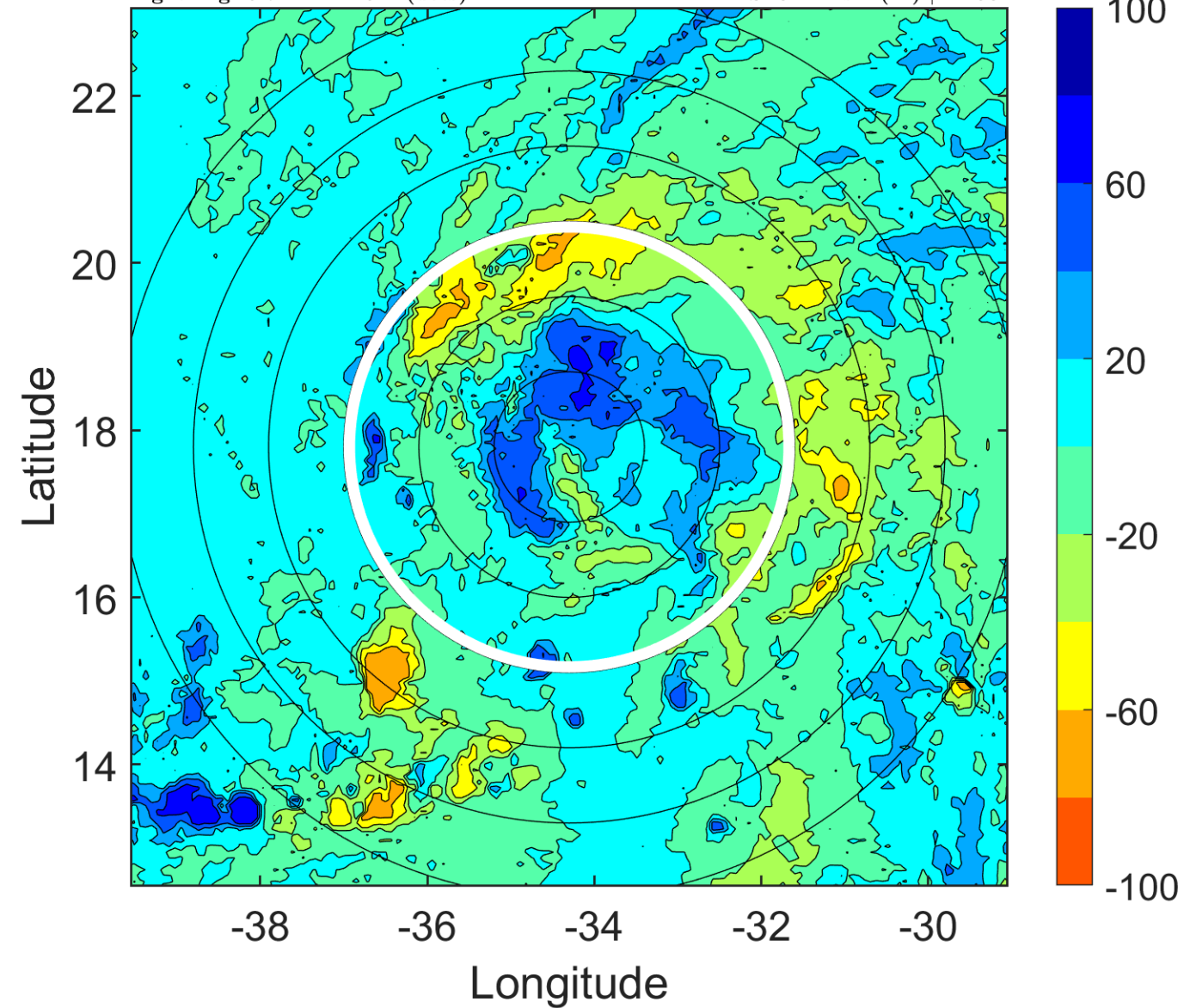
$\Delta$ t: 2009092612 (9.7 LT) - 2009092606 (3.8 LT)

Lightning: 9.7 LT  $\pm$  1.5 h (dots)

PT: LLCP | EA: ACT

08L (EIGHT) | 30 kt TD

S: 8.1 m s<sup>-1</sup> (M) | H: 53°



### IR BT & Lightning

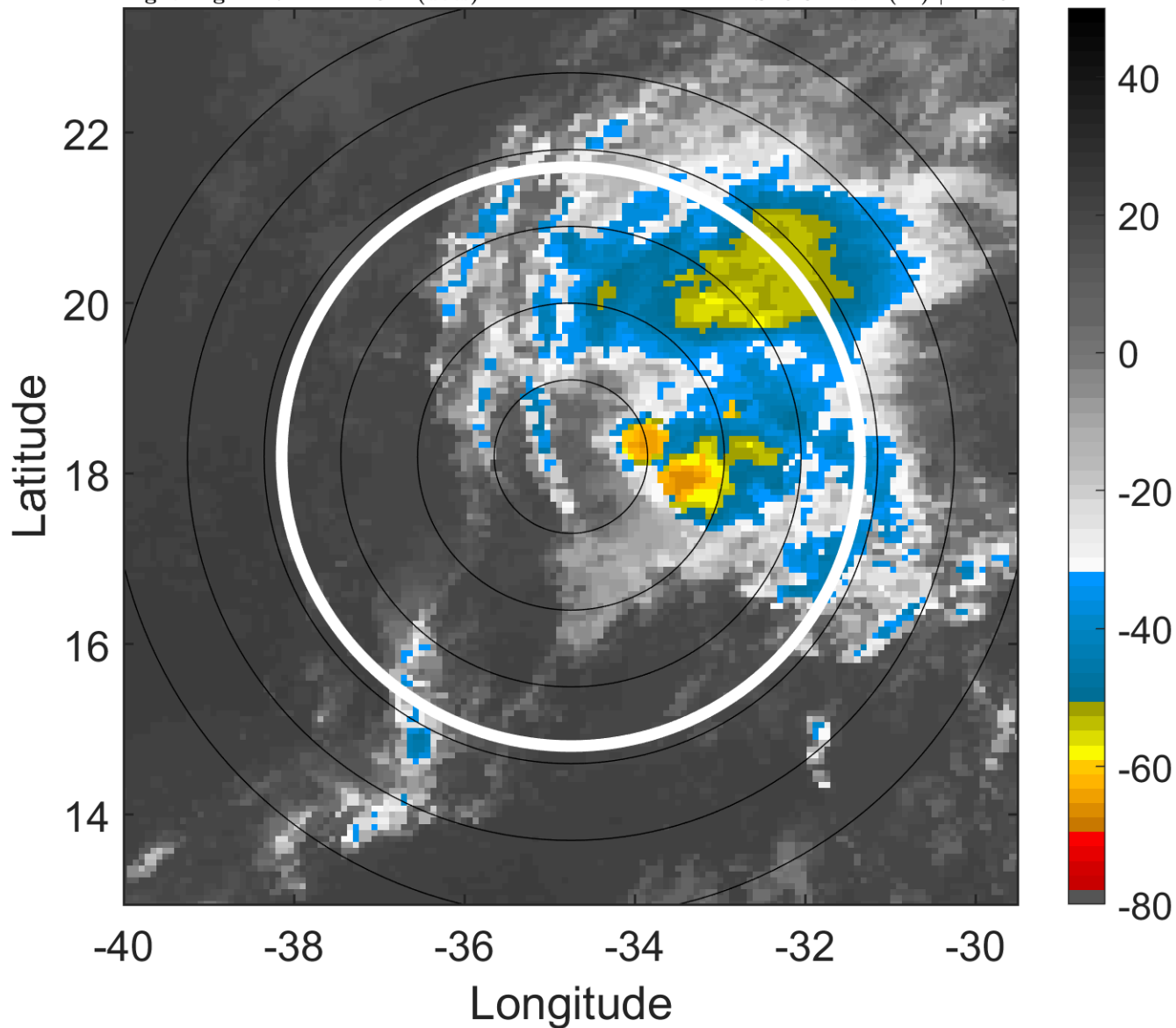
t: 2009092615 (12.7 LT)

Lightning: 12.7 LT  $\pm$  1.5 h (dots)

PT: LLCP | EA: ACT

08L (EIGHT) | 27.5 kt TD

S: 9.8 m s<sup>-1</sup> (M) | H: 49°



### 6-h IR BT Differences & Lightning

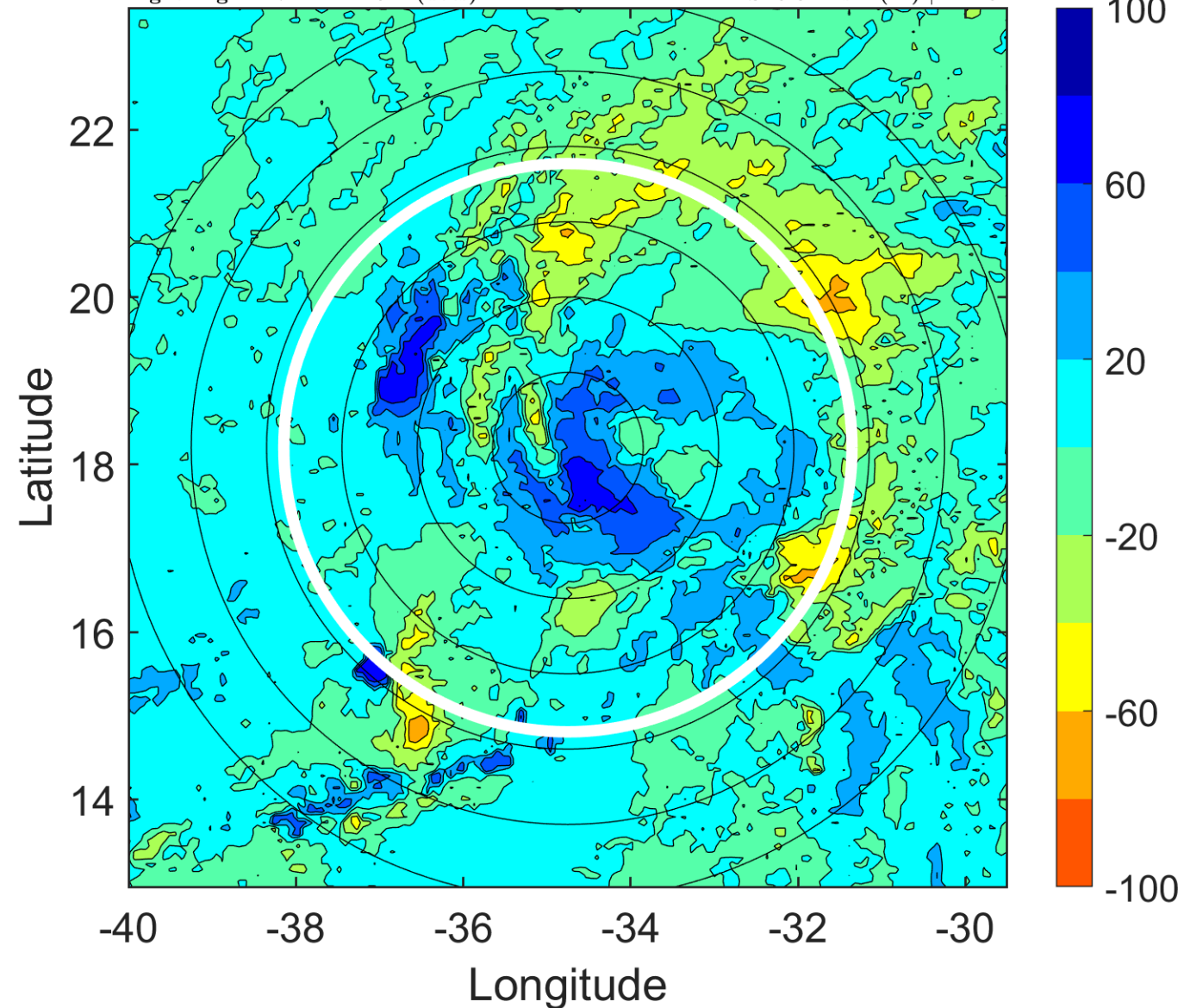
$\Delta$ t: 2009092615 (12.7 LT) - 2009092609 (6.7 LT)

Lightning: 12.7 LT  $\pm$  1.5 h (dots)

PT: LLCP | EA: ACT

08L (EIGHT) | 27.5 kt TD

S: 9.8 m s<sup>-1</sup> (M) | H: 49°



### IR BT & Lightning

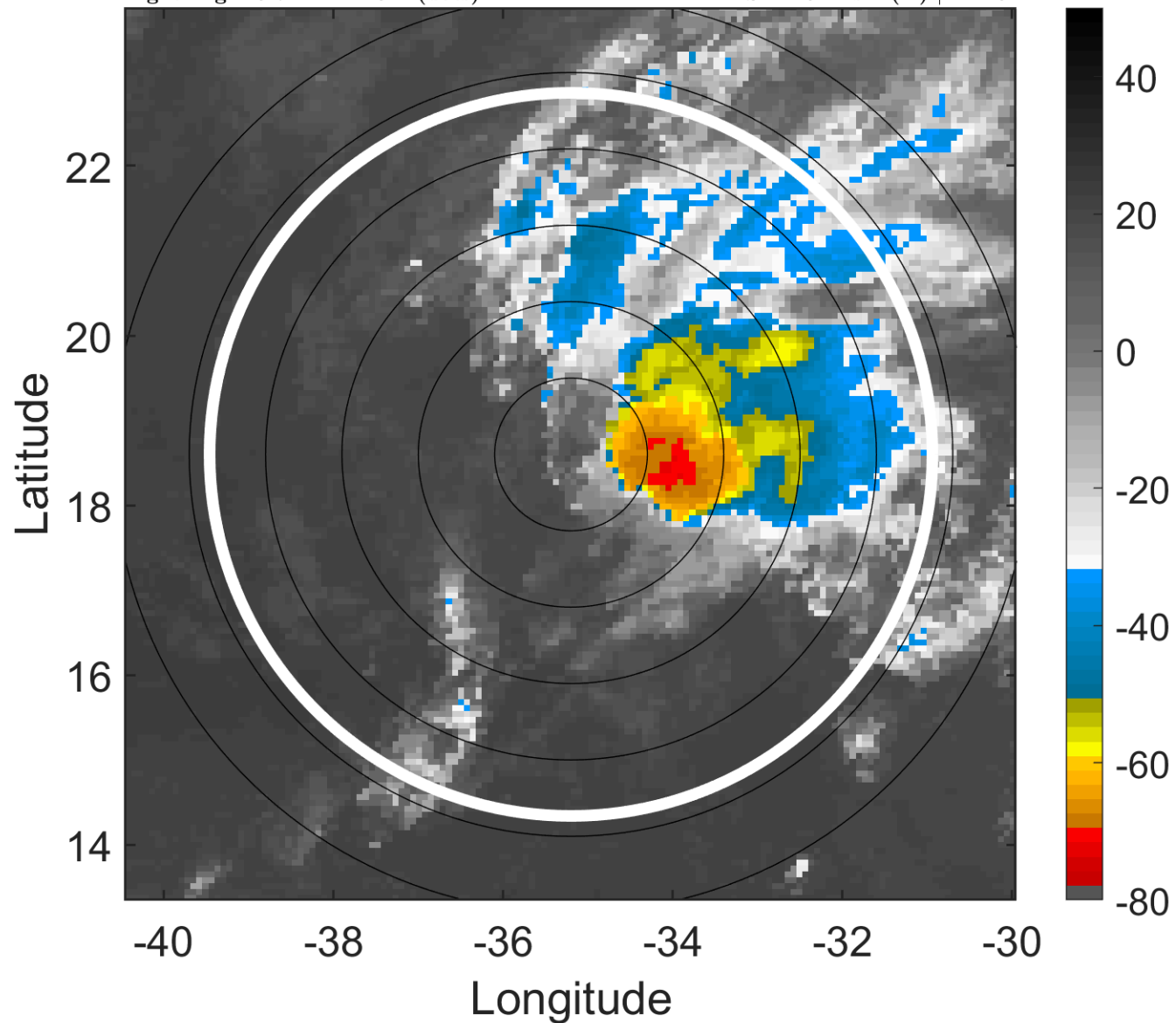
t: 2009092618 (15.7 LT)

Lightning: 15.7 LT  $\pm$  1.5 h (dots)

PT: LLCP | EA: ACT

08L (EIGHT) | 25 kt TD

S: 11.5 m s<sup>-1</sup> (H) | H: 45°



### 6-h IR BT Differences & Lightning

$\Delta$ t: 2009092618 (15.7 LT) - 2009092612 (9.7 LT)

Lightning: 15.7 LT  $\pm$  1.5 h (dots)

PT: LLCP | EA: ACT

08L (EIGHT) | 25 kt TD

S: 11.5 m s<sup>-1</sup> (H) | H: 45°

