

IR BT & Lightning

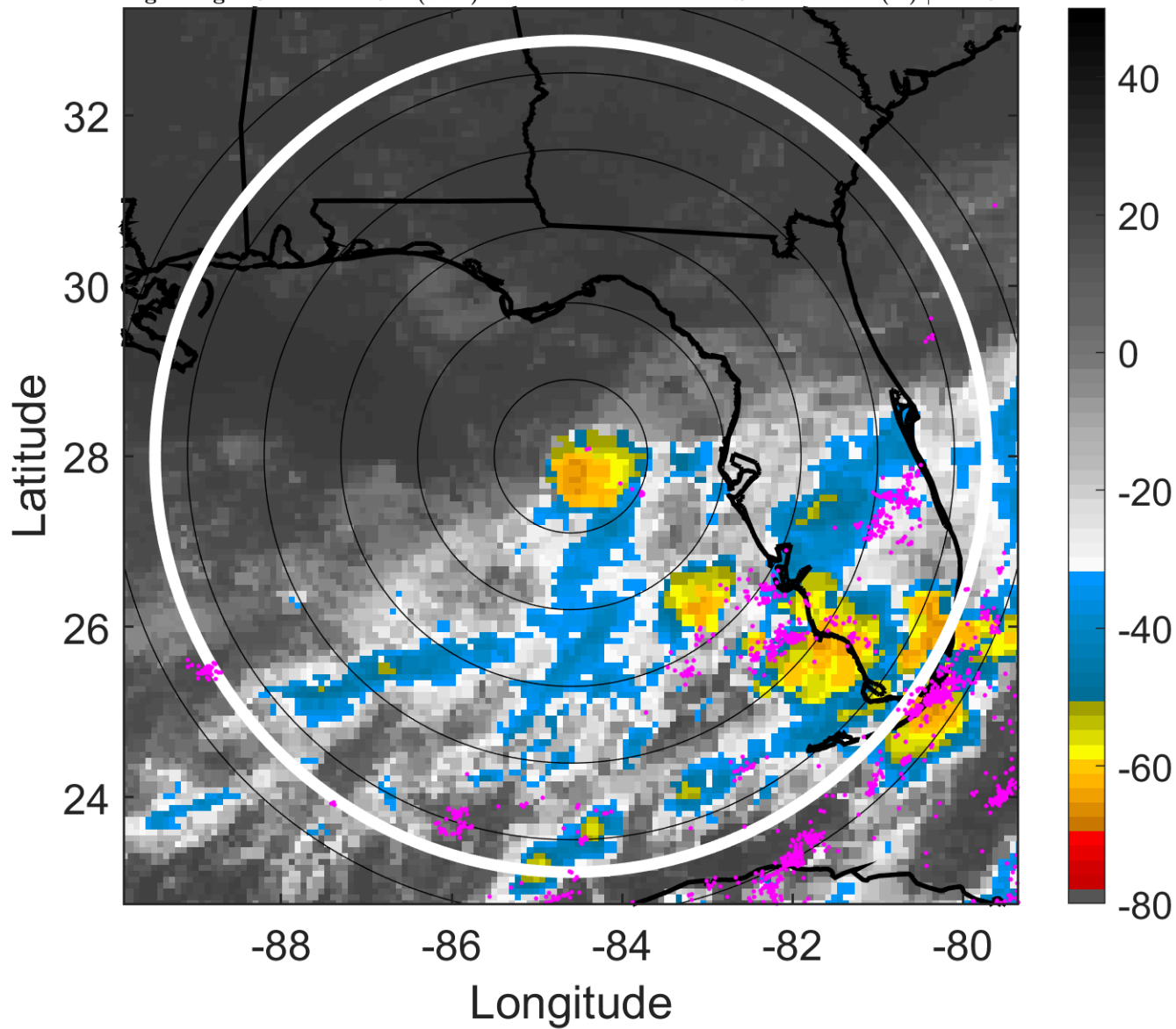
t: 2017073100 (18.4 LT)

Lightning: 18.4 LT \pm 1.5 h (dots)

PT: NP | EA: INACT

06L (EMILY) | 35 kt TS

S: 11.2 m s⁻¹ (H) | H: 151°



6-h IR BT Differences & Lightning

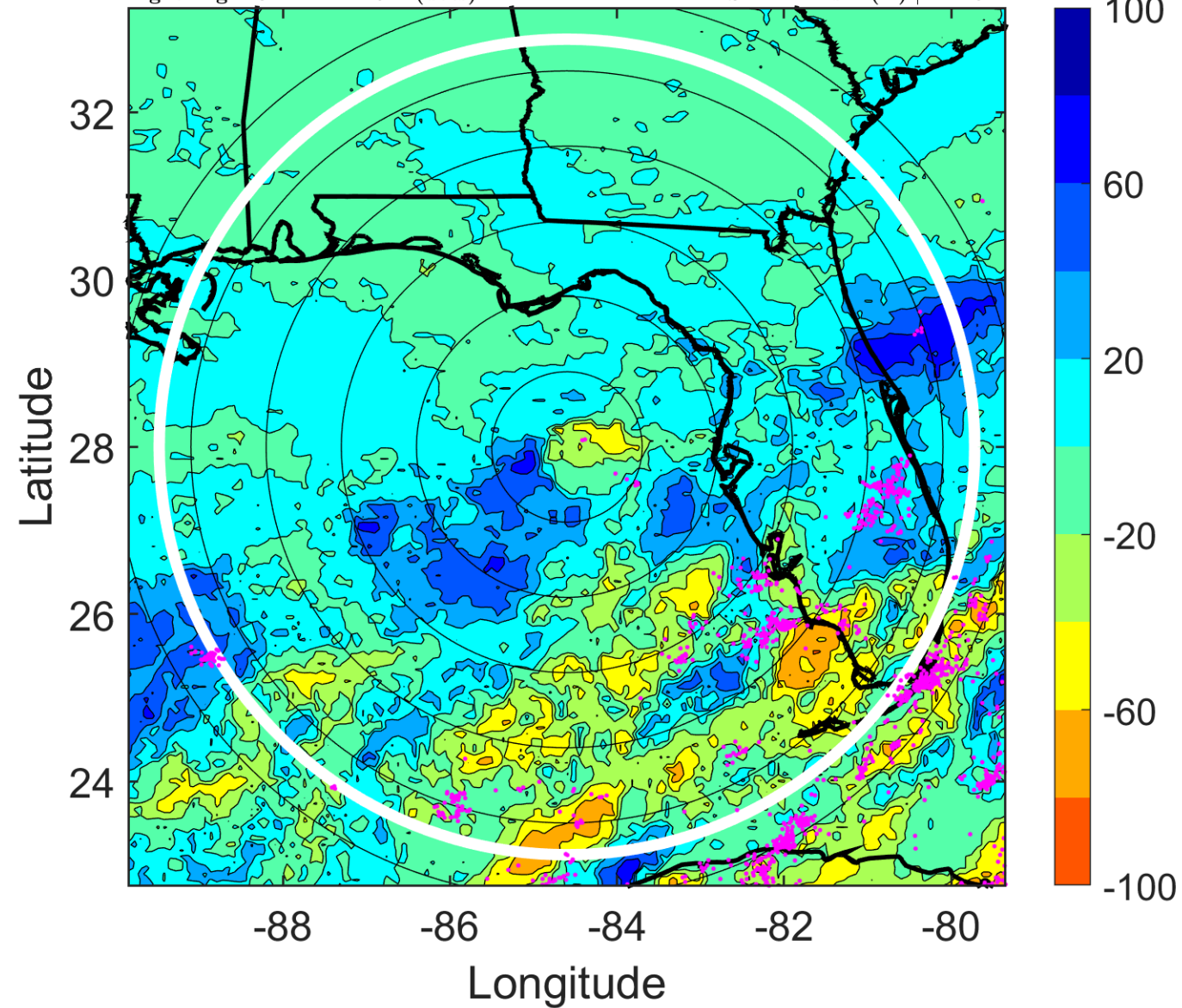
Δ t: 2017073100 (18.4 LT) - 2017073018 (12.3 LT)

Lightning: 18.4 LT \pm 1.5 h (dots)

PT: NP | EA: INACT

06L (EMILY) | 35 kt TS

S: 11.2 m s⁻¹ (H) | H: 151°



IR BT & Lightning

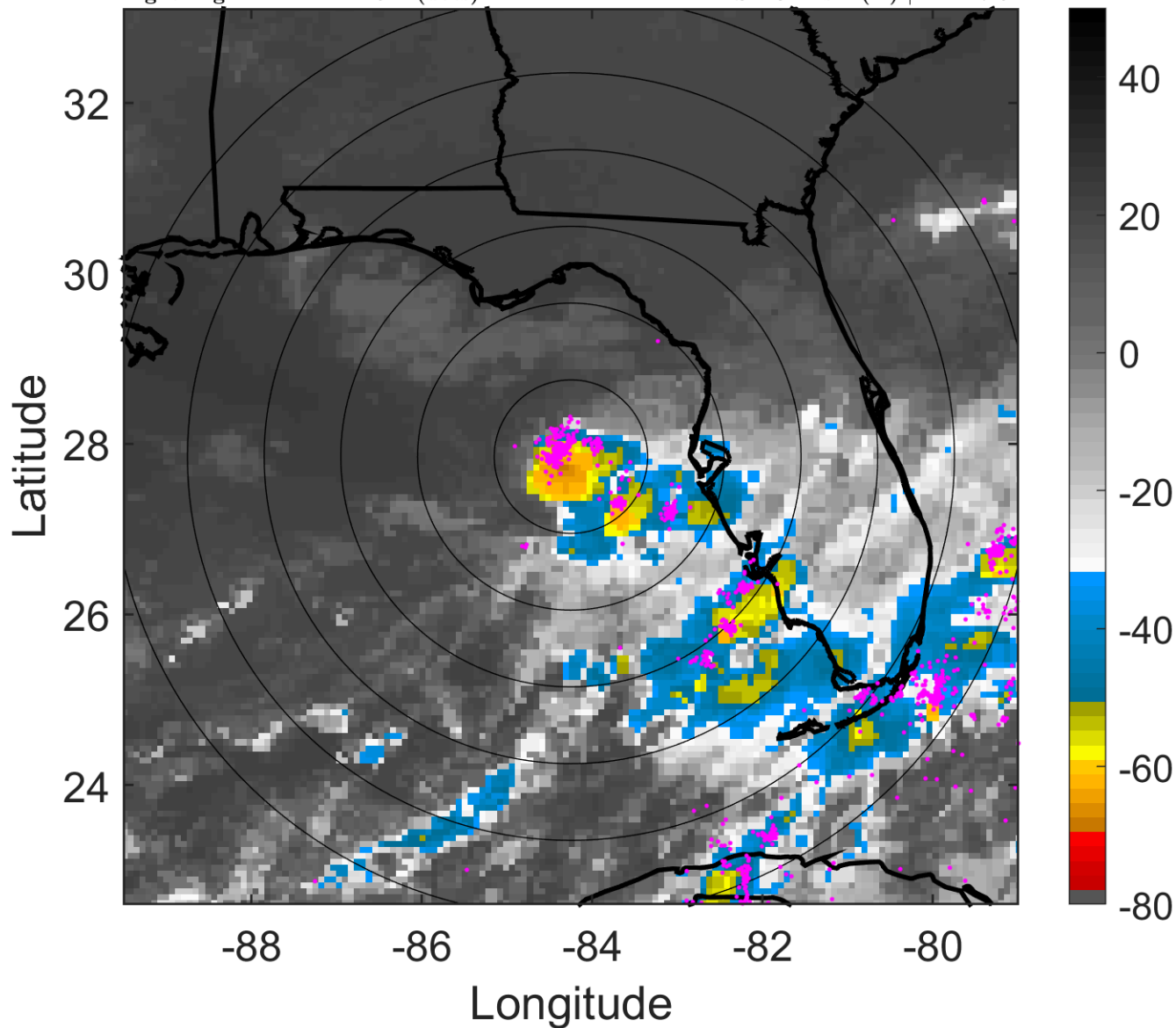
t: 2017073103 (21.4 LT)

Lightning: 21.4 LT \pm 1.5 h (dots)

PT: NP | EA: INACT

06L (EMILY) | 37.5 kt TS

S: 13 m s⁻¹ (H) | H: 147.5°



6-h IR BT Differences & Lightning

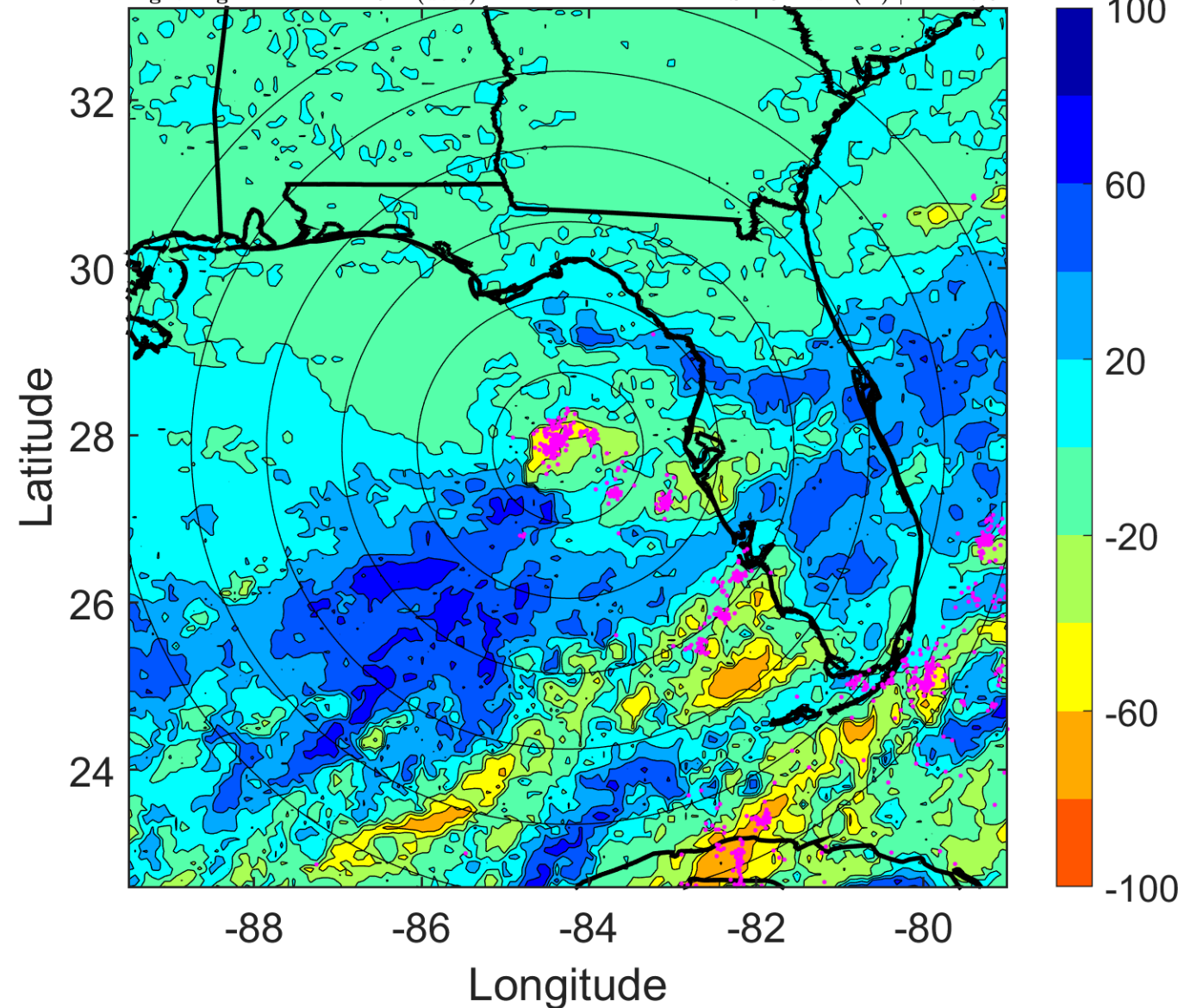
Δ t: 2017073103 (21.4 LT) - 2017073021 (15.3 LT)

Lightning: 21.4 LT \pm 1.5 h (dots)

PT: NP | EA: INACT

06L (EMILY) | 37.5 kt TS

S: 13 m s⁻¹ (H) | H: 147.5°



IR BT & Lightning

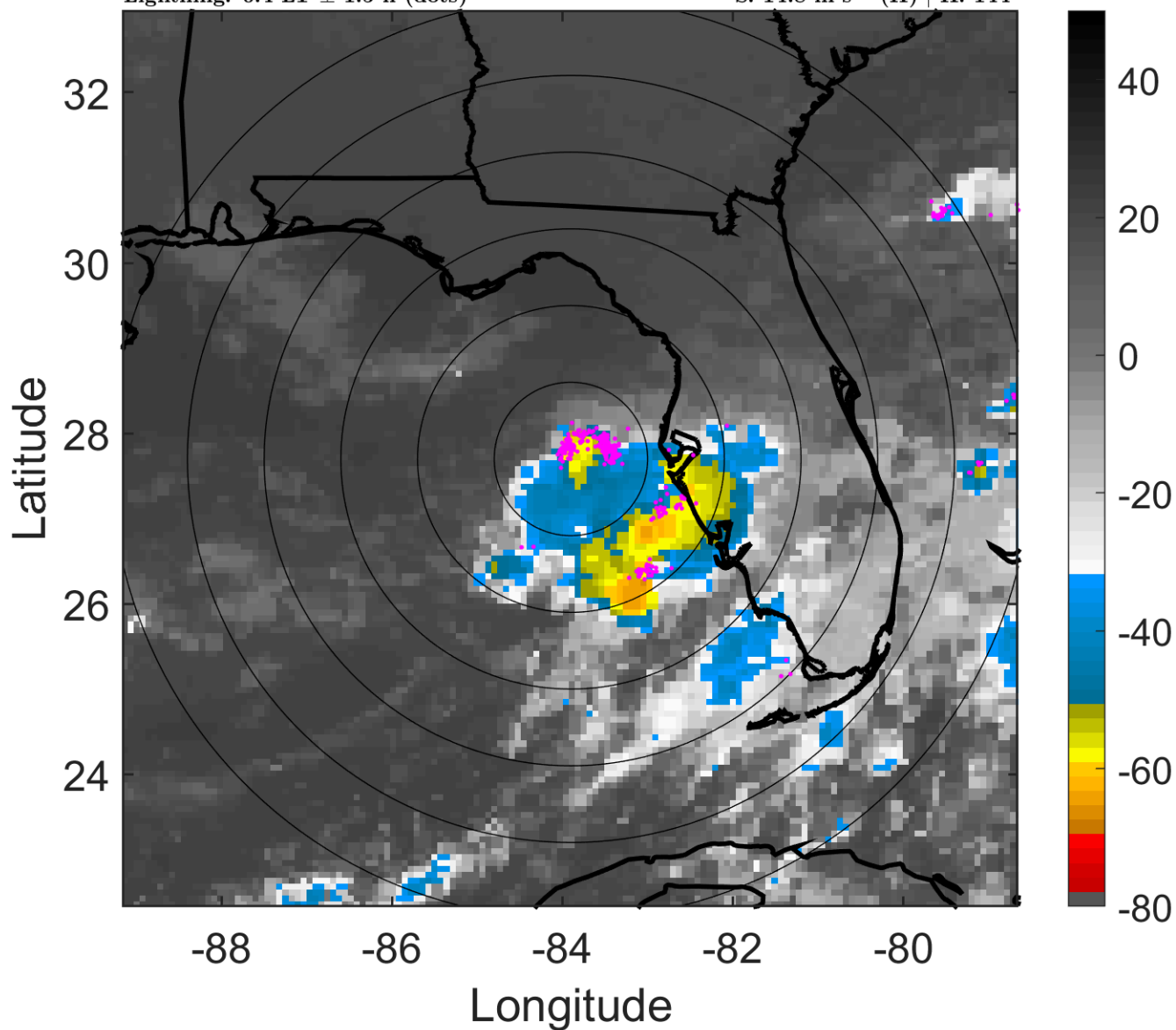
t: 2017073106 (0.4 LT)

Lightning: 0.4 LT \pm 1.5 h (dots)

PT: LLCP | EA: ACT

06L (EMILY) | 40 kt TS

S: 14.8 m s⁻¹ (H) | H: 144°



6-h IR BT Differences & Lightning

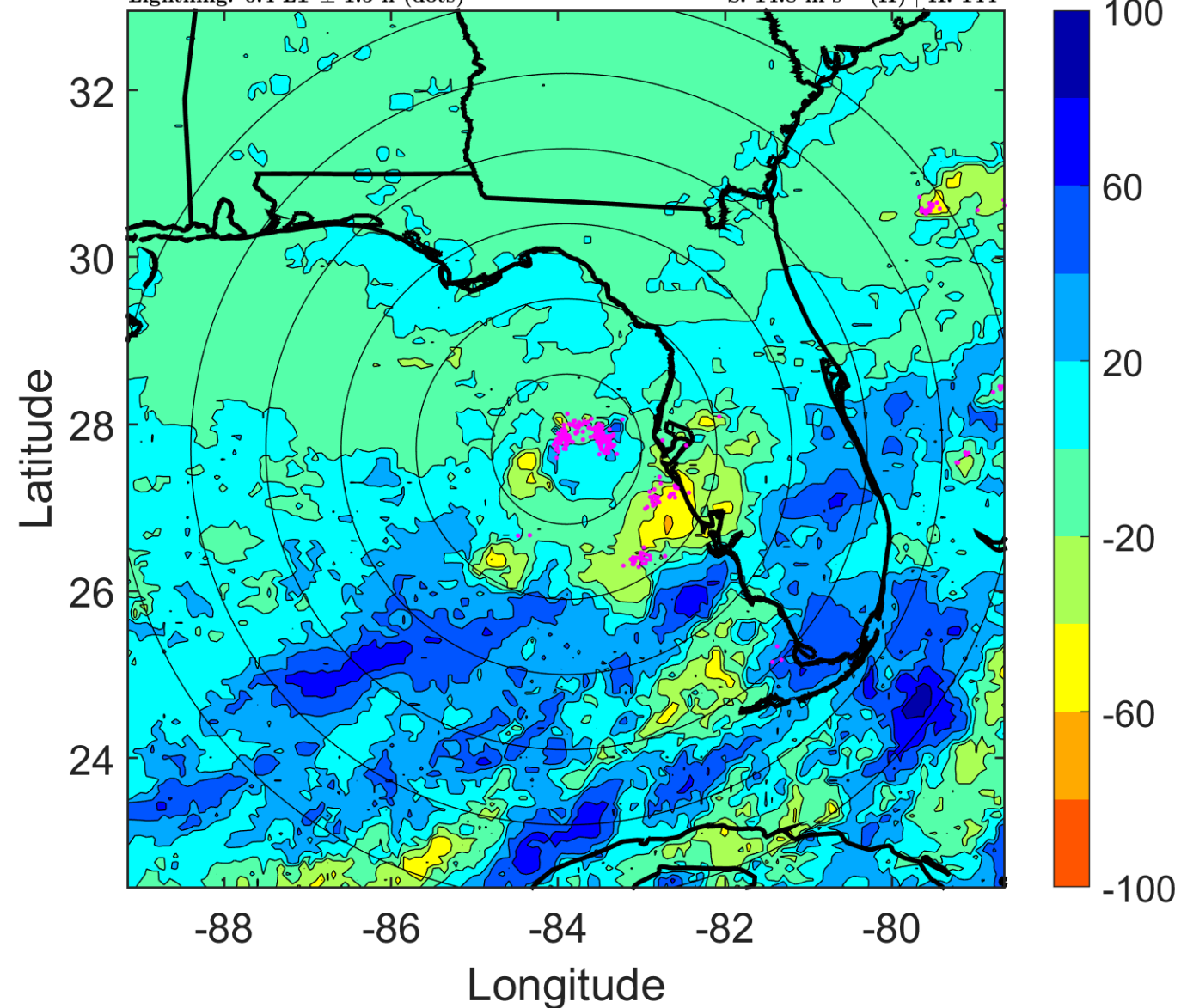
Δ t: 2017073106 (0.4 LT) - 2017073100 (18.4 LT)

Lightning: 0.4 LT \pm 1.5 h (dots)

PT: LLCP | EA: ACT

06L (EMILY) | 40 kt TS

S: 14.8 m s⁻¹ (H) | H: 144°



IR BT & Lightning

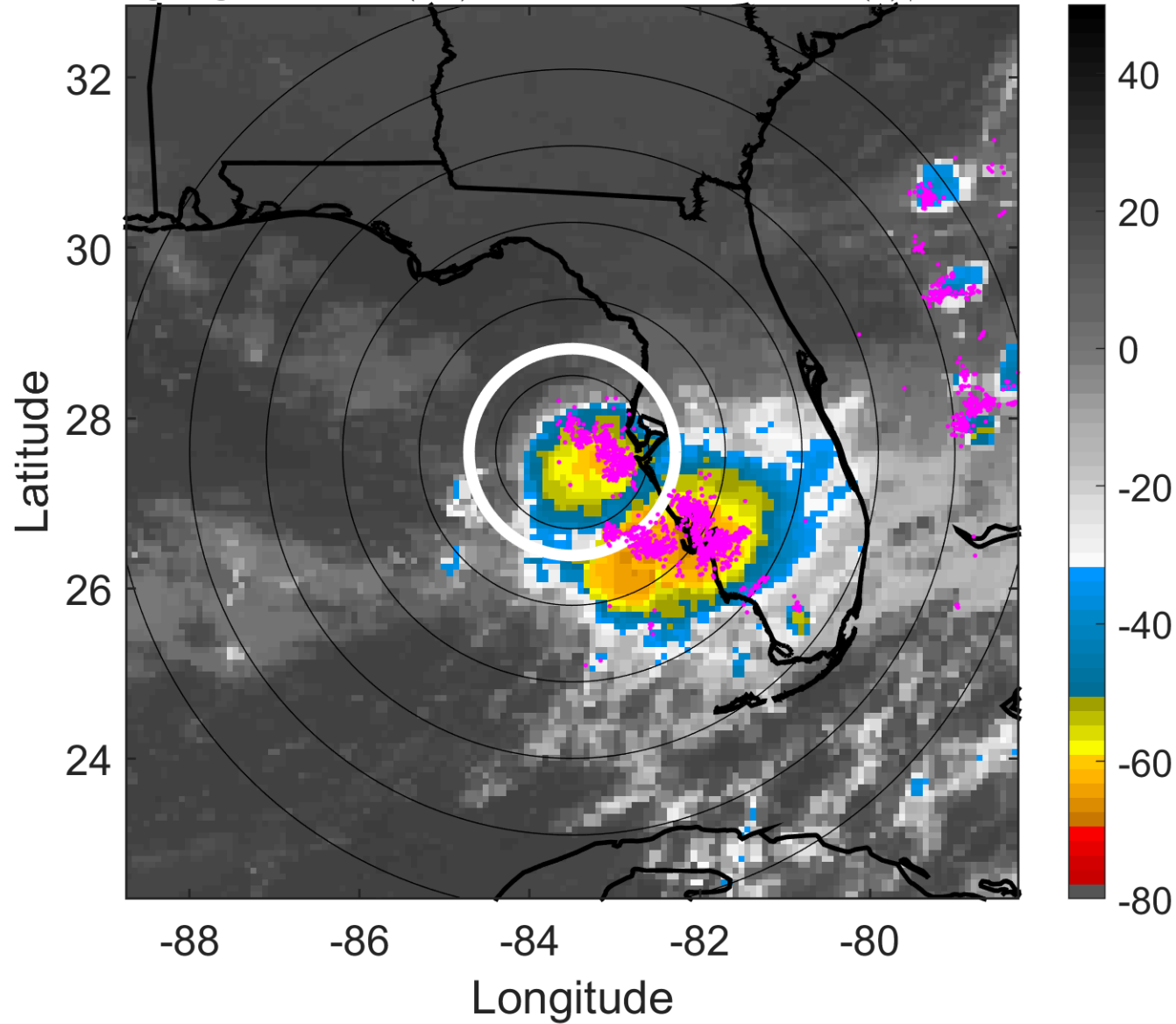
t: 2017073109 (3.4 LT)

Lightning: 3.4 LT \pm 1.5 h (dots)

PT: LLCP | EA: ACT

06L (EMILY) | 42.5 kt TS

S: 13.5 m s⁻¹ (H) | H: 151.5°



6-h IR BT Differences & Lightning

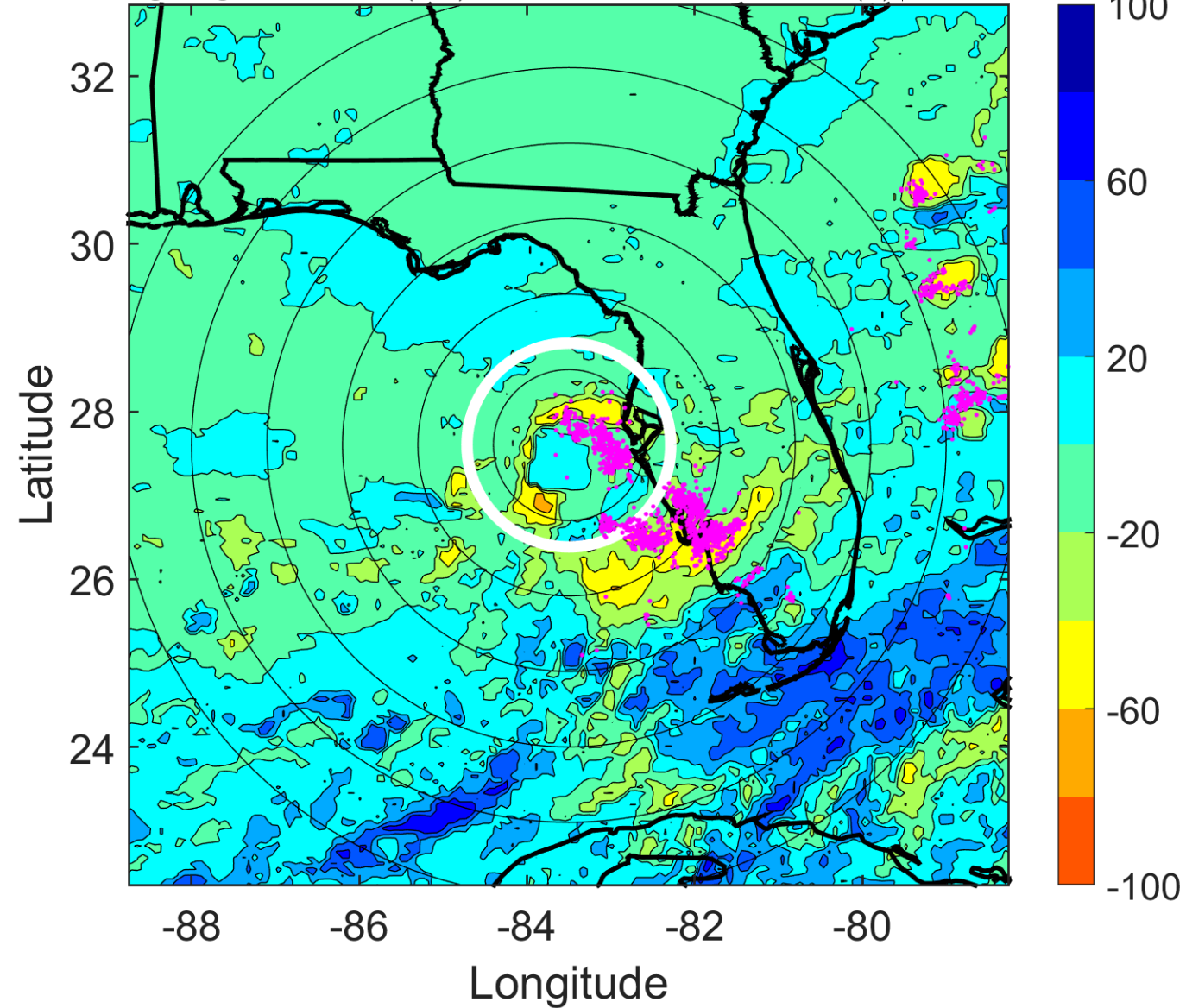
Δ t: 2017073109 (3.4 LT) - 2017073103 (21.4 LT)

Lightning: 3.4 LT \pm 1.5 h (dots)

PT: LLCP | EA: ACT

06L (EMILY) | 42.5 kt TS

S: 13.5 m s⁻¹ (H) | H: 151.5°



IR BT & Lightning

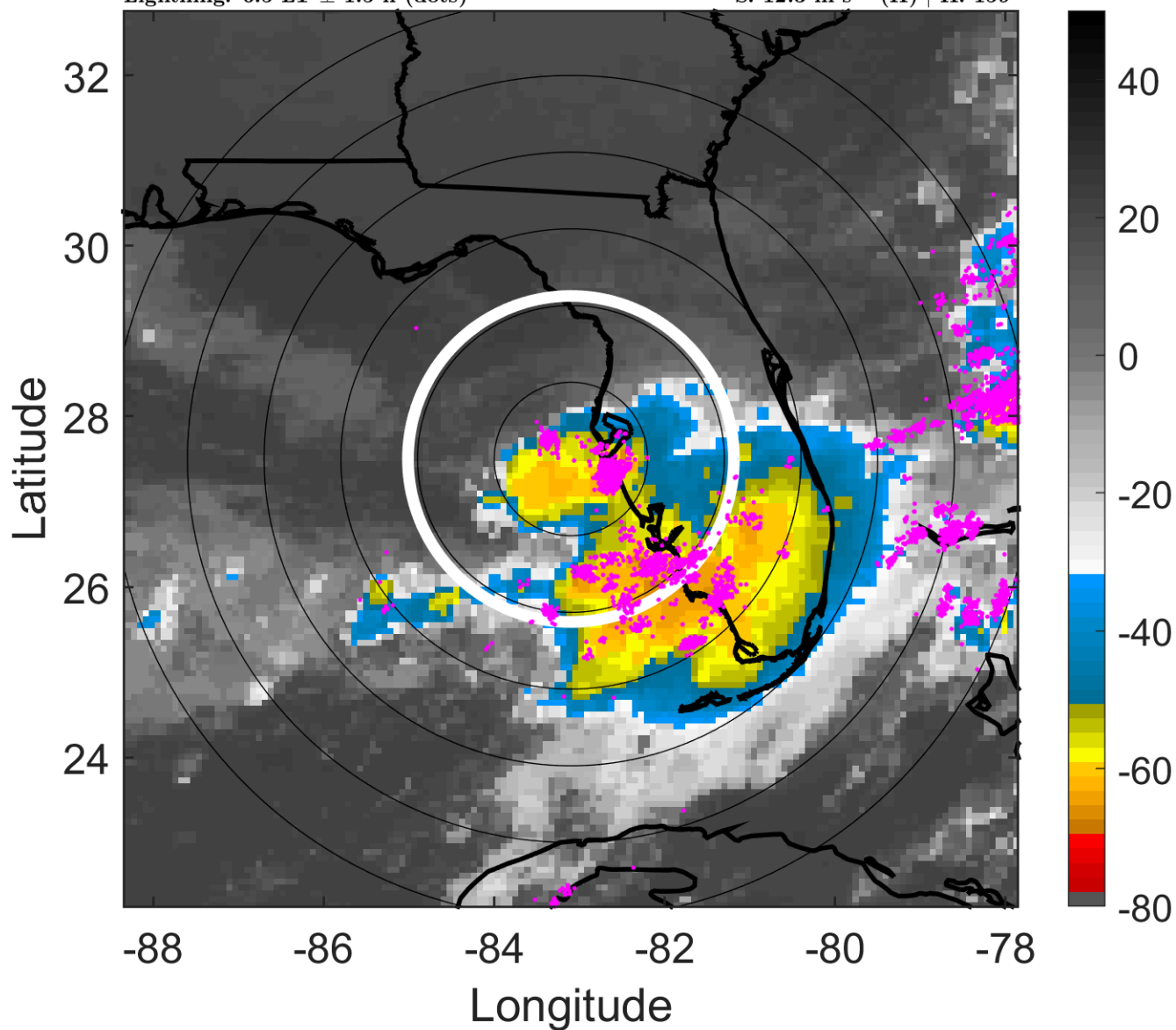
t: 2017073112 (6.5 LT)

Lightning: 6.5 LT \pm 1.5 h (dots)

PT: LLCP | EA: ACT

06L (EMILY) | 45 kt TS

S: 12.3 m s⁻¹ (H) | H: 159°



6-h IR BT Differences & Lightning

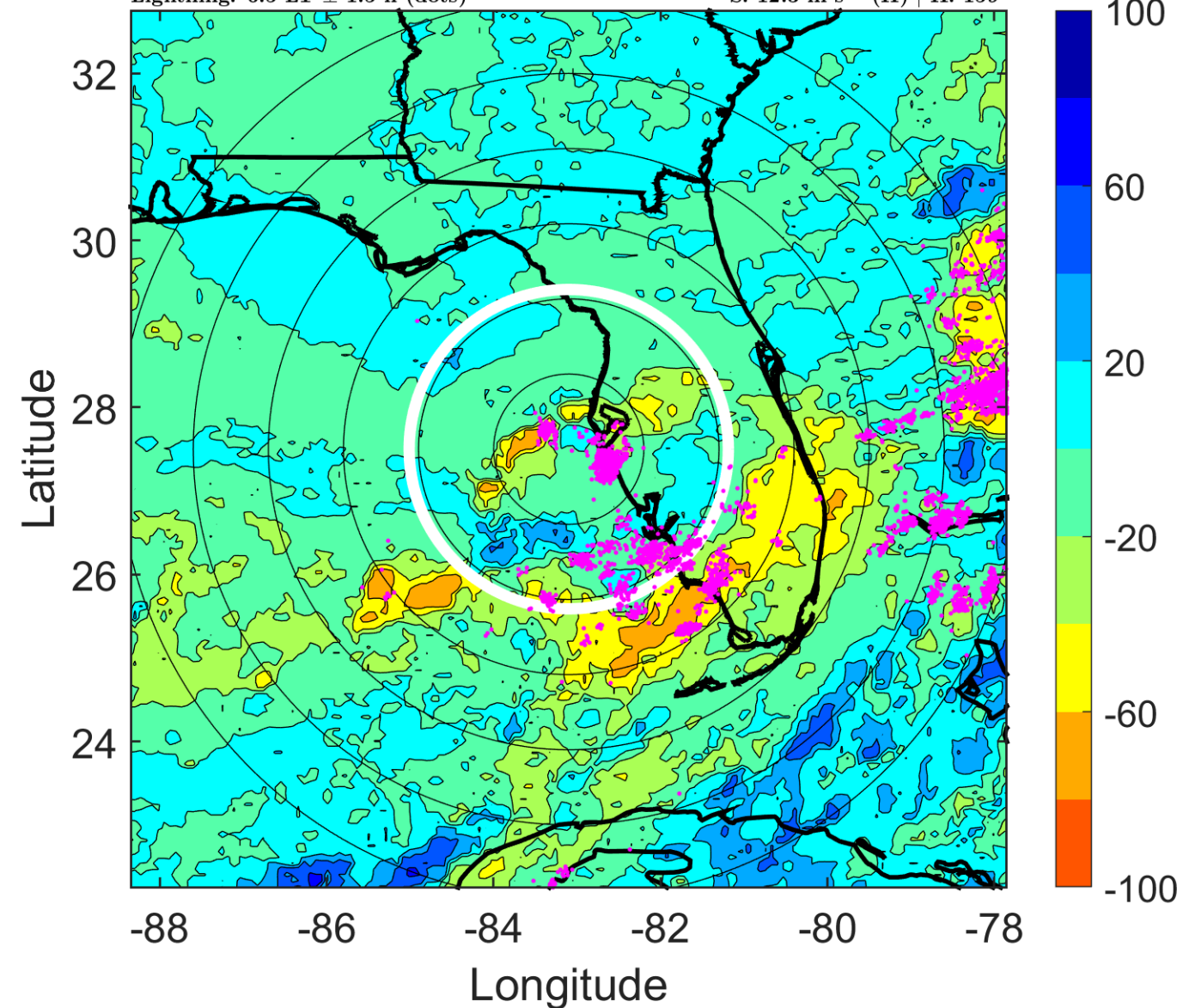
Δ t: 2017073112 (6.5 LT) - 2017073106 (0.4 LT)

Lightning: 6.5 LT \pm 1.5 h (dots)

PT: LLCP | EA: ACT

06L (EMILY) | 45 kt TS

S: 12.3 m s⁻¹ (H) | H: 159°



IR BT & Lightning

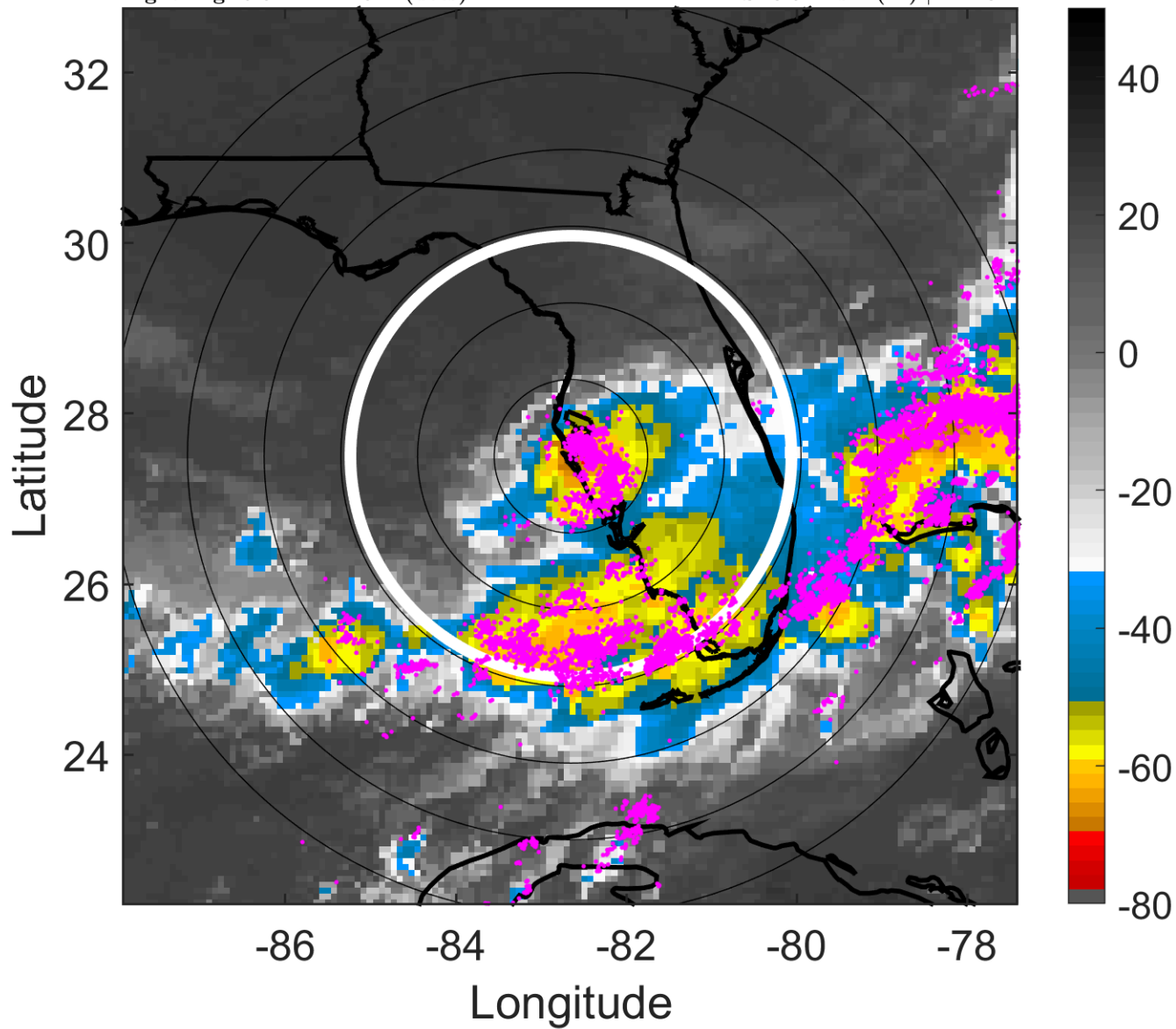
t: 2017073115 (9.5 LT)

Lightning: 9.5 LT \pm 1.5 h (dots)

PT: LLCP | EA: ACT

06L (EMILY) | 40 kt TS

S: 8.6 m s⁻¹ (M) | H: 132°



6-h IR BT Differences & Lightning

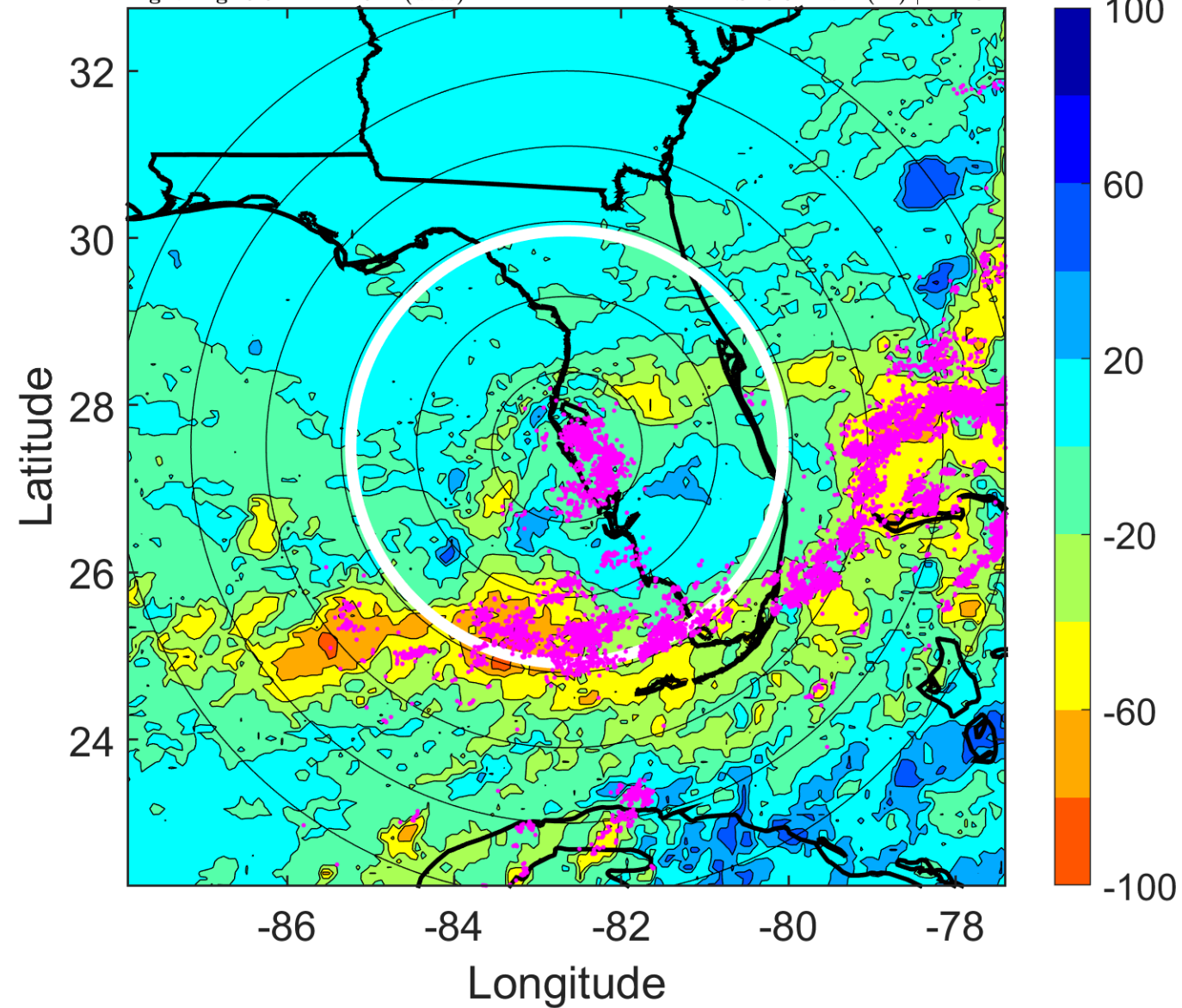
Δ t: 2017073115 (9.5 LT) - 2017073109 (3.4 LT)

Lightning: 9.5 LT \pm 1.5 h (dots)

PT: LLCP | EA: ACT

06L (EMILY) | 40 kt TS

S: 8.6 m s⁻¹ (M) | H: 132°



IR BT & Lightning

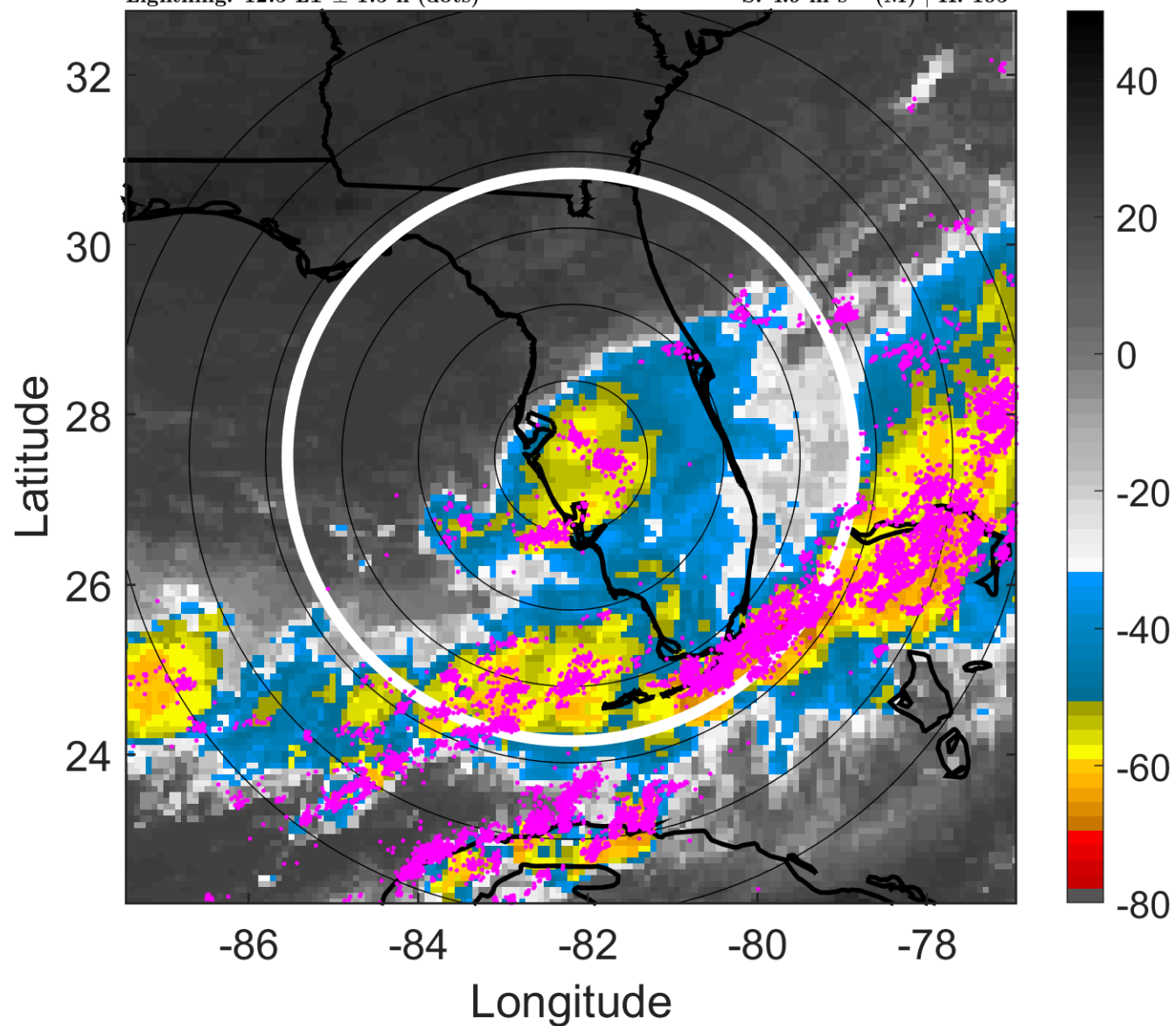
t: 2017073118 (12.5 LT)

Lightning: 12.5 LT \pm 1.5 h (dots)

PT: LLCP | EA: ACT

06L (EMILY) | 35 kt TS

S: 4.9 m s⁻¹ (M) | H: 105°



6-h IR BT Differences & Lightning

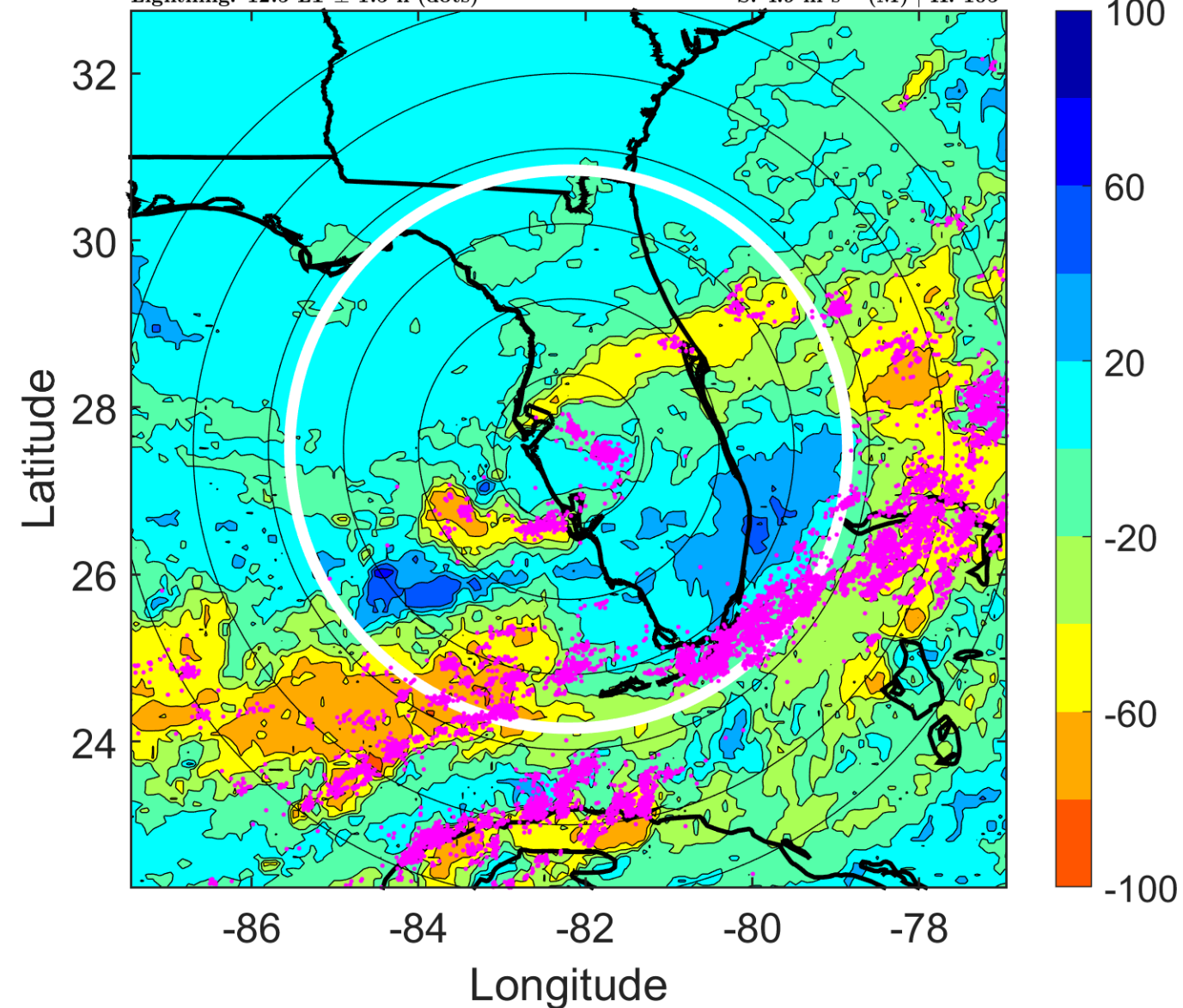
Δ t: 2017073118 (12.5 LT) - 2017073112 (6.5 LT)

Lightning: 12.5 LT \pm 1.5 h (dots)

PT: LLCP | EA: ACT

06L (EMILY) | 35 kt TS

S: 4.9 m s⁻¹ (M) | H: 105°



IR BT & Lightning

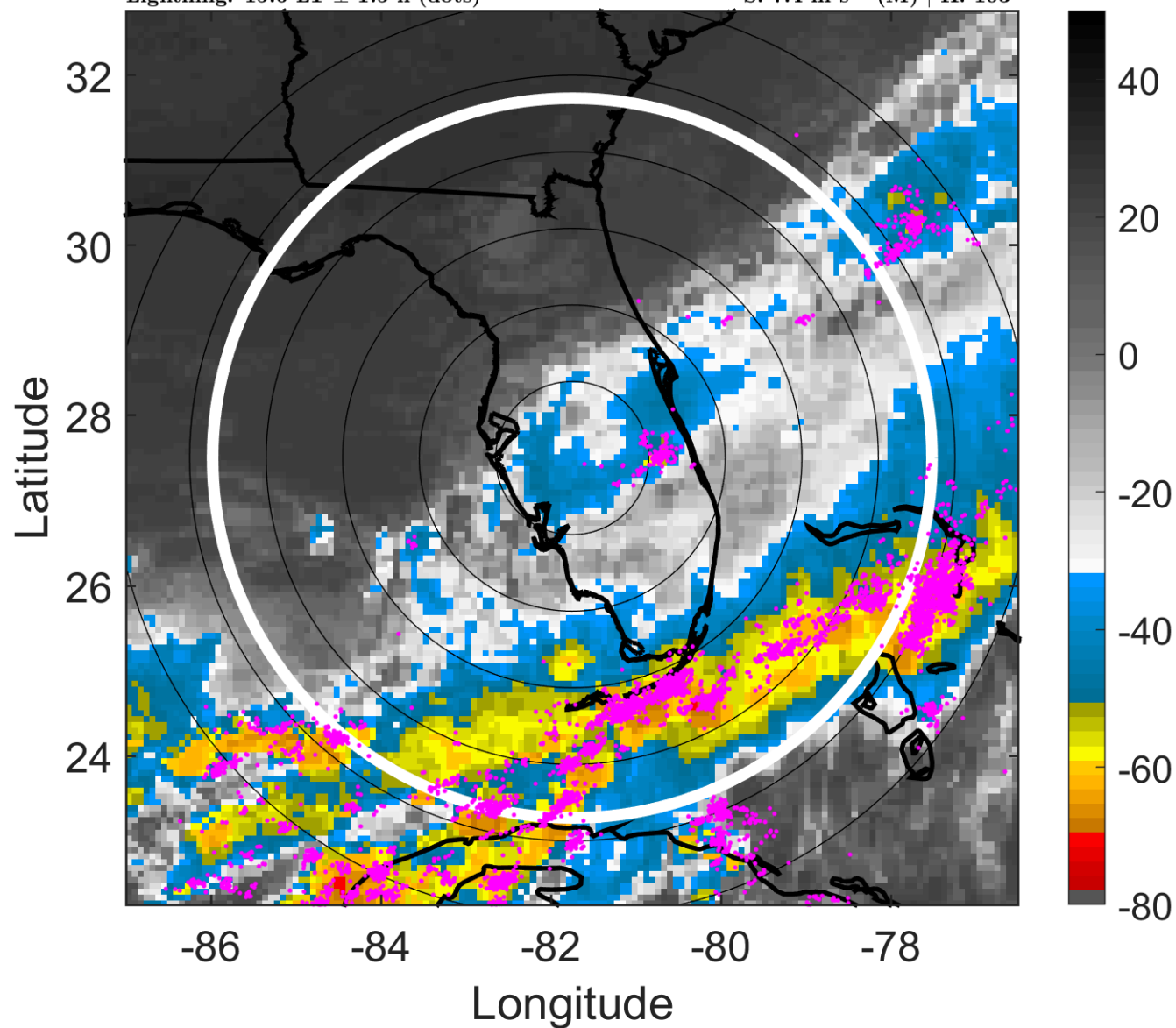
t: 2017073121 (15.6 LT)

Lightning: 15.6 LT \pm 1.5 h (dots)

PT: LLCP | EA: ACT

06L (EMILY) | 32.5 kt TD

S: 7.4 m s⁻¹ (M) | H: 103°



6-h IR BT Differences & Lightning

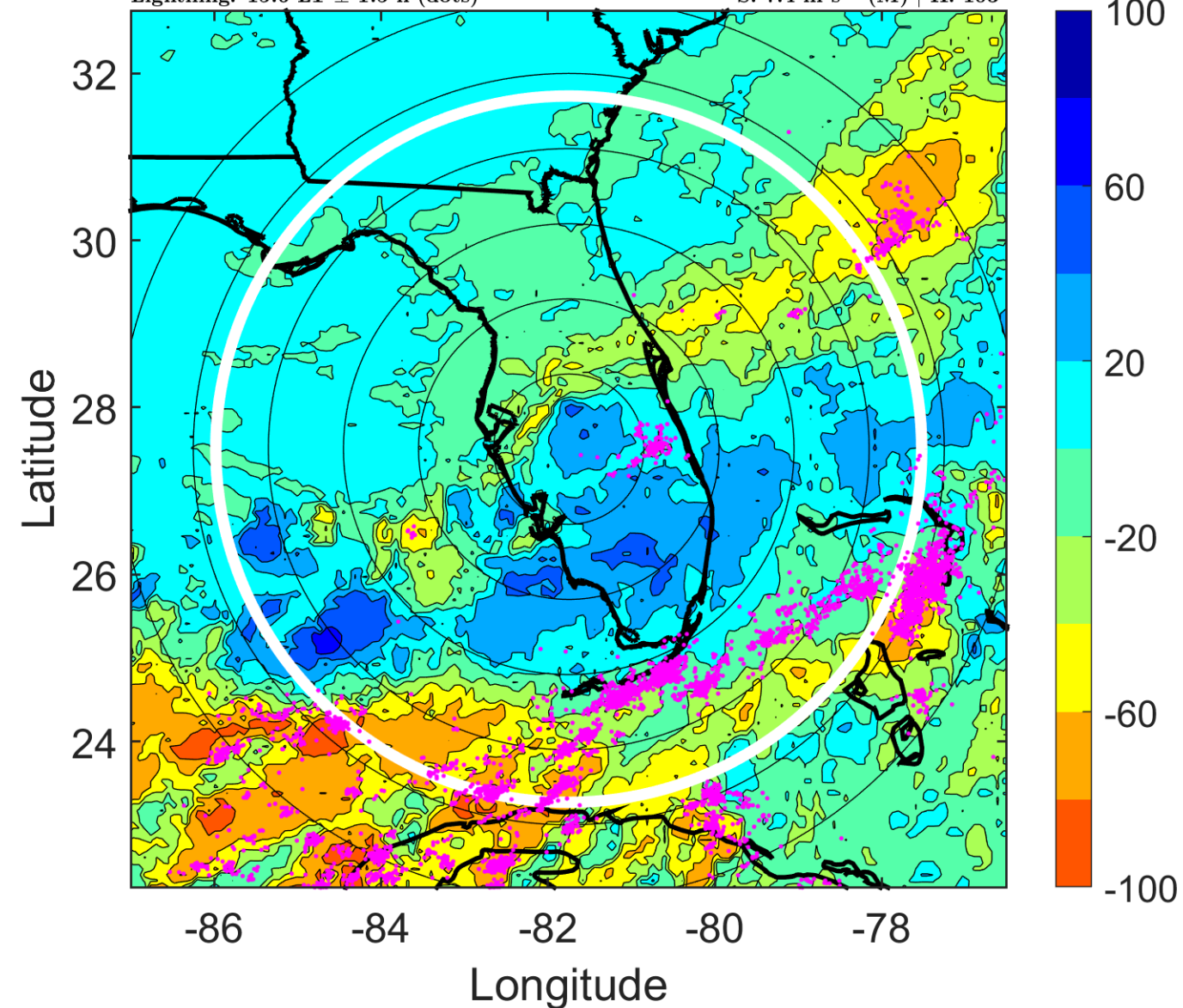
Δ t: 2017073121 (15.6 LT) - 2017073115 (9.5 LT)

Lightning: 15.6 LT \pm 1.5 h (dots)

PT: LLCP | EA: ACT

06L (EMILY) | 32.5 kt TD

S: 7.4 m s⁻¹ (M) | H: 103°



IR BT & Lightning

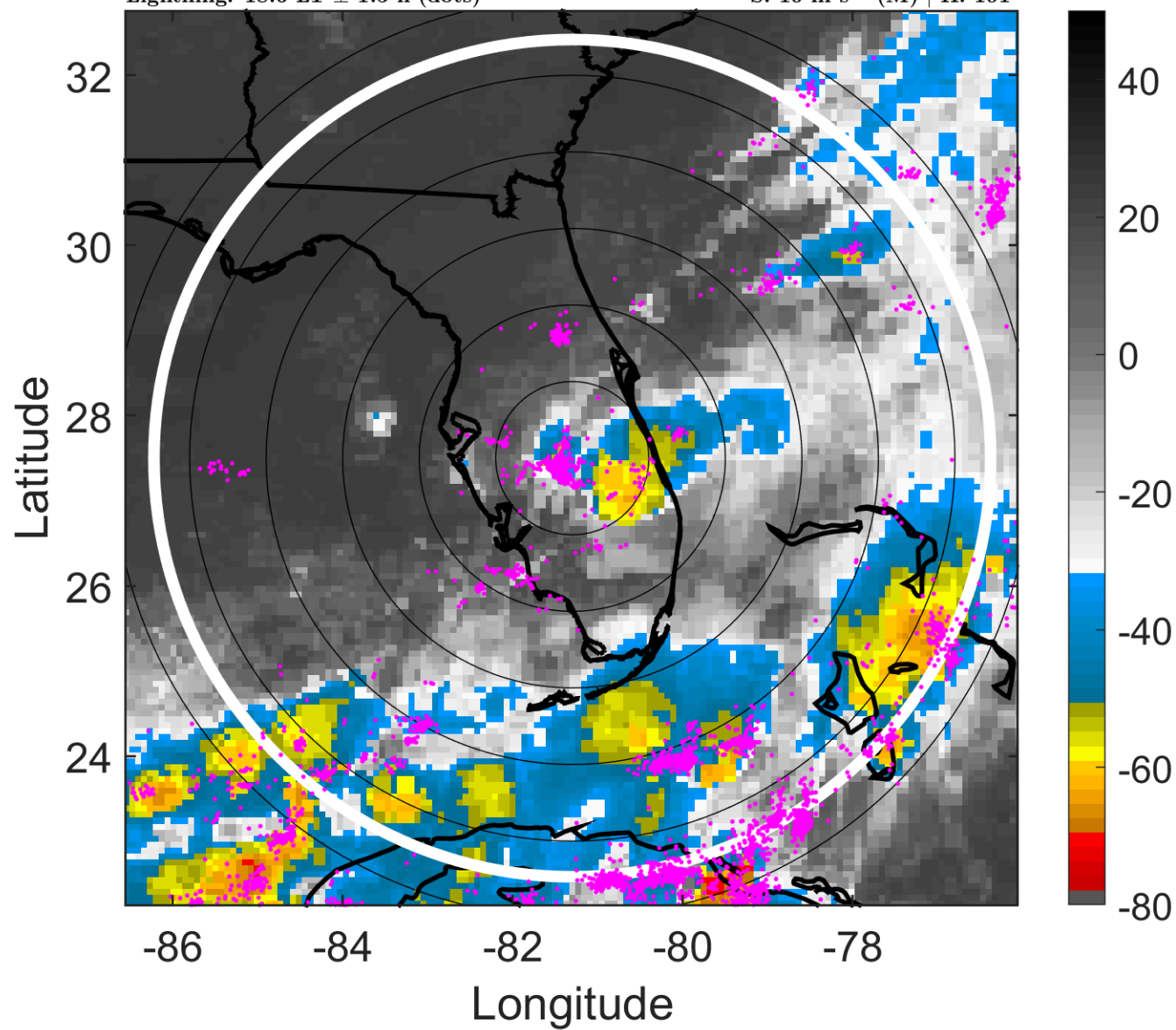
t: 2017080100 (18.6 LT)

Lightning: 18.6 LT \pm 1.5 h (dots)

PT: LLCP | EA: ACT

06L (EMILY) | 30 kt TD

S: 10 m s⁻¹ (M) | H: 101°



6-h IR BT Differences & Lightning

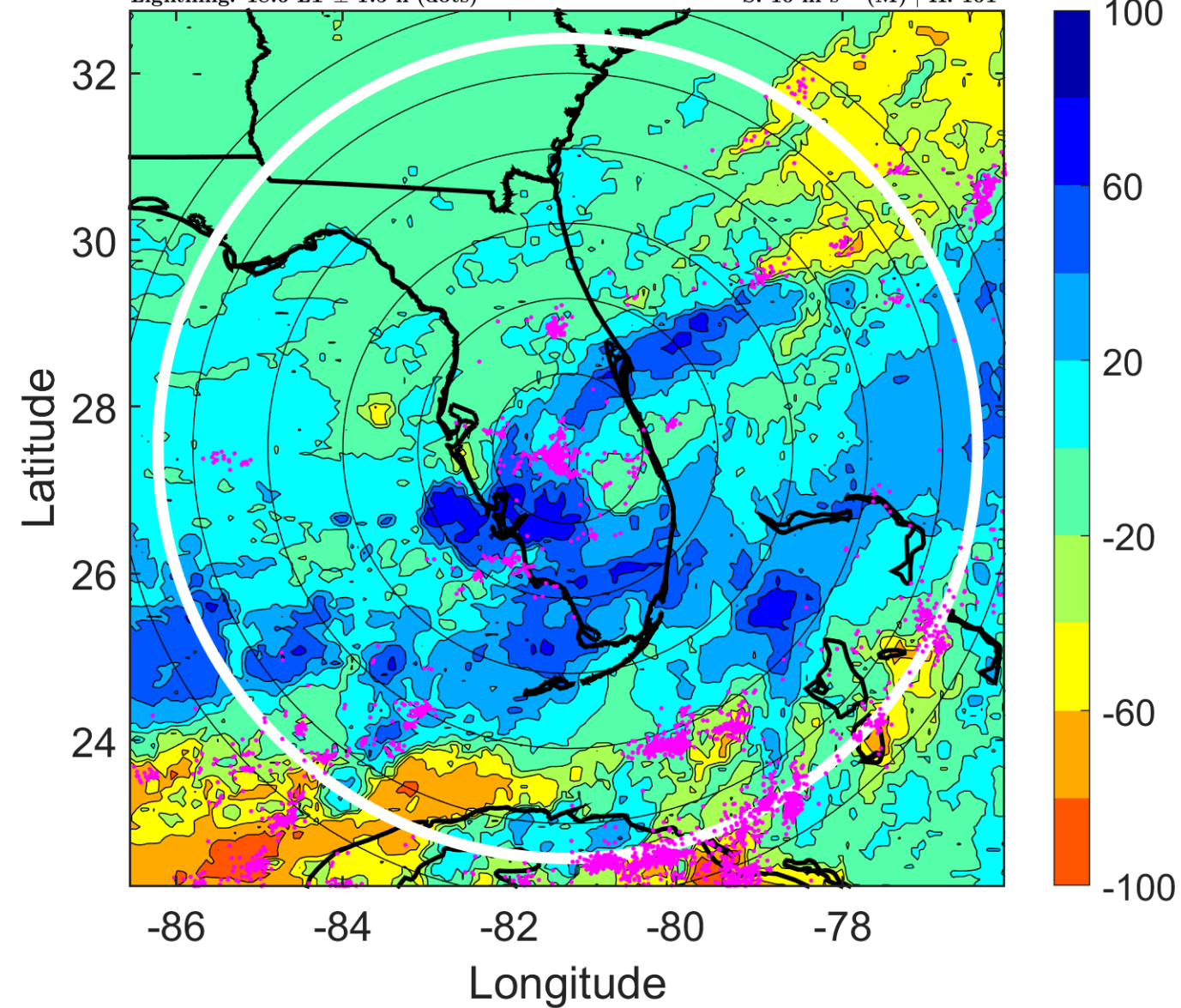
Δ t: 2017080100 (18.6 LT) - 2017073118 (12.5 LT)

Lightning: 18.6 LT \pm 1.5 h (dots)

PT: LLCP | EA: ACT

06L (EMILY) | 30 kt TD

S: 10 m s⁻¹ (M) | H: 101°



IR BT & Lightning

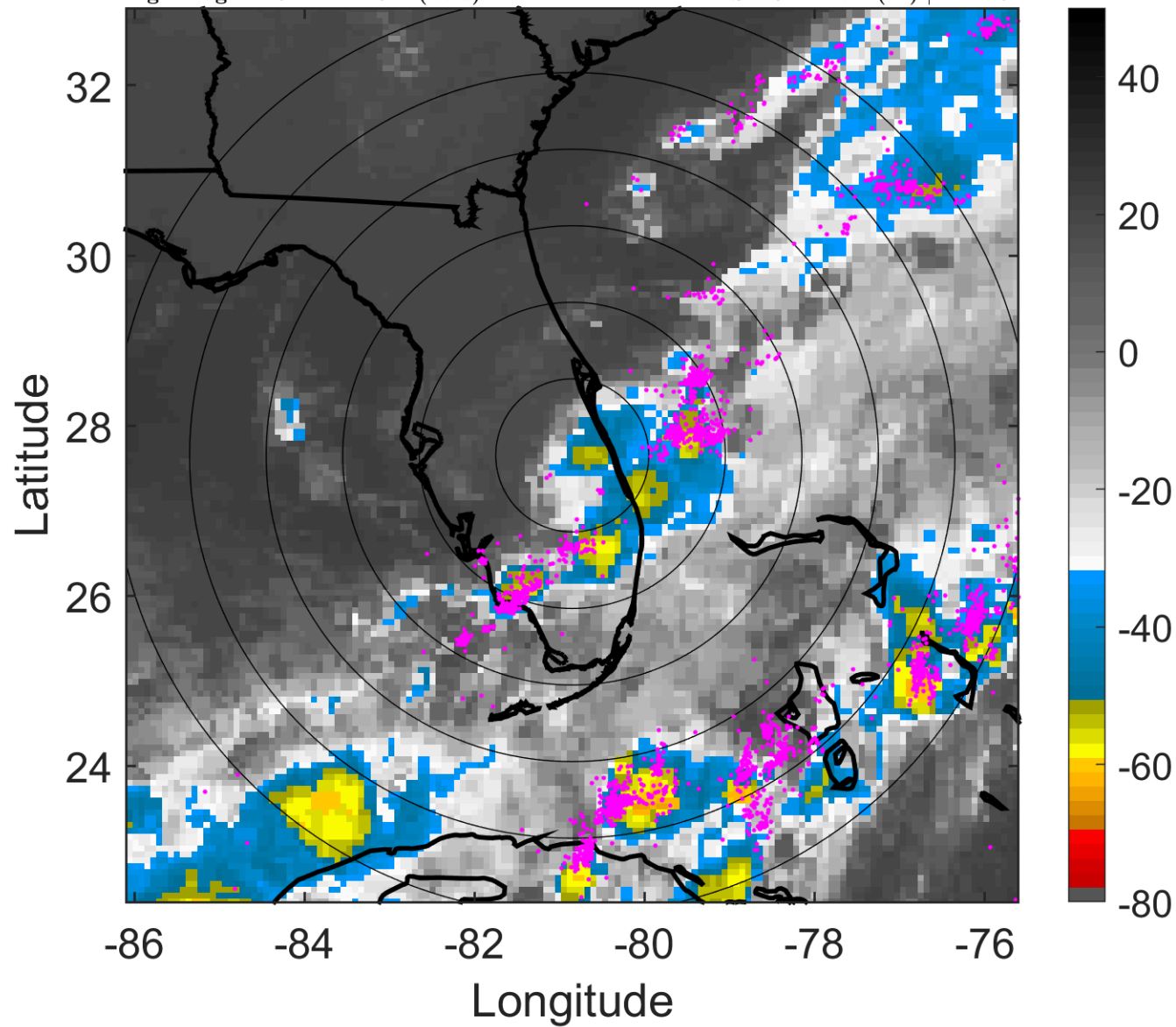
t: 2017080103 (21.6 LT)

Lightning: 21.6 LT \pm 1.5 h (dots)

PT: LLCP | EA: ACT

06L (EMILY) | 30 kt TD

S: 10.4 m s⁻¹ (M) | H: 115°



6-h IR BT Differences & Lightning

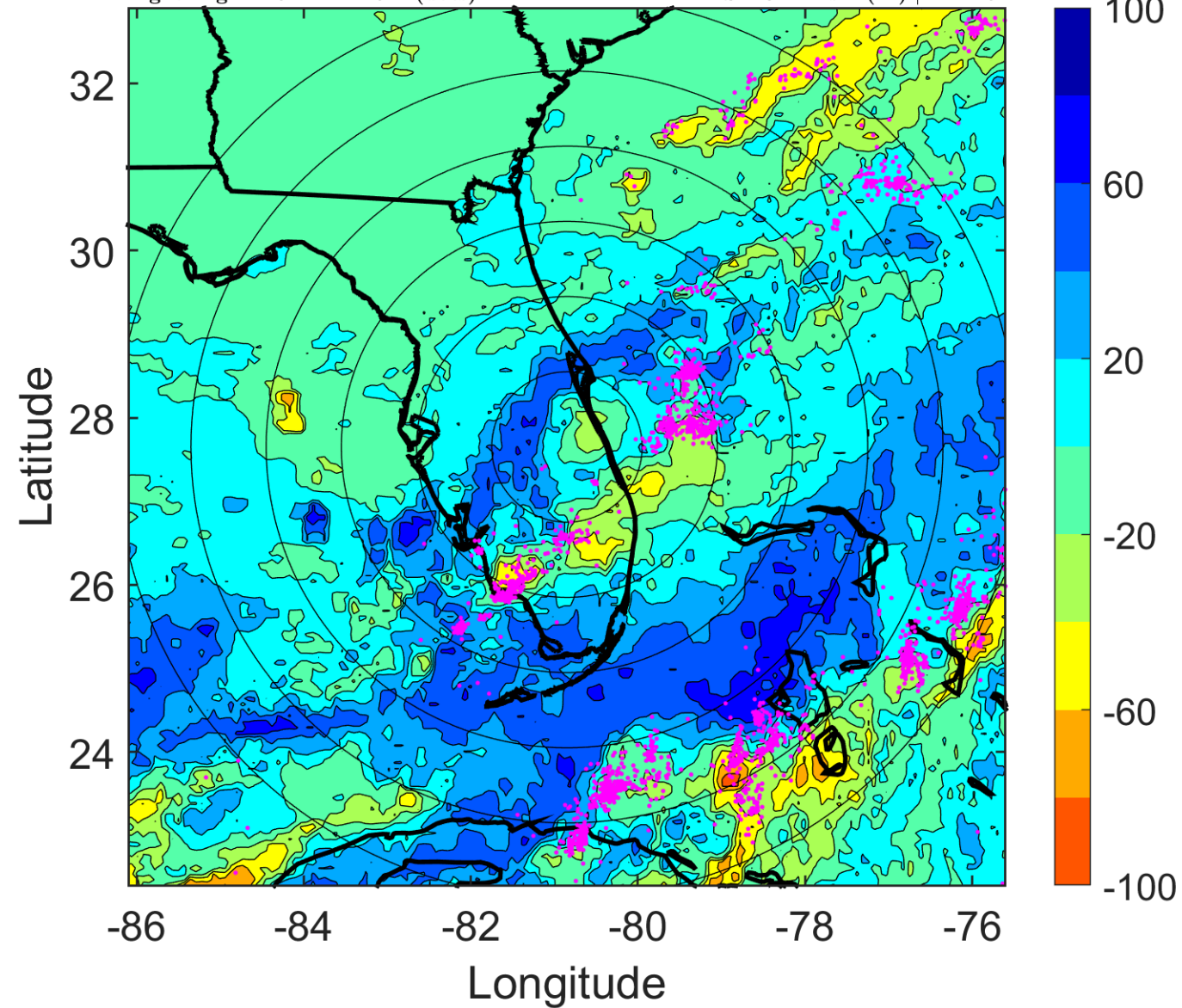
Δ t: 2017080103 (21.6 LT) - 2017073121 (15.6 LT)

Lightning: 21.6 LT \pm 1.5 h (dots)

PT: LLCP | EA: ACT

06L (EMILY) | 30 kt TD

S: 10.4 m s⁻¹ (M) | H: 115°



IR BT & Lightning

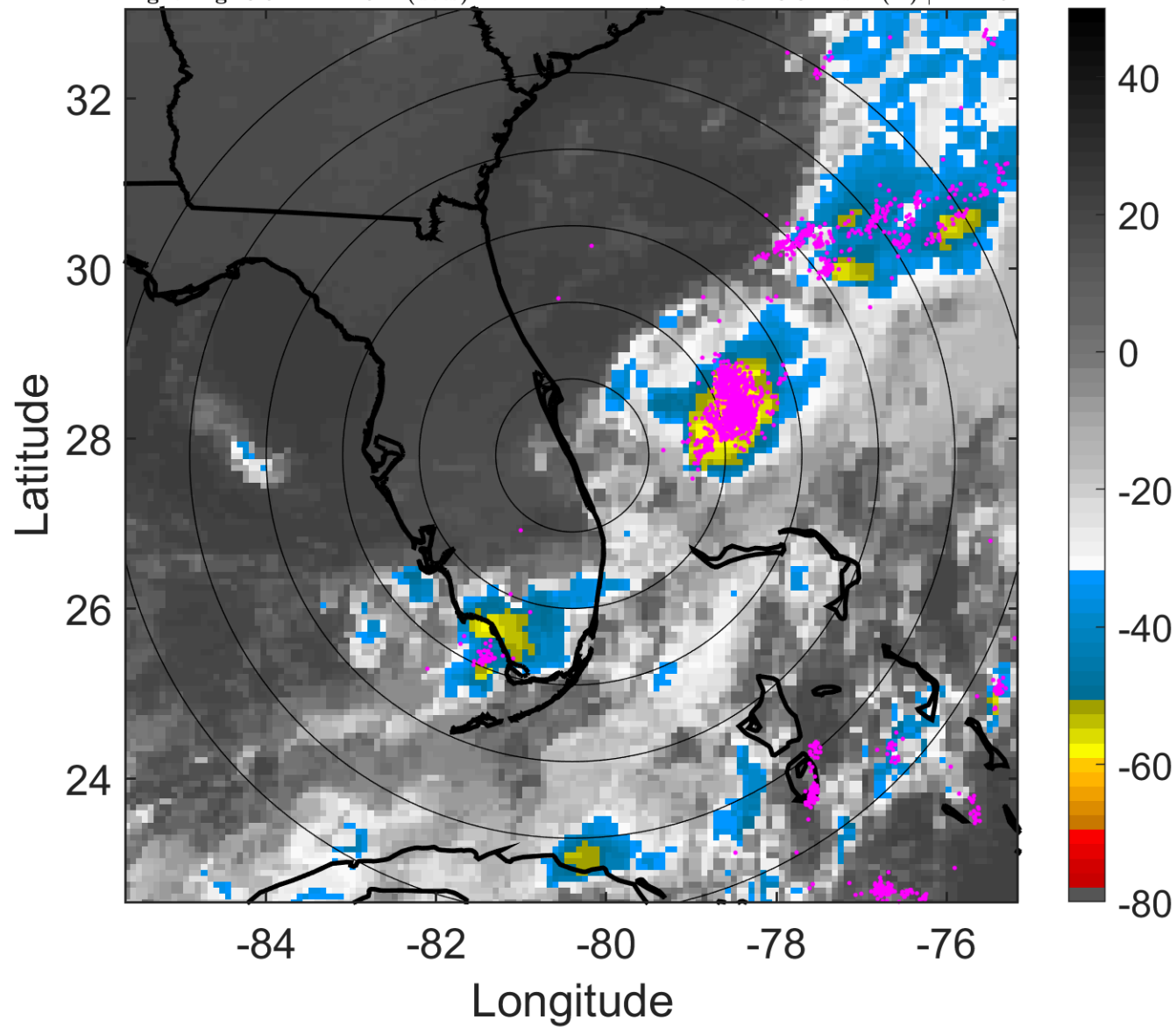
t: 2017080106 (0.6 LT)

Lightning: 0.6 LT \pm 1.5 h (dots)

PT: SLCP | EA: QUASI

06L (EMILY) | 30 kt TD

S: 10.8 m s⁻¹ (H) | H: 129°



6-h IR BT Differences & Lightning

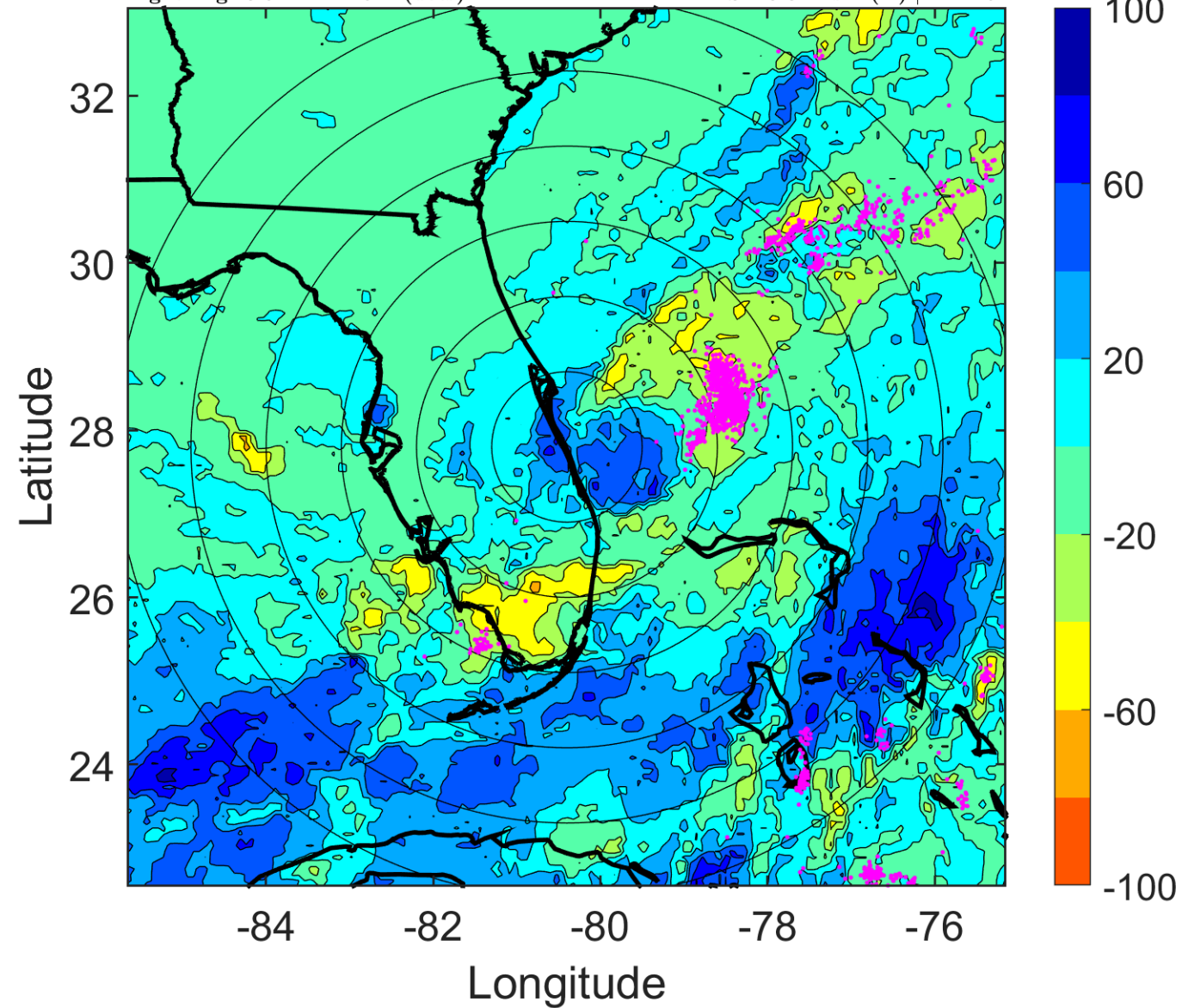
Δ t: 2017080106 (0.6 LT) - 2017080100 (18.6 LT)

Lightning: 0.6 LT \pm 1.5 h (dots)

PT: SLCP | EA: QUASI

06L (EMILY) | 30 kt TD

S: 10.8 m s⁻¹ (H) | H: 129°



IR BT & Lightning

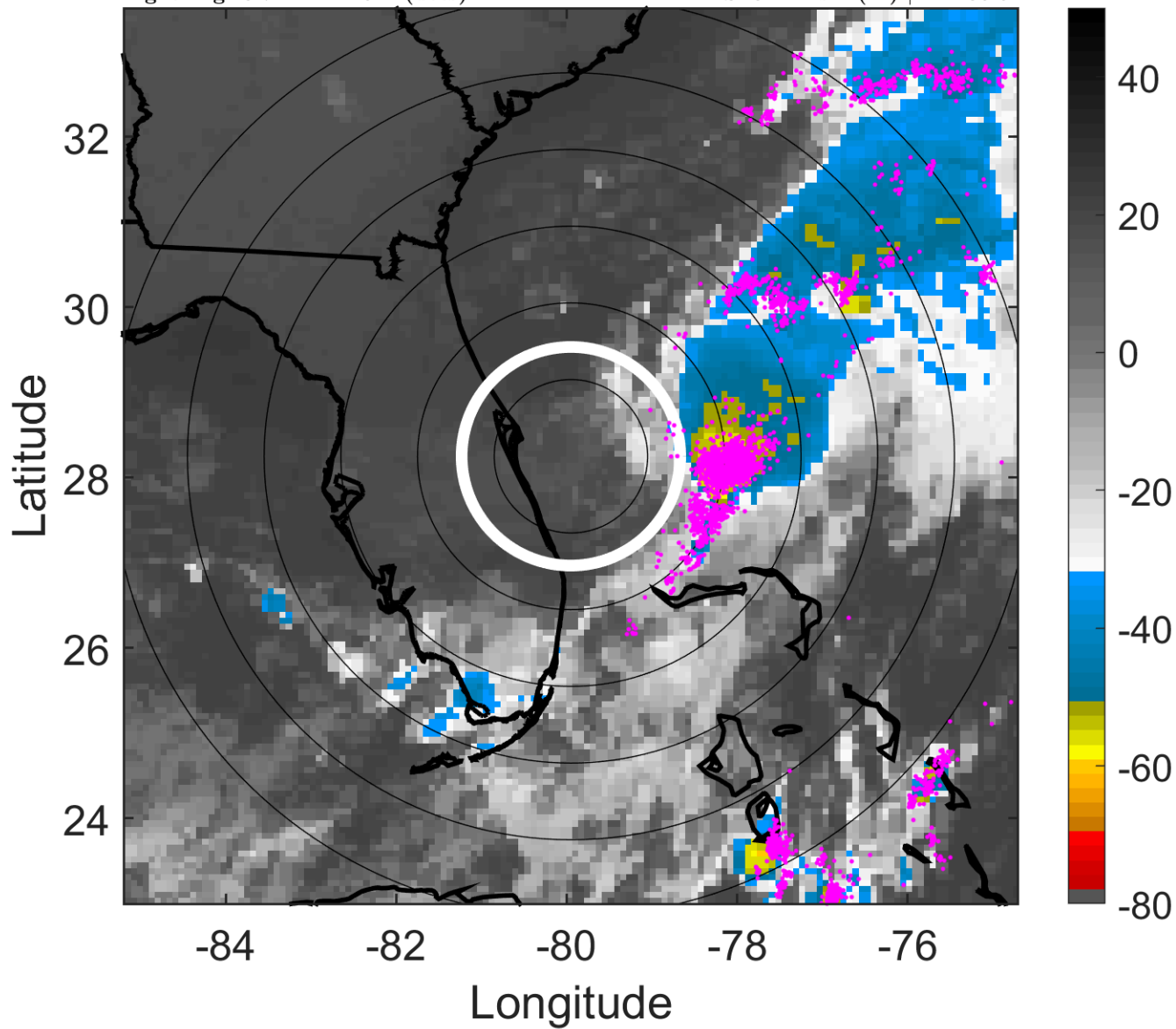
t: 2017080109 (3.7 LT)

Lightning: 3.7 LT \pm 1.5 h (dots)

PT: SLCP | EA: QUASI

06L (EMILY) | 30 kt TD

S: 8.4 m s⁻¹ (M) | H: 136.5°



6-h IR BT Differences & Lightning

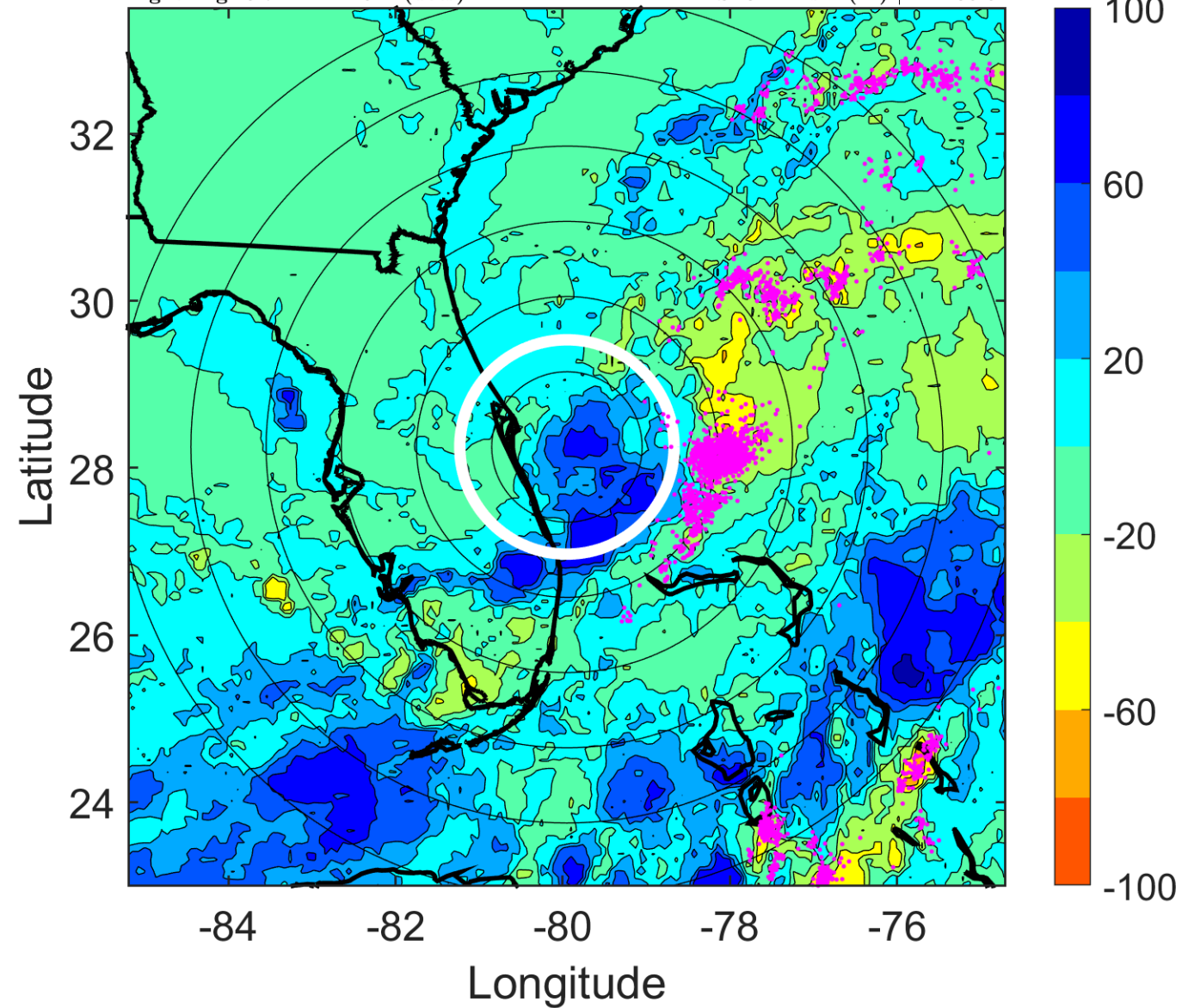
Δ t: 2017080109 (3.7 LT) - 2017080103 (21.6 LT)

Lightning: 3.7 LT \pm 1.5 h (dots)

PT: SLCP | EA: QUASI

06L (EMILY) | 30 kt TD

S: 8.4 m s⁻¹ (M) | H: 136.5°



IR BT & Lightning

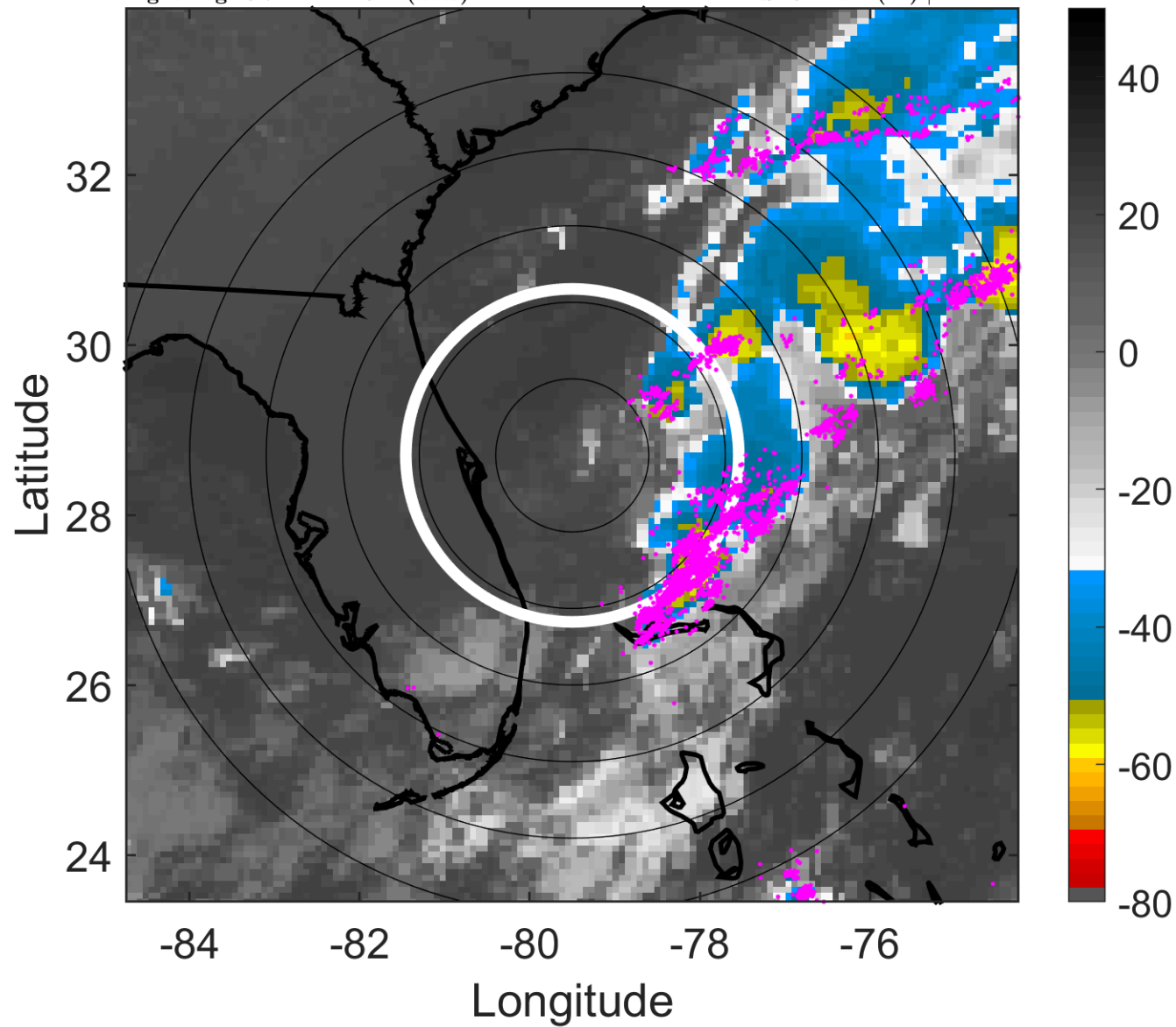
t: 2017080112 (6.7 LT)

Lightning: 6.7 LT \pm 1.5 h (dots)

PT: SLCP | EA: QUASI

06L (EMILY) | 30 kt TD

S: 6 m s⁻¹ (M) | H: 144°



6-h IR BT Differences & Lightning

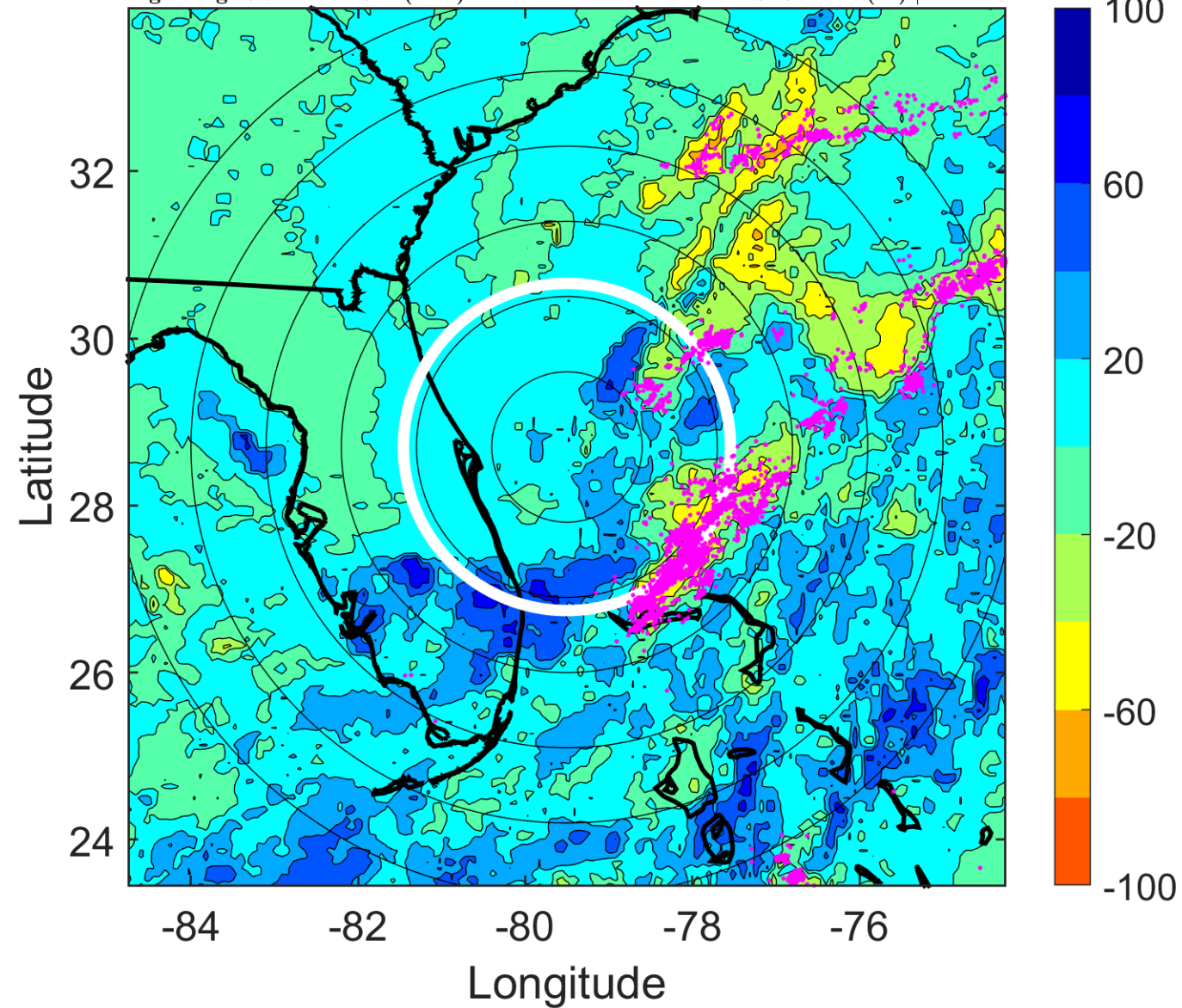
Δ t: 2017080112 (6.7 LT) - 2017080106 (0.6 LT)

Lightning: 6.7 LT \pm 1.5 h (dots)

PT: SLCP | EA: QUASI

06L (EMILY) | 30 kt TD

S: 6 m s⁻¹ (M) | H: 144°



IR BT & Lightning

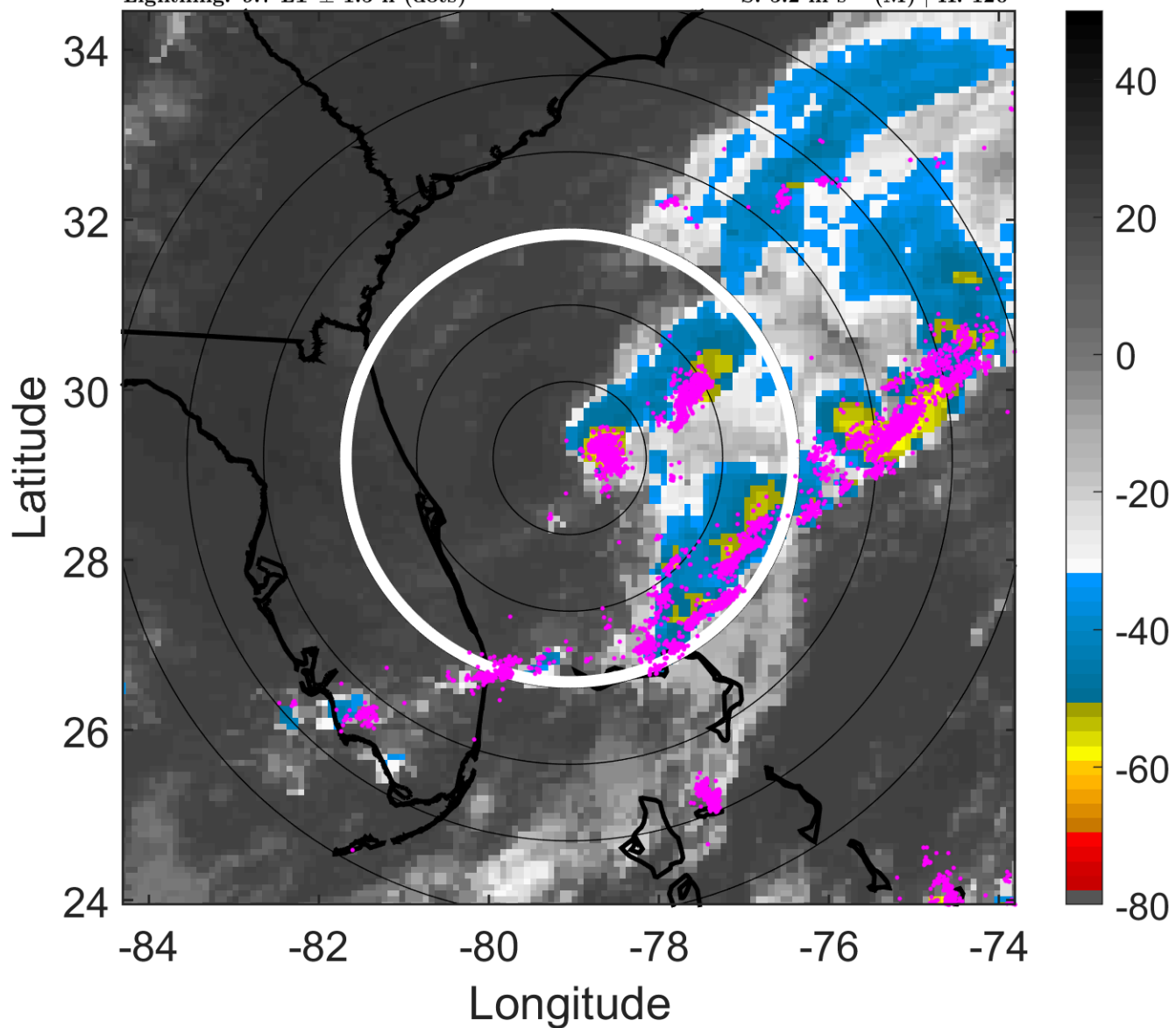
t: 2017080115 (9.7 LT)

Lightning: 9.7 LT \pm 1.5 h (dots)

PT: SLCP | EA: QUASI

06L (EMILY) | 30 kt TD

S: 5.2 m s⁻¹ (M) | H: 120°



6-h IR BT Differences & Lightning

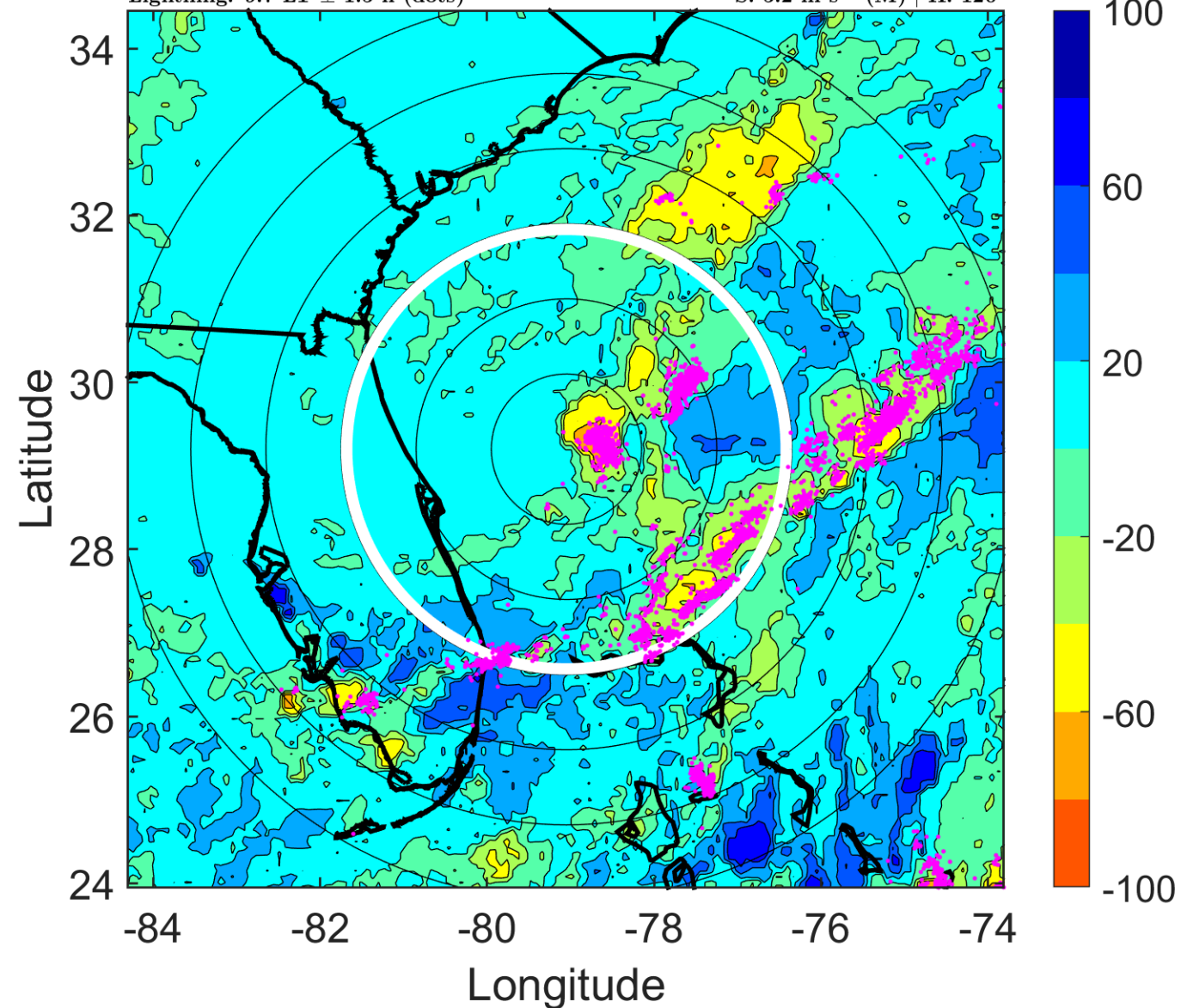
Δ t: 2017080115 (9.7 LT) - 2017080109 (3.7 LT)

Lightning: 9.7 LT \pm 1.5 h (dots)

PT: SLCP | EA: QUASI

06L (EMILY) | 30 kt TD

S: 5.2 m s⁻¹ (M) | H: 120°



IR BT & Lightning

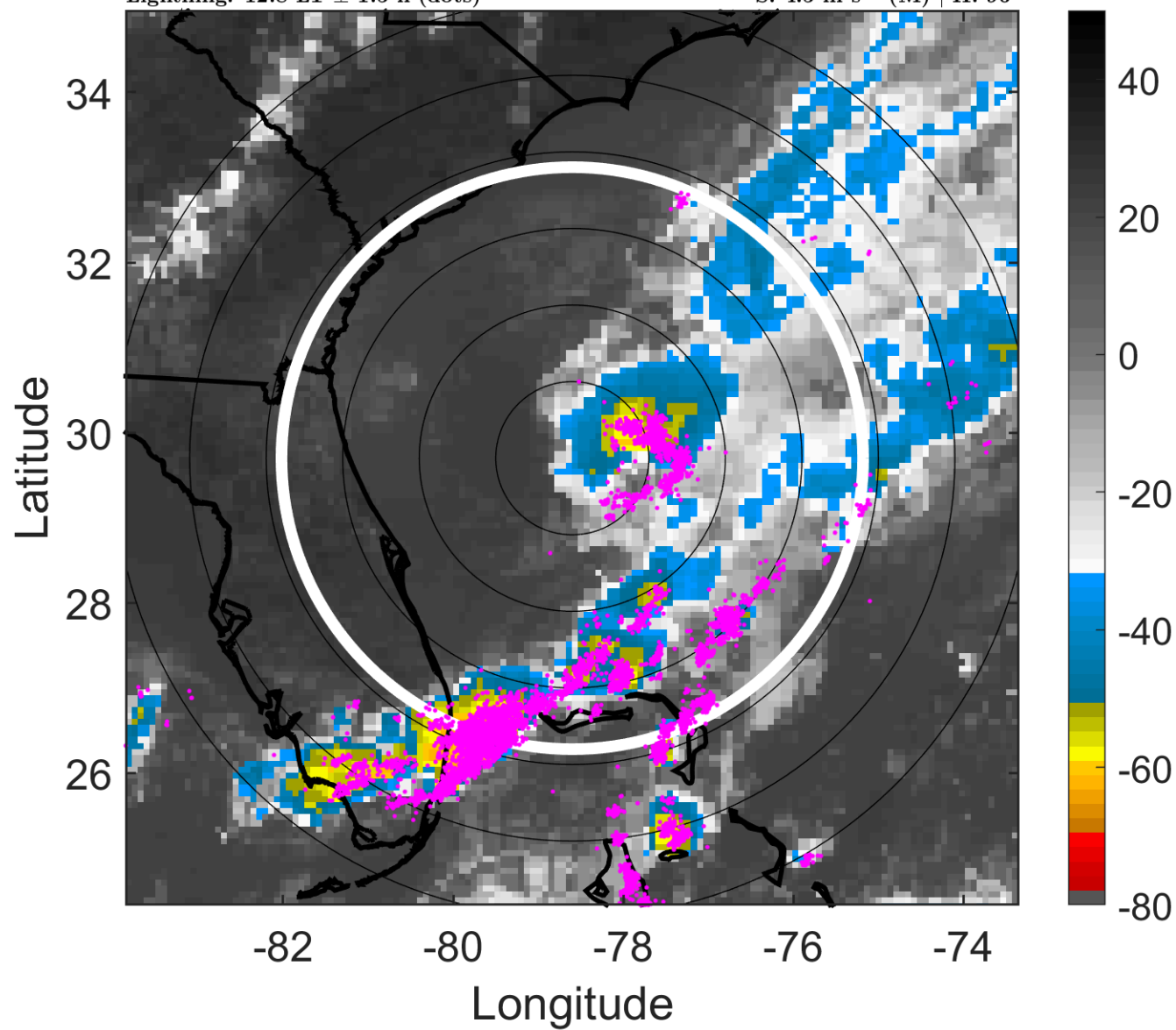
t: 2017080118 (12.8 LT)

Lightning: 12.8 LT \pm 1.5 h (dots)

PT: SLCP | EA: QUASI

06L (EMILY) | 30 kt TD

S: 4.5 m s⁻¹ (M) | H: 96°



6-h IR BT Differences & Lightning

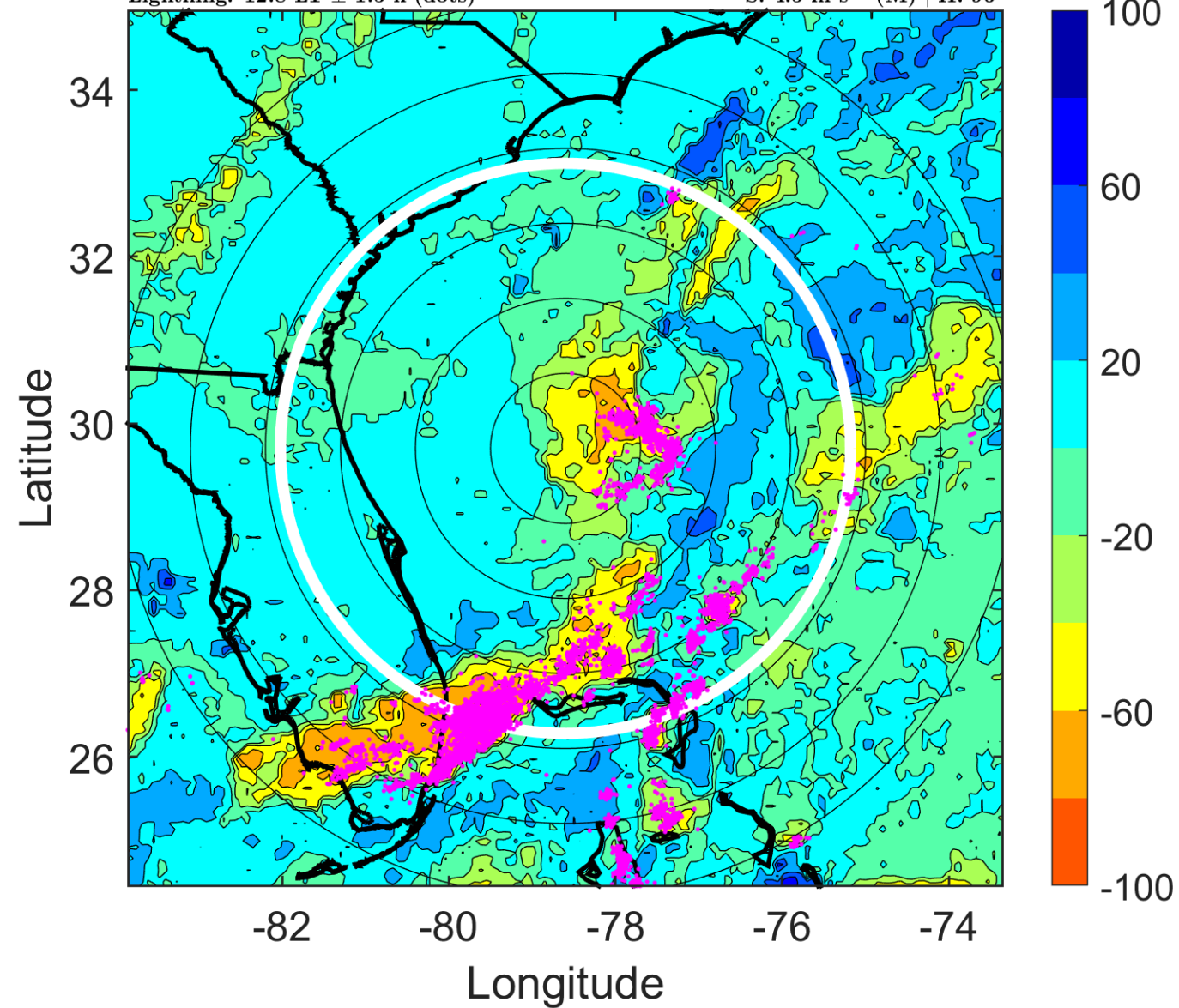
Δ t: 2017080118 (12.8 LT) - 2017080112 (6.7 LT)

Lightning: 12.8 LT \pm 1.5 h (dots)

PT: SLCP | EA: QUASI

06L (EMILY) | 30 kt TD

S: 4.5 m s⁻¹ (M) | H: 96°



IR BT & Lightning

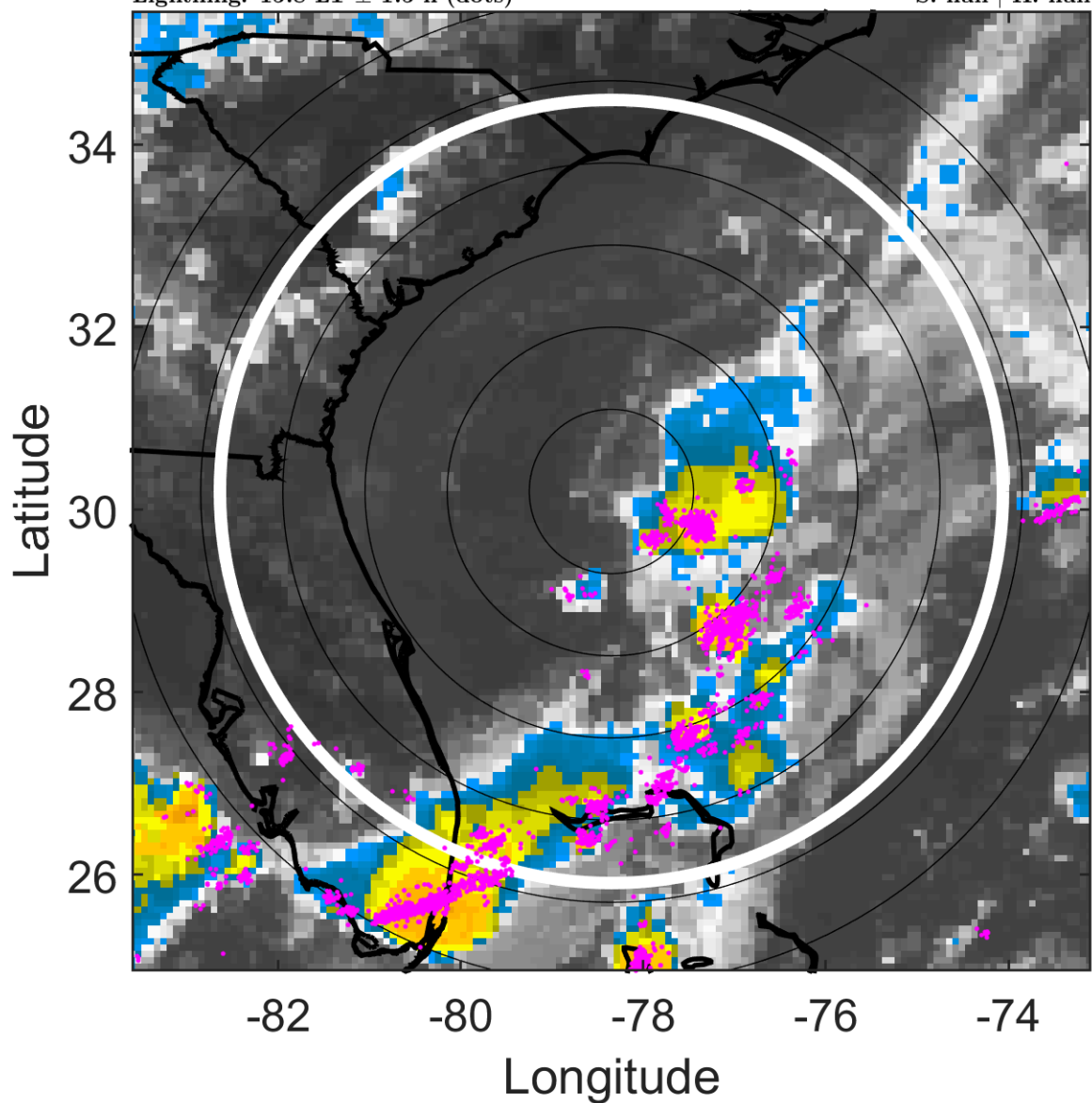
t: 2017080121 (15.8 LT)

Lightning: 15.8 LT \pm 1.5 h (dots)

PT: SLCP | EA: QUASI

06L (EMILY) | 30 kt TD

S: null | H: null



6-h IR BT Differences & Lightning

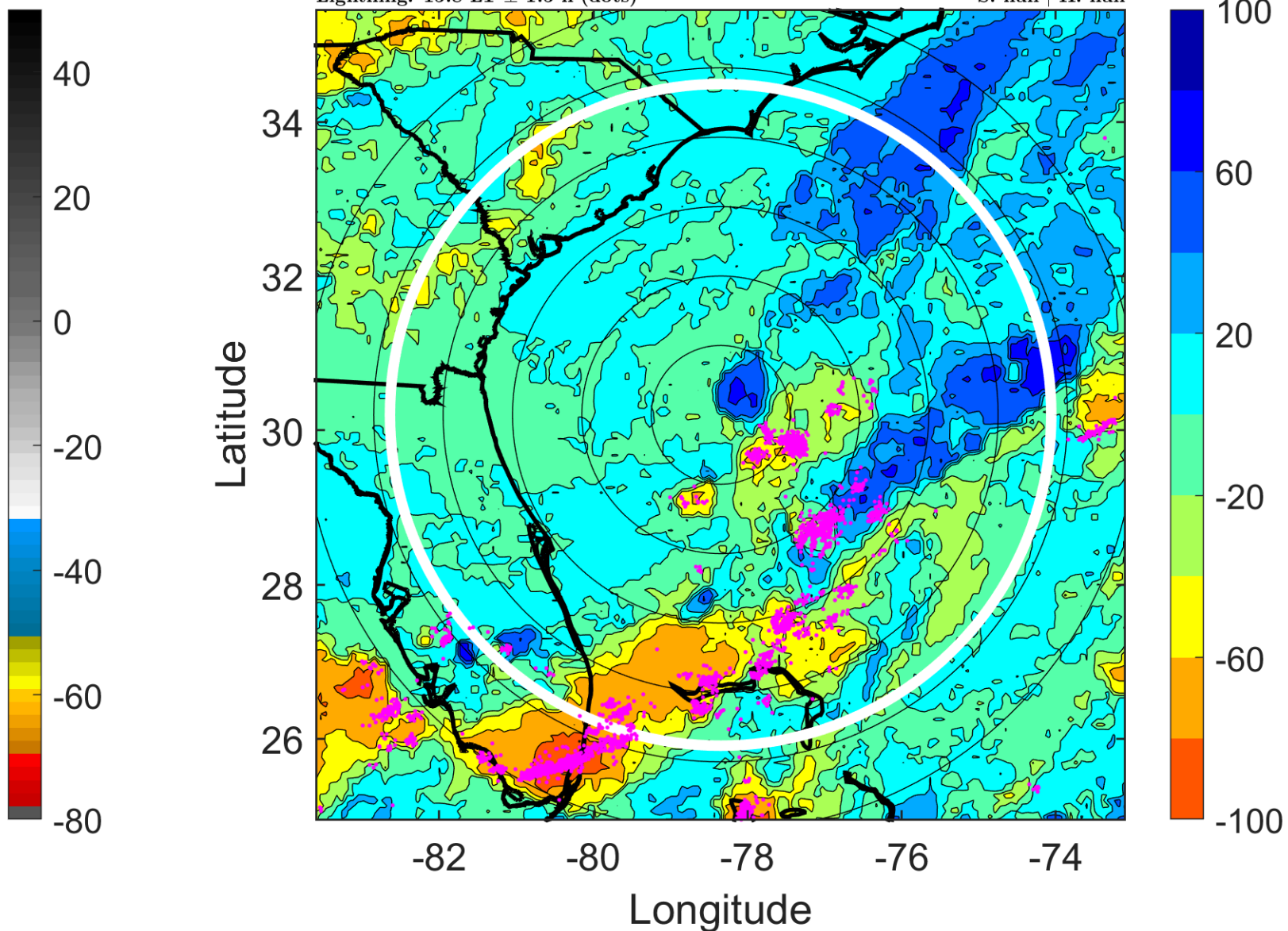
Δ t: 2017080121 (15.8 LT) - 2017080115 (9.7 LT)

Lightning: 15.8 LT \pm 1.5 h (dots)

PT: SLCP | EA: QUASI

06L (EMILY) | 30 kt TD

S: null | H: null



IR BT & Lightning

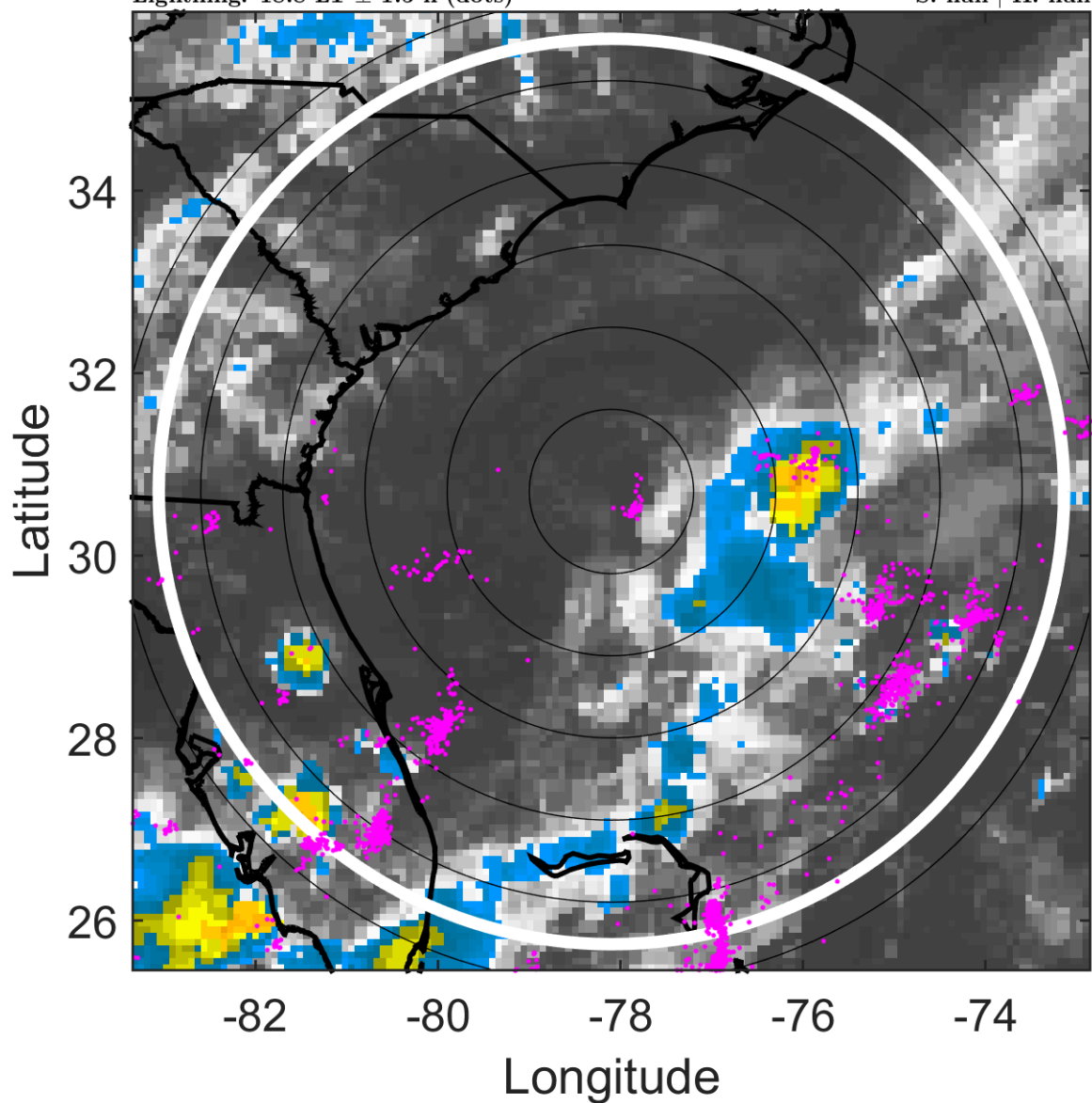
t: 2017080200 (18.8 LT)

Lightning: 18.8 LT \pm 1.5 h (dots)

PT: SLCP | EA: QUASI

06L (EMILY) | 30 kt LO

S: null | H: null



6-h IR BT Differences & Lightning

Δ t: 2017080200 (18.8 LT) - 2017080118 (12.8 LT)

Lightning: 18.8 LT \pm 1.5 h (dots)

PT: SLCP | EA: QUASI

06L (EMILY) | 30 kt LO

S: null | H: null

