

### IR BT & Lightning

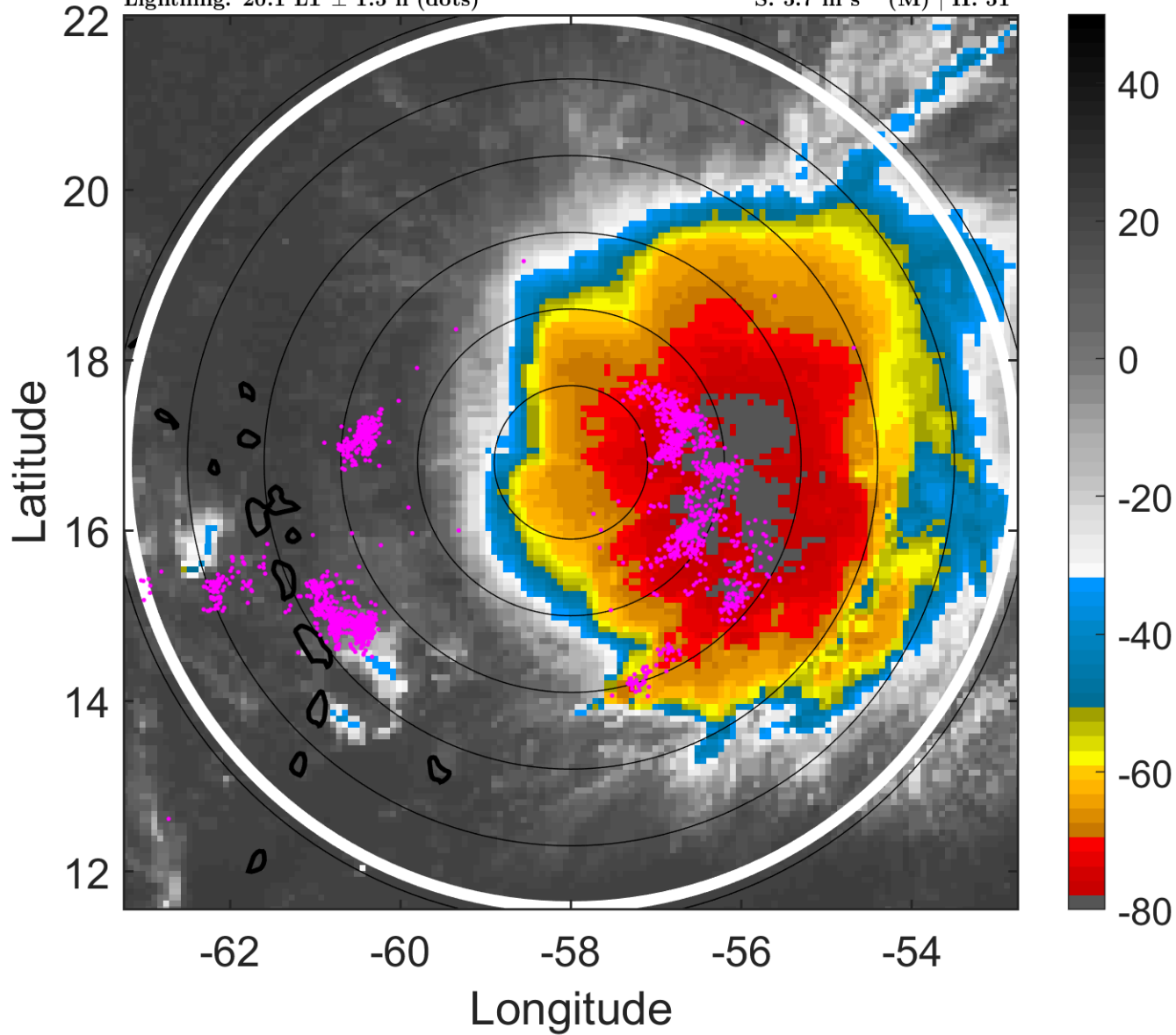
t: 2009090200 (20.1 LT)

Lightning: 20.1 LT  $\pm$  1.5 h (dots)

PT: NP | EA: INACT

06L (ERIKA) | 45 kt TS

S: 5.7 m s<sup>-1</sup> (M) | H: 51°



### 6-h IR BT Differences & Lightning

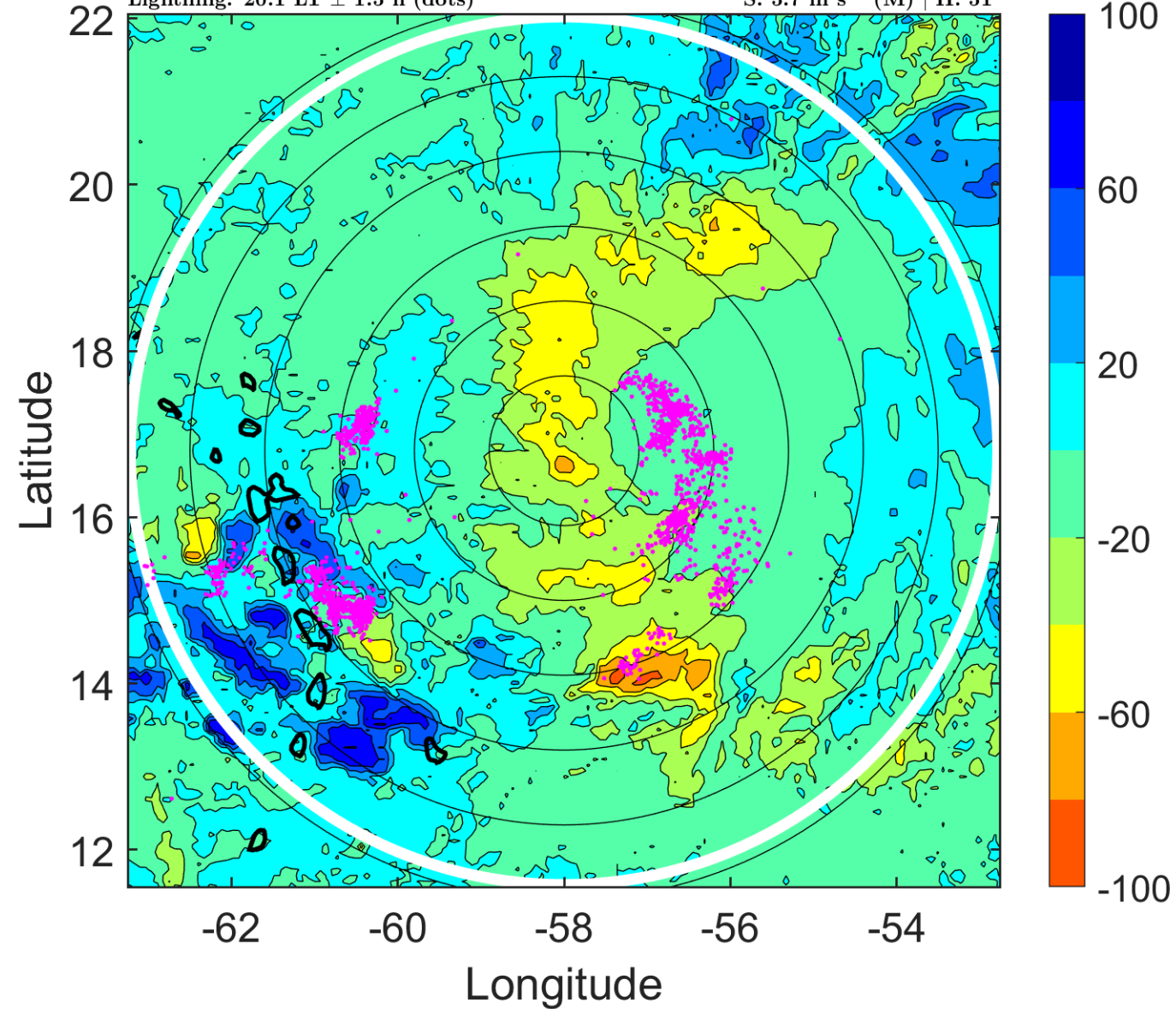
$\Delta$ t: 2009090200 (20.1 LT) - 2009090118 (14.2 LT)

Lightning: 20.1 LT  $\pm$  1.5 h (dots)

PT: NP | EA: INACT

06L (ERIKA) | 45 kt TS

S: 5.7 m s<sup>-1</sup> (M) | H: 51°



### IR BT & Lightning

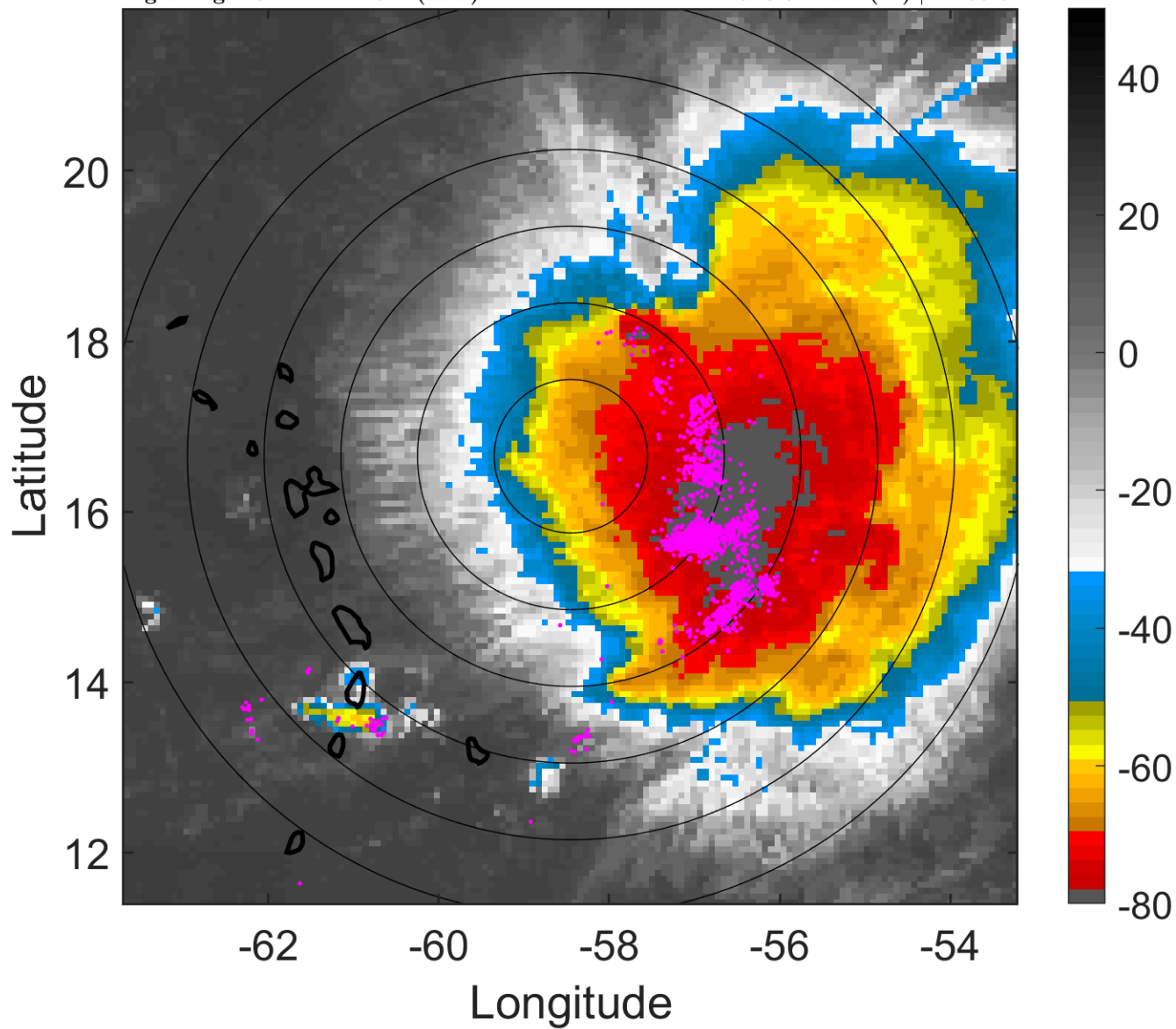
t: 2009090203 (23.1 LT)

Lightning: 23.1 LT  $\pm$  1.5 h (dots)

PT: NP | EA: INACT

06L (ERIKA) | 45 kt TS

S: 5.8 m s<sup>-1</sup> (M) | H: 55.5°



### 6-h IR BT Differences & Lightning

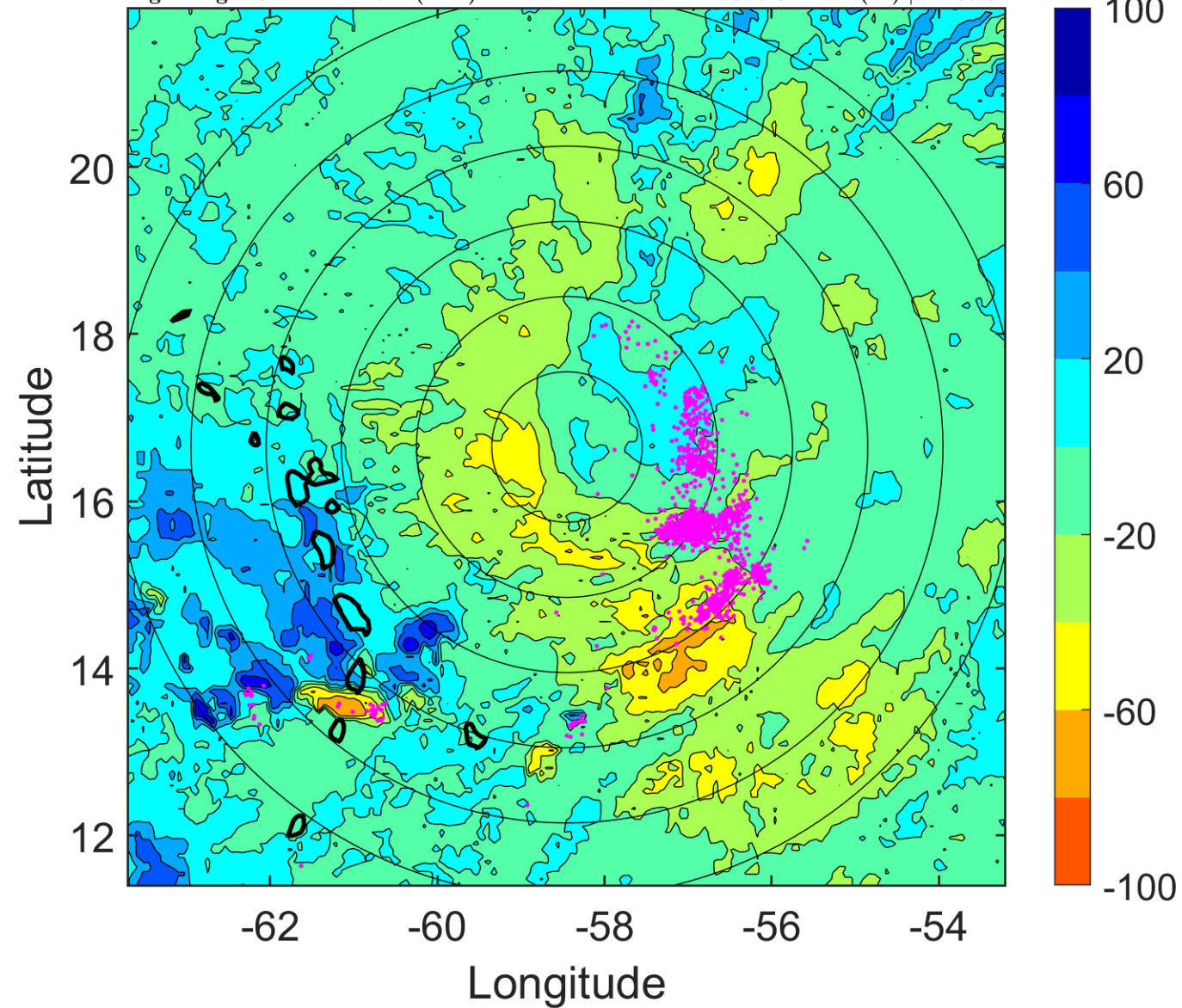
$\Delta$ t: 2009090203 (23.1 LT) - 2009090121 (17.2 LT)

Lightning: 23.1 LT  $\pm$  1.5 h (dots)

PT: NP | EA: INACT

06L (ERIKA) | 45 kt TS

S: 5.8 m s<sup>-1</sup> (M) | H: 55.5°



### IR BT & Lightning

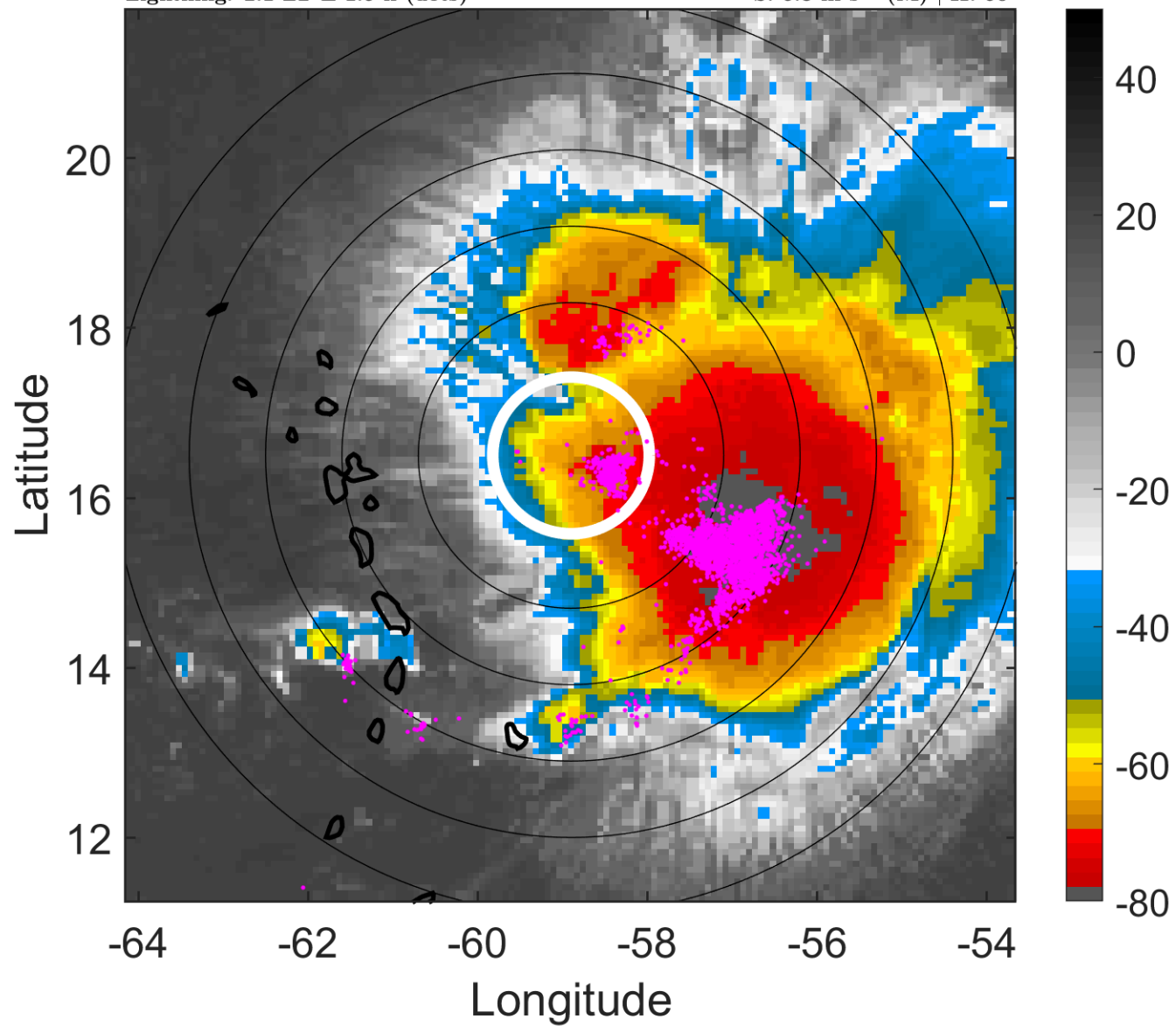
t: 2009090206 (2.1 LT)

Lightning: 2.1 LT  $\pm$  1.5 h (dots)

PT: LLWP | EA: QUASI

06L (ERIKA) | 45 kt TS

S: 5.8 m s<sup>-1</sup> (M) | H: 60°



### 6-h IR BT Differences & Lightning

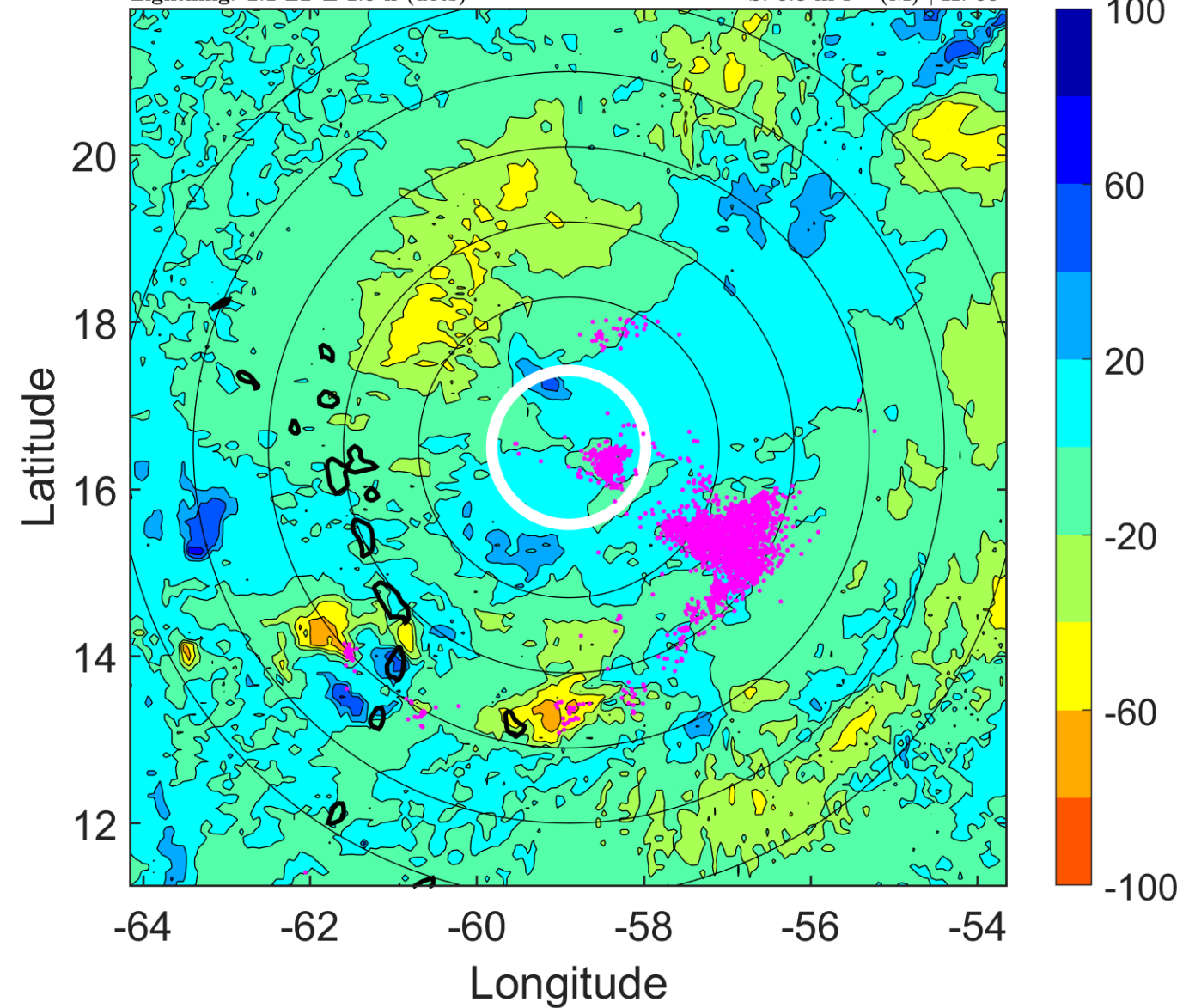
$\Delta$ t: 2009090206 (2.1 LT) - 2009090200 (20.1 LT)

Lightning: 2.1 LT  $\pm$  1.5 h (dots)

PT: LLWP | EA: QUASI

06L (ERIKA) | 45 kt TS

S: 5.8 m s<sup>-1</sup> (M) | H: 60°





### IR BT & Lightning

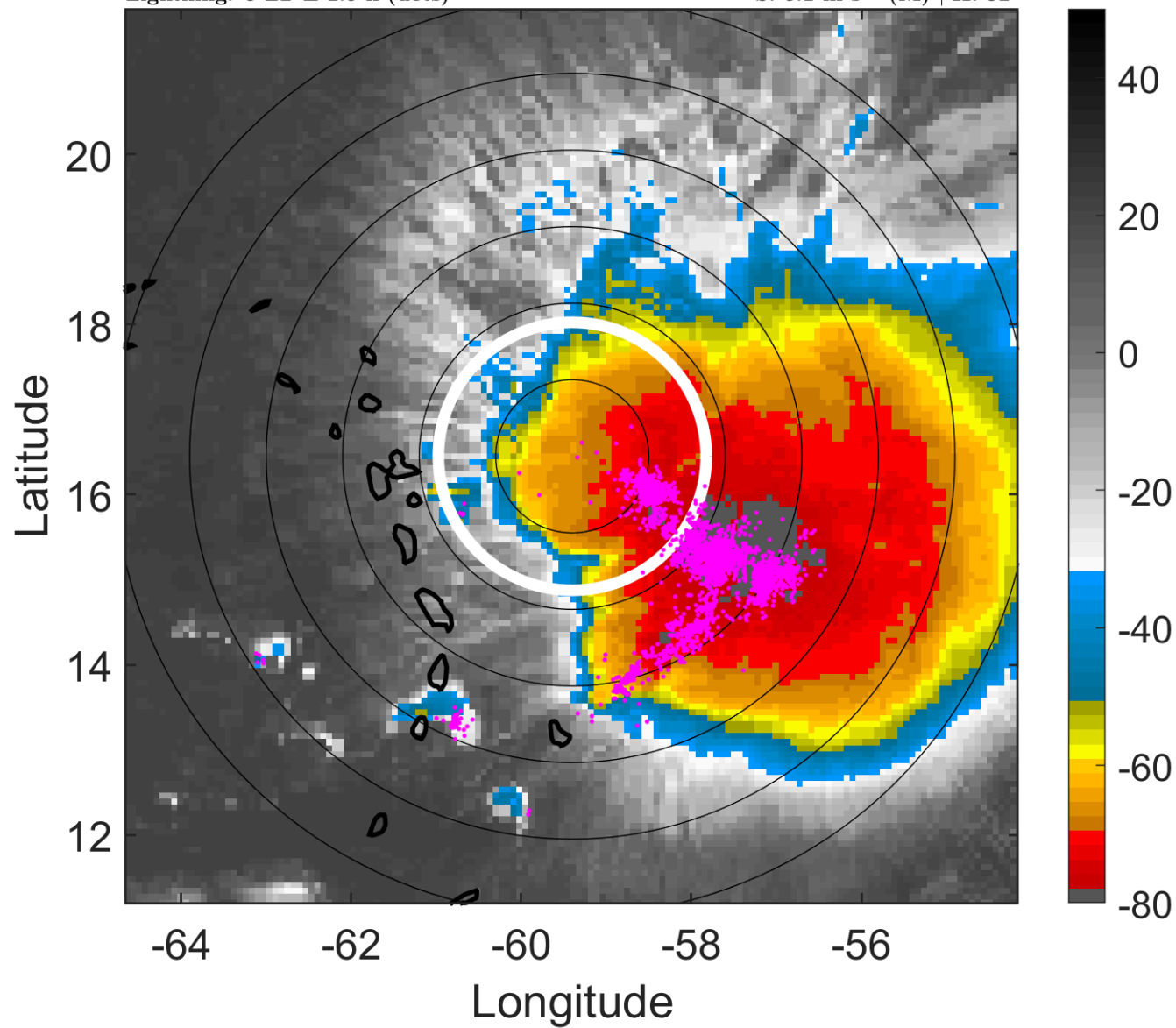
t: 2009090209 (5 LT)

Lightning: 5 LT  $\pm$  1.5 h (dots)

PT: LLWP | EA: QUASI

06L (ERIKA) | 40 kt TS

S: 5.1 m s<sup>-1</sup> (M) | H: 32°



### 6-h IR BT Differences & Lightning

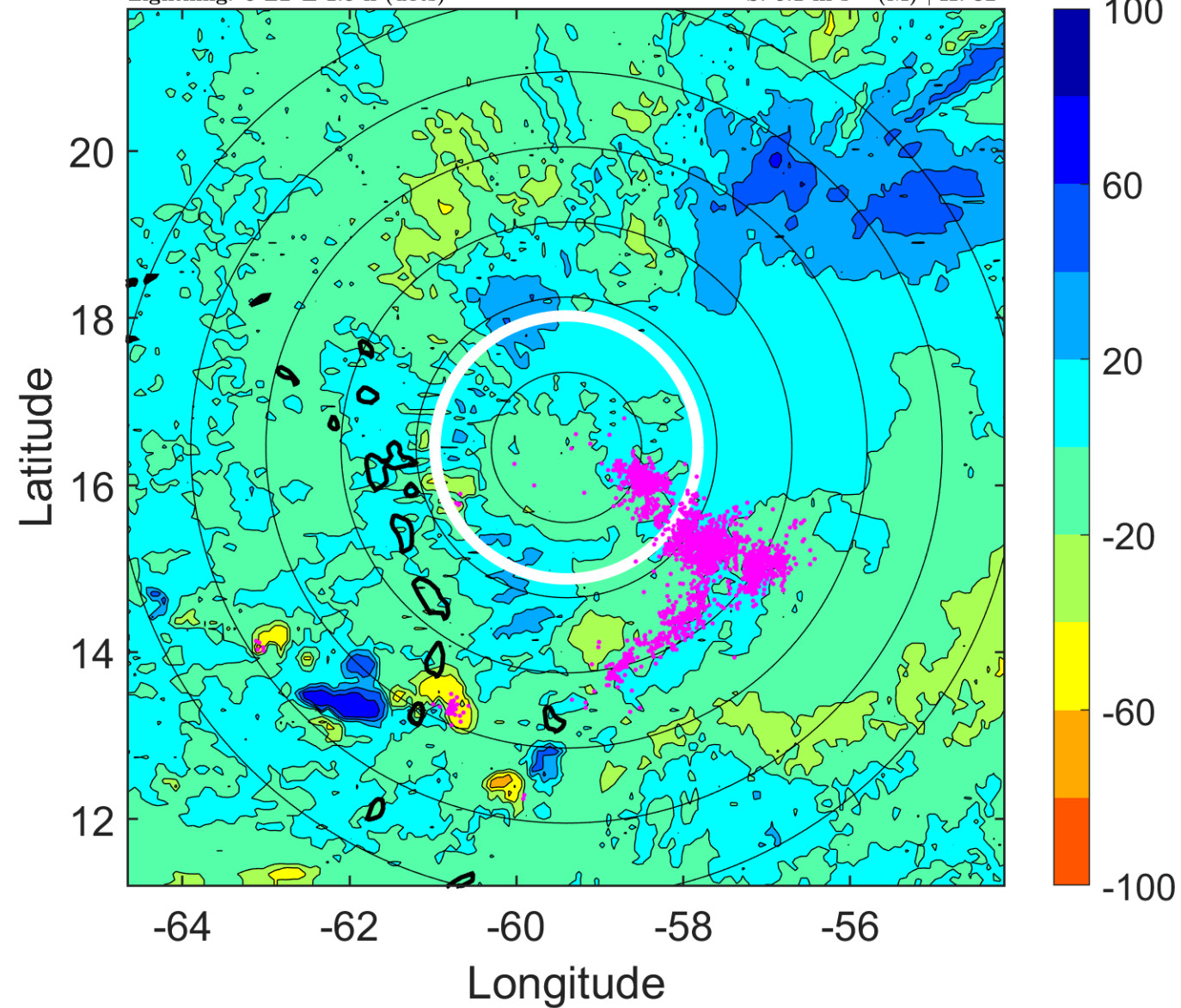
$\Delta$ t: 2009090209 (5 LT) - 2009090203 (23.1 LT)

Lightning: 5 LT  $\pm$  1.5 h (dots)

PT: LLWP | EA: QUASI

06L (ERIKA) | 40 kt TS

S: 5.1 m s<sup>-1</sup> (M) | H: 32°





### IR BT & Lightning

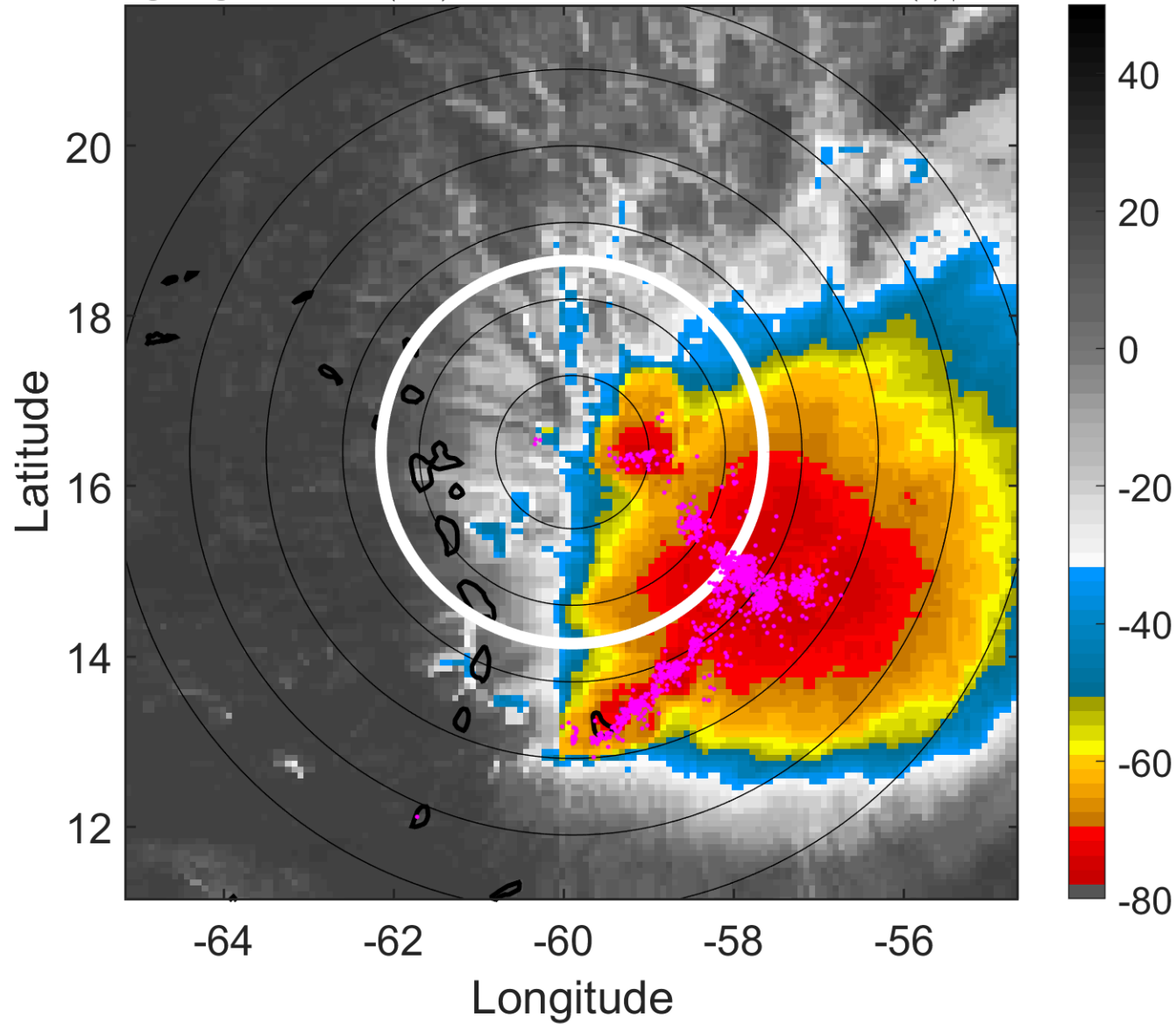
t: 2009090212 (8 LT)

Lightning: 8 LT  $\pm$  1.5 h (dots)

PT: LLWP | EA: QUASI

06L (ERIKA) | 35 kt TS

S: 4.3 m s<sup>-1</sup> (L) | H: 4°



### 6-h IR BT Differences & Lightning

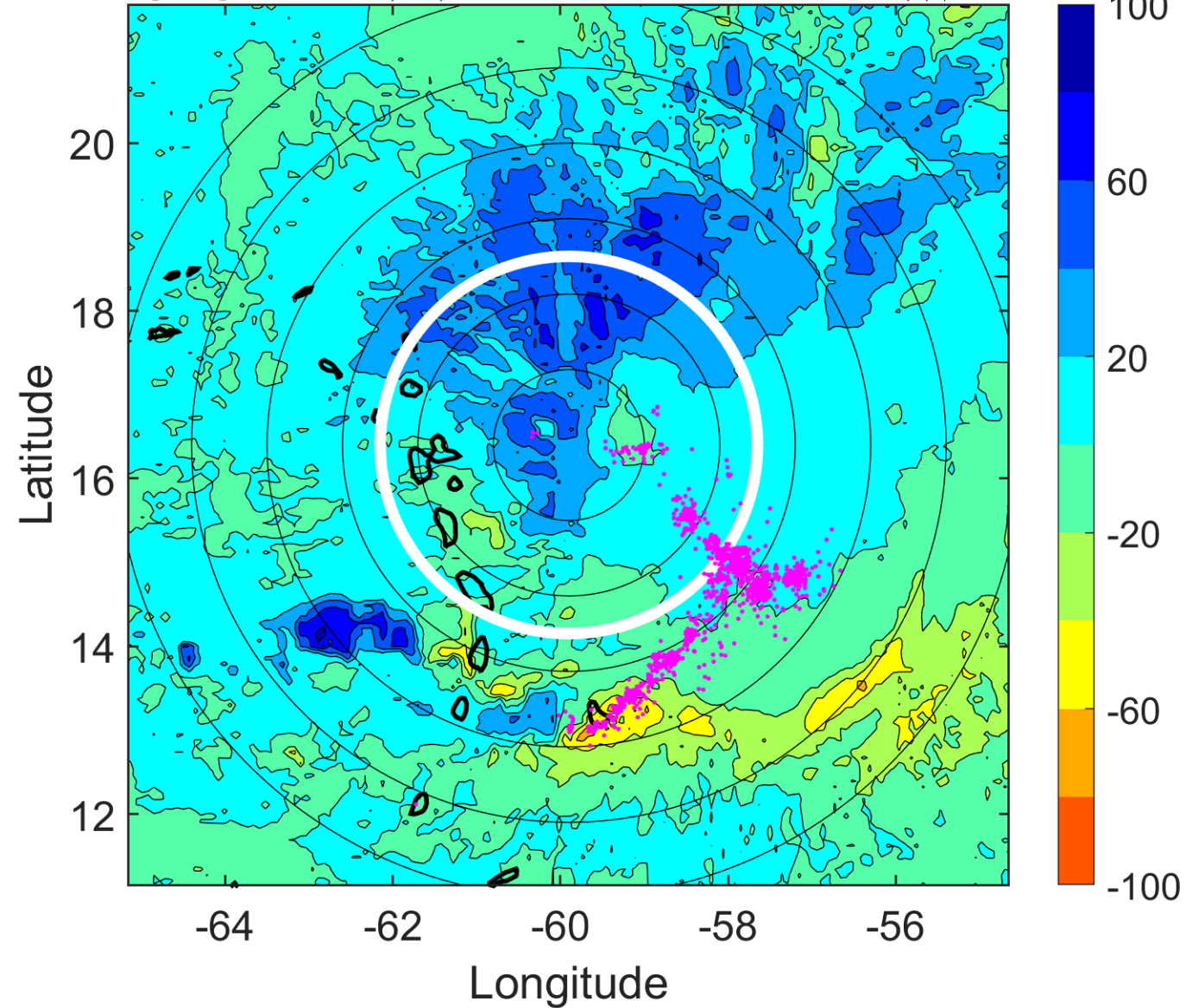
$\Delta$ t: 2009090212 (8 LT) - 2009090206 (2.1 LT)

Lightning: 8 LT  $\pm$  1.5 h (dots)

PT: LLWP | EA: QUASI

06L (ERIKA) | 35 kt TS

S: 4.3 m s<sup>-1</sup> (L) | H: 4°



### IR BT & Lightning

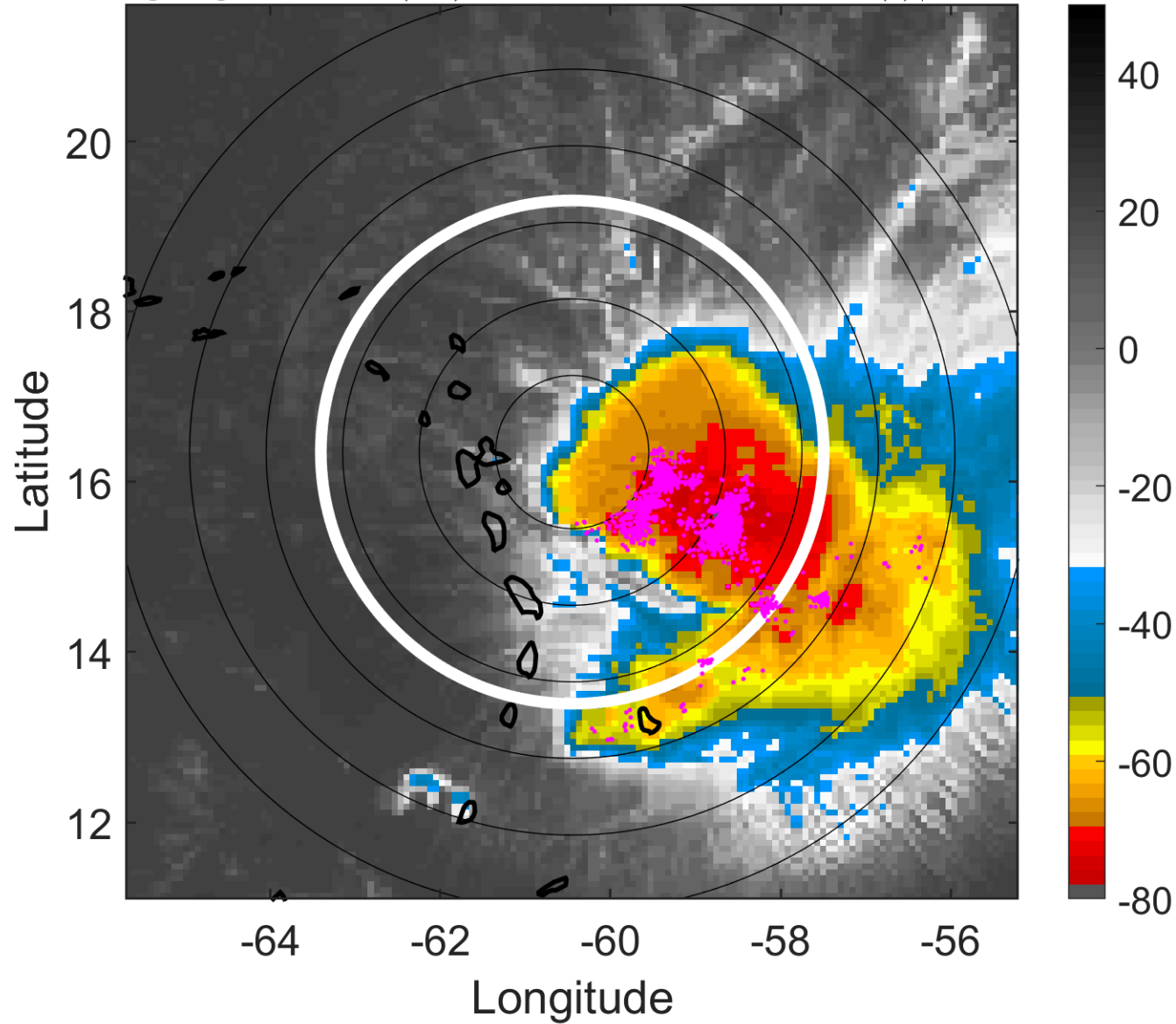
t: 2009090215 (11 LT)

Lightning: 11 LT  $\pm$  1.5 h (dots)

PT: LLWP | EA: QUASI

06L (ERIKA) | 35 kt TS

S: 3.3 m s<sup>-1</sup> (L) | H: 29.5°



### 6-h IR BT Differences & Lightning

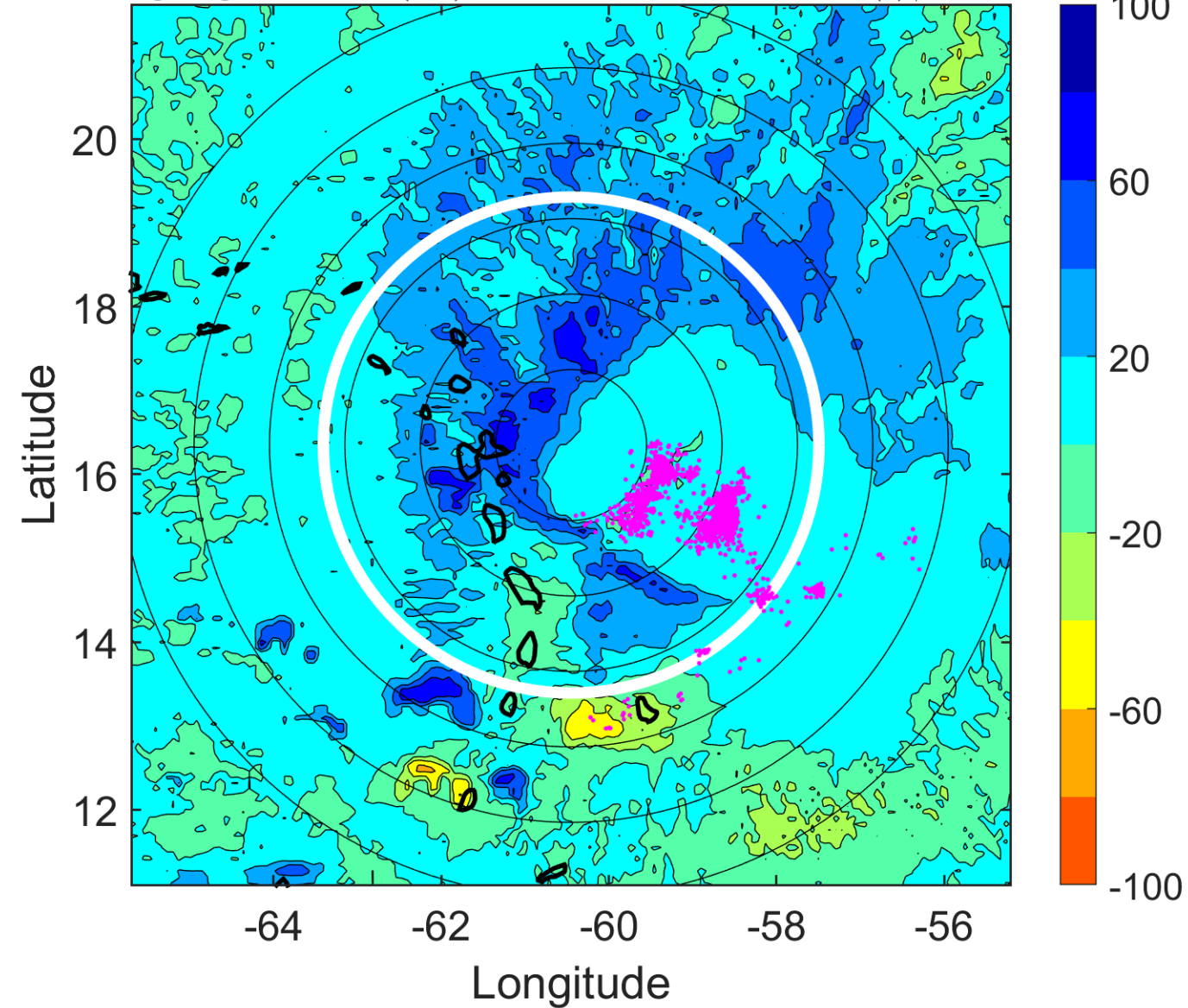
$\Delta$ t: 2009090215 (11 LT) - 2009090209 (5 LT)

Lightning: 11 LT  $\pm$  1.5 h (dots)

PT: LLWP | EA: QUASI

06L (ERIKA) | 35 kt TS

S: 3.3 m s<sup>-1</sup> (L) | H: 29.5°



### IR BT & Lightning

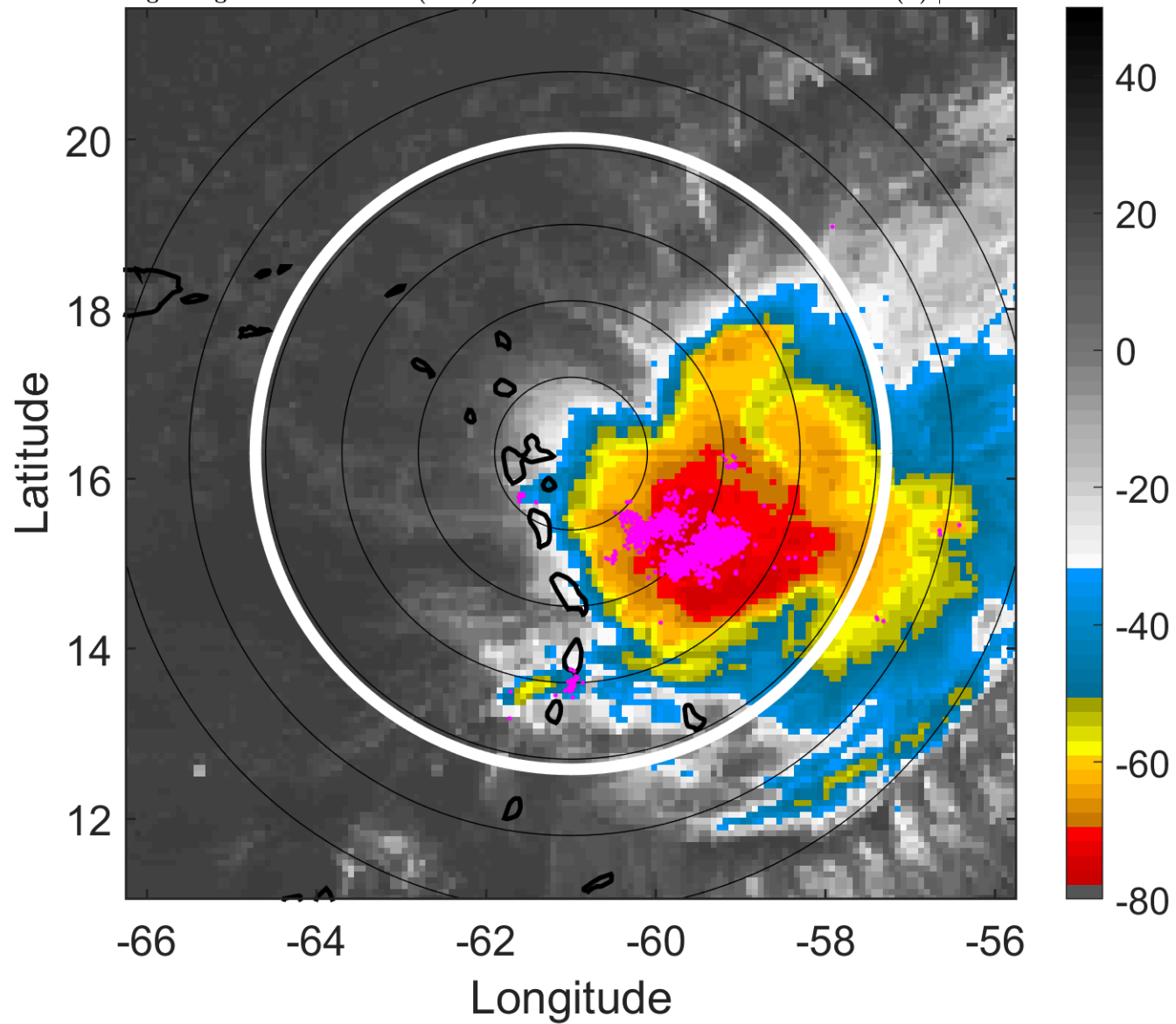
t: 2009090218 (13.9 LT)

Lightning: 13.9 LT  $\pm$  1.5 h (dots)

PT: LLWP | EA: QUASI

06L (ERIKA) | 35 kt TS

S: 2.3 m s<sup>-1</sup> (L) | H: 55°



### 6-h IR BT Differences & Lightning

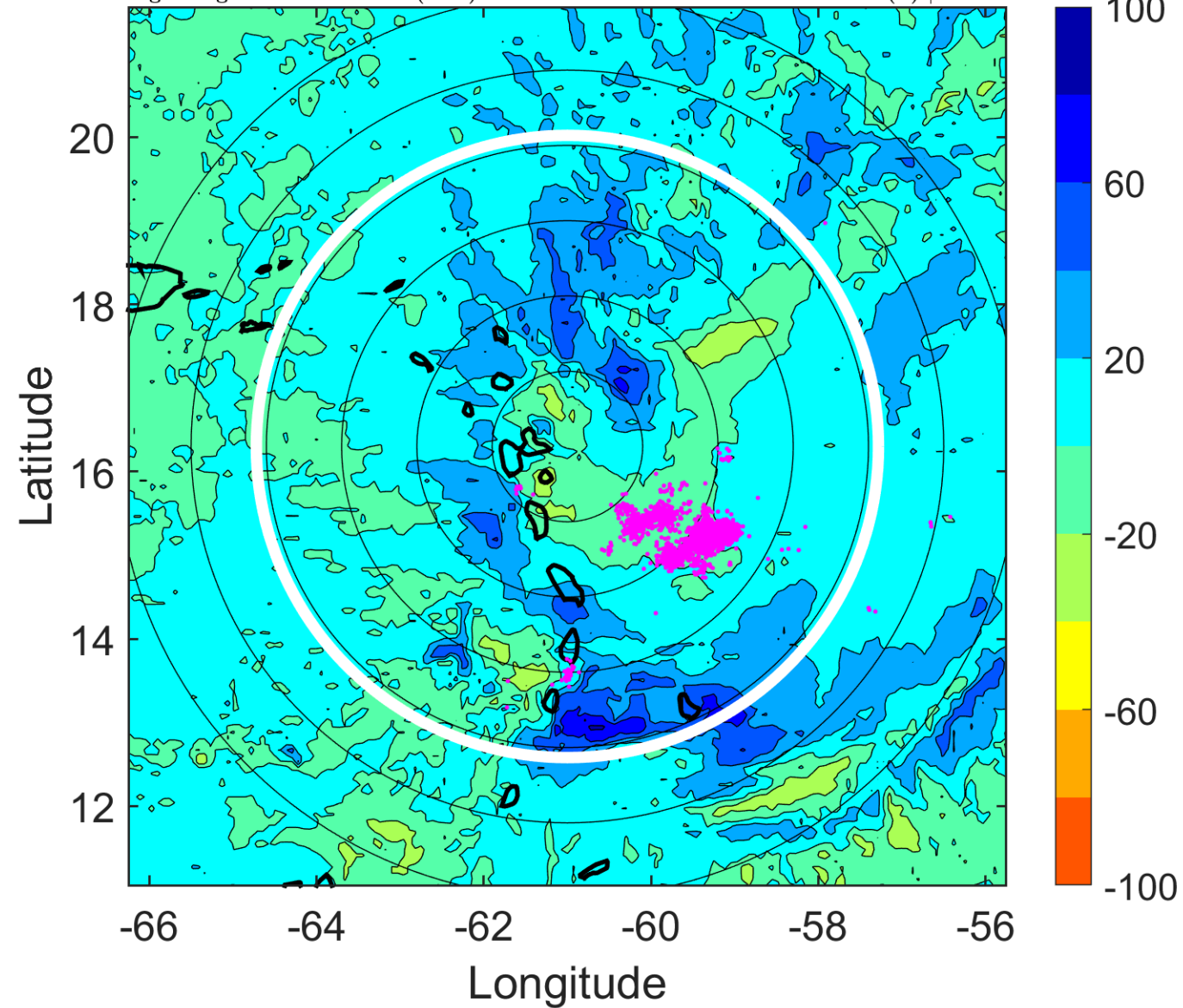
$\Delta$ t: 2009090218 (13.9 LT) - 2009090212 (8 LT)

Lightning: 13.9 LT  $\pm$  1.5 h (dots)

PT: LLWP | EA: QUASI

06L (ERIKA) | 35 kt TS

S: 2.3 m s<sup>-1</sup> (L) | H: 55°





### IR BT & Lightning

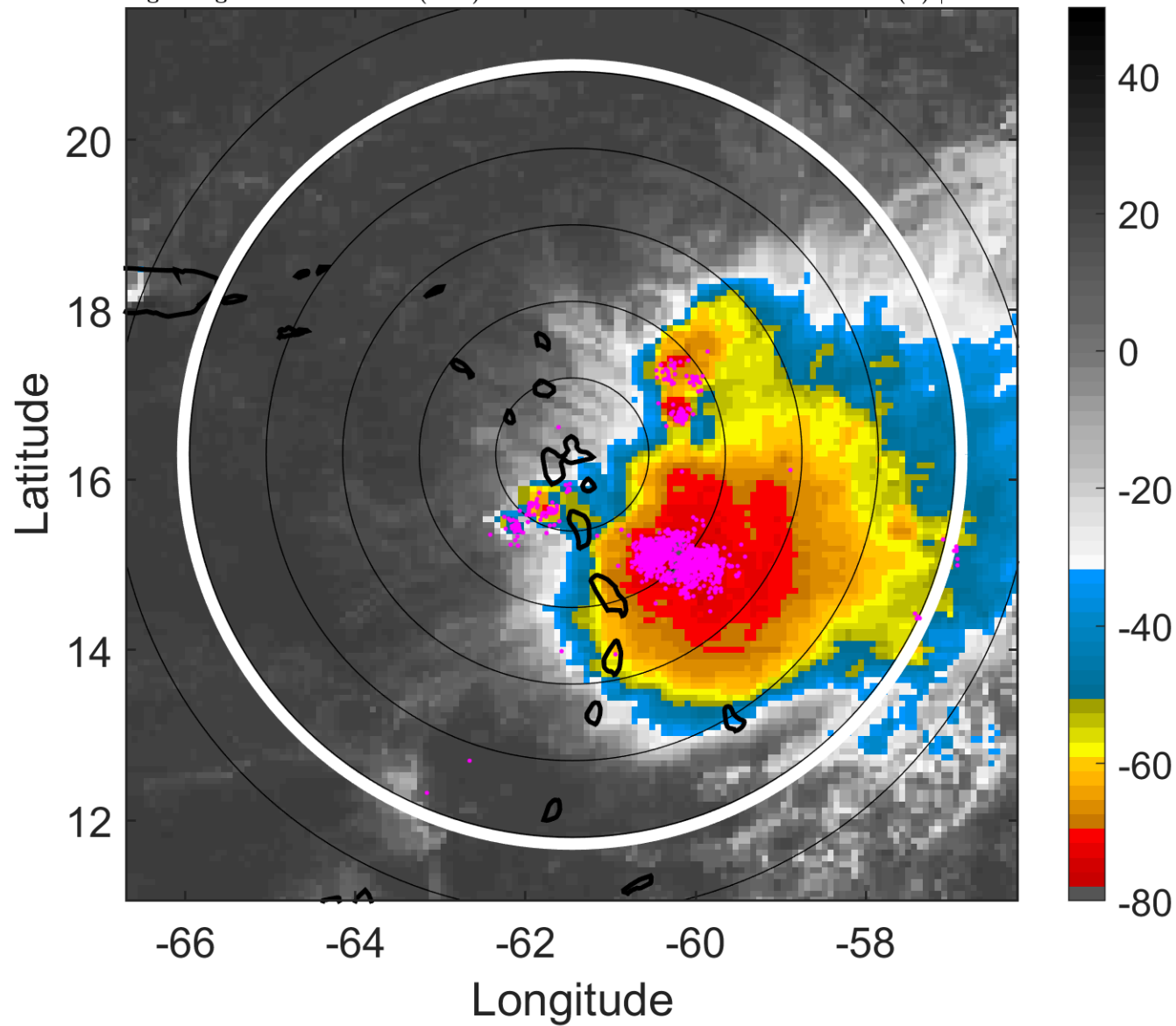
t: 2009090221 (16.9 LT)

Lightning: 16.9 LT  $\pm$  1.5 h (dots)

PT: LLWP | EA: QUASI

06L (ERIKA) | 35 kt TS

S: 3.3 m s<sup>-1</sup> (L) | H: 52°



### 6-h IR BT Differences & Lightning

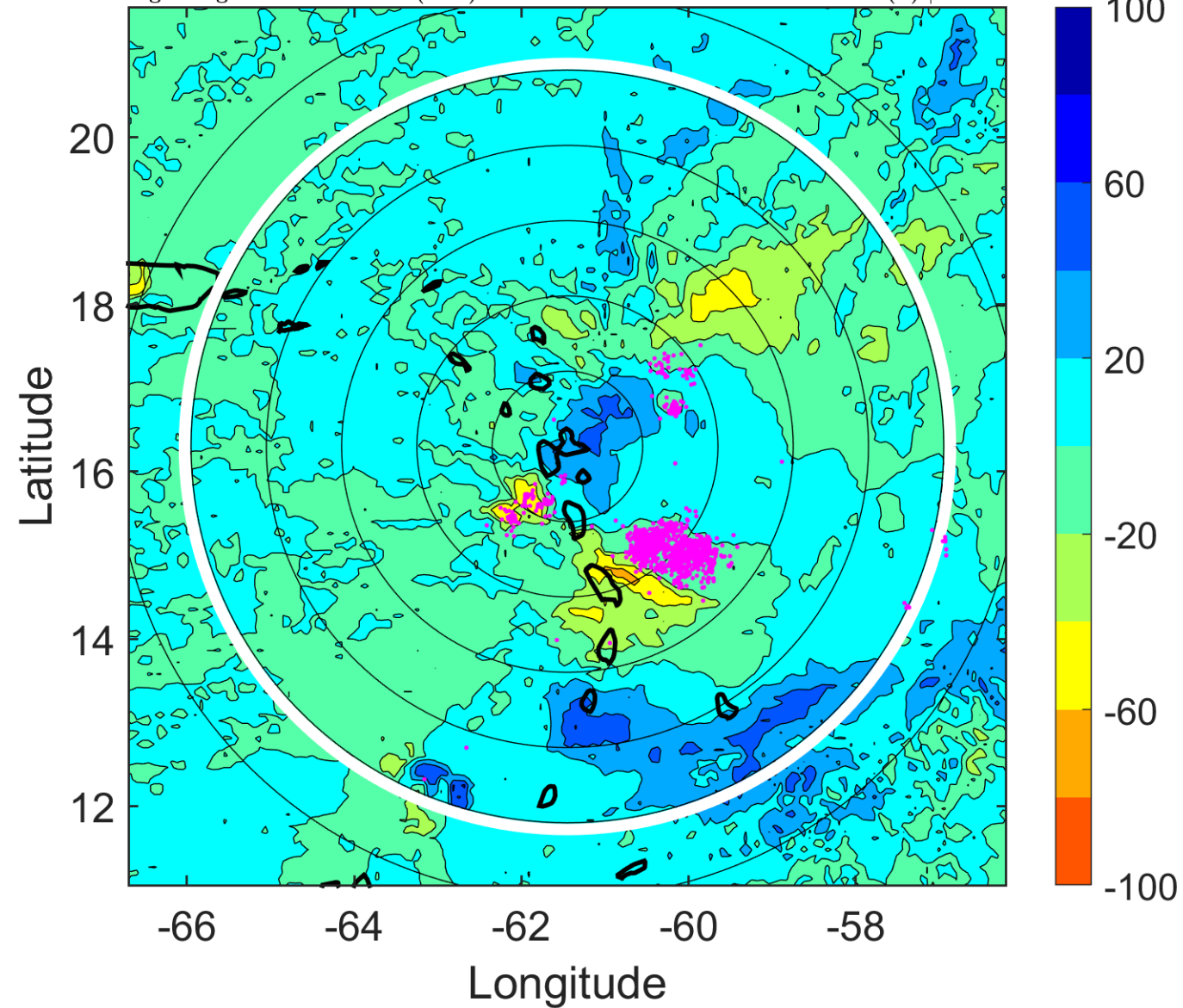
$\Delta$ t: 2009090221 (16.9 LT) - 2009090215 (11 LT)

Lightning: 16.9 LT  $\pm$  1.5 h (dots)

PT: LLWP | EA: QUASI

06L (ERIKA) | 35 kt TS

S: 3.3 m s<sup>-1</sup> (L) | H: 52°



### IR BT & Lightning

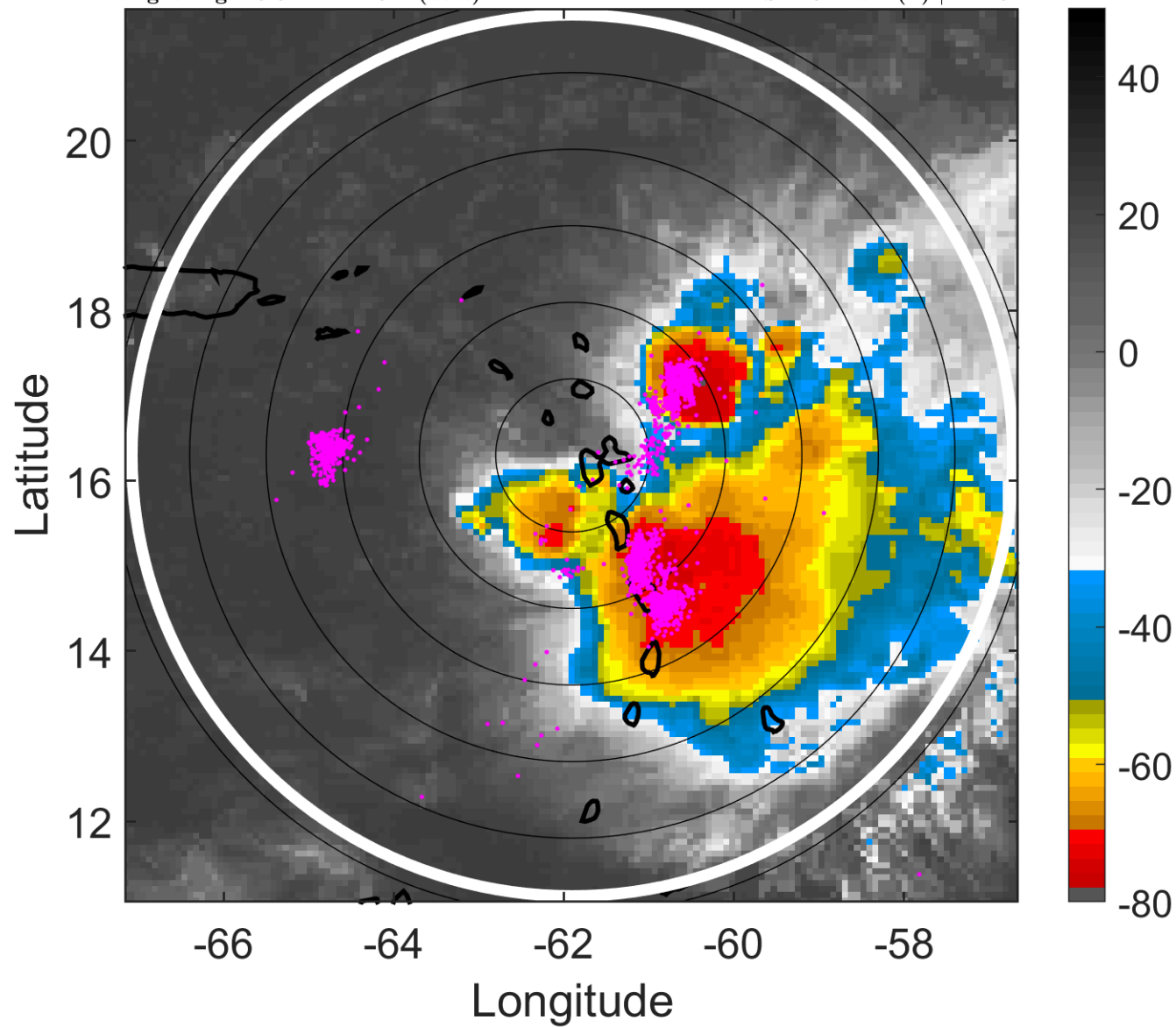
t: 2009090300 (19.9 LT)

Lightning: 19.9 LT  $\pm$  1.5 h (dots)

PT: LLWP | EA: QUASI

06L (ERIKA) | 35 kt TS

S: 4.3 m s<sup>-1</sup> (L) | H: 49°



### 6-h IR BT Differences & Lightning

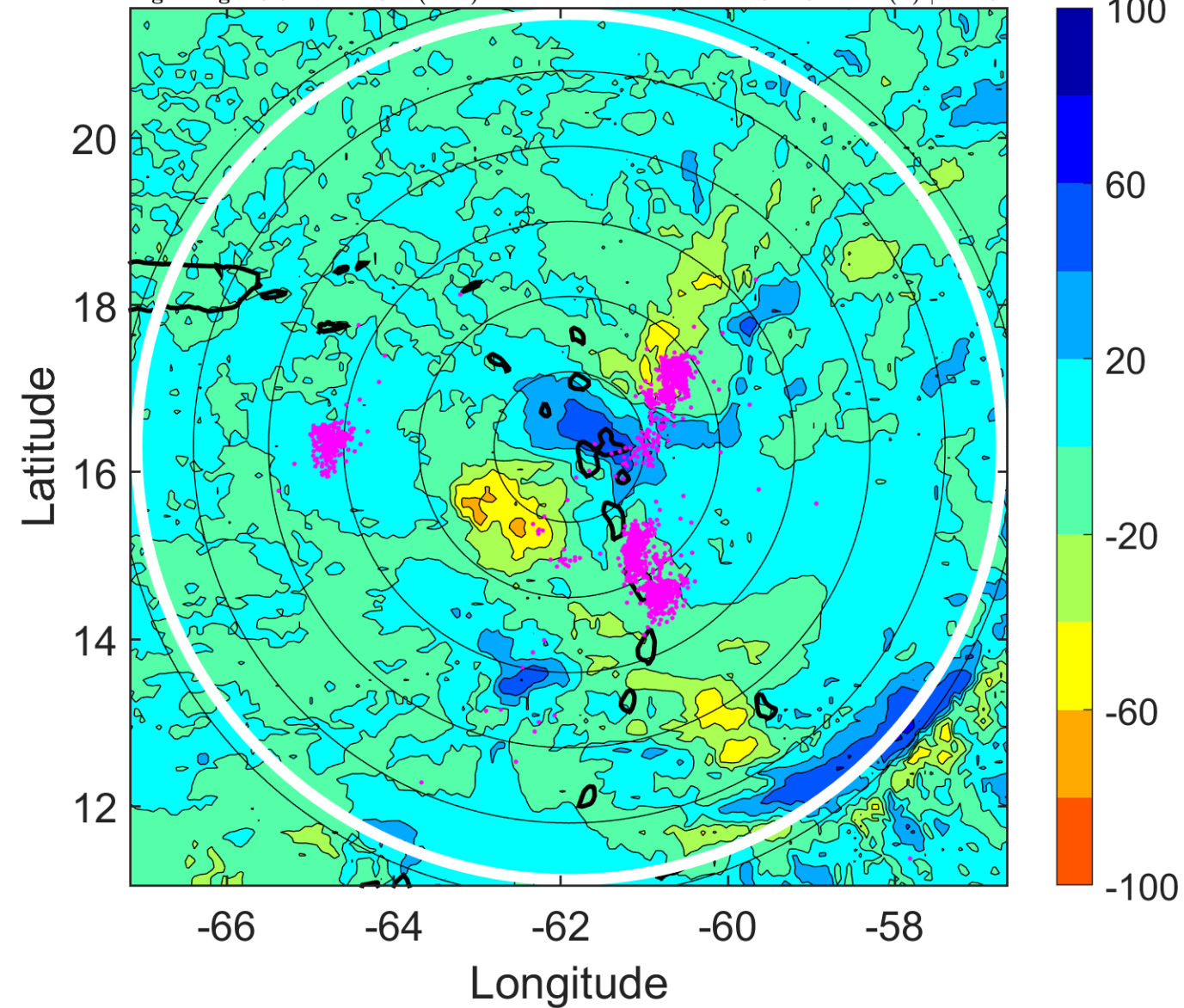
$\Delta$ t: 2009090300 (19.9 LT) - 2009090218 (13.9 LT)

Lightning: 19.9 LT  $\pm$  1.5 h (dots)

PT: LLWP | EA: QUASI

06L (ERIKA) | 35 kt TS

S: 4.3 m s<sup>-1</sup> (L) | H: 49°



### IR BT & Lightning

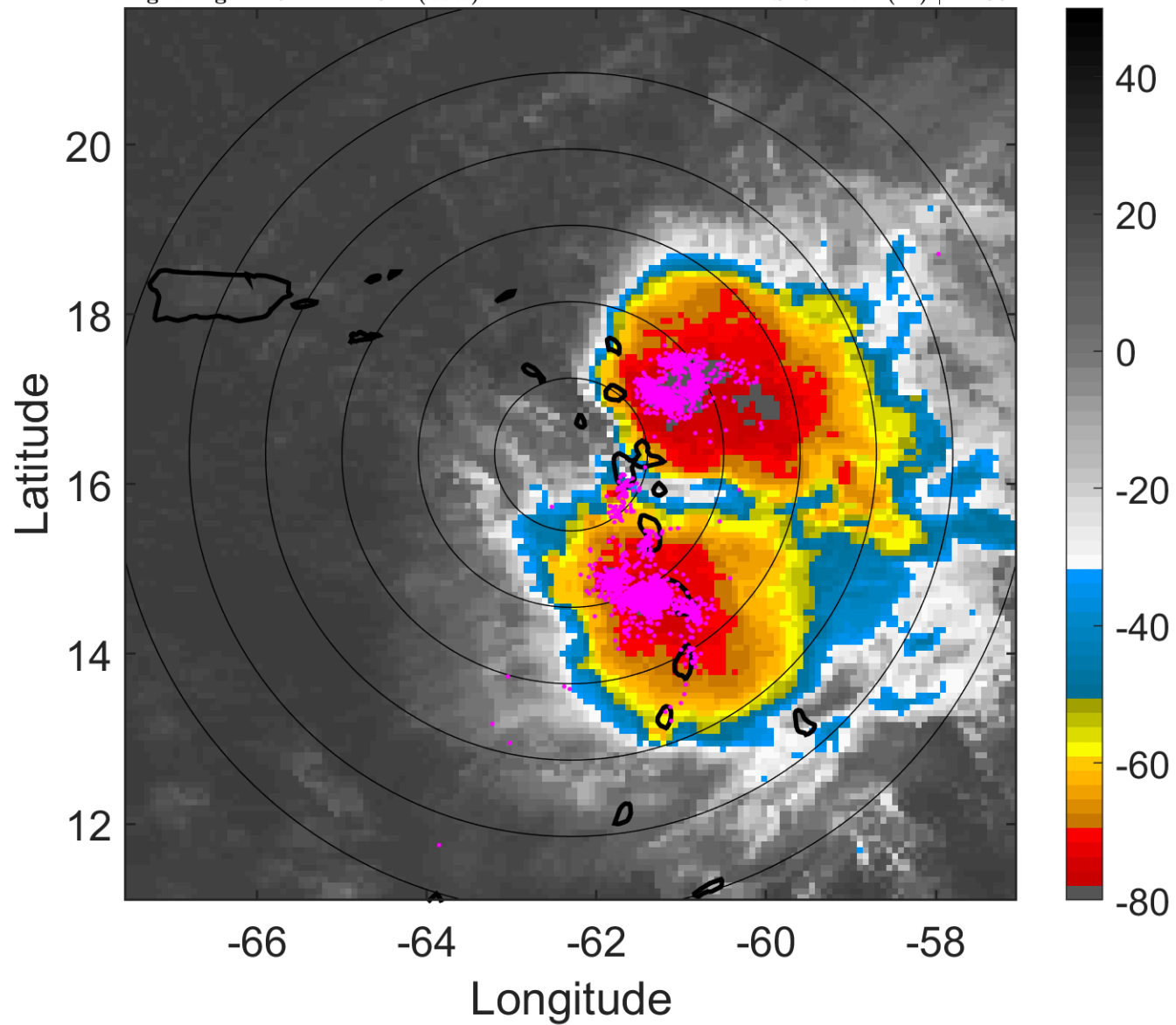
t: 2009090303 (22.8 LT)

Lightning: 22.8 LT  $\pm$  1.5 h (dots)

PT: LLWP | EA: QUASI

06L (ERIKA) | 37.5 kt TS

S: 5 m s<sup>-1</sup> (M) | H: 66°



### 6-h IR BT Differences & Lightning

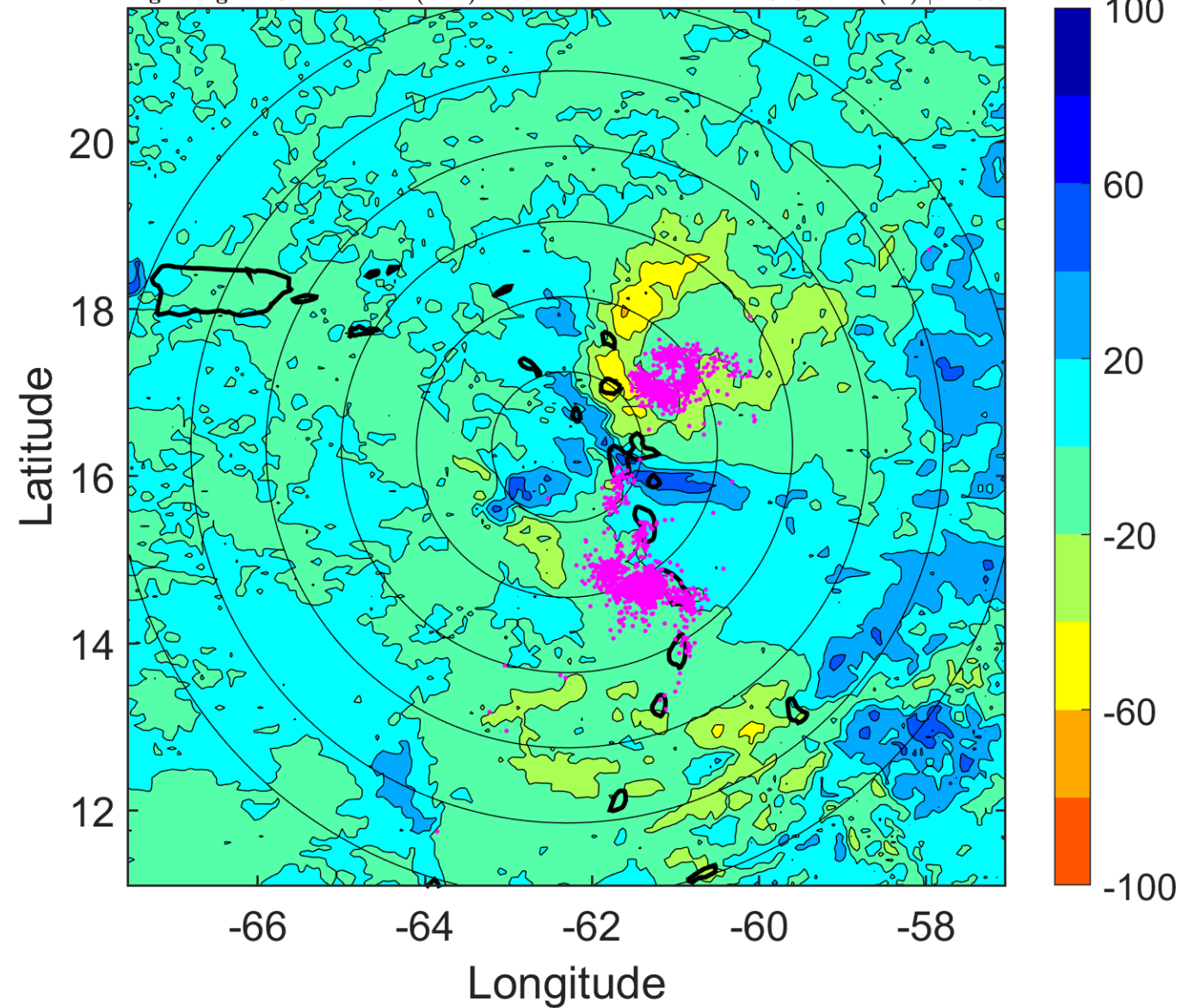
$\Delta$ t: 2009090303 (22.8 LT) - 2009090221 (16.9 LT)

Lightning: 22.8 LT  $\pm$  1.5 h (dots)

PT: LLWP | EA: QUASI

06L (ERIKA) | 37.5 kt TS

S: 5 m s<sup>-1</sup> (M) | H: 66°





### IR BT & Lightning

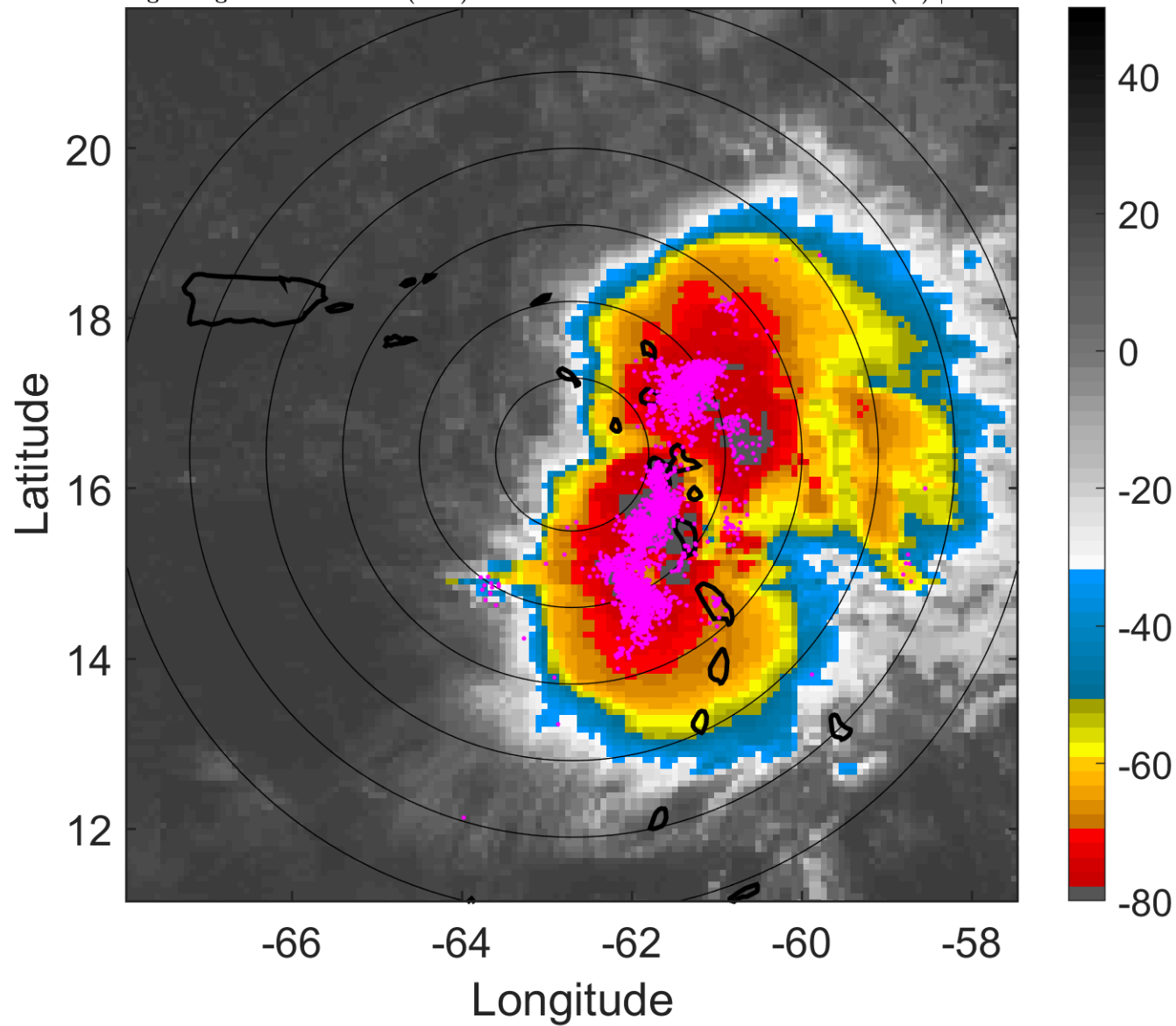
t: 2009090306 (1.8 LT)

Lightning: 1.8 LT  $\pm$  1.5 h (dots)

PT: SLCP | EA: QUASI

06L (ERIKA) | 40 kt TS

S: 5.7 m s<sup>-1</sup> (M) | H: 83°



### 6-h IR BT Differences & Lightning

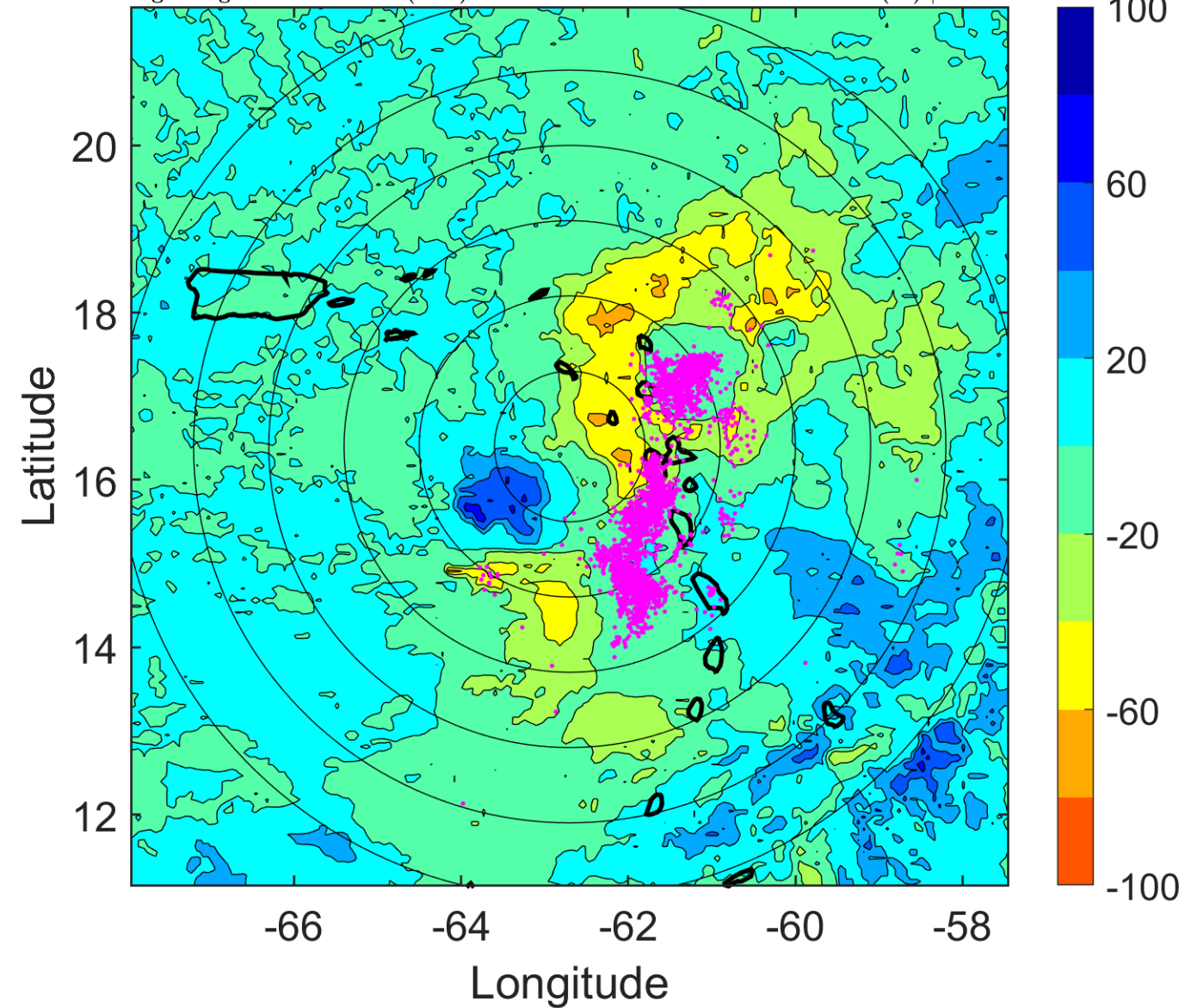
$\Delta$ t: 2009090306 (1.8 LT) - 2009090300 (19.9 LT)

Lightning: 1.8 LT  $\pm$  1.5 h (dots)

PT: SLCP | EA: QUASI

06L (ERIKA) | 40 kt TS

S: 5.7 m s<sup>-1</sup> (M) | H: 83°



### IR BT & Lightning

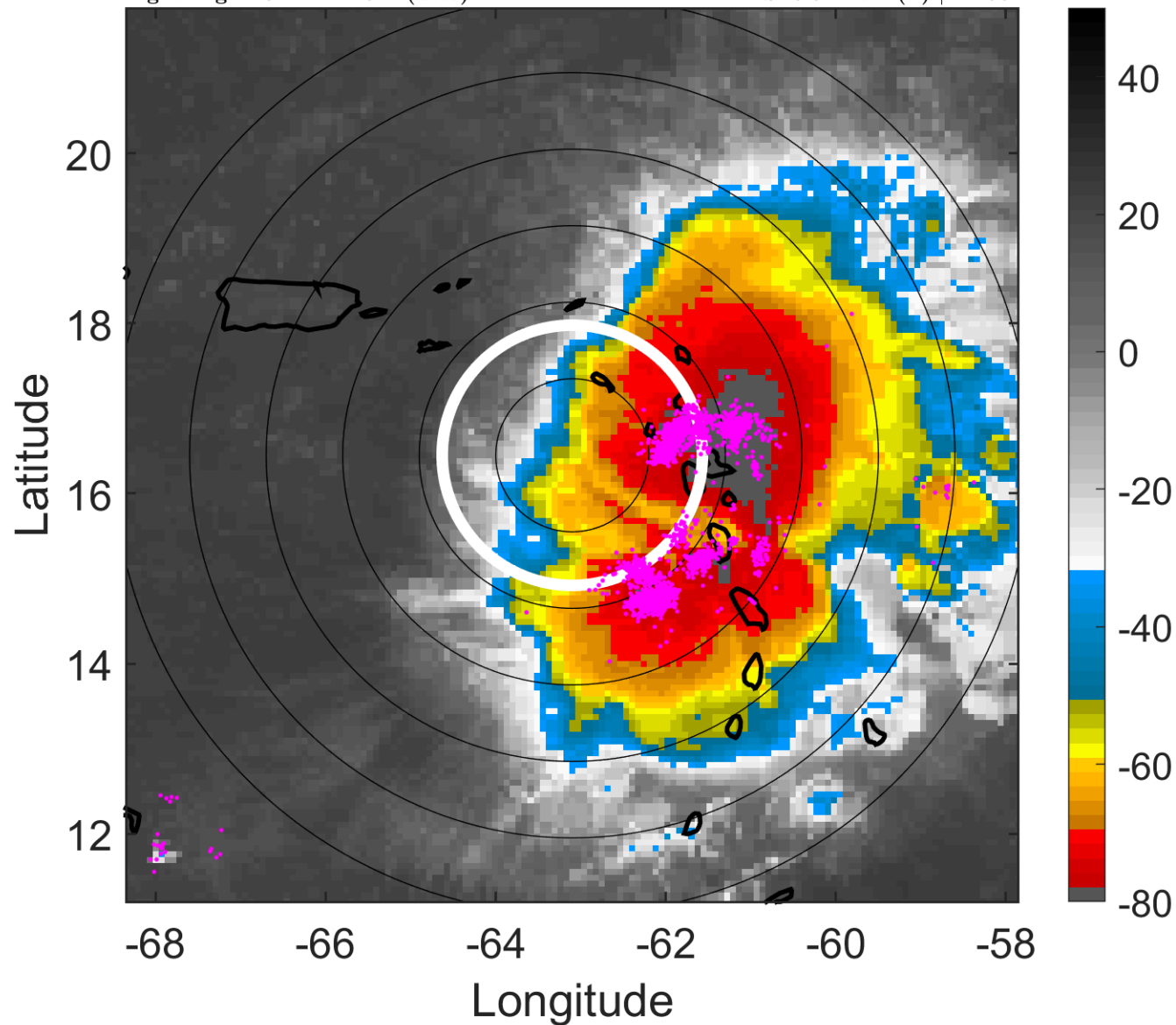
t: 2009090309 (4.8 LT)

Lightning: 4.8 LT  $\pm$  1.5 h (dots)

PT: SLCP | EA: QUASI

06L (ERIKA) | 40 kt TS

S: 3.5 m s<sup>-1</sup> (L) | H: 66°



### 6-h IR BT Differences & Lightning

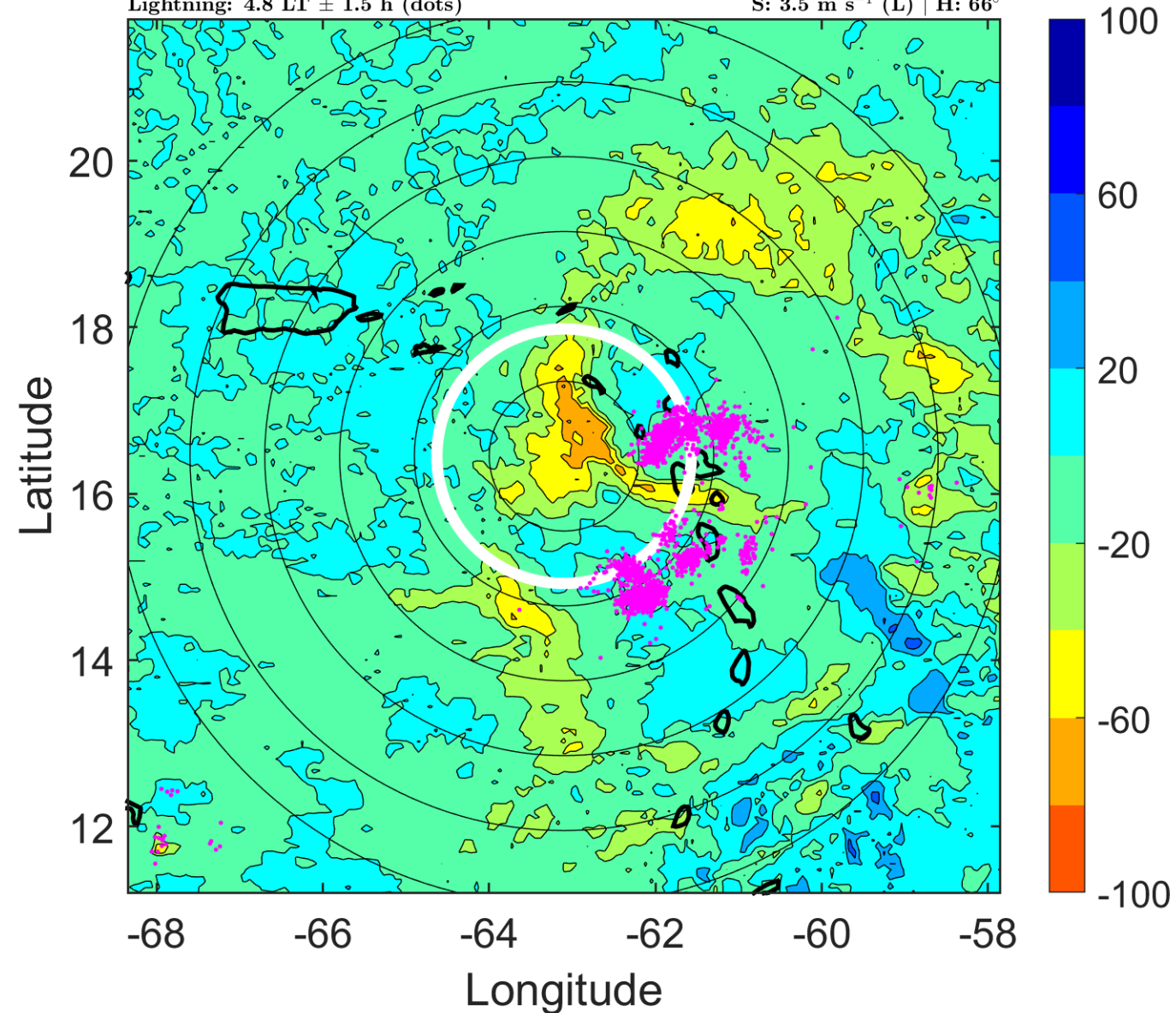
$\Delta$ t: 2009090309 (4.8 LT) - 2009090303 (22.8 LT)

Lightning: 4.8 LT  $\pm$  1.5 h (dots)

PT: SLCP | EA: QUASI

06L (ERIKA) | 40 kt TS

S: 3.5 m s<sup>-1</sup> (L) | H: 66°



### IR BT & Lightning

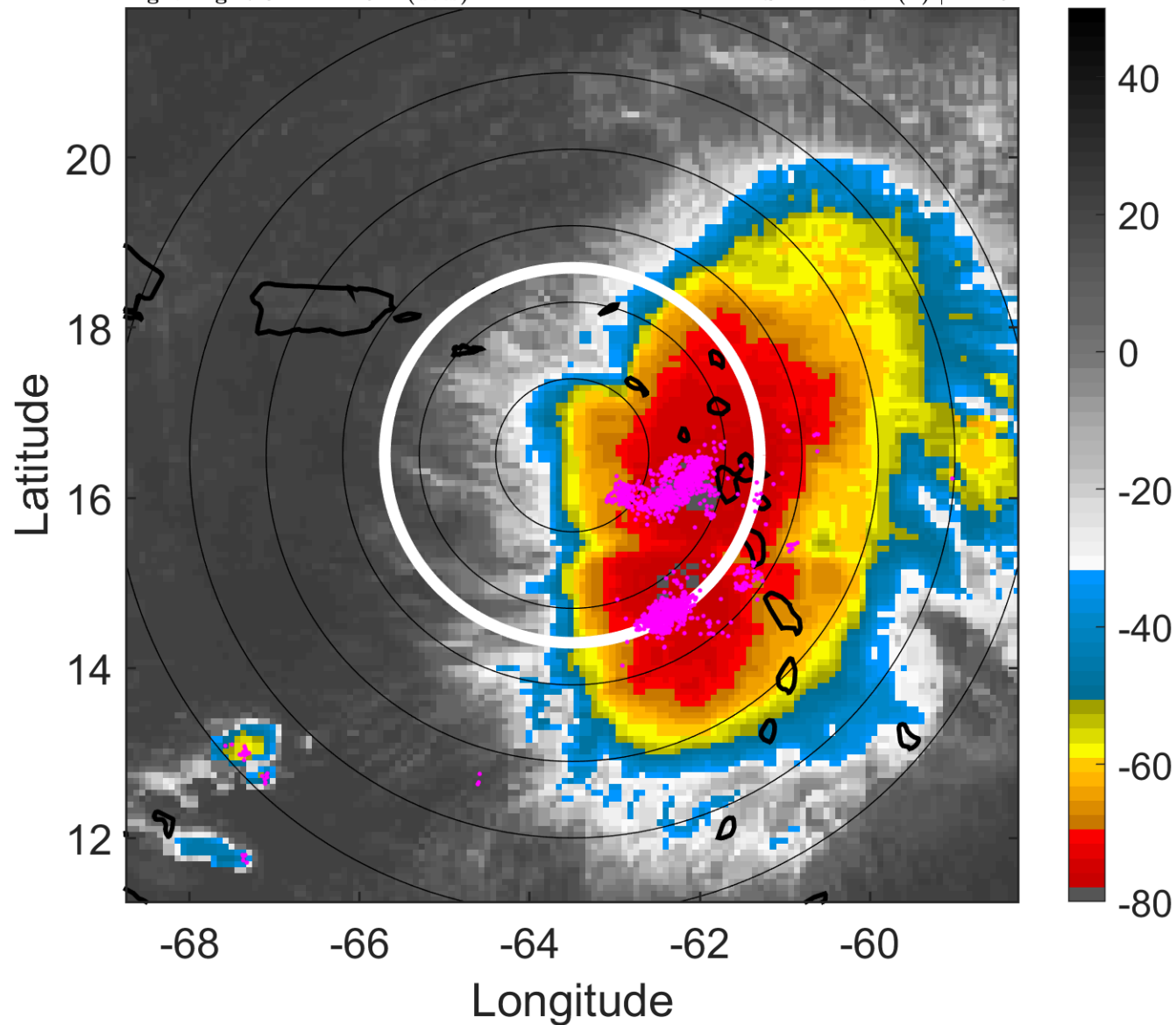
t: 2009090312 (7.8 LT)

Lightning: 7.8 LT  $\pm$  1.5 h (dots)

PT: SLCP | EA: QUASI

06L (ERIKA) | 40 kt TS

S: 1.4 m s<sup>-1</sup> (L) | H: 49°



### 6-h IR BT Differences & Lightning

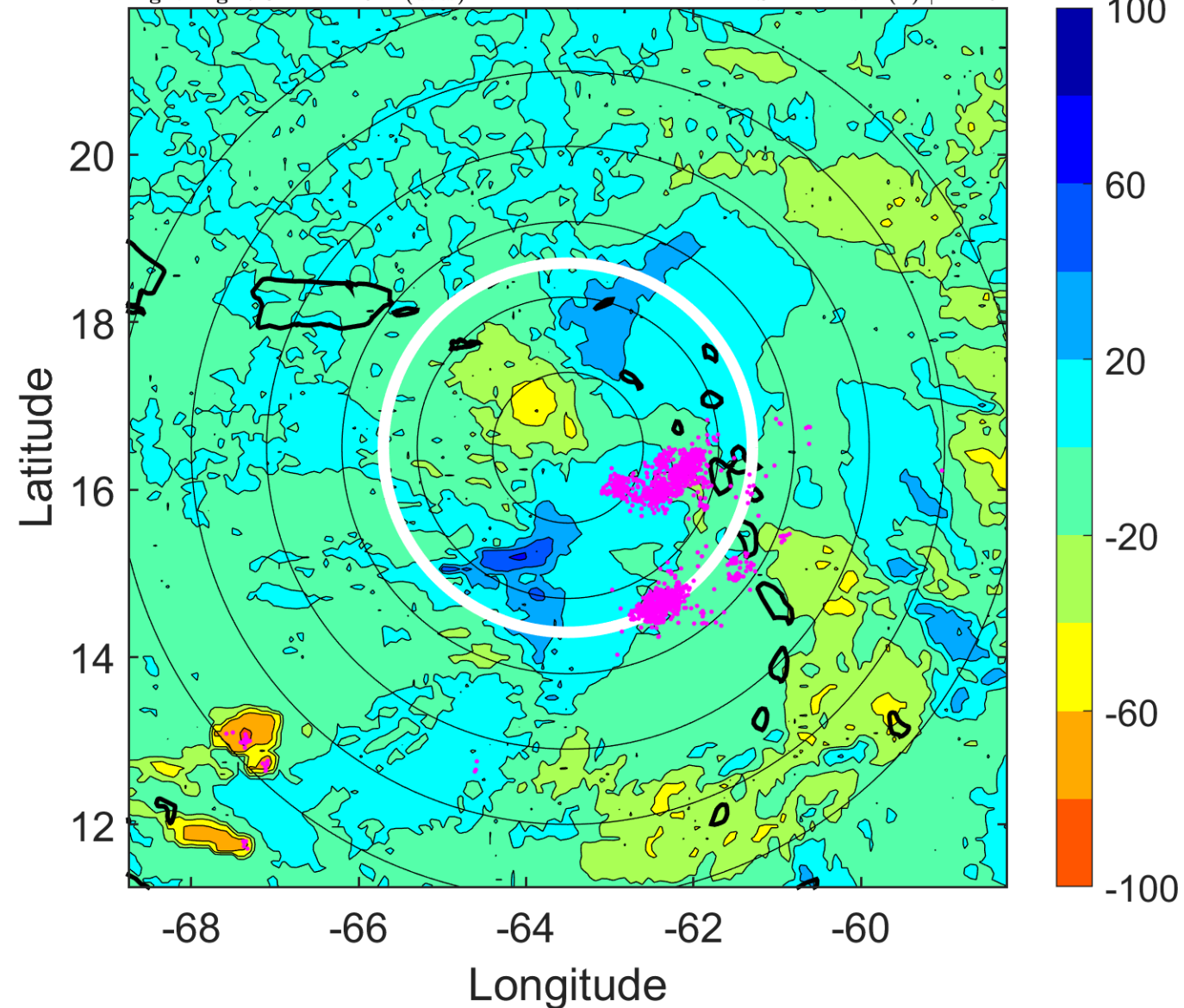
$\Delta$ t: 2009090312 (7.8 LT) - 2009090306 (1.8 LT)

Lightning: 7.8 LT  $\pm$  1.5 h (dots)

PT: SLCP | EA: QUASI

06L (ERIKA) | 40 kt TS

S: 1.4 m s<sup>-1</sup> (L) | H: 49°





### IR BT & Lightning

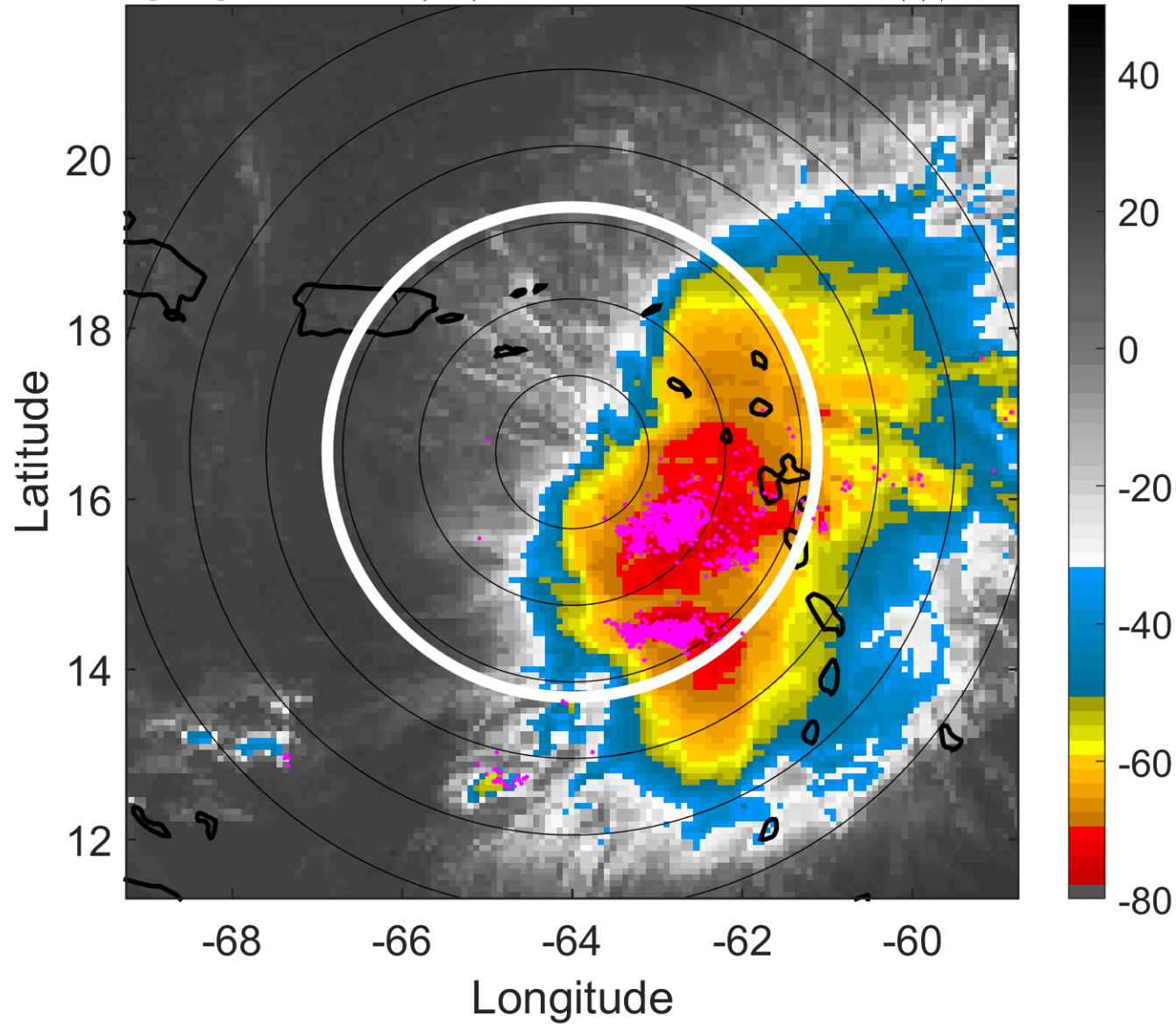
t: 2009090315 (10.7 LT)

Lightning: 10.7 LT  $\pm$  1.5 h (dots)

PT: SLCP | EA: QUASI

06L (ERIKA) | 35 kt TS

S: 2.7 m s<sup>-1</sup> (L) | H: 29°



### 6-h IR BT Differences & Lightning

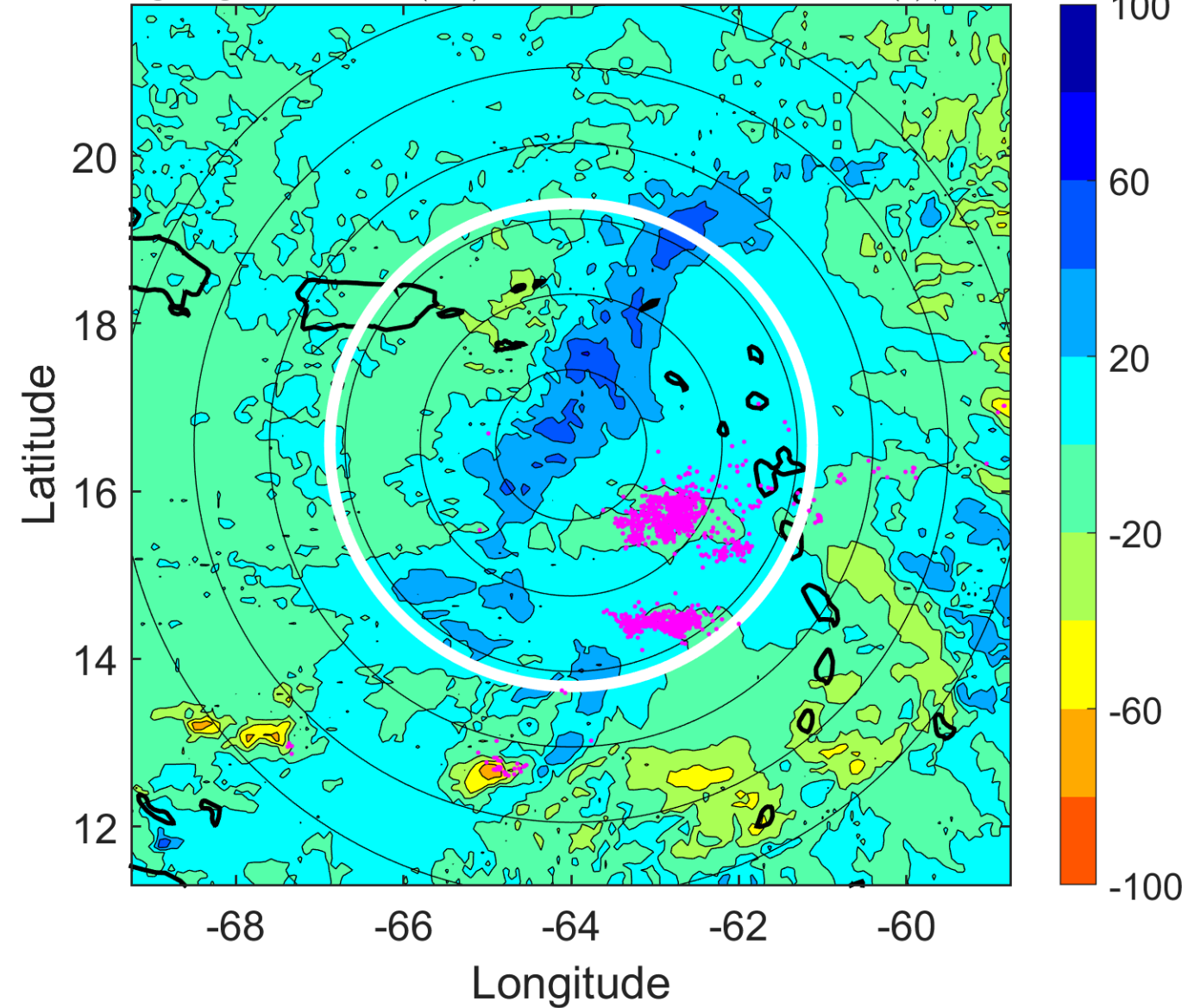
$\Delta$ t: 2009090315 (10.7 LT) - 2009090309 (4.8 LT)

Lightning: 10.7 LT  $\pm$  1.5 h (dots)

PT: SLCP | EA: QUASI

06L (ERIKA) | 35 kt TS

S: 2.7 m s<sup>-1</sup> (L) | H: 29°



### IR BT & Lightning

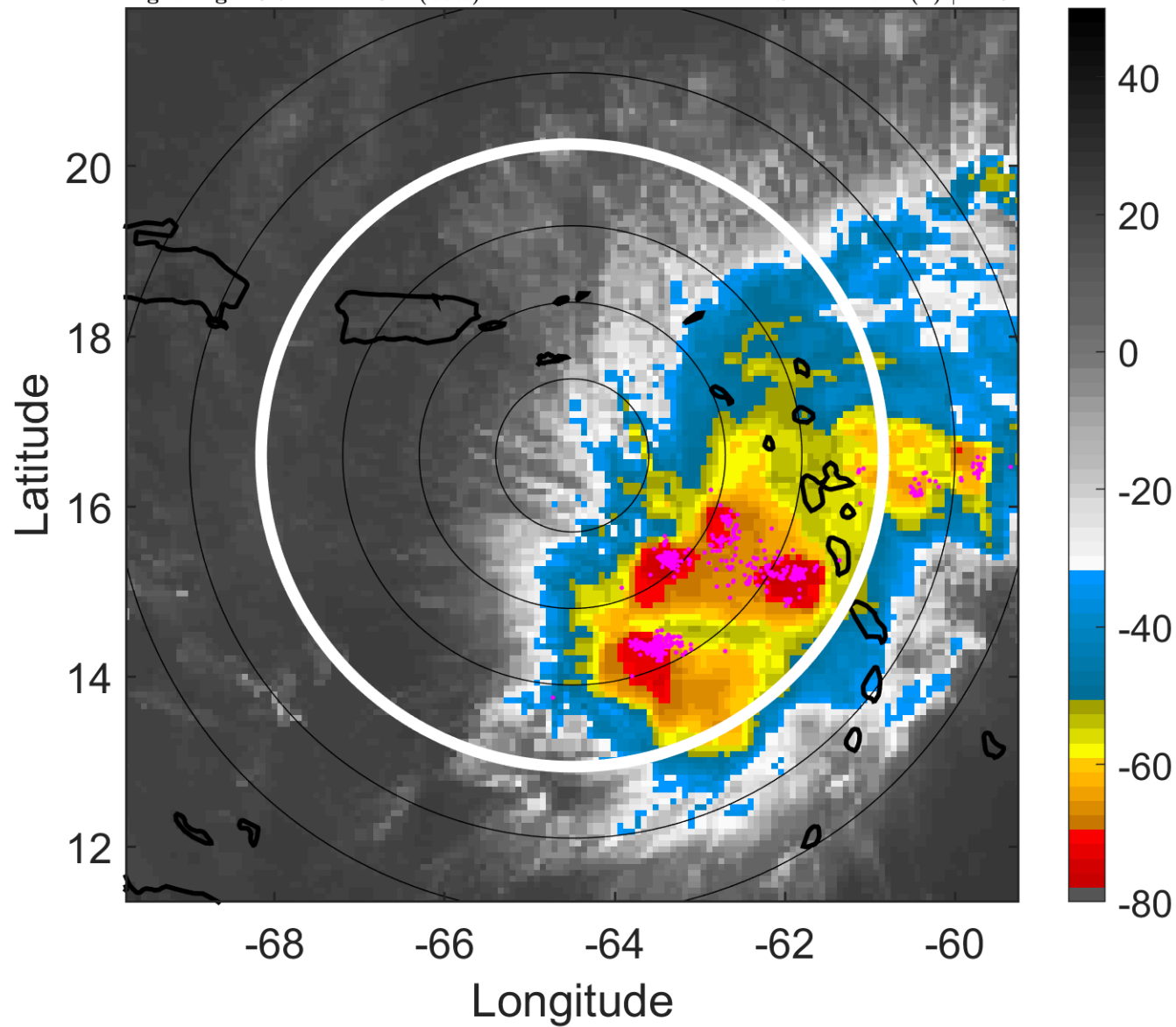
t: 2009090318 (13.7 LT)

Lightning: 13.7 LT  $\pm$  1.5 h (dots)

PT: SLCP | EA: QUASI

06L (ERIKA) | 30 kt TD

S: 4.1 m s<sup>-1</sup> (L) | H: 9°



### 6-h IR BT Differences & Lightning

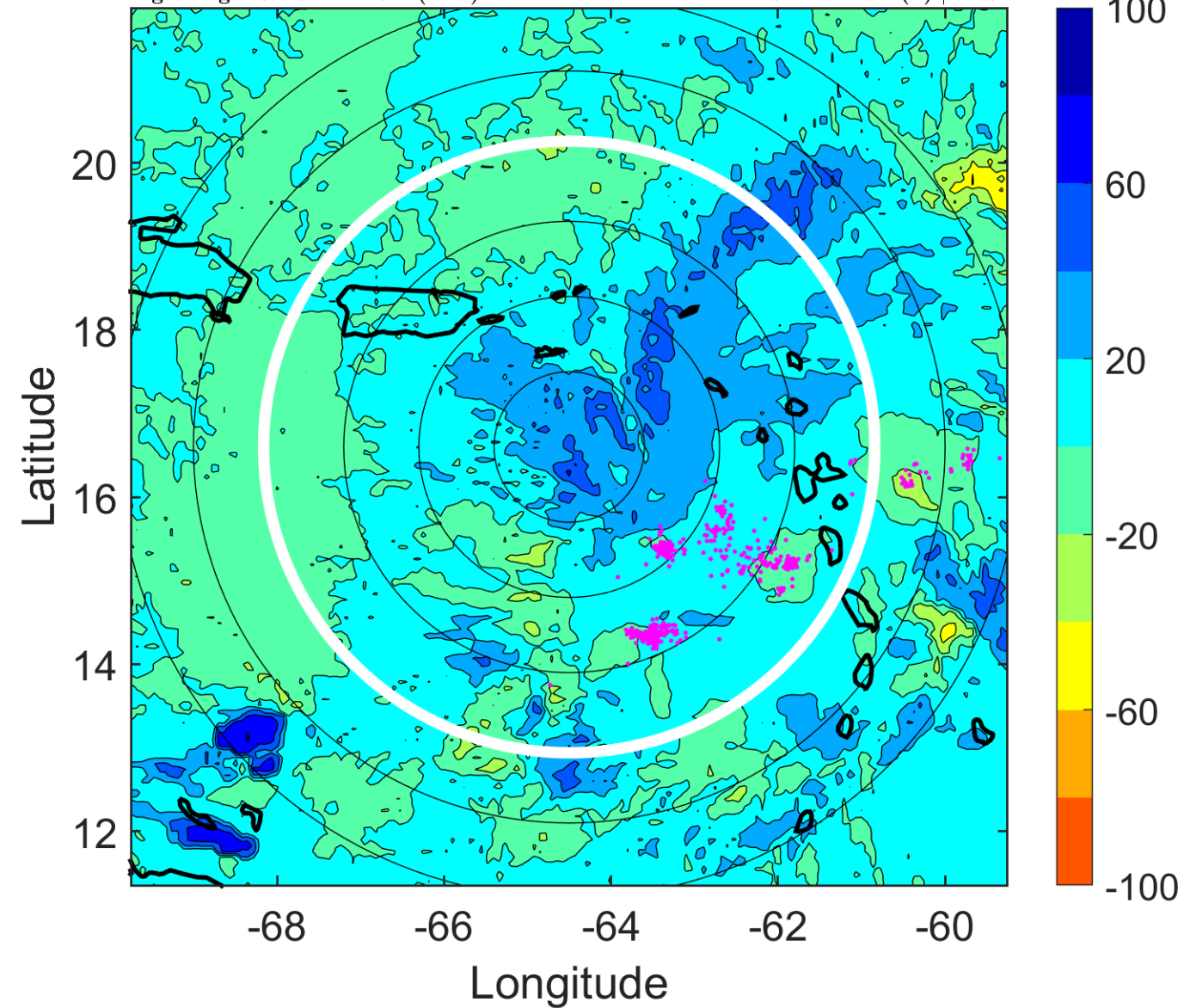
$\Delta$ t: 2009090318 (13.7 LT) - 2009090312 (7.8 LT)

Lightning: 13.7 LT  $\pm$  1.5 h (dots)

PT: SLCP | EA: QUASI

06L (ERIKA) | 30 kt TD

S: 4.1 m s<sup>-1</sup> (L) | H: 9°



### IR BT & Lightning

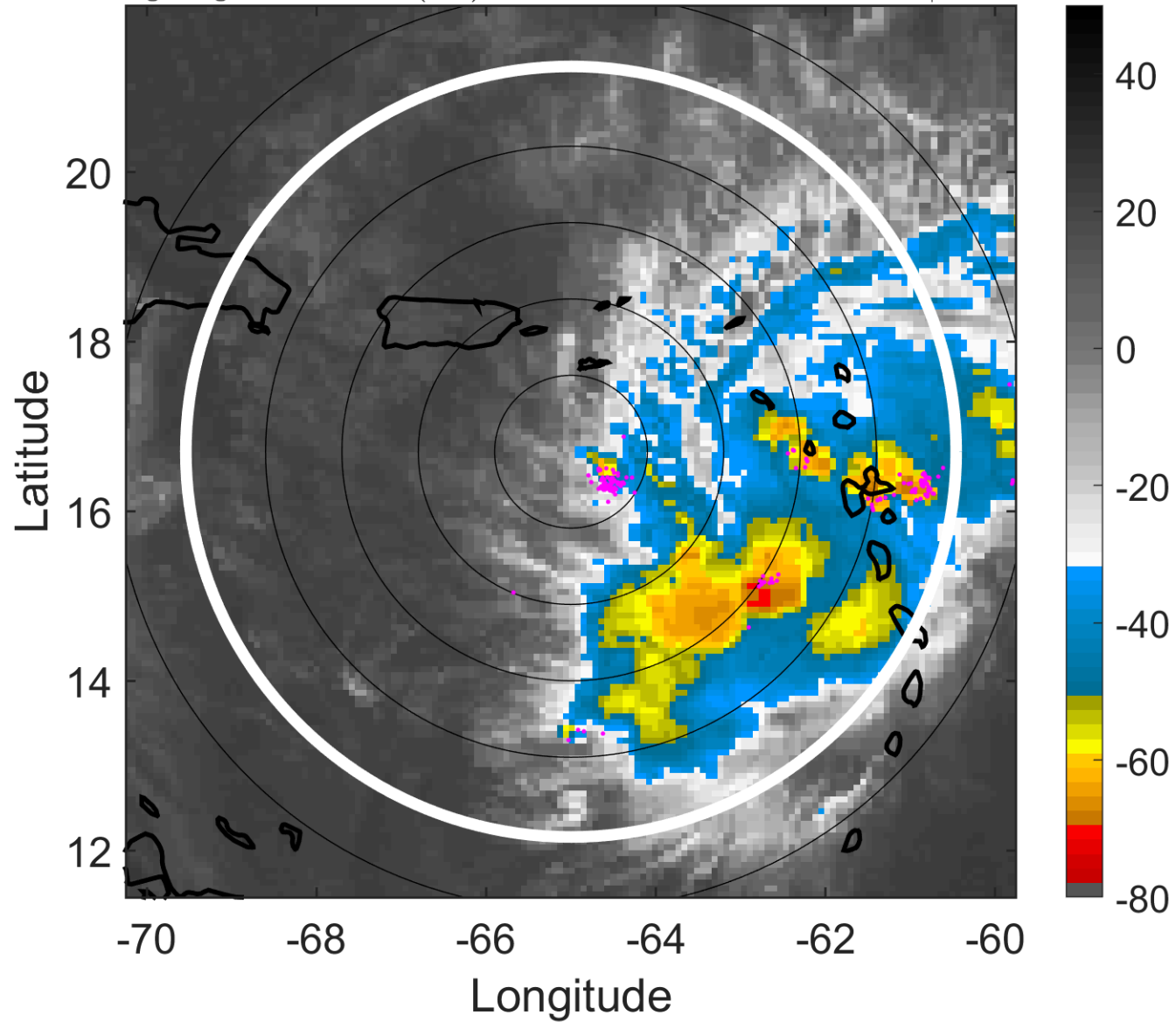
t: 2009090321 (16.7 LT)

Lightning: 16.7 LT  $\pm$  1.5 h (dots)

PT: SLCP | EA: QUASI

06L (ERIKA) | 27.5 kt TD

S: null | H: null



### 6-h IR BT Differences & Lightning

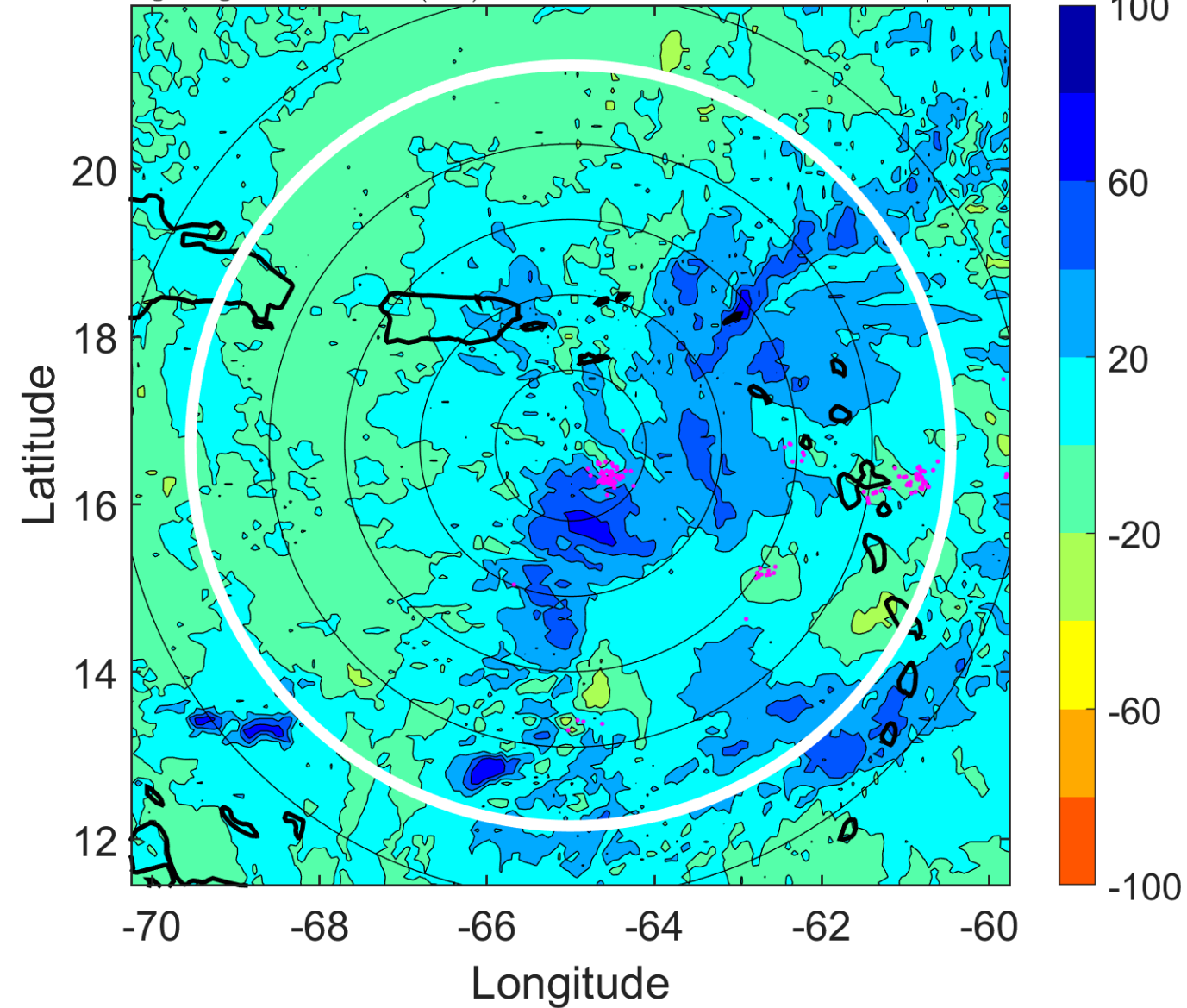
$\Delta$ t: 2009090321 (16.7 LT) - 2009090315 (10.7 LT)

Lightning: 16.7 LT  $\pm$  1.5 h (dots)

PT: SLCP | EA: QUASI

06L (ERIKA) | 27.5 kt TD

S: null | H: null





### IR BT & Lightning

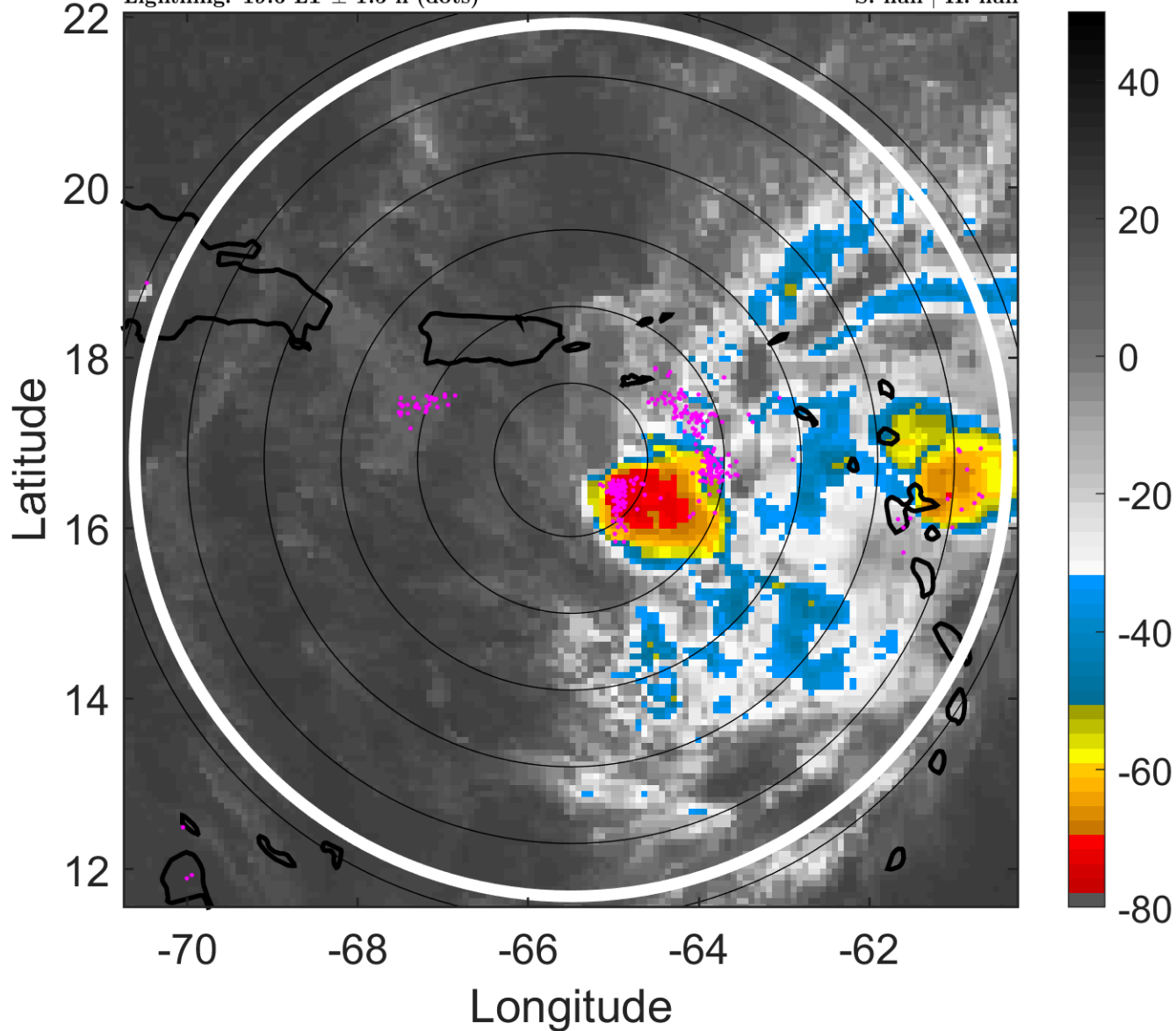
t: 2009090400 (19.6 LT)

Lightning: 19.6 LT  $\pm$  1.5 h (dots)

PT: SLCP | EA: QUASI

06L (ERIKA) | 25 kt LO

S: null | H: null



### 6-h IR BT Differences & Lightning

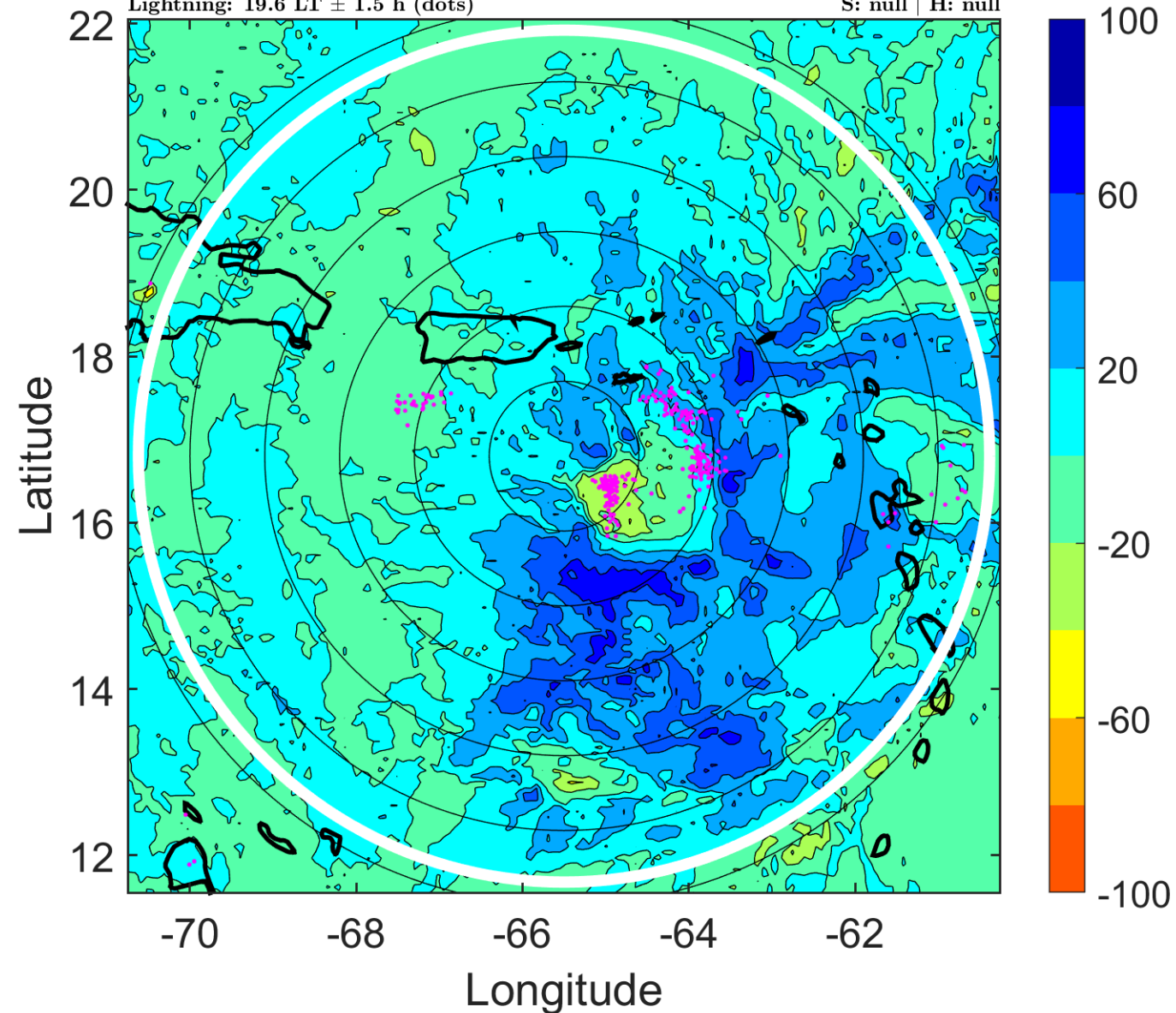
$\Delta$ t: 2009090400 (19.6 LT) - 2009090318 (13.7 LT)

Lightning: 19.6 LT  $\pm$  1.5 h (dots)

PT: SLCP | EA: QUASI

06L (ERIKA) | 25 kt LO

S: null | H: null



### IR BT & Lightning

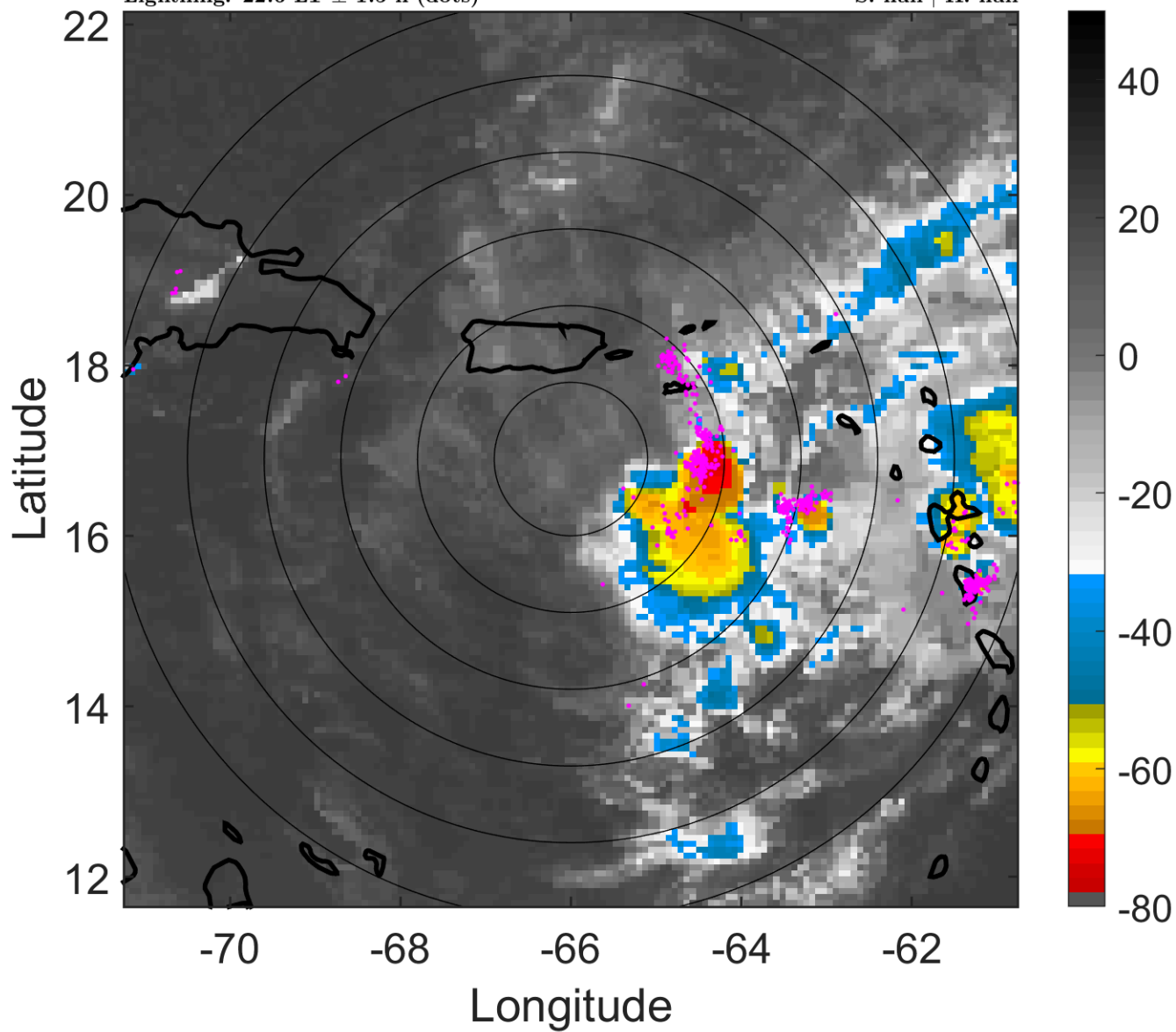
t: 2009090403 (22.6 LT)

Lightning: 22.6 LT  $\pm$  1.5 h (dots)

PT: SLCP | EA: QUASI

06L (ERIKA) | 25 kt LO

S: null | H: null



### 6-h IR BT Differences & Lightning

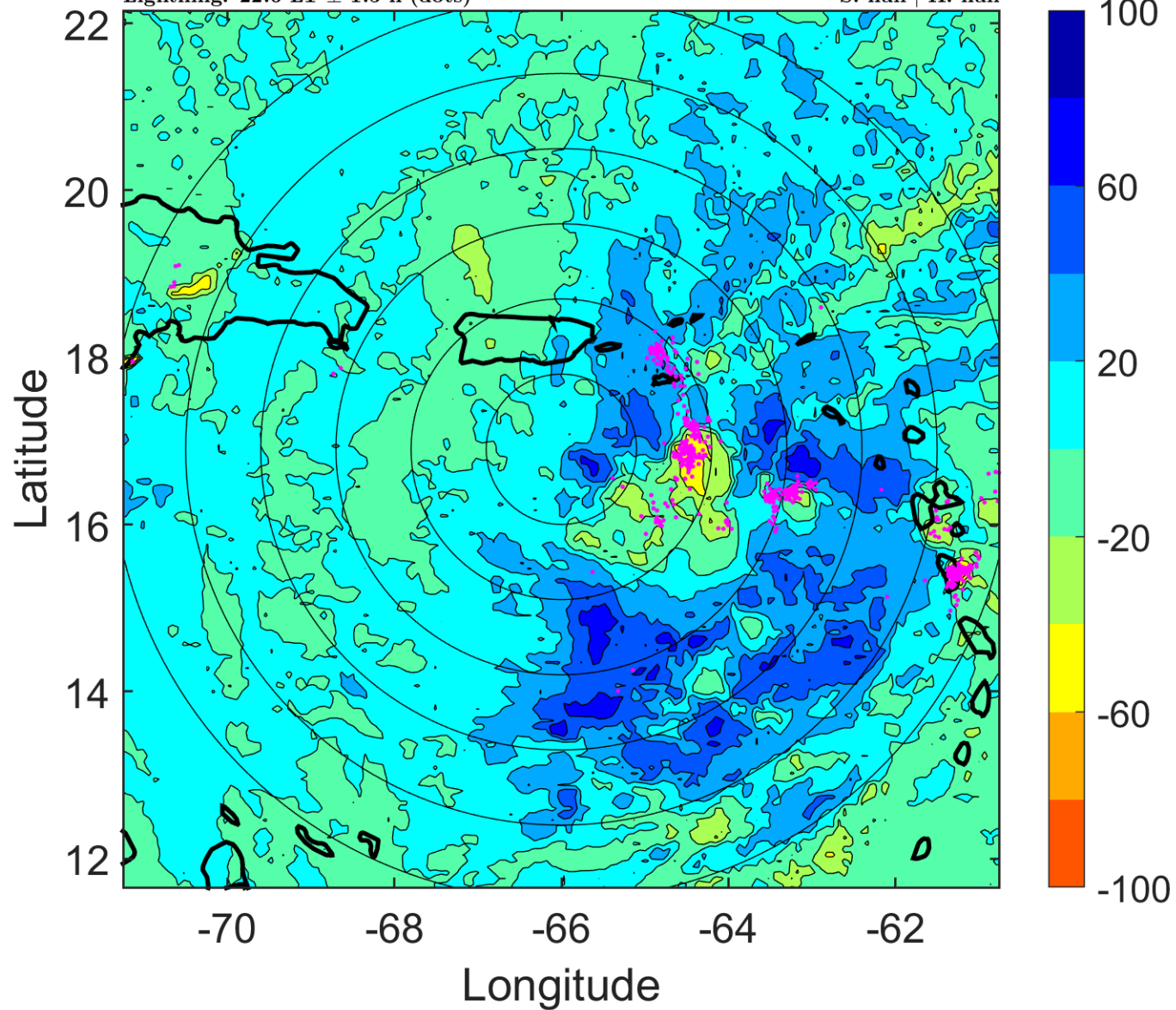
$\Delta$ t: 2009090403 (22.6 LT) - 2009090321 (16.7 LT)

Lightning: 22.6 LT  $\pm$  1.5 h (dots)

PT: SLCP | EA: QUASI

06L (ERIKA) | 25 kt LO

S: null | H: null



### IR BT & Lightning

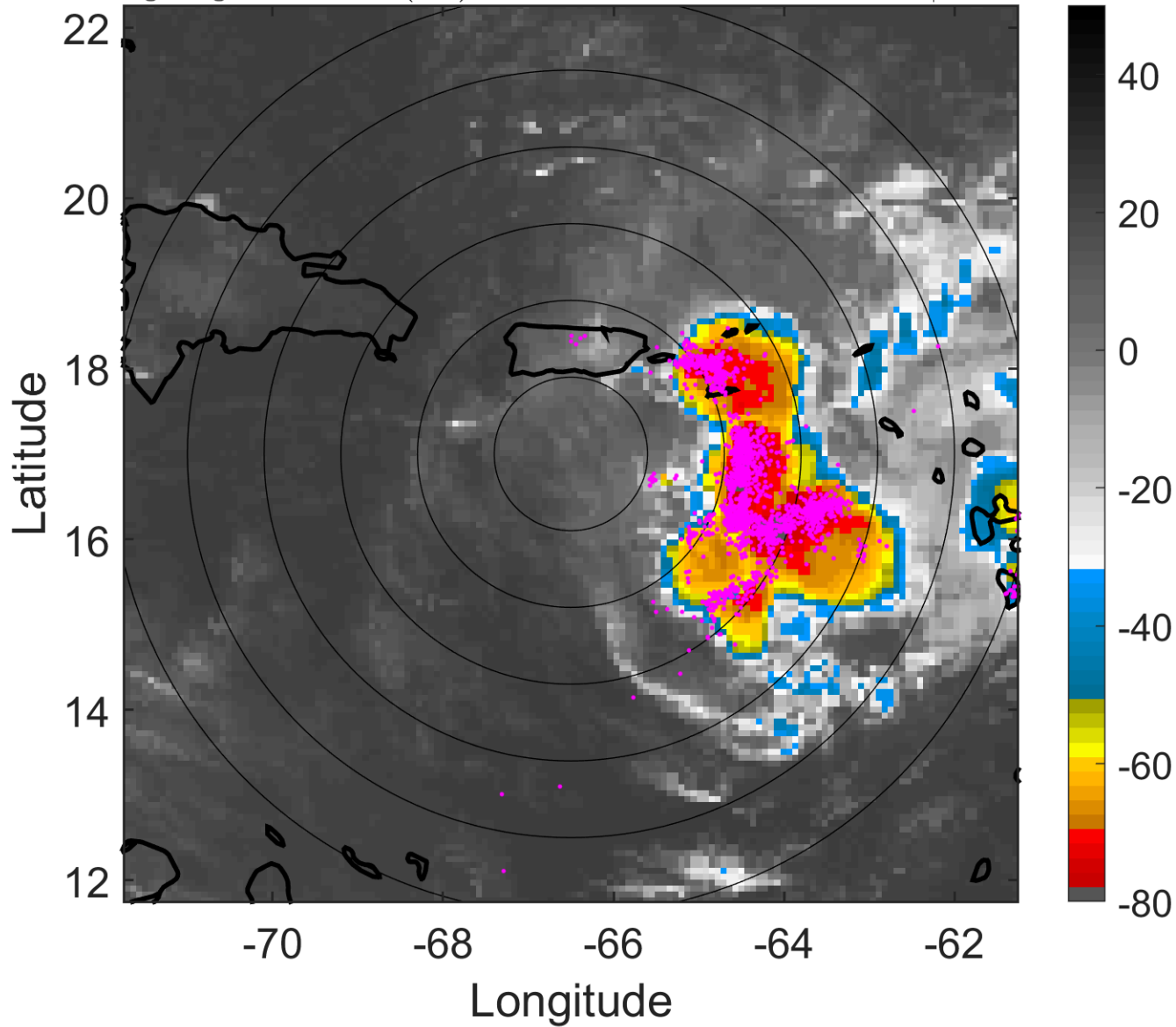
t: 2009090406 (1.6 LT)

Lightning: 1.6 LT  $\pm$  1.5 h (dots)

PT: NP | EA: INACT

06L (ERIKA) | 25 kt LO

S: null | H: null



### 6-h IR BT Differences & Lightning

$\Delta$ t: 2009090406 (1.6 LT) - 2009090400 (19.6 LT)

Lightning: 1.6 LT  $\pm$  1.5 h (dots)

PT: NP | EA: INACT

06L (ERIKA) | 25 kt LO

S: null | H: null

