

IR BT & Lightning

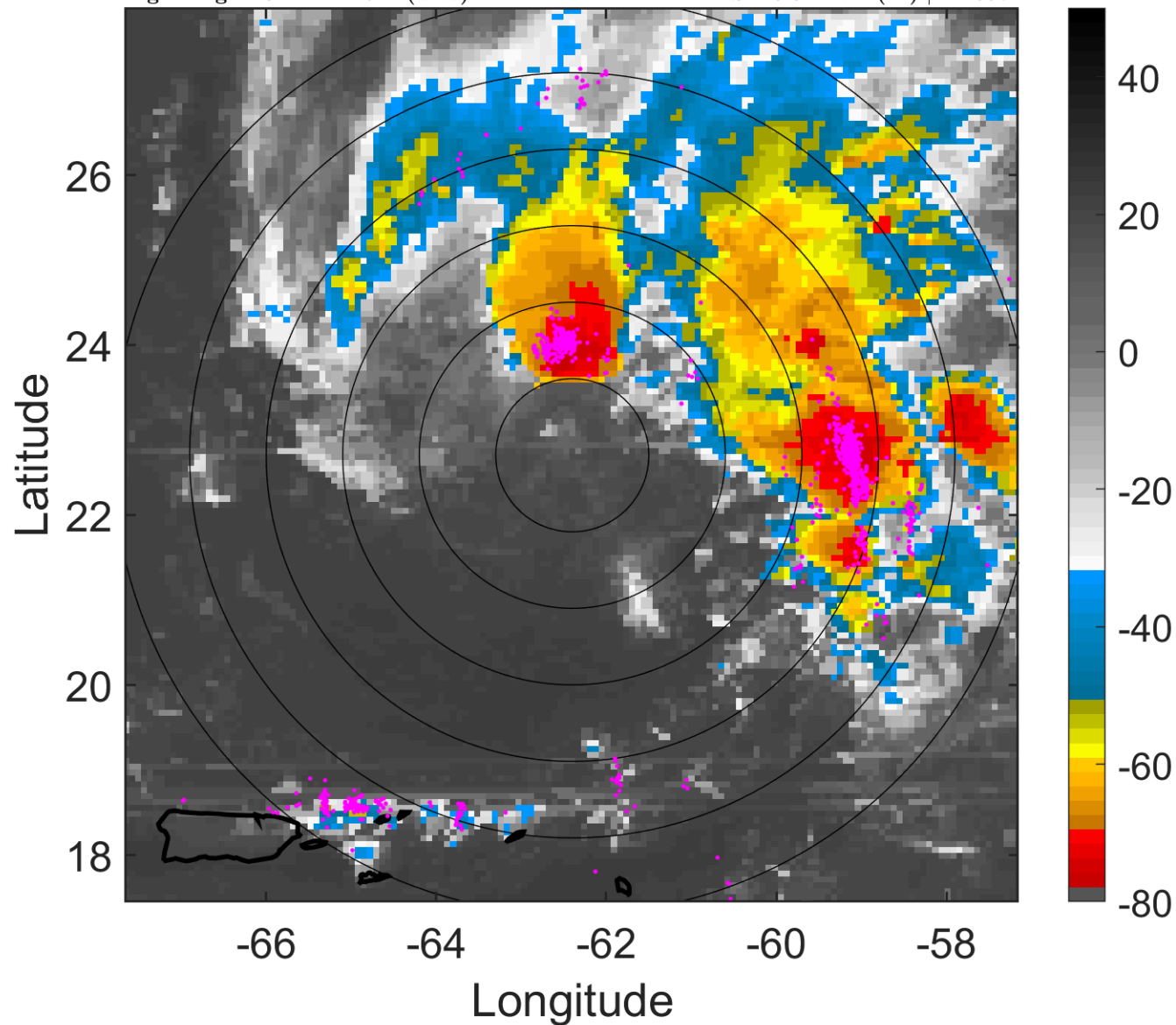
t: 2014101006 (1.8 LT)

Lightning: 1.8 LT \pm 1.5 h (dots)

PT: LLCP | EA: ACT

07L (FAY) | 35 kt SS

S: 10.3 m s⁻¹ (M) | H: 357°



6-h IR BT Differences & Lightning

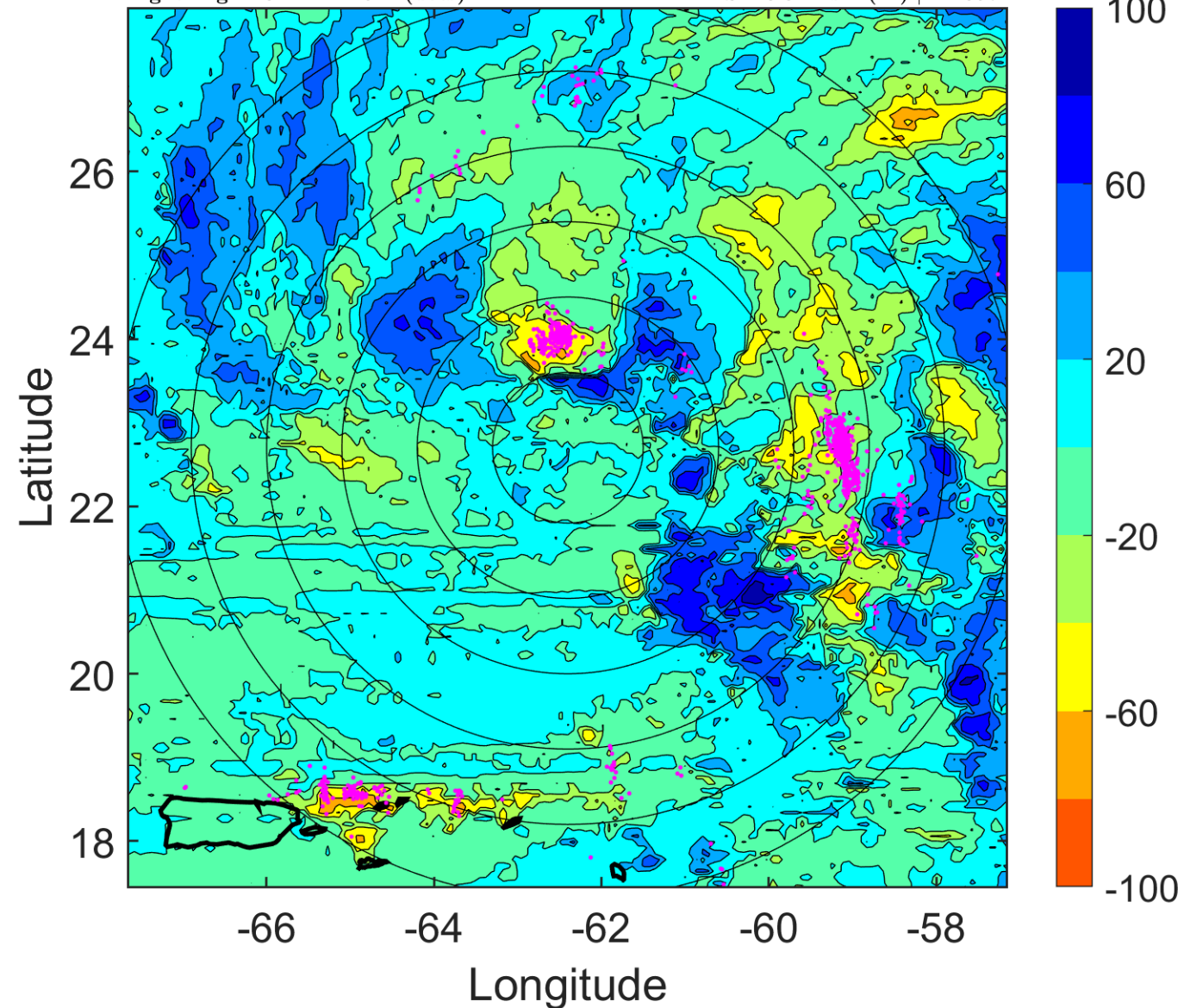
Δ t: 2014101006 (1.8 LT) - 2014101000 (19.9 LT)

Lightning: 1.8 LT \pm 1.5 h (dots)

PT: LLCP | EA: ACT

07L (FAY) | 35 kt SS

S: 10.3 m s⁻¹ (M) | H: 357°



IR BT & Lightning

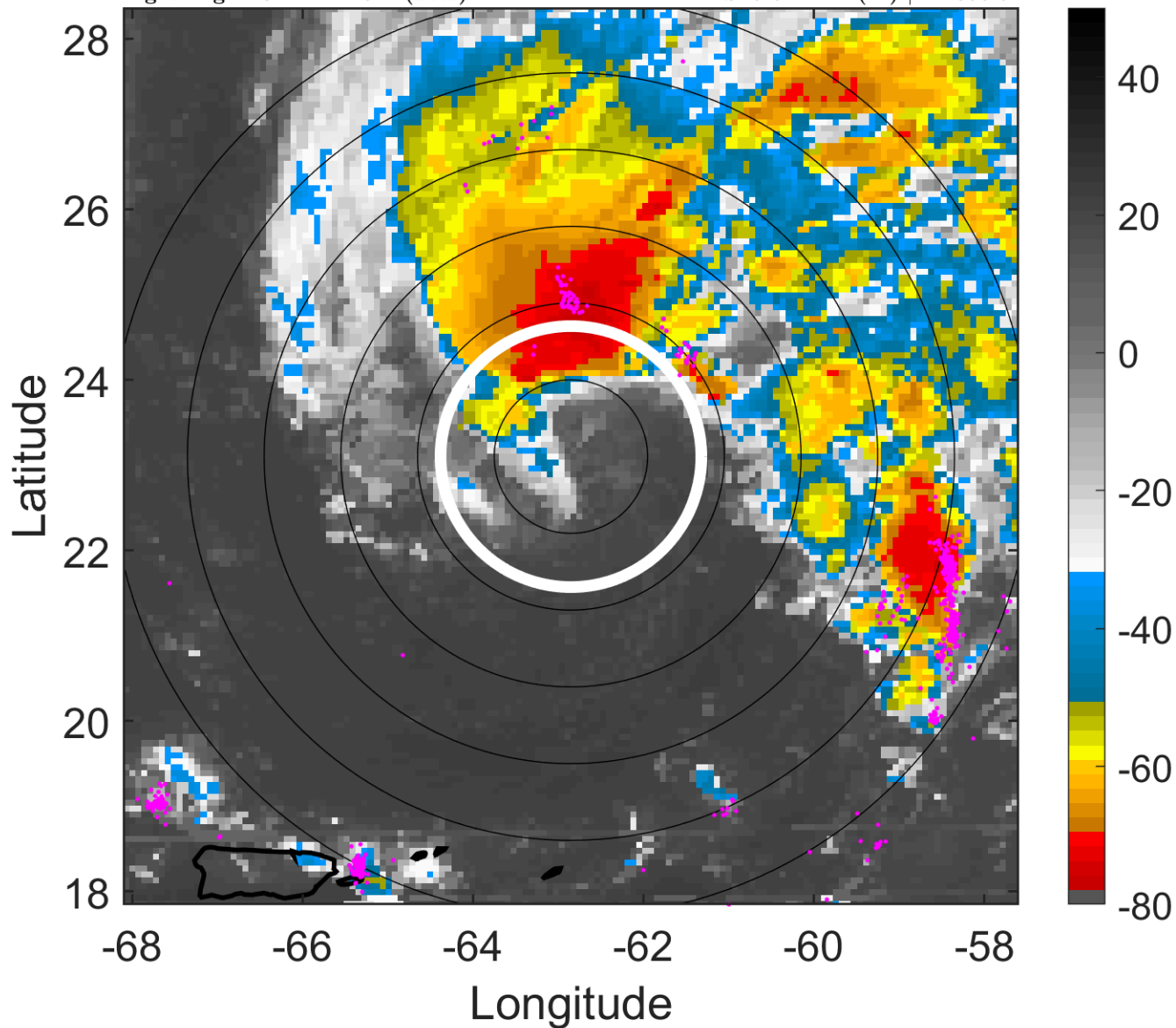
t: 2014101009 (4.8 LT)

Lightning: 4.8 LT \pm 1.5 h (dots)

PT: LLCP | EA: ACT

07L (FAY) | 35 kt SS

S: 9.6 m s⁻¹ (M) | H: 356.5°



6-h IR BT Differences & Lightning

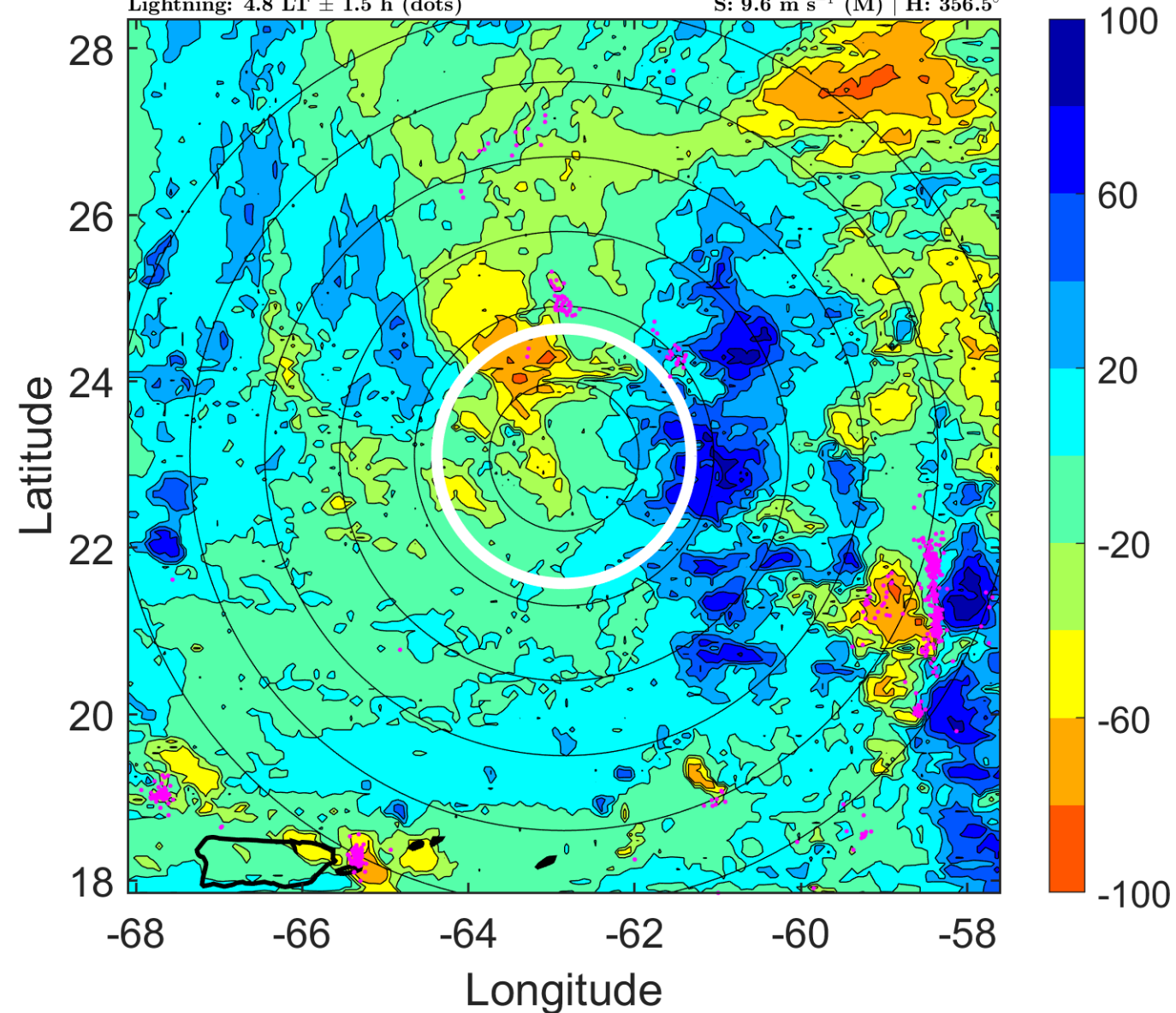
Δ t: 2014101009 (4.8 LT) - 2014101003 (22.9 LT)

Lightning: 4.8 LT \pm 1.5 h (dots)

PT: LLCP | EA: ACT

07L (FAY) | 35 kt SS

S: 9.6 m s⁻¹ (M) | H: 356.5°



IR BT & Lightning

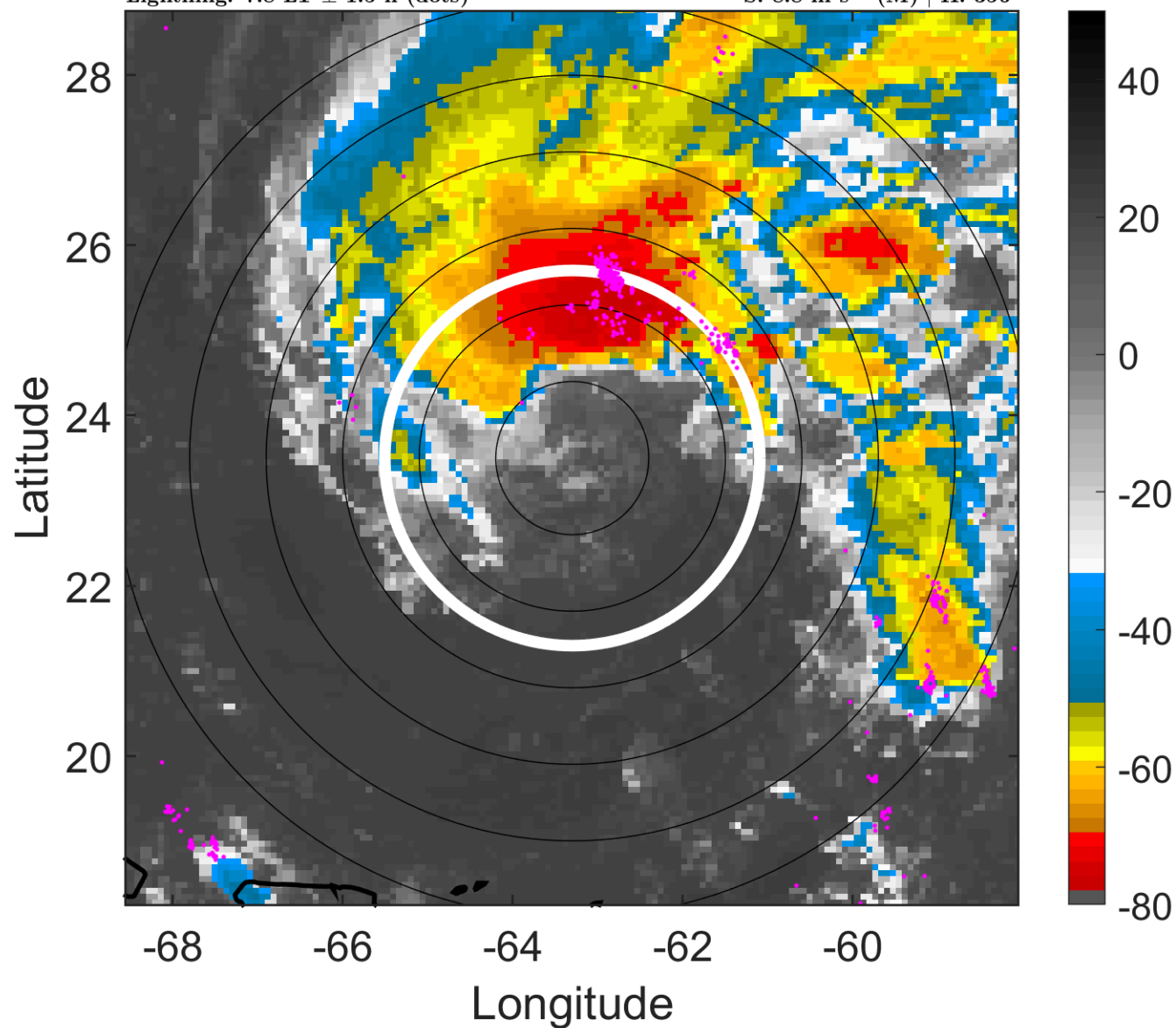
t: 2014101012 (7.8 LT)

Lightning: 7.8 LT \pm 1.5 h (dots)

PT: LLCP | EA: ACT

07L (FAY) | 35 kt SS

S: 8.8 m s⁻¹ (M) | H: 356°



6-h IR BT Differences & Lightning

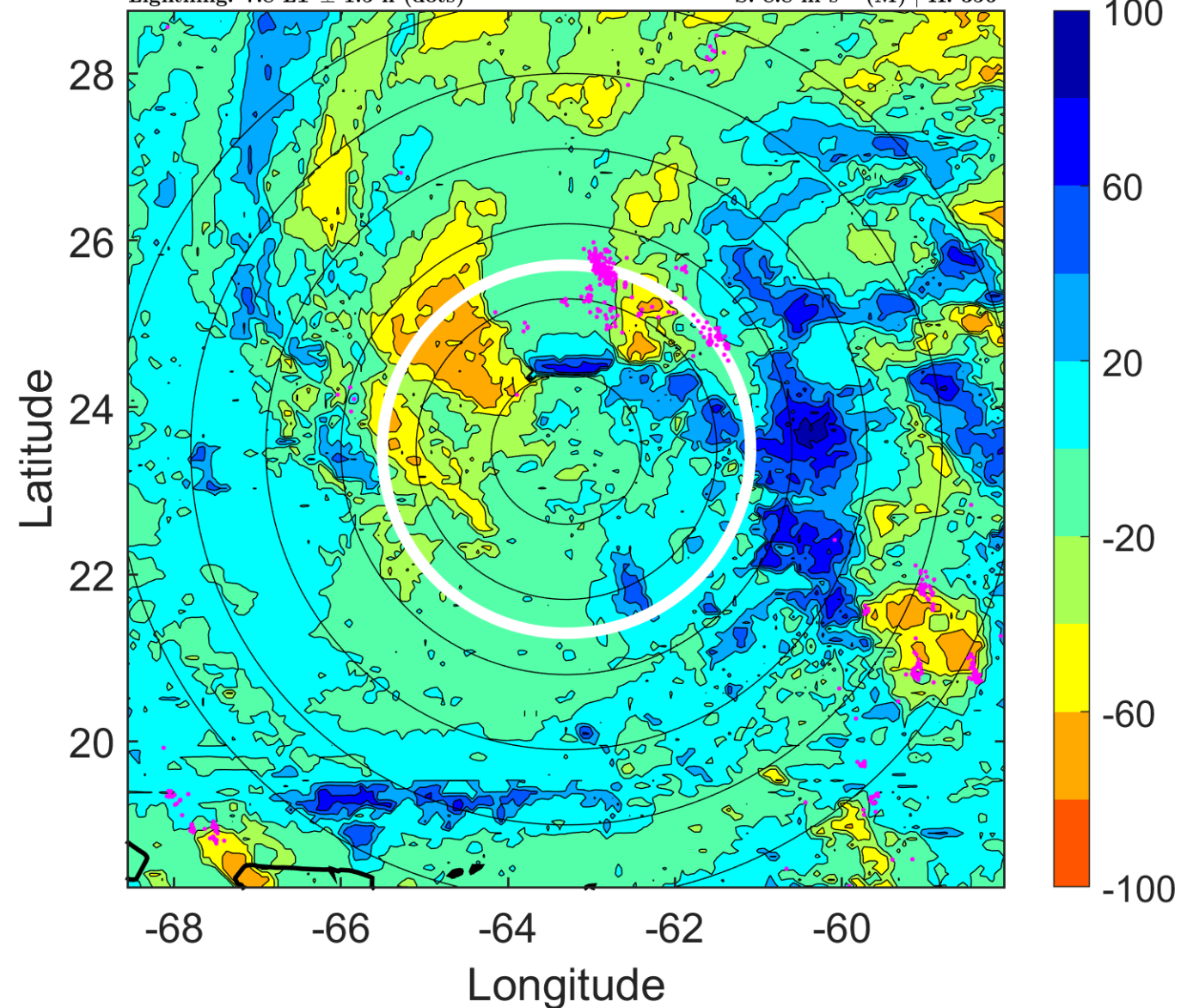
Δ t: 2014101012 (7.8 LT) - 2014101006 (1.8 LT)

Lightning: 7.8 LT \pm 1.5 h (dots)

PT: LLCP | EA: ACT

07L (FAY) | 35 kt SS

S: 8.8 m s⁻¹ (M) | H: 356°



IR BT & Lightning

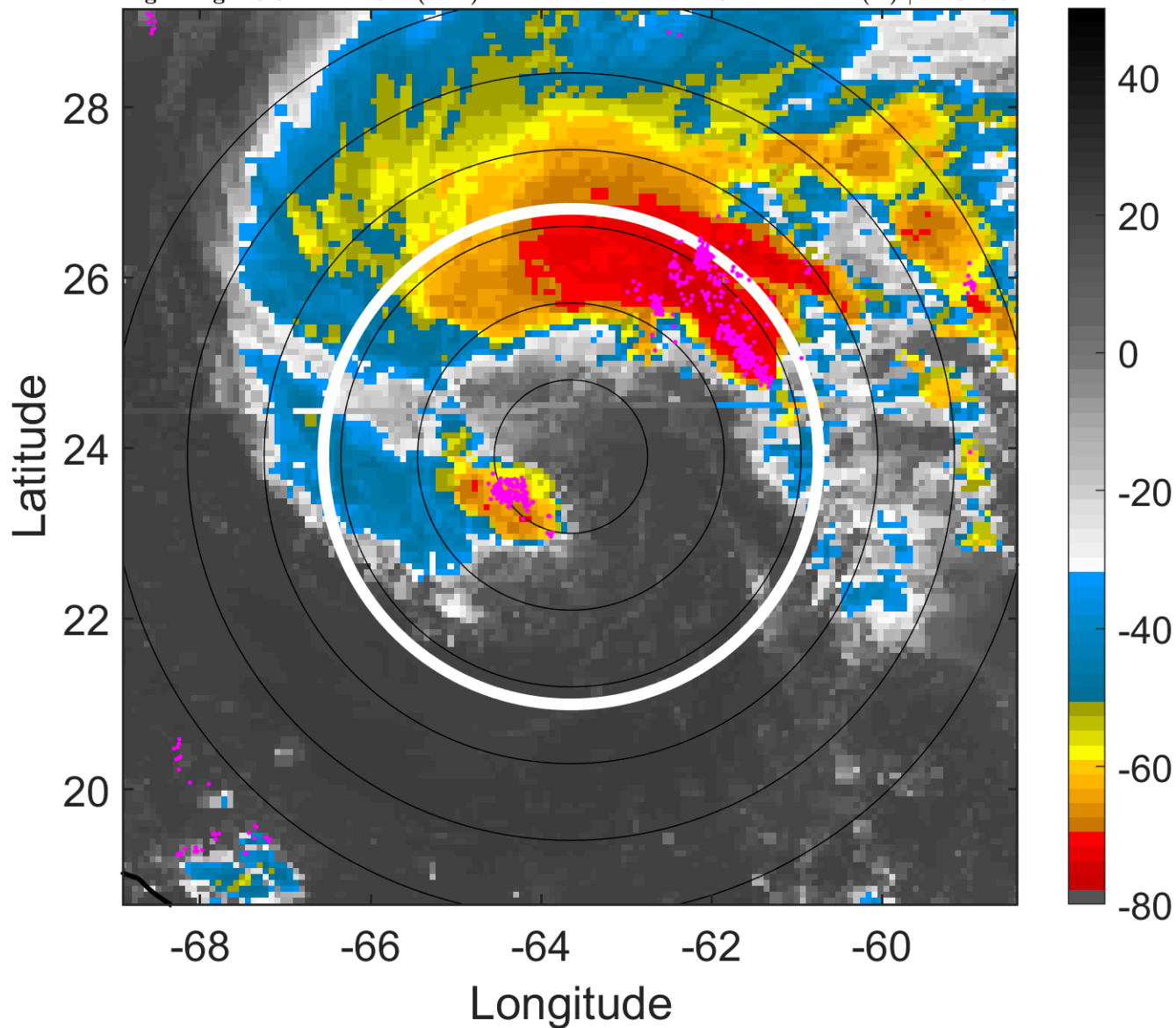
t: 2014101015 (10.8 LT)

Lightning: 10.8 LT \pm 1.5 h (dots)

PT: LLCP | EA: ACT

07L (FAY) | 37.5 kt SS

S: 11.2 m s⁻¹ (H) | H: 345.5°



6-h IR BT Differences & Lightning

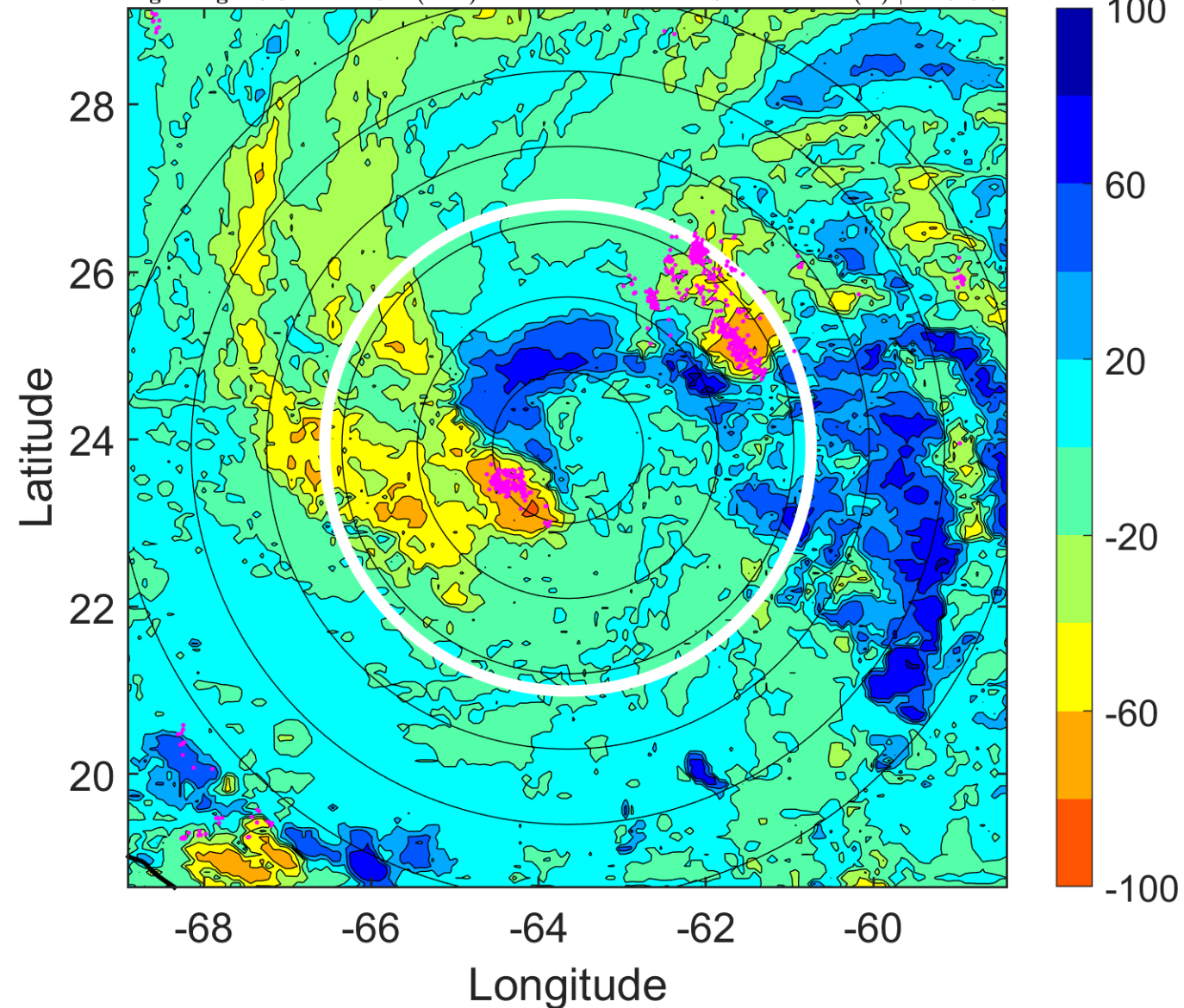
Δ t: 2014101015 (10.8 LT) - 2014101009 (4.8 LT)

Lightning: 10.8 LT \pm 1.5 h (dots)

PT: LLCP | EA: ACT

07L (FAY) | 37.5 kt SS

S: 11.2 m s⁻¹ (H) | H: 345.5°



IR BT & Lightning

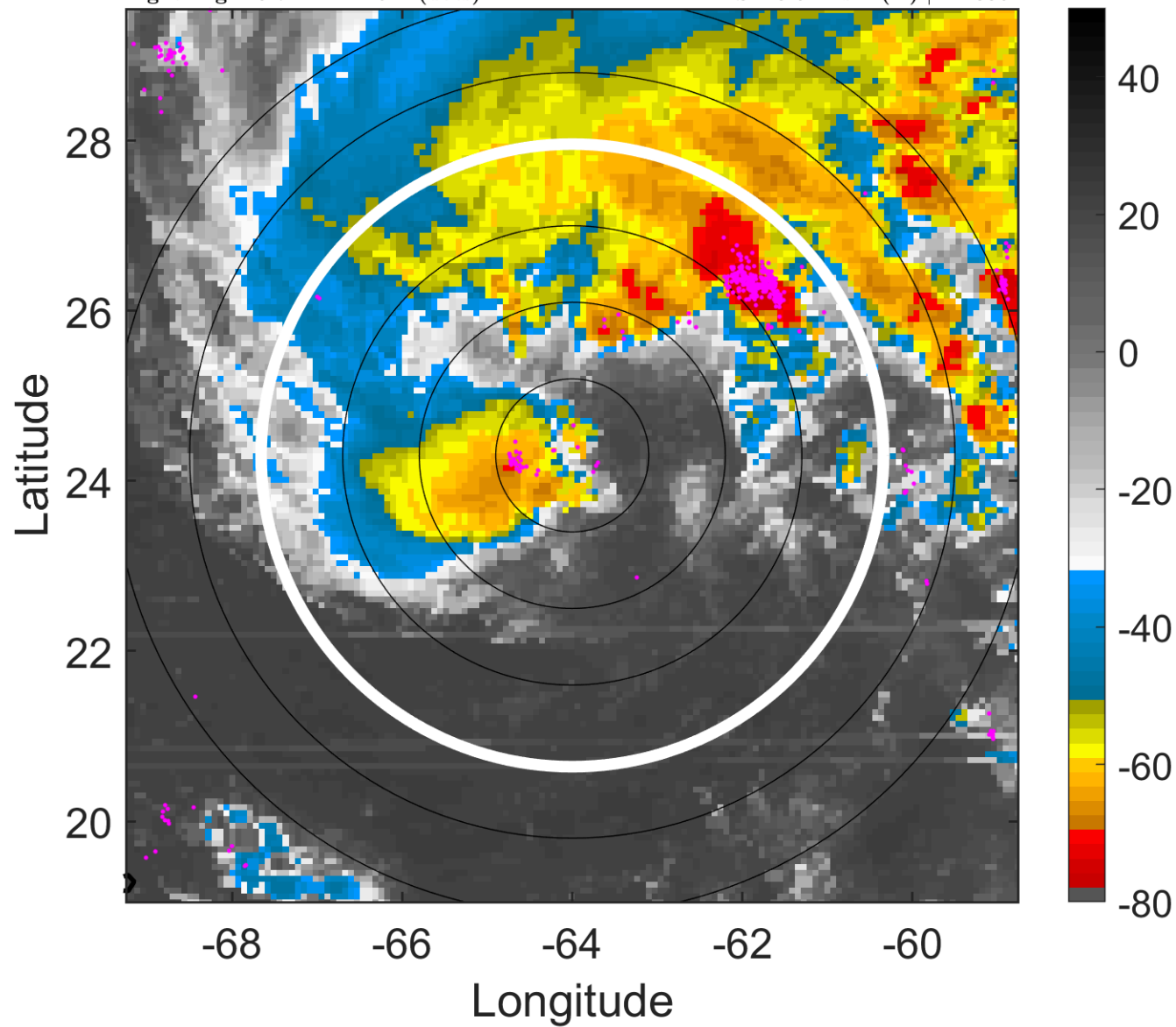
t: 2014101018 (13.7 LT)

Lightning: 13.7 LT \pm 1.5 h (dots)

PT: LLCP | EA: ACT

07L (FAY) | 40 kt SS

S: 13.5 m s⁻¹ (H) | H: 335°



6-h IR BT Differences & Lightning

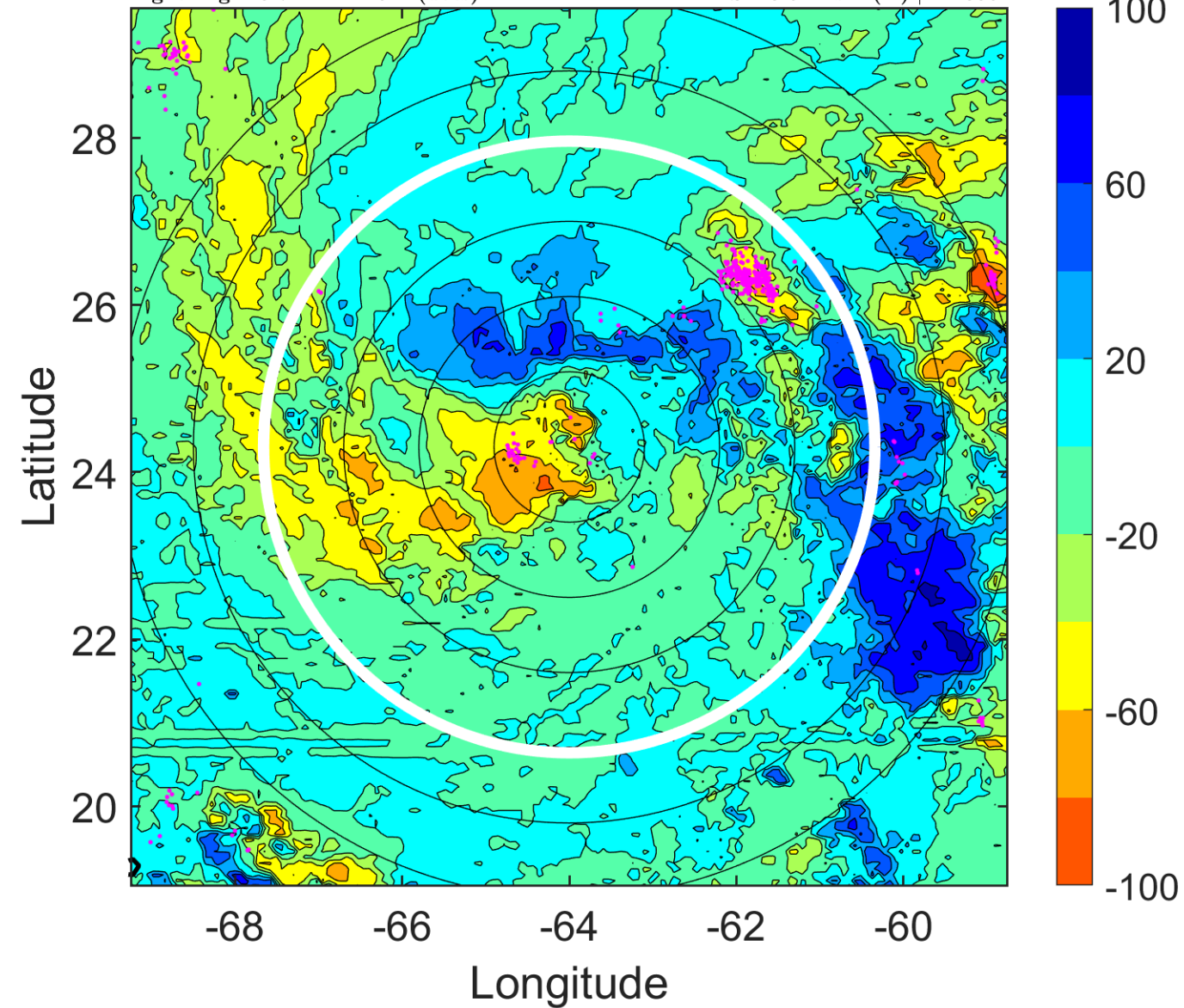
Δ t: 2014101018 (13.7 LT) - 2014101012 (7.8 LT)

Lightning: 13.7 LT \pm 1.5 h (dots)

PT: LLCP | EA: ACT

07L (FAY) | 40 kt SS

S: 13.5 m s⁻¹ (H) | H: 335°



IR BT & Lightning

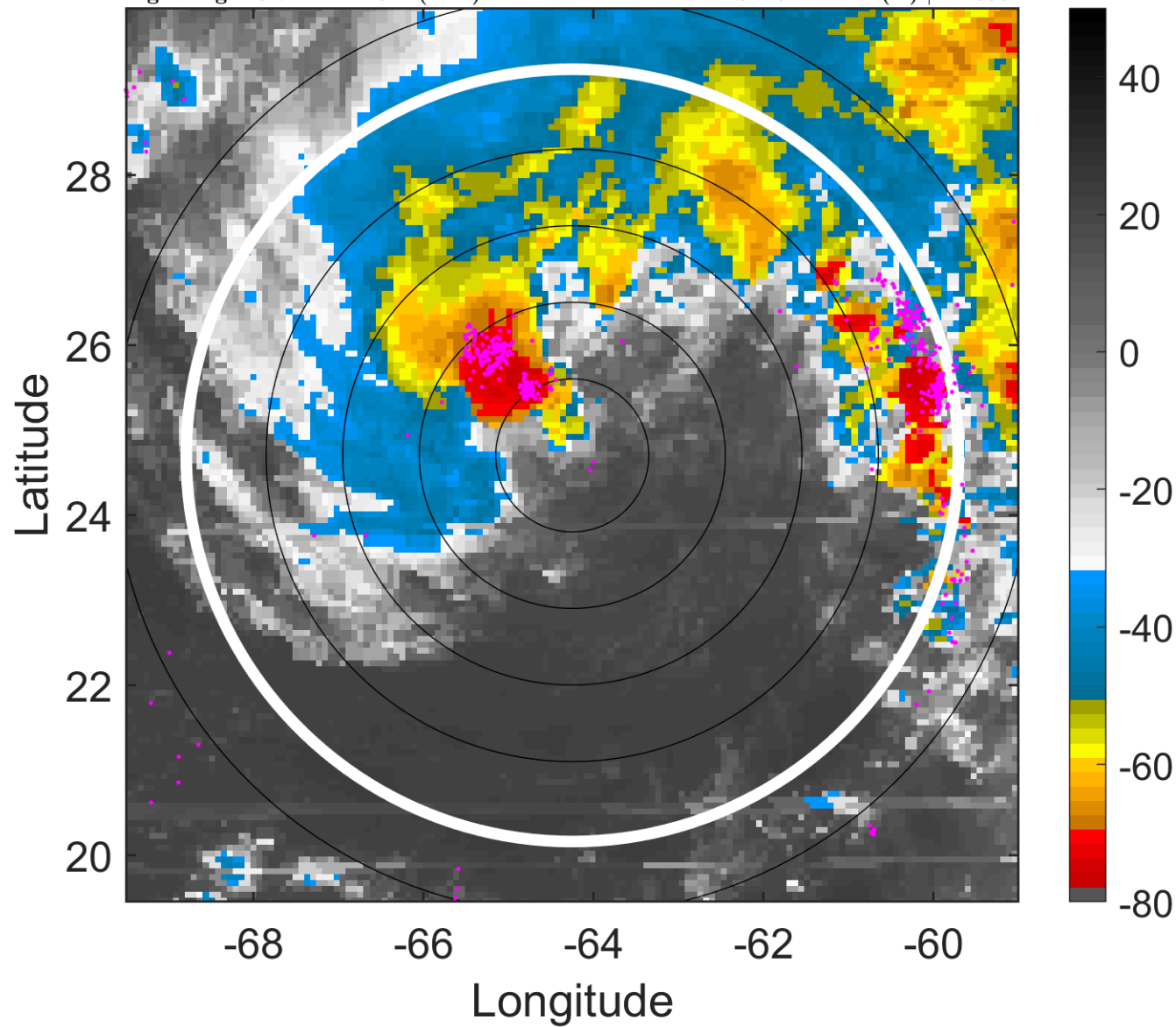
t: 2014101021 (16.7 LT)

Lightning: 16.7 LT \pm 1.5 h (dots)

PT: LLCP | EA: ACT

07L (FAY) | 45 kt SS

S: 15.1 m s⁻¹ (H) | H: 339°



6-h IR BT Differences & Lightning

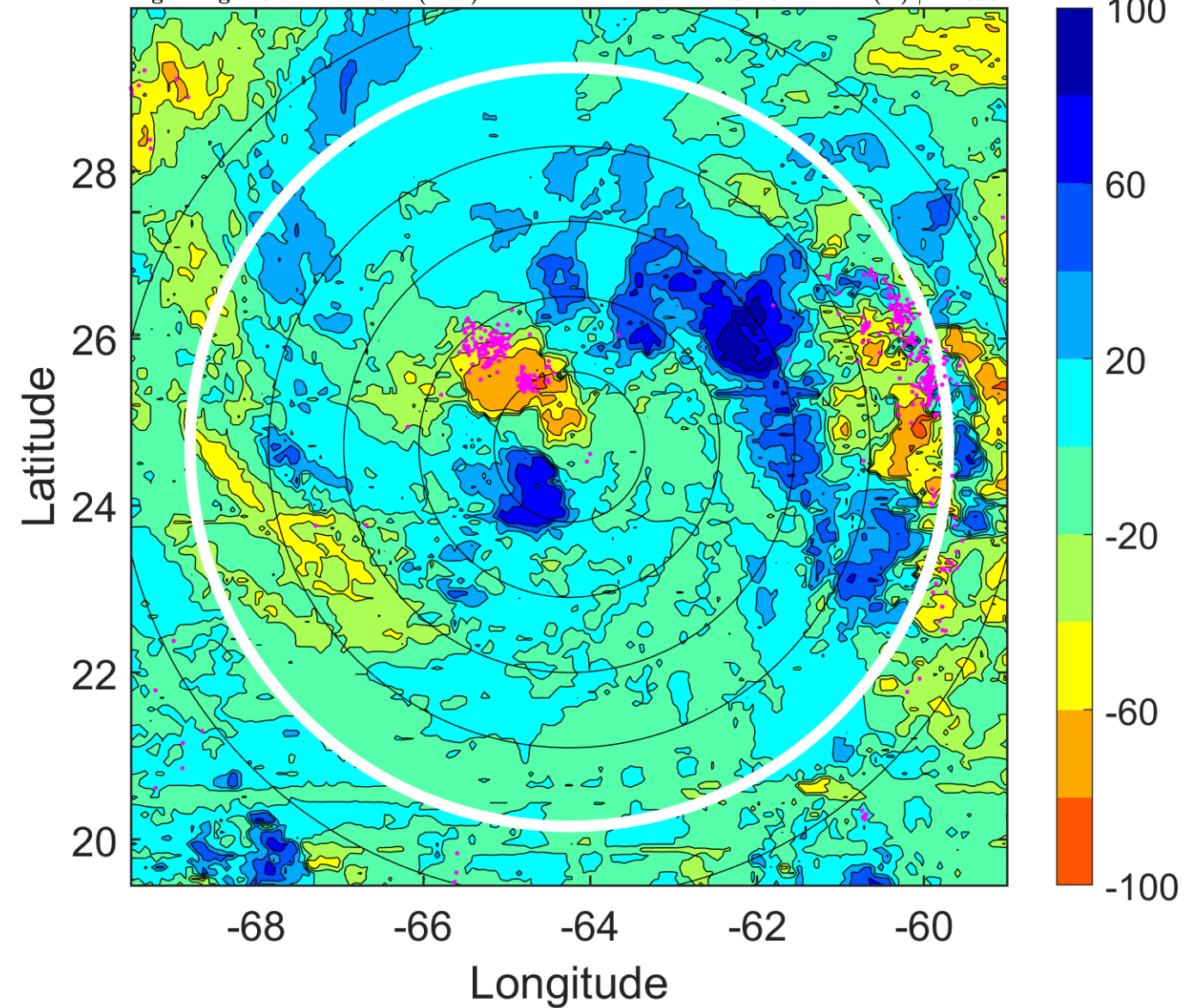
Δ t: 2014101021 (16.7 LT) - 2014101015 (10.8 LT)

Lightning: 16.7 LT \pm 1.5 h (dots)

PT: LLCP | EA: ACT

07L (FAY) | 45 kt SS

S: 15.1 m s⁻¹ (H) | H: 339°



IR BT & Lightning

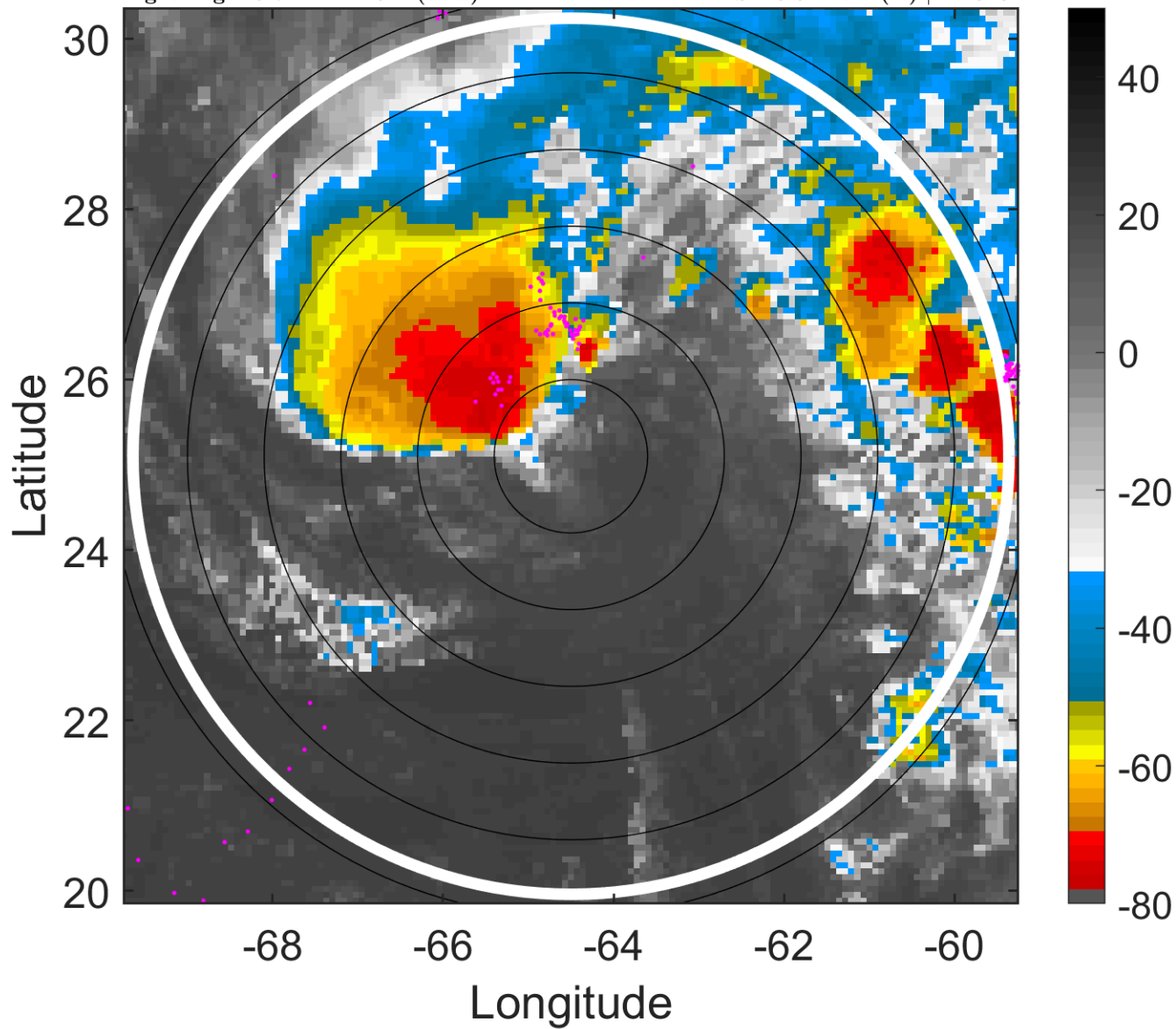
t: 2014101100 (19.7 LT)

Lightning: 19.7 LT \pm 1.5 h (dots)

PT: LLCP | EA: ACT

07L (FAY) | 50 kt SS

S: 16.6 m s⁻¹ (H) | H: 343°



6-h IR BT Differences & Lightning

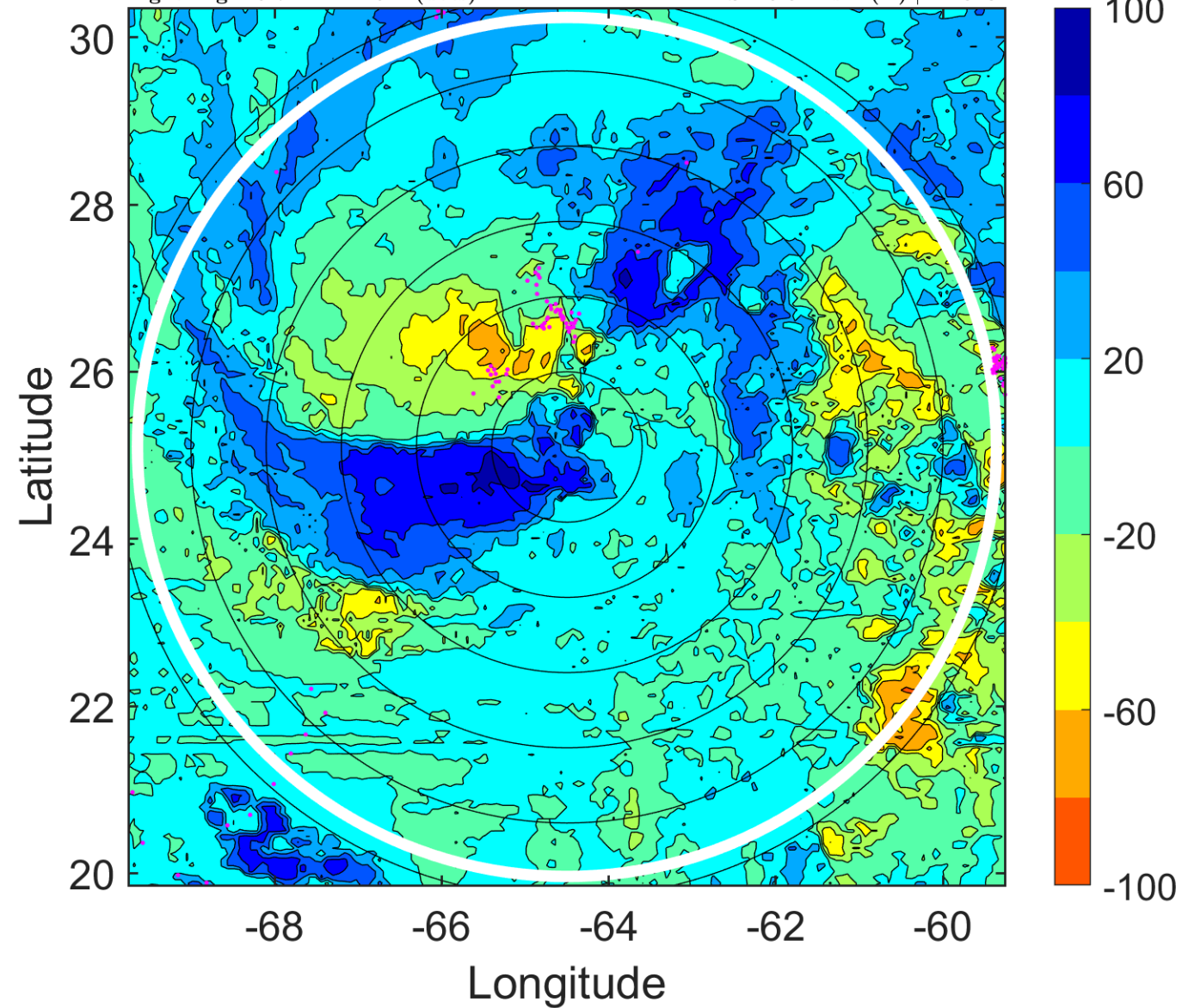
Δ t: 2014101100 (19.7 LT) - 2014101018 (13.7 LT)

Lightning: 19.7 LT \pm 1.5 h (dots)

PT: LLCP | EA: ACT

07L (FAY) | 50 kt SS

S: 16.6 m s⁻¹ (H) | H: 343°



IR BT & Lightning

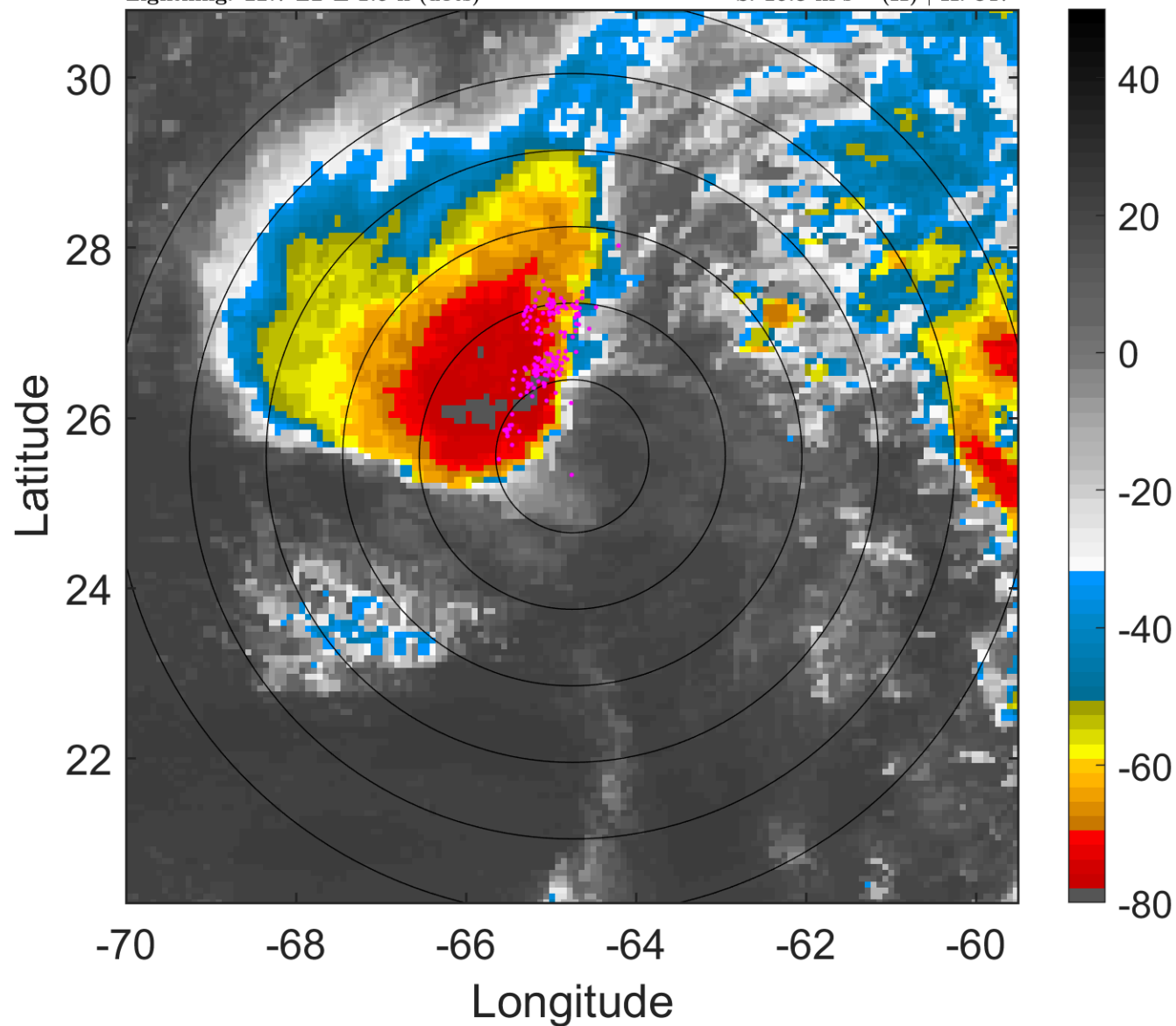
t: 2014101103 (22.7 LT)

Lightning: 22.7 LT \pm 1.5 h (dots)

PT: LLCP | EA: ACT

07L (FAY) | 52.5 kt SS

S: 16.3 m s⁻¹ (H) | H: 347°



6-h IR BT Differences & Lightning

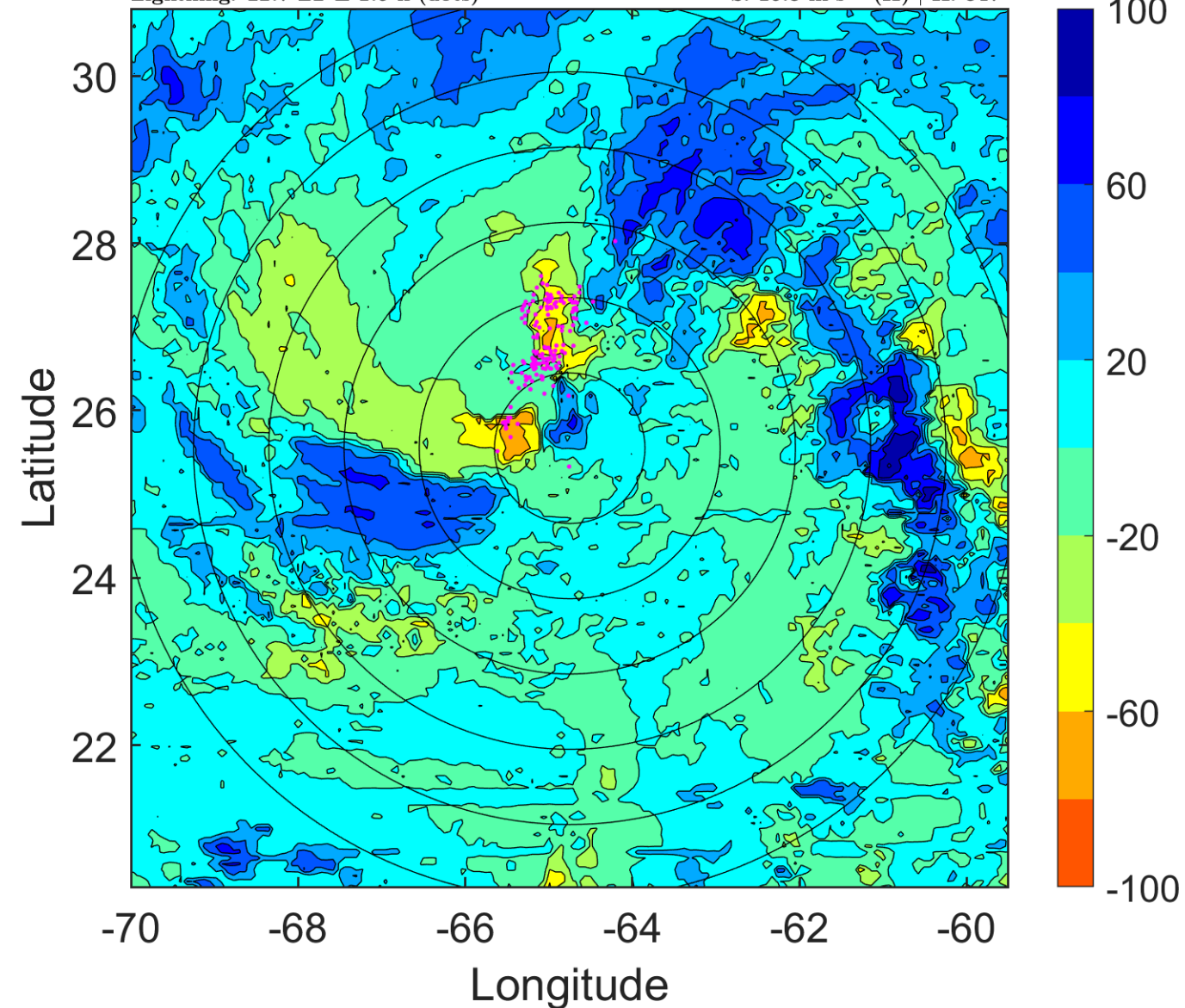
Δ t: 2014101103 (22.7 LT) - 2014101021 (16.7 LT)

Lightning: 22.7 LT \pm 1.5 h (dots)

PT: LLCP | EA: ACT

07L (FAY) | 52.5 kt SS

S: 16.3 m s⁻¹ (H) | H: 347°



IR BT & Lightning

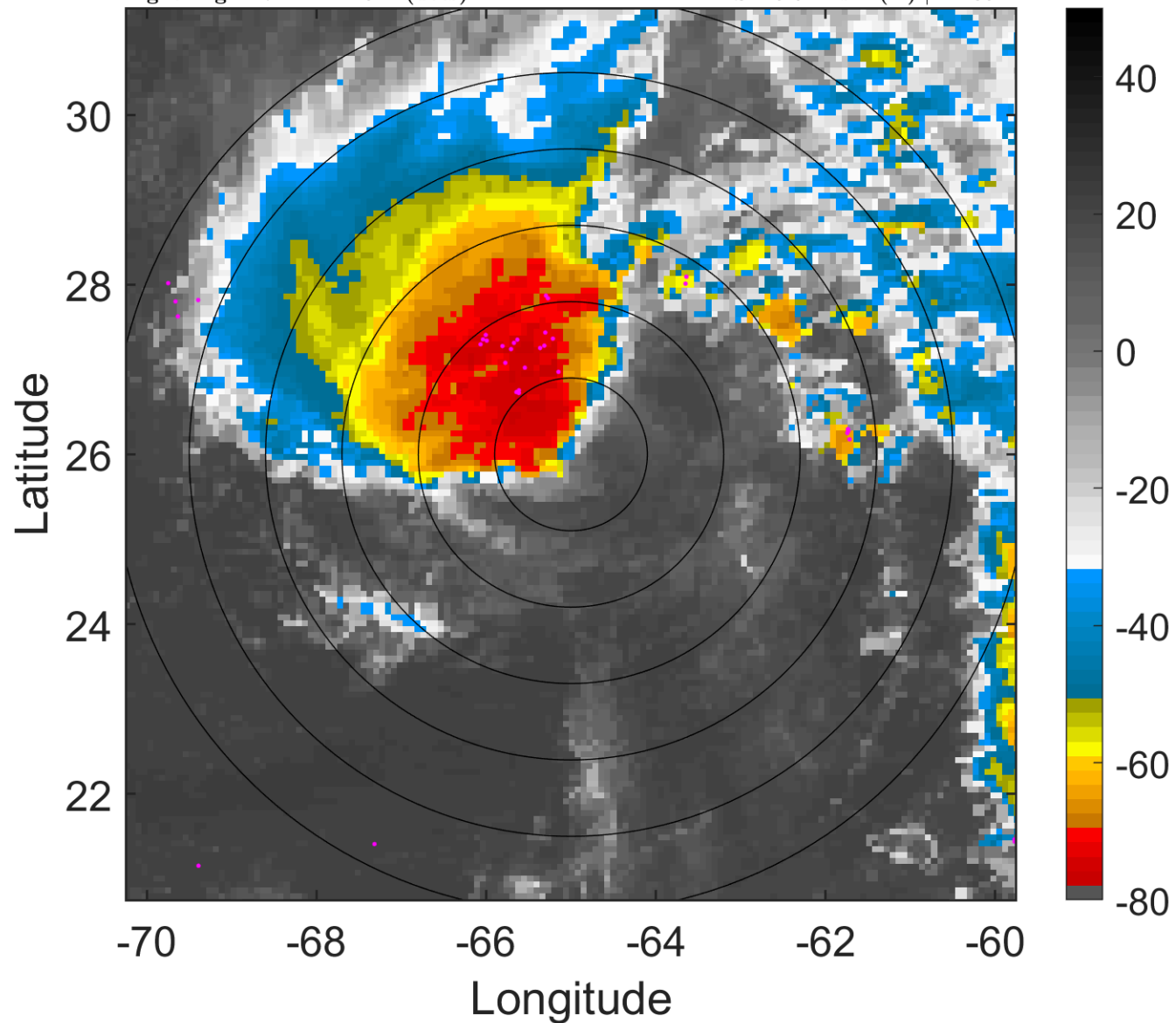
t: 2014101106 (1.7 LT)

Lightning: 1.7 LT \pm 1.5 h (dots)

PT: SLCP | EA: INACT

07L (FAY) | 55 kt TS

S: 15.9 m s⁻¹ (H) | H: 351°



6-h IR BT Differences & Lightning

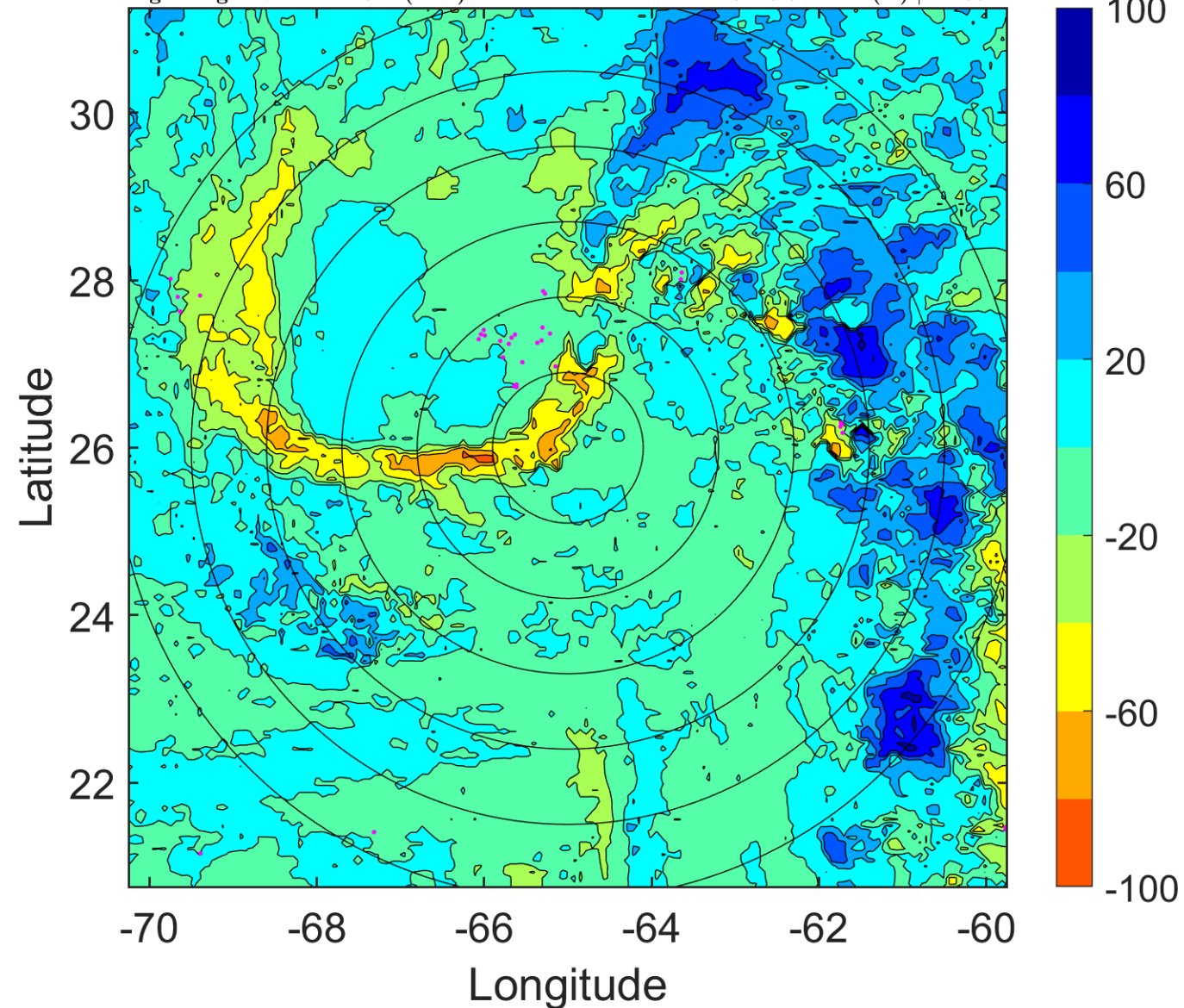
Δ t: 2014101106 (1.7 LT) - 2014101100 (19.7 LT)

Lightning: 1.7 LT \pm 1.5 h (dots)

PT: SLCP | EA: INACT

07L (FAY) | 55 kt TS

S: 15.9 m s⁻¹ (H) | H: 351°



IR BT & Lightning

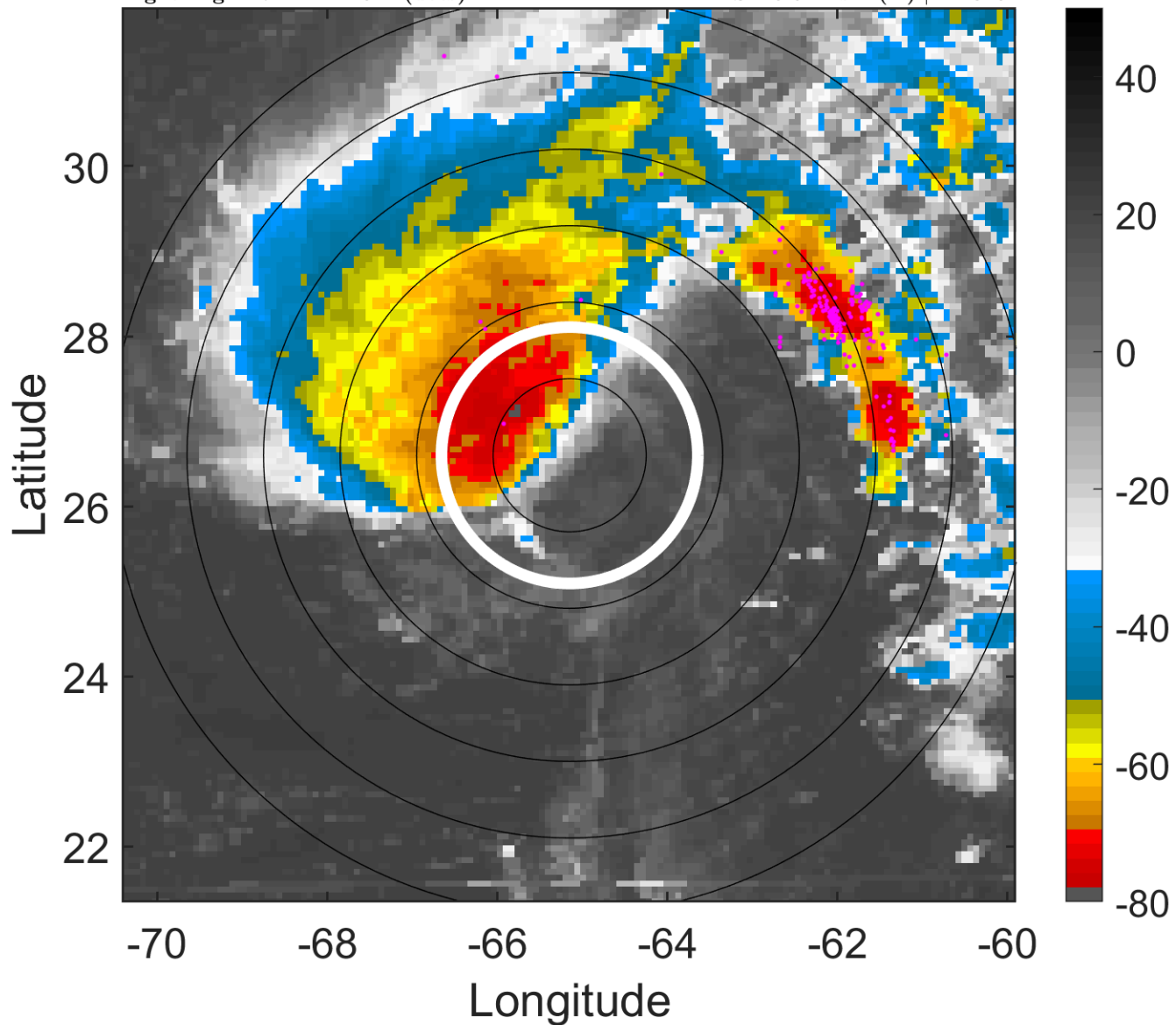
t: 2014101109 (4.7 LT)

Lightning: 4.7 LT \pm 1.5 h (dots)

PT: SLCP | EA: INACT

07L (FAY) | 57.5 kt TS

S: 15.9 m s⁻¹ (H) | H: 349°



6-h IR BT Differences & Lightning

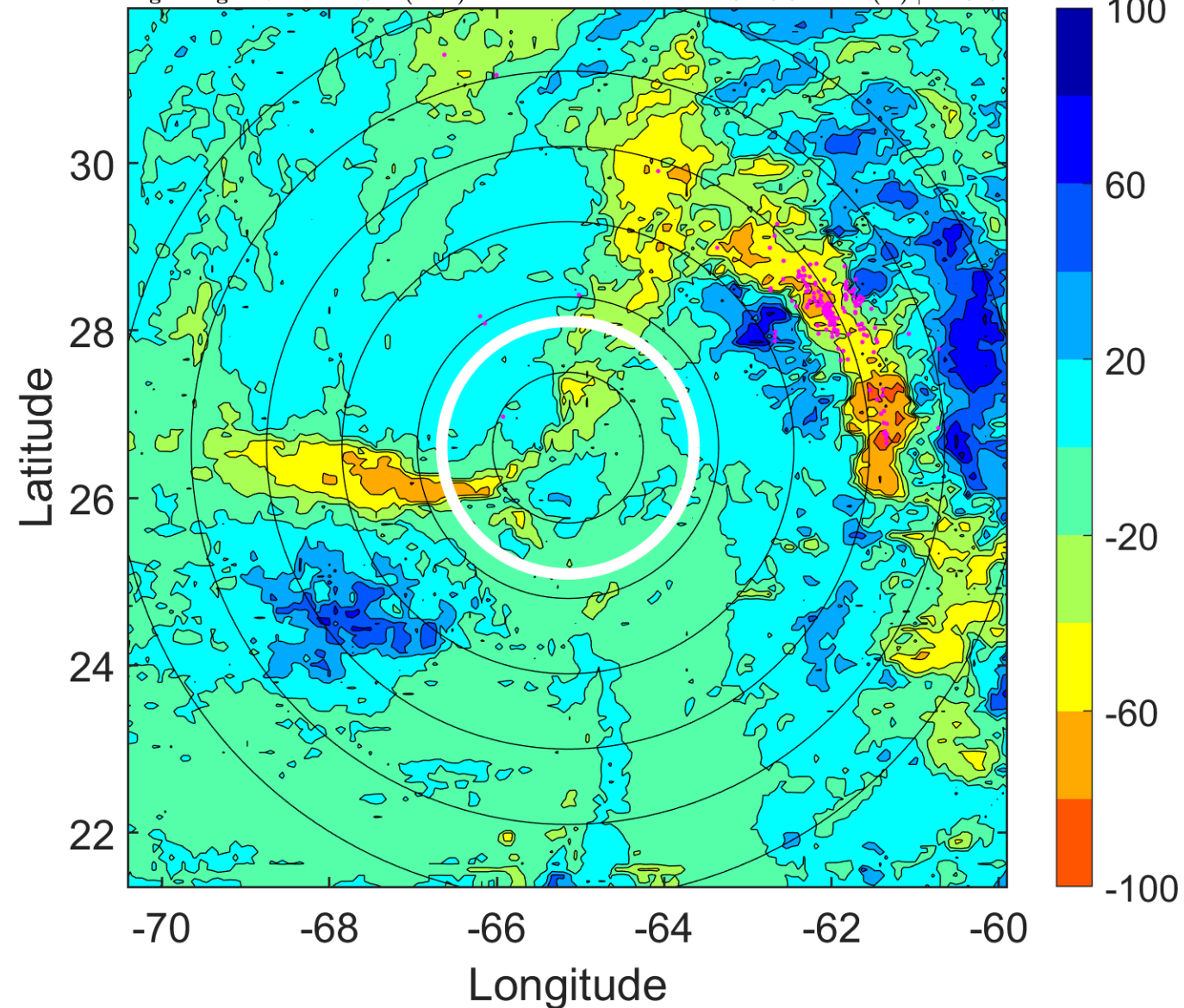
Δ t: 2014101109 (4.7 LT) - 2014101103 (22.7 LT)

Lightning: 4.7 LT \pm 1.5 h (dots)

PT: SLCP | EA: INACT

07L (FAY) | 57.5 kt TS

S: 15.9 m s⁻¹ (H) | H: 349°



IR BT & Lightning

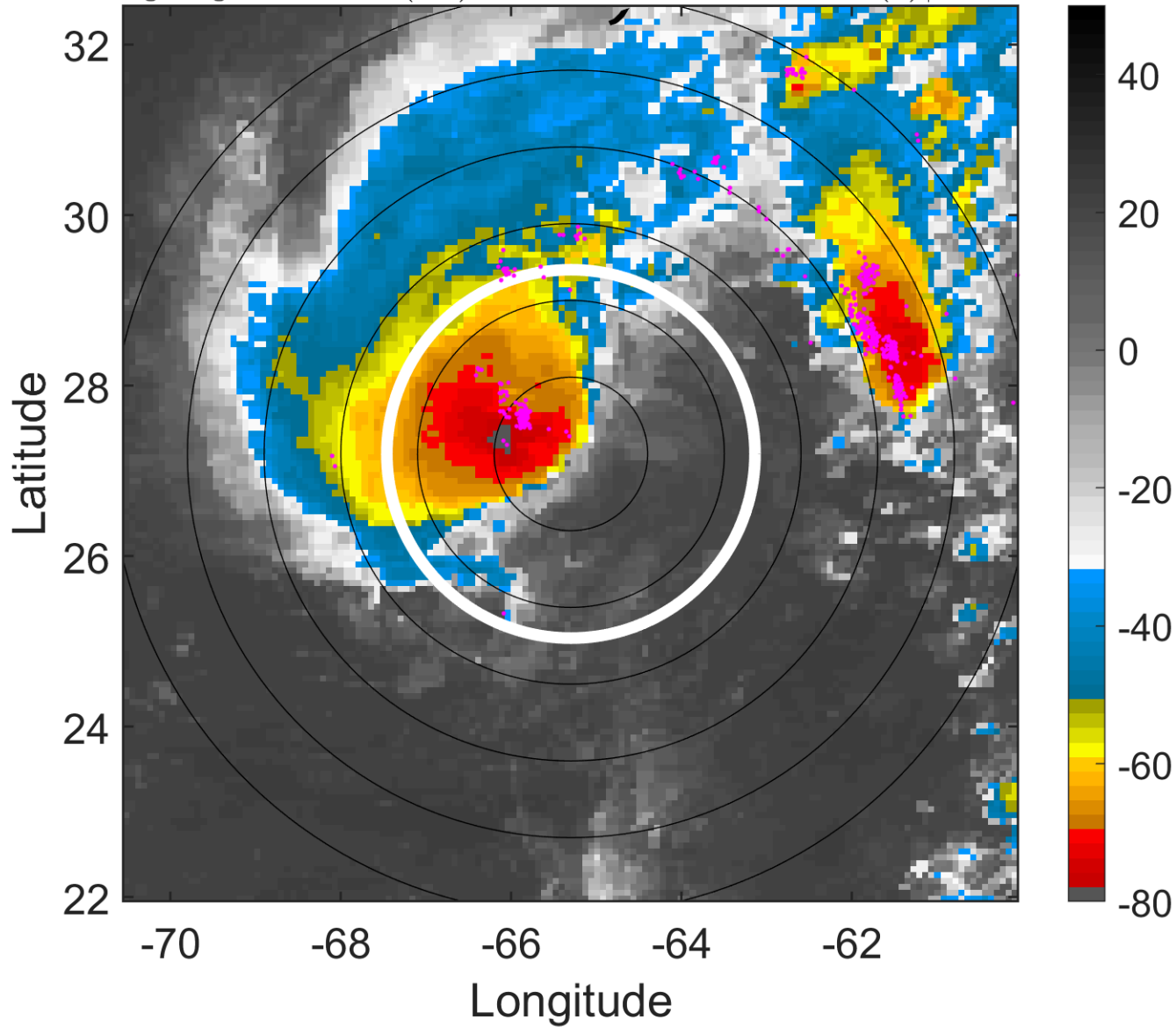
t: 2014101112 (7.6 LT)

Lightning: 7.6 LT \pm 1.5 h (dots)

PT: SLCP | EA: INACT

07L (FAY) | 60 kt TS

S: 15.9 m s⁻¹ (H) | H: 347°



6-h IR BT Differences & Lightning

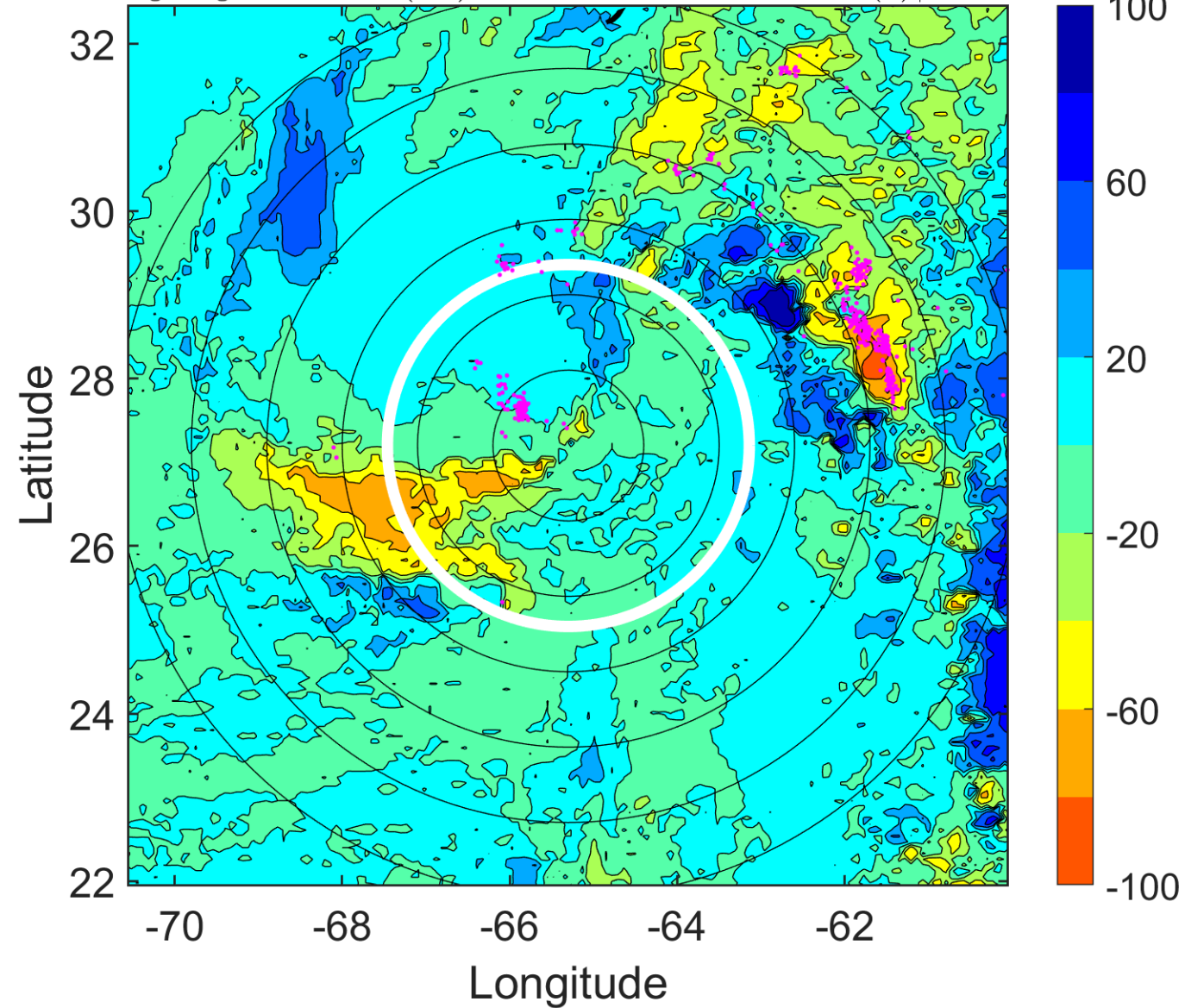
Δ t: 2014101112 (7.6 LT) - 2014101106 (1.7 LT)

Lightning: 7.6 LT \pm 1.5 h (dots)

PT: SLCP | EA: INACT

07L (FAY) | 60 kt TS

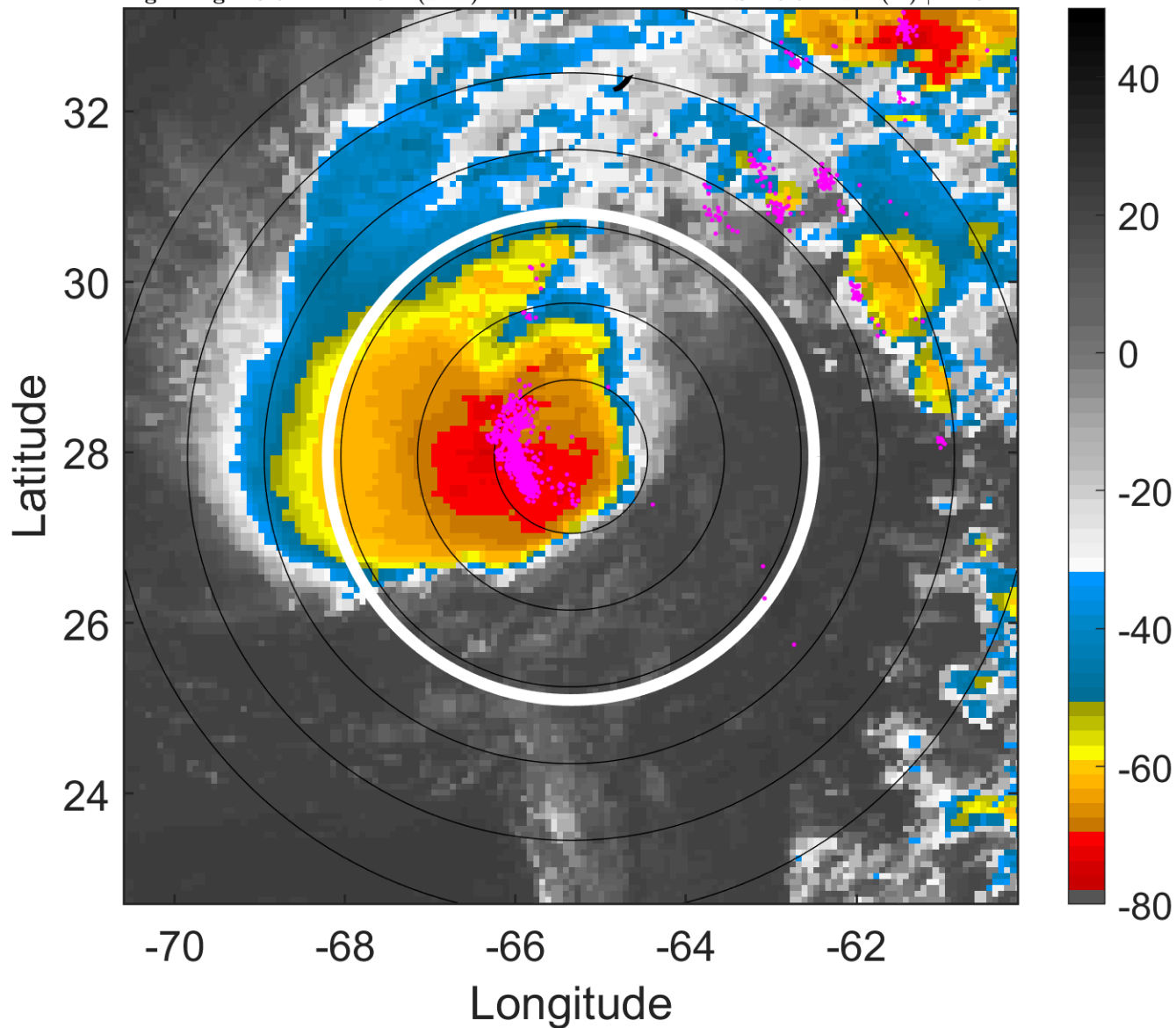
S: 15.9 m s⁻¹ (H) | H: 347°



IR BT & Lightning

t: 2014101115 (10.6 LT)
Lightning: 10.6 LT \pm 1.5 h (dots)

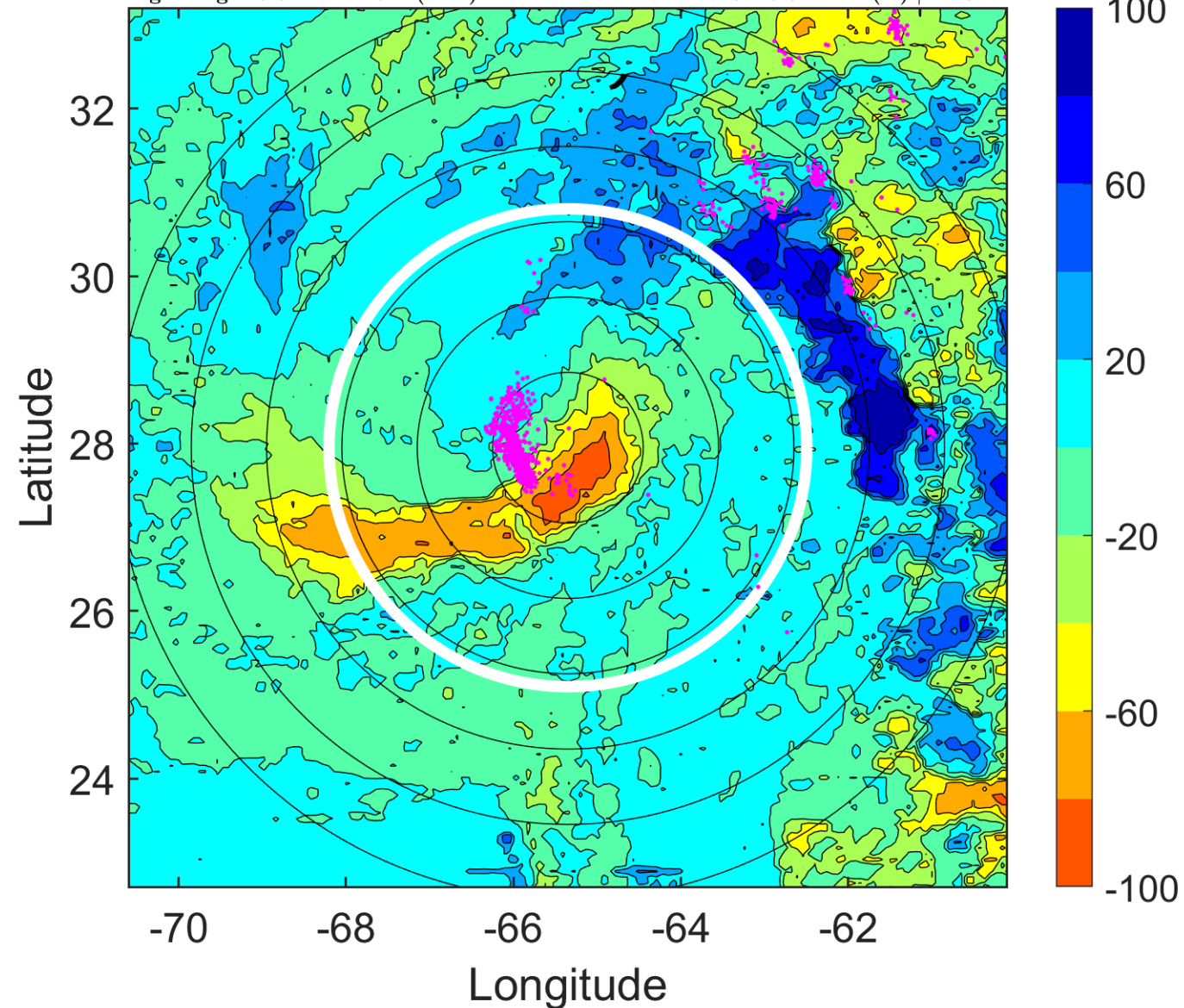
PT: SLCP | EA: INACT
07L (FAY) | 60 kt TS
S: 16.5 m s⁻¹ (H) | H: 344°



6-h IR BT Differences & Lightning

Δ t: 2014101115 (10.6 LT) - 2014101109 (4.7 LT)
Lightning: 10.6 LT \pm 1.5 h (dots)

PT: SLCP | EA: INACT
07L (FAY) | 60 kt TS
S: 16.5 m s⁻¹ (H) | H: 344°



IR BT & Lightning

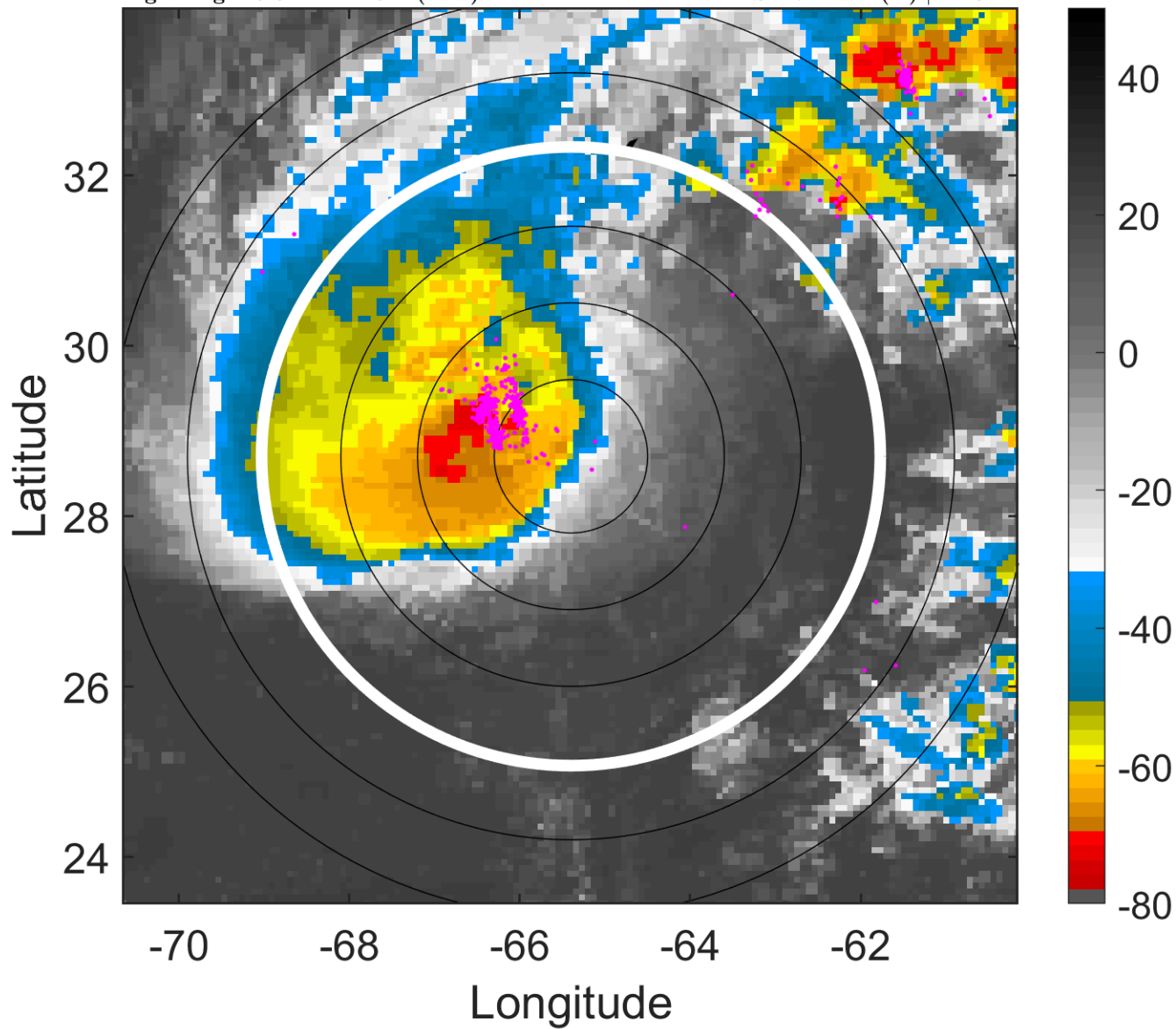
t: 2014101118 (13.6 LT)

Lightning: 13.6 LT \pm 1.5 h (dots)

PT: SLCP | EA: INACT

07L (FAY) | 60 kt TS

S: 17 m s⁻¹ (H) | H: 341°



6-h IR BT Differences & Lightning

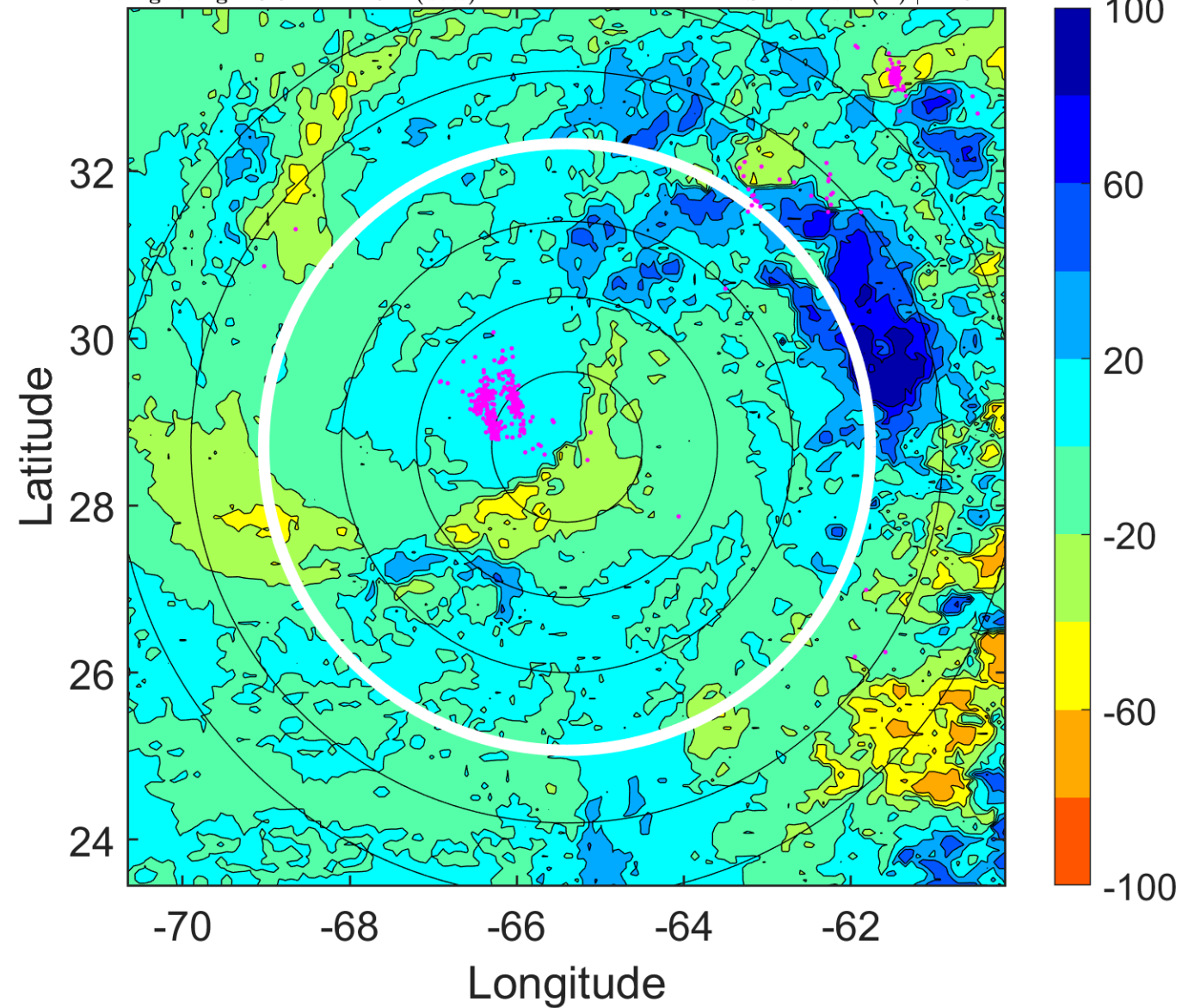
Δ t: 2014101118 (13.6 LT) - 2014101112 (7.6 LT)

Lightning: 13.6 LT \pm 1.5 h (dots)

PT: SLCP | EA: INACT

07L (FAY) | 60 kt TS

S: 17 m s⁻¹ (H) | H: 341°



IR BT & Lightning

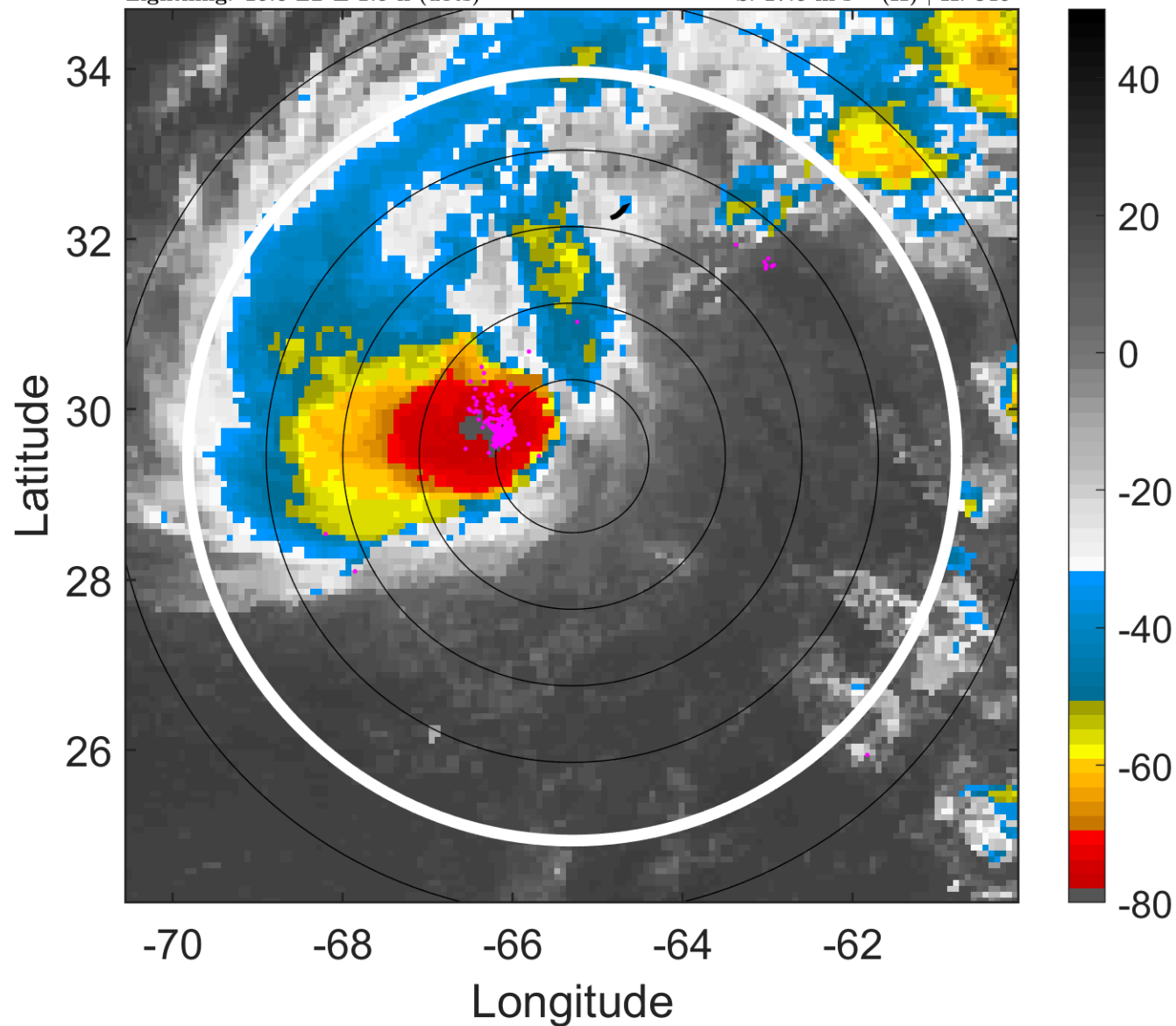
t: 2014101121 (16.6 LT)

Lightning: 16.6 LT \pm 1.5 h (dots)

PT: SLCP | EA: INACT

07L (FAY) | 60 kt TS

S: 17.6 m s⁻¹ (H) | H: 346°



6-h IR BT Differences & Lightning

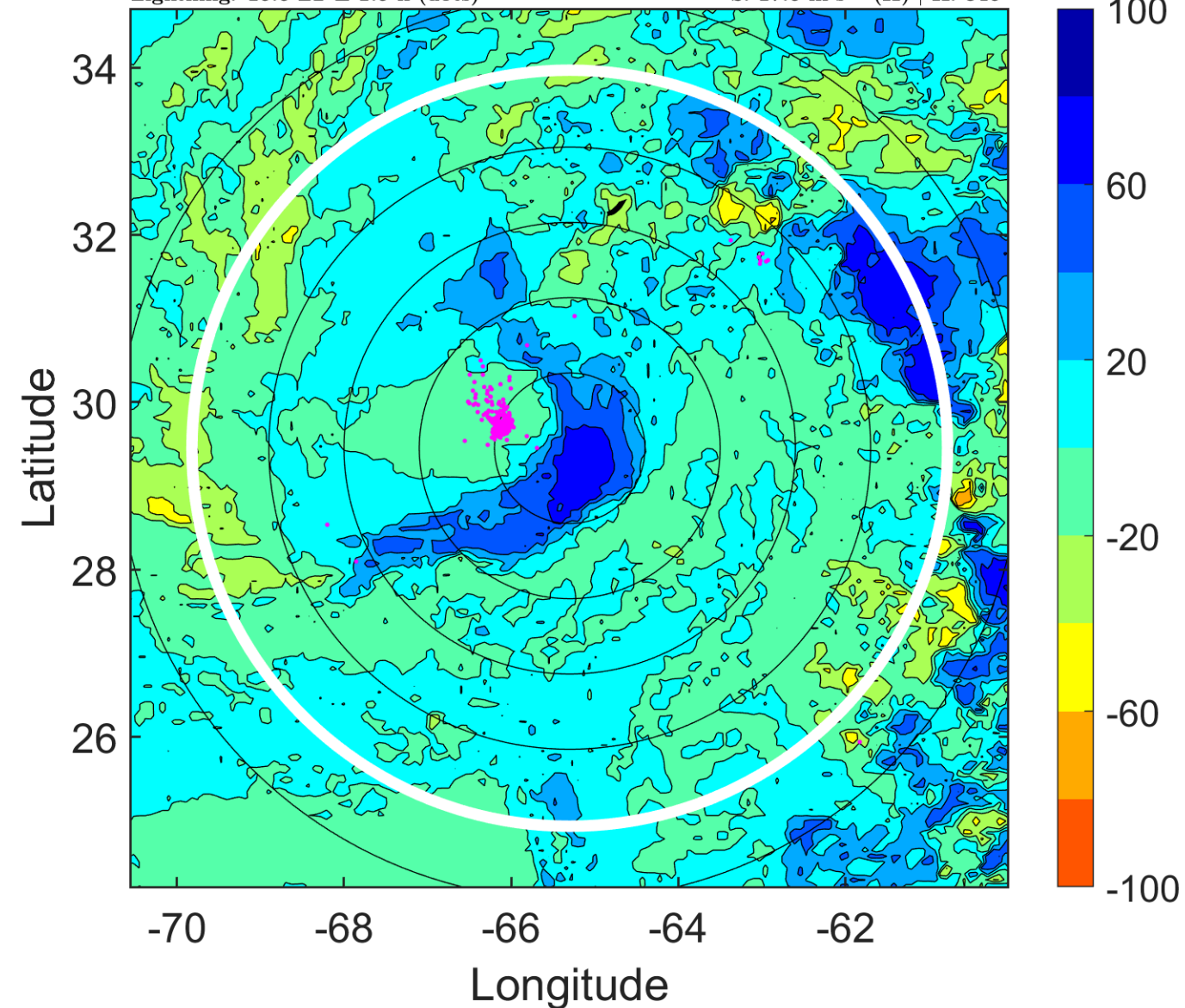
Δ t: 2014101121 (16.6 LT) - 2014101115 (10.6 LT)

Lightning: 16.6 LT \pm 1.5 h (dots)

PT: SLCP | EA: INACT

07L (FAY) | 60 kt TS

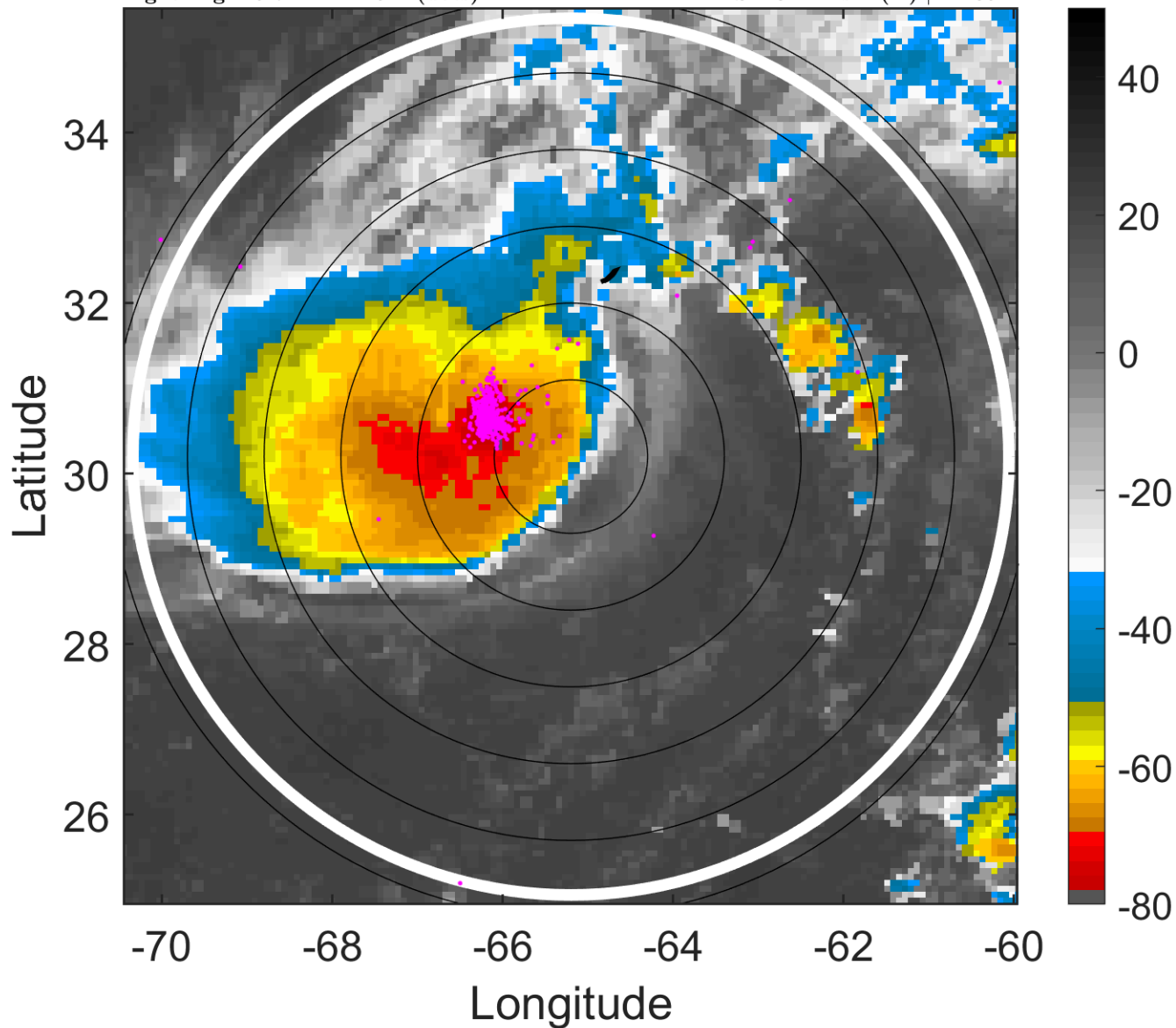
S: 17.6 m s⁻¹ (H) | H: 346°



IR BT & Lightning

t: 2014101200 (19.7 LT)
Lightning: 19.7 LT \pm 1.5 h (dots)

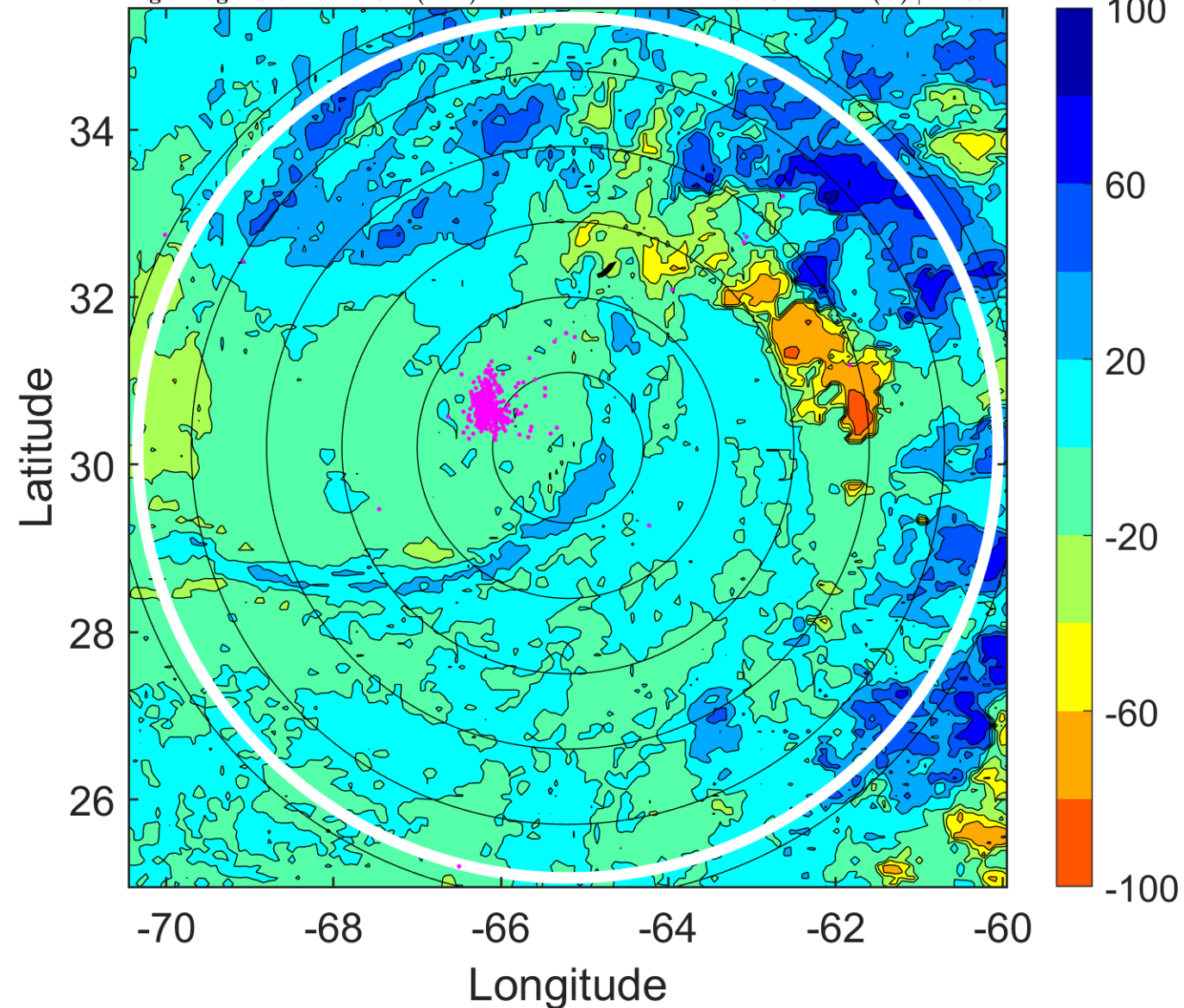
PT: SLCP | EA: INACT
07L (FAY) | 60 kt TS
S: 18.2 m s⁻¹ (H) | H: 351°



6-h IR BT Differences & Lightning

Δ t: 2014101200 (19.7 LT) - 2014101118 (13.6 LT)
Lightning: 19.7 LT \pm 1.5 h (dots)

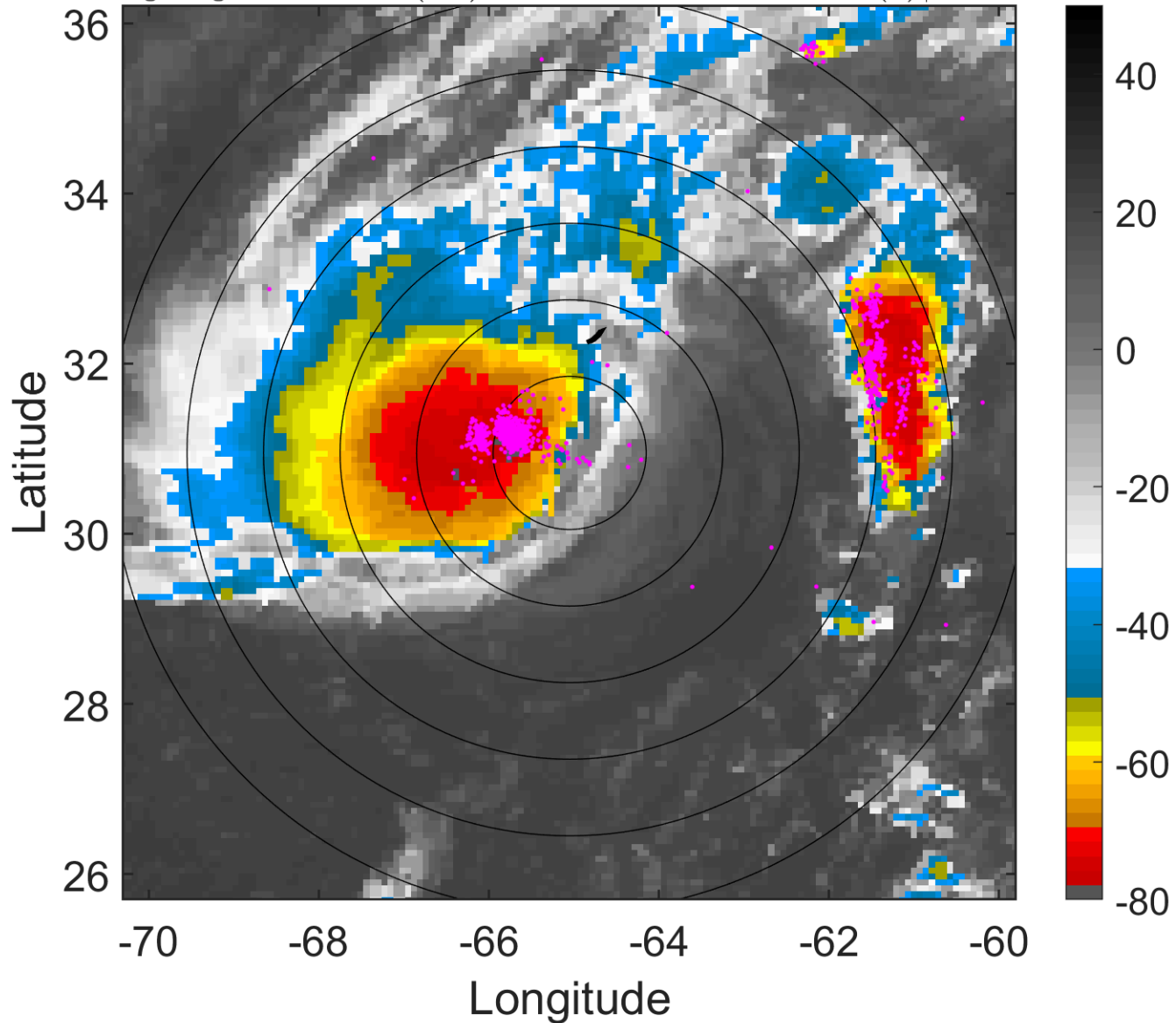
PT: SLCP | EA: INACT
07L (FAY) | 60 kt TS
S: 18.2 m s⁻¹ (H) | H: 351°



IR BT & Lightning

t: 2014101203 (22.7 LT)
Lightning: 22.7 LT \pm 1.5 h (dots)

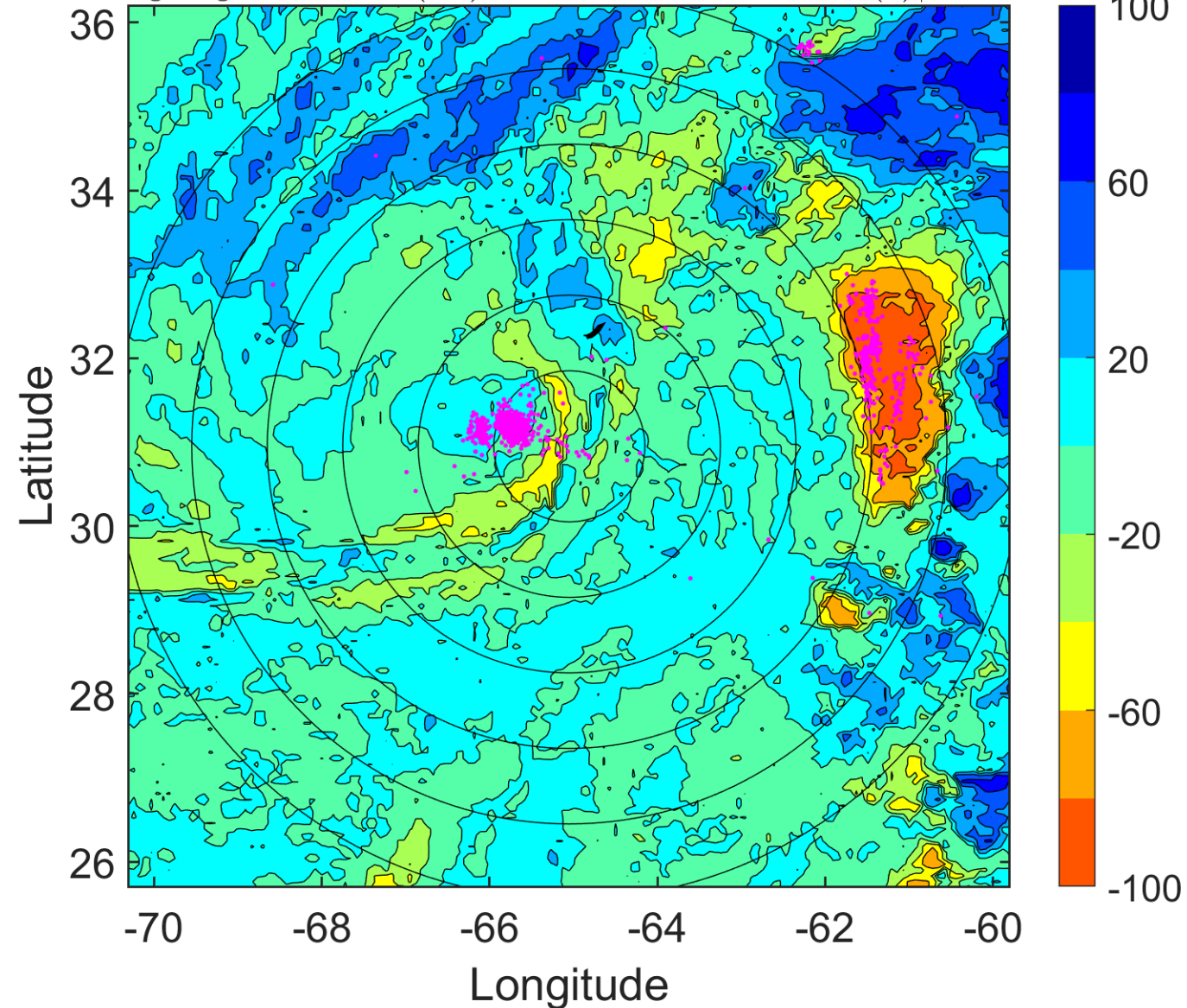
PT: SLCP | EA: INACT
07L (FAY) | 62.5 kt TS
S: 17.2 m s⁻¹ (H) | H: 180°



6-h IR BT Differences & Lightning

Δ t: 2014101203 (22.7 LT) - 2014101121 (16.6 LT)
Lightning: 22.7 LT \pm 1.5 h (dots)

PT: SLCP | EA: INACT
07L (FAY) | 62.5 kt TS
S: 17.2 m s⁻¹ (H) | H: 180°



IR BT & Lightning

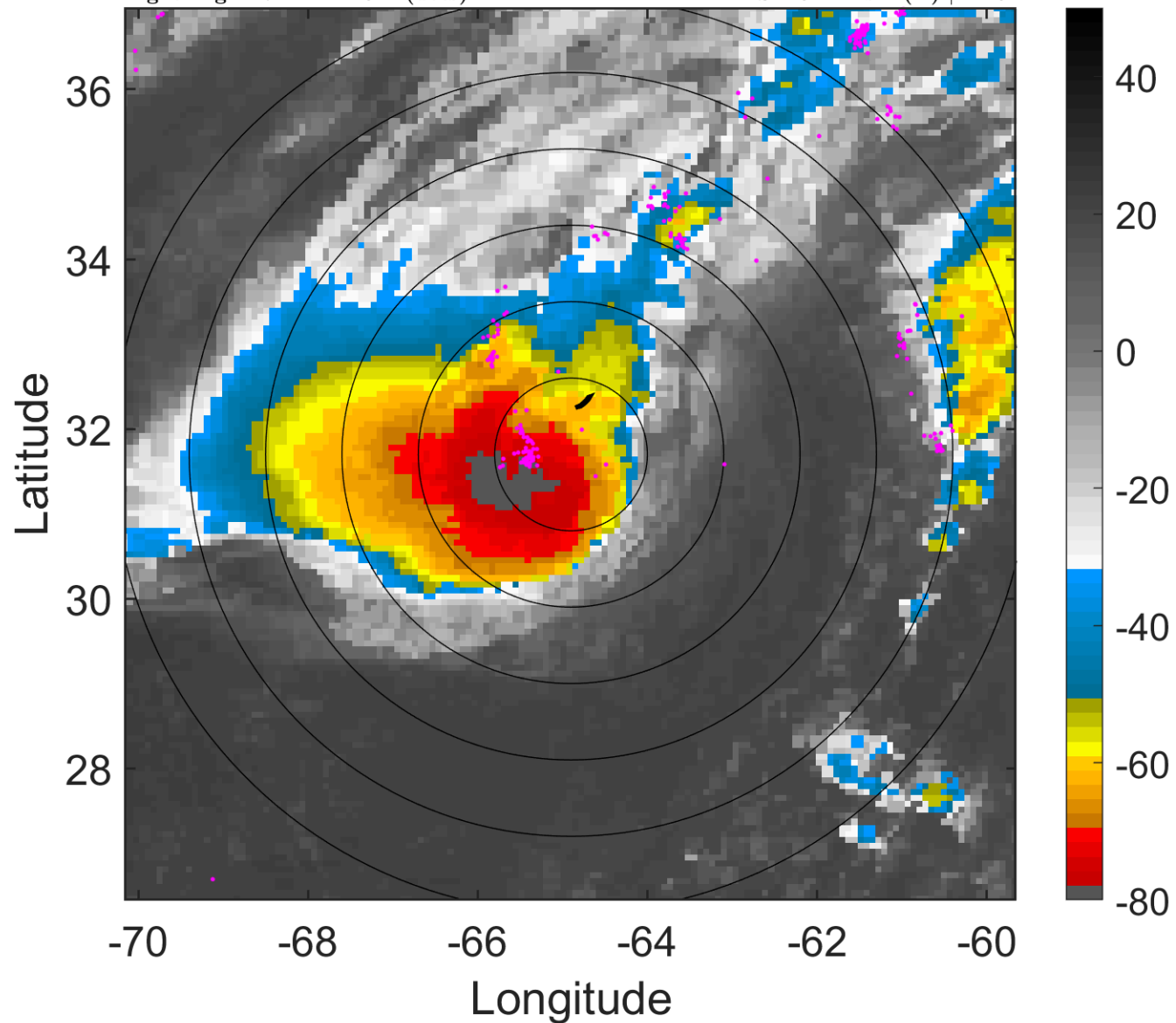
t: 2014101206 (1.7 LT)

Lightning: 1.7 LT \pm 1.5 h (dots)

PT: LLCP | EA: QUASI

07L (FAY) | 65 kt C1

S: 16.2 m s⁻¹ (H) | H: 9°



6-h IR BT Differences & Lightning

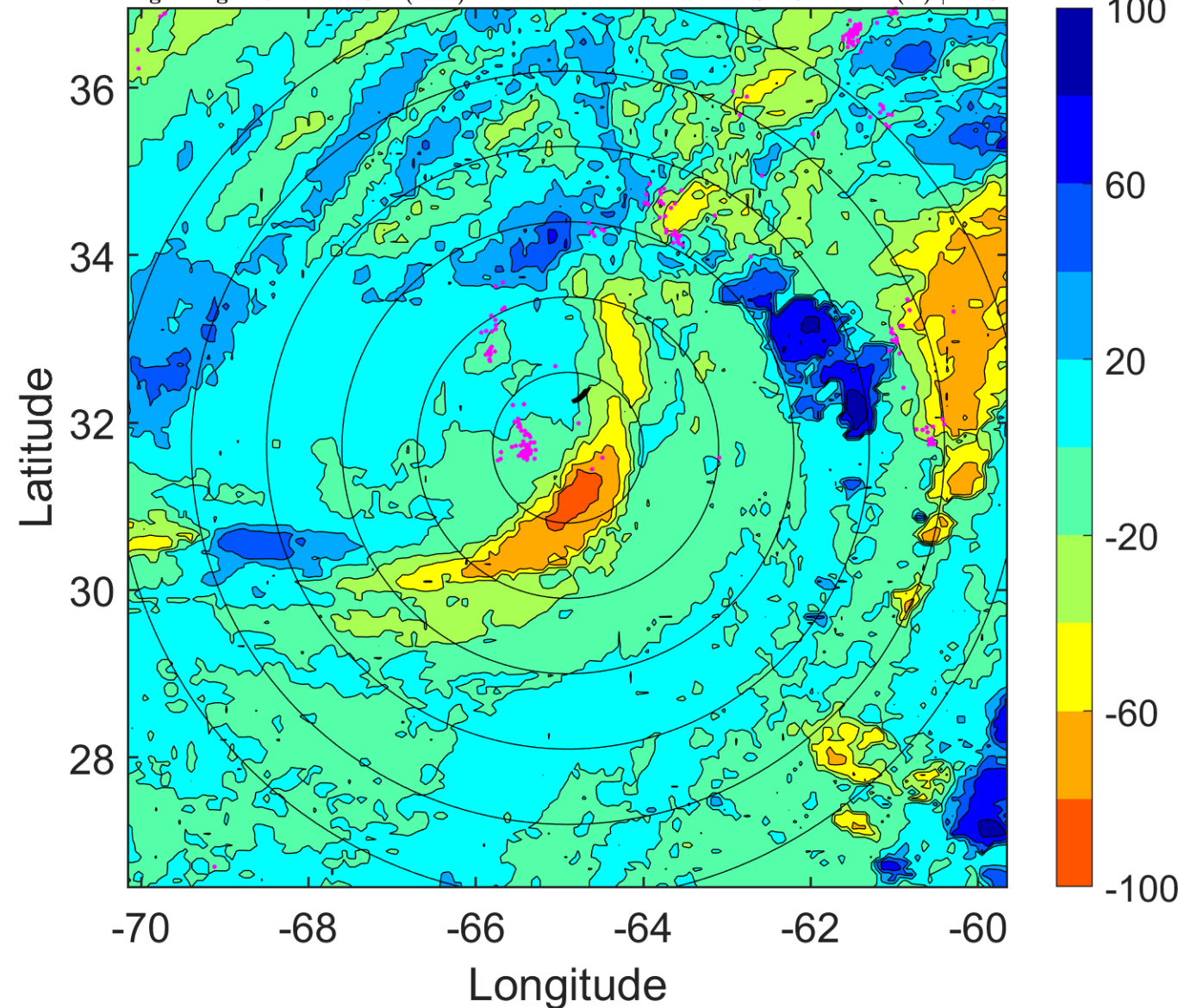
Δ t: 2014101206 (1.7 LT) - 2014101200 (19.7 LT)

Lightning: 1.7 LT \pm 1.5 h (dots)

PT: LLCP | EA: QUASI

07L (FAY) | 65 kt C1

S: 16.2 m s⁻¹ (H) | H: 9°



IR BT & Lightning

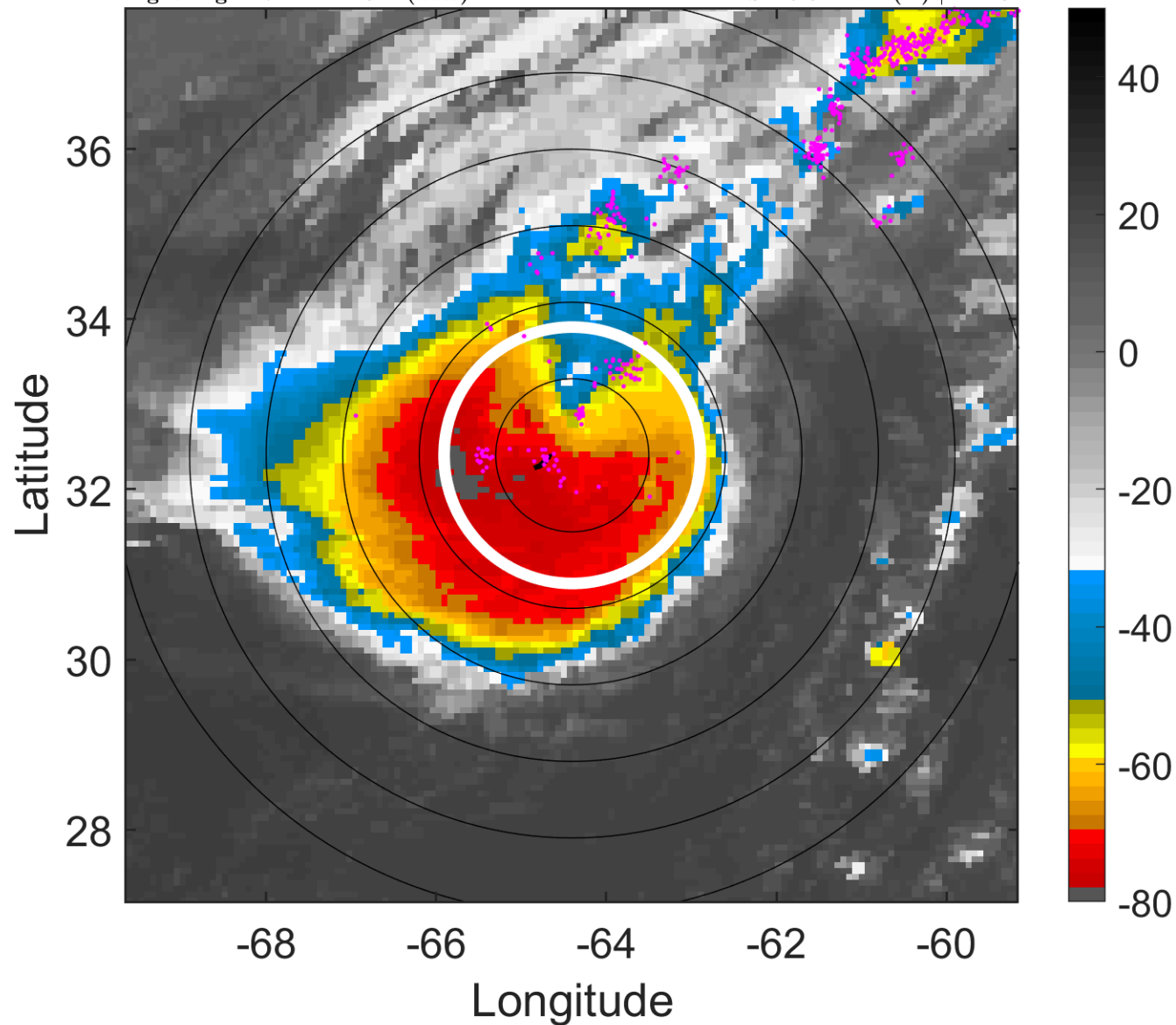
t: 2014101209 (4.7 LT)

Lightning: 4.7 LT \pm 1.5 h (dots)

PT: LLCP | EA: QUASI

07L (FAY) | 67.5 kt C1

S: 15.6 m s⁻¹ (H) | H: 10°



6-h IR BT Differences & Lightning

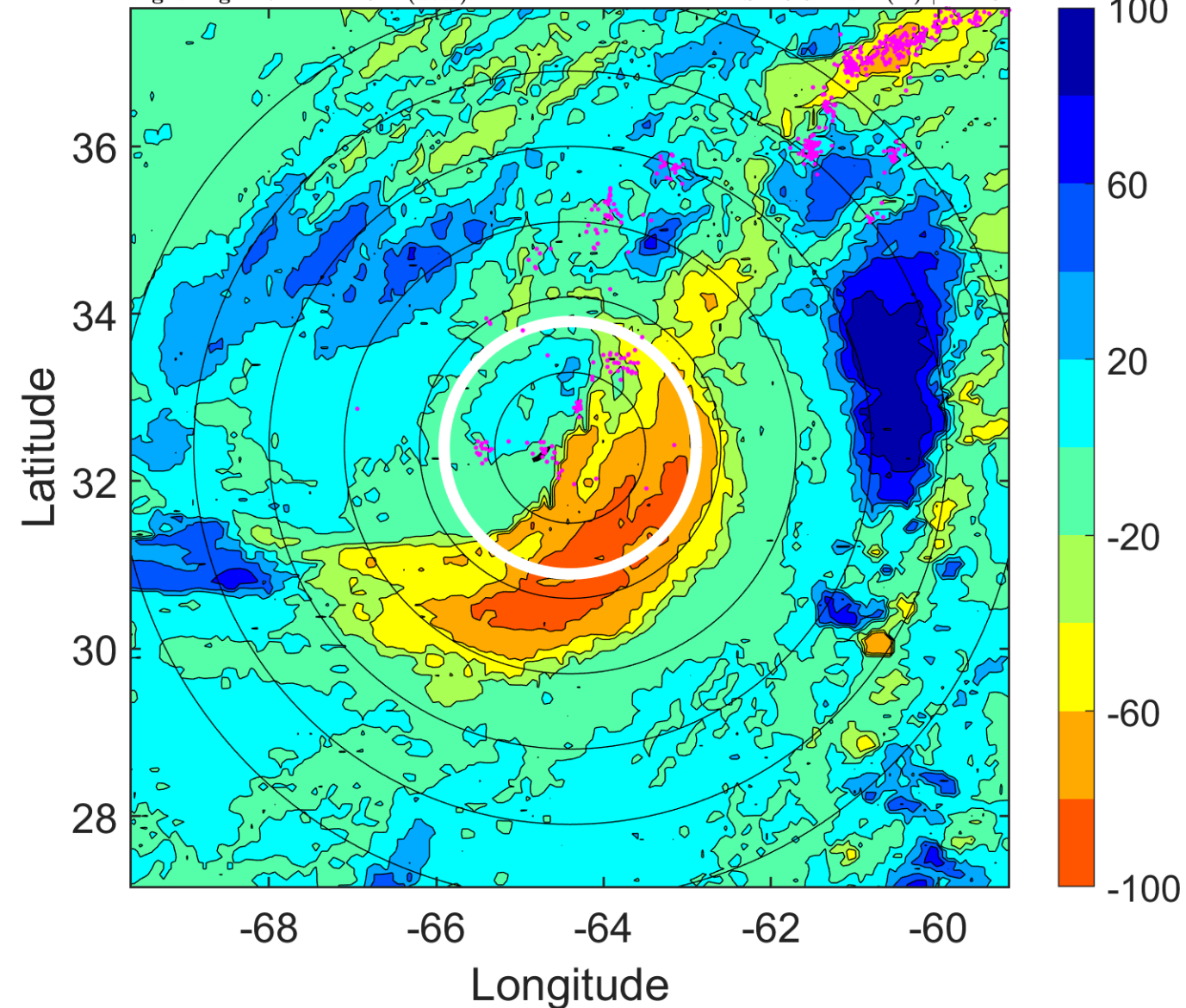
Δ t: 2014101209 (4.7 LT) - 2014101203 (22.7 LT)

Lightning: 4.7 LT \pm 1.5 h (dots)

PT: LLCP | EA: QUASI

07L (FAY) | 67.5 kt C1

S: 15.6 m s⁻¹ (H) | H: 10°



IR BT & Lightning

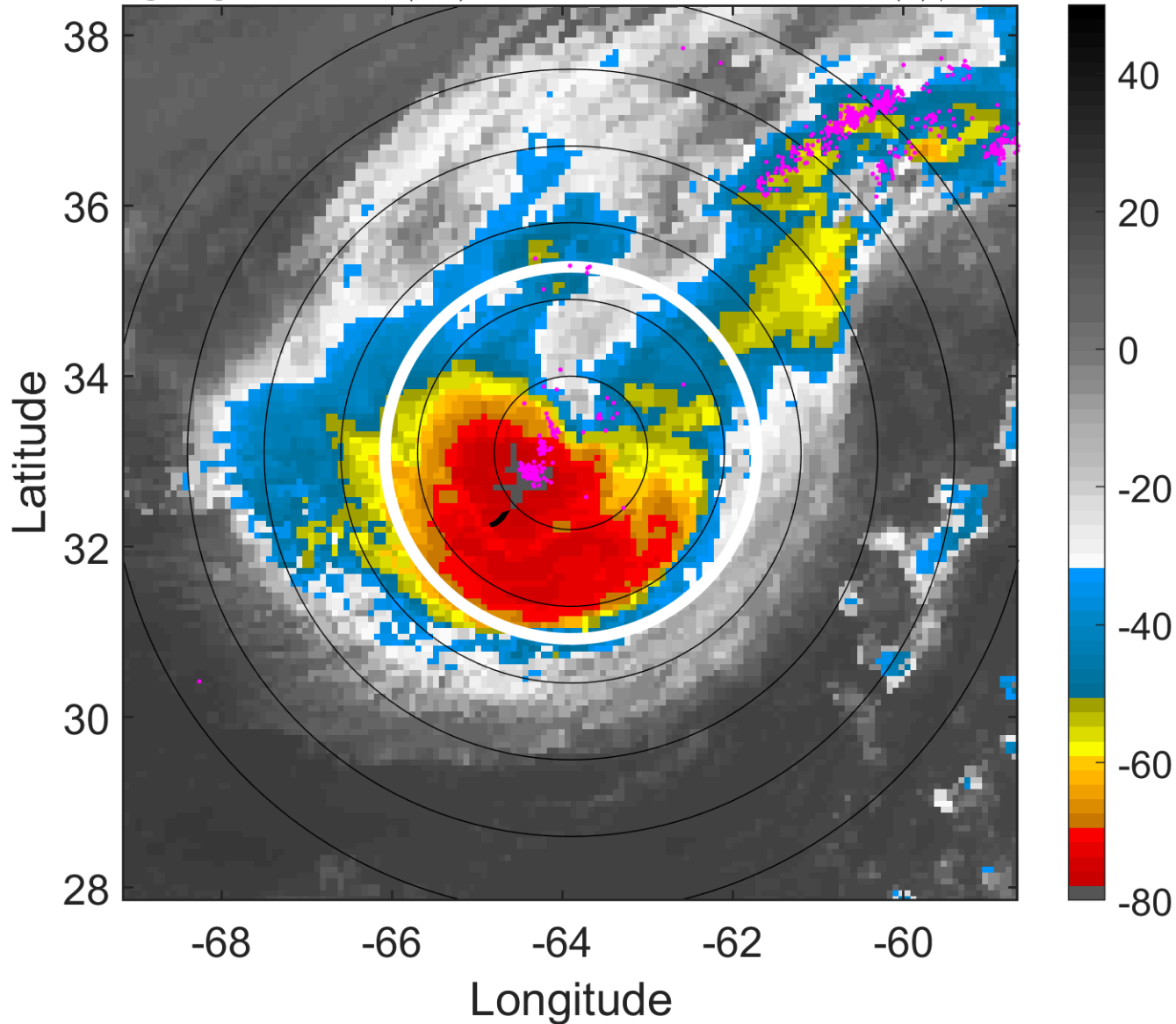
t: 2014101212 (7.7 LT)

Lightning: 7.7 LT \pm 1.5 h (dots)

PT: LLCP | EA: QUASI

07L (FAY) | 70 kt C1

S: 15.1 m s⁻¹ (H) | H: 11°



6-h IR BT Differences & Lightning

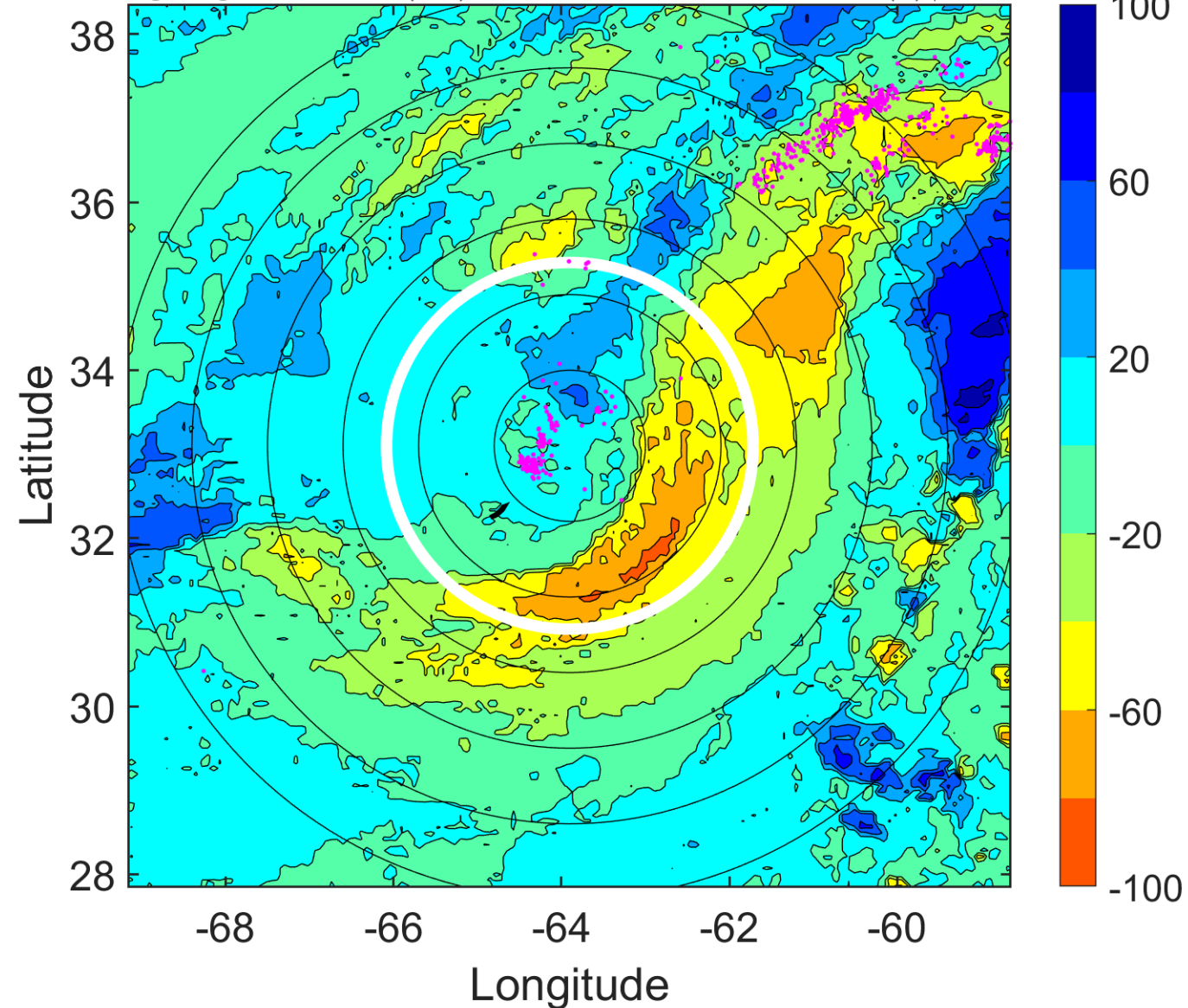
Δ t: 2014101212 (7.7 LT) - 2014101206 (1.7 LT)

Lightning: 7.7 LT \pm 1.5 h (dots)

PT: LLCP | EA: QUASI

07L (FAY) | 70 kt C1

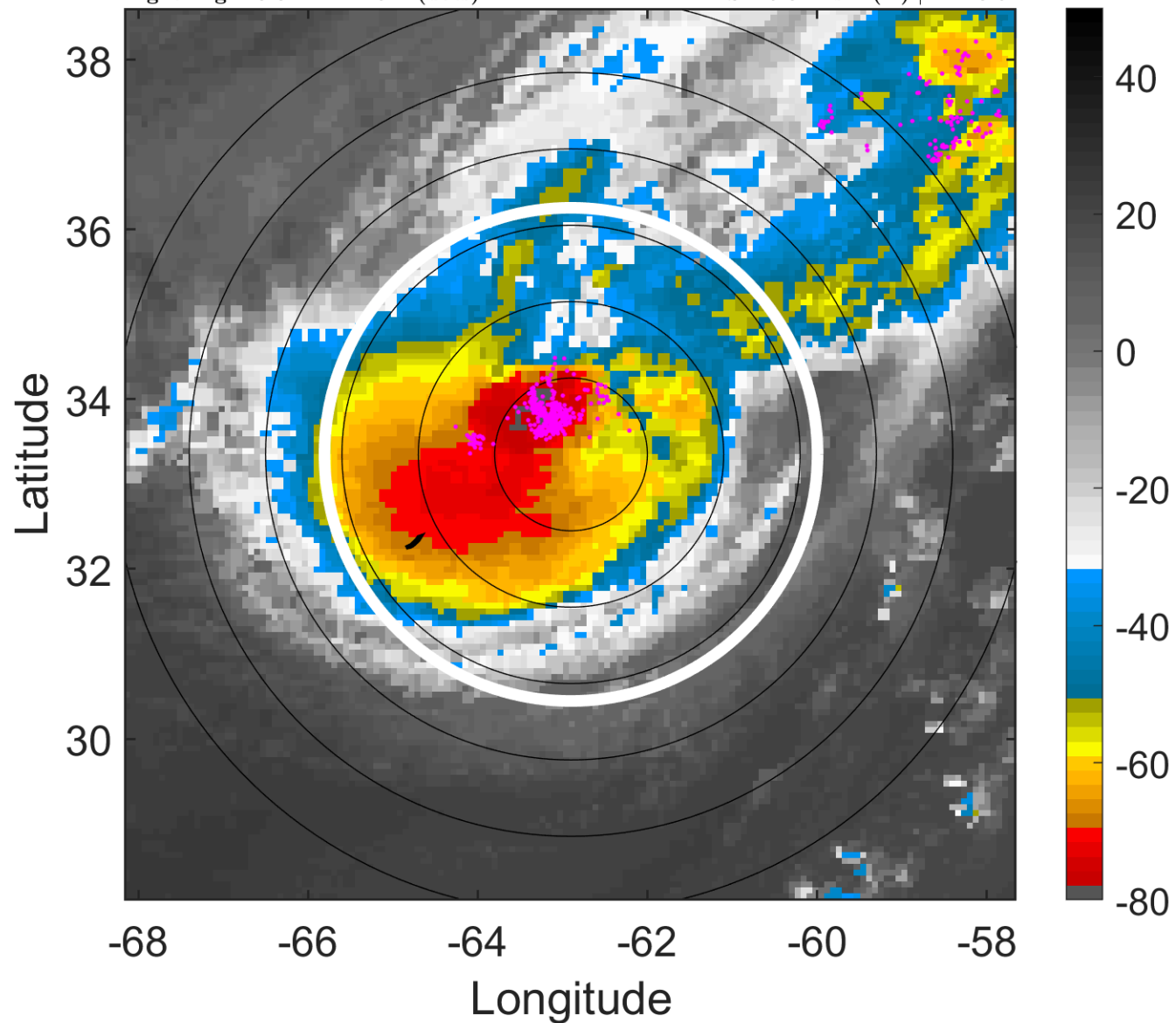
S: 15.1 m s⁻¹ (H) | H: 11°



IR BT & Lightning

t: 2014101215 (10.8 LT)
Lightning: 10.8 LT \pm 1.5 h (dots)

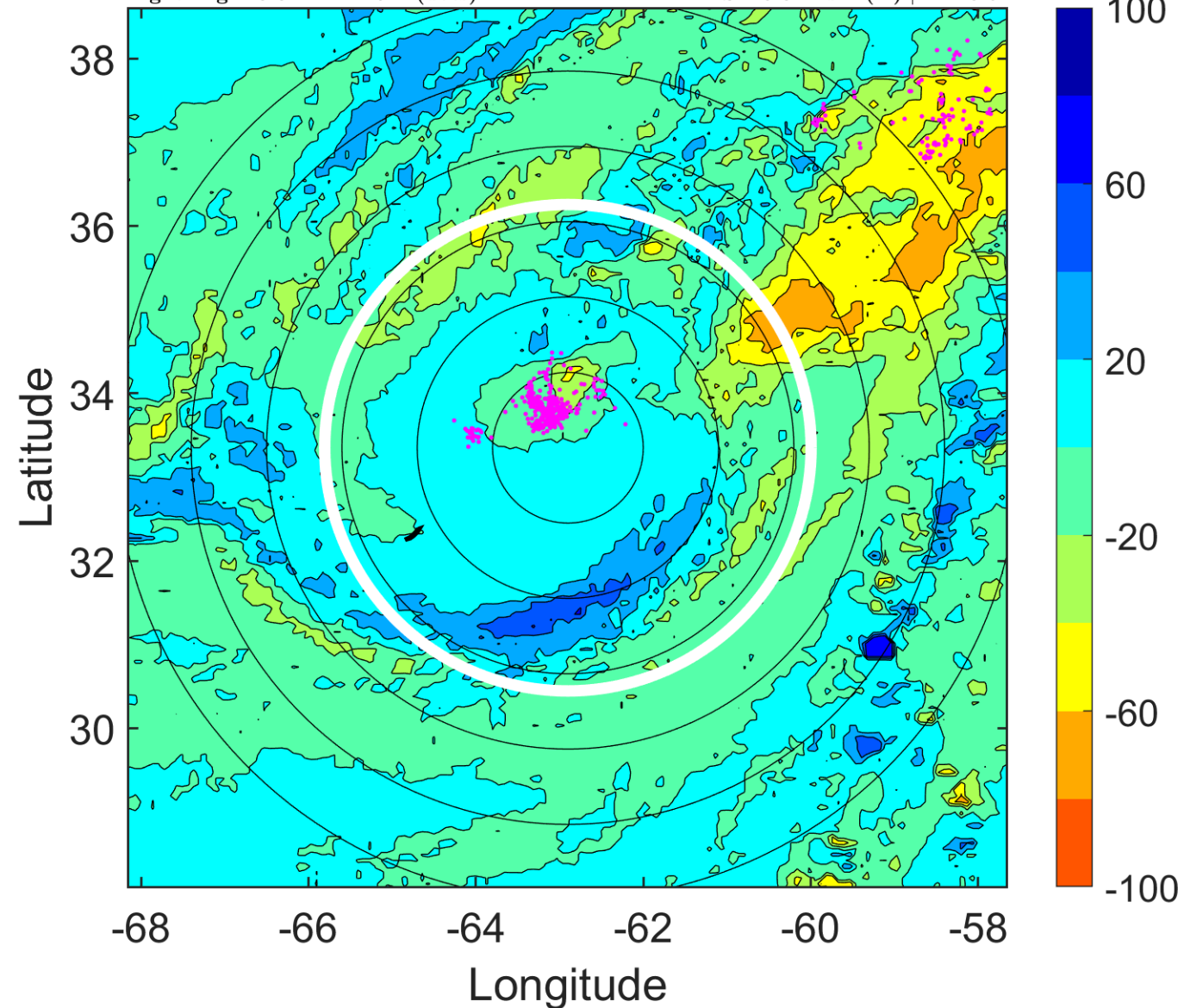
PT: LLCP | EA: QUASI
07L (FAY) | 65 kt C1
S: 16.8 m s⁻¹ (H) | H: 13.5°



6-h IR BT Differences & Lightning

Δ t: 2014101215 (10.8 LT) - 2014101209 (4.7 LT)
Lightning: 10.8 LT \pm 1.5 h (dots)

PT: LLCP | EA: QUASI
07L (FAY) | 65 kt C1
S: 16.8 m s⁻¹ (H) | H: 13.5°



IR BT & Lightning

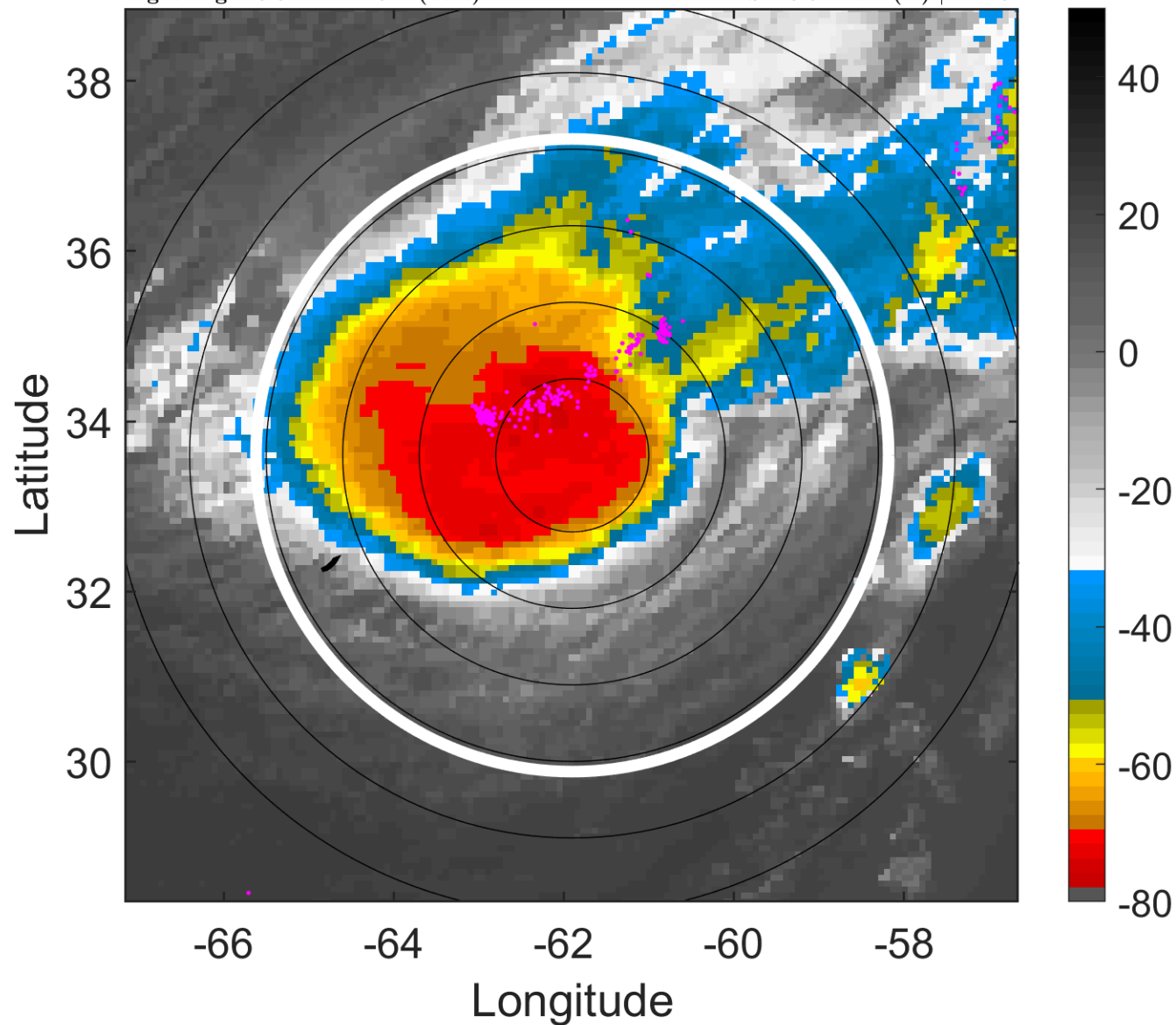
t: 2014101218 (13.9 LT)

Lightning: 13.9 LT \pm 1.5 h (dots)

PT: LLCP | EA: QUASI

07L (FAY) | 60 kt TS

S: 18.6 m s⁻¹ (H) | H: 16°



6-h IR BT Differences & Lightning

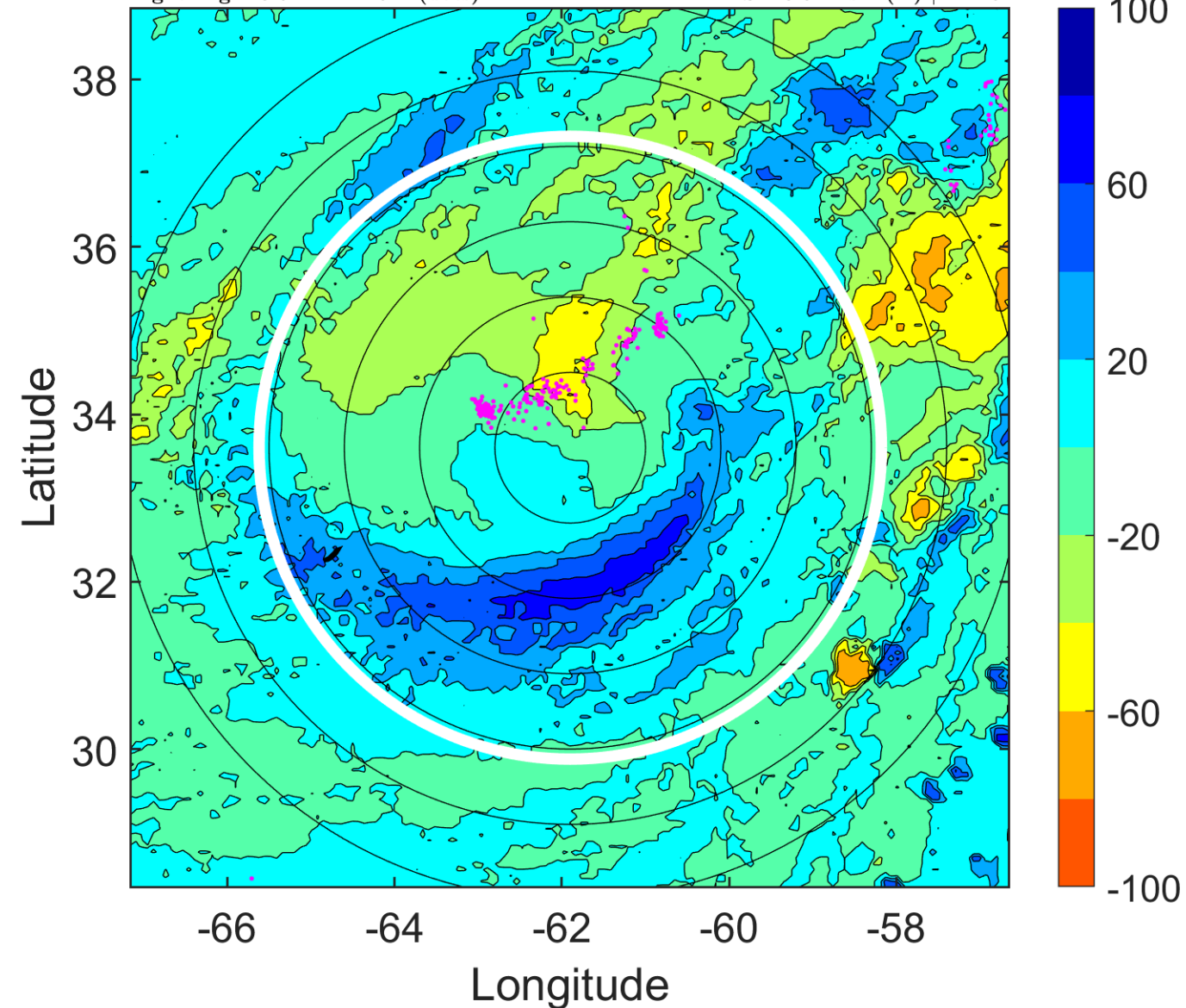
Δ t: 2014101218 (13.9 LT) - 2014101212 (7.7 LT)

Lightning: 13.9 LT \pm 1.5 h (dots)

PT: LLCP | EA: QUASI

07L (FAY) | 60 kt TS

S: 18.6 m s⁻¹ (H) | H: 16°



IR BT & Lightning

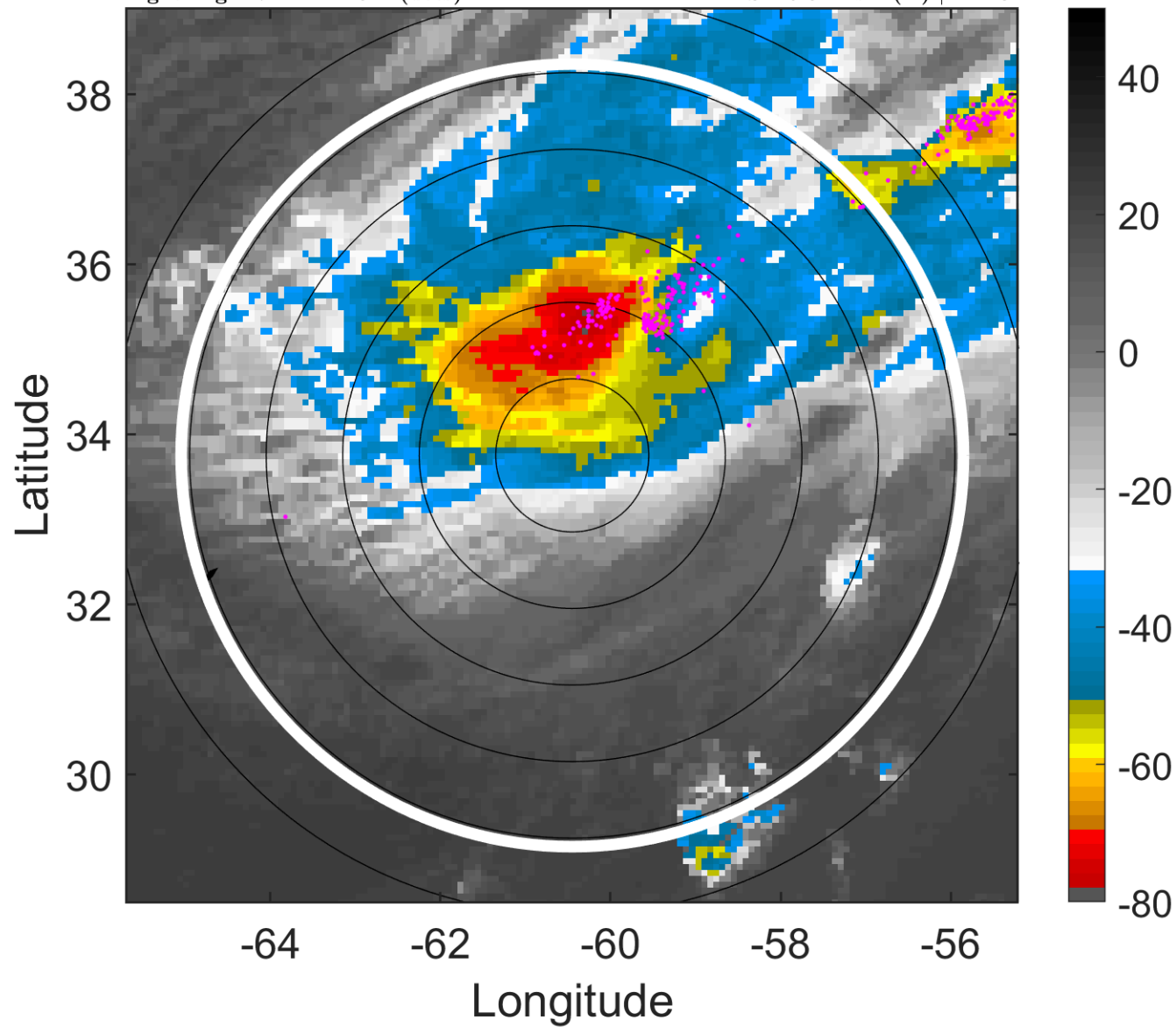
t: 2014101221 (17 LT)

Lightning: 17 LT \pm 1.5 h (dots)

PT: LLCP | EA: QUASI

07L (FAY) | 55 kt TS

S: 19.3 m s⁻¹ (H) | H: 20°



6-h IR BT Differences & Lightning

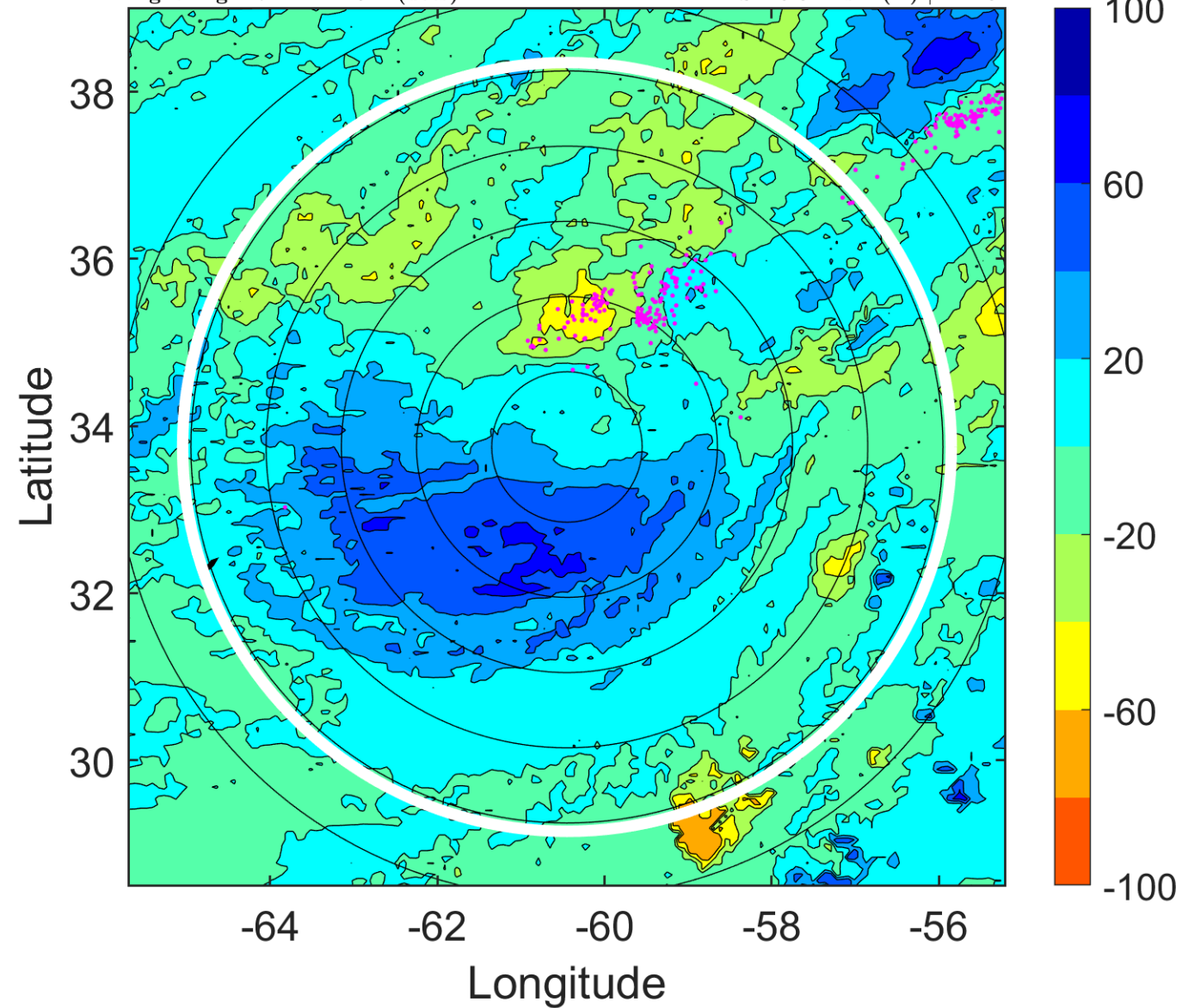
Δ t: 2014101221 (17 LT) - 2014101215 (10.8 LT)

Lightning: 17 LT \pm 1.5 h (dots)

PT: LLCP | EA: QUASI

07L (FAY) | 55 kt TS

S: 19.3 m s⁻¹ (H) | H: 20°



IR BT & Lightning

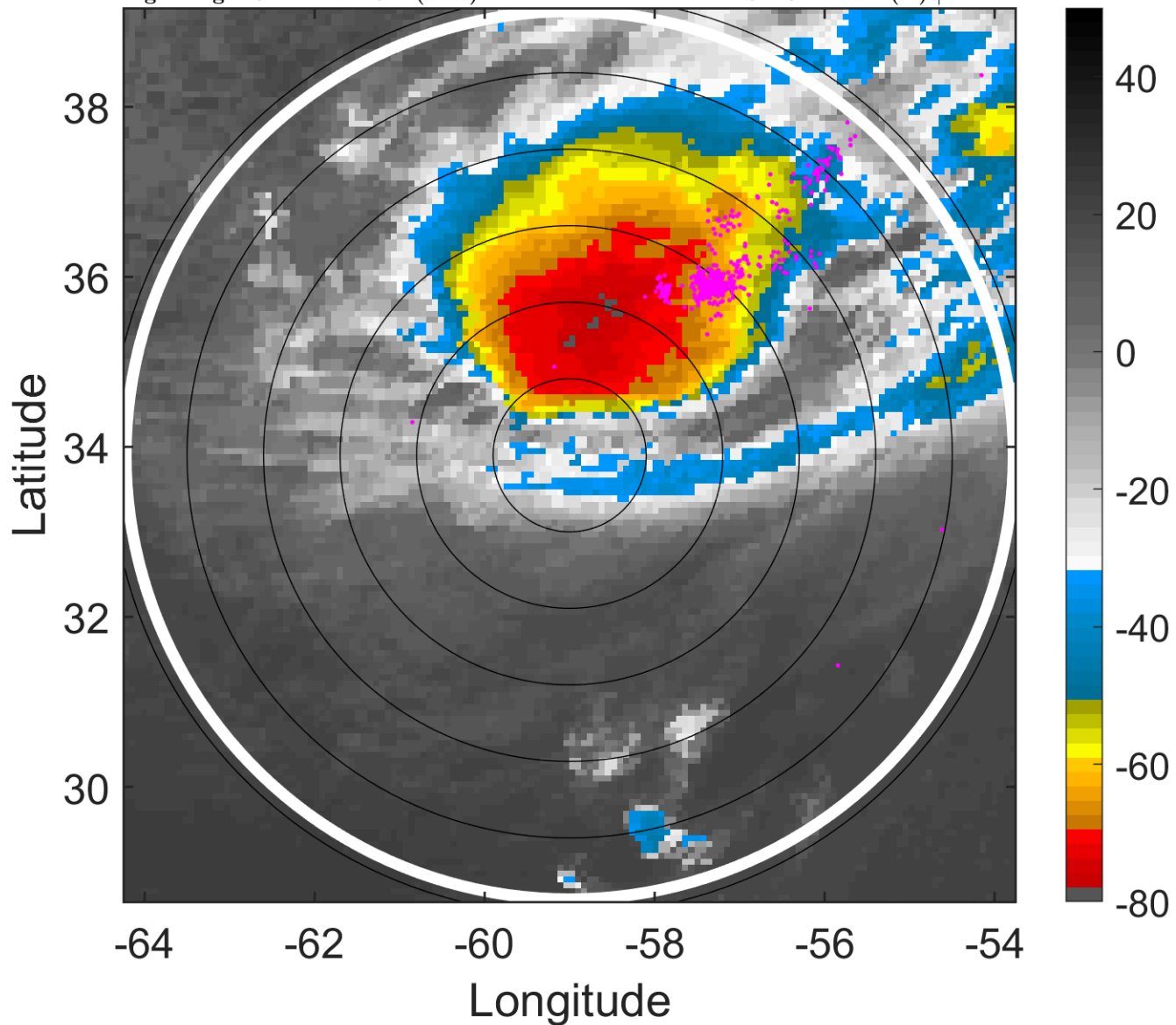
t: 2014101300 (20.1 LT)

Lightning: 20.1 LT \pm 1.5 h (dots)

PT: LLCP | EA: QUASI

07L (FAY) | 50 kt TS

S: 20.1 m s⁻¹ (H) | H: 24°



6-h IR BT Differences & Lightning

Δ t: 2014101300 (20.1 LT) - 2014101218 (13.9 LT)

Lightning: 20.1 LT \pm 1.5 h (dots)

PT: LLCP | EA: QUASI

07L (FAY) | 50 kt TS

S: 20.1 m s⁻¹ (H) | H: 24°

