

IR BT & Lightning

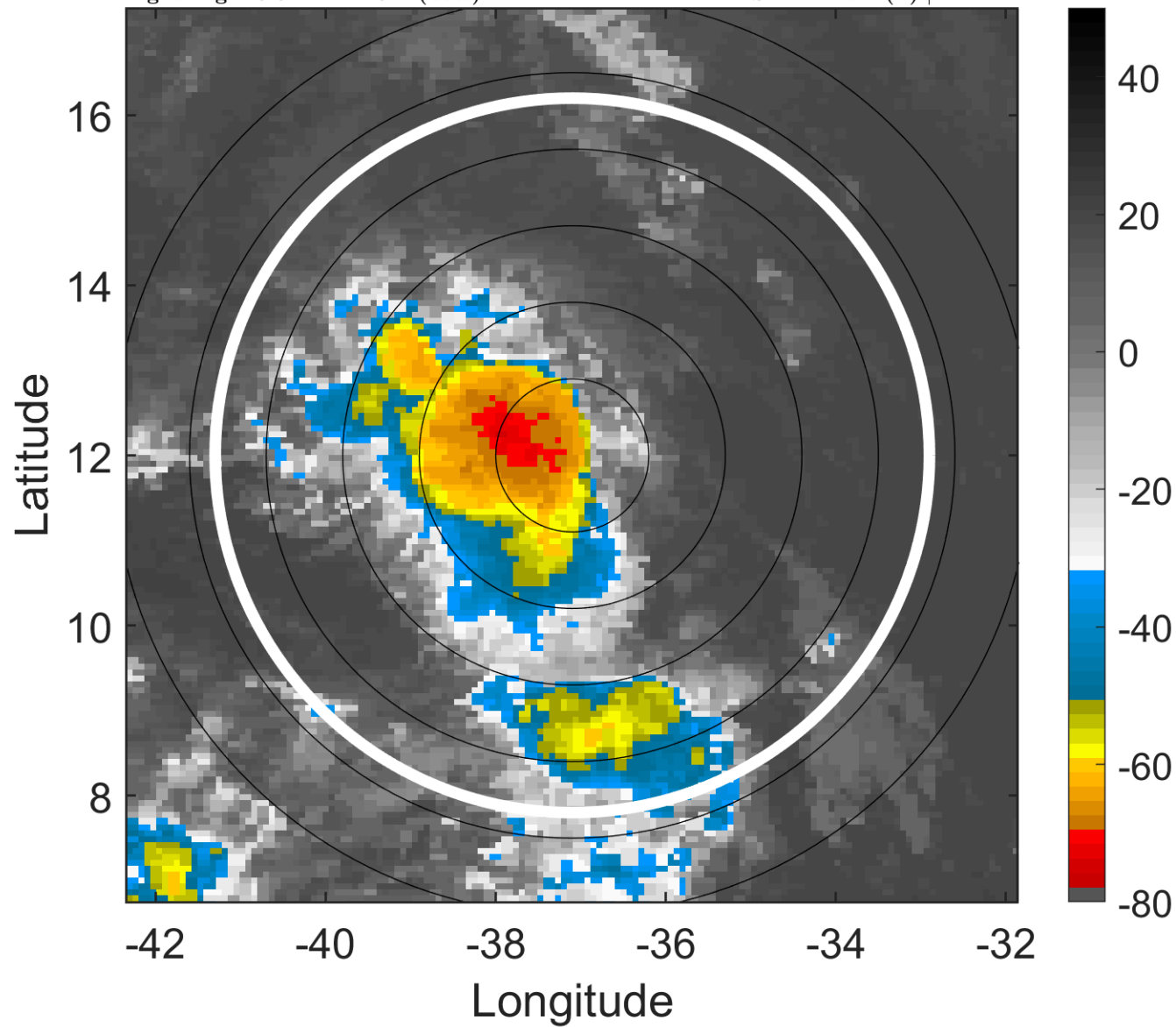
t: 2017070518 (15.5 LT)

Lightning: 15.5 LT \pm 1.5 h (dots)

PT: NP | EA: INACT

04L (FOUR) | 25 kt TD

S: 4.2 m s⁻¹ (L) | H: 244°



6-h IR BT Differences & Lightning

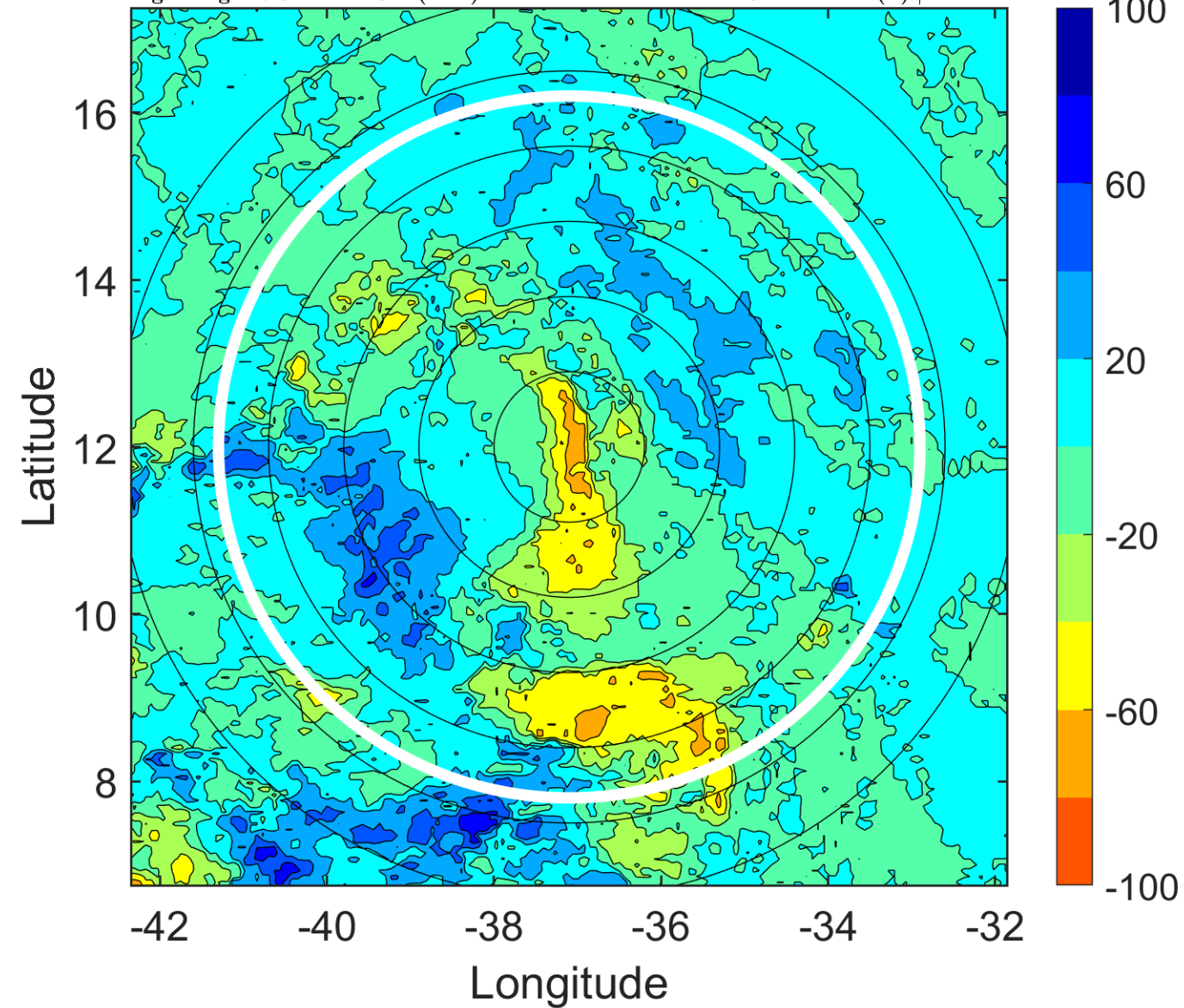
Δ t: 2017070518 (15.5 LT) - 2017070512 (9.6 LT)

Lightning: 15.5 LT \pm 1.5 h (dots)

PT: NP | EA: INACT

04L (FOUR) | 25 kt TD

S: 4.2 m s⁻¹ (L) | H: 244°



IR BT & Lightning

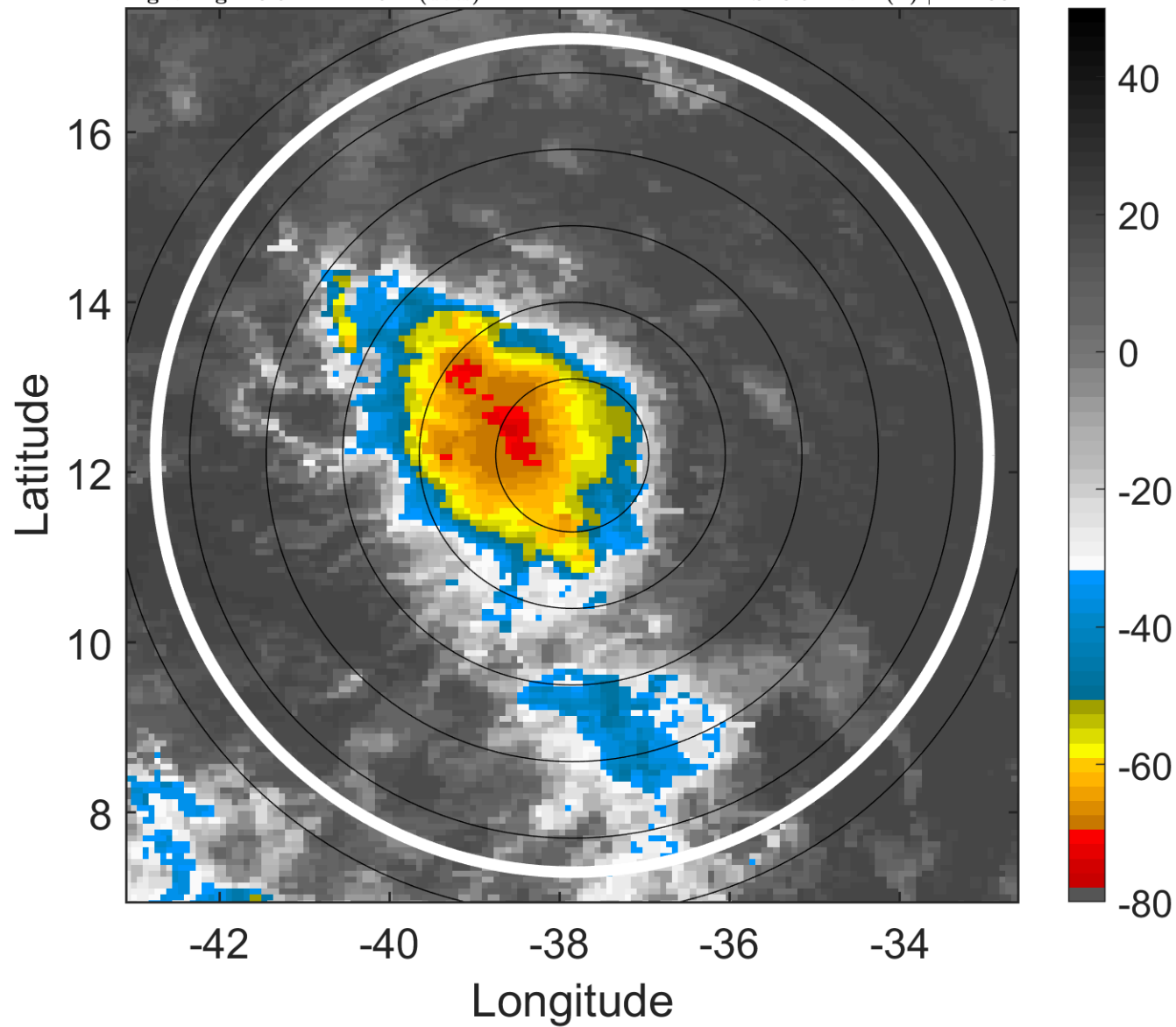
t: 2017070521 (18.5 LT)

Lightning: 18.5 LT \pm 1.5 h (dots)

PT: NP | EA: INACT

04L (FOUR) | 25 kt TD

S: 3.5 m s⁻¹ (L) | H: 230°



6-h IR BT Differences & Lightning

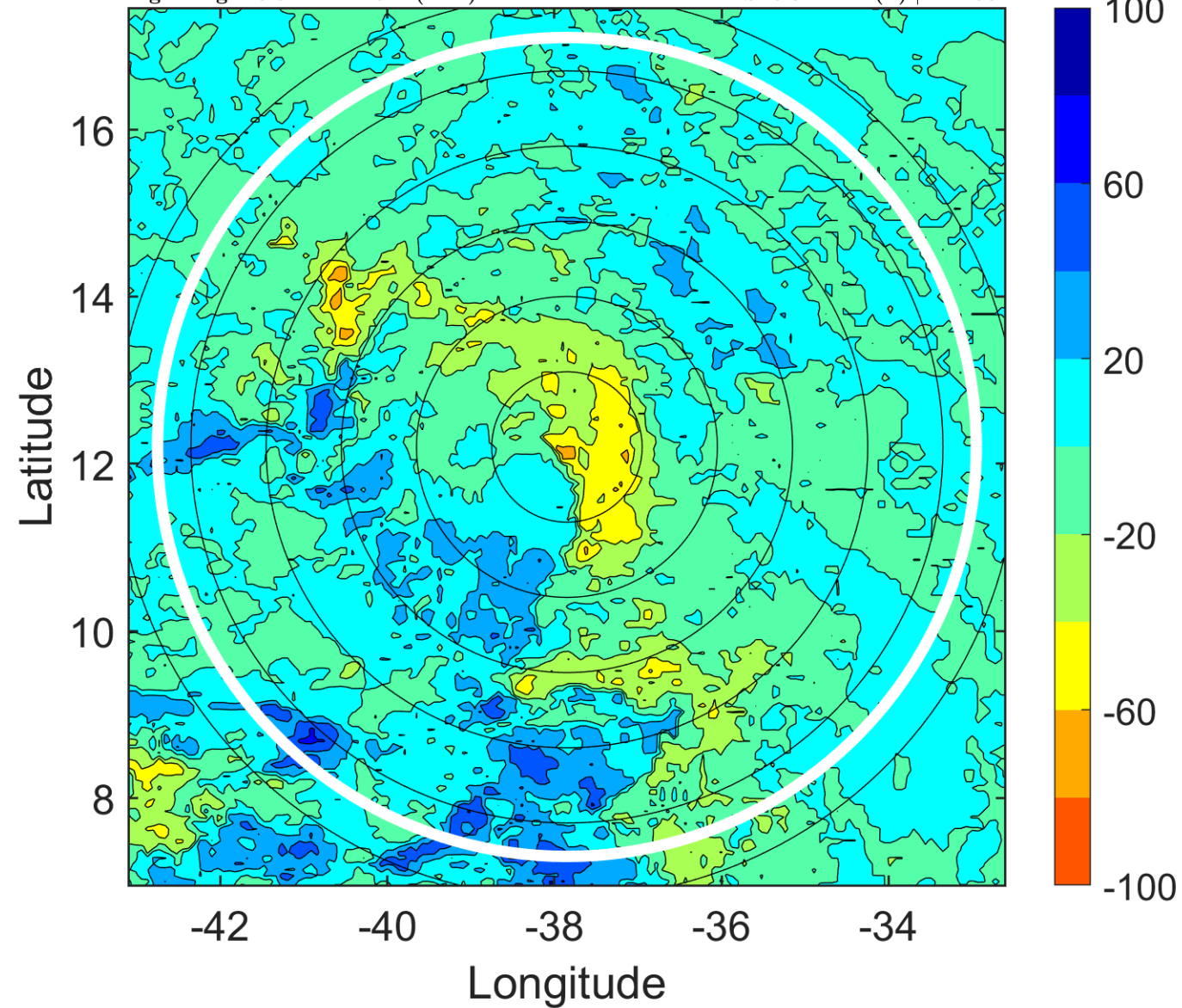
Δ t: 2017070521 (18.5 LT) - 2017070515 (12.6 LT)

Lightning: 18.5 LT \pm 1.5 h (dots)

PT: NP | EA: INACT

04L (FOUR) | 25 kt TD

S: 3.5 m s⁻¹ (L) | H: 230°



IR BT & Lightning

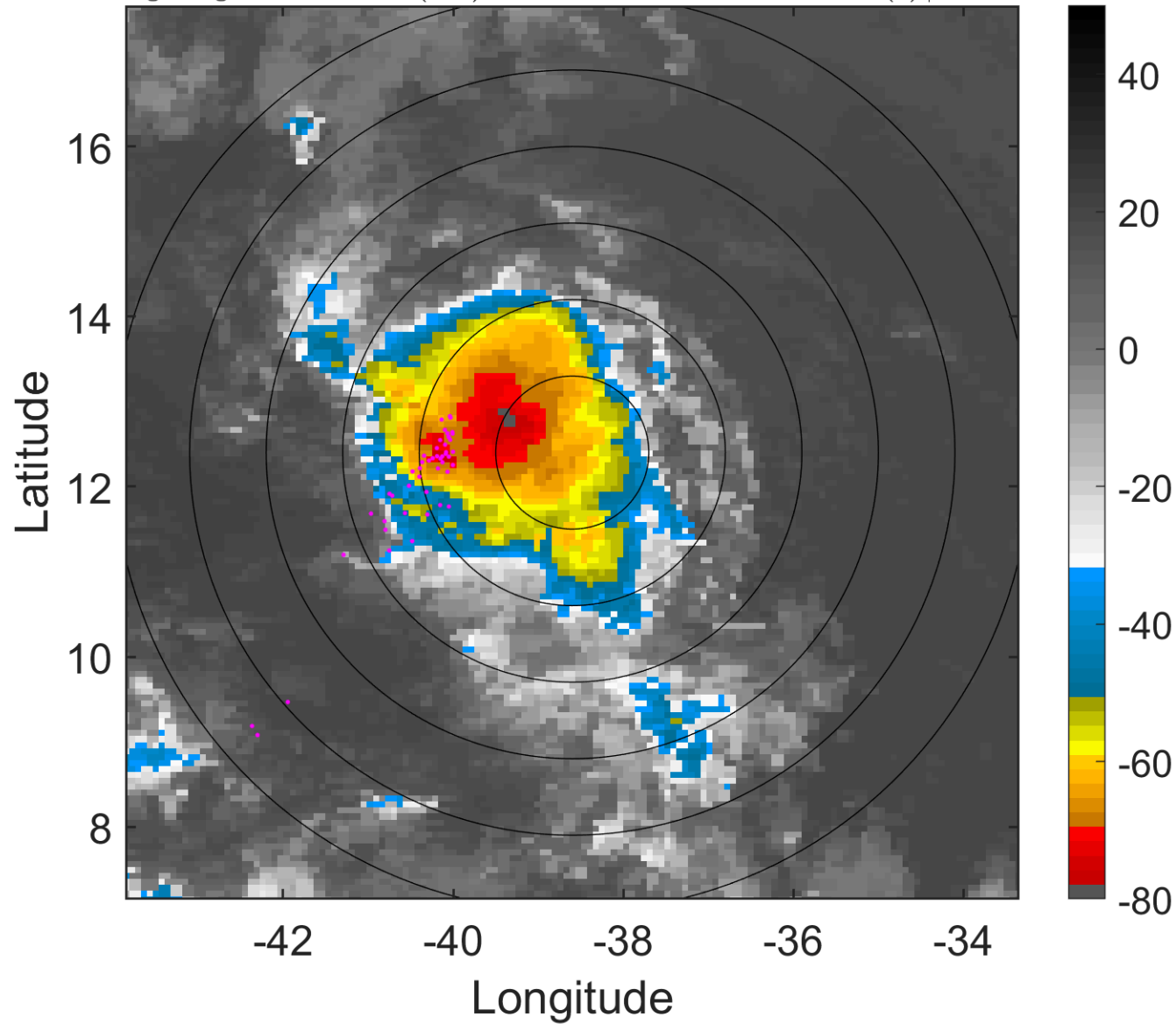
t: 2017070600 (21.4 LT)

Lightning: 21.4 LT \pm 1.5 h (dots)

PT: NP | EA: INACT

04L (FOUR) | 25 kt TD

S: 2.8 m s⁻¹ (L) | H: 216°



6-h IR BT Differences & Lightning

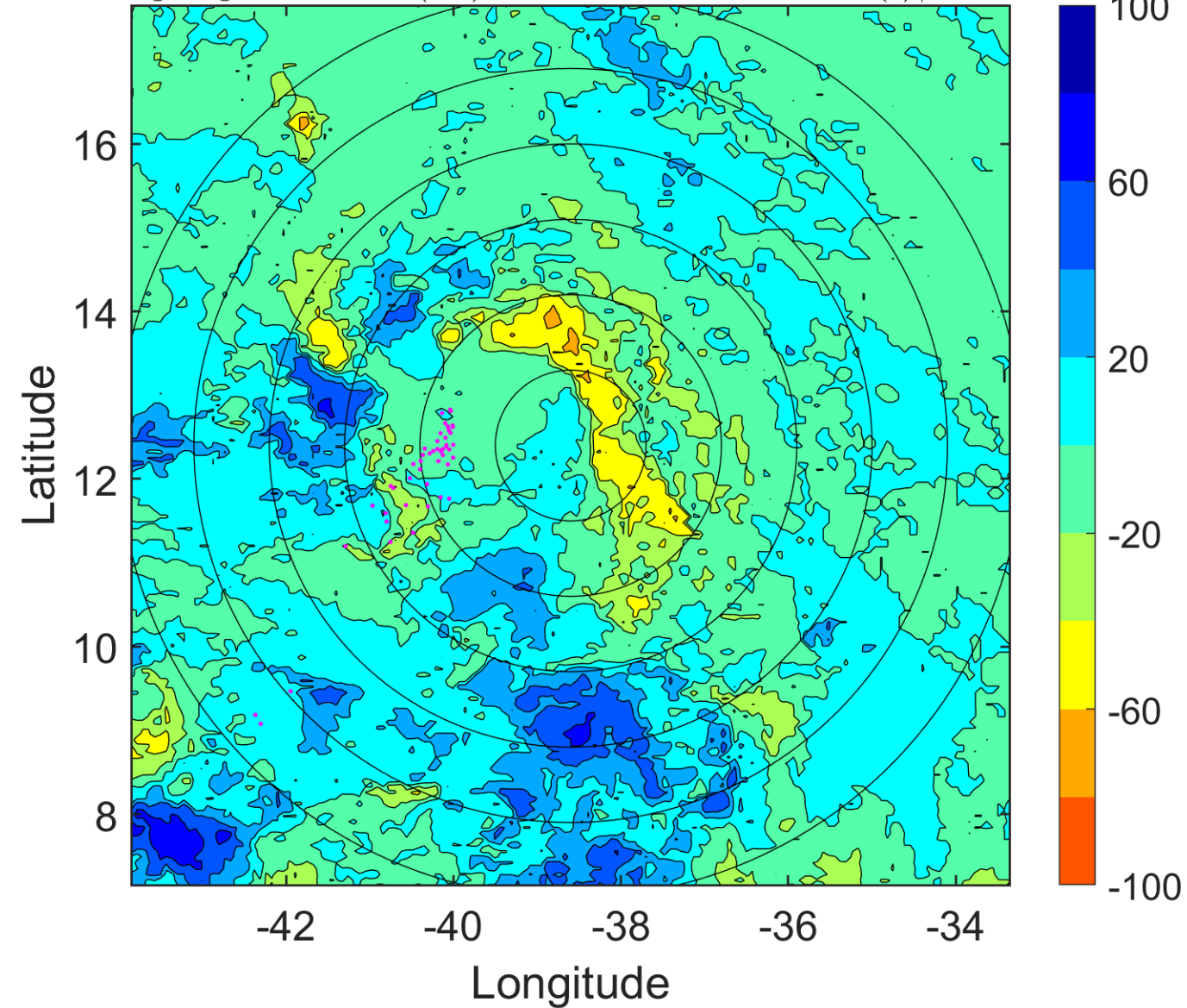
Δ t: 2017070600 (21.4 LT) - 2017070518 (15.5 LT)

Lightning: 21.4 LT \pm 1.5 h (dots)

PT: NP | EA: INACT

04L (FOUR) | 25 kt TD

S: 2.8 m s⁻¹ (L) | H: 216°



IR BT & Lightning

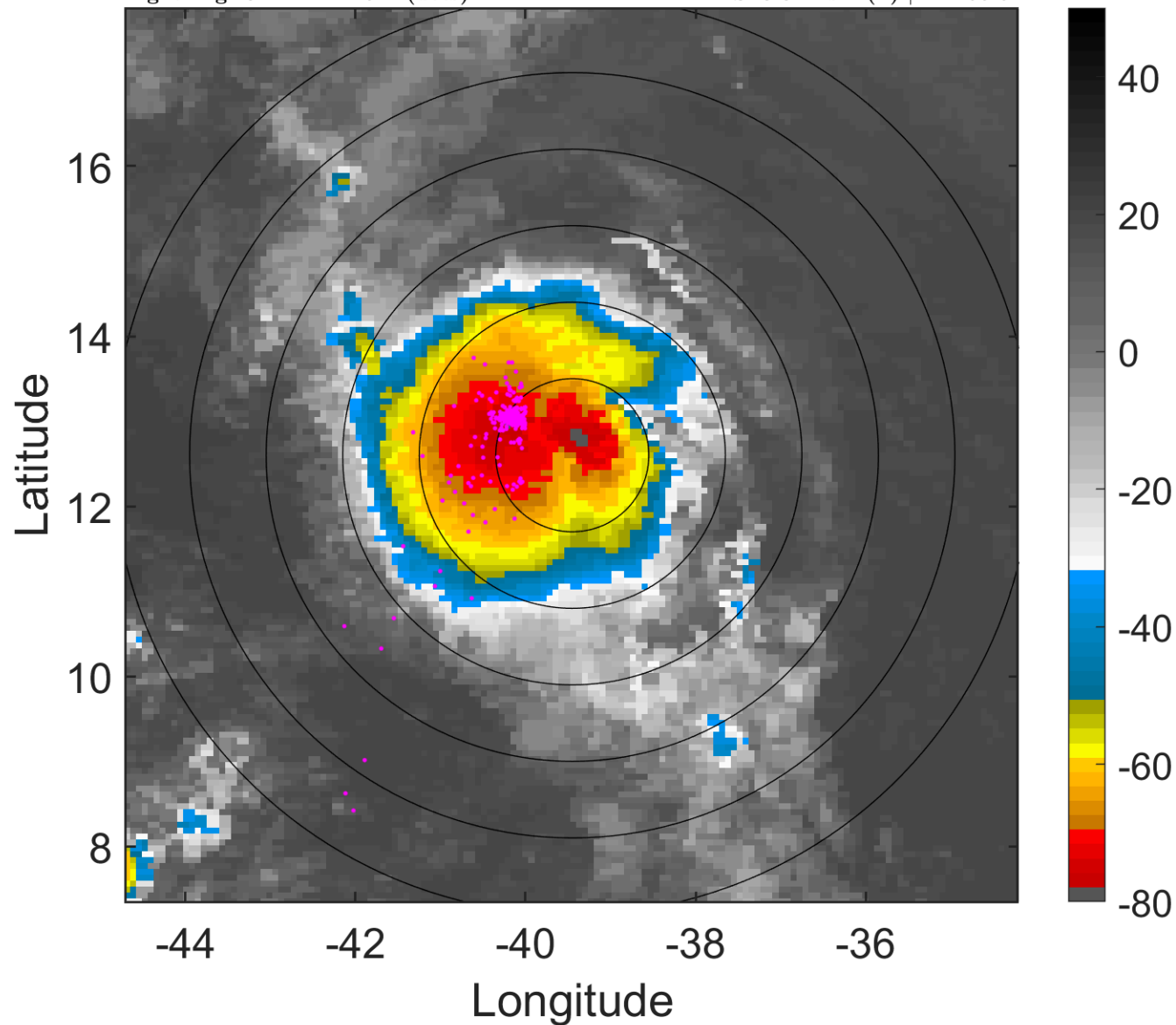
t: 2017070603 (0.4 LT)

Lightning: 0.4 LT \pm 1.5 h (dots)

PT: LLCP | EA: QUASI

04L (FOUR) | 25 kt TD

S: 3.3 m s⁻¹ (L) | H: 195.5°



6-h IR BT Differences & Lightning

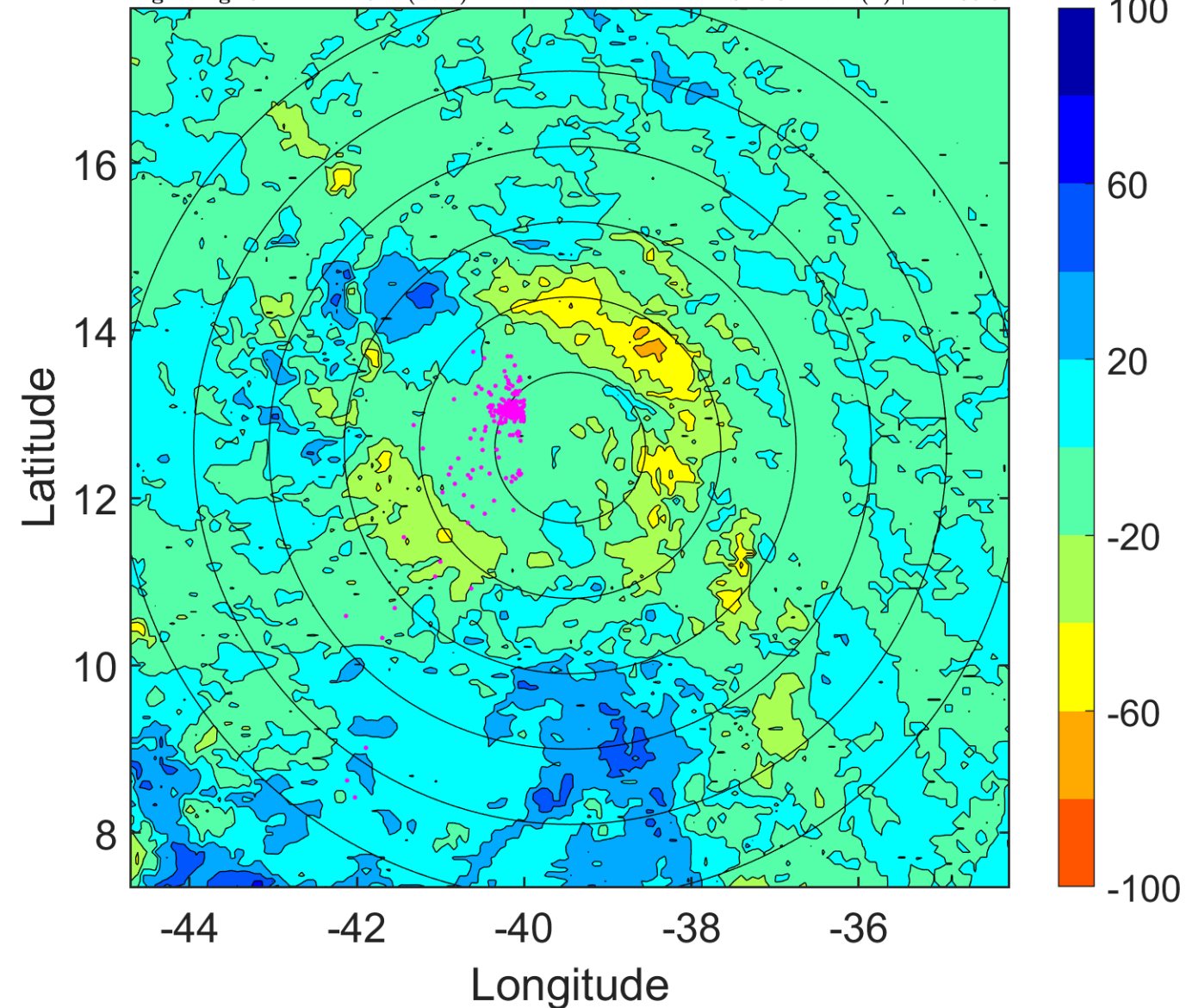
Δ t: 2017070603 (0.4 LT) - 2017070521 (18.5 LT)

Lightning: 0.4 LT \pm 1.5 h (dots)

PT: LLCP | EA: QUASI

04L (FOUR) | 25 kt TD

S: 3.3 m s⁻¹ (L) | H: 195.5°



IR BT & Lightning

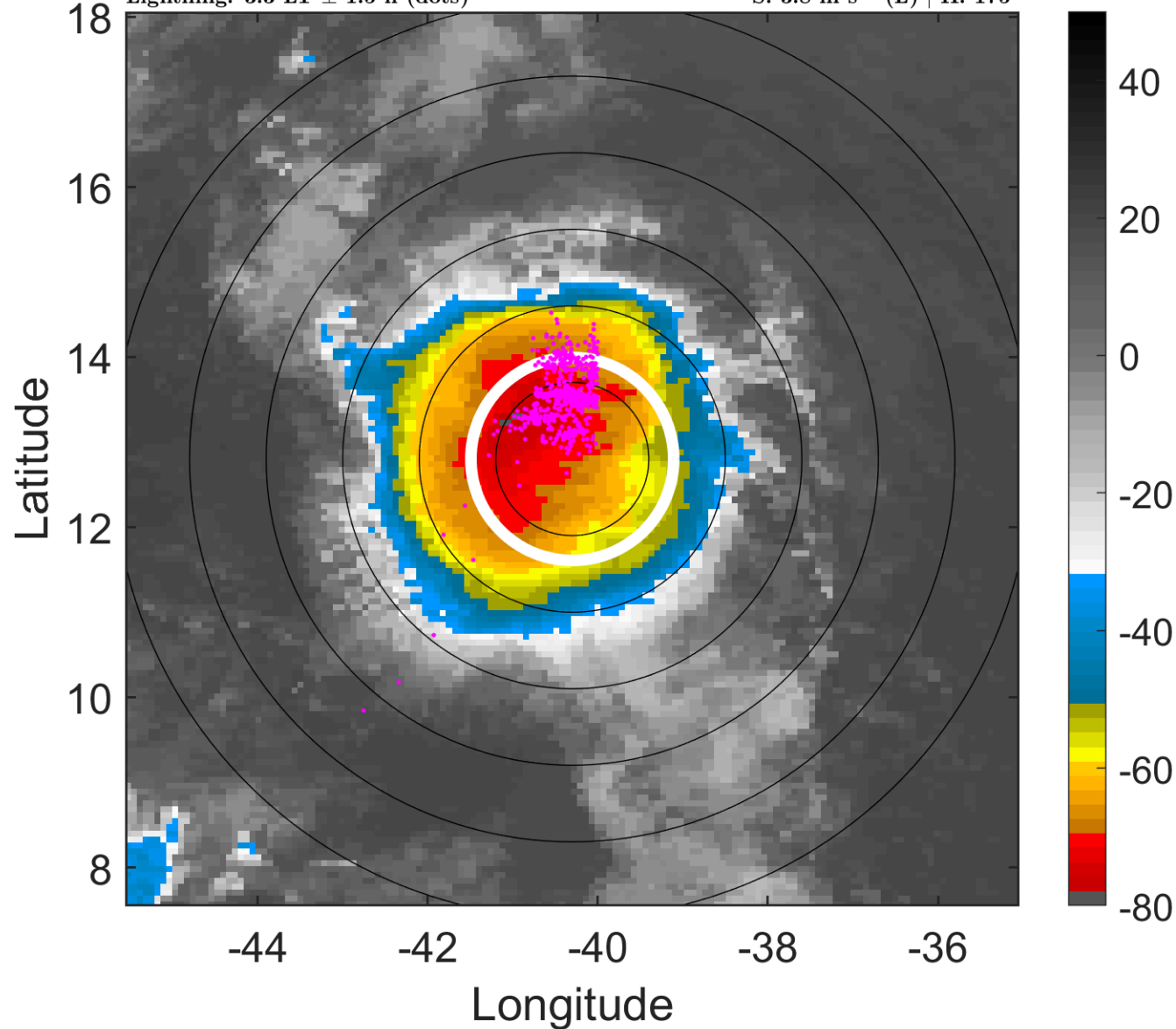
t: 2017070606 (3.3 LT)

Lightning: 3.3 LT \pm 1.5 h (dots)

PT: LLCP | EA: QUASI

04L (FOUR) | 25 kt TD

S: 3.8 m s⁻¹ (L) | H: 175°



6-h IR BT Differences & Lightning

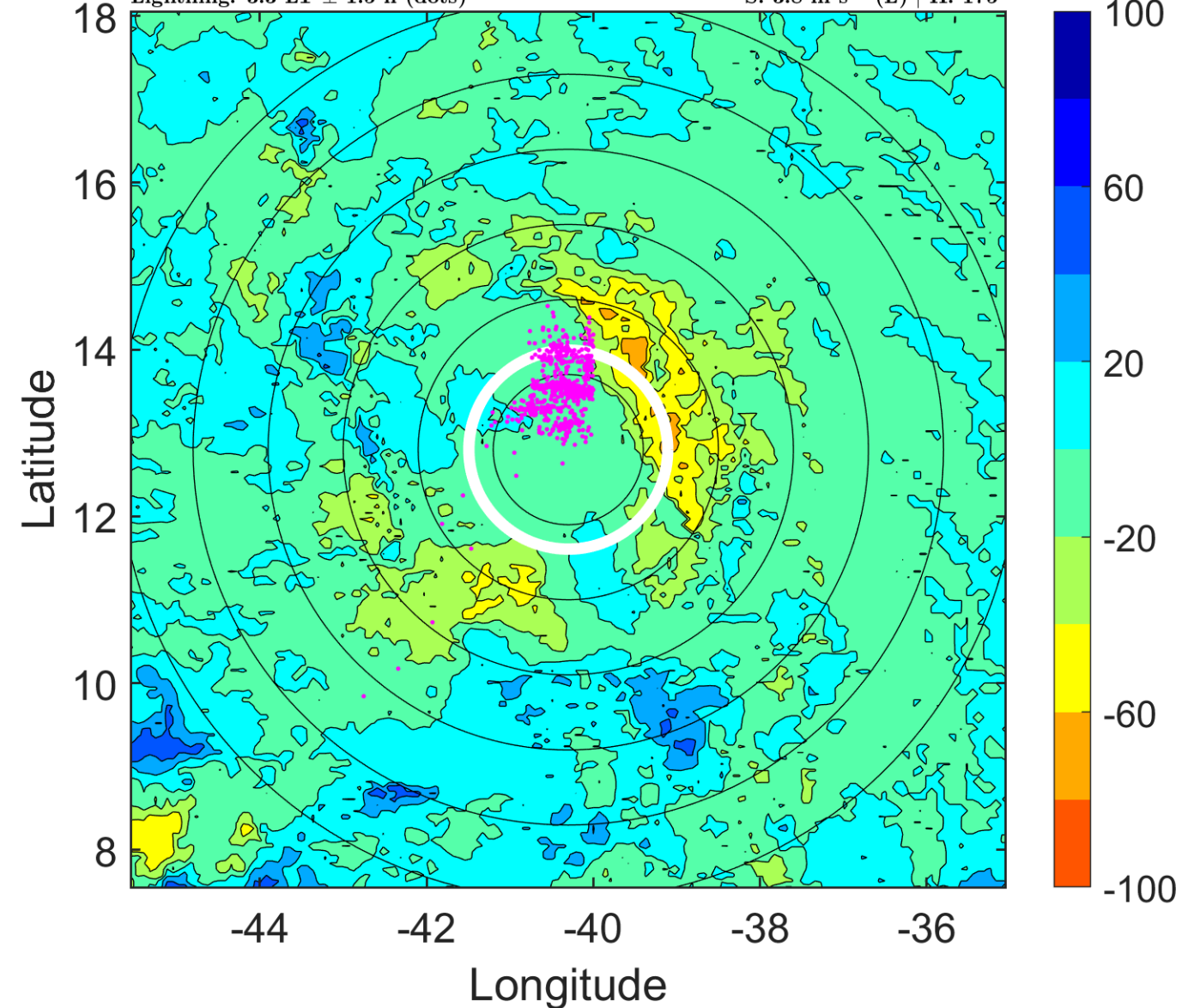
Δ t: 2017070606 (3.3 LT) - 2017070600 (21.4 LT)

Lightning: 3.3 LT \pm 1.5 h (dots)

PT: LLCP | EA: QUASI

04L (FOUR) | 25 kt TD

S: 3.8 m s⁻¹ (L) | H: 175°



IR BT & Lightning

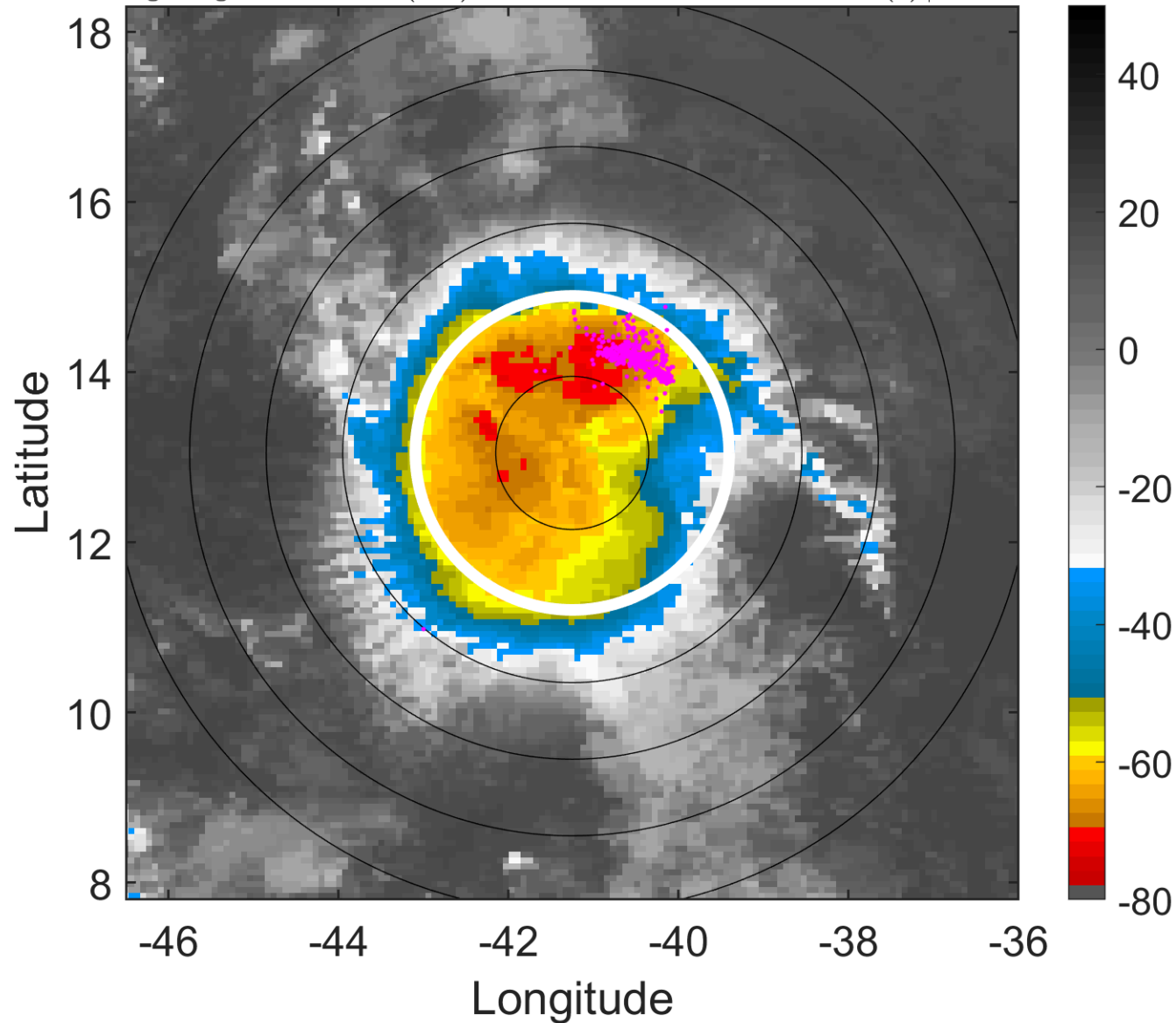
t: 2017070609 (6.3 LT)

Lightning: 6.3 LT \pm 1.5 h (dots)

PT: LLCP | EA: QUASI

04L (FOUR) | 25 kt TD

S: 3.7 m s⁻¹ (L) | H: 179°



6-h IR BT Differences & Lightning

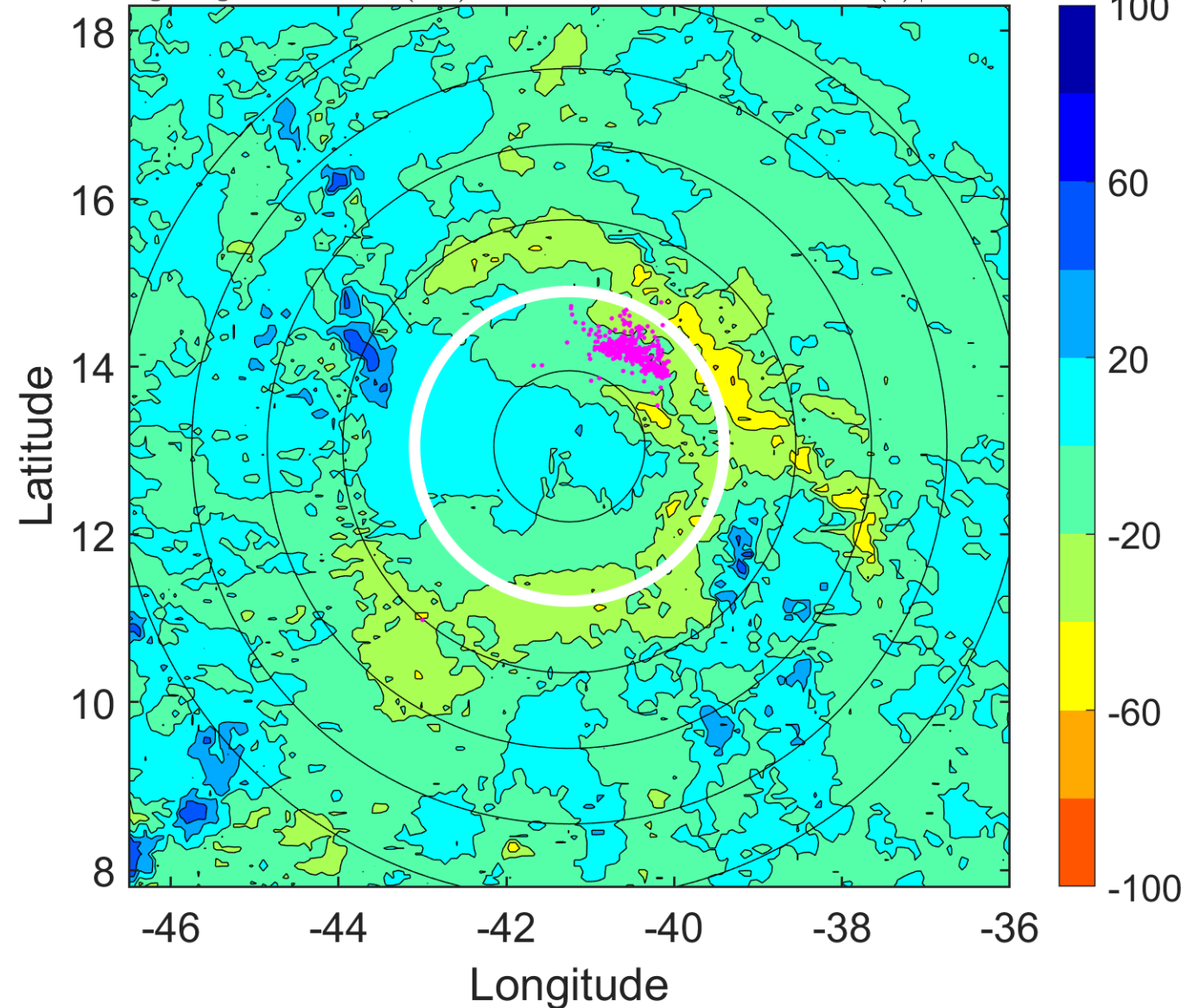
Δ t: 2017070609 (6.3 LT) - 2017070603 (0.4 LT)

Lightning: 6.3 LT \pm 1.5 h (dots)

PT: LLCP | EA: QUASI

04L (FOUR) | 25 kt TD

S: 3.7 m s⁻¹ (L) | H: 179°



IR BT & Lightning

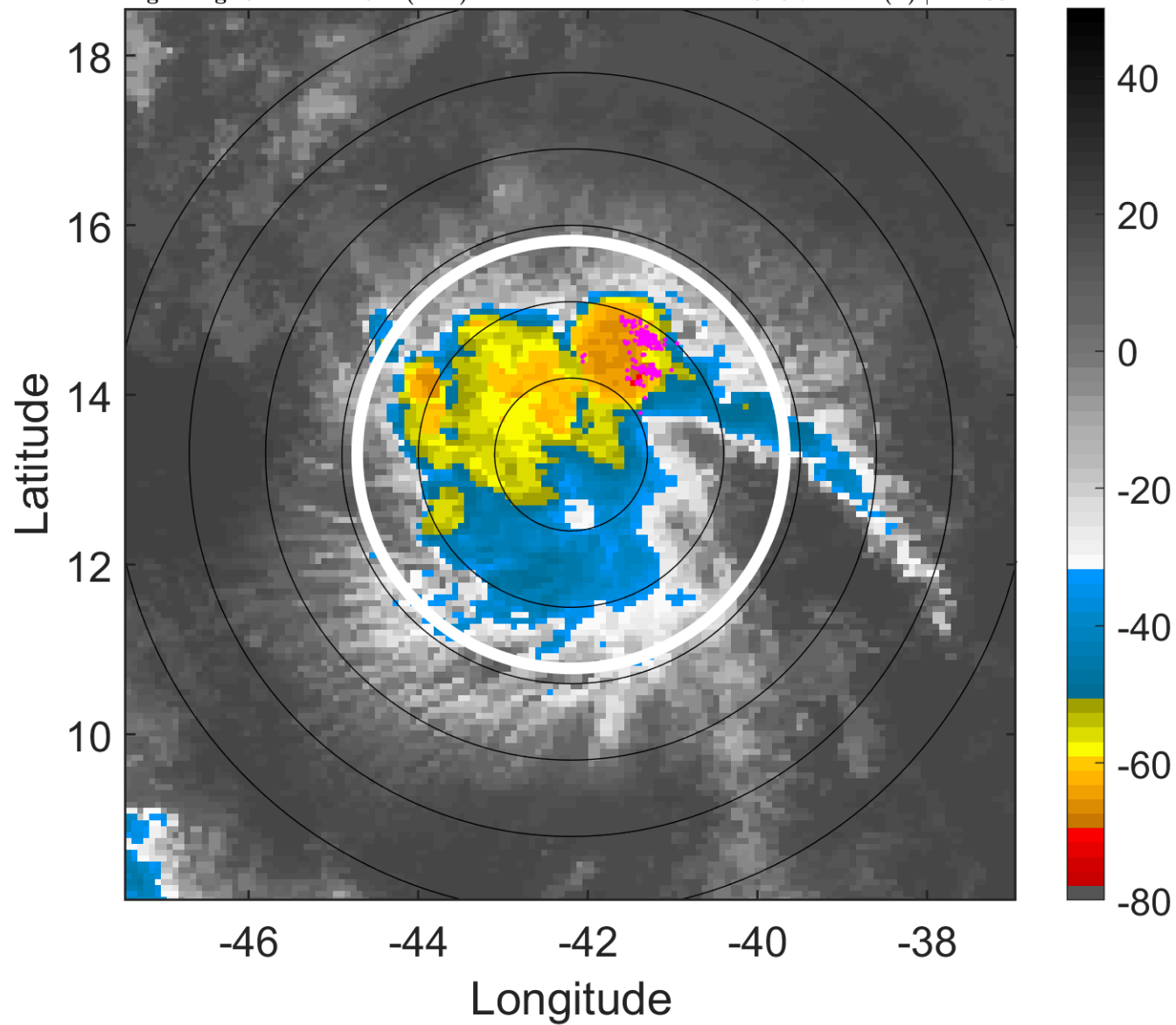
t: 2017070612 (9.2 LT)

Lightning: 9.2 LT \pm 1.5 h (dots)

PT: LLCP | EA: QUASI

04L (FOUR) | 25 kt TD

S: 3.7 m s⁻¹ (L) | H: 183°



6-h IR BT Differences & Lightning

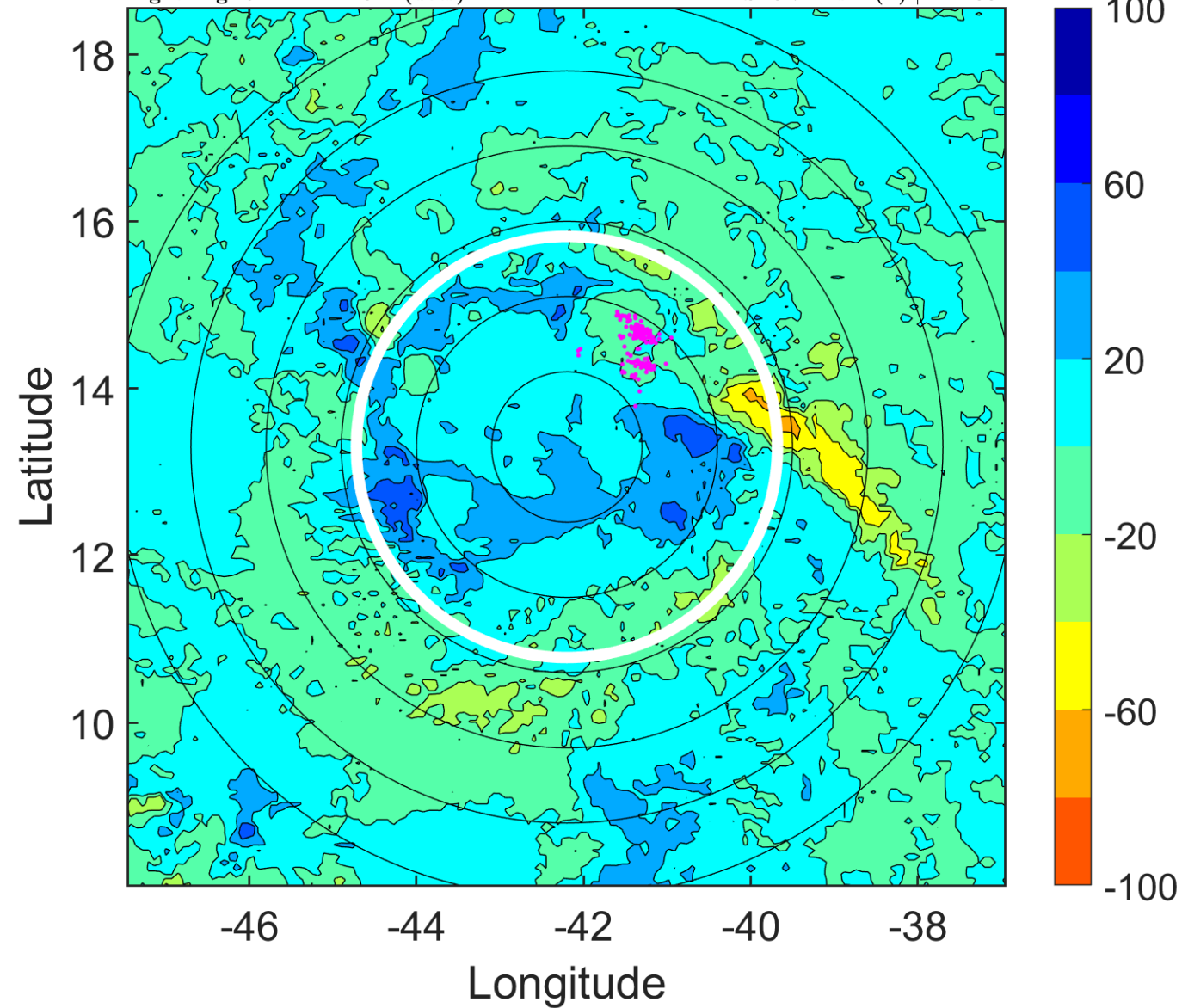
Δ t: 2017070612 (9.2 LT) - 2017070606 (3.3 LT)

Lightning: 9.2 LT \pm 1.5 h (dots)

PT: LLCP | EA: QUASI

04L (FOUR) | 25 kt TD

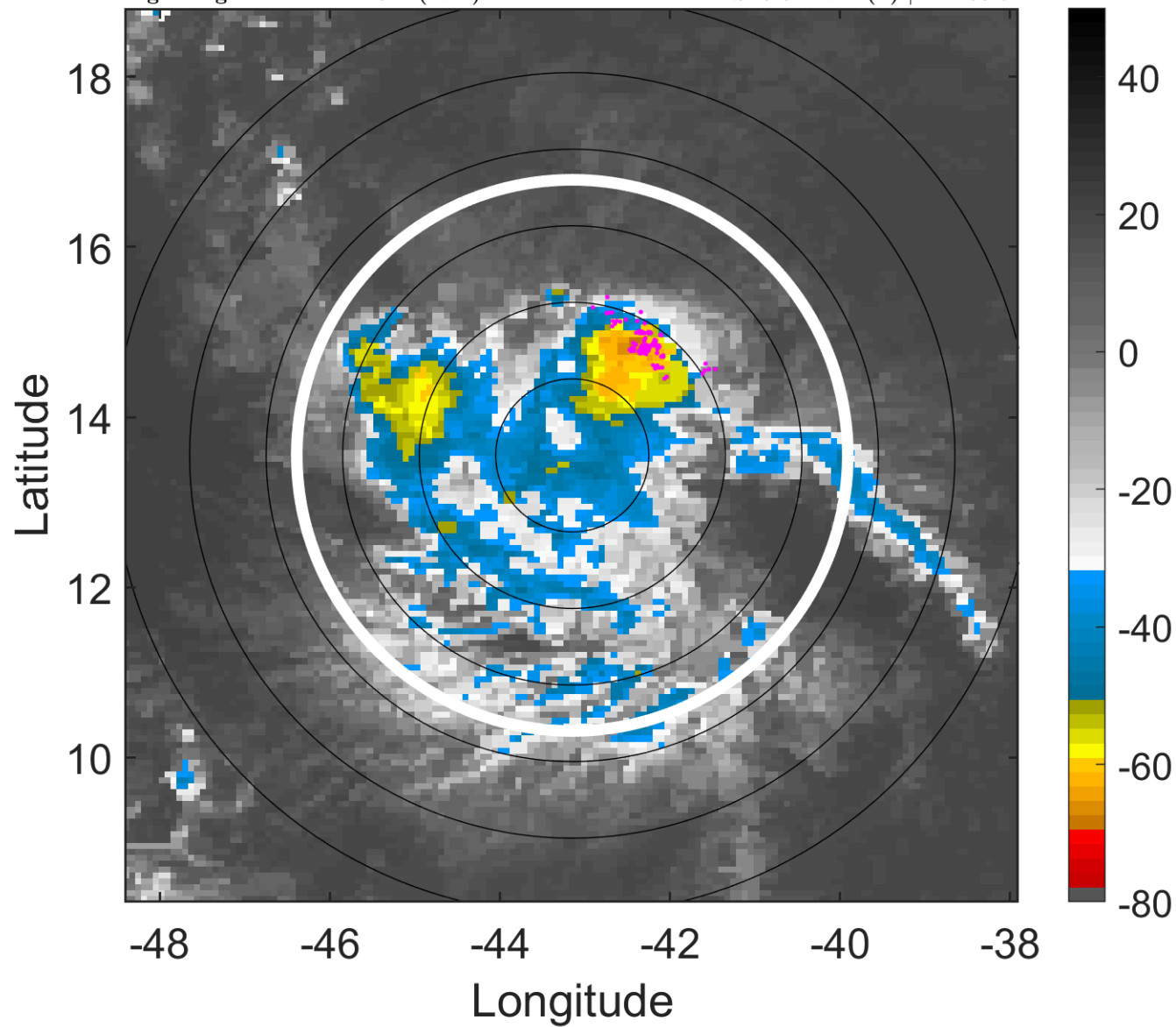
S: 3.7 m s⁻¹ (L) | H: 183°



IR BT & Lightning

t: 2017070615 (12.1 LT)
Lightning: 12.1 LT \pm 1.5 h (dots)

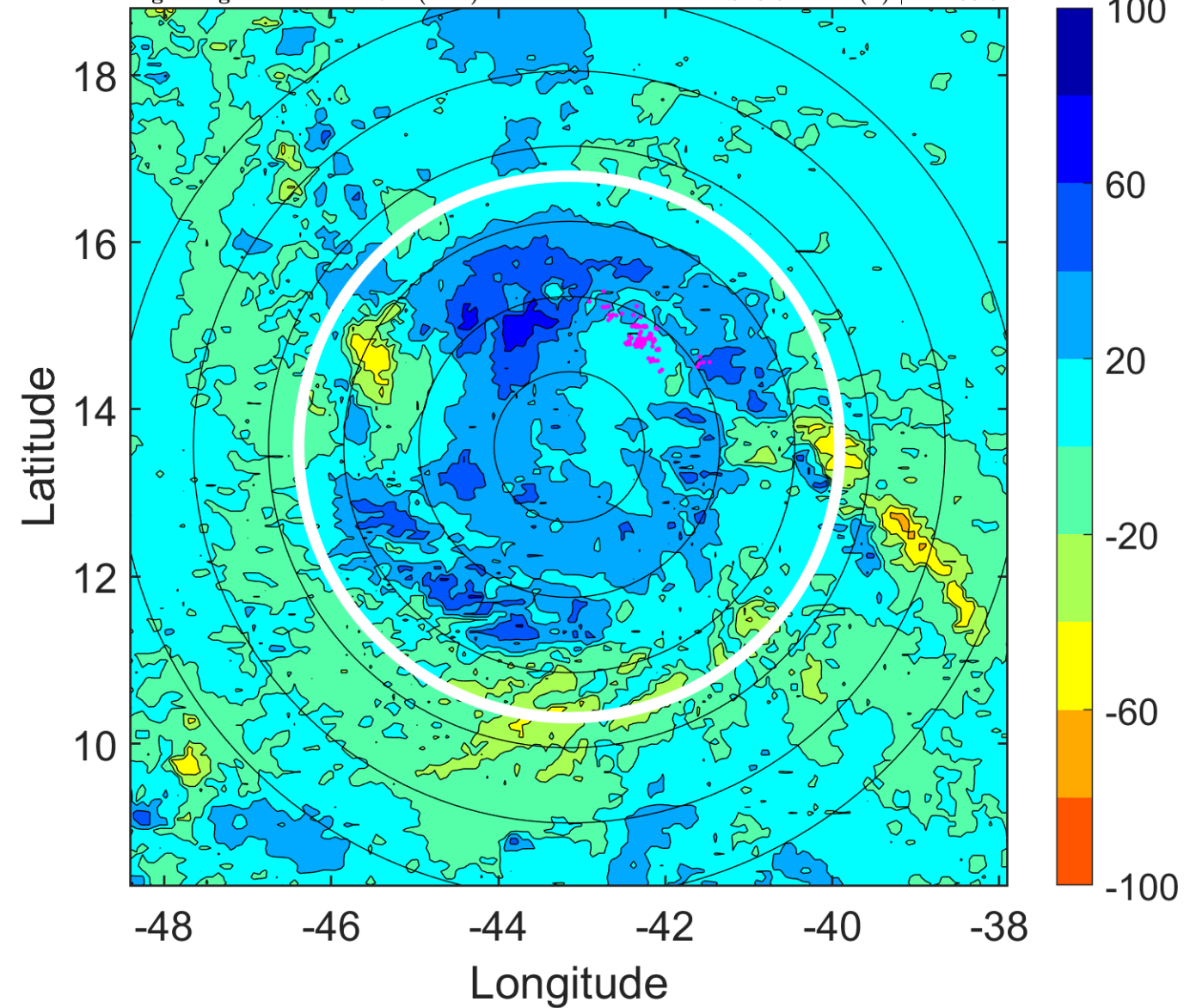
PT: LLCP | EA: QUASI
04L (FOUR) | 25 kt TD
S: 3.3 m s⁻¹ (L) | H: 208.5°



6-h IR BT Differences & Lightning

Δ t: 2017070615 (12.1 LT) - 2017070609 (6.3 LT)
Lightning: 12.1 LT \pm 1.5 h (dots)

PT: LLCP | EA: QUASI
04L (FOUR) | 25 kt TD
S: 3.3 m s⁻¹ (L) | H: 208.5°



IR BT & Lightning

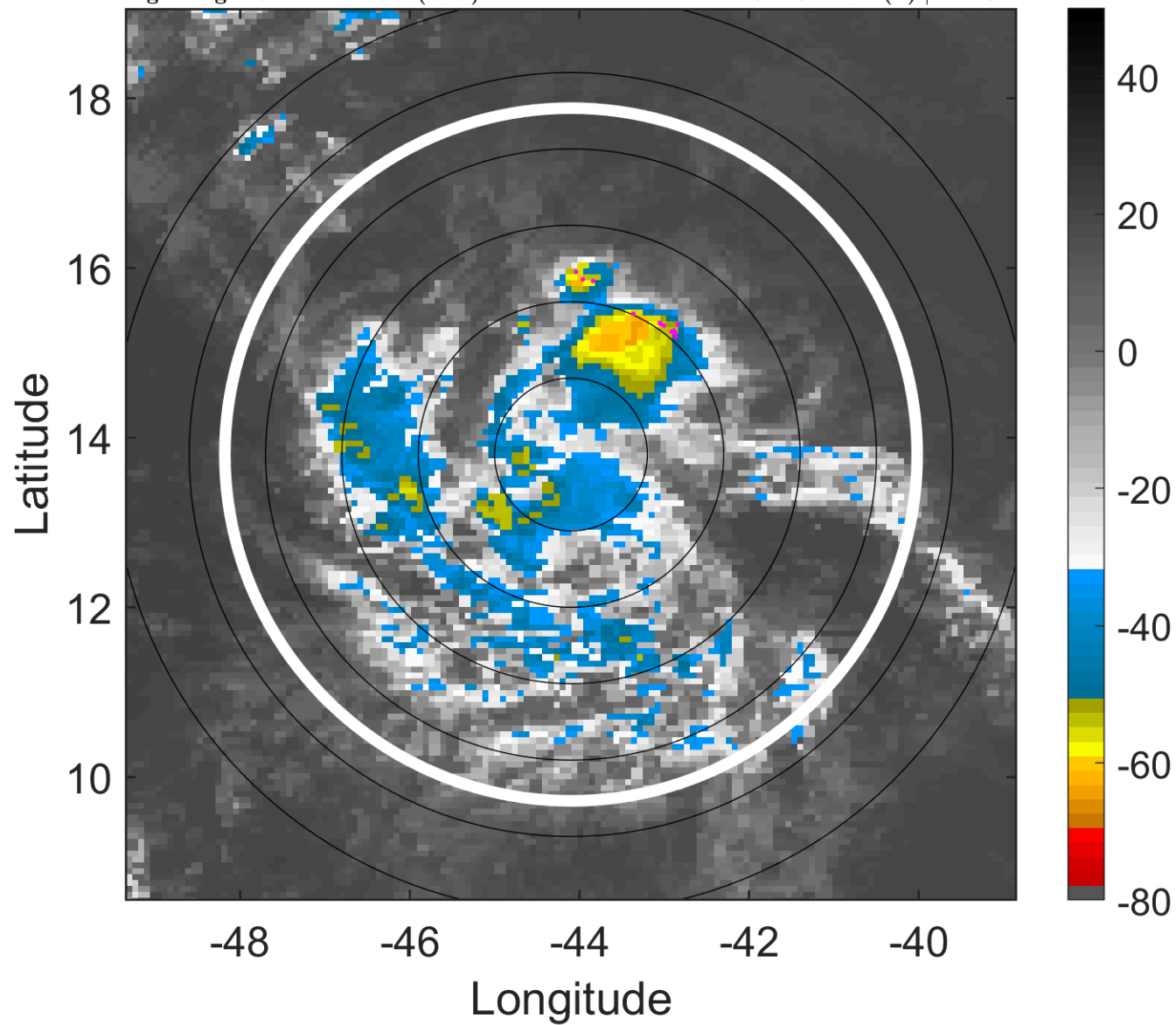
t: 2017070618 (15.1 LT)

Lightning: 15.1 LT \pm 1.5 h (dots)

PT: LLCP | EA: QUASI

04L (FOUR) | 25 kt TD

S: 2.9 m s⁻¹ (L) | H: 234°



6-h IR BT Differences & Lightning

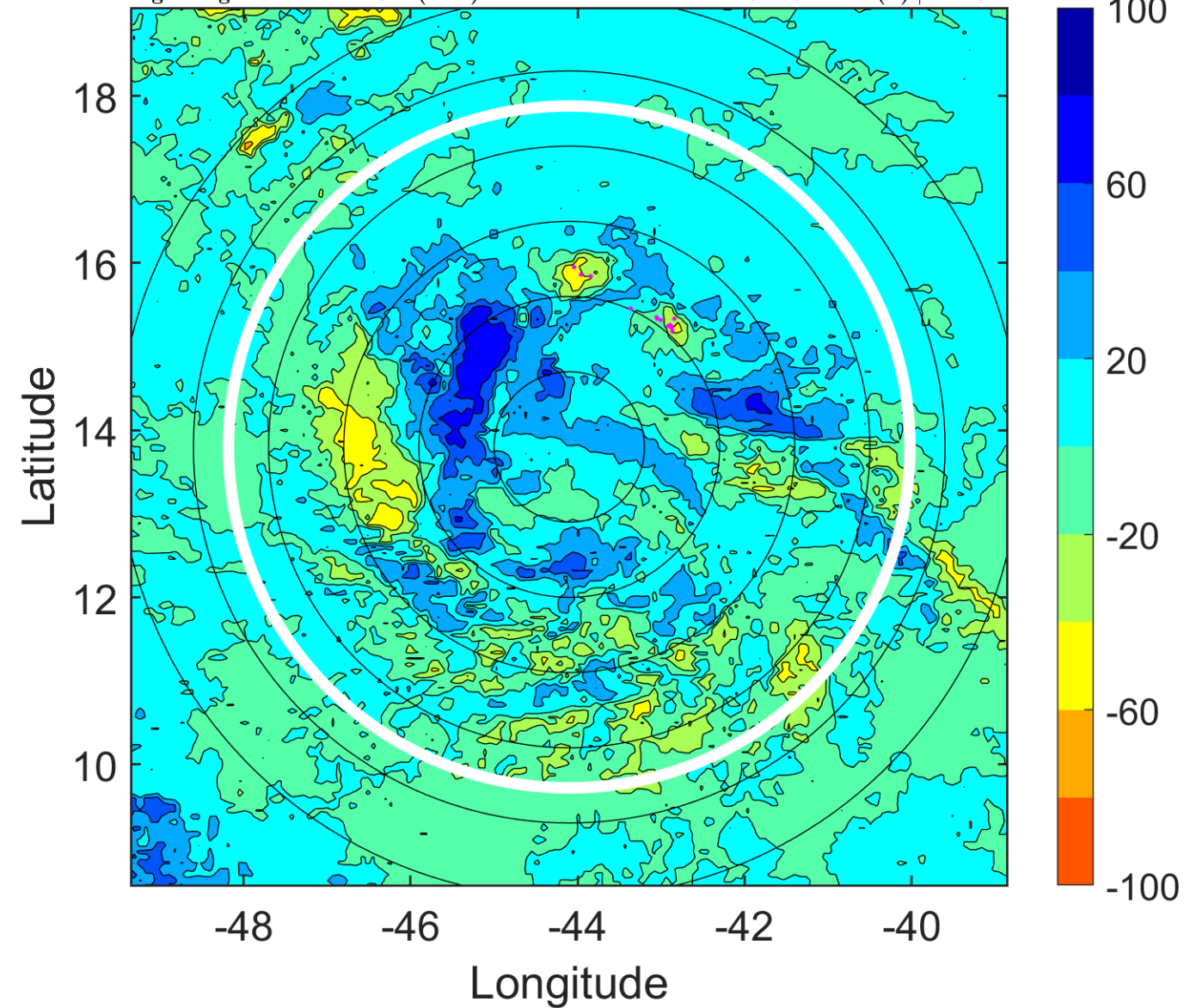
Δ t: 2017070618 (15.1 LT) - 2017070612 (9.2 LT)

Lightning: 15.1 LT \pm 1.5 h (dots)

PT: LLCP | EA: QUASI

04L (FOUR) | 25 kt TD

S: 2.9 m s⁻¹ (L) | H: 234°



IR BT & Lightning

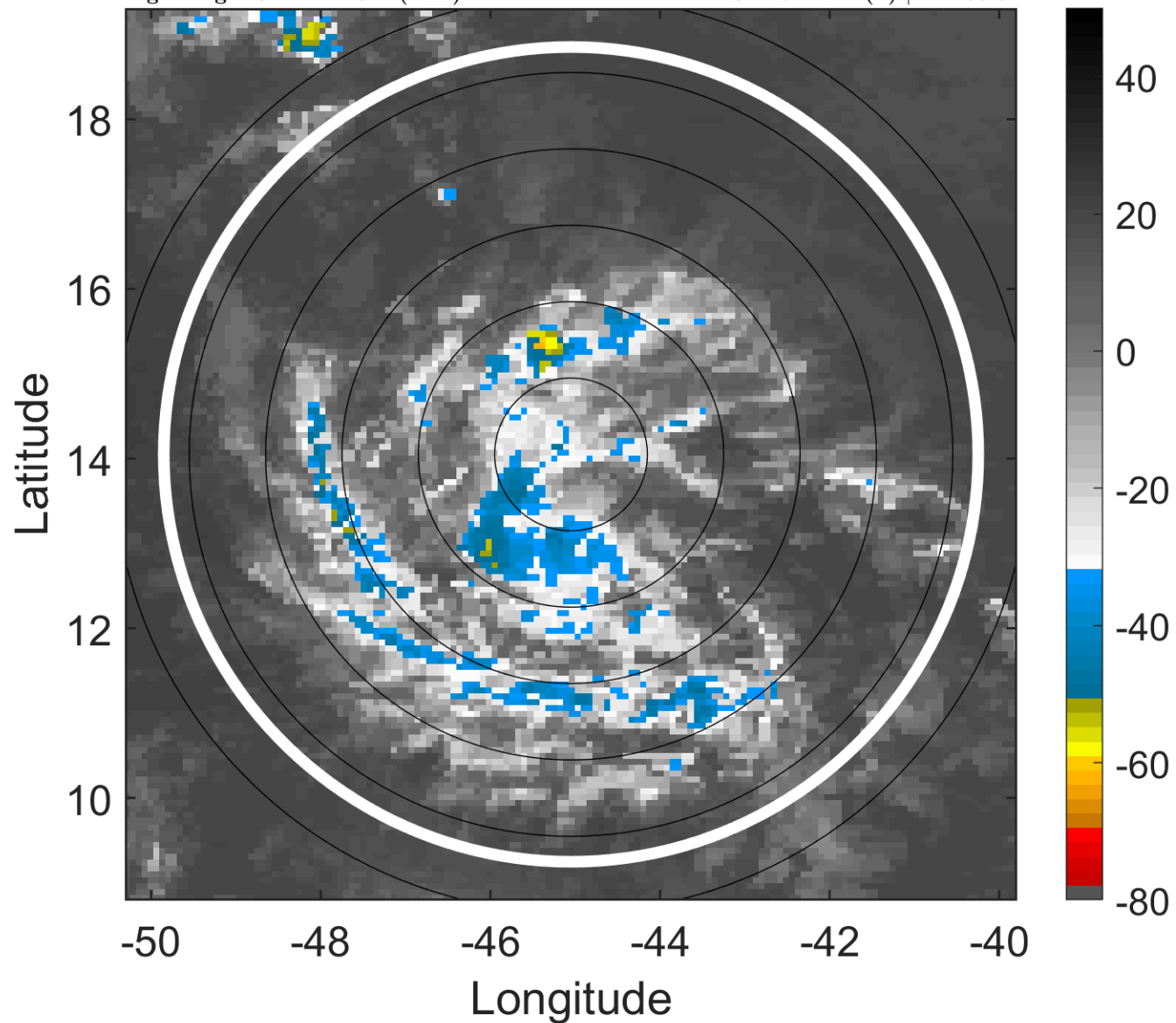
t: 2017070621 (18 LT)

Lightning: 18 LT \pm 1.5 h (dots)

PT: LLCP | EA: QUASI

04L (FOUR) | 25 kt TD

S: 2.5 m s⁻¹ (L) | H: 255.5°



6-h IR BT Differences & Lightning

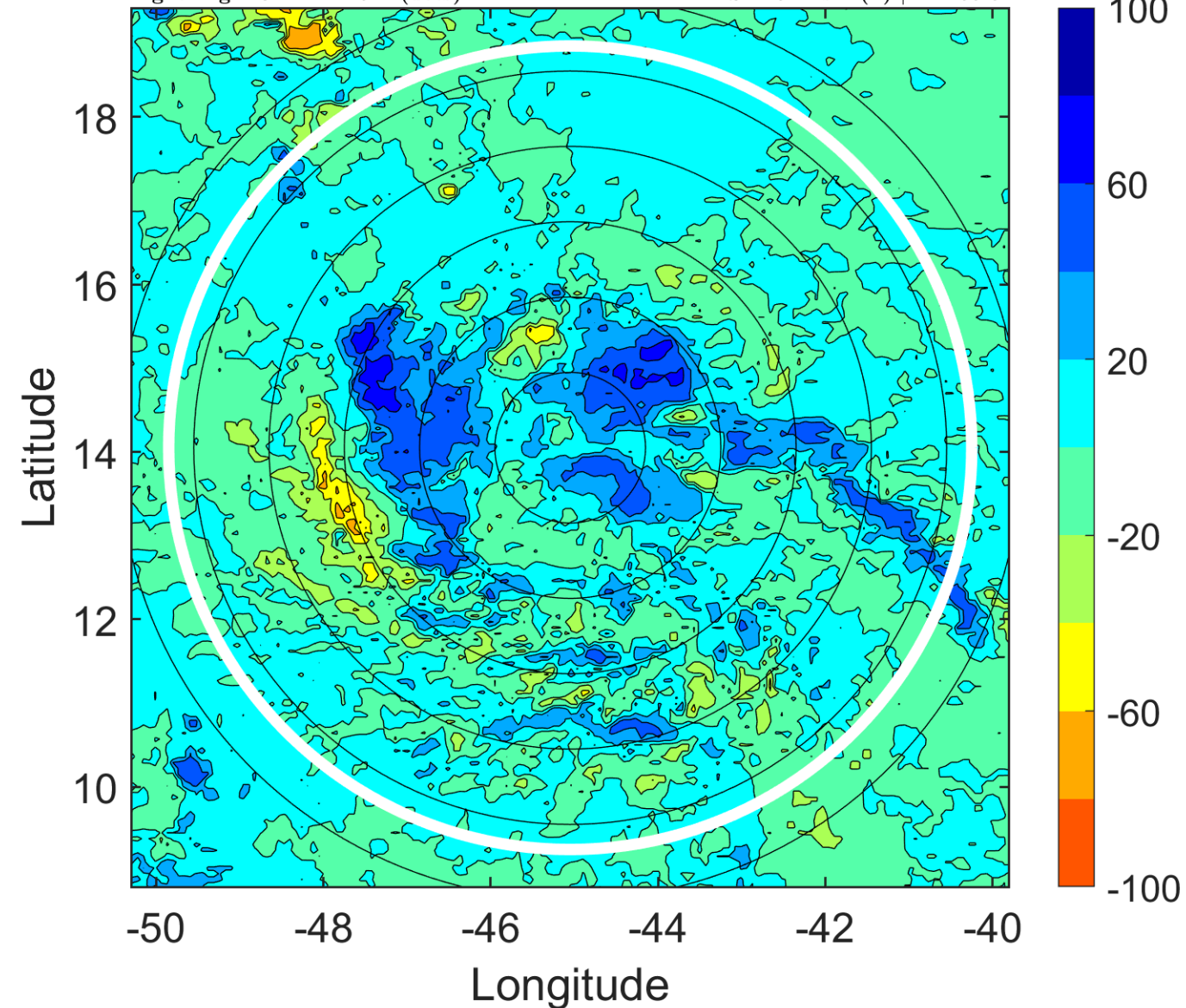
Δ t: 2017070621 (18 LT) - 2017070615 (12.1 LT)

Lightning: 18 LT \pm 1.5 h (dots)

PT: LLCP | EA: QUASI

04L (FOUR) | 25 kt TD

S: 2.5 m s⁻¹ (L) | H: 255.5°



IR BT & Lightning

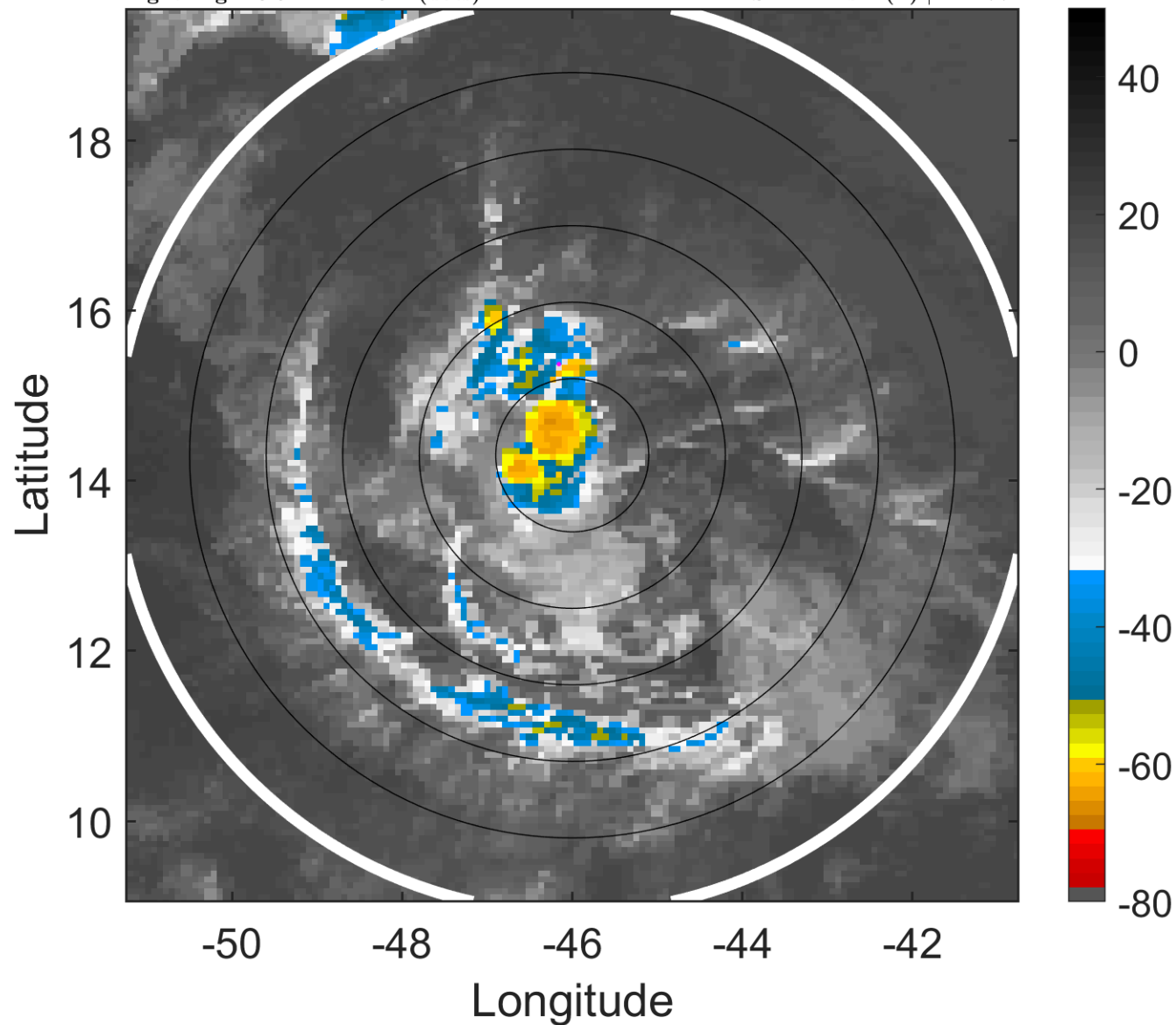
t: 2017070700 (20.9 LT)

Lightning: 20.9 LT \pm 1.5 h (dots)

PT: LLCP | EA: QUASI

04L (FOUR) | 25 kt TD

S: 2.2 m s⁻¹ (L) | H: 277°



6-h IR BT Differences & Lightning

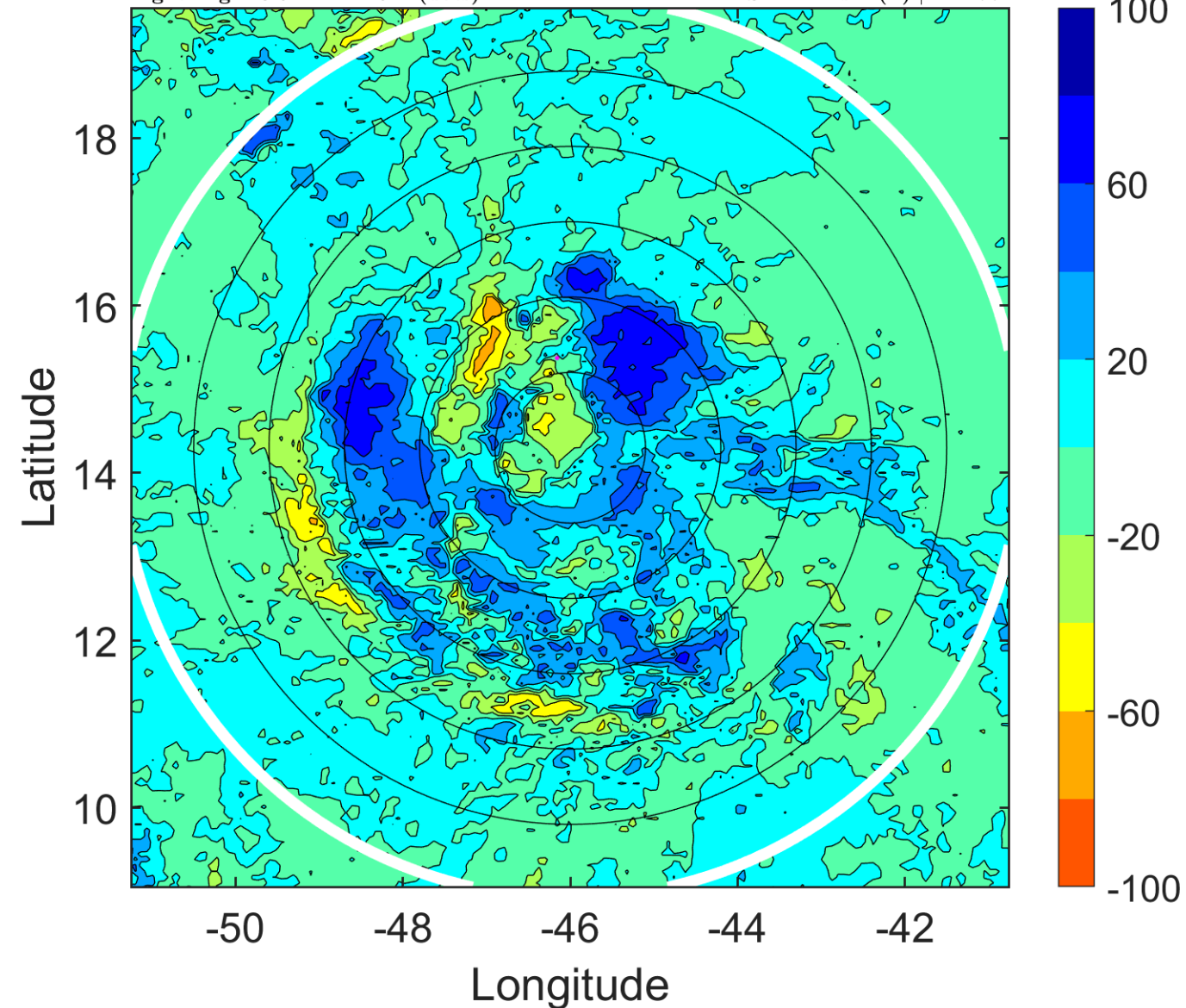
Δ t: 2017070700 (20.9 LT) - 2017070618 (15.1 LT)

Lightning: 20.9 LT \pm 1.5 h (dots)

PT: LLCP | EA: QUASI

04L (FOUR) | 25 kt TD

S: 2.2 m s⁻¹ (L) | H: 277°



IR BT & Lightning

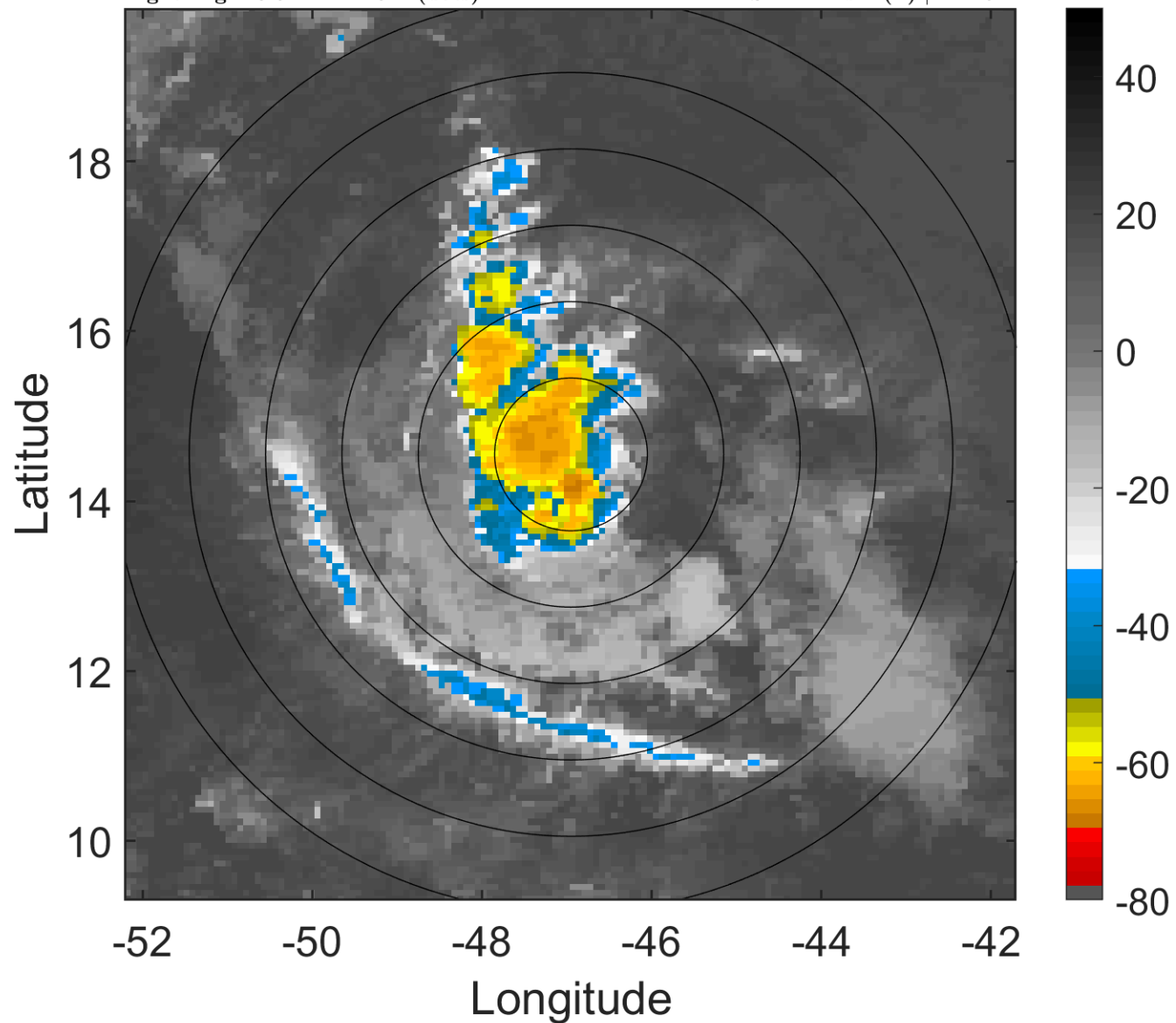
t: 2017070703 (23.9 LT)

Lightning: 23.9 LT \pm 1.5 h (dots)

PT: LLCP | EA: QUASI

04L (FOUR) | 25 kt TD

S: 2.1 m s⁻¹ (L) | H: 152°



6-h IR BT Differences & Lightning

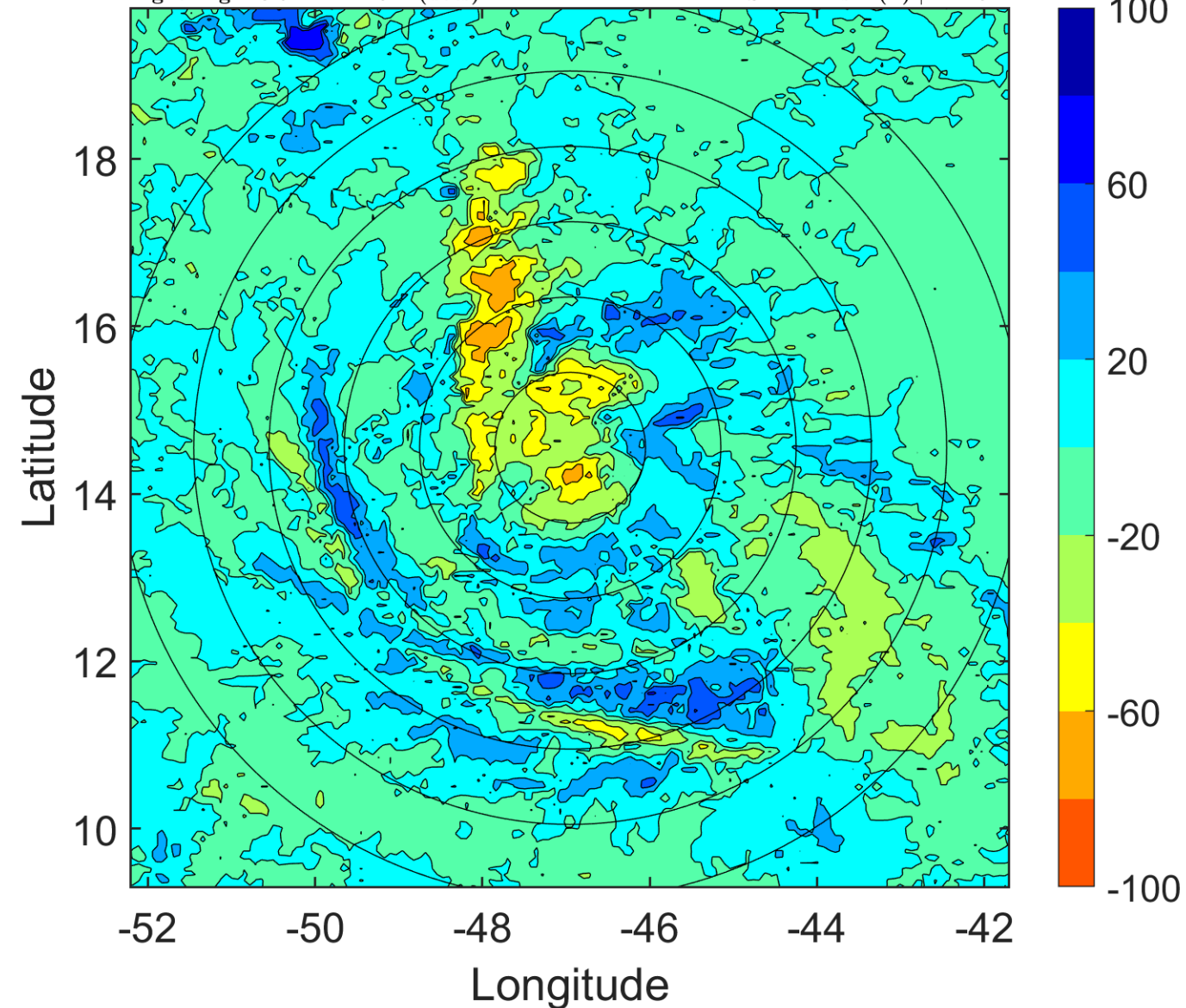
Δ t: 2017070703 (23.9 LT) - 2017070621 (18 LT)

Lightning: 23.9 LT \pm 1.5 h (dots)

PT: LLCP | EA: QUASI

04L (FOUR) | 25 kt TD

S: 2.1 m s⁻¹ (L) | H: 152°



IR BT & Lightning

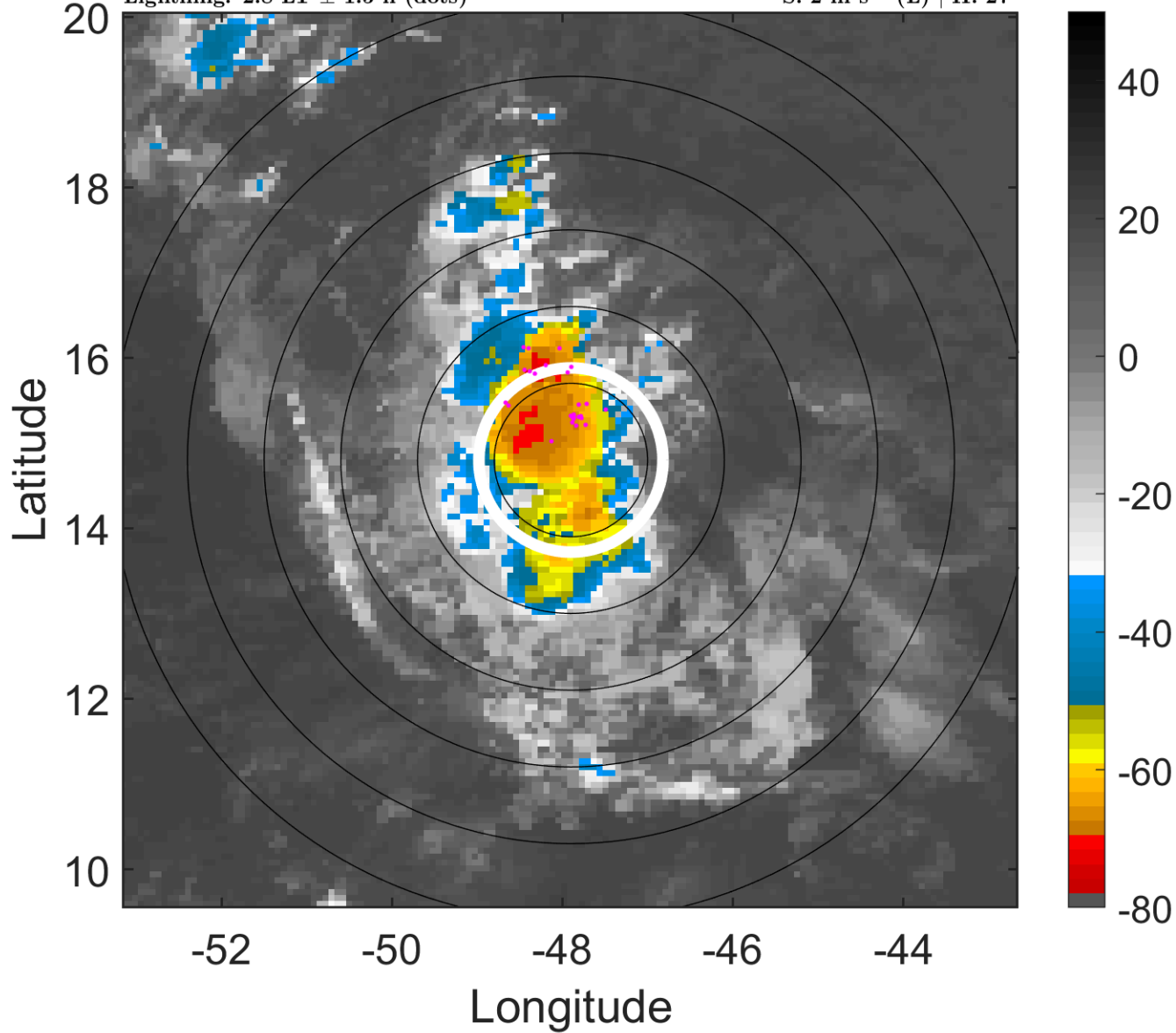
t: 2017070706 (2.8 LT)

Lightning: 2.8 LT \pm 1.5 h (dots)

PT: SLCP | EA: QUASI

04L (FOUR) | 25 kt TD

S: 2 m s⁻¹ (L) | H: 27°



6-h IR BT Differences & Lightning

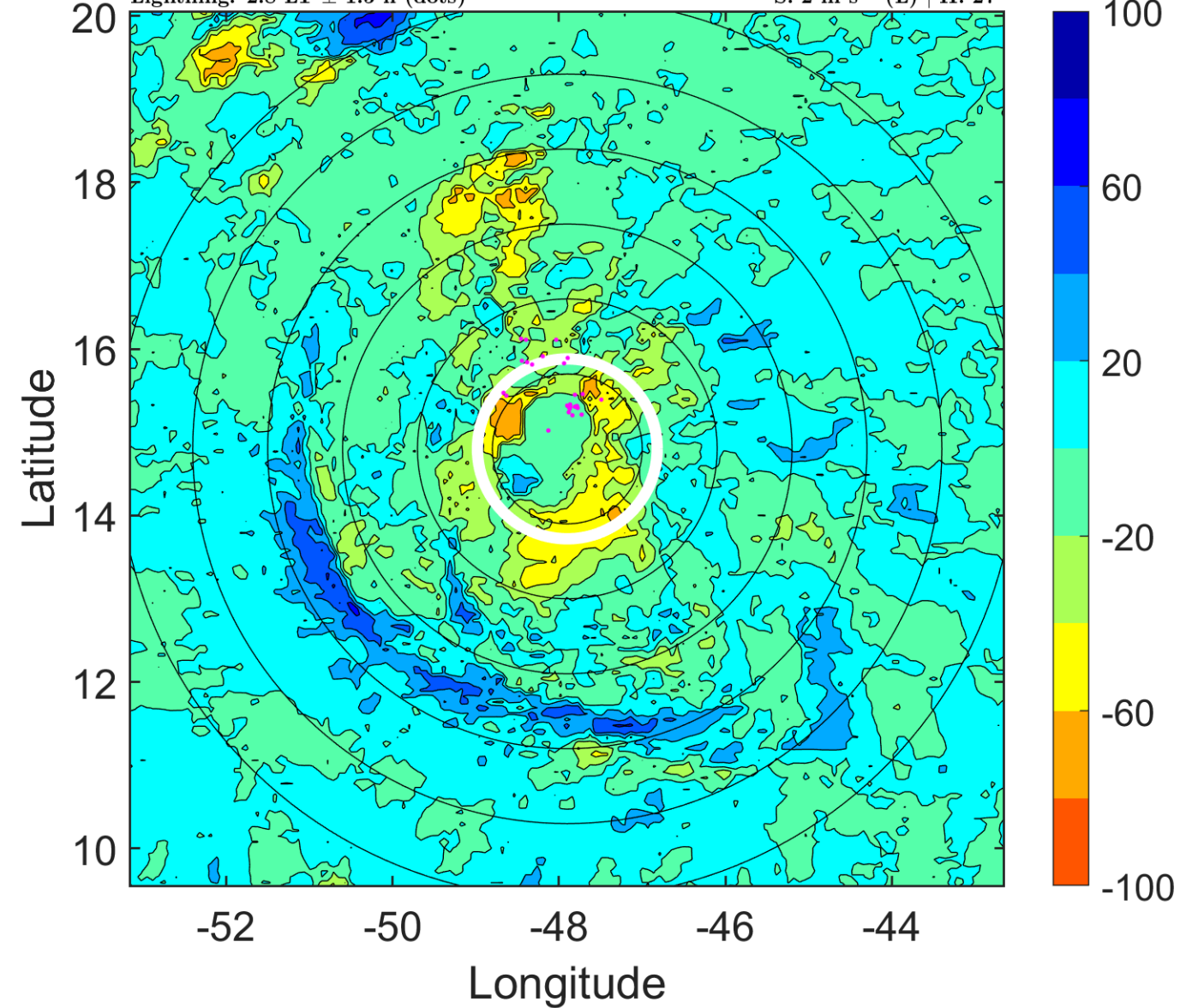
Δ t: 2017070706 (2.8 LT) - 2017070700 (20.9 LT)

Lightning: 2.8 LT \pm 1.5 h (dots)

PT: SLCP | EA: QUASI

04L (FOUR) | 25 kt TD

S: 2 m s⁻¹ (L) | H: 27°



IR BT & Lightning

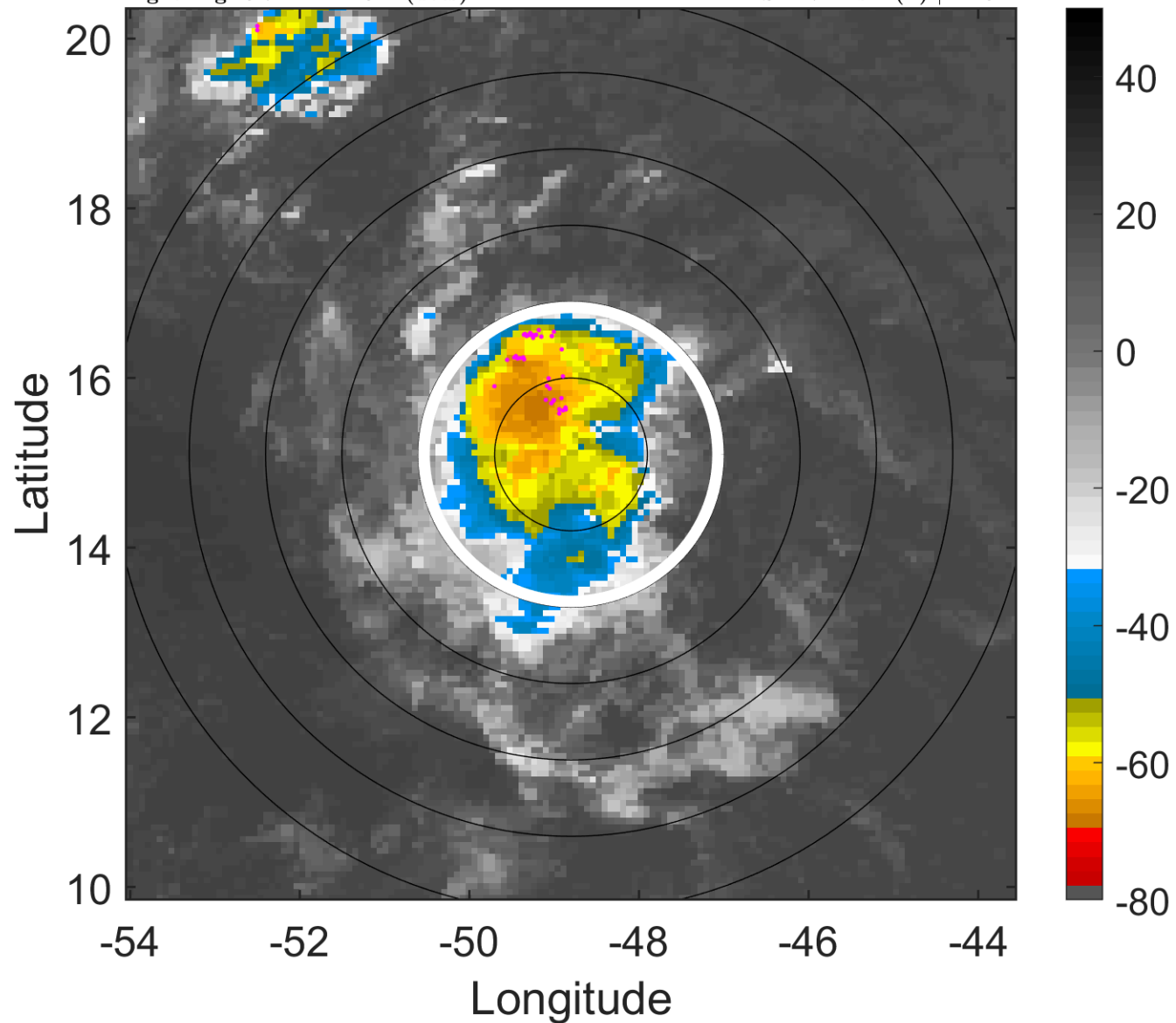
t: 2017070709 (5.7 LT)

Lightning: 5.7 LT \pm 1.5 h (dots)

PT: SLCP | EA: QUASI

04L (FOUR) | 25 kt TD

S: 2.7 m s⁻¹ (L) | H: 54°



6-h IR BT Differences & Lightning

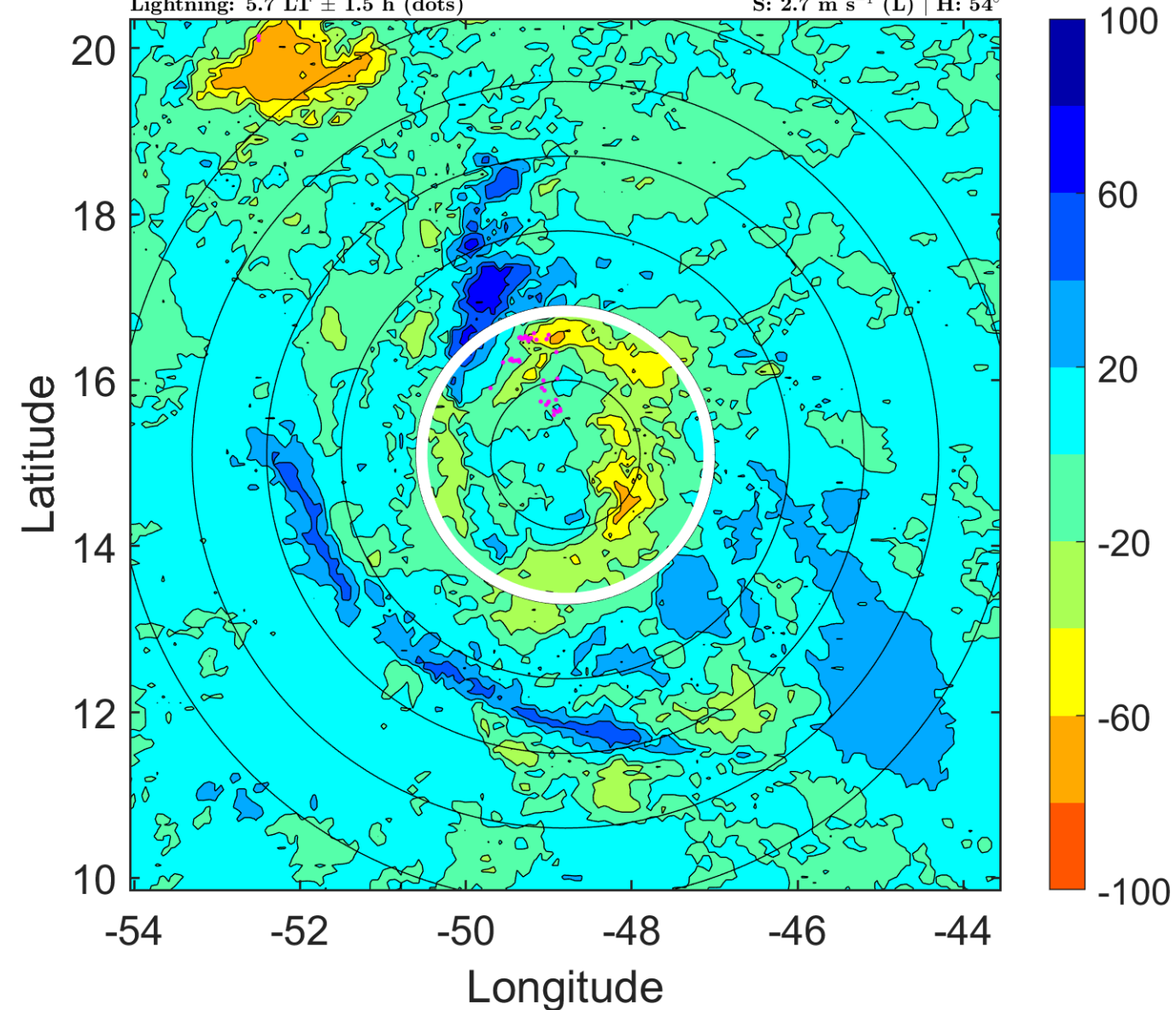
Δ t: 2017070709 (5.7 LT) - 2017070703 (23.9 LT)

Lightning: 5.7 LT \pm 1.5 h (dots)

PT: SLCP | EA: QUASI

04L (FOUR) | 25 kt TD

S: 2.7 m s⁻¹ (L) | H: 54°



IR BT & Lightning

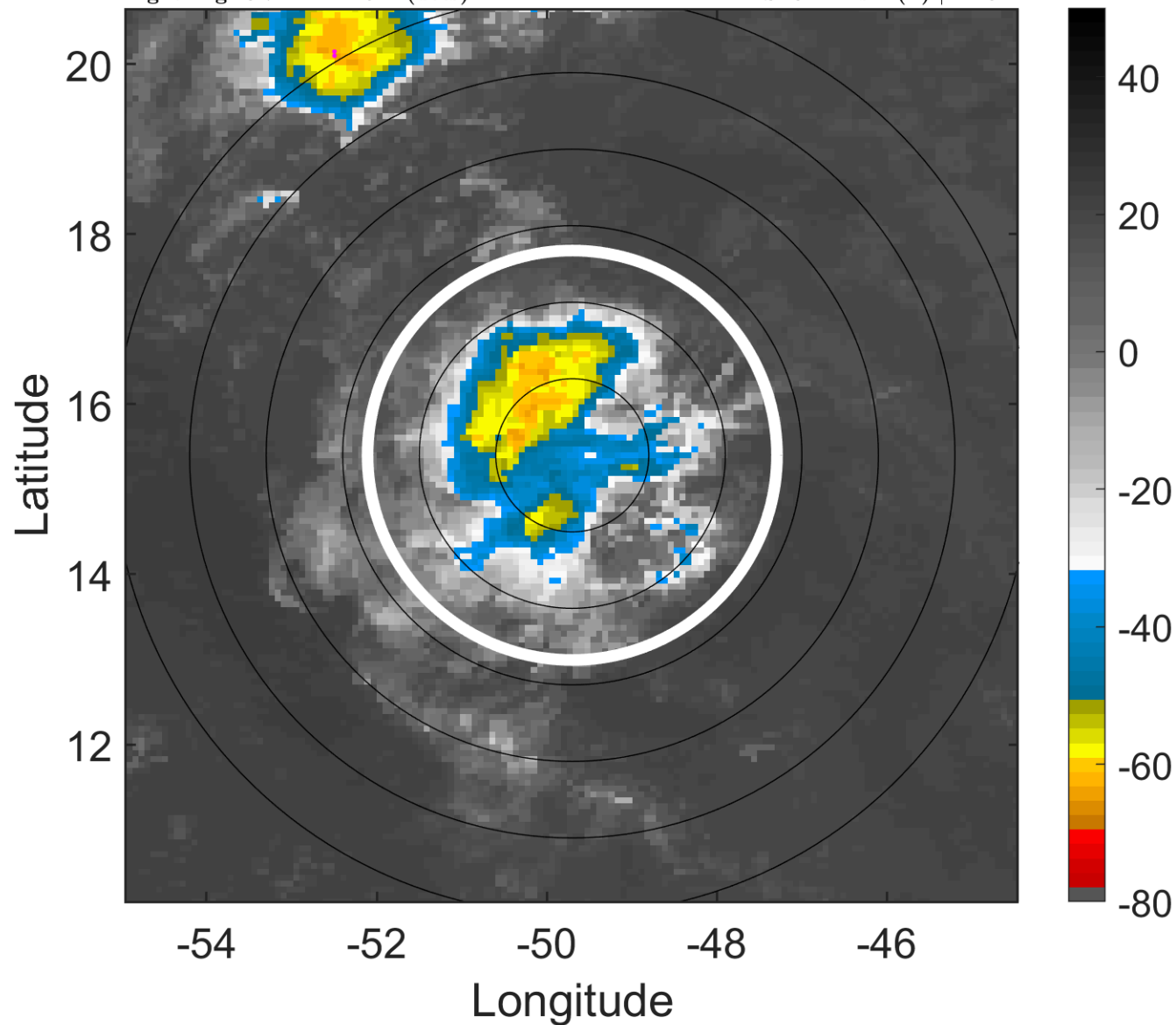
t: 2017070712 (8.7 LT)

Lightning: 8.7 LT \pm 1.5 h (dots)

PT: SLCP | EA: QUASI

04L (FOUR) | 25 kt TD

S: 3.4 m s⁻¹ (L) | H: 81°



6-h IR BT Differences & Lightning

Δ t: 2017070712 (8.7 LT) - 2017070706 (2.8 LT)

Lightning: 8.7 LT \pm 1.5 h (dots)

PT: SLCP | EA: QUASI

04L (FOUR) | 25 kt TD

S: 3.4 m s⁻¹ (L) | H: 81°

