

### IR BT & Lightning

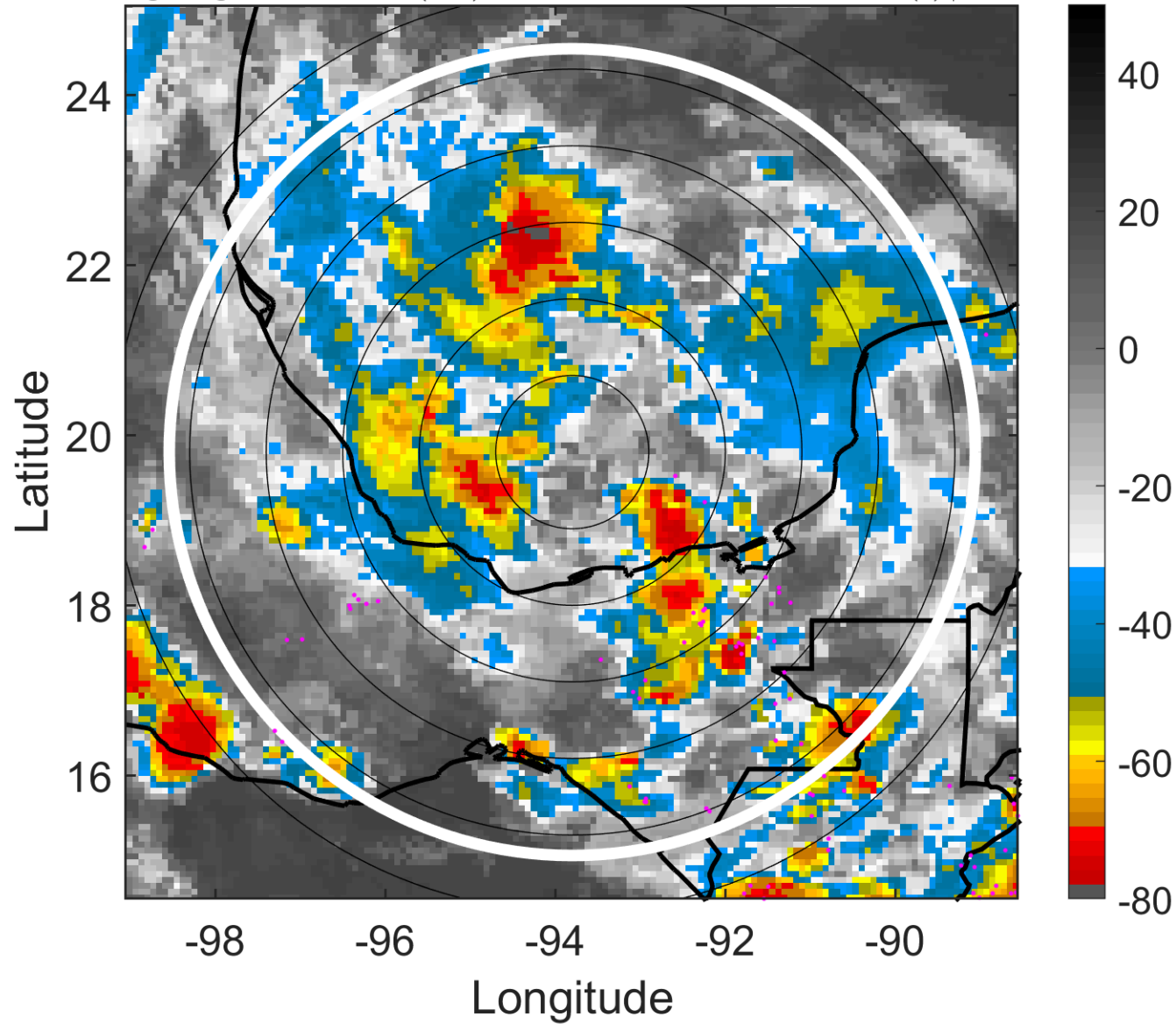
t: 2005072400 (17.7 LT)

Lightning: 17.7 LT  $\pm$  1.5 h (dots)

PT: SLCP | EA: INACT

07L (GERT) | 30 kt TD

S: 3.1 m s<sup>-1</sup> (L) | H: 7°



### 6-h IR BT Differences & Lightning

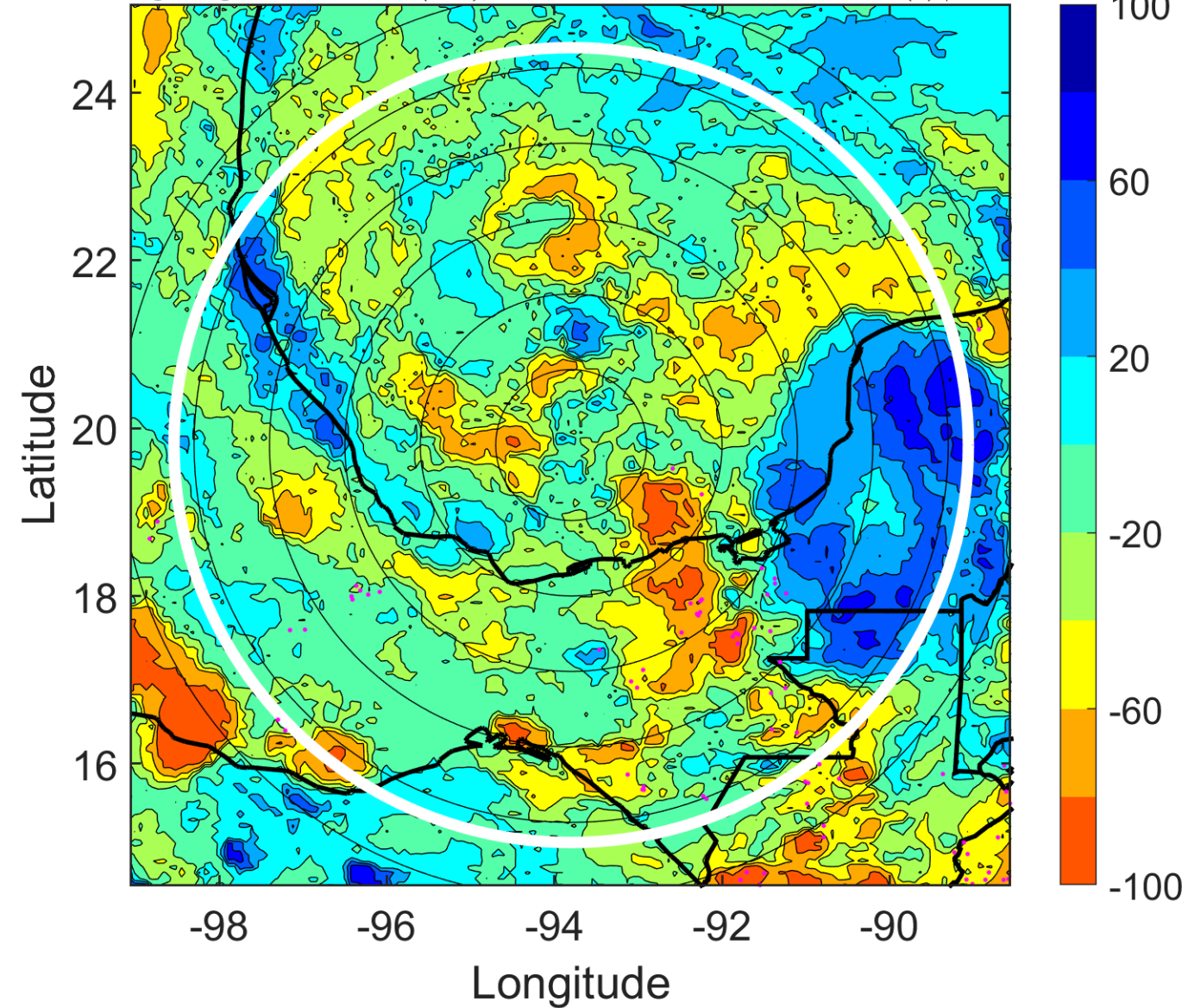
$\Delta$ t: 2005072400 (17.7 LT) - 2005072318 (11.8 LT)

Lightning: 17.7 LT  $\pm$  1.5 h (dots)

PT: SLCP | EA: INACT

07L (GERT) | 30 kt TD

S: 3.1 m s<sup>-1</sup> (L) | H: 7°



### IR BT & Lightning

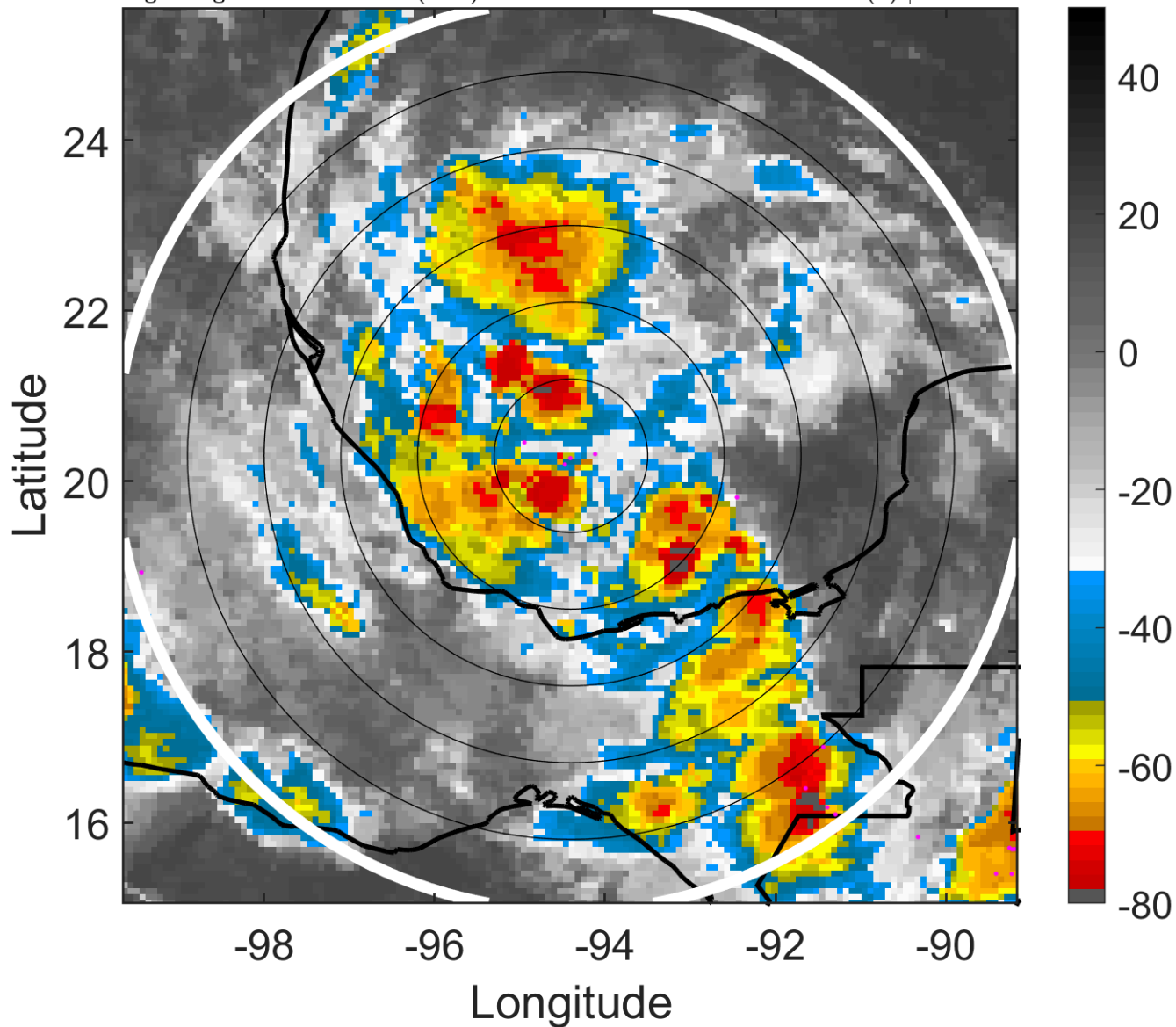
t: 2005072403 (20.7 LT)

Lightning: 20.7 LT  $\pm$  1.5 h (dots)

PT: SLCP | EA: INACT

07L (GERT) | 32.5 kt TD

S: 1.7 m s<sup>-1</sup> (L) | H: 124.5°



### 6-h IR BT Differences & Lightning

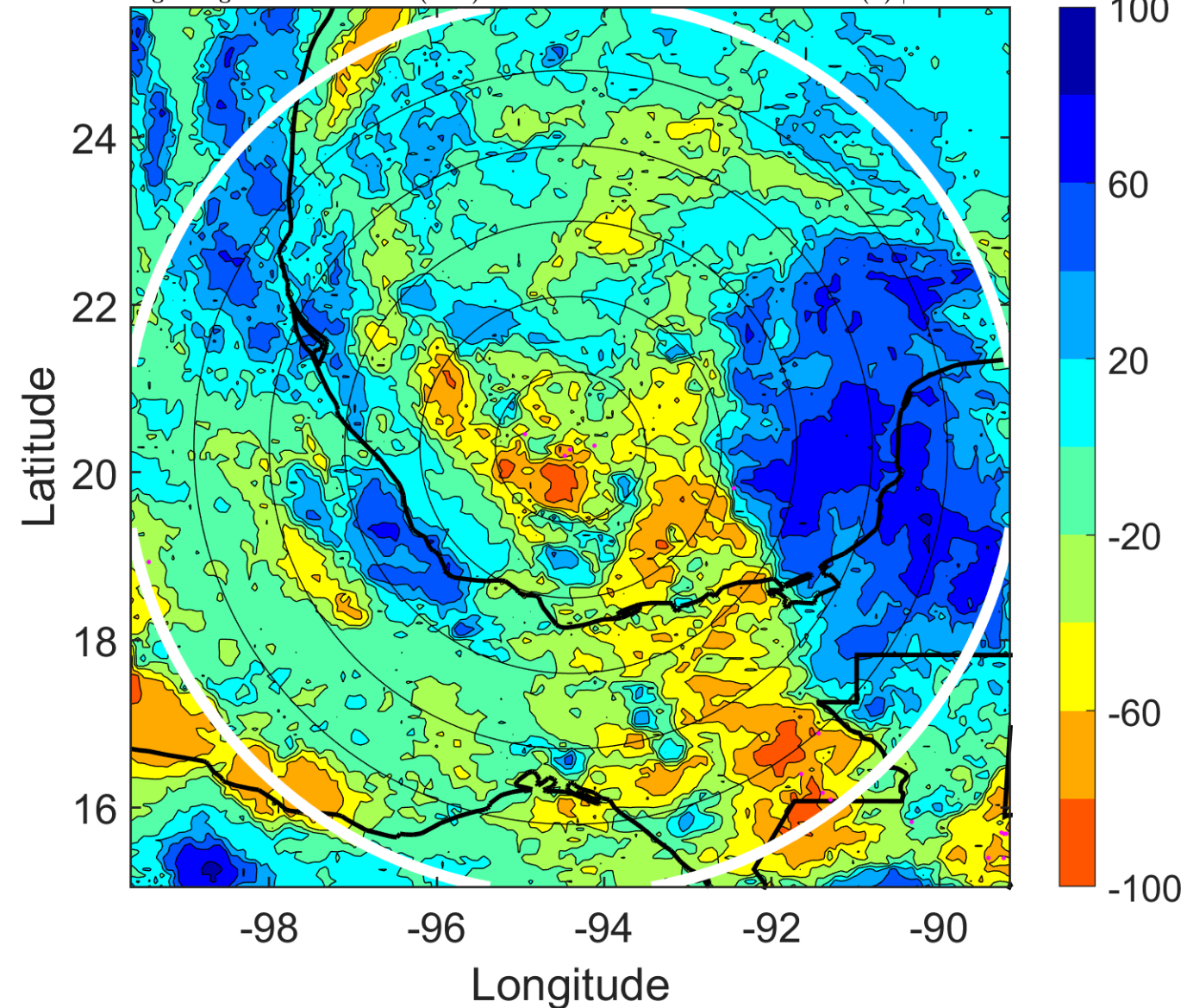
$\Delta$ t: 2005072403 (20.7 LT) - 2005072321 (14.8 LT)

Lightning: 20.7 LT  $\pm$  1.5 h (dots)

PT: SLCP | EA: INACT

07L (GERT) | 32.5 kt TD

S: 1.7 m s<sup>-1</sup> (L) | H: 124.5°





### IR BT & Lightning

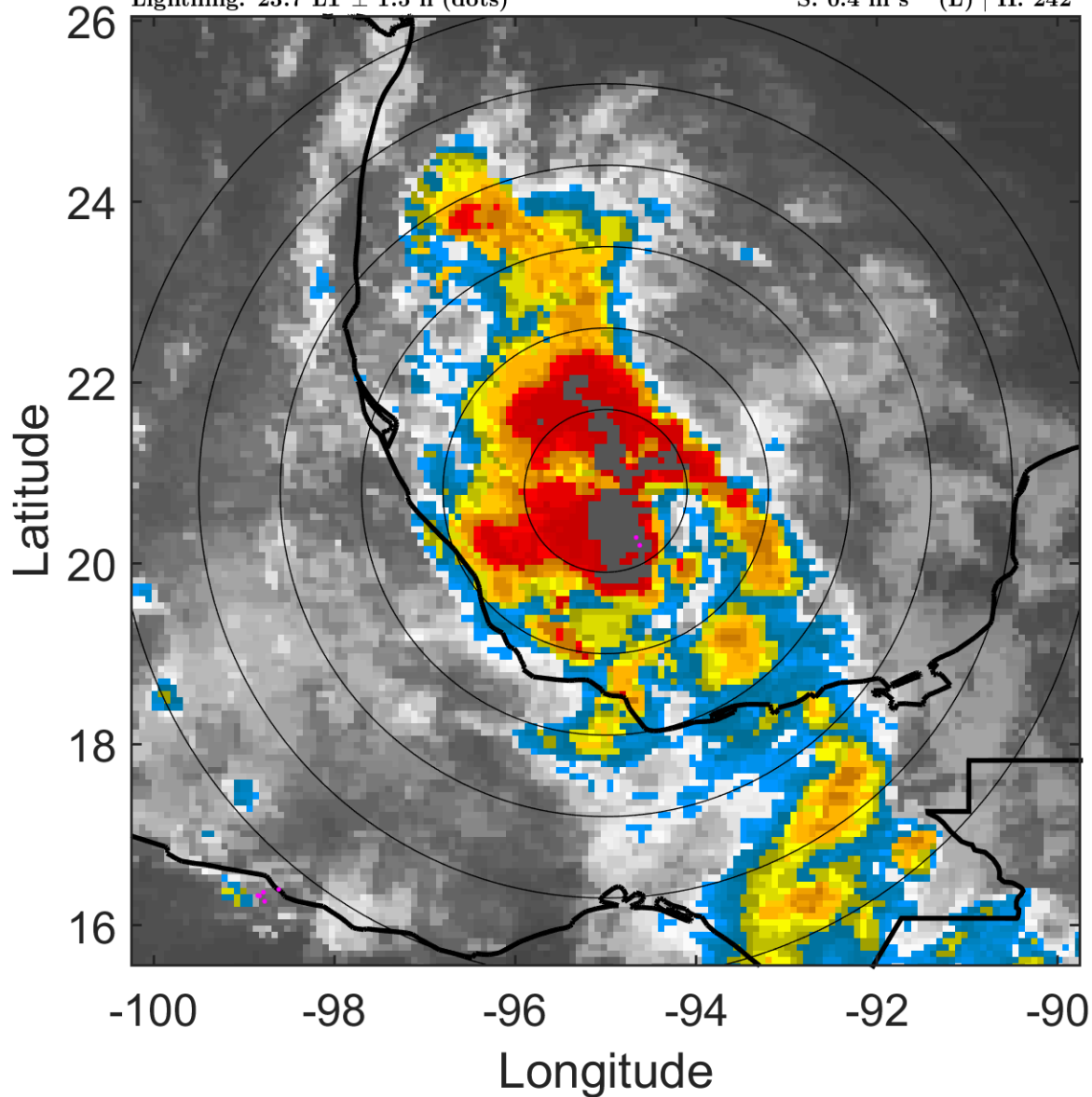
t: 2005072406 (23.7 LT)

Lightning: 23.7 LT  $\pm$  1.5 h (dots)

PT: SLCP | EA: INACT

07L (GERT) | 35 kt TS

S: 0.4 m s<sup>-1</sup> (L) | H: 242°



### 6-h IR BT Differences & Lightning

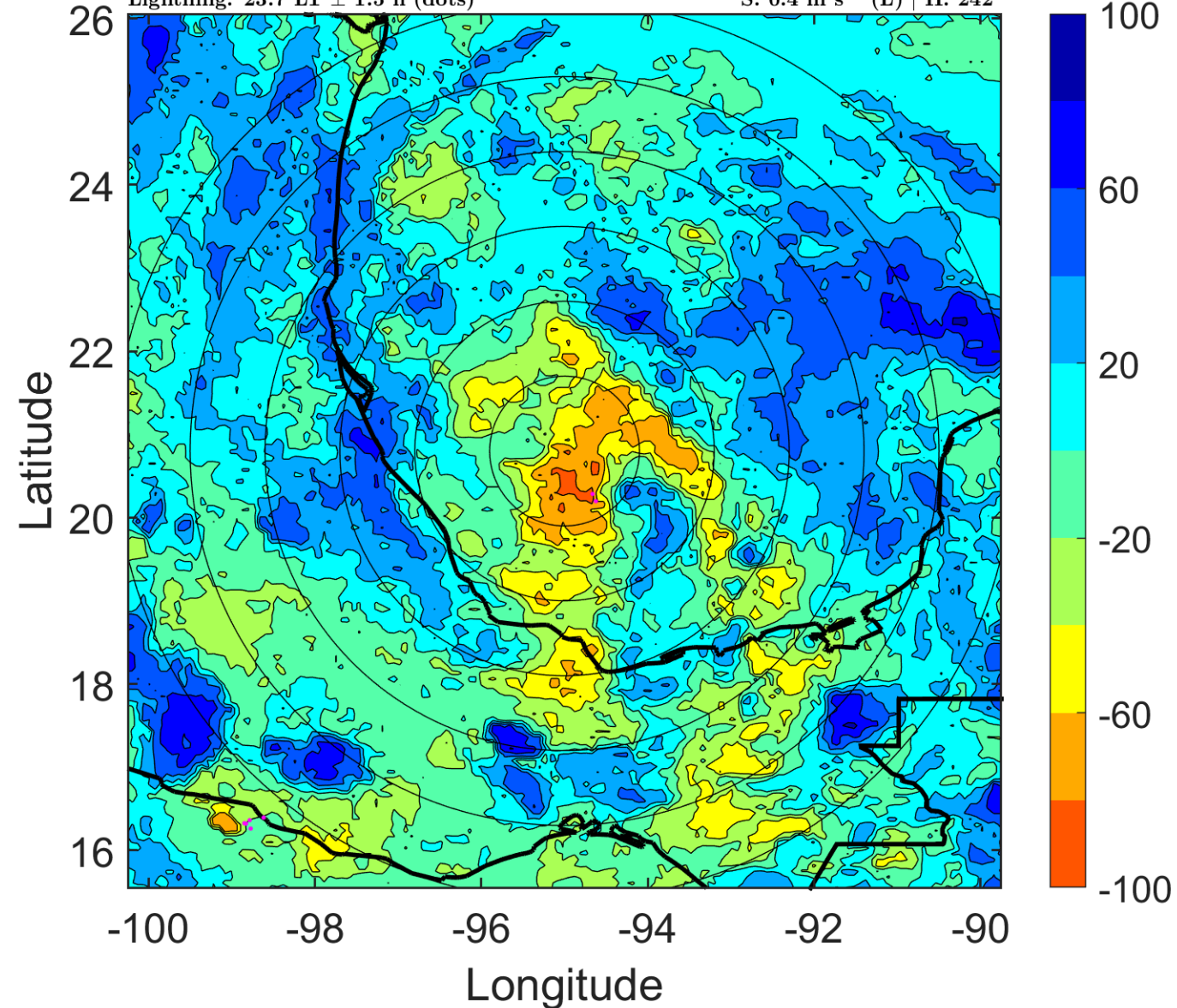
$\Delta$ t: 2005072406 (23.7 LT) - 2005072400 (17.7 LT)

Lightning: 23.7 LT  $\pm$  1.5 h (dots)

PT: SLCP | EA: INACT

07L (GERT) | 35 kt TS

S: 0.4 m s<sup>-1</sup> (L) | H: 242°



### IR BT & Lightning

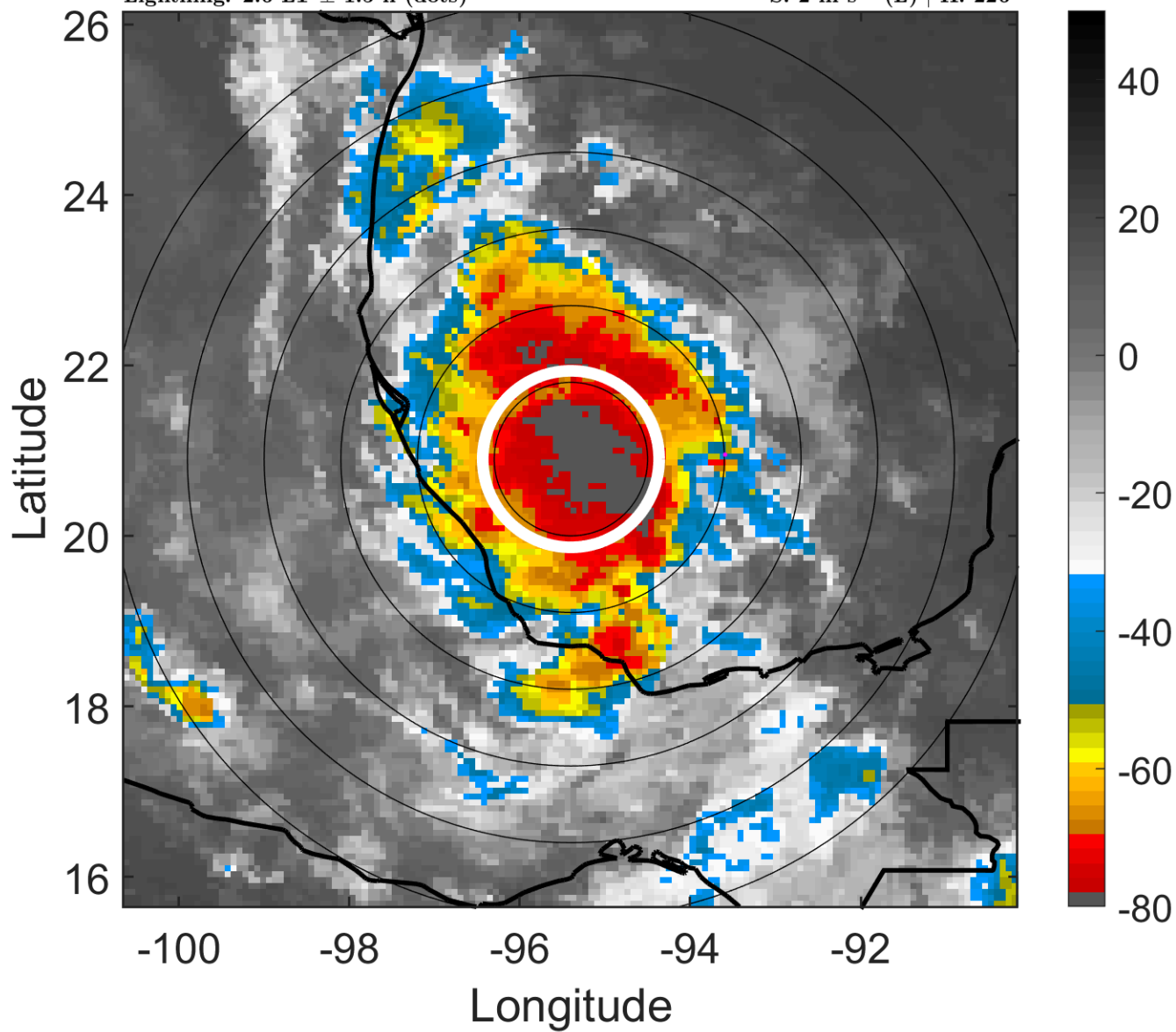
t: 2005072409 (2.6 LT)

Lightning: 2.6 LT  $\pm$  1.5 h (dots)

### LAND EFFECTS

07L (GERT) | 35 kt TS

S: 2 m s<sup>-1</sup> (L) | H: 226°



### 6-h IR BT Differences & Lightning

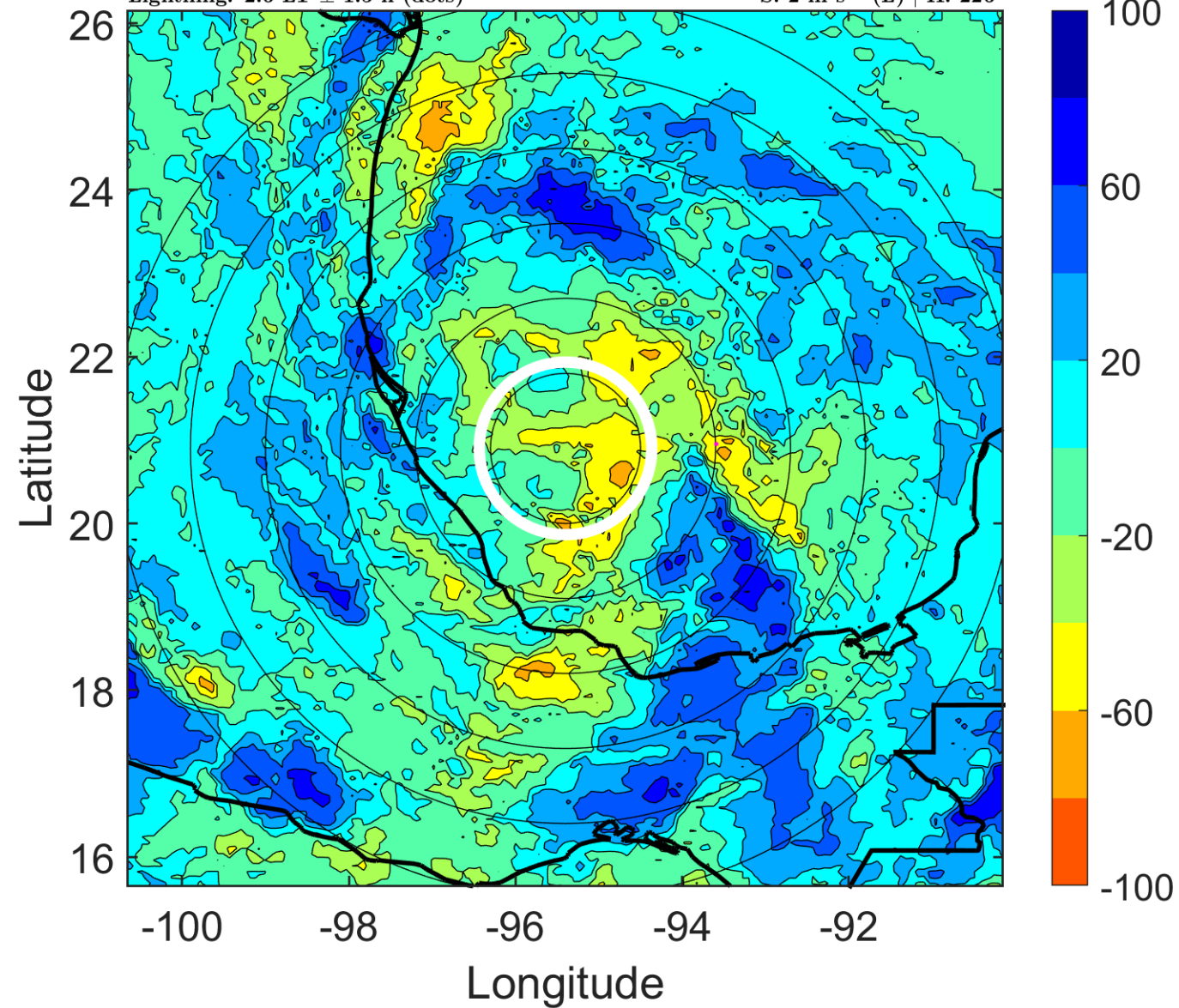
$\Delta$ t: 2005072409 (2.6 LT) - 2005072403 (20.7 LT)

Lightning: 2.6 LT  $\pm$  1.5 h (dots)

### LAND EFFECTS

07L (GERT) | 35 kt TS

S: 2 m s<sup>-1</sup> (L) | H: 226°





### IR BT & Lightning

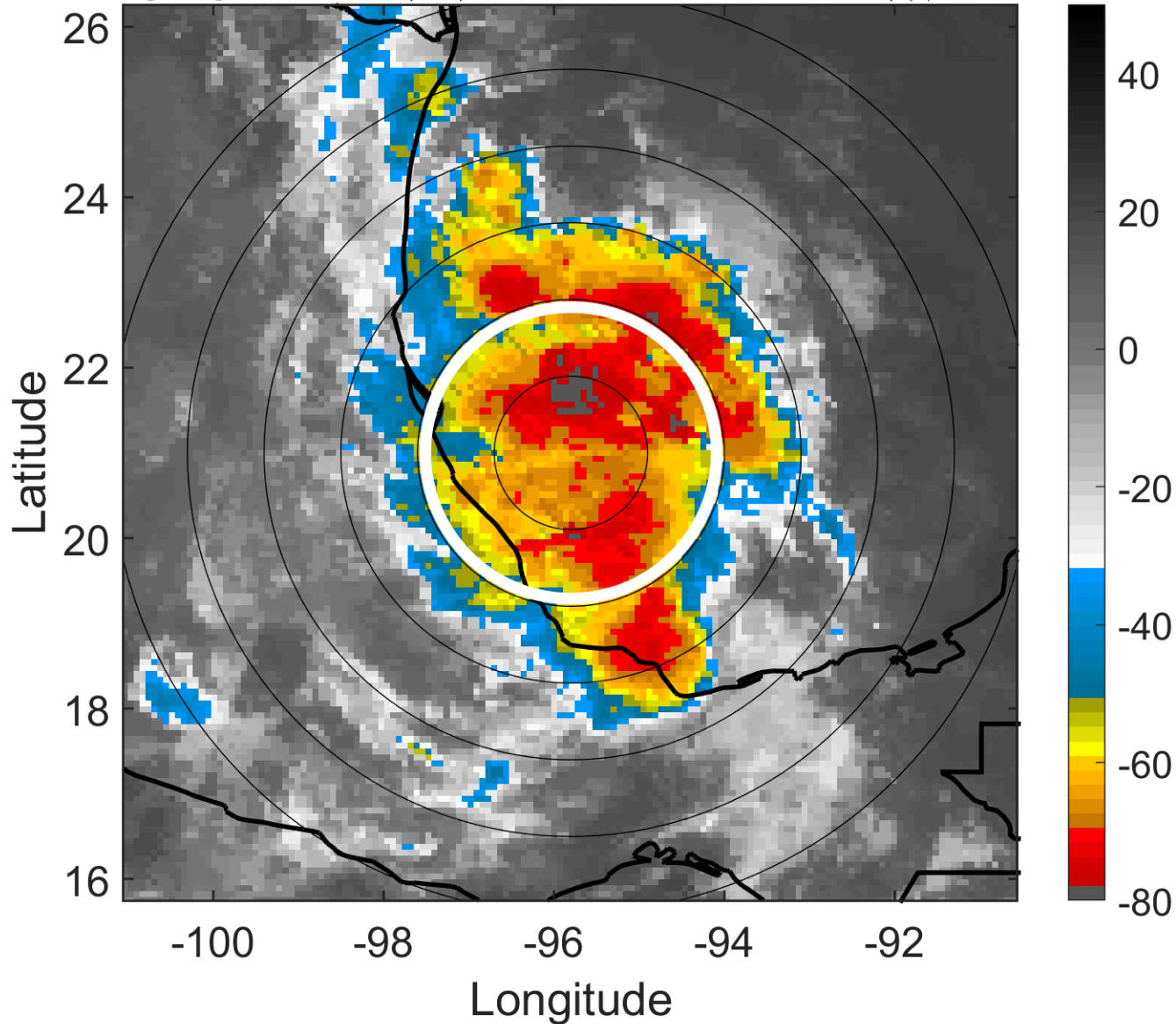
t: 2005072412 (5.6 LT)

Lightning: 5.6 LT  $\pm$  1.5 h (dots)

LAND EFFECTS

07L (GERT) | 35 kt TS

S: 3.5 m s<sup>-1</sup> (L) | H: 210°



### 6-h IR BT Differences & Lightning

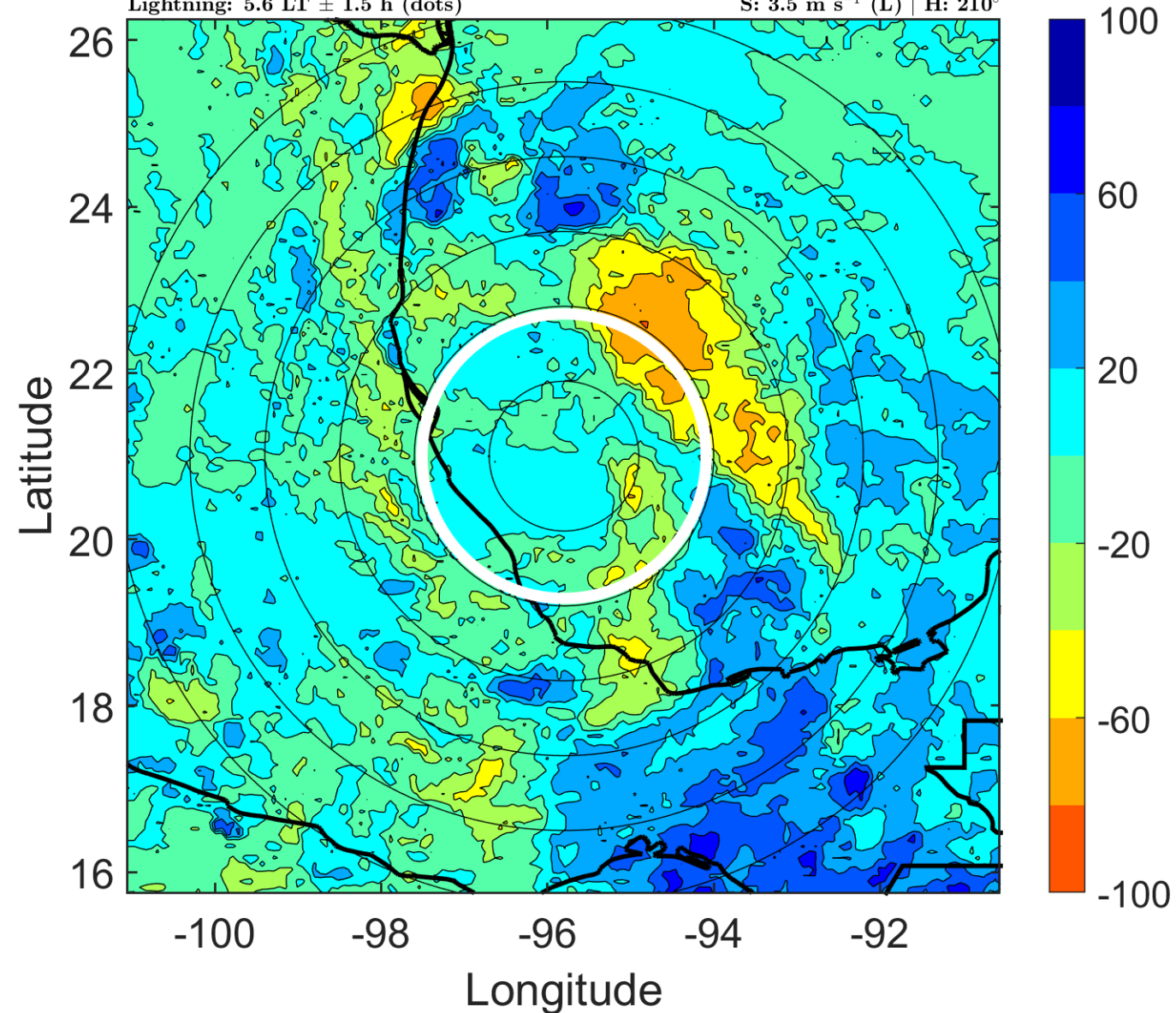
$\Delta$ t: 2005072412 (5.6 LT) - 2005072406 (23.7 LT)

Lightning: 5.6 LT  $\pm$  1.5 h (dots)

LAND EFFECTS

07L (GERT) | 35 kt TS

S: 3.5 m s<sup>-1</sup> (L) | H: 210°



### IR BT & Lightning

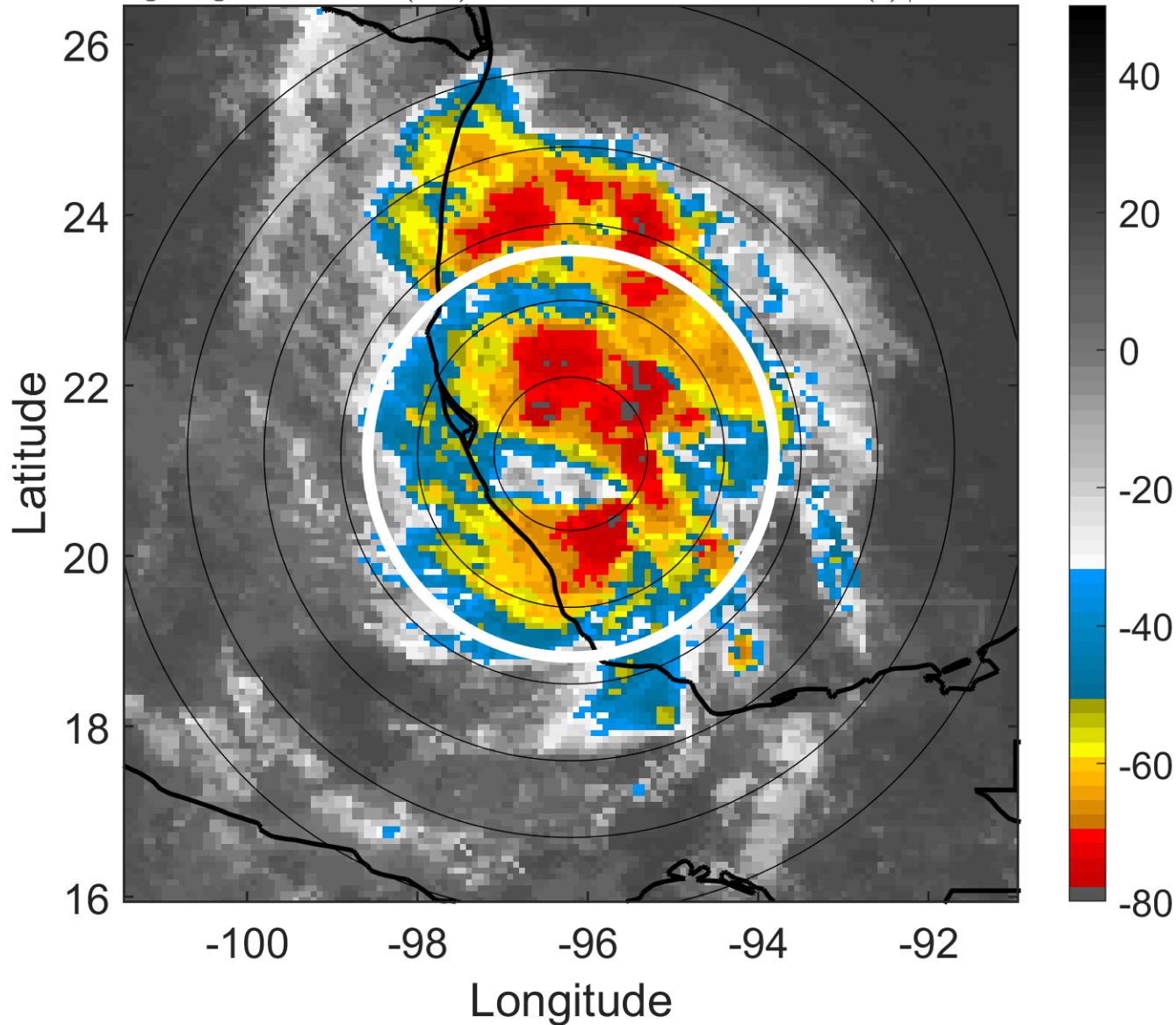
t: 2005072415 (8.6 LT)

Lightning: 8.6 LT  $\pm$  1.5 h (dots)

LAND EFFECTS

07L (GERT) | 35 kt TS

S: 4 m s<sup>-1</sup> (L) | H: 215.5°



### 6-h IR BT Differences & Lightning

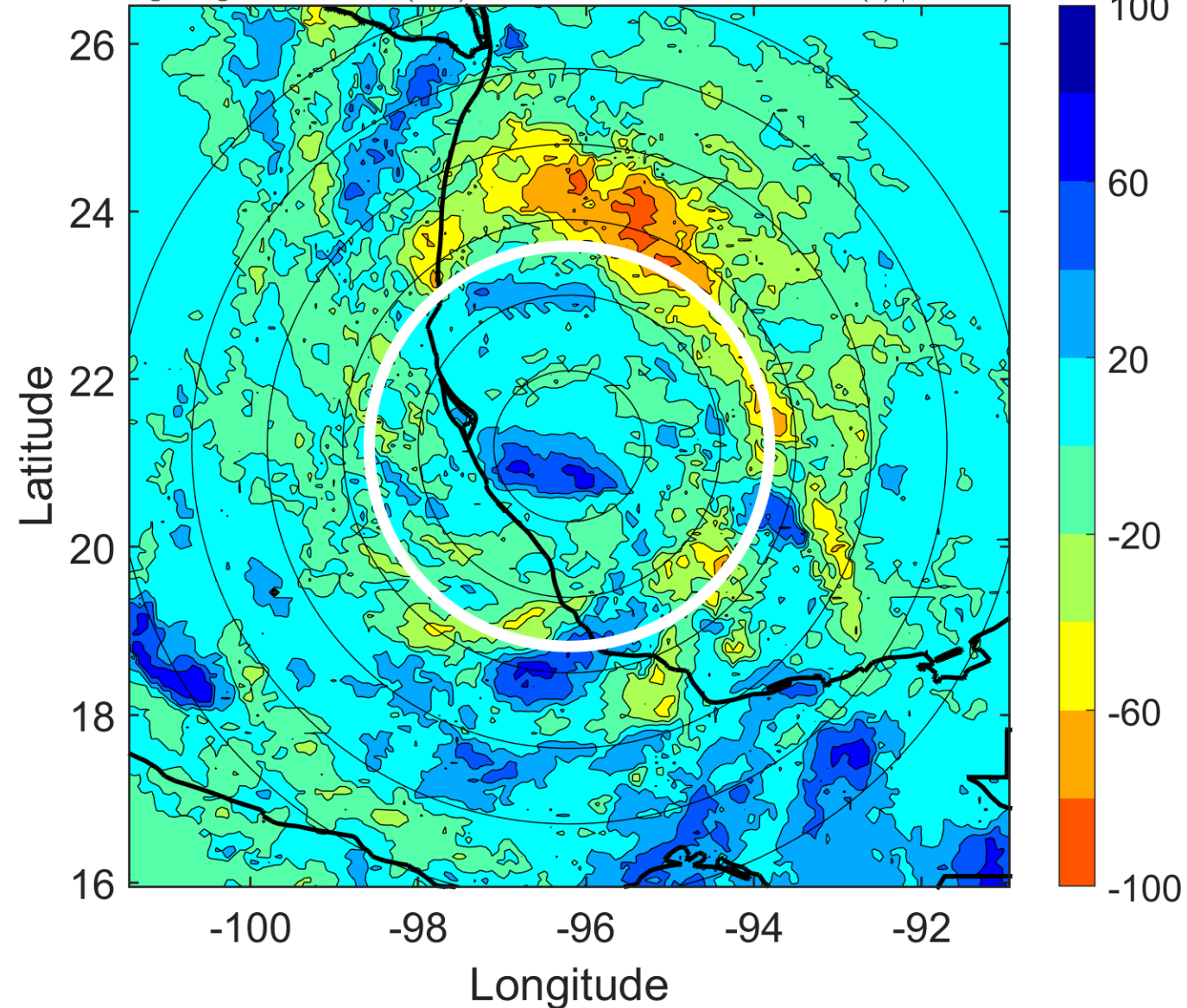
$\Delta$ t: 2005072415 (8.6 LT) - 2005072409 (2.6 LT)

Lightning: 8.6 LT  $\pm$  1.5 h (dots)

LAND EFFECTS

07L (GERT) | 35 kt TS

S: 4 m s<sup>-1</sup> (L) | H: 215.5°



### IR BT & Lightning

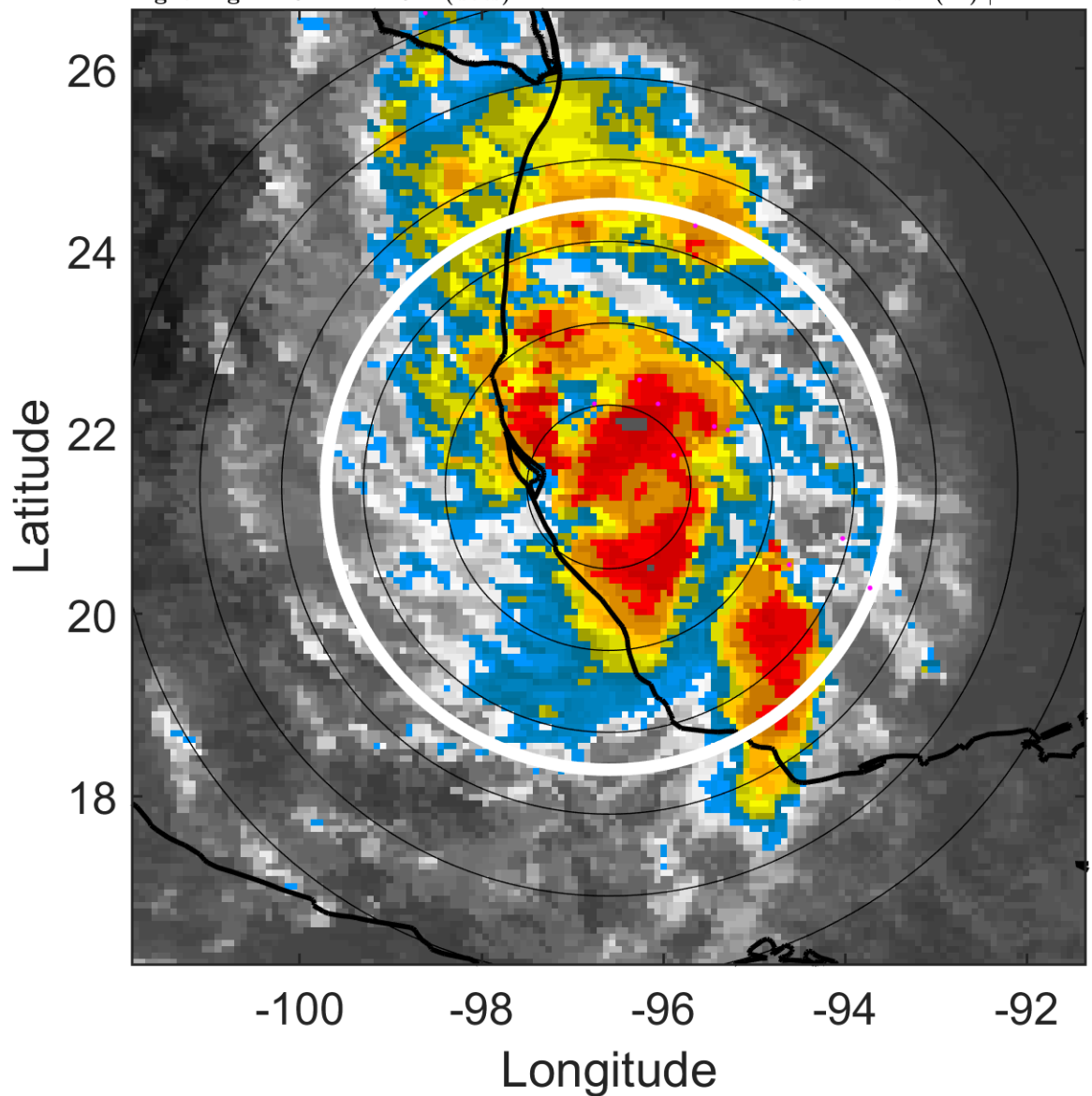
t: 2005072418 (11.6 LT)

Lightning: 11.6 LT  $\pm$  1.5 h (dots)

LAND EFFECTS

07L (GERT) | 35 kt TS

S: 4.4 m s<sup>-1</sup> (M) | H: 221°



### 6-h IR BT Differences & Lightning

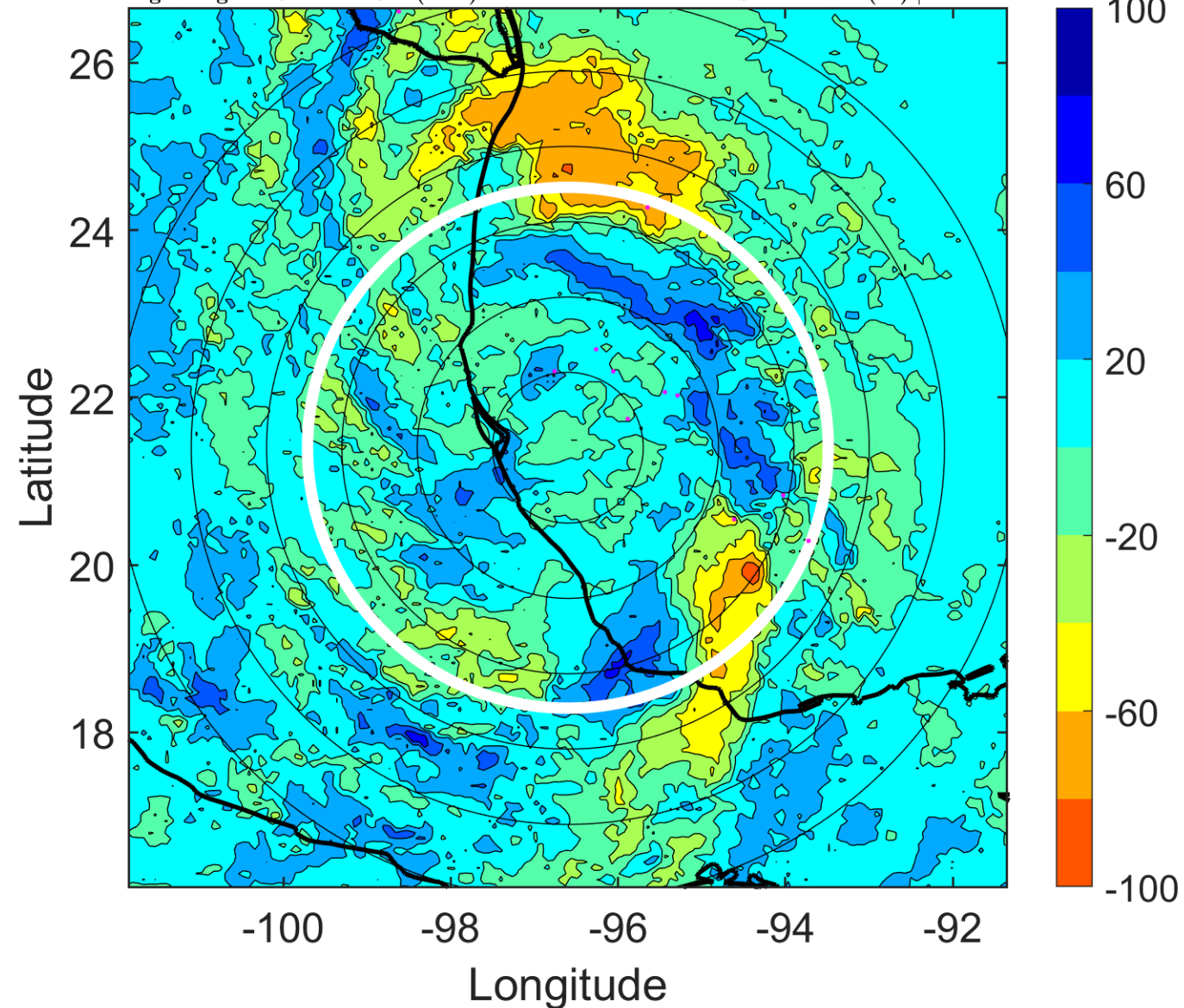
$\Delta$ t: 2005072418 (11.6 LT) - 2005072412 (5.6 LT)

Lightning: 11.6 LT  $\pm$  1.5 h (dots)

LAND EFFECTS

07L (GERT) | 35 kt TS

S: 4.4 m s<sup>-1</sup> (M) | H: 221°





### IR BT & Lightning

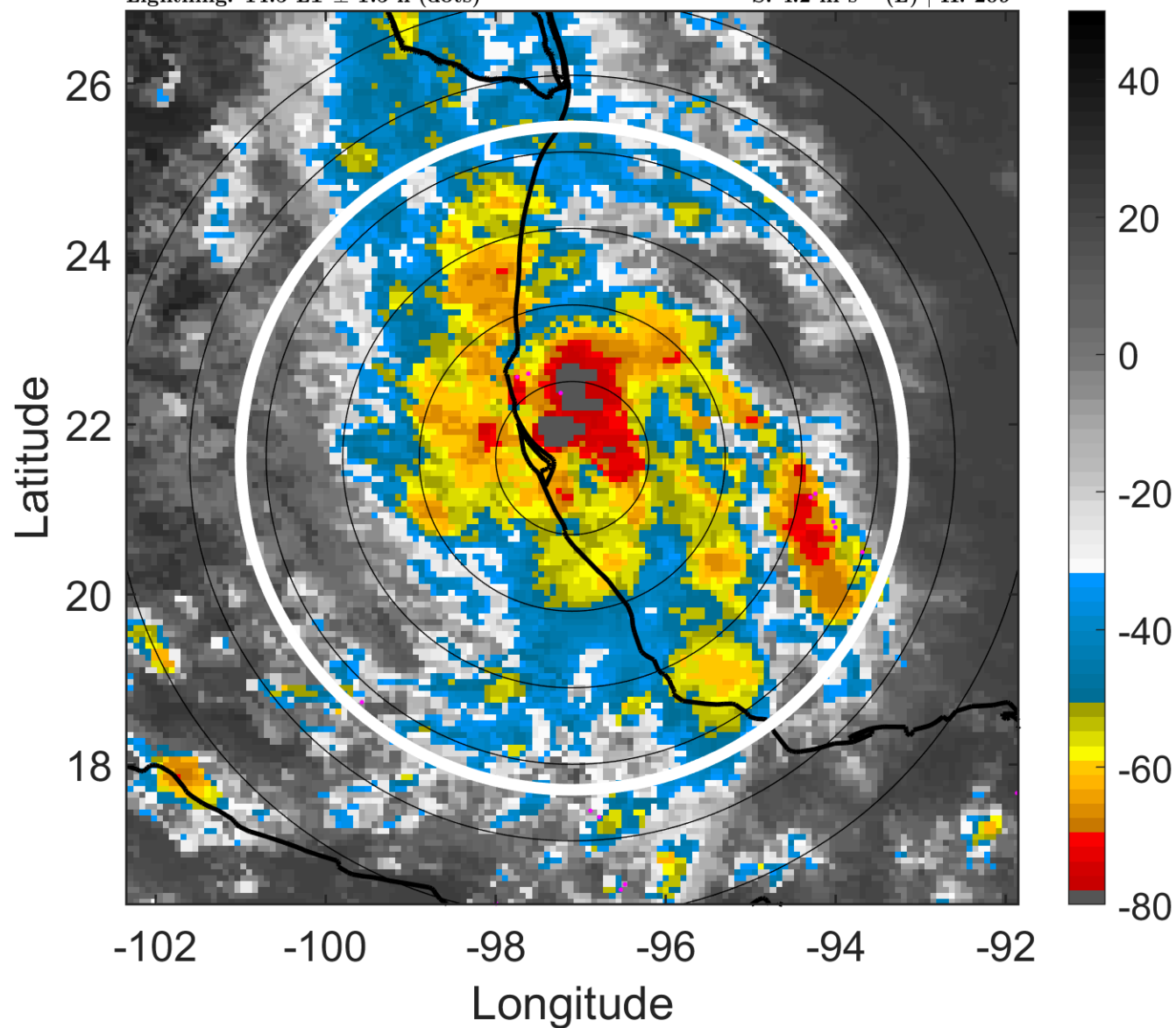
t: 2005072421 (14.5 LT)

Lightning: 14.5 LT  $\pm$  1.5 h (dots)

LAND EFFECTS

07L (GERT) | 37.5 kt TS

S: 4.2 m s<sup>-1</sup> (L) | H: 209°



### 6-h IR BT Differences & Lightning

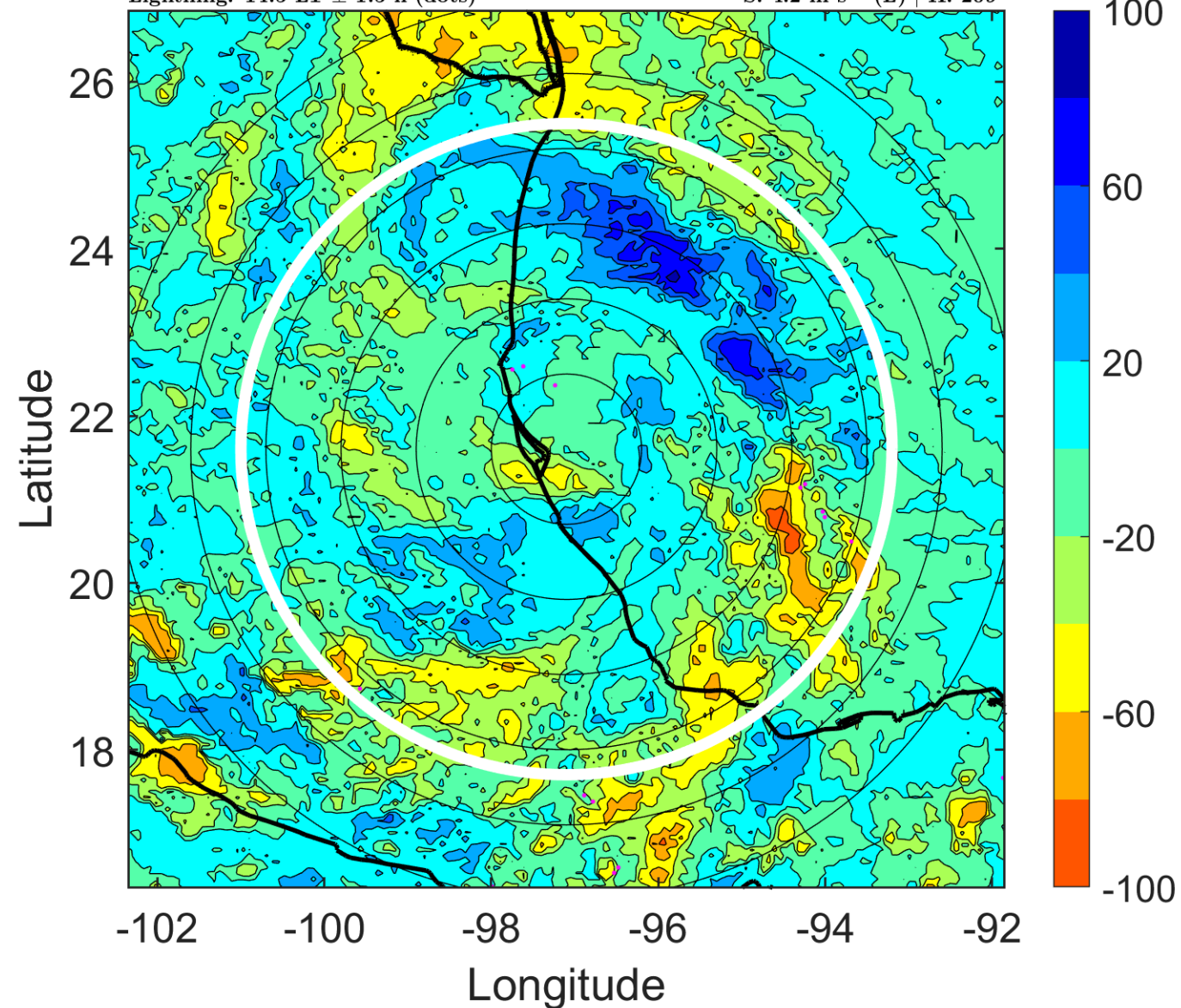
$\Delta$ t: 2005072421 (14.5 LT) - 2005072415 (8.6 LT)

Lightning: 14.5 LT  $\pm$  1.5 h (dots)

LAND EFFECTS

07L (GERT) | 37.5 kt TS

S: 4.2 m s<sup>-1</sup> (L) | H: 209°





### IR BT & Lightning

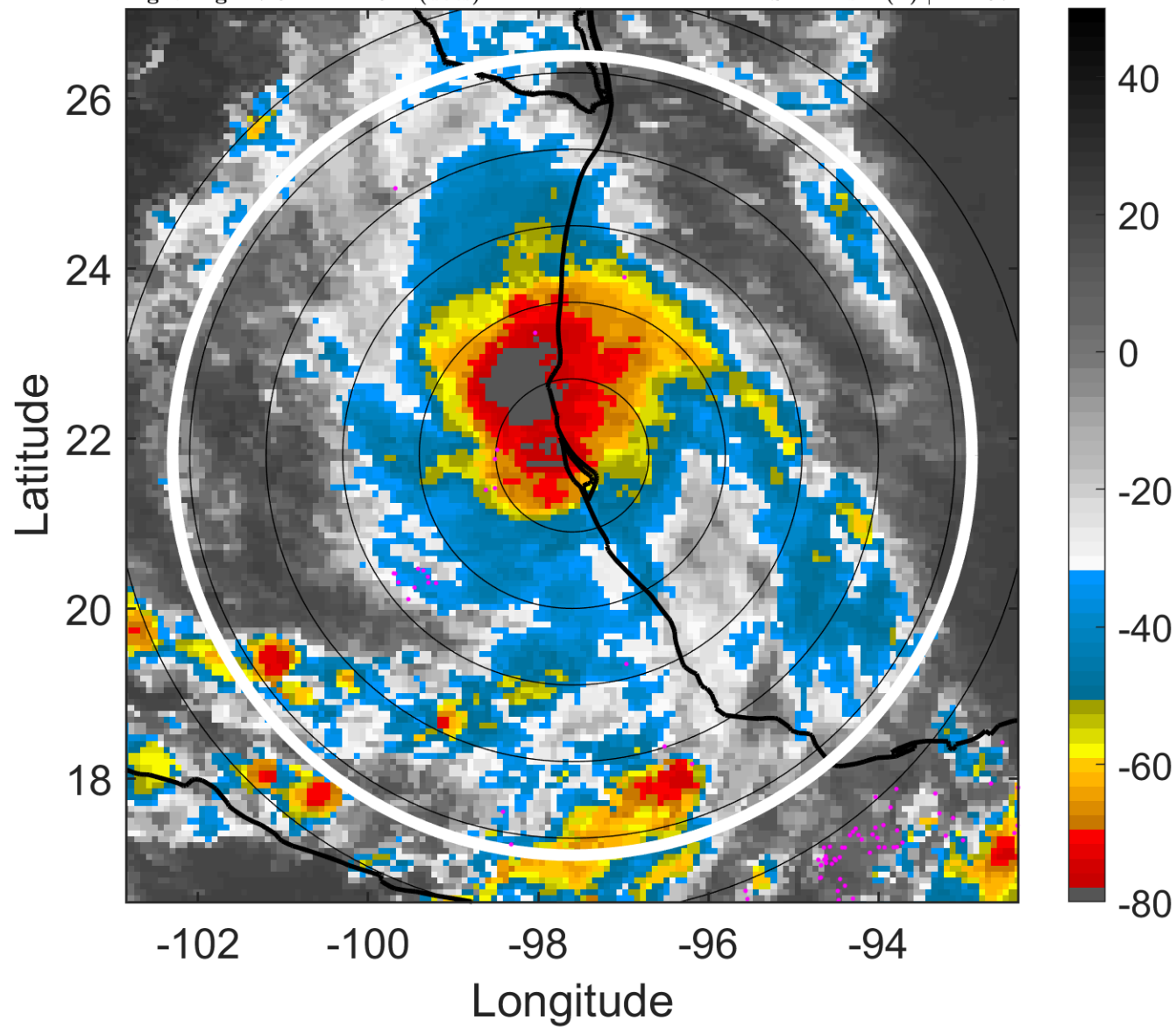
t: 2005072500 (17.5 LT)

Lightning: 17.5 LT  $\pm$  1.5 h (dots)

LAND EFFECTS

07L (GERT) | 40 kt TS

S: 4 m s<sup>-1</sup> (L) | H: 197°



### 6-h IR BT Differences & Lightning

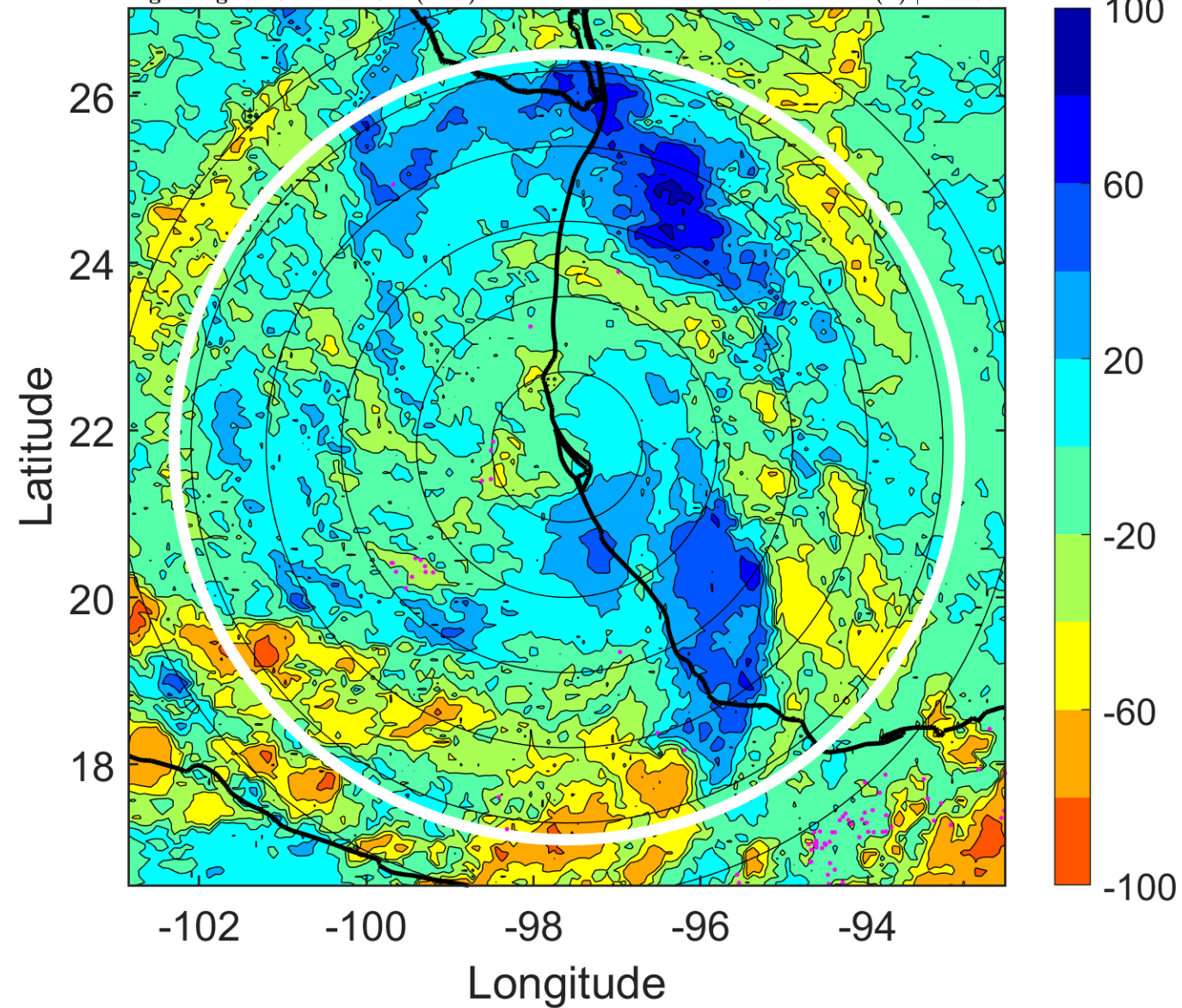
$\Delta$ t: 2005072500 (17.5 LT) - 2005072418 (11.6 LT)

Lightning: 17.5 LT  $\pm$  1.5 h (dots)

LAND EFFECTS

07L (GERT) | 40 kt TS

S: 4 m s<sup>-1</sup> (L) | H: 197°



### IR BT & Lightning

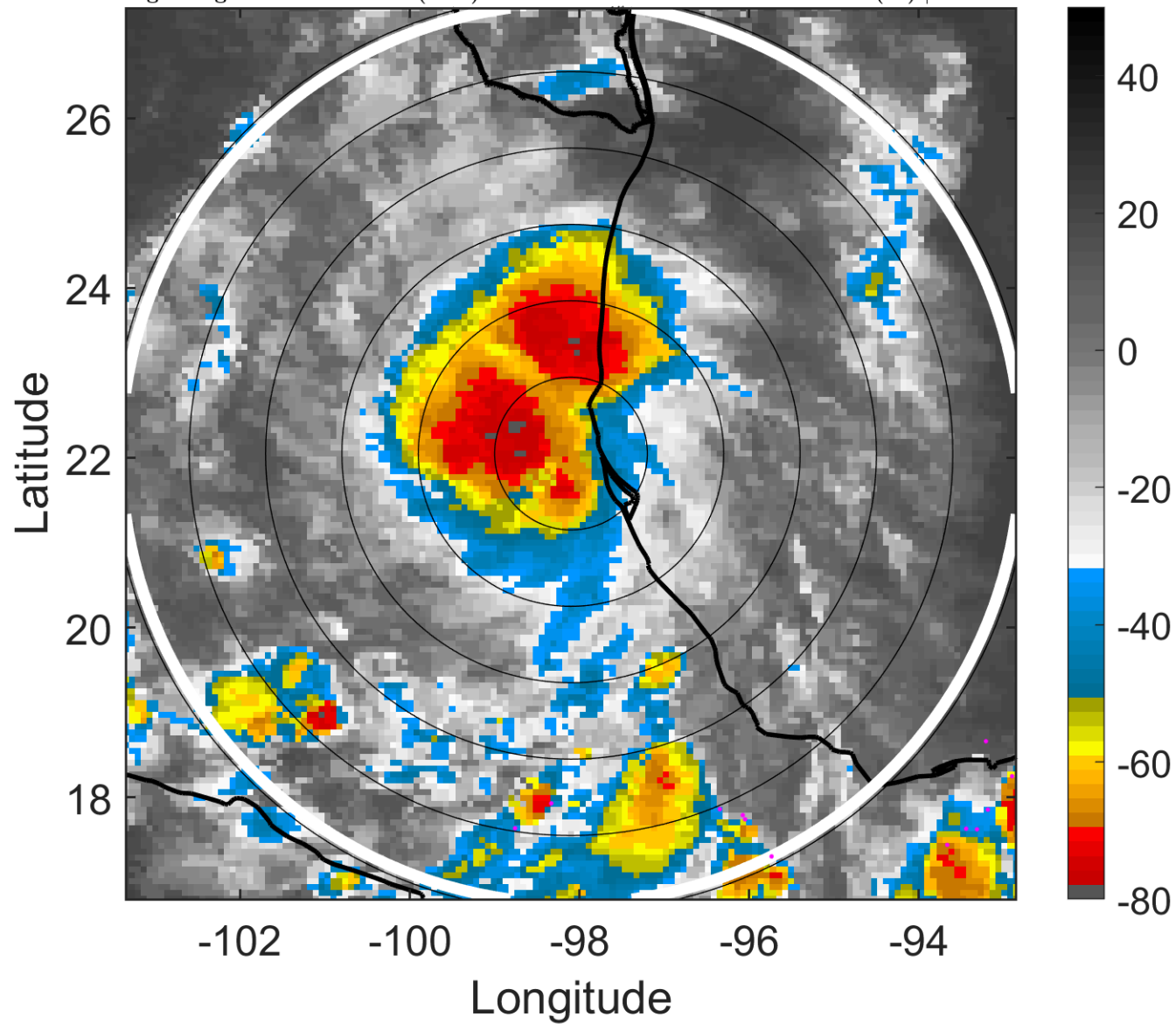
t: 2005072503 (20.5 LT)

Lightning: 20.5 LT  $\pm$  1.5 h (dots)

LAND EFFECTS

07L (GERT) | 35 kt TS

S: 4.7 m s<sup>-1</sup> (M) | H: 193°



### 6-h IR BT Differences & Lightning

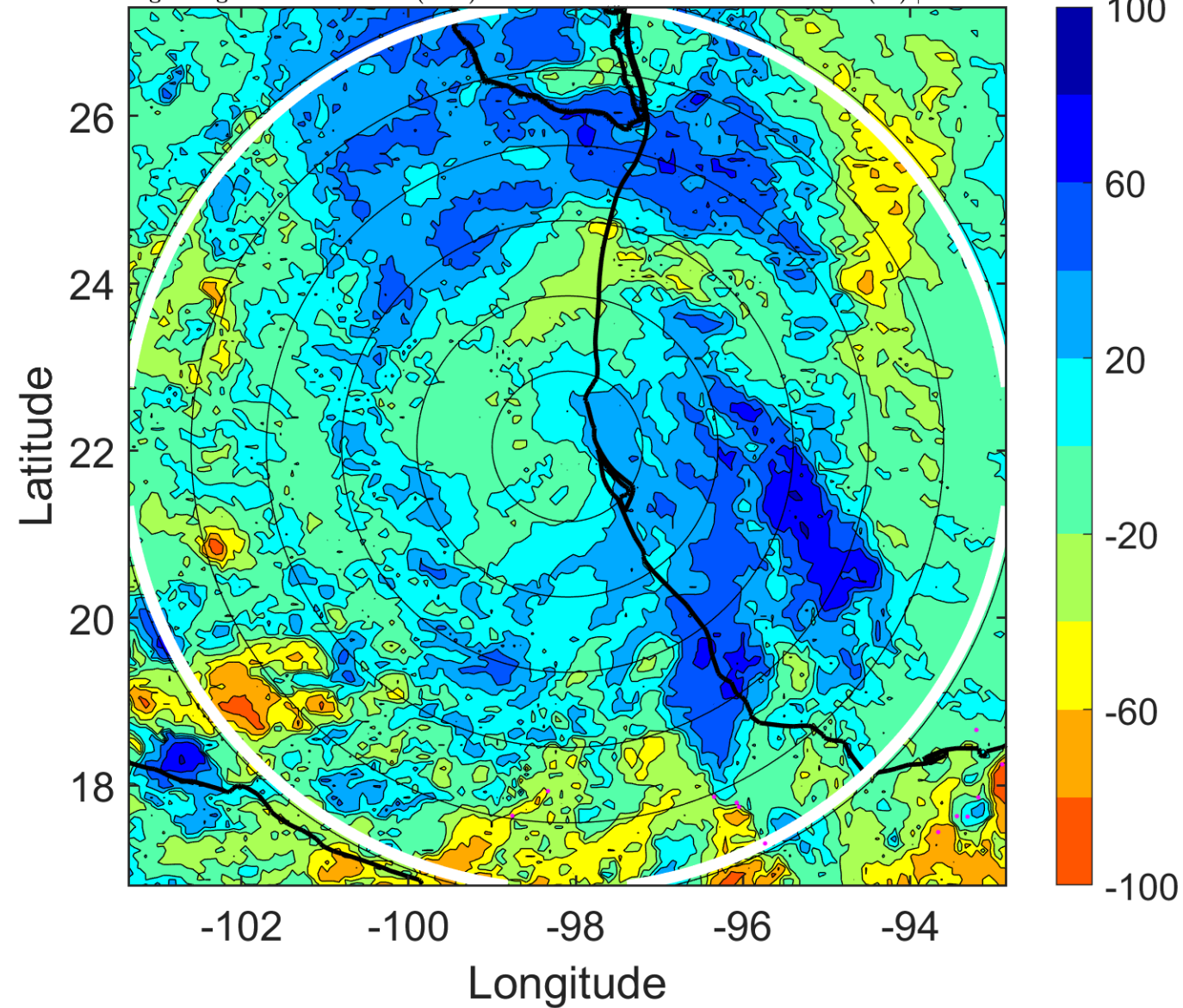
$\Delta$ t: 2005072503 (20.5 LT) - 2005072421 (14.5 LT)

Lightning: 20.5 LT  $\pm$  1.5 h (dots)

LAND EFFECTS

07L (GERT) | 35 kt TS

S: 4.7 m s<sup>-1</sup> (M) | H: 193°





### IR BT & Lightning

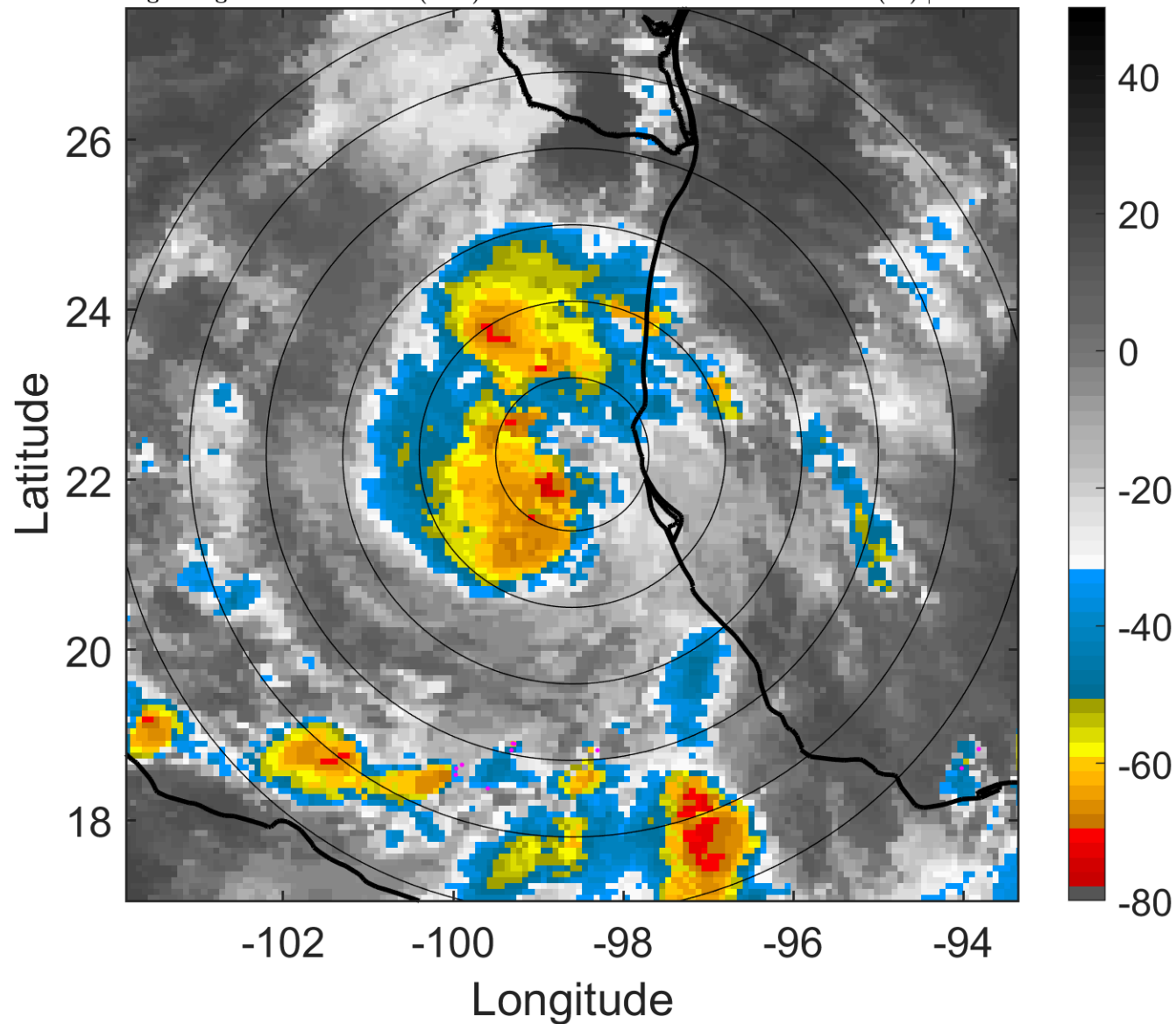
t: 2005072506 (23.4 LT)

Lightning: 23.4 LT  $\pm$  1.5 h (dots)

LAND EFFECTS

07L (GERT) | 30 kt TD

S: 5.4 m s<sup>-1</sup> (M) | H: 189°



### 6-h IR BT Differences & Lightning

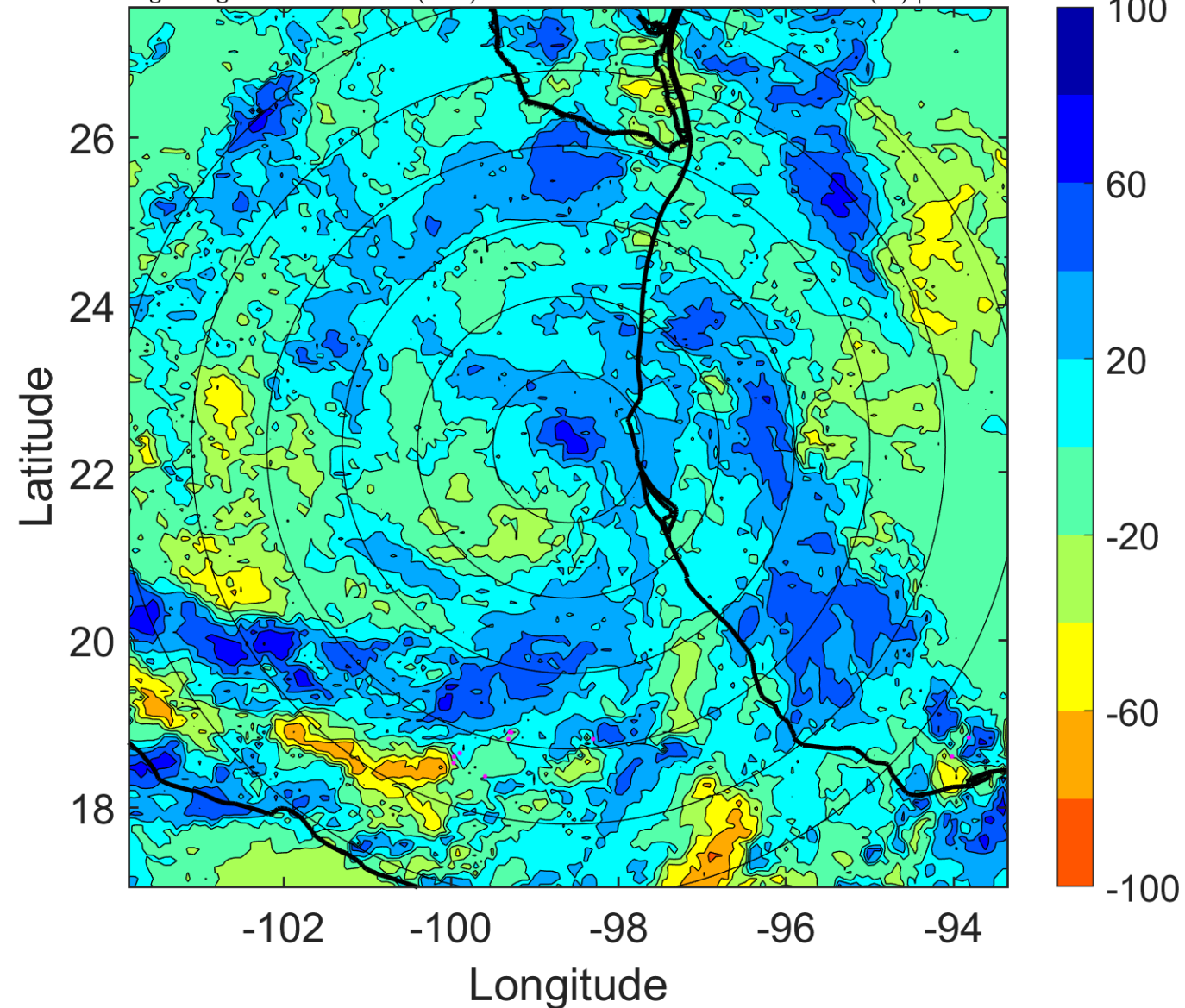
$\Delta$ t: 2005072506 (23.4 LT) - 2005072500 (17.5 LT)

Lightning: 23.4 LT  $\pm$  1.5 h (dots)

LAND EFFECTS

07L (GERT) | 30 kt TD

S: 5.4 m s<sup>-1</sup> (M) | H: 189°



### IR BT & Lightning

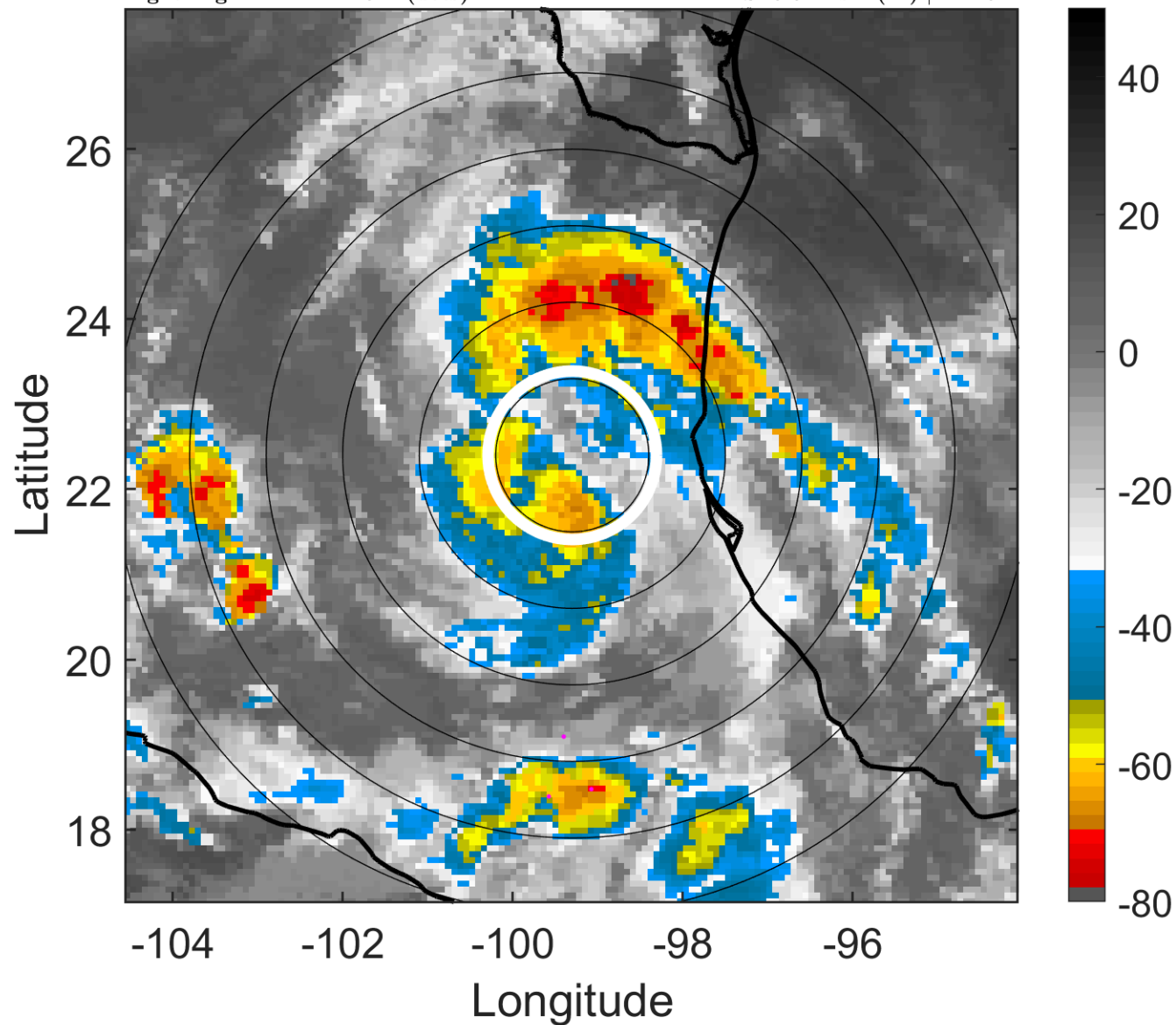
t: 2005072509 (2.4 LT)

Lightning: 2.4 LT  $\pm$  1.5 h (dots)

LAND EFFECTS

07L (GERT) | 27.5 kt TD

S: 5.6 m s<sup>-1</sup> (M) | H: 194°



### 6-h IR BT Differences & Lightning

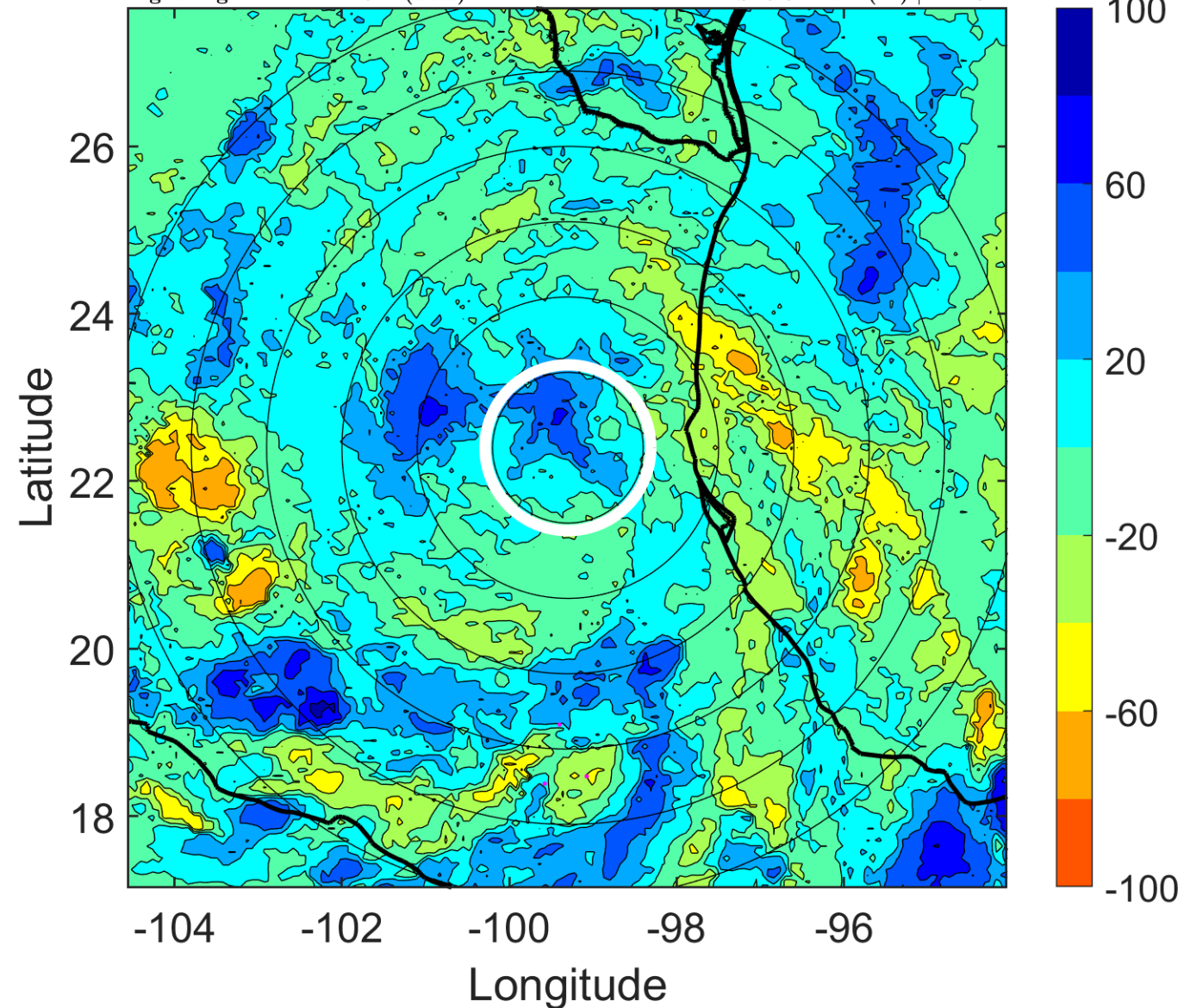
$\Delta$ t: 2005072509 (2.4 LT) - 2005072503 (20.5 LT)

Lightning: 2.4 LT  $\pm$  1.5 h (dots)

LAND EFFECTS

07L (GERT) | 27.5 kt TD

S: 5.6 m s<sup>-1</sup> (M) | H: 194°





### IR BT & Lightning

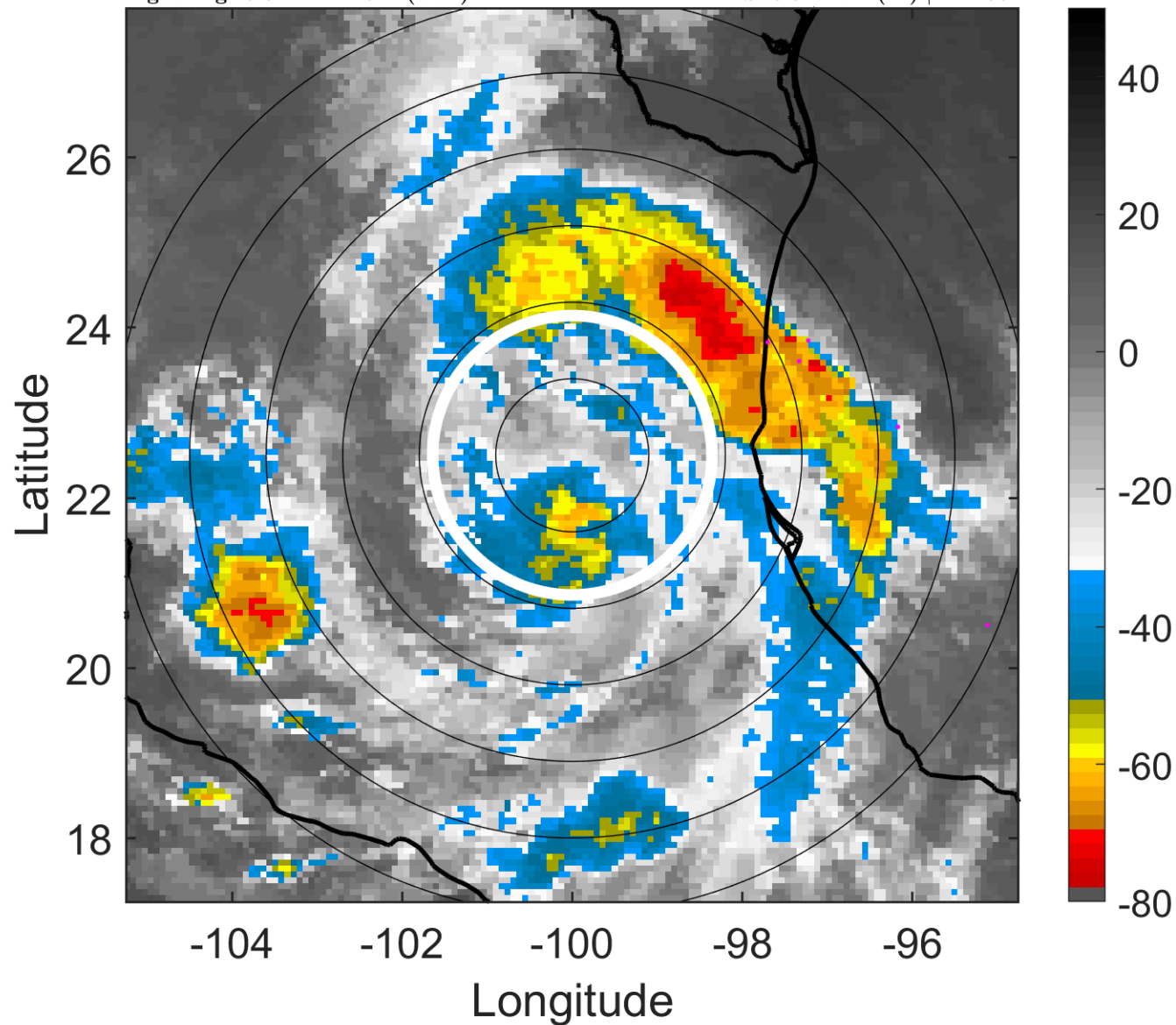
t: 2005072512 (5.3 LT)

Lightning: 5.3 LT  $\pm$  1.5 h (dots)

LAND EFFECTS

07L (GERT) | 25 kt TD

S: 5.9 m s<sup>-1</sup> (M) | H: 199°



### 6-h IR BT Differences & Lightning

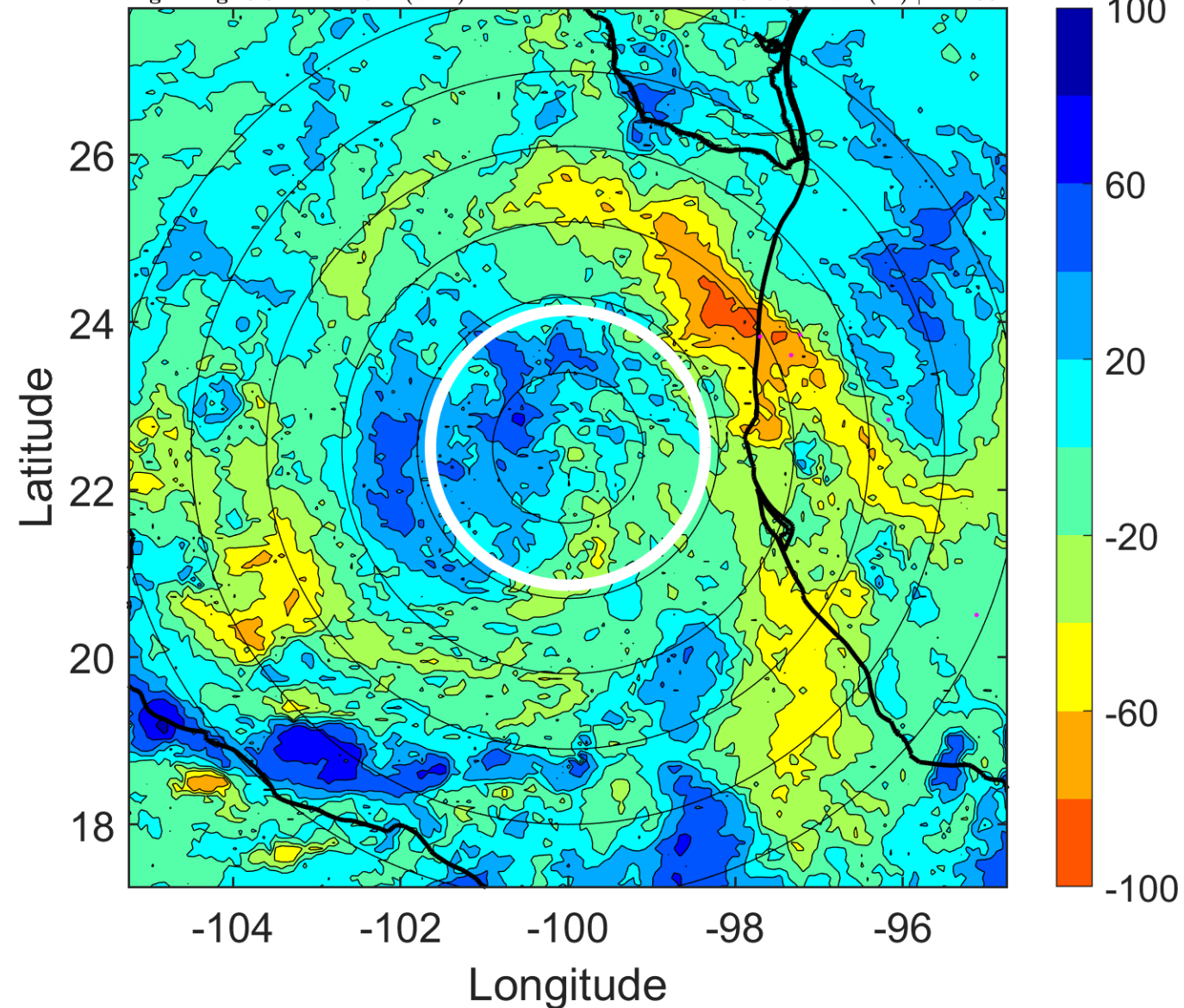
$\Delta$ t: 2005072512 (5.3 LT) - 2005072506 (23.4 LT)

Lightning: 5.3 LT  $\pm$  1.5 h (dots)

LAND EFFECTS

07L (GERT) | 25 kt TD

S: 5.9 m s<sup>-1</sup> (M) | H: 199°



### IR BT & Lightning

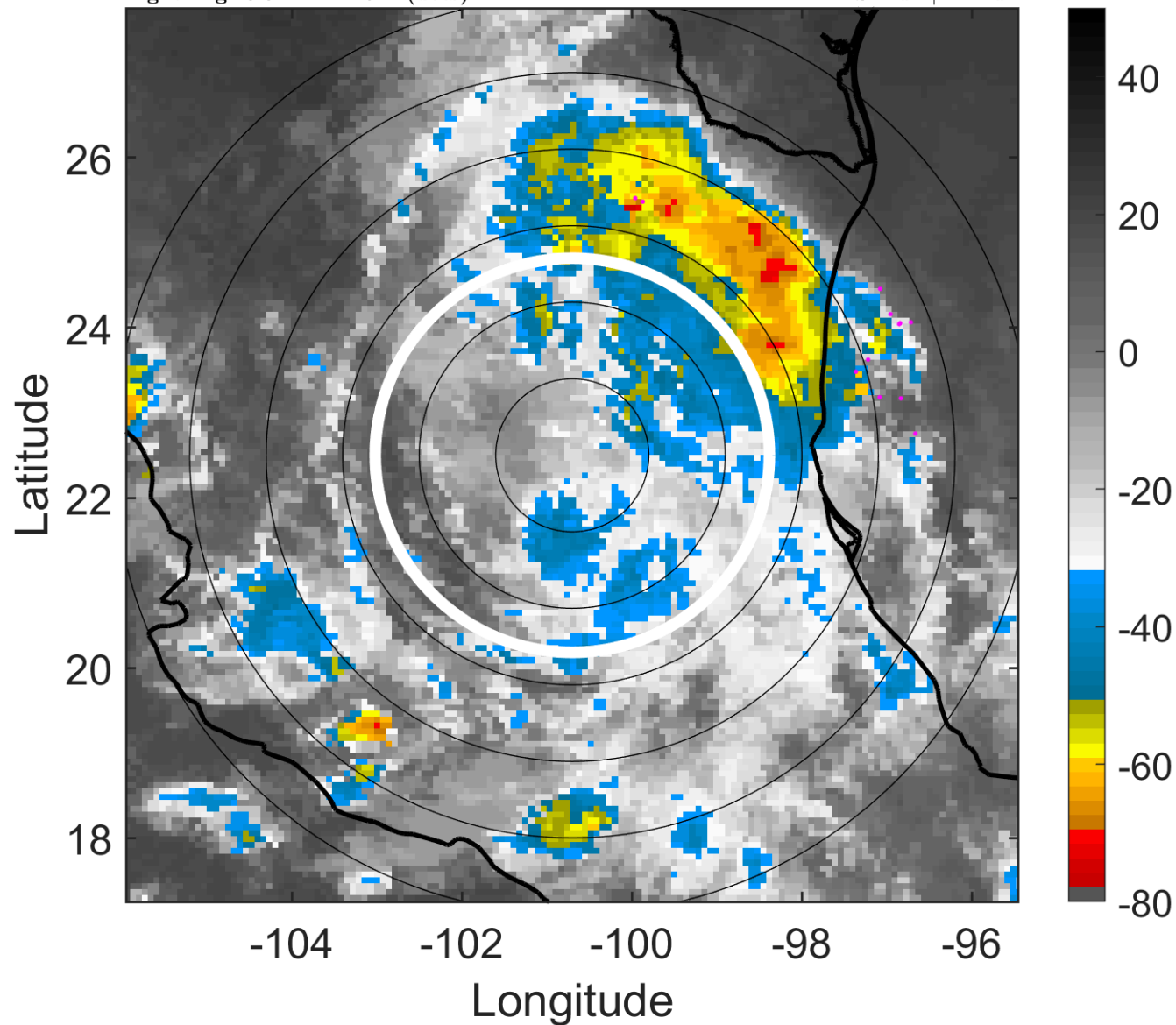
t: 2005072515 (8.3 LT)

Lightning: 8.3 LT  $\pm$  1.5 h (dots)

LAND EFFECTS

07L (GERT) | 22.5 kt TD

S: null | H: null



### 6-h IR BT Differences & Lightning

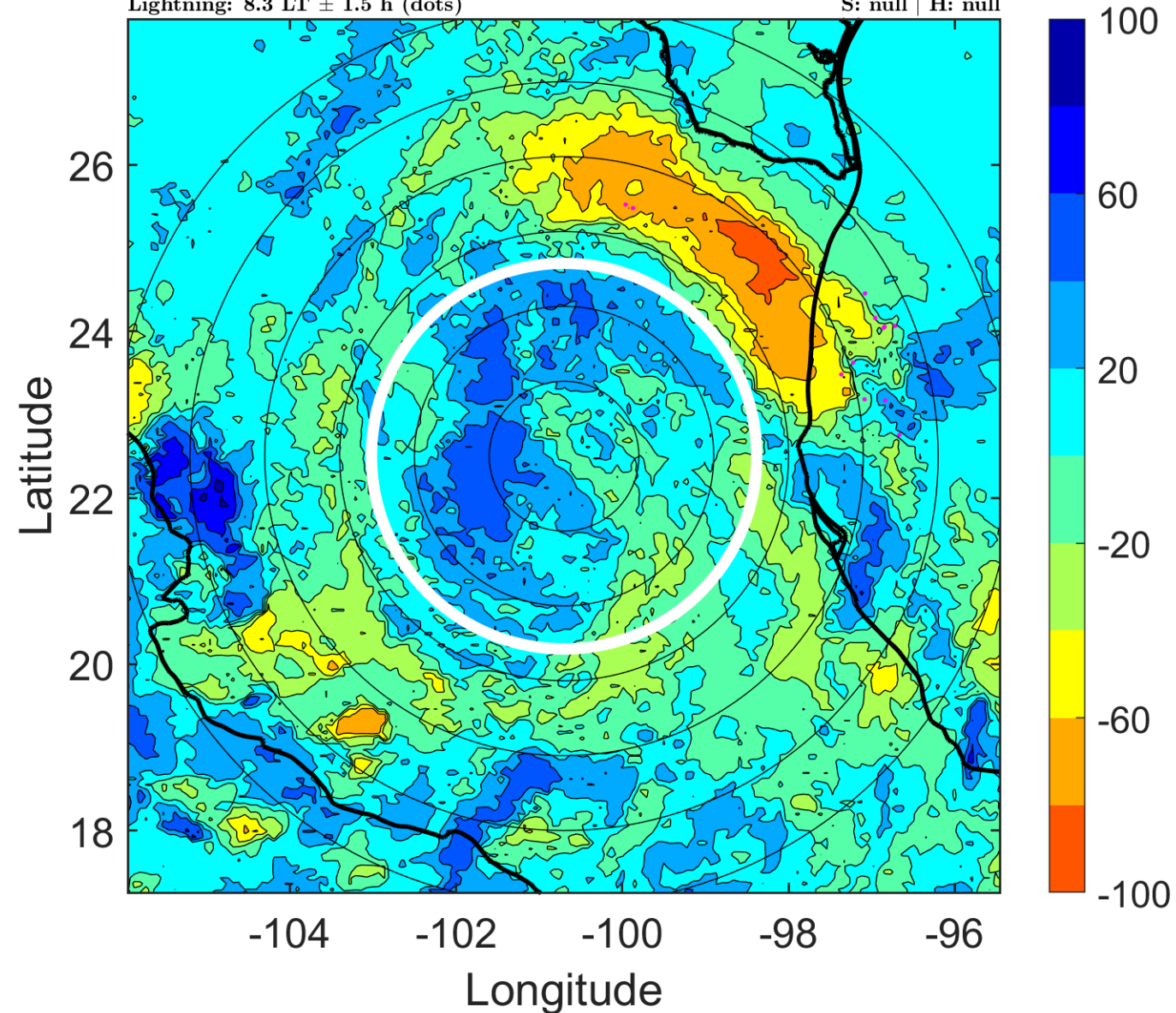
$\Delta$ t: 2005072515 (8.3 LT) - 2005072509 (2.4 LT)

Lightning: 8.3 LT  $\pm$  1.5 h (dots)

LAND EFFECTS

07L (GERT) | 22.5 kt TD

S: null | H: null





### IR BT & Lightning

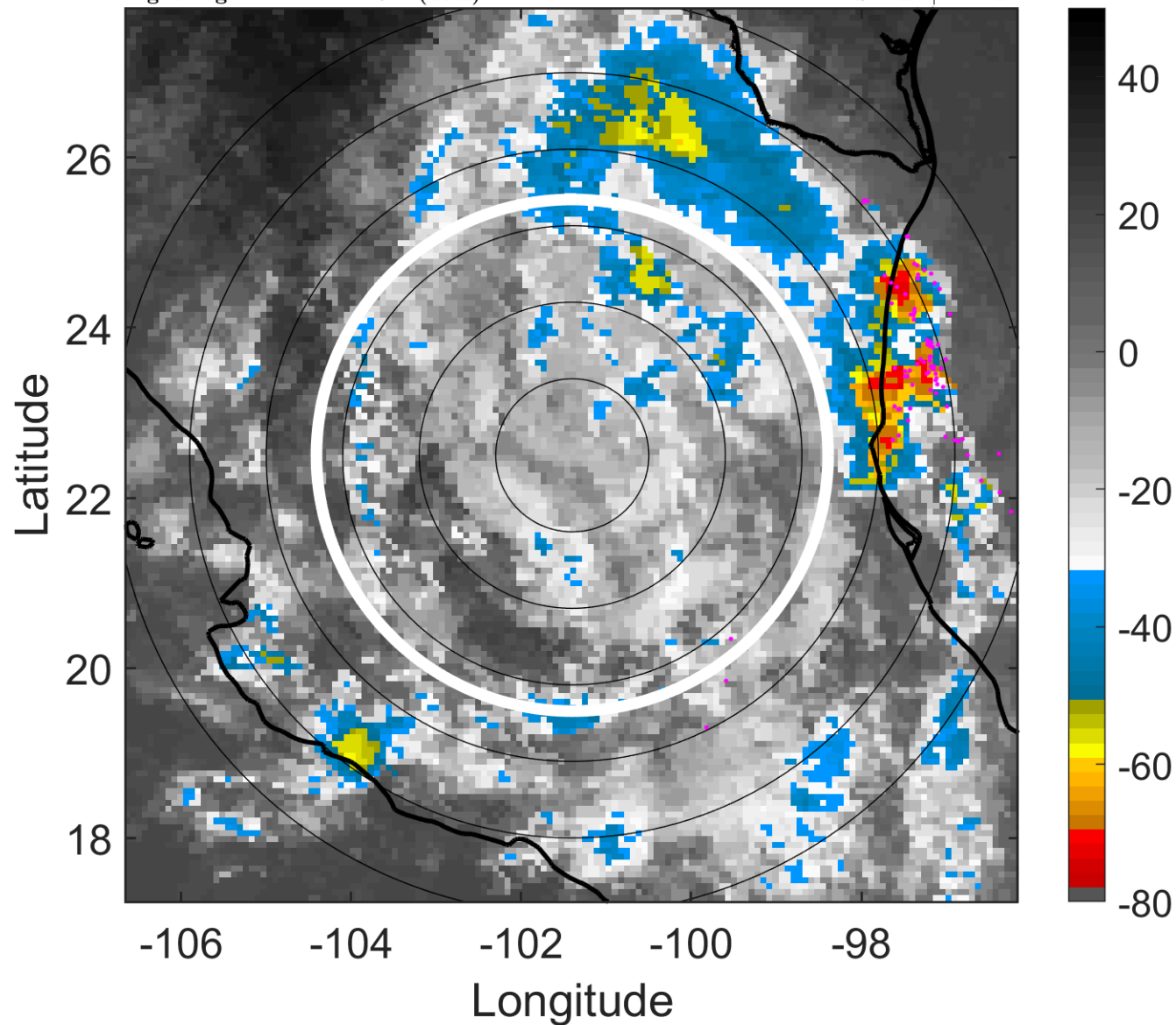
t: 2005072518 (11.2 LT)

Lightning: 11.2 LT  $\pm$  1.5 h (dots)

LAND EFFECTS

07L (GERT) | 20 kt LO

S: null | H: null



### 6-h IR BT Differences & Lightning

$\Delta$ t: 2005072518 (11.2 LT) - 2005072512 (5.3 LT)

Lightning: 11.2 LT  $\pm$  1.5 h (dots)

LAND EFFECTS

07L (GERT) | 20 kt LO

S: null | H: null

