

IR BT & Lightning

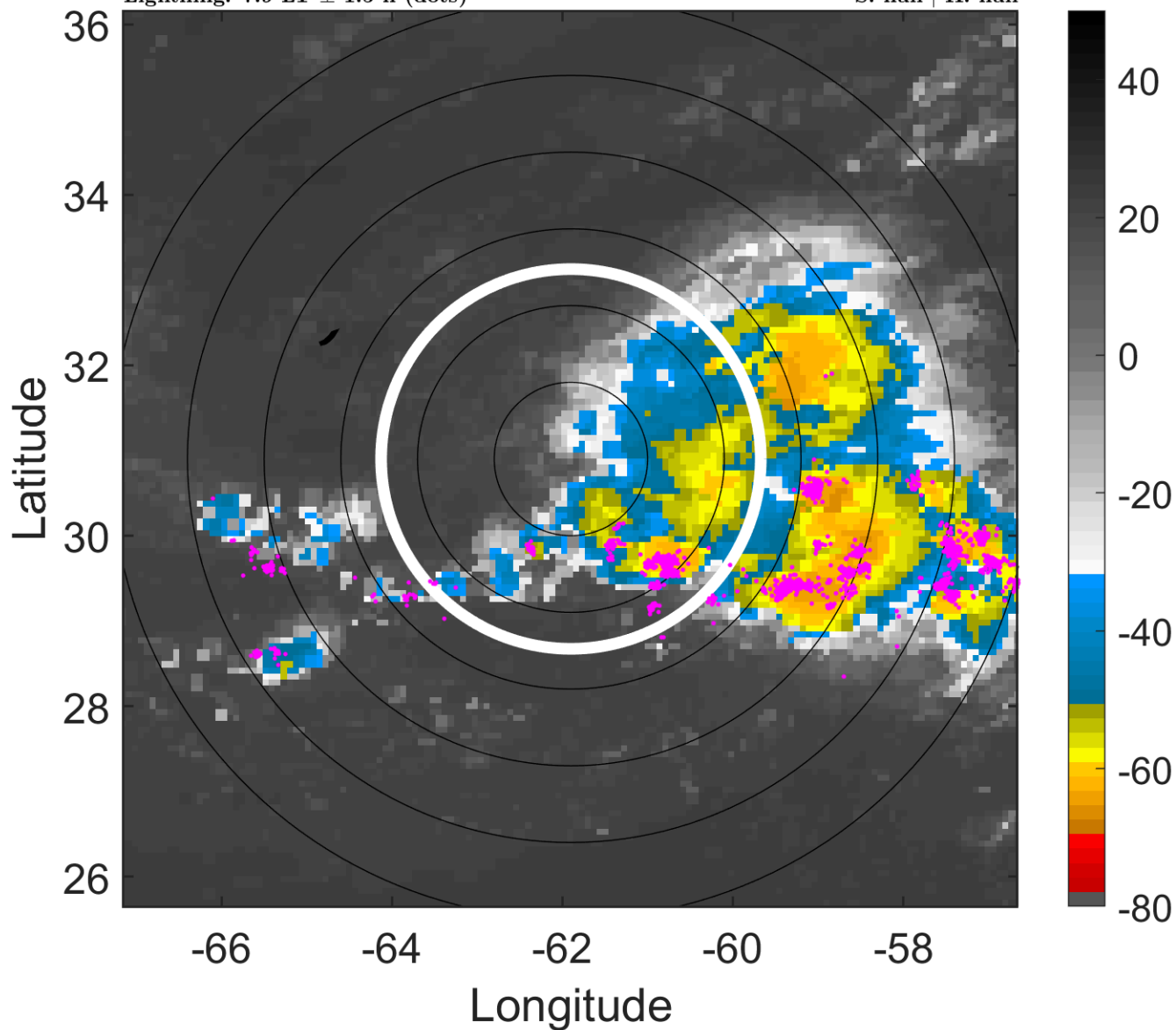
t: 2015090812 (7.9 LT)

Lightning: 7.9 LT \pm 1.5 h (dots)

PT: SLCP | EA: QUASI

08L (HENRI) | 25 kt LO

S: null | H: null



6-h IR BT Differences & Lightning

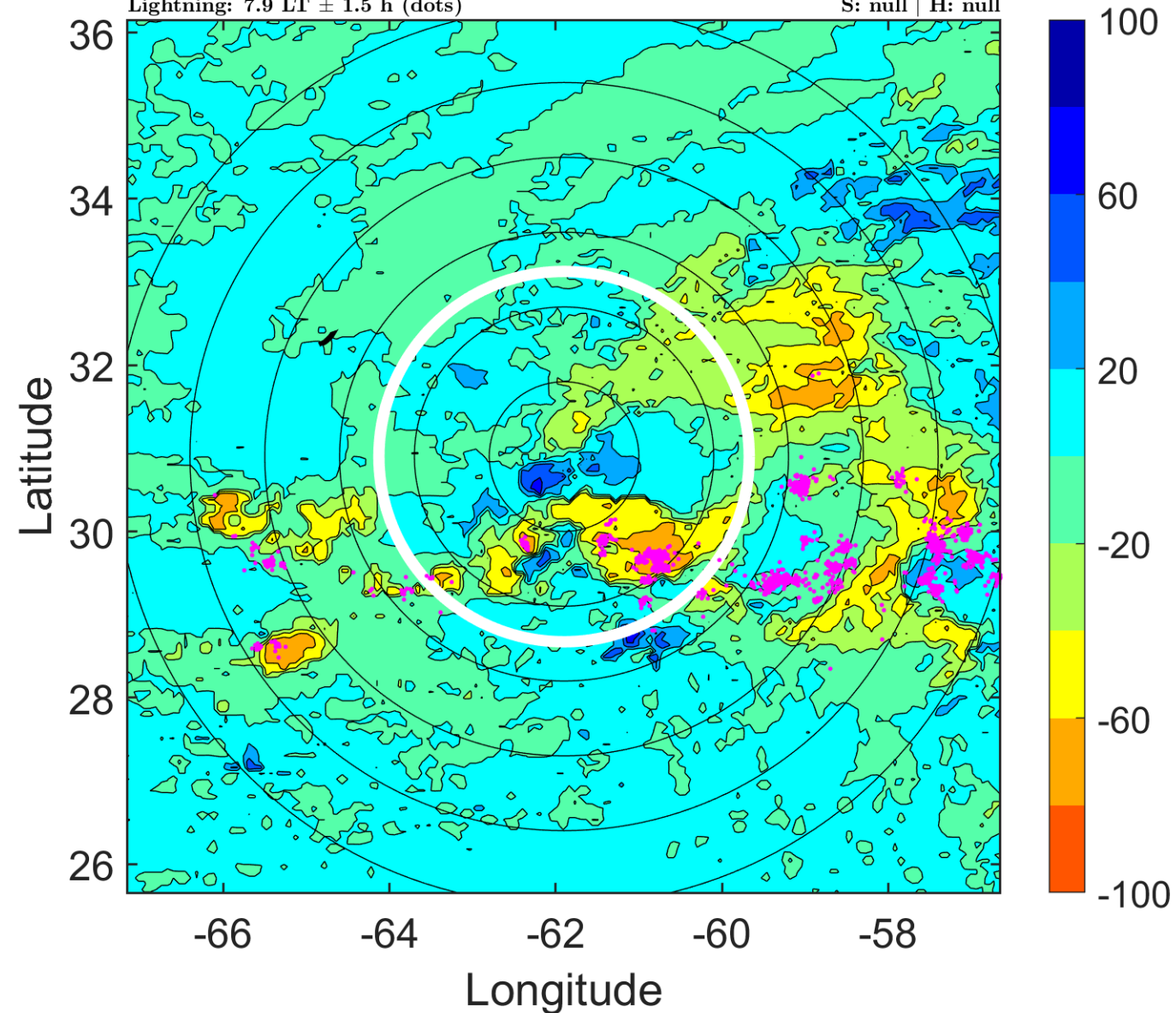
Δ t: 2015090812 (7.9 LT) - 2015090806 (1.9 LT)

Lightning: 7.9 LT \pm 1.5 h (dots)

PT: SLCP | EA: QUASI

08L (HENRI) | 25 kt LO

S: null | H: null



IR BT & Lightning

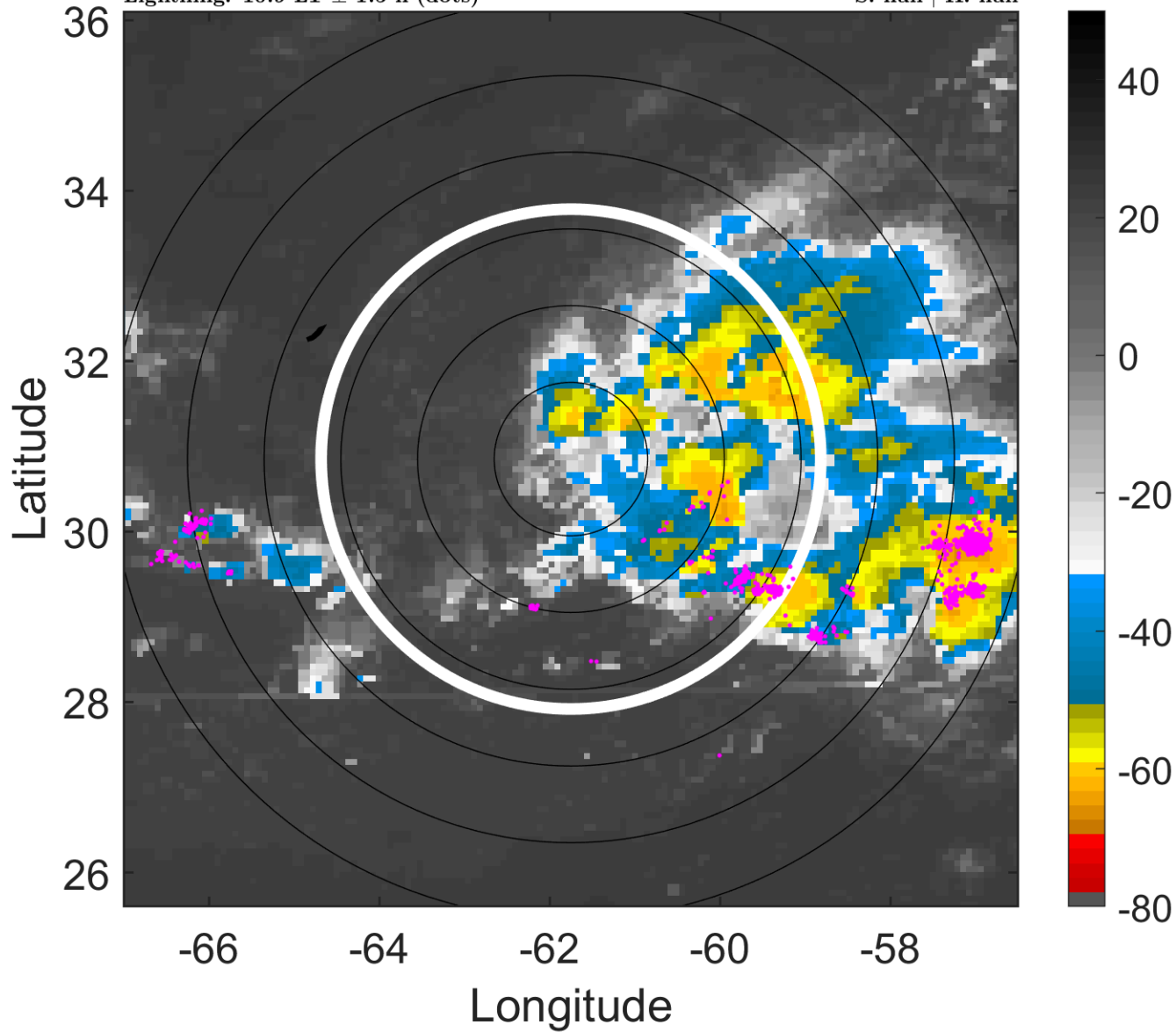
t: 2015090815 (10.9 LT)

Lightning: 10.9 LT \pm 1.5 h (dots)

PT: SLCP | EA: QUASI

08L (HENRI) | 27.5 kt LO

S: null | H: null



6-h IR BT Differences & Lightning

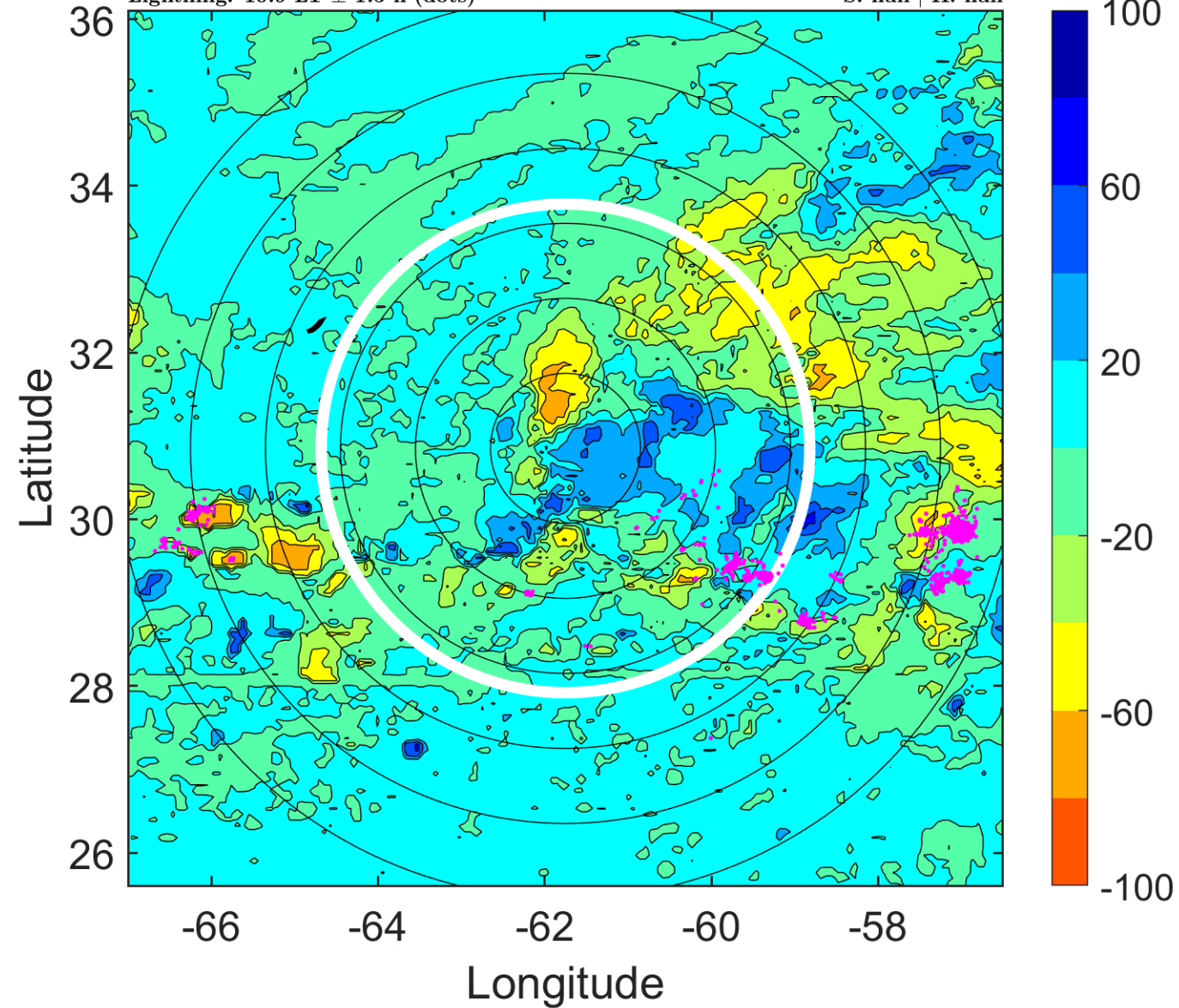
Δ t: 2015090815 (10.9 LT) - 2015090809 (4.9 LT)

Lightning: 10.9 LT \pm 1.5 h (dots)

PT: SLCP | EA: QUASI

08L (HENRI) | 27.5 kt LO

S: null | H: null



IR BT & Lightning

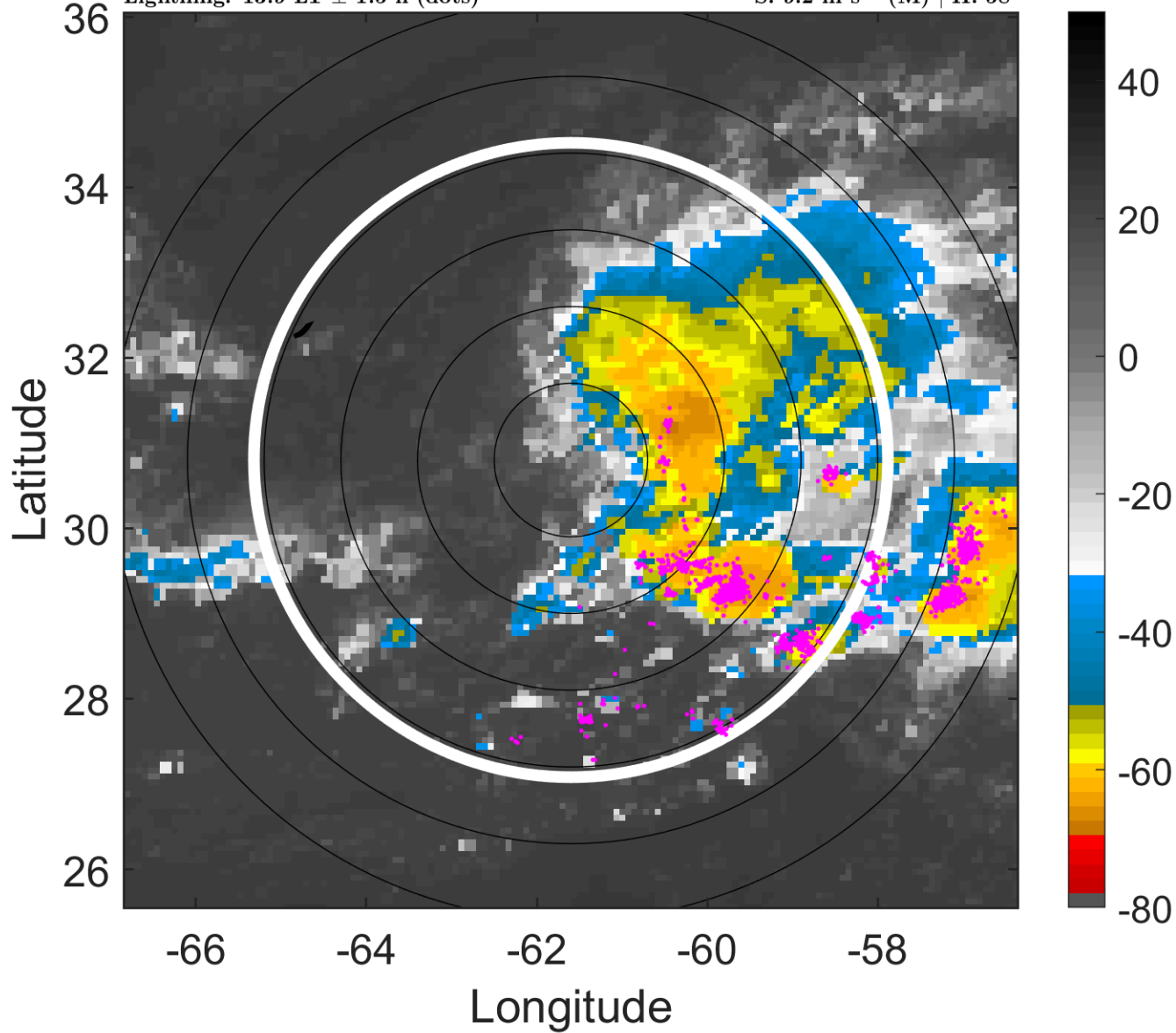
t: 2015090818 (13.9 LT)

Lightning: 13.9 LT \pm 1.5 h (dots)

PT: SLCP | EA: QUASI

08L (HENRI) | 30 kt TD

S: 9.2 m s⁻¹ (M) | H: 58°



6-h IR BT Differences & Lightning

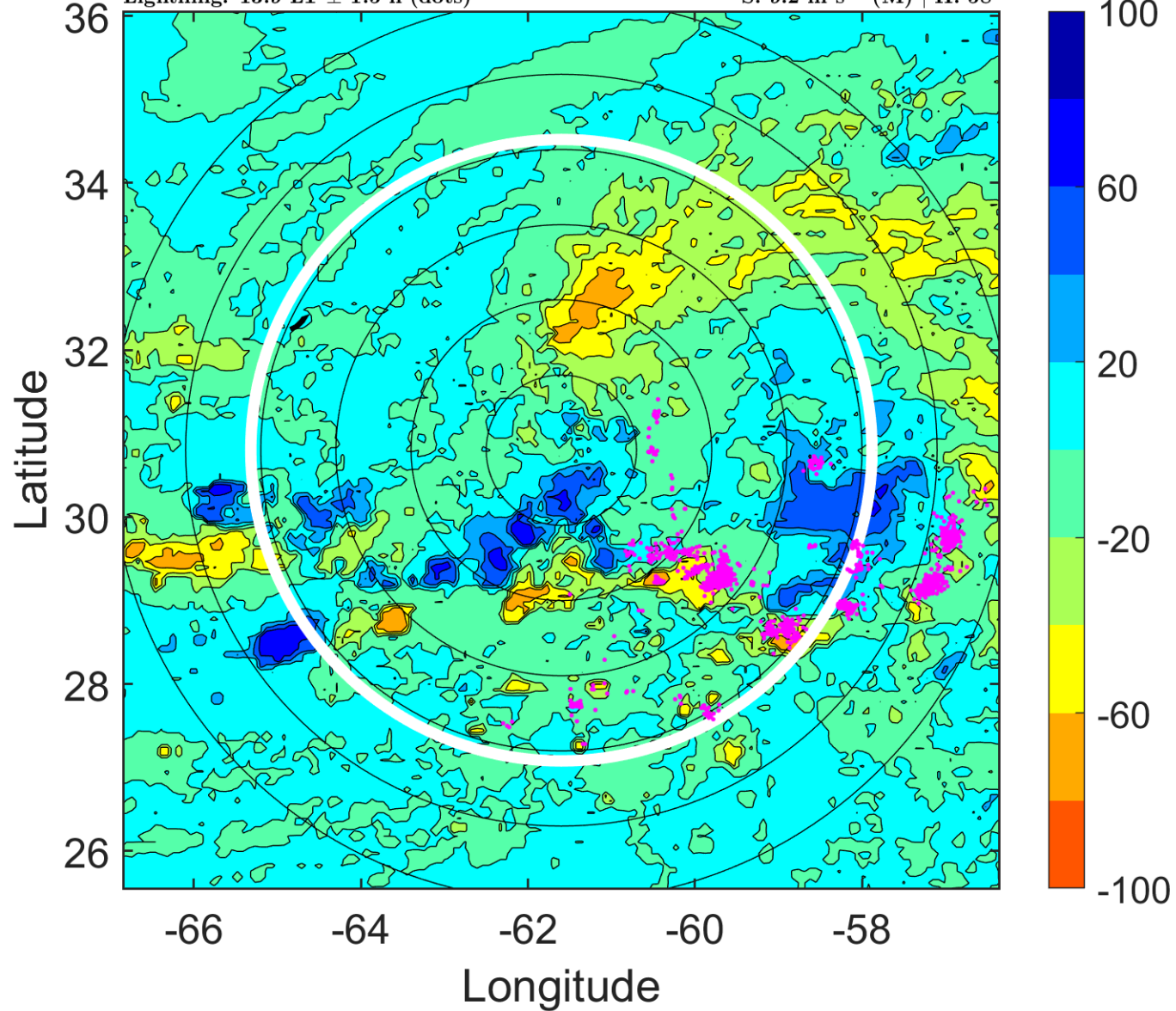
Δ t: 2015090818 (13.9 LT) - 2015090812 (7.9 LT)

Lightning: 13.9 LT \pm 1.5 h (dots)

PT: SLCP | EA: QUASI

08L (HENRI) | 30 kt TD

S: 9.2 m s⁻¹ (M) | H: 58°



IR BT & Lightning

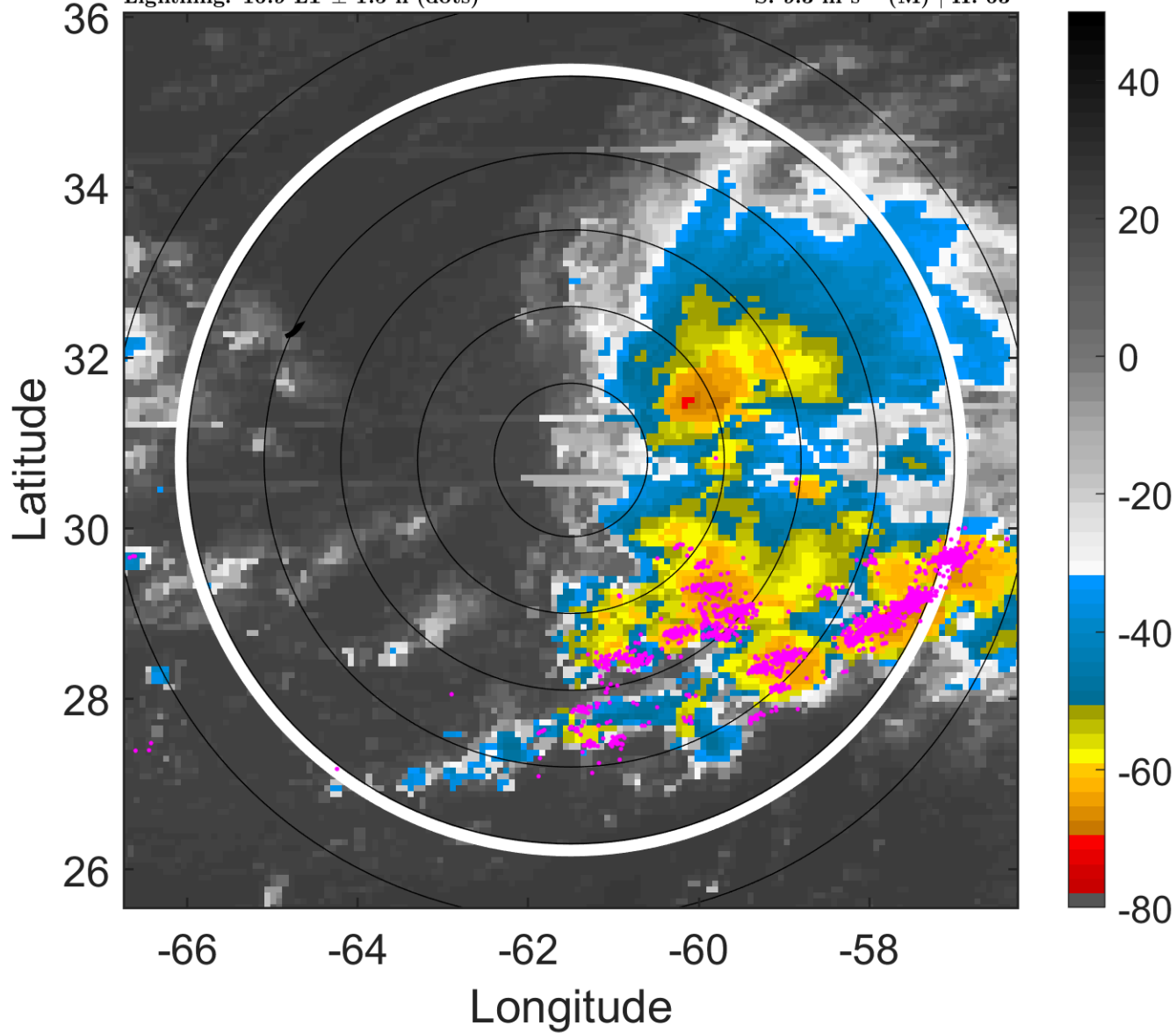
t: 2015090821 (16.9 LT)

Lightning: 16.9 LT \pm 1.5 h (dots)

PT: SLCP | EA: QUASI

08L (HENRI) | 32.5 kt TD

S: 9.3 m s⁻¹ (M) | H: 63°



6-h IR BT Differences & Lightning

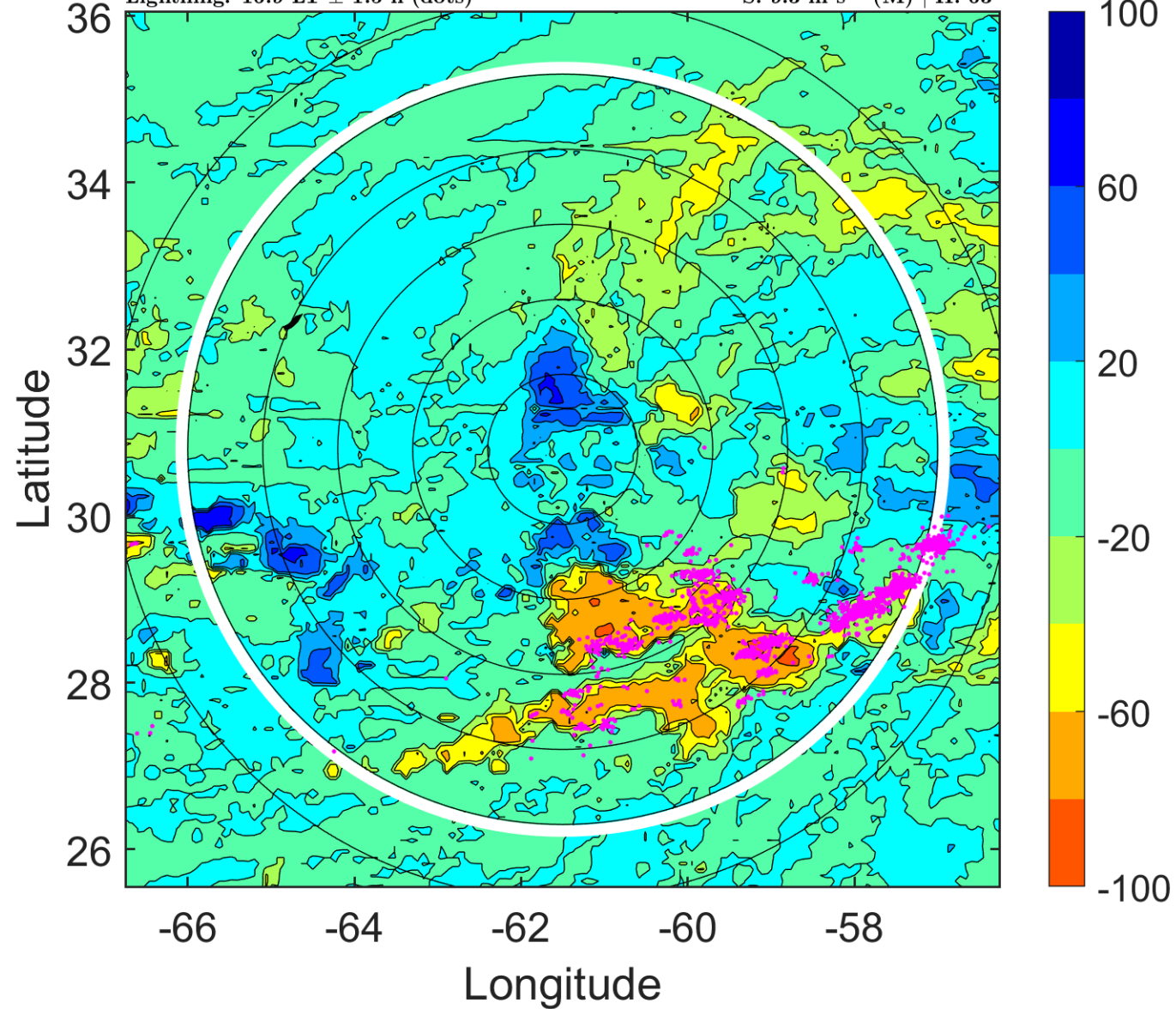
Δ t: 2015090821 (16.9 LT) - 2015090815 (10.9 LT)

Lightning: 16.9 LT \pm 1.5 h (dots)

PT: SLCP | EA: QUASI

08L (HENRI) | 32.5 kt TD

S: 9.3 m s⁻¹ (M) | H: 63°



IR BT & Lightning

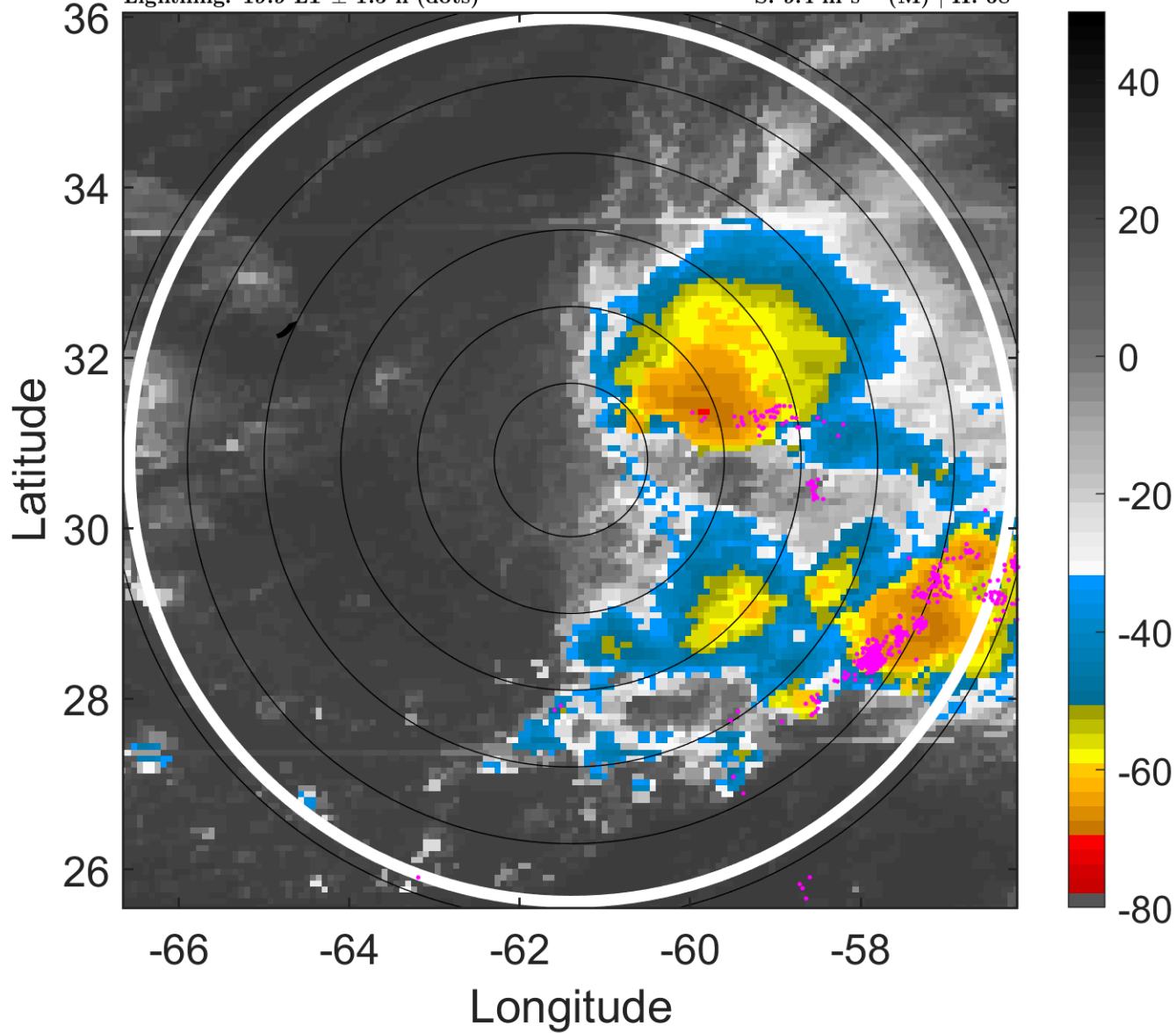
t: 2015090900 (19.9 LT)

Lightning: 19.9 LT \pm 1.5 h (dots)

PT: SLCP | EA: QUASI

08L (HENRI) | 35 kt TS

S: 9.4 m s⁻¹ (M) | H: 68°



6-h IR BT Differences & Lightning

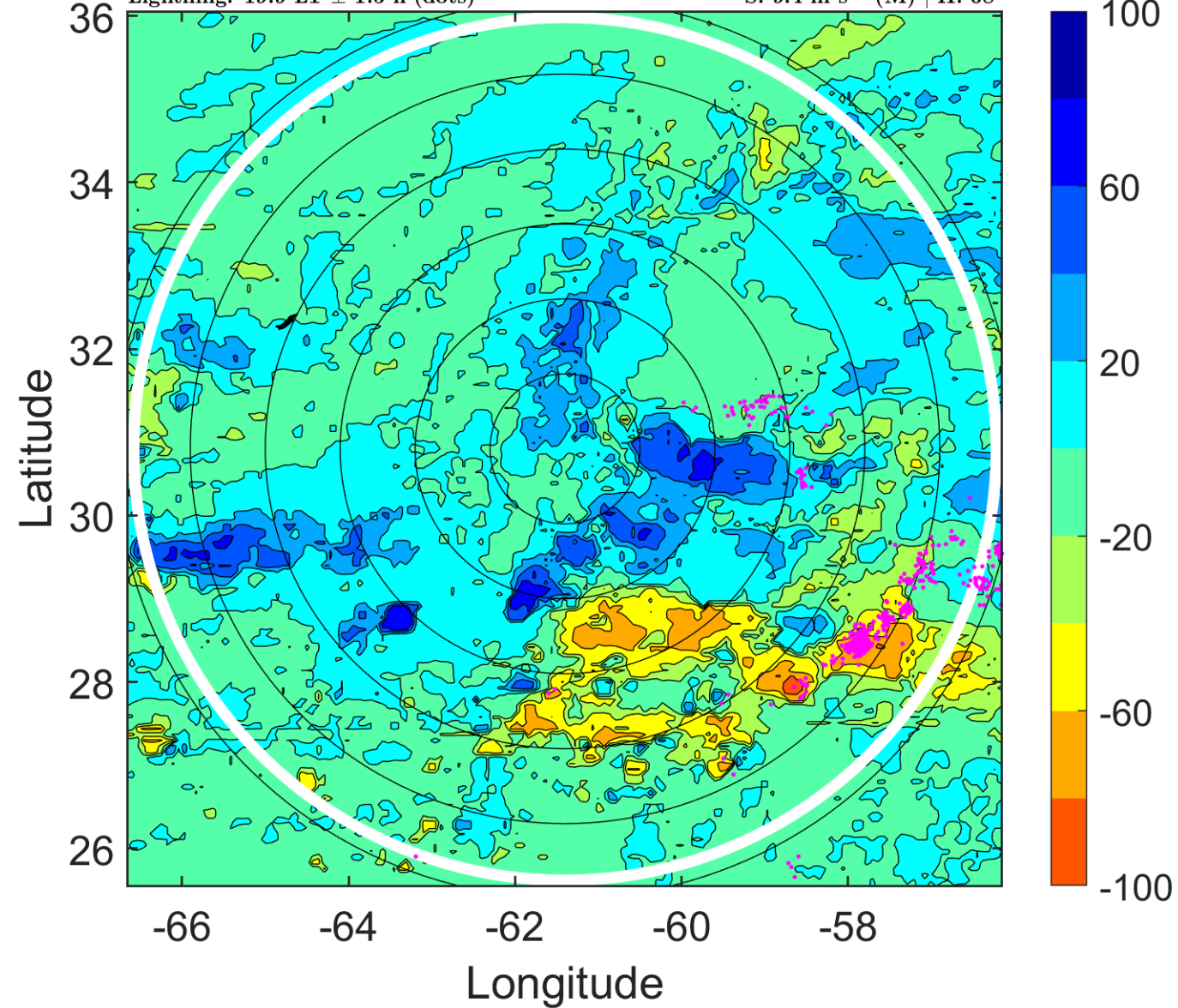
Δ t: 2015090900 (19.9 LT) - 2015090818 (13.9 LT)

Lightning: 19.9 LT \pm 1.5 h (dots)

PT: SLCP | EA: QUASI

08L (HENRI) | 35 kt TS

S: 9.4 m s⁻¹ (M) | H: 68°



IR BT & Lightning

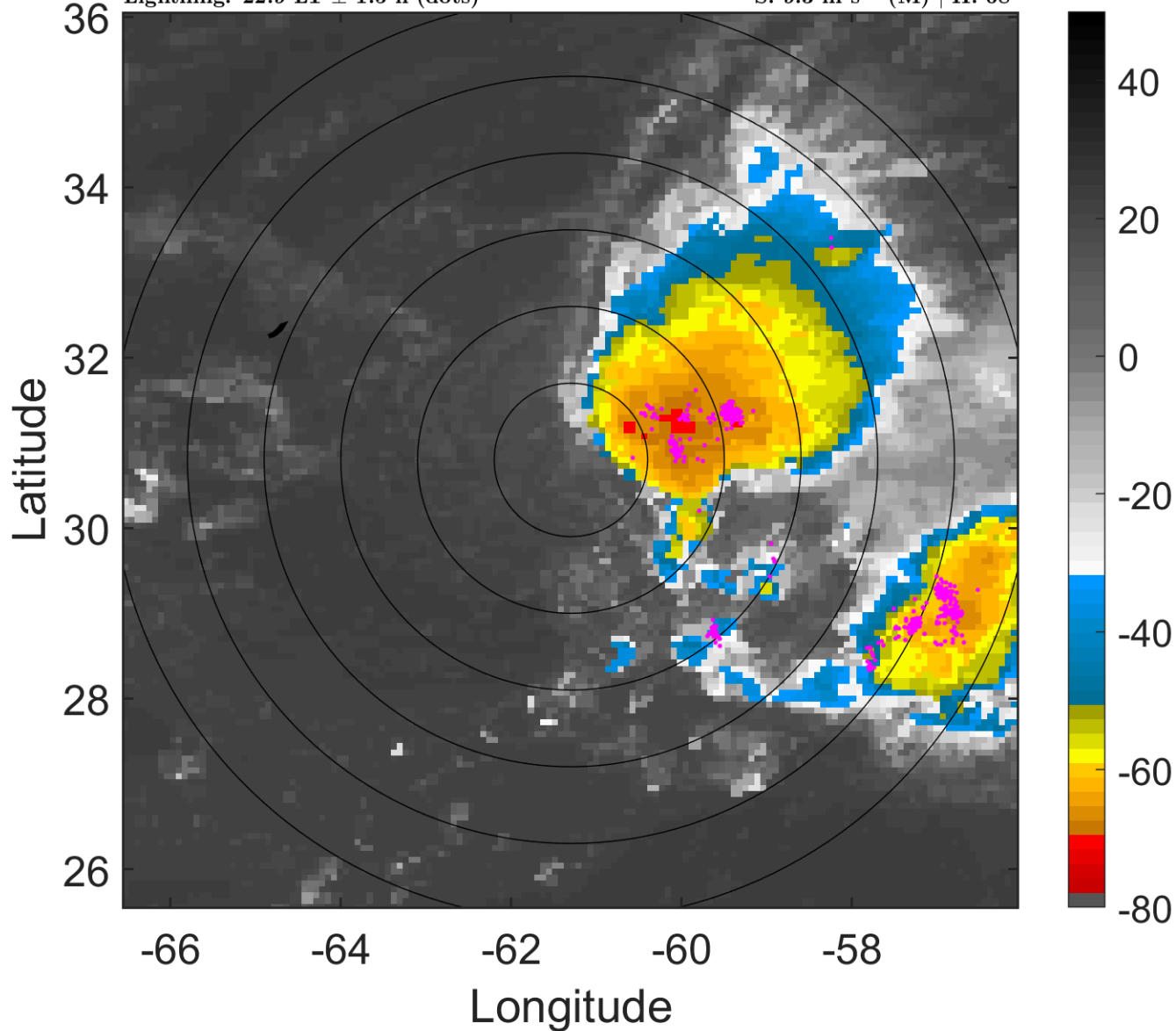
t: 2015090903 (22.9 LT)

Lightning: 22.9 LT \pm 1.5 h (dots)

PT: SLCP | EA: QUASI

08L (HENRI) | 35 kt TS

S: 9.3 m s⁻¹ (M) | H: 68°



6-h IR BT Differences & Lightning

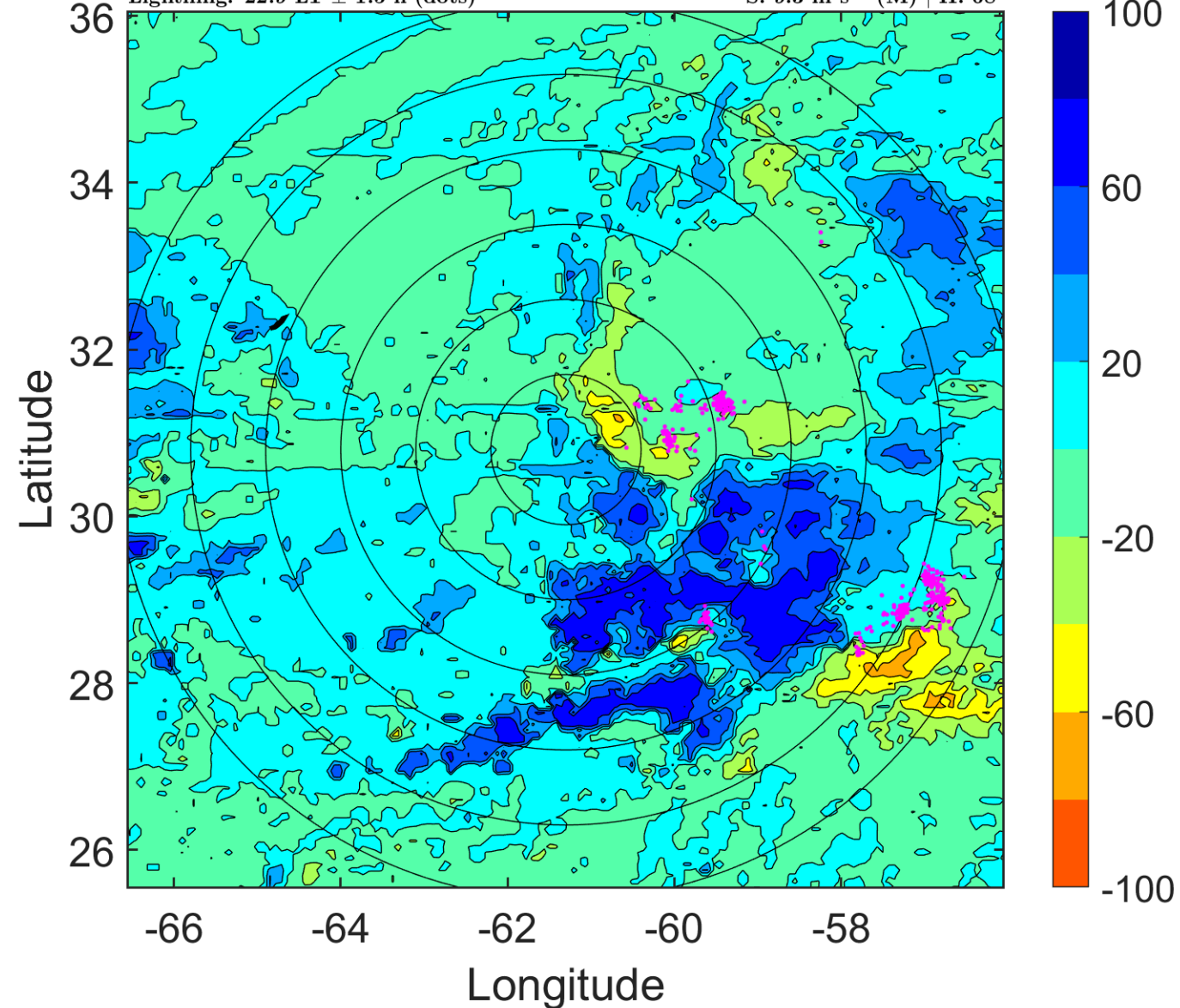
Δ t: 2015090903 (22.9 LT) - 2015090821 (16.9 LT)

Lightning: 22.9 LT \pm 1.5 h (dots)

PT: SLCP | EA: QUASI

08L (HENRI) | 35 kt TS

S: 9.3 m s⁻¹ (M) | H: 68°



IR BT & Lightning

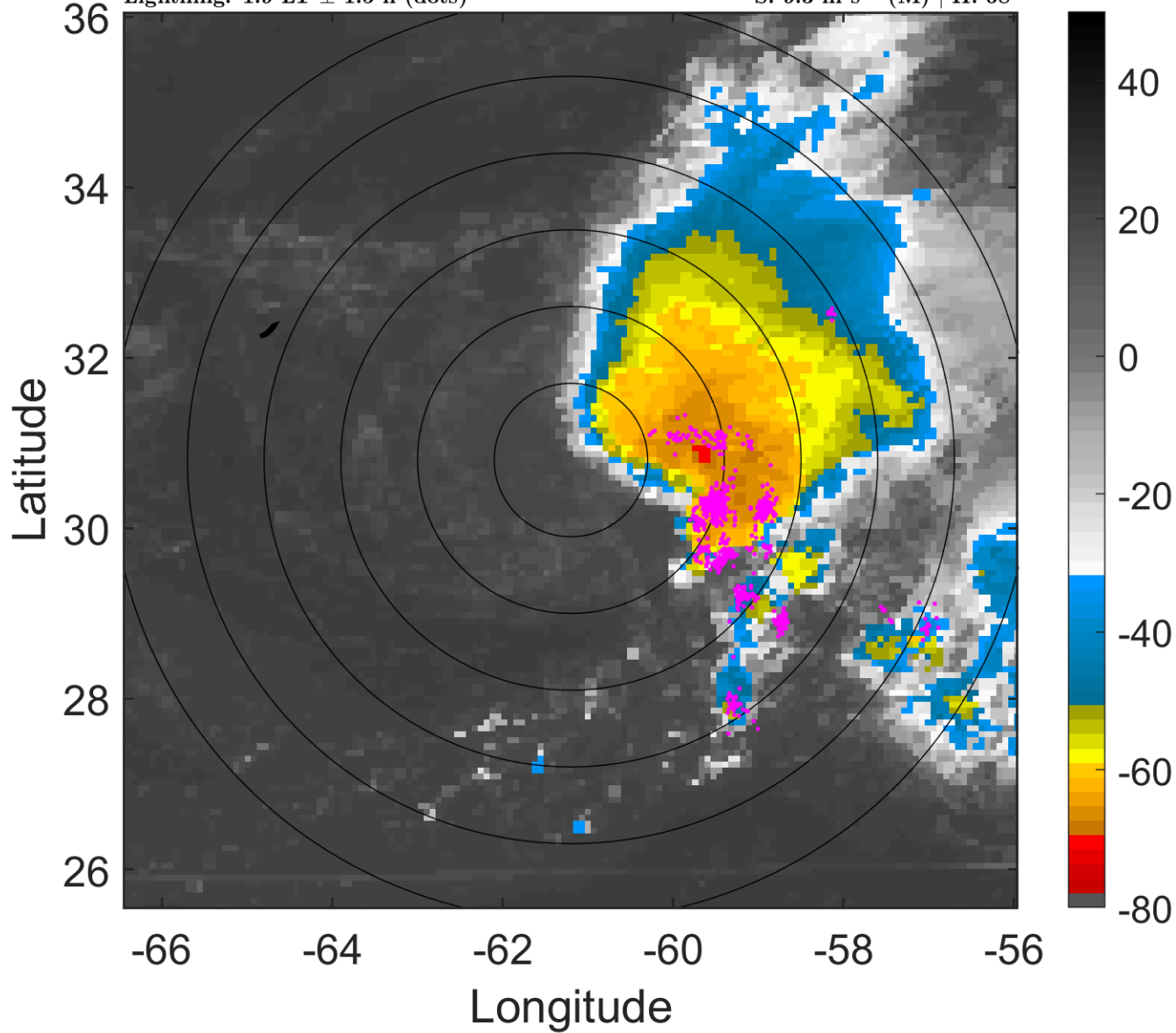
t: 2015090906 (1.9 LT)

Lightning: 1.9 LT \pm 1.5 h (dots)

PT: NP | EA: INACT

08L (HENRI) | 35 kt TS

S: 9.3 m s⁻¹ (M) | H: 68°



6-h IR BT Differences & Lightning

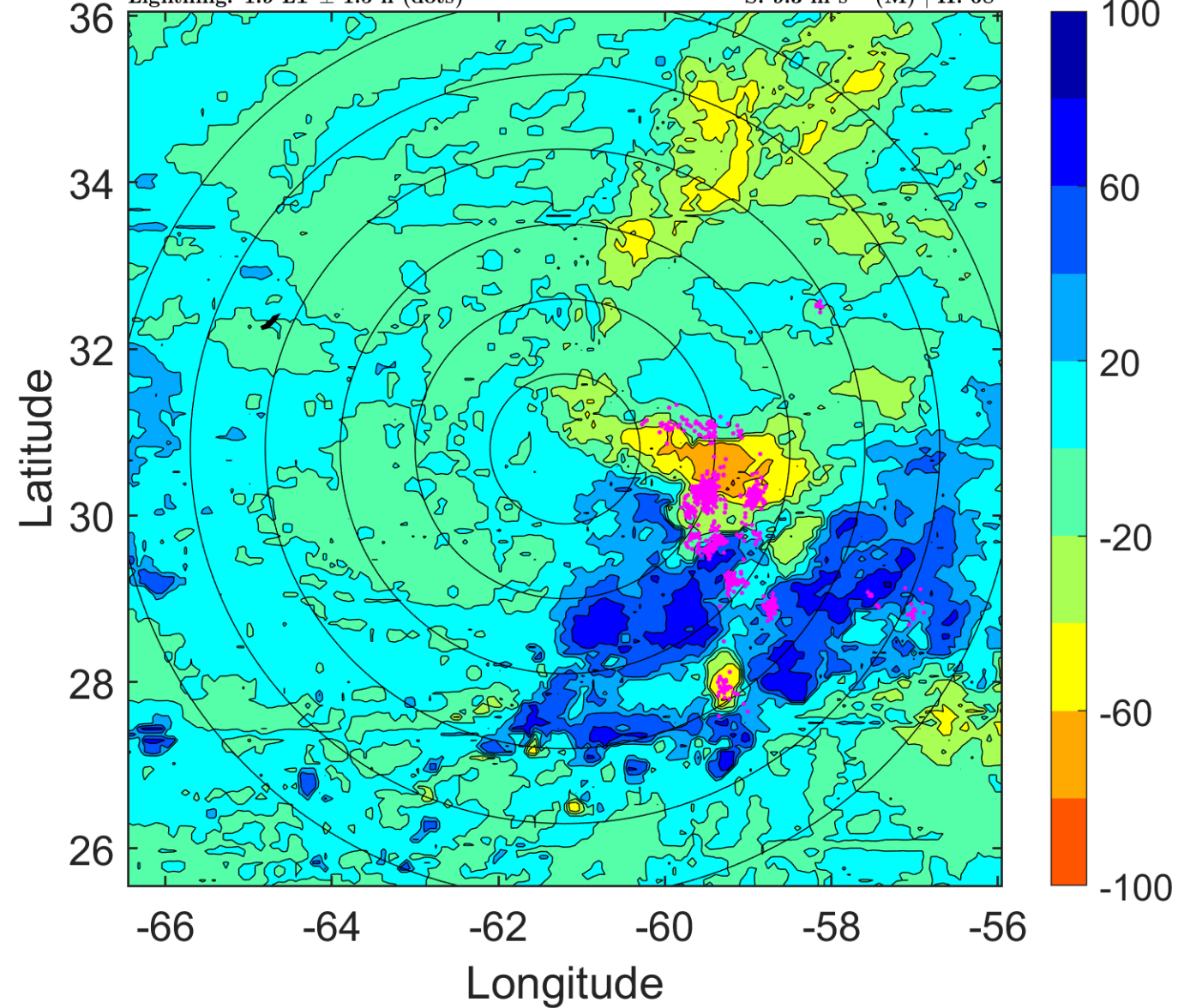
Δ t: 2015090906 (1.9 LT) - 2015090900 (19.9 LT)

Lightning: 1.9 LT \pm 1.5 h (dots)

PT: NP | EA: INACT

08L (HENRI) | 35 kt TS

S: 9.3 m s⁻¹ (M) | H: 68°



IR BT & Lightning

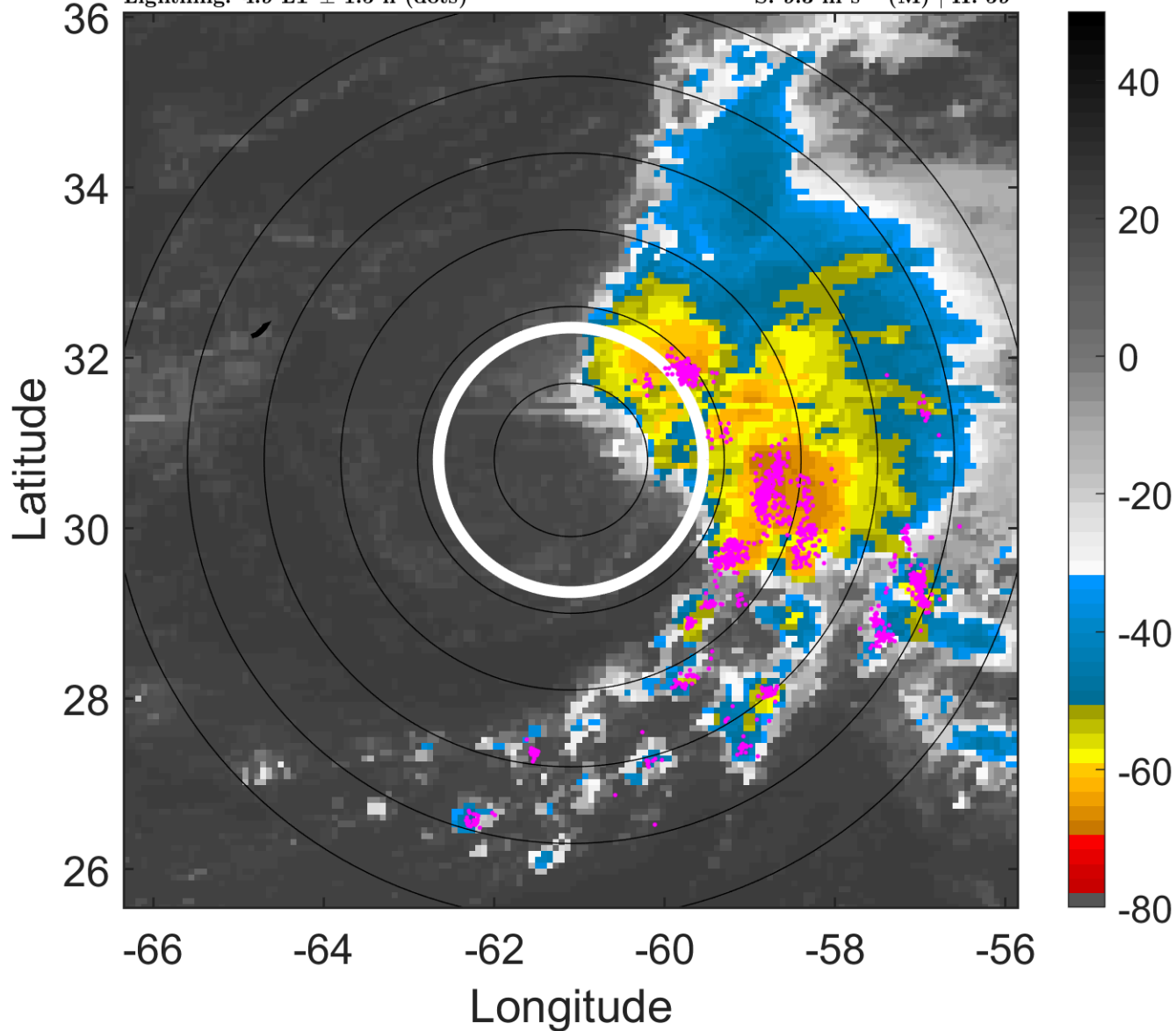
t: 2015090909 (4.9 LT)

Lightning: 4.9 LT \pm 1.5 h (dots)

PT: NP | EA: INACT

08L (HENRI) | 37.5 kt TS

S: 9.3 m s⁻¹ (M) | H: 59°



6-h IR BT Differences & Lightning

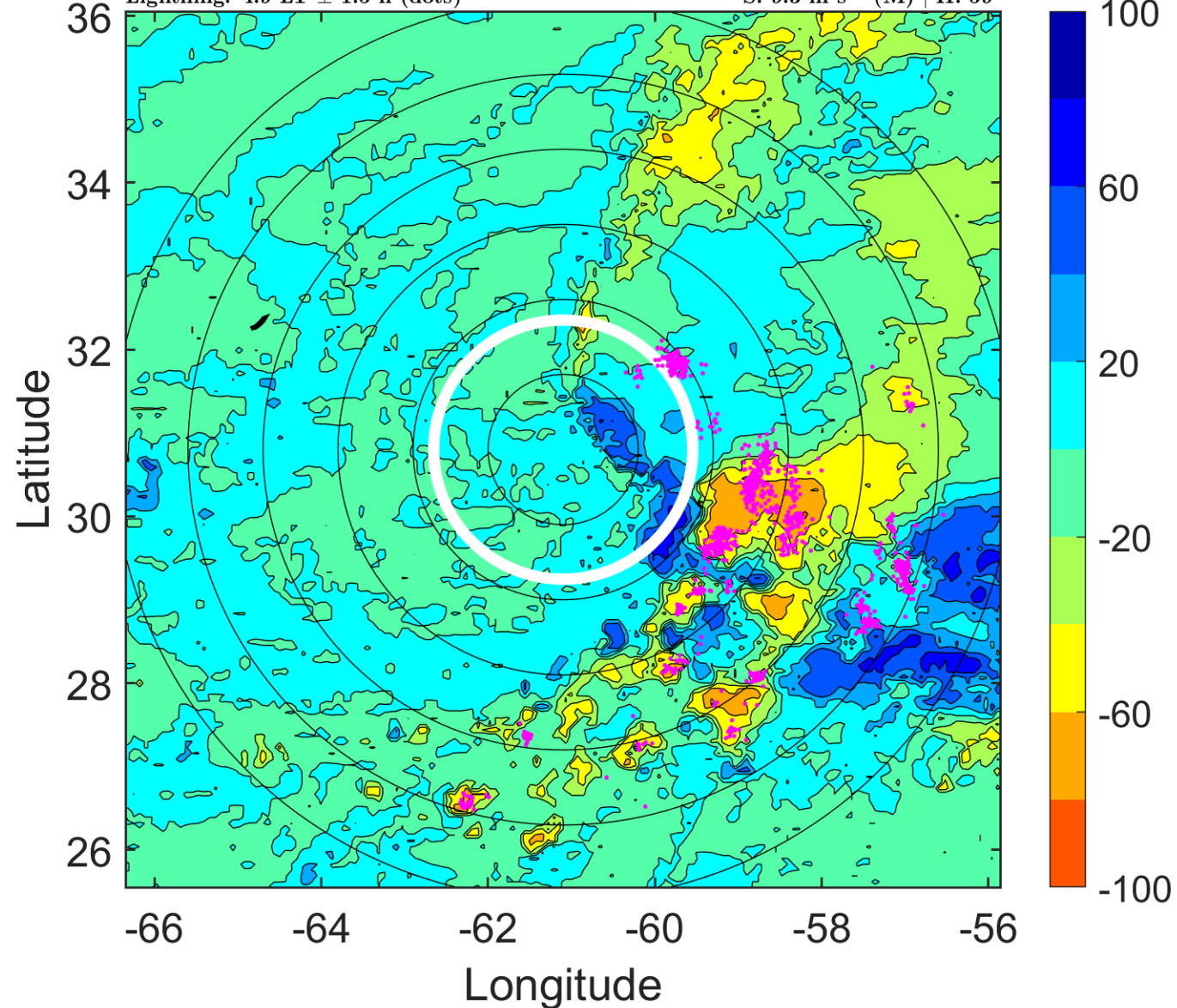
Δ t: 2015090909 (4.9 LT) - 2015090903 (22.9 LT)

Lightning: 4.9 LT \pm 1.5 h (dots)

PT: NP | EA: INACT

08L (HENRI) | 37.5 kt TS

S: 9.3 m s⁻¹ (M) | H: 59°



IR BT & Lightning

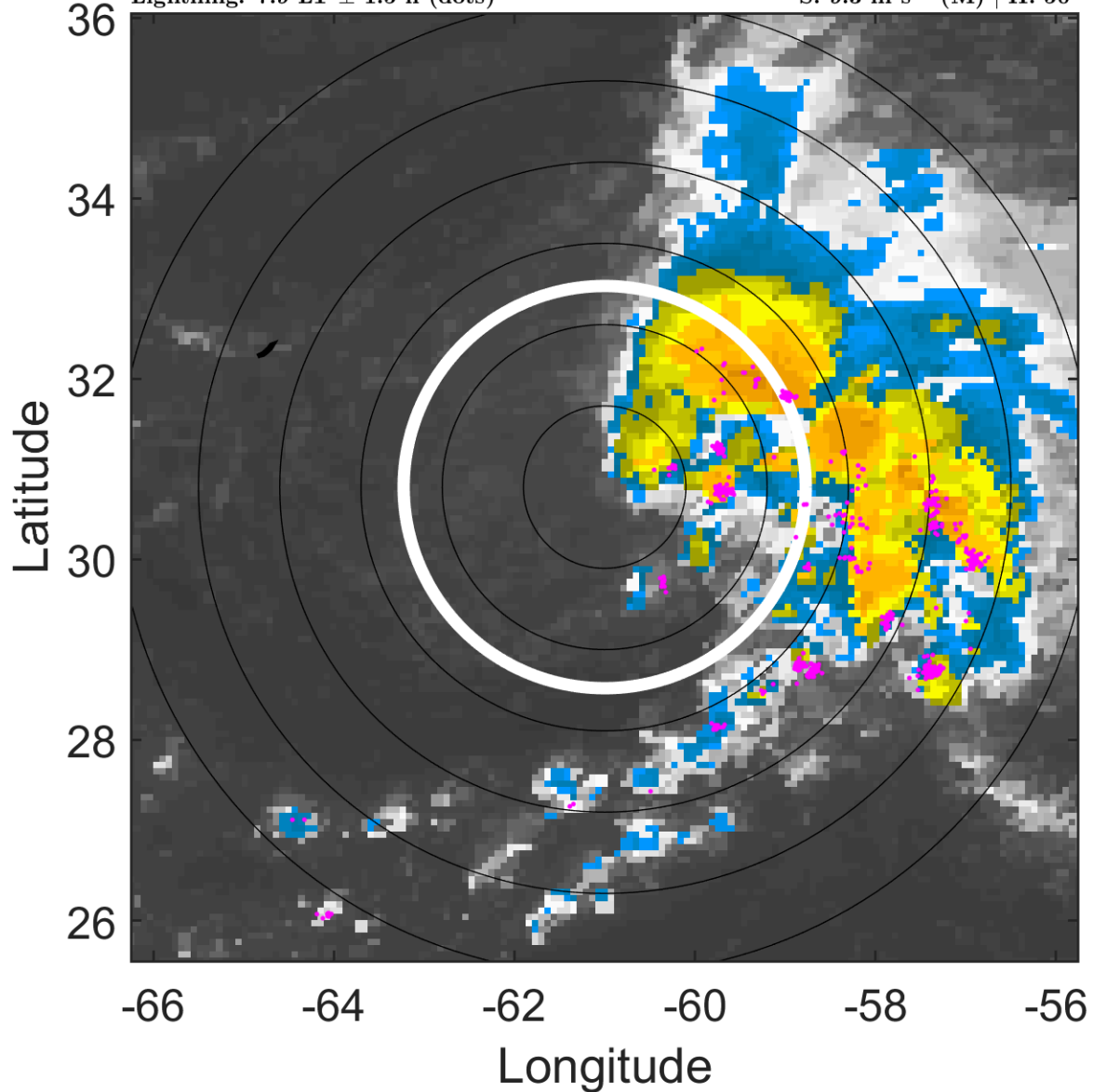
t: 2015090912 (7.9 LT)

Lightning: 7.9 LT \pm 1.5 h (dots)

PT: NP | EA: INACT

08L (HENRI) | 40 kt TS

S: 9.3 m s⁻¹ (M) | H: 50°



6-h IR BT Differences & Lightning

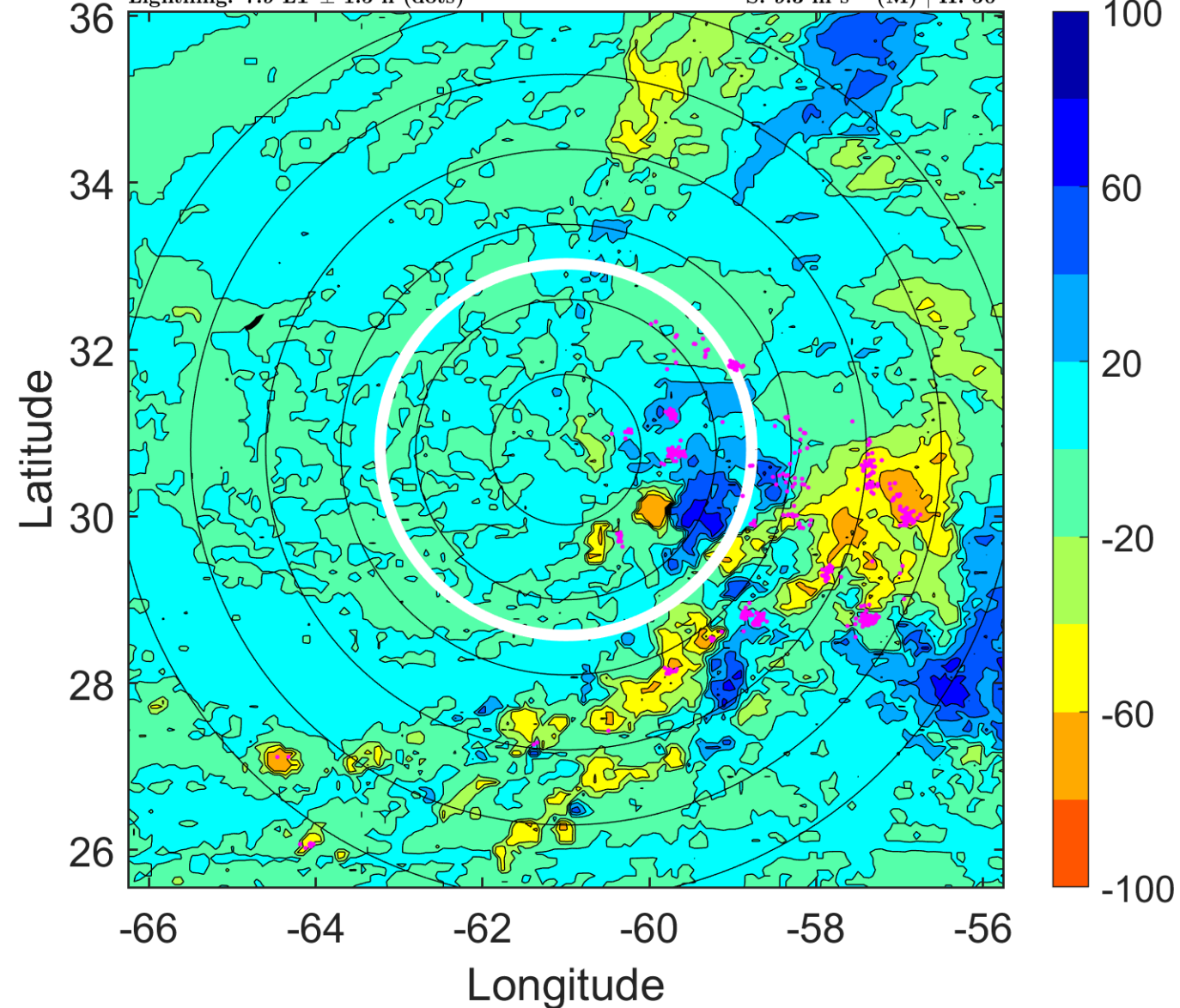
Δ t: 2015090912 (7.9 LT) - 2015090906 (1.9 LT)

Lightning: 7.9 LT \pm 1.5 h (dots)

PT: NP | EA: INACT

08L (HENRI) | 40 kt TS

S: 9.3 m s⁻¹ (M) | H: 50°



IR BT & Lightning

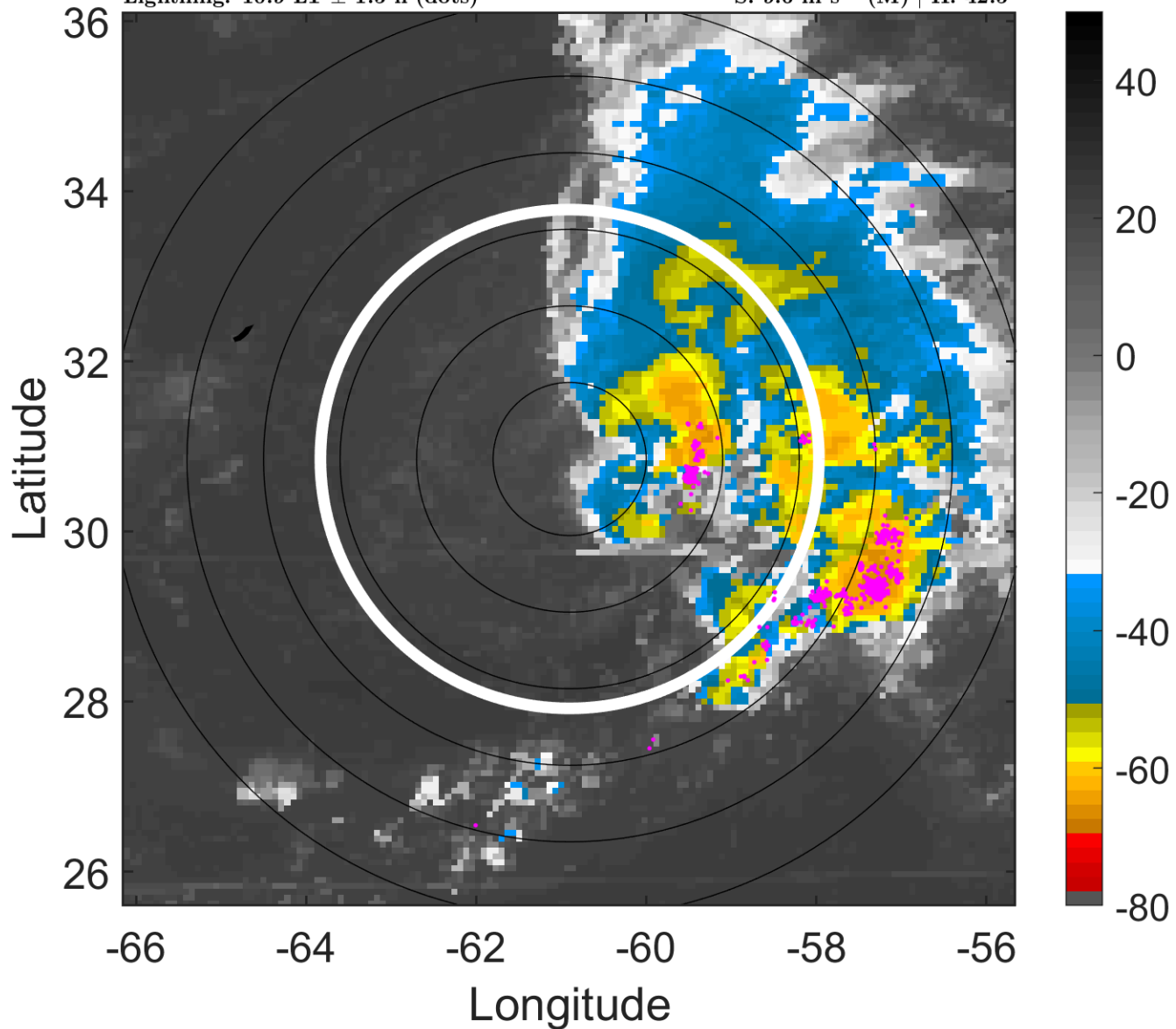
t: 2015090915 (10.9 LT)

Lightning: 10.9 LT \pm 1.5 h (dots)

PT: NP | EA: INACT

08L (HENRI) | 42.5 kt TS

S: 9.6 m s⁻¹ (M) | H: 42.5°



6-h IR BT Differences & Lightning

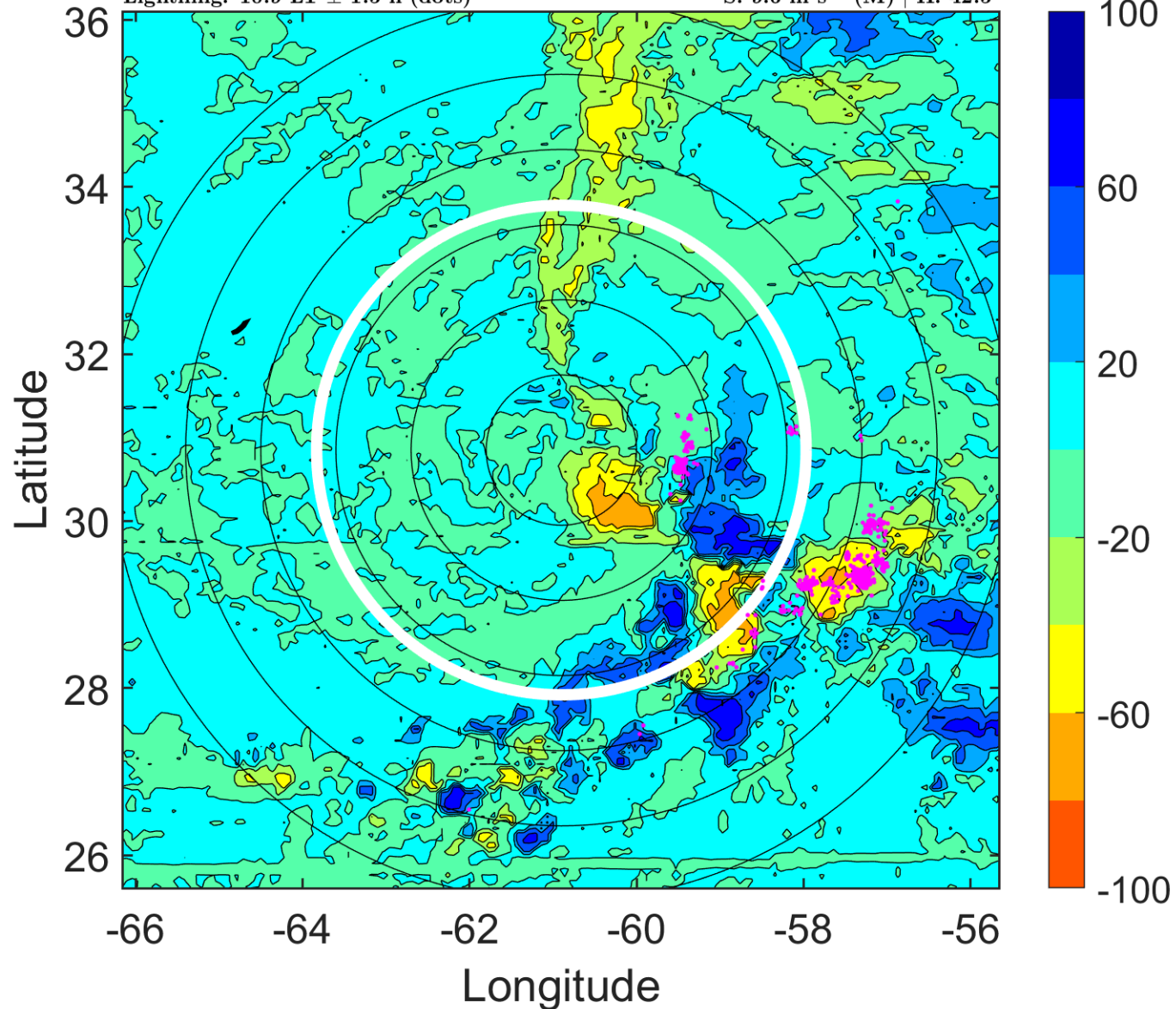
Δ t: 2015090915 (10.9 LT) - 2015090909 (4.9 LT)

Lightning: 10.9 LT \pm 1.5 h (dots)

PT: NP | EA: INACT

08L (HENRI) | 42.5 kt TS

S: 9.6 m s⁻¹ (M) | H: 42.5°



IR BT & Lightning

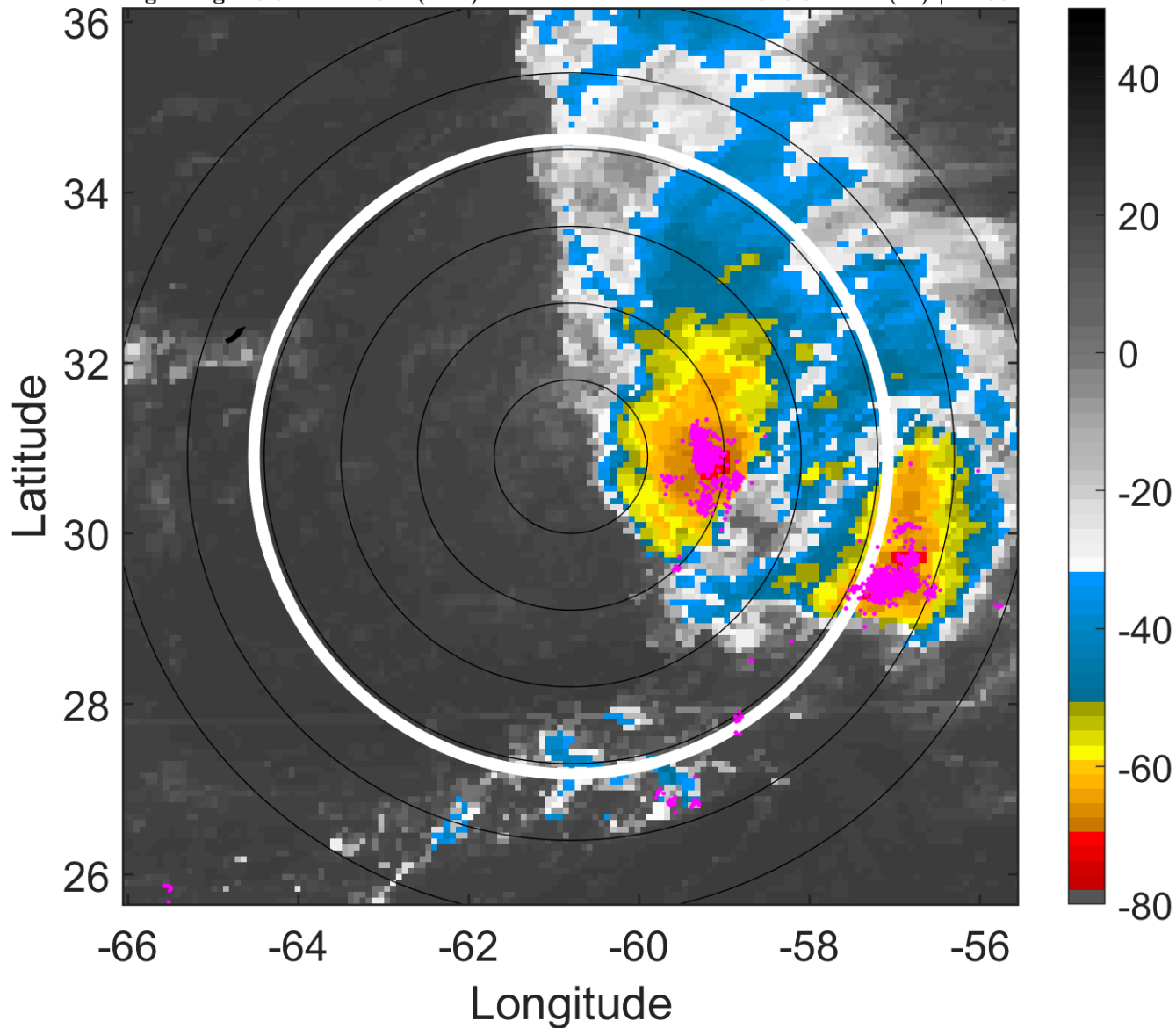
t: 2015090918 (13.9 LT)

Lightning: 13.9 LT \pm 1.5 h (dots)

PT: NP | EA: INACT

08L (HENRI) | 45 kt TS

S: 9.9 m s⁻¹ (M) | H: 35°



6-h IR BT Differences & Lightning

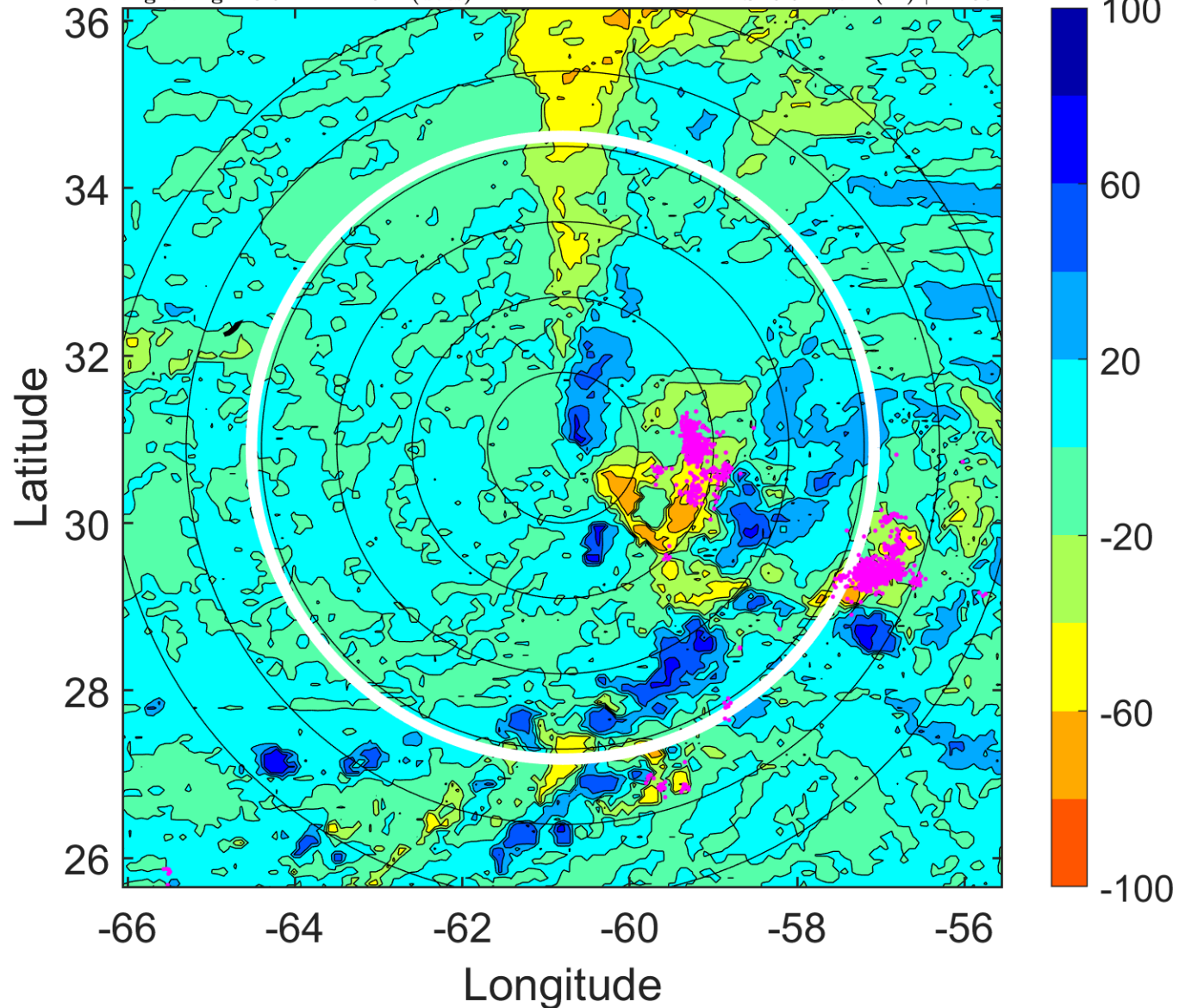
Δ t: 2015090918 (13.9 LT) - 2015090912 (7.9 LT)

Lightning: 13.9 LT \pm 1.5 h (dots)

PT: NP | EA: INACT

08L (HENRI) | 45 kt TS

S: 9.9 m s⁻¹ (M) | H: 35°



IR BT & Lightning

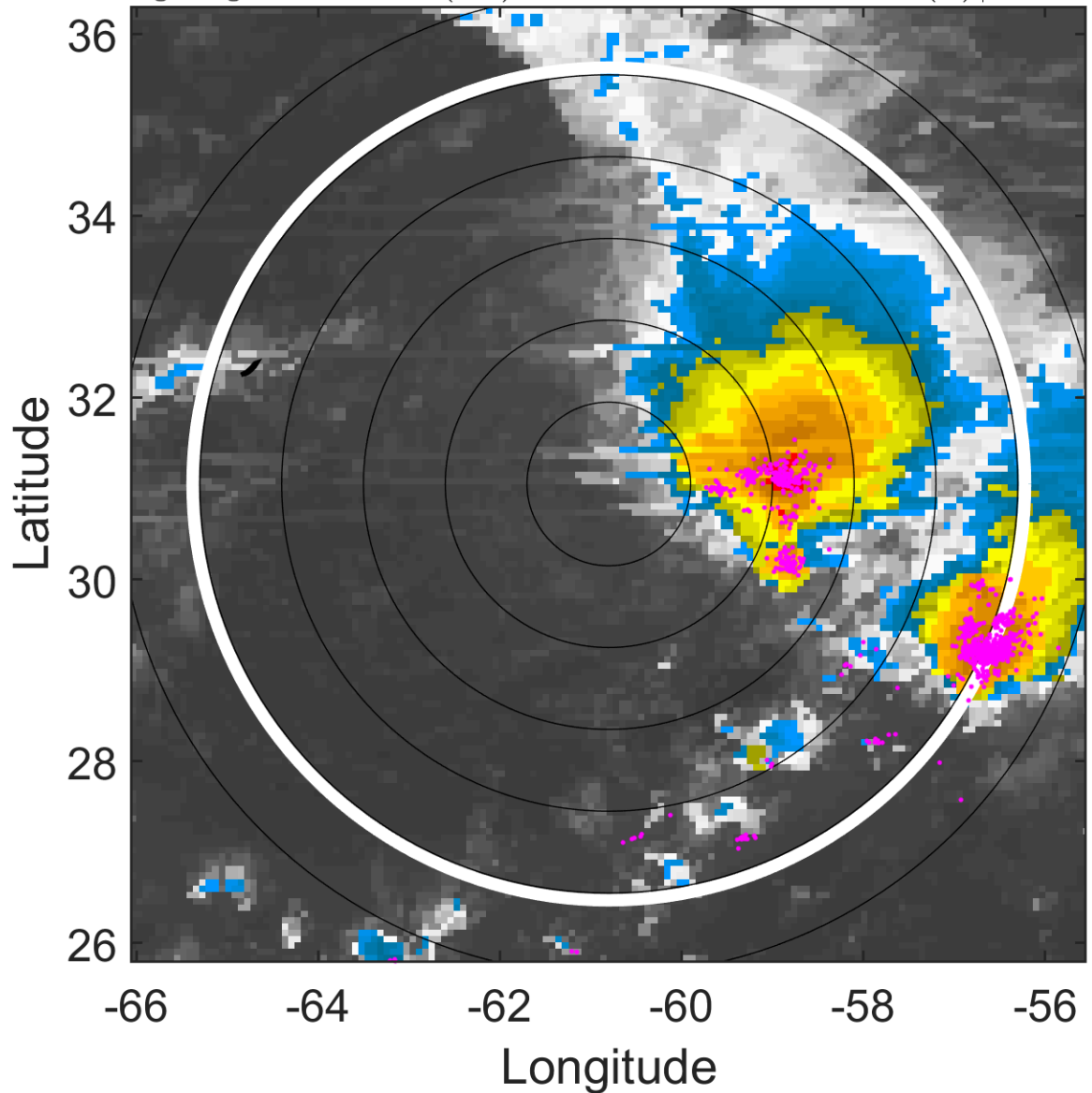
t: 2015090921 (16.9 LT)

Lightning: 16.9 LT \pm 1.5 h (dots)

PT: NP | EA: INACT

08L (HENRI) | 45 kt TS

S: 10.1 m s⁻¹ (M) | H: 34.5°



6-h IR BT Differences & Lightning

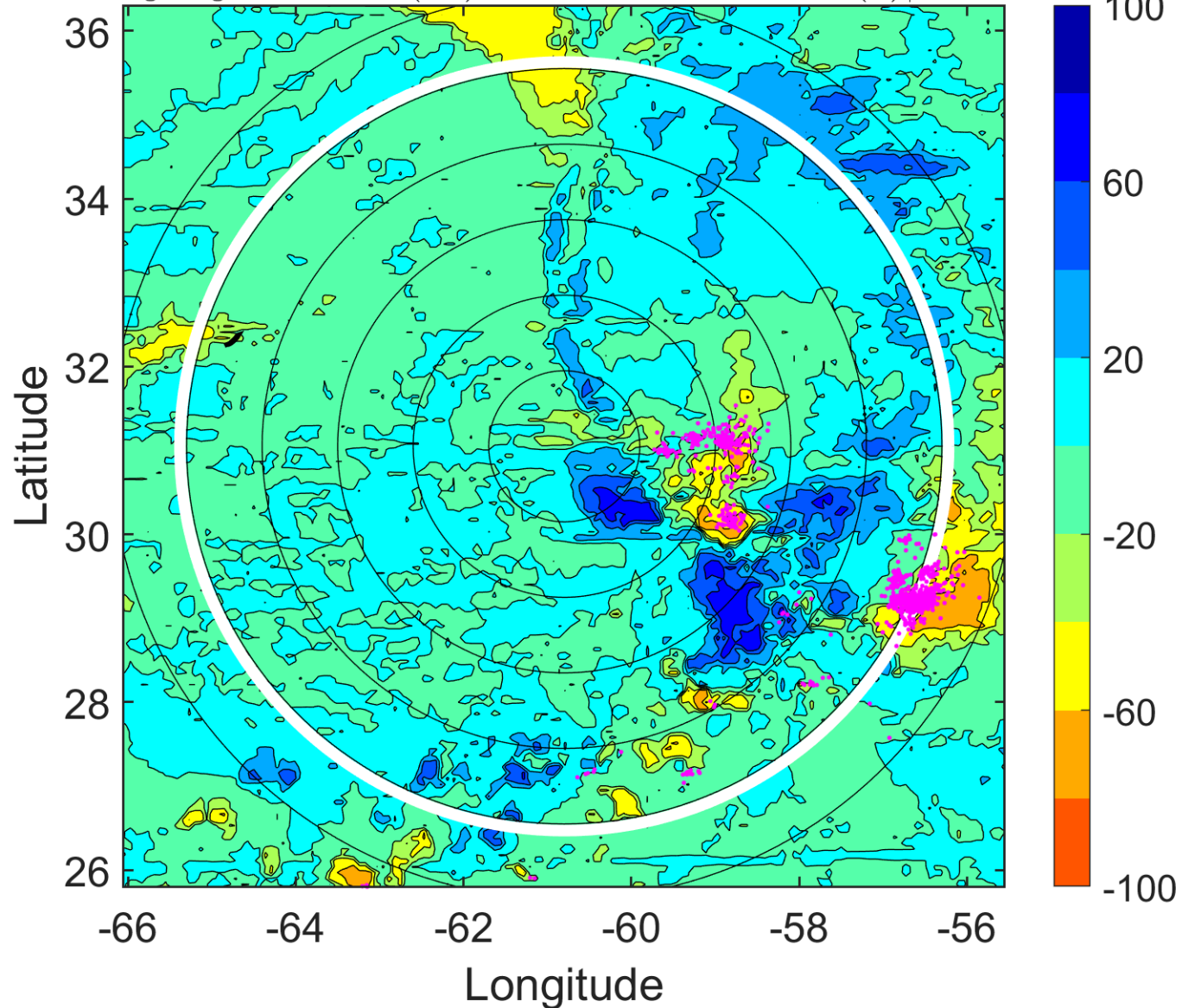
Δ t: 2015090921 (16.9 LT) - 2015090915 (10.9 LT)

Lightning: 16.9 LT \pm 1.5 h (dots)

PT: NP | EA: INACT

08L (HENRI) | 45 kt TS

S: 10.1 m s⁻¹ (M) | H: 34.5°



IR BT & Lightning

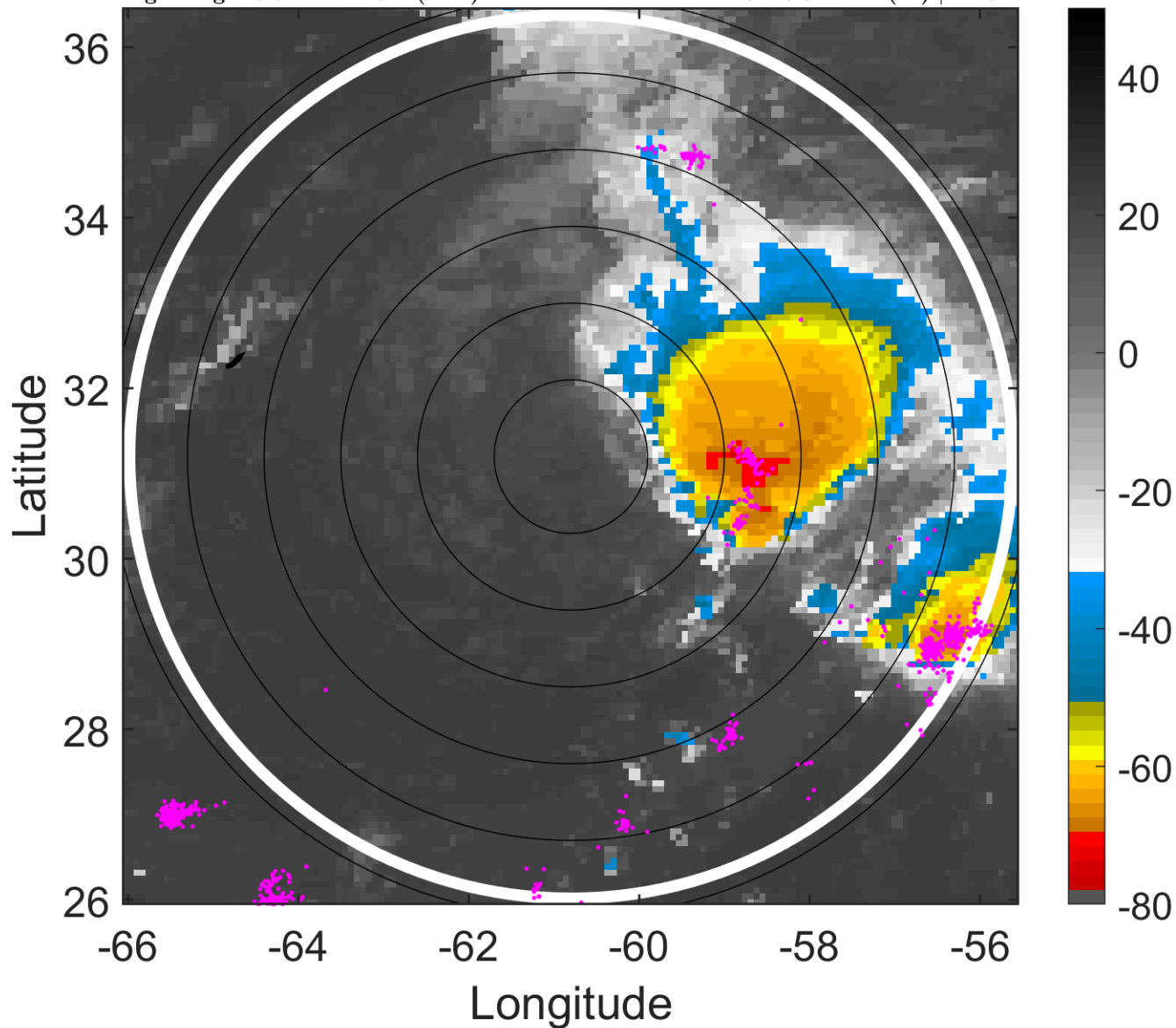
t: 2015091000 (19.9 LT)

Lightning: 19.9 LT \pm 1.5 h (dots)

PT: NP | EA: INACT

08L (HENRI) | 45 kt TS

S: 10.3 m s⁻¹ (M) | H: 34°



6-h IR BT Differences & Lightning

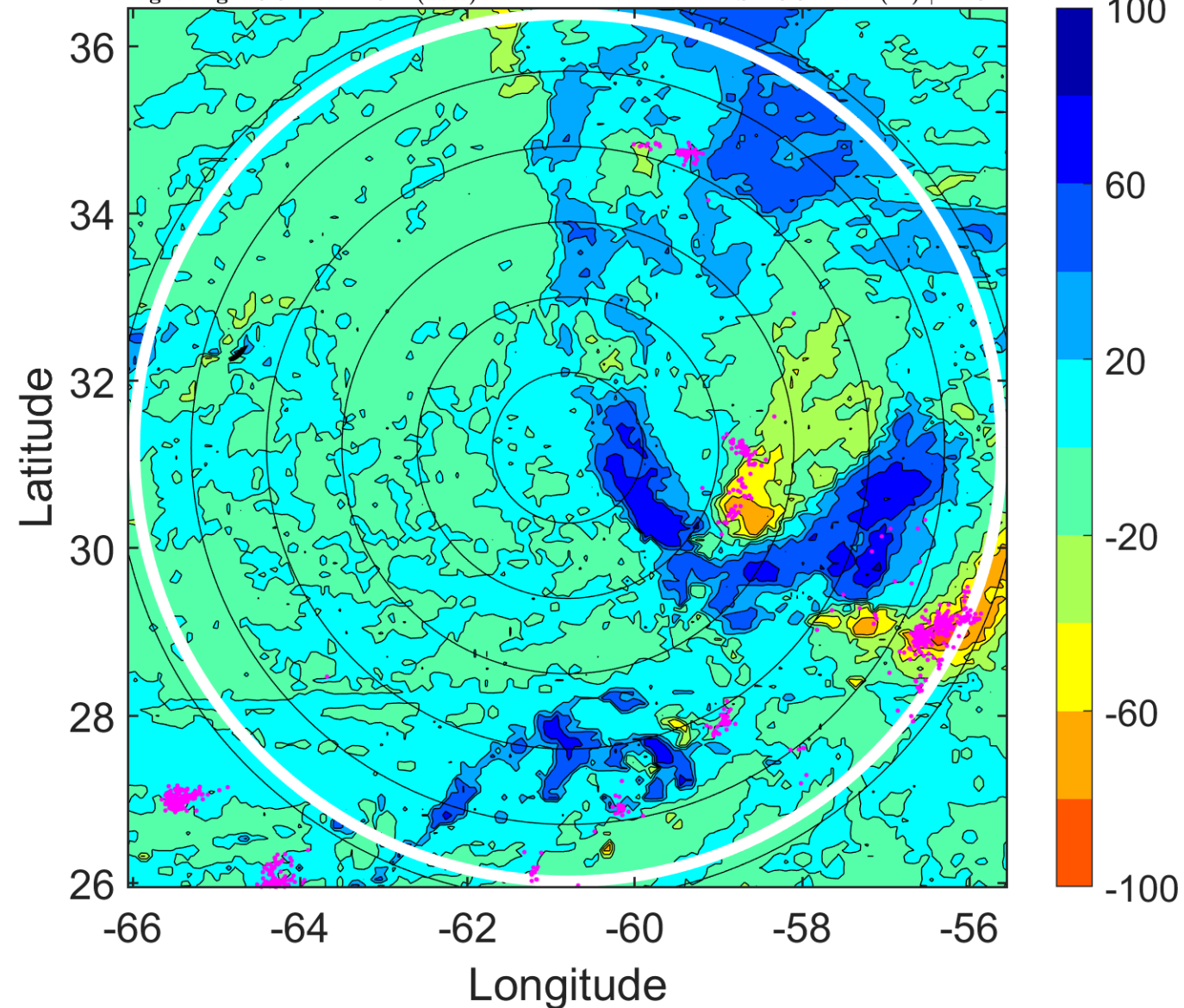
Δ t: 2015091000 (19.9 LT) - 2015090918 (13.9 LT)

Lightning: 19.9 LT \pm 1.5 h (dots)

PT: NP | EA: INACT

08L (HENRI) | 45 kt TS

S: 10.3 m s⁻¹ (M) | H: 34°



IR BT & Lightning

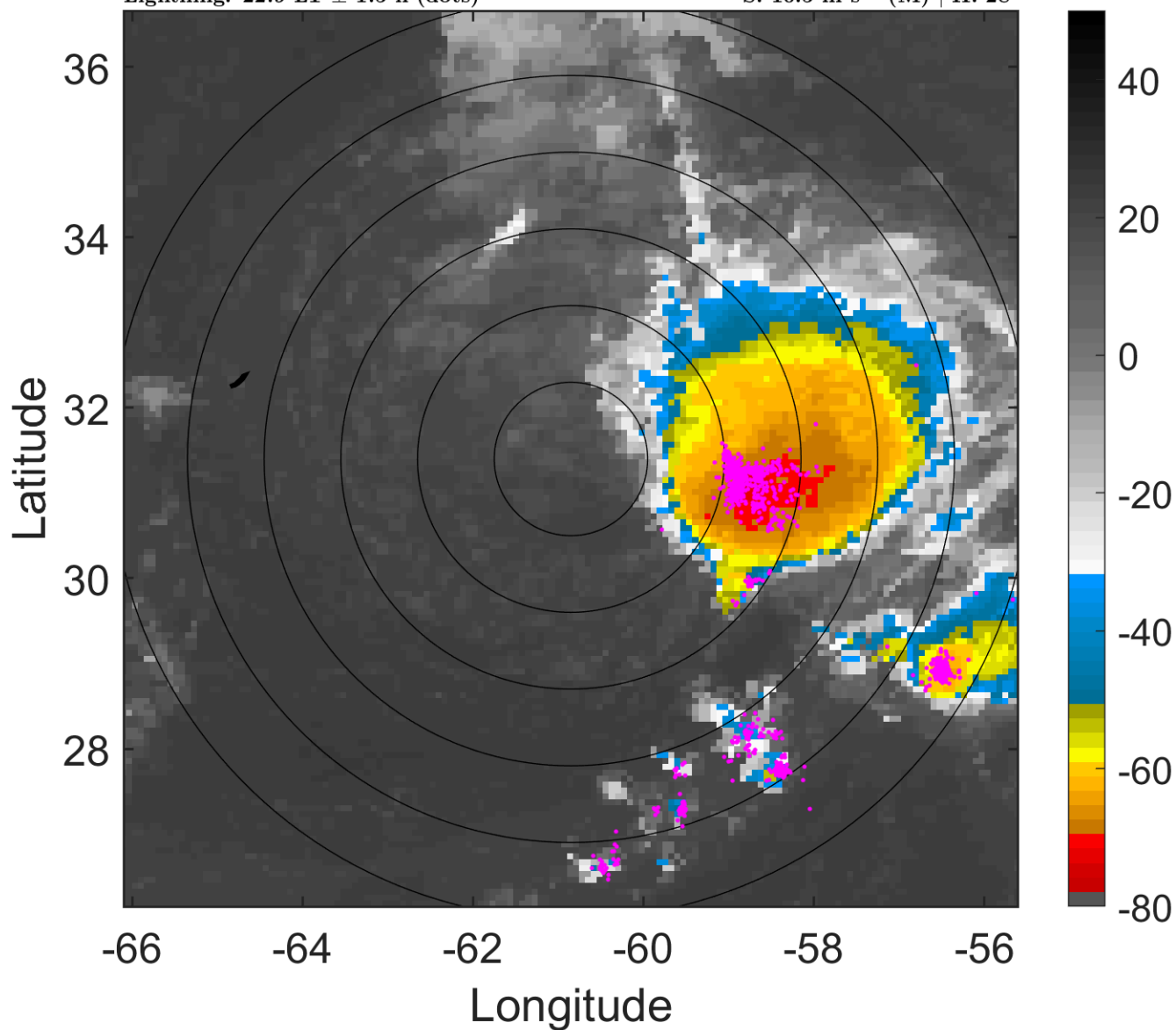
t: 2015091003 (22.9 LT)

Lightning: 22.9 LT \pm 1.5 h (dots)

PT: NP | EA: INACT

08L (HENRI) | 45 kt TS

S: 10.5 m s⁻¹ (M) | H: 28°



6-h IR BT Differences & Lightning

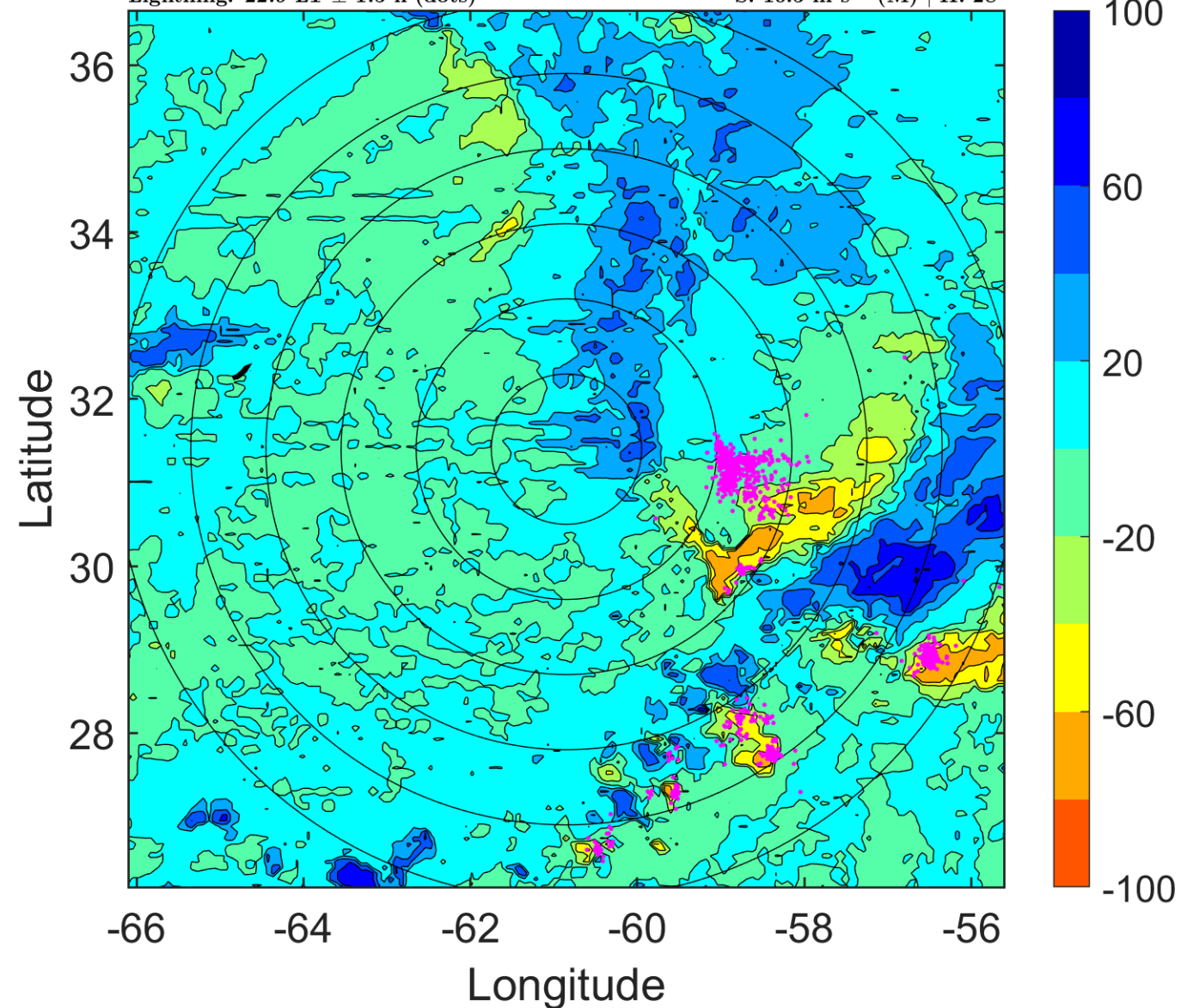
Δ t: 2015091003 (22.9 LT) - 2015090921 (16.9 LT)

Lightning: 22.9 LT \pm 1.5 h (dots)

PT: NP | EA: INACT

08L (HENRI) | 45 kt TS

S: 10.5 m s⁻¹ (M) | H: 28°



IR BT & Lightning

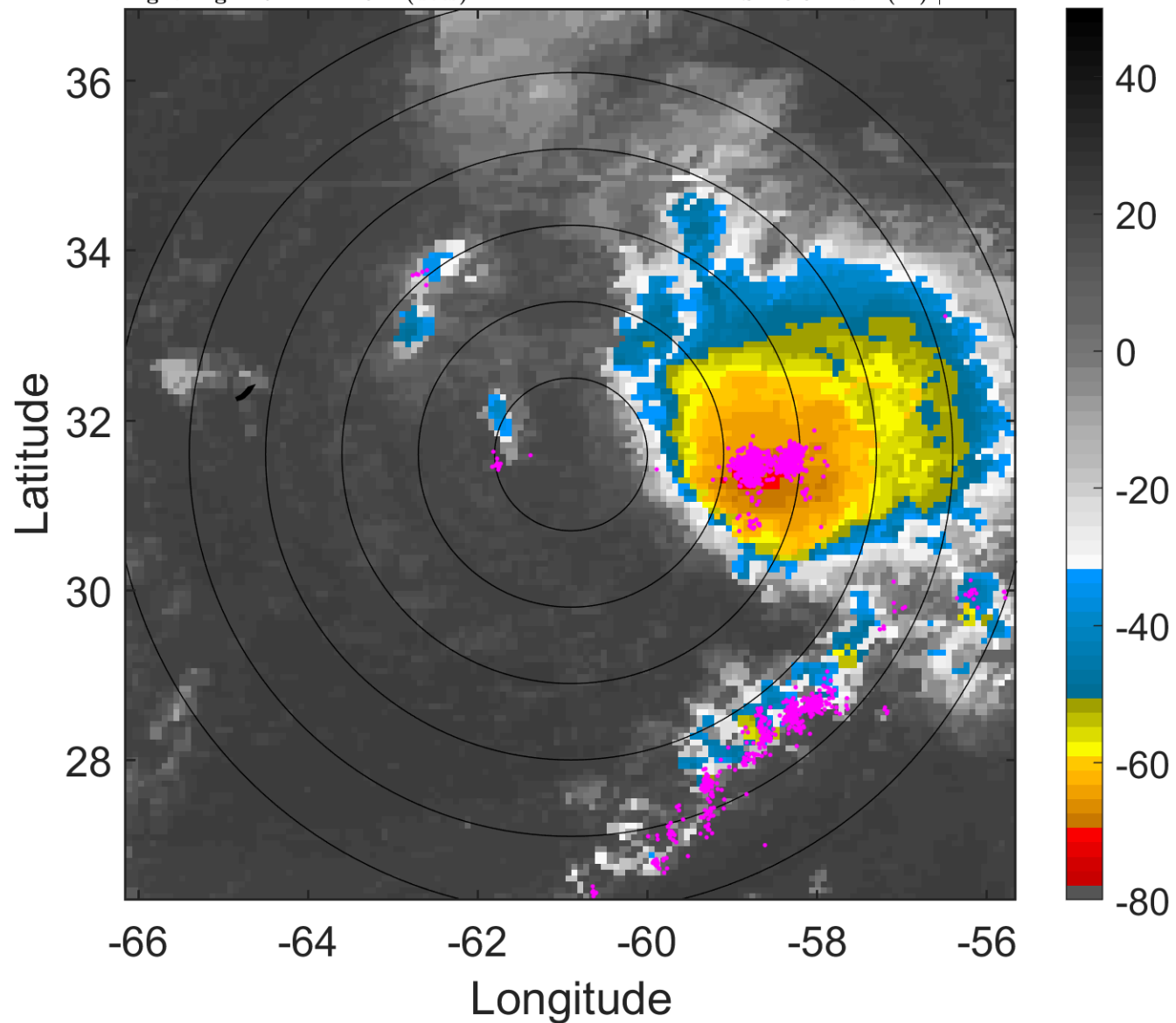
t: 2015091006 (1.9 LT)

Lightning: 1.9 LT \pm 1.5 h (dots)

PT: SLWP | EA: INACT

08L (HENRI) | 45 kt TS

S: 10.6 m s⁻¹ (M) | H: 22°



6-h IR BT Differences & Lightning

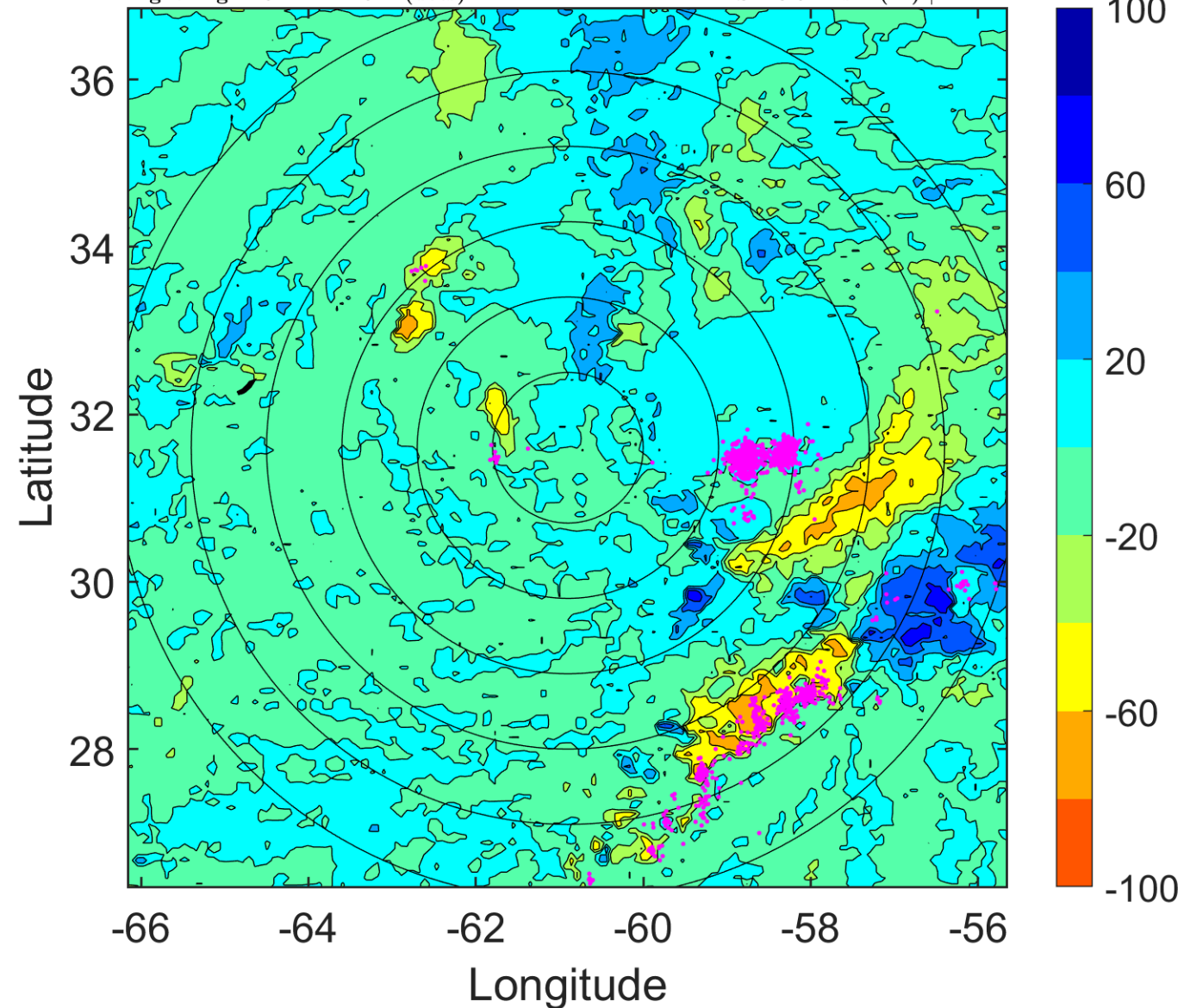
Δ t: 2015091006 (1.9 LT) - 2015091000 (19.9 LT)

Lightning: 1.9 LT \pm 1.5 h (dots)

PT: SLWP | EA: INACT

08L (HENRI) | 45 kt TS

S: 10.6 m s⁻¹ (M) | H: 22°



IR BT & Lightning

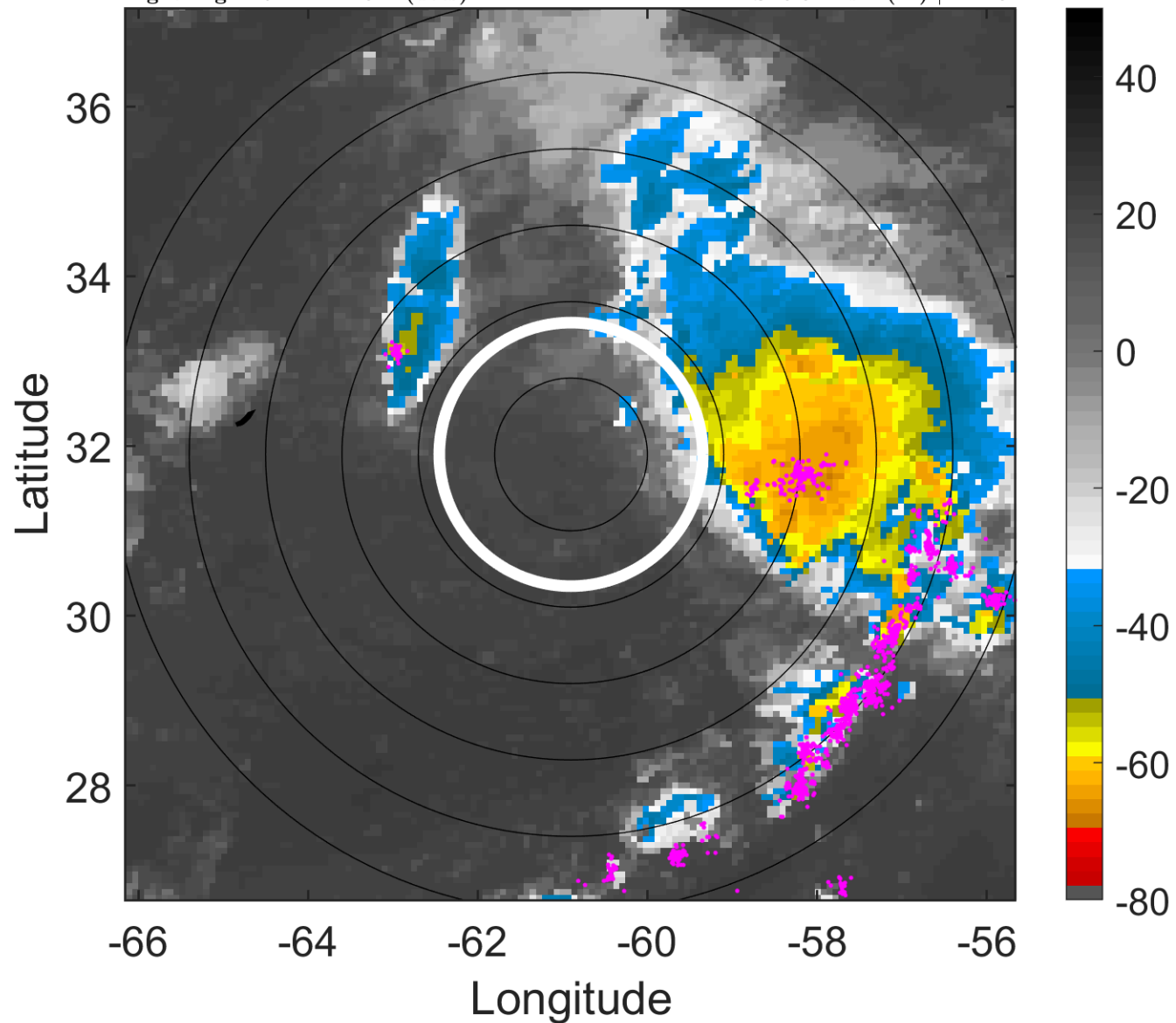
t: 2015091009 (4.9 LT)

Lightning: 4.9 LT \pm 1.5 h (dots)

PT: SLWP | EA: INACT

08L (HENRI) | 42.5 kt TS

S: 9.9 m s⁻¹ (M) | H: 16°



6-h IR BT Differences & Lightning

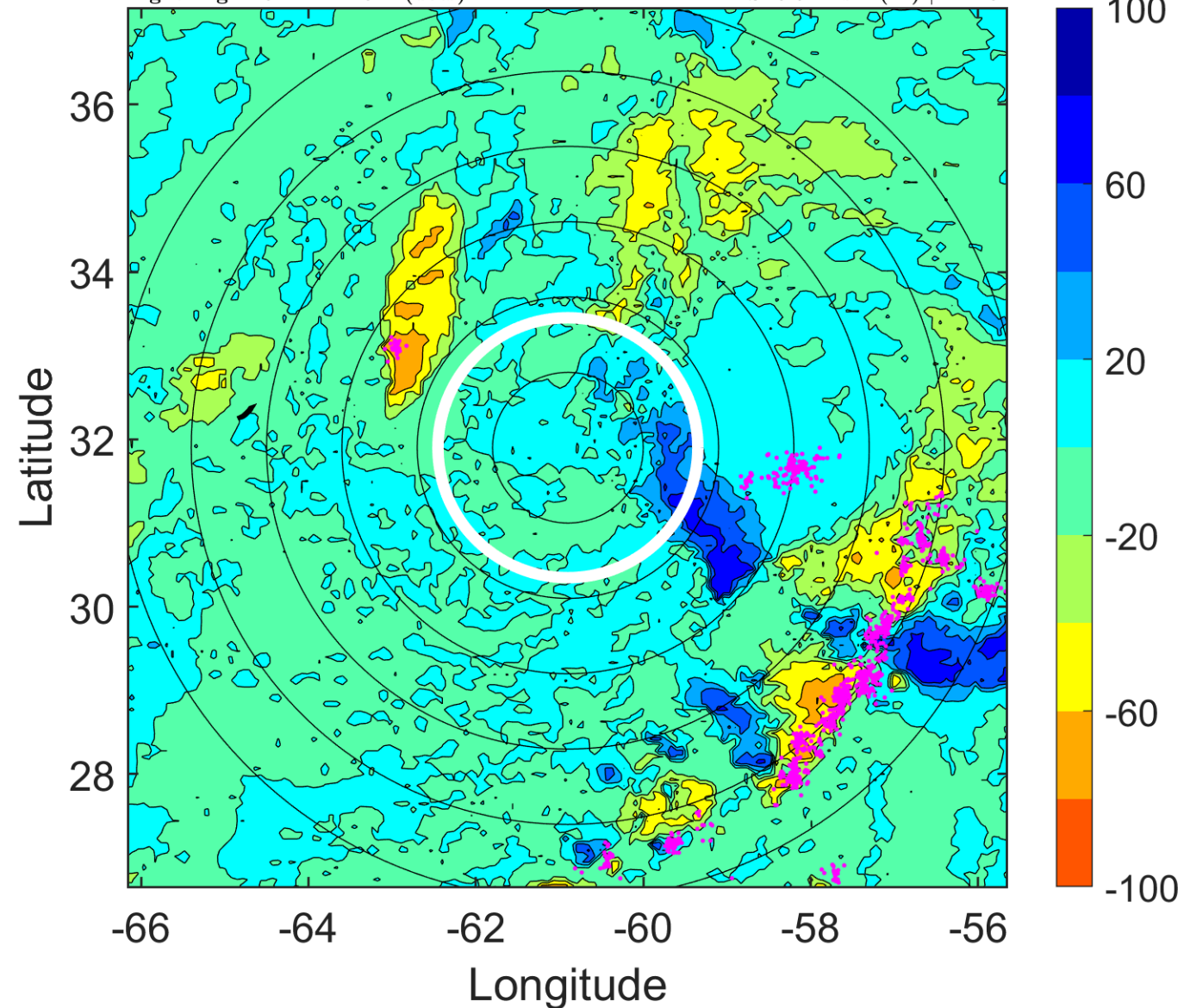
Δ t: 2015091009 (4.9 LT) - 2015091003 (22.9 LT)

Lightning: 4.9 LT \pm 1.5 h (dots)

PT: SLWP | EA: INACT

08L (HENRI) | 42.5 kt TS

S: 9.9 m s⁻¹ (M) | H: 16°



IR BT & Lightning

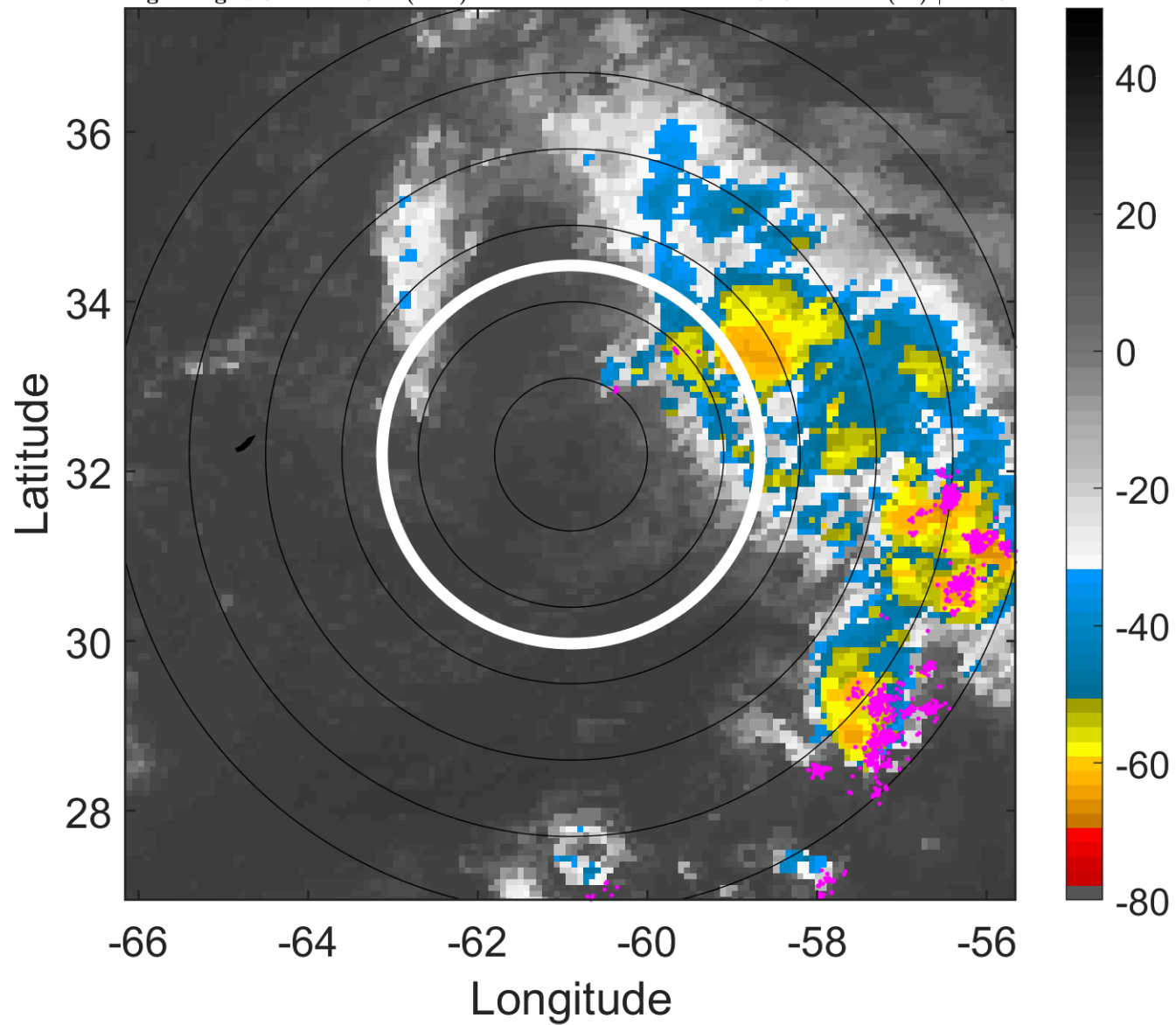
t: 2015091012 (7.9 LT)

Lightning: 7.9 LT \pm 1.5 h (dots)

PT: SLWP | EA: INACT

08L (HENRI) | 40 kt TS

S: 9.2 m s⁻¹ (M) | H: 10°



6-h IR BT Differences & Lightning

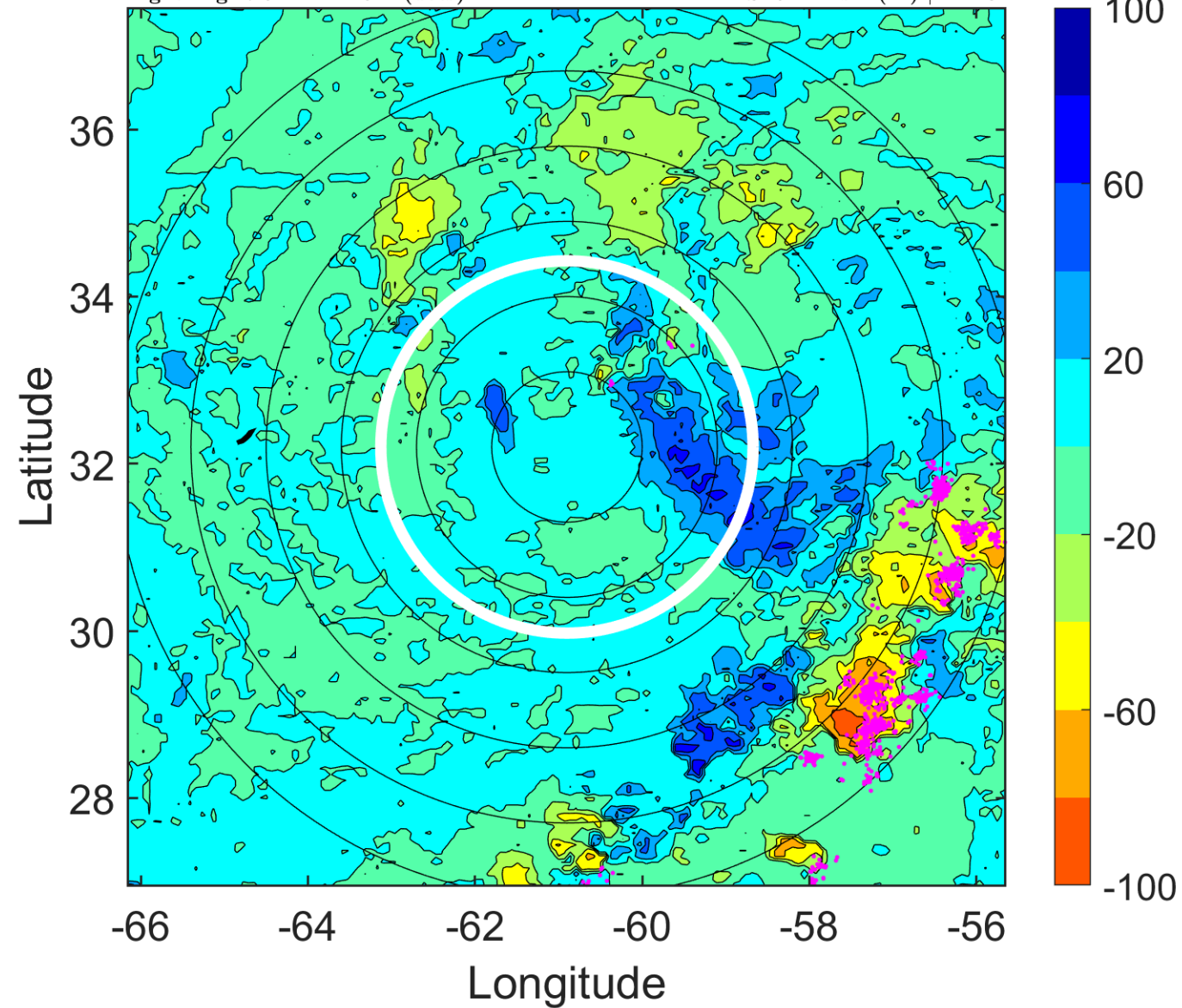
Δ t: 2015091012 (7.9 LT) - 2015091006 (1.9 LT)

Lightning: 7.9 LT \pm 1.5 h (dots)

PT: SLWP | EA: INACT

08L (HENRI) | 40 kt TS

S: 9.2 m s⁻¹ (M) | H: 10°



IR BT & Lightning

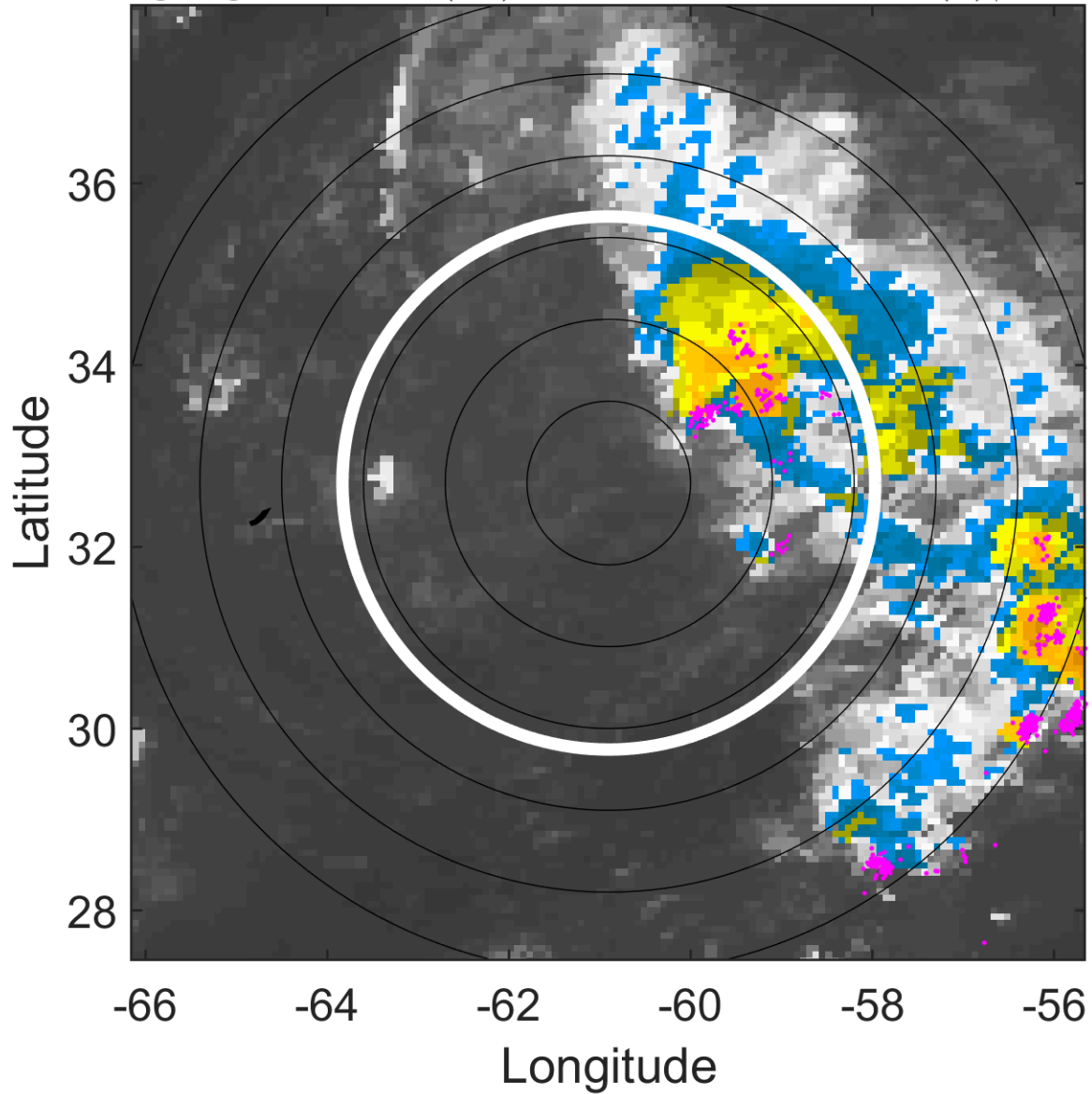
t: 2015091015 (10.9 LT)

Lightning: 10.9 LT \pm 1.5 h (dots)

PT: SLWP | EA: INACT

08L (HENRI) | 40 kt TS

S: 9.3 m s⁻¹ (M) | H: 7.5°



6-h IR BT Differences & Lightning

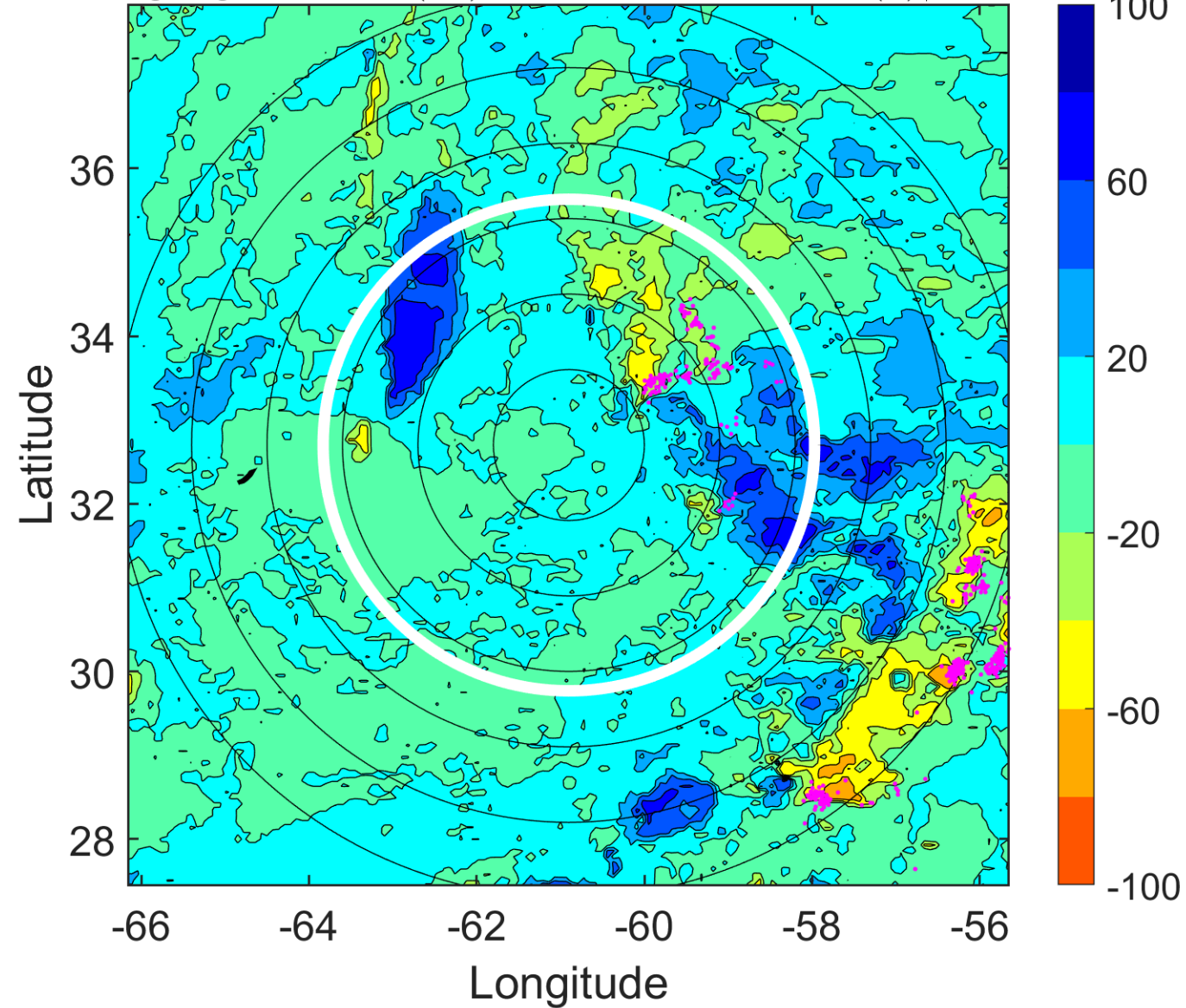
Δ t: 2015091015 (10.9 LT) - 2015091009 (4.9 LT)

Lightning: 10.9 LT \pm 1.5 h (dots)

PT: SLWP | EA: INACT

08L (HENRI) | 40 kt TS

S: 9.3 m s⁻¹ (M) | H: 7.5°



IR BT & Lightning

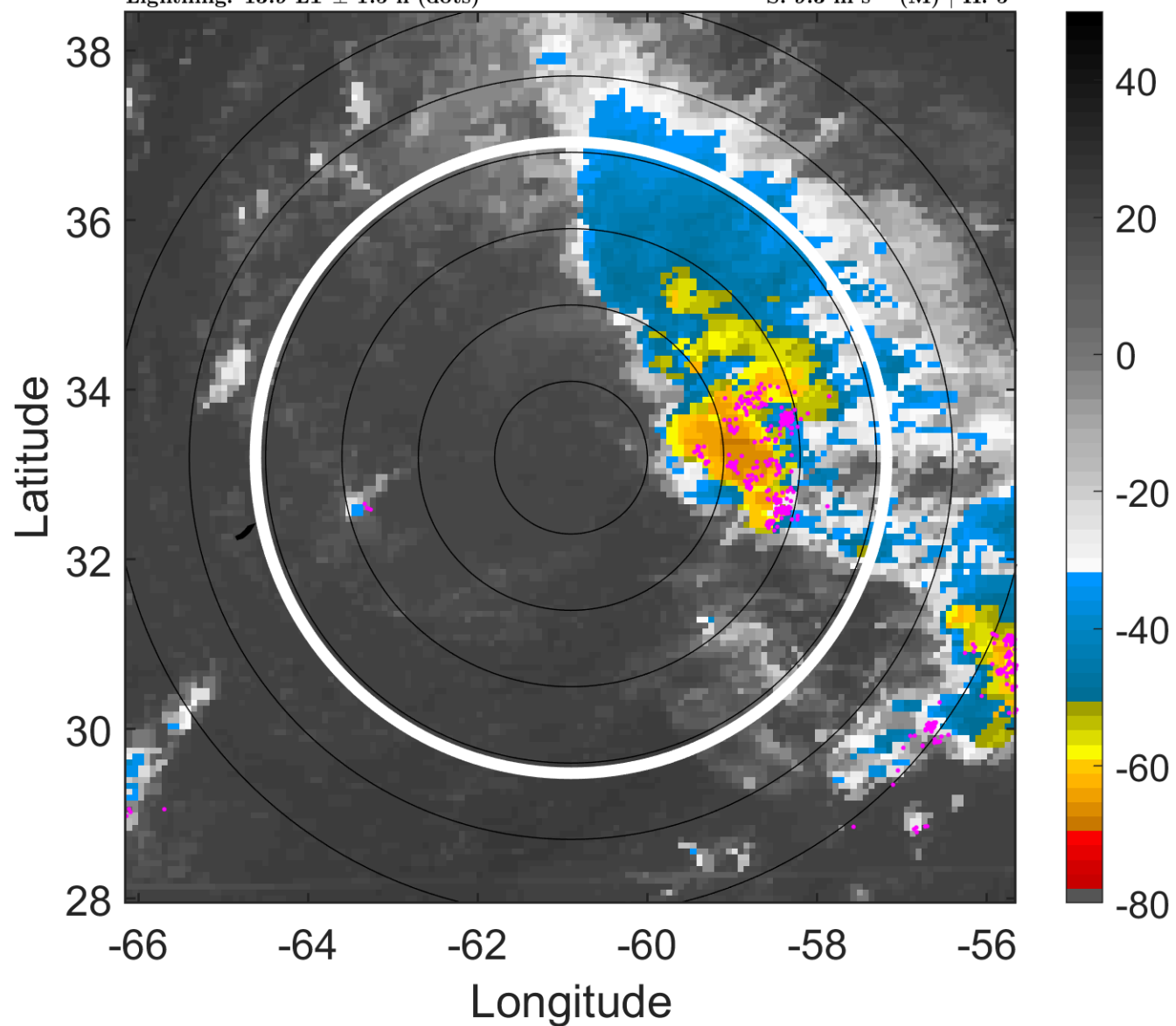
t: 2015091018 (13.9 LT)

Lightning: 13.9 LT \pm 1.5 h (dots)

PT: SLWP | EA: INACT

08L (HENRI) | 40 kt TS

S: 9.3 m s⁻¹ (M) | H: 5°



6-h IR BT Differences & Lightning

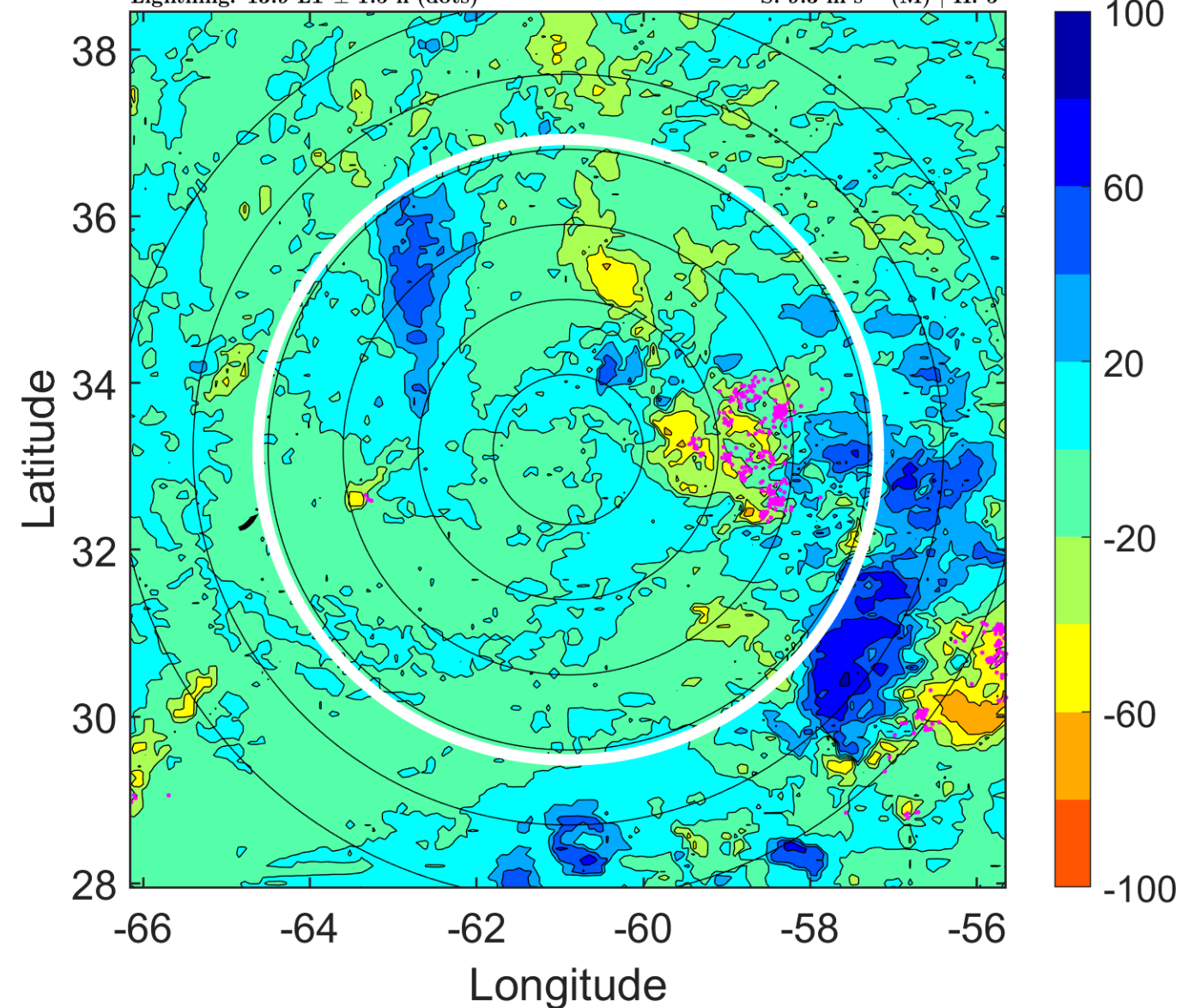
Δ t: 2015091018 (13.9 LT) - 2015091012 (7.9 LT)

Lightning: 13.9 LT \pm 1.5 h (dots)

PT: SLWP | EA: INACT

08L (HENRI) | 40 kt TS

S: 9.3 m s⁻¹ (M) | H: 5°



IR BT & Lightning

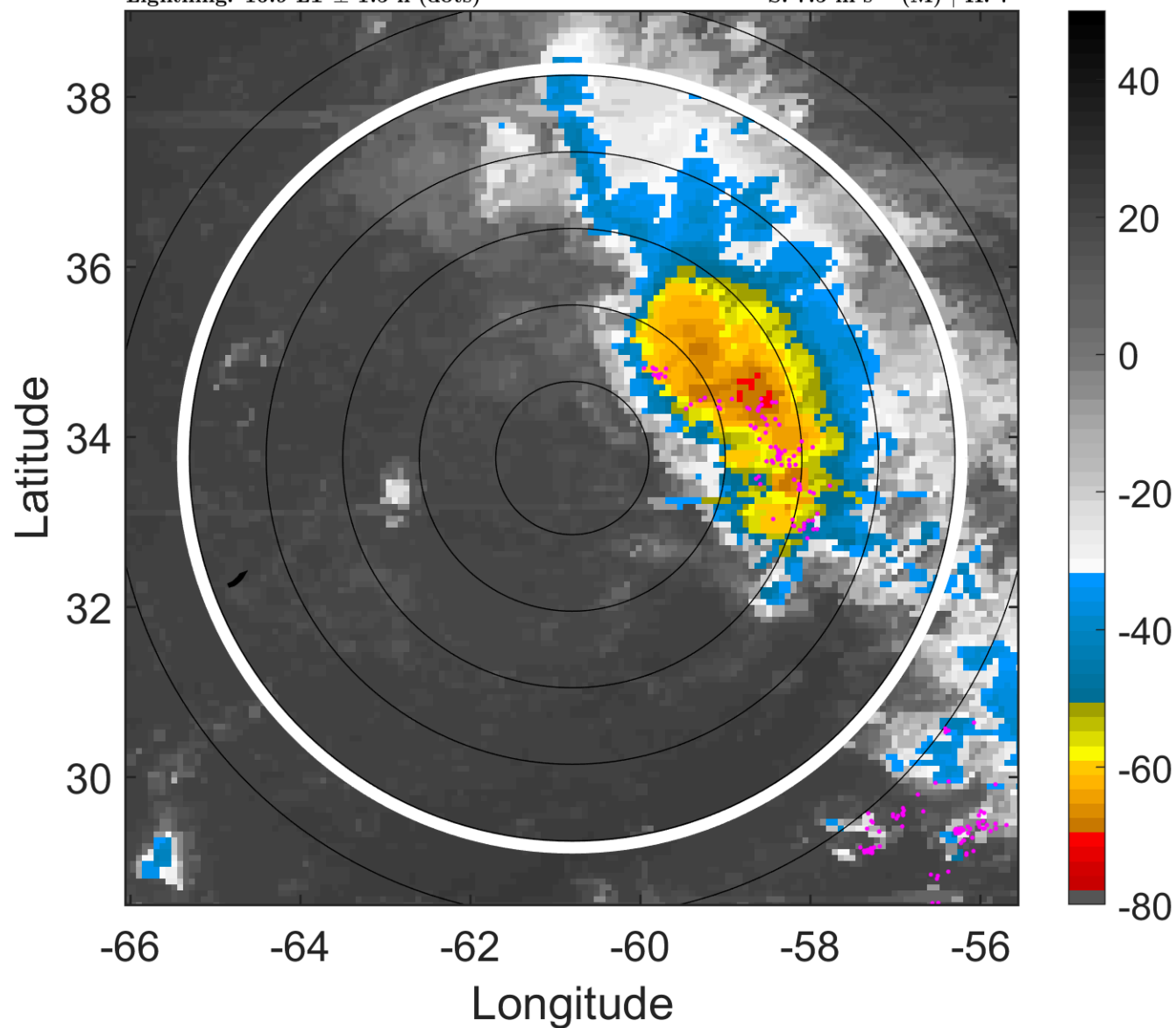
t: 2015091021 (16.9 LT)

Lightning: 16.9 LT \pm 1.5 h (dots)

PT: SLWP | EA: INACT

08L (HENRI) | 40 kt TS

S: 7.5 m s⁻¹ (M) | H: 7°



6-h IR BT Differences & Lightning

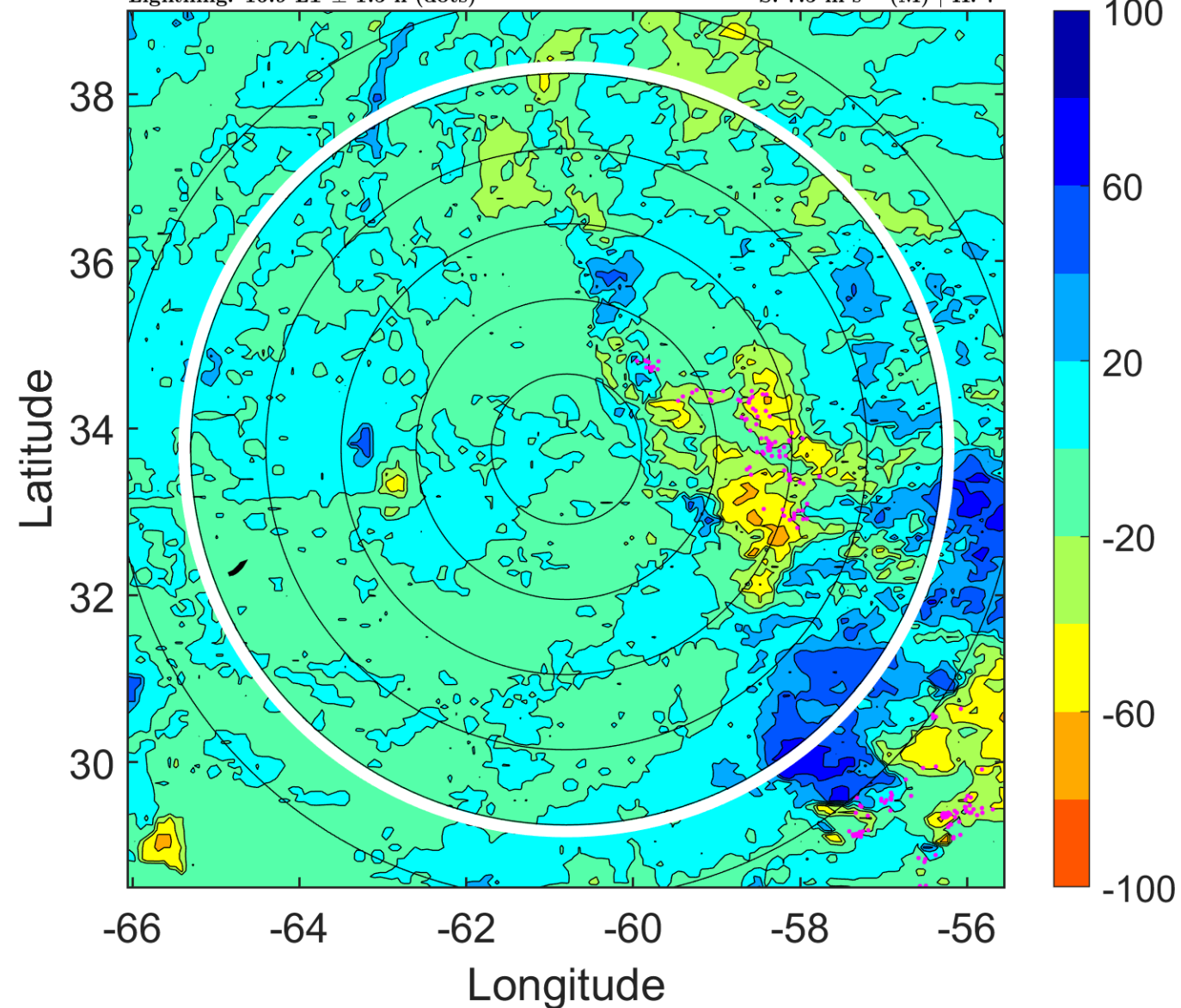
Δ t: 2015091021 (16.9 LT) - 2015091015 (10.9 LT)

Lightning: 16.9 LT \pm 1.5 h (dots)

PT: SLWP | EA: INACT

08L (HENRI) | 40 kt TS

S: 7.5 m s⁻¹ (M) | H: 7°



IR BT & Lightning

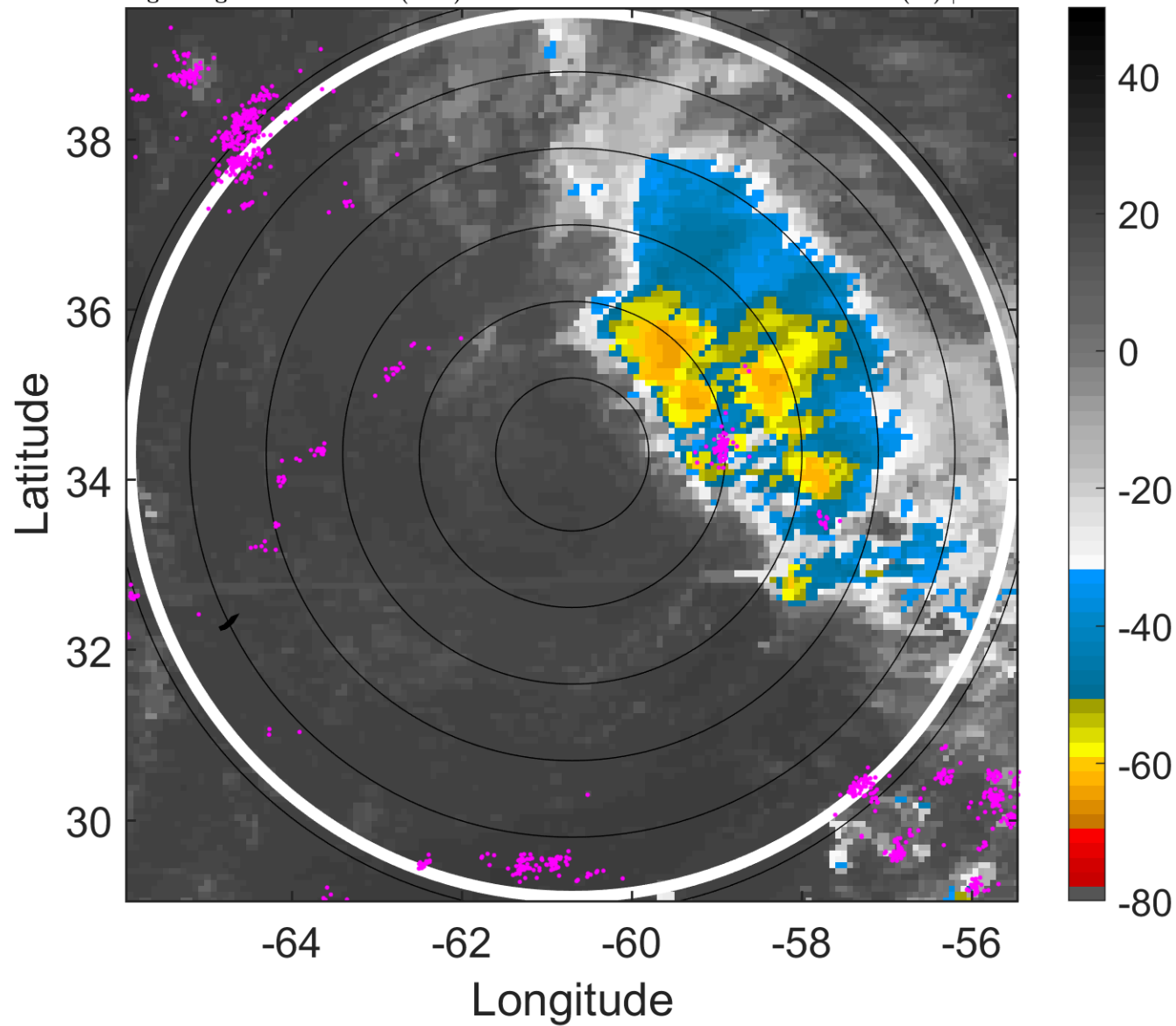
t: 2015091100 (20 LT)

Lightning: 20 LT \pm 1.5 h (dots)

PT: SLWP | EA: INACT

08L (HENRI) | 40 kt TS

S: 5.7 m s⁻¹ (M) | H: 9°



6-h IR BT Differences & Lightning

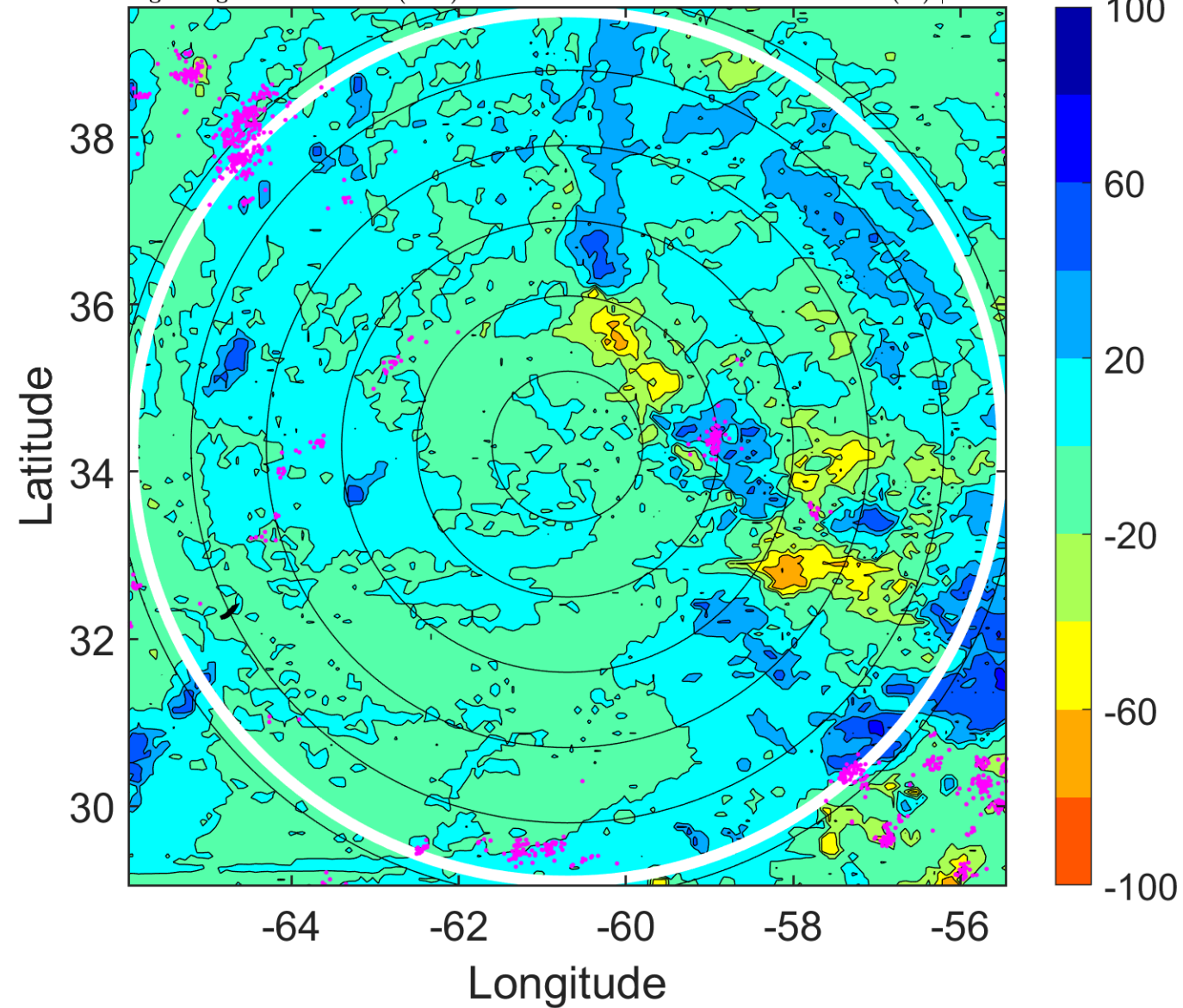
Δ t: 2015091100 (20 LT) - 2015091018 (13.9 LT)

Lightning: 20 LT \pm 1.5 h (dots)

PT: SLWP | EA: INACT

08L (HENRI) | 40 kt TS

S: 5.7 m s⁻¹ (M) | H: 9°



IR BT & Lightning

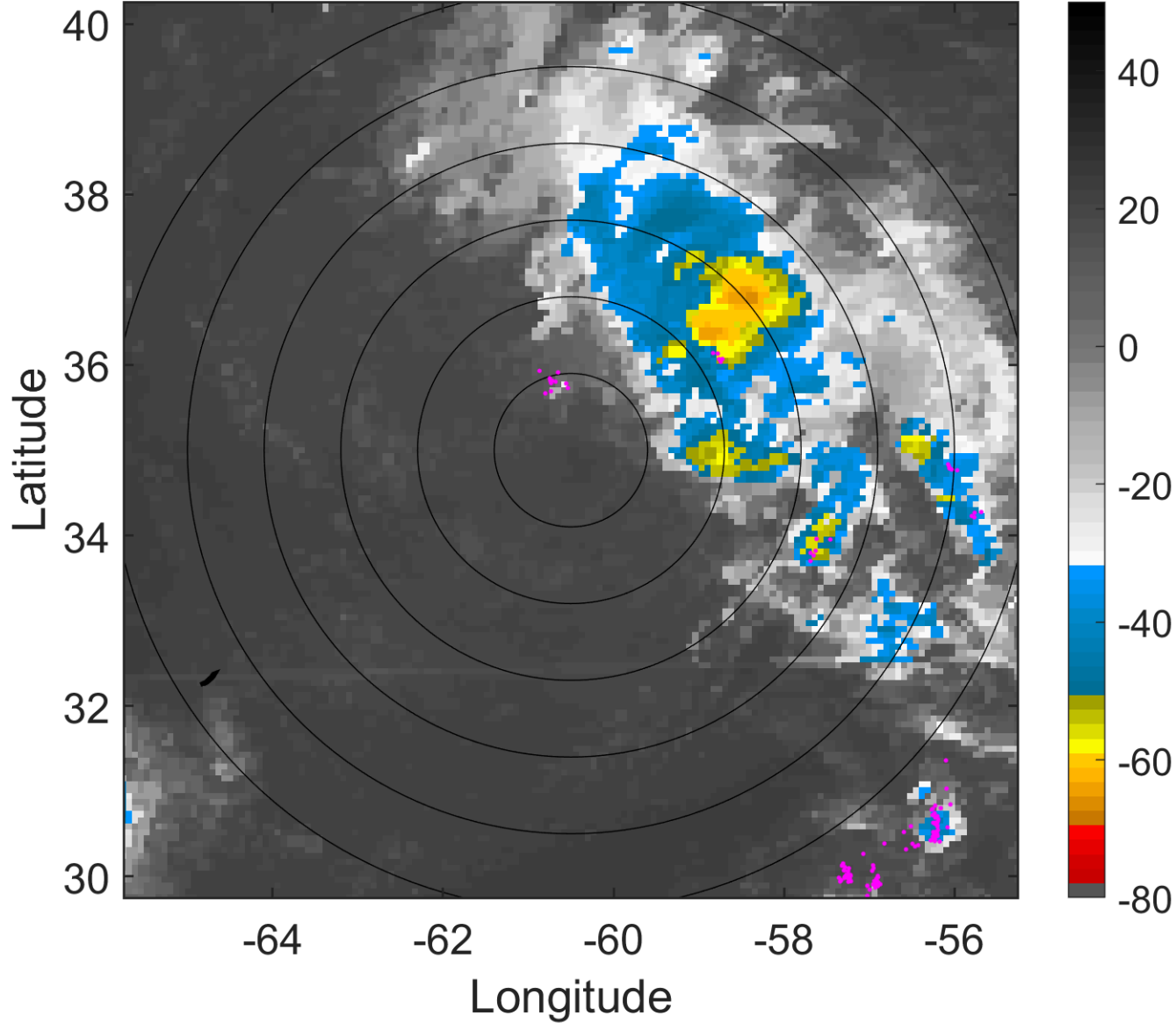
t: 2015091103 (23 LT)

Lightning: 23 LT \pm 1.5 h (dots)

PT: SLWP | EA: INACT

08L (HENRI) | 40 kt TS

S: 4.6 m s⁻¹ (M) | H: 6°



6-h IR BT Differences & Lightning

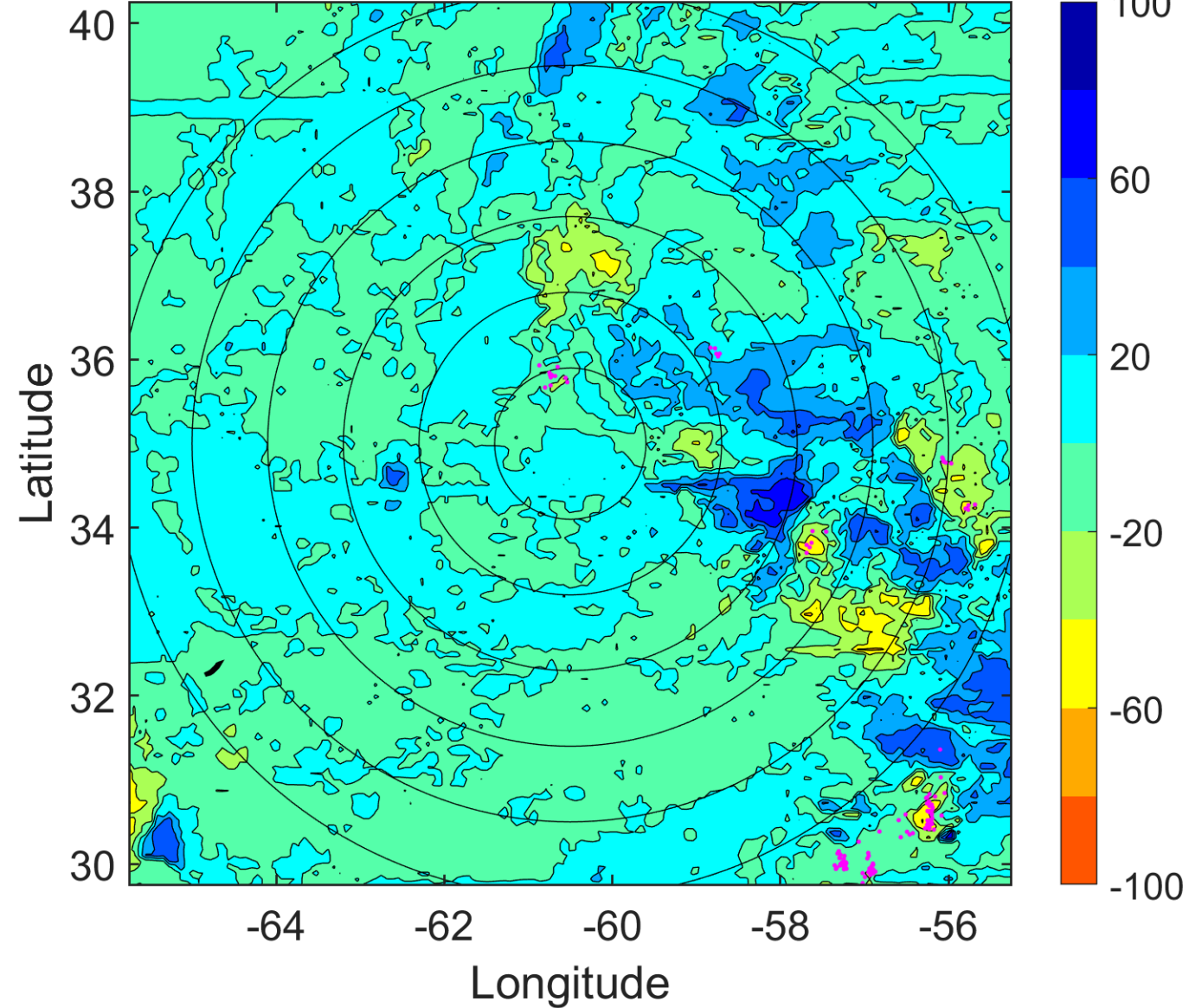
Δ t: 2015091103 (23 LT) - 2015091021 (16.9 LT)

Lightning: 23 LT \pm 1.5 h (dots)

PT: SLWP | EA: INACT

08L (HENRI) | 40 kt TS

S: 4.6 m s⁻¹ (M) | H: 6°



IR BT & Lightning

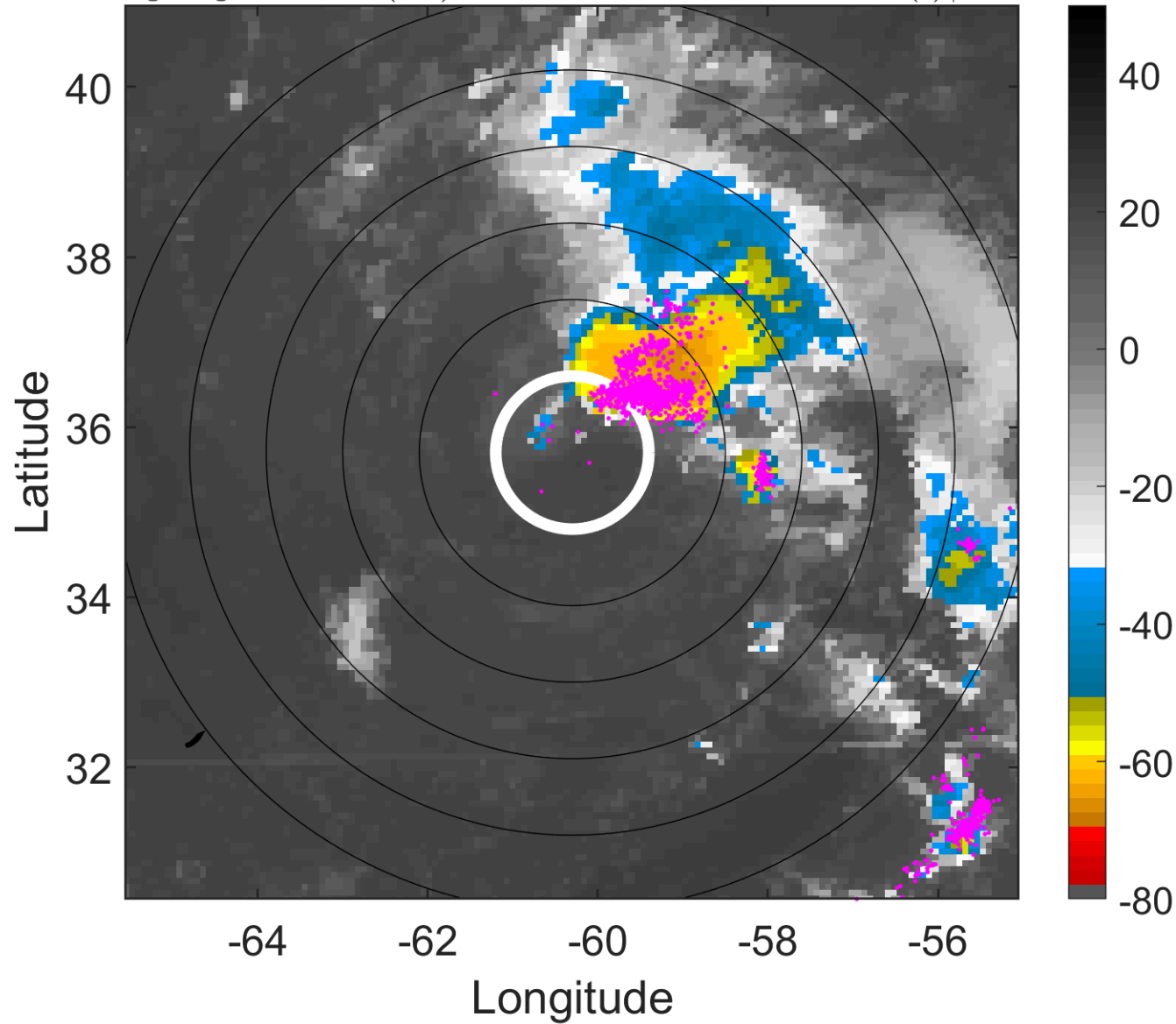
t: 2015091106 (2 LT)

Lightning: 2 LT \pm 1.5 h (dots)

PT: NP | EA: INACT

08L (HENRI) | 40 kt TS

S: 3.5 m s⁻¹ (L) | H: 3°



6-h IR BT Differences & Lightning

Δ t: 2015091106 (2 LT) - 2015091100 (20 LT)

Lightning: 2 LT \pm 1.5 h (dots)

PT: NP | EA: INACT

08L (HENRI) | 40 kt TS

S: 3.5 m s⁻¹ (L) | H: 3°

