

IR BT & Lightning

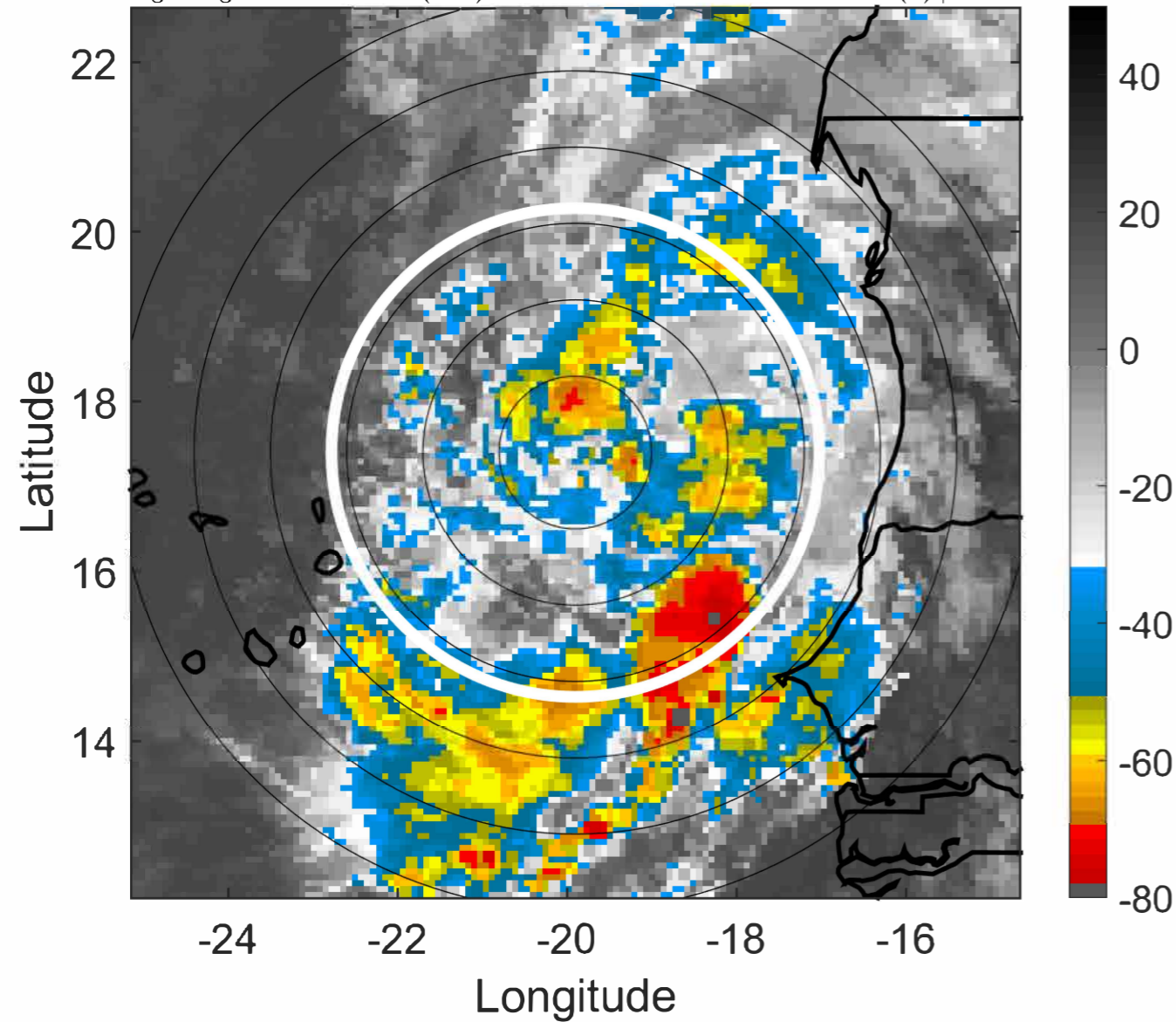
t: 2022092312 (10.7 LT)

Lightning: 10.7 LT \pm 1.5 h (dots)

PT: SLCP | EA: INACT

10L (HERMINE) | 30 kt TD

S: 2.3 m s⁻¹ (L) | H: 64°



6-h IR BT Differences & Lightning

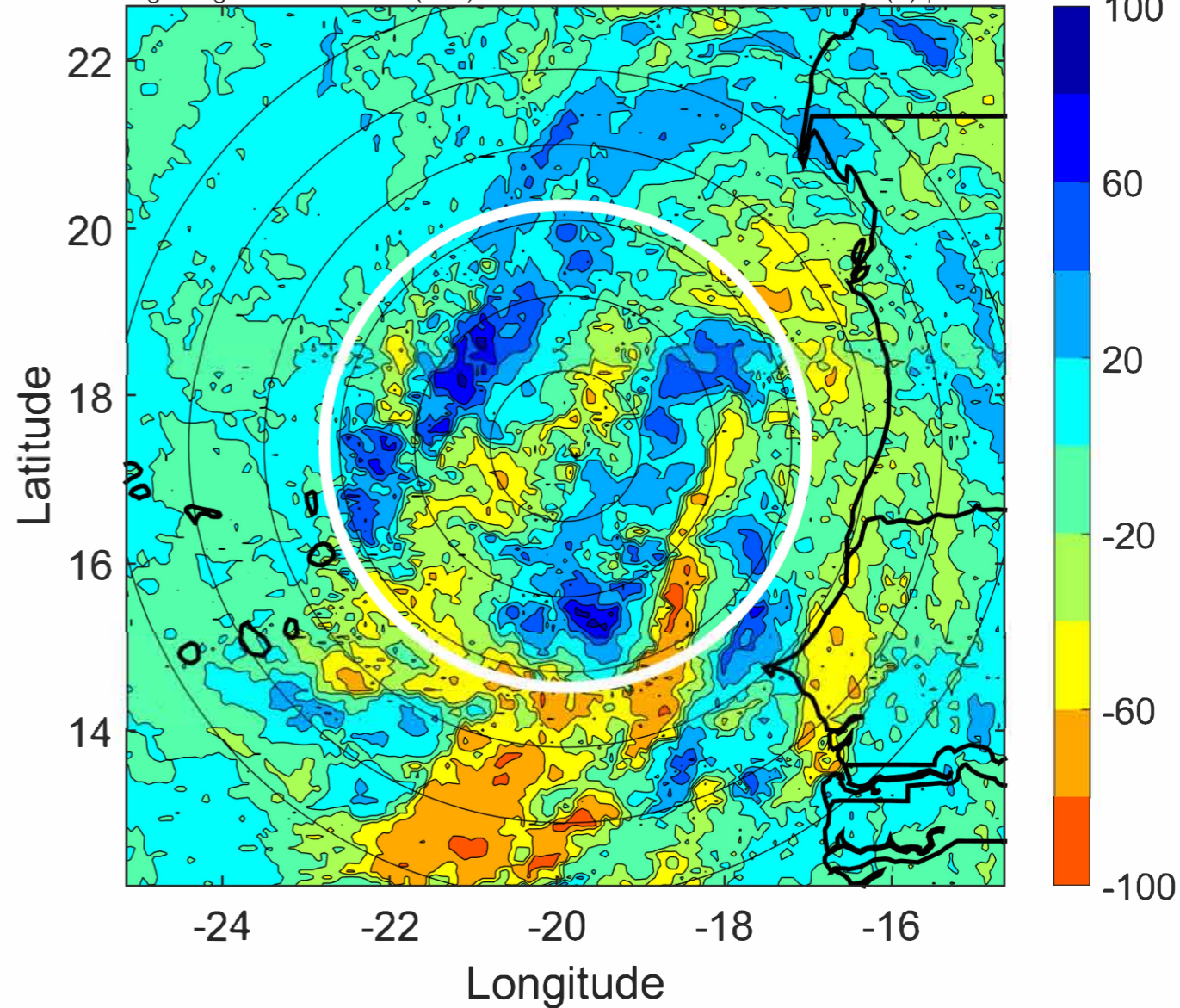
Δ t: 2022092312 (10.7 LT) - 2022092306 (4.7 LT)

Lightning: 10.7 LT \pm 1.5 h (dots)

PT: SLCP | EA: INACT

10L (HERMINE) | 30 kt TD

S: 2.3 m s⁻¹ (L) | H: 64°



IR BT & Lightning

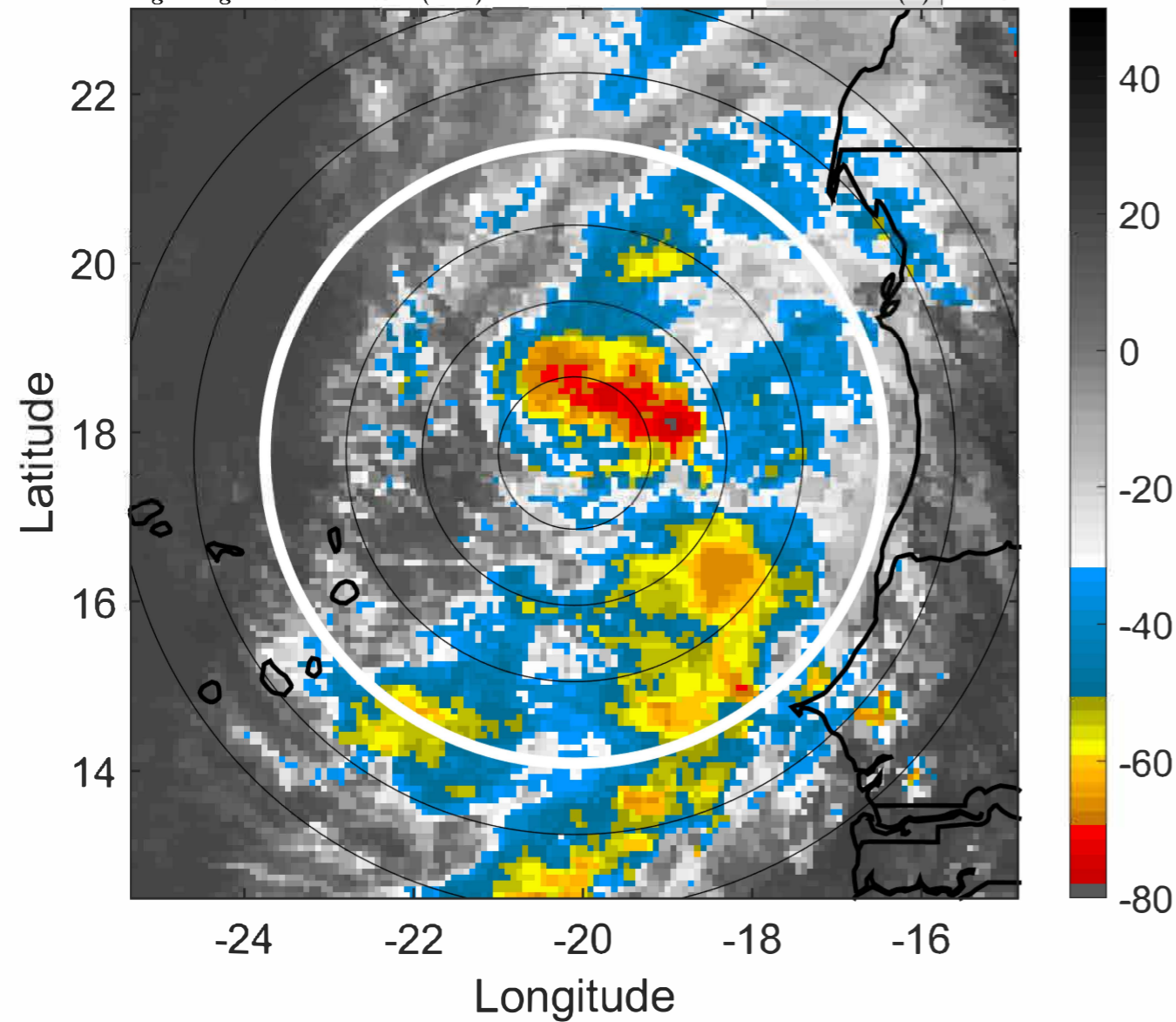
t: 2022092315 (13.7 LT)

Lightning: 13.7 LT \pm 1.5 h (dots)

PT: SLCP | EA: INACT

10L (HERMINE) | 32.5 kt TD

S: 2.5 m s⁻¹ (L) | H: 45°



6-h IR BT Differences & Lightning

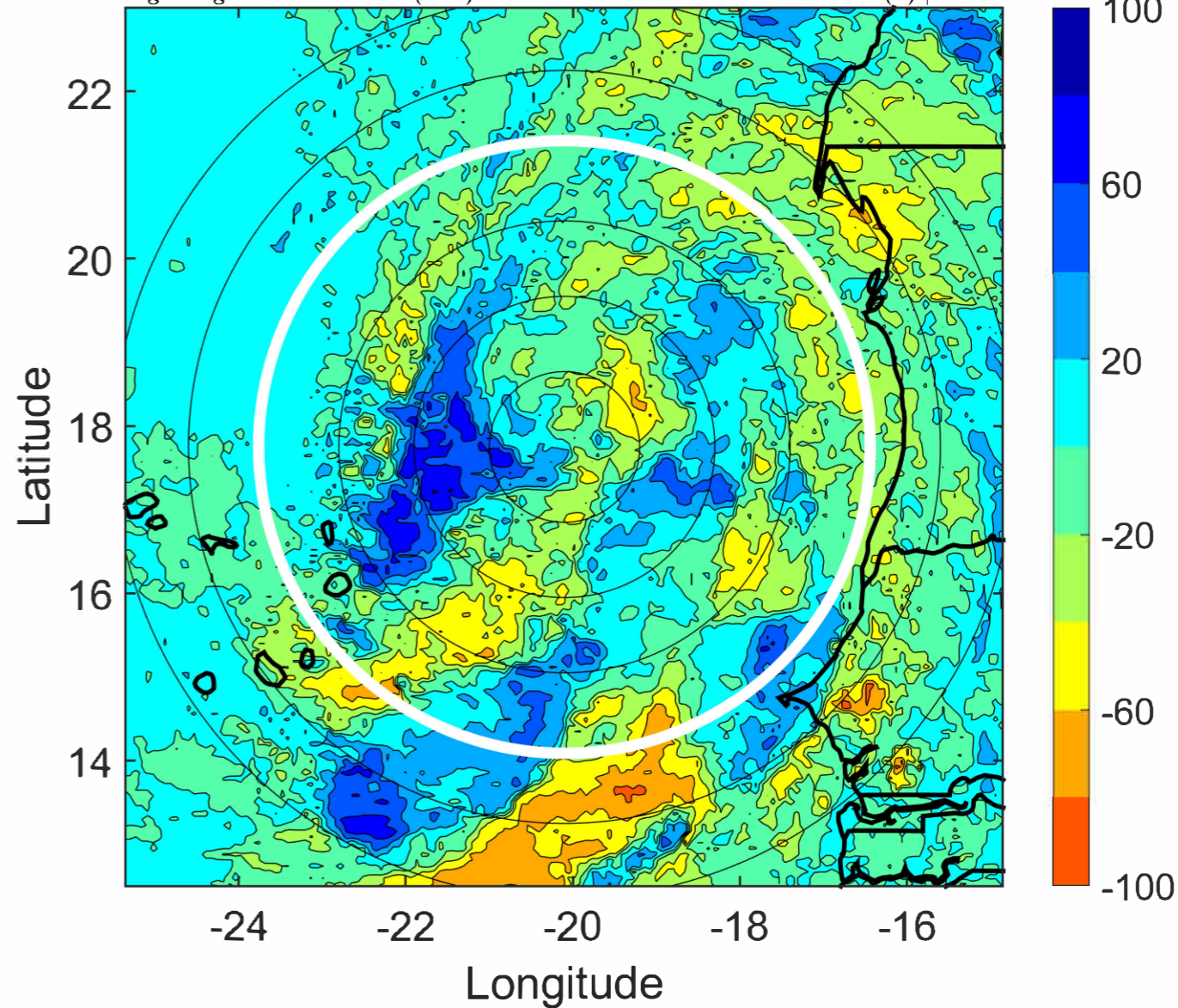
Δ t: 2022092315 (13.7 LT) - 2022092309 (7.7 LT)

Lightning: 13.7 LT \pm 1.5 h (dots)

PT: SLCP | EA: INACT

10L (HERMINE) | 32.5 kt TD

S: 2.5 m s⁻¹ (L) | H: 45°



IR BT & Lightning

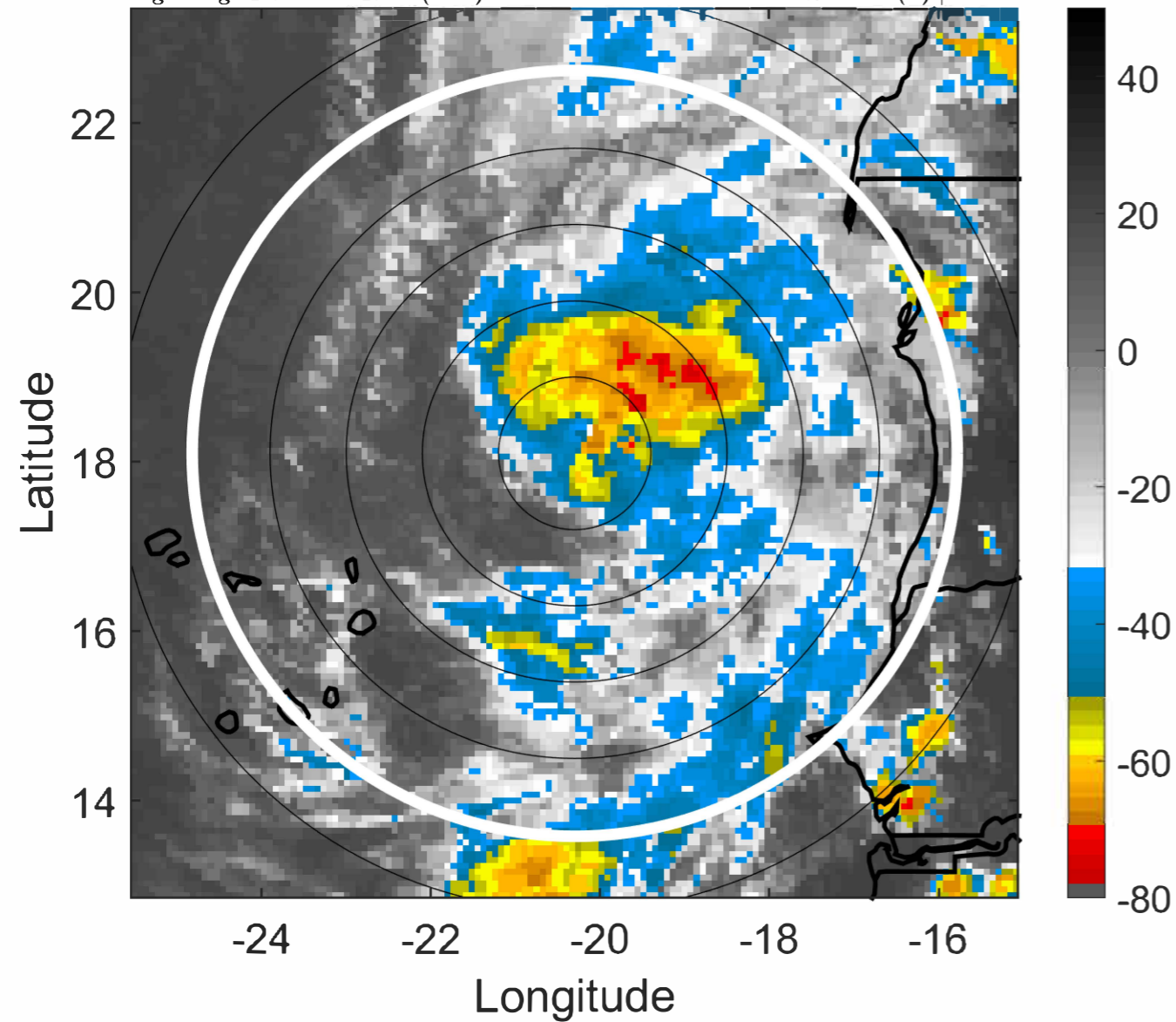
t: 2022092318 (16.6 LT)

Lightning: 16.6 LT \pm 1.5 h (dots)

PT: SLCP | EA: INACT

10L (HERMINE) | 35 kt TS

S: 2.7 m s⁻¹ (L) | H: 26°



6-h IR BT Differences & Lightning

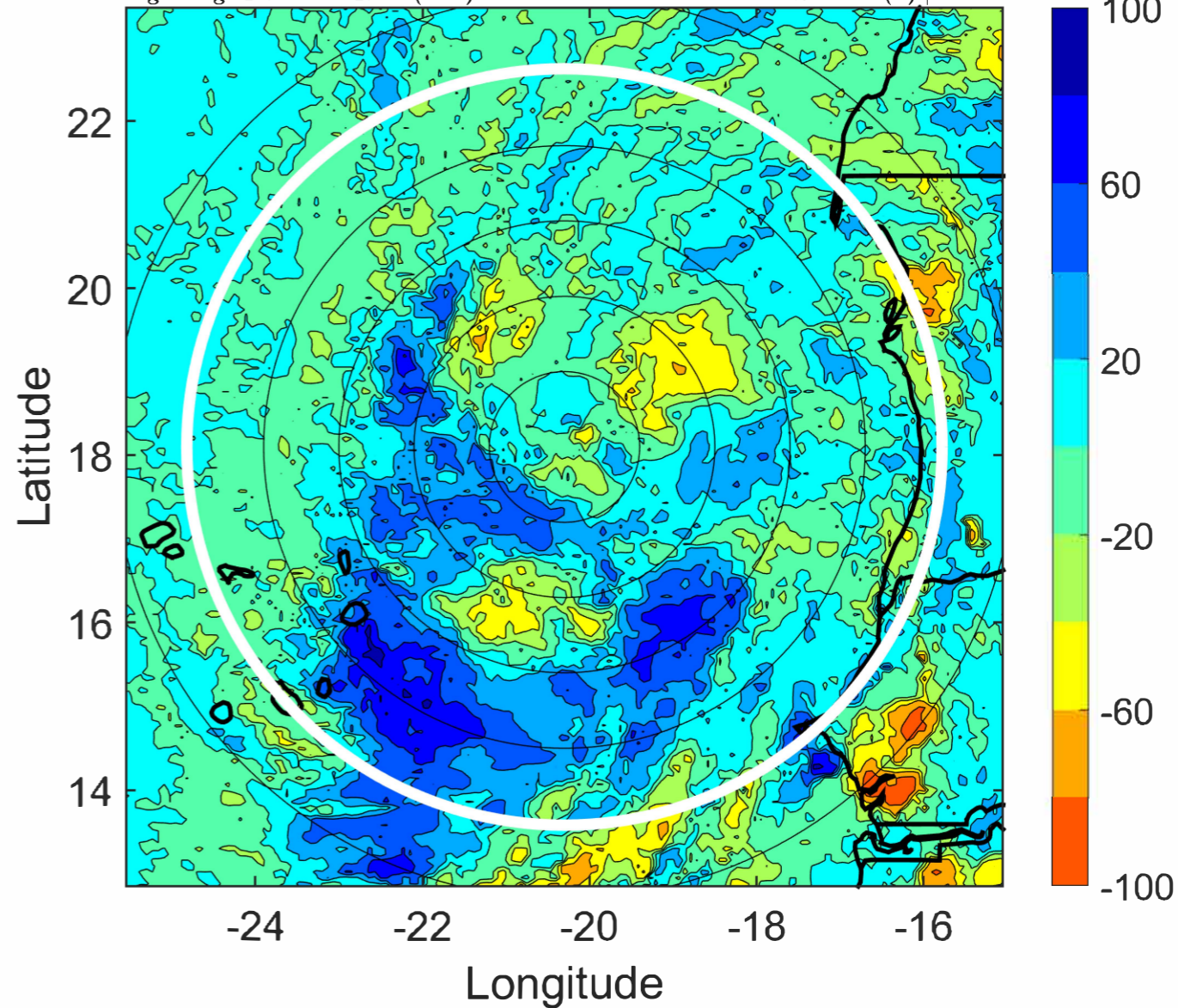
Δ t: 2022092318 (16.6 LT) - 2022092312 (10.7 LT)

Lightning: 16.6 LT \pm 1.5 h (dots)

PT: SLCP | EA: INACT

10L (HERMINE) | 35 kt TS

S: 2.7 m s⁻¹ (L) | H: 26°



IR BT & Lightning

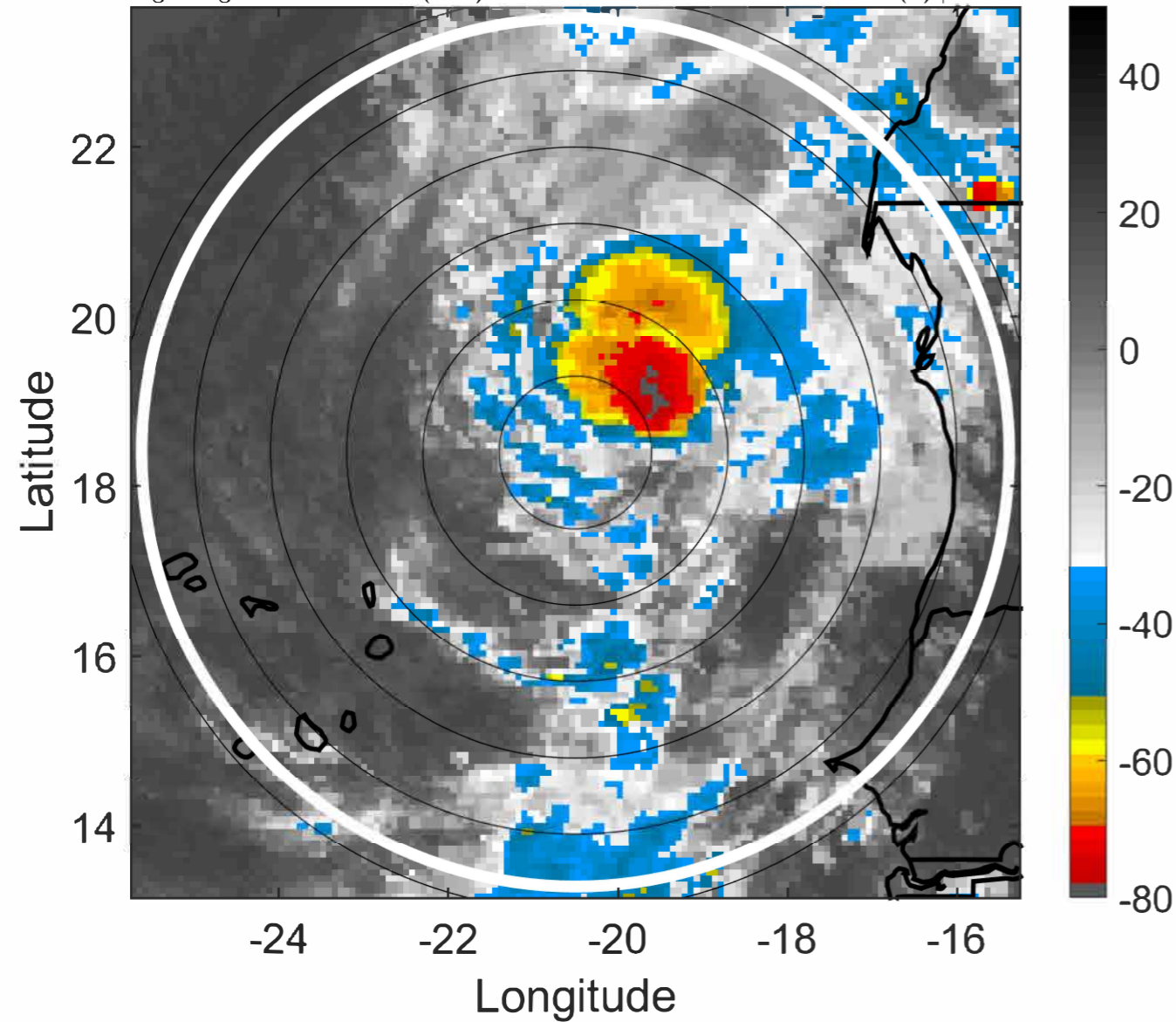
t: 2022092321 (19.6 LT)

Lightning: 19.6 LT \pm 1.5 h (dots)

PT: SLCP | EA: INACT

10L (HERMINE) | 35 kt TS

S: 3.1 m s⁻¹ (L) | H: 29°



6-h IR BT Differences & Lightning

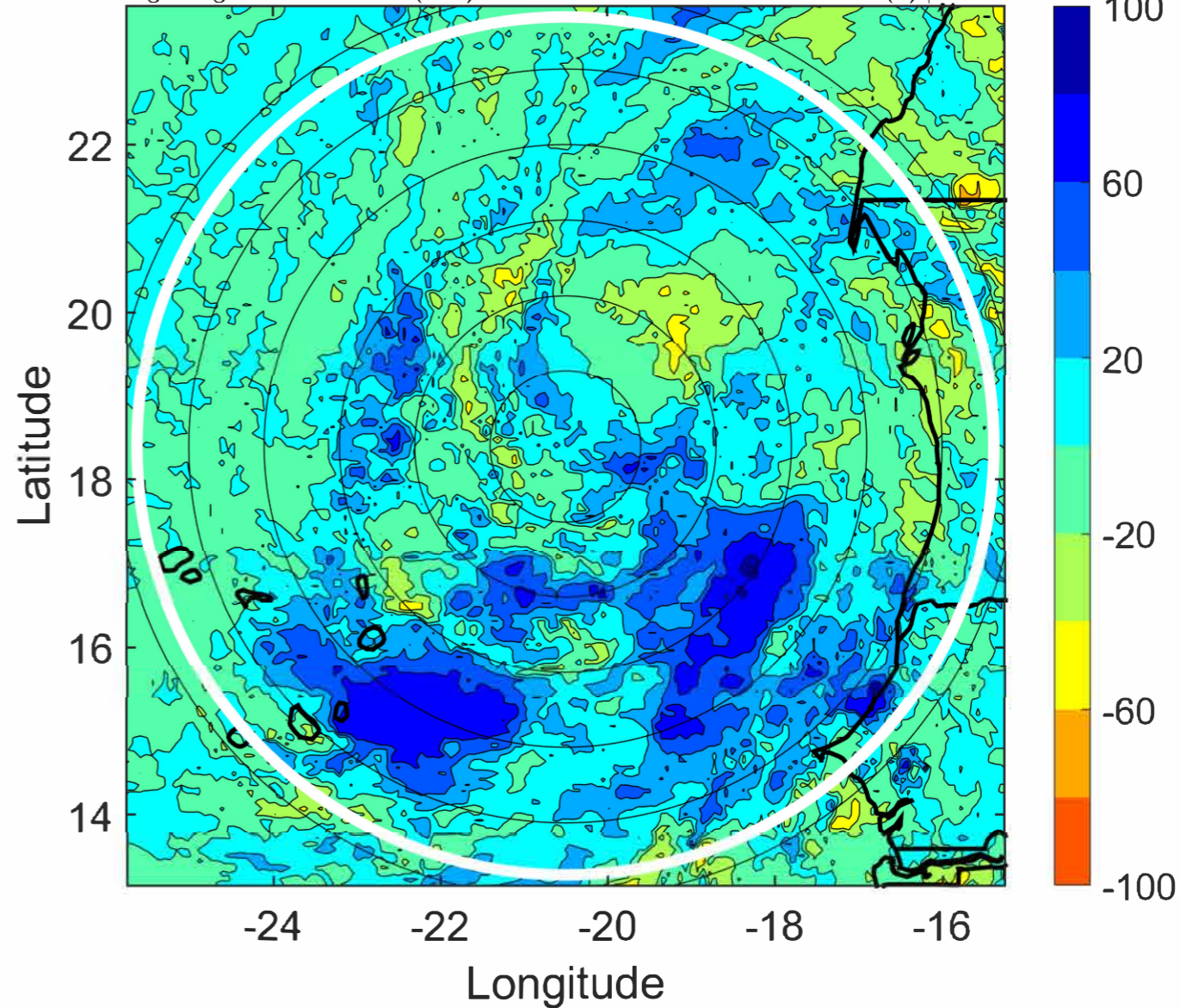
Δ t: 2022092321 (19.6 LT) - 2022092315 (13.7 LT)

Lightning: 19.6 LT \pm 1.5 h (dots)

PT: SLCP | EA: INACT

10L (HERMINE) | 35 kt TS

S: 3.1 m s⁻¹ (L) | H: 29°



IR BT & Lightning

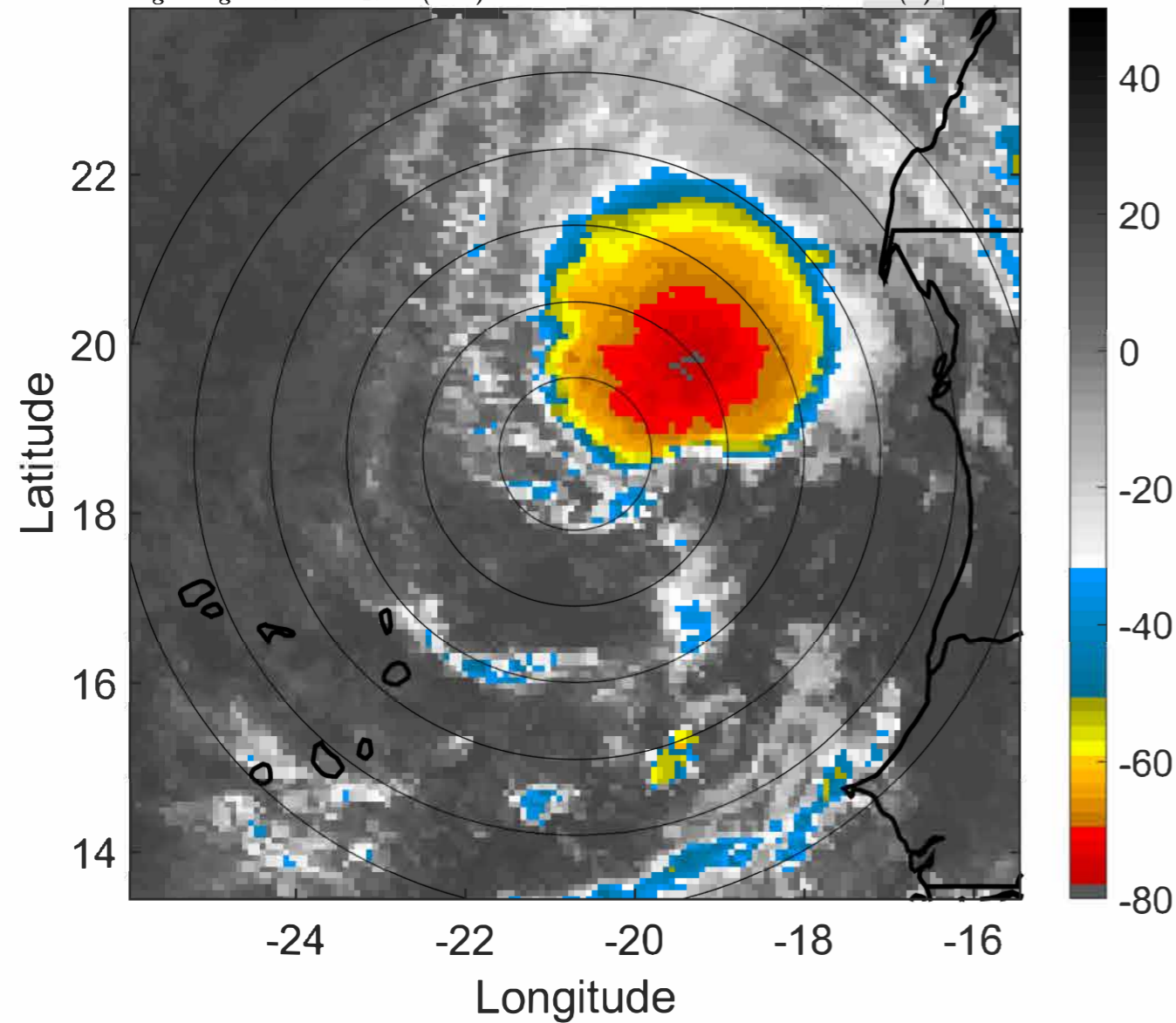
t: 2022092400 (22.6 LT)

Lightning: 22.6 LT \pm 1.5 h (dots)

PT: SLCP | EA: INACT

10L (HERMINE) | 35 kt TS

S: 3.6 m s⁻¹ (L) | H: 32°



6-h IR BT Differences & Lightning

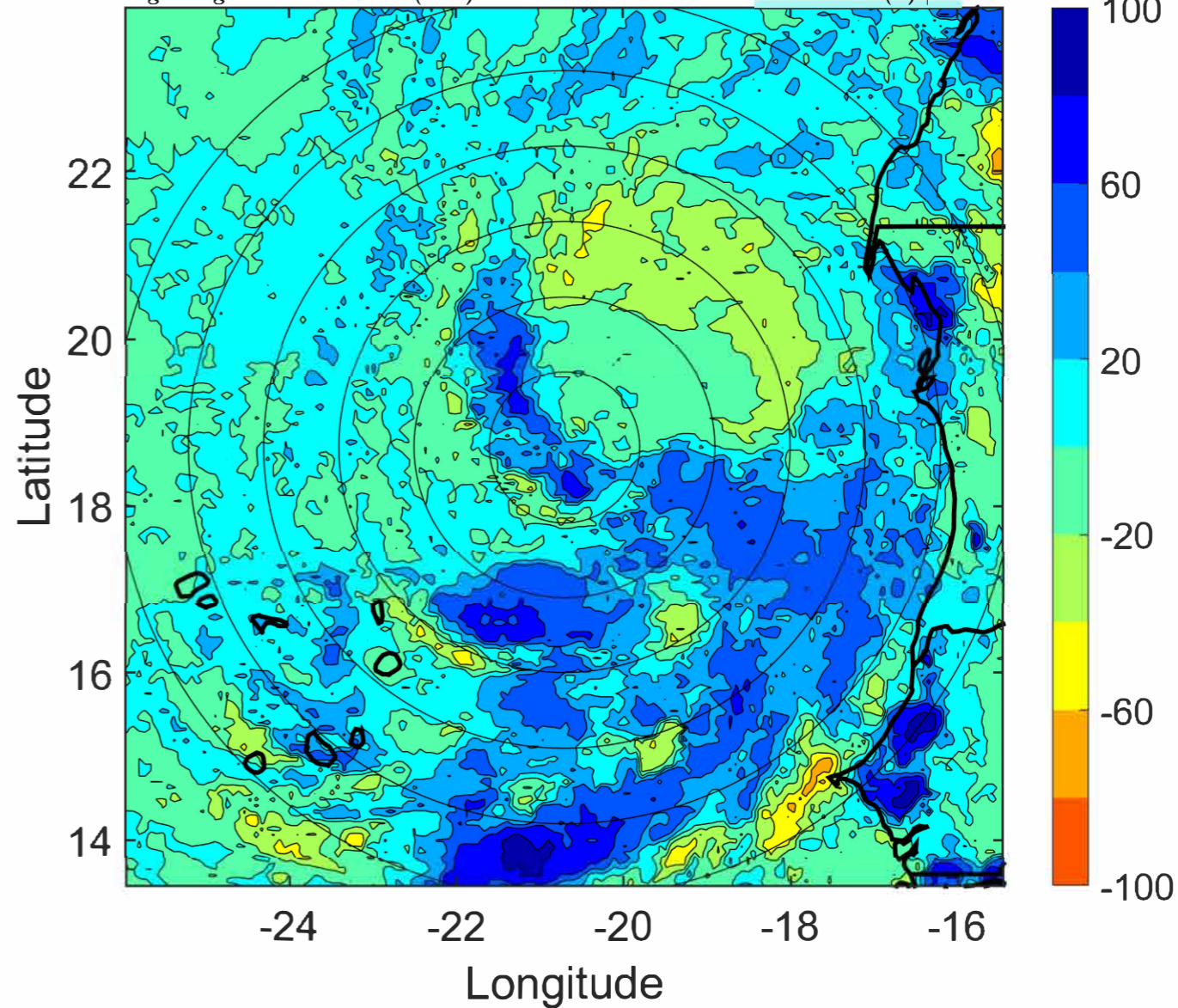
Δ t: 2022092400 (22.6 LT) - 2022092318 (16.6 LT)

Lightning: 22.6 LT \pm 1.5 h (dots)

PT: SLCP | EA: INACT

10L (HERMINE) | 35 kt TS

S: 3.6 m s⁻¹ (L) | H: 32°



IR BT & Lightning

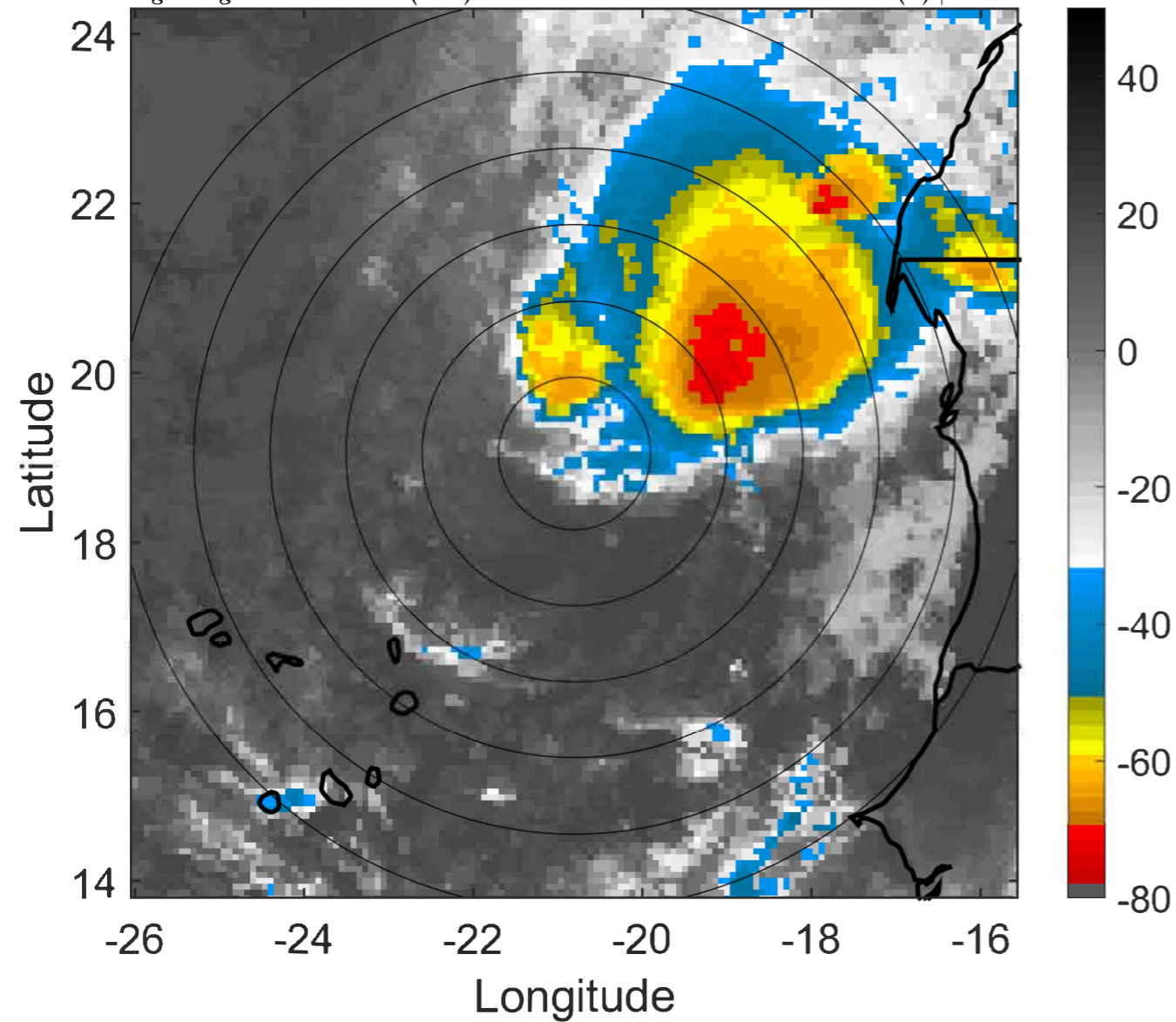
t: 2022092403 (1.6 LT)

Lightning: 1.6 LT \pm 1.5 h (dots)

PT: LLWP | EA: INACT

10L (HERMINE) | 35 kt TS

S: 3.5 m s⁻¹ (L) | H: 41°



6-h IR BT Differences & Lightning

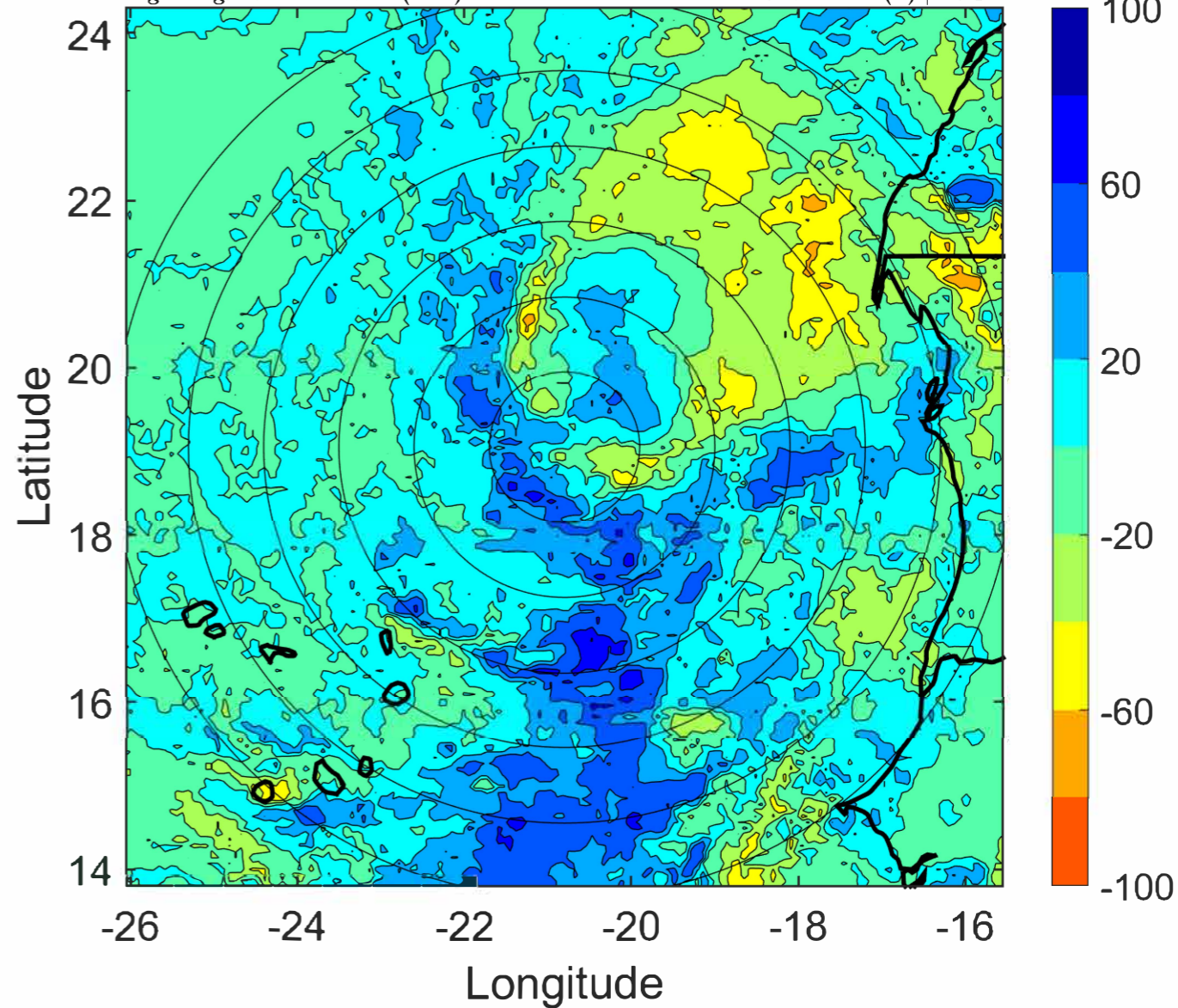
Δ t: 2022092403 (1.6 LT) - 2022092321 (19.6 LT)

Lightning: 1.6 LT \pm 1.5 h (dots)

PT: LLWP | EA: INACT

10L (HERMINE) | 35 kt TS

S: 3.5 m s⁻¹ (L) | H: 41°



IR BT & Lightning

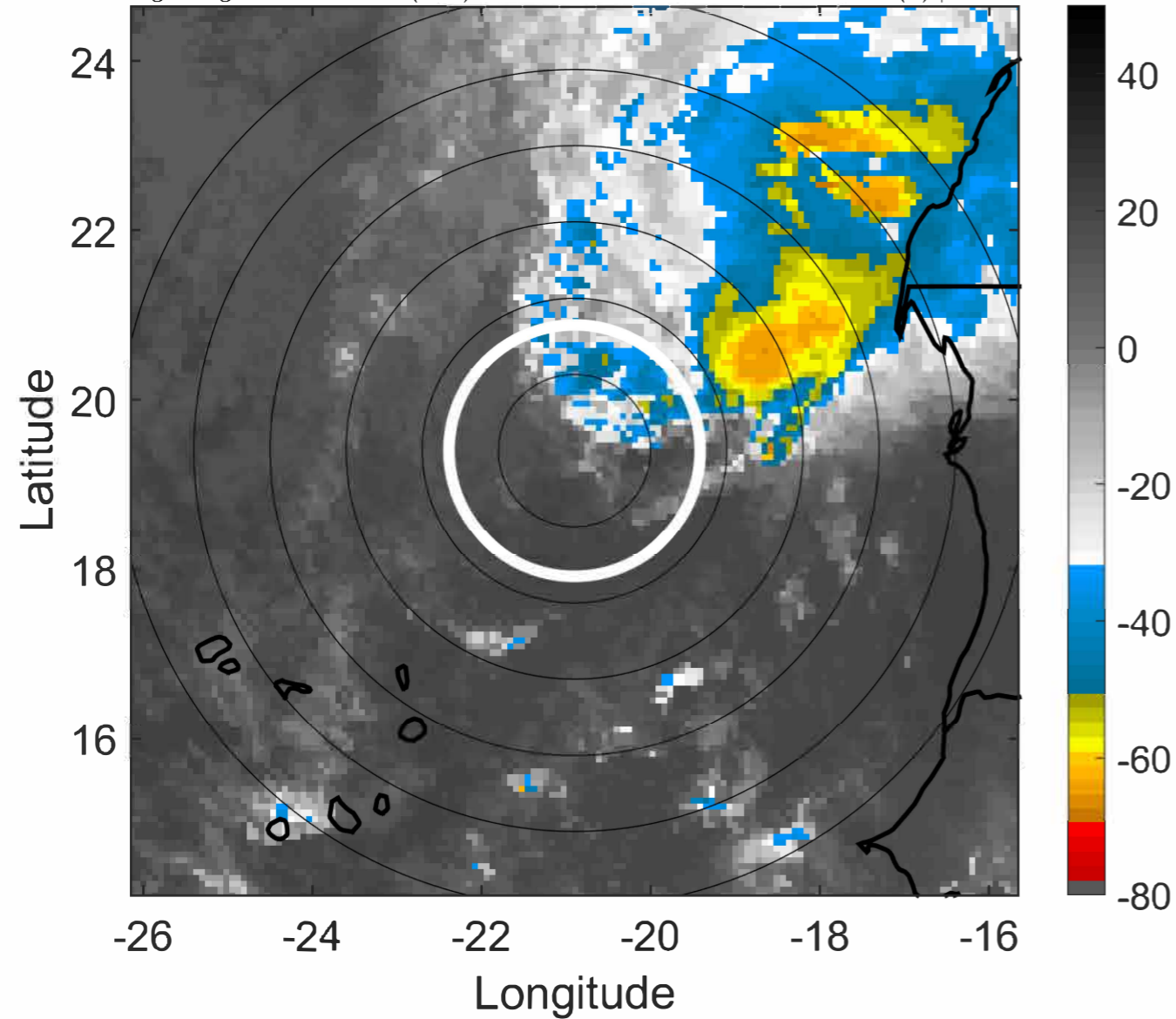
t: 2022092406 (4.6 LT)

Lightning: 4.6 LT \pm 1.5 h (dots)

PT: LLWP | EA: INACT

10L (HERMINE) | 35 kt TS

S: 3.5 m s⁻¹ (L) | H: 50°



6-h IR BT Differences & Lightning

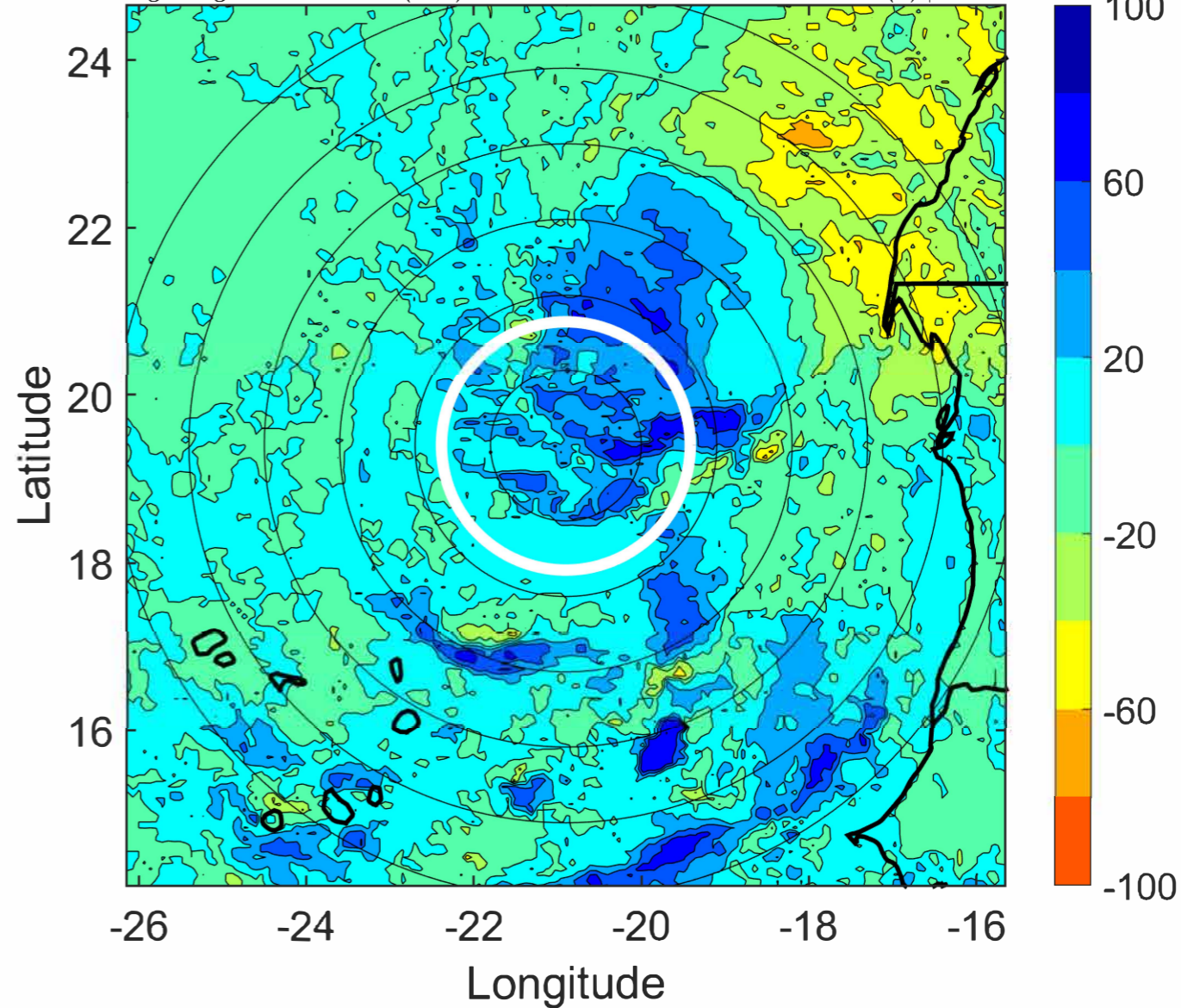
Δ t: 2022092406 (4.6 LT) - 2022092400 (22.6 LT)

Lightning: 4.6 LT \pm 1.5 h (dots)

PT: LLWP | EA: INACT

10L (HERMINE) | 35 kt TS

S: 3.5 m s⁻¹ (L) | H: 50°



IR BT & Lightning

t: 2022092409 (7.6 LT)

Lightning: 7.6 LT \pm 1.5 h (dots)

PT: LLWP | EA: INACT

10L (HERMINE) | 32.5 kt TD

S: 3.9 m s⁻¹ (L) | H: 48°

6-h IR BT Differences & Lightning

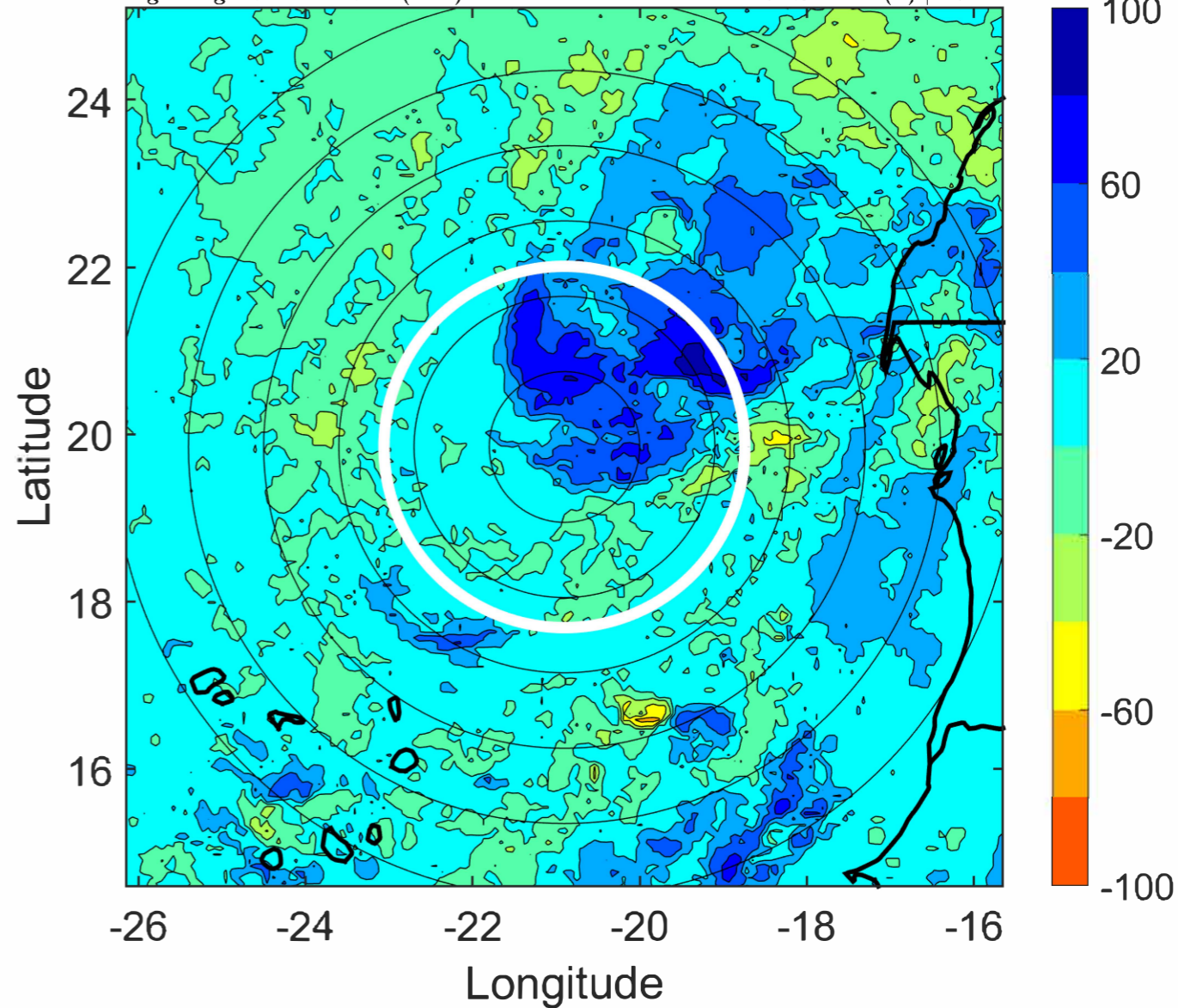
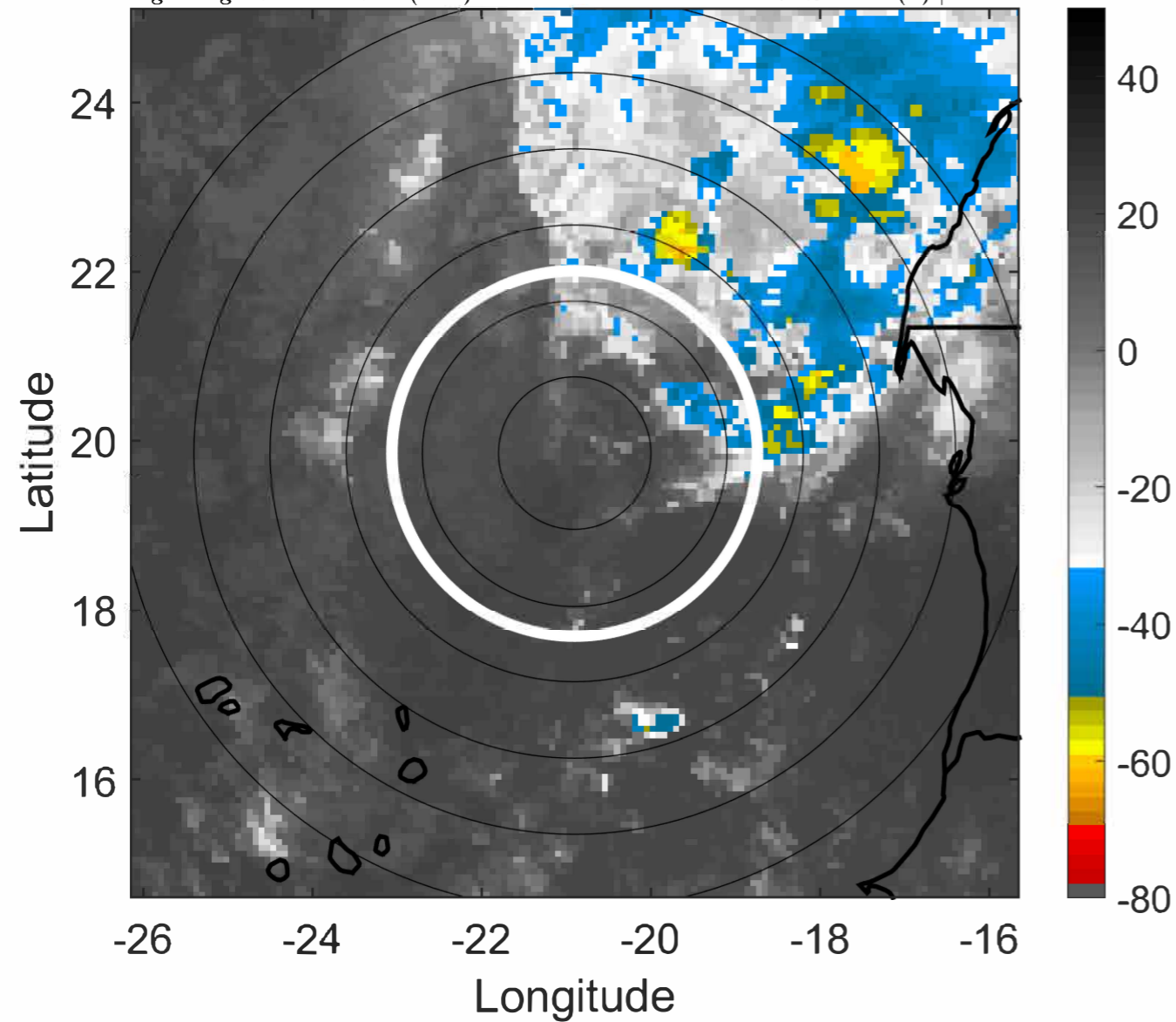
Δ t: 2022092409 (7.6 LT) - 2022092403 (1.6 LT)

Lightning: 7.6 LT \pm 1.5 h (dots)

PT: LLWP | EA: INACT

10L (HERMINE) | 32.5 kt TD

S: 3.9 m s⁻¹ (L) | H: 48°



IR BT & Lightning

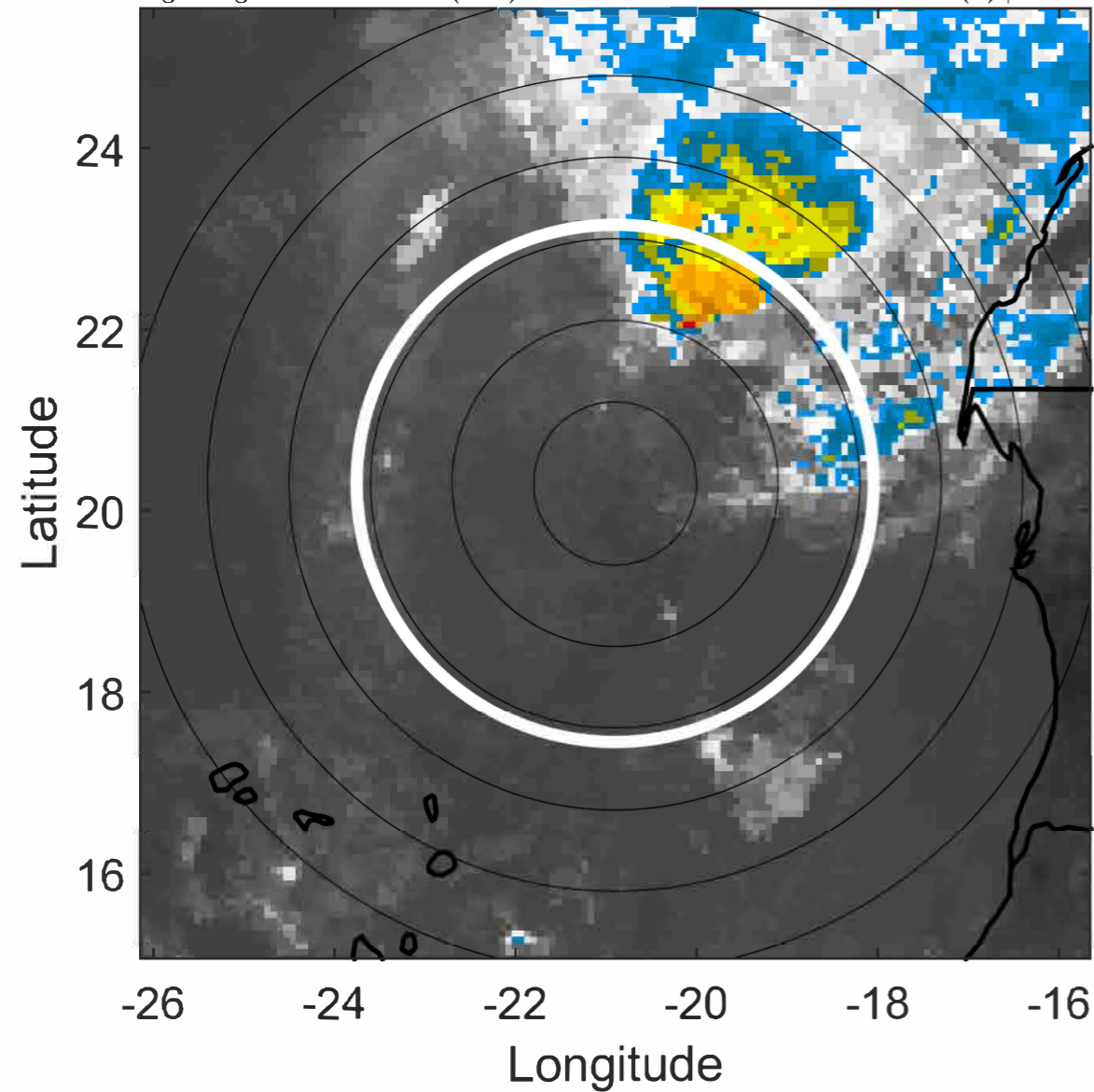
t: 2022092412 (10.6 LT)

Lightning: 10.6 LT \pm 1.5 h (dots)

PT: LLWP | EA: INACT

10L (HERMINE) | 30 kt TD

S: 4.2 m s⁻¹ (L) | H: 46°



6-h IR BT Differences & Lightning

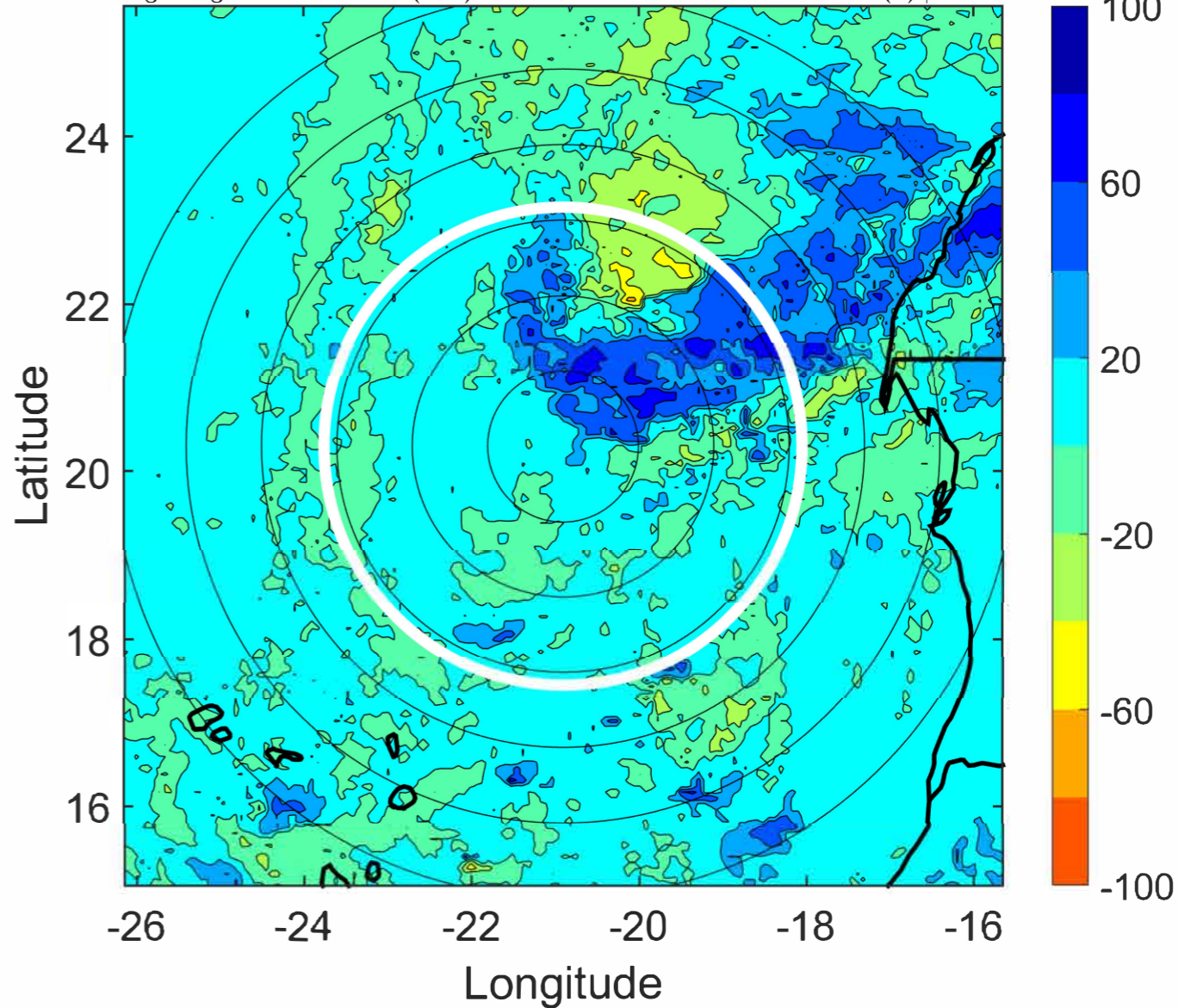
Δ t: 2022092412 (10.6 LT) - 2022092406 (4.6 LT)

Lightning: 10.6 LT \pm 1.5 h (dots)

PT: LLWP | EA: INACT

10L (HERMINE) | 30 kt TD

S: 4.2 m s⁻¹ (L) | H: 46°



IR BT & Lightning

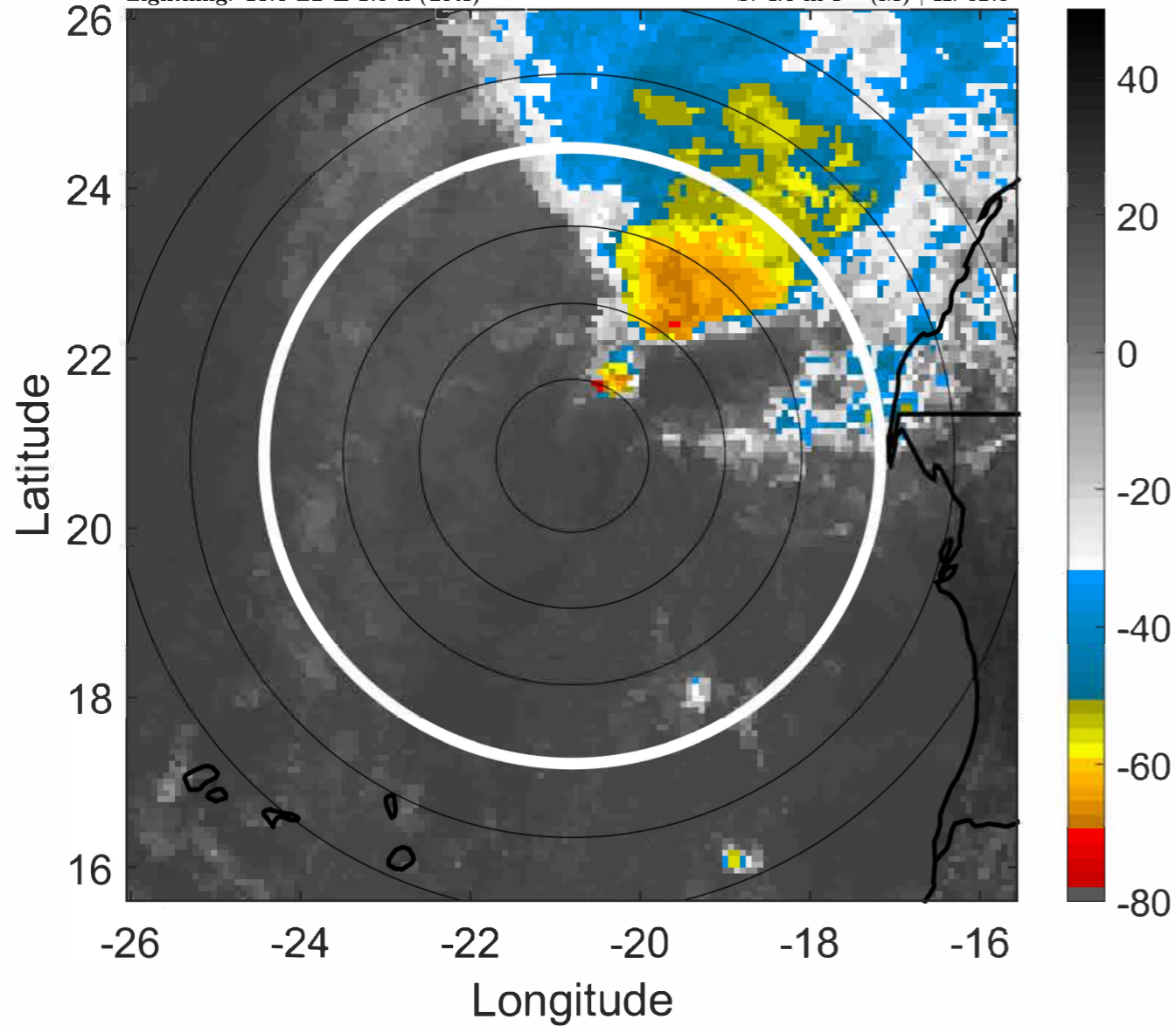
t: 2022092415 (13.6 LT)

Lightning: 13.6 LT \pm 1.5 h (dots)

PT: LLWP | EA: INACT

10L (HERMINE) | 30 kt TD

S: 4.6 m s⁻¹ (M) | H: 52.5°



6-h IR BT Differences & Lightning

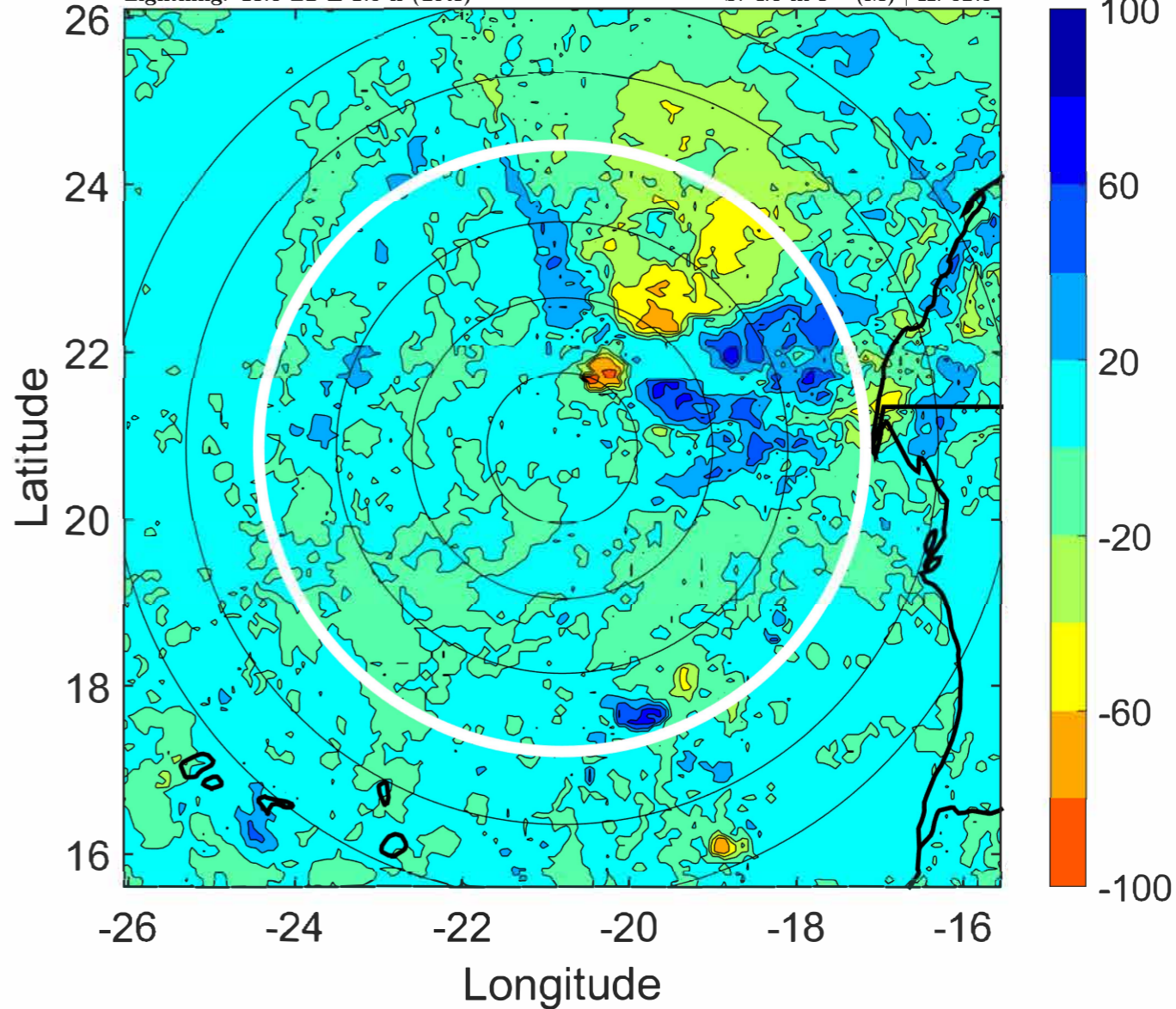
Δ t: 2022092415 (13.6 LT) - 2022092409 (7.6 LT)

Lightning: 13.6 LT \pm 1.5 h (dots)

PT: LLWP | EA: INACT

10L (HERMINE) | 30 kt TD

S: 4.6 m s⁻¹ (M) | H: 52.5°



IR BT & Lightning

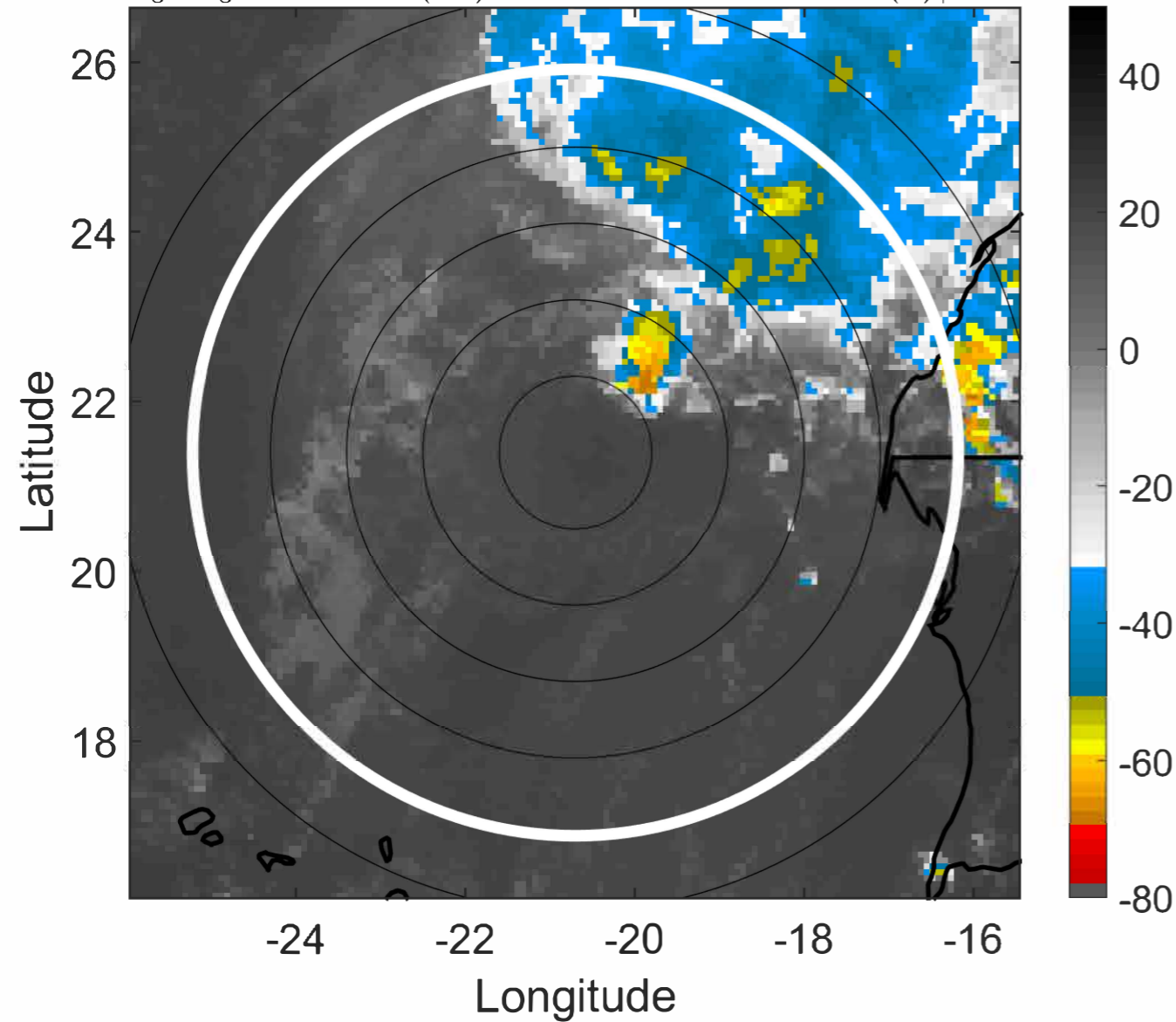
t: 2022092418 (16.6 LT)

Lightning: 16.6 LT \pm 1.5 h (dots)

PT: LLWP | EA: INACT

10L (HERMINE) | 30 kt TD

S: 5 m s⁻¹ (M) | H: 59°



6-h IR BT Differences & Lightning

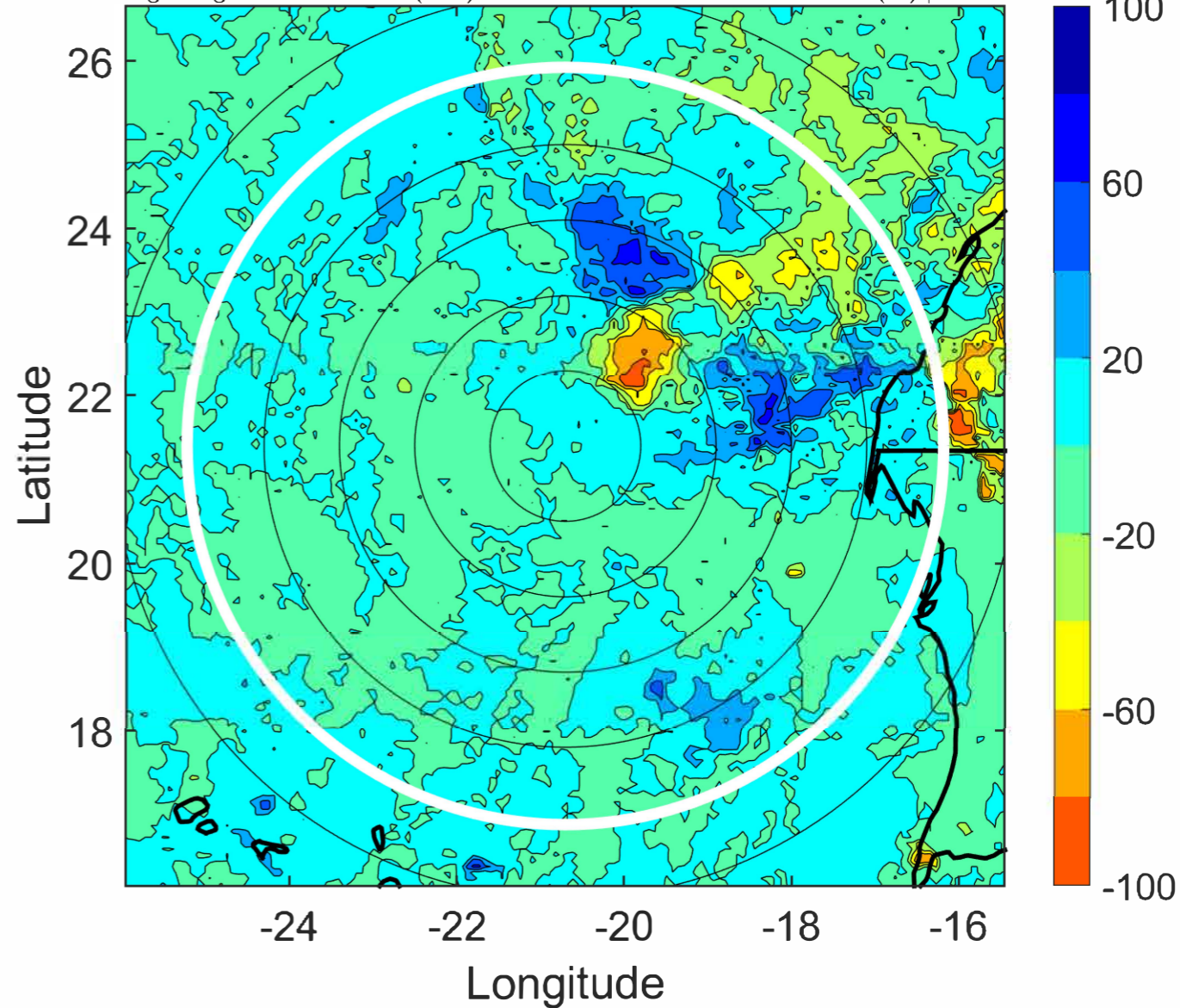
Δ t: 2022092418 (16.6 LT) - 2022092412 (10.6 LT)

Lightning: 16.6 LT \pm 1.5 h (dots)

PT: LLWP | EA: INACT

10L (HERMINE) | 30 kt TD

S: 5 m s⁻¹ (M) | H: 59°



IR BT & Lightning

t: 2022092421 (19.6 LT)

Lightning: 19.6 LT \pm 1.5 h (dots)

PT: LLWP | EA: INACT

10L (HERMINE) | 30 kt TD

S: null | H: null

6-h IR BT Differences & Lightning

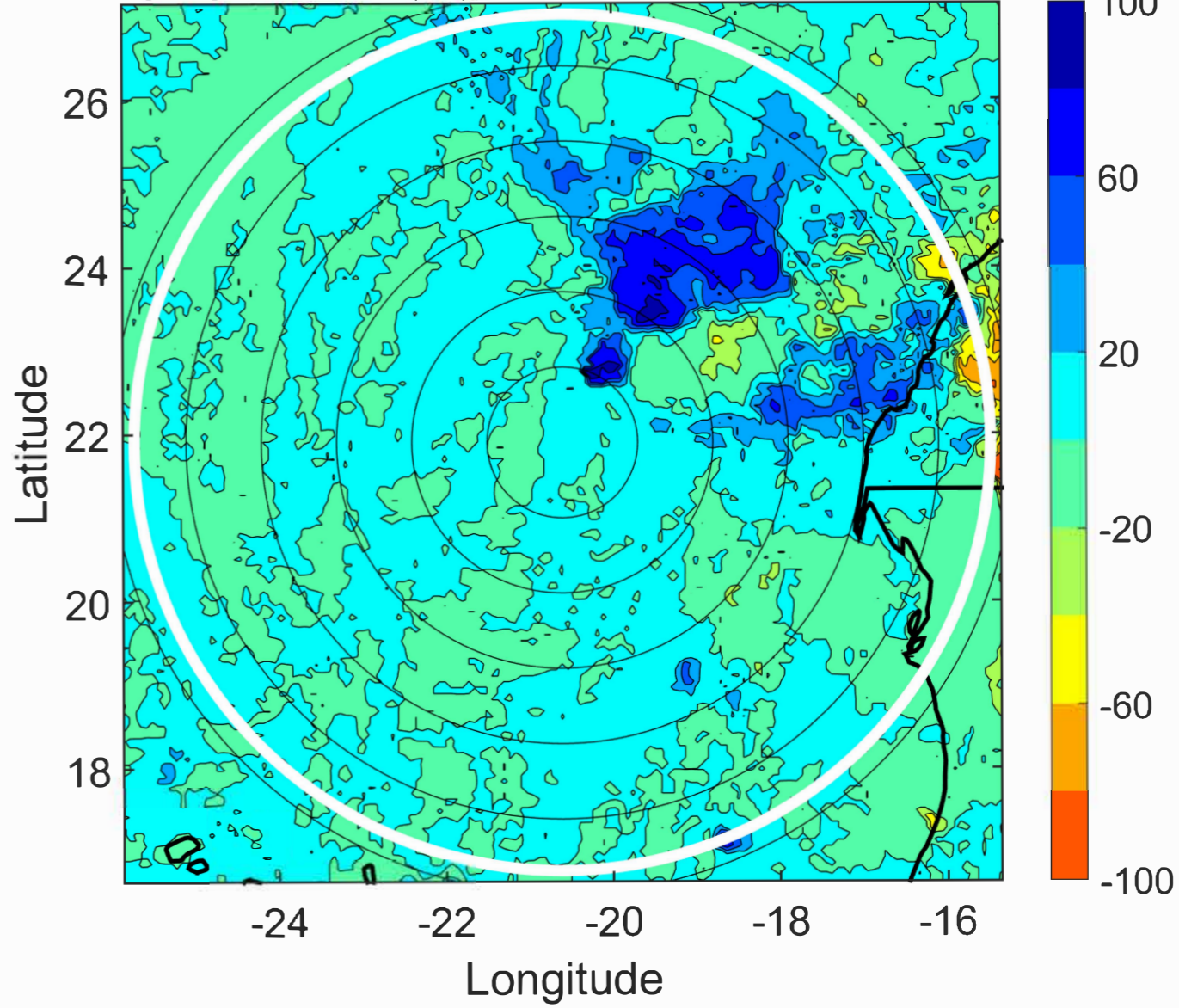
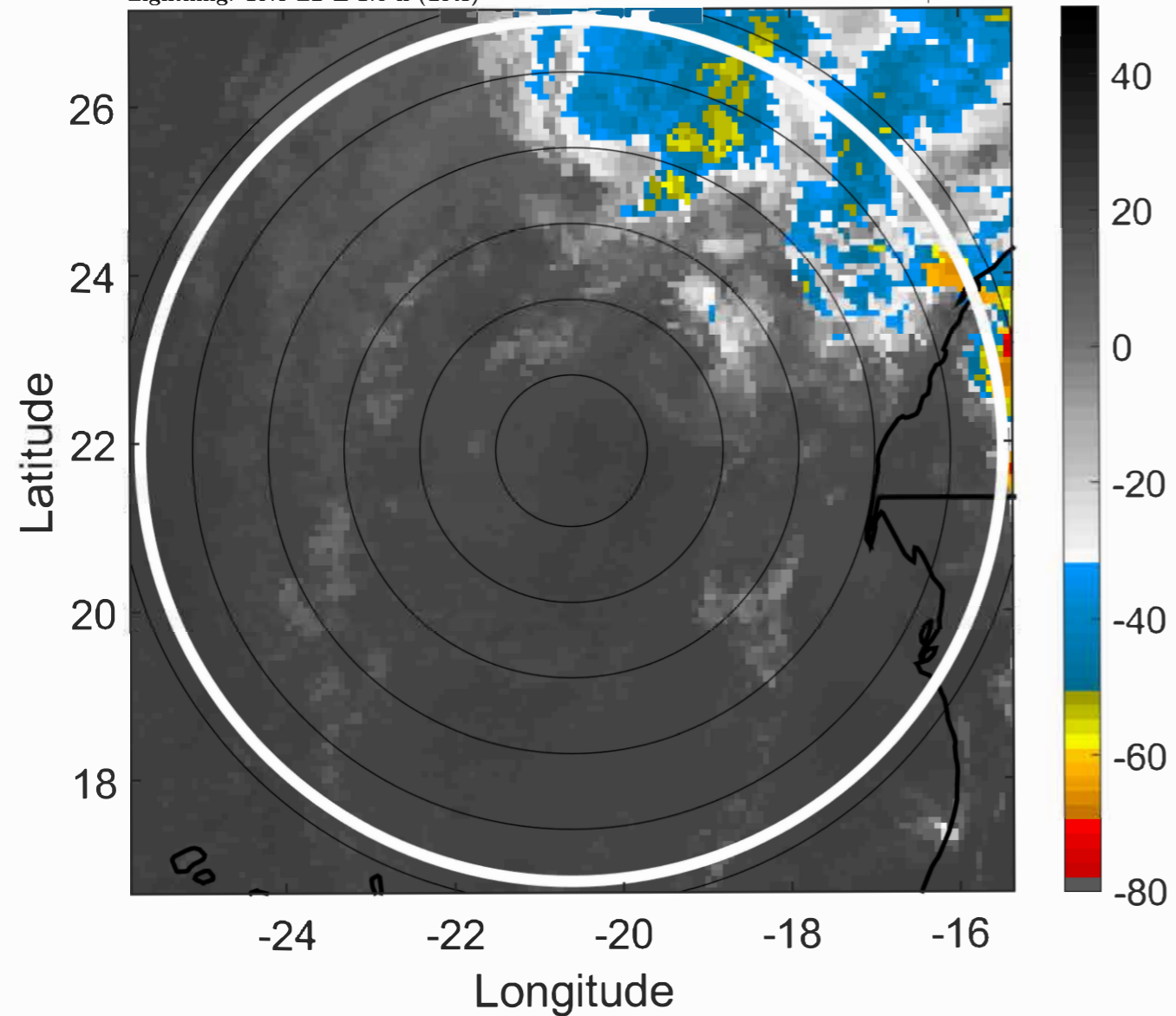
Δ t: 2022092421 (19.6 LT) - 2022092415 (13.6 LT)

Lightning: 19.6 LT \pm 1.5 h (dots)

PT: LLWP | EA: INACT

10L (HERMINE) | 30 kt TD

S: null | H: null



IR BT & Lightning

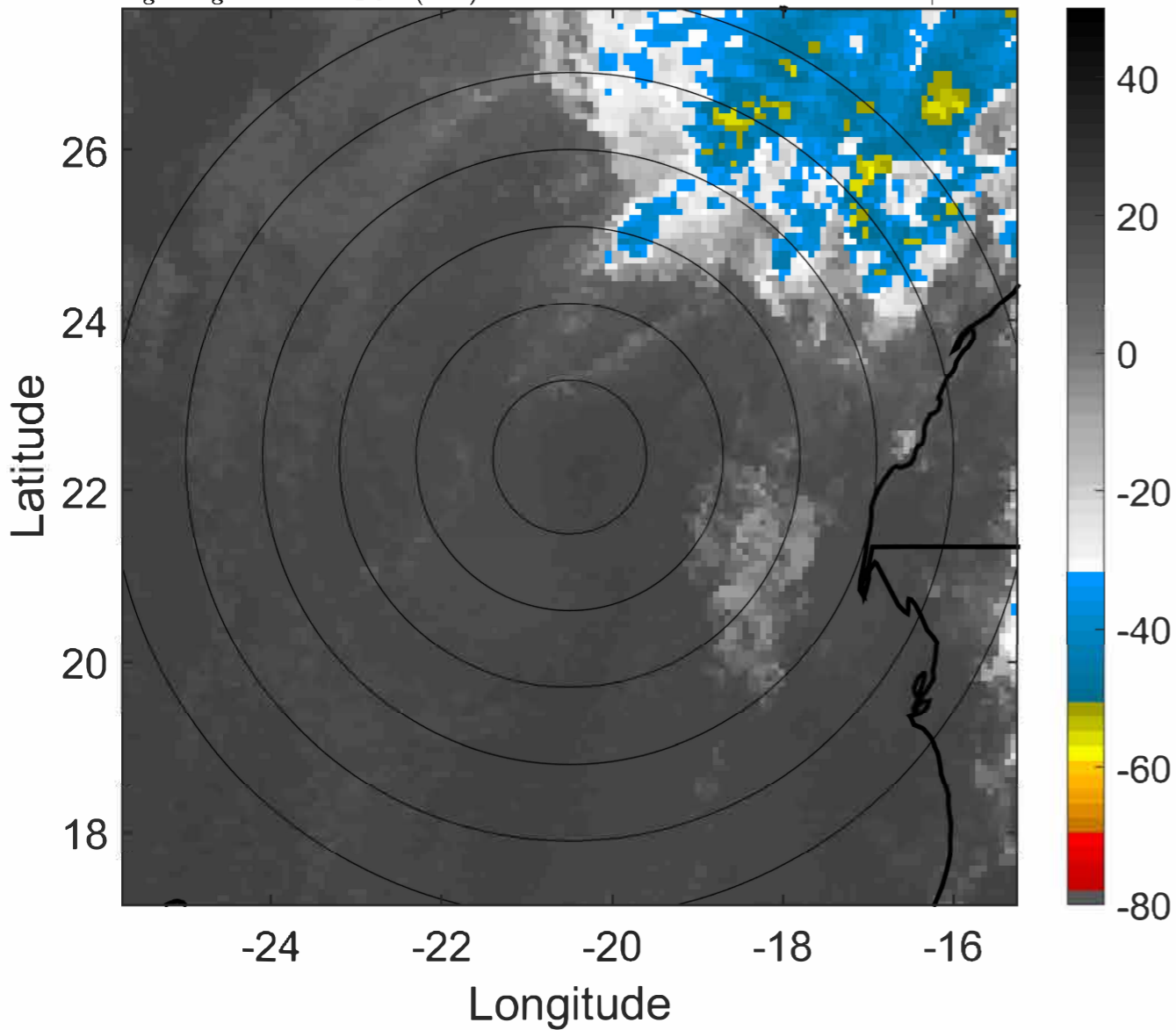
t: 2022092500 (22.6 LT)

Lightning: 22.6 LT \pm 1.5 h (dots)

PT: LLWP | EA: INACT

10L (HERMINE) | 30 kt LO

S: null | H: null



6-h IR BT Differences & Lightning

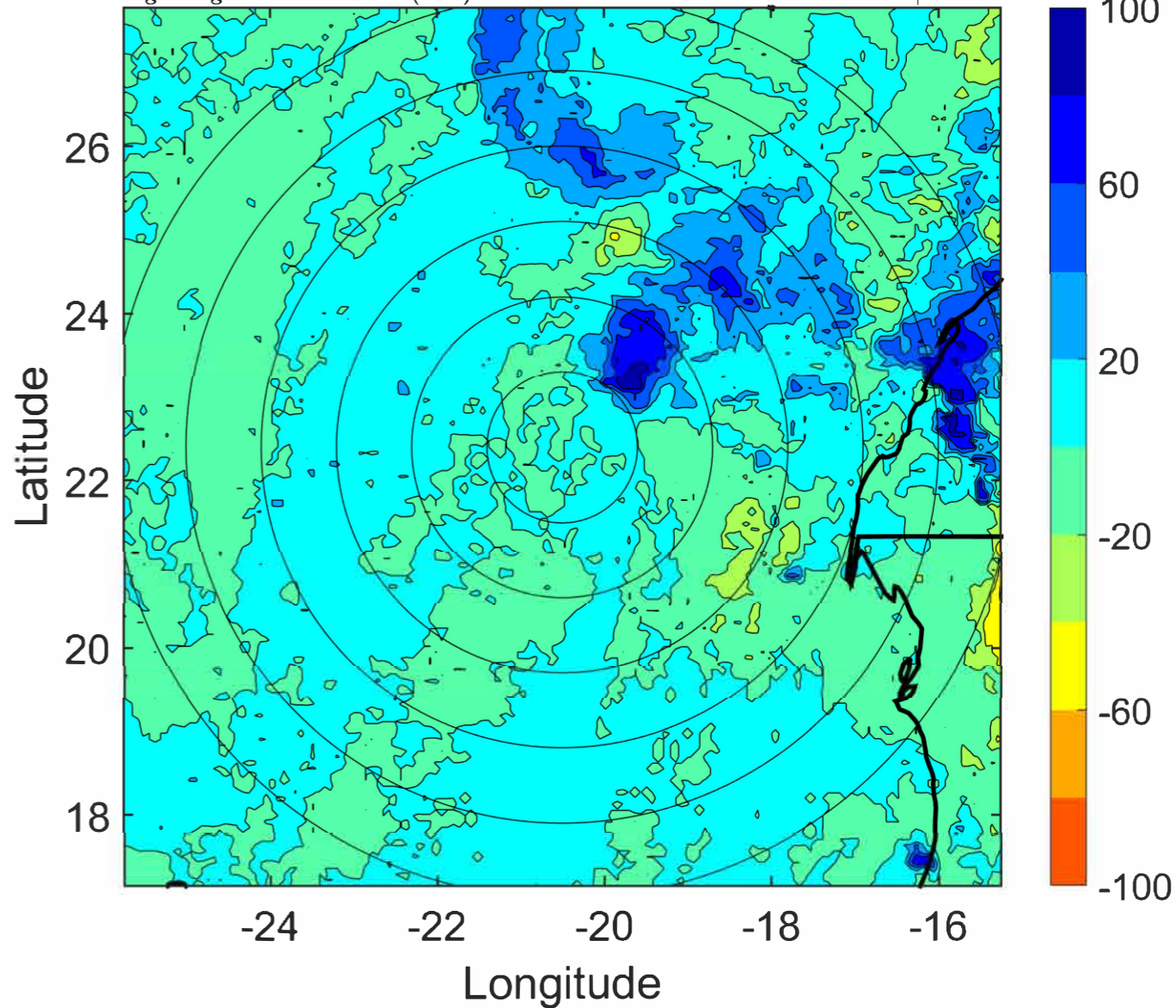
Δ t: 2022092500 (22.6 LT) - 2022092418 (16.6 LT)

Lightning: 22.6 LT \pm 1.5 h (dots)

PT: LLWP | EA: INACT

10L (HERMINE) | 30 kt LO

S: null | H: null



IR BT & Lightning

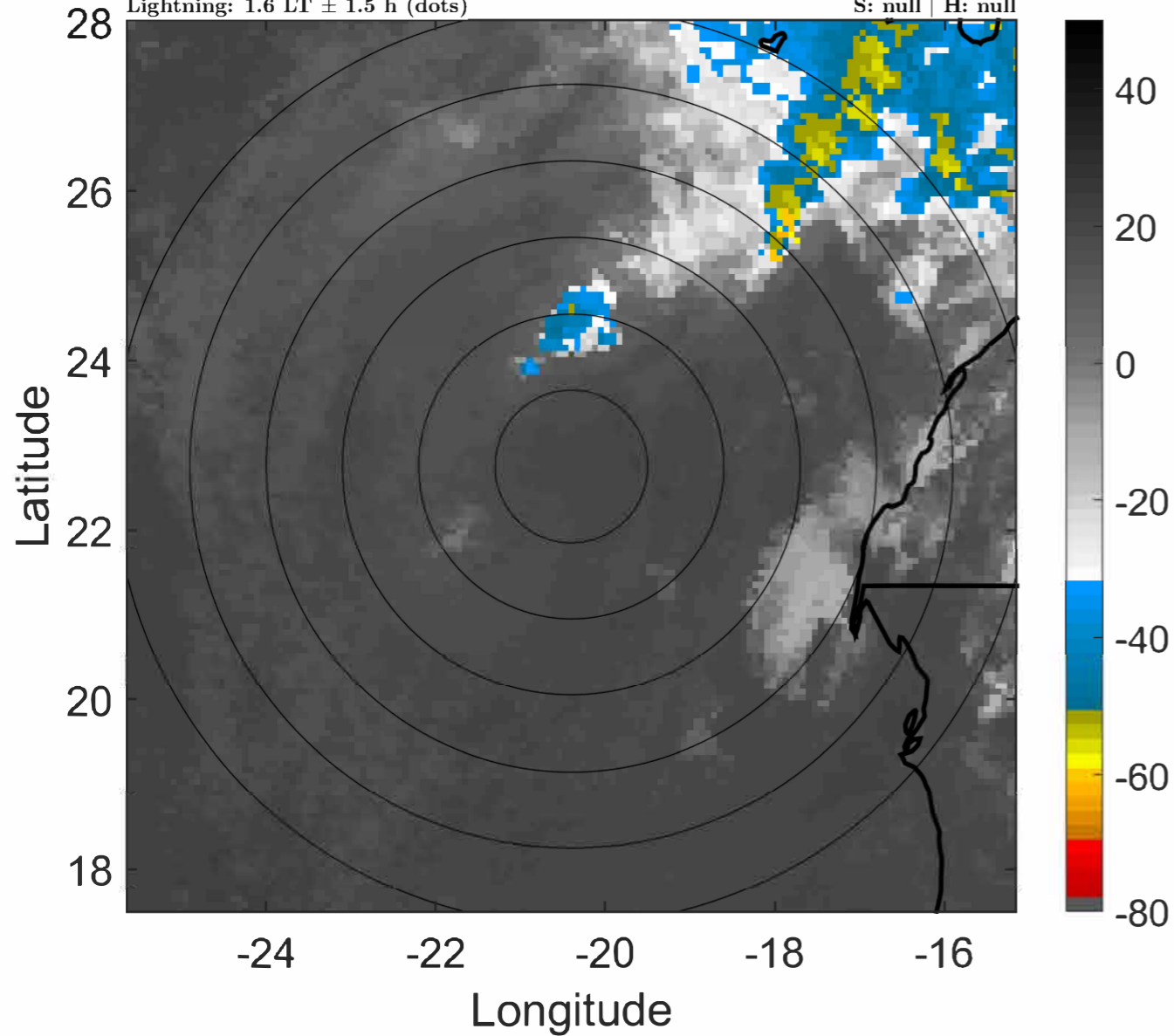
t: 2022092503 (1.6 LT)

Lightning: 1.6 LT \pm 1.5 h (dots)

PT: NP | EA: INACT

10L (HERMINE) | 27.5 kt LO

S: null | H: null



6-h IR BT Differences & Lightning

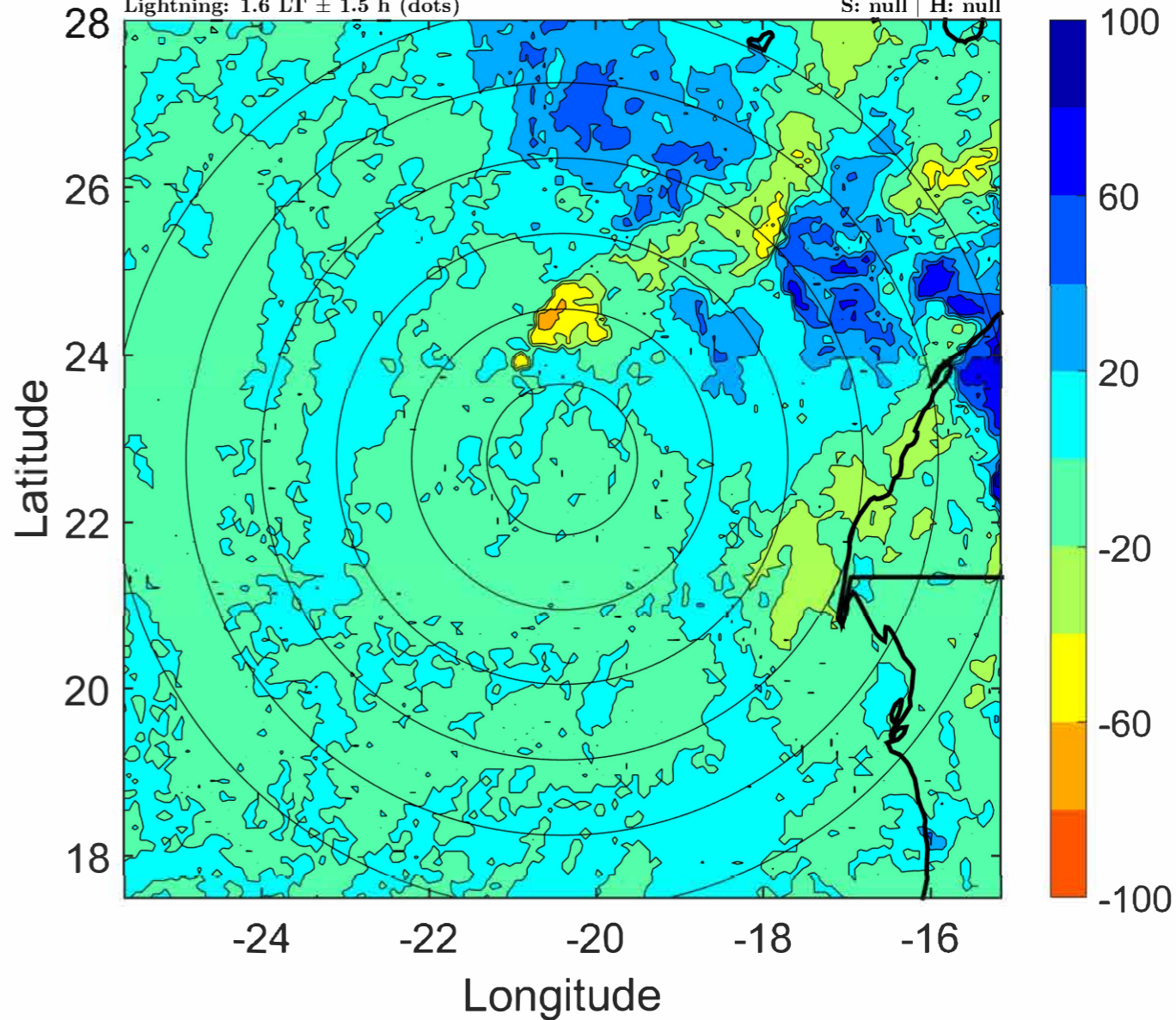
Δ t: 2022092503 (1.6 LT) - 2022092421 (19.6 LT)

Lightning: 1.6 LT \pm 1.5 h (dots)

PT: NP | EA: INACT

10L (HERMINE) | 27.5 kt LO

S: null | H: null



IR BT & Lightning

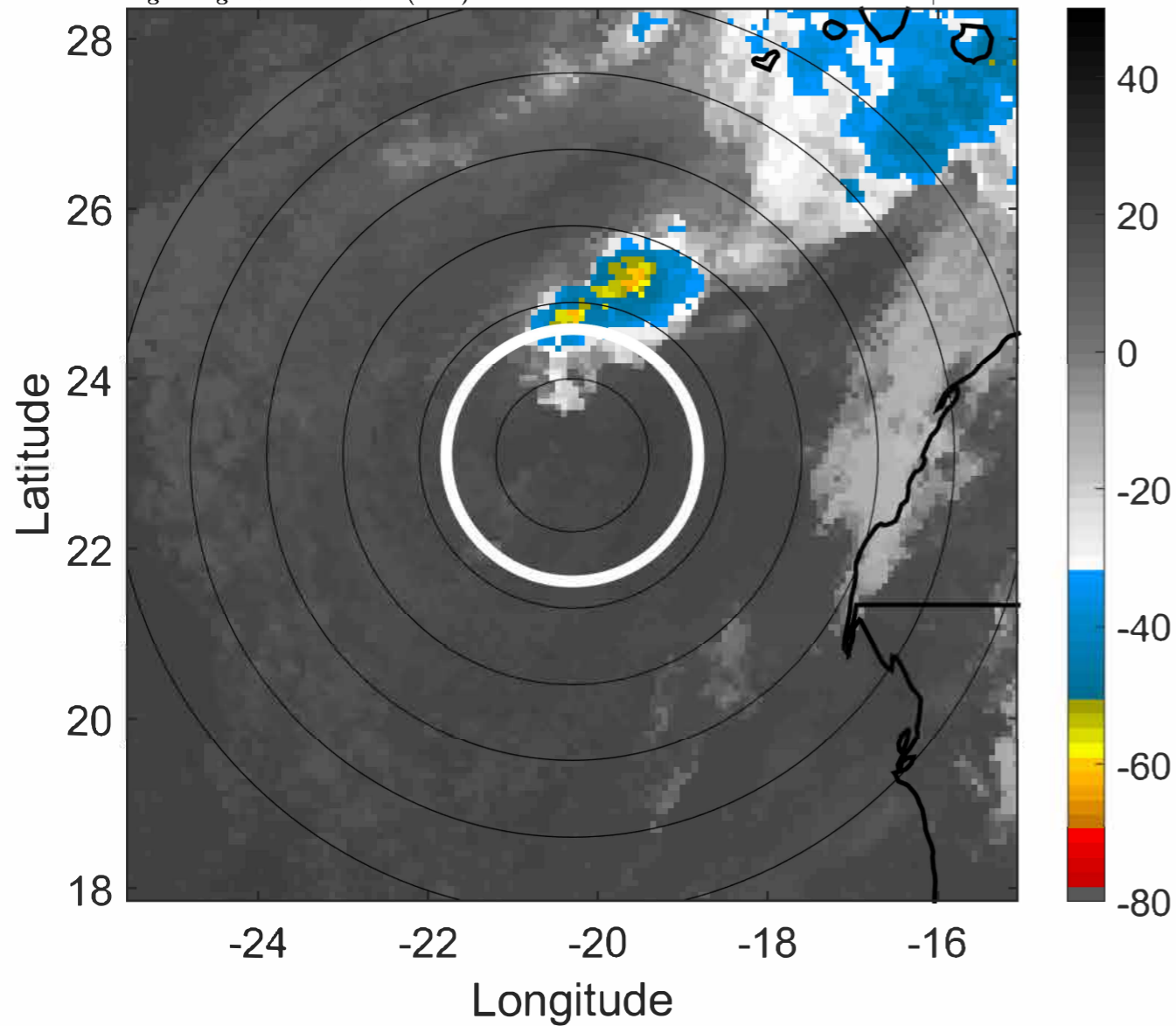
t: 2022092506 (4.6 LT)

Lightning: 4.6 LT \pm 1.5 h (dots)

PT: NP | EA: INACT

10L (HERMINE) | 25 kt LO

S: null | H: null



6-h IR BT Differences & Lightning

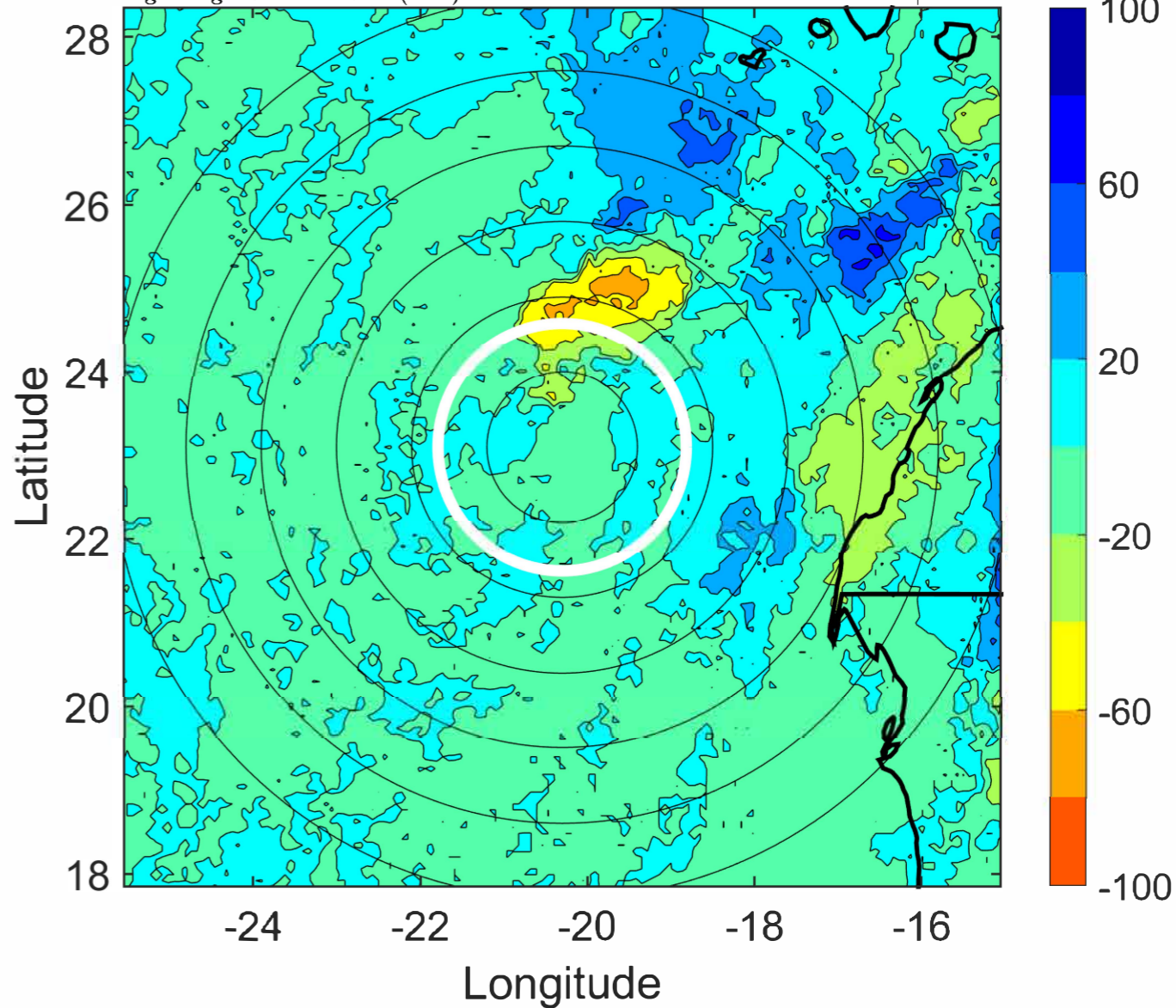
Δ t: 2022092506 (4.6 LT) - 2022092500 (22.6 LT)

Lightning: 4.6 LT \pm 1.5 h (dots)

PT: NP | EA: INACT

10L (HERMINE) | 25 kt LO

S: null | H: null



IR BT & Lightning

t: 2022092509 (7.7 LT)

Lightning: 7.7 LT \pm 1.5 h (dots)

PT: NP | EA: INACT

10L (HERMINE) | 25 kt LO

S: null | H: null

6-h IR BT Differences & Lightning

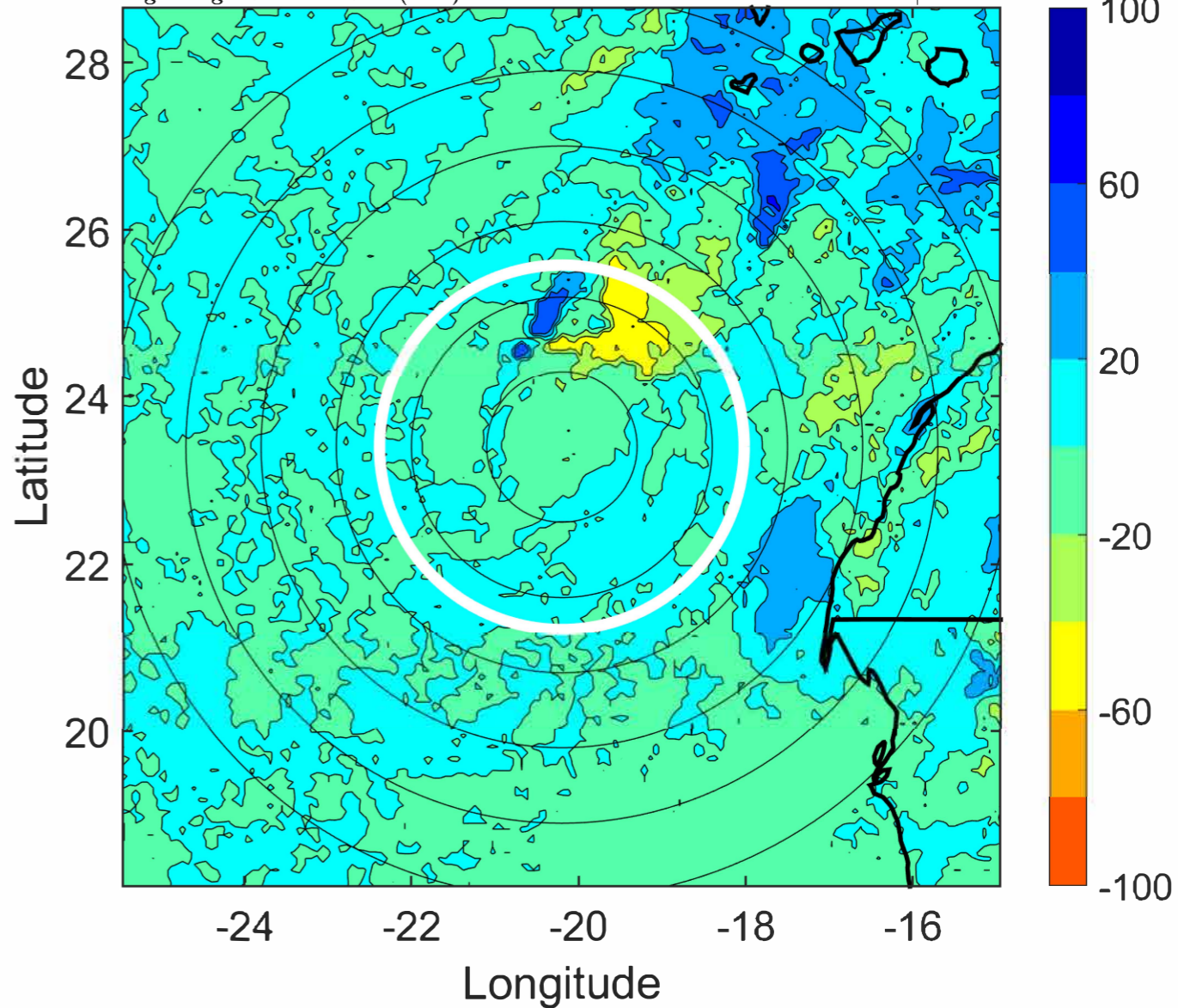
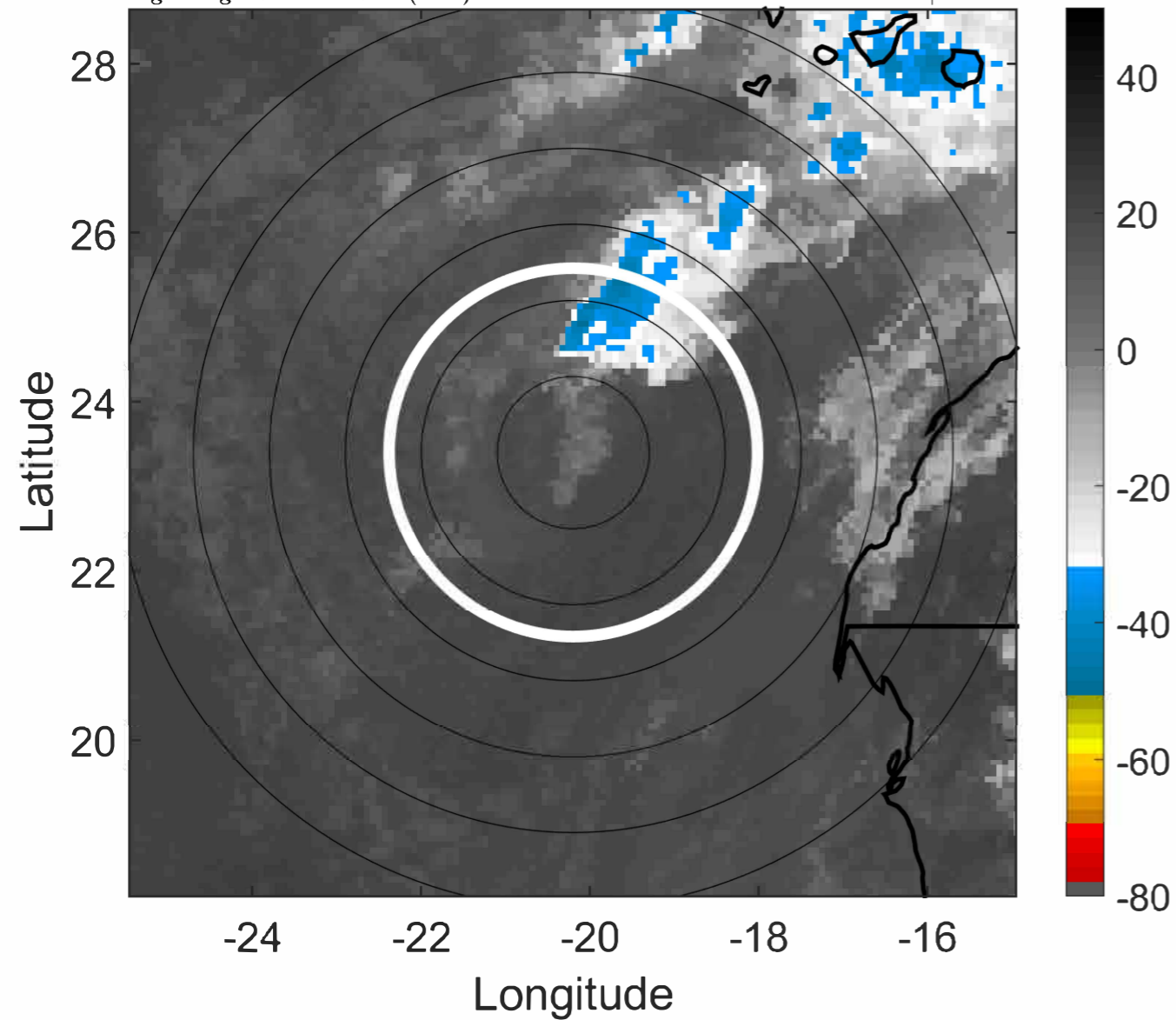
Δ t: 2022092509 (7.7 LT) - 2022092503 (1.6 LT)

Lightning: 7.7 LT \pm 1.5 h (dots)

PT: NP | EA: INACT

10L (HERMINE) | 25 kt LO

S: null | H: null



IR BT & Lightning

t: 2022092512 (10.7 LT)

Lightning: 10.7 LT \pm 1.5 h (dots)

PT: NP | EA: INACT

10L (HERMINE) | 25 kt LO

S: null | H: null

6-h IR BT Differences & Lightning

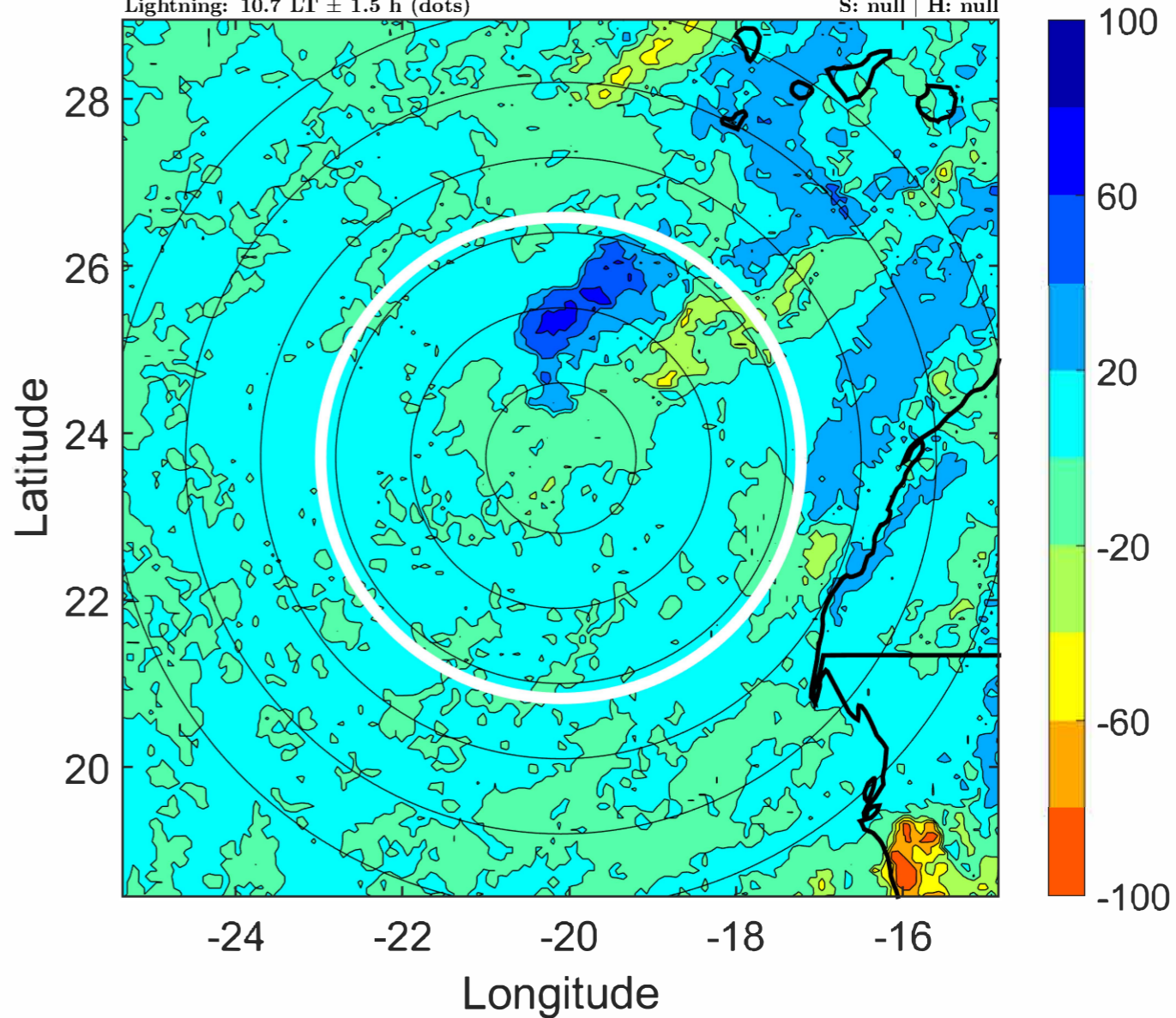
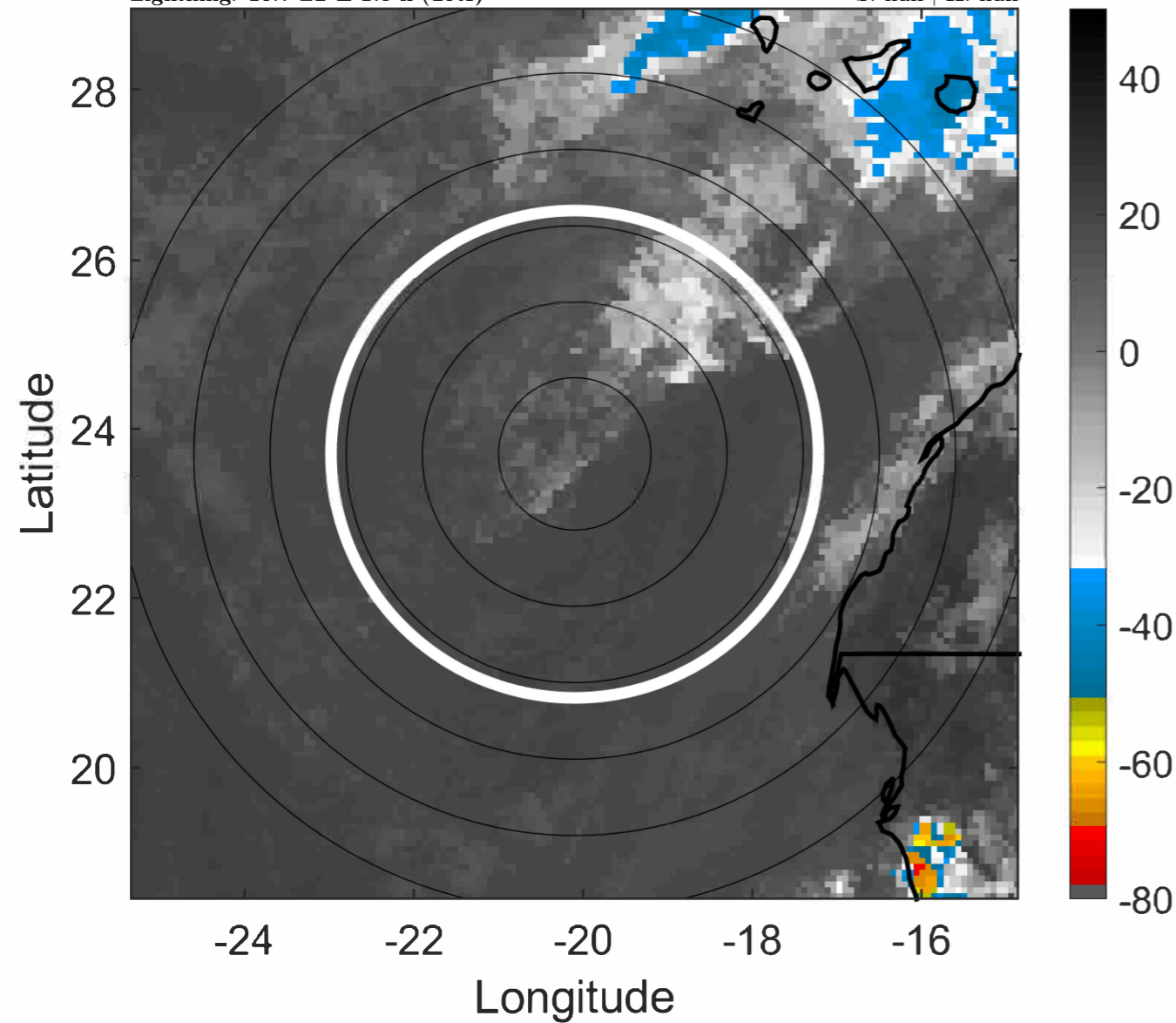
Δ t: 2022092512 (10.7 LT) - 2022092506 (4.6 LT)

Lightning: 10.7 LT \pm 1.5 h (dots)

PT: NP | EA: INACT

10L (HERMINE) | 25 kt LO

S: null | H: null



IR BT & Lightning

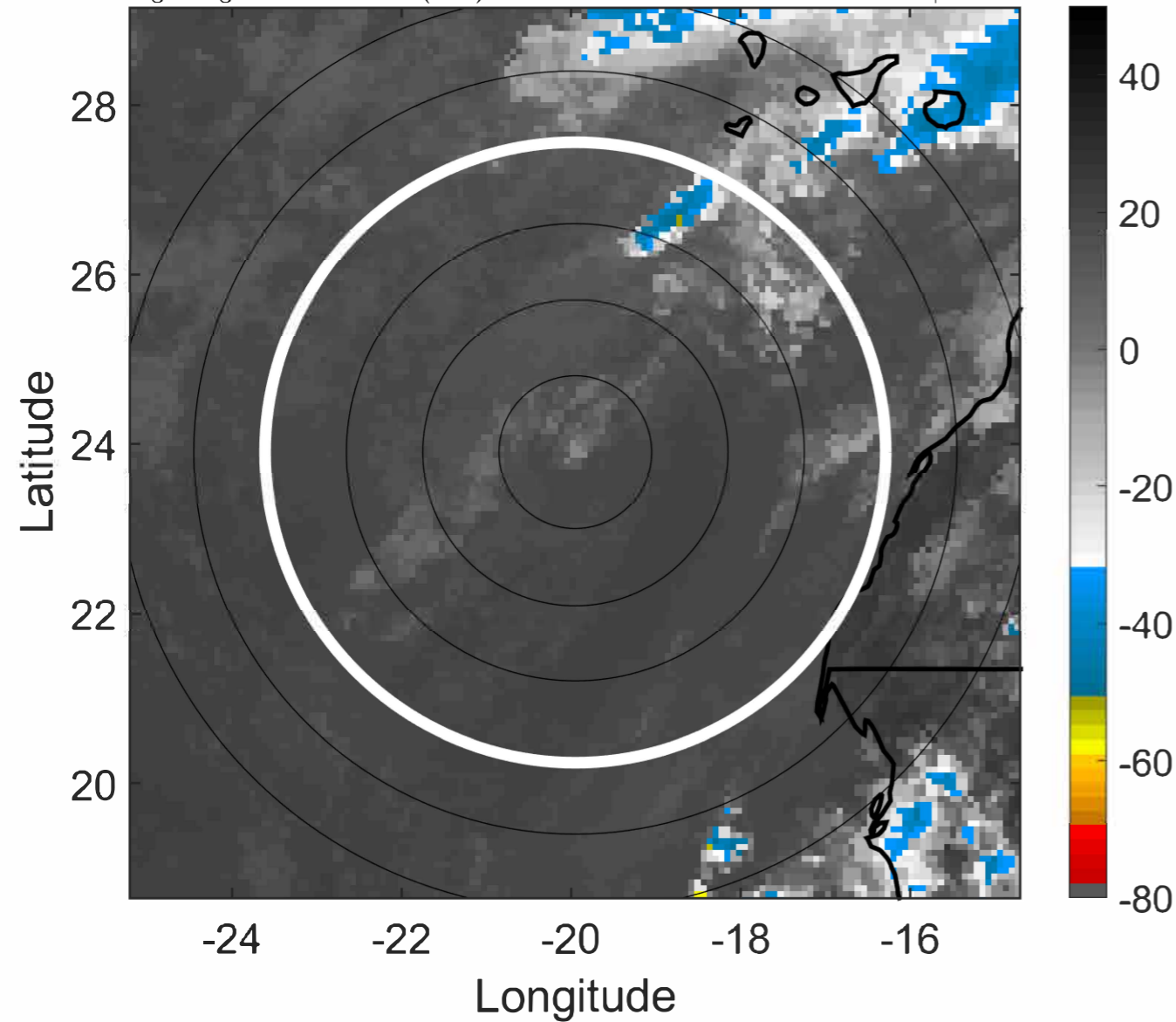
t: 2022092515 (13.7 LT)

Lightning: 13.7 LT \pm 1.5 h (dots)

PT: NP | EA: INACT

10L (HERMINE) | 25 kt LO

S: null | H: null



6-h IR BT Differences & Lightning

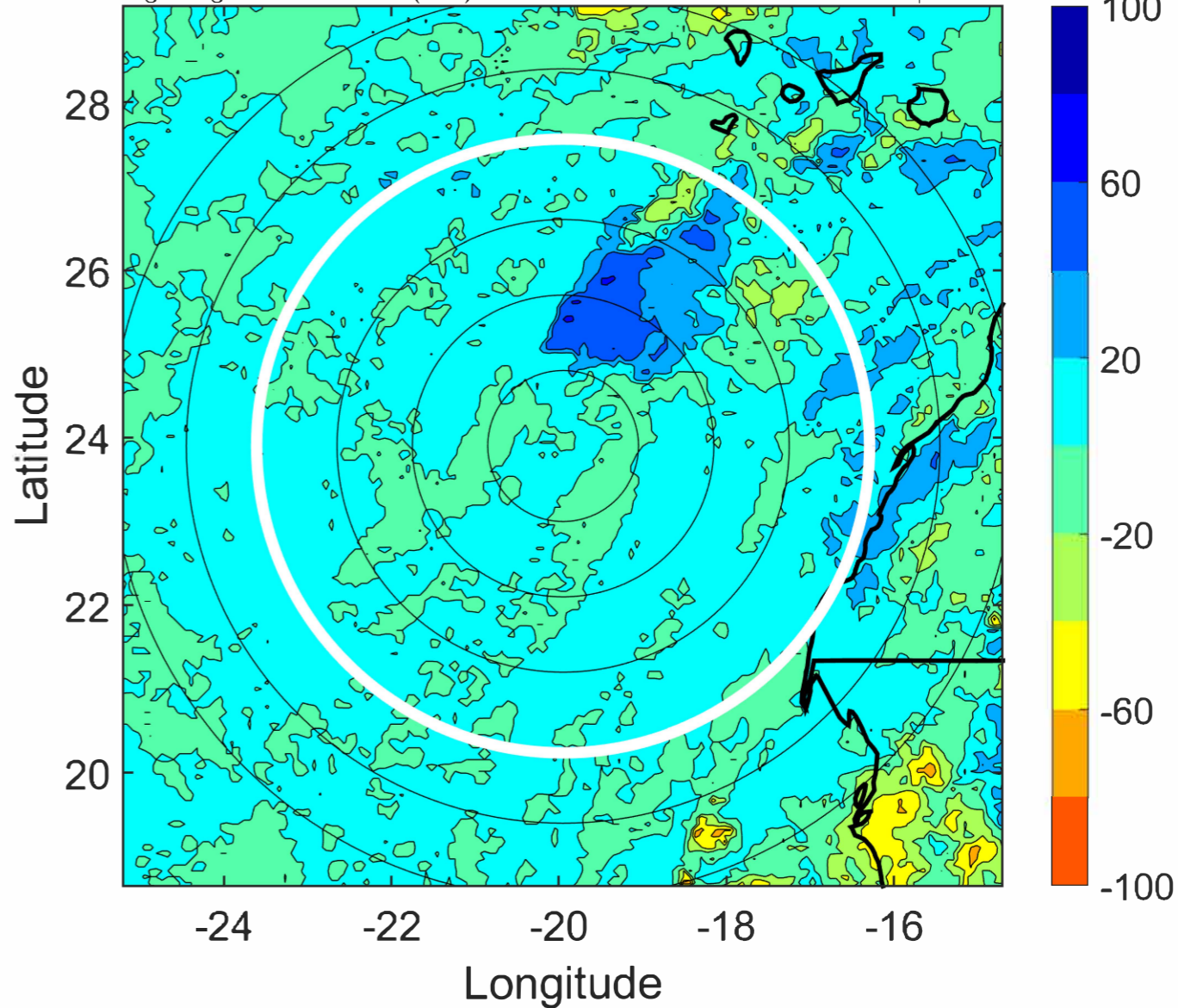
Δ t: 2022092515 (13.7 LT) - 2022092509 (7.7 LT)

Lightning: 13.7 LT \pm 1.5 h (dots)

PT: NP | EA: INACT

10L (HERMINE) | 25 kt LO

S: null | H: null



IR BT & Lightning

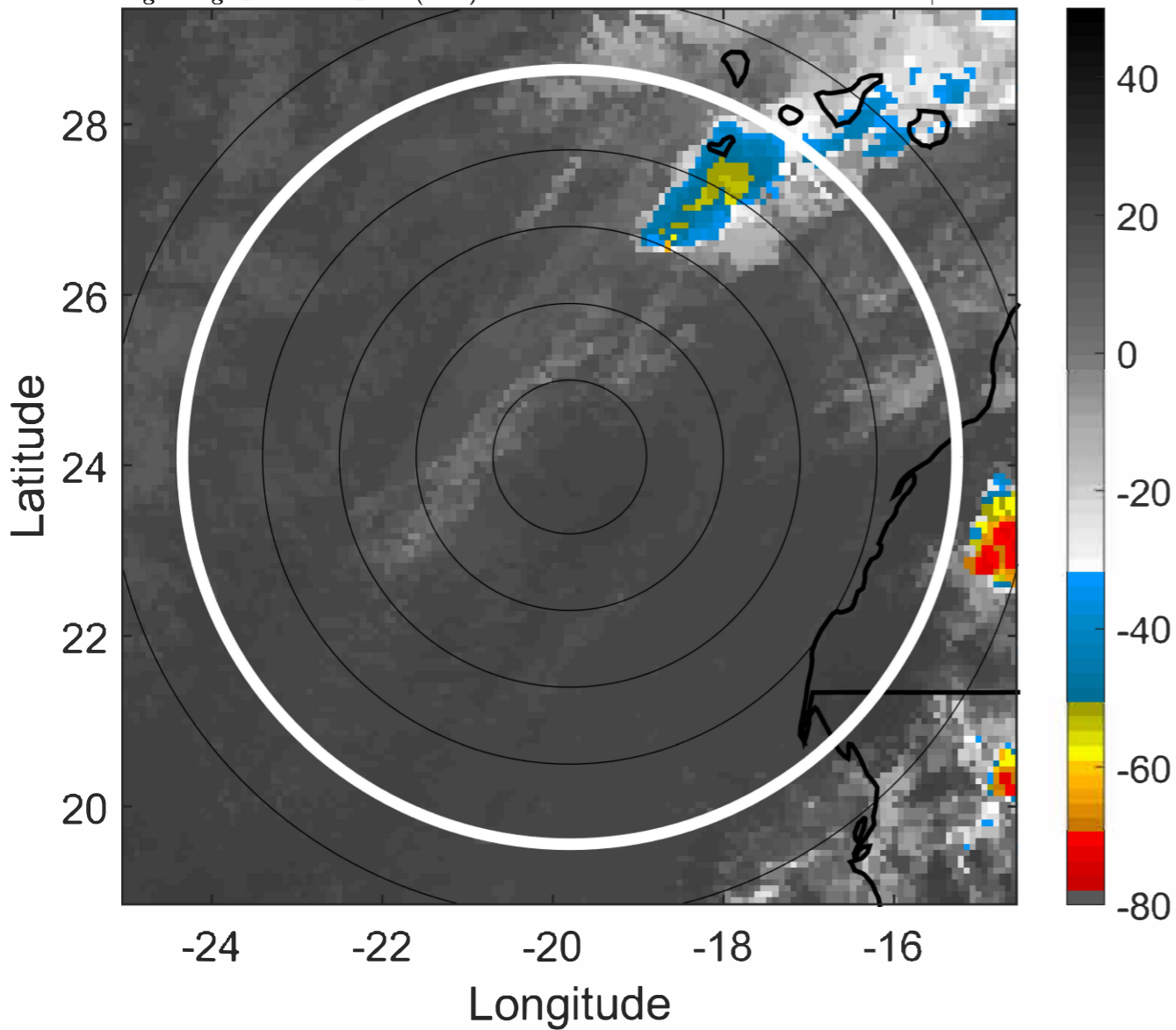
t: 2022092518 (16.7 LT)

Lightning: 16.7 LT \pm 1.5 h (dots)

PT: NP | EA: INACT

10L (HERMINE) | 25 kt LO

S: null | H: null



6-h IR BT Differences & Lightning

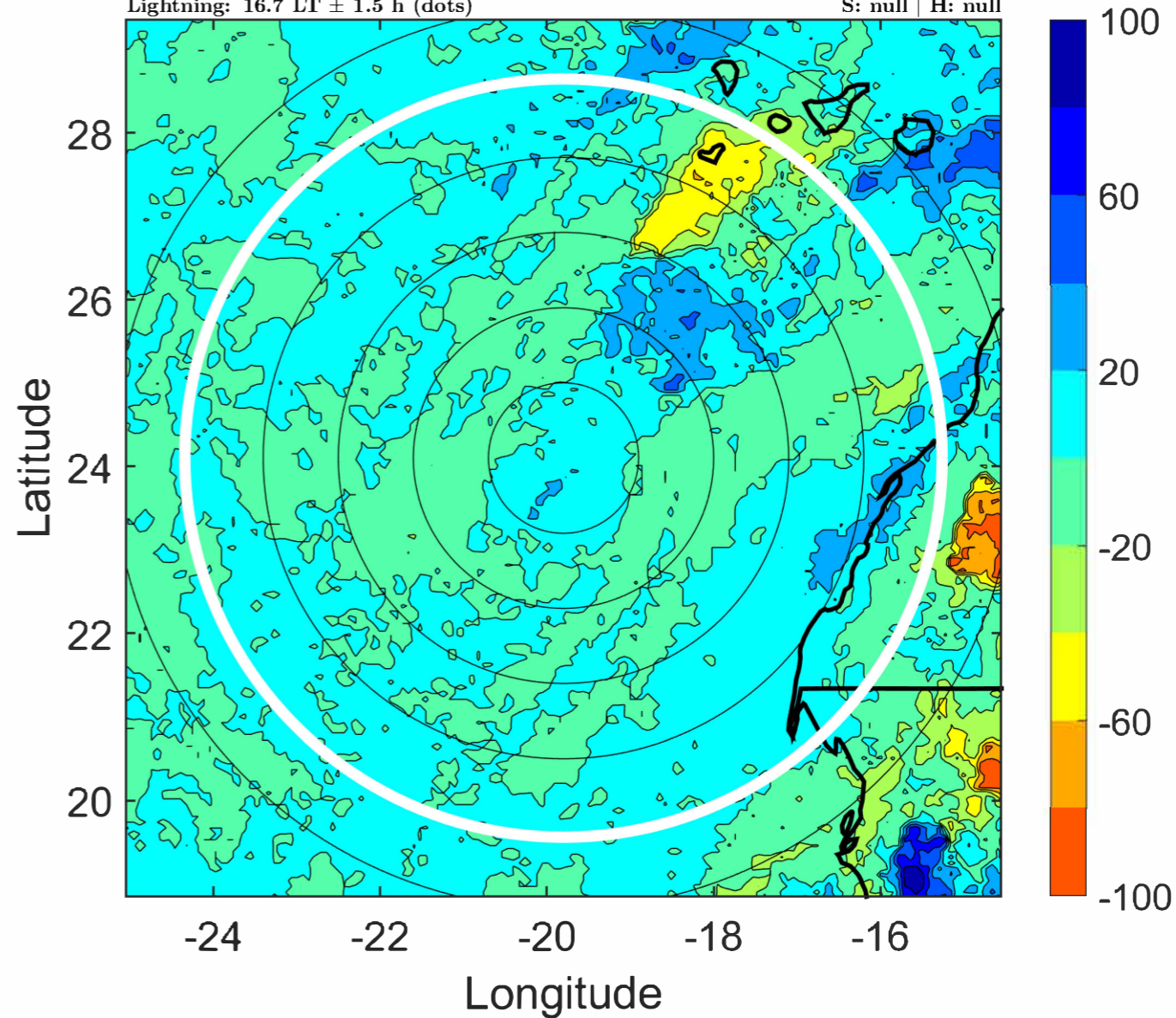
Δ t: 2022092518 (16.7 LT) - 2022092512 (10.7 LT)

Lightning: 16.7 LT \pm 1.5 h (dots)

PT: NP | EA: INACT

10L (HERMINE) | 25 kt LO

S: null | H: null



IR BT & Lightning

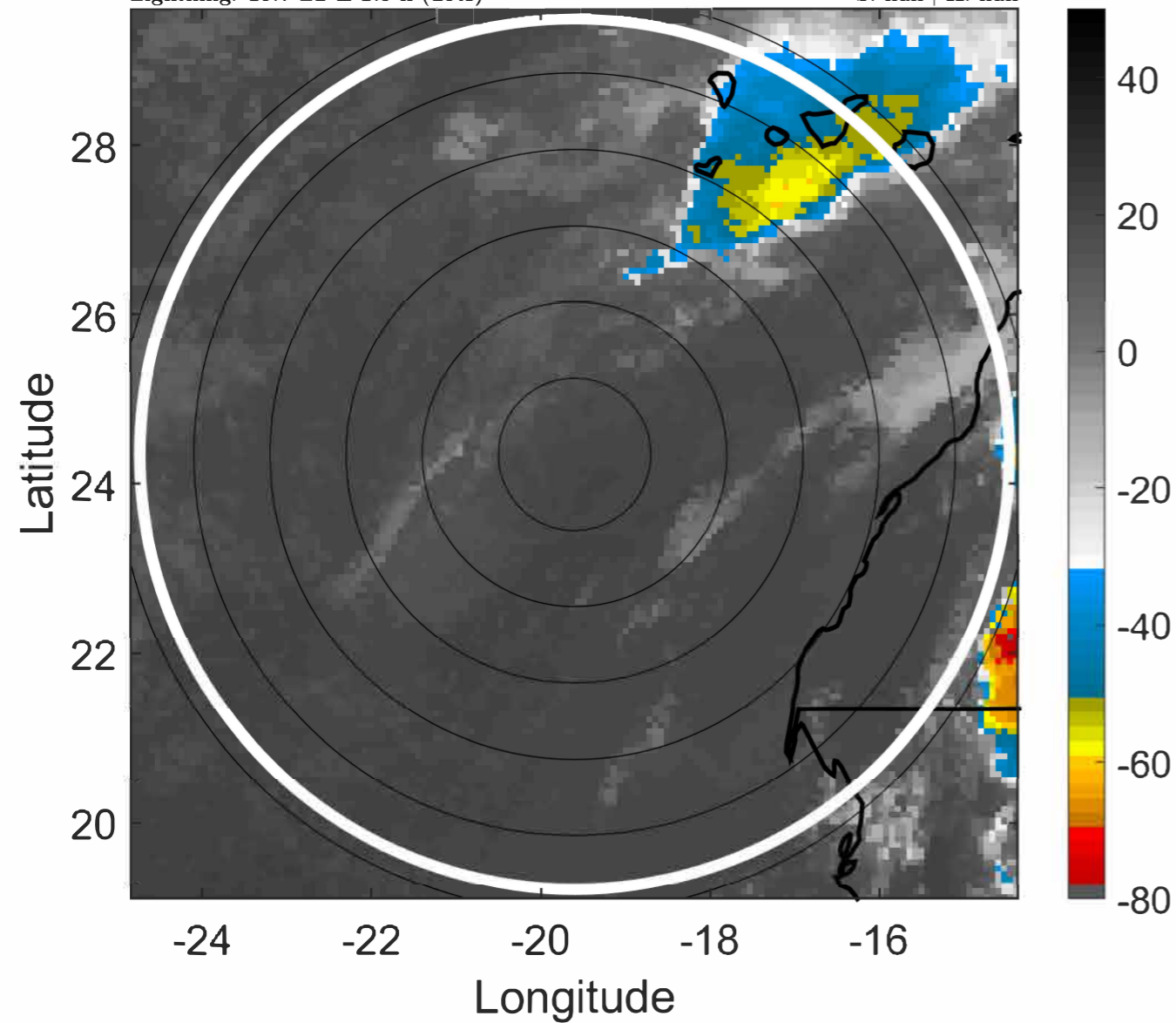
t: 2022092521 (19.7 LT)

Lightning: 19.7 LT \pm 1.5 h (dots)

PT: NP | EA: INACT

10L (HERMINE) | 25 kt LO

S: null | H: null



6-h IR BT Differences & Lightning

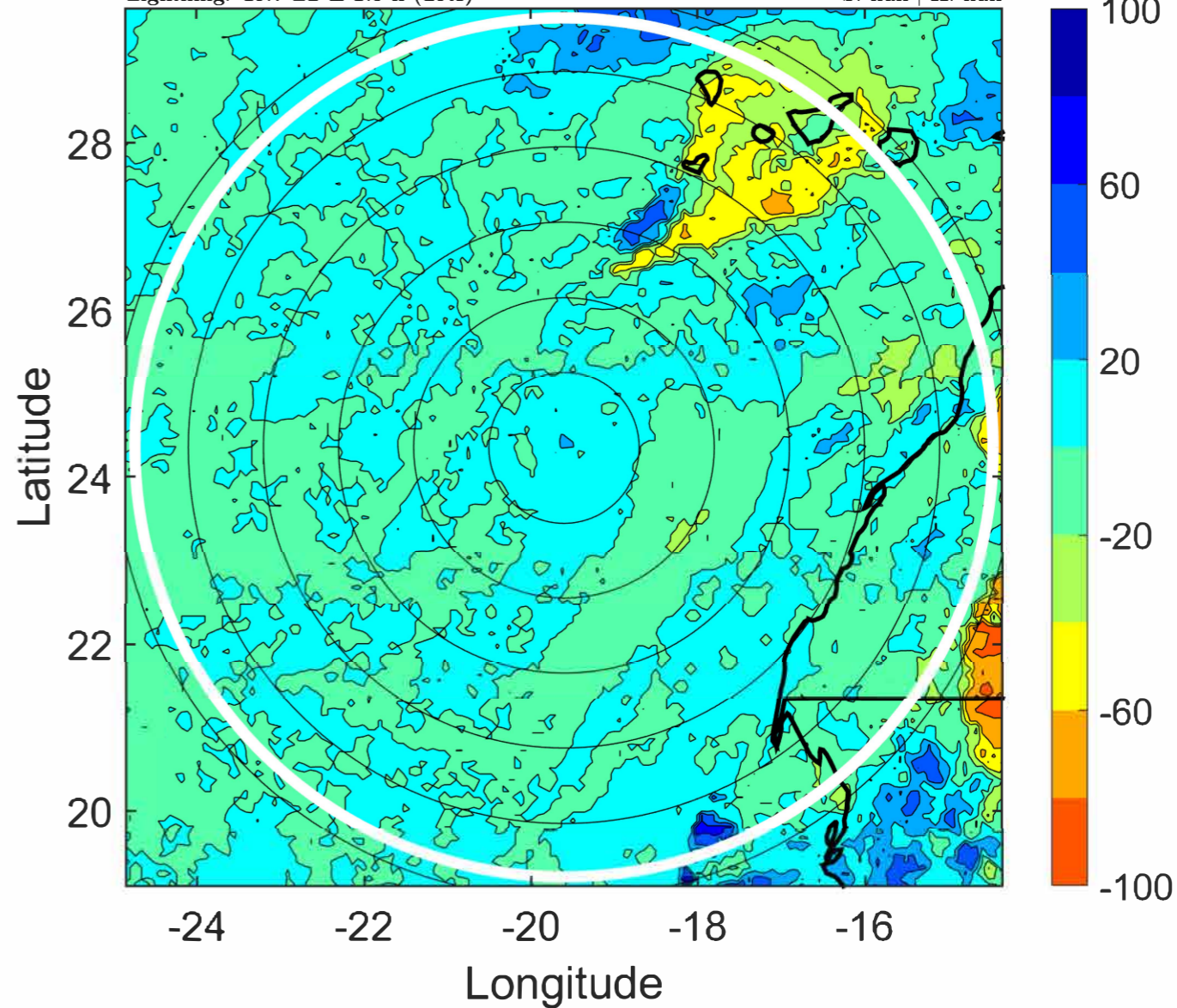
Δ t: 2022092521 (19.7 LT) - 2022092515 (13.7 LT)

Lightning: 19.7 LT \pm 1.5 h (dots)

PT: NP | EA: INACT

10L (HERMINE) | 25 kt LO

S: null | H: null



IR BT & Lightning

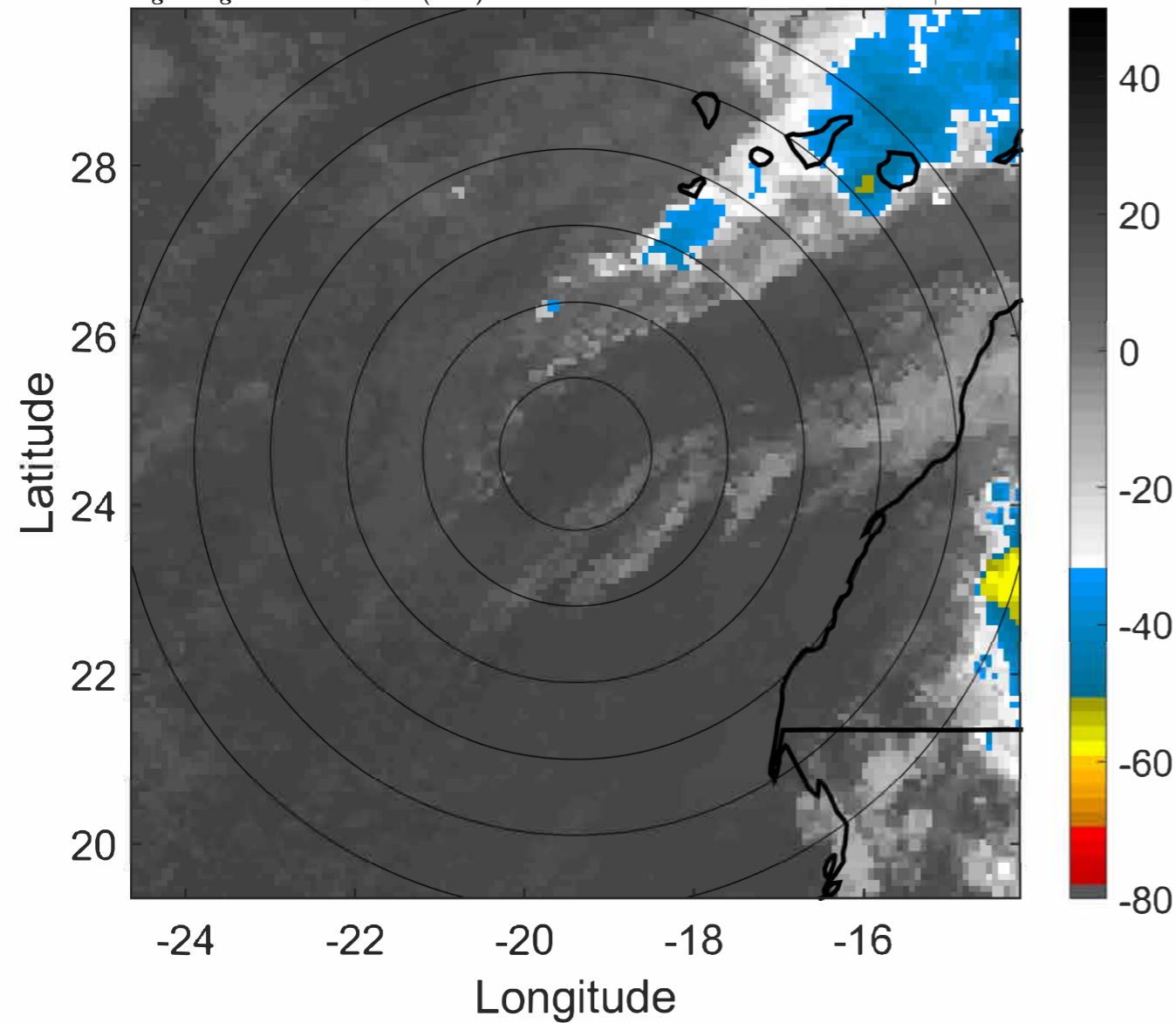
t: 2022092600 (22.7 LT)

Lightning: 22.7 LT \pm 1.5 h (dots)

PT: NP | EA: INACT

10L (HERMINE) | 25 kt LO

S: null | H: null



6-h IR BT Differences & Lightning

Δ t: 2022092600 (22.7 LT) - 2022092518 (16.7 LT)

Lightning: 22.7 LT \pm 1.5 h (dots)

PT: NP | EA: INACT

10L (HERMINE) | 25 kt LO

S: null | H: null

