

### IR BT & Lightning

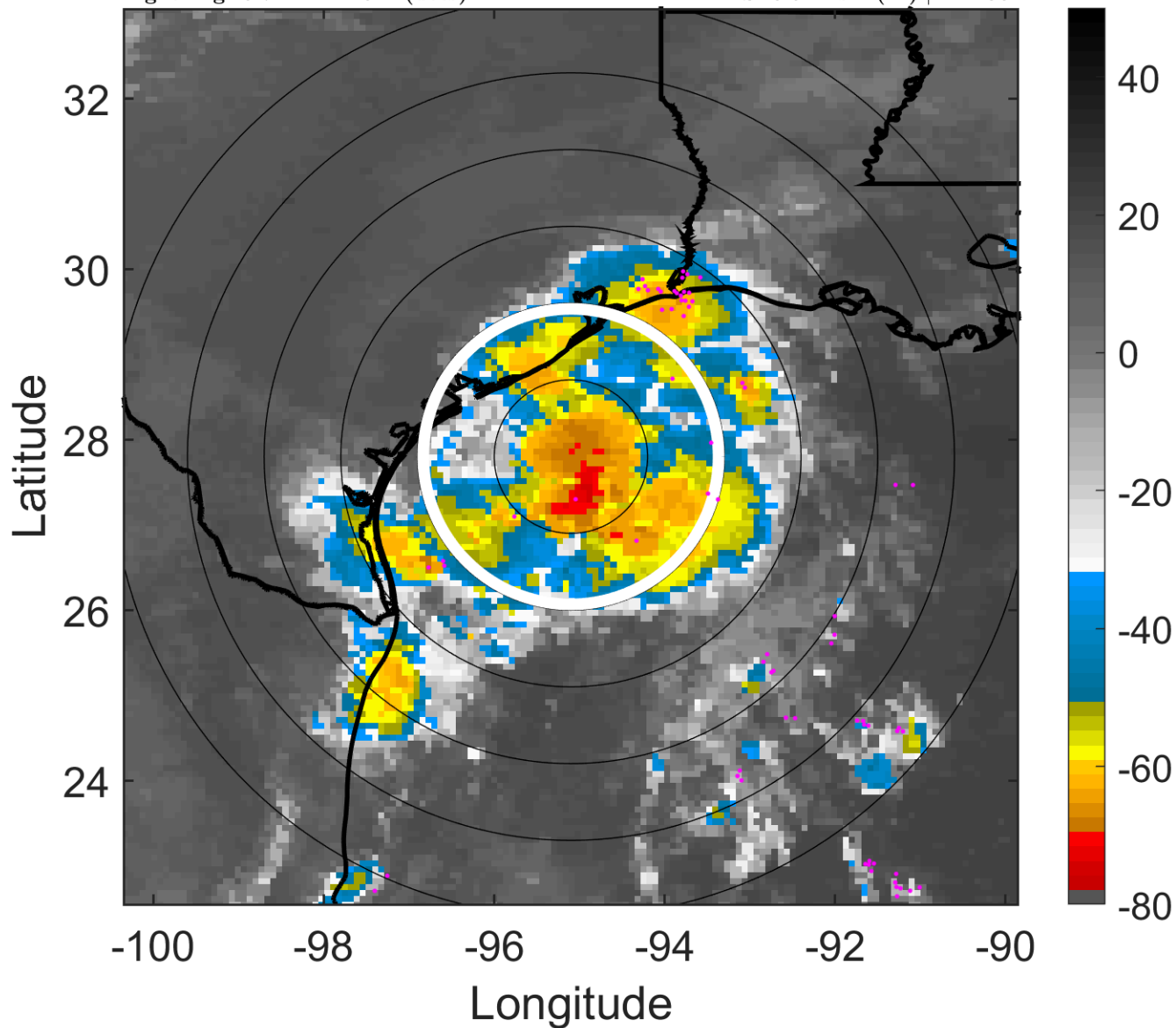
t: 2007091212 (5.7 LT)

Lightning: 5.7 LT  $\pm$  1.5 h (dots)

PT: LLCP | EA: ACT

09L (HUMBERTO) | 35 kt TS

S: 6.6 m s<sup>-1</sup> (M) | H: 106°



### 6-h IR BT Differences & Lightning

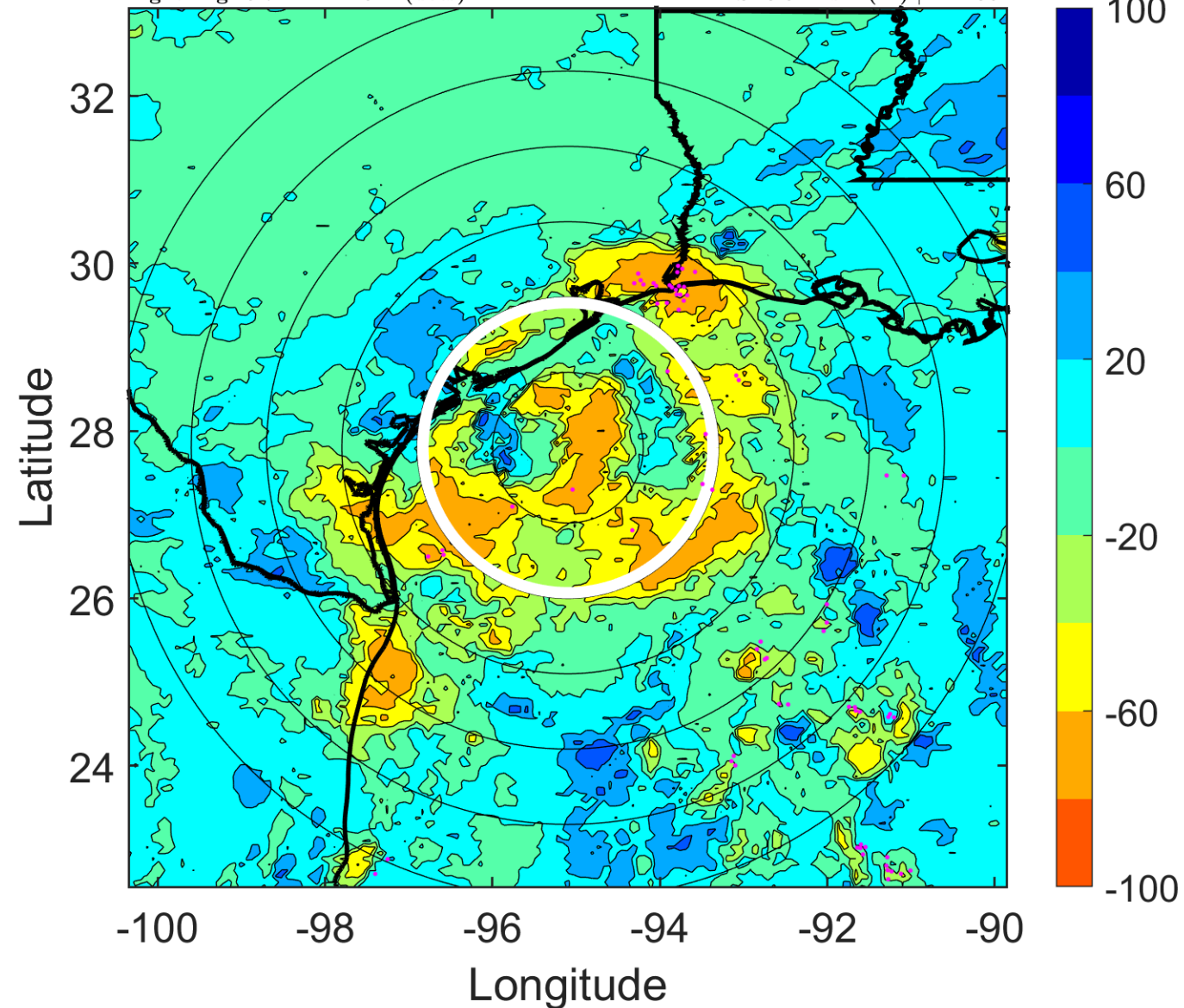
$\Delta$ t: 2007091212 (5.7 LT) - 2007091206 (23.7 LT)

Lightning: 5.7 LT  $\pm$  1.5 h (dots)

PT: LLCP | EA: ACT

09L (HUMBERTO) | 35 kt TS

S: 6.6 m s<sup>-1</sup> (M) | H: 106°



### IR BT & Lightning

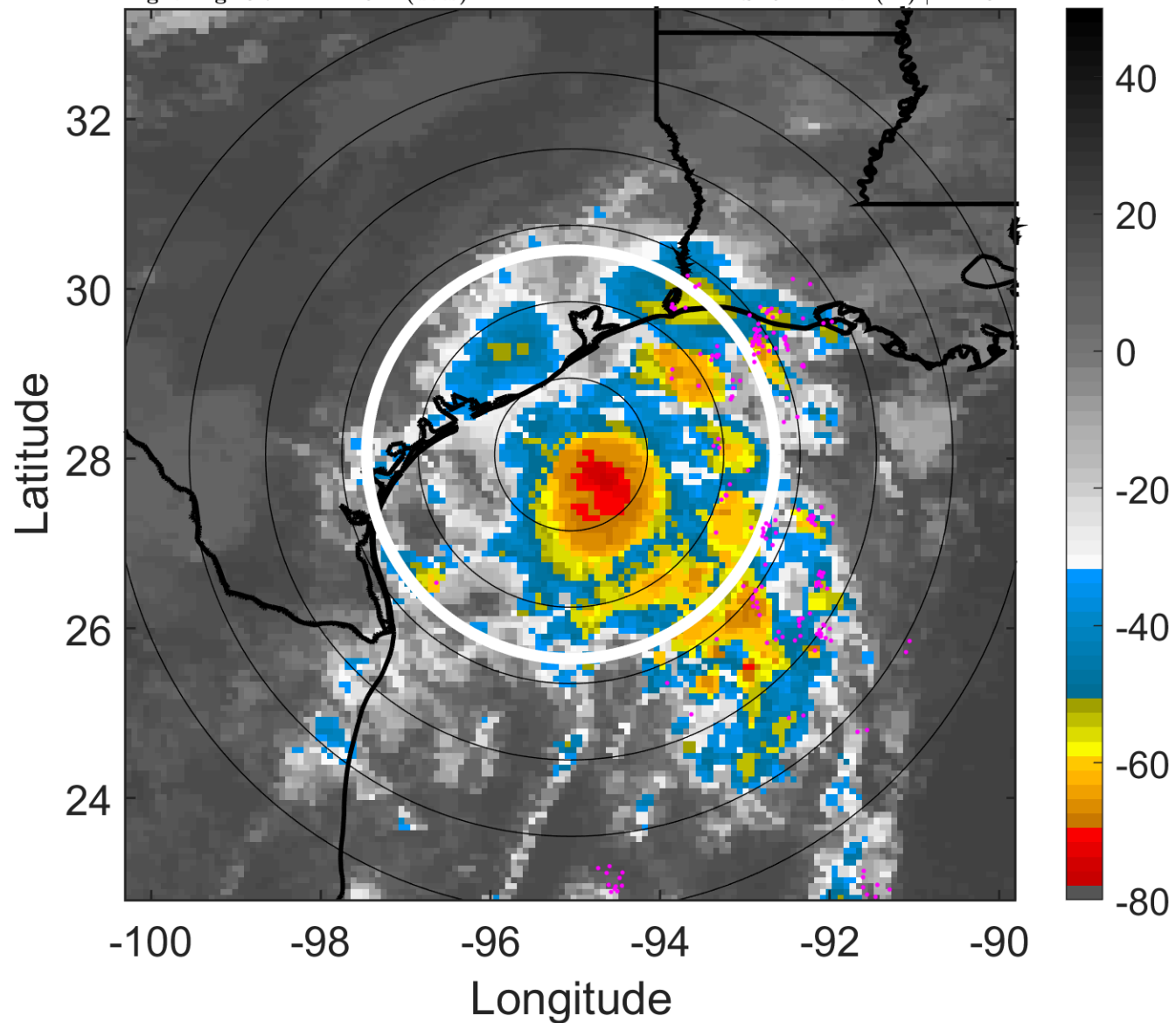
t: 2007091215 (8.7 LT)

Lightning: 8.7 LT  $\pm$  1.5 h (dots)

PT: LLCP | EA: ACT

09L (HUMBERTO) | 40 kt TS

S: 5.4 m s<sup>-1</sup> (M) | H: 101°



### 6-h IR BT Differences & Lightning

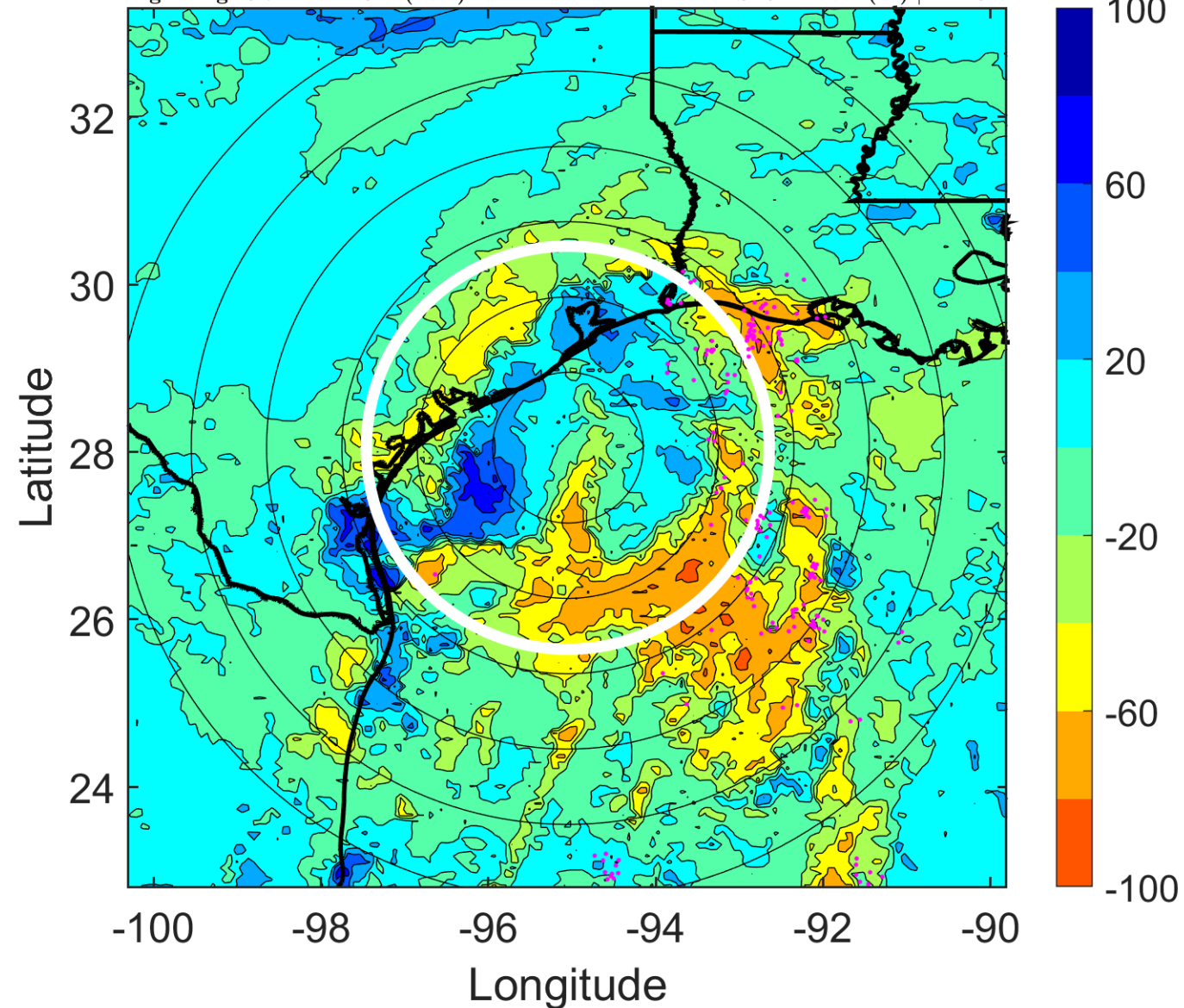
$\Delta$ t: 2007091215 (8.7 LT) - 2007091209 (2.7 LT)

Lightning: 8.7 LT  $\pm$  1.5 h (dots)

PT: LLCP | EA: ACT

09L (HUMBERTO) | 40 kt TS

S: 5.4 m s<sup>-1</sup> (M) | H: 101°



### IR BT & Lightning

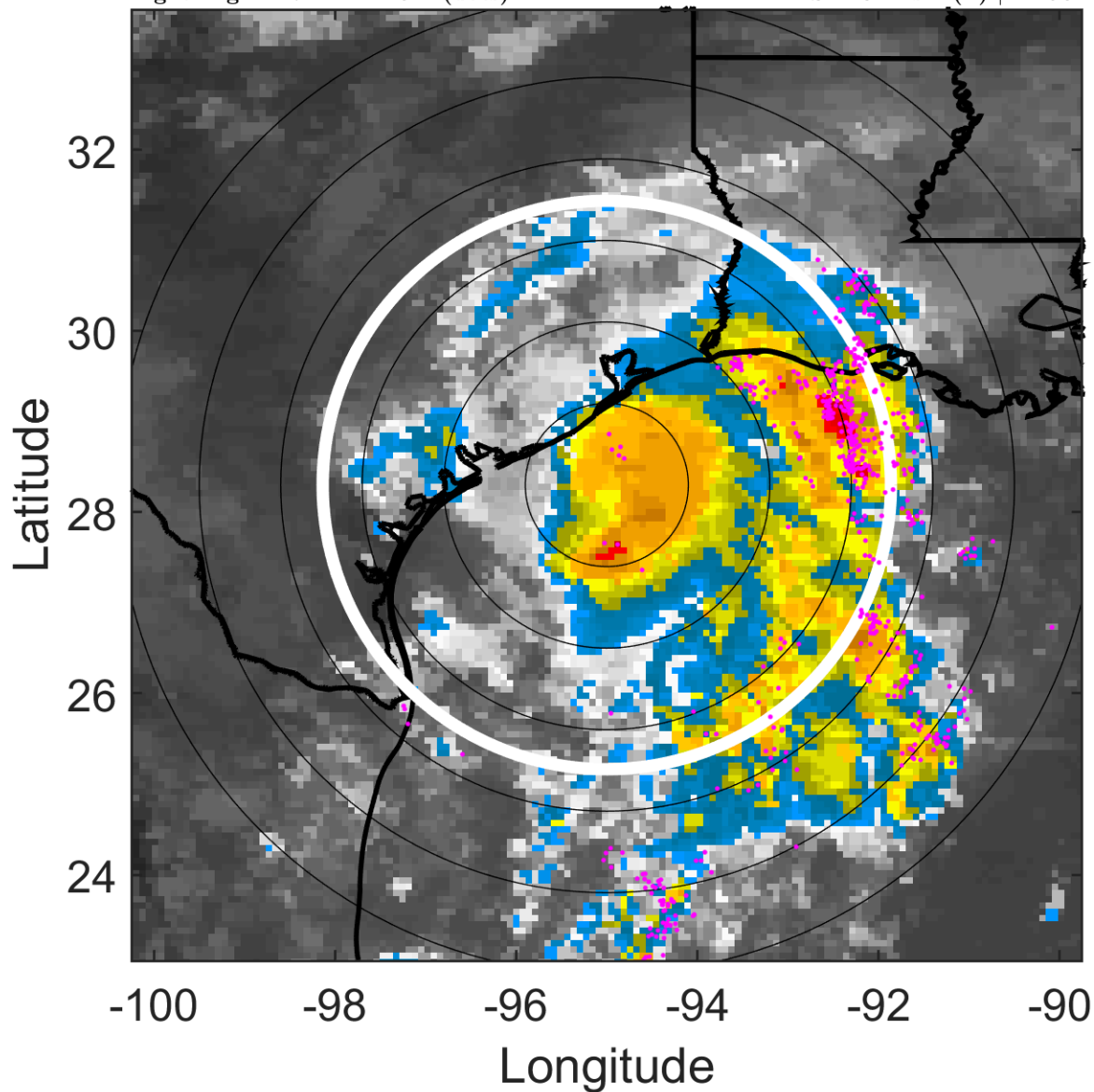
t: 2007091218 (11.7 LT)

Lightning: 11.7 LT  $\pm$  1.5 h (dots)

PT: LLCP | EA: ACT

09L (HUMBERTO) | 45 kt TS

S: 4.3 m s<sup>-1</sup> (L) | H: 96°



### 6-h IR BT Differences & Lightning

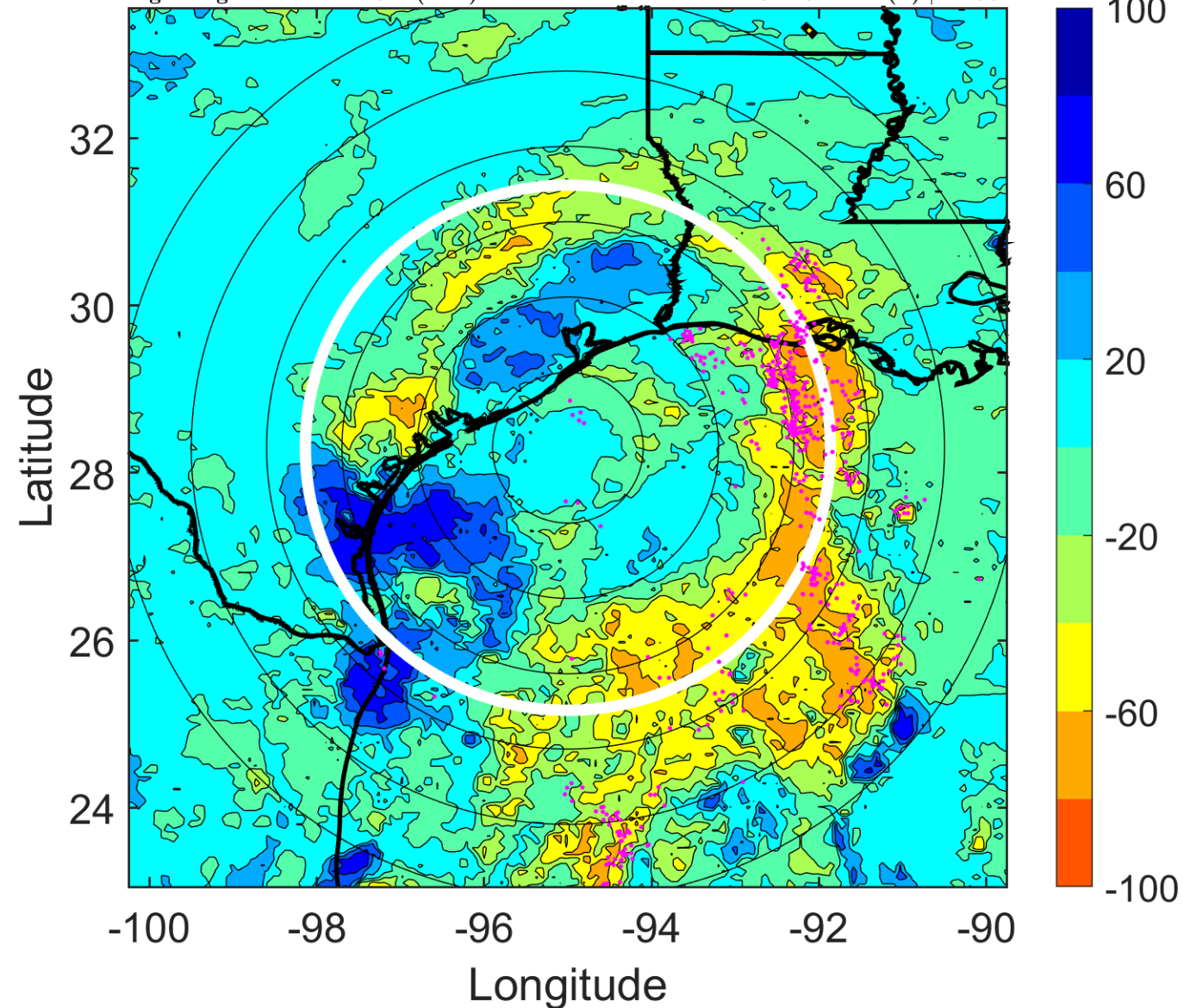
$\Delta$ t: 2007091218 (11.7 LT) - 2007091212 (5.7 LT)

Lightning: 11.7 LT  $\pm$  1.5 h (dots)

PT: LLCP | EA: ACT

09L (HUMBERTO) | 45 kt TS

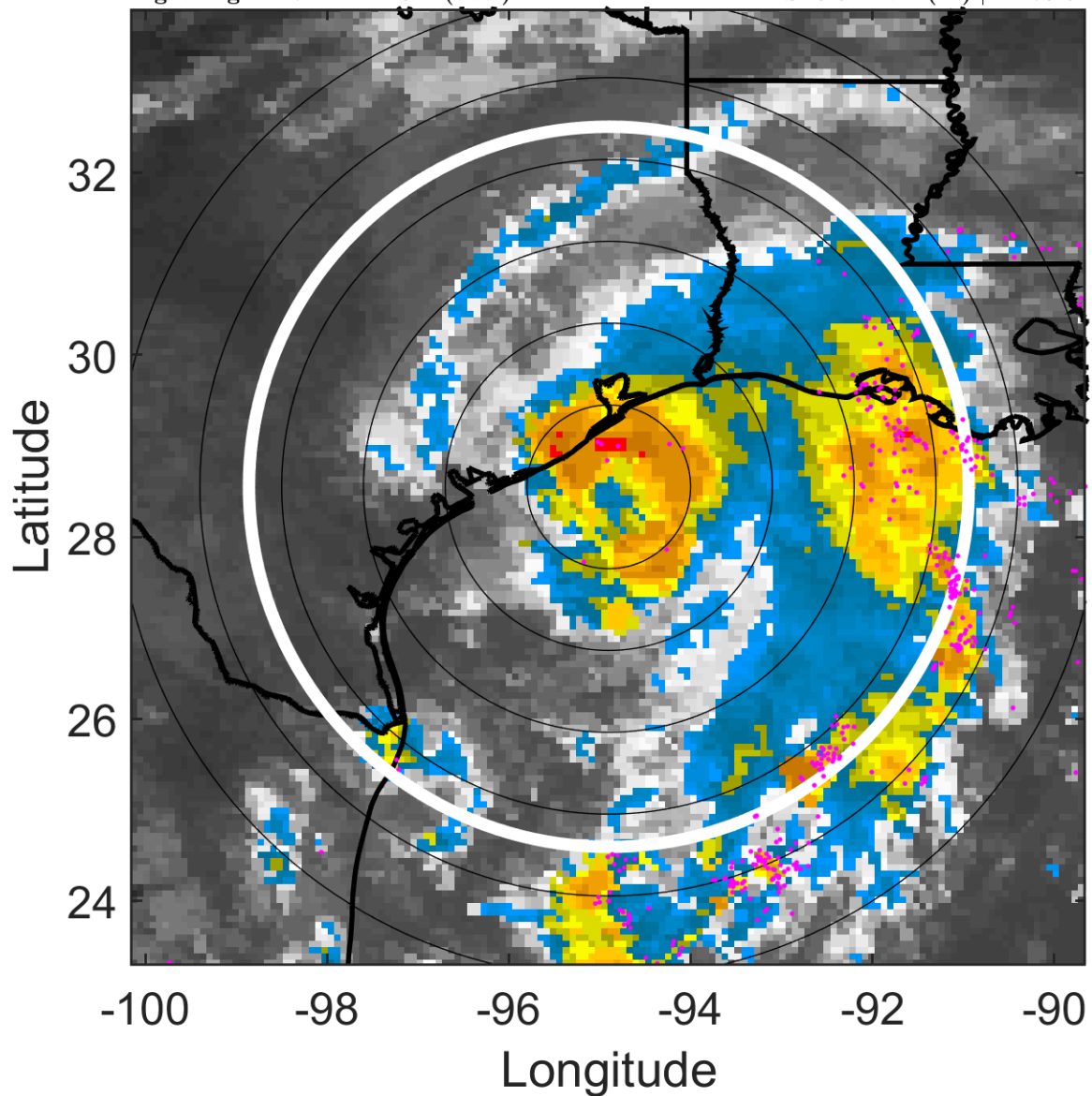
S: 4.3 m s<sup>-1</sup> (L) | H: 96°



### IR BT & Lightning

t: 2007091221 (14.7 LT)  
Lightning: 14.7 LT  $\pm$  1.5 h (dots)

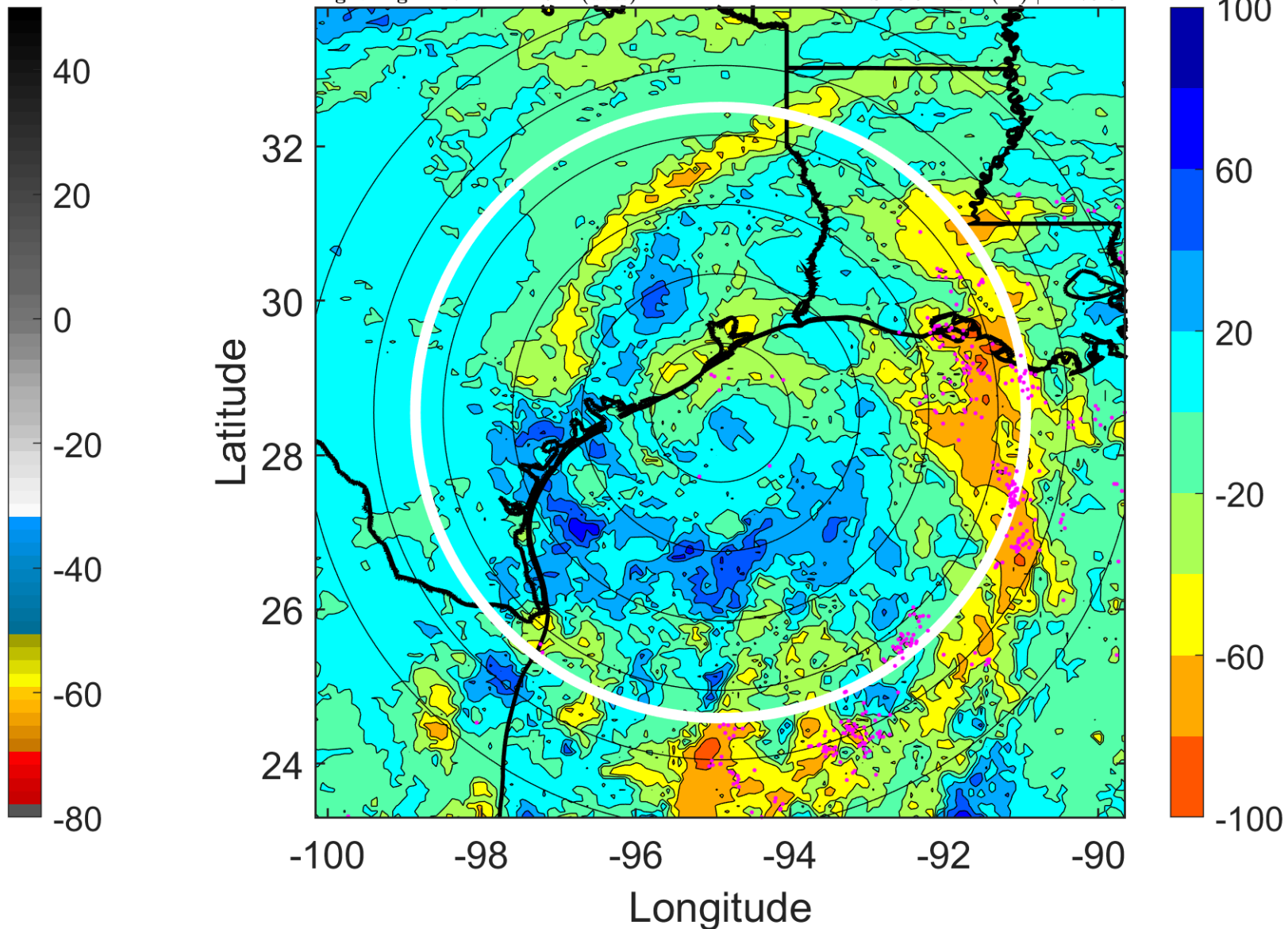
PT: LLCP | EA: ACT  
09L (HUMBERTO) | 50 kt TS  
S: 5.6 m s<sup>-1</sup> (M) | H: 79.5°



### 6-h IR BT Differences & Lightning

$\Delta$ t: 2007091221 (14.7 LT) - 2007091215 (8.7 LT)  
Lightning: 14.7 LT  $\pm$  1.5 h (dots)

PT: LLCP | EA: ACT  
09L (HUMBERTO) | 50 kt TS  
S: 5.6 m s<sup>-1</sup> (M) | H: 79.5°



### IR BT & Lightning

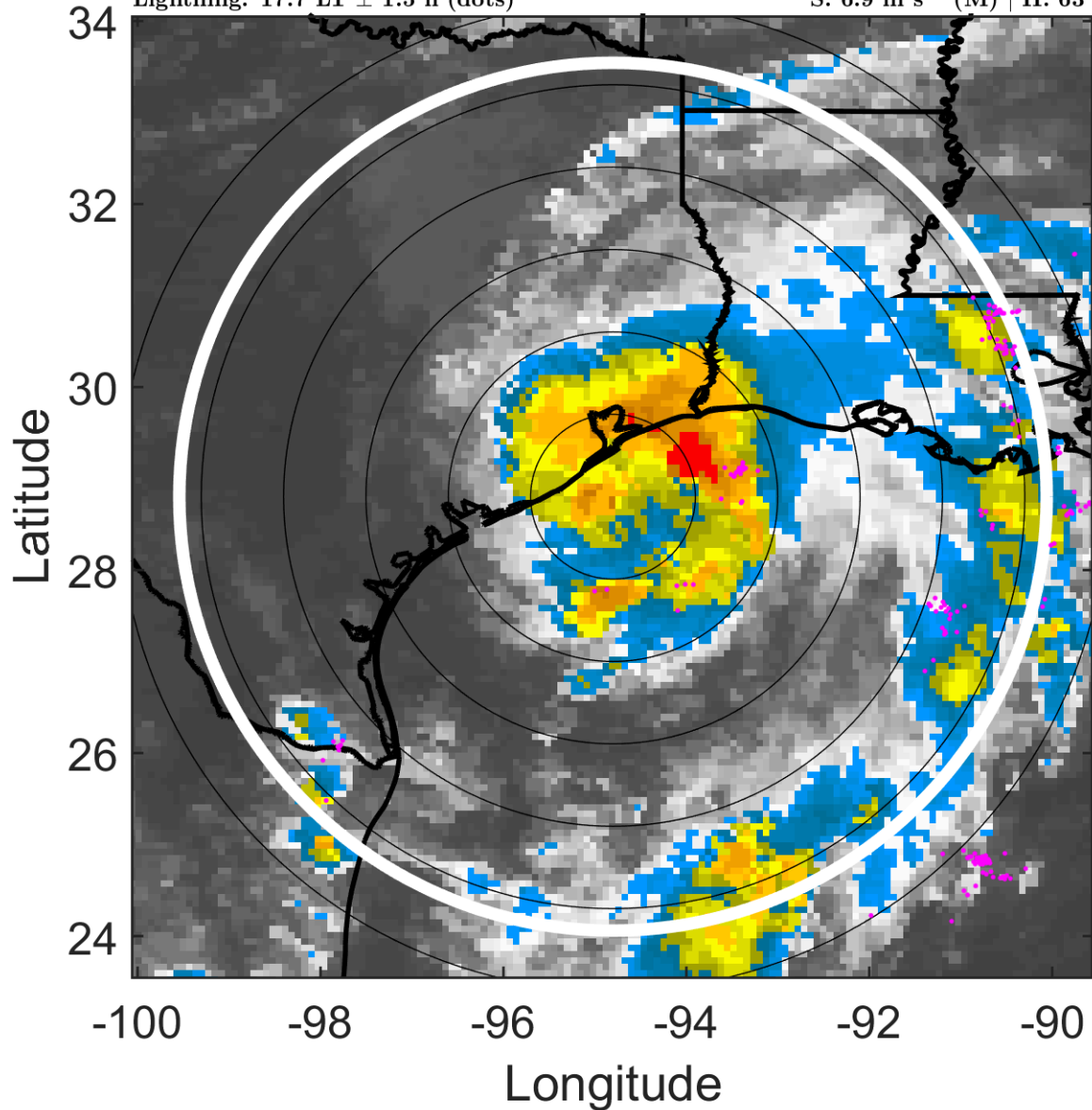
t: 2007091300 (17.7 LT)

Lightning: 17.7 LT  $\pm$  1.5 h (dots)

PT: LLCP | EA: ACT

09L (HUMBERTO) | 55 kt TS

S: 6.9 m s<sup>-1</sup> (M) | H: 63°



### 6-h IR BT Differences & Lightning

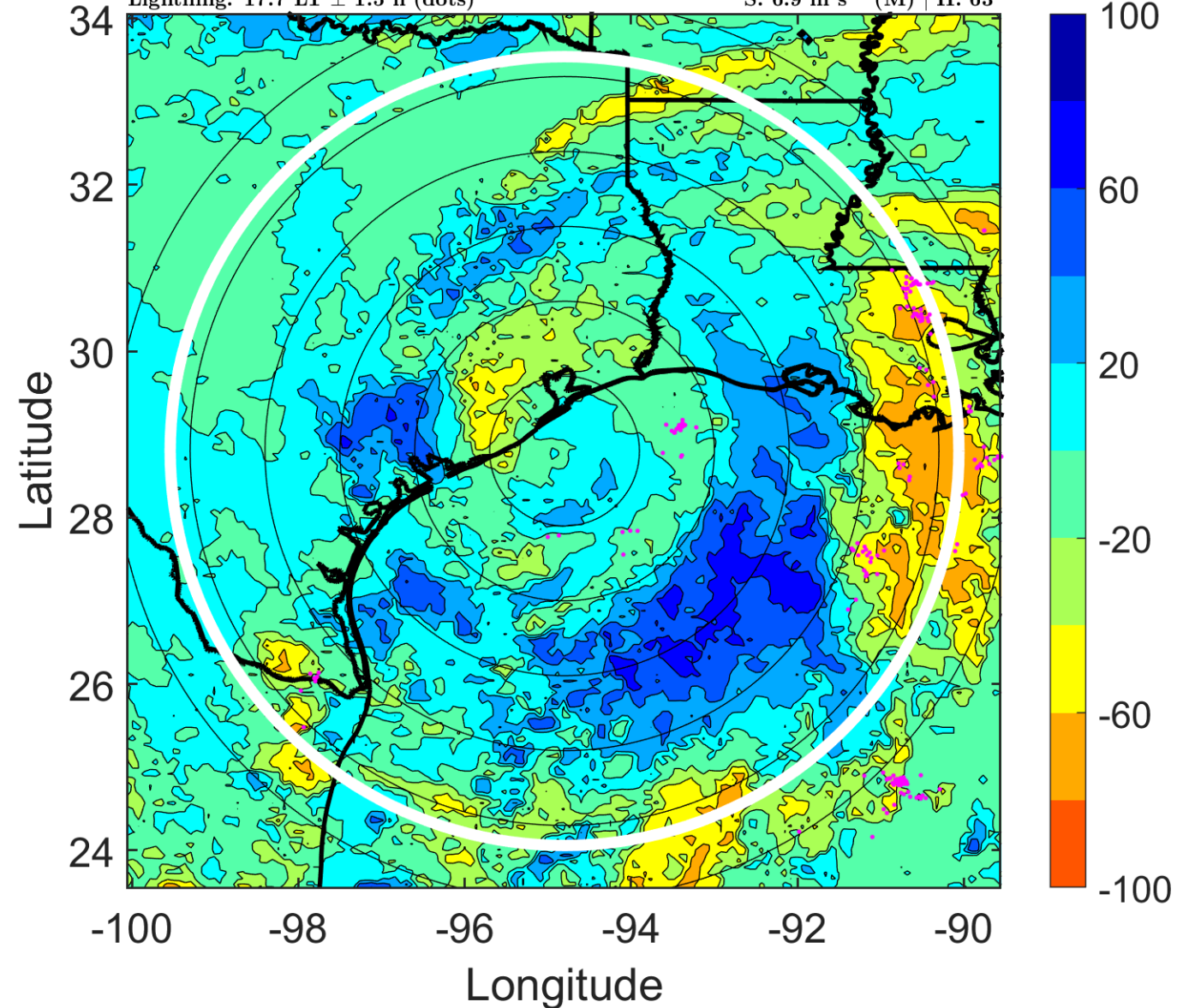
$\Delta$ t: 2007091300 (17.7 LT) - 2007091218 (11.7 LT)

Lightning: 17.7 LT  $\pm$  1.5 h (dots)

PT: LLCP | EA: ACT

09L (HUMBERTO) | 55 kt TS

S: 6.9 m s<sup>-1</sup> (M) | H: 63°



### IR BT & Lightning

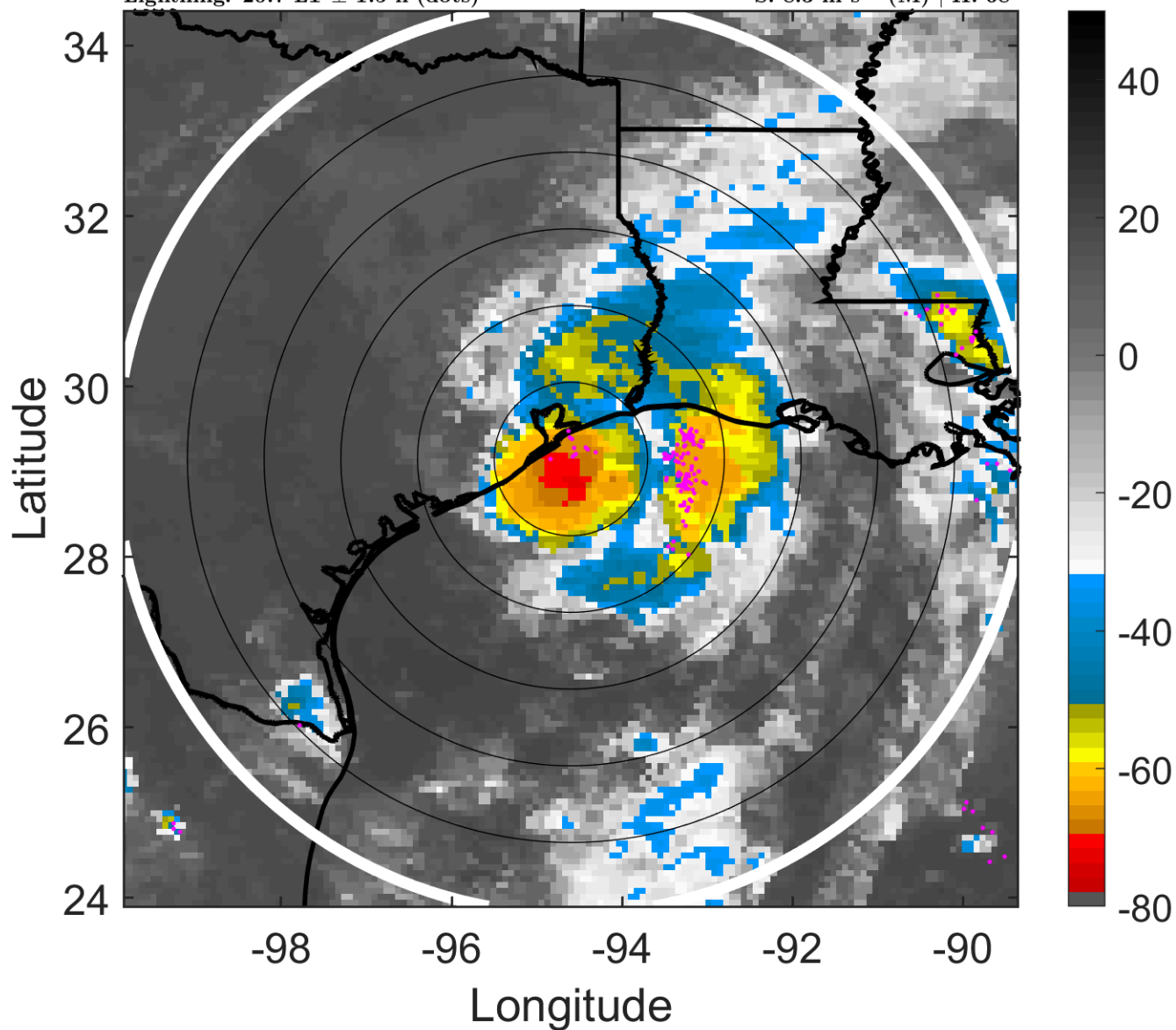
t: 2007091303 (20.7 LT)

Lightning: 20.7 LT  $\pm$  1.5 h (dots)

PT: LLCP | EA: ACT

09L (HUMBERTO) | 67.5 kt C1

S: 8.3 m s<sup>-1</sup> (M) | H: 68°



### 6-h IR BT Differences & Lightning

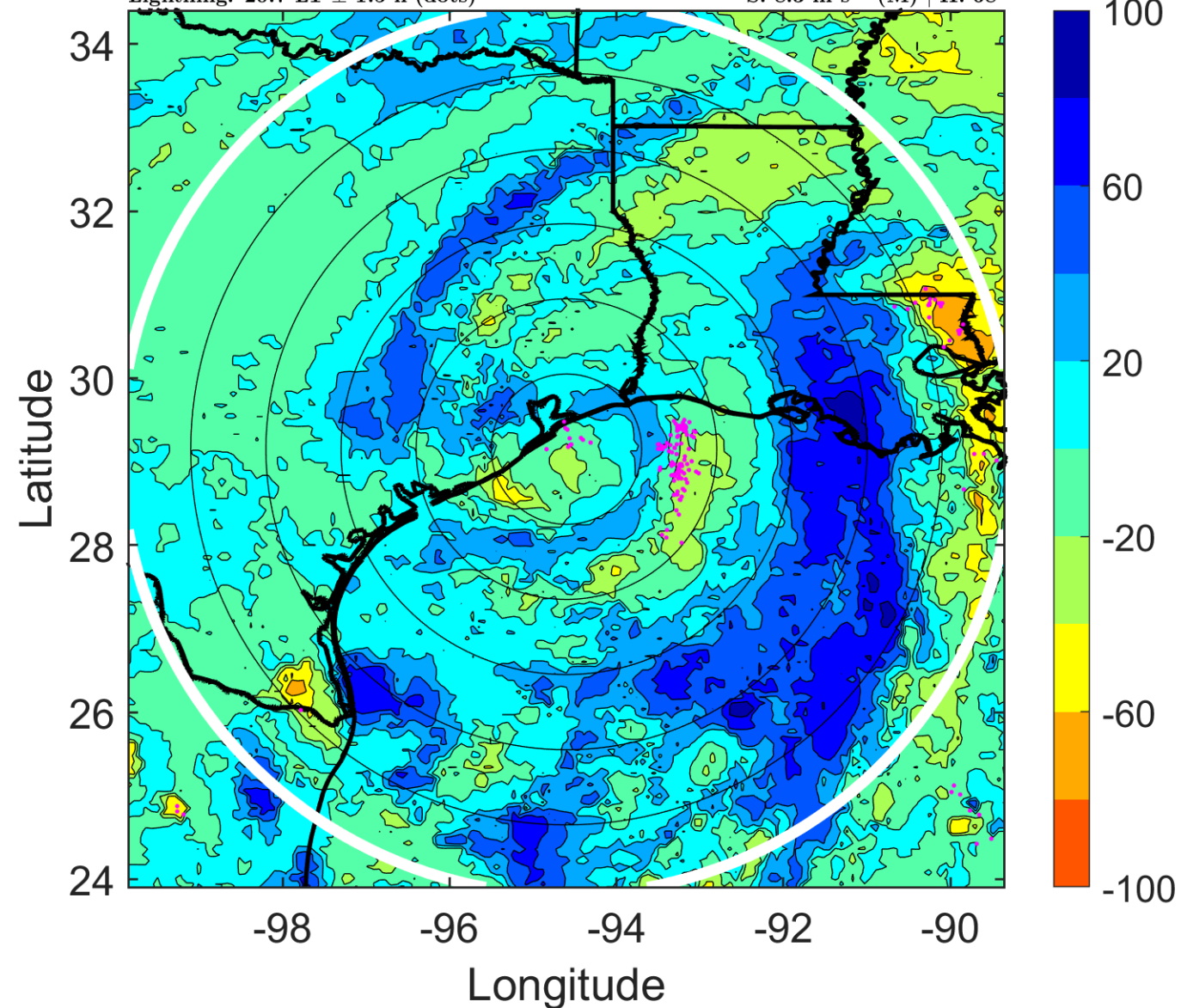
$\Delta$ t: 2007091303 (20.7 LT) - 2007091221 (14.7 LT)

Lightning: 20.7 LT  $\pm$  1.5 h (dots)

PT: LLCP | EA: ACT

09L (HUMBERTO) | 67.5 kt C1

S: 8.3 m s<sup>-1</sup> (M) | H: 68°



### IR BT & Lightning

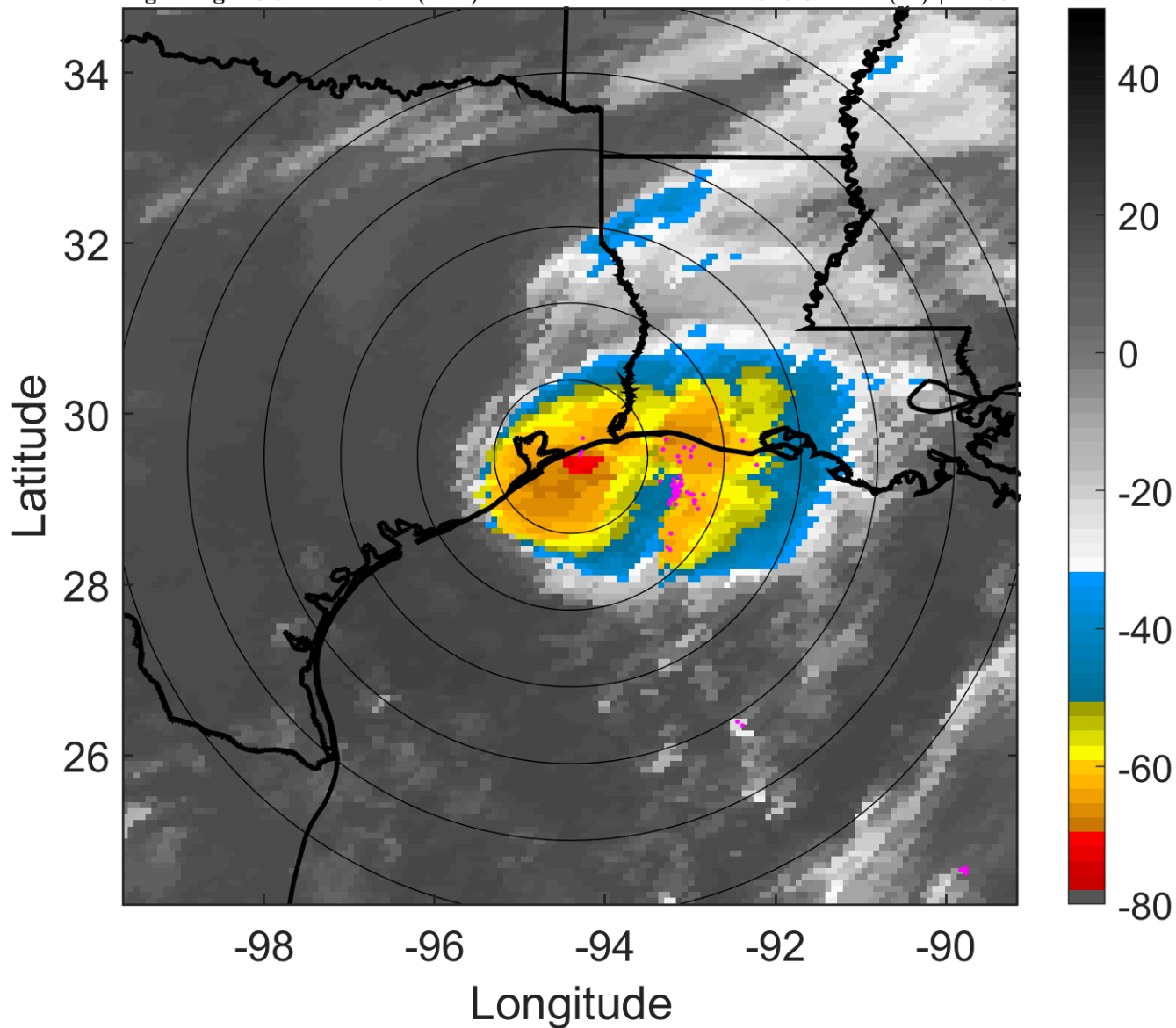
t: 2007091306 (23.7 LT)

Lightning: 23.7 LT  $\pm$  1.5 h (dots)

PT: LLCP | EA: ACT

09L (HUMBERTO) | 80 kt C1

S: 9.6 m s<sup>-1</sup> (M) | H: 73°



### 6-h IR BT Differences & Lightning

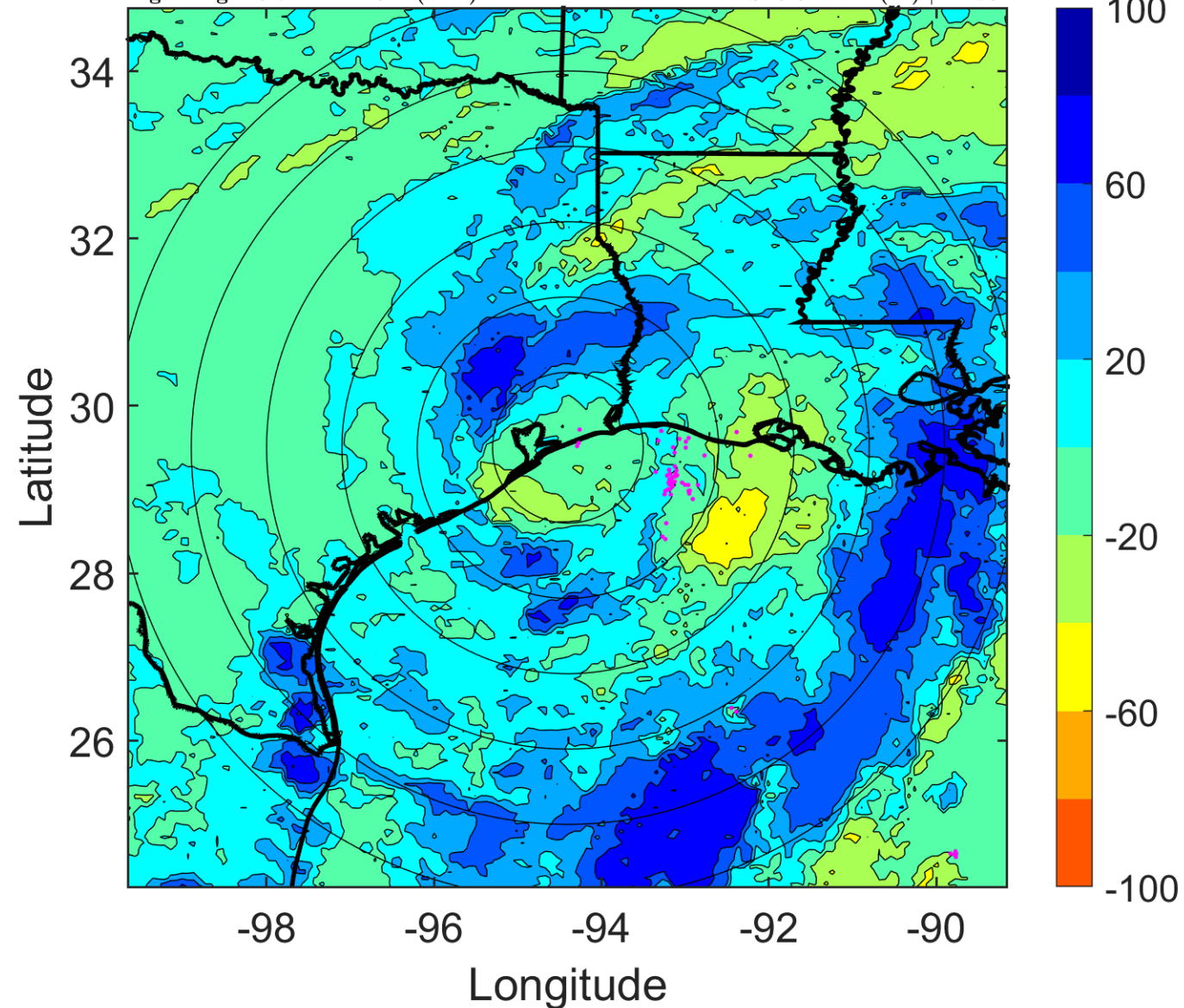
$\Delta$ t: 2007091306 (23.7 LT) - 2007091300 (17.7 LT)

Lightning: 23.7 LT  $\pm$  1.5 h (dots)

PT: LLCP | EA: ACT

09L (HUMBERTO) | 80 kt C1

S: 9.6 m s<sup>-1</sup> (M) | H: 73°



### IR BT & Lightning

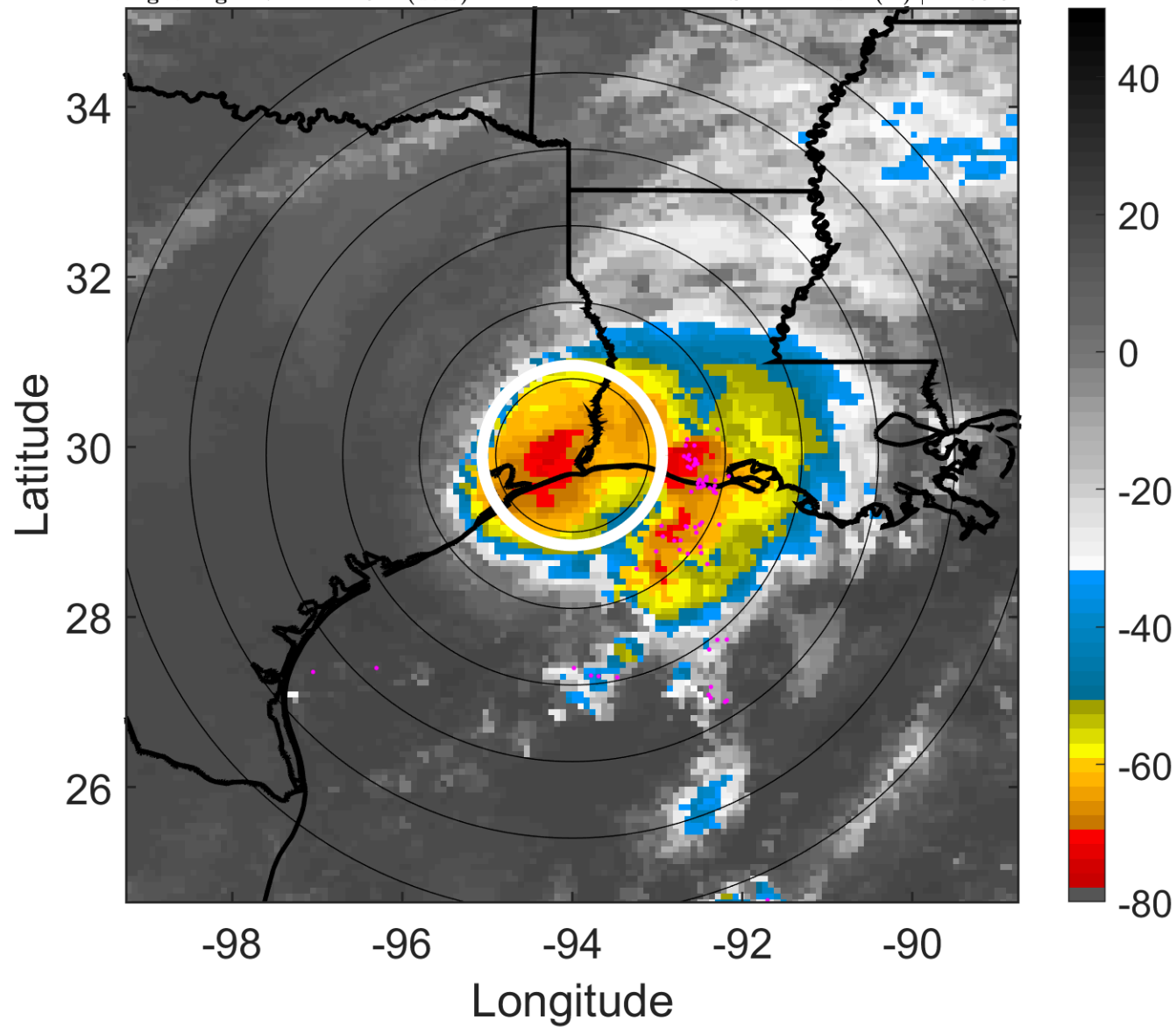
t: 2007091309 (2.7 LT)

Lightning: 2.7 LT  $\pm$  1.5 h (dots)

LAND EFFECTS

09L (HUMBERTO) | 72.5 kt C1

S: 11.2 m s<sup>-1</sup> (H) | H: 75.5°



### 6-h IR BT Differences & Lightning

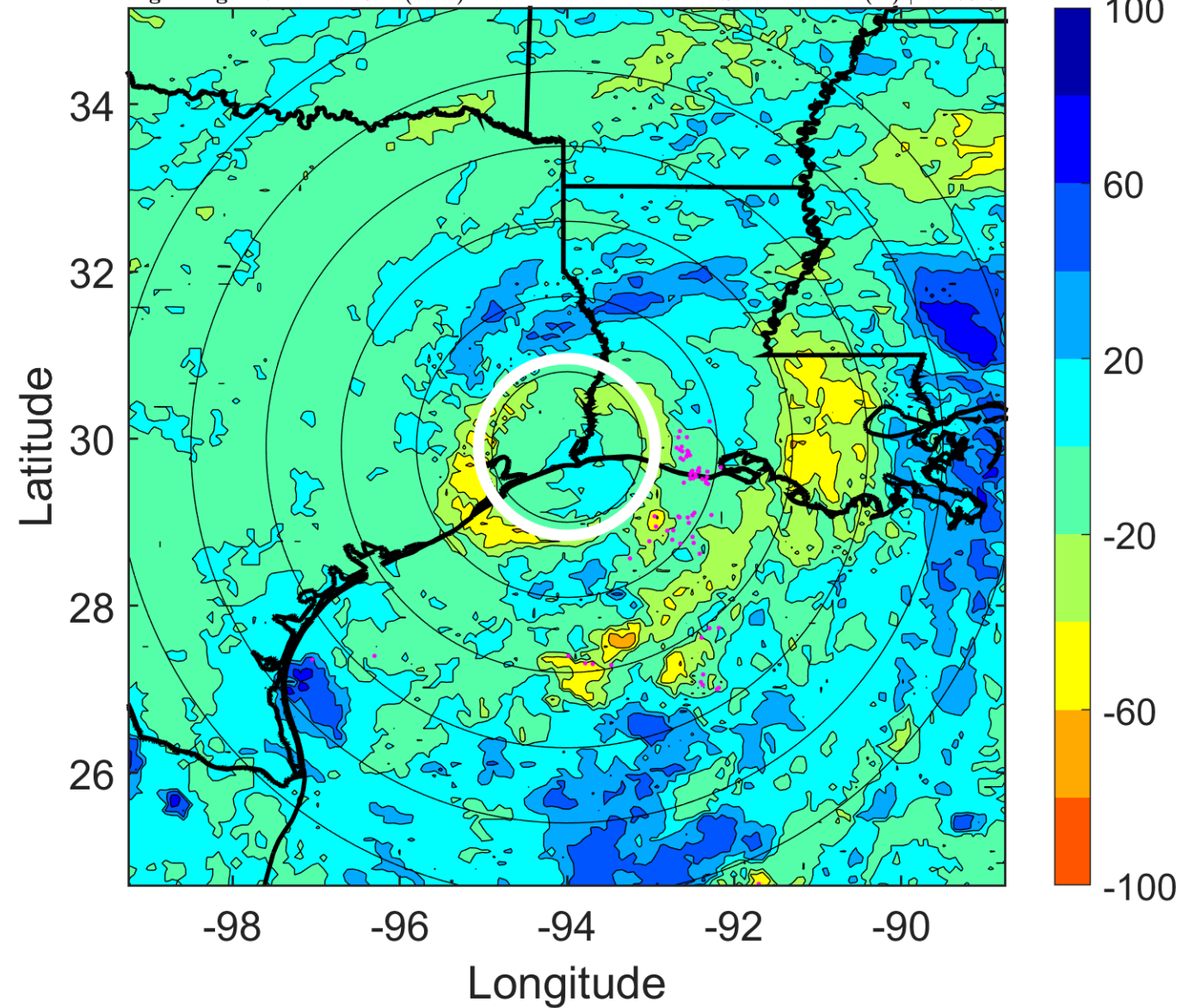
$\Delta$ t: 2007091309 (2.7 LT) - 2007091303 (20.7 LT)

Lightning: 2.7 LT  $\pm$  1.5 h (dots)

LAND EFFECTS

09L (HUMBERTO) | 72.5 kt C1

S: 11.2 m s<sup>-1</sup> (H) | H: 75.5°





### IR BT & Lightning

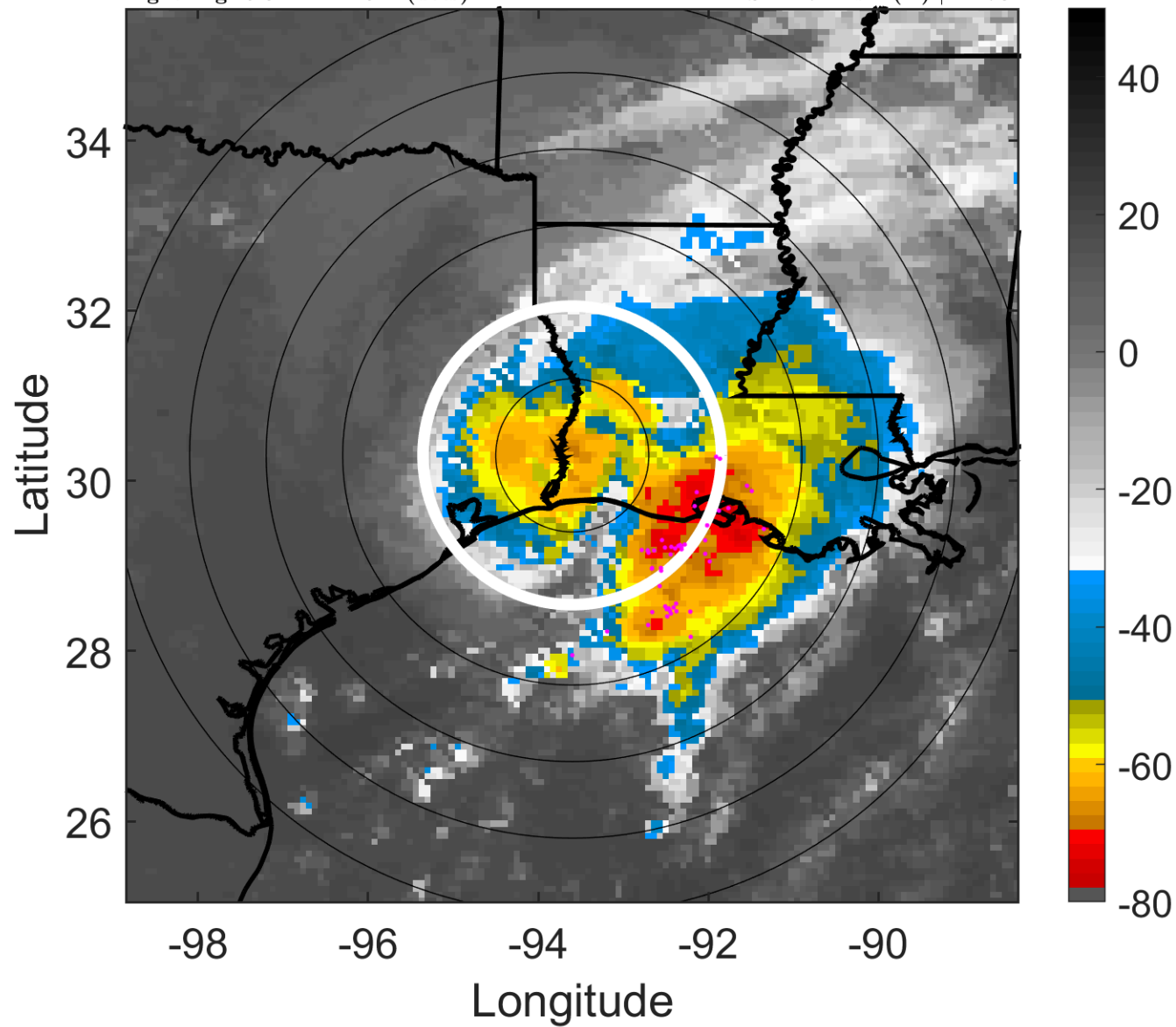
t: 2007091312 (5.8 LT)

Lightning: 5.8 LT  $\pm$  1.5 h (dots)

### LAND EFFECTS

09L (HUMBERTO) | 65 kt C1

S: 12.7 m s<sup>-1</sup> (H) | H: 78°



### 6-h IR BT Differences & Lightning

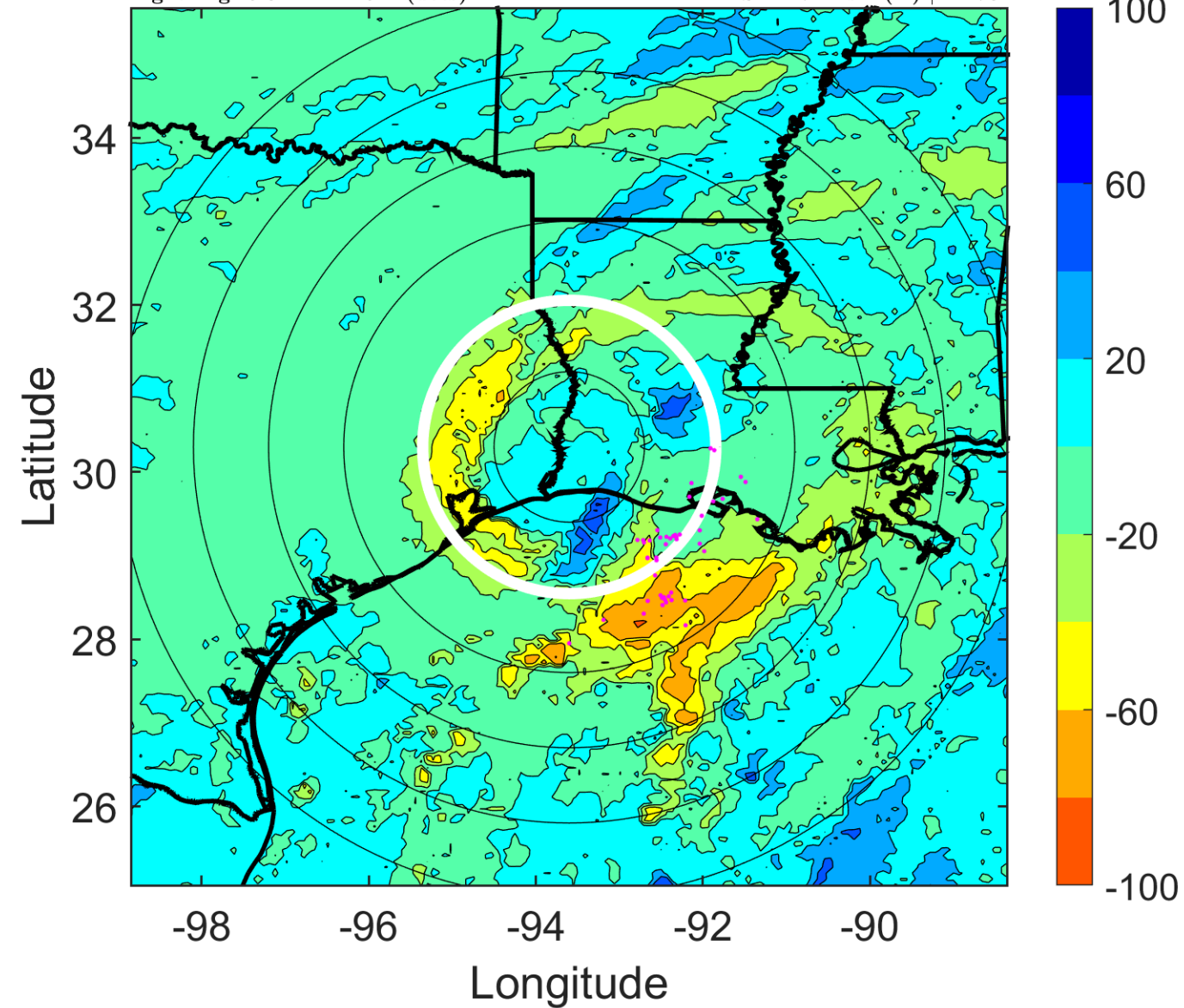
$\Delta$ t: 2007091312 (5.8 LT) - 2007091306 (23.7 LT)

Lightning: 5.8 LT  $\pm$  1.5 h (dots)

### LAND EFFECTS

09L (HUMBERTO) | 65 kt C1

S: 12.7 m s<sup>-1</sup> (H) | H: 78°



### IR BT & Lightning

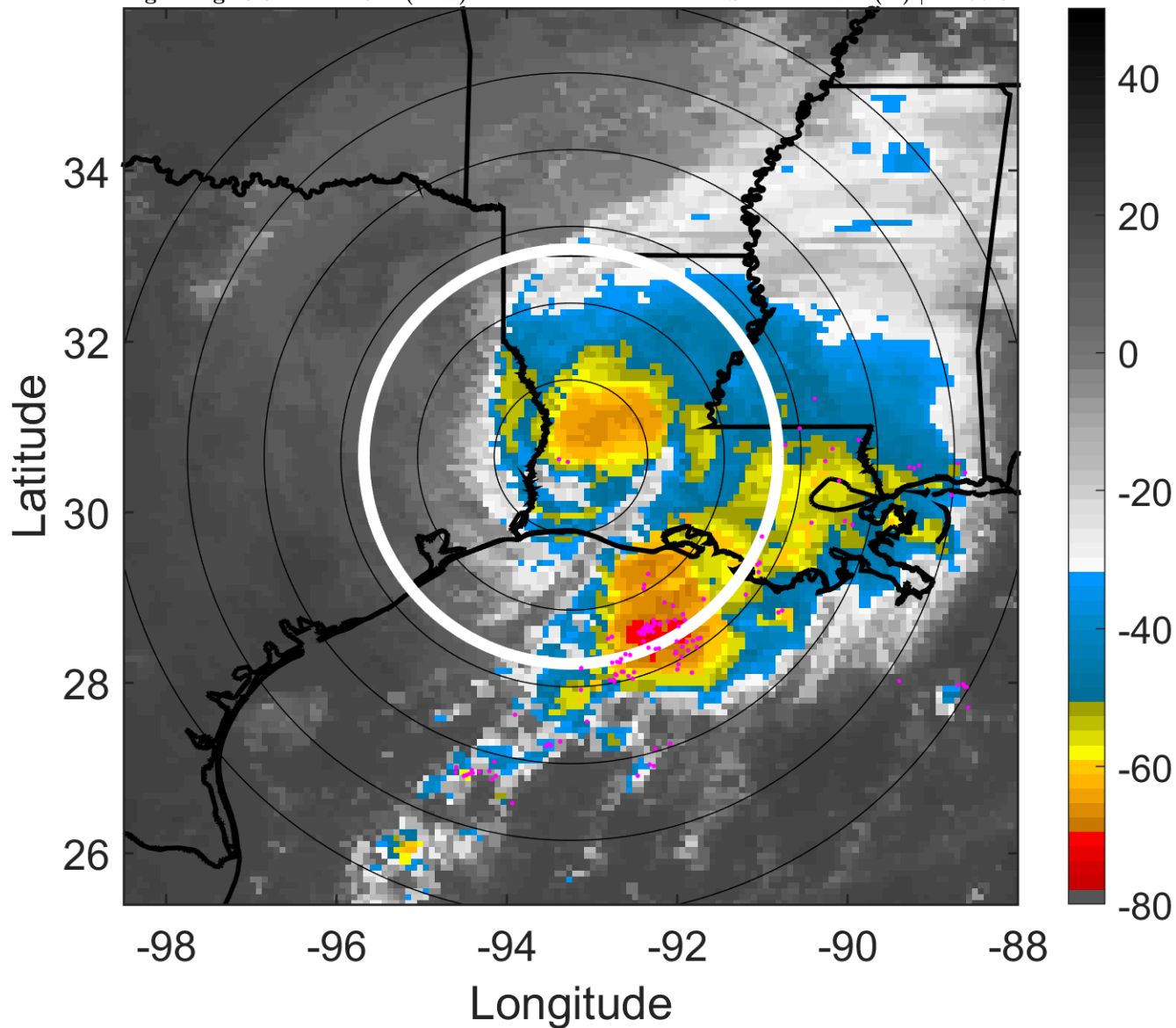
t: 2007091315 (8.8 LT)

Lightning: 8.8 LT  $\pm$  1.5 h (dots)

### LAND EFFECTS

09L (HUMBERTO) | 50 kt TS

S: 11.4 m s<sup>-1</sup> (H) | H: 77.5°



### 6-h IR BT Differences & Lightning

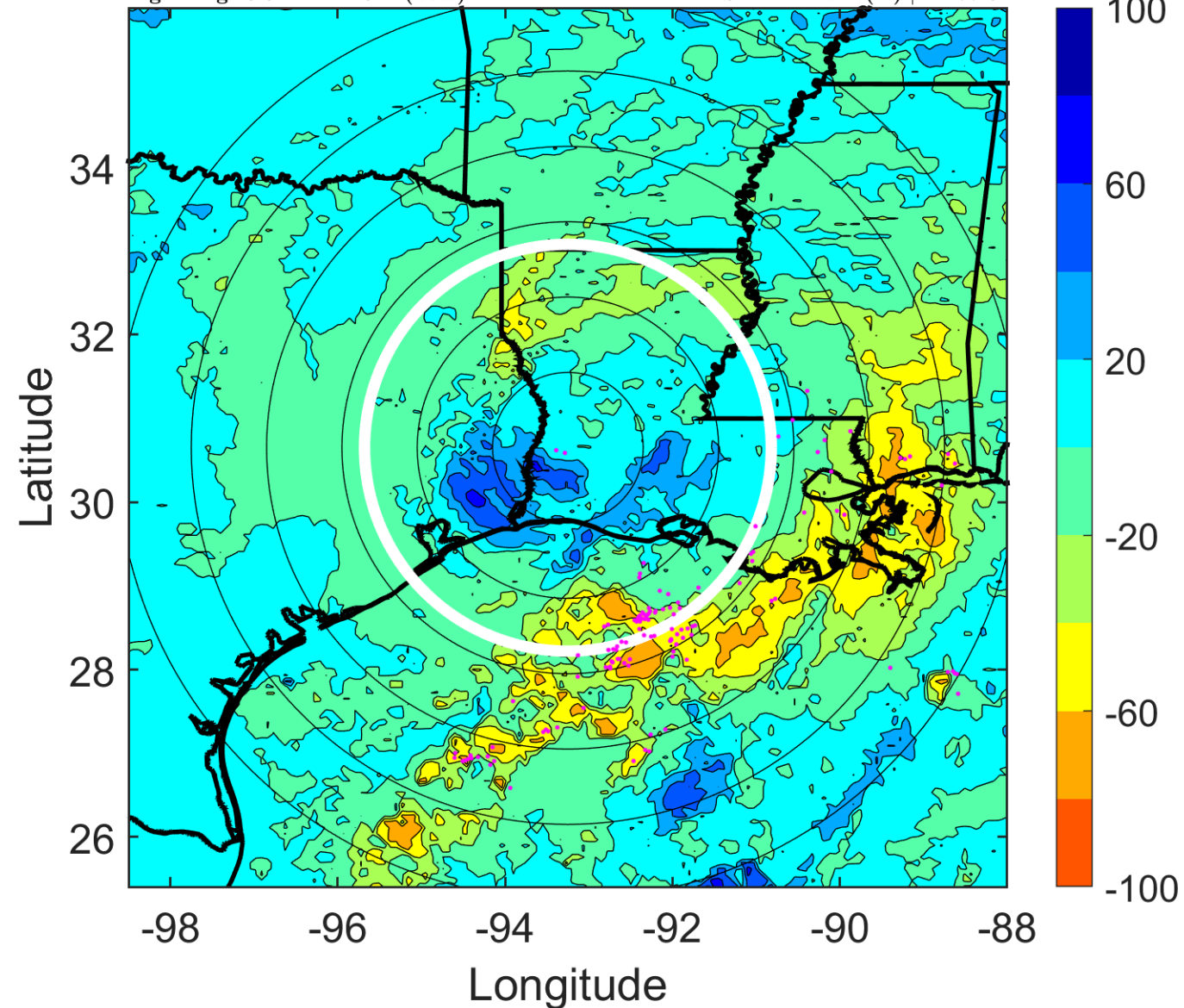
$\Delta$ t: 2007091315 (8.8 LT) - 2007091309 (2.7 LT)

Lightning: 8.8 LT  $\pm$  1.5 h (dots)

### LAND EFFECTS

09L (HUMBERTO) | 50 kt TS

S: 11.4 m s<sup>-1</sup> (H) | H: 77.5°



### IR BT & Lightning

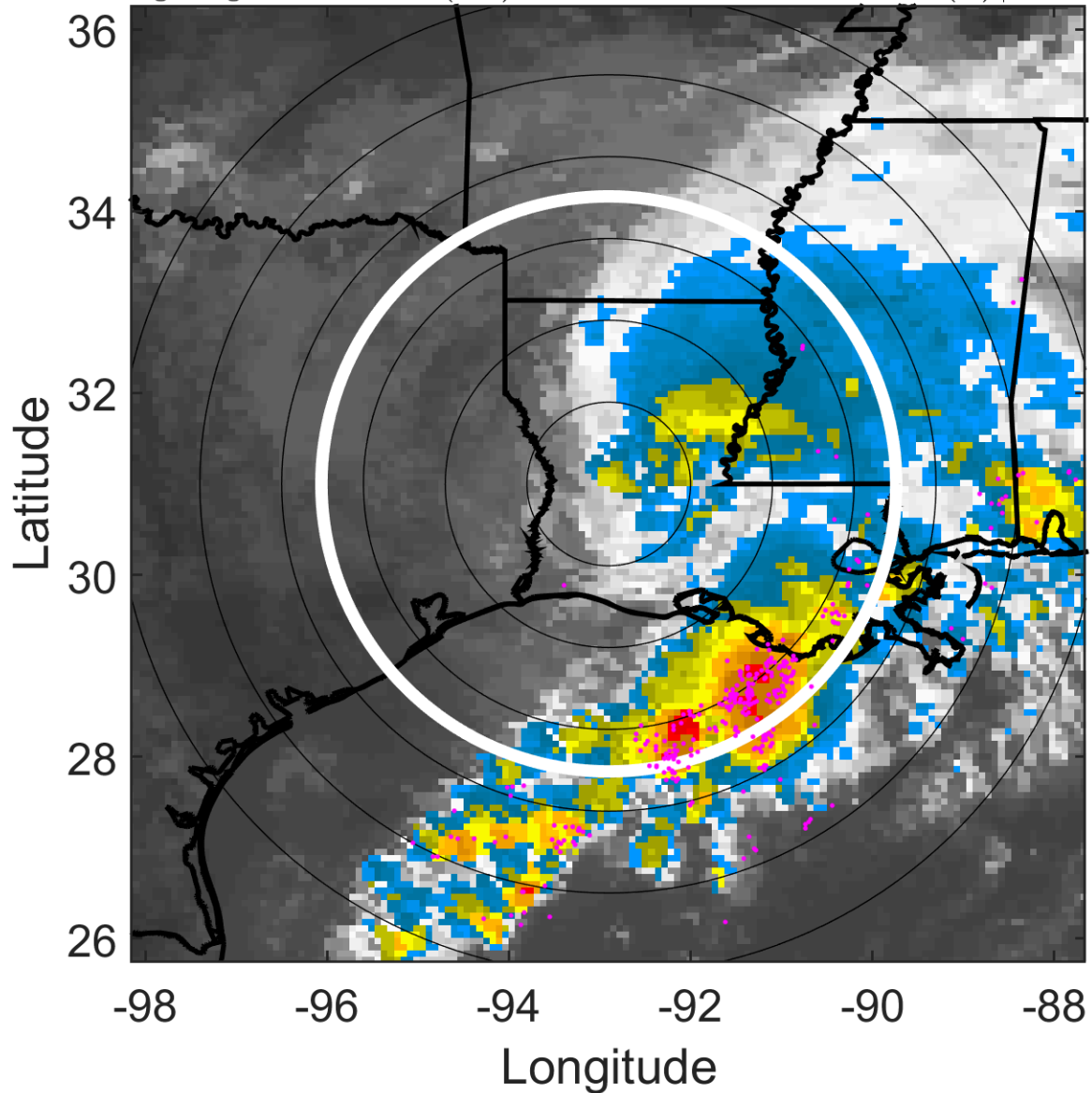
t: 2007091318 (11.8 LT)

Lightning: 11.8 LT  $\pm$  1.5 h (dots)

### LAND EFFECTS

09L (HUMBERTO) | 35 kt TS

S: 10 m s<sup>-1</sup> (M) | H: 77°



### 6-h IR BT Differences & Lightning

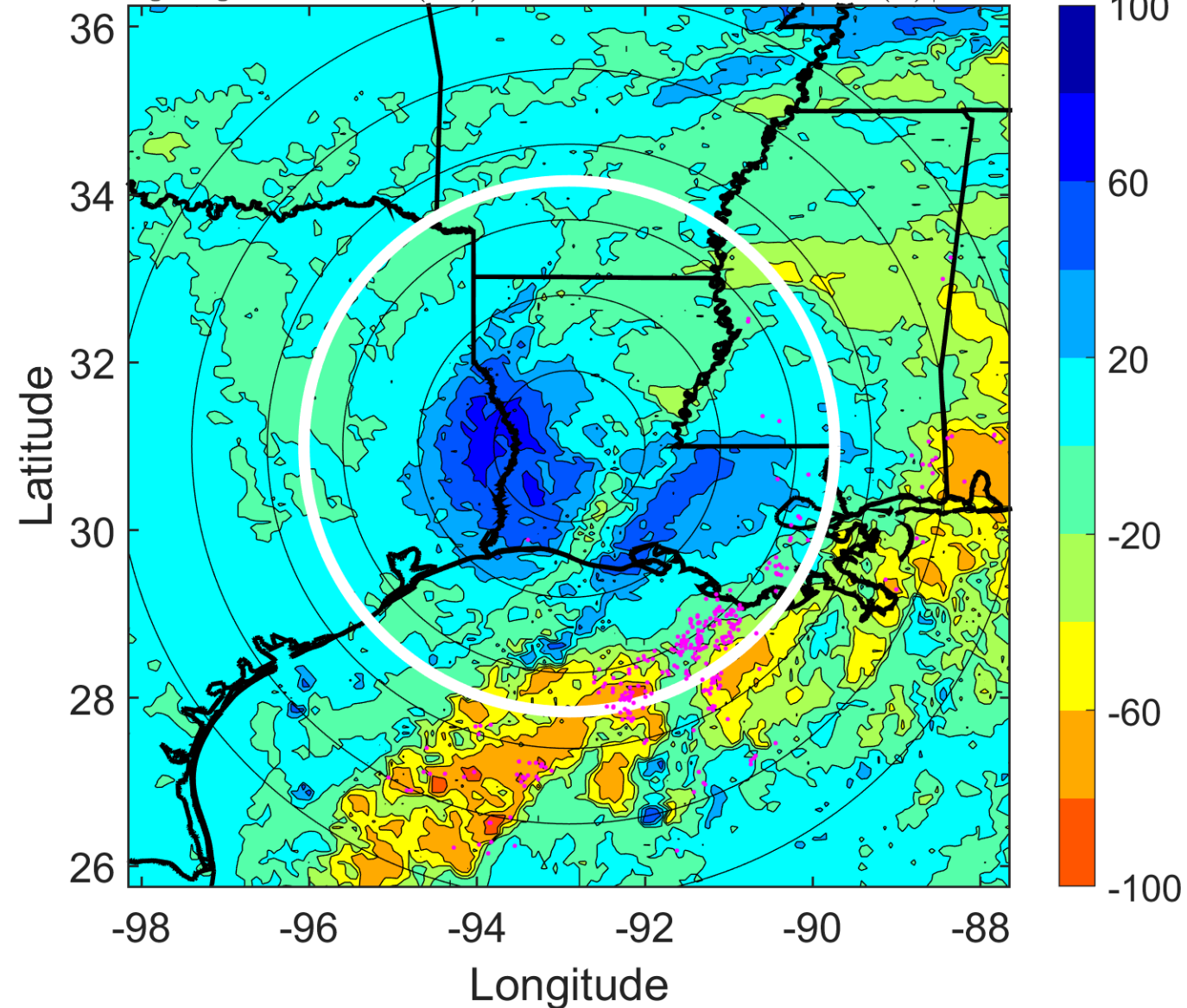
$\Delta$ t: 2007091318 (11.8 LT) - 2007091312 (5.8 LT)

Lightning: 11.8 LT  $\pm$  1.5 h (dots)

### LAND EFFECTS

09L (HUMBERTO) | 35 kt TS

S: 10 m s<sup>-1</sup> (M) | H: 77°



### IR BT & Lightning

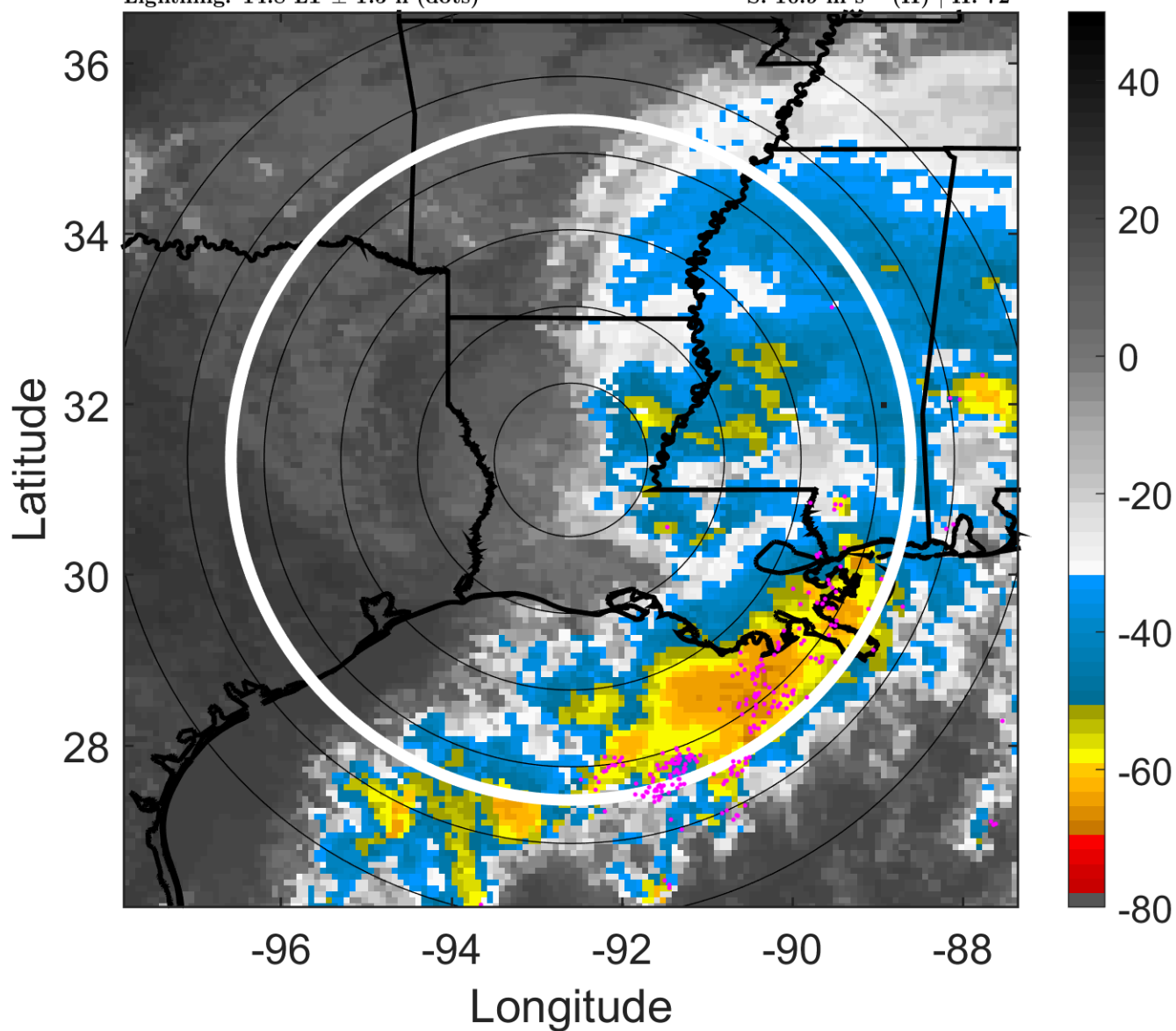
t: 2007091321 (14.8 LT)

Lightning: 14.8 LT  $\pm$  1.5 h (dots)

LAND EFFECTS

09L (HUMBERTO) | 30 kt TD

S: 10.9 m s<sup>-1</sup> (H) | H: 72°



### 6-h IR BT Differences & Lightning

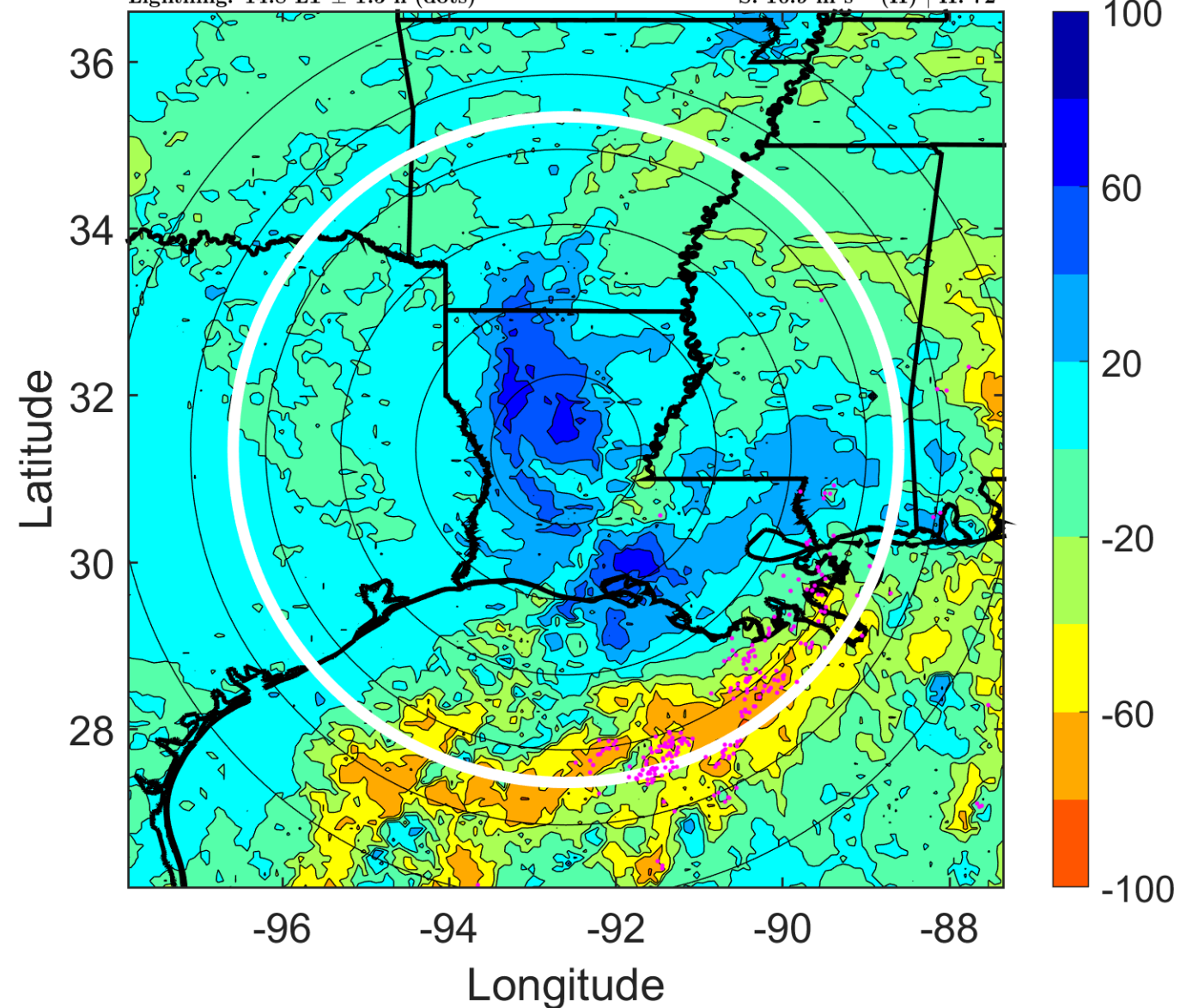
$\Delta$ t: 2007091321 (14.8 LT) - 2007091315 (8.8 LT)

Lightning: 14.8 LT  $\pm$  1.5 h (dots)

LAND EFFECTS

09L (HUMBERTO) | 30 kt TD

S: 10.9 m s<sup>-1</sup> (H) | H: 72°



### IR BT & Lightning

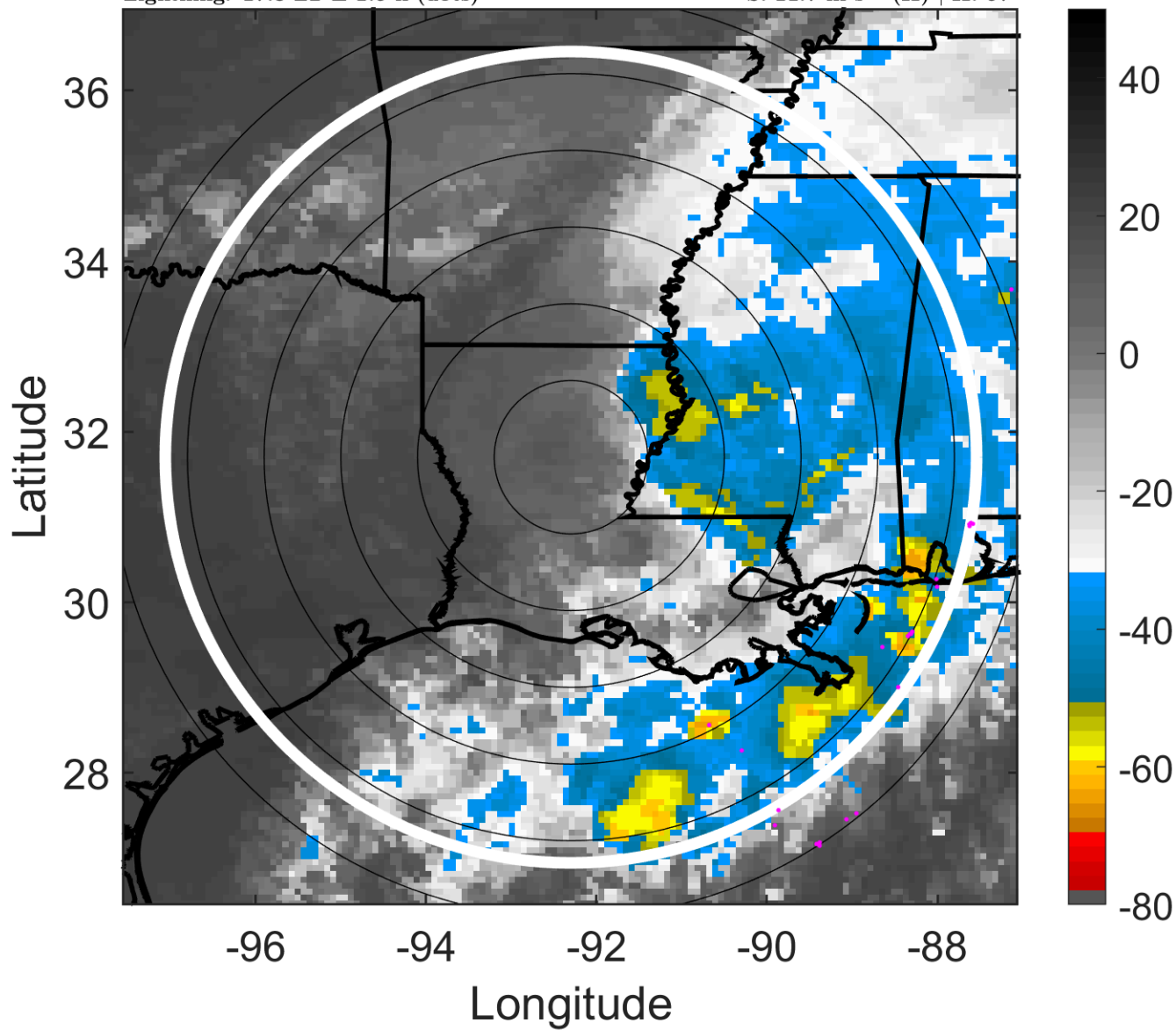
t: 2007091400 (17.8 LT)

Lightning: 17.8 LT  $\pm$  1.5 h (dots)

LAND EFFECTS

09L (HUMBERTO) | 25 kt TD

S: 11.7 m s<sup>-1</sup> (H) | H: 67°



### 6-h IR BT Differences & Lightning

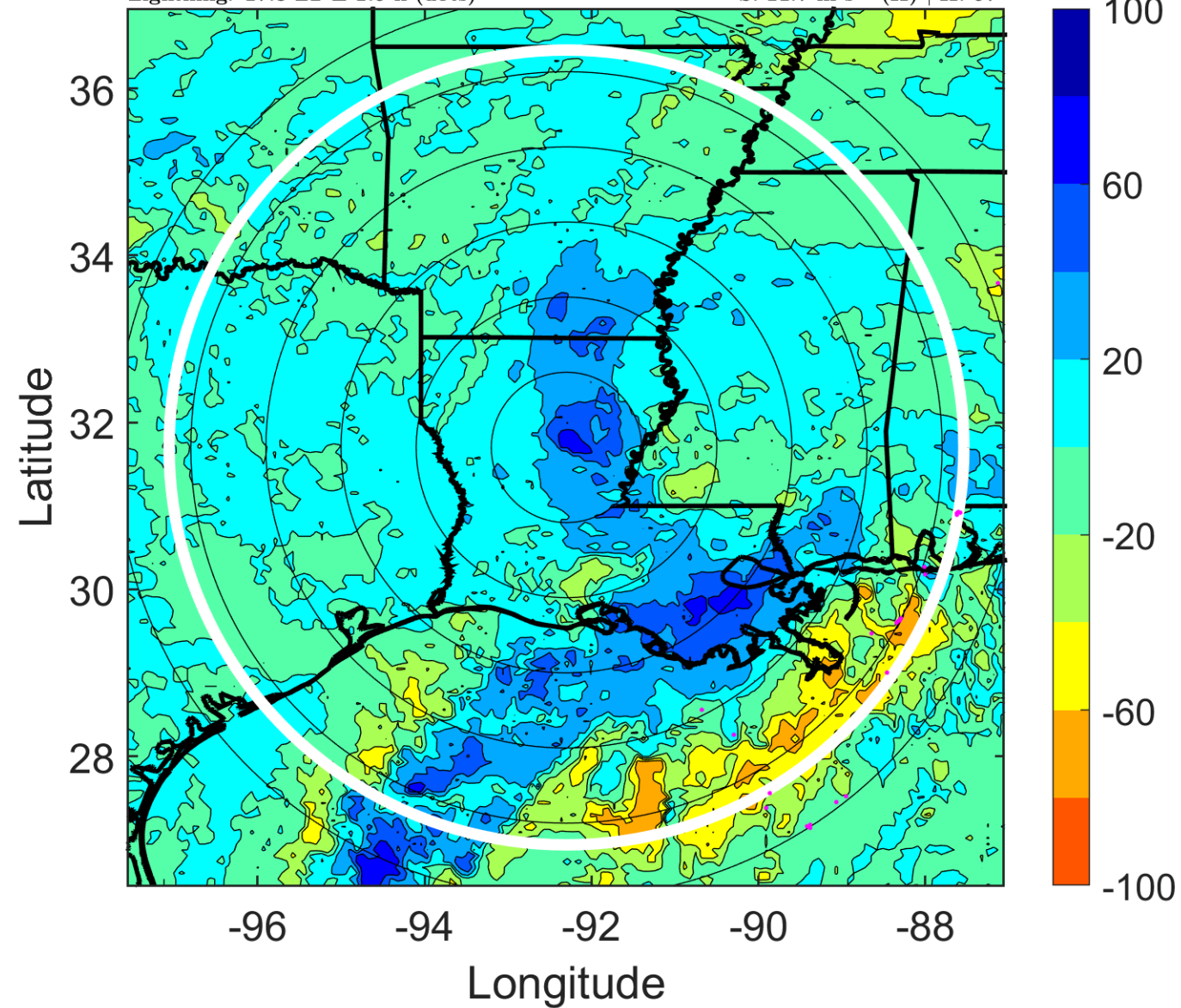
$\Delta$ t: 2007091400 (17.8 LT) - 2007091318 (11.8 LT)

Lightning: 17.8 LT  $\pm$  1.5 h (dots)

LAND EFFECTS

09L (HUMBERTO) | 25 kt TD

S: 11.7 m s<sup>-1</sup> (H) | H: 67°



### IR BT & Lightning

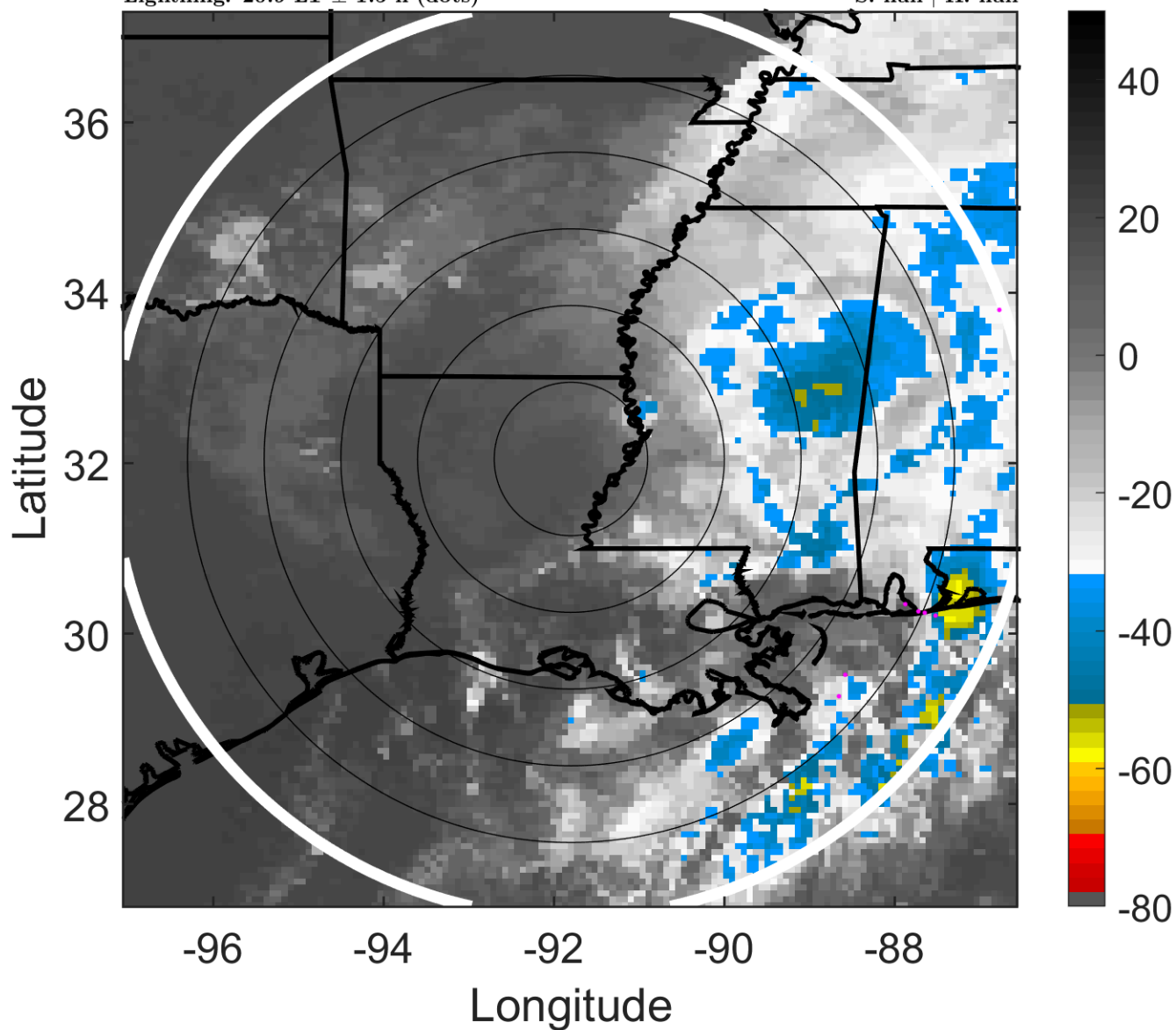
t: 2007091403 (20.9 LT)

Lightning: 20.9 LT  $\pm$  1.5 h (dots)

LAND EFFECTS

09L (HUMBERTO) | 22.5 kt TD

S: null | H: null



### 6-h IR BT Differences & Lightning

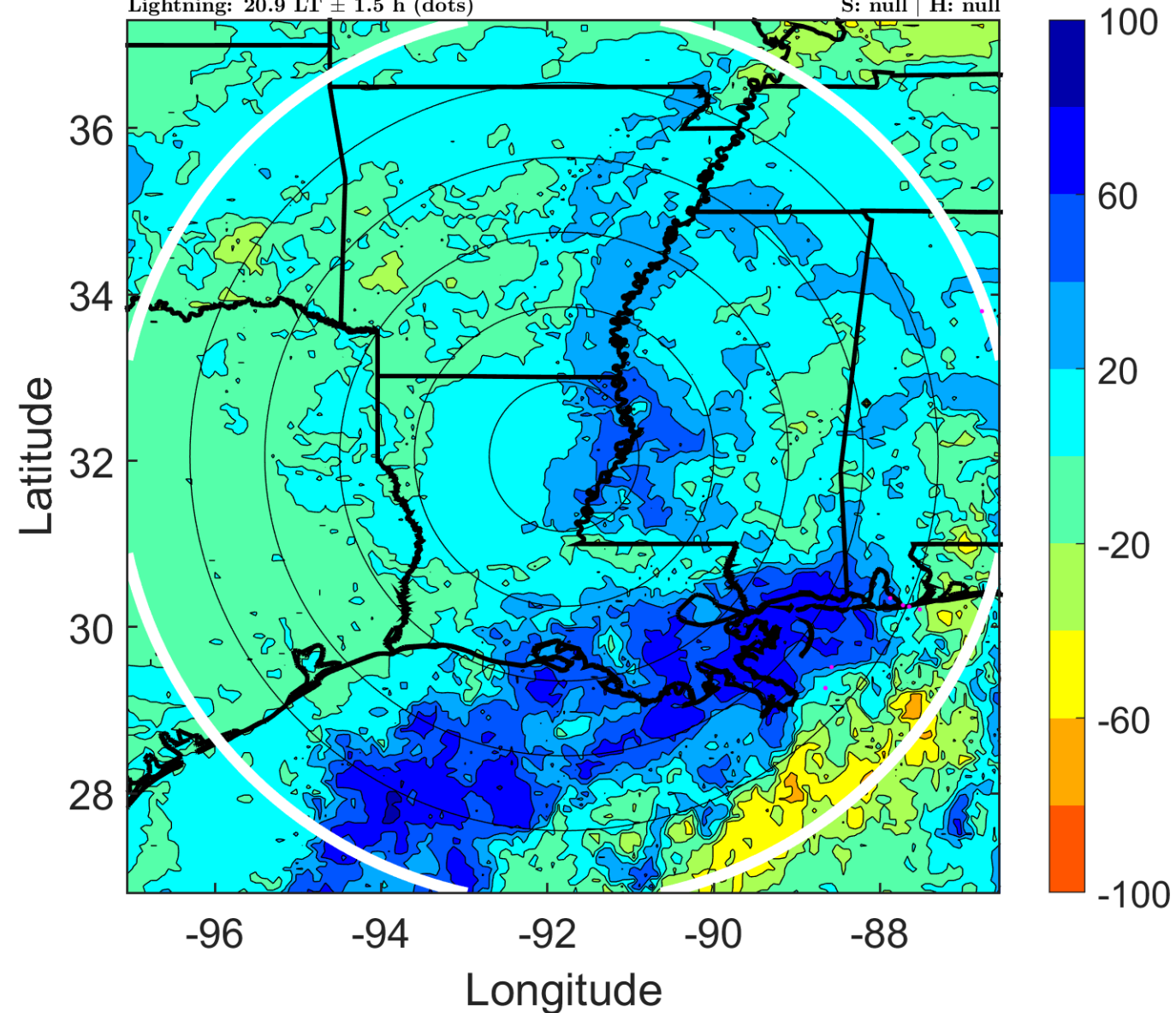
$\Delta$ t: 2007091403 (20.9 LT) - 2007091321 (14.8 LT) 09L (HUMBERTO) | 22.5 kt TD

Lightning: 20.9 LT  $\pm$  1.5 h (dots)

LAND EFFECTS

09L (HUMBERTO) | 22.5 kt TD

S: null | H: null



### IR BT & Lightning

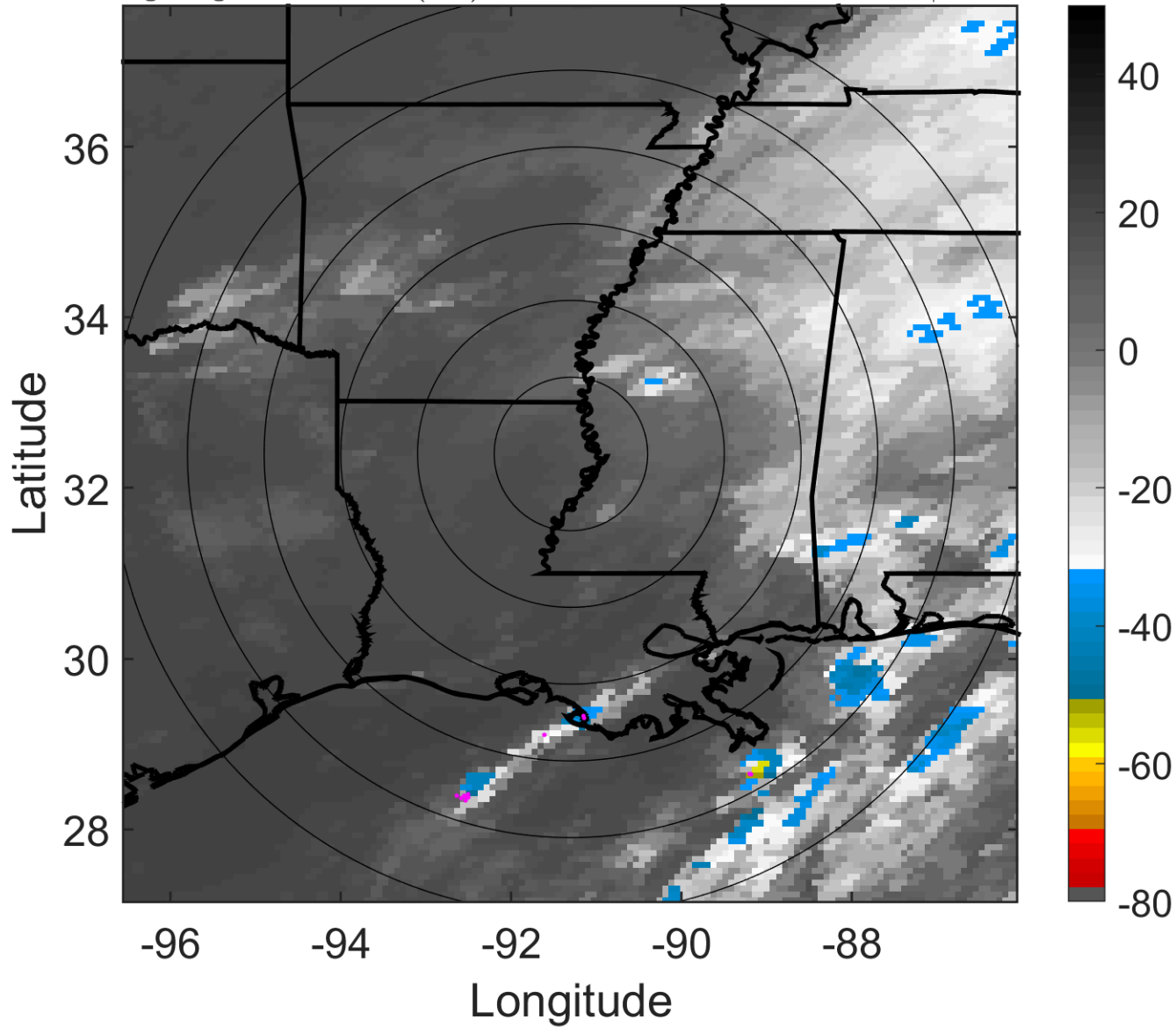
t: 2007091406 (23.9 LT)

Lightning: 23.9 LT  $\pm$  1.5 h (dots)

LAND EFFECTS

09L (HUMBERTO) | 20 kt LO

S: null | H: null



### 6-h IR BT Differences & Lightning

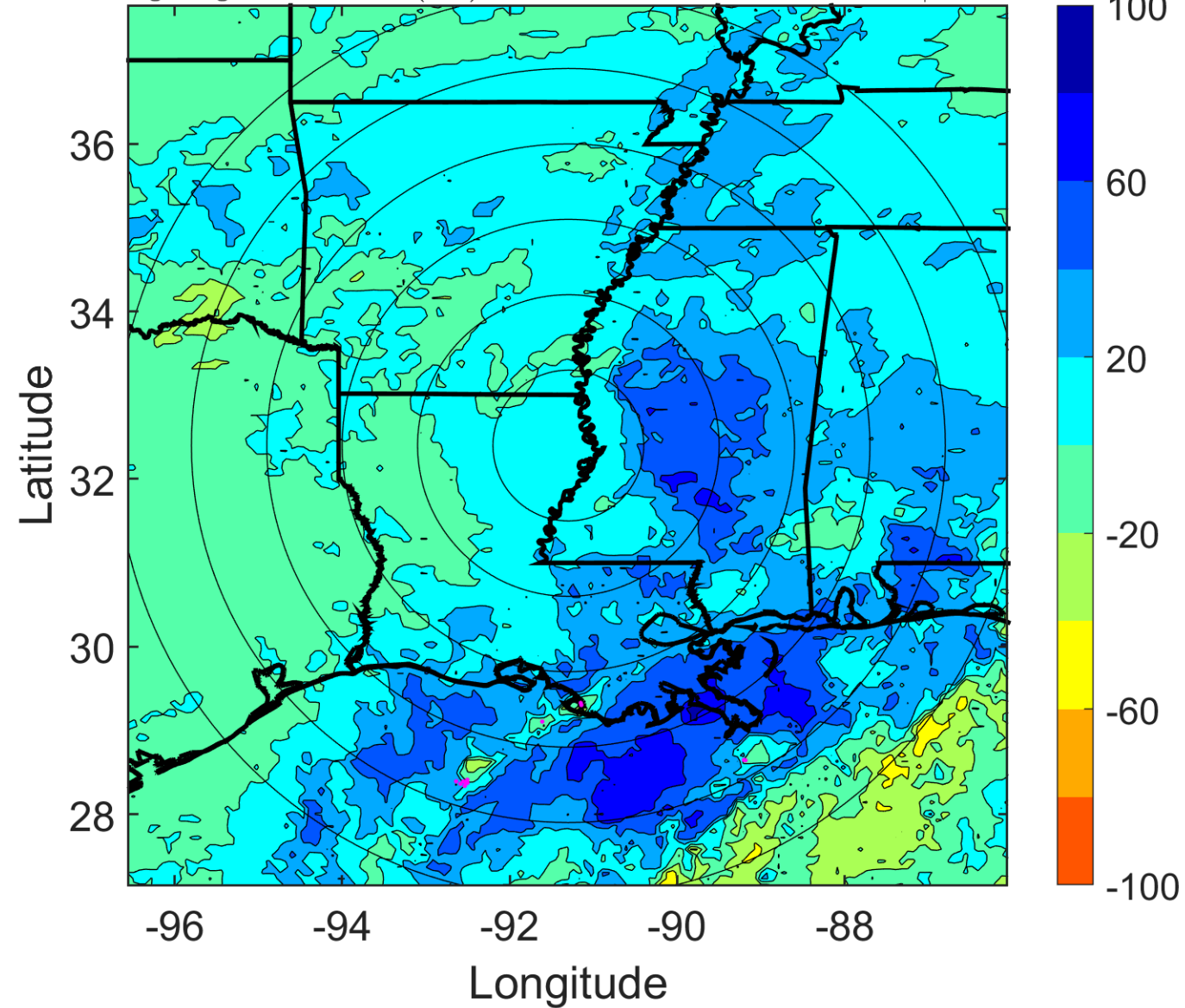
$\Delta$ t: 2007091406 (23.9 LT) - 2007091400 (17.8 LT)

Lightning: 23.9 LT  $\pm$  1.5 h (dots)

LAND EFFECTS

09L (HUMBERTO) | 20 kt LO

S: null | H: null



### IR BT & Lightning

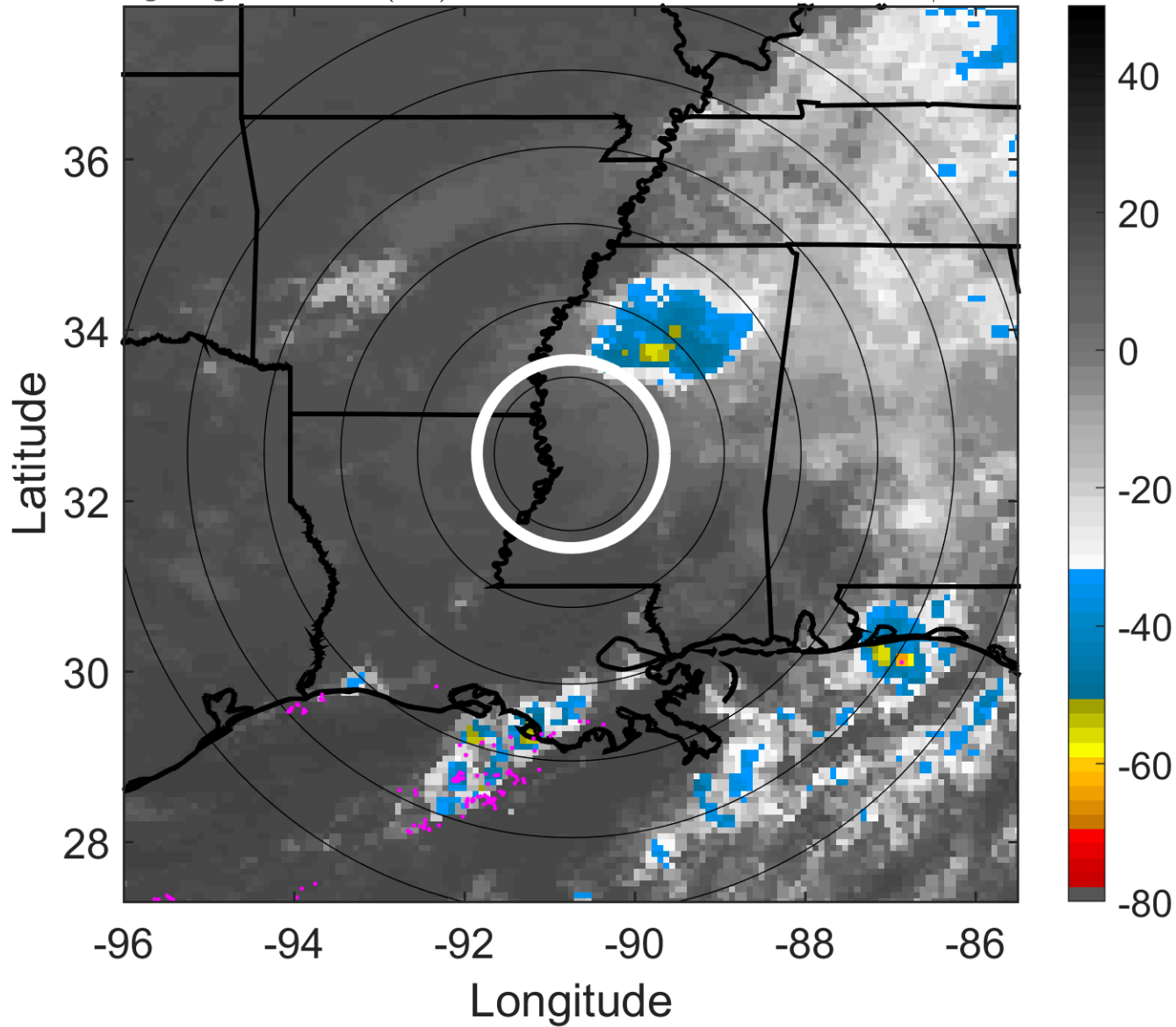
t: 2007091409 (3 LT)

Lightning: 3 LT  $\pm$  1.5 h (dots)

### LAND EFFECTS

09L (HUMBERTO) | 20 kt LO

S: null | H: null



### 6-h IR BT Differences & Lightning

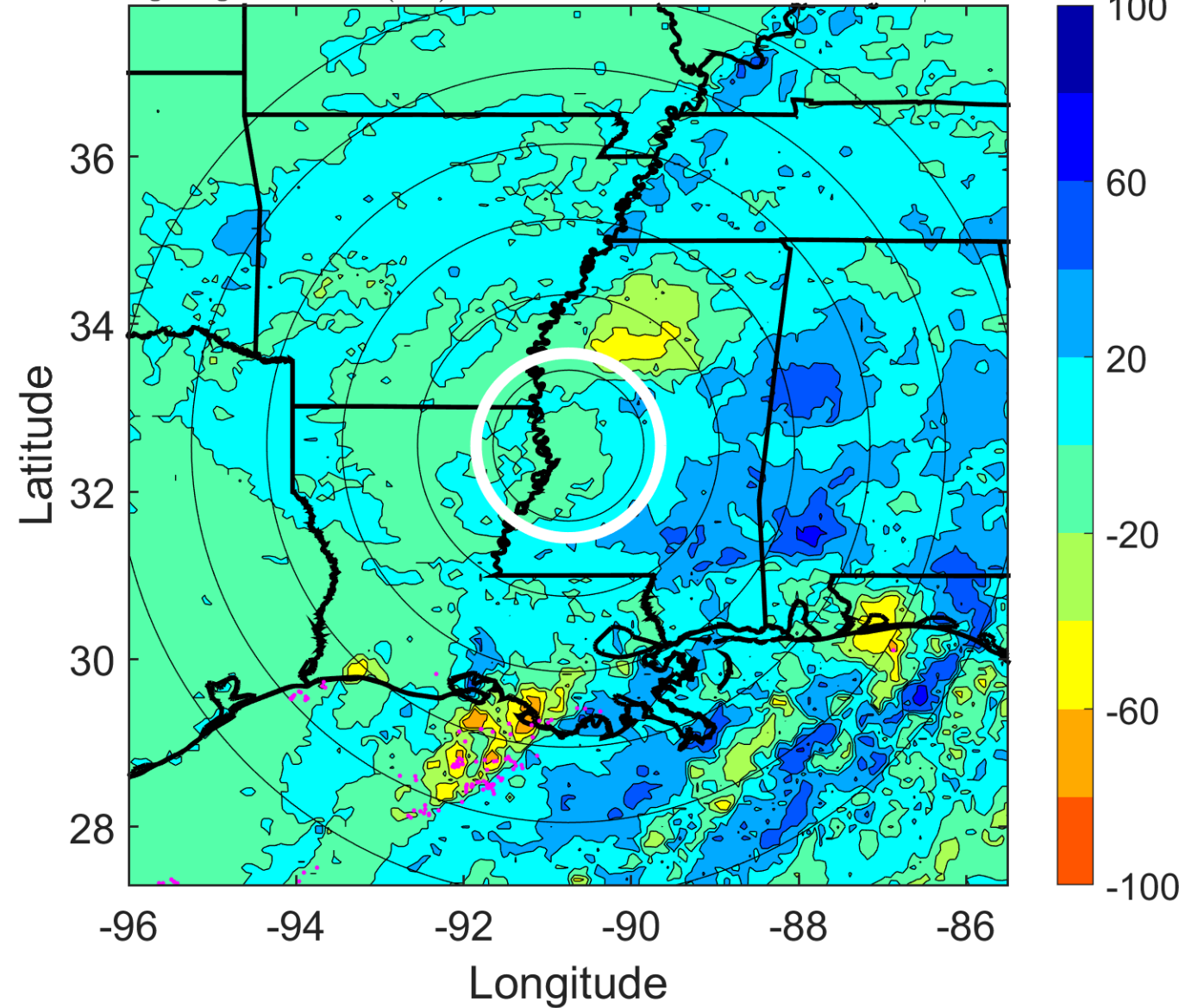
$\Delta$ t: 2007091409 (3 LT) - 2007091403 (20.9 LT)

Lightning: 3 LT  $\pm$  1.5 h (dots)

### LAND EFFECTS

09L (HUMBERTO) | 20 kt LO

S: null | H: null





### IR BT & Lightning

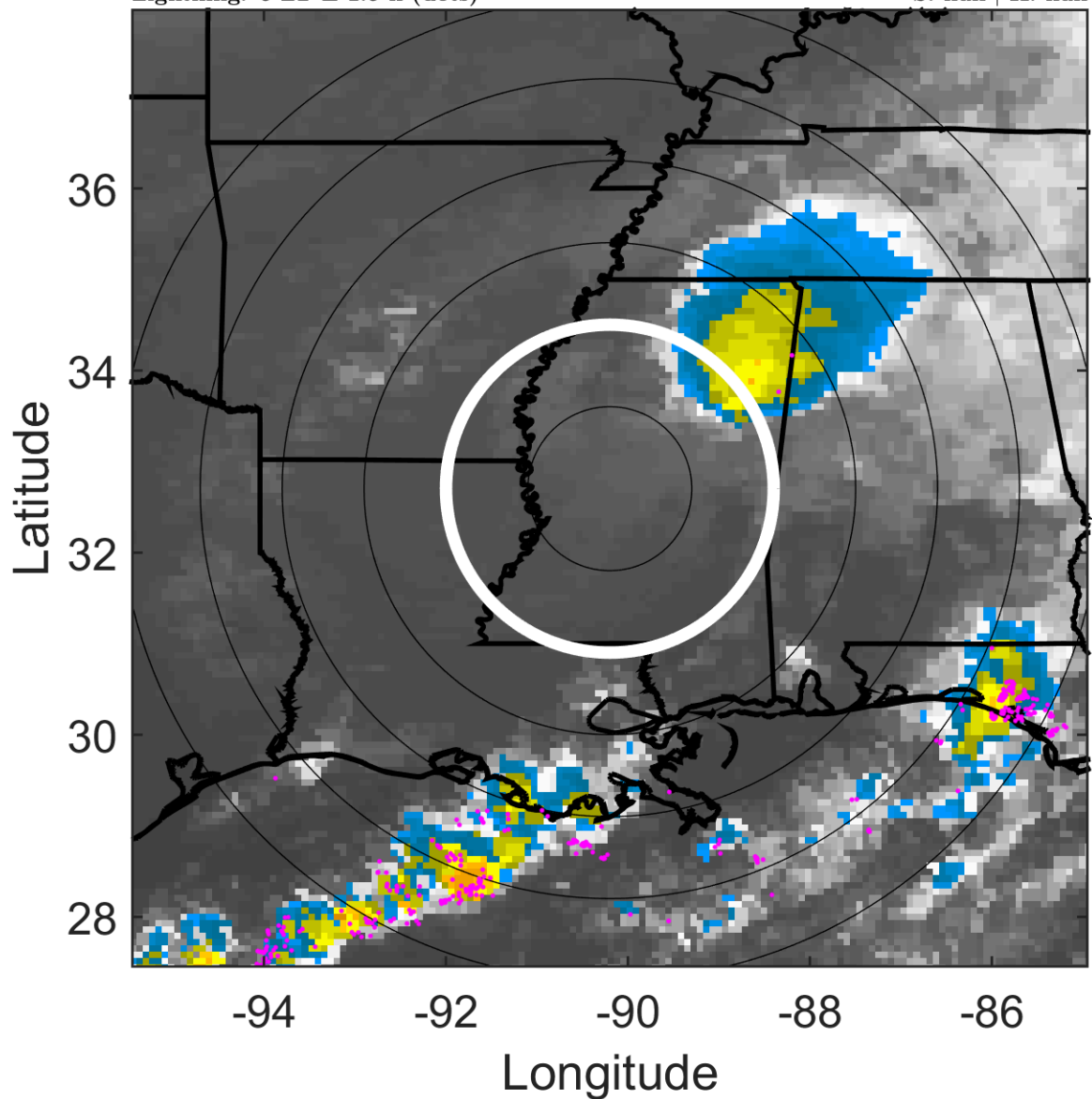
t: 2007091412 (6 LT)

Lightning: 6 LT  $\pm$  1.5 h (dots)

LAND EFFECTS

09L (HUMBERTO) | 20 kt LO

S: null | H: null



### 6-h IR BT Differences & Lightning

$\Delta$ t: 2007091412 (6 LT) - 2007091406 (23.9 LT)

Lightning: 6 LT  $\pm$  1.5 h (dots)

LAND EFFECTS

09L (HUMBERTO) | 20 kt LO

S: null | H: null

