

IR BT & Lightning

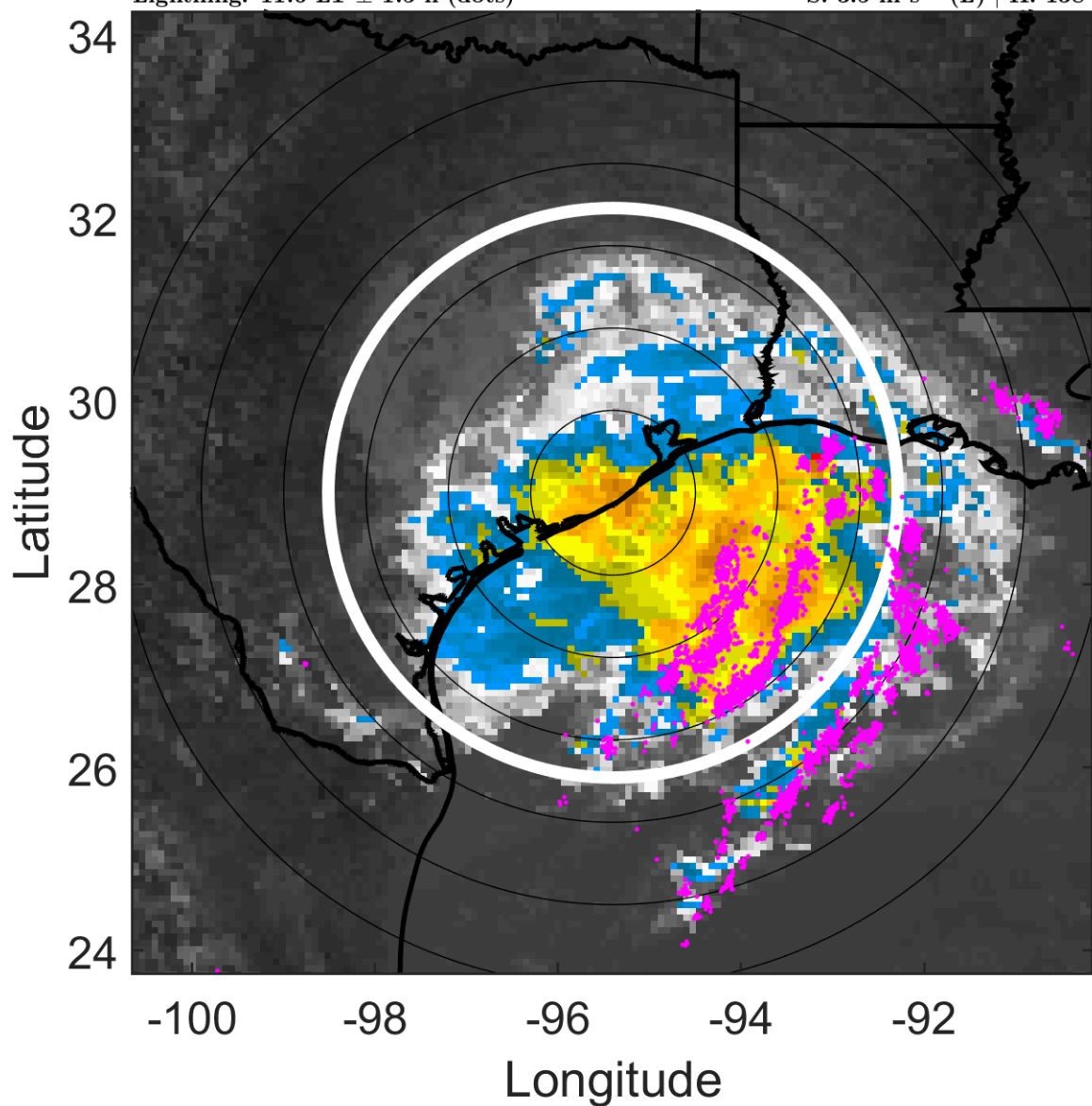
t: 2019091718 (11.6 LT)

Lightning: 11.6 LT \pm 1.5 h (dots)

LAND EFFECTS

11L (IMELDA) | 40 kt TS

S: 3.5 m s⁻¹ (L) | H: 138°



6-h IR BT Differences & Lightning

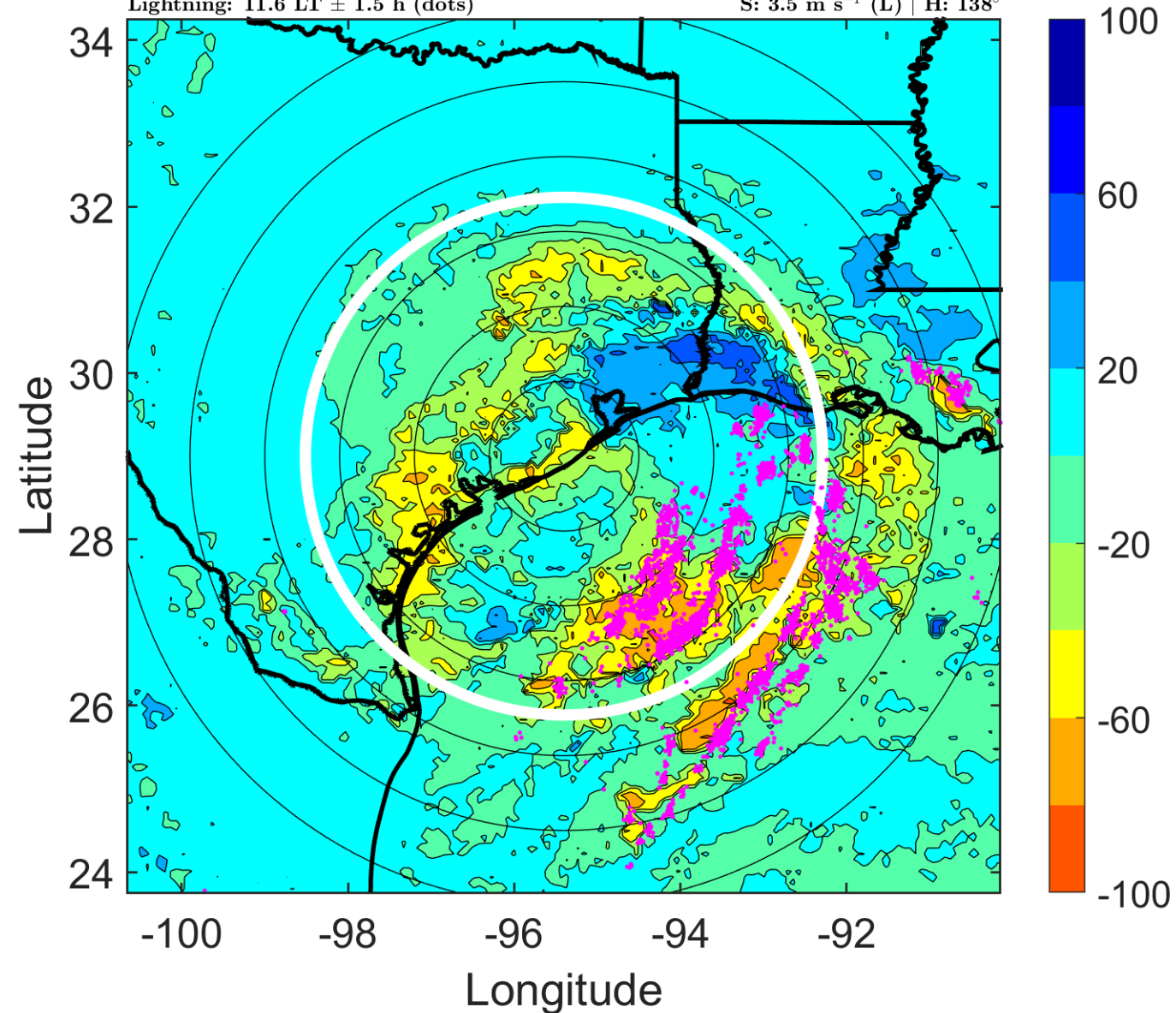
Δ t: 2019091718 (11.6 LT) - 2019091712 (5.6 LT)

Lightning: 11.6 LT \pm 1.5 h (dots)

LAND EFFECTS

11L (IMELDA) | 40 kt TS

S: 3.5 m s⁻¹ (L) | H: 138°



IR BT & Lightning

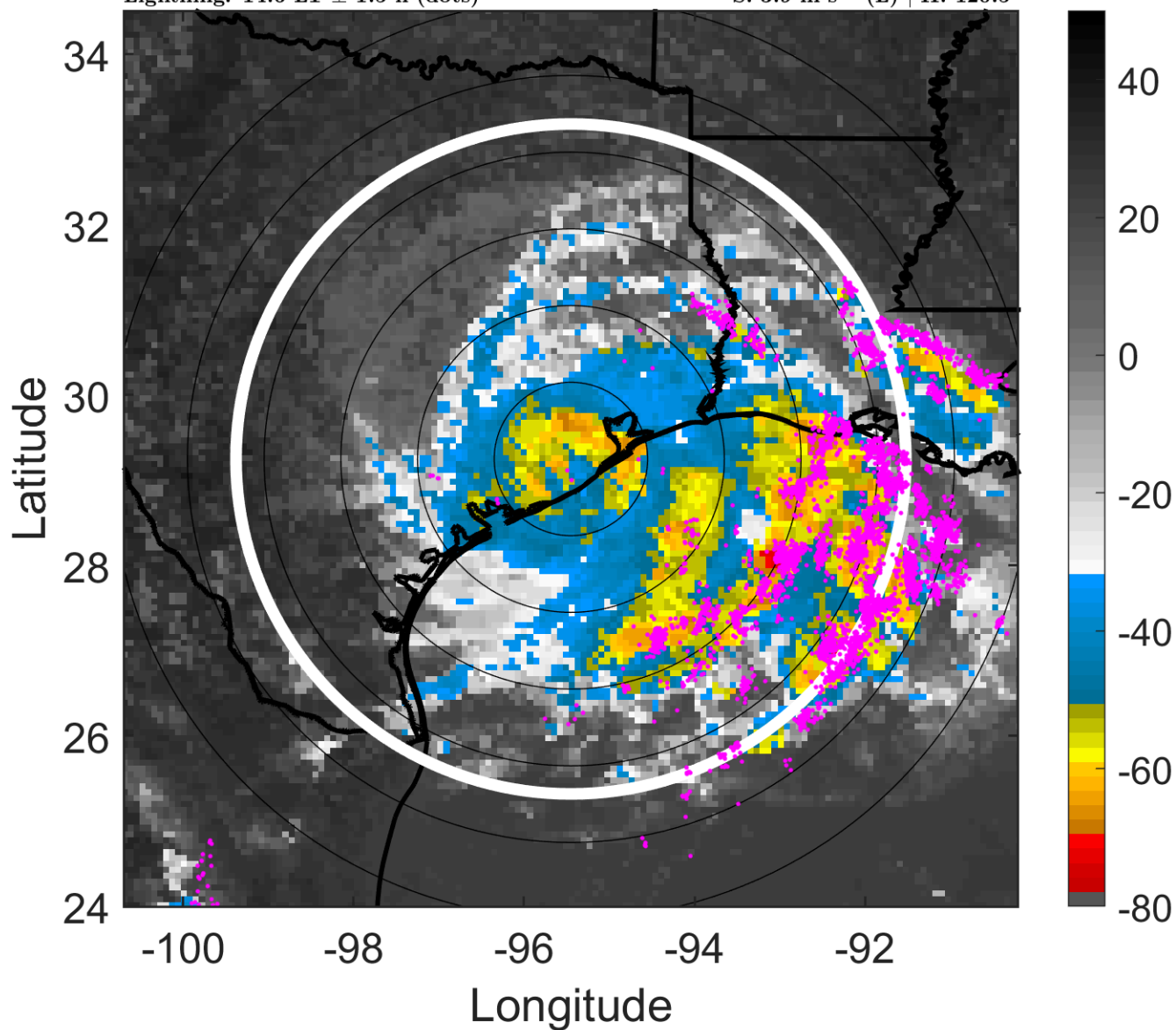
t: 2019091721 (14.6 LT)

Lightning: 14.6 LT \pm 1.5 h (dots)

LAND EFFECTS

11L (IMELDA) | 35 kt TS

S: 3.9 m s⁻¹ (L) | H: 120.5°



6-h IR BT Differences & Lightning

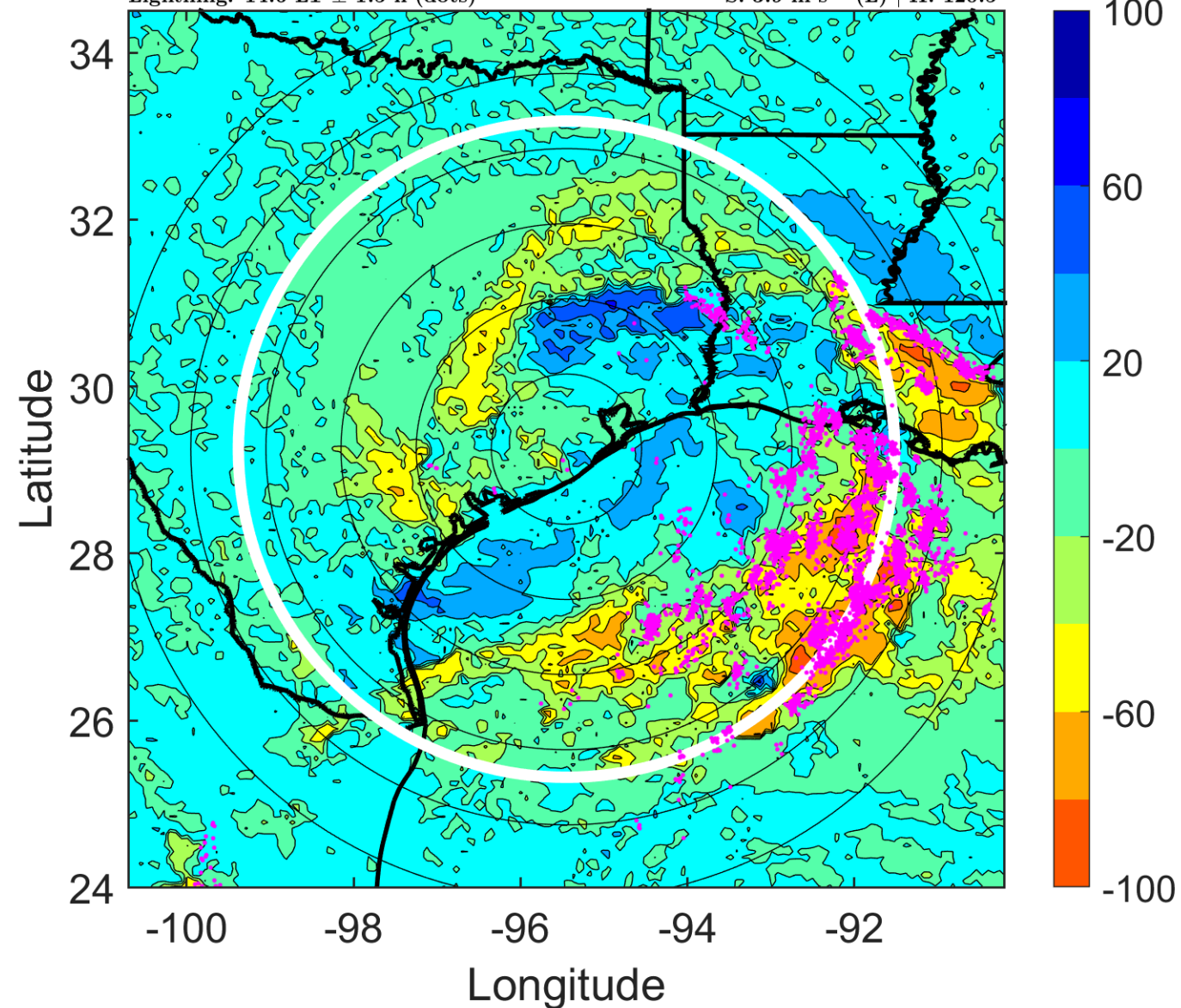
Δ t: 2019091721 (14.6 LT) - 2019091715 (8.6 LT)

Lightning: 14.6 LT \pm 1.5 h (dots)

LAND EFFECTS

11L (IMELDA) | 35 kt TS

S: 3.9 m s⁻¹ (L) | H: 120.5°



IR BT & Lightning

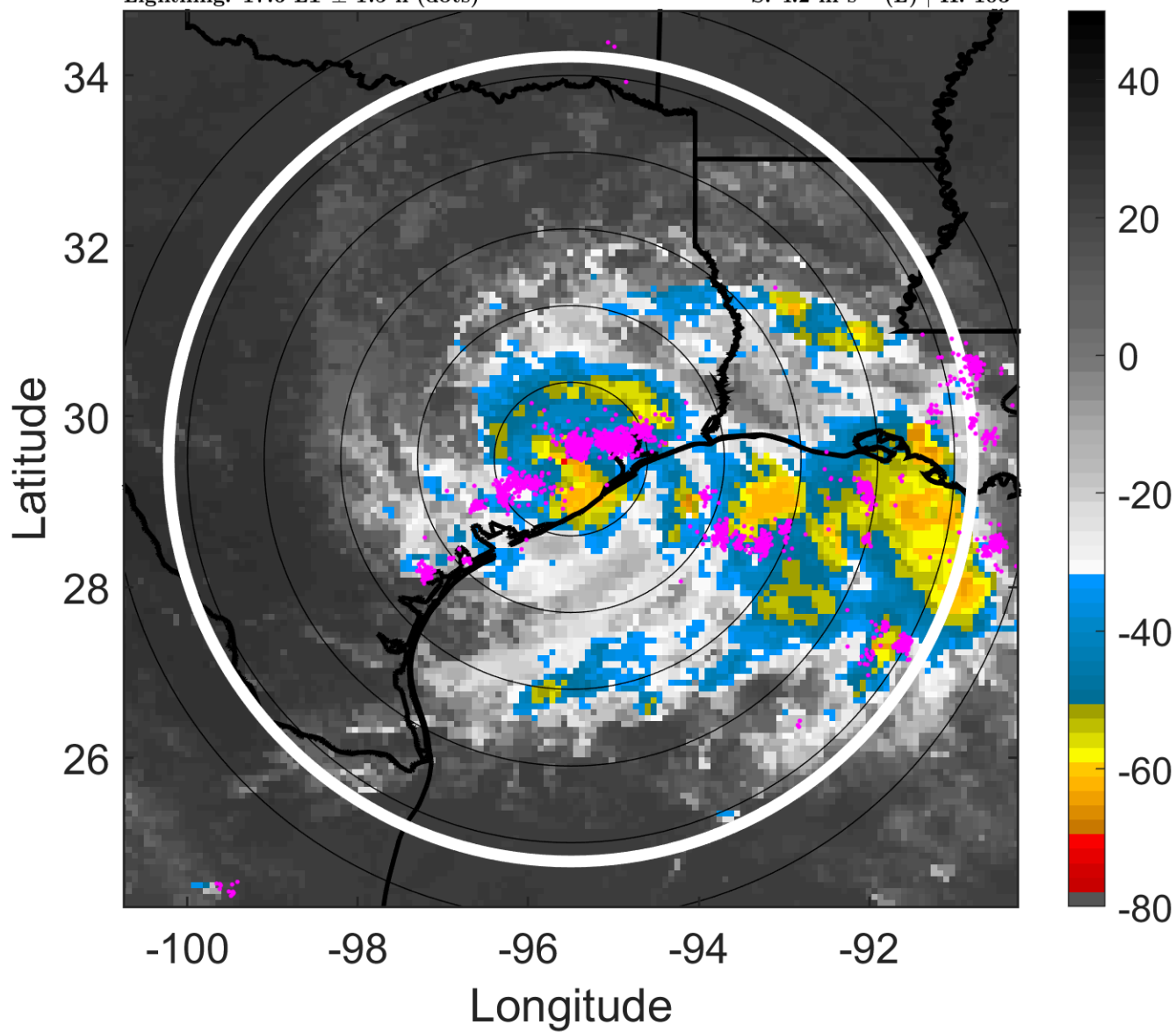
t: 2019091800 (17.6 LT)

Lightning: 17.6 LT \pm 1.5 h (dots)

LAND EFFECTS

11L (IMELDA) | 30 kt TD

S: 4.2 m s⁻¹ (L) | H: 103°



6-h IR BT Differences & Lightning

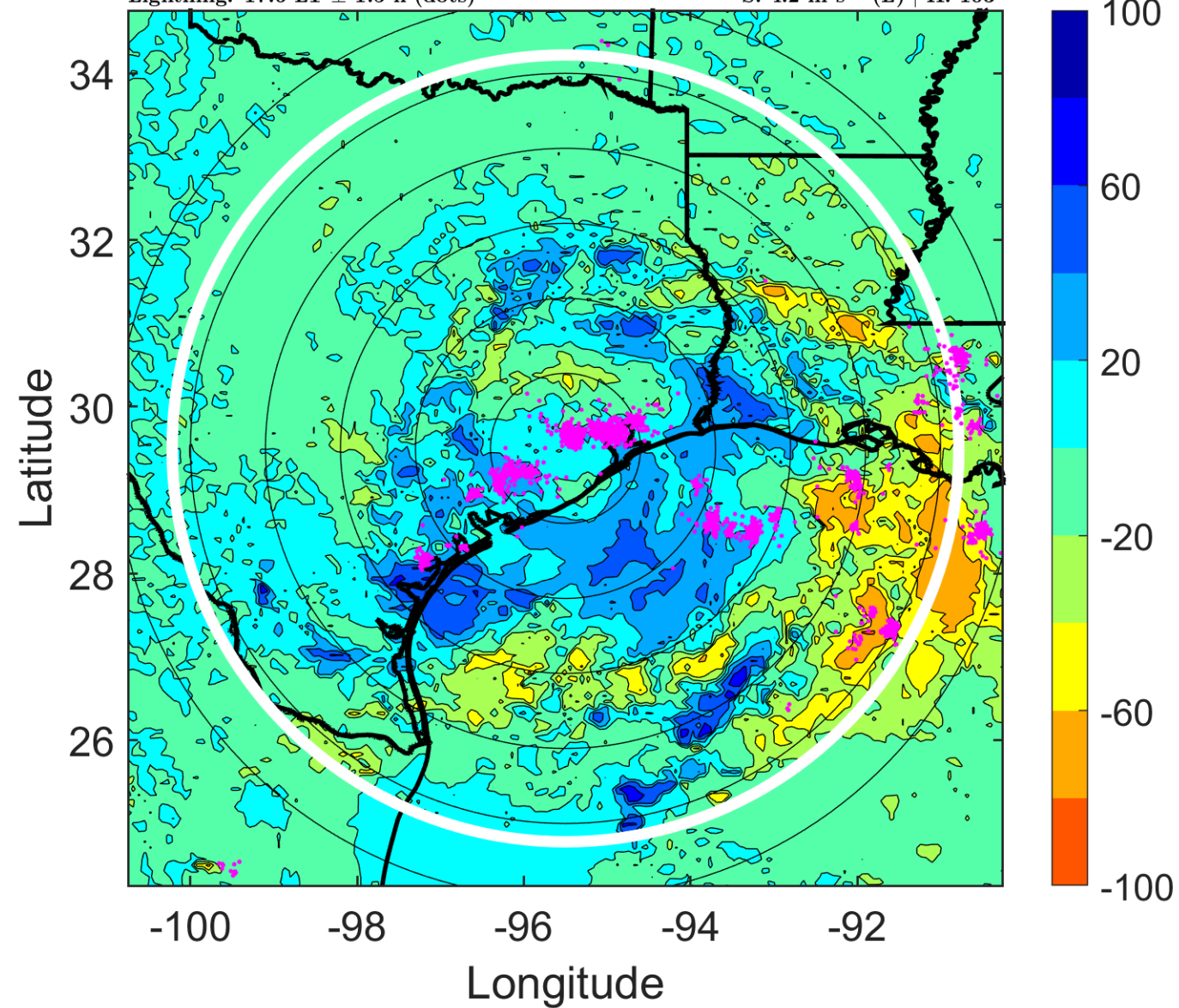
Δ t: 2019091800 (17.6 LT) - 2019091718 (11.6 LT)

Lightning: 17.6 LT \pm 1.5 h (dots)

LAND EFFECTS

11L (IMELDA) | 30 kt TD

S: 4.2 m s⁻¹ (L) | H: 103°



IR BT & Lightning

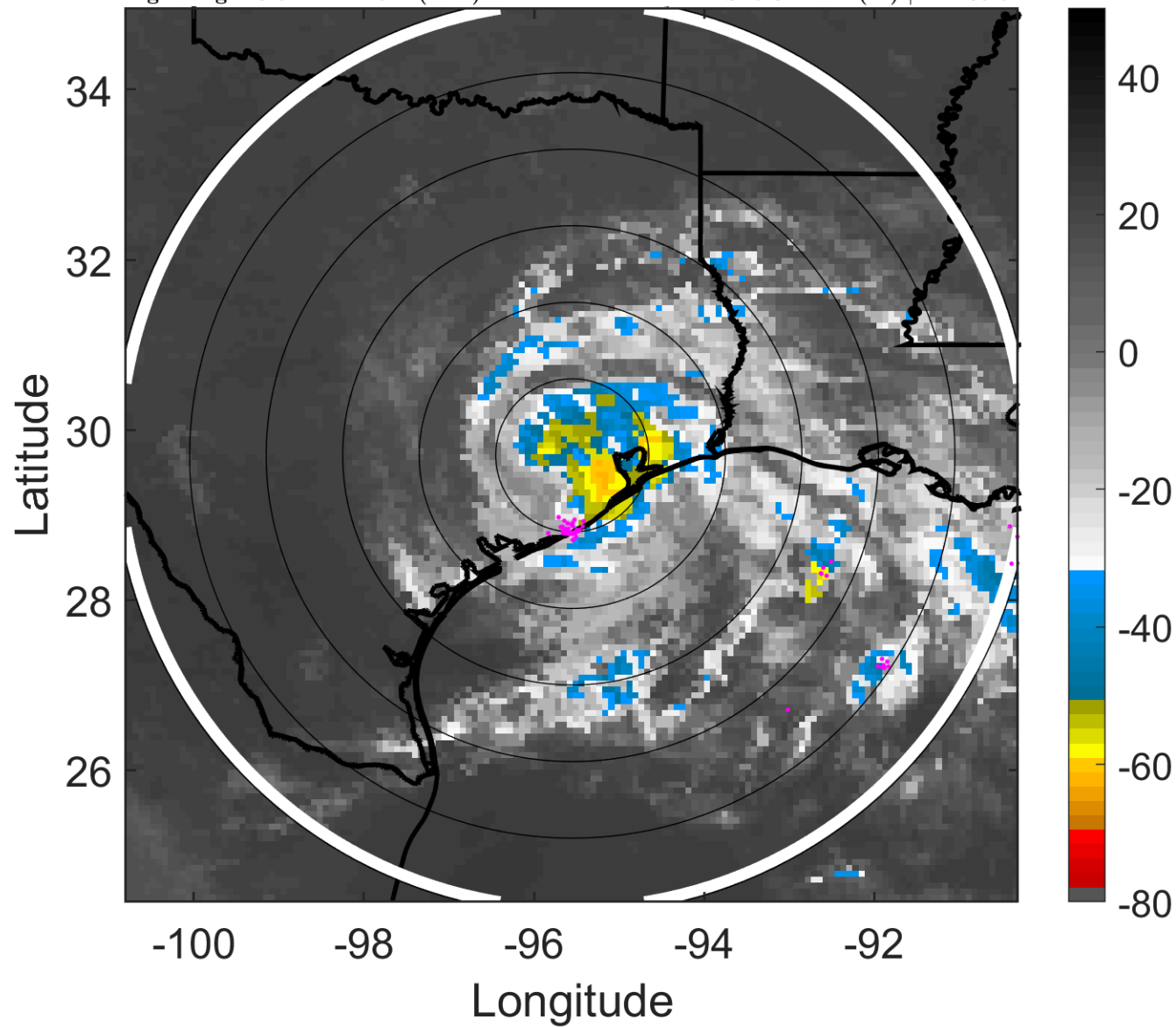
t: 2019091803 (20.6 LT)

Lightning: 20.6 LT \pm 1.5 h (dots)

LAND EFFECTS

11L (IMELDA) | 30 kt TD

S: 5.3 m s⁻¹ (M) | H: 105.5°



6-h IR BT Differences & Lightning

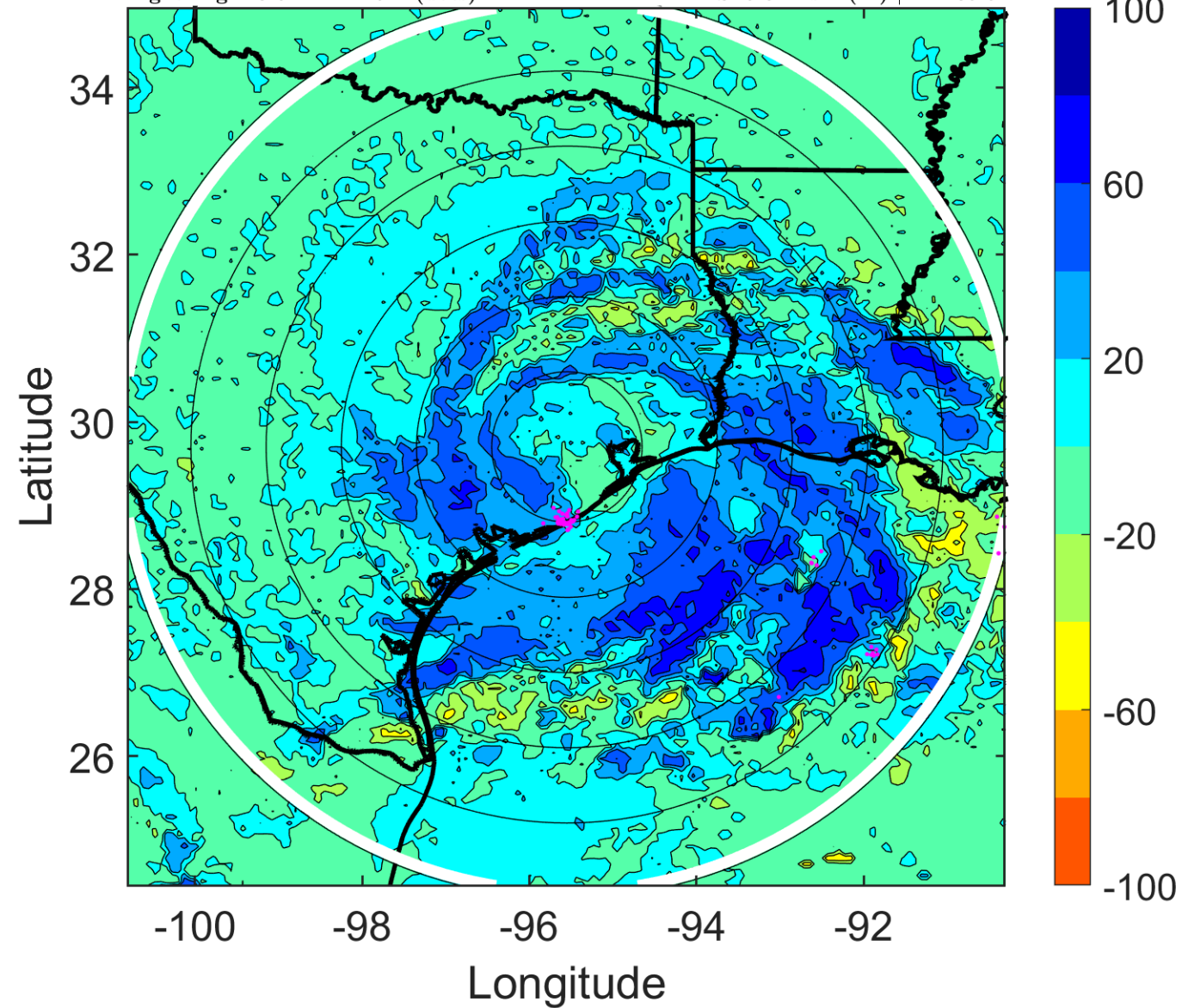
Δ t: 2019091803 (20.6 LT) - 2019091721 (14.6 LT)

Lightning: 20.6 LT \pm 1.5 h (dots)

LAND EFFECTS

11L (IMELDA) | 30 kt TD

S: 5.3 m s⁻¹ (M) | H: 105.5°



IR BT & Lightning

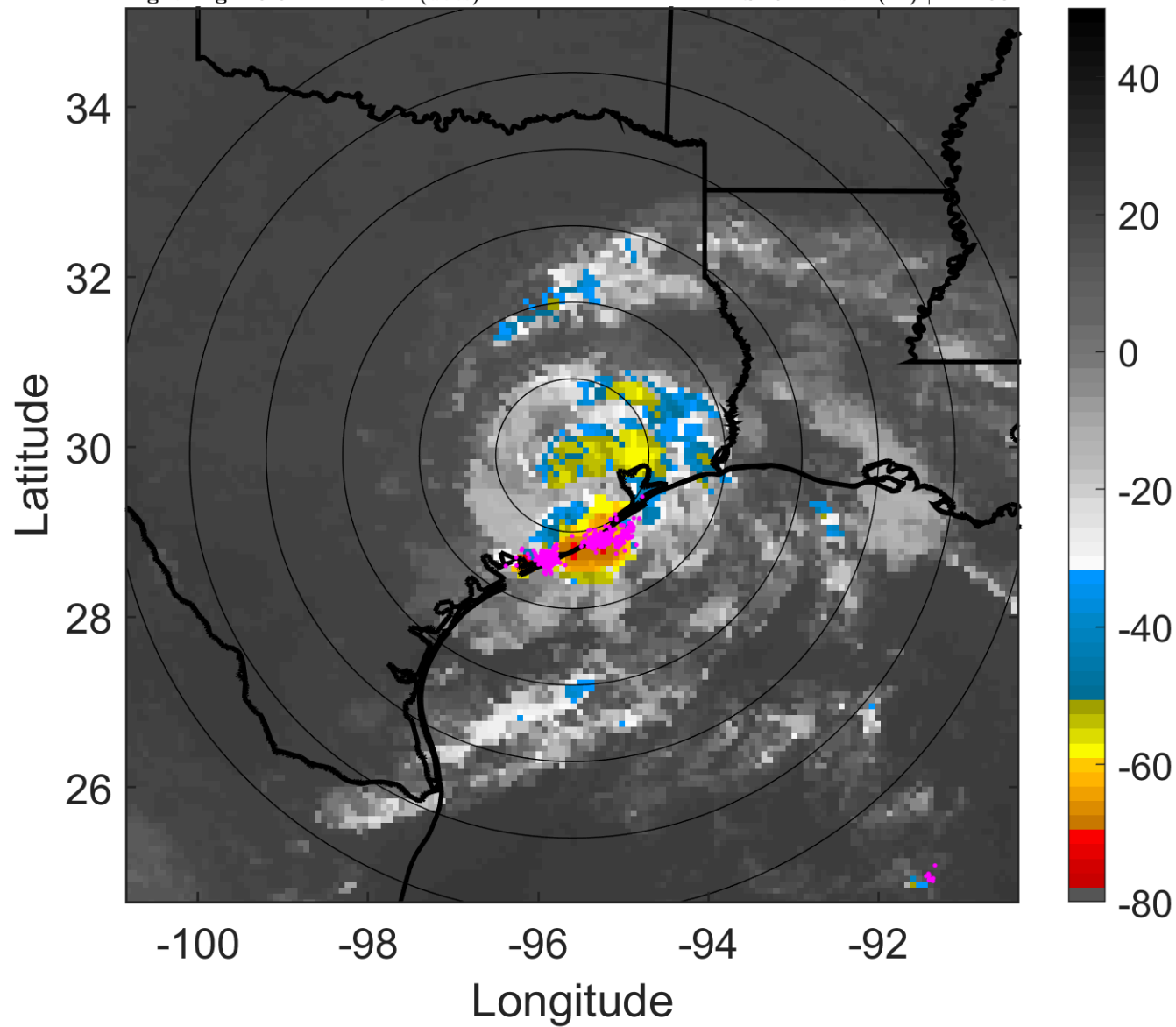
t: 2019091806 (23.6 LT)

Lightning: 23.6 LT \pm 1.5 h (dots)

LAND EFFECTS

11L (IMELDA) | 30 kt TD

S: 6.4 m s⁻¹ (M) | H: 108°



6-h IR BT Differences & Lightning

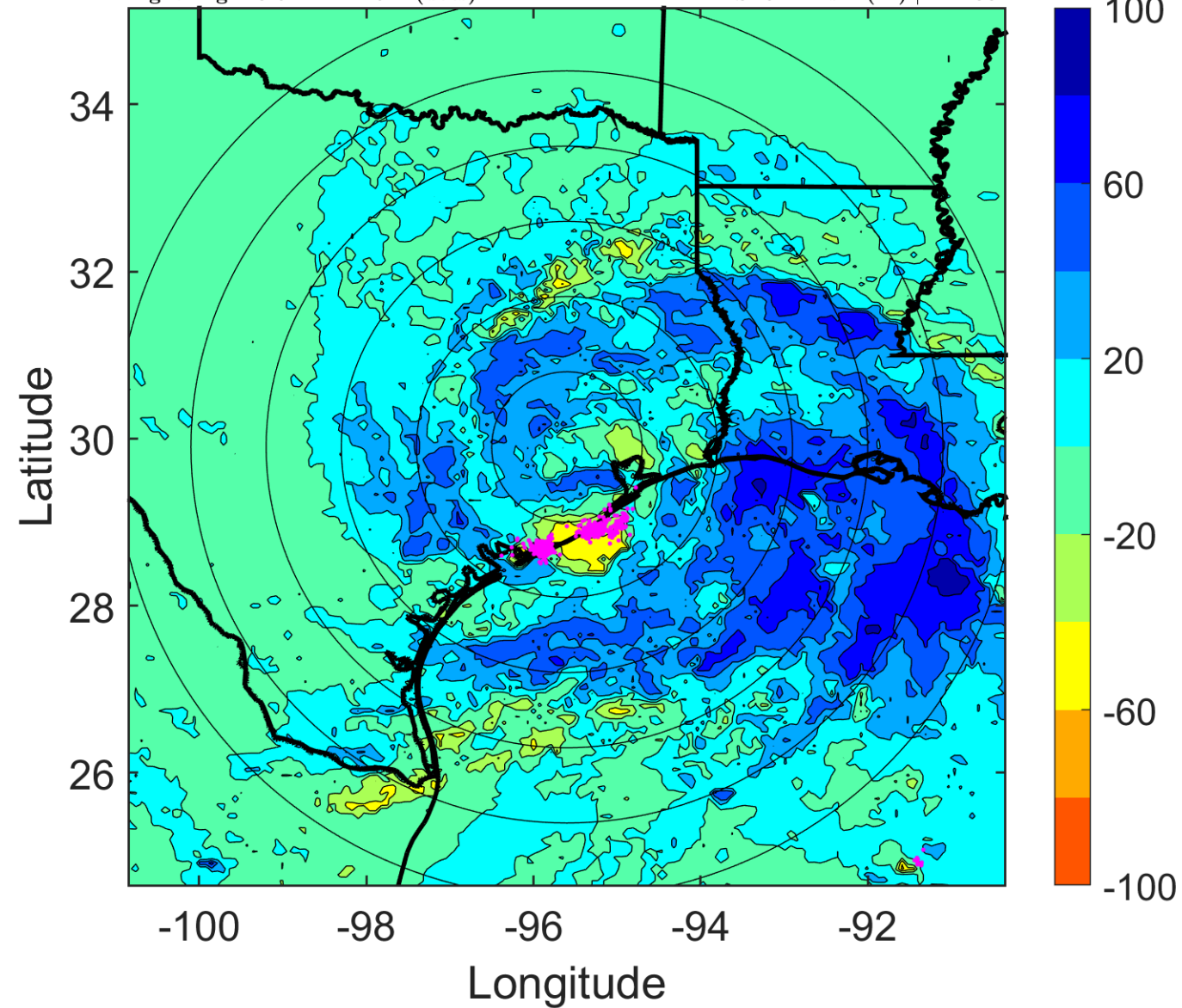
Δ t: 2019091806 (23.6 LT) - 2019091800 (17.6 LT)

Lightning: 23.6 LT \pm 1.5 h (dots)

LAND EFFECTS

11L (IMELDA) | 30 kt TD

S: 6.4 m s⁻¹ (M) | H: 108°



IR BT & Lightning

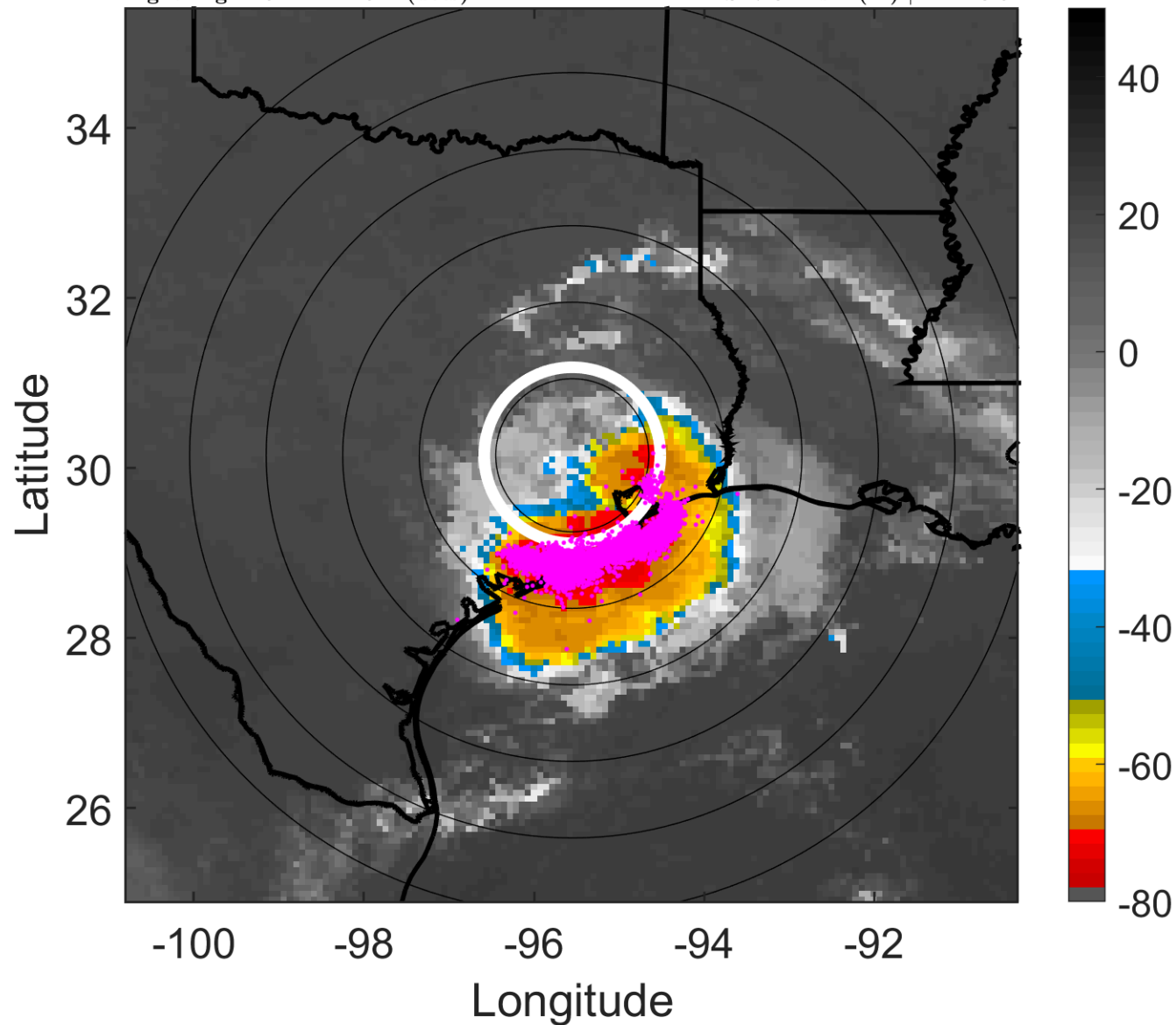
t: 2019091809 (2.6 LT)

Lightning: 2.6 LT \pm 1.5 h (dots)

LAND EFFECTS

11L (IMELDA) | 30 kt TD

S: 7.8 m s⁻¹ (M) | H: 113.5°



6-h IR BT Differences & Lightning

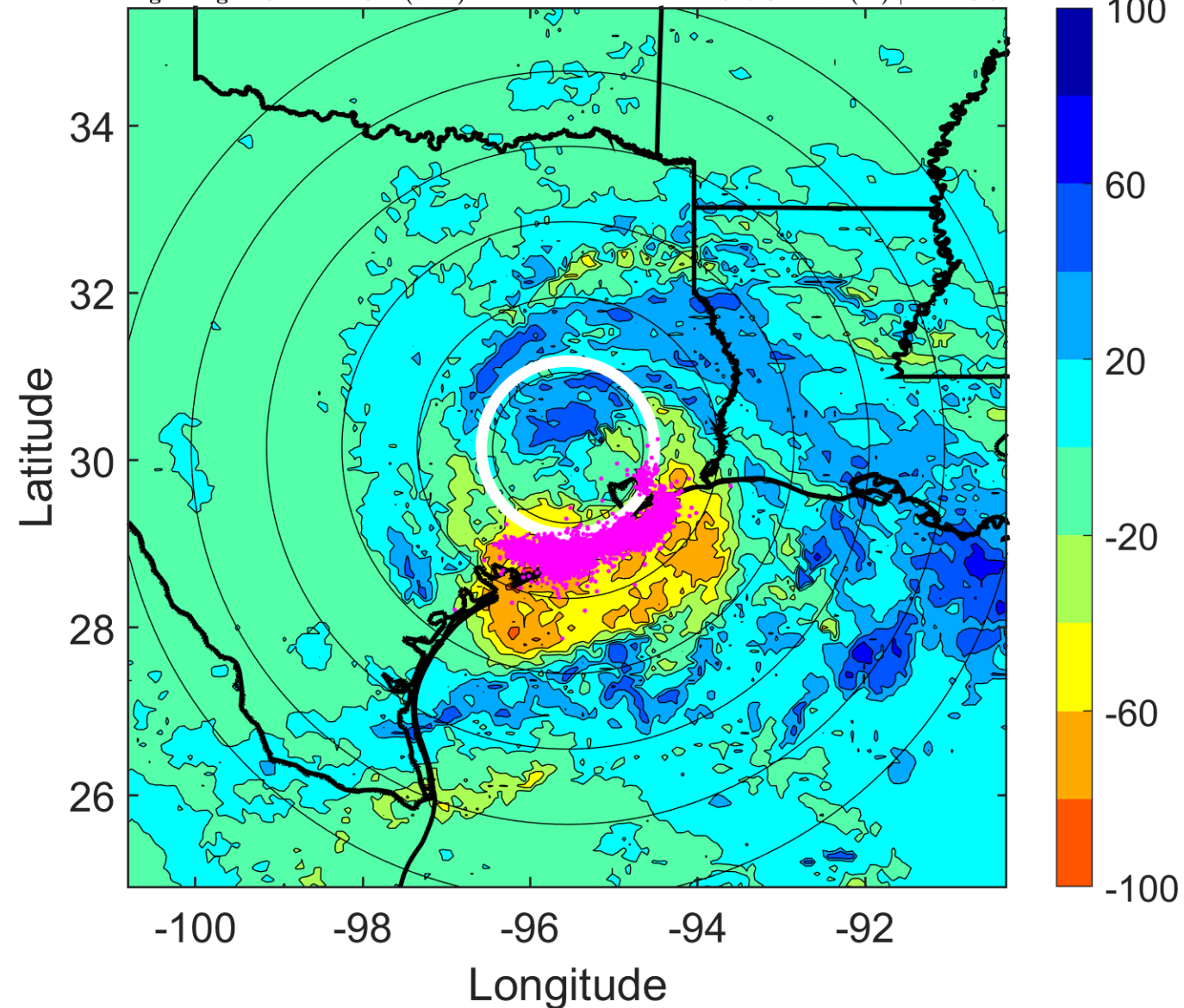
Δ t: 2019091809 (2.6 LT) - 2019091803 (20.6 LT)

Lightning: 2.6 LT \pm 1.5 h (dots)

LAND EFFECTS

11L (IMELDA) | 30 kt TD

S: 7.8 m s⁻¹ (M) | H: 113.5°



IR BT & Lightning

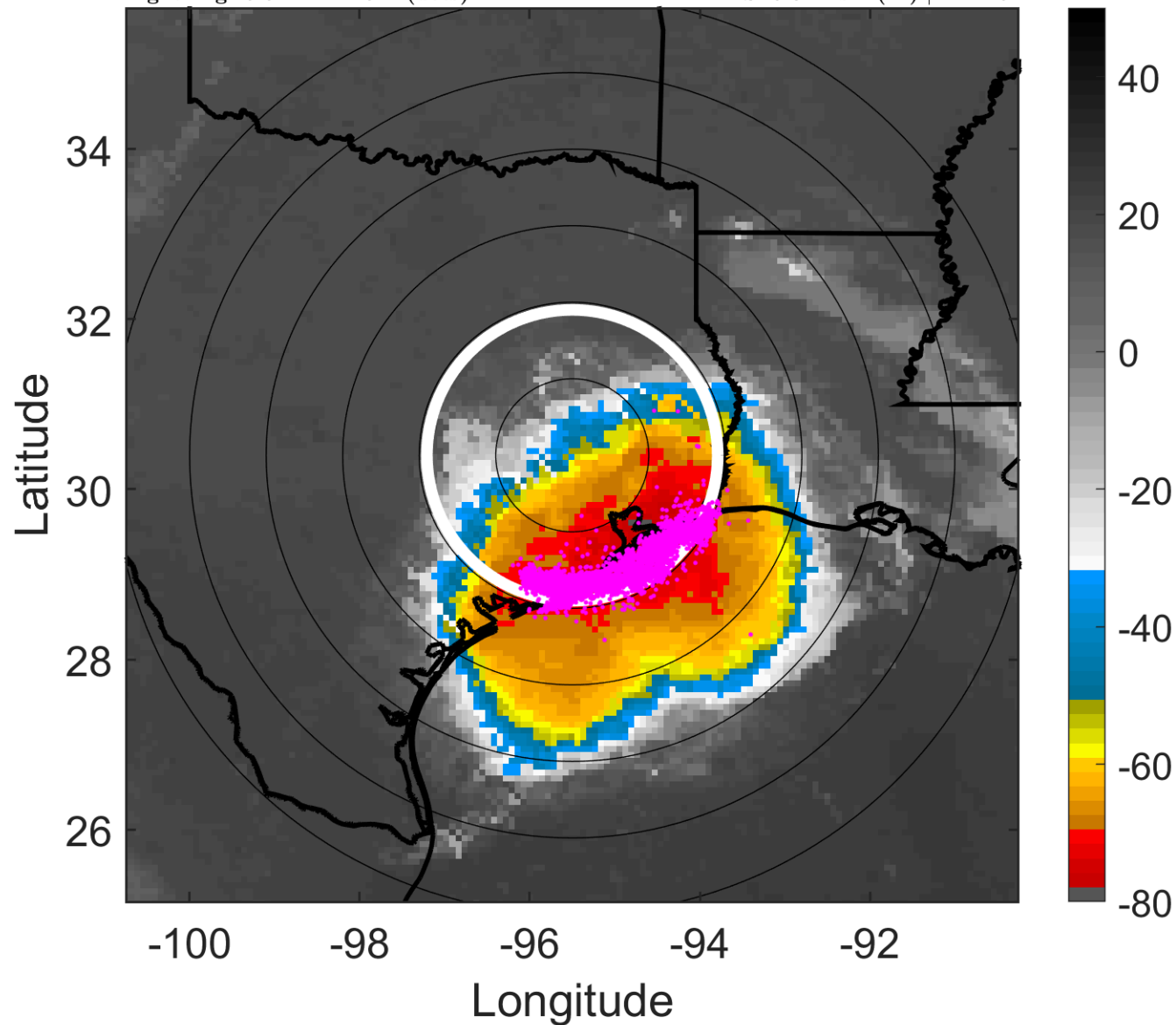
t: 2019091812 (5.6 LT)

Lightning: 5.6 LT \pm 1.5 h (dots)

LAND EFFECTS

11L (IMELDA) | 30 kt TD

S: 9.3 m s⁻¹ (M) | H: 119°



6-h IR BT Differences & Lightning

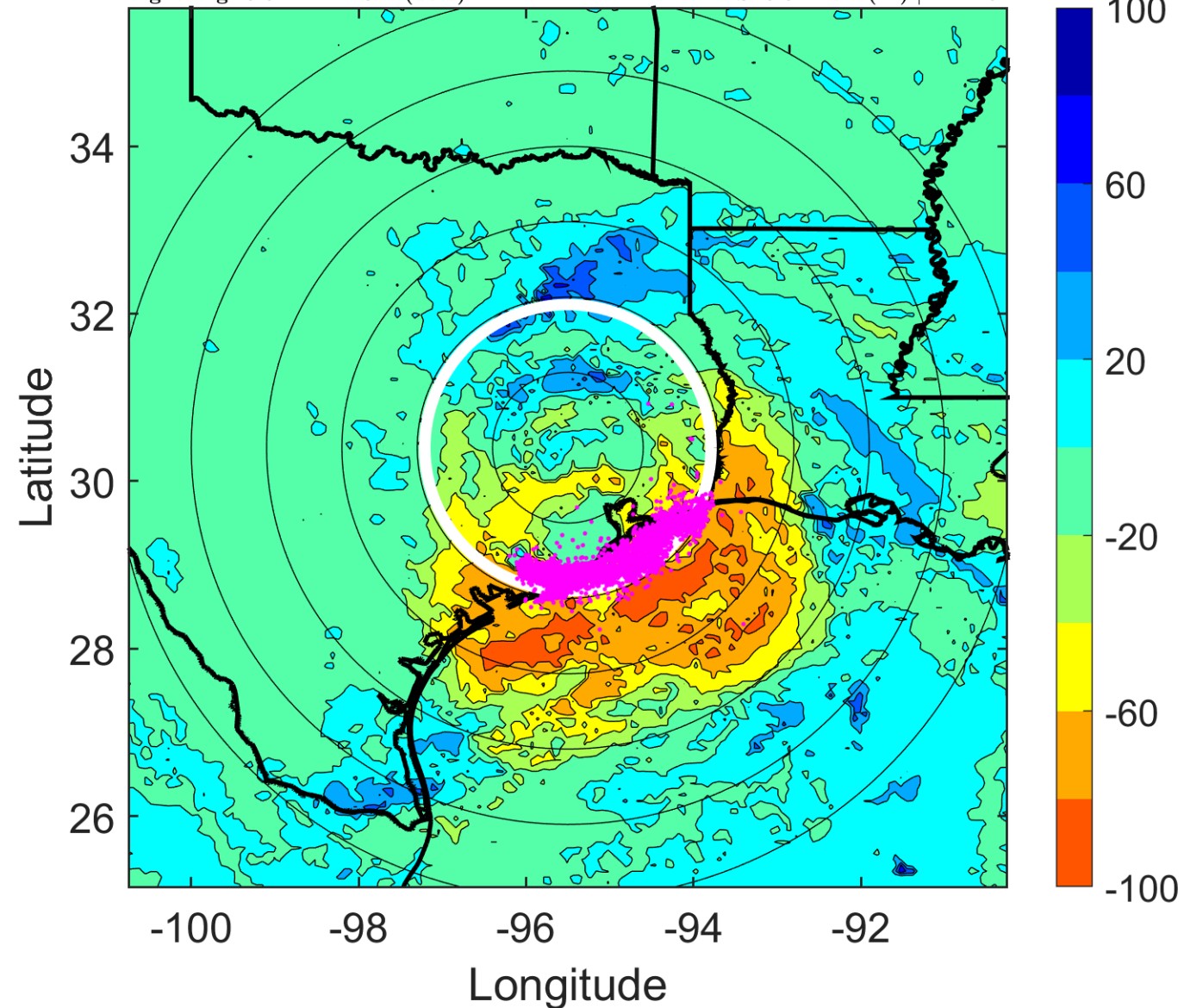
Δ t: 2019091812 (5.6 LT) - 2019091806 (23.6 LT)

Lightning: 5.6 LT \pm 1.5 h (dots)

LAND EFFECTS

11L (IMELDA) | 30 kt TD

S: 9.3 m s⁻¹ (M) | H: 119°



IR BT & Lightning

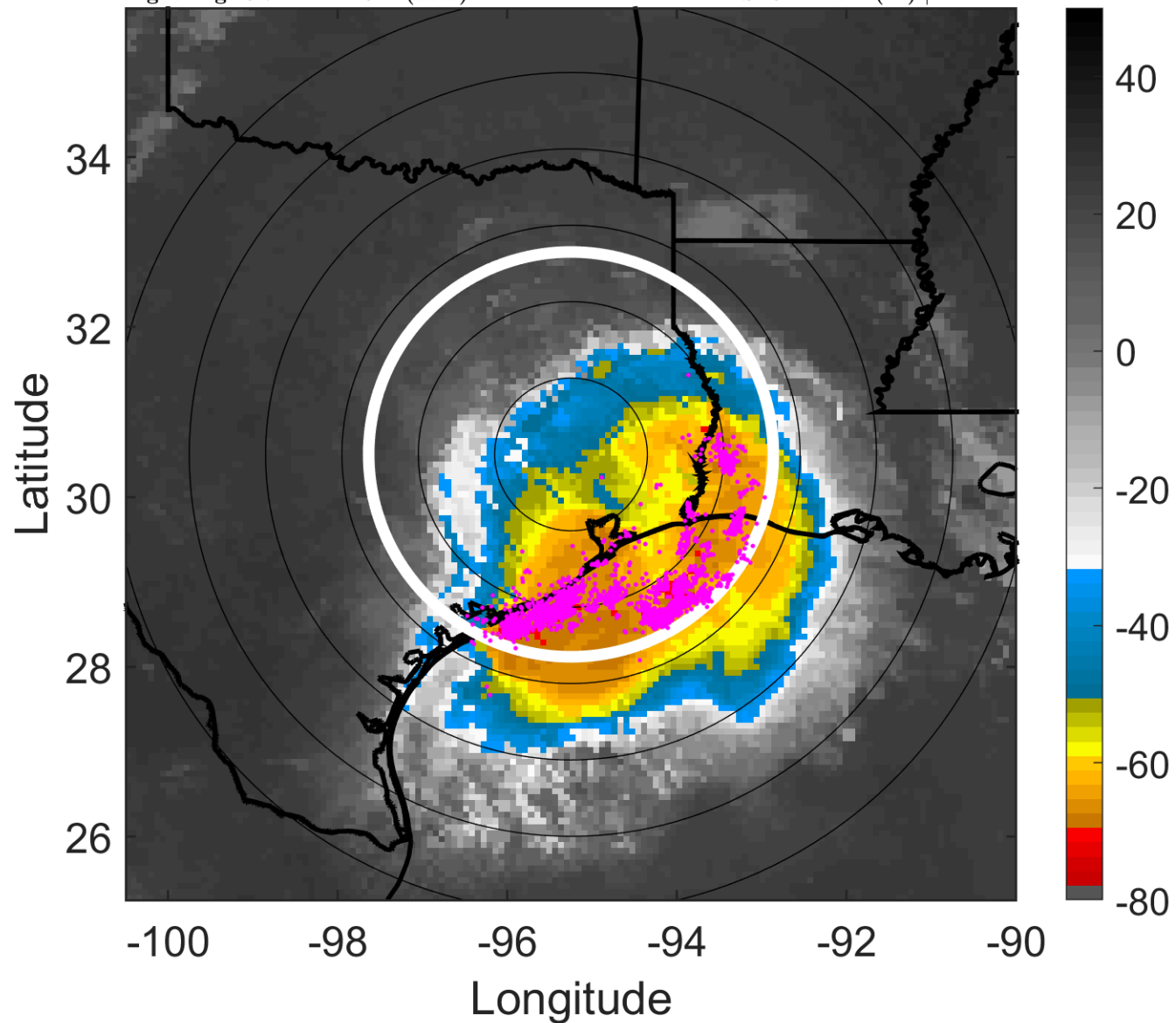
t: 2019091815 (8.7 LT)

Lightning: 8.7 LT \pm 1.5 h (dots)

LAND EFFECTS

11L (IMELDA) | 30 kt TD

S: 8.4 m s⁻¹ (M) | H: 121°



6-h IR BT Differences & Lightning

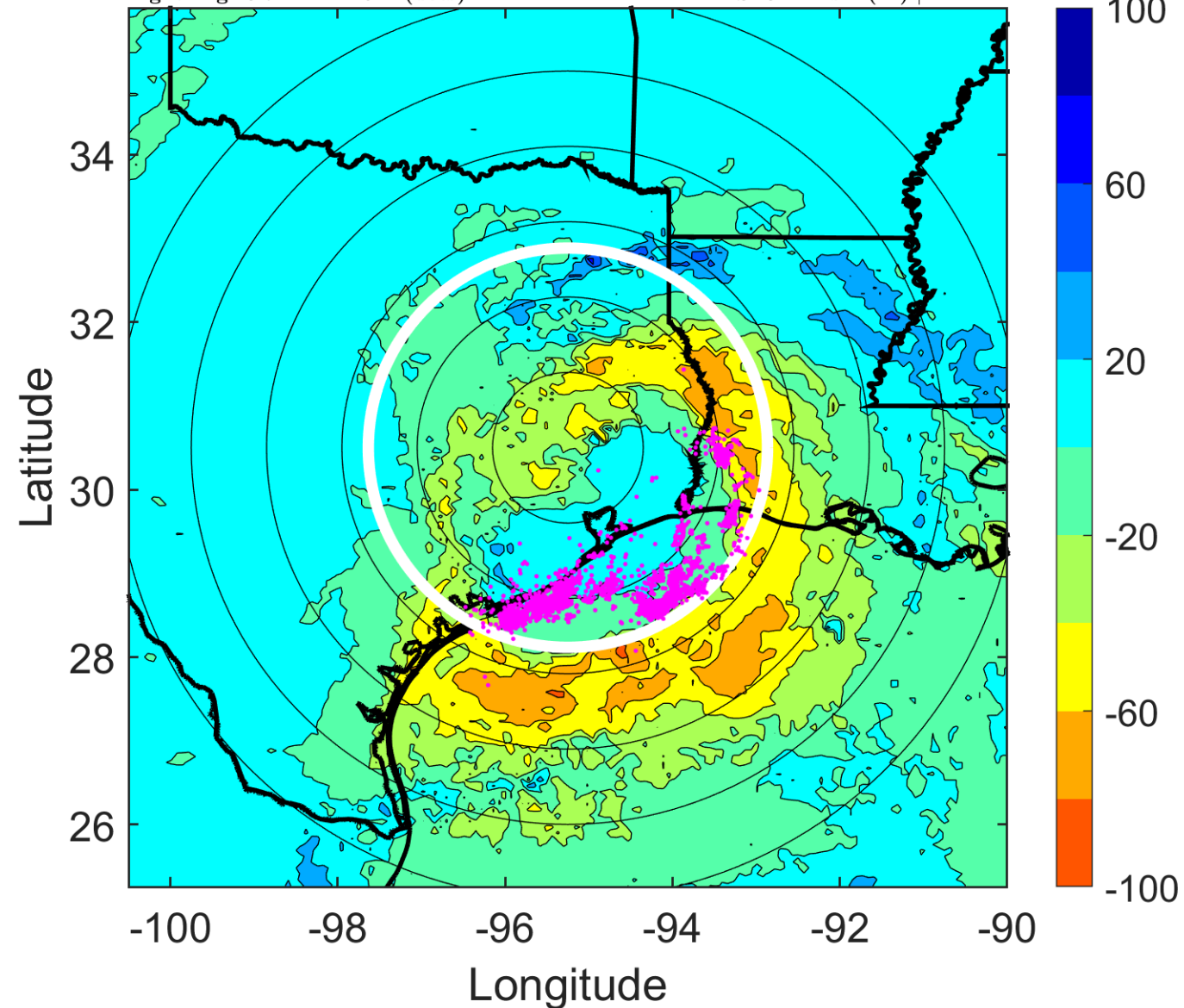
Δ t: 2019091815 (8.7 LT) - 2019091809 (2.6 LT)

Lightning: 8.7 LT \pm 1.5 h (dots)

LAND EFFECTS

11L (IMELDA) | 30 kt TD

S: 8.4 m s⁻¹ (M) | H: 121°



IR BT & Lightning

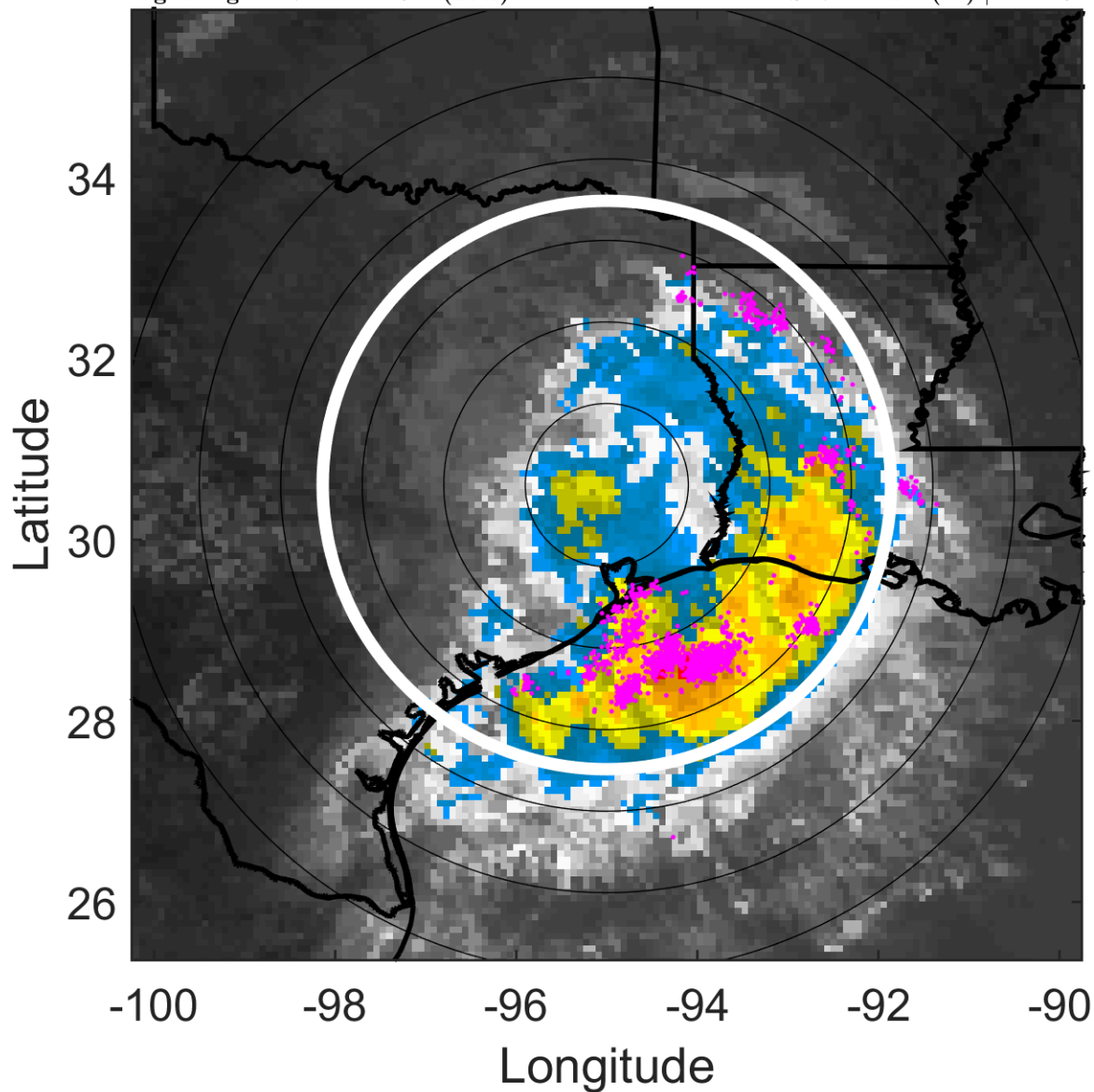
t: 2019091818 (11.7 LT)

Lightning: 11.7 LT \pm 1.5 h (dots)

LAND EFFECTS

11L (IMELDA) | 30 kt TD

S: 7.4 m s⁻¹ (M) | H: 123°



6-h IR BT Differences & Lightning

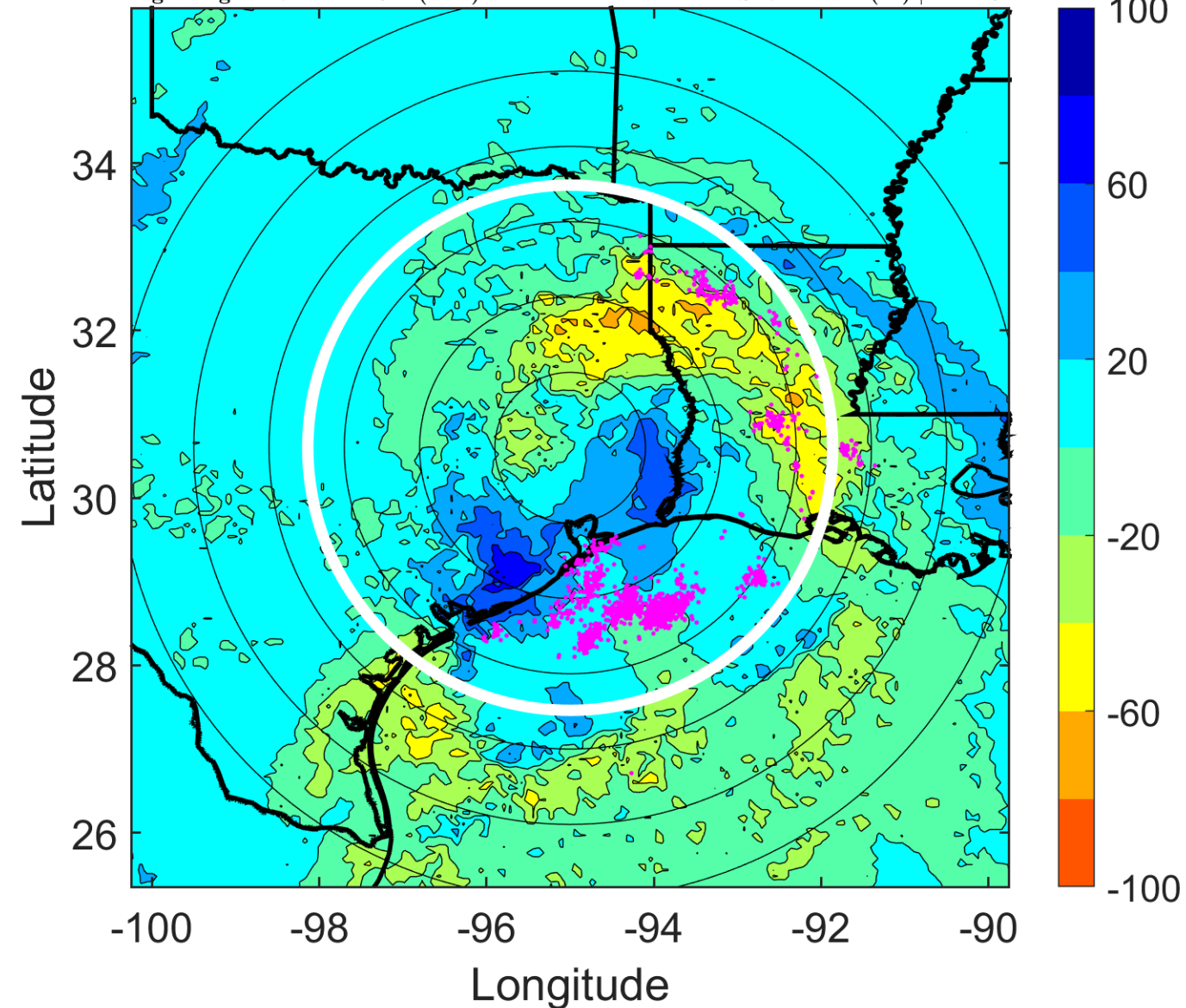
Δ t: 2019091818 (11.7 LT) - 2019091812 (5.6 LT)

Lightning: 11.7 LT \pm 1.5 h (dots)

LAND EFFECTS

11L (IMELDA) | 30 kt TD

S: 7.4 m s⁻¹ (M) | H: 123°



IR BT & Lightning

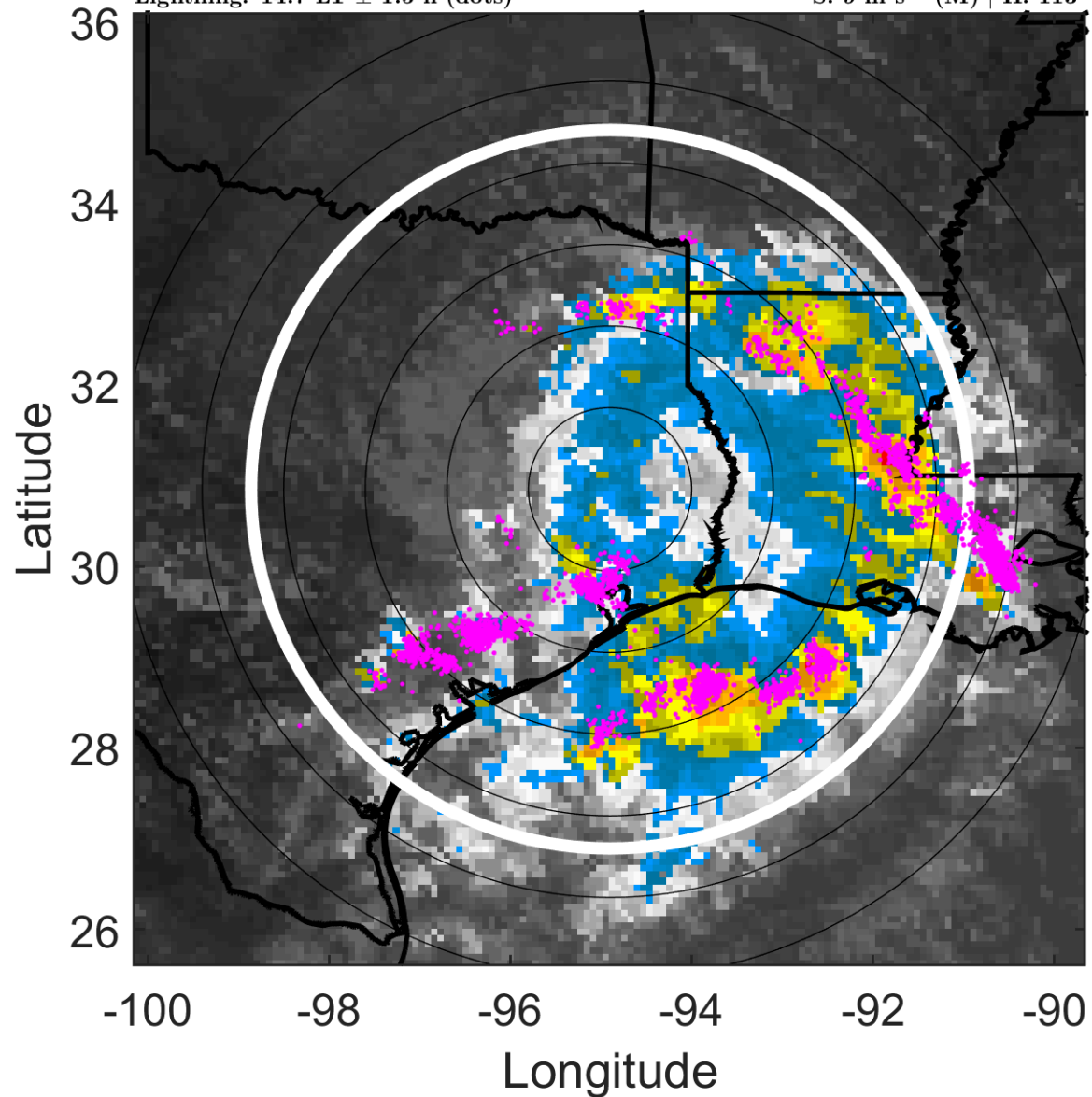
t: 2019091821 (14.7 LT)

Lightning: 14.7 LT \pm 1.5 h (dots)

LAND EFFECTS

11L (IMELDA) | 27.5 kt TD

S: 9 m s⁻¹ (M) | H: 113°



6-h IR BT Differences & Lightning

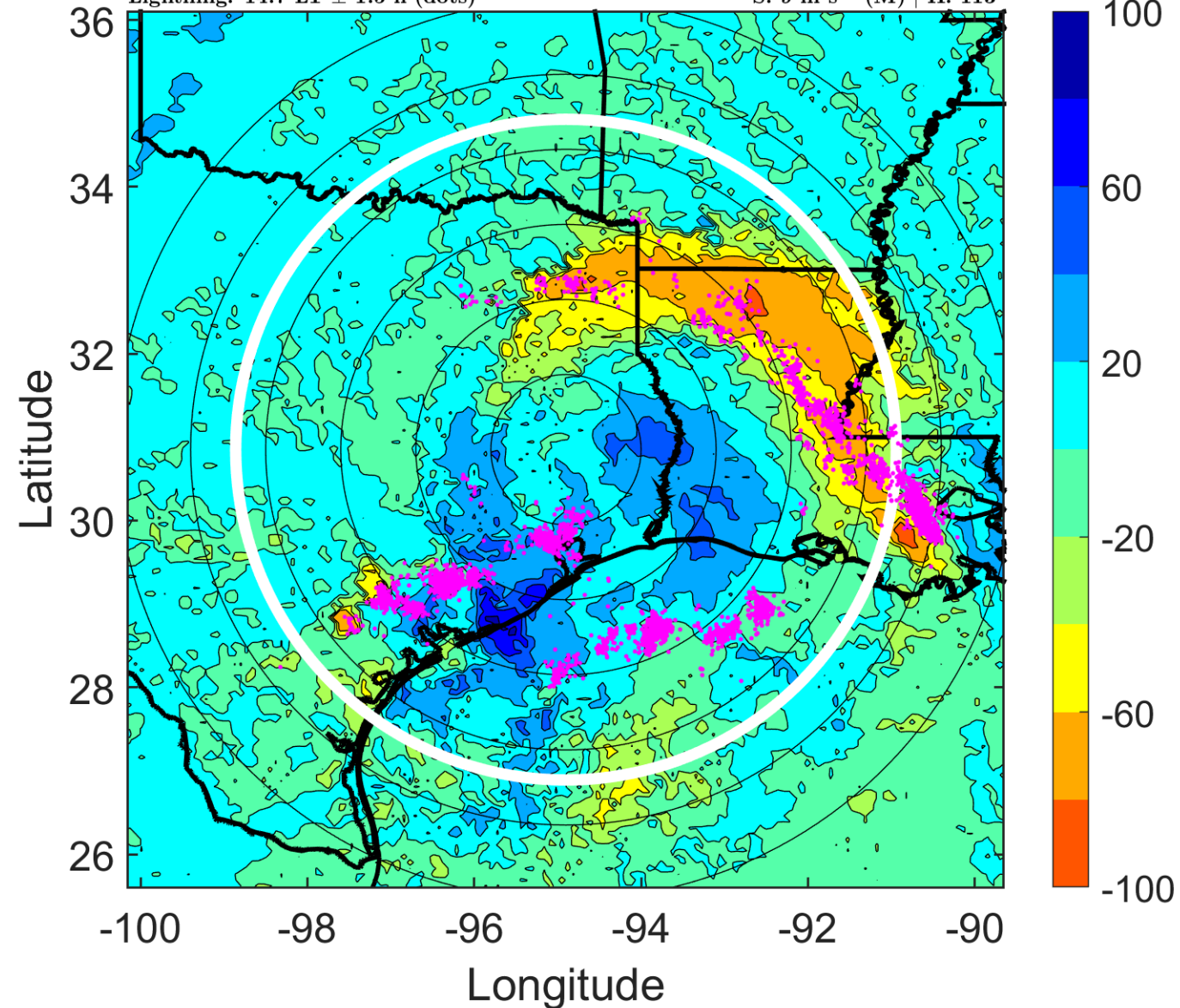
Δ t: 2019091821 (14.7 LT) - 2019091815 (8.7 LT)

Lightning: 14.7 LT \pm 1.5 h (dots)

LAND EFFECTS

11L (IMELDA) | 27.5 kt TD

S: 9 m s⁻¹ (M) | H: 113°



IR BT & Lightning

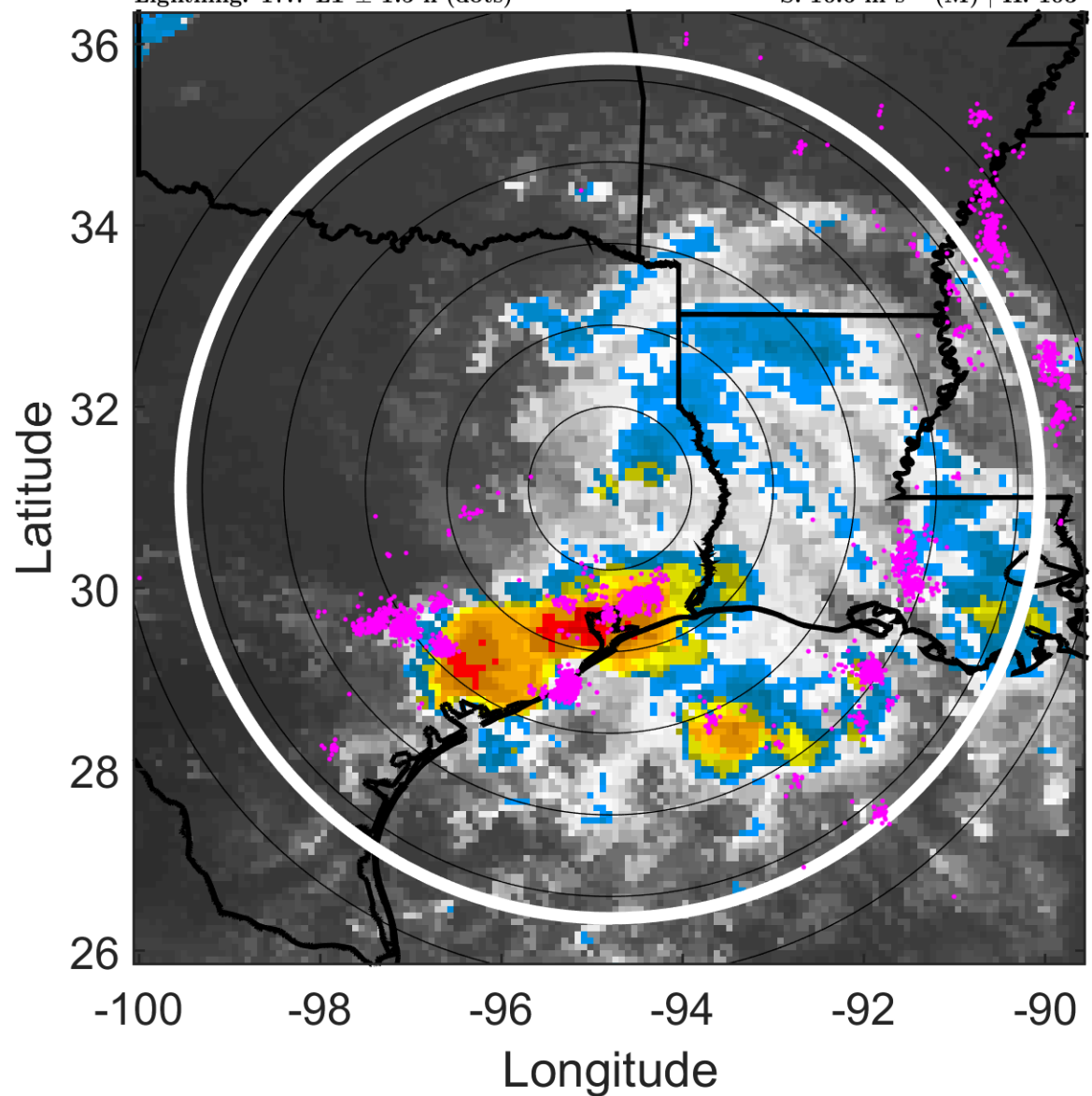
t: 2019091900 (17.7 LT)

Lightning: 17.7 LT \pm 1.5 h (dots)

LAND EFFECTS

11L (IMELDA) | 25 kt TD

S: 10.6 m s⁻¹ (M) | H: 103°



6-h IR BT Differences & Lightning

Δ t: 2019091900 (17.7 LT) - 2019091818 (11.7 LT)

Lightning: 17.7 LT \pm 1.5 h (dots)

LAND EFFECTS

11L (IMELDA) | 25 kt TD

S: 10.6 m s⁻¹ (M) | H: 103°

