

IR BT & Lightning

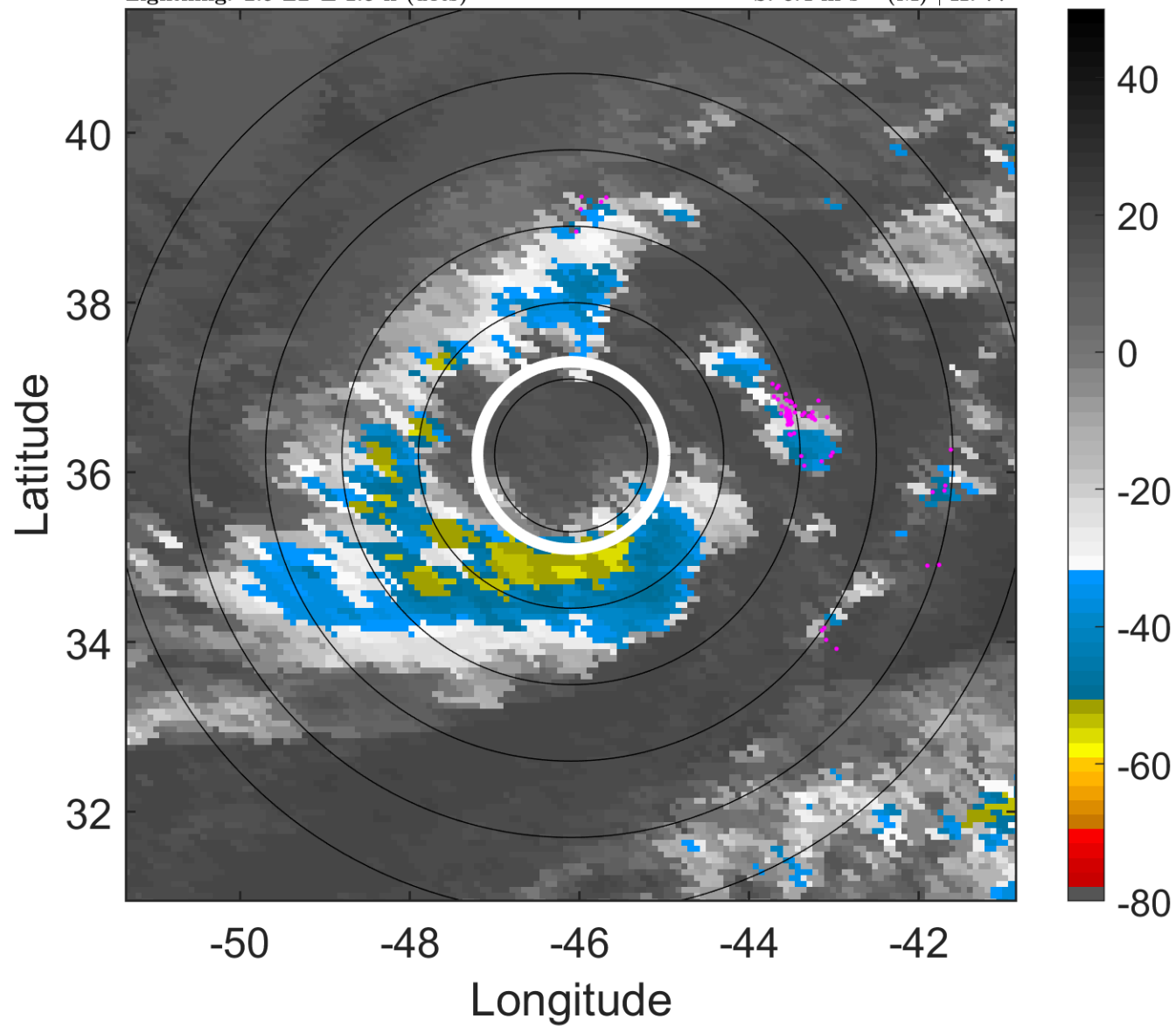
t: 2007092306 (2.9 LT)

Lightning: 2.9 LT \pm 1.5 h (dots)

PT: LLCP | EA: QUASI

11L (JERRY) | 35 kt SS

S: 6.4 m s⁻¹ (M) | H: 77°



6-h IR BT Differences & Lightning

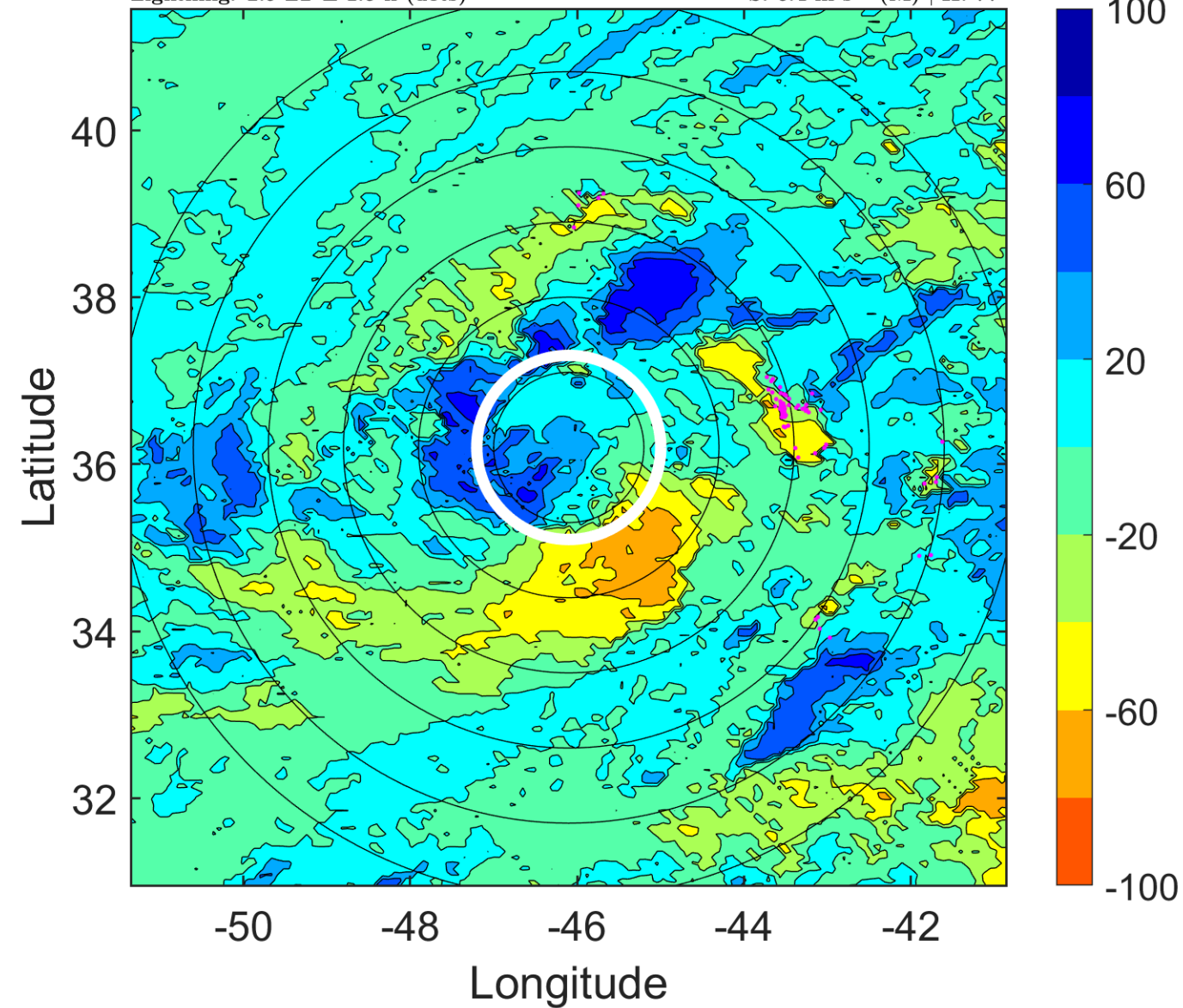
Δ t: 2007092306 (2.9 LT) - 2007092300 (20.9 LT)

Lightning: 2.9 LT \pm 1.5 h (dots)

PT: LLCP | EA: QUASI

11L (JERRY) | 35 kt SS

S: 6.4 m s⁻¹ (M) | H: 77°



IR BT & Lightning

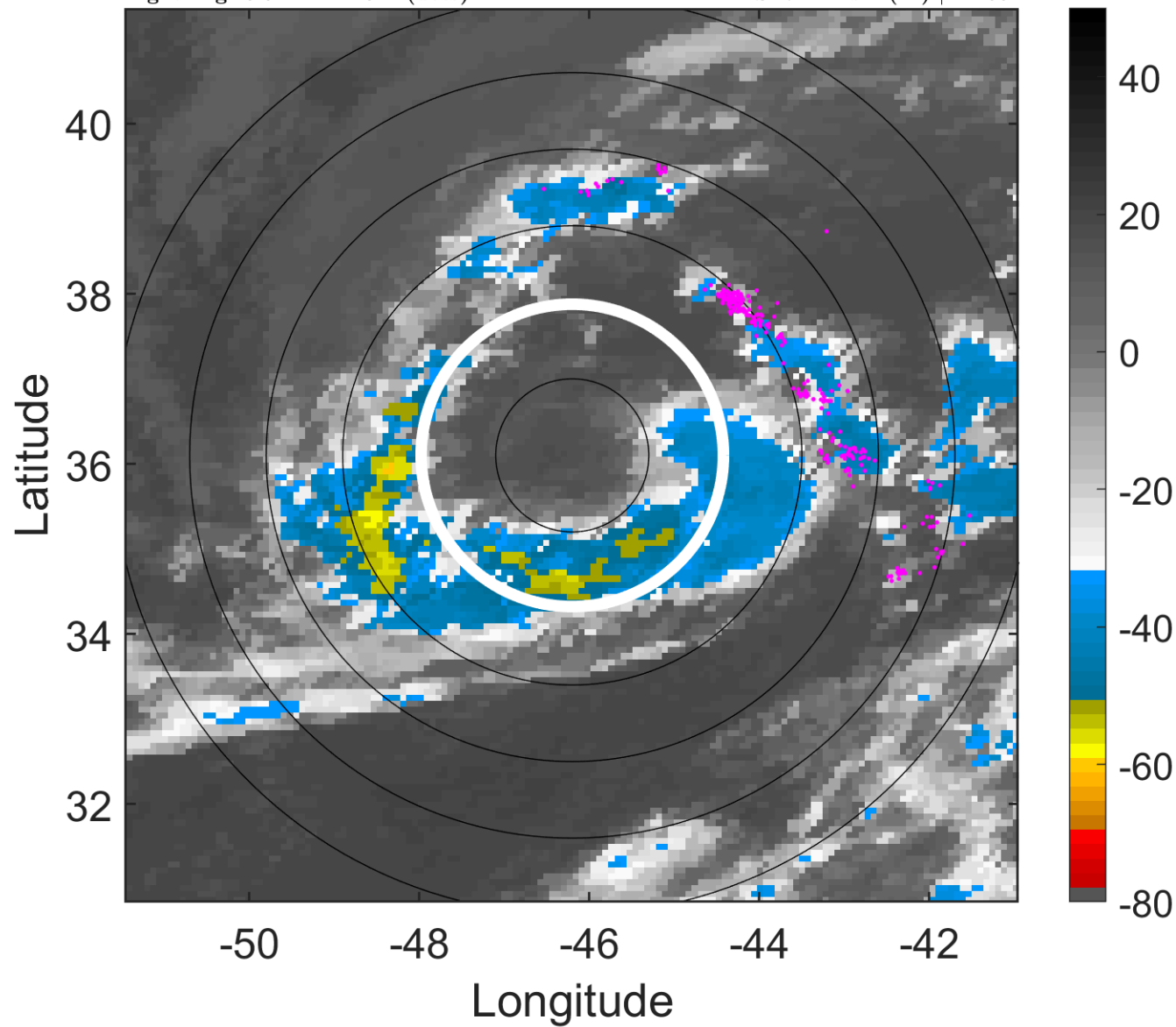
t: 2007092309 (5.9 LT)

Lightning: 5.9 LT \pm 1.5 h (dots)

PT: LLCP | EA: QUASI

11L (JERRY) | 35 kt SS

S: 7.2 m s⁻¹ (M) | H: 69°



6-h IR BT Differences & Lightning

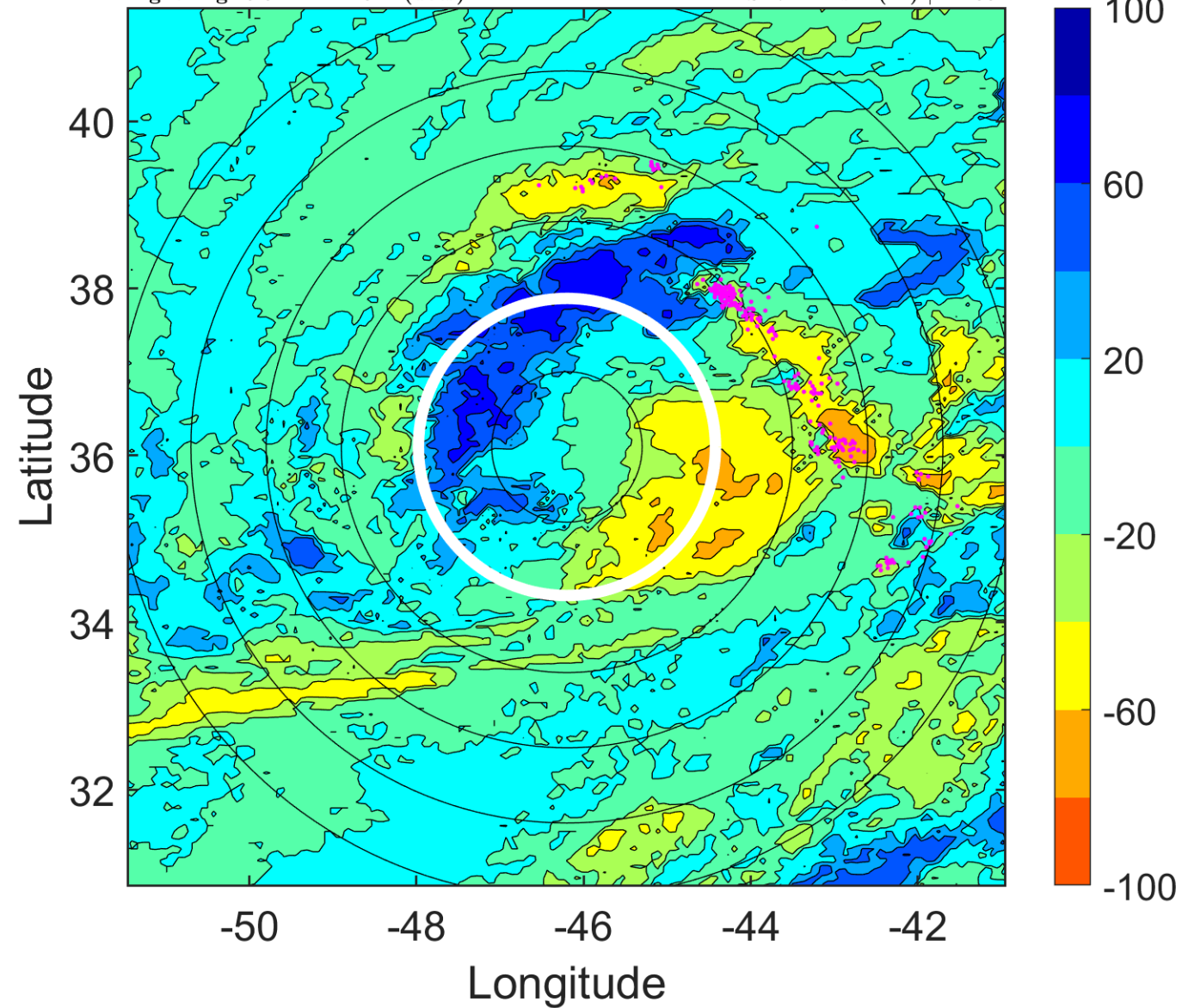
Δ t: 2007092309 (5.9 LT) - 2007092303 (23.9 LT)

Lightning: 5.9 LT \pm 1.5 h (dots)

PT: LLCP | EA: QUASI

11L (JERRY) | 35 kt SS

S: 7.2 m s⁻¹ (M) | H: 69°



IR BT & Lightning

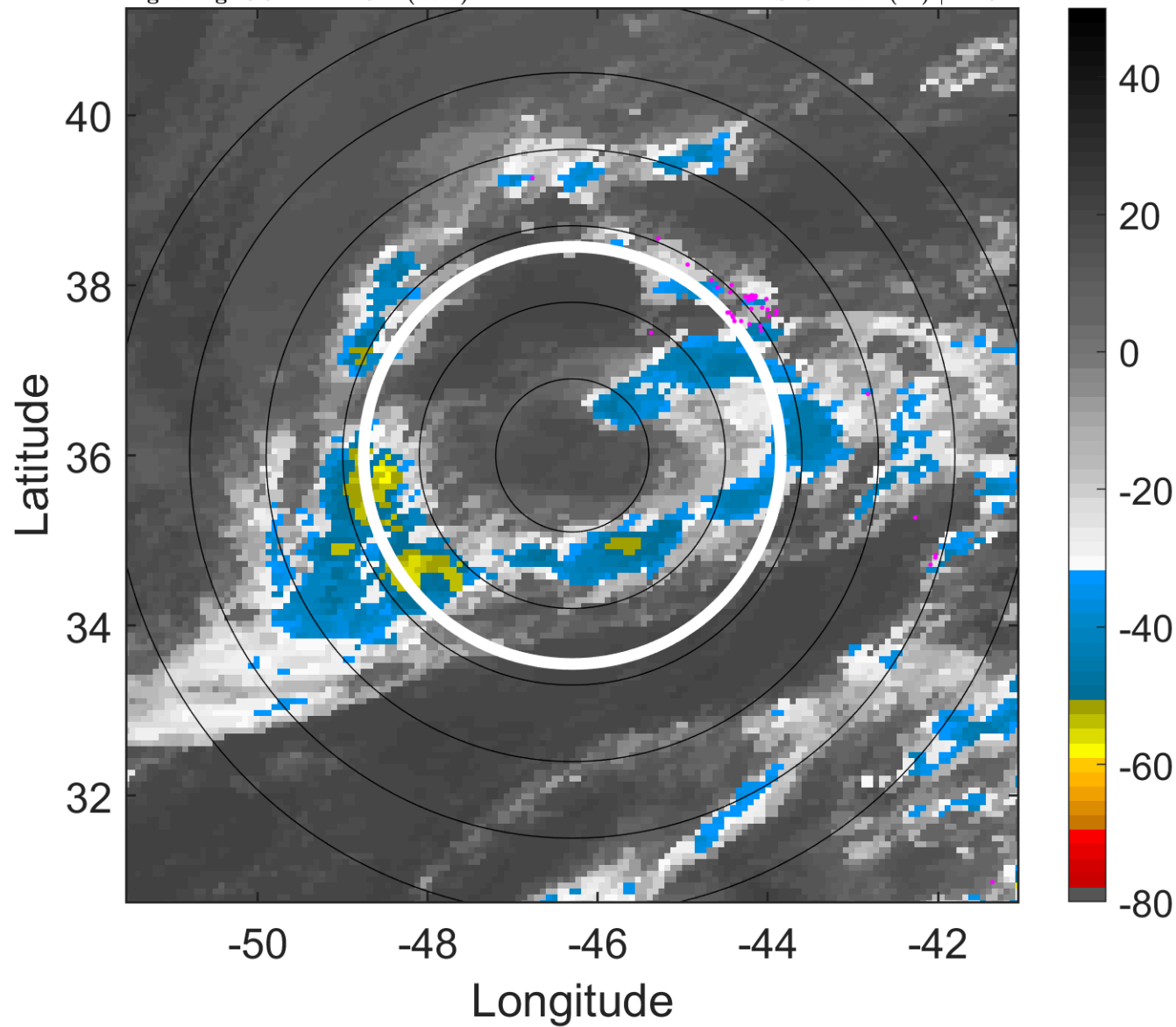
t: 2007092312 (8.9 LT)

Lightning: 8.9 LT \pm 1.5 h (dots)

PT: LLCP | EA: QUASI

11L (JERRY) | 35 kt SS

S: 8 m s⁻¹ (M) | H: 61°



6-h IR BT Differences & Lightning

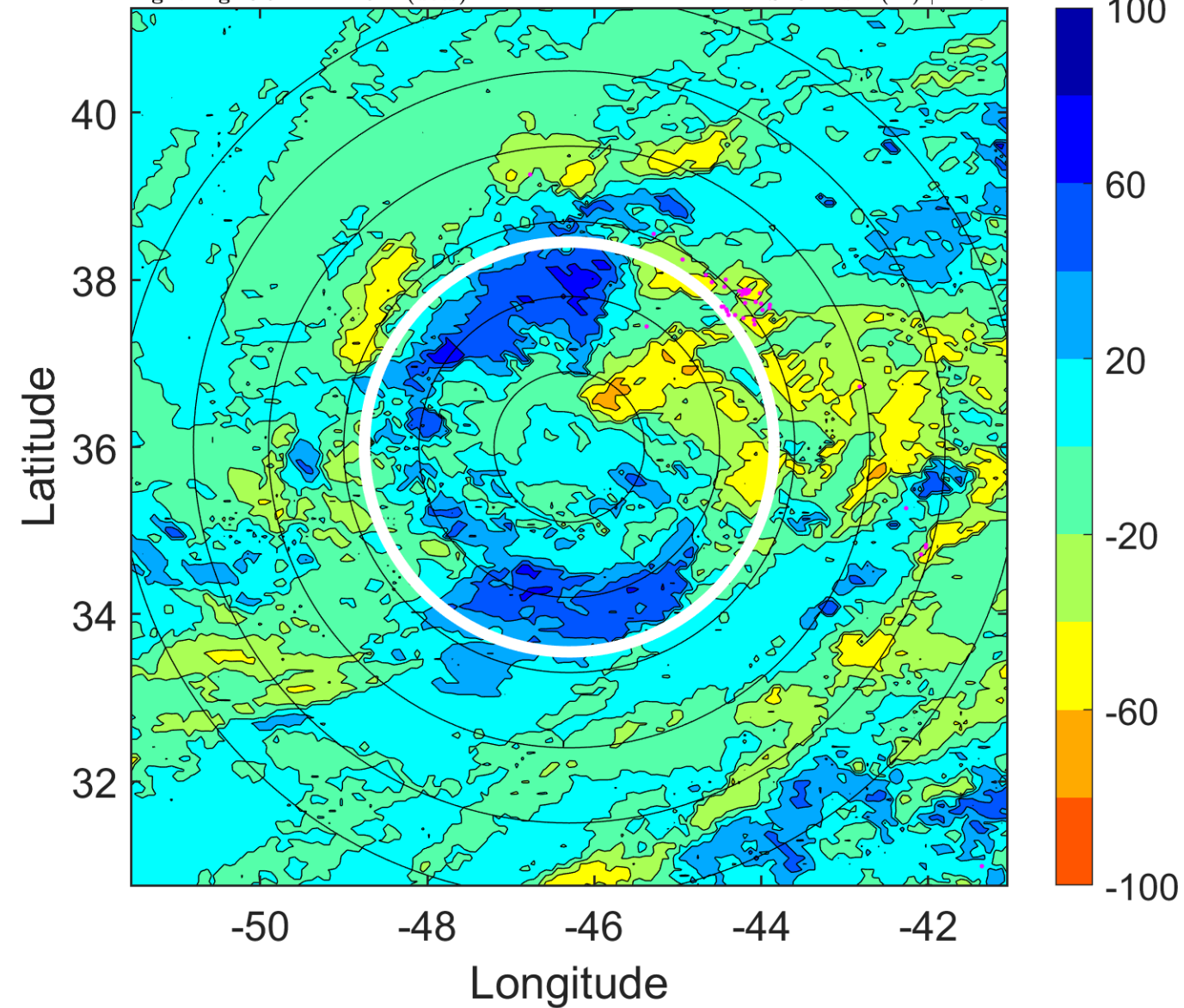
Δ t: 2007092312 (8.9 LT) - 2007092306 (2.9 LT)

Lightning: 8.9 LT \pm 1.5 h (dots)

PT: LLCP | EA: QUASI

11L (JERRY) | 35 kt SS

S: 8 m s⁻¹ (M) | H: 61°



IR BT & Lightning

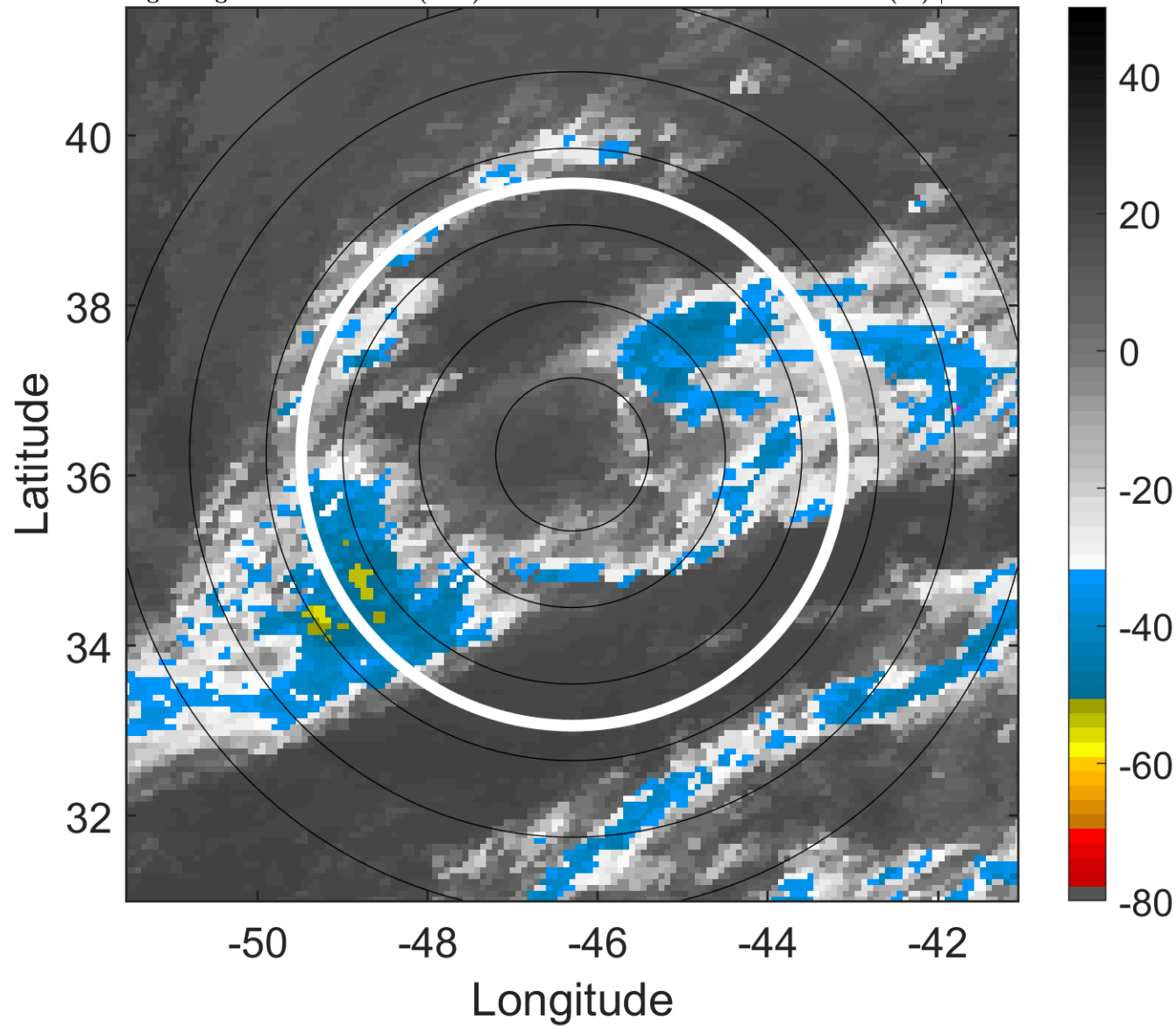
t: 2007092315 (11.9 LT)

Lightning: 11.9 LT \pm 1.5 h (dots)

PT: LLCP | EA: QUASI

11L (JERRY) | 35 kt SS

S: 8 m s⁻¹ (M) | H: 62°



6-h IR BT Differences & Lightning

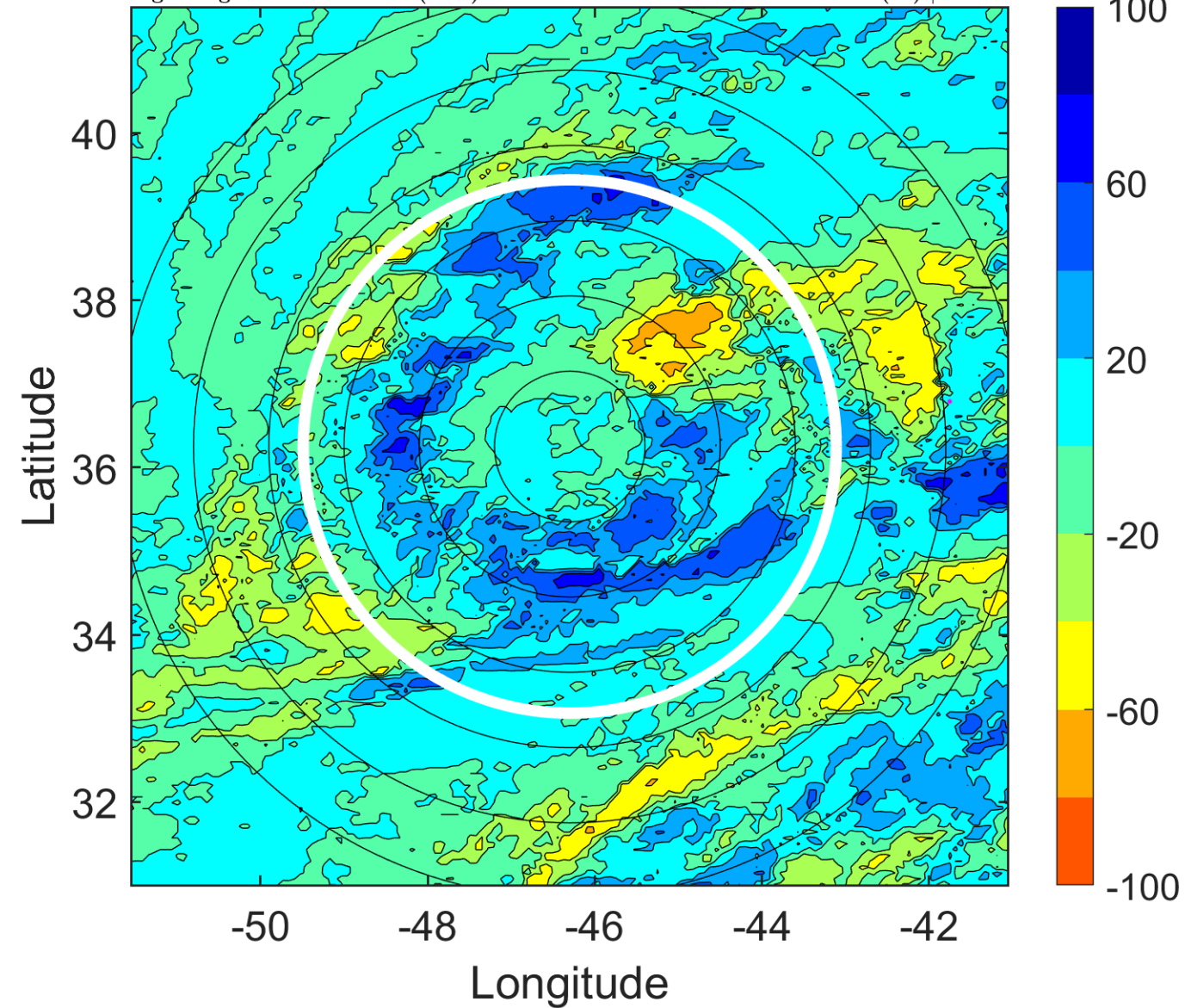
Δ t: 2007092315 (11.9 LT) - 2007092309 (5.9 LT)

Lightning: 11.9 LT \pm 1.5 h (dots)

PT: LLCP | EA: QUASI

11L (JERRY) | 35 kt SS

S: 8 m s⁻¹ (M) | H: 62°



IR BT & Lightning

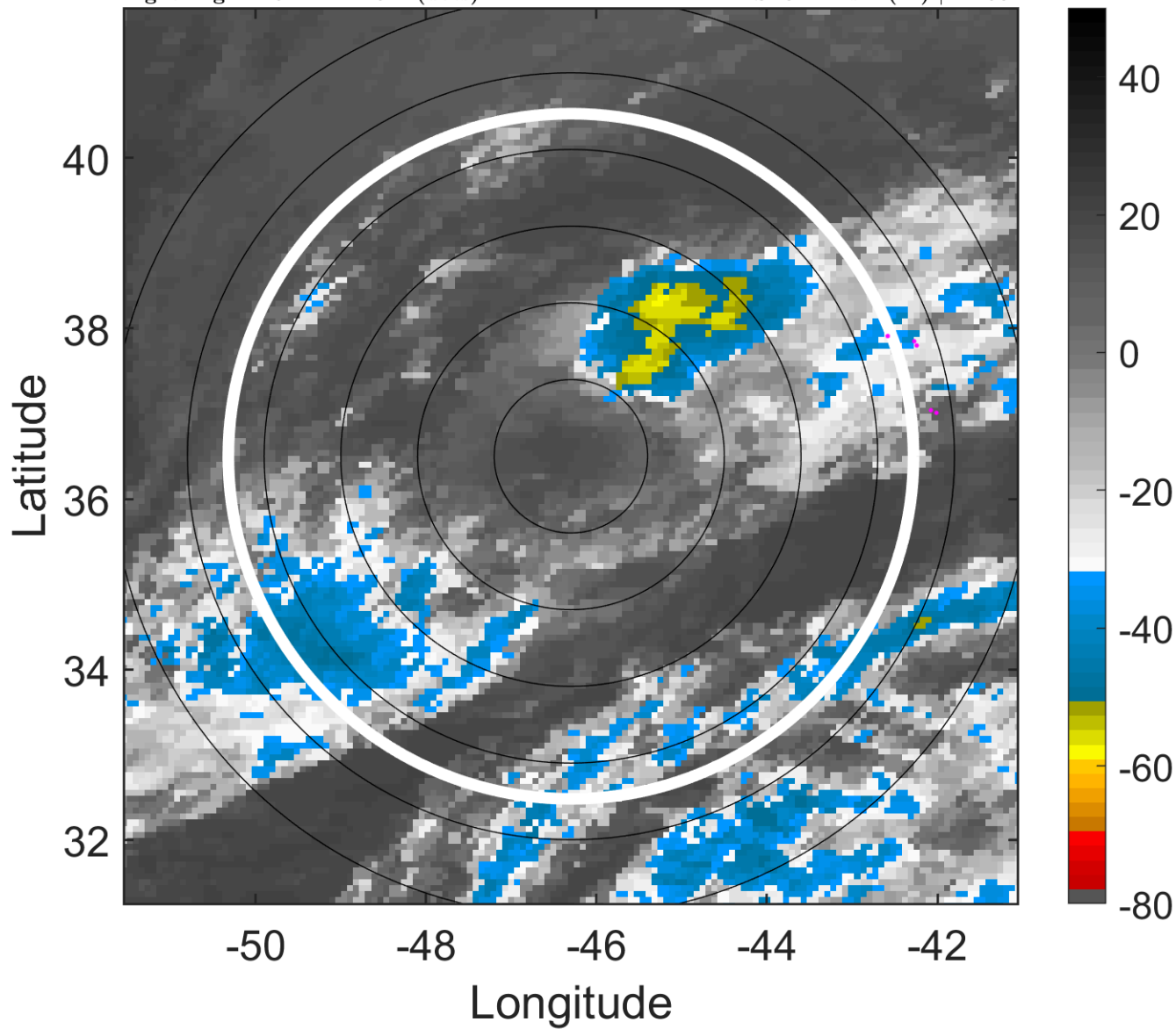
t: 2007092318 (14.9 LT)

Lightning: 14.9 LT \pm 1.5 h (dots)

PT: LLCP | EA: QUASI

11L (JERRY) | 35 kt SS

S: 8.1 m s⁻¹ (M) | H: 63°



6-h IR BT Differences & Lightning

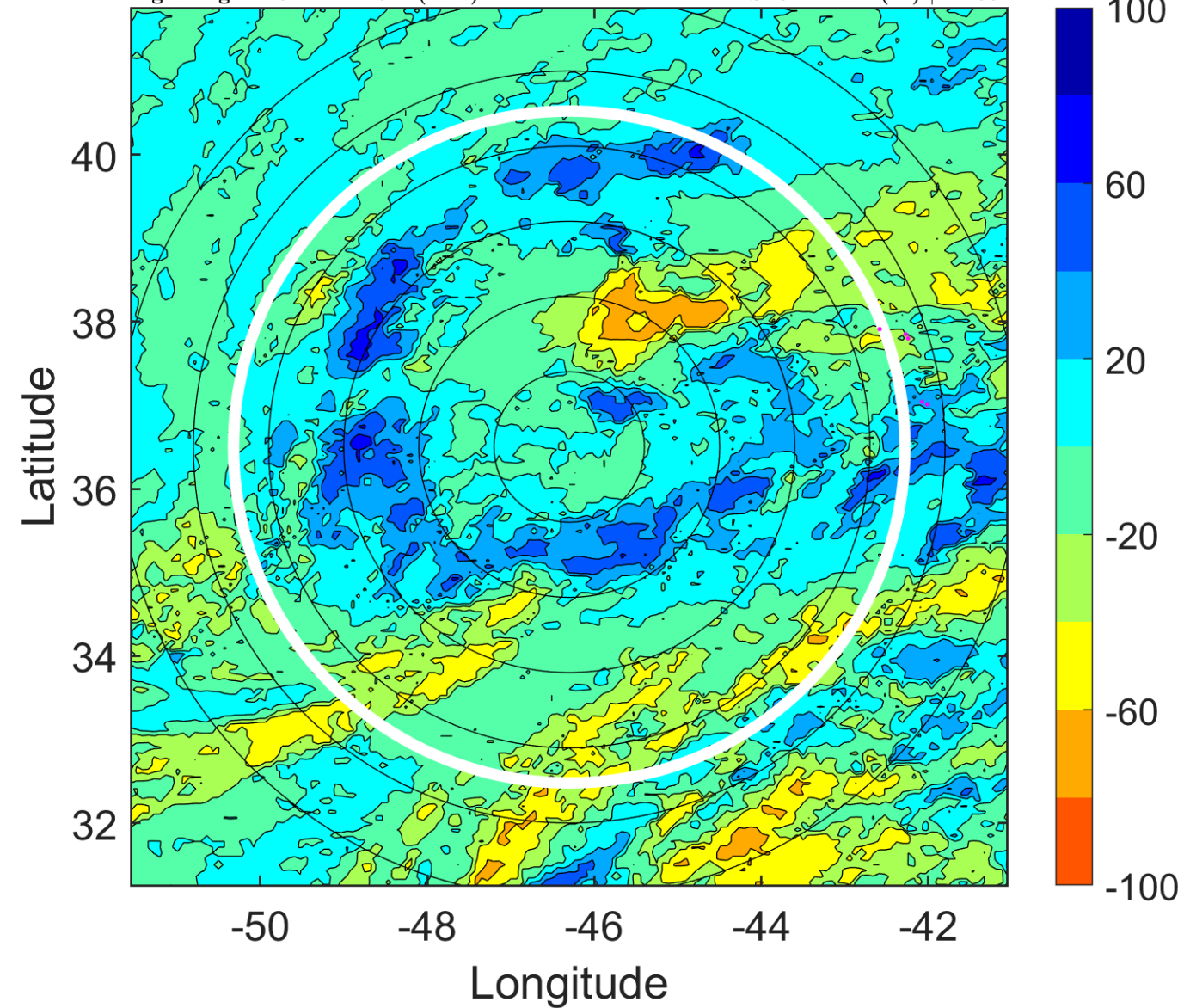
Δ t: 2007092318 (14.9 LT) - 2007092312 (8.9 LT)

Lightning: 14.9 LT \pm 1.5 h (dots)

PT: LLCP | EA: QUASI

11L (JERRY) | 35 kt SS

S: 8.1 m s⁻¹ (M) | H: 63°



IR BT & Lightning

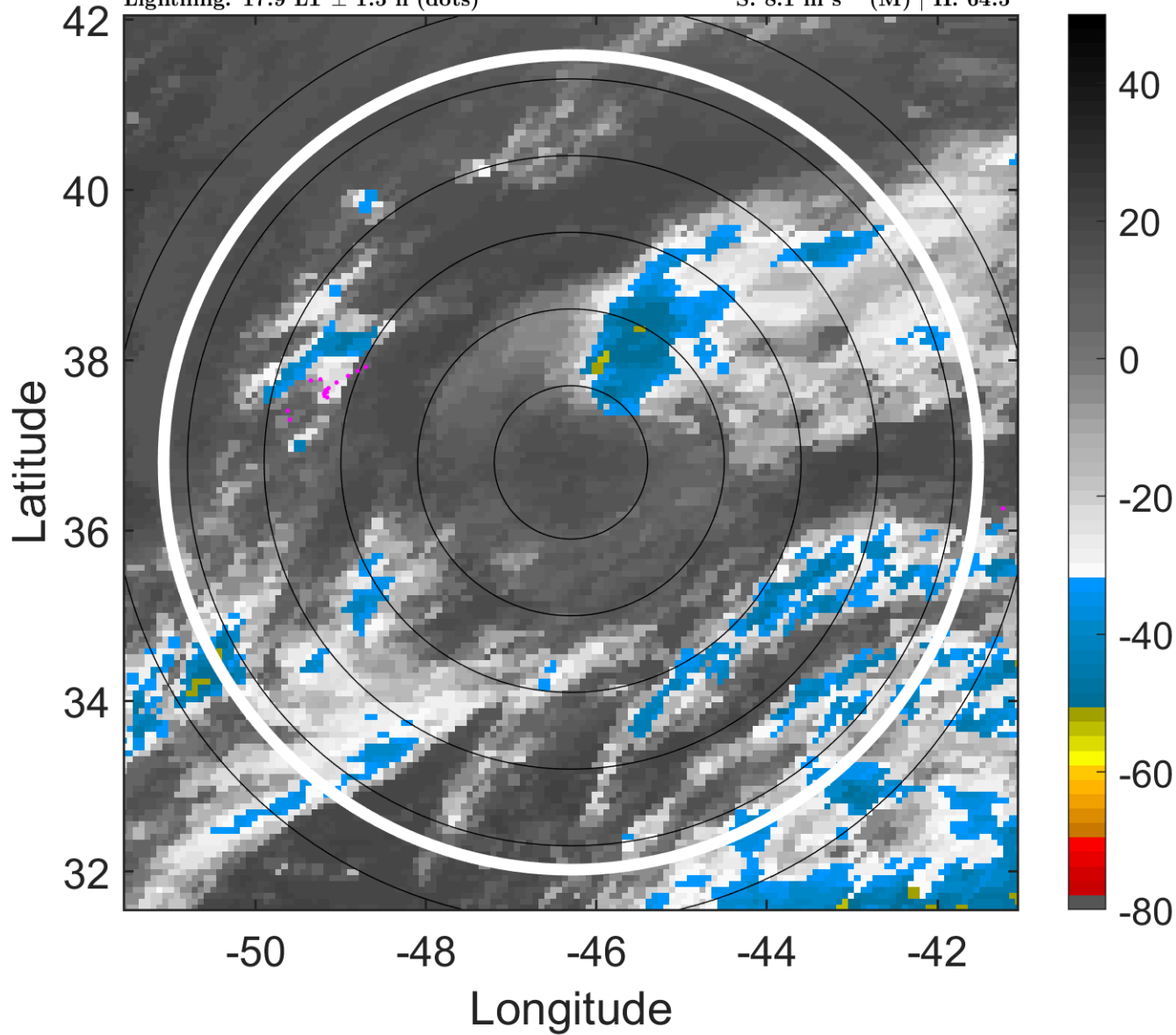
t: 2007092321 (17.9 LT)

Lightning: 17.9 LT \pm 1.5 h (dots)

PT: LLCP | EA: QUASI

11L (JERRY) | 35 kt SS

S: 8.1 m s⁻¹ (M) | H: 64.5°



6-h IR BT Differences & Lightning

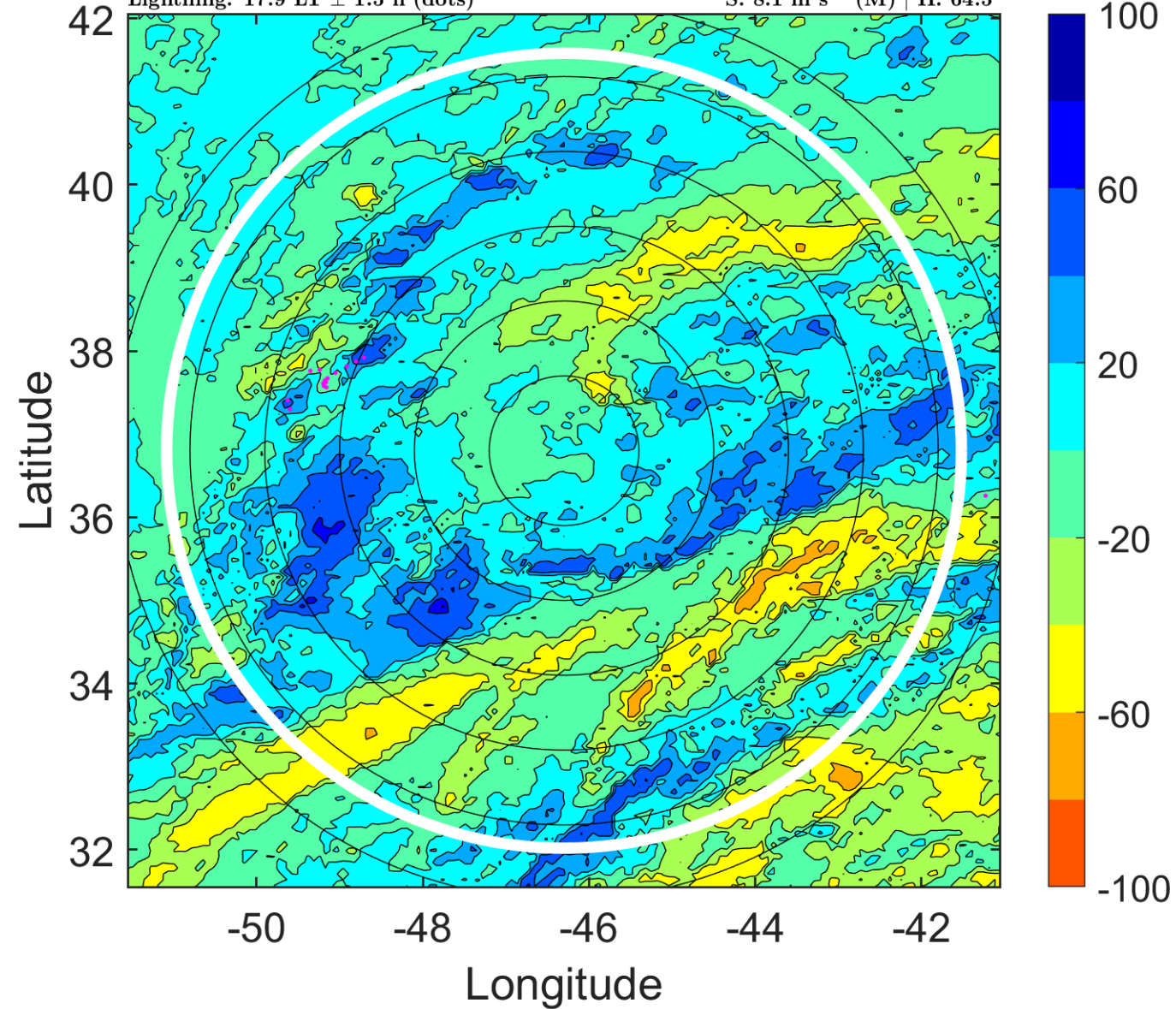
Δ t: 2007092321 (17.9 LT) - 2007092315 (11.9 LT)

Lightning: 17.9 LT \pm 1.5 h (dots)

PT: LLCP | EA: QUASI

11L (JERRY) | 35 kt SS

S: 8.1 m s⁻¹ (M) | H: 64.5°



IR BT & Lightning

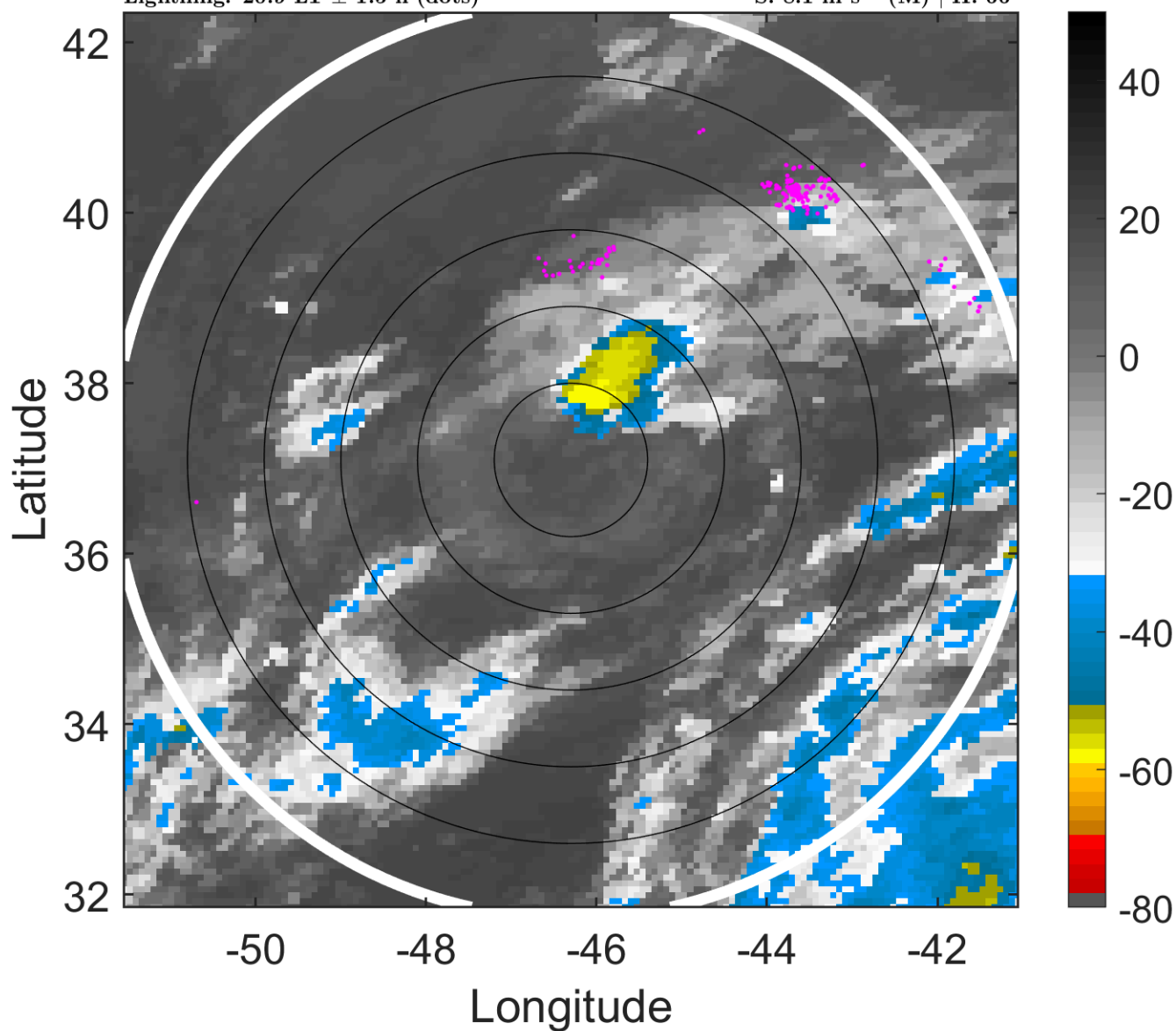
t: 2007092400 (20.9 LT)

Lightning: 20.9 LT \pm 1.5 h (dots)

PT: LLCP | EA: QUASI

11L (JERRY) | 35 kt TS

S: 8.1 m s⁻¹ (M) | H: 66°



6-h IR BT Differences & Lightning

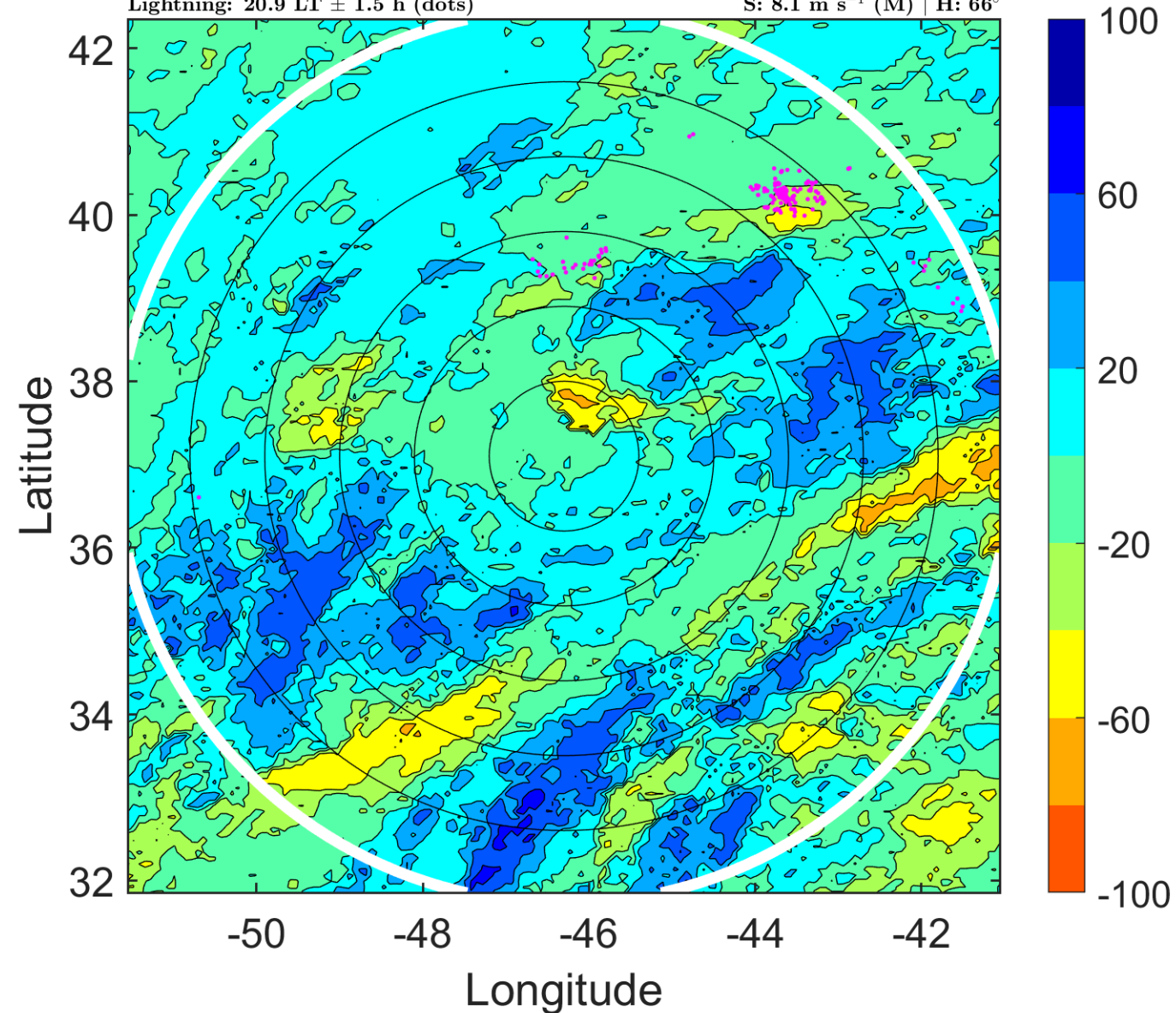
Δ t: 2007092400 (20.9 LT) - 2007092318 (14.9 LT)

Lightning: 20.9 LT \pm 1.5 h (dots)

PT: LLCP | EA: QUASI

11L (JERRY) | 35 kt TS

S: 8.1 m s⁻¹ (M) | H: 66°



IR BT & Lightning

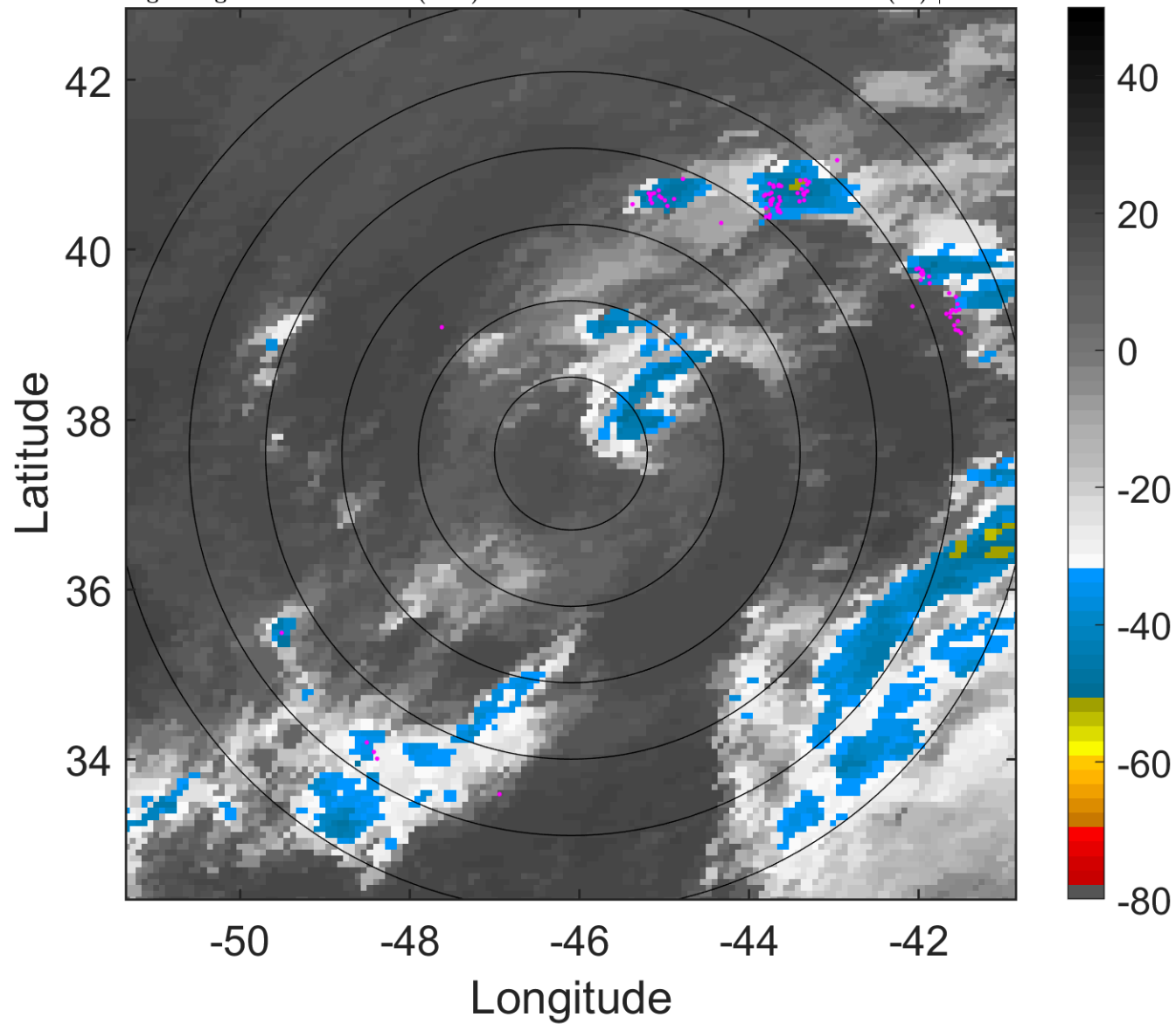
t: 2007092403 (23.9 LT)

Lightning: 23.9 LT \pm 1.5 h (dots)

PT: LLCP | EA: QUASI

11L (JERRY) | 35 kt TS

S: 7.6 m s⁻¹ (M) | H: 63°



6-h IR BT Differences & Lightning

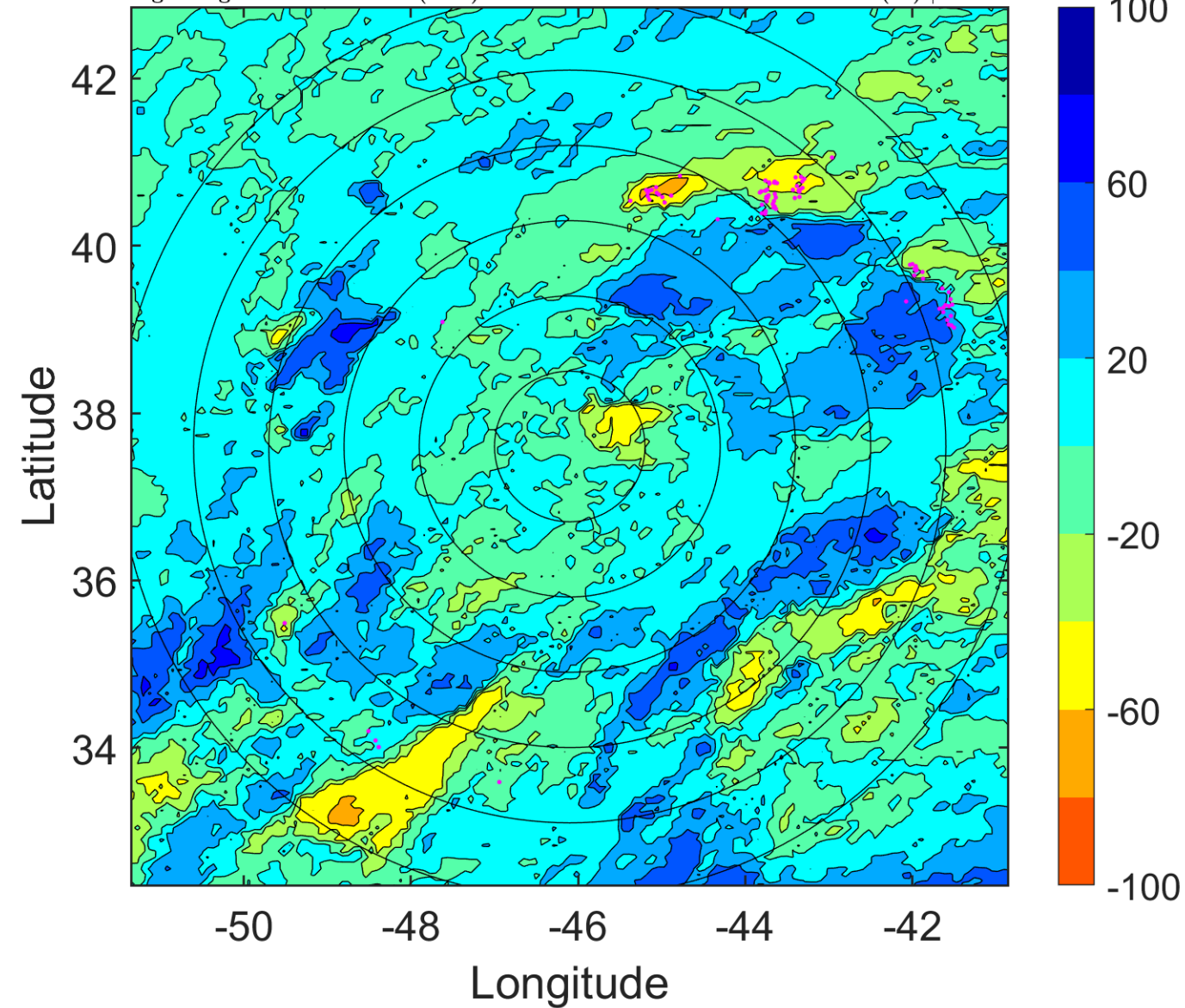
Δ t: 2007092403 (23.9 LT) - 2007092321 (17.9 LT)

Lightning: 23.9 LT \pm 1.5 h (dots)

PT: LLCP | EA: QUASI

11L (JERRY) | 35 kt TS

S: 7.6 m s⁻¹ (M) | H: 63°



IR BT & Lightning

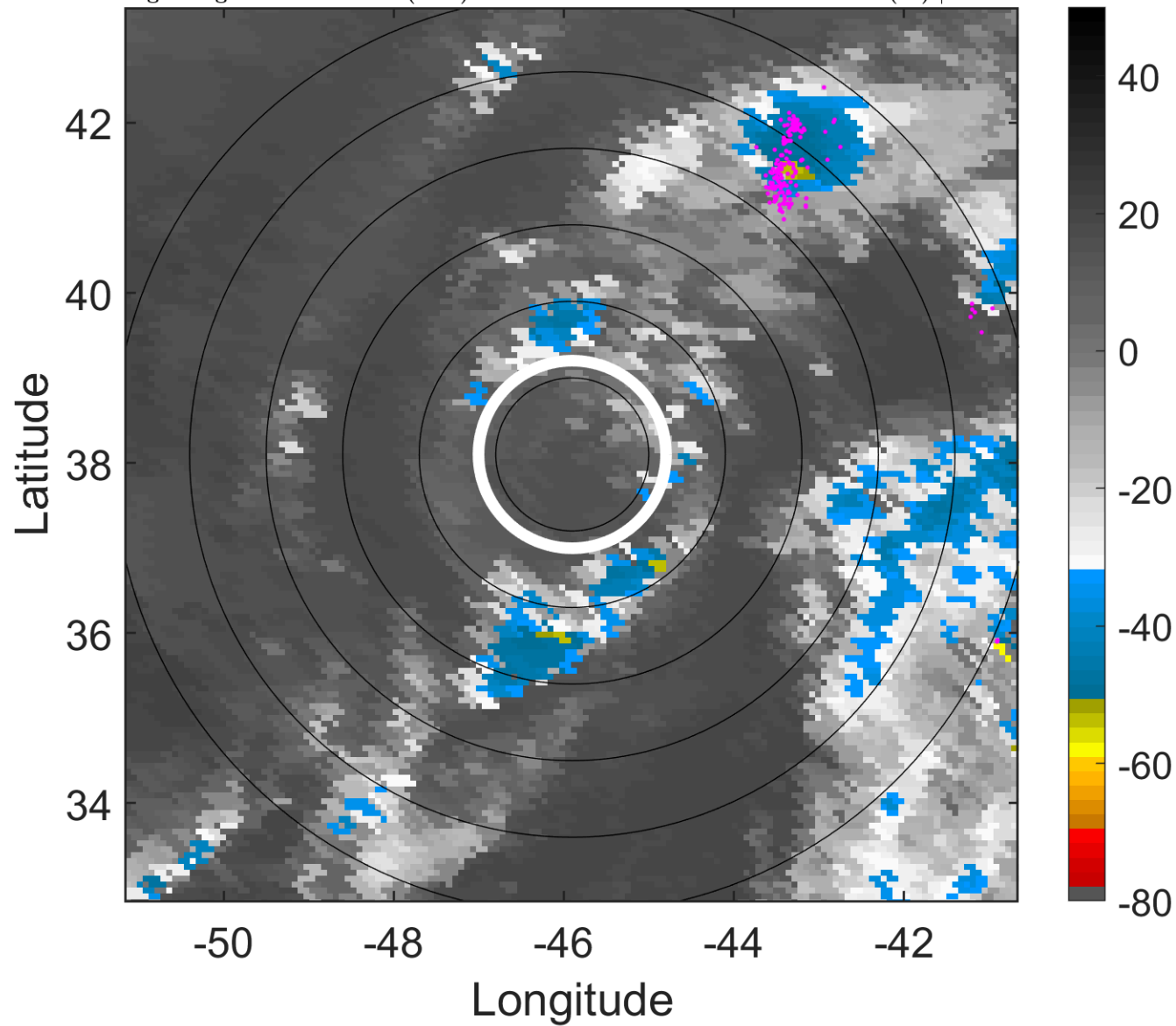
t: 2007092406 (2.9 LT)

Lightning: 2.9 LT \pm 1.5 h (dots)

PT: LLCP | EA: INACT

11L (JERRY) | 35 kt TS

S: 7.2 m s⁻¹ (M) | H: 60°



6-h IR BT Differences & Lightning

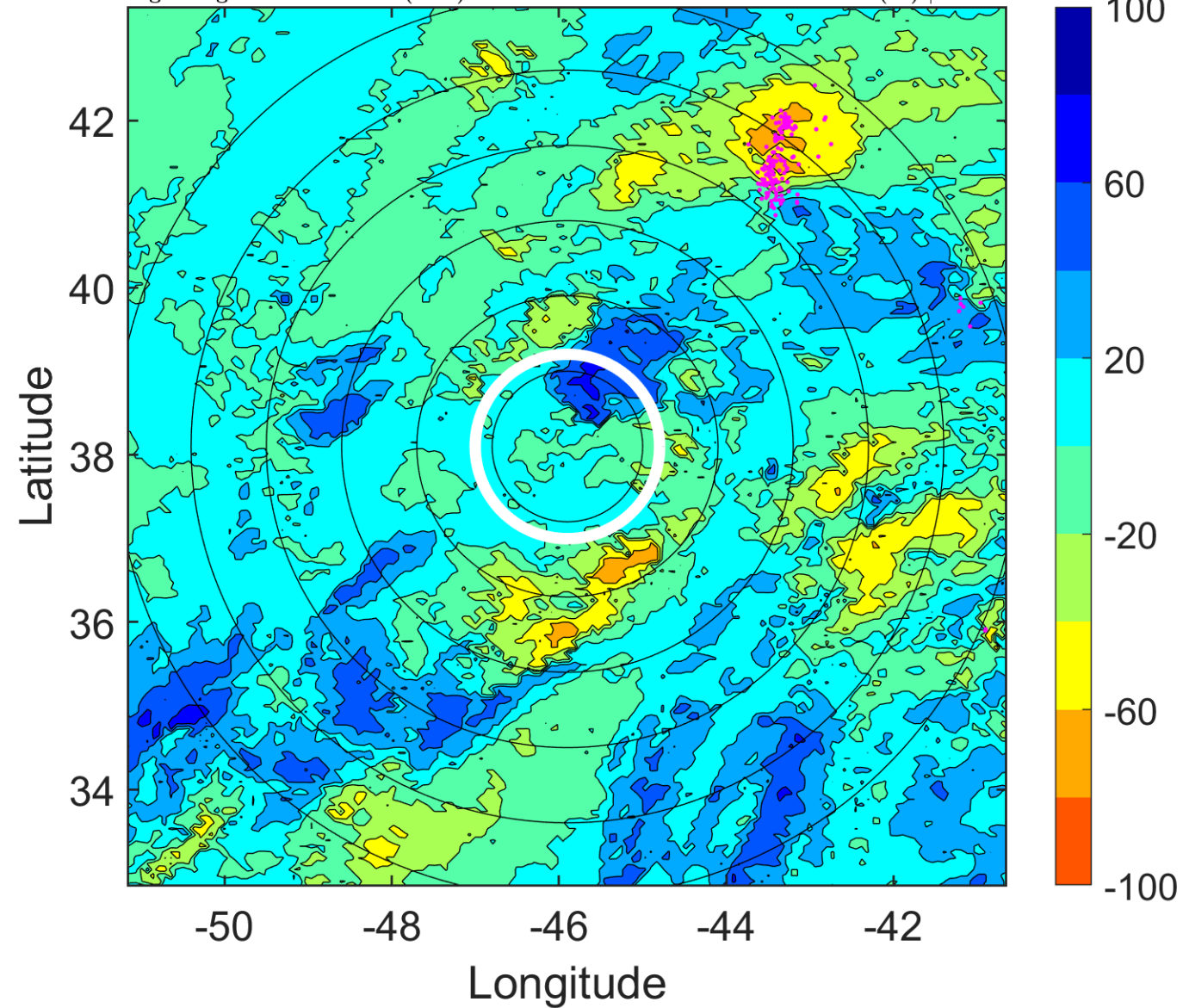
Δ t: 2007092406 (2.9 LT) - 2007092400 (20.9 LT)

Lightning: 2.9 LT \pm 1.5 h (dots)

PT: LLCP | EA: INACT

11L (JERRY) | 35 kt TS

S: 7.2 m s⁻¹ (M) | H: 60°



IR BT & Lightning

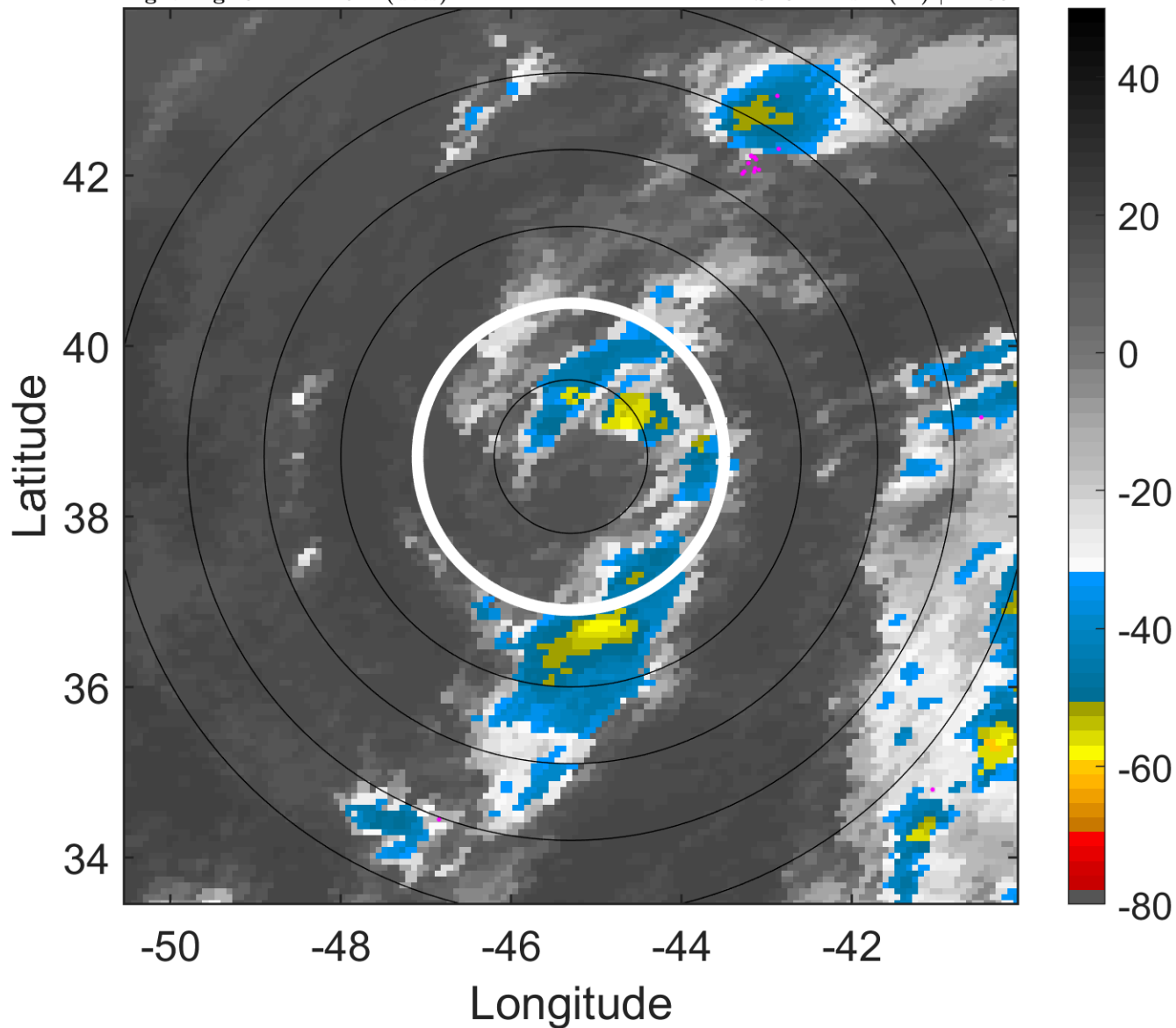
t: 2007092409 (6 LT)

Lightning: 6 LT \pm 1.5 h (dots)

PT: LLCP | EA: INACT

11L (JERRY) | 35 kt TS

S: 6.4 m s⁻¹ (M) | H: 55°



6-h IR BT Differences & Lightning

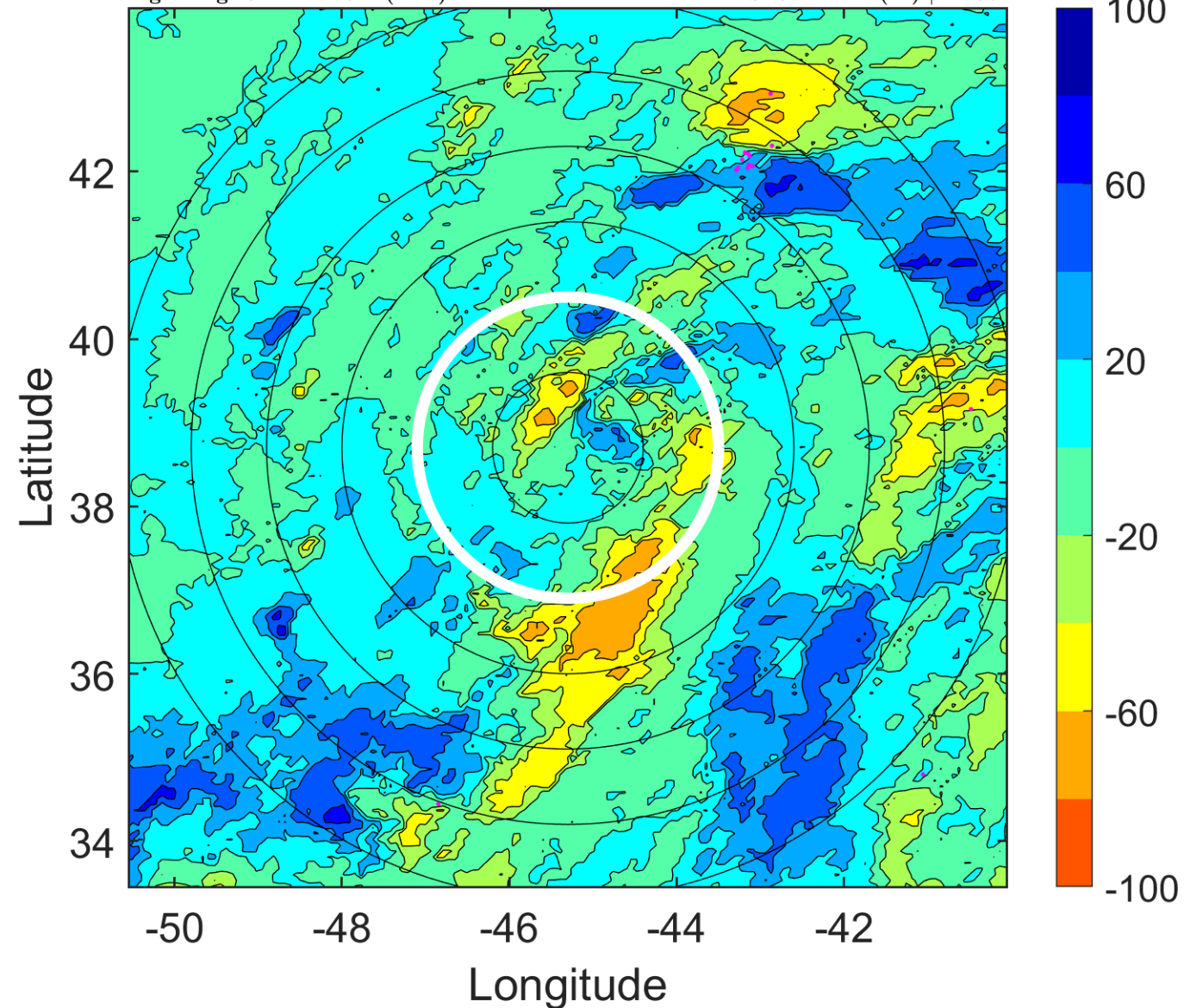
Δ t: 2007092409 (6 LT) - 2007092403 (23.9 LT)

Lightning: 6 LT \pm 1.5 h (dots)

PT: LLCP | EA: INACT

11L (JERRY) | 35 kt TS

S: 6.4 m s⁻¹ (M) | H: 55°



IR BT & Lightning

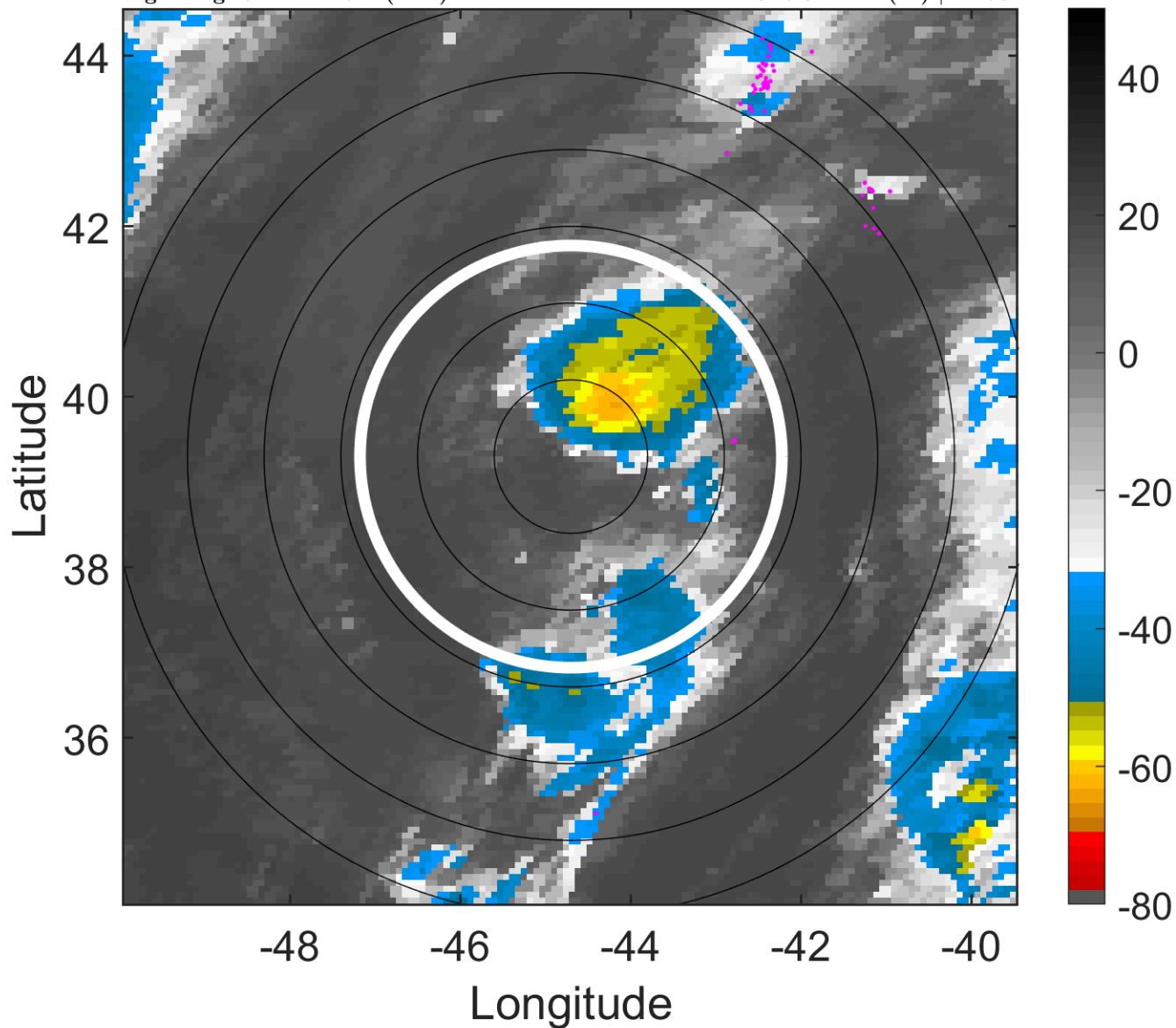
t: 2007092412 (9 LT)

Lightning: 9 LT \pm 1.5 h (dots)

PT: LLCP | EA: INACT

11L (JERRY) | 35 kt TS

S: 5.6 m s⁻¹ (M) | H: 50°



6-h IR BT Differences & Lightning

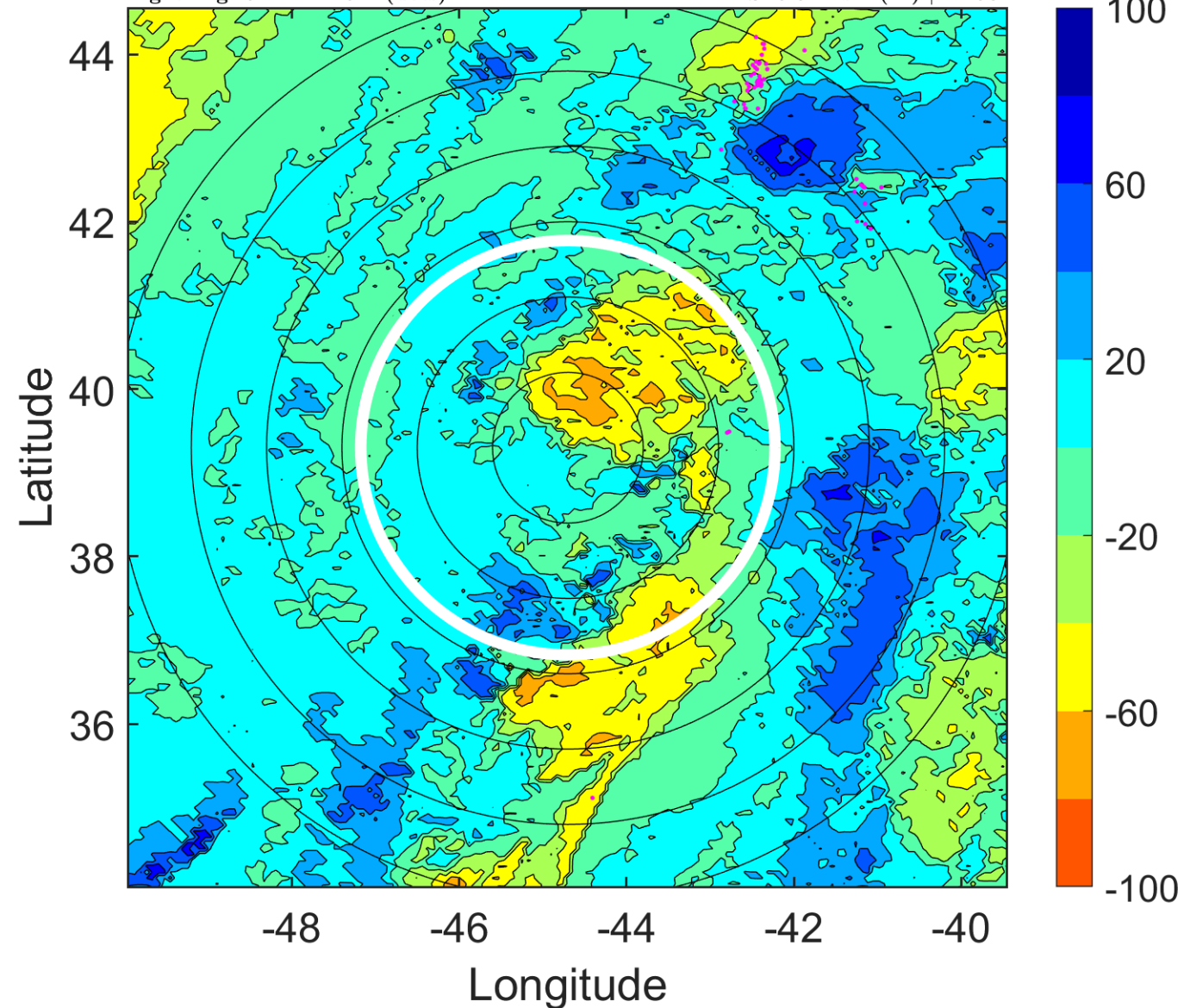
Δ t: 2007092412 (9 LT) - 2007092406 (2.9 LT)

Lightning: 9 LT \pm 1.5 h (dots)

PT: LLCP | EA: INACT

11L (JERRY) | 35 kt TS

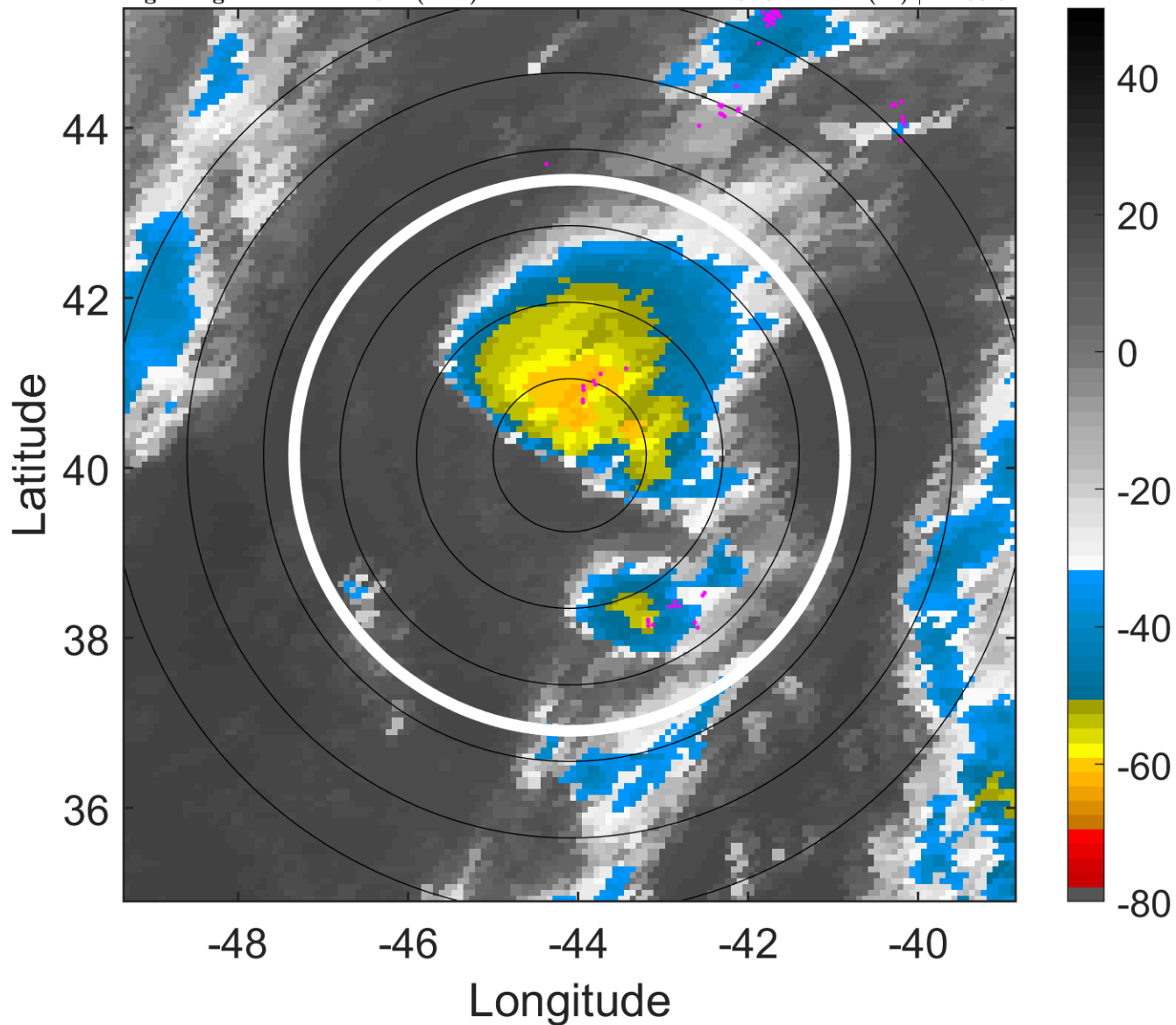
S: 5.6 m s⁻¹ (M) | H: 50°



IR BT & Lightning

t: 2007092415 (12.1 LT)
Lightning: 12.1 LT \pm 1.5 h (dots)

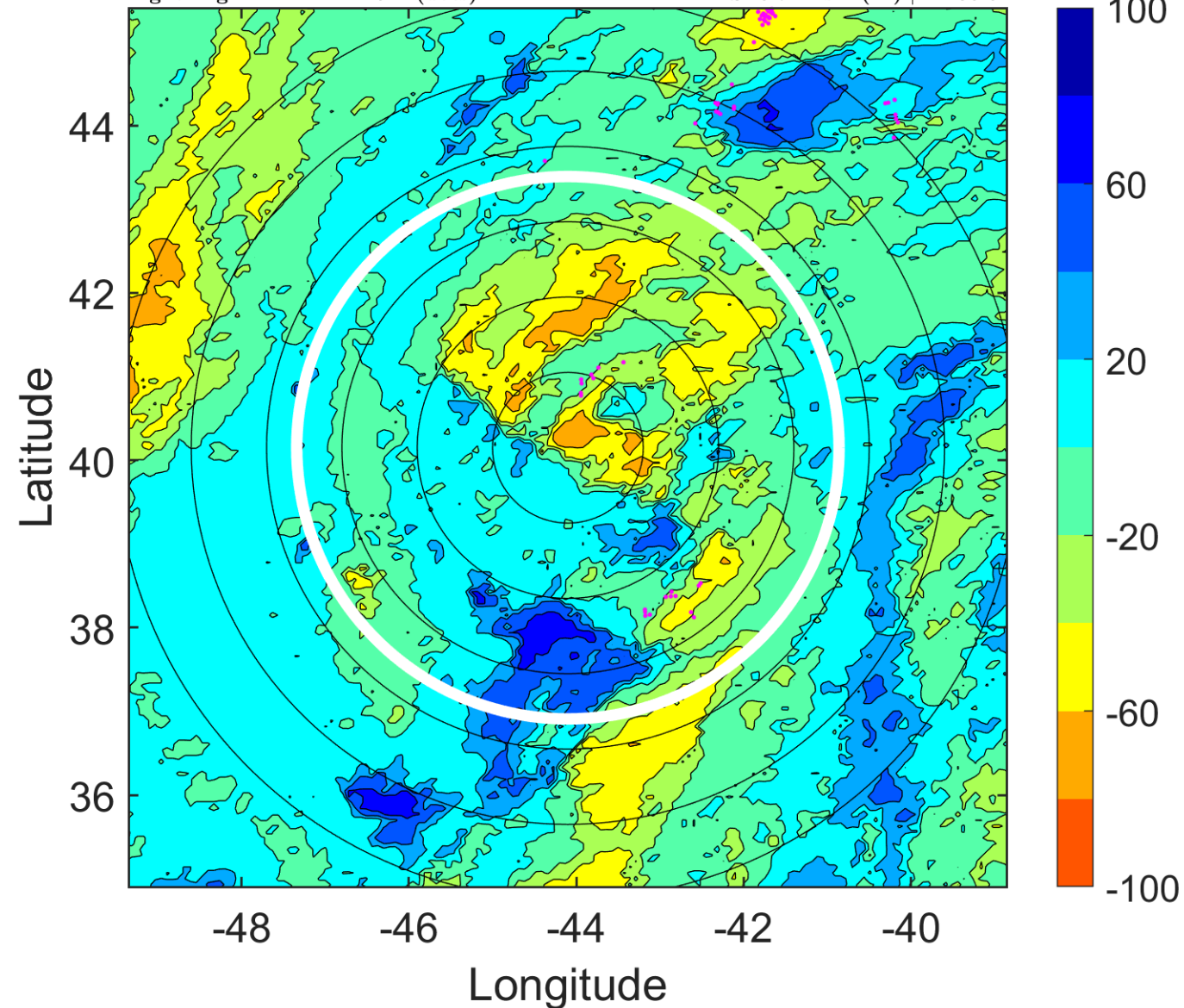
PT: LLCP | EA: INACT
11L (JERRY) | 32.5 kt TD
S: 6.7 m s⁻¹ (M) | H: 36.5°



6-h IR BT Differences & Lightning

Δ t: 2007092415 (12.1 LT) - 2007092409 (6 LT)
Lightning: 12.1 LT \pm 1.5 h (dots)

PT: LLCP | EA: INACT
11L (JERRY) | 32.5 kt TD
S: 6.7 m s⁻¹ (M) | H: 36.5°



IR BT & Lightning

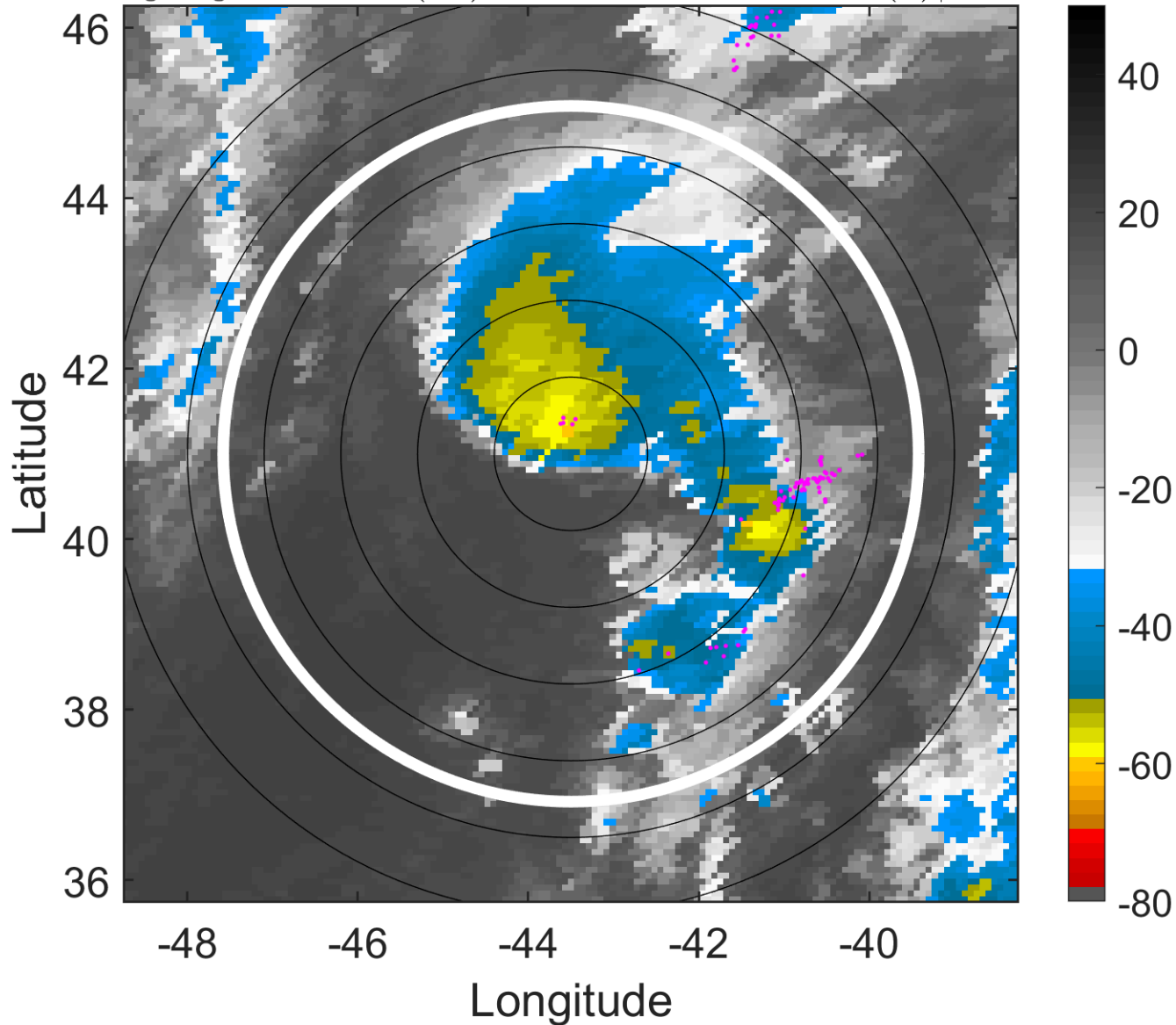
t: 2007092418 (15.1 LT)

Lightning: 15.1 LT \pm 1.5 h (dots)

PT: LLCP | EA: INACT

11L (JERRY) | 30 kt TD

S: 7.8 m s⁻¹ (M) | H: 23°



6-h IR BT Differences & Lightning

Δ t: 2007092418 (15.1 LT) - 2007092412 (9 LT)

Lightning: 15.1 LT \pm 1.5 h (dots)

PT: LLCP | EA: INACT

11L (JERRY) | 30 kt TD

S: 7.8 m s⁻¹ (M) | H: 23°

