

IR BT & Lightning

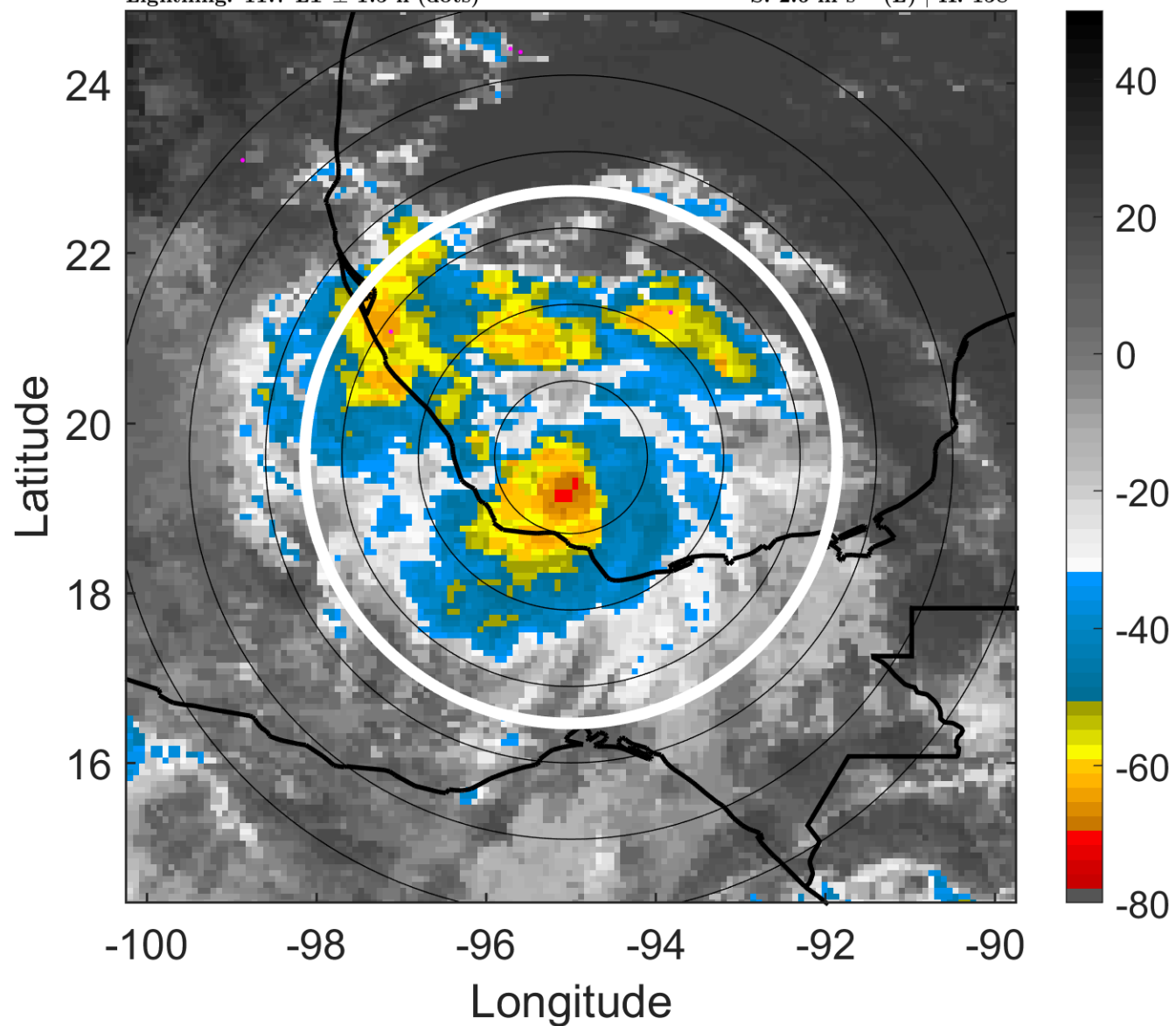
t: 2005082218 (11.7 LT)

Lightning: 11.7 LT \pm 1.5 h (dots)

PT: LLCP | EA: QUASI

11L (JOSE) | 35 kt TS

S: 2.6 m s⁻¹ (L) | H: 158°



6-h IR BT Differences & Lightning

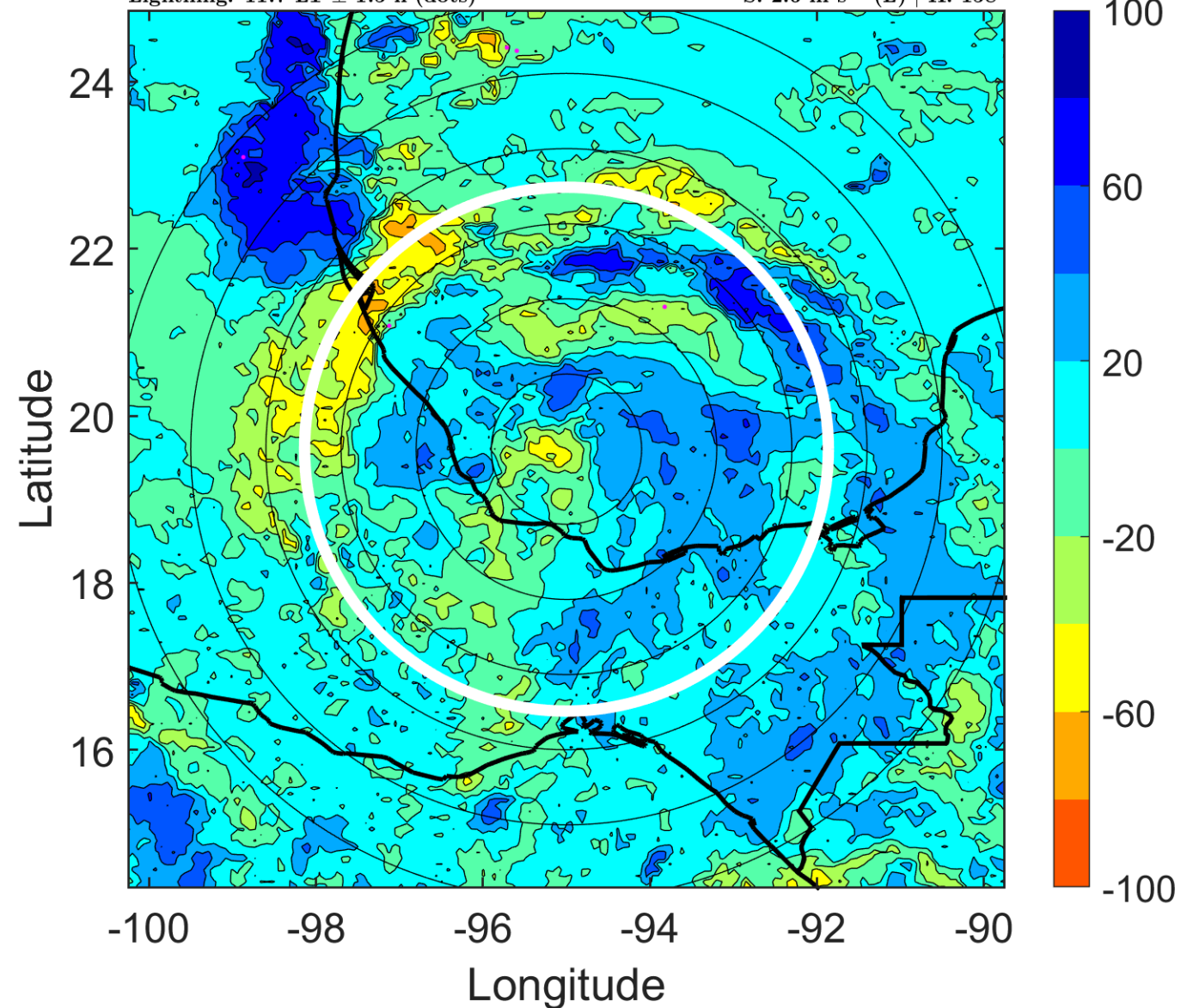
Δ t: 2005082218 (11.7 LT) - 2005082212 (5.7 LT)

Lightning: 11.7 LT \pm 1.5 h (dots)

PT: LLCP | EA: QUASI

11L (JOSE) | 35 kt TS

S: 2.6 m s⁻¹ (L) | H: 158°



IR BT & Lightning

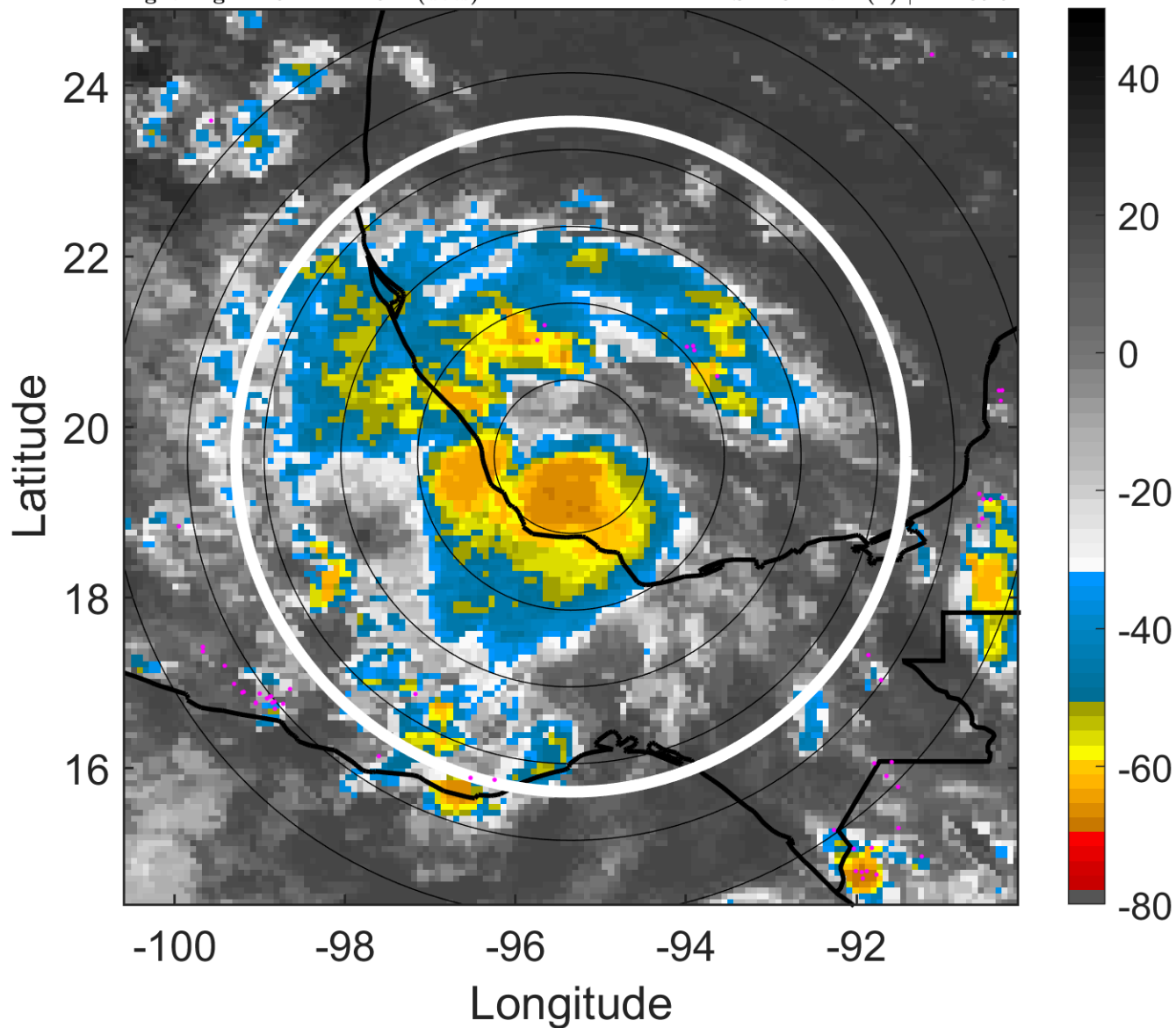
t: 2005082221 (14.6 LT)

Lightning: 14.6 LT \pm 1.5 h (dots)

PT: LLCP | EA: QUASI

11L (JOSE) | 40 kt TS

S: 2.8 m s⁻¹ (L) | H: 185.5°



6-h IR BT Differences & Lightning

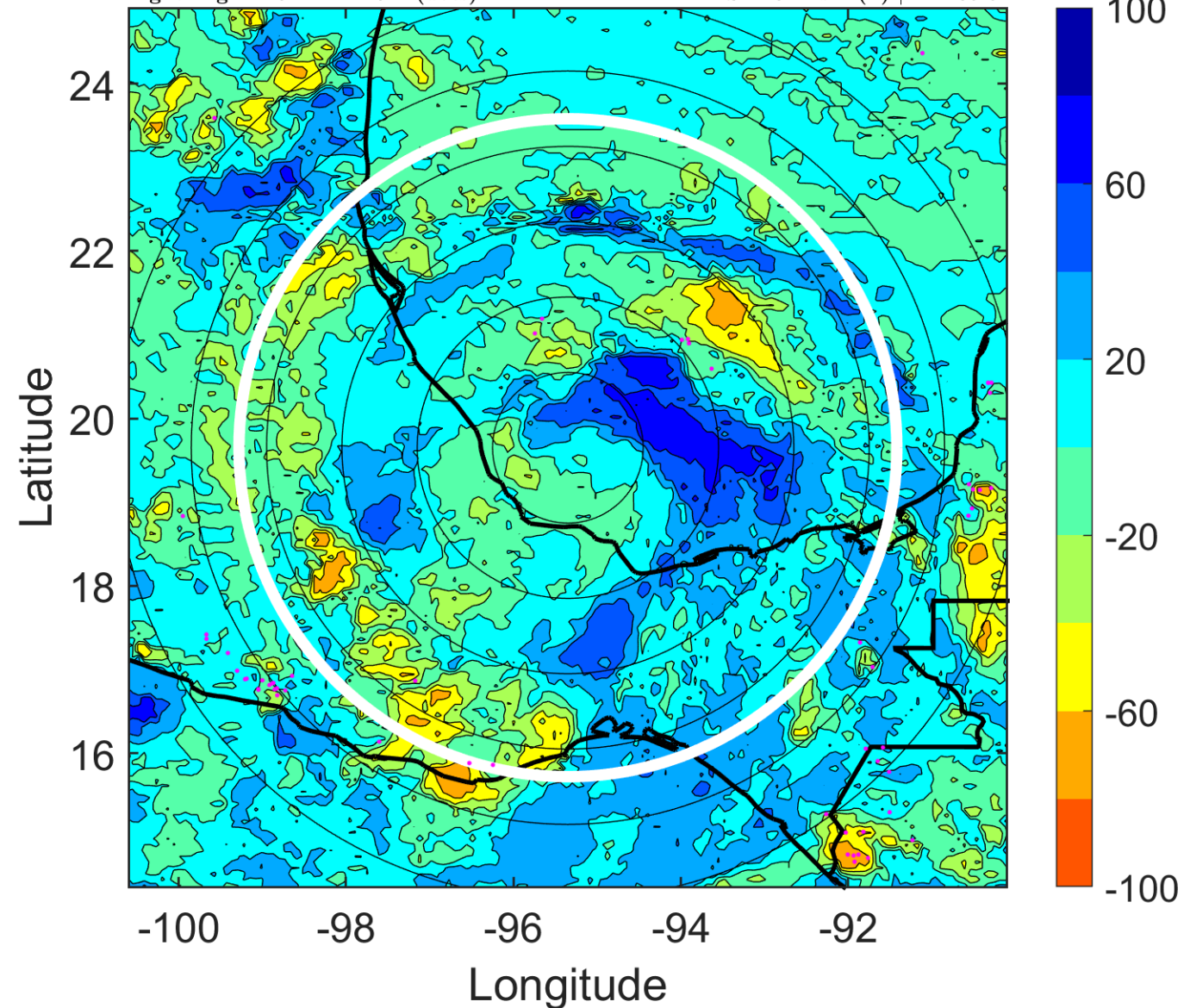
Δ t: 2005082221 (14.6 LT) - 2005082215 (8.7 LT)

Lightning: 14.6 LT \pm 1.5 h (dots)

PT: LLCP | EA: QUASI

11L (JOSE) | 40 kt TS

S: 2.8 m s⁻¹ (L) | H: 185.5°



IR BT & Lightning

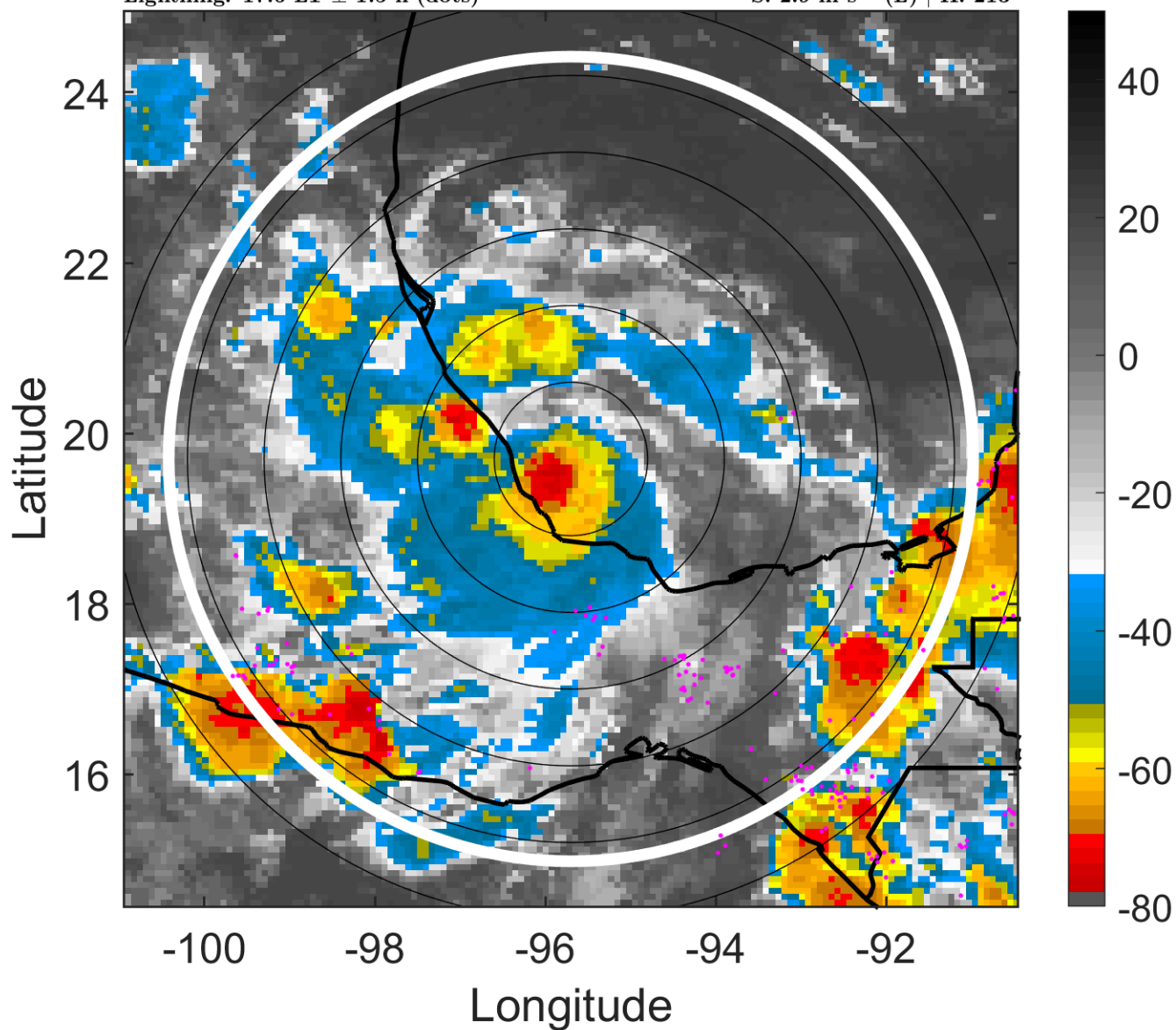
t: 2005082300 (17.6 LT)

Lightning: 17.6 LT \pm 1.5 h (dots)

PT: LLCP | EA: QUASI

11L (JOSE) | 45 kt TS

S: 2.9 m s⁻¹ (L) | H: 213°



6-h IR BT Differences & Lightning

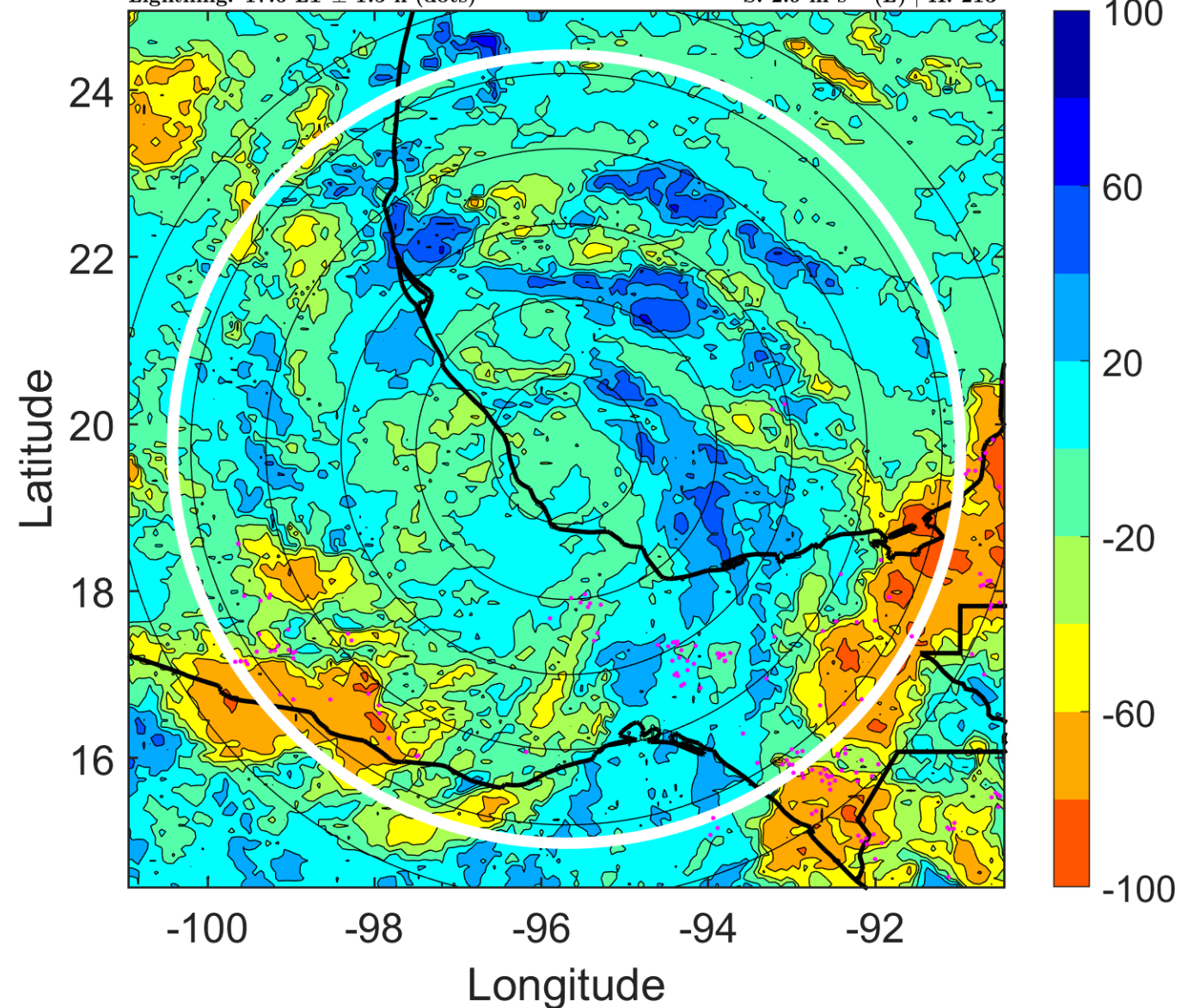
Δ t: 2005082300 (17.6 LT) - 2005082218 (11.7 LT)

Lightning: 17.6 LT \pm 1.5 h (dots)

PT: LLCP | EA: QUASI

11L (JOSE) | 45 kt TS

S: 2.9 m s⁻¹ (L) | H: 213°



IR BT & Lightning

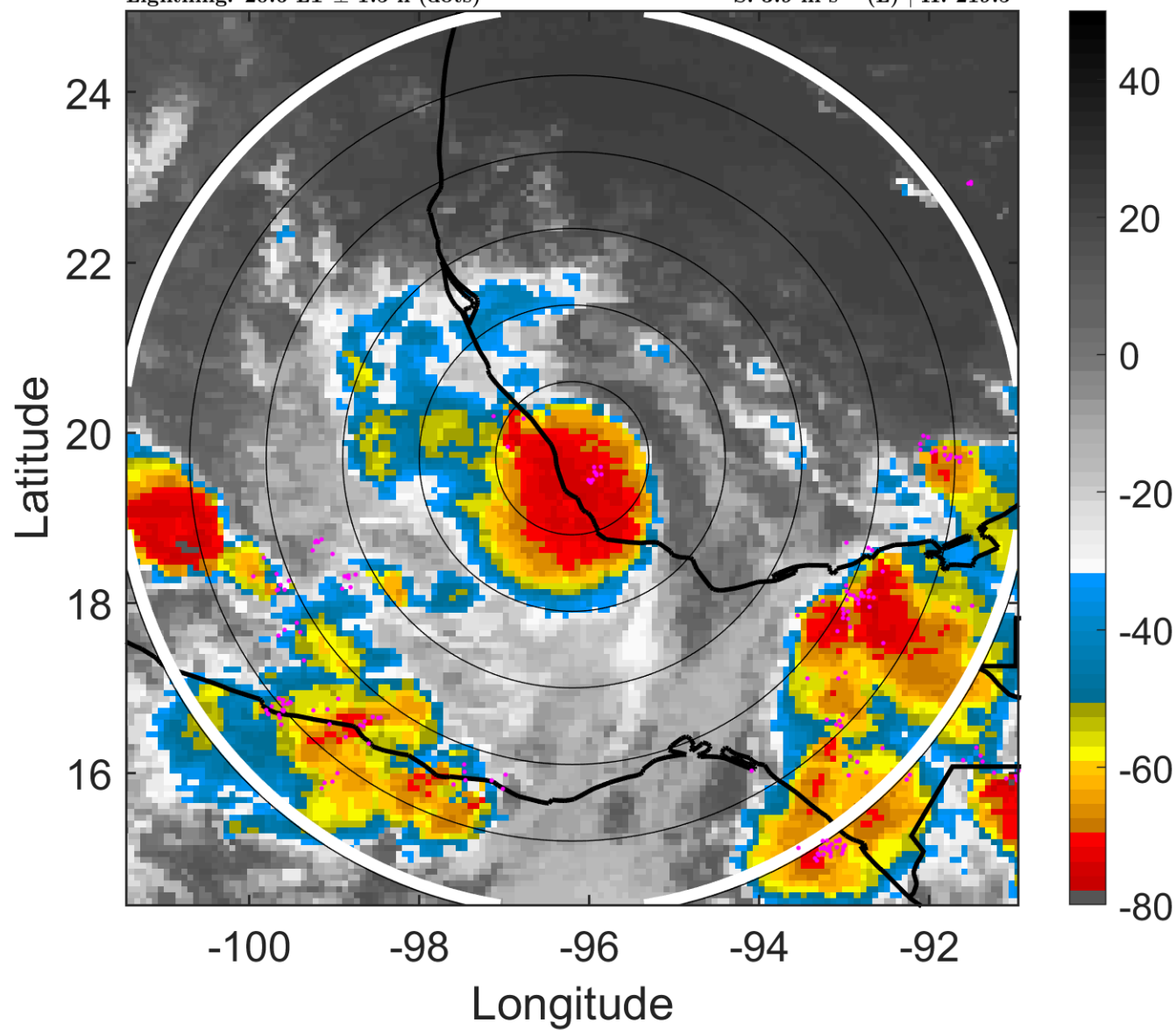
t: 2005082303 (20.6 LT)

Lightning: 20.6 LT \pm 1.5 h (dots)

PT: LLCP | EA: QUASI

11L (JOSE) | 40 kt TS

S: 3.9 m s⁻¹ (L) | H: 219.5°



6-h IR BT Differences & Lightning

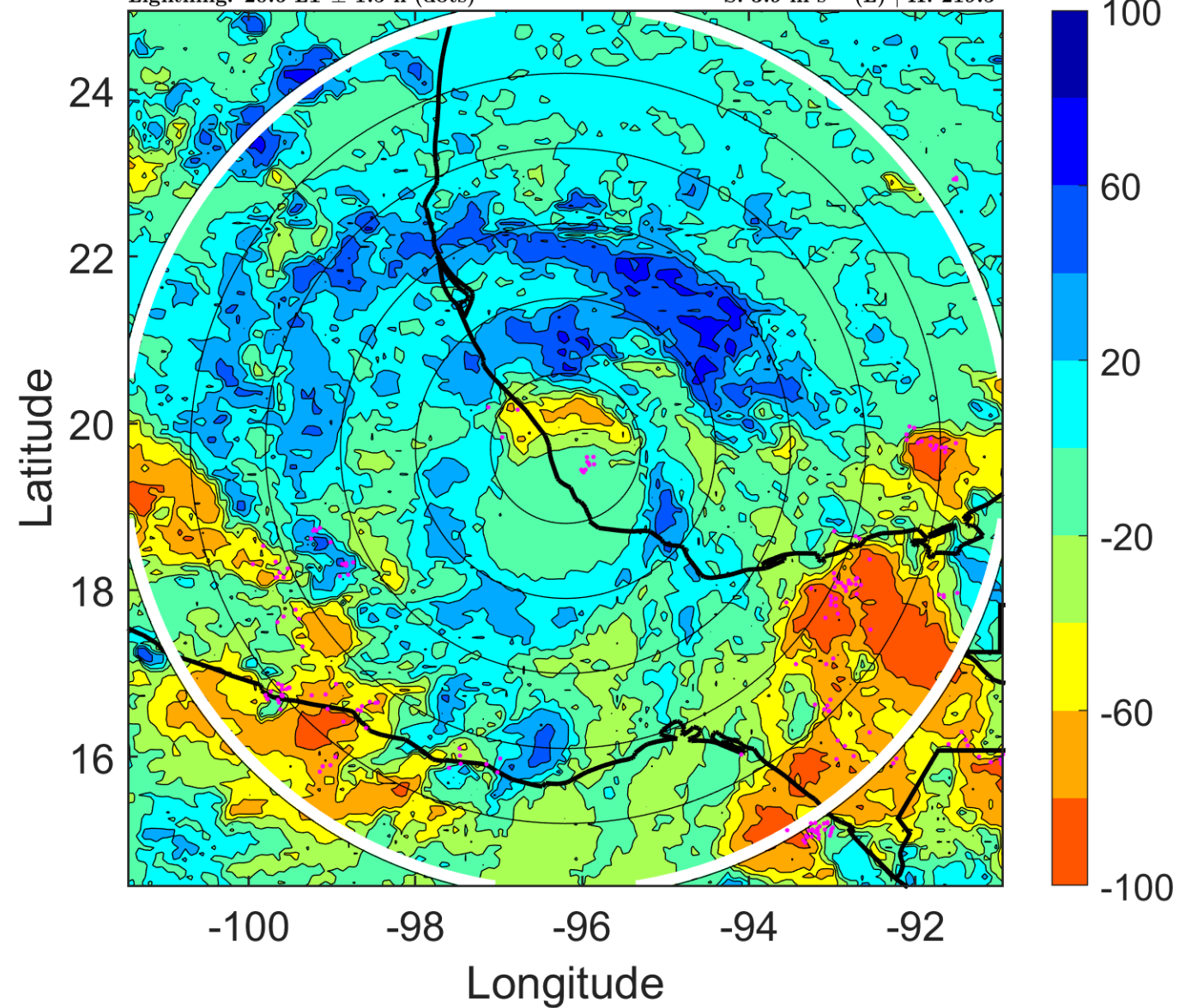
Δ t: 2005082303 (20.6 LT) - 2005082221 (14.6 LT)

Lightning: 20.6 LT \pm 1.5 h (dots)

PT: LLCP | EA: QUASI

11L (JOSE) | 40 kt TS

S: 3.9 m s⁻¹ (L) | H: 219.5°



IR BT & Lightning

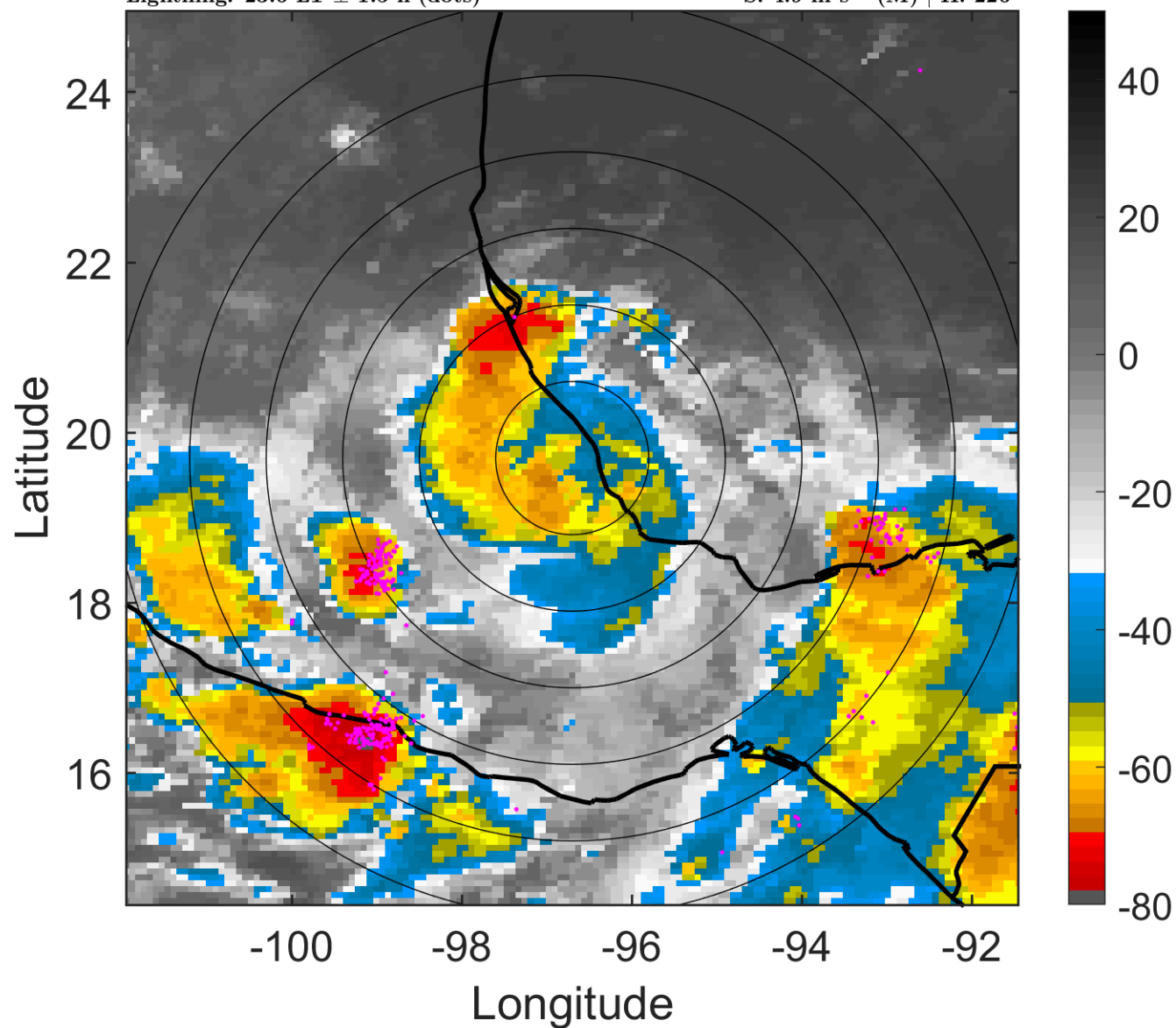
t: 2005082306 (23.6 LT)

Lightning: 23.6 LT \pm 1.5 h (dots)

PT: LLCP | EA: QUASI

11L (JOSE) | 35 kt TS

S: 4.9 m s⁻¹ (M) | H: 226°



6-h IR BT Differences & Lightning

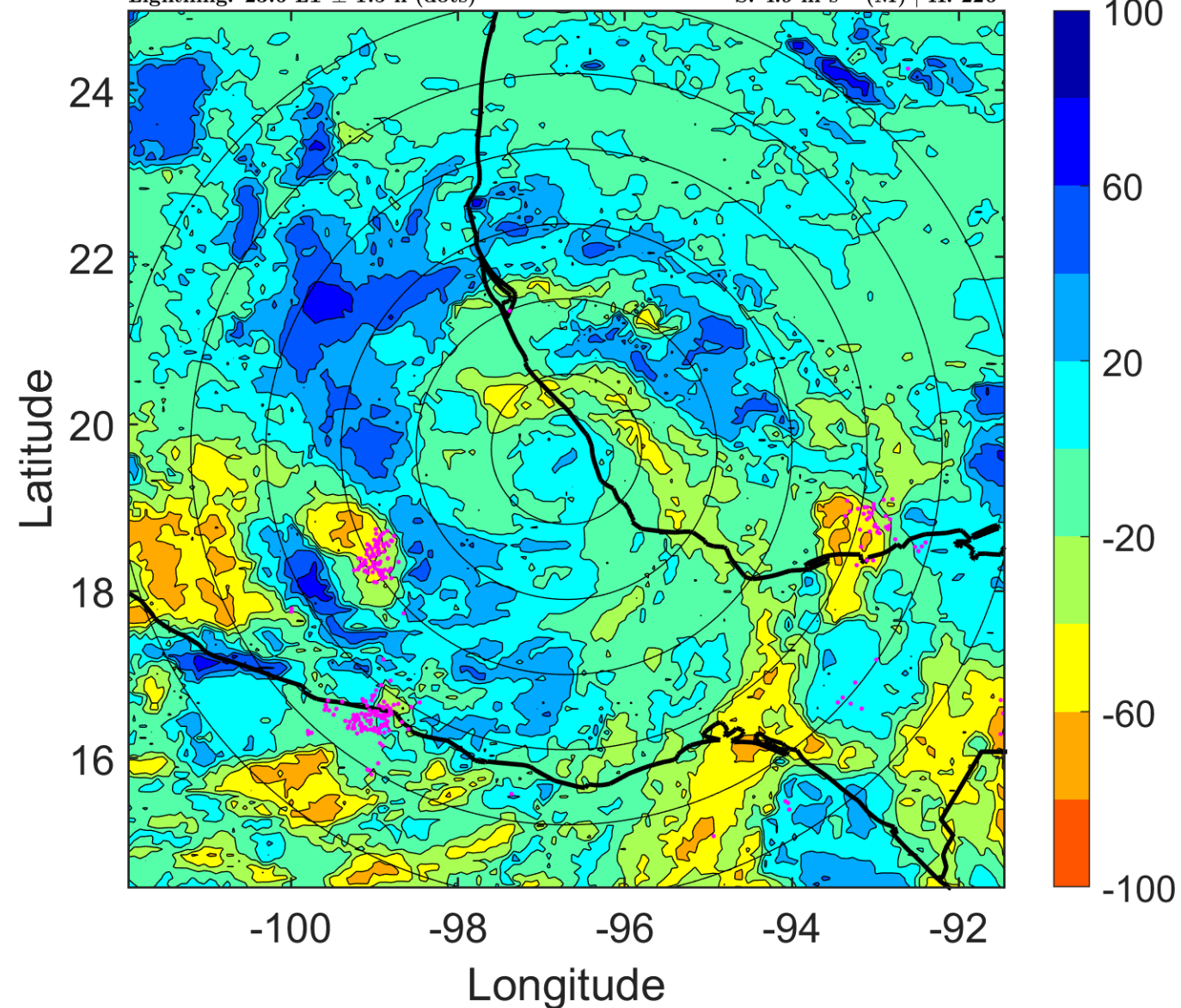
Δ t: 2005082306 (23.6 LT) - 2005082300 (17.6 LT)

Lightning: 23.6 LT \pm 1.5 h (dots)

PT: LLCP | EA: QUASI

11L (JOSE) | 35 kt TS

S: 4.9 m s⁻¹ (M) | H: 226°



IR BT & Lightning

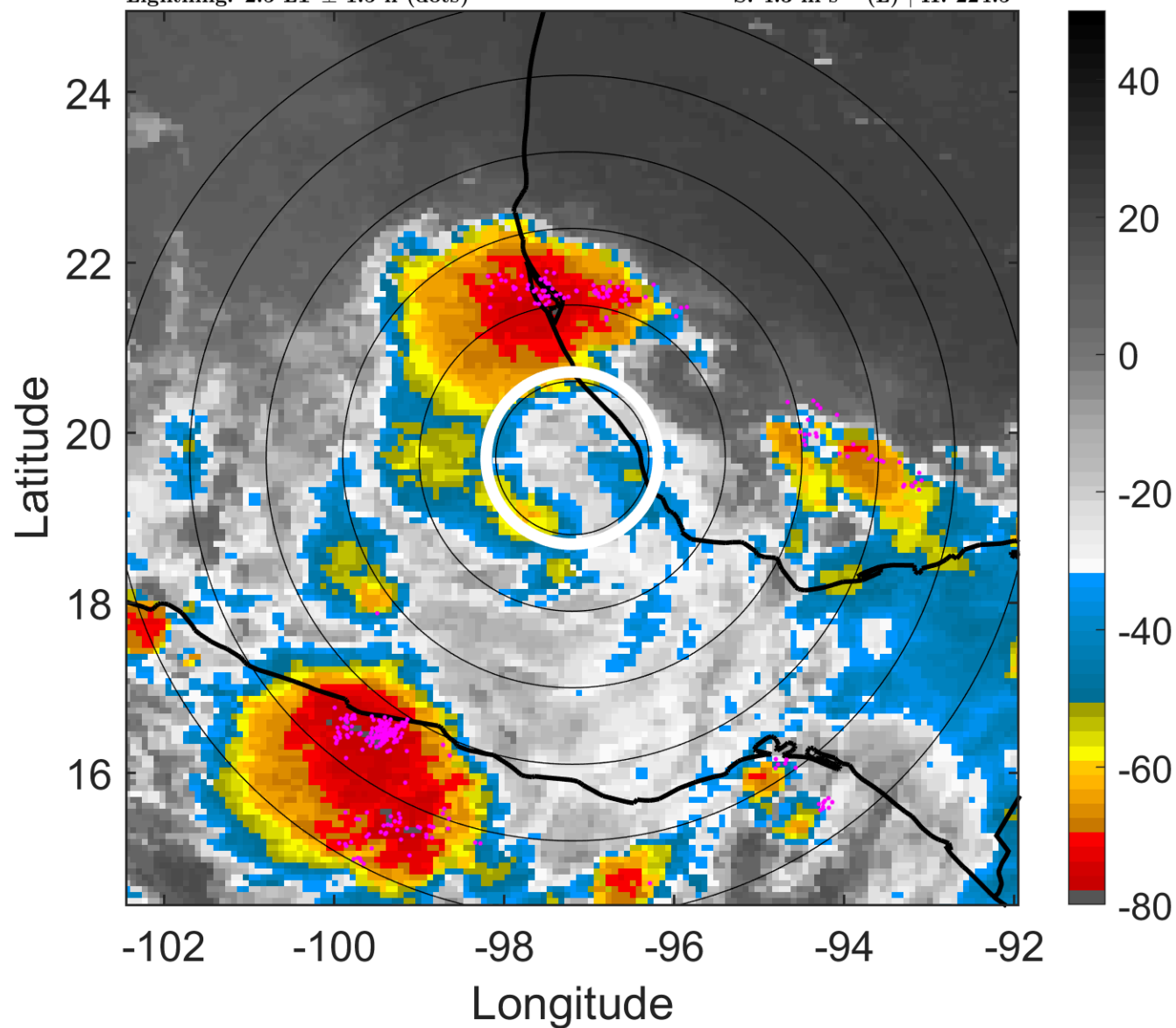
t: 2005082309 (2.5 LT)

Lightning: 2.5 LT \pm 1.5 h (dots)

LAND EFFECTS

11L (JOSE) | 30 kt TD

S: 4.3 m s⁻¹ (L) | H: 224.5°



6-h IR BT Differences & Lightning

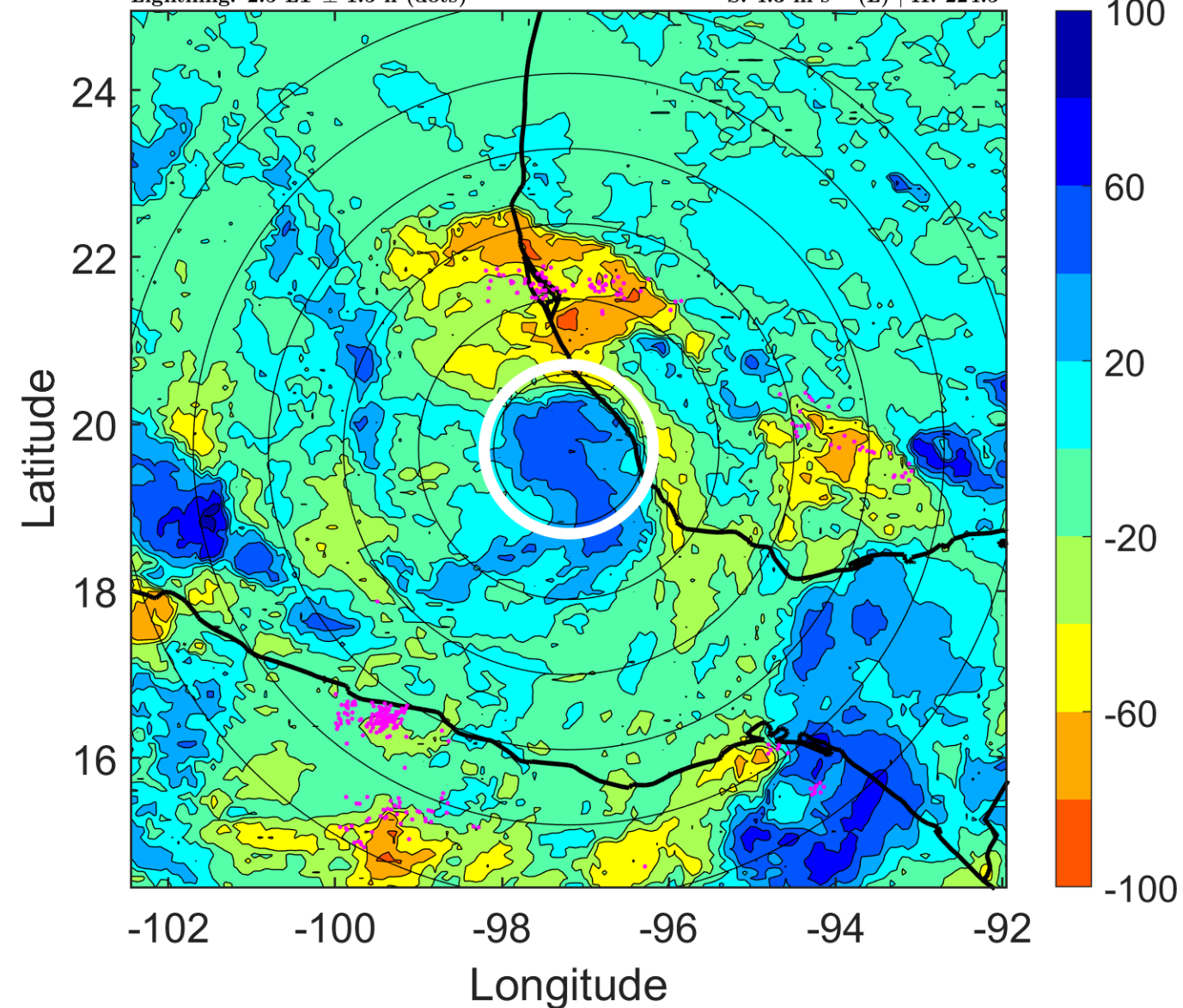
Δ t: 2005082309 (2.5 LT) - 2005082303 (20.6 LT)

Lightning: 2.5 LT \pm 1.5 h (dots)

LAND EFFECTS

11L (JOSE) | 30 kt TD

S: 4.3 m s⁻¹ (L) | H: 224.5°



IR BT & Lightning

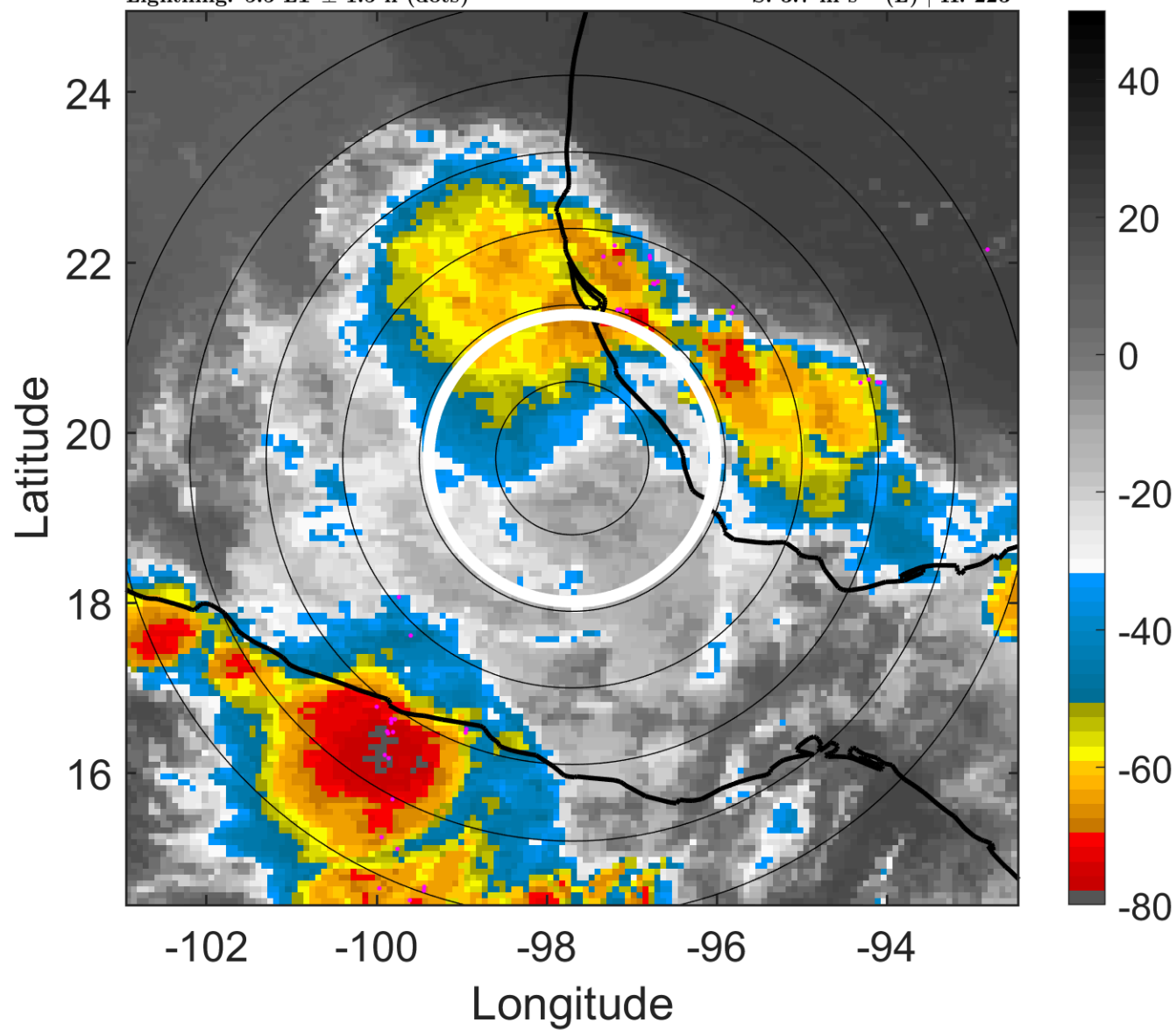
t: 2005082312 (5.5 LT)

Lightning: 5.5 LT \pm 1.5 h (dots)

LAND EFFECTS

11L (JOSE) | 25 kt TD

S: 3.7 m s⁻¹ (L) | H: 223°



6-h IR BT Differences & Lightning

Δ t: 2005082312 (5.5 LT) - 2005082306 (23.6 LT)

Lightning: 5.5 LT \pm 1.5 h (dots)

LAND EFFECTS

11L (JOSE) | 25 kt TD

S: 3.7 m s⁻¹ (L) | H: 223°

