

IR BT & Lightning

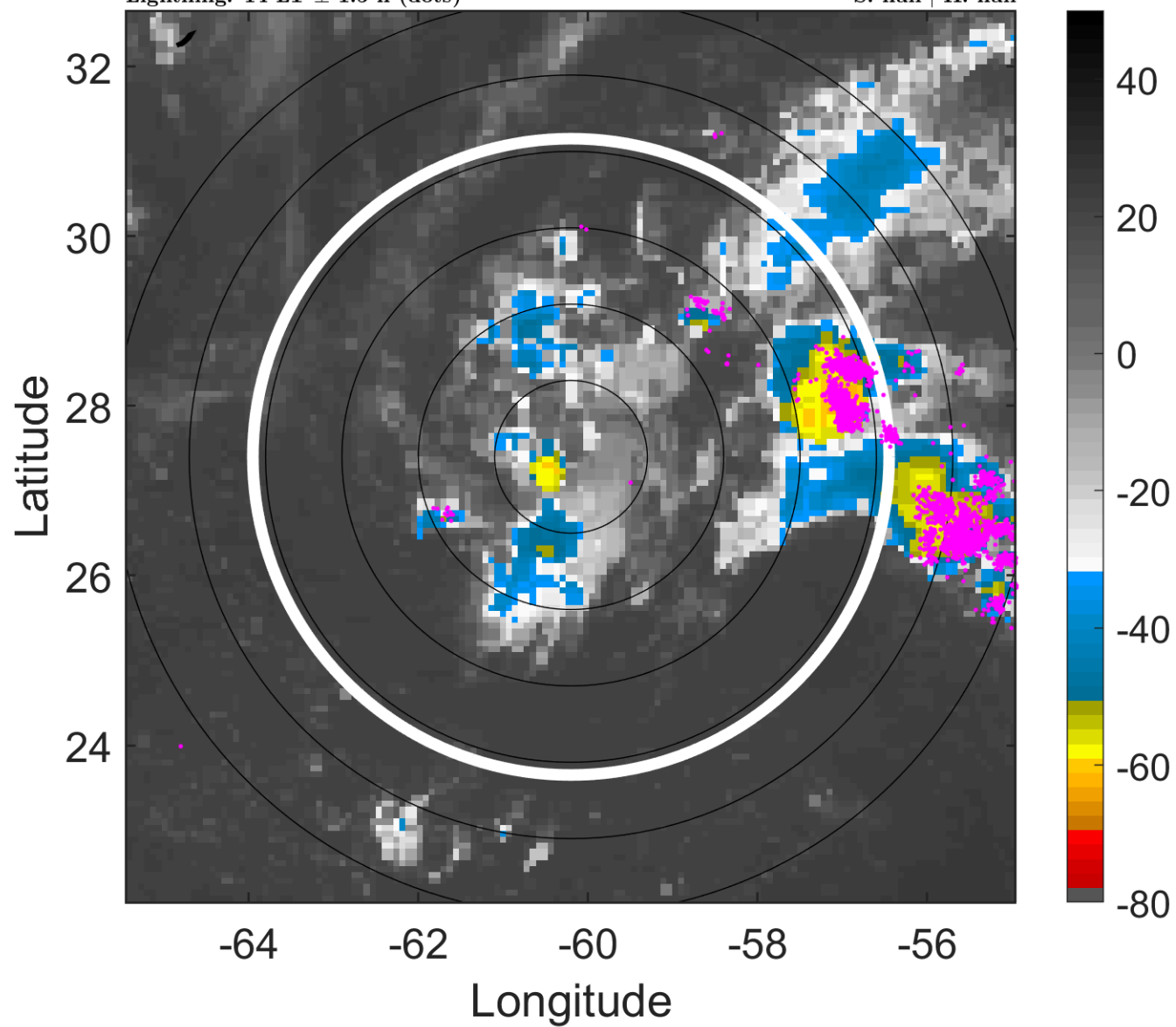
t: 2011082618 (14 LT)

Lightning: 14 LT \pm 1.5 h (dots)

PT: NP | EA: INACT

11L (JOSE) | 30 kt LO

S: null | H: null



6-h IR BT Differences & Lightning

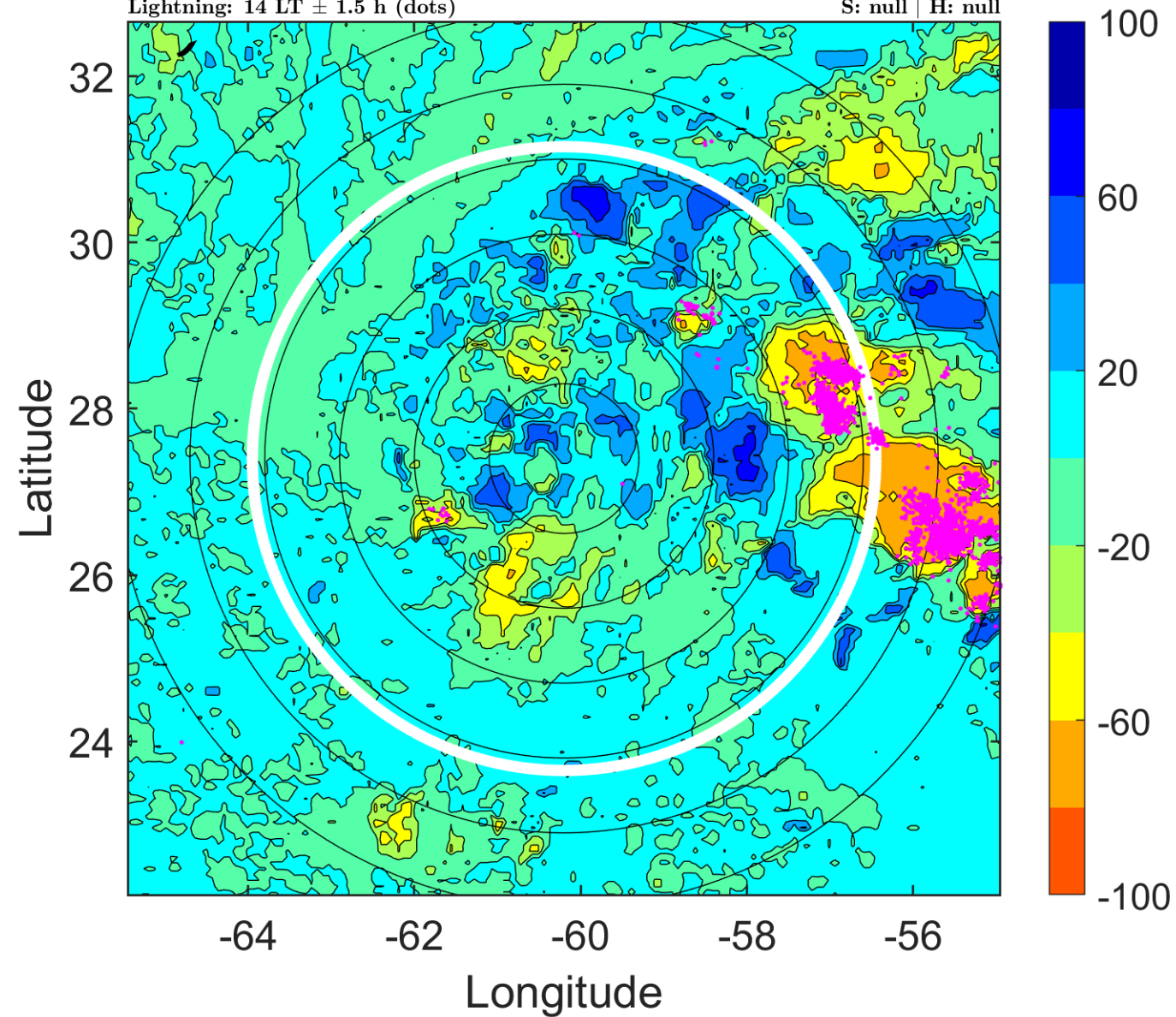
Δ t: 2011082618 (14 LT) - 2011082612 (8.1 LT)

Lightning: 14 LT \pm 1.5 h (dots)

PT: NP | EA: INACT

11L (JOSE) | 30 kt LO

S: null | H: null



IR BT & Lightning

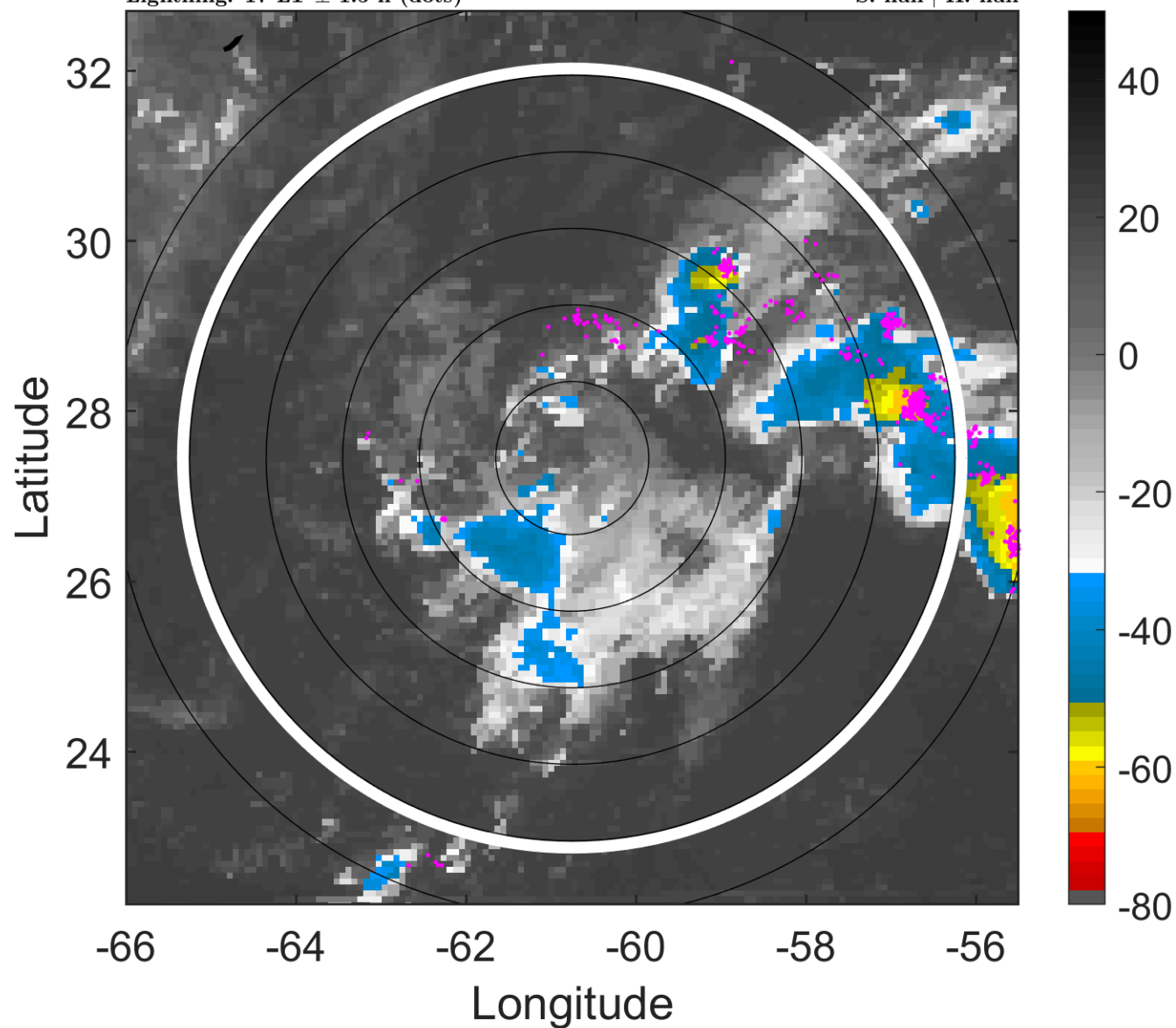
t: 2011082621 (17 LT)

Lightning: 17 LT \pm 1.5 h (dots)

PT: NP | EA: INACT

11L (JOSE) | 30 kt LO

S: null | H: null



6-h IR BT Differences & Lightning

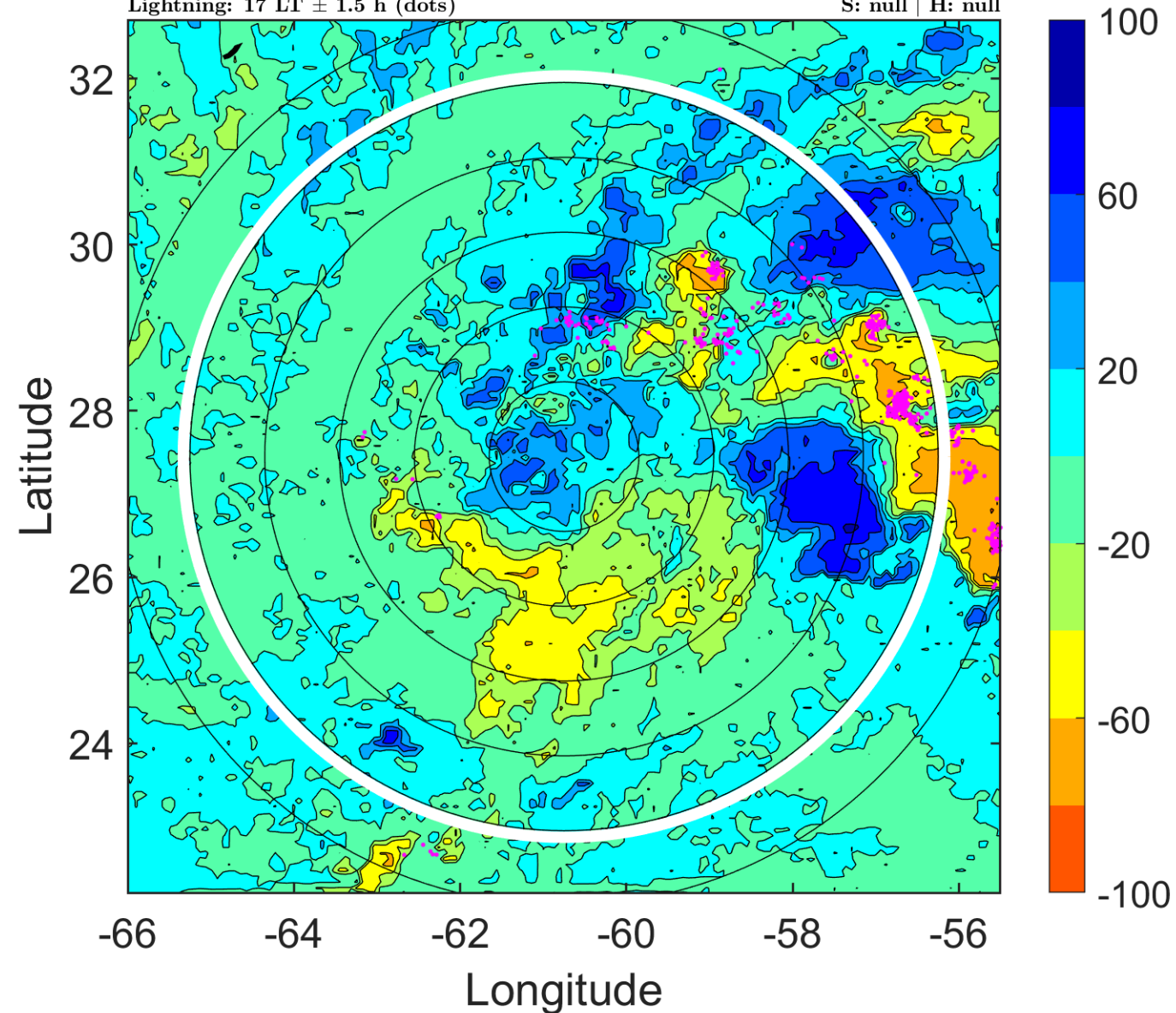
Δ t: 2011082621 (17 LT) - 2011082615 (11 LT)

Lightning: 17 LT \pm 1.5 h (dots)

PT: NP | EA: INACT

11L (JOSE) | 30 kt LO

S: null | H: null



IR BT & Lightning

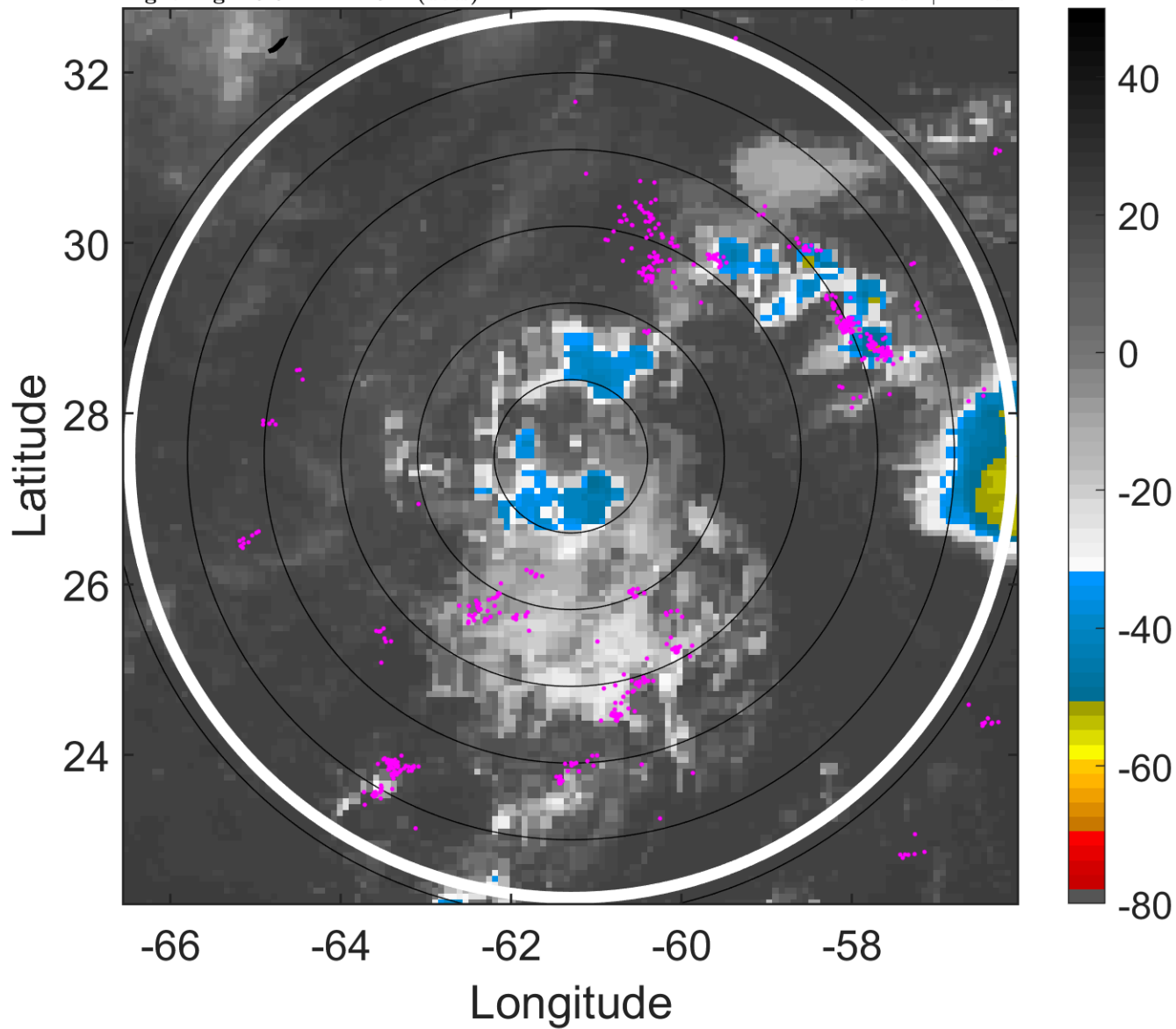
t: 2011082700 (19.9 LT)

Lightning: 19.9 LT \pm 1.5 h (dots)

PT: NP | EA: INACT

11L (JOSE) | 30 kt LO

S: null | H: null



6-h IR BT Differences & Lightning

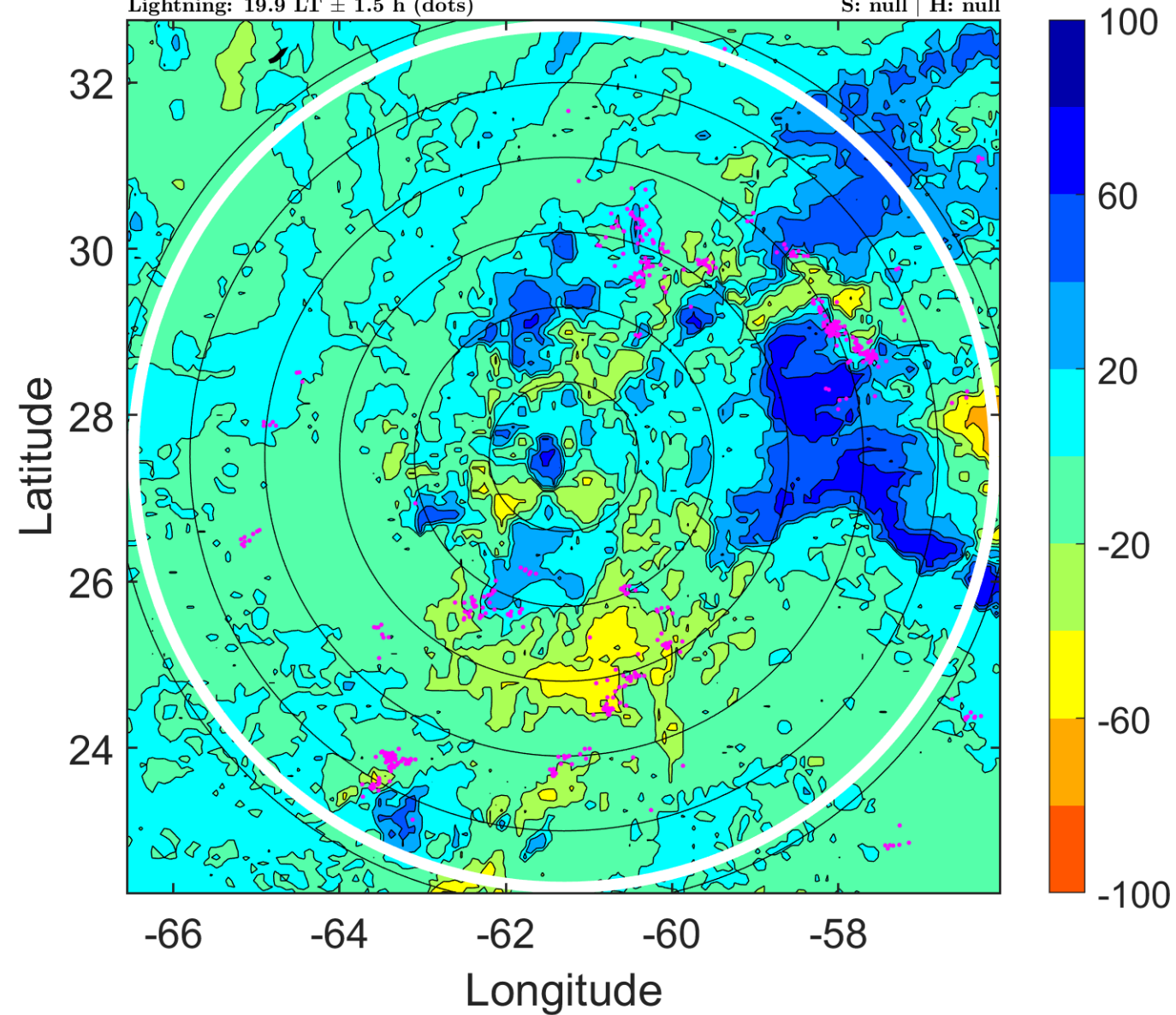
Δ t: 2011082700 (19.9 LT) - 2011082618 (14 LT)

Lightning: 19.9 LT \pm 1.5 h (dots)

PT: NP | EA: INACT

11L (JOSE) | 30 kt LO

S: null | H: null



IR BT & Lightning

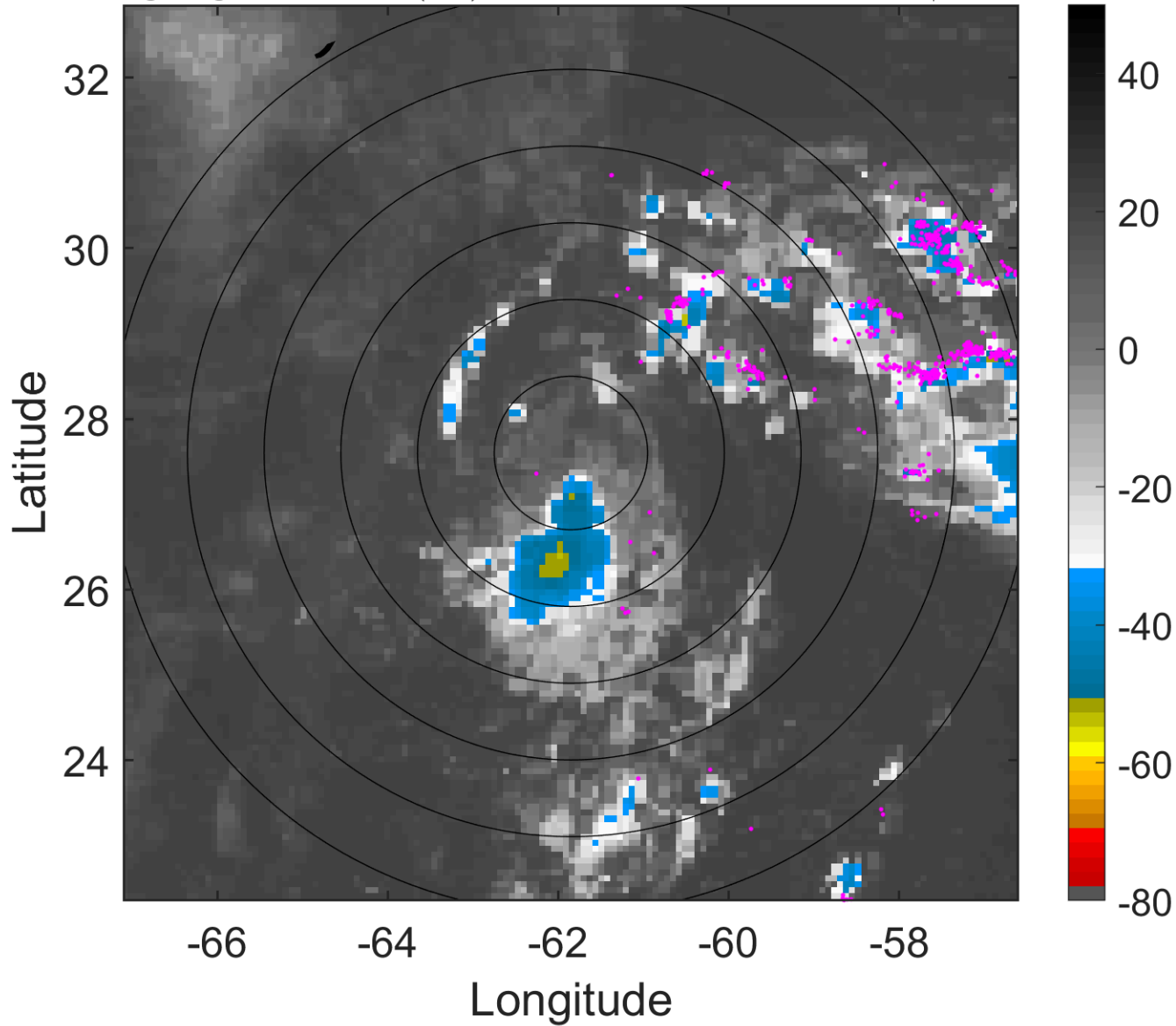
t: 2011082703 (22.9 LT)

Lightning: 22.9 LT \pm 1.5 h (dots)

PT: NP | EA: INACT

11L (JOSE) | 30 kt LO

S: null | H: null



6-h IR BT Differences & Lightning

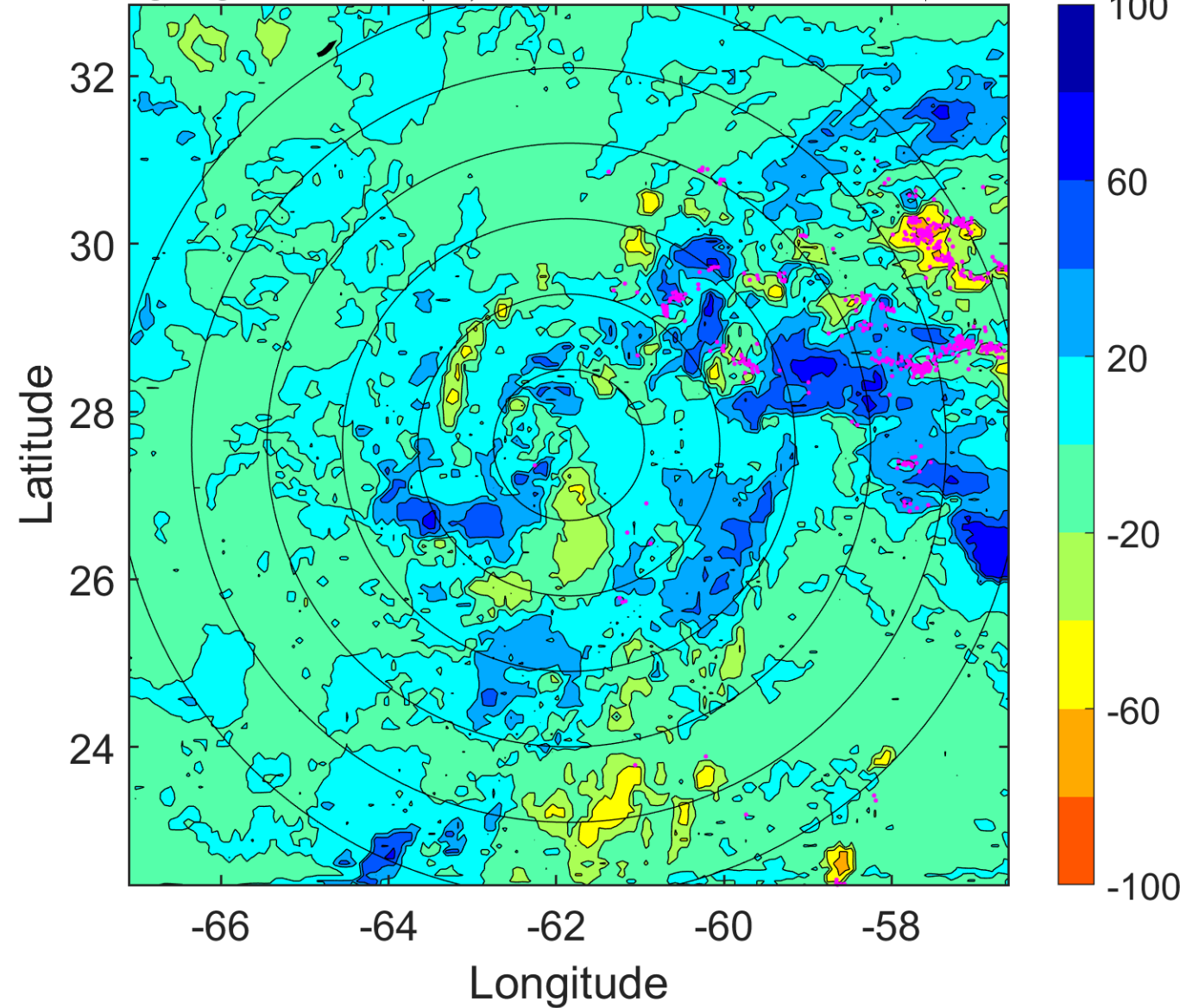
Δ t: 2011082703 (22.9 LT) - 2011082621 (17 LT)

Lightning: 22.9 LT \pm 1.5 h (dots)

PT: NP | EA: INACT

11L (JOSE) | 30 kt LO

S: null | H: null



IR BT & Lightning

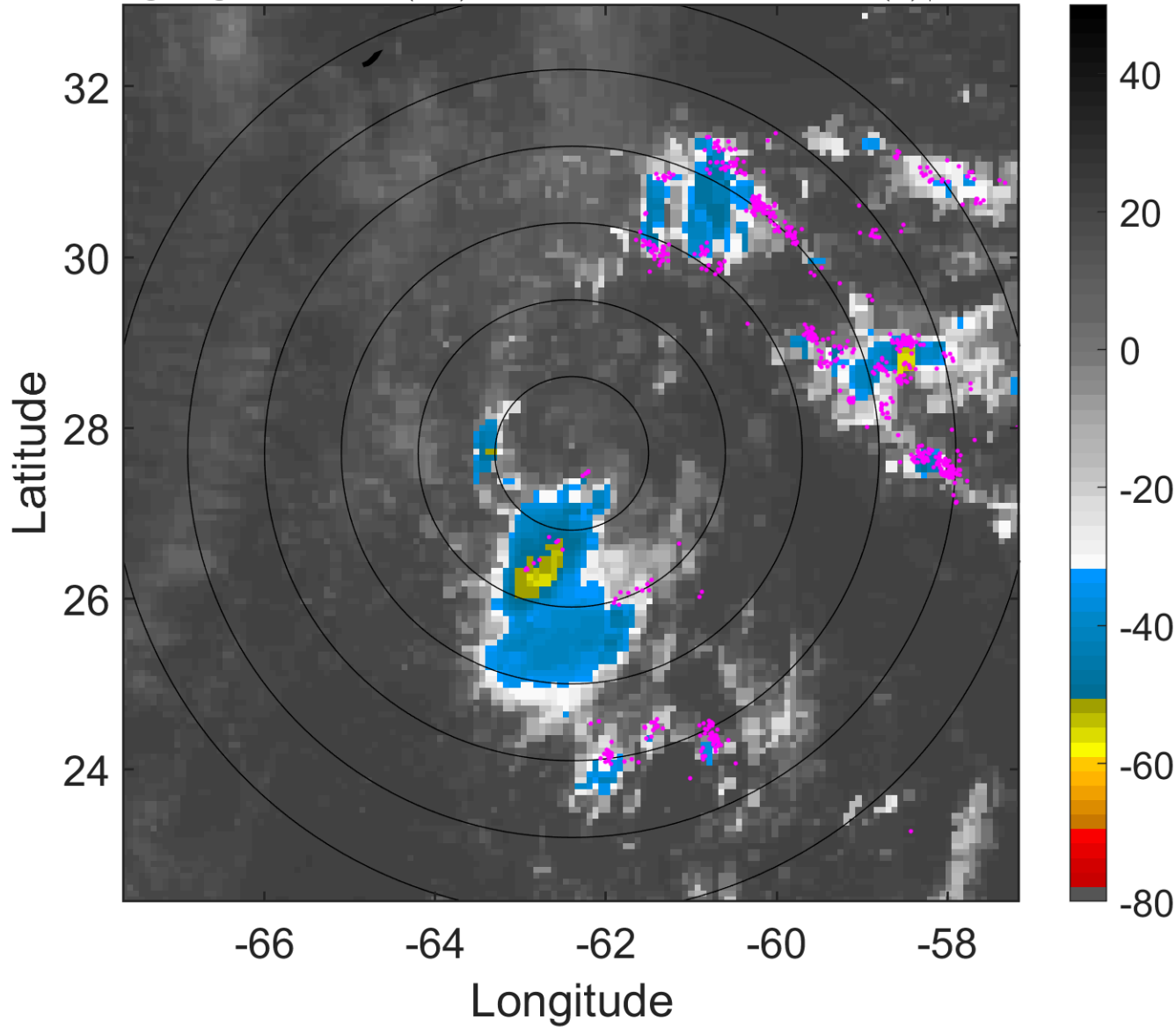
t: 2011082706 (1.8 LT)

Lightning: 1.8 LT \pm 1.5 h (dots)

PT: SLCP | EA: QUASI

11L (JOSE) | 30 kt TD

S: 22.2 m s⁻¹ (H) | H: 196°



6-h IR BT Differences & Lightning

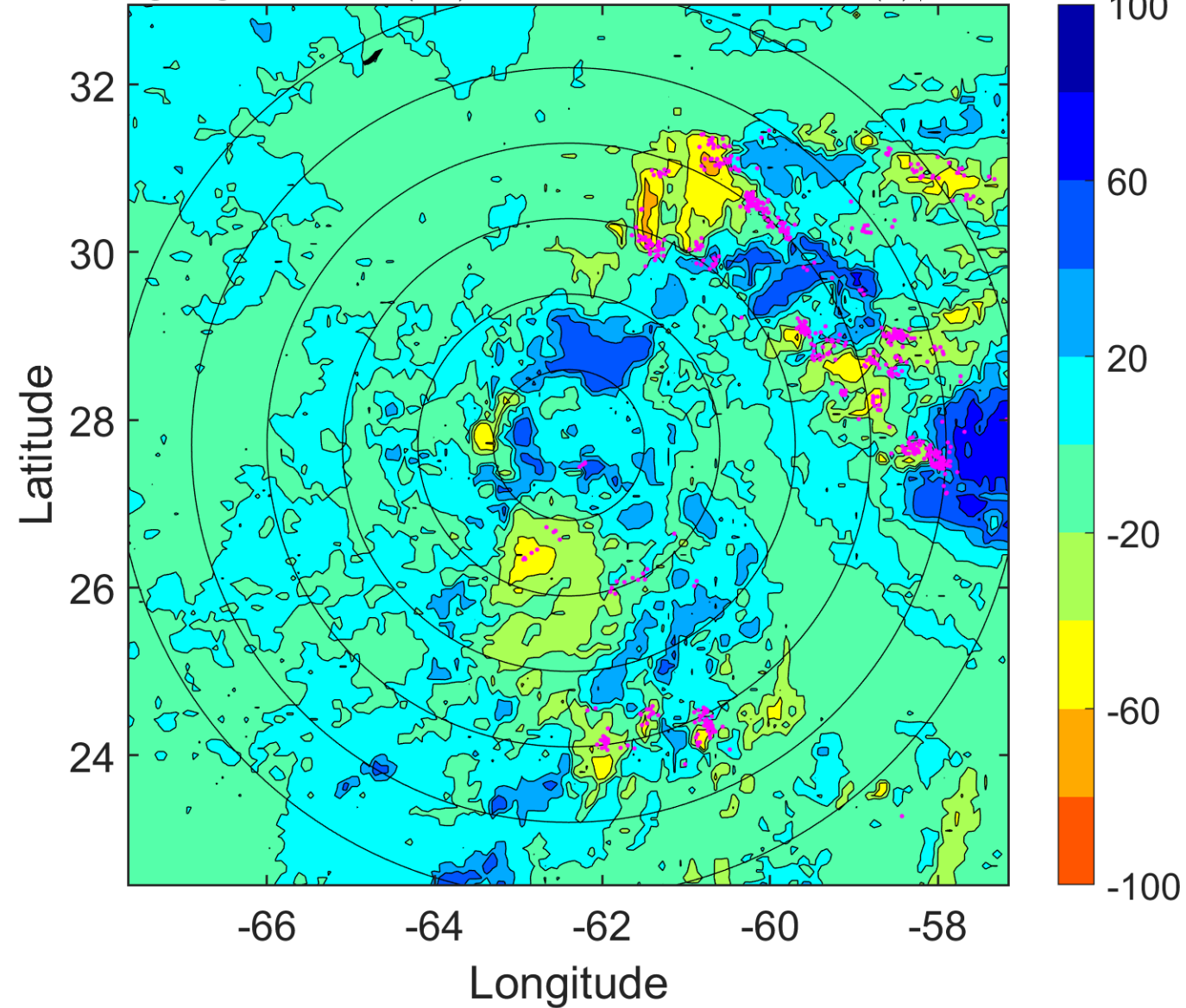
Δ t: 2011082706 (1.8 LT) - 2011082700 (19.9 LT)

Lightning: 1.8 LT \pm 1.5 h (dots)

PT: SLCP | EA: QUASI

11L (JOSE) | 30 kt TD

S: 22.2 m s⁻¹ (H) | H: 196°



IR BT & Lightning

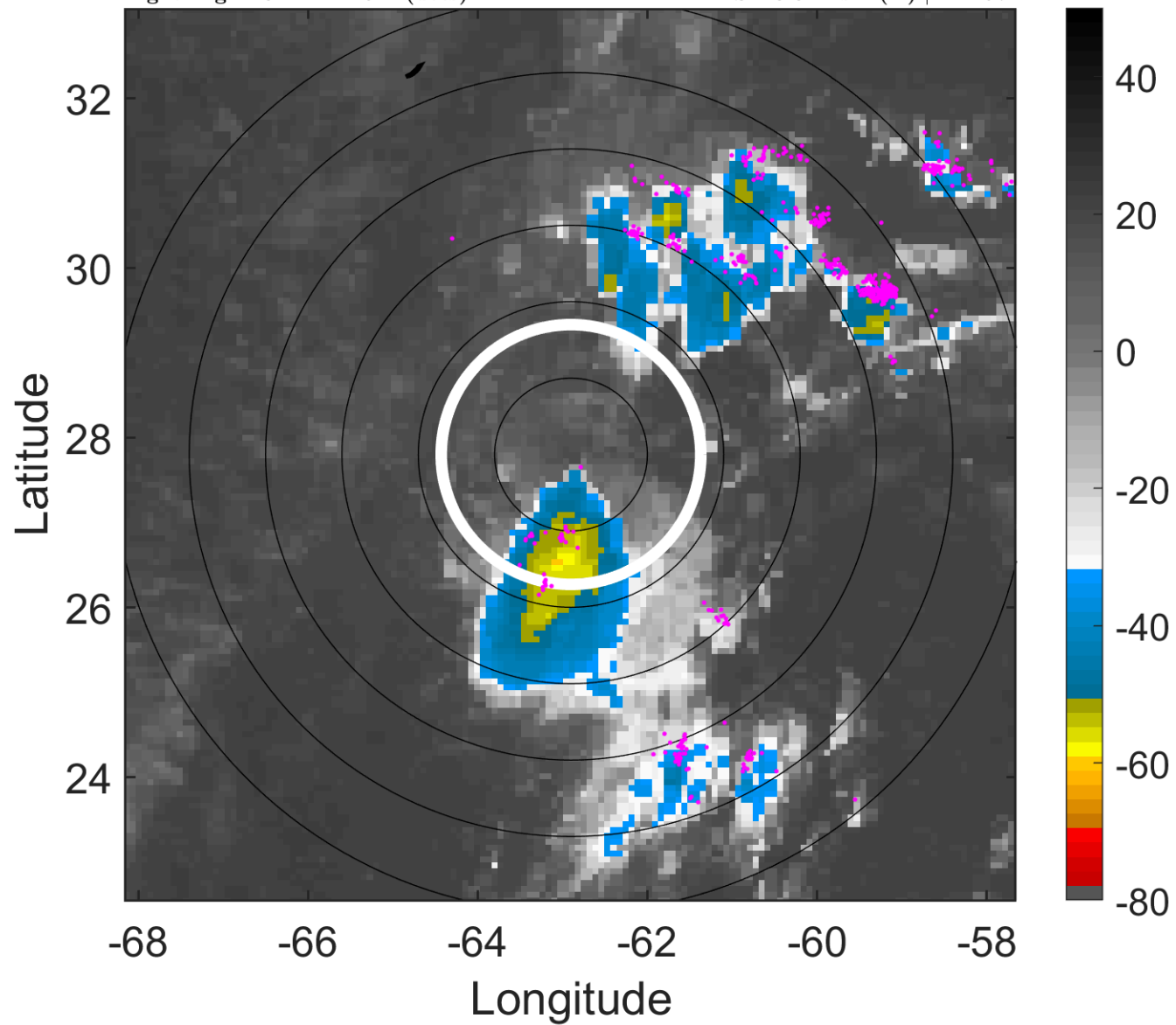
t: 2011082709 (4.8 LT)

Lightning: 4.8 LT \pm 1.5 h (dots)

PT: SLCP | EA: QUASI

11L (JOSE) | 32.5 kt TD

S: 23.3 m s⁻¹ (H) | H: 197°



6-h IR BT Differences & Lightning

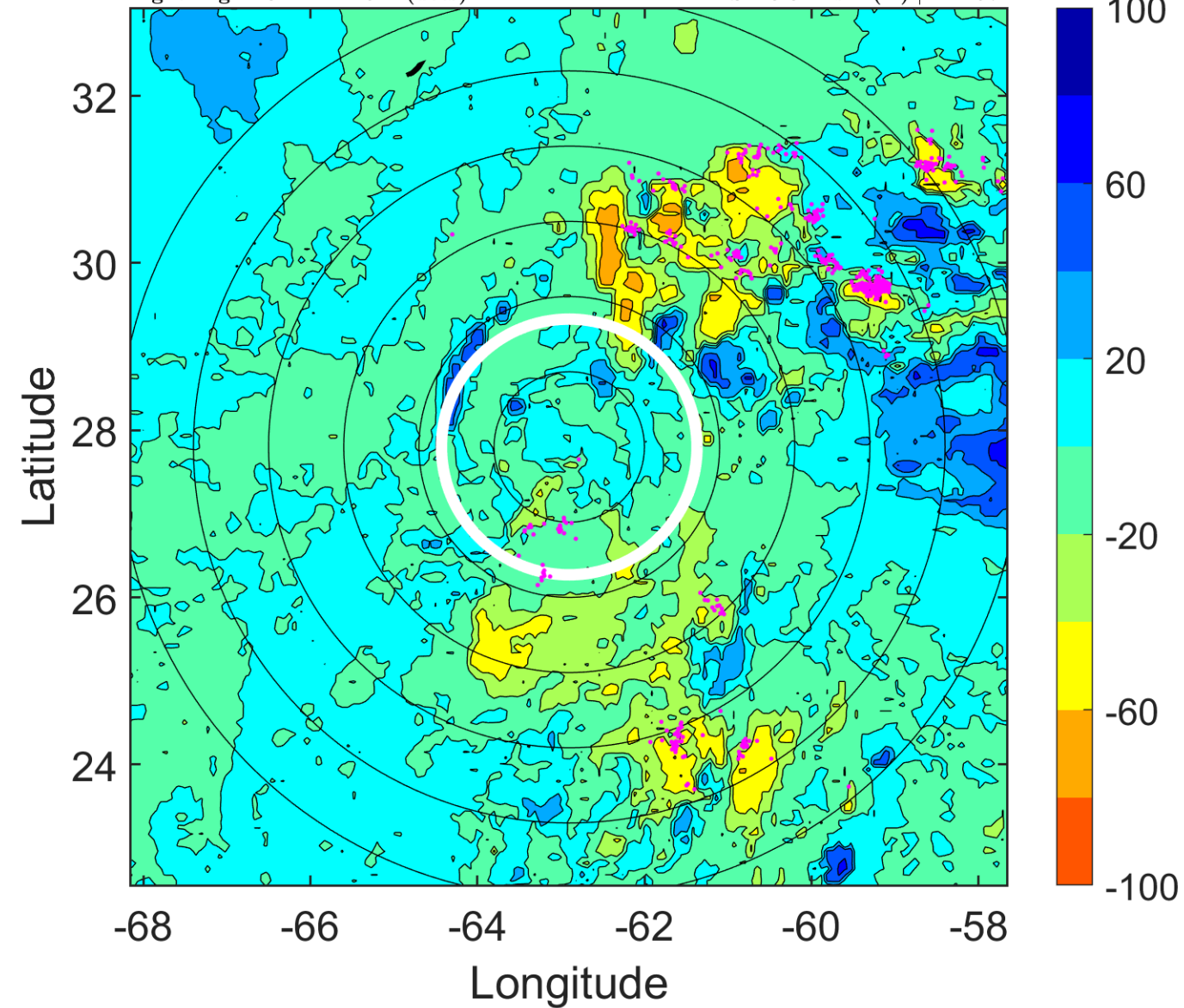
Δ t: 2011082709 (4.8 LT) - 2011082703 (22.9 LT)

Lightning: 4.8 LT \pm 1.5 h (dots)

PT: SLCP | EA: QUASI

11L (JOSE) | 32.5 kt TD

S: 23.3 m s⁻¹ (H) | H: 197°



IR BT & Lightning

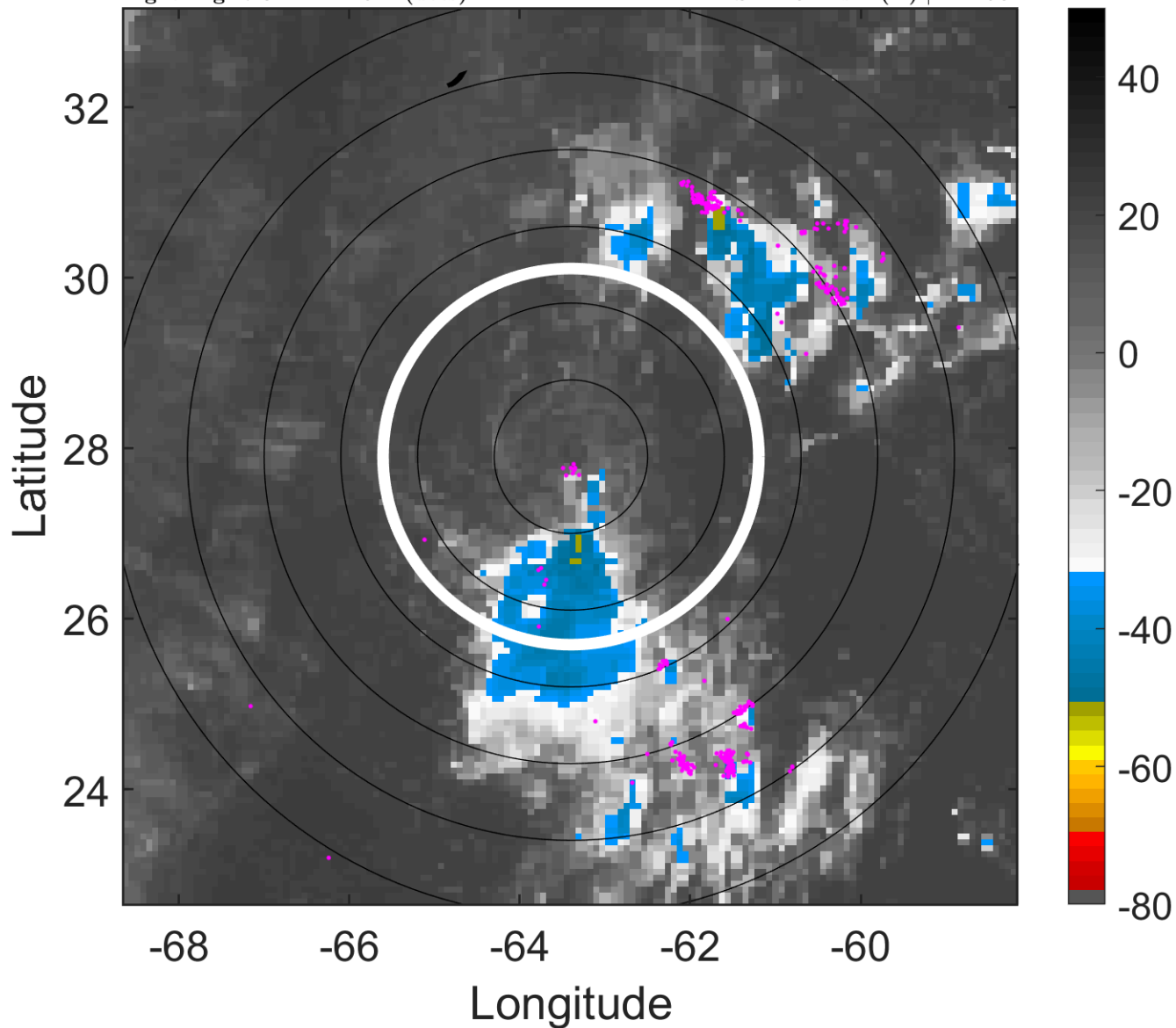
t: 2011082712 (7.8 LT)

Lightning: 7.8 LT \pm 1.5 h (dots)

PT: SLCP | EA: QUASI

11L (JOSE) | 35 kt TS

S: 24.5 m s⁻¹ (H) | H: 198°



6-h IR BT Differences & Lightning

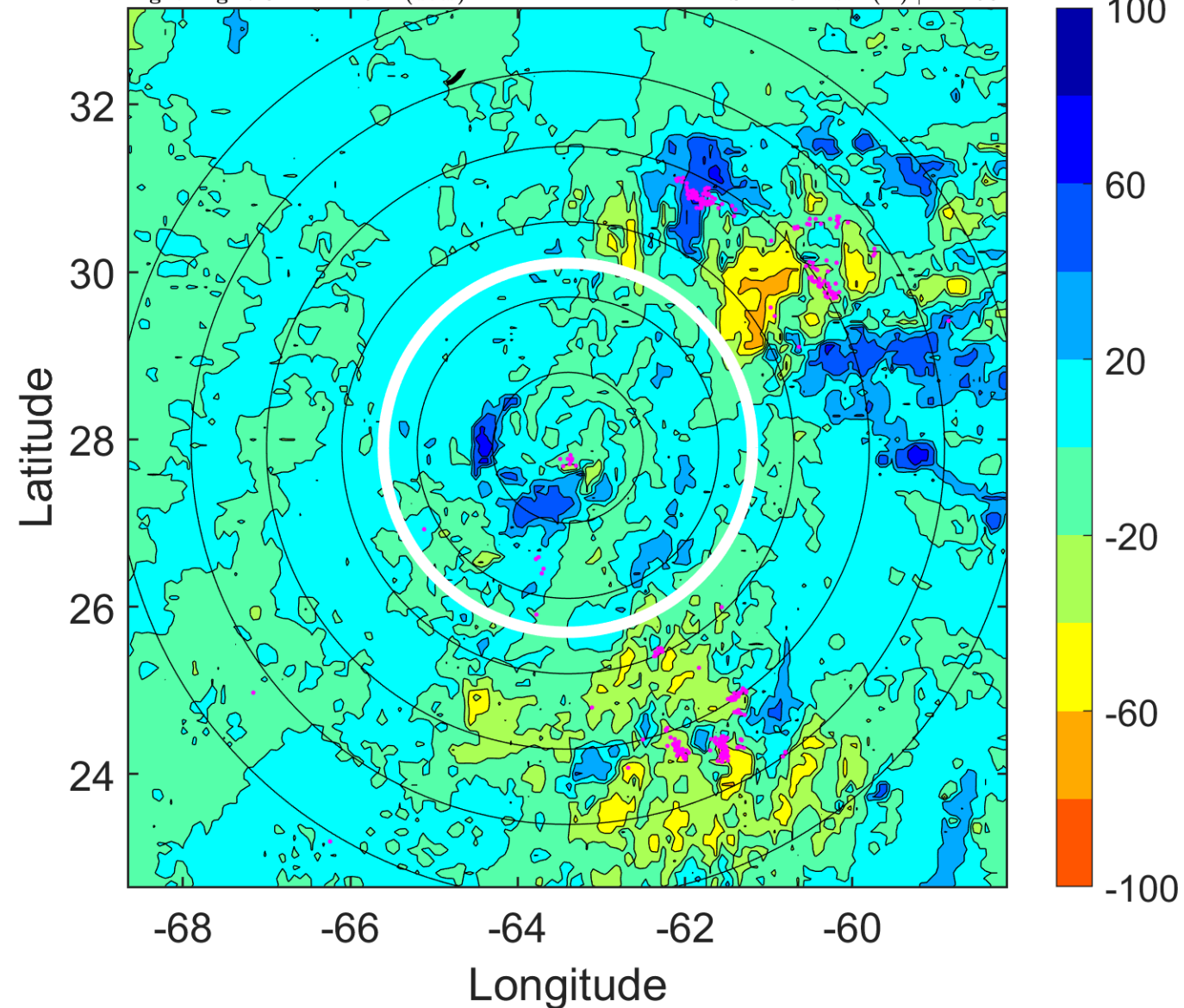
Δ t: 2011082712 (7.8 LT) - 2011082706 (1.8 LT)

Lightning: 7.8 LT \pm 1.5 h (dots)

PT: SLCP | EA: QUASI

11L (JOSE) | 35 kt TS

S: 24.5 m s⁻¹ (H) | H: 198°



IR BT & Lightning

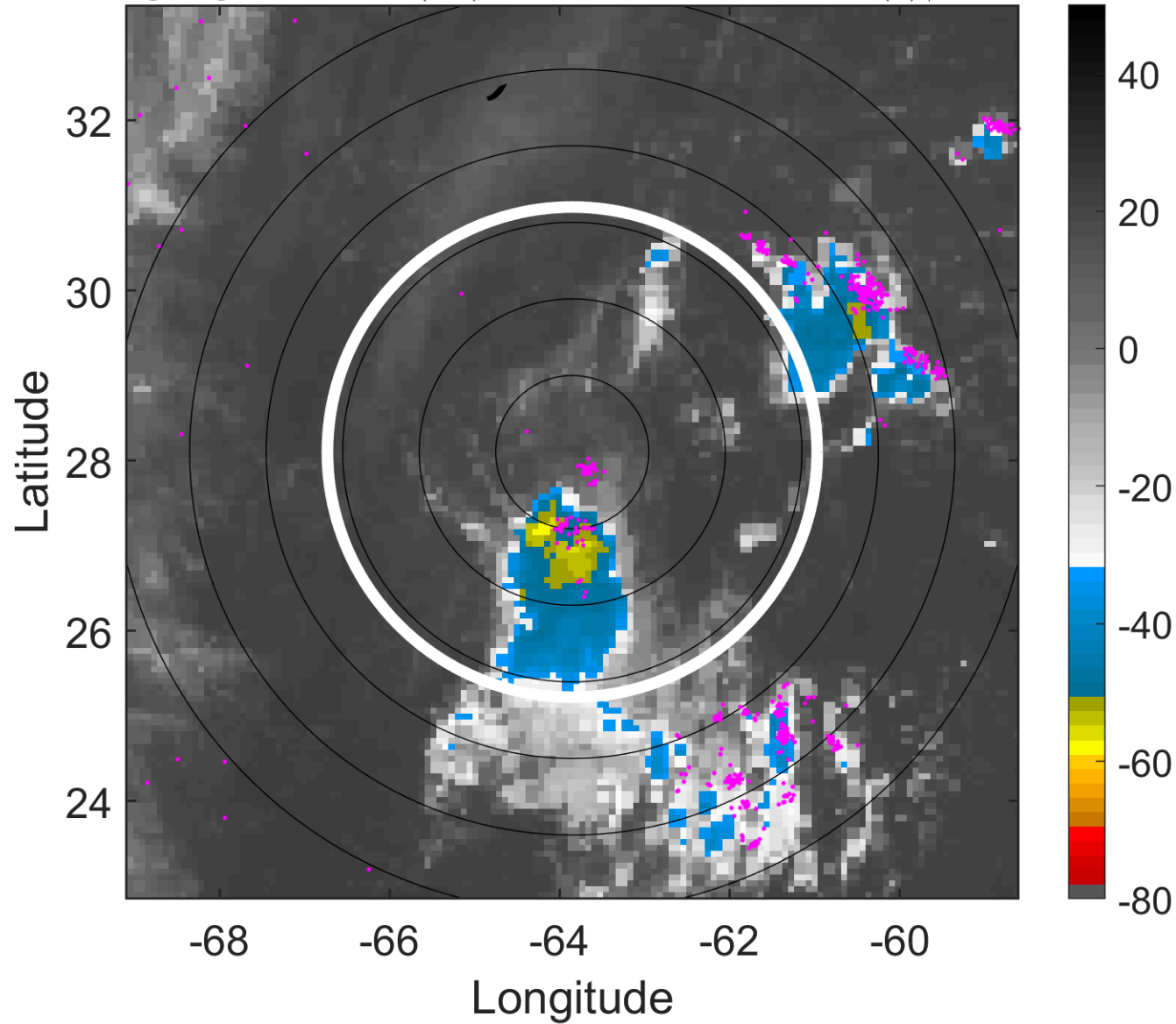
t: 2011082715 (10.7 LT)

Lightning: 10.7 LT \pm 1.5 h (dots)

PT: SLCP | EA: QUASI

11L (JOSE) | 35 kt TS

S: 24.7 m s⁻¹ (H) | H: 202°



6-h IR BT Differences & Lightning

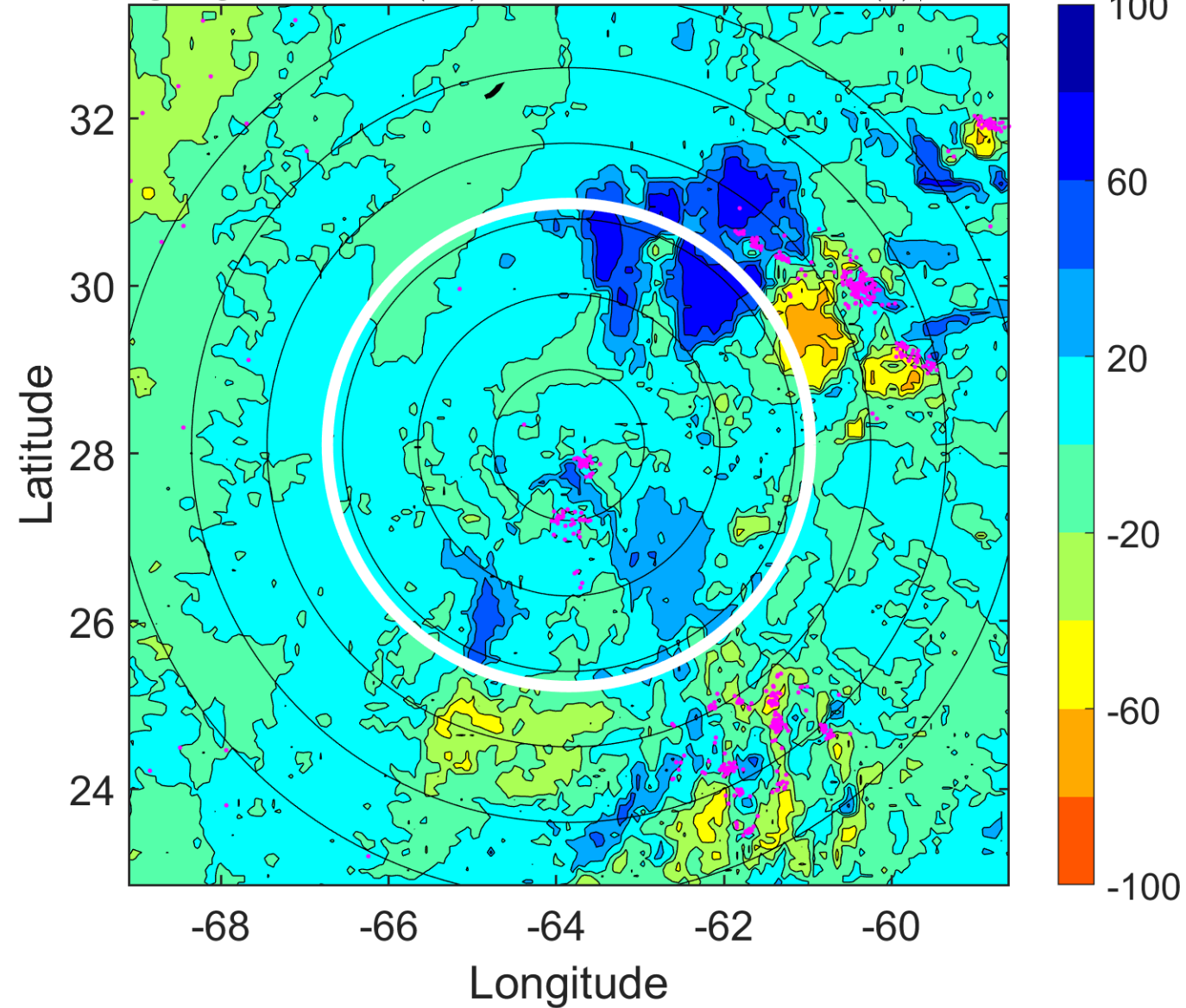
Δ t: 2011082715 (10.7 LT) - 2011082709 (4.8 LT)

Lightning: 10.7 LT \pm 1.5 h (dots)

PT: SLCP | EA: QUASI

11L (JOSE) | 35 kt TS

S: 24.7 m s⁻¹ (H) | H: 202°



IR BT & Lightning

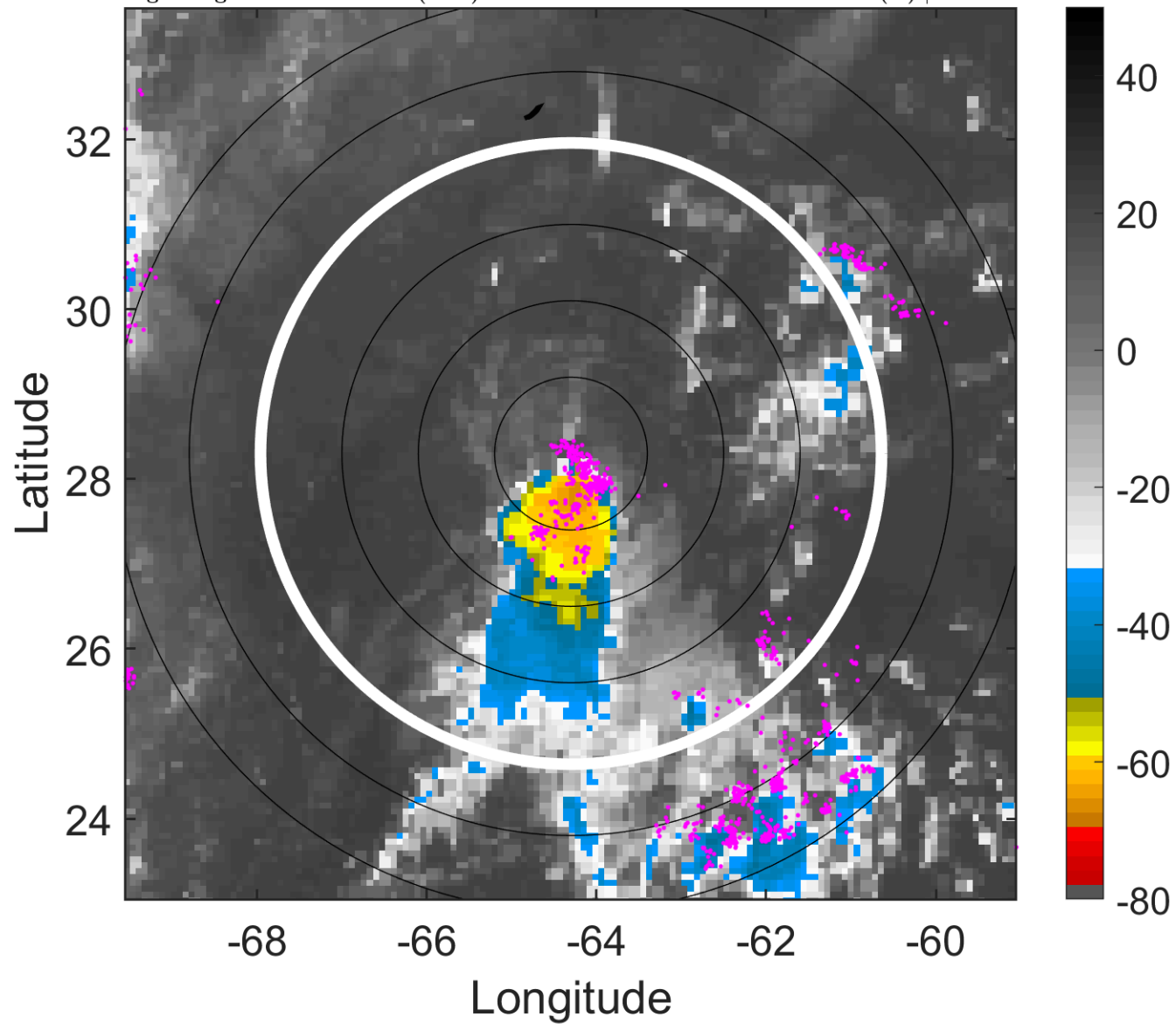
t: 2011082718 (13.7 LT)

Lightning: 13.7 LT \pm 1.5 h (dots)

PT: SLCP | EA: QUASI

11L (JOSE) | 35 kt TS

S: 25 m s⁻¹ (H) | H: 206°



6-h IR BT Differences & Lightning

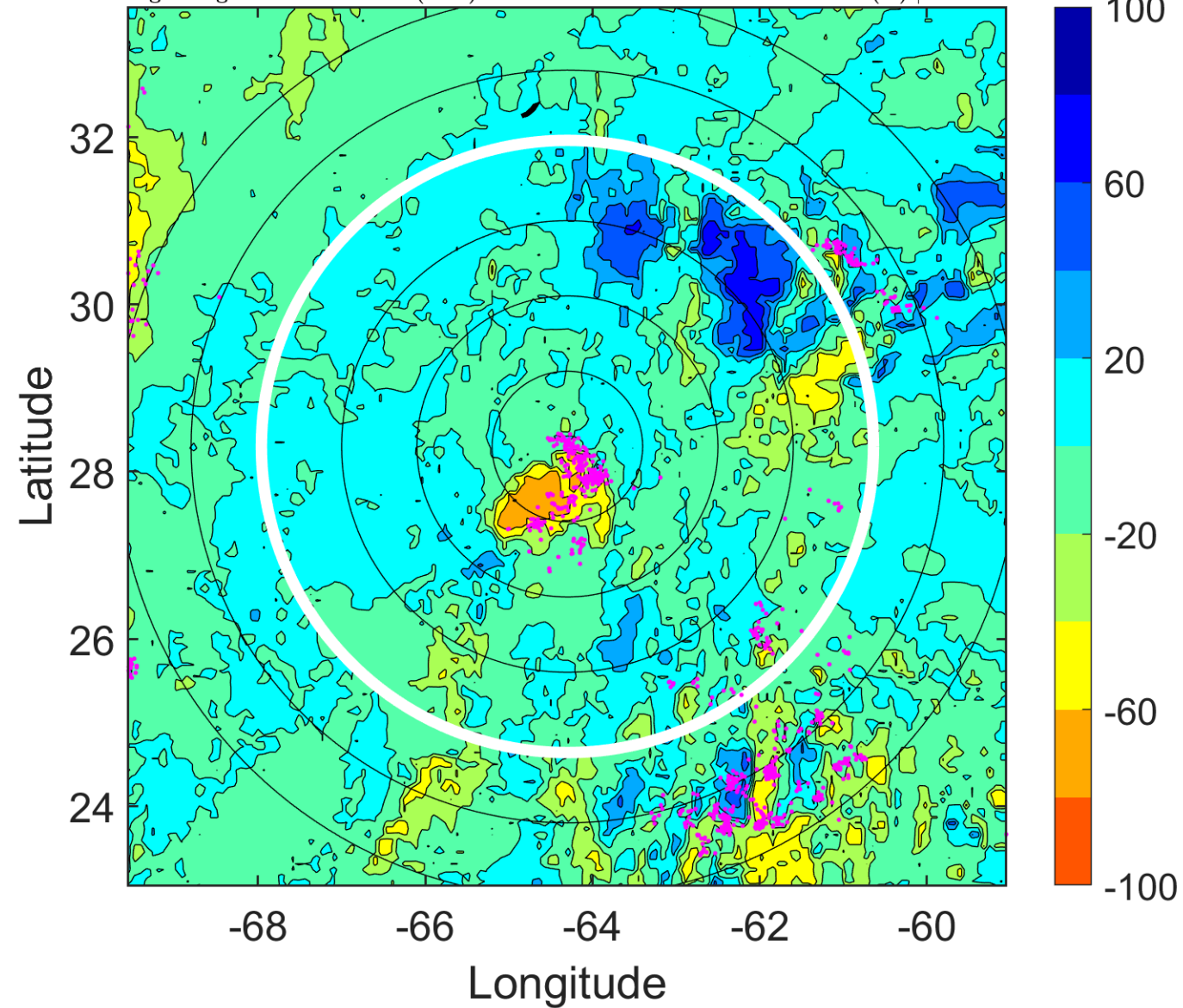
Δ t: 2011082718 (13.7 LT) - 2011082712 (7.8 LT)

Lightning: 13.7 LT \pm 1.5 h (dots)

PT: SLCP | EA: QUASI

11L (JOSE) | 35 kt TS

S: 25 m s⁻¹ (H) | H: 206°



IR BT & Lightning

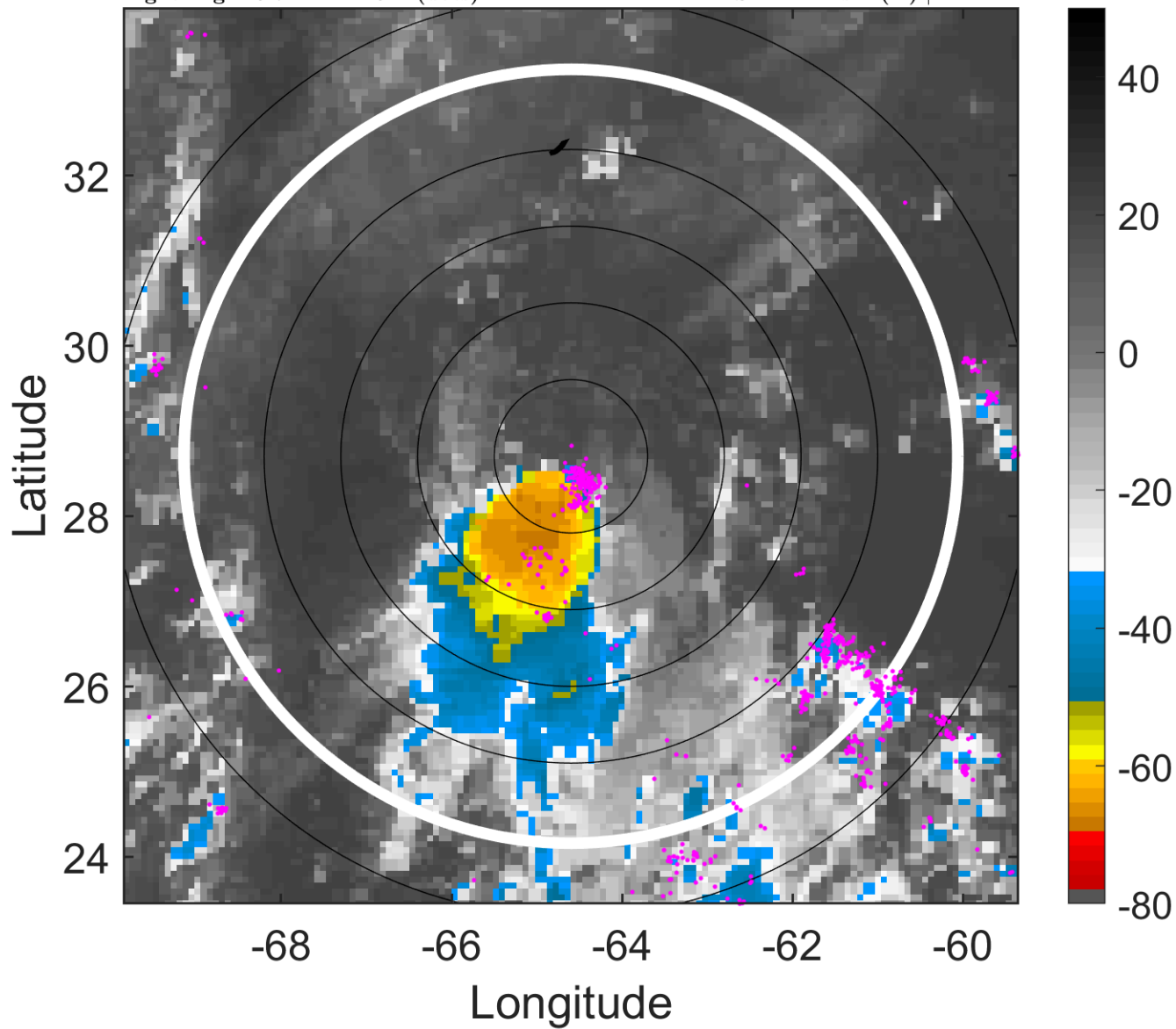
t: 2011082721 (16.7 LT)

Lightning: 16.7 LT \pm 1.5 h (dots)

PT: SLCP | EA: QUASI

11L (JOSE) | 35 kt TS

S: 24.4 m s⁻¹ (H) | H: 211°



6-h IR BT Differences & Lightning

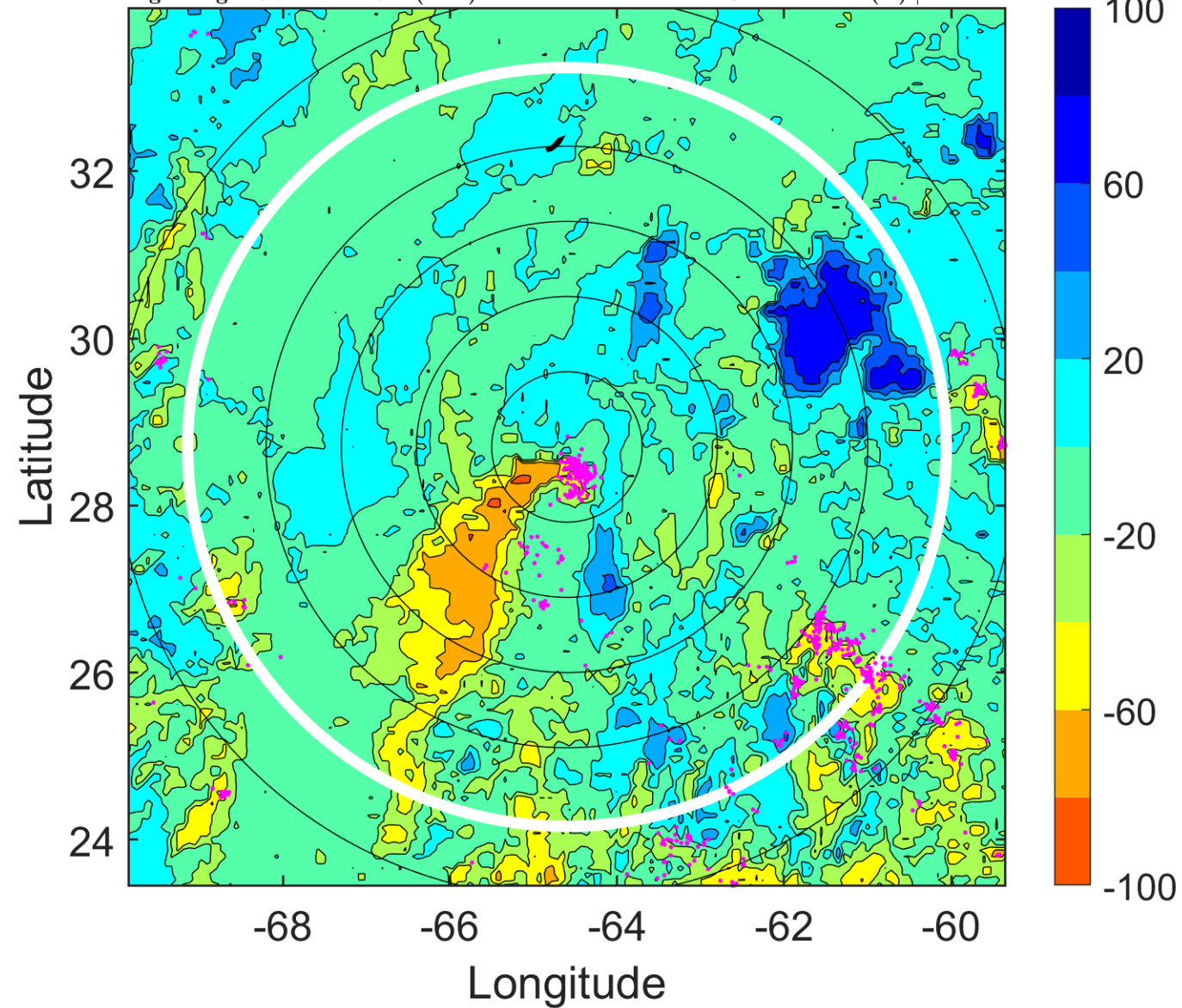
Δ t: 2011082721 (16.7 LT) - 2011082715 (10.7 LT)

Lightning: 16.7 LT \pm 1.5 h (dots)

PT: SLCP | EA: QUASI

11L (JOSE) | 35 kt TS

S: 24.4 m s⁻¹ (H) | H: 211°



IR BT & Lightning

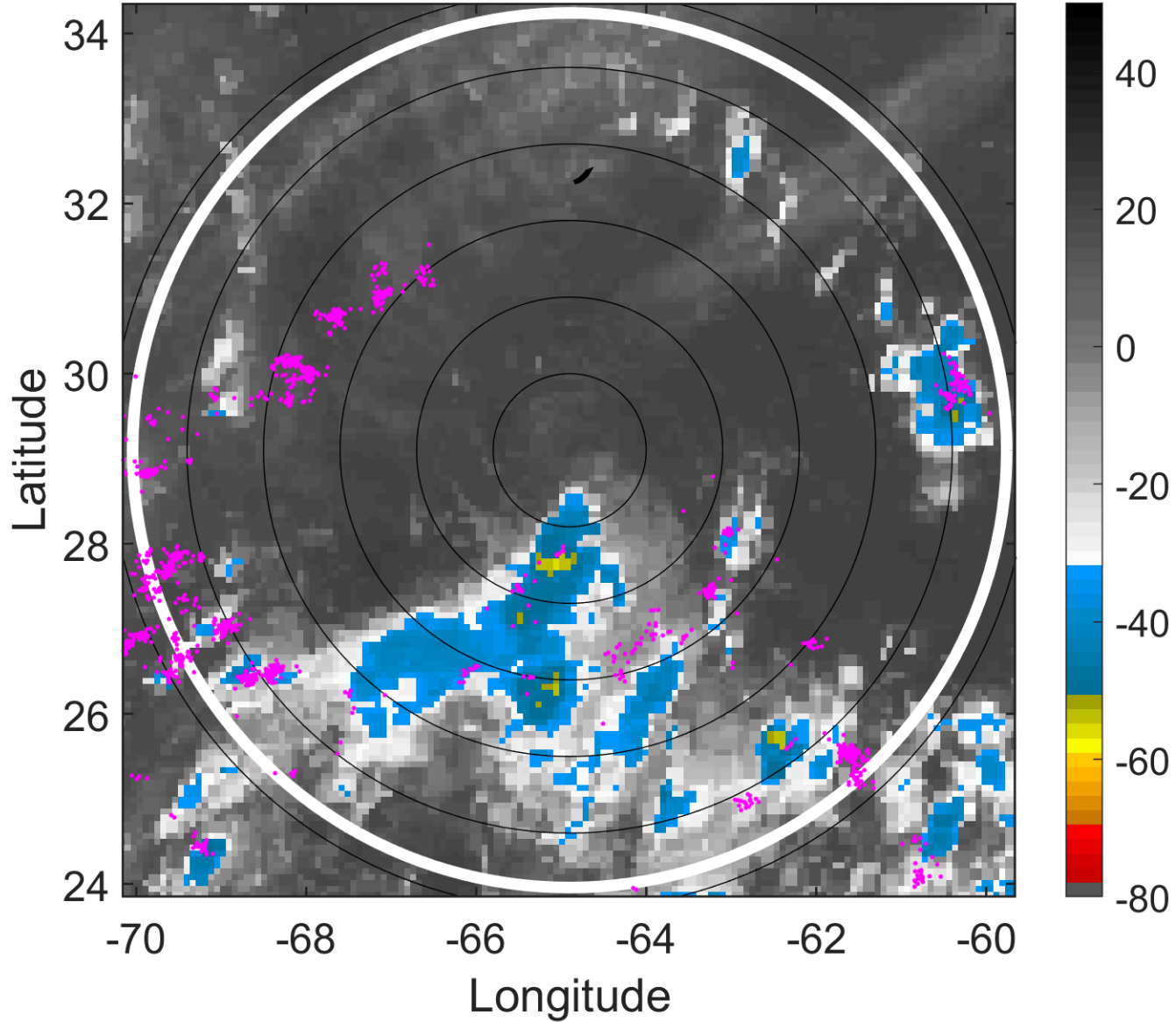
t: 2011082800 (19.7 LT)

Lightning: 19.7 LT \pm 1.5 h (dots)

PT: SLCP | EA: QUASI

11L (JOSE) | 35 kt TS

S: 23.9 m s⁻¹ (H) | H: 216°



6-h IR BT Differences & Lightning

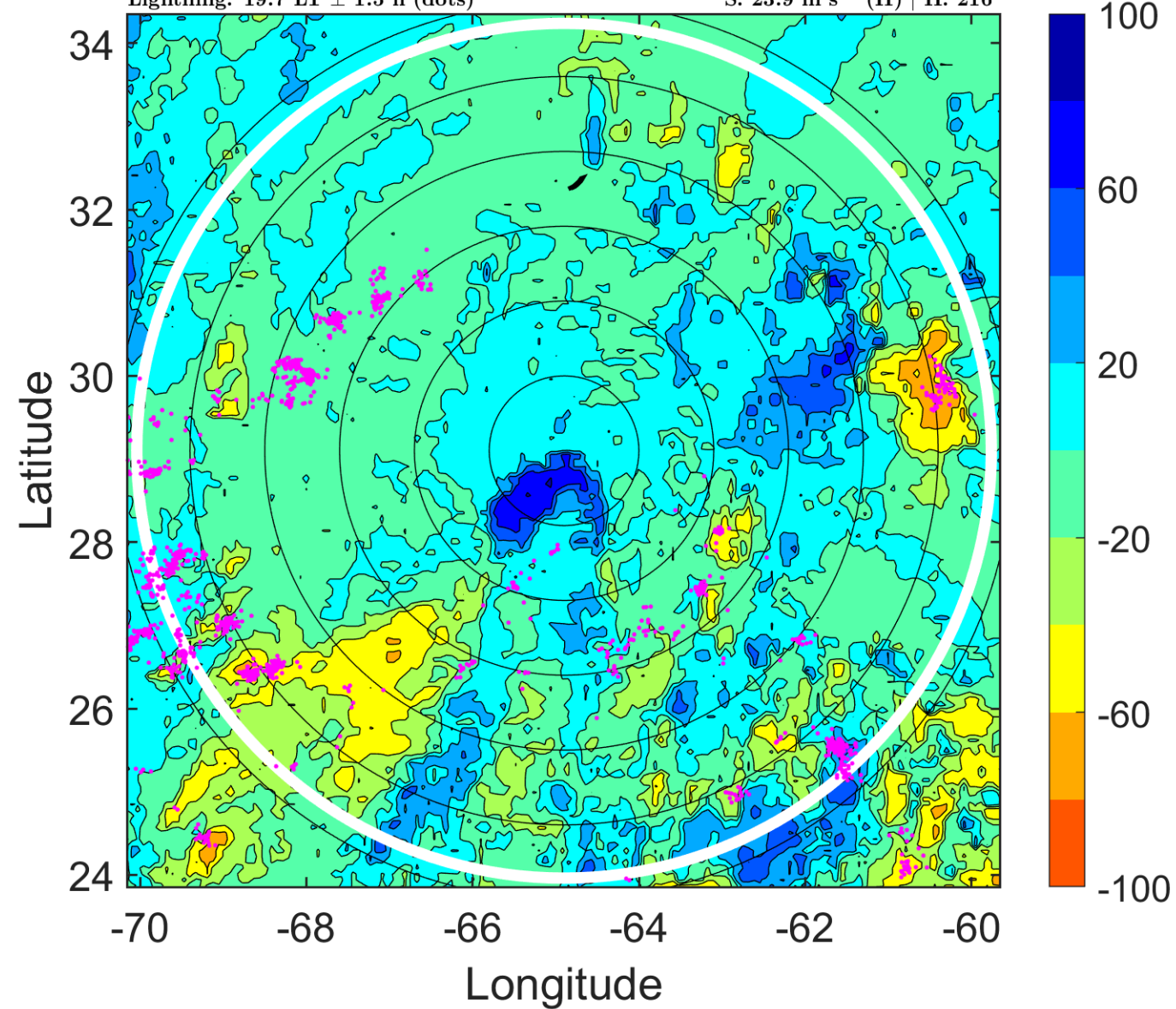
Δ t: 2011082800 (19.7 LT) - 2011082718 (13.7 LT)

Lightning: 19.7 LT \pm 1.5 h (dots)

PT: SLCP | EA: QUASI

11L (JOSE) | 35 kt TS

S: 23.9 m s⁻¹ (H) | H: 216°



IR BT & Lightning

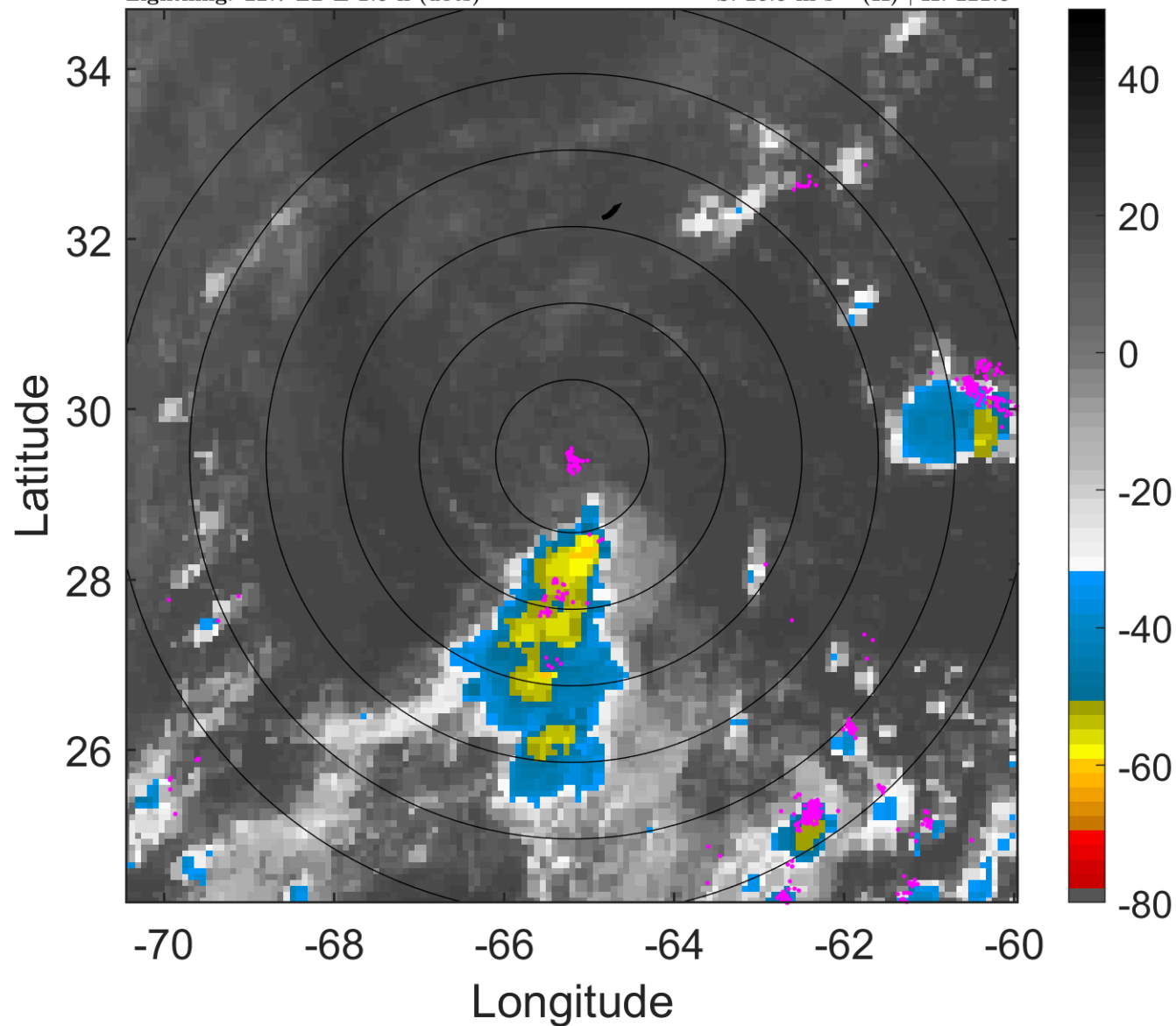
t: 2011082803 (22.7 LT)

Lightning: 22.7 LT \pm 1.5 h (dots)

PT: SLCP | EA: QUASI

11L (JOSE) | 37.5 kt TS

S: 25.5 m s⁻¹ (H) | H: 221.5°



6-h IR BT Differences & Lightning

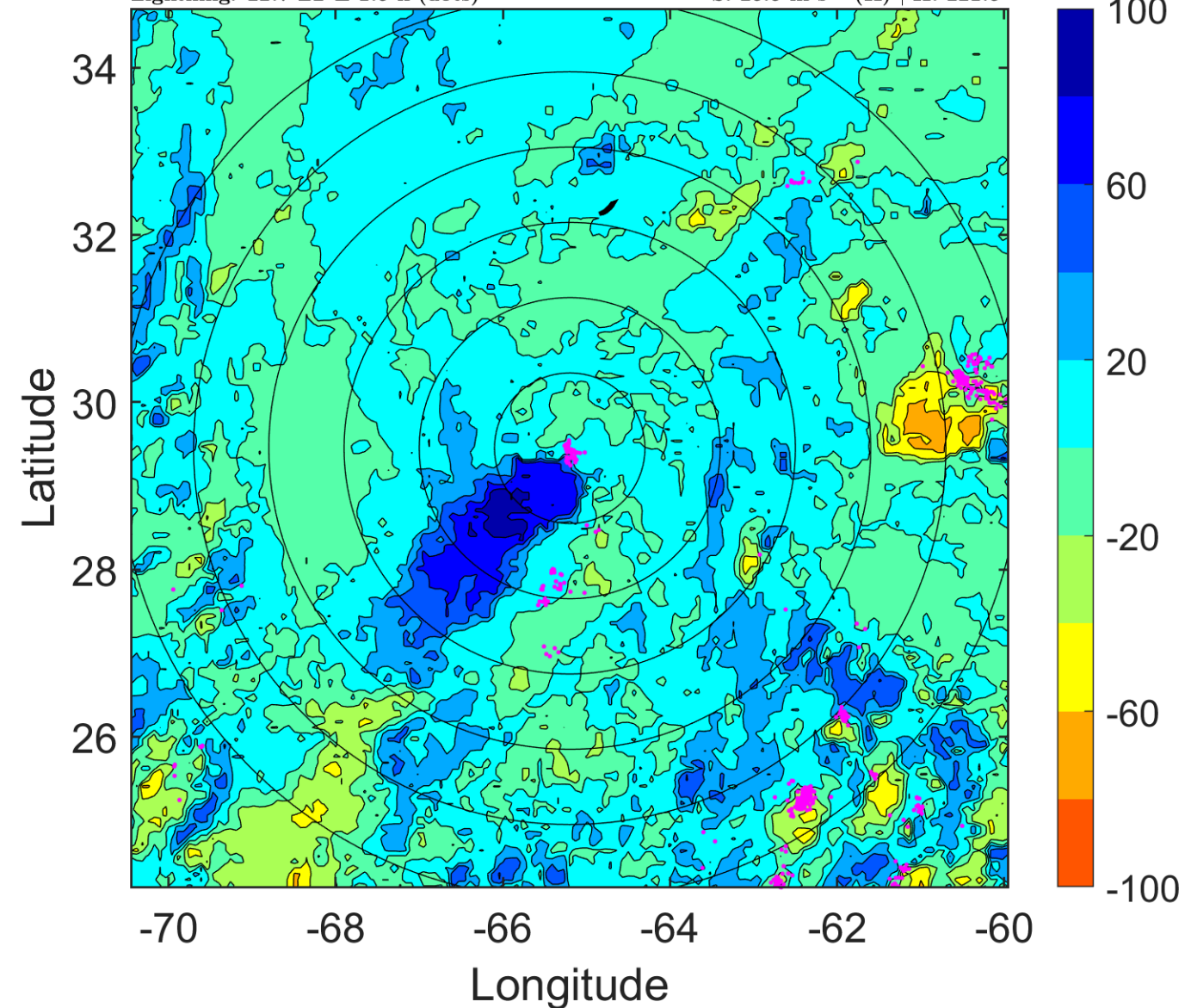
Δ t: 2011082803 (22.7 LT) - 2011082721 (16.7 LT)

Lightning: 22.7 LT \pm 1.5 h (dots)

PT: SLCP | EA: QUASI

11L (JOSE) | 37.5 kt TS

S: 25.5 m s⁻¹ (H) | H: 221.5°



IR BT & Lightning

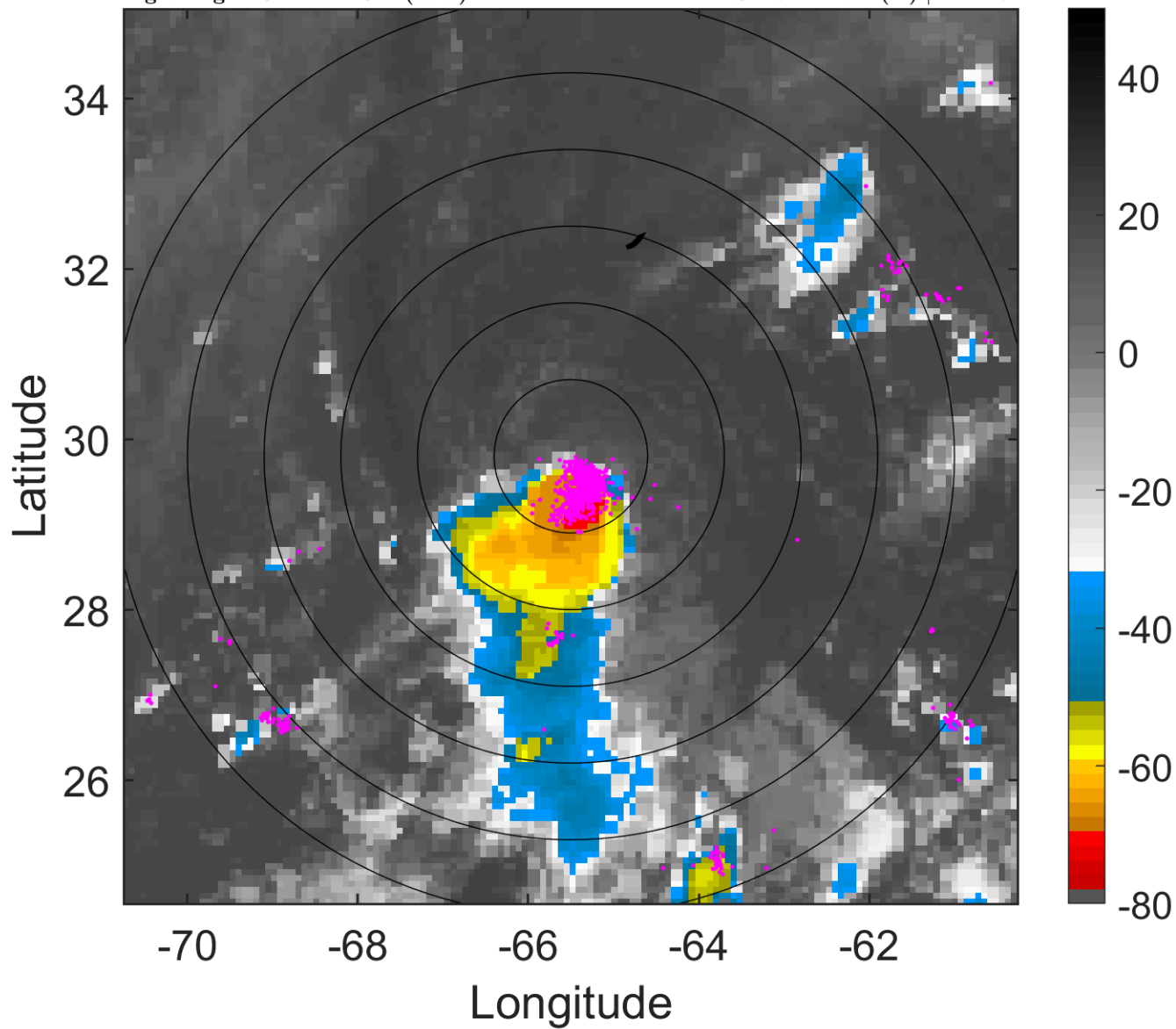
t: 2011082806 (1.6 LT)

Lightning: 1.6 LT \pm 1.5 h (dots)

PT: SLWP | EA: INACT

11L (JOSE) | 40 kt TS

S: 27.2 m s⁻¹ (H) | H: 227°



6-h IR BT Differences & Lightning

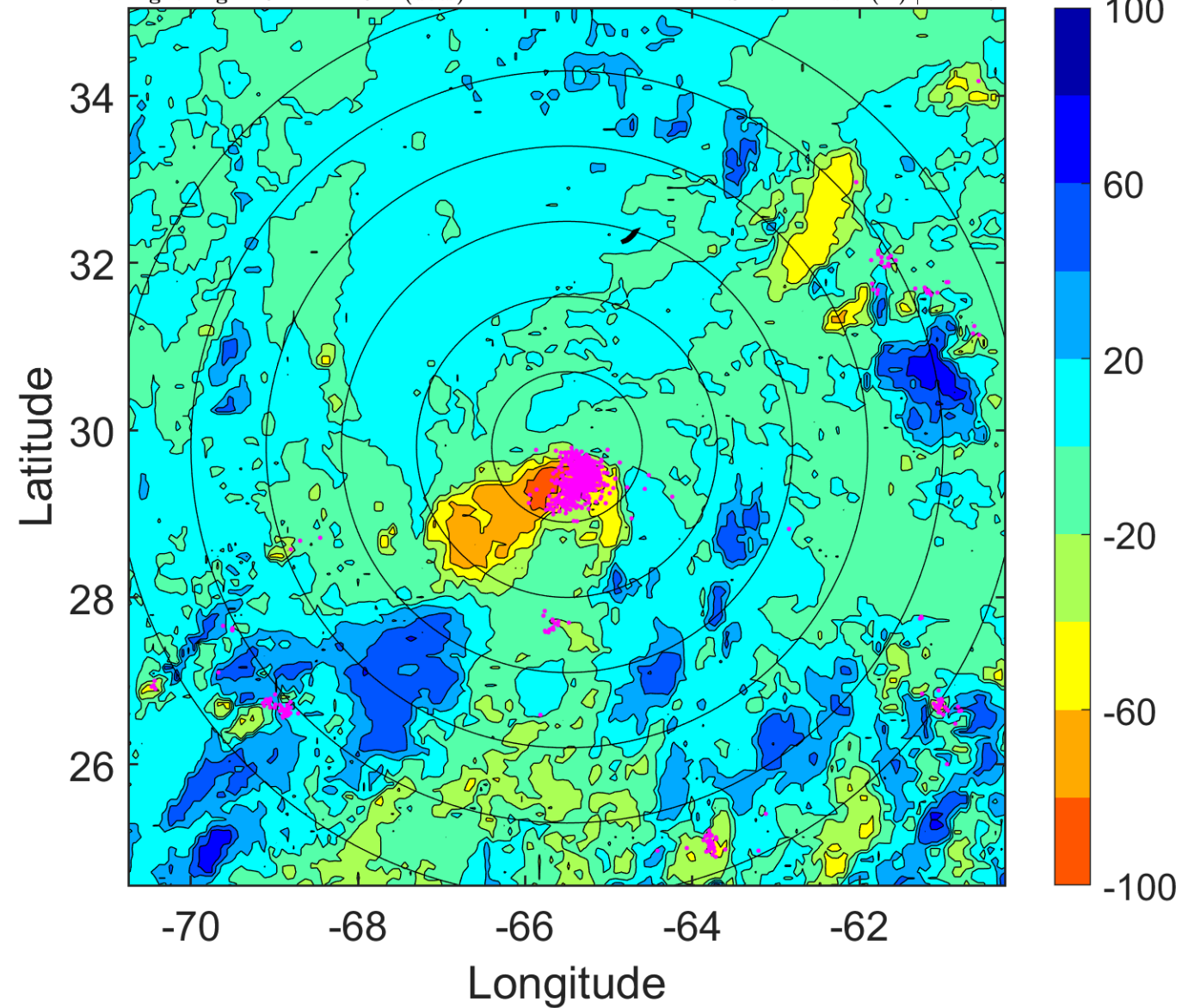
Δ t: 2011082806 (1.6 LT) - 2011082800 (19.7 LT)

Lightning: 1.6 LT \pm 1.5 h (dots)

PT: SLWP | EA: INACT

11L (JOSE) | 40 kt TS

S: 27.2 m s⁻¹ (H) | H: 227°



IR BT & Lightning

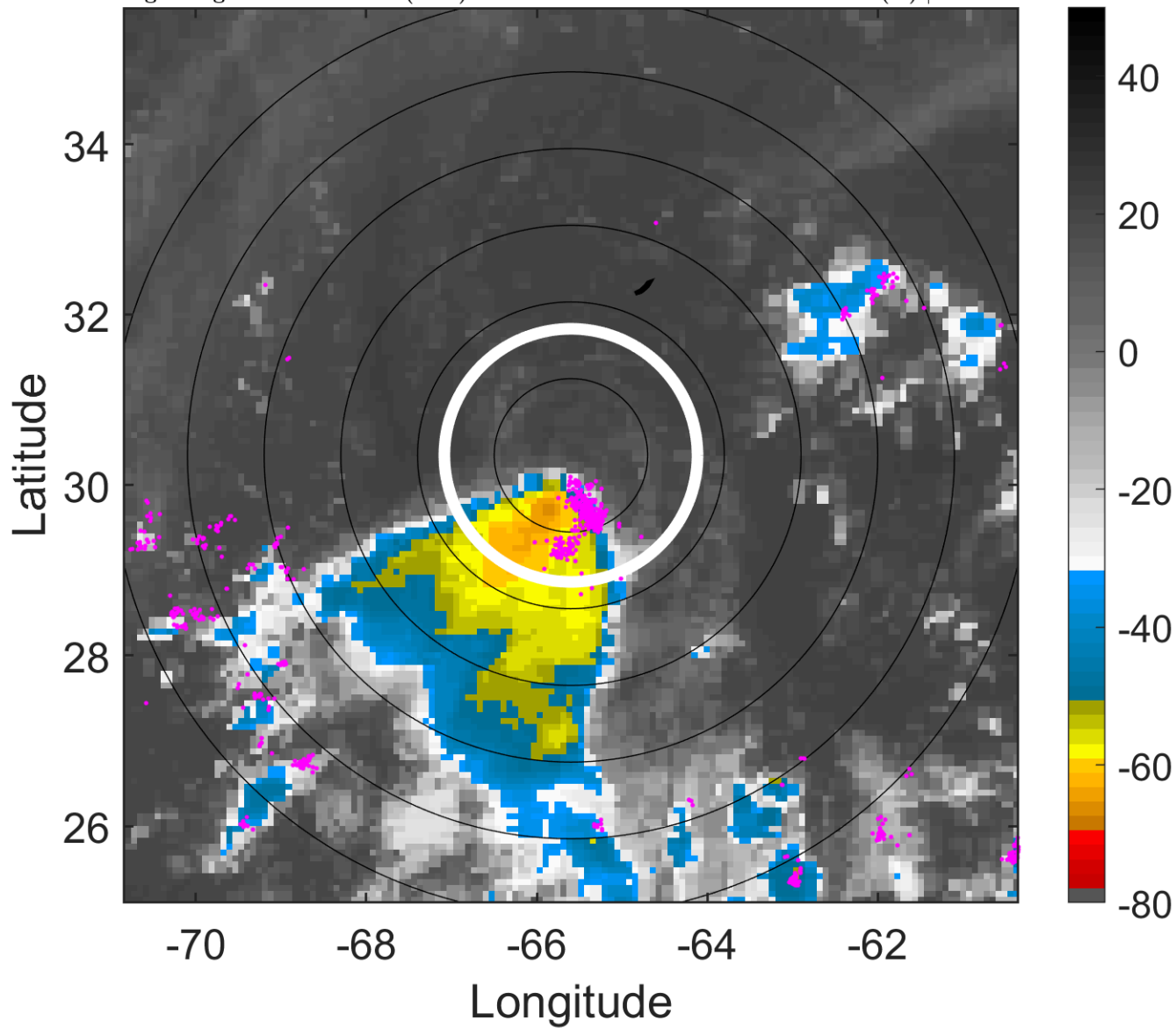
t: 2011082809 (4.6 LT)

Lightning: 4.6 LT \pm 1.5 h (dots)

PT: SLWP | EA: INACT

11L (JOSE) | 40 kt TS

S: 23.2 m s⁻¹ (H) | H: 228°



6-h IR BT Differences & Lightning

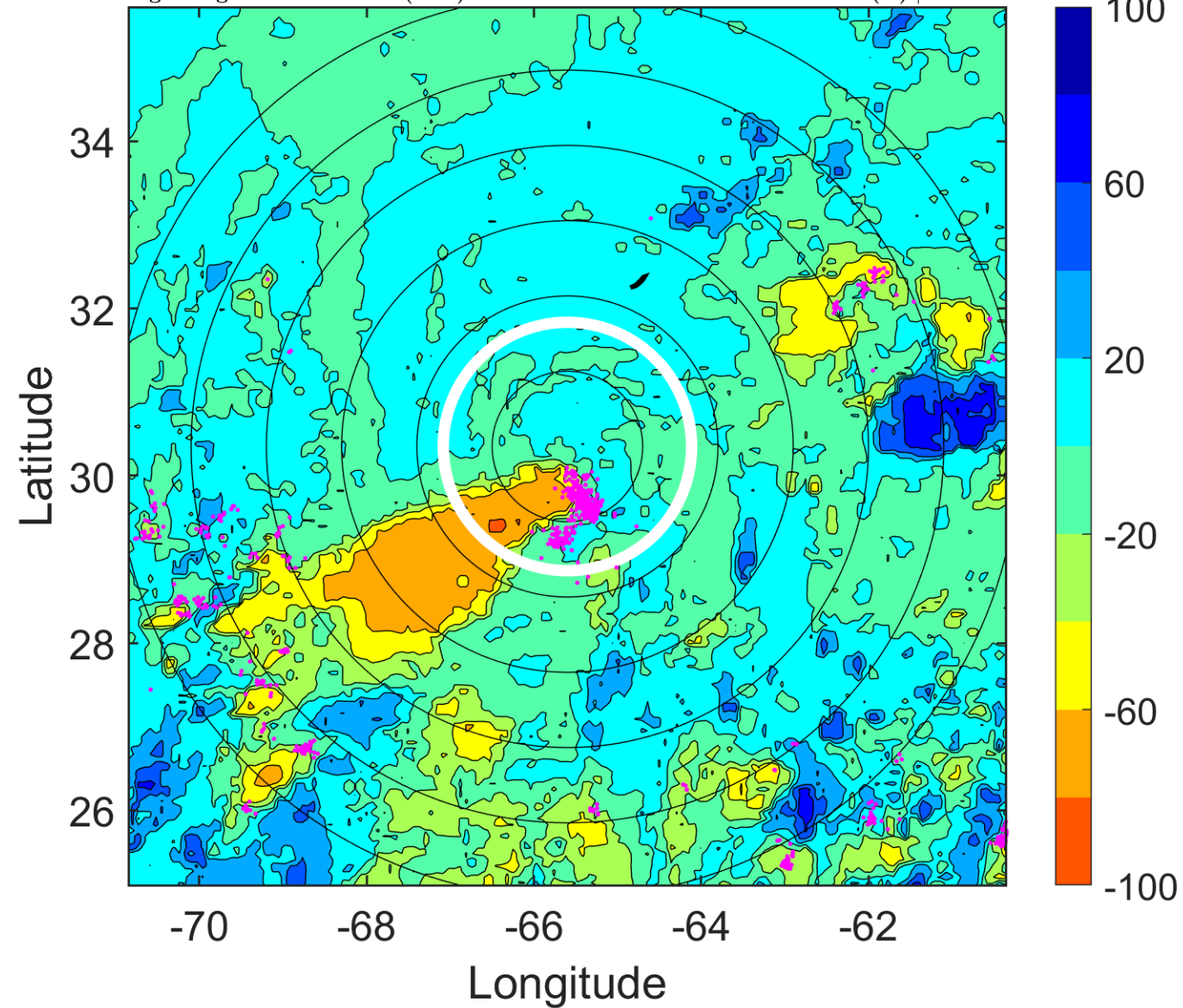
Δ t: 2011082809 (4.6 LT) - 2011082803 (22.7 LT)

Lightning: 4.6 LT \pm 1.5 h (dots)

PT: SLWP | EA: INACT

11L (JOSE) | 40 kt TS

S: 23.2 m s⁻¹ (H) | H: 228°



IR BT & Lightning

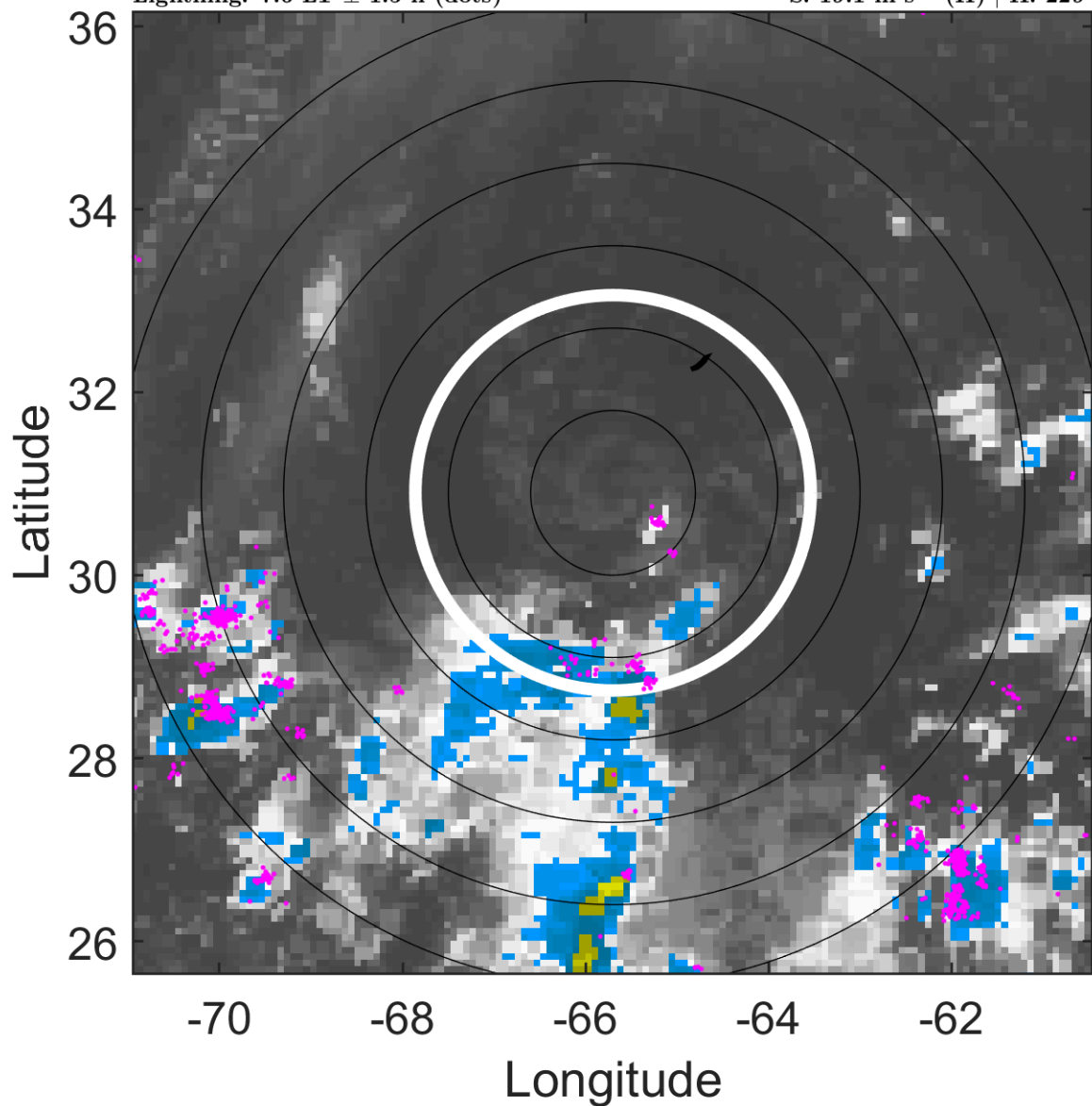
t: 2011082812 (7.6 LT)

Lightning: 7.6 LT \pm 1.5 h (dots)

PT: SLWP | EA: INACT

11L (JOSE) | 40 kt TS

S: 19.1 m s⁻¹ (H) | H: 229°



6-h IR BT Differences & Lightning

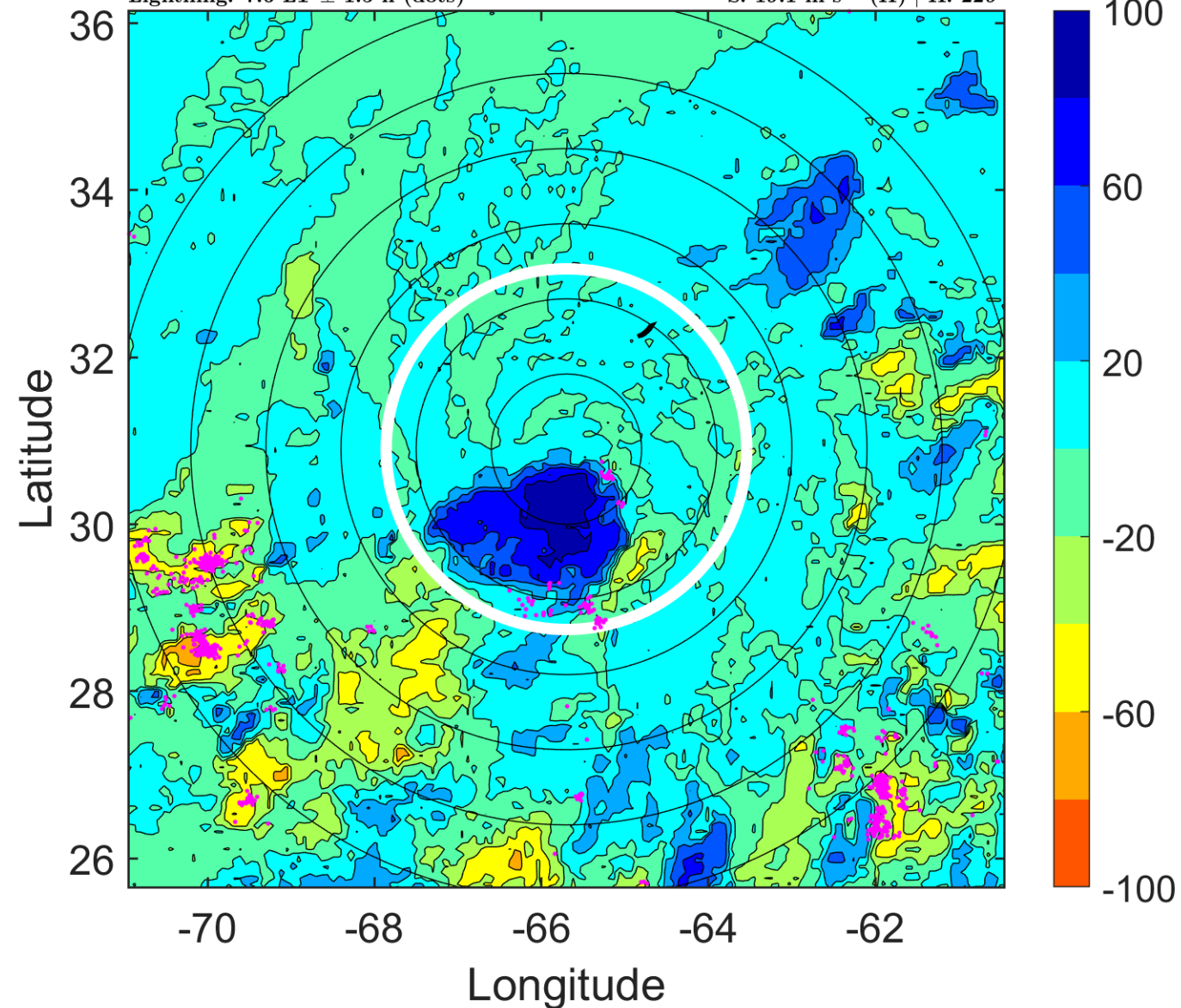
Δ t: 2011082812 (7.6 LT) - 2011082806 (1.6 LT)

Lightning: 7.6 LT \pm 1.5 h (dots)

PT: SLWP | EA: INACT

11L (JOSE) | 40 kt TS

S: 19.1 m s⁻¹ (H) | H: 229°



IR BT & Lightning

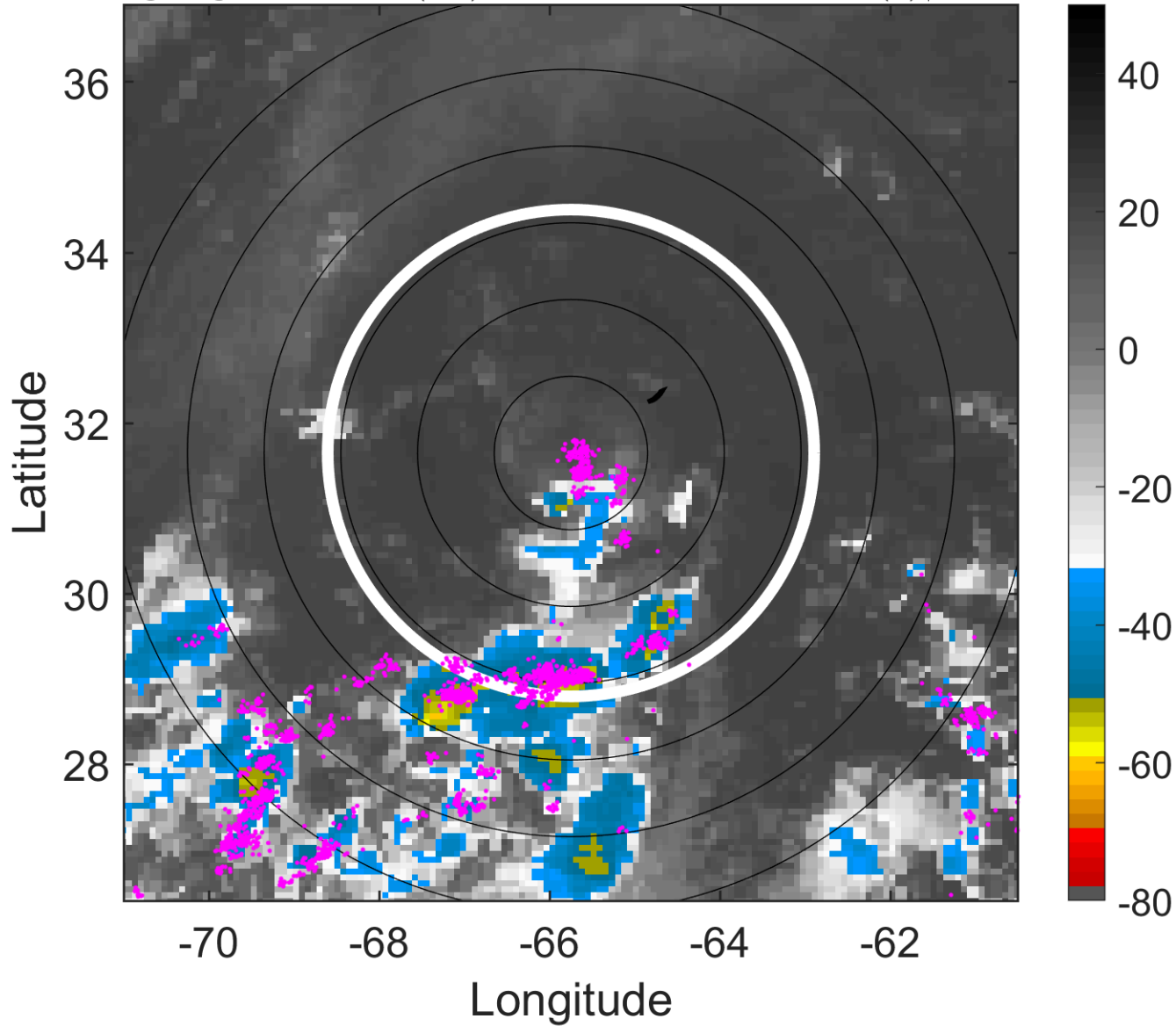
t: 2011082815 (10.6 LT)

Lightning: 10.6 LT \pm 1.5 h (dots)

PT: SLWP | EA: INACT

11L (JOSE) | 40 kt TS

S: 18.8 m s⁻¹ (H) | H: 238°



6-h IR BT Differences & Lightning

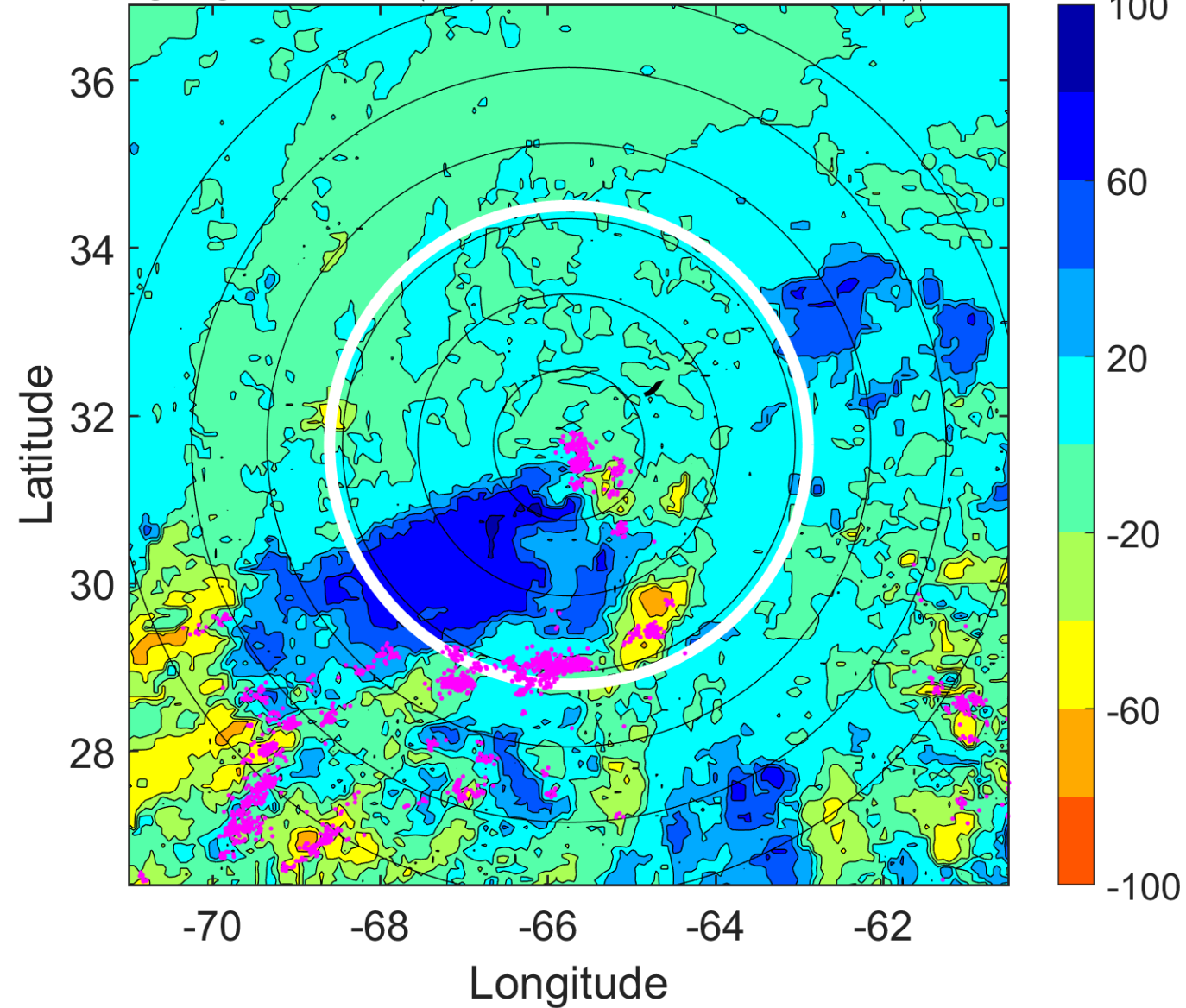
Δ t: 2011082815 (10.6 LT) - 2011082809 (4.6 LT)

Lightning: 10.6 LT \pm 1.5 h (dots)

PT: SLWP | EA: INACT

11L (JOSE) | 40 kt TS

S: 18.8 m s⁻¹ (H) | H: 238°



IR BT & Lightning

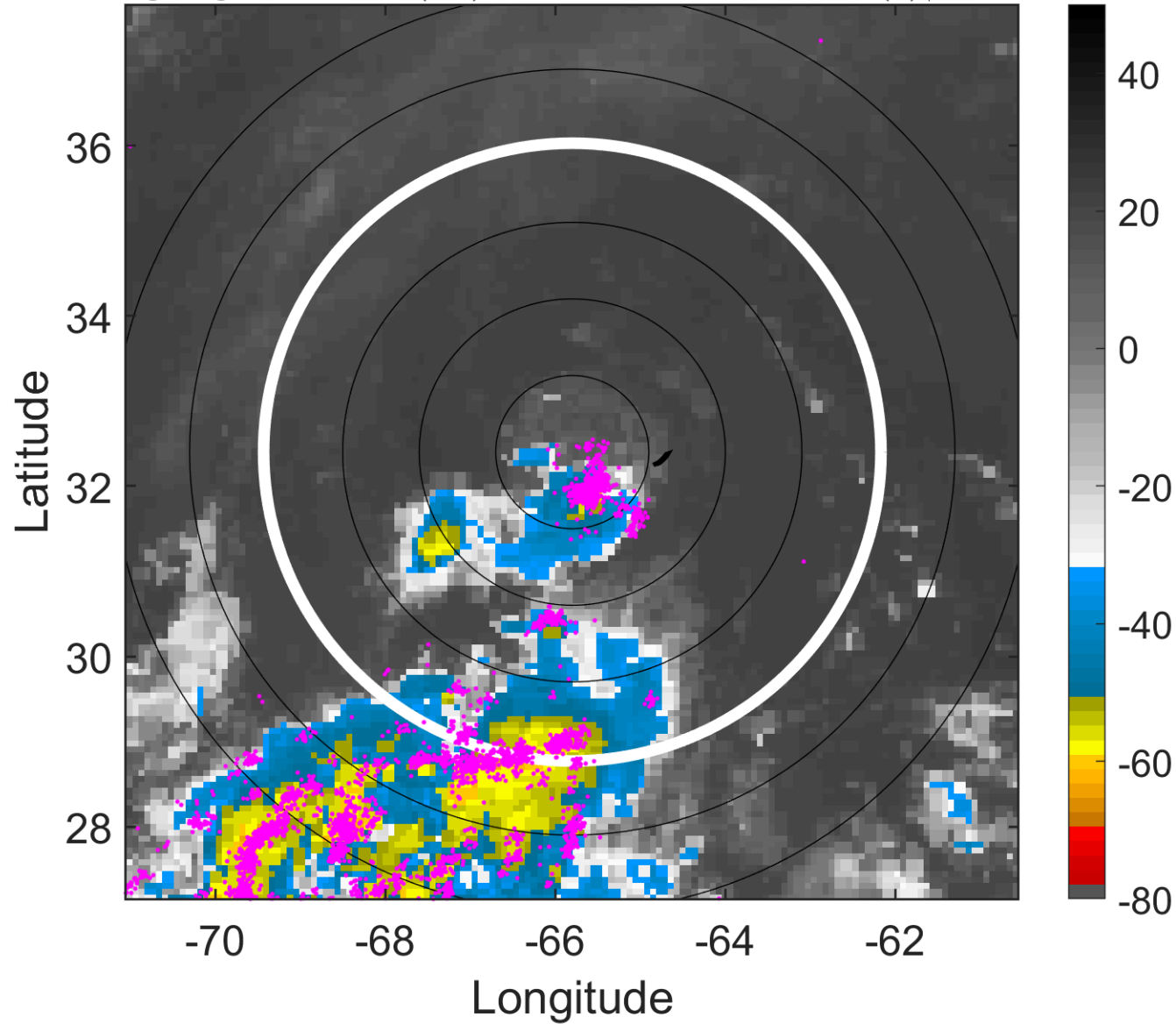
t: 2011082818 (13.6 LT)

Lightning: 13.6 LT \pm 1.5 h (dots)

PT: SLWP | EA: INACT

11L (JOSE) | 40 kt TS

S: 18.4 m s⁻¹ (H) | H: 247°



6-h IR BT Differences & Lightning

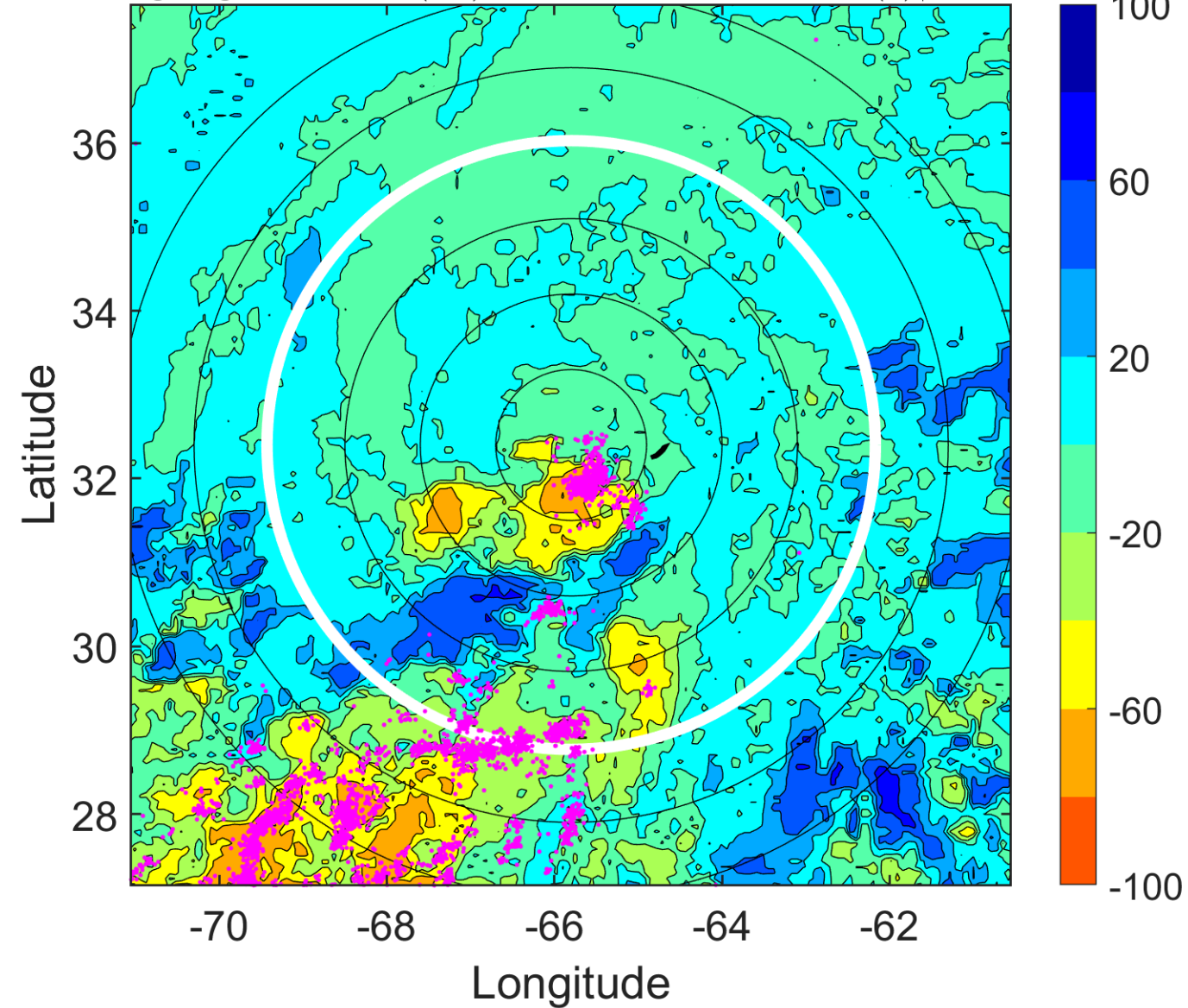
Δ t: 2011082818 (13.6 LT) - 2011082812 (7.6 LT)

Lightning: 13.6 LT \pm 1.5 h (dots)

PT: SLWP | EA: INACT

11L (JOSE) | 40 kt TS

S: 18.4 m s⁻¹ (H) | H: 247°



IR BT & Lightning

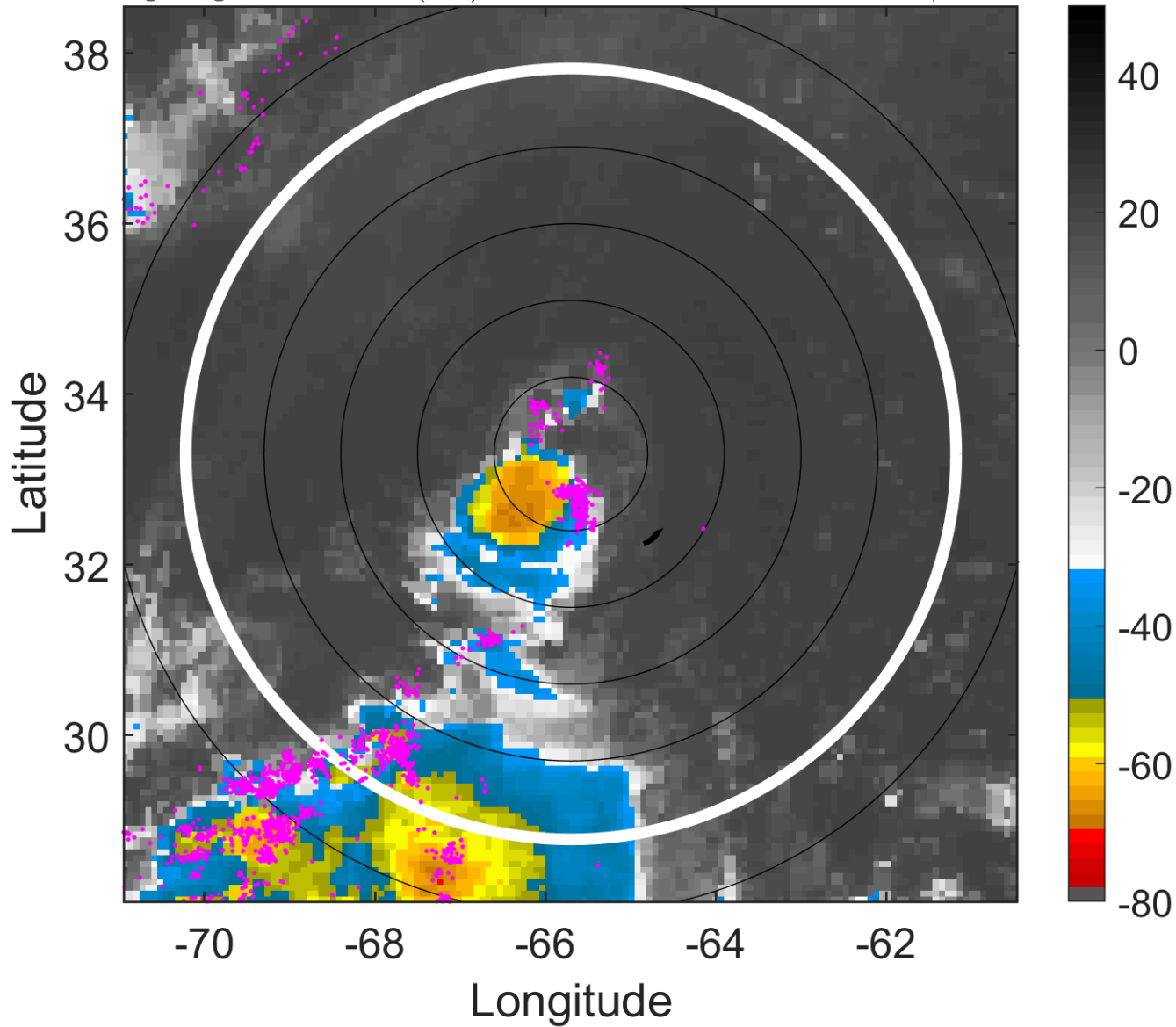
t: 2011082821 (16.6 LT)

Lightning: 16.6 LT \pm 1.5 h (dots)

PT: SLWP | EA: INACT

11L (JOSE) | 40 kt TS

S: null | H: null



6-h IR BT Differences & Lightning

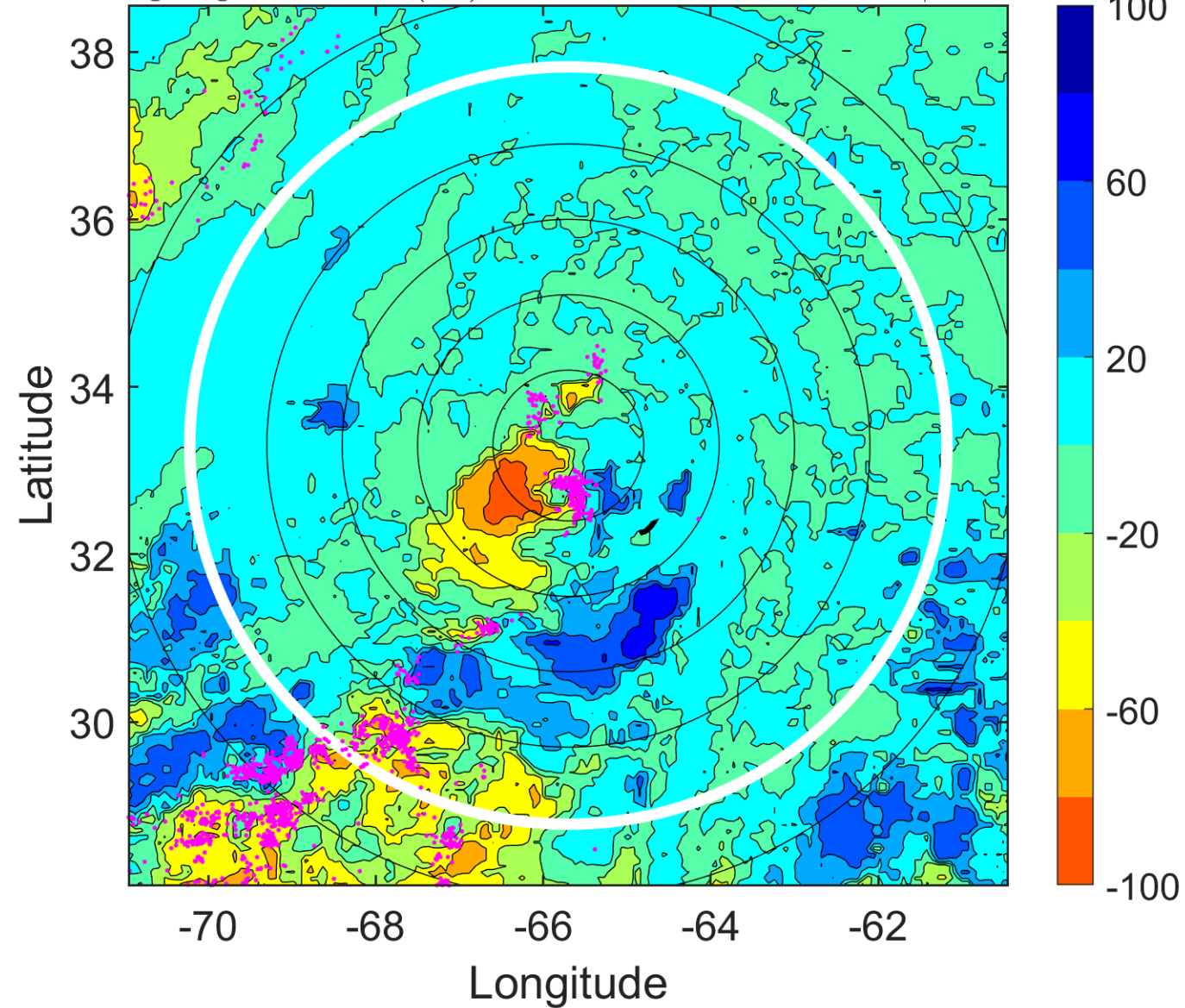
Δ t: 2011082821 (16.6 LT) - 2011082815 (10.6 LT)

Lightning: 16.6 LT \pm 1.5 h (dots)

PT: SLWP | EA: INACT

11L (JOSE) | 40 kt TS

S: null | H: null



IR BT & Lightning

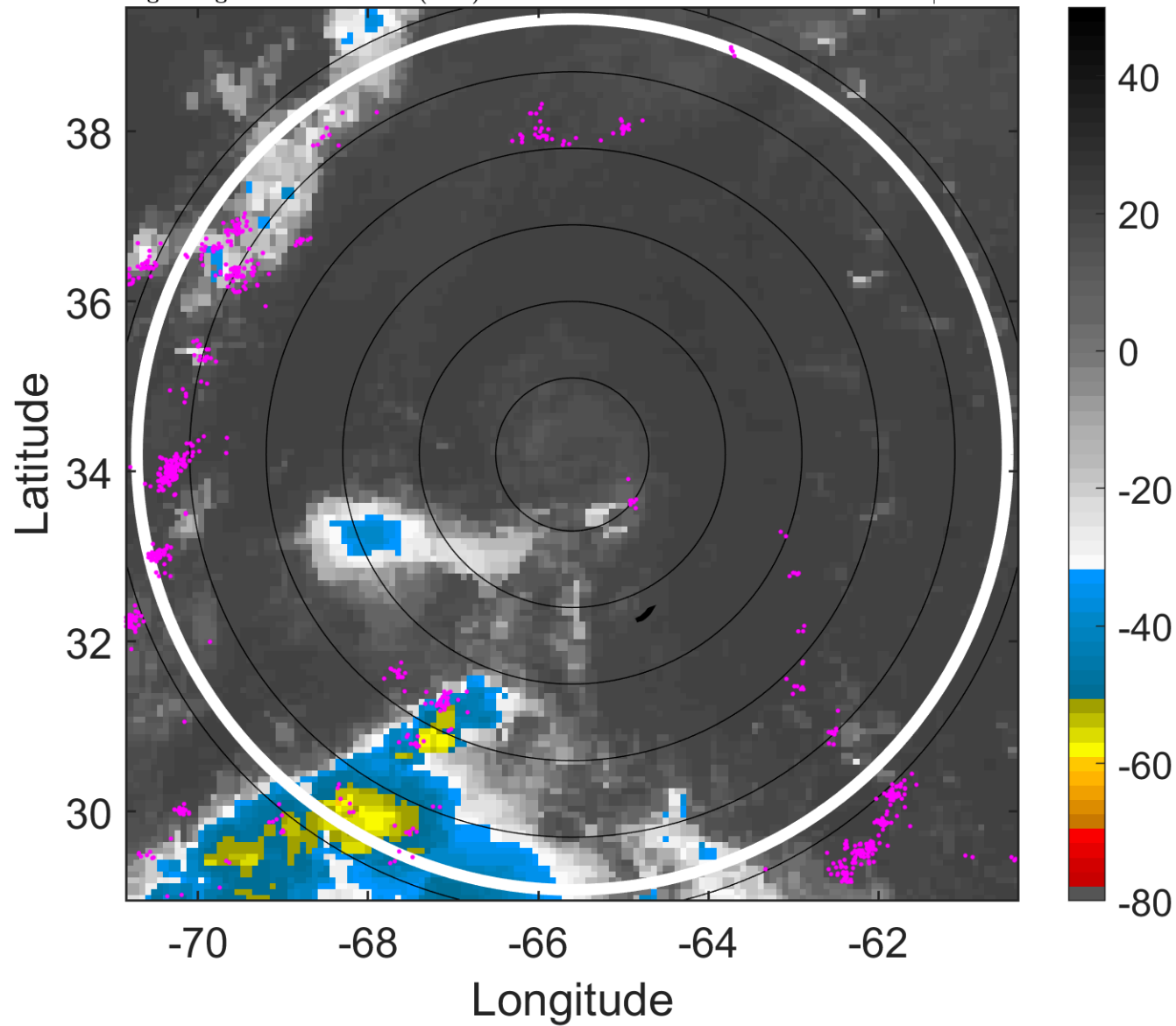
t: 2011082900 (19.6 LT)

Lightning: 19.6 LT \pm 1.5 h (dots)

PT: SLWP | EA: INACT

11L (JOSE) | 40 kt LO

S: null | H: null



6-h IR BT Differences & Lightning

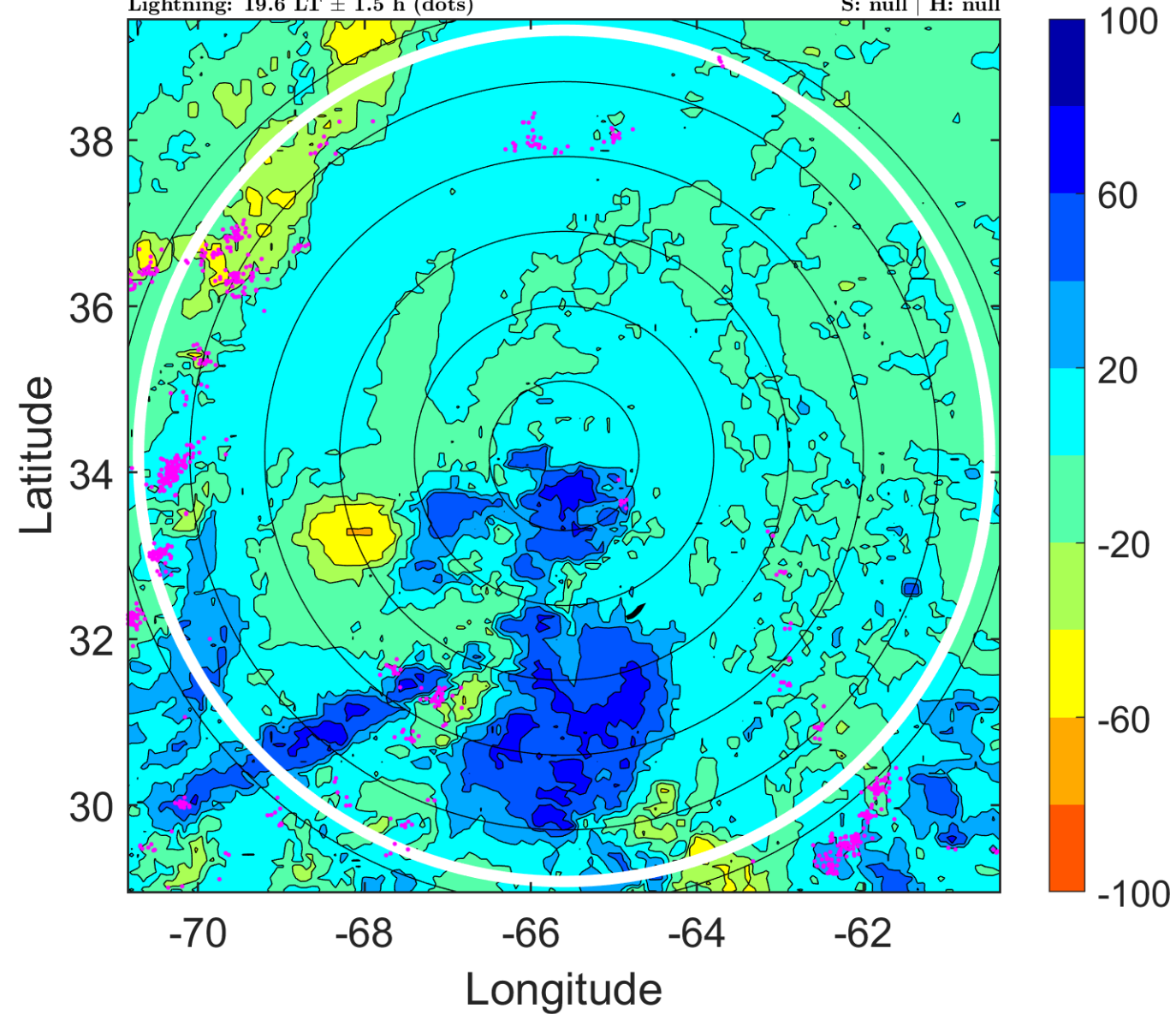
Δ t: 2011082900 (19.6 LT) - 2011082818 (13.6 LT)

Lightning: 19.6 LT \pm 1.5 h (dots)

PT: SLWP | EA: INACT

11L (JOSE) | 40 kt LO

S: null | H: null



IR BT & Lightning

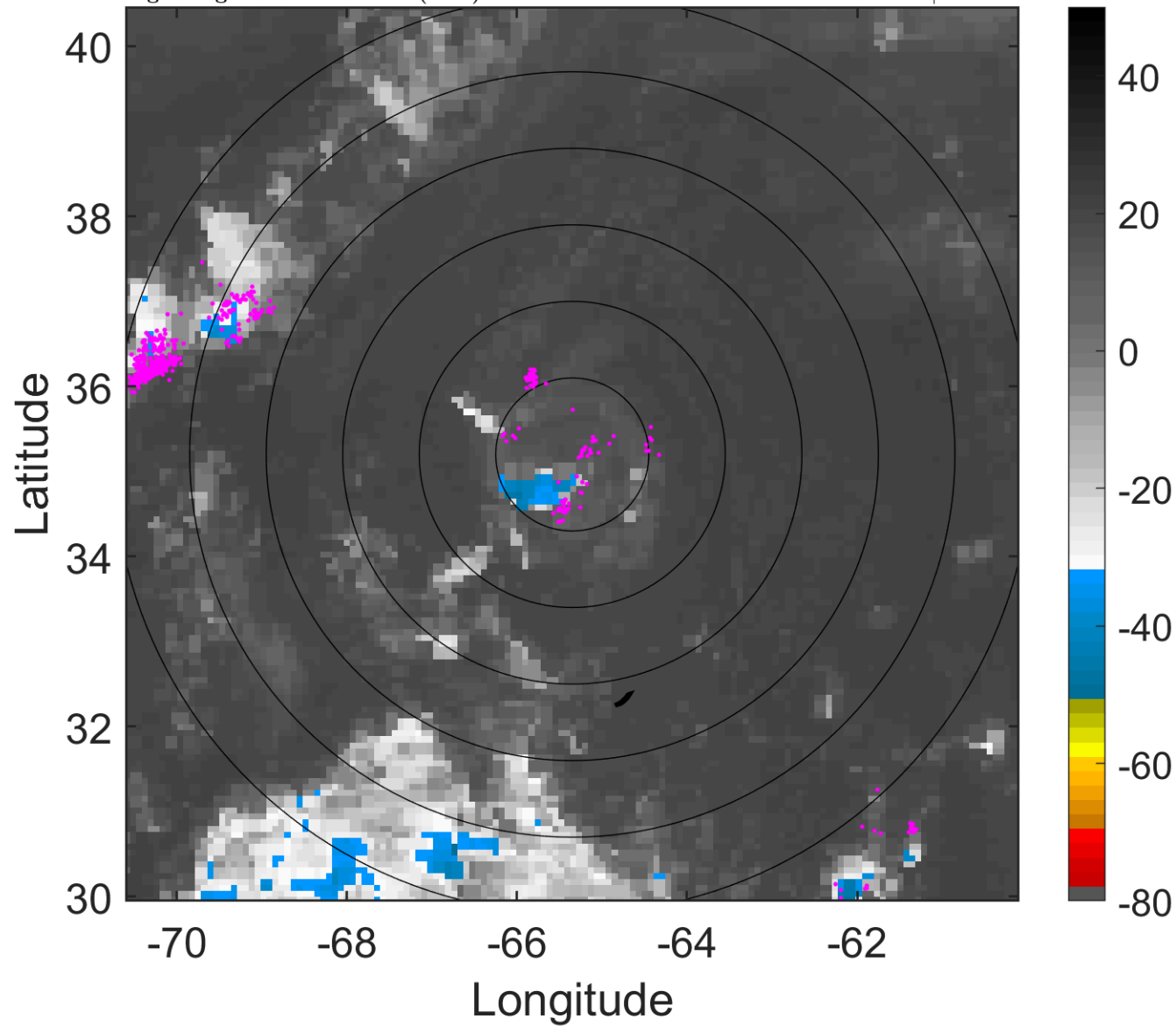
t: 2011082903 (22.6 LT)

Lightning: 22.6 LT \pm 1.5 h (dots)

PT: SLWP | EA: INACT

11L (JOSE) | 37.5 kt LO

S: null | H: null



6-h IR BT Differences & Lightning

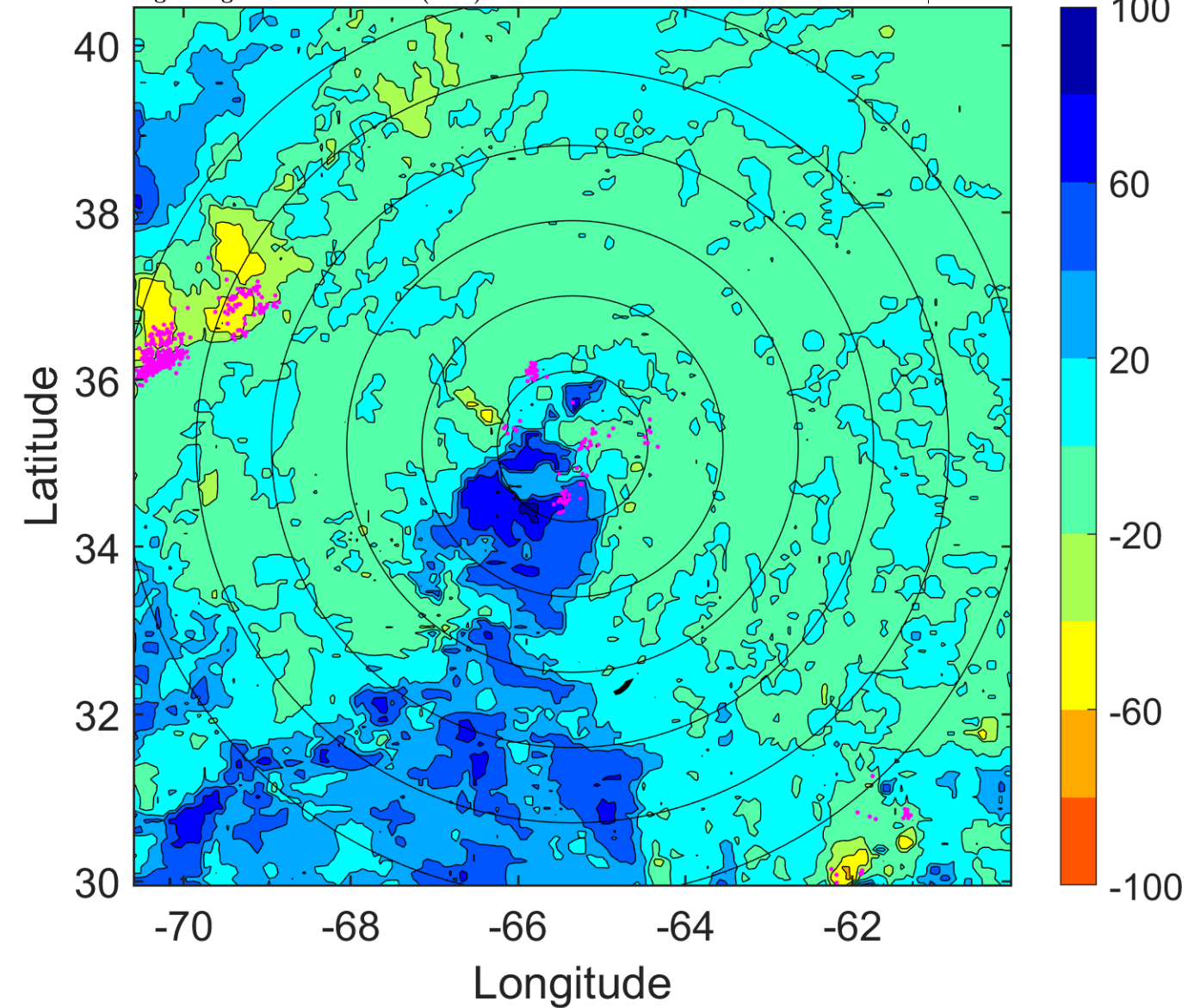
Δ t: 2011082903 (22.6 LT) - 2011082821 (16.6 LT)

Lightning: 22.6 LT \pm 1.5 h (dots)

PT: SLWP | EA: INACT

11L (JOSE) | 37.5 kt LO

S: null | H: null



IR BT & Lightning

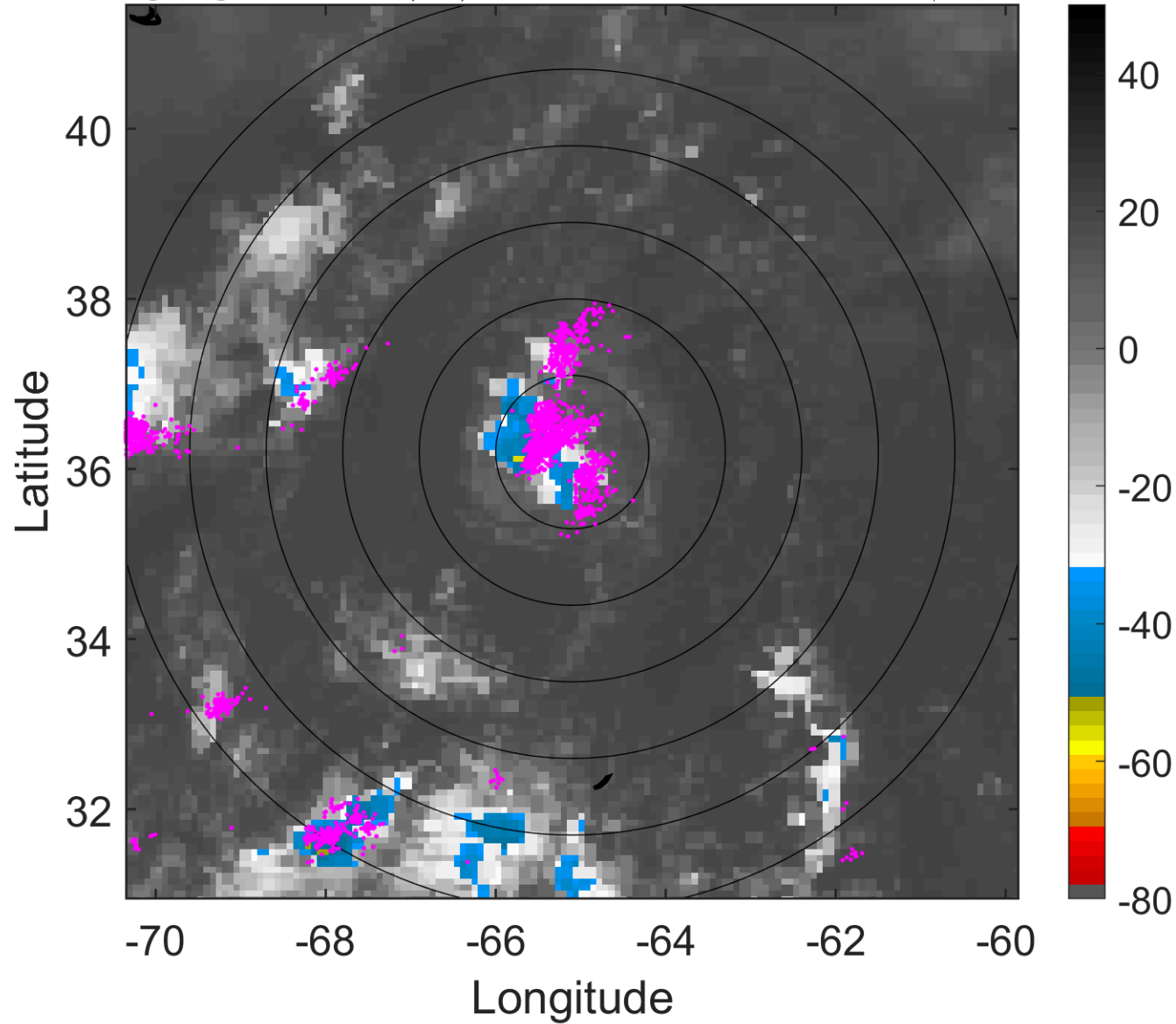
t: 2011082906 (1.7 LT)

Lightning: 1.7 LT \pm 1.5 h (dots)

PT: SLCP | EA: QUASI

11L (JOSE) | 35 kt LO

S: null | H: null



6-h IR BT Differences & Lightning

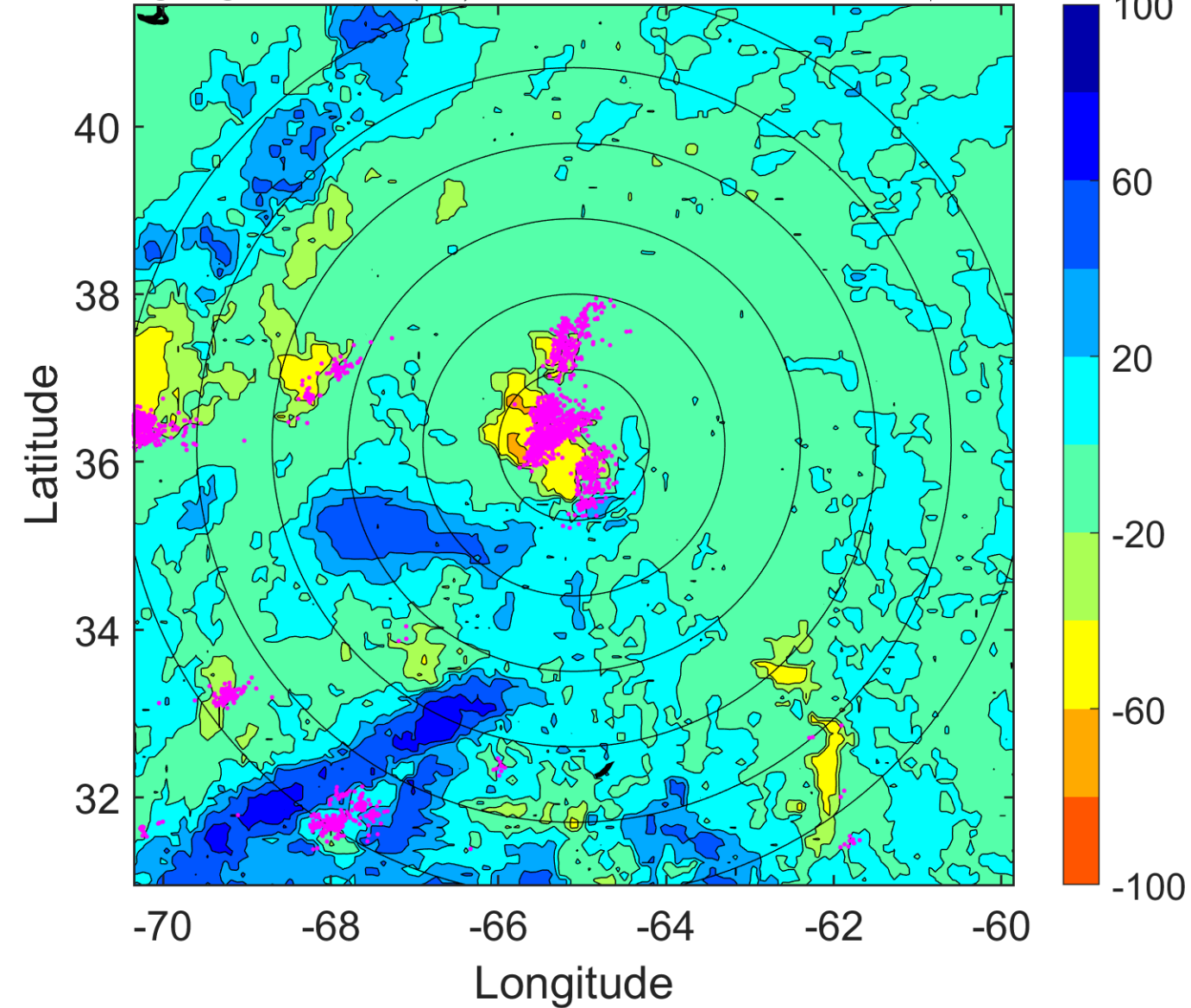
Δ t: 2011082906 (1.7 LT) - 2011082900 (19.6 LT)

Lightning: 1.7 LT \pm 1.5 h (dots)

PT: SLCP | EA: QUASI

11L (JOSE) | 35 kt LO

S: null | H: null



IR BT & Lightning

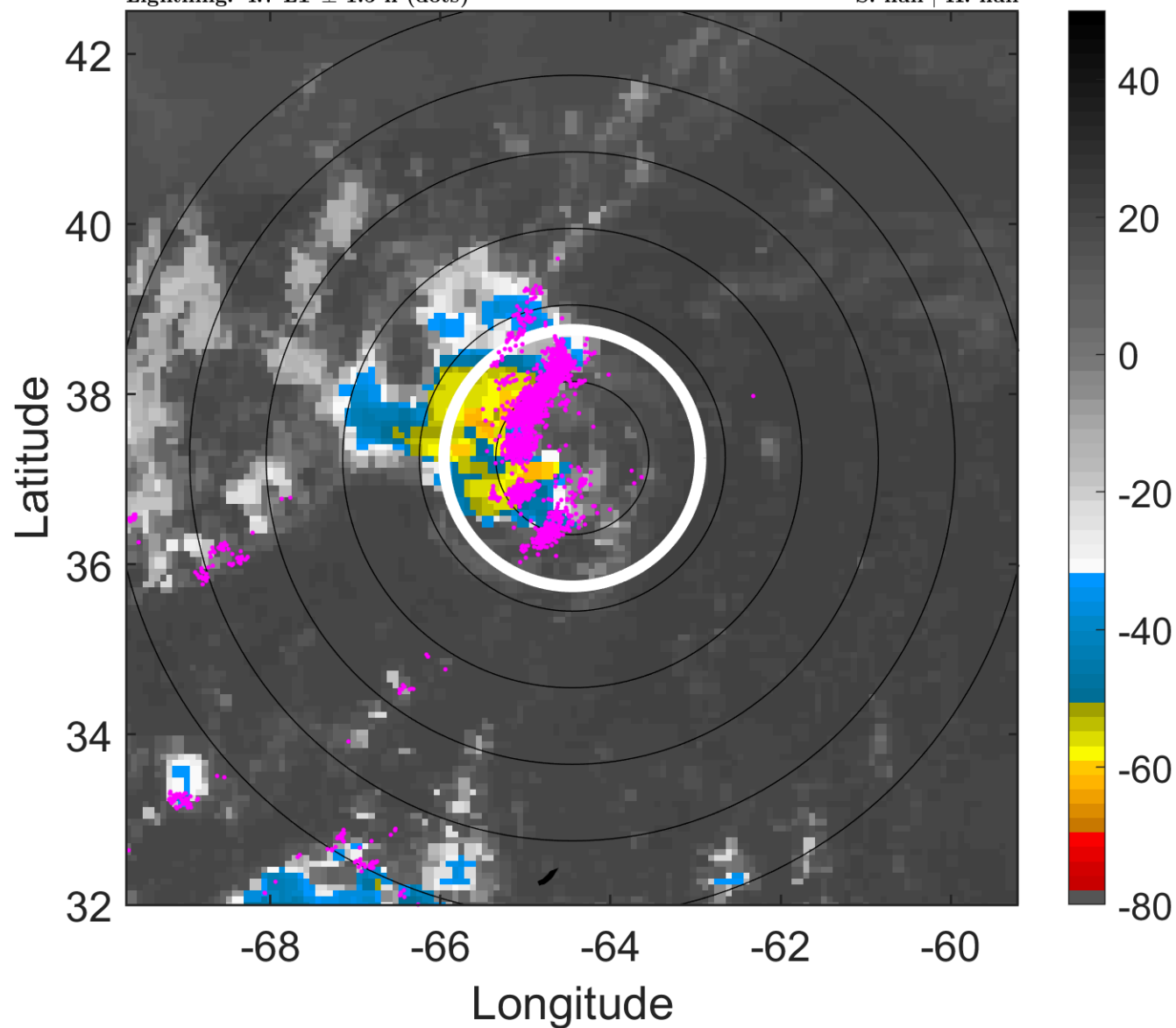
t: 2011082909 (4.7 LT)

Lightning: 4.7 LT \pm 1.5 h (dots)

PT: SLCP | EA: QUASI

11L (JOSE) | 32.5 kt LO

S: null | H: null



6-h IR BT Differences & Lightning

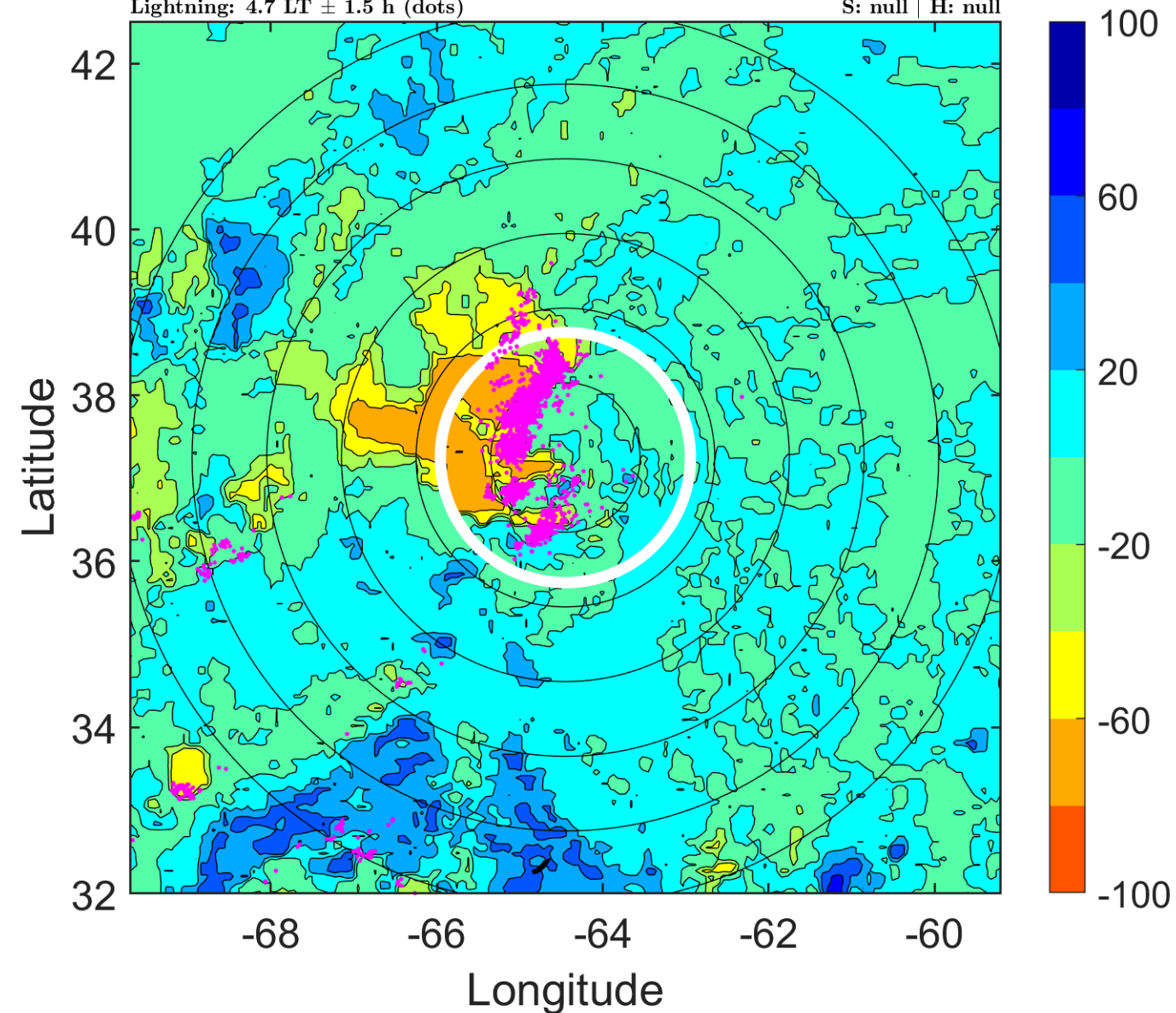
Δ t: 2011082909 (4.7 LT) - 2011082903 (22.6 LT)

Lightning: 4.7 LT \pm 1.5 h (dots)

PT: SLCP | EA: QUASI

11L (JOSE) | 32.5 kt LO

S: null | H: null



IR BT & Lightning

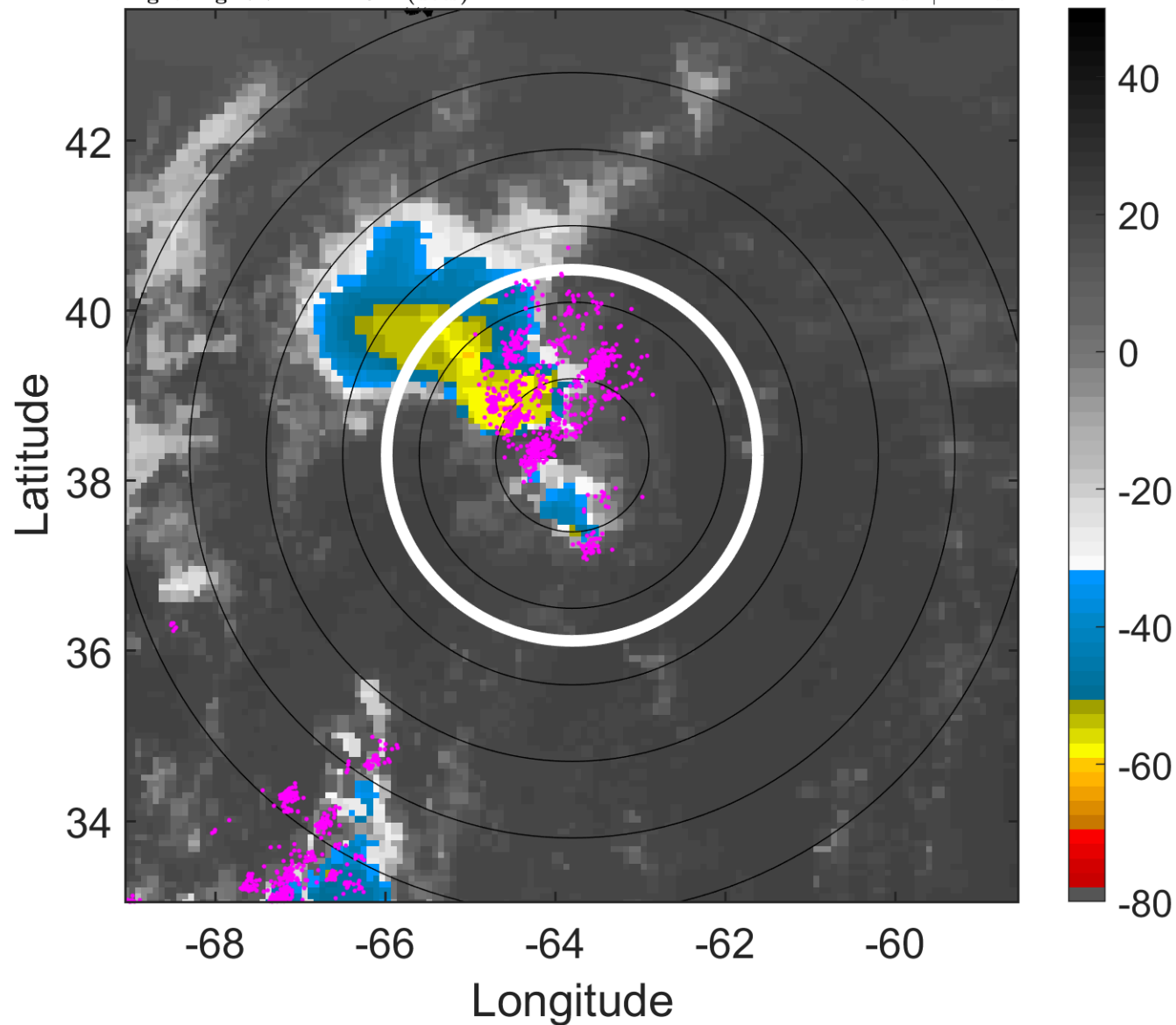
t: 2011082912 (7.7 LT)

Lightning: 7.7 LT \pm 1.5 h (dots)

PT: SLCP | EA: QUASI

11L (JOSE) | 30 kt LO

S: null | H: null



6-h IR BT Differences & Lightning

Δ t: 2011082912 (7.7 LT) - 2011082906 (1.7 LT)

Lightning: 7.7 LT \pm 1.5 h (dots)

PT: SLCP | EA: QUASI

11L (JOSE) | 30 kt LO

S: null | H: null

