

### IR BT & Lightning

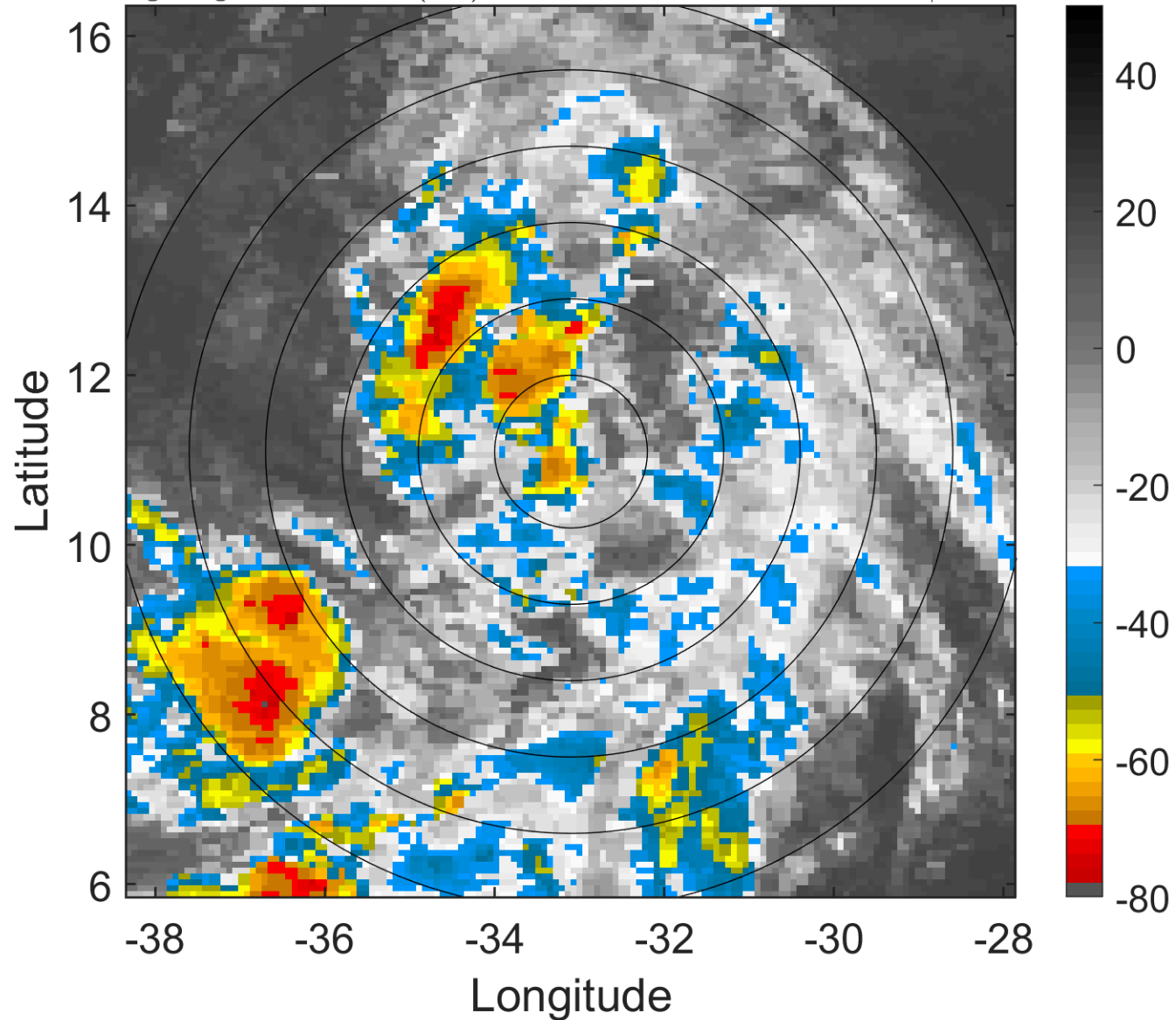
t: 2012082200 (21.8 LT)

Lightning: 21.8 LT  $\pm$  1.5 h (dots)

PT: NP | EA: INACT

10L (JOYCE) | 25 kt LO

S: null | H: null



### 6-h IR BT Differences & Lightning

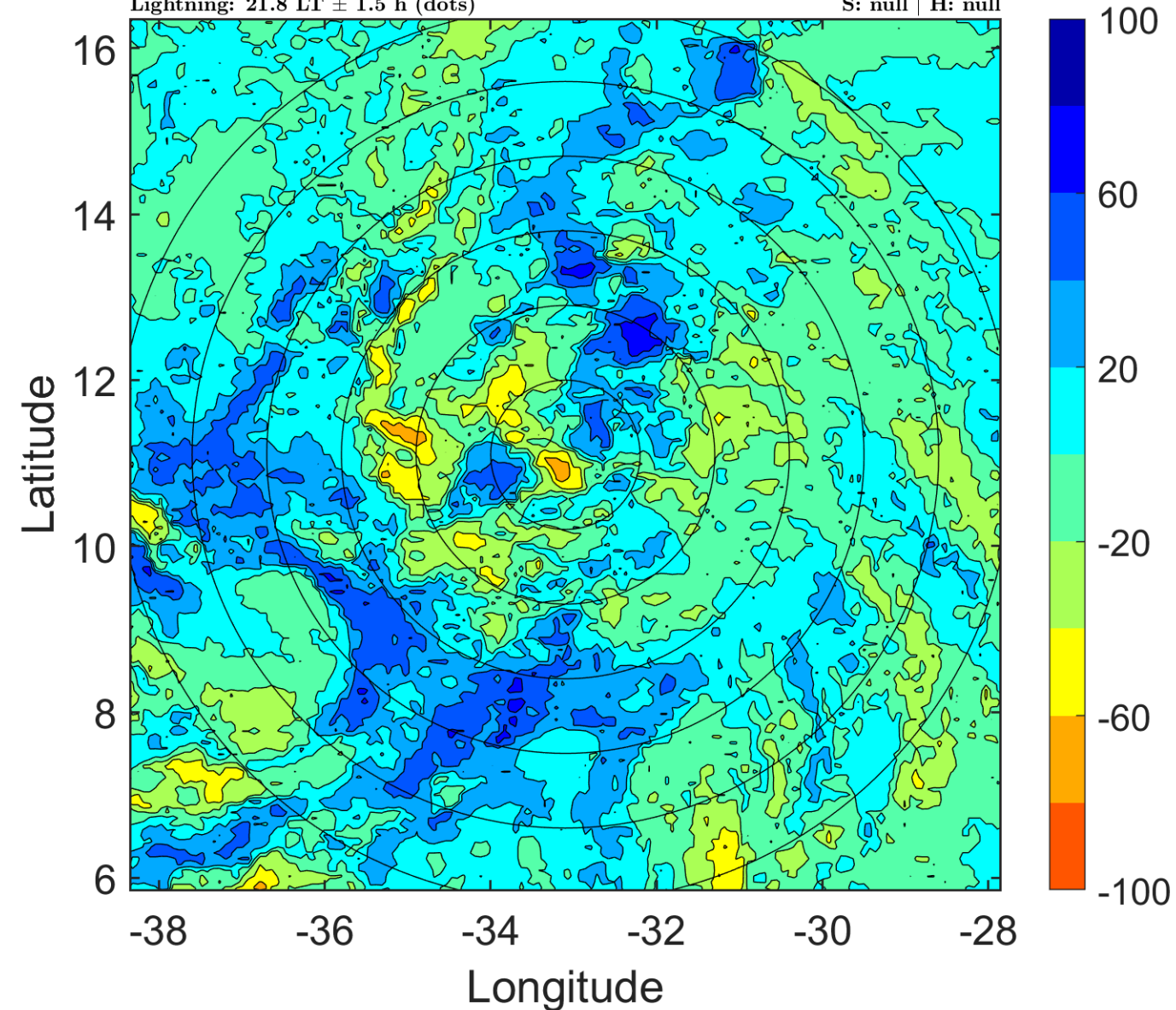
$\Delta$ t: 2012082200 (21.8 LT) - 2012082118 (15.9 LT)

Lightning: 21.8 LT  $\pm$  1.5 h (dots)

PT: NP | EA: INACT

10L (JOYCE) | 25 kt LO

S: null | H: null



### IR BT & Lightning

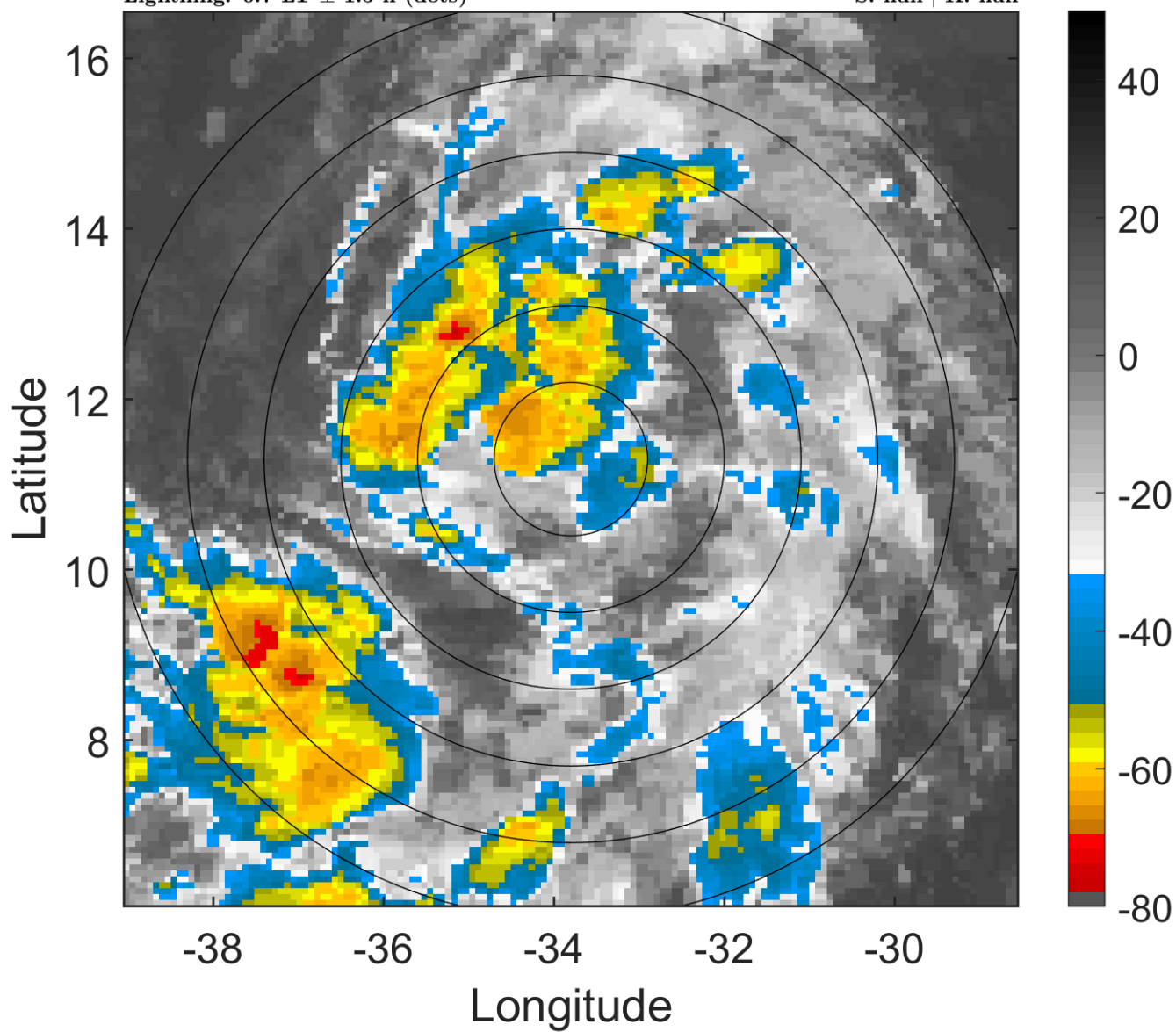
t: 2012082203 (0.7 LT)

Lightning: 0.7 LT  $\pm$  1.5 h (dots)

PT: LLCP | EA: QUASI

10L (JOYCE) | 25 kt LO

S: null | H: null



### 6-h IR BT Differences & Lightning

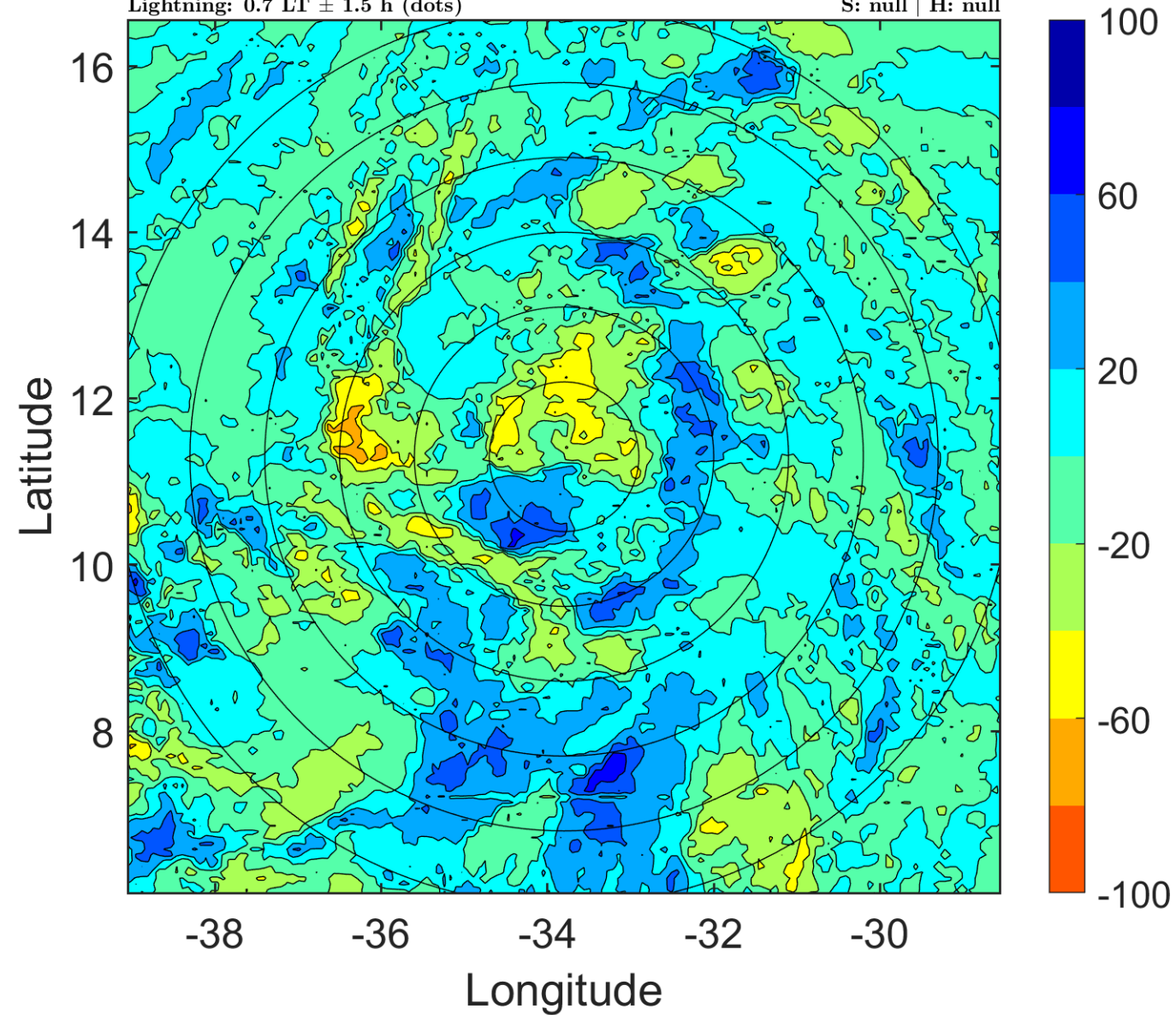
$\Delta$ t: 2012082203 (0.7 LT) - 2012082121 (18.8 LT)

Lightning: 0.7 LT  $\pm$  1.5 h (dots)

PT: LLCP | EA: QUASI

10L (JOYCE) | 25 kt LO

S: null | H: null



### IR BT & Lightning

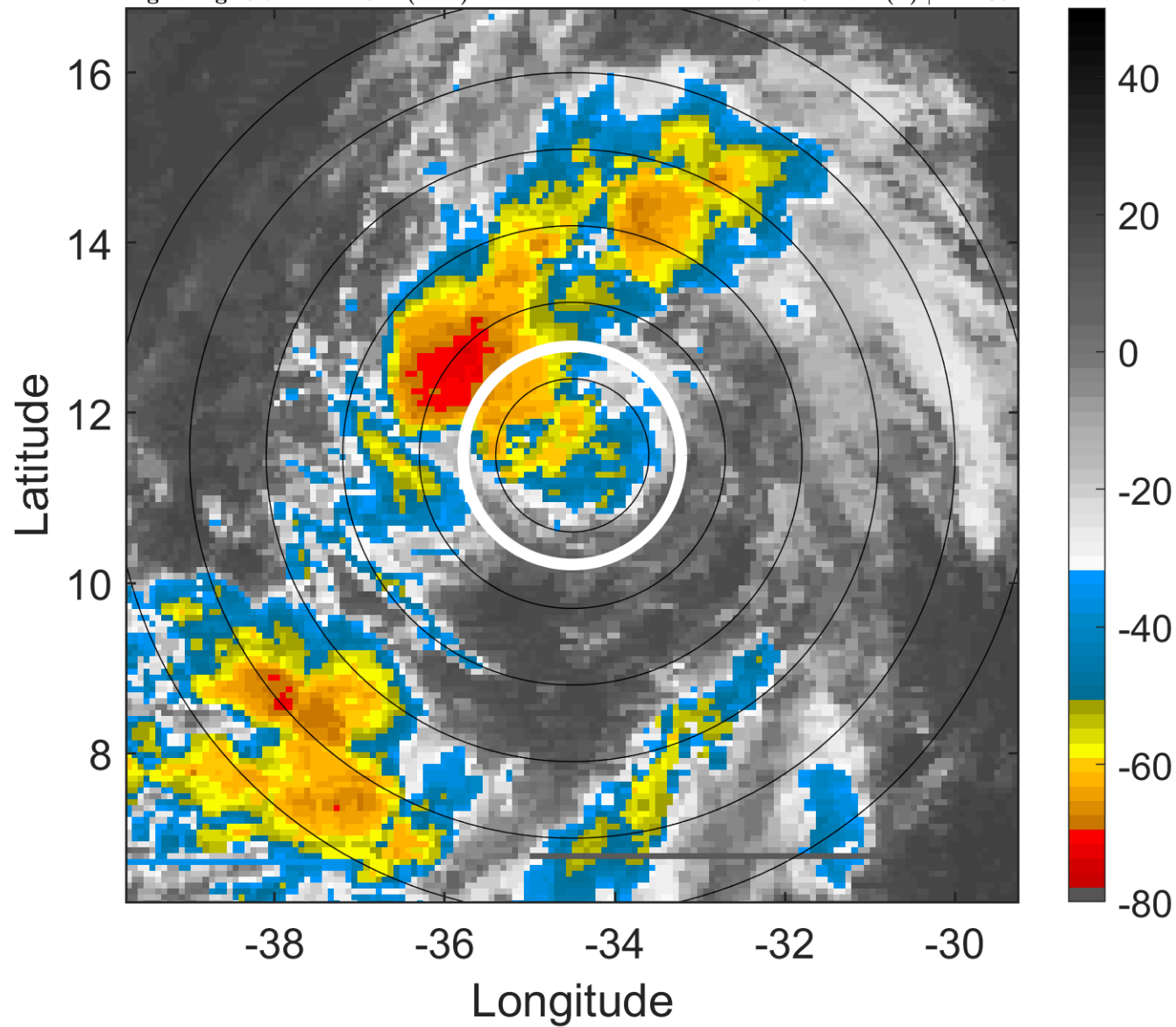
t: 2012082206 (3.7 LT)

Lightning: 3.7 LT  $\pm$  1.5 h (dots)

PT: LLCP | EA: QUASI

10L (JOYCE) | 25 kt TD

S: 2.3 m s<sup>-1</sup> (L) | H: 285°



### 6-h IR BT Differences & Lightning

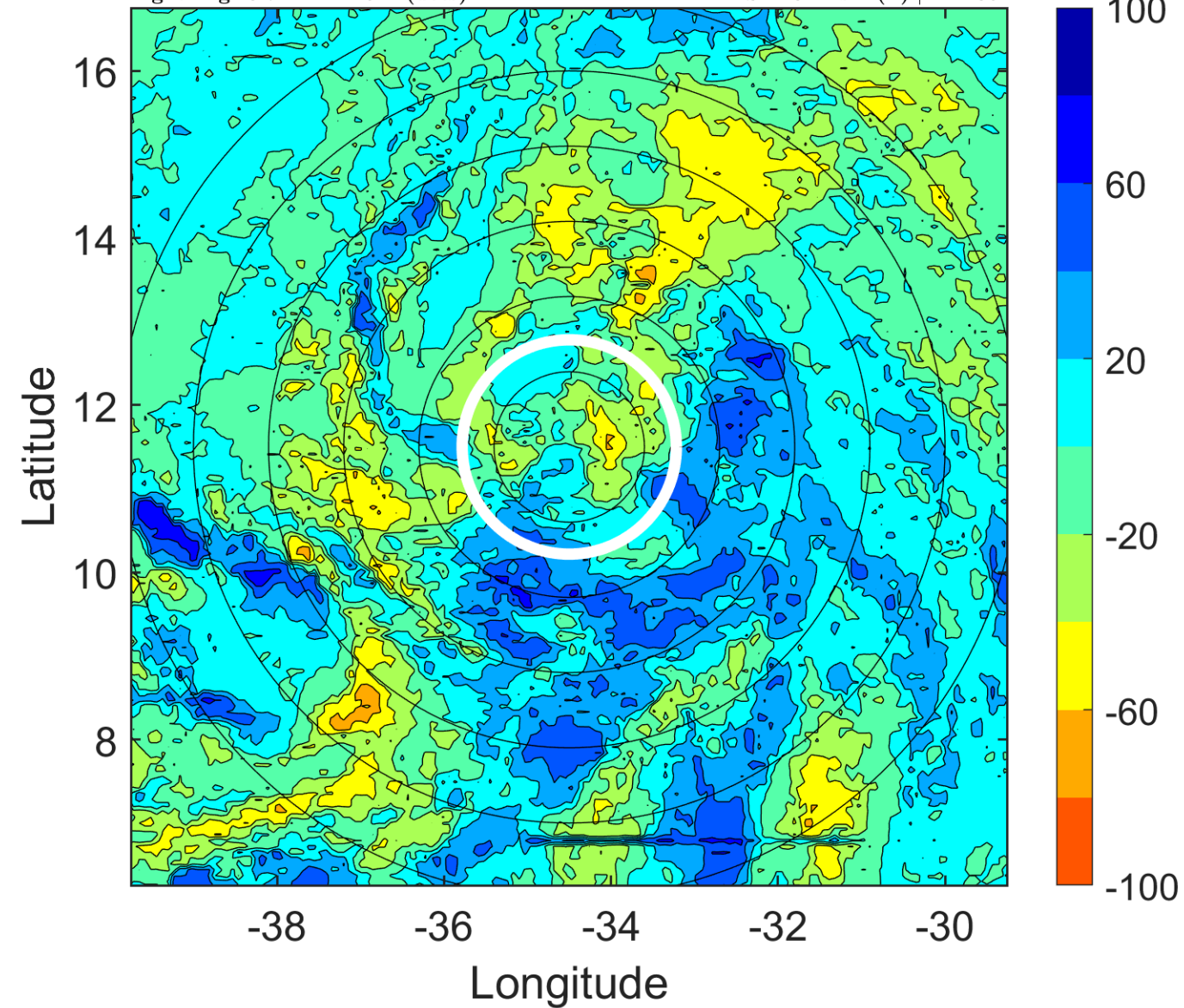
$\Delta$ t: 2012082206 (3.7 LT) - 2012082200 (21.8 LT)

Lightning: 3.7 LT  $\pm$  1.5 h (dots)

PT: LLCP | EA: QUASI

10L (JOYCE) | 25 kt TD

S: 2.3 m s<sup>-1</sup> (L) | H: 285°





### IR BT & Lightning

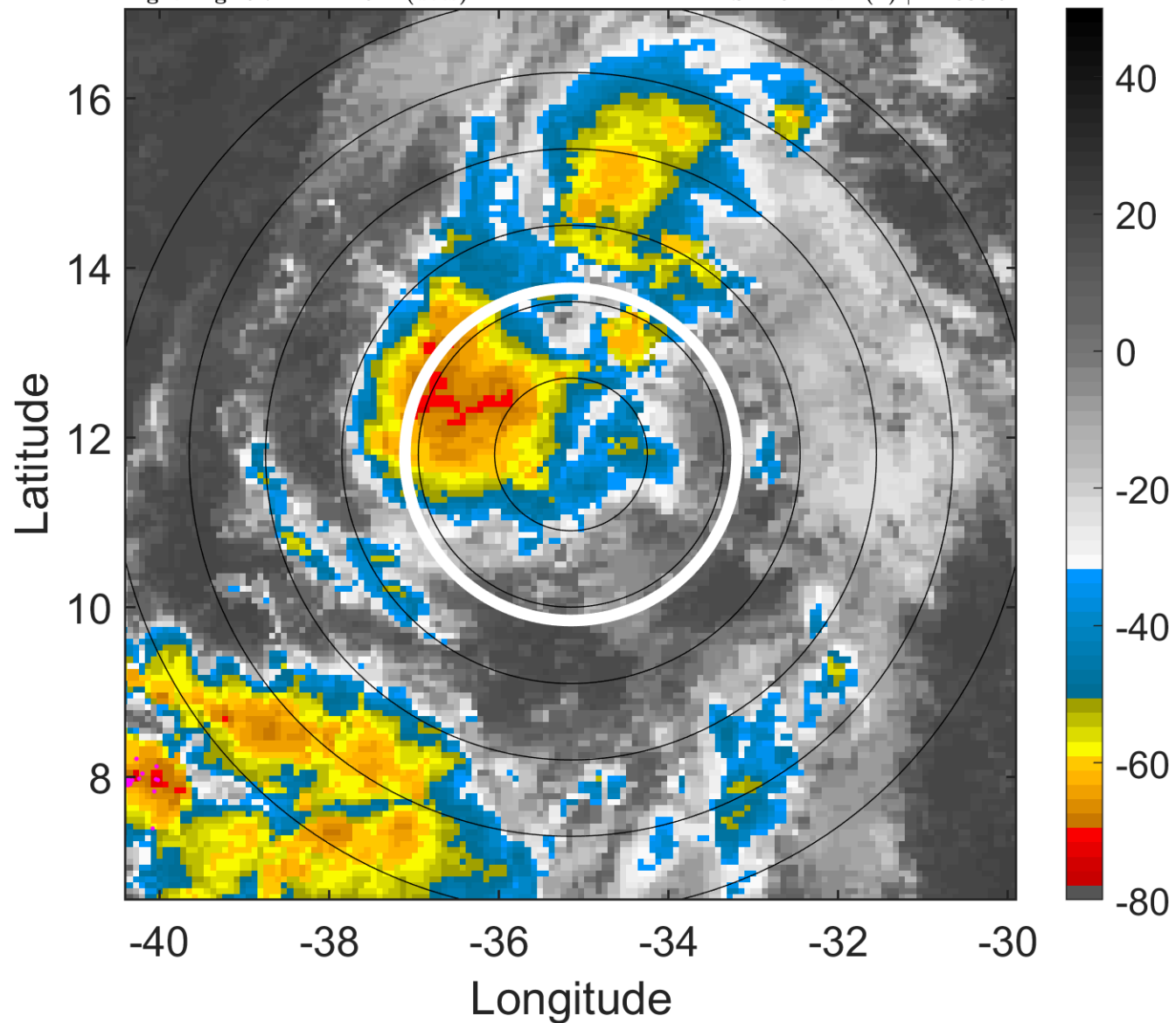
t: 2012082209 (6.7 LT)

Lightning: 6.7 LT  $\pm$  1.5 h (dots)

PT: LLCP | EA: QUASI

10L (JOYCE) | 27.5 kt TD

S: 2.5 m s<sup>-1</sup> (L) | H: 308.5°



### 6-h IR BT Differences & Lightning

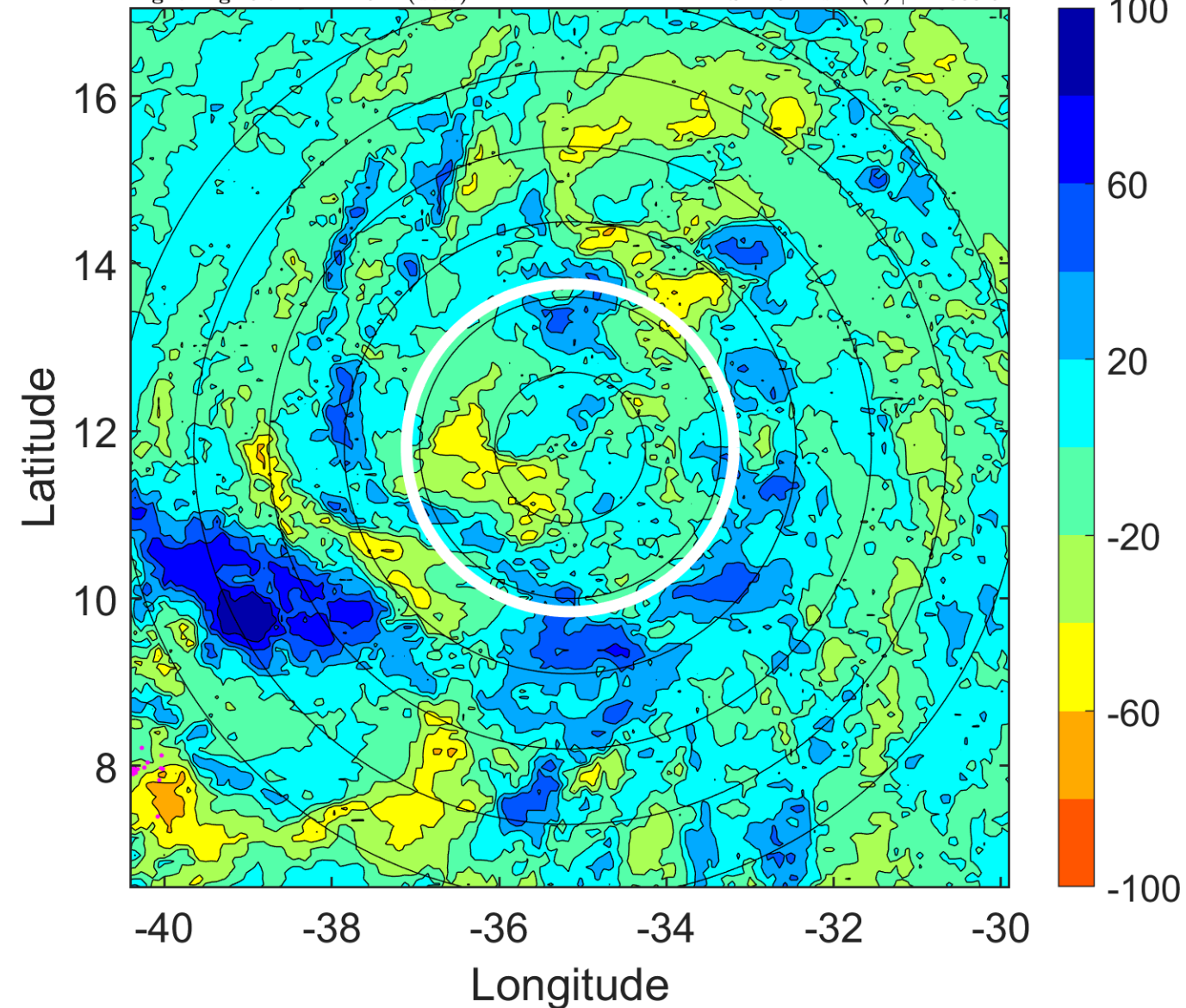
$\Delta$ t: 2012082209 (6.7 LT) - 2012082203 (0.7 LT)

Lightning: 6.7 LT  $\pm$  1.5 h (dots)

PT: LLCP | EA: QUASI

10L (JOYCE) | 27.5 kt TD

S: 2.5 m s<sup>-1</sup> (L) | H: 308.5°





### IR BT & Lightning

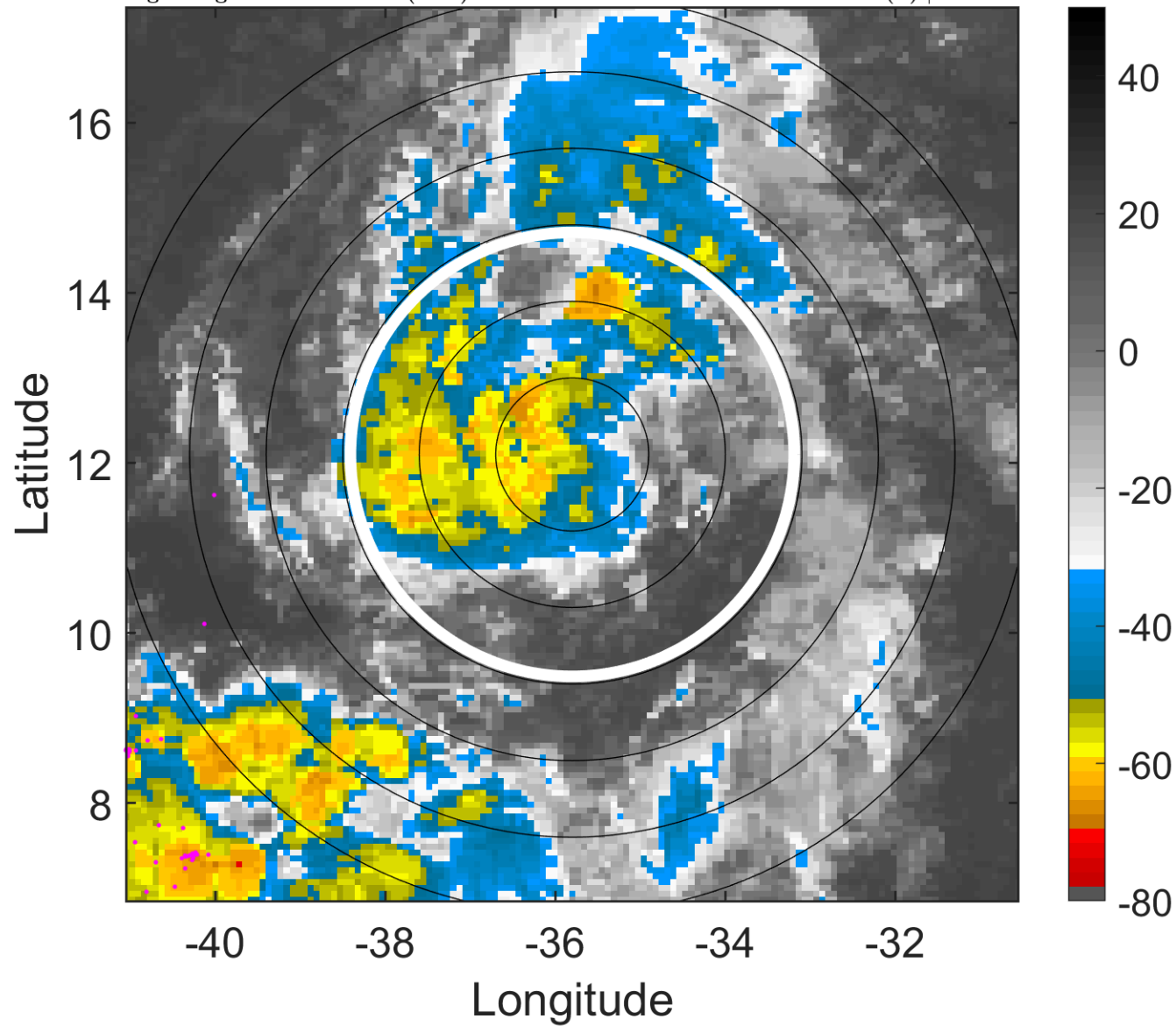
t: 2012082212 (9.6 LT)

Lightning: 9.6 LT  $\pm$  1.5 h (dots)

PT: LLCP | EA: QUASI

10L (JOYCE) | 30 kt TD

S: 2.7 m s<sup>-1</sup> (L) | H: 332°



### 6-h IR BT Differences & Lightning

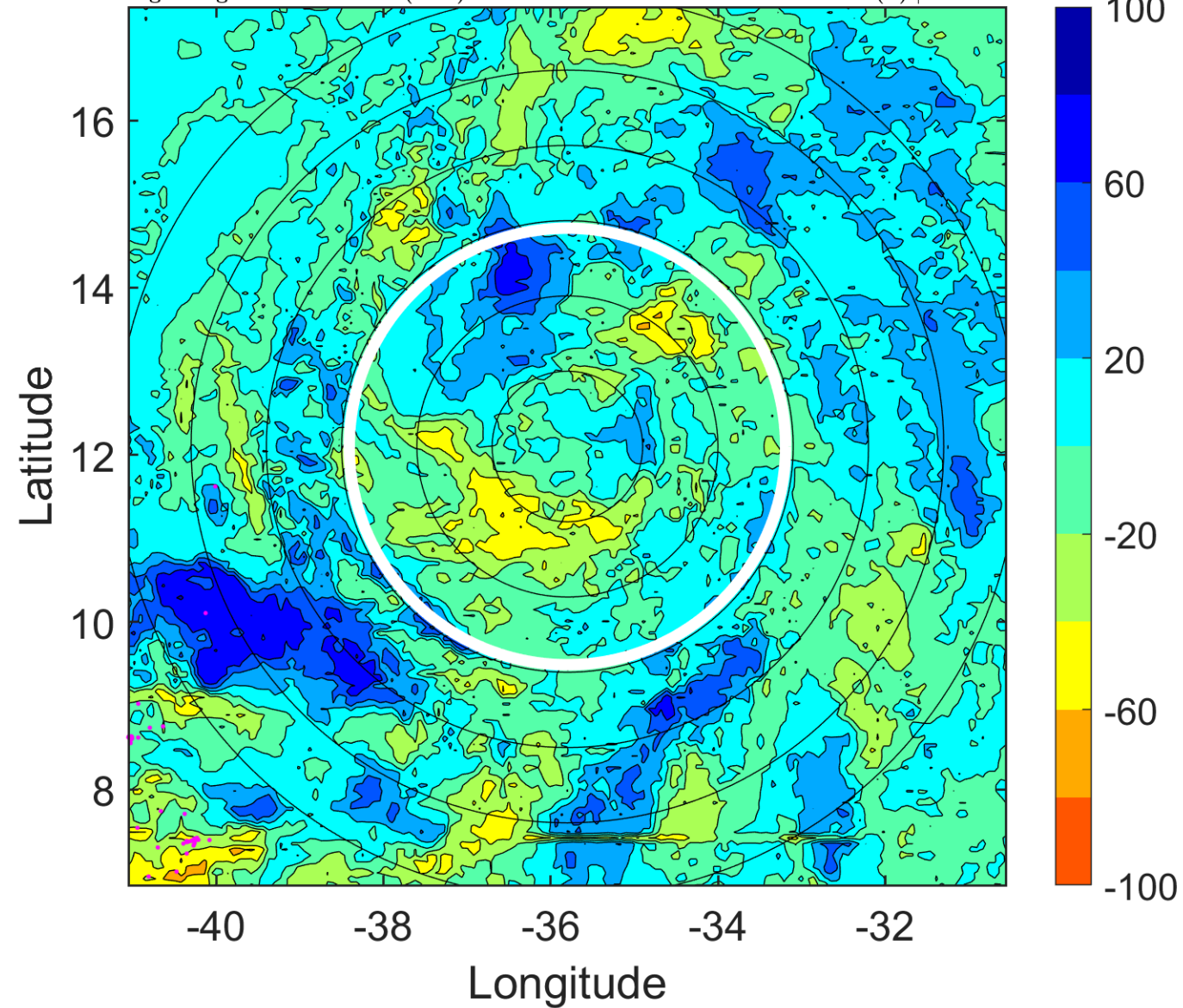
$\Delta$ t: 2012082212 (9.6 LT) - 2012082206 (3.7 LT)

Lightning: 9.6 LT  $\pm$  1.5 h (dots)

PT: LLCP | EA: QUASI

10L (JOYCE) | 30 kt TD

S: 2.7 m s<sup>-1</sup> (L) | H: 332°



### IR BT & Lightning

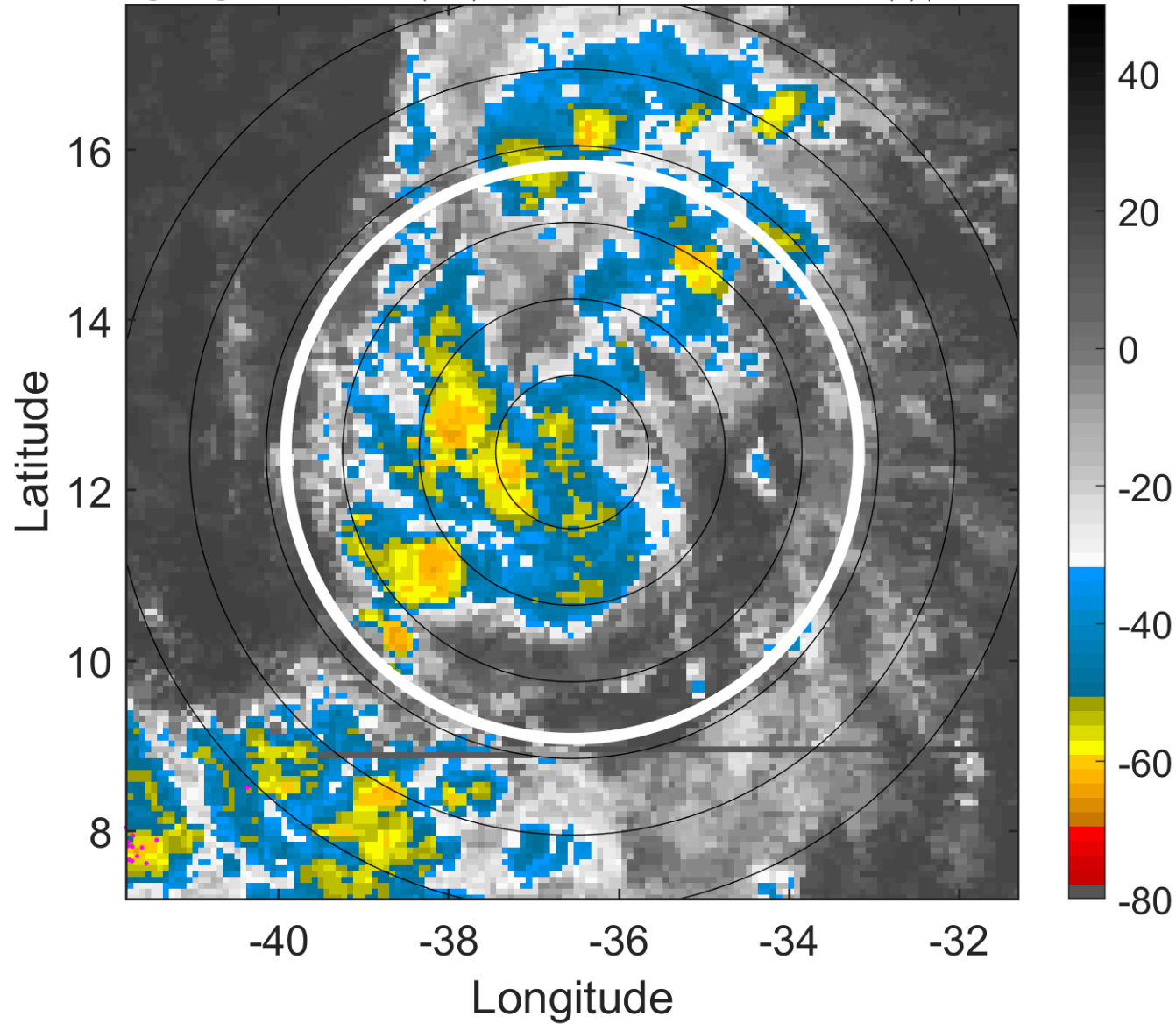
t: 2012082215 (12.6 LT)

Lightning: 12.6 LT  $\pm$  1.5 h (dots)

PT: LLCP | EA: QUASI

10L (JOYCE) | 30 kt TD

S: 2.4 m s<sup>-1</sup> (L) | H: 172°



### 6-h IR BT Differences & Lightning

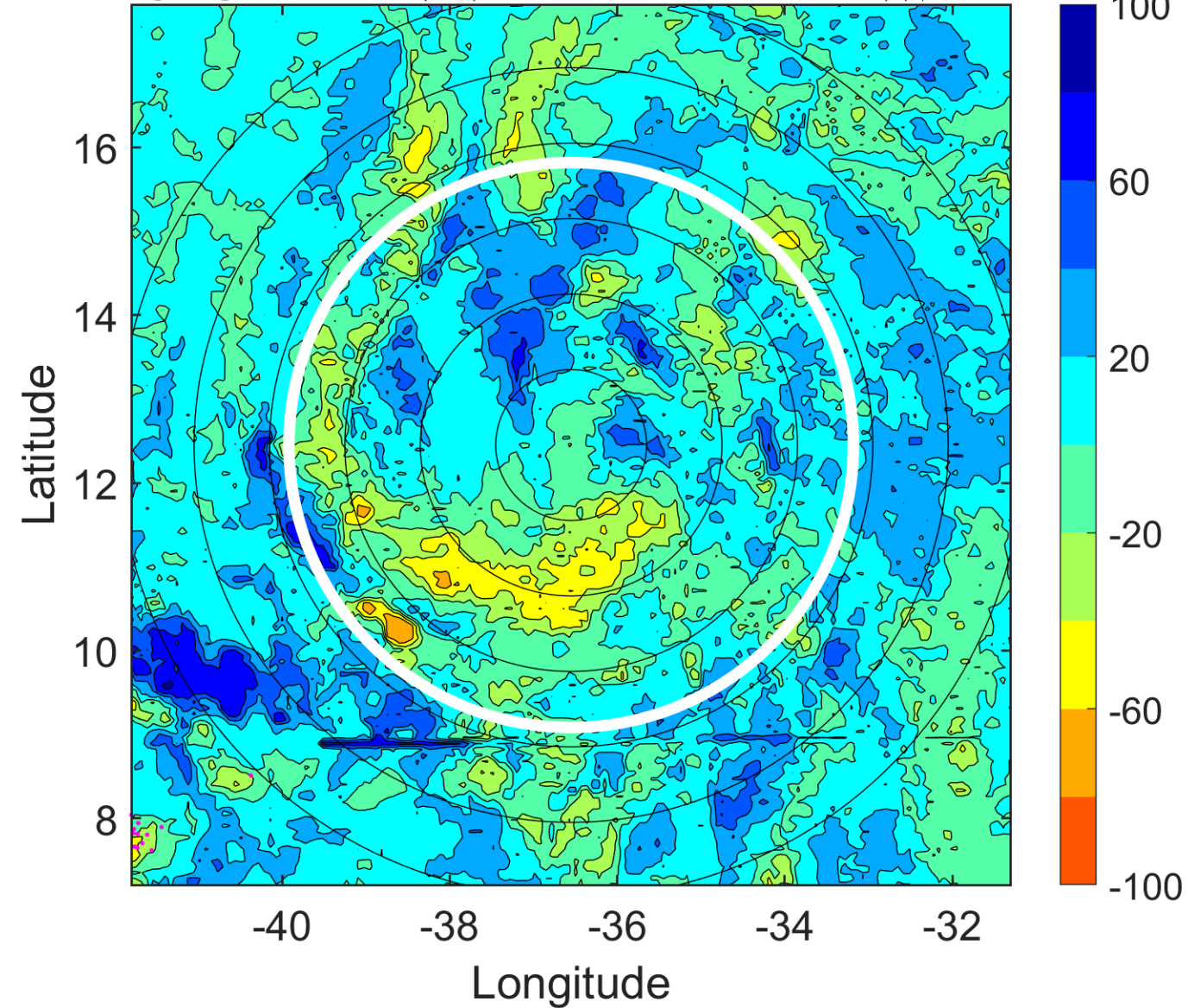
$\Delta$ t: 2012082215 (12.6 LT) - 2012082209 (6.7 LT)

Lightning: 12.6 LT  $\pm$  1.5 h (dots)

PT: LLCP | EA: QUASI

10L (JOYCE) | 30 kt TD

S: 2.4 m s<sup>-1</sup> (L) | H: 172°





### IR BT & Lightning

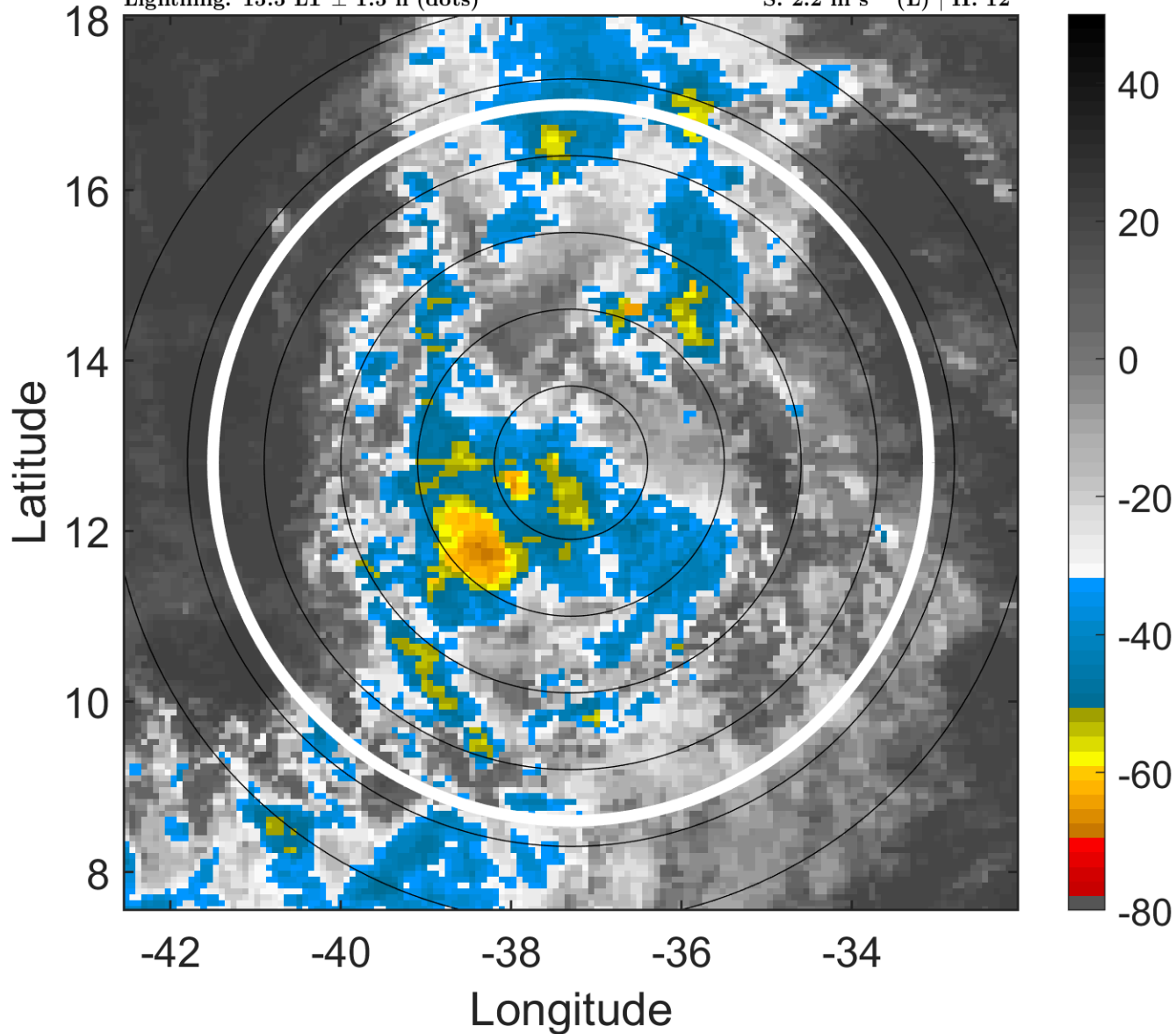
t: 2012082218 (15.5 LT)

Lightning: 15.5 LT  $\pm$  1.5 h (dots)

PT: LLCP | EA: QUASI

10L (JOYCE) | 30 kt TD

S: 2.2 m s<sup>-1</sup> (L) | H: 12°



### 6-h IR BT Differences & Lightning

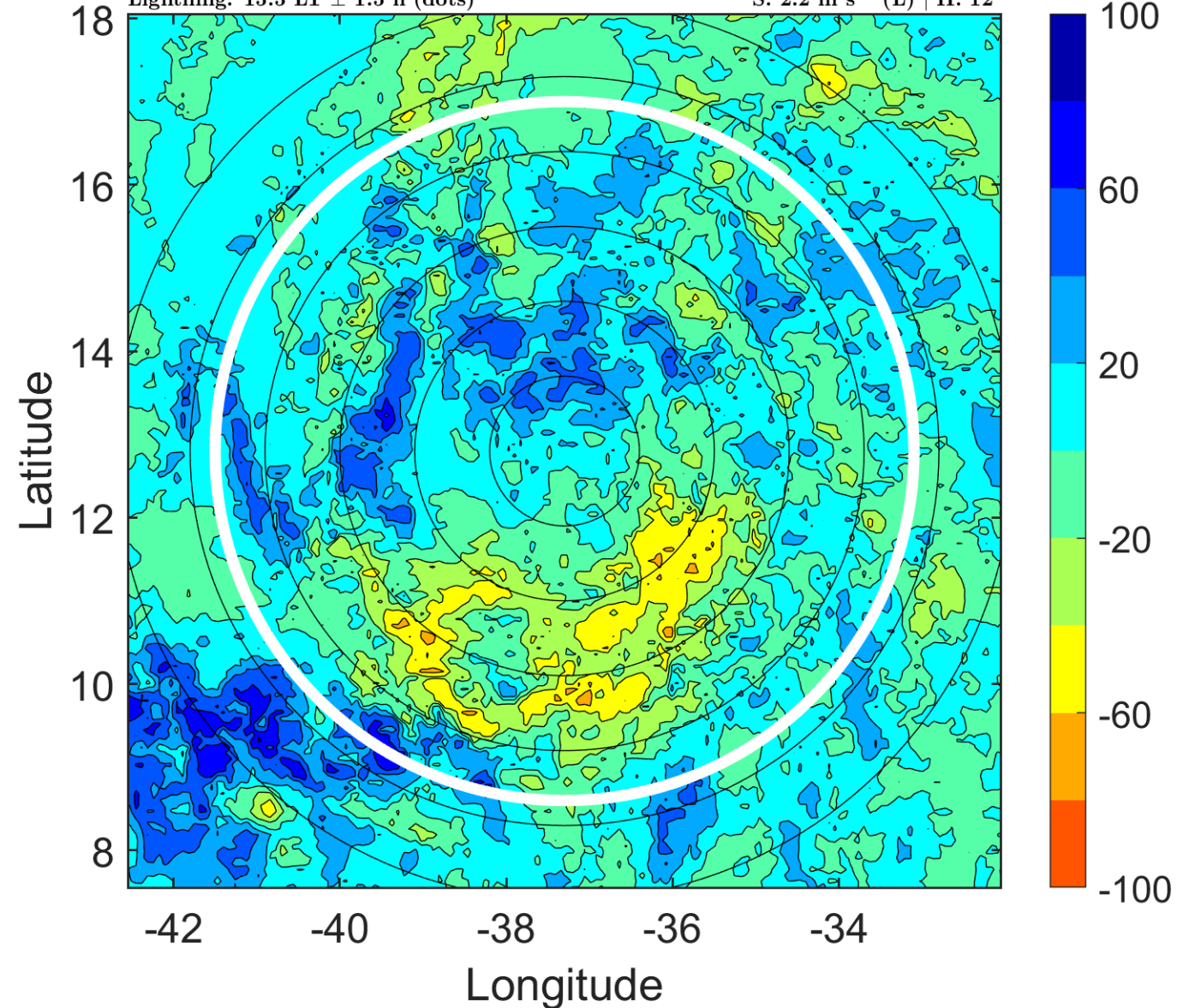
$\Delta$ t: 2012082218 (15.5 LT) - 2012082212 (9.6 LT)

Lightning: 15.5 LT  $\pm$  1.5 h (dots)

PT: LLCP | EA: QUASI

10L (JOYCE) | 30 kt TD

S: 2.2 m s<sup>-1</sup> (L) | H: 12°





### IR BT & Lightning

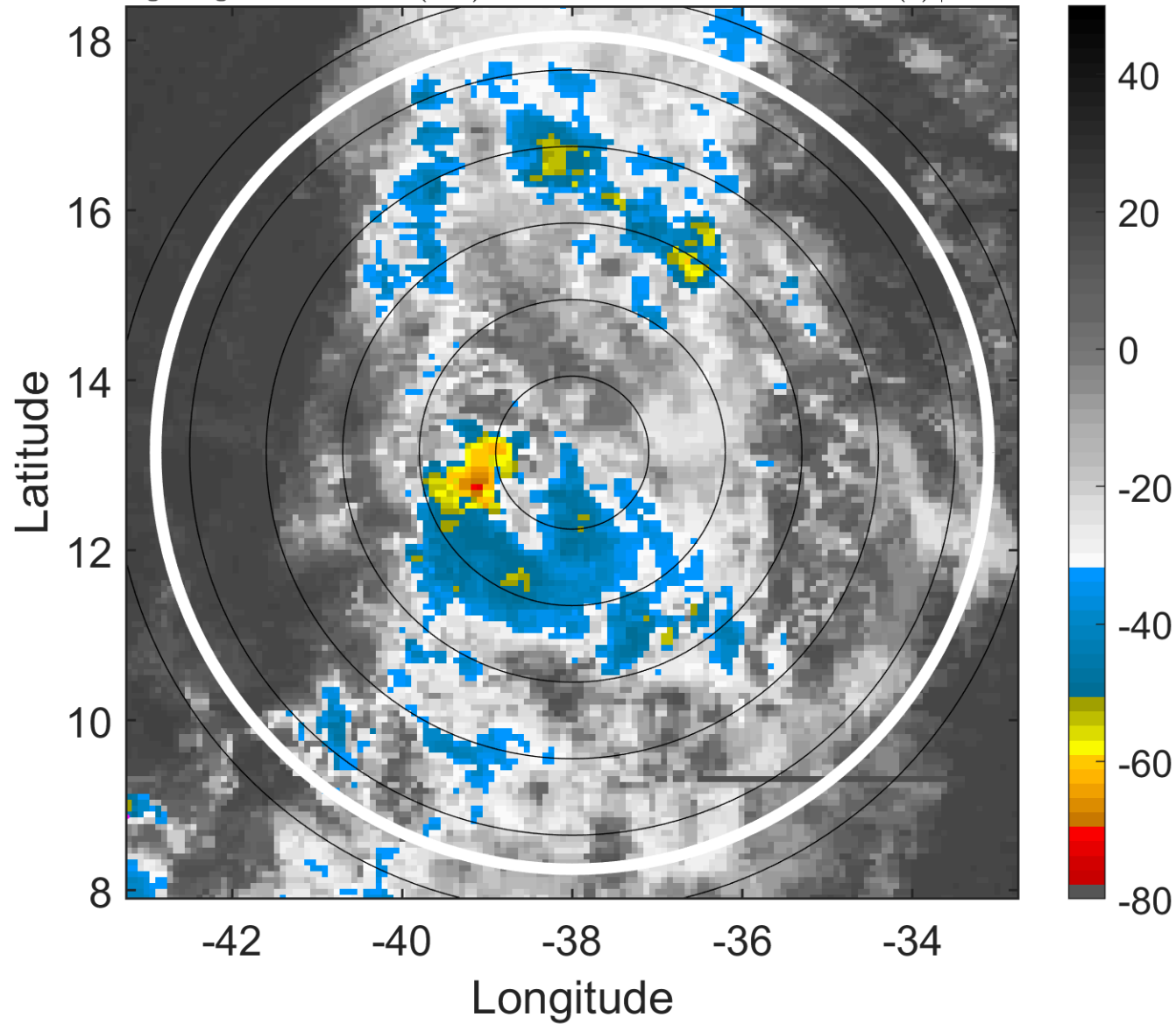
t: 2012082221 (18.5 LT)

Lightning: 18.5 LT  $\pm$  1.5 h (dots)

PT: LLCP | EA: QUASI

10L (JOYCE) | 30 kt TD

S: 3.1 m s<sup>-1</sup> (L) | H: 25°



### 6-h IR BT Differences & Lightning

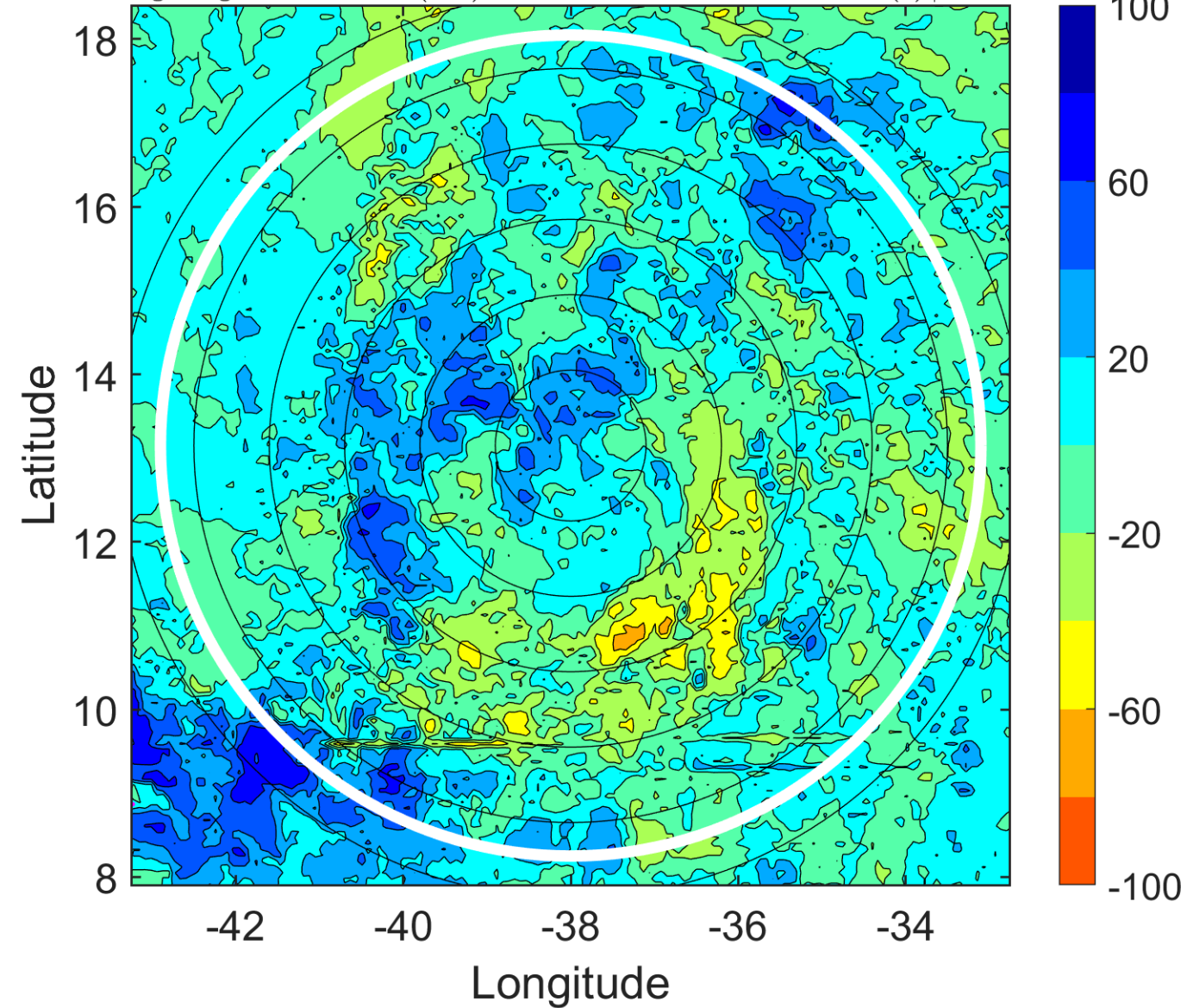
$\Delta$ t: 2012082221 (18.5 LT) - 2012082215 (12.6 LT)

Lightning: 18.5 LT  $\pm$  1.5 h (dots)

PT: LLCP | EA: QUASI

10L (JOYCE) | 30 kt TD

S: 3.1 m s<sup>-1</sup> (L) | H: 25°



### IR BT & Lightning

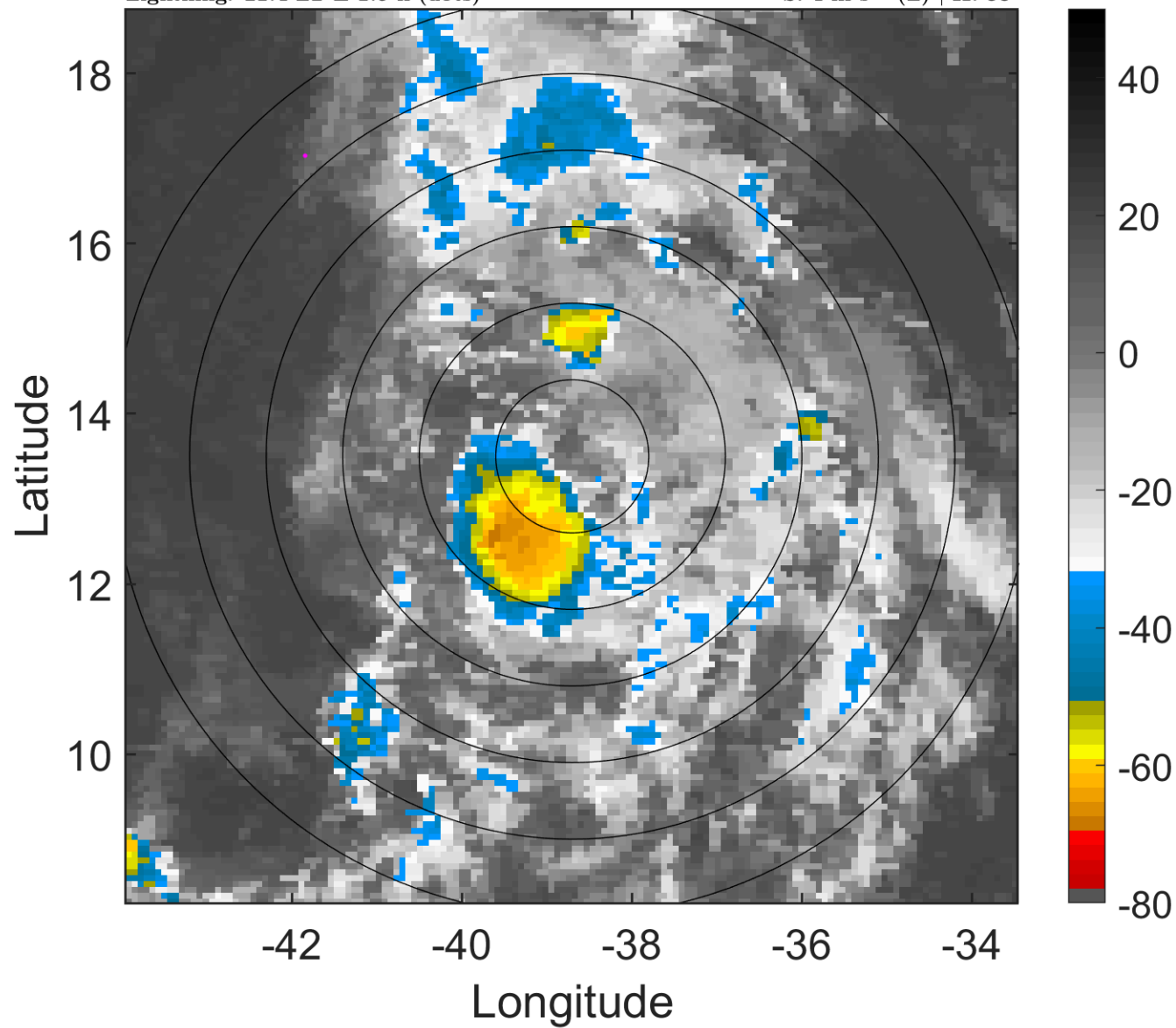
t: 2012082300 (21.4 LT)

Lightning: 21.4 LT  $\pm$  1.5 h (dots)

PT: LLCP | EA: QUASI

10L (JOYCE) | 30 kt TD

S: 4 m s<sup>-1</sup> (L) | H: 38°



### 6-h IR BT Differences & Lightning

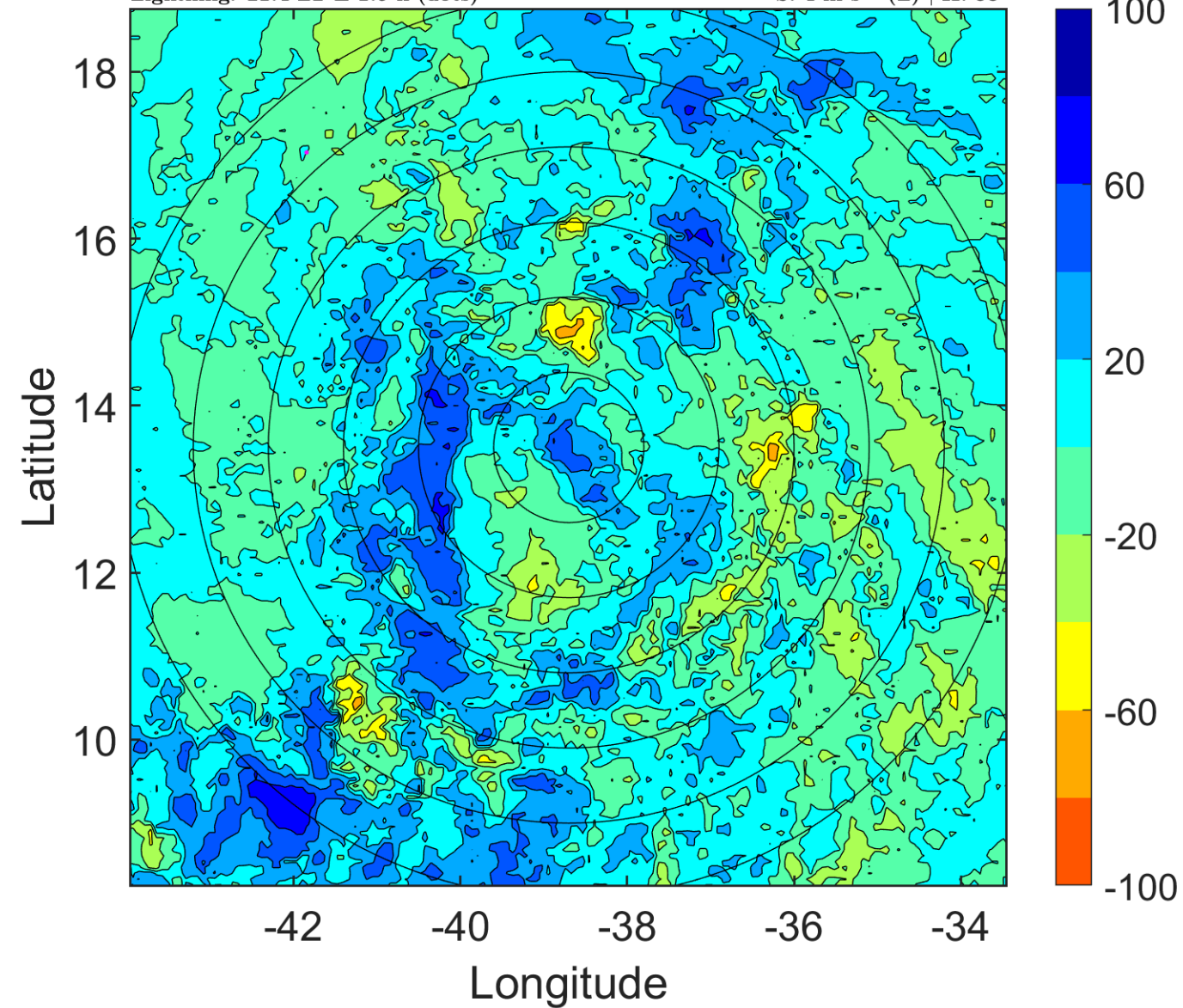
$\Delta$ t: 2012082300 (21.4 LT) - 2012082218 (15.5 LT)

Lightning: 21.4 LT  $\pm$  1.5 h (dots)

PT: LLCP | EA: QUASI

10L (JOYCE) | 30 kt TD

S: 4 m s<sup>-1</sup> (L) | H: 38°



### IR BT & Lightning

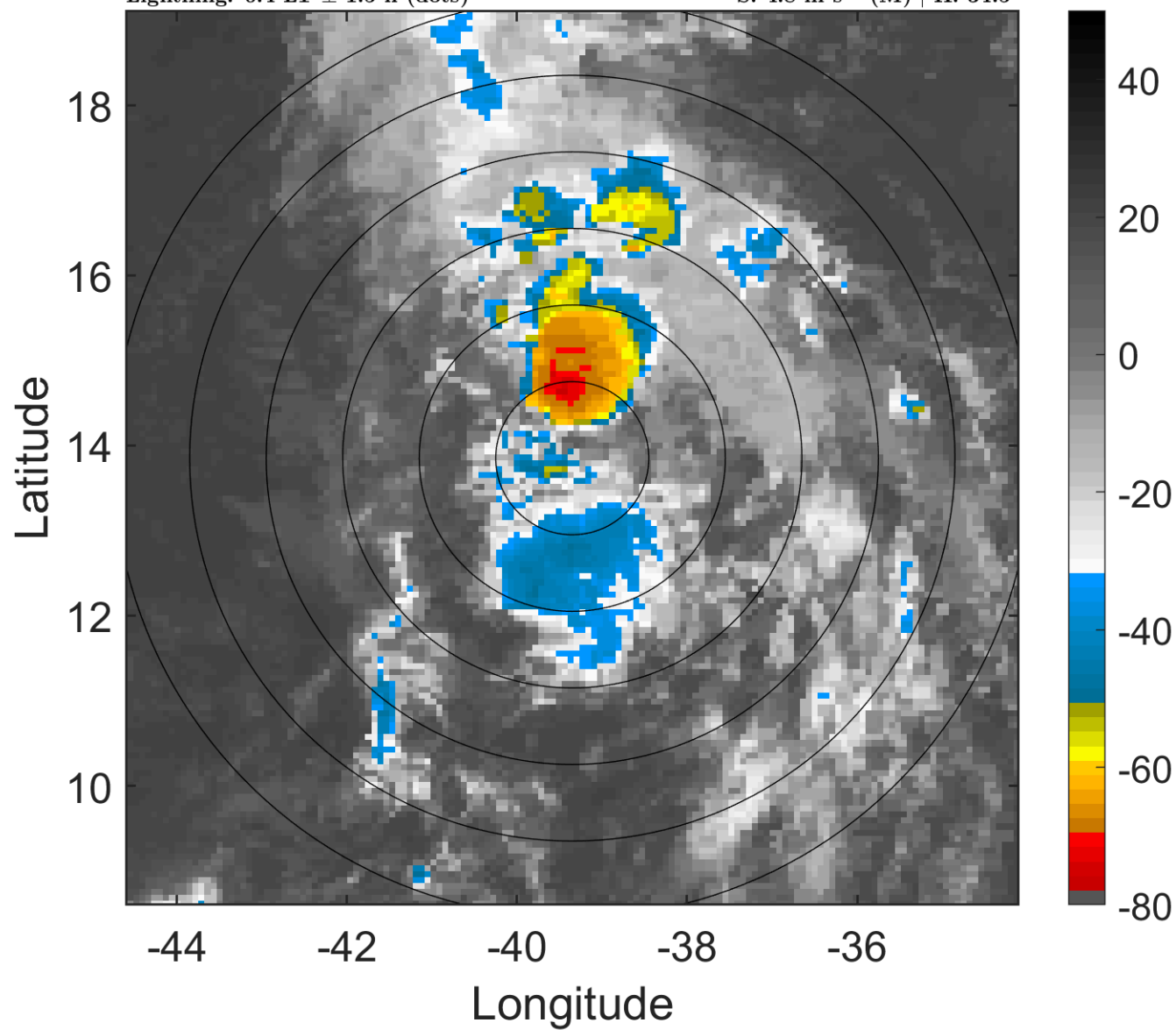
t: 2012082303 (0.4 LT)

Lightning: 0.4 LT  $\pm$  1.5 h (dots)

PT: LLCP | EA: QUASI

10L (JOYCE) | 30 kt TD

S: 4.8 m s<sup>-1</sup> (M) | H: 34.5°



### 6-h IR BT Differences & Lightning

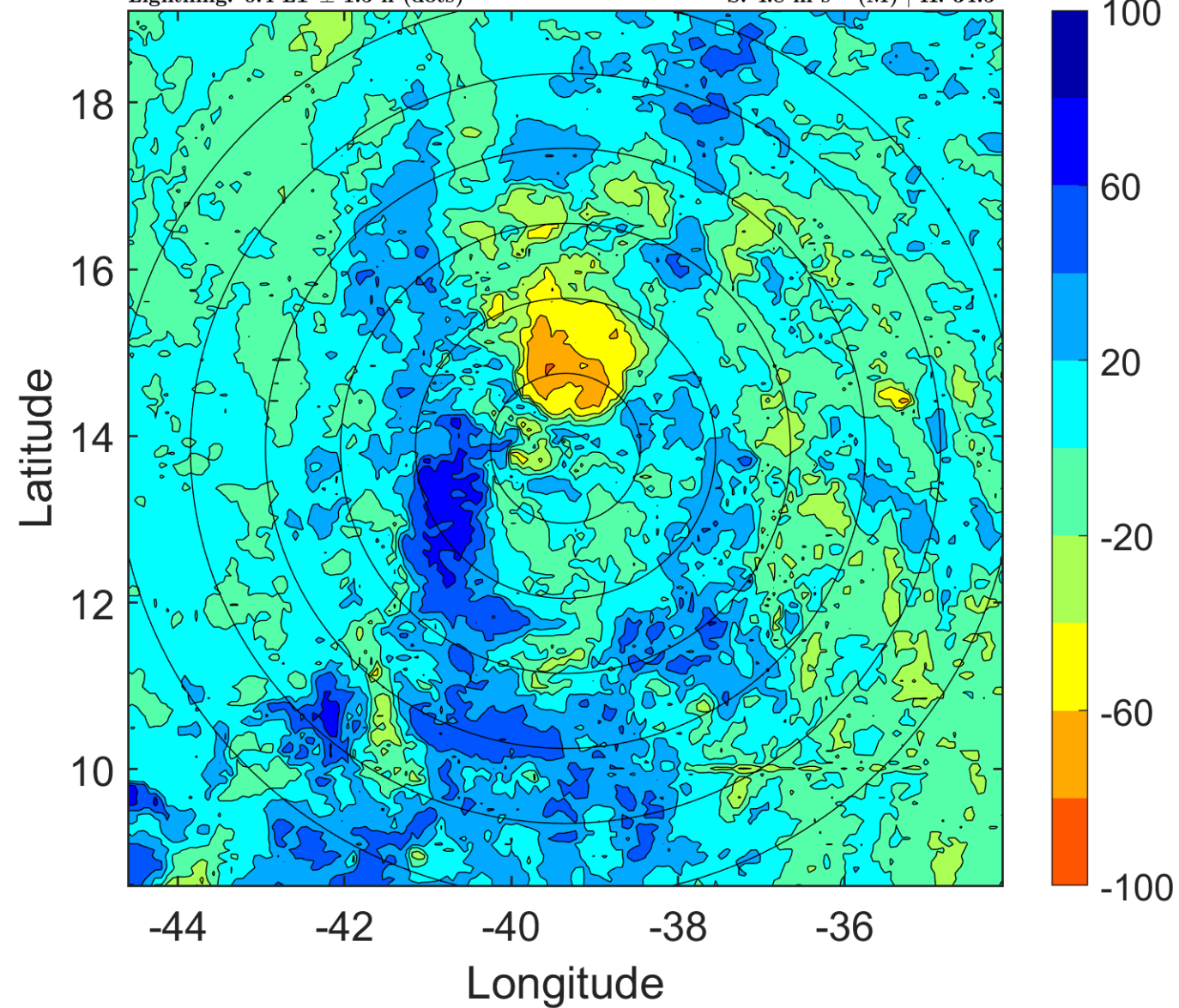
$\Delta$ t: 2012082303 (0.4 LT) - 2012082221 (18.5 LT)

Lightning: 0.4 LT  $\pm$  1.5 h (dots)

PT: LLCP | EA: QUASI

10L (JOYCE) | 30 kt TD

S: 4.8 m s<sup>-1</sup> (M) | H: 34.5°





### IR BT & Lightning

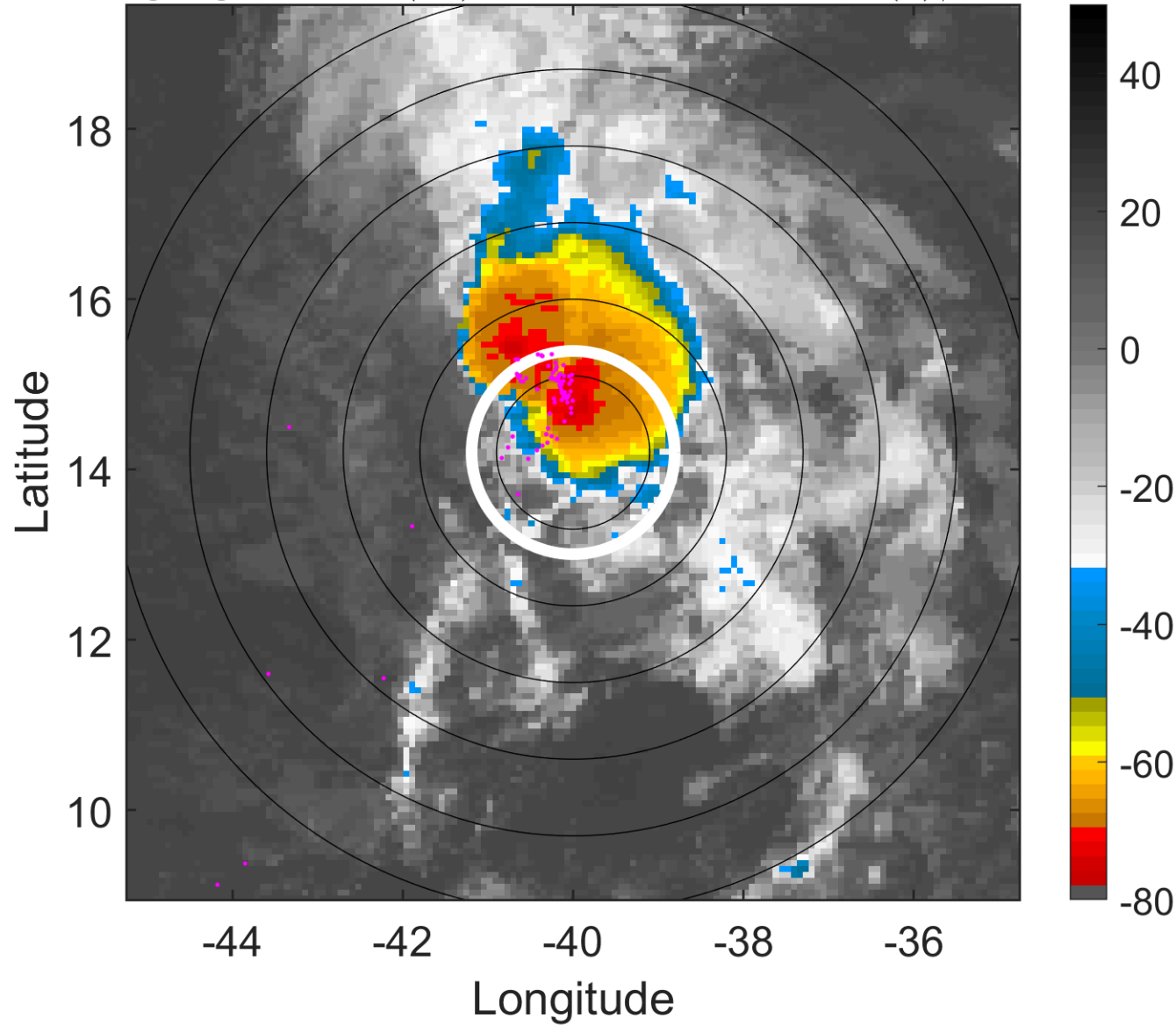
t: 2012082306 (3.3 LT)

Lightning: 3.3 LT  $\pm$  1.5 h (dots)

PT: LLCP | EA: QUASI

10L (JOYCE) | 30 kt TD

S: 5.5 m s<sup>-1</sup> (M) | H: 31°



### 6-h IR BT Differences & Lightning

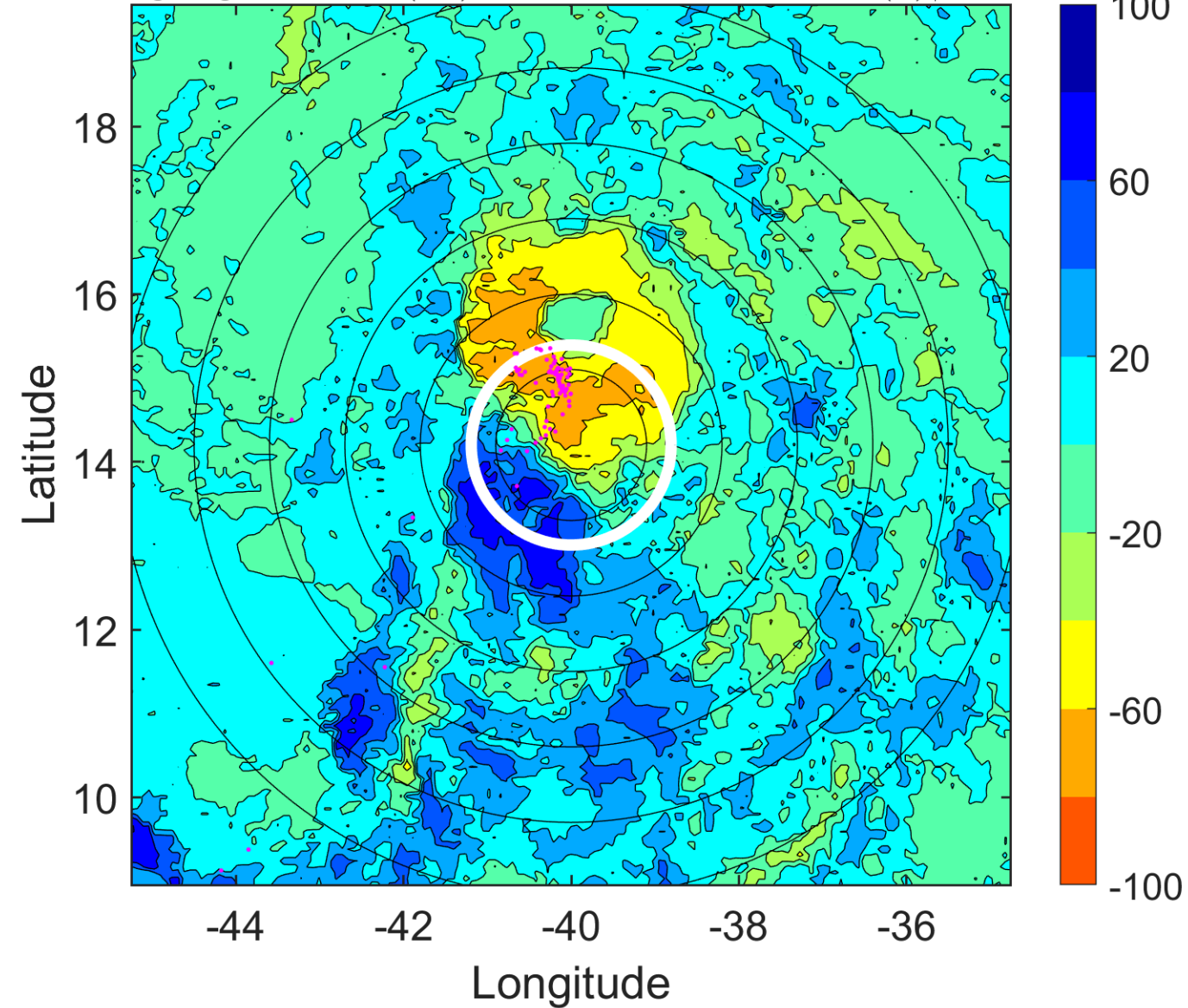
$\Delta$ t: 2012082306 (3.3 LT) - 2012082300 (21.4 LT)

Lightning: 3.3 LT  $\pm$  1.5 h (dots)

PT: LLCP | EA: QUASI

10L (JOYCE) | 30 kt TD

S: 5.5 m s<sup>-1</sup> (M) | H: 31°



### IR BT & Lightning

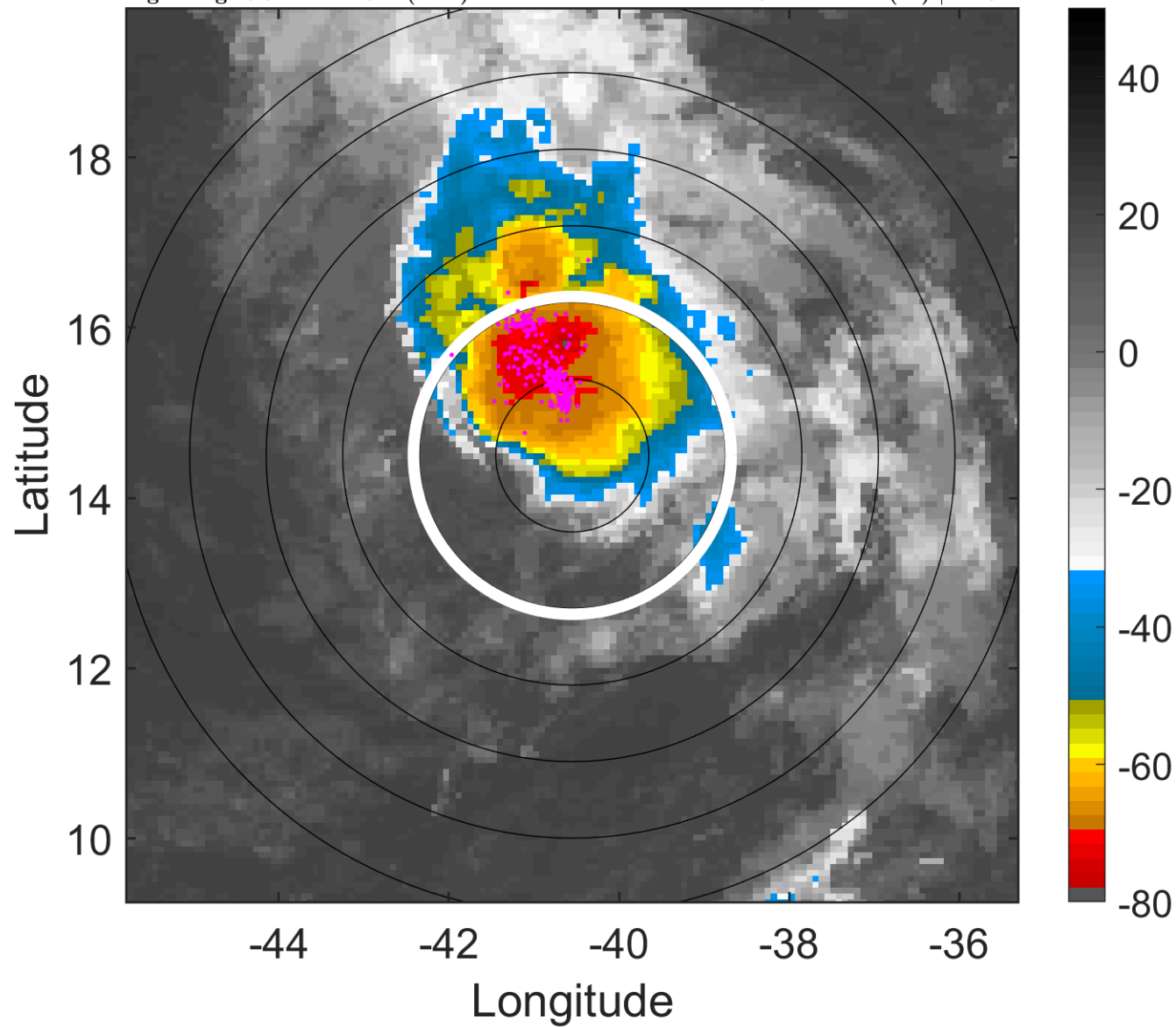
t: 2012082309 (6.3 LT)

Lightning: 6.3 LT  $\pm$  1.5 h (dots)

PT: LLCP | EA: QUASI

10L (JOYCE) | 32.5 kt TD

S: 4.7 m s<sup>-1</sup> (M) | H: 31°



### 6-h IR BT Differences & Lightning

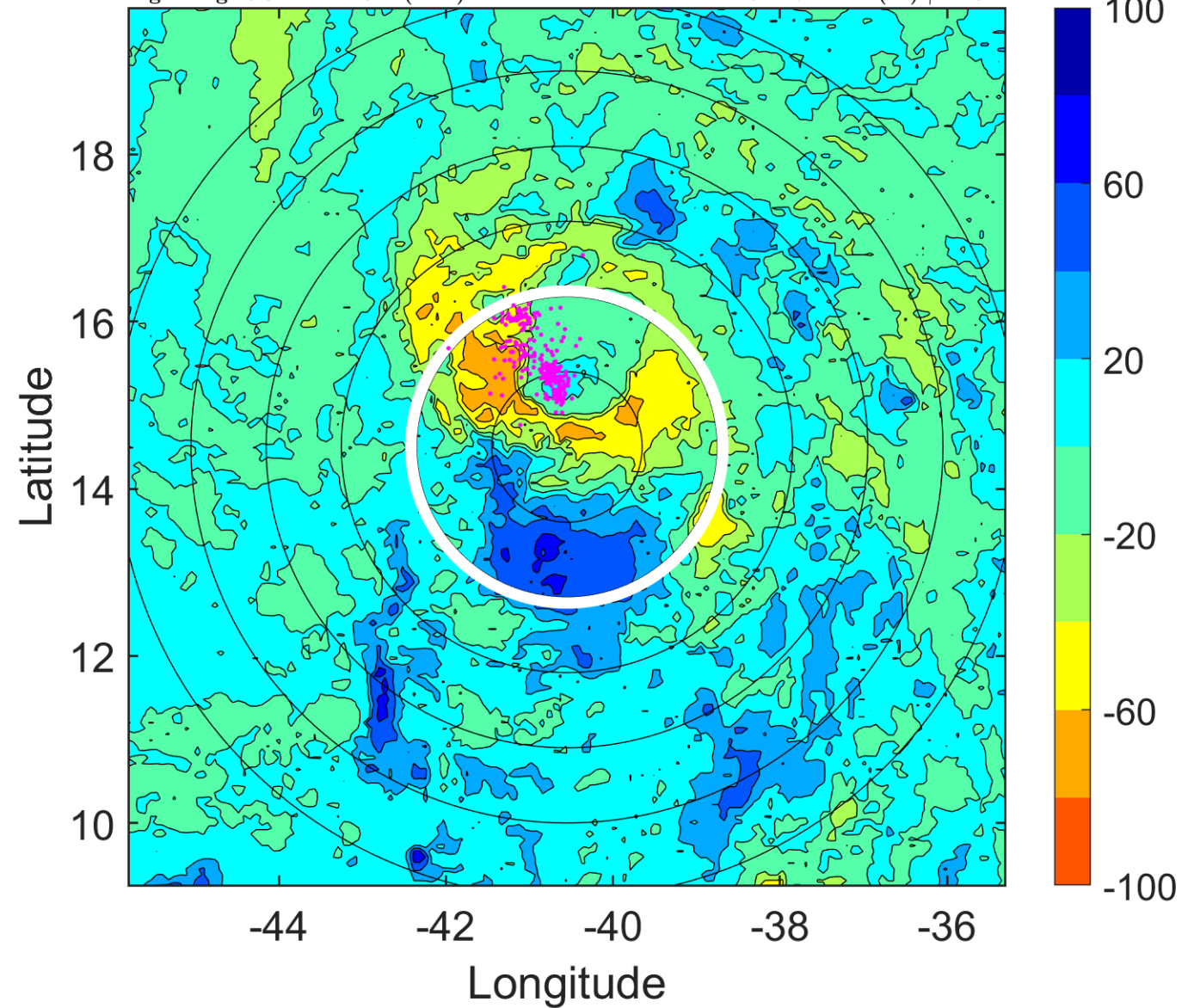
$\Delta$ t: 2012082309 (6.3 LT) - 2012082303 (0.4 LT)

Lightning: 6.3 LT  $\pm$  1.5 h (dots)

PT: LLCP | EA: QUASI

10L (JOYCE) | 32.5 kt TD

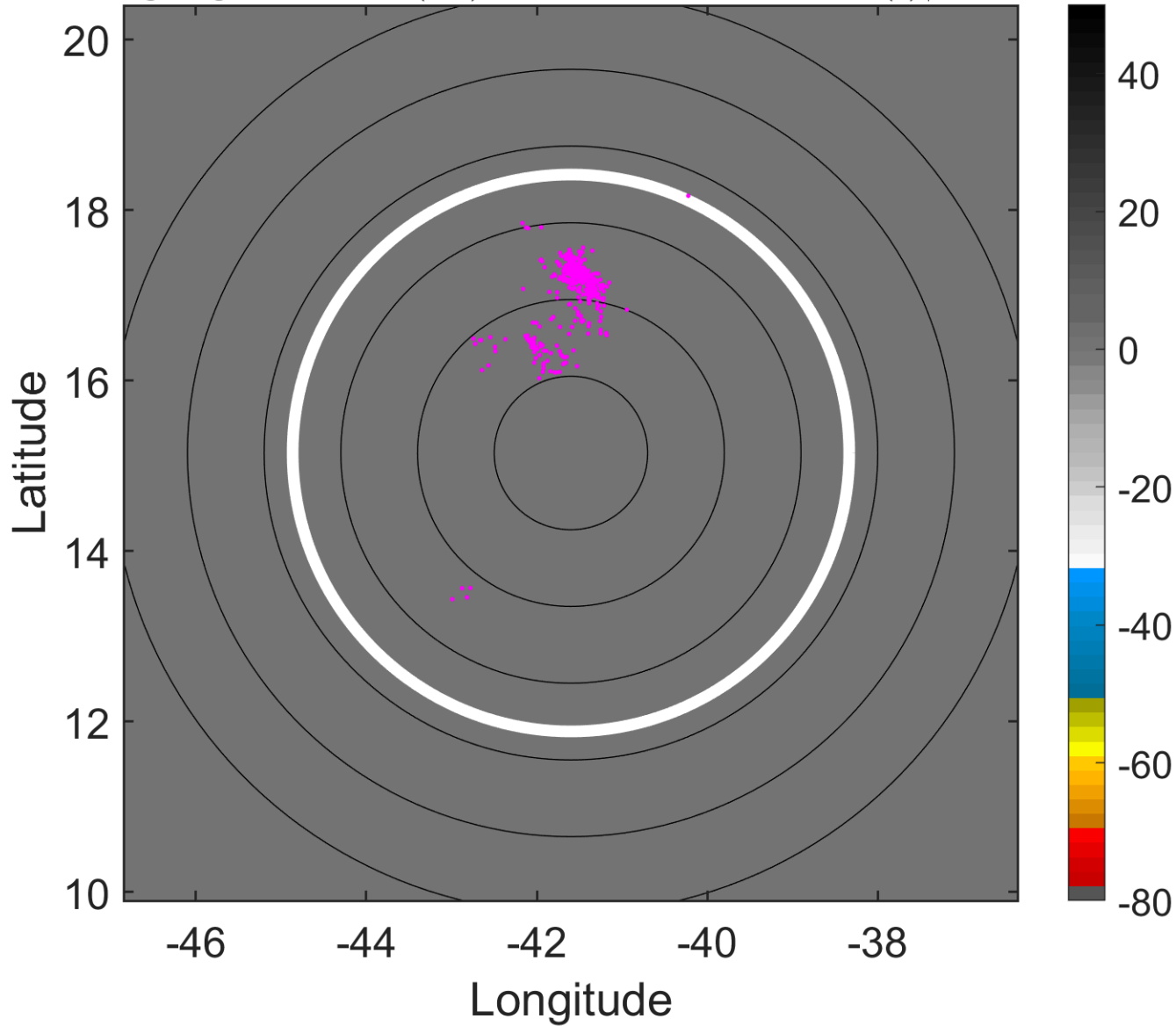
S: 4.7 m s<sup>-1</sup> (M) | H: 31°



### IR BT & Lightning

t: 2012082315 (12.2 LT)  
Lightning: 12.2 LT  $\pm$  1.5 h (dots)

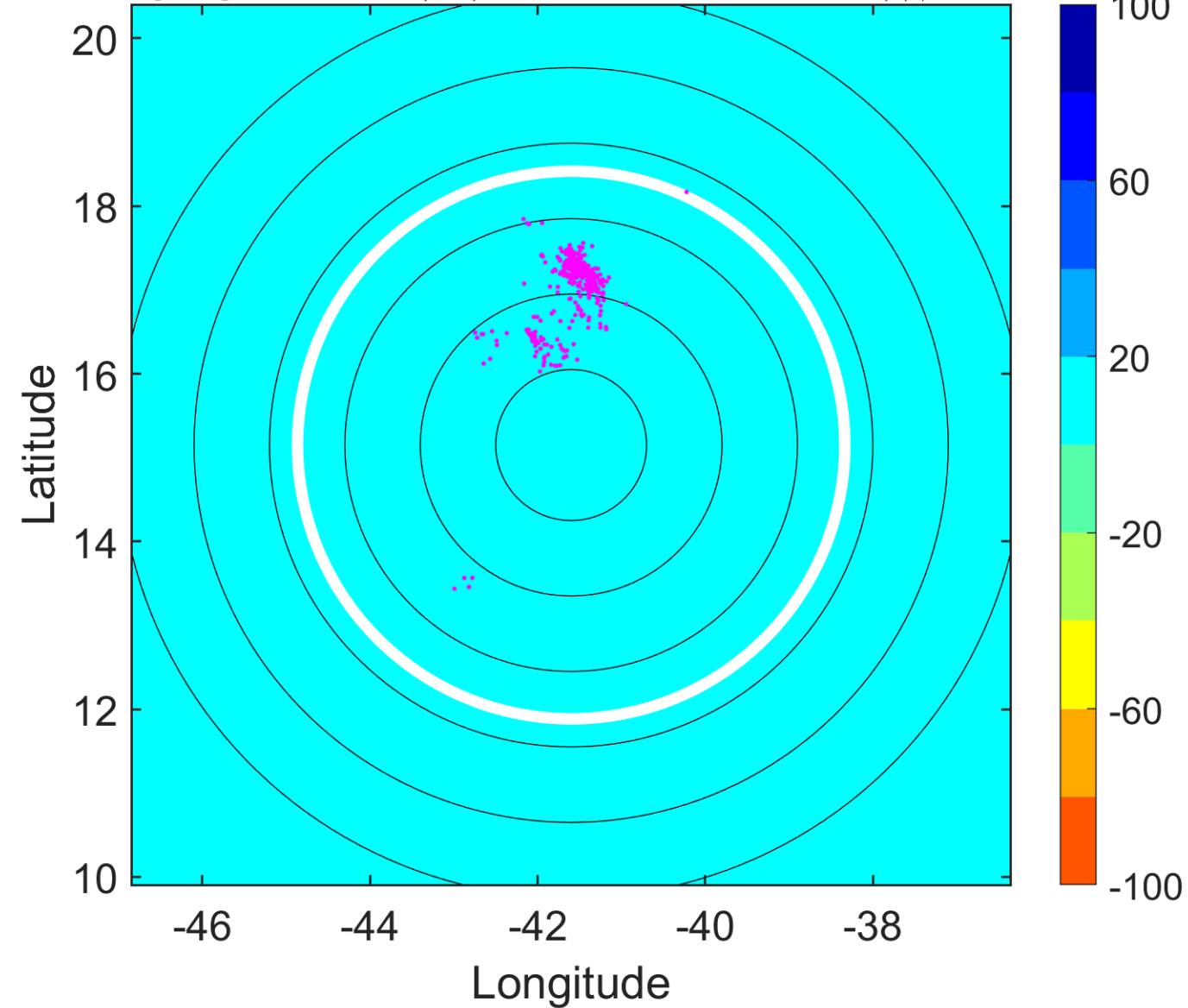
PT: null | EA: null  
10L (JOYCE) | 35 kt TS  
S: 3.6 m s<sup>-1</sup> (L) | H: 177°



### 6-h IR BT Differences & Lightning

$\Delta$ t: 2012082315 (12.2 LT) - 2012082309 (6.3 LT)  
Lightning: 12.2 LT  $\pm$  1.5 h (dots)

PT: null | EA: null  
10L (JOYCE) | 35 kt TS  
S: 3.6 m s<sup>-1</sup> (L) | H: 177°





### IR BT & Lightning

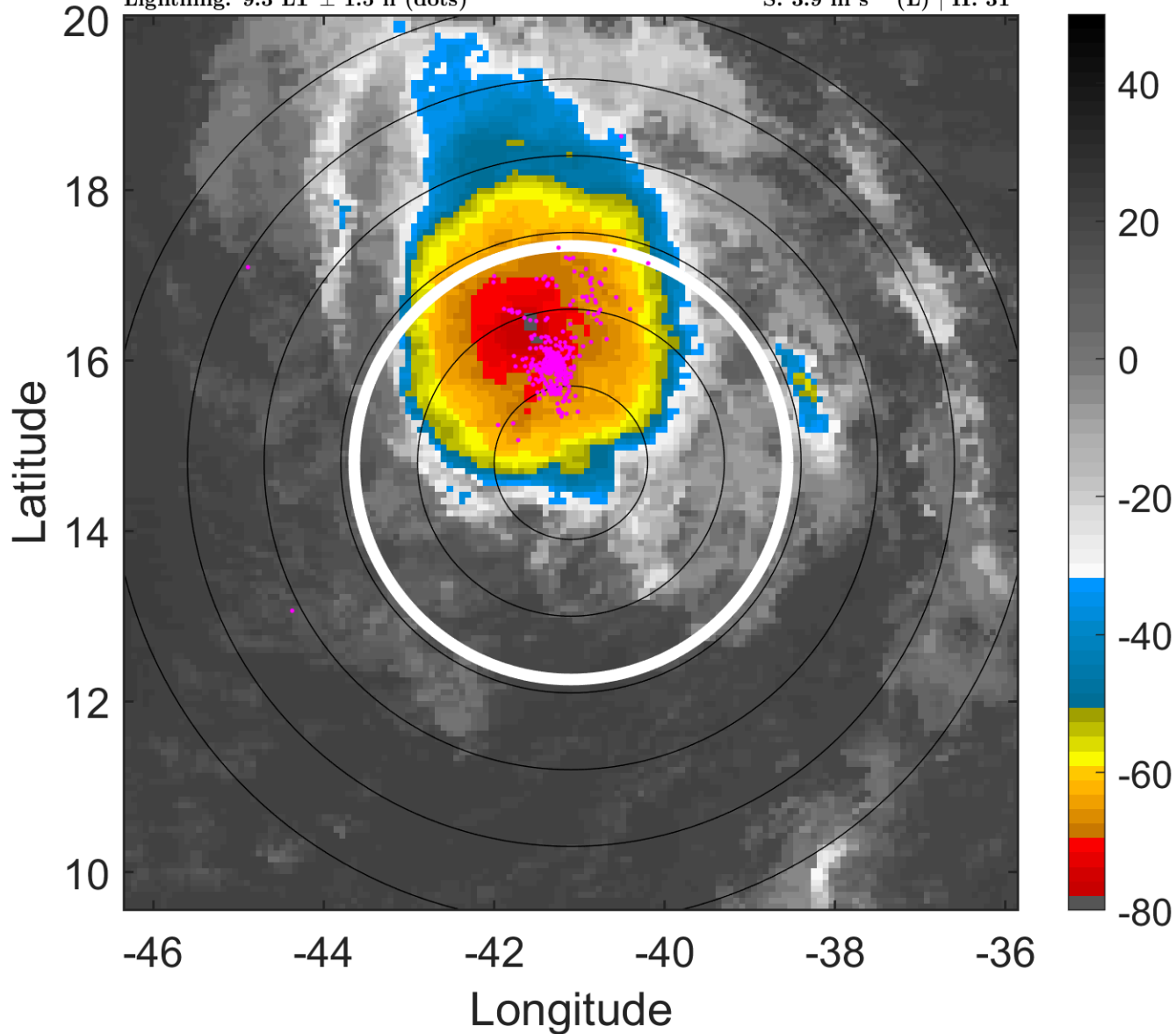
t: 2012082312 (9.3 LT)

Lightning: 9.3 LT  $\pm$  1.5 h (dots)

PT: LLCP | EA: QUASI

10L (JOYCE) | 35 kt TS

S: 3.9 m s<sup>-1</sup> (L) | H: 31°



### 6-h IR BT Differences & Lightning

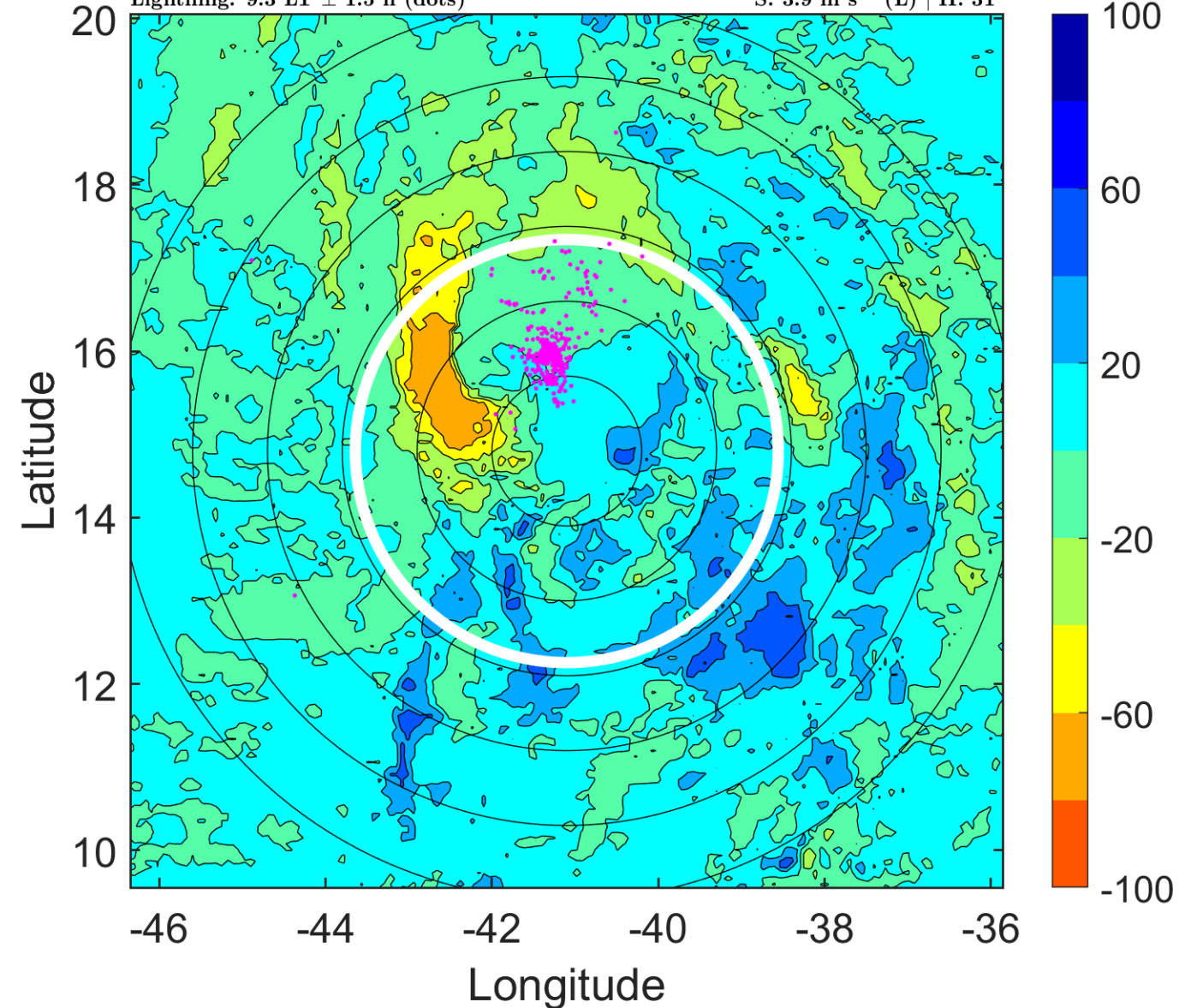
$\Delta$ t: 2012082312 (9.3 LT) - 2012082306 (3.3 LT)

Lightning: 9.3 LT  $\pm$  1.5 h (dots)

PT: LLCP | EA: QUASI

10L (JOYCE) | 35 kt TS

S: 3.9 m s<sup>-1</sup> (L) | H: 31°



### IR BT & Lightning

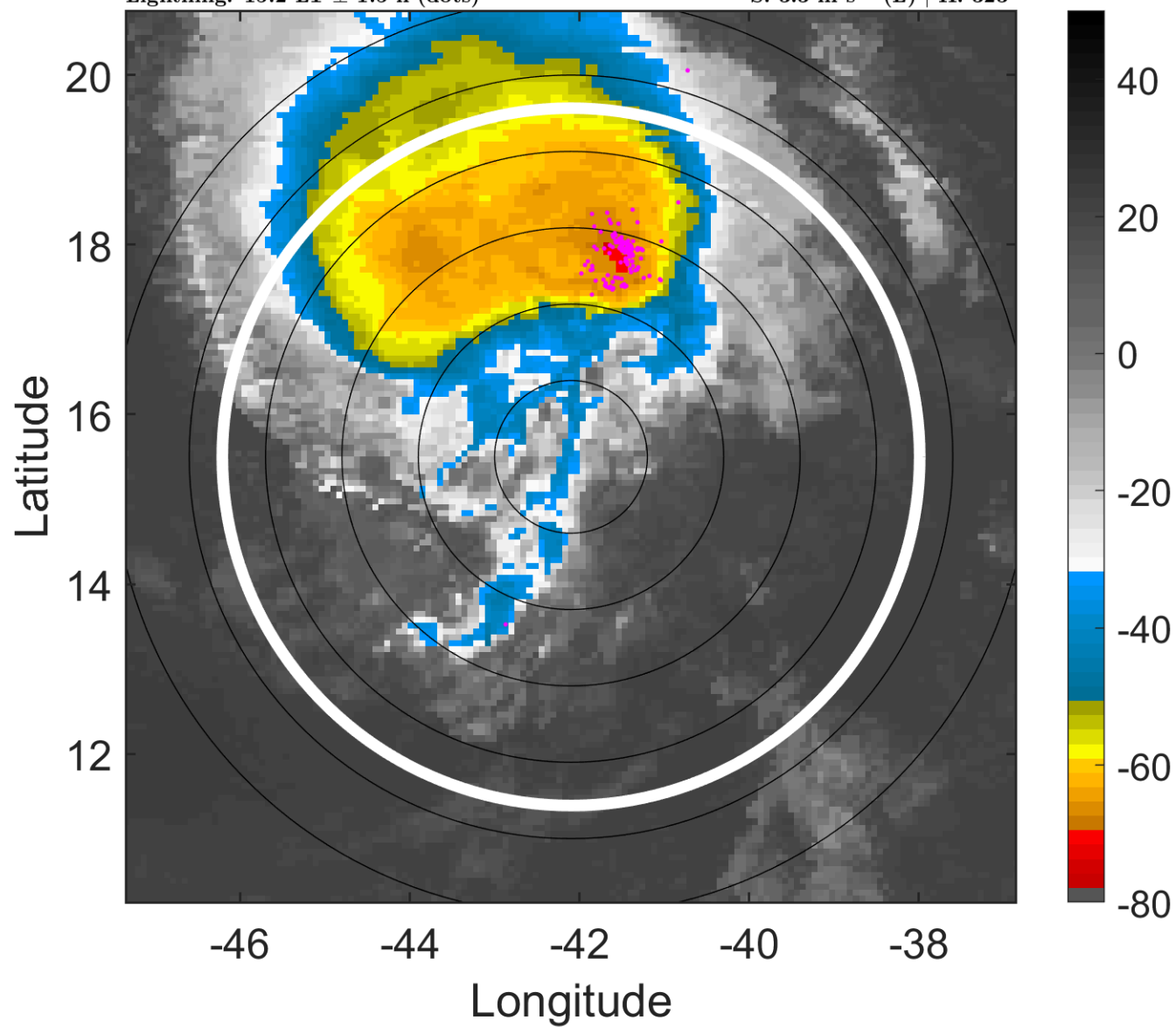
t: 2012082318 (15.2 LT)

Lightning: 15.2 LT  $\pm$  1.5 h (dots)

PT: LLCP | EA: QUASI

10L (JOYCE) | 35 kt TS

S: 3.3 m s<sup>-1</sup> (L) | H: 323°



### 6-h IR BT Differences & Lightning

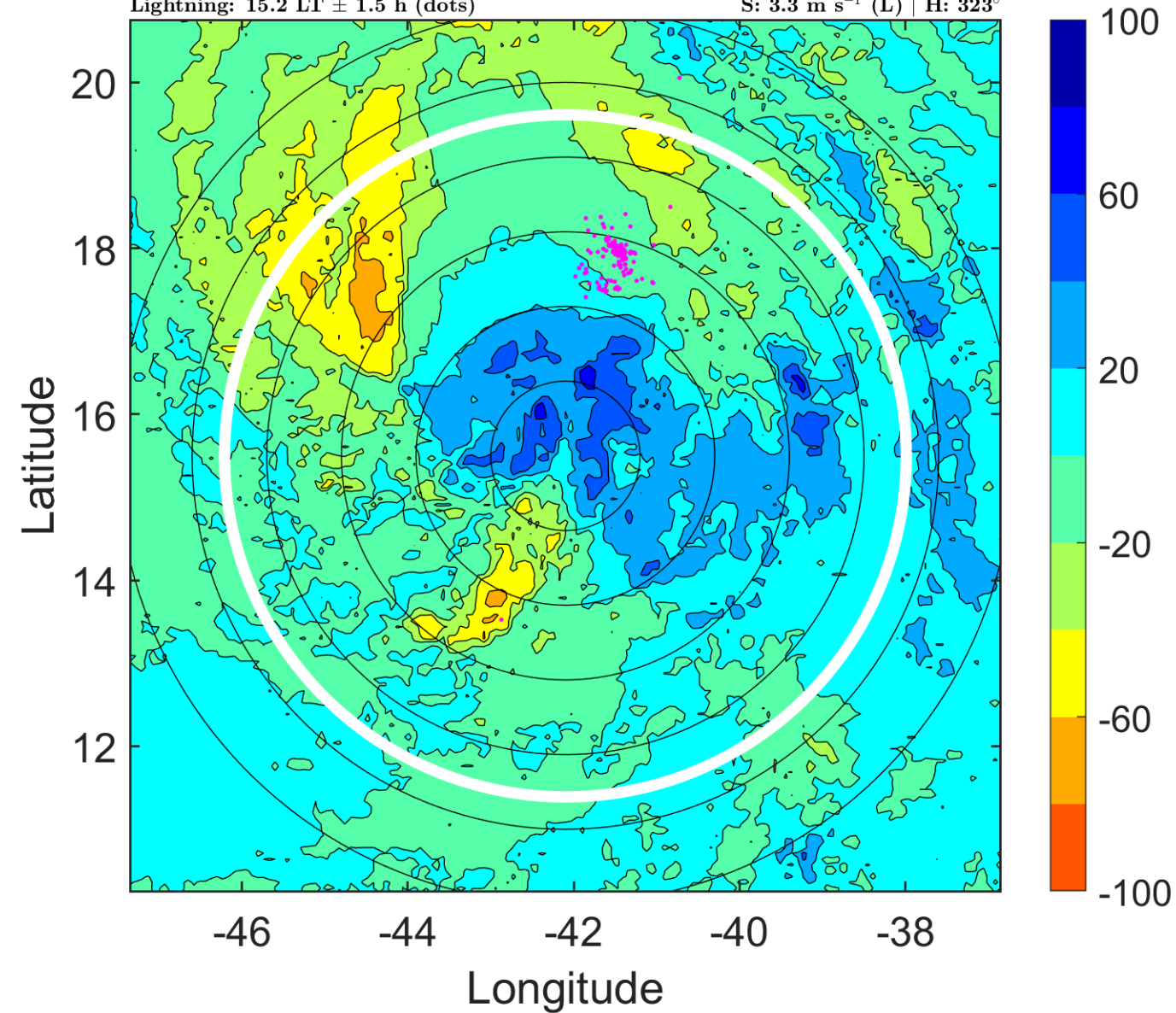
$\Delta$ t: 2012082318 (15.2 LT) - 2012082312 (9.3 LT)

Lightning: 15.2 LT  $\pm$  1.5 h (dots)

PT: LLCP | EA: QUASI

10L (JOYCE) | 35 kt TS

S: 3.3 m s<sup>-1</sup> (L) | H: 323°



### IR BT & Lightning

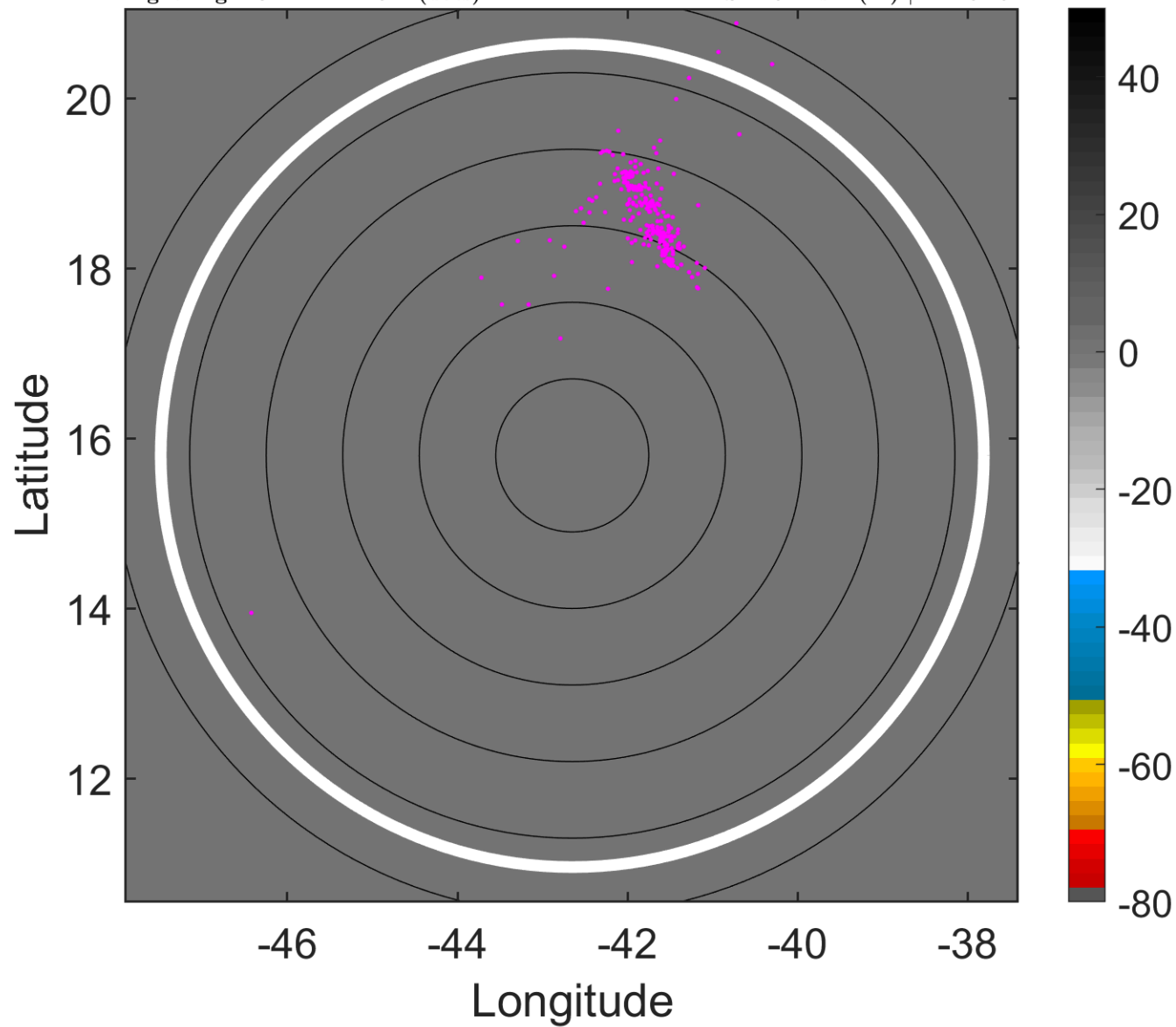
t: 2012082321 (18.2 LT)

Lightning: 18.2 LT  $\pm$  1.5 h (dots)

PT: null | EA: null

10L (JOYCE) | 32.5 kt TD

S: 4.6 m s<sup>-1</sup> (M) | H: 164.5°



### 6-h IR BT Differences & Lightning

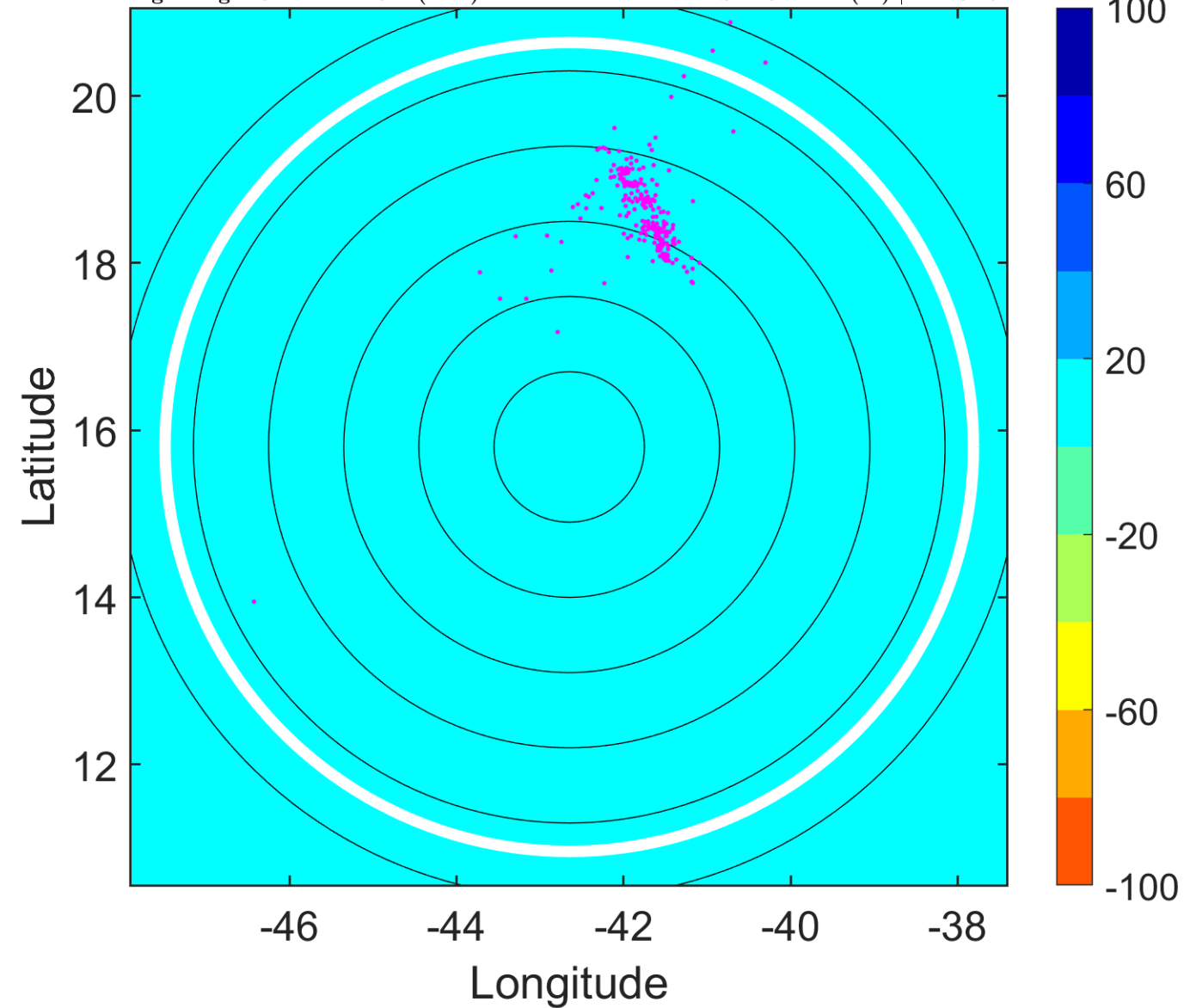
$\Delta$ t: 2012082321 (18.2 LT) - 2012082315 (12.2 LT)

Lightning: 18.2 LT  $\pm$  1.5 h (dots)

PT: null | EA: null

10L (JOYCE) | 32.5 kt TD

S: 4.6 m s<sup>-1</sup> (M) | H: 164.5°





### IR BT & Lightning

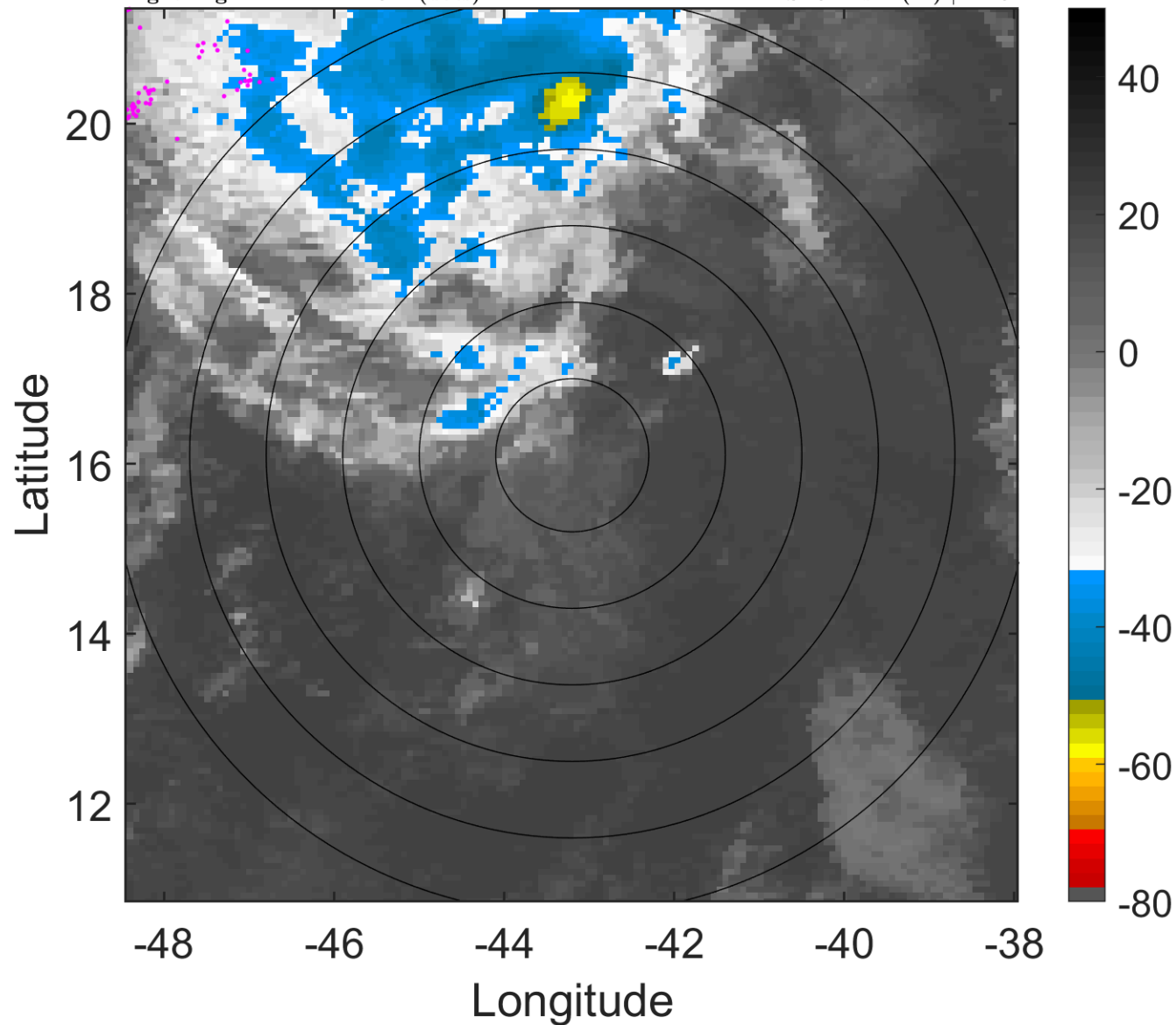
t: 2012082400 (21.1 LT)

Lightning: 21.1 LT  $\pm$  1.5 h (dots)

PT: LLCP | EA: QUASI

10L (JOYCE) | 30 kt TD

S: 6 m s<sup>-1</sup> (M) | H: 6°



### 6-h IR BT Differences & Lightning

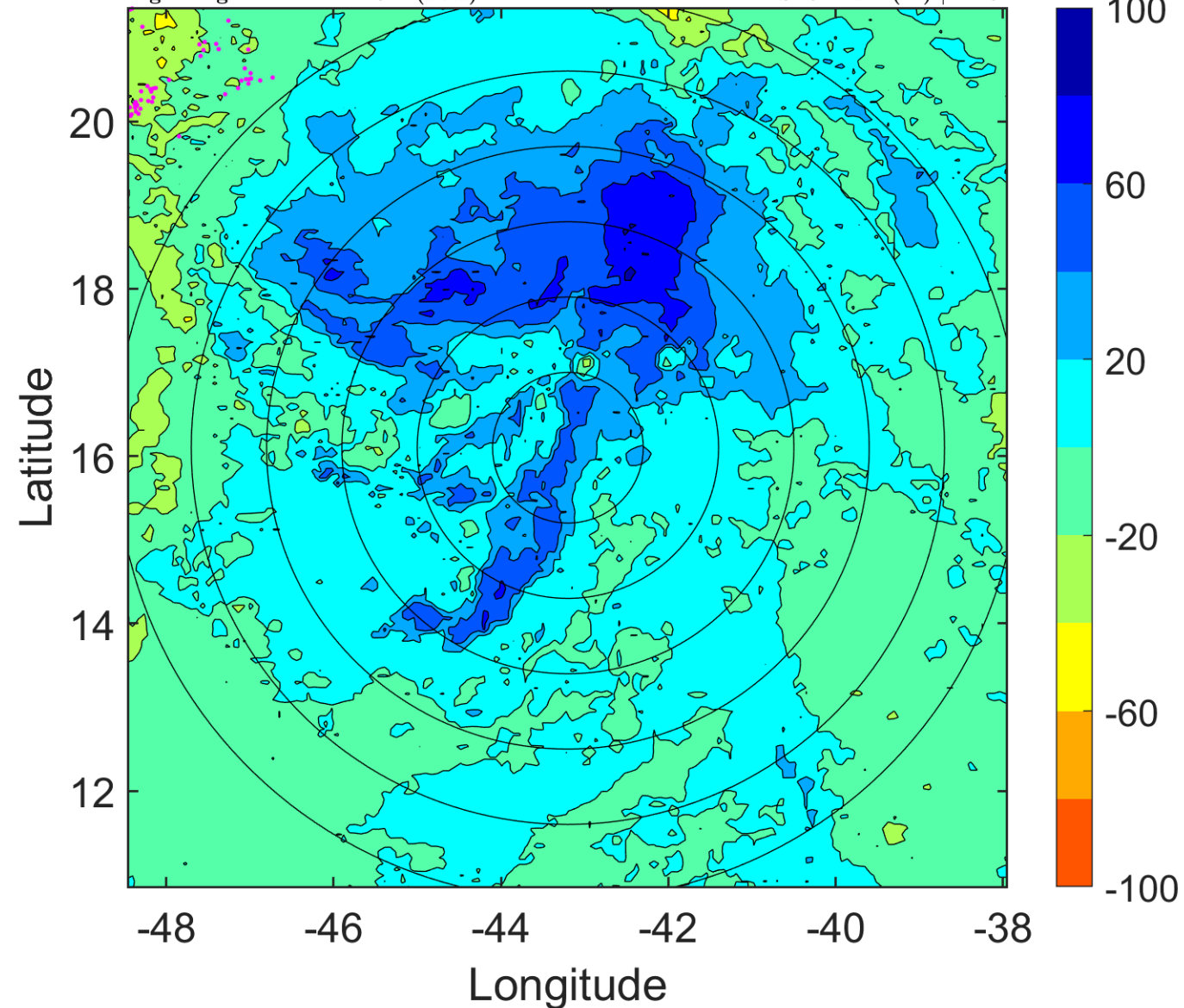
$\Delta$ t: 2012082400 (21.1 LT) - 2012082318 (15.2 LT)

Lightning: 21.1 LT  $\pm$  1.5 h (dots)

PT: LLCP | EA: QUASI

10L (JOYCE) | 30 kt TD

S: 6 m s<sup>-1</sup> (M) | H: 6°



### IR BT & Lightning

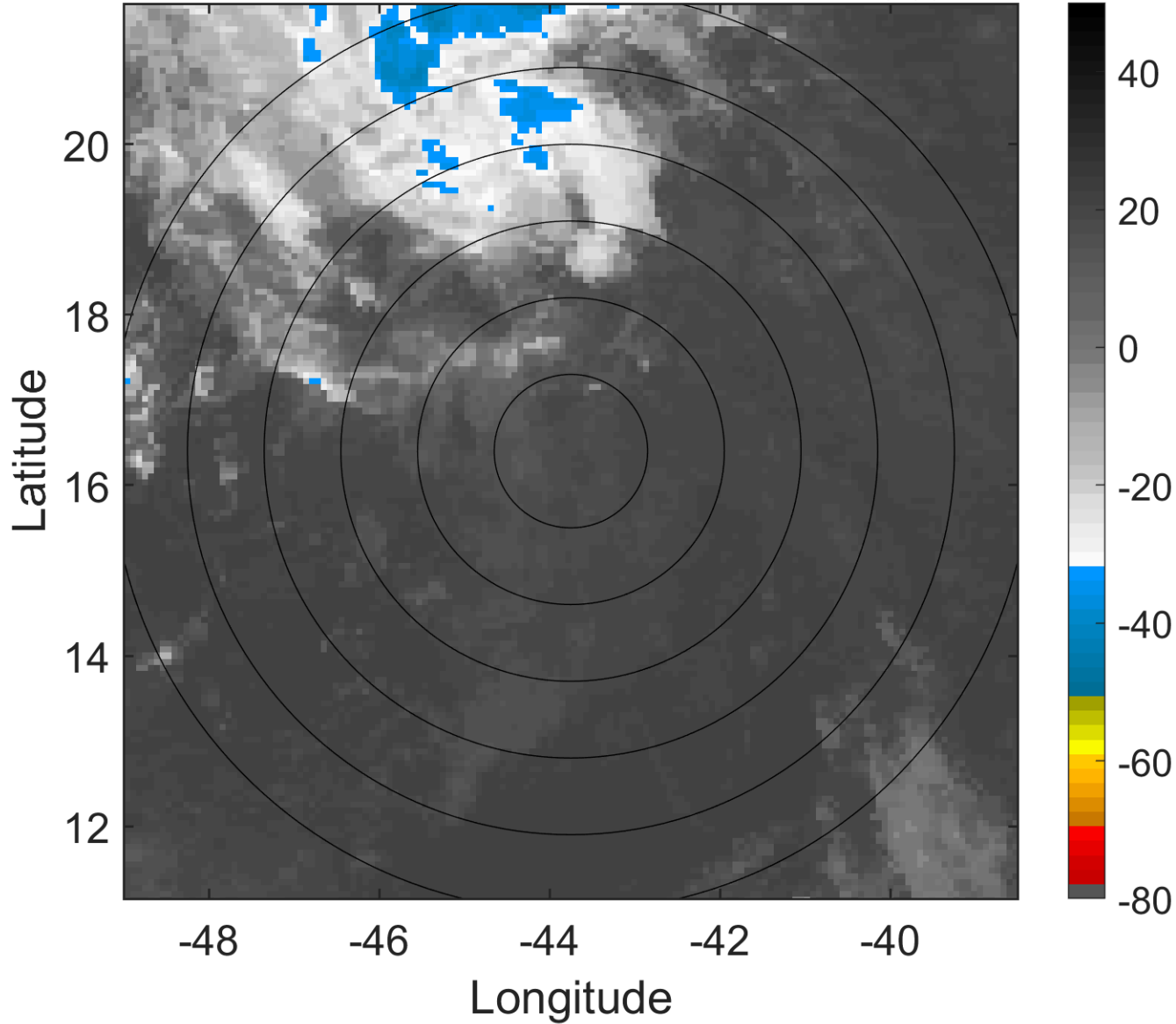
t: 2012082403 (0.1 LT)

Lightning: 0.1 LT  $\pm$  1.5 h (dots)

PT: SLWP | EA: INACT

10L (JOYCE) | 30 kt TD

S: 6.7 m s<sup>-1</sup> (M) | H: 8.5°



### 6-h IR BT Differences & Lightning

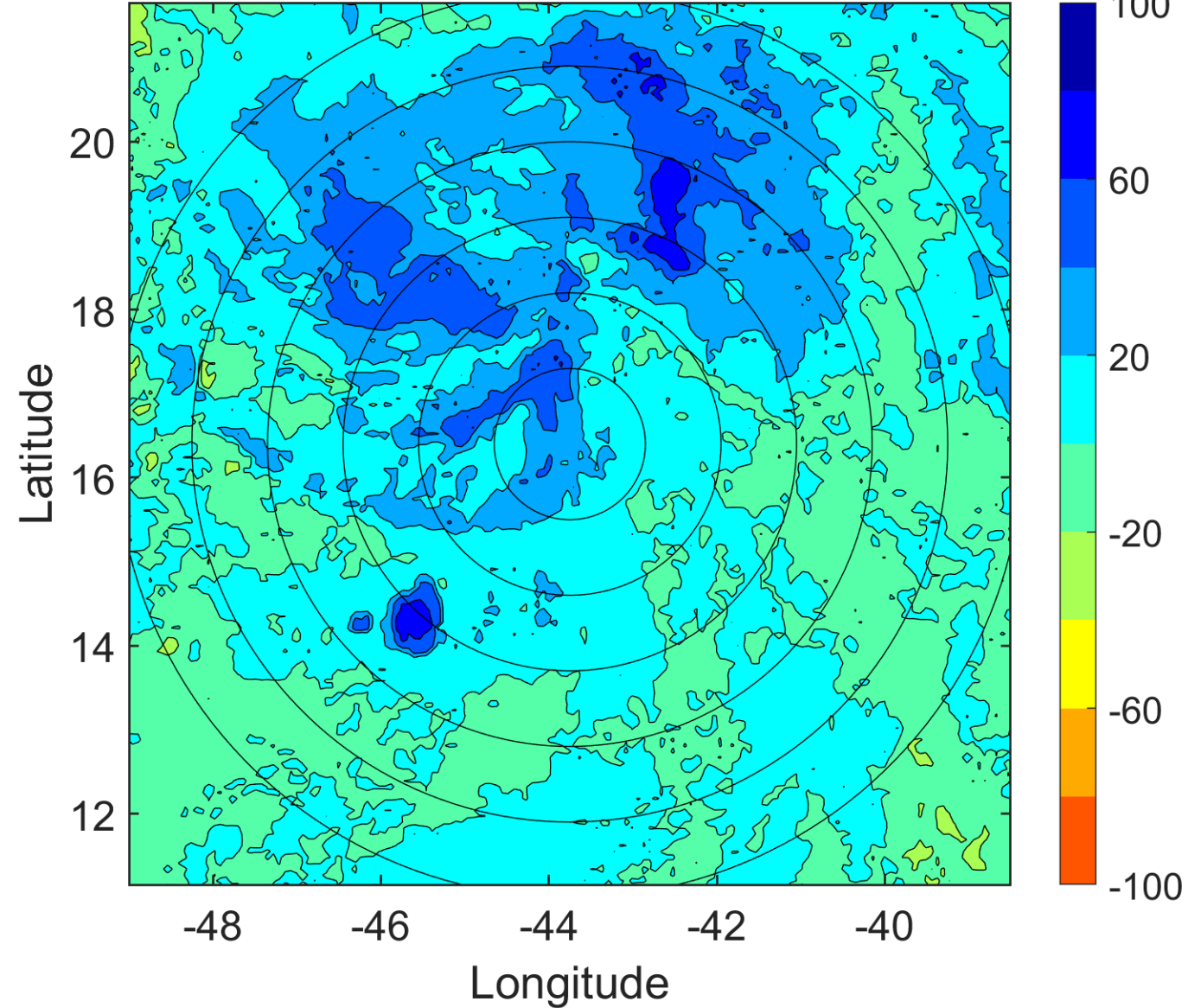
$\Delta$ t: 2012082403 (0.1 LT) - 2012082321 (18.2 LT)

Lightning: 0.1 LT  $\pm$  1.5 h (dots)

PT: SLWP | EA: INACT

10L (JOYCE) | 30 kt TD

S: 6.7 m s<sup>-1</sup> (M) | H: 8.5°



### IR BT & Lightning

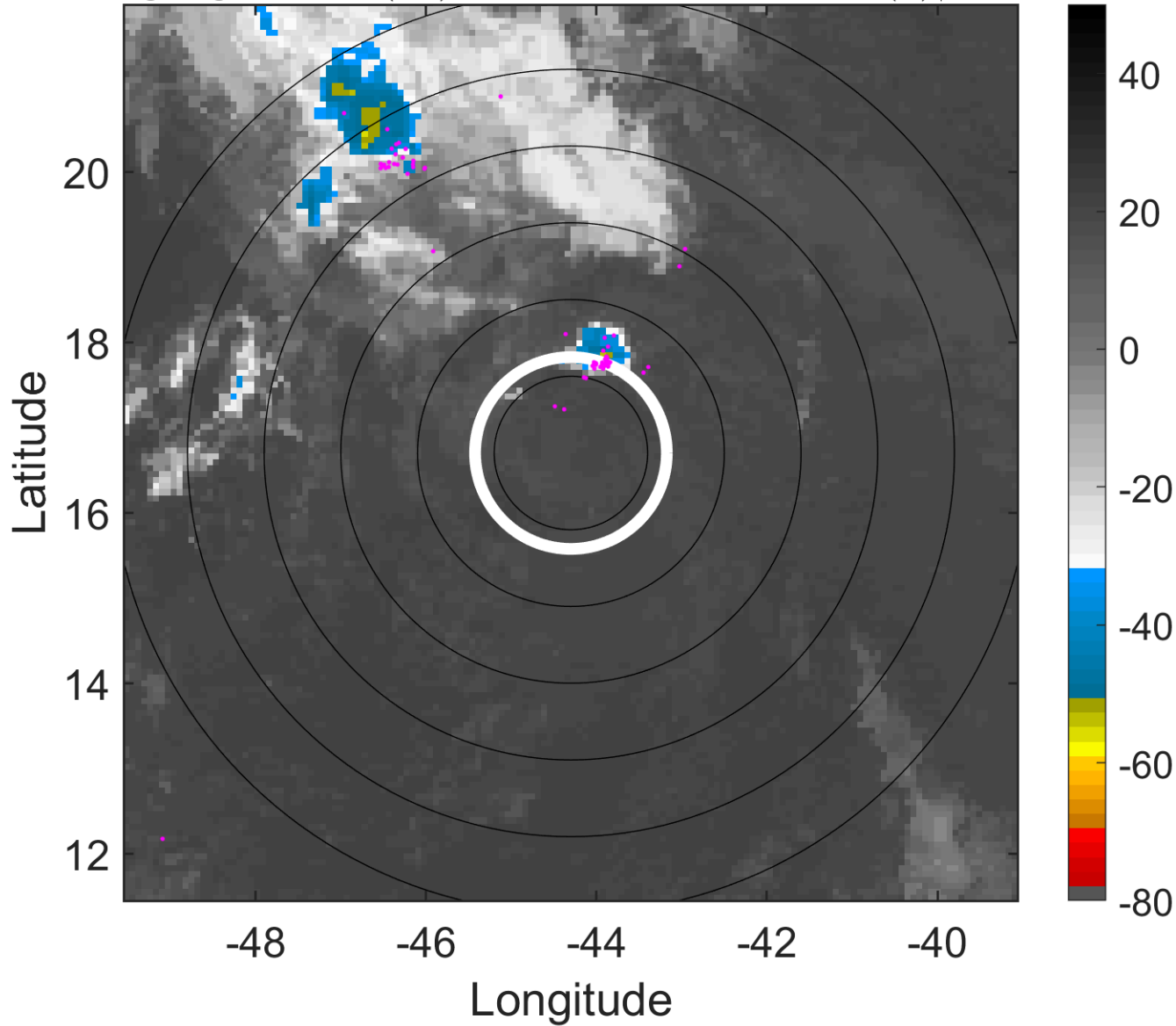
t: 2012082406 (3 LT)

Lightning: 3 LT  $\pm$  1.5 h (dots)

PT: SLWP | EA: INACT

10L (JOYCE) | 30 kt TD

S: 7.5 m s<sup>-1</sup> (M) | H: 11°



### 6-h IR BT Differences & Lightning

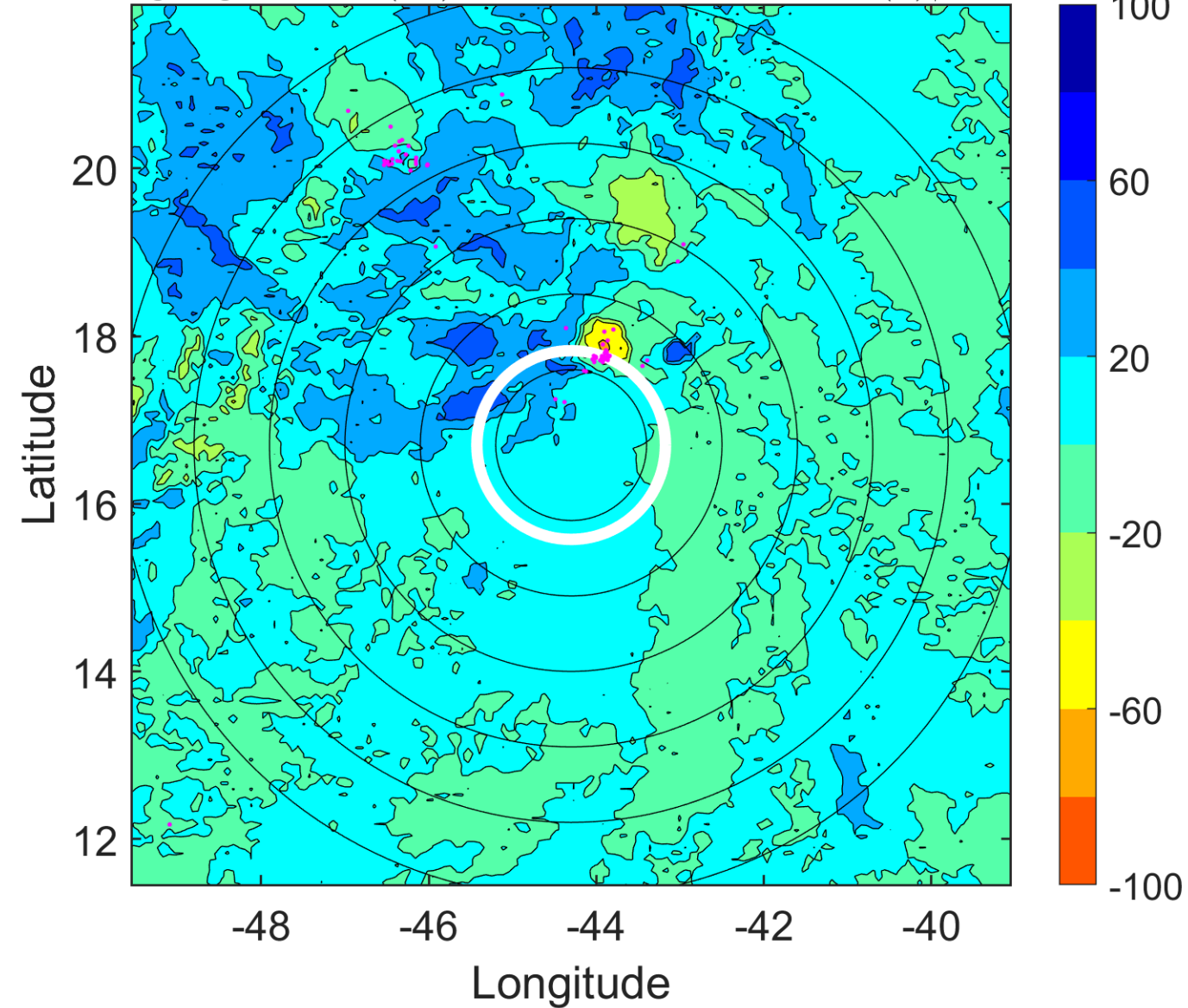
$\Delta$ t: 2012082406 (3 LT) - 2012082400 (21.1 LT)

Lightning: 3 LT  $\pm$  1.5 h (dots)

PT: SLWP | EA: INACT

10L (JOYCE) | 30 kt TD

S: 7.5 m s<sup>-1</sup> (M) | H: 11°





### IR BT & Lightning

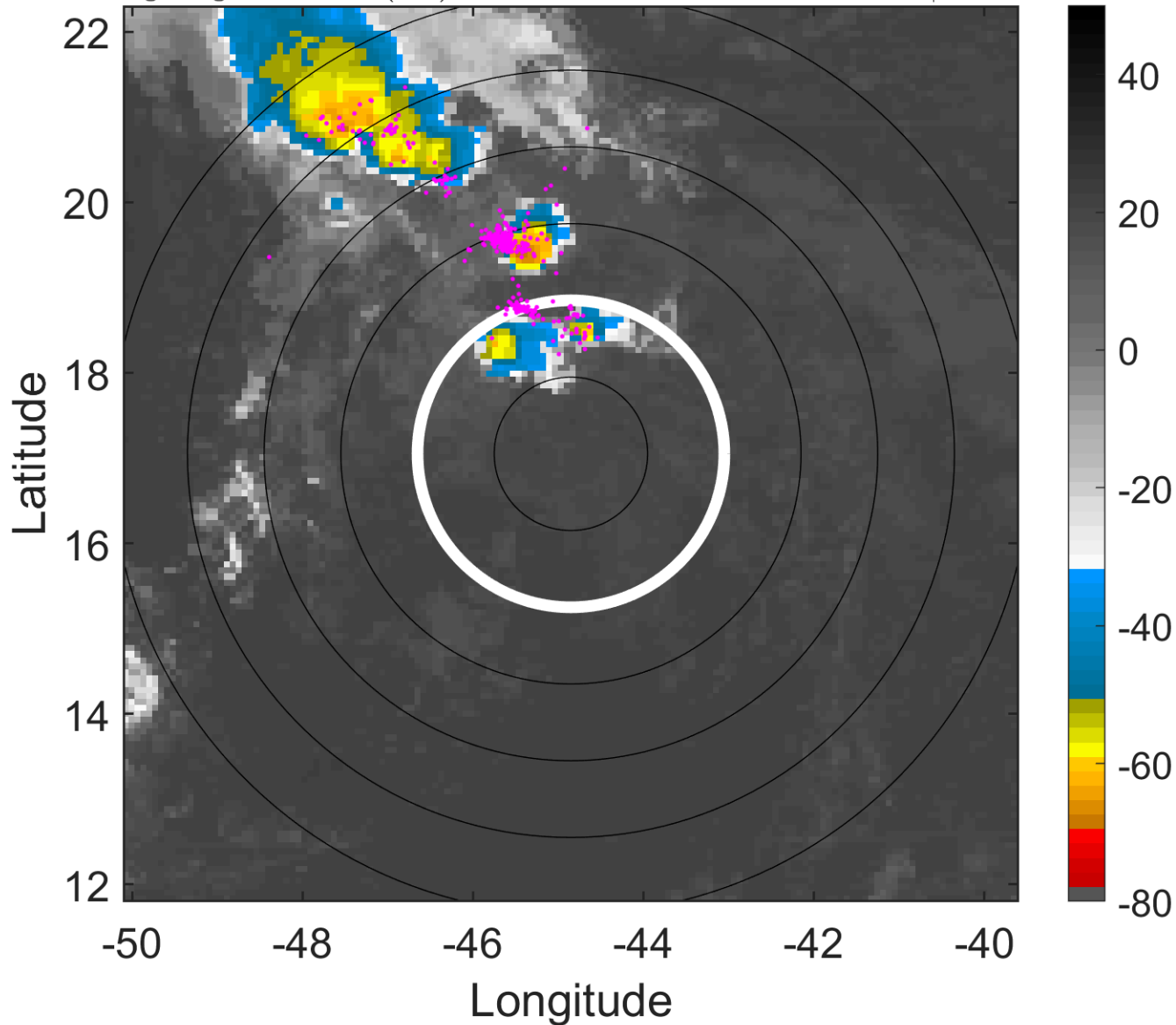
t: 2012082409 (6 LT)

Lightning: 6 LT  $\pm$  1.5 h (dots)

PT: SLWP | EA: INACT

10L (JOYCE) | 30 kt TD

S: null | H: null



### 6-h IR BT Differences & Lightning

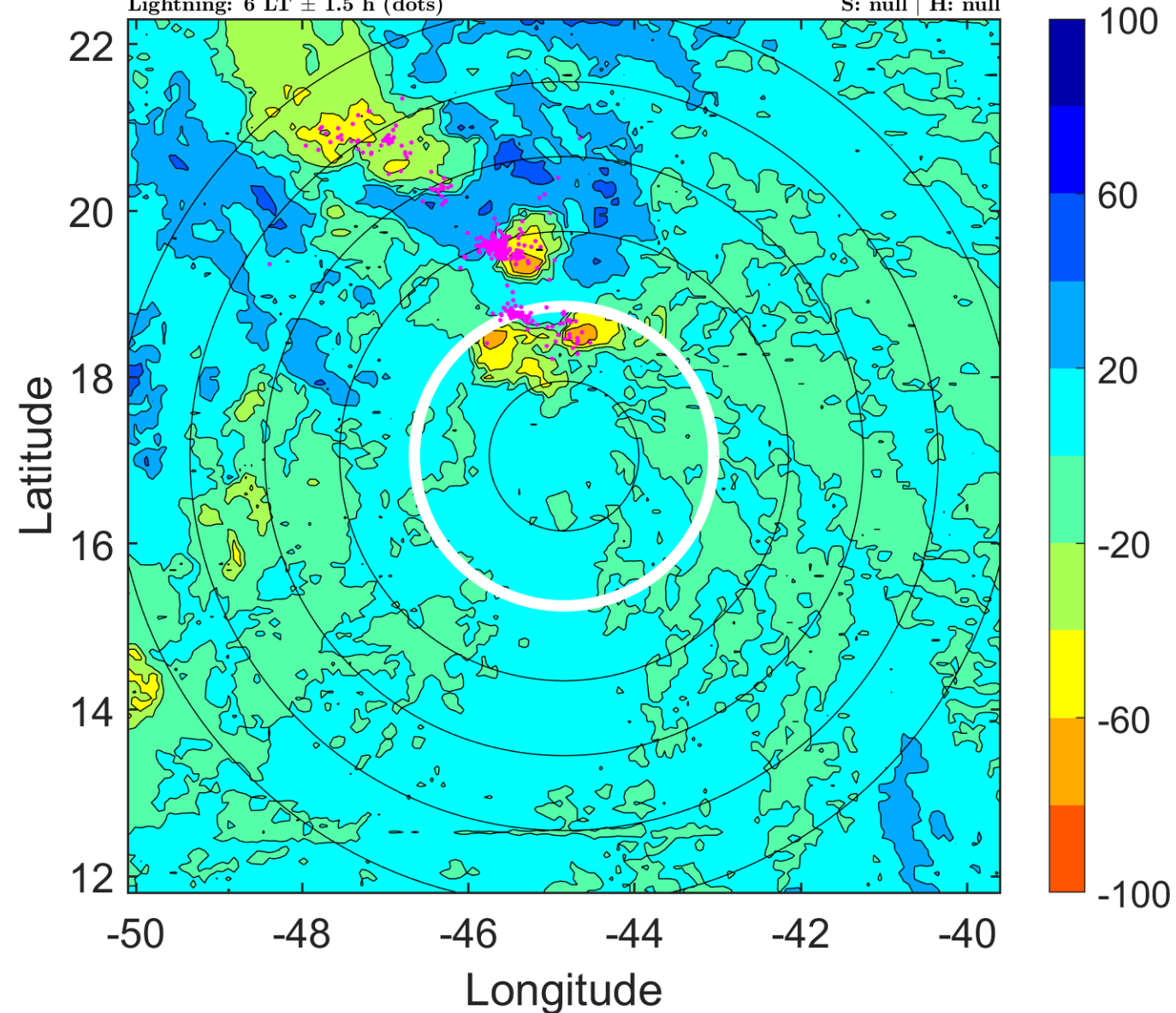
$\Delta$ t: 2012082409 (6 LT) - 2012082403 (0.1 LT)

Lightning: 6 LT  $\pm$  1.5 h (dots)

PT: SLWP | EA: INACT

10L (JOYCE) | 30 kt TD

S: null | H: null



### IR BT & Lightning

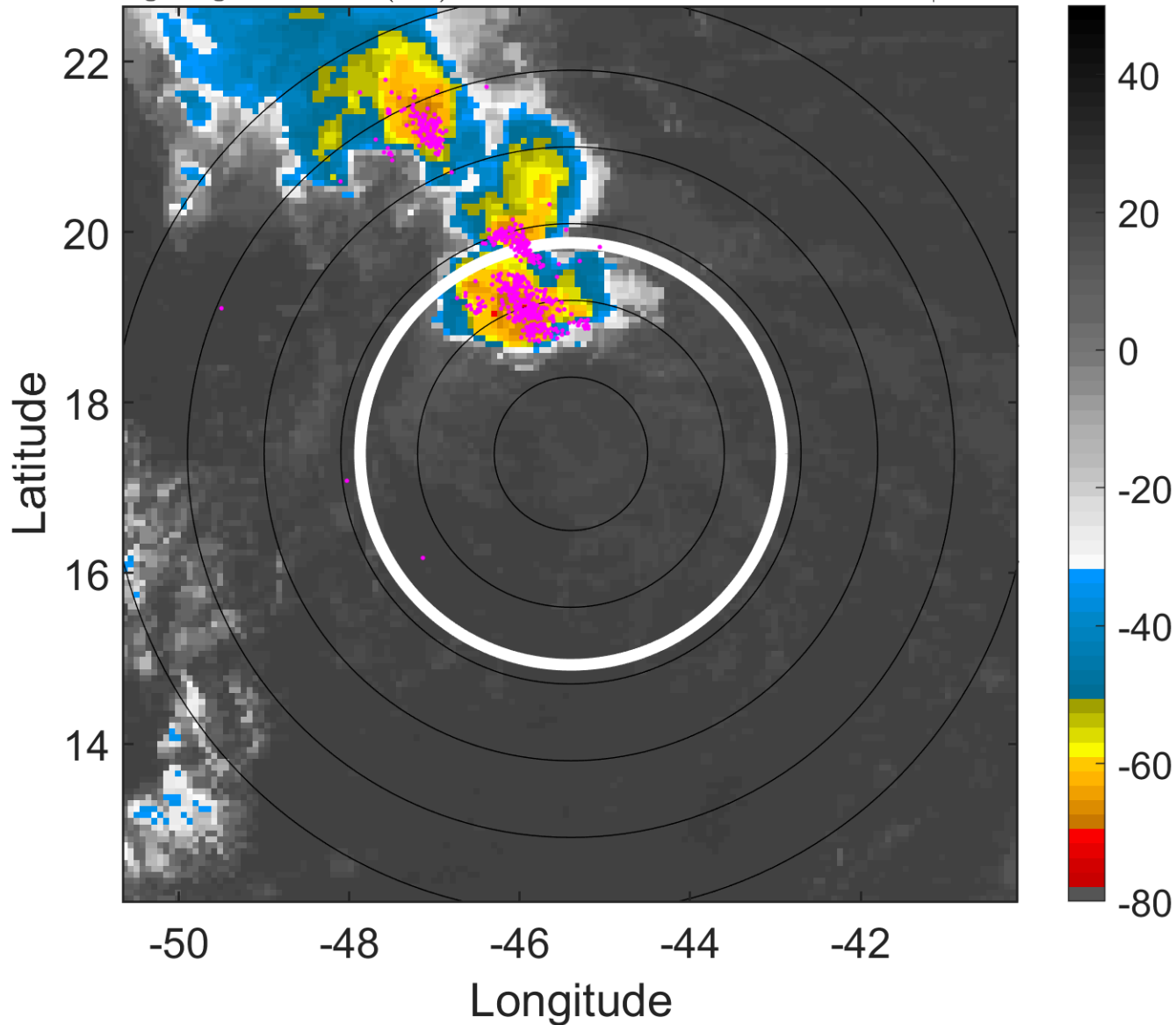
t: 2012082412 (9 LT)

Lightning: 9 LT  $\pm$  1.5 h (dots)

PT: SLWP | EA: INACT

10L (JOYCE) | 30 kt LO

S: null | H: null



### 6-h IR BT Differences & Lightning

$\Delta$ t: 2012082412 (9 LT) - 2012082406 (3 LT)

Lightning: 9 LT  $\pm$  1.5 h (dots)

PT: SLWP | EA: INACT

10L (JOYCE) | 30 kt LO

S: null | H: null

