

### IR BT & Lightning

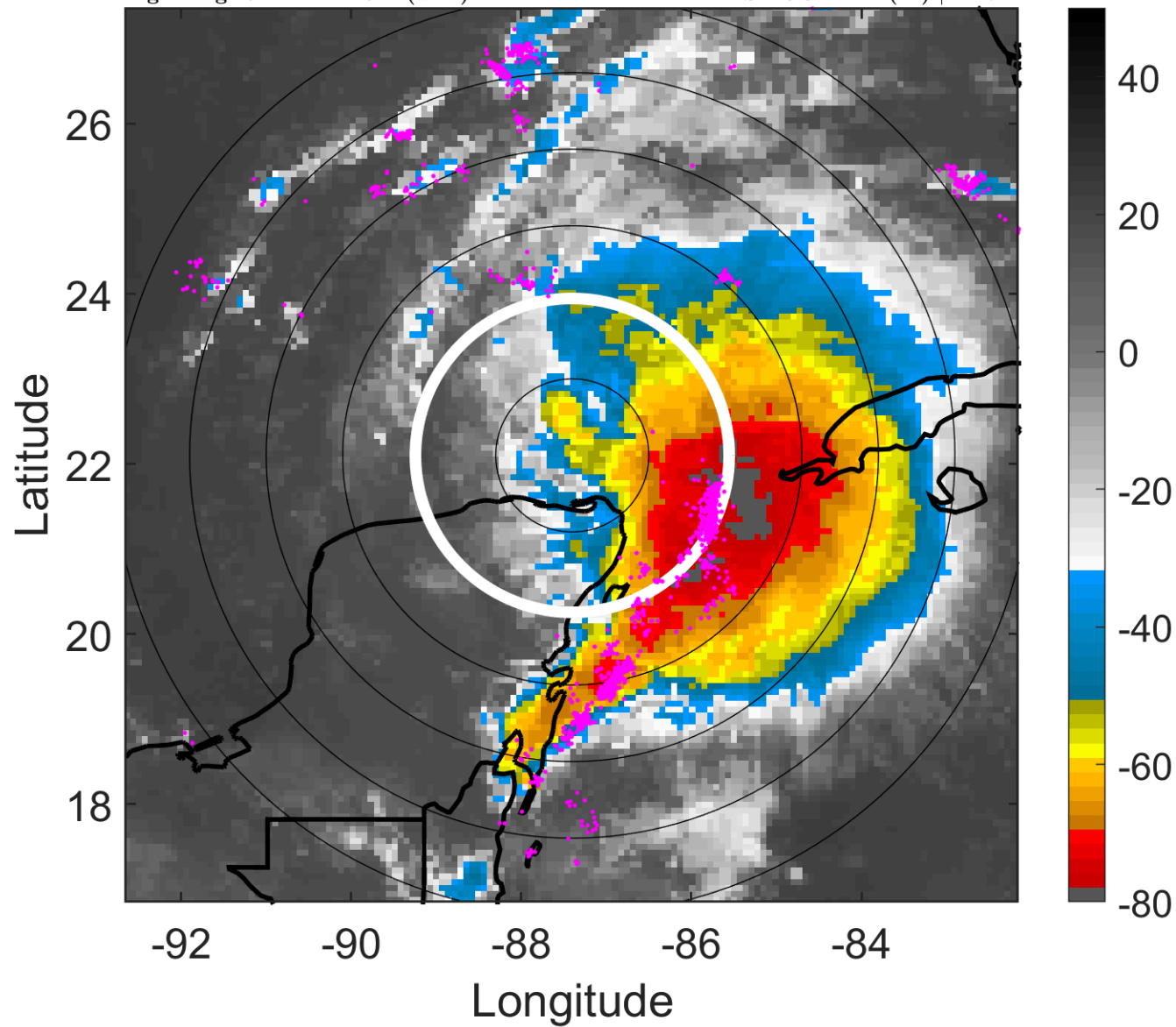
t: 2013100312 (6.2 LT)

Lightning: 6.2 LT  $\pm$  1.5 h (dots)

PT: LLCP | EA: ACT

12L (KAREN) | 55 kt TS

S: 10.5 m s<sup>-1</sup> (M) | H: 71°



### 6-h IR BT Differences & Lightning

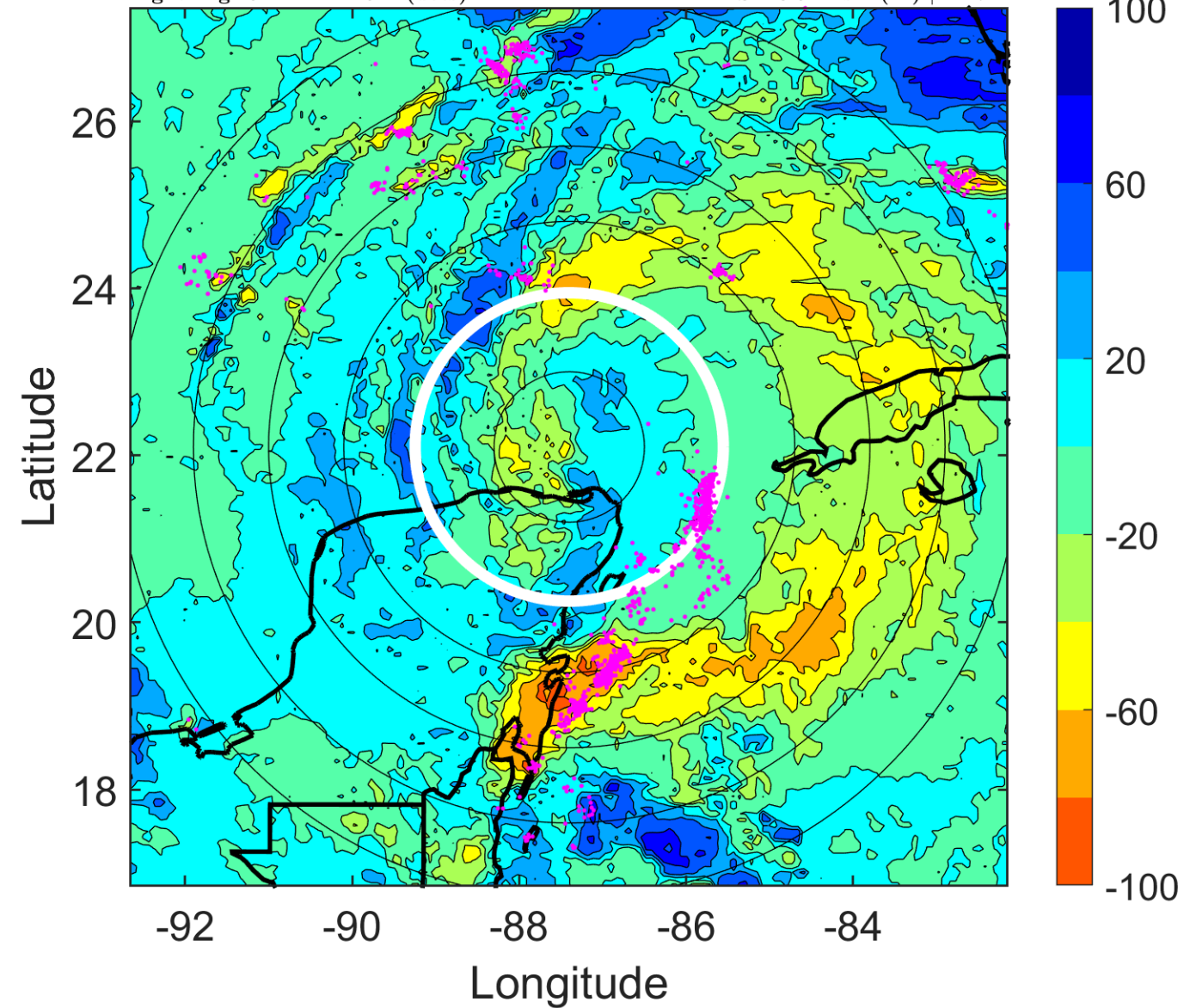
$\Delta$ t: 2013100312 (6.2 LT) - 2013100306 (0.2 LT)

Lightning: 6.2 LT  $\pm$  1.5 h (dots)

PT: LLCP | EA: ACT

12L (KAREN) | 55 kt TS

S: 10.5 m s<sup>-1</sup> (M) | H: 71°



### IR BT & Lightning

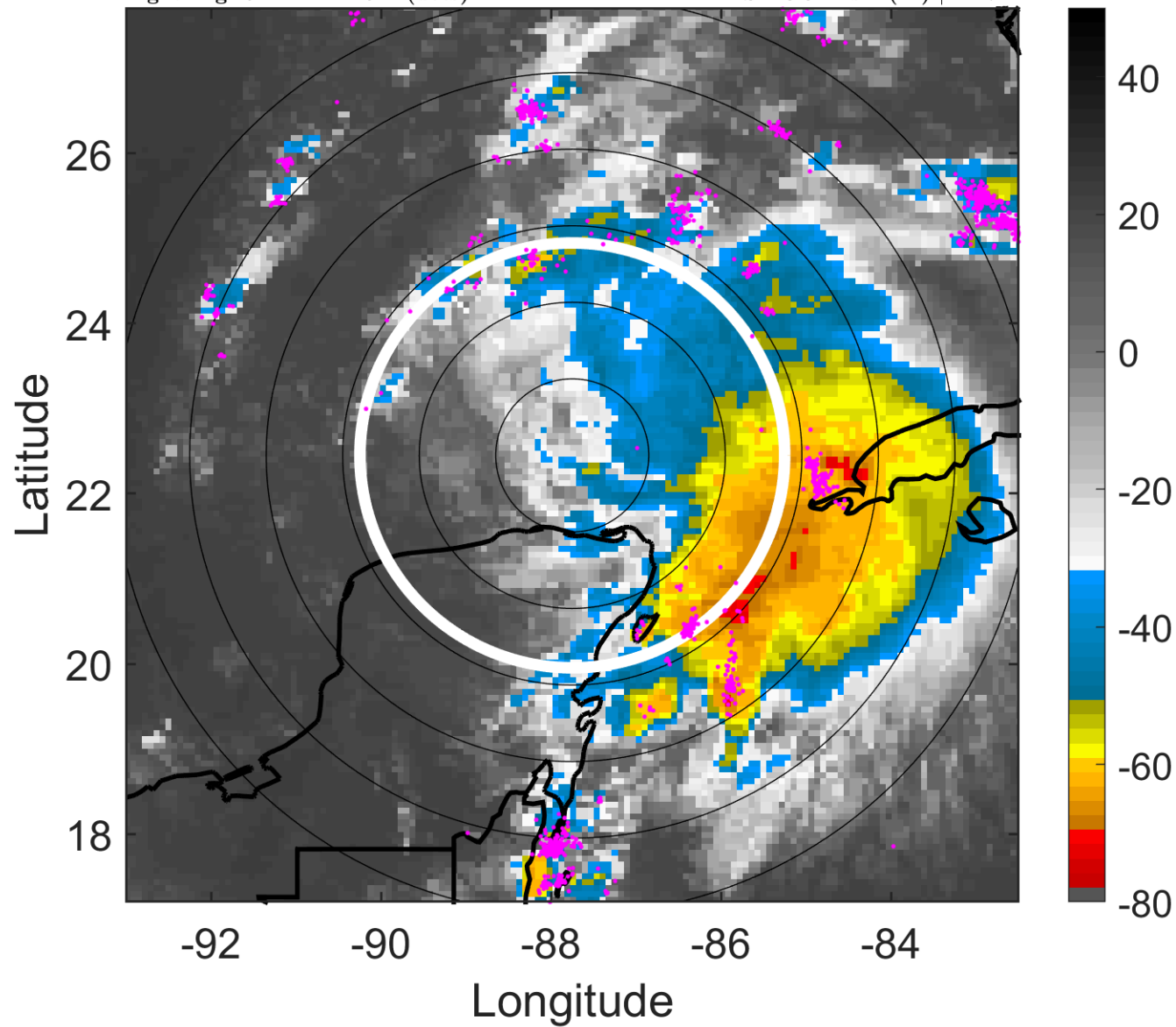
t: 2013100315 (9.2 LT)

Lightning: 9.2 LT  $\pm$  1.5 h (dots)

PT: LLCP | EA: ACT

12L (KAREN) | 55 kt TS

S: 10.3 m s<sup>-1</sup> (M) | H: 72°



### 6-h IR BT Differences & Lightning

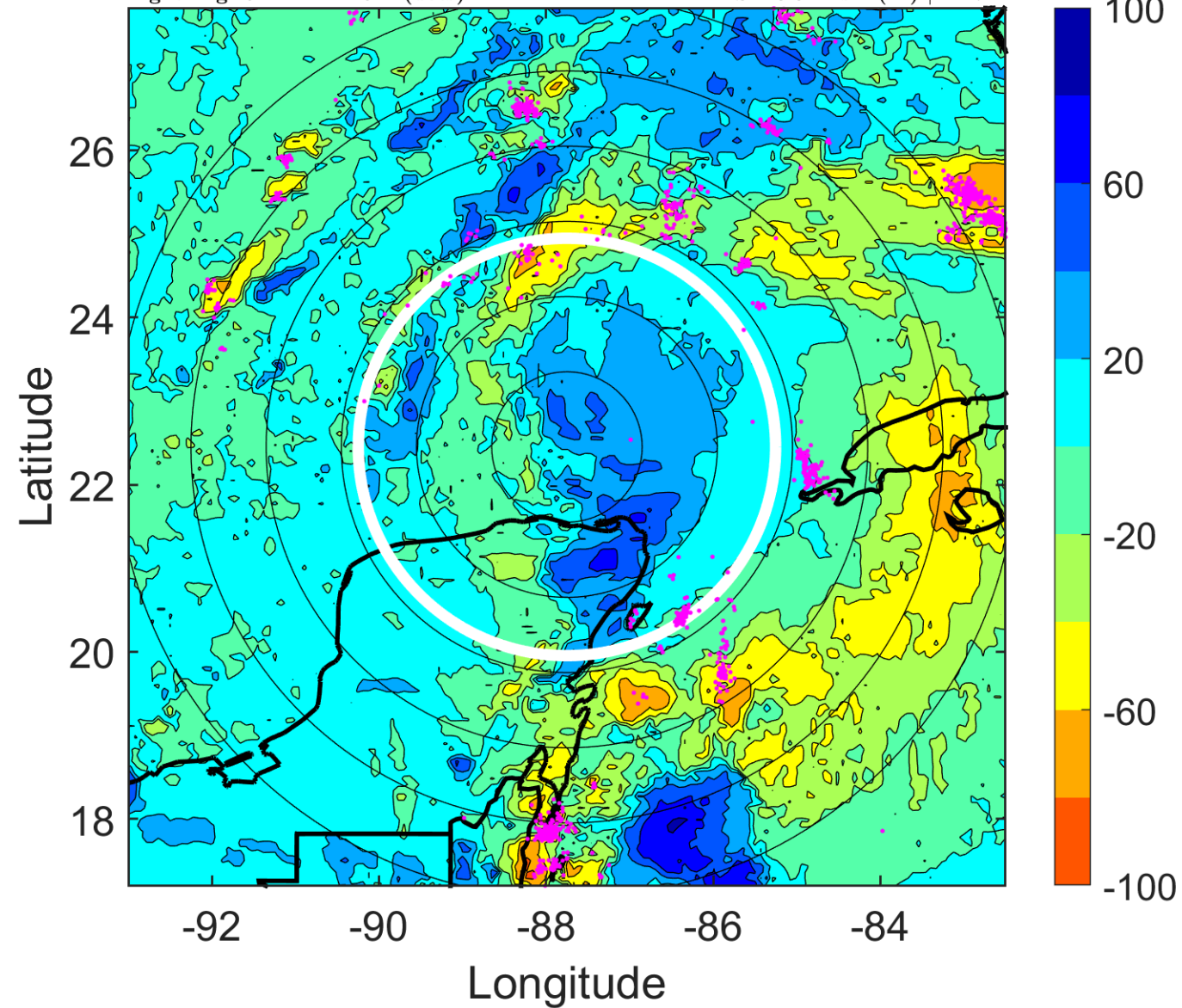
$\Delta$ t: 2013100315 (9.2 LT) - 2013100309 (3.2 LT)

Lightning: 9.2 LT  $\pm$  1.5 h (dots)

PT: LLCP | EA: ACT

12L (KAREN) | 55 kt TS

S: 10.3 m s<sup>-1</sup> (M) | H: 72°





### IR BT & Lightning

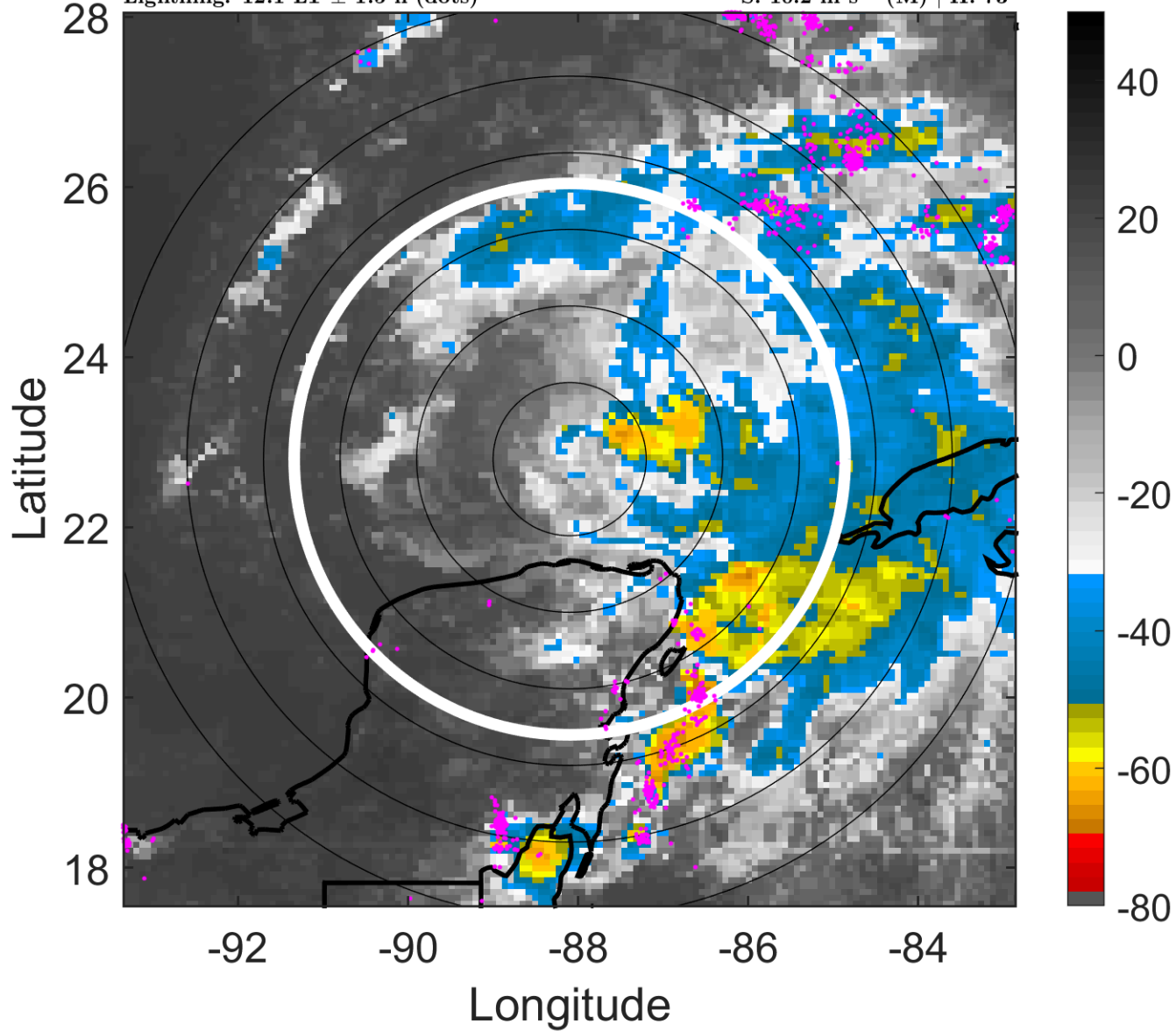
t: 2013100318 (12.1 LT)

Lightning: 12.1 LT  $\pm$  1.5 h (dots)

PT: LLCP | EA: ACT

12L (KAREN) | 55 kt TS

S: 10.2 m s<sup>-1</sup> (M) | H: 73°



### 6-h IR BT Differences & Lightning

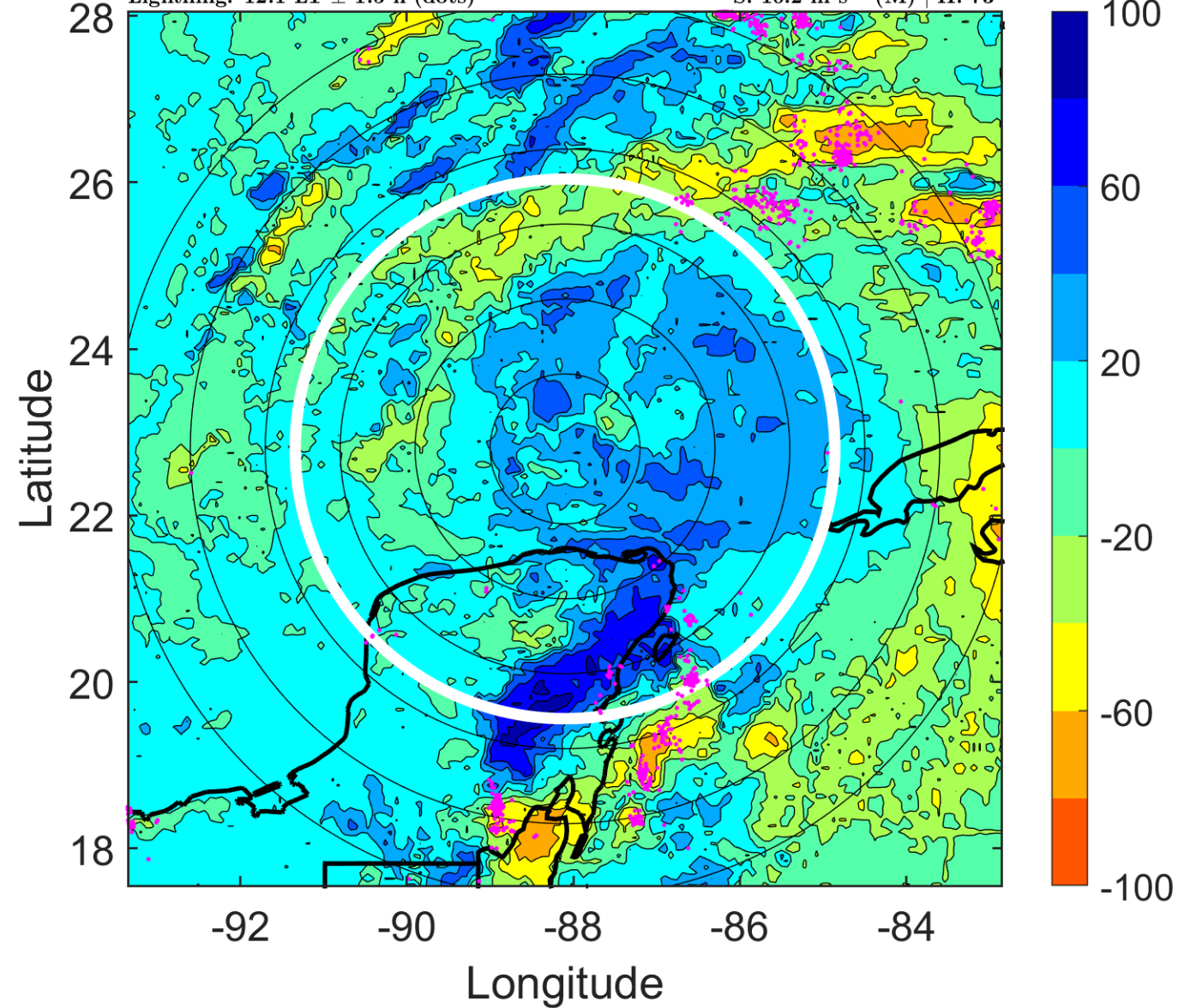
$\Delta$ t: 2013100318 (12.1 LT) - 2013100312 (6.2 LT)

Lightning: 12.1 LT  $\pm$  1.5 h (dots)

PT: LLCP | EA: ACT

12L (KAREN) | 55 kt TS

S: 10.2 m s<sup>-1</sup> (M) | H: 73°



### IR BT & Lightning

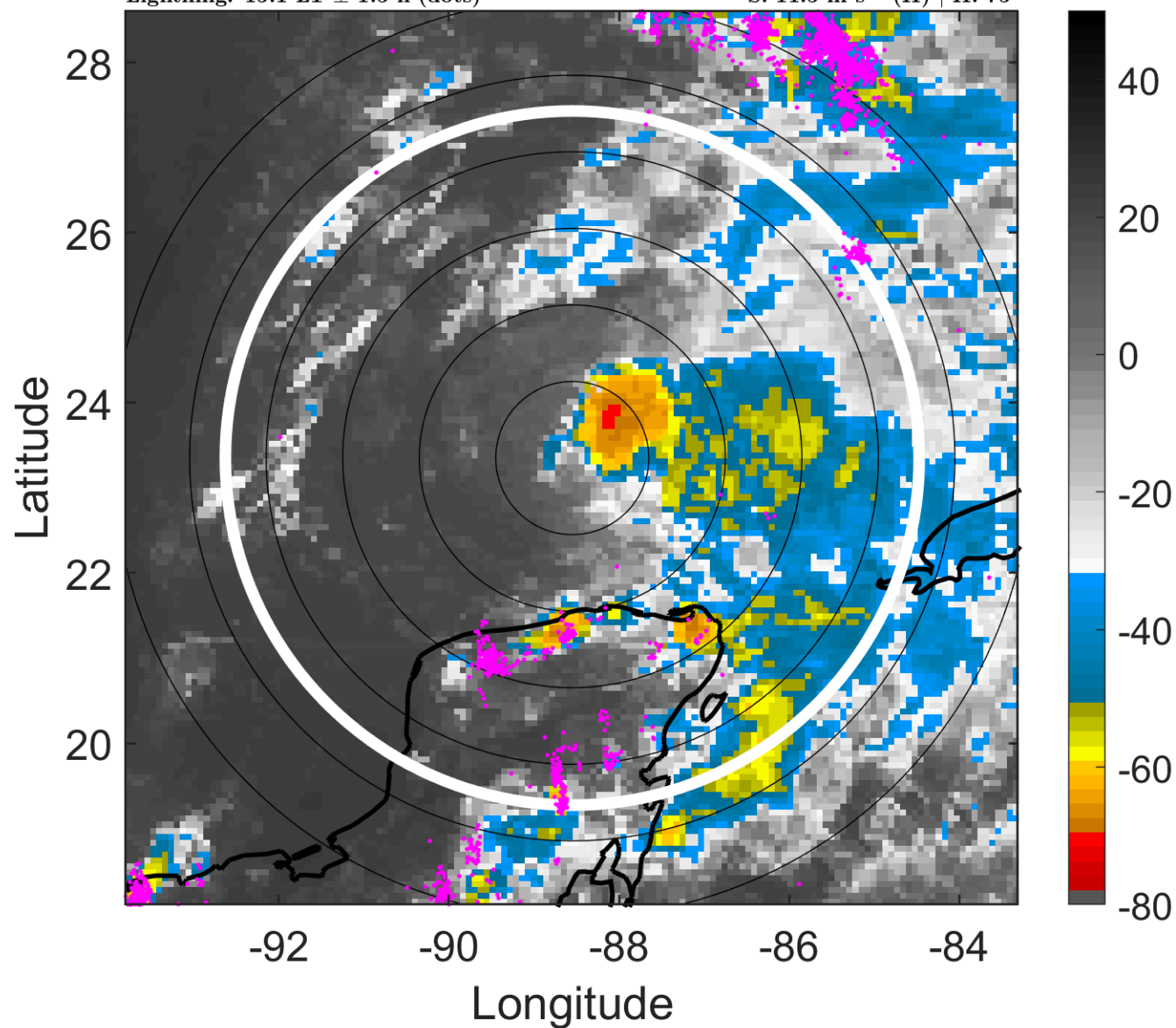
t: 2013100321 (15.1 LT)

Lightning: 15.1 LT  $\pm$  1.5 h (dots)

PT: LLCP | EA: ACT

12L (KAREN) | 52.5 kt TS

S: 11.5 m s<sup>-1</sup> (H) | H: 75°



### 6-h IR BT Differences & Lightning

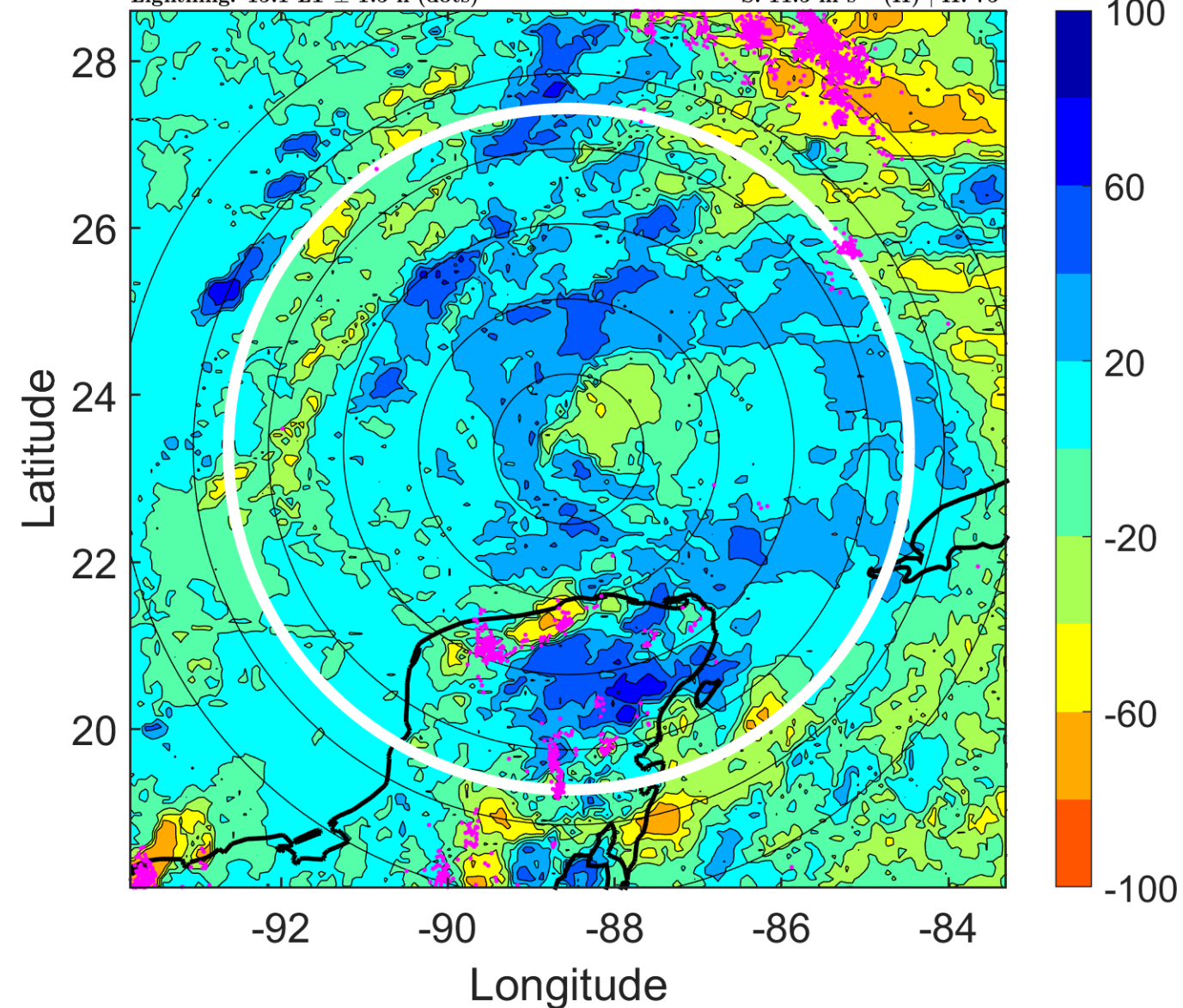
$\Delta$ t: 2013100321 (15.1 LT) - 2013100315 (9.2 LT)

Lightning: 15.1 LT  $\pm$  1.5 h (dots)

PT: LLCP | EA: ACT

12L (KAREN) | 52.5 kt TS

S: 11.5 m s<sup>-1</sup> (H) | H: 75°





### IR BT & Lightning

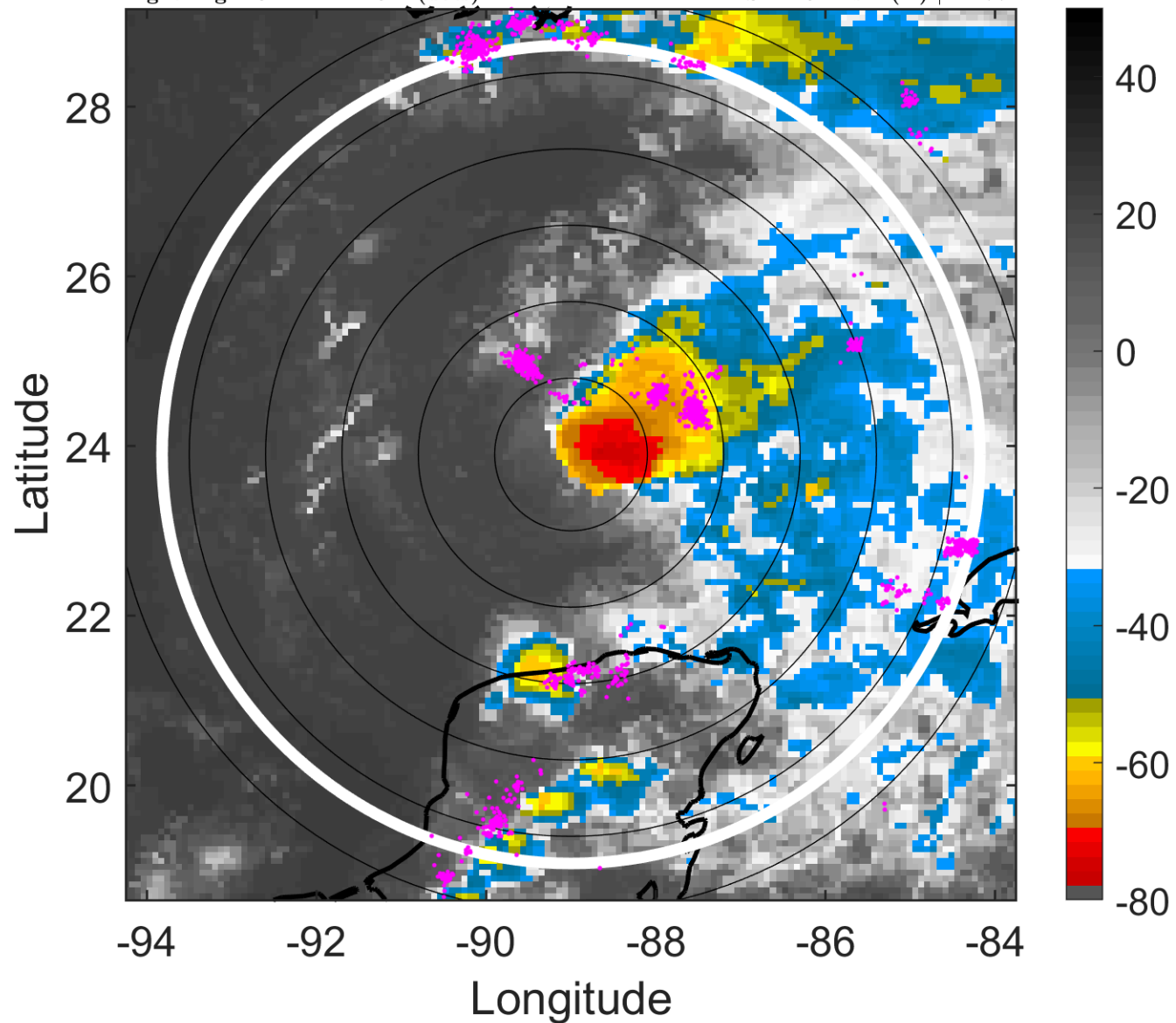
t: 2013100400 (18.1 LT)

Lightning: 18.1 LT  $\pm$  1.5 h (dots)

PT: LLCP | EA: ACT

12L (KAREN) | 50 kt TS

S: 12.9 m s<sup>-1</sup> (H) | H: 77°



### 6-h IR BT Differences & Lightning

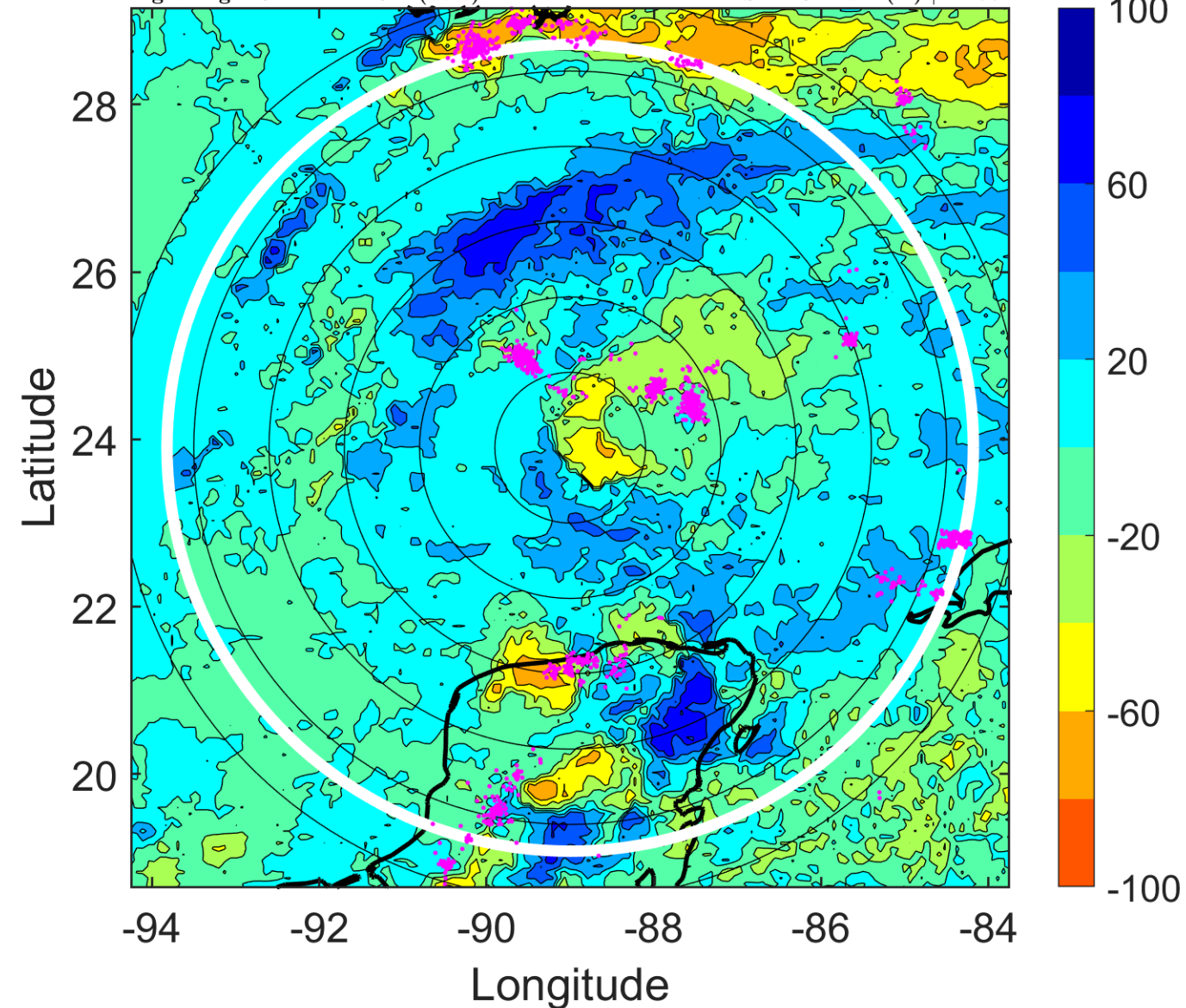
$\Delta$ t: 2013100400 (18.1 LT) - 2013100318 (12.1 LT)

Lightning: 18.1 LT  $\pm$  1.5 h (dots)

PT: LLCP | EA: ACT

12L (KAREN) | 50 kt TS

S: 12.9 m s<sup>-1</sup> (H) | H: 77°



### IR BT & Lightning

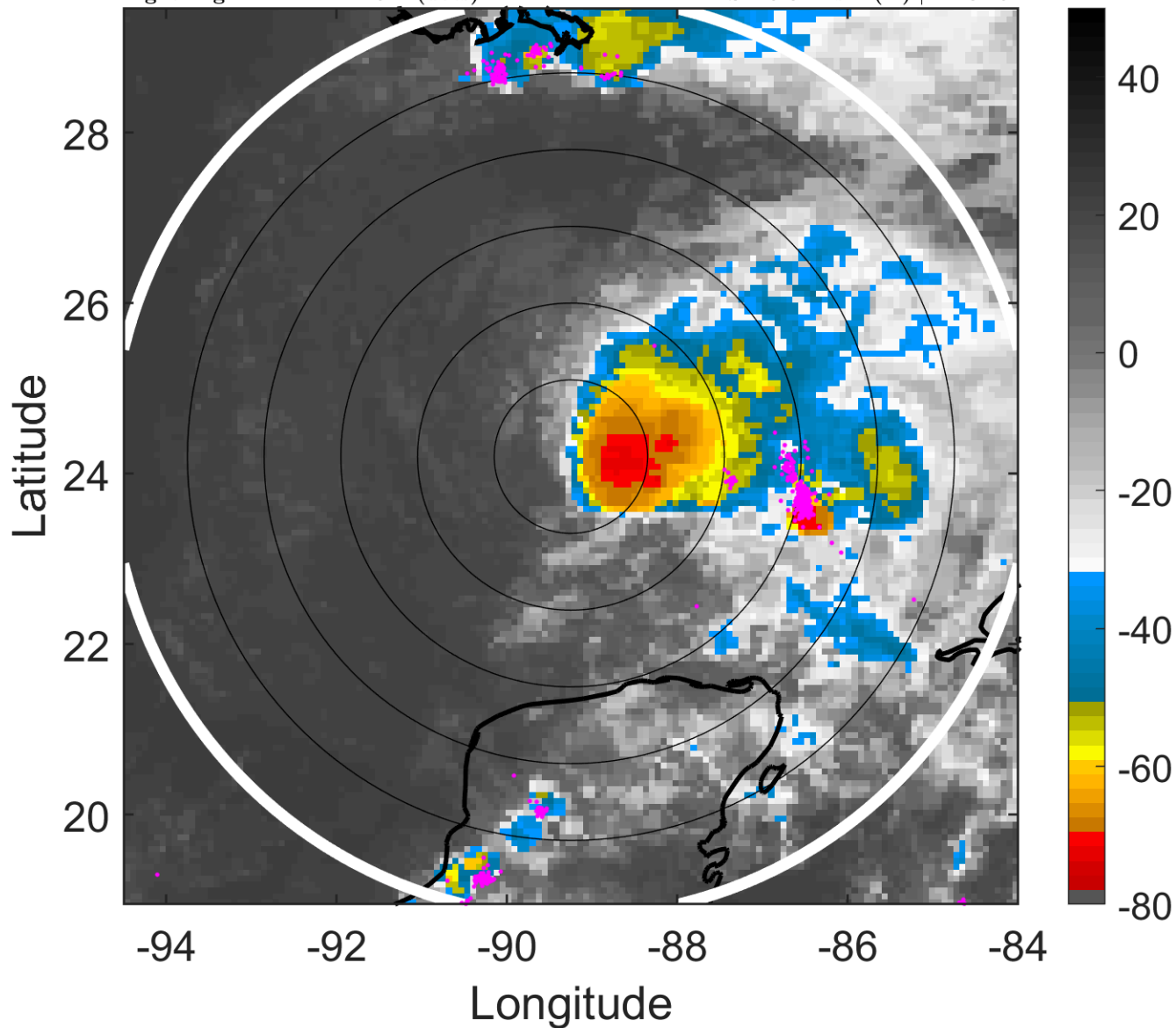
t: 2013100403 (21.1 LT)

Lightning: 21.1 LT  $\pm$  1.5 h (dots)

PT: LLCP | EA: ACT

12L (KAREN) | 47.5 kt TS

S: 13.8 m s<sup>-1</sup> (H) | H: 82.5°



### 6-h IR BT Differences & Lightning

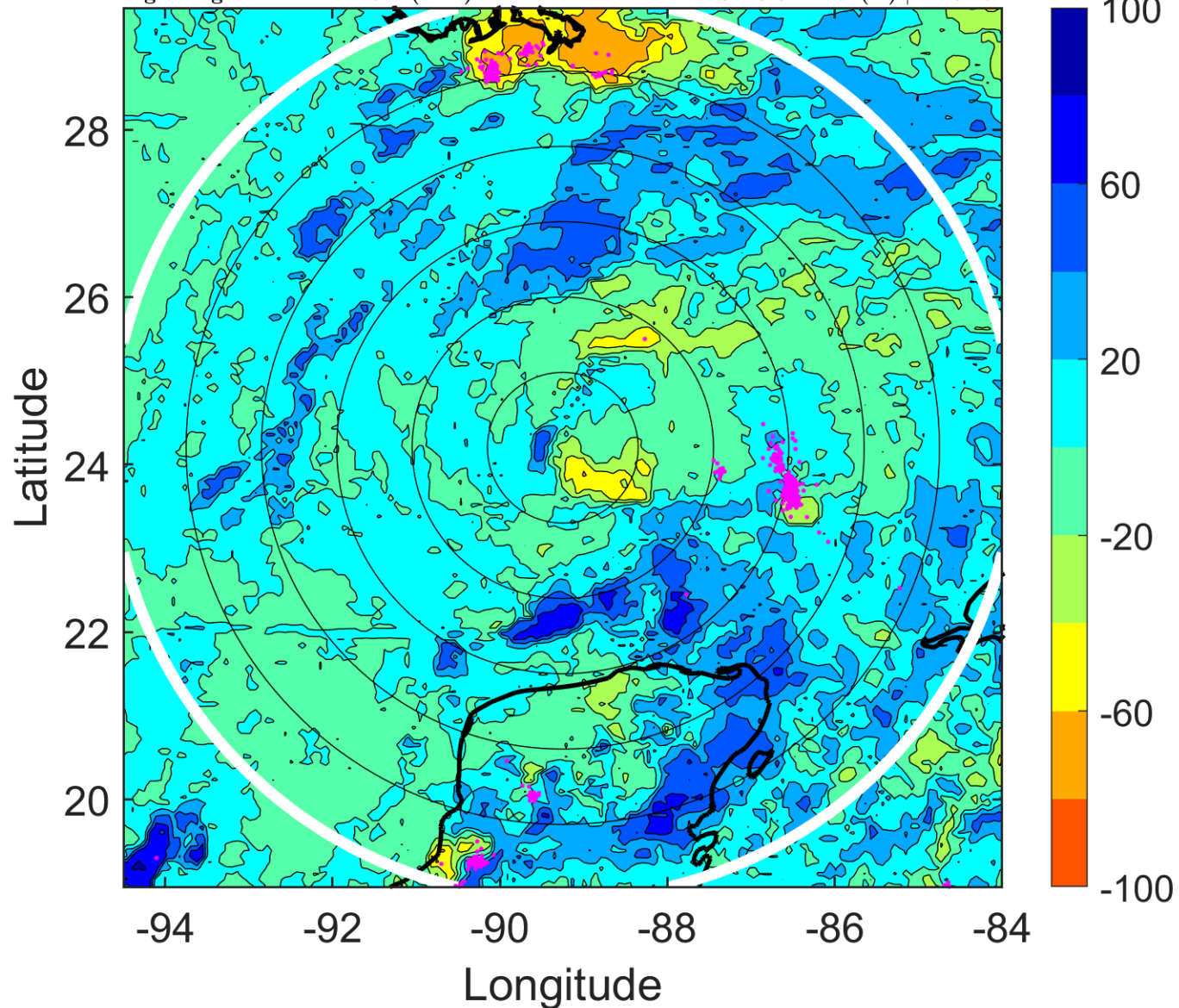
$\Delta$ t: 2013100403 (21.1 LT) - 2013100321 (15.1 LT)

Lightning: 21.1 LT  $\pm$  1.5 h (dots)

PT: LLCP | EA: ACT

12L (KAREN) | 47.5 kt TS

S: 13.8 m s<sup>-1</sup> (H) | H: 82.5°





### IR BT & Lightning

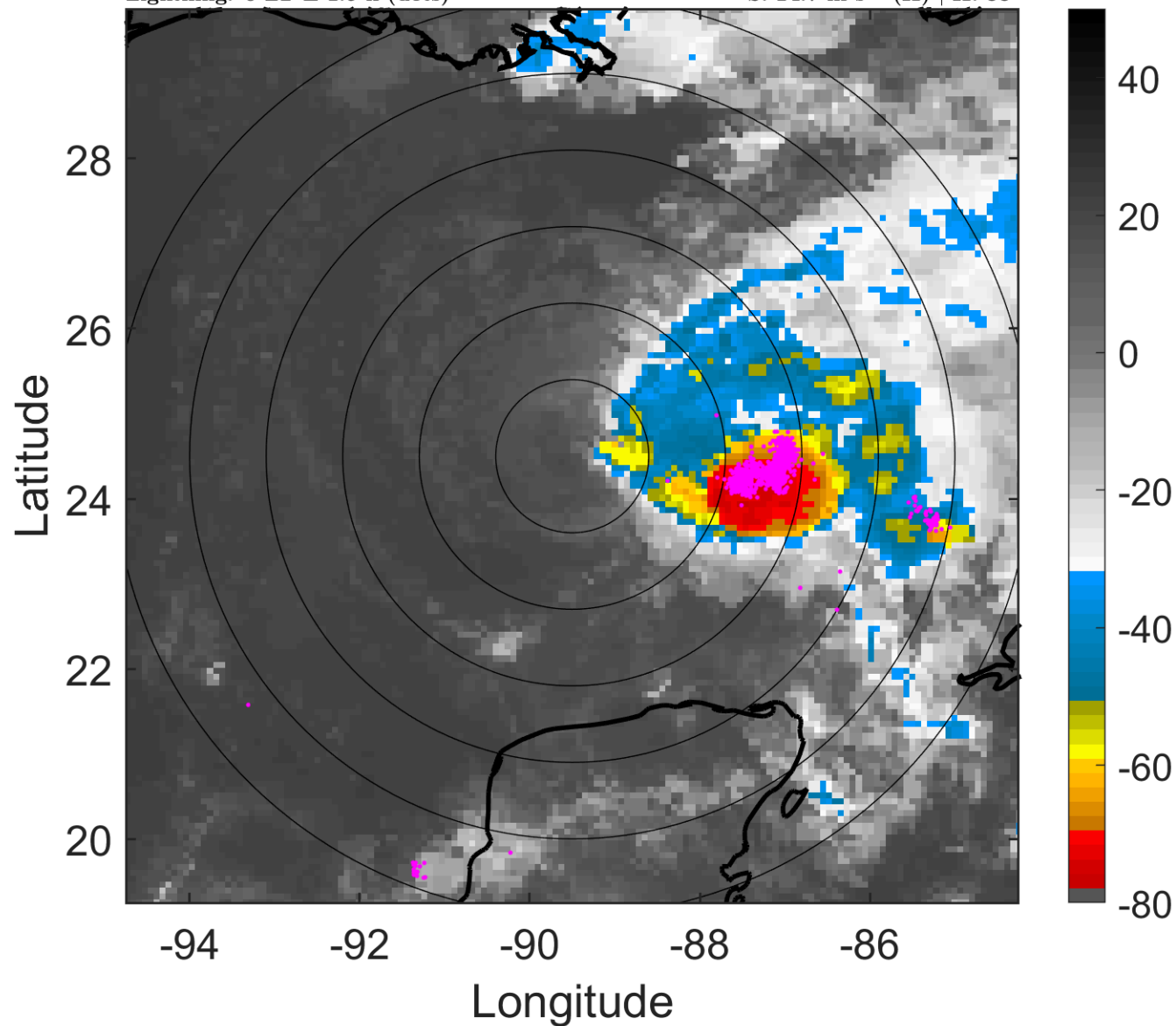
t: 2013100406 (0 LT)

Lightning: 0 LT  $\pm$  1.5 h (dots)

PT: LLWP | EA: INACT

12L (KAREN) | 45 kt TS

S: 14.7 m s<sup>-1</sup> (H) | H: 88°



### 6-h IR BT Differences & Lightning

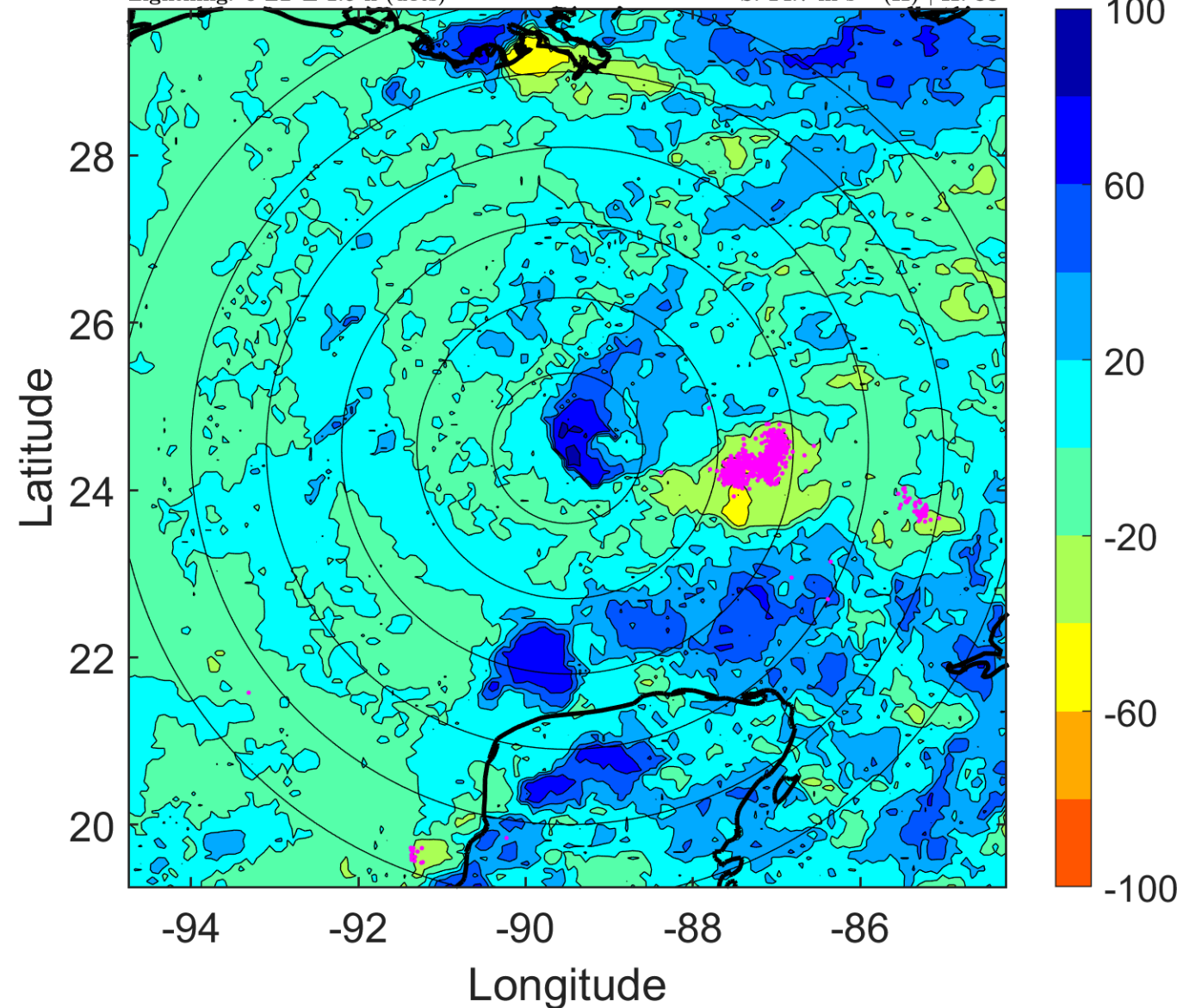
$\Delta$ t: 2013100406 (0 LT) - 2013100400 (18.1 LT)

Lightning: 0 LT  $\pm$  1.5 h (dots)

PT: LLWP | EA: INACT

12L (KAREN) | 45 kt TS

S: 14.7 m s<sup>-1</sup> (H) | H: 88°



### IR BT & Lightning

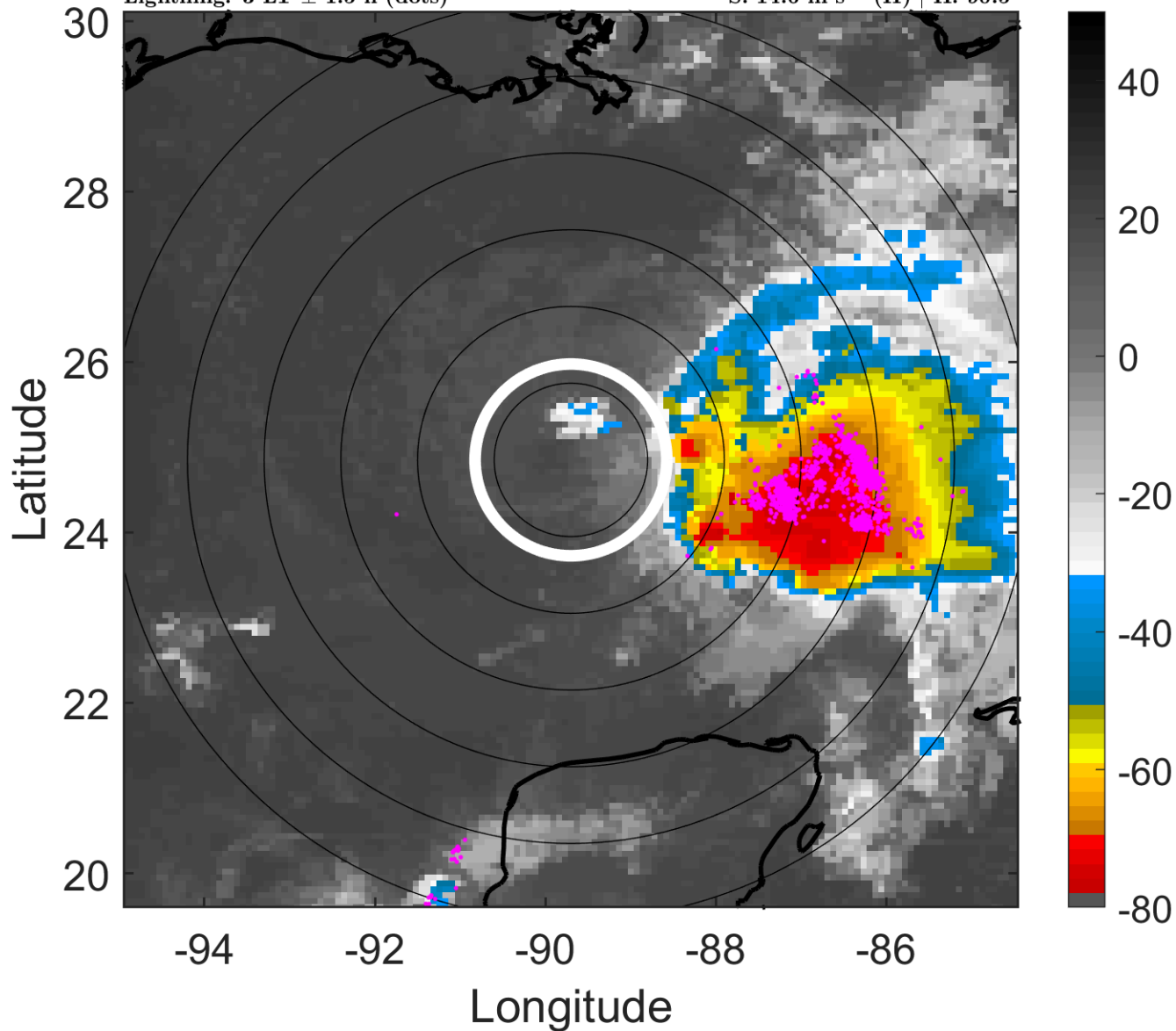
t: 2013100409 (3 LT)

Lightning: 3 LT  $\pm$  1.5 h (dots)

PT: LLWP | EA: INACT

12L (KAREN) | 45 kt TS

S: 14.6 m s<sup>-1</sup> (H) | H: 90.5°



### 6-h IR BT Differences & Lightning

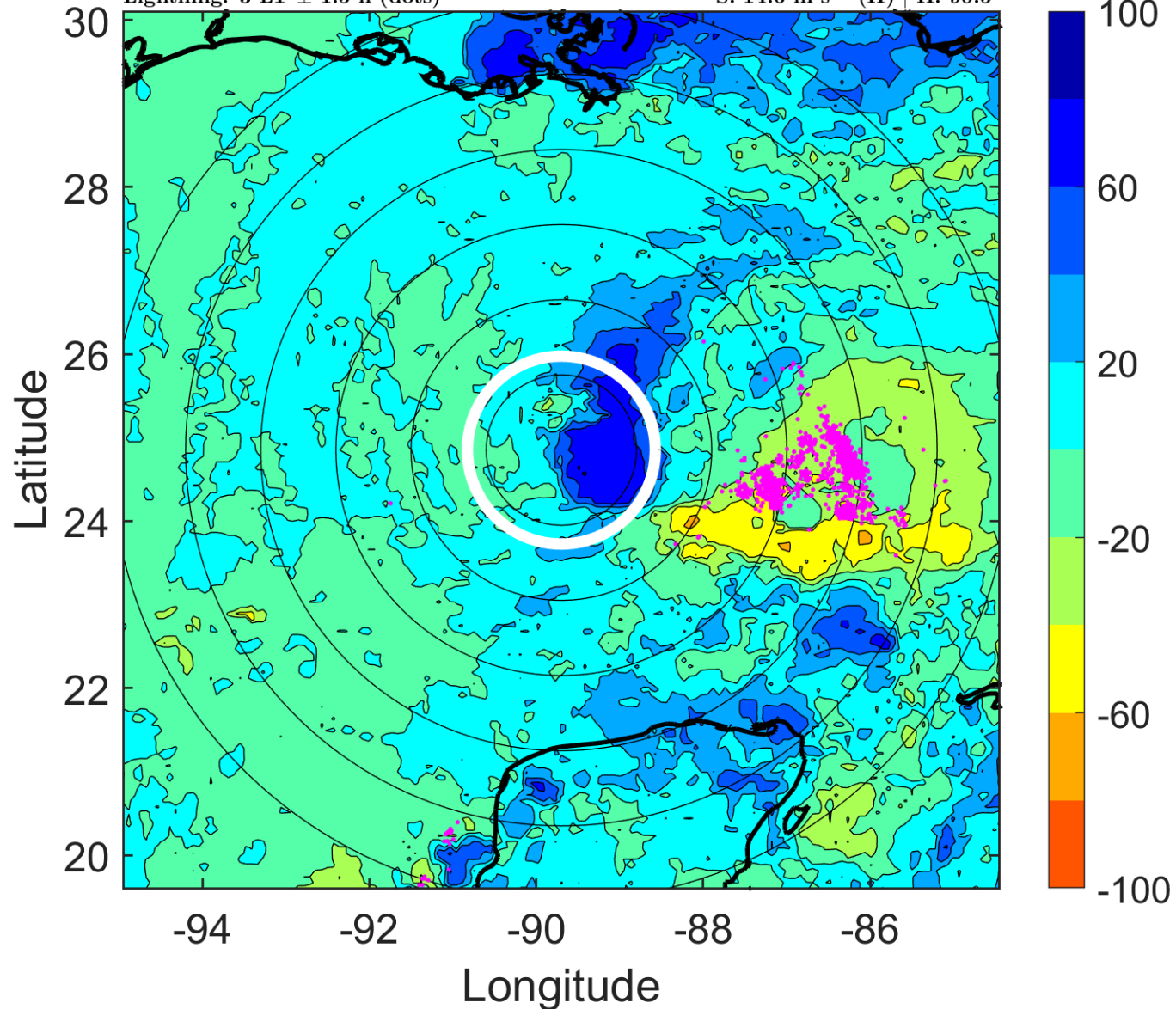
$\Delta$ t: 2013100409 (3 LT) - 2013100403 (21.1 LT)

Lightning: 3 LT  $\pm$  1.5 h (dots)

PT: LLWP | EA: INACT

12L (KAREN) | 45 kt TS

S: 14.6 m s<sup>-1</sup> (H) | H: 90.5°





### IR BT & Lightning

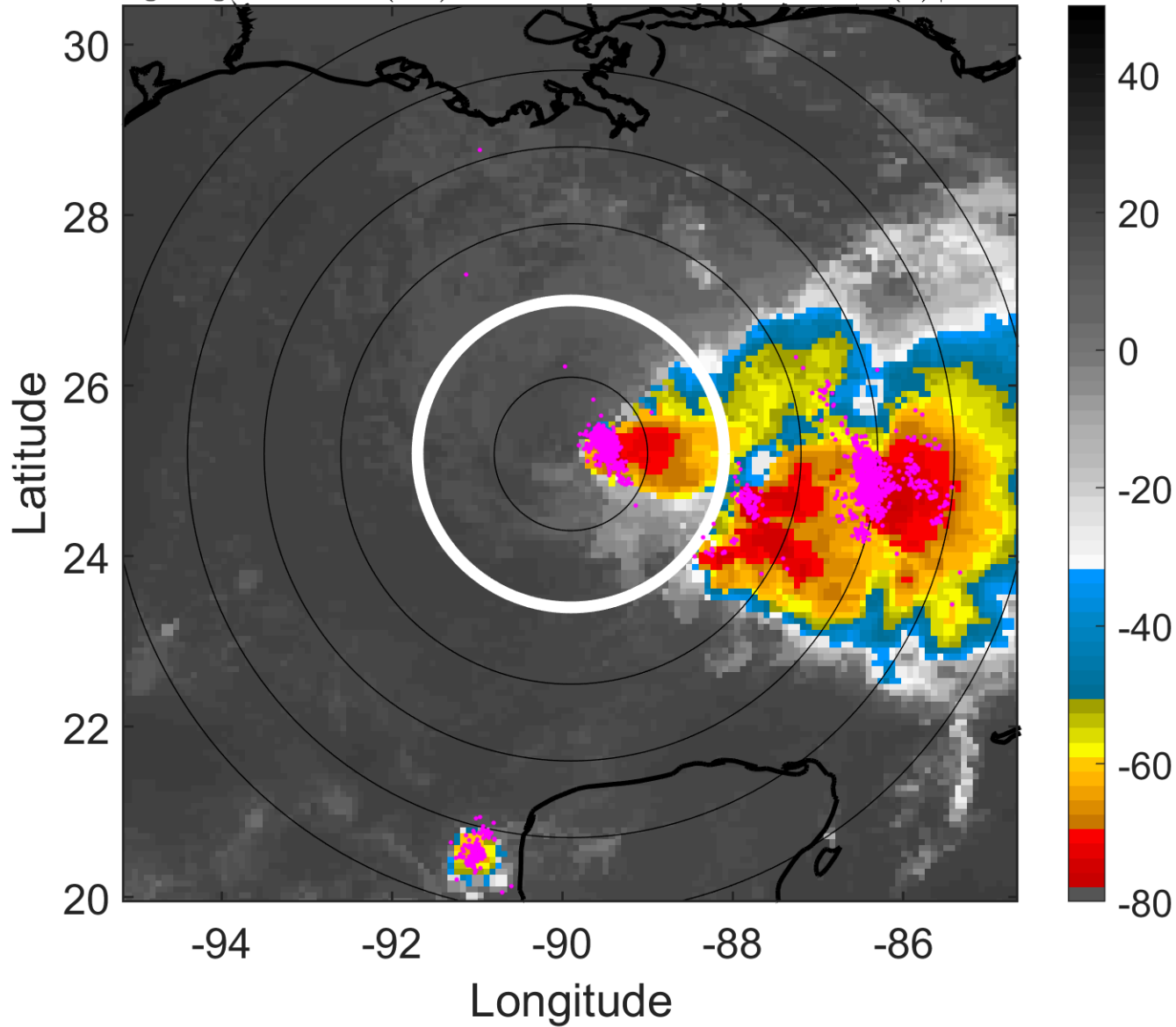
t: 2013100412 (6 LT)

Lightning: 6 LT  $\pm$  1.5 h (dots)

PT: LLWP | EA: INACT

12L (KAREN) | 45 kt TS

S: 14.5 m s<sup>-1</sup> (H) | H: 93°



### 6-h IR BT Differences & Lightning

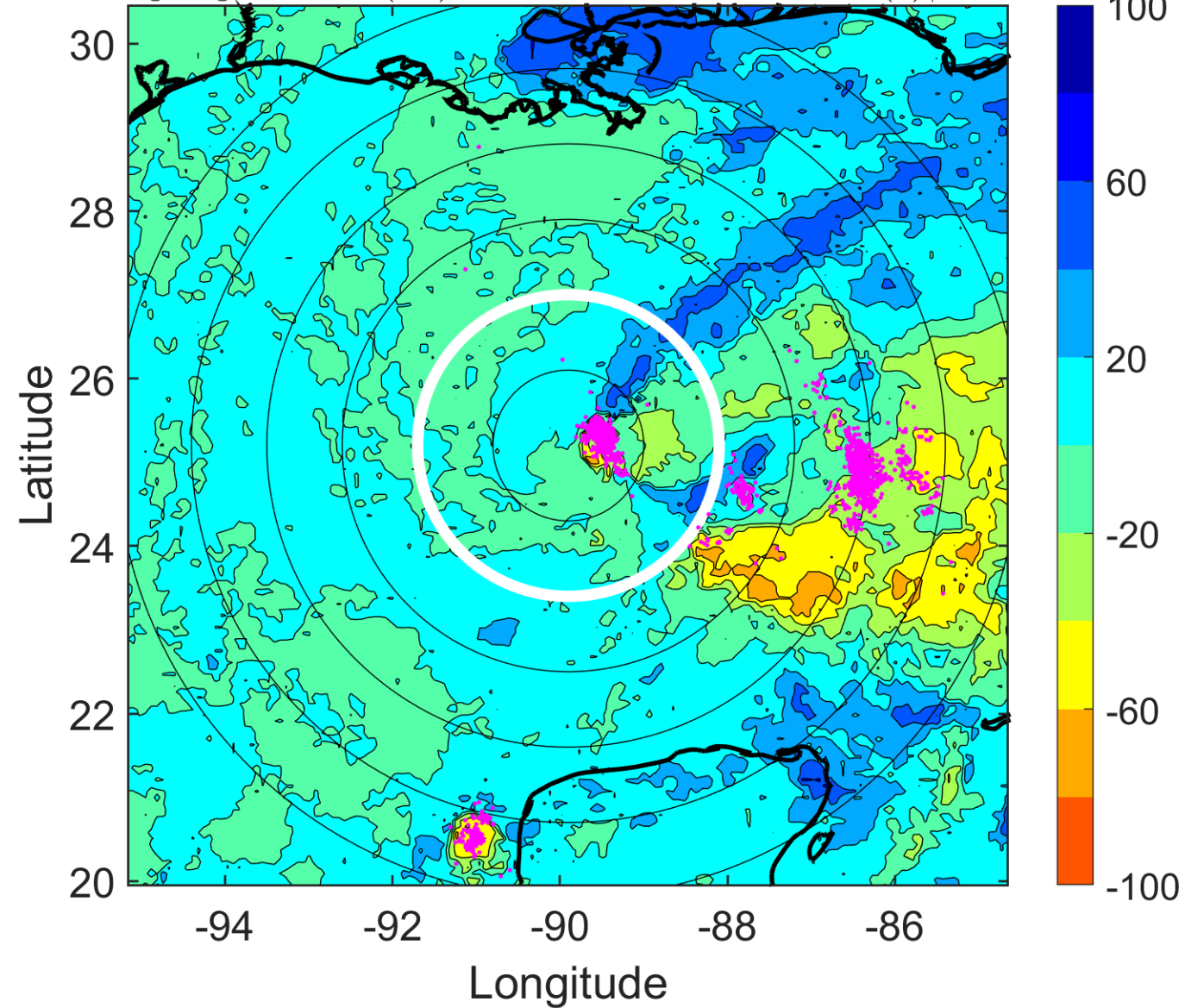
$\Delta$ t: 2013100412 (6 LT) - 2013100406 (0 LT)

Lightning: 6 LT  $\pm$  1.5 h (dots)

PT: LLWP | EA: INACT

12L (KAREN) | 45 kt TS

S: 14.5 m s<sup>-1</sup> (H) | H: 93°



### IR BT & Lightning

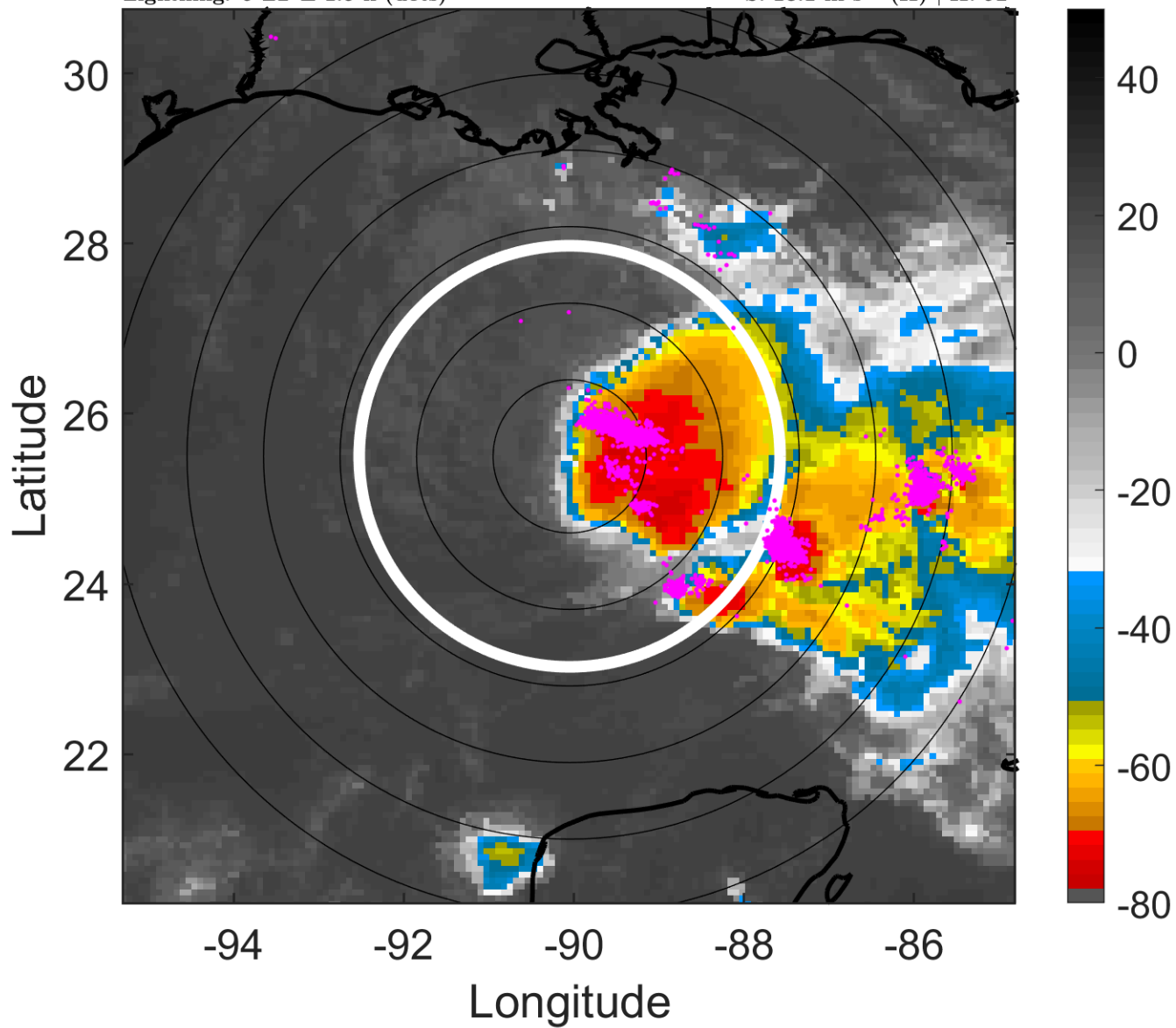
t: 2013100415 (9 LT)

Lightning: 9 LT  $\pm$  1.5 h (dots)

PT: LLWP | EA: INACT

12L (KAREN) | 45 kt TS

S: 13.1 m s<sup>-1</sup> (H) | H: 92°



### 6-h IR BT Differences & Lightning

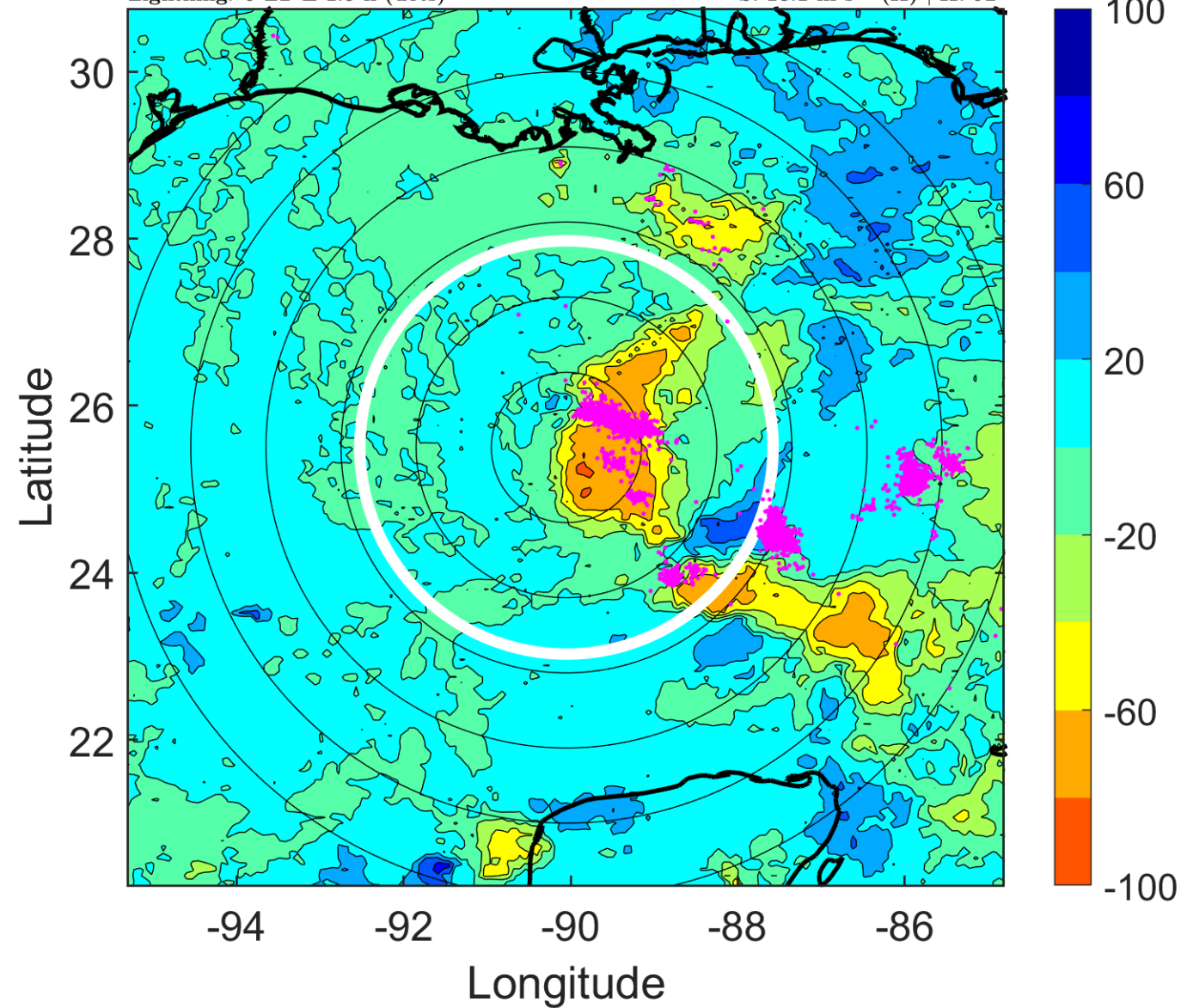
$\Delta$ t: 2013100415 (9 LT) - 2013100409 (3 LT)

Lightning: 9 LT  $\pm$  1.5 h (dots)

PT: LLWP | EA: INACT

12L (KAREN) | 45 kt TS

S: 13.1 m s<sup>-1</sup> (H) | H: 92°





### IR BT & Lightning

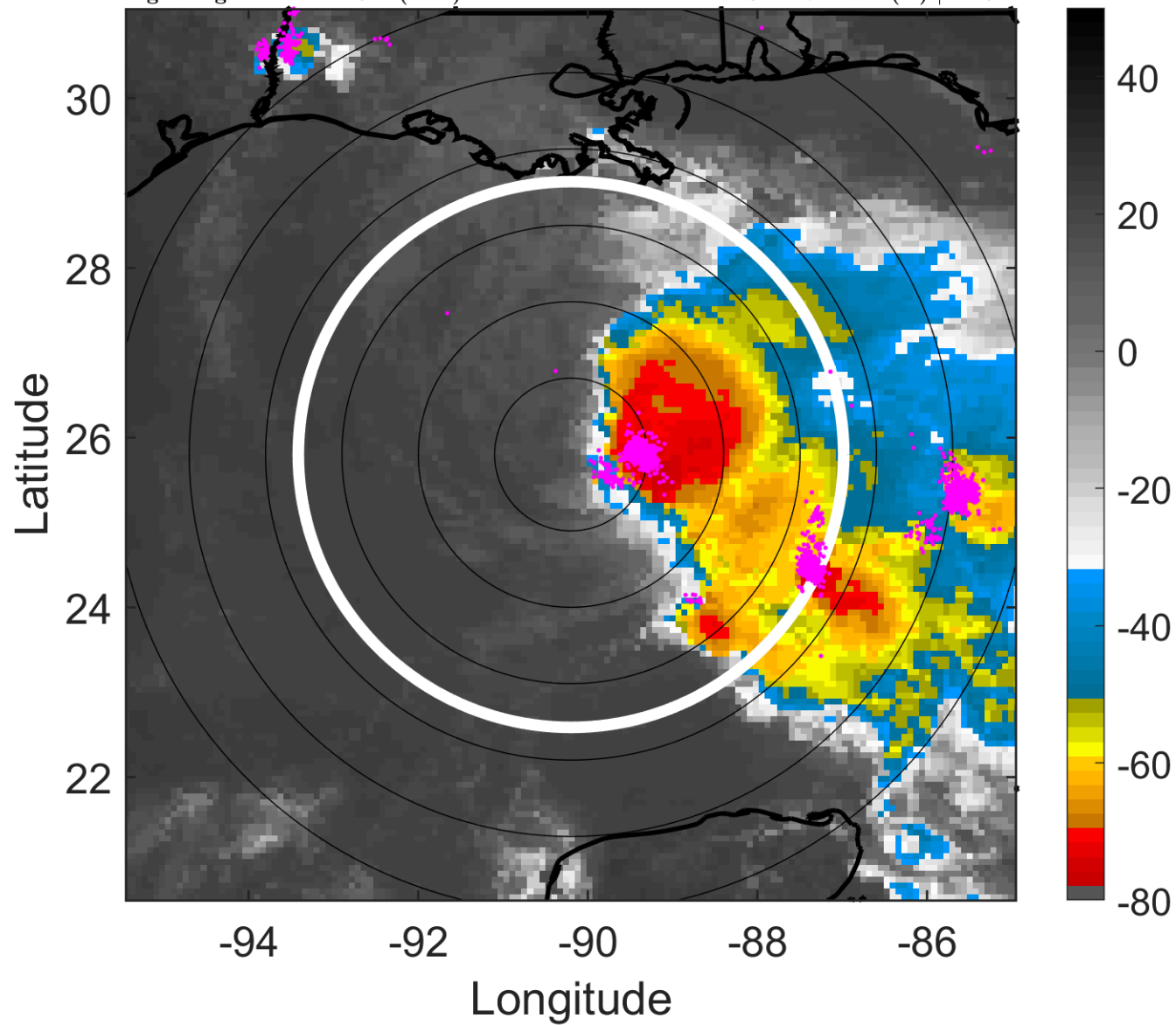
t: 2013100418 (12 LT)

Lightning: 12 LT  $\pm$  1.5 h (dots)

PT: LLWP | EA: INACT

12L (KAREN) | 45 kt TS

S: 11.7 m s<sup>-1</sup> (H) | H: 91°



### 6-h IR BT Differences & Lightning

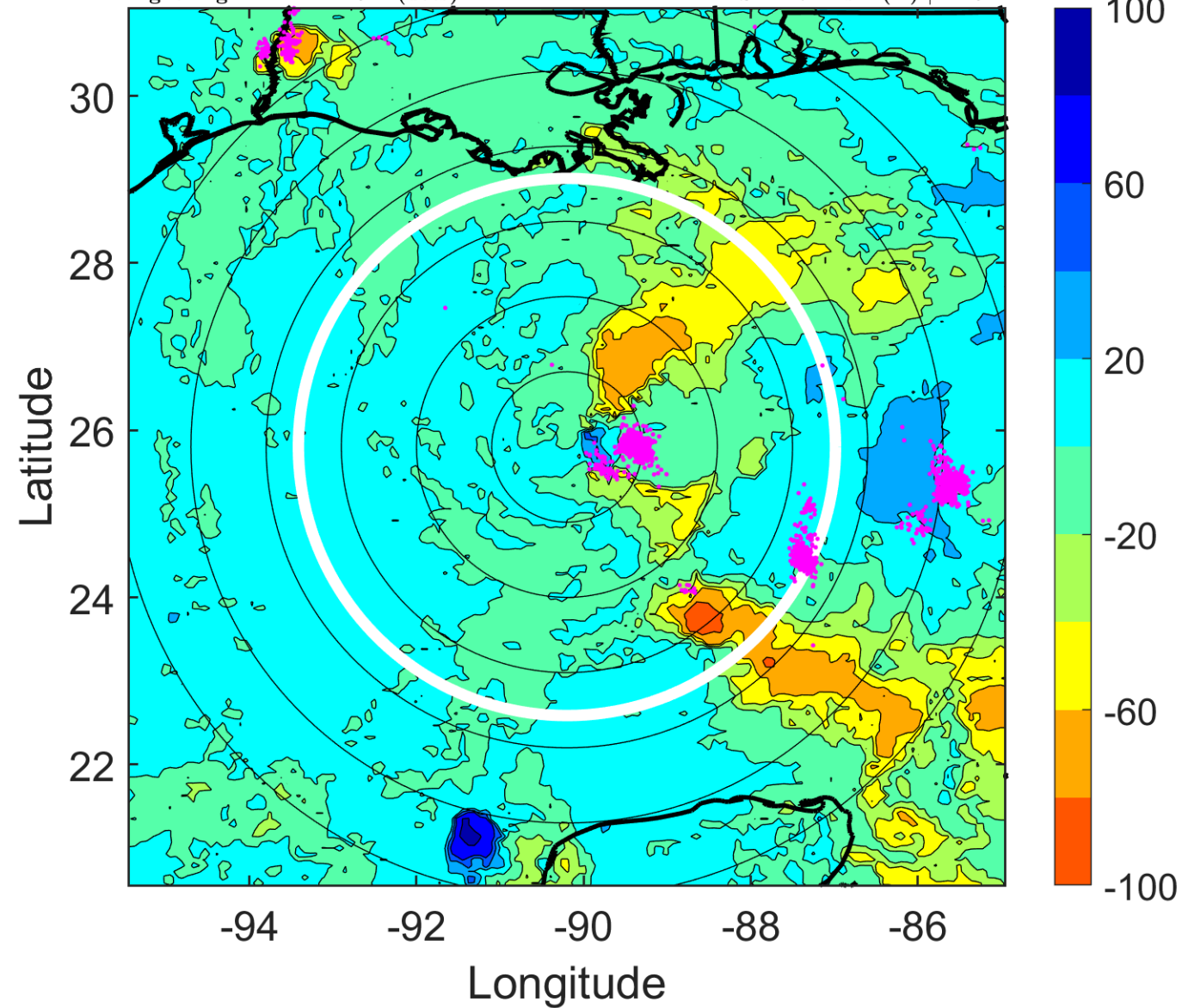
$\Delta$ t: 2013100418 (12 LT) - 2013100412 (6 LT)

Lightning: 12 LT  $\pm$  1.5 h (dots)

PT: LLWP | EA: INACT

12L (KAREN) | 45 kt TS

S: 11.7 m s<sup>-1</sup> (H) | H: 91°



### IR BT & Lightning

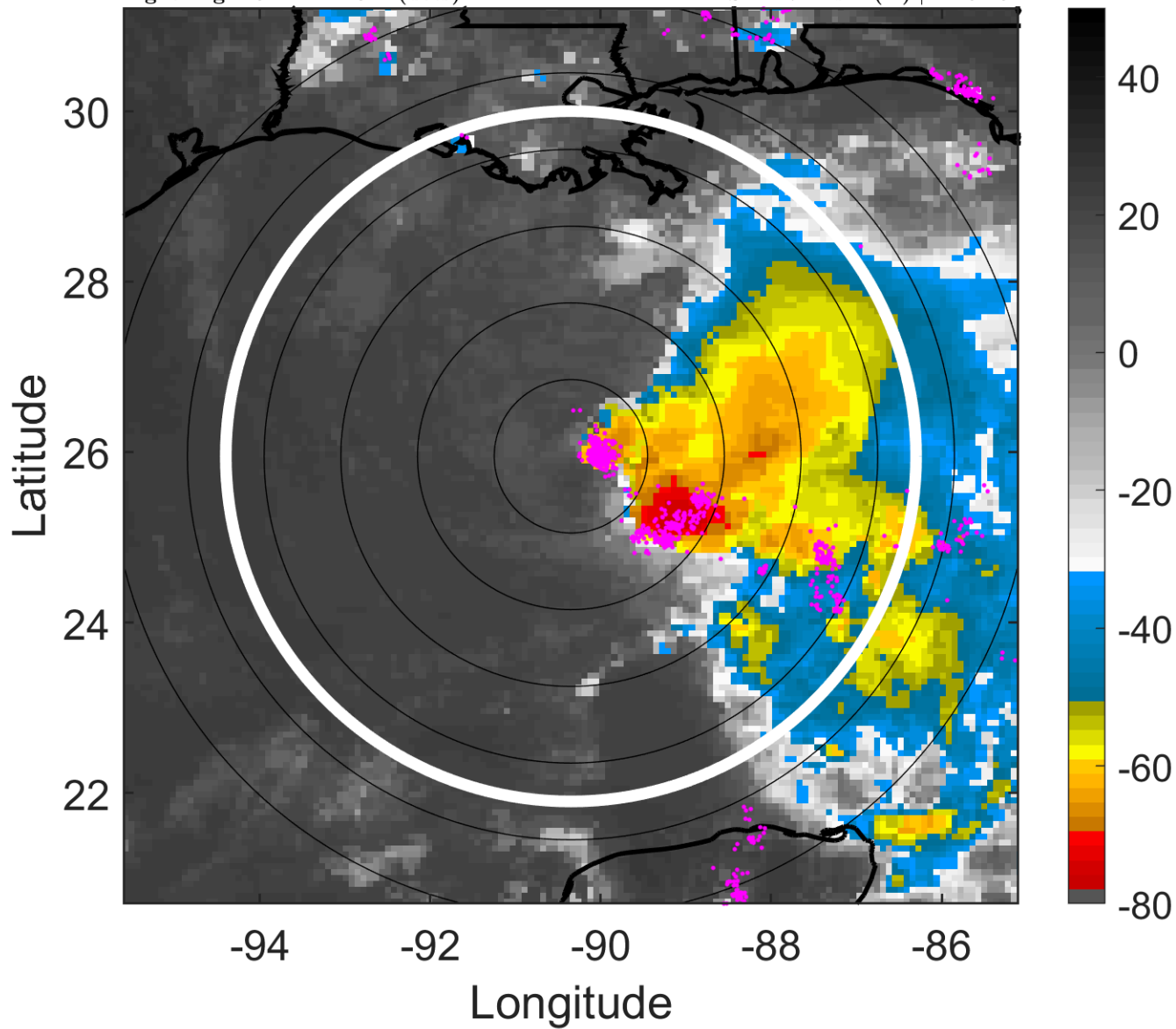
t: 2013100421 (15 LT)

Lightning: 15 LT  $\pm$  1.5 h (dots)

PT: LLWP | EA: INACT

12L (KAREN) | 42.5 kt TS

S: 12.7 m s<sup>-1</sup> (H) | H: 91.5°



### 6-h IR BT Differences & Lightning

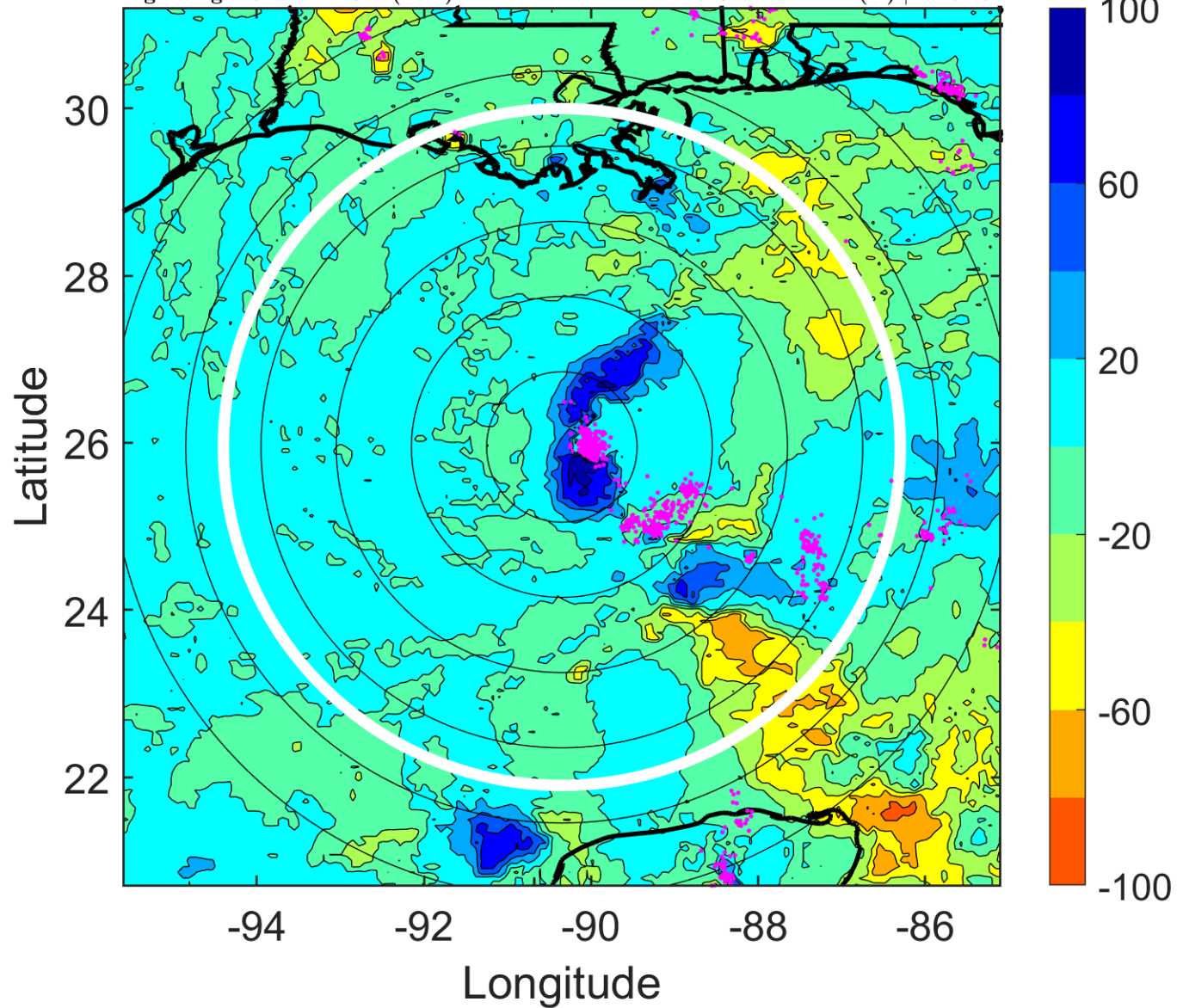
$\Delta$ t: 2013100421 (15 LT) - 2013100415 (9 LT)

Lightning: 15 LT  $\pm$  1.5 h (dots)

PT: LLWP | EA: INACT

12L (KAREN) | 42.5 kt TS

S: 12.7 m s<sup>-1</sup> (H) | H: 91.5°





### IR BT & Lightning

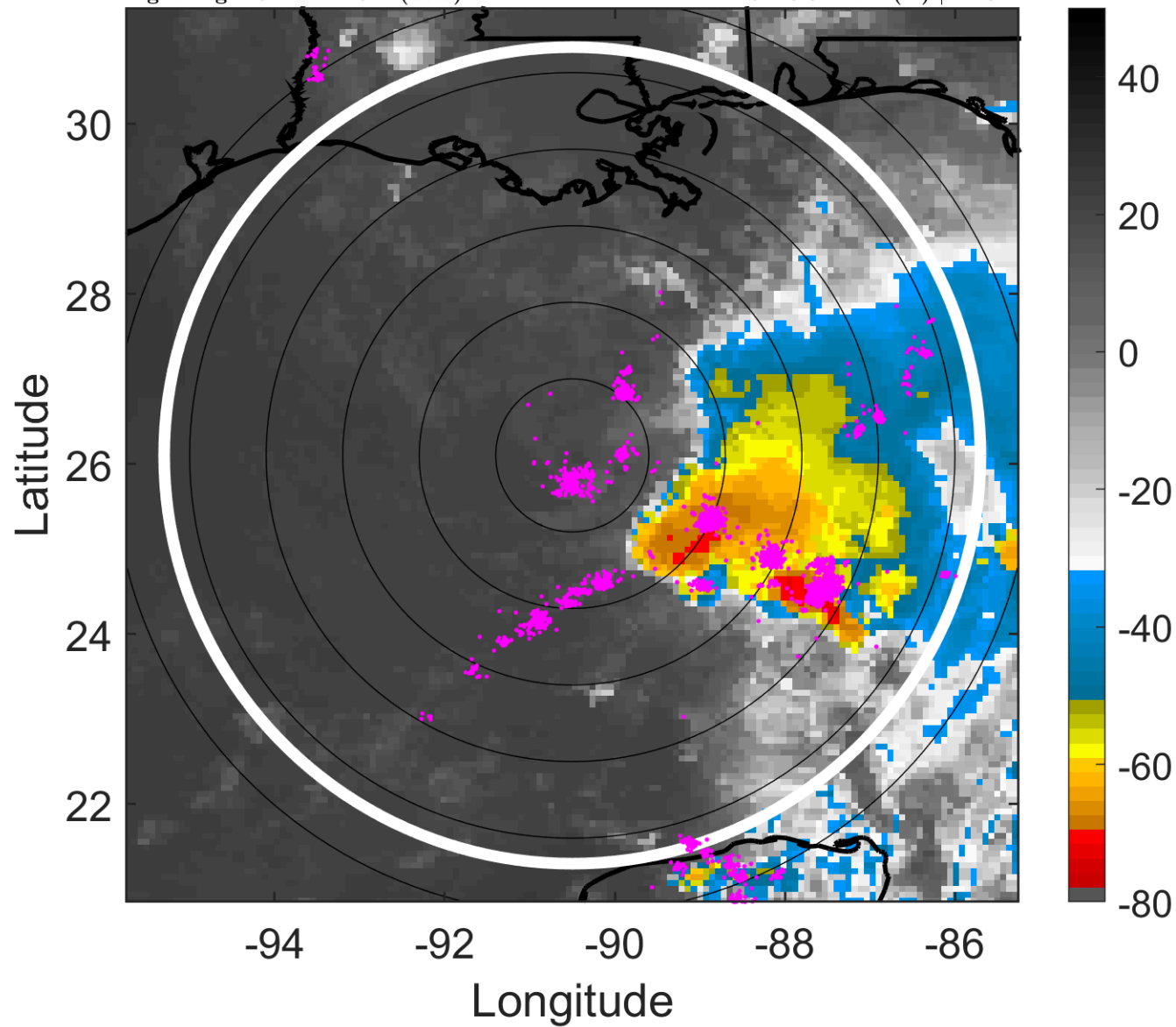
t: 2013100500 (18 LT)

Lightning: 18 LT  $\pm$  1.5 h (dots)

PT: LLWP | EA: INACT

12L (KAREN) | 40 kt TS

S: 13.8 m s<sup>-1</sup> (H) | H: 92°



### 6-h IR BT Differences & Lightning

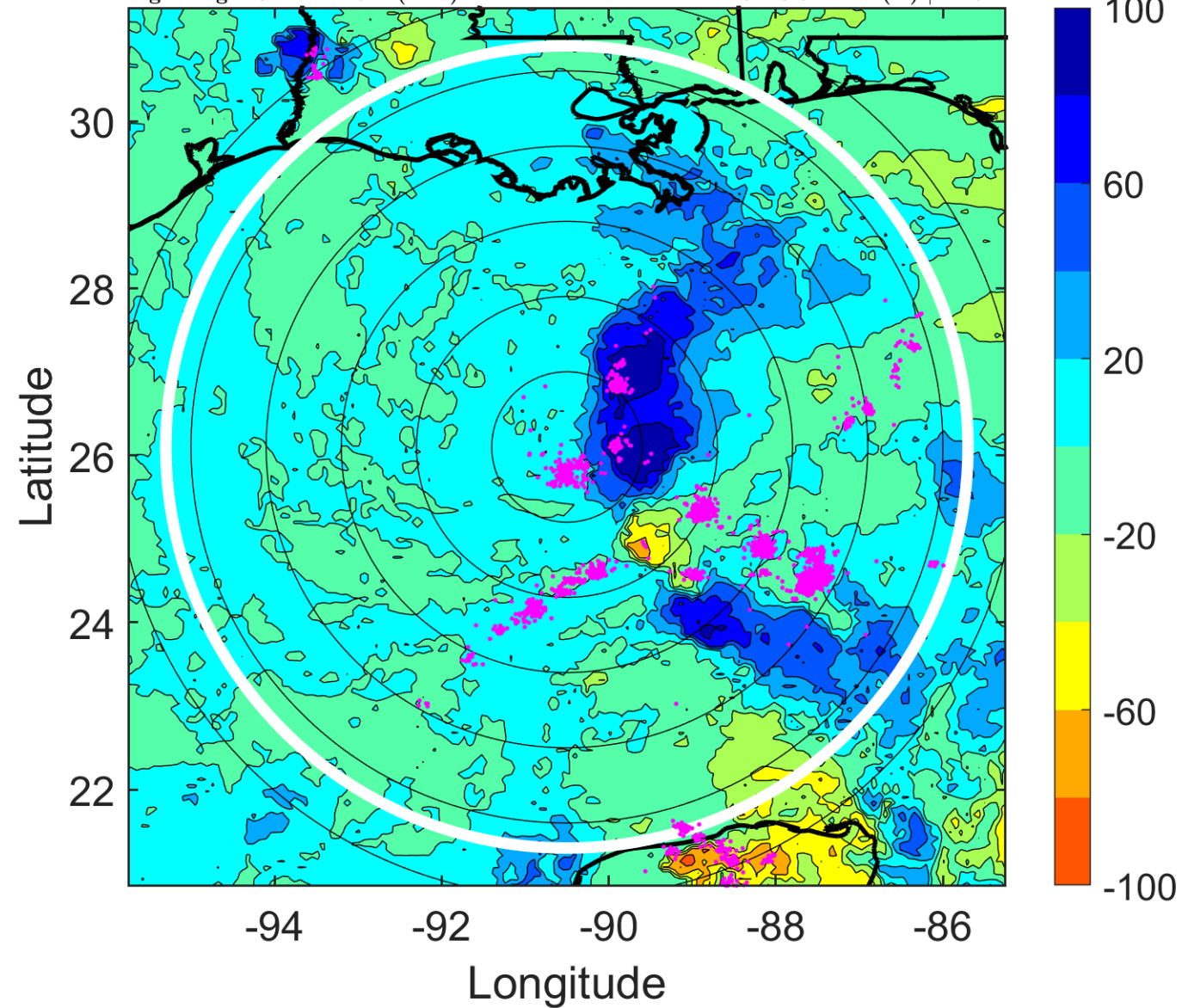
$\Delta$ t: 2013100500 (18 LT) - 2013100418 (12 LT)

Lightning: 18 LT  $\pm$  1.5 h (dots)

PT: LLWP | EA: INACT

12L (KAREN) | 40 kt TS

S: 13.8 m s<sup>-1</sup> (H) | H: 92°



### IR BT & Lightning

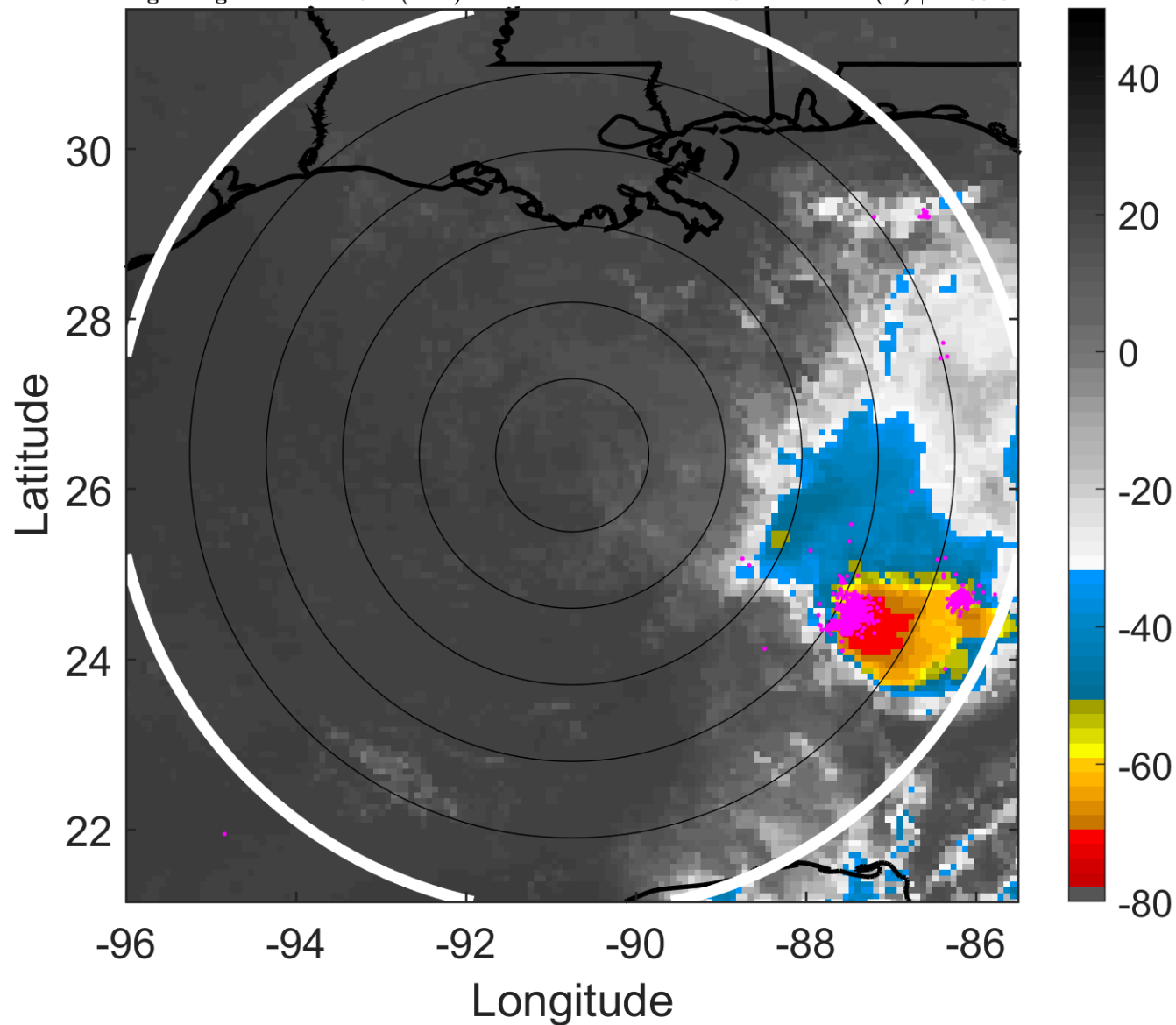
t: 2013100503 (21 LT)

Lightning: 21 LT  $\pm$  1.5 h (dots)

PT: LLWP | EA: INACT

12L (KAREN) | 40 kt TS

S: 14.4 m s<sup>-1</sup> (H) | H: 99.5°



### 6-h IR BT Differences & Lightning

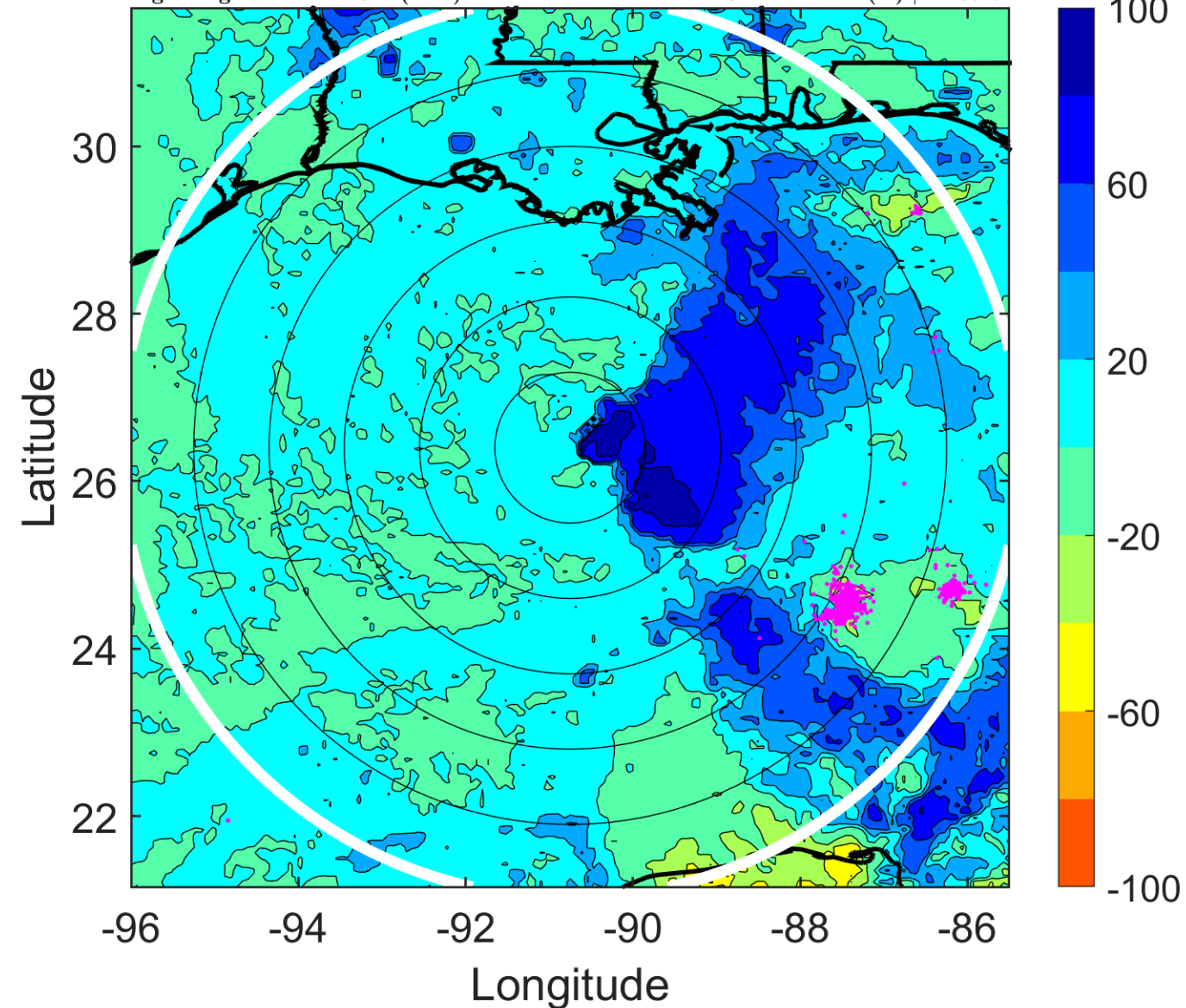
$\Delta$ t: 2013100503 (21 LT) - 2013100421 (15 LT)

Lightning: 21 LT  $\pm$  1.5 h (dots)

PT: LLWP | EA: INACT

12L (KAREN) | 40 kt TS

S: 14.4 m s<sup>-1</sup> (H) | H: 99.5°



### IR BT & Lightning

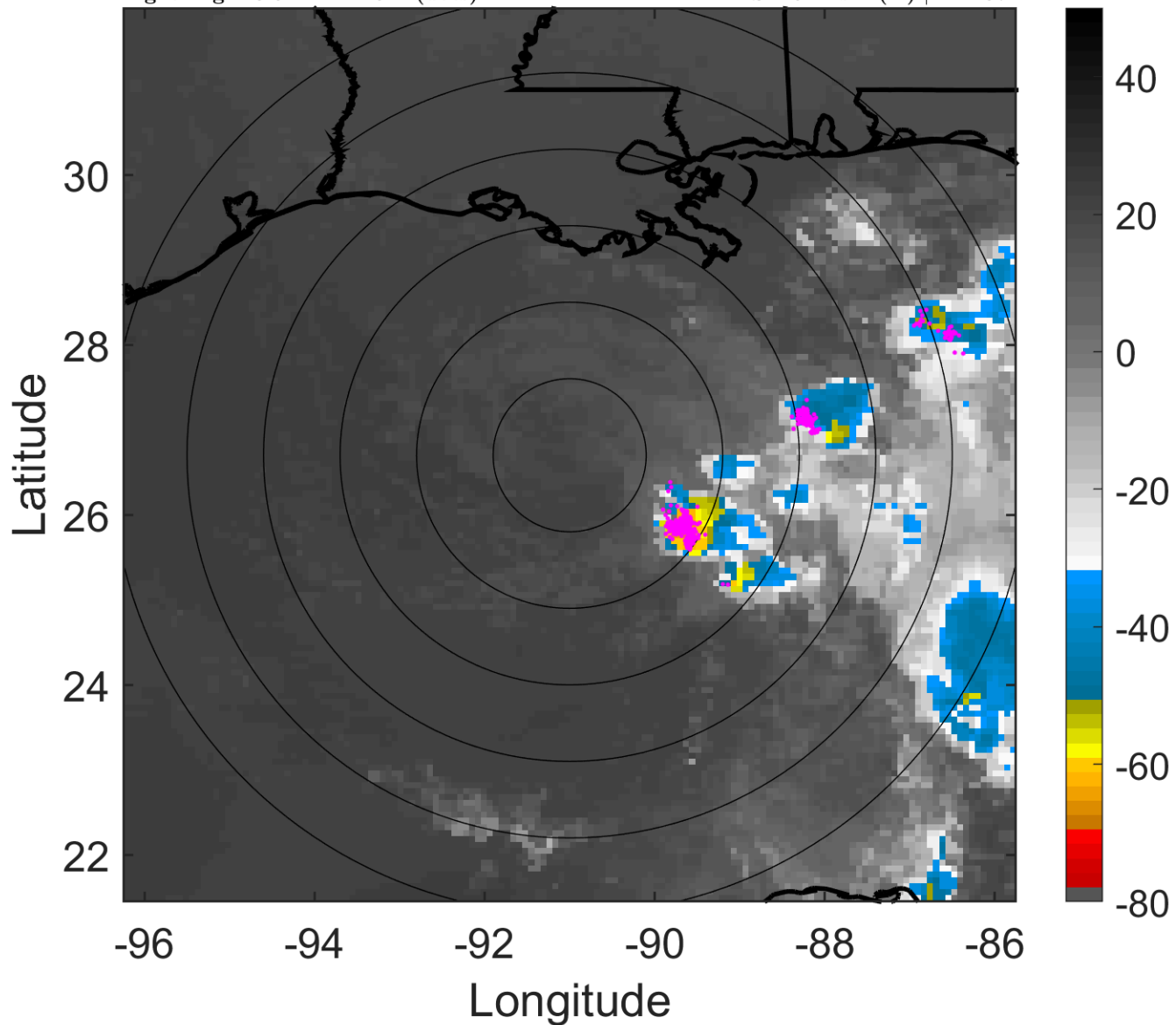
t: 2013100506 (23.9 LT)

Lightning: 23.9 LT  $\pm$  1.5 h (dots)

PT: LLWP | EA: INACT

12L (KAREN) | 40 kt TS

S: 15 m s<sup>-1</sup> (H) | H: 107°



### 6-h IR BT Differences & Lightning

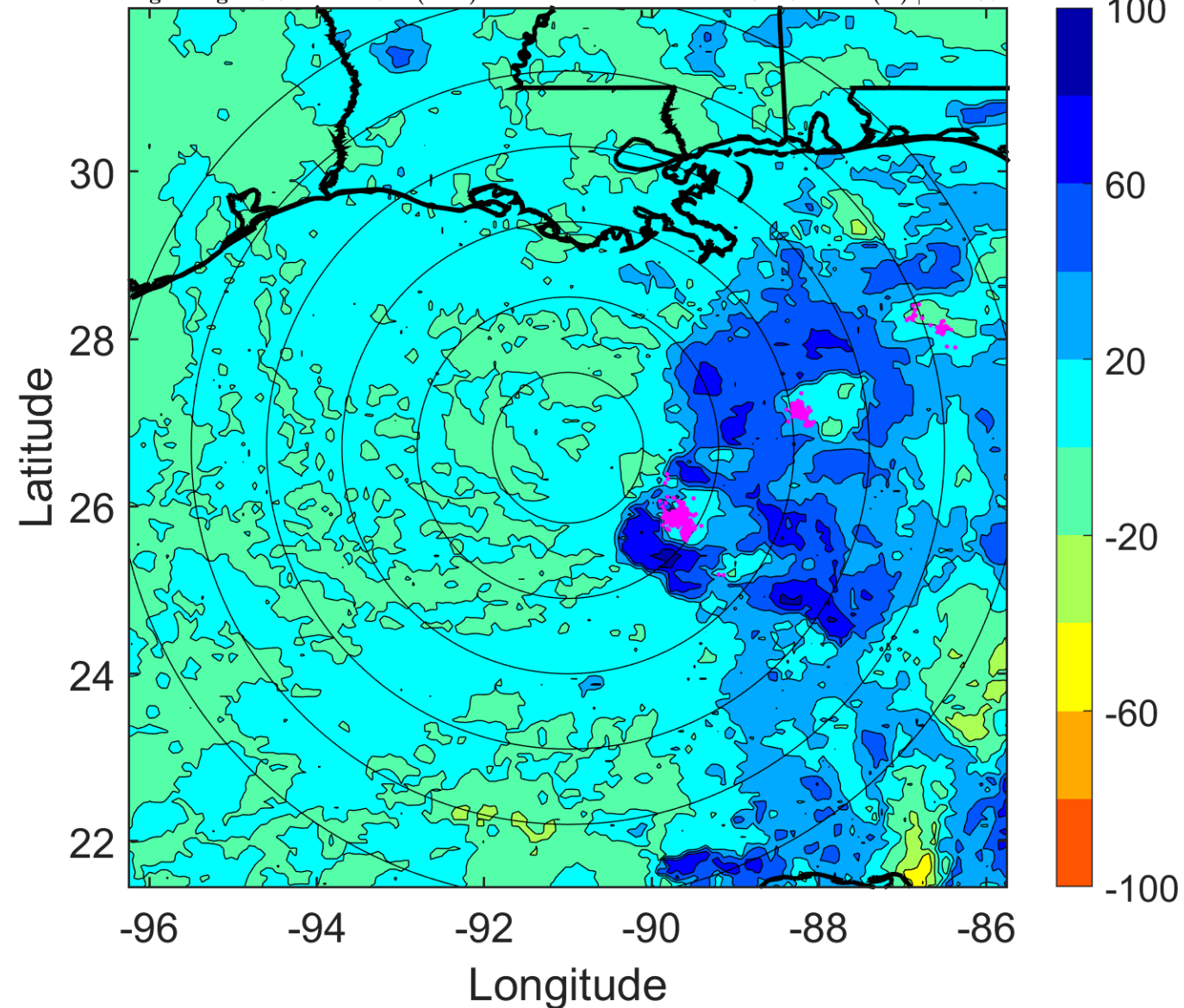
$\Delta$ t: 2013100506 (23.9 LT) - 2013100500 (18 LT)

Lightning: 23.9 LT  $\pm$  1.5 h (dots)

PT: LLWP | EA: INACT

12L (KAREN) | 40 kt TS

S: 15 m s<sup>-1</sup> (H) | H: 107°





### IR BT & Lightning

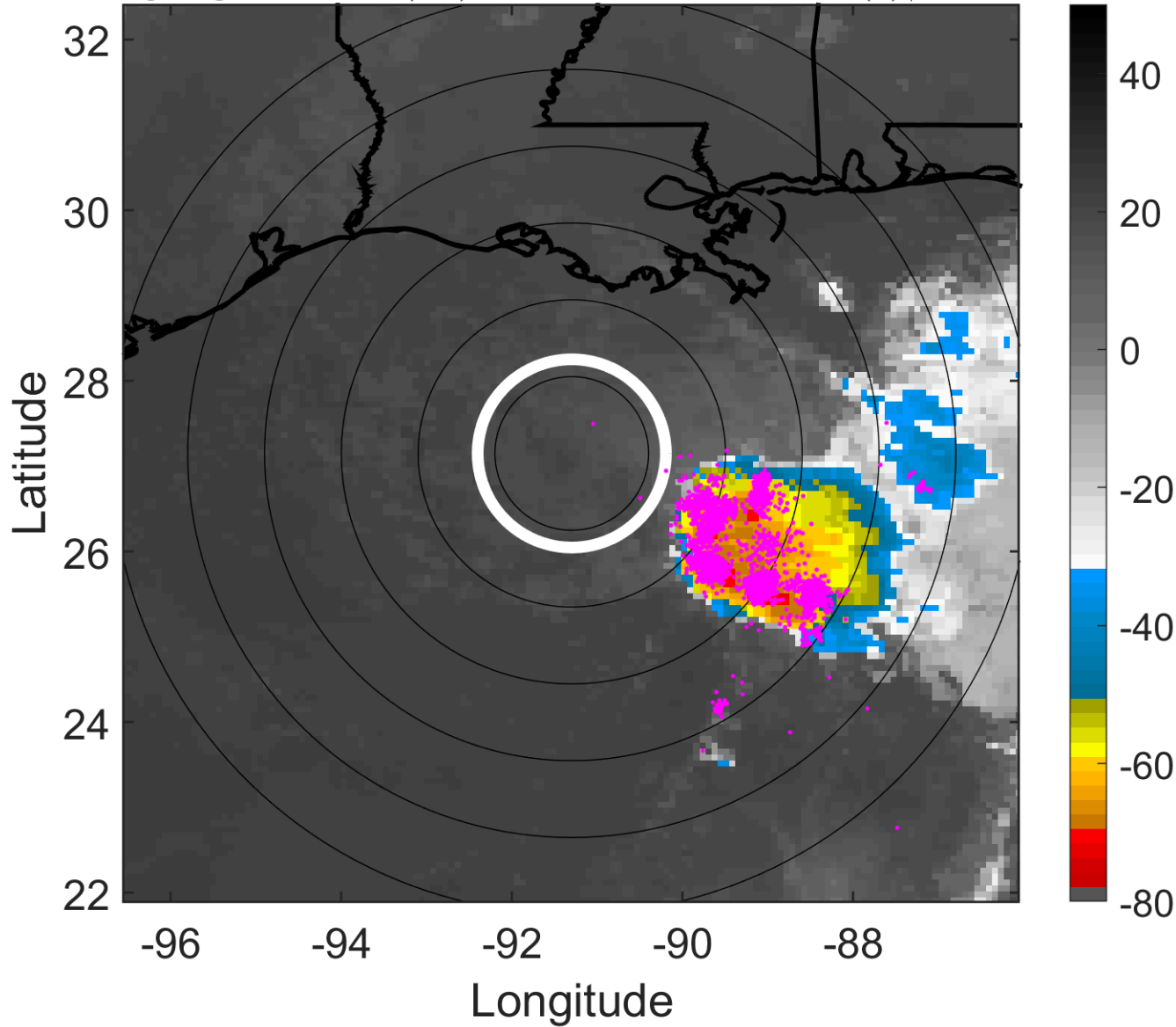
t: 2013100509 (2.9 LT)

Lightning: 2.9 LT  $\pm$  1.5 h (dots)

PT: NP | EA: INACT

12L (KAREN) | 40 kt TS

S: 15 m s<sup>-1</sup> (H) | H: 107.5°



### 6-h IR BT Differences & Lightning

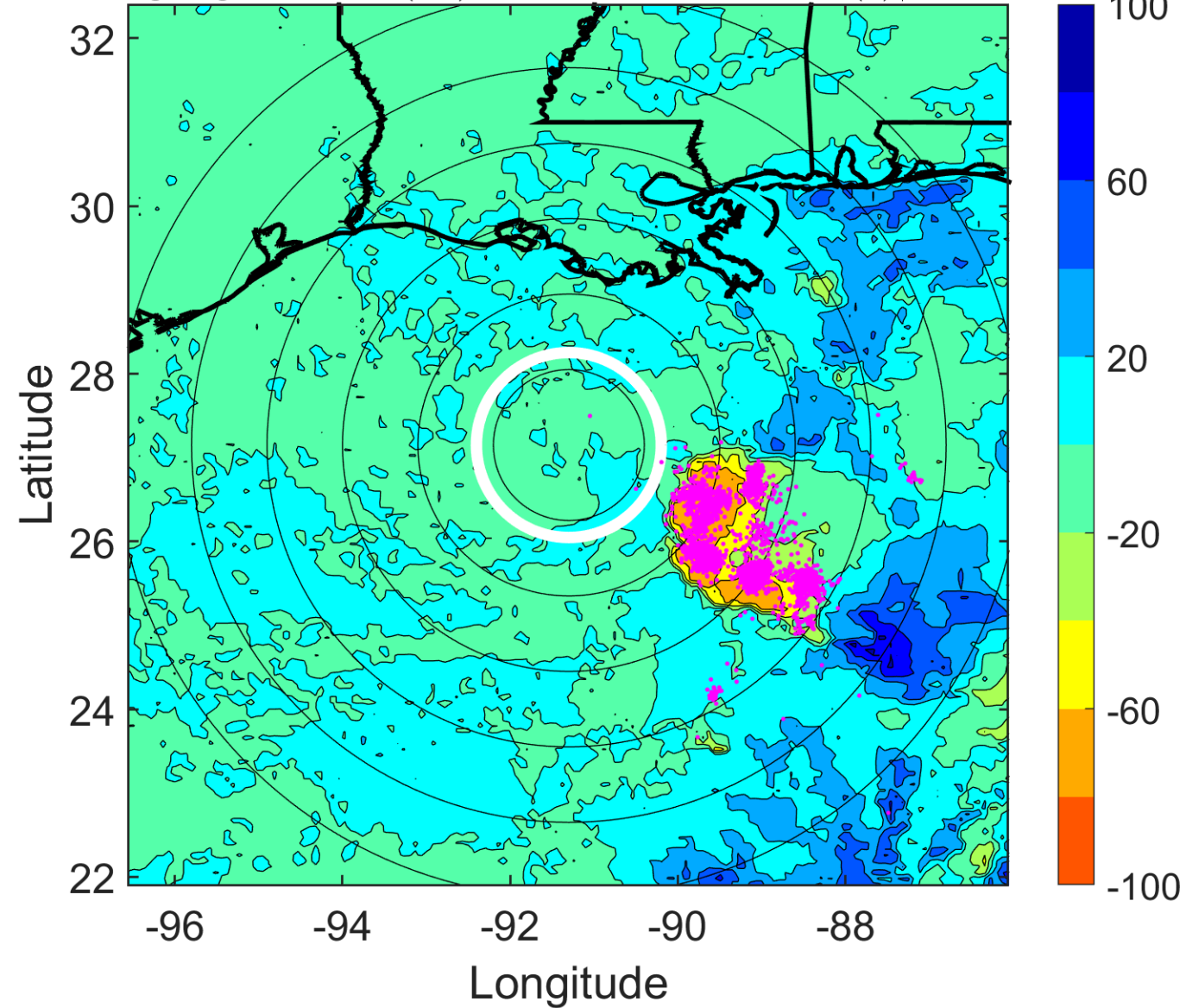
$\Delta$ t: 2013100509 (2.9 LT) - 2013100503 (21 LT)

Lightning: 2.9 LT  $\pm$  1.5 h (dots)

PT: NP | EA: INACT

12L (KAREN) | 40 kt TS

S: 15 m s<sup>-1</sup> (H) | H: 107.5°



### IR BT & Lightning

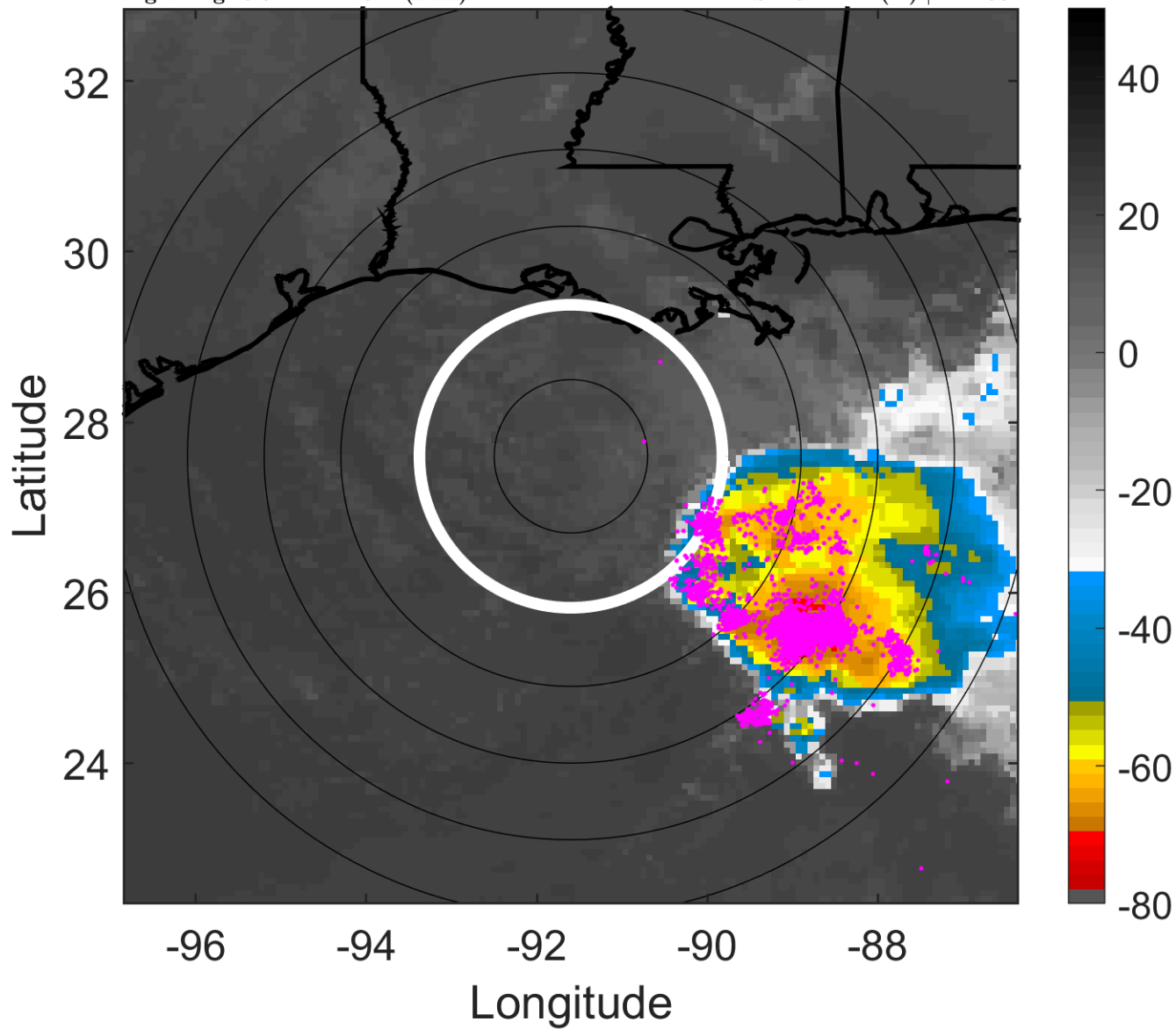
t: 2013100512 (5.9 LT)

Lightning: 5.9 LT  $\pm$  1.5 h (dots)

PT: NP | EA: INACT

12L (KAREN) | 40 kt TS

S: 15 m s<sup>-1</sup> (H) | H: 108°



### 6-h IR BT Differences & Lightning

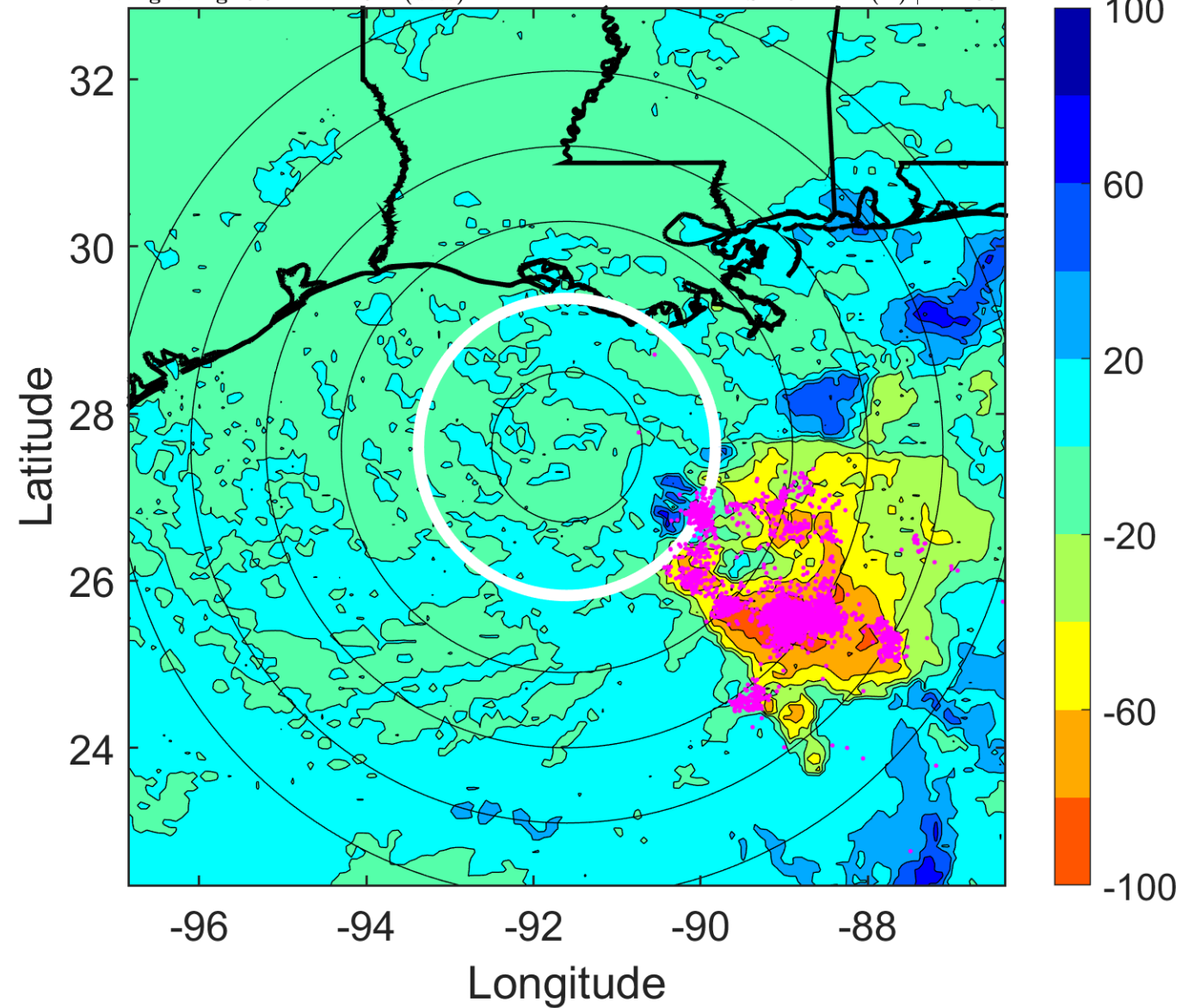
$\Delta$ t: 2013100512 (5.9 LT) - 2013100506 (23.9 LT)

Lightning: 5.9 LT  $\pm$  1.5 h (dots)

PT: NP | EA: INACT

12L (KAREN) | 40 kt TS

S: 15 m s<sup>-1</sup> (H) | H: 108°



### IR BT & Lightning

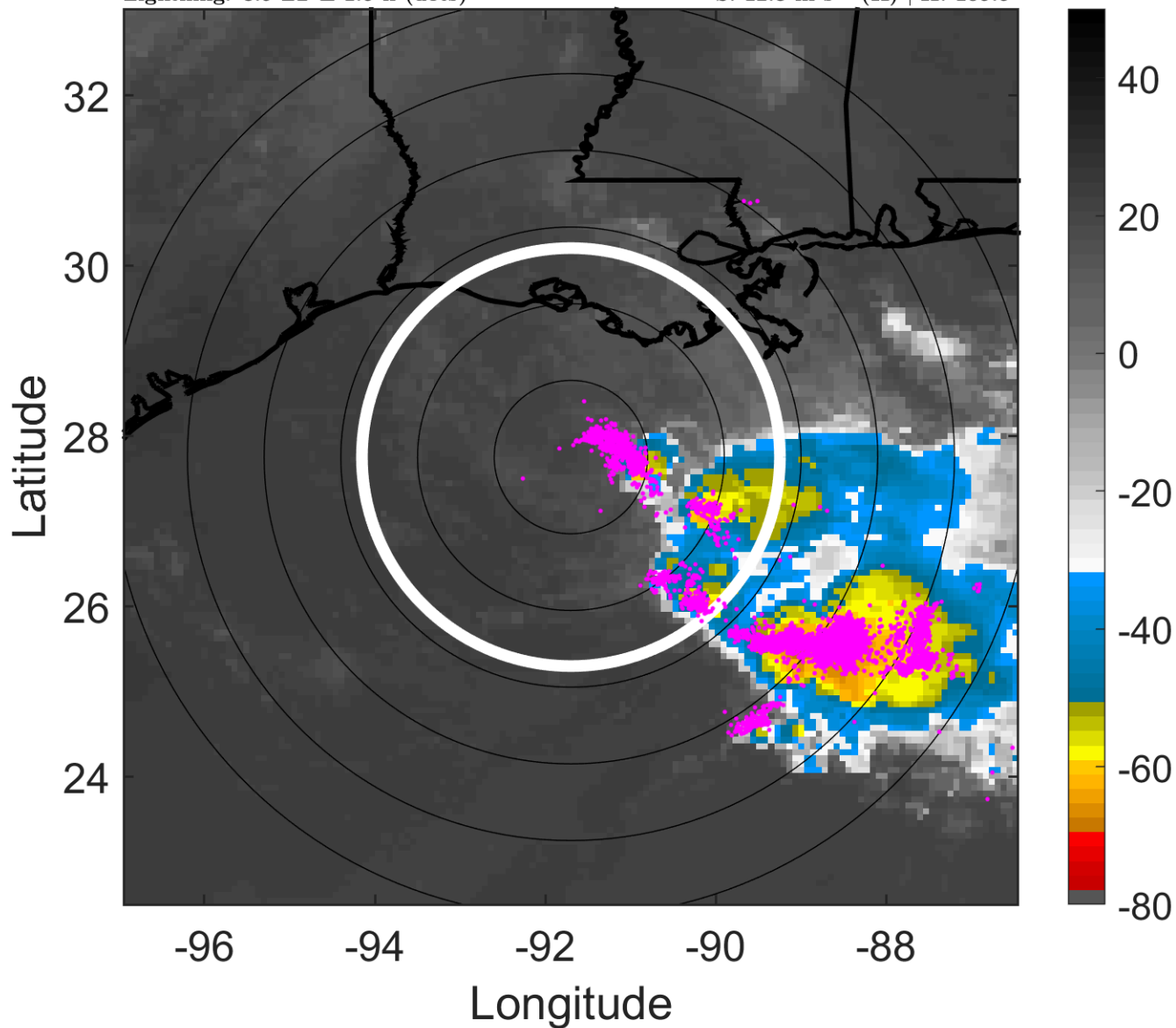
t: 2013100515 (8.9 LT)

Lightning: 8.9 LT  $\pm$  1.5 h (dots)

PT: NP | EA: INACT

12L (KAREN) | 37.5 kt TS

S: 12.3 m s<sup>-1</sup> (H) | H: 105.5°



### 6-h IR BT Differences & Lightning

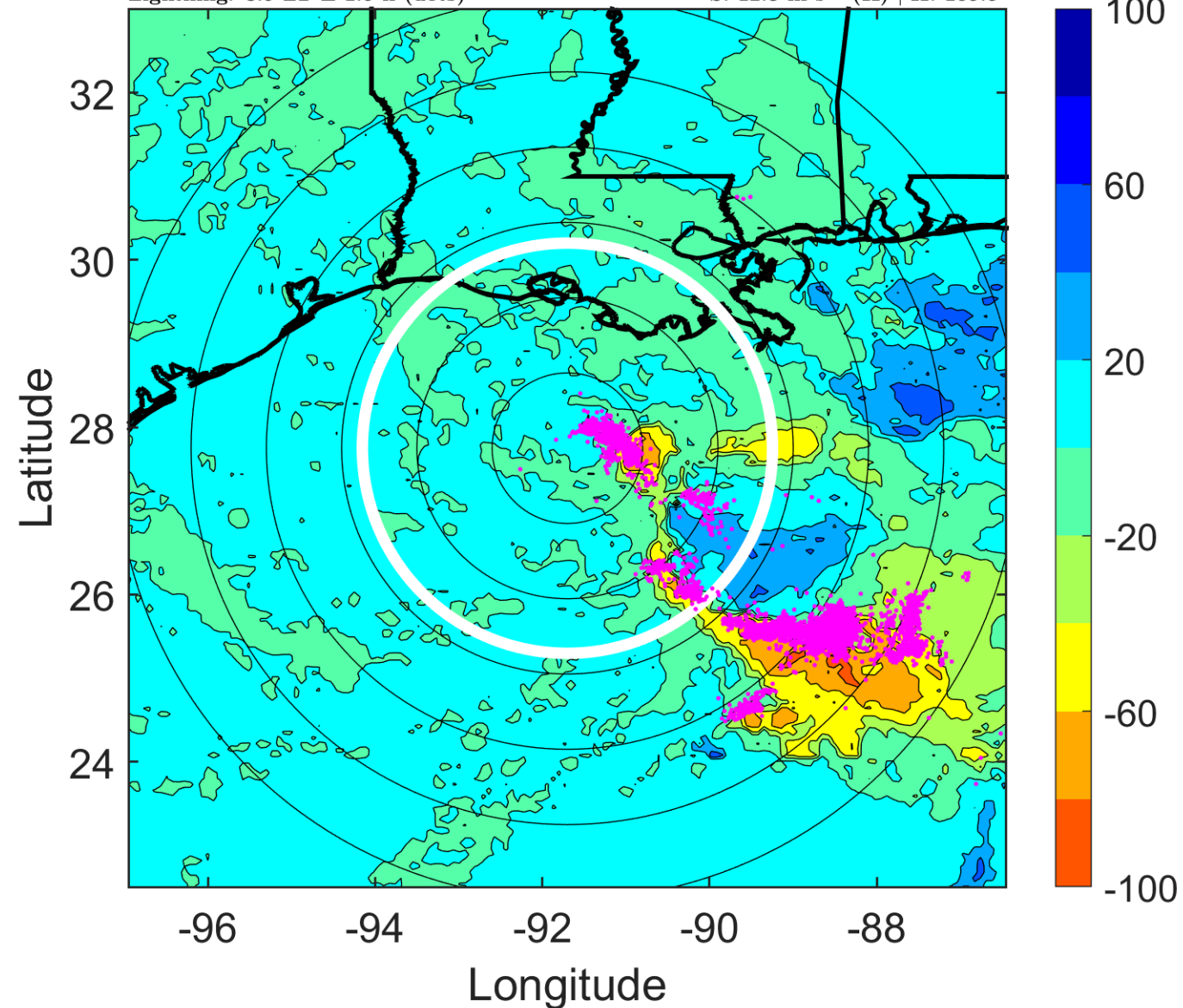
$\Delta$ t: 2013100515 (8.9 LT) - 2013100509 (2.9 LT)

Lightning: 8.9 LT  $\pm$  1.5 h (dots)

PT: NP | EA: INACT

12L (KAREN) | 37.5 kt TS

S: 12.3 m s<sup>-1</sup> (H) | H: 105.5°





### IR BT & Lightning

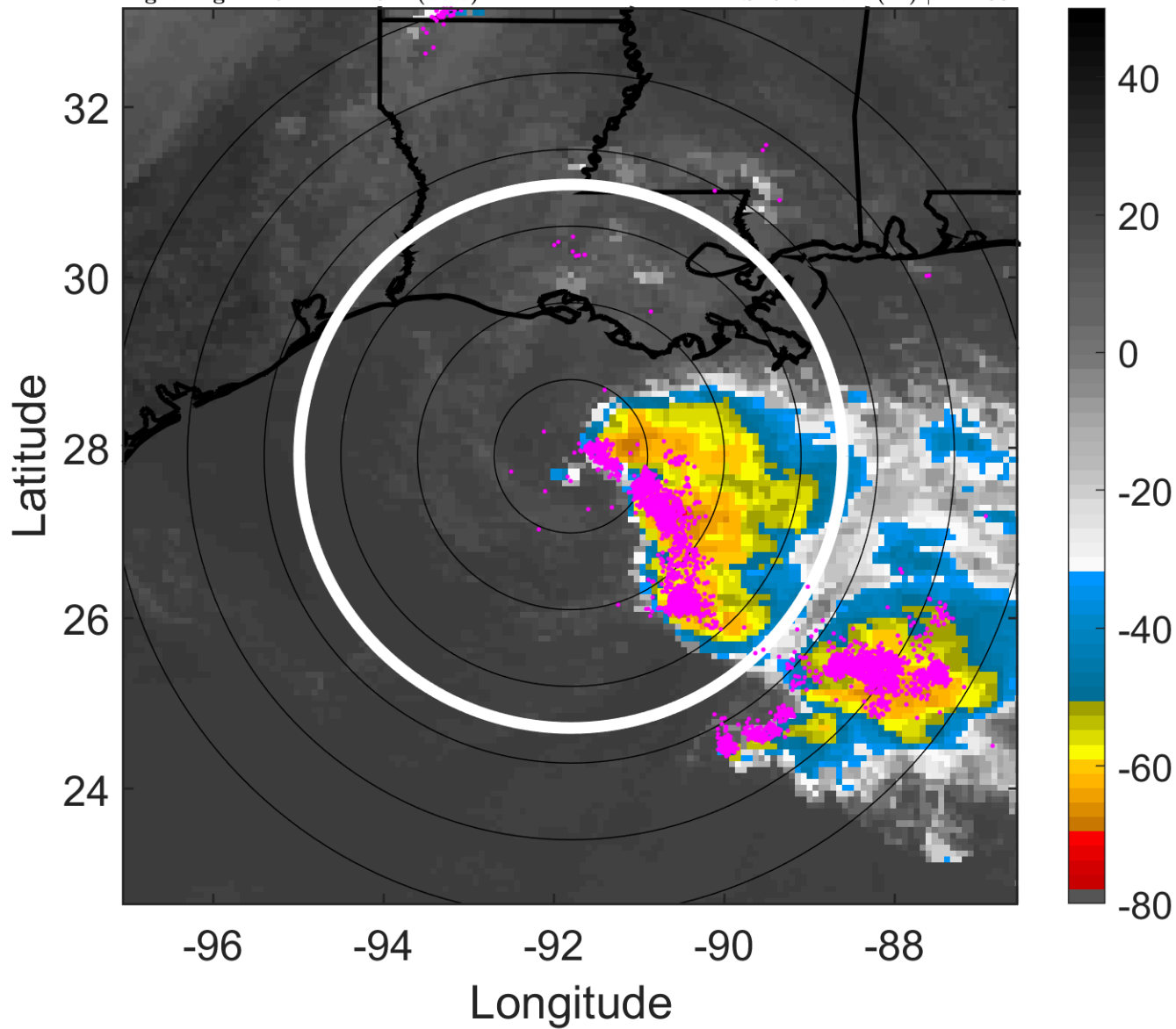
t: 2013100518 (11.9 LT)

Lightning: 11.9 LT  $\pm$  1.5 h (dots)

PT: NP | EA: INACT

12L (KAREN) | 35 kt TS

S: 9.6 m s<sup>-1</sup> (M) | H: 103°



### 6-h IR BT Differences & Lightning

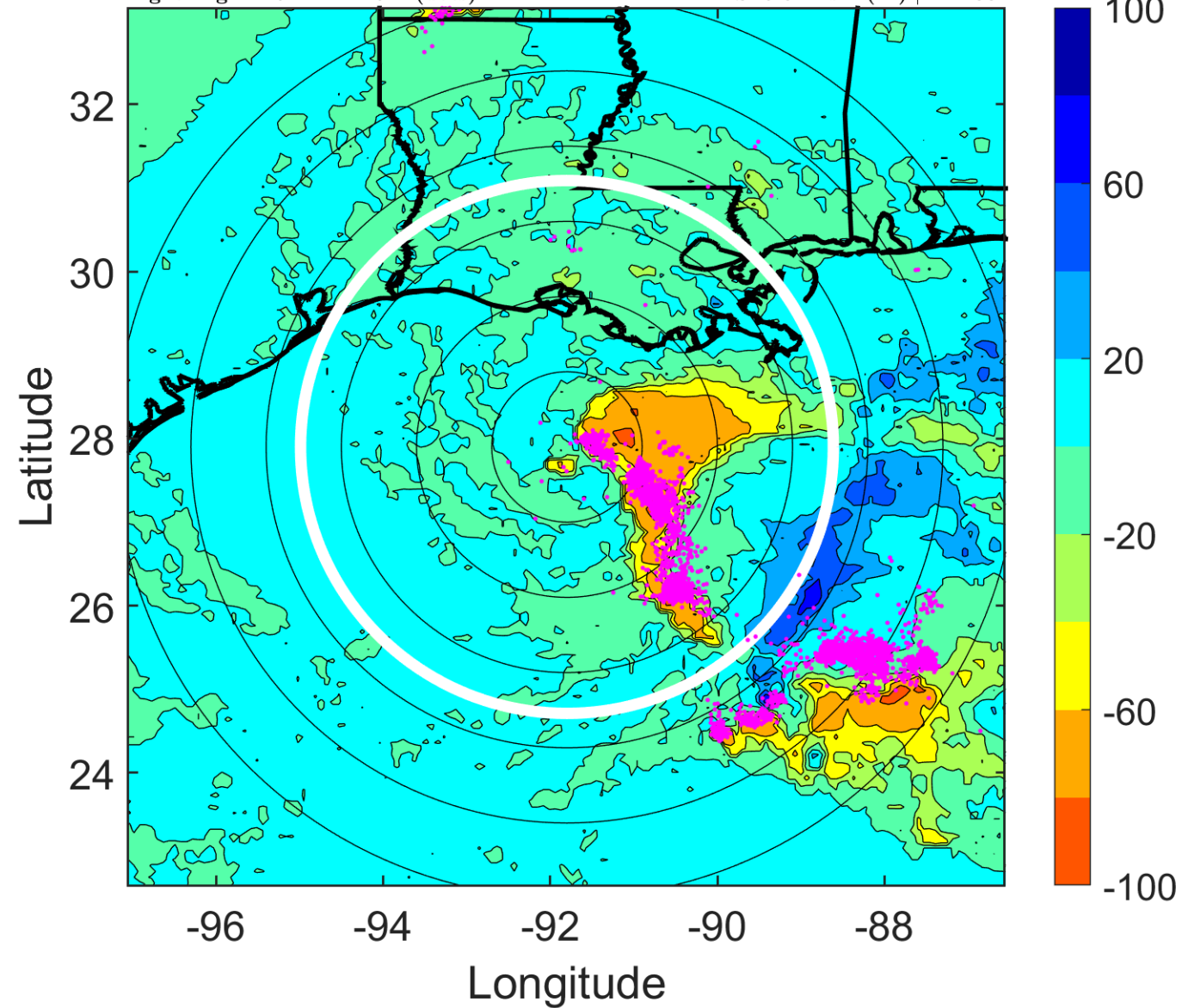
$\Delta$ t: 2013100518 (11.9 LT) - 2013100512 (5.9 LT)

Lightning: 11.9 LT  $\pm$  1.5 h (dots)

PT: NP | EA: INACT

12L (KAREN) | 35 kt TS

S: 9.6 m s<sup>-1</sup> (M) | H: 103°



### IR BT & Lightning

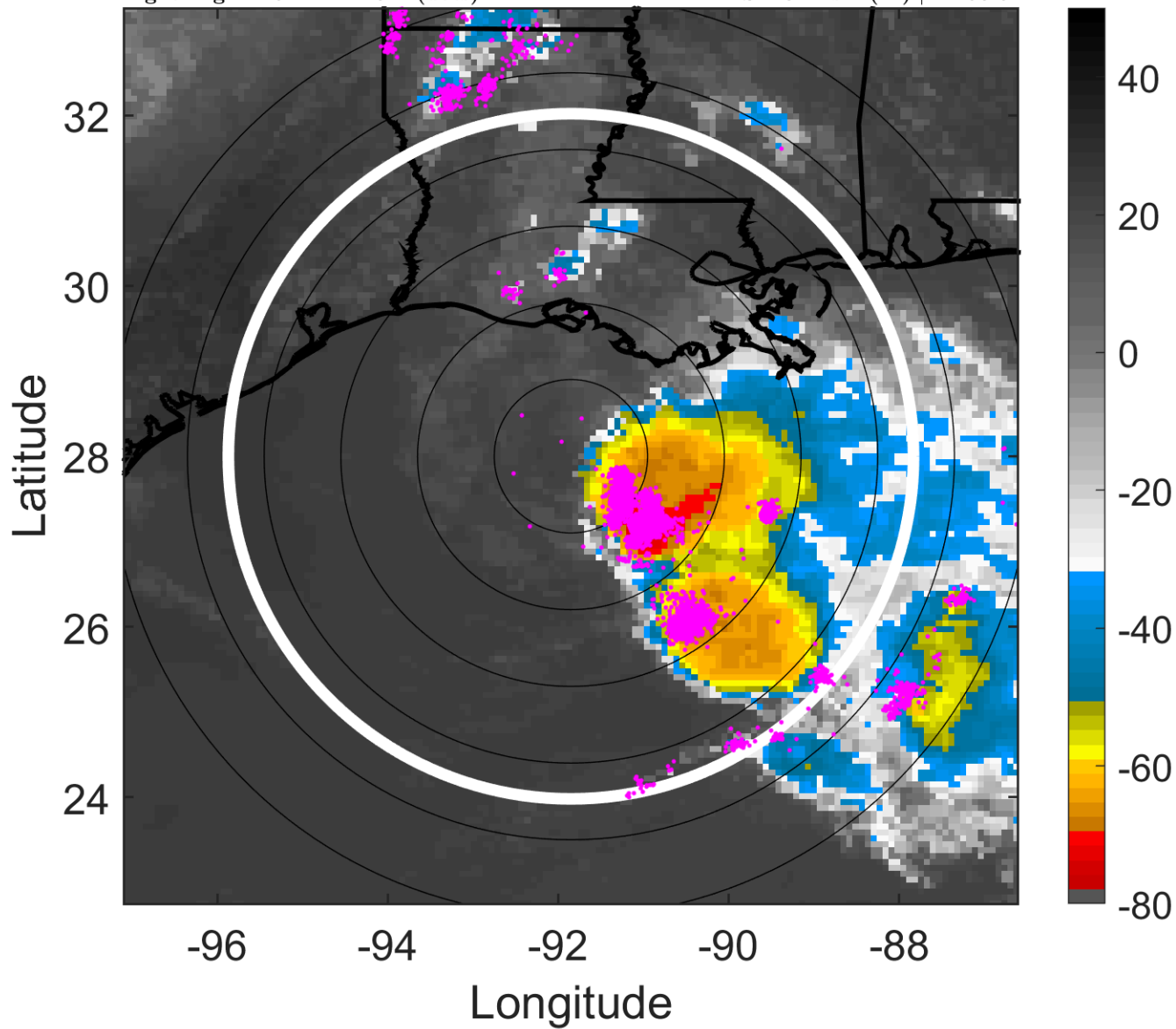
t: 2013100521 (14.9 LT)

Lightning: 14.9 LT  $\pm$  1.5 h (dots)

PT: NP | EA: INACT

12L (KAREN) | 32.5 kt TD

S: 10 m s<sup>-1</sup> (M) | H: 93.5°



### 6-h IR BT Differences & Lightning

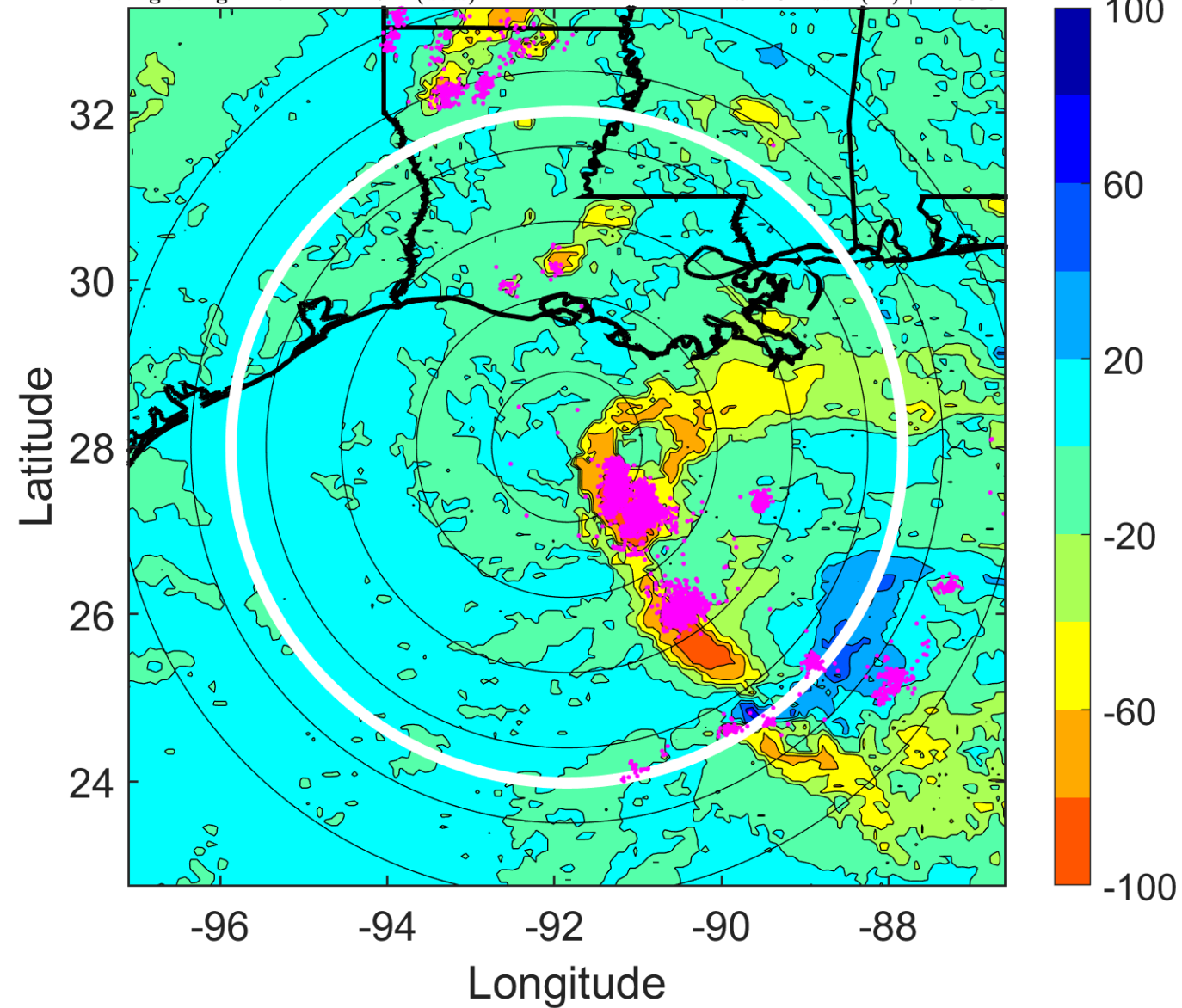
$\Delta$ t: 2013100521 (14.9 LT) - 2013100515 (8.9 LT)

Lightning: 14.9 LT  $\pm$  1.5 h (dots)

PT: NP | EA: INACT

12L (KAREN) | 32.5 kt TD

S: 10 m s<sup>-1</sup> (M) | H: 93.5°



### IR BT & Lightning

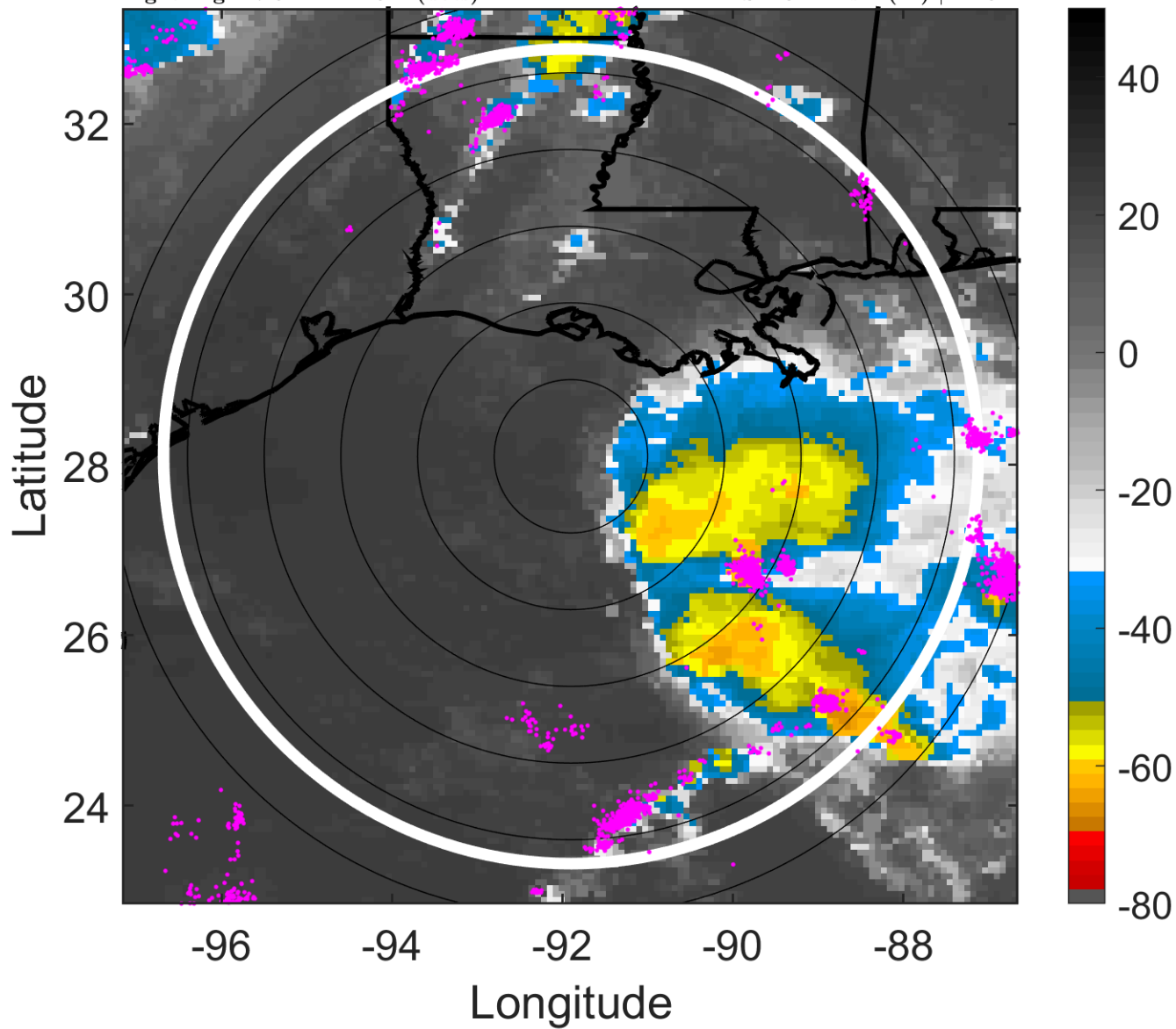
t: 2013100600 (17.9 LT)

Lightning: 17.9 LT  $\pm$  1.5 h (dots)

PT: NP | EA: INACT

12L (KAREN) | 30 kt TD

S: 10.4 m s<sup>-1</sup> (M) | H: 84°



### 6-h IR BT Differences & Lightning

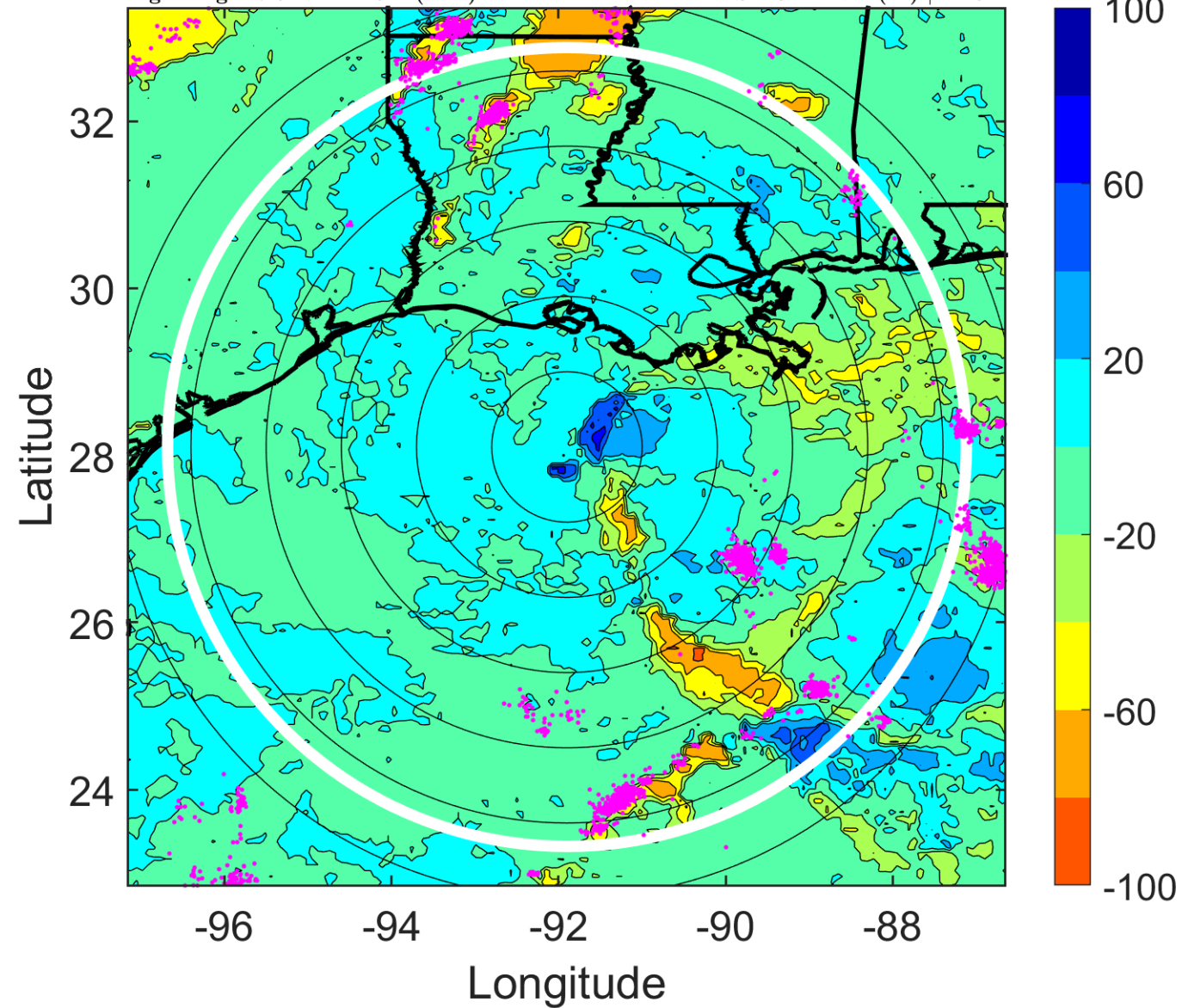
$\Delta$ t: 2013100600 (17.9 LT) - 2013100518 (11.9 LT)

Lightning: 17.9 LT  $\pm$  1.5 h (dots)

PT: NP | EA: INACT

12L (KAREN) | 30 kt TD

S: 10.4 m s<sup>-1</sup> (M) | H: 84°





### IR BT & Lightning

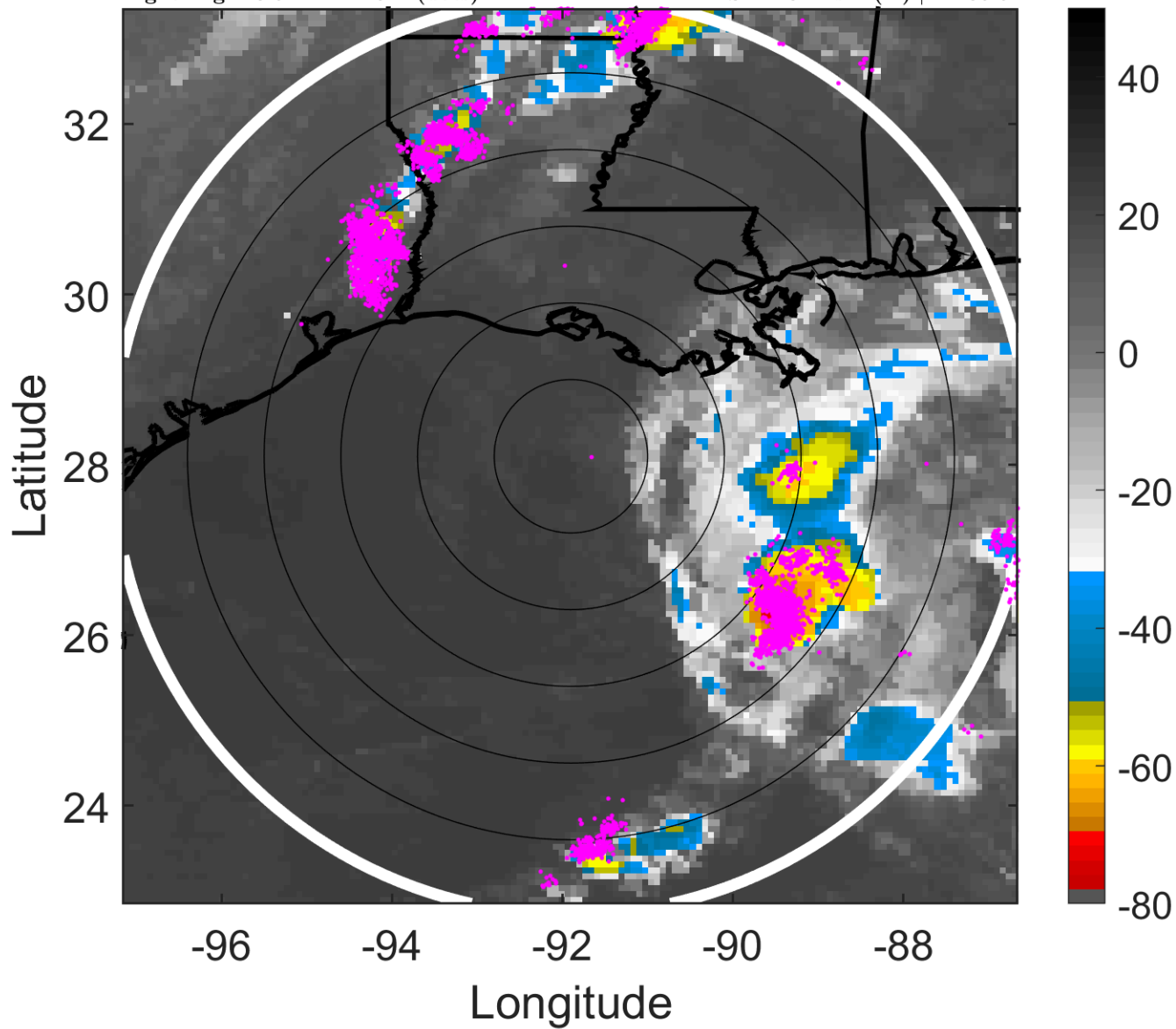
t: 2013100603 (20.9 LT)

Lightning: 20.9 LT  $\pm$  1.5 h (dots)

PT: NP | EA: INACT

12L (KAREN) | 27.5 kt TD

S: 11.3 m s<sup>-1</sup> (H) | H: 86.5°



### 6-h IR BT Differences & Lightning

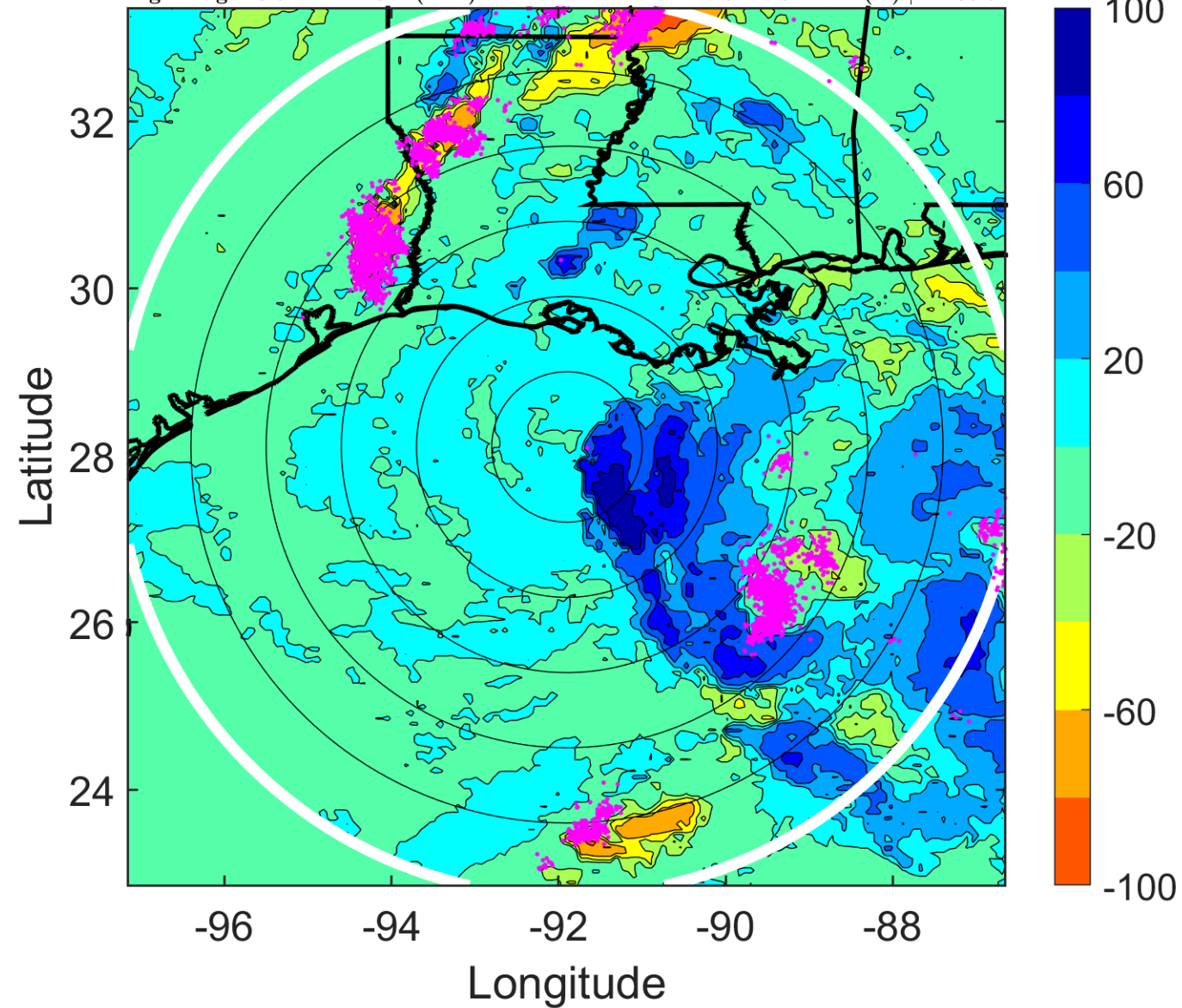
$\Delta$ t: 2013100603 (20.9 LT) - 2013100521 (14.9 LT)

Lightning: 20.9 LT  $\pm$  1.5 h (dots)

PT: NP | EA: INACT

12L (KAREN) | 27.5 kt TD

S: 11.3 m s<sup>-1</sup> (H) | H: 86.5°



### IR BT & Lightning

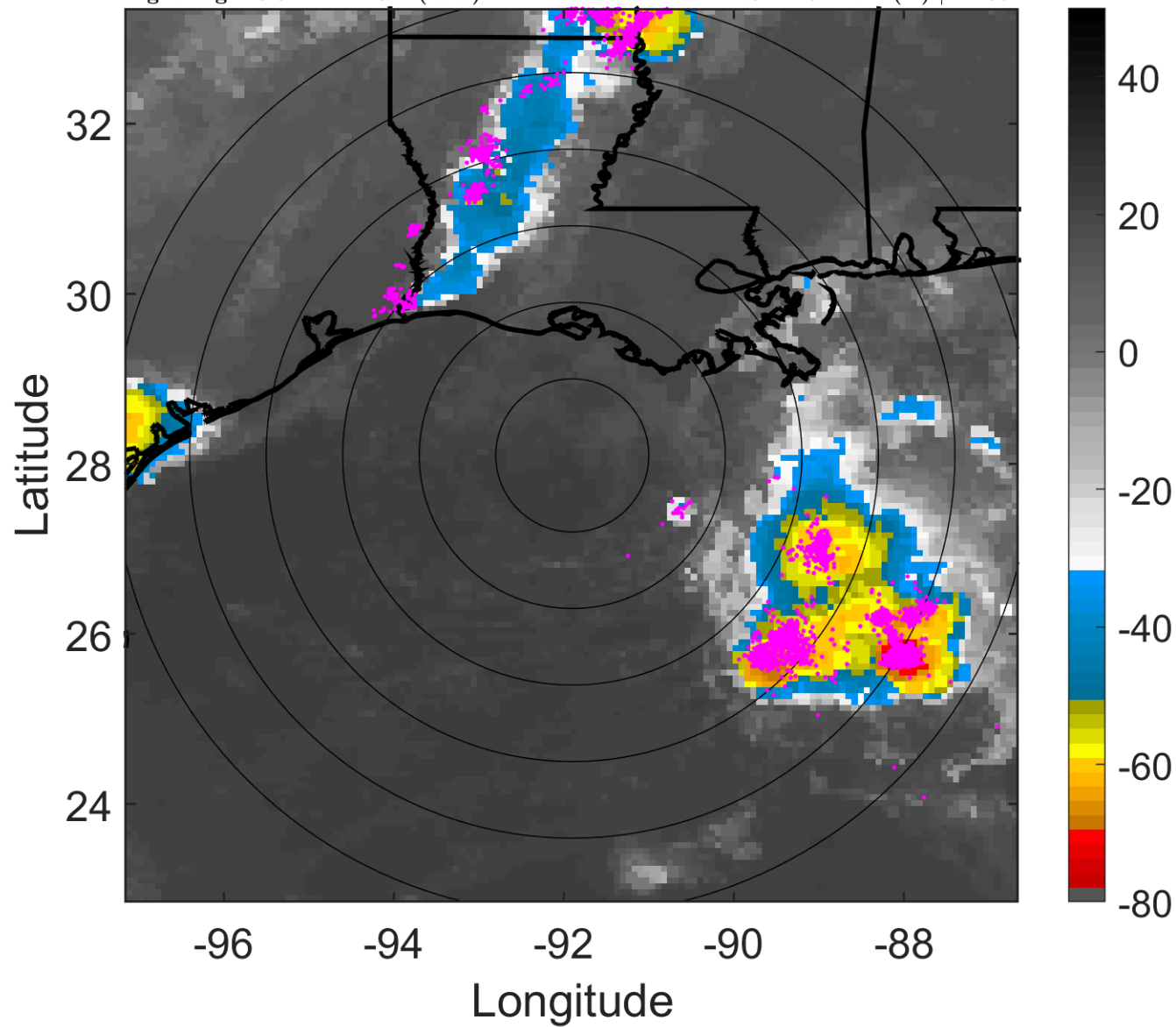
t: 2013100606 (23.9 LT)

Lightning: 23.9 LT  $\pm$  1.5 h (dots)

PT: NP | EA: INACT

12L (KAREN) | 25 kt TD

S: 12.3 m s<sup>-1</sup> (H) | H: 89°



### 6-h IR BT Differences & Lightning

$\Delta$ t: 2013100606 (23.9 LT) - 2013100600 (17.9 LT)

Lightning: 23.9 LT  $\pm$  1.5 h (dots)

PT: NP | EA: INACT

12L (KAREN) | 25 kt TD

S: 12.3 m s<sup>-1</sup> (H) | H: 89°

